

"Nunsense" is habit forming

NUNSENSE

Written and directed by Dan Goggin. -
Playing nightly Tuesday through Sunday.
Boston Shakespeare Theater, 52 St. Botolph Street.

By MICHAEL J. GARRISON

HOW DOES A GROUP OF FIVE NUNS raise enough money in one night to bury four other nuns who are on ice in their freezer? The Little Sisters of Hoboken decide to put on a variety show dedicated to the tenet: "Nunsense is habit forming." The result is two hours of humor that even non-Catholics will find hilarious.

The five nuns who stage the show, led by Sister Mary Regina, represent the most talented of their order still alive. While some of the convent was out playing bingo with the Maryknolls, the rest ate a particularly bad batch of vichyssoise prepared by their chef, Sister Julia, Child of God. Upon the return of the bingo players, they found 52 nuns face-down in cold soup.

In order to raise the money needed for burial, the nuns sold greeting cards. This venture proved a great success, until the Reverend Mother, Sister Mary Regina, spent the last of the money on a new VCR. Unfortunately, four nuns were still left to be buried. So they were stuck in the freezer, over the objections of Sister Julia and the state health department.

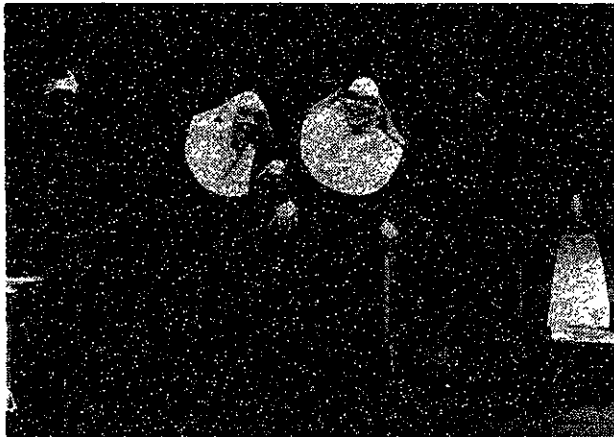
The sisters then take over the stage at Mt. Saint Helens School — after promising not to touch the set for *Grease* that the students had built. By the end of the show the audience is converted; nuns can be entertaining.

From the opening song to the closing remarks, the nuns reveal their deepest desires: Sister Mary Leo wants to be a ballerina; Sister Mary Amnesia wants to remember her name; Sister Mary Hubert hopes to be a saint; Sister Mary Regina wants to be a star; and Sister Mary Robert Anne just wants a solo.

Some sequences stand out especially. Sister Mary Amnesia, in her first solo appearance, conducts a short quiz on the song directly preceding it. She gives the audience awards for correct answers, including a St. Christopher medal. "I know St. Chris-

topher isn't a saint anymore," she explains, "but we just bought a whole batch of them at a huge discount."

Sisters Mary Regina and Mary Hubert present the cookbook of Sister Julia which features, among other gems, the *hors d'oeuvre* served at the Last Supper. "Host Toasties" serves 13.



The sisters prepare to shuffle off to Buffalo.

Another special moment is Sister Mary Leo's "Dying Nun" ballet. The youngest nun comes onto the stage with her headpiece starched into a wing. Sally Fields meets botulism.

Sisters Mary Robert Anne and Mary Amnesia steal the show. Robert Anne is the most streetwise of the nuns, having grown up in a poor Brooklyn neighborhood. She explains that she not only drives the convent car, but can also strip it in ten minutes.

Sister Mary Amnesia, who showed up one day claiming that a crucifix had fallen on her head, pleasantly amuses with her utter lack of concentration. After an episode where she completely fails as a ventriloquist and embarrasses the other nuns, Sister Mary Regina confides to the audience, "We are hoping that when she regains her memory she will remember being a Franciscan."

All four *Tech* reviewers enjoyed this production. But be warned, chewing gum in the audience will be confiscated!

(Editor's note: Julian West, Ronald E. Becker, and Marie Coppola also contributed their opinions to this review.)

Jet Propulsion Laboratory/CALTECH
Campus Interviews Th., Oct. 30 & Fri., Oct. 31

BREAKING THE SPEED LIMIT

JPL led the way, into deep space and the planets. Now, our EEs are shattering the computer speed barrier and unplugging von Neumann architecture bottlenecks with advanced concurrent processors. Our goal is 1-10 gigaflops within the next three years.

Our Hypercube computer contains up to 1024 processors. Each processor is linked to its neighbors via fiber optics. At a tenth the cost of present supercomputers, the Hypercube is revolutionizing scientific computing.

JPL offers scientists and engineers unrivaled vistas in planetary and space disciplines.

Meet with a JPL campus representative. Compute your qualifications in Electrical Engineering and Computer Science. Learn how YOU can help break the speed limit.

An Equal Opportunity Employer M/F

JPL
Jet Propulsion Laboratory

Special Student and Youth Fares to SCANDINAVIA

On Scheduled Airlines!

The inexpensive way to get to Scandinavia and other destinations in Europe, Asia, Africa and the Middle East.

Fall/Winter Rates		OW	RT
From New York	Copenhagen	\$230	\$395
	Oslo	230	395
	Stockholm	230	395
	Helsinki	270	475
From Chicago	Copenhagen	\$235	\$400
	Oslo	275	485
	Stockholm	275	485

Fares also available for Los Angeles & Seattle. Book Now For Your Christmas Holiday!

For Reservations and Information Call:

WHOLE WORLD TRAVEL

Serving the Student/Youth Market for more than 16 years!
17 E. 45th St., New York, NY 10017
(212) 986-9470

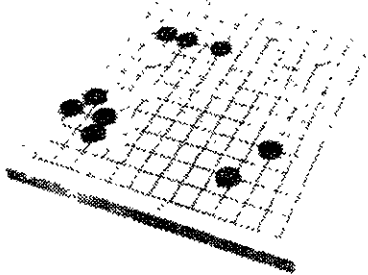
TRY A GAME TOUGHER THAN CHESS, OR BRIDGE!

GO requires the skill of a Grandmaster and the courage of a Samurai warrior! GO is Japan's most popular board game.

The game appears remarkably simple. You only need a board, a set of stones, and a few easy rules. Playing is not as simple. GO requires the use of subtle strategy. The objective is to conquer territory. Position, influence, sacrifices, feints, and indirect attacks are keys to winning.

Expert players strive to make efficient moves that simultaneously attack and defend, as part of their overall strategy. As in real warfare and business, it is possible to win all the skirmishes, yet lose the war.

Ishi Press International offers by mail a complete selection of quality GO sets and instruction books—Write For Our FREE Catalog.



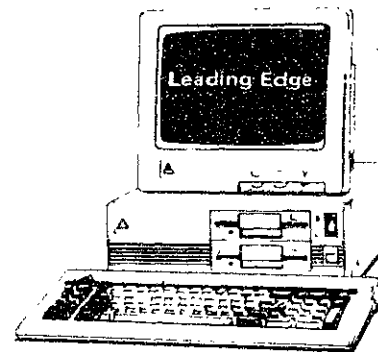
INTRODUCTORY GO SET: 11 1/8" x 12" x 1/2" solid Katsura wood board with 9x9 grid 1st side, 13x13 grid 2nd side; 169-pc. set of plastic stones, 85 black & 84 white; plus 48-pg. instruction book **\$16.95**

Your Satisfaction Guaranteed Or Your Money Back!

HOW TO ORDER: BY MAIL send your Name, Address & Phone No. with your Personal Check, Money Order, or charge it via Visa or MasterCard (with your card no., expir. date & sig.), for the amount of purchase, plus \$2.85 for P/H (CA Res. add 6 1/2% Sls. Tax); OR PHONE (415) 964-7294 during bus. hrs. PST.



ISHI PRESS INTERNATIONAL, Dept. IG1
1101 San Antonio Road, #302
Mountain View, CA 94043



IN STOCK

Leading Edge® Model 'D' Computer™

"Best buy for price/performance."

Consumer Reports

"... is as fully compatible to I.B.M. as one can get without hearing from I.B.M.'s lawyers."

New York Times

Special college I.D. discounts.

Also in stock: 1200 and 2400 baud Modems.

Also carrying Toshiba, Televideo, Zenith, Wyse, Atari, and the Amazing Amiga.

CLUB COMPUTER

Hardware □ Software □ Accessories □ Training □ Service

12 Mifflin Place, Harvard Square 876-6000
2 hours free parking at University Place Garage

Leading Edge is a registered trademark of Leading Edge Products, Inc.
The Model 'D' is a trademark of Leading Edge Products, Inc.
I.B.M. is a registered trademark of International Business Machines Inc.

