

# sports

## Hockey slaps Lowell Tech

By Lou Odette

*Editor's note: Lou Odette is a member of the Varsity hockey team.*

MIT hockey returned from Maine Saturday night with a convincing 8-3 victory over the University of Southern Maine (USM).

In the first period, both MIT and USM came out skating hard. The teams kept the scorer busy, exchanging goals twice, before Rejean Meisner '81 tallied to give MIT a 3-2 advantage at the end of one.

In the second period it was the goaltenders' turn to control the game. Freshman Larry Wagner was sensational for MIT, stopping 9 shots in the course of defusing USM's power play. At the other end, USM's goalie missed only one, a tremendous blast from Meisner that increased MIT's lead to 4-2.

Now, in college hockey, a two goal lead isn't much at all, so the Engineers were on the spot in the third period with the team that scored next in a position to take command.

It was Al Strong '80 who ended the suspense, coming through once again in an important situation and finishing off an end to end rush with his third goal of the night.

MIT just skated away with it after that. Goals by seniors Dave Tohir, Rick Bryant and Kevin Dohart established the final result, while on defense, Wally Corwin, Scott Schwartz '81, and Steve Mickel '80 were unbeatable.

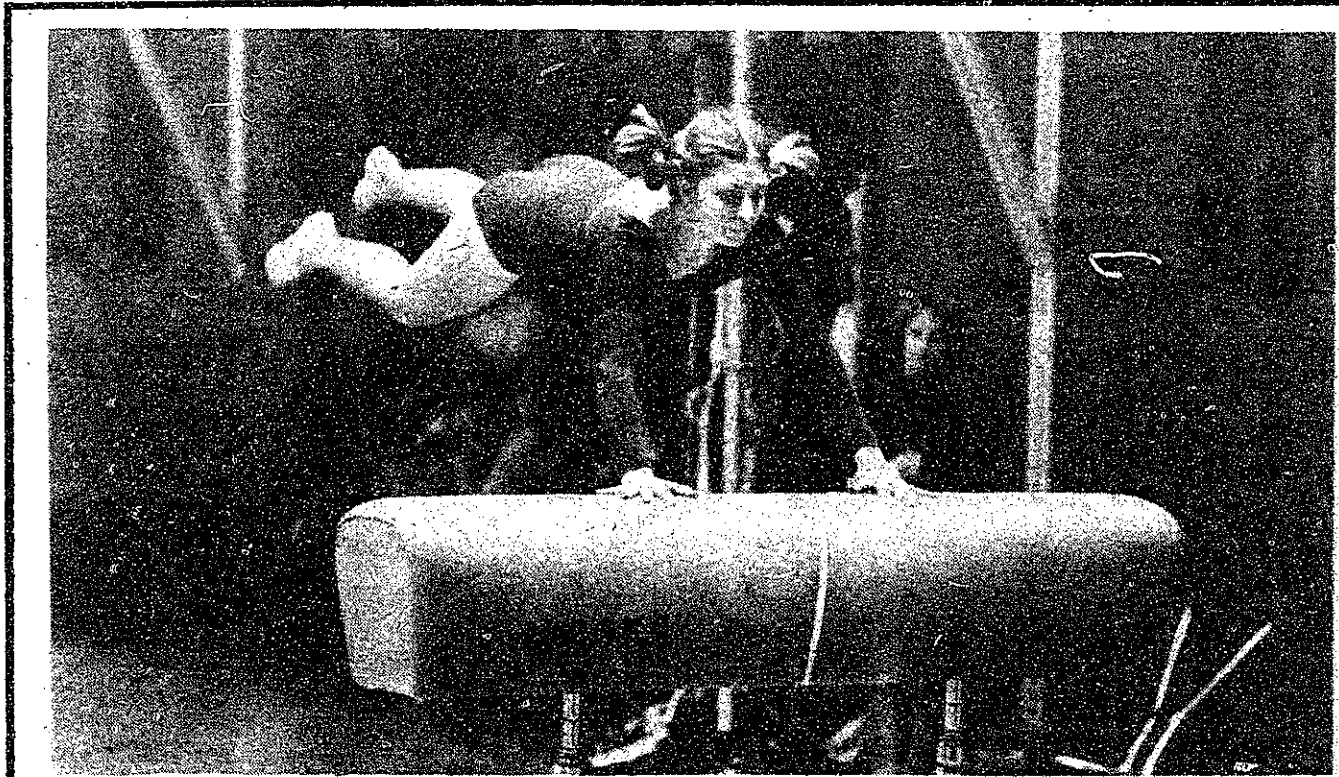
MIT plays Suffolk at Brigg's Arena at 7pm tonight, and Bates at the same time, same place Saturday night.

### on deck

**Wednesday**  
Men's basketball at Merchant Marine ..... 7:45pm  
Hockey vs. Suffolk ..... 7pm  
Swimming vs. Tufts ..... 5pm  
Track vs. Colby at Tufts .. 6pm

**Thursday**  
Men's basketball at Yeshiva University ..... 8pm  
Squash at Bowdoin ..... 7pm

**Friday**  
Women's basketball vs. Amherst ..... 7pm  
Women's fencing vs. Clemson ..... 3pm  
Men's fencing vs. Clemson and North Carolina ..... 3pm  
Squash vs. Middlebury ... 4pm  
Squash vs. Franklin and Marshall ..... 7pm



Gymnast Linda Dolny '80 vaults into action during the meet against Dartmouth last Saturday. The women lost 100.2 to 72.95, while the men lost 172.55 to 155.95. (Photo by Joel West)

### Interested Seniors & Grad Students

See the

## UNIVERSE

A film about Cosmology & Space Exploration

Thursday, Jan. 25 3:30pm  
Room 3-133

Sponsored by the Jet Propulsion Lab  
California Institute of Technology

# You don't need to go to Harvard Sq. anymore.

**GRAPHIC ART 2**  
694 Massachusetts Avenue  
CALL 492-2727  
20% DISCOUNT to students/professionals

**Central Sq. has Graphic Art 2.**  
Everything in architectural, graphic art, fine art and stationery supplies.

# Party

Out there in the Atlantic Ocean on a sunshine beach there's going to be an outbreak of revelry this vacation break. And after the sun goes down... well, you know the effect that moonlight has on a celebration. We can only hope it won't be a full moon.

Because from Jan. 13 through April 21 we're opening Nassau and Paradise Island to a wave of American college students. We have reason to believe that wave may reach tidal proportions. Probably because of the price: \$269 including air fare and 7 nights hotel.

So there it is, young America. We guarantee you the best of dancing on the beach, water sports and a roaring party. Beyond that, you're invited to improvise. And since your talent for good timing is legendary, we've made preparations for you. We're going to be ready.

With open arms.

## FLYING

501 Madison Avenue  
New York, N.Y. 10022  
(212) 355-4705  
toll free (800) 223-0694

INTELLIGENT COLLEGIATE HOLIDAYS INC.

\$269

- Jan. 13-Jan. 20
- Jan. 20-Jan. 27
- Jan. 27-Feb. 3
- Mar. 3-Mar. 10
- Mar. 10-Mar. 17

\$319

- Mar. 17-Mar. 24
- Mar. 24-Mar. 31
- Mar. 31-Apr. 7
- Apr. 7-Apr. 14
- Apr. 14-Apr. 21

Alright! Sounds good! I've checked the week I want to party and enclosed my \$50 deposit.

Sounds good but I'd like to hear more. Send me your brochure.

Name \_\_\_\_\_  
Address \_\_\_\_\_  
City \_\_\_\_\_ State \_\_\_\_\_ Zip \_\_\_\_\_  
Telephone \_\_\_\_\_

**NASSAU & PARADISE ISLAND. BAHAMAS COLLEGE WEEK.**