

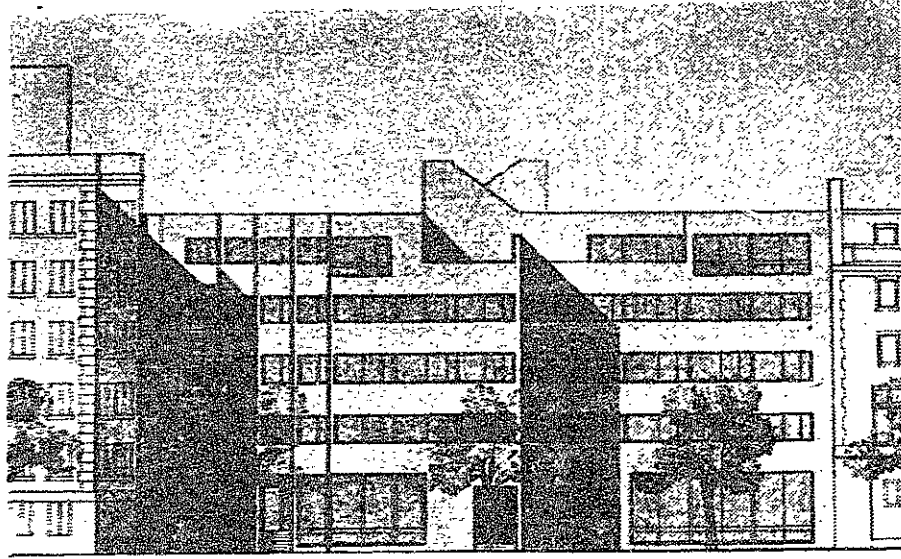
Final plans set for new house

By Ken Knyfd

When we return to Cambridge next September, there may well be a new building on campus. According to Paul Bataglia '73 of Kappa Sigma fraternity, there is a strong probability that ground will be broken this summer on a new consortium for KS and ATO. The proposed housing unit will be located in what is now the parking lot between Burton and the Deke house.

Originally conceived five years ago as a joint effort of several fraternities, the project has been carried forward by ATO alumnus Jim Ecker. The group has changed composition repeatedly until by this fall only KS and ATO were left. The only remaining obstacle to construction is finalizing the tax rate on the property. However, Bottaglia reports the fraternities and the city of Cambridge are near agreement on that.

The MIT housing office views this project as an important part of plans to revitalize the Amherst Alley area. The alley itself will be moved away from Baker House. The house will be five stories high, the same as the existing structures on either side, and will blend with their architecture. Moreover, the building



Artist's conception of the planned KS-ATO house on Memorial Drive.

will be constructed in such a way as to ease its conversion to a dormitory if either of the fraternities should fail.

With such an obvious interest in the project, MIT has arranged for loans to cover approximately three-quarters of the construction costs. The loans are coming from the Independent Residence Development Fund. This fund was established several years ago to allow alumni to make contributions earmarked for specific projects or living groups and still maintain the tax breaks for giving to a non-profit organiza-

tion. The total cost of construction is expected to be over one and a quarter million dollars.

The building will be composed of two separate units, each designed to house forty five individuals in one building. Representations of the fraternities emphasized that this would make it ideal for coed living, if it ever became a dormitory. The architect for the project is Harry Ellenzweig who did the renovations for East Campus and the Math Department, and several other MIT buildings.

Finboard allocates \$32K

(Continued from page 1)

radiation AM broadcasting, available only on the MIT campus. It is not allowed to accept commercial advertising on its non-profit, educational FM station which is available throughout the Greater Boston community.

Consequently, Finboard granted a subsidy equal to the sum of last year's allocation and the Dean's office subsidy totalling \$5000.

There were several issues raised concerning the Debate Society. Foremost among these

was the disproportionate per capita funding of the organization. It was felt that debate is a competitive non-athletic sport and in order to compete on the level of the Debate Society's ability, requires a high per capita funding to cover transportation, lodging and entrance fees to attend national tournaments. By a 5-3-2 vote, Finboard approved a grant of \$6850, similar to last year's \$7250. This year's allocation was almost \$3000 less than requested.

Other business discussed included a redefinition of Thursday's financial status. The activity was given a one year grace period to demonstrate fiscal responsibility and make a concerted effort to reach financial solvency. Though as a policy, it would not subsidize normal operating expenses, Finboard did grant Thursday \$260 for minor capital improvements.

A number of groups did not receive funding because specific budget proposals, primarily in the area of cultural presentations, were not presented to Finboard. Finance Board has a policy of not approving blanket funding for events without presentation of an itemized proposal.

Current members of Finance Board are: Natalie Parks '73 (chairman), Fred Hughes '73 (vice-chairman), Bob Elkin '73, Rob Hunter '73, Joy Judell '73, Steve Roy '73, Larry Brazil '74, Jim Cook '74, Fred Duncanson '74 and Mitch Epstein '74.

Proposed Finance Board budget for 1972/3

	Op.Exp.	ACF*	CEF*
Student Activities			
African Students Association	\$300	\$	\$
Arnold Air Society	50		
Black Students Union	(1000)†		
Chess Club		1200	
Chinese Students Club	200		
Classical Guitar Society	100		
Club Latino	90		
Commando Group	65		
Dance Workshop	370		
Debate Society	2000	4850	
Ecology Action	150		
Educational Studies Program	1265		
Electronics Research Society	75		115
International Students Council	200		
Rocket Society	350	200	150
Science Fiction Society	800		
Soaring Association	1500		
Strategic Games Society	115		
Technology Community Association	7725		
Thursday	260		
Tiddlywinks Association	20	430	
Tropical Plant and Orchid Club	125		
Urban Action	2575		
WIMX (Radio Society)	160		
WTBS	5400		
Zero Population Growth	335		
	\$25,130	\$6680	\$ 305
Student Government			
Association of Student Activities	925		
Stud. Comm. on Educational Policy	250		
Stud. Information Processing Board	1740		
Undergraduate Association			
Salaries and office expenses	7445		
Special Projects Fund	3500†		
Secretary General	300		
Nominations Committee	100		
Finance Board			
Salaries and office expenses	12400		
Treasurers conference	275		
	\$26,935		
Capital Equipment Fund			
-unallocated			\$2695
Unallocated Reserves	\$8955		
Total expected available funds	\$70,800		

*ACF is the Activities Competition Fund

CEF is the Capital Equipment Fund

† These funds are reserved and will be allocated upon presentation of a specific proposal.

Open 8:00 to 5:30

354-6165

Larry's Barber Shop

"for that well-groomed look"

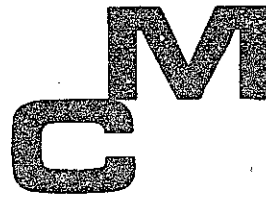
Razorcutting, sun lamp facial

545 Tech Square

(opposite garage

Serving Techmen for over 35 years

behind East Campus)



MASTERWORKS CHORALE

Allen Lannom, Conductor presents

DURUFLÉ — Requiem POULENC — Gloria

Saturday, May 20, 1972 at 8:30 P.M.
Kresge Auditorium, M.I.T., Cambridge

Tickets \$5.50, \$4.50, \$3.50. Student rates available
Call 244-0984. Also box office sales

Europe CHARTER

Aircraft	Routing	Depart	Return	Cost*
707	Bos/Lon	June 7		\$125
707	Bos/Lon/Bos	June 14	Sept 6	\$179
707	Bos/Lon/Bos	June 20	Aug 30	\$189

Meals and open bar

*includes \$15 administrative charge

Deposit holds seat

Non-stop jet

Also: **STUDENT/YOUTH FARE \$213**

Students & Non-Students, 12-25 years

Contact:

Joe Walkusb

STUDENTS INTERNATIONAL

Student Center

621 Church Street

TCA Office

Sponsored By:

Ann Arbor, Michigan 48104

864-6900, x4885

TECH TRAVEL (313) 769-5790

5:15 pm

Tuesday, May 2

Lecture Hall 9-150

Technology and Culture Seminar

Alienation and Economics

Professor Walter A. Weisskopf,
Professor of Economics
Roosevelt University

KENDALL SQUARE OFFICE



8:30 am 'til

3:00 pm - Mon. thru Thurs.

6:00 pm - Fridays



Cambridge Savings Bank

Member FDIC

KENDALL — HARVARD — PORTER SQUARES
Telephone 864-8700

A professional
ABORTION
that is safe,
legal &
inexpensive

can be set up on an
outpatient basis by calling
The Problem Pregnancy
Educational Service
(215) 722-5360

24 hours - 7 days
for professional, confidential
and caring help.