

Pub features relaxation

By Storm Kaufman

The Muddy Charles Pub, which serves inexpensive beer and wine to members of the MIT community over 21, is open to all and provides a pleasant atmosphere in which to eat lunch or dinner.

Organized at the beginning of the 1969 school year, the Muddy Charles, in the words of manager Sam Stroud, "... seems to have grown from a common desire for a place to relax, have a beer, meet new people, listen to music..." It is subsidized by the Graduate Student Council and is officially a non-profit organization, thus allowing it to maintain its prices at significantly less than local restaurants and bars. The Pub is entirely a graduate student operation, from the eight paid grad bartenders to those who keep the books and sponsor special activities.

Complete with wall-to-wall carpeting, drapes, comfortable chairs, music, and a dart board, the Muddy Charles is located on the first floor of Walker, in the southeast corner. Students can bring their meals from the Walker cafeteria and eat in the Pub by just going through the doors at the Memorial Drive end.

All students, undergrads and grads alike, are welcomed at the Muddy Charles which is open Monday through Friday 11 am

to 2 pm and 4:30 pm until everyone leaves.

The beer is Budweiser at a quarter per 10 oz. cup or \$2.50 for a gallon pitcher. The Pub also stocks various Almaden wines at 40 - 50 cents for seven oz. and Boone's Farm for a quarter for the same amount. Soft drinks, nuts, potato chips, and other salty snacks are also sold.

Bartender Paul Engel stressed that the Muddy Charles can handle parties, degree celebrations and such. Given a little advance notice, they can supply almost any quantity of Bud.

Recently, the Pub has been doing fairly well. Lunch and Thursday and Friday nights are

On Deck

Friday
Skiing (V) - St. Lawrence
Carnival
Swimming (V) - New England
Squash (V) - Nationals at Army

Saturday
Gymnastics (V) - New England
Championships, home, 11 am
and 7:30 pm

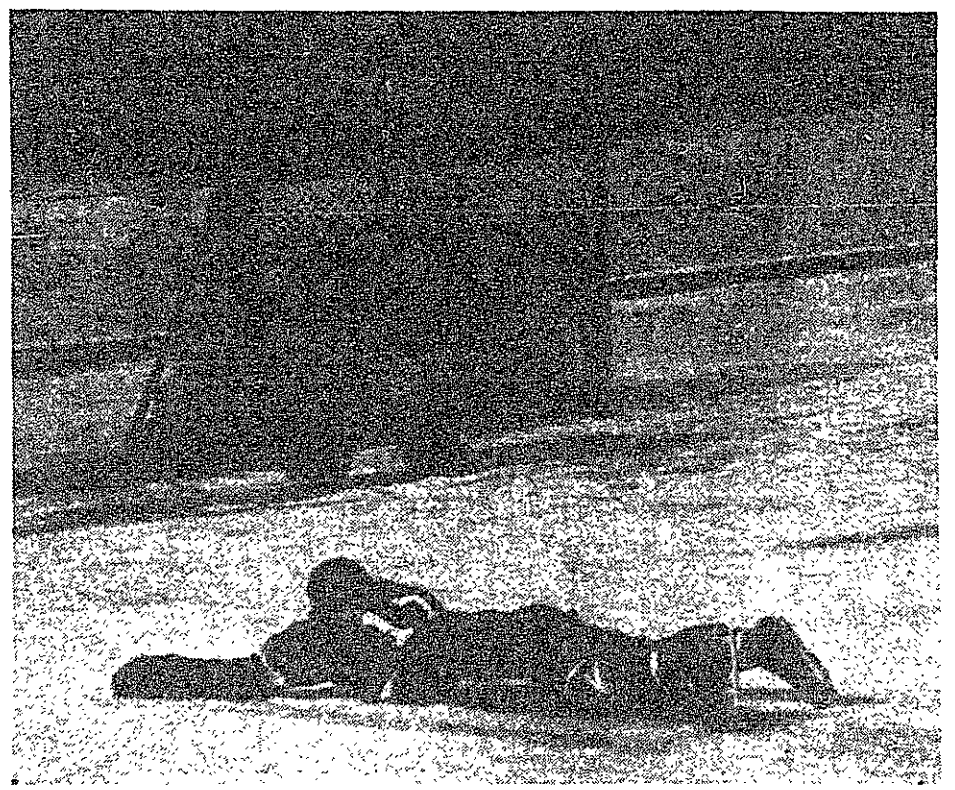
Wrestling (V) - NCAA
tournament, away
Fencing (V) - New England at
Holy Cross

Indoor track (V) - ICAAAA at
Princeton

usually crowded while other times vary. A large number of faculty also visit, and Secretary of the Graduate Student Council Laura Hawkins noted that the Pub is very popular with those in Physical Plant.

However, business is not as good as it could be. To increase interest, special events are being planned. On Registration Day a pub party was held, complete with barmaids. Since then, the presence of barmaids has been erratic, but any girls who admit to drinking age and would like to try their hand at the volunteer job are urged to contact Judy Cornfeld of the Graduate Student Council at 354-7717. Other events are being arranged for the future, including Monday Ladies Nights, dart tournaments, and total consumption contests.

If you're over 21 and thirsty or underage but just don't like the hassling atmosphere of Walker, try dropping by the Muddy Charles sometime soon.



Defenseman Bob Hunter '73 dove headlong on the ice in a desperate attempt to block a shot on goal in the third period of the MIT-Connecticut game played last Monday on Tech ice. The shot was good, slipping under the glove of goalie Mike Schulman '73. MIT's defense was good for two periods in the game, but Connecticut scored five times in the final frame to defeat the Engineers 9-3. It was the last game of the season for the home team, which finished the year with a dismal 2-15 record.

Photo by Brad Billetteaux

Tech takes big winks tilt

By Peter Rubinstein

The MIT tiddlywinks team journeyed to Cornell for the continental championships on February 19-20, and came back an overwhelming victor on all fronts. The 'A' team won the A division competition by a wide margin. The 'B' and 'C' teams finished 1 and 2 in the B division. MIT also had the top pair in each division.

Tiddlywinks teams are made up of three pairs. A pair takes two different colored sets of six winks: Red-Blue pair plays against the Yellow-Green pair. Contrary to popular belief, the main object of the game is not to put winks in the pot as fast as possible. At the beginning of the game, the object is to cover your opponents' winks. This is called squopping and goes on for a time limit of 25 minutes. After time expires, each player gets five turns in which the winkers start to pot. Each potted wink counts for three points; each unsquopped wink is one point.

First place finisher gets 4 tournament points; second gets 2; third 3; and fourth none. If one player pots all his winks, everyone must shoot for the pot. In this case one point is transferred from the losing team to the winning team, making a 7-0 game possible. If one were to attempt to pot out early in the game, the likelihood is that his remaining winks would be squopped, leaving him helpless.

At the continentals, the top pair from MIT's 'A' team, Schiller and Christ, took the

pair's honors in the 'A' division, while Callon and Hirsh easily walked away with the pair's honors in the 'B' division. The issue was not in doubt for long as MIT 'A' broke 40 points (of a possible 63), against all but one opponent. The 'B' team was just as devastating, finishing far ahead of the second finisher, MIT 'C'. The 'C' team was closely followed by Toronto, but clinched second place by demolishing Hyth 'B', an independent team, in their last matchup.

classified advertising

20% to 50% OFF ON ALL STEREO EQUIPMENT, stereo components, compacts, and TV's. All new in factory sealed cartons. 100% guaranteed. All major brands available. Call Mike anytime, 491-7793.

HOUSE FOR SALE: Newtonville, 8-room colonial on wooded quarter-acre, academic neighborhood. Four bedrooms, 1 1/2 baths, dishwasher, disposal, screened porch, garage. Walk to bus, shops, schools. June occupancy. 969-5766.

JOBS ON SHIPS! MEN. WOMEN. Perfect summer job or career. No experience required. Excellent pay. Worldwide travel. Send \$2.00 for information. Seafax, Box 1239-MJ, Seattle, Washington 98111.

EUROPE this SUMMER \$199. NY/LON/NY via BMA 707 Jet. Also BOS/LON/BOS \$219. Only 40 seats available to MIT students, employees and their families. CALL UNI-TRAVEL, 262-2818.

Want to advertise here? Write to Box 29, MIT Branch, Cambridge, Mass.

The Old Vilna Synagogue
Invites you to our Traditional
Orthodox Services:

Friday - Sundown, Sabbath -
9 am
16 Phillips St., Beacon Hill,
Boston

all of the Jewish faith welcome

OVERSEAS JOBS FOR STUDENTS. Australia, Europe, S. America, Africa, etc. All professions and occupations, \$700 to \$3,000 monthly. Expenses paid, overtime, sight seeing. Free information - Write, Jobs Overseas, Dept. F6, Box 15071, San Diego, CA 92115.

PSYCHEDELIC LIGHTING for parties, room decorations, dances, rock concerts. World's largest psychedelic lighting catalog for rentals, sales, lightshows, send \$1 (credited as \$2). Rocktronics, 22-MIT Wendell St., Cambridge, MA 02138. Call EL4-4444.

Singer-guitarist BONNI RAITT benefit concert for female liberation. Sunday, March 5, 8pm. Lowell Lecture Hall, Harvard. Tickets \$2.00 at door. Call 491-1071 for information.

If you don't get
Ziebart
rustproofing here
you won't get
Ziebart
rustproofing

W.F. LACEY & SONS
50 Mystic Ave.
Medford, Mass.
396-2883

Absolute rustproofing

Live and Work in Beautiful Newport Beach, California

DANALAB, INC.

Manufacturer of
Precision Electronic Test Equipment

is seeking

ELECTRONIC ENGINEERS

Interviews will be conducted

Friday, March 10 by

Mr. Norman Walker,

Corporate Vice-President

Contact your College Placement Office
for an Appointment

Danalab, Inc. 500 Newport Center Drive, Newport Beach, California 92660

An Equal Opportunity Employer

MIT Concert Band

John Corley, Conductor

SPRING CONCERT

with the Boston Dance Theater

Works of HOLST, REED, EARLS
HINDEMITH, JENKINS

SUNDAY, MARCH 5, 1972, 3:00 P.M. KRESGE AUDITORIUM

FREE ADMISSION