

APO holds convention here

By Paul Johnston

The New England Sectional Conclave of Alpha Phi Omega Service Fraternity was held at MIT over the weekend of October 14-15. Forty APO brothers, from ten New England colleges attended the convention, which decided to submit a bid to hold the 1968 National Convention at MIT. Registration for the meeting Friday evening was followed by a stag social function in Burton House.

Saturday was devoted, for the most part, to business meetings and discussion groups. In the morning amendments to the National Constitution were discussed. These amendments will

SCC representatives to attend conference

Members of the Student Center Committee will be attending the annual conference of the Region I (New England) Association of Student Unions. The three day conference will be held at URI in Kingston, Rhode Island. Chairman of SCC this year is Paavo Pykkonen '67.

be considered at the 1966 National Convention, to be held December 27-29 in Minnesota.

Alpha Chi Chapter, MIT, then recommended extending a bid to the National Office to hold the 1968 National Convention in Boston, at MIT. When this motion was passed, Alpha Chi was directed to submit the bid, and to contact other New England chapters not present to secure their support.

N.E. sectional split passed

The meeting also decided favorably on a proposed sectional split in New England. Thus New England will be divided into two sections, one consisting of APO chapters in Maine, New Hampshire, Eastern Massachusetts and Rhode Island, and the other of chapters in Connecticut, Western Massachusetts and Vermont. The reason for the split is to enable the sectional vice president to cover the chapters under him more thoroughly, and thus do a better job.

After lunch discussion groups were held; topics for consideration included recruitment, fund raising, forming new chapters

and service to Scouting. Of the latter it was felt that service may be accomplished on the council and district levels. Service to an individual unit is undesirable because involvement should be a continuous thing, but chapters are active primarily during the school year, continuity is lost over the summer months.

Chapters urged to act on own

It was suggested that a chapter establish contact with local units by visiting the council office and offering to help in any capacity. Visits to Scout camps were also recommended, the visitors looking for things that need to be done, and then going ahead and doing them.

The Conclave ended with a banquet in the Student Center, after which two movies were shown. Alpha Chi showed a movie of the annual spring Carnival, and Delta Nu (Yale) sent a movie about organizing a Scout troop in an underprivileged area.

Those schools represented at the conference include Brown, University of Maine, University of Massachusetts, University of New Hampshire, New Haven College, Quinnipiac College, Springfield University, Suffolk College and WPI.

Short animated film to be shown at Dizzy Gillespie concert this week

'The Hat,' an 18-minute animated film by John and Faith Hubley, with music and dialogue by Dizzy Gillespie and Dudley Moore, will be shown at the Dizzy Gillespie concert to be given in Kresge Saturday. The concert is being presented by the MIT Dormitory Council.

'The Hat' is an unusual and provocative film which explores in humorous context the complicated questions related to disarmament and the organizations of a peaceful world. It received first prize as the best animated film at the 1964 Venice Film Festival, the

Special Jury Prize at the Festival de Tours, and the Edward Kingley Award for the best short subject. Most recently 'The Hat' won its fourth award, the Special Prize in the short film competition at the 1966 Melbourne Film Festival. It was recently shown over CBS nationwide television.

The film is sponsored by the World Law Fund, a small private educational foundation. Tickets to the concert-and-film program are still available in the lobby of building 10, at \$2.25 and \$2.75. Telephone reservations may be made at x2910, days or x3169, nights.

Art exhibition

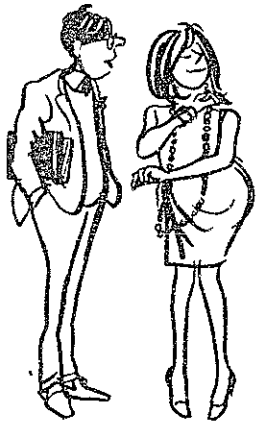
Warhol comes to town

Andy Warhol, noted for his "happenings," is currently presenting an exhibition at the Institute of Contemporary Art. The exhibition will run through November 6.

An "event" will take place October 29 at 9 p.m. Entitled 'Expanding Plastic Inevitable,' it

will feature Andy Warhol with the Velvet Underground and Nico. The "event" will take place at the Institute of Contemporary Art.

The price of admission is \$5. Tickets and information are available at the sales desk, or by calling 262-0600.



1. Um...uh...now that we know each other a little, I was wondering if, uh, you think I'm the type of guy you could go for?

I could go for a real swinger.



2. I have an exciting pipe collection.

I want to be where the action is.



3. I know some daring chess openings.

I want a man who's making it happen.



4. I read all about it in 'The New York Times.'

I want to do 'in' things with 'in' people in 'in' places.



5. I spend a lot of time in the library.

My motto is fun today and fun tomorrow.



6. Then I guess you wouldn't be interested in someone like me who has landed a good-paying job that will let his family live well and who, in addition, has taken out a substantial Living Insurance policy from Equitable that will provide handsomely for his family if, heaven forbid, anything should happen to him.

How's about showing me that pipe collection, swinger?

For information about Living Insurance, see The Man from Equitable. For career opportunities at Equitable, see your Placement Officer, or write: Patrick Scollard, Manpower Development Division.

The Equitable Life Assurance Society of the United States
Home Office: 1285 Ave. of the Americas, New York, N.Y. 10019 • Equitable 1966
An Equal Opportunity Employer, M/F



From the World's Finest Imports

Deutsche Grammophon Gesellschaft

ARCHIVE PRODUCTION

A SPECIAL VALUE
for October only
Entire Catalogue \$3.49 each
Mono & Stereo

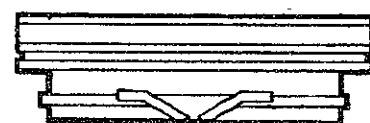
Reg. low Coop price \$3.90 each

Among the many selections:

- BACH:** The Brandenburg Concertos (Complete) — Lucerne Festival Strings / Baumgartner
- BACH:** Magnificat; Cantata No. 78, "Jesu, Du der Meine Seele" — Stader, Toepper, Fischer-Dieskau, Haefliger, others; Ansbach Festival & Munich Bach Orchestra/Richter
- BACH:** Mass in B Minor — Stader, Toepper, Haefliger, Engen, Fischer-Dieskau; Munich Bach Orchestra/Richter
- BACH:** Organ Toccatas & Fugues — D minor, F, "Dorian" in D minor & C — Helmut Walcha, Alkmaar Organ
- BACH:** St. John's Passion — Lear, Toepper, Haefliger, Prey, Engen, Munich Bach Choir; Munich Bach Orchestra/Richter
- BACH:** Well-Tempered Clavier, Vol. I — Ralph Kirkpatrick, Clavichord (Boxed; booklet)
- BEETHOVAN:** Complete Late String Quartets & Grosse Fuge — Amadeus Quartet
- BEETHOVAN:** Piano Concerto No. 3; Rondo in B flat — Sviatoslav Richter, Piano; Vienna Symphony/Sanderling
- BEETHOVAN:** Symphonies 8 & 9 ("Choral") — Berlin Philharmonic/Karajan, vocal soloists
- BERG:** Wozzeck (Complete, Sung in German) — Fischer-Dieskau, Lear, Wunderlich, others; Chorus & Orch. of Berlin Opera/Boehm
- BRAHMS:** German Requiem; Variations on a Theme by Haydn — Janowitz, Vienna Singverein; Berlin Philharmonic/Karajan

- BRUCKNER:** Symphony No. 9; Te Deum — Stader, Haefliger, others; Berlin Philharmonic/Jochum
- JANACEK:** Slavonic (Glagolitic) Mass — Lear, Roessel-Majdan, Haefliger, Crass; Chorus & Bavarian Radio Symphony/Kubelik
- MAHLER:** Das Lied von der Erde — Merriman, Haefliger; Concertgebouw Orch./Jochum (Leaflet of texts)
- MOZART:** The Magic Flute — Lear, Peters, Fischer-Dieskau, Crass, Wunderlich, others; Berlin Philharmonic/Boehm
- MOZART:** Mass in C Minor, K. 427 — Stader, Haefliger, Toeppfer, Sardi; St. Hedwig's Choir; Berlin Radio Symphony/Fricsay
- MOZART:** Requiem — Lipp, Roessel-Majdan, Berry, Dermota, Vienna Singverein; Berlin Philharmonic/Karajan (Leaflet of texts)
- STRAUSS:** Elektra — Borkh, Madeira, Schech, Fischer-Dieskau, Uhl, Dresden State Opera/Boehm
- STRAVINSKY:** Rite of Spring — Berlin Philharmonic/Karajan
- VIVALDI:** Concerto Grosso, Op. 3, No. 11; Cto for Flute, 2 Violins, Viola, Strings, Op. 10, No. 3; Cto for 2 Violins, Viola, Cello, Continuo in A; Cto for Bassoon, 2 Violins, Viola, Cello, Continuo; Sinfonia, "Al Santo Sepulcro" — Lucerne Festival Strings / Baumgartner

Store Hours:
Open weekdays and Saturdays too,
from 8:50 a.m. to 5:30 p.m. —
all year long



THE TECH COOP

IN THE M.I.T. STUDENT CENTER

84 Massachusetts Avenue, Cambridge, Mass. 02139