

Theta Chi, S.A.E. Head Grid Slate

Theta Chi, defending champs, will clash with Sigma Nu in one of 10 exciting games on the intramural football schedule this week-end. Other leading contenders in action include S.A.E., playing Phi Gamma Delta, and Grad House A, colliding with the Student House. The complete schedule is as follows:

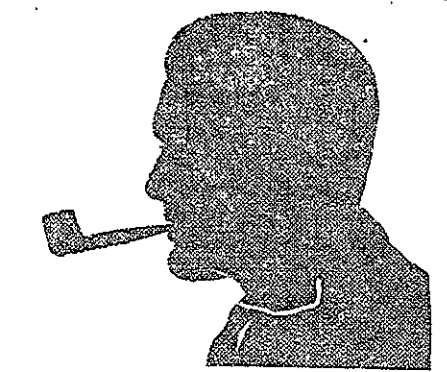
- October 22, 2:00 p.m.
League IV—Grad House A vs. Student House
- League III—New Dorms A vs. New Dorms C
- October 23, 1:30 p.m.
League II—Kappa Sigma vs. Barracks B
Sigma Chi vs. Phi Delta Theta
Grad House B vs. Pegis Club
- League III—Sigma Alpha Epsilon vs. Phi Gamma Delta
- October 23, 3:00 p.m.
League IV—New Dorm B vs. Delta Kappa Epsilon
- League I—Phi Kappa vs. Theta Delta Chi
Chi Phi vs. Walker
Theta Chi vs. Sigma Nu



Absorbent filters in Medico pipes and holders have 66 baffles that stop flakes and slugs... absorb juices... reduce tongue bite... give you the utmost in smoking pleasure.

MEDICO V. F. Q. (VERY FINE QUALITY)
Specially selected imported briar Pipes. \$2
Wide variety of shapes. With 10 filters... \$2
Also Frank Medico "Standard"...
America's Outstanding Dollar (\$1) Pipe
Frank Medico Cigarette Holders \$1 & \$2

MEDICO
FILTERED SMOKING
S. M. Frank & Co., Inc. • Fifth Avenue, New York 22
ALL MEDICO PIPES NOW MADE OF
BEST WARE QUALITY IMPORTED BRIAR



Pipe tobacco blended to your order

You can add immeasurably to your pipe enjoyment with a mixture blended by Dunhill to your individual taste. Let us create a personal mixture for you—your own favorite blend of fine, rare tobaccos. A mild, delicious blend—not too strong for steady smoking, completely satisfying to you!

From \$1.00 per 1/4 lb.

Write for "Tobacco Questionnaire" or come in and discuss your tobacco preferences with our expert blenders.

alfred dunhill
FIFTH AVE. AT 50th ST., NEW YORK 20
Mail or phone orders filled—Circle 7-5133

Football Forecast

by Leo Sartori

Following the singular lack of success which marked our efforts to predict the outcome of the baseball season, one might think that we would abandon the prognosticating business in favor of a less dangerous occupation. However, hope springs eternal, as the saying goes, so we shall now bravely attempt the task of forecasting the results of this week-end's major football games. Anyone losing money by betting on these predictions deserves no sympathy. Here goes:

HARVARD-DARTMOUTH: Our neighbors from up the river are getting closer to their own class, but are still over their heads. Dartmouth by two touchdowns.

B. U.-N. Y. U.: Hardly a contest. Harry Agganis & Co. should be able to name their own score. B. U. by about 30 points.

B. C.-GEORGETOWN: This one should be close. We'll pick the Eagles.

ARMY-COLUMBIA: Another case of "name your own score." Lou Little's sophs still have a lot to learn. Army by five touchdowns.

NAVY-PENN: Good chance for an upset here. Penn is favored, but we'll go out on a limb and pick Navy in a squeaker.

PRINCETON-CORNELL: The Big Red rolls on. Cornell by three touchdowns.

MINNESOTA-MICHIGAN: Two Big 10 powerhouses fight it out for the Little Brown Jug. Michigan should be up for this one after losing two in a row, but we'll cast one timid vote for Minnesota.

CALIFORNIA-WASHINGTON: Big game on the West Coast. We'll string along with the Bears.

RICE-TEXAS: Down in the Southwest anything can happen and usually does. We'll take Texas in this one.

ILLINOIS-PURDUE: Two of the Big 10's weaker outfits get together. Purdue is our choice.

YALE-HOLY CROSS: Herman Hickman's boys got their lumps from Cornell last week but should still have enough to take the Crusaders by at least 2 t.d.s.

Tufts Soccermen Edge Tech Frosh With Late Score

Tech's freshman Soccer team lost a close game last Wednesday to the Tufts College Frosh, 1-0. The game was scoreless until 7 minutes and 10 seconds of the third period when Conojo of Tufts broke through to score the only goal of the game.

Led by Co-Captains Bachman and Medal the Engineers played a good game in spite of their defeat. Four or five good shots at goal all were narrowly missed.

The starting lineups:—

- | | |
|-----------------|-----------------|
| Tufts | M.I.T. |
| Martin, G | Tarry, G |
| Thompson, RFB | Bachman, RFB |
| Buckley, LFB | De La Vega, LFB |
| Thaxter, RHB | Ratins, RHB |
| MacDonald, CHB | Belo, CHB |
| Frazier, LHB | Medal, LHB |
| Brown, OR | Echart, OR |
| Lrkhyanarde, IR | Gutwurcel, IR |
| Albright, CF | Gonzales, CF |
| Kruszyne, IL | Gardner, IL |
| Ripley, OL | Sabin, OL |

Make Your Selection of

ARROW

SHIRTS, UNDERWEAR, TIES and HANDKERCHIEFS
AT THE
Technology Store

from HARVARD to HAWAII U.
(you'll find ARROW in the best stores)

Yes sir! Near practically every college you'll find a campus shop or department store where you can buy Arrow shirts.

Arrow makes many of its products especially for college men and has advertised in college publications for over forty years.

When you need a few new shirts—shirts that will look well, fit well, and really wear and wash well—see your Arrow dealer. \$3.65 up.

DO CLOTHES MAKE THE MAN? Write for your free copy of "The What, When and Wear of Men's Clothing," College Dept., Cluett, Peabody & Co., Inc., 10 E. 40th St., N. Y. 16, N. Y.

ARROW SHIRTS

TIES • UNDERWEAR • HANDKERCHIEFS • SPORT SHIRTS

Booters Nip Tufts, 4-3, On Second-Half Rally; Goalie Sylveston Stars



Photo by North
Pete Sylveston, Tech goalie, has just stopped a Tufts shot and is about to kick the ball out of danger. Captain Dimitriou is administering a block to an unidentified Tufts player.

Overcoming a two point half time deficit, Tech's soccer team defeated Tufts in its home opener on Briggs Field Wednesday afternoon. The final score of this closely-fought contest was Technology 4, Tufts 3, giving the Engineers their first victory after three losses.

Tufts Takes Lead

The game was stalemated at a one to one tie until about five minutes before the half, when Tufts put two goals in rapid succession through an uninspired Tech defense.

However, the Beaver eleven came back with new life after the half. Falcao, who scored the first goal, put in another one on a pass from Akcaharman. A long pass from

Blanco then gave Akcaharman his chance, and he scored the tying goal.

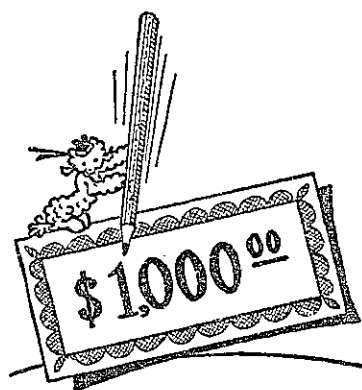
Moore Scores Clincher

Just as the whistle blew ending the third quarter, Mel Moore burst out of a terrific tangle at the Tufts' goal and booted in the winning point. The Jumbos threatened during the last few moments but were kept from scoring.

Starting Lineups

- | | | |
|-------------|-----------------|--------------|
| Tech | Position | Tufts |
| Sylveston | G | Carter |
| Dimitriou | RF | Held |
| Thornton | LF | Dybrek |
| Skillman | IR | Goylick |
| Haegler | CH | O'Neil |
| Barcinski | LH | Breyton |
| Austen | OR | Clifford |
| Blanco | IR | Bennet |
| Sumb | CF | Craitz |
| Akcaharman | IL | Norris |
| Falcao | OL | Moulton |

THE ROGERS PEET Inter-School-and-College ADVERTISING CONTEST



\$1,000 in prizes

—in Cash and in Merchandise Certificates

All you have to do is write a little ad for Rogers Peet—one in our well-known cartoon style—one that will appeal to students like yourself.

On the Bulletin Board are not only full details about the Contest but also some of the winning ads of other years. They show how easy it is!

Start now! Win a worth-while prize and also a little fame for yourself. Contest closes midnight Sunday, October 30, 1949.

P.S. As a further honor, it is also our practice to publish in the New York newspapers, and also in the New Yorker Magazine, a group of the best advertisements submitted.

Rogers Peet
Company
A label that spells character

In New York:
Fifth Avenue
at 41st Street

Thirteenth St.
at Broadway

Warren Street
at Broadway

And in Boston:
Tremont St.
at Bromfield St.