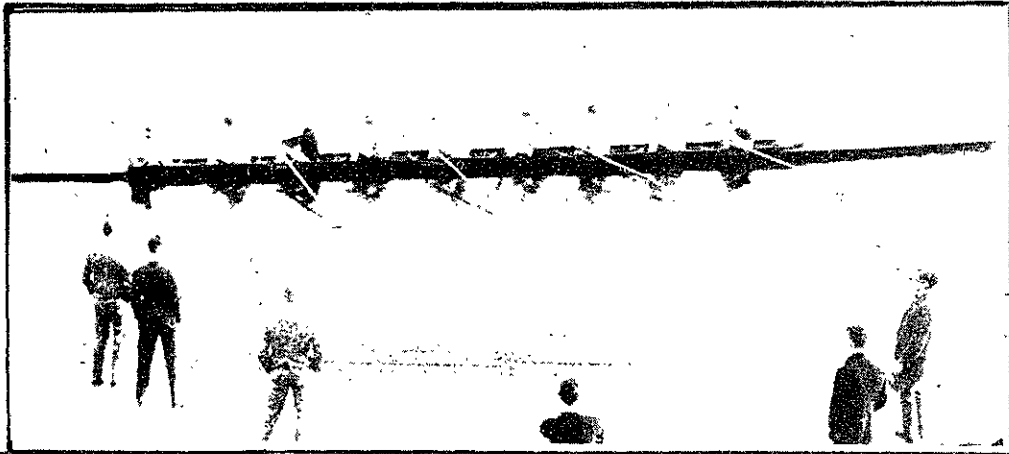




SOPHOMORE CLASS BASEBALL TEAM
Last spring 1925 defeated 1924 in the two team league, and the athletes pictured above hope to come out on top of this year's four class struggle



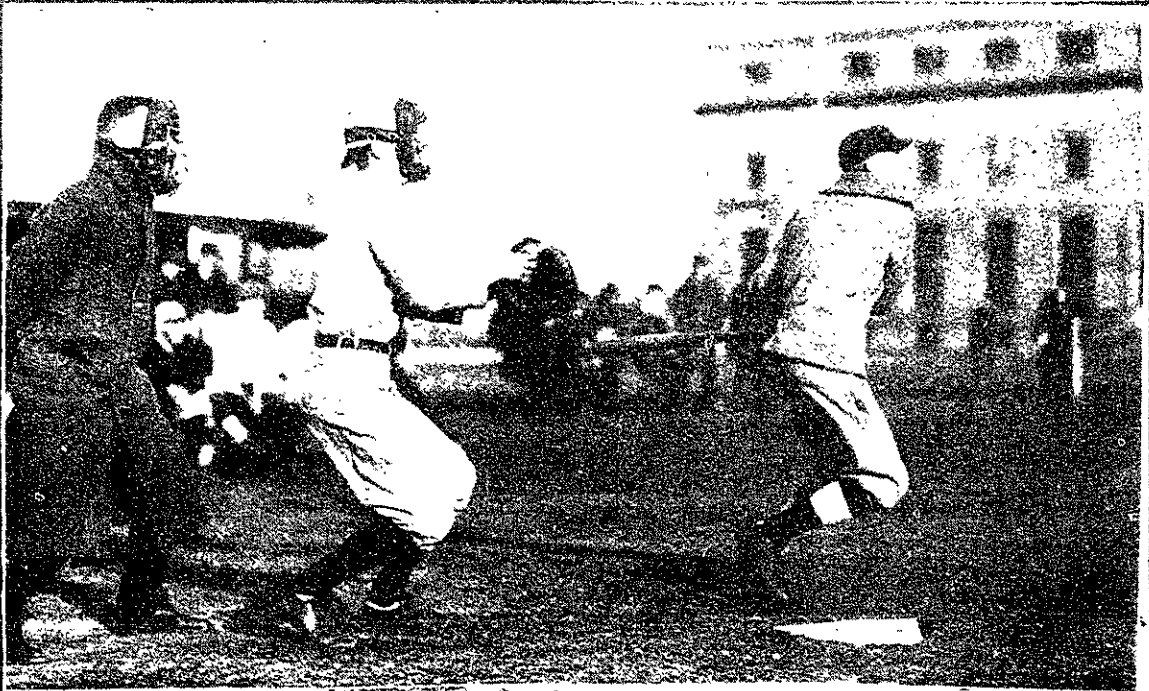
GETTING UNDER WAY
One of the temporary Technology crews



BILL WALTERSKIRCHEN
Junior Captain and first baseman



EARLE BATES



Guy Canfield '24, takes one out of the Sophomore catcher's hands

In the same test-tubes that insure the Nation's safety, Peace finds myriad blessings!



IN 1802 Eleuthere Irenee du Pont de Nemours, at the invitation and with the assistance of Thomas Jefferson, built on the Brandywine River the first du Pont plant . . . the first powder mill to be erected in America. Jefferson had seen the vital necessity to the country's safety of insuring its supply of explosives, and so du Pont became powder-maker to the United States Government.

For the 120 years following, from 1802 to 1922, the du Pont Company has been a manufacturer of explosives . . . *today*, explosives are but *one* of the family of du Pont products.

And the reason is . . . The Chemical Engineer!

* * *

THE Chemical Engineer is a strange mingling of abilities—a coupling of the man of science with the manufacturing expert. He is a chemist who knows manufacturing as well as his science, and who can take the chemist's discoveries on the experimental scale and put them into production on the larger scale of commerce. His province is the *practical* transformation of matter from useless to useful forms. And he has brought into the world's manufacturing plants a new knowledge, a new set of abilities, that has revolutionized industry in the past generation.

The du Pont Company was one of the pioneers in developing the Chemical Engineer. Since its founding by E. I. du Pont de Nemours, who was himself a chemist, it has been building on the foundations of chemistry, for the manufacture of explosives called for increasingly higher forms of chemical knowledge. And in the early years of this century, the du Pont Company had come to have one of the finest research staffs in the country, and in addition a staff of *Chemical Engineers*, men who knew manufacturing as well as chemistry.

This staff was essential, for since 1802 the du Pont Company's larger service has been to be *ready* to supply the Government with whatever explosives it might need for the country's defense. And for the same reason, the company had acquired sources of supply for the large quantities of the raw materials that it might one day need—acids, nitrates, coal-tar products and other materials that were absolutely essential to the production of explosives.

In war, immense quantities of such materials are desperately needed—in peace, very little—yet the supply of materials has to be kept open, for who knows when they may be *instantly* needed?

But how? The Chemical Engineer found the answer. And in the answer lies the key to the du Pont Company's family of products. For the products that du Pont makes are *not* unrelated products. Each of them has its root in one or another of the materials used in making explosives.

It may be another use of the same materials as in the manufacture of dyes. It may be a variation in process, as in the case of Pyralin and Fabrikoid. It may be a product like paints, varnishes, enamels, etc., in which the knowledge of the Chemical Engineer is needed, and the colors produced in dyes, may be used. It may be a product like ether, or a long list of chemicals that other industries use, which the du Pont Company produces in manufacturing its other products.

* * *

THUS, the seemingly unrelated products that carry the du Pont Oval are not strangers, but brothers in the same family. They are not merely the diversions of peace but the peace uses of materials that the country's emergencies may require the du Pont Company to have at hand in overflowing abundance.

This is one of a series of advertisements published that the public may have a clearer understanding of E. I. du Pont de Nemours & Co. and its products.

E. I. DU PONT DE NEMOURS & COMPANY, Inc.
Wilmington, Del.

TRADE  MARK