

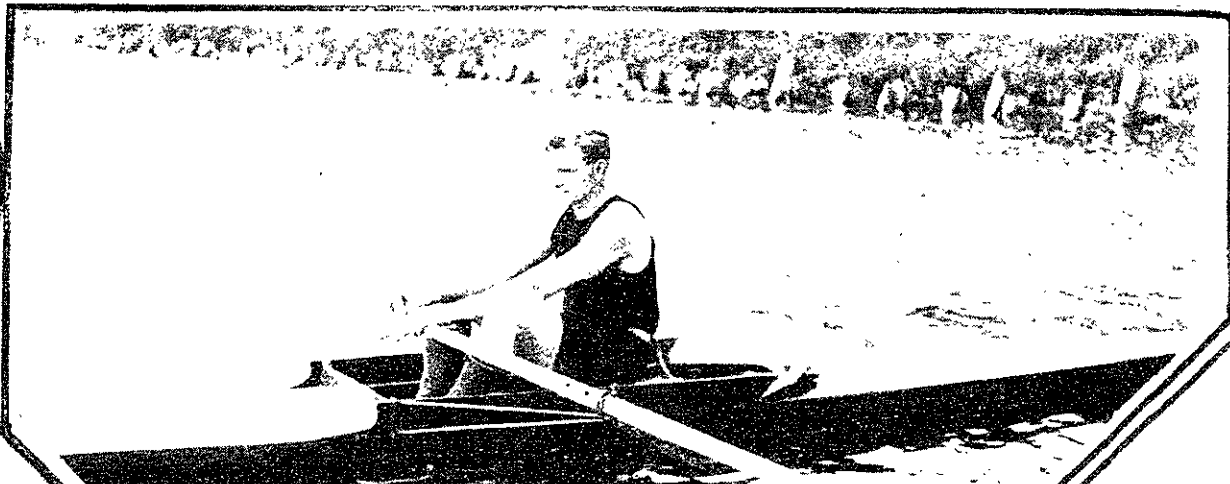


EMMONS BLODGETT
High Hurdle Expert stepping out to clear one of the barriers

(Right)—**COACH STEVENS**
In general charge of Institute rowing



GORDON JOYCE



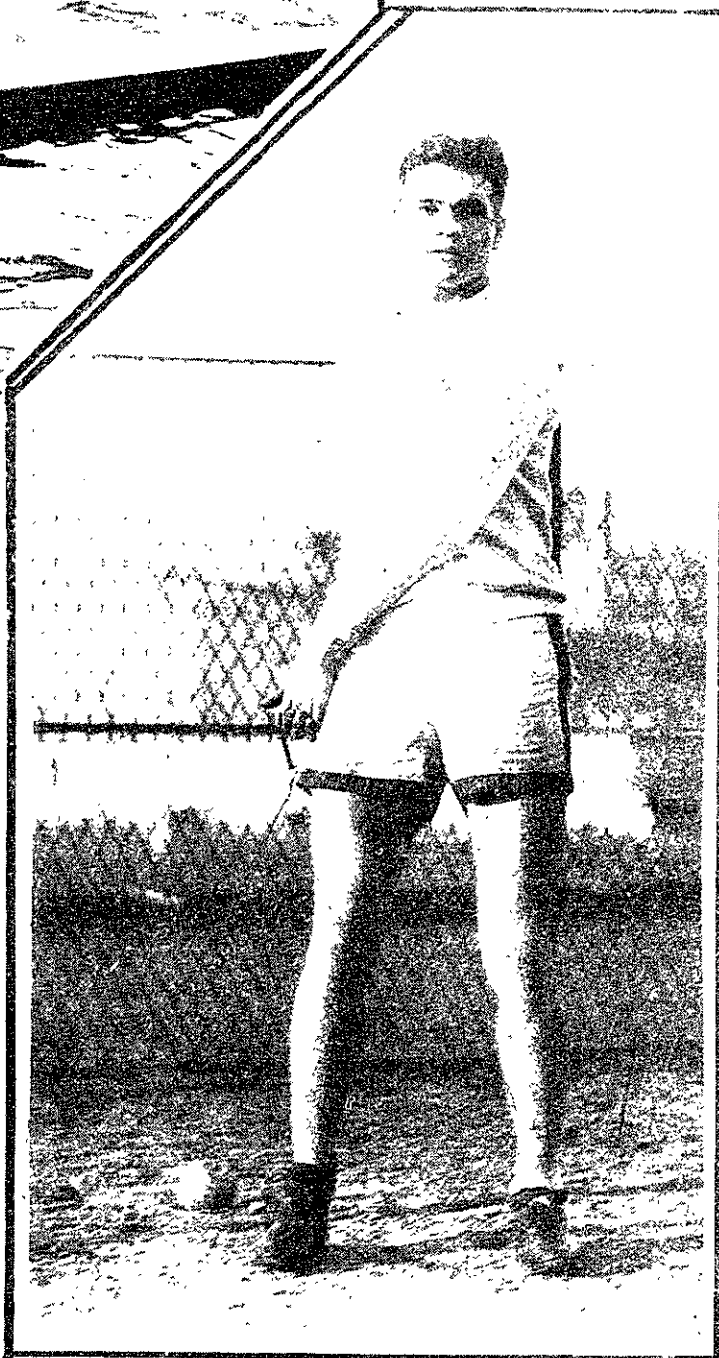
FRED DELLENBAUGH
Ready to chase the varsity crew. He is in charge of Technology's first eight, through a comparatively new man at the boat house

(Below)—**G. A. DREW**



(Right)—**ART SMITH**
Captain of the track team, who is helping Coach Kanaly prime the Engineer runners. Art's specialty is the quarter-mile

(Left)—**GREENOUGH**,
one of Technology's high jumpers who is expected to help the cardinal and gray team this spring



THE MASSACHUSETTS INSTITUTE OF TECHNOLOGY
Cambridge, Mass.

THE MASSACHUSETTS INSTITUTE OF TECHNOLOGY offers Courses, each of four years' duration, in Civil, Mechanical and Electrical Engineering; Naval Architecture and Marine Engineering; Mining Engineering and Metallurgy and Geology and Geological Engineering; Architecture and Architectural Engineering; Chemistry, Chemical Engineering and Electrochemical Engineering; Biology and Public Health and Sanitary Engineering; Physics, General Science and General Engineering; and in Engineering Administration. These Courses lead to the Degree of Bachelor of Science.

To be admitted to the first year class, applicants must have attained the age of seventeen years, and must satisfactorily fulfill entrance requirements in Algebra, Plane and Solid Geometry, Trigonometry, Physics, Chemistry, English, History, and French or German and one elective subject. Examinations are required in all subjects except Chemistry, History and the elective, the requirements for which are fulfilled by the presentation of satisfactory certificates. A division of these entrance subjects between different examination periods is permitted.

Entrance examinations are held at the Institute in September. In June, applicants will be examined by the College Entrance Examination Board in Boston, New York, Philadelphia, Chicago, and many other cities in America and Europe. A circular stating times and places is issued in advance by the College Board.

Graduates of colleges and scientific schools of collegiate grade, and in general all applicants presenting satisfactory certificates showing work done at another college corresponding to at least one year's work at the Institute, are admitted, without examination, to such advanced standing as is warranted by their previous training.

Graduate courses leading to the Degrees of Master of Science, Master in Architecture, Doctor of Philosophy and Doctor of Science are also offered. Special Research Laboratories of Physical Chemistry, Applied Chemistry and Science have been established.

PUBLICATIONS

Bulletins of General Information, Courses of Study, Summer Session, Advanced Study and Research; and the Report of the President and the Treasurer.

Any of the above named publications will be mailed free on application.

Correspondence should be addressed to

Massachusetts Institute of Technology
Cambridge 39, Mass.

SIMPLEX WIRES AND CABLES
Insulated with rubber, cambric or paper

SIMCORE—National Electrical Code Standard. Every length is subjected to searching electrical tests to insure a first quality product. Ask for specifications.

CAOUTCHOUC—"B. C." A rubber covered, braided wire insulated with a 30% Para compound. Send for specifications.

LEAD COVERED CABLES AND WIRES—For under-ground distribution where a conduit system is used.

STEEL TAPED CABLE—Used where a conduit system is not available. It carries its own conduit. Descriptive booklet upon request.

FIBREX TREE WIRE—For installation among trees or wherever chafing may occur. It is non-inductive. Send for circular.

SUBMARINE CABLES—For power transmission or for telephone or telegraph service. Our engineering department is always available for consultation.

SIGNAL CABLE—Dependable insulated cable for police or fire alarm service.

IGNITION WIRES—Used extensively, and with satisfaction throughout the automotive field.

TIREX PORTABLE CORD—For electrical tools and appliances. Rubber-armored. Flexible. It cannot kink,—and has the wearing qualities of an automobile tire.

TIREX LAMP CORD—A rubber armored cord for drop lights or table lamps, made in colors. Send for folder.

TIREX MINING MACHINE CABLES—Heavily insulated, rubber-armored, portable cables with the wearing qualities of a cord tire.

SIMPLEX WIRE & CABLE CO
MANUFACTURERS

201 DEVONSHIRE ST., BOSTON 9, MASS.
15 S. DESPLAINES ST., CHICAGO, ILL.
612 HOWARD ST., SAN FRANCISCO, CAL.
120 WEST 32nd ST., NEW YORK