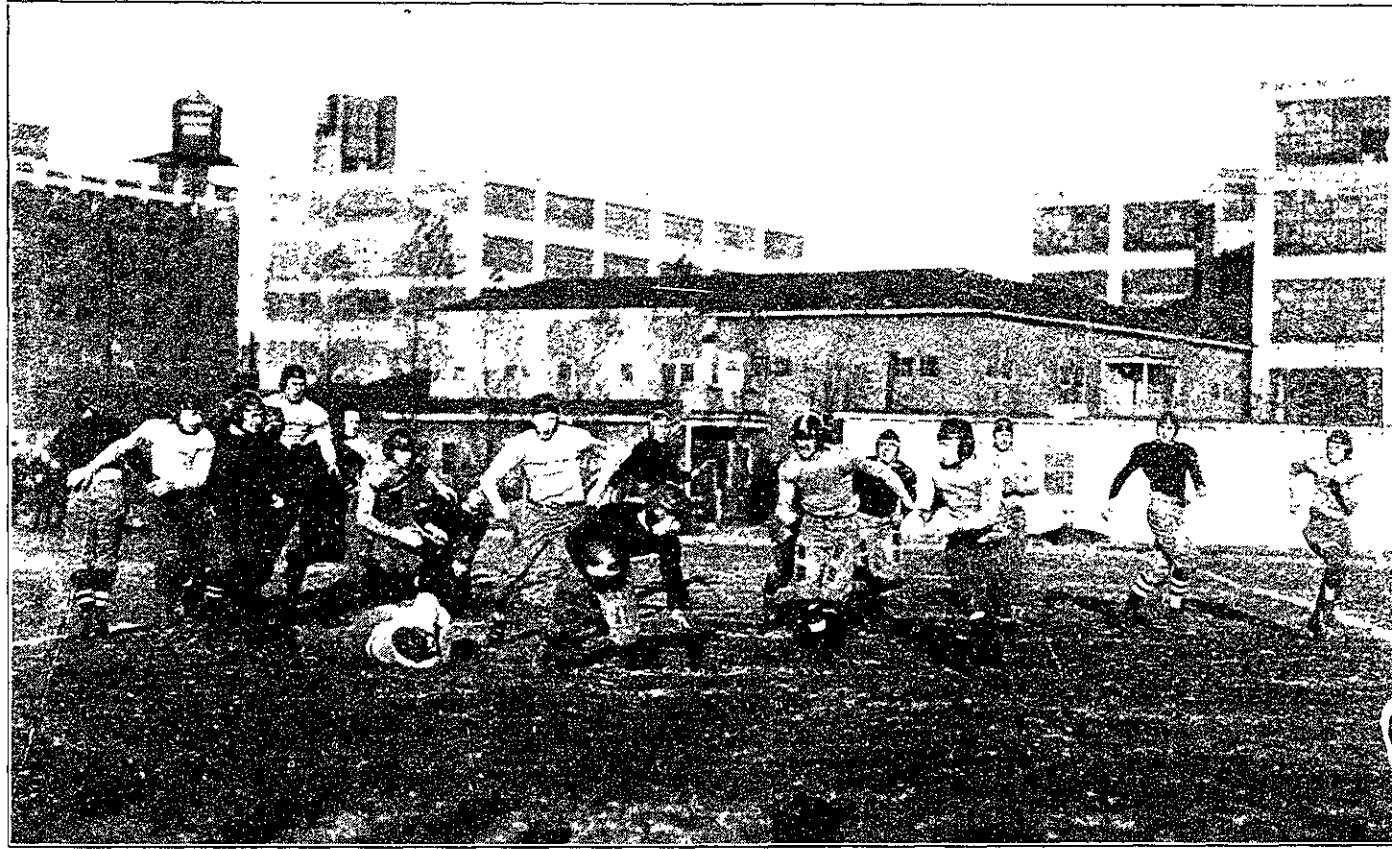
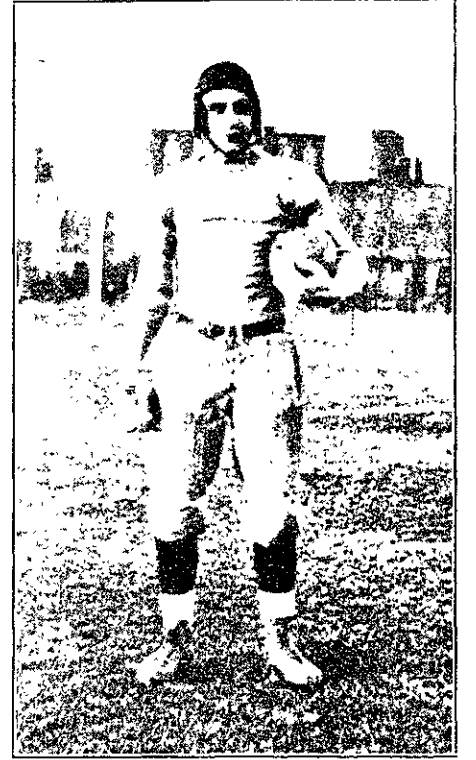




GLEN BATEMAN—Leader of the 1925 Sprinters Last Year, Who Has Been Re-elected and Will Run in the Anchor Position.



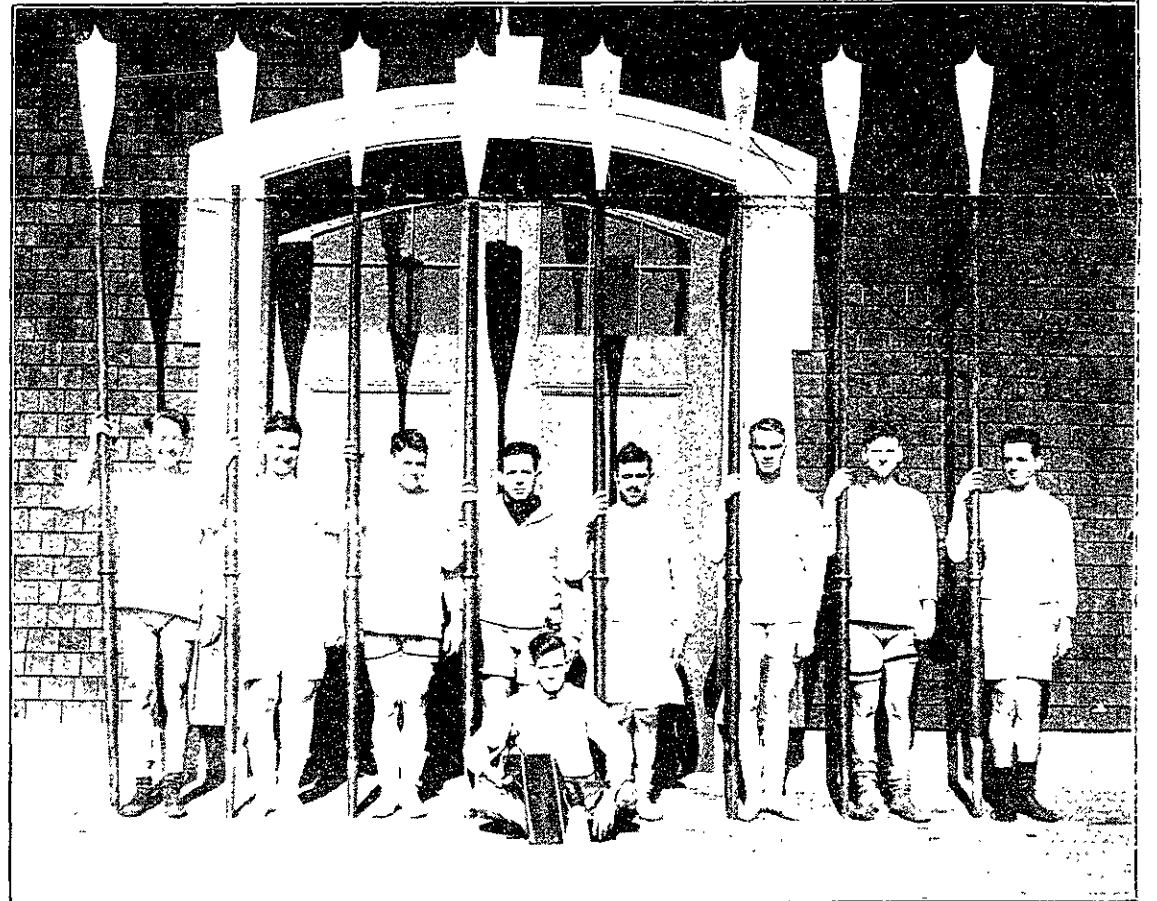
FRESHMAN ELEVEN IN ACTION—McDonald, the Brown Second's Quarterback Just About to Fall, After Making a Substantial Gain Through the 1926 Line in a Hard Fought Game on Tech Field Last Saturday.



CHARLES BIANCHI—Captain and Quarterback of the 1926 Football Team.



1925 CREW READY TO GO—The Sophomore Eight Is Seated as Follows—Kul'man, 1; Blair, 2; Butler, 3; Seis, 4; Goble, 5; Harriman, 6; Captain Campbell, 7; Prentiss, stroke; Hooks, coxswain.



FRESHMAN OARSMEN AT ATTENTION—The Gray Jerseyed Crew of 1926 Will Row in This Order—Villalon, 1; Farr, 2; Peterson, 3; Richardson, 4; Gorriaran, 5; Valentine, 6; Norton, 7; Captain Greer, stroke; Houghton, coxswain.



1925 STRATEGY STAFF—Bill Hull, One of the Sophomore Football Coaches, Ed Johnston, the Signal Calling Captain, and Walt Metcalf, Head Coach, Are Getting Their Heads Together.



FOOTBALL WARRIORS ON WHOM 1925 RELIES—Seventeen Members of the Sophomore Squad After a Stiff Afternoon's Work.



THREE FRESHMAN MAINSTAYS—Tim Callahan, the Scrappy Center, Charles Bianchi, Captain and Quarterback, and Steam Harrison, the Husky Right Tackle.