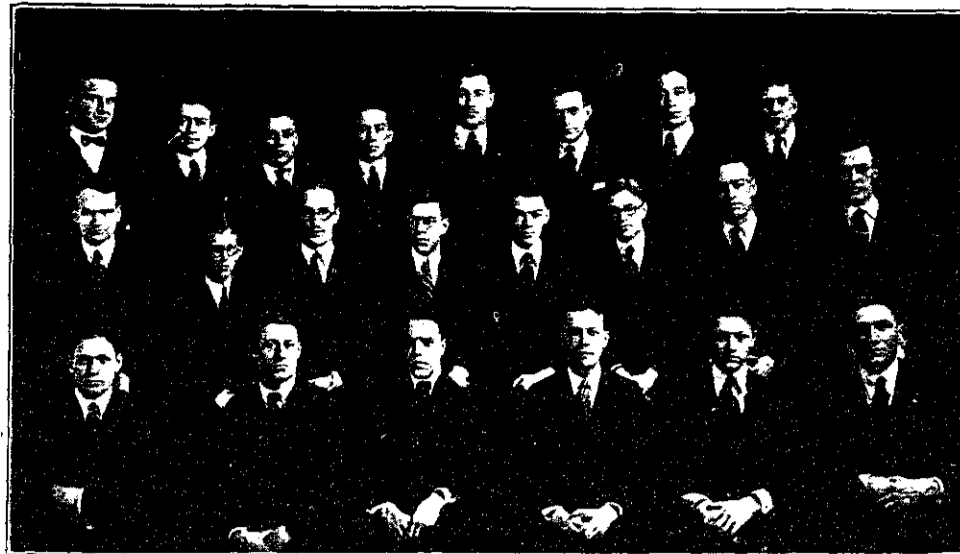
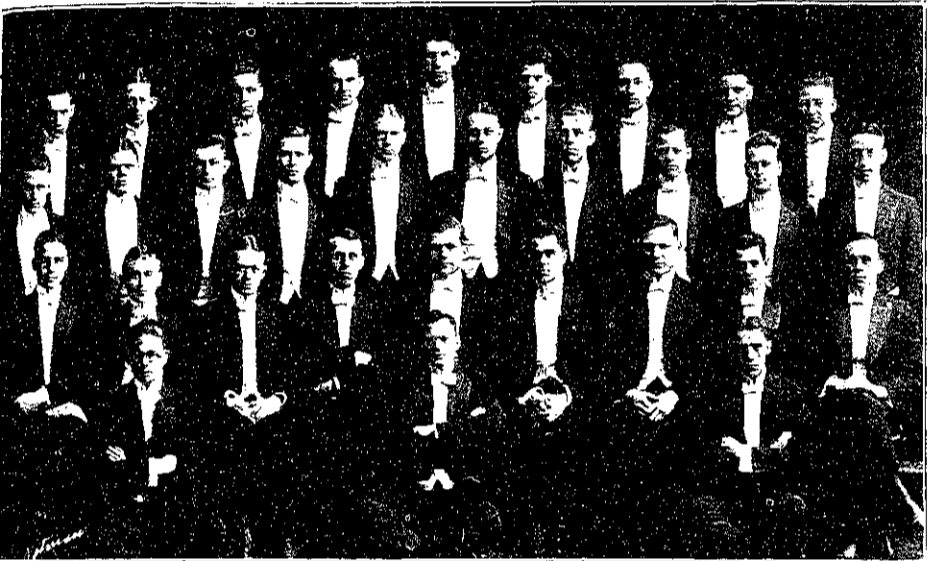


WALKER MEMORIAL



MANAGEMENT OF TECH SHOW 1920
Back Row, Left to Right:—H. Kirkham, H. C. Ham, W. C. Roberson, B. Haskell Jr., W. L. Searles, E. W. Booth, H. A. Kaufman, O. G. Williams. Middle Row:—L. K. Cowie, W. T. Hedlund, S. V. Chamberlain, J. G. Lee, P. Bugbee, S. Nixon, H. W. Smith, F. Pratt. Front Row:—J. C. Nowell Jr., T. O. Richards, H. I. Beadle, W. Kirkpatrick, W. K. Coolidge, W. D. Schofield.



MANDOLIN CLUB



GEORGE H. BURT '20
Chairman Finance Committee



COUNT B. CAPPS '20
General Manager THE TECH, VOL. XXXIX



JOHN C. NASH '20
Institute Committee



HARRY GRIBBLE
Assistant Coach Tech Show 1920



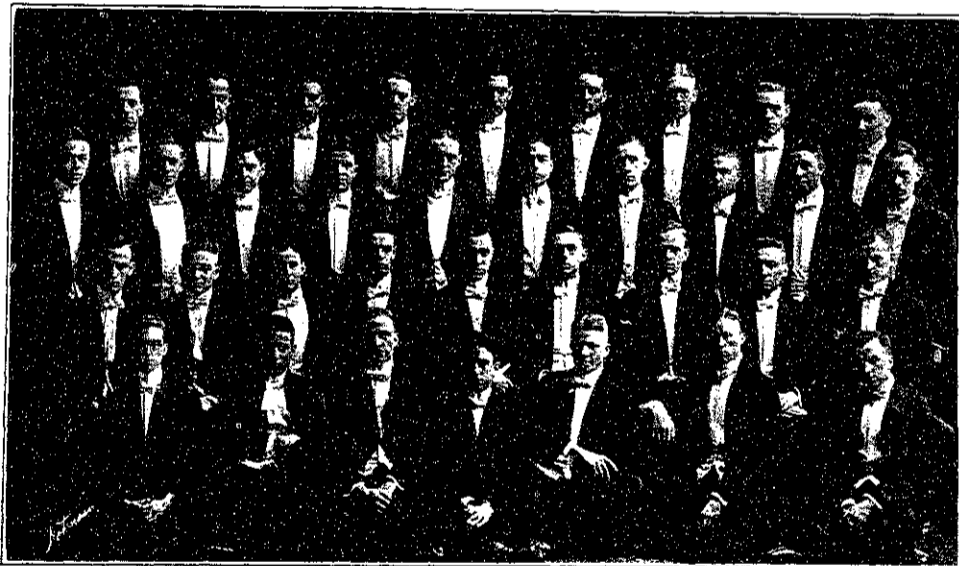
W. W. RUSSELL '22
Captain Wrestling Team



SPITZ '21



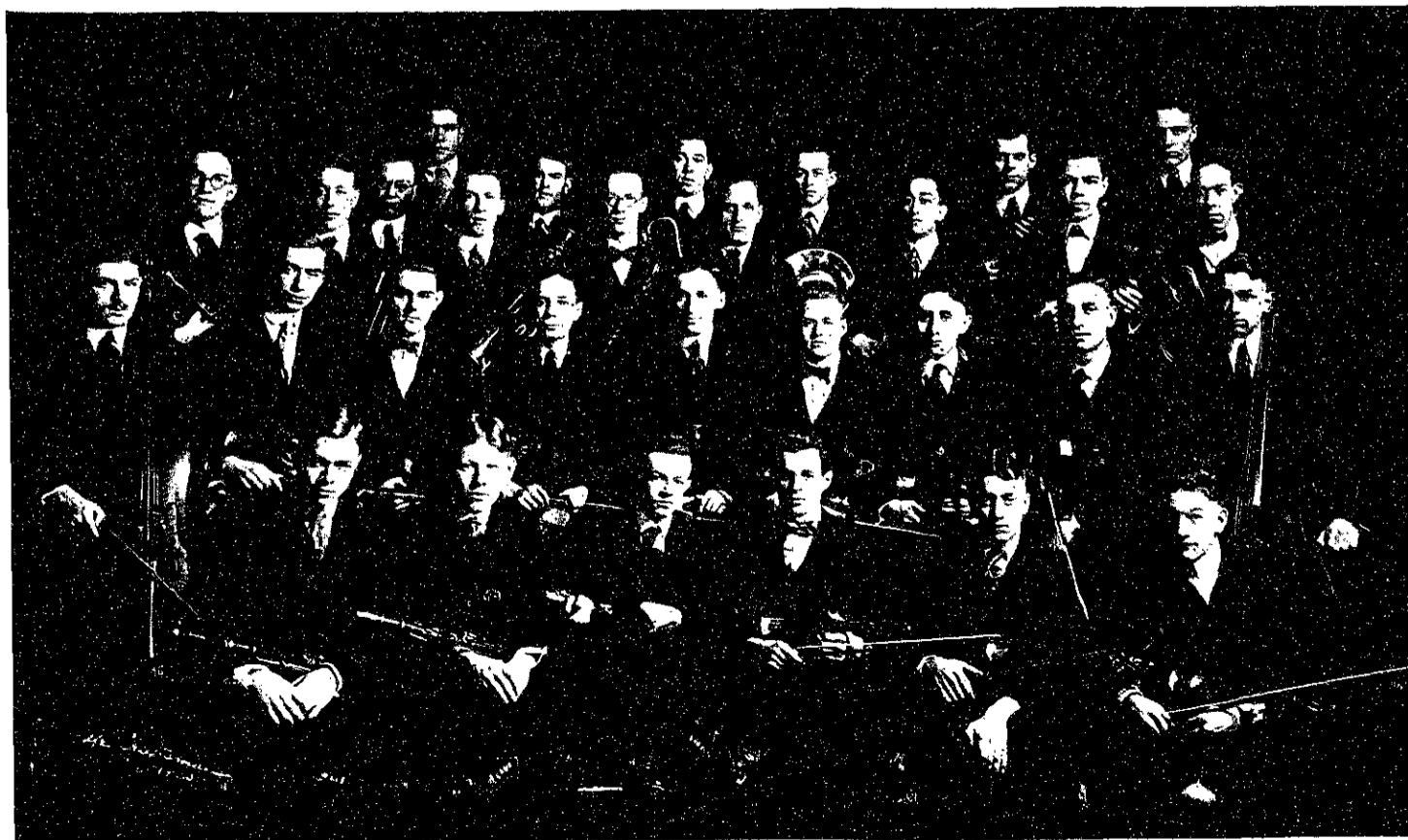
"PHILIP MORRIS AND HERBERT TAREYTON"
F. D. Gage '22 and H. J. Horn '22



GLEE CLUB



BARDES '21



M. I. T. ORCHESTRA

Back Row, Left to Right:—Moosbrugger, Chambers, Case, Willis, Brown, Lavedan. Third Row:—Farmer, Shepard, E. Wolf, Gentleman, Youtz, Reinhard, Nathan, Waldron, Hodges. Second Row:—Weinburg, Kurth, Daesen, J. Wolfe, Sumwalt, Myers, Raphael, McGorum, Pennypacker. First Row:—Perkins, Abbott, Harden, Winkfield, Starbuck, Hendril.



"KEEZER" AND "SNEEZER"
E. H. Schmitz '23 and A. L. Mock '21