

Hugh MacRae '85, III, Hugh MacRae & Co., Bankers; President Consolidated Railways Light and Power Co.; President Wilmington Cotton Mills, Wilmington, N. C.

Benjamin C. Lane '87, V, Director Allen-Lane Co., 226 Devonshire St., Boston, Mass.

F. Manton Wakefield '87, IV, Died 1913.

Theodore Stebbins '86 VI, Engineer, 27 West 67th St., New York, N. Y.

Erastus Worthington '85, I, Civil Engineer, Dedham, Mass.

Charles H. Woodbury '86, II, Artist, 194 Clarendon St., Boston, Mass.

Frederick H. Newell '84, III, Director U. S. Reclamation Service, Washington, D. C.

Albert E. Leach '86, II, Chief Analyst of Food and Drugs, Mass. State Board of Health Died 1910.

VOLUME FIVE—1885-1886.

BOARD OF DIRECTORS.

James E. Simpson '86 President

H. C. Spaulding '87 William H. Chadbourn '86

Edwin O. Jordan '88

T. W. Sprague '87, III, Sprague, Jackson and Associates, Consulting Engineers, Boston.

Franklin W. Hobbs '89, II, President of Arlington Mills, 78 Chauncy St., Boston.

BOARD OF EDITORS.

W. R. Ingalls '86 Editor-in-Chief

Albert E. Leach '86 Charles H. Woodbury '86

Benjamin C. Lane '87 F. M. Wakefield '87

Wm. M. Taylor '86, II, President of Chandler & Taylor Co., Indianapolis, Ind.

Francis L. V. Hoppin '88, IV, Architect, Hoppin & Koen, New York City.

Guy Kirkham '87, IV, Architect, Kirkham and Parlett, Carr Bld'g., Springfield, Mass.

A. S. Warren '88, III, Formerly with Buffalo Smelting Works. Died 1907.

Solomon Sturges '87 II, With Noyes & Jackson, Brokers, 124 West Adams St., Chicago, Ill.

VOLUME SIX—1886-1887.

BOARD OF DIRECTORS.

T. W. Sprague '87 President

H. C. Spaulding '87 Franklin W. Hobbs '89

G. C. Dempsey '88, V, P. Dempsey & Co., 177 Merrimac St., Boston, Mass.

W. L. Dearborn '88, I, Port of Havana Docks Co., Havana, Cuba, Resident Engineer and General Manager.

BOARD OF EDITORS.

A. Sidney Warren '88 Editor-in-Chief

Edwin O. Jordan '88

George O. Draper '87, III, Pres. Draper-Latham Magneto Co., New York, N. Y.

James T. Greeley M. D., '87, V, Physician and Surgeon, Telegraph Block, Nashua, N. H.

J. H. Towne '90, IX, Sec. Yale and Towne Mfg. Co.

Quintard Peters '87, IX, Died 1894.

H. G. Gross '88, VII, Physician. Died 1894

J. Lawrence Mauran '89, IV, Architect, President American Institute of Architects; Mauran-Russell & Cromwell, St. Louis, Mo.

George C. Wales '89, IV, Architect, 71 Kilby St., Boston.

Russell Robb '88, VI, Stone & Webster, Boston.

William I. Finch '90, IX, Retired, 1526 Hawthorne Terrace, Berkeley, Cal.

VOLUME SEVEN—1887-1888.

BOARD OF DIRECTORS.

H. J. Horn, Jr. '88, I President

General Manager, Northern Pacific Ry. Co.

J. H. Towne '90 F. W. Hobbs '89

Richard Devens '88, II, Manager Eastern Office, Brown Hoisting Machine Co., New York City.

Hollis French '89, VI, French & Hubbard, Construction Engineers, 88 Pearl St., Boston.

Marshall S. Scudder '91, II, Sec. and Manager Yakima Central Heating Co., North Yakima, Wash.

BOARD OF EDITORS

Sidney Warren '88 Editor-in-Chief

H. G. Cross '88 Russell Robb '88

J. Lawrence Mauran '89 E. O. Jordan '88

W. I. Finch '90 G. C. Wales '89

Irving L. H. Gardiner '89, II, Died 1888.

A. L. Kean '88, IX-XII, Livingston, N. J.

Wm. H. Merrill '89, VI, Manager of Underwriters Laboratories, Chicago, Ill.

VOLUME EIGHT—1888-1889.

BOARD OF DIRECTORS.

F. W. Hobbs '89 President

J. H. Towne '90 Hollis French '89

L. M. Hills '90, IX, Manufacturer of Straw Hats, The Hills Co., Amherst, Mass.

C. H. Muhlenburg, '91, IV, Architect, Muhlenburg Bros., 511 Penn St., Reading, Pa.

F. I. Davis '92, IV, Architect, Davis and Brooks, 49 Pearl St., Hartford, Conn.

BOARD OF EDITORS.

James T. Greely, M. D., '89 Editor-in-Chief

J. Lawrence Mauran '89 W. H. Merrill, Jr. '89

A. L. Kean '89

James W. Cartwright, Jr. '89, V, Orchardist, Sunset Farm, Hampton, Conn.

J. L. Batchelder, Jr. '90, VII, Batchelder Bros., Coal Merchants, Boston.

Allen French '92, IX, Writer, Concord, Mass.

VOLUME NINE—1889-1890.

BOARD OF EDITORS.

Herbert E. Hathaway '91, V Editor-in-Chief

Chemist, Solvay Process Co., Detroit, Mich.

John L. Batchelder, Jr. '90 Harry N. Williams '93

Theodore Spencer '91, VI, General Supt. Bell Telephone Co., Philadelphia, Pa.

Central Trust Company

THE OLDEST BANK IN CAMBRIDGE

599 MASS. AVENUE

LARGEST SUBURBAN TRUST COMPANY IN MASSACHUSETTS

Nearest Cambridge Bank to Technology



STONE & WEBSTER

FINANCE public utility developments.

BUY AND SELL securities.

DESIGN steam power stations, hydroelectric developments, transmission lines, city and interurban railways, gas plants, industrial plants and buildings.

CONSTRUCT either from our own designs or from designs of other engineers or architects.

REPORT on public utility properties, proposed extensions or new projects.

MANAGE railway, light, power and gas companies.

NEW YORK BOSTON CHICAGO

DRAWING A CROWD

is easy—but retaining the goodwill of the crowd and inducing them to return is a different problem.

The first garment you order will make you a happy member of the large number of satisfied patrons who return to us season after season for clothes of distinction.

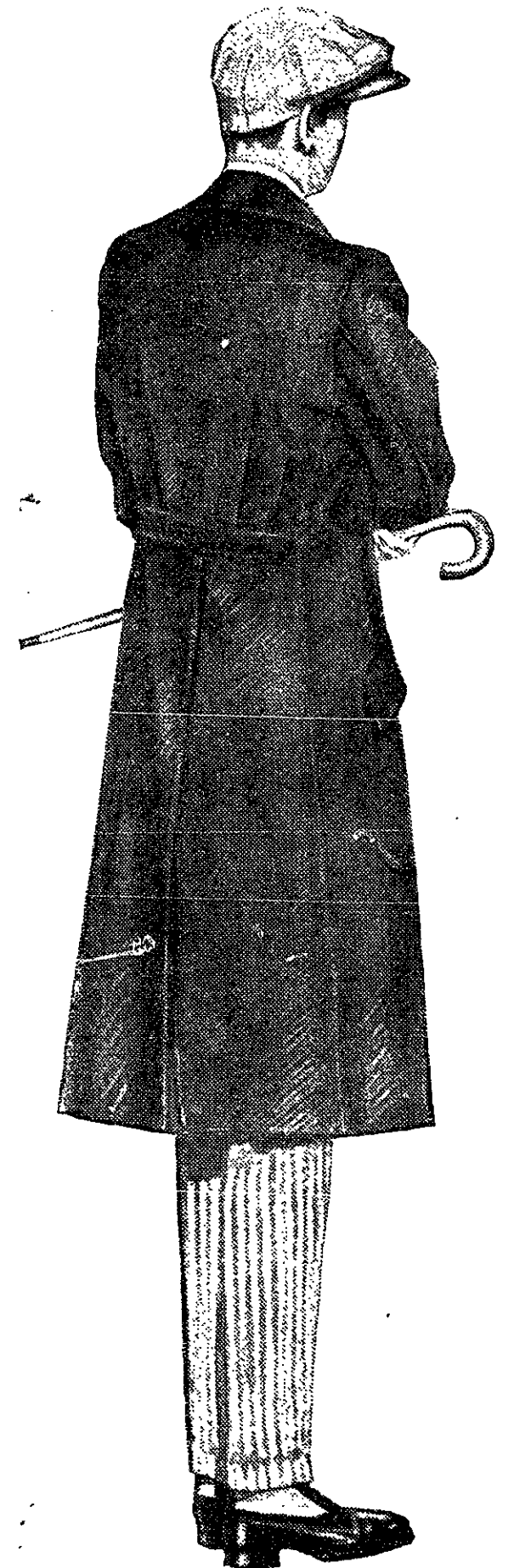
IVAN FRANK & CO.

overcoats and suits are a special feature here. It is our aim to give the Tech men satisfaction, and we know of no better way than to get you into one of our

SNAPPY

YOUNG MEN'S MODELS

SUITS AND OVERCOATS \$18.00 UP



We make a feature of demonstrating our models and patterns at the different fraternity houses evenings, and a card or phone will bring our college representative with the machine full of overcoats for immediate delivery.

S. H. KNOPF CO.

RAINCOATS

AUTO CLOTHES

125 SUMMER ST., BOSTON

R. G. BURNS

Beach 622

F. A. CROWLEY