

OFFICERS OF SENIOR, JUNIOR AND SOPHOMORE CLASSES CHOSEN TODAY IN MAIN LOBBY

Polls Open 8.30 to 4.30—Architects to Vote in Rogers from 1 to 2—Class Dues Must Be Paid to Secure Ballot and May Be Paid at the Polls—Mass Meeting 8 Tonight in the "Caf"

EVERYONE ELIGIBLE TO VOTE ON STRAW BALLOT

EVERYONE ELIGIBLE TO VOTE ON STRAW BALLOT

Elections for the three upper classes and the straw vote for President of the United States will take place today from 8.30 A. M. to 4.30 P. M. in the Main Lobby; the results to be announced this evening at a Mass Meeting in the "Caf" instead of "Smith" Hall as stated on the ballots. In this same (Continued on page 2)



PRESIDENT
WOODROW WILSON

When, in the spring of 1913, the Democratic party came into power, after sixteen years of Republican control, it little realized that it was facing one of the most trying periods of American history. Surely there had been no greater need of a strong hand to guide the State safely through the perils of foreign war, the possibility of financial disorganization, the trials of impending labor dissatisfaction, and multitudinous, though less important, other critical situations; but fortunately, the party found it had chosen a man, who, whatever the wisdom of his policies might be, was unquestionably a leader. That man was Woodrow Wilson.

The career of the President previous to his election is generally familiar: after studying law in Princeton and pedagogy at Johns Hopkins, he became president of the former university at the age of forty-five. Nine years later, the corrupt party in New Jersey used him to get into power; but no sooner was he elected governor of the state than he ousted the politicians who had intended to "use" him. His record in that office, although it incited unpopularity among men of his own state, made him a national figure and won him the Democratic nomination in 1912 and, coupled with the division of the Republicans, shortly after placed him in the Presidential chair, also giving his party a strong working majority in both branches of Congress.

It must be admitted that the promises in the Democratic platform were carried out to the letter. In a year and a half the tariff was revised in the direction of free trade; the Federal Reserve measure was passed to alleviate financial panic; the income tax was started to curb accumulating fortunes; anti-trust regulations were revised; provision

(Continued on page 4)

1917 Nominations

PRESIDENT—
John M. DeBell—Course XA, Kappa Sigma, Osiris, Beaver, Pi Delta Epsilon, Walker Club, K2S, Masque, Chemical Society, Editor-in-Chief Technique 1917, Associate Editor-in-Chief The Tech (2), Member Advisory Council The Tech (4), Institute Committee (3), Executive Committee of Institute Committee (3, 4), Freshman Football (1), Technique Electoral Committee (2), Technology Orchestra (3) Chairman Student Service T. C. A. (4), Manager Technology Reunion Pageant Chorus (3), Glee Club (4).

Lucius T. Hill—Course XV, Lambda Phi, M. I. T. A. A., Class Football Captain (1916 class), Principal Tech Show, Technique 1916 Electoral Committee, XV Corporation.

Leroy A. Swan—Course II, Sigma Alpha Epsilon, Osiris, Beaver, Walker Club, Theta Tau, Masque, Mechanical Engineering Society, Technique 1917 Electoral Committee, Portfolio Editor, Technique 1917, Tech Night Committee (3), Chairman (4), Tech Show (1, 2), Musical Clubs (1, 2, 3, 4), Class Election Committee (2, 3), Undergraduate Reunion Committee (3).

VICE-PRESIDENT—

Dudley E. Bell—Course XV, Osiris, Beaver, Pi Delta Epsilon, Football (1, 2), Class Track (1, 2), Baseball (1, 2), Captain (1), Institute Committee (1), Tech Show (1, 2), Sporting Editor The Tech (2), Assistant Managing Editor The Tech (3), Treasurer M. I. T. A. A. (3), Class Treasurer (2), Blanket Tax Committee (3), Undergraduate Reunion Committee (3), Finance Committee (2, 3), Treasurer Summer Camp Minstrel Show (2), Musical Clubs (3), Corporation XV (3, 4), President Corporation XV (3, 4), Civil Engineering Society, Technique 1917 Electoral Committee, Class Election Committee (3).

William B. Hunter—Course X, Lambda Phi, Masque, Chemical Society, Tech Show—2nd Assistant Stage Manager (1), 1st Assistant Stage Manager (2), Stage Manager (3).

Leon L. McGrady—Course XV, Sigma Chi, Osiris, Treasurer Technique 1917, Assistant Business Manager Tech Show (1), Technique 1917 Electoral Committee, Treasurer Interfraternity Conference (3), Temporary Chairman Finance Committee (4).

Richard J. McLaughlin—Course XV, Delta Upsilon, Technique 1917 Electoral Committee, Class Baseball (2).

Neal E. Tourtellotte—Course IV, Option 3, Beta Theta Pi, Osiris, Architectural Society, Cosmopolitan Club, Class Secretary (1), Electoral Committee, Tug-o-War Team (1), Manager Track Team (3), M. I. T. A. A. (3, 4), Advisory Council on Athletics (3-4), Athletic Finance Committee (3), Vice President N. E. I. C. A. A., Executive Committee I. C. A. A. A., Wearer of the T. Corporation XV (4).

TREASURER—

Robert C. Erb—Course XV, Class Relay (1, 2), Class Baseball (2, 3), Tech Show Ballet (3), Reunion Undergraduate Picnic Committee (3), Director XV Corporation.

(Continued on page 3)

1918 Nominations

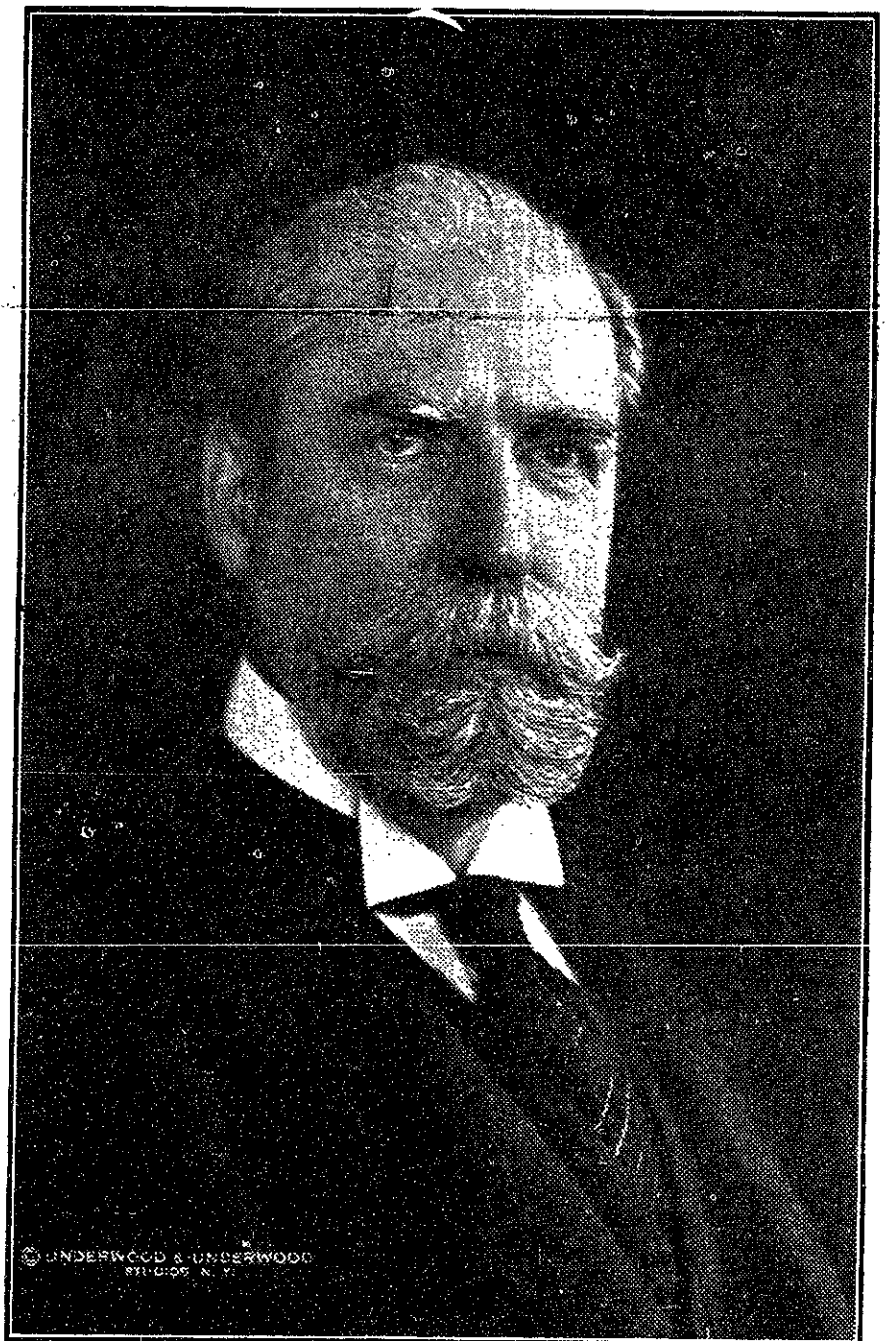
PRESIDENT—
Julian M. Avery—Course XIV, Kappa Sigma, Class Track (1), M. I. T. A. A. (2), Relay (2), Technique Electoral Committee.

(Continued on page 3)

1919 Nominations

PRESIDENT—
George F. French—Course VIII, Phi Gamma Delta, M. I. T. A. A. (1), Tug-o-War (1, 2), Track (1), Pageant Arrangement Committee, Undergraduate

(Continued on page 3)



CHARLES EVANS HUGHES

To supersede a political party in power requires a convincing argument that the incoming party will provide a more generally satisfactory administration than its predecessor; and the Republican party is confident that it has found such an argument in its candidate for the Presidency, Mr. Charles Evans Hughes.

The record of Mr. Hughes, with its highly inconspicuous beginning, is a testimonial to his ability to plan wisely and then to "deliver the goods." After being graduated from Brown University, he took up the practice of law in New York City, and until 1905 was utterly unknown. Then he was employed to conduct an investigation into

(Continued on page 4)

Seat Sale For Tech Night After Field Day Begins Next Monday-Room-10-001