

THE TECH.

Published daily except Sunday during the college year by students of the Massachusetts Institute of Technology.

Entered as second class matter Sept. 29, 1909, at the post office at Boston, Mass., under the Act of Congress of March 3, 1879.

General Manager,
R. H. Ranger 1911

News Board.

D. P. Gaillard 1911 Editor-in-Chief
A. L. Fabens 1910 Institute Editor
J. I. Murray 1912 Athletic Editor
G. M. Keith 1912 Exchange Editor
J. Ahiers 1910 Society Editor

Business Board.

N. DeForest 1911.... Business Manager
D. N. Frazier 1911, Circulation Manager
H. Merrill 1912 ... Advertising Manager

Advertising Associate,

R. M. Barton 1911 .. Asst. Adv. Mgr.

Circulation Associates.

S. C. Neff 1912 Mailing and Dist.
H. D. Kemp 1912 Posters
A. Yereance 1911 Notices

Tuesday Issue,

L. S. Walsh 1912 Assoc. Editor

All communications regarding advertisements should be addressed to the Business Manager. Regarding subscriptions address the Circulation Manager.

Subscriptions within the Boston Postal District and outside of United States must be accompanied by postage at the rate of one cent for each copy.

Subscription \$1.50 per year in advance
Single Copies 1 Cent.

Printed by Puritan Linotype, Boston

BOSTON, MASS., NOVEMBER 9, 1909.

CALENDAR.

Tuesday, November 9.

- 1:30 P. M.—Meeting M. A. H. S. Club in 26 Rogers.
- 4:15 P. M.—Meeting Civil Eng. Society in 11 Eng. B.
- 4:15 P. M.—Banjo Club.

Wednesday, November 10.

- 1:00 P. M.—1910 Class Meeting in H. H.
- 1:10 P. M.—Business Meeting Biological Society, 28 Pierce.
- 8:15 P. M.—Catholic Club Meeting in Union.

Thursday, November 11.

- 4:15 P. M.—Banjo Club.

Friday, November 12.

- 8:00 P. M.—Friday Night Entertainment, Union.

COMMUNICATION

There are a great many men in the Institute who ought to make good on The Tech. if they would only come out and try. Follows for the most part seem to think that it is necessary to present previous experience, in order to become a staff member. This, however, is not true, for most of the fellows who come out for positions are green at newspaper work.

Again, some men think it foolish to spend their time on this work, as they can see nothing in it. The best cure for these men will be for them to go right to the bottom of things and question anyone who has ever been on The Tech, and they will probably find out that there is plenty of fun and more valuable experience in The Tech work than in any other activity.

ANNOUNCEMENT

Owing to the great demand for Field Day editions, The Tech has had a second edition of the Saturday paper printed. This edition contains all the incidents of Field Day, and is most interesting. It is almost invaluable as a souvenir of the day. These copies can be bought at The Tech office and will be sold for the regular price, one cent. Buy a copy and mail it home to the folks.

MUSICAL CLUB PLANS

Western Tour During Mid-Year -- Full List Of Members

This year the musical clubs are planning a grand Western tour during the mid-year vacation. Plans now are nearly complete for a trip to all the big cities. W. W. Warner 1911, manager of the clubs has written to all the alumni associations of the cities and is now waiting for a favorable reply. The cities which the clubs propose to visit are New York, Philadelphia, Pittsburg, Columbus, Chicago, Detroit, Buffalo and Rochester. The report in the Sunday papers was immature, as no definite plans have been made as yet.

THE MANDOLIN CLUB.

The following are permanent members of the Mandolin Club: First mandolins, R. F. Hill, J. A. Applequest, H. D. Williams '11, K. A. Scott '13, R. H. Scanlon '12, C. B. Rowley '12; second mandolins, S. H. Seelye '12, W. B. Denton '13, W. S. Moore '13, H. K. Franzheim '13, R. Cremer '12, R. W. Jacoby '10, S. W. Selfridge '12, H. V. S. Taylor '10; guitar, T. L. Wheeler '13, M. Lewis '13; cello, L. C. Shaw '10, W. A. Bryant '13; tenor mandola, W. W. Warner '11, W. H. Wengert '10; flute, H. H. Partridge '12; violin, M. K. Sweet '10; traps, J. S. Martin '12; manager, J. W. Northrop, Jr., '10.

The Glee Club is made up as follows: First tenors—R. N. Doble '12, P. T. Herren '13, G. F. Maglott '10, Q. Jones '10; second tenors, H. S. Birchard '13, G. S. Bonney '13, W. R. Glidden '12, R. L. Golden '11, A. P. Horner '12, T. C. Knight '12, F. A. Moore '11, G. L. Mylchreest '10, U. Thompson '13, G. W. Walton '13, E. M. Young '11, L. Odell '11, J. E. Champagne '12; first basses, C. H. Brett '12, P. A. Cushman '11, R. O. Fernandez '10, G. N. Francis '12, H. W. Hall '12, E. R. Hamilton '10, K. Howlatt '13, E. Kennedy '11, F. H. Kingsbury '12, F. E. Poor '12, C. H. Reeves '13, H. Thompson '13, T. C. Wardwell '13, W. W. Warner '11, W. J. Wilfert '13, S. Swenson '12; second basses, A. K. Adams '11, A. F. Leary '11, L. O. Mills '10, J. I. Taylor '12, and G. P. Lunt '10.

M. A. H. S. MEETING

Today in 26 Rogers-- Election Of Officers To Take Place

Tomorrow at 1:30, the Mechanic Arts High School club will hold a meeting in 26 Rogers. It will be a business meeting. This meeting was usually held earlier in the year in the evening, but the committee in charge did not think that it was worth while to hold the meeting until now.

The financial report of last year's standing will be read. The results of the tennis tournament with the Harvard M. A. H. S. club will also be announced. The annual election of officers will take place, the new men being nominated from the floor.

Each class will be represented on the board of directing committee. The president will be a senior, the vice-president will be a junior, and the secretary-treasurer will be a sophomore. The freshmen will be represented on the executive committee. The members of the club who are on the instructing staff of the Institute will be represented in the executive committee also.

GLOVES

Ask for the best and see how quick they'll bring you

FOWNES

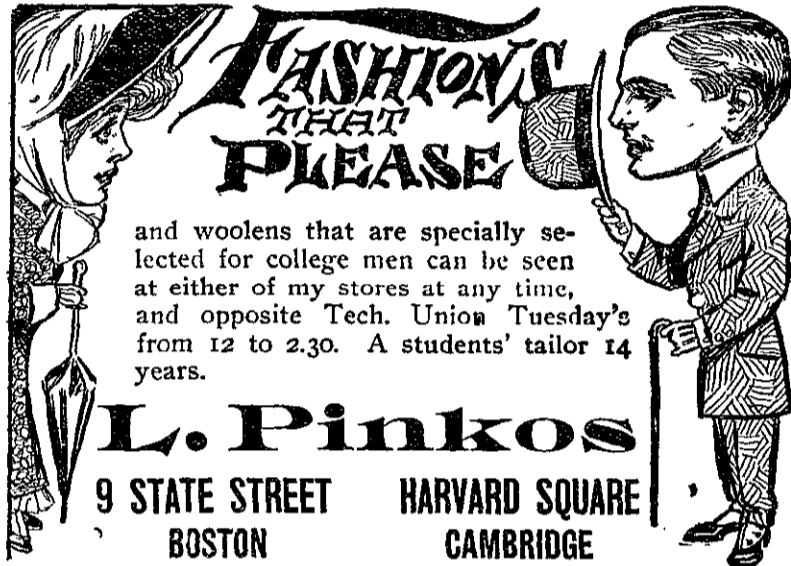
BACK BAY BRANCH

State Street Trust Co.

130 MASSACHUSETTS AVENUE, BOSTON

Credits interest monthly on accounts of \$300 and over.

MAIN OFFICE: 38 STATE STREET



and woollens that are specially selected for college men can be seen at either of my stores at any time, and opposite Tech. Union Tuesday's from 12 to 2.30. A students' tailor 14 years.

L. Pinkos

9 STATE STREET BOSTON HARVARD SQUARE CAMBRIDGE

HAVE YOU TRIED THEM?

TASHA Turkish Cigarettes

They are fine in flavor and smooth. The most perfect blend you ever smoked.

15 CENTS PER PACKAGE OF 10.

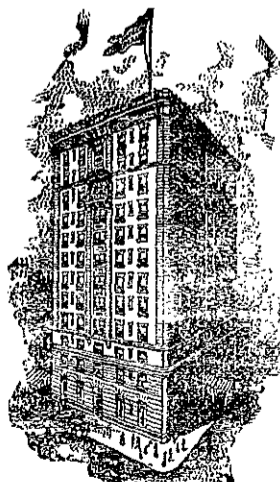
Try a box TODAY and see for yourself.

HOTEL CUMBERLAND

Broadway at 54th Street, New York. Near 50th St. Subway Station and 53d Street Elevated

KEPT BY A COLLEGE MAN

Headquarters for College Men



Special Terms for College Men

New and Fireproof Rates Reasonable. \$2.50 with bath and up. Send for booklet. HARRY P. STIMSON Formerly with Hotel Imperial

It won't leak

MOORE'S NON-LEAKABLE FOUNTAIN PEN

THE PEN THAT can be carried in any position in your pocket or bag. Upside down or lying flat it can't leak. It is extremely simple in construction, and never gets out of order. When not in use the pen point remains in ink, is always moist, and does not require shaking to start the ink-flow, but writes at once. There are thousands of satisfied users of Moore's Fountain Pen. Ask any of them what they think of theirs.

FOR SALE BY

ALL DEALERS