

© 1978 The Tech

in the news

INSIDE

Outgoing Dean for Student Affairs Carola B. Eisenberg, in a letter to *The Tech*, explains her feelings and her reasons on her resignation and her six years as dean at MIT.

p4

Yes, Yes was back in town Wednesday night.

p6

MIT football will begin its first season since the sport was discontinued in 1945 with strong support from the MIT Athletic Department. A schedule for 1978 is included, and features Duquesne and Stonybrook in a five game schedule.

p7

CAMPUS

Dr. Gerald L. Wilson has been appointed head of the Department of Electrical Engineering and Computer Science at MIT. Dr. Richard B. Adler and Dr. Joel Moses were also named associate heads of the department.

EXCERPTS

In most cases, it costs a dime to make a local call, although it's a nickel in Louisiana and a quarter in Florida. Some pay phones rest on their hooks for months. It happens that the phone near track 21 of the Long Island Railroad, in the bowels of New York's Penn Station, is snatched up an average of 5,500 times a month. That makes it the busiest pay phone in the nation. Have to call the doctor? Go anywhere else.

— N.R. Kleinfield
The New York Times

ERRATA

No reference to any MIT fraternity was implied in Gordon Haff's review of *Animal House* in yesterday's *The Tech*.

A picture in Thursday's issue was incorrectly captioned. The picture on page 3 showed Dean Robert L. Halfman addressing foreign freshmen.

Eisenberg resigns, Halfman acting dean

By Bob Wasserman

Robert L. Halfman '44 has been named acting dean for student affairs, replacing Dr. Carola B. Eisenberg who resigned last month to become Dean for Student Affairs at Harvard Medical School.

Dr. Eisenberg had served as the Dean for Student Affairs at MIT since 1972.

The change, which will become effective today, will promote Halfman from associate dean in the Dean for Student Affairs (D-

SA) Office to interim dean until a new dean has been appointed. As associate dean, Halfman was a senior member of the counseling group and Chairman of the Experimental Study Group. Halfman, who joined the DSA office in 1972 after serving as deputy head of MIT's Department of Aeronautics and Astronautics, will continue his previous duties while acting as interim dean.

Dr. Eisenberg said "the opportunity arose" for a new position at Harvard Medical School (HMS), "and I couldn't resist the challenge." She added "I expect the move to invigorate me, just as my replacement will add life to MIT." Eisenberg plans to perform clinical psychiatric work as well as administrative duties at HMS. She has lectured on psychiatry at Harvard and Johns Hopkins, and also worked in psychiatry at MIT and Massachusetts General Hospital.

She has already received an "overwhelming number of letters and calls" bidding her goodbye, remarked Eisenberg. "I will always be available to MIT students," she added, "and I hope



Carola B. Eisenberg has resigned for her position as Dean of Student Affairs to become the Dean of Student Affairs at Harvard Medical School. (Photo by Steve Solnick)

to maintain some type of connection to MIT in the future."

DSA Review

"Dr. Eisenberg's resignation as Dean for Student Affairs leaves a gap at the Institute which will be exceedingly difficult to fill", wrote Chancellor Paul Gray '54 in a memo to the DSA office earlier this month. "It also creates a deep personal void for all of us who had the good personal fortune to be associated with her."

In the same memo Gray proposed a "careful review of organization, responsibilities, and relationships" of the Office of the Dean for Student Affairs. Gray added "I have decided to delegate my responsibilities for the DSA area to Constantine B. Simonides," currently Vice President in the Office of the President and Chancellor. "Mr. Simonides will be responsible for bringing together the members of the DSA

(Please turn to page 2)

RESIDENCE							
O R I E N T A T I O N	7						
	8						
					31		2
	3	4	5	6	7	8	

R/O airport shuttle gets off the ground

By Michael Taviss

Anyone who has ever flown into Logan Airport knows what a horribly confusing experience it can be. To a freshman, however, this confusion is multiplied by unfamiliarity with the city and lack of knowledge about the Boston subway system, known as the "T".

Fortunately the R/O Committee provides an Airport Shuttle service to relieve the incoming freshmen of the necessity of making their own way to the Institute. The R/O Shuttle Co-ordinator is Andrew Robinson '79.

Freshmen who arrived by air and took the shuttle to the campus were in various states of relief over its existence. They felt that the operation ran smoothly and was well organized. Many knew about the shuttle in advance from an Alpha Phi Omega National Service Fraternity mailing, or from the Undergraduate Residence book. Others were preparing to make their own way in and were surprised by the shut-

tle's presence.

Kent Hauser '82, from North Carolina, was one of the latter. "I read about it (the shuttle) on the plane. I was going to try to take the bus — I thought it would be an experience. I'm glad it was there, though."

The people involved with the Shuttle are all volunteers. They include students who have cars and are willing to serve as drivers, students to man the booths at each airline terminal at Logan, and students to wander the airport as "floaters," trying to spot the freshmen as they arrive.

"All the manpower has been provided by the independent living groups," Robinson said. "The frats have been especially helpful."

There were no real difficulties getting enough volunteers, or getting things cleared with the airport, added Robinson. Communications between the people at the airport, the cars, and MIT is being provided by the MIT UHF Repeater Association.



In a corner of the R/O Center, one of the UHF Repeaters works on coordinating the cars used for the Airport Shuttle. (Photo by Gordon Haff)

Freshmen awaited

By Gordon Haff

As the sun set on Cambridge Wednesday, the machinery that makes R/O Week possible began to shift into gear.

R/O workers and dormitory desk staffs met to discuss policy for R/O Week. For the first time in recent memory, the Dormitory Council (DormCon) has imposed strict regulations on its members for the residence-choosing period. Despite protests from several groups, posters and signs may only be displayed near dormitory R/O desks, thus eliminating clutter and reducing the usual confusing disarray of paper. In addition, some rules that have in the past applied primarily to fraternities will be enforced for dormitories as well. For example, a dormitory resident wearing a living-group t-

shirt or advertising a party before the allowed time may cause a fine to be levied against his dormitory.

House leaders stressed the importance of allowing freshmen to meet residents instead of the usual touring and touting of facilities.

Meanwhile, fraternities were trying to put the final touches on Work Week while getting ready for Rush. Last-minute cleaning, painting, polishing, and decorating were more than enough work for most fraternities' members.

Paint sheets seemed to be more plentiful than draperies; in one house students waited impatiently for hours while their first coat of wax dried on the floor. But signs of the future were also abundant: carloads of beer and stockpiles of food were steadily loaded into

(Please turn to page 2)



One fraternity stocks up in anticipation of the Rush. (Photo by Gordon Haff)

Dorms, frats anticipate frosh

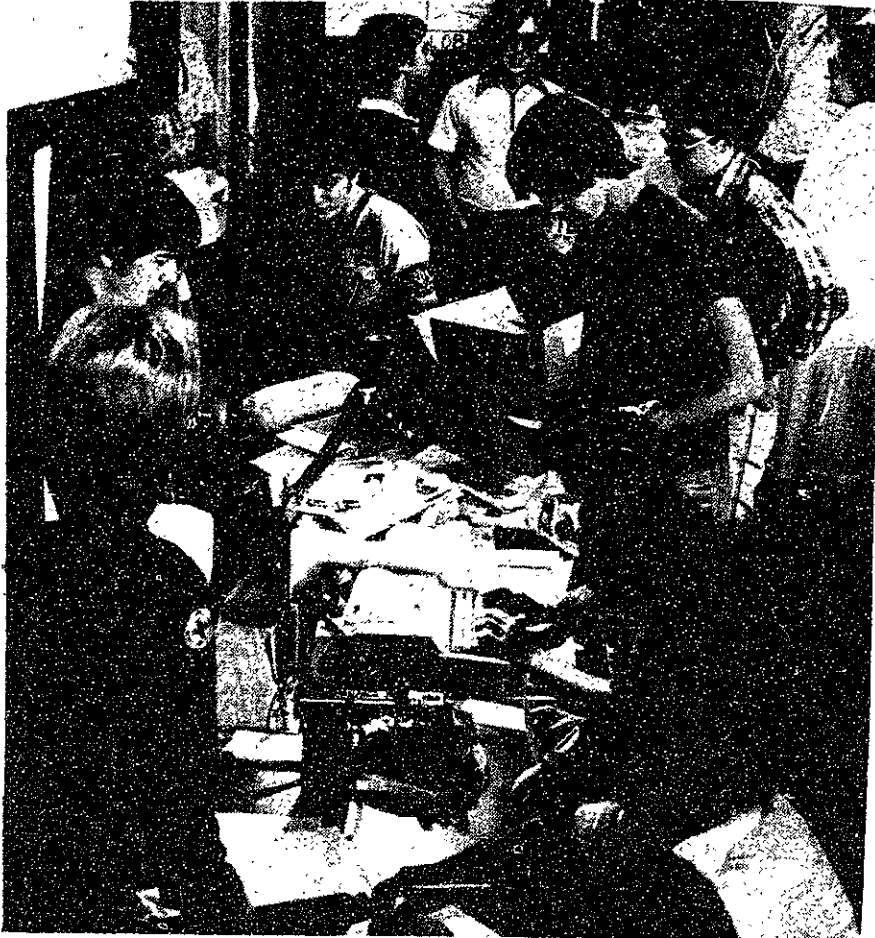
(Continued from page 1)

houses for their upcoming Rush parties.

By Thursday morning, freshmen began to arrive on campus, largely oblivious to the behind-the-scenes hustle and bustle.

As the Class of 1982 streamed in through the cool drizzle, the R/O Center and the dormitory desks grew increasingly chaotic. Freshman packets and course catalogs were handed out to the new students, but the latter with the stern admonishment from at least one R/O worker: "Burn it, mop the floor with it, do anything you want with it except read it, until next week."

The pervasive atmosphere on campus has been one of anticipation, both for upperclassmen and for newcomers. The veterans must fill their dormitories and fraternities with freshmen who want to live in them; the members of the class of 1982 must choose their residences while keeping a nervous eye out for academic orientation and the impending start of their MIT careers.



R/O Center workers gather around the computer terminal as one enters a freshman's temporary address into the Clearinghouse system (Photo by Gordon Haff)



Robert L. Halfman will take over Dean Eisenberg's duties in addition to his own until a new Dean of Student Affairs is appointed. (Photo by Steve Solnick)

Halfman takes over

(Continued from page 1)

office and other members of the faculty, students, and staff who can make a contribution to this review process."

Simonides announced the appointment of Dean Halfman as interim dean, and remarked "We are fortunate that Professor Halfman has agreed to be acting dean. He is superbly qualified to lead the office." Eisenberg also expressed optimism with her successor, saying "The DSA office now has the best possible leadership, both with Professor Halfman as dean and with Mr. Simonides heading the review."

The review has been slated to last four to six months, and Simonides said he has gone into the process "with an open mind from the beginning." The initial phase, he added, would consist of "mostly listening for suggestions to proceed with the review" from students, faculty, and staff. Simonides already has approached the Undergraduate Association for "ways of reviewing as well as their own ideas." On a smaller scale, Simonides remarked "I am interested in individual and group opinions from students on the review process," adding that individuals should write in.

In his memo, Gray said "I anticipate that Mr. Simonides will wish to ask certain members of the staff to undertake additional responsibilities" during the interim period. Simonides agreed on a "thinner layer of participation" for the DSA office, and said that Halfman "won't do

the full job of his old and new positions, but only what he can do."

Gray explained in his memo to the DSA office that the review would have four goals: to

- 1) Review and define the scope and responsibilities of the DSA Office.
- 2) Review the relations of the Office with the faculty and with the Institute's educational program, including admissions, academic advising and personal counseling, discipline, athletics, campus environment, and the coupling of the Office to the work of the standing faculty committees.
- 3) Review the relations among student support areas and recommend appropriate changes or improvements in the organization of these areas and their interaction with the DSA Office, guided by the reviews in 1), 2), 3), and take whatever steps are necessary to put this leadership into place.

Police Blotter

The Campus Police extend a warm welcome to the newly arrived members of the Class of '82. We hope your time in Cambridge is profitable, safe, and enjoyable.

With our Headquarters located on the second floor of the Armory (W31-215), we patrol the campus 24 hours a day, seven days a week, and are always ready to provide emergency police and ambulance assistance. Our officers, all of whom hold commissions as Massachusetts Police Officers, circulate constantly throughout the MIT environs.

In order to help you avoid being victimized by crime, we offer the following information and advice.

Theft

The sad fact is that thieves abound in the Boston area. In order to keep yourself from becoming one of their victims, follow these simple suggestions:

1) **Never** leave personal belongings: unwatched articles invite the thief. This includes articles left in automobiles, whether the car is locked or not. Always remove articles from view — the trunk is the best place to leave them if they must stay in the car.

2) **Wallets, pocketbooks, etc.**, are prime targets for the "hit and run" thief. They should stay with you all the time. Often people leave such items unguarded while leaving their rooms and offices for a moment or two — to visit a friend, or go to a washroom, answer a phone, etc., and upon their return find the valuables missing.

3) **Lock your doors** when you are leaving your room, office or lab. Most of the thefts from such areas occur when the areas are unlocked. The doors and windows at MIT have locks — Use them.

Bicycle Theft

Along with a high rate of auto theft, this area also has a climbing rate of bicycle theft: in fact it has become a booming business for thieves, especially since the advent of the 10-speed models.

To counter this trend, MIT has established a constantly monitored, centrally located bicycle compound in the rear of Building 13. Since it was opened we have maintained an excellent security record. The compound operates from Monday through Friday, from 7:45am to 6:15pm. Bicycles can be easily marked with Operation Identification

engraving tools. After you've engraved your bike, make a record of the design or number you used, and keep this record, bill of sale, and complete written description of the bike (including the manufacturer's serial number) in a safe place.

Beyond this, we urge you to safeguard your bicycle by using heavy duty locking devices. Recently several high-quality bicycle locking mechanisms have appeared on the market. Information on these can be obtained at our headquarters, and from most reputable bicycle outlets.

Wandering Juveniles and Other Strangers

Along the same lines, whenever you notice juveniles or other strangers wandering about or entering dormitories, offices, labs, etc., notify the Campus Police immediately. Officers will quickly respond. Remember that if you live in a dorm, it serves as your home while you're here. No one can keep it secure better than you.

Hitchhiking

Hitchhiking may seem convenient, but it is an exceedingly dangerous practice. The recent murder of an MIT undergraduate hitchhiker amply demonstrates the terrible dangers involved. Many other hitchhikers have been beaten and robbed. Take advantage of the public transportation system; and share rides with friends. There is a ride-board in the first floor cor-

ridor of Building 7, which is for the use of community members travelling around the country.

Escort Service

During the hours of darkness, an on-campus escort service is available to any person travelling to or from remote campus areas. All you have to do is call the Campus Police business extension x3-1212 and request an escort. For instance, a student working late in the Dewey Library who must walk back to a dormitory, or a secretary who has worked after hours, and has a car parked in a garage or isolated parking lot should give us a call and ask for an escort. An officer will be dispatched by radio to meet and escort you to your campus destination. Please don't hesitate to call — we're always here to serve you.

In Any Emergency Dial 100

There is an Institute-wide emergency telephone number 100. Dialing it connects you instantly with the Campus Police at any hour of the day or night. Call it anytime an emergency arises and you need police, firefighting or medical assistance. Help will be dispatched immediately.

We hope these ideas will be of help to you, and wish you good luck in your pursuits while at MIT. If we can be of any help to you while you're here, please don't hesitate to call. We're always here to serve you.

MATTRESS SELL-OFF

TWIN Your Choice
FULL From
QUEEN \$35 ea.
KING

SERTA-SIMMONS-SEALY Your Choice
TWIN \$79.95
FULL \$115
QUEEN \$157
2 PC. SET 2 PC. SET 2 PC. SET

SIMMONS QUEEN & KING SETS UP TO 1/2 OFF

Bedding Specialty Shops

MALDEN 34 Eastern Ave. 324-6381	SOMERVILLE 236 Elm St. 666-1900	WALTHAM 359 Moody St. 893-5157	WATERTOWN 19 Main St. 926-0286
---------------------------------------	---------------------------------------	--------------------------------------	--------------------------------------

ANY U.S. BOOK IN PRINT
ORDERED BY PHONE
DELIVERED PROMPTLY TO
YOUR HOME OR OFFICE

The easiest way to get
the books you want.

CALL 944-8060 ANYTIME
7 Day — 24 Hour Free Service
MAJOR CREDIT CARDS ACCEPTED
Cooperative Book
Service of America,
International
Reading, MA 01867
7 Years of World Wide Service

IMAGE

HAIR CUTTING

THE NATURAL LOOK
wash & wear cuts for
long and short hair

Open Evenings till 7
20% off with this AD

223 Newbury
536-1605



A fraternity member goes after the last few spots during Work Week. (Photo by Gordon Haff)

	Best place to eat, drink, and be merry three years in a row.	Why cut it short? LIFE: American Cancer Society
	Sunday 3-6pm Stage Fight Showcase with Bob Case	
Ladies invited 1350 Cambridge St., Inman Sq., Cambridge. 354-8458	Fabulous multi-talent showcase every Sunday 3:00 to 5:00 World's longest happy hour	This space donated by <i>The Tech</i> .

Where to eat at MIT

THERE ARE SIX DINING SERVICE FACILITIES ON CAMPUS

On West Campus, in the Student Center (Stratton Building, W20)

Lobdell Dining Hall

on the second floor, across the lobby from the R/O Center
 cafeteria service providing breakfast, sandwiches at lunch, and complete meals at lunch & dinner

	Year Round Hours:	
	Monday through Friday	Dinner 5:00 to 7:00
Breakfast 7:30 to 10:00	Lunch 11:00 to 2:00	
	Saturday	Dinner 5:00 to 7:00
Breakfast 8:00 to 10:00	Lunch 11:00 to 2:00	
	Sunday	Dinner 5:00 to 7:00
Breakfast 9:00 to 11:00	Lunch 11:00 to 2:00	

The Lobdell grill will be open seven days a week from 2:10 to 4:30 for grill orders and sandwiches. Twenty Chimneys will open at 7:00 PM.

Twenty Chimneys

on the third floor, above Lobdell
 fountain and grill serving bar-b-que chicken, half-pound chopped steak, Weiner Schnitzel, sirloin strip steaks, and fishwich, as well as California burgers, French fries, sandwiches, and desserts

Open daily from 7:00 PM to 1:00 AM

And, on East Campus, in Walker Memorial (Building 50) which faces East Campus dormitory and the Great Sail

Morss Hall

on the first floor, on the side facing the Great Sail
 cafeteria service providing breakfast, sandwiches at lunch, and complete meals at lunch & dinner

School Year Hours, effective September 13	
Breakfast 7:30 to 10:00	Continental Breakfast 10:00 11:00
Lunch 11:00 to 2:00	Dinner 5:00 to 7:00

Pritchett Lounge

on the second floor, above Morss Hall
 snack bar serving hamburgers, French fries, fountain specialties

R/O Week Hours, effective September 7 through 10		
5:00 PM to Midnight		
School Year Hours, effective September 11:		
Sunday	Monday through Friday	Saturday
9:00 AM to Midnight	11:00 AM to Midnight	8:00 AM to Midnight

For the convenience of West Campus residents, in two of the West Campus dormitories

Residence Dining Halls

Baker House Dining Hall
 MacGregor Dining Hall

Breakfast 7:30 to 9:30	Continental Breakfast 9:30 to 10:00
Lunch 11:15 to 1:30	Dinner 5:00 to 6:30

Board Plan Options

- 19 Meal Plan/Unlimited
- 15 Meal Plan/Unlimited/No Seconds
- 300 Point Plan/Unlimited/No Seconds
- 200 Point Plan/Unlimited/No Seconds

You may sign up for any one of these options at any of the dining facilities, and you may take any meal in your contract at any of the four main dining halls. (Lobdell, Morss, Baker, MacGregor)

If you have any questions, call the Dining Service at x3-2718

news roundup

World

UN troops sent to Namibia — United Nations Secretary General Kurt Waldheim asked the Security Council to send a UN force of 7,500 troops and 1,200 civilian officials to Namibia to preside over that territory's transition to independence from South Africa.

State

Politicians on TV — Television viewers will be subjected to the hopeful faces of Massachusetts politicians pursuing elective office with increasing frequency over the next several weeks. The pièce de résistance for the candidates will be the Ali/Spinks championship fight on Sept. 15. One minute spots will be going for \$20,000 each.

Local

High school returns to local control — South Boston High School was returned to the control of the School Committee after two and a half years under federal court receivership. District Judge W. Arthur Garrity, Jr. says he is now satisfied that school officials are taking "affirmative action" to eliminate segregation at the school.

T station renamed — The Kendall Square subway stop presently known as Kendall will soon have its name changed to Kendall/MIT. New graphics are being designed for this Red Line station and will be installed sometime this fall.

Campus

New carcinogen found — An extensive study conducted by Dr. Paul M. Newberne, professor of Nutritional Pathology at MIT indicates that sodium nitrite, a widely used meat preservative, can cause cancer.

— By Michael Taviss

carpet - sales

Room-size rugs
 Oriental rugs
 Remnants
 Rya Rugs

Cambridge Rug Cleaning Co.
 1157 Cambridge St.
 Cambridge, MA
 354-0740

opinion

Premonitions of R/O week 1978

(Something else is an opinion column written by the Editor-in-Chief and appears regularly in The Tech.)

By Bob Wasserman

The summer's finally come to an end and over 1,000 freshmen and even more upperclassmen are descending on the MIT campus for R/O 1978. So, looking into *The Tech's* little crystal ball, we can discover what the next week and a half holds for us.

The Weather: "If you don't like New England weather", the saying goes, "stick around until tomorrow" Well, they say this about most

places, but what is unique about Boston weather conditions is when they change, and not how often. In May 1977 it snowed ten inches, and last February there were over twenty days of total sunshine, and only a few days of precipitation. Unfortunately, one of those days it snowed two feet.

But this is the fall, the time of rain, and it will certainly rain this week or the next, hopefully not on the freshman picnic. This is good preparation, however, because it is likely to rain every week until November, if only on Saturday and Sunday.

Social life: R/O week seems to be an entirely separate social period, an intensive period of meeting people before settling down to the regular grind. Some of the people you will meet will remain close friends throughout college, and some will be forgotten, associated only with the next week and a half.

What R/O really stands for, however, is partying. This is particularly obvious to upperclassmen looking back on their arrival at MIT. You know what they say about too much of a good thing, though, and by the end of the ten days the class of 1982 will be tired of fun and games and even ready for classes to start. This will be the first and last time this will happen.

Housing. Next week freshmen will begin seriously looking into dorms and each will encounter Bexley Hall's "anti-rush." Although Bexley "authorities" (officially the dorm is an anarchy) will deny an "anti-rush", various methods are employed to disinterest freshmen with this dorm. Loud, creepy music often pours from Bexley windows, and dorm members themselves often attempt to look as scary as possible to frighten away newcomers.

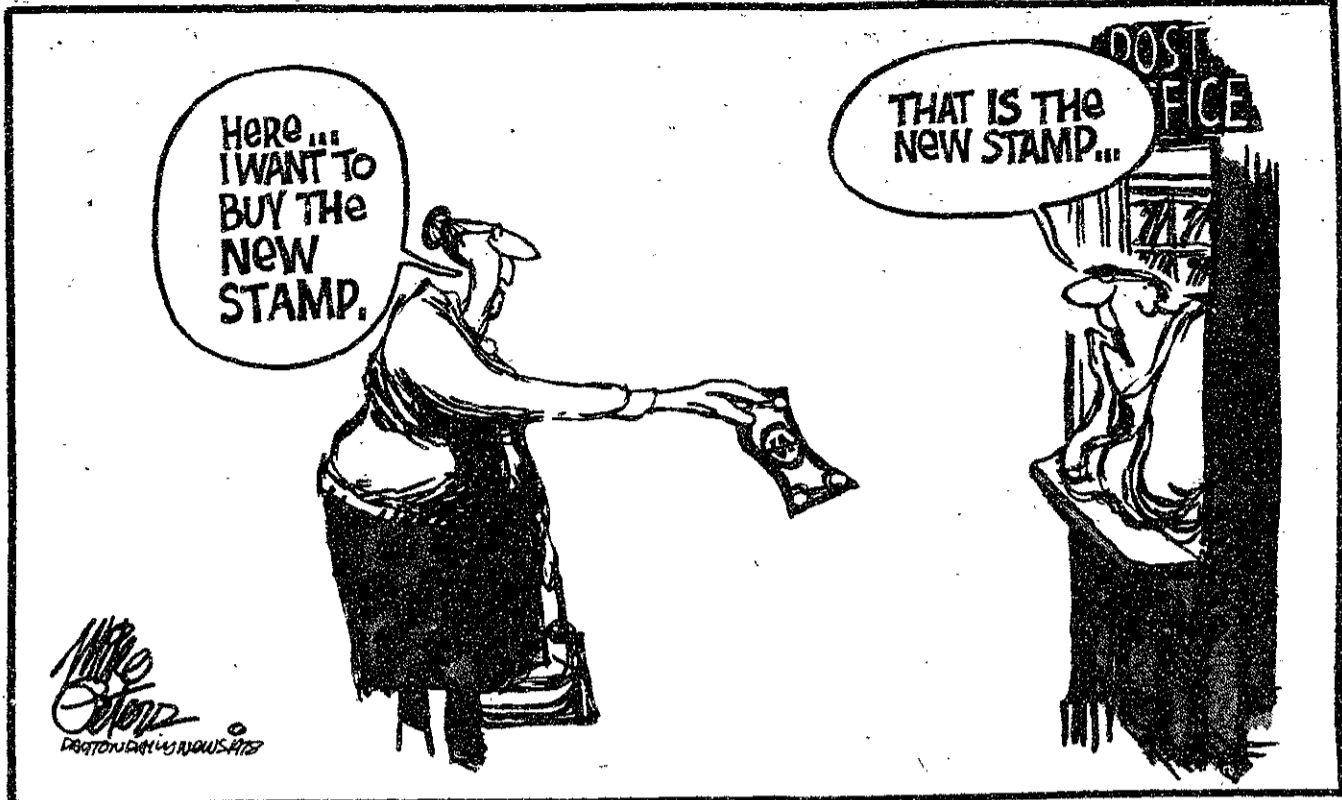
Bexley's indifference toward the incoming class begins to look pleasant compared to the recruitment push by the rest of the dorms and the frats. Immediately after the Freshman Picnic, fraternity rush workers swarm into Killian Court, leaving the freshmen little time to ponder over the thought-provoking remarks of Dean Robert Halfman. Dormitories, too, fight pitched battles for freshmen, although the dorms with the hardest rush, MacGregor, Burton, and Baker, are over-subscribed year after year. Relations between dorms and frats often become strained as well, due to the constant rivalry between these two factions.

Expectations: Invariably, the incoming freshman class will flunk their first modesty test. At the Freshman Picnic, for example, someone will ask how many of these newcomers expect to finish in the top ten percent of their class upon graduation. It is more likely that ten percent will not expect to do so than that only ten percent will expect to.

Since most freshmen indicate a vague "math or science" interest when applying, (engineering has something to do with trains), it is not surprising that a good number of each freshman class initially expects to major in physics or chemistry. This preference in the class of '82 is almost as predictable as the rapid loss of prospective majors in these departments as 8.012 (physics) and 5.41 (chemistry) get under way in the first semester.

Some member of the new freshman class will undoubtedly bring his own self-made robot to MIT, and this frosh will describe the mechanical man as "only a hobby", or wittily remark "I thought maybe I'd teach him to help me with my homework". It is doubtful, however, that the owner will remark "Lube-oil" (or whatever its name is) will fit in real well with the social life here.

Whatever happens the next week of so, R/O '78 will turn out to be a surprising, if predictable, time for the newest inhabitants of MIT, the class of '82. Who knows, these freshmen may even have some surprises in store for this "clairvoyant" upperclassman.



Eisenberg bids farewell

To the editor:

There are times for beginnings and times for endings. The times for endings are at the peak: when affairs are going well, when enthusiasm is still high and when memories are fond. That time has come for me, the time to leave the role of Dean for Student Affairs, exhilarated about every moment here (well, most moments, anyway), so much in love with the people here and the institution that I want to be succeeded by someone with new passions and new ideas.

Deaning is a consuming job, or at least it is for someone who takes students seriously. There

is just so long one can be inventive and imaginative. Students deserve the best: fresh Deans at appropriate intervals.

And so, I've decided it's time for me to move on — with tears and nostalgia — from the best job I've ever had — because I respect the institution and the people in it so much. I leave with love for all those I've had the good luck to come to know.

What next for me? It's back to medicine, and high time, too. I've accepted the post of Dean of Student Affairs at the Harvard Medical School, a new challenge in a new setting. I expect the move to invigorate me, just as my replacement will add

life to MIT.

I do mean it. I am grateful for the privilege I've had, for the support I have had from the administration and faculty, for the students who have been my friends.

My role at MIT has been more rewarding than anything I have ever imagined. I hope — and I am bold enough to think — I contributed something worthwhile to the place I have come to love with a passion — and will continue to love for all of my days.

Carola Eisenberg
Dean for Student Affairs
July 27, 1978

A few tips for Rush Week

By Dave Dobos

Editor's Note: Dave Dobos '77 is a former member of the Interfraternity Conference (IFC).

You are about to embark on four of the most unique and well-remembered days of your MIT experience: Rush Week. If you are interested in pledging a fraternity, the following hints and insights may be helpful.

— An often asked question is "What is a fraternity looking for in a freshman?"

First, a fraternity is looking for a personality that will fit in with the ones already present. Often times this will mean having interests that are similar to those of many in the group. The second (and more important) characteristic is a willingness to give a genuine commitment to the well-being of the house.

— Be open, honest and yourself. Don't be afraid to talk with people. You'll have to make an impression on people if you like a place. But don't force yourself on people, either.

— Choosing a fraternity is a mutual decision. You won't like every house you see; likewise, not every house is going to like you. — You don't have much time — use it wisely. See houses you are interested on Friday night and Saturday. If you are just getting to a place on Sunday, it may not pay much attention to you because it will be concentrating its efforts on the people it has already bid.

— Stay at a place you like for at least a few hours to meet the upperclassmen there. Generally, the only way you will be extended a bid is to meet most if not all of the people at a house. An average of 200 freshmen will visit each house; so you will have to stay around a while to show your in-

terest. By the same token, if you are at a place you don't like, leave. You're only wasting your own time.

— Don't take it hard if a place you like does not offer you a bid. Odds are that you probably would not fit in there anyway. Besides, there are still many houses left that you probably would easily fit into well.

— On Friday and Saturday, try

to meet as many people as possible at the houses you visit. Devote you time Sunday to the houses that have extended you bids.

— Although houses are understandably eager to pledge the people they have bid, don't let anyone pressure you into making a decision before you are ready to do so. Don't be swayed by hard-sell tactics. But when you are ready to pledge, don't wait around.

— Enjoy Rush Week, but don't get caught up in it. Keep track of what you are doing. Be aware of what is going on around you. Good Luck!

perspectives

feedback

What are frats like?

To the Freshman Class:

We hope that you will find MIT an enjoyable place to be. Your choice of a living group during R/O Week can have a profound effect upon what you get out of MIT, so consider all of your options carefully. As you have read in the *Undergraduate Residence Book*, you may choose between living in a dormitory and in one of the 32 fraternities and independent living groups at MIT. We'd like to take this opportunity to say a few important things about the fraternities.

As the *Residence Book*, the *Freshman Handbook* and the fraternities themselves in their booklets, letters and visits this summer all try to point out, the fraternities are so diverse that almost all of you could find one to fit into. We especially encourage women to look into the four co-ed houses: Epsilon Theta, Number 6 Club (Delta Psi), Stu-

dent House, and Pi Kappa Alpha and the Women's Independent Living Group. The fraternities here are probably unlike any you know or have heard about, so don't judge us by what you have heard about fraternities elsewhere. Come, look into a few houses and see for yourself.

A fraternity is a brotherhood, a closely knit group of individuals with a similar spirit, similar interests, or who just get along well together. The atmosphere is like that of a family. The biggest difference between a fraternity and an Institute House is the people. Since a fraternity is small (average size: 35 people) the members get to know one another very well. To anyone away from home, knowing that you have 34 people who are your friends can be very important, especially when MIT starts getting you down. The friends you make in a fraternity

(Please turn to page 5)

The
Tech

David Schaller '78 — Chairman
Bob Wasserman '80 — Editor-in-Chief
Steve F. Frann '80 — Managing Editor
Lee Lindquist '79 — Business Manager

Volume 98, Number 29
Friday, September 1, 1978

ARTS DEPARTMENT

Arts Editors: Leigh J. Passman '81, David G. Shaw '81; Staff: Clark Bisel '79, Bruce Nawrocki '79, Mark Childs '81, Steven Lazar '81, David McCall '81, Dennis McGrail '81, Kenneth Nordhauser '81, Bill Rathbone '81, Al Sanders '81, Daniel Togasaki '81.

BUSINESS DEPARTMENT

Advertising Manager: Brenda L. Hambleton '79; Accounts Receivable: Kathy Dutrow '80; Accounts Payable: Wes Asbury '80; Cash Receipts: Marcia Grabow '79; Advertising Account Representative: Thomas Turner '79; Circulation Manager: John Love '80; Circulation Staff: John Muggeridge '80.

Third class postage paid at Boston, MA. Non-Profit Org. Permit No. 59720. *The Tech* is published twice a week during the academic year (except during MIT vacations), daily during September Orientation, and once during the last week of July. Please send all correspondence to: P.O. Box 29, MIT Branch, Cambridge, MA 02139. Offices at Room W20-483, 84 Massachusetts Avenue, Cambridge, MA. Telephone: (617) 253-1541. ISSN 0148-9607. Advertising, subscription, and typesetting rates available. © 1978 The Tech

opinion cont.

feedback

Freshwomen urged to visit fraternities

(Continued from page 4)
are ones you'll remember and keep for life, and will definitely make your stay at MIT more enjoyable.

The fraternities offer their members many social activities, ranging from large parties to formal dinners to just meeting people — opportunities that are not as great in the Institute Housing system. On the other hand, you should not worry about being able to study in a fraternity. Most of them keep quiet "study hours" on school nights. People who have taken a course are always

willing to help a fraternity brother having trouble with that course. There are many tutors and teaching assistants within the fraternity system.

To make life easier for the incoming freshman, and to make Rush fairer for all the fraternities, the houses have established a set of rules to govern Rush Week. Two of the most important ones are: first, a freshman must sign into and out of every fraternity house he goes to. This gets to be a hassle at times but it is important in the event that someone (your

folks, a fraternity, the Dean's Office, etc.) needs to get in touch with you; and, second, a fraternity cannot take you away from its house during the day for more than 5 consecutive hours on Saturday, or 6 consecutive hours on Sunday and Monday of Rush Week, so that you will have a chance to look at several houses. Whatever happens, the fraternities should treat you courteously. If you have a complaint about your treatment at any house, bring it to the attention of Dave Maurer (IFC Rush Chairman,

536-3931) or Jim Thompson (IFC JudComm Chairman, 267-1801).

Rushing fraternities is very easy, and, as you will see, a lot of fun. A few points to keep in mind are: Rush starts immediately after the picnic, so you shouldn't leave early look at the fraternities early in the weekend, particularly on Friday night and Saturday, as they begin to make their choices starting Sunday and you can always look at the dorms Sunday and Monday; travel lightly as you can expect to move around a lot during Rush (large pieces of lug-

gage can be left at the R/O Center); visit several houses, no two are quite the same, but don't plan to spend time at more than about four so that you will have time to meet the brothers of those houses; be yourself and don't try to over-impress people. We think you will find that living in a fraternity will make your time here more enjoyable and enhance your educational experience. Have fun during Rush.

Dave Maurer
IFC Rush Chairman
Joe Chapman
IFC Chairman

The intricacies of finding a place to live

By Leigh J. Passman

Leigh Passman '81 is a member of an MIT fraternity.

Residence/Orientation week can be an elating, exciting week making new friends, finding a place to live, and getting acclimated to the MIT environment. It can be equally frustrating and exhausting if things don't work out as you might hope. Undoubtedly the most pressing concern for freshmen first arriving on campus is the choice of a living group. There are over 40 living groups, each with its own distinctive flare and flavor.

Arrival

Your first choice of a room is made at the R/O Center on the second floor of the Student Center. You are given a temporary room assignment in the dormitory of your choice, as available. Definitely request a room in a dorm that you think you might prefer based on what you've read in the *Freshman Residence Book*. This will provide you later with more to base your dorm choice on. Then leave your excess baggage in the storage area in the Sala de Puerto Rico (next to the R/O Center); it is safe there and you are not bothered dragging all your possessions around until you know definitely where you will be living. You may also lock up your bike there.

Getting Settled

Once you have been given a temporary room assignment, your best bet is to take whatever possessions you will be keeping directly to your room (especially if you still have your parents around to help you carry it.) You will be given keys to your room, and linen and towels at the dorm's desk.

If you are strongly considering the fraternities as a living group, it is to your advantage to tour the various dormitories before today's picnic for you may want Friday evening (Sept. 1) through Monday (Sept. 4), to concentrate your time and energy on the fraternities. Although it is not due at the R/O Center until Monday, Sept. 4, the sooner you get your dorm preference card turned in, the less you will be preoccupied with it. It is important to have a back up should you not receive a fraternity bid.

Dormitories

A word about dorm choices. This year's freshman class, like last year's, exceeds the optimal number for housing. Unless there is an exceedingly strong fraternity rush, room crowding will be employed. Of the 1080 students in the class of 1981, 607 (65%) chose to live in dorms. Although 560 (80%) received their first choice, 113 (16%) were placed in crowded rooms. Last year Baker, Burton, MacGregor and French House were oversubscribed on the first round. Many students willing agreed to be placed in a crowded room (you will be able to do so by indicating on the dorm preference card) improving their chances for the most coveted dorms.

The Rush

R/O week officially commences this afternoon with the Freshman picnic. Immediately after the last welcoming speech, banner-touting representatives from each fraternity will rush Killian Court wisking away willing freshmen.

When you enter a fraternity, you enter an environment carefully prepared to impress you. Most

fraternities spend the week before Rush Week performing maintenance work on their houses. Most houses will look their best during rush; likewise, cooks, food and booze will be at their prime.

As you enter and leave frats and dorms, you will be repeatedly asked to sign in and out and record your destination as you leave. At the R/O Center is a computer terminal connected to the "Clearinghouse" computer system which attempts to keep track of each student. The temporary dorm room you are assigned to is recorded and during the fraternity rush, the frats are required to call Clearinghouse every half-hour and update the movements of the freshmen. Clearinghouse is important because it facilitates the R/O Center in tracking you down in a family or other emergency, but primarily it permits fraternities interested in seeing you to locate you.

Dividing Your Time

In visiting the fraternities, you must choose how to divide a limited amount of time. Although rush week extends through Friday, Sept. 8, essentially the bulk of fraternity bids are extended Sunday and Monday. Some frats extend all their bids immediately Sunday morning (the earliest they can) and are done with their rush unless many bids are turned down. This means if you have not visited a frat that you are interested in once or twice before Sunday, you may miss the boat.

It is generally agreed that five or six frats can be comfortably visited in the first two or three days of rush. Most frats select their prospective pledges on the

basis of a majority or unanimous vote of its members. Clearly the more members of a fraternity you meet, the greater your chances for support are. If you have spent several hours at a frat and don't feel you are getting anywhere, you probably should consider moving along to another fraternity.

Flushing

This leads us to another facet of fraternity rushing, which can be upsetting and emotionally draining. Flushing is action by a fraternity to get you to leave, or at least to make it clear to you that you will not be bid. Flushing can range from being as subtle as being ignored by the frat members, to as blatant as being told you would not fit in. Generally and hopefully, flushing will fall somewhere in the middle. Members may suggest other fraternities where they suspect you might be happier, and they might offer to transport you to them. Keep in mind that flushing should not and generally will not be vicious, but only the fraternity's expression that moving along is in the best interests of both parties. Don't make it hard on yourself and try not to take it personally should you be flushed; for many a flush has sent people to other frats where they are truly happier.

Activities, Competition and Bidding

Most fraternities have activities on Saturday and Sunday (see *The Tech's Daily Confusion*), many away from their houses at parks or lakes. The purpose is to provide a fun atmosphere in which to get to know more about

the frat brothers. However, taking you away from the Boston/Cambridge area also takes up a lot of your time and makes you inaccessible to other frats. The IFC imposes a five or six hour limit on the length of time a frat can have you away from their house. After all the day's activities, the frat may invite you to stay overnight.

Fraternities can extend their first bid Sunday morning; with Monday morning the earliest acceptance date. Bids are quickly extended and quickly accepted. Indeed last year 277 of nearly 400 freshmen who eventually pledged fraternities had done so by 9:30pm Monday (the first day of pledging).

Pledging

Most fraternities give you at least several days in which to accept their bid, and a very few fraternities place no time limit on their bid. Clearly, though, the sooner you give them the courtesy of a response, the sooner they will know how they stand in their efforts to get a certain number of pledges.

Keep in mind that you should have a dormitory preference card turned into the R/O Center by Monday in case you are not bid or choose not to live in a fraternity. If you have any problems, questions, or complaints contact the R/O Center, Dave Maurer, the IFC Rush Chairman, the Office of the Dean of Student Affairs or Housing, or even *The Tech*.

Finally, in spite of the many preoccupations of R/O Week, try to enjoy yourself!

Don't miss your chance!

You have only until Thursday evening to see us putting out our daily issues of *The Tech*.

Everyone is always welcome, whether to watch, to question, or to help.

The Tech

Room 483
Student Center

Great music? Yes!

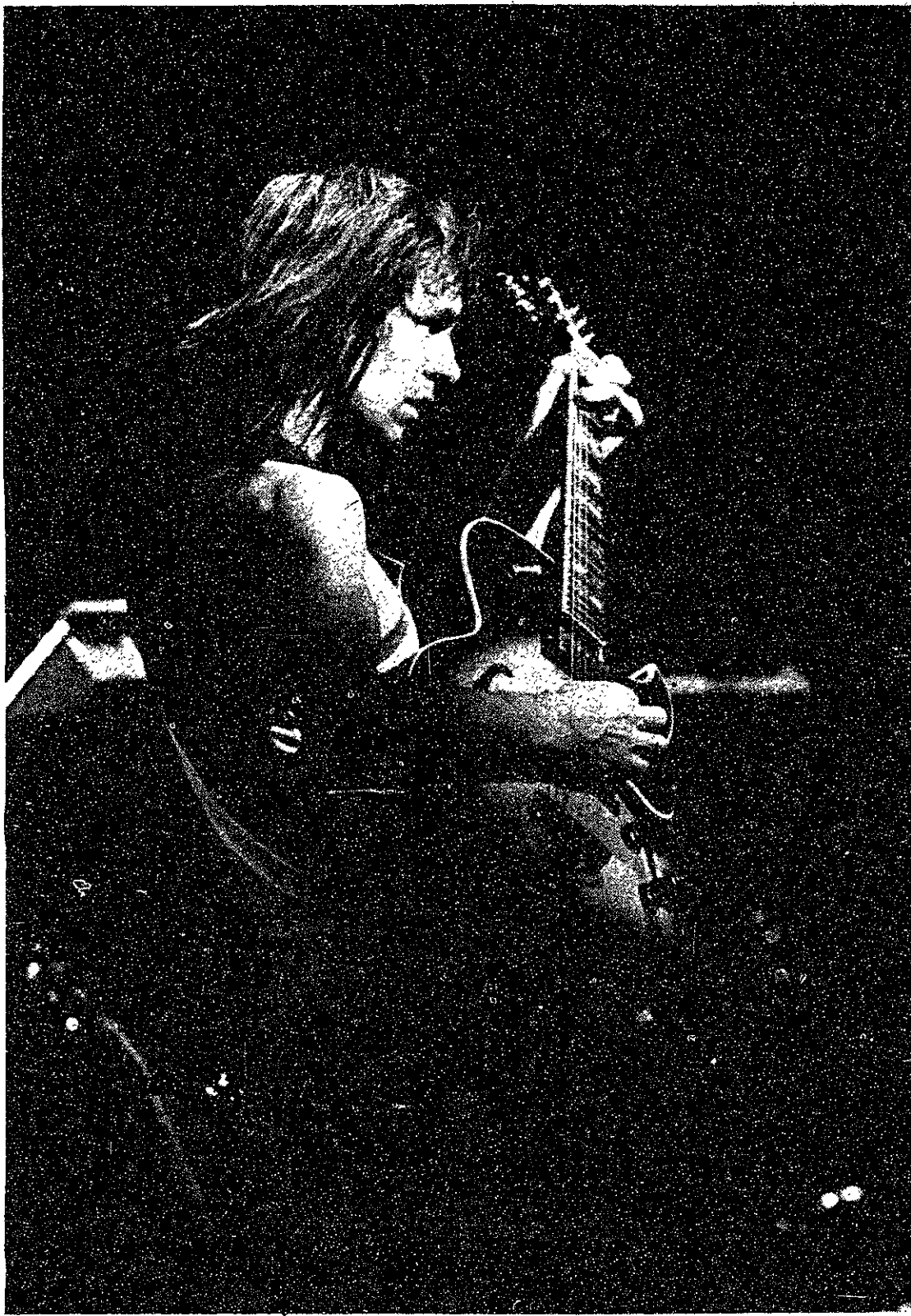
By Gordon Haff

Gone was the mist, laser show, pulsating cobra heads, and Chris Squire's triple-necked guitar. This was *Yes's* concert at the Garden last Wednesday night. Instead there was a beautifully conceived rotating stage set in the center of the Garden and just plain good music. The group concentrated on their newer material. They played "Awaken" and "Parallels" from *Going for the One* and a variety of songs from their upcoming album. Judging from the sampling played at the concert, the new album seems to be conceived along the same lines as *Going for the One* and opposed to the long elaborate compositions of *Close to the Edge* and *Tales From Topographic Oceans*.

Playing without a warmup group, *Yes* led off with "Siberian Khatru" and finished off with their classic "Roun-

dabout". The new material was warmly received but it was "I've Seen All Good People/Your Move" and "Roundabout" which brought the crowd to its feet.

Jon Anderson, as always, did lead vocals but this year he not only played the harp (for "Awaken"), and the tambourine, he added a guitar and a wide variety of percussion instruments. Steve Howe played lead guitar including an impressive solo performance. Rick Wakeman, who replaced Patrick Moraz with his return to *Yes* for the *Going for the One* album, displayed his usual mastery of a massive battery of synthesizers and organs and did an amusing little solo with cut-out horses bobbing up and down to the tune of circus music. Alan White was consistent as usual on the drums and Chris Squire did an equally fine job on bass.



Steve Howe (photo by Gordon Haff)

Rick Wakeman, with the help of a few crib sheets, adds his keyboard wizardry to *Yes's* show. (photo by Gordon Haff)

Hey kid, wanna see a great concert?

By Dave Shaw

For the connoisseur of rock music, happiness is finding a person who can get him good tickets to see his favorite rockers — live and kicking. The happiness changes to euphoria if all his favorite bands decide to go on tour over the summer.

As this summer began I read the publicity notices for the bands that would be appearing in my area, and I figured I would be happy if I got to see only one show. I had nightmares about going to box offices to buy tickets, only to have "sold out" signs pasted up at my arrival.

Then, due to some cosmic concurrence (I'm a Sagittarius), I befriended a ticket

scalper who would get me seats at any show I cared to see. Better yet, he charged list price rather than his normal highway robbery. I dropped a few paychecks on about 50 tickets to various performances. Following are my opinions of some of these shows:

I started off on a mellow note and saw *America* (yes, the band). The show was pretty much an "America's Greatest Hits" deal, but they did perform some new material. I had my doubts about two acoustic guitars/singers achieving a good live sound, but they managed to pull it off rather well. As I left, I overheard someone say "They didn't play 'Lonely People'." Oh, well...

Next on my list was *Kansas*. I had seen

them once before in a very small music hall, but due to "Dust in the Wind" they graduated to the usual hockey rink. The band's older tunes were not as well received since the teeny-bopper crowd was only familiar with the new album. Despite the band's choice of songs, the concert was excellent. *Kansas* is one of the best live bands — each tune was performed expertly. Maybe some day they'll play in music halls again.

Another mellow concert followed: *Crosby, Stills, and Nash*. I never thought I'd ever get to see real folk heroes, but there I was, getting blown away by the opening bars of "Turn Back the Pages". Those fellows were fantastic! The first half of the show was a hard-rocking set including

"Almost Cut My Hair" and "Pre-road Downs". The singing was perfect and Steve Stills tore into his electric guitar like a reborn Jimi Hendrix.

An acoustic set was next; each member sang two of his own songs. Graham Nash brought the house down (again) with "Cathedral" and "Our House"; Stills sang "4&20" and Crosby floated through "Guenivere" effortlessly. Then the three joined up again and continued the acoustic set, receiving a standing ovation for "Suite: Judy Blue Eyes".

The years have taken their toll, but CSN has the magic. It was quite a trip to see a living legend.

With the loss of guitarist Steve Hackett, I thought *Genesis's* days were numbered. I went to the concert with the idea that it would be their last. Nothing could be farther from the truth. With the help of Chester Thompson on drums and guitarist Darryl Steurmer (guitarist for Jean-Luc Ponty) the trio — Banks, Collins and Rutherford — turned out a great show. Most of the material was from the latest album, but they surprised me with a few choice oldies. The concert ended with a surprise; when the band returned for an encore, somebody else was with them. This somebody turned out to be Peter Gabriel (former vocalist for *Genesis*). Gabriel and Collins ended the show by singing "I Know What I Like."

Finally, on a whim, I decided to see Jackson Browne. A large factor in my decision was that I would have second row seats in front of the stage. Yes, I would actually see the band.

Not only were the seats good, but the show was pretty decent as well. Things got exciting once or twice, especially during "Doctor My Eyes" and "The Load-Off". Listening to Jackson live is not unlike listening to *Running on Empty*. He's worth seeing once, but not twice, as his shows remain pretty much the same.

The summer ends and the term begins, so it's time to get more tickets. I hear Billy Joel is coming to Boston. . . .



Genesis was one of the many bands touring this summer.

sports

Football in gear for '78

By Michael Ries

MIT is sponsoring an intercollegiate football team this fall, for the first time since 1945.

Strong support for the club has come from the Athletic Department, and Professor Ross H. Smith, Director of Athletics, noted that "the 1978 season will be a trial year and we hope it is a success. The future of club football depends on the success of this trial year and we will make every

effort to assist in its success."

The Athletic Department conducted an in-depth survey of club football programs at six colleges when considering the feasibility of starting such a program at MIT. Barry indicated that the results of the study showed a club football program could be introduced at MIT without affecting the rest of the athletic program.

According to Associate Professor John G. Barry, Assistant

Director of Athletics, financial support for the club has come from the Dean for Student Affairs Office, the Athletic Department, Finboard, and fund raising efforts by club members, for the 1978 season.

Accommodations for training field space has been arranged using the rugby, fall lacrosse, and one of the intramural fields, with scheduling around these activities. Locker room space will be provided in the Briggs Field House prior to hockey season.

Barry added that "the Medical Department has been very cooperative in assessing the issue of medical insurance." All team members will be required to carry the MIT extended health insurance, which provides for up to \$25,000 in medical fees and 120 days of hospital care.

Ted Rose has accepted the position of head coach. Coach Rose has scouted for the New England Patriots and coached football at Harvard and Tufts. He is enthusiastic about the new team and noted that "there is a great deal of student interest and 38 men are out for the team already." Coach Rose is "looking forward to the season" and "hopes that more students will join the team." He added that "the Athletic Department had been most helpful in assisting him."

The football club will play five games following one scrimmage. Once game has been tentatively scheduled as a home game, although a location for it has not yet been determined.



Practices are held from 5pm to 7pm on weekdays. Graduate students as well as undergraduates are eligible for the team, and anyone interested in joining the club is encouraged to contact Bruce Wrobel at 266-6377, the club president, or Gary Spletter at 262-1099, the club secretary.

1978		
Sept. 16	Sienna (scrimmage)	away
Sept. 24	Fitchburg	away
Oct. 8	Duquesne	away
Oct. 21	Brooklyn	away
Oct. 28	Sienna	home
Nov. 4	Stonybrook	away

GODSPELL

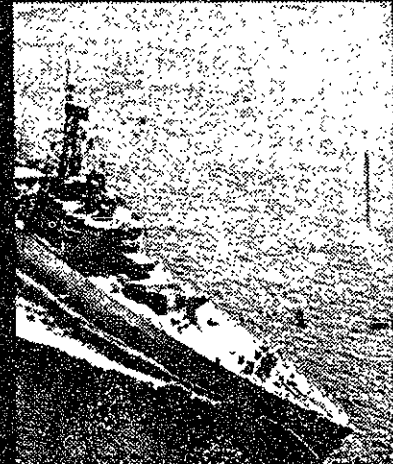
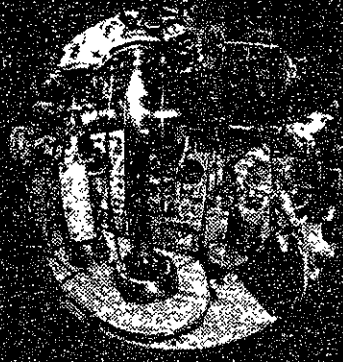
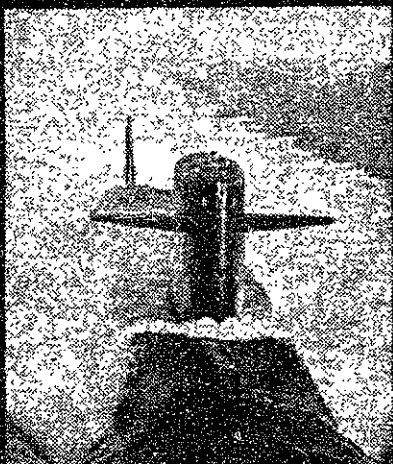
TONIGHT & TOMORROW
at 8 pm
Tickets \$4.00

MATINEE
TOMORROW at 3 pm
Tickets \$3.50

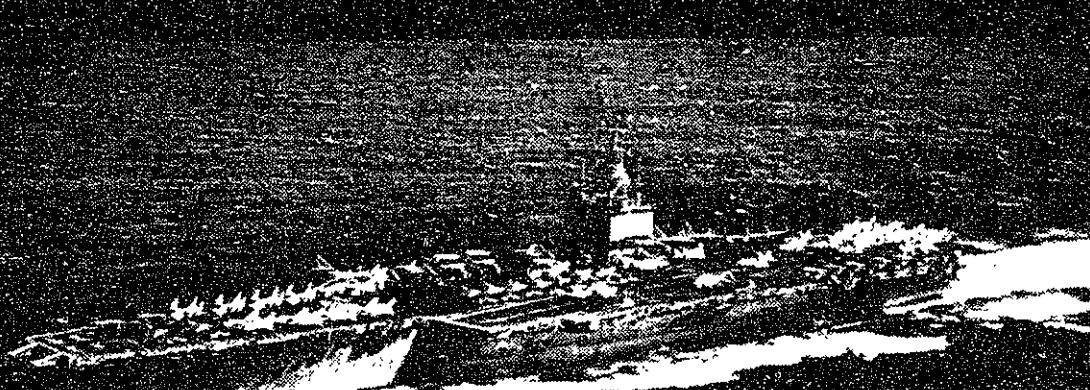
All tickets \$2.00 with MIT ID

KRESGE LITTLE THEATRE

For info call x3-6294



THE NAVY



The Navy is more, has more, and does more than you think.

Just ask any Midshipman here at MIT.

Freshmen and Sophmores interested in the Navy and NROTC should drop by the NROTC office 20E-125 or call 3-2991.

The Daily Confusion

FRIDAY

All day More Freshmen arrive.
8am-12midnight R/O Center open.
 8:30am-4:30pm Fill out medical forms in Room 491 (not 407), Student Center if you haven't done so already.
 9am-3pm Airport Shuttle operates.
 1,2,3pm Tours of MIT leave from the front of the Student Center.
 3-4pm Tours of MIT for parents and freshmen leave from Building 7 Lobby.
 3-4pm Parent Hospitality hour in the Mezzanine Lounge, Student Center.
 3pm Pre-picnic discussion groups in Killian Court (Rain location: duPont Gymnasium).
4:30pm Freshman Picnic in Killian Court (Rain location: duPont Gymnasium).
 4:30pm MIT Hillel: A table of Kosher food will be available at the Freshman Picnic.
6:30pm Fraternity Rush begins.
 6:30pm-12midnight Harbor in Private Dining Room #2, Student Center third floor.
 7pm MIT Hillel Traditional Shabbat services in the Kosher Kitchen, 50-005.
 7-8:30pm United Christian Fellowship (IVCF) regular meeting. Prayer, praise, Bible study, and singing in Room 1-236.
 10pm MIT Hillel Oneg Shabbat.

Living Groups

All morning Nu Delta Stop by after you check in at the R/O Center.
 6:30pm Theta Xi Pizza, beer, make your own sundaes, music, open bar, and conversation. Call Chuck at 266-4363 for rides.
 6:30pm No.6 Club Party.
 6:30pm TDC Open House

6:30pm Kappa Sigma Wine and cheese party on the roof (weather permitting); music to be served.
 6:30pm ZBT Wine and cheese party.
 6:30pm AEPi Ice Cream Party stocked by the famous Steve's Ice Cream and Emack and Bolio's. Make your own sundaes.
 6:30pm PDT Beer and Pizza party
 6:30pm ADP "The Casbah Experience", featuring live arabesque band, belly dancers, and a sorcerer.
 6:30-11pm WILG Party after picnic. Celebrate with champagne and cheesecake at 10pm.
 7pm Sig Ep Pizza, beer, and munchies.
 7pm BTP Beer and pizza party.
 7pm PLP Vatoshka Party. Light refreshment. For rides or info call 247-7775.
 7pm PKS Exotic beers and deli.
 7pm PSK Open bar party.
 7pm PKT Informal party: music, dancing, munchies, drinks.
 7pm Nu Delta Wine, cheese, and conversation.
 7pm Sigma Chi Open bar, beer and munchies. Call 262-3192 for rides
 9pm TEP Come to TEP! Beer tasting party.
 9:30pm Nu Delta Presumptuous Pizza Party (well, sumptuous, anyway).
 10pm ZBT Entertainment by the *Loco-Motion Circus* (juggling and acrobatics).
 11pm ZBT The Great Pyramid of Ice Cream.
 11:55pm Fenway House Nuclear Countdown.



(Photo by Gordon Haff)

ODDS AND ENDS

Harbor is a place to sit down, relax, and talk to people who have time (and aren't trying to get you to live with them). We're located in Private Dining Room number 2, on the third floor of the Student Center. We'll be open until midnight all week. Drop by. We'd be glad to see you.

Anyone who has problems with a fraternity should call Dave Maurer, IFC Rush Chairman, at 536-3931, or Jim Thompson, IFC JudComm Chairman, at 267-1801.

Transfer students are welcome at all freshman activities.

Presently there is an extreme shortage of off-campus housing in the Cambridge and greater Boston areas. Incoming students, single or married, in need of housing are urged to go to the Off-Campus Housing Service, E18-301, for information concerning roommate listings and apartment rentals. Listings are updated daily and free telephone service is available for local calls concerning the listings.

Students, Faculty and Staff members, who can temporarily house single students or families are asked to call Off-Campus Housing, x3-1493, to list their accommodations.

Come browse through Christian books at the Christian book table in Building 10 Lobby from 10am to 2pm.

Consult page 38 of the *Undergraduate Residence* book for addresses, phone numbers, and full names of living groups. Please note the following corrections to telephone numbers listed in the *Undergraduate Residence* book:

Bexley Hall should be dl 5-9680.
 ATO should be 253-7764.

An informal group is being organized for students interested in visual arts. Varied, interesting monthly activities. For more information, contact the ArtFacts Coordinator, Committee on the Visual Arts, Room 7-145, x3-4400.

Experimental Study Group Open House, 9am-9pm in room 24-612. Drop by and visit us — we provide refreshments, company, and information about ESG.

Come meet with people from the Christian groups on campus in Room 7-106, from 9am to 5:30pm.

Drop by the Hillel office any time for information on R/O activities, Jewish life on campus, or just to meet people and talk.

Other phone numbers: R/O Center: x3-4551 (2-3-4551 from dormline, (617)-253-4551 from outside), Office of Freshman Advising (OFA): x3-7661, and Campus Patrol: x3-1212.

TELEPHONE NUMBERS

In an emergency, dial 100 from any MIT phone.
 R/O Center: x3-4551 (2-3-4551 from a dormline)
 Office of Freshman Advising (OFA): x3-6771
 Campus Patrol: x3-1212 or x5-8191

SATURDAY

9am-9pm R/O Center open.
 9am MIT Hillel Conservative Jewish Services, Hillel basement (312 Memorial Dr.).
 9:30am Women's Brunch in the Cheney Room (3-310).
 10am-midnight Harbor in Private Dining Room #2, Student Center third floor.
 10:30am Women's brunch in Cheney room.
 3-4pm Tours of MIT for Parents and Freshmen leave lobby of Bldg. 7.

Living Groups

All day Russian House 5-Kopek tours
 7am-7pm Epsilon Theta Visit us. Great food, and we'd like to meet you. Call 743-0648 to arrange for transportation.
 7am-11am Russian House Breakfast
 8-11am ZBT Breakfast made to order.
 8-11am Theta Chi Steak & Eggs breakfast. Call 267-1801 for rides.
 9am Burton House Breakfast
 9am-5pm PKT Assorted trips around Boston, sporting events, and tours of the city.
 9am-12noon WILG Brunch. French rolls, Bacon and eggs to order
 10am BTP Basketball at duPont Gym.
 10am Fenway House Banana Breakfast. Our annual exploration of musaceous cuisine.
 10am-all day Theta Xi Sidewalk art exhibit! Create your own masterpiece or contribute to ours: sculpture, murals, finger painting, etc. Lunch provided. Call 266-4363 or 266-8073 for rides.
 10am-5pm SAE Visits to historic Boston landmarks.
 10am ADP Create-your-own-pancake bazaar.
 10am-5pm Nu Delta rock climbing, sailing, frisbeeing, and tours of Boston all day.

10am Sigma Chi Trips to Boston, Prudential Center, "Where's Boston?"
 12noon Nu Delta Taco Party.
 Noon TEP Annual Jeffrey C. Gelpy Memorial Walking Tour of Boston. Also: Bicycle Ride
 12:30-3pm ZBT Steak Fry.
 1pm ADP Tours of Boston, trips to the Aquarium and Science Museum.
 1pm-4pm Russian House Frisbee Roast
 1pm-5pm WILG Tours of Boston and Cambridge
 1pm Sigma Chi Shishkebab barbeque on front steps. Call 262-3192 for rides.
 2pm Kappa Sigma Football at Wellesley College. Beer and munchies.
 2pm Fenway House Canoeing on the Concord River.
 2pm BTP Touch Football.
 5pm SAE Castle Party at Crane Memorial Reservation. Catered banquet, entertainment by world-famous magician Cabert Michaels.
 5pm AEPi Buffet dinner.
 5pm ZBT Fried Chicken dinner.
 5pm Sigma Chi Cookout along seashore at Gloucester, Ma.
 6pm Nu Delta Italian Fest.
 6pm ADP New England Seafood Extravaganza.
 6pm ZBT Trip to Paragon Amusement Park. Unlimited rides, pizza.
 6pm TEP Turkey dinner - just like mom used to make.
 6pm-8pm WILG - Crepe Dinner. Fill your own for dinner and dessert
 6:30pm AEPi Boat tour of Boston Harbor.
 7pm PLP Casino Party: Blackjack, roulette, poker, cocktails and prizes. Call 247-7775 for rides.
 7:59pm Nu Delta The nth annual Great Pyramid Party, an ice cream orgy of gastronomic proportions.
 8pm Theta Xi Casino Party! Try your hand at our house tables. This one night you have *nothing* to lose. Call 266-4363 or 266-8073 for rides.
 8pm Sig Ep Our famous casino party: prizes and open bar.
 8pm DKE Casino party with open bar and dancing.
 8pm Fenway House Film Festival. A variety of shorts followed by ice cream.
 8pm BTP The famous Beta Rotation Party. Vodka, Gin, Tequila, and Rum bars.
 8pm PKS Jazz party featuring the *Chris Trio*; open bar.
 8pm Kappa Sigma Band party featuring the *Beaver Steel Band*; open bar.
 8pm No. 6 Club Party.
 8-9pm McCormick Informal get-together in the lobby. Free munchies, all welcome.
 8pm TEP Cocktail Party
 8:30pm WILG Coffee House. Wine, cheese, and our own talent.
 8:30 PSK Wine and Cheese party.
 8:30pm PKT Live band party, featuring *Blitz*. Dancing, food and open bar.
 8:30pm Baker Hawaiian Luau. Eat, drink, and dance the night away.
 9pm PBE Party.
 9pm ADP Live band party featuring *Seventh Sun*.
 9pm-? TDC Party with the *Ellington Alley Band*. Wine, women and song, the whole night long.

EATING

On Campus Dining Service: Lobdell (Student Center): Fri.: Breakfast: 7:30-10am (\$1-\$2 approx.); Lunch: 11am-2pm (\$2-\$3); Dinner: 5-7pm (\$3-\$4). Sandwiches and grill open 2:15-4:30pm. Closed Sat., Sun., and Mon.

Twenty Chimneys: Fri. 11:30am-1:30pm, Saturday: Breakfast 9-10:30am, Grill etc. until 7pm.

24-Hour Coffeehouse (2nd floor Student Center) coffee, donuts, candy, bagels.

The Daily Confusion

Coordinating Confusor: Pandora Berman '80
 Editing Confusors: Cindy Delfino '81, Rhonda Peck '81, S. Tanner Wray '81