

© 1978 The Tech

in the news

INSIDE

Former CIA Director William Colby spoke at MIT last week, discussing his views on the status and future of the intelligence business in this country.

p3

"But soft, what light on yonder Sala breaks?" It is the Shakespeare Ensemble's production of *Romeo and Juliet*, running now through Sunday.

p10

On Monday, nearly a million spectators watched over 4,000 runners compete in the 82nd annual BAA Marathon. Most of the attention has been focused on second-time winner and local hero Bill Rodgers; *The Tech* looks at some of the unsung heroes of Monday's classic.

p15

The varsity baseball team's season has been a series of ups and downs. This spring has seen everything from five-game losing streaks and 18-0 losses to victories over top New England teams.

p19

EXCERPTS

A frequent comment that arises when discussing campus life is that students are isolated from the "real world;" they rarely keep up with quality newspapers or magazines and therefore know little about day-to-day events in the outside world. Most classes do not emphasize current events and many reduce past crises to a few generalizations in a lecture or a couple of paragraphs in an article of reserve reading. So much is clear to the point of becoming a cliché.

The results are also obvious. Students do not discuss current problems or events or, at least, we deal with them in only superficial and perfunctory ways. Our energy and creativity go to waste simply because we are not aware of the challenges of the larger world.

Local or personal concerns occupy our thinking and we retreat into a type of selfish isolationism, surrendering to the popular notion that "awareness" lies not in knowledge of the social, economic and political forces which affect millions of lives, but in being "in touch" with one's own body or emotions.

— Steve Schiller
The Stanford Daily

Equity level remains constant

Financial aid limits to be raised

By Jordana Hollander

The Student Financial Aid Office has increased the standard student budget for 1978-79 to \$8,350, raising the maximum possible financial aid by \$350.

Changes were made in all four of the budget's components. Tuition has been increased by \$350, average dormitory costs have risen \$85, medical fees have gone up \$15, and the allowance for books and personal expenses has increased \$85.

To partially balance these increases the allowance made for food has been cut \$185. This was done by changing the base from the cost of the most expensive Commons meal plan to an average figure including some meals eaten on Commons and some eaten elsewhere.

Food Service data show that only three percent of the student body subscribe to the nineteen-meal plan and only twenty percent of student meals are eaten on Commons. The new allowance grants \$300 per student for Commons meals plus \$5 a day for other meals, giving an average of \$38 per student per week. This is a much more reasonable figure for the student body's need, said Jack Frailey, Director of Student Financial Aid.

The lower food allowance helped prevent an increase in the \$2500 equity level, according to Frailey. This is the first time in several years that the equity level has remained constant.

The maximum financial aid a student is eligible to receive is the standard student budget minus the equity level. Though the equity level remains the same, students still need to raise additional funds to cover the cut in the food allowance. All the other increases are for fixed expenses.

According to Frailey, the increased demand for aid will be met partly through the normal increase in the parent's contribution, due to the inflationary rise in wages, and partly through a \$400,000 increase in unrestricted Institute funds. Frailey noted that MIT undergraduates receive over \$10 million a year in financial aid, with an average need of \$5,000.

Of that figure \$3.2 million dollars comes from MIT — \$2 million dollars in endowed funds set aside for scholarships and \$1.2 million of unrestricted funds, which have been used for scholarships for the past five or six years, said Frailey.

The rest comes from outside scholarships from National Merit, SEOG, BEOG, ROTC programs, corporations, etc. and from various types of loans.

One of these loan programs, the Parents Loan Plan, lends money to the parents of students to help them meet their expected contributions. Although only in its first year of operation David Wiley, Administrative Associate, Analytical Studies and Planning Group, said that it was "working well" and would be extended next year. The plan is sponsored by MIT and financed with MIT's invested funds.

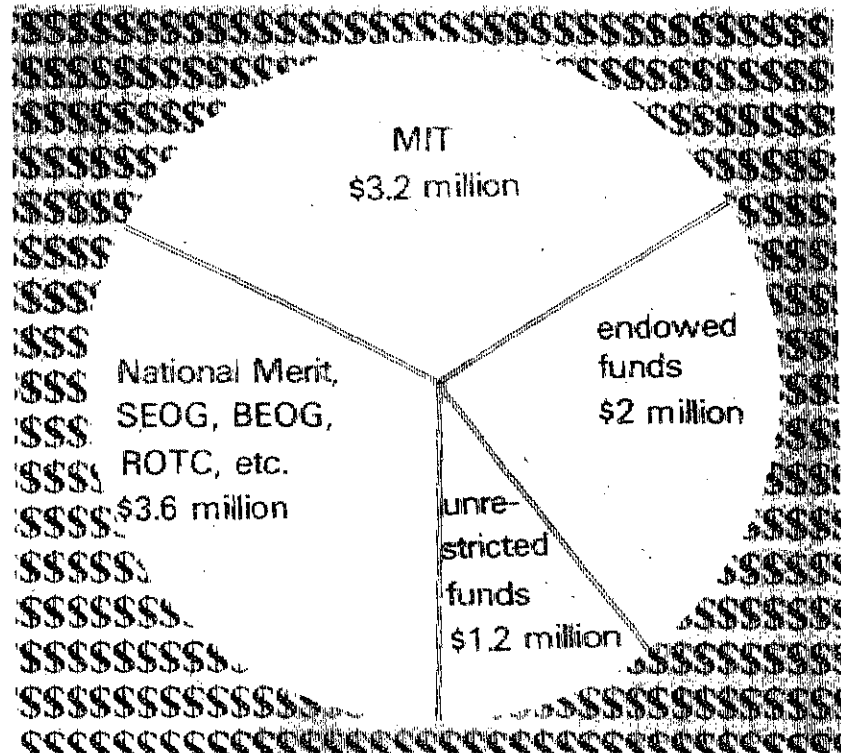
Parents of any full time undergraduate or graduate student at MIT with an income of between \$15,000 and \$60,000 may borrow

money for up to 8 years of school, whether or not they are eligible for financial aid.

Some changes have been made in the program, noted Wiley. Since last year the maximum loan per year has risen from \$6500 to \$7000. Restrictions on how the loan must be spent have also been loosened.

Most importantly, the program is now open to upperclassmen as well as freshmen. Applications were mailed to incoming freshmen and are available in the Student Loan Office and in the Financial Aid Office for upperclassmen.

According to Wiley over 80 families participated this year, borrowing an average of \$4,000. He said he felt the number of participants will increase this year as upperclassmen become eligible.



David Koretz/Benson Marquies

'New College' plan announced

By Mark James

A new program in science, technology and society has received \$2.5 million in grants from three foundations, Associate Dean of the School of Humanities Donald Blackmer told the faculty at Wednesday's meeting.

The "new college" in humanities, as the program has become known, is now under slow development, Blackmer said. A director, two full-time professors and several part-time and visiting members now compose the program. Blackmer said that this core group would serve as the center of a program that would include participants from all of MIT's schools.

Blackmer described the program as providing a focus for teaching and research on the connections between science, technology, and social issues. The present Technology Studies Program will be abolished at the end of this year, and its present participants are invited to join the new program.

Early plans for the program, formulated over a year ago, called for the program to eventually be separate from the Schools of MIT, a "new college" that would

cooperate with members of all Schools. Blackmer said at the meeting that changes in plans make it premature to discuss this possibility now. The program is now planned within the School of Humanities, and will remain there during its development, he said.

A recruitment committee is searching for members in four fields: the social study of science, the history of technology, the history of modern biology, and the study of modern industrial societies. A faculty advisory council is giving joint appointments to professors already at MIT, Blackmer said. Professor of Aeronautics and Astronautics Leona Trilling now has such an appointment.

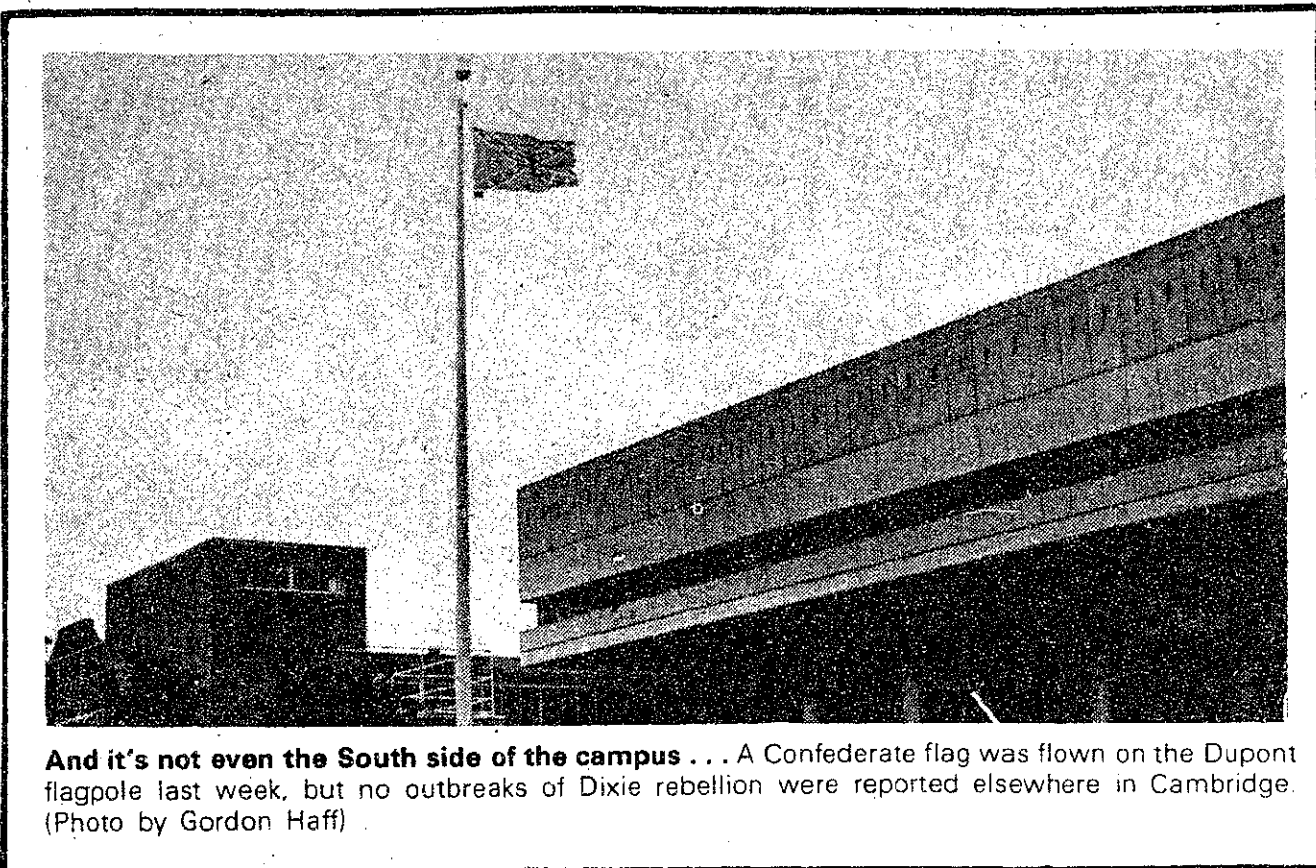
Blackmer would not give details on the funding of the program, as no official announcement has yet been made. He said that the program may eventually lead to an undergraduate major for a "handful" of students interested in the social and historical implications of technology.

In other reports at the meeting, Vice President John Wynne discussed implications of the new federal law prohibiting involun-

tary retirement before age 70. Tenured faculty are exempted from the law until July 1, 1982. Wynne noted that MIT has several options in dealing with the law: stop mandatory retirements at 65 now, wait until the law goes into effect in three years, or strongly encourage, by financial or other means, retirement at 65 even after the law goes into effect. Wynne noted that the present pension structure would give "excessive" pensions to late retirees if it was not adjusted. Chancellor Paul Gray '54 said that the Academic Council would probably decide the issue by the end of the summer.

- Students who do not receive substantial support for their thesis work will now hold copyright on their theses under the new federal copyright law. MIT rules now give the copyright to the Institute, in conflict with the new law, according to Jay Lucker, head of the MIT Libraries.

- MIT is now awarding a master's degree in Science Communication as part of Course XXV (Interdisciplinary Science). Another new program will lead to a PhD in Human and Clinical Nutrition.



And it's not even the South side of the campus . . . A Confederate flag was flown on the Dupont flagpole last week, but no outbreaks of Dixie rebellion were reported elsewhere in Cambridge. (Photo by Gordon Haff)

news roundup

World

Police fail to find Moro — After dynamiting several layers of thick ice covering Lake Duchessa, police failed to uncover the body of former Italian Prime Minister Aldo Moro. Police had received a message purportedly from the Red Brigade that said that Moro had been "executed by suicide" and his body "immersed in the slimy bottom of Lake Duchessa."

Police did, however, recover the body of someone else. Yesterday the Red Brigade sent police a picture of Moro holding up Wednesday's newspaper. They called the earlier message a hoax.

Nation

Senate sanctions airline competition — By a vote of 83 to 9, the Senate approved legislation Wednesday night to allow airlines to compete for passengers by lowering fares with minimum interference from the Civil Aeronautics Board (CAB). The legislation would also reduce the power of the CAB to block entry of new carriers. President Carter hailed the Senate action and called for a quick follow-up by the House.

Clergy ban ruled unconstitutional — The US Supreme Court unanimously invalidated a 182-year-old provision of the Tennessee Constitution that prohibited clergymen from serving in the State Legislature because they "are by their profession dedicated to God and the care of souls and ought not to be diverted from the great duties of their functions." This was the last state ban of this nature to be ruled unconstitutional.

Students start new TV channel — Three or four Syracuse students illegally broadcast their own programming last weekend on unoccupied TV Channel 7. Movies such as "Deep Throat", "Rocky", and "Annie Hall" were broadcast. If caught, the students could be liable for fines up to \$10,000 or a year in jail or both.

Carter testifies by videotape — President Carter, testifying by videotape in a federal conspiracy case, said he "instantly" rejected a request for gambling raid tipoffs while he was Governor of Georgia. Carter ordered an investigation of a legislator accused of initiating the request. Carter's testimony is the second videotaped testimony by a sitting president in US history.

— Steve Kirsch

classified advertising

Want to spend the summer sailing the Caribbean? The Pacific? Europe? Cruising other parts of the world aboard sailing or power yachts? Boat owners need crews! For free information, send a 13c stamp to Skoko, Box 20855, Houston, Texas 77025.

College Reps Wanted
\$75/week. International Marketing Co. is seeking students P.T. while in school to develop business in local area. Tuition aid for leaders. Call: 396-8773.

Tennis Pros and Assistant Pros — Seasonal and year-round clubs; good playing and teaching background. Call (301) 654-3770; or send 2 complete resumes and 2 pictures to: Col. R. Reade, W.T.S., 8401 Connecticut Avenue, Suite 1011, Chevy Chase, MD 20015.

Summer counselor positions at New England Boys' Camp — Swimming, Sailing, Skiing (3-mile lake; 30 man staff); Tennis (16 staff, 16 courts); Baseball, Basketball Coaches (Varsity or Phys Ed Majors); Electronics, Nature-ecology. Other openings. Send resumes: Camp Mah-Kee-Nac, 20, Allen G., South Orange, N.J. 07079

For Sale: Garrard 440M turntable, Rotel RA-110 Amp, pair Jensen 1 speakers; fine condition; entire system \$95. x5-8297

Wanted: VW Beetle '66 or older. Must have good body, minimal rust. Mechanical condition not important. Will pay cash and tow it away. Jim, 492-0737, evenings.

Summer rooms! Singles and Doubles available at No. 6 Club, Memorial Dr. next to Burton dorm. \$80-\$100 \$110/month. Call Calvin at 253-3213.

Students try to get in CIA group

By Elaine Douglass

At least one member of the ad hoc MIT committee to set guidelines for the Institute's relationship to US intelligence agencies has received unsolicited phone calls from faculty members describing the extent of previous contacts with the CIA, *The Tech* learned this week.

In a related development, newly elected Undergraduate Association President Barry Newman '79 said he intends to press Chancellor Gray to appoint a student to the ad hoc committee, and Graduate Student Council President Steve Horlitz said he may renew his efforts to obtain a student on the committee.

The ad hoc committee was established in January by Chancellor Paul Gray '54 as the result of disclosures made by a US Senate Committee in 1976 that intelligence agencies had secretly funded university research and had involved university personnel in a variety of other covert relationships.

MIT learned in September 1977 that an Institute faculty member and a researcher were unknowingly funded by the CIA in 1961 and 1959. Gray has refused to appoint a student to the committee, which consists of six faculty and administrators.

No details about the unsolicited phone calls were available, except that the individuals mak-

ing the calls wish their identities to remain confidential.

"I'm not going to let the situation lie the way it is now," UAP Newman said Wednesday, referring to the Chancellor's refusal to appoint a student, and said he would speak this week with the Chancellor about it.

In a letter received by the Graduate Student Council March 23, the Chancellor seemed to imply that the ad hoc committee would be considering matters of relevance only to the faculty. Yet, for example, current Institute regulations permit a faculty member with an outside research contract to hire student researchers without disclosing to them the source of the project funding. Conceivably, such funding could come from the CIA.

Such a situation would "take away the ethical decision of the student," Newman said. "Students have a right to decide who

they will work for," he said.

Ad hoc committee chairman Ken Hoffman, head of the Department of Mathematics, said he "is willing to see anyone on the committee that the Chancellor appoints." Hoffman said he has not received any calls from faculty describing previous contact with the CIA.


In January, ad hoc committee members said it might be too late to obtain a student representative because the committee had planned to complete its work in June. However, Hoffman now believes the ad hoc committee will continue working until sometime in the Fall 1978 semester.

Hoffman also said that, contrary to previous expectations, the ad hoc committee may take up the issue of how MIT should deal with the possibility that foreign students might be asked by US intelligence agents to become spies in their home countries.

Sun-Sat (7 days)
11-12 Midnight
4 Brookline St. 354-8238
Central Square Cambridge

MIDDLE EAST RESTAURANT


Luncheon \$1.25-2.50
Entrees \$2.75-4.00



the Coop
M.I.T. STUDENT CENTER

Early Spring Event

WILSON Tennis Equipment



★ **FIRST TO THE COOP . . . THEN TO THE COURTS!**

★ **CHOOSE FROM OUR GREAT SELECTION OF RACQUETS including.**

T 2000 - the most popular metal racket in tennis:
FRAME only — 29.99 STRUNG — 39.99

T 3000 - for power with added control:
FRAME only — 33.99 STRUNG — 43.99

Wilson TENNIS BALLS: the best playing ball in tennis!
REGULAR FELT for soft courts
EXTRA DUTY FELT for hard courts **\$3 EACH CAN**

Stringing Also Available.

And . . . if RACQUET BALL is your game choose between:

Wilson's SUPERSHOT \$16
Wilson's CONQUEROR \$25
Wilson's PRESTIGE \$28

SPORTING GOODS

the Coop
M.I.T. STUDENT CENTER

Offer Ends April 26

Special Bonus!

4 Kodak color reprints from Kodacolor negatives **for the price of . . . 3**

THE NEW COLOR PROCESSING by Kodak

CIA's Colby speaks about Chile, abuses

By Elaine Douglass

Press reports of CIA abuses have been "exaggerated" and "sensationalized," and the United States needs the CIA to get information "about the dangerous world outside our borders," former CIA director William Colby told an audience at MIT last week.

Colby was director of the CIA from 1973 to 1975, when he was dismissed by President Ford. Colby said he was fired because Ford and Henry Kissinger thought he was too candid with Senators investigating the CIA.

"Throughout history, even from the time of Moses, intelligence has been ruthless and outside the law," Colby declared. The 1947 legislation which established the CIA was written, he said, in "nice, fuzzy language."

"After Vietnam and Watergate, we asked all CIA employees to search their memories and their files for objectionable past practices," he said. "We collected a bundle — not a very big bundle — and in there we found some things we didn't like. Then we decided the CIA should be under American law," he continued, "and since that time there has been no case where the CIA has violated its regulations."

CIA regulations are in the form of presidential executive orders. A controversial feature of the orders promulgated by both the Ford and the Carter Administrations is a provision authorizing warrantless surveillance and physical searches of US citizens in national security cases.

Colby told *The Tech* he does

not believe the government should conduct any surveillance or searches without a warrant. Pending federal legislation would prohibit warrantless taps and break-ins, even in national security cases.

There is no longer a danger that US intelligence agencies will violate laws and regulations, Colby maintained, because a "new era" of law-abidingness has set in. "The CIA is under a legal obligation. CIA employees would go to the press, they would *explode* if there was a major cover-up," he said. "The CIA is patriotic — that's your fundamental protection," Colby declared.

Colby repeatedly declared the CIA must preserve its capability (Please turn to page 14)



William Colby, former director of the Central Intelligence Agency (Photo by David Schaller)

10% Discount on School & Office Supplies

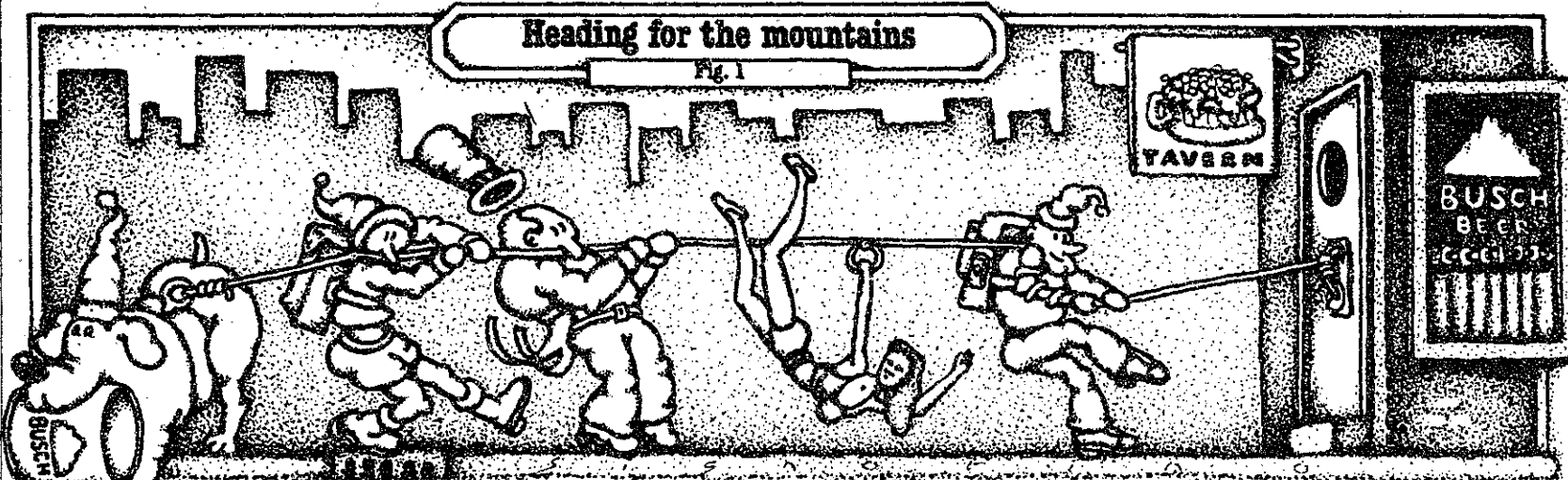
(College ID required; Minimum purchase \$5.00)

UNIVERSITY STATIONERY CO.

311 Mass. Ave. Cambridge 3 Blocks from MIT

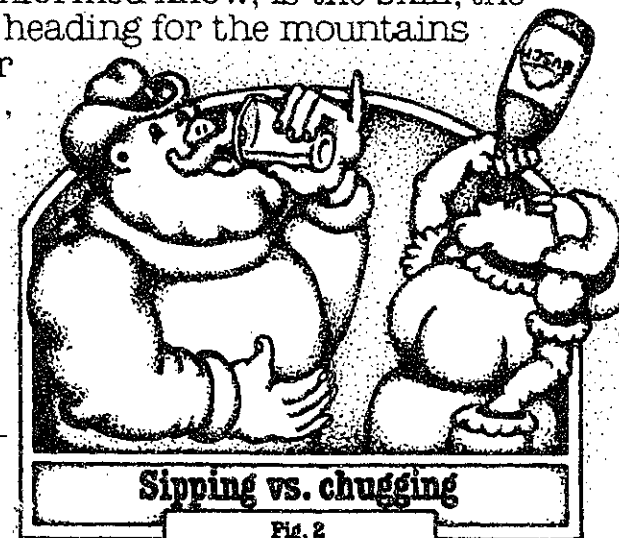
Mountaineering #3.

METHODOLOGY

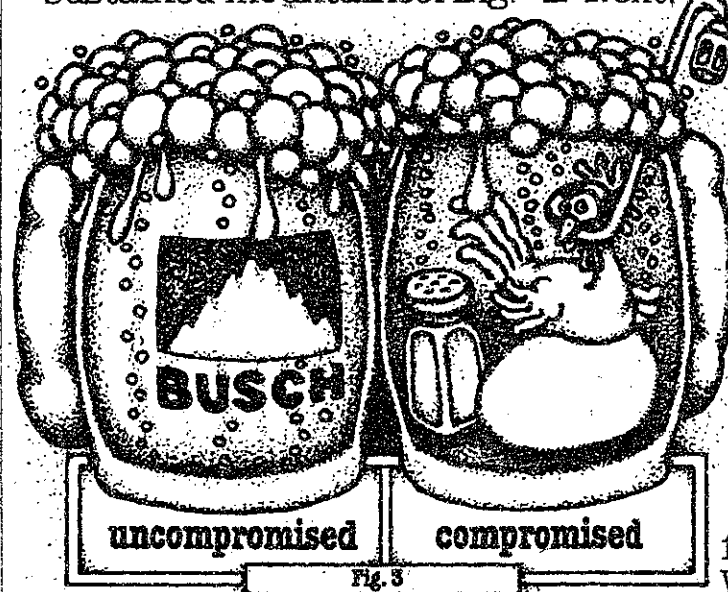


Mountaineering, as all but the chronically misinformed know, is the skill, the science and the art of drinking Busch Beer. It begins by heading for the mountains (i.e., a quick jaunt to your favorite package emporium or wateringhole) and ends by downing the mountains (i.e., slow slaking swallows of the brew that is Busch).

¶ However, between those two points lies a vast area of personal peccadilloes sometimes called technique and sometimes called methodology (depending on your major). Hence, this ad. ¶ Sipping vs. chugging. Both have their merits, of course. But generally speaking, except for cases of extreme thirst or a leaking glass, sipping is the more prudent practice for serious, sustained mountaineering. ¶ Next,

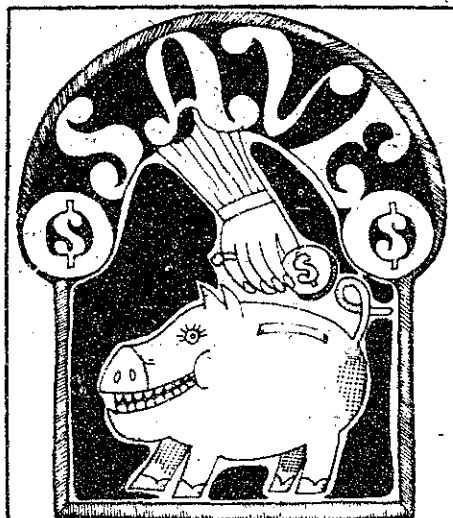


the proper position. Some swear by sitting; others by standing. Suffice it to say that the most successful mountaineers are flexible, so you'll find both sitters and standers. (Except on New Year's Eve, when it's almost impossible to find a sitter.) ¶ Which brings us to additives. Occasionally a neophyte will sprinkle salt in his Busch; others mix in tomato juice; and a few on the radical fringe will even add egg. While these manipulations



can't be prohibited (this is, after all, a free country), they are frowned upon. Please be advised that purity is a virtue, and the natural refreshment of Busch is best uncompromised.

¶ Finally, there's the issue of containers. Good taste dictates a glass be used. But bad planning sometimes prevents that. If you find yourself forced to drink from the can, you should minimize this breach of etiquette. Be formal. Simply let your little finger stick out stiffly (see Fig. 4). Happy Mountaineering!



SIDEWALK SALE!

THIS FRIDAY

10 am to 4 pm

Save 1/3 to 2/3 and more

ART PRINTS, POSTERS, & FRAMES

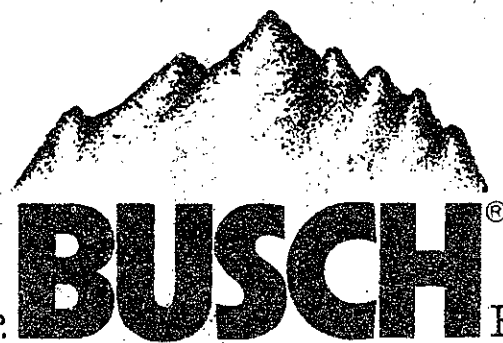
(plus, weather permitting)

- *STRAW HAMPERS, BED SHEETS & TOWELS
- *WOMEN'S SPORTSWEAR & ACCESSORIES
- *ROCK & NEW SELECTION OF JAZZ RECORDS
- *MEN'S GOLF JACKETS, DRESS & SPORT SHIRTS

all sales final

the Coop

M.I.T. STUDENT CENTER



Don't just reach for a beer. **BUSCH** Head for the mountains.

opinion

Colby deserved better treatment

By Kenneth Hamilton

William Colby, the former director of the CIA, spoke Monday evening, April 10, on the subject of "Intelligence Out Of The Shadows." The lecture and particularly the question-answer session was marred by students yelling inflammatory and slanderous comments, and chanting loud slogans. Mr. Colby was frequently accosted, particularly by a group of Iranian foreign-exchange students when he discussed the CIA's involvement in Iran. These students shouted such rude exclamations as "Colby you murderer" along with other vulgarities.

However, I was less concerned about the disrespect shown to Colby, than by the lack of respect demonstrated toward the free and responsible exchange of ideas. This exchange is the very essence of academic freedom and the backbone of a university environment. Often repetitive, vacant slogans, such as "Down with the CIA" were chanted for lengthy periods of time, effectively halting discussion, and even debate, during the question-answer session. Frequently Colby's remarks were interrupted by a few members of the Iranian student group who jumped to their seats to frantically shout a barrage of heated abuse, instead of coming to the microphone to responsibly represent their views. At the same time the Iranian contemptuously ignored other students who waited in line to speak, and the audience responded with enraged cries of "wait in line" and "give others a chance to speak."

In contrast, Mr. Colby remained composed. Even in the face of these offensive remarks, he asked that someone from the Iranian group come to the microphone to make the question or comment clear so that he could respond.

When individuals from the group did come forward, often their "questions" were nothing more than lengthy emotion-charged discourses about the "fascist, imperialistic, chauvinistic Americans." At one point, the situation almost erupted into violence as members of the audience called to have the irate students thrown out.

However, the Campus Patrol was careful to keep the situation under control.

I clearly don't expect placid discussion in matters relating to the CIA, in the light of some of the past abuses of the agency. However, the occasion Monday evening resembled a political rally more than a university lecture. Hopefully, the opportunity to meet and talk with eminent people can be used in the future to enhance our education at MIT to a productive end.

MIT brings an unusual student body together with an international character. Please let us try to understand each other's views, or at least make their presentation possible, instead of ending a thoughtful exchange of ideas with rude shouting and slogan chanting.

About nerds and coeds

To the Editor:

As someone who contemplates suicide on a fairly regular basis maybe I can share some of my insights into the reasons for suicidal urges: Life sucks. As one graduate student remarks: "You're born owing the world \$80,000.00 and you have to spend a certain amount of your life paying it back." Oh, excuse me, I've gotten ahead of myself. I forgot to say that *money is everything*. Read your column on anti-nerds (*The Tech*, April 11) for reference. Another anxiety causer is self-confidence. "Am I a nerd?" "Will I ever MAKE IT?" etc. I'll admit it, I love my calculator. I even tell my girl friends about it — I hate doing calculations without it. Maybe, if you hate calculators, you're not a nerd, but you're stupid. I mean, who are these "undesirables": "nerds"? They are people. Like you and me to a much greater extent than you might want to admit. If they don't agree with your values of interesting things to do, number of times to bathe, or best TV shows or whatever, they might see YOU as a nerd.

Why aren't there more girls around here? Who wants to be a minority?! Over at BU, where the ratio is better than 50-50, the girls there get labeled princesses of Jewish American descent (JAP). Here at MIT, we have goddesses. They really are frightening. If you make a misstep with even a minor goddess (a troll), 25 love-starved nerds attack armed with calculators and Vulcan death grips. Of course, coeds tend to be incredibly spoiled when you do meet them. So who needs to feel bad compared to your women? (We are boys or guys and they're women).

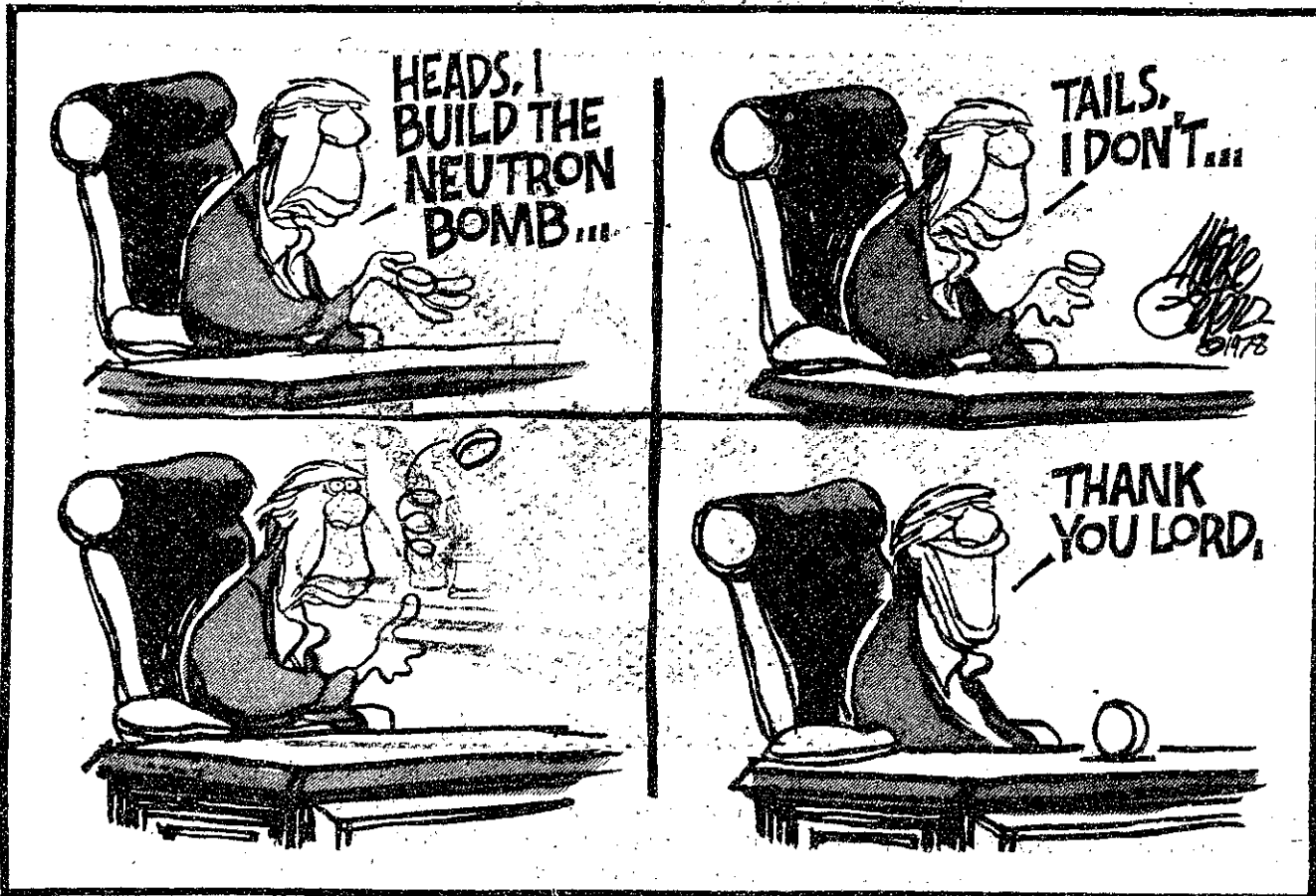
Then there's this reoccurring

nightmare in which everyone is walking past me with a fixed smile or frown on their faces. No matter what I say or do, no emotion crosses their faces. The trouble with this dream, is that it happens while I'm awake walking down the halls at MIT. Happiness and sadness are part of the human condition. Along with embarrassment, fear, pain, depression and everything else that goes through your head.

We are pervertedly "normal" here. At other schools people are having fun! If anybody here starts to have fun, especially during the week, their "friends" suggest that they visit the local psychiatrist. Or, if you come to your friends feeling lonely and depressed, they send you away so you don't get them down too. You just know that if all the human feelings and thoughts that wandered down the MIT hallways could find some expression, what a lively place this could be!

But I can't honestly end on an optimistic note. Tech is not a fun place for many of the people here. It is just a stopping point on the way to wealth, fame or graduate school. People of the "Life is rough" school of thought. People who hate Star Trek vs Trekkies, nerds vs jocks, people vs MIT coeds etc. We're all so sensitive to views different from our own and all so threatened by someone's personal expressions. If we let it all hang out, we will undoubtedly make more enemies than our future careers might allow. Then again, we might make friends to change our entire perspective on our lives. We commit suicide when our lives clearly hold nothing of interest for us. Like I said before, imagine all the thoughts going down the main hallways!

Brian Donovan '80



A student Rep speaks out

To the Editor:

As a graduate student representative to the Committee on Educational Policy, I found Chuck Markham's letter in last Friday's *The Tech* both interesting and provocative. I would like to take advantage of Mr. Markham's request for comments and respond to some of his statements and suggestions.

First, Mr. Markham imagines a much stronger polarization between student and non-student views on student-faculty committees than actually exists: "A student brings to a committee a different perspective, which a faculty or an administrative member could not have." [my emphasis] In fact, on most issues the spread of opinions and points of view among faculty and administrative members is as broad as, and subsumes, that of the student members on the committee.

Second, in neither of the two committees that I have served on (the Medical Advisory Board and Committee on Educational Policy) were student members ever regarded or treated as *token* members, if Mr. Markham uses that term in its usual pejorative sense. Student votes (when it comes to voting — most action being based on consensus and compromise) count as much as faculty votes. In this regard, it is interesting to note that there are currently more student members of CEP (5) than there are faculty from the entire School of Engineering (4).

Third, Mr. Markham says, "... the student representative's function is *not* to be an ombudsman, student advocate or an instant Gallup pole [sic] of student interests. A student only represents himself and his particular viewpoint." [his emphasis] This is only partially true. A student's function is really to be *all* of those things: certainly an ombudsman, frequently a student advocate, occasionally an instant Gallup poll, and always an engaged and responsible advocate of what is best for MIT — as seen, obviously, from a *particular* student viewpoint.

Mr. Markham's suggestions about ways in which student committee members can get more feedback from other students are well taken. Unfortunately, trying to get such feedback is often like trying to communicate over a tin-can-and-string telephone — with no one holding the other can! I would like to suggest that the student newspapers permanently assign one writer to helping student reps report on their committees' activities. However, note that for

feedback there has to be a *response* to those summaries from other students!

Finally, a suggestion on influencing faculty decisions that affect students. It can be done, as the recent Drop Date motion showed. One of the best ways students can influence faculty members is to talk to them, express concern, and present clear, simple, reasonable arguments in support of a particular position. (Hint: an argument such as, "The Grading Committee's proposals should be voted down because all

MIT students are the smartest of the smart anyway and deserve good grades." does *not* qualify.) I strongly urge all students to take the time to read and consider carefully the Grading Committee's report, make a mature, considered evaluation of the Committee's recommendations, and start talking to faculty members. If each student would devote *one hour* to this exercise, the influence on the faculty would be overwhelming!

Richard Goldhor G.
April 10, 1978

Analysis slighted pols.

To the Editor:

Steve Kirsch's "Political Commentary" of April 11 is one of the least professional articles I've seen appear in any campus newspaper. Unsupported allegations regarding the candidates' characters and reputations are no substitute for a careful, thoughtful, analysis of what the candidates stand for and how well they would function as UAP/UAVP.

Kirsch's description of Dan Nathan begins by stating that he has "no special qualifications for the office of UAP. In an interview with *The Tech*, Nathan demonstrated that he is unfamiliar with how student government functions." That may be, but instead of presenting some quotes from that interview so that we could evaluate Kirsch's judgement, Kirsch just lays on the insults: "His concern for student welfare appears to be superficial." Finally, we are presented with a statement from Nathan's advisor (who is not named) that he could not remember Nathan talking to him about the drop date. Did Kirsch interview the advisors of any other UA candidates? If he did, why aren't their statements in the article? Considering that the faculty meeting on drop date occurred eight weeks ago, it's just as likely that Nathan's advisor is a bit absent-minded as it is that

"Nathan hadn't made much of an impression on his advisor." (Incidentally, why is this repeated in the page 1 news article on the UA Forum?)

Kirsch's treatment of Mike Brzustowicz and Rebecca Waring isn't much better. "Some people doubt that social partners make good business partners," he writes, again with no apparent documentation or justification. "Waring is hard-working, and when she takes on a job she gets it done. However, the same statement cannot be made about Brzustowicz, according to two LSC Execomm members." Leaving aside the questionable practice of trying to dig up dirt on people by exchanging gossip with their co-workers, we again don't find out what these two LSCers actually said. Since both candidates on this ticket hold positions on *The Tech*, I can only conclude that Kirsch is using page 4 to publicly air out the internal disputes of the newspaper.

I'm not making this complaint out of partisanship or personal friendship with these two candidates. In fact, neither Brzustowicz nor Nathan received my first choice for UAP. But certainly both deserved better treatment than *The Tech* gave them in the last issue printed before the election.

Ron Newman '79
April 12, 1978

The Tech

David A. Schaller '78 — **Chairman**
Robert Wasserman '80 — **Editor-in-Chief**
Steven F. Frann '80 — **Managing Editor**
Leroy A. Lindquist '79 — **Business Manager**

Volume 98, Number 18
Friday, April 21, 1978

Third class postage paid at Boston, MA. Non-Profit Org. Permit No. 59720. *The Tech* is published twice a week during the academic year (except during MIT vacations), daily during September Orientation, and once during the last week of July. Please send all correspondence to: P.O. Box 29, MIT Branch, Cambridge, MA 02139. Offices at: Room W20-483, 84 Massachusetts Avenue, Cambridge, MA. Telephone: (617) 253-1541. ISSN 0148-9607. Advertising, subscription, and typesetting rates available on request.

opinion cont.

Perspectives

Homosexuals are people, too

"The only 'unnatural' sex acts are those which are physically impossible to perform."

— Alfred Kinsey

This is the second part of a two-part series on homosexuality written by four members on GAMIT (Gays at MIT). The first part appeared on April 11.

Is gay rights a new issue?

No, in 1897, the first gay liberation organization, The Scientific Humanitarian Committee, was formed in Germany. The current gay rights movement in America did not start as a reaction to Anita Bryant. Various homophile organizations, such as the Mattachine Society, existed in the 1940's and 1950's, but the present concept of gay rights started in 1969, following a raid on the Stonewall Inn in Greenwich Village by the police, which was met with unexpected resistance from the patrons of this gay bar. Much of the bulk of current gay political literature dates from the first years of the seventies, before the start of the current anti-gay crusade, which has resulted in a revival of gay rights activities, and more importantly has caused homosexuality to receive widespread public and media attention in the United States.

Can homosexuals be changed to heterosexuals?

If at all, then only with great

difficulty. Many techniques have been tried, ranging from in-depth analysis to lobotomy, castration and many forms of torture. None have "succeeded" beyond producing an asexual — a person who associates sexual feelings so closely with pain and punishment that any sexual expression becomes impossible.

Are gay people sick?

This question is motivated by two schools of thought on the causes of homosexuality. One contends that being gay is a genetic or a biological error or malfunction. The second believes that it involves emotional or psychological maladjustments.

Concerning the former, the findings of most geneticists are that homosexuality is not inherited. There is also much agreement that any malfunction involving sexual organs or hormones does not lead in itself to a person being homosexual. However, there are efforts underway to determine whether the biological processes will offer clues to the cause of homosexuality in some individuals. The second is more controversial and more generally subjected to misunderstanding. The American Psychological Association met in 1975 and decided by a slim majority that "homosexuality *per se*" is not a pathological disorder." However, not everyone studying

human behavior is in complete agreement.

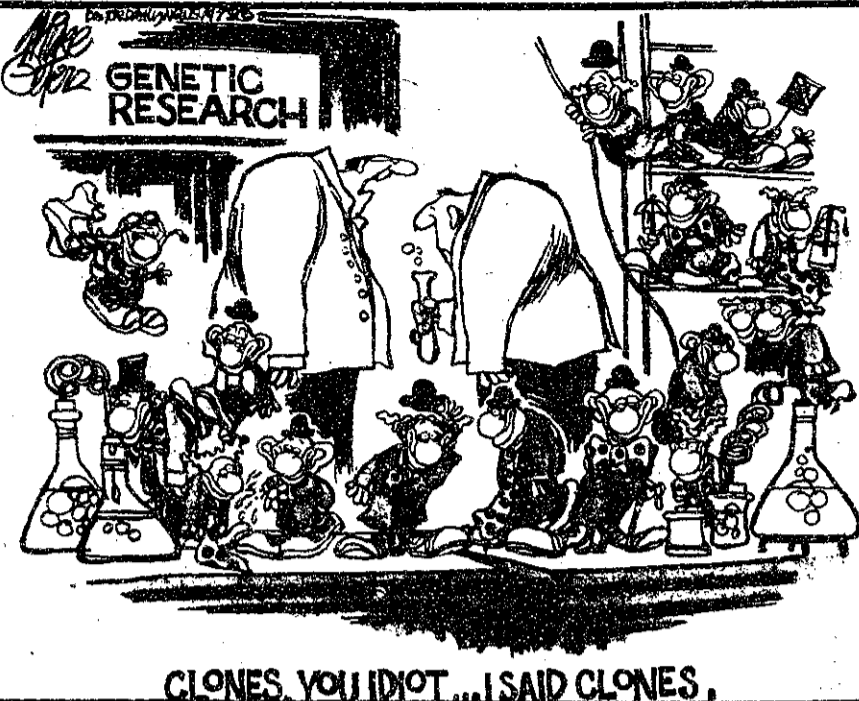
Is gay love as stable as straight love?

Gay love relationships present an enigma to society; their success would indicate an error in society's judgement of homosexuality. Most of those that are successful either remain unknown to the public in order to protect the members, or are rationalized away as something other than a gay relationship. Those that are unsuccessful or short lived have been pointed at as proof of some innate instability of homosexual feelings. Disregarding teenage "crushes" and other such first attempts at love, the average lifetime of a heterosexual relationship is seven years, according to sociologist C.A. Tripp. Very often, the social institution of marriage holds couples together after the relationship has deteriorated, and the force of love is replaced by social or financial obligations. However, this is changing somewhat, causing an ever-rising divorce rate in this country.

Because of the very strong anti-homosexual sentiments which prevail during youth, many homosexuals are forced into a belated adolescence, and do not find their "love legs" until later in their lives when they begin to find some appreciation for their sexual feelings. Once this hurdle is passed the maturing gay person may explore a variety of relationships, just as would any properly maturing straight person.

What is a gay bar like?

They are really not very different from straight bars. A gay bar may have many appearances, from quiet homey to pulsating disco. Much more interesting than the appearance of a gay bar is its function. The gay bar is still the major organized, expressly gay, social institution. It is a public place where gays may feel



CLONES YOU IDIOT... I SAID CLONES.

free to be themselves without fear ensuing from a potentially hostile environment. It is a place where gays are assured of finding other gays, again bypassing the need to search within a homophobic environment.

Are there really bisexuals?

Certainly, Kinsey and more recent sexologists have shown that sexual preference is not polarized along heterosexual-homosexual lines, but forms a continuum with exclusive heterosexuality or homosexuality at either end and bisexuality falling in the middle. Everyone has the capacity for bisexual behavior. Heterosexual men when deprived of women may turn to homosexual activities as in prisons, for example. There are many gay people who are married and manage to function sexually with their spouses.

Do gays have a tendency towards child molesting?

There is a general misconception that gay people are child molesters. In studies done of child molesters there was no evidence found to support this. For example an American Humane Association study found ten to twelve times as much heterosexual child molestation as homosexual. In 75% of the cases, the adult involved was a relative or acquaintance of the child and/or the parents. This does not negate the fact that some individuals in the gay community do have sex with minors. There is an accent on youth in the homosexual world as is true of sexuality in general.

Are there married gay people?

Yes, there certainly are, and their sexuality may vary from complete homosexuality to bisexuality. People who are gay and married live varied lives and are married for many different reasons. One of the most cited reasons is a marriage for "front" purposes. This is done to

guarantee social acceptance, tax and estate benefits or to provide a stable basis to rear children. This doesn't differ much from some straight marriages. Some gay people marry having suppressed or having been entirely unaware of their sexuality. Once committed, they remain with their partners. Others, upon coming to grips with being gay will separate, feeling that they can no longer live with the context of a straight marriage. Unfortunately, if a partner is unaware of a mate's sexuality or is intolerant or unaccepting, emotional turmoil or a dissolution of the marriage can result.

Do children of homosexuals become homosexuals themselves?

Some homosexuals who are or have been married do have children. It is often brought up in custody disputes that gay parents should not keep the children because they will become homosexuals. We know of no studies to support or refute this allegation.

How do parents deal with gay children?

The answer to this question depends highly upon the relationship between parents and offspring and values held in common by members of a given family. The responses to a child being gay may range from "it is O.K. as long as you are happy," or "I am a lesbian too," to "Don't tell your sister she may lose her baby," or "My lawyer will tell you about my funeral two days after I'm dead." Most often, however, the reaction lies between the extremes. After a period of time there may be a reluctant effort to deal with or accept the situation. The National Organization of Parents of Gays is geared to help parents and their children to deal with issues arising out of homosexuality. They point out that the most important thing a parent can do is to "reassure a child that you love him or her."

feedback

Disruptive Iranians

To the Editor:

This past Monday there was a lecture by William Colby, former director of the CIA. During the course of the lecture a group of surly, ill-mannered and loud-mouthed hoors chose to continuously interrupt the talk. They saw as their privilege the abridgment of my right, and the right of everybody else, to hear Mr. Colby, and spewed out a torrential flood of bombastic rhetoric and

personal abuse at Mr. Colby.

I would like to protest the total inaction of the LSC against these irresponsible hooligans. I hope that in the future my right to hear the speaker will be honored, and that this kind of bully-boy tactics will never again be permitted to impinge upon the MIT community.

Mike Gerardi '81
April 10, 1978

CIA plot uncovered

To the Editor:

I believe I have uncovered a foul CIA plot to discredit Iranian student protest. Monday evening, at the lecture by former Director of the CIA Colby, a mob of flaming asses posing as demonstrators obnoxious the crowd present into

abysmal apathy for the plight of the Iranian people. This was a vile trick on the part of the CIA and I feel that Mr. Colby owes the Iranian people an apology. Thank you.

Zigurd R. Mednieks '81

COLAGE

Contemporary Music Ensemble

Donald Sur, composer/conductor
Fred Lerdahl, composer/conductor

Donald Sur & film maker
Martha Haslanger:
Penumbra, Focus & Echo
(WORLD PREMIERE)
Fred Lerdahl: Eros
Christopher Kies: Music for Soprano
& 7 Players
(BOSTON PREMIERE)
Arnold Schoenberg: Fantasy for
Violin & Piano, Op. 47
Richard Rodney Bennett: Commedia II
(BOSTON PREMIERE)
Beverly Morgan, guest artist
David Hoese, guest conductor

Sunday, April 23, at 8:00 pm
Museum of Fine Arts, Boston

Tickets: \$5 and, for students & Museum
members, \$2.50
ARTS Youths Accepted
Form 10/10/76 661-3222

NEW ENGLAND WOMENS SERVICE

A QUALITY, LICENSED MEDICAL FACILITY
ABORTION, BIRTH CONTROL, GYNECOLOGY,
FREE PREGNANCY TESTS & COUNSELING

HOURS: MON — FRI 9-9; SAT 9-5

738-1370

1031 BEACON STREET, BROOKLINE

Red Cross
is counting
on you.

Minicomputers Artificial Intelligence

Kurzweil Computer Products is a young, rapidly growing company devoted primarily to application of AI and computer technology to the needs of the handicapped. Our principal product is the Kurzweil Reading Machine for the Blind, a minicomputer based device which converts printed material into full word English speech. A commercial data entry device based on our reading machine technology as well as several other products for the handicapped are under development.

We are looking for:

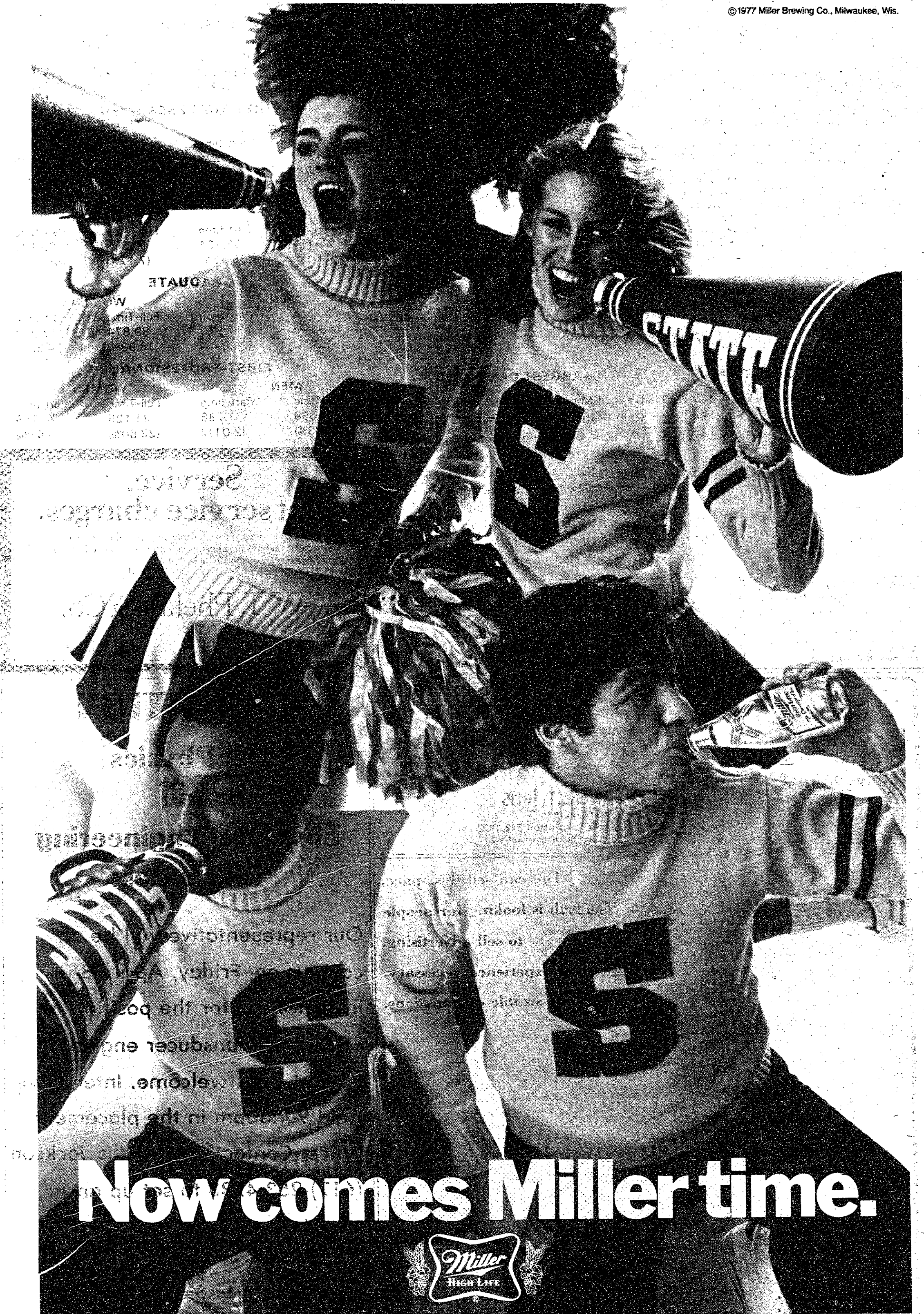
2 Programmers

To work on our data entry and reading machine related projects, with at least 1 year assembly language experience (preferably D.G.) and a B.S. in Computer Science or equivalent required. Experience in AI, OCR, Text Processing, Systems Programming or Human Engineered systems desirable.

Send resume to:
Manager, Software Development
Kurzweil Computer Products, Inc.

8 Rogers Street
Cambridge, MA 02142.

An Equal Opportunity Employer



Now comes Miller time.



State universities show gains

By David B. Koretz

Nearly 3.4 million students are enrolled in state and land-grant universities this academic year, according to the Office of Research and Information of the National Association of State Universities and Land-grant colleges (NASULGC).

These students make up about 30 percent of the estimated 11.5 million students attending colleges and universities in this country.

Enrollment was up by one percent over last year, with women more than offsetting a slight decline by men. There are 1.78 million men and 1.55 women enrolled in the state schools.

Undergraduate enrollment represents 76 percent of the total

student body, and graduate students another 14 percent. Unclassified and professional schools compose the remainder.

The largest institutions by enrollment are State University of New York (SUNY), City University of New York (CUNY), the University of Wisconsin (UWis), and the University of California (UCal).

The largest campuses by enrollment are the University of Minnesota (UMinn) — Twin Cities, Ohio State University (OSU) — Columbus, Michigan State University (MSU) — East Lansing, and the University of Texas (UTex) — Austin.

The top four schools ranked by undergraduate enrollment are exactly the same in both categories. By graduate enrollment, the

largest schools are SUNY, UCal, UWis and the University of North Carolina (UNC). The largest campuses are University of Michigan — Ann Arbor, UMinn — Twin Cities; MSU — East Lansing and OSU — Columbus.

Among women, the largest schools are SUNY, CUNY, UWis and UCal. The largest campuses are UMinn — Twin Cities, MSU — East Lansing, OSU — Columbus, and UTex — Austin.

The University of Massachusetts (UMass) is a medium size state school, with total enrollment of about 33,000, only 8,000 of whom attend the Boston campus. By comparison, SUNY boasts some 348,000 students — more than ten times as many as UMass.

TOTAL ENROLLMENT FALL 1977

LARGEST INSTITUTIONS

State University of New York . . .	347,809
City University of New York	184,058
University of Wisconsin System . . .	146,328
University of California	126,505
University of North Carolina	111,197
University of Texas System	91,062
University of Minnesota	77,215
Indiana University	72,377
University of Maryland	61,312
University of Illinois	60,569

LARGEST CAMPUSES

Univ. of Minnesota, Twin Cities . . .	64,629
Ohio State University, Columbus . . .	51,002
Michigan State Univ., E. Lansing . . .	47,383
University of Texas, Austin	41,660
Univ. of Wisconsin, Madison	39,022
Univ. of Maryland, College Park . . .	37,866
Univ. of Washington, Seattle	37,765
Univ. of Michigan, Ann Arbor	36,740
Temple University, Philadelphia	36,339
Arizona State University, Tempe . . .	35,954

FULL-TIME/PART-TIME ENROLLMENT BY LEVEL AND SEX FALL 1977

UNDERGRADUATE			
MEN		WOMEN	
Full-Time	Part-time	Full-Time	Part-time
1,100,941 (43.46%)	235,627 (9.3%)	950,971 (37.54%)	245,674 (9.7%)

FIRST-TIME FRESHMEN			
MEN		WOMEN	
Full-Time	Part-time	Full-Time	Part-time
218,177 (46.37%)	21,226 (4.51%)	205,605 (43.69%)	25,548 (5.43%)

UNCLASSIFIED			
MEN		WOMEN	
Full-Time	Part-time	Full-Time	Part-time
25,416 (11.01%)	82,724 (35.83%)	16,553 (7.17%)	106,178 (45.99%)

GRADUATE			
MEN		WOMEN	
Full-Time	Part-time	Full-Time	Part-time
148,973 (31.38%)	117,960 (24.84%)	89,874 (18.93%)	117,979 (24.85%)

FIRST-PROFESIONAL			
MEN		WOMEN	
Full-Time	Part-time	Full-Time	Part-time
65,098 (73.33%)	1,788 (2.01%)	21,125 (23.80%)	768 (.87%)

Service, not service charges.

Good service isn't something you should have to pay for. So when you buy car, apartment, or any insurance from us, there's no service charge tacked on. And we'll only sell you what you need.

W. T. Phelan & Co.
Insurance Agency, Inc.

11 Dunster St., Harvard Square (next to the Holyoke Center),
876-0876. Representing Aetna, Travelers, Hartford.

**Summer Study in
New York City**
Columbia University offers over 350 undergraduate, graduate, and professional courses. Write for bulletin: Summer Session Columbia University, 102C Low Library, New York, N.Y. 10027

**You Never
Looked So Good**
USE YOUR HEAD
WHEN YOU BUY A HAT!
STETSON
Walker's
RIDING APPAREL, INC.
292 Boylston St., Boston, Ma. 02116
Telephone: (617) 267-0195

CONTACT LENS SPECIALISTS

INNOVATORS-DEVELOPERS-PIONEERS IN CONTACT LENSES

With our own research and laboratory facilities, we are producing tomorrow's contact lenses today. If you are interested in quality knowhow and value, we can't be surpassed, for we manufacture most of our own products. Check with us on any type of contact lenses, hard or soft.

CONTACT LENS SPECIALISTS

77 Summer St., Boston 542-1929
190 Lexington St., Waltham 894-1123

ATTENTION

All Physics and Electrical Engineering Graduates:

Our representative will be on campus on Friday, April 28 interviewing for the position of ultrasonic transducer engineer. BS and MA's welcome. Interviews held 9-4:30pm in the placement office. Contact Mrs Phyllis Jackson (617)-253-4733 to set up an appointment.

Automation Industries Incorporated
Sperry Products Division
Shelter Rock Road
Danbury, CT

You can sell this space.

This is looking for people
to sell advertising.

No experience necessary.

We offer sizable commissions.

Several CSF grants announced Campus Patrol warns of exam peddlers

In mid-March, the MIT Community Service Fund (CSF) announced that it had funds available for student-initiated community projects. A number of such proposals, relating MIT to the community, were received and at a meeting last week the Trustees voted to fund the following:

1. To Alpha Phi Omega National Service Fraternity, \$200 for a four day paint-up project at Trinity Camp, which is associated with Trinity Neighbor-

hood House in East Boston. The grant was allocated to cover the cost of supplies. Dates for the project will be April 15-18 and all help is welcome.

2. To Kurt Silverman '80, \$175 for a slide projector and screen for Just-a-Start, a program which is dedicated to the employment and educational advancement of Cambridge youth and which has always had great MIT student involvement.

3. To MIT Ecology Action, \$175 for Alternative Energy Slide

Shows in which a dozen MIT students and staff will be involved in speaking to community groups about alternative energy as part of SUN DAY activities.

The Community Service Fund, which was created by vote of the faculty to raise and allocate funds to assist MIT people interested in contributing their time and talent in the Greater Boston/Cambridge communities, will be celebrating its 10th anniversary with the Kick-off of the Spring Campaign on April 19.

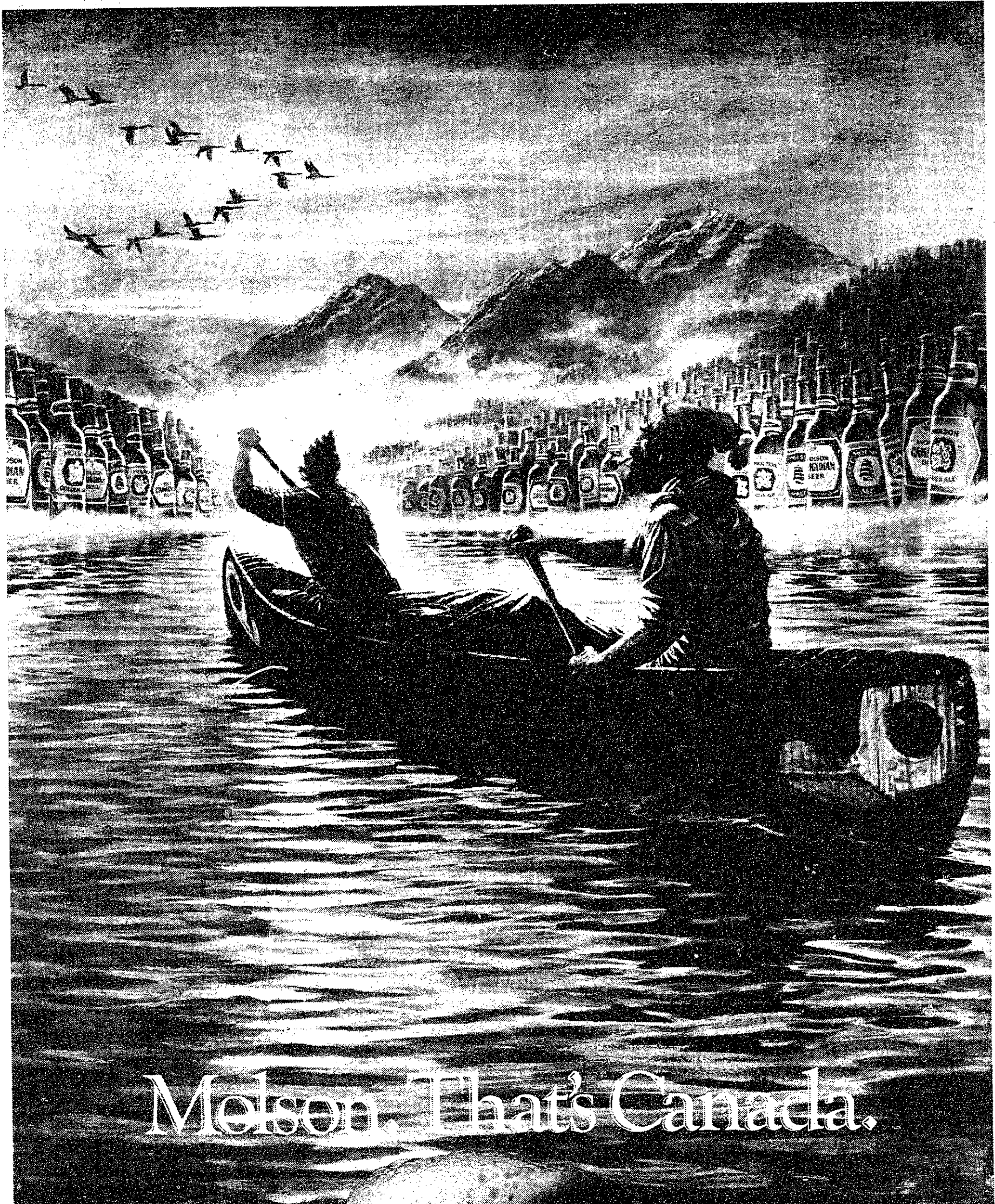
of exam peddlers

The Campus Patrol has informed us that an organization known as "Student Rescue", PO Box 126, Harvard Square, sends out flyers to parents of students offering them copies of college exams for a price.

This organization claims that if the parents remit the money the company will forward the proper

exams to the students. The parents usually do not find out until after the school year that the students never received the exams.

According to Sergeant Smith of the Harvard University Police, the Post Office Department has been notified of the fraud.



Molson. That's Canada.

From a country as clean and unspoiled as Canada, you'd expect a very special taste. Fresh from North America's most experienced brewery, Molson has been making friends on both sides of the border since 1786.

Our three import brands are ready to show you just how great Canada can taste.

Make it the heartiness of Molson Ale, spirited Canadian Beer, or smooth Golden. Or all three.

SIPB to provide computerized text services

By Benson Margulies

Computer-produced humanities papers? Well, not exactly, but close.

As of this Monday the Student Information Processing Board (SIPB) is offering text-preparation services on MIT's Multics computer system. This

service will allow students to enter, edit, format, and print text on Multics. Typical applications are expected to be letters, papers, resumes, reports and the like.

To use the service a student will need an account on Multics and access to several special tools. The basic tools consist of an editor, a

formatter/justifier, and a special printout service.

The theory behind computerized text processing is that the user should only have to type the whole document once. After that only corrections should have to be entered.

This idea is implemented by the

editor program. Once the text is correct, it can then be formatted. The formatter "fills" the text to produce lines of even length and optionally justifies it to give even margins on the left, right, or both sides. It can also put footnotes at the bottom of the page and perform numerous other special services. Finally, the special printer service allow access to high quality 8 1/2 by 11 paper for the final product.

In addition, the standard Multics system provides programs that can check spelling, maintain lists, and various other services, as well the usual general purpose software.

This is the first time that text processing has been available to MIT students. In the past, the SIPB has specifically prohibited the use of its computer time for text-handling purposes.

According to Charles Hornig '79, one of the organizers of the effort to offer the service, "in the past, only a few students have had access to text processing tools.

SIPB was not able to offer it due to our limited budget. Since the [Information Processing] Center implemented a new rate structure early in the fall term, however, the idea has looked more and more feasible."

Hornig emphasized that the service is experimental, and that its continued existence depends its remaining within its budget and otherwise staying manageable. He was especially emphatic in pointing out that major projects, like term papers, are discouraged due to the strong possibility that the service will be terminated before the project can be completed. If the service is terminated users will be allowed to print out whatever work they have done so they can finish it in the usual fashion.

Any student can make use of the service by coming to the SIPB office, 39-200, and filling out an application. The application can either be for a specific project or to experiment with and learn to use the text processing programs.

Pretty women in old *Technique*

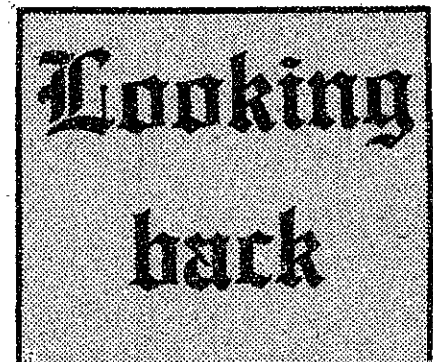
Editor's note: Technique 1978, this year's yearbook, is back from the printer and as usual is full of the best-looking girls that Technique photographers could find. Take heart, enemies of sexism — it was once a lot worse. (Reprinted from July, 1943)

With full page pictures of Lana Turner, Rita Hayworth, and Janet Blair, the 1944 *Technique* last night announced plans for the novel "dream girl" section to be included in the book. The section will consist of six pictures and is supposed to represent what Technology men think are the most beautiful and alluring girls of their dreams. They will probably make the 1944 *Technique* even better than it promised to be.

Three of the girls have already been chosen — Lana Turner of sweater fame, Rita Hayworth, who will soon be seen in the picture *Cover Girl* as the girl that all magazines would like to see on their cover, and the new triple-threat star Janet Blair, who can be seen in the new picture, *Something to Shout About*. However, the editors are not decided yet who the other three "dream girls" shall be, and plan a popularity contest to find the students' preferences for the other three. The three girls who receive the most votes will be considered for the other three "dream girls" and their pictures will be printed in *Technique* if obtainable.

On page four of this paper there is blank on which you can put your vote for your dream girl. Turn it in at the *Technique* office on the third floor of Walker Memorial or at the *Technique* sales desk in the Building 10 lobby by noon next Monday. Meanwhile you can look at Lana,

Rita, and Janet's pictures, which are displayed on various posters



and bulletin boards throughout the school. Rita Hayworth's picture, according to Carlton J. Rohrer '45, editor of the 1944 *Technique*, is one of the most outstanding photographs he has ever seen. It was secured through permission of *Life* magazine.

Since all originally ordered copies of the *Technique* have been sold, an additional 100 have been ordered and they are now on sale in the Lobby of Building 10 and in Walker Memorial.

PhD's in EE or CS: Now you can have it all at TI in BIG D.

We are the Equipment Group of Texas Instruments. We're talking to PhD's in EE or CS about opportunities as systems Engineers and Digital Hardware/Software Designers.

Now you can have it all.

Advanced Work in State-Of-The-Art Fields.

These are projects in design and development that will utilize TI's industry-leading technology in many fields:

• Electro-optical sensors • Radar • Air traffic control • Navigation • Communications • ASW • Weapon guidance • Fire control

The Stability Of A Highly Diversified Company.

Since 1946, TI has maintained a compound average growth rate of more than 23% in net sales and net income.

In 1977, net sales billed for government electronics increased 19% over 1976.

TI is, and always has been, a company managed by engineers and scientists. Its commitment to research and development was backed



up by a \$96 million investment in 1977 alone, a 33% increase over 1976.

TI facilities now include 45 manufacturing plants in 18 countries and 50 product distribution centers in North America, Europe and Asia.

A Rich City With A Low Cost Of Living.

Dallas is TI's home town. It's the heart of the South-

west's largest and liveliest metro center — the Dallas-Fort Worth Metroplex. It is rich in culture, entertainment and environmental advantages. These include two civic opera companies, the World Champion Dallas Cowboys, the cleanest air and the lowest population density of any of the largest U.S. metro areas. The area also has 34 colleges and 102 major medical facilities.

At the same time, Dallas is an unusually affordable place to live. There are no state and local income taxes. And the cost of living is 9% below the U.S. average.

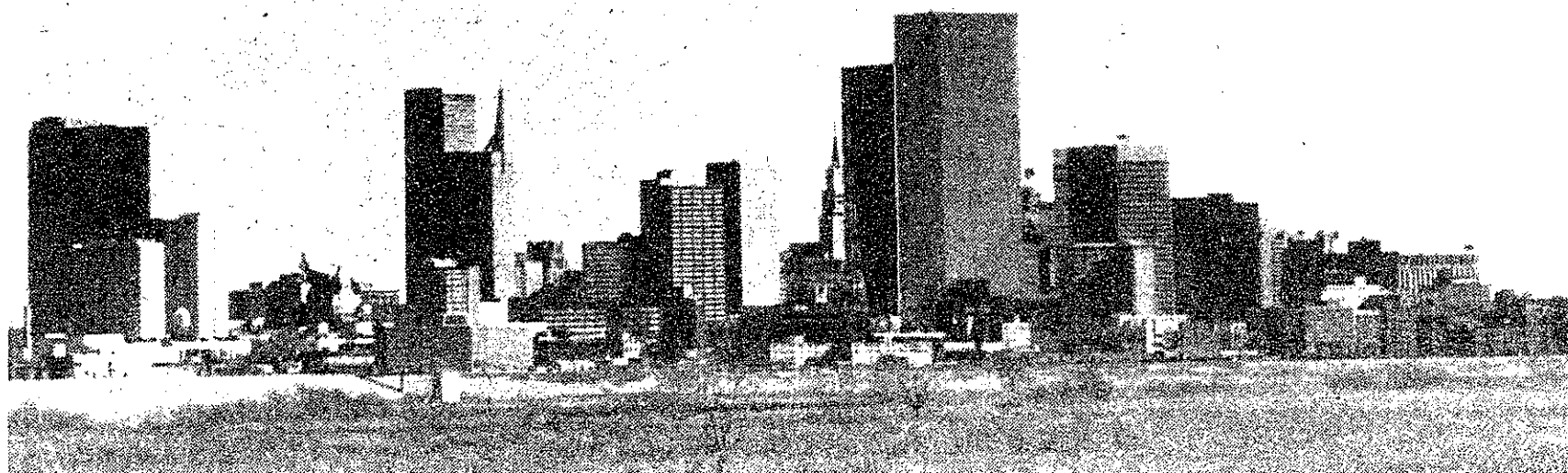
It's all at TI in Big D waiting for you. Send your resume to Ed Haynes, Box 6015, MS 222, Dallas, TX 75222.



TEXAS INSTRUMENTS

INCORPORATED

An equal opportunity employer M/F



Order
ANY BOOK
in print.
ANY TIME
day or night
ANY DAY
of the week
BY PHONE
We'll deliver
BY MAIL
promptly

and you can
CHARGE IT
if you like
CALL
(617) 944-8060

CBSA

Cooperative Book Service
of America, International
Reading Massachusetts 01867

We're alone in the
Boston yellow pages



Lady Capulet (Ann Frates '80) mourns the death of Tybalt (Jim Walker '79). (Photo by John Lepingwell, courtesy of *Technique*)

"Wherefore art thou?" At *Romeo & Juliet*

By Daniel Togasaki

The MIT Shakespeare Ensemble will be performing their production of the famous tragedy *Romeo and Juliet* from now until Sunday. Romeo is played by Tom Stefanick '78, and Juliet by Dorian Jankowski '80, under the direction of Murray Biggs, assisted by Jo Ann Kruger.

Everyone knows this classic tale of the starcrossed lovers of Verona, whose happiness is doomed by their families' feud. The Shakespeare Ensemble sticks closely to the original text, with a few scene deletions, although the Prologue, which is often cut, was retained. (These deletions possibly arose from the Ensemble's limited size, as several cast members were already doubled up on roles.)

Both leads turned in excellent performances. Stefanick's Romeo was quite believable, and, except for a few opening-night mistakes, smoothly performed. Jankowski's Juliet was also well done. Her soliloquy before drinking the sleeping potion was impressive, although her speech on the balcony seemed strained, and did not convey her mental anguish at having just found out that her true love is her enemy.

Bob Hull '79, who played Mercutio, Romeo's friend, did an outstanding job, conveying the bawdiness and humor of his role in such passages as the Queen Mab speech. Nancy Lindsey G. as Juliet's nurse, also performed well, as was shown when she told Juliet of Romeo's marriage arrangements. Stuart Rumsey '80, who played Capulet, Juliet's father, gave a very convincing performance in a difficult role that spanned many emotions. Daniel Kim

'78 was quite good as the wise Friar Lawrence, showing the dignity and seriousness inherent in the part.

The stagings were well done. The lack of a balcony, however, detracted greatly from the mood of the garden scene. The above/below spatial relationship is lost, which is unfortunate. This problem stems from the Ensemble's simplicity of sets, even though simplicity is usually preferable for Shakespeare performances, by the nature of his plays.

The choreography in this play, although not as elaborate as in *Love's Labour's Lost*, was fitting. The fight scenes were fast-moving, and some of the fencing was very impressive looking. A bit more rehearsal would have given these scenes a final polish, which could have made them extremely exciting.

The costumes, designed by Lita Wright, with Jan Ostrowski, were superb, repeating the high precedent of *Love's Labour's Lost*. The lighting was undistinguished, mostly because of the limitations of the Sala de Puerto Rico.

Overall, the performance was a fitting follow-up to *Love's Labour's Lost*, showing that this year's Shakespeare Ensemble can perform a play about serious love, as well as comic.

Romeo and Juliet will be playing through Sunday, in the Sala de Puerto Rico at the Student Center, at 8:00pm. A musical prelude is provided by the MIT Early Music Society under the direction of Tim Aarset, beginning at 7:40 each evening. Tickets are \$3.00 and \$3.50, with \$1.00 off for students. Seats may be reserved by calling 253-2903 (answering service).

Tacchella's *Blue Country* is oversimplified Aesop

Blue Country, a Quartet Films release, starring Brigitte Fossey, Jacques Serres, and Ginette Garcin, written and directed by Jean-Charles Tacchella, music by Gerard Anfosso; photography by Edmond Sechan; playing at the Allston Cinema.

By Al Sanders

Blue Country offers an interesting view of life in the mostly agricultural southeast section of France. The principal characters of the film all come from varied backgrounds and yet they share one thing in common that all people have felt at one time or another: dissatisfaction with their lot.

There are those such as the young nurse Louise (Brigitte Fossey) who, unhappy with city life, have decided to give the country a try. Naturally others, including the lazy bachelor Mathias (Jacques Serres), born and raised in the small villages, are equally bored with their lot.

In the story's main thread, involving Louise and Mathias' love affair, both are so concerned with maintaining their own independence that it becomes frustrating to watch the romance develop or, more accurately, not develop.

The film's two major episodes involve gatherings of the entire community, occasions during which many individual peculiarities, sometimes comic, sometimes tragic, are revealed.

First, Louise, newly arrived in the region, shows what a charming person she is (the script often goes a bit far on the goodwill aspect) by throwing a gargantuan dinner for everyone in the area. During the meal, many villagers, aided by a characteristically large intake of wine, see fit to profess their unhappiness to the rest

of the crowd.

In a similar situation a year later, Mathias, somewhat influenced by his relationship with Louise, takes everyone on a bus ride to a thriving seacoast resort. Along the way, most of the problems are resolved as the villagers realize how lucky they are to live in their precious *Blue Country*.

The film is most at fault in its overly simplistic nature. Director and writer Jean-Charles Tacchella, best known for his previous work, *Cousin, Cousine*, spells his message out so plainly that it is reminiscent of a childhood Aesop's Fable, ending with some clever little lesson that all of us may learn from ("moral: the grass is always greener... or whatever").

Yet, in spite of the failure of the story as a whole to accomplish its aims, many of the subplots and supporting characterizations are very effective. The story of Zoe (Ginette Garcin), a seasoned veteran of life with a cynical outlook on everything and Manon (Ginette Mathieu), vulnerable and hurt by her children's rejection of her, is a particular example.

In the lead role, Brigitte Fossey (also currently starring in *That Obscure Object of Desire*) gives an enthusiastic performance as Louise, making up somewhat for Jacques Serres' lackluster performance.

There are several features of the film that would make fascinating stories in themselves. Unfortunately, *Blue Country* (spoken in French, with English subtitles, by the way) goes the way of many films before it that also had the potential to be special, but instead turned out merely average.

This Year's Model: new and improved Costello

This Year's Model — Elvis Costello on Columbia Records.

By Bill Rathbone

Elvis Costello is the first "new wave" artist to achieve any measure of lasting recognition, with his work on the album *My Aim is True* helping him earn *Rolling Stone's* New Artist of the Year Award. But Elvis isn't a punk at all, and that fact is brought out in his latest release, *This Year's Model*.

The new album is more musically sophisticated than *My Aim is True*, sounding less like a Fifties throwback. It is certainly much more sophisticated than that of any punk group. *This Year's Model* is also more of a band-oriented album than Elvis' earlier one, with a great deal of input from his band, the Attractions.

What makes Elvis Costello so different is his attitude. He is, to put it mildly, very cynical. This outlook is at times funny, at times eye-opening, and occasionally irritating, but it is certainly unique.

The song "Living in Paradise," for example, is a showcase for Costello's leering vocals. His voice is literally oozing with sarcasm when he sings, "Here we are living in paradise, living in luxury... now it's much too dangerous to stop what you've begun, everyone in paradise carries a gun."

Perhaps the best song on the new album is "Radio, Radio," a straight-forward put-down of the radio industry and the control it wields over just what we hear. Elvis sings, "The radio is in the hands of such a lot of fools trying to anesthetize the way that you feel. It's shut up or get cut out, they don't want to hear about it, it's only inches on the reel-to-reel."

This Year's Model is a very good album for those who can appreciate Elvis Costello's style. The music is good rock and roll but the vocals are sharp and critical, leading to a very unconventional sound. For those who are interested, Elvis will also be appearing at the Orpheum on May 4.



Left to right: Romeo (Tom Stefanick '78) and Mercutio (Bob Hull '79) in the Shakespeare Ensemble's production of *Romeo and Juliet*. (Photo by John Lepingwell, courtesy of *Technique*)

arts cont.

Coming Home syrup smothers message



Sally Hyde (Jane Fonda), falls in love with Luke Martin (Jon Voight) in *Coming Home*.

Coming Home, a United Artists release, starring Jane Fonda, Jon Voight, and Bruce Dern; screenplay by Waldo Salt and Robert C. Jones; cinematography by Haskell Wexler; directed by Hal Ashby and produced by Jerome Hellman; playing at Sack Charles; rated R.

By Leigh J. Passman

When one considers that Jane Fonda, the most intelligent, controversial entertainment figure to oppose the Vietnam War was the moving force behind the most consequential Vietnam retrospective to date, it seems highly appropriate. Fonda led the conception and screenwriting, starred in the movie, and used her influence and money to push the project through. Simply said, *Coming Home* is Fonda's baby.

With Fonda, activist cinematographer Haskell Wexler, and liberal director Hal Ashby (who directed the war satire *Harold and Maude*), one might hope for cogent political and social commentary. On the contrary, what resulted is a mawkish love story which serves as the medium for a sympathetic and tenuous study of the emotional effects of the war.

The plot, a love triangle, centers around Sally Hyde (Jane Fonda), the patriotic wife of an even more patriotic and gungho marine, Capt. Bob Hyde (Bruce Dern) and a paraplegic veteran, Luke Martin (Jon Voight) with whom she falls in love.

Dern's character, a stereotypically gungho patriot and an emotional and sexual weakling, is tempered solely by his attempt convey Capt. Hyde's fear of war. This is perhaps the film's most damaging fault, for it destroys the film's credibility and sense of fairness by reducing the nationalists of the period, who may have felt a sense of duty, to little more than socially shallow militarists.

After sending Dern off to 'Nam, Fonda befriends Viola Munson (Penelope Milford). Eager to pass the time, Fonda volunteers at the local veteran's hospital where she meets the bitter and stubborn paralyzed Voight. Fonda's firmness and warmth engage the sexy Voight, softening his bitterness and turning his attention to rehabilitation.

As he warms, Voight's boyish charm and good looks take over, and he and Fonda fall in love. Voight is a breath of fresh air in an otherwise lackluster acting retinue. And while that acting is more a function of a script worthy of a weekday soap-opera, Voight brings forth a lovable charm, while preserving his, the most forceful character.

As the title implies, *Coming Home*, is the story of the men who come home, and the effect their absence and return, and the war has on them and their families. The movie treats Voight's condition with frankness and sensitivity. Yet when Dern returns as a shattered man, the attention shifts to Fonda and the decision between the two men in her life, which she seems to have to make, but has already made.

For all its diverse charm, *Coming Home* can be annoying. Throughout the film an irritating barrage of period 1968 songs permeate the dialogue, with the lyrics coordinating that dialogue in an awkward and suspicious fashion.







However, the greatest disappointment is that the film which sets out to study war's effects on soldiers, often the greatest sufferers of war, treats them in a terribly condescending tone. Dern is miscast, and his brashness and shallowness add to that tone.

Rather than social commentary or emotional documentary, Jane Fonda and Hal Ashby instead have gone with a sure thing — a love story — subordinating the main themes we had hoped they would have addressed.



Sally Hyde (Jane Fonda, right), wife of a soldier in Vietnam, becomes the best friend of Vi Munson (Penelope Milford), whose boyfriend is also fighting in the war.

The Tech's movie rating scale:

-  excellent
-  very good
-  good
-  fair
-  poor
-  the absolute pits

BRATTLE FILMS PRESENTS
Features for the week of
April 19 - 25

Brattle Theatre
TR 6-4226 40 Brattle Street
Ernst Lubitsch's
NINOTCHKA
Starring Greta Garbo and Melvyn Douglas,
5:45 - 9:45

and
George Cukor's
THE PHILADELPHIA STORY
Starring Cary Grant, Katherine Hepburn,
and James Stuart
7:45 - Week Mat 3:45

CENTRAL SQUARE CINEMAS
425 Massachusetts Avenue 864-0426

CINEMA I
Miguel Piñero's
SHORT EYES
Starring Bruce Davidson
6:00 7:50 9:40 - Week Mat 4:10
All occ. incl. \$2.50 - Week Mats \$2.00

CINEMA II
April 19-22 Wed Sat
WITNESS FOR THE PROSECUTION
Starring Charles Laughton
and Marlene Dietrich
6:30 9:25

and
WOMAN IN THE WINDOW
Starring Edward G. Robinson
7:35 Sat Mat 3:45
April 23-25 Sun Tues
Orson Welles
THE LADY FROM SHANGHAI
6:00 9:35

and
Helen Hayworth and Glenn Ford in
GILDA
7:35 Sun Mat 4:00

EVERY WEDNESDAY IS DOLLAR DAY AT THE BRATTLE AND CENTRAL SQUARE CINEMAS.

NOTICE

In accordance with Sections 2 and 4 of the Bylaws of the Corporation of the Massachusetts Institute of Technology, on April 6, 1978, ballots for the election of a nominee for membership in the Corporation were sent to alumni(ae) as follows:

1. Undergraduate class receiving a Bachelor's degree during the current calendar year (1978).
2. Graduate students completing their terminal year of study and receiving an advanced degree during the current calendar year (1978).
3. Those who graduated from the Institute or received a graduate degree during 1977.
4. Those who graduated from the Institute or received a graduate degree during 1976.

If you should have received a ballot but did not, please contact Rosemary Carpenter at (617) 253-8221.

Candidates for nomination are:

- J. Abraham '77
- M. A. Brintnall '77 G
- C. Clay '78 G
- V. J. Frankiewicz, Jr. '76 G
- G. G. Gammon '78

- A. M. Goldberg '78 G
- B. Hughes '77
- R. Jacobsen '78
- V. K. Singhal '76 G
- R. A. Wasson '8 G

THE BALLOT MUST BE RETURNED TO THE ALUMNI ASSOCIATION BY MAY 12, 1978.

Laurence Storch '71
Chairman, Corporation Screening Committee

2707 Adams Mill Road, N.W.
Washington, D. C. 20009

arts cont.

Stop flaming long enough to see Pompeii

By Karen Hladik

With end of term panic rapidly setting in, it's hard to imagine MIT students dropping problem sets and papers to, of all things, visit a museum. However, it's also hard to imagine anyone passing up a truly exceptional exhibition now at the Museum of Fine Arts in Boston. *Pompeii AD79*, a collection of over 300 relics from the ancient city, has been heralded as the "most comprehensive display of the relics of Pompeii that can be seen outside of Italy." On its recent tour of European cities the ex-

hibit drew record breaking crowds, and for the MFA to snare top honor of hosting the American debut of this show is quite an accomplishment.

The exhibition consists of a series of galleries depicting various aspects of life in Pompeii. Each gallery is devoted to a particular feature, such as the House, the People, and Cults and Beliefs. One room is reconstructed as a garden portico, providing a natural setting for several sculptures and paintings. Other rooms in-

clude magnificent displays of jewelry, mosaics, wall paintings, and even plaster casts of the original victims of volcanic ash and fumes.

While wandering through the exhibit, one can stop in either of two small theatres for a short sound and slide show on Pompeii. The museum has also arranged special lectures, slide presentations, and films on certain topics of life and art in Pompeii. A special number, (617) 267-0600, has been set up to answer questions

about viewing the exhibition, and it was stressed that definite measures have been taken to ensure against overcrowding.

A complimentary exhibition of prints and paintings depicting Mt. Vesuvius is also on display at the MFA, including the works of such artists as Turner, Degas, and James Hamilton. The Pompeii exhibition runs through to July 16.

So, if you get a few free hours some day, or even if you don't, *put* and visit the museum — it'll be well worth it!



Theater masks portraying stock characters in Greek Comedy, as it was played in the Roman Empire, are depicted in relief on a rectangular panel. The panel probably stood on a small column in a garden, and is typical of the decoration to be found in a Pompeian garden.



A wallpainting of a figure of a girl, her hair decorated with an ivy wreath. Although probably intended to represent a figure sacrificing or in attendance upon some religious occasion, her head has all the appearance of having been drawn from life.

JUNIORS!

Now's the time to get shot
for your senior portrait
in

TECHNIQUE 1979!

Call x7-2980 now for details.

Sittings the week of April 24th.



TECHNIQUE — STUDENT CENTER RM. 451

arts happenings

AROUND MIT

Romeo and Juliet, presented by the Shakespeare Ensemble at MIT, Tues.-Sun., April 18-23 at 8pm in the Sala de Puerto Rico, in the Student Center. Tickets \$3 & \$3.50 (\$1 less for students) available in Lobby 10, at the door, or by calling 253-2903.

John Buttrick, pianist, will have a free one-man faculty recital Fri., April 21 in Kresge Auditorium at 8pm. Program includes Schubert: 2 *Impromptus*; Ravel: *Miroirs*; Beethoven: *Sonata, Opus 101*; Chopin: *Polonaise in C-minor, Prelude in C-sharp minor, 2 Mazurkas, and Sonata in B-minor*.

The **Horizon Company** Exhibition of the luminous murals of Stephen Hanneck accompanied by the electro-symphonic music of Andrew Shannon Sat.-Mon., April 22-24 in the Bush Room (10-105). Exhibition hours are Sat: 7pm-12mid, Sun: 2-11pm and Mon: 10am-11pm. Shannon will perform piano improvisations at 7:30, 8:30

and 9:30pm, Sat. and Sun. An informal gallery talk will be held Sun. at 3pm. The exhibition is sponsored by the GSC, U.A. and Council for the Arts. Admission is free.

MIT Gospel Choir Extravaganza, several guest choirs join the MIT choir in its sixth annual benefit concert, Sun., April 23 at 7:30pm in Kresge Auditorium.

AT THE MOVIES

Road to Morocco, the SCC MidNite movie, Sat., April 22, second floor of the Student Center: free.

Center Screen Spring Series: Memories and Conversations, Fri., April 21, 7:30 & 9:30pm and **New Portraits of Women**, a group of films Sat. & Sun., April 22 & 23, 7:30 & 9:30pm at Carpenter Center, Quincy St. off Harvard Sq.; call 253-7620.

Simplemte Jenny and The Double Day, sponsored by the Radcliffe Women's Center, Sun., April 23 at 7:30 & 9:30pm.

This weekend's LSC lineup:

Carrie (Fri.) 7 & 9:30pm in 26-100.
The Towering Inferno (Sat.) 6:30 & 10pm in 26-100.
Charly (Sun.) 6:30 & 9pm in 26-100.

IN TOWN

Tower of Power, with Lenny White, April 21, 8pm at the Orpheum; tickets \$6.50-\$7.50.

Patti Smith at the Paradise, Sun., April 23, 7:30 & 10:30pm; tickets \$4.50-\$5.50.

Art Garfunkel, at Symphony Hall, Tues., April 25, at 8pm; tickets \$7.50-\$8.50.

Elvis Costello and the Attractions, with Mink De Ville, and Nick Lowe and Rock Pile, Thurs., May 4, 7:30pm at the Orpheum; tickets \$6.50-\$7.50.

Warren Zevon at Berklee Perf. Center, May 5 at 7pm; tickets \$7.50.

Renaissance, with Al Di Meola at the Music Hall, May 6, at 8pm; tickets \$6.50-\$7.50.

David Bowie at the Boston Garden, May 6 at 8pm; tickets \$7.50-\$10.

IN THEATRE

Anything Goes, presented by the Dunster Drama Society April 14, 15, 21, and 22 at 8:15 & 11:15pm at Dunster House, Harvard; tickets \$2; call 498-2203.

Ruddigore, presented by the Harvard Gilbert & Sullivan Players, at the Agassiz Theatre, Radcliffe Yard April 13-29; Thur., Fri. & Sat., 8pm and Sun., 2:30pm. Tickets at Holyoke Center; call 495-2663.

Tribute, starring Jack Lemmon in the Broadway-bound play at the Colonial Theatre, 106 Boylston St., Boston. For info, call 426-9366.

Waiting for Godot, Beckett's classic, at the Boston Arts Group Theatre, 367 Boylston Theatre St., Boston. For info, call 267-7196.

— Leigh J. Passman

Best tilt of the day!



Good times are great times for the easy taste of

Budweiser

KING OF BEERS • ANHEUSER-BUSCH, INC. • ST. LOUIS, MO.

notes

Colby sees fewer CIA abuses

(Continued from page 3)

to carry out "special activities" — defined by the Carter Administration as intelligence "activities conducted abroad in support of US foreign policy... which are planned and executed so that the role of the US government is not apparent or publicly acknowledged."

"The French government in the

In a recent volume of memoirs entitled *Honorable Men: My Life in the CIA*, Colby wrote that the CIA should "become an integral part of the democratic process, subject to checks and balances." Colby contended that this has already been accomplished "because the CIA is required to disclose all its activities to Congress, which has the power of the purse" to veto any acts of

analysis," he went on.

But there is still a need for secrecy, he said. "In our society we have the secret ballot, secret crop statistics, proprietary secrets, and secret income tax returns. And I think there is a category of names of foreigners from whom we learn information to keep our country strong." And there is a need for spies because "there are secrets our country needs which we can't get from pictures. So we have to depend on brave Americans."

"I can see threats growing." Colby told his audience. In the future, the US must be concerned about "other superpowers, and about the economic and political health of Europe."

"But," he continued, "the greatest challenge will be in the so-called underdeveloped world where population is growing faster than economics."

"They look at us with some envy and bitterness," he said, "but we can beat these problems. With knowledge we can defend ourselves and not be surprised."

"I can see threats growing

They look at us with some envy and bitterness."

1776 period set up a front company to provide the American revolutionaries with arms," Colby pointed out, "and after the Second World War, when we saw a subversive campaign in Europe mounted by Moscow we provided secret help to the democratic forces in Europe," he said.

One such "special activity" was the secret three-year CIA campaign to "destabilize" the Chilean regime of Salvador Allende. Allende was overthrown in 1973 in a coup which brought a military dictatorship to power. "We aided only center groups in Chile," Colby said, "except that for six weeks we did aid a right-wing group. In Chile we were combatting Soviet and Cuban influence."

"I never used that word 'destabilize' in my secret testimony before Congress on the coup. That is a very dramatic word. I never used it but that word spread around the world and just last year a non-aligned nations group used it in a resolution against the United States," he complained.

Special activities have declined in recent years, Colby maintained. During the Cold War, "fifty percent of the CIA budget was spent for paramilitary activities. Now it's about two percent, on a comparable basis," he said.

which it disapproves. Thus Congress cut off CIA funds for covert operations in Angola in 1974, he said.

The acid test of the legitimacy of intelligence and military operations, Colby asserted, is that "you are permitted to do it, whatever the ends, if it's in your self-defense, but you cannot use more force than is necessary to achieve your self-defensive objectives." In Vietnam the US used "more force than necessary," he said.

When the Cold War came, the US was faced with a "need to know" about distant parts of the world. "First we went to the universities," he said. After that, "we used technology and we flew higher and farther than ever before," he said, referring to the U-2 spy plane. "We have learned to solve problems using cost benefit and productivity

* Final exam schedules are available at the Information Center, 7-111. Examinations not listed or a conflict in examinations, such as two examinations in the same period, must be reported to the Schedules Office, E19-338, by Friday, April 28.

* The last day to cancel subjects from registration (Drop Date) is Friday, April 28.

* There will be a 1978 summer College Work Study Program on and off campus. All students interested in participating in this program should obtain a Request for Participation Form from the Student Employment Office (Rm 5-119). Forms should be returned to the office no later than April 28.

* This is a reminder that May 1, 1978 is the filing deadline for all renewal applicants for the Pennsylvania State Grant. All MIT students who are eligible for this grant must apply and only if he/she is unsuccessful in receiving the grant will MIT provide the missing funds from its own scholarship sources. Students with questions about the program can contact the regional director at (717) 787-1490.

* Dr. Robert M. Solow, Institute Professor and professor of economics, has selected the topic, "What We Know and Don't Know about Inflation," for the 1978 Killian Award Lectures. His second lecture will be presented on Thursday, April 27, at 4pm in Room 54-100.

* Entries for the Sun Day Photography and Art contest are due at 10am on Monday, April 24, in the Ecology Action Office in the Student Center basement. The office will be open today, tomorrow, and Sunday from 12 noon to 5pm and on Monday from 8:30 to 10am. For further information, call x3-7922 or Bob Chen at 628-4319.

* The deadline for entries for the annual Humanities Department Writing Prizes has been extended to Monday, April 24, at 5pm. Copies of the official "Rules for Entries" are available in the Writing Program office, 14E-310B, and in the Humanities office, 14N-307.

* "Nuclear Power and Proliferation" will be the topic of the next lecture in the Cambridge Forum series entitled "My research and its Social Conse-

quences," on Monday, April 24 at 4pm at the MIT Chapel. The speakers will be Albert Carnesale, Associate Director, Program for Science and International Affairs, Gordon McKay, Lecturer on Engineering and Applied Physics at Harvard, and Eugene B. Skolnikoff, Director of the Center for International Studies and Professor of Political Science at MIT. Cambridge Forum is open to the public without charge.

* NonCom hearings, April 24: 7:00pm: Committee on Educational Policy — formulates and articulates overall educational policy, sponsors educational experiments, and coordinates much of the faculty's other business. CEP representatives are appointed to other standing committees of the faculty. Contact: Mike Kowtko '79.

8:00pm: Finance Board — reviews requests from student groups for operating funds and allocates such funds on the basis of need, scope, and outreach of individual groups. Contact: Rob Mitchell '78.

* TCA is sponsoring a donation drive for CARE, Inc. for Mother's Day. For further information, contact TCA, x3-7911.

* A course entitled "Solar Food Production and Processing" will be offered at Boston University's Sargent Camp, in Peterborough, NH on April 22. The course is part of a solar energy series and will focus on the skills needed for solar living. For further information, call (617) 353-3201.

* A review of summer job opportunities for college students at Guest Ranches, National Parks and Recreation Areas for this coming summer looks good. Students and graduates who are sincerely interested in receiving assistance on locating summer jobs may send a self addressed stamped envelope for a free booklet to Opportunity Research, Lock Box 730, Coeur d'Alene, ID 83814.

* Plans for *BikeWeek '78*, scheduled this spring for April 22-30, have been announced by the Boston Area Bicycle Coalition, a sponsor of the event. Groups wishing to list their events on the week's official program, or to obtain further information, should write the Bicycle Coalition at 3 Joy Street, Boston 02108 or call the Registry of Motor Vehicles at 727-3827.

You Never Looked So Good

FRYE

BOOTMAKERS SINCE 1863

Walkers

RIDING APPAREL, INC.
292 Boylston St., Boston, Ma. 02116
Telephone: (617) 267-0195


Spring ★ Weekend

A time to

WARM UP TO Wellesley

April 21—23 Wellesley College

Reality:



Matter or Mind?

Please come to this free lecture on Christian Science, "Reality: Matter or Mind?" by Charles W. Ferris, C.S.B. (a member of the Christian Science Board of Lectureship) sponsored by First Church of Christ, Scientist, Cambridge Tuesday, April 25 at 8 P.M. in the church 13 Waterhouse St. at Mass. Ave. Child care and parking will be available.

The last thing you need is Life Insurance, right? Wrong!

The fact is, just about everyone needs life insurance. And the older you get the more you need it... and the more it costs. So if you think you're too young to worry about life insurance, think again. If you buy life insurance now, while you're starting out, you can save throughout your life. And with SAVINGS BANK LIFE INSURANCE you save — because of your age and because SBLI is low-cost life insurance. For more information on how to pay less for life insurance, visit our bank or send us the coupon below.

\$10,000 TEN YEAR MODIFIED LIFE*		
Age Nearest Birthday	Annual Premium 1st 10 Years	Average Annual Net Payment 1st 10 Years**
16	\$23.60	\$19.06
17	24.00	19.44
18	24.40	19.76
19	24.70	19.96
20	25.20	20.14
21	25.50	20.18
22	25.80	20.18
23	26.20	20.23
24	26.60	20.25
25	27.20	20.33
26	27.70	20.41
27	28.40	20.73
28	29.20	21.08

* Automatically convertible to single life insurance at the end of ten years with premiums based on the then attained age.
** Based on current market Scale which cannot be guaranteed.

SAVINGS BANK SBLI LIFE INSURANCE

A Better Way of Life

Name _____ Street _____ City _____ State _____ Zip _____ Date of Birth _____ School _____

Cambridgeport Savings Bank

Cambridge Office 689 Mass. Ave. Central Square (617) 864-5271
Lexington Office 1751 Mass. Ave. Lexington Center (617) 861-6550

The 82nd Annual Boston Marathon . . .



Success . . .



agony . . .



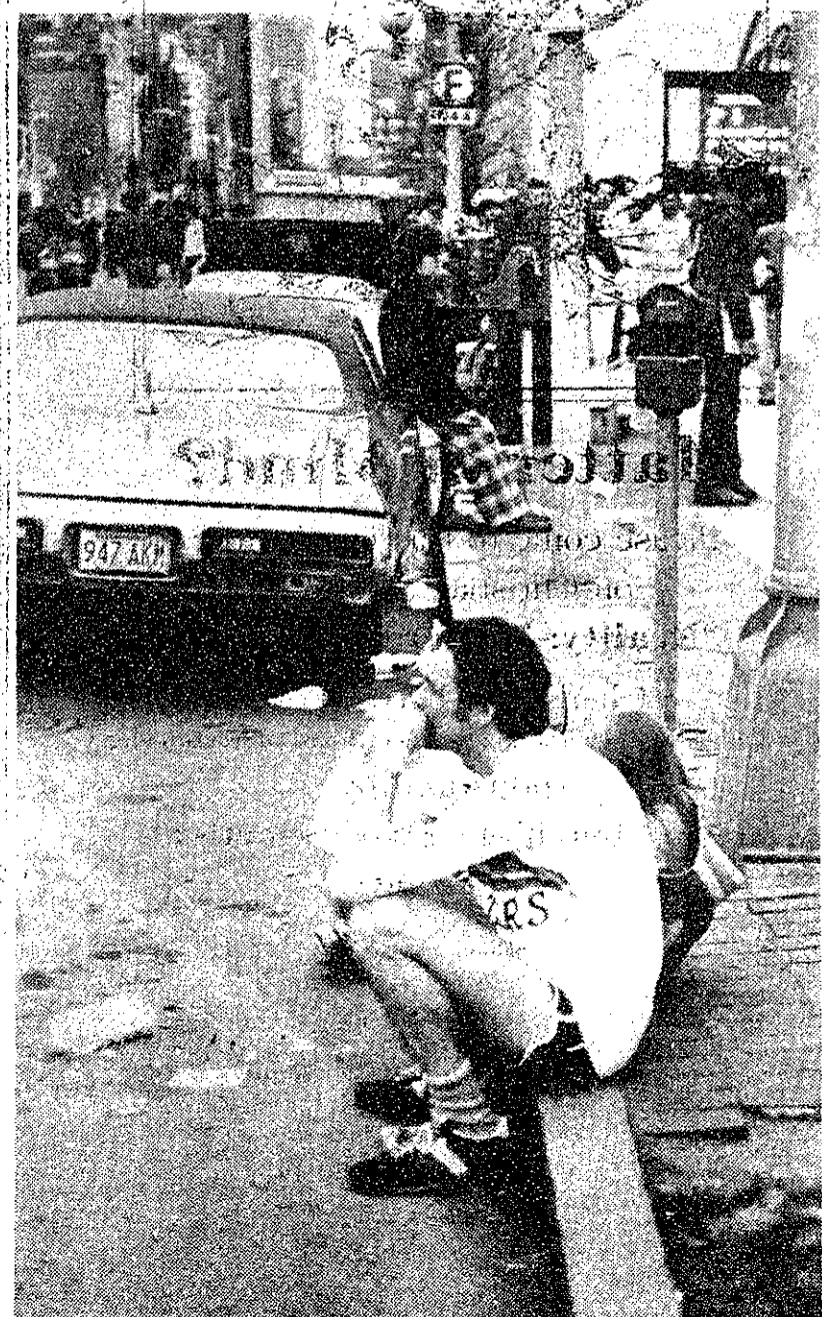
Photos

by

Steve

Solnick

disappointment.



sports cont.

IM Softball standings

FA-1	W L	B-3	W L
ZBT	2 0	Chem. Eng.	1 0
Orangutans	1 0	EC 4E	1 0
Phi Delta Theta	1 0	Dielectrical Materialism	1 1
Delt Bowsers	1 1	The Big Ones	1 1
Lambda Chi Alpha	0 2	Burton 4 Players	0 1
Theta Chi	0 2	TEP Purple Haze	0 1
FA-2	W L	B-4	W L
Baboons	2 0	E. Campus 2W	2 0
ESL	2 0	Sigma Chi B	1 0
Mech. Eng.	1 1	The Hit Men	1 0
Blind Faith	1 1	Bronx Science Bombers	1 0
Muddy Charles Pub	1 1	Rednecks	0 1
Mandel's Mutants	0 2	Panama Red Sox	0 2
Economics	0 2	B-5	W L
A-1	W L	AEP	1 0
Varsity Hockey	2 0	Chi Phi	1 1
ISD-1	1 1	DKI	1 1
Nuclear Eng.	1 1	BTP	1 1
Washington Senators	1 1	PKS	1 1
Sinister Sinterers	1 1	TDC	0 1
Hydros	0 2	B-6	W L
A-2	W L	F-entry Vigilantes	3 1
Burton Third Bombers	2 0	Sloan	2 1
Conner	2 0	Fiji-1	1 0
Box 1	1 1	SAE B	0 0
Kappa Sigma	1 1	Jack Florey	0 2
Second East	0 2	Baker TNT	0 2
Dollar Pitchers	0 2	B-1	W L
A-3	W L	Baker Emog.	2 0
Delta Upsilon	2 0	CSC	2 0
Sig Ep	1 1	Burton 5	1 0
SAE A	0 0	Conner 4	0 1
Pi Lam A	0 0	Dopee	0 2
Beta Orioles	0 1	Math	0 2
ADP	0 1	B-2	W L
B-1	W L	Theta Chi B	2 0
Baker Emog.	2 0	Senior House	2 0
CSC	2 0	Dead Sox	2 0
Burton 5	1 0	Jokers	1 1
Conner 4	0 1	PrKA A	1 1
Dopee	0 2	Abusers	0 2
Math	0 2	Bucky Sims	0 2

B-7	W L	B-8	W L
Bio-Tox	1 0	Eps Green Sox	2 0
New Three Stooges	1 0	Dust Devil	1 0
Baker Blazers	1 1	Fizzle Chem.	1 1
Pi Lam B	1 1	Mandor	1 0
Choc. City	0 1	Club Latino	0 1
Fiji-2	0 1	Gray Sox	0 2
B-9	W L	C-1	W L
Sig Ep B	1 0	Hillel Maccabees	3 1
Sloan	1 1	East Prussia Blue Bons	2 1
Westgate	1 1	Les Bourgeois	1 0
Chelate B	1 1	Russian House	0 0
SH Forceable Entry	1 1	Bassoon Blitz	0 2
EPSEL	0 1	Frenchy's 14	0 2

C-2	W L	C-3	W L
Burton 5	1 0	TDC-orgy	2 0
Spanish Inquisition	1 0	Grote Clusters	1 0
Conner 3	1 0	The Mace	1 1
No. Six	1 1	1st West & Phoenix	1 1
Sigma Chi	0 1	Mark Schmelz	0 2
BTB	0 2	Minor Leagues	0 2
C-3	W L	C-4	W L
TDC-orgy	2 0	Ceramics	1 0
Grote Clusters	1 0	Church Polite	1 0
The Mace	1 1	Prep. H	1 1
1st West & Phoenix	1 1	Mass. Pike	0 0
Mark Schmelz	0 2	Rednecks	0 1
Minor Leagues	0 2	CSC	0 1
SH Chokin Tokers	0 2	C-5	W L
C-4	W L	Burton 1	2 0
Ceramics	1 0	Kappa Sigma	1 0
Church Polite	1 0	ATO	1 0
Prep. H	1 1	EC 2W	0 1
Mass. Pike	0 0	Burton IV-C	0 1
Rednecks	0 1	Vardebedian House	0 2
CSC	0 1		

C-6	W L	C-7	W L
Heathen Swine	2 0	Paintes	1 0
AEP Span. Inq.	1 0	3-070-C	1 0
CBG	1 1	WILG	0 1
Virjins	0 1	Baker Damsels	0 1
Calories	0 1	C-8	W L
ADP-C	0 1	D-Featers	2 0
C-7	W L	Mangled Baby Ducks	1 0
Paintes	1 0	Mae C	1 1
3-070-C	1 0	DKI C	1 1
WILG	0 1	ISD-2	0 1
Baker Damsels	0 1	Desmond Derelicts	0 2
C-8	W L	C-9	W L
D-Featers	2 0	Phi Delt.	2 0
Mangled Baby Ducks	1 0	PSK	1 1
Mae C	1 1	Delts Ding Dongs	1 1
DKI C	1 1	LCAC	1 1
ISD-2	0 1	Baker Maybe	1 1
Desmond Derelicts	0 2	PBI	0 2
C-9	W L		
Phi Delt.	2 0		
PSK	1 1		
Delts Ding Dongs	1 1		
LCAC	1 1		
Baker Maybe	1 1		
PBI	0 2		

WORLD EXPEDITION
 78 month 65 foot schooner
 Coast Governmenters needed
 to share expenses. No expert
 experience necessary. \$9,200 each.
 Departing Nov. 2, 1978
 Join
 Herb and Doreen Smith
 P.O. Box 84
 Portsmouth NH 03801
 207 644 8691

COME AND SEE THE BURIED TREASURE.



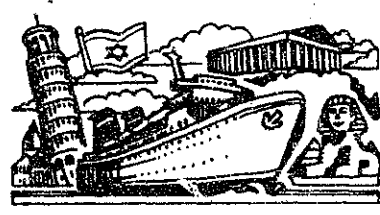
Nearly 2000 years ago, a prosperous, sophisticated city was buried under 12 feet of volcanic ash. In less than two days, the homes and temples of 20,000 people literally disappeared. A civilization was frozen in time. Now the glory that was Pompeii has come to Boston. The stunning paintings, the gold and silver jewelry, the marble and bronze sculptures are alive again. You can walk through an elegantly

frescoed room, pause under a garden portico as if 20 centuries ago were yesterday. Vesuvius destroyed Pompeii. And saved it at the same time. This exhibition is made possible by grants from the National Endowment for the Humanities and Xerox Corporation.

POMPEII AD 79
 Museum of Fine Arts, Boston
 April 15th to July 16th



Circle the Mediterranean the easy way



On Adriatica's passenger/car ferries, you can choose either of two regularly scheduled, time-saving routes: Italy/Greece/Egypt or Italy/Greece/Cyprus/Israel.

Rates start at \$120, with moderately priced restaurants, bars, shops and a swimming pool all on board.

Your car? Bring it aboard. With student discounts of up to 30%, you'll be ahead on money as well as gas!

Adriatica Passenger/Car Ferries
 The most relaxing route around the Eastern Mediterranean.

See your travel agent, or contact **extra value travel** General Sales Agents in the U.S.
 5 World Trade Center, Suite 6383
 New York, N.Y. 10048
Toll Free: (800) 221-5252
 In NY State: (212) 466-1370, collect.

sports cont.

sporting notices

Fielding, hitting suffer difficulties

(continued from page 19)

The team's pitching troubles seemed to be gone in their next contest, a game with Babson. However, as their pitching problems ended, their hitting problems began. The Beavers could garner only three hits, all singles, as Babson shut them out 2-0. George Noll '81 gave up only seven hits, but in a losing cause.

Hitting difficulties continued into the Harvard game in which Harvard's Peter Brown pitched a one-hitter. Senior Jeff Felton's leadoff single in the first inning was MIT's only hit. Harvard won 5-0.

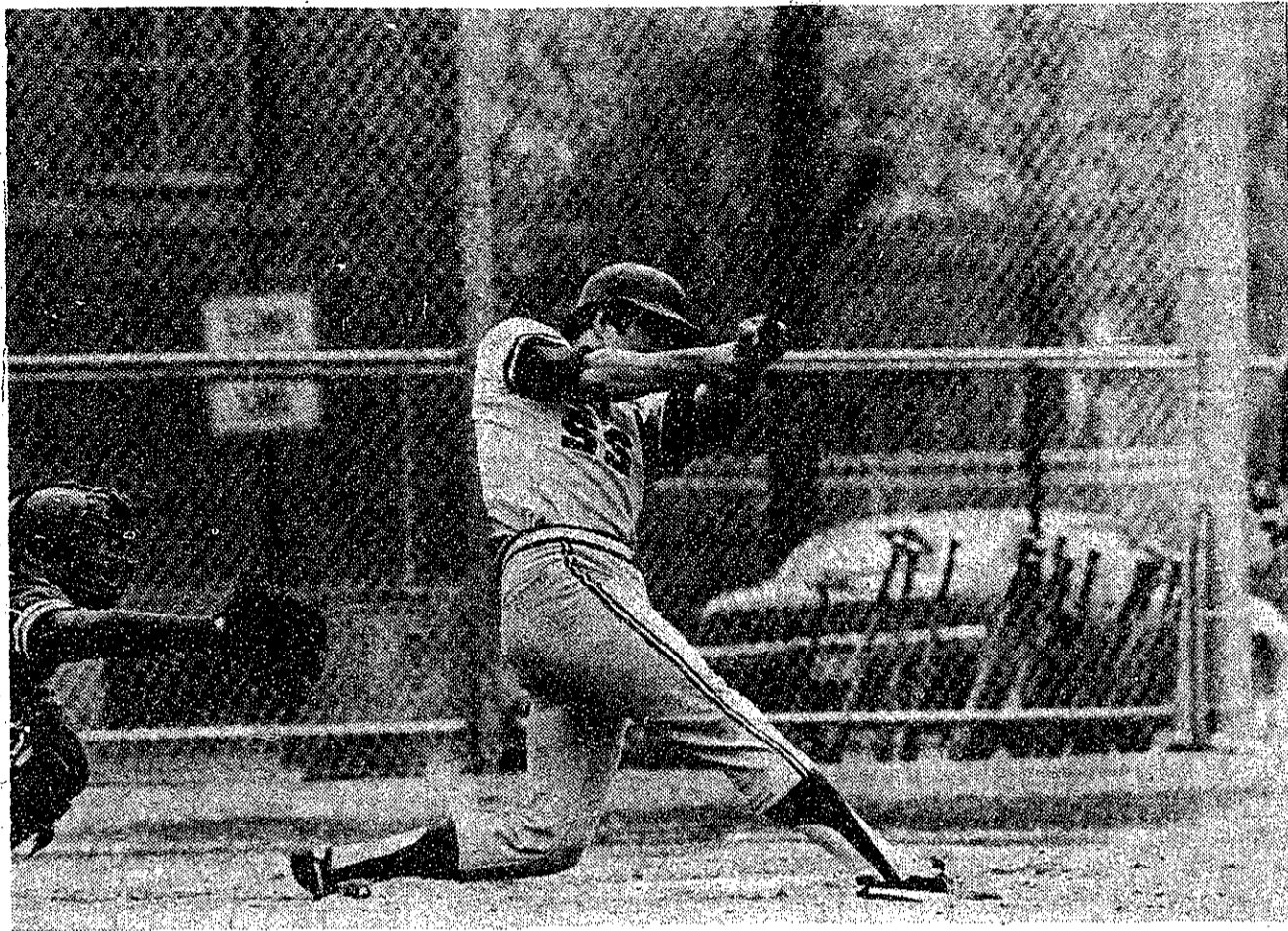
The Beavers broke their losing streak with a 5-3 victory over Boston University. The team snapped out of its hitting slump with 11 hits, all singles. Jim Datesh '78 was both the winning pitcher and the leader in RBI's as he drove in two runs on a single in the seventh.

The Beavers played to their full potential in a doubleheader with the University of Lowell, the fifth-ranked Division II team in New England. In the first game, Peter Steinhagen '79 pitched his first good game of the year as he led the team to a 6-4 victory, MIT's first win over Lowell in two years. The Beavers pounded out 12 hits, all singles. Once again, the winning pitcher led the hitting attack as Steinhagen rapped out three hits.

All but two MIT batters made hits. Even the Beaver fielding, which is usually responsible for three errors a game, perked up for this contest. In the final inning with two outs and Lowell men on second and third, second baseman Felton leaped high into the air to snag a line drive that would otherwise have been a game-tying single.

In the second game with Lowell, the Beaver hitting slumped again. John Jaskul, Lowell's number five pitcher, held the Beavers to three hits, all late in the game. MIT's pitcher Noll took the 4-0 loss.

Monday, the Beavers worst hitting, pitching, and fielding problems came together and the result was an 18-0 victory for Brandeis, the third-ranked Division III team in New England. Only Junior Steve Garverick's seventh inning single prevented



Brandeis's George Griffin from recording a no-hitter. Seven Beaver errors helped Brandeis to several of their runs.

Joseph Kracunas '79 takes a swing at a pitch during the late innings of last Saturday's Varsity Baseball game against Lowell. (Photo by Gordon R. Haff)

Wednesday, in a cold drizzle, the team stopped Boston State 9-4. George Noll '81 pitched a complete game to record his first victory for MIT. The Beavers seemed to hit at will as they hammered out 13 hits, their highest total of the season.

One of the reasons for the Beavers poor fielding is the loss of shortstop Phil Bugnacki '78. Bugnacki, who will miss the entire season, was injured when a runner slid into him in the Tufts game.

The baseball team's next game is tomorrow at 1pm on Briggs Field. The Beavers will be playing two games with Coast Guard.

You Never Looked So Good
SINCE 1849

RIDING APPAREL, INC.
292 Boylston St., Boston, Ma. 02116
Telephone: (617) 267-0195

"An invaluable aid to young Americans who want to study and travel in other lands."
— SENATOR EDWARD M. KENNEDY

THE NEW GUIDE TO STUDY ABROAD

1978-1979 Edition

by John A. Garraty, Lily von Klemperer, and Cyril J.H. Taylor

A practical, authoritative, and up-to-date handbook of year and summer programs for high school students, college and university students, and teachers.

\$15.95 cloth, \$5.95 paper

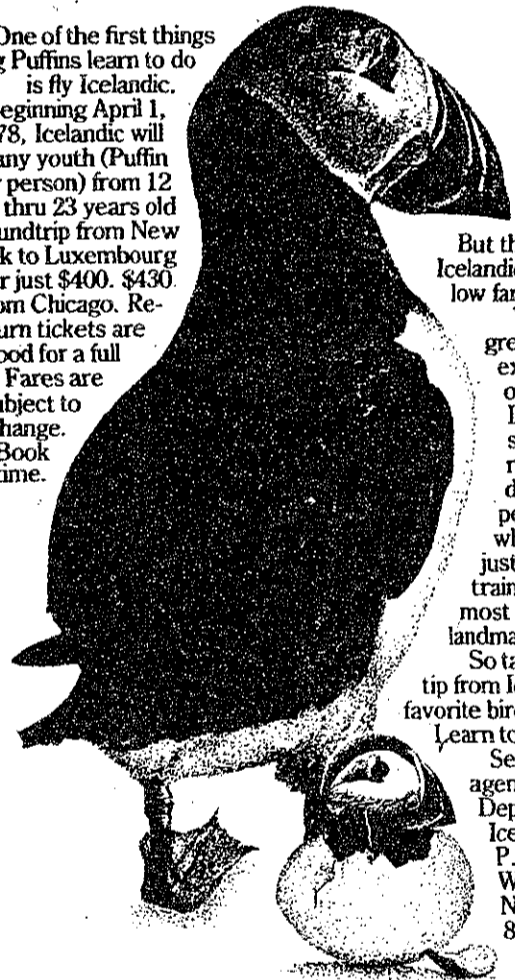
Harper & Row

TRAVEL ANYWHERE
All arrangements expertly handled by New England's Largest Travel Agency. Individual, group or business travel.

1230 Mass. Ave. Cambridge
Tel. 492-2300
24 Offices in New England

The Puffin fare for youths.

One of the first things young Puffins learn to do is fly Icelandic. Beginning April 1, 1978, Icelandic will fly any youth (Puffin or person) from 12 thru 23 years old roundtrip from New York to Luxembourg for just \$400. \$430 from Chicago. Return tickets are good for a full year. Fares are subject to change. Book anytime.



But there's more to Icelandic than just low fares. You'll get a great dinner and excellent service on your trip. And Icelandic will set you down right in the middle of the European Continent, where you'll be just hours away by train from Europe's most famous landmarks. So take a travel tip from Iceland's favorite bird. Learn to fly Icelandic. See your travel agent. Or write Dept. #C352, Icelandic Airlines, P.O. Box 105, West Hempstead, N.Y. 11552. Call 800-555-1212 for toll-free number in your area.

\$275
Roundtrip 14-45 day APEX fare from N.Y.

\$400
Roundtrip Youth Fare. Good thru age 23.

Icelandic to Europe

*\$295 from Chicago. Tickets must be reserved 45 days prior to departure and paid for within 8 days of reservation. Add \$15 each way for travel on weekends.

80 PROOF DISTILLED FROM WHITE BEETS. IMPORTED AND BOTTLED BY IZMIRA IMPORTS, S. O. N. Y. 10778

First Russian Vodka Was In. Then Polish Vodka Was In. Then Finnish Vodka Was In. Now look What's Going Down.

Turkish Delights by **IZMIRA** Imported Vodka

from Turkey.

Get your outrageous wall poster of an Izmira Turkish rug design. Full-color. 30" X45". Send \$1.00 to "Turkish Delight" Dept. K, P.O. Box 2130, Grand Central Station, New York, N.Y. 10017. Allow 3-4 weeks delivery.

**"BACK WHEN I WAS IN SCHOOL, I COULD'VE
USED A LESS FILLING BEER. ON WEEKDAYS
I CARRIED 21 CREDITS. ON WEEKENDS I
CARRIED DEFENSIVE TACKLES, LINEBACKERS
AND WEAK STRONG SAFETIES."**

**Matt Snell
Former All-Pro Fullback**



**ITE BEER FROM MILLER.
EVERYTHING YOU ALWAYS WANTED
IN A BEER. AND LESS.**

sports cont.

Baseball makes hits and strikes



MIT celebrates after their victory over Lowell last Saturday their first victory over that team in two years. (Photo by Gordon R. Haff)

By Tom Curtis
The rule of the MIT baseball season has been feast or famine. Twice, the Beavers have beaten teams which were highly ranked in New England, yet four times they have lost by ten or more runs.

The team began its season by feasting on Division III New England seventh-ranked Massachusetts Maritime for a 7-1 victory. Then the Beavers began a five-game drought with a 15-5 loss to Tufts.

After the Tufts defeat, the team reached what can safely be called the low point of the season — a 23-4 thrashing by Boston College, the third-ranked Division I team in New England. Four Beaver pitchers could do nothing to stop the onslaught. When it was over, BC's Eagles had 15 hits including one home run.

The Beavers' next game was nearly as bad. This time the opponent was Bowdoin, a usually mediocre team. Against MIT, however, the Polar Bears seemed like world-beaters. Fourteen hits, seven of them for extra bases, allowed Bowdoin to breeze to a 15-5 victory. Although MIT had 12 hits and Bowdoin made four errors, the Beavers' hits did not come in clutch situations.

(Please turn to page 17)

Rugby team has good outlook

By Connie Cotton

Out of a field of eight teams, the MIT women's rugby club placed second in the Northeast Collegiate Women's Rugby championship held at Brown University in Providence on April 15 and 16. MIT defeated Williams College 18-0 and Cornell University 28-0 before falling to Brown 14-4 in the tournament finals on April 16.

Both forwards and backs played well in their first two games, and the victories were the result of a really superb team effort by MIT. The forwards played as a pack and supported better than they have in any previous game. The backs handled the ball well and played an excellent defensive game as well as moving the ball offensively. Although MIT had only 12 players to field against Williams' 15, the opposition's forwards never won a single set scrum, nor could their backs manage to get the ball out and set up a score. Scrum half Jan Hammond G accounted for two of Tech's scores against Williams, with Nancy Breen '80 and Barbara Kasting contributing the other two.

The game with Cornell on Saturday highlighted the talents of MIT center Nancy Breen. She ran for four scores against the hapless Cornell rugger, and contributed a number of key tackles. Forward Barbara Kasting and fullback Sandy Rivas were credited with the other Engineers scores. Again, the MIT forwards played a tight game and supported well. The Cornell forwards

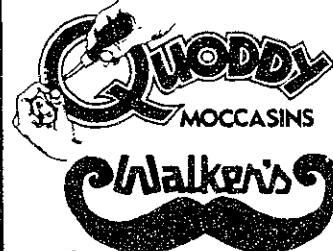
won very few set scrums and could not manage to get a clean ball out to their backs. Unfortunately, Breen was injured during the game and was unable to play against Brown on Sunday.

The championship game with Brown proved to be a disappointment. MIT forwards were no longer the cohesive unit they had been during play on Saturday, and the Engineer backs were not able to get a successful drive going offensively, or to cover their opposing players defensively. The only Tech score came when wing-forward Connie Cotton recovered

a loose ball in the Brown end zone.

The women's rugby team at MIT has a lot of potential and could conceivably be a strong contender for the New England championship tournament held in May, but the team still needs more players. Anyone interested in learning to play rugby is invited to come to any practice session, Monday-Wednesday-Friday from 5-6:30pm at Briggs field. All women staff and students are eligible and welcome. For further information, contact Connie Cotton, x3-4784.

You Never Looked So Good



RIDING APPAREL, INC.
292 Boylston St., Boston, Ma. 02116
Telephone: (617) 267-0195

FUTURE LAW STUDENTS

Getting into law school is not enough! PREPARE for your crucial first year.

Legal Education Ltd. is presenting Law School Preparation Seminars in Boston (May 12-13); Washington (June 9-10); Greensboro, N.C. (June 16-17).

CURRICULUM: Classroom learning process; successful study methods; a practical approach to legal research and writing. How to write law school exams. Complete written materials provided.

TUITION: \$115 per person. You obtain our **GROUP TUITION** of \$95 per person simply by returning three or more registrations in the same envelope. Check, Visa, and Mastercharge accepted.

Send tuition, name, choice of locale and complete address to LEL, 41 Commonwealth Avenue, Newton, Mass. 02167.

VISA Card # _____
Mchrg Card # _____
Exp. Date _____
Mchrg # above name _____

EUROPE
Less than 1/2 economy fare
Call toll free (800) 325-4867
Guaranteed Reservations
or see your travel agent
UniTravel Charters



Lunch time in the patio of our La Rojeña distillery.

When our workers sit down to lunch they sit down to a tradition. When they make Cuervo Gold it's the same.

Every day at just about eleven the wives from Tequila arrive at the Cuervo distillery bearing their husbands' lunches.

Lunches that have been lovingly prepared in the same proud manner since men first began working here in 1795.

It is this same pride in a job well-done that makes Cuervo Gold truly special. Any way you drink it, Cuervo Gold will bring you back to a time when quality ruled the world.



Cuervo. The Gold standard since 1795.

CUERVO ESPECIAL® TEQUILA. 80 PROOF IMPORTED AND BOTTLED BY ©1977 HEUBLEIN, INC., HARTFORD, CONN.

PROGRAMMERS

We shall offer \$24K and PROFIT SHARING to:

TOP MICROCOMPUTER PROGRAMMERS

fluent in assembly language (8080, 280, 6502 or the like)

and I/O Routines

Ideal situation for the

ENTHUSIASTIC SOFTWARE GENIUS

who wants fun ANDed with great REWARDS

Write or call

Pierre R. Schwof

PRS — THE PROGRAM OF THE MONTH CORPORATION

257 CPW NY NY 10024

Tel: 212-724-5377

sports

Sailors season shaping up

By Ed Marcus

Three MIT sailors are still alive in the competition for the New England Singlehanded Championships to be held this Spring at MIT. Lenny Dolbert '79 won his elimination round Saturday at Harvard, and is now one of eight seeded finalists in the competition. Both Gary Smith '78 and Elliot Rossen '79 finished second in their eliminations, and are going on to compete for the remaining spots in the final competition.

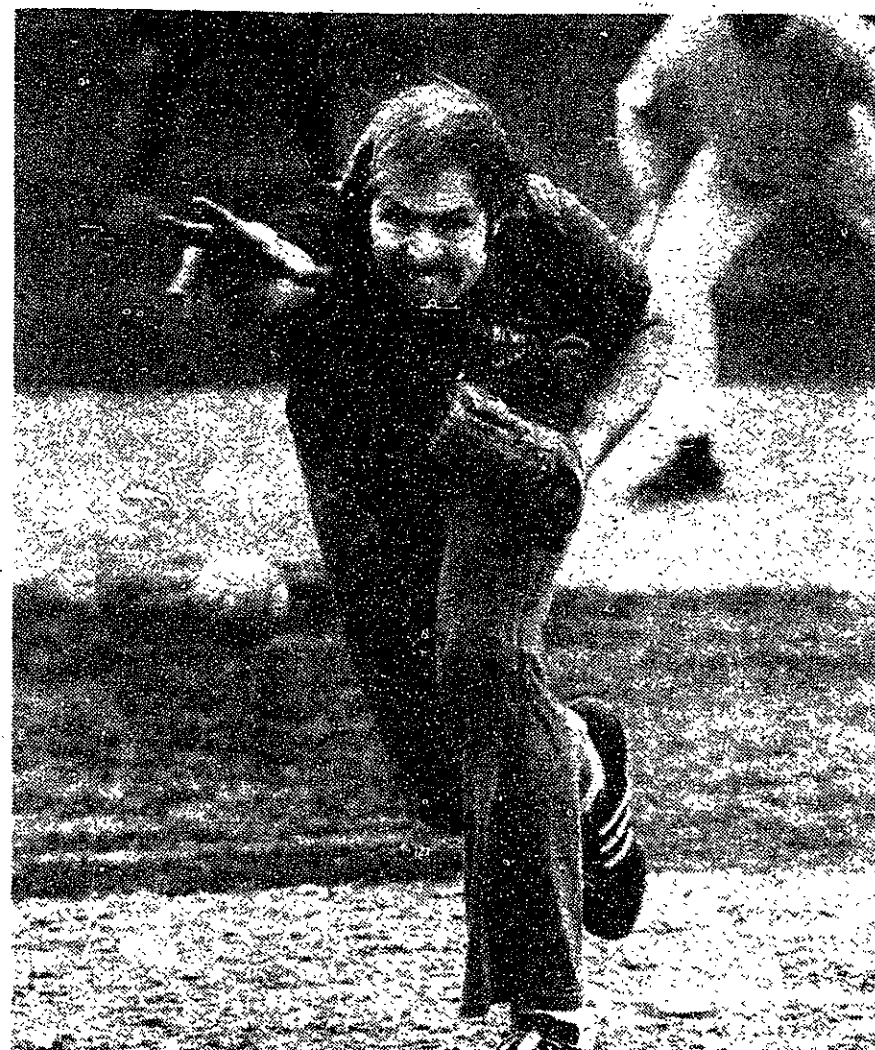
In other competition, the freshman team sailed their first trophy regatta of the Spring at Tufts. The Greater Boston Freshman Championship was held on the Mystic Lakes where

strong, shifty winds resulted in many capsize. Competition was very close throughout the entire regatta, and MIT sailed well, finishing with an overall second place. Skipper Dave Kuller '81 and crew Keith Robine '81 teamed up for second place in A Division, while Skipper Ed Marcus '81 and crewmember Steve Dalton '81 took fourth place in the B Division.

In contrast to the gusty conditions at the Freshman Championships, light, variable winds graced Sunday's Freshman Invitational held at Yale. Sailing the new "420" sloops, A-Division skipper Dave Kuller '81 and crew Dave Russell '81 put on an

impressive performance to take three first place finishes and a second overall in their division. After some difficulty, B-Division skipper Ed Marcus '81 finished sixth. As a result both MIT divisions combined to give the freshmen a fourth place in the field of ten schools.

The first team-racing competition of the spring was the Dartmouth Bowl hosted by Harvard. Team racing pits two teams of three boats each in a match race around the sailing course. Whichever team combines for the lowest finish tally wins the match. At Sunday's Dartmouth Bowl, both MIT and Harvard soundly defeated just about every team they met. At day's end, both teams had only one loss to their record. However, since MIT's loss was to Harvard, the Crimson sailors took the trophy. Bruce Gage '80, John York '80, and Elliot Rossen '79 were the MIT skippers, and Lynn Marchiando '81, Steve Dalton '81, and Hoon Won '81 were their respective crews.



(Photo by Gordon Haff)



Joel Lederman '81 waits in a lineout during the Rugby Club's match against Ecole Nationale D'Alembert a week ago last Wednesday. This was the first of two matches against foreign teams that the club has planned for this spring. They will be hosting Queen's University of Canada on Tuesday, April 25.

MIT enthusiastic over softball

By Gordon Haff

Despite the loss of one field because of the new track, this year's IM softball program will allow every team to play five or more games. This is being accomplished by scheduling games as late as 4:15pm and by allowing those teams that cannot make certain weekends to play doubleheaders. Thus, although there are 10 more teams than last year's total of 143, teams in several of the leagues are having more games.

Softball is the largest of the IM sports, with participation by about fifty percent of MIT's students. As a result, it is not surprising that there is more interest in the lower leagues than the upper ones. There are 69 teams in C-league and 53 teams in B-league. However, there is no "Women's league" this year. According to Modesto Gomez '80, this year's manager, that league was plagued with forfeits and a general lack of interest last year.

This interest in the lower leagues has not hurt softball as it has hockey and football. On the contrary,

there is considerable interest in A-league. Slow pitch and fast pitch have 18 and 13 teams respectively.

Gomez said that one of his biggest goals this year was to create intradivisional rivalries in the lower leagues. For example, he attempted to set up a schedule in which floors or entries in a dorm would play other floors or entries in the same dorm. In doing this, however, Gomez did not meet with universal approval. In particular, he noted that Baker residents were very upset at having to play among themselves, and the final schedule was altered so that Baker would not be an intradorm division. Gomez also noted an advantage of the intradorm system was that it would be much more difficult for teams to present "padded" rosters and then play with ringers from other floors in the dorm, apparently a rather routine practice among the lower leagues.

The question of playoffs is still undecided. As with all outdoor sports, they will largely depend on the weather. As it stands now, Gomez sees the possibility of a playoff between the top six teams from slow-pitch-A league and the top four teams from fast-pitch A league.

IM

MITAA serves many necessary functions

By Helen Miyasaki

Last Wednesday, the MIT Athletic Association held elections for its officers — president, vice-president, and two members-at-large. Candidate after candidate noted the fact that only a handful of people knew of the election's existence. One candidate did not even appear because she did not know that they were being held then. So, just exactly what is the Athletic Association and what does it do?

The membership of the Athletic Association consists of the captains and managers of all varsity sports, athletic chairmen of living groups, managers of intramural sports, members of the Intramural Council, members of the Women's Athletic Council, and a representative from each club sport. The voting power is distributed among the officers of the various groups to total 18 votes. The casual user is represented by the two members-at-large and there is a graduate student council representative. So everyone who might have occasion to use any athletic facility has some voice in the AA.

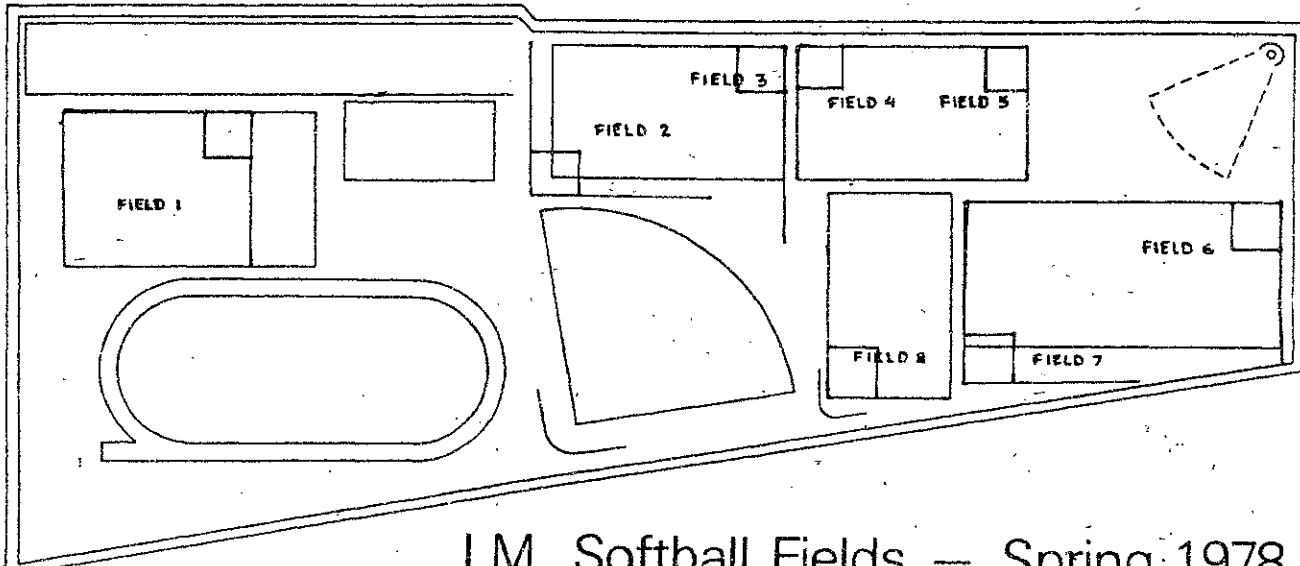
Ross Smith, Director of Athletics, views the AA as "... the principal means of communication between students and the athletic administration." Bert Halstead, the present graduate representative and also long-time member of the AA Executive Committee called it an "amalgamation of all that happens in the athletic department." Perhaps the most important role

of the AA is to serve as a voice for all users of the athletic facilities.

In past years, the AA has given varsity status to new men's and women's sports and served as a board of appeals for the Intramural Council. In more recent years it has dealt with such issues as user priority during peak hours. This year, members of the AA Executive Committee spoke to the MIT Corporation Visiting Committee on the urgency of building the new athletic complex.

The AA does not have defined duties like the IM Council and in the past year or two, there have been fewer pressing items on its agenda. So few, that this year only one meeting was held to elect next year's officers.

Where does it go from here? What the AA accomplishes each year is very dependent on the initiative of its officers. To gain more visibility, the new officers have proposed several projects for next year. President-elect Tom Smith would like to see the continuation of the "club handbook," a project he initiated last year. Secretary Barbara Biber and members-at-large Jeff Tyrrell and Richard Allen also mentioned ideas such as newsletters to alumni, updating them on current teams and an "all-sports week" to encourage the MIT student to come watch athletic events. If nothing else, the Athletic Association will continue to serve as a common meeting place for all aspects of athletics at MIT.



I.M. Softball Fields — Spring 1978



Allan Strong '80 looks for an open man in Burton Third Bombers C league water polo action. According to IM water polo manager, Steve Pettinato '80, the season is coming along fine. At this point most teams have one or two games remaining. Because of a lack of practice time, the first of every team's six games was practice and does not count in the standings. In post season play, Pettinato plans to have playoffs for the top four A league teams and the top two from every B league division.