

in the news

INSIDE

Renovations were completed just in time for 10-250 to open for the beginning of classes.

p2

The Tech editorial maintains that the Committee on Discipline should not be used to resolve the Freshman Picturebook controversy.

p4

New rates from the Information Processing Center should mean lower costs for the use of their computers.

p10

EXCERPTS

Roman Catholic. The words are redolent of rich and solemn rituals chanted amid clouds of incense and in an ancient tongue. Many American Catholics over 30 remember living in that history-heavy church as if living in a spiritual fortress — comforting at times, inhibiting and even terrifying at others. But it was a safe and ordered universe, with eternal guarantees for those who lived by its rules.

That fortress has crumbled. Before the Second Vatican Council in 1962, the US Catholic Church had seemed, at least to outsiders, to be a monolith of faith, not only the church's richest province but, arguably, its most pious. When the council ended in 1965, American Catholicism had been swept by a turbulent new mood, a mood of opened windows, tumbled walls, broken chains. It became a painful experience for many, and over the next decade the casualties were heavy: nuns leaving their convents, priests their ministries, lay Catholics simply walking away from worship and belief.

— Time

THE TECH

Lee Linquist '79 has resigned as Photo Editor. Steve Kirsch G has been appointed Associate News Editor, and John Grunsfeld '80 has been appointed Associate Photo Editor.

COD to hear Picturebook charge

By Mark James

Charges have been brought before the Committee on Discipline (COD) against a student for his part in publishing an allegedly racist photograph and caption in the Freshman Picturebook.

A photograph of Groggo, the statue of a gorilla used as a mascot and symbol by *Technique*, bore the caption "Harvey Groggo — Kampala, Uganda." Administrators and deans have reported that a number of staff members and students have come before them to protest the picture and caption as a racial slur against black Africans.

COD charges have been brought against the Picturebook's editor, David Soule '79, by Associate Professor of Political Science Willard Johnson, according to well informed sources.

These sources report that Johnson has charged that Soule should have realized that the picture would cause injury to many because he is an intelligent MIT student, that his failure to apologize quickly for the action shows that he is a racist and has no respect for the community, and that for this reason, he should be expelled.

President Jerome Wiesner and Chancellor Paul Gray '54 spoke out against the picture in Wednes-

day's *Tech Talk*, saying that "the symbolism of the photograph has been seen as a racist slur entirely unacceptable in this community." They continued: "We share this view."

Soule himself has refused comment, but many members of the Technology Community Association (TCA) — the Picturebook's publisher — and *Technique*, have said that they feel the entire matter has been blown out of proportion.

TCA signed a letter to *The Tech* which asserted that the photograph was a joke and "was not intended to insult anyone." The letter did not apologize for the publication of the picture and caption.

Gray told *The Tech* that he had been visited by a group of staff members who were upset by the photograph, and that he had received a petition in protest of the picture, containing between 150 and 200 signatures.

Steve Lawrence '78, co-chairman of the Black Students Union (BSU), said that one petition had been circulated by an African student. This petition said that a number of students are dissatisfied with the Picturebook photograph because it showed a lack of concern for a large segment of the MIT community, according to Lawrence.

He added that a second petition may have been circulated by other students later. The BSU is drafting a statement on the issue to be released this weekend. Lawrence noted.

Wiesner refused to release the

text of one petition he had received, claiming that those who circulated it would have released it themselves, if they wanted it made public.

Gray said that he was not
Please turn to page 11



Groggo, the symbol of *Technique*, suddenly became controversial when his photograph was published in the Freshman Picturebook

Carter's Science Adviser interviewed

Press advocates Delaney repeal

Editor's note: This summer The Tech Editor-in-chief William Lasser interviewed President Carter's Science Advisor Frank Press in Washington. Press was the head of the Earth and Planetary Sciences department at MIT prior to his appointment. The interview covered a number of topics concerning federal science policy. The first portion is below; the remainder of the interview will appear in a later issue.

* 1977

The Tech: Based on the scientific evidence, do you think saccharin represents a major hazard to the public health?

Press: I'm not a specialist in epidemiology or in carcinogenic substances. As you know, the most recent experiments are two Canadian experiments, one dealing with rats which were fed large doses of saccharin, the other an epidemiological study, with a sample population that had bladder cancer... The law is very clear, he [The Food and Drug Administration (FDA) director, Donald Kennedy] had no choice. The law states that if there is any evidence — no matter what the dosage level — for cancer due to some potentially toxic substance, he's got to remove it, and that's what he did. On the basis of the existing experiments there is some controversy about their removal, so I've suspended judgment waiting for the data to develop and [be] further analyzed. As far as Don Kennedy is concerned, he had no choice, he had to take it off the market.

The Tech: Do you favor the proposed Congressional action to give the FDA Director discretion in terms of risk/benefit judgments of carcinogenic substances?

Press: I think it's the Secretary of Health [Education and

Welfare] who gets that. Yes — I do. In other words, [it would] repeal the Delaney clause and give the Secretary of Health that discretion.

The Tech: Do you support, or does the Administration support, the Rogers or Kennedy action to tie the hands of the FDA for 18 months, pending a study?

Press: I don't know what the administration position is. I would have to check with my colleague, the Assistant Director [of the Office of Science and Technology Policy] who does follow that. I don't know if the Ad-

ministration has as of today a position on that...

The Tech: How about your personal opinion?

Press: No, I haven't looked into it enough to say.

The Tech: Some have said that the saccharin issue is too minor a controversy — that it is too weak a carcinogen — to base a full-scale national debate on the FDA, the Delaney clause and some of the other points of controversy. Do you think we're making a mistake by arguing too much over too small an issue?

Press: No, I think it's an issue

that won't go away. Saccharin will be the first of many. It has just come to our attention because saccharin is so much in the public eye, so we have to confront this dilemma, so we might as well start now to think the whole process through [concerning] toxic substances and on what basis, at what point in a series of experiments which will continue, we can be sure of what it is and now's the time to take federal action.

The Tech: Then we get into the question of cigarettes — tobacco — which is not technically considered a food additive, but the evidence points to it being a carcinogenic substance.

Press: Well, as you know, the correlation between smoking and bladder cancer is also very strong. I shouldn't say "also very strong" — but it has been established. And you raise a very good question — it is a dilemma why do we move on saccharin and not on smoking. These issues I think will be debated from now on until a policy is evolved.

The Tech: Is it the government's responsibility to tell people what's bad for them, assuming it doesn't hurt anyone else?

Press: There's no question that it's the government's responsibility to tell people and interpret for people the latest scientific results on substances — on potentially toxic substances. The government role beyond that — how far it should go — especially when data are uncertain — that is what the basic issue's about and that's what Congress and H.W. are looking into. That's something that we're tracking also.

The Tech: Another major controversy in health is DNA
Please turn to page 2



Calvin Campbell, MIT News Office
President Carter's Science Adviser, Frank Press

Public has research input

Continued from page 1
 research — which began with the controversy at Cambridge. Has the Administration taken a position on the proposed legislation?

Press: There is an administrative bill that was hammered out by an inter-agency committee, which you will remember, the chairman of the committee was the Director of NIH, and that bill was introduced. Of course there's Kennedy's bill, and the Rogers bill.

Some variant of those bills will be brought out, or the Administration bill will be brought out of the Congress. I'm sure that it will come out this session.

Press: Do you favor the establishment of the Kennedy Commission on recombinant DNA? Or would you rather see the regulation in the hands of the Secretary of HHS?

Press: I'm concerned about the Kennedy Commission. I think it sets a bad precedent for control of research. It's too much overkill. I think there should be legislation on some sort of legislation such as subsequent research to constitute that there really was a hazard the legislation should

have built-in clauses that allow for relaxation of the controls. If subsequent experimentation shows that there is a hazard then it should have built-in clauses which work the other way.

There are a great many issues going beyond DNA with experimentation which may have hazards, and the public wants to be protected, and it may be that legislation is necessary. But before we write such legislation, we have to be absolutely certain about these regulations and the impediments they throw into the way of research in this country.

Regulations basically are to protect the public, but regulations can also hurt the public if they inhibit research — they make it more expensive, they contribute to inflation, so the concept of a cost-risk analysis for regulations is a very good one and I think it should be examined in great detail.

The Tech: What are some of the other fields of research that you are thinking of when you speak of potentially dangerous research?

Press: Well, say this country wants to make a big push in the area of tropical medicine as a con-

tribution to developing countries. One of the major problems they have in the lesser-developed countries is disease — the kinds of diseases we have no experience with in this country. Well, some of those viruses are very dangerous, and there should be sensible procedures in laboratories in handling these materials.

Now most places have biosafety committees, biohazard committees which really have quite severe oversight, but you can't guarantee that every institution in the country that wants to engage in this will have that kind of standard, and it may be that we want to have regulations which don't impede the research but which do protect the public, [regulations] of a flexible kind, [so] that when the risk is shown to be negligible, they just simply are removed.

to be continued

Looking for a church community that works?

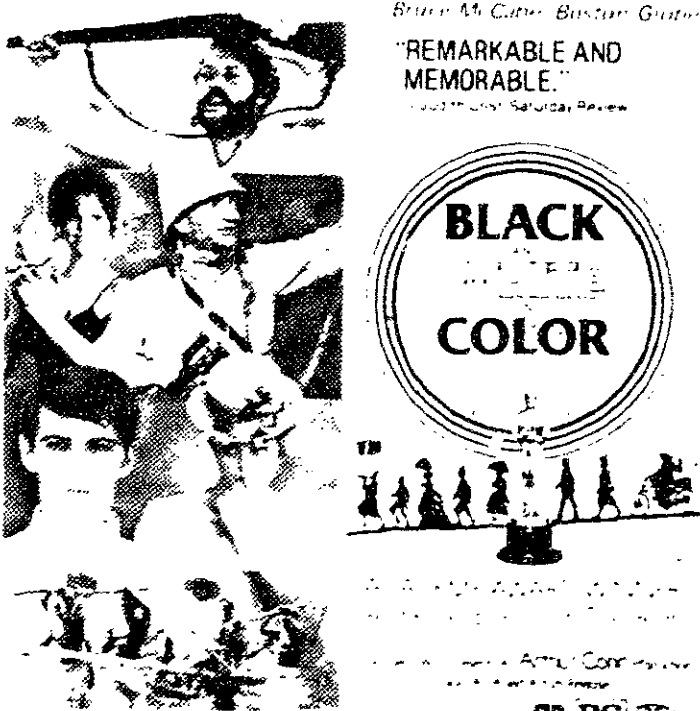
Try University Lutheran Church

Harvard Square, Winthrop & Dunster Streets

Sundays at 11:00am

Student brunch following

"An absolute GEM of a film."



Exeter St. Theatre 1 2 50 4 30 6 15 8 9 45

POSITIONS AVAILABLE

People interested in working at *The Tech*

are invited to stop by Sunday evening at 7:30.

Room 483 Student Center



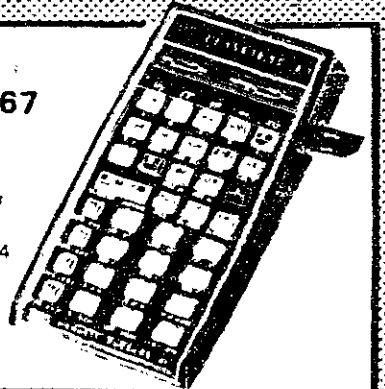
the Coop

COUNT ON US FOR ALL YOUR CALCULATOR NEEDS

HEWLETT  PACKARD

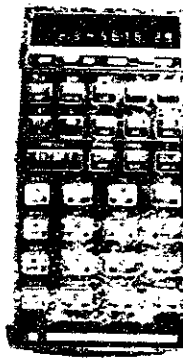
Hewlett-Packard HP-67 \$395.00

The greatest programming power HP has ever made available in a personal calculator. Takes up 224 steps. 26 storage registers. Convenient pre-programmed functions.



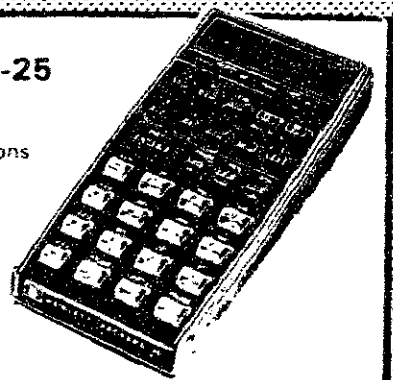
Hewlett-Packard HP-29c 179.95

Continuous memory capability stores data in 16 of its 30 addressable registers and display register. Handles sophisticated calculations. Lets you merge keystrokes. Many powerful programming features.



Hewlett-Packard HP-25 114.95

72 built-in functions and operations. Keystroke programmability. Full editing capability. Branching and conditional test capability. 8 addressable memories.



Calculators with student design

There Will Be A Hearing
MONDAY SEPT. 19,
AT 7:30 pm
In Rm 400 Student Center
To Select New Members For
NOMINATIONS
COMMITTEE

HAPPY BIRTHDAY, PETER

from the Impeach Berke Committee (IBC)

news roundup

World

South African student protest — Over 1,200 black university students were arrested yesterday after the youths refused to leave a memorial service for a young black leader who died in detention following a hunger strike to protest white minority rule in South Africa.

Nation

Lance testifies at Senate hearing — OMB Director Bert Lance appeared yesterday in front of a Senate hearing to answer allegations that he acted improperly as president of a bank in Georgia. Lance termed the allegations "false charges, half-truths, misrepresentations, innuendo and the like." He asserted that allowing customers to withdraw their accounts without interest was a long-standing policy of the Calhoun National Bank.

Carter on Lance — President Carter told reporters yesterday via a telephone hookup to San Francisco that he is keeping an open mind on the Lance situation, and is eager to hear the budget director's responses to charges of personal financial mismanagement. Carter added that he was awaiting the end of this week's Senate hearings before "assessing" the charges against Lance.

PBB contamination suspected — The State of Michigan has begun tests on infants born on farms where the toxic chemical polybrominated biphenyl (PBB) was accidentally mixed with livestock feed in 1972. At the time, a large number of farm animals died, but effects on humans have not been fatal.

Teenage minimum wage rejected — The US House of Representatives yesterday voted, 211-210, to defeat a bill that would have set the minimum wage for teenage workers lower than the regular minimum wage. The deciding vote was cast by Speaker Thomas P. (Tip) O'Neill, Jr. (D-Mass.), for a result that is considered a victory for organized labor.

Episcopalians divided — More than 2,000 dissident conservative Episcopalian priests and laymen have been meeting in St. Louis this week to formalize a split within the church over changes adopted one year ago, including the ordination of women as priests.

Sixties campus radical surrenders — Mark Rudd, a fugitive from justice for seven years for his part in the 1968 student riots at Columbia, turned himself in at Manhattan Criminal Court Wednesday to face misdemeanor charges still outstanding against him.

State

Abortion bill veto overridden — By three votes more than needed, the Massachusetts House of Representatives yesterday overrode Governor Michael Dukakis's veto of the Doyle-Flynn bill which would ban the use of state funds for abortions when the mother's life is not endangered. The veto is expected to be upheld in the Senate, however.

MBTA approves 1978 budget — The MBTA Board of Directors Wednesday approved a proposed 1978 budget of \$258.5 million. Budget Director Troy Murras said that the seven-percent increase over this year's spending "marks the second consecutive year in which the MBTA budget has not exceeded the rate of inflation."

10-250 ready at last minute

By Steve Kirsch

Huntington Hall, better known to most students as Room 10-250, re-opened last Tuesday after closing six months for extensive renovations.

Construction crews worked throughout the night to have 10-250 ready for the start of classes. Although the carpeting and the audio-visual equipment installation were incomplete, hardware had not arrived for the doors, and a strange piece of twisted copper tubing protruded from one of the

walls, the room was quite usable as a lecture hall.

"There was no question in my mind that it wouldn't be ready," commented Campus Architect Harry Portnoy. He indicated that the room would be complete by the end of the month.

The layout of the room has been changed so that the blackboard is visible from all seats. In order to accomplish this, aisles were moved and the seating was decreased from 520 to 450. The projection booth was enlarged, one rear stairway was converted to a storage area, and a TV control room was added at the front of the room.

The new projection booth will house two new \$17,000 projectors capable of projecting both 16 and 35mm movies, a \$5,000 slide projector, audio mixers and

amplifiers, and a system for projecting closed circuit TV images onto a large 7' x 10' screen located in the front of the room.

Brighter lights that can be dimmed have been installed. Additional lighting has been added to the front of the room to allow color TV and filming. Aisle lights have also been added.

The acoustic design of the room was done by Robert Newman — the Newman of Bolt, Beranek, and Newman. Portnoy said that the wall-to-wall carpeting, the extensive use of wood and fabric and the shape of the room result in improved acoustics. Audio amplifiers, which he said were actually not essential, do exist however, and there are 25 one, two, and four watt four inch full-range loudspeakers

Please turn to page 9

notes

* Henry Moore sculpture dance choreographed by Celia Shneider and to be performed by the MIT Dance Workshop at the Henry Moore sculpture in the Great Court on Friday, Sept. 16 at 12n, Saturday, Sept. 17 at 12n and Sunday, Sept. 18 at 3pm. Free Admission.

classified advertising

House for Sale: Cambridge, Windsor St \$27,500 Six room single completely remodeled Steam heat with gas, new tile bathroom. Call after 4pm 6469668, 484-2204

Contact Lens Wearers
Save money on your brand name hard and soft lens supplies. Send for free illustrated catalog Contact Lens Supply Center, 341 E Camelback, Phoenix, AZ 85012

Indirect Discs with Burwen fidelity Dick Wellstood — Jazz Piano, Petty Trio — Dance \$15.75 each tax inc. Decibel Records, Dept. 14, P.O. Box 631, Lexington, Mass. 02173

Technical Translators
Must have strong technical background and native fluency. Work in your spare time (free-lance). All languages. Call, write PO Box 450, Reading, MA 01867, 944-8488

Mimi Kagan School of Contemporary Dance: Classes still small and personal. Modern technique, composition. All levels, morning and evening. Low rates from \$2-hour. Call 536-4162, 247 Newbury Street, Boston

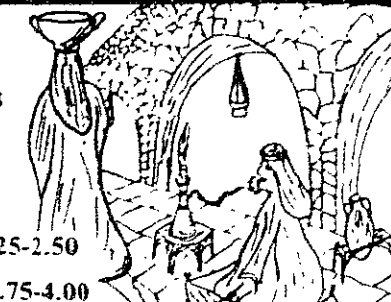
Tired of spending your weekends in the city? See the New England countryside. Army ROTC entails no obligation for freshmen and sophomores. Call Captain Murphy x3-4471 or stop by 20E-126

The Tech Classified Ads Work! \$300 per 35 words (or fraction) per day. Just send your ad with payment to The Tech, W20-483, or PO Box 29 — MIT Branch, Cambridge, MA 02139 by US Mail

M-Sat 11-Midnight
Sunday 3-11
4 Brookline St. 354-8238
Central Square

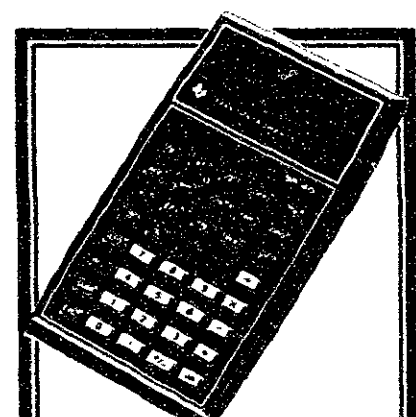
RESTAURANT

Luncheon \$1.25-2.50
Entrees \$2.75-4.00



the COOP

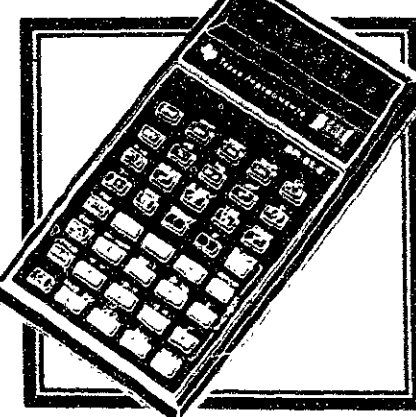
TEXAS INSTRUMENTS



SR-40
electronic slide rule

Designed for college students and professionals with 8 digit calculating capacity. An excellent buy just in time for back to school.

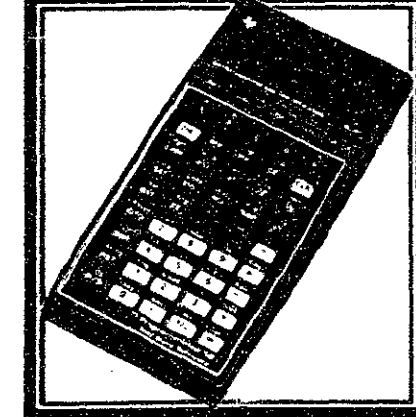
24⁹⁵



SR-51-II
advanced professional

Includes statistical functions, direct key conversions and engineering notation. A professional calculator at an affordable price.

48⁵⁰



TI-58
programmable with rebate offer

Take advantage of this free offer of Leisure Library Programs with purchase of TI-58. Up to 480 program steps for 60 memories. Master Library. Master with purchase. AOS entry system.

99⁵⁰

Offer good til Oct. 31, 1977 Here's what you do


Fill out this coupon. Return it to TI with your serialized Customer Information Card (packed in the box) along with a copy of a dated proof of purchase showing the serial number. **IMPORTANT** Your envelope must be postmarked no later than October 31, 1977.

Leisure Library Offer
P. O. Box 53, Lubbock, Texas 79408

Name _____
Address _____
City _____
State _____
ZIP _____

TI-58 or TI-59 Serial Number _____

Texas Instruments reserves the right to substitute alternate models of equal value based on hardware changes. • Free delivery. Shipments where prohibited by law add postage and handling charges.



Next Move Productions Presents
BOSTON'S SMASH HIT!
Limited Return Engagement
Now Playing!
Perfs Wed-Sun at 8 PM

"Rich, warm, human, affectionate and very moving. Gerri Librandi is extraordinary as Emma, a performance of sweeping empathy!"

— Kelly Boston Globe
"Impressive blend of documentary drama and ingenious staging... Librandi achieves a star-tinted performance... an eloquent piece of work!"



EMMA
Based on the life of
EMMA GOLDMAN
Written by
HOWARD ZINN
Directed by
MAXINE KLEIN
Fully Air Conditioned
Group Rates Available

For Reservations 536-0600
Next Move Theatre
955 Boylston Street, Boston, Mass.

An intensive course in Hebrew grammar and style by Professor Dov Eron begins on Sunday, Sept. 18.
A wide range of courses in Hebrew conversation begin on Oct. 9.
Registration may still be possible for courses in:
Bible, Jewish History, Hebrew Literature, Philosophy, Rabbinics, Jewish Education and Contemporary Jewish Studies.
For information regarding requirements and schedules, etc., please contact: Office of the Registrar 232-8710
Hebrew College
43 Hawt St.
Brookline, MA 02146
A fully accredited, non-theological institution of higher Jewish learning

TEXAS INSTRUMENTS
Demonstration
Monday, September 19.
From 11 a.m. to 3 p.m.

A Texas Instruments representative will be in our Calculator Department to demonstrate and to answer any questions about the entire line of TI calculators.

Calculator Counter



M.I.T. STUDENT CENTER

Editorial

The great misunderstanding

We are sympathetic to those persons who have been hurt by the publication of what some perceived to be an offensive picture and caption in the Freshman Picture Book. However, the charges brought against David Soule before the Committee on Discipline are hardly grounds for expulsion from the Institute or any other substantive disciplinary action.

The incident, which began as a well intended joke, has been escalated into a major controversy which threatens to spread far beyond campus. The crux of the difficulty lies in the inability of either side to understand the motives and reactions of the other. Whether in fact Soule or anyone else is "insensitive" in this context is a problem of our society as a whole, not of MIT or any of the parties involved.

President Wiesner and Chancellor Gray surely did nothing to calm the situation by their inflammatory and overreactive statement in *Tech Talk* on Wednesday. By interpreting the action of the Technology Community Association, publishers of the Picturebook, as a "racist slur entirely unacceptable in this community," they are guilty of misjudging an undoubtedly apolitical act. And by bringing the question of "prior editorial review" into this issue, they evoked concerns about freedom of speech and of the press which are unrelated to the incident.

A glance at the record of David Soule and TCA militates against the conclusion that dis-

ciplinary action is necessary. Unless the COD dismisses the demand for the expulsion of David Soule from the Institute, serious questions concerning the appropriateness of that body as an arbiter of such controversies will arise.

Perhaps tensions would have been eased by a more direct apology by Soule and TCA for the pain caused by the publication of a picture of *Technique's* mascot, Grogo. Such a statement would in no way have implied that Soule or TCA had committed any offense or that the publication of the picture was in any sense a political or racist act.

While the COD is certainly not the appropriate forum in which to resolve this situation, it raises issues which are real and which will not disappear. The most productive steps towards arriving at a reasonable conclusion would be in the form of direct discussion between those who are aggrieved and those who were unaware of the implications of the act.

Many Americans, we suspect, would have acted just as Soule did had they been in his place. Their attitudes are the result of a lack of communication between diverse groups, not only at MIT but throughout society. Only sincere and widespread discussions will begin to ease the situation. These should begin immediately.

Imperialistic history of the Panama Canal

By William Lasser

Fights over treaties between the President and the Congress are nothing new in American politics; between 1789 and 1971 the Senate amended or caused to be withdrawn over a quarter of those submitted to it by the President. Nor are bitter, partisan controversies over proposed international agreements novel in the United States; even the current Panama conflict has a way to go before it reaches the proportions of the Jay Treaty debate in 1795.

The Constitution provides that the President "shall have power, by and with the advice and consent of the Senate, to make treaties, provided two-thirds of the Senators present concur." Over time, the Chief Executive has reserved the right to negotiate and sign treaties, excluding the Senate until the treaty is formally submitted for the ratification vote. The Senate has the right to approve or reject the agreement, or to modify it, or to accept it "with reservations."

The original conception of the Founding Fathers — that the Senate be included in all phases of the process in what Woodrow Wilson called the "spirit of an executive council" — was rejected by the time of the Jay treaty, although President Washington had attempted for a short time to work with the Senate in this way. And after the war of 1812, the Executive had even denied the Upper House's right to approve negotiators for important discussions.

The proposed Panama Canal treaty has a long and elaborate history.

The US interest in a waterway across the isthmus of Panama dates back to the early 19th century; in 1850, the Senate ratified the Clayton-Bulwer Treaty with England, in which both nations agreed not to obtain or exercise exclusive control over such a canal, guaranteed the neutrality of the canal, agreed to keep any future canal open to nationals of both countries, and promised not to colonize or occupy any part of Central America.

But by 1902, the two nations had signed the first Hay-Pauncefote Treaty, which gave all rights to construction, control and maintenance of a canal to the United States, in return for a pledge for neutrality of the canal, but not allowing the United States to fortify it. The second Hay-Pauncefote Treaty abrogated the Clayton-Bulwer Treaty and gave the United States fortification rights.

In 1903, Congress decided on Panama, at the time a part of Columbia, as the site of the canal, and in the Hay-Herran Convention of that year with Columbia the two nations agreed that in return for a payment of \$10 million and an annual fee of \$250,000, the US would receive a 99-year lease over a zone six miles wide. The Columbian Senate rejected the convention on August 12, 1903; this greatly distressed President Theodore Roosevelt. On Nov. 3, 1903, backed by interests linked to the newly formed Panama Canal Co., and acting with the American President's at least tacit approval, Panamanians revolted and declared themselves free from Columbia. Three days later the United States formally recognized the new nation, and a week later received as minister from that country a one-time associate of the Canal Company.

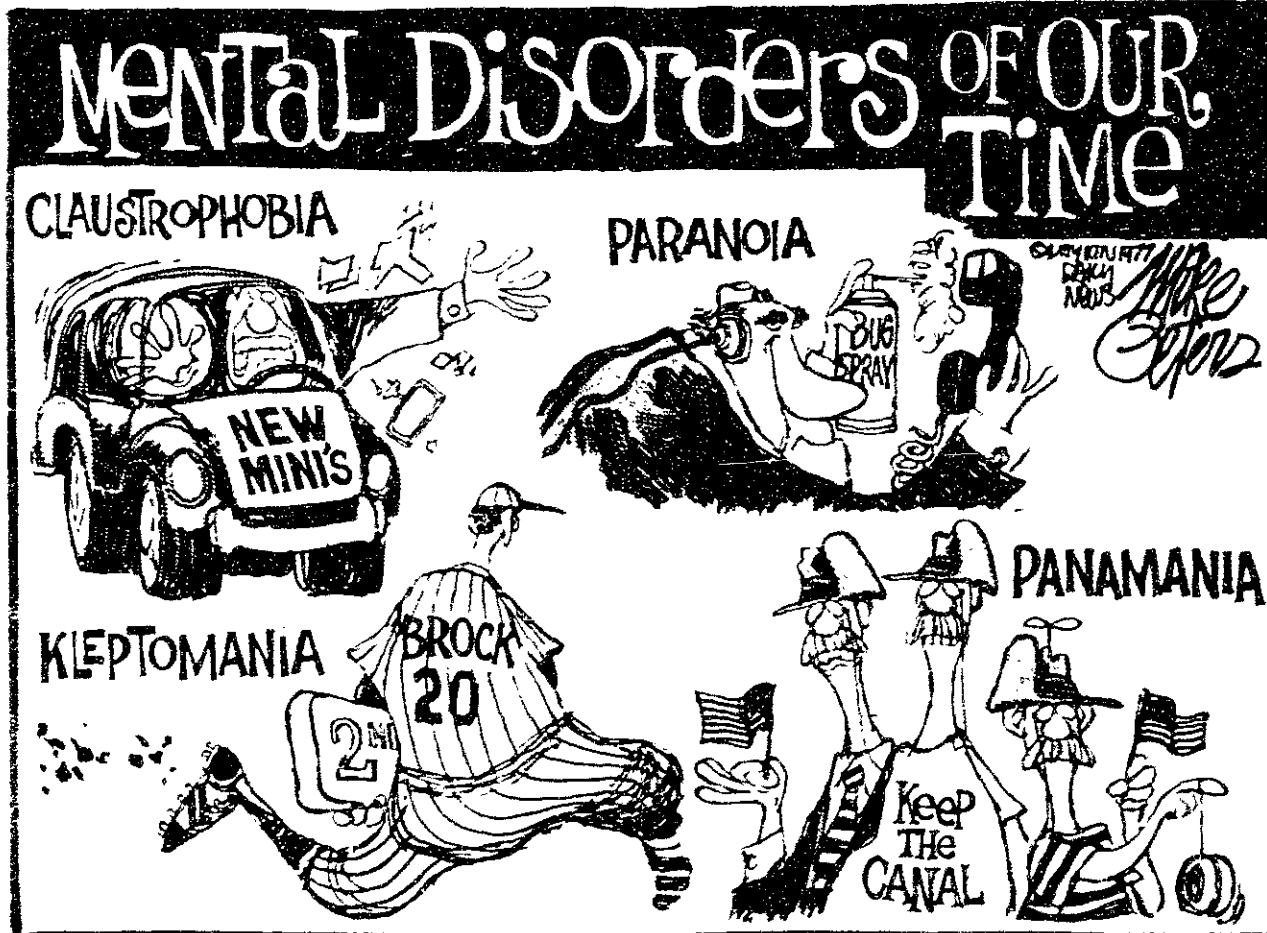
Acting with great dispatch, the United States and Panama concluded on Nov. 18 the Hay-Bunau-Varilla Treaty, which guaranteed to the United States use and control "as if sovereign" of a ten-mile-wide zone "in perpetuity." The United States agreed in return to the neutrality of the canal (which still had not been built) and the independence of Panama, and agreed to pay to the new nation the same amount of money as it had offered Columbia earlier in the year, beginning nine years after ratification. The Senate approved the Treaty in February of 1904.

In a 1955 treaty with Panama, the United States increased the monetary payments to Panama, gave that nation \$28 million worth of property formerly held by the Canal Zone administration, guaranteed equality of pay to non-Americans working in the Zone, and agreed to construct a bridge over the canal to link the two parts of Panama by the Inter-American Highway. But since then, there have been repeated acts of violence and an increasing atmosphere of tension: the 1964 deaths of 21 Panamanians and 4 American soldiers led President Johnson to begin negotiations to change the Canal's unique political status. Thirteen years later Jimmy Carter concluded what has been the work of four Presidents.

The new canal treaties, if approved by the Senate — which is by no means likely — would give the Canal Zone and all control of the canal back to Panama by "noon, Panama time, Dec. 31, 1999," and would guarantee the neutrality of the canal. The strategic importance of the waterway has been reduced anyway by the fact that it can not accommodate large oil tankers or aircraft carriers, despite Ronald Reagan's exaggerated claims that the treaties contain a risk "for our national security and for hemispheric defense."

The canal treaties represent an important change from the policies of US imperialism of an era long past to President Carter's new era of "morality in foreign policy." Opponents of the treaty claim that "we built it, we paid for it," and we should keep it. Anyone armed with the perspective of history is forced to agree with S.I. Hayakawa's comment about the canal: "we stole it fair and square." Hopefully, 67 Senators will see Carter's point.

here and now



feedback *Technique's* Picturebook role

To the Editors:

There has been a great deal of controversy concerning the publication of a photograph of a plaster gorilla known as Grogo in the *Freshman Picture Book*. In recent days we have seen a letter in *The Tech* from TCA and a statement on the first page of *Tech Talk* written by Drs. Weisner and Gray. We feel that there has been a breakdown in communication and would like to clarify some points.

First, the letter in *The Tech* from TCA implied that *Technique* had suggested the use of Grogo, its long-standing mascot, in a hack picture in the *Freshman Picture Book*. We would like to make it clear that *Technique*, as an organization, had nothing to do with this suggestion. It was made by one of our staff members, acting on his own, while he was engaged in some photographic work for TCA. Our staff members are free to do as they please; however, only decisions made by *Technique's* managing board, or the entire staff, can be

considered as actions of the yearbook.

Secondly, we realize that some people were, perhaps deeply, offended by the nature of the title under the photograph, a nature they interpreted as derogatory. We feel, however, that those involved were not acting in bad faith when they made the decision to run such a title. (Certainly, no one should be complaining about the photograph itself, since Grogo has been pictured in every edition of the yearbook since 1962 without complaints.) Consequently, there is no reason for harsh disciplinary action against those involved. Rather, it seems essential that both sides make an effort to better communicate with each other. It is likely that all involved will, in the future, be more aware of the possible pitfalls inherent in their actions, and this is all that the complainants could ask for. Disciplining students could only result in bitterness.

Finally, we would like to express our dismay at what we feel is an over-reaction by the ad-

ministration. Printing a statement on the front page of *Tech Talk*, without first considering those involved in an effort to clarify the situation, has led to a great deal of confusion on the part of those not fully informed of the situation. And although we have always endeavored to respect the sensitivities and values of the community, we are upset by the veiled threats of censorship which seem apparent in the statement.

In conclusion, we regret the series of misunderstandings that has led the Institute community to the situation it is in now. We hope that in the future those on both sides of an issue keep an open mind and try communicating before orating.

Dan Gauger '79
Robin Graves '79
Jeff Mogul '79
Bill Hoffman '80
The Managing Board
of *Technique* 1978
September 14, 1977

The Tech
 Mark J. Munkacsy '78 — Chairman
 William Lasser '78 — Editor-in-Chief
 Rebecca L. Waring '79 — Managing Editor
 William H. Harper '79 — Business Manager
 Volume 97, Number 38
 Friday, September 16, 1977
 Third Class postage paid at Boston, MA. Non-Profit Permit 59720. *The Tech* is published twice a week during the academic year (except during MIT vacations), daily during September Orientation, and once during the last week of July. Please send all correspondence to: P.O. Box 29, MIT Branch, Cambridge, MA 02139. Offices at Room W20-483, 84 Massachusetts Avenue, Cambridge, MA. Telephone: (617) 253-1541. Advertising, subscription, and typesetting rates available on request.

Police Blotter

(The Police Blotter is a report written by the Campus Patrol on crimes, incidents, and actions on the MIT campus each week.)

VW Stolen from Lot

A red VW "bug" was stolen from the Tang Hall parking lot sometime between the hours of 5:30am and 11:00am on Monday. Taken along with the car was personal property valued at around \$300 (including \$150 worth of tools).

Auto Alarm Saves Car

Aroused by the sound of an auto alarm sounding in the Tang Hall parking lot early Wednesday morning, a Tang resident looked out his window in time to spot a man wearing a white shirt run from a Chevy Corvette, enter a white two-door sedan, and rapidly leave the area.

"Solicitor" Ejected

Investigating complaints of Westgate residents Wednesday evening, Officers arrived in the High Rise building to find a man in a hallway who professed to be an agent from Virginia for a magazine society in Michigan. He was quickly escorted from the area.

Such "cover" stories are commonly heard from prowlers casing buildings for easy targets. Largely because of this problem, soliciting in MIT buildings is prohibited. Residents are urged to contact the Campus Police whenever "solicitors" make their presence known on the campus.

Woman Assaulted on Drive

A woman walking alone on Memorial Drive in front of

Building 2 Saturday evening was assaulted by an unidentified white male, 16-18 years of age, 5'6"-5'7" tall, medium build, long and dirty blonde hair, wearing a light colored shirt and blue pants. The woman was able to break free and run to safety.

Everyone is reminded that an on-campus escort service is available simply by calling the Campus Police at x3-1212. People working late who must travel isolated areas are urged to take advantage of this service.

Imposter at East Campus

A man who identifies himself as a Physical Plant Department employee is the prime suspect in a series of larcenies from buildings in the East Campus area.

Described as a black male, early 20's, 5'7", 150 pounds, short hair, and last seen wearing a "Bermuda" long sleeve shirt, he was most recently seen dragging a plastic bag full of refuse down a corridor in Building E10, late last Friday afternoon just before an unbolted IBM Selectric typewriter valued at \$750 was discovered missing from an unattended office on the same floor. It is believed that the typewriter was taken out in the refuse bag.

This suspect appeared in recent weeks in Buildings E21, E40 and E32 in addition to E10, and is suspected of responsibility for other larcenies. Anyone who sees this man is asked to call the Campus Police immediately at x3-1212.

INN-SQUARE MEN'S BAR

Friday, Sept 16 — Saturday, Sept 17
Reggae with True Culture

Sunday September 18
One night only
Elephant's Memory

Monday, Sept. 19 — Tuesday, Sept 20
Johnny & the Luncheonettes

Ladies Invited • No cover charge
1350 Cambridge St., Inman Sq.,
Cambridge 354-8458

Fabulous multi-talent showcase every Sunday 3:00 to 5:00
World's longest happy hour

DICKSON BROS.
Hardware, Housewares, Paints
We Mix Paints.

Custom Color Service
1350 Colors Available

ALSO CUSTOM CUTTING OF WINDOW SHADES, ASSORTED COLORS AND DESIGNS, PLUS WHITE

26 Brattle St., Cambridge
876-6760 **Yes, We Deliver**



FORD HALL FORUM

Lectures are held at Northeastern Alumni Auditorium, 360 Huntington Ave., at 8:00pm.

Oct. 2 **ROGER MUDD** Members are
9 **LARRY FLYNT** admitted at 7:00pm.
16 **DR. BARRY COMMONER** Open to the public
23 **BELLA ABZUG** at 7-45
30 **I. F. STONE**

NAME _____ Enclosed is my check for
ADDRESS _____ \$5.00 student.
_____ \$7.50 student couple

(Membership card & program will be sent to you)

MAIL CHECK TO The Ford Hall Forum
358 Chestnut Hill Ave
Brookline, MA 02146

For more information: Telephone 734-3796

**Graduate Student Council
Open Hearings
For
Institute Committees**

You can shape the future of MIT. The Graduate Student Council (GSC) is empowered to elect members to most of the major Institute Committees which advise various aspects of Institute life. The GSC will be conducting Open Hearings on September 21 for candidates for the following committees:

6:00pm The Corporation Joint Advisory Committee on Institute-wide Affairs: This committee broadly represents the student body as well as the long-range planning of MIT campus-wide programs, institutional arrangements, and MIT's relations with Cambridge and metropolitan Boston. There are several seats on this very important committee. Contact: Max Graham x3-3202.

6:30pm Discipline Committee: This committee considers cases of alleged misconduct brought to its attention. An accused student is given the opportunity to present his/her case. If a student is recommended for withdrawal from the Institute, the recommendation with the findings shall be referred to the President for approval or disapproval. Otherwise, the committee is empowered to effect its own reprimand.

7:00pm Committee on Graduate School Policy: The Committee establishes admission requirements, student standards, and requirements for advanced degrees in the MIT Graduate School. It grants approval of new courses of instruction at the graduate level. It shall report to the faculty the qualifications for the award of advanced degrees. Contact: Harvie Branscomb x3-2195 or Greg Park x3-3114.

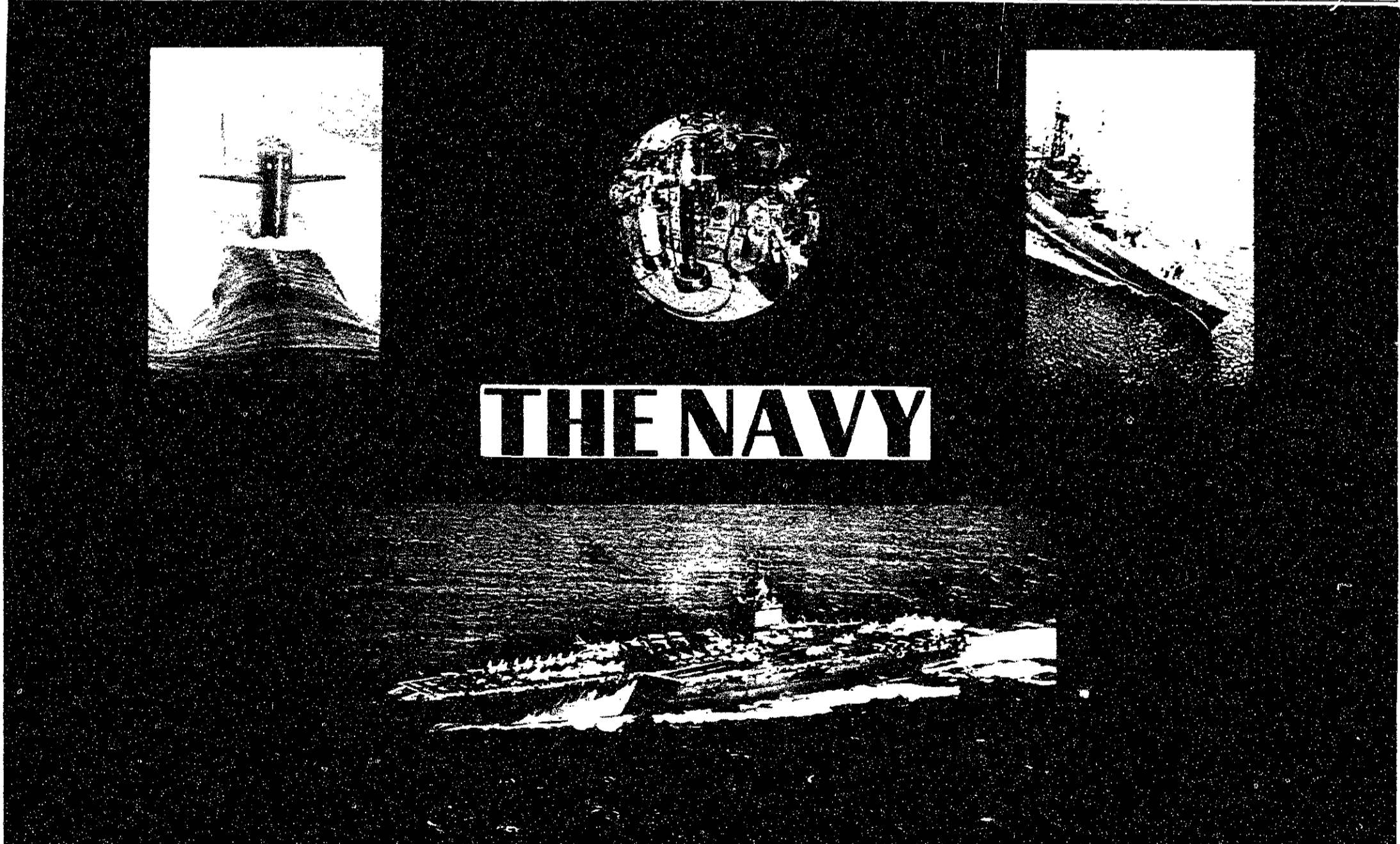
7:30 pm Library Systems Committee: The Committee's activities center on the development of the General Institute requirements and course curricula. They include: proposing proposals for changes in the Institute requirements and making suitable recommendations to the faculty. It has the power to propose for Science Distribution and Laboratory Subjects. It also has the power to request for individual students for exceptions to the general Institute requirements, and seeks other proposals as well. Contact: James Mays x3-3361.

8:00 pm Committee Preprofessional Advising & Education: Established in 1971, this committee is composed of members of the faculty, administrators, and students. The committee has the responsibility to advise, guide, and extend preprofessional training for students. It seeks the faculty's informed judgment in student interest, and to promote closer ties with the professional schools to which MIT students apply. It is assisted in these pursuits by two subcommittees, the Pre-law Advisory Council and the Pre-medical Advisory Council.

8:30 pm Medical Advisory Board: This board serves as a liaison between the Medical Department and the Institute. Its functions are to advise the MIT community on matters relating to the activities of the Medical Department and to coordinate the Institute's participation in the medical school's educational and research activities. Contact: James Mays x3-3361.

9:00 pm IAP Policy Committee: The committee was established to advise the Institute on the use of the IAP system. It is composed of members of the faculty, administrators, and students. It works with the Committee on Graduate School Policy and the Pre-law and Pre-medical committees to develop a program of reports to the faculty on the use of the IAP system. Contact: James Mays x3-3361.

*There is no charge for these hearings. If you are unable to attend, please contact the Graduate Student Council at x3-2195. Hearings will be held in the Ford Hall Auditorium, 360 Huntington Ave., Brookline, MA 02146. Room 5-211, Tel. 734-3796.



THE NAVY

**The Navy is more, has more, and does more than you think.
Just ask any Midshipman here at MIT.
Freshmen and Sophmores interested in the Navy and NROTC
should drop by the NROTC office 20E-125 or call 3-2991.**

Now that it's all over



R/O 1977



**"I've had a great time this weekend, but now I just want to sack out!"
-freshman at dormitory assignments**

*There are places I remember all my life,
Though some have changed,
Some forever, not for better.
Some have gone and some remain.*
— In my L
©1965 Northern Songs, L

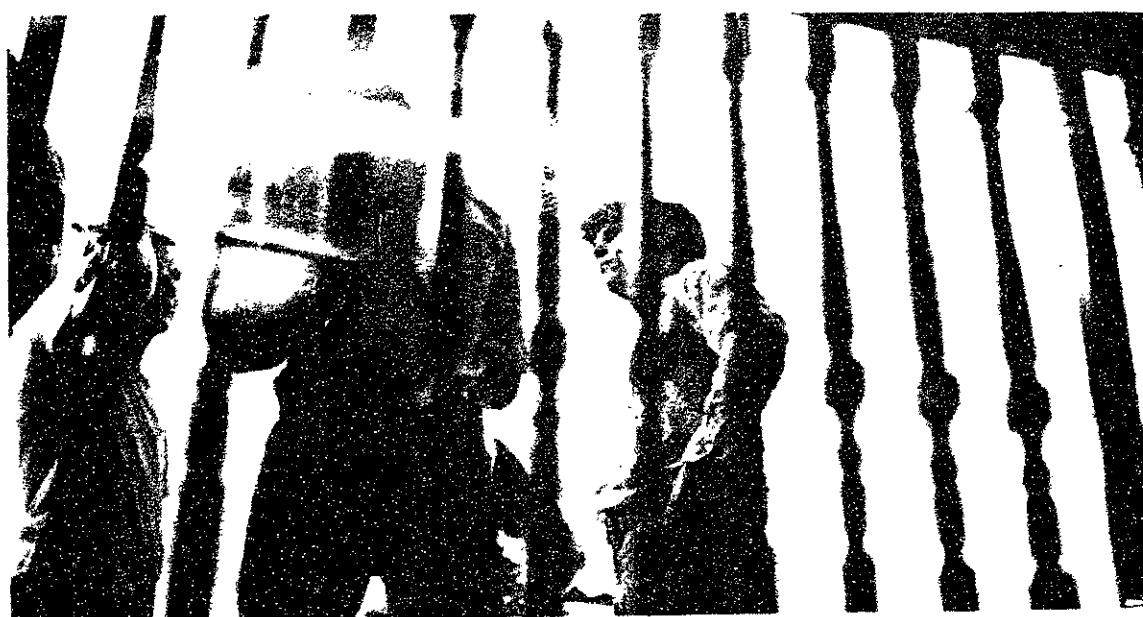


*I listened hard but could not see
Life tempo change out and inside me.
The preacher trained in all to lose his name,
The teacher travels asking to be shown the same.
In the end we'll agree, we'll accept, we'll immortalize
That the truth of the man maturing in his eyes.
All complete in the sight of seeds of life with you.*
— And You And I, Close to the Edge
©Yessongs, Ltd.

Photo Essay by Gordon Haff



and done



Excerpts from R/O Week 1977.

From Friday, September 2:

A freshman leaves the R/O Center laden with luggage and a variety of pamphlets, books, and sheets of paper. He heads for his temporary dormitory assignment. If he is lucky, he knows where it is from an earlier visit. Otherwise this freshman, whose arms are getting more and more tired by the minute, starts wandering in ever-widening circles in search of his goal. He finally encounters an upperclassman, who tells him he has been heading in the wrong direction for the last five minutes.

From Monday, September 5:

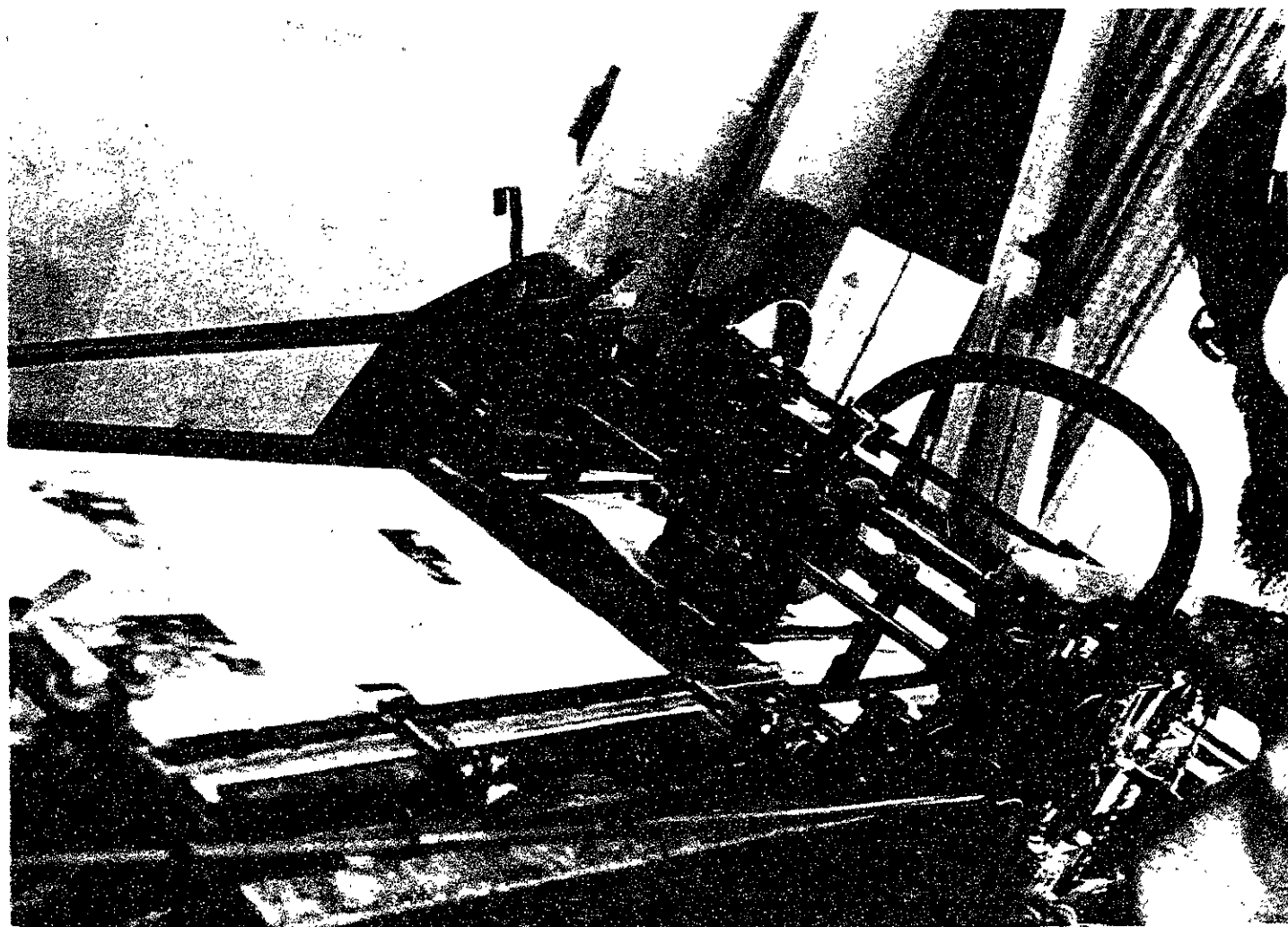
The fraternities lined up on the south edge of the Great Court and raised their placards. Fraternity members ran across the field to grab prospective pledges before their competitors, and associate advisors were suddenly transformed into frat rushers.

As the freshmen were packed into an assortment of cars and vans, they were treated to their first example of what passes for driving in Boston, as the vehicles cut each other off and swung around the "No U-Turn" sign on Mass. Ave.

From Tuesday, September 6:

I walked into the R/O Center about 11 am after a late party the previous night. A large number of freshmen were already there. They were all holding little green slips of paper — dorm preference cards. . .

Except for a few nervous freshmen, the atmosphere around the dorm was very carefree. When someone called up the desk and said, "I'm a freshman," he was answered, "That's not your fault." Upperclassmen were lounging around the R/O desk in great numbers chatting with each other and the newcomers who entered in ever-increasing numbers as the day went on.



life
td.

K+L SOUND'S COUNT DRECKULA HI-FI SALE

ALL WEEK LONG

(11)
PIONEER CTF-2121
FRONT LOADING DOLBY CASSETTE
\$99.00 (A)

PIONEER RECEIVERS (A)
18) SX-450 15 15 RMS \$119
16) SX-550 20 20 RMS \$149
12) SX-1050 120 120 RMS \$439

(16)
BIC 920 (A) TURNTABLES w/Base Dust Cover
Shure M75ECS
\$59.00

TEAC TAPE RECORDERS ALL BRAND NEW
A-2340 4 channel open reel \$599.00
A-100 Front Loading Dolby Cassette \$149.00
A-170S \$159.00
GREAT SAVINGS ON ALL OTHER TEAC DECKS IN STOCK TOO!

THE CODE

A	DYNAMITE DRECK	PERFECT Full Manufacturer's Warranty
B	DIDDLEY DRECK	Fire Stock or Open Unit NO WORSE THAN DEMO DIRTY OR SCORED BOXES Full Manufacturer's Warranty
C	DRECK DRECK	USED SOME NEED WORK AS IS, NO WARRANTY

From Monday, September 19th, thru the 24th you can take advantage of the best prices on audio equipment you'll see all this year. Whether it's buying out the inventory of financially troubled stores, or obtaining fire stock merchandise from insurance companies, the K&L Bomber is always on the lookout to save you money. Many of these components are being sold at or below dealer cost... so act quickly.

JUST A SAMPLE OF THE GREAT DEALS ON NEW EQUIPMENT ON SALE

TDK C 90 CHROME 2 1/2 ea case of 10 17"	Akar AA-1010 Receiver 14 14 RMS	119
TDK C 60 CHROME 1 1/2 ea case of 10 13"	Pioneer SX 450 Receiver	136
TDK SA C-90 1 ea case of 10 29"	Pioneer SX 550 Receiver	160
Jensen 6x9 CoAx speakers 35 pr	Shure M95ED Cartridge	27
Jensen 6x9 TriAx car speakers 59 pr	Audio Technica AT 11E cartridge	15
Dakorder 8100 open reel deck 349	Sherwood S-7110B receiver	149
Dual CS 1241X turntable w B+DC 139	Cervin-Vega V-8 speakers	125 pr
Dual CS 1245S turntable w Shure V15H 219	Altec Model one speakers	150 pr
Technics RS 640 US cassette deck 229	Altec Model Three speakers	200 pr

BIC 1) 960 Pa+K w base cover Shure M75ECS 59 A 2) 960 Pa+B w base cover Shure M91ED 129 A 3) 112 speakers 179pr A 4) 940 Pa+B w base cover Shure M91ED 99 A 5) 960 turntable only 95 A 6) 960 turntable w base 159 A 7) 960 turntable w base Shure M91ED 69 B 8) 960 turntable w base 159 B	BOSE 1) 2 speakers 149 pr A 2) 2 speakers 219pr A 3) 2 speakers 39pr A	Brewster 1) 2 speakers 800 B	Shure 1) 2 speakers 750 B 2) 2 speakers used w base 450 C	Phips 1) 2 speakers 69 A	Garrard 1) 2 speakers 69 A 2) 2 speakers 49 A 3) 2 speakers 59 A 4) 2 speakers 69 A 5) 2 speakers 39 A 6) 2 speakers 59 A 7) 2 speakers 49 B 8) 2 speakers 39 C	Dual 1) 2 speakers w Shure V15 159 A 2) 2 speakers 89 A 3) 2 speakers 99 C 4) 2 speakers 99 B 5) 2 speakers 59 C 6) 2 speakers as is 300pr C 7) 2 speakers used w base 249 C	Celestion 1) 2 speakers 399pr B	Onkyo 1) 47055 139 B 2) 7X220 139 B 3) 7X330 159 B	Superscope 1) 440 receiver 99 A 2) 4250 amplifier 89 A 3) R-270 8 track receivers 119 A 4) R-270 receiver 169 A 5) A235 amplifiers 49 A 6) 7010 tuners 69 A 7) C101A portable cassette recorders 29 C 8) C103A portable cassette recorders 59 C 9) C100 portable cassette recorders 39 C 10) C105 portable cassette recorders 29 C 11) R300 receivers 79 B 12) C002A cassette deck 69 C	Sansar 1) 7070 receivers 329 A 2) 7060 receivers 349 A 3) 7050 receivers 209 A 4) 7040 receivers 269 A 5) 7030 receivers 99 A 6) 7020 receivers 69 A 7) 7010 receivers 139 A 8) 7000 receivers 69 A 9) 7000 tuner 179 A 10) 7000 amplifier 199 A 11) SR100 turntable 59 C	Sherwood 1) 5010A receivers 119 A 2) 5010B receivers 139 A 3) 5010C receivers 219 A	Marantz 1) 7000 receivers 179 A 2) 7000 receivers 159 A 3) 7000 receivers 279 A 4) 7000 receivers 229 A 5) 7000 integrated amplifiers 329 A 6) 1040 integrated amplifiers 99 A 7) 100 speakers 129pr A 8) 100 speakers 59pr A 9) 100 w warranty 79 C 10) 100 speakers 49pr B 11) 100 speakers as is 300pr C 12) 100 tuner used w base 249 C	Epicura 1) pr 202 299pr A	Electro Voice 1) 7108 59 95pr B 2) 7108 99 95pr B 3) 7108 59 95pr B	U.S. Pioneer 1) SX1050 receivers 439 A 2) SX950 receivers 379 A 3) SX 850 receivers 329 A 4) SX 750 receivers 259 A 5) SX 550 receivers 149 A 6) SX 450 receivers 119 A 7) TX 7500 tuners 139 A 8) SA8500 integrated amplifiers 199 A 9) SA6500 integrated amplifiers 109 A 10) CT4141A cassette deck 99 A 11) CTF 6161 cassette deck 149 A 12) CTF 7272 cassette deck 229 A 13) CTF 9191 cassette deck 209 A 14) CTF 2121 cassette deck 99 A 15) PL510A turntable 119 A 16) PL 150 turntable 69 A 17) PL 150 turntable 89 A 18) PL 120 turntable 69 A 19) PL 170 turntable 109 A 20) WC2121 case 5 A 21) TH3131 compact 139 A	Kenwood 1) KD103F turntable 69 A 2) KD2033 turntable 99 A 3) KA1400G integrated amp 79 A 4) KX910 tape deck 199 A 5) KX620 tape deck 169 A 6) KA5500 amplifier 169 A	Cervin Vega 1) pr 211R speakers 449 A 2) pr V10 speakers 169 A 3) pr V8 speakers 119 A 4) pr R10 speakers 199 95 B 5) pr R12 speakers 249 95 B	Technics 1) SA5360 receiver 199 A 2) SA5250 receiver 159 A 3) RS671AUS cassette deck 269 A 4) SA5160 receivers 159 A 5) T200 speakers 100pr B 6) T100 speakers 75pr B 7) ST6600 tuner 239 A 8) SA5150 receiver 139 B 9) SL1200 turntable 175 B	AKAI 1) 4700DS open reel deck 249 A 2) C46300 499 B 3) C42300 329 B 4) C4130 used w base 59 C	JVC 1) J4700 receiver 149 A 2) J4800 receiver 239 A 3) J4900 receiver 119 A 4) J5000 receiver 179 A 5) J5100 cassette deck 149 A 6) J5200 cassette deck 129 A 7) J5300 turntable 119 A 8) J5400 turntable 29 A 9) J5500 turntable w base 149 A	Fisher 1) MC 3010 turntable 59 A 2) MC 3010 turntable 59 A 3) MC 3010 turntable 119 A	Dakorder 1) M4550 cassette deck 139 A	Nikko 1) STA 6066 receiver 169 A 2) STA 4010 receiver 79 C	Sanyo 1) RD5000 cassette deck 169 A 2) TP 600 turntable 69 A	Sanyo 1) STD1510 cassette decks 109 A	Transcriptors 1) Skelton turntables 249 A	Janszen 1) pr C9852 29 B 2) pr C9851 25 B 3) C9854 10 B 4) C9738 10 B 5) pr C9940 29 B 6) 21 20 speakers 69pr B 7) 210 headphone 15 A	Klipsch 1) pr Heresy 479pr A	Dynaco 1) ST400K 359 A 2) SCA800/A 195 A 3) A25 demo 100pr B	Panasonic 1) RF975 portable radio 10 B 2) RF70 portable radio 5 B 3) RF1170 Tech series radio 99 B 4) RC 7254 Clock radio 35 B 5) RC6234 clock radio 30 B 6) R 1013 10 B 7) CX141EUA car cassette deck 49 B 8) CD142 car cassette w AM-FM 99 B 9) CR6 1717 AM-FM Push CE 69 B 10) CD4890 FM-B Deck 79 B 11) SA6800 8 track 39 B 12) RC4490 clock radio 35 B 13) RC 6154 clock radio 30 B 14) RA175 multi cassette 60 C	Nakamichi 1) reference monitor 800pr B	ESS 1) 21 20 speaker speakers 300pr B	Concord 1) BA 3000 tempo works 69 C 2) PD 7007 demo works 99 C	Presage 1) 15 speakers 100pr B	Philips 1) BA209 turntable 99 C	Quintessence 1) Preamp 299 B	RTR 1) pr 180JR speakers 200pr B	dB Systems 1) Preamp 350 B	SAE 1) MK 4XB preamp 329 A 2) MK XXXIB power amp 179 B	Spectro Acoustics 1) 101B preamp 200 A 2) P202 poweramp 250 A	Sony 1) PS2350 turntable as is 49 C 2) TC 3530 tape deck 149 B 3) TC645 tape deck 329 B 4) TC 121 cassette deck 49 B 5) MX14 Mixer works 158 C
--	--	--	--	------------------------------------	--	--	---	--	--	---	---	--	-------------------------------------	---	--	---	--	--	--	--	---	---	---	---	---	---	---	--	--	---	--	---	---	--	---	--	--	--------------------------------------	---	--	--

When quantities are limited first come, first served

Hours: Mon-Thurs. 10-10
Fri. 10-9 Sat. 10-5
We are not your stereo typed stereo store!



75 No. Beacon St. Not responsible for typographical errors
Watertown, MA 02154 ALL SALES FINAL
Tel. 926 6100
Don't forget to call & make sure you're getting the lowest price!

Brighter lights and new chairs for 10-250

(Continued from page 3)
 recessed into the ceiling. There is also a four channel audio system for music and movies.

The room is air-conditioned and the blackboard area has been increased. There are no sprinklers, only a fire alarm; all the wood, fabric, and carpeting are fire-resistant.

There are spaces for students confined to wheelchairs at the top of the room, but there is no way for a handicapped person to get to these seats without having to climb several flights of stairs. Portnoy said that a door would be added in the rear to allow han-

dicapped students to enter, but he did not know when this door would be added.

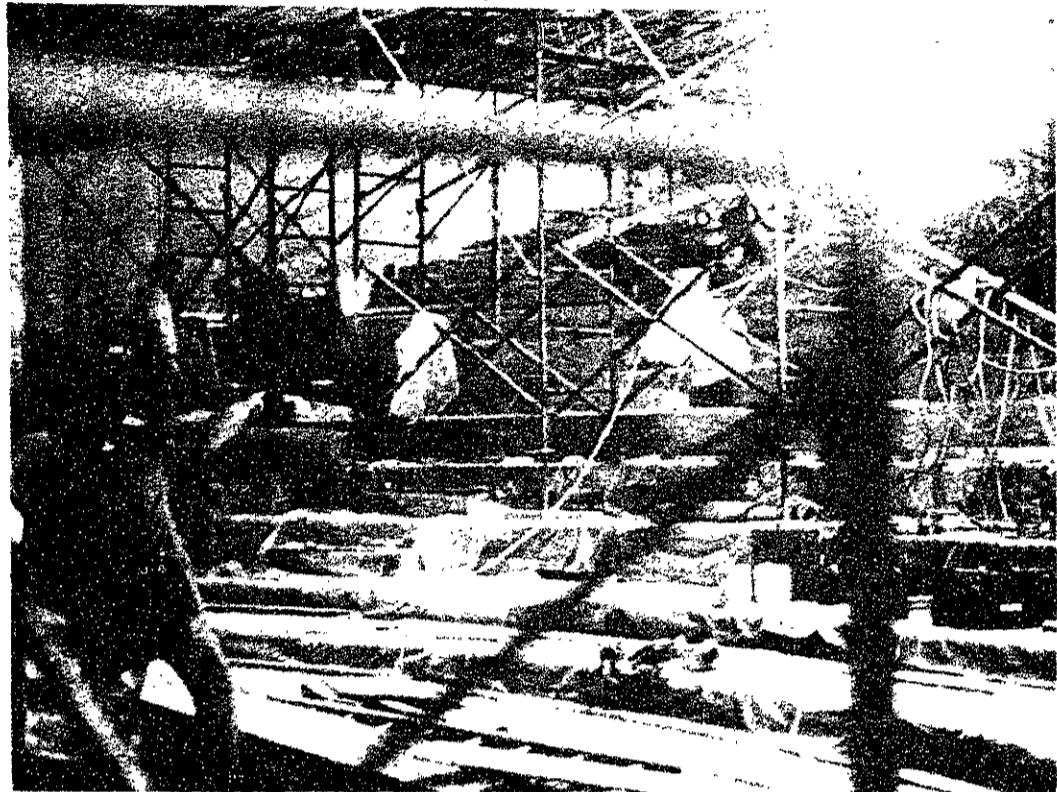
Student comment on the room was generally favorable: "It's more comfortable ... easier to fall asleep ... the acoustics are much better ... I like the three levels of blackboard ... not enough leg room on the side ... writing arms too small ... no clock ... the purple isn't that bad." Professor of Electrical Engineering James K. Roberge '60, who gave the first lecture in the new room said, "I grew up in 10-250. It's just not the same anymore."

Winston E. Flynn, assistant registrar in charge of scheduling, told *The Tech* that it is too early to tell how popular the new room will be with student activities, but he noted that it is definitely popular with the faculty. He speculated that the superior acoustics and sound system in the room make 10-250 attractive.

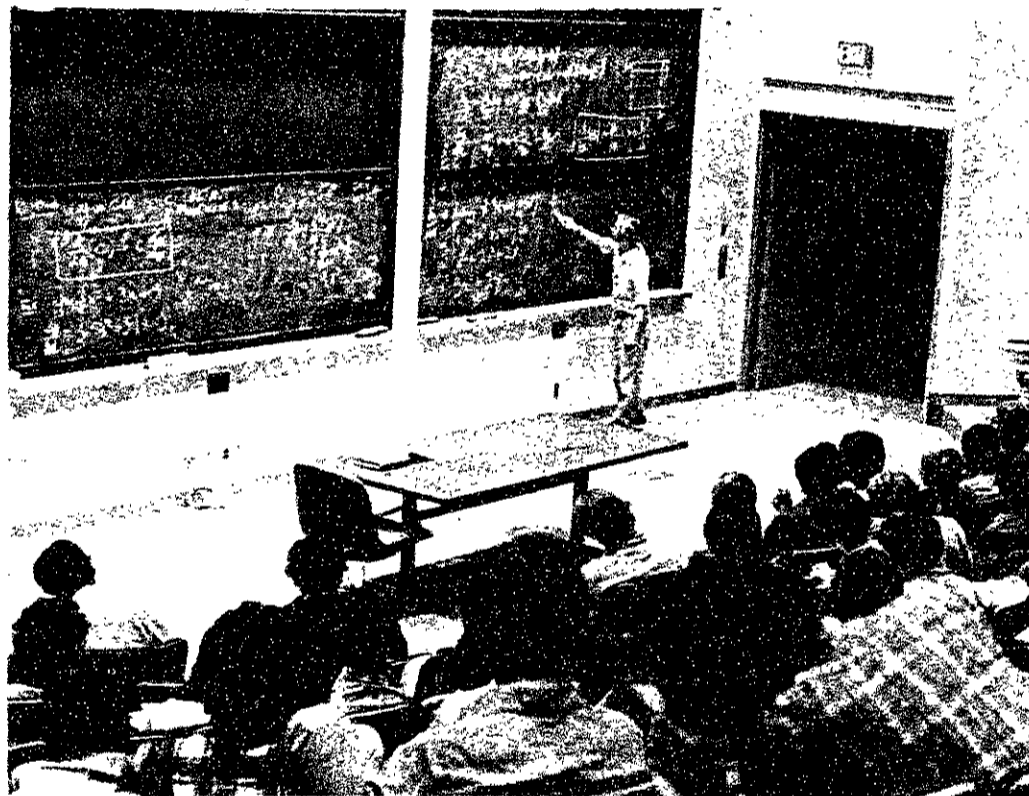
The renovation is a major part of a \$1.325 million program undertaken by the Alumni Association as part of MIT's five-year, \$225 million Leadership Campaign. The program also includes the development of a new Alumni Center on the first floor of

Building 10 which Portnoy expects to be complete in late November. Funding for the program is going "exceptionally well," according to Richard A. Knight, secretary of the Alumni Association. He said that almost \$800,000 has been collected and that brass plaques on 80 chairs in the hall have been sold to alumni at \$2,000 per chair.

The room's dedication is scheduled for October 7 at 4:30pm. This time corresponds to the annual Alumni Officers Conference and one of the quarterly meetings of the Corporation.



The renovation of Room 10-250 is the biggest project undertaken by the Alumni Association since building Walker Memorial in 1929 and the Alumni Swimming Pool in 1939. Above: during construction, below: the finished product



"Foam rubber is our business"

FOAM RUBBER AND POLYURETHANE FOAM & FABRICS FOR EVERY PURPOSE

mattresses cushions bolsters cut to any size & shape at no extra charge

DISCOUNT PRICES

IMPORTED DANISH DESIGN FURNITURE

Cover replacements made to order in vinyls & upholstery fabrics. Shredded foam. Bean Bag chair refills. Styrofoam.

Foam Rubber Discount Center
 254-4819

165 Brighton Ave., Allston

TIRED OF DORM FOOD?

We'll keep you going with hearty home-style Jewish fare ... your favorite deli sandwiches ... homemade pastry ... now you can enjoy beer and wine ... and more.

We've been a Boston tradition for over 50 years, so visit us soon ... and bring your appetite!

FAMOUS ORIGINAL PREMIER RESTAURANT - DELI

1130 Washington Street
 Corner East Berkeley, Boston
 Open Monday-Saturday 5am - 9pm
 426-2218

For Good Coffee & Donuts
 Come to the

**Junior Class Donut Stand
 Lobby of Building 7**

Donuts 15¢	Hot Chocolate 15¢
Coffee 15¢	Apple Juice 15¢
Hot Tea 15¢	Pepsi 25¢

Open Monday thru Friday
 8 a.m. to 12:30 p.m.

To our regular customers, Due to increasing costs, effective Monday Sept. 19, donuts will no longer be sold at 2 for 25¢

The Bus

Some answers to your questions:

Buses will run approx. every 8 minutes. All stops will be marked by yellow signs, just wait for a bus at the stop next to your dorm.

Your tickets are good any Saturday, if you buy several now you will help assure the continuation of the service.

The manager of Stop & Shop has assured us that delays at the registers will be minimal.

Initiation of the service is sponsored by Dormcon, but we hope to become self-supporting soon.

See you Saturday.

New rates cut computer costs

By Kent Pitman

Rate decreases which took effect at the beginning of this month are expected to significantly reduce the cost of computer processing on the Multics computer time-sharing system at MIT.

"We have unused capacity," noted Weston Burner, Director of Information Processing Services (IPS). A complicated rate schedule, which charged separate rates for the amount of time that users are connected to the computer, for time used by the central processor in computations, and for disk memory space, has been

simplified to a single flat rate cost for the time for which users are connected.

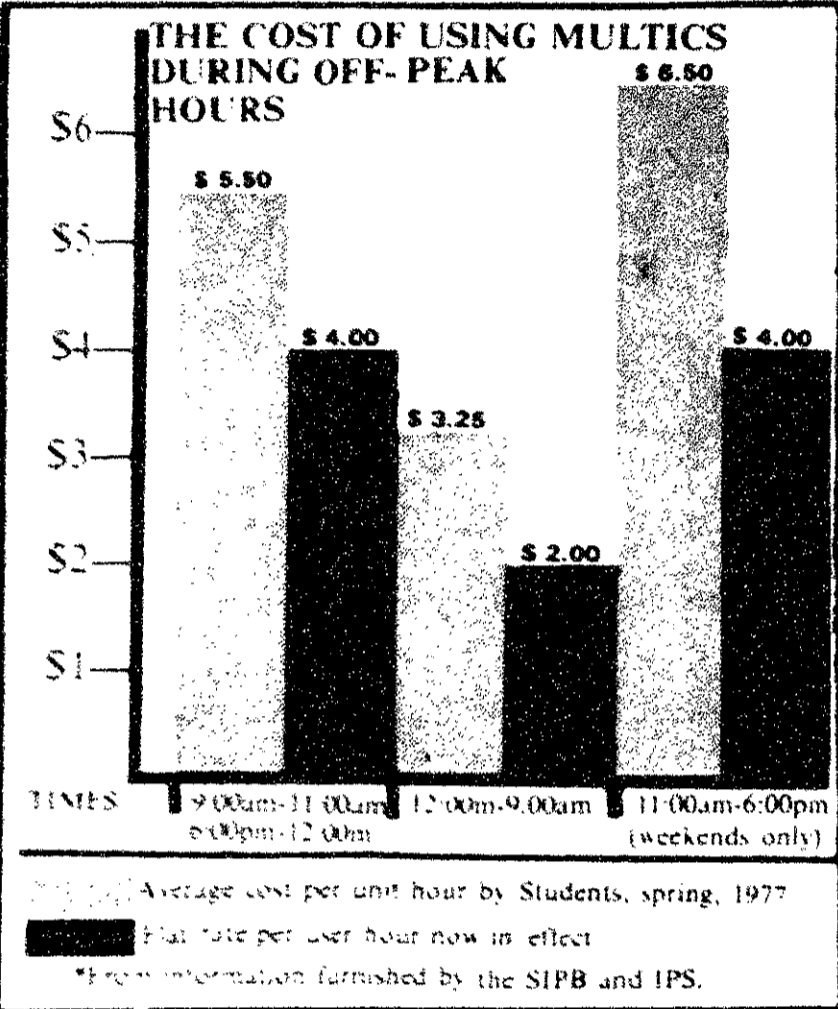
According to statistics furnished to *The Tech* by IPS and the Student Information Processing Board (SIPB), the average cost per hour during off-peak hours under the new rates will be at least 30 percent less than usual, a feature that IPS hopes will make Multics more desirable to members of the MIT community.

One notable effect of the new schedule is felt by users of the SIPB Educational Calculator System (ECS), a free subsystem using a language similar to

BASIC. Until recently, the system ran under the control of a "governor" which monitored all programs run in ECS and controlled the amount of processor time used by them.

Since the new rates charge only for connect time and not for processor time this restricting device has been removed, and it is now possible to use ECS for much larger calculations than were previously feasible.

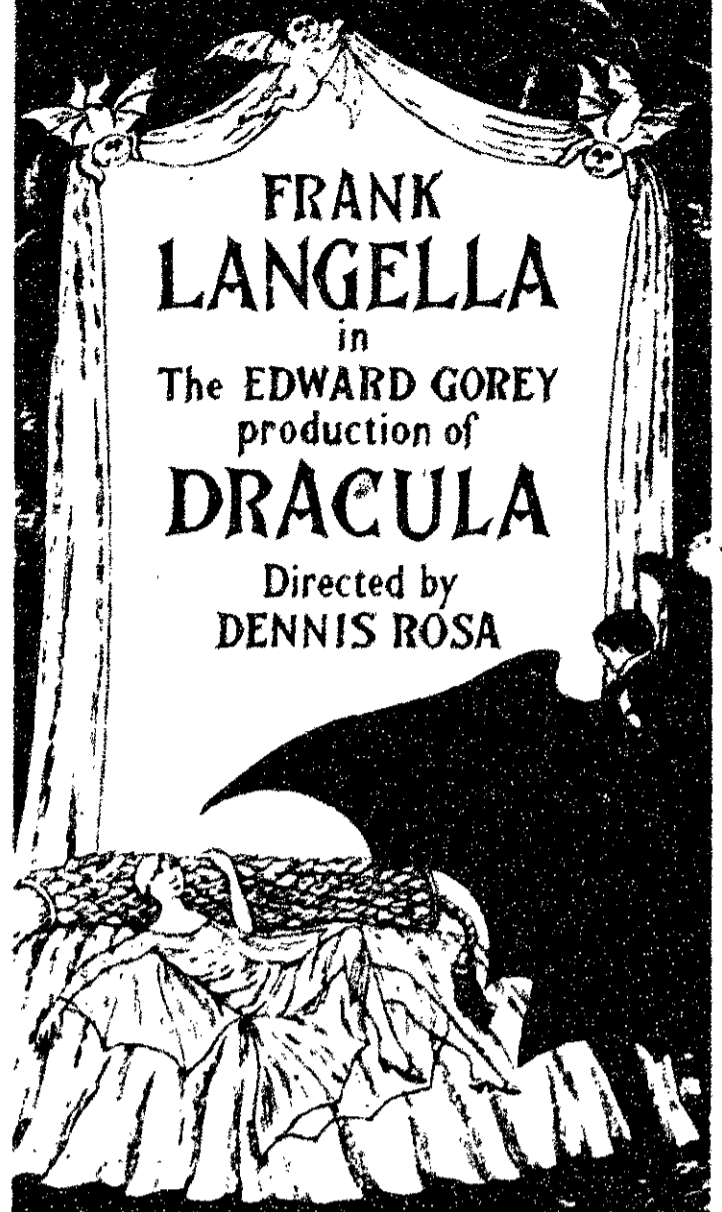
Additionally, for projects which require large time expenditures, a flat rate of \$700 per month will provide "unlimited interactive usage through one guaranteed-access port." This service provides for an arbitrary number of users, but only one may log in at a time.



*Psychiatric
Counseling
For College
Age Adults*

COLLEGE MENTAL
HEALTH CENTER

Located in Prudential
Center. For information
call 262-3315.



SEATS NOW AT BOX OFFICE AND BY MAIL
2 WEEKS ONLY! SEPT. 23 thru OCT. 8

PREVIEWS:
Fri., Sept. 23 at 8, Sat., Sept. 24 at 2 & 8 & Mon., Sept. 26 at 8

OPENS TUES. SEPT. 27 at 7:30

PRICES Mon thru Fri Evgs at 8 and Sat Mats at 2 Orch \$12; Mezz \$12.50; Balc \$9. Sat Evgs at 8 Orch \$13.50; Mezz \$13.50; Balc \$9.50 Thurs Mats at 2 Orch \$11; Mezz \$11; Balc \$8

THEATRE CHARGE: (617) 661-5990 All Major Credit Cards
(Mon thru Sat 10 A.M. to 6 P.M.)

Group Sales and Theatre Parties call toll free (800) 223-7565
or call the Box Office (617) 423-4008.
Tickets also available at all TICKETRON Outlets.

WILBUR THEATRE 252 Tremont St., (617) 426-9366

MARKLINE

America's Foremost Discount Electronics Dealer

411 Waverly Oaks Road/Waltham, Mass. 02154

CALL OUR 24 HOUR TOLL FREE ORDER LINE
1-800-225-8493

ASK FOR OUR FREE 64 PAGE CATALOG-INCLUDING
SPECIALTY ELECTRONICS, STEREOs, TAPE DECKS, RADIOS, TV'S

Texas Instruments

TI-58 Programmable

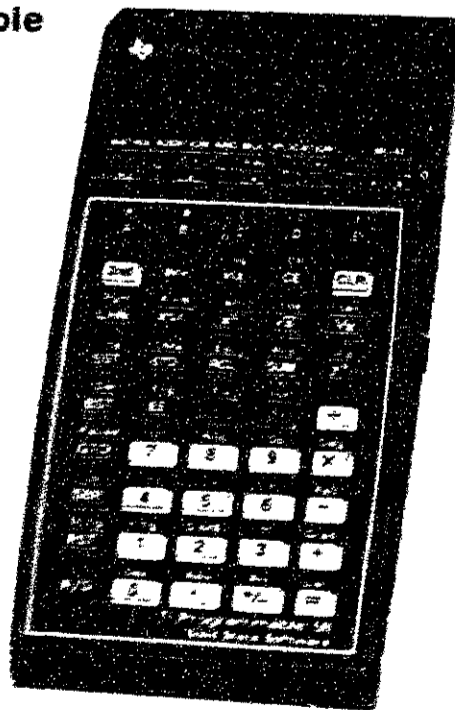
NEW!

The advanced key programmable
with plug-in Solid State
Software Libraries

INCLUDES FREE LEISURE LIBRARY
\$25.00 value Offer good Aug. 15-
Oct. 15, 1977

An exceptional value for the professional
or the advanced student.
The TI Programmable 58 utilizes the state-of-
the-art advance in programmable calculators:
Solid State Software. This revolutionary
development gives you complete on-line
programmed variables of up to 5,000 program
steps with convenient plug-in modules.
You can also key-in programs you develop
right from the keyboard.

\$98.75



Other Texas Instruments Calculators

TI-57	\$64.95	TI Bus. Analyst	\$28.25
TI SR66	\$67.95	TI 30 S P	\$17.25
TI-59	\$229.95	TI Money Manager	\$17.50
TI PC100A	\$159.95	TI 1750	\$16.95
TI SR4C	\$23.95	TI 5050M	\$79.95
TI SR61-II	\$48.50		
TI 2550-III	\$23.95		

Hewlett Packard HP-29C/19C

The HP-29C has continuous memory capability so
programs of your choice are saved, ready for use, until you
clear them or over write them with more programs.

As a result you can program frequently-needed calculations
once, and then perform them as often as necessary—
hour after hour, day after day—without bother or lost time
caused by reentering your program.

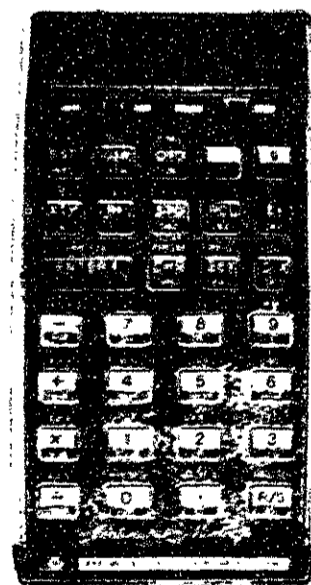
The 29C also retains data in 16 of its 30 registers, so
you can store away needed constants or record data in the
field for later use.

As an added convenience, the number in the display is
also saved by continuous memory. And the display format
is kept as well.

You can operate the HP-29C on batteries alone or from
a convenient electrical outlet while batteries are being
recharged.

Battery operating time is significantly extended since
the calculator may be switched off between calculations or
in the midst of writing a program without losing program
steps or data.

ORDER NO. HP29C / SHIPPING WT. 3 LBS.



ONLY
\$169.95
RETAIL \$195.00

HP-19C: Same features as HP-29C but in the
portable printer configuration of the HP-10.
MARKLINE PRICE: \$309.50 (Retail \$345.00)
ORDER NO. HP19C / SHIPPING WT. 4 LBS.

Other Hewlett Packard Calculators

HP 21	\$69.95	HP 80	\$254.50
HP 22	\$109.95	HP 67	\$387.95
HP 25	\$109.95	HP 92	\$562.50
HP 25C	\$144.50	HP 97	\$645.00
HP 27	\$149.95	HP 10	\$154.95

MARKLINE ACCEPTS MASTERCARD
CALL OUR 24 HOUR ORDER LINE 1-800-225-8493

Photograph called racist

(Continued from page 1)

satisfied with TCA's response. He called it an "extraordinary non-apology" and "an outrage." He said that he could not comment on TCA's intent in publishing the picture.

According to Dan Gauger '79, the editor of *Technique*'78, Grogo was inserted in the book at the suggestion of a staff member of *Technique* who did some photographic work for the Picturebook.

He said that Kampala, Uganda was chosen as the "home" of Harvey Grogo because gorillas are indigenous to Africa, and Uganda has received much news coverage recently.

The *Technique* staff member involved said that "I don't understand the symbolism there is in having an animal indigenous to Africa come from Africa."

He added that if he had been in the place of TCA he would have written an apology "saying we didn't mean it to be racist, which we didn't."

Gray said that those who put the picture in the Picturebook should have realized the symbolism involved before they did it.

Gauger said that he knew that the picture and caption were go-

ing into the Picturebook, but that the decision to run it was not made by *Technique* but by the individuals involved.

Pictures of the small black statue called Grogo have been published in *Technique* for many years. Members of *Technique* receive these statues as awards. Gauger said, T-shirts bearing a picture of Grogo have been worn by many *Technique* members, and Grogo is a familiar symbol of *Technique* to many of those involved in activities on the fourth floor of the student center, where TCA is also located.

Hope, one of the deans who has been contacted by aggrieved students, said that in addition to the possible racial slur, some African students objected to making fun of a gorilla, which they regard as a sensitive animal.

She noted that many students were unaware that the gorilla was a special symbol of *Technique*, and that a lack of communications was partly responsible for the events that have occurred.

A drawing by cartoonist Carl Szep that appeared in *The Boston Globe*, which pictured Ugandan President Idi Amin as a gorilla, resulted in similar complaints earlier this year.

notes

* The MIT Committee on Visual Arts will sponsor an exhibition of over 100 prints and posters for loan to full-time officially registered MIT students in the Student Center West Lounge September 19-21. The exhibition will be open from 11am to 2pm and 5 to 9pm on Sept. 19 and 20, and from 11am to 2pm on Sept. 21. Students may register first, second, and third choices during the exhibition. At the close of the exhibition, students will be selected at random and winners will be notified. Students who

will be unavailable during the Yom Kippur observance should register a proxy. In May the works will be recalled for redistribution in the fall of 1978.

* The MIT Dramashop will be holding auditions for its first set of one act plays at 7:30pm Monday night in the Little Theater. The plays will be performed on Sept. 30 and Oct. 1. People interested in all areas of production are welcome — no previous experience necessary.

DAMES AT SEA

Friday & Saturday evenings at 8
September 16, 17
Kresge Little Theatre, MIT
Tickets \$3.50, \$2.00 with MIT ID
For information call 253-8294

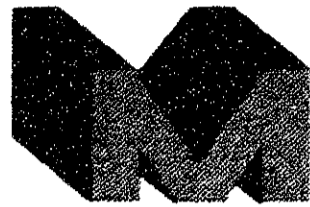
NEW ENGLAND WOMENS SERVICE

A QUALITY, LICENSED MEDICAL FACILITY
ABORTION, BIRTH CONTROL, GYNECOLOGY,
FREE PREGNANCY TESTS & COUNSELING

HOURS: MON.—FRI. 9-9; SAT. 9-5

738-1370

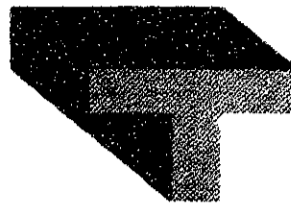
1031 BEACON STREET, BROOKLINE



LADIES' CARD NIGHT

Drinks 25¢

8 PM 'TIL CLOSING



LADIES' CARD NIGHT

Drinks 25¢

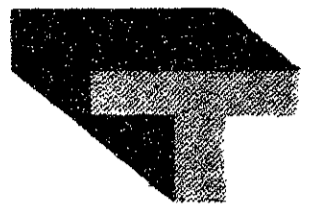
8 PM 'TIL CLOSING



LARGE PITCHER OF BEER

\$1.45

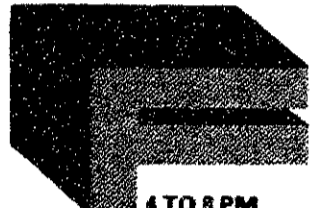
8 PM 'TIL CLOSING



COLLEGE BEER BLAST

PITCHER OF BEER \$1.00

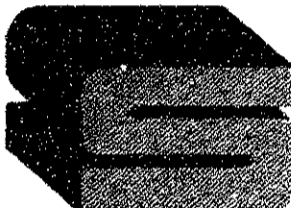
8 PM 'TIL CLOSING



HAPPY HOUR

PITCHER OF BEER \$1.45

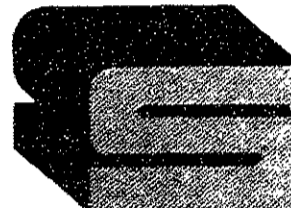
ALL DRINKS AND BOTTLED BEER 65¢



HOT DOGS

10¢

NOON TO SIX



HOT DOGS 10¢

NOON TO SIX

MICHELOB and BLOODY MARY'S 75¢

ALL DAY & NIGHT

SCREWDRIVERS 75¢

8 PM 'TIL 11 PM

ENJOY EVERY NIGHT* OF THE WEEK AT **FATHER'S fore**

300 Mass. Avenue Cambridge

*AND EVERY DAY TOO

Come play.



Tech Hifi offers you 70 brands. And soundrooms to play them in.

In most stores that sell stereo, you're not exactly encouraged to play the equipment on display. In fact, many stores have big signs that tell you "Don't Touch the Merchandise!"

But at Tech Hifi we invite you to come play any of the 70 brands of quality components we have on display. Not just look at them.

Take as much time as you like in our soundrooms to compare all the stereo equipment you want to hear.

If your budget is around \$359, one of the systems you might want to try this week features the powerful Marantz 2215 am/fm receiver, reliable BSR 20BPX belt-drive turntable, famous KLH 101 loudspeakers, and an ADC cartridge.

It's a great-sounding system. But don't take our word for it.

Come play it this week at the Tech Hifi near you.

tech hifi
Soundrooms you can play in.

182 Massachusetts Ave., Cambridge 864-HIFI

"THE FIRST NUDIE MUSICAL!"

"CINDY WILLIAMS IS A MARVEL!"

"HILARIOUS" — L.A. Times

"FUNNY" — WOR

"PORN CHIC" — Playmate

"BAWDY" — NY Daily News

"CHARMING" — Women's Wear Daily

"RIBALD" — Newsday

"SIDE SPLITTING" — WABC-TV

"OUTRAGEOUS" — Newsday

"FUNKY" — NY Post

"RAUNCHY" — Newsday

"ZANY" — Newsday



RATED R FOR RAUNCHY, RACY, AND RIOTOUS.

Starts Friday, September 16

MEDFORD Cinema
395-9499

HARVARD SQ. Galeria
661-3737

ALLSTON Cinema
277-2140

NEWTON CTR. Academy
332-2524

sports

Pats picked over Chiefs as seasons begins

By Drew Blakeman

This column begins a series of weekly predictions of NFL scores. Although they will hopefully be as accurate as any guesses can be, don't come up here to complain if you bet away your tuition after using these predictions as a your guide.

Baltimore 40, Seattle 14 — The NFL's best offense goes against the NFL's worst defense in this matchup. Bert Jones and Lydell Mitchell should romp through the Seahawks' secondary, while Jim Zorn will have considerable difficulty setting up anything except turnovers for the Colts.

Cincinnati 24, Cleveland 17 — The Browns will hang tough throughout the entire game, but Cincinnati should win it with some late precision passing by Kenny Anderson. This time out the semi-annual war takes place in Riverfront Stadium, and you can be sure that the Bengals will benefit from their hometown support.

Dallas 17, Minnesota 13 — Roger Staubach and Tony Dorsett should be fully recovered from their pre-season hurts, and will help the Cowboys manhandle the Vikings in Bloomington. Dallas will prove to have more stamina than Minnesota, the oldest team in the league, and will be stronger at the end. This should be a good defensive battle.

Chicago 28, Detroit 24 — Both teams will come out of the dressing room with all of their offensive guns blazing, but Walter Payton will be the difference in a fairly high-scoring struggle. Bob Avellini should be able to work the option very well against the Lions.

New Orleans 27, Green Bay 13 — The Saints looked good during the pre-season, and there is no reason to suspect that they won't play adequately nor that it's for real Archie Manning, now coming into his own after years with personality problems and injuries, should have a field day riddling the Packer's secondary.

New England 38, Kansas City

13 — Steve Grogan and the Patriots should walk over the un-revamped Chiefs at Foxboro. Kansas City will succumb early to the onslaught, which will make New England fans happy. The

Philadelphia 21, Tampa Bay 13 — In this battle of perhaps the NFC's two worst teams, the Eagles will show that they still have some life left in them. The Buccaneers have improved con-

the Giants tend to give the Redskins fits. Look for some last minute heroics by either Billy Kilmer or Joe Theismann, whichever of them is in the game at the end. It will probably be decided within the last minute of play.

Los Angeles 31, Atlanta 10 — Steve Bartkowski is out for six weeks with another knee injury, and none of Atlanta's replacements for him have ever been effective with any of their previous teams. The Rams' offense will methodically pick apart the Falcons' defense, while the Los Angeles defense will force several turnovers.

Miami 13, Buffalo 7 — O. J. Simpson will gain close to 200 yards and score most of the Bills' points, but Miami will manage to

shut down the rest of the Buffalo offense. The Dolphins should manage to score enough to win, but neither team will look too impressive.

Houston 20, New York Jets 6 — Poor Richard Todd will get to feel how hard the AstroTurf is a great number of times this Sunday. The Jets' line will be a sieve, and the Oilers' front four led by Elvin Bethea should be able to blast through often, as they did fifty times last year for a club record.

Pittsburgh 23, San Francisco 17 — The Steelers should muscle their way past the 49ers in this Monday night contest on Pittsburgh's home turf. Although the Steeler defense isn't the Iron Curtain it once was, it should still be strong enough to close down the 49ers potentially potent offense.

"George Allen has never lost a season opener..."

Pats' offense shouldn't stop rolling all year long.

Denver 23, St. Louis 20 — The Cardinals will falter near the end of the game, allowing the Broncos to pull past them for the victory. This should be the first of many last-minute losses for St. Louis, which tended to pull these close ones out over the past two seasons.

Oakland 35, San Diego 13 — The Raiders will power their way past the Chargers, who won't be doing too much charging of their own. Ken Stabler should have a stellar day against San Diego's poor secondary, which was the NFL's second worst last year.

siderably since last season, and should be able to keep pace with many of their opponents this year.

Washington 20, New York Giants 17 — George Allen has never lost a season opener, but

Sailors take second in opener

By Audrey Greenhill

The men's sailing team opened their fall season by placing well in four regattas. At Yale, the varsity team competed in the Harry Anderson Intercollegiate, cruising to a second place finish in a field of fourteen schools. Among those fourteen schools were the top teams in the East, including Navy, the number one ranked team in the country, and IRL, which won the 1977 North American Intercollegiate Dinghy Championship. Sailing in a tough A-division, Lenny Dolbert '79 with crew Diana Healy '78 finished fifth, Elliot Rossen '79 and crew Sally Huested '78 won low point honors in B-division.

By winning the sloop eliminations at Coast Guard Saturday, the varsity team qualified for the New England Sloop Championships to be held in October. Co-skippers Wally Corwin '78 and Gary Smith '78 with crews Eric Greene '79 and Bruce Gage '79 made a clean sweep of the regatta by finishing first in all races.

On Sunday MIT hosted two regattas, a varsity Lark In-

vitational and a freshman Tech Invitational. Six schools participated in the Lark Invitational with the MIT team finishing in second place, a mere three points behind Harvard. A-division was won by John York '80 with Royce Gardner and Martin Peeters, sailing in their first intercollegiate regatta, co-skipped in B-division and finished a very respectable second.

In the Tech regatta, the MIT freshmen performed out-

standingly and finished first in a field of six schools. David Kuller won A-division despite capsizing in the last race and co-skippers Ed Marcus and Keith Robine did the same in B-division. Crews for the regatta were Paul Belloch and Charles Calkins.

The women's team begins their fall season by hosting the New England Women's Single-Handed Championship this coming weekend while the men will travel to four regattas across New England.

on deck

Saturday

Sailing in New York Intercollegiate at King's Point 9am
Sailing at Coast Guard Invitational 9:30am
Sailing in Lark Invitational at Tufts 9:30am
Women's sailing in NEWISA Single-handed Championship at MIT 9:30am
Soccer vs. Bentley at MIT 10am

Sunday

Sailing at Bates 9:30am

Monday

Golf vs. Northeastern at Merrimack 12n
Water polo vs. Boston University at MIT 5pm

sporting notices

Team entry forms for intramural soccer are due Fri., Sept. 16 at 3pm in the Soccer Manager's mailbox in W32-131. Rosters, which must contain at least sixteen names, are due Tues., Sept. 20 at 3pm. Because of work on Briggs Field, there will be an upper limit of 60 teams, early entries having priority. Contact Rick Kunin (d15-7384) or Bob Marcialis (d15-9424 or 494-8142)

for more information.

There will be a meeting for anyone interested in competing on the men's or women's fencing teams on Wed., Sept. 21 at 5pm in the fencing room in duPont. The training schedule will be discussed. Direct questions to Eric Sollee at x3-4910.

Service, not service charges.

Good service is something you should have to pay for. So when you call an apartment or an insurance from us, there's no service charge tacked on.

W. T. Phelan & Co.

121 Devon St. Hynes Sq. and 1st St. Home Bldg. Center
Tel. 876 Representing Actual Landlords - Hartford

Seats Now Available
Now thru Sat., October 8.

Barbara Rush Tom Troupe



Same Time, Next Year

Prices: Mon thru Fri Evgs and Wed & Sat Mats Orch \$10.00; Mezz. \$10.00; Balc \$6.00; Sat Evgs Orch \$12.00; Mezz \$12.00; 10.00; Balc \$6.00

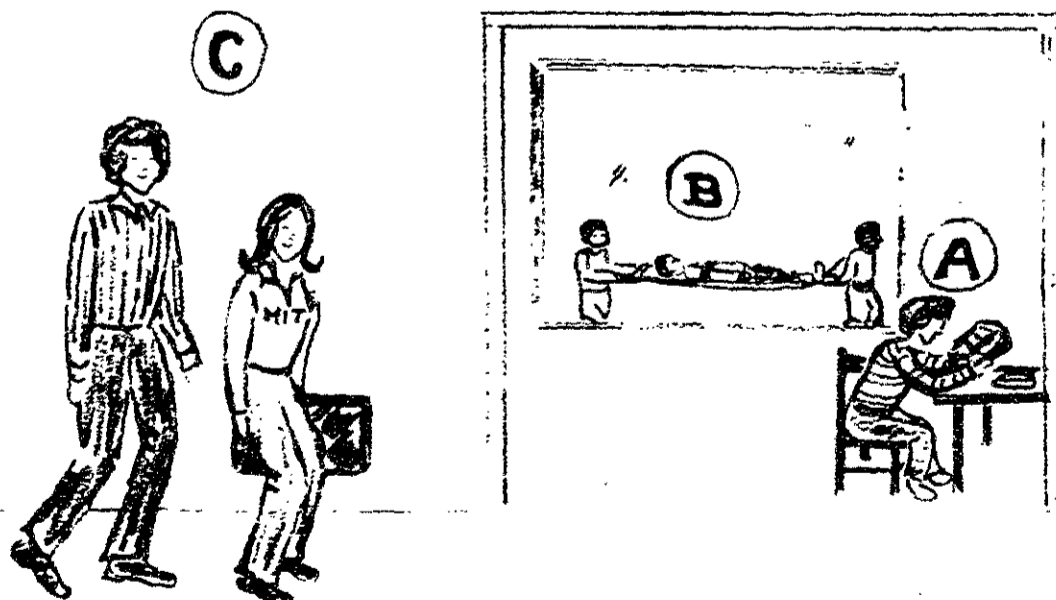
Perf. Schedule: Mon thru Sat Evgs at 8.00, Wed. & Sat Mats at 2.00

TELE-CHARGE: (617) 482-2425

Group Sales—Toll Free (800) 223-7565 or locally 426-4522

The Shubert Theatre
265 Tremont Street Boston, Mass. 02116 426-4520

WHICH ARE YOU?



A) is Andrew Albatross. He spent so much time shopping and cooking for himself that now he has to catch up on his work.

B) is Barry Botulism. He cooks all of his own meals. Now he is on his way to the infirmary because of eating his mistakes.

C) are Carole Clever and Carl Content. They were two of the smart people who signed up for commons. They enjoy balanced, nutritious meals without the hassle of cooking, shopping, and cleaning up. They are off to see "Star Wars."

Sign Up Now