

## in the news

### INSIDE

In keeping with the holiday season, *The Tech* presents its own form of a traditional Christmas classic.

p4

Led by senior Phil Brucat, the Varsity pistol team crushed WPI Saturday for its third straight victory.

p8

The MIT women's volleyball team finds the California sun not to its liking, dropping three straight matches at the college division national championships last weekend.

p8

### OUTSIDE

Pi Kappa Alpha (PiKA) student members overwhelmingly selected the Big Brothers Movement (BBM) as its official national service project during the fraternity's August convention here it was recently announced.

Alan Altshuler, MIT professor of political science, is being seriously considered by President-elect Carter for the position of Secretary of Transportation, *The New York Times* reported recently. Altshuler told *The Tech*, however, that he has received "no direct confirmation" from the Carter-Mondale transition team that the report is accurate.

Second term registration material will be available today in lobby 10. Completed forms are due at the Registrar's Office before January 12.

A hearing by the US Office of Education asking for public comments on its intention to issue regulations under the recently enacted Education Amendments of 1976 will be held in Boston, Wednesday, Dec. 15 at 9am in Room 2307, John F. Kennedy Federal Building, Government Center. OEO is asking for public comments on its proposed changes of regulations for Title I and a portion of Title III programs.

### THE TECH

This is the last issue of *The Tech* for this term. *The Tech* will be published once a week during IAP, starting Friday, Jan. 7. Regular semiweekly publication will resume on Friday, Feb. 8.

## Writing Program future uncertain

By Thomas J. Spisak

The year-long dispute within the Humanities Department over writing at MIT erupted again this week amid an atmosphere of firings, boycotted meetings, and charges of backstabbing.

Wednesday, five Writing Program instructors received notices that their contracts were not renewed for the next academic year.

Members of the Writing Program declined to comment on the dismissals but Professor Bruce Mazlish, head of the Humanities Department, asserted that the notices were routine.

"Since we have an obligation to protect people, the Institute gives notices when appointments are terminated. With part-time instructors [four of the terminated personnel are part-time instructors] there is an almost automatic assumption the job ends with the academic year," Mazlish explained. "But because the situation has become nearly litigious, we sent notices to the part-time people to be on the safe side."

Mazlish asserted that the notices did not preclude the recipients being rehired.

Friday, the Humanities Department met to discuss the



Dean of the School of Humanities, Harold Hanham, discusses the proposed organization of a permanent writing program to succeed the present experimental program which was surrounded in controversy again this week.

recommendations of the Committee to Evaluate the Pilot Writing program, chaired by Professor Nathan Sivin, and an organization plan to administer writing instruction proposed by Dean of the School of Humanities Harold Hanham.

No members of the Writing Program attended Friday's

meeting, citing day-long meetings with colleagues from Harvard and Cornell for their absence.

Sources within the Humanities Department called the Hanham proposal "completely opposite the Sivin Committee's recommendations and evaluations." The Evaluation Committee

suggested that the Writing Program be removed from the Humanities Department and be administered by the School of Humanities directly because of past conflicts with certain senior members of the Department and the Program's "emphasis on Institute-wide activities."

Sources within the Writing Program attacked Hanham's proposal as "locking us into a program that doesn't let us teach the way we want to, the way we have shown to be most successful in filling the widest range of students' needs and abilities."

"Hanham's proposal is designed to meet the needs of a small number of talented people who pass through MIT. We have been trying to meet the needs of the average student."

Both Hanham and Sivin denied that there was any substantive difference between their recommendations.

"There is no basic conflict between Hanham's proposal and ours, if you understand the different nature of the papers," Sivin explained. "Our report was an evaluation, his is a draft of an organization. The functions are quite different."

"Dean Hanham wrote a talk- (Please turn to page 6)

## Death of women also deplored

# Dormitory overcrowding attacked

By Mark James

MIT's fundraising and spending priorities and their effects on student housing were challenged by students at an Undergraduate Association (UA) Housing Forum held last Thursday.

The forum was held to discuss issues relating to four motions on student housing that have been brought before the Undergraduate Association General Assembly (GA), and specifically to allow student input to the class size decision to be made by the Academic Council soon.

Participating in the forum were representatives from the Academic Council, the Dean for Stu-

dent Affairs Office, and the GA's Committee on Student Housing. Over fifty students also were at the meeting.

### Class Size

Vice President Kenneth Wadleigh '43, a member of the Academic Council, said that the class of 1981 would be "significantly smaller" than the 1100 that had been planned for all future classes, but added the Council had not yet reached a final decision.

One of the GA motions calls for future classes to be set at 1050 students, and recommends that next year's class be limited to 1000 in order to reduce over-

crowding.

Associate Dean for Student Affairs Ken Browning '66 estimated that a class of 1000 would result in 130 students more than the capacity of the system with no crowding.

Alfred Geller '79 asked Wadleigh, "How come you are deliberately overcrowding [the dormitories]?" Wadleigh responded that he thought that MIT was doing a good job of providing housing considering its lack of a "base of capital" to fund new dormitories.

Wadleigh said that MIT does not have as strong a tradition of undergraduate residence as an important part of the educa-

tional experience as older Ivy League schools such as Harvard have had, and that this has made fundraising for housing more difficult.

Wadleigh said that "we are busting our guts" to get more gift income.

Several students questioned whether MIT was sufficiently stressing student housing needs in its fundraising efforts.

Geller said that "corporations don't see the quality of student life as important. This doesn't mean that we have to accept this attitude."

Dean of the School of Science Robert Alberty, also a member of (Please turn to page 2)

## Heine joins DSA staff

By David B. Koretz

Efforts to improve the status of women "can not be purely aimed towards one sex," asserted Mary C. Heine '67, the recently appointed Assistant Dean for Student Affairs with special responsibilities for women students.

"The point is a general human liberation. We want input from both men and women," explained the former Wellesley student who transferred to MIT to receive a degree in biology.

For the near future, Heine feels that her job will entail mainly "talking to people, and doing a lot of listening. I've got to go out there and meet people, renew old acquaintances."

She added that "by having been a student, a graduate student, an instructor, and by having lived in the dorm [as a Senior Tutor in McCormick Hall while a doctoral candidate], I can be particularly sympathetic, and be able to see potential problems."

Heine noted that one of the ma-

ior problems involving women at MIT is "the attitude toward women in a number of classes. There are still some professors who will make sexist comments, and imply that these women cannot do particular work." Heine explained this in part, by a "sheer lack of numbers. Women tend to stand out more."

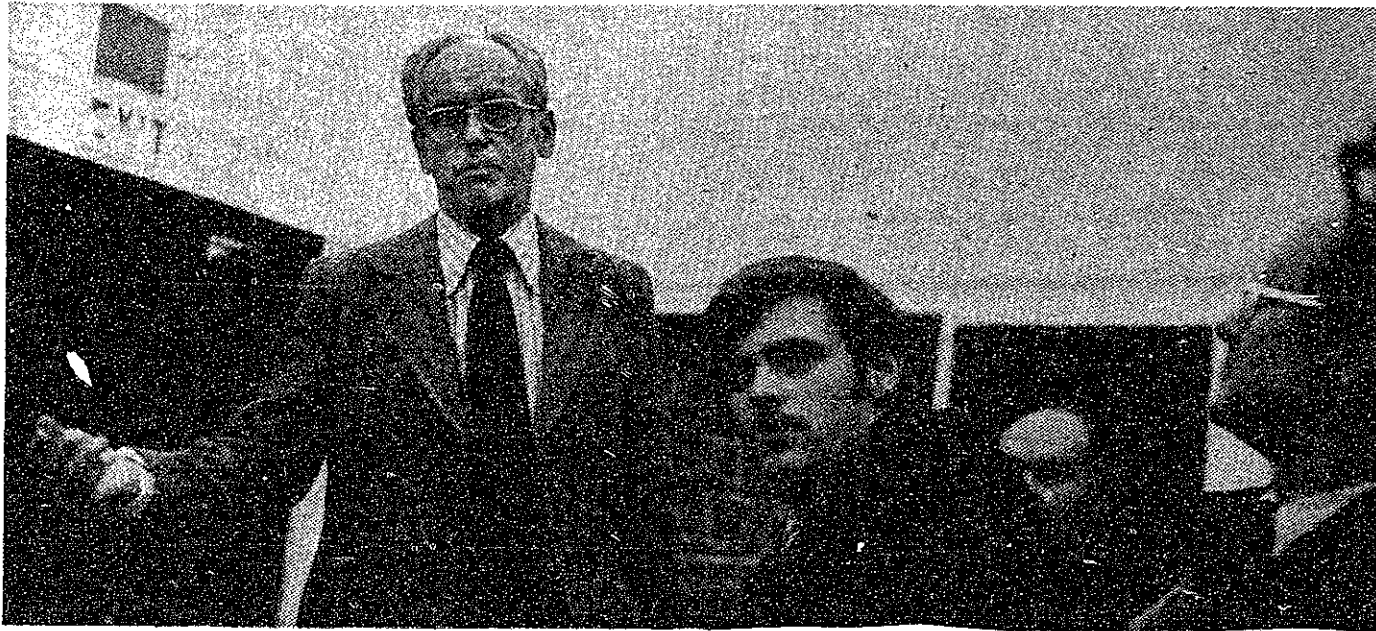
Another problem she pointed out is the "lack of focus. Everybody's so busy — and they don't have help with organizational aspects."

Asked whether MIT should make a specific effort to recruit more women, Heine replied that it already does, explaining the catch phrase of the Admissions office: "MIT — A Special Place for Women."

Heine added that "the number [of women] seems to have hit a kind of plateau, this twenty per cent women. It will take quite some time to increase the applicant pool, to increase the number (Please turn to page 3)



Mary C. Heine '67 recently assumed the role of assistant dean for student affairs in charge of women.



Vice-President Kenneth Wadleigh (left), Associate Dean for Student Affairs Ken Browning (center), and Dean of the School of Science Robert Alberty (right) presented their views on overcrowding at the Undergraduate Association's Forum on Housing and Overcrowding held last Thursday

## UA holds Housing Forum

(Continued from page 1)  
the Academic Council, said that the \$400,000 revenue gain from one hundred extra students is a significant means of lowering the MIT deficit, even after the extra costs of the students is taken into account.

The deficit is expected to be close to \$1 million this fiscal year, according to Alberty.

Tom Gindin '77 accused the administration of not taking the budget cuts that other departments are experiencing, pointing to a doubling in the budget of the President's Office since Jerome Wiesner took office. Alberty responded that "you have to be very careful about [analyzing] the Institute budget," since responsibilities may be shifted between departments.

### Rate Review

The rate review process — a series of meetings between students and Housing and Dining officials to determine how the fees for these services are to be distributed among students — should be expanded so that students could question items in the budget itself, according to one of the GA resolutions.

Director of Housing and Food Services Eugene Brammer said that he was willing for the budget to be discussed, but that the amount of time available might not allow a complete discussion of the budget.

Baker House President Norman Smith '77 said that when he asked to see the budget during last year's rate review, he was told by Associate Director of Housing and Food Services Arthur Beals that it would just "confuse me."

Smith defended the commons subsidy — the amount paid from dormitory rents to subsidize the commons meals program — by saying that being allowed to cook in dormitory rooms adds a load to the system in terms of extra maintenance that justifies the charging of a fee.

### Coed Situation

Coed living at MIT and the results of a UA survey on attitudes of undergraduates concerning this question were also discussed at the forum.

Judy Stein '78 of the GA Housing Committee announced the preliminary results from the survey, a one-to-one male-female ratio was preferred by the largest fraction of those surveyed, although opinions varied widely on this question.

Stein pointed out results show-

ing that singles-sex living was disliked by many respondents because it was "unnatural" or provided limited opportunities to meet the opposite sex. "Not enough women" was the main disadvantage to coed living, according to those surveyed.

Most respondents said that decisions about the coedity of living groups should be made by the groups themselves. Stein cited this as a contradiction of the desire for a more even male-female ratio, because allowing any living group to go coed with no restriction might not permit each group to have an adequate number of women.

Browning said that the present decision-making process involves group discussions to get input from both the group in question and groups that are already coed.

He said that two factors were essential for a successful group: a "critical mass" (minimum number) of women and a reasonable male-female ratio.

Ken Kantor '78 proposed that, except for one all-male and one all-female group, all other assignments should be given out by free choice.

Many objections were raised to this plan, including concerns for women who ended up in a group that had almost no women, and questions about what would happen to groups that did not succeed in providing a good living environment.

Browning asserted that "it's hard to de-coedify" a group once it has been opened to both sexes.

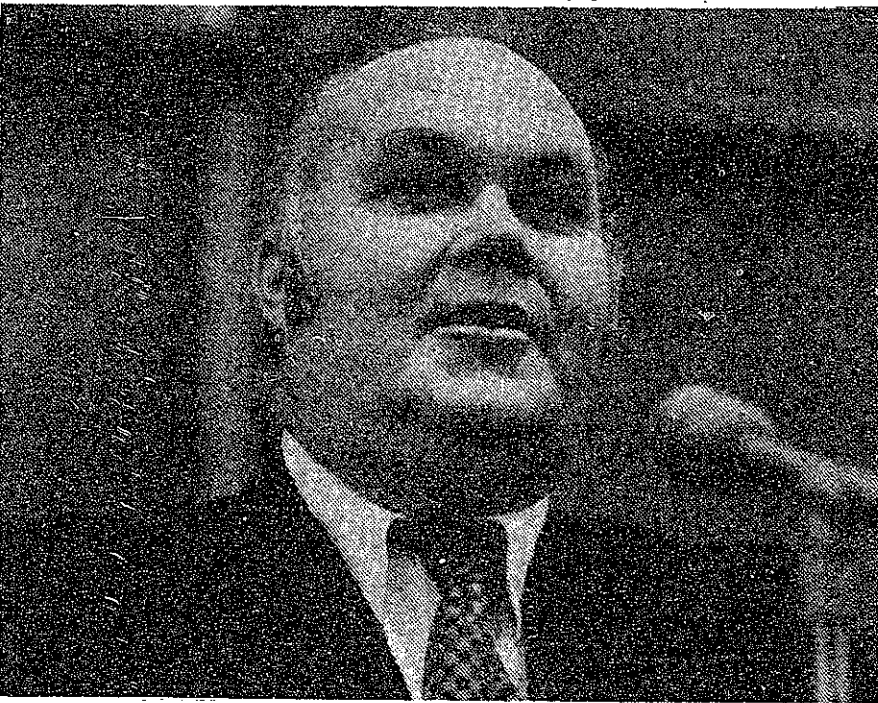
Professor of Architecture Donlyn Lyndon, the new head of the Committee for the Visual Arts (CVA), was also at the forum to answer questions on the CVA's plans for selection of sculptures and other artwork to be placed near dormitories.

Lyndon said that the selection of the New House sculpture would be done in cooperation with residents. He said that he had no objections to making CVA meetings open to the community, but that it had not been discussed by the Committee yet.

One of the GA's housing resolutions asks "that living groups on campus be given more complete control over the uses and decoration of internal facilities and over the placement of statues and other objects" both inside and outside dormitories.

Lyndon said that he was not personally involved in the selection of Transparent Horizons, but that to his knowledge, there was "no deliberate bypassing of East Campus people" in the selection process, which only involved officials in the Chemical Engineering department.

When asked if the CVA had "learned its lesson" from the Transparent Horizons controversy, Lyndon replied that architects "try to learn from all building processes."



Director of Housing and Food Services Eugene Brammer discussed issues relating to the prices of student housing and meals at the UA sponsored forum.

## Mass. auto insurance, explained.

Mass. automobile insurance can get a little complicated. And if you're under 25, it can get expensive. We'll simplify things. And we'll help you keep your premiums as low as possible.

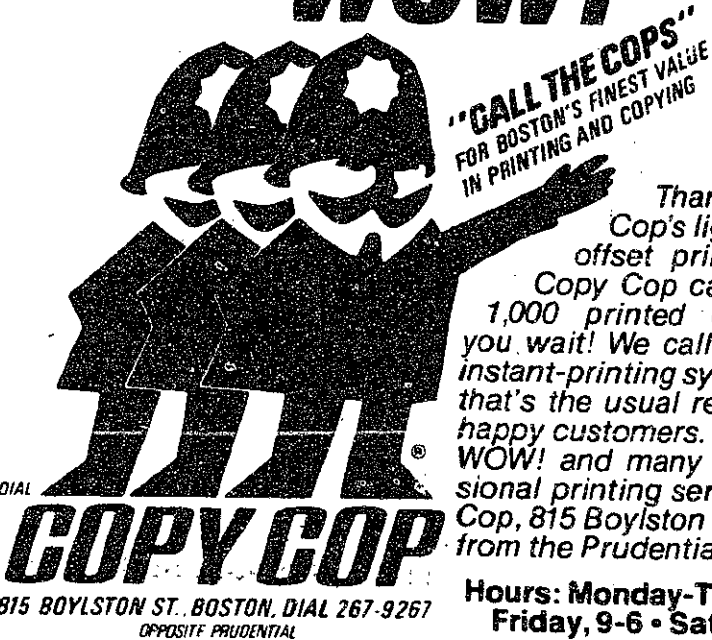
### W. T. Phelan & Co.

Insurance Agency, Inc.

11 Dunster St., Harvard Square (next to the Holyoke Center). 876-0876. Representing Aetna, Travelers, Hartford.

## 1,000 prints while you wait?

# WOW!



"CALL THE COPS" FOR BOSTON'S FINEST VALUE IN PRINTING AND COPYING

Thanks to Copy Cop's lightning-quick offset printing system, Copy Cop can print up to 1,000 printed copies while you wait! We call it our WOW! instant-printing system because that's the usual reaction of our happy customers. You'll find the WOW! and many other professional printing services at Copy Cop, 815 Boylston Street, across from the Prudential.

815 BOYLSTON ST. BOSTON, DIAL 267-9267 OPPOSITE PRUDENTIAL

Hours: Monday-Thursday, 9-9 Friday, 9-6 • Saturday, 10-6

## HRCP

reluctantly bids farewell to

# Diane Michalik

on December 31st.

We and all her Institute friends wish her well in all her future enterprises.

## Yea Diane!

## SEE MICROCOMPUTER KITS AND FULLY ASSEMBLED SYSTEMS

\*IMS Associates \*SOUTHWEST Technical Products  
\*The DIGITAL GROUP \*Z-80 \*SPHERE

## SEE PERIPHERALS ON DISPLAY

\*Floppy Discs \*Teletypes \*TV Typewriters

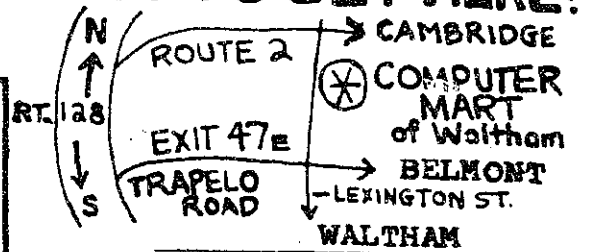
## SEE OUR LIBRARY

Large selection of Books, Computer Magazines, Manuals, Game Books, Software

## COMPUTERMART

1097 Lexington Street, Waltham  
Hours: Tues.-Fri. 11-8, Sat. 11-5  
899-4540 closed Mondays

## HOW TO GET HERE!



BUS FROM HARVARD SQUARE  
Bus 73 to Waverly Sq  
MCC bus up Trapelo Rd. to Lexington Street Off.

**Celebrate Chanukah**  
Next Tuesday, Dec. 21  
Hillel Open House

W2A - 312 Memorial Dr  
10:30 am - 8 pm  
"Have a Latke On Us"

# Heine to help women students

(Continued from page 1)  
of women."  
Commenting further on the Admissions Office's role, she said that they have been "urging women to be very positive, go back to high school, tell their math professors, guidance counselors, and students" about MIT. Heine added that "a lot of them are doing concrete things, working to increase admissions."  
Other encouraging signs she cited include increasing number of women faculty members, especially those wanting to work for

greater admissions, and a "lack of antagonism" towards women, enabling them to be more positive about their performance in society.  
Heine allowed that further improvements would necessitate being "open for suggestions. We want to get lot of input, to see what ideas can be gotten from a wide variety of sources." She added that she hopes to work closely with the Association for Women Students, the Wellesley-MIT exchange, and with Mary Rowe, the

special assistant to the president and chancellor for women and work.  
Heine is looking forward to beginning her duties here — she expects to start during IAP. "It takes a definite recognition of the giant steps made so far," she said.  
"It can seem cold and impersonal, but MIT can make exceptions to the rules, to help everyone adjust. The entire society must make changes; it's like moving a very bulky object. It takes time."

## cable tv highlights

**Wednesday, Dec. 15**  
**Channel 8**  
noon-2:30pm Forum on Housing and Overcrowding (R)  
4-5pm Tuesday Noon "Video Collage" (R)  
**Channel 10**  
11:30am-8pm Sportsweek  
**Thursday, Dec. 16**  
**Channel 8**  
11am-1:30pm Forum on Housing and Overcrowding  
2-2:45pm 60, 46, 37 HUT (The story of an office building.)  
**Friday, Dec. 17**  
**Channel 8**  
noon-1pm Friday Night Bombs Away (live from studio in Building 9)  
5-6pm Friday Night Bombs Away  
**Channel 10**  
11:30am-8pm Lookaround  
**Monday, Dec. 20**  
**Channel 8**  
11am-noon Friday Night Bombs Away (R)  
noon-12:45pm 60, 46, 37 HUT  
**Channel 10**  
1-6pm MITV News

## Hifi & CB Radio & Auto Sound

### 20-75% off retail

on names like:

ADS	HARMON KARDON	SAE
ADVENT	JBL	SANSUI
B&O	KENWOOD	TANDBERG
BOSE	MARANTZ	TEAC
CERWIN VEGA	NAKAMICHI	TECHNICS
CROWN	PHASE LINEAR	THORENS
DUAL	PHILIPS	YAMAHA
EPI	PIONEER	ETC., ETC.

**we can beat any price!  
on any product!**

**CALL 646-1115 CALL**

IF WE'RE NOT IN, BE SURE TO LEAVE A MESSAGE!

# best buy hifi



ROGER CORMAN presents

a film by  
*francois truffaut*  
*small change*

Screenplay by FRANCOIS TRUFFAUT and SUZANNE SCHIFFMAN  
Director of Photography PIERRE-WILLIAM GLENN Music MAURICE JAUBERT  
Directed by FRANCOIS TRUFFAUT

A Les Films du Carrosse and Les Productions Artistes Associes co-production

PG PARENTAL GUIDANCE SUGGESTED  
SOME MATERIAL MAY NOT BE SUITABLE FOR PRETEENAGERS

A NEW WORLD PICTURE  
New England Premiere  
STARTS WEDNESDAY DEC. 22

*Exeter St.*  
COPLEY SQUARE / 536-7067

# Give The Tech

Send with payment to Circulation Manager  
The Tech  
PO Box 29 - MIT Br.  
Cambridge, MA 02139  
(W20-483 by Institute Mail)

Renewal: Yes  No  Dec. 10, 1976  
US Mail - 1st Class - 1 yr \$16  2 yrs \$31   
3rd Class - 1 yr \$6  2 yrs \$11   
Foreign - Air Mail - 1 year \$90   
Surface Mail - 1 year \$16   
Institute Mail - 1 yr \$4  2 yrs \$7

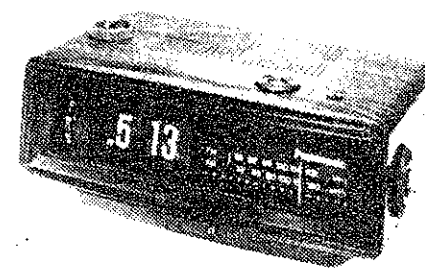
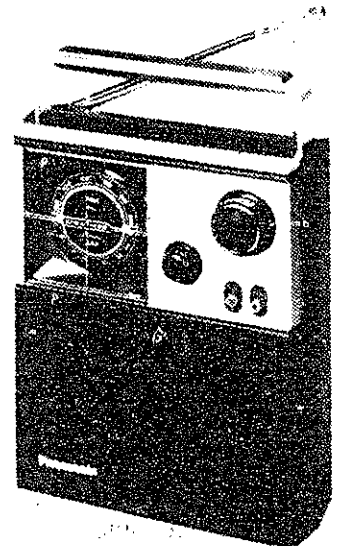
Name \_\_\_\_\_  
Address \_\_\_\_\_  
City \_\_\_\_\_ State \_\_\_\_\_ Zip Code \_\_\_\_\_

## ENTERTAINING GIFT IDEAS FROM

# Panasonic

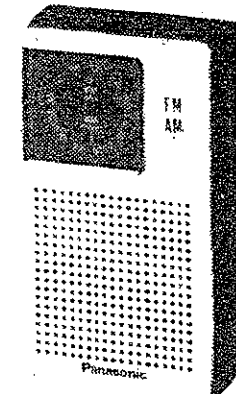
AC/BATTERY  
FM/AM WEATHER  
BAND  
PORTABLE RADIO

**39.95**  
Preset weather band for instant 24-hour continuous weather. Circular tuning dial. AFC for virtually drift-free reception on FM. 2-step tone control for bass/treble blending. 3" PM dynamic speaker. Other features: Built-in AC power cord, AC/Battery selector switch. With earphone.



**FM/AM DIGITAL  
CLOCK RADIO**  
**29.95**

24-hour digital timer. 60-minute sleep timer with automatic shut-off. Music or buzzer alarm. Lighted clock face for easy night viewing. Slide rule dial. 3" dynamic speaker. Simulated wood cabinet.



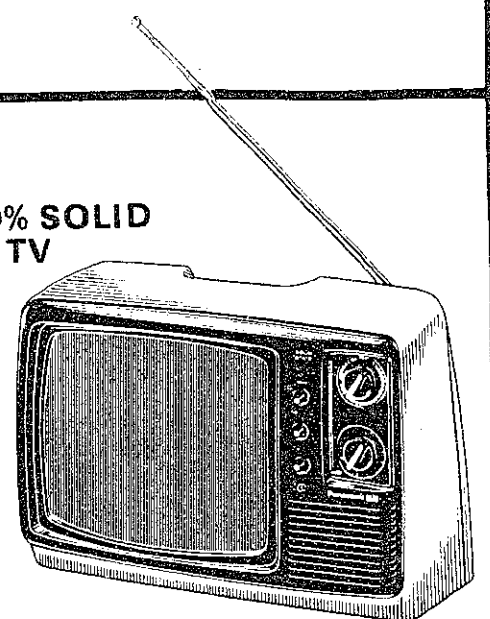
**FM/AM POCKET PORTABLE**  
**19.95**

Battery powered. Circular tuning dial. 2 1/2" PM dynamic speaker. Band selector switch. Earphone/external speaker jack. In red, black or white with handstrap. 2 Panasonic "AA" batteries and earphone.

**12" DIAGONAL 100% SOLID  
STATE PORTABLE TV**

**99.95**

Featuring vacational switch; "click stop" UHF tuning; 36 watts of power consumption; automatic voltage regulator; VHF/UHF unipotential antenna.



**9" DIAGONAL PORTABLE TV**

**99.95**

100% Solid State IC chassis; automatic voltage regulator. "click stop" UHF tuning; VHF/UHF unipotential antenna.

The Tech inadvertently reversed the prices of the FM/AM Digital Clock Radio and the FM/AM Pocket Portable in our last issue. We regret any inconvenience this may have caused our readers or The Coop.

# the Coop

RADIOS & TV'S  
M.I.T. STUDENT CENTER  
& HARVARD SQUARE

# Opinion

## feedback

USC from Cambridge

### A Christmas Carola

A. Lawrence Ebenezer Cabot XXXIII '43 stood in his sparsely furnished State Street office. The phone rang. Cabot picked up the receiver and heard a voice say: "Hi, this is Paul over at MIT. Just been going through the budget figures and we're going to be \$25 million short for the Leadership Campaign. I don't see any way we can come up with the dough — all the alumni I've talked to just care about using the squash courts and the Faculty Club. Can you help?"

"No!!!" Cabot replied gruffly, slamming down the receiver. He turned to his shivering secretary. "I don't want another phone call from that turkey. All he's interested in are those blasted students of his — imagine \$6 million for some chemical building and \$5 million for a place for ungrateful undergraduates to eat and sleep — and who knows who they're sleeping with, anyway! He should learn to manage his money better!"

The shivering secretary stammered, "Yes, s-sir. M-M-May I p-put another p-p-piece of c-coal on the f-f-fire, almighty liege?"

"No, we spent \$2 on coal last month. What're you trying to do, bankrupt me?"

Cabot closed his roll-top desk and locked it. "I'm walking home to Newton now. Anything else?" he sneered.

"May I have tomorrow off, liege? It's such a special day."

"What — another day off? You just had one eight years ago. Well . . . I suppose, but I'll expect you to work overtime next week." Cabot walked to the office door, opened it, muttered, "Bah, humbug!" and stalked out of the room.



Back at home, Cabot amused himself for a while by signing the foreclosure papers for an orphanage, then quickly retired to his bedchamber. After putting on his nightcap and climbing into bed, Cabot turned off his bedside light and was startled to see the visage of his former law partner, Quincy Wadsworth Hancock XII, on the far wall.

He flicked on the light quickly, but the apparition had disappeared. Cabot muttered to himself, "Must have been a misdigested french fry — I think I'll repossess the corner Burger Boy." He turned out the light and went to sleep.

The clock struck twelve. "Cabot, Cabot," a stentorian ethereal voice bellowed. Cabot arose with a start. "Who goes there?" he insisted.

"Why, Lawrence, don't you recognize your old law partner?"

"What? You've been dead for years. I buried you myself. You can't be more than some 'special sauce' I had for dinner."

Hancock rattled the massive chains hanging from his body. "These chains are the sins I accumulated on Earth. The chains you are forging are heavier still. Tonight, before the clock strikes thrice, you shall be visited by three more spirits," he moaned and faded away.

"Bah, humbug," Cabot growled, pulling the covers back over his head and falling into a deep repose.

The clock struck one. "Cabot, Cabot," a sagacious voice drawled. "Who are you?" Cabot demanded.

"I am Vannevar, the Spirit of MIT Past."

"And I'm Bobby Orr," he replied sardonically, and rolled over.

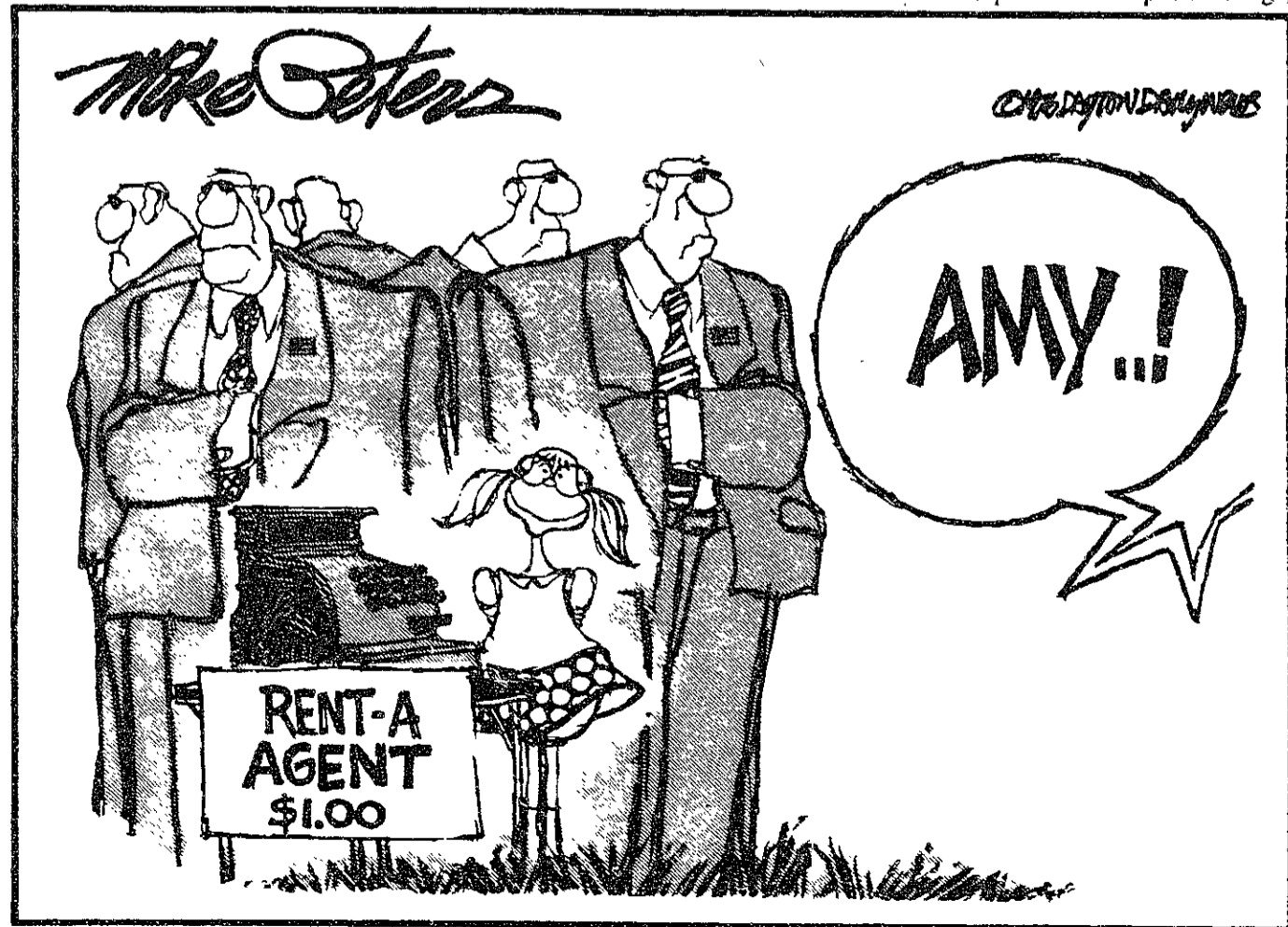
"Arise, ye son of MIT. Come with me to the banks of the Charles," he commanded, taking a firm grasp of the collar of Cabot's nightshirt.

Almost at once the scene had changed. Cabot was floating in the Building 7 rotunda, overlooking the well-groomed, intent, beanieed figures scurrying in all directions on the floor of the lobby below.

"Do you remember, Lawrence? There you are," Vannevar remarked, pointing down to a young, clean-shaven Tech man. "You were only twenty then, an ambitious, determined young man striving hard to succeed as an engineer."

"Yes, I recall," Cabot sighed. "Those were fine years at the Institute. Tuition was but a pittance — no financial difficulties back then. I fondly remember those verbal jousts with old Professor Cratchit. How we used to . . ."

(Please turn to page 5)



## Irresponsible ideology

To the Editor:

I have noticed a dangerous journalistic trend surfacing in *The Tech*. *The Tech* has become a mouthpiece for a socially irresponsible ideology held by some segments of the MIT Administration; namely, that political and moral issues take second place to the narrow economic and political interests of a particular institution or group. Let me review some recent cases:

- Taiwan. When it was disclosed that 15 military officers from a Nationalist Chinese defense research institution on Taiwan were learning inertial guidance technology at MIT, *The Tech* immediately responded with a kowtowing article which presented uncritically the views of the program's administrators who were trying to exonerate themselves.

- Flat electric rate referendum. When Chancellor Gray told *The Tech* that tuition would go up if flat electric rates were instituted, his words were printed verbatim without criticism and without a presentation of the other factors relevant to this issue. The Administration already has its mouthpiece in *Tech Talk*. As was pointed out exhaustively elsewhere (in a 28 Oct. *thursday* article and a 1 Nov. SACC leaflet), a simple calculation shows the economics of the tuition increase to be untenable, and even so, some very important social issues such as energy conservation, the rising cost of electricity, and the subsidizing of corporations come into play. These are all issues that students and their newspapers should con-

cern themselves with. Paul Gray didn't care as much about a tuition increase, let alone social issues, as creating a scare tactic to convince students to vote in the interests of the big businesses represented by the MIT Corporation, and to psychologically condition us into accepting yet another tuition increase because

Congress will be holding hearings on this matter. Thus, if P-3 research is in fact harmful any guidelines will most likely be nationwide. This line of reasoning would seem to be one that an alert reporter should be following and drawing questions from.

An indication of the shakiness of *The Tech* — Baltimore posi-

" . . . the basic issue at hand is whether P-3 research is in fact hazardous, not whether MIT will be losing Nobel Prize winners."

things are so "tight" for them. Does anyone believe that the annual tuition increase will be any less because the flat rate was defeated?

- A report of the statement by Nobel laureate Baltimore that a P-3 DNA recombinant research ban in Cambridge will cause him to leave Cambridge. The scenario presented is naive, and constitutes another scare tactic. If P-3 were banned in Cambridge, a precedent would be set for resisting and banning it elsewhere. Therefore if a researcher moved elsewhere he or she would possibly be faced with another banning. The researcher would be worse off than before — no opportunity to do P-3 research, plus the hassle of moving. Already the New York Attorney General has begun an investigation into the Cold Spring P-3 facility on Long Island, and there are also indications that

tion is evidenced by the statement of John Dowling, head of Harvard's Biology Department, that "I don't think from the Harvard point of view, Baltimore has an accurate statement. I don't know anyone who will leave Harvard because of the ban."

In any case, the basic issue at hand is whether P-3 research is in fact hazardous, not whether MIT will be losing Nobel Prize winners.

*The Tech* has done some fine student-oriented investigative reporting in the past. For example, its exposure of the Iran nuclear engineering program and of black admissions recruitment at MIT spurred awareness and action among the student body on these issues. As a student newspaper, let's hope it continues in this tradition.

Bonnie Buratti, G  
December 12, 1976

## Retain folk dance informality

To the Editor:

I was greatly saddened by the anonymous letter (*The Tech* 12/10) concerning internal difficulties in the MIT Folk Dance Club. As the author suggested, the question of soliciting United Way contributions for dance requests is a minor one. The true issue is whether this decision of the officers was made democratically, or by a "casual asking of friends and acquaintances." The anonymous author suggests that the Folk Dance Club could better serve the MIT community were it more closely supervised by the ASA, and the officers forced, by dictated policies and proceedings,

to be more responsive to its members.

I could not more strongly disagree with this viewpoint. I became involved in the club's activities as a freshman, seven years ago. Since that time, I have been continuously amazed at its capacity to grow, change, and respond to new members with new ideas and interests, while simultaneously retaining a thread of unity and friendship among its members that is indescribable to anyone but a fellow folkdancer. Over the years, we have built up a refreshing informality about the business of the club, and seldom bracketed ourselves in arbitrary constitutional rigor, formal elections, and bureaucratic rules. This informality helps put newcomers (always self-conscious anyway!) at ease and allows activities to be efficiently planned with as much input from the membership as

possible. Many decisions are made by a simple show of hands on the dancefloor. In short, we would all rather spend time dancing than attending formal meetings to vote on every minor decision facing the club.

While the arbitrariness surrounding the United Way solicitations is questionable, I find the anonymous author's judgements and suggestions to be harsh and to lack perspective. As many of the older members will substantiate, the informal nature of the folkdance club has historically made it one of the most democratically run organizations on the MIT campus. What a shame it would be to sacrifice this distinction to personality differences between a handful of shortsighted members and this year's overzealous but well meaning officers.

Mark Horenstein G

## Faulty argument

To the Editor:

I don't see how you can allow an article like "Avant-garde tastemakers" written by Roger Kolb to be printed in a "reputable" college newspaper except possibly for the sensationalistic excitement it may cause. This hardly makes your paper reputable in the journalistic sense. The article is filled with statements taken out of the air, for example, there are quoted statements taken out of context, faulty generalizations, and mass stereotyping. You call this kind of article a commentary or an opinion, but are opinions so improperly argued worth the attention they will receive in the col-

lege community? I neither deny nor accept many of the ideas presented in Mr. Kolb's article because I am not as familiar with the art world as he and therefore have been unable to reach any conclusions of similar import, yet at the same time I am not moved by such faulty methods of argument.

Alex Theodorou

*The Tech* always welcomes Letters to the Editor. Preference for publication is given to triple-spaced typewritten letters of under 400 words. They should be sent to: Letters to the Editor, *The Tech*, W20-483.

# Opinion

## A Christmas dream

(Continued from page 4)

"That's enough," interrupted Vannevar. "My time has passed. I shall return you to your bedchamber now."

Cabot found himself back at home, trembling slightly from his journey. "Just a nightmare, I imagine," he said, shutting his eyes once more.

\* \* \*

The clock struck two. "Cabot, Cabot," another voice called. "What is this?" Cabot cried out.

"I am Jerry, the Spirit of MIT Present. Let us see what your *alma mater* is like today."

Cabot discovered himself floating above a multi-colored, oddly-shaped ironwork next to the familiar ivy-covered walls of his former residence.

"Look carefully, Cabot, at this deteriorating bastion of technology. Paul tells me we have almost reached the point where we can no longer raise tuition. We are even forced to save scrap metal to pay off our debts, just as the Allies did when you were a senior."

"Surely the Great Court has not been blemished by such monstrosities," Cabot protested. "Yes, Cabot, only there it is worse," Jerry explained.

"Can it really have come to this?" Cabot muttered.

"And Paul tells me next year will be no better. But come, Lawrence, I must return you in time to receive your next visitor."

\* \* \*

The clock struck three. "No more, oh Lord, no more," pleaded Cabot, who had been unable to return to his slumbers. But still there appeared another figure, draped in white, his features obscured by a hood pulled around his face.

A long, bony finger beckoned him forth. "I am the Spirit of MIT Future," he announced. "I have come to show you what fate holds in store for beloved Technology."

"Please, I've seen enough," Cabot implored.

"Nonsense, my boy."

And though he tried to resist, Cabot could not prevent himself from being carried away to Twenty-first Century Cambridge.

"My God, where am I? How can this be?" said Cabot, surveying a barren plot where once the Sloan School of Management proudly stood.

The hooded figure pointed to Cabot's right. Cabot exclaimed, "Where is Walker Memorial?"

The Spirit of MIT Future slowly shook his head and whisked Cabot away to Memorial Drive, from where they viewed the Great Dome — in shambles.

"Oh, no!" Cabot screamed, breaking down in sobs. Wordlessly, the spectre lifted him up and deposited the pitifully weeping miser into his bed.

\* \* \*

The morning sun streamed into Cabot's bedchamber. He awoke a new man, determined to donate his life savings to the MIT Leadership Campaign. Cabot walked to the window, opened it, and breathed the fresh air as he had never done before. Constable O'Livieri spotted the smiling gentleman in the window and waved a cheery hello.

"Good morning, officer," Cabot shouted joyfully. "Pray tell me, what day is this?"

"Why, it's Commencement Day, gov'nor!"

Cabot, who did in some ways resemble Francis Sargent, threw on his clothes and raced, clutching his checkbook, to the bedecked portals of Rockwell Cage.

"Paul, Paul," he exclaimed, entering the hallowed fieldhouse. "Take this, build some buildings, pay some professors, give some more scholarships. It's the least I can do."

Too amazed to reply, Paul could only shake his head in disbelief.

"Please, Paul. It's me, Cabot. Here's your \$25 million."

Paul gratefully gazed skyward and said, "God bless us, everyone."

### The Tech

Julia A. Malakie '77 — **Chairperson**  
 Glenn R. Brownstein '77 — **Editor-in-Chief**  
 Rebecca L. Waring '79 — **Managing Editor**  
 John M. Sallay '77 — **Business Manager**  
 Mark J. Munkacsy '78 — **Executive Editor**  
 Volume 96, Number 53  
 Tuesday, December 14

#### NEWS DEPARTMENT

**News Editor:** Gerald Radack '77; **Associate News Editors:** William Lasser '78, Nivin Pei '79; **Staff:** James Eisen '77, Mitchell Trachtenberg '78, Paul Yen '78, Henry Fiorentini '79, Eileen Mannix '79, Daniel Nathan '79, Rich Newcome '79, Stephen Utkus '79, Stephen Besen '80, Donna Bielinski '80, Drew Blakeman '80, Hillary Lust '80, Kate Mulrone '80, Kent Pitman '80, Bob Wasserman '80

#### PRODUCTION DEPARTMENT

**Night Editors:** David Thompson '78, Kevin Wiggers '79; **Production Manager:** Lynn Yamada '78; **Associate Night Editor:** Pat Thompson '80; **Staff:** Steve Frann '80, Marlon Weiss '80.

#### PHOTOGRAPHY DEPARTMENT

**Photo Editors:** Tom Klimowicz '77, David Schaller '78; **Associate Photo Editors:** Mark James '78, Richard Reihl '78; **Staff:** Mike Garcia '78, Rob Mitchell '78, Corey Chaplin '79, Randy Fahey '79, Gordon Haff '79, John Hopper '79, Mike Kowtko '79, Lee Lindquist '79, Gary Zakon '79, John Bradstreet '80.

#### SPORTS DEPARTMENT

**Staff:** Leo Bonnell '77, Dave Dobos '77, Chris Donnelly '77, Charles Cox '79, Tom Curtis '80, Gary Engleson '80, John Hengeveld '80.

#### ARTS DEPARTMENT

**Associate Arts Editors:** Peter Coffee '79, Katy Gropp '80; **Staff:** Kathy Hardis '78, Claude Perry '80, Thomas Spisak.

Third Class postage paid at Boston, MA. *The Tech* is published twice a week during the academic year (except during MIT vacations) and once during the last week of July. Please send all correspondence to: P.O. Box 29, MIT Branch, Cambridge, MA 02139. Offices at Room W20-483, 84 Massachusetts Avenue, Cambridge, MA. Telephone: (617) 253-1541. Advertising and subscription rates available on request.

# ROY JENKINS

President-Elect of the European Communities

Public Lecture On:

The United States and  
 United Europe: Are We  
 Now Uncertain Partners?

8:00pm,

Thursday, December 16  
 Kresge Auditorium, M.I.T.

For Information: 253-7353

## holiday season food service schedule Student Center

Thursday, Dec. 23  
**Lobdell** — Breakfast 7:30am to 10:00am  
 Lunch 11:00am to 2:00pm  
 Snacks 2:10pm to 4:30pm  
 Dinner 5:00pm to 7:00pm  
**Twenty Chimneys** Closed

Friday and Saturday,  
 Dec. 24-25  
**Lobdell & Twenty Chimneys** Closed

Sunday, Dec. 26  
**Twenty Chimneys** 9:00am to 7:00pm  
**Lobdell** Closed

Monday, Tuesday,  
 Wednesday, and Thursday,  
 Dec. 27-28-29-30  
**Lobdell** — Breakfast 7:30am to 10:00am  
 Lunch 11:00am to 2:00pm  
 Snacks 2:10pm to 4:30pm  
 Dinner 5:00pm to 7:00pm  
**Twenty Chimneys** Closed

Friday and Saturday,  
 Dec. 31-Jan. 1  
**Lobdell & Twenty Chimneys** Closed

Sunday, Jan. 2  
 Monday, Jan. 3  
**Twenty Chimneys** 9:00am to 7:00pm  
**Lobdell** — Breakfast 7:30am to 10:00am  
 Lunch 11:00am to 2:00pm  
 Snacks 2:10pm to 4:30pm  
 Dinner 5:00pm to 7:00pm  
**Twenty Chimneys** Closed

Tuesday, Jan. 4  
**Lobdell & Twenty Chimneys**  
 resume regular schedule

### Walker

Wednesday, Dec. 22  
 to Sunday, Jan. 2  
 Monday, Jan. 3  
**Morss Hall & Pritchett** Closed  
**Morss Hall** — Breakfast 9:30am to 11:00am  
 Lunch 11:00am to 2:00pm  
 Dinner Closed

Tuesday, Jan. 4  
**Pritchett** Closed  
**Morss Hall** — Breakfast 9:30am to 11:00am  
 Lunch 11:00am to 2:00pm  
 Dinner Closed  
**Pritchett** 3:00pm to 12mid

Wednesday, Jan. 5: All Dining Halls resume regular schedule.  
 Last day for all Board Plans is Wednesday, Dec. 22.

# Sivin: signs misread

(Continued from page 1)

ing paper' to test what conditions people can agree on for a regular writing program to replace the experimental one we have now," Sivin added. "He can't just wave a magic wand or give a set of orders and make everything groovy.

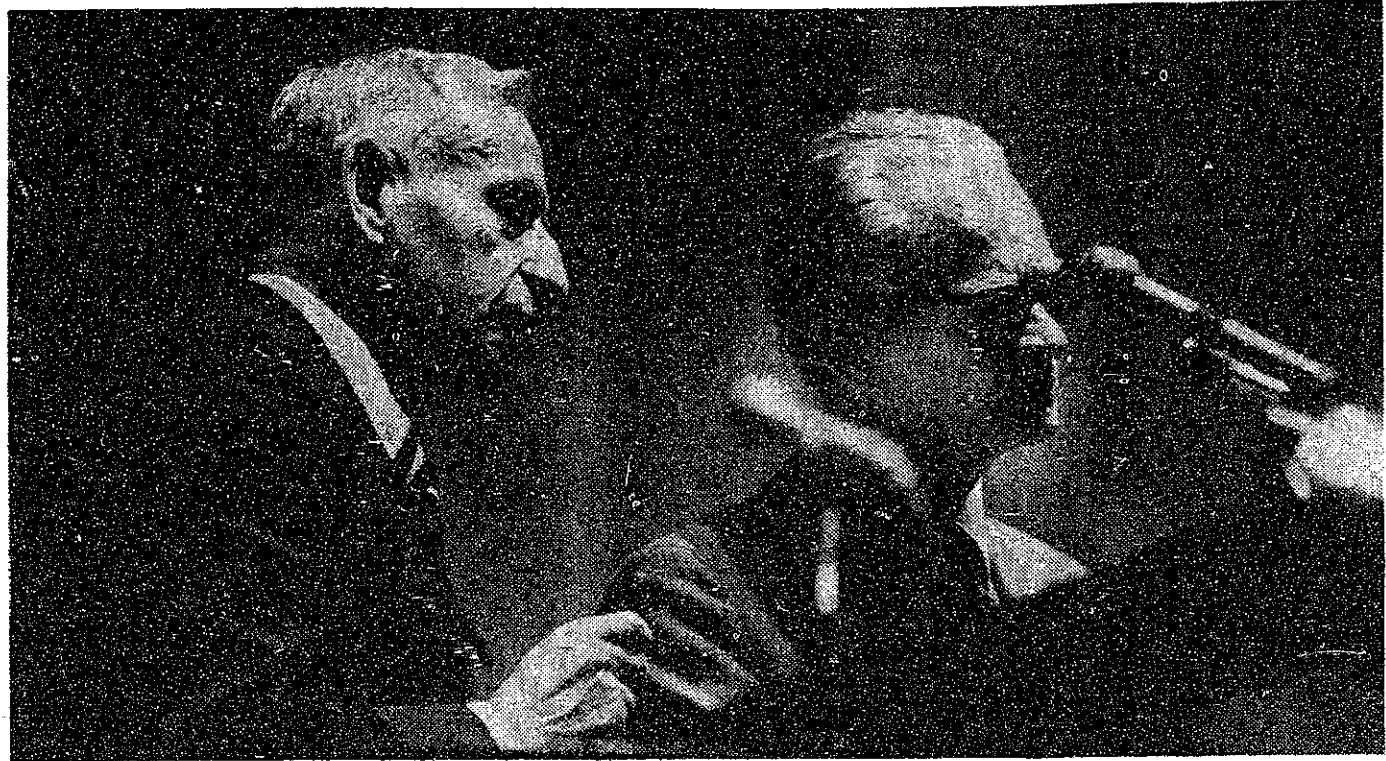
"Working consensuses do have to be achieved and they can only happen where everyone is willing to give something," he concluded. "Unfortunately a lot of very positive signs are being terribly misread by members of the Program."

The Sivin report, according to Hanham, did pat the Writing Program on the back but also said "now it's time to look at a wider

spectrum. They really were occupying a very narrow area of a broad field," Hanham stated.

"There have to be many different techniques of teaching writing because students have such different skills, interests, and means of learning," he pointed out. "I keep finding myself in an uncomfortable position because one can't say there is only one way of doing things. Some members of the Pilot Writing Program keep getting themselves into that position."

Hanham characterized his discussion paper as "a peace offering. I'd like to show that the Department is really a lot more friendly than the Program may have expected."



Harvard Professor Emeritus B.F. Skinner (right) delivered a speech entitled "Why I am not a Cognitive Psychologist" to approximately 700 people in Kresge Auditorium last Sunday night. This LSC-sponsored speech was moderated by Hans-Lukas Teuber (left), the head of the MIT Psychology

Department and one of the world's leading cognitive psychologists. In his speech Skinner put forth his "black box" theory of behaviorism which states that one cannot hope to analyze what goes on inside the mind — one can only see the behavioral result of a given input.

## classified advertising

**Sublet Wanted:** Dec. 26. 2 weeks to 9 months. Family of 3, former Harvard student. 732-2913.

**Winthrop House** to share with MIT couple. 8 rooms, 2 private, mostly furnished. Ocean view. \$170/month. 846-6791.

**For Sale:** 1" uncoiled paper tape. 50/roll. **Wanted:** 1 or 7/8" coiled paper tape. Call Len, x3-1541.

**The Tech Classified Ads Work!** \$3.00 per 35 words (or less) the first time. \$2.25 each time after that, if ordered at the same time. Just send your ad with payment to *The Tech*, W20-483, or PO Box 29-MIT Br., Cambridge, MA 02139 by US Mail.

I've been **Typing Masters** and **Ph.D's** full time for 5 years (and still love it!) I'd be happy to help you. IBM Correcting Selectric. 894-3406 (Weston).

**Psychiatric  
Counseling  
For College  
Age Adults**

COLLEGE MENTAL  
HEALTH CENTER.

Located in Prudential  
Center. For information  
call 262-3315.

**great part-time job:**

**\$4.00 per hour**  
your hifi at cost  
flexible hours  
a car is required  
(we pay expenses)

**you should be:**

personable  
self-motivated  
interested in hifi

call 646-1115 and leave message

**best buy hifi**



**GO GREYHOUND**  
...and leave the driving to us®

**SHARE THE RIDE  
WITH US THIS  
CHRISTMAS  
AND GET ON  
TO A GOOD THING.**

Us means Greyhound, and a lot of your fellow students who are already on to a good thing. You leave when you like. Travel comfortably. Arrive refreshed and on time. You'll save money, too, over the increased air fares. Share the ride with us on weekends. Holidays. Anytime. Go Greyhound.

**GREYHOUND SERVICE**

TO	ONE-WAY	ROUND-TRIP	YOU CAN LEAVE	YOU ARRIVE
New York City	15 <sup>30</sup>	24 <sup>95</sup>	Hourly	4 hr. 30 min.
Hartford, CT	9 <sup>45</sup>	17 <sup>95</sup>	2:30, 4:5, 4:55pm	2 hr. 10 min.
New Haven, CT	11 <sup>30</sup>	17 <sup>95</sup>	2:30, 4:5, 4:55pm	3 hr. 30 min.
Albany, NY	14 <sup>30</sup>	27 <sup>20</sup>	4:15, 8pm	4 hr. 30 min.
Portland, ME	8 <sup>95</sup>	17 <sup>05</sup>	2:15, 4:15, 6:15pm	2 hr.

**GREYHOUND TERMINAL**

St. James Ave. Boston, MA 423-5810

**The Memories**

**The Movies**

**The Stars**

**The Planes**

**The Janes**

**The Blitz**



**Words and Music  
by  
John Lennon & Paul McCartney**

and soundtrack performances by the world's leading artists.

**AMBROSIA · THE BEE GEES · THE BROTHERS JOHNSON · RICHARD COCCIANTE · LYNSEY DE PAUL · DAVID ESSEX · BRYAN FERRY · THE FOUR SEASONS · PETER GABRIEL · HENRY GROSS · ELTON JOHN · FRANKIE LAINE · THE LONDON SYMPHONY ORCHESTRA · JEFF LYNNE · WIL MALONE & LOU REIZNER · KEITH MOON · HELEN REDDY · THE ROYAL PHILHARMONIC ORCHESTRA · LEO SAYER · STATUS QUO · ROD STEWART · TINA TURNER · FRANKIE VALLI · ROY WOOD**

Twentieth Century-Fox Presents **ALL THIS AND WORLD WAR II**  
A MARTIN J. MACHAT/ERIC KRONFELD PRESENTATION A LOU REIZNER PRODUCTION  
Produced by SANDY LIEBERSON and MARTIN J. MACHAT · Executive Producer RUSS REGAN · Directed by SUSAN WINSLOW  
Musical Director LOU REIZNER

PG PARENTAL GUIDANCE SUGGESTED

Soundtrack Album on 20th Century Records & Tapes



**New England Premiere  
STARTS WEDNESDAY DEC. 22**

A WALTER READE THEATRE  
**Charles cinema**  
195 CAMBRIDGE ST. BASE OF BEACON HILL  
CHARLES ST. MBTA. PARKING AVAIL. 227-2727

# notes

\* Several students are wanted to help evaluate the structure, content, etc. of the *Freshman Handbook*, and possibly to serve as an ongoing advisory group. If interested, please write a brief description of your interest, including information about experience which may be relevant. Send to the FAC Office, 7-103, no later than Monday Dec. 13. The committee will be selected by Wednesday, Dec. 15.

\* There are still openings available for Talbot House for the month of January. The weeks of the tenth and seventeenth have not been scheduled. Applications will be considered on a first come first serve basis. Please contact the Preprofessional Advising and Education Office, 10-186, x3-4158

\* The MIT Chamber Players will give a midnight concert on Friday, Dec. 17, in Lobby 7. The Players will perform Bach's Brandenburg Concerto No. 1 in F, Mozart's Serenade No. 11 in E flat, K.375, Trio for Two Flutes and Harp from *L'Enfance du Christ* by Berlioz, and Bach's Cantata #32. *Liebster Jesu, mein Verlangen*.

\* The MIT UHF Repeater Association, together with the TTPSSH, will hold its December meeting on Tuesday, Dec. 14, at 9pm in Student Center Room 473. The meeting is open to the public. Anyone interested in Amateur Radio is invited to attend.

\* Charles E. Miller will speak on High Speed Videography at 11am Tuesday, Dec. 14 in Room 4-402.

\* A series of life-saving courses keyed to aiding victims of heart stoppage is being offered by the Greater Boston Chapter, American Red Cross. Instruction by the Red Cross includes texts, films and actual application of such techniques on mannikins especially designed for the course. The course runs for eight to ten hours and can be given in a single day-long session, two four-hour blocks of instruction, or in four two-hour periods. Interested students are urged to call the Red Cross at 262-1234, ext. 223 or 224, for a schedule.

\* 6.121 Bioelectronics Project Laboratory will be offered *Spring Term*. This course provides an interesting and enjoyable introduction to medical instrumentation for students with any level of electronics experience. Students from other departments with an interest in medical engineering are encouraged to attend. Please call David Abrams at x3-1938 for more information.

\* Northeastern University Art Gallery will exhibit Stephen Elston's "Starlight: Photographic Prints produced by the Action of Light Upon Bi-Chromated Gum Arabic and Watercolor Pigment," beginning Nov. 16 and continuing through Dec. 18. For further information call 437-2247.

\* From Dec. 12 through Feb. 6, the DeCordova Museum will feature an exhibition entitled "Homer to Hopper: Sixty Years of American Watercolors," spanning the golden age of American watercolor which flourished from 1870 through 1930. The public is invited to come to the opening on Sunday, Dec. 12 from 1:30 to 5pm. Admission for nonmembers will be \$1.50 for adults and \$.50 for those 21 and under. Sherry will be served from 3 to 5pm.

\* Youth for Understanding is a non-profit group that provides the opportunity for high school students from Latin America to stay with host families in the United States. These students speak English, have their own spending money, and will attend the local US high school. Interested Host Families may contact Hinda Magidson, regional director of YFU, at 267-1141.

\* Lecture — "Communicative Action," at Boston University, by Jurgen Habermas, Philosophy, Max-Planck-Institute, Starnberg. Today at 7:45pm at the Boston University George Sherman Union Conference Auditorium, 775 Commonwealth Avenue, Boston.

## YALE

### summer term

Interdisciplinary curriculum designed and taught by members of the Yale College Faculty. Students will be accepted for full-time and part-time study.

May 29-August 14

Yale seeks to attract qualified persons of diverse backgrounds. No applicant for admission is discriminated against because of race, sex, color, religion or national or ethnic origin.

For application information:  
Summer Term Admissions,  
1502A Yale Station  
New Haven  
Connecticut 06520  
(203) 432-4229

Basic courses will be offered in such subjects as: English, prose style, statistics, accounting, introductory economics, computer science, general chemistry, organic chemistry, and introductory physics.

Humanities Center  
Narrative Forms  
Romanticism  
The State and the Arts  
Religion and Social Crises  
The New World Experience  
Film  
British Art (in London)  
Social Sciences Center  
International Dependence and Interdependence  
Education and Society  
Rationality in Society  
Evolution and Behavior  
Urbanization in America  
Natural Sciences Center  
Perspectives on Life  
Genetics and Biochemistry  
Chemical Engineering

# TECH HIFI HAS A CHRISTMAS "PACKAGE" FOR YOU.

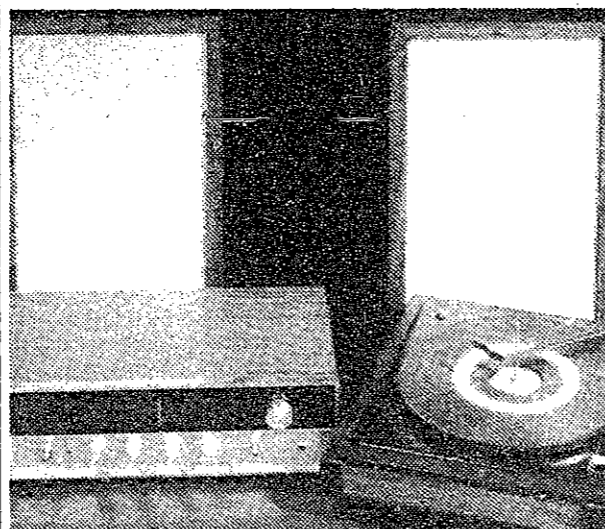
If you like listening to music but think that putting together a good component system is too complicated, Tech Hifi has a Christmas "package" that's just for you! These "package" music systems feature the best components made — we've already matched them for you to assure optimum performance and value.

So for the price and convenience of a mediocre "compact", you can have a great-sounding component system!

What's more, the massive buying power of the fifty-five Tech Hifi stores means we can not only *guarantee* you the lowest price

for your "package" system, but also include our fourteen important Customer Satisfaction Guarantees.

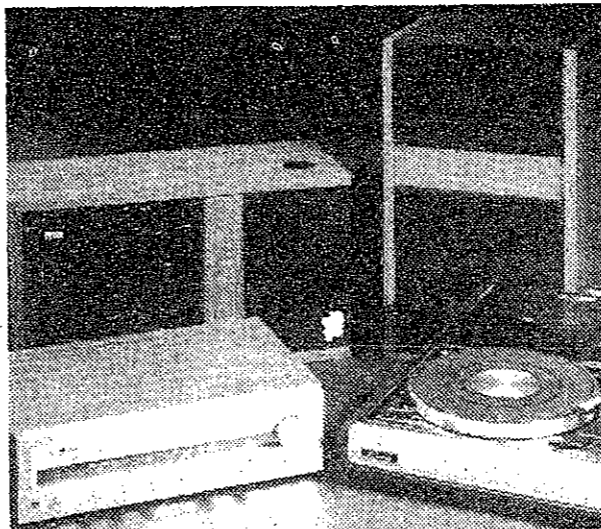
Tech Hifi's Christmas gift to you is the 112-page "The Hifi Book". It contains everything you need to know before buying hifi and includes photographs and descriptions of fifteen system packages ranging from as little as \$199, to as much as \$6,150. One of them will sound perfect to you! To get your free copy of "The Hifi Book", just drop by the Tech Hifi nearest you. We're open until 9:00 P.M. weekdays and until 6:00 P.M. Saturdays.



**Our \$199 Package.**

Our \$199 package offers a lot of musical pleasure for not much money. We've combined the versatile Concord CR50 stereo receiver, wide-range Studio Design 26 two-way loudspeakers, and the BSR 2260 BX automatic turntable for true component fidelity and quality at a budget price.

**BSR CONCORD Studio Design**



**Our \$499 Package.**

To fill slightly larger rooms with more than mistletoe, we recommend this \$499 system with the high-performance Kenwood KR-3600 stereo receiver, MicroAcoustics FRM-3 Multi-Axial loudspeakers, and a Garrard 1255B belt-drive turntable with a fine Stanton 500FE magnetic cartridge.

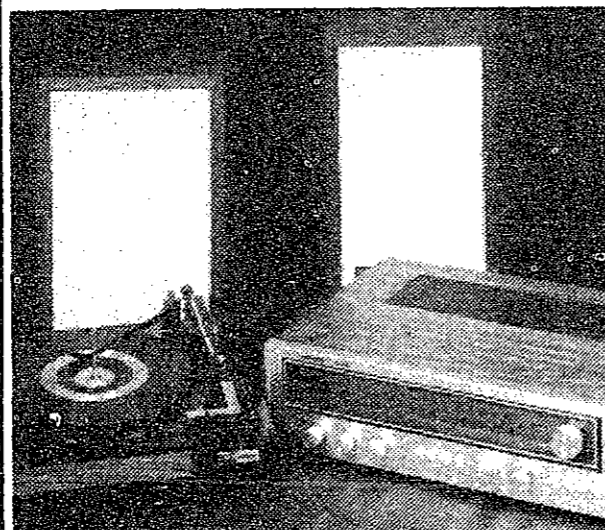
**Garrard KENWOOD ma Stanton**



**Our \$799 Package.**

When it comes to big Christmas packages, you're not likely to find one that'll give your whole family more lasting pleasure than this \$799 system with the excellent Sansui 881 stereo receiver, big KLH 103 three-way loudspeakers and a Philips GA 212 electronic turntable complete with an Audio-technica AT100E Dual Magnet cartridge.

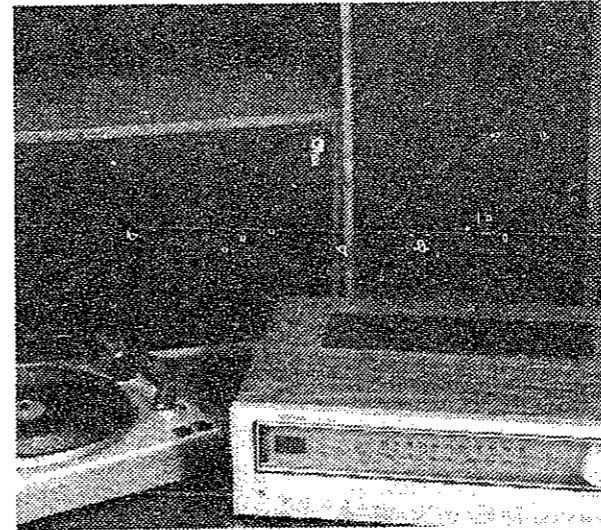
**Philips audio-technica KLH Sansui**



**Our \$299 Package.**

Good sound can come in a small package. Priced at only \$299, you won't find a better-sounding system for the money than this with the Nikko 2025 stereo receiver, accurate KLH 100 two-way loudspeakers, and a fully-equipped BSR 2260BX automatic turntable.

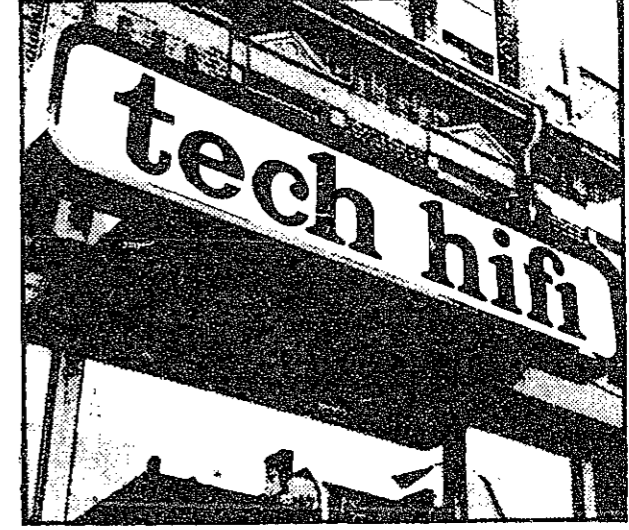
**NIKKO KLH BSR**



**Our \$599 Package.**

We can't think of a better way to express your Holiday Spirit than with this \$599 Tech Hifi system featuring the powerful Nikko 6065 stereo receiver, Ohm D2 optimally-vented loudspeakers, and a Philips GA 427 belt-drive turntable with a Stanton 500EE magnetic cartridge. It'll play as loudly as you like, for as long as you like... and sound great while doing it!

**NIKKO Philips Ohm Stanton**



**Shop and compare.**

Technics 5060 receiver.....	\$139.
Sansui 221 receiver.....	\$ 99.
Sansui 331 receiver.....	\$109.
Pioneer 1250 receiver.....	\$549.
Dual 1225 turntable.....	\$ 75.
Pioneer SX550 receiver.....	\$168.
Pioneer SX650 receiver.....	\$199.
Pioneer PL45D turntable.....	\$139.
Sherwood 7210 receiver.....	\$179.



**182 Massachusetts Ave, Cambridge 864-HIFI**

In Massachusetts: Harvard Sq., Comm. Ave., Newbury St., Waltham, Stoneham, Framingham, Dedham, Quincy, Hanover, Brockton, Worcester, Amherst and Northampton.

Stores also in New Hampshire, Vermont, Rhode Island, Connecticut, New York, New Jersey, Pennsylvania, Ohio and Michigan.

Boston Symphony Open Rehearsal

**BOSTON SYMPHONY ORCHESTRA**  
SEIJI OZAWA  
Music Director

**Wednesday**  
January 5 at 7:30 p.m.  
**Klaus Tennstedt**  
Conductor

works to be rehearsed:  
Webern: Passacaglia  
Haydn: Symphony No. 100 'Military'  
Schubert: Symphony No. 9

**Michael Steinberg,**  
Director of Publications of the Boston Symphony Orchestra, will host an informal discussion period beginning at about 6:50 pm in the Cabot-Cahners Room at Symphony Hall. So come early.  
All seats unreserved at \$3.00.  
All proceeds benefit the Orchestra's Pension Fund.

# W swimmers split meets

By Wendy Irving

The women's varsity swim team opened its 76-77 season last week with meets against Jackson and Wheaton.

Tuesday night, the Engineers met a decidedly stronger Jackson team. Despite the better caliber of this year's swimmers, the MIT women found themselves behind during the entire meet. Jackson won the opening relay event and captured first place in eleven of the fifteen events. The final score was MIT 49, Jackson 81.

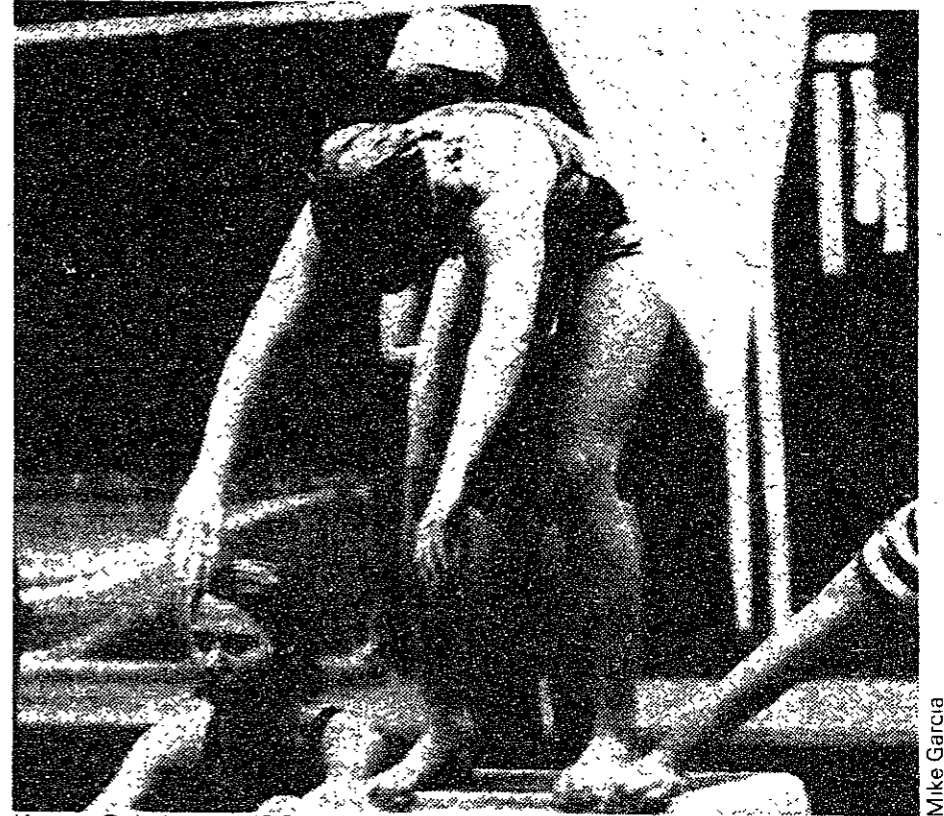
Point winners for MIT were: Sheila Konecke '80, winning the 100 I.M. and 100 breaststroke; Enora Kunica '80 in the 200 freestyle and 50 backstroke; Barb Thornton '77 in the 100 I.M., 100 freestyle and 50 freestyle; Tina Kangas '78 winning the 50 breaststroke; Carol Brown '79 winning the 50 freestyle and placing in the 100 freestyle; Peggy Page '78 in the 50 fly, 100 fly and 500 free; Karen Fabricious '80 in the 50 fly and 100 fly; Lori Lamel '79 diving; Barb Belt '77 in the

100 backstroke; Beth Marcus '79 in the 100 breaststroke.

Thursday night, however, was a different story. Having beaten Wheaton last year, the MIT women were determined to do so again.

MIT jumped to an early lead winning the first two events, but found it had to battle hard all evening. By the diving event, the half-way point, the score was MIT 31, Wheaton 30.

The scored see-sawed back and forth, neither team having an edge until MIT pulled away by taking first and second in two consecutive events. Page and Irving took first and second in the 500 freestyle. Knocke and Marcus took the 100 yard breaststroke, one, two. Finishing up the meet, the Engineers blasted their way to win in the 200 yard freestyle relay for a final score of MIT 72, Wheaton 51.



Karen Fabricious '80 prepares to start the first leg of the 200-yard freestyle relay in Tuesday's women's swimming meet against Jackson College. The women's swim team finished the week 1-1, losing the Jackson meet and winning a Thursday meet against Wheaton.

# National tourney proves unlucky for volleyball

By Glenn Brownstein

The Eastern champion MIT women's volleyball team discovered just how good the rest of the country's top teams were this past weekend, as the squad completed its stellar 1976 season on a down note by losing all three matches at the Nationals at Pepperdine College in Malibu, California.

Perhaps the key to MIT's showing rested in a pre-tournament injury to top spiker Sheila Luster '78, who jammed her thumb in the final practice before the first tournament match Wednesday night.

While Luster was still able to play an adequate frontcourt game, the team missed her ability to boom spikes through and over opponents' blocks until the team's final match.

MIT's fortunes might still have been better, though, had not Lewis & Clark College of Idaho dashed their hopes of advancing to the double-elimination round of the tourney with a 19-17, 14-16, 15-12 win over the Engineers.

MIT trailed in the first game

12-2, but ran off ten straight points to even the score. The squad had one game point at 14-13, but Lewis & Clark retied the game and the teams battled through more than ten minutes of overtime before the Idaho school gained the victory.

Trailing 8-12 in the second game, MIT rallied to win 16-14, but Lewis & Clark held off yet another come-from-behind effort by MIT to clinch the match in the final contest.

Discouraged by the close loss, MIT could not match up against awesome Texas Lutheran College, 1975 national champions and the eventual winners of this year's tournament (in a three-game thriller against UC-Riverside). TLC, paced by the Junior Olympics MVP Laurie Falch, simply outclassed the Engineers 15-3, 15-7.

In the final pool match Thursday afternoon, Kearney State of Nebraska overcame a strong MIT start to top the Engineers 15-12, 5-15, 12-15.

Top player for MIT, despite two heavily taped ankles, was setter Lisa Albright '78, who was also used as a blocker against Texas Lutheran's super spiker Falch.

The team's three losses sets their final all-competition record at 27-4, an incredible achievement for only a second-year varsity sport. That accomplishment, plus the return of four starters (only Lisa Jablonski and Sue Copper-smith graduate this year) should be an encouraging sign for the program's immediate future.

# Pistol takes 3rd straight

By Dave Schaller

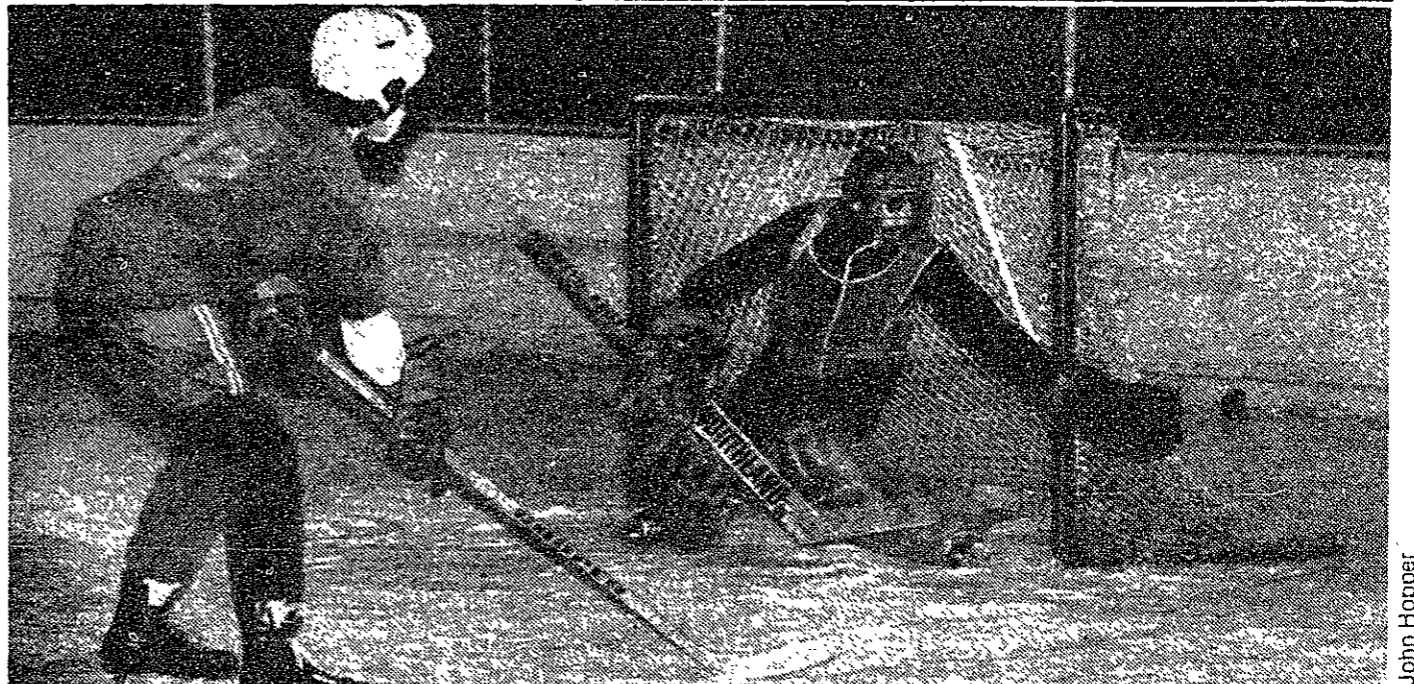
The MIT varsity pistol team stretched its winning streak to three last Saturday in a match against Worcester Polytech.

Leading the 3,133 to 2,951 victory for MIT was senior Phil Brucat with his best score of the year. A double alibi in the rapid fire stage of the Standard Pistol course prevented him from breaking 800, as he wound up with a 792. Junior Phil Morris earned second place overall with his score of 790, David Schaller '78 took third with a 785, and Denny McMullen '78 fired a score of 766 to give MIT a sweep of the top four individual positions in the team's last

match of the year.

The Varsity Pistol team now has a free schedule until February 12, allowing them to practice for matches against the Army, Navy, and Air Force Academies which will be fired during a three week period. The MIT shooters have a good chance of defeating both Army and Air Force, although their chances of defeating the midshipmen appear to be slim.

The Varsity team has a perfect 3-0 record in collegiate matches and a 6-1 record in the Greater Boston Pistol League. The JV team has a 6-2 record in the GBPL.



The IM Hockey season is now well underway with 61 teams competing in nine leagues. Here, in a C-league contest, TEP shoots against FIJI.

## sporting notices

The women's Varsity Swim team needs a manager. Undergraduate women interested in helping the team during some practices and meets (keeping times, getting refreshments, etc.) please see Coach John Benedick at the pool weekdays from 3-7pm or call Wendy Irving at 492-0951.

# IM Hockey standings and results

League	Team	W	L	TPts	GFGA	Three-Toed Sloths	Points
A-league	MechE 'A'	1	0	0	2	3	2
	LCA 'A'	1	1	0	2	5	5
	CHL	0	0	1	1	0	0
	FIJI/Baker	0	0	1	1	0	0
	Metallurgy 'A'	0	0	0	0	0	0
B-league	DKE 'B'	2	1	0	4	7	2
	MechE 'B'	1	0	0	2	3	0
	Bio/Nuts	1	0	0	2	1	0
	SAE 'B'	0	0	0	0	0	0
	MITNA	0	0	0	0	0	0
C1-league	Biology	1	0	0	2	10	1
	PBE/#6	1	0	0	2	5	2
	Aero/Astro	0	0	0	0	0	0
	EC 'LSD'	0	0	0	0	0	0
	SC 'Out'	0	1	0	0	2	5
C2-league	Nuclear Engineering	1	0	0	2	6	1
	EC '3E'	1	0	0	2	3	2
	Conner	0	0	0	0	0	0
	EPS Wobblers	0	1	0	0	2	3
	Baker's Dozen	0	1	0	0	1	6
C3-league	PKT Buzzards	1	0	0	2	12	0
	NSRA	1	0	0	2	5	3
	BTB	1	0	0	2	3	1
	PLP/AEPI	2	0	0	4	8	1
	PBE/#6	2	0	0	4	6	1
C4-league	PLP	2	0	0	4	9	0
	LCA 'C'	1	1	0	2	9	5
	DU	1	1	0	2	8	4
	DTD Tripods	1	1	0	2	3	6
	SAE 'C'	0	1	0	0	1	6
C5-league	TDC 'I'	2	0	0	4	18	0
	DKE 'C'	2	0	0	4	11	1
	BTP	1	1	0	2	3	10
	PKS	0	1	0	0	1	6
	Tower Court West	0	1	0	0	0	8
C6-league	FIJI 'C'	2	1	0	4	15	3
	TDC '2'	1	0	0	2	8	0
	ATO	1	0	0	2	4	1
	ZBT	1	1	0	2	4	6
	CP	0	1	0	0	0	4
C7-league	PLP/AEPI	2	0	0	4	8	1
	PDT	2	0	0	4	6	1
	PKA	1	0	0	2	8	0
	TC	1	1	0	2	4	5
	MacGregor	1	2	0	2	4	13
A-league	CHL	0	0	0	0	0	0
	LCA 'A'	0	0	0	0	0	0
	Plumbers	0	1	0	0	0	12
	DKE 'B'	0	1	0	0	3	5
	MechE 'B'	0	1	0	0	1	3
B-league	Montréal Express	0	0	0	0	0	0
	Bexley	0	0	0	0	0	0
	Walker	0	0	0	0	0	0
	DKE 'B'	0	0	0	0	0	0
	BTP	0	0	0	0	0	0
C-league	Les Spastiques	0	0	0	0	0	0
	PKS	0	0	0	0	0	0
	TEP	0	0	0	0	0	0
	TC	0	0	0	0	0	0
	LCA 'C'	0	0	0	0	0	0