



## MIT Leadership Campaign Goals (in millions of dollars)

<b>Endowment</b>	<b>Total</b>
Faculty Chairs and Career Development Support	\$50.0
Student Aid: Loan and Scholarship Funds, and Special Loan Subsidy Support	10.0
Research and Innovation Fund	20.0
General Endowment	20.0
	<b>\$100.0</b>
<b>New Program Support</b>	
Energy Laboratory	\$7.5
Health Sciences	2.0
Division for Study and Research in Education	2.5
Creative and Performing Arts	1.2
Library System Development Fund	8.0
Continuing Education	2.0
Support for the Five Schools	20.0
	<b>\$43.2</b>
<b>Facilities</b>	
Student Housing	\$10.0
New Athletics and Special Events Center	6.1
School of Management	
School of Architecture and Planning	
Mathematics Department	
Lecture Hall (10-250)	
Creative Arts	
Existing Commitments	
Other facilities, including Libraries, Independent Residence Development Fund, Psychology, Creative Arts and Public Events	45.7
	<b>\$61.8</b>
<b>Unrestricted Funds</b>	<b>\$20.0</b>
<b>Grand Total:</b>	<b>\$225.0</b>

## MIT launches \$225M drive for capital facility funds

By Mike McNamee  
MIT will conduct a two-phase \$225-million fund drive over the next five years in an effort to increase endowment and improve programs and facilities, Institute officials announced this week.

The drive, which has been planned by MIT for more than two years, will attempt to raise \$100 million for increase of the endowment, or permanent funds, of the Institute, with the remainder of the funds planned for expenditure on new programs and facilities.

Announcement of the drive, which has been named the MIT Leadership Campaign, was made Tuesday night at an Alumni Advisory Council meeting at MIT, and at a New York City press conference Wednesday morning. The announcement was made by Corporation Chairman Howard W. Johnson, President Jerome B. Wiesner, and Chancellor Paul E. Gray '54.

Also participating in the announcements was Paul F. Hellmuth '47, a member of the Corporation who will serve with Johnson as co-chairman of the

Leadership Campaign.

The drive is needed, the administrators said, to enable MIT to retain its role in scientific and technological work. "This campaign," Wiesner told a briefing for students Tuesday afternoon, "reflects what we think is a role that MIT should play in society in the years ahead."

"MIT will be in the forefront of coping with the socio-technical needs of society, and we feel that the added assets are necessary to help MIT play that role," Wiesner continued.

(Please turn to page 3)

## Bruce: graduates can find jobs

By Greg Erwin Lemke  
MIT engineering students receiving their degrees this June should have virtually "no trouble" finding employment after graduation, according to Prof. James Bruce, Associate Dean of the School of Engineering.

"I honestly don't see any real problem as far as employment

for the great majority of our graduates goes," Bruce said, "although opportunities for graduates holding Masters and Ph.D. degrees may be somewhat more limited than in previous years."

Bruce offered several reasons for his optimism, and pointed to the favored position held by MIT students in the engineering job market.

"The fact that MIT is the number one engineering school in this nation, must be counted as a big plus in favor of her graduates," Bruce asserted. "I think it would be fair to say that MIT's reputation gives her graduates an added edge, and that it tends to moderate, at least to some extent, the effect that the current recession might ordinarily have on a student's employment options."

Bruce did acknowledge, however, that the job market in general will not be as strong as it was last year.

"There is a slump," he admitted, "and although the jobs will still be there, the students won't be able to be quite as picky as they have in the past."

Although generally confident, Bruce does see potential employ-

ment problems ahead, especially in the area of doctoral graduates.

"I'm somewhat worried about our graduates with Ph.D.s," Bruce stated. "The situation is slightly different for them."

"In general, companies don't like to hire Ph.D.s, except in high technology areas," Bruce continued, "and the present state of the economy doesn't lend itself to research in high technology. When times get tough, industrial engineering tends to turn to bread and butter areas, to designing burglar alarms and the like."

Even though choice may be limited, Bruce pointed out that starting salaries for engineers with S.B. degrees are averaging six to seven per cent higher than comparable salary offers last year.

Bruce further pointed to the current overall shortage of engineers in industry, as well as the projected shortage of engineers in industry.

"The market for engineers is like a hog market," he quipped. "When the demand for hogs is great, more hogs are produced. It's about the same for engineers."

## Congress to veto NSF funding?

By Mike McNamee  
Frustration over "zany grants" given out by the National Science Foundation, coupled with budget-cutting zeal, has led the House of Representatives to approve a grant-review process labeled by its critics as "anti-intellectual" and "censorship." The House approved April 9 a floor amendment to the fiscal 1976 NSF budget authorization which would give either house of Congress veto power on any of the 14,000 grants awarded by the Foundation each year.

The measure isn't expected to pass the Senate, where Massachusetts Democrat Edward M. Kennedy, chairman of the subcommittee which oversees NSF, has already voiced opposition to the proposal. Even if it did pass, MIT officials say it would have little effect on MIT — despite the fact that MIT receives about \$18 million annually from NSF.

But opponents of the measure say it represents an "anti-academic" trend in Congress which would lead to weakening of the NSF's "peer review" method for giving grants and introduce strong political considerations in research funding.

The legislation approved by the House requires that NSF send to Congress monthly listings of the grants made by the Foundation, along with "all facts, circumstances, and considerations relating to or bearing upon the decision . . . to approve said grants." Congressmen would then have 30 days to review the grants, and to attempt to muster "resolutions of disapproval" against those they opposed.

If a majority vote in either house approved such a resolution, NSF would be required to rescind the grant.

The proposal, introduced on the House floor by Rep. Robert E. Bauman (R-Md), is designed to "give Congress a very necessary review of what taxpayers' money is being used for," according to one member of Bauman's staff.

"This measure would just add some more thought to the NSF grant-giving procedure," Alan Bock, a legislative aid in Bauman's office, told *The Tech*. "The peer review system is intended to pass some sort of scientific judgment on research — this would add a review that would assess whether taxpayers' money should be spent on that research."

The proposal might "delay all our grants by about a month for a while," but would have little effect on MIT's research efforts otherwise, according to MIT Vice President for Research Albert G. Hill. "For a short time, it would hold things up, but after a while no one would notice," Hill said.

Combination of pressures Bauman's move was sparked

by a combination of political and public-relations pressures which many Congressmen have felt recently, Washington sources told *The Tech*. Recent publicity given to a number of NSF grants and programs thought to be "wasteful" by Congress and the public have generated a great deal of pressure to cut the Foundation's \$775 million annual budget.

"Congress is feeling very frustrated about articles on wasteful spending at a time when they are worrying quite a bit about making budgetary ends meet," a Foundation staff member said. "The issue has generated an incredible amount of mail, and Congressmen have felt that they had no outlets, no way to show that they had tackled this problem." (Please turn to page 5)

## Kaleidoscope events

Friday

- 10am-5pm: MITV Hack Show in Lobby of Building 10.
- 11am-12pm: Concert Jazz Band performance on Student Center steps.
- 12pm-2pm: MITV video display in Student Center TV room.
- 12pm-2pm: Folk dance club, Kresge Oval.
- 12pm-5pm: APO Big Screw contest. Vote in front of the Student Center. Proceeds go to the winner's favorite charity. Winner gets a large, aluminum, left-handed screw.
- 2pm-3pm: MITG singing on Student Center steps.
- 2pm-3pm: "Camp Cambridge" and "Tech is Hell" T-shirts will be silkscreened by TCA free in front of Student Center. Bring your own shirt or buy a T-shirt from TCA.
- 3pm: Parachute jump — Briggs field.
- 3pm-6pm: Watch the WTBS staff as they produce a live broadcast from the steps of the Student Center.
- 5pm-5:30pm: Festival Jazz Band on Student Center steps.
- 5pm-7pm: Commons Roast Beef Dinner served between Kresge and Rockwell Cage.
- 12:15am: MIT Logarithms and Wellesley Tupelos perform in Lobby of Building 7.
- 4pm, 6:30pm, 9pm, 11pm: LSC presents "1001 Danish Delights" in Kresge Auditorium.

Saturday

- 12pm-3pm: TCA will auction art prints in front of Student Center.
- 12pm-4pm: TCA silkscreening. (See Friday listing.)
- 12pm-5pm: DU old car smash — get three sledgehammer blows for a quarter. Proceeds go to the American Cancer Society.
- 12pm-5pm: APO Big Screw contest. Vote in front of Student Center.
- 12pm-5pm: WTBS broadcast. (See Friday listing.)
- 2pm-5pm: Unicycle demonstration on Kresge Oval.
- 3:30pm-5pm: Live band on Student Center steps.
- 5pm: Announcement of Big Screw contest winner on Student Center steps.
- 4pm, 9pm: LSC presents "Gone With the Wind" in 26-100.

## Poor ticket sales force cancellation of concert

By Mike McNamee

The Kaleidoscope Concert featuring the James Montgomery blues band scheduled for tonight has been cancelled and replaced by a "free live-band blast," the Undergraduate Association President announced yesterday.

UAP Steve Wallman '75 said that poor ticket sales and the prospect of a large monetary loss forced cancellation of the concert, which was to be the showpiece event of the Kaleidoscope weekend.

Between 250 and 300 tickets had been sold by Wednesday night, Wallman said, far short of the 3000 tickets which needed to be sold to cover the costs of the concert. At the present rate of ticket sales, the UA would have lost "several thousands of dollars" on the concert, the UAP added.

In place of the concert, a dance featuring Cricket Hill, the group originally scheduled to back-up the Montgomery Band, will be held starting at 8:30pm

in Rockwell Cage. Admission to the dance will be free, and beer will be on sale in the Cage.

Wallman blamed scheduling conflicts with other Boston-area concerts for the lack of interest in the Montgomery Band show. Concerts at other colleges tonight and a concert in Boston Garden by James Montgomery Sunday "cut the response a great deal," he said.

The dance concert replacing the Montgomery Band show will cost the Association about \$900, significantly less than the \$9000 cost of the original concert. "We'll be able to cut the losses and still entertain a lot of people at this party," Wallman said.

UA-sponsored concerts in the last three years have lost a total of about \$12,700, according to Wallman. Losses are covered by appropriations from the Association's contingency funds.

Refunds for ticket-holders, Wallman said, will be available at the entrance of the Cage tonight or in the UA office on the fourth floor of the Student Center today, Monday, and Tuesday.

# classified advertising

## NIGHT OWL?

Gnomon Copy Center has openings for Xerox operators on all shifts, especially late nights. Liberal raises for reliable performance. No experience necessary. Contact Eddie Shaoul 204pm, weekdays, 99 Mt. Auburn Street, 492-7767.

**Middle East Restaurant** Tasty original, home style cooking. Exotic, flavorful, middle east dishes. In Central Square. Open 11:30-2 for lunch, 5-10 for dinner (to 9 on Sunday). Brookline St. Cambridge, MA. Call 354-8238.

French Speaking Woman Student Wanted. Faculty family will exchange room and board for babysitting and French tutoring for daughter starting September. Call 731-2035 evenings.

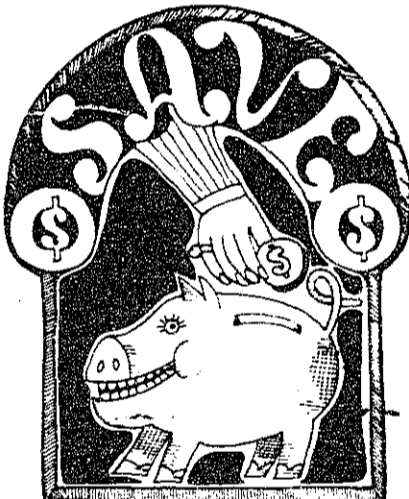
"Perfect typing for you. Near MIT Call 262-7237."

Apartment in Bonn, Ge.- Available 6 wks in July & August. New, w/bdrm, living room, kitchen, bath. In Central Bonn, near Beethovenhalle. Call Sharon, evenings & wknds 1-443-5469.

Lost: Black hat and jewelry in plain plastic bag. Left in white station wagon March 29. You gave me a ride across Wellesley's campus. Call Anna 235-6752.

Professor and wife wish to rent air-conditioned Boston-area apartment or house, mid-June to end-August. Brobeck, Crawford Hall, CWRU, Cleveland Ohio 44106.

Travel agency, North America's Largest Service. For catalog, send \$2.00 to ESSAY SERVICES, Box 1218, Niagara Falls, NY 14302. Computer reqs needed. Please write or call (415) 369-6549.



## SIDEWALK SALE!

THIS FRIDAY

10 am to 4 pm

Save 1/3 to 2/3 and more

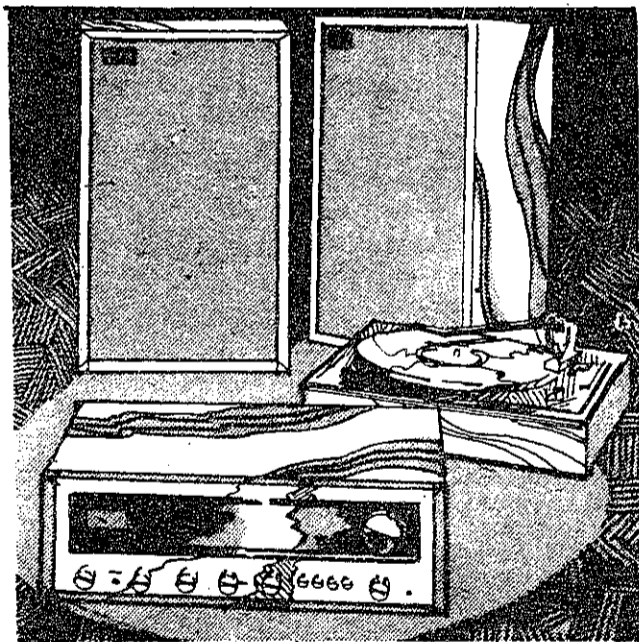
weather permitting  
ART PRINTS,  
POSTERS & FRAMES  
POPULAR &  
CLASSICAL RECORDS  
Women's and Men's  
BOUTIQUE CLOTHING  
FURNITURE SET-UPS  
SHEETS & TOWELS  
*all sales final*

# the Coop

M.I.T. STUDENT CENTER



This is the season for handsprings on grassy hillsides. And for Tech Hifi's annual clearance sale. If anything could put you in the mood for handsprings, these hifi discounts can!



Cambridge Audio 1500 receiver, KLH 31 Loudspeakers and a Glenburn 2110A turntable for **\$239** List price \$389  
KLH GLENBURN Cambridge Audio



Nikko 5050 stereo receiver, KLH 102 loudspeakers and BSR 2310X turntable for **\$425** List price \$559!  
BSR KLH NIKKO

# SPECIALS

	LIST	SALE		LIST	SALE
KLH 102 Loudspeakers (pair)	\$210	\$179	MicroAcoustics FRM-1 loudspeakers (slight cabinet imperfection, pair)	\$330	\$240
Miracord 625 turntable with base and dustcover	\$200	\$129	Panasonic 805US 8-track record/playback tape		\$109
Nikko 4030 stereo receiver	\$219	\$179			
Dokorder MK 50 Dolby Cassette deck	\$280	\$199			

# tech hifi

Quality Components at the Right Price



MA 240A Newbury St, 870 Commonwealth Ave, Boston • 38 Boylston St, 182 Massachusetts Ave, Cambridge • Route 9 Framingham  
 Route 1, Dedham • 352 Main St, Stoneham • 667 Main St, Waltham • 279 Main St, Worcester • 48 Teed Drive, Randolph  
 186 Main St, Northampton • 253 Triangle St, Amherst • Hanover Plaza, Hanover • 375 North Montello St (Route 28) Brockton  
 CT Caldor Shopping Center, West Main St, Avon NH Main St, Hanover • Nashua Mall Extension, Nashua VT 150 Church St,  
 Burlington • 21 Main St, North Bennington RI 165 Angell St, Providence • 1989 Post Rd, Route 1, Warwick

# \$225M sought in 3d MIT post-War drive

(Continued from page 1)

The drive is MIT's third since World War II, following the Mid-Century Drive of 1950 and the Second Century Fund, launched in celebration of MIT's centennial, in 1961. Both of those drives exceeded their target — \$20 and \$66 million, respectively — by large amounts.

All gift income which comes to MIT during the five-year span of the drive will count towards the goal — a provision that makes the goal somewhat less imposing, since MIT regularly receives \$20 to \$25 million each year in gift income. Income which has already been pledged but not yet received, including several large gifts for the Chemical Engineering Building, will also count in the goal.

The drive is planned in two phases — a three-year, \$125 million phase followed by "reassessment" and a second phase aiming for \$100 million over two years. This two-phase planning was originally emphasized to "reduce the shock" of the large

goal, administrators said, but has not been emphasized in recent discussions of the drive.

About \$43 million in recent gifts has been designated as a "starter fund" for the drive. According to fund-raising experts, one-quarter to one-third of the goal should be "in hand" before the drive begins; therefore, MIT is counting only the first-phase goal in estimating the starter fund.

#### Local committees

Wiesner, Gray, Johnson and Hellmuth made the announcement Wednesday at the start of a 10-day cross-country tour, during which they will meet with alumni officers and prospective large donors in several cities. Beyond this immediate tour, there is no "official itinerary" of events for the drive, Wiesner said.

Committees of alumni and "friends of MIT" are being established in about 30 cities to administer the drive, according to James Lampert, MIT Vice President for Resource Develop-



Howard W. Johnson  
Co-Chairman of the \$225 million Leadership Campaign



Paul F. Hellmuth '47  
Co-Chairman of the \$225 million Leadership Campaign

ment. Chairmen for more than 16 of these committees have already been appointed. Lampert said.

"We're devising some events in each of those cities to focus attention on the drive," Lampert said, citing alumni conferences in Houston and Tampa, Fla., as examples. The events "would have been held anyway," Lampert explained, but "the drive lends a special significance to them."

solicits contributions from alumni on a continuing basis.

#### Timing questioned

The drive has been planned by MIT for more than two years and the actual beginning of the drive was postponed twice due to economic reasons. In December, however, the administration decided to make the announcement this month despite the poor economic conditions at the time. "Since we made that deci-

sion, the economy has generally improved," Johnson quipped.

Wiesner stressed that recent economic conditions were not as important as long-term indicators, since the drive will stretch over a five-year period. "Over that period, we are optimistic and believe we will reach our goal," Wiesner said.

An important factor in deciding to go ahead with the drive was the increasing competition from other schools conducting similar campaigns (see chart, this page). MIT's drive is the 103rd college drive currently underway; the MIT goal of \$225 million is the fifth largest in the nation.

"There was growing competition for donors from these other drives," Wiesner explained. "It became clear that unless MIT matched their efforts, we would be further down on the list for support."

One unusual view of the timing problem was expressed by an administrator who told *The Tech*, "There's really never any good time for a fund drive. So if no time is better than any other, then no time is ever worse, either."

## Sports funding is \$6.1M of goal for fund drive

(Continued from page 12)

ties to the same extent it does now, according to Jack Barry, Assistant Director of Athletics and a chief planner of the athletic improvements.

The final phase of renovations will consist of synthetically resurfacing Rockwell Cage and using it as a major center for MIT's expanding women's athletics program, Barry stated. Space would also be set aside for MIT's volleyball program, which requires more space than is presently available.

If funds remain, the possibility exists that the Cage would eventually be demolished to make way for another new building providing similar facilities, as well as extra locker space, dance studios, specialized athletic rooms, and possibly another indoor pool.

Present target date for completion of the first three phases of the planned renovations, including the Cage improvements, is 1978, assuming the fund drive is successful, Barry said.

### Progress of 13 Major College Fund Drives

School	Started	Goal (thousand \$)	Progress (thousand \$)	As of:
CalTech	1/74	130,000	52,473	12/74
U. of California	2/74	20,000	3,500	2/75
U. of Chicago	11/74	280,000	83,700	2/75
Georgetown U.	3/74	51,300	30,000	2/75
Johns Hopkins U.	2/73	80,000	70,000	2/75
New York U.	9/73	300,000	29,000	1/75
U. of Pittsburgh	3/72	35,000	7,621	1/75
Princeton U.	7/69	125,000	85,500	2/75
RPI	7/64	45,500	43,641	1/75
Rochester I.T.	11/73	42,000	26,262	1/75
Stanford U.	4/72	300,000	183,304	1/75
Wellesley College	3/73	70,700	15,100	2/75
Yale U.	4/74	370,000	97,000	2/75

MIT's Leadership Campaign is only one of more than 100 active capital-gift drives currently being conducted by colleges and universities. This table presents the most recent figures available on 13 campaigns at leading universities and institutes of technology. Source: *The Chronicle of Higher Education*, March 24, 1975.

The administration is considering possible ways of involving students and faculty in drive activities which might take place on campus. "If there is a fair amount of local activity, we think both students and faculty can be effective in showing potential donors what MIT is like now," Wiesner said, adding that contact with students has been "particularly helpful" in raising funds for student aid.

Staff support for the drive will be provided by the Resource Development staff at MIT, which handles continuing fund-raising activity for the Institute, and the Alumni Fund, which

## FULL SCHOLARSHIP OPPORTUNITY

Now, full scholarship assistance for your junior and senior years, plus chance to become a leader in the nuclear energy field.

Tuition, books and educational fees are all included in this new NROTC Nuclear Propulsion Candidate program. Along with \$100 a month to help you with your living expenses. And on top of that you have an opportunity to build a rewarding career for yourself in the fast-growing nuclear energy field.

To qualify, you must have completed one semester each of calculus and physics, or two semesters of calculus and have a B- average or better.

Depending upon your performance, you will be interviewed during your senior year for the Navy's Nuclear Program and for training as a Navy Nuclear Officer.

If you can qualify for the demanding yet rewarding nuclear field you can anticipate five years of employment as a regular Navy officer.

For full details on this new NROTC Nuclear Propulsion Candidate program, phone or see your local Navy recruiter.

### Be someone special in the Navy.

Call LT Bruce Freeman  
(617) 223-6216  
Navy Officer Programs  
575 Technology Square  
Cambridge, MA 02139

# Rates reduced on new life insurance effective May 1.

New, reduced premium rates have been announced for what was already one of America's best life insurance buys — SAVINGS BANK LIFE INSURANCE. You'll get substantially lower rates on all policies issued on and after May 1st at Cambridgeport.

Despite inflation  
Despite the recession  
Despite the high cost of living

we've cut our premium rates to make SAVINGS BANK LIFE INSURANCE even more competitive! Check the rates and the dividends today in person, or call 864-5271. You'll be glad you did!

## Cambridgeport Savings Bank

689 Mass. Ave. in Central Square  
Cambridge, Mass. 02139

# Opinion

## The Tech

John J. Hanzel '76 - *Chairperson*  
Michael D. McNamee '76 - *Editor-in-Chief*  
Julia A. Malakie '77 - *Managing Editor*  
John M. Sallay '78 - *Business Manager*

Continuous News Service Since 1881  
Vol XCV, No 20 April 25, 1975

News Editors: Michael Garry '76, Margaret Brandeau '77  
Night Editors: Mark Munkacsy '78, William Pritchard '78,  
David Thompson '78

Photo Editors: Tom Klimowicz '77, David Schaller '78  
Sports Editor: Glenn Brownstein '77

Arts Editors: Neal Vitale '75, Stephen Owades '75

Advertising Manager: Mark Suchon '76

Contributing Editors: David M. Tenenbaum '74, Dan Gantt '75,  
Norman D. Sandler '75, Leonard Tower Jr.

Third Class Postage paid at Boston, MA. *The Tech* is published twice a week during the academic year (except during MIT vacations) and once during the first week of August. Please send all correspondence to: P.O. Box 29 - MIT Branch, Cambridge, MA 02139. Offices at Room W20-483, 84 Massachusetts Avenue, Cambridge, MA. Telephone: (617) 253-1541. Subscription rates available upon request.



"LUCKY FOR US THEY NEVER LEARNED HOW TO WORK THOSE THINGS...."

## Commentary

# The Universal appeal of food (and 'Food') 'Food' a Campus Exhibition Art Crucified

By Suzanne R. Weinberg

"Food" was an exhibit presented by the Lobby 7 Committee to the MIT Community. The major work in the design and execution of the exhibit was done by MIT students. "Food," a campus exhibition, as it was described in the program and on the poster was designed to be a meeting place for scientists, artists and engineers and for the MIT Community at large.

The subject of "Food," like the subject of "Weather" was chosen as one of universal interest, which would bring together many people of varying interests in a single forum. The object of this exhibit was to involve many members in the MIT Community in the process of designing, producing, and assembling a large exhibit. The primary purpose of the exhibit was educational, both for the observers and for those who worked on it. For most of the students who contributed work to the exhibit, this was their first experience in producing and presenting their work for exhibition.

The majority of the three-dimensional pieces were produced as work from two classes in the Department of Architecture. As was explained in the program, there was also participation by classes in the Film Section, by the Humanities Department, the Department of Nutrition and Food Science, Rotch Library, the Humanities Library, Design Services, the Fellows of the Center for Advanced Visual Studies and many others. I attach the program for an exact listing of the participants.

The exhibit was announced to the Community as early as last fall in an article in *Tech Talk*. At that time, we asked for participants for the exhibit from the Institute as a whole. The exhibit was, at all times, completely open to any member of the Community who wished to participate.

The Lobby was used, in this case, as an exhibition space for those students at MIT who would not normally be able to participate in a large exhibition. The fact that the participation in the show was open and that most participants were working in a new context in a difficult space, accounts for the variation in quality in the exhibit. This is a nontraditional forum for producing and exhibiting work and the nature of this exhibit, as well as many of the exhibits and events in Lobby 7, are experi-

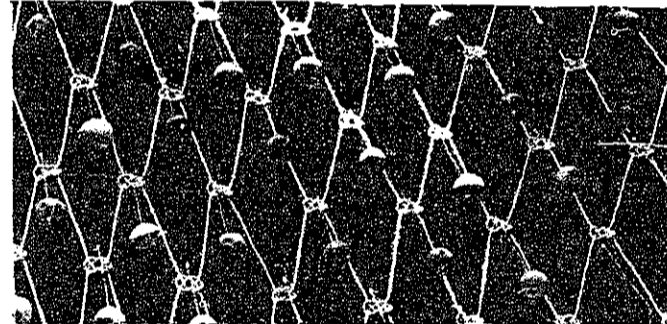
mental. One cannot always predict the kinds of work one will receive or the exact outcome of all projects. The work is meant to provide an educational experience and the process through which a student goes in producing such work is as valuable as the final product.

To answer specific question posed by *The Tech* concerning "safety and obstruction of the Lobby."

The Safety Office was always informed about all the specific elements of the exhibit. Due to the nature of such an installation, many of the participants were not aware of the potential problems they might cause. It is an irrefutable fact that the pathway through Lobby 7 should be maintained, and all attempts will be made in the future to maintain that path.

The exhibits and events in Lobby 7 which go on throughout the Academic Year are sponsored by the Lobby 7 Committee. The Committee itself is made of those people with an immediate interest in the Lobby: Information Center, Registry of Guests, Office of the Dean for Student Affairs, Physical Plant, Safety Office, Undergraduate Association, Design Services, Planning Office, Department of Architecture, Office of the Vice President for Admin-

istration and Personnel, and the Coordinator of the Programs in the Lobby. The program decisions are made by the coordinator, but the programs are normally formed as a result of suggestions by MIT organizations and, then, a limited number of outside groups. One of the purposes of the Lobby is to



provide a place for organizations at the Institute to perform. Any organization with a presentable program can perform in the Lobby.

Funding for the "Food" Show provided support for student projects, materials and student labor. The majority of the work was carried out by students from most departments at the Institute. Money spent for this exhibit was spent for an educational effort, much like other educational projects in other parts of the Institute.

(Suzanne R. Weinberg is the Lobby 7 Committee Coordinator.)

## Not Even Decorative

By Ann Porto  
and Andree Green

As Artists of the MIT community who did not participate in the Food Show we agree with the general overall views of the students responding to the poor taste that was displayed.

As artists, we feel that Professor Otto Piene's comparative answer by his referral to Arman Fernandez's exhibition, "Le Plein," was rather stale. This 1961 Paris exhibition was a timely social statement on surplus and accumulation.

The Food Show was not a timely social statement, as pointed out by its many critics, on the world-wide problem of food.

To the contrary, it was a mixture of meaningless objects dangerously put together overshadowing the few meaningful statements which could be found.

Art is sometimes given the term "low decorative." It means art with no feeling, no meaning, no value. Art which does not function, excite, a mere decora-

tion. We feel most pieces in the Food Show did not even have these qualities, and we think the show was a display of indulgence and not "Arts."

We cannot think in terms of production line Art but we feel the students should not be blamed fully for the pieces which were guided, approved and accepted before they could be exhibited. We cannot on the other hand, accept censorship as an alternative.

We are hopeful that the next exhibition will be a meaningful display, a socially responsible statement, one which the MIT community can be proud of and not embarrassed by. In Mohololy Nagy's words, "The problem of our generation is to bring the intellectual and emotional, the social and the technological components into balanced play; to learn to see and feel them in relationship."

(Ann Porto and Anaree Green are graduate students at the Center for Advanced Visual Studies.)

By Neal Vitale

In all the furor over the "Food" exhibit in the Lobby of Building 7, the issues central to serious consideration - those of artistic freedom versus control, and of artistic arrogance - have either been overlooked or misrepresented. The popular sentiment of distaste for the display

relevance - on one hand, the waste of "Food" itself is trivial compared to that with which the exhibit deals: on the other, it is hardly the public's prerogative to dictate acceptable means to an artist, as perhaps wasting several dozen apples and mushrooms is necessary and essential for "Food" to complete its sensory overload.

Yet that latter point is the one most callously ignored in the petition drive to enable Inscorm to decide what exhibits will be placed in Lobby 7. One level of bureaucracy already deals with that space (Suzanne Weinberg and the Lobby 7 Committee), and approved "Food's" residency. The idea of adding another layer of political maneuvering, particularly by demanding the approval of the culturally-deprived and self-serving ranks of Inscorm, is an insult.

The question of artistic arrogance focuses more strongly on the real problem. The idea which MIT has of presenting Art (with a capital A) so that everyone realizes it is Art and thus thinks, "Wow, MIT has real sympathies with the humanities and the arts," reveals both the true arrogance and the true fraudulence of "Food." Such window-dressing, which is easily destroyed by a quick look at the Humanities Department and the lumping of an Art Department in with Architecture, is the matter of greatest offense. The particular artists behind the giant apple and its sweaty-smelling internal slide/sound barrage, the neon and silver refrigerator, "Consumed Dog," and all of the other "inconveniences" and "nuisances" in Lobby 7 are far less the culprits than are the sensibilities which first force Art to be publically exposed and crucified, and then do the actual, ignorant crucifixion. Those who are infuriated, embarrassed, or disgusted by "Food" would be well-advised to take the exhibit on its own terms (realizing that space considerations prevented its placement in the less-prominent and more-sterile Hayden Gallery) and appreciate or not appreciate its means and messages about food; or else take "Food" on MIT's terms, and then look past the overblown sham to the artistic and cultural voids which are being so poorly hidden.

(Neal Vitale '75 is Arts Editor of *The Tech* and a participant in the "Food" exhibit.)

## Letter Booths?

To the Editor:

I could easily salute Marian Tomusiak and her group's letter (*The Tech* April 15) for wishing to save the Institute space, money, and electricity. But I sense another motive behind her letter. It's not that she wants to remove art exhibits that she considers a nuisance (because they mean little to her). What she really wants in Lobby 7 is space for all those little booths in Lobby 10 with their garish junk: Blood Drive, Israel Emergency Fund, Shakespeare, 1776, etc. Well, I don't want any of that clutter in the Lobby, either. An apple (even a deflated one) is a much better greeting.

Geoff Baskir '78

The Tech welcomes Letters to the Editor. Typed letters are preferred. Letters must be signed; names will be withheld upon request. Send letters to *The Tech*, W20-483.

# House challenges NSF funds

(Continued from page 1)  
 lem." The publicity — which the NSF staff member said "comes in cycles, every couple of years" — has included a number of articles in national magazines and newspapers criticizing NSF grants funding studies of why people fall in love, curricular changes in public schools, study of Polish bisexual frogs, the sex life of crabs, and why people fall off tricycles, among others.

One such attack was launched by Sen. William Proxmire (D-Wis) against the MIT Innovation Center, an engineering center that helps student and faculty inventors develop their inventions and market them. Proxmire charged that the center used NSF funds to set students up in business allowing them to make a profit using Federal money.

"Whenever one of these articles appears," Bauman said on the floor of the House, "you get a large volume of letters asking why the government spends money on such projects, and why we Congressmen do not do something about it."

"Natural progression" One item that received a great deal of attention in Congress was the NSF funding of a social science curriculum for fifth-grade students intitled "Man: A Course of Study," which had been criticized by many educators. Congressional critics of this program had introduced two amendments to place restrictions on NSF curriculum-development programs — amendments defeated through the efforts of the NSF lobbyists.

Then Bauman proposed his amendment. "It was almost like a natural progression, one after the other," the NSF staffer told *The Tech*. Another NSF lobbyist told the *Chronicle of Higher Education*:

"I sensed an incredible groundswell building up. People

were getting up and making statements, and other people were cheering and yelling and clapping. It was clear they were trying to get rid of their frustrations."

After what the *Chronicle* termed "a flood of anti-academic rhetoric," the Bauman amendment was passed by a vote of 212 to 199.

**Opposition**  
 The proposal, however, received almost immediate opposition from members of both the House and the Senate, including many members of the committees which oversee the Foundation.


"It's quite clear that his (Bauman's) amendment has virtually no chance of getting through the Senate on the subcommittee or committee level," A Kennedy aide told *The Tech*. Although Bauman is reportedly seeking a Senate sponsor to support the amendment during floor debate, Kennedy will also

fight the measure in the Senate-House conference committee.

"The Proxmire way of making NSF more efficient," said Robert Mills, a member of Proxmire's staff, "would be to cut the budget and force them to re-adjust their priorities."

"Bauman has good intentions, and shares concerns of many of the members on both ends of the political spectrum," Mills said. "But the mechanics of his plan just aren't workable."

**KABUKI**  
 Japanese Cuisine  
 859 Main St.  
 5 min. from MIT



10% Student Discount  
 5-10pm CLOSED MONDAYS  
 Dinner from \$3.90

**GREEK FOOD AT ITS BEST**  
**The Parthenon Restaurant**  
 Authentic Greek Restaurant  
 Modest prices, superb European wines  
 Variety of Liquors - Open 11am - 11pm Daily  
 924 Mass. Ave. in Cambridge Phone 354-5444

**Buddy's Sirloin Pit**  
 39 Brattle St. Harvard Sq.  
 (located in Cardell's Restaurant)

3/4lb. N.Y. Cut Sirloin Steak Dinner — \$3.40  
 Chopped Sirloin Dinner — \$1.60


We serve Pabst. Refills cost less.  
 "The price gets lower — you get higher."  
 We use only USDA Inspected Western Steer Beef with no tenderizers, fillers, or coloring added (unlike the beef in some other restaurants).  
 Open 11:30am — 9:00pm. Closed Sunday.

**Service, not service charges.**

Good service isn't something you should have to pay for. So when you buy car, apartment, or any insurance from us, there's no service charge tacked on. And we'll only sell you what you need.

**W. T. Phelan & Co.**  
 Insurance Agency Inc. Since 1898  
 11 Dunster St., Harvard Square (next to the Holyoke Center).  
 876-0876. Representing Aetna, Travelers, Hartford.


**SURPRISE!**  
 We have a Mamiya-Sekor  
**SINGLE LENS REFLEX Camera**  
 for just  
**\$109.95**



It has an ultra-sharp 2.8 lens, comes with a case, and here's the real surprise,  
 Optional AUTOMATIC EXPOSURE Control!  
**SANBORN CAMERA 525 Mass. Ave.**  
**CENTRAL SQUARE, CAMBRIDGE 876-4966**

**MAIN MARKET**  
 782 Main Street  
**Nearest Supermarket to MIT**  
 Food — Beer and Wine  
**FREE DELIVERIES TO MIT**  
 547-8400

Truck on down to F.I.P.



**Fiji Island Party - May 3**

Special Lecture Sponsored by the Seminar on Technology and Culture at M.I.T.

Wednesday, April 30, 1975  
 5:15 P.M.  
 Lecture Hall 9-150

**Images of Death: Dreams, Dying, and the Underworld**

DR. JAMES HILLMAN, Jungian analyst in private practice in Zurich, and former Director of Studies at the C. G. Jung Institute in Zurich.

6:45 P.M. Buffet Supper  
 Bush Room, 10-105  
 followed by open discussion  
 ALL WELCOME

**STAR TREK STUFF**

1 **DEFLECTOR SHIELDS UP! TM SPACEDOUT SAURIAN BROWN**  
 2 **WARRIOR THIS VEHICLE CRUISES WARP 8**  
 3 **PEOPLE THE FINAL FRONTIER DI-LITHIUM BLUE 75¢ each, any 3 for \$2.00**  
 4 **VINYL BUMPER STICKERS 15" x 4" Guaranteed 12 month or 12,000 miles at warp 8. STAR TREK LIVES! FOUR COLOR \$1.25 ea. Send Check or Money Order plus 15¢ postage per order SPACED OUT ENTERPRISES 123 Templeton Parkway Watertown, Mass. 02172**

FREE When Ordering All Four "VISIT SCENIC STAR BASE 12"

KLINGON SPY UNURA FOR CAPTAIN IMPULSE POWER

Multicolor 1 1/2" buttons 50¢ ea/3 for \$1.25/5 for \$2.00  
**NEW STAR TREK MOVIE IN '76**

**MAKE MONEY AND KEEP YOUR OWN HOURS!!!**

Sell advertising for HoTo-GAMIT! Commissions range from \$3.50 to \$14 per ad! Call X3-1541 and ask for Mark (advertising manager), or leave name and number.

**SIR SPEEDY INSTANT PRINTING**  
 876-6098  
 895 MAIN STREET  
 CAMBRIDGE, MASSACHUSETTS  
**COPIES WHILE YOU WATCH!**

- Advertising Flyers
- Business Forms
- Newsletters
- Price Lists
- Contracts
- Programs
- Resumes
- Bulletins

**Do you care?**

If you are taking a course from a NON-TENURED faculty member (T.A., Assistant Professor, Lecturer, ...) who you feel is superb, take the time out to nominate him/her for the Baker Memorial Teaching Award.

Send us a brief letter of nomination stating the person, course he's teaching & why you feel (s)he's deserving to room 7-101.

APPEARING SAT APRIL 26 (NOON) . . . .  
**CHARLES LAQUIDIRA** from  
**WBCN-FM** at the bicycle workshop  
 to test **CITADEL** bicycle lock

the bicycle workshop  
 233 Mass Ave  
 Cambridge

# A-bomb for Iran 'unfeasible'?

By Thomas J. Spisak

It is unfeasible for Iran to use its growing nuclear capacity for weapons production, a Harvard researcher recently returned from Iran told an MIT audience. Speaking at a Center for International Studies Seminar on Wednesday afternoon, Anne Cahn said that Iran's present lack of technically trained people and the types of reactors that it has ordered would make weapons production difficult at best.

The ability to produce nuclear weapons, Cahn said, is dependent on three elements: availability of usable materials, access to the necessary technology, and the incentive to do so. She stated that although the Shah of Iran's incentive to produce nuclear weapons is problematical and his access to usable nuclear materials is limited, knowledge of the necessary technology is widespread.

There is no hard data about the Shah's intentions, Cahn asserted. She cited his growing arms superiority in the Persian Gulf and contended that nuclear proliferation might tend to negate that superiority.

Cahn also argued that as the Shah's military power has grown, his horizons have also grown. Iran has recently guaranteed the territorial integrity of Pakistan, she pointed out, add-

ing that there are international prestige incentives for Iran to build nuclear bombs.

If any other country in the Persian Gulf or Middle East "goes nuclear," Cahn said, it is likely that Iran will also "exercise its nuclear option."

Iran's access to the necessary nuclear material for weapons production will be very limited, Cahn said. Light water reactors (LWRs) — the type Iran is purchasing — must be shut down to remove the fuel rods which contain the plutonium usable in bomb production. This, she said, would make monitoring of the plutonium produced simple.

Acting Chairman of the Nuclear Engineering Department Kent Hansen told the seminar the plutonium produced in an LWR is "poison as far as fission is concerned." The reactor product, he explained, is a mixture of elements and isotopes which must be refined by a difficult and costly process to be usable in fission reactions.

In 1970, Iran became one of

the first signatories of the Nuclear Non-Proliferation Treaty. The treaty, obligated the non-nuclear signatories to not develop atomic weapons. The signatories who had already developed nuclear weapons pledged to bring the benefits of nuclear technology to non-nuclear nations, and agreed that they would actively seek disarmament.

Cahn noted that the non-nuclear powers now feel that the superpowers have not made the benefits available, and have not actively sought disarmament. Cahn warned that this attitude could cause Iran to go nuclear.

*Patriarchy and Paranoia in Western Society: Sexism, Racism and Anti-Semitism*

April 27, 5:30pm  
Prof. Rosemary Ruther, prominent Roman Catholic theologian and author of several books, including *Religion and Sexism*.

Mezz. Lounge, MIT Student Center 7:30pm

*Matriarchy and the Mastery of Nature*

Second lecture by Dr. Ruther at the Bush Room. Dinner beforehand at 6:45pm. For dinner reservations call Women's Forum Office, X3-1595, or University Lutheran at TR6-3256. Sponsored by the MIT Chaplaincy and the Women's Forum.

**summer in europe** CHARTERS LESS THAN **1/2** REG. ECONOMY FARE

65 DAY ADVANCE PAYMENT REQUIRED  
U.S. GOVT. APPROVED  
TWA PANAM TRANSAVIA  
CALL TOLL FREE 1-800-325-4867

**The Historic OLD VILNA SHUL**  
16 Philips St., Boston  
invites the Jewish students to our Traditional Orthodox Services.  
**FRIDAY: Sundown** **SABBATH: 9am**

**HIGH ADVENTURE STARTS AT 2500 FEET**  
Your first jump course takes only 3 hours. Costs only \$70.00  
World's largest and safest. Our 17th year. Free brochure.  
(Includes all equipment) over 250,000 jumps. 25,000 First jumps.

ORANGE PARACHUTING CENTER  
Box 98 Orange, Mass. 01332  
Phone: 517-544-6911

LAKEWOOD PARACHUTING CENTER  
P.O. Box 258 Lakewood, N.J. 08701  
Phone: 201-363-4900

**Happy Hour**  
Weekdays 5-7  
in the Gallery Bar. Your favorite drinks at your favorite prices.  
WEEKEND HAPPY HOUR Sat. & Sun. from 3:30 to 5:30... Upstairs at the Welles.  
SATURDIA: Live music, cartoons, silent movies, special dishes & Super drinks.  
**at the ORSON WELLES**  
1001 Mass. Ave. Cambridge, Mass.

**RYDER RENTS TRUCKS**

ONE-WAY or Local

CLIP THIS COUPON AND BRING TO PAUL LANDRY INC. 100 Brighton Ave. Boston (Allston) 731-0074

**10% OFF!**

PAUL LANDRY INC. RYDER TRUCK RENTAL  
100 Brighton Ave. Boston (Allston), MA 731-0074

There is an alternative to Harvard Square

**KENS PUB**  
CENTRAL SQUARE  
Serving a Complete Lunch and Dinner Menu  
Cambridge's best Sunday Brunch 12 noon - 5pm  
684 Mass. Avenue Ample Parking 868-5640

**A Pocketful of Miracles**  
POCKET SIZE SLIDE RULE dataguides by Medcon

Engineers • Designers • Students • Secretaries

**STRUCTURAL DATAGUIDE** — Features... Beam and Stress Formulas and Definitions; Column and Shell Data; Moments of Inertia; Vibration Data; Metric and Common Conversions; Trig Data. \$2.95  
**ELECTRONIC DATAGUIDE** — Features... Circuit and Power Formulas; Electric units and definitions; Conductor and Insulator Properties; Copper Wire Tables; DB Tables; Color Codes; Metric and Common Conversions. \$2.95  
**MECHANICAL DATAGUIDE** — Features... Screw and Bolt Data; Drill sizes and clearances; Standard fits; Gear Data; Gauge Data; Metals Properties; Trig Data; Metric and Common Conversions. \$2.95  
**SECRETARIAL DATAGUIDE** — Features... Commonly misspelled and misused words; Rules of Punctuation and Capitalization; Common Abbreviations. \$2.50

Special Dataguides designed upon request.  
Send check or money order plus 25¢ for postage & handling to:

**Medcon** 92 Taxiara Road  
Stoughton, Massachusetts 02072  
Area Code: (617) 344-7729

**YALE**  
summer term

Interdisciplinary curriculum designed for undergraduates and taught by members of the Yale College Faculty. Students will be accepted for full-time and part-time study June 2-August 16

Humanities Center  
Interpretation and Criticism  
The Creative Process: Theory and Practice  
Europe and America  
Social Sciences Center  
The Family  
Values and Institutions  
Public Policy and Decision Making  
Natural Sciences Center  
Environment and Natural Resources  
Genetics and Biochemistry  
Special Programs in Humanities and Social Sciences Centers  
History and Public Policy

Basic courses will be offered in each center such as:  
English prose style, statistics, introductory economics, organic chemistry, general physics, and introductory calculus

Applications considered through May 16. For further information: Christopher T. B. Murphy, Summer Term Admissions, 1502A Yale Station 3, New Haven, Connecticut 06520, 203 432-4229

**NEW HOUSE OPEN HOUSE**

Saturday, April 26  
11am - 2pm  
Refreshments

ANYBODY AND EVERYBODY IS WELCOME. YOU'LL LOVE THE BIG SINGLES AND KITCHENS. APPLY FOR ROOM AT THE DEAN'S OFFICE, 7-133. PLANS ARE ALSO AVAILABLE IN THE DEAN'S OFFICE. ONLY PRESENT INSTITUTE HOUSE RESIDENTS MAY APPLY.

No YMCA

# Sports

## Williams, URI beaten by Engineer women's crew

By Renan Beckman  
(Renan Beckman '77 is a member of the MIT women's crew team.)

Despite last Saturday's rainy dreariness in Springfield, Mass., the MIT women's crew came away from there in good spirits, having taken first place over Williams and the University of Rhode Island in the varsity eights competition and first and second in the JV fours race.

The race was held on the UMass course on the Connecticut River rather than on host Williams' home course because the latter had not completely thawed yet.

An unusual format, requested by the Williams coach, was followed for the day's races. Instead of rowing a standard 1500 meter course, it was agreed that a race lasting six minutes would be a good competition, and the starting line was set accordingly. Normally a women's eight covers 1500 meters in closer to five than six minutes, but considering the strong head current and moderate wind, a distance of 1300 meters was established.

The fours race started off choppily for all involved: one

boat from Williams and two from MIT.

One MIT four (Bow-Kim Roddis '77; 2-Nancy Greenberg '77; 3-Renan Beckman '77; Stroke-Diane McKnight '75; Cox-Lynn Yamada '78) pulled ahead from the start and finished the race in 6:30. The other MIT four (Bow-Alice Cowan '78; 2-Joan Pendleton '76; 3-Julia Malakie '77; Stroke-Beth Plasse '78; Cox-Sandy Tong '78) had a harder time of it, pulling up from behind Williams in the last strokes of the race to cross the line one second in front in a time of 6:40.

The varsity eights race also turned out to be a battle between MIT and Williams, URI having dropped back several lengths by the time the contestants were within sight of the finish line at 300 meters to go. MIT and Williams were within one seat of each other throughout the body of the race, but MIT, taking the stroke up to 37, pulled ahead to finish in 5:30.0, followed by Williams in 5:33.5, and URI in 5:50.2.

Tomorrow, on the Charles, is a race against several of MIT's nearest neighbors, Radcliffe, BU, and Wellesley. The JV race is at 11:15, and the varsity at 11:45.

## Thinclads overrun Tufts after losing to Bowdoin

By Dave Dobos

After a 99-55 drubbing at the hands of Bowdoin in its season opener last Saturday, the MIT track team overpowered Tufts Wednesday 84-69 on the Briggs Field facility.

The victory, assuring an improved record over last year, avenged an earlier indoor loss to the Medford school and provided Gordon Kelly with his first outdoor victory as head coach.

Junior Greg Hunter's heroic efforts paced the Engineer thinclads in the Tufts win. Hunter, who placed fourth in the decathlon at the Boston College Relays last weekend with 5977 points, swept to firsts in the shot put, discus, and javelin, and thirds in the high hurdles and pole vault.

Senior co-captain Gary Wilkes performed consistently throughout both meets, scoring 13 points against Bowdoin and 12 1/2 more against Tufts. He captured the long jump at both meets, took seconds in the 100 and 220 against Tufts, and earned a first and a second in the 220 and

100, respectively, with Bowdoin. Sophomores Rich Okine, Frank Richardson, and John Lundberg all won their specialties in both meets. Okine leaped to victory in the high hurdles, Richardson took the two mile against Bowdoin and switched to the mile with Tufts, and Lundberg maintained a long MIT tradition of hammer throw victories. Tomorrow, MIT, hoping to extend its winning streak, takes on WPI here at Briggs Field. Field events are at 12:30 and running events begin at 2:00.

### JOBS in SOCIAL CHANGE

For Summer or School Year

New 320 page indepth guide to 175 major Wash. DC public interest groups & their internship programs. Also five proposed innovative social projects including a revolutionary new town plan. Immediate shipment. Send \$1.50 to SER Foundation, 3416 Sansom St., Phila. Pa. 19104. Attn: Ray Choka (215) 382-2986

### The Old Culture and the New Technology

The Final Lecture in a Series of Three

## Dr. Lewis Mumford

Charles Abrams Visiting Professor, Department of Urban Studies and Planning

Third Lecture: Tuesday, April 29, 1975  
4:00 P.M., Lecture Hall 9-150

### The Person Versus the Automaton

Sponsored by the Technology and Culture Seminar, the Department of Urban Studies and Planning and the School of Humanities and Social Science

# Baseball snaps four-loss streak

By Lawrence D. David  
(Lawrence D. David '75 is the MIT varsity baseball manager.)

The MIT baseball Beavers skidded to a 7-8 mark week with four consecutive losses to Harvard, 9-2, to Lowell Tech, 7-3, to Wesleyan, 14-11, and to Brandeis, 12-3, before edging Boston State on Tuesday, 5-4, to even the season's slate at 8-8.

MIT batters raked Harvard pitching for eleven hits, but stranded eleven runners and could manage only a two-run triple by John Cavolowsky '76 after Harvard had bagged the game with a 9-0 lead. Harvard had only eight hits, but MIT pitchers issued twelve walks and MIT fielders committed seven errors, as the Beavers nailed their own coffin shut. In addition, Don Proper '76, a solid southpaw hurler who had posted a 0.79 ERA in 11-1/3 innings of relief, was lost to the club for the rest of the season when a pitch fractured his left arm in the fourth inning.

Five more fielding errors, all in the last three innings, led to five unearned Lowell Tech runs and a 7-3 verdict over their Cambridge rivals. Lowell Tech lefthander Tip Durkin baffled the Beavers, allowing only six hits in going the route for his

victory. Mike Royal '76 absorbed his second loss against four wins.

The ECAC New England champs, the Wesleyan Cardinals, had a fat 10-3 lead, but the Beavers pulled to within 10-9 before a four-run, two-out rally by Wesleyan in the sixth put the game out of reach. Wesleyan's explosive hitting attack (.294 team batting average last year) rocked Rick Olson '78 in the second inning with seven runs in their half of the fifth, the highlight of which was Royal's three-run double.

Ken Smith '77 had struck out the first two Wesleyan batters in the sixth when Cardinal hitting star Rick Burpee rammed a fast-ball down the right field line and out of the park to ignite a rally of five straight hits, one of which resulted when Royal and Steve Edelson '76 collided under a fly ball that should have been the third out of the inning. With the Cardinal lead 14-9, Wesleyan ace Dave Durian, who pitched the last four frames, was scratched for two more runs, but it wasn't enough and the Cardinals prevailed, 14-11.

Brandeis batsmen ripped two doubles, a triple, and two home runs (one a grand slam) off Royal and Cavolowsky while

again eleven Beavers died on base in a 12-3 romp by the Waltham nine on Monday. Royal walked ten batters in his eight innings, but only three of the eight runs he allowed were earned because of two crucial errors by shortstop Mike Dziekan '76.

Against Boston State the Beavers put it back together and posted their first home win of the season, 5-4. Herb Kummer '75 crunched out four hits and drew a walk, Dziekan drove in three runs with two hits, and David Yauch '75 pitched 2-1/3 innings of shutout relief for the win. Each team wound up with eleven hits, Boston State stranding 13 men and MIT 12.

Smith pitched a fine game but got the two-out blues in the seventh after an error by Jeff Felton '78, and MIT was down 4-3 at the end of the inning after Yauch had come in to force the Boston State catcher to ground out, ending the threat.

Kummer started the winning rally in the bottom of the seventh with a sharp double to left center and Felton singled him in. Felton moved up on a ground single by Yauch. Felton was then forced in when David Wargo '75 and Vince Maconi '76 drew walks.



You'd be wise to check with us on:  
• New Oxygen-Permeable Contact Lenses (they breathe!)  
• Ultraviolet Filtering & Ultraviolet Infrared Filtering Contact Lenses  
• New Wet-Treated Contact Lenses  
• New Type of Soft Contact Lenses  
Call or visit us for information.

CONTACT LENS SPECIALISTS  
77 Summer St. Boston 542-1929  
190 Lexington St., Waltham 894-1123

## Bowmar Scientific MX-100 Calculators

originally \$119.95,  
will sell for \$79

New, with full guarantee. Limited quantity.

Larry Cole, Inc.  
617-237-1260 (Wellesley)

# 2 bucks off.

A delicious Sirloin Steak  
plus  
golden brown French Fries  
plus  
2 frosty pitchers of beer  
plus  
all the salad you want to make.

Steak, 2 pitchers of beer and more. Now only **\$3.95.**  
Sunday through Thursday, with this ad or your college I.D.

## EMERSONS<sup>LTD.</sup>

Cocktails, wine and beer available.  
Open for lunch 11:30 'til 2:30\*

Expires 12/75 - Not good with other discounts or promotions.

Framingham — 1280 Worcester Road (Route 9) — 879-5102  
Peabody — Routes 1 & 128 N — 535-0570  
Newton — 1114 Beacon Street at 4 Corners — 965-3530  
Lawrence — 75 Winthrop Avenue (Route 114) — 687-1191  
Randolph — 493 High Street (Routes 28 & 128) — 986-4466  
East Providence — 1940 Pawtucket Avenue (Routes 44 and I-A) — 434-6660

## Heavies crush Northeastern

By David I. Katz

MIT's undefeated heavy-weight crew rowed away from Northeastern and Boston University Monday morning, establishing the Engineers as one of the strongest teams in the country. In a race postponed twice due to rough water, the Engineers routed the highly-rated Husky crew by nearly fourteen seconds in notching their third straight win of the year.

The Engineers came off the line at a cadence of 36 strokes per minute and began to pull away. A full length of open

water separated the Tech and Husky shells after 750 meters. NU challenged at this point and closed the margin by half a length at the halfway mark.

Coming through the Harvard Bridge, coxswain Mike Newman '76, called a power twenty and the Engineers opened the lead to three lengths. Northeastern was not able to close the gap and trailed MIT by four lengths at the finish. BU was never in the race and finished two lengths further back. The times were: MIT 6:48.7; NU 7:02.2; BU 7:09.5.

The other heavyweight races were rowed on Saturday before the varsity race was postponed.

The junior varsity held off a hard-charging Northeastern crew to gain the victory. Leading by a length after 100 meters, the NU eight pulled even with 300 meters remaining. Three times Northeastern upped the cadence and each time the Engineers answered them to regain the lead. A deck-length (about 10 feet) separated the two shells as they crossed the line. The times of this race were: MIT 6:56.6; NU 6:57.4; BU 7:19.4.

The freshmen rowed their poorest race of the season on Saturday. Coming off the line with a very fast start, they led by a length after 250 meters. At this point Northeastern began to move back on the Engineers. They never stopped moving and finished a length and a half ahead of the MIT frosh. The times were: NU 6:52.3; MIT 7:04.5; BU 7:11.9.

On Sunday, Yale came up to row on the Charles. They rowed a shorter course further upstream where the water was smoother. The varsity and JV won easily and the frosh died after a fast start.

## Doubles sweep rallies netmen over Williams

By Paul R. Giguere

(Paul R. Giguere '75 is MIT's varsity tennis manager.)

The MIT tennis team pulled off its biggest upset in years on Saturday by defeating Williams College 5-4 in a very exciting match at home. The victory was the Engineers' first over Williams in seven years, and raised the team's record to 5-2.

After the singles, Williams led 4-2, as only Lee Simpson '75 at number two and Paul Menig '76 at number six had been able to gather singles wins to preserve a chance of victory going into the doubles.

In a strongly contested match at number one doubles, Simpson teamed with Jim Austin '75 to upset the highly regarded Williams pair of Browne-Einsiedler in straight sets, 7-5, 6-3. Captain Simpson, the only double winner for MIT Saturday, played some of his finest tennis ever for the Engineers in this match.

Neal Rockowitz '78 and Jim Datesh '77, playing in their first match together as doubles partners, proved Coach Edward Crocker's move to be a good one as they put on a great show and

battled back from a 2-5 deficit in the third set to win the second 7-6 doubles and set the stage for the deciding third doubles match.

In this one, Phil Yang '76 and Neal Soiffer '78 came back from a 5-7 first set loss to win 6-4 in the second and broke Williams' first serve in the third set to take a 4-1 lead. The Williams team broke back and tied the match at 4-4 before Soiffer held his serve for a 5-4 MIT lead.

With both benches and several spectators cheering every point, Yang and Soiffer displayed remarkable poise under breaking serve to take the game, the set, the match, and the entire contest for MIT.

On Thursday, April 17, the team suffered a heartbreaking 5-4 loss to UMass in Amherst. Winning for MIT were Austin at number one, Rockowitz at number three, Menig at number six, as well as the Simpson-Austin duo at number one doubles.

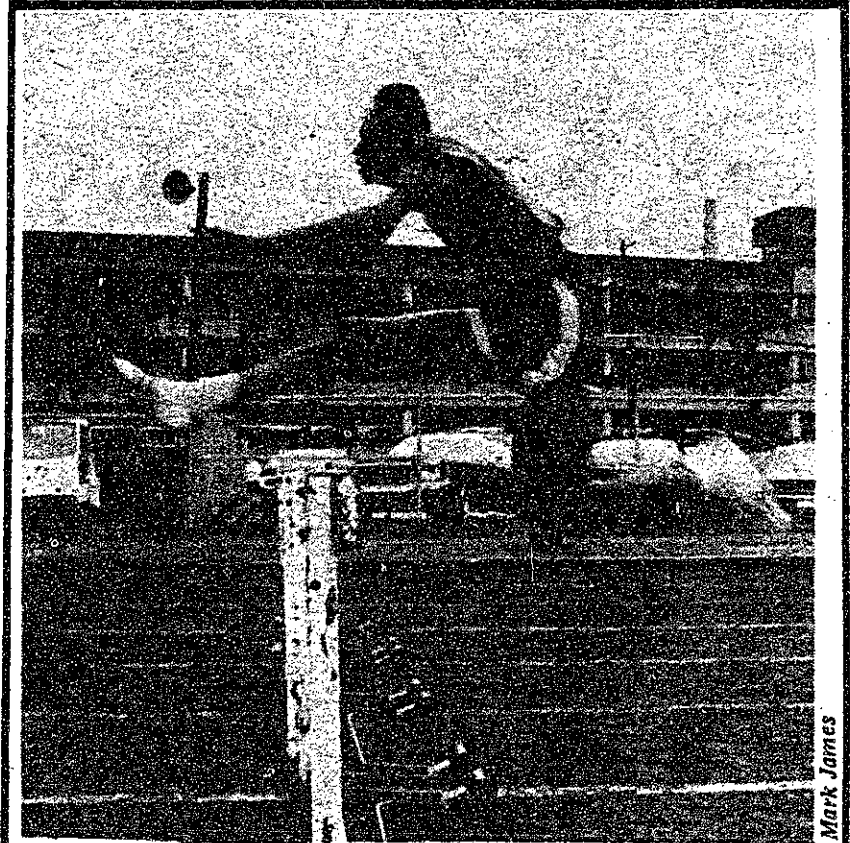
By sweeping all three doubles matches, MIT triumphed over Colby 6-3 at home on Monday, April 14.

## Lacrosse tops HC; Braun nets 5

By Glenn Brownstein

In any situation where someone new takes over, it takes a while for the change to show. For first-year MIT lacrosse coach Walter Alessi, the first results of his season-long hard work showed last Friday afternoon when his team, the doormats of New England lacrosse for the past two seasons, manhandled Holy Cross for three quarters and then withstood a furious final-period Crusader surge to win, 12-7.

## Sports



MIT hurdler Rich Okine '77 clears a hurdle enroute to a second-place finish in the 440-yard intermediate hurdles against Bowdoin last Saturday. Okine was more successful in the meet's other hurdle event, winning the 120-yard highs in a time of 15.0.

Co-captain George Braun '75 scored five goals and added one assist to lead MIT, which, after trailing 2-0 early in the game outscored Holy Cross 11-1 in the next 35 minutes to lead by eight goals going into the final period. The Crusaders appeared sloppy and not really ready for the Engineers who had been bombed earlier in the week by Bowdoin, 19-5, in their worst performance of the season and wanted to show what they could do against Holy Cross to make up for the Bowdoin rout.

Only in the fourth quarter did Holy Cross come to life, scoring four goals in the first half of the period as the MIT players, unaccustomed to such a large lead, began to let up. However, Engineer goalie Jeff Singer '77 made a couple of key saves to shut off the Holy Cross threat, and Braun netted the clincher at 9:49 of the final period.

Five other MIT players broke into the scoring column against the Crusaders. Bob Laurenson '75 ran his team-leading goal total to 13 with three scores and picked up his first assist of the year. Gordon Zuerndorfer '78 (with one assist), Alan Epstein '75, Steve Hyland '75, and Roger Renshaw '77 tallied one goal apiece for MIT.

By defeating Holy Cross, MIT notched its second win of the

season and its first win against a New England opponent in almost three years.

In the Bowdoin game Tuesday, MIT played a disorganized first half and allowed the Polar Bears to roll up a 10-2 halftime lead. Singer made 16 first-half saves, preventing the score from becoming extremely embarrassing. MIT opened the second half hitting, but Bowdoin found many holes in the Engineer defense and pulled away to a 19-5 decision.

Malcolm Gould scored eight goals for the Polar Bears, while Dave Hansel netted four and contributed three assists to the Bowdoin offense. Bob Connor '75 and Braun scored twice for MIT, while Laurenson tallied the fifth MIT goal.

For Coach Alessi, the breakthrough may have come last week with MIT's big win. However, the Engineers' real test will come in the final third of the season, when MIT must face two nationally-ranked teams, Harvard and Massachusetts, at Briggs Field, and Springfield and Trinity, two good New England squads, on their home fields.

MIT meets Trinity in Hartford Saturday afternoon before returning home to meet the 17th-ranked Crimson at Briggs Field Wednesday afternoon at 4:00.

## MIT fund drive includes planned athletic center

By Glenn Brownstein

As part of its \$225-million fund drive announced Wednesday, MIT will raise \$6.1-million in order to build a new athletic center and make substantial improvements in existing athletic facilities.

The planned center will include a hockey rink and a new fieldhouse suitable for track, indoor practices, and other athletic events. The rink will double as a special events center when the ice is not in use.

Present structural plans call for the rink to occupy the lower level of the center, with a synthetic-surface fieldhouse and track housed on the second floor.

The center will cover the area directly behind Rockwell Cage and extend partially over what is presently the Skating Rink. The

Briggs Oval track will be moved a short distance for construction to take place. It will be resurfaced with an all-weather synthetic material after it is moved.

Construction of the new athletic facility comprises only one stage of a three-part plan to upgrade MIT's existing athletic facilities.

In the second stage of the current project, duPont Armory will be renovated and the varsity basketball program will be moved inside. A new composition floor will replace the present wooden one, and bleachers and overhanging baskets will be installed.

In this way, varsity basketball and gymnastics will be provided with suitable facilities, yet duPont will still be able to serve as a home for intramural activities.

(Please turn to page 3)



Despite solo homeruns by Lisa Jablonski '77 and Sheila Luster '78, the MIT women's softball team lost to Boston University Friday night, 10-4. Playing its season opener, MIT found that it doesn't matter how hard the ball is hit if it's hit right to the other team. Shortstop Ellen Scotti '76 is shown knocking the ball to the BU third baseman. The women's next game is Tuesday at UNH.

## Sailors capture Sharpe Trophy

By Chris Donnelly

(Chris Donnelly '77 is a member of MIT's men's varsity sailing team.)

Last weekend, the varsity sailors finished first and third in two major regattas. Strong winds forced the cancellation of several other events during the holiday period.

The men's sailing team won the Sharpe Trophy last Saturday at Tufts; its first trophy regatta victory of the season. The regatta served as the elimination round for the New England Championships, the top five schools qualifying for the finals at Coast Guard next month. Leading Brown by a slim one-point margin at the end of four races, MIT won the final race in each division to clinch first place. Sailing in Larks against nine other schools, Captain Paul Erb '76 with crew Steve Gourley

'77 was low-point skipper in A-Division, while Chuck Tucker '75 with Sam Pennock '77 crewing won low-point honors in B-Division. The men also sailed at Coast Guard on Saturday in a Shields (29 foot, high performance keel boats) regatta. In light to moderate air, skipper Steve Ryan '77 with crews Chris Donnelly '77, Marty Lurie '78, and Mark Tanquary '76 finished fourth of six schools.

MIT sailed in the Oberg Trophy for the Greater Boston Championship last Monday at Northeastern. The three division regatta sailed in Mercuries was shortened to four races due to high winds. Tucker with crew Stan Stone '76 placed fourth in A-Division, Bill Critch '77 with crew Chip Ford '75 finished third in B-Division, and in C-Division Ryan with Donnelly crewing placed third. Overall

MIT placed third behind Harvard and Tufts in the six team field.

On Saturday the women's team hosted three schools in a CCT Invitational on the Charles River. In the eighteen-foot sloops, skipper Barbara Belt '77 with crews Sally Heusted '78 and Allana Connors '78 tied for first in points with Wellesley, but placed second because Wellesley had finished ahead of MIT in more races.

Due to heavy winds on Sunday, the women's President's Trophy Regatta at BU was cancelled and eliminations for the men's New England Single-Handed Championships at Tufts, Harvard, and MIT were postponed until next month. In addition, the Gibb Trophy for the Freshman Greater Boston Championship was cancelled on Monday at Tufts because of high winds.