

IFC ponders rush, discusses froshcomm

By Howard D. Sitzer

The Inter-Fraternity Council held its first meeting of the semester Tuesday night to disseminate information on Rush Week and plan activities for the term. In addition to the Rush evaluation, the IFC discussed the proposed Froshcomm, a charity drive, reinstating a fraternity tutor system, and the progress of the Judiciary Committee in investigating rush violations.

Although it was below the original projections, the IFC was pleased with this year's pledge total. According to Ken Browning, Dean of Student Affairs, 383 freshmen decided to live in fraternities.

The figure compared "favorably" with past years despite an entering class of less than 900. The IFC discovered through a preliminary study that there was a large amount of cross-rushing among the houses, and houses that employed a strong summer rush fared well. A "trouble list reference" circulated among the fraternities, an innovation this year, proved helpful for houses that were in trouble in the early stages. Unlike recent years, this fall many freshmen pledged during the latter part of Rush Week rather than immediately after receiving the bids.

The IFC Froshcomm will serve as a "policy-generating rather than a policy-making" committee once it is organized. Each house will be required to send one representative, selected by its freshman class. The main purposes of the Froshcomm will be to recruit people into the IFC with no previous experience, establish an internal work force, and generate interest in the Council.

There were several suggestions for a concerted effort on behalf of a specific charity. The membership has the option of approving a collective IFC func-

tion or operating through separate and independent charity drives by the houses themselves. A "walkathon" for a national charity within the Greater Boston area is being considered.

Derek Vlad led a discussion on the viability of a tutor program similar to the dormitory tutor system. In addition to assisting students with scholastic problems, the tutor would serve in the capacity of a "big brother," hopefully sensitive to personal problems. Tutors were once a common feature of the fraternities but died over the past several years. The tutor was usually a graduate student and former brother, and received free room and board. The costs of the program were shared equally by MIT and the individual fraternity. Dean Browning asserted that the school would be interested in resuming the program "only after the fraternities come up with a definition of the role of a tutor and his place in the house."

The Council also listened to a laconic presentation by Drew Jaglom on the status of rush violations. Jaglom, heading up the Judcomm, would not disclose any further developments in the investigation because "everything that I've been saying has somehow been finding its way into *The Tech*." (He appeared to be referring to a story based on unattributed sources in *The Tech*, 9/11/73.) He did mention that there were an unusually large number of complaints before the seven-member committee. Jaglom expressed hope that the decision and hearing process would be completed by mid-October. Towards the end of the meeting he requested rush sign-in books from LCA and Fiji for the committee's use. The IFC has a fining capacity of \$500 per violation.



A scene from last Tuesday's IFC meeting.

Brookline parking warning

Brookline Police Chief James C. Rourke has issued a warning to all students living in Brookline that fines can and will be levied on cars violating that city's rules, including the prohibition against overnight parking.

The warning was contained in a letter sent to Dean for Student Affairs Carola Eisenberg, which Rourke asked be distributed publicly.

[Some students in Brookline report that cars left out overnight are towed, even though Rourke does not mention this as a possible penalty. -Ed]

As Chief of Police for the Town of Brookline, I would like to extend a

cordial welcome to those many out-of-state students who attend schools in the Town of Brookline, or establish temporary residence here while attending school in the greater Boston area. I am well aware that the commencement of the school year brings with it the usual flurry of activity necessary to get oriented at school and establish a temporary residence. However, I feel it is appropriate at this time to inform those students who operate motor vehicles registered out-of-state, of two pertinent and important laws which members of the Brookline Police Department will be called upon to enforce.

The first is Brookline's prohibition against all-night on-street parking. Article I Section 11 of the Traffic Rules and Regulations provides as follows: "NO ALL NIGHT PARKING: It shall be unlawful for the driver of any vehicle, other than one acting in an emergency, to park said vehicle on any street for a period of time longer than one (1) hour between the hours of 2 am and 6 am of any day." The penalty

provided is a \$5 fine.

The other law which I would like to call to the attention of out-of-state students is Section 3 of Chapter 90 of the General Laws of the Commonwealth. In summary, this law provides that every non-resident student enrolled as a student at a school or college in the Commonwealth, who operates a motor vehicle registered in another state or country, must file in triplicate with the Police Department of the city or town in which such school or college is located, a *Non-Resident Student Vehicle Information Form*. The student is also obligated to maintain in full force a policy of liability insurance.

Failure to comply with the provisions of this law may subject the non-resident to a fine up to \$50.

It is important for the public safety and the convenience of all motorists that non-resident students become aware of these laws and endeavor to comply with them.

I thank you for your cooperation in this matter and wish you a safe, happy and productive school year.

Dining prices held stable

By Margaret Brandeau

"Although food prices have risen sharply over the past months, the commons price will hold throughout the year," says Eugene Brammer, Director of Housing and Food Services.

The number of students now subscribing to commons is eight to ten percent over dining service projections at the end of the regular four-week trial period.

In Baker House 225 students are on commons; in Walker there

are 225; in MacGregor, 231; in Lobdell, 112.

Each year the dining service loses money, but the Institute replaces the loss, according to Brammer.

Though *a la carte* prices were raised on August 13, Brammer stated that dining service will try to keep prices as low as possible. "A lot, of course, depends on what will happen with food prices," he added.

Some students have complained that the dining halls are overcrowded during meals. However, according to Salvatore Lauricella, Student Center Dining Manager, the dining service is not feeding capacity at lunch. "In fact," he said, "we could very easily feed another 150 to 200 people with no strain."

Lauricella said that there are many times between 11 am and 2 pm when there are few people in the dining halls. He attributed overcrowding to the fact that most people are in the habit of eating lunch at the same time every day.

While some corporations run subsidized employee dining rooms, employees of MIT who eat in Institute cafeterias pay a (Please turn to page 2)

Sci-fi writer coming; LSC sponsors talk

By Paul Schindler

Who is Theodore Sturgeon; besides being the speaker at a free LSC (Lecture Series Committee) lecture in Kresge Auditorium at 8:15 pm Monday, Sept. 24 on the topic "Any Questions"?

Three out of five people called in a random *The Tech* poll had never heard of him, so it is obvious that some more information needs to be made available to the community.

It is clear that he authored two episodes of "Star Trek," which does not make him terribly unique, and that he wrote *More Than Human* and *Venus Plus X*, which does make him unique, as no other can claim to have written these novels, according to LSC.

There are a couple of other things that Sturgeon is: 55, native of New York City, former circus aerialist, former hotel

manager, bulldozer operator, glass-worker, truck driver, salesman and ad-man, all according to one of his book's dust jacket.

Even that list does not particularly establish his place as an author; after all, widely experienced people tend to make good writers - Hemingway springs to mind, as does Mark Twain, who worked on both a riverboat and a newspaper before he learned to write.

It is easier, of course, to use the descriptions of others for this man I have never met. Damon Knight called him "the most accomplished technician this field has produced, bar nobody, not even Bradbury..."

One book jacket calls him "the most widely anthologized living writer of English," for appearances in over 50 collections and at least six languages.

James Blish raved, "... he (Please turn to page 7)

Registration Statistics

Third-day (9/14) unofficial figures from the Registrar's Office. Official count will be released in the fifth week of the term (10/20).

	Total	Undergraduate
Total enrollment: 7580		
School of Architecture and Planning:	438	192
School of Engineering:	2911	1247
School of Humanities and Social Science:	445	161
School of Management:	484	123
School of Science:	2125	116

First-year Students: 890

Top Ten Departments

Electrical Engineering:	1159
Physics:	520
Biology:	496
Management:	484
Mechanical Engineering:	412
Mathematics:	389
Civil Engineering:	353
Chemistry:	347
Architecture:	266
Chemical Engineering:	244
Aeronautics:	206
Economics:	177
Urban Studies:	172
Political Science:	114

3 Institute profs selected

By Mike McNamee

Three faculty members were appointed to the rank of Institute Professor, the highest academic honor at MIT, according to an announcement released Monday.

Professors Philip Morrison of the Physics Department, Walle J.H. Nauta of Psychology, and Robert Solow of Economics joined six other faculty members in the post after the faculty voted to bestow this honor. Besides the nine Institute Professors, there are currently 15 Institute Professors Emeriti.

Institute Professor is a post bestowed by the faculty in recognition of "greatness as participants in, and contributors to, the intellectual and educational life of the Institute," according to a statement made by the Committee on Educational Policy last spring.

The three latest appointments bring the number of Institute Professors appointed this year to four. Gordon S. Brown, Profes-

sor of Electrical Engineering, was made an Institute Professor on February 9, and became an Institute Professor Emeritus when he retired on June 30.

According to the CEP statement, an Institute Professor is no longer directly responsible to his department, but related directly to the Provost. An Institute Professor "does not have specific departmental or school responsibilities." The statement added, "Appointment [as an Institute Professor] provides a special opportunity to work across departmental boundaries."

Institute Professors are also granted the right to serve half-time for five years past the normal retirement age of 65.

There are usually no more than twelve Institute Professors at any one time, and the CEP recommends that this limit be maintained under most circumstances. Nominations for an Institute Professor are made by MIT faculty members, and are considered by the Academic

Council and the Chairman of the Faculty.

The Chairman and the President then appointed an *ad hoc* committee to investigate the appointment, which reports directly to the President. The faculty then considers the nomination.

A listing of the professors who have met the standards in the past may indicate what the standards really mean.

— Victor Weisskopf, appointed in 1965, former head of the Physics Department, and a recent visitor to Mainland China.

— Chia-Chiao Lin, a professor of applied mathematics was appointed in 1966.

— Nobel Prize Laureate and professor of Economics Paul Samuelson was appointed in 1966.

— Professor of Mathematics Norman Levinson was elevated in 1971.

Former Institute Professors whose status has recently changed include Professor Manson Benedict of Nuclear Engineering, and Professor Arthur Ippen of Civil Engineering have both become emeritus Institute Professors, and Professor Edwin Gilliland, Warren K. Lewis Professor of Chemical Engineering has died.

Professors Emeritus, besides those named, include Professors Jakobsen, Kepes Rossi, Schmitt, Slater, Smith, Soderberg, VonHuppel, Zacarias.

Commons prices stable

(Continued from page 1)

la carte prices.

According to a recent survey, 34% of the people eating lunch in Walker are Institute employees. Brammer noted that more employees seem to be "brown-bagging" this year.

Dining Service plans to try to run specials at various times through the year, not to get more service, according to Bram-

mer, but to relieve the monotony of eating.

"If there's a problem with the food, we want to know about it," Brammer stated. "Our dining facilities are open for inspection by any of the community at any time."

This year Dining Service has two new food production supervisors. They are Amy Fraade in Walker and Beth Robbins in the Student Center.

classified advertising

For Sale: Kitchen table and 4 chairs, excellent condition, \$30; and large assortment of kitchen accessories & misc. housewares, cheap! Wanted! turntable in good condition. Call 232-7959.

I've been typing Masters and Ph.Ds

FULL TIME
for 4 years (and still love it!) I'd be happy to help you. (IBM Correcting Selectric) 894-3406 (Weston)

Choral Singers
First Church in Cambridge, Harvard Square, invited experienced singers to consider its excellent music program. Our choir is substantial and well above average. Repertoire is of the highest quality and historically all-inclusive. Good sight reading required, plus Thursday evenings and Sunday mornings. First Church Collegium, our concert group, is selected from choir members. We offer a friendly open congre-

gation and our remarkable new Frobenius Organ. James Johnson, Music Director, 876-5829.

20% - 50% OFF ON ALL STEREO EQUIPMENT. Stereo Components, Compacts, and TV's. All new, in factory sealed cartons. 100% guaranteed. All major brands available. Call Mike anytime, 891-6871.

LPC

Friday:
Marjoe, 7 & 9:30
26-100
Saturday:
Dirty Harry, 7 & 9:30
Kresge
Sunday:
The Wild One, 8
10-250

Continuous News Service
The Tech
Since 1881
Vol. XXIII, No. 32 September 21, 1973
David Fenenbaum '74, Chairman
Paul Schindler '74, Editor-in-Chief
Strom Kautzman '75, Managing Editor
Jack Van Woerkom '75, Business Manager
Second class postage paid at Boston, Massachusetts. The Tech is published twice a week during the college year, except during vacations, and once during the first week of August by The Tech, Room W20-483, MIT Student Center, 84 Massachusetts Avenue, Cambridge, Massachusetts 02139. Telephone (617) 253-1541.

"ONE FLEW OVER THE CUCKOO'S NEST"
"Magnificent mind-blowing play" — Carolyn Clay, Boston Phoenix
"The 'IN' loony-bin to visit" — Arthur Friedman, Real Paper
SAVE MONEY: STUDENT DISCOUNT! STUDENT RUSH
CHARLES PLAYHOUSE
76 WARRENTON ST.
423-1767

Mass. auto insurance, explained.

Mass. automobile insurance can get a little complicated. And if you're under 25, it can get expensive. We'll simplify things. And we'll help you keep your premiums as low as possible.

W. T. Phelan & Co.
Insurance Agency, Inc.

11 Dunster St., Harvard Square (next to the Holyoke Center).
876-0876. Representing Aetna, Travelers, Hartford.

LPC
presents

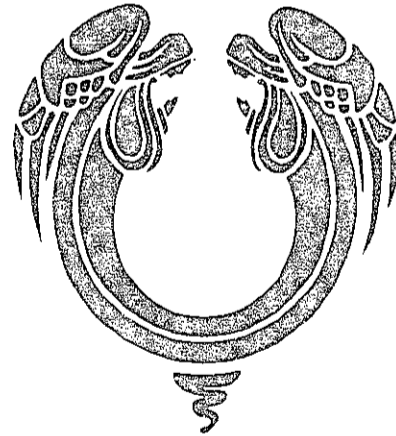
Theodore Sturgeon
author of
Venus Plus X ...and MANY more
Better Than Man

"Any Questions?"
FREE

Mon. 8:15pm Kresge

SACK THEATRES

A Musical
Entertainment
An Epic Movie



A NORMAN JEWISON Film

"JESUS CHRIST SUPERSTAR"

SPECIAL STUDENT PRICE
\$2.00 EVERY DAY ALL SHOWS
No new students and returning students in the greater Boston area present school I.D. at box office.

SACK 723-8110
BEACON HILL AT TREMONT

\$1.50 PARKING AFTER 5 P.M. IN THE GARAGE ADJACENT TO THE THEATRE

MARRIED COUPLES FULL PART/TIME JOB OPENINGS

- LIVE FREE- ALL EXPENSES PAID, GOOD SALARY
- WORK WHEN AND WHERE YOU WANT AROUND METROPOLITAN BOSTON
- COUPLES WITH CHILD WELCOME

REGISTER NOW FOR:
EXTENDED CHILD CARE, HOUSEWATCHING
PERMANENT PLACEMENTS AND OTHER
HOME RELATED TASKS

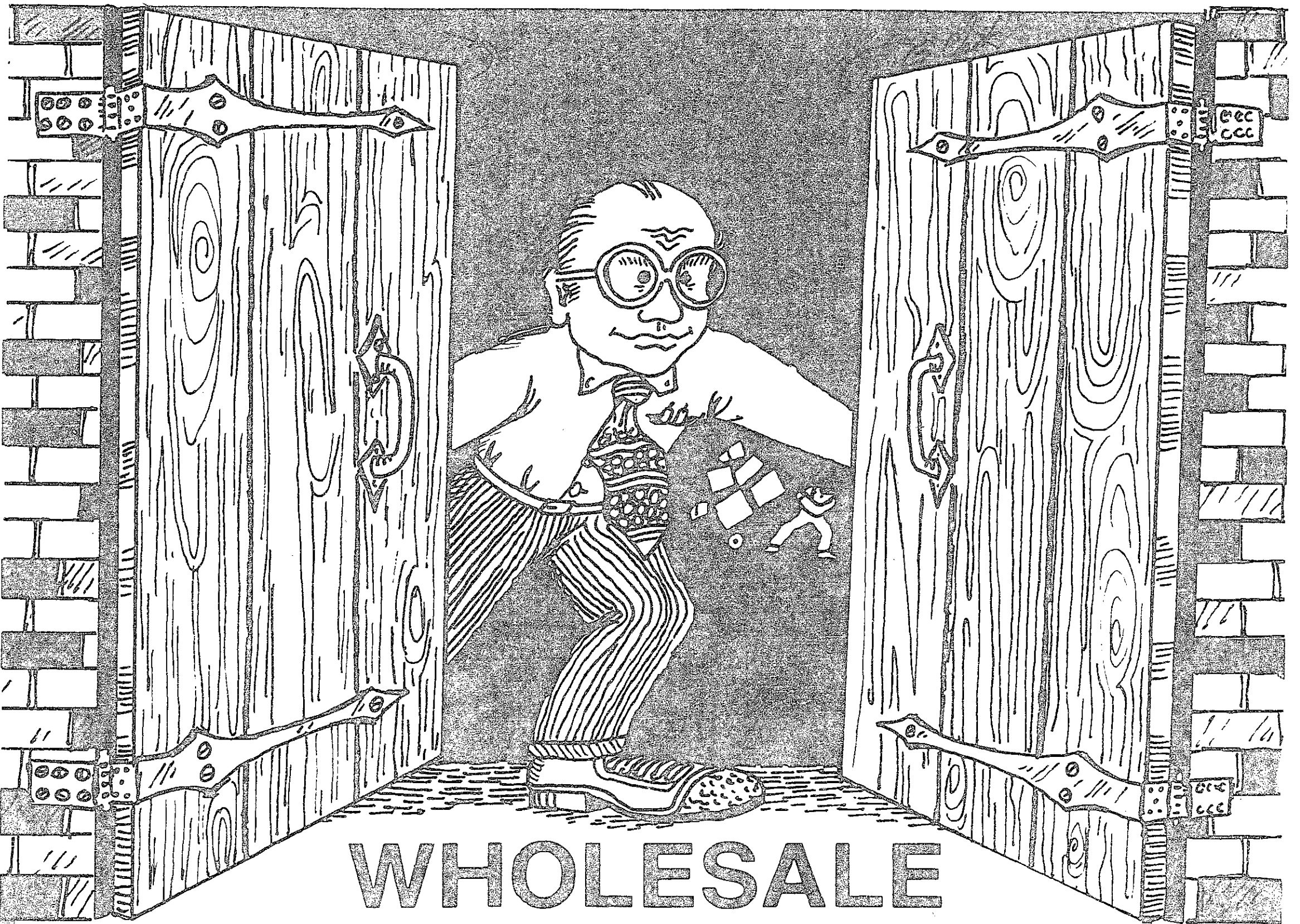


CALL: **University Home Services**

LYNNFIELD 595-4045 NEEDHAM 449-3590

BOSTON'S FOREMOST COUPLE PLACEMENT SITTER SERVICE

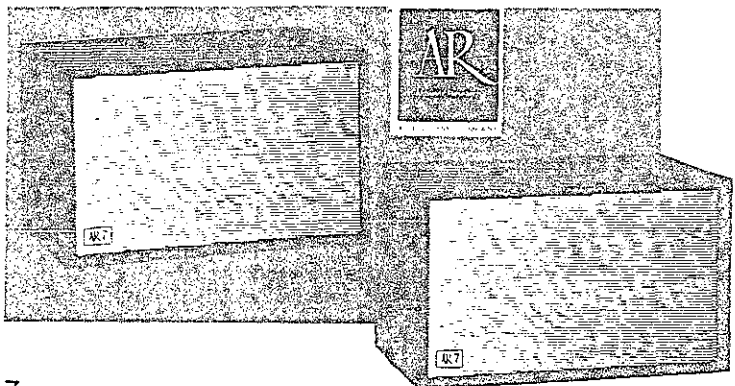




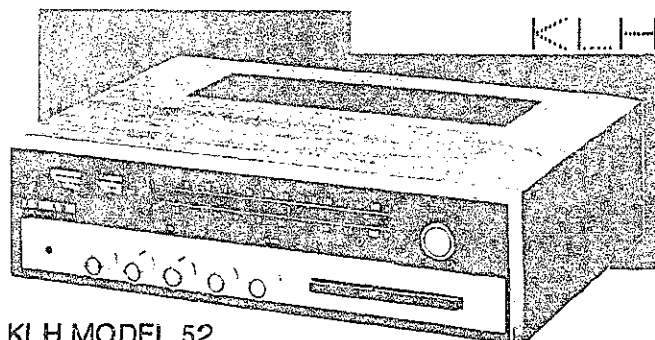
WHOLESALE INDUSTRY OPENS ITS DOORS TO STUDENTS

SPECIALY OFFERED TO STUDENTS AND FACULTY FOR LESS THAN THE RECEIVER, PER SE

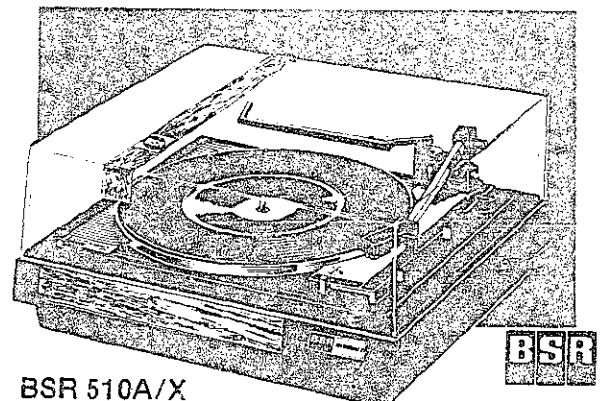
BSR 510A/X	LIST \$106.80	\$289.00
AR-7 (PAIR)	LIST \$135.00	
KLH 52	LIST \$289.95	
		\$531.75



AR-7
The new 2-way AR-7 speaker made by Acoustic Research



KLH MODEL 52
The KLH model fifty-two AM-FM stereo receiver



BSR 510A/X
The professional series automatic turntable

Sound room on premises. Full warranties and guarantees. Closed door wholesale showroom featuring ALL MAJOR BRANDS OF STEREO EQUIPMENT, TELEVISIONS, CLOCK RADIOS, MINI CALCULATORS, PHONE ANSWERING SYSTEMS, MINI REFRIGERATORS as well as full lines of all standard MAJOR appliances; ranges, washers, dryers, dishwashers, air conditioners, refrigerators, freezers, compactors.

Furniture, carpeting, bedding, all discounted — New automobiles and tires available — just call 723-9230

NEW DIVISIONS: CLOSED CIRCUIT TV, VIDEO TAPE — call and ask for MARTIN WEBSTER.

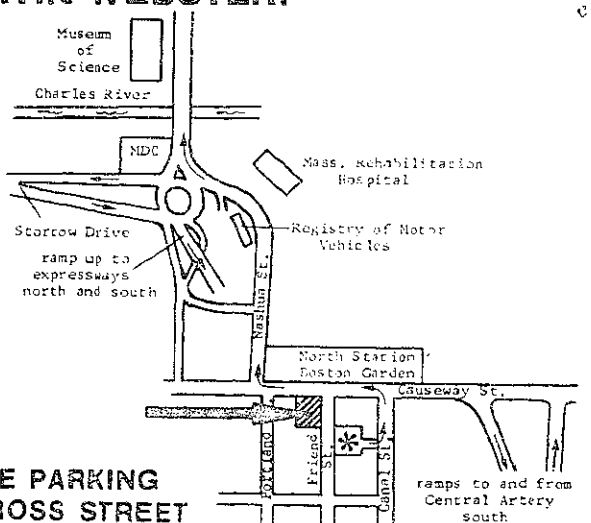
OPEN: MONDAY, TUESDAY, FRIDAY — 9 AM TO 6 PM
WEDNESDAY, THURSDAY — 9 AM TO 9 PM
SATURDAY — 9 AM TO 2 PM

BRANDS MART

INCORPORATED

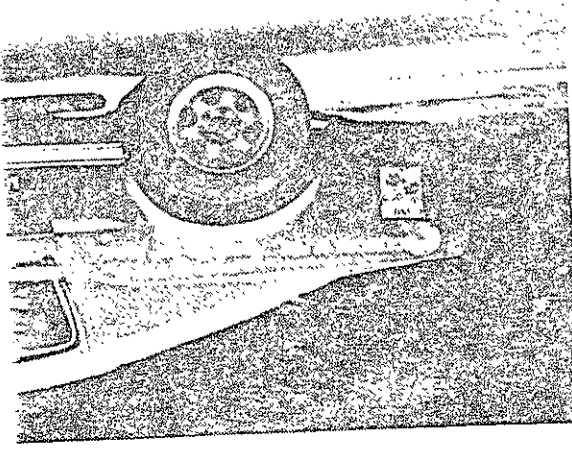
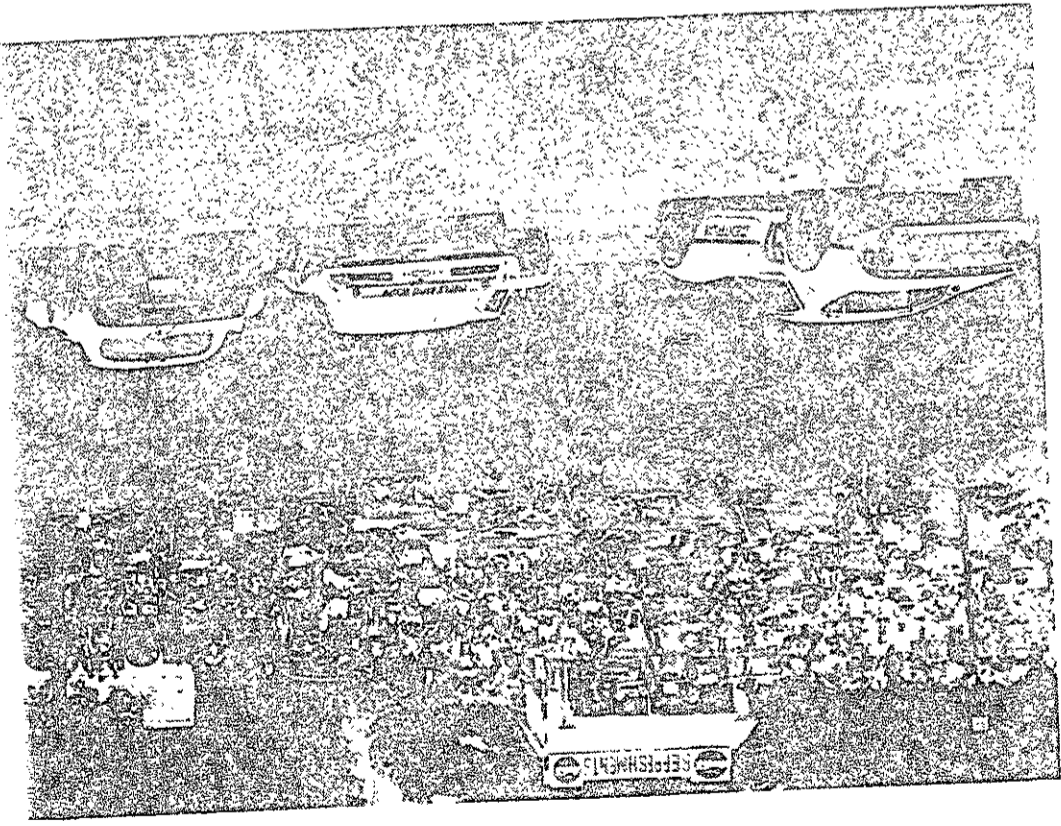
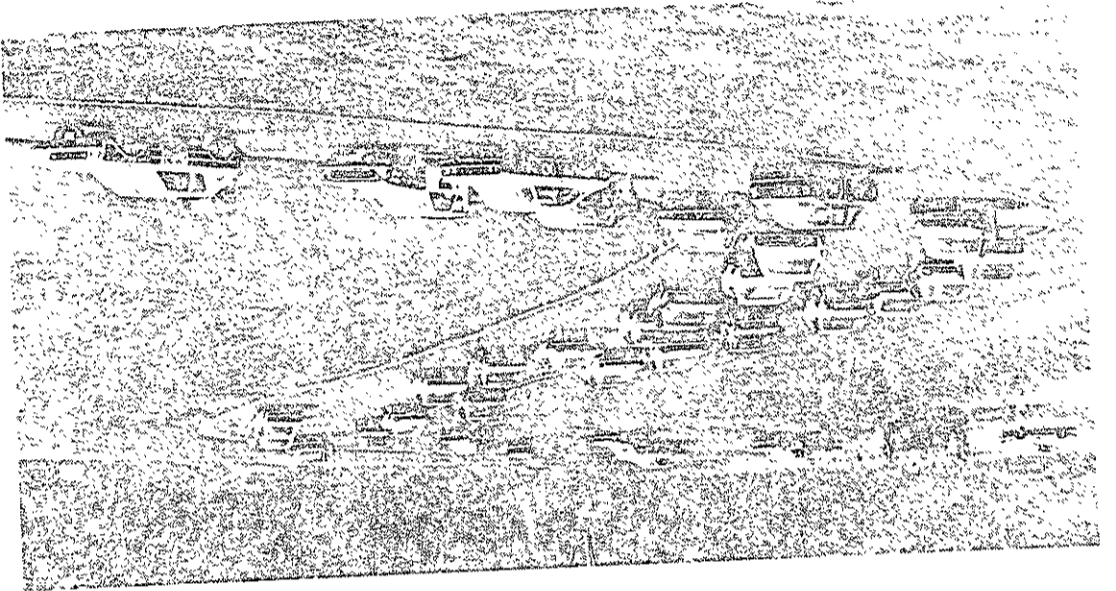
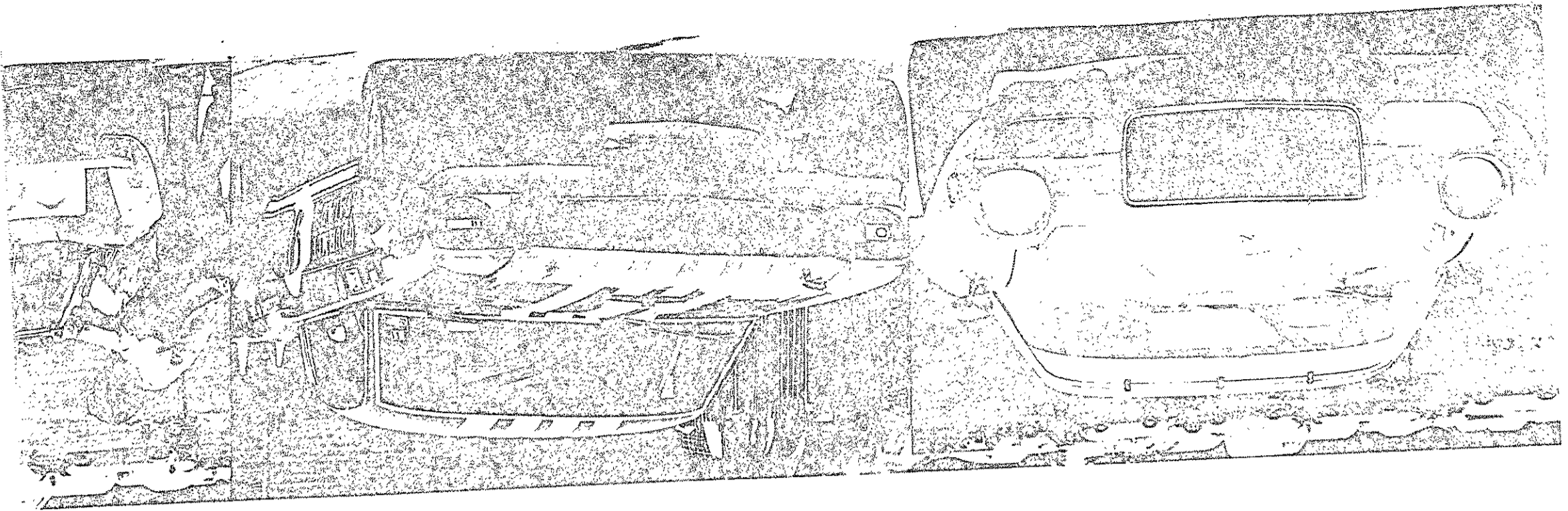
280 Friend Street, Boston

742-2029

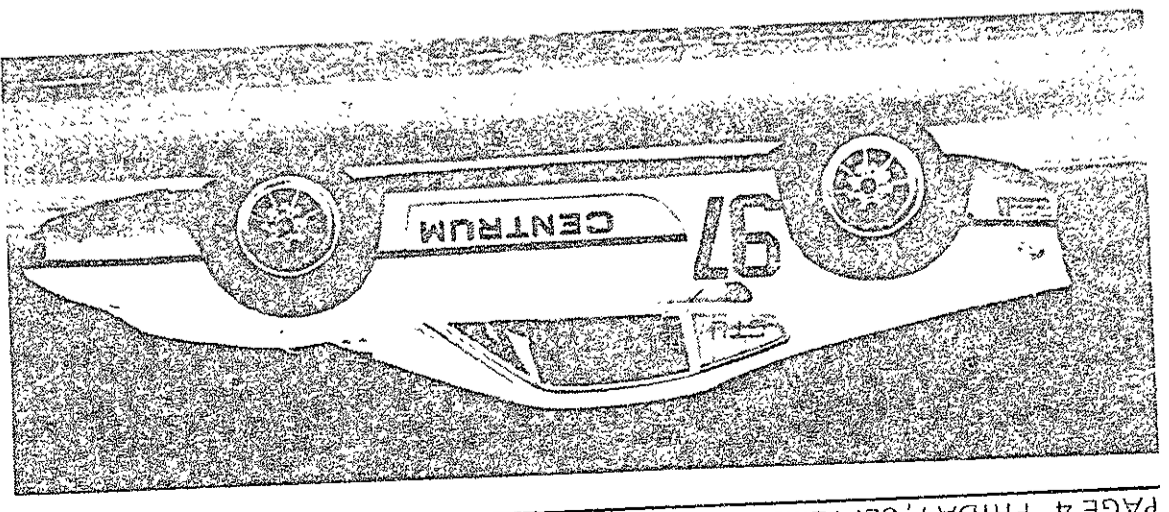


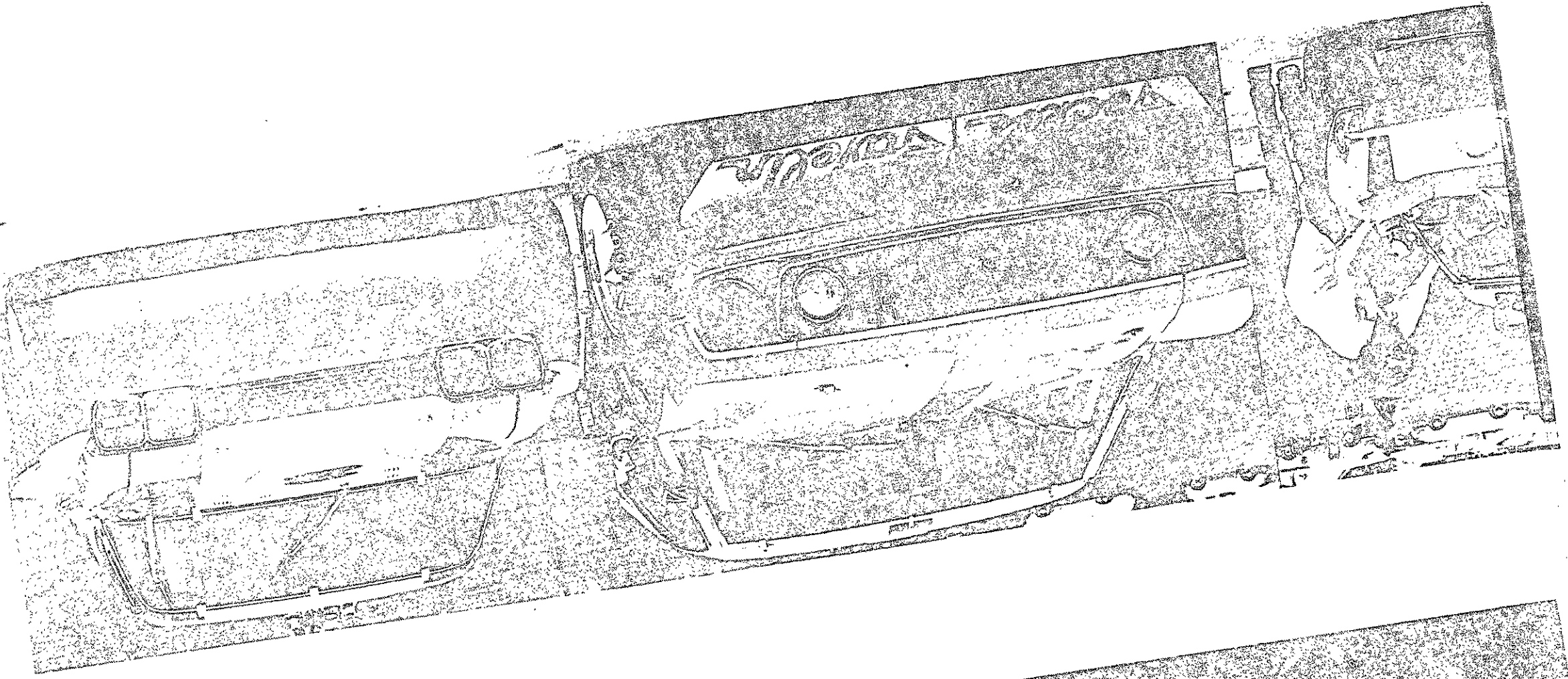
* FREE PARKING
ACROSS STREET

STUDENT OR FACULTY I.D. REQUIRED FOR ADMITTANCE TO SHOWROOM

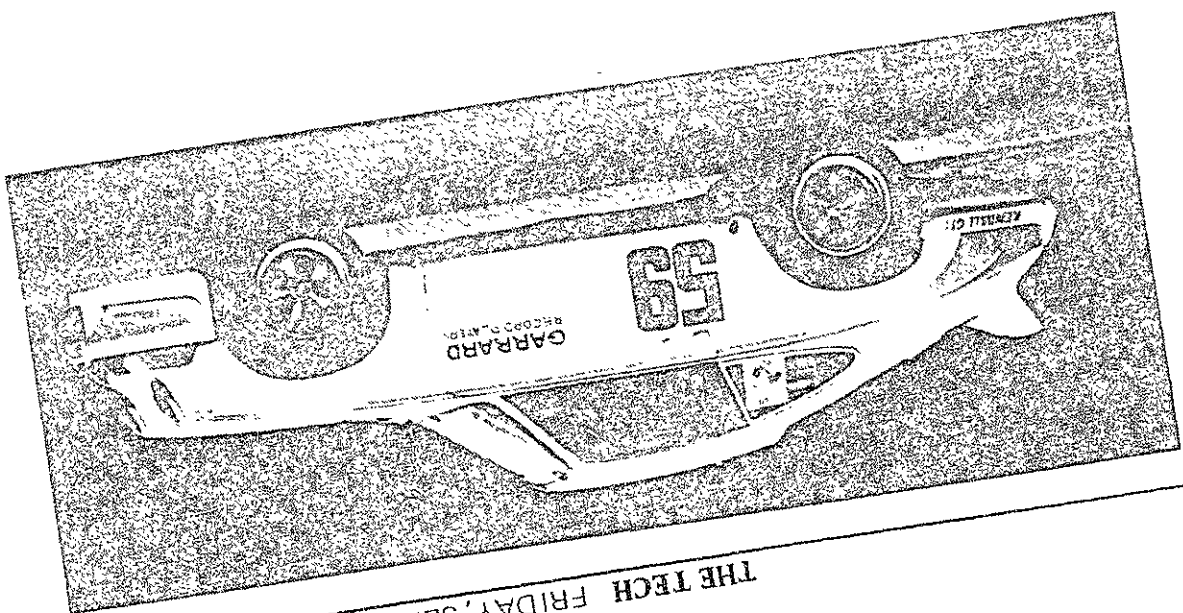
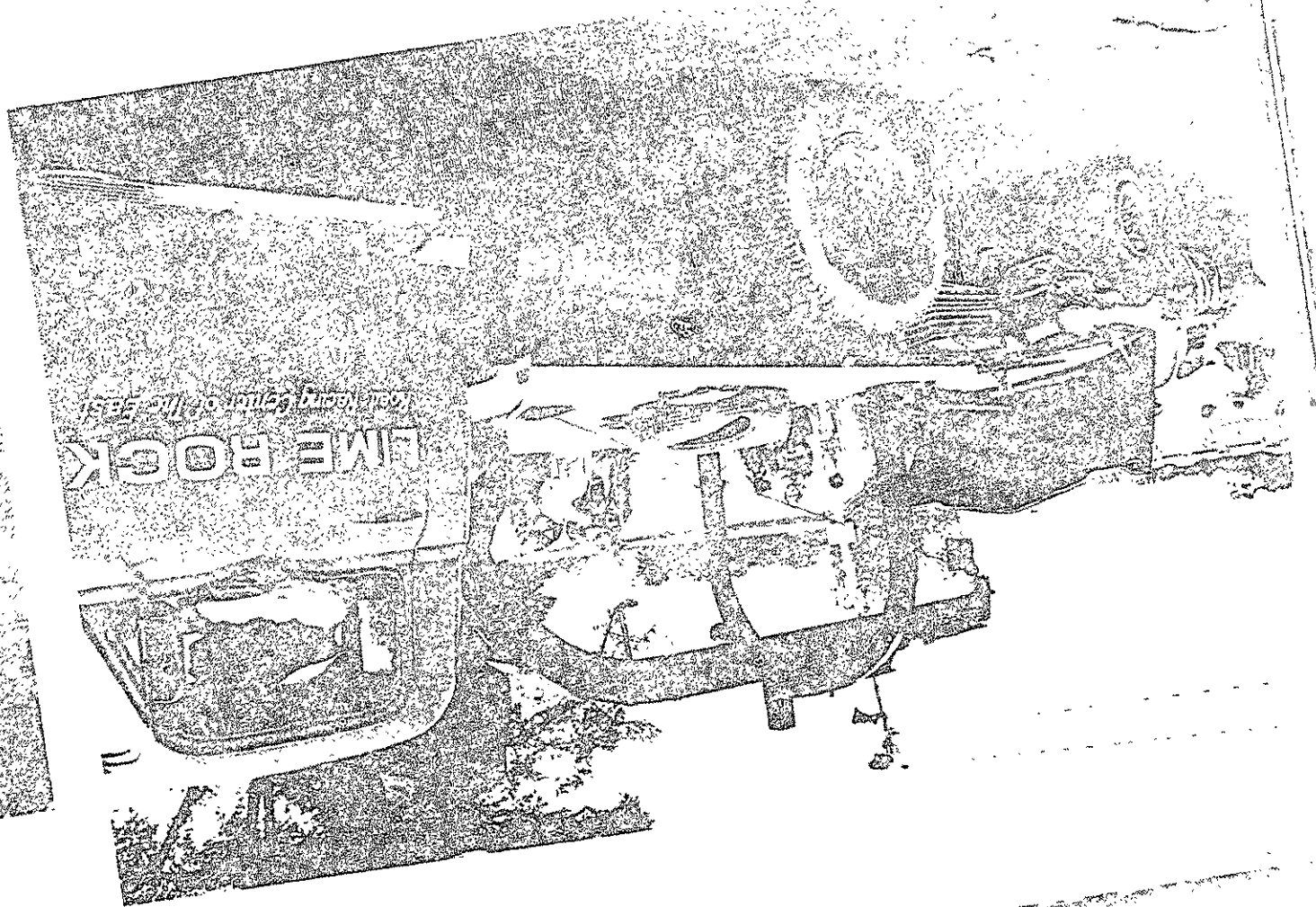
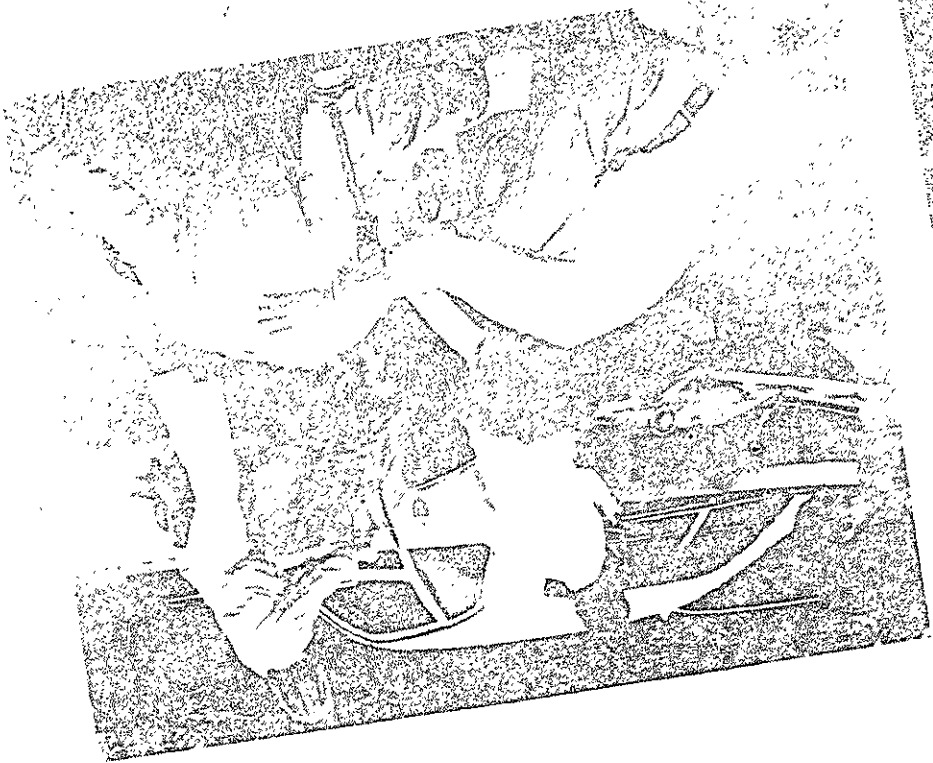


LIME

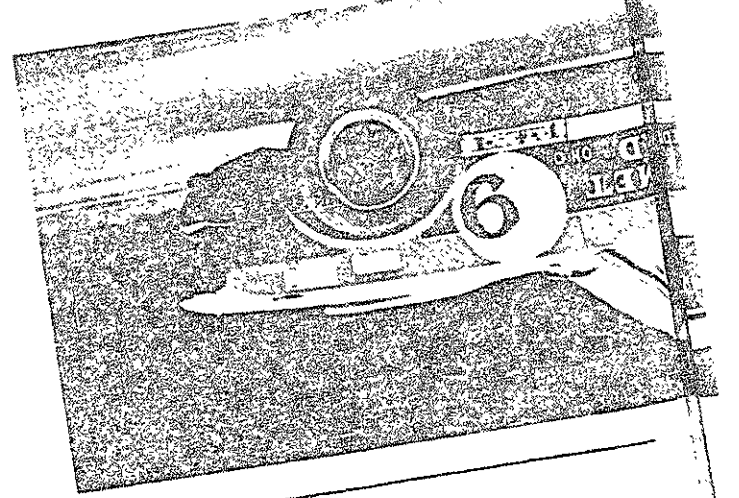




Photos by David Green
and David Tenenbaum



ROCK



Police Blotter

Police Blotter is a compilation prepared by Campus Patrol to report crimes occurring in the MIT community.

9/13/73

Motor vehicle stolen in Boston recovered in East Garage.

1:24 am; Westgate patrol apprehends a suspect in Westgate parking lot attempting to gain entrance to a motor vehicle. Subject placed under arrest. Motor vehicle which suspect drove into parking lot area was reported stolen in Cambridge.

9/14/73

10 pm: Motor vehicle stolen in Brookline on 9/12 recovered on Memorial Drive near McCormick.

Theft of Building 41 phone equipment reported. Patrol is investigating.

9/16/73

Resident of McCormick reports theft of trunk from basement of McCormick hall. The four foot long, blue trunk was deposited outside the baggage room. The Patrol is investigating.

9/17/73

Patrol noticed four students causing damage to pin ball machines; no new damage was discovered. Students were attempting to manipulate machine and gain free games.

9/18/73

Patrol received second complaint of man in basement ladies

room in Student Center at 6 pm. Suspect is being sought on description supplied by complainant.

9/19/73

Attempted larceny of motor vehicle parked on Danforth St.; prevented by Patrol activity, 1 am.

Parking meter found in pos-

session of students in Building 10, 12:20 am. Returned to city.

Two subjects observed examining a vehicle near Audrey St. and Memorial Drive at 3 am. Subjects saw Patrol, ran to motor vehicle nearby, departed at high speed with lights out. Description transmitted to all patrols.

POT LUCK COFFEEHOUSE RE-OPENS TONIGHT!!

LIVE ENTERTAINMENT - REFRESHMENTS - FREE !!

**EVERY FRIDAY AND SATURDAY NIGHT
8:30 pm - Midnite**

MEZZANINE LOUNGE -- STUDENT CENTER

Note: We are in need of performers and volunteers to help with the setup. If you can help (or know someone who can) call x3-3916, or leave a note in the SCC office, Student Center Room 347.

Meet new friends at the Museum.



Take a Bacchante to lunch, or rendezvous with a Roman Emperor. Just \$5 gets you a Student Admission Card, good for a year's free admission to the Museum of Fine Arts. For only \$5 more, you get a Student Membership... the same free admission, plus invitations to special exhibitions, plus a 10% discount on your sales desk purchases. Bring your Student ID card, and sign up now.

**Museum of Fine Arts
Huntington Avenue & The Fenway
Boston**

Admission to Museum is required for purchase of these cards.

the Coop

MIT STUDENT CENTER

OUTDOOR

SALE

TODAY

(FRIDAY)

WEATHER PERMITTING
10AM to 4PM
ON KRESGE PLAZA
adjoining the
STUDENT CENTER

SAVE

1/3

TO

2/3

AND MORE

SLIGHTLY HURT
HARD COVER
TECHNICAL
BOOKS
30¢

were \$4 to \$10

MEN'S BOUTIQUE
CLOTHING

MISSES and JUNIOR
SPORTSWEAR

POPULAR and
CLASSICAL RECORDS

ART PRINTS
and POSTERS

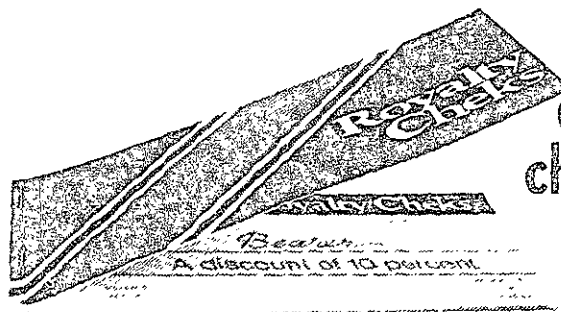
SHEETS, TOWELS
and PILLOWS

ALL SALES FINAL

- Albion Record Lane Inc.
- The Bugatti
- Bowl & Board
- Brattle Square Florist
- Cambridge Coffee Tea & Spice
- Cambridge Photo and Sound
- Camera Obscura
- Chez Dreyfus Restaurant
- Central Square Hardware & Tool Rental Co.
- J. H. Corcoran & Co. Inc.
- Elbery Ford
- Grazzy Furs
- Kopersmith Florist
- The Old Cambridge Co. Inc.
- Phillips-Brentanos
- The Pot Shop of Cambridge
- The Prep Shop, Inc.
- Rogers of Harvard Square
- Rogers Jewelry
- Sollingers
- Tennis & Squash Shop
- Terra-Cotta Inc.
- Upper Crust Boutique
- Zorbas Restaurant

save
\$ up to **100!**

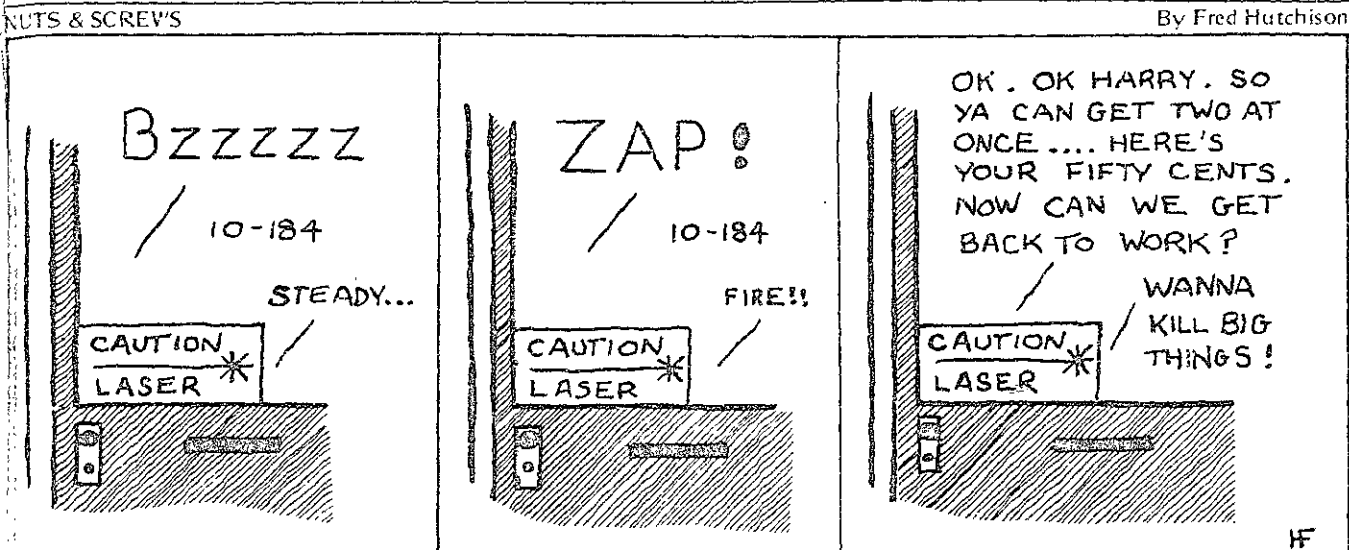
Charlesbank Trust will give you a discount book filled with ROYALTY CHEKS... each good for a cash discount from these well known Cambridge merchants. Simply open or add to your savings or checking account and get this valuable discount book. Now you'll receive 5%, 10% and up to 20% discount from these stores. Its our way of treating you like Royalty.



Charlesbank Trust



Kendall Square, 124 Broadway, Central Square, 671 Mass Ave., Harvard Square, One Boylston St.
Telephone: 864-4444



Sturgeon to give LSC talk

(Continued from page 1)
has made himself into the finest conscious artist science fiction has ever had . . ."

Judith Merrill said simply, "The man has style."

None of which indicates that Sturgeon can get through a single sentence as a speaker, except that Merrill's entire article characterizes him as an engaging and complex man; thus we can hold out some hope of an engaging and complex lecture.

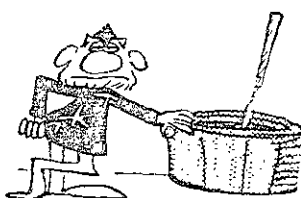
Sturgeon could be the toast of two continents as a person,

without receiving an invitation to speak at MIT. The invitation is predicated on what he has written, and how it stands out from what anyone and everyone else has written.

Sturgeon has been accused of sinning against English for comparing marmalade to stained glass, but his images, of "violins and stained glass and velvet and little needles in your throat," as Knight put it, are compelling.

His fame is built at least partially on two major departures from the usual standards of

the genre. His stories do not tend to be peopled by wheeler-dealer heroes (epitomized by Juban Harshaw in Heinlein's *Stranger in a Strange Land*, but present in all of his books, and in those of most other authors); instead, they are the little people, including a few bulldozer operators.



SCEP holds first meeting

By Bill Conklin

The Student Committee on Educational Policy held its first meeting of the year last Wednesday.

Matt Farber, Chairman, and Robert Sacks, Secretary and Director of Projects, reviewed last year's projects and outlined goals for the coming year.

The three major projects proposed by the committee for this year were the sponsoring of educational lectures, a study of degrees and grading, and an evaluation of courses.

Last year, SCEP co-sponsored three lectures with TCA and the UA. "Relatively speaking, last year's lectures were a success," commented Sacks. "They were meant to be a learning experience for students, and they were."

The main problem discussed in connection with last year's lectures was lack of publicity, according to Sacks.

The study on grades will cover inflation in recent years, the philosophy of grading, and present Institute requirements, which have not been changed since 1964. Comparisons will be made with grade systems of other schools.

SCEP may propose new criteria on requirements to the Committee on Educational Policy based on their findings. Last

year SCEP opposed the adoption of the 60-unit limit for freshmen, arguing that the limit would inhibit exploration and experimentation by freshmen.

The student committee also decided to take a survey of freshmen and sophomores to answer questions on the problem of choosing a major.

A proposal was discussed to follow fifty of the freshmen throughout their college careers, and study their changes in majors and the reasons for them.

The committee discussed the problem of finding enough people to carry on projects. "We need to get people to work on projects that they are particularly interested in," said Sacks. Lack of personnel was a major problem last year.

At present, the SCEP is comprised of eleven graduate and undergraduate students. "We are supposed to represent the students' point of view to the CEP and act as a sounding board for ideas," explained Sacks.

"Foam Rubber Is Our Business"

FOAM RUBBER

AND POLYURETHANE FOAM & DACRON

FOR EVERY PURPOSE

CUT TO ANY SIZE & SHAPE AT NO EXTRA CHARGE

DISCOUNT PRICES

MATTRESSES - CUSHIONS - BOLSTERS
PILLOWS - PADS - SHREDDED
IMPORTED DANISH DESIGN FURNITURE
& Cover Replacements

Made To Order in Vinyls & Upholstery Fabrics

FOAM RUBBER DISCOUNT CENTER

Telephone 254-4819 165 Brighton Ave. Allston
STORE HOURS: DAILY 9 A.M. TO 5:30 P.M. SATURDAY TO 4:30 P.M.

The Historical OLD VILNA SHUL

16 PHILLIPS STREET, BEACON HILL, BOSTON

Invites Its Friends to Join Them for the High Holy Days

TRADITIONAL ORTHODOX SERVICES

Rosh Hashonah, Sept. 27, 28

Evening Services 6:00, Morning Services 7:30

Yom Kippur, Oct. 6

Kol Nidre: 5:30 Morning Service 7:00 Yiskor: 10:30 a.m.

NO CHARGE FOR SEATS

Apartment insurance, in a low-cost package.

Our single, low-cost coverage protects all your personal property, including credit cards. And not just in your apartment, but world-wide.

W. T. Phelan & Co.

Insurance Agency, Inc.

11 Dunster St., Harvard Square (next to the Holyoke Center)
876-0876. Representing Aetna, Travelers, Hartford.

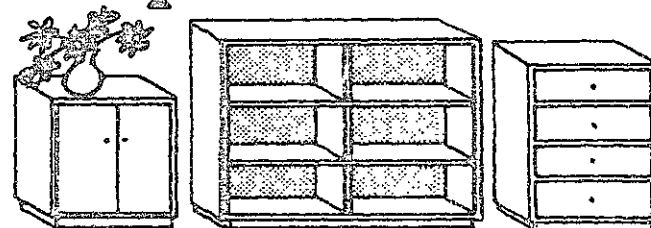
Seniors!

Last chance for yearbook portraits

Sittings Sept. 24-28

Phone dl 9167, x2980 or drop in at W20-451

Select group of ready-to-finish maple furniture



cabinets, bookcases, chests, desks, beds, tables, chairs, shelving etc.

Country Workshop II

2527 Mass Ave. Cambridge (617) 876-2262
Mon-Fri. 11-6, Sat. 10-5, Thurs. Eve. 7-9

Headquarters

DENIM JEANS
LEVI'S • LEE • WRANGLER

HIKING BOOTS
DUNHAM TYROLEANS

TURTLENECK JERSEYS
2.98

Central War Surplus
433 MASS. AVE
Central Square
Cambridge

IS YOUR CLASSROOM EDUCATION ENOUGH ??!

Be a *Volunteer* through the **Urban Action** volunteer & resource center
Student Center Rm. 437 x3-2894

Do Yourself A Favor — — Volunteer

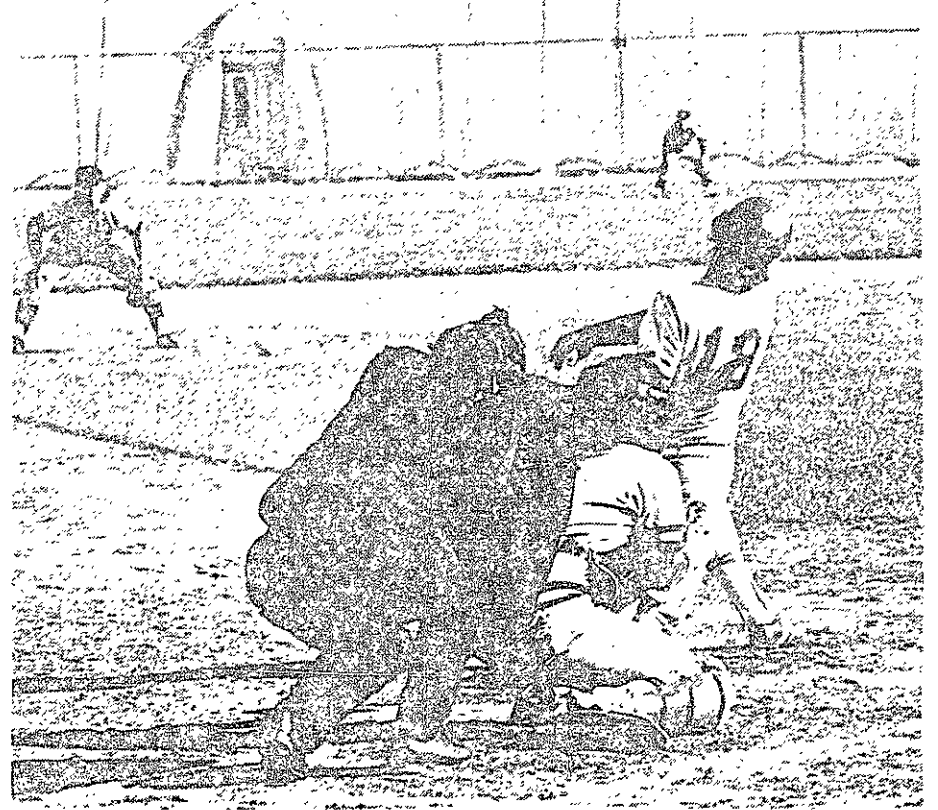
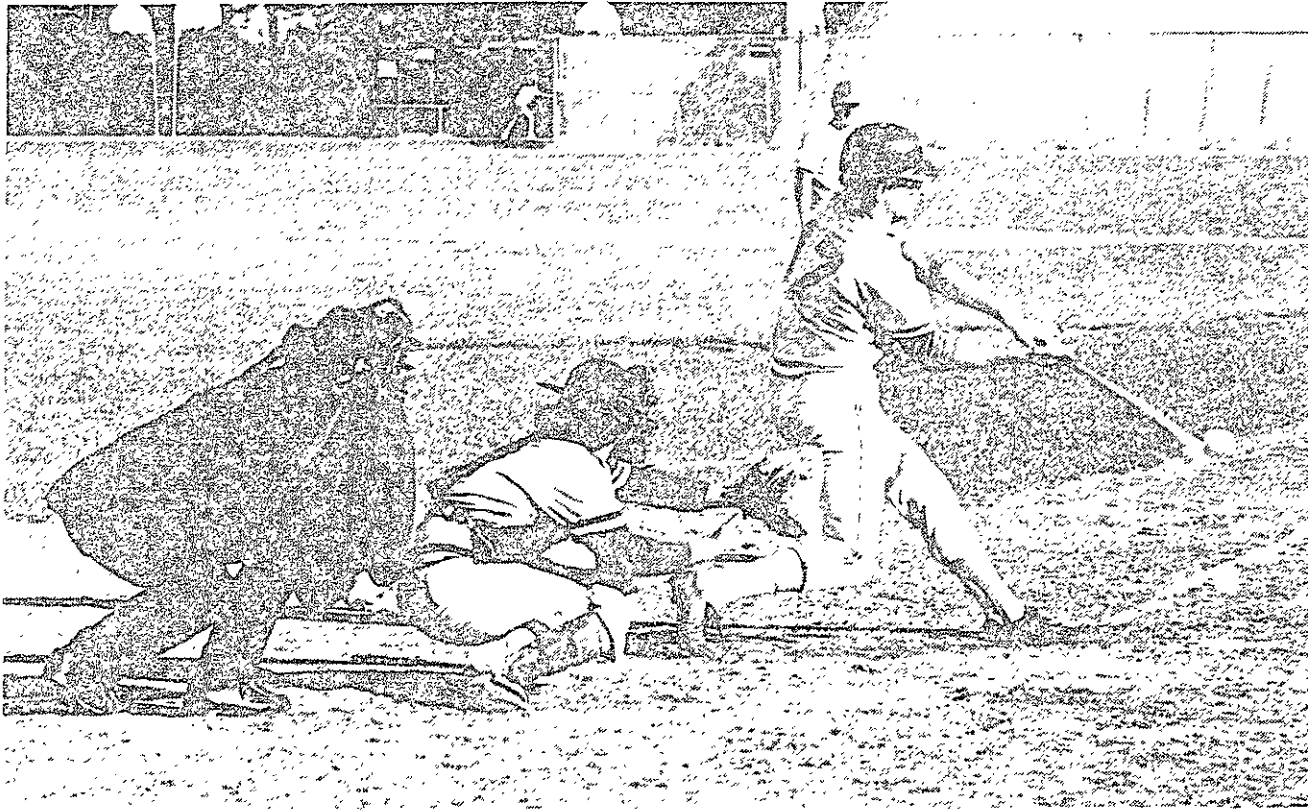
There will be an open meeting for all undergraduates interested in the COMMITTEES on

EDUCATIONAL POLICY
ACADEMIC PERFORMANCE
CURRICULUM and GRADES

on Tuesday, Sept. 25 at 5pm in the Mezzanine Lounge of the Student Center. Refreshments will be served.

Hearings for the Ad Hoc Committee on Grades will then be on Thursday, Sept. 27. All persons interested in this committee must make an appointment for a hearing no later than 2pm on Wednesday, Sept. 26. For more information call x3-2696 or drop by Room 403 of the Student Center.

THE NOMINATIONS COMMITTEE



Photos by Roger Goldstein

Sports

Sailors' 1st weekend: one victory, 2 close

The MIT men's sailing team opened its season last weekend with four regattas, and came away with one first place and three seconds.

On Saturday and Sunday, team captain Steve Cucchiaro '74 skippered MIT's entry in a team race between the New England and Middle Atlantic Intercollegiate Sailing Associations. The event was sailed in Raven class sloops at the United States Coast Guard Academy in New London, Connecticut, and Paul Erb '76, Larry DuBois '76, and Tom Freeman '77 crewed with Cucchiaro. The New England squad, filled out by teams from Tufts and Coast Guard, won the series handily, five races to two.

Chuck Tucker '75, Arsenio Nunez '74, George Todd '76 and Walter Frank '74 represented MIT in a dinghy invitational at Tufts on Saturday. Tucker sailed in A-Division, with Nunez crewing, while Todd and Frank co-skippered in "B." The Tech sailors finished second to Tufts in the light shifty wind, followed by Brown, Boston University, and Coast Guard.

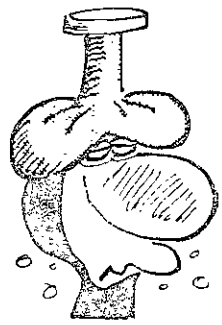
On Sunday the Charles River was the scene of a three-crew race among MIT, Tufts, and Coast Guard. Tufts dominated the sailing throughout the day, and MIT, represented by Kevin Sullivan '73, Frank, and Randy Young '74, with Chuck Johnson '76, Guy Consolmagno '74, and Bill Rizzi '76, respectively, as crew, placed second.

The MIT freshman team competed Sunday in an invitational regatta at Tufts, and placed sec-

ond in the four-school field. Tufts won the event, and following the Tech mariners were Coast Guard and the University of Massachusetts/Amherst. Dave Fish, Chriss Donnelly, Steve Ryan, Bill Critch, and Kerry Emanuel sailed for the Engineers.

Upcoming action this weekend will be highlighted by the Women's New England Single-handed Championships at MIT tomorrow and Sunday and the Hap Moore Trophy Regatta at the Coast Guard Academy on Sunday.

Tomorrow the men's varsity will also compete in a dinghy invitational at Harvard, while the freshmen men will sail at Harvard on Sunday.



The field hockey team is now practicing Monday-Friday between 4:30 and 6 pm on Briggs Field. Their first game will be September 26. Anyone interested in joining the team, no experience required, should come to practice or contact Mary-Lou Sayles, x3-7946.

Batters slam Graham, 5-1

By Dan Gantt

In his first appearance in a varsity baseball game, freshman Dan Sunberg earned a permanent spot in the MIT record books last Monday as the first designated hitter ever to wear the Engineers' uniform. Sunberg was not the only new wrinkle in the MIT offense, however, as the Engineers also used their first metal baseball bat to help defeat Graham Jr. College 5-1 in the opening game of the fall season.

Both of these innovations

came about due to recent NCAA rules in an admirable effort to update the staid game of baseball at the college level. For those familiar with the American League's designated hitter rule, that instituted by the NCAA is noticeably different. The college coach is not held to using his DH for his pitcher and can, therefore, exercise somewhat more latitude in his batting order.

Coach O'Brien chose to bat Sunberg in the number six slot to hit for the shortstop and was

rewarded for his choice as Sunberg was hit with a pitch in his first trip to the plate. His other two times at bat, Sunberg walked and so he is untried as a designated hitter.

The squad looked amazingly good against Graham for a game so early in the season. Good pitching, clutch hitting, and alert baserunning all contributed to the win.

MIT plated all of its tallies in the first four innings: one in the first on a Steve Reber '74 RBI single, one in the third on a double steal beautifully executed by Reber and Dave Rirrell '74, and three in the fourth on two walks and singles by Bill Sayers '74, Tirrell, and Herb Kummer '75.

Pitchers Dave Yauch '75, Don Proper '75, and Mike Royal '76 combined to yield but a single late-inning run and should form the nucleus of a promising staff.

O'Brien began to substitute freely in the middle innings, getting a good look at some of his younger players. This is a primary purpose of the fall schedule which continues this afternoon at 4:30 with a contest against Mass. Bay Community College on Briggs Field.

IM NOTES

Intramural Council Meeting: Tuesday, September 25, 1973 at 7:30 pm in the Varsity Club Lounge. Election of managers for bowling, cycling, and wrestling will be held. Cider and doughnuts will be served after the meeting.

in the IM tennis manager's box in the IM Manager's Office (W32-121). For more information, call x3-7947.

Football

The football season will begin this weekend; please note that there are several additions to the rules, which have been mailed to all teams. For more information, contact the IM Office, x3-7947 or Mike Cucchissi, 267-5898 or 247-8124.

Tennis

Rosters for this year's IM Tennis season are due today, September 21, by 5 pm. They should be left



Photo by Dave Relman

Though their season doesn't open for over a week, the first meet being the Engineer's Cup vs. WPI and RPI at Troy on September 29. The cross county team has been practicing regularly. This is how they looked Wednesday, before their multi-mile workout.

Soccer Coach wanted once a week for an after-school class of young boys in Arlington. 10 sessions (person will be paid per session). 646-3414.

GAY DANCERS
9-11 AM EVERY FRIDAY
CHARLES ST. AT HOUSE
AT VERANO & CARRIES

Take a long weekend and sail the Maine Coast in its most beautiful season:

Special offer to College Students

FALL WEEKEND CRUISES
aboard the 81' schooner
"NATHANIEL BOWDITCH"

Sept. 21, 28
Oct. 5, 12, 19, 26
\$50/person
includes six delicious meals and 2 nights aboard.

Sail from picturesque Bucks Harbor at 5:30 Friday eve. Return Sunday noon

Call (207)-326-4345 for Reservations and information.

The Tech

Keep up with what's going on at MIT
Have The Tech mailed to your home
Great for parents

The Tech, P.O. Box 29, MIT Branch P.O., Cambridge, MA 02139

U.S. Mail Rates: _____ 1 Year: \$5 _____ 2 Years: \$9

NAME _____

ADDRESS _____

CITY _____ STATE _____ ZIP _____

Second class postage paid at Boston, Massachusetts. The Tech is published twice a week during the college year, except during college vacations, and once during the first week in August, by The Tech, Room W20-483, MIT Student Center, 84 Massachusetts Avenue, Cambridge, Massachusetts 02139. Telephone: Area Code 617 253-1541 or 253-2731. United States Mail subscription rates: \$5.00 for one year, \$9.00 for two years.

Friday, September 21, 1973