

Frats report rush violations

By Paul Schindler

Interfraternity Council (IFC) officials refused on Monday to comment on reports of an unusually high number of rush violations this year.

David Bernstein '74 (SPE), IFC Chairman, would say only that the IFC Judicial Committee (Judcomm) met Friday to decide which complaints to proceed on, and that no final actions of any type have been taken.

Drew Jaglom '74 (DTD), Judcomm chairman, refused to release the names of any of the fraternities or charges involved. He stated emphatically that no decisions have been made, or fines charged, and declared that Friday's meeting only served to remove trivial or already solved cases from the agenda.

As of late Sunday night, no new Judcomm meeting was scheduled, according to Jaglom, who is waiting for Judcomm members to turn in their schedules to him. He expects to set a meeting date today.

Members of IFC Judcomm are Jaglom, secretary Sunchai Rajadhon '76 (SPE), Sal Molica '75 (LCA), Dick Michel '76 (SAE), Mark Suchon '76 (DU), Frank Suak '74 (TC), Rich Inz '76 (ZBT), and Joe Sacco '75 (SN).

Jaglom would only say that he has received "about ten" complaints by telephone and "a couple" of written complaints. He stated that Judcomm will take no action without a written complaint, but noted that the uncertainty as to how many complaints have been filed stems from disagreement over the necessary contents of a complaint.

"I expect several more written complaints by Tuesday," Jaglom said, "at which time Judcomm will try to set a meeting to determine a hearings schedule and then give the houses involved the needed one week notice."

Seven of the eight committee members compose Judcomm. Jaglom will detach two to perform each investigation, the results of which will be examined by the other five in private session.

"I reserve the option, on the advice of Judcomm, not to release the names or fines of fraternities found in violation of rush rules. However, I do not envision any need for secrecy."

Jaglom said he had followed the Judcomm's constitutional mandate to solve as many problems as possible informally.

He also noted that complaints "can be made by anyone," and that they were not necessarily good indications of wrongdoing.

Violations

In spite of the unwillingness of IFC officials to comment, *The Tech* has learned of several actions that have been taken with regard to possible Rush Week violations.

- Baker House was accused by at least AEP and possibly other houses of interfering with the passage of freshmen and rushing. Baker denied the charges and according to Assistant Dean for Student Affairs Ken Browning, the dispute was worked out during Rush Week.

- DKE had a complaint registered against it for putting a sign behind Linda Tufts, Undergraduate Association President, during her speech to the freshmen.

- ZBT has allegedly had complaints filed against it for rushing during the Freshman Picnic and having an airplane fly over the grounds before the picnic ended. Rumors that the fraternity has been fined \$200 for each violation are completely unfounded, according to Jaglom.

- SAE appears to have the largest number of complaints filed against it, including one by the Clearinghouse that it did not turn in overnight cards, and another by LCA listing a variety of charges.

The Clearinghouse complaint contends that SAE was negligent in returning cards which make it possible to trace the location of freshmen by knowing their first location in the morning.

One Clearinghouse worker called SAE "notoriously negligent about answering their phone and helping locate freshmen."

The most serious allegations, however, appear to be those made by LCA. The fraternity has reportedly filed several typed pages of complaints about alleged SAE rush rule violations. No details on the report were available, but sources report it was prepared by the LCA President and the Rush Chairman.

The complaint is said to mention specific, judgeable propositions for Judcomm to consider, as well as some general comments. According to one LCA brother, "it has already put a strain on relations between the two houses and the individuals in them."

"I hope it blows over soon, or there will be hard feelings for a long time," he added.

IFC sources mention at least two major violations, one involving access and another involving pledging.

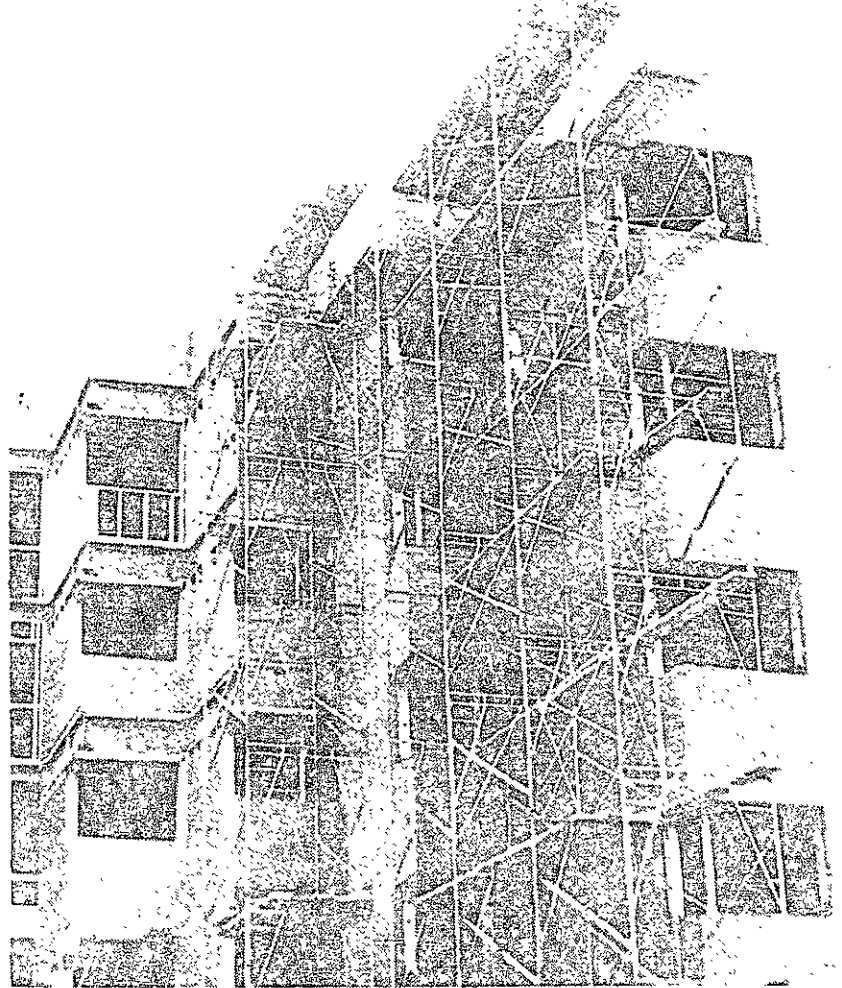
SAE allegedly signed a freshman out to Boston while he was standing on the house's front porch, and another fraternity wanted to talk to him.

More serious is the allegation that a freshman was bid, and then refused as a pledge. The refusal was reportedly indirect, couched in terms of, "we are full, and if we bring you in we will be overcrowded."

Causes

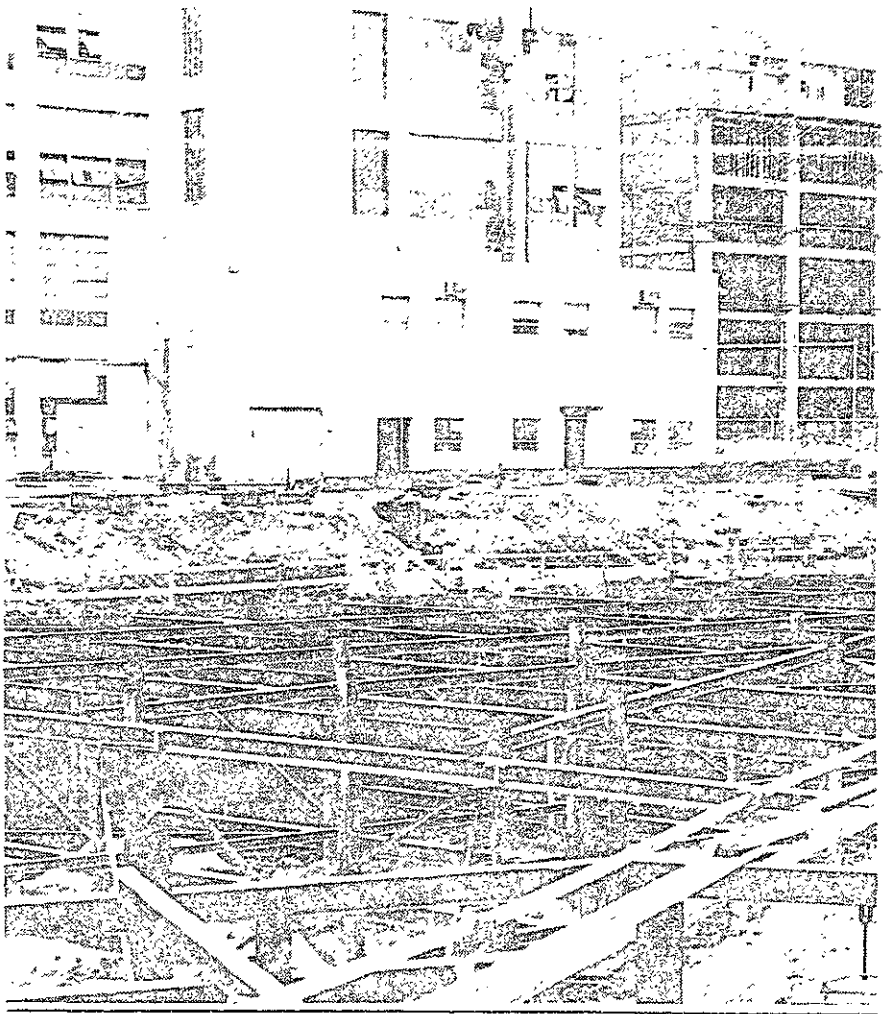
Browning was asked for possible causes and any comment he might have on the allegations, but stated, "It is too early to say anything. Comment would be misleading."

"I am not sure if there were
(Please turn to page 3)



Construction continues apace on three projects; the combined ATO-KS project, shown above, and the Chemical Engineering building (foreground) as well as the Mudd Building (background, home of the Cancer Center) shown below. Details in "New projects on time" on page 7.

Photos by Craig W. Reynolds



CP intensifies area patrols

By Stephan Maltenbaum

While denying any sharp increases in crime at MIT in recent years, the Campus Patrol this week announced plans to intensify crime preventive measures.

Patrol Chief James Olivieri said the Patrol has embarked on a "multi-phase crime prevention program" to keep the MIT statistics down, as national crime figures increase.

Olivieri expressed concern over a "gradual rise" in certain crime rates on the MIT campus in the past two years, including personal assaults. However, he said he was confident the Patrol will be more effective in keeping the rates down by working as a preventive unit rather than being called in "after the fact."

The first stage of the program, according to the Patrol head, is campus-wide distribution of information and advice to students to combat larcenies and assaults. Specifi-

cally, the Patrol is urging students to lock all personal effects, report all suspicious persons seen loitering around living groups and secure all valuables safely.

Olivieri said the first phase would focus on preventing possible crimes, while a second program will be aimed at both preventing theft of personal belongings and making robbery less profitable by making items more difficult for thieves to re-sell.

"Operation Identification" will encourage students to engrave identifying numbers on all valuables with electric engravers available from the Patrol. Olivieri said the marked items, being readily identifiable if stolen, are harder to re-sell, acting as a deterrent from being stolen.

The final aspect of the Patrol's anti-crime effort will be aimed at cutting down on bicycle theft by supervising bicycle lock-up areas, informing students of new locking devices,

and warning them of high crime areas.

Olivieri emphasized that "security is everyone's problem," and urged students to take advantage of services offered by the Patrol.

City voting commissioners refuse to register students

By Barb Moore

The Cambridge Election Commission has upheld its previous decision to deny voter status as Cambridge residents to three students, residing in Cambridge for the academic term. The students, two from MIT and one from Harvard, had originally been refused voter registration by Commissioner Edward Swamp, Jr., prior to the presidential election last year. This decision had been held invalid as "discriminatory," and new hearings were ordered for the three. This refusal upheld the original decision to refuse voter registration.

These three students, along with over a hundred others,

appeared at hearings before the Commission after the original refusal. At these hearings, they were still denied registration, and sought declaratory and injunctive relief in Middlesex Superior Court. Last December 22, this refusal was held invalid, finding that residency requirements could be used as a "discriminatory presumption" against students.

John Reinstein, an attorney for the Civil Liberties Union of Massachusetts, has been representing the students, but had no comment on the recent action. Further appeal on the decision is planned, however.

A spokesman for the registration drive in Cambridge stated

that the decision is a continuation of the effort to prevent most university students from voting in Cambridge. "Cambridge is one of the few places in the United States which is still obstructing students' voting rights."

Several other members of the state legislature have criticized the action of the commission. Two State Representatives have filed legislation to resolve this and other similar problems throughout Massachusetts. "The Election Commission should realize that the time has come to put an end to this discriminatory policy once and for all, and to register citizens regardless of their occupation."

MIT Crime Statistics

	1970	1971	1972
Personal Property Loss	\$54,000	\$14,000	\$16,000
Bicycle thefts	186	246	119
Car thefts	170	168	136
Assaults	10	22	33
Rape	1	1	0

Innovation problems subject of seminar

Professor Y.T. Li of the Department of Aeronautics and Astronautics has believed for some time that the current method of training scientists and engineers was insufficient.

He believed it ignored instruction in areas such as patent law and marketing which is critical in taking a discovery from the laboratory to the public.

The National Science Foundation (NSF) agreed with Li and gave him \$1 million to run an experimental Innovation Center at MIT for five years.

The first organization meeting for the group will be held on Tuesday, September 11 at 3 pm in 35-225.

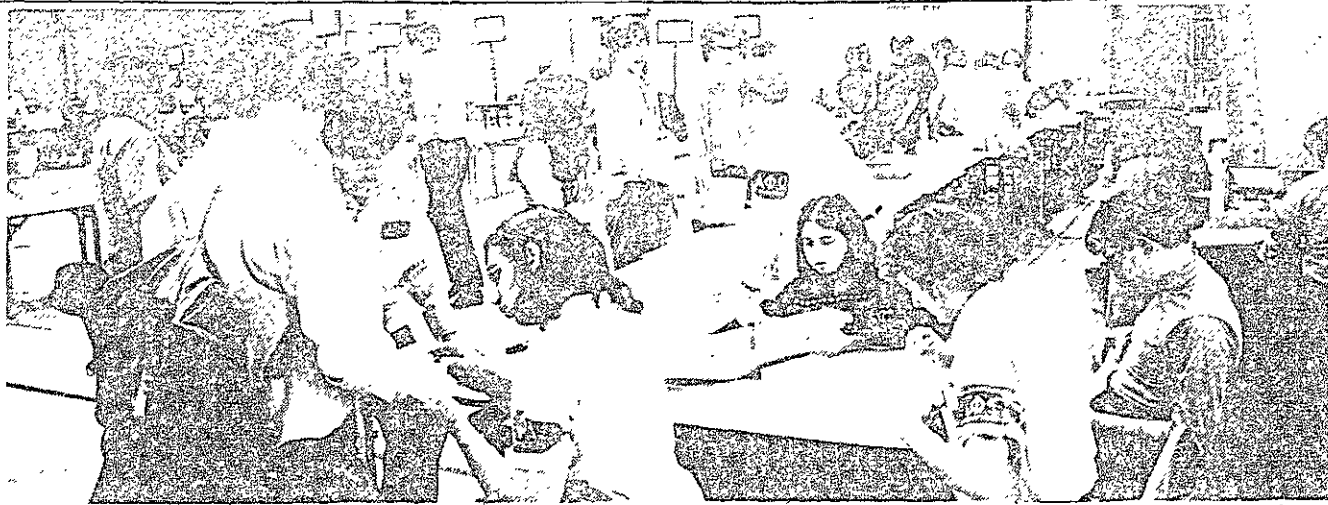
The Center will offer a lecture seminar and two special project seminars. 16.671, 672 and 673.

The special project seminars will concentrate on solution of some practical problems, while the seminar will discuss product evaluation, patents, and licensing, and will feature speakers who have both succeeded and failed at new product introduction.

Li is planning to start an Innovation co-op this fall to complement the educational program at the Center. Boston area industrialists have been lined up to help direct the co-op according to Li; they will pro-

vide assistance in developing specific concepts to the marketable stage.

Li's work has already received some publicity nationally; *Time* magazine noted his plan for saving the Leaning Tower of Pisa in the September 10 "Science" section. The Tower is the subject of one of the special project seminars.

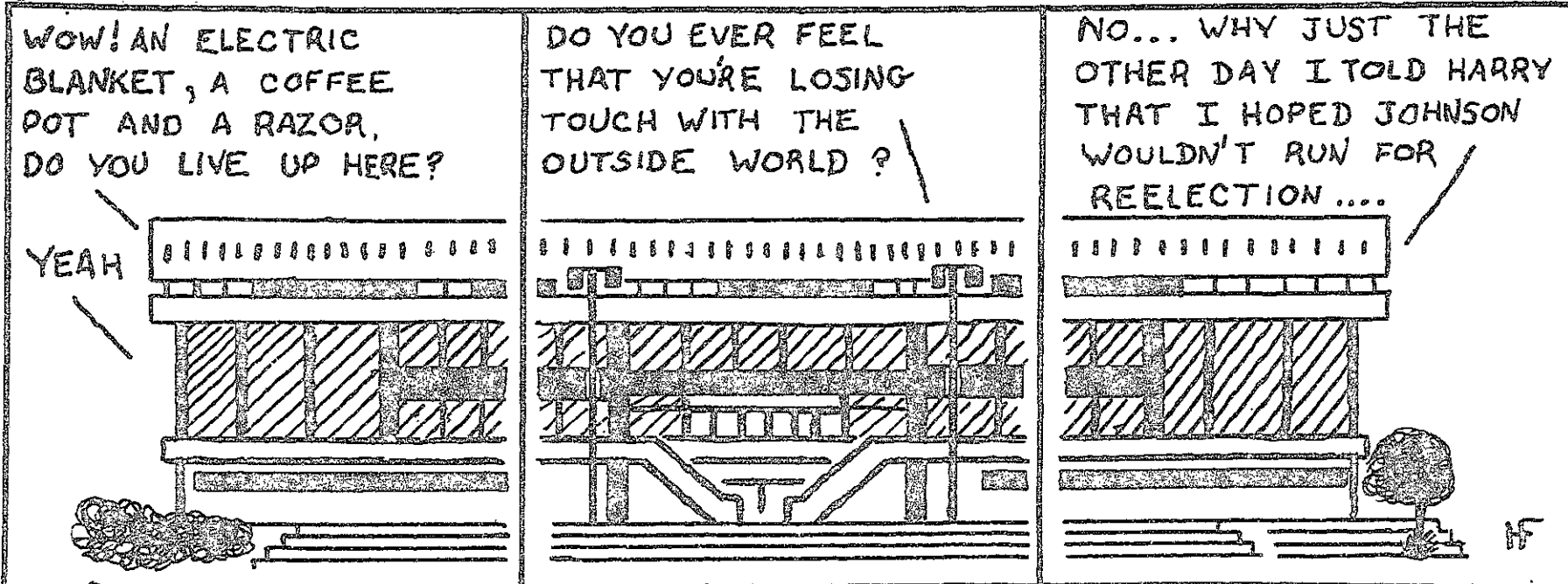


Registration took place Monday, complete with the usual APO monitors.

Photo by Roger Goldstein

Nuts & Screws

By Fred Hutchison



NOTES

* There will be a meeting of all those persons interested in working on FREE PARKING, the MIT magazine, on Sunday, September 16 at 7 pm in Walker Memorial, Room 50-316. All are welcome; no experience necessary. Call Steve or Larry at 492-5672 if you can't make it.

* The first rehearsal of the MIT Symphony Orchestra for this year will be on Tuesday, September 11 at 7:30 pm in Kresge Auditorium. All former members of the orchestra, who wish to play this year, as well as all those wishing to join, should attend. MIT and Wellesley freshmen are especially welcome.

* There will be a meeting of the wrestling team on Monday, September 17 at 4:30 pm in the wrestling room in Dupont. Anyone interested is invited to attend.

* The Graduate Student Council will meet today, Tuesday September 11, at 6 pm in the Blue Room of Walker Memorial (next to Pritchett). Course Evaluation Project Meeting, Saturday, September 15 at 10 am in W20-450 (TCA).

* MIT Early Music Choir is being organized, all voice parts needed. Auditions are being held on Monday, September 17 from 7-9 pm, 4-260. For further information, call Prof. Hallmark, 3-3260, 3-6931. Repertory to include English and Italian madrigals, medieval English carols, French chansons, Latin masses, and motets.

classified advertising

Student-oriented restaurant needs hard working energetic people for all jobs. Call between 10 and 5. 868-3607.

8.014 (Physics I, Seminar-tutorial Format) — Needs volunteer tutors, graduate and undergraduate. Credit for 8.299 may be obtained. If you can give two hours or more per week, contact Earle Lomon 3-4877, Room 6-304.

Work Study Students or Volunteers to work in an open setting after school learning center in Cambridge (near MIT). Inner C, children ages 5-12 — hours 2 pm to 5 pm, Mon. — Fri. (flexible). Call Audrey Jacobs at Tutoring Plus 547-7670 (4681) or at home, 661-1066.

The Tech needs a fast typist (at least 65 wpm) starting October 1. Minimum two days per week — good starting salary. Call John or Storm at x3-1541.

At Harvard Trust, a checking account makes more cents for your dollars.

SERVICE-CHARGE FREE CHECKING.

At Harvard Trust you are entitled to a service-charge free checking account simply by keeping \$100 in a Harvard Trust Savings Plan.

Most checking accounts give you an incentive to spend money.

At Harvard Trust, we give you a little incentive to save money.

And that makes sense for you.

 **HARVARD TRUST**
Bank on us.

Cambridge • Arlington • Belmont • Concord • Lexington • Littleton

Room allotments changed

By Paul Schindler

The departure of the Electrical Engineering (EE) Department from buildings 10 and 4 has resulted in major reconsideration of MIT's "space philosophy."

Current plans call for several student services to be located in the first floor area, including student employment and placement offices. Already existent in the area are the pre-law and pre-medical offices.

Plans for the second floor areas include a new office for Mary Rowe, offices for research groups from the Architecture Department and Urban Studies, as well as larger offices for Vice President James Lampert's resources development effort. Alumni Association offices will probably go into Lampert's old space. Some new classrooms will be created.

Administrators deny persistent rumors that new administration positions were being planned with office space located in the newly-freed area. Some new classrooms will almost definitely be created during the remodeling process.

The EE card-punching rooms will be staying under current plans, although the area around them is being remodelled.

At this time there are many contenders for the new space, according to Assistant to the Provost Joel Oren, but no final decisions have yet been made. "We are trying various fits to meet office space needs. I don't know when we'll reach a decision; the process has worked slowly to date.

"I thought the plans would be made by the end of the summer, so we're already late."

Provost Walter Rosenblith, who chairs the Institute Space Committee, told *The Tech* that "There is no master plan for office space allocation. We are only taking a prudent look ahead at the major pieces of real estate that are being opened up and the contenders for that space."

Rosenblith said current planning movement was the result of EE's move this summer, but included consideration of space in building 12 which will become available when the new Chemical Engineering building is opened.

"There have already been some moves into building 10, there will be others during the year," he said.

"Our philosophy in the next few years will make modernization of old space our primary mode if it continues to be difficult to get new buildings. We are preparing a general statement on these matters."

Rosenblith said the major concern of the Provost's office was in policy, not in specific implementation of policy. He said there is serious concern on his part about under-utilization of space by academic departments.

Student activity space is also on the agenda for the fall, Rosenblith added, with no determination yet made as to whether activities need more or less space. He suggested under-utilization of space was one area in need of serious study.

Rosenblith said he is planning to ask the Dean for Student Affairs and whatever students

she feels are an appropriate "cast" to assist in making decisions on a "more rational use of space."

One area in which student activities and academic activities currently share space is building 20. Rosenblith squelched the persistent rumors of the building's imminent destruction by pointing out that the new Humanities Dean, Harold Hanham, has recently moved in as have the Council for the Arts and the new education division.

Burglary

Over \$2,000 worth of goods were stolen from the Chi Phi fraternity in Boston's Back Bay last weekend.

The Boston Police Department is investigating; the Campus Patrol reports that the theft is out of their jurisdiction. The robbery occurred about 4 pm while members of the fraternity were at Plum Island playing football with pledges.

The thieves, two white females and one black male, gained entrance to the house by claiming that they had come for a visit. While one was playing pool with the pledge, the other two unlocked the back door of the house. All three then left.

They returned through the back door and took wallets, cash, four guitars, and a flute. They did not take many small valuable items including cameras, stereos, and watches.

In one room they removed a wallet from a pair of blue jeans, took the cash, left the credit cards, and stole the blue jeans.

Houses investigated for bid misdemeanor

(Continued from page 1)

more violations this year, or just more complaints," he added.

Browning also noted that "Publicity of the final decisions of Judcomm is likely. It may have a role to play in preventing future violations, by letting people know the violators."

One fraternity member told *The Tech*, "In the case of some houses, it may be competition

for athletes, but that is not the overall cause.

"There are a few good freshmen every year, with personalities that a lot of houses are looking for. One part of that personality is sports, so it may look like head-hunting for jocks."

He concluded, "It is not. It is achieving houses looking for achieving people."

MIT Musical Theatre Guild announces

AUDITIONS

FOR

Man of La Mancha

September 11-14

7:30-10:00pm

Tuesday	September 11	Room 407	MIT Student Center
Wednesday	September 12	Room 5	Kresge Auditorium
Thursday	September 13	Room 407	MIT Student Center
Friday	September 14	Room 5	Kresge Auditorium

Singers should prepare a musical selection from the show.

Orchestral players: come to auditions or call Bill Grossman at 489-2304

Technical crew positions: call Brian Rehrig at 494-9035
For further information call 253-6294 or Jack Mayer at 646-6694

Are you suffering from:

Bad service from merchants?

bad service from MIT?

Registration, finaid, housing hassles?

YOU NEED
HELP!

The Tech is now offering to apply its expertise at getting things done at MIT to your problems, and at the same time offers you a better chance of help on your commercial problems than a big Boston daily newspaper that processes hundreds or requests a day. HELP! is NOT a telephone hotline; it is a strictly mail-only service. PHONE CALL REQUESTS WILL NOT BE ACCEPTED.

Gather up everything you have on a problem -- documents, sworn statements, phone logs, secret memos, receipts, cancelled checks -- and either send them or the originals by inter-departmental mail to:

HELP!
The Tech
W20-483

being sure to include your name, year, address and phone number.

Even if we can't solve a problem, at least we can focus the bright light of publicity on it, and that in itself may help. You will never get action just by moaning. You may by asking for HELP!

New housing

By Michael McNamee

Last week, MIT announced another attempt to solve those difficult questions — What sort of student housing is needed? What sort of housing will help bring about the social effects and qualities desirable in students?

Although very few of the 2,000 and some odd residents of the seven Institute houses realize it, their social life, study habits, dating relationships, and educations have been subject to quite a bit of study in the 25 years since Baker House was built. Everyone from Paul Schindler (*The Tech*, 9/8/72) to Benson Snyder to Richard Sorenson — not to mention quite a few doctoral and masters theses in between — has taken a stab at finding out what sort of physical and social structures will best bring about that happy combination of traits and abilities that the 1963 Report of the Committee on Student Environment called "character."

The latest of these studies are the report of the 1973 CSE entitled "Undergraduate Housing in the 1970's," and the literature that has grown up around it. It is this report that will determine the features of the new dorm which the Institute is building on West Campus (*The Tech*, 9/7/73), just as it was the '63 CSE Report that determined the features of MacGregor and "new Burton."

Success?

Those involved in housing philosophy and policy at MIT will tell you that it is too early to tell about the success or failure of MacGregor or the remodeled Burton — the first class of "all-MacGregor" students will graduate just this year. However, all indications seem to point out that attempts to make these environments livable have not fared well; as Schindler said of Burton, "I ran into a wall of hostility unparalleled elsewhere on campus . . . The security here is almost prison-like in its omnipresence. . . rooming in Burton seems like living in a Hilton Hotel." MacGregor is deemed to be marginally better, but its construction was unhampered by the constraint of building within a pre-existing shell, as was the case with Burton.

Is rush a meat sale?

By Paul Schindler

The annual meat sale called Rush Week is a thing of the past for another year. It should become a permanent thing of the past.

I am not the first person to suggest that the second most important decision of one's college career — namely his living group — is made too hastily at MIT (the most important decision is which school to attend).

Many reforms have been instituted over the years to reduce the more obvious absurdities and inequities of the current system, but they are a patchwork approach to a complex problem.

With few exceptions, fraternities have played the game by the rules in recent years. The rules make sure no house "hides" freshmen, coerces them, or otherwise takes unfair advantage of competitors.

But the rules are not sufficient to prevent the basic abuse of the system; too much to do in too little time.

Those freshmen who could make a good, fast first impression are now settled into their fraternities. Those that could not or would not be settled into their dorms.

No one will be greatly surprised in January when people start changing their living groups, from fraternities to dorms or apartments, and out of dorms to apartments.

Most of the movement will be made by upperclassmen. Some will be escaping personality hassles, some will be looking for more privacy.

But as Associate Professor of Philosophy John Graves and the Committee on Student Environment pointed out last year, there is not enough flexibility in the current system to allow people to move around inside of it.

Current opinion of the '63 Report can be gauged by the '73 CSE Report, which often states that, in the light of experience, several aspects of the earlier document were not successful. In a report prepared by Sorenson and Larry Speck G, based on the '73 Report, several aspects of MacGregor and Burton were discussed with generally negative conclusions. Plushness, security, lighting and furnishings are all discussed; the conclusions drawn do not lead one to believe that the current administration is particularly pleased with the results of the earlier report.

And now . . .

Now, there is another report, another site, another plan, and MIT is going to make another attempt to house students successfully. Associate Professor of Philosophy John Graves, author of the '73 Report, pointed out to this reporter several times that the Institute is not trying to build the perfect house for all students. Indeed, the current feeling is that there is no "perfect" solution to any housing problem, and that diversity is a desirable goal within the system.

This diversity may well be related to the large number of students that contributed to the plans for the building. Sorenson stated that "there is more student participation in the planning of this dorm than in any other building the Institute has ever built." Besides student members of CSE, students were involved in 15,302 projects and surveys, interviews with residents in the dorms, and discussions with administrators. If student participation will make a dorm that fits students, this one should be great.

What are the chances for success this time around? If it is MIT's intention to build a dorm that can be adopted by almost any student and modified to his needs, the Sorenson-Speck report makes many suggestions that should help achieve this goal. Emphasis is on flexibility, diversity, inventiveness, and individuality. If the architect can follow this report as well as its authors followed the '73 CSE Report — and the design is not compromised by financial concerns — the new dorm should be all that is hoped for, and more.

When they need flexibility, they move out.

Many of the people who run fraternity rushes realize that the system is flawed, as do the MIT administrators who admit the need for the system as long as MIT cannot house as many students as want housing.

Housing reached a crisis state this year, when the class size was chopped by 150 because of insufficient space. Possibly, the new west campus dorm will restore the needed 150 places.

Which brings us to the dormitories, and they are no freer of abuse than the fraternities, even though they do not have a rush. People who are already living in a dormitory generally develop a certain ambience which they attempt to impart to freshmen.

Some dormitories may even have attempted to rush freshmen they considered desirable, which is a clear violation of the Rush Week concept and a bad idea in view of dorm crowding.

Besides this, while a distinctive ambience makes a house a home, the dormitories must by their very nature accept anyone who wants in, even someone who doesn't fit. Anxiety results from a non-standard personality.

If some method could be worked out by which students could move from dorm to dorm or from dorm to frat and back, then picking a living group in three days would not be such a disastrous concept. As it is now, a person who finds himself in a living group with a personality which does not match his own is really stuck.

Social upheaval, increased travel time to the campus, more expense for food and board, are often the results of departure from the housing system. And all because the "brothers" or the "people in the dorm" aren't the same after Rush

Watergate heroes?

By Norman D. Sandler

The hottest thing on television recently has been "gavel to gavel" network coverage of hearings before the Select Senate Committee on Campaign Practices, the Watergate hearings.

The seven senators and the Committee staff are becoming "household words," but the two "heroes" of the Senate spectacular are chairman Sen. Sam J. Ervin, Jr., (D-N.C.), and vice-chairman Sen. Howard H. Baker, Jr., (R-Tenn.). Ervin and Baker, as overseers of the hearings, were immediately cast as "super senators" and revered by millions of television viewers spanning the political spectrum.

However, do the two southern Watergate heroes, who accent the often monotonous hearings with their down home philosophies and anecdotes, actually deserve to be considered protectors of democracy as they pursue their Watergate investigation?

A quick examination of their political backgrounds and voting records indicates the senators from North Carolina and Tennessee do not necessarily embody the spirit of the Founding Fathers as their fans insist.

"Uncle Sam" Ervin has been in the Senate for almost 20 years, and is regarded as its leading constitutional lawyer. It is fitting Ervin should serve both as chairman of the Senate Judiciary Committee's Constitutional Rights subcommittee and head of the Watergate Committee.

However, throughout his tenure in the Senate, North Carolina's senior senator has used his constitutional background to oppose legislation he claimed violated basic liberties, including civil rights bills, end-the-war resolutions and the 18-year-old vote.

Baker has a similar record. A practicing attorney in Tennessee for 18 years prior to being elected in 1966, Baker has stood out as a leading conservative Republican, even though many people look to him as a young, fresh possibility for the '76 GOP ticket.

The Tennessee senator's voting record reflects his southern conservatism. Baker opposed anti-war and civil rights legislation, supported the Nixon Administration's plans for development of the

Safeguard anti-ballistic missile system (ABM) and the supersonic transport plane (SST) and voted for the Administration's move to give police "no knock" power to make searches.

A quick check of special interest group ratings also gives some indication of the less-than-favorable voting records of both Ervin and Baker.

Americans for Democratic Action (ADA), a liberal group pushing for Great Society legislation and opposing military measures, gives both men a 13 acceptability rating, with 100 indicating total compatibility.

The conservative National Society Index of the American Security Council, on the other hand, a group supporting military spending and anti-Communist actions, rates both Ervin and Baker at 100.

This is not to say the Watergate Committee's ranking members are doing an inadequate job, nor is it a condemnation of their personal political beliefs.

Rather, it is to point out that "Senator Sam" and philosophical Sen. Baker may not deserve to be cast as American folk heroes, in light of their past performance in preserving the nation's democratic system.

Continuous News Service

The Tech

Since 1881

Vol. XCIII, No. 29 September 11, 1973

David Tenenbaum '74; *Chairman*
Paul Schindler '74; *Editor-in-Chief*
Storm Kauffman '75; *Managing Editor*
Jack Van Woerkom '75; *Business Manager*

Carol McGuire '75, John Hanzel '76,
Jim Miller '76
Night Editors
Norman D. Sandler '75; *News Editor*
Neal Vitale '75; *Arts Editor*
Sandra G. Yulke '74, Fred Hutchison '75;
Sports Editors
Roger Goldstein '74, David Green '75;
Photography Editors
David Gromaia '74; *Advertising Manager*

Steve Wallman '75; *Associate Night Editor*
Michael McNamee '76, Barb Moore '76;
Associate News Editors
Mark Astolfi '73; *Associate Arts Editor*
Stephen Shagoury '76;
Accounts Receivable
David Lee '74; *Accounts Payable*

Production Staff

Ken Isaacson '75, Frank McGrath '75,
Larry Appleman '76, Tom Birney '76,
Robert Nilsson '76

News Staff

Curtis Reeves '74, Drew Jaglom '74,
Howard Sitzer '74, James Moody '75,
Ken Davis '76, Mark Haley '76,
Wendy Peikes '76, Charlotte Cooper

Arts Staff

John Kavazanjian '73,
Moray Dewhurst '76,
Wanda Adams, Jeff Palmer
Mike Curren
Sports Staff
Paul Bayer '73, Mike Charette '74,
Randy Young '74, Dan Gantt '75,
David Katz '75, Donald Shobrys '75

Photography Staff

Sheldon Lowenthal '74,
Craig W. Reynolds '75,
Chris Cullen '76, Krishna Gupta G

Circulation Staff

Scott Berg '73, Fred Zerhoo '73
Editorial Staff: Mark Fishman

Staff Candidates

Production
Michael Graves '76, Julia Malakie '77
News
Margaret Brandeau '77,
Terry McElroy '77,
Jules Mollere '77, James Rothstein '77,
Alan Shapiro '77
Sports
Glenn Brownstein '77, Caren Penso '77

Second class postage paid at Boston, Massachusetts. *The Tech* is published twice a week during the college year, except during vacations, and once during the first week of August by *The Tech*, Room W20-483, MIT Student Center, 84 Massachusetts Avenue, Cambridge, Massachusetts 02139. Telephone: (617) 253-1541. MDM, SMW/SKJ



Technical Notes

By Storm Kauffman

ROCKWELL INTERNATIONAL reports that its engineers have figured out a way to bring tractor trailers to a safe, controlled stop. The Skid-Trol anti-wheel lock system can help to bring a truck to a safe, sure, in-lane stop on any road surface and in any weather conditions. The heart of the system is an IC digital computer the size of a match head. The computer is encased in the Skid-Trol pneumatic valve, one of which is used on each axle of the vehicle. Within each wheel is a sensor that reads the wheel speed and gives this information to the computer. When the brakes are applied, the computer makes as many as 500 decisions 50 times a second in regulating the air pressure on each wheel. If the computer reads a critical deceleration on a wheel that could cause wheel-lock and skidding, it reduces the air pressure to avoid the lock even though the driver may have the brake jammed to the floor. The device went on the market in July, more than a year in advance of the date such a system is required by law.

ROCKWELL INTERNATIONAL, in conjunction with the Air Force Avionics and Materials Labs at Wright-Patterson, have developed RAM (radar-absorbing material), which is somewhat "transparent" to radar detection. A lightweight, heat resistant, and load-bearing material, RAM is basically a honeycombed and reinforced fiberglass which can be used in place of conventional materials in building an airplane or missile. However, unlike conventional materials, it cannot be picked up as easily by radar since it absorbs the incoming waves, thus preventing them from bouncing back to the receiver. Test panels have maintained their strength after one thousand hours at temperatures up to 600°F with no loss of radar absorbtivity. A prototype engine inlet cowl has undergone more than 300 hours of flight testing without encountering operational problems. The prototype weighs significantly less, is superior electrically, and could be mass-produced at costs competitive to the conventional production cowl. Although its primary use is on weapon systems, RAM could be used to reduce electromagnetic interferences around transmitters and radio antenna by cutting down the sidelobe reflections, by shaping the main beam, and by reducing unwanted reflections from nearby metallic surfaces. Another possible use is the shielding of tall buildings and other structures surrounding a commercial television station or airport radar landing system transmitters to eliminate the interference caused by unwanted reflections. Militarily, RAM could so reduce an aircraft's signature that when it first appeared on a radar screen, the enemy defensive system would not have sufficient time to react to the penetrating vehicle.

NASA's administrator, Dr. James C. Fletcher, told the National Security Industries Assn. that he felt that the

Apollo program was well worth its cost. Among the nine points he enumerated were: Apollo reasserted US technological leadership long before the first lunar landing; the program produced "the kind of government-industry cooperation on large scale research and development programs needed to make the American system work and keep it competitive with any other system in the world;" national security considerations made it imperative that the US make rapid progress in the area of manned spaceflight in the mid-1960's; a great deal of valuable scientific knowledge which was not obtainable by any other method was produced (strengthening "the case for scientific bases on the moon and further manned exploration in the solar system") it gave impetus to the environmental movement and helped establish the fact that space technology could contribute greatly to the quality of life on earth; Apollo precipitated an unprecedented advance in technology, the value of which has been estimated as at least \$150 billion over the next quarter century, six times the program cost; and the price tag for Apollo, about \$25 billion, closely matched NASA's 1961 estimates, the ability to accurately project costs being an "important national asset."

BELL Telephone System, as part of a utility wide effort to cut costs and save its customers money, has installed new electronic telephone switchboards for operators. Called Traffic Service Position Systems (TSPSs), they make it possible for the Bell System to hire fewer new operators, slowing the growth in wage and training costs. This is because the TSPSs improve operator efficiency at least 30% by automatically handling details which operators on conventional switchboards now must handle themselves. Also, when a TSPS operator discovers a malfunction in the network, he or she can key a code into the console to notify a computer in Cleveland of the disorder. Such pinpointing of trouble spots should significantly improve service.

HEWLETT-PACKARD has marketed

a new calculator which is significantly more powerful than its popular HP-35, of which 75,000 have been sold since its introduction in January of 1972. The new HP-45 is the same size as its predecessor and costs \$395 (the HP-35 is now \$295). There is also a larger, desktop version, with built-in paper tape printer, the HP-46 at \$695. Both of the new models have nine addressable memory registers plus the four register operational stack of the HP-35. It works in any of three trig input modes (degrees, radians, or grads); has trig, log, and antilog functions; features user control of the 15-character LED display (up to 10 significant figures); plus having all the capabilities of the HP-35.

RCA reports that certain tell-tale signs can be found in weather photos to indicate the presence of tornadoes, the most difficult of storms to detect. These signs are related to the position of the jet stream clouds and the appearance of thin cloud lines at an angle to the jet stream. They appear several hours prior to the actual occurrence of tornadoes. When these conditions are observed, weathermen can issue alerts of severe local storms and possibly tornadoes. To reduce the loss of life from "twisters," the National Weather Service has implemented a new program called "Skywarn '73." This plan has two phases: a tornado watch to inform the public that atmospheric conditions are ripe for the storms to form, and a tornado warning that a tornado has actually been spotted.

Technical Notes is intended as a service to the students and faculty in the engineering and scientific disciplines. The column reports technical advances and innovations made by investigators at universities or in industry. Product information is not intended as advertising but rather to provide information to members of the MIT community. Any individual or group interested in having a note on research published in Technical Notes is encouraged to send a summary to *The Tech* to be edited and printed at our discretion.

STUDENTS FOLLOW STUDENTS TO B. A. HOLMES

FOR THE

BEST DEAL ON FURNITURE RENTALS OR SALES

RENT FURNITURE BY WEEK, MONTH OR YEAR

Complete Apartments — Individual Pieces

BANKAMERICARD — MASTERCHARGE

B. A. HOLMES, Inc.

1096 BOYLSTON ST., BOSTON — 536-4421

1 Block from Prudential Center

FREE DELIVERY

JOIN YOUR FRIENDS IN THE M.I.T. DINING ROOMS

NO SHOPPING
NO COOKING
NO DISHWASHING
EXCELLENT FOOD
GREAT VARIETY
CONVENIENT LOCATIONS

Commons
UNLIMITED SECONDS
SET PRICES
TRIAL PERIOD

A LA Carte
MEAL TICKETS
DAILY SPECIALS
SNACK BARS



You Can't Lose



Ask For Information At Any Dining Room

Student Center

Walker

MacGregor

Baker

Sunday's at:

Newton Presbyterian Church

Celebrate Life in Worship at 11:30 a.m. and 6:30 a.m.

Share in a Campus Seminar with Dick Peace at 9:45 a.m.

Grow with others at (Challenge II) 8:00 p.m.

Park and Vernon Sts., Newton

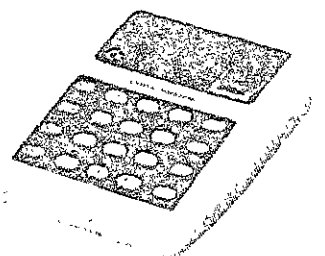
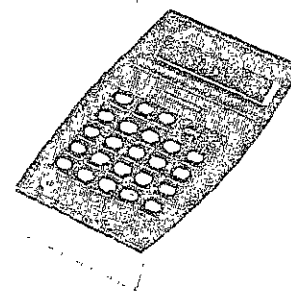
332-9255

LOWEST PRICES IN TOWN

ALL POPULAR ELECTRONIC CALCULATORS in stock on display

COMMODORE MM-2SR

COMMODORE MM-3SR



- * SQUARE ROOT
- * RECIPROCAL
- * X² KEY
- * MEMORY
- * % KEY
- * RECHARGEABLE
- * REG. \$119.95

- * SQUARE ROOT
- * X² KEY
- * CONSTANTS
- * EIGHT DIGITS
- * RECHARGEABLE
- * REG. \$89.95

ONLY \$109.95

ONLY \$69.95

OTHER DISCOUNT MACHINES

	Reg.	Special
COMMODORE MM-3	69.95	49.95
COMMODORE MM-2	99.95	59.95
Unitrex DATAKING	129.95	99.95

OVER 20 OTHER MODELS TO CHOOSE FROM

MARKLINE CO INC

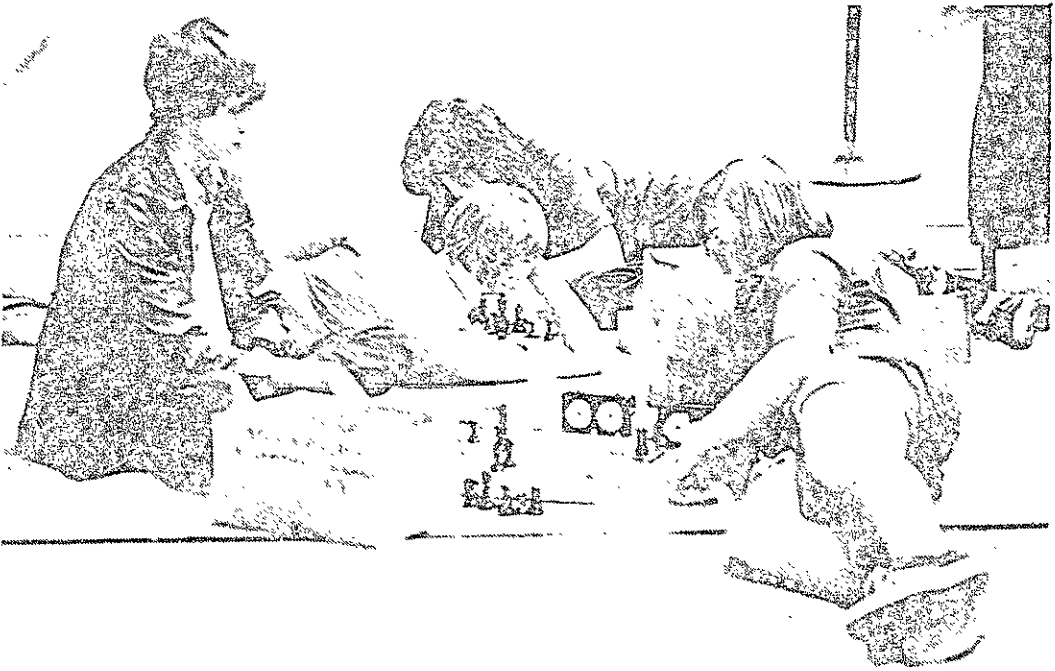
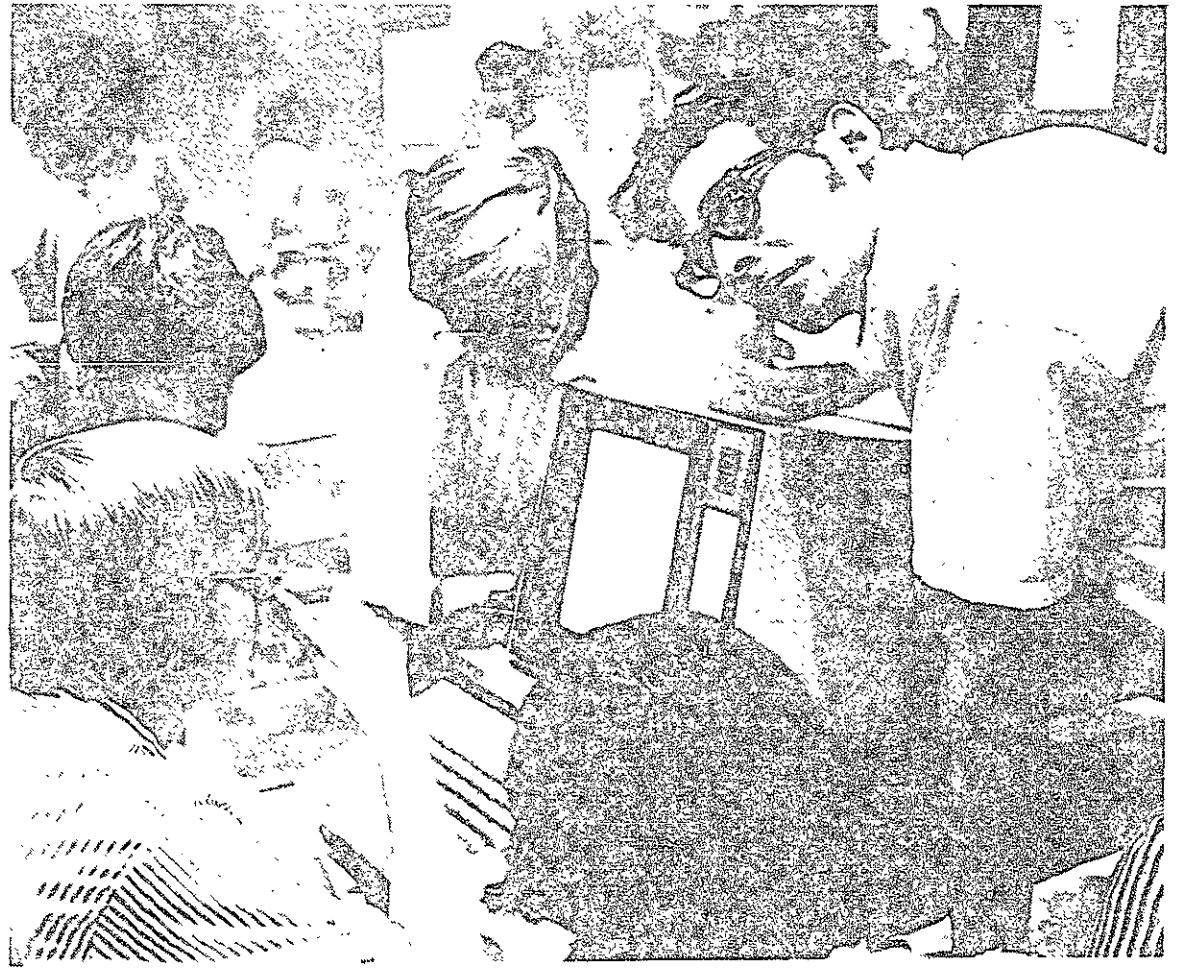
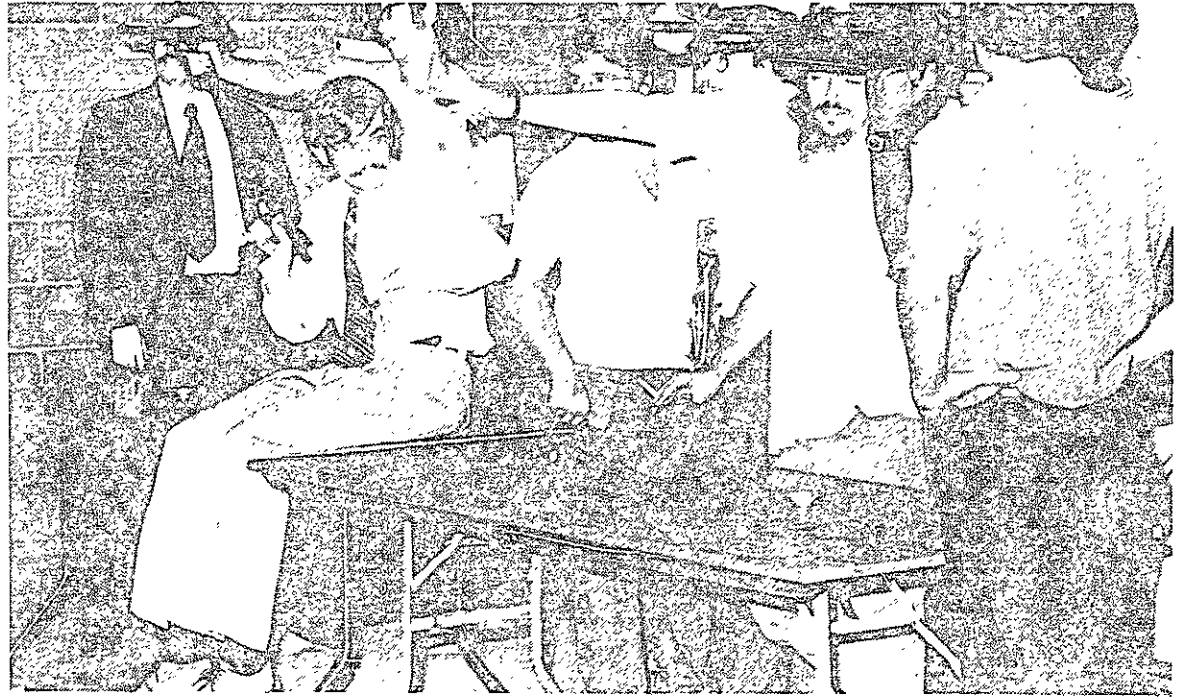
767 MAIN STREET, WALTHAM TEL. 891-6800

OPEN 9-5 WED TILL 8:00 SAT 9-12:30



Scenes from R/O Week

*Photos by Sheldon Lowenthal
and Roger Goldstein*



Part two

New construction on time

By Paul Schindler

Construction is proceeding on schedule at three on-campus projects, and MIT spokesmen expect most noise problems to be over within a month.

Paul Barrett, superintendent for engineering and construction in MIT's Physical Plant department told *The Tech* that excavation at the new chemical engineering building site should be complete within one month when the noise problem will end.

Harry Ellenzweig, architect for the ATO-KS building - going up next to Burton House - said cement mixing and welding operations will be completed by the end of September, to be followed by quieter interior work.

Ellenzweig said the last windows will go into the building next week, and added the roof is already on. He said he was confident the building will be completed before Christmas, on time and within budget.

He said the project has met no unexpected obstructions, including the nationwide toilet shortage which has resulted from a ceramic workers strike.

Barrett said neither Ashdown nor the two academic buildings, the new Mudd building housing the Cancer Center and the Chemical Engineering building, have been slowed down by the shortage. "We had our orders in and besides, we didn't need too many fixtures in these buildings."

In discussing Chemical Engineering building problems, Barrett noted there has been some delay in delivery of structural steel to hole-up sheeting which allows excavation at the site. In another month, the concrete mat of the

foundation should be in, followed by concrete walls, and eventually the superstructure.

He said such work requires smaller, quieter equipment than the work going on now.

Barrett expects the current one month delay in the project will be made up and the building will be complete in June of 1975 as scheduled.

The Mudd Building

The Mudd Building is already scheduled for completion later than Institute Professor of Biology Salvador Luria would have liked, but it is proceeding on its accelerated schedule.

Barrett currently expects to

have the fifth floor ready for occupancy by the beginning of December. Interior work on the sixth floor and the lower floors will continue with completion expected by March.

Luria has teams who are ready and waiting to move in to the Center according to Barrett, which imparts a sense of urgency to the project and is responsible for attempts to finish the project quickly.

"As is the case any time when you try to do a project fast, a lot of little things crop up and slow you down." Among other things, Brigham's was slow in moving their chocolate factory out of the building, Barrett reported.

SESPA chapter formed

A chapter of "Science for the People" is currently being formed at MIT. Science for the People (also known as Scientists and Engineers for Social and Political Action, or SESPA) is a national organization dedicated to "recognizing the political nature of science... access for all people to useful human knowledge," and "the organizing of men and women in science to struggle along with other communities aimed at fundamental social change."

The organization, whose activities are "a mixture of research, discussion, publication, and direct action," advocates an attack on the "myth and jargon" that "serve only to intimidate those not in the scientific community, causing them to surrender their powers of reason and action to a 'detached' and 'dispassionate' scientific elite. And elitism only provides the

distance between knowledge and people essential for the system to control us."

There will be a Boston area general meeting of SESPA on September 10 at 7:30 pm in 2-0215 Sawyer Hall, at the University of Massachusetts. The new MIT chapter will hold its first meeting on Wednesday, October 3, at 7:30 pm.

Among the activities to be discussed at the meetings are organizing "seminars and actions for the December convention of the AAAS (American Association for the Advancement of Science)... preparation of a pamphlet on the politics of science, particularly as manifested at MIT."



Twenty Chimney's, the Student Center's gastronomical headquarters, began serving wine and beer last Friday, according to Curtis Reeves, above.

Photo by David Green

LSC

Friday, September 14
What's Up Doc?
7 & 9:30 - Kresge

Saturday, September 15
Easy Rider
7 & 9:30 - Kresge

Sunday, September 16
Destination Moon
8 - 10:250

Sign-up meeting, Monday, September 17, 7 to 8pm, Mezzanine Lounge, Student Center.

HIGH-ADVENTURE STARTS AT 2500 FEET

Your first jump course takes only 3 hours... costs only \$65.00


World's largest and safest
Our 15th year
Free brochure

(Includes all equipment)
over 220,000 jumps
21,000 First Jumps

ORANGE PARACHUTING CENTER
P.O. Box 96, Orange, Mass. 01364
Phone: 617-344-6911

LAKEWOOD PARACHUTING CENTER
P.O. Box 250, Lakewood, N.J. 08701
Phone: 201-663-4500

For New York Information call 212-582-5860



The Tech

Keep up with what's going on at MIT
Have The Tech mailed to your home

Great for parents

The Tech, P.O. Box 29, MIT Branch P.O., Cambridge, MA 02139

U.S. Mail Rates: _____ 1 Year: \$5 _____ 2 Years: \$9

NAME _____

ADDRESS _____

CITY _____ STATE _____ ZIP _____

$$20C \rightarrow B + W \forall A \geq 18$$

$$T \geq 4 \quad D = 9-7-73 \rightarrow \infty$$

where:

- C = Chimney's
- B = Beer
- W = Wine
- A = Age
- T = Time
- D = Date

BUDWEISER BEER, HEINEKEN BEER, and BURGUNDY WINE will be served at 20 Chimney's Grill Room this year along with our regular sandwiches and grilled items.

BEER AND WINE SERVING HOURS

Weekdays	2pm to 12:30am
Saturday	11am to 12:30am
Sunday	12noon to 12:30am

ALL served must 18 years of age - ID required



Burton narrowly defeated the MIT Campus Patrol with a fifth inning sprint from the first base line to left field after the game had 'ended' in a 13-13 tie. Shown above are Nancy Lindsay '74 (center) Burton, Campus Patrolman Sargeant Fred Sullivan (right),

and umpire Constantine Simonides, who managed to get in his 'licks' before the contest ended.

Photos by Dave Green

SPORTS

ON DECK

September 15
Sailing (MV) Dinghy Invitational @ Tufts
Sailing (MV) Interdistrict Team Race

September 16
Sailing (MV) MAISA vs. NEISA @ Coast Guard
Sailing (MV) Three-crew Invitational, home

September 17
Baseball (MV) Graham Junior College, home

September 19
Golf (MV) Phillips Andover, home

September 22
Sailing (MV) NEISA Sloop Championship @ Coast Guard
Sailing (MV) Dinghy Invitational @ Harvard

September 22, 23
Sailing (WV) Single Handed Championships, home

September 21
Baseball (MV) Mass. Bay Comm. Col., home

September 23
Sailing (MV) 'Hap' Moore Trophy @ Coast Guard

September 24
Baseball (MV) Graham Junior College, home

September 25
Golf (MV) St. Anslems, Plymouth St., home

September 26
Soccer (MV) Harvard, away

Rosters and entry cards for this years IM Football season are due Friday, September 14 at 12 noon in the IM office, (W32-121). Teams which owe fines from last year are reminded that their entries will not be accepted unless their fines are paid.

By Dan Gantt

Burton House's overwhelming softball team won a sprint from the first base line to left field in the bottom of the fifth to hand the Campus Patrol a tenuous 13-13 defeat in MIT's opening athletic encounter of the 1973-74 season.

There were really no losers in the scheduled several-inning contest. Members of the Campus Patrol held up amazingly well against the mass confusion thrown at them by the ingenious students. Time and time again umpire Constantine Simonides was called upon to make judicious decisions and he should also be cited for his great integrity in turning aside numerous Burton bribes.

The Patrolmen won the opening toss of the coin in the game's only sane moment; degeneracy then set in.

Burton House held the Campus Patrol scoreless through the first two innings resorting to numerous illegal pitches: a grapefruit disguised as a softball and softballs stuffed with water balloons, bean bags, cornstarch, and anything else that would fit inside.

The Patrolmen were, however, able to gain a good bargaining position for the foot race due to an interesting call by Simonides. With the bases empty and two down in the third, the Campus Patrol was awarded three baserunners in an effort to counter Burton irregularities. Six runs followed, and the Campus

Patrol was back in the game.

Only once could Simonides' scruples be questioned, this when winning pitcher Pam Jorgenson enticed him to change a called strike with a kiss on the cheek.

Two mad, uninhibited innings later, Chief Olivieri of the Patrol presented the plan to resolve the "conflict" via the race. With all parties in agreement, the Burton runners took the win at the wire. Authorities are now investigating charges that the police threw the race.

Burton beats CP's 13-13? Simonides cited for integrity and fair play

Headquarters

- BOOTS
- PARKAS
- PEACOATS

CENTRAL WAR SURPLUS

433 MASS. AVE.
Central Square
Cambridge

Second class postage paid at Boston, Massachusetts. The Tech is published twice a week during the college year, except during college vacations, and once during the first week in August by The Tech, Room W20-483, MIT Student Center, 84 Massachusetts Avenue, Cambridge, Massachusetts 02139. Telephone: Area Code 617, 253-1541 or 253-2731. United States Mail subscription rates: \$5.00 for one year, \$9.00 for two years.

Tuesday, September 11, 1973

FAST
FREE
DELIVERY

ALWAYS DELIVERED HOT
TO YOUR DOOR!

876-2882

[BIG DEAL]

380 Green Street, Cambridge