

The Tech

VOLUME 92 NUMBER 29

MIT, CAMBRIDGE, MASSACHUSETTS

FRIDAY, SEPTEMBER 8, 1972

FIVE CENTS

Good rush fills fraternities

By Lee Giguere

MIT's twenty-nine fraternities came within of their goal of 400 freshmen in a Rush Week that was marked by a new level of cooperation between dormitories and fraternities.

IFC Rush Chairman Steve Alchuler '73 commented that he was "very happy" with this year's rush.

While Rush Week got off to a slow start Friday night, Alchuler noted activity picked up on Saturday, and by Wednesday afternoon 18 houses had closed their front desks (a general indication that the house had ceased active rushing). As of mid-afternoon, Alchuler reported only three houses "in trouble" while many others had pledged more freshmen than they had stated they were looking for.

The heaviest competition in this year's rush, according to Alchuler, was between the fraternities and the dormitories rather than between different fraternities. However, he added that there was a large amount of

cooperation between the dorms and fraternities, and that "a lot of people in the dormitories actively helped us." The residents of Institute Houses often emphasized the likelihood of crowding in the dorms and frequently urged freshmen to visit fraternities. Alchuler saw in all this the beginning of a "real residence week," when freshmen would be able to see the "whole MIT residence system" as a unit rather than seeing the MIT fraternities and the MIT dormitories as separate entities.

This year's freshman class, Alchuler felt, is "straighter" than that of two years ago. He noted that houses with a traditional bent seemed to do well quickly, adding that as the week progressed, the list of houses doing well became more mixed. The week also revealed a jump in the level of activity as one crossed from the Boston to the Cambridge side of the Charles. The on-campus houses (located on Memorial drive) had more

freshmen than they could handle while the houses in Boston's Back Bay area (where the predominant number of MIT's fraternities are located) had trouble finding people.

No house, Alchuler explained, was in serious trouble because it had too many people. Some of those that had exceeded their planned goal are seeking apartments to avoid overcrowding. Three houses, however, were still actively rushing on Wednesday afternoon.

Alchuler reported that there were no formal complaints of rush rules violations. Instead, he noted that many things which might have been considered violations in the past were found to be misunderstandings or accidents. He mentioned that a few houses were using unfair techniques, but said they stopped when contacted by the clearing-house.

The IFC Rush Chairman was unwilling to attribute the heightened cooperation of the dormitories with rush to the likelihood of overcrowding, although he admitted that this was a factor. He added, however, that a more important factor was the fact that there were "people on both sides who see that they're in the same boat."

Massachusetts Institute of Technology

Undergraduate Student

015 42 1325

KATZ DAVID I

9 33

Place registration sticker here.

Invalid unless current registration sticker is affixed above.

In case of emergency, call (617) 864-6900, extension 2997.

M.I.T. Graphic Arts Service

A typical identification card for a member of the class of 1975 is reproduced above. Upper-classmen will note the changed location of the embossed name, social security number, and birthdate. The reproduction of the back of the card shows the old emergency number which all sophomores will be carrying, at least for the time being. Right now, callers to 864-6900 are referred to the correct number, in this case 253-2997.

Clearinghouse closing figures

AEP	21/18*	PMD	6/8
ATO	16/15	PSK	10/10
BTP	9/12	PiKA	9/12
CP	13/12	PLP	20/20
DKE	7/7	SAE	17/18
DP	8/8	SAM	10/11
DTD	21/16	SC	13/12
DU	8/11	SN	13/12
KS	14/14	SPE	21/22
LCA	15/13	TEP	13/15
PBE	14/13	TC	13/12
PDT	11/13	TDC	12/9
PGD	17/16	TX	14/20
PKS	8/8	ZBT	23/21
PKT	11/18	Total	387/400

*Number of pledges/pre-Rush Week goal

MIT standardizes ID's

By Storm Kauffman

The Institute is issuing new student identification cards to replace those presently held by seniors and juniors. This is the first step in what is hoped will become an Institute-wide system to utilize the cards for more efficient maintenance of records.

The new cards will be of the type held by this year's sopho-

mores. They are very slightly smaller and carry the embossed name, social security number, and birth date in larger letters and in a different location from the older version. Students will receive their cards in the armory on registration day.

The replacement cards will also carry the new MIT emergency phone number under the cen-

trex system. When *The Tech* noted that those cards held by the sophomores, which are not being exchanged, carried the old phone number, Don Collupy of Graphic Arts stated that the point had not occurred to them. He did not yet know what, if anything, would be done.

Production manager Al Paone of Graphic Arts said that the change grew out of the employees' need to have some sort of MIT identification to facilitate the cashing of their checks. Such utilization required special placement of the embossing. With the recent distribution of cards to faculty and staff, it was decided that all cards should be standardized to permit the usage of a single type of imprinter. This necessitated the replacement of the ID's of the upper-classmen.

According to Collupy, the medical department and the libraries will make immediate use of the cards. It is hoped that the lengthy and error-prone process of writing in name and number by hand will thus be eliminated. Very possibly, the athletic department will replace their paper cards with a sticker to be affixed to the ID as are the current registration tapes. The bursar may adopt a system using the card to imprint receipts of transactions with students. In the future, some departments which already keep their records on computers can utilize an optical scanner which can read the new version of the card to speed their clerical work.

Paone, who said that such a system had been a pet project for his nineteen years at the Institute, pointed out that MIT has been "a long time in arriving at a workable, efficient, and adaptable identification card system."

Freshman class size rises to 1056

By Paul Schindler

Although final figures are changing every day, the latest information available to the admissions office indicates that about 1056 freshman students have accepted admission to MIT.

The desired size of the class of 1976 was determined last spring by a group of MIT administrators, and was planned as the largest class ever. Admissions uncertainties may have made the class even larger than expected. The target figure was 1025, and the probable 1056 is easily within the admission's office margin of error. In fact, by Wednesday there were still 25 freshmen who had not picked up their advisor forms, indicating that they may not yet be on campus.

Director of Admissions Peter Richardson stated that the problem is a fairly standard one which the Institute faces every year. "A certain percentage of the people we admit do not choose to come to MIT for various reasons. We know this in advance, and have statistics from the past to guide us as to expected 'yield.' This year we admitted 1650 freshmen."

The "largest ever" designation for the class of '76 may be a

little misleading, as it is intended to be only a small increase over previous class sizes. Even if all admitted freshmen eventually arrive, there will be no excessive strain on academic planning.

Historically, it could be noted that the size of the admitted class each year stayed close to 900 over a long period of time. This number included a handful of women, usually less than a dozen, which was as many as MIT could provide housing for. Starting in the early sixties when McCormick opened, the number of women went up in proportion to housing opportunities. So did the class size. Finally, last year, because of co-ed living and increased housing, sex quotas were removed from admission decisions.

This led, for the first time, to a real question of class size being presented to decision makers. One such question was: If the number of women goes up, should the class size increase?

That question was sidestepped by making the class size decision first, then going through a sex-blind admission process.

Why did there have to be any change at all in the class size?

John Wynne, MIT vice president for administration and personnel, has responsibility for both the financial aid and admissions offices, and as such is involved in the class size decision. He explained the process to *The Tech*:

"There are several broad considerations which lead us to consider changing the class size. These have mainly to do with the Institute's financial picture, and the applicant pool." Wynne pointed out that MIT has very high fixed costs in physical plant, administrative personnel, and equipment; these costs are not directly proportional to the number of students admitted. He also noted that there is concern if the number of applicants drops significantly, as to whether the student quality might decrease.

Once the question of class size has been brought up by these considerations, there are many factors which are weighed by administration and faculty members. These focus on admit-tee quality, financial aid, housing, general supportive facilities, and potential income. Wynne noted that there was no way to place them in order of importance.

He noted that housing and other Institute supportive services are currently "tight but not strained," and that the consensus last spring was that the addition of another 25 students would not overload the system. Financial aid officials felt confident that the line could be held, with extra students having no great effect on the self-help level (now set at \$1600). Admissions felt that 25 additional students would not lower MIT's standards. And consideration of potential income showed a gross figure of \$58,000 with little likelihood of costs increasing to that extent.

Wynne also said that the question of any effects on educational quality were considered by the Academic Council before it made the final decision on class size. They apparently agreed that the additional students would not place any undue strain on the MIT system.

At this time, the class of '76 is expected to have 118 women in it, a slight drop from last year's record high. The number of women applying was up slightly, but the yield of admit-tees was down.

Cockroaches and overcrowding

By Jim Moody

Amid shouts of "Cockroaches!" and "They can't put me in a McCormick triple!" and new words, such as "standby list" and "level three over crowding," this year's freshmen are slowly being shuffled out to the various campus living groups. Depending on how much success the fraternities have in their rushing, which officially ended today, the Institute Housing System may be faced with a serious overcrowding problem, according to Dean for Student Housing Ken Browning. Also, two dorms, East Campus and Bexley face a more serious problem than expected with vermin, notably cockroaches.

Dean Browning accounted for this latter problem by noting that there hadn't been sufficient time to give East Campus its usual thorough annual cleaning because summer programs kept the dorm full until the start of this year's Residence/Orientation Week. Also, the increased incidence of students cooking in their rooms has attracted these additional insect guests. The Housing Office plans to take action on this problem as soon as possible, by calling in their exterminators.

The problem of overcrowding, however, is not so easily solved. There are simply too few spaces in the system, as it stood last year, to accommodate the number of freshmen that actually showed up. The class of '76 has approximately 1055 members (118 women and 937 men), and this is about 30 more than the target number expected by the Admissions Office.

The Admissions Office extends offers of admission to far more than the target number, expects a statistical percentage of these to actually accept the offer, and show up in September. Their percentage was a bit off this year because of the low amount of waiting list acceptances over the summer by other colleges, and because fewer than usual admittees changed their minds over the summer. Therefore, the Housing Office, already facing a tight situation should the expected number show up, was burdened with the task of finding 30 extra beds for the remaining freshmen.

Last spring, Dean Browning, in consultation with the various houses, worked out a plan to cope with the possibility of an overcrowded situation (which has now materialized). Since freshmen are required to live in dorms, fraternities, or the cooperative Student House, and since MIT has no present plans for building or acquiring more campus housing, the solution was simple: add more beds to the Institute Houses, and hope for a good rush. The group worked out levels of overcrowding, with the criterion of spreading the overload as fairly as possible throughout the entire system.

Filling every available bed would make available only 433 beds for male students. Level one overcrowding would open up 60 more beds for men by making 10 Baker triples into quads, 5 Bexley quads into 5-man rooms, 10 Burton doubles into triples, 25 East Campus singles into doubles, the 2 MacGregor doubles into triples, tripling 7 Senior House doubles, and by adding 1 to Russian House. Level two overcrowding would, if necessary, provide 31 more spaces by doubling 10 more East Campus singles, quintupling another Bexley quad, and tripling 9 more Burton doubles. Finally, 10 more spaces can be obtained by level three overcrowding by making 10 Mac-

Gregor tower living rooms into singles.

The coed housing program was slated for expansion this year, but this has also been hurt by the overcrowding situation. The Housing Office felt that it could not justify leaving open any spaces in McCormick while they were turning males away from the other dorms. Therefore, it was decided that McCormick must be kept full. Because 20 new spaces were added to McCormick last year during the Rate Review Committee process (to help alleviate the high cost burden that McCormick was putting on the system), and because the discontinued Wellesley Residence Exchange Program added 25 spaces to the system, mostly in McCormick, 77 spaces are left open in McCormick. Subtracted from the 118 admitted women, this leaves only 42 candidates for coed living situations. Twelve of these went to the two coed fraternities, Sigma Nu and No. 6 Club, and Student House, leaving 30 for the coed Institute Houses, Burton, East Campus and Senior House. Three of these went to Russian House, part of Burton.

Each of the coed dorms had requested that between 12 and 15 coeds be housed there, to keep support for their programs. But, because of the limited number of available coeds and the sizeable differences in the coed living situations, in order to maintain maximum flexibility, 11 openings for female students were assigned to Burton, 9 to Senior House, and 7 to East Campus.

The actual assignment process began last Friday, with the start of Rush Week. The number the

fraternities would take was crucial to the overcrowding situation. As of Wednesday evening last week, 379 freshmen had pledged fraternities. Clearing House, the agency that keeps track of where all the freshmen are, is shooting for 413 as an optimal number of pledges. Depending on how many finally pledge, how many students commute, and on the number of cancellations, the final situation will lie somewhere in the level two overcrowding, according to Dean Browning, but could become worse than even level three can accommodate.

The first round of housing applications was processed last Tuesday morning. Houses were

assigned no worse than a student's third choice in this first drawing, and in most cases no worse than second choice. MacGregor led the race for first choice votes with 220, followed by Burton with 164, East Campus with 72, Baker with 52, Senior House with 35, Bexley with 27, and Russian House with 8. Lotteries had to be held to determine who would receive places in MacGregor and Burton. It was useless to put Burton or MacGregor as second choice, since both of these dorms were filled with first choices. Theoretically, those who put any other dorm as first choice automatically got in. Those cards left over were then sorted by second

choice, and then third choice, and, where necessary, drawings were held to fill the remaining positions assigned that day.

After some students submitted new preference cards, and after more spaces opened up, another drawing was held on Wednesday. About 40 more permanent assignments were handed out, leaving around 50 students still on the standby list. In addition to these, there was no record at all, either with fraternities or the Housing Office, of 31 freshmen. Therefore, as of Wednesday evening, the situation was still unresolved.

As for suggestions for ameliorating this dilemma, Dean

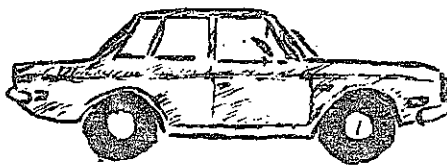
DO YOU KNOW THAT...

Savings Bank Life Insurance is available to people who live or work in Massachusetts . . . you should check it out while you are at M.I.T. . . . rates you may never be able to match again.

See us, as hundreds have. You'll save for the rest of your life.

CAMBRIDGE SAVINGS BANK — Kendall Square

owned and managed
by Harvard MBA's
Expert service on foreign cars



Auto-torium, Inc.

412 Green St.
Cambridge
661-1866

Behind the
Central Square
YMCA

Mon.-Fri.
8am to 8pm



RENT FURNITURE

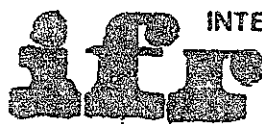
LOWEST PRICES

Pick your apartment, pick your furniture

Special student groupings

all styles available

24 hour service



INTERNATIONAL FURNITURE RESOURCES

FURNITURE RENTALS DIVISION

IFR Furniture Rental — Near Boston Univ.
1107 Comm. Ave., Allston, MA
787-4936

Relax and Divert

CAMPUS CUE

590 Commonwealth Ave.
(Opposite B. U. Towers)

Pocket Billiards

Pinball Machines

Friday, September 22



8 PM, Kresge Auditorium, M.I.T.

Admission: \$2.25 — For Reservations call: 253-2696

MCAT Review Course

Comprehensive science and math review for the October Medical College Admissions Test. Course begins Saturday September 6 at 8:30 AM. Call 227-4944 or write: MCAT Review Course, Inc. Room 625, 53 State Street, Boston 02109

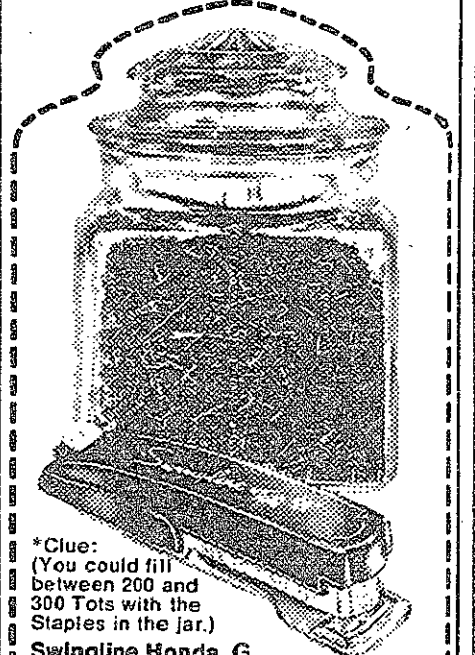


Guess the number* of Swingline Tot staples in the jar.

The jar is approximately square — 3" x 3" x 4 3/8". Look for the clue about "Tot" capacity.

The "Tot 50" is unconditionally guaranteed. It staples, tacks, mends and costs only 98¢ suggested retail price at Stationery, Variety and College Bookstores with 1,000 staples and vinyl pouch. Swingline Cub Desk and Hand Staplers for \$1.98 each.

Fill in coupon or send postcard. No purchase required. Entries must be postmarked by Nov. 30, 1972 and received by Dec. 8, 1972. Final decision by an independent judging organization. In case of tie, a drawing determines a winner. Offer subject to all laws and void in Fla., Mo., Wash., Minn. & Idaho. **IMPORTANT: Write your guess outside the envelope, lower lefthand corner.**



*Clue:
(You could fill between 200 and 300 Tots with the Staples in the Jar.)

Swingline Honda G
P.O. Box 1
New York, N.Y. 10016

THERE ARE _____ STAPLES IN THE JAR

Name _____
Address _____
City _____
State _____ Zip _____
Telephone No. _____

Swingline
32-00 Skillman Ave., Long Island City, N.Y. 11101

plague housing

Browning said that the freshmen-on-campus rule, except for commuters from home, would not be lifted. He said that if the situation becomes worse than even third level overcrowding can handle, some freshmen would have to be temporarily housed in Ashdown until spaces opened up (which eventually would occur).

One outstanding point for improvement is in the area of coed housing. Only 41 women selected McCormick as their first choice, but since McCormick must be kept full, 36 other women were assigned there who indicated a coed (or cheaper) living group preference on their cards.

One easy solution to this problem would be to admit more women, while keeping the class size constant. This would provide the slighted dorms with the coeds they need to maintain their programs at an effective level. And, since about a third of the admitted women select McCormick, it could be nearly filled by first choicers. The Admissions Office is planning an extensive recruitment program to try to meet this goal.

Of course, there is another solution to this problem: that is to make McCormick, or some

part thereof, into a coed living group. This brings to light an old controversy. The residents of McCormick voted in a house meeting last year to go coed, but respecting the wishes of a highly vocal minority, McCormick remained a place lived in and controlled solely by women. Their highly justifiable argument is that women at MIT should have the option of an all-female environment. But, as the trend toward coed preferences continues to grow stronger in successive freshmen classes, the tradeoff between such an option and the satisfaction of the residents who live there against their will becomes highly questionable. Perhaps the dissenting MIT women will have to forego this option in favor of changing times and preferences.

According to both Janet Markham, McCormick President, and Dean Browning, the final decision on the fate of unisexual McCormick will rest in the hands of its residents. Markham expected that a vote would again come up on this issue within the next few weeks. Browning said that the Dean's Office would be receptive to a coed proposal from McCormick, but that he wished to remain neutral

in the coming discussions, leaving the decision solely up to the McCormick women.

Dean Browning also noted that plans concerning new undergraduate housing at MIT were in the very initial stages of internal discussion. These arrangements might proceed along different lines than the existing suite and entry style of MacGregor, the apartment style of Burton and Ashdown, or the traditional styles of Baker, East Campus, and Senior House.

"Foam Rubber Is Our Business"

FOAM RUBBER

AND POLYURETHANE FOAM & DACRON

FOR EVERY PURPOSE

CUT TO ANY SIZE & SHAPE AT NO EXTRA CHARGE

DISCOUNT PRICES

MATTRESSES - CUSHIONS - BOLSTERS

PILLOWS - PADS - SHREDDED

IMPORTED DANISH DESIGN FURNITURE

& Cover Replacements

Made To Order In Vinyls & Upholstery Fabrics

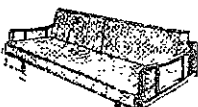
FOAM RUBBER DISCOUNT CENTER

Telephone

254-4819

254-4819

165 Brighton Ave.



Allston

STORE HOURS: DAILY 9 A.M. TO 6 P.M. SAT. TO 5 P.M.

We serve you better....

3 convenient Cambridge locations

We serve you longer...

Harvard Square, 8:00-5:30 Mon. thru Fri.

Kendall Square, 8:30-3:00 Mon. thru Thurs. and Fri. until 6:00

Porter Square, 8:30-3:00 Mon. thru Fri. and Thurs. 10:00-7:30

And we pay you well!

5.47% effective annual interest
day of deposit to day of withdrawal

CAMBRIDGE SAVINGS BANK

Member FDIC



DON'T MISS OUR
BACK-TO-FALL

SALE

men's
usual \$9-\$15
jeans and
slacks

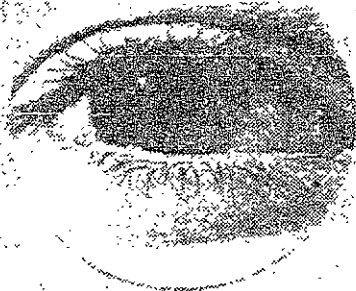
\$5 and \$7

Get your legs over to our Beam Shop and into some super new pants or jeans while they're on sale! The group includes novelties, corduroys, denims, and soft brushed denims in favorite fashion colors and styles.

BEAM
SHOP

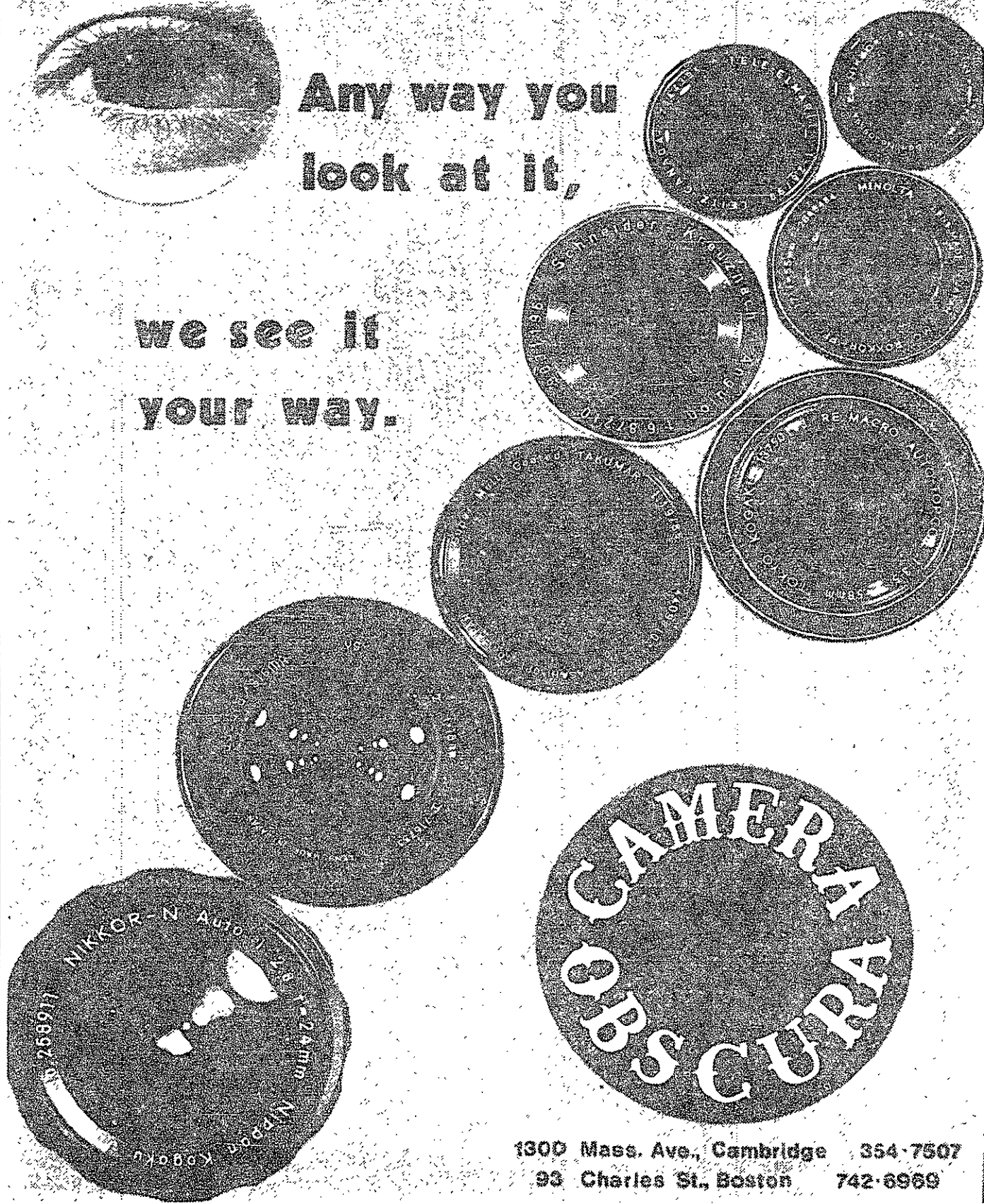
AT THE

tech
Coop



Any way you
look at it,

we see it
your way.



1300 Mass. Ave., Cambridge 354-7507
93 Charles St., Boston 742-6969

Who's going to pick up the tab?

By Paul Schindler

Times are tight for financial aid at MIT, and they are likely to get worse before they get better. There are several factors contributing to this: the economic downturn, the increasing size of the freshman class, steeply rising tuition, and a gradually increasing need for financial aid. Yet, instead of trying to meliorate those factors which are within its power to control, MIT continues to be inexplicably perverse by compounding its problem with the growing class size, and creating antagonism which spills over into other areas of Institute-Student relations. A student who feels he is being screwed on financial aid will more easily believe he is being screwed on registration procedures, textbook prices, and room rents (for example).

70% of the student body at MIT applies for financial aid, and 50% receive it in some form or another. In spite of the importance of the issue, most of the people who are quoted here did not want to be quoted by name, because financial aid is a very touchy subject.

In one sense it is touchy because it is beclouded with euphemisms. To start with, many people who apply for financial aid are defined out of existence by the "self-help package" which includes low interest loans and the former "job award" which is neither a job nor an award (and is now referred to as a "term-time job," although MIT still assumes no obligation to help you find one). The method of elimination, which often seems as capricious as a coin toss is the "need analysis," which might more properly be known as the "parents wealth analysis." In spite of the seeming adulthood now conferred on American citizens at age eighteen, parental financial standing, as indicated by the Parent's Confidential Statement, is the sole determinant of the level of aid.

(Reasonable men may differ over the level of caprice involved in financial aid, but a number of people perceive it as being capricious which either indicates that (a) it is, or, (b) it doesn't explain its

procedures and problems to the community. In either case, the current situation is intolerable, and cries out for change.)

The question of parental wealth has been in court before, but certainly not since the movement towards full citizenship at eighteen. Some would argue that only the students' own attributes should be considered. MIT has eliminated academic standing or ability from the financial aid equation, and gotten near-unanimous praise for the move. Yet the result, according to an official in the President's office, might soon be "a gradual squeezing-out of middle class students at MIT, for financial reasons."

With parental wealth the sole determinant, the results might have been predictable. The obviously wealthy can afford a budget of \$5000 per year without great strain. The obviously poor get substantial aid to enable them to attend. This leaves "primarily" the middle class "to pay a greater percentage of total family income to send their children through school," according to a high administration official. With increasing taxes, insurance costs, union dues, operating costs, and inflation, some parents balk. And if the parents withhold support (a condition which universities do not recognize), then the student has a choice between self-sufficiency and a state university.

The system of wealth determination could not discriminate against the thrifty middle class more thoroughly if that were its designed intent. Debt structure is taken into consideration when ability to contribute is being calculated, and if there is no debt structure, then all income above an "adequate but modest subsistence" level is considered disposable. Thus, if the car and appliances are purchased with cash, if the mortgage is paid off, and if job security is seemingly great, income is considered unencumbered, without consideration of any encumbrances incurred in the past, when "do without" was the rule.

Students are told by financial aid

officials that if the costs here are burdensome, they should consider going somewhere else. This has always seemed to be a much easier answer than reform; but as they have frequently explained, a family of four that has been fortunate enough to avoid staggering debt is expected to fork over 25% of their after-tax income for support of one child in school. Things are not really put into such terms; financial aid policy is to convert a family's assets into equivalent income, and figure that such an amount is available each year in addition to using current income.

The amount of family income available for tuition and support purposes is calculated as the amount remaining after meeting basic financial commitments, and after providing "modest but adequate" support for family children. That level has been determined to be \$900 per year per child, and has been referred to by at least one financial aid officer as "modest but adequate subsistence." Income above that level is determined to be "discretionary" (available as a parent contribution) after certain adjustments are made for family income, parental age, and several other factors.

The Technology Loan Fund, a major source of money for students (the major source of loans outside of the federal government) has run into hard times. In some cases, it has become difficult for parents to get loans on their own, and engineering unemployment has resulted in an increasing number of very talented, but suddenly needy, students.

Such factors affect other schools too, but they reportedly have things a little more under control. In many cases, enormous endowments make the difference, especially in the cases of Harvard and Cal Tech, but more equally endowed institutions still "outbid" MIT for equivalent students. MIT meets with other schools annually for the avowed purpose of "aid equalization." On separate occasions, they meet with the Ivy League schools and with Cal Tech to consider the

aid offers made to all students admitted to two or more institutions. Participants interviewed last spring said that the intent was to make school quality a more important factor than aid offered. One noted that "MIT consistently offers less aid, and tries hard to talk other schools down when the student involved is particularly desired."

(It should be noted that the quotation which appears above is as it appears in my notes. The person to whom I was speaking was a financial aid officer from an Ivy League school. MIT has since informed me that the meetings referred to determine need, not aid. To some, these concepts seem synonymous. In any case, if MIT is actually talking down anything, it is need not aid. It is not impossible that the person quoted was referring to MIT's consistently lower scholarship offers.)

The Institute has the least success in head-on competition with Harvard: of 10 joint admittees, 8 will go to Harvard, and one cannot know whether finances were really a factor (forms are sent to all people who reject MIT, but their accuracy is difficult to ascertain), but the aid disparity is often gross.

Then too, there is the question of what happens to aid after the student arrives here. Former practice seemed to be "a large scholarship upon admission, and reduce it in later years," according to a former student, financial aid recipient and now administrative staff member. Now, the same effect can be noted on the loan which the Institute is willing to provide, but the effect is not so harsh. Besides, as one aid official noted, "you can always get your own bank loans." Officials seldom note that the interest on such loans is twice as high as on MIT loans.

One cannot ask MIT to generate money where there is none, or to change new federal rules which outline wealth determination procedures.

Major steps are being taken: Wiesner and Gray have made financial aid money the number one fund raising goal for this year. Their cost cutting efforts are hopefully going to slow the rise in tuition.

But when are they going to stop letting in more students than they can adequately help? When are financial aid procedures going to get the thorough, public analysis and overhaul they plainly need? When will financial aid procedures be properly explained? When will the system of bitterness and animosity be replaced with one which is, and is perceived as, just?

The above column was checked for factual accuracy by L.V. Gallagher, associate director of financial aid at MIT. He was not asked to comment, nor did he, on the opinions expressed, which are still those of this writer. In those cases where facts were disputed, either the original source was rechecked, or the change was made as suggested.

Two additional notes which Gallagher raised: financial aid costs are rising 10-12% per year, and parents now pay 3/4 of the educational bill at MIT (meaning, he states, that treating students as independent would quadruple the financial aid bill).

UAP Notes

A time for new beginnings

By Curtis Reeves

Student government must make a new beginning. The Undergraduate Association Constitution is outdated, and has been practically useless since its ratification. The General Assembly has not met in one-and-a-half years. Until recently, no thought was given to reviving or replacing it. No projects have been undertaken by the UA officers either of a social, political or academic nature.

By last March, it seemed that student government was dead. It was damned by most students because it was not responsive to student opinion. It addressed the wrong issues when it focused on any at all. The structure was too diverse and too bureaucratic.

The UA has several problems. It lacks credibility and has been relegated to a position of insignificance among student groups: Vital potential is being wasted.

Part of the reason for this waste is the discontinuity between the terms of office of the UA presidents (UAP). Many frustrating hours could be saved if the outgoing UAP would give the incoming officer some idea of the kinds of problems that might crop up, of who are good people to deal with in the administration and faculty, and other such things.

But this has not been done. The Undergraduate Association, for the past few years, has been one of the most wasted, misused groups on campus.

It doesn't have to be this way. Once it is realized that student government must be student-oriented, and not a business or political organization, changes can start to be made to bring a more effective UA.

The major effort at this time should be in getting people involved. Studies can be made in the following areas: why housing is in such a critical condition; the humanities at MIT, especially freshman courses; the structure of the administration — who the officers are and what they do; the powers that are given to the faculty vs. the rights of the student; tenure; the Corporation.

Perhaps more interesting to some

would be engaging in UA projects. These could include social events, such as parties, beer blasts and concerts, or service projects such as the voter registration drive, Open House/Parents' Weekend, or bulletin boards.

Organizational change should wait until enough people are working in the UA to care about what changes are made. Some thought has been given to the idea of reorganization, and this is what I would suggest:

Although the office should be left open to innovation, the UAP should have some specific duty to perform. As things now stand, the UAP who wants to do nothing can. The whole structure of the organization should be reviewed periodically to evaluate the effectiveness of subcommittees and officers.

For this purpose, and as a way to establish communications linkages between all segments of the student body, I suggest the reorganization of the Institute Committee. It would be composed of the UAP, UAVP, ASA president, Finance Board chairman, Nominations Committee chairman, Student Committee on Educational Policy chairman, Student Center Committee chairman, Athletic Association president, class presidents and representatives of the Interfraternity Conference and the Dormitory Council.

Student participation should be searched for on an entirely different level. A lot of what is done in the student government is hack work, pure and simple. The General Assembly proved that giving a large committee little tasks was a bad idea.

The Institute Committee would handle major policy problems, but they would have to depend heavily on groups of students outside of the committee for the groundwork for projects. Student groups would be essential, under this system, as researchers, and would probably have the more interesting jobs of talking to other students, directing publicity campaigns and seeing faculty members, deans and other administrators.

This will give the Institute Committee and therefore the Undergraduate Association, the unity that it needs; it will allow several projects to be undertaken simultaneously, it will incorporate the talents of leaders in student organizations and members.

One asset of this group will be that it will be able to get rid of inactive or inept officers. The irresponsible UAP would be replaced, and his competence could be evaluated by the committee. The same type of process could be used for any officer, but it should be used sparingly.

These arrangements should help the officers of the UA to become more effective, and to become more responsive to student sentiments.

The UA should be able (even without these structural changes) to take a much bigger interest in social affairs than it has in the past. In fact, with the great emphasis put on activities and their budgets, the UA should change its entire outlook to be geared toward social issues and away from politics. Also, the UA's ability to work with the administration and effect meaningful social change should be evaluated and strengthened.

Such an ability depends upon the leader's own power. This power comes, not so much from the administration, as from the cohesiveness of the student group. It should be the goal of any president to form as tight a bond as possible. From a unified student body, he can get a strong backup organization.

This is the attitude that student government is taking. The ideas that have been presented are my own, although they have been influenced by many other opinions. They are by no means definite, but great ideas may go unheard if students don't take the initiative to introduce themselves and their ideas to those who are working to make the changes. We're working hard to make your student government better. All I ask for is a chance and a helping hand.

Continuous News Service

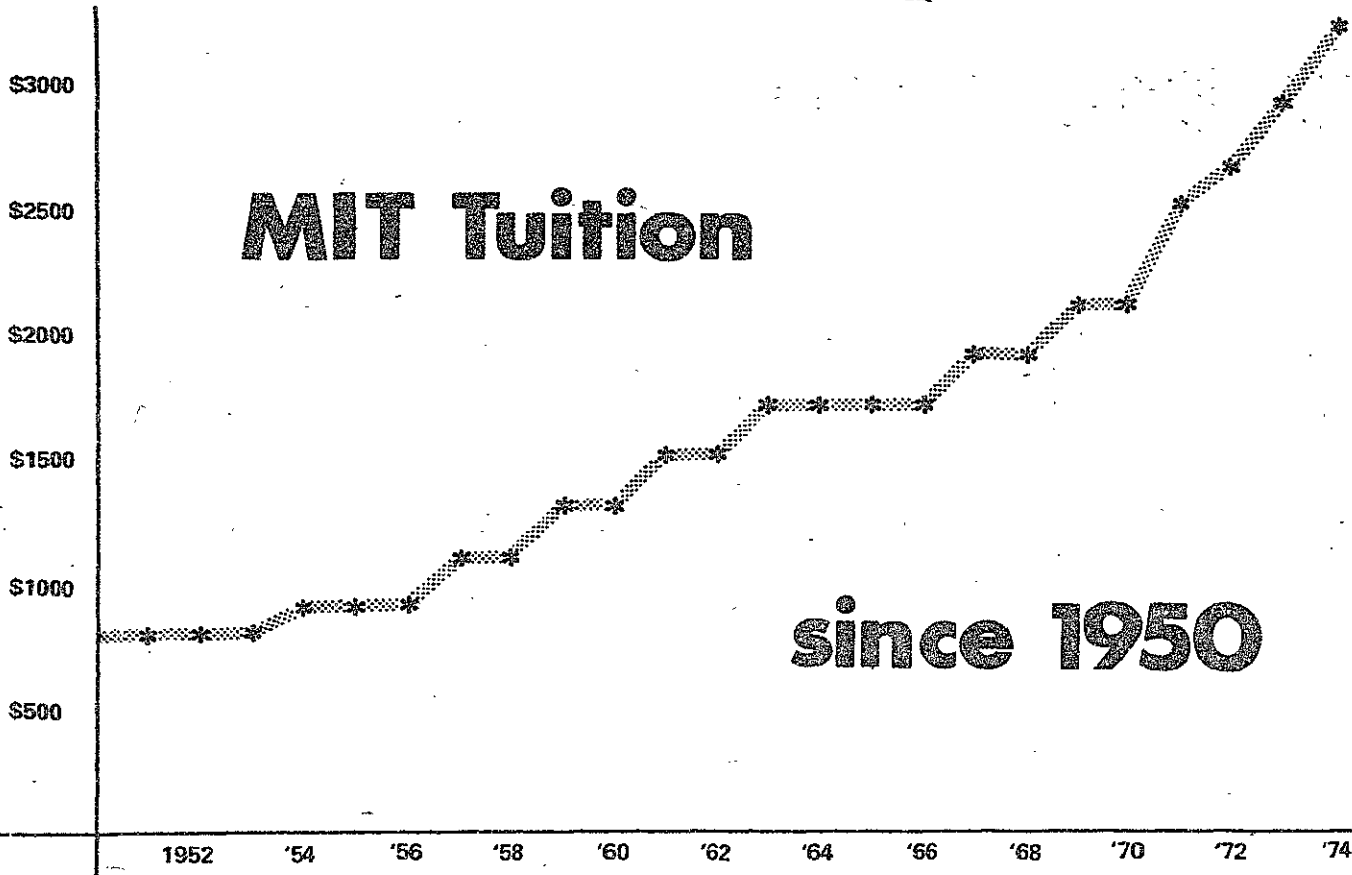
The Tech

Since 1881

Vol. XCII, No. 29 September 8, 1972

Robert Elkin '73, *Chairman*
 Lee Giguere '73, *Editor-in-Chief*
 John Miller '73, *Business Manager*
 Sandra Cohen '73, *Managing Editor*
 Carol McGuire '75, *Night Editor*
 Walter Middlebrook '74, Paul Schindler '74,
News Editors
 Sandra Yulke '74, *Sports Editor*
 Sheldon Lowenthal '74,
 David Tenenbaum '74,
Photography Editors
 Alex Makowski '72, *Advertising Manager*
 Bill Roberts '72, *Production Manager*

Second-class postage paid at Boston, Massachusetts. The Tech is published twice a week during the college year, except during college vacations, and once during the first week in August, by The Tech, Room W20-483, MIT Student Center, 84 Massachusetts Avenue, Cambridge, Massachusetts 02139. Telephone: (617) 864-6900 ext. 2731 or 1541.



This graph charts the sharp rise of MIT's yearly tuition over the past 25 years. Tuition has exhibited a pattern of exponential growth: tuition seems to double about every 12 years, for an annual percentage increase of 5%. If tuition continues to increase at that 5% annual rate, MIT's second centennial celebration in 2061 should see a staggering tuition charge of half a million dollars!

Graphics conceived by David Searls
Mathematical assistance Alex Makowski

10,000 FEET

10,000 sq. ft. of office or research space available immediately. Single or multiple offices with carpeting, central air conditioning, convenient to Mass Pke, Harvard, MIT, & MBTA (Quincy-Harv. Sq. line). Units from 250 ft also available. Broker cooperation invited.

Call owner at 868-1650.

CAMBRIDGE

DO YOU KNOW THAT...

We can PROVE to you that your best buy in life insurance is our own low-cost Savings Bank Life. Ask to see the net cost per \$1,000 per year, at YOUR AGE. Figures don't lie.

CAMBRIDGE SAVINGS BANK — Kendall Square

MARRIED COUPLES FULL/PART-TIME JOB OPENINGS

- LIVE FREE - ALL EXPENSES PAID, PLUS AVERAGE WEEK'S PAY OF **\$115.**
 - WORK WHEN AND WHERE YOU WANT AROUND METROPOLITAN BOSTON
 - COUPLES WITH CHILD WELCOME
- REGISTER NOW FOR:
EXTENDED CHILD CARE, HOUSEWATCHING
PERMANENT PLACEMENTS AND OTHER
HOME RELATED TASKS

CALL: **University Home Services**
449-3590 ANYTIME OF DAY
NO. SHORE 449-3590 BETWEEN 9 AM & 5 PM
SO. SHORE 449-3588 9 AM & 5 PM

BOSTON'S FOREMOST COUPLE PLACEMENT SITTER SERVICE

JOIN THE TECH
(SEE PAGE 8)

**\$3100
TOO DAMN
MUCH**

The Eighth Annual Tuition Riot will be held Tuesday, September 12. It will commence spontaneously at 11 PM at the Great Sail and proceed from there to the President's House.

**At Harvard Trust,
a checking account makes
more cents for your dollars.**

SERVICE-CHARGE FREE CHECKING.

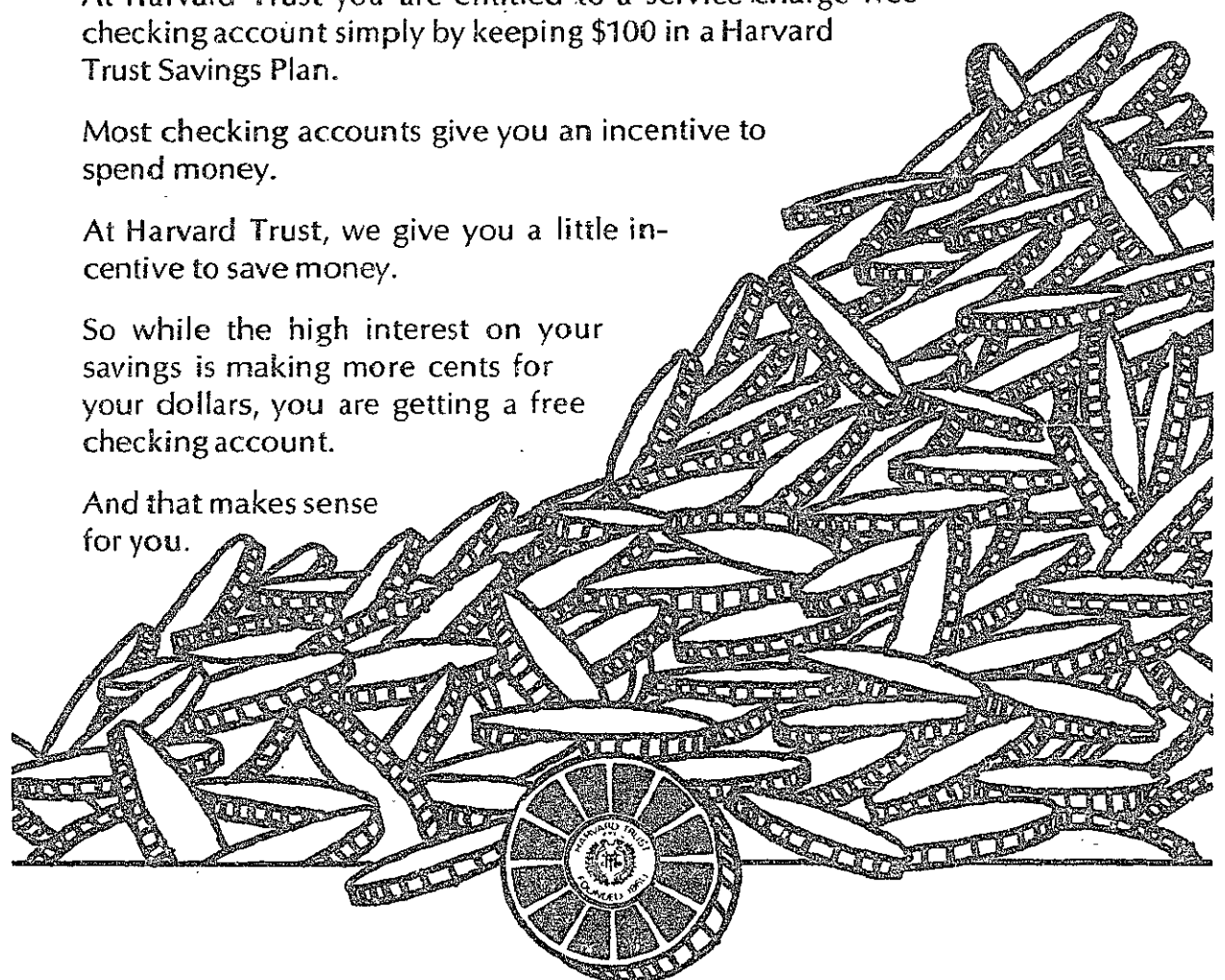
At Harvard Trust you are entitled to a service-charge free checking account simply by keeping \$100 in a Harvard Trust Savings Plan.

Most checking accounts give you an incentive to spend money.

At Harvard Trust, we give you a little incentive to save money.

So while the high interest on your savings is making more cents for your dollars, you are getting a free checking account.

And that makes sense for you.



HARVARD TRUST

Harvard Square, Kendall Square, Central Square, and Arlington, Belmont, Lexington, Littleton

**Get Metal Frames at
Tech Coop
Optical**

CONVENIENTLY LOCATED
MIT STUDENT CENTER - Lower Level
24 Massachusetts Avenue, Cambridge
491-1938 or MIT ext. 81950
Mon-Fri 9:15 am - 5 pm, Lunch (2-3) closed



LOOK

- You will HEAR a lot about life insurance while you are studying here.
- LISTEN to the various presentations.
- COMPARE the cost of the benefits.

CHECK the cost of Savings Bank Life Insurance. Then you'll see why it is America's lowest cost life insurance for all Ordinary Life, Endowment, and Renewable Term policies.

SEE for yourself. While others talk about low cost, we have it right here!

Come in to talk with our experienced people, or give us a ring at 864-5271.

**LIFE INSURANCE DEPARTMENT
CAMBRIDGEPORT
SAVINGS BANK**

689 Massachusetts Avenue
Right in Central Square
Within easy walking distance of MIT

An architectural menagerie at MIT:

By Paul Schindler

There are seven undergraduate dormitories on the main campus of MIT. They stretch from the oldest on one side (Senior House) to the newest on the other (MacGregor). Each has its own distinctive style and flavor, uniquely difficult to describe.

Very few people have spent much time in a majority of the Houses. But there is one group that "sees them where they live" in the dormitories, and that is the Dormitory Telephone Service.

It is unfortunate but true that opportunities for exploration are slowly being choked off for anyone but a physical plant type worker. An incredible rise in theft in recent years has forced the Institute to tighten security at a spiraling rate. All dorms are now locking their front doors, some for the first time, others for longer hours than before. Dorm residents are being asked to view all strangers with deep suspicion, and even MIT phone repairmen are now asked for ID (they have it, but were rarely asked to show it in the past). The increasing and justifiable paranoia makes the gathering of even such superficial insight as this more difficult as time goes on.

But descriptions of the physical plant and brief glimpses of the occupants cannot describe a dorm any more than a jet plane flight from coast to coast can tell you all about America.

Senior House

Senior House is the oldest dorm on campus, and is located right next to what used to be the President's house. The house is still there, but the President of MIT rarely is; he controls it, and uses it for social functions or an occasional cat nap, but it has not in fact been the presidential residence for several years.

Senior House does not need a location next to MIT's president to lend it distinction. It has many claims of its own, primarily as the oldest dorm, which was also one of the first to go co-ed.

Senior House is actually six dorms in one complex, each with its own name; each with its own unique barriers to efficient phone work. These self-same barriers reveal something about the "architectural psychology" in vogue at the time of their construction. Some of the rooms seem to be arranged on a suite system with three or four rooms fronting on a common living room and common bath (some MIT houses share a bath per floor). The intent seems to be fellowship and communication, at least between the people in the same suite. Merely standing in these living rooms conjures up images of hale fellows in smoking jackets and ties studying hard or preparing for the weekend dance.

The image is a little difficult to maintain, as each of the rooms off the central area is decorated in "student modern":

walls covered with posters, floors covered with blue jeans, and an occasional textbook hidden here and there.

There is no quick and easy way to characterize the people in Senior House; however, I have rarely seen anyone in his room there. More so than in any other dorm, work here is work in solitude, with communication via notes on the phone or tacked to the door.

Bexley

In the case of Bexley, the character is shared by residents and structure alike. Long rumored to be "freak central" at MIT, Bexley has gotten a reputation for being the place to go if your head is into radicalism or rock music played loud.

It is difficult if not impossible to get any sort of statistical check on the accuracy of these rumors. In spite of many categories for classification, Institute housing records do not include any notation for "free thinker" or "prominent weirdo and dope smoking radical." There are straight people living in Bexley's dimly lit, dillapidated rooms; and they surely appreciate paying what is rightfully one of the lowest rents on campus, while enjoying one of the most central locations.

Approaching Bexley from the outside might convince one that there is some kind of paranoia here; there are four parts to the dorm (unlike Senior House, where the parts are named, Bexley's component houses are known only by number) and each has its own locked door. There is no common desk, making it unique among dorms.

But it should be remembered that the building was not originally designed to be a dorm: it was once an apartment house, designed admirably for that purpose; serving passably in its present incarnation.

The seeming architectural hostility is not reflected by the



McCormick

occupants, nor by the individual suites (which share a kitchen). Indeed, leaving aside their individual merits, the people of Bexley are, as a group, the friendliest on campus to outsiders. There is no unspoken glaring hostility towards the innocent dormphone repairman here; only unbridled interest in the innermost workings of telephone systems.

Burton

Burton House is the most recently remodelled dorm on campus. It was once a hotel, and has for some time been an MIT dorm. Last year refurbishing relegated the infamous Burton walk-through doubles to the junkheap of history — tales told by residents who were actually there tell of men who had no recourse but to walk through someone else's room in order to get to their own. In addition, it has been said in *The Tech* that the rugs, when wet, "smelled dankly of old beer."

Those days are gone, as the innards of the building are essentially brand new. Also gone are the high population density, the low rents, and any semblance of community feeling, or at least that portion of it which can be visibly detected by an outsider.

In ironing out the small bugs which Dormphone found there during this first year of operation, I ran into a wall of hostility unparalleled elsewhere on campus. It must be remembered that the residents of the building are picked as randomly as those of any other dorm, but their environment is not.

The accommodations are plush; the plushest and most modern

looking on campus. Most of the public areas are very "pop-art" in appearance: broad areas of splashy color, silvered surfaces, ceiling tile and wall to wall carpet as far as the eye can see. This might be having its effect on the occupants who have to look at it day in and day out as they go about their business. But there are other things which might be having a more direct effect on Burton minds.

The security here is almost prison-like in its omnipresence: the rooms not only do not open on a common hall, they rarely open into their own suite. The public halls face blank walls shielding suite hallways which are protected by locked doors. Getting past the suite door you find locked individual rooms, and often a common area in disuse.

Relative to the other dorms, rooming in Burton seems like living in a Hilton hotel.

MacGregor

MIT's newest dorm, MacGregor, opened for business in the fall of 1970 in semi-completed condition; unlaidd carpets and uninstalled phones were the rule, and some floors didn't have running water for a few weeks. As a result, a special cornerstone was made and installed by students and then removed by MIT; it said "Jackson sux" and was dedicated to the general contractor, Jackson Construction.

Things operate much better now in the Institute's only high-rise undergraduate dorm; the original slogan "grease rises to the top" has died as student politicians slowly vacate the more desirable upper-floor rooms in favor of the common folk. The common areas in each suite are frequently used, and the people on any one floor in any one suite seem to know each other fairly well.

Both the rent and the accommodations here are similar to those in Burton, but there are subtle differences. The image here is less one of plastic and gloss than one of quiet wood and dark colors. Many people in MacGregor seem rather quiet and reserved, again seemingly reflecting their surroundings.

If interest in studies can be judged by the prominence of textbooks in most rooms, than MacGregor is second only to East Campus in terms of scholastic effort. If spartan decoration

DO YOU KNOW THAT...

Many students say the most important service this bank has ever offered them is:

Low-Cost Life Insurance. You won't believe it until you look — and compare. We've got the best buy.

CAMBRIDGE SAVINGS BANK — Kendall Square

SPECIAL SCHOLARSHIP OFFER.

CLASS OF '75 ONLY.

Scholarship Includes: 2-year tuition...free! \$100 monthly. Book allowance, lab fees, etc.

How to qualify:

Just send in the coupon, or talk to the Professor of Aerospace Studies on your campus. (If you're class of '76, next year is your year.)

U.S. Air Force Recruiting Service
Directorate of Advertising (RSAV)
Randolph Air Force Base
Texas 78148

Please send me more information on your 2-year scholarship program.

Name _____ Birth Date _____

Address _____ Sex _____

City _____ County _____ State _____ Zip _____

Present College _____ Future College _____

Soc. Sec. # _____

**FIND YOURSELF A SCHOLARSHIP
IN AIR FORCE ROTC.**

2-NR-92

A professional ABORTION that is safe, legal & inexpensive

can be set up on an outpatient basis by calling
The Problem Pregnancy Educational Service
(215) 722-5360

24 hours — 7 days
for professional, confidential and caring help.

DO YOU KNOW THAT...

Each year Savings Bank Life Insurance ranks 4th or 5th in sales in Massachusetts — of all Ordinary insurance sold?

The reason: low-cost; annual dividends; first-rate protection. See us.

CAMBRIDGE SAVINGS BANK — Kendall Square

a peek inside the 7 Institute Houses

of rooms indicates sober-sided attitudes, then sides of iron are to be found at this house.

MacGregor is further west than any other undergraduate dorm, and overlooks one of Cambridge's best restaurants, Joyce Chen's, an MIT favorite that will probably disappear (since MIT owns the land) when enough money is raised for MacGregor II (working title only). Within MacGregor there is a beautiful modern dining hall where food is prepared by the same people who make the food at the Top o' the Hub (high atop Prudential tower in Boston); most people concede that better can be had in any one of the kitchens to be found in every suite in the dorm. And some people wonder why the dining service is dying...

McCormick

Built with \$26 million: McCormick fortune, this recently constructed building has the distinction of being one of the few officially single-sex dorms on campus.

The building starts off with splendid public rooms on the first floor, and rises 8 stories in both the old tower and the new. It is the single building most responsible for the ever-increasing number of women at the Institute: at the time it was built it was virtually the only residence for undergraduate women, and its capacity served as the upper bounds on the number of women who could be admitted.

However, the history of the place is not something you see as you nervously walk its halls. What you see first and foremost is the carpeting that has an uncanny ability to produce great amounts of static electricity, no matter what the time of year; electricity which comes discharging off unsuspecting fingers in great ringing blue bolts at the slightest brush of grounded metal.

Over a period of time there is an increasing sense of paranoia which makes access to individual rooms that much more difficult. People are more suspicious of strangers than ever in all dorms, but the suspicion is rampant here. As part of the increasing security in all dorms, locked doors have been installed dividing each floor in two. The kitchenettes continue to serve as frequently used common areas for half of a floor, but the doors seem to be reducing any cross-floor communication.

There is a distinct, noticeable spirit in some parts of McCormick; a lot of women feel that they are a minority, and that sticking together is in their own self-interest. (One floor is essentially all black, and the spirit seemed especially strong here.) It is difficult to analyze these things when you are stapling wuad (wire) to the floorboard, but it is heartening to find a dorm in which people at least know their neighbor's name, and seemingly care even about one another's inability to get a dialtone. The same is not true of all the other dorms.

Baker

At the outset, I must mention that in some circles, Baker has a reputation for sheltering a number of gnurd-types; the most undeserved reputation ever to impugn the honor of any living group. If anything, Baker houses as many esoterics as Bexley; but since it is a much larger house, they tend to get lost in the crowd more easily.

Many was the time when hardworking phone men were met, upon departing the Baker passenger elevator, by a pungent cloud of dope smoke, which

rivalled those of story and song. Fortunately seldom were the occasions when a door was opened by passkey to reveal not one, but two bodies in bed in a room lived in by but one. The men of Baker distract themselves in a manner similar to that of other hard working college students.

To look at the place, it is easy to believe that it is an architectural marvel, and sometimes hard to believe that it is over 20 years old. For reassurance of this fact, one need only talk to the residents, who will be quick to point this fact out, when mentioning that their rents are not as low (relative to the newer west campus dorms) as some people think they ought to be.

Baker morale is extremely well developed, usually among rooms in one half of a single floor. There are currently unlocked doors demarcating these areas, which provide a sense of geographical isolation but allow free access. The cooperation of Baker residents easily extends to bamboozling mere dormphone employees attempting to do their job; but it is all in a spirit of good fun.

The walls and ceilings here are often among the most completely and gayly decorated at MIT, and the doors are an unparalleled source of information and amusement. Almost no door is without its sign, newspaper clipping, or comic strip (Peanuts and Doonesbury are the most popular) and they make the halls a delight to traverse.

East Campus

Similarly delightful are the halls of the two wings (or parallels) of East Campus, which are officially but almost invisibly divided into 8 separate houses. The home of the hack; and long-time nerve center for the activist student type, East Campus is in many ways the epitome of MIT dormitory life.

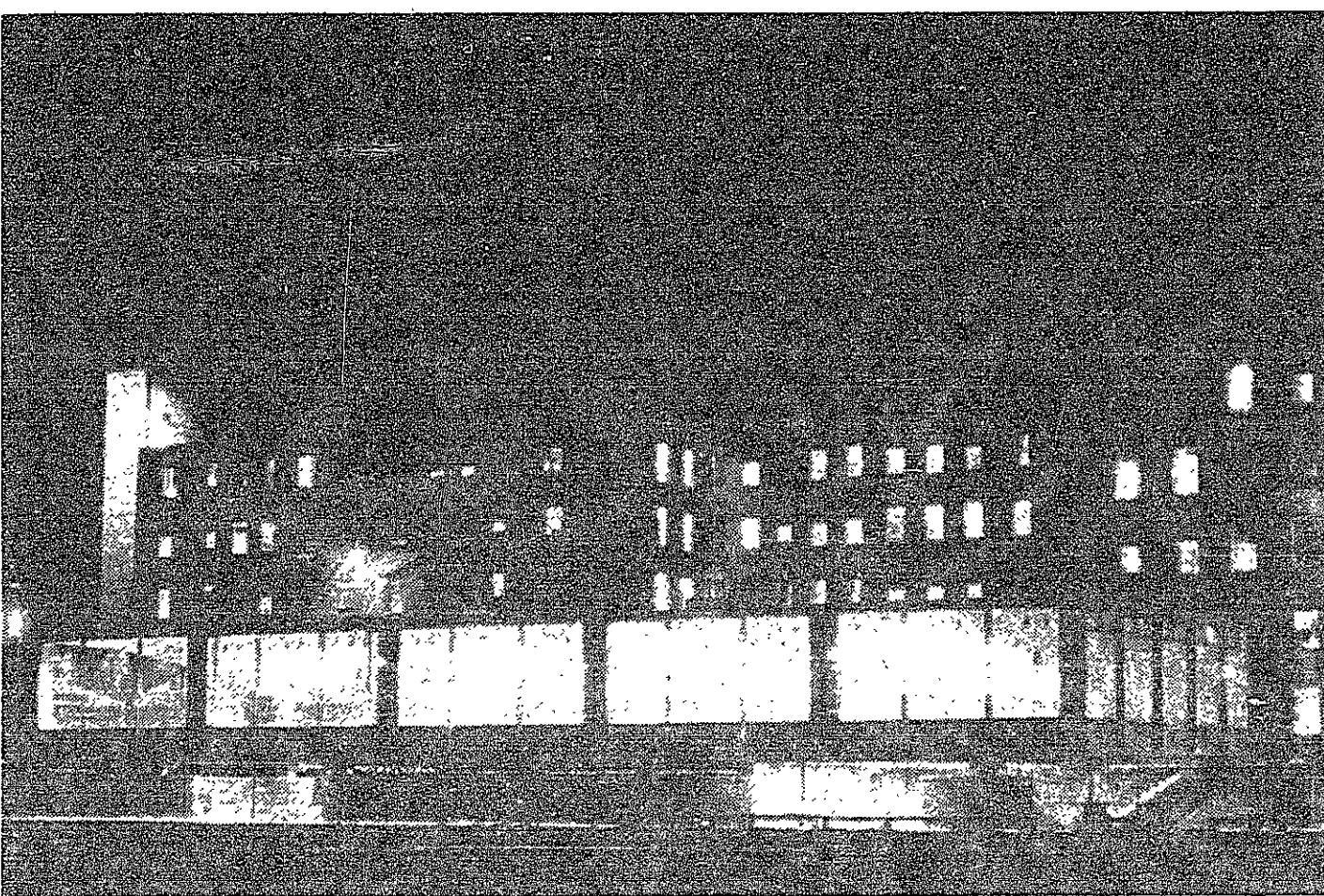
The first dorm to develop real morale, EC will most likely be the last ever to lose it. Built before World War I, the buildings have many quaint eccentricities, including a stunning resemblance to the main buildings, with long straight corridors facing seldom opened doors. The dorm probably deserves its reputation as home of the MIT tool, at least partly because of its extremely central location to academic buildings; there may be a self-selection process of people who actually want to live that close to class.

Usually reliable rumors have it that the recent round of remodelling (yet to be completed) was begun as a result of a fire which started when someone returned to find his room filled from ceiling to floor with newspaper. Rather than enter and remove the paper, he is said to have merely thrown in a match.

In any case, practical jokes are the rule here, but no one seems to take them very seriously, and the unit social group is probably the tightest and largest on campus. There is something of a sense of the dorm as a whole, but the major grouping unit tends to be the floor, which has parties, study sessions, work gangs, teams, and enters WTBS contests.

The rents are not the lowest, and the accommodations are not the best, but EC has lived-in lounges, and more than passable rooms. Decorating a room here seems to be a challenge to the imagination; mere colors and posters abound. But, in EC, one is as likely to find a room stacked full of orange soda cans as one with a 6 color telephone.

The residents tend to be friendly if not outgoing, which poses a rip-off problem. The



Burton House

security devices which some have proposed are intriguing, if not downright illegal; if they are installed an armed escort might be in order for any East Campus tour of the future.

MIT will probably be building more dorms in the future, and there are persistent rumors that East Campus will eventually be torn down to make way for academic buildings. No one will confirm or deny such rumors, at this time.

But one thing seems sure, as

the building date of a dorm moves up, the "team spirit" and morale seem to decrease. Some of this may be attributable to student desires, since students have a large hand in deciding

what kind of buildings they will live in. It will be difficult if not impossible to fight isolation, if that's what people really want. But the issue was probably never presented very clearly.

DO YOU KNOW THAT...

More than \$35 MILLION of low-cost Savings Bank Life Insurance has been bought from us — by college students in Cambridge?

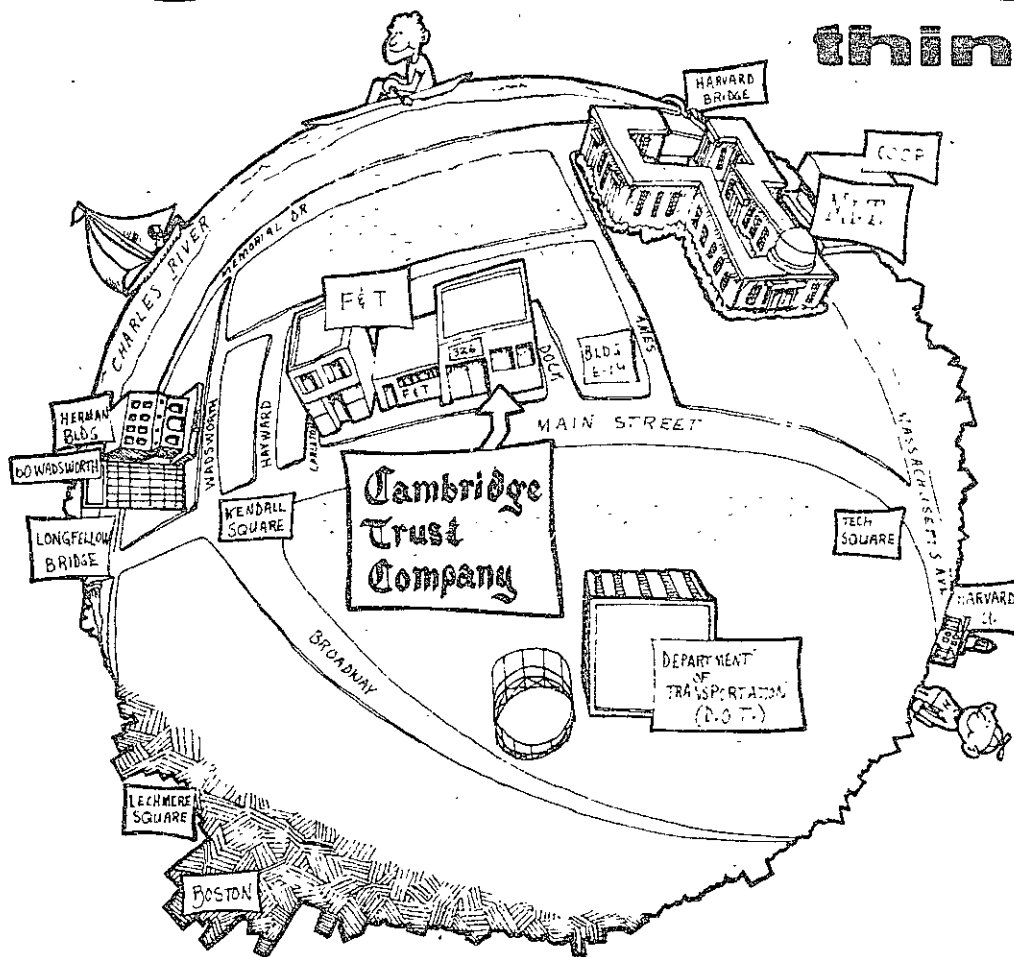
We must be doing something right.

Could be the low cost.

Could be the kind of service we give. Try us.

CAMBRIDGE SAVINGS BANK — Kendall Square

in Kendall Square, we're right in the middle of things.



Check with us!

I am enclosing a check for \$ _____ as the initial deposit in my free (with \$100 minimum balance) Cambridge Trust Company individual joint checking account. I understand that you'll immediately send me pertinent information and a supply of checks.

Authorized signature(s) _____

Name _____ Phone _____

Street _____

City _____ State _____ Zip _____

Mail to: Cambridge Trust Company, 1336 Mass. Ave., Cambridge, Mass. 02138

Cambridge Trust Company

Harvard Square 1336 Mass. Ave., Holyoke Center 876-5500 Member FDIC Kendall Square 326 Main St., near Ford Bldg. E-19

SPORTS

Dopfel and the big leagues

By Sandy Yulke

MIT has finally made the big league, in baseball that is. Al Dopfel, who has accrued many other honors in the last few months, has become the first MIT baseball player to be signed by a major league team. Al was the number three draft choice of the California Angels this spring, and has been playing baseball this summer with their Shreveport, Louisiana Double A farm club.

Dopfel has been keeping Pete Close, the Sports Information Director here at MIT, informed of what he has been doing this summer in a series of very funny letters, which give a great deal of insight into the differences between the minor and major leagues.

According to Dopfel

"I'm finally situated in Shreveport and it's really different. Down here, I've got to worry about all the poisonous snakes and vermin. Last week... the center fielder killed five trandillas (sic). After the game a five inch beetle landed on my shoulder. Down here it's man against the elements.

"Our home field is beautiful, though it's located in the worst section of town. Consequently, attendance is really low. On free night they got 300. Hopefully on beer night we'll draw more."

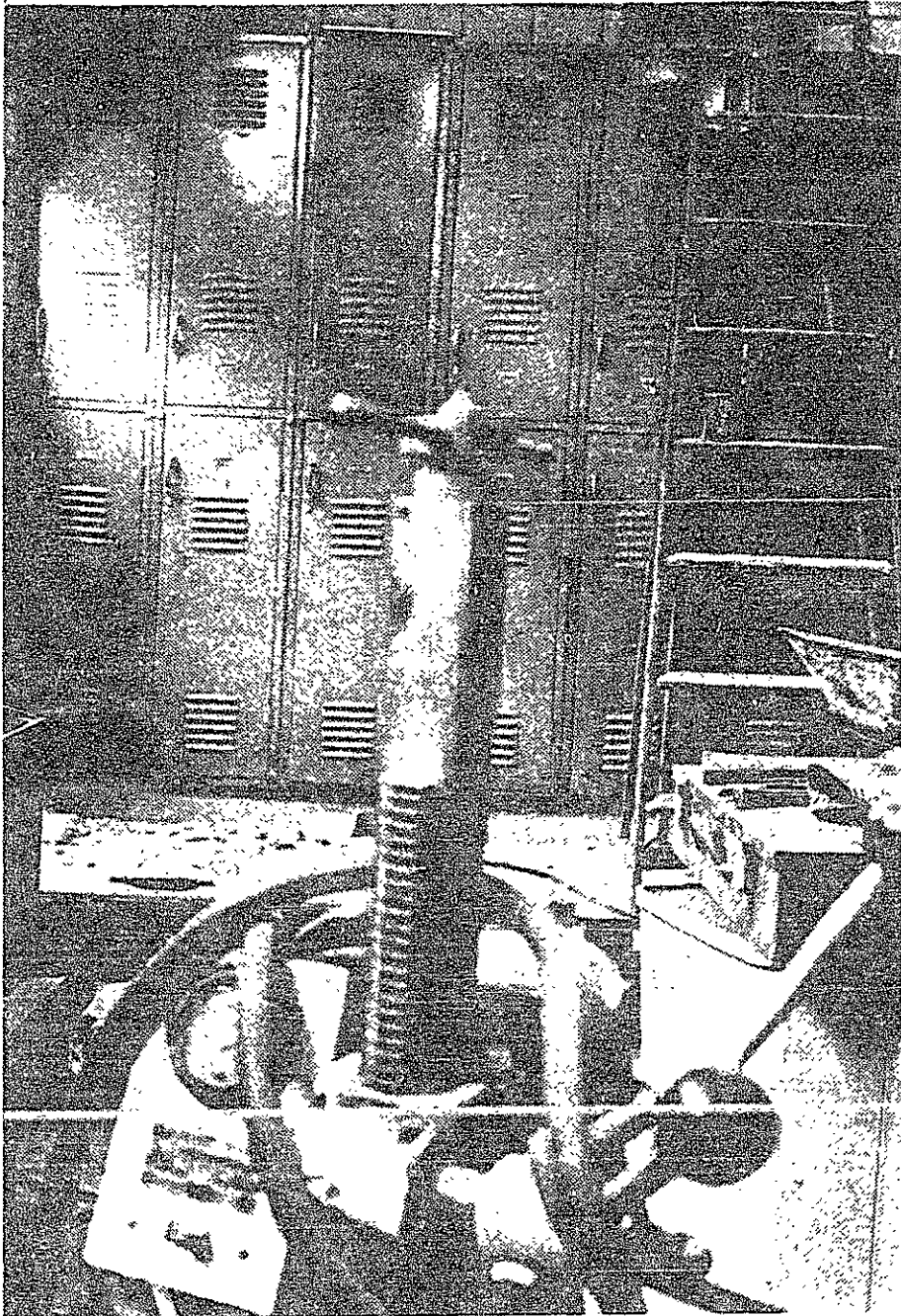
Dopfel got into the starting rotation and had a very good record (pitching two shutouts and two incomplete games he compiled the following record: 2-1, 1.40 ERA, 25 innings, 22 strike-outs, 16 hits and 15 walks) until he ran into what he described as "a black day in my career." What happened was that he was literally knocked out of the game when a ball hit him on

the head.

For those unfamiliar with Dopfel's record here at MIT, the following is a short recap: 1972 Captain and Most Valuable Player; 1972 Greater Boston League All Star Pitcher; 1972 Greater Boston League Most Valuable Player; 1972 All New England; 1972 NCAA Strike-out

Leader (15.82 s.o./game); NCAA New England Regional No. One Player; Sporting News All American Honorable Mention; and Sports Illustrated "Face in the Crowd."

Dopfel majored in management here at MIT and signed with the Angels three weeks after graduating from MIT.



Briggs Field House is being converted into an additional women's locker room. The conversion involves the moving of the entrance to the duPont Athletic Center, as well as the installation of 56 new lockers and 120 new baskets for women.

Tropical Fish?

10% Discount Cards Available

Boston Pet Supply, Inc. Just Past Kendall Square

200 First St. Cambridge, MA 02142 863-3474

BENCHWARMER

Today, for the first time, all freshmen, including women, will have a vested interest in attending the Athletics Midway in the Armory between 3 and 6 pm. The Class of '76 is the first in which women will also be required to fulfill the eight points of physical education credit that has been required of the male students since anyone can remember.

There are a great many good reasons for the requirement to be extended to women. The first and most important reason is that a physical education requirement is a good thing, especially at MIT, where the majority of students think that sports are only for less intelligent people - hence the idea of the "dumb jock." This is certainly not true, not only are sports fun, and not only are they good for the maintenance of one's body, they are good for the maintenance of one's mind as well. There are numerous studies, which can be cited, that have demonstrated this quite well, by showing that people seem to perform better in the classroom if they spend part of their day engaged in some kind of athletic activity.

Another reason that the requirement is good is that sports at MIT are not like sports in high school, and that once people discover this, many of them are not only glad to fulfill their requirement, but take subjects beyond it as well. The physical education instructors at MIT are not interested in making you into the world's greatest athlete, in fact they do not emphasize competition at all.

The reason that women were previously excluded from the athletic requirement is that the athletic department did not have sufficient facilities for women to participate in the physical education program on an equal basis, and in typical vicious circle manner, they did not have the facilities because there was no requirement. Both these problems have now been solved, and a new women's locker room is scheduled for completion later this month (see *The Tech* summer issue, page 16). Also, for the first time, a woman has been made Coordinator of Women's Athletics and she will not be the only woman on the staff of the athletic department. There will even be a women-only course offered this year; the only courses that women are not allowed to take are weightlifting, wrestling and football.

Women's athletics have come a long way in the last several years, for it was only a few years ago that women were permitted to take any of the physical education courses. There is also now a women's varsity team, sailing, and they won the national championship last year. The women's crew team, which has done quite well recently, may become a varsity sport sometime this year. There are also women's intercollegiate teams in basketball, tennis, swimming, fencing and field hockey.

DO YOU KNOW THAT...

You can get up to \$25,000 life insurance protection at less than \$100 a year net cost... (average NET payment for age 24 for 20 years based on 1972 dividend scale).

CAMBRIDGE SAVINGS BANK — Kendall Square

Handy Grocery Shopping

MIT Eastgate Apts—

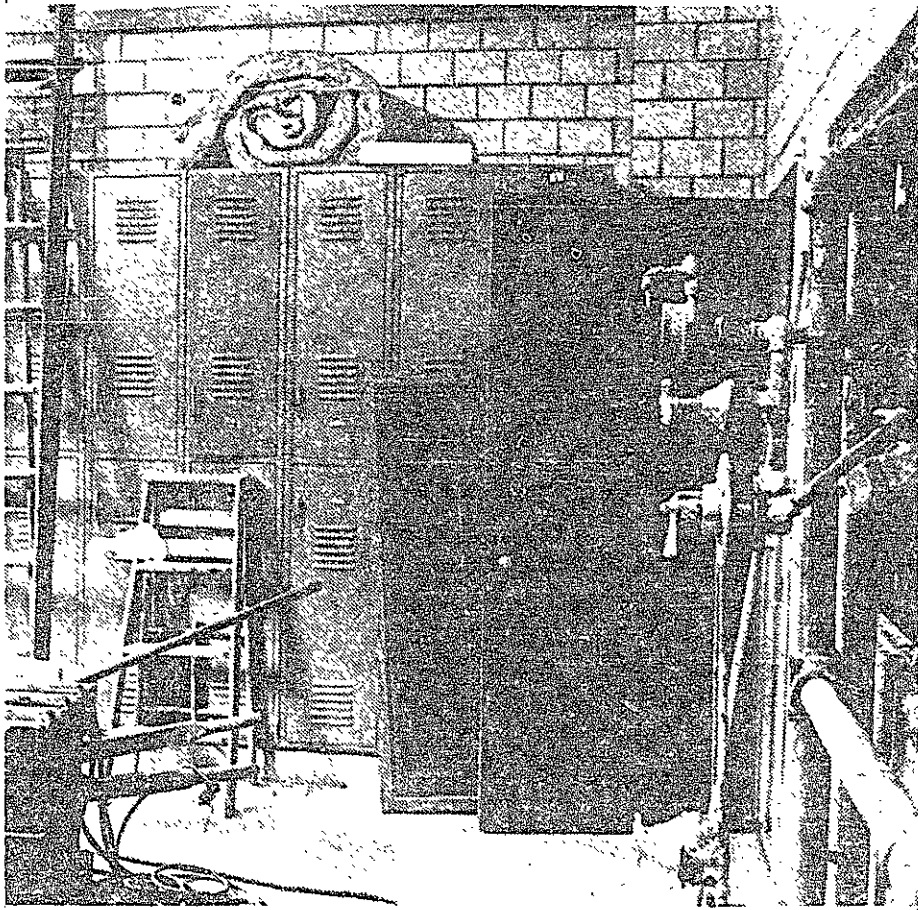
closest store to East Campus Dorms

MIT Westgate Apts—

closest store to West Campus Dorms

Open to All of the MIT Community

Hours: 11am to 1pm, 4pm to 7pm; Mon. thru Sat.



classified advertising

20% - 50% OFF ON ALL STEREO EQUIPMENT. Stereo Components, Compacts, and TV's. All new, in factory sealed cartons. 100% guaranteed. All major brands available. Call Mike anytime. 491-7793.

OVERSEAS JOBS FOR STUDENTS - Australia, Europe, S. America, Africa, etc. All professions and occupations. \$700 to \$3,000 monthly. Expenses paid, overtime, sightseeing. Free information - Write Jobs Overseas, Dept. F6, P.O. Box 15071, San Diego, CA. 92115.

DIAMOND ENGAGEMENT & WEDDING RINGS. 3,000 ring selections in all styles at 50% discount to students, staff, and faculty. Buy direct from leading manufacturer and SAVE! 1/2 carat \$179, 3/4 carat only \$299. For free color folder write: Box 42, Fanwood, N.J. 07023.

Student to manage small business. No selling. Short hours. \$300-\$600/month. Write INF, Box 508, Boulder, Colo. 80320. Include a few personal details.

The Tech

Wants YOU!

JOIN US! at the Activities Midway this afternoon in the Armory.

Second-class postage paid at Boston, Massachusetts. *The Tech* is published twice a week during the college year, except during college vacations, and once during the first week in August, by *The Tech*, Room W20-483, MIT Student Center, 84 Massachusetts Avenue, Cambridge, Massachusetts 02139. Telephone: Area Code 617 864-6900 extension 2731 or 1541. United States Mail subscription rates: \$5.00 for one year, \$9.00 for two years.

Friday, September 8, 1972