

SDS members and sympathizers gathered in the lobby of building seven for a rally Tuesday afternoon before marching to protest CIS work. Half a dozen campus patrolmen waited in the

Hermann building, home for the CIS, but the demonstrators instead confronted CIS-head Everett Hagen on the first floor of the Sloan Building.

Photo by David Tenenbaum

## CJAC debates ombudsman

By Curtis Reeves

The Corporation Joint Advisory Committee (CJAC) ended its series of meetings for the second term by devoting its final two meetings to an in-depth discussion of the advisability of having an ombudsman at MIT. Similar, but less detailed consideration, had been given to the issue at CJAC's meeting of March 18.

Attending on Wednesday night were Dean for Institute Relations Benson Snyder and Professor of Electrical Engineering and chairman of the Committee on Academic Performance Campbell Searle. Both men have had contact with ombudsmen at other schools in recent weeks.

Searle came out in favor of suggesting the establishment of the office to incoming president Jerome Weisner. In summing up the feelings of a MIT Commission subcommittee which is in favor of the move, Searle said, "We feel that the function is necessary in order to make the judicial system work."

Snyder, on the other hand, bitterly opposed the idea. Asking CJAC if the ombudsman was "as effective a role as we can get," Snyder viewed the move as

"a rather expensive band-aid for a serious wound, and I'm not sure that it gets at the source of bleeding." Referring to the system at Stanford University, Snyder supported his opinion by pointing out that the office had not been well used by the Stanford community and noting the particularly high cost per case in debating his position. Out of a student body of 1200 (the office is also open to faculty and staff) only 81 cases were handled last year, at a cost of about \$300 each.

CJAC, overwhelmingly in favor of the establishment of the position, responded. Walter Koltun, special advisor to CJAC, expressed the general feelings of the group in saying, "if he can relieve the load from the president, he's worth the price." It was estimated that between \$20,000 and \$25,000 would be spent annually on the office were it established.

Snyder, in rebutting, suggested that the function be served, not from the creation of a new office, but within the means afforded by the present structure. To separate the office from the system, he said, would be fatal.

Again, CJAC disagreed. They

pointed to the situation at Dartmouth College, which had been the model that they had discussed at the April 22 meeting, as the kind that they were aiming for. At Dartmouth, the magnitude of problems handled was much lower than Stanford, the main concern being the easing of trivial matters from the shoulders of the president.

## Mitchell sees spark of support for space

By Lee Giguere

There is a "resurgence of support" for space exploration according to Captain Edgar Mitchell, NASA astronaut and a crew member of Apollo 14.

Mitchell, speaking Monday at MIT, admitted that "people want to know what their money is going to return," and argued that the United States must either develop a better rationale for space flight or educate citizens to our [the scientific community's] level of competence in long-range research."

"I do believe that technology can be used improperly," Mitchell commented. The scientific community, he continued, must "keep in the back of its mind" that it has "more of an obligation than to just produce new gadgets." However, he disclaimed any belief that all research should be directed.

Mitchell also briefed the gathering on NASA's manned space flight program. Three more Apollo flights are planned, each of which he felt would add significantly to the data already collected about the moon. Science is "what we're going for," Mitchell said. "We felt we turned the corner in Apollo 14 and started bringing back real science." Up until that flight, he explained, the effort was directed at establishing the "transportation system" to get men to the moon.

Plans beyond Apollo include the Skylab program and an orbital shuttle. Skylab, "a small space station," is funded for only one orbiting lab, with three flights. The orbital shuttle, he noted, which will not fly until the late 1970's, could reduce orbiting costs from \$1000/lb. to

## Recent grads vie for Corporation openings

By Harvey Baker

The special Corporation Screening Committee has completed the job of selecting candidates for the new Corporation membership category of Representatives from Recent Classes.

From among a group of 447 nominations that were made, the Committee selected fourteen to be on the ballot for the upcoming election; five of them will be elected and will serve staggered terms. The ballot should already be in the mail to the 5800 eligible voters.

The fourteen are: Gregory Arenson '71, Karen Wattel Arenson '70, John B.L. Harkness '71, Peter Q. Harris '69, Randolph G. Hawthorne '71, James Hester '70, Christian H. Jansen '63, Robert McGregor '70, Mark Rockoff '69, Alfred F. Sanford '69, Michael Sawyer '71, Laurence Storch '71, Michael R. Terry '62, and Pamela T. Whitman '70.

The Screening Committee met once in March and again on April 8. All five members attended both meetings. The five on the Committee were the youngest alumni presently sitting on the Corporation. The Screening Committee for next year's Corporation candidates will consist of the five that are

elected this year. Only one new Corporation member will be elected each year from now on.

People on this year's ballot had to represent four different classes, the undergraduate classes of '69, '70, and '71, and graduate students completing their terminal year of study at MIT. This same pattern will be followed in future elections, with the eligible classes being the most recent three undergraduate classes and the current class of graduate students. In order to serve on the Corporation, a successful candidate may not be a member of the MIT faculty, staff, or student body during his tenure as a Corporation member. Should any successful candidate become ineligible, his vacancy will be filled by one of the remaining candidates until March, 1972, and thereafter by next year's election.

The candidate receiving the most votes this year will serve for a five-year term, with the other candidates serving for terms of four, three, two and one years depending on their order of finish in the voting.

There were complaints from some students earlier this spring that the Screening Committee of the Corporation served essentially to screen out radical candidates from appearing on the ballot. A statement on the ballot under the heading of "Background Information" had this to say, "In the final analysis, the selection of candidates by the Screening Committee rests on their judgment in a broad sense of who among the many well qualified nominees might be most effective as potential Corporation members." The statement goes on to say that all nominations were considered, regardless of the number of times each was nominated. In this way, it said, lesser known persons were guaranteed full consideration.

The Screening Committee was required by the bylaws to place at least ten people on the ballot, and though it had no maximum number to work with, it was understood that in the interests of fairness to the candidates the number would not be too large. Ballots must be returned to the Secretary of the Alumni Association by May 19, 1971.

## Task Force to continue function of Commission

By Alex Makowski

MIT has established a Task Force on Education to continue through next fall the Commission's evaluation of education at MIT.

Professor Hartley Rogers, chairman of the new study group, explained to *The Tech* that a main goal of his group would be to "shape some of the possible courses of action" the faculty could take for educational reform.

Besides Rogers, the six-man working group includes Sheila Widnall, MIT Commission member, Frank Press, chairman of the Department of Earth and Planetary Sciences, Tony

French, assistant chairman of the Physics department and a member of the Science Council, Benson Snyder, Dean for Institute Relations, and Robert Galager, Electrical Engineering.

Working closely with this central team will be a student advisory group and a faculty advisory group. The student advisory group has already been selected, and Rogers predicted close cooperation and consultation among all three committees.

Chance for change

Rogers explained that he sees a real chance now for significant change. The momentum from the Commission study may well

(Please turn to page 6)

## CEP gives go-ahead to Concourse Experiment

By Buddy Miller

The Committee on Educational Policy has unanimously voted its support for a new experimental program of undergraduate education for the first two years at MIT.

Called the Concourse Experiment, the program is authorized to operate during the academic year 1971-72 with up to 35 freshmen and 15 sophomores. The staff of the program will include eight to ten half-time faculty members from various departments as well as six graduate and undergraduate teaching assistants.

The basic idea of Concourse is to create a teaching community in which the faculty members can learn from each other as well as teach their students. The structure will basically be collaborative teaching rather than the usual "turn" teaching, and the goal will be an intense, continu-

ous interaction of ideas and techniques from engineering, science, social science, and humanities.

The hope of the program is to foster students' abilities to set problems for themselves as well as solve them, and to choose problems intelligently rather than accepting passively what they have been told to do.

The program's unique strength stems from the fact that it grows from a background of successful educational experimentation by its staff, a young group with a wide variety of educational backgrounds.

Most of the staff have taught at other universities, and all have been students or faculty members at MIT during the past several years. Three of the group have received MIT's Baker Award for undergraduate teaching.



**THE WORLD IS FULL OF BEAUTIFUL PEOPLE AND PLACES. . .  
To help you get there, TWA introduces the Getaway\* Program.**

If you could dig hitch-hiking across Spain or camping along a road in England. Staying at a chateau in France or living near a beach in California. TWA brings you Getaway.

First there's the Getaway\* Card. With it, you can charge airfare, hotels, meals, cars, just about anything just about anywhere. And then take up to two years to pay.

There's also the Youth Passport\* Card. It lets you fly at 33% off on all domestic flights on a standby basis.

It also gives you reduced rates at many places you'll be staying.

Youth Passport is good on 20 other airlines. It costs \$3 and it's available to anyone between 12 and 21.

And if you send in the coupon, we'll send you the Getaway Vacation Kit.

It has a Getaway Book, a 224 page look at 19 of the great cities of the world.

Three brochures, one on America, one on Europe, and a third on Africa, Asia, the Orient, and the Pacific.

It has the independent Getaway Brochure. For those who would rather travel by themselves than with a group.

And it has applications for both the Youth Passport and Getaway Card.

Mail in the coupon for TWA's free Getaway Vacation Kit.

And find out how easy getting away really is.

**The Getaway Program**

U.S.A./EUROPE/ASIA/PACIFIC/AFRICA

TWA, P.O. Box 465,  
Farmingdale, N.Y. 11735

Please send me  
TWA's free Getaway Vacation Kit.



Name		
Address		
City	State	Zip

TET05031

Service marks owned exclusively by TWA

# Coeds stage Study Break

Students, faculty, and administrators gathered Wednesday night in McCormick for an informal "Study Break" to promote communication among these three campus groups.

Attendance at the gathering swelled to over 100 people, with more than a dozen faculty on hand and a handful of administrators. Invitations had been extended to students in the west campus McCormick, Baker, and MacGregor dorms.

The evening was the idea of freshman coed Sandy Lazo. Administrators from the Dean's office had voiced their desire for increasing ties with students, and Miss Lazo approached Dean Robert Holden with her plan for an informal night at McCormick. Invitations went out to both faculty members and administrators.

The large supply of refreshments available undoubtedly spurred the good turnout. McCormick president Marcia Keyes supervised the supply of ice cream and toppings for sundaes as well as punch, donuts, and cookies.



Students, faculty, and administrators all gathered in McCormick Wednesday night for an evening of informal discussion.

Photo by Sheldon Lowenthal

The goal of improving communications seemed successfully met. Knots of students formed around several of the faculty members, as the conversation flowed from subjects like MIT problems to dorm life.

The evening was much less

structured than the recent Baker House forums. Then faculty and administrators had split off into discussion groups for seminar-like talks about MIT problems. The McCormick evening aimed for a freer format.

Bexley Hall residents complained that they had not received any invitations, and the supposed slight prompted signs in the dorm urging all residents to go anyway. One Bexleyite smilingly observed that at 8:30, half an hour after the evening got underway, "95 percent" of the students were from Bexley.

### Visiting Committee

Today and tomorrow the Corporation Visiting Committee on Student Affairs will be at MIT to discuss student housing. The multi-faceted program includes open meetings to present committee members with both the financial factors involved with housing students and some feel for the quality of life offered by the various living groups.

Of particular interest to students is a meeting from nine am to twelve noon Saturday. In the East Campus Talbot Lounge representatives from the IFC and Dermcomm will discuss what their respective living groups have to offer. Students are welcome to attend and offer their own opinions.

# Class of '71 sponsors Kent State lectures

By Harvey Baker

The Class of '71 is continuing its efforts to raise \$10,000 to establish an Annual Kent State Memorial Lecture Series.

The series would take the form of annual presentations by competing sides on given issues; the topic and speakers for each installment will be decided by a committee consisting of interested Class of '71 members, faculty members, and current students.

The lecture series is to commemorate the deaths of the four Kent State students who were killed by the National Guard just prior to last year's nationwide university strike. It is the hope of the Class of '71 officers that the series will serve as a reminder to MIT students of the future that such occurrences have happened and should never be allowed to occur again.

The Kent State Memorial Lecture Series is the gift of the Class of '71, but that class hopes to share in money that has been raised by the previous two year's classes, money that has as yet

been unallocated. The Class of '70 has \$2000 that is still undesignated, and the Class of '69 has almost the same amount. This latter money was originally set for some sort of lecture series which never got started so it is hoped that '69 officers will allow it to be used for this project.

The Class of '71 had run a donation booth in the lobby of Building 10, but the amount collected there was disappointingly small. Hence, a new donation booth is being set up at the donut booth in Building 7, and donations will also be taken at the booth selling tickets to the '71 Rock Revival next week. A lecture series is an expensive gift, but, say class officers, is a lot more useful than a plaque on a wall or a purple carpet. Contributions may be sent to the Kent State Memorial Lecture Fund, E19-437.

## classified advertising

MEN of all trades to NORTH SLOPE, ALASKA and the YUKON, around \$2800.00 a month. For complete information write to Job Research, P.O. Box 161, Str-A, Toronto, Ont. Enclose \$3.00 to cover cost.

PSYCHEDELIC LIGHTING For parties, room decorations, dances, rock concerts. World's largest psychedelic lighting catalog for rentals, sales, lightshows, send \$1 (credited as \$2). RockTronics, 22-MIT, Wendell St., Cambridge, Mass. 02138. Call EL4-4444.

ECOLE BILINGUE French-American School of Belmont, 380 Concord Avenue. Accredited private school (Grades I-VI). Now registering pre-school grades (Nursery, Kindergarten, and Transition) for September, 1971. Parents interested in a quality education plus French language training from an early age, call 484-6222 for information.

Mustang 1966, 6 cylinder, 3 speed, tach, reverb., gauges. New tires, shocks, and muffler. Excellent condition \$775.00. Call Jack: 864-1878 days; 245-7296 evenings.

WATERBED EXPERIENCE-wholesale/retail, Beds \$9-65, 20 mil union carbide vinyl, 20 yr. guar. Heaters \$12-35, silicone rubber, 400 watt, 115 v. thermostat. Waterbed Experience, 2259 Polk, S.F. Calif. call(415) 441-5111/441-2744 Distributors wanted.

DESPERATE DIETERS, moral down, weight up?

Reverse the trend! Join Diet Seminars for problem dieters (developed by Diet Workshop). Group leaders, group support provide motivation to follow individually tailored diets. Call Joan, 244-5847, evgs. 237-1077.

Rooms avail. \$125 single, \$75 dbl. per person for entire summer 6/1-8/27. \$25 deposit. Common kitchen. Locat. close to MIT/rt. by BU Bridge, Cambridge side. Don 354-9016.

FOR SALE 1964 TR-4, \$225 or best offer. Must sell. x3307 days. 742-0414 evenings.

Berit performance for a Boston Area Womens Center, "It's All Right to Be Woman," N.Y. Women's Theatre group. Saturday evening, May 8, MIT Student Center. Tickets \$1.50 at the door. Men and Women invited.

### WATERBEDS ARE SWEEPING THE COUNTRY

Everyone says, "Two things are better on a waterbed and one of them is sleep." The flowing rhythm of water literally follows the sleeper gradually reaching perfect stillness as you settle into place for a heavenly rest that holds no backaches, muscle tension — just pure ecstasy and a sea of dreams indeed.

WATERBED HISTORY: Designed by and for hospitals for better body conformation and weight displacement but now it's in the bedroom. YEH! DELUXE MODEL \$49.95 KING SIZE 6ft. x 7ft. The world's finest quality waterbed carrying a 10-year guarantee. Send check or money order for immediate delivery to: TROPICAL WATERBEDS; Box 2243; Hammond, Indiana 46323. (Economy models are also available in all sizes.) Would you like to make money for your sorority, fraternity, any project, or just for yourself? Sell waterbeds, we have a price set up for dealers and organizations.

## ABORTION

pregnancies up to 12 weeks terminated from

\$175.00

Medication, Lab Tests, Doctors' fees included.

Hospital & Hospital affiliated clinics.

(212) TR 7-8803

24 hours — 7 days

PHYSICIANS REFERRAL

We know we can help you, even if it's just to talk to someone.

**Young Gee**  
CHINESE AND AMERICAN RESTAURANT

29 Church Street, Cambridge  
For take home service call: UN 4-3018

AIR CONDITIONED  
29 CHURCH STREET  
HARVARD SQ., CAMBRIDGE  
TEL. 864-3018  
PERRY V. WONG, MGR.

Relax and Divert  
**CAMPUS CUE**  
590 Commonwealth Ave.  
(Opposite B. U. Towers)  
**Pocket Billiards**  
"Great for a Date"

**SUMMER EUROPE**

A. 6/7-9/5 \$202  
NY/Lon/NY  
D.I.A. Boeing 707

B. 6/29-8/28 \$222  
NY/Lon/NY  
D.I.A. Boeing 707

Only (95A) & (94B) seats per flight available. Above prices based on full occupancy and may vary if less than (95A) or (94B) seats are filled. Only MIT students & employees eligible. Call Cambridge Student Flights 864-0642. Air transportation (+ tax) & administrative expenses are: A. 177 + 25 = 202; B. 197 + 25 = 222.

**MIT CONCERT BAND**

in a program of contemporary band music  
Saturday, May 16, 8:30 pm  
KRESGE AUDITORIUM

tickets free to MIT community in Bldg. 10 lobby

BOSTON'S NEWEST SMASH HIT —  
A BRILLIANT COMEDY DRAMA!

**"I URGE YOU TO SEE MARIGOLDS"**

A BEAUTIFUL PIECE OF WORK. HONEST, HEART-BREAKING AND PERFECTLY ACHIEVED. IN EVERY INSTANCE THE SHINING EQUAL OF THE ORIGINAL PRODUCTION (WHICH WON THE N.Y. DRAMA CRITICS AWARD AS THE BEST AMERICAN PLAY OF 1970) — AND THEN SOME. ACHINGLY BEAUTIFUL. — Kevin Kelly, *Globe*

**"A BEAUTIFUL PLAY, A LOVELY PLAY."**

A DRAMA OF QUIET WISDOM AND HEART-BREAK, OF HUMOR THAT IS SOMETIMES COLDLY CRUEL AND SOMETIMES GENTLE AND TENDER. A DRAMA TO ADMIRE AND CHERISH. — Elliot Norton, *Record American*

**"EILEEN HECKART IS SUPERB!"**  
— Pat Collins, *WBZ-TV*

"A SAD, FUNNY, PENETRATING, CAUSTIC PLAY."  
"THE HUMAN CONDITION THAT ONLY LIVE DRAMA CAN CAPTURE. IT'S UNDENIABLY ALIVE."  
— Samuel Hirsch, *Herald Traveler*

"EILEEN HECKART ABSOLUTELY BRILLIANT! SPECTACULAR, EMOTION-DRAINING PERFORMANCES. INCREDIBLY POIGNANT WIT — MAKES YOU FEEL AS IF YOU'RE ON A TIGHTROPE BETWEEN LAUGHTER AND TEARS."  
— Arnold Reisman, *Boston After Dark*

**4 WEEKS! NOW THRU SUN., MAY 23** (LOCATED ONE BLOCK FROM HARVARD SQUARE)

ORDER NOW BY MAIL OR PHONE **661-1610**

TUES., WED., THURS. EVES. 7:30 & SUNDAY MATINEES AT 3:00	6.50	5.50	4.50
FRI. & SAT. EVES. AT 7 & 10	7.50	6.50	5.50

THE NEW THEATRE • 12 HOLYOKE STREET, CAMBRIDGE • TEL. 661-1610

# The Bag - a pure medium

By Lee Giguere

The Bag is an experiment in media, and an unusual one in that the medium is easily distinguished from its content - a differentiation which was first widely popularized by Marshall McLuhan.

The Bag is a pure medium. It can only serve as a carrier of other media - essays, short stories and poems in print form, photography and visual art and small objects (tactile media?), but it has no form or message of its own. Not only is it a pure medium or carrier, but it is proclaimed to be a free medium, open to everyone.

Traditionally, newspapers have been a closed medium in the sense that all their "content" is produced internally (by their staff). The better a newspaper, the more pride it has in the skill of its writers and reporters. Coupled with a myriad of financial considerations, this has made newspapers reluctant to publish articles written by "outsiders." In recent years, minority groups have increasingly come to feel repressed by the inaccessibility of the mass media. The Bag, it seems, reflects current trends in opening up the media. (This same analysis applies equally well to radio and TV.)

The thrust of this, of course, is that a free medium like The Bag depends heavily on community interest. It offers a wide audience to anybody with something to say. (More precisely, the full realization of the concept of The Bag would do this; the experiment is too limited to involve a significant number of people.) The first Bag was disappointing in that there were practically no contributions from the community. (For example, SDS might have inserted one of their leaflets.) The Bag as yet either hasn't found or hasn't connected itself to the "central megaphone" that Kevin George refers to in his "Bag Manifesto."

However, The Bag has a number of disadvantages. In spite of being "modularized" (a concept introduced to the news by Time magazine), it fails to be well organized enough to take advantage of this. The first edition, with only nine sheets, is easy enough to sort through, but as the number of contributions rises, the job will become increasingly more difficult. A newspaper, at least, has the advantage of putting some things in the same place every issue. (This is the same as the level of modularization that appears in The Bag. The kind of innovation that The Bag might attempt would be a matter of sorting out the news to make it more comprehensible to the reader, something it may or may not do in the future. Besides, there are only so many different colors of paper.)

Political Science Visiting Lecturer Ed Diamond asserts in an essay stuffed in The Bag that it "can be honest to its readers." In some ways, the format does free the readers from the bias of the "editors." There is no dis-

junction between page one and page thirty-seven. In addition, the concept of "free access" insures that the editors' judgment of what news is will not threaten to "censor" the news that the public sees. In spite of his contention that headlines are not needed, all of The Bag's articles have them. Some device is still necessary to attract the reader's attention and quickly reveal the contents of his daily bag of papers. In a free medium, everyone will try to shout for attention. At least an editorial staff, no matter how biased (and any major bias can usually be detected by a reader over a period of time) can act as a "referee" in this struggle for attention.

Diamond's essay also makes two points about advertising. The first is the fact that it is the advertising which controls a given day's volume of news, not the real amount of news for the day. The Bag, he asserts, neatly circumvents this problem. If nothing else, The Bag might at least make its readers aware of what controls the volume of news in other media. Diamond's second point is that all ads are displayed equally. However, The Bag's format offers considerably less guarantee that readers will

see all the ads. Most newspaper advertising is now based on the assumption that newspapers are read for their contents and while reading, a possible customer will notice an ad. The Bag, however, rests on the notion that its audience will read the advertising on its own merits. Under this assumption, The Bag may indeed be superior, but the assumption is unproved. It may be worth nothing, also, that advertisements, once found, are more easily saved for future reference.

The Bag is a bold experiment with a pure medium. Unfortunately, the experiment has been very limited. Its first issue has served only a limited audience (about 1000 Bags were distributed) - a fact which negates many of its most important advantages. As a pure medium, The Bag or something like it could be highly worthwhile. Its value lies in how well the community, especially the large segments of the community which are not closely tied with the media or do not have access to them, is able to make use of this method of communicating with itself, while circumventing the usual and sometimes restrictive channels of the established, traditional, impure media.

# THE TECH

VOLUME XXI, NO. 22

Friday, April 30, 1971

## Board of Directors

Chairman	Bruce Weinberg '72
Editor-in-Chief	Alex Makowski '72
Managing Editor	Bill Roberts '72
Business Manager	Bob Elkin '73
News Editors	Harvey Baker '72, Joe Kashi '72 Lee Giguere '73, Bruce Peetz '73
Night Editor	Tim Kiorpes '72
Features Editor	Dave Searls '73
Entertainment Editor	Rob Hunter '73
Sports Editor	Randy Young '74
Photography Editors	Sheldon Lowenthal '74, Dave Vogel '74
Advertising Manager	John Kavazanjian '72

Accounts Receivable	Leonard Tower '72
Accounts Payable	Larry Eisenberg '74

Production Staff	Daneene Fry '72, Cindy O'Connell '73
News Staff	Tom Finger '71, Ken Knyfd '72 Curt Reeves '73, Walter Middlebrook '74 Buddy Miller '74, Paul Raber '74 Kyle Richardson '74

Features Staff	Dena Kleiman '73, Bob Lefkowitz '74 Pete Maierna '74, Paul Schindler '74
----------------	---

Sports Staff	Ed Kavazanjian '73, Larry Krussel '73 Drew Jaglom '74, Jarvis Middleton '74
--------------	--

Second-class postage paid at Boston, Massachusetts. The Tech is published twice a week during the college year, except during college vacations, and once during the first week in August, by The Tech, Room W20-483, MIT Student Center, 84 Massachusetts Avenue, Cambridge, Massachusetts 02139. Telephone: Area Code 617 864-6900 extension 2731 or 1541. United States Mail subscriptions: \$4.50 for one year, \$8.00 for two years.

Printed by STI Publishing

## Letters to The Tech

To the editor:

We would like to call the attention of the MIT community to certain recent events at the faculty club and to express our opinions about them.

Last fall three black workers there claimed they were underpaid relative to others doing the same work at MIT. As a result of protests MIT and the union (in whom the workers have no faith) picked an outside arbitrator to evaluate the claims. (The arbitrator was chosen without consulting the workers.) This arbitrator decided the workers were underpaid and advised a 23 per cent increase (part of which was the "normal" increase of a new contract). So there is an implicit admission by MIT that they had been underpaid. One month later the faculty club reduced the usual overtime work of these men (one of them had received this overtime for 16 years) so their income was reduced to what they would have received without arbitration. A protest again occurred and as a result the overtime was restored. Again there seems to be an implicit admission that MIT was wrong.

Now the faculty club has again reduced the overtime work of these men, this time claiming that poor business forces cut-backs. We do not feel this action is justified because, apart from the little faith one has by now in the faculty club management, of the following: 1) if business is bad at the club it is at least partly because of the recent squabbles in which the administration was wrong, so why

should the workers take the consequences? Especially since MIT probably owes them something for past underpayment. Why not replace the faculty club management? 2) It is a socially iniquitous policy to cut back by reducing the income of the lowest paid employees, especially when the economy is inflating. These blacks, one of whom has been working at MIT for 16 years with no serious promotion, already suffer enough. They receive miserable salaries and are forced to live in the ghetto. It is touching to hear their personal stories (one can hardly pay his child's 90 dollar dental bill). MIT should not be so callous about the lives of its workers.

We would like to add a remark about the latest protests. As a result of them the workers and students who participated have received intimidating letters from MIT. They are accused of, among other things, abusive language and obstruction. The abusive language did occur and we don't defend it. There was no serious obstruction. To us it was more objectionable to see an MIT vice-president (Wynne) and deans (Sizer and Nyhart) standing up against poor workers with a just cause and against students who, though they may have been strident, are idealistic. We think these dignified MIT officials would also become strident if they suffered the indignities of these black workers. MIT can surely do better for society than behave like a tough businessman.

Prof. Richard M. Dudley  
Prof. Warren Ambrose

To Faculty Club Members:

This is to inform you about a current labor dispute between the Club and the three Banquet Set-up men...

On April 1, the Manager, after reviewing the matter with the three employees, concluded that the work could most effectively and economically be carried out by changing the hours of two of the employees to 6:30 am to 3 pm in order to reduce daily overtime hours...

The three employees then contacted several members of the Club's Executive Committee and complained that these changes would result both in financial loss to them and in a lower standard of cleanliness at the Club, and asked that the previous arrangements be restored. The Executive Committee looked into the matter and found the changes consistent with changes in all other departments of the Club and reflective of the Manager's efforts to operate the Club on a sound financial basis. It also found that the Manager has acted in accordance with the procedures stated specifically in the Agreement reached last December between him, the three employees and the Union which represents them, and in accordance with the Addendum to that Agreement of February 8, 1971. In view of these facts the Committee decided at its meeting of April 23 that it could not agree to the employees' request. It informed them of this decision and urged them to follow the orderly grievance procedure provided in their Agreement if they disagreed with the

decision, rather than to attempt to enforce their views by refusing to work overtime or engaging in other violations of the Agreement.

During the past few weeks, these three employees have engaged in conduct which has hampered the operation of the Club and hindered access to the Club by the members. Most recently, on April 23, they engaged in illegal and coercive picketing, with two of them using abusive and threatening language. This conduct is in direct violation of the Agreement, as is their refusal to work overtime, and the Executive Committee authorized the Manager to write to each of the men warning them that continuation of such conduct is unacceptable and will make them subject to disciplinary action up to and including discharge.

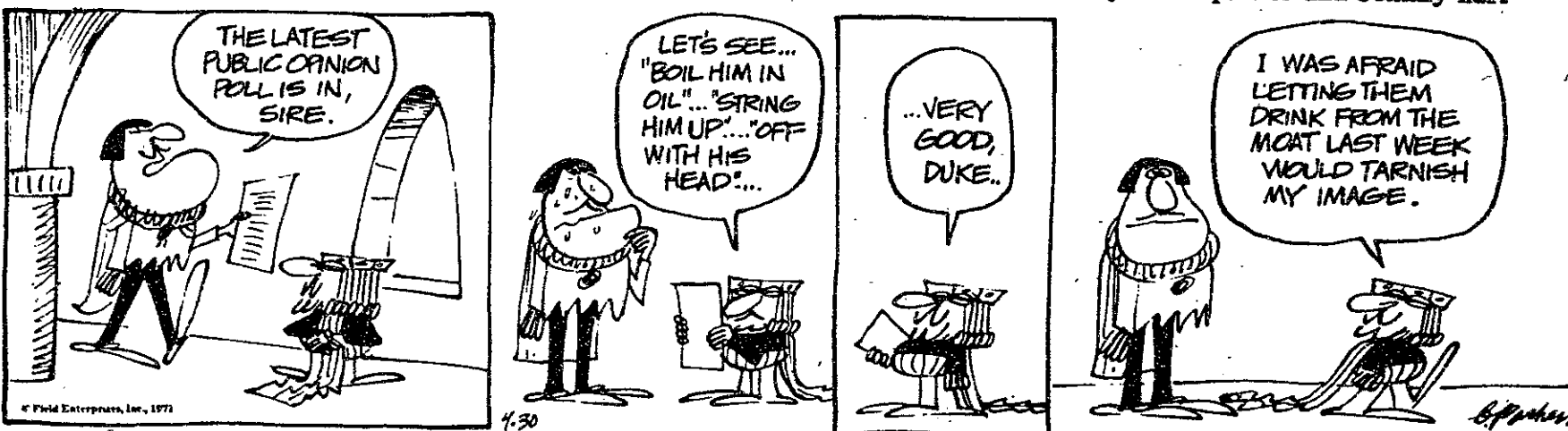
In addition, a number of persons acting in concert with the employees have also been interfering with the operation of the Club. On Friday noon, April 23, they picketed and hindered access to the Club and verbally abused or intimidated persons at the Club as part of their effort to gain access to the Club premises to "confront" the Manager. Acting under the by-laws of the Club, the Executive Committee voted on April 23 to deny access to the Club premises until further notice, to certain individuals who had participated actively in the above action...

The Tech regrets an error on page four of Tuesday's issue. The headline on the humanities column said that Course XXI had deleted 21.013. As the column itself correctly noted, only consideration of dropping the subject is currently going on.

The Committee is hopeful that, in the future, disagreements with the three employees can be resolved in an orderly manner through procedures explicitly provided for in the contract between the Club and the Union which represents the employees. To this end, we ask the cooperation of all concerned.

Elias P. Gyftopoulos  
President, for the  
Executive Committee

### THE WIZARD OF ID



by Brant Parker and Johnny Hart

The Wizard of Id appears daily and Sunday in The Boston Herald Traveler.



# A column on things

By Paul Schindler

Last Saturday, there was a rally in Washington, D.C. A lot of people came. We all missed you.

The atmosphere was something like a cross between a political campaign when it's just getting started and a circus when it is just wrapping up. Yet somehow, they managed to draw a crowd which some say may be the largest ever to attend a peace rally in Washington. The police estimated the crowd at 200,000; my personal estimate was 400,000.

But how do you estimate a crowd that, according to one of the many D.C. police along the march route, "just never stopped coming. They just kept coming and coming." They filled Pennsylvania Avenue from the Hill back to the House; and if you've never been to Washington, let me tell you that's a loonnngggg way. (That comes from someone who is no real pro: I've only been there once.)

The cherry blossoms, which have been the subject of 10,000 trite mood pieces on the Capitol, will be mercifully mentioned only once in this piece. Instead, I will talk about something almost as prevalent at peace rallies: the police.

There are enough police departments in the nation's Capitol to boggle your mind, but the nicest ones are the ones who guard the Capitol itself. As one of them explained to me, "we just naturally get along with people better. People who come to the Capitol have a reason for being there. They're usually good solid citizens on vacation. The DC metropolitan police, and the park police, are out making arrests, and seeing the bad side of people all the time. Besides, we're the best disciplined force in town."

I found out all of this as I stood by the fence which was put up to keep a lot of fine American citizens from getting any ideas about ripping up our fine American Capitol.

There were all sorts of incongruous sights; long hair anti-war

vets who still managed to fall into step as they walked down the streets; the dearth of short hairs in the crowd, even among people in suits and ties; and the 50-50 split between "kids" and "adults" at the march gathering grounds. That's probably the most important thing about the whole action: the fact that people who clearly and obviously have not been to college in years were in Washington to join the protest against the war.

The carnival atmosphere surrounding the march was really something to behold. Marchers were clothed in all the colors of the rainbow and festooned with a quantity of buttons which seemed to multiply beyond all understanding (especially noteworthy in light of the fact that they were not being given away, but rather sold at 10-25 cents each). In addition, there was the usual vast quantity of panhandlers with buckets for money — all for a good cause of course. At 10 cents a throw you could spend a thousand dollars at one of these things.

But we all missed you. I'm told Dick even noticed you weren't there: "As long as MIT is dormant, it doesn't matter..."

### Another Restaurant

Simeones is the lucky recipient of the Schindler tongue this week, as we launch into the 3rd in an unendable series of reviews which should make it easier for you to locate a restaurant of your choice.

Simeones is easy to get to. Located just off Central Square at 21 Brookline Street, it is an easy walk from MIT and a quick subway ride from the fraternities on Bay State Road. The restaurant serves American and Italian food both, and clearly caters to the college crowd.

The prices ranged from a low

\* MIT's first coed was Ellen Swallow, 1873. Shortly after graduating, she married the head of the Department of Mining and Metallurgy and became an instructor of Sanitary Chemistry.

of 50 cents to an isolated high of \$4.25. (I say isolated because no other menu item comes close). The quality of the dishes sampled (baked lasagna and steak; with the steak being the high item on the menu) by my cohort and I ranged from adequate to good.

Clearly the cuisine is not spectacular here; neither is the atmosphere (I for one like juke-box order panels in each booth with individual speakers; maybe you don't. Be forewarned.)

This is no place to take a heavy date if you are in white tie and tails. And don't expect to be wiped off your feet by the food. But the prices are reasonable; and as a matter of fact, they pass the most basic tests for any restaurant: their cokes were sufficiently supplied with syrup. The mark of excellence, to be sure. By the way, the service was fast, the wine list vast, the desert came last, and the 13th of every month, any college student can get a 10% discount by showing his ID card. This is their 25th anniversary year, you see.

A quick closing note; WTBS is re-playing the Sexuality Lectures at 7 pm each night this week, Monday through Friday. And "WTBS Presents Private Nick Danger, Third Eye" tomorrow night at 9:30 pm.

# Bridge

By Daniel Reinharth

**NORTH**  
 ♠ 7 6 2  
 ♥ A J 10  
 ♦ K 6 3  
 ♣ K Q 9 2

**WEST**  
 ♠ J 9 8 4 3  
 ♥ 6 2  
 ♦ A 8 5  
 ♣ 8 6 4

**EAST**  
 ♠ K 10 5  
 ♥ 8 7 5 4 3  
 ♦ 9 7 2  
 ♣ A 5

**SOUTH**  
 ♠ A Q  
 ♥ K Q 9  
 ♦ Q J 10 4  
 ♣ J 10 7 3

South 1 NT pass  
 West pass  
 North 3 NT  
 East pass

Today's hand illustrates the necessity for thinking ahead. Following the preliminaries, in which South opened a weak no trump, North raised to game, and West led the four of spades, declarer considered his situation.

When planning the play of a hand it is generally a useful policy to count winners and/or losers. Declarer counted five tricks in spades and hearts, leaving the necessity of taking four tricks in the minor suits. And since each minor suit could yield a maximum of three tricks, both suits had to be attacked.

The only problem is that if

declarer plays in a straightforward manner defenders will set the contract by leading spades at every available opportunity. A little deception was therefore called for, and diamonds had to be the suit.

South made the clever lead of the jack of diamonds, and West fell into the trap by playing low. He had been duped into committing the fatal error because it had appeared that South was finessing the queen of diamonds.

The clubs were then played, after which the hand posed no further problems.

Declarer's play in this hand also illustrates the oft-used tactic of sneaking in the final trick early, before the defenders have any inkling of what is going to occur later on.

## JET TO EUROPE & ISRAEL

Inexpensive flights throughout the year  
 Lowest Fares, choice of 1-way or round trips  
**STUDENT HOLIDAYS**  
 40 East 54<sup>th</sup> Street  
 New York, N.Y. 10022  
 212-832-6844

**STUDY SOUNDS**  
**IMPROVE GRADES**  
 Improve Grades While Devoting The Same Amount Of Time To Study  
**USE STUDY SOUNDS**  
 Increase Your Concentration And Improve Your Comprehension. Study At A Faster Rate.  
**ELECTRONICALLY PRODUCED SOUNDS CAUSE THIS TO HAPPEN**  
 Please Specify:  
 8 Track Tape, Cassette, Or LP Record  
 Send Check or Money Order — \$9.95 Each  
 Include 75¢ Handling and Postage  
 Sound Concepts, Inc. — Box 3952  
 Charlottesville, Va. 22902

**GREEK FOOD AT ITS BEST**  
**The Parthenon Restaurant**  
 New authentic Greek restaurant.  
 Modest prices, superb European wines.  
 variety of liquors. Open 11 a.m. 11 p.m. Daily  
 924 Mass. Ave. in Cambridge Phone 491-9592

## Announcements

\* Wellesley-MIT Exchange, Fall 1971. Application deadline: Friday, April 30. Applications available in the MIT Information Center. For information call x1668.

\* Kaleidoscope '71 is Friday, May 7, from 4 to 10:30 in Kresge Plaza. It's the Day of Wonderfulness, so come!

\* Free outdoor concert at Wellesley College, Sunday May 2, from 12:30. James Montgomery Blues Band, The Orphans, Travis, Shook, and the Club Wow. If rain, in the Chapel. Exhibit and sale of art, leather, and knit works.

\* Want to help someone's social life? Off-campus ticket sales are now possible. For information and/or to help, come to the meeting of the GA Social Committee Task Force on Monday, May 3, at 8:00 pm in Dining Room 3, third floor of the Student Center, or call H.J. Siegel at 864-0254.

\* WTBS will present Acharya Yatishvarananda Avadhuta, a yogi recently arrived from India. He will speak on the need for a harmonious blending of the ancient spiritual science and a progressive use of technology. Wednesday, May 5, 3 pm. WTBS, 88.1 FM, 640 AM.

\* On Friday, April 30th, the Community Service Fund is sponsoring a Carnival. It will be located on Kresge Plaza from 12 to 5. There will be food and games. Won't you support the fund while you enjoy yourselves? In case of rain it will be held in rooms 407 and 491 in the student center. Come and play!!!

\* The annual exhibition of paintings, prints, drawings, sculpture, ceramics and jewelry by students from the Division of Art at Boston University will be on display April 30 through May 22 at the School of Fine and Applied Arts Gallery, 855 Commonwealth Ave. Gallery hours are from 10 am Monday through Saturday and 2 to 5 on Sundays.

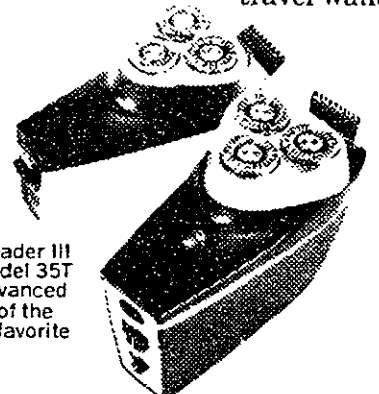
\* A Co-ed class in sensitivity training is now forming at the Cambridge YWCA. For further information call the Young Adult Department, 491-6050.

## Norelco introduces the micro-thin head. Shaves up to 44% closer, 50% faster than ever before.



**New super Microgroove™**  
 0.09mm-thin heads shave you up to 44% closer than the ones that beat the blades.  
**New 90-slot design** shaves you up to 50% faster, and far smoother than last year's.

Whichever Tripleheader III you buy, cord model or rechargeable, you get new micro-thin heads—plus all the proven quality features of the world's favorite. Rotary action for smoother shaves. Floating heads to follow your face. 18 self-sharpening blades. With pop-up trimmer for sideburns. And metal travel wallet.



Tripleheader III cord model 35T Most advanced version of the world's favorite shaver.

Deluxe Tripleheader III. Rechargeable model 45CT. Delivers up to twice the shaves per charge of any other rechargeable. Use it with or without the cord.

**Norelco**  
 © 1971 North American Philips Corporation, 100 East 42nd Street, New York, N. Y. 10017.

# Prof. Fredkin: man of the Renaissance

By Paul Schindler

"The world won't end if you personally do not solve any particular problem that you are working on. Obviously, if everyone had this attitude, no progress would ever be made. But on an individual level, if you stop worrying about problems you can't solve, you'll do a lot better on the ones you can solve."

That's the opinion of the one professor now at MIT teaching a course which shows (hopefully) how to solve problems in general (Understanding and Solving Problems, 6.48 — it will be offered first term next year). He is one of the few full professors at the Institute who has never graduated from any college or received any honorary degrees. He likes to fly.

Ed Fredkin is a renaissance man. His interests are very nearly universal, and any conversation of length with him will no doubt at least touch on Artificial Intelligence, digital logic, problems in general, and flying.

When asked to start at the beginning, he mentioned that he was born in ward 2000C of Los Angeles General. He had 12 non-distinguished years of education in California public schools, with mediocre grades. Caltech admitted him as a special case since his scores on the standardized tests were so high. He flunked out in the middle of his sophomore year, and the admissions office told him "we won't try that again." The draft was blowing like a mighty wind across the land, but Caltech's required ROTC had convinced Fredkin that he would be better off volunteering for the Air Force. He learned to fly in 1½ years, and was then assigned to MIT's Lincoln Labs. There his love affair with computers began, and he has been working with them and thinking about them ever since.

One result of his computer work is a device which is probably the most interesting usage of digital logic to date: the music composing and synthesis device known as the Muse.

Although he is happy to see a

worthwhile and interesting commercial application of computer technology, Ed Fredkin does not care for the business side of his ideas.

Possibly it's a function of the problem which he says eliminated him from Caltech: a lack of motivation. "I felt sure the problem would be eliminated with age, and it has been, a little." I suggested that an MIT professorship would seem to indicate total abolition of the problem, but he stated his views on the topic:

"There are certain established paths in a society which lead to careers. Now the way the system works at present is actually pretty close to the Peter Principle: people rise to their first level of incompetence. But I firmly believe that just because a person is incompetent at one in-between level doesn't mean that he wouldn't be perfectly competent in the end position. General MacArthur, if historical accounts of his personality are correct, would never have been made a general if he had had to start as a private. He was haughty and proud, and these are not the characteristics of humility and subservience required of a private looking for advancement. If you are sure you will be good at the end of the road, and have good reason to believe you are correct in that belief, then you should step around the normal path."

Which is just, it seems, what Prof. Fredkin did. As he pointed out, there is no written requirement that an MIT professor must be a college graduate. "Knowledge is more important than a degree," and Ed Fredkin seems to have picked up a lot of diverse knowledge outside of normal channels over the years.

In particular, his interest in Artificial Intelligence (AI) has led him to a lot of thinking on the nature of the human problem-solving process. "People could be a lot better at solving problems if they would approach them logically and apply a few simple generalities. A university teaches you to solve

problems by giving you a lot of them in hopes you will see a general pattern."

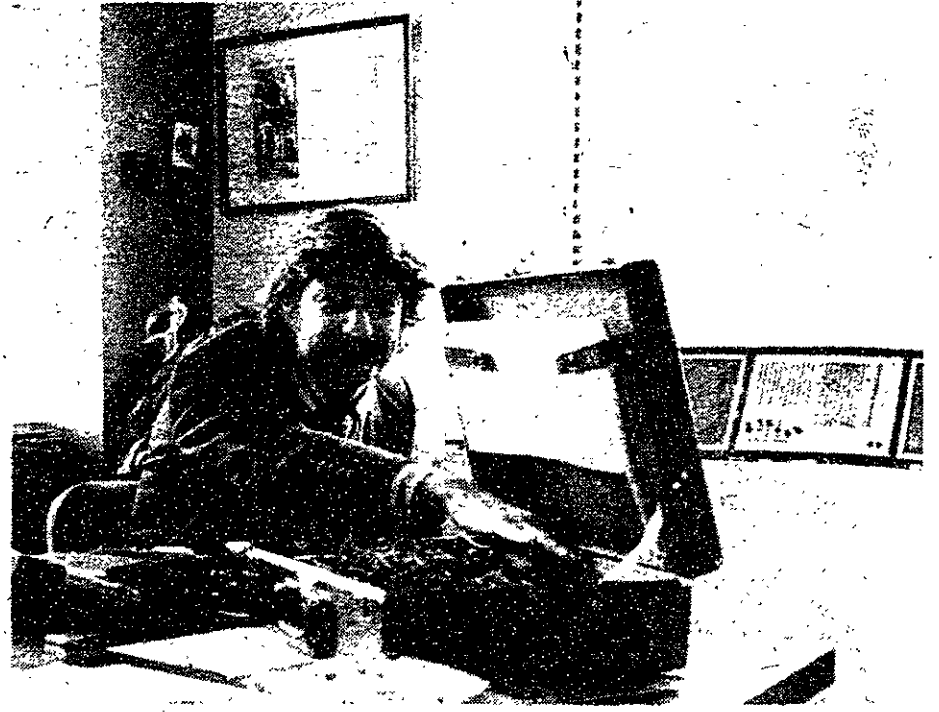
After teaching some sessions of 6.00, Prof. Fredkin set up the first course he taught as a full professor: Problem Solving. "There isn't a lot known about it, and most of what is known has come from our work with computers. I am teaching the course because I am interested in education, and I wanted to see if it could be done. I wanted to see if I could design and teach a new course which would be good and important to the students."

His success has not been unqualified; he admits being heartened by his first term group (all freshmen) and a little disappointed at a slight lack of spirit in his section this term. But Fredkin says he is learning, too, and any man who flies a glider and has his own war surplus Graumann Goose can't be all bad. Here, for example, is the type of problem he has put his class to work solving, and an example of the kind of assignments he gave in connection with it.

### The Doctor's Dilemma

Suspend your natural skepticism and imagine the following miracle to have occurred: A young doctor working in a hospital discovers that he has the power to cure anyone under the age of seventy of any sickness or injury simply by touching the patient. Any contact, however brief, between any part of his skin and the skin of the patient will cure the disease.

He has always been devoted to his



work, and he wants to use his gift to benefit humanity as much as possible. However, he knows that his gift is absolutely non-transferrable (this was explained by the angel or flying saucerite who gave it to him), will last for his lifetime only, and will not persist in tissue separated from his body.

What will happen if he uses his gift?

What should he try to do and how should he go about it?

What is the most favorable result that can be expected?

I consider myself a member of the scientific rather than the literary culture, and my idea of the correct answer to the above question reflects this. However, in order to mislead the reader I shall give a number of pessimistic scenarios together with some related literary exercises.

1. His gift is judged sacrilegious by the church of your choice. Fanatics

are aroused by preachers and our hero is burned at the stake. Write a speech justifying burning the doctor as a lesser evil compared to letting him go on violating God's law that man must suffer disease and death.

2. His gift is judged holy by a religion that gets control of him, and its use is surrounded by so much ritual that hardly anyone gets cured. Describe the ritual.

3. People keep coming to him until he is exhausted, but there is always an emergency case more touching than all that have gone before and eventually he dies of exhaustion. Write his speech saying that he realizes that he can cure more people if he gets some sleep, but true morality requires him to treat the immediate emergency.

## Task Force to continue function of Commission

(Continued from page 1)

provide the driving force for implementation of new ideas. The Task Force will likely take the job of sifting and evaluating proposals from individuals and groups, keeping in mind the finite resources of the Institute. Particular emphasis will fall on undergraduate education during the freshman and sophomore years.

Asked why no students were appointed to the Task Force, Rogers explained that while he did not make the decision he could see justifications for it. There is much to be gained, he pointed out, from having a unified faculty voice presenting proposals at faculty meetings. Close contact with the student advisory group, he added, should insure the important student input.

The Task Force members were selected by President Howard Johnson, provost Jerome Wiesner, faculty chairman Ted Martin, and Commission chairman Ken Hoffman.

## NAS selects 3 from MIT

By Lee Giguere

The National Academy of Sciences elected three MIT professors to its ranks Tuesday.

Professor of Earth and Planetary Science William F. Brace, Professor of Physics Philip Morrison, and Department of Nutrition and Food Science head Nevin S. Scrimshaw were among 50 American scientists elected.

The National Academy of Science was established by an act of Congress on March 3, 1863, to serve as an official advisor to the government, on request, in all matters of science and technology. Since World War II it has been joined with the National Research Council, an organization it founded in 1916. Over the years, NAS-NRC has considered problems in the areas of federal support of science, world population problems, civil defense, transportation, and loyalty for federal research contracts. Currently, it

has been increasingly concerned with environmental problems and related political issues.

Professor Brace, contacted by *The Tech*, commented that he was "a bit overwhelmed," and "highly pleased." Brace explained that his work at MIT has focused on earthquakes, and in particular, their prediction and control. He added that his involvement with NAS would "pretty obviously" be in this area.

Professor Morrison stated that the election came as a surprise. He had not yet, he said, had time to consider what it meant.

Neither Brace nor Morrison had any previous involvement with NAS.

Professor Scrimshaw, who was unavailable for comment, has been a member of the executive and full Food and Nutrition Boards, both subgroups of the NAS.

**OVERLAND INDIA**  
Expedition leaves London mid-June crossing Turkey, Iran, Khybar Pass, Afghanistan, Pakistan, Kashmir, Taj Mahal to Khatmandu.  
\$545  
**ENCOUNTER OVERLAND**  
1414 E. 59th St.  
Chicago, Illinois 60637

### SOPHMORES

The International Honors Program offers you the opportunity to spend your junior year going around the world with 3 outstanding teachers and 30 students. Theme: The Nature and Culture of Man. Itinerary includes Esalen, Tokyo, Kyoto, Hong Kong, Ceylon, India, Nepal and Nairobi. Students live with families. A year's credit given by most universities.

The International School of America  
491-7687

**HARVARD SQ.**  
864-4580 Thru Tues!  
Costa Gravas' THE CONFESSION  
Yves Montand 1:00-5:10-9:20  
Lindsay Anderson's IF...  
3:15-7:25

**BRATTLE SQ.**  
876-4226 Thru Tues!  
The Contemporary French Film  
Resnais' HIROSHIMA MON  
AMOUR 6:30-9:50 & Ophuls'  
THE EARRINGS OF MADAME  
DE... 8:00 Wknd. Mats.

**CENTRAL 1**  
UN4-0426  
12th Unbelievable Week! De-  
Broca's KING OF HEARTS Alan  
Bates 6:30-9:45 & DeBroca's  
GIVE HER THE MOON 8:15  
Weekend Matinees 4:55

**CENTRAL 2**  
UN4-0426 Thru Tues!  
Bergman's PASSION OF ANNA  
6:50-10:00 Wknd. Mats. 3:50 &  
Paul Williams' OUT OF IT Jon  
Voight 8:35 Wknd. Mats. 5:35

The Rolling Stones  
**GIMME SHELTER**  
EXETER STREET THEATRE  
KENmore 6-7067  
1:30, 3:00, 4:35, 6:10, 7:50, 9:30

Interested in starting your own business this summer with a new nationally-known product? Write R.A.H. Distributing Company: Suite 14; 4821 Sahler Street; Omaha, Nebraska 68104 or call 402-455-3395 (no collect calls).

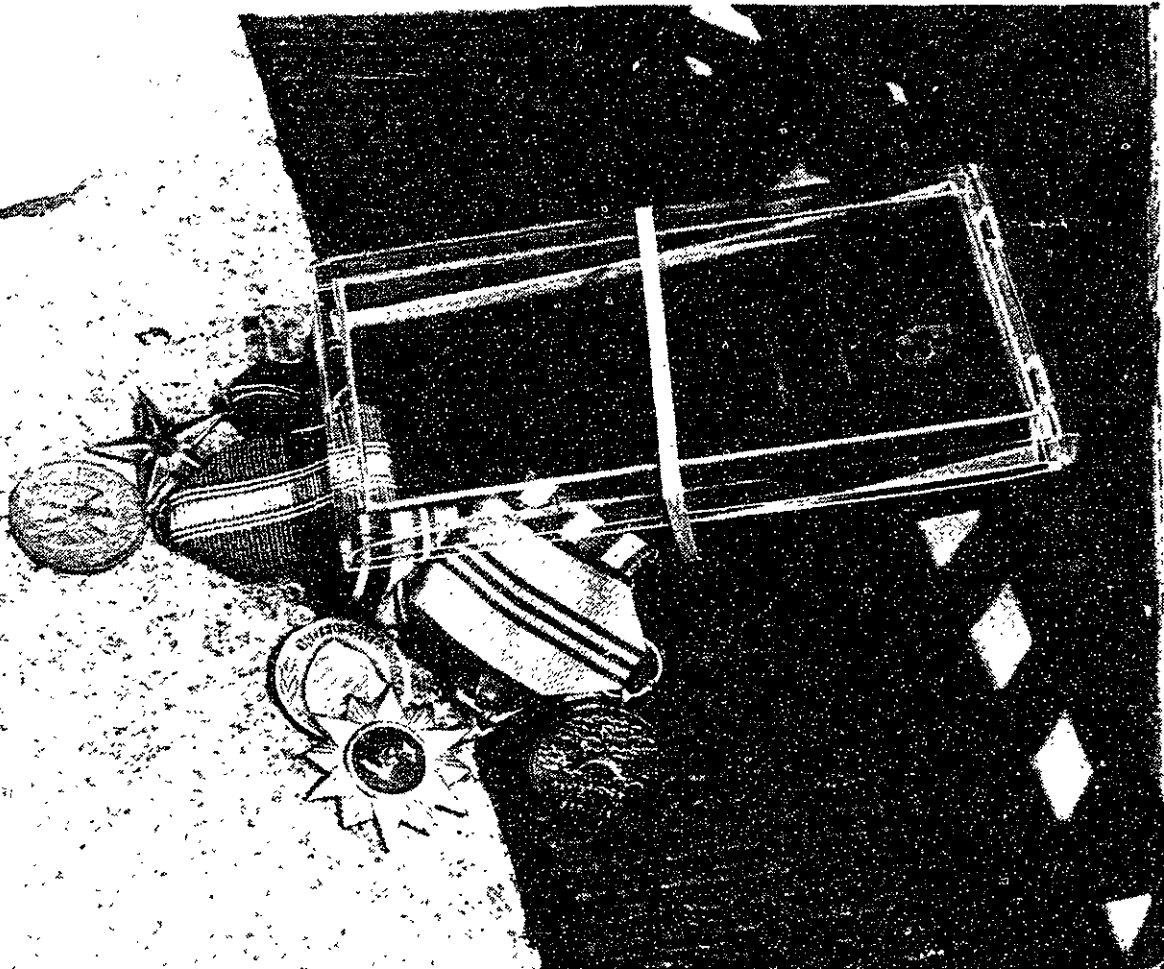
**abOrtions**  
LEGAL UP TO 24 WEEKS IN NEW YORK  
Immediate scheduling, licensed physicians, accredited hospitals and their out-patient clinics.  
As Low as \$150.00... Call today for immediate confidential information and assistance. Lowest prices for finest care.  
**24HRS./DAY**  
**ETHICAL ABORTION REFERRAL**  
215-879-3100

**ABORTION**  
INFORMATION AND ASSISTANCE  
CALL (215) 878-5800  
24 hours 7 days  
FOR TOTALLY CONFIDENTIAL INFORMATION.  
We recommend only:  
the most reputable physicians; doctors offering fair and reasonable prices; services which will be completely within the law; services performed at accredited hospitals.  
**Legal Abortions Without Delay**  
**ARS INT.**

**A non profit ABORTION that is safe, legal & inexpensive**  
can be set up on an outpatient basis by calling  
**The Problem Pregnancy Referral Service**  
**215-722-5360**  
24 hours—7 days  
for professional, confidential and caring help.



Radicals,  
Liberals,  
Radic-Libs,  
Women's Libs. . .



Students,  
Union men,  
(Union women),  
Veterans. . .



# The Tech Sports

## Dopfel paces varsity diamond squad in win

With the bases loaded and one out in the third, Al Dopfel '72 stepped to the plate. On the first pitch, a waist-high fast ball, he ripped a triple to left-center, scoring DeAngelo, Tirrell, and Weisshaar. With these runs he then went on to pitch himself to a 3-1 victory over Brandeis.

The victory was gratifying to the team in a number of ways. First of all, they snapped a five game losing streak. Secondly, the infield made only two errors and did an excellent overall job. Finally, though the hitting attack only included eight hits, many a ball was caught deep in the outfield.

But the real reason for the win was "Big Al." Not only did he strike out eleven to raise his

season total to 59 in fifty-two innings, but also he lowered his over-all ERA to 2.25 (1.75 in GBL play). Other stand-outs were Joe DeAngelo '74 and Dave Tirrell '74. Joe raised his average 73 points, scattering the ball for three hits, and Dave's performance raised his GBL average to .385.

The team's record now is 3-5 in New England and 2-3 in GBL play. Saturday the club plays a doubleheader at the Coast Guard Academy. Coast Guard is regarded as a team of comparable ability, with weaker pitching than the Techmen. A double win there would put the club record at a respectable level and prepare them for next week's rough games.

## Intramural regatta set for weekend of May 8, 9

With the 1971 Intramural Sailing Regatta scheduled for May 8 and 9, only a week away, living groups planning to enter teams are reminded that the deadline for submitting rosters is 5 pm on Monday, May 3. A team will consist of crews for two boats, each comprised of a skipper and a crew member.

Requirements for participation this year have been changed somewhat from past years, and now the skippers will be required to have only the Provisional Helmsman and Crew ratings. In addition, those who have not scored reasonably well on the Racing Skipper exam must attend a rules review meeting on Tuesday, May 4, at 6:30 pm, at the Sailing Pavilion. Racing will

be done under the Simplified Racing Rules for Physical Education classes.

The regatta will be run with preliminaries on Saturday, and at the end of the day, the top six teams in each of two leagues will be selected for the trophy finals to be sailed on Sunday.

Last year's action proved to be a fine sailing meet, with thirteen teams participating, and another good turnout is expected this year. If you know how to sail and have always wanted to race, talk to your athletic chairman and come out and try your skill. For more information, contact IM Sailing Manager Dave Davis at Ext. 3782. Rosters should be submitted to the IM managers' office, W32-121.

### On Deck

**Today**  
Golf(V)-Bowdoin, Lowell at Concord C.C.  
Baseball(JV,F)-Stevens College, home, 4 pm

**Saturday**  
Baseball(V)-Coast Guard at New London, 1 pm  
Track-WPI, Amherst at Amherst, 1 pm  
Lacrosse(V)-Trinity at Hartford 2 pm  
Lacrosse(JV,F)-Harvard, home, 2 pm  
Tennis(V,F)-Trinity, home, 2 pm

Medals from the Intramural Swimming Meet are now available in the IM office, W32-123. Anyone who placed first, second, or third in an individual event should go in to pick up his medal.

### British Crown Motor Company

Service Specialists For Jaguar, Rover, MG-Austin, Triumph, Lotus. Restorers of British Classics. 63 Beacon St. Inman Sq./Cambridge 492-1070, James Dean, Prop.



The Tech players (striped jerseys) are from left to right: Mike Byrne, Frank Pompei, Wayne Book, Ed Walker, Dave McQueen, Pat Bailey (blocking kick), and Dave Zoller. Photo by Jon Fleming

## Ruggers score win, draw

By Ali Khedou

The MIT Rugby Club rebounded strongly from last week's defeats by Mystic Rugby Football Club to gain a win and a draw from scrappy Harvard Business School sides. The ruggers' record now stands at 4-3-1.

The first side drubbed their opponents throughout the game with hard-charging, sure-tackling play. The forwards consistently delivered the ball to the back-line, but the high winds resulted in many breakdowns in the back-line, keeping the game score low.

The Business School squad was unable to advance the ball over the mid-line, except for occasional long kicks which were promptly returned by fullback Steve LeMott and wings Pat Bailey and Jim Hunt. Every running play mounted by the B-school back-line was promptly dragged down by the Tech back-line.

The game was decided quite late in the second half by kicker

Ed Walker, who finally was able to convert a penalty, having missed in every direction on four earlier attempts - including one forty-yarder which struck the upright. The lone kick proved to be the margin of the match, and the game ended 3-0.

The second match was another kicking contest which resulted in a 9-9 draw at the full-time whistle. After several misses, second-row forward A.N. Other appeared to ice the game for Tech with his third successful penalty goal late in the match. But a penalty in front of the MIT goal allowed the B-school to eke out a tie about 30 seconds before time finally ran out.

This Saturday, MIT will send two sides to the seven-a-side

tournament sponsored by Harvard Business School. Last spring's entry tied for third-place in the fast-moving version of the game. A regular side will travel to Portland, Maine, for a match against a recently-formed Portland RFC side.

Cut out and save this ad:

## Don't Call Your Travel Agent!

When you want the most charters available for Summer 1971, Call 212-697-3054. As a student at this college, YOU may be eligible for our low, low cost fares. Flights from New York to all major European Cities. Weekly departures. Flights under the auspices of World Student Government Organization. Send coupon... call, write or visit.

W.S.G.O. please send: C/A  
 Travel bulletins.  
 Application for International Student I.D.

Name \_\_\_\_\_  
Address \_\_\_\_\_  
City \_\_\_\_\_  
State \_\_\_\_\_ Zip \_\_\_\_\_  
School \_\_\_\_\_

**Charter & Group Travel Specialists**  
60 East 42nd Street  
New York 10017  
Call (212) 697-3054

**PREGNANT?**  
Need help?  
For assistance in obtaining a legal abortion immediately in New York City at minimal cost:  
Call:  
CHICAGO (312) 922-0777  
PHILADELPHIA (215) 878-5800  
MIAMI (305) 754-5471  
ATLANTA (404) 524-4781  
NEW YORK (212) 582-4740  
8 AM - 10 PM - 7 DAYS A WEEK  
Abortion Referral Service (ARS), Inc.

**POT LUCK COFFEEHOUSE**  
-ENTERTAINMENT-  
-ATMOSPHERE-  
-FOOD & DRINK-  
and all for FREE  
8:30 - 12  
Student Center  
Mezzanine Lounge  
Tomorrow night:  
Cookie Robinson & Jennifer Rand

**Your mother loves you, no matter what.**

Send her a BigHug bouquet, and send it early. Make Mother's Day last a little longer. Call or visit an FTD florist today. He'll take it from there. Delivered almost anywhere in the country. A special gift. At a special price. For a special mother. Yours. Usually available at less than **\$12.50\***

**Send her the FTD BigHug Bouquet early.**

\*As an independent businessman, each FTD Member Florist sets his own prices.

**M.I.T. CHORAL SOCIETY**

Klaus Liepmann, Director  
Henry Gibbons, Ass't Director

CARISSIMI	Jephte Oratorio
BILLINGS	Solomon's Songs
	Lamentation over Boston
MOZART	Variations for 4-Hand Piano
BRAHMS	Liebeslieder Waltzes
	Quartette

Sunday, May 2nd 8:30 pm  
Kresge Auditorium

Tickets at Kresge Auditorium Box Office, M.I.T. Building 10 Lobby, Harvard Coop. Reserved seats, \$3.00; unreserved, \$2.00; Students with ID, \$1.00.

Friday, April 30, 1971  
Second-class postage paid at Boston, Massachusetts. The Tech is published twice a week during the college year, except during college vacations, and once during the first week in August, by The Tech, Room W20-483, MIT Student Center, 84 Massachusetts Avenue, Cambridge, Massachusetts 02139. Telephone: Area Code 617 864-6900 extension 2731 or 1541. United States Mail subscriptions: \$4.50 for one year, \$8.00 for two years.