

Sept. housing crisis looms

By Bruce Schwartz

Buried in a July 29 Boston *Globe* story headlined "Appeals Board rejects BC's apartments plea" was a seemingly insignificant paragraph which said:

"He (Boston Mayor Kevin White) noted that the city refused yesterday to allow MIT to lease the Hamilton House Motel at 1114 Commonwealth Avenue, Allston, for use as a dormitory for a year."

Hamilton House had been leased by the Institute in February to house about 144 displaced residents of Burton House (and some freshmen) while the house undergoes renovations this year. (Some 324 others will move into the new MacGregor House.) The motel and 16 apartment units on Linden Street in Allston were to have constituted "Burton-in-Exile," and were going to house about 200 students this fall.

The city's unexpected ruling has thrown the Housing Office's plans into confusion. Although officials are certain that they will be able to provide housing, they are not sure where it will be or whether further overcrowding of existing dorms will be necessary to relieve the crunch which could develop.

The picture is clouded by the

fact that Hamilton House is not yet irretrievably lost to the Institute. The story behind this, as related to *The Tech* by Ken Browning, Assistant to the Director of Campus Housing, is roughly as follows:

MIT signed leases for Hamilton House and the Linden Street apartments on February 19. On May 5, unknown to the Housing planners, Boston's zoning commission rezoned the area in which Hamilton House is located, making dormitory usage a conditional rather than an approved use—meaning that approval is required. This is known as "obtaining a zoning variance."

Dormitories also require permits from the Building Commissioner.

The zoning change went into effect May 27, but the Institute was not informed of this until mid-July. On the 28th, the Building Commissioner refused to grant a dormitory permit, but this was expected, since now the area was zoned against dormitory use. It was the denial of this permit to which Mayor White referred. MIT is now trying to seek an appeal to obtain the necessary variance. However, because of certain political developments in Boston, Browning gives a 60% chance that it will be granted and the permit issued.

He linked Hamilton House with the Boston College situation. BC had been attempting to purchase a 19-acre apartment

(Please turn to page 3)

52 teams to rally in Clean Air Car Race

On August 24, at 6 am, the first of 52 automobiles will be flagged across the starting line at MIT, as the 1970 Clean Air Car Race (CACR) gets underway.

They will follow a 3,600 mile superhighway route through Canada, the Mid- and Southwest to the Pasadena campus of Cal Tech. This course is divided into 7 legs and promises to envelop at least some of the cars in traffic jams since it includes stretches through congested cities.

The competition, which has received extensive publicity (especially in places boasting entrants—some schools and towns seem to have developed considerable local partisanship) is restricted to low pollution vehicles, defined by the rules as being able to meet or better the 1975 California Standards for automobile emissions. Additionally, all entrants had to be associated with a "recognized college or university". As of the July 15 deadline, over 44 different colleges and schools were represented. The rules additionally require that all driving crews be university students.

To recount a bit of background: CACR is being coordinated by student committees at MIT and Cal Tech, and the idea was conceived by Prof. Richard D. Thornton of the MIT Electrical Engineering Department and Dr. Jerome Shapiro of Cal Tech (a school at times considered MIT's "brother" and at others its rival). The CACR committee was organized last winter, and at MIT it is chaired by Bob MacGregor, a Course II grad student. It became apparent to the committee by spring that CACR, an outgrowth of the MIT-Cal Tech Electric Car Race of 1968, was an idea whose time had come, what with the surge of interest in ecology. Originally, the organizers expected perhaps 10-15 entries. By July, there were tentatively over 50, although some subsequently dropped out.

CACR'S objectives, as set forth in its rules statement, are fourfold: to assess the state of vehicle technology, to determine pollution emission characteristics for different types of propulsion systems, to publish technical reports (each entry must file one) and "to create public awareness of ... current progress in vehicle technological development and dispel any public

misconceptions as to science's capabilities."

The events of the CACR competition have been structured to conform to these goals. All entries will arrive at MIT by August 16 for a week of emission, performance and noise tests, and seminars and presentations of technical reports.

The race itself is not really a race, but a rally. Points will be awarded on the basis of a standard time for each leg. The course has been structured so as to provide maximum public and press exposure. For example, the

(Please turn to page 11)

Killian retiring in 1971 after 32 years in admin

By Bruce Schwartz

At the Alumni Homecoming luncheon on June 15, Dr. James Rhyne Killian, Jr., announced his plans to retire as Chairman of the MIT Corporation on June 30, 1971. He cited "personal reasons," mentioning that he had served at the request of the Corporation beyond the Institute's usual retirement age. Dr. Killian is 66.

The Corporation accepted his retirement, and President Howard Johnson conveyed the news to the community in an appreciative letter, saying of Dr. Killian, "He has stood always and striven always for what is best for MIT;

Jim Killian's career has been one of success piled upon distinguished success; replete with high honor and access to all the prerogatives of power afforded in this society. An advisor to four presidents of the United States, Dr. Killian has also played a role in the shaping of this country's policies, especially

(Please turn to page 9)



Dr. James R. Killian, Jr.

and with a singular style and a selfless devotion he helped to shape the character of the Institute." And it is so. Whatever opinion one may have of that character, one cannot deny that Dr. Killian, in his 32 years with the MIT administration, was instrumental in making it what it is.



THE PROMISED LAND — Hamilton House Motel, intended home for one year of 144 Burton exiles.

Expenses seen forcing tuition increase again

News Analysis by Wells Eddleman

At the beginning of July several administrators headed by VP John Wynne informed a number of students about MIT's financial problems. Paul V. Cusick, VP, stated that it cost MIT \$2½ million yearly just to "stand still" with no new programs or expansions.

For the year 1971-72, fiscal plans now being made intend that \$1 million of the projected loss be made up through additional gifts from corporations. For the other \$1.5 million, tuition may well be the primary source of additional funds. Wynne stated.

Cusick explained that a \$100 tuition increase will only net MIT \$557,000 due to added

financial aid and other expenses necessitated by a tuition hike.

Howie Siegel, President of the Class of '71, asked Wynne if money could be saved by giving more Institute jobs to students (who must now make \$600 through term-time jobs due to a financial aid cut). Wynne replied that unions prevented replacing many employees with students. "So what are you going to do when tuition is \$3500 a year?" queried Siegel. "We don't have the answer to that question," said Wynne.

MIT derives much of its operating income from gifts by alumni and corporations (MIT leads the nation in amount of corporate gifts received), and from overhead and directors' salaries on contracts (many professors have to supply a large percentage of their salaries through research contracts). But now Nixon and Congress are combining in their own bumbling way to severely cut research money, and much lucrative research is highly controversial (*viz.* the departure of the D-Labs from MIT).

As a result, MIT will almost certainly raise tuition by \$200 or more for 1971-1972. Tuition of \$2700 will maintain the traditional percentage of academic costs paid by students. But no one has answered the question of why students are forced to pay this percentage. It just grew.

Rising costs have already led to major changes in financial aid policy, negating the liberalization of the late '60's and probably adversely affecting admissions for the Class of '74. Soon all of MIT will have to find the answer to the tuition question, for, if tuition continues to rise with costs, MIT will face the prospect of becoming an elitist institution which only the rich and the winners of big scholarships can afford to attend. Answers, anyone?

7 expelled for presence at January occupation

By Wells Eddleman

Last January 15, four people wearing white lab coats and ski masks battered open the door to MIT President Howard Johnson's offices. Part of the large crowd which had gathered outside to protest actions by MIT's Faculty Committee on Discipline (which included the expulsion of UAP Michael A. Albert '69 for insulting Committee Chairman Roy Lamson) surged into the offices occupying them. After 34 hours during which the offices were held by a changing group of several hundred, the protesters left. They had failed to win demands of rescinding past Discipline Committee punishments in political cases, of abolishing the Discipline Committee, and of ending war research at MIT.

Several thousand dollars of damage was done to the offices during the occupation.

Subsequently, 31 persons were charged with trespass by

MIT, and two — George Katsiaticas '70 and Pete Bohmer, a former grad student — were charged under an 1854 statute for disrupting classes when they entered two lecture halls to announce meetings during the occupation.

Twenty-eight were tried; they received six-month "good behavior" continuances in the Third District Court of Eastern Middlesex. Twelve of the twenty-eight were MIT students.

Katsiaticas and Bohmer were convicted, lost an appeal and ultimately served six weeks in Billerica Correctional Institution. (See page twelve.) They were released in July.

In June, an administration newsletter reported that the Discipline Committee had acted on eleven cases arising out of the office occupation. Seven people were expelled and three more were put on probation for "being present without right in a

(Please turn to page 10)

Cambridge Trust Company

wants your account

It's that simple, and we've made it very easy.
Just fill in & return the coupon below with an
opening deposit of \$10⁰⁰ or more, and your
free imprinted checks will be ready for you
when you arrive at M.I.T.



FREE CHECKING ACCOUNTS (\$100 minimum balance)

LONGER HOURS — 8:00 am to 5:00 pm

Cambridge Trust Company

Located on the edge of the campus
near the Ford Building (E-19)
320 Main Street
876-5500

Cambridge Trust Company, 240 Main Street, Cambridge, Mass. 02142

NAME _____

HOME ADDRESS _____

CITY _____ STATE _____ ZIP _____

M.I.T. ADDRESS (IF KNOWN) _____

AMOUNT ENCLOSED: \$ _____

News Briefs

* Constantine B. Simonides, executive assistant to President Johnson since 1966, has been appointed to the additional post of Vice President. He will continue as the president's aide, in addition to acquiring new duties including responsibility for liaison with the Commission on MIT Education, due to issue its report in the fall.

* Homberg Infirmary is in the process of moving to new quarters in the building adjacent to Baker House which formerly housed Sancta Maria Hospital. The renovated facility will make 24 beds available to the MIT community. Dr. Peter Jenney told *The Tech* that Sancta Maria will probably only house the infirmary temporarily, that is, for five or six years.

The move is being made to enlarge the infirmary and to make available another floor in Building 11 for other Medical Department uses, including an expanded Psychiatric Service. MIT's Medical Department treats not only students and faculty but also staff, employees and their families under the Institute's various health care plans.

* The Charles Stark Draper Labs, currently in the process of being spun-off, have received a 2-year, \$410,000 contract from the Navy to incorporate a search capability into the on-board computer the Labs developed earlier as part of the integrated control-display system for the deep-submergence rescue vehicle (DSRV). The labs have also received extensions of two other DSRV contracts and additional funding of \$550,000. No new weapons system contracts have been announced by the MIT administration.

* The Third Bi-monthly Harvard Square Riot took place on the 26th of July, the 17th anniversary of Fidel Castro's attack on the Moncada Barracks — the opening gun of the Cuban revolution. Following a rally about 200 people lit trash fires, smashed windows in stores and looted them, overturned a trackless trolley and generally raised hell until dispersed by about 150 helmeted police with clubs and tear gas. Several arrests and about a dozen injuries were reported. Property damage was in the thousands.

The action has been traced to no known group, nor have any reports attempted to blame any group for starting the affair. No one has claimed credit for the action, though many rumors have circulated to the effect that it was incited by police provocateurs. Cambridge City fathers are tired of the destructive sprees. This time the City Council passed an ordinance banning gatherings of more than five persons on the Cambridge Common between 9:30 pm and 5:30 am.

* The Faculty Committee on Discipline, easily the most controversial faculty committee, has a new chairman. The post just vacated by Roy Lamson of Course 21, who more than once found himself the target of criticism over the committee's actions last year, has been given by the faculty to Thomas B. Sheridan, Associate Professor of Mechanical Engineering.

The Discipline Committee has a long backlog of cases to be heard and will attempt to dispose of some of them during the remainder of the summer, according to Prof. Sheridan. One of them is that of George Katsiaticas '70, who was released from the House of Correction at Billerica last month after serving 6 weeks of a 2-month sentence for disrupting classes during the occupation of the President's office last January. He received his degree while in jail; hence he cannot be expelled — but a notation can be entered against his MIT record. The Discipline Committee has attempted to contact Katsiaticas to notify him of the charges pending against him (being present without right in the offices) and to set up a hearing. But George has split for California with Pete Bohmer and their whereabouts are unknown.

Another headache for Professor Sheridan is the refusal of UAP Wells Eddleman '71 to name students to serve temporarily on the committee during the summer. Eddleman and UAVP Steve Ehrmann '71 told Sheridan they consider hearings during vacations unfair to student defendants, who would be forced to return to MIT (or be tried in absentia) when witnesses may well be unavailable and when less public attention will be focused on trials of students who desire public knowledge of their hearings.

* Campus Patrol has moved to new headquarters on the second floor of the Armory, building W31. The recently renovated facility includes air conditioning, locker space for the 40-man patrol, and a squad room where the men can relax before and after shifts — plus a shower.

The old headquarters, on the second floor of Building 20, a wooden structure built for temporary use during World War II, lacked these amenities. Captain James Olivieri reports that he and the patrol are well pleased with the new location.

The patrol's extensions — 2996 and 2997 — remain unchanged.

The new facility is larger than the old, Olivieri explained, allowing more space for the files and paperwork that increasingly plague the patrol. Part of the paperwork is being generated by an increase in the number of robberies on MIT property: laboratory equipment, supplies, electronic gear, and bicycles. Thefts of the latter numbered close to 100 last year. In connection with this problem, Captain Olivieri is seeking to establish an identification system for MIT bicycles. This would probably utilize a metal-stamp "branding" operation and registration. Olivieri hopes to have the program ready by the fall term.

Bicycle thefts on rise; 100 stolen last year

Bicycle thefts have been a major problem in Cambridge for many years. In the past two years or so, however, Campus Patrol has noted a dramatic upsurge in the reported number of thefts on campus. Partly this is due to the increasing numbers of people who are using bicycles to commute to and from the Institute, but it is also due to the increased sophistication of the thieves. Organized bicycle-theft rings exist; their operatives use bolt-cutters capable of snapping all but the strongest of chains in mere seconds.

Nearly 100 MIT people last year experienced the sinking, frustrating anger that wells up when you approach the bike rack and find your bike missing. The stolen vehicles represent something on the order of an \$8000 loss. As one graduate (now an instructor) complained in a letter to several members of the MIT administration, such losses as his (3 bicycles in 2 years, worth \$180) strike heavily against students who can't afford them.

No bicycle rack, anywhere, is proof against thieves. Captain Olivieri made this clear in an interview about two weeks ago. The only real protection is people; the only real security lies in placing bicycle storage areas in frequented places where people act as de facto guards. What is needed are indoor bicycle racks, or racks located in frequented areas.

Campus Patrol has made sporadic attempts over the past two years to spur the Planning Office to a solution of the bike theft problem. However, when you're

dealing with million dollar dormitory projects a mere \$8000-a-year problem can wait (and after all, it isn't costing the Institute its costing us \$8000.). Six months ago, the problem was tossed into the lap of Francis Spinks of the P.O.; but his time has been occupied with several more pressing matters assigned by his superiors. Moreover, Mr. Spinks is a landscape architect, which indicates that the Planning Office hasn't even analyzed the situation enough to realize that no outdoor area is safe.

That this is so is attested to by innumerable experiences. Bicycles have been stolen from the patio of Dewey Library while chained at night to the light standards; they have been stolen in full view of Massachusetts Avenue.

The Institute ought to be seeking new locations for its bike racks. A few suggestions: The entranceways to Dewey and Hayden libraries, and Building 10.

However, the best way to keep your bike is to stay with it. Since many areas cannot be considered safe at any time, and nowhere is safe at night, *The Tech* advises all members of the MIT community to keep their bikes indoors. Dormitory members should always use the bike room (or theirs) at night. Never leave your vehicle on a rack at night unless you want to lose it.

During the day, try to bring your bike to your place of work. Lock it up in a corner of your office or lab. (Many people already do, to the chagrin of some Institute officials. Officially bi-

(Please turn to page 10)

Burton-in-Exile: 40 years in the desert?

(Continued from page 1)

complex in Brighton adjacent to its campus for use as student housing. Community and city reaction was vehemently opposed to this. Boston suffers from the same housing shortage plaguing Cambridge, which, combined with ever-growing numbers of students (mainly from rapidly expanding schools like Boston University and Northeastern) creates a housing market which permits landlords to jack rents up to astronomical levels. Additionally, Boston is plagued by a slim tax base due to the fact that about half its land area is owned by tax-exempt institutions, i.e., government, churches, or schools. Completing the picture is widespread neighborhood opposition to large transient student populations. For all these reasons, then, BC's proposal was thwarted by the City.

Hamilton House is not really analogous, Browning said. MIT would not be buying, only leasing, so there would be no tax loss to the city; furthermore, it is intended for use only for one year—not forever. These are the arguments that the Institute will present to the five man Board of Appeals. Sometime this week, Browning expects a date for a hearing will be set. There is also hardship involved—MIT will be in a real bind to house the students should Hamilton House fall through all the way. Demolition of Burton House is proceeding on schedule; the Connor side is by now a shell. To stop the renovation program in mid-stride would result in insufferable expense and would require months of re-planning. Burton, then is useless for this year's housing.

A series of emergency meetings among Institute administrators followed word of the ruling. Officials emerged with a two-pronged strategy for handling the situation: On the one hand, attempt to lobby with Boston officials for a speedy Appeals Board hearing at which to plead the case for Hamilton House being granted a zoning variance; on the other, formulate contingency plans in the event of an unfavorable ruling. The latter means lining up alternate housing off campus and/or making arrangements to absorb more students into extant campus dormitories.

MIT had only planned to use rented housing in Boston for the year Burton will be unavailable, Browning re-emphasized at a meeting July 31 with UAP-UAVP Wells Eddleman and Steve Ehrmann, Baker House President and Dormitory Council Chairman Marvin Keshner, and this reporter. The meeting had been set up for the purpose of informing the community via *The Tech* and to begin the process of obtaining student inputs on possible solutions.

Since no tax loss to the city is involved, the major factor operative here is community opposition to students. To prevent any possible suspicions of an MIT "invasion" of Allston, Browning said the Institute had decided not to use the Linden Street apartments. Six students living there for the summer were relocated to Bexley and Random Halls.

Thus the housing fates of at least 200 are uncertain. The residents of Burton-in-Exile should be receiving notice of this as *The Tech* appears.

While the Institute awaits an

Appeals hearing, the Real Estate office is seeking alternative locations. Tight housing markets in Boston and Cambridge would be further aggravated if MIT tried to throw this burden on them at that time, so the Real Estate office is concentrating on suburban locations, starting, as Browning put it, with "Somerville, Medford, Weston and going out from there." The students recommended that the Wellesley area be scouted as well, explaining that this made sense because of the MIT-Wellesley exchange and the existing transportation system it provides—not to mention the desirability of being near the Wellesley campus.

Simultaneously, contingency plans for housing some of the overflow on campus must be set up. Moreover, not one plan but several must be made—an overload of anywhere from 20 to 200 students could materialize depending on several factors—the size of the fraternities' fall pledge classes; the number of upperclassmen leaving the dormitories for apartments (this figure appears to be down from last year, reflecting rising rents off-campus and the lessened desirability of moving to an apartment); and the amount of off-campus housing the Institute can find to replace Linden Street and Hamilton House.

Browning and the students agreed that students will have to participate in the resolution of the housing crisis even though most of them are away (it being presently summer). Browning said that the Institute may ask Burton-in-Exile president Frank Barber to fly back from California to represent the orphaned Burtonites. The Housing Office also expects to consult with rep-



Linden Street apartments.

representatives of the living groups which would have to take up the excess if it becomes necessary to do so. Since this will require adjustments such as making triples out of doubles, or quads out of triples, each dormitory must be involved in the allocation of students and the decision making process. Browning said he expects to meet with the presidents of every dormitory.

There was some fear that a serious housing shortage would force the postponement of coed living for a year. To keep overcrowding equal among all the MIT dorms would require either putting some of the displaced men into McCormick Hall or else substituting them for some of the women moving into Senior House and East Campus in September, forcing the women back into McCormick.

This term, McCormick Hall will be nearly filled, but some of its smaller doubles will be singles. The house will certainly not be overcrowded as, for example, Baker House, which last year saw triples become quads. However, McCormick voted last Spring not to go coed and the administration views putting men into the dorm as an unacceptable solution—mostly because many coeds and their parents oppose it.

However, both Browning and Dean for Student Affairs J. Daniel Nyhart told *The Tech* that every effort would be made not to impair or abort the coed living program.

Much hinges on the Hamilton House appeal. If the variance is granted, MIT will have to find only 54 instead of 200 beds.

Summer: awaiting the fall



Vol. XC, No. 29 Tuesday, August 4, 1970

Editor	Bruce Schwartz '72
Managing Editor	Robert Furer '72
Centerfold Editor	Mike Feirtag '72
Business Manager	Bruce Weinberg '72
Chairman	Craig Davis '71
Night Editors	Sandy Cohen '73, Vicki Haliburton '72
Advertising Managers	Bob Elkin '73, Ed Markowitz '70
News Staff	Wells Eddleman '71, Dwight Davis '72

"This is disgusting. It's nauseating. I wrote this whole fucking paper."

Thus spoke a member of our staff, with half the job still ahead of him. One wonders if the Supreme Deity, whoever may he be, has not felt the same at times, looking out over his ever-to-be dominions: "This is disgusting. It's nauseating. I created this whole fucking universe."

The wretched beings down below might be tempted to agree with him; our wretched readers among them might well wish to concur with the aforementioned editor. Spring is the season of birth, and summer the season to regret it; and it's been summer since June, and this is August.

Still, man is seldom wont to lament his wretchedness to its full extent; whatever the humility of our efforts, we can never spurn a certain degree of pride. And so, fate and the doldrums notwithstanding, we bring forth this summer edition with at least a certain measure of confidence.

Our purpose is twofold. To begin with, a sizable portion of our staff is still around, and find they have something worth printing—a feat hardly surprising when it's been accomplished twice a week for years. The fact is, newspapers become a habit; and they have to, if they're to be produced efficiently.

In addition, this serves as the Freshman Issue. Copies are being sent to all members of the class of '74, expanding both audience and ad base at a time when the Institute is largely vacant. It also may provide the new year's neophytes a preview of the state of things here, though they'll learn quickly enough when they arrive and might just as well be left a final summer in innocence; and it is hoped it will attract new staff members from among them.

To be truthful, this last motivation was, in many ways, the greatest. Admittedly, all the important additions to last year's staff were sophomores, and no freshman in recent memory has contributed anything especially original; on the other hand, there's no lack of work and a perpetual lack of workers. And, while it's possible to pick up the necessary experience elsewhere, the requisite twice-a-week-newspaper habit comes only from practicing it.

It takes only a few people to produce a paper this size, if they're good at it; but there are never enough people good at it, so we're always looking. There's a fuller description of our operation (written in spring) in the Freshman Handbook; there's usually someone worth talking to around the office, especially on weekends.

Meanwhile, the season's greetings to all.

Second-class postage paid at Boston, Massachusetts. The Tech is published every Tuesday and Friday during the college year, except during college vacations, by The Tech, Room W20-483, MIT Student Center, 84 Massachusetts Avenue, Cambridge, Massachusetts 02139. Telephone: Area Code 617 876-5855, or 864-6900 extension 2731. United States Mail subscription rates: \$4.50 for one year, \$8.00 for two years. Printed by STI Publishing.

another of the Senator's periodic nightmares.

Mr. Peckarsky sacrifices truth for bad history when he charges that Lockheed's C-5A problems started with an "underbid in order to win the contract." Small percentage points separated Lockheed's bid from that of the second contender, and the Air Force considered the third competitor's price excessive. Further, a report by Asst. Air Force Secretary Phillip Whittaker fully cleared Lockheed of the "buy-in" charge, also first inspired by the Senator whom Mr. Peckarsky follows with such touching, albeit blind, confidence.

Yet Mr. Peckarsky urges that Lockheed be given "the fate of all inefficient producers," e.g., be allowed to go under, which, he says, would be no great loss since most of its plants and equipment are merely leased from the government which would

on the program and Lockheed almost as much, about \$80 million, of its own funds.

It must be emphasized that Mr. Peckarsky's intentions, as conceded at the outset, are evidently good. He closes with flourishes and drumrolls against the alleged "flagrant breach of the public confidence" he imputes to a company and its management of whom he knows very little—and that little only by devoutly reading distortions of fact from a single source. But conceding his zeal in the public interest, it is his journalism that is bad and needs improving if it is to serve such high causes as he aspires to. More experienced writers and commentators, at least the reputable ones, would surprise him with the care they take in checking original sources of data before assessing its worth. He would do well to study this subject more thoroughly prior to his next declamations upon it in The Tech.

S.B. Swirsky
Corporate Writer-editor

The above letter was received by The Tech early in June. This being our first issue since that time, we have waited until now to reply to Lockheed's rebuttal of Mr. Peckarsky.

Your letter is remarkable for the obfuscation of which you accuse Mr. Peckarsky. As for "the cooling of a few facts"... well, figures don't lie, but their interpreters do. (Parenthetically, I would like to know why you avoid naming "the Senator" in your letter. I assume you mean William Proxmire, chairman of the Joint Economic Committee's Subcommittee on Economy in Government. Your sarcastic comments on his expertise notwithstanding, his information was received from Air Force and civilian witnesses quite as responsible as those who testified in Lockheed's behalf—witnesses possessed of considerably less conflicts of interest.)

An article by James G. Phillips, former military editor of the Congressional Quarterly, appeared in the August 1 issue of the New Republic and shed new light on the Lockheed C-5A jet transport story. Let us consider it briefly from the beginning and in light of yours and Mr. Peckarsky's statements.

The contract signed in October, 1965, was one of the first under a concept known as "total package procurement"; i.e., research, development and production for a price designated at the time of the contract. This contract contained a provision called the "repricing formula." Specifically, the production run of 120 projected planes was to be divided into 3 runs of 58, 57 and 5 or more (up to 85). Only the first two runs were to be covered in the original bid, however, under the formula, the price of the second run could be reset to cover losses on the first—a virtual invitation to cost overruns. (This, of course, could apply only if the Air Force opted to buy Run B.)

Lockheed came in with a low bid of \$1.9 billion for research, production and runs A and B (if ordered)—a bid which would have made the cost of the entire program \$3.4 billion, including airframe, engines and spare parts. By March 2, 1970, the price tag had risen to \$5.3 billion for only 81 planes. Inflation has been about 5% per year over that period, which would account for an overrun of \$0.4 billion, leaving \$1.5 billion unexplained.

The contention that Lockheed underbid to win the contract is not refuted by your statement that its bid was only "small percentage points" below its nearest competitor (Douglas Aircraft, now McDonnell-
(Please turn to page 11)

Letters to The Tech

TO THE CLASS OF '74

Sisters and Brothers,

Welcome to MIT. A battle for the hearts and minds of people is going on here. Don't mistake me—you can get a fantastic education from MIT (at an ever-higher cost): professional training, humanistic ideas, bitter-sweet experience.

Probably you came here to receive this education, not to solve the world's problems. But the problems are here: when you move to Cambridge, you aggravate the housing problem; when you have a car, you create pollution; when you don't work to solve problems, you acquiesce in them. And we all do this in our own ways.

You say you sympathize with the problems but you don't have the expertise to tackle them. Do you think the CIA is expert in foreign policy, or that Nixon is an expert on race relations? Besides, you learn by doing. This year at MIT you'll get your chance many times over.

"Problems worthy of attack, prove their worth by hitting back," so don't expect instant success. Being right doesn't guarantee that you'll win. MIT is an ecosystem of the most perverse kind: a human one.

Don't be afraid—you've been warned (and invited). You can choose. If you don't want to get involved, eat well, get plenty of sleep, do your problem sets, and escape via drugs if you wish. If you want to live

with some solutions, you had better think a lot, lose some sleep (and maybe your mind), and have the courage to act.

People are power.

Make peace,

Wells Eddleman
Undergraduate Assoc. Pres.

LOOK TO LOCKHEED FOR LEADERSHIP

Conceding Mr. Peter Peckarsky's good intentions as well as lack of valid information, his article "Lockheed soaks Uncle Sam" in The Tech of April 4, 1970 abound with his own value judgements that do a disservice to his readers as well as to his subject. Since he announces he will make further excursions into the matter, it would be well to offer him and The Tech's readers, the cooling balm of a few facts.

It is easy enough to see why a student commentator would view with alarm Lockheed's request for over \$600 million in payments pending a legal decision in its contract disputes. He is in the company of a source he names and quotes, a man whose rise to the U.S. Senate has remarkably endowed him with expertise in aircraft structural design as well as the complications of government procurement regulations and contracting procedures. It has also led him to discover that criticizing several defense contractors is not only viable in the present social ferment but indeed wins large headlines and a continuing reputation.

But it is Mr. Peckarsky who alleges that the funds requested would "pay for inept management practices" by Lockheed executives. He fails to state that the C-5A cost growth was largely caused by unanticipated inflation, as has been repeatedly told committees of Congress by responsible Air Force spokesmen. He does not state that, notwithstanding unforeseen technical unknowns, the cost growth is far from being the largest among several other government and private programs during the same period. And of course he fails to state that the management he so roundly denounces (following the Senator's lead) is the same that has given the nation good and honest service for decades past and, indeed, continues to do so.

He attributes to the Senator the charge that Lockheed has been hopelessly behind in its C-5A production and has misspent funds intended for later planes. However, the fact is that other than a six-month offset negotiated some time ago, C-5A production has been on schedule and thus the alleged misspending is only

Footnotes

* "Had he not graduated, he would have been expelled." This exists in the MIT record of Rich Edelman '70, who took his degree last February and was postgradually tried by the Committee on Discipline for his role in the occupation of the President's office.

* Hard Times I: MIT's financial situation is so tight that, in addition to a \$350 tuition rise and increases in dorm rents and the price of commons, financial aid has been cut back across the board. Students granted aid received letters this summer telling them that they were the recipients of \$600 job grants in lieu of cash grants and/or loans. Some of the money for these jobs will come from Uncle Sam. This year, for the first time, MIT will participate in the Federal work-study program. Under it the government pays 4/5 of a student's salary. Those job grants imply some rather interesting consequences, especially for anyone working at student scale rates. At \$2.00 an hour, working the ten hours per week the Institute recommends, it would take 30 weeks for a student to gross 600 dollars, and while income tax deductions would ultimately be returned, Social Security would not (until retirement). 30 weeks is about the combined lengths of both terms, plus interim vacations and the January independent study period. Student scale for freshmen starts at \$1.70 per hour.

* Hard Times II: The Institute has been saving a little bread and electricity this summer by "browning out" many hallways and areas not in

use. This is being done in cooperation with New England power companies who are urging large users to conserve power in the face of a shortage (which shouldn't exist according to public statements by officials of the Boston Edison Company, which has on occasion had to drop its voltage 5%). The Great Dome, however, is still illuminated at night.

* Hard Times III: Seeking to dispense wisdom on the current economic crunch, the Institute has printed up 80,000 glossy-paper booklets containing the text of a March 3 HoJo speech delivered to the Economic Club of New York. Its title: "Technology, Students and the Interest Rate." Additionally, attendees of Alumni Weekend last June were met by several thousand reprints of a Fortune magazine article entitled "Come Squeeze or Bust, In HoJo We Trust."

* "I never saw a purple cow, I never hope to see one. But I can tell you anyhow, I'd rather see than be one."
— F. Gelett Burgess '87 and he's still turning in his grave.

* Unrest and demonstrations of the past year have apparently not caused alumni to tighten their pursestrings vis a vis the Institute, according to Corporation Chairman James R. Killian, Jr. In an interview with a The Tech editor he said "This has been the best year yet [for donations]."

* "You don't get medals for doing things; you get medals for being things."
— Rex Begonia, posthumously.

centerfold

AUGUST 4, 1970 NO. 26

metallic manna: Servend
 snowjobs: MIT on the make
 film: revolting revolutionaries
 recordings: blood, sweat and swivel-hips

Are you a mens. or a manus?

Introducing MIT

(The following is a series of excerpts from one of MIT's numerous "Get Acquainted" booklets, which the Institute publishes in the hope of making a few points perfectly clear and winning a few converts.)

Page 2. *Introducing MIT*: "The Massachusetts Institute of Technology is a corporation devoted to research and training in the mutually supportive roles of university, defense contractor, and modern corporation. Its growing breadth is in wide response to the trend toward successful conglomerates in many fields. In a very real sense the Institute is an expression of the interdependence of many factors controlling our present-day society, to the extent that this makes sense . . ."

"The undergraduate men and women are immersed in a dynamic environment with the option of loving or leaving, decided by the student in close consultation with faculty advisors. MIT recognizes that most students are likely to be most productive if they are contented; thus the Corporation allows great freedom of experimentation with drugs, sex, student activities, and student government."

"The firm commitment MIT has made to the final solution of complex problems is manifest in the evolution of expertise in counterinsurgency, urban renewal, disarmament, defense systems, pollution, and public art."

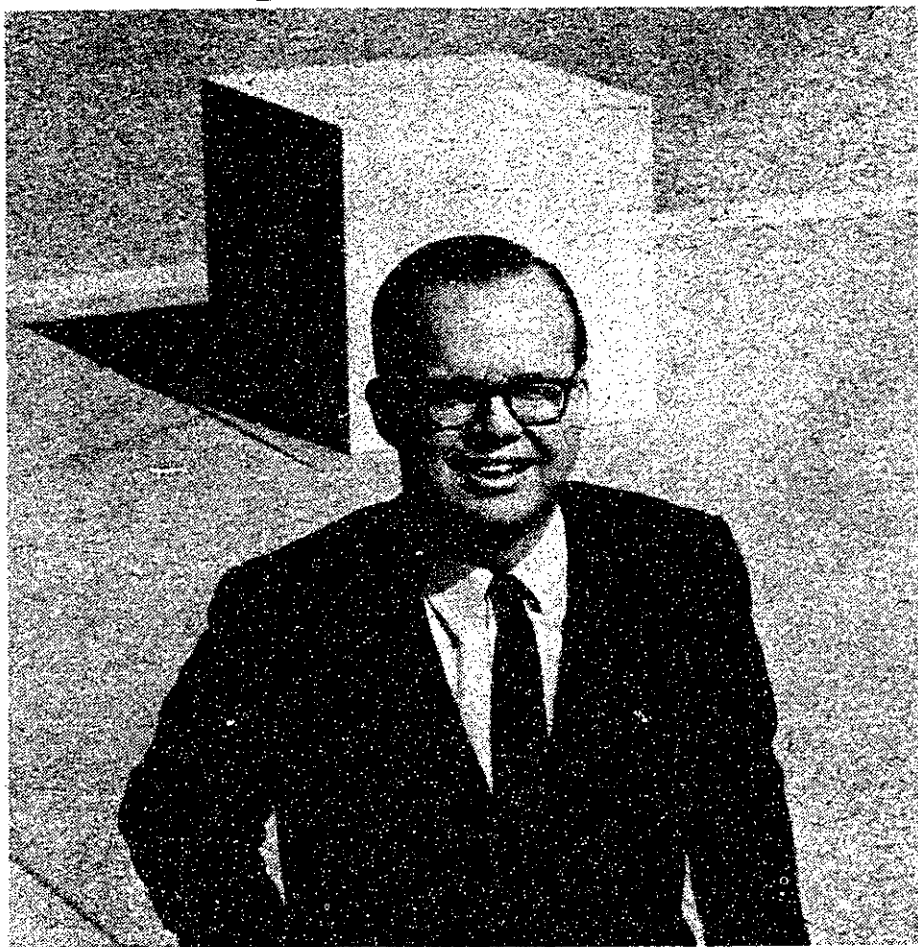
Page 3. *The Community*: "MIT is a centralized university that takes advantage of its urban environment in every possible way. The Institute combines the benefits of an isolated campus with full advantages derived from the Boston area and its cultural, historical, military, and technical facilities . . . Within a radius of three miles are scores of universities with which MIT amicably competes for land, housing, and control of local governments . . . A few miles farther away is Wellesley College, with which MIT has reciprocal cross-pollination privileges."

"The MIT community includes 7,800 students, of whom some 500 are women."

Page 4. *The Undergraduate*: "MIT is first of all an educational institution. Its students must have the ability to find and make their own education; they must develop the perceptive and cognitive abilities to realize that it doesn't derive from their academic programs. In turn, MIT takes the fullest advantage of its student body with \$4,500 yearly tuition and fees . . . A powerful curiosity about things not understood permeates every classroom."

Page 5. *Undergraduate Programs*: "Students who enter MIT have been preselected for their technocratic potential . . . At the same time MIT recognizes its responsibility to provide a liberal patina of humanities and social science . . . Emphasis on fundamentals and getting things right are central to MIT's educational philosophy. A strong sense of the quantitative, a critical analysis of the cause of defects, and a demand for precision motivate learning at the Institute."

"The curricula tend toward



From page 1 of the booklet: Photo of President Howard Johnson (HoJo), cropped square.

broad specialization, giving the student professional competence. To this end, the basic intent of MIT's academic program is to work his ass off."

"The scope of MIT has always been wider than its title 'Institute of Technology' might suggest. The increasing use of science by government and business is reflected in MIT's research in management, economics, political engineering, mass and abnormal psychology, architecture, city planning, and military science."

Page 6. *Specific Requirements*: "MIT divides degree pogroms into two parts: the part we make you take, and the part we make yourself take. Together, these account for about 100% of the curriculum. Each departmental pogrom includes rigorous training for participation in that field through service to the real world."

Page 7. *Visits to MIT*: "Members of the Admissions Office are pleased to find students in (Please turn to page 8)

The staff of *Centerfold* regrets to announce the disappearance and presumed demise of Rex Begonia.

Rex suffered from birth from an aversion to sunlight. When the solar rays shone on him, he wilted and lost color. On several occasions last spring, Rex's existence seemed in doubt due to exposures to sunlight as well as to increasing nervous tension.

Rex was by nature a brooding creature, given to dark and morbid speculation on the world situation tempered by a stubborn refusal to give up hope altogether and lapse into madness or misanthropy. The political and human situation so distressed him that his health considerably worsened. Yet during this period he continued to contribute prolifically to *Centerfold*.

In June of 1970, Rex dropped four leaves. In desperation, injections of vital minerals were tried. To no avail. By July, Rex had shrivelled to a small, gnarled ghost of what he had been in his prime. Some time in late July, Rex vanished.

In searching through his worldly possessions, we have found the following poem, scrawled on scrap paper in Rex's handwriting. We publish it here as the final utterance of Rex Begonia.

The Song of the Hemorrhoid

O I am a jolly hemorrhoid
 My home is your derriere
 And if you use Preparation H
 You will not find me there.

O many a hock has been my home
 Many a butt my abode
 But the derriere of a maiden fair
 Was the best that I ever knowed.

O you may be killed by a cancer
 Or a carcinoma deady and gory
 But a hemorrhoid can be destroyed
 By the dread suppository.

Now all this talk of sickness
 May put you ill at your eases
 But the only thing you human fools are
 Is a home for your diseases.

film:
Revolting

By Robert Fourer

American college students going to the movies today are finally getting a taste of what American Indians have known from the Westens for decades. The new "revolution" genre may not leave it's mark so heavily on the cinema, but it's going about it with all the same "cowboys and injuns" standards.

Films like *The Revolutionary* and *Getting Straight* are at no loss for character values—good, bad, strong, weak, experienced, naive—or action—arguing, rioting, brooding, bombing. But the characters and plot themselves are figments of an uninformed imagination, and the issues, being a touchy matter, are lost entirely. The screenwriters, apparently, are no less scared and no less uninformed than the rest of the country, and are playing their fantasies safe. After all, they can't fall back yet on what they've seen at the movies:

At the furthest extreme, *The Revolutionary*, actually the more sincere of the two, eschews the slightest hints of any motivation of its characters. The hero, "A," (Jon Voight) drifts through a series of ill-defined organizations—a ridiculously impotent liberal protest group, a socialist cell of some sort run by older laborers, the army, and a more violent group of only the vaguest composition. Not only are they nameless, but they bear little relationship to anything existing, on campus or off. A student trying to ally with workers might join a PL group with other students; "A's" final organization is first Yippiesque, finally Weathermannish.

Missing the intricacies of activist organization is the most pardonable failing of Hans Koningsberger's faint-hearted script, however. Two tolerable demonstrations lead immediately to police actions, but after being taken off to jail "A" is released the next morning with no explanation whatsoever. Neither is he told why he's suddenly suspended from school, the only charge against him being a vague reference to his "activities." When he unexpectedly gets up the nerve to return home to be presented with a draft induction notice by his father, and shows up in the following scene in an army unit on riot duty, all pretense of reality has flown. The setting, ostensibly "somewhere in the free world," could only be a vacuum finer than any yet achieved on Earth. The army sequence, and subsequent escape, are so far removed from the rest of the character's world, and from the rest of the movie, that they could be cut entirely with hardly a trace.

Part of the problem is the character "A" himself: his perceptual shyness and incoherence renders him incapable of expressing whatever motives or ideas he might have. Voight scrupulously avoids any substantial show of emotion, perhaps in the hope of making his part as unreal as his surroundings. The only other parts of some depth are the hero's two girlfriends, but their irrationality robs them of any value.

The most one can say for *The Revolutionary* is that its sincere. Koningsberger apparently wanted to plot the anonymous development of an anonymous student activist, in the hope of providing an honest, unbiased view. Unfortunately, his grasp of literature wasn't much better than of his subject: to talk about the world requires at least a parallel with reality.

Of *Getting Straight*, however, one can say even less. It's a fake from the beginning, right from the stock Hollywood credit scene of innumerable student-types passing an apple around the hallways and stairways of some overgrown high school. At one spot two girls, one black, one white, converse in the center of the screen; a similar pair of males approaches. Precisely rehearsed, the men switch sides, and the two unexpectedly interracial couples walk happily off. It's a false, mindless comment, and typical of what follows.

The overgrown highschool, it turns out, is a state university, though at times it looks more like a kindergarten. As in *The Revolutionary*, its a fairy tale setting with little parallel in reality; and again, the causes behind the "campus unrest" are pitifully vague. When a crowd chanting meaningless phrases gathers in front of the administration building, cops disperse them in a version of a playground free-for-all. Later, the protagonist (Eliot Gould) argues with the university's president alone in his huge office while another cops-kids battle goes on right outside his picture window.

Getting Straight, its true, is rationally plotted. By the end, the hero must save himself and his girlfriend (Candice Bergen) from dreadful cooptation and death in middle-class suburbia. There are no new insights, though, and what effect a repetition of the old ones might have had is negated by the unreal setting and glib presentation. The supporting characters are not so much stereotypes as hyperboles, who blend nicely into the faked surroundings.

In short, *Getting Straight* presents a modern campus the way people who know nothing about one might want to believe it's like. It's a fake, meriting no credit even for the effort.

So currently this summer's youth film wave looks still less promising, critically and otherwise, than last's (*Easy Rider*, *Alice's Restaurant*, *Medium Cool*). Still to reach the Hub is *The Strawberry Statement*, whose notices so far are still less promising. And Stanley Kramer's next joke (the last was *The Secret of Santa Vittoria*) will have a campus setting—at least it might make its predecessors look better.

Certainly the definitive movie on the vocal part of the current college population has yet to be seen. With this latest crop upon us, it's about time to fight fire with fire—to make film instruction in the colleges bear fruit. At least the writers might have seen what they're talking about.

Grooves:

Blood, sweat, tears, and grease;

BS&T

Blood, Sweat and Tears 3—(Columbia)

Were one to input every standard jazz line, arrangements of all Dionne Warwick's and Tom Jones' hits, and the later's illustrious voice to a computer, the result would be *Blood, Sweat and Tears 3*. The promise of their previous album has been washed from memory by this musical disaster which contains not one original note.

The material isn't really that bad—essentially from the same sources as the last album. The results comprise, however, the first anthology of jazz-pop brass muzak.

"Hi-Di-Ho" is almost redeemed by Steve Katz' harmonica, but the arrangement is choppy and never cuts loose. Katz' traditional one-song-for-the-album, "The Battle," is a totally worthless imitation madrigal. Clayton Thomas' "Lucretia McEvil" is the first cliché-offender of the album, pounding the ears with more over-used brass phrases than have ever been crammed in one arrangement before. Add to this a lifeless groan by a feelingless vocalist and the result is horrifying. The first side finishes with James Taylor's "Fire and Ice" and the Band's "Lonesome Suzie," both of which remain much preferable in their original form.

Side two manages to outdo the first for musical atrocities. BS&T expanded the Stones' "Sympathy for the Devil" into "Symphony for the Devil" and in the process castrated a musical entity which had a crude and brutal quality which was its strength. Laura Nyro too deserves a better fate for her music than having Thomas mangle more of it. The loser this time was "He's a Runner" which features a human imitation of a Moog jazz piano solo. "Something's Comin' On" sounds exactly like Tom Jones—hopefully BS&T has sent Joe Cocker an apology. The atrocities end with a "slow and slimy" version of Traffic's "40,000 Headmen" featuring offences to every composer but P.D.Q. Bach.

Blood, Sweat and Tears 3 is a difficult pill to swallow—the last BS&T album showed much promise and the first (with Al Kooper) was at least interesting and excellent in its own way. But with David Clayton Thomas sounding like a hoarse voice synthesizer and the rest of the group playing jazz-rock muzak, BS&T is naught but Bullshit and Tripe.

—Jeff Gale

Elvis

(RCA having issued an Elvis Retrospective, we consulted a Greaser)

From January 1956 through January 1970 Elvis Presley gathered the fifty golden discs contained on this four-record monaural set, fifty singles that have sold over one million copies each. Twelve came during his two-year hitch in the army. An analysis of the Presley phenomenon borders on impossible, but given a Saturday night with nothing to do... Is there a better time to listen to greaser love songs?

In January of 1956, when the pop music scene was dominated by Joe Turner's "Corine, Corin-

na" and Clyde McPhatter's "Treasure of Love," Presley broke into the music world with two records, both million sellers. "Heartbreak Hotel" can be described as pre-rock. It was written for the movie of the same name and merely followed the "Teen Movie Scene" scores of the day. The other was "I Was the One" and reflected the beginning of the "grease scene," containing the requisite redundant piano triplets complemented by oo-wahs, doo-doo-wahs, and wah-wah-oos.

In May of 1956 Presley followed with another greaser song, "I Want You, I Need You, I Love You." Ray Charles' "Hallelujah I Love Her So" and J. Robins' "Smokey Joe's Cafe" dominated music at the time. Presley's redundant piano triplets overtook them for no apparent good reason.

The following month the

Moonglows took over the number one spot with "Sincerely," followed directly by "We Belong Together" by Robert and Johnny. A battle royal had begun between Negro rock and greaser rock.

July of 1956 brought Presley two more golden records in different but related styles. "Don't Be Cruel" continued the greaser music with the addition of black leather jacket and tight motorcycle pants; sex, raw passion, and swivel-hips had entered the music market. His other recording was "Hound Dog."

Presley attained national notoriety that month by appearing on the Ed Sullivan Show in a tight gold lame suit, shaking his hips (Sullivan refused to allow close-ups of the torso), causing girls to scream and faint in those pre-Beatle days. Some claimed at that point that his act was obscene; most people didn't say

anything. After all, nobody was trashing anything after his concerts.

September of 1956: two more golden discs and two more recording styles. The first, "Love Me Tender," reminiscent of sock hops, dancing close, and Davy Crockett. Davy Crockett? "Love Me Tender" was Presley's first attempt at a tender love ballad. He embellished all his performances of this genre by dressing like Harry Belafonte and looking hurt, a facial expression calculated to make every female in the world want to mother him. "Any Way You Want Me" also came out in September. It utilized heavy breathing, redundant triplets, and, for the first time, a choral background—all in all, a romantic grease song.

November of 1956 brought LaVern Baker into the forefront with a recording of "Jim Dandy." "So Young" by the Stu-

dents followed, as did "A Kiss From Your Lips" by the Flamingos, and Presley didn't have another million seller for four months.

Presley rode a wave of success throughout 1957 despite strong contention for the number one position coming from the late great Chuck Willis (King of the Stroll), "C.C. Rider," and the Sensations' "Cry, Baby, Cry." Presley's love ballad period continued off and on until the middle of 1957.

Presley had a pair in September (following two each in March and June). "Jailhouse Rock" from the movie of the same name was the first swivel hips song of a transitional garbage period. It featured a Dixieland band in the background and (Surprise!) no triplets. "Treat Me Nice" also came out that month with a lot of harmony, a lot of deep bass, and a certain

If you were born after 1948,

you're in luck.

If you're under 22, you can join the TWA Youth Club.

Which means that everytime you fly with us in the continental U.S., you'll get 40% off regular coach fares, on a standby basis.

If we don't fly where you want to go (and we fly to 42 cities around the country), just take another airline. You can still use our Youth Club Card.

You can also use your card for discounts at the Hilton and Sheraton

Hotels.*

All of which means our Youth Club Card can save you loads of money. Which isn't bad for a \$3.00 card.

Just mail in your application with all the correct information, and don't worry about it.

Your application won't be rejected.

TWA

TWA YOUTH CLUB
IDENTIFICATION CARD APPLICATION
FOR AGES 12 thru 21

Please Print

1. Name _____

2. Address _____

City _____ State _____ Zip Code _____

3. Male Female 4. Hair Color _____ 5. Eye Color _____

6. Date of Birth _____
Month _____ Day _____ Year _____

7. Fee enclosed: \$3.00 Check \$3.00 Money Order
Make checks payable to: TWA
(Not refundable — DO NOT MAIL CASH)

8. Signature _____

Mail to: Trans World Airlines
P.O. Box 2952
Clinton, Iowa 52732

1-067-7-17004

TRAVEL RESTRICTED ON CERTAIN HOLIDAY PERIODS

*in continental U.S. only.

Country Pie and Earthly Woe

studdiness about it. Yet another pair of hits appear in December 1957: "I Beg of You" being identical to "Treat Me Nice" with the addition of numerous choral oo-wahs, and "Don't" of the hurt genre.

In 1958 strong competition emerged in Bobby Darin ("Queen of the Hop," "Splish, Splash"). With the appearance of the Coasters ("Yakety Yak"), Presley was held to only three golden records for the whole year, as opposed to ten in 1957. "Wear My Ring Around Your Neck" had a Negro spiritual beat with grease words ("goin' steady teenage love..."), "Hard Head-

ed Woman" is a swivel hips song with a Dixieland sax and piano, and "I Got Stung" is swivel hips, tight gold lame hurt rock.

In 1959 Elvis entered the U.S. Army. It is interesting to note that while "G.I. Blues" sold almost no copies, "A Fool Such As I" was a million seller (a tender oo-wah-wah love ballad).

In 1960, Elvis produced five of the worst songs to come out of the decade—they were all million sellers. "Stuck On You," a sex rock love ballad, "Now Or Never," a Bossa Nova love ballad, "I Gotta Know," pure garbage, and "Lonesome Tonight," a sexy talking Shakespeare ("All

the world's a stage...") tender choral love ballad.

With the decline of Murray the K (Golden Gassers) and the rise of surfing music, Presley decided to follow the trend of 1961. He wound up with only two hits: "I Feel So Bad," a surfin' beat tender love song, and "Rock-a-Hula Baby"—jump on your surf boards and get out of earshot. Deciding, perhaps, that he needed more money, he then moved back to old formulas and came up with two pieces of garbage, "Little Sister" and "Falling in Love." Each sold a million copies.

In 1962 three interesting things happened. Elvis found religion, recorded five songs, and lost religion. The songs didn't sell.

The trend in 1963 was the change from surfing music (Beach Boys: "Surfin' Safari," "Surfin' USA," "Surfer Girl," Surfin' ad nauseum) to drag car race music (Jan and Dean: "Dead Man's Curve," "New Girl in School"; Beach Boys: "409," "Little Deuce Coupe," "Little GTO"). Presley followed. "Devil in Disguise" was the first of the Presley surfin' beat songs. The beat approached that of "Dead Man's Curve." "Bossa Nova Baby," despite its title, was drag race in beat.

From 1964 until October 1968 Presley came up with six more golden discs. He wandered all over hell and back while regressing steadily. "Wooden Heart" was a polka, probably a tribute to Germany, where he spent time while in the army. "Ain't That Loving You Baby" is Del Shannon's "The Wanderer"

with the words changed. "Viva Las Vegas," from the movie etc., might have been written in 1954 by the Clovers or Danny and the Juniors or even Lee Andrews and the Hearts. "Kissin' Cousins" regressed to surfer music. April 1965 brought "Crying in the Chapel." A dead ringer for any 1956 Moonglows arrangement.

From October 1968 to date five songs have been recorded by Elvis. Five hits. It is unclear how they are to be explained. Perhaps Presley is getting religious in his old age (he is around 36). Presley had previously released several religious albums on the order of *In His Hand*. They never gained notoriety. Is it possible that he is taking another stab at it? God only knows.

Whatever the influences have been, are now, or will be in the future, Presley is a remarkable phenomenon. What he records sells. Animal magnetism or Divine intervention? A truly remarkable phenomenon.

—Ed Markowitz

Dylan

Self Portrait—Bob Dylan (Columbia)

Theory One is that there's been something wrong ever since the motorcycle accident. Theory Two is that he's secretly infiltrating the rednecks by singing country music. Theory Three is that he's an artist who's passed through several distinct periods: Woodie Guthrie imitation, political messagery, surrealist imagery, and finally country pie.

In *Nashville Skyline* there are lyrics that might explain things: "I never realized what I had until I threw it all away..." and "Love is all there is..." And there are others in *Self Portrait*: "Take me as I am or let me go..."

Revolution or no, there ought to be a place for gentle, quiet music for the sake of music. If no one keeps beauty and Utopian ideals alive now, post-Revolution man may find himself without the former and with no idea how to attain the later after all the corpses are buried.

—Rex Begonia

Bessie Smith

Bessie Smith: The World's Greatest Blues Singer—(Columbia)

The first of five two-record sets which will completely cover Bessie Smith's recorded output. These discs represent the first 16 and last 16 songs. Her voice is overwhelming, with a flowing naturalness on the early pieces, an irresistible shriek of earthly woe on the late efforts, recorded after she had been through hell and not too long before her fatal automobile accident. Even two hokey spirituals and one song (which she reluctantly recorded) with risqué lyrics can't hurt the power, dignity, and honesty of the voice. The sound quality is gratifying as well, the engineers having cut through the surface noise and the echo effect sometimes added at the time of original recording. Incredible music.

—Mike Feirtag

"Bravo! A mind-bending sparkler, shockingly brilliant."

—Cosmopolitan



At: 12:45, 2:50, 5:00, 7:05, 9:15
26 Exeter Street - 536-7067

Exeter St. Theatre

March 4: Scientists, Students, and Society

edited by Jonathan Allen
A movement of scientists and students concerned about the misuse of science and the proper relation between science and society, beginning to a large extent at M.I.T. and spreading rapidly to other campuses, emerged as a public force, "March 4," 1969. Sponsored on the M.I.T. campus by the Union of Concerned Scientists, this was a

positive protest and the time was used in intensive examination of alternatives.

It differed in other ways from many recent forms of protest. It was planned from the start as a joint effort between faculty and students. And the protestors — students and Nobel Laureates alike — set out to examine what could actually be done — done now

or in reasonable time — by taking fully into account the reality and inertia that keep priorities out of balance in the present system.

The text of this book consists of an essentially unedited transcription of the talks and panel discussions presented at March 4, thus preserving the intellectual flavor of the event, with its air of spontaneous groping toward mutual understanding among various groups of participants.

The full text of George Wald's moving address, "A Generation in Search of a Future," is included. This address, largely extemporaneous, has already had a far-reaching impact in published form through reprints and extracts distributed by several newspapers and magazines. Its influence will be

extended now that it is available in the permanence of book form.

Two other addresses are also available in the book: "Reconversion for What?" by Congressman George E. Brown, and "Protesting the Draft" by Father Mullaney.

The remainder of the book reports the deliberations — the agreements and the disagreements — of five panels. These take up in turn a num-

ber of large but definable problem areas: the responsibility of intellectuals; reconversion and nonmilitary research opportunities; the academic community and government; Science Action Coordinating Committee proposals for further action; and the questions of arms control, disarmament, and national security. These panels were manned by some of the sharpest critics of national policy and some of the most thoughtful students of the American scene to be found today. Among others, including several students, Eugene Rabinowitch, Victor F. Weisskopf, Noam Chomsky, Howard Zinn, Salvador Luria, Francis

Low, Thomas Schelling, Franz Schurmann, Bernard Feld, Hans Bethe (speaking on the ABM), and Matthew Meselson (on biological and chemical weapons) served as members or chairmen of panels.
\$1.95

MITPRESSPAPERBACKSFROMTHEMITPRESSPAPERBACKS

The R&D Game Technical Men, Technical Managers, and Research Productivity

edited by David Allison
This book confronts many questions and provides even more answers relating to R&D. It explores the conflict between the wish of the scientist to contribute to so-called "pure" science as a by-product of his work, and the apprehension of the corporate management that these contributions will interfere with the company's research program. A number of expert R&D men help Mr. Allison make this study one of directness and lucidity.
\$2.95

Scientists as Writers edited by James Harrison

This delightful sampler of scientific writing introduces the reader to the state of science yesterday and today. Lucid in their presentation of complex scientific problems, these writings together demonstrate that science can be made not only accessible but enjoyable as well for the general reading public and the student of humanities.
\$1.95

Silence: Lectures and Writings by John Cage

This collection ranges from serious discussions of experimental music to delightful verbal pranks and autobiographical fragments. Many are in the form of musical pieces, some designed using the same coin-tossing and other techniques Cage uses in his audible music. The reader is thus presented with a working demonstration of chance composition (which can then be read in random fashion, as the music might be performed.)
\$2.95

The Mathematical Sciences: A Collection of Essays edited by COSRMS

This absolutely first-rate collection of essays has been written by a group of the most outstanding mathematicians, economists, biologists, and mathematical physicists in this country in an attempt to acquaint the non-professional reader with the latest developments in the most ancient of the exact sciences... Most of them are self-contained, and all are written with such lucidity that a reader who is willing to take the pains will come away with an understanding of why this field has flourished with such vigor since the dawn of recorded intellectual history.
—The New Yorker
\$3.95

Ordinary Differential Equations by H. Gask

"It is an elegant, readable and truthful account of the general foundations of the subject, some of its applications and a modest selection of specific solution methods."
—Choice
\$2.45

Science, Technology, and American Foreign Policy by Eugene B. Skolnikoff

"The author of this book is neither a scientist nor a professional diplomat. Yet he manages to crowd into 300-odd pages a great deal of pertinent and often useful information about the interaction between the impressive and fast-paced developments in science and technology and the growing complications of our international relations."
—Technology and Culture
\$2.95

The MIT Press
Cambridge, Massachusetts
02142

Introducing MIT

(Continued from page 5)

the vicinity between 9 and 5 every weekday except during paid vacations. Visitors should find the Admissions Office entering the Institute at 77 Massachusetts Avenue. Advance appointments are seldom necessary but often recommended."

"Student-led Institute tours leave each weekday . . ."

Page 12. Undergraduate Life: "Residence: More than three-quarters of MIT undergraduates reside in student residences on campus or in fraternities across the river. The remainder tighten up the housing market . . . All housing units are at least 20 years old except new houses designed from 20-year-old plans . . . Fraternities are housed in buildings carefully preserved from the renaissance."

"All housing units provide either their own compulsory food or nearby vending machines, where 21 meals per week are occasionally available. Students may choose between required commons meals or the club plan, under which they pay \$155 per semester for not eating."

Page 13. Activities and Student Government: "In order to pacify those students not satisfied by drugs, sex, or the more common sublimations of the studious life, MIT provides a wide range of stupid activities, including several newspapers, mostly defunct . . . An AM/FM radio plays around the clock . . ."

"The variety of activities is prodigious, catering to all known tastes, and more flavors are being discovered all the time."

"Student government, a powerless organization, is maintained by the Administration as a front in order to maintain that students control their own lives.

Many students also endorse this belief."

Page 14. Government: MIT is ruled by the Corporation, a board of businessmen, financiers, alumni, and tokens. The actual administration of the Institute is left to the benign despotism of the Administration, an \$8-million management cadre. The faculty regulates student needs and carries out the Administration's requirements in student discipline . . ."

"Faculty members must supply up to two-thirds of their salaries through research grants, mainly from the Department of Defense."

Page 15. Athletics: "For those who enjoy physical combat, MIT provides a host of alternatives to counterproductive campus demonstrations. Last year, nearly 1500 students participated in rifle, pistol, karate, boxing, and 23 other sports."

Page 16. Applications Procedures: "Freshmen may enter the Institute only in September when, at traditional ceremonies, the entering class assembles at the Charles River basin's end for MIT President Howard Johnson's Parting of the Waters of the Charles. A reception at the President's manor follows, at which time Dr. Johnson will shake your parent's hand."

"... Fill out the enclosed forms and enclose \$20 dollars application fee. SAT, NMSQT, and other tests of technocratic ability are required. In addition, admissions are affected by an essentially random personality rating assigned to all applicants by conservative alumni."

"Applications, together with all supporting materials, are due at the Athletic Office by January 15 of the calendar year of

proposed entrance. The Admissions Committee completes selection of the freshman class early in the day, and most candidates are informed of their condition in early April. Other applications will be held for consideration with prejudice at the usual time in the spring. A student admitted under this plan is not required to reply."

"All candidates for admission will receive an application for 'Need Analysis.' Every student who wishes to be considered should return the application to the Student 'Aid' Center with a Parents' Confidence Statement."

"Arraignments for payment of all formal charges may be made with the Bursar."

"This is not at all funny."

Page 17. Financial Aid: "MIT recognizes that it would be elitist to admit only students who can afford the \$5,000 yearly fees and dues (tuition has been increased since page 4 was printed), so low-cost loans and scholarships financed by major corporations are provided. In addition, MIT requires everyone on financial aid to take summer and term-time employment grossing \$2,000. Thus, those whose need is less than \$2,000 according to the computer receive nothing."

Page 18. What's New On Campus: "MIT has recently received a grant from the city of Boston to house 200 additional students on campus this year . . ."

Written inquiries and requests for additional copies should be addressed to: Director of Admissions; MIT; Cambridge, Massachusetts 02139.

—Wells Eddleman
Mike Feirtag
Bob Fourer

Deus ex machina: Servend

By Bruce Schwartz

This reviewer has, in his short lifetime, been privileged on only three occasions to have a glimpse of what a homicidal maniac must feel in the moment before murdering the victim.

The first occurred in connection with an attempt to make a call from a pay phone in Manhattan. The second was occasioned by a visit to my Congressman.

The third occurred about 4:15 one morning in the basement of the MIT Student Center, when I was refused service by six consecutive machines euphemistically labeled, "SERVEND."

I cursed, I wept. I pleaded with them, tried to reason with them, pounded them with my hands and finally tried to smash the plastic . . . but to no avail. Starving for a morsel at 4:30, I skulked upstairs and sat down at a typewriter to ream Servend.

Herewith, the review.

The silent partners of the Servend Corporation are much like certain girls we all used to know in high school: they promise much but deliver little, and then only under duress. Their performances have been, when delivered at all, less than fulfilling, and usually stale. Particularly saddening has been the declining careers of the cast of Candyshop, all of whom seem to have lost weight in recent years, and

who appear in general malnourished. Obviously needed in these slots are some fresh new faces, and we hope that the producers of this organization will see fit to introduce some in the near future.

For it is with this august body that the ultimate responsibility must lie. The resources of even so great a talent as Pastryshop are limited and must be periodically replenished. The supporting cast has been noticeably weak which is probably why so many have been requesting their money back at the gate, only to find that refunds must be sent by mail.

Nor is this procedure of redress satisfactory. Extension 5858 displays a remarkable lack of inflection, combined with a disturbing nasality and a total lack of vocal imagination. It lacks the ring of conviction, and has suffered greatly since the days when it hung in the men's locker room.

But Servend's worst crime is that of the strip-tease: unfulfillable titillation. When, last year, the soda machine with its gaudy colorful painted sodas tempted a trusting tool and proceeded to devour his change and then served him a sparkling grape soda *but no cup—why*, could you blame the fellow for what he did, which was to firebomb the machine? No truer rape has ever been performed.

You'll want to shop at . . .

**the
Coop**

Harvard Square's largest and Best department store, specializing in serving you since 1882.

Here you'll find up-to-date Boutiques, full lines in both men's and ladies' clothing, plus stationery, art supplies, sporting goods, shoes, and attractive gift items. Plus Boston's Biggest Book Store, Record Store, and Print Department.

The Coop is a 98 year old Co-operative and being a member of the Harvard community invites you to share in the store's profits.

Stop in the cashier's office and pick up your Coop card, which will entitle you to a cash rebate every June 31st.

So get in the habit of shopping and saving at the Coop.

**the
Coop**

HARVARD SQUARE
M.I.T. STUDENT CENTER
CHILDREN'S HOSPITAL MEDICAL CENTER

JUST THINK
OF IT:

**5 Year
Renewable Term
Savings Bank
Life Insurance**

\$25,000

for less than \$65 a year

\$20,000

for less than \$50 a year

\$15,000

for less than \$40 a year

\$10,000

for less than \$25 a year

\$5,000

for less than \$15 a year

Based on current dividend rates, these are the annual net payments for 5 years if purchased at age 25. If purchase made at earlier age, payments are less.



CAMBRIDGEPORT
SAVINGS BANK
689 Massachusetts Avenue
Right In Central Square
864-5270 Cambridge, Mass.

Savings Bank Life Insurance
IS
America's lowest cost life insurance
for all Ordinary Life, Endowment,
and Renewable Term policies

Cambridgeport Savings Bank
689 Mass. Ave., Cambridge, Mass.

Please send me Low Cost
Term Insurance booklet

Name: _____

Street: _____

City: _____

Zip: _____

Telephone Number: _____

Date of Birth: _____

Killian advisor to Presidents

(Continued from page-1)
as they relate to science, technology and related education.

James Killian has class. He belongs to that social class Mills tagged "the power elite" and he conducts himself in a manner suggesting a man who is used to commanding respect. His is a dignified and authoritative presence, and he directed the course of the interview.

Trinity College (now Duke U.) 1921-1923; transferred to MIT, 1923. Class of '26; majored in business and engineering administration.

And was editor-in-chief of Volume 45 of *The Tech*. We spoke first of Dr. Killian's undergrad days, which he described as tough, but "very happy"; *The Tech* in 1926 was a lively publication, but not nearly so caught up with issues outside MIT as the present production, which he feels is today more vital than then.

His interest in communications has apparently never waned, for he described as "One of the most rewarding and fascinating experiences I've ever had" his work as Chairman of the Carnegie Commission on Educational Television, which was instrumental in the establishment of the Corporation for Public Broadcasting by Congress in 1967. He pointed to commercial TV as an example of technology

misused, but stated that PTV was never intended as a replacement but as complement to the networks. His description of the process by which CPB was established threw a great deal of light on how one gets things done in America.

The Commission studied the problems of educational TV for two years, concluded that a federally-established and funded corporation should be set up, and then lobbied for it. Dr. Killian, Dr. Edwin Land (President of Polaroid), Dr. Lee DuBridge (then president of Cal Tech, now Nixon's science advisor) and 3 or 4 other people testified before Senator John Pastore's committee and within a year Congress had passed action setting up CPB. Lyndon Johnson appointed Dr. Killian a director of the Corporation in March, 1968, for a six-year term.

One of CPB's first accomplishments has been "Sesame Street," a widely acclaimed children's educational program.)

Jim Killian got his start as a journalist. After graduation he became assistant managing editor of the *Alumni Association* magazine, *Technology Review*. He became managing editor in 1927, editor in 1930, and there he stayed until 1939 when then-President Karl Taylor Compton made him executive assistant.

The war brought sweeping transformations to MIT. It was a

time lived under the shadow of necessity. The Institute became one of the nation's largest centers for weapons research and development, a distinction it has never lost since. MIT's famed Radiation Lab developed radar; Charles Stark Draper formed the nucleus of the Instrumentation Lab—their first task, bombsights.

The war effort took first priority and President Compton took charge of it at MIT, so the burden of administering the educational affairs of the Institute fell to Dr. Killian. He became executive vice-president in 1943; was elected veep and member of the Corporation in 1945. In April 1949, Dr. Compton became Chairman of the Corporation. Jim Killian became President.

Under his administration MIT began its transformation toward a university. The Faculty Committee on Educational Survey (Lewis Commission), formed at his suggestion in 1947, delivered its report in November 1949. One of its suggestions was the establishment of the School of Humanities and Social Sciences. In 1952, with the aid of grants from Alfred P. Sloan '95, Chairman of General Motors, the Sloan School of Management was established. Reflecting the fact that MIT never really demobilized (a cold war was on) was the establishment with CIA funding of the Center for International Studies (its avowed purpose to stem the spread of communism) and the Lincoln Laboratory. And it was Dr. Killian who coined the legendary phrase, "university polarized around science."

The presidency of any college entitles the bearer to numerous invitations to serve on panels, boards of directors, and so on. The presidency of MIT carries with it access to the highest offices in the land. Between 1949 and 1957, Dr. Killian

served on several important groups, including the Science Advisory Committee of the Office of Defense Mobilization, the President's Advisory Committee on Management (1950-52), the Federal Reserve Bank of Boston (1954-57) and the Committee for the White House Conference on Education (1954-56).

In recognition of his and MIT's contributions to the nation's defense, Dr. Killian has received numerous awards and certificates of merit. He has received other honors too numerous to list here, including a Peabody Broadcasting Award for his Carnegie Commission work, the Hoover Medal, and the French Legion of Honor.

Dr. Killian is a member of Sigma Chi; an honorary member of Phi Beta Kappa and Tau Beta Pi. His position has won him membership in seven of the nation's most exclusive social clubs, including the Century and University of New York City.

Dr. Killian holds 37 doctorates, all of them honorary.

In 1957 the cold war took a turn with the launching of Sputnik, indicating an unexpected Soviet capability in ICBM technology. The panic that followed put the nation into what *The Tech* described as "a state of semi-emergency," and, in order to rally America's scientific establishment to the cause of beating the Russians in technology, President Eisenhower called Jim Killian to Washington in November to become the first Presidential Science Advisor. Julius Stratton, then Chancellor, became acting president of MIT.

As chairman of the President's Science Advisory Council, Killian presided over studies which led to an overhaul of the nation's system of scientific-technological education, establishment of NASA, and the nuclear test-ban treaty. As PSAC chairman he exercised tremendous influence over the nation's policies in science and technology.

I asked him if his influence in Washington might not have been used at times to benefit MIT. He said that "no program to the benefit of MIT came to my desk in Washington," and it would seem that there has never been any conflict of interest in his dual role—MIT's needs being at this time in natural concordance with those of a government needing the aid of science and technology anyway.

In 1959, the Corporation asked him to return and take the Chairmanship. Stratton became

President; Killian returned in July. President Kennedy re-appointed him to PSAC as consultant at large in 1961 (Jerry Wiesner was made chairman).

As President Dr. Killian had resisted urges to join boards of directors of private corporations, feeling this to be inappropriate for the chief executive officer. After becoming Chairman, however, he acceded to the invitations of Alfred Sloan (GM), Edwin Land (Polaroid), Godfrey Cabot (Cabot Corp.) and today sits also on the boards of AT&T and MITRE, an MIT spinoff (nonprofit) corporation.

His directorships are not inconsistent with the role of Corporation Chairman. This role he views as one not of policy-making (except in the broad sense) but of support for the administration, of which the president is chief executive. His responsibility, he explained, has been primarily that of augmenting the financial resources of an expanding MIT, a job which he has performed exceptionally well on the face of it—70% of the Institute's endowment has come from funds and gifts obtained since 1950. In addition, he to some extent represents the Institute to the outside world.

He feels that he brings to his directorships the views of a university man, wider than the narrow concerns of a purely business executive. Alfred Sloan, in fact, asked him to join GM as "a public representative."

I asked whether he felt he had a mandate to represent the public interest. He said yes, explaining that complete democracy of the sort proposed by radicals would lead to chaos; that about the best you can hope for in any system is that men of intelligence will act wisely in positions of power.

Dr. Killian looks forward to an active retirement. He is, of course, a Life Member of the Corporation and he does not expect to end his affiliation with MIT. He hopes to take a more active role with the Corporation for Public Broadcasting.

He also spoke of a book about MIT's history and policies, placing them in the context of national history—perhaps a successor to Prof. Emeritus Samuel Prescott's "When MIT Was Boston Tech," which relates the Institute's history from its founding to its establishment in Cambridge in 1917.

What about a successor? Dr. Killian said he had no idea whom the Corporation would choose, nor does he plan to recommend a successor.

LIGHTER/STOVE/HEATER

Lights charcoal in 90 seconds, cooking ready in 6 min. using 1/pc paper. No lighter fluids used. Steak and burgers in 20 min.

Stainless Steel \$8.95 Ppd.

Aluminized Steel \$4.95 Ppd.

Gift mailed to you.

One day service.

AUTO FIRE, P.O. Box 487

Corinth, Miss. 38834

(\$1.00 off to students and teachers.)



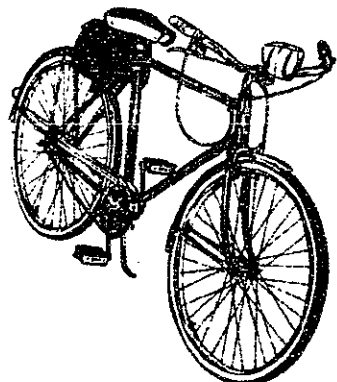
The presidency of any college entitles the bearer to numerous invitations to serve on panels, boards of directors, and so on. The presidency of MIT carries with it access to the highest offices in the land. Between 1949 and 1957, Dr. Killian

Fight Pollution!

Raleigh - Columbia - Peugeot

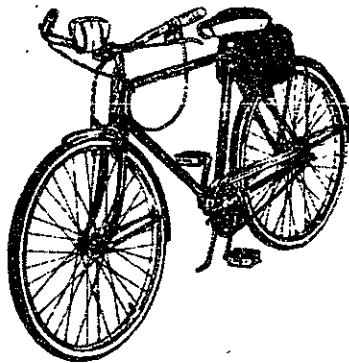
All at the lowest prices anywhere

BROOKLINE SALES & SERVICE



33 Harvard Street
Brookline, Mass.

566-1213



New and Used Bicycles

Service on all makes and models

The area's most complete line of accessories

After the Sale - It's the Service That Counts

CHARLIE the-Tech-Tailor

Established 1918

STUDENT CENTER

84 MASSACHUSETTS AVENUE

Have Him

Press your suit

Sew on buttons

Mend your clothes

Dry clean your clothing

Repair your shoes

ELiot 4-2088

Dorm Line 9-180

LAUNDRY SERVICE AVAILABLE



Tech Coop Optical

NEXT TO THE POST OFFICE, LOWER LEVEL
Sunglasses, tailored to your prescription in the finest of
Bausch and Lomb and American optical lenses
Quality and Service is Our Byword—Patronage Refund
Ophthalmologists prescriptions are filled promptly—accurately.
Excellent selection of frames for Men, Women, Children.
Office Hours: Monday—Friday, 8:50 am to 5 pm—Lunch 2-3 (Closed)
Saturday, 9:20 am to 1 pm

Phone 491-4230, Ext. 50 or from MIT dial 81950

THE TECH COOP

In the MIT Student Center
84 Massachusetts Avenue
Cambridge, Massachusetts 02139
491-1938



Radicals harassed hearings

(Continued from page 1)
 portion of the offices of the President . . ." (Two of those expelled were also charged with blocking the office door, but they received the same sentence as five others who were only present.)

Expelled were Peggy Hopper '71, Greg Habeeb '71, Charles Simmons '72, Jeff Mermelstein '72, and Rich Edelman '70, all of Rosa Luxemburg SDS; also Don Wolman '71 and Aaron Tovish '71, both of MIT-SDS. Sentenced to probation were Dave Krebs '72, Meryl Nass '72, and Larry White '69, all of RL-SDS. Tom Goreau '71, a reporter for *Thursday*, was acquitted because he was present as a reporter. All expulsions were approved by President Johnson and a 5-person board he appointed to help him evaluate the recommendations of the Discipline Committee. George Katsiaticas '70, in jail during the spring discipline hearings, will be tried at a later date.

The Discipline Committee before which the hearings of these defendants were held was composed of seven faculty members, Dean for Student Affairs J. Daniel Nyhart, and (usually) two students out of the five officially on the committee. Clem McCalla G, a student member of the committee, boycotted the political hearings.

Starting shortly after the May strike began, defendants were tried singly or in batches of two or three, under tight security on the third floor of building 24,

PREVENT RIPOFFS: CHAIN YOUR BIKE TO A POLICEMAN

(Continued from page 3)
 cycles are prohibited within buildings. Until such time as the Institute comes up with guarantees for bike protection, we feel that people are justified in protecting their investments in this way.) If you don't have a set workplace, try to leave your bike in a frequented area. 77 Mass. Ave. is safe during the day, but not at night. If you use the Dewey or Hayden libraries, park in view of the librarians. If you ride over from a fraternity, you are wise to arrange storage in a dorm bike room, an office, or some other protected area.

But you will always have to occasionally leave your bike parked in the open for at least a few minutes (e.g. going to the bank). While any chain can be cut, not every thief has boltcutters or a hacksaw or time to use them. A good chain is important — it will discourage thieves in many cases. They'll go for clods who chain a \$100 ten-speed with a chicken-wire chain. Avoid cable-type locks — they can be cut with sturdy wire-cutters. The least you should settle for is quarter-inch link, with a correspondingly thick lock.

Additionally, you can pay 8 or 10 dollars a foot for case-hardened steel chain, which will resist bolt cutters. This is perhaps advisable if your bike costs \$75 or so; otherwise, it probably isn't worth it.

And as a final rule of thumb: if you give the bike thieves an opportunity, they'll probably take it. Unless, of course, your bike is so crummy no one wants it. But that's a whole other story.

which the administration had taken over for the hearings. Administration VP John Wynne supervised security arrangements for the hearings, which were breached once (out of several attempts to do so) by friends of the defendants protesting against the closed (but televised) hearings. This may result in future disciplinary action.

Prosecuting the cases for the MIT administration were Associate Provost Paul Gray and VP Wynne. Gray recited the events of the office takeover at each trial, paying special attention to numerous warnings given that

the occupation could result in disciplinary action. The prosecution stressed the fact that "presence without right" (i.e., without Administration authorization or approval) was the criterion of guilt as far as they were concerned.

Most defendants put up a political defense, for which they lacked audiences due to the closed hearings and the strike. Nonetheless they emphasized the fact that the offices were taken over to stop the Discipline Committee's action in politically motivated cases, and to stop MIT's military research. Several defendants explained at length

their social and political motivations for being in the offices. Some defendants also made it clear that they did not expect a fair hearing from the Discipline Committee in view of its past actions, and cited numerous resolutions of student groups calling for a new system of justice at MIT and revocation of past Discipline Committee decisions. (Discipline Committee action can only be taken against students.)

Also, on June 30, the Staff (faculty) Section of the Staff-Administration Committee, in response to a request by President Johnson, proposed procedures for faculty "self-discipline" and an inquiry into the office takeover. Radicals have charged that this procedure and inquiry were set up to "get rid of" Lillian Robinson and Louis Kampf of the Humanities Department, who allegedly participated in the occupation.

Open 8:00 to 5:30

354-6165

Larry's Barber Shop

"for that well-groomed look"

Razorcutting, sun lamp facial

545 Tech Square

(opposite garage

Serving Techmen for over 35 years

behind East Campus)

your PICK of SIX

HARVARD TRUST COMPANY

Personal Checking Accounts

**NO MINIMUM BALANCE
SERVICE-CHARGE FREE**

when you have a Harvard Trust charge card account (Master Charge, CAP, COOP, Coop/CAP, Coop/Master Charge) in good standing

2.

**NO MINIMUM BALANCE
SERVICE-CHARGE FREE**

when you keep at least \$500 in a Harvard Trust Savings Account

3.

**NO MINIMUM BALANCE
SERVICE-CHARGE FREE**

when you have \$500 or more in a Blue Chip Plus 90-day Notice Time Account

**\$100 MINIMUM BALANCE
SERVICE-CHARGE FREE**

for people who keep a balance of at least \$100 in the checking accounts

5.

200-PLAN CHECKING

for people who do not wish to meet the requirements of a Service-Charge Free account and who write a limited number of checks

6.

REGULAR CHECKING

the traditional account preferred by and particularly suited to those who normally maintain balances sufficient to offset activity charges

HOURS AND OFFICES FOR YOUR CONVENIENCE

- 13 Banking Offices: Six in Cambridge, others in Arlington, Belmont, Concord, Littleton . . . and Lexington (opening Winter 1970)
- Banking Hours: 8:30 a.m. to 5 p.m. at all Cambridge offices (6:00 p.m. Friday only at Kendall Square). Half-day Saturday hours 9:30 a.m. to 12:30 p.m. at our Harvard Square office.

MAIL THIS COUPON NOW TO OPEN THE ACCOUNT OF YOUR CHOICE

Harvard Trust Company • P.O. Box 300 • Cambridge, Massachusetts 02139

Yes, I wish to open a Harvard Trust Personal Checking Account. Please send literature and signature cards to open:

- Service Charge Free No Minimum Balance Checking Account and . . .
- Harvard Trust Charge Card
- Coop / Harvard Trust Charge Card
- Savings Account
- Blue-Chip Plus 90-day Notice Time Account
- Service Charge Free (\$100 Minimum Balance) Account
- 200-Plan Checking Account
- Regular Checking Account

I qualify for a Service Charge Free Checking Account because I already have:

- Harvard Trust Charge Card Account No. _____ in good standing
- Coop/Harvard Trust Charge Card Account No. _____ in good standing
- Harvard Trust Savings Account No. _____ with at least \$500 balance
- Harvard Trust Blue-Chip Plus Account No. _____ with at least \$500 balance
- Harvard Trust Checking Account No. _____ with \$100 minimum balance

Name _____
 Address _____ Apt. _____
 City _____ State _____ Zip _____

Your shortest path . . . to person-to-person banking
HARVARD TRUST COMPANY
 Cambridge Arlington Belmont Concord and Lexington Member F.D.I.C. - Federal Reserve System

Announcements

* The Fifth Congress of the International Humanist and Ethical Union will meet in Kresge Auditorium this week, August 4 through August 9. It is the first time the Union has met in the United States; the theme will be "To Seek a Humane World - How Can Man Direct His Future Evolution?"

Sessions open to the public will feature addresses by Senator Walter Mondale (D-Minn) and MIT's noted professor and antiwar activist, Noam Chomsky. Tickets are available at the door for \$2.00, students \$1.00.

The following is the schedule for the open sessions:

TUES, Aug 4, 8pm - "Power to the People," keynote address by the Rt. Hon. Joe Grimmond, member of the British Parliament and a past leader of the Liberal Party.

WED, Aug 5, 10 am - Lord Ritchie-Calder, noted British author and lecturer, speaks on "The 21st Century - a look ahead."

THURS, Aug 6, 10 am - Prof. Chomsky speaks on "Here and Now - Problems and Promise of the Present."

FRI, Aug 7, 10 am - Sen. Mondale and Dr. Elmo Roper, radio commentator, columnist, editor and pollster, address the topic "What Can We Do - What Must We Do?"

* A benefit performance of *Man of La Mancha* will be given at the South Shore Music Circus in Cohasset on August 26, 1970, at 8:30 pm. The proceeds will go to help Gerry Studds, Democratic candidate for Congress in the 12th Congressional District.

Studds, a 33-year old former White House staff member during the Kennedy administration, was New Hampshire coordinator for Eugene McCarthy in 1968. Studds proposes an immediate end to our military involvement in Southeast Asia and a reordering of our national priorities.

Tickets are \$5 (contributor), \$10 (sponsor-name on program) and \$20 (patron - admission to pre-show party); and may be ordered by mail by writing Studds for Congress, 376 Court St., Plymouth, Mass. 02360. For further information please call 1-746-7601.

Letters...

(Continued from page 4)

Douglas, Douglas may also have bid low. Furthermore, an Air Force Source Selection Board found Boeing's proposal (bid at \$2.2 billion) superior in its technical aspects—a tipoff that Lockheed's was not adequate and would require changes, as subsequently developed, raising the cost more. The wings had to be redesigned, necessitating still more modifications to cut weight.

Evidence of Lockheed's inefficiency comes from Air Force cost experts assigned to monitor the project, and emerges as early as 1966, when Mr. A.E. Fitzgerald (whom you somehow manage to avoid mentioning in your letter even though he was central to Mr. Peckarsky's article), a systems analyst, noted that overhead rates at the Marietta, Georgia plant were in excess of target. Col. Larry M. Kilpack, chief of the Air Force's Cost and Economic Information Bureau, informed AF Headquarters on December 8 that "Lockheed is in serious difficulty on the C-5A." On Dec. 13th, Col. Joe Warren, a cost-efficiency expert, warned the Air Force that "The contract costs will be exceeded." In February, 1967, the C-5's Systems Program Office (SPO) threatened to terminate the contract and switch production, not yet begun, to Boeing. This was averted when Lockheed dispatched a technical team from its California HQ to troubleshoot in Georgia.

But according to Fitzgerald and Col. Jack W. Tooley, a former Army airlift expert working as a civilian advisor for Lockheed, nothing changed. Tooley reported seeing workers loafing extensively, reported vast overhiring, and generally low productivity. Fitzgerald made a trip to Georgia in early 1967 and reported that perhaps 26% of the men he saw appeared to be working.

The fates of these four cost analysts is most intriguing. In 1967, the Air Force tried to transfer Warren to Addis Ababa. Friends were able to block that transfer but he was reassigned to a Pentagon computer managing job. Kilpack got transferred to Vietnam. Tooley, angry and disgusted, quit Lockheed-Georgia. As for Fitzgerald, who testified to Proxmire's subcommittee in 1968—he was (as Mr. Peckarsky reported) fired.

An interesting postscript to this is that the President, when questioned about the firing and harassment at a press conference on December 9, 1969, would not answer. The white-wash goes that high. For reasons which can be deduced without much difficulty—mutual interest in large defense budgets, lucrative industry jobs for retired officers and former defense officials, and perhaps the belief that Lockheed simply could not be allowed to go bankrupt—the Air Force tried to cover up. For example, the AF Public Affairs Office repudiated Fitzgerald's \$5.3 billion estimate with its own of \$4.3 billion—as it turned out the AF had omitted the cost of spare parts (\$900 million) from its figures.

Despite opposition from the DoD's Systems Analysis Office, on January 14, 1969 the Air Force chose to exercise its option to buy Run B—but it ordered only 23 more planes instead of the projected 57 (making a total for both runs of 81). Lockheed, which had figured to make up its losses on Run A with the profits from Run B (Run B costing more due to the repricing formula) now found itself standing to lose \$600 million, and on March 2, 1970, it requested money from Congress to bail it out.

Readers of *The Tech* should refer to the article for a more detailed account.

I have no information available on the Cheyenne program. However, even conceding your figures, you still have not refuted Mr. Peckarsky's information that Lockheed informed the Pentagon that final cost of the contract will be \$137 million, and that much of this was spent after cancellation.

I will also concede you that Lockheed does own the lion's share of its plant and equipment. Even if so, Lockheed's bankruptcy would still not deny the nation access to those facilities—as Mr. Peckarsky notes, the government would recover their use.

Your attempt to cast Senator Proxmire in the role of opportunistic hay-maker is unconvincing in light of this, as is your vituperative attack on Mr. Peckarsky. As for your enclosure, "29 Questions" concerning the Military-Industrial Complex, I find in it more a confirmation of our darkest suspicions than a refutation. Its hypocrisy is obvious in statements like the half-truth, "The number of retired officers employed in defense companies is less than one-tenth of one percent of the total roll." The rest of the truth is that these retired officers don't work in the plants or the offices like 99% of the employees—they're in the executive suite, with your bosses.

I do not, however, concur with Pete's solution of letting Lockheed merely go bankrupt. The trustees and stockholders of large corporations are generally well buffered against losses; it is the employees who will suffer—as they are suffering now at the bankrupt Penn Central. I would opt for nationalization of Lockheed and the railroad as well were it not for the fact that you are probably correct in your pamphlet when you note the post office as an example of governmental inefficiency. Both your corporation and the government, alas, are dodos that refuse to die, inaccessible and unanswerable to the majority of the people. The redirection of our national priorities is necessary and it begins to appear that some sort of revolutionary solution is the only possible way of achieving this. Unfortunately, the nature of such solutions is as yet unknown to us—but Lockheed and Lockheed's system are not the answer.

Bruce S. Schwartz
Summer Editor

It's a Clean Machine...

(Continued from page 1)

second day's leg, from Toronto to Detroit, is short enough to permit arrival of the cars in the capital of the auto industry early in the afternoon. Publicity showings in various cities are being planned; the first will be in Boston on August 23, one day prior to the start of the race.

Winners will be determined in each of the five classes being entered. (Internal Combustion Engine (ICE), electric, electric hybrid, steam and turbine) The overall winner will be determined by a weighted performance index, which penalizes emissions more heavily than other factors.

Emissions tests will be made in Pasadena at the end of the race (for those cars that make it) and at several interim points. At the conclusion of the competition, the CACR committee will compile its data into a concise report. In addition to support from universities, private corporations and foundations, the CACR is receiving funds from the Department of Transportation and the National Air Pollution Control Agency (NAPCA) for its research function.

The power plants being entered range from exotic to conventional. Some are complicated electric-gasoline hybrids, utilizing on-board generators to recharge batteries. Some are internal combustion engines modified to burn "cleaner" fuels such as propane and liquefied natural gas. Some will merely burn lead-free gasoline. One entry, originally designed to burn kerosene, was found to work better with paint thinner.

The MIT CACR committee has been excoined in Room 2-136 since June, and as the day of the competition approaches activity is becoming increasingly hectic. Arrangements for lodging and food as well as fuel and repairs are virtually complete as of this writing. These arrangements included the setting up of recharging stations for electrics every 60 miles or so. Also, all state and local authorities have been contacted to prevent hassles along the route, such as occurred during the 1968 Electric Car Race, when the Cal Tech entry was ordered off an interstate highway for going too slowly.

(Piddling pickup was not the only problem in 1968. Both cars required towing; MIT's entry, a Corvair in frame only, was towed nearly half the distance.)

Business has been watching

the event keenly. Of note, General Motors gave the CACR Committee 20 Chevilles plus \$2000 for each car for modifications. Almost every vehicle contains equipment donated by some industrial firm or automotive dealer; many of the bodies are donated as well. Several gas companies are sponsoring liquefied propane-fueled entries, and are supplying the fuel. Most teams have received financial support from business firms.

During the race each vehicle will be accompanied by an official observer, who will record performance, times, fuel consumption and who will observe repairs and interpret the rules en route. For this, the CACR Committee has been recruiting people for the past several days. The observers' expenses will be paid to California and air fare back will be provided from Pasadena or from wherever a car they may be assigned to breaks down or must for any reason leave the race. Because of the possibility of breakdowns, each team is being encouraged to travel with a "back-up" vehicle which can be used to carry tools, spare parts and/or drivers. No time outs are permitted, and towing will be counted as elapsed time—and towed vehicles must return to their breakdown points before proceeding. Part of the course goes through the Sonoran desert; that and other rigors of the route will probably provide enough unexpected problems to spice what often appears to be an event so well planned as to be almost dull.

It will not, of course, be dull to the participants. In addition to the possibility of financial reward (the committee is at present negotiating for "substantial money prizes," according to Craig Lentz, the vice coordinator of CACR) and the glory attendant to victory, the entrants will be doing something to actively develop solutions to the air pollution problem—or at least, that is the committee's hope.

Four entries will represent the Institute. Dave Saar '71 and Bill Carson G, both veterans of the 1968 Race, were the first to enter the field last winter. Their car is an electric hybrid, utilizing a 100-horsepower dc motor, 1000 pounds of nickel-cadmium batteries, and an 18-horsepower gasoline engine which will be used to drive an alternator recharging the batteries. The car's range on batteries alone is only 30 to 40 miles. The gas engine is

intended for use only outside polluted urban areas. Saar & Carson are using the Corvair body and chassis from the earlier race.

A second group, led by Michael Bennett '71 (teammates: George Negoro '71 and Stanley Bone '71) is also driving an electric hybrid, but theirs features a much heavier drive motor (600 hp) and a turbine-driven generator—no batteries. They feel that most other groups are using engines that are simply too small. They have had to design an exhaust cooling and filtration system for oxides of nitrogen. The turbine also presents the problem of noise shielding. (Noise pollution is one of the characteristics also being tested.) Bennett said he felt they would be able to produce acoustical shielding good enough to make it "possible for us to run the turbine inside a library and not disturb anyone's reading." Bennett's group has been receiving advice and space at MIT's Bedford flight facility from Dr. Charles Stark Draper, well-known head of MIT's Draper Laboratory Division.

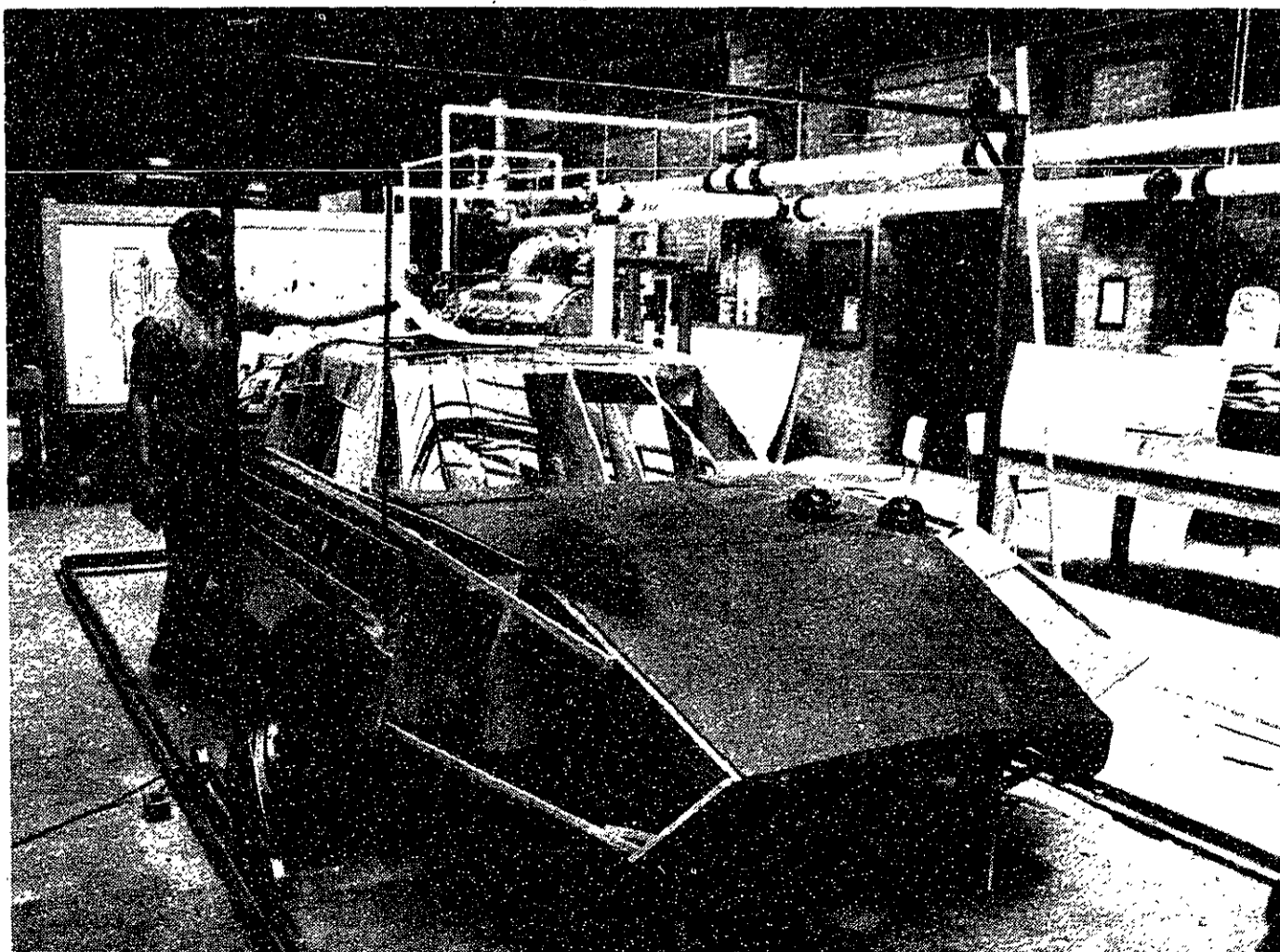
Two other MIT teams are building steam cars. One group consists of graduate students from the department of Nuclear Engineering; Brunn Roysden is the leader. (Their car, however, is not nuclear-powered.) The other group, mostly Mechanical Engineering students, call themselves the MIT Steam Propulsion Society. They are being advised by Asst. Prof. Walter D. Syniuta.

Cal Tech, the Institute's original rival, is sending two cars, both using compressed natural gas with internal combustion engines. Meanwhile, a veteran of the victorious Cal Tech 1968 Electric Car team, Wally Rippel, is heading the Cornell team (Cornell Electric Car Project) utilizing a battery-powered electric vehicle.

Worcester Polytechnic Institute (WPI) seems to be trying to cover the board with its entries—six of them: a steam piston engine, a steam turbine, a gas turbine, a hybrid electric, a natural-gas fueled car, and one with a modified conventional engine.

Other area entries include: BU School of Engineering, an electric car;

Northeastern: a steam-propane fueled vehicle, an ICE burning lead-free gasoline, and an ICE burning liquid natural gas (sponsored by the Boston Gas Co.).



Worcester Polytechnic student with template for fiberglass body being built for WPI's CACR entry.

Power to the Freshmen, a modest proposal: FRC

To the Class of 1974 and other progressive people:

In spite of innumerable rush books, letters, and personal visits by fraternity men, one thing remains hidden from the incoming MIT freshman who chooses to go through rush week: he and his freshman brothers really hold all the power during rush week!

Fraternities need freshmen to survive, and if freshmen refuse to enter fraternities because of specific practices, then fraternities face only one real alternative: to change those practices to meet the demands of freshmen. Otherwise, fraternities would soon disappear for lack of membership.

A group of freshmen going through rush week in a strong and unified manner could thus effectively make demands to fraternities as pre-conditions for joining them.

For instance, most houses have some type of pledge-training program. In many cases these programs are designed by upperclassmen to help freshmen "adjust" to the new living group. Actually, they impose requirements upon freshmen without the "pledges" having anything to say about them. In most houses pledges are not allowed to vote at or even attend house meetings. Freshmen are thus prohibited from having any say in living group decisions which affect them. They must wait until they have "proved" themselves through their pledgeships before they are "qualified" to help determine living group policies.

What would happen, then, if every freshman going through rush week were to state that he could not live in a house where he did not have an equal voice with others there in running that house? By demanding equal participation before entering fraternities, freshmen have the power to eliminate the subservient pledge status. The demand can be made from a position of great strength if every freshman states his feelings on this matter in every conversation he has with fraternity men during rush week. Fraternities can then either meet the demand or have partially vacant houses.

Freshmen can further use their power to raise other issues during rush week, such as:

- co-ed living groups
- archaic, ritualistic fraternity practices
- political action in living groups
- racist fraternity practices

There can be no quick, clear-cut response to these issues, but freshmen can at least initiate some action in relation to them during rush week. Then, as equal-voting members of a house they could continue this action in the future.

Much of the above material fosters a very negative image of fraternities. In light of this, one fact is very important. The Fraternity Radical Caucus is com-

posed of people who are presently members of MIT fraternities. We consider the experience of collective living too valuable to surrender and have decided to work to change the regressive aspects of our houses while maintaining

the fundamental qualities of group living. There are FRC members in 21 houses, and we are anxious to have freshmen join us who share our enthusiasm for collective living and our determination to make this experience a

better one. For the tremendous potential power that freshmen have during rush week can do more in five days to improve our living groups than we could accomplish in a year.

— Fraternity Radical Caucus

On May 21, George Katsiaticas and Pete Bohmer were jailed after losing an appeal of a conviction on charges of disrupting classes during the January occupation of the offices of MIT's President Howard Johnson. They were also fined \$50 each, and George's mother, Mrs. Chryssoula Katsiaticas, was sentenced to serve 10 days in Charles Street Jail when Judge George Johnson found her in contempt for an outburst she made during George's sentencing. She was released after 6 days.

George and Pete were released on parole early in July, after serving six weeks of two month sentences. George and I talked briefly on July 27. He had lost weight (in prison he'd gotten the crabs) but seemed to be in good health and surprisingly good spirits. His experience had not embittered him but rather had educated him, he said. He does not plan to swerve from the radical life he has chosen despite his imprisonment. Finally, we spoke about his experiences in prison, descriptions of which follow. The excerpts below are reprinted from a taped interview with the two radicals which originally appeared in The Old Mole.

— B.S.S.

BILLERICA:
VOICES
FROM
INSIDE

"The structure revolved around what the person was in for. The people at the bottom of the social ladder, very heavily despised, were the diddlers, the sex offenders. These people got all the worst jobs, and were always being dumped on by both the screws (prison guards) and the inmates. Above them were the winos, old men who were in there for being alcoholics. Those two groups ate together apart from the other inmates. A few months ago the other prisoners had refused to eat with them. Also in there was the Mafia, basically they did a lot of betting on the basketball games, and ran a numbers thing. They provided services for the people there, like giving them an extra towel. There was a group of junkies, and that's who we hung out with mostly."

"I didn't know one guy in there who would not take drugs. Everyone was very heavily into drugs. The first thing that people would say when somebody

was leaving was 'oh, wow, you'll really get it on tonight. A lot of people had habits before they came in and some would talk that they were just going to go back out and get another habit.

"People who come in with a habit, they suffer. There's no treatment. One of the black guys, who had been transferred from Deer Island, he was on a habit when he came in and he was just locked up in a cell."

"If you would ever try and help another guy out, like pick up his mail, the screws would say what are you doing, or if you would show any interest in somebody else, they'd ask you, 'You're sick, aren't you?' They try to keep people very separate. Nothing was communal at all.

"A screw is completely a patronage job, different people in the county pick them. A few of the guys in there are really sick. One guy used to be a Cambridge cop, he's the worst example, he shot some guy in Cambridge and killed him. The guy was reaching for his driver's license, and this incredible paranoid cop shot and killed him because he thought he was reaching for a gun or something. He lost his job on the police force, and now is a guard at Billerica."

"Bridgewater is the real threat. The hole is the immediate threat, like you do this, and you'll get sent to the hole. Like if you don't work for example. Bridgewater is the threat for the people they're really trying to get on. It's kind of like 1984, you know, the thing everybody fears worst is Bridgewater.

"One guy we knew, he had been in the hole, and six guards had beaten him down there, and they kept him for 17 days, and so finally he smashed his head through the window so he would get sent to Bridgewater.

"In Bridgewater segregation, you're locked up all the time, and drugged to sleep except when somebody wants to talk to you and they don't give you your pill. It's an insane institution. They can keep you there as long as they want to, if they can get people to say you're really crazy.

"There's a movie made about Bridgewater, Ticut Follies, which was banned by the Supreme Court. The guys were saying the real reason it was banned was that people would freak out if they knew what was happening. One guy said we hear about how bad the communists are, but he'd been in a P.O.W. camp in Korea, and that was much better than Bridgewater. It freaked this guy out that some American hero had been sent to Bridgewater. It's the thing of being reduced to half existence, and possibly not getting out at the end of your time, and people are really scared of it."

"Once we got put into segregation. It's a long story. Blank paper is illegal. They give you two sheets of stationery a week to write letters on. Everything is censored incredibly heavily. We got a lot of letters from the warden when we left, but I couldn't understand how they were any different than the ones which got through to us in prison.

"So I had my two sheets of paper, and also the back of a letter I had gotten, and I was making notes to myself, about books I'd been reading and also there had been a meeting the day before with all the inmates and Keriakos, the chief warden. I'd made some notes about the meeting, for myself, and I called him a 'smart Fascist.' I had it hidden, inside a letter, inside a book, and I thought I had it very well hidden, but obviously it wasn't. They shook down our lockers and they found this note.

"At the time we were working and they came and yanked us into Keriakos' office. He just began screaming at us, 'Fucking communists, call me a smart fascist will you!'

"First of all I tried to ask what we'd done, but I couldn't get a word out, he was just screaming. He did two tirades about five or six minutes each. He shook his finger at us. 'Call me a smart fascist. I am not a fascist. Lock them up.' Then we got put into segregation. Doug got locked up because he was a friend of mine."

"Racism there is very heavy. Just before we left, the blacks were told they couldn't sit together. The blacks were all sitting together and everyone was laughing and cracking up and people were just being people and the screws came over and said stop the talking. After the meal the blacks were told they couldn't sit together. They talked it over, and decided that they would go into the next meal, which was breakfast, and sit together and confront the screws. They told us what was going to happen and a group of about 30 of us got together, basically the junkies and the radicals formed a coalition with the blacks, so that we would go in front of them and behind them and if any of us were asked to sit between them then we would help them confront that."

"One prisoner, who was kind of a leader in the prison, kept calling us political prisoners, and the sheriff started calling us political prisoners and everybody started calling us political prisoners. In the morning when the papers came out, people were always running up to us and saying did you see this, or what did you think of that. Towards the end, we would get into heavy raps with a lot of guys, as many as fifteen people would come around talking. Often we'd just be sitting there and people would come over and go into a half hour speech about politics, and say what do you think of that."

"The chief warden, Keriakos, called us down to his office the day we were told we were getting out. He's really a sick guy. A few times I'd be called in his office and stuff, and he always would talk about a fight where one of us was going to die and one of us was going to live, and you could never tell what he meant.

"We thought he was going to give us immense shit because some people had come to visit us and tried to give us a Panther paper. They couldn't get in. He looked at us and said, 'It's going to be you or me in the end, I know that.' He was sitting around with his yes men, who were saying yeah, we won World War II and we'll beat you guys. He said he had 23,000 square feet of land and he was going to defend that to his last drop of blood and if we could take that, the rest would be easy."

Second-class postage paid at Boston, Massachusetts. The Tech is published every Tuesday and Friday during the college year, except during college vacations, by The Tech, Room W20-483, MIT Student Center, 84 Massachusetts Avenue, Cambridge, Massachusetts 02139. Telephone: Area Code 617-876-5855; or 864-6900 extension 2731. United States Mail subscription rates: \$4.50 for one year, \$8.00 for two years.

Tuesday, August 4, 1970

subscribe to

The Tech

Keep up with what's going on at MIT

Have The Tech mailed to your home

Great for parents

The Tech, P.O. Box 29, MIT Branch, Cambridge, Massachusetts 02139

U. S. Mail Rates: _____ 1-Year \$4.50 _____ 2 Years \$8.00

NAME _____

ADDRESS _____

CITY _____ STATE _____ ZIP _____