

# Apollo launched despite project, had difficulties

By Neil Colvin and George Flynn

Kennedy Space Center, Fla., Oct. 2, 1968—After a pause of more than 10 months in the United States manned space effort, Friday's near-perfect launching of Apollo 7 paved the way to a manned landing on the moon before the end of 1969. Prior to the launching Paul Donnelly, Launch Operations Manager for the Apollo 7, commented, "I can't remember any cleaner launch preparations." His comment typified the attitude of calmness and confidence which pervaded the Cape last week.

Six minutes before the launching, trouble developed in the elevator which would carry the astronauts to safety in the event of a serious malfunction before liftoff. A hold was considered; however, the decision was made to continue with the countdown even though a primary on-pad escape system was partially disabled.

### Optimism

There seemed to be no doubt in the (Please turn to page 12)

# The Tech



Vol. 88 Number 36 Tuesday, October 15, 1968 Five Cents

# Fraternities vexed by impersonator

By Steve Carhart

An unidentified young woman with serious mental problems has posed substantial difficulties for several Boston area fraternities during the past two weeks. Exhibiting an unusual combination of symptoms which includes continual impersonation of nonexistent individuals, she succeeded in convincing members of two MIT chapters and one BU chapter that she was (alternately) Ann Hughes, daughter of billionaire Howard Hughes, and Thomasina Mellon IV, great-granddaughter of Andrew Mellon and attorney for Ann Hughes.

Arriving in Boston on October 1 from New York, the young woman

called an MIT chapter house, identified herself as "Ann Hughes," and asked to speak with the president. Claiming that she had been referred to him by the president of that house's Columbia chapter, she requested his help in tracing obscene telephone calls which she had been receiving from someone who had supposedly been registered at MIT.

The following morning he received another call from "Ann," this time requesting that he meet her lawyer, "Thomasina," at the airport. He met the young woman, who was now "Thomasina," at the airport. Later that day, he dropped her off at the airport again, ostensibly so that she could go

to New York to meet "Ann." Leukemia

While these episodes were taking place, "Thomasina" constructed a description of "Ann" for the president. According to "Thomasina," Ann was twenty-one, a psychiatrist, a black belt in judo, the owner/driver of her own Ferrari and Learjet, and extremely attractive. Ann was also dying of leukemia and was extremely grateful to the house president for helping her and wanted to meet him in Las Vegas. All day Thursday, "Ann" and "Thomasina" called him from the airport. His suspicions about the women were confirmed on Thursday when he found the woman he knew as "Thomasina" at the airport as she spoke to another brother at the house as "Ann."

After being exposed, "Ann" called (Please turn to page 3)

Anyone who was unable to obtain tickets to the second Compton Seminar, featuring McGeorge Bundy, and who wishes to attend should go to Kresge with their MIT ID, if space permits.

# Julian Bond links Viet war, race violence in BU speech

By Robert Somers

Julian Bond, the Negro legislator from Georgia, spoke at BU's Hayden Auditorium Thursday. Mr. Bond, known for forcing Lester Maddox's all-white Georgia delegation at the Democratic Convention to admit Negroes, drew an overflow crowd with many turned away because of lack of space.



Photo by Jon Borschow  
Julian Bond, legislator from Georgia spoke at Boston University Thursday.

Thinnest book in the world  
Bond opened his remarks on a light note. He first told of the time when he was a summer student at BU in 1958, while living in Cambridge. But "commuting just got to be too much, so I left after two weeks" he told the audience.

Having thus awakened the audience, the legislator related his recent reading of what he termed the thinnest book in the world, "The Lives and Convictions of Spiro T. Agnew."

Can't support any candidate

In regards to the Chicago Democratic Convention he quipped, "The networks are putting out two more new shows, 'Beat the Press' and 'Face the Nation.'"

Examining the more serious side, Bond stated he could not give his support to any of the three presidential candidates. He generally seemed disillusioned with the political scene and, in particular, the racial one. He said Negroes had won court decisions regarding voting rights, school and housing integration and the right to sit anywhere on a bus; yet the Negro is actually worse now than ever before.

Compared to whites, the income of the Negro had declined, unemployment has risen, infant mortality has risen and the number of families living in poverty has also increased.

Violence in US due to LBJ

In fact, since the 1954 desegregation ruling by the Supreme Court, more blacks than ever before are attending all-black schools. And what good is education to Negroes when they are taught that "whiteness is

rightness?"  
The legislator lashed out at the government's handling of the Vietnamese war. He directly blamed the administrations's use of violence to impose its values on the Vietnamese people as the source of the Negroes' turn toward violence in this country. He compared the use of the militia in Vietnam to the use of the national guard in this country and accused both of being used to suppress popular revolutions.

English had conscience; we don't

Non-violent methods, continued Bond, did work when used by Gandhi, but that was "because the English had a conscience." He asserted that non-violence is failing in this country because our government has no conscience. The Kerner report stated that 500,000 new jobs must be created and 6 million new houses built. Yet LBJ cut these figures down to 100,000 new jobs and only 1.5 million new housing units and further responded by

(Please turn to page 2)

# Rosenblith, Samuelson among Sloan speakers

By Karen Wattel

(Ed. note: this is the first of a two-part article on the Sloan Convocation held October 8-10.)

Do we need a moral equivalent of war? Which are the worthwhile multi-institutional arrangements and how should they be monitored and evaluated? Are recessions a thing of the past? Is it possible for managers and engineers and scientists to join forces to make preparations for the future before it occurs?

These are some of the questions raised at the fifth triennial MIT Sloan Convocation, October 10-12, for the first time open to the press. Approximately 650 people (almost half of those who have ever participated in

the program) heard an exciting group of speakers take a thorough look at what management can do about today's problems.

### Communication

A continual theme in the speeches, in the seminars, and in the discussion from the floor, was the lack of communication between schools and business, between the public sector and the private sector, between those who know how to use technology and those who feel victims of it.

Richard Beckhard, Senior Lecturer of the Sloan School gave the Fourth Douglas McGregor Memorial Lecture, opening the Convocation on Thursday afternoon. He pointed out three major (Please turn to page 12)

## Greek accent

# JP to feature Fudge, Ian and Sylvia, Berry

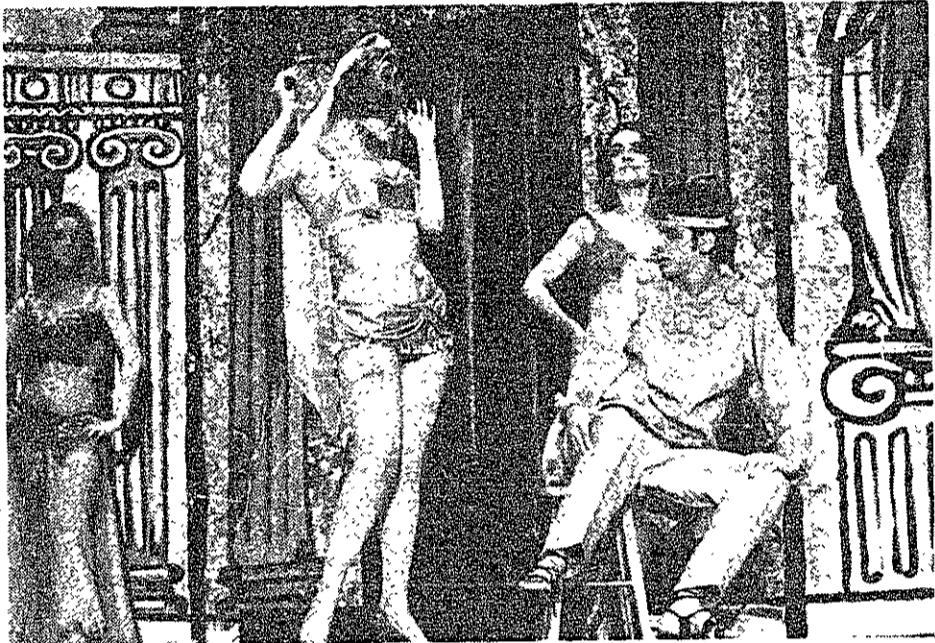


Photo courtesy Empire Theatrical Corp.

A scene from the production of "A Funny Thing Happened on the Way to the Forum," which will play as part of Junior Prom entertainment, November 8.

By Karen Wattel

Greek statues are being solicited from each living group by the junior prom committee for this year's weekend. The best house nymph, god, or satyr will win for its sponsoring sculptors free champagne at the Friday night formal. The contest and the four major entertainment events scheduled for the Veterans' Day weekend highlight the efforts to make this weekend a more involved one for the campus as well as a snowy two days.

Ian and Sylvia and the Ill Wind are to perform at the formal on Friday night in a "Greek" student center, along with The Sedition, a blues band, and a formal dance orchestra. A Greek style movie will also be shown continuously. Before the formal there is a free open-bid cocktail party at the ZBT house from 4:00 to 6:30.

"A Funny Thing Happened on the Way to the Forum" will be performed twice on Saturday followed in the late afternoon by a concert by the Vanilla Fudge. The Saturday evening beer blast will feature MIT weekend special tradition Chuck Berry.

A Field Day will be run by Inscomm executive committee on Sunday, November 10. Monday the 11th is a holiday. Ticket price is \$17 for the weekend.

# H.S. counsellors attend conference, discuss issues of undergrad life

By Dave deBronkart and John Dulcey

In order to better acquaint high school guidance counsellors with MIT, the Institute invited them to a conference last weekend, during which they met with heads of various departments, including the leaders of student groups. Two of the three sessions were covered by The Tech and the main points of each are presented.

### Undergrad life

At the second general session of the MIT Guidance Conference, the visiting high school counsellors took part in a

panel discussion of MIT undergraduate life. UAP Maria Kivisild '69 served as moderator of the two-hour session Friday in the Mezzanine Lounge of the Student Center. Other panel members were Michael Ginzberg '69, Activities Council Chairman; IFC Chairman James Truitt, Jr. '69; Dormcon Chairman Eben Walker '69; Athletic Association Chairman James Yankaskas '69; and Michael Albert '69.

"What can MIT offer my students?" was the most pressing question at this second session. Showing remarkable talent for getting at the issue, the

counsellors asked pointed questions concerning fraternities, athletics, and student-establishment relations until they had assured themselves that MIT has more than just an excellent technological curriculum to offer its students.

### Fraternities

Coming under close scrutiny was the fraternity system. The counsellors seemed very concerned whether the benefits of fraternities outweighed the failings. Armed with stories of dirty rushing and discrimination, the teachers pressed hard for facts. Truitt and Yankaskas defended the fraternities on these two points. It was true, Truitt admitted, that dirty rushing, including tapping of telephone lines, has taken place in past years. He noted, however, that the number of houses involved was very small because of stiff fines imposed on violators by IFC rulings. Furthermore, Truitt made clear the fact that while discrimination has occurred, there are no houses on campus which have in their charters clauses excluding persons because of race or creed. Just last year, he pointed out, the last house with such a clause received a local waiver from its national.

The fact that Rush Week was too fast was also discussed and in spite of the answers given by the panel, the counsellors could not be satisfied. They (Please turn to page 5)



Photo by Gary De Bardi

Paul E. Gray, Assistant Provost, served as moderator for the first session of the MIT Guidance Conference held in the Mezzanine Lounge.

# 'Nation slipping deeper,' Bond warns BU throng

(Continued from page 1)  
slashing funds from the summer job program and closing many job corps centers. Johnson promised much in 1964 but did not keep his word. Instead he started an unpopular war and used all the funds there. Bond summed up this dismal picture when he said that "the nation is slipping deeper and deeper into a sea of war and racism." He accused LBJ of failing to guarantee a minimum income to the poor, yet "guaranteeing a minimum annual income to the munitions manufacturers who make arms for use in Vietnam."

### The fire next time

He likewise had stern words for the affluent in this country whom he accused of being rich at the expense of the lower quarter of the people.

He concluded his remarks with a quote from Baldwin in which he warned that the end would come by "the fire next time," presumably an allegory to Negro riots sweeping the country.

### Tax the churches

There was a question and answer session afterwards in which Mr. Bond stated he was in favor of large organizations being taxed whenever possible to ease the tax burden on the poor. He received much applause when he advocated taxing the churches. Many people, wondering how rational problems should be solved, specifically asked Mr. Bond what should be done. But Bond kept repeating that "Blacks don't need reforms, whites do" and "we must be patient and wait for change."

He spoke against a national presidential primary, saying that it would be an additional burden on a presidential candidate and might prove too expensive. Instead he advocated improving the processes of choosing delegates to the conventions and making them more responsive to the will of the people by requiring them all to be elected a short time before the conventions.

## Announcements

\*Thomas Hayden, founder of the SDS, will be the first speaker in a series of lectures entitled "The Urban Crisis" next Tuesday at 8 pm in the Fogg Museum lecture hall. The series is presented by the Harvard Graduate School of Design, the MIT School of Architecture, and the Joint Center for Urban Studies.

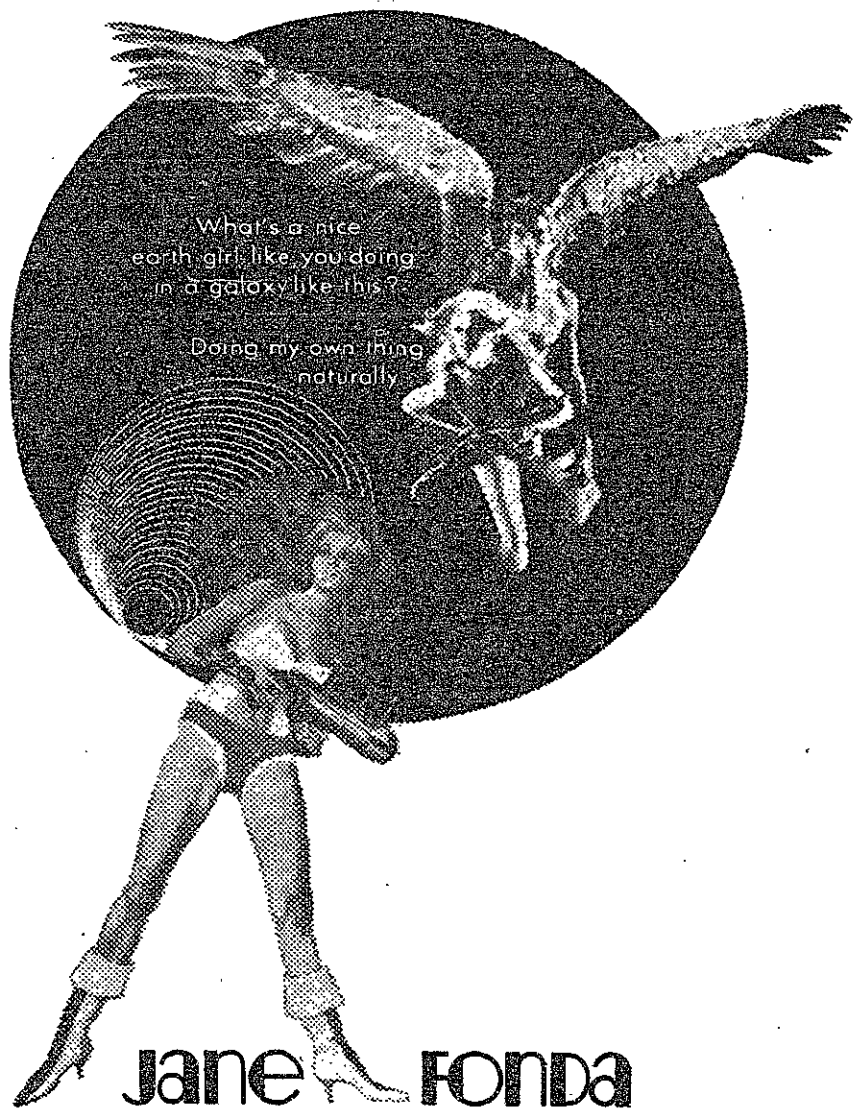
\*All libraries will be on their regular schedule for the November 11 holiday.

\*Israel Foreign Minister Abba Eban has accepted an invitation to speak at MIT, in Kresge on October 22 at 8 pm. Tickets to the Hillel sponsored affair will be available Friday, October 18 in the lobby of Building 10 beginning at 10 am.

\*The Seminar on Social Inquiry group on the University and Society will present "The Meaning of Columbia," films and discussion, Thursday at 7:30, 26-100.

\*Junior class rings will be available October 16-17 in the lobby of Building 10. Representatives of Dieges and Clust will be present from 9 to 5 to distribute the rings upon payment of balance due.

PARAMOUNT PICTURES PRESENTS  
A DINO DE LAURENTIIS PRODUCTION



What's a nice  
earth girl like you doing  
in a galaxy like this?  
Doing my own thing  
naturally

Jane Fonda  
**BARBARELLA**

STARRING JOHN PHILLIP LAW · MARCEL MARCEAU

SPECIAL GUEST APPEARANCE  
**DAVID HEMMINGS** AS DINO  
AND WITH **UGO TOGNAZZI** AS MARCO

Produced by DINO DE LAURENTIIS · Directed by ROGER VADIM · FROM THE BEST-SELLER "BARBARELLA" BY JEAN CLAUDE FOREST · "Le Terribil Voyage"  
SCREENPLAY BY TERRY SOUTHERN · LYRICS AND MUSIC BY BOB CREVE AND CHARLES JOE · PERFORMED BY THE BOB CREVE GENERATION ORCHESTRA · AVAILABLE ON DISCOGRAPH RECORDS · Marianne Productions S.A.  
A Franco-Italian Co-Production · Dino De Laurentiis Cinematografica S.p.A.  
Panavision® Technicolor® A Paramount Picture

SEE BARBARELLA DO HER THING STARTING  
WED., OCT. 23, CLEVELAND CIRCLE THEATRE,  
IN BOSTON

# Flash! The COOP makes big Minolta savings news

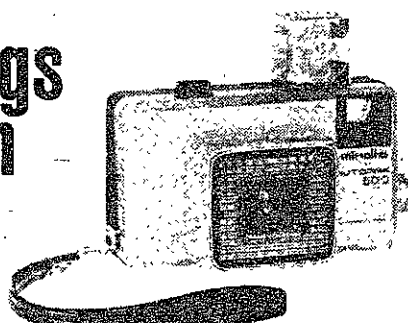
Featuring Minolta Camera all-day demonstrations by  
factory representatives

Tech Coop  
Thursday,  
Oct. 17

HARVARD COOP  
Saturday,  
Oct. 19

Medical Coop  
Friday,  
Oct. 18

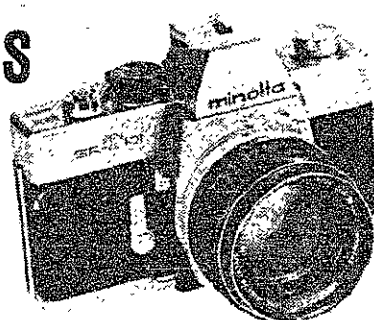
savings  
flash  
1



Purchase  
**Minolta Autopak™ 500**  
at Coop's low price of **\$39.85**

Receive  
free ... (1) Deluxe carrying case,  
(2) Package of flash cubes and  
(3) Roll of Instamatic color film.  
A \$10.32 value!

savings  
flash  
2



Purchase **Minolta SR T 101**  
w/ f1.7 Lens **\$199.85**

Purchase **Minolta SR T 101**  
w/ f1.4 Lens **\$229.85**

Receive Free.  
Minolta Deluxe Leather Custom  
Carrying Case with either cam-  
era (Value \$29.95)

savings  
flash  
3

|   |                           |
|---|---------------------------|
| Soligar 35 mm F 2.8 Minolta mount<br>Automatic Lens Reg. \$52.85  | Special<br><b>\$34.13</b> |
| Soligar 28 mm F 2.8 Minolta mount<br>Automatic Lens Reg. \$89.85  | Special<br><b>\$41.88</b> |
| Soligar 135 mm F 3.5 Minolta mount<br>Automatic Lens Reg. \$52.85 | Special<br><b>\$31.81</b> |
| Soligar 200 mm F 4. Minolta mount<br>Automatic Lens Reg. \$99.85  | Special<br><b>\$36.18</b> |

savings  
flash  
4

|   |  |
|---|--|
| ALF<br>w/case<br><b>\$64.85</b>                           | HIMATIC 9<br>w/case<br><b>\$89.85</b>            |
| HIMATIC 7S<br>w/case<br><b>\$79.85</b>                    | AUTOPAK 700<br>w/carrying case<br><b>\$64.85</b> |
| <b>MINOLTA 16 MG</b> 6 rolls of color film <b>\$69.85</b> |  |

See the above specials and also a complete line of  
Minolta Movie Cameras in the Camera Dept.

**THE  
COOP**

HARVARD SQ. 8:50 - 5:30 Mon. - Sat.  
Open Thurs. 'til 9. One hour free park-  
ing Church St. Garage with purchases  
\$3 or more. M.I.T. STUDENT CENTER  
8:50 - 5:30 Mon. - Sat. Sat. free parking  
in three adjacent parking areas  
**CHILDREN'S MEDICAL CENTER** Long-  
wood and Brookline Aves. 9:30-6 Mon.-  
Sat. Parking available at Medical Center  
and Deaconess Hospital garages.  
"B" SCHOOL Mon. - Fri. 8:20 - 5.

The Collegiate Department Store

can intervenes

# Chapters discover hoax

(Continued from page 1)

Richard Sorenson on Friday to demand that the house president be expelled from the Institute. She threatened to use the Hughes fortune to humiliate MIT if her wishes were not obeyed. She also attempted to call MIT President Howard Johnson. At this point Dean Sorenson contacted the fraternity, ascertained what the situation was, and dispatched a cryptic memorandum to all fraternities asking anyone who knew "Thomasina" or "Ann" to contact him.

Second try

On Saturday "Ann" contacted another MIT chapter. In two lengthy telephone calls with the house president, "Ann" described her education, Learjet, Ferrari, etc., and indicated that she might fly to Boston to meet him.

The following morning "Ann" called again, asking the president to hire her lawyer for a day because F. Lee Bailey, who was representing TWA stockholders in a fight with the Hughes empire, had a warrant out for her arrest. The president took a room at the Sheraton in his name for "Thomasina," whom he met at the Walter Hilton and who showed him a picture of "Ann."

The presence of "Thomasina," who projected a personality completely different from that of "Ann" made the story convincing. However, "Ann's" comment that she had mentioned the

phone calls to Dean Sorenson prompted the president to contact Dean Robert Holden, who was Dean of the Day on Sunday. Dean Holden knew that "Ann" was a hoax. When confronted with this fact over the telephone, "Ann" claimed ignorance but then became hysterical. The president's efforts to convince her to see Dean Sorenson were futile.

BU chapter hit

According to Dean Sorenson "Ann" contacted a BU chapter on Monday. Using approximately the same techniques she used in her encounters with the MIT chapters, she ingratiated herself and managed to convince the president of the chapter to accompany "Thomasina" to Chicago to meet "Ann." They left Boston at 2:45 pm on Tuesday, October 8, just before they could be stopped. Nothing was heard of the two until they returned to Boston Wednesday night to get the president's car; "Ann" could not meet them in Chicago. They were met at the airport by Dean Sorenson and an MIT staff psychiatrist; police were available if needed.

Dean Sorenson told *The Tech* that after two hours of conversation, it was determined that no unusual events had befallen the president in Chicago and that although the young woman appeared to exhibit symptoms of mental difficulties she was not likely to harm anyone. The psychiatrist decided that hospitalization was inappropriate.

Later the decision was also made that it was beyond the responsibility of the Institute to prosecute, if indeed there were any legal basis for such action. Aside from the impersonation of nonexistent people and the relatively small amounts of money gained from those who were deceived, little that could be cause for legal action took place. As this is written, the impersonator is at large in Boston.

Anger becomes sympathy

The first reaction of those who were involved with this person (which included members of five other fraternities with which she had no extended contact) was anger, but after a short time and some extended discussions with one another and the Dean's Office, this feeling subsided and became one of concern and sympathy, according to Dean Sorenson. One of the students involved explained that although the young woman could be detained for ten days for observation had the psychiatrist felt it appropriate, this was not done because ten days' observation probably would not have done any good. The problem was compounded by the fact that it was impossible to identify the young woman or determine whether or not she had any relatives who might be contacted. He added that the best thing under the circumstances would probably have been for her to commit herself to indefinite observation, which she would not do.

# Candidate R. Rosenblith asks help from colleges

By Kathy Swartz

Ronald F. Rosenblith, son of MIT's faculty chairman Professor Walter Rosenblith, candidate for the State Senate from the 3rd Suffolk district, is calling for "university responsibility to the community" to deal with the problems that he says are caused by the lack of cooperation between the universities and community in the 3rd district. Rosenblith feels that if the universities wish to remain where they are, they must be made to realize that they owe a certain amount of responsibilities and duties to the community.

University problems

Some of the things that Rosenblith feels the universities must do are: (1) Help pay the rising costs of government. Because the universities account for 20% of the city's non-taxable land area, Rosenblith feels that they do not contribute enough to the city's finances. (2) Solve the parking and traffic problems that they create by building vertical parking lots or underground garages. (3) Solve the housing shortage that Rosenblith claims the universities create by allowing students to live off campus. He wants the universities either to use the land resources they now have to provide adequate student and faculty housing, or to build 221-D3 type housing so the rents will not rise when there is an influx of students wanting apartments. (4) Use their existing land more efficiently. Rosenblith feels that there is no excuse for the sprawling out of the universities—it only creates problems for the people who live in the neighborhoods.

To implement all of his plans Rosenblith is calling for the formation of special Community Corporations which would be established and directed by representatives from both the university and the community. The function of these corporations would be to develop, plan, and oversee the progress of the community as a whole. The ultimate goal of these corporations would be to create a harmonious relationship between the universities and the community.

McCarthy workers

Rosenblith attended Clark University and is now a student of government at BU. He was a full-time staff member of Massachusetts Scientists and Engineers for Johnson & Humphrey in 1964 and worked this year in Senator Eugene McCarthy's campaign. In this capacity, he organized and managed district headquarters and supervised literature distribution in Milwaukee, Omaha, and Lake County, Ind. He was later promoted to Senator McCarthy's Personal Advance Staff. He has also worked for Governor Volpe's Commonwealth Service Corps—the Massachusetts version of the Peace Corps founded as a memorial to the late President John F. Kennedy. As well as his political work, Rosenblith has taught English and German at a private language school.

Do you think  
a bright young engineer  
should spend  
his most imaginative years on  
the same assignment?

Neither do we.

That's why we have a two-year Rotation Program for graduating engineers who would prefer to explore several technical areas. And that's why many of our areas are organized by function—rather than by project.

At Hughes, you might work on spacecraft, communications satellites and/or tactical missiles during your first two years.

All you need is an EE, ME or Physics degree and talent.



If you qualify, we'll arrange for you to work on several different assignments... and you can help pick them.

You may select specialized jobs, or broad systems-type jobs. Or you can choose not to change assignments if you'd rather develop in-depth skills in one area.

Either way, we think you'll like the Hughes approach.

It means you'll become more versatile in a shorter time.

(And your salary will show it.)

**HUGHES**

HUGHES AIRCRAFT COMPANY  
AEROSPACE DIVISIONS

## CAMPUS INTERVIEWS:

October 21 & 22, 1968

Representatives of several activities of Hughes Aircraft Company (each with highly-specialized personnel requirements and separate interview schedules) will visit your campus. If your career interests lie in one or more of the following fields of aerospace/electronics, contact your Placement Office TODAY to make sure your name gets on the interviewing schedule for HUGHES AEROSPACE DIVISIONS:

Microwave & Antenna Engineering  
Guidance & Controls Engineering  
Spacecraft Design Engineering  
Components & Materials Engineering  
Weapon Systems Engineering

Electro-Optical Engineering  
Microcircuit Engineering  
Space Systems Engineering  
Missile Systems Engineering  
Circuit Design Engineering

U.S. Citizenship required/An equal opportunity employer.

## You Are Eligible

If you live or work in Massachusetts, you are eligible for low cost, high quality life insurance in a mutual organization with an outstanding record of financial soundness.

Founded as a public service in 1907, Savings Bank Life Insurance is sold only through Mutual Savings Banks direct to keep cost low. And although not guaranteed, dividends have been paid to policyholders every year since 1908, to reduce cost still further.

Savings Bank Life Insurance policies are available in a wide variety of forms. To find out what Savings Bank Life policy will meet your needs best, visit a mutual savings bank and ask for personal counselling about Savings Bank Life Insurance. It could be one of the smartest financial moves you'll ever make.



CAMBRIDGEPORT  
SAVINGS BANK

RIGHT IN  
CENTRAL SQUARE  
Cambridge

864-5271

# Minority opinion

## On Politics, 1968

(Ed. note: The following editorial represents the opinion of the minority of the Board of Directors whose initials appear at the end of this article. It was felt that the subject matter covered was of serious enough import for the minority opinion to be represented.)

1968 has surely been, in the political sense, an unusual year. A Senator challenged and toppled an incumbent President who seemed a shoo-in for renomination, winning that initial battle only to lose the war. A front-runner for the presidency was struck down by an assassin's bullet, while on the right, a veritable threat arose in the form of a strong third party. And yet, perhaps the most peculiar of all, in the midst of all the turmoil and upheaval, in the era of the new politics, the most fervent advocate of the old politics, a man known primarily for his attachment to conservative partisan politics, seemed destined to be the next President of the United States.

The purpose of this editorial is not to discuss the merits (if any exist) of Richard Nixon. He is well known as a shrewd and scheming politician. His campaign is humming along, seemingly, without opposition, and surely without the demonstrations which have plagued his rivals. And this is unfortunate, for Richard Nixon deserves the ardent, vocal opposition of the nation in general and the youth of this country in particular.

The problems which this country faces will not be solved by the cold and calculating, two-faced politician which Nixon epitomizes. His refusal to discuss or debate any of the major issues of the day characterizes his campaign strategy of smiling his

way into the White House, while Wallace thunders on the right, and McCarthyphiles either picket Humphrey or sit home and contemplate their virtue. For if Nixon believes that a smile and a new make-up man can eradicate the old Nixon, then he is dreaming in an aura of delusion. It is our responsibility, the young or young thinking Americans who will have to live under the rule of Nixon, to try our damndest to make sure this hoax is not perpetrated upon the American people.

Richard M. Nixon will be in Boston on Thursday and Friday. His initial plans called for an open rally, Friday on the Common, but fears of protest, the first blemish on his campaign may induce him to hold the rally indoors. It is our duty to insure that the Nixon expectations for a demonstration are gross underestimations. We owe it to ourselves to voice our opposition to the man, for what he stands, and the possibility that he may soon occupy the most powerful position on earth.

If the politics and policies of John F. Kennedy (the likes of the Peace Corps, the Nuclear Test Ban Treaty, and the international esteem which he was accorded) made you feel good after eight years of undynamic Eisenhower-Nixon rule (when our Vice President could not venture freely in this hemisphere without being stoned and spat upon); if the names Spiro T. Agnew and Strom Thurmond, for all for which they stand, elicit a visceral feeling akin to nausea; then don't miss the opportunity to express your disgust with the prospect of Richard Nixon as President of the United States.

MEW, TL, KHW, GA

## On Campus

The Thing has come and gone. The campus turned out for it with high expectations, and was disappointed. It would have made a superlative mixer, if more people had been brought in for that purpose, but it was not slated as such. It was to have been an evening of entertainment.

It was a good idea, but... We hope that more things do arise. Perhaps what is needed is a little more thought on the part of the committee as to what it takes to involve the MIT community: the mind boggles.

-KHW

## Making Religion Ethical

By Jim Smith

WASHINGTON—Paul Goodman has said that the main thrust of religion in our society is to treat Americans with such a small dose of Christianity as to immunize them against "the real thing."

Indeed, our Christian ethic is supposed to be making us sensitive and humanistic, but our Christian ritual has de-sensitized us. Thomas Melville, one of eight Roman Catholics who went on trial today for napalming draft files last May in Cantonville, Md., explained the moral subversion within his own church:

"Two thousand years ago Christ said 'love your brothers' and that was that. Now it's go to mass on Sunday, go to communion, make nine first Saturdays—all these little tricks for getting into heaven, except loving."

Protestantism has been subverted socially. Within the upper-class Episcopal Church the Sunday service is a social function that must not be overlooked. Christianity for the poor—especially the Negro Baptist Church—has been a domestic pacification program, which the blacks pay for themselves.

In each of these three cases the problem has been the same: a severe Jesus-complex. The preoccupation with details, from the creation of man to the crucifixion of Jesus, has stood in the way of direct acquisition of Christ's own ethic. There is little credence given to the concept of being "christian" without professing Christ's divinity.

As a result, the college generation, with its basically Christian idealism, has looked to religion more for an example of moral hypocrisy than for a basis of organization. These same students, however, who are too intellectually honest to recite un-felt beliefs for purely social advancement, are then punished for their honesty in such an area as conscientious objection to the draft. Until the Seeger case in March of 1965 one had to profess belief in a Supreme Being (the same one Hitler believed in) to convince the Draft Board that one was conscientiously shy of killing people.

One can go down to the National Archives here and read the text of the Bill of Rights as it was originally composed by James Madison and passed by the House of Representatives. In that document it is asserted (in the same paragraph as the right to bear arms) that "no person religiously scrupulous of bearing arms shall be compelled to serve in person." This phrasing could certainly be interpreted—had it been passed by the Senate—as including simple humanism.

Instead, only now is non-theistic humanism becoming recognized in different states as a bona fide religion. Currently there are 33 "Ethical Societies" within the American Ethical Union across the nation; one here in Washington has been granted such legal recognition, and its Leader, Edward L. Ericson, has been the Union's geographically-chosen lobbyist before

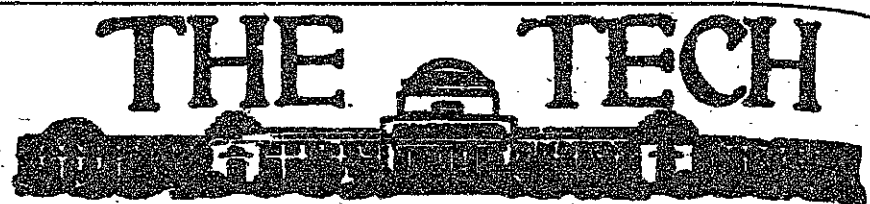
Congress and the Selective Service System in, for example, getting the SSS to issue a new CO application form last week which eliminates built-in discrimination against non-theists.

What is striking about the Washington Ethical Society—after its strict regard for ethics, and disregard for ritual—is the fact that this idealistic, active organization has not attracted college students. The membership at this Society is mostly middle age and young families.

Visiting a Sunday morning meeting, several comparisons come to mind between Ethical Culture and Christianity. The former is active and the latter passive. (After a coffee hour, many members returned to the hall to ask questions of the Leader about his talk.) Also, Ethical Culture is directed at community problems, whereas Christianity is more concerned with personal redemption and personal problems.

The bulletin handed out at the door describes the Society as a "liberal religious and educational fellowship without formal creed or dogma, uniting men in the belief that the greatest moral and spiritual values are to be found in raising the quality of human relationships."

Ericson could not explain why his fellowship had not drawn extensively from the college generation except to hypothesize that students preferred to remain aloof from any organization that is not of their peers.



Vol. LXXXVIII, No. 36

Oct. 15, 1968

### BOARD OF DIRECTORS

|                      |                                 |
|----------------------|---------------------------------|
| Chairman             | Tom Thomas                      |
| Editor               | Tony Lima                       |
| Managing Editors     | Greg Arenson '70, Karen Wattle  |
| Business Manager     | Steve Kinney                    |
| Production Manager   | Michael Warren                  |
| News Editors         | Carson Agnew '70, Steve Carhart |
| Sports Editor        | George Wood                     |
| Entertainment Editor | Randy Hawthorne                 |
| Photography Editor   | George Flynn                    |
| Advertising Editor   | Dave DeWitte                    |

|                              |                               |
|------------------------------|-------------------------------|
| Washington Correspondent     | Jim Smith                     |
| Associate Production Manager | Jeff Gale                     |
| Associate News Editors       | Dean Roller                   |
|                              | Greg Bernhardt '71, Jay Kuzin |
| Associate Sports Editor      | Ron Cline                     |
| Accounts Receivable          | Stan Gilbert                  |
| Assistant Advertising Editor | Dick Stokes                   |
| Accounts Payable             | Julian James                  |
| Treasurer                    | Steve Tharp                   |
| Circulation Manager          | Tim Furney                    |
| Secretary                    | Linda Bright                  |

|                |                                  |
|----------------|----------------------------------|
| Managing Staff | Mike Titelbaum                   |
|                | Wells Eddleman '71, Mitch Serota |

|                  |                               |
|------------------|-------------------------------|
| Production Staff | Bruce Weinberg                |
|                  | John Dulcey '72, Sandy Weiner |
|                  | Rick Waterloo                 |

|            |                               |
|------------|-------------------------------|
| News Staff | Reid Ash                      |
|            | Bob Dennis '70, Steve Loeb    |
|            | Barry Weiss '70, Pete Lindner |
|            | Tom Pipal                     |

|              |                                    |
|--------------|------------------------------------|
| Sports Staff | Jon Steele                         |
|              | Harry Drab '69, Scott Rhodes       |
|              | Steve Weiner '69, Roger Dean       |
|              | Jeff Goodman '70, Bill Michaels    |
|              | George Novosielski '70, John Wargo |
|              | Joe Angland '71, Bob Dresser       |
|              | Dale Geiger '71, Dave Peterson     |
|              | Dan Smith                          |

|                     |                           |
|---------------------|---------------------------|
| Entertainment Staff | Steve Grant               |
|                     | Ray Ergas '71, Roy Furman |

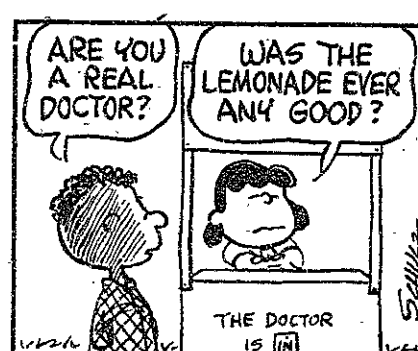
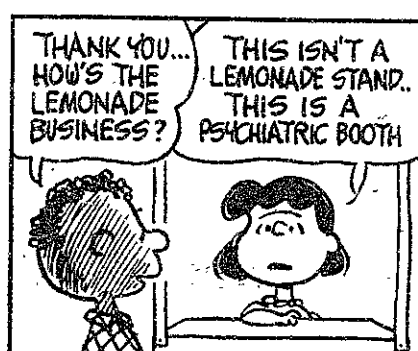
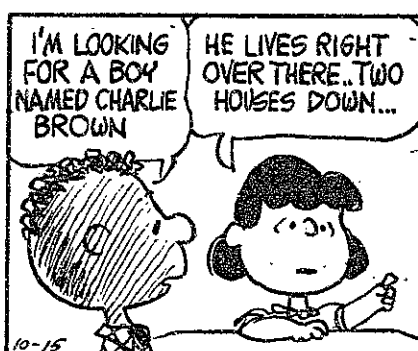
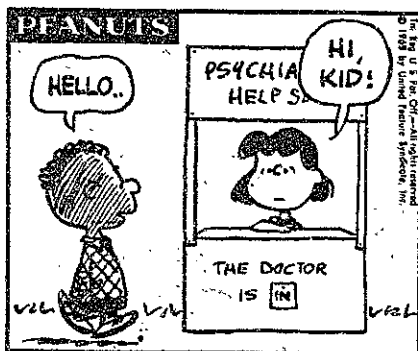
|                   |                                     |
|-------------------|-------------------------------------|
| Photography Staff | Lew Golovin                         |
|                   | Terry Bone '69, Al Goldberg         |
|                   | Dale Stone '69, Li Liang            |
|                   | Steve Loeb '70, Jim Martin          |
|                   | Mike Venturino '70, Brad Williamson |
|                   | Craig Davis '71, Harriet Kang       |
|                   | Dave Simansky '71, Bill Swedish     |
|                   | Steve Saunders                      |

|                  |                                    |
|------------------|------------------------------------|
| Staff Candidates | Gary DeBardi                       |
|                  | Don Arkin '72, Carliss Baldwin     |
|                  | Alan Baumgardner '72, Gary Bjerk   |
|                  | Jon Borschow '72, Dave Davis       |
|                  | Dave deBronkart '72, George Flint  |
|                  | Robert Fourer '72, Larry Klein     |
|                  | Charles Kushner '72, Bruce Laird   |
|                  | Al Morgan '72, Jay Pollack         |
|                  | Greg Resker '72, Mark Settle       |
|                  | Steven Shladover '72, Kathy Swartz |
|                  | Gail Thurmond '72, Richard White   |

Second-class postage paid at Boston, Massachusetts. The Tech is published on Tuesday and Friday during the college year, except during college vacations by The Tech, Room W20-483, MIT Student Center, 84 Massachusetts Ave., Cambridge, Massachusetts 02139. Telephone: Area Code 617, 876-5855, 864-6900, ext. 2731. United States Mail subscription rates: \$4.25 for one year, \$8.00 for two years.

Front page photo of Saturn V by George Flynn.

Just prior to press time it was learned that Richard Nixon fearful of a demonstration had indeed changed the plans for his Boston visit. An indoor rally is now planned for 12 noon Friday at the National Guard Armory on Commonwealth Avenue (just on Brookline side of BU Bridge).



The young Democrats of MIT have announced that they will be willing to debate either the Young Republicans or the Young Americans for Freedom on the issues of the current presidential campaign. For further information or to respond to this challenge, contact any officer of the Young Democrats.

**Coming: October 21 & 22, 1968**

**HUGHES RESEARCH LABORATORIES**  
announce campus interviews for Electronics Engineers  
and Physicists receiving B.S., M.S. and Ph.D. degrees

Current programs include:  
Semiconductor Physics and Microelectronic Devices  
Ion Physics/Propulsion Research  
Electron/Ion Beams—Surface Interaction  
Millimeter Wave Generation and Amplification Technology  
Laser Technology  
Quantum Electronics and Solid State Materials Studies  
Image Sensing and Display Devices

Contact your Placement Office to arrange  
a campus interview. Or write

Mr. W. K. Walker  
Hughes Research Laboratories  
Malibu, California 90265

Creating a new world with electronics

**HUGHES**

HUGHES AIRCRAFT COMPANY

U.S. Citizenship required/An equal opportunity employer.

## Counsellors debate Negro admissions

(Continued from page 1)

clearly indicated their fear that "superficial" characteristics are not enough for anyone to decide his living group for four years. The panel could only point to the small percentage of persons who actually discover they have erred in choosing a living group, and the large number who after six to eight weeks can truthfully say that theirs is the only living group to live in.

### Financial aid

An incident of misunderstanding and lack of communication took the effectiveness out of what was otherwise a very productive seminar Saturday morning. This session was concerned with MIT's procedures and policies on admissions and financial aid. Dean Kenneth R. Wadleigh moderated the discussion, which featured Professor Roland B. Greeley, Director of Undergraduate Admissions, and Associate Director of Financial Aid Leonard V. Gallagher; a question-and-answer session followed the prepared talks.

Professor Greeley first outlined the Institute's selection procedures. The three-part process is designed to select students who are among the best in the nation, and takes many factors into account. First, through a combination of indicators, test scores, and grades, the Admissions Office determines an entirely objective "scholastic index." This is intended in all ways to find out realistically how the applicant would fare at MIT. The second step, also designed for impartiality, is a subjective evaluation of the applicant's non-academic activities and qualification, to determine a "personal rating."

Third, and most significant, is the "roundup," the combination of the two ratings. In this procedure, the Admissions Office sets up a matrix on which each applicant's standing is determined by plotting both his Scholastic Index and his Personal Rating. In the past, Greeley said, in effect the rule has been that the sum of the two scores must be such that it indicates a certain quality in both scholastic and personal competence.

Greeley stressed that in no way, at any time, was any distinction made about the applicant's secondary school or geographic area.

Gallagher then discussed MIT's financial aid policies. The program, he said, is unique in several ways. It is entirely need-oriented, rather than being based on merit; the program assures every undergraduate that money alone shall not prevent him from attending the Institute once he is accepted; all aid consists entirely of scholarship grants and loans, and does not require students to accept jobs. Approximately 52% of all freshmen receive aid, he said, of 70% who apply for assistance. He pointed out that in the past, the main reason for refusal of an offer of admission was lack of funds.

### Black students

The troublesome misunderstanding arose during the question-and-answer period. Several counselors in the audience asked specific questions about admissions criterion; then Miss Branda DeVaul of Fisk University inquired about the defacto racial situation at MIT. Black students, she said, having been offered admission to the Institute, were often uncertain about how they would be treated and accepted by the institute community in general. She asked, not if the Institute were segregated, but how blacks were, in fact, treated; when she had asked the question at an earlier session of the conference, she felt she had not received a satisfactory answer. Almost immediately, other members of the audience expressed their beliefs on the situation in general, but Miss DeVaul said again that she had still not received an answer to her specific problem. Within five minutes several counselors in the audience were debating various aspects of the issue; twice Dean Wadleigh tried to restore order, but was interrupted by repeated outbursts from the participants.

Miss DeVaul succeeded, after ten to fifteen minutes of argument, in presenting her question more clearly. Professor Greeley was able to effect silence, and answered, "We are basically," he said, "a white community...trying to understand the colored student...all minority groups. We do not have too much experience at it, but we feel all have been made at home." "An effort"

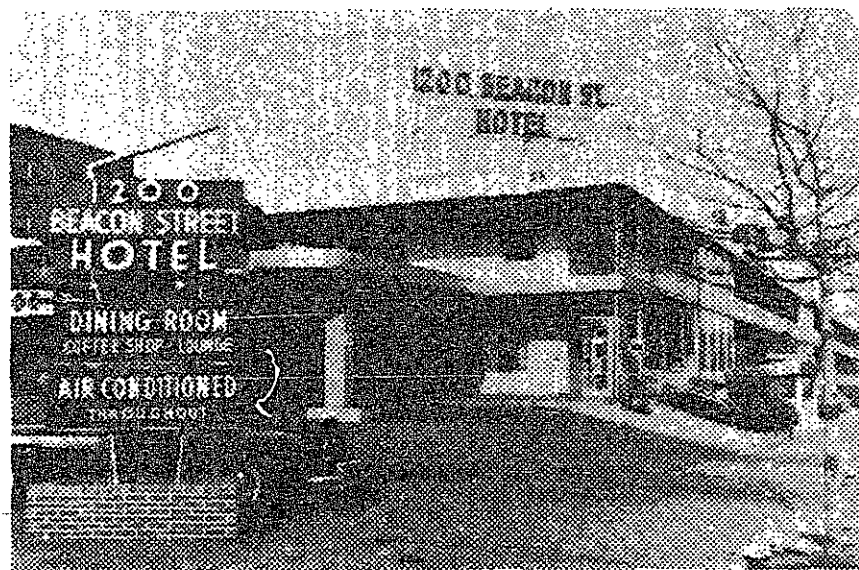
Asked later about her question, Miss DeVaul said that she was "not looking for a guarantee. . . . I'm looking for an effort. . . . I'm seeking an awareness of the uneasiness of the blacks in respect to this." The problem, she felt, was not particularly serious in the classroom, but she stressed that the classroom is by no means the only place where people are found and things happen at MIT; it's in activities that the problem manifests itself.

Once the question was understood by those at the seminar, Miss DeVaul said, she felt that Prof. Greeley's answer was "adequate for now. . . . I'll hope for more in the future." The reply reflected, she felt, the type of awareness and perception for which she was looking.

The Seminar did present a significant amount of worthwhile information concerning the Institute's policies on admissions and financial aid, but the misunderstanding and resulting disorder seemed to destroy the atmosphere of cooperative communication which had been hoped for.

## In the HUB of BOSTON

# 1200 BEACON STREET HOTEL



### Greater Boston's Finest Motor Hotel

- 200 Air-Conditioned Rooms
- Color TV in ALL ROOMS
- 24-HOUR COFFEE SHOP
- Minutes from Downtown Boston by Trolley
- Ample FREE Garage Parking
- All Credit Cards Honored

Complete Facilities for  
**BUSINESS MEETINGS**

Tel. 617/232-7979

1200 BEACON STREET, BROOKLINE, MASS.



SPAULDING COMPANY  
1071 Massachusetts Ave. Cambridge  
491-1230  
**COPY CENTER**  
New England's Most Completely  
Equipped Copy/Printing Service

DICK BARRYMORE PRESENTS

HIS 1968 MOVIE

THE TENTH WINTER

JOHN HANCOCK HALL

200 Berkeley St., Boston

Friday, October 18, 8:30 p.m.

Tickets \$2.00 at door of call  
PA9-5126 for reservations*Auspices of White Mountain Ski Runners***PARTHENON RESTAURANT**

*AUTHENTIC GREEK CUISINE*  
**EXCELLENT EUROPEAN AND AMERICAN WINES**  
**ALL KINDS OF LIQUOR**  
**UNIQUE HELLENIC ATMOSPHERE FEATURING**  
**THE ANCIENT GREEK PARTHENON**



OPEN EVERY DAY  
 11 A.M. to 11 P.M.  
 Extremely Moderate Prices  
 For Reservations Call 491-9592  
**924 Mass. Ave.**  
 (BETWEEN HARVARD AND  
 CENTRAL SQUARES)

**Christmas in California**

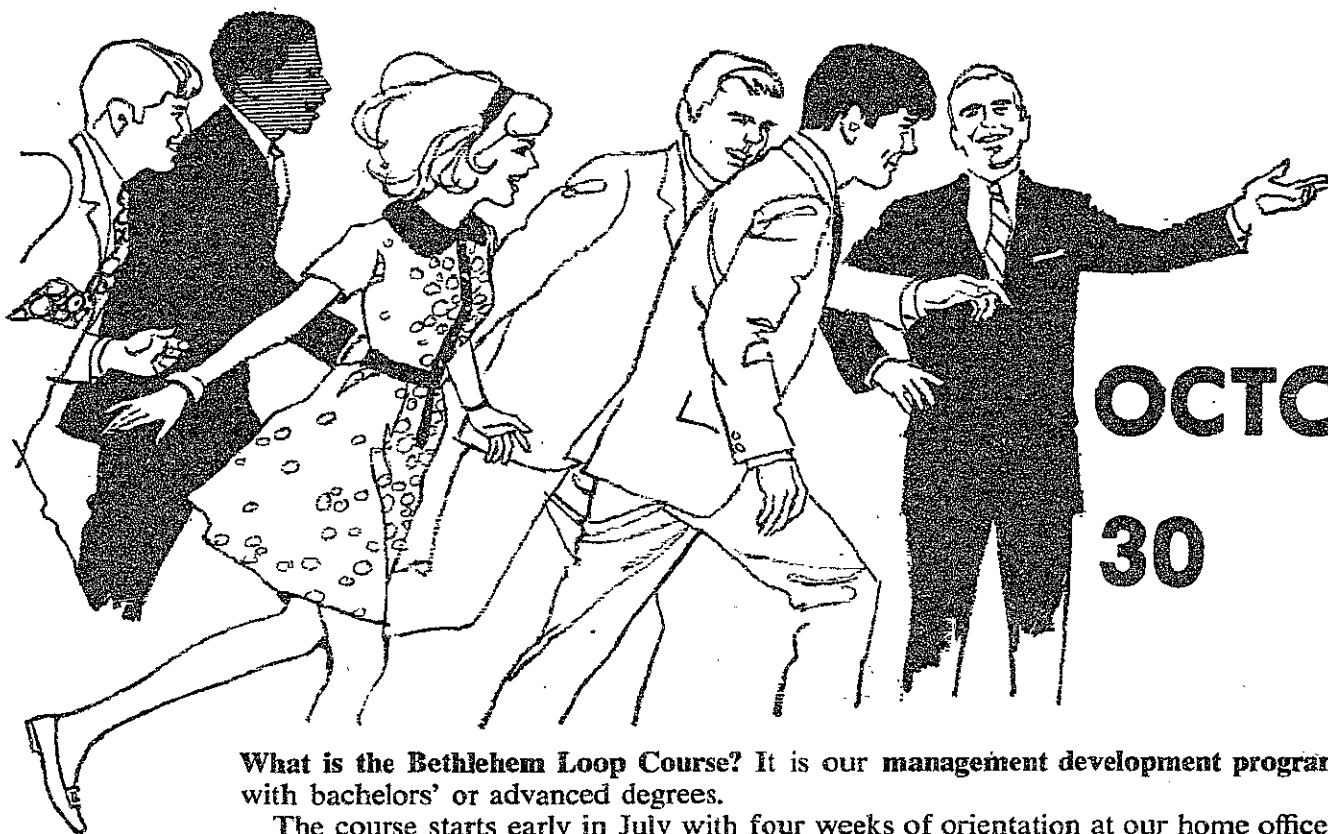
- \*\* Spend your vacation in California this year
- \*\* Board a Non-Stop Jet
- \*\* 2 Bags Free Plus Carton
- \*\* Save \$80.00 over reg. airfare (228. PLUS TAX)

CALL

**PARKER TRAVEL AGENCY**  
 (opp. B.U.) 566-4087

**NOW** — Reservations are limited so reserve your seat now.

## Bethlehem Steel Loop Course Interviews:



**What is the Bethlehem Loop Course?** It is our management development program for graduates with bachelors' or advanced degrees.

The course starts early in July with four weeks of orientation at our home offices in Bethlehem, Pa. Loopers attend lectures on every phase of the corporation's activities, and make almost daily visits to a steel plant.

**Steel Plant Loopers**, who comprise a majority of the average loop class of 150 to 200 graduates, proceed to various plants where they go through a brief orientation program before beginning their on-the-job training assignments. Within a short time after joining the course, most loopers are ready for assignments aimed toward higher levels of management.

**How about other loopers?** Our Sales Department loopers (30 or so) remain at the home office for about a year of training. Most are then assigned to district offices where they take over established accounts.

Fabricated Steel Construction loopers are trained in a drafting room, on a field erection project, in a fabricating shop, and in an engineering office. A looper's first work assignment is based on interests and aptitudes disclosed during this program.

Loopers in Accounting, Shipbuilding, Mining, Research, Traffic, Purchasing, Finance and Law, General Services, and Industrial and Public Relations go through training programs tailored to their types of work.

**Where would YOU fit in?** Check your degree or the one most similar to it.

**MECHANICAL ENGINEERING**—Engineering or mechanical maintenance departments of steel plants, fabricating works, mining operations, and shipyards. Fuel and combustion departments. Supervision of production operations. Marine engineering assignments in Shipbuilding Department. Also: Sales or Research.

**METALLURGICAL ENGINEERING** — Metallurgical departments of steel plants and manufacturing operations. Engineering and service divisions. Technical and supervisory positions in steelmaking departments and rolling mills. Also: Research or Sales.

**CHEMICAL ENGINEERS**—Technical and supervisory positions in coke works, including production of byproduct chemicals. Fuel and combustion departments, including responsibility for operation and maintenance of air and water pollution control equipment. Engineering and metallurgical departments. Steelmaking operations. Also: Research or Sales.

**INDUSTRIAL ENGINEERING** — Positions in steel plants, fabricating works, shipyards, and mines. Engineering and maintenance departments. Supervision of steelmaking, rolling, manufacturing, and fabricating operations. Also: Sales.

**CIVIL ENGINEERING:** Fabricated Steel Construction assignments in engineering, field erection, or works management. Steel plant, mine, or shipyard assignments in engineering, construction, and maintenance. Supervision of production operations. Sales Department assignments as line salesman or sales engineer (technical service to architects and engineers).

**ELECTRICAL ENGINEERING**—Steel plant, fabricating works, mining operations, and shipyard electrical engineering, construction, and maintenance departments. Technical and supervisory positions in large production operations involving sophisticated electrical and electronic equipment. Also: Research or Sales.

**MINING ENGINEERING** — Our Mining Department operates coal and iron ore mining operations and limestone quarries, many of which are among the most modern and efficient in the industry. This 10,000-man activity offers unlimited opportunities to mining engineers. Also: Research.

**NAVAL ARCHITECTS AND MARINE ENGINEERS:** Graduates are urged to inquire about opportunities in our Shipbuilding Department, including the Central Technical Division, our design and engineering organization. Also: Traffic.

**OTHER TECHNICAL DEGREES**—Every year we recruit loopers with technical degrees other than those listed above. Seniors enrolled in such curricula are encouraged to sign up for an interview.

**ACCOUNTANTS**—Graduates in accounting or business administration (24 hours of accounting are preferred) are recruited for training for supervisory assignments in our 3,000-man Accounting Department.

**OTHER NON-TECHNICAL DEGREES** — Graduates with degrees in liberal arts, business, and the humanities are invited to discuss opportunities in the Sales Department. Some non-technical graduates may be chosen to fill openings in steel plant operations and other departments.

**NOW'S THE TIME TO SIGN UP FOR AN INTERVIEW.** And when you register at the placement office, be sure to pick up a copy of our booklet, "Careers with Bethlehem Steel and the Loop Course." It contains important information about the corporation and your opportunities through the Loop Course.

# BETHLEHEM STEEL

*An Equal Opportunity Employer  
 in the Plans for Progress Program*



# 'Lettvin'--an hour of casual discussion

By Reid Ashe

Professor Jerome Lettvin, who said last year that he would curtail or limit his public speaking engagements in order to spend more time at the Institute, began Sunday night his own weekly television program on Channel 56. The program, "Lettvin," runs for one hour beginning at 10 pm Sunday nights.

After the taping session on Friday night, Lettvin told



The Tech his reasons for involving himself in the television venture: "After spending a summer of going around and meeting people, I came to realize that people, myself included, suffer hangups based on premature opinions. The program, which consists of hour-long group discussions, is intended to be an educational process, in which I hope to mature my opinions, and in the process help others to do so also."

#### Student guests

On the program, Lettvin, in an open-collar shirt and canvas shoes, meets with ten or fifteen local students in a sparsely-furnished set and leads a discussion on the topic of the evening. In future programs, Lettvin plans to have special guests to lend particular information to the discussion. Lettvin said that his guests "will not be well-known names, but people who can inform."

As an example, Lettvin cited next week's guest, Dr. Frank Ervin of the Mass. General Hospital, who will discuss "Injuries of Children in Vietnam." Dr. Ervin was on the commission that went to Vietnam to investigate the treatment of children there.

#### Intellectual program

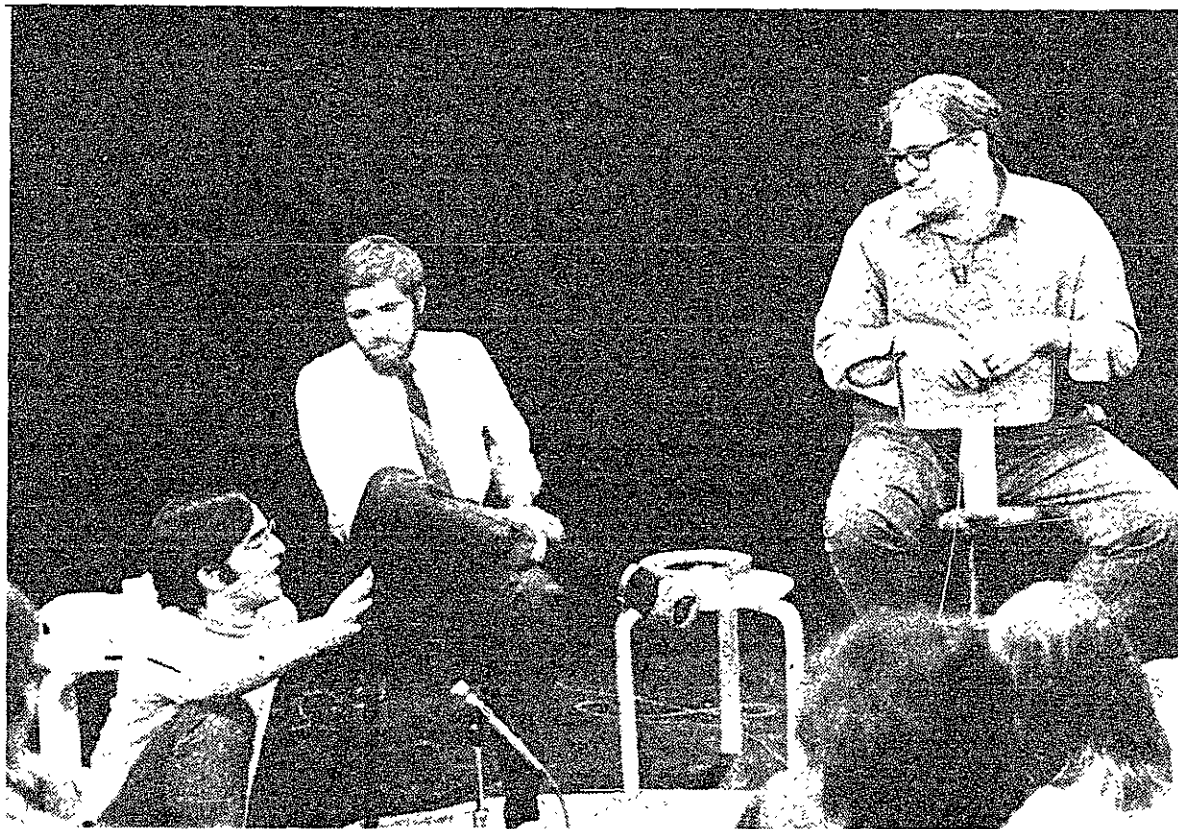
Lettvin said that his program is aimed at no particular audience, but rather to the public at large. He is quite interested in attracting a large general audience. He said that "people are more intelligent than they are given credit for by the media," explaining why he felt that his basically intellectual program might become popular among the general populace.

A program had been recorded for screening a week earlier than Sunday's broadcast, but was not shown due to a transmitter failure at the station (WKGB-TV).



Photos by Jon Borschow

Professor Jerome Lettvin, MIT Professor of Biology and Electrical Engineering, is shown here during the taping of the premier program of his new weekly television show. The program consists of hour-long informal discussions with groups of local students.



## LOOKING FOR ACTION IN YOUR CAREER?

Look to Bendix. You'll find an excitement that's unique to our pursuit of technical firsts.

Bendix offers you diversified scientific and engineering opportunities—careers in research and application engineering, data processing and business administration.

You'll become a creative problem-solver serving the aviation, automation, oceanics, aerospace, automotive and electronics industries. You'll help create, develop and produce new systems, new products, new techniques.

You'll also meet up with a lot of fresh ideas—a continual "cross pollination" of technologies between the Bendix groups.

And whichever Bendix division or subsidiary you choose, you'll find it offers small-company concern and personal recognition. As well as the chance to continue your education.

You'll also enjoy the security of a diverse billion-dollar corporation whose sales have doubled since 1959. A healthy balance of commercial and defense business. And a research and development program that assures continued growth. Ours and yours.

Stop in at your placement office to sign up for a Bendix interview and get a copy of Bendix Career Opportunities, our directory of current openings. An equal opportunity employer.

Campus interviews October 17th—MIT



Where ideas unlock the future

## U. S. NAVAL CIVIL ENGINEERING LAB RECRUITING REPRESENTATIVE FROM

Port Hueneme, California  
(where you ski in the morning  
and surf in the afternoon)

is  
interviewing engineering grads with

BS, MS, PhD DEGREES  
in  
CIVIL, ELECTRICAL, or MECHANICAL

also  
any grads interested in a career in  
OPERATIONS RESEARCH  
on

Friday 25 October 1968

Interview appointments and info at your  
Placement Office. All positions are in the  
Federal Career Civil Service — an Equal  
Opportunity Employer.

### Ski Instructors

Week-end positions available  
for skiers to instruct high school  
boys and girls. Prior instruction  
experience not required. Good  
compensation. Excellent ski fa-  
cilities. Write or call:

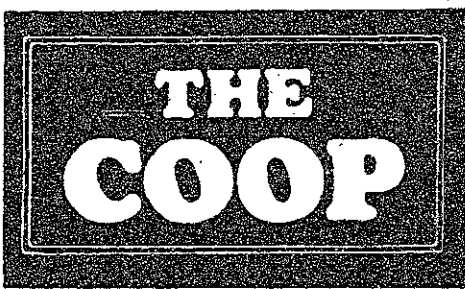
### Shaker Village Ski Group

P.O. Box 1149, Pittsfield, Mass.  
Lebanon Springs (N.Y.) 7-1255



# Pick up Your Share

On October 14th, Coop members can pick up their share of the annual patronage dividend (\$700,000) at any one of the Coop Stores' Cashiers' Desks. Starting November 1, the Coop will begin to mail checks to the members.



HARVARD SQ. 8:50 - 5:30 Mon. - Sat. Open Thurs. 'til 9. One hour free parking Church St. Garage with purchases \$3 or more. M.I.T. STUDENT CENTER 8:50 - 5:30 Mon. - Sat. Sat. free parking in three adjacent parking areas CHILDREN'S MEDICAL CENTER Longwood and Brookline Aves. 9:30-6 Mon.-Sat. Parking available at Medical Center and Deaconess Hospital garages. "B" SCHOOL Mon. - Fri. 8:20 - 5.

## dramashop...

# Dramashop presents Brecht and Ionesco

By Peter Linder

The MIT Dramashop, under the supervision of Professor J. D. Everingham, has created for the MIT community an enjoyable alternative to LSC for weekend nights. An evening of one-act plays (actually two) are presented by a decidedly amateur, although sometimes polished, group of actors. The fare was balanced with a comedy, Ionesco's "Jack or the Submission," and a tragedy, Brecht's "The Measures Taken."

Cat, cat, cat

"Jack is an interesting attack on the modern family: a collection of individuals who talk to, but never listen to, each other. Throughout the play, words are flung about without any respect paid to their meaning, only to their impact, as in the line: "Don't be angry, Papa. I said it without thinking. But knowingly." At the end of the play, Jack finds out he can communicate with just one word. "In order to say, 'I'm terribly sleepy, let's go to sleep...' just say 'Cat, cat, cat.'" Thus, language becomes almost trivial and meaningless compared to the speaker's intention.

Using a young cast of sophomores and freshmen, director Marc Miller '69 created an interesting production. Some of the lines were omitted by the actors, although this can be attributed to the short (ten day) rehearsal period. But on the whole, the play was so pleasant, the group should consider presenting it again, perhaps this weekend. No one character stood out; maybe this was because each of them took turns stealing the show with their apt expressions and quick delivery.

The second play, by Brecht, took a different tack: there was a constant tension, or perhaps morbid curiosity, on the part of the audience. "The Measures Taken" is about a revolutionary who thinks with his heart, rather than his indoctrinated head, when performing deeds for The Party. He does not follow the dogma of "what baseness would we not commit to root out baseness." The conflict is between harsh realism and humanistic idealism. Briefly, the play concerns itself with the destruction of one man in order to facilitate a revolution furthering the "teachings of the classics...The ABC of communism." And trite as it may seem, the end should not justify the means.

Slightly muffed it

Richard Finberg '70 directed this performance and executed its stark lines with admirable style. The diction was a bit disappointing. Only one character, Alex Monty '71, gave his role a necessary macabre twist with an authoritarian, impersonal and accented voice. This added to Brecht's effect of audience alienation, and gave one the feeling of being forced into an unpleasant situation. However, what might have been a forceful performance was shattered by the break in unison of the narrator—a Greek chorus of three men. This was due to the hesitancy of the actors and some minor fumbles which resulted in their being "up-tight." (N. B. It was a difficult part.) Otherwise, the play was handled quite well, ending the evening on a reflective note.

## movies...

# Plain and simple: Duffy is a bore

By Robert Fourer

"Duffy" is an English movie about a couple of bored, rich kids and a more experienced (but also bored and rich) friend who decide to rob their rich father of several million pounds to have some fun. Even if such people exist, I don't see how anyone could care at all about them, though they supposedly are typical of modern youth and morals. The only thing they really do typify is modern cliché.

Not Funny

No doubt some will contend that I am taking the whole thing too seriously, that the film is really a clever and funny spoof of some sort or else just a good means of escape for a couple of hours. There are some attempts at humor, but not being at all funny, they aren't easy to find. If it actually does parody something, it's not very clear just what (unless maybe the movie is supposed to make fun of itself, in which case it succeeds

admirably). As to pure entertainment value, there are so many obvious clichés that even the surprises seem predictable. What's the use of escaping from reality, if its replacement is even less interesting?

In a couple of years when "Duffy" reaches the college campuses, students can have fun mocking the then old-fashioned clichés. For now, it's just a bore.

### ANNOUNCEMENTS

Light Seven, a contemporary exhibition of American and European photography, is now showing in Hayden gallery. The selection of 85 works by 75 photographers will run through November 10.

Richie Havens will perform at Kreps "Friday October 18. Havens will be performing songs from his album "Something Else" in his own folk style.

### CANADA CALLING!

#### ATTENTION CANADIAN STUDENTS

A team of Canadian experts will be at your university the week of October 21, 1968.

The Purpose: To answer your questions and discuss the economic situation in Canada today. This is your opportunity to find out what is going on and what job opportunities await you at home.

Sponsored by the Department of Manpower and Immigration, teams will include Deans or Heads of Departments from Canadian universities, Canada's Public Service Commission and an Officer from the Department.

OUT OF SIGHT . . . BUT NOT OUT OF MIND  
Department of Manpower and Immigration - Canada

Plan on attending this important meeting

music...

# BST soul sounds rouse the crowd

By Gary Bjerke

Blood, Sweat, and Tears, with their earthy, soul-rock sound, evoked a standing ovation and a mass call for encore Saturday night at the Psychedelic Supermarket. Their set was preceded by a short performance by The Tom Swift Band, a local group which has only been in existence for seven days. This group definitely shows great promise and a surprising amount of coordination for such a short period of rehearsal. Their greatest fault lay in their overuse of the microphone amplifying system, which both in vocal and harmonica solos tended to drown out completely the other performers. Because of this abuse, it was difficult to judge the abilities of the background instrumentalists, and the quality of both the vocals and the harmonica spots suffered.

The first three songs in the BST set established their rapport with the audience, a mixed group of college students, straight hippies and giggling teeny-boppers. Everyone was caught up in the surge of drum beat, instrumental flight and vocal soul. All boundaries were broken, and the listeners reacted as a body to the pattern of frequencies focused on them, threading them together like beads on a string.

The songs had no "hip" messages—no seductive "Jeffersonian Airplane" fantasies into the world of acid, no Fug-like electric disasters screaming out the word of sex,

perversion and instinct, no political messages—just complex musical designs with words of simple soul-emotion woven into them. By the third song, the lead singer had the audience tuned in, and he knew it. The performance had reached a sub-crescendo.

As the players started to vacate the stage at the end of the set, loud cries of "More!" caused hesitation among certain of the group. Finally, they reassembled themselves on stage and after some initial tomfoolery launched into "Somethin's Goin' On." This blended into a medley of random improvisations, including the vocalist's imitation of Janis Joplin, and a segment from the Cream's "Sunshine of Your Love." Each instrument had a lengthy solo; notable among these were Jerry Weiss' trumpet solo, in which he attained almost unearthly notes and at times was reminiscent of old-fashioned progressive jazz. In fact, this entire amazing addition to the performance was more in the way of a jazz workshop than a rock concert.

All in all, BST has probably done every bit as much as the Beatles or the Tijuana Brass in restoring the older, but legitimate brass and woodwind instruments to their proper place in modern music. They have also combined older musical patterns and scales with the newer, at times raga-like musical forms resulting in interesting musical mosaics.

music...

# 'Ten Years After' is blues-rock at its best

By Randy Hawthorne

There was a guitarist in town named Alvin Lee who just may be the best guitarist in rock today—Clapton, Beck, Hendrix inclusive. The first time that Ten Years After broke into the heavy blues-rock which is dominant in their performance it was evident that the Boston Tea Party had presented the critical segment of the Boston rock audience a chance to compare the relative merits of lead guitar virtuosos Beck (at the Tea Party Oct. 24-27), Hendrix (at the Supermarket soon), and possibly Clapton (in concert?), with one of the younger and most talented guitarists to come to Boston.

Individually and singly, Ten Years After is an uncommonly talented group of people. The drummer and bass player played with distinct evidences of jazz backgrounds or at least jazz influences. The bass player made this obvious by the manner in which he played. That is to say, he literally finger thumped the strings rather than playing with the pick used by most rock electric bass players. The drummer lacked the heavy drum style common to most drummers today so consequently when he attempted to play his ten minute drum solo he seemed to not measure up to the efforts of the Ginger Baker he was trying to be. In fact he played more in the style of Bob Moses, the one time drummer of Gary Burton, not that this would be bad in itself, only in that it seemed an effort to out-Ginger Baker Ginger Baker. In fact there was the irresistible urge to compare the whole group to their fellow Britishers, Cream. And, surprisingly enough, Ten Years After often seemed to be equal or better. The presence of the organ player lent a solidness and depth to the group hard to achieve live with only three people. In order to not mislead, it must be mentioned that the organ player did more than fill out the sound of the group. He showed this in his occasional solos. The most notable of these was his job on a Count Basie number in which he played a Jimmie Smith type organ that is markedly different from the standard heavy, pounding style of rock. In fact, it was almost like jazz. (That word seems to keep coming to mind listening to much of today's music.)

Alvin Lee, on lead guitar can best be appreciated live. His work is as varied as the group's material and it remains excellent throughout. Whether the number was jazz a la Count Basie, blues-rock Cream (with due respect to Skip James), or a straight Sonny Boy Williamson blues number, Lee demonstrated his talents accordingly. With possibly the fastest hands (and the requisite cleanness in picking) Lee should soon become one of the most imitated guitarists around today, when the group attains the recognition it deserves. When in the peak of what is only descriptibly as a frenzied performance, Lee begins to experiment for new sounds by playing with drumsticks, mike stands, and anything else relatively close. With any improvement at all it would not seem unlikely that this young man will be looked upon as one of the innovators in lead guitar solos evident in the current blues revival. And along with him will be the rest of the group—Ten Years After.

## CAPITAL PUNISHMENT—SHOULD IT BE RETAINED IN MASSACHUSETTS?

Watch AN EYE FOR AN EYE

Tonight on

WGBH—TV CHANNEL 2 8:00

Debaters: Charles Brown, Boston College  
 Joel Perwin, Harvard  
 Bill Arthur  
 James Oliff, Brandeis  
 Moderator: Arthur Thibeaux, Project 50 of the Boston YMCA

music.....

# Julliard Quartet at Jordan Hall

By Steven Shaladover

Sunday afternoon, the second concert in the Boston University Celebrity Series featured a performance by the Julliard String Quartet at Jordan Hall. The lengthy program included Mozart's Quartet in E flat, K. 428, Bartok's Sixth Quartet, and the Haydn Quartet in C, Op. 76, No. 3 ("Emperor"). The playing of the Julliard Quartet, one of the world's leading chamber music organizations,

was characterized by a remarkably tight ensemble of the quality obtained only after long practice and many years of experience playing together. Great attention was paid to nuance, with the result that the opportunities for musical expression in each of the three works were fully realized. This factor, combined with the unanimity of the playing, made the concert a satisfying experience.

The Mozart received a fine

performance, marred only by some roughness in the fourth movement, allegro vivace. There also seemed to be some question about the intonation of one of the violins. The Bartok was certainly the most interesting of the three works because of the unusual sonic effects called for. If played by a lesser ensemble, these effects would not have been convincing. In the second movement, marked

(Please turn to page 12)



## THE LIVING THEATRE

WILL THIS BE YOUR REACTION WHEN YOU SEE.....

THE LECTURE SERIES COMMITTEE  
 and  
 DEPARTMENT OF HUMANITIES  
 sponsor  
 THE LIVING THEATRE  
 presented by  
 THE RADICAL THEATRE REPERTORY COMPANY  
 in association with  
 MEL HOWARD and BEVERLEY LANDAU

|            |                              |                    |
|------------|------------------------------|--------------------|
| OCTOBER 31 | FRANKENSTEIN                 | 7:30 P.M.          |
| NOVEMBER 1 | FRANKENSTEIN                 | 8:30 P.M.          |
| NOVEMBER 2 | ANTIGONE(BRECHT)             | 8:30 P.M.          |
| NOVEMBER 3 | MYSTERIES AND SMALLER PIECES | 2:30 and 8:30 P.M. |
| NOVEMBER 5 | PARADISE NOW                 | 8:30 P.M.          |
| NOVEMBER 7 | ANTIGONE(BRECHT)             | 8:30 P.M.          |
| NOVEMBER 8 | PARADISE NOW                 | 8:30 P.M.          |

ALL PERFORMANCES IN KRESGE AUDITORIUM

TICKETS RESERVED FOR PURCHASE BY MIT COMMUNITY ON SALE IN BUILDING 10 LOBBY BEGINNING OCTOBER 17

PRICES: WEEKNIGHTS AND SUNDAY \$4.00, \$3.00, \$2.00  
 FRIDAY AND SATURDAY NIGHTS \$5.00, \$4.00, \$3.00

**Wilson sets mark**

# Harriers second to CG in triangular, 26-30-88

By John Wargo

The Tech harriers journeyed to New London, Connecticut Saturday only to place second to a now 9-0 Coast Guard five. Wesleyan was never seriously in the race and received the lowest end of the 26-30-88 score. Co-captain Ben Wilson '70 knocked over forty seconds off the 20:11.0 4.2 mile course record with a 19:26.5 clocking and finished nearly a half minute in front of the field. The next three finishers also cracked the mark and along with Wilson led a fast, close race. Both leading teams grouped their runners well; Coast Guard grabbed second, third, fourth, sixth, and eleventh; MIT squeezed in with first, fifth, seventh, eighth, and ninth. The first four Coast Guard men finished within 23 seconds of each other (the first THREE tied for first in the Academy's last meet); Co-captain Jim Yankaskas '69, and Larry Petro '70, Stan Kozubek '69, and John Owens '70 crossed the line in a spread of 30 seconds to follow Wilson's record shattering performance. Coast Guard's group turned out to be the proverbial "little bit better;" they scored 26 to Tech's 30.

Face BC today

Art Farnham's squad now stands on a 4-2 mark with five opponents remaining. The thinclads meet Boston College today at Franklin Park at 4:00. Last year Tech beat them 15-49, and

# RPI rolls over varsity kickers in 8-1 shelling

By Ron Cline

An undefeated RPI soccer team continued their win streak in passing by the engineers Saturday, 8-1. A well co-ordinated attack kept the ball in RPI territory for most of the game, and Tech was allowed few attempts at the RPI goal.

RPI's offensive thrust was most potent in the form of their star player, Tim Conway. The talented lineman scored four goals against the engineers, and is presently only a couple goals away from the RPI scoring record, with the season only half over.

Jerry Maskiewicz '71 at least partly vindicated his trip to Troy when he deftly dribbled the ball to within 20 yards of the net and fired a shot. A silent assist can be credited to Dave Peterson '71, who, cutting across the field for a possible pass, found himself in front of Maskiewicz's bomb and made a timely duck. Co-captain Jeff Weismann, temporarily leaving his post at fullback, joined the forward ranks to try and spark a come-back drive, but the personnel shift was unsuccessful—at least in this game.

The kickers begin Greater Boston League play Saturday at noon when they journey to Tufts. Although the engineers lost to them last year 2-5, Tech claims a 17-12-2 series record, and the varsity booters will be anxious to strengthen that lead Saturday.

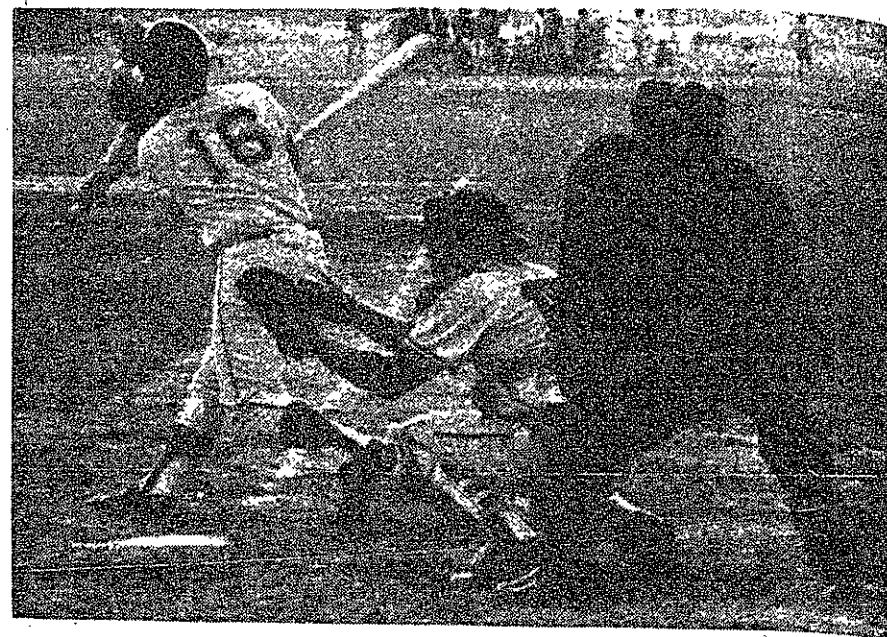
MIT will continue league action when they meet Brandeis at Briggs Field October 23, followed by a trip to Boston College October 30, and a meeting November 6 with league favorite Boston University on the Terriers' new astro-turf field.

hopefully can come up with the right formula to repeat. Friday the team travels north to New Hampshire to run UNH (last year MIT 19, UNH 39); this week should prove an opportunity to tack a few wins on to the 4-2 record.

**GBCAA's coming**

The first big meet of the season, the Greater Boston's, is scheduled for Tuesday, October 29, at Franklin Park. Last year the harriers placed third in

By Jay Zager  
The University of Vermont, scoring runs early and often, pounded out fifteen hits, good for twelve runs, as they coasted to a 12-1 victory over the varsity nine last Saturday on Briggs Field. Tech starter Dave DeWitte '69 put himself in a hole early as he gave up a single and a home run to the first two Vermont batters, and the team spent the rest of the day trying to play catch-up baseball. In the end, the offense could only produce a lone tally



Tech catcher Rich Freyberg '70 watches as Vermont batter hits an infield grounder and Bob Gerber '70 moves to cover first base.

## The Tech Sports

the mammoth meet behind Boston and Tufts, 42-61-62. Wilson matched the team placing with a third in the individual standings, and this year, with his record-breaking running in the season thus far, should be a formidable threat for first place honors.

**On Deck**

Today

Cross Country (V,F)—Boston College, away, 4:00 pm

Tomorrow

Soccer(V)—Tufts, away, 3:00 pm  
Soccer(F)—UNH, home, 3:30 pm  
Tennis(V)—Brandeis, home, 3:30 pm

and four singles.

Vermont's Jim Rapoport hit a long home run in the first, a drive to left center which sailed about 350 feet, and the visitors added another run before the side was out. They picked up one more run in the second, and they added three more in the fourth, giving pitcher Charlie Brucato a cushion of runs to make his work easier. In the fifth, Vermont's Steve Runkin hit another long home run, knocking DeWitte out of the box. Coach Fran O'Brian brought in southpaw Herm Mayforth '70 who got Tech out of the inning. In the sixth, however, he was touched for three runs, as Bruce Clarin hit the third home run of the day for Vermont.

Tech's entire offense centered about the bottom of the sixth inning when they picked up their lone run. Bob Dresser '71 led off the inning with a single to left, and went to second on a walk to Bob Gerber '70. After two were down, catcher Rich Freyberg '70, returning to the lineup after a bout with mononucleosis which caused him to miss five games, singled up the middle, scoring Dresser. A two out single by Art Kilmurry '72 in the ninth inning was the only other safety for the home team.

**Freshmen help**

If there were any bright spots in the crushing defeat, they would have to be focused on the outstanding relief pitching by two freshman pitchers. Alan Dopfel came out in the seventh inning, and retired the side without any serious scoring threat. The final two frames were pitched by Kilmurry who allowed no runs, and struck out two, while giving up only one hit. These two pitchers will form the nucleus for this year's freshman team.

# Professionalism at Grumman ...is personal development programs

As a graduating engineer, how can you position yourself so that your career chances are constantly optimized? Answer—get with an aerospace company where the optimum conditions are . . . Grumman. Here we take a keen interest in seeing that our engineers and scientists develop personally. We are sincerely interested in their personal progress within the company . . . that they keep abreast of the sweeping advances in technology, not because they can contribute more (although this is true), but more because it makes for greater individual progress and well-being. Job satisfaction, if you will. Let's look at these personal development programs.

**Tuition Reimbursement Program**

Directly applicable to their work, these programs offer engineers and scientists financial assistance for graduate studies at the many institutions in the Long Island-New York area.

**In-Plant Courses**

Engineering courses, particularly those not available at neighboring institutions, to deepen technical knowledge to the specific needs of the engineering sections.

**College-Industry Courses**

Selective attendance for rapid technical updating on fundamentals, theoretical methods and design information. (One to two weeks' duration.)

**Engineering Masters Fellowship Program**

To enhance creative design capability, one-year fellowships, renewable for a second year, are awarded to new engineering Bachelor of Science graduates and engineers with a year or more company service. The program combines two days of graduate school study with three days of in-plant engineering (in fixed or rotating assignments) and covers payment of full tuition, books, fees, a stipend, and a salary at engineering hourly rates for the hours worked.

**Professional Development Programs**

Lasting for 2 years, participants are given, in 4 six-months' terms, an exposure to Grumman operations which broadens their technical knowledge, sharpens ability to make sound decisions, and raises their career potential. Separate programs serve individuals in Business Systems, Engineering and Manufacturing.

**Senior Engineers' Program**

Intended to overcome the threat of technological obsolescence, individual disciplines are updated with regard to new scientific discoveries, new or expanded applications of long existing knowledge, and computer applications to problem solving.

**Senior Management Development**

Selected individuals within Grumman junior and middle management groups are nominated to attend management development programs such as the MIT Executive Development Program, the Program for Management Development or the Advanced Management Program at Harvard University.

**Basic Principles of Supervisory Management**

A series of discussion sessions provide a course in management principles to group leaders who show technical management ability.

Here then is a real opportunity for graduating engineers in AE, CE, EE, ME, IE, Physics and Chemical Engineering . . . to take their place in the continuum of technology that is Grumman. Grumman representatives will be

ON CAMPUS

If an interview is not convenient at this time, send comprehensive resume to: Mr. Richard N. Haug, Administrator of College Relations, Engineering Employment, Dept. GR-251



# GRUMMAN

AIRCRAFT ENGINEERING CORPORATION  
Bethpage • Long Island • New York, 11714

An Equal Opportunity Employer (M/F)



**HARVARD SO** UN 4-4360  
Last times today!  
"THE FOX"  
2:00, 5:45, 9:35  
"NO WAY TO TREAT A LADY"  
3:55 and 7:45  
Starting Wednesday  
"ROSEMARY'S BABY" plus  
"I'll Never Forget What's Is Name"  
**BRATTLE SO** TR 6-4226  
Tuesday and Wednesday  
GRETA GARBO as  
"ANNA CHRISTIE"  
Starting Thursday  
GARBO as "ANNA KARENINA"  
Shows daily 5:30, 7:30, 9:30

IM sports

# SAE, Betas win again

SAE and BTP were crowned league champs in the Trophy Division as they each easily won their third consecutive game. The offenses of both teams finally jelled to complement already proven defenses which had previously done much of the scoring.

**Tough first half**  
The SAE's were partially stymied by a tough Phi Delt team in the first half, as they were able to score only once in the first half, as they were able to score only once on a Ken Weisshaar aerial to Minot Cleveland '71 for a 10-0 lead. However, Weisshaar threw three more touchdown passes in the second half to make the final score 34-0. Cleveland snared his second of the day, and Don Rutherford '67 and Phil Brinard caught one apiece.

BTP demolished Burton House 38-8. Steve Schroeder '67 had a hand in all the scoring. He passed for four touchdowns, scored another on a run and ran in still another with an intercepted pass. Bill Finkston '71 killed on two of the passes and Tom Men '68 and Joel Hemmelstein '70 scored on the others.

**LCA, SAM win**  
Other Trophy Division games had LCA blanking Theta Chi 28-0 as Tom Manion '66 threw three TD passes to Tom Riley '70 and ran for another score. A safety completed the scoring.

SAM won its first game of the season with a 13-7 triumph over DTD. Al Zernicki '71 caught a 30 yard TD toss from Stu Nemser and Ray Kwasmick '71 hit paydirt with an interception for the winning margin.

SAE 'B' and DU won their divisions in the bottom half of A league. SAE topped PLP 6-0 as Dave DeWitte scored on a run during the first series of offensive plays. DU won 19-13 in overtime over PGD as Terry Hammons hit the deciding points on the scoreboard.

Titlists in B league were ATO with a 20 shutout over Sigma Nu, Student



Photo by Don D'Amico

George Novosielski '71, sandwiched between two opposing ends, intercepts an AEP aerial; Kappa Sigma, however, dropped a close 13-10 decision to the AEP's.

House with a 21-7 victory over PKT, and Burton 'B,' who beat ZBT 26-6. The final titlist will be decided by a playoff between Senior House and Sigma Chi, who tied during the regular season.

in the finals. The Burton team of John Graves (first singles), Stan Smilack '70 (second singles), and Ed Rinehart '69 and Rick Heldt '67 (doubles) went through the entire tournament without losing a single match.

Burton had gained the finals by beating LCA 4-0 while TC beat Burton 'C' also 4-0. In the consolation round, PLP-Baker 'B' and Baker 'A'-Senior House play off with the winners meeting LCA and Burton 'C' for third and fourth place.

**Tennis results**

Burton House 'A' captured the IM tennis title by whipping Theta Chi 4-0

**How They Did**

**Soccer**

RPI 8-MIT (V) 1  
RPI 4-MIT (F) 0

**Cross Country**

Coast Guard 26- MIT (V) 30-Wesleyan 88  
MIT (F) 27-Coast Guard 29-

**Baseball**

Wesleyan 82  
U Vermont 12-MIT (V) 1

M. A. Greenhill presents



**PETE SEEGER**  
FRI. OCT. 18 8:30 P.M.  
SYMPHONY HALL  
CO 6-1492  
Tickets: \$4.50/3.50/2.50

**MAD RUSSIAN**

• Live Soul Entertainment  
• Football Films • Slides

**SUNDAY HAPPY HOUR 4:30**

COMING- Chuck Berry & Fats Domino

77 WARRENTON ST., BOSTON

**LUCIFER** SUNDAY HAPPY HOUR 4 P.M.

Sophisticated Soul

Dixieland Nightly!

ROCK & JUG BANDS  
SUNDAYS AT 3:30 P.M.  
SILENT FLICKS  
members, guests, friends

THE KENMORE CLUB  
KENMORE SQ  
Boston 536-1950

# Art chairman Wayne Andersen forms a 'Student Art Council'

By Charlie Mann

The visual arts at MIT over the past two years have been as controversial as they have been striking. Last year, the Park Place exhibit of modern sculpture so disgusted some members of the student body that they stole one of the works. Other pieces of the same exhibit were dropped on the doorstep of Professor Wayne Andersen, Chairman of the Faculty Committee on Visual Arts.

The strength of the student reaction to art, whatever the form of that reaction, was enough to convince Professor Andersen that the students ought to have a more considerable voice in the selection of art to be exhibited on campus and the manner in which the selections will be shown.

**Council formed**

In order to achieve added participation, Professor Andersen has formed a counterpart of the Faculty Committee entitled the Student Art Council. The Council, composed of representatives from the Institute houses, includes five undergraduate and five graduate students. These students will work with Professor Andersen and make suggestions relating to all aspects of visual arts at MIT. At present the visual arts program is undergoing expansion to include more and larger exhibits, a viable art collection and increased ways to involve students in art.

**Methods criticized**

The methods by which art has been selected have come under considerable criticism. In response, two students from the Council will participate on the Exhibitions Committee, the Acquisition Committee and the Faculty Committee on the Visual Arts. These two students will then report to the Council.

Two points of controversy remain: first, why is money in considerable amounts being spent on art; and second, how should the art be selected: In the first case, the money spent has been donated by a variety of persons specifically for the purchase of art. The second has no definite answer.

**Modern art**

Professor Andersen justified the concentration of modern works in the Visual Arts Program on the basis that modern art is, to a large degree, an expression of a technologically oriented society and is, therefore, one valid interpretation of that society. Commented Andersen, "Why should we not emphasize advanced art if we emphasize advanced science."

In addition, the MIT community is not isolated but is a part of an urban environment that includes the Fogg and Boston Museums of Art, both of which have excellent collections of traditional art.

**Seven exhibitions**

Another factor governing the selection of works is that there are a limited number of shows available during a given year, and they must include the following: one traditional show, one painting show, one sculpture show and one architecture show out of an available seven shows. In addition, the cost of staging any good exhibition of traditional art can easily run in excess of \$20,000.

**Other innovations**

In setting up the exhibitions, the Committee has instituted a number of ideas, including gallery girls instead of guards, a new program of lecture tours and a plan to make available to any student on a one year, no strings attached loan a number of fine prints which range in value from \$150 to \$500.

## Fresh sports

# Harriers take triangular, 27-29-82

By Don Arkin

Freshmen athletes had a varied schedule last week. The frosh cross-country, soccer and sailing teams competed with differing degrees of success while the frosh gymnasts began practice.

The frosh harriers won, 27-29-82, in a triangular meet Saturday against Coast Guard and Wesleyan. Taking first for Coast Guard was Borloz with a time of 18:03 on a new three-mile course. Coast Guard runners also took fifth, sixth, eighth and ninth for their second place total of 29.

Craig Lewis was first across the line for MIT, capturing second with a time of 18:12. Next for MIT were George Kimball and Richard Goldhor, who took third and fourth. Bob Myers and Peter Borden rounded out the scoring for Tech by capturing seventh and eleventh. Gray finished

thirteenth for Wesleyan with a time of 19:11. Wesleyan's total was 82.

The soccer team lost to RPI, 4-0, Saturday afternoon. RPI was in command all the way as they scored one goal in each quarter.

The MIT gymnastics team began practice Monday. There is no freshman team so the frosh and varsity practice together. Eleven freshmen have showed up for practice thus far.

Starting this week the team will practice from 4:00 to 6:30 on Mondays, Wednesdays and Fridays and from 5:00 to 6:30 on Tuesdays and Thursdays. Any freshmen interested in coming out should come to the Armory at those times.

SAVE! SAVE! SAVE!

LOWEST CHRISTMAS RATES TO CALIFORNIA

LOS ANGELES OR SAN FRANCISCO

\$228.00 + 5% tax

COMPLETE ROUND TRIP FARE NO OTHER CHARGES

ALSO FLIGHTS TO SAN DIEGO

Group departures Fri., Dec. 20 and Sat., Dec. 21  
Return Sun., Jan. 5 (or any day between Jan. 1 and Jan. 19)

MEET PEOPLE IN THE CALIFORNIA RUSH  
MIXED TRAVEL GROUPS  
MIT - WELLESLEY - HARVARD - RADCLIFFE - BRANDEIS - TUFTS  
PINE MANOR - SIMMONS - BABSON - WHELOCK - AND OTHERS

OTHER SPECIAL CHRISTMAS FARES:  
Portland and Seattle: \$224.00 round trip  
Groups to Europe:  
London: \$223.00 - Paris: \$243.00 - Zurich: \$261.00  
LIMITED SPACE - RESERVE YOUR SPACE NOW!!!

HERITAGE TRAVEL, INC.  
238 Main Street  
Cambridge

call 491-0050  
ask for Miss Sherman

next to MIT at Kendall Square

# De Young speaks

## Sees role of business increasing

(Continued from page 1)

problems centered around the connection of the behavioral sciences to the field of management, in the areas of the integration of the transmission of management knowledge, the utilization of specialties, and communication among students, faculty, and managers in the field.

The last problem was emphasized as being of primary concern to the Sloan Fellows. Too often the student finds that he has received only raw data from his instructors and he must make his own judgments as to the application of the techniques. As a result, many managers in the field find that they must teach the new crop of managers the basics of how to manage.

In addition, this lack of dialogue between faculty and management deprives management of a very worthwhile source of new techniques and research done by the academic community. Professor Beckhard also emphasized the growing concern with the management of education itself. The recurrent theme during the lecture was a plea for communication between the academic community and the management field.

### Education incomplete

After being awarded the degree of Honorary Sloan Fellow, Friday morning President Howard Johnson reminded the audience of managers that upon them falls the job of understanding the time and also of doing something about it. "What has produced so well for so many has functioned poorly for a large segment." He cited as a cause for optimism a new awareness on campus and saw concern for one's fellow man as the first step. "Positive leadership is an essential function in our society to meet our hope and achieve our future."

Describing today's university to those who have been away for a while Professor Rosenblith raised the question of how knowledge a responsibility are to be coupled. He

noted an imperialism about knowledge, pushing its own frontiers both inside and with respect to the rest of the world. At present "it's hard to tell what's inside."

### Rosenblith

According to Professor Rosenblith there exists a trinity in universities consisting of education, research and public service. Today's university has assumed the responsibility of being one of the most important sources of change in society, of public service to keep society literate with respect to developments. Now ways of looking at problems, closer to the real world where there are no clearcut areas, have developed. "What kinds of new institutional forms do we have to evolve?" he asked.

### Understand and act

He felt it necessary that the university remain responsible for its brainchildren and their descendants, not just for first generation work, and that it not damage the functions it performs uniquely, especially the educational process. Universities can no longer claim the academic freedom privilege of the 13th century. Rosenblith said, the power to modify society must be related to institutional concerns. The university must live in the mood, style, mode of operation and organization of flexibility, and "give man a chance to experiment in society that is extremely experimental."

### University role Samuelson

Institute Professor and Professor of Economics Paul Samuelson reported on the New Economics. Beginning with a few assorted observations ("nothing's impossible in economics", "we're born with the same skull as primitive man but born into a modular world"), he looked back on a five year forecast he had formulated in 1965.

Since February 1961 there has been a "Methusala of an expansion" with the American economy reaching a high point in May, 1965. Since mid-1968 it

has been overheating, bringing forth calls for fiscal restraint which culminated in the tax surcharge (but at 10%, not 6%)

### Today's economics

Economists then began to wonder about overkill and whether fiscal restraint would cause a 1969 recession. The third quarter of 1969 showed only very modest restraint, with Wall Street remaining happy. There does seem to be some showdown but whether something will still go wrong remains a question.

Commenting on the coming election, Professor Samuelson remarked. "It seems that a born loser but that in Hubert Humphrey he's more than met his match."

Fielding questions from the floor, Samuelson noted that controlling employment and price stability together is a mixed economy is hard, Germany, France, and other countries can't do it . . .

### Business view

Russell De Young, Chairman of the Board of the Goodyear Tire and Rubber Company and Sloan Fellow of 1940 gave an "Industrialist's Look at Social and Technological Change." The time for action to keep the gap between technology and society from growing wider than ever is now, according to De Young. He saw an increasing demand for the private sector to take over. "It may even be good business to do so" he added, explaining that any drag is felt by all of society, and that the responsibility to eliminate it therefore rests with all of society. He noted that business and industry are mobilizing for action as never before.

"Government needs to have the creative competition of private industry in the area of social welfare" De Young proposed, but warned at the same time not to try "to be all things to all men." In closing he called for consideration of "not what the universe will do to us, but what man will do to himself."

## CLASSIFIED ADS

**BARGAINS FOR HOUSEHOLDERS:** Chairs, waffle iron, vacuum cleaner, broom closet, kitchen stools, maple table, dishes, many other items—all cheap. 50 Centre Street, Coolidge Corner, 277-0492.

**UPWARD BOUND GROUP LEADER NEEDED.** Work on Sat. throughout the year. Reg. student rates. interested in working with H. youngsters. Contact Dr. Louis M. 20C-006. X5124.

**AMERICAN UN family living in Rome** seeks to exchange home for one in greater Boston area next July and August. Offering exceptional, panoramic 3-story apartment in outskirts with bus and subway service to downtown Rome and nearby beaches. Write: G. Viera, FAO, Rome, Italy.

**WERE YOU IN CHICAGO?** Have Law students conducting survey of events during the convention. Want to talk with you. Call immediately Bruce 864-5291 or 864-8892.

**GOT ANY QUESTIONS?**—call John or Jim at 536-0713.

**FOR LESS THAN IT'S WORTH** you can have my dependable, loyal, low sexy red 80cc Yamaha. Call Larry—X6295 or 625-2241.

## Congressional fund cuts endanger Apollo project

(Continued from page 1)

minds of NASA officials that the shot would be successful. Minor difficulties which would have caused postponements in the Mercury and Gemini programs were encountered and overlooked.

At the same time as Apollo 7 was entering its final countdown, a Saturn booster was moved from the Vehicle Assembly Building to the launching pad. This rocket is scheduled to carry the Apollo 8 aloft in mid-December. If Apollo is successful, the flight plan could be revised to allow Apollo 8 to carry the astronauts on a "free return" trajectory to the moon.

The only pessimistic note came when Dr. Werhner von Braun, Director of the Marshall Space Flight Center, cited evidence for a decline in the morale of NASA personnel who have seen their programs cancelled before reaching completion. A major portion of the money appropriated for space exploration in the last few years has been needed to maintain the momentum of the Apollo project. This year's NASA budget, 3.3 billion dollars as compared to 4.4 billion last year, leaves no room for research and development on new and more ambitious space projects.

Von Braun sees hope for new programs since all three candidates for the Presidency have expressed interest in a strong and viable space program. However, he admits that since there is generally a two to three year lead time necessary before a new program can enter the construction and utilization phase, no new projects are likely to be seen before 1971.

The Apollo Applications Program, originally designed as a stop-gap measure because of lack of funds, is in serious trouble. In place of a full scale space station program, there was to have been a series of earth orbital flights providing a pseudo space station environment but utilizing left-over Apollo hardware. Five Saturn rockets, the type used in Friday's shot, were to have been used in the program beginning late this year. However, following Friday's launching, the last remaining launching pad capable of handling the Saturn I-B vehicle was deactivated. Since the launch complex will require nine to twelve months for reactivation, there is little possibility of an Apollo Applications Program flight before 1970.

### USSR tests seen

The Russians do not seem to be suffering from a similar lack of funds for the space program. The first test flight of the new Russian booster, expected to be more powerful than the Saturn 5, may come as early as next month. This booster should be capable of landing the entire Service and Command modules of the Apollo spacecraft on the moon.

One large Russian booster could be used to soft-land an earth-return vehicle on the moon. After radio data confirmed the safe landing of the return vehicle, a team of cosmonauts would be sent to the same area on the moon with a second booster. These cosmonauts would use the first vehicle to return to earth.

This lunar surface rendezvous technique is considered by many US officials to be at least as safe and reliable as the orbital rendezvous technique used in Apollo. If their program proceeds on schedule, von Braun expects that cosmonauts could land on the moon by the summer of 1969.

## Julliard String Quartet does Bartok at Jordan Hall Sunday

(Continued from page 9)

Mesto-Marcia, the cellist was required to continuously vary the pitch of a note by sliding his hand down the neck of the instrument, while the violist had to pluck the strings of his instrument, without bow in hand, to imitate folk-style guitar playing. The third movement, Mesto-Burletta, was staged almost as a battle between traditional and new techniques of string playing. At one point, the two violins were maintaining a consistent and outlandish dissonance which gave the impression of the composer sticking his tongue out at the audience. The Julliard Quartet conveyed the effect well, as evidenced by the laughter they drew with this antic of Bartok's. The final movement, Mesto, was serene until the cellist produced a peculiar buzzing sound during a quiet passage, with shattering effect. This deliberate technique gave the momentary impression that someone had left a radio on backstage, and had the desired effect of startling the audience. While we are on the subject of extraneous noises, it should be noted that the New England Conservatory would be well advised to vacate adjacent rehearsal rooms while concerts are in progress at Jordan Hall. The sound of a piano is somewhat out of place between the movements of a string quartet.

concluded the program, truly a noble piece of music, could hardly have been done better than it was by the Julliard Quartet. The fervor and feeling of their playing, plus the excellent ensemble work, far outweighed the occasional variability of the violin tone.

The Haydn quartet which

Second-class postage paid at Boston, Massachusetts. The Tech is published every Tuesday and Friday during the college year, except during college vacations by The Tech, Room W20-483, MIT Student Center, 87 Massachusetts Ave., Cambridge, Massachusetts 02139. Telephone: Area Code 617 876-5355, 864-6900, extension 2731. United States Mail subscription rates: \$4.25 for one year, \$8.00 for two years.

Tuesday October 16, 1968

# YOU'RE "IN" AT PHILCO-FORD IF YOU ARE

INTUITIVE  
INTROSPECTIVE  
INQUISITIVE  
INNOVATIVE  
INDEFATIGABLE  
INDESTRUCTIBLE  
INGENUOUS  
INDIVIDUAL  
INVENTIVE  
INVINCIBLE  
AND  
INVOLVED

PHILCO-FORD WILL BE HERE ON

DIVISIONS: Aeronautic • Appliance • Communications & Electronics • Consumer Electronics • Education and Technical Services • International • Lansdale • Microelectronics • Sales & Distribution • Space & Re-entry • Western Development Laboratories.

Tomorrow can be yours at Philco-Ford. If you have "a better idea" we have the desire and the resources to make it work. No matter what your area of interest, one of our 11 Divisions has a spot for you. Come and talk to us about your future—or write to College Relations, Philco-Ford Corporation, C & Tioga Streets, Philadelphia, Pa. 19134.

