

# Rabbi Pollack protests draft, collects 25 registration cards

By Dean Roller

The increased involvement of clergy in the domestic and foreign policies of the United States government is beginning to become an active concern of MIT's religious counselors. Rabbi Herman Pollack's participation in last Monday's antidraft rally at the Arlington Street Church forcefully demonstrated this anxiety, as he, along with several other clergy from the Boston area, accepted the draft cards of 25 youths protesting against United States participation in the Vietnam war.

## Boston arraignments

Rabbi Pollack's action took on added meaning in the light of the

indictment of Reverend William Sloane Coffin Jr., chaplain of Yale University, on charges of conspiring to aid young men to evade the draft. Arraigned along with Coffin in Boston's Federal District Court on January 30 were famed author and pediatrician Dr. Benjamin Spock, New York writer Mitchell Goodman, co-director of the Institute for Policy Studies in Washington Marcus Raskin, and Michael Ferber, a graduate student in English at Harvard. If convicted the men could receive maximum penalties of five years in prison and \$10,000 fines. Following the arraignments, a procession gathered which led to the

Arlington Street Church the center of peace and civil rights rallies in Boston for the past several years. Here a "Rededication Service" was held at which Rabbi Pollock delivered an address citing evidence from the ancient Hebrew Talmud in support of the war's conscientious objectors. He then proceeded to collect the draft cards of 25 men from the audience. These cards will eventually be sent to the United States Justice Department.

## Moral issues

Pollock told *The Tech* that there are very valid grounds for being a conscientious objector by participating in civil disobedience. He feels that the government's

(Please turn to Page 2)



Vol. 88, No. 2 Cambridge, Mass., Friday, February 9, 1968 5c



Rabbi Herman Pollack collects draft cards during the trial of five men, including Dr. Benjamin Spock, accused of aiding young men in evading the draft. L. to R.: David Dellinger, Rabbi Pollack, and Father Philip Berrigan.

## Gray leaves two positions

# Rota, Buttner to coordinate FAC policy and counseling

MIT President Howard Johnson has recently announced the appointments of Professor Gian-Carlo Rota as Chairman and of Mr. Peter Buttner as Executive Officer of the Freshman Advisory Council. They will be taking over the positions from Professor Paul E. Gray, who will move on to his new post as Assistant Provost.

## Responsibilities of FAC

The FAC is composed of about one hundred members of the faculty and administration. These individuals are responsible for the orientation and counseling of the freshman class and approximately 200 sophomores who have not designated a departmental course in their second year. The executive committee of the FAC, which Professor Rota will head, is responsible for developing policy

guidelines for the counselors and for the freshman orientation weekend and the freshman course selection program. Professor Rota will be responsible for providing liaison on matters of policy between the FAC and certain faculty committees and administrative offices.

## Diversified background in mathematics

Born in Vigevano (Milan) Italy, Professor Rota received his B.A. degree (summa cum laude) at Princeton University in 1953 and his M.A. and Ph.D. degrees in 1955 and 1956. He was postdoctoral research fellow at New York University in 1956 and 1957, and Benjamin Pierce Instructor at Harvard from 1957 to 1959. Dr.

(Please turn to Page 2)

# Professor Pye holds little anxiety over Cong 'desperation' offensive

By Tom Pipal

On December 20, 1967 Professor Lucian Pye, of Course 17 in conjunction with a group of thirteen other leading Asian scholars published a report on our Asian foreign policy. Since that time, over three hundred other professors in the field have also signed the report. A summary of that report follows:

First, developments in the Asia-Pacific region are of vital importance to the future of the United States. Second, it is appropriate to recognize that in Asia, as in Europe, the United States was called upon to play a crucial and largely unilateral role in the years immediately following World War II. Mistakes were made but on balance, ours is a record — both in Europe and in Asia — of which we can be justly proud. And finally, we must examine the issues, procedures and cultural attributes in the American scene which have a major impact upon our foreign policy. It is false and dangerous to argue that we must choose between our international commitments and our domestic ones. We need not revert to the isolationist policies which precipitated both World War I and World War II. But having been recognized by the Public Affairs In-

stitute of Freedom House (it was the PAI of Freedom House that selected Professor Pye to be a delegate to the conference which War II in order to solve our domestic problems.

## Pye Reserved

When questioned about the report, and in particular about the present situation in Vietnam, Professor Pye seemed very pressed for an answer. He stressed the point that all his opinions were personal and could certainly be published (the report) as one of the top fourteen men in the field, his opinion should certainly carry a great amount of weight.

## Offensive "Interesting"

Concerning the new offensive staged by the "National Liberation Front," Professor Pye, al-

though obviously interested from the academic point of view, did not seem severely concerned. He stated that the Viet Cong terrorists, but in particular the North Vietnamese Regular Army, was taking a great and somewhat foolhardy risk. In essence, they were exposing the cream of their manhood to the firing line with almost

(Please turn to page 2)

# Teaching, research to be draft exempt

By Greg Bernhardt

A definitive policy on graduate student deferment will likely appear later this spring, according to Mrs. Eleanor Lutz, Selective Service Adviser. The plan will provide deferments for all graduate students who assist in teaching or participate in active research critical to national defense.

## 2A classification

The new deferment will be known as a 2A classification. The plan has been approved by the President's Scientific Manpower Commission, and the National Headquarters of the Selective Service System. The recommendations have been sent to the National Security Council. At present there is a moratorium on drafting graduate students.

## 'Informed Americans'

While the graduate deferment policy appears to be clearing up, some others are apparently intent on further confusing affairs. The *Tech* recently received a letter from the Committee for Informed Young Americans in which a number of charges were made concerning Selective Service policy. The letter stated, "We discovered how little is known about the draft law and how difficult it is to find any information... We have spent months researching the law and have found a lot of facts that are not generally known outside the Selective Service Headquarters."

The letter then listed a number of statements concerning draft policy. With the help of Mrs. Lutz,

(Please turn to Page 14)



Professor Lucian Pye, expert on the Far East and the Vietnam War, is not worried by the present offensive.

Beaver Key applications are due tomorrow Feb. 10. Anyone who has not yet picked up an application can do so from any Beaver Key member or by contacting Herb Finger at 262-7034.

# MIT High becomes a teaching lab

By Scott Hartley

An entirely new type of undergraduate course may be offered to next fall's students at the Institute. The proposed course, a teaching lab seminar, would include actual classroom teaching experience in the public high schools of Cambridge.

## MIT High

Proposed by Richard Adelstein and other members of the group working on "MIT High," the idea is a direct outgrowth of that original project. If full approval is granted, both by the Cambridge school board and the Institute, the course would admit approximately 75 undergraduates.

## Letvin's Suggestion

First suggested by Dr. Jerome Letvin at last fall's Myth Conference, the MIT High project was begun early in November when a group of over 200 interested students attended the first organizational meeting.

A steering committee, led by Mark

Spitzer, Richard Adelstein, and Dave Peterson, undertook direction of the program, forming five work groups to study various aspects of the problem. To date, these study groups have apparently accomplished very little.

## No Money

Necessary funds for building such a high school were estimated by Peterson at \$10 million, to be used over a ten-year period. They might be raised from private foundations with the aid of MIT. However, since no budget has ever been suggested, money-raising can hardly begin.

With these problems cropping up, the idea of using available high school facilities came as a welcome alternative to those in charge. As Mark Spitzer remarked of the program, "It was just a matter of giving it some coherent direction."

## Ohio Experiment

Research on similar experiments elsewhere revealed an instance at Ohio State

University where high school students working in a college-type environment showed dynamic improvement over an eight-year period.

Adelstein has recently been talking with teachers, administrators, and parents of the Cambridge school system. Responses have been so encouraging that he feels ready to announce the new proposal in a general meeting on Tuesday, February 13.

## "Unofficial" Approval

Authority for this announcement comes mainly from the unofficial approval of the project by Cambridge's assistant superintendent of education in charge of high schools.

However, some negative reactions have come from some parents, the chief objection being a fear of lowering in the caliber of teaching with the introduction of undergraduate students as "teaching assistants." It is as yet unclear whether these objecting will be able to exert sufficient influence to block the program.

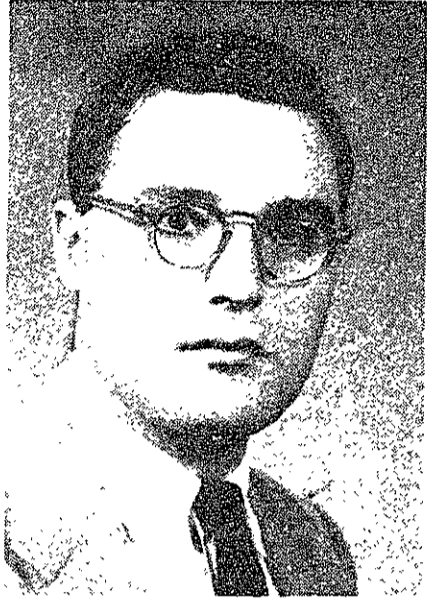
In response to numerous inquiries, the News Department of THE TECH wishes to clarify its policy on unsolicited material. In general, we are glad to consider any material which is submitted; obviously our reporters cannot be everywhere and usually a story is better written if it is done by someone with first hand knowledge. Contributions from political and social action groups are particularly encouraged, provided the material is factual. Needless to say, individuals with ideas for news stories which they are unable to develop themselves are also encouraged to bring these to our attention.

# FAC officers selected

(Continued from Page 1)

Rota joined the MIT faculty in 1959 as assistant professor of mathematics. He became associate professor in 1962, left for two years (1965-1967) to become professor of mathematics at The Rockefeller University, and returned to MIT as mathematics professor in 1967.

Professor Rota has made im-



Prof. Gian-Carlo Rota

portant contributions in research in the fields of combinatorial theory, spectral theory, and probability. He is co-author of the textbook *Ordinary Differential Equations*, editor of *The Bulletin of the American Mathematical Society*, and associate editor of the *American Mathematical Monthly*.

Former student aid assistant Mr. Buttner has been assistant to the director of student aid at MIT since June, 1965. In his new position as Executive Officer of the FAC, he will become assistant to the dean of student affairs. He will be responsible for advisor recruitment, assignment of students to advisors, and operational liaison with the Admissions Office, Registrar, Schedules Office, heads of freshman subjects, and faculty in residence. In addition, his office will handle the detailed planning and implementation of both freshman weekend and the course selection program.

Mr. Buttner received his S. B. degree in political science from MIT in 1961. He served in the U. S. Army Signal Corps from 1961 to 1963 as a lieutenant. From



Mr. Peter Buttner

1963 to 1965 he was employed by IBM in computer programming and communications systems analysis. As assistant to the director of student aid, he has been involved in providing data processing support, system definition and liaison between the Student Aid Center and the Office of Institutional Studies. Mr. Buttner, his wife and two children, are residents of Wayland, Massachusetts.

# NSC may grant II-S deferments to graduate student assistants

By John Corwin

Early reports from Washington indicate a possible liberalization of graduate student deferments in the future, according to Mrs. Eleanor Lutz, Selective Service Adviser.

The President's Scientific Manpower Commission recommended to the National Security Council Tuesday that all graduate students who are teaching assistants or research assistants be granted occupational deferments (II-A) regardless of their field of study. The National Headquarters for Selective Service issued the same recommendation, and so did the American Chemical Society. No specific references to changes in current policies regarding the II-S have been issued as yet.

The National Headquarters for Selective Service indicated Wednesday that "We may require the graduate students to do a little more teaching or a little more research to qualify for the II-A than is being done by graduate students currently."

# Pollack—

(Continued from Page 1)

failure to ever clearly state the causes of the war and the continual support of a corrupt and

non-democratic regime in Vietnam gives us all a very definite right to "search and question to settle moral issues."

### Legal interpretation

An issue that may appear as a result of Rabbi Pollock's action and one that has certainly come to the forefront of the case against Rev. Coffin is whether or not his action and participation in anti-Vietnam civil disobedience influenced the youths to turn in their draft cards and break the law.

(Please turn to Page 6)

New Board of Tech Engineering News Volume 50	
General Manager	Barry Eisenstat '69
Editor	George Flynn '69
Business Manager	Al Ratner '69
Managing Editor	Neil Colvin '70
Associate Editor	Norman Marx '71
Associate Managing Editor	Mark Fishman '71
Art Editor	Pete Stasiowski '69
Photo Editor	John Bergmann '71
Distribution Manager	George Randall '70
Publicity Co-ordinator	Dave Silverman '69
Comptroller	Richard Hawryluk '71

# Hanoi gambles on military force, internal weakening of US resolve

(Continued from Page 1)

no hope of victory. He explained this in three ways, the first taken almost directly from the report.

### Reasons for offensive

The report stated that "Hanoi is placing considerable hope at present upon the theory that the United States will end in Vietnam as did France — forced to accept defeat by a combination of internal political considerations and external pressure . . . In this sense, the outcome is being decided on the streets and in the homes of America as much as in the jungles of Vietnam." To cause a panic in America, to shake America's belief that the war in Vietnam still can be won would be the closest thing to the heart of any Viet Cong. With this in mind, it is not difficult to see at least one reason behind this new offensive. However, Professor Pye does not see this as the main reason.

### What we are fighting

In an interview with Professor Pye, he stated that to understand this new action, you must first understand both the political and psychological goal of these people. Unlike ourselves, they are fighting for their homeland. But also, they are fighting for control of that homeland. This is not a group of individuals fighting for the liberation of a country and then going on to decide what kind of government is right for them. Rather, it is a government fighting for control of a new area and in this there is a total and absolute personal commitment. The professor called this new offensive analogous to Japan's use of Kamikaze pilots in World War II. Both situations were desperation moves to keep the war effort going. But why is it so necessary to keep the war going, particularly when faced by such a formidable opponent?

Professor Pye explained it in this way. He stated that this was a government designed and oriented towards war. It simply could not survive in a situation of peaceful co-existence. This is the reason behind the fact that they have not simply tried to infiltrate the present South Vietnamese government; they are a government themselves.

### Situation Polarized

Concerning the report the Professor had this to say: "The main opposition to the report has come from those who believe it to be a document simply supporting the administration's point of view. This was not its intent." The professor went on to say that the intent of the report was to make it possible to again debate the Vietnam issue without being immediately classified as a "dove" or "hawk." He said that debate had become polarized with seemingly only two views possible and likened it to the situation existing during the Korean War. You were immediately classified as backing either Truman or MacArthur. Now you are classified as total dove or total hawk. The professor believes this a most unhealthy situation.

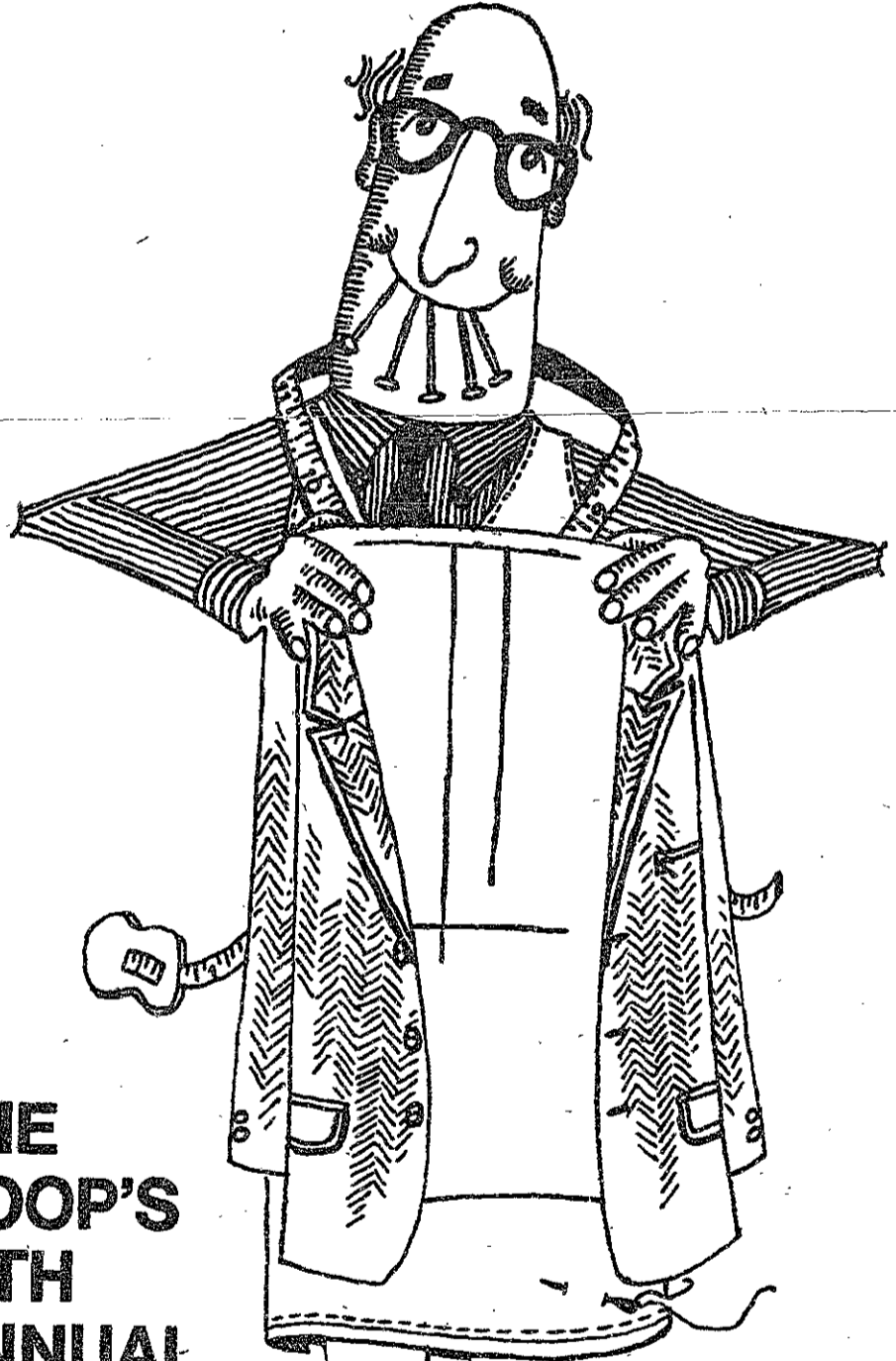
### Was it worth it?

As for the future, the report is optimistic. It points out the recent success in Indonesia and generally states that: "the United States has bought time for two-hundred million people (of South East Asia) to develop, without their being ceaselessly confronted with combined external-internal Communist threats of growing proportions." And the experts seem to think that it was and still is worth the price.

## SINCE 1882 SMART SHOPPERS SHOP THE COOP

SINCE 1882 SMART SHOPPERS SHOP THE COOP

THE COOP SINCE 1882 SMART SHOPPERS SHOP THE COOP SINCE 1882



## THE COOP'S 11TH ANNUAL "MADE-TO-MEASURE" SALE

Starting in the month of February you may purchase expertly fitted "Made-To-Measure" suits and sport coats at exceptional savings.

SUITS . . . \$110.00, REGULARLY \$145.00 to \$160.00.

You save \$35.00 to \$50.00 on every "Made-To-Measure" suit you buy. All "Made-To-Measure" suits are made to your specifications, in your choice of luxurious imported worsteds, chevots, flannels, lightweight Dacron® polyester and wool blends.

SPORT COATS . . . \$75.00, REGULARLY \$85.00 and \$90.00.

"Made-To-Measure" sport coats are tailored to your individual needs in sumptuous tweeds and shellands.

Each and every suit and sport coat will be impeccably fitted by our two master tailors . . . Joe Luongo and Pat Fiandaca. Come early to the Men's Clothing Department, second floor, main building of the Harvard Square store for best selection of fabrics during this outstanding event.



84 Massachusetts Avenue, Cambridge, Mass. 02139

Regular Hours: 8:50 - 5:30 PM, Mon. - Fri. / Sat. 9:20 - 6 PM  
Open Thursday 'til 9 P.M.

All Makes — Large Variety  
**SQUASH RACQUETS**  
**Tennis & Squash Shop**  
67A Mt. Auburn St., Cambridge  
(Opp. Lowell House)  
TR 6-5417

**ROXBURY HOUSE FOR SALE**  
\$3,850 Total Price—1897 Victorian House. Fireplace, 3 floors, 11 rooms, 2 baths. Call David Hahn, MIT '65, at 445-5810.

THE COOP

THE COOP

**YELLOW CAB SERVICE**  
ALL CABS RADIO EQUIPPED  
Dial MIT X2303

**Edwin O. Reischauer**

Former Ambassador to Japan — University Professor, Harvard

**DISCUSSES JAPAN  
EAST CAMPUS SEMINARS  
IN GOVERNMENT**

Talbot Lounge, East Campus  
8 p.m. Tuesday, Feb. 13

Faculty reshuffling?

**Rosenblith asks innovations**

By Jay Kunin

A major change in faculty committee structure may be in the offing, if faculty chairman Professor Walter Rosenblith has his way. Although still in the idea stage, Rosenblith is now formulating his opinions into discussion suggestions to be gone over at a faculty meeting at the end of this month.

The major change suggested in The Tech's interview with Rosenblith is a reorganization of committees by a "task force orientation" system, as opposed to present all-encompassing struc-

ture. These committees would be organized to study specific problems, and would disband when the problem was sufficiently investigated.

Tried on CEP

The program was recently tried experimentally with the Committee on Educational Policy; three "task forces" were organized to study the problems of the Institute core curriculum, evaluation of student performance, and the structure of faculty committees. According to Rosenblith, the experiment was a success because specific issues are better handled

through intensive discussion by smaller groups. Another advantage of this type of organization is the ability to call in people who are not members of the parent committee, should their knowledge or opinions about the subject under discussion be wanted.

'Continual flux'

The basic idea of any change in the faculty structure is twofold. First, it is a "natural concern in the evolution of the faculty," in that, in a university like MIT, policy is in a "continual flux" and this should be reflected in its faculty committees. A program of this sort would make the faculty structure more flexible and closer to the needs of the Institute. The second premise is that faculty, students, and administration are not always involved in policy decisions that effect all of them, and that this reorganization would help remedy the situation.

'Continuity'

A major factor in restructuring would be a change in the CEP. Rosenblith would like to make this group a "smaller committee with more continuity." Finally, his goal is to "produce a faculty organization that can respond as rationally as possible to the changing demands of the educational scene." Rosenblith wished to stress, however, that these ideas are still ideas of his, and must be presented to and discussed by the faculty, administration, and student representatives before they can even be considered as concrete suggestions.

**A growth challenge to M.B.A.'s**  
from Standard Oil Company (New Jersey) and its 300 worldwide affiliates.

**SEE US ON CAMPUS FEBRUARY 14 AND 15**

You may discover a career of unlimited growth potential with Standard Oil Company (New Jersey) and its worldwide affiliates in oil, chemicals, plastics, cryogenics and minerals. In each of these, we're operating an unusual system of developing management people.

It starts with decentralization of responsibility to autonomous affiliates. We're ideally structured to see that you don't "get lost in the organization."

And as you grow, you'll never face the mid-career blight that comes from choosing too small a company at the start. Your advancement can be inter-company as well as intracompany, overseas as well as domestic.

We'll give you a real growth challenge during your whole career—because this is a basic responsibility of our top management.

If you have superior business and analytical ability, confidence, and unusual breadth of view, we have immediate openings in a variety of activities, including: marketing—pricing and research; investment evaluation and coordination; financial management; feasibility studies; business and operations analysis; supply planning; and mathematics and systems.

The Jersey story is one you should hear. Make an appointment with your placement office now to hear it while we're on campus.

**Humble Oil & Refining Company    Enjay Chemical Company**  
**Standard Oil Company (New Jersey)**  
and its other affiliates  
Equal Opportunity Employers



**LLOYD STEBBINS**

BScHE, Bucknell, was assigned to open hearth operations at our Bethlehem, Pa., Plant soon after joining the 1965 Loop Course. Lloyd helps coordinate the multi-million-dollar maintenance program, analyzes operating costs, and heads up experimental programs. He's studying for an MS under our Educational Assistance Program.

**MANAGEMENT MINDED?**

Career prospects are better than ever at Bethlehem Steel. We need on-the-ball engineering, technical, and liberal arts graduates for the 1968 Loop Course. Pick up a copy of our booklet at your placement office.

*An Equal Opportunity Employer in the Plans for Progress Program*

**BETHLEHEM STEEL**



# Black Power

Just before intercession, Dick Gregory spoke at MIT. And, in one fell swoop, LSC managed to justify its existence. Dick Gregory had something to say.

If he had known his audience better, perhaps his talk would have come out as an appeal — an appeal to the students to wake up and do something about the racial mess this country is in. Gregory pointed out that he now spends 90% of his time on college campuses. He is not worrying about the older generation, for they will not be around long enough to make a great deal of difference. He sees his role as waking up the massed student body of this country.

Gregory's key point can be summarized in one statement he made in

answer to a question. In describing what Chicago would be like next summer, he said, "If I had a match, I'd show you." He then invited students to join him in protesting the Democratic convention. Everyone at the Institute can realize that there is discrimination in this country, but it will not make a bit of difference unless they have the intestinal fortitude to get out and do something about it.

We are not advocating a program of riots started by Techmen next summer. However, it certainly would not hurt for each and every student to get out and learn about the subject first-hand — by working against discrimination and for equality.

There were riots last summer. There will almost certainly be more next summer. What are you going to do about it?

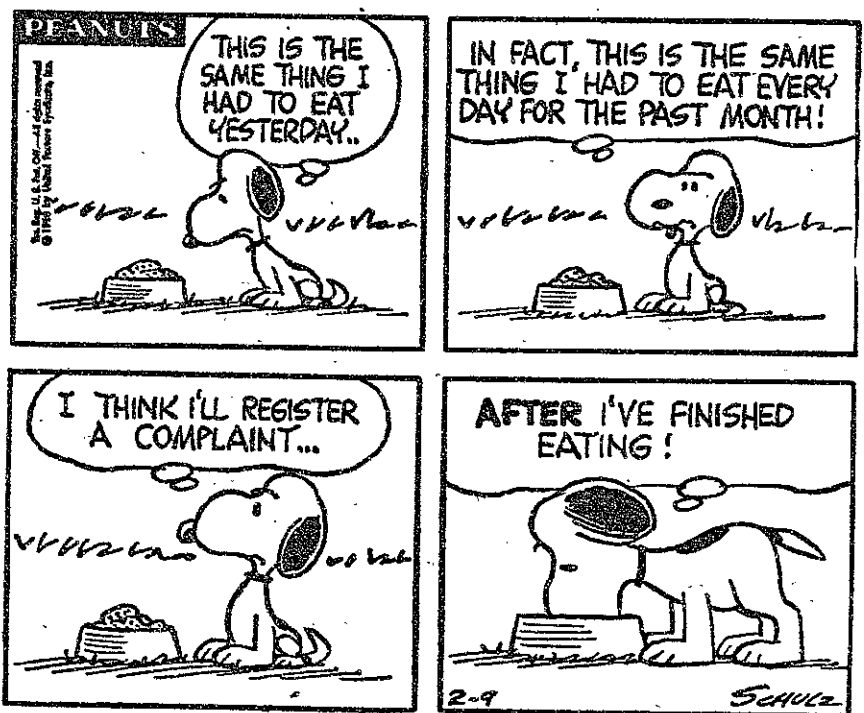


Vol. LXXXVIII, No. 2 Feb. 9, 1968

Chairman	Tom Thomas '69
Editor	Tony Lima '69
Managing Editors	Greg Areson '70 Karen Wattel '70
Business Manager	Pat Green '69
Production Manager	Michael Warren '69
News Editors	Carson Agnew '70 Steve Carhart '70
Sports Editor	George Wood '70
Entertainment Editor	Randy Hawthorne '71
Photography Editor	George Flynn '69
Advertising Editor	Jack Swaim '68
Editorial Consultants	Mark Bolotin '68 John Corwin '68, Nick Covatta '68 Guille Cox '68, Dan Green '68 Bill Ingram '68, Mike Rodburg '68
National Advertising Manager	Dave Dewitte '69
Associate Sports Editor	Ron Cline '71
Accounts Receivable	Stan Gilbert '71
Assistant Advertising Manager	Dick Stokes '71
Controller	Steve Kinney '70
Treasurer	Steve Tharp '71
Secretary	Jane Fisher
Managing Staff	Larry Silverston '70 Wells Eddleman '71, Bill Hahn '71 Leslie Horwitz '71, Mitchell Serota '71 Lee Swislow '71
News Staff	Dave Kaye '68 Peter Meschter '69, Ed Chaffie '70 Bob Dennis '70, John Foran '70 Jack Katz '70, Don Minnig '70 Dean Roller '70, Pat Szymanski '70 Barry Weiss '70, Louis Zarfas '70 Greg Bernhardt '71, Jay Kunin '71 Philip Selwyn
Entertainment Staff	Orville Dodson '68 Barry Mitnick '68, Ray Hagstrom '69 John Loewenstein '69, Steve Grant '70 Raisa Berlin '71, Marc Covitt '71 Ray Ergas '71, Roy Furman '71 Peter Lindner '71, Mike Mihalca '71
Sports Staff	Herb Finger '68 Jon Steele '68, Arm Varteresean '68 Steve Wiener '69, Scott Rhodes '69 Robert Dean '70, Jeff Goodman '70 Bill Michels '70, John Wargo '70 George Novosielski '71, Dale Geiger '71 Scott Ramos '71, Dave Peterson '71
Photography Staff	Harold Iuzzolino '68 Larry-Stuart Deutsch '67, Morris Markowitz '68 Bob Reed '68, Dave Pack '68 Steve Silverstein '68, Pete Blucher '69 Terry Bone '69, Tom Dooley '69 Jeff Reynolds '69, Dale Stone '69 Stan Hoderowski '70, Kanth Rao '70 Brad Williamson '70, Mike Venturino '70 Steve Lee '70, Steve Orcutt '71

Second-class postage paid at Boston, Massachusetts. The Tech is published every Tuesday and Friday during the college year, except during college vacations by The Tech, Room W20-483, MIT Student Center, 8 Massachusetts Ave., Cambridge, Massachusetts 02139. Telephone: Area Code 617 876-5855, and 864-6900 extension 2731. United States Mail subscription rates: \$4.25 for one year, \$8.00 for two years.

Front page photo of registration by Steve Grotter.



# Letters to the Tech

## War crimes

To the Editor:  
Regarding the article in the February 6th edition concerning the statement by the 400 French and Japanese scientists condemning the use of universities and their facilities for war research, I would like to point out a small inaccuracy, and also contribute to the information given. MIT does not, in fact, hold the distinction of being the largest single defense contractor among American universities. Rather, Johns Hopkins holds this honor to the tune of \$50,394,000, compared to MIT's \$47,308,000, followed by Stanford Research Inst. at \$30,000,000.

The contracts now outstanding run from Johns Hopkins' high to a low of \$339,000 at University of Missouri. Other colleges include Emmanuel, Dartmouth, University of Alaska, and Yale. In all, 89 Universities are involved out of 500 contractors listed by the U.S. Department of Defense.

From a CBW (Chemical and Biological Warfare) directory compiled by the editors and staff of "Viet Report": "MIT has been active in a major Army project on the Pharmacology and Physiological Chemistry of Chemical Warfare, designed to develop through pharmacological research, data for the support of a rational approach to the search for a new CW lethal and incapacitating agent."

MIT's share of this project was performed under Contract No. DA18-108-405-CML-942; the principle investigator was Dr. L. Stark. According to a 1961 report, MIT's specific task was to "determine the usefulness of servoanalytic, information theory concepts and digital computer programs in the assessment of proposed incapacitating compounds." (ARTS, p. 1-140; Army Research Task summary, Fiscal year 1961, nine volumes; Washington, D.C., Dept. of the Army, 1961).

The list of such projects, information concerning which is open to all, albeit hidden in an impossible tangle of bureaucracy, is endless. What is more frightening is the realization that these are non-secret projects, and that much of the defense funds goes into "secret" and "classified" projects, the nature of which are largely unknown at this time, although certain information has been turned up, and more is in the offing.

It is perhaps naive of me to point out that CW, lethal, and non-lethal, is illegal under international law, and while the US has claimed that the CW used in Vietnam is non-lethal in nature, there is a massive amount of evidence accumulated by the International Red Cross that this is only true in the case of healthy, adult males. In any event, the US tries to cover up its violations of CW accords by claiming the chemicals we use are non-lethal. In that case, why is MIT engaged in research for lethal CW agents? It is not naive of me to point

out that those people who actively or passively contribute to the war research effort at MIT either by engaging in research or accepting its presence here are guilty of crimes even the super naive post-world war one diplomats and politicians considered heinous and "illegal." (See Sartre: "On Genocide" in this month's Ramparts.)

This is only one of a long list of items in the indictment of the US in its role in Vietnam and the world at large. MIT shall certainly be considered an accessory to the crime.

Jeffrey B. Satinover '69  
P.S. After reading a certain poster, I welcome Y.A.F. to the club.

(Ed. note: Our defense contracting figures were for the year 1967. This large change could be due to the radical change in the nature of the Vietnam war, or the fact that some universities have given up large portions of their government research due to the bad publicity generated.)

To the unwary reader, we would point out that most synthetic materials, if breathed long enough, tend to lead to death.

## Police brutality

To the Editor:  
Today I observed a young man carrying a pile of newspapers, The Avatar, run into the building 7 information office, breathlessly explaining that a Cambridge Policeman had spotted him selling his newspaper and that he was taking refuge in the Institute. Sure enough about 60 seconds later a member of Cambridge's finest appeared on the scene and apparently unable to make an arrest on Institute property phoned what I assumed to be our Campus Patrol to relate the situation. Now I know that a policy of cooperation exists between the Campus Patrol and local police forces and I'm completely in favor of this as a general policy, but I wonder if in this particular situation (The Avatar) an exception to general policy could be made. Suppression of ideas in society itself can hardly be tolerated, in the university community it is an absolute farce. I am writing this letter to The Tech because I believe that freedom of the press for all press is the vital interest of each publication in the community. I hope that you will see fit to take some action in this matter: perhaps a talk with Capt. Sidney.

Jacob A. Bernstein '68  
(Ed. Note: The Tech contacted Lieutenant Olivieri of the Campus Patrol, who informed us that the Patrol's policy is to warn salesmen who are MIT students against repeating the offense; non-MIT salesmen are asked to leave the campus. In fairness to the police, we would like to point out that there is an obscenity judgment against Avatar now, and it will remain in effect until a higher court rules on the appeal now taking place.)

# The Thumb

Recently, the city of Boston has taken it upon itself to see that the menace of hitchhikers is eliminated from the streets forever. Thus it is that, on a frosty morning, students engaged in the pastime of hitching across the Harvard Bridge in an attempt to get to their classes on time have found themselves short a few dollars as a result of a slip of paper given them by a man in a blue suit.

Actually, it is hard to condemn the city for this. Hitchhiking is indeed against the law. Until recently, however, the regulation had been enforced only mildly, to say the least, and was virtually never applied to students crossing (or attempting to cross) the bridge.

Recently, however, the police department appears to have gotten a bug on traffic control. It is charged that hitchhikers interfere with the normal flow of traffic by standing far out from the curb, forcing cars to form a single lane of traffic to avoid them. This is no doubt true, and a word to the wise on this subject should be sufficient. However, in the spirit of exchange, we believe that the Boston police should reciprocate by ticketing only those people who are, indeed, interfering with the flow of traffic. This is a matter of personal judgment, of course; it is assumed that a police officer will have developed this capacity.

This seems like a reasonable solution to a problem which is minor, but which is also causing a "tax on those least able to bear it."

## College World

# YAF builds Berlin Wall; Hemlines affect economy

Protests have taken a slightly different turn at Ohio State University. Instead of the usual pickets and mimeographed handouts, the Young Americans for Freedom went into the construction business. The Soviet Union was holding an education exhibit, so the YAF constructed a "Berlin Wall." The wall, a cardboard structure, was seven feet high and forty feet long. It came complete with a "Checkpoint Charlie" and guards.

Certainly a more classical protest occurred when Dow Chemical came to the University of Minnesota campus. The philosophy de-

partment came out in full force with biting comment on the war. Included was a handpainted sign that read, "University of Minnesota faculty protest the production and use of napalm tokened by the presence of Dow Chemical on campus."

## Bargains

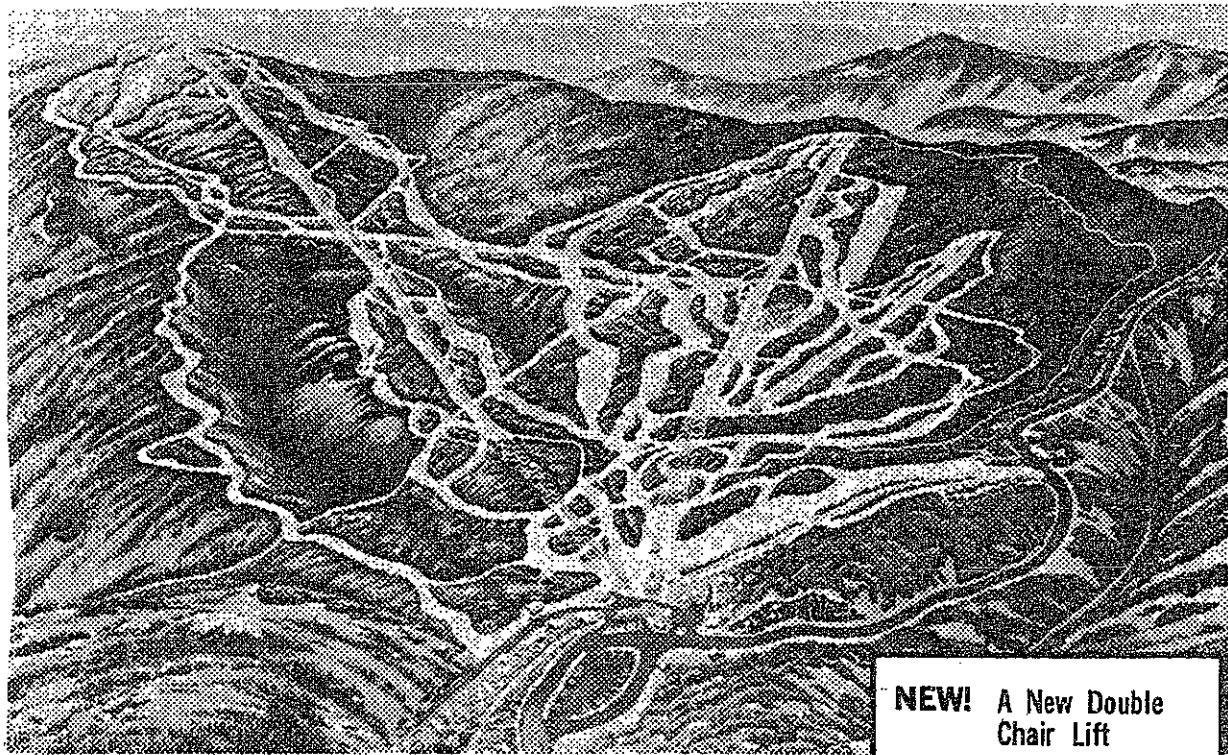
Meanwhile, George Washington University is busy raising funds. In a good old-fashioned auction, such items as lunch with Senator Hatfield and a Go-Go girl for an hour went up for sale. The proceeds went to the university library fund.

A new economic principle has

been formulated that promises to equal the law of supply and demand. This one has been set forth by the H. W. Gossard Company, manufacturer of bras. Gossard's law of economics states that as the hemline goes, so goes the economy. Gossard has been accurately predicting the economy since 1958. For instance, 1957 was a record year as miniskirts reached new highs. The prediction for '68 shows a see-saw year as the mid-thigh and mid-calf skirts appeared on the market.

Gossard's thesis is backed by

(Please turn to Page 15)



**a Particular Place  
For Particular Skiers...**

Exciting skiing for all skills. Complete variety in steepness and difficulty from the *Chute and Fall Line*, among New England's steepest, to gentle *Loon* and *Vixen*. Headquarters of 9 leading ski clubs! Special SKI WEEK rates. Write for Folder, information.

- NEW! A New Double Chair Lift
- NEW! Five New Trails
- NOW! Three Chair Lifts and T-Bar
- NOW! 25 Trails
- NOW! Great Skiing Variety

In the "Snow Corner" of New England

**MAD RIVER GLEN**

SKI AREA

Waitsfield, Vermont • on Routes 100 and 17



**SCE "Gripe Week" to feature maps, exhibits and questionnaires**

Maps of the Institute with crayons for people to write comments and designs will be one feature of a lounge-nodal area-exhibit in the lobby of Building 7. The exhibit will be part of the publicity for a "Gripe Week" to be sponsored by the Student Committee on Environment some time early this term.

There are two main objectives for creating a "Gripe Week." They are:

1. "To increase student interest in and student knowledge concerning their environment"
2. "To gather student opinions about various aspects of the environment, generate ideas, and determine areas of greatest student interest in an attempt to determine our committee's course of action."

**Nodal areas tested**

In addition to maps the exhibit will contain a student art display, architectural designs for Buildings 7 and 10, classroom designs, color schemes for the halls of the Institute, furniture for relaxing, coffee posters and displays hanging from the mezzanine, and comment pads placed in various parts of the exhibit. The exhibit in itself will also serve the purpose of examining the feasibility of nodal areas.

Questionnaires to be distributed Another plan for "Gripe Week" will be the distribution of a short questionnaire to get the fullest possible return of student opinion. Suggestion boxes will also be placed throughout the Institute and in

To complete the program "Encounter"-type luncheons will be held in the exhibit in Building 7 with various people who play a part in determining or have expressed an interest in student environment.

**Constructive Criticism Sought**

It is emphasized by both the Planning Office and the SCE that though the name of the week has negative connotations positive constructive comments will be sought

"Gripe Week" is the implementation of one of several ways to develop student interest in their environment. A previous device was the model classroom. The Planning Office stands ready to promote useful ideas. The definition of useful improvements must ultimately come from the students whose environment they will improve.

Elections for Undergraduate Association President, Class Presidents and the Executive Committees of the Classes of '69, '70, and '71, and Permanent Class Officers for the Class of '68 will be held Tuesday, Feb. 27.

Petitions and campaign rules will be available in the Incomm Office, W20-401, after Registration Day, Feb. 5. Petitions must be returned by 4 p.m. Feb. 19.

**Astronomers,  
salesmen, designers,  
programmers, chemists,  
psychologists, writers,  
sociologists, economists,  
metallurgists, artists,  
accountants, physicists,  
mathematicians,  
etc, etc, etc.**

**That's what  
General Electric  
is made of.**

General Electric is made up of a lot more than just engineers — because it takes a lot more than engineers to tackle the problems we deal with. Like helping to unsnarl traffic jams in our cities, fighting air pollution or finding new ways to provide power for underdeveloped nations. It takes sociologists, meteorologists, astronomers, writers — in fact, it takes people with just about every kind of training. But, more than any of this, it takes people

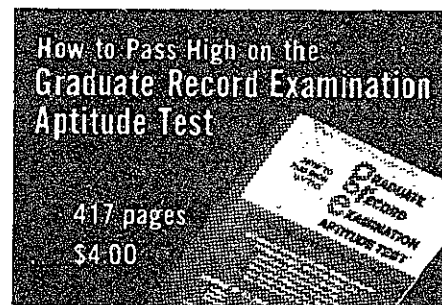
with nerve, gumption, intellectual curiosity — people who care about what happens to the world. So it's not only your major we're interested in. It's you. Why not see our interviewer when he comes to campus and find out whether you're the kind of person General Electric is made of.

**GENERAL ELECTRIC**  
An equal opportunity employer

**Preparing for a  
Graduate School or  
Professional School  
Exam?**

**Test yourself with an ARCO  
Exam Preparation Book**

OVER 250,000 CANDIDATES  
HAVE SUCCEEDED WITH ARCO



All books have complete sample tests with answers

**G.R.E. ADVANCED TESTS (\$3.95 each)**

- Biology
- Business
- Chemistry
- Economics
- Education
- Engineering (1.95)
- French
- Geography
- Geology
- Government
- History
- Literature
- Mathematics
- Music
- Philosophy
- Physical Ed.
- Physics
- Psychology
- Sociology
- Spanish
- Graduate Record Exam (4.00)
- Medical College Admission (4.00)
- Law School Admission Test (4.00)
- Dental Aptitude Tests (4.00)
- Miller Analogies (4.00)
- Graduate Business Admission (4.00)
- National Teacher's Exam (4.00)
- Officer Candidate Tests (4.00)
- Prof. Engineer Exam—Chemical (5.00)
- Prof. Engineer Exam—Mechanical (5.00)

AT YOUR COLLEGE BOOKSTORE  
or send remittance to

**ARCO PUBLISHING CO.,**  
219 Park Ave. South, New York 10003

# GSC follows faculty on draft

Continuing in the same vein as they have in the past, or perhaps maintaining the strange preoccupation they have with the draft, the Graduate Student Council sent a telegram to the President with the following wording:

"The MIT Graduate Student Council expresses its grave concern about the recent action of the Director of Selective Service using the draft to punish persons accused of illegal protests of government policies. The GSC believes that this action is totally improper and requests the President to take immediate action to prevent such abuses of the draft laws."

This simply means that the GSC is upset about the draft being used as weapons against demonstrators.

Along these same lines, in a statement remarkably similar to the one issued by the faculty, the GSC made a resolution stating that the draft, as far as graduate students are concerned, should not be discriminatory towards people in certain fields.

"The MIT Graduate Student Council urges that if there must be Selective Service, all graduate students be treated equally, without limitation or preference as to their particular disciplines or fields of study."

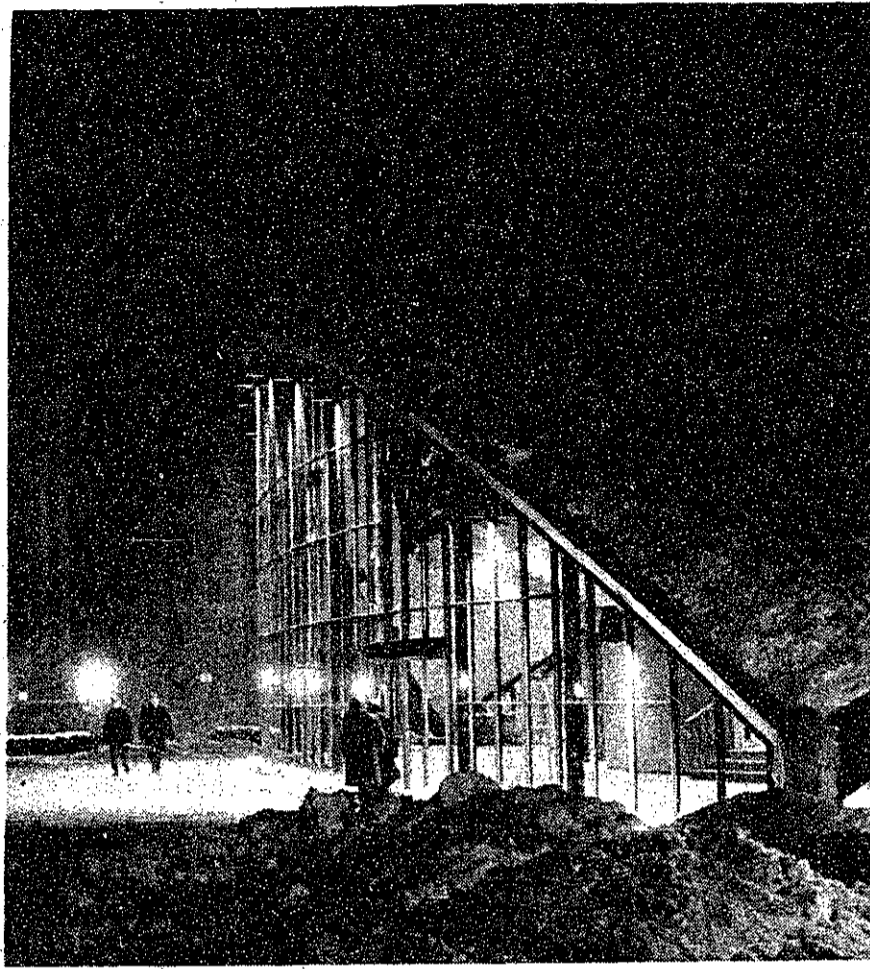
Last Monday, along with the above resolutions, the GSC attempted to alter its constitution, but due to an inability to compromise on certain basic issues, little constructive was done. These

problems will be rebashed at the next meeting. A motion to abolish the draft was also tabled until the next meeting.

In the past the GSC has come up with the resolution on the Vietnam War and other similar

motions. Yet, for all this sounding of the horns, little has been seen in the way of something tangible.

Perhaps, though, if the GSC continues with its plan of revampment, action instead of talk will be the order of the day.



# Pollack's action not his first effort to voice opinions on Vietnam

(Continued from Page 2)

Pollack insists that by his action, he merely lent moral support to those who were handing in draft cards and was not "counseling, aiding, and abetting" young men to refuse to serve in the armed forces.

Last October, Reverend Coffin urged Yale undergraduates to consider turning in their draft cards. This drew sharp criticism from Yale's President Kingman Brewster, Jr. Pollack told "The Tech" that he informed MIT of his decision to participate in the collection of draft cards some time before the day of the rally; his decision was respected and no attempt to interfere was ever made.

### Past efforts

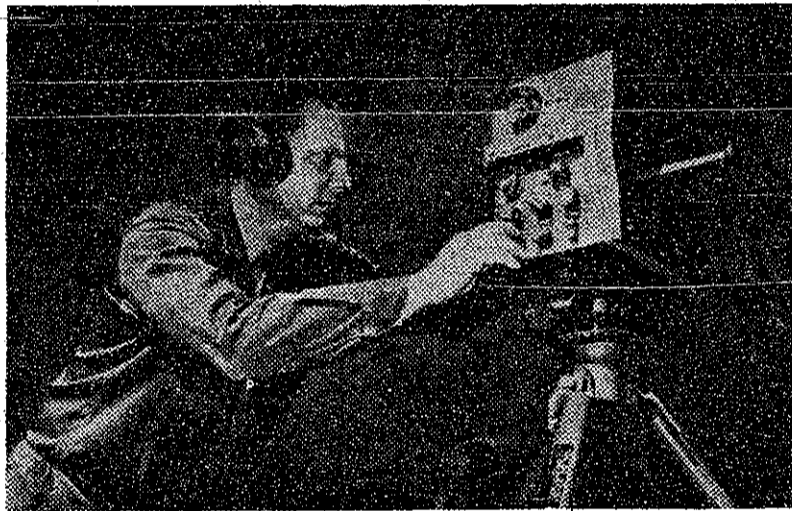
Pollack's action at the Arlington street church, although certainly his most dynamic, was not his first effort to voice his opinions on the Vietnam war. He has conveyed his sentiments as a concerned member of the clergy to President Lyndon Johnson as well as Senators Edward Brooke and Ted Kennedy. He is also a member of Committee of Religious Concern for People, an organization which is attempting in part to find a meaningful role for the clergy with respect to important national and international issues. In addition, he has been conferring with Prof. Walter Rosenblith, Chairman of the MIT Faculty, in an effort to establish a committee here that would concern itself with MIT and the war, possibly by meetings similar to that several months ago which focused on Dow Chemical's recruiting on campus.

### Active dissent

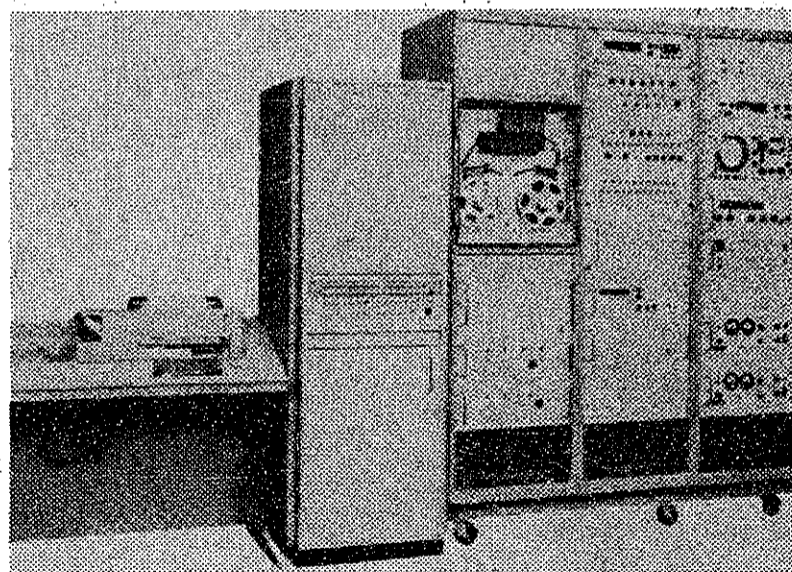
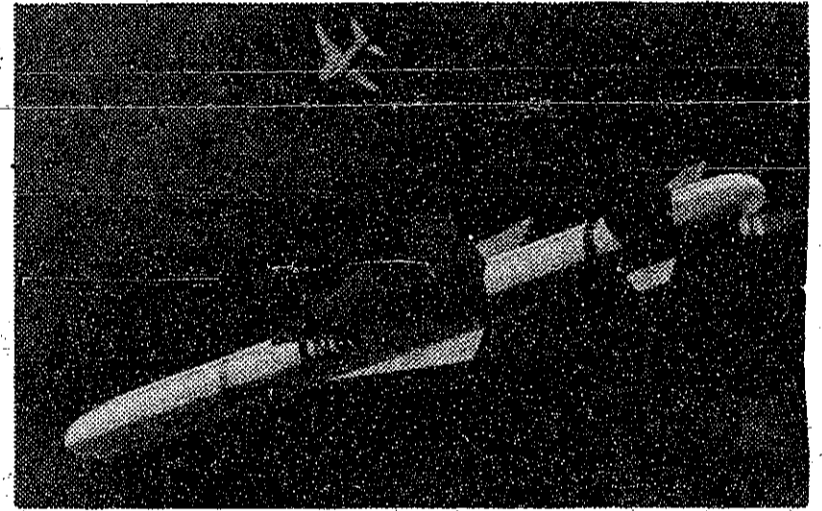
Lieutenant General Lewis B. Hershey, director of Selective Service was quoted last month as saying: "Sometimes I don't know but what these kids who resist the draft are not so much at fault as some older people who are advising them." At MIT, at least, dissent with such statements, is no longer passive but has rather become an active and dynamic force — one which may exert a profound influence in the months ahead.

## Where else can you work on projects like these ...where the engineers call the shots!

**This is a people radar** The AN/PPS-6 Battlefield Surveillance Radar is the most recently developed radar of its class to reach operational status. It was developed by the Radio Receptor Division and is now in large scale production for the Marine Corps. It is smaller and lighter than its predecessors and, unlike these, it can be carried, set up and operated by *one man*.



**The Condor**, developed by North American Aviation, Columbus, Ohio, is an air-to-ground guided missile to be carried by Grumman's A6A. It carries a TV camera in its head and what it sees is displayed in the cockpit via a radio link. With General Instrument's Mission Recorder, the TV pictures received during flight will be recorded on film for postflight examination.

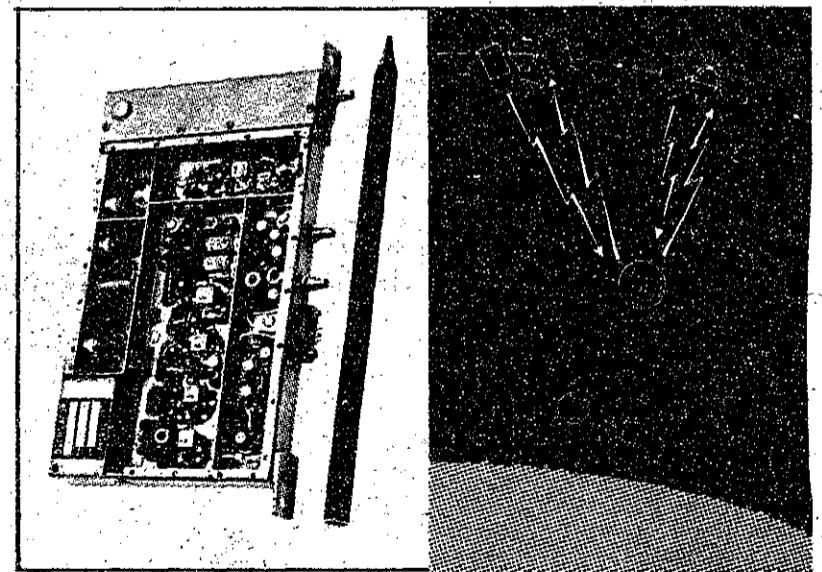


**Computer controlled checkout system for LM (Lunar Module)** simulates ground commands from Houston Manned Space Flight Center, in-vehicle pre-recorded mission profile tape commands, and commands from the LM guidance control. Developed and built by G.I. for Grumman, this Automated Test Station will check out the Lunar Module (Command Control Section).

Typical of the competence of the company, the programs shown above are some of the many advanced areas in which General Instrument is engaged.

As a graduating engineer, you have an opportunity at General Instrument which you owe to yourself to look into, particularly if your goals demand growth and diversification. General Instrument comprises 20 world-wide facilities in sophisticated commercial and government electronic equipments. The Radio Receptor Division is a medium-sized, engineer-oriented and managed operation. Here engineers call the shots in a broad spectrum activity that includes:

• Radar • Active ECM • Passive ECM • IFF • Telemetry & Communications • Support Systems • Ordnance Electronics • Reconnaissance & Surveillance • Instrumentation • Digital Systems Design • Field Engineering • Quality Assurance Engineering



**To chart high altitude winds**, hang some electronics on a balloon and track it with a satellite. The receiver was developed by G.I. for NASA's IRLS (Interrogation, Recording and Location System). It is part of a large concept and envisioned as a massive global system of balloons and service buoys, providing constant meteorological data.

Graduating engineers who can see their own careers expanding in such a professional environment are urged to call or send a resume to Gene Lester to arrange a mutually convenient appointment to further explore these opportunities.



**GENERAL INSTRUMENT CORPORATION**

Radio Receptor Division

100 Andrews Road, Hicksville, Long Island, N. Y. 11802  
In Electronics Since 1921/An Equal Opportunity Employer

## Blow Yourself Up To POSTER SIZE

2 ft. x 3 ft. — only \$4.95 ppd.

Get your own BLO-UP Photo Poster. Send any Black and White or Color Photo from wallet size to 8 x 10, or any negative from 2 1/4 x 2 1/4 to 4 x 5 inches. We will send you a 2 ft. x 3 ft. BLO-UP.

JUMBO 3 ft. x 4 ft. — only \$7.95 ppd.

Send any Black and White or Color Photo from 4" x 5" to 8" x 10" or any negative 2 1/4 x 3 1/4 to 4" x 5", we will send you a 3 ft. x 4 ft. BLO-UP.

Any printed document can be made into giant size posters — diplomas, drawings, programs, pop-art, etc. No C.O.D.

Send Check or Money Order to

**PHOENIX  
PRODUCTIONS, INC.**  
60 EAST 42ND ST.,  
NEW YORK, N.Y. 10017

## IN THE FEBRUARY ATLANTIC MONTHLY

**"Where Graduate Schools Fail":** They are stuck in a complacent rut of pure academia and antediluvian requirements, write two Harvard educators.

### "Advice to a Draftee":

Published for the first time, this letter written by Leo Tolstoy in 1899 to a desperate young potential conscript bears a relevance to America in 1968.

### "On Civil Disobedience":

by Charles E. Wyzanski, Jr., a carefully reasoned examination of the problem by a federal judge directly confronted with the issue.

### "The Perversity of Aubrey Beardsley":

A fascinating examination of the rococo artist whose work has become a cult for the sixties.

AT YOUR  
NEWSSTAND  
NOW

# Carter completes 50 years at MIT

**By Bob Dennis**  
Yesterday MIT paid tribute to Harold H. Carter of the Chemical Engineering Department as he completed fifty years of service to the Institute. Mr. Carter is the fifth person to achieve such a record at the Institute, and be-

cause of labor laws and MIT's retirement policies, he will be the last to gain the distinction.  
**Messenger Boy**  
A native of Maine, Mr. Carter—known at MIT as Nick—arrived as a messenger boy on February 2, 1918, at the age of 15, while

trying to get into the Yankee Division and go overseas. He failed to make the Yankee Division and was nearly fired from MIT after an incident involving a crane on campus. Before the year was over, however, he became a laboratory assistant in the Research Laboratory of Applied Chemistry.  
Mr. Carter found a career when the Department of Chemical Engineering was formed in 1920. He progressed from a technician to a project technician until 1956 when he was promoted to the academic staff as a technical instructor.



**Mr. Harold H. Carter**  
firm task master. Thousands of students learned how to convince others after convincing him."

**"Carter method"**  
Many MIT alumni now working in industry have attested to the success of the "Carter method" in instilling good thinking habits. With a firm, good humor, he taught his students valuable lessons in thinking problems through before working on them.

"Carter's first answer to graduate students who came to him for equipment to test their theses was always no," recalls Professor Gilliland, Head of the Chemical Engineering Department.

"Students had to convince Carter why they wanted to do what they proposed before he would issue a thing to them. He was a

**Remains part-time**  
Carter plans to continue working part-time. "It's an awfully nice place to work," he says. He will purchase equipment and keep records for the Department, but he will miss the one-to-one relationship with the students as a personal advisor that has marked his career.

Mr. Carter has long been sought

after by his students for "something new—something you can't find in the catalogs." He remarks, "Young fellows studying chemical engineering grow up with so many things handed to them nowadays. They don't know what it is to hunt for a temperature control which isn't too sensitive for them to handle or a thermocouple small enough to fit a scale model."

#### Many contributions

Students have not been the only ones to see the determination of Harold Carter's personality. Mr. Carter's contributions to Institute services have been instrumental in building MIT into the community it is today.

He was a founding member and an officer of the Research, Development, and Technical Employees Union until he was promoted out of the bargaining unit.

#### Active in Blood Drive

Perhaps closest to his heart has been Mr. Carter's annual visit to the Red Cross Bloodmobile at MIT. Before his sixtieth birthday disqualified him, he had given nearly seventy pints of blood. On his last visit, the nurse, who was new, told him he was overage. Mr. Carter then walked home more than a mile away and returned with his birth certificate. Today he continues to help as an enthusiastic solicitor for the drive.

#### Honored in Kresge

A reception for Mr. Carter took place yesterday afternoon in Kresge. Toastmaster was Professor J. Edward Vivian of the Chemical Engineering Department. He introduced President Johnson and other MIT dignitaries. Mr. Carter's two sons, Frank, a technician at Lincoln Laboratory, and Harold, a lawyer, attended with their families. Thus, MIT honored a man who made a name for himself by saying "no."



## ASK HERMAN ABOUT MIKE

... Why The

**SHURE**

**UNISPHERE®**

Is The Official  
Microphone Of  
Herman's Hermits  
On Tour

Herman knows his microphone is his link with his audience. He wants you to hear his voice and the lyrics, naturally, without howling feedback, without annoying close-up breath "pop", without audience sounds. Pretty tough test for a microphone... routine for the incomparable Shure Unisphere. Just ask the better groups.

Shure Brothers, Inc.  
222 Hartrey Ave.  
Evanston, Ill. 60204

© 1967 Shure Brothers, Inc.

Do you think  
a bright young engineer  
should spend  
his most imaginative years on  
the same assignment?

Neither do we.

That's why we have a two-year Rotation Program for graduating engineers who would prefer to explore several technical areas. And that's why many of our areas are organized by function—rather than by project.

At Hughes, you might work on spacecraft, communications satellites and/or tactical missiles during your first two years.

All you need is an EE, ME or Physics degree and talent.



If you qualify, we'll arrange for you to work on several different assignments... and you can help pick them.

You may select specialized jobs, or broad systems-type jobs. Or you can choose not to change assignments if you'd rather develop in-depth skills in one area.

Either way, we think you'll like the Hughes approach.

It means you'll become more versatile in a shorter time.

(And your salary will show it.)

**HUGHES**

HUGHES AIRCRAFT COMPANY  
AEROSPACE DIVISIONS

### Some of the current openings at Hughes:

Microwave & Antenna Engineers  
Electro-Optical Engineers  
Microcircuit Engineers  
Space Systems Engineers  
Missile Systems Engineers  
Guidance & Controls Engineers  
Spacecraft Design Engineers  
Weapon Systems Engineers  
Components & Materials Engineers  
Circuit Design Engineers  
Product Design Engineers

For additional information, please contact your College Placement Director or write:

**Mr. Robert A. Martin**  
Head of Employment  
Hughes Aerospace Divisions  
11940 W. Jefferson Blvd.  
Culver City, California 90230

U.S. Citizenship is required  
An equal opportunity employer

### CAMPUS INTERVIEWS

February 12 & 13

Contact College Placement Office to arrange interview appointment.

**Club Henry IV**  
Cuisine par Pierre—  
Chef, Prop.  
(Formerly with the French Line)  
Lunch 12-2 Mon. thru Sat.  
Dinner 6-9 Mon. thru Thurs.  
Open Friday till 9 p.m.  
Saturday till 10 p.m.  
(Closed Sunday)  
864-9061 354-8388

Ski Buffs do it!



**English Leather®**

For men who want to be where the action is. Very schussy. Very masculine. ALL-PURPOSE LOTION. \$2.50, \$4.00, \$6.50. From the complete array of ENGLISH LEATHER men's toiletries.

A PRODUCT OF MEM COMPANY, INC. KODIAK, ALASKA

theatre...

# TCB performs Herlihy world premier

Theatre by James Leo Herlihy. World premiere of four-one-act plays by the author of "Blue Denim" and "All Fall Down." At Theatre Company of Boston until February 11. Directed by David Wheeler, the cast includes Larry Bryggman, Roberta Collinge, Laurie Gould, Gustave Johnson, and James Spruill.

By Ray Hagstrom

"Philosophy is just a system that somebody works out so's he doesn't go crazy when he's stuck in a motel room." So says terrible Jim Fitch. Maybe so for Jim Fitch; he and other characters offer their own insights into phil-

osophical matters in Theatre Company of Boston's latest. This production is well done, insuring an evening of entertaining theater.

The play is actually a set of four playlets each revolving around a different character. The link between the playlets is that the principal character in each gives his views on the subject of the oneness of Humanity, and different they are.

The art of the playwright is evidenced in that the viewer is forced to identify with the characters of his own self image. The four characters are all miserable with their philosophies yet each receives the benefits he wants most from his system. To the individual members of the audi-

ence one or two of the characters will seem better off than the others.

The first character, played by James Spruill, is Fletcher, a would-be hippie. He finds that all men are united under a single purpose, to "do their thing." Although the playwright casts Fletcher and his dirty-footed love-child friend, Cynthia, humorously, their experience is similar to that of the rest of the characters.

The price Fletcher pays is social rejection and, most important the humiliation associated with this. "I feel like an asshole handing out all those flowers." This section of the play is pleasingly produced, the characters' uneasiness while smoking pot is radiated out to the audience effectively.

In direct contrast, the second playlet presents a member of the idle class who has taken an apartment in the East Village. "It's so unspooled." She is depicted in the act of running off at the mouth at a party after her husband has already passed out.

Finally, it leaks out that due to her inaction a heroin addict has died of withdrawal trauma, yet she remains visibly unmoved by the experience, claiming that "Charity begins at home." She indeed does pay heavily for her philosophy in guilt.

The tough kid, Terrible Jim Fitch, believes much differently from the others. He sums up his own philosophy in saying that if

(Please turn to Page 10)

# Talking Rock

By Steve Grant



Photo by Tommy Byrne

The Ill Wind, popular Boston rock group, will have an album out in six weeks. Standing (l. to r.) are Conny Devanney, Rich Griggs, and Kenn Frankel. Seated are Dave Kinsman and Carey Mann.

The Ill Wind are on the verge of making it big. Among the currently popular groups playing in and around Boston, they have perhaps the best chance at success. They played at last year's Junior Prom and will be featured with the Buckingham Saturday night of Winter Weekend (February 24). Next Thursday they will begin to record an album in New York for ABC Records. The finished product, as well as a single, will come out some time around the end of March. Meanwhile, the group will be touring Los Angeles, San Francisco, Chicago, and New York.

Musical style

The group consists of Conny Devanney, the beautiful girl singer; Kenn Frankel, lead guitar; Rich "Bruce Pisces" Griggs; Carey Mann, bass; and Dave Kinsman, drums. Stylistically they vaguely resemble the Jefferson Airplane, with a dominant girl singer and extremely tight, complex instrumentation. Conny, the powerhouse of the group, has a strong delivery reminiscent of Janis Joplin of Big Brother and the Holding Company. The group relies mostly on original songs by Kenn and brother Tom, who also serves as manager. These two are as versatile a team of writers as there is. Compare, for example, the beautiful "Coming Down," as pretty a straightforward love tune as any; "Full Cycle," which Rich calls "a Gregorian chant," and which is as driving as the blues come; and "People of the Night," the group's magnum opus with which they often close an evening's performance.

Group's history

Kenn, who used to play with Grateful Dead leader Jerry Garcia, and Carey met three years ago here at MIT, where they were both grad students. Carey, in fact, used to play guitar in the Concert Jazz Band. They formed the Blues Crew, which later became the Prophets, a folk-rock group, when a girl singer joined. Carey switched from rhythm to bass when Stu Schulman, the original bass player, left. Then Conny and Dave joined, and the Ill Wind was born in August 1966. Since then the group's personnel has not changed. They pro-

(Please turn to Page 9)

## MIT FILM SOCIETY

Experimental Films	\$1
Monday February 12 8 and 10 pm	Room 10-250 77 Massachusetts Avenue
Miracle Robert Breer	Comic Karmic Plot Lorren Sears
Craven Sluck Mike Kuchar	Night Crawlers Peter Goldman
Hot Leatherette Robert Nelson	Due Concertantes Larry Jordan
Palace of Arabian Nights Melies	Port Chicago Bruce Baillie
Hall of Mirrors Warren Sonbert	Moith Light Stan Brakhage

## Tuesday, February 13, explore an engineering career on earth's last frontier.

Talk with Newport News On-Campus Career Consultant about engineering openings at world's largest shipbuilding company—where your future is as big as today's brand new ocean.

Our half-a-billion-dollar backlog of orders means high starting salary, career security, with your way up wide open. It also means scope for all your abilities. We're involved with nuclear ship propulsion and refueling, nuclear aircraft carrier and submarine building, marine automation. We've recently completed a vast oceanographic ore survey. We're a major builder of giant water power and heavy industrial equipment. We're starting to apply our nautical nuclear know-how to the fast expanding field of nuclear electric power generation. We're completing competitive systems designs for the Navy's \$1 billion plus LHA fleet concept.

Interested in an advanced degree or research? We're next door to Virginia Associated Research Center with one of the world's largest synchrocyclotrons, offering advanced study in high energy physics. We're close to Old Dominion College and University of Virginia Extension Division, where you can get credits for a master's degree, or take courses in Microwave Theory, Solid State Electronics, Nuclear Engineering and other advanced subjects. Ask about scholarships, tuition grants, study and research leaves to implement these opportunities.

Ask, too, about the pleasant living and lower living costs, here in the heart of Virginia's historic seaside vacation land, with superb beaches, golf, fishing, boating, hunting.

**IMMEDIATE ENGINEERING CAREER OPENINGS**

Mechanical Engineers	Naval Architects
Electrical Engineers	Nuclear Engineers
Marine Engineers	Civil Engineers
Industrial Engineers	Metallurgical Engineers
Systems Analysts	

See our representative  
Lynn Schwartzkopf  
Tuesday, February 13

He'll be at the Placement Office to answer questions, discuss qualifications, take applications for fast action.

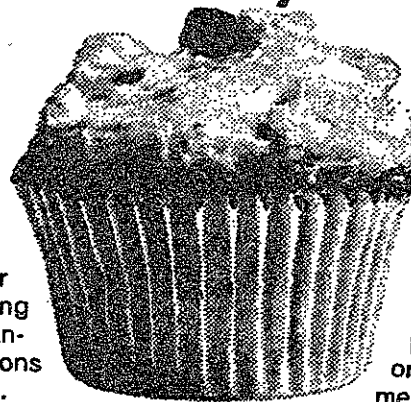
**EXETER 67067**

A MOVIE OF EXCEPTIONAL BEAUTY!

## Elvira Madigan

IN EXQUISITE EASTMAN COLOR

# At Sun Oil Company you can have your cake...



Sun Oil Company is a "glamour" company. (That surprise you?) At Sun you work on projects as far out as anyone's, in areas ranging from petrochemistry to internal management consulting, from operations research to advanced engineering. Sun Oil Company is also a very, very stable company, enjoying solid sales and substantial growth year after year after year. At Sun when a "glamour" project is completed, its people aren't. There is always a new project to move to, to contribute to. And a new, higher position to fill. That's where you come in. If you're the kind of individual who

wants to be right in the thick of things... who doesn't think it's old hat to work your way to the top. We cordially invite you to find your place in the Sun, in a permanent or summer position. Visit your placement office now to schedule an appointment with our representative on campus. If you can't meet us on campus, we'll send you employment information. Just drop a note to: Personnel & College Relations, Dept. H, Sun Oil Co., 1608 Walnut St., Phila., Pa. 19103. **Sun Oil Company**  
An equal opportunity employer m/f

## and eat it, too.



We'll be on campus

FEBRUARY 23, 1968

# Meet at MIT

(Continued from Page 8)

ceded to do and then re-do a master of "RU Right," "Tomorrow You'll Come Back," and "You're All I Seem," which Capitol Records turned down. Dissatisfied with Dick Weissman's production on the record, the group split with him. Their new producer, who will do their album, is Tom Wilson, who is famous for having produced the complicated "Winds of Change" album by Eric Burdon and the Animals, as well as many other quality records. Wilson is successful, too: Billboard ranked him 41st in their listing of producers for 1967.

### Album content

Their album will have a very liberal format; the group will have full control of what they want to do. Almost all, or all the songs will be originals by the group, and at least one will be an extended solo. The actual material is not firmly set, but will probably include "Delayed Reaction" (which has a 7-4 break), "Flashes," "My Dark World," and "Transmutation," as well as "Full Cycle" and "People of the Night."

Last year many of the local bands from the San Francisco Bay area made it big. This year it could be Boston's turn. The publicity (that article in Newsweek certainly helped) and promotion being given to such "Boston Sound" groups as the Beacon Street Union and the Ultimate Spinach (now at the Fillmore) are second to none. National success to a few or all of the better ones would come as no surprise. The Ill Wind has as fine a chance as any to be there for the big break, when and if it comes.

In Tuesday's report of the poll results, the Supremes were mistakenly identified as Billboard's third-ranked singles artists of 1967. They were in fact fifth, immediately after Aretha Franklin. The Young Rascals placed third.

music ...

## Humanities Series Concert Features Zsigmondy duo

By Ray Ergas

On Feb. 6, the Department of Humanities sponsored a free concert by Denes Zsigmondy, violin, and his wife Anneliese Zsigmondy, piano. The program consisted of Schumann's Sonata in A Minor, Opus 105, the Brahms Sonata No. 1 in G Major, Opus 78, and Bela Bartok's Sonata for Violin and Piano, No. 1. By far the highlight of the evening was the Bartok, and it was followed by two encores, an arrangement of one of Prokofiev's Songs without Words, Opus 35, and Stravinsky's Scherzo. The Zsigmondys, residents of Munich, were here for their third concert at MIT, and they seem to have built up a great following here.

Acoustics could have been better. While technically the performance was more than perfect, the Sala de Puerto Rico was not too cooperative, as it gave the violin a somewhat weak sound in soft passages. This effect was particularly noticeable in the back of the hall. Yet the beauty of Bartok's quiet Adagio remained intact. The final movement, Allegro, was played with true flair and brilliancy, and brought to a stunning climax. It was in this movement that Mr. Zsigmondy's Hungarian background began to pay off. He was able to interpret well the thoughts and feelings of his fellow countryman, Bartok. In sum, this was truly an excellent concert, especially when one considers the admission price (zero),

and it is amazing that more people did not attend.

The next concert in this series will be on Feb. 19, at 8:15 in the Sala de Puerto Rico. Michael Rudiakov, cello, will be accompanied by Gilbert Kalish. Mr. Rudiakov is former first cellist with the Indianapolis Symphony Orchestra and is now with the Aeolian Players. The program includes works by Bach, Mendelssohn, Gunther Schuller, and Sertiu Natra. This concert is open to the public and admission is free.

## Making the Scene

Monday evening at 8 p.m. the Dept. of Humanities and Lecture Series Committee will sponsor the smash off-Broadway production of Gertrude Steir's play, "In Circles." Given rave reviews in New York, it promises to be well worth the \$2 admission.

Log-jam '68 is coming. Along



Janis Ian, of 'Society's Child' fame, will appear in concert Saturday at 8:30 in Jordan Hall.

with groups from Cornell, Dartmouth, Harvard, U. Mass. and Vassar, will be MIT's own Logarithms. The intercollegiate sing will be in Kresge on the night of Saturday, Feb. 17, at 2 p.m. Admission is \$1.50.

Next week's (Feb. 16 and 17) Boston Symphony Orchestra concerts will be devoted to complete performances of Haydn's Orato-

rio, the Creation, presented in honor of the New England Conservatory of Music's one hundredth anniversary. Soloists Beverly Sills, John McCollum, and Ara Berberian will join Erich Leinsdorf and the Conservatory chorus for the performance, which will be in English. Thursday night, Feb. 15, there will be an open rehearsal at Symphony Hall at 7:30, for which tickets are still available.

The Shakespeare Society of Wellesley College is presenting "Much Ado About Nothing" this weekend, Feb. 9 and 10. There is no admission to this comedy at the Shakespeare Society House. The performance is at 8 p.m. with an extra performance on Saturday afternoon at 3.

**HOUSE OF ROY**  
REAL CHINESE FOOD  
Open daily from 4 p.m. to 2 a.m.  
Food Put Up To Take Out  
25 TYLER STREET, BOSTON 11  
DE 8-8882

HARVARD SQ UN 4-4580

Elizabeth Taylor  
Marlon Brando  
"REFLECTIONS IN A GOLDEN EYE"  
1:45, 5:45, 9:50  
"UP THE DOWN STAIRCASE"  
3:35 and 7:45

BRATTLE SQ TR 6-4226

"THIS SPORTING LIFE"  
5:15, 7:30, 9:45,  
Saturday matinee 3:00  
Sunday:  
"CHILDREN OF PARADISE"  
2:00, 5:15, 8:30 only

College Relations Director  
c/o Sheraton-Park Hotel, Washington, D.C. 20008  
Please send me a free Sheraton Student I.D. Card:

Name: \_\_\_\_\_  
Address: \_\_\_\_\_

## We're holding the cards.

Get one. Rooms are now up to 20% off with a Sheraton Student I.D. How much depends on where and when you stay.

And the Student I.D. card is free to begin with. Send in the coupon. It's a good deal. And at a good place.

**Sheraton Hotels & Motor Inns**   
155 Hotels and Motor Inns in major cities.

**In Concert**  
**PHIL OCHS**  
Presented by Class of 1970  
**FEB. 16 — 8:30 P.M.**  
**Kresge Auditorium**  
Tickets: \$3.50, \$3.00, \$2.50

**M.I.T. Humanities Series 1967-68**  
presents

**CHIGIANO SEXTET**

SUNDAY, FEBRUARY 11, 1968, AT 3:00 P.M.

**Kresge Auditorium**

"Verklarte Nacht," Opus 4 ..... Schonberg  
Sextet in C Major, Opus 36 ..... Brahms  
Tickets: \$3.00 (reserved seats). Write Kresge Box Office,  
M.I.T., Cambridge 02139, or call UN 4-6900, Ext. 2910.  
Make checks payable to M.I.T. Humanities Series.

Don't forget!



**AMERICAN AIRLINES**

**JET AGE  
CAREER  
EXPOSITION**

9 A.M. to 5 P.M. FEB. 10, 1968

*Boston's Statler Hilton Hotel*

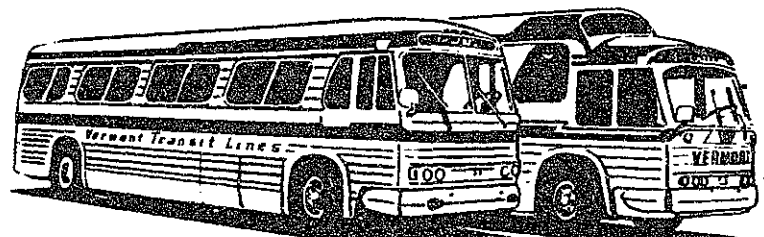
## GO! Vermont Transit SKI BUSES To 13 Major SKI AREAS



Convenient Vermont Transit Bus service to 13 famous Vermont Ski Areas! Leave on Fridays, return after skiing on Sundays. • Additional weekend connecting service plus daily connecting service to Stowe. • Why be in the driver's seat? Avoid tiring driving. Go on modern rest room equipped Vermont Transit Buses!

**STOWE**  
**KILLINGTON, PICO**  
**MT. SNOW, HAYSTACK**  
**MAD RIVER, SUGARBUSH**  
**GLEN ELLEN**  
**BROMLEY, HOGBACK, MAGIC**  
**SNOW VALLEY, STRATTON**

Convenient Daily Service to Northern New England Points



**VERMONT TRANSIT LINES**  
GREYHOUND TERMINAL

10 ST. JAMES AVE. TEL. 423-5810

**Skillfully handled**

# Playlets shine in Herlihy vehicle

(Continued from Page 8)

all of Humanity were spiritually united, all of the cares of life would be nullified. Of course he knows the shortcomings of such a

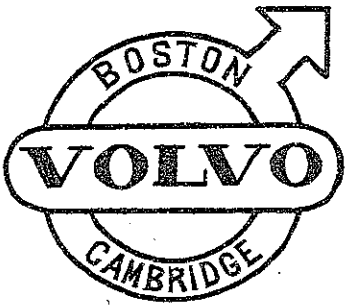
belief and he experiences a complex reaction to the world and his philosophy. Although lacking a little of his usual polish during the premiere, Larry Bryggman very

capably projects frustration and persecution feelings

The best performance of the evening is the fourth playlet, "Bad-Bad Jo-Jo." The central character, played by William Young, is a latter-day Ian Fleming style producer of mass entertainment. He is interviewed by a "Gee, I've always been one of your greatest fans" admirer. Hathaway is fantastically cynical about the intelligence of Humanity, which he regards as his audience. He says, "Of course the public is King, but it's a king with no balls." He sees Humanity as an idiot to be outwitted and taken advantage of. With a very strong performance by both Young as Hathaway and Gustave Johnson as Frank, the interviewer, the production is a success in its impact.

The conclusion of the action becomes obvious early in the performance, so that the intent from that time on is solely to build up tension. The director has skillfully complemented the action to achieve this result.

## NEW ENGLAND'S MOST PROGRESSIVE VOLVO DEALER



Immediate Delivery of Most Models and Colors  
For European Delivery Buy a Volvo From an Exclusive Volvo Dealer The big PLUS IS OUR SERVICE And Warranty Upon Return  
**BOSTON VOLVO**  
304 Mass. Ave., Camb. 491-5440

BURTON HOUSE SOCIAL COMMITTEE is holding

### A MERRY UNBIRTHDAY MIXER

WIN A FREE CRIMSON TRAVEL WEEK IN BERMUDA  
CONTINUOUS MUSIC BY 3 BANDS

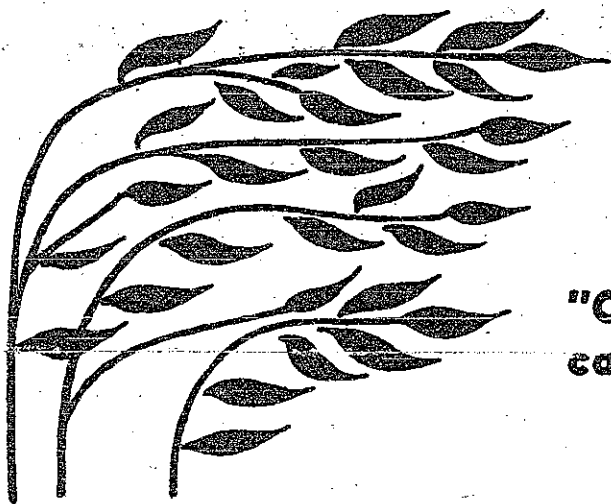
**TRAVIS PIKE'S TEA PARTY — GALE BAKER**

HORN'S FOREST — FARTHINGALE MABEL TUBBS  
FREAQUE FASHIONS FROM FREAQUE BOUTIQUE

NETWORK TV COVERAGE

Fri. Feb. 9th 8 P.M., MIT Student Center, \$1

SINCE 1882 SMART SHOPPERS SHOP THE COOP



"O, Wind...  
can spring be far behind"

### Pre-spring 1/2 PRICE sale on light weight suits and sports coats

The Coop swings towards Spring with a great pre-Spring Sale on Suits and Sports Coats in the Men's Clothing Department. 2nd Floor, Main Store, Harvard Square. There's a great variety of Mens' lightweight suits and sports coats. However, the supply is limited. Come in soon for the best selection of style and fabric.

**SUITS** were \$69.50 to \$100. **NOW \$34.75 to \$50.**

Lightweight suits . . . a blend of 55% dacron, 45% worsted tropical weight . . . 4-button natural shoulder in a wide variety of colors.

**SPORTS COATS** were \$37.50 to \$65. **NOW \$18.75 to \$32.75**

Lightweight sport coats . . . all wool blends . . . 3 button models in a fine selection of patterns and colors.

**NOW . . .**

The Coop's 11th Annual "Made-to-Measure" Sale  
Expertly fitted suits and sports coats  
at exceptional savings



**THE TECH COOP**

84 Massachusetts Avenue, Cambridge, Mass. 02139

Regular Hours: 8:50 - 5:30 PM, Mon. - Fri. / Sat. 9:20 - 6 PM  
Open Thursday 'til 9 P.M.

THE COOP

THE COOP

theatre . . .

## Dynamic duo's Plaza Suite funny, but could be better

Remember "Barefoot in the Park"? Or "The Odd Couple"? Or "Come Blow Your Horn"? How about "The Graduate"? Well, they were all the work of the dashing twosome of Neil Simon and Mike Nichols, who are also responsible for "Plaza Suite," playing until February 10 at the Colonial Theatre. Add to this stars George C. Scott and Maureen Stapleton, and one can expect nothing but brilliance in this pre-Broadway tryout.

It must be hard to have such a glittering record that an evening as humorous as this still proves a disappointment. For "Plaza Suite" is occasionally very funny indeed, but it is still not brilliant.

The play itself consists of three one act playlets set in a suite of the plush Plaza Hotel in New York. The set is professional and impressive. (Set designer Oliver Smith is considered one of the best in the business.) As to the carryings-on in front of it, their effect could be graphed as a damped sine wave.

The first act, "Visitor From Mararoneck," begins rather tritely. A charmingly scatterbrained lady, coming to celebrate her anniversary in her honeymoon suite, bubbles at the waiter. There are extremely funny one-liners (the Simon specialty), but the script smacks rather much of a good television comedy, the yuks are contrived. This impression continues when we are introduced to Sam Nash. He is a successful businessman, and 51 years old, though he will not accept this. He is a familiar and ludicrous figure, the slave of handball and lean roast

beef. We laugh at the biting (but loving) jibes of his wife. (Still more of the famous Simon one-liners.) Yet suddenly, like a rising crescendo, a tragic note enters the play, as the comedy suddenly embraces the topic of infidelity. The jibes now have truth behind them, and the laughter is bitter. This is one playlet that rises from the mediocre to something extremely memorable. The ending especially is most effective in its pathos.

Regrettably, the "Visitor from Hollywood" bit was weak. The humor was visual and obvious, and solely derived from the acting. None of the Simon magic touch appears in this feeble script. The main thrill is seeing George C. Scott with a Hollywood wig. Come now sirs, this is barely even competent. The only funny thing was trying to ascertain why you thought it was.

The third playlet is built upon the premise that there is something inherently hysterically funny in a bride locking herself in the bathroom on her wedding day. The comedy is broad, slapstick, funny, but again, lacks the originality that we have come to expect from truly great comedy. You will enjoy this skit while it plays, but you will hardly remember it forever as an all time comic gem.

With judicious applications of blood, sweat, toil and tears, the dynamic duo should glean many more laughs. As is, "Plaza Suite" makes an enjoyable evening. As it may be, ah . . .

**LSC**

## Presents

FRIDAY IN KRESGE

AT 7:00 & 9:30

"ONE OF THE YEAR'S 10 BEST FILMS!"  
-CROWTHER, N.Y. TIMES



A Carlo Ponti Production  
**Antonioni's BLOW-UP**  
Recommended for Home Audiences **COLOR**

A Premier Productions Release

SATURDAY IN KRESGE

AT 7:00 & 9:30



20th Century-Fox presents  
**AUDREY HEPBURN**

STAR OF TOMORROW'S  
**ALBERT FINNEY**

STANLEY DOEN'S  
**TWO IN ROAD**  
Panavision® Color by Deluxe  
THEATRE

SUNDAY IN 10-250

AT 8:00

## 'THE JAZZ SINGER'

with Al Jolson

THE FIRST TALKING MOVIE!

ADMISSION 50c — MIT ID  
REQUIRED EXCEPT SUN.

# 55 students involved in cross-registration

Without fanfare, without hysteria, the Wellesley-MIT cross-registration program has now become a fact of life. Conceived last term with an insignificant number of four students, the exchange counts fifty-five young hardies this term, even though it is not to begin officially until next September.

The obvious question to ask is why to have the cross-registration in the first place. Besides the subtleties involved in administration (one Wellesley student made the observation that a women's college could not continue to exist as an entity unless she aligns herself with a men's college, the problem being decreasing amount of endowment, (re Radcliffe and Vassar), the student must stand to gain some advantages. The natural advantage would seem to be co-education, but, because of the peculiar nature of both schools, this is certainly not the main interest.

### Unexplored fields of study

Reasons that a Wellesley student might enroll for a class at MIT differ generally from her MIT counterpart. Wellesley girls seek to increase the knowledge they may have in their already selected major, while MIT students desire the taste of something different, a forage into an unexplored field of study.

Last Tuesday found 25 Wellesleyites scurrying around the MIT campus, adding considerably, in the opinion of some, to the scenery. The MIT students, on the other hand, have been trodding the turf of Wellesley since January, when its second term commenced.

Announced last May, the Wellesley-MIT experimental plan is supposed to serve as "a means of extending educational experiences available to students in the curricula and environments of both schools." On the bureaucratic level, the joint faculty-administra-

tion committee established to rear the program from infancy contains: Dean Virginia Onderdonk, Wellesley, and Dean Robert A. Alberty, MIT, co-chairmen, with Professors Virginia M. Fiske, Phyllis J. Fleming, Walter E. Houghton, Kathryn Preyer, Patricia Spacks and Claire Zimmermann of Wellesley and Professors Stanford O. Anderson, Richard M. Douglas, Walter A. Rosenblith and Emily L. Wick and Dr. Benson R. Snyder of MIT. Sprinkled among the committee are students Cordelia Swain and Martha Wiske of Wellesley News and C. Mark Spitzer, Alan S. Willisky and Karla S. Hurst of MIT.

tion committee established to rear the program from infancy contains: Dean Virginia Onderdonk, Wellesley, and Dean Robert A. Alberty, MIT, co-chairmen, with Professors Virginia M. Fiske, Phyllis J. Fleming, Walter E. Houghton, Kathryn Preyer, Patricia Spacks and Claire Zimmermann of Wellesley and Professors Stanford O. Anderson, Richard M. Douglas, Walter A. Rosenblith and Emily L. Wick and Dr. Benson R. Snyder of MIT. Sprinkled among the committee are students Cordelia Swain and Martha Wiske of Wellesley News and C. Mark Spitzer, Alan S. Willisky and Karla S. Hurst of MIT.

### Enthusiasm causes early cross registration

In response to student enthusiasm, the Joint Committee granted permission to students to cross-register before the official beginning of the exchange. Having the rather dubious distinction of being guinea pigs, the students will help in ironing out some of the practical problems such as the 12-mile distance between the two campuses and the differences in daily class schedules. The original four are still happy and well and enthusiastic after their pioneer experience in the fall term. Through the

liminary reaction to the plan. Out of 1700 students at Wellesley, 878 responded, 642 pros and 236 cons. The 3700 undergraduate population of MIT produced 774 answers, 484 for and 257 against.

### Wellesley students prefer advance courses

In an analysis of the questionnaire, a greater interest in taking courses was shown by the upperclassmen at both schools, with freshmen reflecting a comparatively more negative attitude. In concurrence with the generalization made at the beginning of this article, that the Wellesley students had a greater desire to continue with their field of study at MIT, some 60% opted a preference for advanced courses while only 47% of MIT students did the same. Other data showed that there was a desire to participate in extracurricular activities at the other school, and that most popular amount of time for the one-way trip was a maximum of 40 minutes. Although the Wellesley girls are more enthusiastic, they do not relish the idea of losing their trimester system.

From the Wellesley standpoint, there is a greater interest shown in the MIT fields of Architecture (much of this being in the Art and the Visual Arts Fields), Electrical Engineering (mainly computer sciences), Psychology, Economics, Political Science, Humanities, and the Modern Languages. MIT preferences were distributed among the Wellesley fields of Art, History, Philosophy, Sociology, and the three areas termed by MIT students as "Literature," "Humanities," and "Languages." In contrast to the Wellesley responses, the MIT majors tend to choose other than their own field at Wellesley, preferring instead to tackle the different subjects.

### Plan to become way of life

As the cross-registration becomes more integrated into the academic programs of both schools and after the practical problems themselves are corrected, if the enthusiasm at this early date continues, the experimental plan will soon become an accepted everyday occurrence.

The most interesting statistic, apart from the data pertinent to the ends of the survey, is the one mentioned above, where over 50% of the Wellesley student body returned the questionnaires while only 20% of the MIT students did. This is in keeping with the old MIT tradition of not filling out anything that does not look like a final exam, or doing anything which seems to be on the extraneous side.

## "a means of extending educational experiences"

**RACKETS RESTRUNG**  
**Tennis & Squash Shop**  
67A Mt. Auburn St., Cambridge  
(Opp. Lowell House)  
TR 6-5417

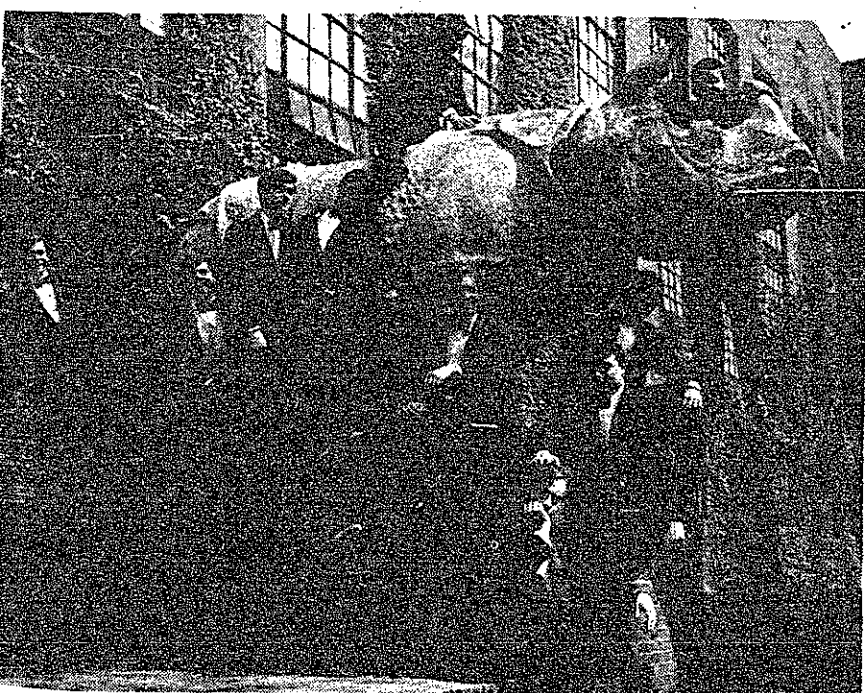
**STAMP IT!**  
IT'S THE RAGE  
REGULAR MODEL  
ANY \$2  
3 LINE TEXT  
The finest INDESTRUCTIBLE METAL  
POCKET RUBBER STAMP. 1/2" x 2".  
Send check or money order. Be  
sure to include your Zip Code. No  
postage or handling charges. Add  
sales tax.  
Prompt shipment. Satisfaction Guaranteed  
**THE MOFF CO.**  
P. O. Box 18523 Lenox Square Station  
ATLANTA, GA., 30326

### Roommate Wanted

To share modern apartment in  
Stoneham with '67 grad. About  
\$80/mo. with utilities.  
Call 438-3671 evenings

**TECH COOP OPTICAL**  
NEXT TO CUSTOMER SERVICE IN BOOK DEPARTMENT  
Sunglasses, tailored to your prescription in the finest of Bausch  
and Lomb and American optical lenses.  
Quality and Service is Our Byword - Patronage Refund  
Ophthalmologists prescriptions are filled promptly-accurately.  
Excellent selection of frames for Men-Women-Children.  
Office Hours: Monday-Friday, 8:50 to 5:30 - Lunch 2-3 (Closed)  
Saturday, 9:20 to 1:00  
Phone 491-4230, Ext. 50 or from MIT dial 8950  
**THE TECH COOP**  
IN THE M.I.T. STUDENT CENTER  
64 Massachusetts Avenue, Cambridge, Mass. 02139

## LogJam '68 coming soon: Six top groups represented



The Harvard Krokodiloes

LogJam '68 (Logarithm Jam-boree) is coming. On February 17 at 8 pm the MIT Logarithms will be host to five other top collegiate singing groups participating in the intercollegiate sing-LogJam '68. Present will be the Cornell Sherwoods, the Dartmouth Injunaires, the Harvard Krokodiloes, the University of Massachusetts Musicals, the Vassar G-Stringers, and of course the MIT Logarithms.

The groups will be doing a great variety of material with the musical programs showing such things as barbershop, show tunes, comedy and modrigals. The presence of the girls from Vassar and U Mass will certainly offset the all male groups from the other schools.

Tickets may be purchased at the Coop, the lobby of Building 10, and the Kresge Box Office for \$1.50.

**FERRARI 275/GTB**  
1965 in immaculate condition, bottle-green metallic finish, natural leather interior, 5 new Pirelli tires. Blaupunkt AM/FM, 18,000 miles. \$7,250.00.  
Call 491-8712 evenings

There once was a girl named Mary  
Of whom it was said "She's contrary."  
Until a young chap  
With Schlitz laid a trap:  
Now Mary is married to Harry.

© 1968 Jos. Schlitz Brewing Co., Milwaukee and other cities.

**PARTHENON RESTAURANT**  
AUTHENTIC GREEK CUISINE  
EXCELLENT EUROPEAN AND AMERICAN WINES  
ALL KINDS OF LIQUOR  
UNIQUE HELLENIC ATMOSPHERE FEATURING  
THE ANCIENT GREEK PARTHENON  
OPEN EVERY DAY  
11 A.M. to 11 P.M.  
Extremely Moderate Prices  
For Reservations Call 491-9592  
**924 Mass. Ave.**  
(BETWEEN HARVARD AND  
CENTRAL SQUARES)



The Armory didn't have enough desks and tables registration day to meet the demands of students trying to fill out schedule cards—some of them tried to use the floor, and some of these were evicted from it.



## Inscomm plans Viet poll in conjunction with elections

In an effort to diversify its activities and play a more meaningful role in student life, Inscomm will tentatively conduct a poll among MIT students on the war in Vietnam as a part of student government elections this year. The poll, which is actually more in the form of a questionnaire, was presented to the Inscomm meeting Thursday night.

Most of the questions on the Poll allow the student to select one of seven to nine responses, each of which summarizes the position of a major segment of the American population on that particular question.

The questionnaire consists of three portions. The first and shortest requests the student's course and a characterization of his political views in one of a few main categories (far right, left or right wing Democrat, etc.). The last section asks the student's opinion of student government polls.

The second section contains the main body of questions on the war itself. Those responding to the poll are asked to indicate their opinions on the causes and results of the war, and are also asked to recommend a US policy which will bring an end to the war. Just how many students will take the time to participate in the poll remains to be seen.

## Freshman fights, meets computer

By Mitchell Serota

"Uh, pardon me sir, but the computer forgot to give me a 6.47 recitation."

My two day fight with the computer had begun. The computer had originally given me a decent schedule but now it seemed that it conspired against me by not giving me a course that would teach me how to be its master.

When I came to pick up my revised program, I expected to see the same schedule with 6.47 stuck in somewhere. But instead I saw that it had stuck 6.47 in very nicely but proceeded to take the rest of my subjects, put them in its egg-beater brain, turn the crank 15 times, and had come up with a monstrosity.

Among other inconveniences, the computer had ordered me to go from 54-1510 to 1-277 and then to 37-226 during the 10-minute breaks. First of all, where was building 37? "It's that dotted-in building on the map," offered a friend.

"No, that's building 9; 37 is over here," returned another.

"Thanks, but I'll check it myself." I went to E19 to ask someone who knew. The first grad student I met pointed, "It's that dotted-in building here."

"No, that's building 9; 37 is over here," a more knowledgeable voice interjected.

"O.K., but how do I get from building 1 to building 37 in ten minutes?" I asked.

You're too lazy

"That's the trouble with you freshmen. You're too lazy to do anything."

I woke up early the next morning to start my battle. First to my counselor. "He's not in," observed the secretary as she looked in an empty room. "Please leave a message." I scribbled a note and as I left, she suggested that I try the department office of the subject I want switched.

I went to the department's office where I saw a huge line waiting for "the dragon lady" as the faculty affectionately calls the head secretary. After a half-hour wait, I told Miss D., "I'd like to switch back to my original recitation."

"Why??" she barked, flames emanating from her nostrils. I felt like I was being burned at the stake. I told her the reasons and she accepted them but curtly noted that all recitations were filled for the time I wanted. "You'll just have to wait. Sit tight. Next?" I was smoldering.

To prove my point to myself, I went to 54-1510 and tried a leisurely walk to 1-277. It took 8½ minutes. I then went to 37-226. It was recommended that I go through building 13. But between 13 and 37, I found I had to tiptoe amidst rusty pipes, splinters, and mud. I finally got to the room after nine minutes.

Disgusted, I trekked back to Miss D and asked if anyone switched out of the time period. "Not yet; sit tight." The room was full of hot air.

MWF tried out

The next day, I tried out the schedule for MWF. I went to 1-277 just in case Miss D threw me back in there. The instructor there read off a list of names and told anyone not on the list to see Miss D. At Miss D's (she was wearing a crimson dress that morning) I was told that there were no vacancies but that I should "sit tight."

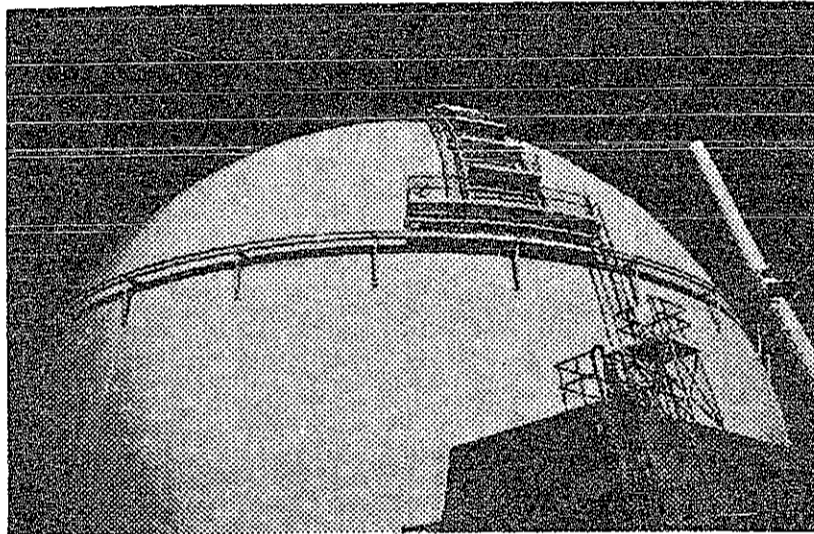
In my class in 37-226, renamed 37-232 to confuse people, the instructor said that the class will be changed to building 2. That meant I didn't have to walk as much. Still, the recitation I was trying to get into was more convenient because it was in the same room as my class in the previous hour.

I decided to sit in on the class that I planned to be in. To my amazement, the same instructor was sitting in front of the class. I explained my situation and was granted refuge from Miss D. Since the original class was more crowded, I decided to tell Miss D. that I would accept what the computer had given me. Her face matched her dress as nasty things roared from her mouth.

I exited her office humming "Puff, the Magic Dragon" reassured that I had won the battle with the computer.

## Electrifying Opportunities at Southern California Edison

Electrical Engineers  
Mechanical Engineers  
Civil Engineers  
Chemical Engineers  
Thermonuclear Engineers



Come live and work with us in Southern California. Aside from the fact that Southern California is the advanced technology capital of the world, we'd also like to mention that the weather is great, sports and entertainment are unlimited, and all the girls are beautiful.

Now about us. We're just completing our first major nuclear station, the 450,000 kw capacity San Onofre facility. It will be the largest in the U.S. when it completes the check-out phase and goes on line.

We have more nuclear stations in the planning stages, including a combination electric power and desalinization plant.

We're doing lots of work in EHV transmission, too. And we're looking even further ahead to direct conversion methods: thermionics, thermoelectrics, and magnetohydrodynamics.

### Grow With Us

We must double our generating capacity in the next eight years to keep

pace with the electrical demands of Southern and Central California. By 1975, we'll also have doubled our total plant and equipment investment to more than five billion dollars. And we'll probably have to double again in the eight years after that. We need top engineering talent. Electrical engineers, mechanical engineers, civil engineers, chemical engineers, and thermonuclear engineers.

### Master's Program

We offer good starting salaries and opportunities for rapid advancement. Our master's program will pick up the bills for you if you want to work toward an advanced degree while employed at Edison.

If you're interested in advancing the state of the art in the generation, transmission and distribution of electricity, check with your placement office regarding Edison's visit on campus. Or write: F. J. Ofsanko, Southern California Edison, P. O. Box 351, Los Angeles, California 90053.

**SCUBA DIVING CLASSES**  
Coed — Boston YWCA  
KE 6-7940

**McClean's Moving and Storage**  
Coast-to-Coast Moving  
24-Hour Service to New York, New Jersey and Pennsylvania  
Phone 522-8720

Southern California Edison **SCE**  
An Equal Opportunity Employer

NEW... **JADE EAST<sup>TM</sup>  
GOLDEN  
LIME**



AFTER SHAVE from \$2.50  
COLOGNE from \$3.00  
SWANK Inc.—Sole Distributor  
As an alternate fragrance,  
try JADE EAST or Jade East CORAL

Important as a primary

**CHOICE 68** termed significant

By Peter Meschter

"It can be as important as the primary in any contested state," so says Political Science professor John Saloma '56 of CHOICE 68, the student-run national collegiate presidential primary which will take place April 24 and which has so far attracted the participation of 200 colleges and universities (including MIT), having an enrollment of over 2 million students.

First opportunity

Noting that by 1972 nearly one-half of the electorate will be under 30 years old, Prof. Saloma calls 1968 the first great opportunity for the young to make their presence felt on the U. S. political scene, and CHOICE 68 as the first real indication of the political views of the young — if they will only take the primary seriously.

"CHOICE 68 is a test of the will and resourcefulness of young people — a test of strength between the young and the Establishment. By taking a serious attitude towards this primary and by turning out in large numbers to vote, students can show that they do count as a political group. Too often the student or under-30 vote is discounted because it lets itself be discounted. If successful, CHOICE 68 can do much towards the politicians' attitude." Saloma also noted that, if it is successful, more votes will be cast in it than in all of the contested small-state primaries combined.

CHOICE a rejection?

Prof. Saloma says that CHOICE 68 could well be a clear rejection of the older generation of politicians, among whom he lists Johnson, Nixon, and Reagan. This primary will be an especially important test for the President, who is not forced to be on the ballot in any other primary. The importance of CHOICE 68 will lie as much in the trends it shows, and the votes on party preference

and the war in Vietnam, as in the name of the most popular individual candidate. Trends shown by CHOICE 68 will differ significantly from those indicated by the Gallup polls, and most probably be more oriented against Johnson and towards the left, states the professor.

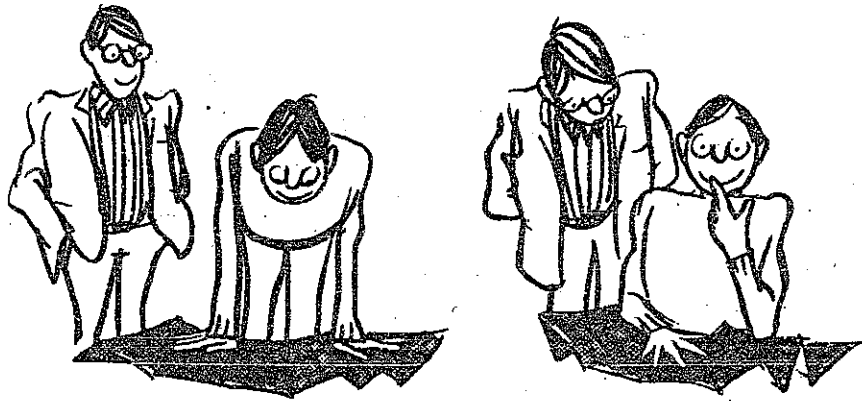
Effects of primary

Other possible effects of the primary, according to Saloma, could be:

- 1) A repudiation of the President, and a boost to the Republicans' effort against him.
- 2) A veto on the candidacy of one of the major Republican candidates. For instance, if this primary shows that Nixon can't win among young people, his chances for the nomination may be ended.
- 3) Of the four candidates having a real chance at this point for the Presidency — Johnson, Nixon, Reagan, and Rockefeller — CHOICE 68 might give the greatest boost to Rockefeller's chances.
- 4) The vote could go far towards determining the Republican vice-presidential nominee, especially since the major parties have recently nominated well-known political figures for vice-president.
- 5) There is a possibility that the primary could bring another, lesser candidate such as Lindsay into prominence, although the primary will probably be too early for this.

Rebuild politics

In conclusion, Saloma stated that he was impressed by what he called "how far off base the American political system is now. As Prof. Lettvin says, the older generation has gotten us into the present mess. If a politician of the older generation is elected in 1968, it will be 10 years before another chance comes to elect a young, Kennedy-like candidate. If the domination of the older political generation is to be ended and American politics rebuilt, the job must be done by the young."

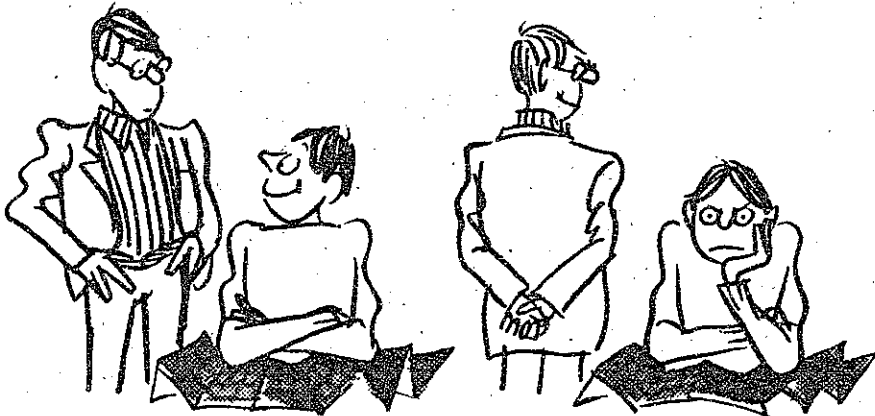


1. Planning a trip?

Dabbling in real estate. There's some choice acreage for sale.

2. But that's just swampland.

I'll call it Bog Harbor.



3. What'll you do with the alligators?

How about one free with every acre?

4. Have you checked for tsetse flies?

You sure look on the dark side.



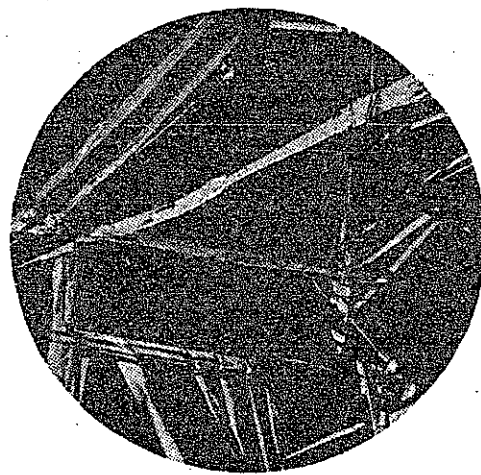
5. I hate to see you throw your dough away.

Listen, I'm doing this so my wife and kids will have something to fall back on if something happens to me.

6. Then why don't you put some money into Living Insurance from Equitable. That way, you'll all be on solid ground. Living Insurance gives top protection while your kids are growing up. And when you retire, it can give you a lifetime income.

I never could read road maps.

**Ch.E.s at Merck... "You know that isothermal recrystallization process Dick Klophaus\* worked out?"**



\*A graduate of Newark College of Engineering (B.S.Ch.E., 1965), Dick Klophaus, helped perfect techniques to improve output of this complex crystalline compound—an important component in nutritional supplements.

**...it's working out just fine."**

Dick Klophaus gets real satisfaction from the variety and sophistication of engineering needed to develop, design, and manage the processes required to produce Merck products.

He and his Ch.E. colleagues get equal satisfaction from the knowledge that the end result for more people is a better life for more people, around the world.

For many engineers, it's an ideal combination. Add mobility... real opportunity for growth and promotion... real opportunity to learn and develop new techniques... Merck's liberal policies on benefits, graduate work,

and professional achievement... Merck's outstanding sales growth (122% since 1957) and research investment (\$46 million this year).

Add all these factors together, and you'll see why Merck attracts some of the finest engineering talents in the country. And keeps them.

How about you? Think about the engineering variety and sophistication required to produce the complex molecules used for pharmaceutical products. Think about the good use these products are put to.

Then see your Merck Representative on campus.

Dick Klophaus, by the way, now supervises production of Vitamin C, Vitamin K<sub>1</sub>, and various sulfa products. His responsibilities, and those of other young Ch.E.s, are described in our new booklet, *Merck: an engineer's company*. You'll not only learn from this booklet—you'll actually enjoy reading it. Pick up a copy at your Placement Office, or write: Manager College Relations.



**MERCK & CO., INC.**  
Rahway, New Jersey 07065  
An Equal Opportunity Employer

For information about Living Insurance, see The Man from Equitable. For career opportunities at Equitable, see your Placement Officer, or write: James L. Morice, Manager, College Employment.

The **EQUITABLE** Life Assurance Society of the United States

Home Office: 1285 Ave. of the Americas, N.Y., N.Y. 10019  
An Equal Opportunity Employer, M/F

©Equitable 1968

# Committee for Young Americans tries to expose draft loopholes

(Continued from Page 1)

The Tech has been able to clarify or refute most points. Because of the generally informative nature, a number of these statements are presented.

## Draft information

"The government does not give out copies of the law to the public." Copies of and information about draft laws are available from either the state headquarters or the National Headquarters. Ideally, the information will also be available from the local boards, but this is not always the case, largely due to inadequate staffs. The Selective Service also puts out a monthly bulletin that is available to the public at nominal cost.

"MANY persons are NOT EVEN REQUIRED TO REGISTER for the draft." Mrs. Lutz stated that the only ones she was aware of are foreign students here on student visas.

"There are 22 other classifications besides 1A." This is true and everyone should be aware of it. The complete list of classifications comes with the classification questionnaire that everyone receives.

"There are two services which fulfill your military obligation besides the Army Navy, Coast Guard, Marines and Air Force." This is also true. The two services

are National Institute of Health and the Environmental Science Services Administration, formerly the Coast and Geodetic Survey. These are commissioned positions.

## Appealing induction

"If you are scheduled for induction there are many postponements available." This item should be common knowledge since the procedure is on the back of the draft card. In addition to the appeal to the local board, one may appeal to the state or national draft board, both of which have the power to postpone induction.

Mrs. Lutz explained that she

has always found the selective service reasonable and willing to listen. She has never lost a student or staff member to the services. She began her job at the time of the Korean War. Mrs. Lutz believes that many of the problems of the draft are caused by the colleges themselves. Very few schools have set up facilities to counsel students. She pointed out that she has helped such schools as Dartmouth and Ohio set up student services. Harvard has offered draft counseling services for only a year and even then the school doesn't handle the requests for 2-S deferments.

## Map Room addition

# Library to get MAC console

The Map Room of Hayden Library will soon contain an index to some five years' worth of Physics Journals stored on a computer and accessible through a project MAC console. The bibliographic files are presently stored as part of the Technical Information Program (TIP), and can be reached from any MAC console.

Plans are to install a console in the Map Room, in the space formerly occupied by the plaster globe. Although Mr. L. E. McGuire couldn't say whether use of the console would be restricted to those who wish to use TIP files, it is reasonable to say that there will not be completely free access to the console. The "time-sharing numbers" which are required when a user begins to operate the MAC system will help somewhat with the use problem.

Articles from 25 Physics journals are stored on the machine. The bibliography is updated every week. TIP can retrieve information based on author, title of the article, name of the journal, or some combination of these. The program is also able to list citations of other works on the subject listed in articles in its file, thus expanding the effective size of its listings.

TIP was first written by W. D. Mathews, Department of Sponsored Research, in 1965.

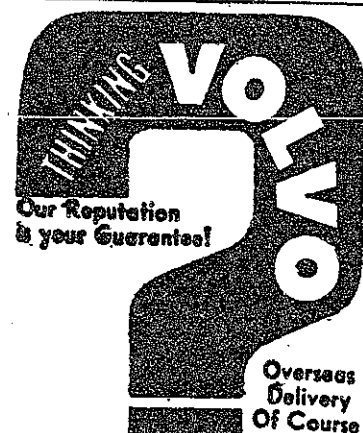
## On Deck

### Today

Basketball (V)—Colby, home, 8:15 pm  
Fencing (V)—Brooklyn College, home, 7:00 pm  
Squash (V)—Trinity, away, 4:00 pm  
Hockey (V)—Bowdoin, home, 5:00 pm  
Squash (F)—Trinity, away, 4:00 pm  
Indoor Track (V&F)—GBCAA at Northeastern

### Tomorrow

Basketball (V)—Clark, home, 8:15 pm  
Wrestling (V)—Amherst, away, 3:30 pm  
Swimming (V)—Trinity, away, 2:00 pm  
Squash (V)—Williams, away, 2:00 pm  
Gymnastics (V)—Coast Guard, away, 2:00 pm  
Pistol (V)—Intercollegiate Sectional, here  
Wrestling (F)—Amherst, away, 2:00 pm  
Fencing (F)—Concord-Carlisle, home, 2:00 pm



**DALZELL**  
MOTOR SALES  
Rte. 1, Dedham  
(Dedham Plaza)  
329-1100

## PART-TIME JOBS

ALCOA has openings which may lead to a career in science, engineering or management.

Call Mr. Hewitt  
at 326-3142  
to arrange an interview

**LRL Develops Fiber Optic Oscilloscope  
with 20 Picosecond Resolution**

**Underground  
nuclear explosion  
heralds new era  
in recovery of  
natural resources**

**NEW!  
electron-positron accelerator  
being built at  
Livermore Laboratory**

**LRL - Livermore  
discovers "mendelevium 258"  
The heaviest isotope  
known to man!**

**Engineers build  
a graphite engine  
to operate  
continuously at 2700°F  
for more than  
270 hours**

These are a few of the accomplishments of scientists and engineers at Livermore. These pioneers of research work on the technology of tomorrow in virtually all phases of nuclear energy.

If the following information is of interest, contact your placement office and arrange an interview with our representatives when they visit your campus.

**What are we?** — One of the largest scientific research laboratories in the world with a staff of over 5,600 scientists, engineers and support personnel engaged in virtually all phases of nuclear energy research.

**Where are we?** — Our Livermore facility is located in a pleasant suburban area within easy driving distance of the San Francisco Bay Area.

**What do we offer?** — A tremendous variety of unusual stimulating research problems; a large number of outstanding technical associates; a vast array of equipment including some of the most advanced computers in existence; hard work.

**What kind of people are we seeking?** — Scientists, Engineers, Mathematicians at all degree levels who have the ability and desire to contribute to our research effort.

Current openings at all degree levels include:

**Theoretical and Experimental Physicists** • Hydrodynamics • Nuclear physics • Fission and fusion reactions • Astrophysics • Geophysics • Solid state physics • transport theory

**Electronics Engineers** • Systems design and development • Instrumentation • Computer technology • Field systems engineering

**Mechanical Engineers** • Advanced machine design • Analytical and experimental stress analysis • Applied mechanics • Environmental testing

For further information about these and other openings arrange to talk with our representatives during their

**CAMPUS INTERVIEW  
WEDNESDAY, FEB. 14, 1968**



or write:

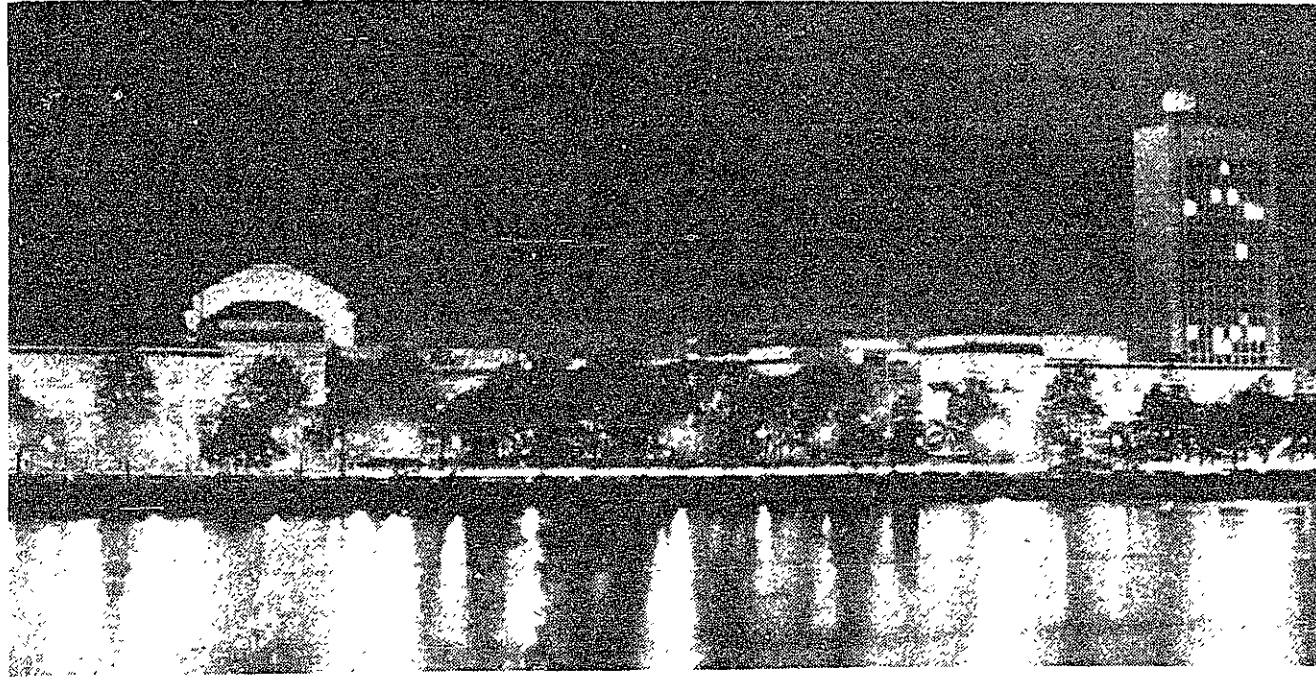
Lawrence Radiation Laboratory  
University of California  
P.O. Box 808 XX-78  
Livermore, California 94550

An Equal Opportunity Employer  
U.S. Citizenship Required

## SCEP panel to examine effects of MIT on students

How does an MIT education affect a student's personality? What pressures does it create, and how does it change a student's motivation in school and his ability to function after graduation? How can the environment be manipulated to alter undesirable aspects of life at MIT?

These questions will be discussed by a faculty panel, under the sponsorship of the Student Committee on Educational Policy, Tuesday, Feb. 13, at 8 p.m. in the Student Center Mezzanine Lounge. Panelists will be Prof. Walter Rosenblith, Chairman of the Faculty; Undergraduate Planning Professor George Valley; Dr. Benson Snyder, the Psychiatrist-in-Chief; and Prof. J. Forrester of the Sloan School. Moderator of the panel for SCEP will be Alan R. Millner '69.



Campus Interviews Monday, Feb. 12

### IMPROVED MACHINERY INC.

## Electrical Engineers MECHANICAL ENGINEERS

B.S. or M.S.

#### Professional Development

You will find expanding horizons and career fulfillment at IMPCO. All the knowledge you have gained at school will find practical application; working with top engineers your technical competence will rapidly increase. Your assignments will be broad in scope, with total project involvement. You will assume responsibility in machine design or project engineering as rapidly as you demonstrate capabilities. Some assignments require special interest and background in hydraulics and mathematical analysis.

... is an international leader in the design and production of machinery for the pulp and paper, and plastic molding industries — a solid company with outstanding growth rate and heavy non-defense commitments. Modern, well-equipped facilities in a spacious 63-acre site.

Both at work and in your personal living, New Hampshire offers room to breathe, room to grow. No state sales or income tax, low insurance rates. Incomparable recreation area in your backyard, yet Nashua is only one hour from the cultural and entertainment centers of downtown Boston.

A company representative will be on campus  
Monday, February 12  
Please contact your Placement Director  
for interview appointment.



A SUBSIDIARY OF  
INGERSOLL-RAND COMPANY

**IMPROVED  
MACHINERY INC.**

NASHUA · NEW HAMPSHIRE 03060

An Equal Opportunity Employer

## Kayaks to compete indoors

A canoe race in the pool? They said it couldn't be done. MIT's White Water Club will do it, though. The second annual MIT-New England Kayak and Canoe Slalom will be held tomorrow night, at 7 pm in the Alumni Pool. Admission is 50 cents; free tickets are available to members of the MIT community in the lobby of Building 10 and at the pool desk.

#### French contestants

Among the participants will be students from schools throughout New England, including MIT, Har-

vard, University of New Hampshire, University of Rhode Island, and University of Connecticut, as well as members of the United States and French national white water teams. Features of the event will be a performance of synchronized swimming by Ann Kivisild '71, and a demonstration of advanced kayak techniques by Charles Richardson. A student at Weston High School, Richardson is the son of Peter Richardson, MIT associate director of admission.

The race is similar to a ski slalom. Fiberglass kayaks and one- and two-man canoes are raced against time through a specified course of "gates" suspended over the pool. Special maneuvers are required, includ-

ing paddling backward and rolling 360 degrees in the water, or "Eskimo rolling." Penalties are exacted for omitting maneuvers and for hitting gate poles.

#### Practice sessions

Members of the White Water Club practice elementary and advanced paddling and slalom techniques in the pool throughout the winter. This controlled indoor practice provides invaluable preparation for the spring season of outdoor cruising and racing.

Members of the MIT community are invited to attend pool sessions. A showing, open to the public, of movies and slides of the national white water championships will be held Tuesday at 8 pm in room 407 of the Student Center.

### Second nationwide

## Debate team gains stature

Room 469 of the Student Center provides the home base for an MIT team that is solidifying its position as one of the best in the nation. Though young and somewhat inexperienced, the MIT debate team has worked its way into the national limelight. After a slow start, the team won second place in a nationwide competition. The team of Barry Rosenbaum '70 and Dave Hiatte '69 lost a 3-2 decision in the final round of the Emporia Classic. In its next major competition, the Emory Invitational Tournament, the team scored a major success. Bill Arthur '69 and Rosenbaum went 7-1 in the preliminary rounds and defeated the University of the Pacific in the octo-finals before dropping a 2-1 decision to Wichita State — the team that went on to win the meet with a 7-0 decision in the final round. The Tech squad also compiled the best overall record as Gary Ketner '69 and Joe Angland '71 contributed six wins and two losses. The Brown University Tournament provided a pleasant surprise for the team. Four freshmen were sent to this varsity tournament for experience. When their "experience" was completed, Joe Angland, Craig Richardson, Steve Givot and Alan Fuchs had won first place. Angland won the award for second best debator, Richardson took third in oratory and Angland and

Givot achieved finalist status in extemp. After a slight letdown at the Georgetown Tournament, the team picked up when they visited Air Force. Rosenbaum and Angland placed ninth while Rosenbaum walked off with the title of fourth best speaker — his third individual recognition of the term. Team president Arthur augmented his individual laurels by winning third place at Southwest Missouri State and combining with Hiatte to place ninth at Harvard in a field of 170 schools. The team is currently preparing for the March District Tournament, which will determine who will represent New England at the National Finals.

## ACE poll shows fresh attitudes

(Continued from Page 4)

historical fact. Hemlines were descending with the crash of 1929. In 1959, hemlines went up an inch and the GNP broke \$400 billion for the first time. And in 1966, the miniskirt really came into style while the economy showed a record 9.5% increase. The course of action is obvious, but will there be a moral to the story?

#### Fresh thought

On the more serious side, the American Council on Education has released the results of a poll of 185,848 freshmen representing 252 colleges and universities. The study showed that 85.3% believe that faculty members should determine the curricula while 62.2% believe that faculty salaries should be based on student evaluation.

Other results showed that 56.7% didn't want the college to give preferential admissions treatment to the disadvantaged, 20.8% favored de-emphasizing college sports, 56% said that the main benefit of a college education is increased earning power while 82.9% rated "developing a meaningful philosophy of life" as an important objective.

#### Clean clear through

For the parting shot, some students at the University of Oregon are living proof of the Cleanliness-is-next-to-Godliness school of thought. One of the dorms is trying to break the national collegiate record for hours under the shower. The record is 240 hours but they're shooting for 400.

### HEADQUARTERS

- LEVI'S
- LEE'S
- WRANGLERS

### CENTRAL WAR SURPLUS

Central Square, Cambridge  
433 MASS. AVE.

### THE CODON CORPORATION

special computer system  
Several full and part-time  
positions exist for:

- real-time systems analysts
- programmers
- control systems engineers

Please call or write:

### THE CODON CORPORATION

Post Office Box 137  
Cambridge, Mass. 02140  
492-6870

An Equal Opportunity Employer

### SKI EQUIPMENT

Large Variety - Famous Brands

### Tennis & Squash Shop

67A Mr. Auburn St., Cambridge  
Opp. Lowell House TR 6-5417

# Grapplers rout BC, 36-9

# Crimson defeat JV cagers; First loss for Tech squad

By Dan Swift

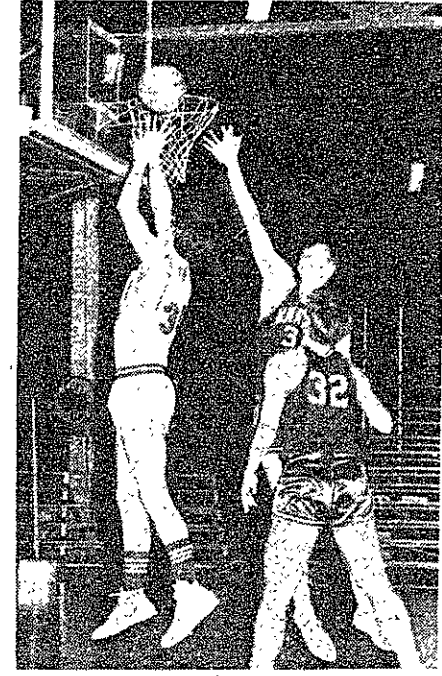


Photo by George Flynn

Nick Mumford '70 lays in an easy basket after getting by two Harvard defenders in Wednesday's game. Harvard won, 60-36.

to pull five rebounds in succession off the offensive boards. The engineers tried putting in reserves but the theory of inertia seemed to be in effect. There was very little for the lonely six or seven spectators to cheer about. No one on the squad seemed to be able to find the range. Bob Listfield '71 sunk a couple of long ones, but that was all.

The end of the game came mercifully as Harvard began to get hot. They lengthened their lead to 24 before the final buzzer sounded. The loss was the first one for the Tech squad.

The Tech JV squad was thoroughly trounced by the Harvard Crimson by a 60-36 margin Wednesday night at Rockwell Cage. The first half score (27-15) seemed to indicate that one of the two teams was deploying the freeze.

This unfortunately was not the case. Tech simply could not come close to penetrating the Harvard defense and the Crimson also was having some problems against the man-to-man defense of MIT. The Harvard defense consisted of keeping the big man underneath and playing the other four man-to-man. Tech could not work the ball inside for the sure chippie. In the past, most of the points have come by finding someone open underneath. This time, however, they were forced to go with the long shot and, as a result, hit for less than 25%.

Steve DeRodeff '68 appeared to have the range as he hit three 25-footers in a row at the outset, but he began forcing his shots and lost his touch.

### No improvement

The second half was almost a carbon copy of the first, as the level of play was only slightly better. Harvard's Waickowski was the big man both literally and figuratively. Standing 6'6", he effectively clogged up the center lane on defense. His rebounding was equally impressive as he quickly stifled any hope that Tech may have had of making a comeback.

At one point Harvard was able

### Ten straight

Which brings us to Fred Andree. In his first year of varsity competition, his 225 pound sophomore has compiled 10 straight victories in dual meets. His tenth was in the BC match, pinning his opponent in the first period. He, together with the three other sophomores on the squad, should continue to be a big influence in the coming seasons.

Besides Andree's thus far perfect record, three other grapplers have lost only 1 match: Baron, 5-1; Harris, 7-1-2; and Price, 8-1. In addition, Hawkins has come through with a very respectable 8-2.

### Two wins, one maybe

The engineers are expected to repeat their performance at Amherst tomorrow night, hoping to cut down a 5-11-1 series record now held.

Similarly, the eight game difference of the 24-16-3 record with Tufts is expected to increase to nine when the engineers receive them on the home mat Wednesday.

Tech's next big match will be a week from today, when Army comes to meet this year's Tech team. Army has one of the best wrestling teams in the country, and a very tough team contest is expected.

Varsity lacrosse practice began last night and will continue to be held every evening. Practices will begin at 7 pm and will be held in Rockwell Cage until weather permits outdoor practice.

By Ron Cline

The Tech grapplers upped their season record to 7-3 Monday by methodically taking apart Boston College to the tune of 36-9. Outstanding individual performances highlighted this match, with three engineers retaining one loss seasons and sophomore Fred Andree chalking up one more for his undefeated skein.

Roger Chang '69 got a rest this week in the 115 pound bracket, winning by a forfeit. At 123, Joe Baron '70 took his match 5-3 for Tech's first earned win. Captain Bill Harris '68 took his turn at the mat, and pinned his opponent in the second period.

Wrestling a weight class above what he usually competes at, Gregg Erickson '69 made a good try; however, he lost by a decision, 4-2. Losing also by a decision was Jack Wu '68, who, re-

covering from an injury, also tried to wrestle one class above normal.

### Hawkins' dilemma

Norm Hawkins '68 has a problem. He can't pin his opponents. But this inability doesn't keep him from winning. Ask the BC wrestler who lost to Hawkins 13-0.

Dick Willoughby '70 added his own winning points to the mounting Tech score, pinning his opponent in the third period in the 160 class. After Dean Whelen '70 took 167 by forfeit, Walt Price '70 added his second period pin to claim the 177 bracket.

At 191, Jeff Cove '70 lost to a worthy opponent. When one realizes that this is Cove's first year at intercollegiate wrestling, a certain amount of respect must be given. With some more hard work and experience, he can look forward to a promising future.

# Crimson downs fencers, 19-8; Stephan wins three epee bouts

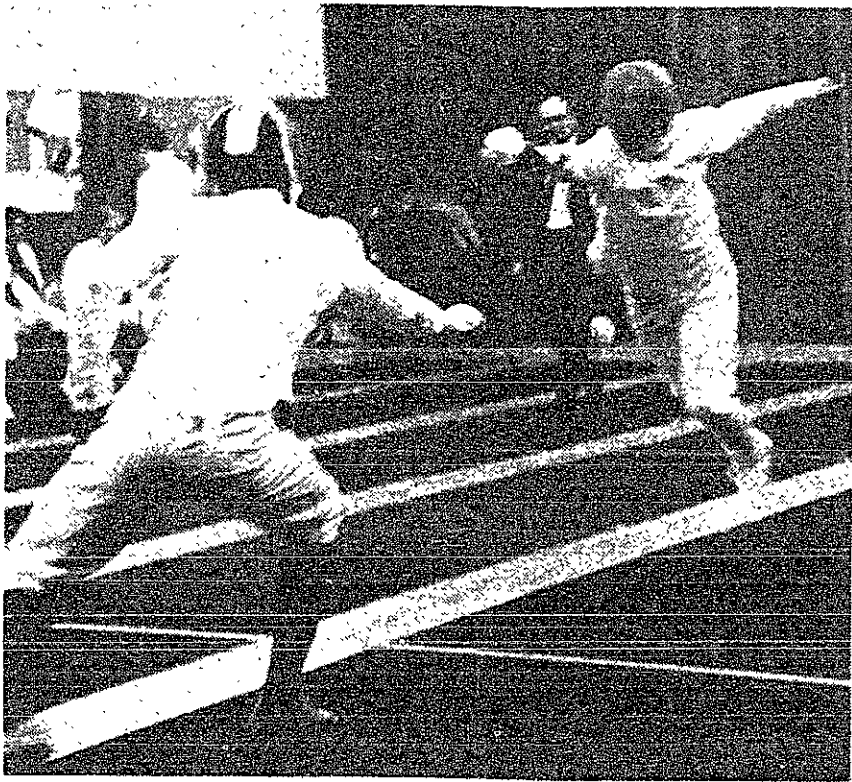


Photo by Brad Williamson

Bruce Sather '70 (right) flashes toward the Crimson's Winfield. Winfield was unable to parry the thrust to the head and Sather scored. The engineers were outclassed by the Harvard fencers and lost 19-8.

By Dale Geiger

Harvard University again demonstrated their fencing prowess and skill by repeating an early season margin of victory over MIT, winning 19-8.

Several of the engineers, however, turned in outstanding performances. Bill Stephan '69 had a perfect night registering three victories against no losses in epee.

Frank Carroll '68, the Tech high scorer in the last mutual engagement, ended the night with two victories against one loss in the sabre division.

The other Techmen who registered single victories were Burt Rothberg '68 in sabre, and Jack Stafurik '68 and Vince Fazio '70 in epee.

The Crimson fencers started by sweeping the foil division, nine victories to no losses. Desmel Murphy '70 ran the score in the last foil duel to four touches apiece, almost depriving Harvard of the sweep.

The MIT squad put on their best performance in epee winning the division five to four. Harvard dominated the sabre competition, scoring six victories to three defeats.

A breakdown of scoring into actual touches or registered hits leaves things looking a little bit better. For example, while losing all the foil duels, the Techmen still scored 16 touches, suffering in the process 45 with five being necessary for a loss. Although defeated 6-3 in sabre, the difference in the number of touches was only 11, with Harvard sustaining 27.

# Babson tops skaters, 9-5; Harris, Satow score twice

By Scott Rhodes

The MIT hockey team lost its third game in a row as it was defeated by Babson College Wednesday night 9-5. The contest, the first of two between these teams this year, was decided by inspired, hard skating on the part of Babson and several defensive blunders by the engineers.

The Tech skaters jumped off to an early lead in the first period when Rich Pimlock '69 fired the puck from the blue line and Clay Satow '68 slapped it into the goal. As in previous games, however, the visitors took advantage of some sloppy defensive play to tie the score and then take the lead. With the tying goal, the MIT team seemed to fall apart and Babson added two more for a 3-1 lead at the end of the first period.

### Tech closes gap

In the opening minutes of the second period, the Babson beavers boosted their lead to 4-1 before MIT began to apply their strongest pressure of the game. Captain Mike Harris '68 carried the puck in from the blue line and fired from about twenty feet out into the lower right corner of the Babson goal. For the next ten minutes, Tech continued to dominate play.

The effort finally paid off when the Babson goalie lost sight of



Photo by Terry Bone

Hockey captain Mike Harris '68 drives a hard slap shot past the goalie in Wednesday's game with Babson. Despite a two-point effort by Harris, which was matched by teammate Clay Satow '68, Babson on the match 9-5.

the puck in his skates after he blocked a long shot from the point. The puck sat at his feet for five seconds while Satow skated towards it to slide it across the goal line. This put the home team only one goal back, 3-4 and it looked as though the game could go right down to the wire, but at this point Babson took charge for good.

### Harris scores again

In the final period, Harris

scored on a close-in scramble and Denis Coleman '68 carried the puck out from behind the Babson goal and flipped it by the goalie for MIT's final score. But neither the forwards or the defensemen were able to cover their men in their own end and the final score rose to 9-5.

The teams clash again next Tuesday at 7:00.

# Mermen fall to Amherst

By Jeff Goodman

Tech swimmers fell victim to a powerful Amherst squad, which was last year's New England champs, 52-43 at Alumni Pool on Wednesday.

A 400-yard medley relay composed of Luis Clare '69, Tom Nesbitt '69, Jim Bronfenbrenner '70, and Bill Stage '69 lost to an Am-

herst relay by a body length.

The bright spot of the meet was Lee Dilley's win in the 200-yard freestyle in a record-breaking 1:53.2. Dave Benbasset '68 took a third. Jim McFarren '68 placed second behind Amherst's Stoeckle, who dominated the sprints. Clare took second in the I.M. to make the score Amherst 22, MIT 12 going into the diving.

Bob Rorschach '70 won the diving event with Kling and Forbess of the opposition two-three. Dilley proceeded to rack up his second win of the day by winning the 200 fly in 2:11.5.

Bronfenbrenner finished third with his best effort of the season, unofficially 2:15. Stoeckle won the 100 in 49.2 with McFarren and Stage second and third.

Tom Nesbitt turned in his best time to date while taking second in the 200 breast with Larry Preston third. MIT narrowly won the 400 free relay as McFarren, Stage, Jim Lynch '69, and Dilley combined to add seven final points to the engineers' losing effort.

### How They Did

- Wrestling
- MIT (V) 36—Boston College 9
- Swimming
- Amherst 52—MIT (V) 43
- Hockey
- Babson 9—MIT (V) 5
- Fencing
- Harvard 19—MIT (V) 8
- Basketball
- Harvard 60—MIT (JV) 36

Second-class postage paid at Boston, Massachusetts. The Tech is published every Tuesday and Friday during the academic year, except during college vacations, by The Tech, Room 420-483, MIT Student Center, 84 Massachusetts Avenue, Cambridge, Massachusetts 02139. Telephone: Area Code 617 876-5255, and 866-6000 ext. 273. United States mail subscription rates: \$4.25 for one year, \$8.00 for two years.