

Killian, Johnson named to advisory committee

America's foremost university city will be unable to handle the influx of visitors which will arrive when Harvard's John F. Kennedy Memorial Library and School of Government is built, warned Attorney George A. McLaughlin, head of the Cambridge Citizens Advisory Committee in a recent speech before that group. In particular, he singled out the Harvard Square area as the part of the city most in need of redevelopment.

Traffic problems

In order to determine the best way to improve the traffic patterns around the Square while preserving the historic buildings located there, Mr. McLaughlin has appointed a subcommittee to consider the problem. Among the members of the subcommittee are Chairman of the MIT Corporation James R. Killian and MIT President Howard Johnson, as well as Harvard President Nathan Pusey and Radcliffe President Mary I. Bunting.

University city

The heavy representation of the Cambridge academic community is the result of Mr. McLaughlin's conviction that Cambridge is a "unique" city built around its great universities. Mr. McLaughlin also had some kind

words for MIT, praising the Institute for the work it has done in developing its area of Cambridge. "Cambridge is a university city, is will be our job now to see that it becomes and remains the best university-city in the world today," concluded Mr. McLaughlin.

Professor Trump receives engineering societies award

Dr. John G. Trump, Professor of Electrical Engineering, will be the recipient of the New England Award presented to a scientist by the combined engineering societies of New England. The award, presented annually to an outstanding engineer, will be given to Dr. Trump at a February 21, lunch-

eon, terminating Engineer's Week, now being held in Boston.

Dr. Trump was born in New York, and received his undergraduate education at the Brooklyn Polytechnic Institute, obtaining the degree of electrical engineer in 1929. He received his Masters from Columbia Univer-

sity in 1931, and two years later secured his doctorate in EEE from MIT.

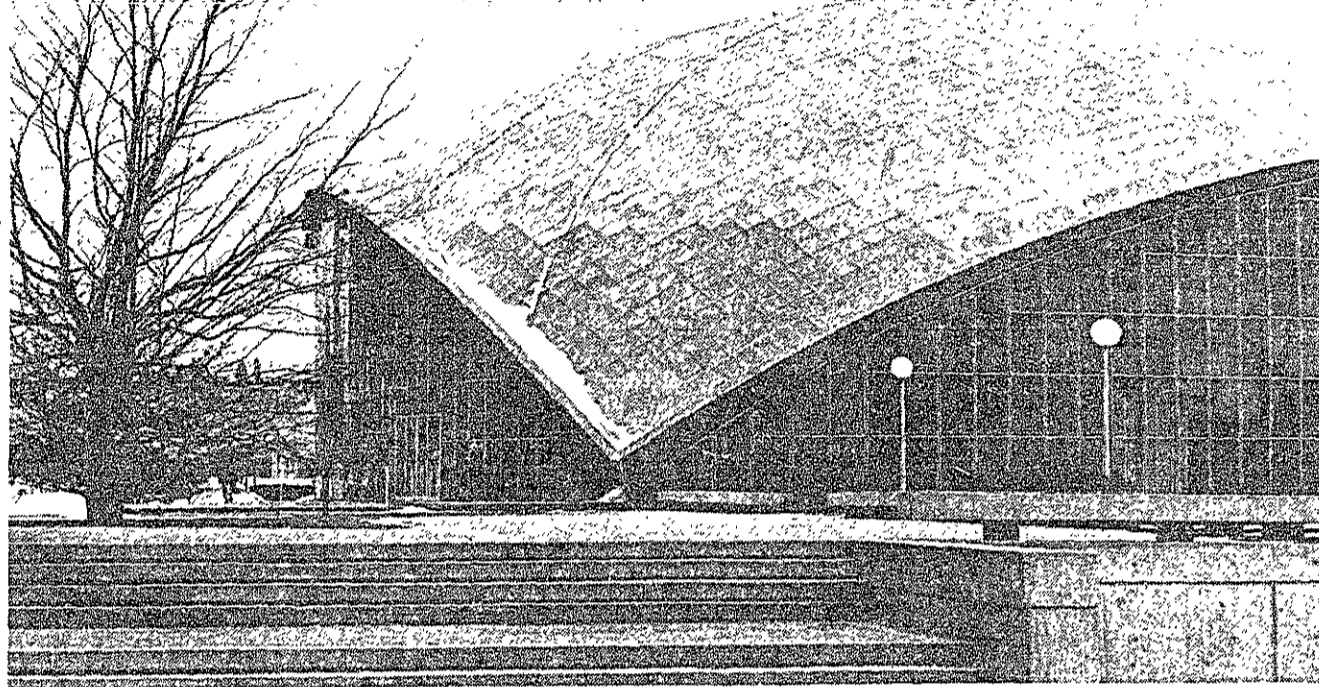
Research helps treat cancer

Continuing at MIT as a research associate, Trump studied the feasibility of vacuum-insulated rotating electrostatic power machinery, which led to medical applications of the Van de Graaff generator. In 1935 the development of a million-volt electrostatic generator was undertaken at the Huntington Memorial Hospital in Boston for the treatment of cancer. Subsequent studies of the insulating properties of compressed gases and of methods of controlling the electric fields in a pressure-insulated Van de Graaff generator led to the development of a far more compact X-ray source for the Massachusetts General Hospital. This source was first used clinically in 1940. Today over forty two-million volt Van de Graaff electrostatic X-ray sources are used in the treatment of an estimated thousand patients a day.

After working for the NDRC during World War II, Dr. Trump resumed his work in MIT's High Voltage Research Laboratory. He was given an associate professorship, and in 1952 was made a full

(Please turn to Page 9)

The Tech



Vol. 87, No. 4

Cambridge, Massachusetts, Friday, February 17, 1967

Five Cents

Carnegie sponsored effort

Killian report proposes tax for support of ETV

By Cary Bullock

Is educational television about to go big time? Dr. James R. Killian, chairman of the Carnegie Commission on Educational Television, and chairman of the MIT Corporation, recently announced the Commission's proposal to President Lyndon Johnson that an excise tax be placed on new TV sets to support non-commercial television.

Tax initially ranging 2-5%

The levy, ranging from a start of 2 per cent to 5 per cent on the manufacturer's price, would mark the first time in American broadcasting that the consumer would contribute directly to the cost of programs on the air.

Proceeds from the tax, estimated at \$40 million a year at the 2 per cent rate and \$100 million at the 5 per cent rate, would be used to underwrite a corporation for public television. The corporation, to be established by Congress, would direct and finance expansion of educational video as "a new and fundamental institution in American life."

Only 124 stations exist

Existing educational TV stations now total only 124. The commission envisions 240 stations within four years and 380 stations within 10 years, which would blanket 93% of the U. S. population.

The report has been praised from a number of sides. Immediately after the commission announced its request, the Columbia Broadcasting System pledged \$1 million toward the \$25 million endowment initially needed by the corporation.

A major public service

McGeorge Bundy, president of the Ford Foundation, lauded the commission, citing as its most important conclusion the fact that non-commercial TV needs some sort of federal support. "The job at hand is to turn the report's blueprint into reality. Dr. Killian and his colleagues have performed a major public service, and the American people stand to benefit

immeasurably from the fresh approaches in the report."

While the American Telephone and Telegraph Company expressed general approval of the report, it disapproved of the idea that educational TV be given free satellite channels to relay its own shows. The company also rejected the commission's suggestion of a preferential rate for use of ground relay facilities.

Further dissent expected

The greatest dissent, however, is expected to come from the television manufacturers who stand to suffer from the loss of sales. As a group with extremely powerful lobbies in Washington, they could present serious opposition to approval of the Commission's report by Congress.

In response to anticipated dissent it should be said that the commission is not attacking commercial TV. Rather it is emphasizing that there is a difference between what is important and what is popular. It strives to make available that which is important—something which if left to TV polls would probably never be seen.

Johnson serves on finance agency

President Howard W. Johnson was appointed by Governor Volpe to a three-year term as a member of the Massachusetts Housing Finance Agency.

The agency is part of the Department of Commerce and Development and is charged with financing low rental housing for families of low income and veterans. The members serve without pay.

Applications for postponed final, condition, and advancement examinations must be returned by Thursday, February 23, to Room E 19-335.

A debate will be held among the three UAP candidates, Richard Karash '68, Bob Horvitz '68, and George Phillies '68, in the Sala de Puerto Rico of the Student Center, Wednesday at 7:30 pm. The format will consist of a five minute basic policy speech by each candidate followed by a question-answer period: questions by the audience and moderation by UAP Frank March '67. All interested are urged to attend.

'Falling Men' shown

Trova to open exhibit

Ernest Trova, the sculptor whose "Falling Man" figures have attracted wide attention, will be present for the opening of an exhibition of his recent work in Hayden Gallery at MIT from 7 to 9 p.m. next Monday, February 20. He will give an informal talk at noon on Tuesday in the gallery.

'Car Man' to be shown

A dozen of the fourteen works to be shown will be of bronze or other metals and most of them were completed during the past year. One is a "Car Man," in which Trova's standard human figure, armless and sexless, forms the body of a highly polished racing automobile six and one-half feet long.

The Car Man does not move but another piece of sculpture, "Figure in Bed," is motorized. In this case the Falling Man is aluminum and lies on a canvas-covered mattress on an electric hospital bed which, when plugged in, can be raised and lowered.

Innovation by artist

One new work, the first of its kind done by Trova, carries the title "Intaglio," and consists of a six-and-one-half-foot shaft of polished bronze with the Falling Man appearing in intaglio on the three sides.

One of the smaller pieces, "T Landscape," which is less than two feet in its longest dimension and is of enamel, aluminum and bronze, has a recumbent Falling Man attached to cryptic apparatus which includes pieces of ski cables — relics from a trip to

Gradual approach needed

Wiesner foresees peace only by trial and error

(This is the second of three articles in a series about Dr. Jerome B. Wiesner, provost of MIT, and his thoughts about disarmament.)

By John Foran

The Gaitner Panel study caused Dr. Jerome B. Wiesner to become

involved with the technical, military, and political facets of the disarmament problem. Dr. Wiesner expressed his feelings in an article written recently for the Associated Press.

He began to view the lack of agreement as critical. In the US government, "there was no real understanding of the relative importance of continued nuclear testing to develop "clean" neutron bombs . . . as compared to the achievement of a test ban. Neither was there any agreement on what constituted a deterrent force."

Gross overestimate

At the outset the US grossly overestimated the size of the Russian offensive and defensive systems. Since the Cuban crisis, there has been a Russian build-up, which could in actuality intensify the arms race. Reasons suggested for this build-up include: (1) the disadvantage the Russians felt during the Cuban crisis; (2) Russian agreement with reasons we have used to justify our defenses; and (3) Russian fear of a more powerful China.

When President Kennedy established the Arms Control and Disarmament Agency in 1961, an American President had for the first time competent and regular advice about disarmament from a staff of experts. Still, all was not perfect.

Trial and error

Trial and error, says Dr. Wiesner, is the only practical method for achieving a peaceful world order—a "process of evolution." The fact that China is acting belligerent should not stop us from actively seeking an accord with the Soviet Union. And China, he thinks, will "ultimately . . . want to avoid the dangers and great costs of a continuing arms race."

The keynote, though, is a sensible gradualistic approach. To be acceptable to all, there must be trial and error, not the construction of a master plan to be carried out at all costs. There is no room for "major miscalculation."

The Test Ban Treaty of 1963,

(Please turn to Page 7)

Southeast Asia beckons; Salinger cancels lecture

Pierre Salinger, who was to have given a lecture, "The Kennedy Years and After," at Kresge February 20, has been forced to cancel his talk due to a trip to Southeast Asia. Salinger was previously scheduled to speak in October, but that lecture was also cancelled because of a previous trip to Southeast Asia.

Plastic housing favored by Dietz

By Cary Bullock

For many years Albert G. Dietz, professor of building engineering in the department of architecture and the department of civil engineering, has advocated that plastics be used for housing. In London, plastic has been used extensively in house building for over twenty years. In Mexico City, plastic has been used extensively for house building. It has not been used very much in technologically superior America however.

Main obstacle is psychology

The principal problem to overcome in expanding use of plastics in construction is grounded in psychology, Professor Dietz indicated. The first exposure to plastics for many Americans came during World War II. "We regarded plastic as a cheap substitute for something better." This is the impression that has and will continue to remain if parents of children with broken toys have anything to say. The fear of using plastics in this country is reflected by the fact that building codes still require special permission before plastics

can be used even on outside walls — "and this sometimes means going through an appeal," says Dr. Dietz.

Fear still persists

That this fear still persists in the U.S. is the height of irony, since most of the plastic panels used for Britain's housing are produced in this country.

Progress on selling plastics as a construction material is slow, but "architects more and more, are beginning to come around, even though their attitude has been cautious and hesitant." Factors in this change-of-heart have been the consideration of a few successful experiments. The house of the future at Disneyland, all reinforced plastic, is in excellent condition after 10 years of handling two million people a year. A Moscow exhibit of U.S. technology a few years ago contained rooms made completely of plastic.

Offers economic advantages

While the evolution of plastics in building will bring new kinds

of architectural expression, it will also offer many economic advantages. For example, the use of lightweight plastic panels in apartments substantially reduces the load on the foundation, according to Dr. Dietz. The ability to limit the size of the foundation produces a savings of about 50%. In addition, savings are made because the assembly time of buildings is drastically cut.

The challenge for plastics producers has moved from the realm of engineering to that of selling. And it looks like quite a job to change public image of plastics from toys to apartments and office buildings.

WANTED

Men looking for extra money who would be willing to sell
ELSIE'S SANDWICHES
Contact Elsie's, 491-2842

The compleat bookstore (and much more)

That's the new Brentano's at 91 Plaza, Prudential Center, in Boston.

We're the bookstore with tens of thousands of volumes—hardcover and paperbound—to meet your every need for collateral reading, reference and entertainment.

And we're more, too. Brentano's is also a cultural center, with a gallery of original art...sculpture masterpieces and museum jewelry in replica...prints and posters...decorative folk art from around the world...records...distinctive stationery...games that give your brain a workout.

Visit this newest Boston landmark. It will pay off with pleasant surprises.

BRENTANO'S

booksellers to the world

91 Plaza, Prudential Center, Boston
Open Wednesday and Friday until 9;
Monday, Tuesday, Thursday, and Saturday until 6.

ARE YOU UNDER 35?

LOOK AT THIS!

**5-Year
Renewable Term
Savings Bank
Life Insurance**

SAVINGS BANK
SBL
LIFE INSURANCE

\$25,000

for less than \$75 a year

\$20,000

for less than \$60 a year

\$15,000

for less than \$45 a year

\$10,000

for less than \$30 a year

\$5,000

for less than \$15 a year

These are the average annual net payments for five years, based on current dividend rates, if you buy while under age 35. Dividends are not guaranteed. We will gladly quote premium rate for your age, without obligation.



**CAMBRIDGEPORT
SAVINGS BANK**

Right in Central Sq.,
Cambridge

Life Insurance Dept.
864-5271

SUNDAY	MONDAY	TUESDAY	WEDNESDAY	THURSDAY	FRIDAY	SATURDAY
FEBRUARY			1	OPEN EVERY THURSDAY	3	4
5		7	8	UNTIL 9	10	11
	13		15	PARK FREE AT CHURCH ST. GARAGE	17	18
19	20	21	22	FOR 1 HOUR WITH PURCHASE OF \$3.00 OR MORE	24	25
26	27	28		1967		

"MADE-TO-MEASURE" SALE MONTH. AT THE COOP.

"Be sure your tailor is a man of sense."

Oliver Wendell Holmes

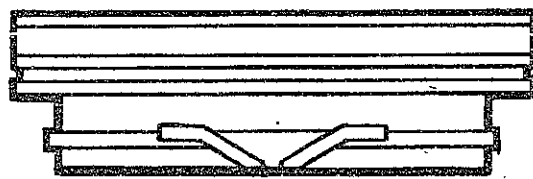
The Coop's Clothing Department has been making styling sense for its customers for years . . . especially now in February during the 10th Annual "Made-to-Measure" Clothing Sale. The Sale is one of the outstanding events in the clothing industry. Come in, and choose from a wide selection of materials.

NO INCREASE IN SUIT PRICE OVER LAST YEAR'S SALE!

Suits \$99.50 Reg. \$135 to \$150
Our selection includes imported worsteds, cheviots, flannels, and 55-45 dacron wool tropicals.

Also: Sports Coats \$75 Reg. \$85-\$90
Choice of Tweed and Shetland materials.

Men's Clothing Department, Second Floor, Main Store, where Joe Luongo and Pat Fiandaca, two of the finest tailors in the clothing industry, await to individualize your suit or sports coat.



THE TECH COOP

84 Massachusetts Avenue, Cambridge, Mass. 02139

Regular Hours: 8:50-5:30, Monday - Saturday.

Free Parking . . . On Saturdays at 3 spacious parking areas adjacent to the Student Center.

The Coop Open Thurs., 'til 9 PM

Regular Hours 8:50-5:30 PM, Mon. - Sat. • Free Parking Church St. Garage for 1 hour with purchase of \$3.00 or more at the Coop.

A Particular
Place
for
Particular
Skiers



AEB to hold elections for seven open positions

Activities Executive Board will be holding elections for the positions of chairman, secretary, treasurer and four members-at-large. Any member of an MIT activity is eligible for all positions.

Those seeking positions should sign up for interviews with Miss Hendrick in W20-401 before Friday, Feb. 24. The elections will be held Wednesday, March 1, at 8:15 pm in W20-400.

Qualified operators sought for LSC printing press

At the beginning of last year the Undergraduate Association purchased an offset printing press for use by the various activities and living groups. Currently there is a dire shortage of operators. Learning to run the press can be a time-consuming job. It takes at least three sessions of about three hours each. However, the benefits to an activity or living group which has one of its members qualified to run the press are obvious.

to other groups who desired items run on the press. Working on your own time, this can be a pretty desirable part-time job.

School starts Wednesday
Beginning Wednesday at 10:00 a.m. in the LSC office, W20-431, Steve Metz will run a "school" for anyone interested in learning to run the press. Freshmen and sophomores are particularly encouraged to attend. For any other information, call Steve at 864-4799 or Dave Sanders at CI 7-8048 or X3217.

Variety of styles

Posters can be done in as many colors as you like. Pictures can be easily reproduced.

Qualified operators have in the past charged a fixed hourly rate

'70 Beaver Pins to be distributed

Beaver Pins for the Class of '70 will be distributed next week in the Lobby of Building 10 and in the individual living groups. The pins should be picked up as the orders were placed, that is, people who ordered their pins in Bldg. 10 should pick their pins up there.

Money collected from the sale of beaver pins should be given to Greg Arenson.

Advertisement

The Bible says: For God so loved the world, that He gave His only begotten Son, that whosoever believeth in Him should not perish, but have everlasting life. The Father loveth the Son and hath given all things into His hand. He that believeth on the Son hath everlasting life: and he that believeth not the Son shall not see life; but the wrath of God abideth on him.—John 3:16, 35, 36.

THIS
IS
THE
PLACE!!!

Mobay is the place where young chemists can grow. As the leader in the field of urethane chemistry, the company offers exciting opportunities to expand in whatever direction you choose at the same time you apply what you've already learned. At Mobay, you'll work in an environment characterized by a strong emphasis on individual ability, where you can trade ideas with talented, experienced associates and utilize the most advanced facilities. And you'll be helping to pioneer in a stimulating area whose applications have already multiplied to the extent that they significantly affect almost every major industry today. Mobay representatives will be on your campus in your Placement Office for talks with you on:

PRINCIPAL AREAS OF INTEREST INCLUDE:

CHEMICAL ENGINEERS

PROCESS ENGINEER

Conduct economic and process studies in existing production units; recommend and facilitate needed process changes; assist in start up of new process equipment. (Location: New Martinsville, West Virginia)

APPLICATIONS RESEARCH

Personality suited for dealing with customers in the area of cellular and non-cellular urethanes, polyesters and elastomers. (Location: Pittsburgh, Pennsylvania)

PROJECT ENGINEERS

Responsible for the engineering design of capital additions; provide equipment specifications for procurement and mechanical design of facilities; prepare economic analysis; maintain cost control of projects and carry out special assignments. (Location: Pittsburgh, Pennsylvania)

CHEMISTS

Perform applications research work in coatings, foam applications, isocyanates and elastomer processes. These positions also entail customer service work. (Location: Pittsburgh, Pennsylvania)

ELECTRICAL ENGINEERS

Design of industrial plant, electrical power distribution systems, controls circuits and lighting systems; establish maintenance schedules and procedures on all electrical equipment; conduct load surveys on existing power distribution systems. (Location: New Martinsville, West Virginia)

MECHANICAL ENGINEERS

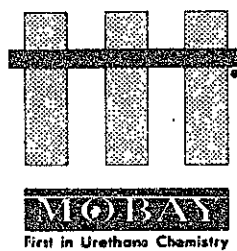
In applications research section, work with small scale precision machinery encountered in the rubber and plastics industry; work also requires some customer-contact. (Location: Pittsburgh, Pennsylvania)

SALES REPRESENTATIVES

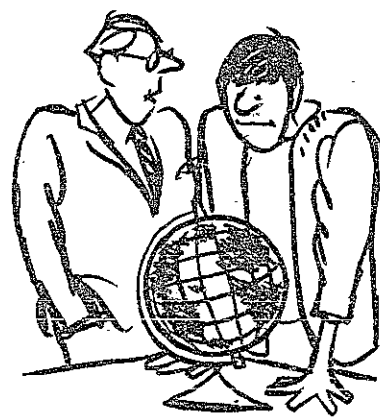
Any engineering degree applicable if person is interested in industrial sales; duties include developing and maintaining direct field contact with potential and established customers. (Approximately one year training program in Pittsburgh before entering field.)

CAMPUS INTERVIEWS IN YOUR PLACEMENT OFFICE.

February 27, 1967



W. E. White, Personnel Administrator
MOBAY CHEMICAL COMPANY
Penn Lincoln Parkway West
Pittsburgh, Pa. 15205
An Equal Opportunity Employer



1. Now that graduation's getting close, have you given any thought to the kind of work you'd like to do?

I want to work for The Good of Mankind.



2. I might have suspected.

I'll probably grow a beard.



3. Is it required?

It helps. And I'll certainly need a pair of sandals.



4. What do you expect to earn?

All I ask is the satisfaction of knowing I'm helping to Build a Better World.



5. I'll be doing much the same thing. I've also lined up a job that affects society in a positive way. And if I do good, I'll move up, and my decisions will be even more important in the scheme of things.

But where's your beard? What about sandals?



6. You don't need them in Equitable's development program. All you need is an appetite for challenge and responsibility, and the desire to do the best possible job. The pay is tops, too.

You know, I'm afraid a beard would itch—could you get me an interview with Equitable?

Make an appointment through your Placement Officer to see Equitable's employment representative on **March 2nd** or write to Patrick Scollard, Manpower Development Division, for further information.

The EQUITABLE Life Assurance Society of the United States

Home Office: 1285 Ave. of the Americas, New York, N.Y. 10019
An Equal Opportunity Employer, M/F ©Equitable 1965

A need for space

Activities at MIT play an integral part in the total educational environment. They exist for the students solely for the benefits which can be gained in extra-curricular participation. When the Student Center was originally designed, it was thought that the fifth floor would be used to house activities as the need for more space developed. However, a later idea created the Student Center Library.

Nevertheless, it became apparent last Spring that the activities floor was not adequate to meet all the needs of those groups desiring space. At the same time pressure mounted on the Planning Office to reallocate the vacated space in Walker Memorial. Competing for Walker were activities denied space in the Student Center, the academic department interested in creating testing rooms, East Campus interest in expanded athletic facilities, and the idea to house the Religious Counselors there.

The Activities Executive Board (AEB) sought to establish some groups in the basement and on the 3rd floor. They gathered information and submitted a report to the Planning Office containing a priority list for those activities needing space. Though the Planning Office has done some work in gaining new facilities, establishing the counselors, and increasing the space of W1MX and Hillel, the needs of the activities in general have not been considered.

The Student Center Committee (SCC) thought it had found a solution in constructing a tunnel under Mass. Ave. complete with activity rooms underground. When the decision to build a bridge was announced, no such solution was feasible. Finally, Inscomm created the Ad Hoc Long Range Planning Committee to investigate the present situation and learn just what space was available for all activities and how might it be better used. The committee consisted of representatives of AEB, SCC, and the musical-theatrical groups who were to suggest short term remedies and long term solutions to the problem.

The AEB has conducted an investigation and evaluation of the short term solutions to the activities floor. Data has been collected concerning the number of people engaged in activity at different times during the week, month, and year. In addition, information on activity peaks and troughs, equipment used, and future needs has been collected. The SCC is considering the use of the lounges; the musical-theatrical representative is investigating Kresge. Eventually such information will be used for decisions by the AEB and the SCC. The Planning Office, too, will need the data to evaluate decisions originating with them.

This being the second year of full operation for the Student Center, we feel it is an excellent time for such studies. The original design of the fourth floor represented somewhat arbitrarily the state of activities as it existed in the early 60's. The composition may have changed since then. If an undergraduate library could be constructed, the fifth floor might be used for activities. Unfortunately, the premium of land and the high costs involved makes such a proposal too distant for consideration now.

We can hope that the present allocation of room be optimized for maximum efficiency. Where inequities exist, they should be corrected. There are pitfalls here: Activities tend to expand to fill the space allotted, yet any plan should not stifle a legitimately growing activity. Nor should any activity be removed from its office simply because of temporary difficulties. Finally, any short run solution should not interfere with long range plans which would increase the general welfare of activity at MIT.

The Student Center Committee was begun in 1954, yet the Student Center did not open until 1965. If a solution of such a magnitude is necessary, it is not too soon to start. Nevertheless, it should be a cautious, well thought out beginning if it is to succeed.

Some of the short run solutions include space sharing among groups, much like time-share. Offices which are too large could be partitioned, or a general reshuffling of activities might be in order.

We are encouraged by the attempts to collect data and make reports toward a more equitable solution to the present space problem. But, a word of warning is in order. Reports are only of value if the proper people read them and decide to act. Unless there is cooperation on all levels to alleviate the difficulties we can expect the reports to gather dust and the situation to worsen.



Vol. LXXXVII, No. 4 Feb. 17, 1967

BOARD OF DIRECTORS

Chairman	Guille Cox '68
Editor	Mike Rodburg '68
Managing Editors	John Corwin '68
	Tom Thomas '69
Business Manager	Dan Green '68
News Editor	Mark Bolotin '68
Features Editor	Michael Warren '69
Sports Editor	Tony Lima '69
Entertainment Editor	Jack Donohue '69
Photography Editor	Bill Ingram '68
Advertising Editor	Nick Covatta '68

Editorial Consultants	Gerry Banner '68
	Dave Kress '67
	Mark McNamee '68

Associate Sports Editor	Stan Kask '70
Intramural Sports Editor	Herb Finger '68
Associate Photography Editor	Jeff Reynolds '69
Acct's Receivable	Pat Green '69
Copy Editor	Brian Harvey '69
Treasurer	Mike Ginsberg '69
Natl Adv. Mgr.	Jack Swaim '69
Circulation Managers	Ken Bracy '70
	Regan Fay '70

Managing Staff	Greg Arenson '70
	Jeff Gale '70, Charles Movit '70
	Joan Entweller '70, John Havelkotte '68

News Staff	Susan Downs '68
	Dave Kaye '68, Roy Benveniste '68
	Jeff Reece '68, Geoff Russell '69
	Carson Agnew '70, Steve Carhart '70
	Paul Johnston '70, John Foran '70
	Karen Wattell '70

Features Staff	Lee Shaeffer '70
	Richard Stern '70, Jim Smith '68
	Louis Zarfus '70

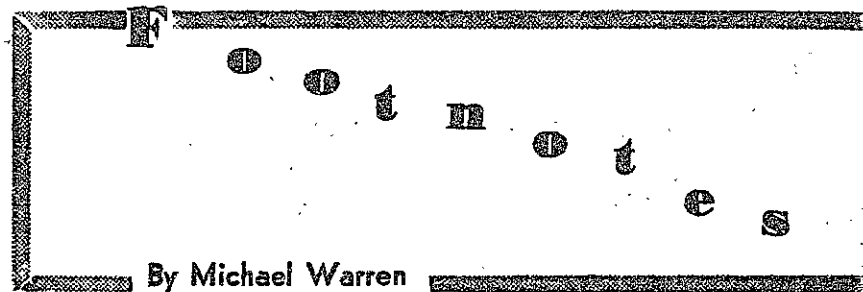
Sports Staff	John Kopolow '68
	Armen Varteressian '68, Steve Weiner '69
	Chuck Hottinger '67, Larry White '69
	Jon Steele '67, Paul Baker '70
	Jeff Goodman '70, Jim Yankaskas '69

Entertainment Staff	Don Davis '67
	Sherry Guilmon '68, Jeff Stokes '68
	Ric Klass '68, David Grosz '69
	David Koffman '69, Paul Linsay '69

Photography Staff	Gene Skrabut '69
	Art Kalotkin '68, Larry Deutsch '67
	Ed Lamon '67, Tim Holiner '69
	Steve Rife '67, Steve Silverstein '68
	Pete Blicher '69, Tom Dooley '69
	Chuck Howey '69, George Flynn '69
	Dave Pack '68

Second-class postage paid at Boston, Massachusetts. The Tech is published every Tuesday and Friday during the college year, except during college vacations, by The Tech, Room W20-483, MIT Student Center, 84 Massachusetts Ave., Cambridge, Massachusetts 02139. Telephones: Area Code 617, 878-5855, and 864-6900 extension 2731. United States Mail subscription rates: \$4.25 for one year, \$8.00 for two years.

Front page photo by Art Kalotkin



By Michael Warren

8. If anyone is interested in purchasing a record album by The Fugs, don't bother going to the Coop. For that matter, don't go to Briggs and Briggs Music Company in Harvard square, or any other record shop in the square. You won't find any Fugs albums around. The albums have been taken off the shelves by police after a parent of a minor who purchased the record at Briggs and Briggs, threatened to bring a criminal complaint.

Charges were sought under a Massachusetts statute which makes it illegal to sell obscene material to minors, and carries a stiff penalty for failure to comply. A Cambridge judge threw out the criminal complaint when the store agreed not to sell the album in the future.

9. Harvard's Quincy Hall was the scene of a little paper airplane contest presided over by the publisher of Scientific American. The Quincy contest was an exact replica of the larger, well-publicized contest that the magazine sponsored this winter.

The winning entry in the Oregon division was an invention called "Pre-fab Blizzard." Its designer won a package of typewriter paper. Among the victors was a 6.2 second glide, which won the longest duration of flight category. Among the disgruntled losers was a student whose spitball was disqualified. "What if it was wet," he complained, "it was made of paper, and that's all that was required."

10. Working into the hours of the night, the staff of Technique is composing one of the better college yearbooks around. The introduction will be twice last year's 64 pages. It rumored that the book will feature a new format, replacing the chronological history of the academic year. Included will be photographic essays, and some other new ideas from the editorial board.

The number of color photographs has been doubled, and the Senior Section is in a more readable format. The book looks to be the largest ever, with 36 pages.

11. The February issue of Science reported the findings of two female researchers on the sex life of the polyphemus moth. Their findings: Oak leaves turn into moths on.

The two researchers, Lynn Riddiford and Carroll Williams have been investigating the sex life of moths since last March. They have found that the vapor from the oak tree activates the production of a sex hormone in the female, which in turn activates the male.

The discovery was made when the researchers discovered that moths never mate inside cages although the male can attract the female from as far away as two miles. Oak seedlings were introduced into the cage, and mating was observed among the moths. Other tree types were tried, but none succeeded in exciting the moths as much as the oak.

College World

by Ed Chalife

The question of freedom of the press in campus newspapers has recently cropped up at Johns Hopkins University. Two editors of the university newsletter were suspended from the school after having run a spoof on President Lyndon Johnson. Johnson was listed in the article, along with Charles Whitman, the Texas sniper, and Richard Speck, alleged Chicago murderer, on a "Man of the Year" ballot. The university's president, Milton Eisenhower, was asked if this was really freedom of the press. His comment: "Don't ask a stupid question like that. That newspaper is subsidized by the university."

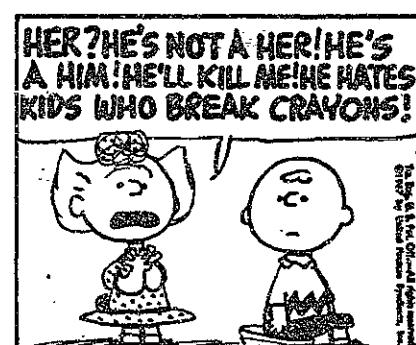
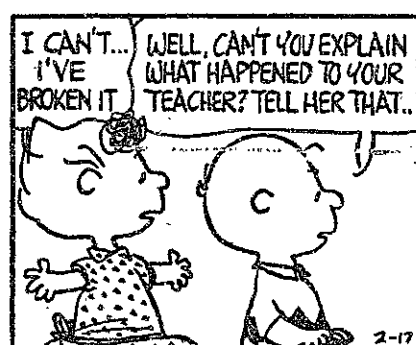
Try, try again
A coed at the University of Colorado has filed a second suit with Boulder District Court to have a failing grade in English charged. Miss Jacalyn Dieffenderfer's first suit was dismissed on the grounds that the court was asked to play the part of an instructor. Miss Dieffenderfer asked the court for a "B." The second suit asks only a passing grade. I'd better call my lawyer. My cum needs help.

Pass-Fail grade
On the subject of grades, the proposed pass-fail system at Wayne State University has been happily received by students. According to their comments many

of the university students feel the proposed innovation would be a panacea. Some interviewees stated that the system "would put more emphasis on learning," and students "would get more out of college." One coed said "grades should be abolished entirely." This, she thinks, "would eliminate cheating." Eli Greenbaum, an English major, remarked, "I can now take courses like physics, and not worry about grades." Amen.

Inflation?
It seems the University Police of Michigan State University aren't half as friendly as MIT's campus patrol. Last year they issued 45,339 tickets to students for ordinance violations, violations of meter vehicle regulations and moving violations. The fines for these violations start at two dollars and increase to 25 dollars for every ticket after the fourth. The university police have their biggest problems with minor parking tickets. The fine for these is only one dollar, and the court processing costs in terms of paperwork always exceed the fine. To correct this situation the fine has been raised to two dollars. It's only fair.

Bookstore picketed
Wayne State University's bookstore was picketed recently by students who alleged inadequate service. The protest, organized by Students Concerned About the Bookstore (SCAB), was covered by several Detroit television stations and newspapers. University president William R. Keast, obviously concerned about the protest, talked to SCAB chairman Jim Krumm prior to the demonstration and together they looked for a new location for the bookstore.



DON'T

fight it.

Get Eaton's Corrasable Bond Typewriter Paper.

Mistakes don't show. A mis-key completely disappears from the special surface. An ordinary pencil eraser lets you erase without a trace. So why use ordinary paper? Eaton's Corrasable is available in light, medium, heavy weights and Onion Skin. In 100-sheet packets and 500-sheet ream boxes. At Stationery Departments.



Only Eaton makes Corrasable.®

EATON PAPER CORPORATION, PITTSFIELD, MASSACHUSETTS

Vietnam seminar

The Students for a Democratic Society will be holding a series of seminars on Vietnam. Beginning tomorrow, the seminars will be held every other Saturday from 1 pm to 3 pm in room 467 of the Student Center.

Tomorrow's seminar will discuss "French Colonialism in Vietnam." Other topics to be discussed include "The development of the war," "The nature of the Viet Cong," "Reasons for US intervention," and "The possibilities for US withdrawal."

Scuba Diving Classes

Seven Days a Week.
All Equipment Supplied.
Avenue 2-5818

MIXER

TONIGHT
FEB. 17

WALKER MEMORIAL

Guys \$1, Girls Free —IDC

Debaters take second place in tourney at Northwestern

The MIT first debate team finished second at a debate tournament at Northwestern University this last weekend. On the MIT team were Eric Johnson '67 and James Foster '67.

In the preliminary rounds, MIT went undefeated, qualifying first out of eighty schools. In the quarter-finals, the MIT team defeated the University of Illinois, and in the semi-finals, San Fernando Valley State College. In the finals, MIT was defeated by Georgetown University.

Each MIT debater won individual honors. Eric Johnson was

named 4th speaker out of 200. Foster was named 15th.

The team's record so far is impressive: 61 wins and 17 losses. A consensus would probably rank MIT among the top four teams in the country along with Western Reserve University, Northwestern University, and Georgetown University.

The MIT second team with Barry Rosenbaum '70 and Gary Ketner '69, placed third after Harvard and King's College at a recent tournament at St. John's University.

'Radicals' to hear lecture on Rand's idea of justice

Howard Hood will discuss "Law and Ayn Rand's concept of justice" at 2 pm Sunday in room 407 of the Student Center. The

talk will be delivered to a joint meeting of the MIT Radicals for Capitalism and the Harvard-Radcliffe Ayn Rand Society. Admission for non-members will be forty cents.

Mr. Hood will talk about the objectivist concept of justice and its application to law, as based on the philosophical principles described by novelist-philosopher Ayn Rand.

All Makes — Large Variety
SQUASH RACQUETS
Tennis & Squash Shop
57A Mt. Auburn St., Cambridge
(Opp. Lowell House)
TR 6-5417

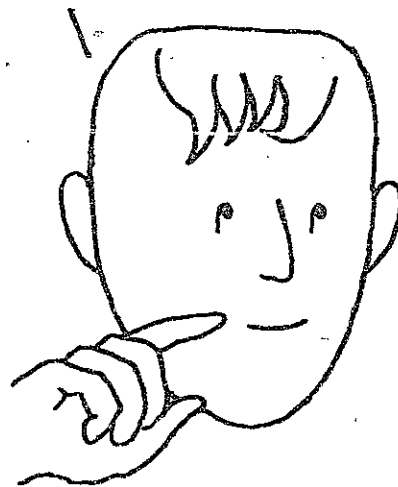
WHEN I WAS STILL IN COLLEGE I HEARD THAT WHEN YOU WENT TO WORK IN A LARGE CORPORATION...



THEY PUT YOU IN A TRAINING PROGRAM AND ALL YOU DID WAS PAPER WORK



AND WENT TO SOME LECTURES AND WATCHED OTHER PEOPLE WORK.



AND THOUGHT ABOUT WHAT YOU WOULD DO IF ONLY THEY ASKED YOU TO DO SOMETHING.



THAT WAS LAST JUNE



BEFORE I WENT TO WORK AT GT&E



GENERAL TELEPHONE & ELECTRONICS IS DIFFERENT.
GOT ANY IDEAS WE CAN USE?

GTE
GENERAL TELEPHONE & ELECTRONICS
730 THIRD AVENUE, NEW YORK, NEW YORK 10017

Going Places?
INTENSIVE COURSES

(Feb. 27 - May 25)

SPANISH FRENCH ITALIAN
VIETNAMESE PORTUGUESE GERMAN
ACADEMIA Phone 354-2124

Peter Benjamin discusses films

A young film-maker, Peter Benjamin, will discuss his means and methods next Monday evening at 7:30 in the Student Center Art Studios, room 425 and will show a pilot of the film he is currently engaged in producing. There will be no admission charge.

The Lecture Series Committee

presents

CASANOVA '70

FRIDAY

FEBRUARY 17

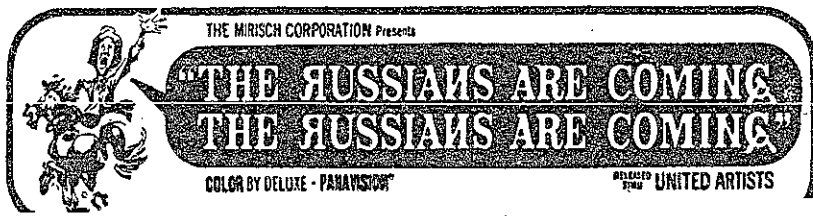
7 and 9:30

BOTH SHOWS IN 26-100

SATURDAY

5:15, 7:10 and 9:45

FEBRUARY 18



The Sunday Classic Film

CHAPLIN'S
THE GOLD RUSH

8:00

No MIT ID required on Sundays

10-250

Baroque music concert

Impressive performance delivered by New York Chamber Soloists



Pictured-above are the members of the New York Chamber Soloists, whose performance at Kresge Auditorium last Sunday was received with enthusiasm. Among the works performed by the group were those of J. S. Bach, Telemann, and Rameau. The concert was presented by the Department of Humanities as part of their series of concerts.

By Ralph Earle

Sunday afternoon in Kresge Auditorium, The New York Chamber Soloists presented a concert of baroque music which was a

model of musicianship and style. The program given by the six performers included cantatas of Telemann, Rameau and J. S. Bach, as well as the Boismortier Concerto in E major and Couperin's Concert royal No. 4. All the performances were spirited and vital, especially the cantatas, sung by tenor, Charles Bressler.

Flawless intonation

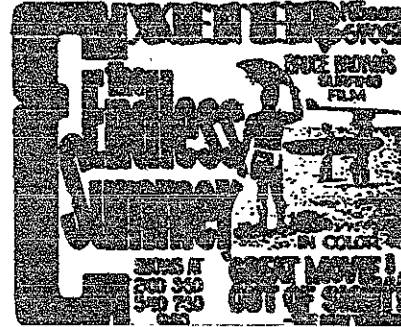
From professional groups we expect flawless intonation and ensemble playing, yet what a rare pleasure it is to hear it achieved as it was by the New York group. With this solid base to make music upon, both their and their audience's enjoyment was assured.

Perhaps the most impressive aspect of the performance was

(Please turn to page 8)

Who Needs a Kilt

to have a ball Monday nights
Scottish Country Dancing at the
Cambridge YWCA, 8-10:30
Fun/Friendly/Coed



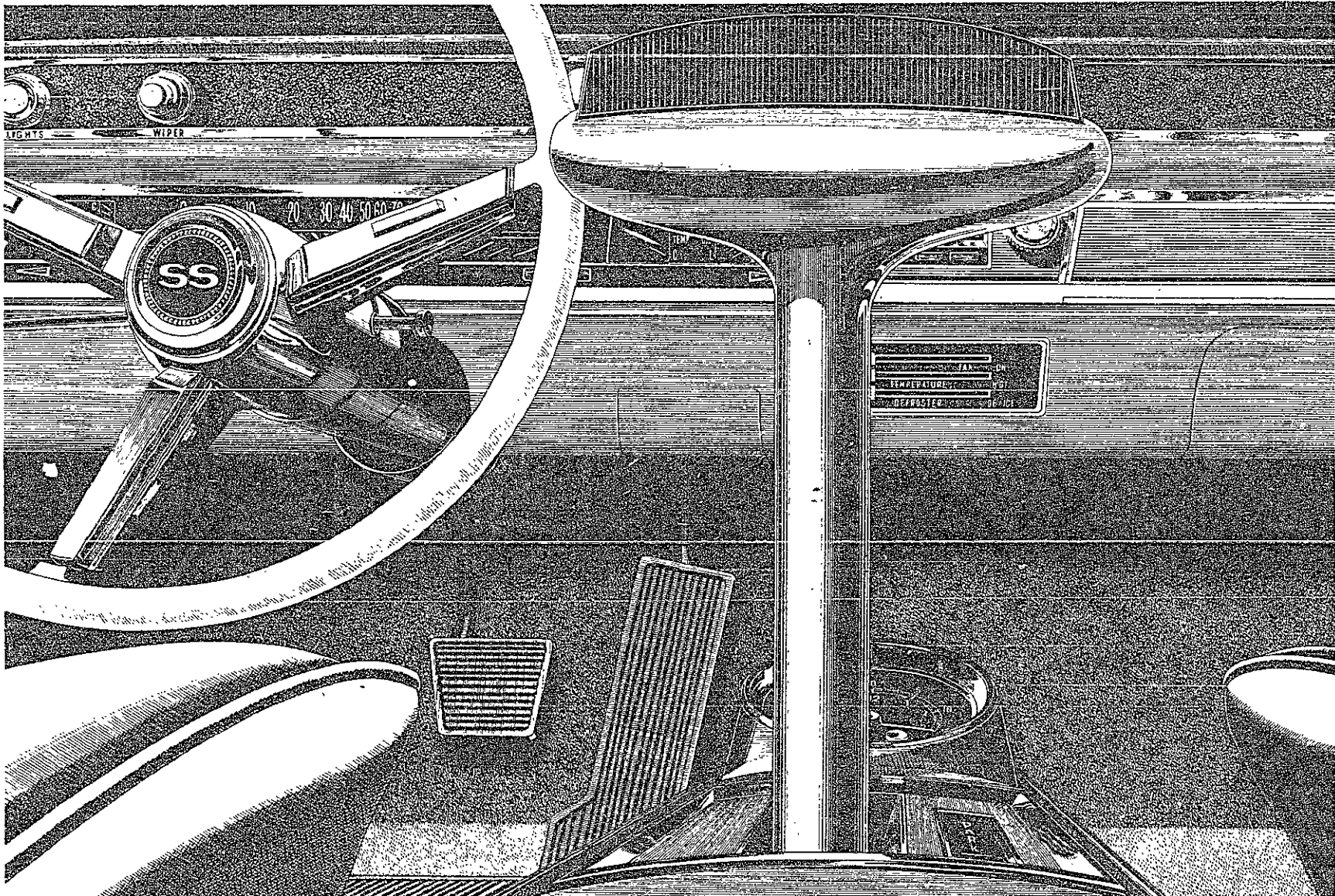
Movies & Theatres

MOVIES

- Astor—'The 25th Hour,' 9:45, 11:45, 1:45, 3:45, 5:45, 7:45, 9:45 (Sun. 1, 3, 5, 7, 9)
- Beacon Hill—'Fahrenheit 451,' 10, 12, 2, 4, 6, 8, 10 (Sun. 1:30, 3:30, 5:30, 7:30, 9:30)
- Boston Cinerama—'Grand Prix,' 9:15, Wed., Sat., Sun. mat. 2: Sun. 9:30
- Brattle—'Morgan,' 3:30, 5:30, 7:30, 9:30
- Cheri I—'Man for All Seasons,' 8:40; Wed., Sat., Sun. mat. 2:30; Sat. 7, Sun. 5:30
- Cinema Kenmore Square—'Loves of a Blonde,' 2:30, 4:15, 6:05, 7:45, 9:45
- Circle—'Oh Dad, Poor Dad . . .', 1:30, 3:30, 5:30, 7:30, 9:30
- Coolidge Corner—'Gambit,' and 'Kaleidoscope,' 1, 2:45, 7:45, 9:30; Sat., Sun. 2:35, 4:30, 6:10, 8, 9:55
- Esquire—'Loves of a Blonde,' 7:30, 9:30 (Sun. 3, 5, 7, 9)
- Exeter—'The Endless Summer,' 2, 3:40, 5:25, 7:15, 9:10
- Harvard Square—'Gambit,' 2, 5:50, 9:40, 'A Very Special Favor,' 4, 7:45
- Music Hall—'Fistful of Dollars,' 2, 4, 6, 8, 10 (Sun. 1:30, 3:30, 5:30, 7:30, 9:30)
- Orpheum—'The Quiller Memorandum,' 10, 12, 2, 4, 6, 8, 10 (Sun. 1:25, 3:30, 5:35, 7:40, 9:40)
- Paramount—'Warning Shot,' 9:30, 11:25, 1:25, 3:25, 5:25, 7:25, 9:20 (Sun. 1:10, 3:10, 5:10, 7:05, 9:05)
- Paris Cinema—'Blow Up,' 2, 4, 6, 8, 10
- Park Square Cinema—'A Man and a Woman,' 2, 4, 6, 8, 10
- Savoy—'Georgy Girl,' 10, 12, 2, 4, 6, 8, 10 (Sun. 1:30, 3:30, 5:30, 7:30, 9:30)
- Saxon—'The Bible,' 8:15; Wed., Sat., Sun. mat. 2; Sun. 7:30
- Symphony I—'La Dolce Vita,' 1:15, 5:10, 9:15; 'Venetian Affair,' 11:35, 3:30, 7:25
- West End—'A Woman,' 11:45, 1:45, 3:45, 5:50, 7:45, 9:45

THEATRE

- Charles Playhouse—Bertolt Brecht's 'Mother Courage'; thru March 5, 8:30, Sat. 5 and 9 pm, Sun 3 and 7:30 pm
- Colonial—'A Delicate Balance,' by Edward Albee; thru Feb. 25
- Theatre Co. of Boston—Bertolt Brecht's 'Caucasian Chalk Circle'; thru March 4, 8:30; Sat. 6, 9:30 pm; Sun. 5, 8:30 pm; \$2.50-\$4.50



SS 396 Sport Coupe

SS 396

And a new Turbo Hydra-Matic transmission for the driving man.
If you get tired of shifting, put it in "D".

Even a driving man's man can get tired of clutching and shifting in a traffic jam. But there are times when you want to stir your gears by hand. A dilemma! Until now, that is. Now you can order Turbo Hydra-Matic in the SS 396. It's



an automatic transmission you can shift—really shift—for yourself. Feeling lazy? Slip the selector into Drive and relax. Want to play expert? So make beautiful music on the gearbox. In the Chevelle for the driving man, it's up to you.

THE QUICK-SIZE '67 CHEVELLE—Now at your Chevrolet dealer's

HARVARD SQ UN 4-4500

Michael Caine
Shirley MacLaine in
"GAMBIT"
2:00, 5:50, 9:40
Rock Hudson
Leslie Caron in
"A VERY SPECIAL FAVOR"
4:00 and 7:45

BRATTLE SQ TR 6-4226

Friday and Saturday
"MORGAN"
5:30, 7:30, 9:30
Sat. Matinee 3:30
Sunday and Monday
Antonioni's
"LA NOTTA"
5:15, 7:30, 9:45
Sunday Matinee 3:00

Talking Rock

By Don Davis

by Don Davis

This term, I am beginning to include top tunes lists with comments in the column. Often it will be Billboard's top singles list, generally regarded as the official national list; however sometimes different lists of interest may be used. As will be noted, this list, for week ending February 18, is considerably behind Boston's charts, due both to Boston's position as a breaking ground for many records and to compilation delays for Billboard. The previous week's position in parentheses.

- 1 (3) Kind of a Drag—Buckin' horns
- 2 (1) I'm a Believer—Monkees
- 3 (4) Ruby Tuesday—Rolling Stones
- 4 (2) Georgy Girl—Seekers
- 5 (5) (We Ain't Got) Nothin' Yet—Blues Magoos
- 6 (9) Love is Here and Now You're Gone—Supremes
- 7 (7) 98.6—Keith
- 8 (6) Tell It Like It Is—Aaron Neville
- 9 (10) The Beat Goes On—Sonny and Cher
- 10 (17) Gimme Some Lovin'—Spencer Davis Group

Monkee's displaced

"I'm a Believer" was finally displaced after seven weeks at number one. This figure is the only real measure I have to compare it with big hits of the past.

Yearly leaders in number of weeks atop Billboard's charts follow:

- | | | |
|------|----------------------------|----|
| 1967 | I'm a Believer | 7 |
| 1966 | Ballad of the Green Berets | 7 |
| 1965 | Satisfaction | 7 |
| 1964 | I Want to Hold Your Hand | 7 |
| 1963 | Blue Velvet | 7 |
| 1962 | I Can't Stop Loving You | 7 |
| | Sherry | 7 |
| | Big Girl's Don't Cry | 7 |
| 1961 | Tossin and Turnin' | 7 |
| 1960 | Theme from a Summer Place | 7 |
| 1959 | Mack the Knife | 7 |
| 1958 | At the Hop | 7 |
| | Don't | 7 |
| | Purple People Eater | 7 |
| | It's All in the Game | 7 |
| 1957 | All Shook Up | 7 |
| | Teddy Bear | 7 |
| 1956 | Hound Dog/Don't Be Cruel | 11 |

This gives some indication of how the Monkees are selling. It is even more significant in light of the competition produced by the huge number of records now released. There were 26 different number one songs in 1966 as compared with 11 in 1956. The Monkees' first album was number one for 14 weeks only to be dropped to two the last two weeks by their second album. This 14-week figure is a 2-year high (my figures go back no farther).

Sales figures

The U.S. sales figures (in millions of copies) for their records, which I am sure are tops at least since the earliest days of the Beatles, go roughly "Last Train to Clarksville" 1.5, "I'm a Believer" 3.5, "The Monkees" 4, "More of the Monkees" 2. "I'm a Believer" is now number one

Wiesner on peace . . .

(Continued from Page 1)

which banned atmospheric testing, and the recent agreement at the UN against military use of outer space are first steps. But, notes Dr. Wiesner, as it takes many years to build up a highly organized defense system, so it takes time to break it down with any reasonable safety.

An interview with Dr. Wiesner provided some insights into possible beginnings.

in most foreign countries, including Britain.

"Georgy Girl" joins "Sounds of Silence," "California Dreamin'," and "Lady Godiva" among the recent songs on which Boston has led the rest of the nation by some two months. These are the type of songs which do well in Boston's collegiate, folk-influenced atmosphere. In these four cases of songs by new or slumping artists, Boston was the only market to play these songs first. Other cities jumped on the bandwagon after the songs became hits in Boston.

Spencer Davis Group

Boston is the only place where the Jordan Brothers' version of "Gimme Some Lovin'" was big. Everywhere else it was the Spencer Davis Group, a very talented British group long a favorite in Britain. Davis' version, which hit 2 in Britain, is marked by more soul in the vocal and a harmonica solo rather than organ. The Jordan Brothers' cleaner version was bigger in Boston than Davis' was in regions where Davis' was big, but the Jordan Brothers failed to hit Billboard's top 100.

Charles Lloyd Quartet to appear next Tuesday

The upcoming concert of Charles Lloyd's quartet next Tuesday should be viewed with a great deal of interest by the MIT community. Lloyd's music is part of a new trend in jazz, which the public is gradually being made aware of. Though not as avant garde as Coltrane, for example, he introduces totally new elements into his music, about which he says 'We try to use all the components of music; chordal composition and improvisation are not finished, nor is complete freedom the answer.'

Tickets, at \$2.50, \$3, and \$3.50, are on sale in Building 10. For information and reservations call UN 4-6900 x2910 or 868-1831.

The Lovin' Spoonful plays 'good-time' music

By Jack Donahue

The Lovin' Spoonful, one of the country's top groups will be appearing with their 'good-time music' sound in Boston tonight at Symphony Hall. The concert, sponsored by Frank Connelly productions, will begin at 8:30 pm. The group's last record, 'Nashville Cats,' continued its long line of hits, and it has just released an album of these past hits, 'The Best of the Lovin' Spoonful.'

RACKETS RESTRUNG
One-Day Service
Tennis & Squash Shop
67A Mr. Auburn St., Cambridge
(Opp. Lowell House)
TR 6-5417

WILLIAM SAYS HE'S LUCKY! HOW ABSURD.

TECH SHOW '67
MARCH 3, 4, 9, 10, 11

where will you be 5 years from now?

In as good a spot as you are today? Well-informed? Up on things? Intimately acquainted with the state of the art in your field of study?

Or will you (through no fault of your own) be dangerously close to the brink of obsolescence?

Could happen. Often does. Which is one good reason to consider a career at MITRE.

MITRE is pioneering in the design and engineering of complex information, sensor, command, control and communications systems for the United States Government. Our assignments include such prominent electronic systems as the NORAD Combat Operations Center, the Backup Interceptor Command System for SAGE, and the National Military Command System (NMCS).

These projects represent the most important systems challenges of our time, and require the most advanced thinking on a broad range of scientific problems and the technologies needed to solve them.

As a member of the MITRE team, you'll be working in an atmosphere of scientific inquiry, alongside colleagues of outstanding reputation, with the opportunity to make

an original contribution to your area of interest. In an environment like this, there's no telling how far you can go. But this much is certain. You'll not be overlooked, and you can't be overtaken.

Salary? Benefits? They're competitive, of course. Moreover, we have an excellent Educational Assistance and Staff Scholar Program. (Many MITRE employees presently attend nearby educational institutions including Harvard, Boston University, Boston College, Brandeis, Northeastern, MIT, and Tufts.) Depending on your interests, qualifications and current openings, you may start in one of the following, or other, departments:

- System Planning and Engineering
- Air and Missile Defense Systems
- System Design
- Systems Analysis
- Air Traffic Systems
- Tactical Systems
- Strategic Systems
- Range Instrumentation
- Information Sciences
- Computer & Display Technology
- Communications
- Electronic Warfare
- Radar Design and Technology
- Information Processing
- Surveillance and Warning Systems
- Applied Mathematics

Technical representatives of The MITRE Corporation will be conducting interviews on campus February 20, 1967

THE MITRE CORPORATION
An Equal Opportunity Employer (M&F)

If you have a M.S., or Ph.D. in Electrical Engineering, Physics, or Mathematics and want more information regarding opportunities at MITRE, call collect, James L. Glinos (617) 271-2078 or write in confidence to College Relations Coordinator, The MITRE Corporation, Box 208, Bedford, Massachusetts.

CNE

Meet the only man



at M.I.T. with 139 jets.

Jeffrey Silverman
TWA Campus Representative

He's the guy to know when it comes to travel. TWA specially trained him to make it easy for you to go places in the U.S. and to Europe, Africa and Asia. He's the man to see for TWA 50/50 Club cards—you can get 'em right on the spot. Working with your local travel agent, he can help you with travel plans, tours, schedules, fares, ticket arrangements—right on campus.

Easy? Just call Jeff at 232-3258. Tell him where you want to go—and he'll warm up a jet.

Welcome to the world of  Trans World Airlines

Unicorn presents
IN CONCERT
Dave Van Ronk
JORDAN HALL
SATURDAY, FEBRUARY 18
Tickets: \$2.75, \$3.50, \$4.50

MAIL ORDERS: Enclose stamped self-addressed envelope, check or money order payable to Unicorn Coffee House, Boston, Mass. 02116.

Rights opportunity missed

By Carson Agnew

Daniel P. Moynihan, Director of the Joint Center for Urban Studies at MIT and Harvard said that the opportunity to make a "total commitment to the cause of Negro equality" was lost twenty months ago because of shortsightedness on the part of Negro and white civil rights leaders.

Writing in the magazine Commentary, the author of the controversial report which contended that Negro families were becoming increasingly matriarchal and that Negro family life was disintegrating, stated that the nation was ready for an all out commitment to the cause of civil rights in June of 1965.

LBJ speech crucial

Moynihan cited the speech which President Johnson made to the graduating class of Howard University as "a bold beginning." But after half a year the initiative was in ruins and "after a year and a half it is settled that nothing whatever came of it."

Moynihan also cites the controversy over his own report, which was released for publication in the fall of 1965, as one reason initiative was lost. The report said that 300 years of injustice had led to a "tangle of pathology" that would require major national effort to rectify.

Negro opposition hurt chances

But opposition to the report by several Negro organizations and leaders who felt that it placed the blame for their condition on the Negroes themselves and dealt un-

fairly with the problem, helped to kill the initiative.

Negroes unable to comprehend opportunity

Opposition stemmed from "Negro leaders unable to comprehend their opportunity; from civil rights militants, Negro and white, caught up in a frenzy of arrogance and nihilism; and from white liberals unwilling to expend a jot of prestige to do a difficult but dangerous job," over the report attracted attention from the job to be done.

Democratic majority made time right

Moynihan feels that, because of the heavy Democratic majority in Congress, and the fact that civil rights demonstrations in the South up to that time had been "unsustainable in their justice," action could and should have been taken at that time.


Moynihan adds: "The essential fact is that neither the government nor the civil rights move-

ment had the resources to prepare a program in response to the Howard speech."

Moynihan is pessimistic

Moynihan is pessimistic about any immediate progress at present, because of the white backlash which has built up since 1965. He notes that white Americans generally feel that Negroes "have received enough for the time being."

"It appears," he writes, "that the nation may be . . . reproducing the tragic events of Reconstruction: giving to Negroes forms of legal equality but withholding the economic and political resources which are the bases of social equality."

SALES SERVICE
 **VOLVO**
 The Swedish Wonder Car
DALZELL MOTORS
 805 Providence Highway
 Dedham Plaza 329-1100

We've
been at it
120 years—



But it still takes
over four months
to brew Carlsberg—
the mellow,
flavorful beer
of Copenhagen.



Drink Carlsberg—the mellow, flavorful beer of Copenhagen.

Brewed and bottled by the Carlsberg Breweries, Copenhagen, Denmark • Carlsberg Agency, Inc., 104 E. 40th St., N.Y.

Kaplan, Dressler talented musicians

(Continued from Page 6)

the care they took with the slow movements. These were not merely to be endured, the price to be paid for the fun of playing allegro; they were to be endowed with all their stateliness, as was the second movement of the Boismortier.

Each of the musicians was impeccable, but note should be made of Melvin Kaplan, oboist, who modified his tone to fit the character of first the German Telemann and then the courante Francaise and the courante a l'Italien in the Couperin, and of Charles Dressler, whose diction in the recitatives was exemplary. The color of Mr. Dressler's animated voice was well matched to the ensemble, although occasionally he might have projected more..

Minor fault

The only slight lapse of the afternoon came in a few discursive places in the Couperin where the playing seemed to lack conviction. By far the lasting impression was of music alive, excellently performed. To the New York Chamber Soloists, and therefore, to the MIT Humanities Series went long, appreciative applause for a rewarding afternoon.

HISTORY OF
STANDARD OIL
COMPANY
(NEW JERSEY)

As a student M. B. A.,
you read Vols. I-II
As a graduate M. B. A.,
you can put yourself
in future volumes

We don't know much about *you* (although we'd like to).

But *you* start with the singular advantage of knowing a great deal about *us*: Standard Oil Co. (N.J.). These two volumes contain facts of history, not figments of fiction.

We're looking for M.B.A.'s who have what it takes to work for a company whose history is important enough to be required reading in many schools. That takes imagination, hard work, and a rather special brand of responsibility.

If you'd like to be included in future volumes, and feel that you've got what it takes, ask your College Placement Service to set up an appointment for you with a Jersey Standard Representative. There will be a team representing Jersey and its New York-based affiliates visiting your Campus soon. Or write now for detailed information about careers with us. For your personal bookshelf.

Standard Oil Company (New Jersey)

College Recruiting Office, 30 Rockefeller Plaza, New York, New York 10020
An Equal Opportunity Employer.

The Jersey team will be on Campus Feb. 20-21

ELSIE'S

Noted for the best Sandwiches
to eat in or take out.

FAMOUS ROAST BEEF SPECIAL
SANDWICH—KNACKWURST—
BRATWURST with SAUERKRAUT
or POTATO SALAD

"und die feinen Wurstwaren"

71 Mt. Auburn St., Cambridge

491-2842

PHIL & CLAUDETTE MARKELL

Should you drink beer straight from the bottle?



If you're on a fishing trip or something, carrying along a glass is pretty clumsy. But when it's convenient, we think it's a shame not to use one.

Keeping Budweiser inside the bottle or can is missing half the fun.

Those tiny bubbles getting organized at the top of your glass have a lot to do with *taste* and *aroma*. Most beers have carbonation pumped in mechanically. Not Budweiser. We go to a barrel of trouble and expense to let Budweiser create its *own* bubbles with the *natural* carbonation of Beechwood Ageing. So you really can't blame us for wanting you to get it at its best, can you?

Just for fun, pour your next four or five bottles of Bud® into a glass. If you don't agree that the extra taste, clarity and aroma make a big difference, go back to the bottle.

We won't say another word.

Budweiser

KING OF BEERS • ANHEUSER-BUSCH, INC. • ST. LOUIS
NEWARK • LOS ANGELES • TAMPA • HOUSTON

Six billion people

Panel probes life in 2001

"January 29, 2001" was the topic of a symposium recently held in California to promote a new television series on the 21st Century (1 p.m. Sundays on CBS). The panel consisted of experts in various fields, including Dr. Jerome B. Wiesner, Provost, MIT. The biggest problem facing mankind is simply to make it to the 21st Century, but if we do we will have to contend with an estimated six billion homosapiens, about double the present world population. The basic problems of food and housing will be solved by tapping vast unused resources of food,

especially in the ocean, and uninhabited areas of the earth. This was the opinion of Dr. Wiesner and Professor John Isaacs, acting chairman of the Department of Oceanography at Scripps. Dr. Wiesner, a former assistant to President Kennedy for science and Technology, feels the need for housing will be met by an advancement in technology.

The already tremendous problem of automobile transportation will be very acute in the 21st Century. Dr. Thomas Malone, chairman of the U.S. National Commission for the U.N. Educational Scientific and Cultural Organization, felt that the ability to communicate by television will lessen the amount of physical travel.

"We won't be able to recognize the automobile as such. With the kind of concentration that we will have, you won't be able to go wherever you want. The future automobile will be controlled," presumably by some safety devices. "It will have a different interior, one which is designed to minimize any injury that inadvertently may result from an accident." Hillard W. Paige, vice president and General Manager, Missil and Space Division, General Electric Company said that the internal combustion engine, which spews carbon monoxide and carbon dioxide into the atmosphere, will be replaced by an electric car, powered by batteries that can be recharged in a garage overnight.

The size and shape of the United States will be changed, according to Dr. Robert A. Charpie, president of the Electronics division of Union Carbide Corp. To make room for the growing population, the coastlines will be extended outward. Coastal cities will be built on what is now water, and communities inland may be stretched along high-speed transportation lines.

All agreed that fossil fuels will be replaced by nuclear fuel, with the reactors built in the ocean to disperse excess heat.

Trump wins NE award for electrical research

(Continued from Page 1)

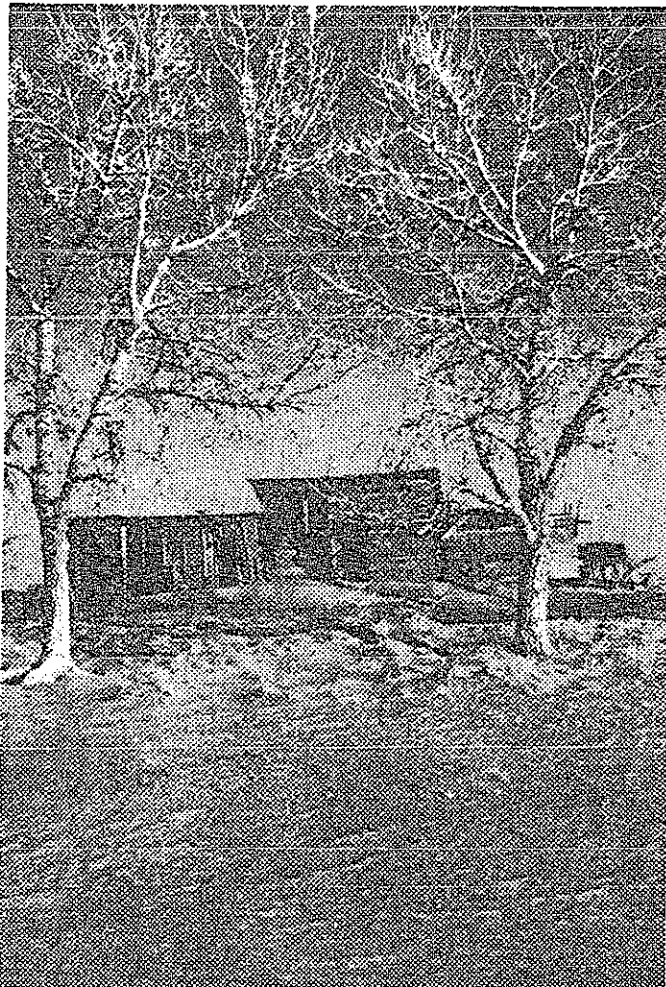
professor at the Institute, and director of the HVR Lab.

Founds company

In the meantime, he co-founded, in 1946, the High Voltage Engineering Corporation, with Drs. Robert J. Van de Graaff and Denis M. Robinson. From the outset, Dr. Trump has been chairman of the Board of Directors and technical director of this corporation. The company manufactures particle accelerators for nuclear research organizations and for medical research all over the world.

Dr. Trump is a fellow of the IEEE, a fellow of the American Physical Society, and a member of the American Academy of Arts and Sciences, American Nuclear Society, and the American Radium Society. In 1960 he was awarded the Lamme Medal by the IEEE "For meritorious achievement in the design of particle accelerators and X-ray generators . . . and also for exceptional contributions which lead to applications in treatment of malignant diseases."

Engineering Societies sponsoring the award include the American Association of Cost Engineers, NE Section, American Society of Civil Engineers, Massachusetts Section, Boston Society of Civil Engineers, American Society of Mechanical Engineers, Boston Section, Illuminating Engineering Society, NE Section, and the American Institute of Industrial Engineers, Boston Chapter.



Engineering is a social science

To save itself from extinction, society must transform itself into something radically different than what we know today.

To do this, the social scientists discover what human needs really are. But it's up to technology to show us how to fill these needs.

The problems are many: food, air and water pollution, mass transportation and urban renewal. In these fields, as in defense and space, McDonnell engineers are actively concerned. They are working toward solutions. Are you?

Build a better future for your country and yourself at McDonnell.

MCDONNELL

Box 516, St. Louis, Missouri 63166

A Plans For Progress And An Equal Opportunity Employer

White Water Club to hold indoor slalom races

This Saturday at 7:00 p.m., the first of 30 racers will capsize his boat in the MIT swimming pool. The MIT White Water Club is sponsoring an unusual event — an indoor slalom race for kayaks and one man canoes.

During the race, striped poles

are hung in pairs over the water, each pair being a gate. Boats are expected to go through a prescribed sequence of gates, including four gates which must be made while paddling backwards. Contestants are also required to roll their boats, hanging for a

brief moment with head down until they right themselves again. In the slalom race, both speed and accuracy determine the racer's score. Penalty points are assessed for violations such as missing gates, hitting gates, and failing to do the required rolls. These

accumulated penalty points are added to the time it took the racer to go through the sequence, and the lowest total score wins. Each racer gets 2 turns, with the lowest score counted. Free tickets to the MIT community will be available for two

days before the race in the lobby of Building 10. For others, admission is 50c, payable at the door. There is a practice session from 4-6 which is open to the public, and the Mount Holyoke Water Ballet will perform during intermission.

Can you make it as a modern banker ?

A banker today is a lot more than a money specialist who waits for the community to come to him. He's a well-rounded, imaginative individual who knows how to present a package of financial services to fill his client's needs. He's professionally involved with every kind of business, from government to space exploration to problems of emerging nations. And he can't be pigeonholed because versatility is one of the keys to his success.

He has job status and pride of profession. And his compensation and employee benefits are the envy of many.

His training is thorough and guided by experienced seniors who cushion the rough spots and put him on the high road when he's ready

in his own mind and deed.

Before you make your big career decision, take a long look at banking. Ambition is the key, and the best way to check yourself out is to set up a give-and-take session with a Chase Manhattan Banker.

One more thing.

Modern banking is in. It asks for versatile, creative, imaginative men who want to range the community, the nation and the whole wide world.

Discuss the possibilities of a career in modern banking. A Chase Manhattan banker will be on campus soon. Your Placement Office will tell you when and where.



THE CHASE MANHATTAN BANK
National Association/1 Chase Manhattan Plaza, New York,
New York 10015 • Member Federal Deposit Insurance Corporation
An Equal Opportunity Employer

Racketmen downed 8-1; Amherst wins easily

By Roger Dear
MIT's varsity squash team hosted a strong Amherst squad Wednesday night at DuPont and were defeated 8-1. Seven of the matches were decided by 3-0 scores, and the remaining two by 3-1 tallies. Captain "Chye" Tantivit '68, the number one man, and Ken Wong '68, number two man, were the only Techmen to play four games. Chye beat Steve Hannes 3-1, but Ken lost to Perry Pickert, 3-1. Ken's match was marked by many long rallies and also numerous excellent recoveries for both contestants. Perry just eked out a victory in the first game, 18-16. Ken took him in the second, 15-7, and appeared to have the third in hand, when he fell going for the

ball and lost control of his game. Perry came back to win the third game, 15-10, and the fourth, 15-11. Chye's opponent, Steve Hannes, tried to beat Chye by tiring him out. He kept making Chye run up and back and into both corners, but it was doing no good. Chye took the first game, 18-17, and the second, 15-12. Chye was beginning to tire in the third game, as Steve won, 15-11. But after a five-minute break, Chye came back anew. Despite many lets called by Hannes, Chye kept control of the game. At one point Chye was leading 13-6 and Hannes called a foot-fault and two lets in a row. But Chye had too much, winning the final game, 15-7.

Frosh sports

Cagers top Northeastern

By Mike Schibly
Last Tuesday, in what may have been their best game of the season, the freshman hoopsters downed Northeastern by the score of 88-71. Bruce Wheeler led the

scoring for the engineers with 26 points; Steve Chamberlain was second with 24, and Nick Mumford added 18 to the winning effort. The engineers started hot, scoring 11 points before Northeastern

could manage a tally. The Huskies put on a tight press early in the game, but it was Tech's game all the way. The press caused some trouble, but it was generally handled well, and Northeastern could not come within 6 points of MIT. Thanks chiefly to the efforts of Chamberlain, who was responsible for numerous assists as well as 24 points of his own, Tech was able to score consistently, and simply outplayed a good Northeastern team.

The next contest for the frosh will be this Saturday at home against Brown.

Thinclads win by 15

The trackmen added another win to their record Wednesday as they downed Governor Dummer by fifteen points, 53-38, in a meet at the Institute. Techmen took first place in seven events, and managed two ties for second in forging their victory. Ben Wilson and John Owens effected two wins apiece, and Joel Hemmelstein copped a first and a second.

Bruce Lautenschlager turned in his usual performance in the shot put, winning with a throw of 48' 5 1/4". Hemmelstein was victorious in the broad jump with a leap of 19' 9 1/2", and Covert and Kelly tied for second in the low hurdles. Kelly and Hemmelstein tied for second in the 50-yard dash; John Owens won both the 600-yard (1:17.4) and 1000-yard runs; Ben Wilson was first in both the one and two mile events; and James Zilli won the high jump to complete Tech's scoring.

The freshmen have two meets left to complete their indoor season this year. The next meet will be against New Hampshire on Saturday, February the eighteenth, in Rockwell cage. Their last meet will be against Connecticut on the twenty-fifth. Both promise to be tough opponents.

Squash team loses

The racketmen did not fare well this Wednesday, as they lost to Exeter, 4-1. Terry Champlin, Bob McKinley, and Rod Walker dropped their sets 3-1; Manny Weiss lost 3-0. Chris Mar was the only engineer to emerge victorious with a 3-1 score. Exeter, being a prep school, has a team composed of only five men as opposed to the college nine man team; thus the match was over after the third set.

The loss evens the teams season record at 4-4. Their next opponent will be Trinity College, whom they will meet today at Trinity.

Grapplers extend record

Tufts was no match for the MIT freshman wrestlers this Wednesday night, and they fell 31-10. The outcome was apparent from the start, as Joe Barron, 123 lbs., and Paul McCreary, 130 lbs., won forfeits, and Regan Fay, fighting at 137 lbs., won his bout 9-0. Tufts came as close to the engineer's point total as they would all evening when Horatio Daub, 145 lbs., was pinned. Dick Whealen won his match, fighting in the next weight bracket at 152 lbs., and Rick Willeby and team captain Walt Price were victorious by pins. John Stempeck was pinned in his bout, but it made little difference as Fred Andree won a forfeit in the heavyweight class.

The frosh matmen now have a record of seven wins and only one loss. Their next contest will be against the University of Massachusetts, and another victory is likely.

Face GCNY next

Tech fencers post 19-8 victory; Holy Cross falls, Churinoff stars

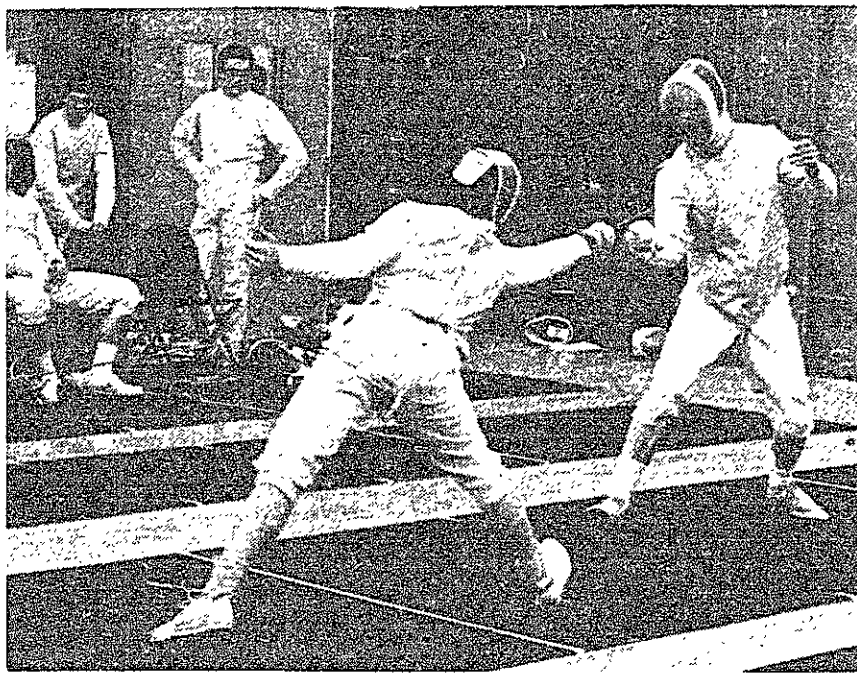


Photo by George Flynn
George Churinoff '68 scores a touch against Holy Cross foil fencer Duax in his first bout. Churinoff won this bout 5-0, as he sparked MIT to a 19-8 win over Holy Cross. Tech's fencers lost only one foil bout in the meet.

By George Wood
MIT fencers had an easy time with outclassed Holy Cross Tuesday afternoon, winning by a score of 19-8. Tech fencers jumped to an early 3-0 lead, as they swept the first round of sabre, Curt Max '68, Frank Carroll '68, and Bob Fall '67 each defeating their first round opponent Burt Rothberg '68 and George Churinoff '67 each won their first round foil matches by scores of 5-0. Bill Murray '67, Bill Stephan '69, and Tom Lamb '69 won the first three epee bouts, Lamb by 5-0. This left the score 8-1 for MIT at the end of the first round.

After one loss in the first round of foil, Tech fencers were undefeated in foil for the rest of the

meet. George Churinoff '67 fenced brilliantly, winning all three of his foil bouts with a total of three touches scored against him. Peter Hayward '69 won his only foil match 5-0, as Larry Deutsch '67 and Burt Rothberg '68 were also undefeated.

Bob Fall '67 and Curt Max '68 each won two bouts in sabre, as MIT won 5-4. Frank Carroll '68 accounted for the other sabre victory. Tech fencers also came out ahead in epee, winning 6-3, on two wins each by John Stafurik '68 and Tom Lamb '69. Bob Stephan '69 and Captain Bill Murray '67 each won and lost one in epee. This brought Maestro Vitale's fencers record to 5-4 for the year.

YELLOW CAB SERVICE
ALL CABS RADIO EQUIPPED
Dial MIT X2303

if she doesn't give it to you...
— get it yourself!

JADE EAST

Cologne, 6 oz., \$4.50
After Shave, 6 oz., \$3.50
Deodorant Stick, \$1.75
Buddha Cologne Gift Package, 12 oz., \$8.50
Spray Cologne, \$3.50
Buddha Soap Gift Set, \$4.00
Cologne, 4 oz., \$3.00
After Shave, 4 oz., \$2.50

SWANK, NEW YORK - SOLE DISTRIBUTOR

Announcing:
20% discount
"Any Wednesday"

\$5.50 lift ticket for \$4.40
\$4.00 class lesson for \$3.20

waterville valley
NEW HAMPSHIRE

That's right, you get 20% off on lift tickets and/or ski lessons if you're a bona fide college student. (bring I.D.) Because from now on, Wednesday* is College Day at Waterville Valley. As you know, midweek skiing's the greatest! Our well-groomed slopes and trails are uncrowded and lift lines are nil. You get in a lot more runs for your money. After skiing, you'll enjoy the swinging bar and good food at the "Afterthought" in the Waterville Inn. It's a fast, easy drive via Interstate 93 and 3 to West Campton; then follow signs.
* except on Washington's Birthday

GO! Vermont Transit
SKI BUSES
To 12 Major SKI AREAS

Convenient Vermont Transit Bus service to 12 famous Vermont Ski Areas! Leave on Fridays, return after skiing on Sundays.
• Additional weekend connecting service plus daily connecting service to Stowe. • Why be in the driver's seat? Avoid tiring driving. Go on modern rest room equipped Vermont Transit Buses!

- STOWE
- KILLINGTON, PICO
- MT. SNOW, HAYSTACK
- JAY PEAK, MAD RIVER
- SUGARBUSH, GLEN ELLEN
- BROMLEY, STRATTON, MAGIC

VERMONT TRANSIT LINES
University Travel Co. Tel. UN 4-7800
18 Brattle St., Cambridge, Mass.

MIXER
TONIGHT, FEB. 17
Walker Memorial
Guys \$1, Girls Free — IDC

Tech wrestlers down Tufts, 26-3

By Arm Varteressian
The Varsity wrestlers upped their season record to 6-2 last Wednesday, as they demolished a Tufts squad 26-3. Their only loss came in the 160 lb. match to last year's second place finisher in the New England's, Tom Martin. Bill Harris '68 started the meet with a 5-4 decision over Don Altwater. At 1:30 John Reynolds '67 handed John McKenna a 10-6 defeat. Jack Maxham '69 followed with a 3-1 decision over Greg Gessay.

At 145, Jack Wu '68 continued his winning ways with an easy 6-0 defeat of Tufts' Al Sugarman. In addition to a reversal and predicament Jack piled up 2 points riding time. John Fishback '68 kept the string going with a 5-2 defeat over Lee Nordan. Julian Schroeder '69 iced the meet with a 4-0 decision over Jack Alkon in the 167 lb. division. After Tufts forfeited the 177 lb. match to Keith Davies '69, Dave Schramm '67 finished up with a 7-0 decision against Jerry May.

Schramm is 18-0

To date, Schramm has won 18 consecutive dual meet contests. His record for the past two years is 29-4, including National competition. Other outstanding records this year include Jack Wu's effort both first time starters for 5-1 tally and Jack Maxham's 5-1-2 the varsity. Keith Davies has also made his presence felt by racking up a 5-1 record against tough opponents.

On Deck

Friday, February 17

- Basketball (V)—Amherst, away, 8:15 pm
- Hockey (V)—Hamilton, home, 7 pm
- Rifle (V)—Wentworth, home, 6:30 pm
- Squash (V&F)—Trinity, away, 4 pm
- Skiing (V)—EISA Seniors at Williams

Saturday, February 18

- Basketball (V)—Middlebury, away, 8 pm
- Basketball (F)—Brown, home, 7 pm
- Wrestling (V)—Massachusetts, home, 3:30 pm
- Wrestling (F)—Massachusetts, home, 2 pm
- Indoor Track (V&F)—New Hampshire, home, 1 pm
- Squash (V)—Stony Brook, home, 2 pm
- Swimming (V)—Springfield, away, 2 pm
- Swimming (F)—Springfield, away, 12:30 pm
- Fencing (F)—Lenox School, away, 2 pm
- Skiing (V)—EISA Seniors at Williams
- Skiing (V)—New England College Carnival, away

Sunday, February 19

- Skiing (V)—New England College Carnival, away

MIT's varsity wrestling team will wind up its season this Saturday at 3:30 with a match here against the University of Massachusetts. The engineers anticipate a victory, and spectators are encouraged to attend.

Record now 4-9

Tech icemen fall to Babson, 5-3

By Jon Steele
Tuesday night Babson College defeated the MIT hockey squad for the third straight time here, 5-3. Despite the loss, however, the game proved to be one of the

most exciting of the season, and was attended by the largest home crowd of the season. MIT got onto the scoreboard first when Larry Hall '67 took a pass from Captain Bob Smith '67 and whipped a shot past the Babson goal tender. Alan

Comey tied the game two minutes later when Tom Newkirk '67 was in the penalty box for cross-checking. Scott Rhodes '68 then found the net again for Tech and MIT held the lead until midway in the second period. At this point Babson's explosive offensive line scored twice in three minutes. Undaunted, Denis Coleman '69 retaliated by slapping the puck unassisted into the Babson cage. The rest of the period was marked by hard checking and fighting along the boards, but with only a minute remaining Babson set up a fast break and scored to go ahead 4-3.

It was the third period which determined the contest. MIT trailed by one and was pushing hard for the score, but the Babson defense would not yield, despite eight minutes with men in the penalty box. Finally, with seventy seconds remaining in the game, Mike Harris '68 was called out for hooking and Babson scored the final tally.

The next game for the skaters is here Friday night at 7:00 against Hamilton College.



Photo by George Flynn

Larry Hall '67 turns loose a shot on the Babson goal in the game Tuesday, as the goalie sets to block it. Despite an early lead, the skaters fell to the Babson squad for the third time this year, 5-3.

Cagers topped by NU, 69-60; NCAA chances not eliminated

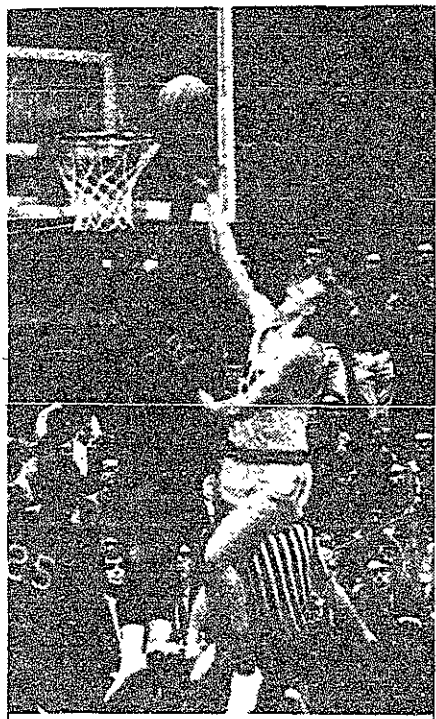


Photo by George Flynn

Alex Wilson '67 drives for a layup against NU's Barnes, who was penalized for goal-tending. MIT lost 69-60.

By John Kopelow

MIT's varsity basketball squad clashed with a highly-touted team of Northeastern Huskies last Tuesday night and dropped a fiercely-contested battle, 69-60. It was only Tech's fourth loss of the season to go with 15 wins while NU's record now stands at 17-3. More important, however, it makes more remote—though does not eliminate—the chances of MIT gaining a post-season berth in the NCAA regional tournament.

Northeastern brought to Rockwell Cage a team considered by many to be the best cage outfit among all New England colleges. However, they were without the services of starting guard and playmaker Jim McNaught, who was injured in their previous encounter, a loss to American International. But much of their success has been due to their depth in talent, and the ten ex-

cellent ballplayers, who shuffled in and out, in time simply wore down the six or seven men that Coach Barry has been able to use effectively for MIT.

Defenses tight

The Beavers faced a mobile zone defense which collapsed on their two big men, co-captains Alex Wilson and Bob Hardt, and played outcourt threat Dave Janson '68 very tight. They were slow in getting started, but primarily on the strength of five straight points by Hardt grabbed a 14-11 lead after ten minutes of play. The Huskies had even more trouble scoring primarily because of the tough defensive jobs being done by Bob Ferrara '67 and Wilson on their two big guns, Leo Osgood and Harold Barnes.

NU began out-battling Tech off the boards and edged away to a slim lead. When Hardt came out with four personals with 5:24 left in the half, the Huskies held a 23-19 lead which they increased to 33-26 by halftime.

Talus provides spark

Senior Roy Talus, who in the role of sixth man seems to spark the club whenever he enters the game, spearheaded a comeback at the outset of the second half. He had a hand in 10 straight MIT points, hitting 3 buckets and providing assists on scores by Jansson and Wilson, so that Tech narrowed the margin to 39-36 with 14:05 left.

At this point the Beavers were bothered for the first time by NU's zone press, losing the ball on two successive occasions. Meanwhile the Huskies took advantage of Hardt's being in foul trouble and hit on several cheap baskets.

For the next four minutes of play Alex Wilson was all that kept Northeastern in sight. The greatest point-getter in Tech history proved once again why he is on occasion unstoppable; when not scoring on a drive, he was certain of at least drawing a foul. His spree of ten straight markers limited the NU lead to 51-48 with 7:52 remaining.

NU stalls

With just 2:50 to play and a 61-56 advantage, the visitors went into a stall which MIT could break only by fouling. The Huskies proved to be more than adequate from the charity stripe as well, and hence walked off with a well-deserved victory.

Only Wilson and Talus could better their per game scoring averages, both by two, with 20 and 10 markers respectively.

With 2:34 remaining in the game, Tech held a 90-51 advantage. Stewart stole the ball and passed to Randy Heckman '69 who swished from the foul line. Suchon missed a short bank shot, but Ross Hunter '69 tapped it in with 1:17 remaining.

The onslaught continued in the second session, Bash completing a perfect night from the foul line with fourteen consecutive free throws and four field goals. Santini was taken out early in the period after swishing three more jumpers to raise his total to 17.

The Benchwarmer

Hockey needs spectator support; time for practice also required

By Paul Baker

Once again because of their indifference, MIT students have missed the boat. The hockey season soon draws to a close, and only a handful of Tech students have taken advantage of any of the games. At the last two home games, both against Babson, their opponents had more fans

than the engineers. Now consider that Babson's team is only a club team.

Why "waste" time watching a team whose record is only 4-9? Aside from the fact that hockey is one of the fastest and most exciting sports in the world, the team record, while unimpressive, does not tell the entire story. Tech played many excellent games this year, losing 1 by one goal and 2 by two goals.

Scant practice time

Hockey obstacles at MIT are great, but they can be overcome. One of the biggest drawbacks is the scant time allotted to the team for practice. Monday thru Friday, the rink is reserved from 5 until 8 for hockey practice, but also includes time for the freshman team. On most days the freshman have little more than one hour to skate and often less than that, while the rink is reserved for general skating and intramural use the remainder of the day between 10 a.m. and 11 p.m. An extra half hour for the team would not be interfering too much, and certainly would help the players.

IM vs Varsity

Another problem not so easily solved is the large number of good hockey players who compete for house teams rather than play for the varsity. While intramural sports are important, intercollegiate sports should take precedence. Another disadvantage is the archaic rink. Many practice days are lost because of stormy or warm weather.

Still, despite these problems and lack of student support, the hockey players continue to fight. If you gave it a chance, you may find you enjoy hockey. Why don't you try the next home game? It will be tonight at 7:00 p.m.

Second-class postage paid at Boston, Massachusetts. The Tech is published every Tuesday and Friday during the college year, except during college vacations, by The Tech, Room W2-433, MIT Student Center, 24 Massachusetts Avenue, Cambridge, Massachusetts 02139. Telephone: Area Code 617, 876-3333, and 864-6900. Extension 211. United States Mail Subscription rates: \$4.25 for one year, \$8.00 for two years.