

Financed by AEC

## Essex County site picked for electron accelerator

By John Corwin

The Essex County Sanatorium property has been described as the "outstanding site" for the construction of MIT's 5.4 million dollar electron accelerator.

Dr. Peter Demos, Director of Laboratories for nuclear science at the Institute, met Friday afternoon with Essex County officials to discuss details, and reported that the plans for the choice of the site are "in no serious jeopardy."

### Year study

Plans for the site began about a year ago, when MIT undertook an extensive examination of all sites within a 20-mile radius recommended by a survey conducted by the National Aeronautics and Space Administration. The Essex site, located about 20 miles north of MIT, was declared "highly appropriate."

Negotiations will continue for the next few weeks while legal matters are being settled, but it is generally felt that the schedule now in preparation will be executed roughly as planned.

The accelerator will be paid for jointly with \$4.6 million appropriated through Congress by the Atomic Energy Commission, and \$900,000 coming from MIT.

Operated by MIT under contract to the AEC, the facility would occupy approximately 40 acres of the sanatorium's 80-acre tract. Completion is hoped for by 1969.

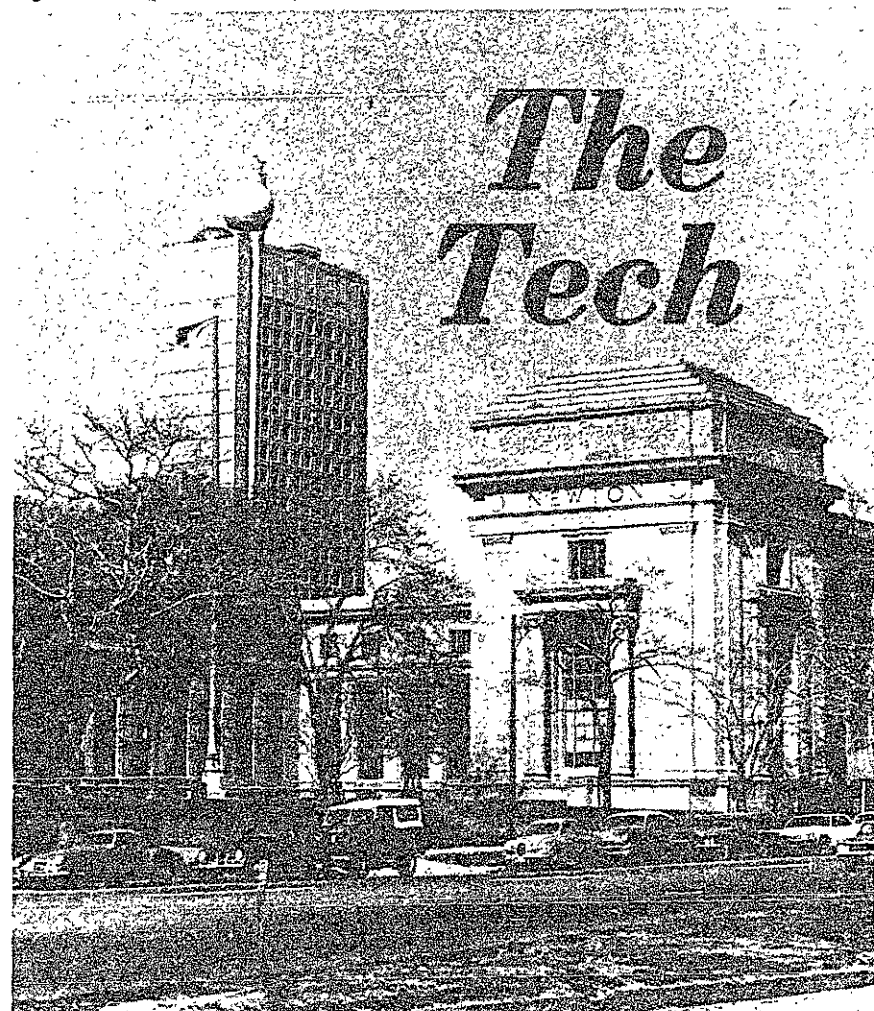
The accelerator would be used by MIT and neighboring universities to explore the nature of the atom. The structure of the atom would be probed with high-speed electrons produced by the accelerator.

### Room to expand

Dr. Demos noted that a prime consideration in the choice of the site was the availability of room to expand the size of the facility in years to come. He said that in the next 20 years it might become necessary to double or triple the length of the underground tube, which would extend it into the industrial farm owned by Essex County.

Use of part of the property is

also being sought by Salem State College to establish a four-year degree-granting school of nursing. Both Dr. Frederick A. Meier, Salem State College president, and Dr. Demos stated that the accelerator program and the College would be able to coexist in a "quite compatible" way.



Vol. 86, No. 22 Cambridge, Mass., Friday, April 29, 1966 5c

## Breakfast and auto rallye sponsored Sunday by IFC

The IFC will hold its second bi-annual spring rallye Sunday. This event will be open to all Tech men and their dates, but there are limited entries. The cost is 3 dollars per couple.

The day will begin with a Pancake breakfast at Zeta Beta Tau fraternity on Manchester Road, starting at 10:30 am.

The rallye will start at noon but all registrants must be there by

# Alfred Keil to head Course XIII

Dr. Alfred H. Keil has been appointed as Professor and Head of the Department of Naval Architecture and Marine Engineering, effective July 1.

Dr. Keil will succeed Professor C. Richard Soderburg, Institute Professor Emeritus, who has been serving as Acting Head of the Department since Dr. H. Guyford Stever left to become President of the Carnegie Institute of Technology last year.

### German scientist

Dr. Keil received the Doctor of Natural Science degree from Friedrich Wilhelm University in Germany in 1939. During the war he was a research associate for the Germany Navy and later worked for the US Naval Technical Mission in Germany. After serving 12 years as chief scientist of the Underwater Explosion Research Division of the Navy's Bureau of Ships, Dr. Keil was responsible for many advances in ship protection and weapons effects research. His work earned him recognition as authority on the physics of underwater explosions.

Dr. Keil has also served as Technical Director of the Structural Mechanics Laboratory at the Navy's David Taylor Model Basin. As director, he guided the laboratory through a program which brought about the expansion of the laboratory and his appointment as Technical Director of the Basin.

### Undersea warfare

He has been a member of the Undersea Warfare Research and Development Planning Council of the Navy, the Technological Forecasting Committee of the Office



Dr. Keil

of the Chief of Naval Developments, and the steering committee of the Deep Submergence Systems Project of the Navy.

Dr. Keil belongs to the American Physical Society, the Society of Naval Architects and Marine Engineers, the Armed Forces Management Association, and the National Academy of Engineering. He has been awarded the Navy's Distinguished Civilian Service Award and the Gold Medal of the American Society of Naval Engineering.

## Electronics Research Laboratory to celebrate 20th anniversary

By Mike McNutt

The 20th anniversary of the Research Laboratory of Electronics (RLE) at MIT will be observed Wednesday, May 11, with panel programs examining the relation of large academic laboratories to education, government and industry.

U. S. Rep. Emilio Q. Daddario, (D., Conn.), chairman of the subcommittee on science, research, and development of the House Committee on Science and Astronautics, will take part in the afternoon panel on the relation of academic laboratories such as RLE to federal government and industry.

### Stratton 1st Director

The morning panel, moderated by MIT President Julius A. Stratton, who was RLE's first director when the laboratory began 20 years ago, will explore the influence of a large academic laboratory on education.

The idea for RLE grew out of the MIT Radiation Laboratory, where radar was developed for the military during World War II. The Radiation Laboratory was, itself, multidisciplinary, bringing together hundreds of scientists and engineers working on common problems in microwave theory and practice.

The people, their inter-related style of research, and the body of knowledge they built up through wartime work at the Radiation Laboratory represented a national resource that held exciting promise for still greater advances in man's understanding and use of electromagnetic waves.

### RLE began after war

Consequently, when the Radiation Laboratory was dissolved with the end of the war, the Division of Basic Research was reorganized into the Research Laboratory of Electronics. Originally, RLE served as a research center for faculty, staff, and students from the Departments of Physics and Electrical Engineering, but in the years since, the number has grown to 11 participating departments.

## Dr. Shrock to lecture at State Science Fair

The Massachusetts State Science Fair began at 9 this morning with the setting up of exhibits in the Rockwell Cage.

The fair will be open to the public between 6 and 9 this evening, from 1 to 6 tomorrow afternoon, and from 3 to 5 Sunday afternoon.

The Fair will climax Sunday afternoon at 2 with an Awards Ceremony at Kresge Auditorium. Speaking on behalf of MIT will be Dr. Robert R. Shrock, Professor and former Head of the Department of Geology and Geophysics.

Titles of some of the projects to be set up at the fair include The Fourth Dimension, Crystals and Light, Electronic Vowel Synthesis, The Incredible Ruby Ray, Freezing Motion with Sound, The Artificial Kidney, and The Chemistry of Taste.

Some of the more interesting projects to be shown prove to be Learning, Memory, and Teamwork in Starfish and The Effects of Seaweed on Hamsters.

## District in turmoil

### Back Bay crowded with students

By Jeff Stokes

(This is the first in a series of articles on Back Bay and its political, social, and economic problems. Subsequent articles will explore the roles played by civic groups such as the Back Bay Planning and Development Corporation, by real estate operators, by the city of Boston, and by students in the changing face of Back Bay, in order to throw some light on the future of fraternities at MIT.)

The story of Back Bay is one of great glory, tragic economic and social decline, and turmoil in the present. It is not a new story, since many a fine old neighborhood in this and other cities has undergone a similar transformation. But while many of these residential districts have become shabby slums since the turn of the century, the Back Bay has

fallen prey to a new kind of invader: the student.

### MIT students in Back Bay

There are at least 9,000 of them living between Arlington St. and Charlesgate West alone, almost half the resident population. MIT has 12 fraternities in this district, as well as 8 more in the area around Kenmore Square and 2 on The Fenway. In addition to fraternity men there are several hundred more MIT students living in apartments, bringing the total number of MIT undergraduates living in Boston to around 1,100. There may be as many as 500 MIT grad students living in the area as well.

Where once upper middle class tycoons promenaded down the mall on Commonwealth Avenue, arm in arm with their ladies, young girls throng laughing and shouting to their morning classes. Where once the streets murmured with the conversation of wealthy merchants and the clip-clop of horses' hooves, the rippling of motorcycles and the honking of taxis echo between brownstone housefronts. Where once satin dowagers in wide-brimmed hats went strolling with their pekingese, boys in sweatshirts toss a football back and forth. Where once the aristocrats of Boston used to tread, the streets have

(Please turn to Page 3)

11:45 in order to register, get car numbers, and line up. The rallye begins at the East Parking Area (near East Campus). Dean Fassett will be honorary Rallyemaster.

The rallye will end with a picnic at the Blue Hills, where the trophies will be awarded. There are three individual trophies for the winners, as well as a team trophy. The teams consist of groups of three cars which will pool their individual scores.

A rallye is not a race. It is a contest of precision, timed driving. Each entrant will be given a direction sheet with "clues" which explain the route and the correct average speed to maintain.

At various locations there will be checkpoints where your arrival will be recorded. Each checkpoint means a separate leg, so that

(Please turn to Page 3)

## Computer pioneer

### Corbato receives award

Fernando J. Corbato, Deputy Director of the MIT Computation Center and Professor of Electrical Engineering, was presented the first W. W. McDowell Award Wednesday in recognition of his contribution to the field of computers.

The award was given by the Institute of Electrical and Electronics Engineers at a luncheon of the Spring Joint Computer Conference. The award, \$500 and a certificate, was financed by IBM.

Prof. Corbato aided in the origination of the idea of computer time-sharing in 1961. The idea of time-sharing led to the formation of Project MAC. Prof. Corbato is Head of the Systems Program Group, which is continuing the development of Project MAC and the time-sharing system.

Prof. Corbato received his BS from Caltech in 1950 and his PhD



Prof. Corbato

in Physics from MIT in 1956.

Guest speaker at the luncheon was Dr. Isaac Asimov, noted science fiction and science writer and Associate Professor of Biochemistry at the Boston University School of Medicine.

## Draft test note

The Science Research Associates in Chicago will continue to accept applications from students who wish to take one of the Selective Service College Qualification Tests as long as they have the seating capacity to accommodate them.

## Summer school

Summer session registration material must be returned to the Registrar's Office, Room E19-335, or the Information Office, Room 7-111, before 5 pm Wednesday, May 18.

# For your reference shelves

## BEHAVIOR SCIENCE

THE NATURAL HISTORY OF AGGRESSION  
Carthy-Ebling, 1965, \$5.00  
PAIRED-ASSOCIATES LEARNING  
Goss-Nodine, 1965, \$13.50  
BEHAVIOR OF NONHUMAN PRIMATES—Schrier  
Volume 1, 1965, \$9.00  
Volume 2, 1965, \$9.50

## BIOLOGY

THE FUNGI—Ainsworth-Sussman  
Volume 1, 1965 Sub. \$19.50; Non-Sub. \$24.  
HISTONES AND OTHER NUCLEAR PROTEINS—Busch, 1965, \$9.50  
THE PHOTOCHEMICAL ORIGIN OF LIFE—Dauvillier, 1965, \$7.50  
THE THEORY OF INBREEDING  
Second Edition—Fisher, 1965, \$6.00

CHEMISTRY AND BIOCHEMISTRY OF PLANT PIGMENTS  
Goodwin, 1965, \$18.50

ADAPTIVE GROWTH—Goss, 1964, \$12.00

THE CONTROL OF FERTILITY  
Pincus, 1965, \$9.00

THE EVOLUTION OF GENETICS  
Ravin, 1965 (Paperback), \$2.95

SELECTED PAPERS ON MOLECULAR GENETICS—Taylor, 1965 (Paper), \$5.95

THE PHYSIOLOGY OF THE INSECT CENTRAL NERVOUS SYSTEM  
Treherne-Beament, 1965, \$10.00

METHODS AND GOALS IN HUMAN BEHAVIOR GENETICS  
Vandenberg, 1965, \$8.95

## CHEMISTRY

METHODS OF SILICATE ANALYSIS—Second Edition  
Bennett-Hawley, 1965, \$10.00  
THE KJELDAHL METHOD FOR ORGANIC NITROGEN  
Bradstreet, 1965, \$9.50  
FUNDAMENTALS OF CARBANION CHEMISTRY  
Cram, 1965, \$9.50  
CONFORMATION THEORY  
Hanack, 1965, \$14.50

INTRODUCTION TO QUANTITATIVE ULTRAMICROANALYSIS  
Korenman, 1965, \$9.50  
INTERPRETATION OF ORGANIC SPECTRA  
Mathieson, 1965, \$7.00  
NUCLEAR MAGNETIC RESONANCE IN CHEMISTRY  
Pascoe, 1965, \$13.50  
NON-AQUEOUS SOLVENT SYSTEMS  
Waddington, 1965, \$14.50

## ENGINEERING

NONLINEAR PARTIAL DIFFERENTIAL EQUATIONS IN ENGINEERING  
Ames, 1965, \$16.00

MATHEMATICAL THEORY OF CONNECTING NETWORKS AND TELEPHONE TRAFFIC  
Benes, 1965, \$12.00

A VECTOR APPROACH TO OSCILLATIONS—Booker  
1965 (Paperback), \$2.45  
SYSTEMS AND SIMULATION  
Chorafas, 1965, \$14.50  
ELEMENTS OF HYPERSONIC AERODYNAMICS  
Cox-Crabtree, 1965, \$6.50  
INDUSTRIAL WASTEWATER CONTROL  
Gurnham, 1965, \$16.00

## FOOD SCIENCE

PRINCIPLES OF SENSORY EVALUATION OF FOOD  
Amerino, 1965, \$19.50

## MATHEMATICS

REPRESENTATION THEORY OF FINITE GROUPS—Burrow  
1965 (Paperback), \$3.45  
INFORMATION AND PREDICTION IN SCIENCE  
Dockx-Bernays, 1965, \$9.50  
ENUMERABILITY, DECIDABILITY, COMPUTABILITY  
Hermes, 1965, \$9.75

DIFFERENTIAL AND RIEMANNIAN GEOMETRY  
Laugwitz, 1964, \$8.50

THE METHOD OF AVERAGING FUNCTIONAL CORRECTIONS: THEORY AND APPLICATIONS  
Luchka, 1965, \$3.45

A THEORY OF SETS  
Morse, 1965, \$7.95

GEOMETRIC INVARIANT THEORY  
Mumford, 1965, \$5.50

METHODS OF MATRIX ALGEBRA  
Pease, 1965, \$13.75

LINEAR OPERATORS IN HILBERT SPACE—Schmeidler  
1965 (Paperback), \$2.95

## MEDICAL RESEARCH

METHODS OF ANIMAL EXPERIMENTATION—Gay  
Volume 1, 1965, \$13.50

SCREENING METHODS IN PHARMACOLOGY  
Turner, 1965, \$12.00

HUMAN CHROMOSOME METHODOLOGY  
Yunis, 1965, \$8.50

## PHYSICS

SCINTILLATION COUNTERS IN HIGH ENERGY PHYSICS  
Akimov, 1965, \$9.50  
ORIENTED NUCLEI POLARIZED TARGETS AND BEAMS  
Daniels, 1965, \$9.00

THE THEORY OF ELECTRON-ATOM COLLISIONS—Drukarev, 1965, \$6.50  
OPTICAL PHYSICS  
Garbunov, 1965, \$14.50

THE DOPPLER EFFECT—Gill, 1965, \$6.50  
PLASMA TURBULENCE  
Kadomtsev, 1965, \$6.50

CLASSICAL DYNAMICS OF PARTICLES AND SYSTEMS  
Marion, 1965, \$11.50

CLASSICAL ELECTROMAGNETIC RADIATION—Marion, 1965, \$10.75  
PRINCIPLES OF VECTOR ANALYSIS  
Marion, 1965 (Paperback), \$2.45

STATISTICAL THEORIES OF SPECTRA: FLUCTUATIONS  
Porter, 1965 (Paperback), \$5.95

HANDBOOK OF MICROWAVE FERRITE MATERIALS  
von Aulock, 1965, \$12.00

## PAPERBACKS

### BIOLOGY

DIVISION OF LABOR IN CELLS  
Bourne, 1962, \$2.95  
DESIGN AND FUNCTION AT THE THRESHOLD OF LIFE: THE VIRUSES  
Fraenkel-Conrat, 1962, \$2.45  
PRIMARY PROCESSES IN PHOTOSYNTHESIS  
Kamen, 1964, \$2.45  
RADIATION, ISOTOPES, AND BONE  
McLean-Budy, 1964, \$3.45  
RADIATION, RADIOACTIVITY AND INSECTS  
O'Brien-Wolfe, 1964, \$3.45  
THE EVOLUTION OF GENETICS  
Ravin, 1965, \$2.95  
TIME, CELLS, AND AGING  
Strehler, 1962, \$2.95  
RADIATION AND IMMUNE MECHANISMS  
Taliaferro-Taliaferro-Yaroslav, 1964, \$3.45  
SELECTED PAPERS IN MOLECULAR GENETICS  
Taylor, 1964, \$5.95  
ISOTOPES IN BIOLOGY  
Wolf, 1964, \$2.45

### MATHEMATICS

ELEMENTS OF ABSTRACT HARMONIC ANALYSIS  
Bachman, 1964, \$3.45  
AN INTRODUCTION TO P-ADIC NUMBERS AND VALUATION THEORY  
Bachman, 1964, \$3.45  
REPRESENTATION THEORY OF FINITE GROUPS  
Burrow, 1965, \$3.45  
THE METHOD OF AVERAGING FUNCTIONAL CORRECTIONS: THEORY AND APPLICATIONS  
Luchka, 1965, \$3.45  
NON-EUCLIDEAN GEOMETRY  
Meschkowski, 1964, \$2.45  
LINEAR OPERATORS IN HILBERT SPACE  
Schmeidler, 1965, \$2.95  
FINITE PERMUTATION GROUPS  
Wielandt, 1964, \$2.45  
QUADRATIC FORMS AND MATRICES: AN INTRODUCTORY APPROACH  
Yefimov, 1964, \$2.45

### PHYSICS

A VECTOR APPROACH TO OSCILLATION—Booker, 1965, \$2.45  
CRYSTALS: THEIR ROLE IN NATURE AND IN SCIENCE—Bunn, 1964, \$3.45  
POTENTIAL BARRIERS IN SEMI-CONDUCTORS—Gossick, 1964, \$2.45  
ELEMENTARY DYNAMICS OF PARTICLES  
Harkness, 1964, \$2.95  
ELEMENTARY PLANE RIGID DYNAMICS  
Harkness, 1964, \$2.95  
PRINCIPLES OF VECTOR ANALYSIS  
Marion, 1965, \$2.45  
STATISTICAL THEORIES OF SPECTRA: FLUCTUATIONS—Porter, 1965, \$5.95  
MECHANISMS IN BIOENERGETICS  
Racker, 1965, \$3.45  
MECHANICS—Sommerfeld, 1952, \$3.95  
MECHANICS OF DEFORMABLE BODIES  
Sommerfeld, 1950, \$3.95  
ELECTRODYNAMICS  
Sommerfeld, 1952, \$3.95  
OPTICS—Sommerfeld, 1954, \$3.95  
THERMODYNAMICS AND STATISTICAL MECHANICS—Sommerfeld, 1956, \$3.95  
PARTIAL DIFFERENTIAL EQUATIONS IN PHYSICS—Sommerfeld, 1949, \$3.95  
MOSSBAUER EFFECT: PRINCIPLES AND APPLICATIONS—Wertheim, 1964, \$2.45

Titles by **ACADEMIC PRESS**



**THE TECH COOP**

IN THE M.I.T. STUDENT CENTER

84 Massachusetts Avenue, Cambridge, Mass. 02139

# Rules for Sunday's auto rallye to emphasize precision driving

(Continued from Page 1)  
Missing one leg does not mean that you will lose the entire rallye. One penalty point is given for each second an entrant is

either ahead or behind the proper time at each checkpoint. The car with the fewest points is the winner.

For amateurs, the real trick is to stay on course. Contestants can beat half the pros with their pocket computers if they just stay on course, watch those clues, and pray. For further information, contact Ray Paret, IFC Social Chairman.

**SERVICE**  
**VOLVO**  
The Swedish Wonder Car  
**DALZELL MOTORS**  
605 Providence Highway  
Dorchester Plaza  
329-1100

**STEREO**  
MUSIC WHILE YOU DRIVE  
Impossible? No! See  
**RICHARDSON & WALKER, INC.**  
Auto-Musical Enjoyment  
Any Type of Car  
WE ALSO SELL AND REPAIR  
AUTO RADIOS  
1123 Commonwealth Avenue  
Call: 782-9111

**Samuel Bluestein Co.**  
"Complete School Supplies"  
**TYPEWRITERS**  
SALES - SERVICE - RENTAL  
1080 Boylston St. | 345 Main Street  
Boston | Malden  
COplay 7-1100 | DAvenport 2-2315

**YELLOW CAB SERVICE**  
ALL CABS RADIO EQUIPPED  
Dial MIT X2303


**Attention: Seniors Going to MEDICAL SCHOOL**

The Nikon Medical Microscope is guaranteed for 25 years. (So please don't wait until the last day before classes to buy yours.)

Be compulsive and write us now for our brochure. You'll learn what to look for in your microscope.

**Ferranti-Dege, Inc.**  
New England's Exclusive  
Nikon Student Dealer, and  
one of the world's largest

**Ferranti-Dege, Inc.**  
1252 Massachusetts Avenue  
Harvard Square  
Cambridge, Mass. 02138



THE NIKON SBR MICROSCOPE

# Students initiate cleanup

(Continued from Page 1)  
become noisy in the daytime and unsafe at night.

**Imbalance of population**  
Back Bay's population has not risen substantially since it reached its comfortable capacity early in this century.

Nor have its buildings—mostly Victorian townhouses built of brownstone, brick, and granite—changed much over the last fifty years. What has changed is the number of students: the fifteen to twenty-four age group has swelled rapidly, and real estate owners have made room for them by partitioning the spacious old houses into smaller and smaller compartments. But as the student population grows day by day, the flight of the older residents al-

most balances out the influx of the younger.

Of about 9,700 students who go to 31 schools in the Back Bay, about 5,500 live in recognized dormitories. Of the rest it is estimated that 2,000 to 3,000 live in apartments or rooming houses. The single population is passing the married, and the female population is growing faster than the male.

This abundance of young people is believed to attract a large number of others—both students and non-students—who live elsewhere but come in at night looking for a good time.

**Growing concern**  
This imbalance of population and the problems it has generated have led to a growing concern on the part of the older residents who remained behind.

The students, on the other hand, have paid but little attention to what their neighborhood has become. For most of them, Back Bay has always been a kind of gay, civilized jungle where parties and hangouts abound.

Some few are concerned, however. In March, a group of fraternities from MI Tand Northeastern formed the Back Bay Clean-up Association, whose function is not only to encourage people to keep the neighborhood physically clean but also to demonstrate that students are aware of that neighborhood's problems. Their first major project is a clean-up to be held Saturday, May 7.

Next week The Tech will examine some of the specific problems in Back Bay and how some of the civic organizations there hope to solve them.

**The Bulletin Board**

Compiled by the Public Relations Committee of Inscomm, The Bulletin Board is a semi-weekly service of the PRC and The Tech.

Meetings and events may be included in this article and in the MIT Student Bulletin by filling out a form in the Inscomm office or in Mr. Jim Murphy's office in the Student Center at least 12 days in advance of the week the event is to occur.

Further information may be obtained from Bob Howard (x3783), editor of the MIT Student Bulletin.

Friday, April 29  
9:00 am - 5:00 pm—Class of 1967 Senior Pictures. S.C., Rm. 467.

5:00 pm—Science Fiction Society meeting. Spofford Room, 1-236.  
5:00 pm—Concert Band rehearsal. Kresge.  
7:00 pm — LSC Movie: Taxi for Tobruk. Admission 50c. Rm. 26-100.  
7:30 pm—MIT Hillel Service. MIT Chapel.  
8:30 pm — MIT Hillel Discussion. S.C., East Lounge.  
8:30 pm—Dramashop presents "A Country Scandal." Kresge Little Theatre.  
9:00 pm—Spring Weekend. Student Center.  
9:30 pm—LSC Movie.  
Saturday, April 30  
9:00 am—ASME Conference. S.C.  
12:00 noon — Spring Weekend: trains leave from North Station.  
1:00 pm—Strategic Games Society. S.C., Green Room.  
1:30 pm — Chess Club. S.C., Mezzanine Game Room.  
2:00 pm — Open Seminar on Education. S.C., East Lounge.  
4:00 pm—Ethiopian Library. S.C., Mezzanine Lounge.  
6:00 pm—LSC Movie: The Longest Day. Admission 50c. Rm. 10-250.  
8:00 pm — MIT Outing Club: Square Dance. Sala de Puerto Rico.  
8:00 pm — Spring Weekend: The Beach Boys Concert. Crane's Beach.  
8:00 pm—LSC Movie. Rm. 26-100.  
8:30 pm—Dramashop presents "A Country Scandal." Kresge Little Theatre.

**Clean, One Owner**  
**1961 RAMBLER**  
Must sell. Best offer.  
Call 262-4435

All Makes — Large Variety  
**SQUASH RACQUETS**  
**Tennis & Squash Shop**  
67A Mt. Auburn St., Cambridge  
(Opp. Lowell House)  
TR 6-5417

DE 8-8882  
**HOUSE OF ROY**  
REAL CHINESE FOODS  
Open daily from 4 p.m. to 2 a.m.  
Food Put Up To Take Out  
25 TYLER ST., Boston 11, Mass.

**BOLD NEW BREED**



How to look good on any golf course: play it bold with Arrow's Mr. Golf, the Decton wash and wear knit that stays fresh and crisp to the eighteenth and beyond. Stays tucked-in, too. An extra-long back tail keeps down while you swing. Many standout colors, \$5. Pick out a few at your Arrow retailers.

**ARROW**

GEORGE WEIN presents  
**The Newport Festivals**

**The Newport Jazz Festival**  
July 1, 2, 3, 4, 1966  
Four evening concerts; Friday, Saturday, Sunday, Monday. Three afternoon concerts: Saturday, Sunday, Monday. Featuring: Count Basie, Ruby Braff, Dave Brubeck, John Coltrane, Miles Davis, Duke Ellington, Ella Fitzgerald, Bud Freeman, Stan Getz, Dizzy Gillespie, Woody Herman, Herbie Mann, Thelonious Monk, Jimmy Smith, Joe Williams, and many others.  
Evenings: \$3.50, 4.50, 5.50 Afternoons: \$3.00

**The Newport Opera Festival**  
July 12, 13, 14, 15, 16, 1966  
Presenting the Metropolitan Opera Company of New York. Major stars, Chorus, and Orchestra in four operas in concert performance and five afternoons of musical workshops, panels, and lectures.  
Tuesday, LA BOHEME Wednesday, CARMEN Thursday, (rain date)  
Friday, LUCIA DI LAMMERMOOR Saturday, AIDA (Sunday, rain date)  
Evenings: \$3.50, 5.50, 7.50 Afternoons: \$2.00


**The Newport Folk Festival**  
July 21, 22, 23, 24, 1966  
Four evening concerts; Thursday, Friday, Saturday, Sunday. Three All-Day Workshops; Friday, Saturday, Sunday.  
Featuring: Theo Bikel, Oscar Brand, Brownie McGee and Sonny Terry, Judy Collins, Bob Dylan, Jack Elliott, Mimi and Dick Farina, Flatt and Scruggs, Carolyn Hester, Bessie Jones, Phil Ochs, The Pennywhistlers, Jean Ritchie, Grant Rogers, Buffy Sainte-Marie, Howling Wolf, and others.  
Evenings: \$3.50, 4.50, 5.50 All Day Workshops: \$2.00

SPECIAL DISCOUNT: deduct 20% from the list price of tickets for all concerts if purchased by mail before May 15th.

For information, write Newport Jazz, Opera, or Folk Festival. For tickets specify dates and Festival. Make checks payable to the specific festival you plan to attend.  
For accommodations, write the Newport Chamber of Commerce, Newport, Rhode Island 02840.

If you're age 12 through 21, you can fly to the Newport Festivals for half fare on American Airlines, creator of the American Youth Plan, via Providence, R. I. To become eligible, just send \$3.00 with the coupon below and receive your Youth Plan ID, plus a free copy of AA's Go Go American with \$50 worth of discount coupons.

American Airlines Youth Plan  
633 Third Avenue  
New York, N. Y. 10017



NAME \_\_\_\_\_ BIRTH DATE \_\_\_\_\_  
ADDRESS \_\_\_\_\_ CITY \_\_\_\_\_ STATE \_\_\_\_\_ ZIP \_\_\_\_\_  
COLOR OF HAIR \_\_\_\_\_ COLOR OF EYES \_\_\_\_\_  
SIGNATURE \_\_\_\_\_







Yesterday, you may have had a reason  
for missing a good, nourishing breakfast.

Today, you don't.



Now you can have  
new Carnation  
instant breakfast  
-makes milk a meal  
that's too good to miss.

Each glass delivers as much protein as two eggs,  as much mineral nourishment as two strips of  
crisp bacon,  more energy than two slices of buttered toast,  and even Vitamin C—the  
orange juice vitamin.  It comes in a lot of great flavors, too. Look for them in your cereal section.

# Talking Rock

By Don Davis

Tom Rush is back. The popular folksinger who got his start several years ago at the Club 47 as a Harvard student, appeared at the 47 this week after a six month absence. Physical ailment was primarily responsible for the leave; Rush has had several lung collapses, the most recent little over a month ago. He was still noticeably thin and weak and because of this played only two five song sets.

His most recent album, 'Take A Little Walk With Me,' includes one side of Rush performing early rock 'n roll songs with an electric group backing him up. Much interest centred around whether he would perform in the folk or rock 'n roll idiom and regarding his future plans along these lines. He performed on acoustic guitar with only Harvey Brooks on string bass as accompaniment. In an interview, the text of which will be printed in the next issue of Innisfree, Rush remained noncommittal on his future music plans, saying that he will play whichever type appeals to him most at the time.

**Acoustic guitar**

Even when accompanied by a rock 'n roll band, Rush still plays acoustic guitar. He says that he has nothing intrinsically against electric guitars, and if it seemed to fit in on a certain arrangement, he would have no qualms about switching. However, he did indicate that if he is selected for the Newport Folk Festival he will probably perform in the folk style.

He indicated that he has always liked the early rock 'n roll—Carl Perkins, Buddy Holly, Bo Diddley—and has been considering recording this style for several years. It was not the success of such artists as Bob Dylan and John Sebastian after a switch to electric instruments, but rather just finally getting around to it which was responsible for his recording it. He listed the Lovin' Spoonful, the Beatles, and the Rolling Stones as his favorite contemporary rock 'n roll groups. Tom Rush also remained mystified as to what folk-rock is. He would classify Dylan, the Spoonful and the We Five as straight pop rather than folk-rock.

**First pop hit**

Rush's current single, 'Who Do You Love,' a Bo Diddley song, is receiving a large

amount of airplay in Boston and in other cities. It should become his first pop hit, although it has not yet entered the Billboard charts. Rush seems dissatisfied with the song, saying that he recorded it only as a 'joke.' He complained that the multiple-recording techniques caused it not to sound like him.

He much prefers 'The Urge For Going,' a song which has not been recorded on either a single or album. WBZ played a tape of it for a while. The song, which was recorded on the tape with amplified guitars (he also performs it on acoustic guitar),

(Please turn to page 7)

## Freehof to speak at Kresge May 1

Dr. Solomon Freehof of Rodef Shalom Temple, Pittsburgh, will speak at 8 pm May 1 at Kresge Auditorium on 'Reform Movements in Judaism Throughout History.'

## MOVING

For Estimate, Call:

**UNITED VAN LINES**  
Wm. MacDonald agent  
CO 6-3388

## YELLOW CAB SERVICE

ALL CABS RADIO EQUIPPED

Dial MIT X2303

## PEOPLE FOR PEACE CONCERT

Judy Collins—Barbara Dane—Son House  
Phil Ochs—Tom Paxton—Tom Lehrer  
Earl Robinson—Skip James  
New Lost City Ramblers

May 4th, 8:00 p.m.—Back Bay Theatre

Tickets \$2.00, \$2.50, \$3.00 at SDS, Rm. 199  
1785 Cambridge St., Cambridge, Mass. 547-5457

### CELLO FOR SALE

Call BE 2-7588

HI 5-9831

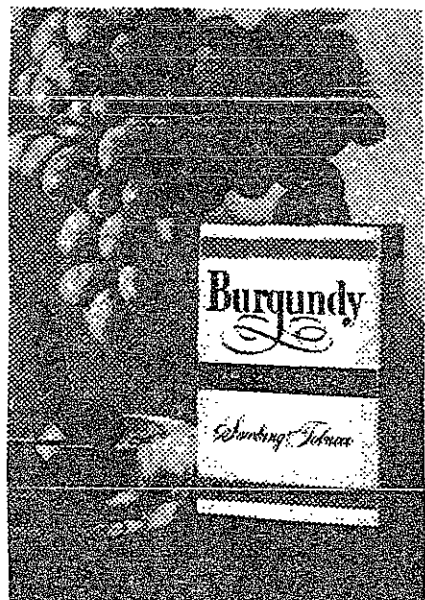
### RACQUETS RESTRUNG

Prompt Service

### Tennis & Squash Shop

67A Mt. Auburn St., Cambridge  
(Opp. Lowell House)  
TR 6-5417

Have 18 bowls of  
vintage burgundy  
...on us!



## NEW Burgundy

AROMATIC SMOKING TOBACCO

Enjoy a free full-size pouch of Burgundy. An aromatic blend of vintage tobaccos, fine taste and pleasant wine aroma, for the smoothest smoke ever to come out of a pipe. Clip the coupon now. Cheers!

P. LORILLARD COMPANY  
200 East 42nd Street, New York City 17, N. Y.  
Please send me a free package of Burgundy Smoking Tobacco.

Name \_\_\_\_\_  
Street \_\_\_\_\_  
City \_\_\_\_\_ Zone \_\_\_\_\_ State \_\_\_\_\_



## Nothing can take the press out of Lee-Prëst slacks

Not that it's on his mind right now. And it needn't be. Those Lee-Prëst Leesures can't help but stay crisp and neat. No matter what you put them through. They have a new permanent press. So the crease stays in. The wrinkles stay out. Permanently. And that's without ironing. No touch-ups, either. They're made from Lee's special blend of 50% polyester and 50% combed cotton. For wash and wear... with conviction.

Incidentally, that permanent press is the only change we've made in Leesures. They still have that lean, honest look... smart, tailored fit. New Lee-Prëst Leesures. Test their permanent press yourself. It isn't necessary, but it's a great way to spend an evening. From \$6.00 to \$8.00.

## LEE-PRËST® Leesures®



H. D. Lee Company, Inc., Kansas City, Mo. 64141 ALSO AVAILABLE IN CANADA.

**FOR SALE**  
New & Used Fender, Guild, Vox, Ampeg, Slingerland, etc.  
Guitars, amps, drums, organs.  
Call Ralph 396-8145

**Relax and Divert**  
**CAMPUS CUE**  
590 Commonwealth Ave.  
(Opposite B. U. Towers)

**Pocket Billiards**  
"Great for a Date"

**STEREO COMPONENTS**  
**TAPE RECORDERS**  
GET OUR BIG SYSTEM DISCOUNT  
**ARKAY SALES CO.**  
1028 Commonwealth Avenue  
Boston Phone 734-7886

Enjoy the Finest Italian-American Food and Delicious Pizzas



**Simeone's**  
ITALIAN-AMERICAN RESTAURANT  
Choice Liquors and Imported Beers

21 BROOKLINE STREET, CAMBRIDGE — Tel. EL 4-9569  
(at Central Square)

★ Open Every Night 'til Midnight — Free Parking  
★ Ask about Student Discount Books

**VISA**

**\$25,000** FIVE YEAR RENEWABLE TERM SAVINGS BANK LIFE INSURANCE

for an average net payment of \*\$61.75 (a year) at age 24, for example.  
(10 year average net cost — \$2.47 per \$1,000)  
\*Based upon 1966 dividend scale

FIVE YEAR TERM IS OUR LOWEST COST PLAN.  
Extremely flexible, automatically renewable to age 65.  
Available in amounts from \$3,000 to \$36,000.  
Let us give you facts and figures for your age.

NO OBLIGATION. Come in and see us or call 864-5271  
Open Mon. thru Fri. 8:30 to 2, THURS. EVES. 5 to 7:30

**CAMBRIDGEPORT SAVINGS BANK**  
689 MASS. AVE., Right in Central Square, CAMBRIDGE

**M.I.T. DRAMASHOP**  
**"A COUNTRY SCANDAL"**  
By ANTON CHEKHOV  
Directed by JOSEPH EVERINGHAM

8:30 P.M.  
Thursday, April 28 through Saturday, April 30  
Friday and Saturday, May 6 and 7  
Little Theatre, Kresge Auditorium  
All Tickets \$1.50  
Reservations UN 4-6900, Ext. 2910

**Senior House to perform Shaw's 'Devil's Disciple'**

Senior House will present George Bernard Shaw's comedy, 'The Devil's Disciple,' Friday, May 6 at 8:30 pm in the Sala de Puerto Rico.

There is no charge for admission, and the entire MIT community is invited.

**BECAUSE OF LEAVING THE COUNTRY**  
I have to sell pram, stroller, high chair and crib.  
All in excellent condition.  
325-1186 or X6667

**ELSIE'S**  
Noted for the best Sandwiches to eat in or take out.  
FAMOUS ROAST BEEF SPECIAL SANDWICH—KNACKWURST—BRATWURST with SAUERKRAUT or POTATO SALAD  
"und die feinen Wurstwaren"  
FREE DELIVERY  
7:00 pm to 10:30 pm  
71 Mt. Auburn St., Cambridge  
491-2842  
PHIL & CLAUDETTE MARKELL

**Smoker next week**  
**Tech Show '67 underway**

With Tech Show '66 barely two months off the stage of Kresge Auditorium, the organization of Tech Show '67 is underway.

There will be an introductory smoker held in the Student Center, room 491, at 5 pm Thursday, May 5. All those affiliated with Tech Show in the past and those interested in joining the staff of next year's show are invited.

The show has many openings in a great variety of areas, including actors, musicians, stage crew, production crew, and business staff. Anyone interested in writing the book, lyrics, or music for Tech Show '67 is also most cordially invited.

For further information contact Dave Espar, General Manager, at 262-4169 or x3783.

**Rush may record 'Urge for Going'**  
(Continued from Page 6)

was kept from his most recent album because it did not fit into the format of the album. He expresses hope that it will be recorded in some form in the near future.

**Making the Scene**

| S | M | T  | W  | T  | F  | S  |
|---|---|----|----|----|----|----|
| 1 | 2 | 3  | 4  | 5  | 6  | 7  |
| 8 | 9 | 10 | 11 | 12 | 29 | 30 |

**THIS WEEK MUSIC**  
Boston Symphony Orchestra — Arthur Fiedler opens Boston Pops season Apr. 28.  
Gardner Museum — Boston Arts Associates, selections from Schubert, May 1, 3 pm.  
MIT — Organ recital by John Fesperman, May 1, 3 pm, MIT chapel.  
MIT — Concert by MIT Woodwind Quartet, May 2, 5 pm, Student Center.

**THEATRE**  
Back Bay Theatre — Opera Co. of Boston, 'La Boheme', May 1.

**MISCELLANEOUS**  
Wellesley — Film Festival, Apr. 30, 2, 7:30 pm.  
Israel Club — 'The Ayalons,' Israeli entertainment; April 30, 8:30 pm; Kresge; \$1.50.

**NEXT WEEK MUSIC**  
MIT — MIT Symphony Orchestra. David Epstein conducting. May 6, 8:30 pm.  
MIT — Mozart's 'Idomeneo,' with Douglass College Choir, MIT Glee Club, Cambridge Festival Orchestra, May 7, 8:30 pm.  
Brandeis — Folk Festival, May 6, 7, 8:30 pm. Children's Concert at 1 p.m. May 7.  
Wellesley — Wellesley and Hamilton College Choirs, selections for brass choir by Hamilton choir, May 8, 4:30 pm, Houghton Memorial Chapel.  
MIT — Violin and piano concert by Denes and Anna Lisa Zsigmond. May 9, 5 pm, Student Center.  
Organ Recital — Pierre Cochereau; May 11, 8:30 pm; Kresge; \$1.50.

**MISCELLANEOUS**  
Cambridge Center for Adult Education — Lecture by Dr. Martin Kilson, 'Political Instability in Africa,' May 3, 8:30 pm. Poetry reading by Mr. Robert Stuart Fitzgerald, May 6, 8:30 pm.  
International Student Association — International Fun Fair, May 7, 12 noon to 12 midnight.  
Theatre — 'The Good Woman of Setzuan' by Brecht; May 5-14; Loeb Drama Center; call UN 4-2650.

**REHEARSAL 6-7067**  
**COMPPELLING DRAMA!**  
**THE PATCH OF BLUE**  
BY SIDNEY SHELLY  
POTTER AND WINTERS  
ELIZABETH HARTMAN  
PRESENTED BY METRO-GOLDWYN-MAYER

BULLETIN No. 22 FACULTY & PERSONNEL OF MIT SPRING 1966

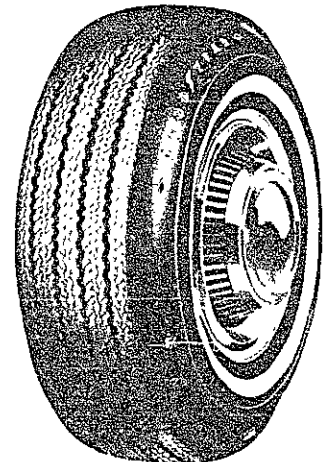
OVER 25,000 TIRES IN STOCK INCLUDING FOREIGN AND COMPACT SIZES

MAY PURCHASE **TIRES** At Wholesale Prices

MIT IDENTIFICATION CARD REQUIRED

NEW Perfect Quality **GOODYEAR** or **Firestone** or **B.F. Goodrich** or **US**

**BATTERIES**  
FREE INSTALLATION Most Cars  
6 VOLT \$6.83 EXCH.  
12 VOLT \$9.48 EXCH.  
FULL Guarantee provides for battery replacement FREE within 90 days



TUBELESS  
600/650x13 \$9.84  
775/750x14 \$9.86  
825/800x14 \$12.52  
855/850x14 \$14.96  
900/915/820x15 \$18.04

TUBE TYPE  
775/670x15 \$7.75  
815/710x15 \$11.98  
845/760x15 \$13.15

NATION-WIDE GUARANTEE NO LIMIT ON MILES • NO LIMIT ON MONTHS  
(Adjustment Pro-rated on Tread Depth, Based on Actual Cost Prices)

Plus Tax No Trade-In Required.

Terms Available **FREE TIRE MOUNTING**

AT SAME PRICES WE SELL OUR DEALERS

New England regional warehouse for **DELTA** PREMIUM NYLON TIRES. **NATIONWIDE LIFETIME GUARANTEE**

**STATE INSPECTION PERIOD APRIL 1st TO MAY 15th**

**CAMBRIDGE TIRE COMPANY**  
"Nationwide Wholesale Warehouse Distributors"  
290 ALBANY STREET • CAMBRIDGE 39, MASS.  
Off Mass. Ave. Near M. I. T.  
• • • UNIVERSITY 4-7575 • • •  
HOURS — 7:30 A.M. to 5:30 P.M.  
Saturday: 7:30 A.M. to 2:00 P.M.  
HALF A CENTURY OF SERVICE

NEW WHEELS Genuine Firestone Retreads

AMPLE PARKING

MEMBER: CAMBRIDGE CHAMBER OF COMMERCE AND BOSTON BETTER BUSINESS BUREAU



from our University Shop  
**OUR CLASSIC LIGHTWEIGHT ODD JACKETS AND TROUSERS**

(shown) New Vycron® Polyester-and-Cotton Jackets in Light Blue or Bright Olive, \$42.50; in Brick Red Dacron® Polyester-and-Flax, \$45

Cotton India Madras Jackets, \$42.50  
New Double-Breasted Blazer of Navy Orlon® Acrylic-and-Wool, \$60;  
Single-Breasted in Navy, Green or Tan, \$55  
Cotton Seersucker Odd Jackets, \$31.50  
Odd Trousers in Tropical Worsted, \$22.50; Dacron®-and-Cotton, \$15; Cotton Chino, \$10.50  
Also Bermuda Shorts and Sport Shirts.

ESTABLISHED 1818

**Brooks Brothers**  
**CLOTHING**  
Mens & Boys Furnishings, Hats & Shoes

346 MADISON AVE., COR. 44TH, NEW YORK, N.Y. 10017  
46 NEWBURY, COR. BERKELEY, BOSTON, MASS. 02116  
PITTSBURGH • CHICAGO • SAN FRANCISCO • LOS ANGELES

IM sports

# Rain slows softball tourney

By Dave Lyon

Burton "A" romped over previously unbeaten ZBT Saturday for their third victory of the season,

## Managers talk football for interclass play only

At a recent meeting of the Varsity Managers Council, several items of interest to the MIT community were discussed. Chief among them was the possibility of interclass football next year. This would be primarily aimed at the person who would like to play varsity football, but is hampered by lack of a team. It would be held along the lines of the All-Tech Swim. A field would be available for practice as well as games. The question of holding a poll to determine student interest is to be brought up at the next meeting of the Athletic Advisory Board.

George Jones '67, president of the MITAA, asked the managers to help him with a poll to determine how athletics affects a person's grades. Each manager is to find out his team's grade-point average for the preceding term and report it to Jones, who will then compile the data and determine whether or not there is any significant difference between athletes and non-athletes.

The next meeting of the council will be held May 17 at 7:30.

while rain washed out Sunday's games. The final score read 22-5 and it suddenly looks as if Burton "A" is in good position to regain the softball championship.

Three other games were played in Grad and A leagues Saturday. Sig Ep topped Phi Kappa Theta 17-0 and in grad play Westgate beat Chem "B" and Ashdown "A" edged Grad Management 3-2.

In B league play 3 teams remain unbeaten in the first weeks of action. Sigma Nu, Theta Delta Chi, and AEPi "B" all have three victories.

### Mediterranean wins V-ball

The championship of the '66 Volleyball tournament went to Club Mediterranean; Ashdown "A" went down because of erratic play. The scores of the match were 15-10, 2-15, 15-8.

Final results for the tournament:

|                                  |  |
|----------------------------------|--|
| 1. Club Mediterranean            | 90   |
| 2. Ashdown "A"                   | 72   |
| 3. SAE "A"                       | 58   |
| 4. Chinese Students              | 34   |
| 5. Club Latino                   | 34   |
| 6. TEP                           | 22   |
| 7. Baker 2nd Floor               | 22   |
| Sigma Phi Epsilon                | 22   |
| Ashdown "A" and Chinese Students | met in the finals of the badminton tournament on Wednesday night in the Armory. Chinese students picked up the victory but not the championship because of double elimination in the tournament. Each team now has lost only one game, each losing to the other once. The final match will be held Monday in the Armory at 7:30. |

Frosh sports

# Frosh golfers top Harvard

By Jim Yankaskas

The golf team opened its season with a 4-3 win over Harvard at Oakley Country Club. Number one man Bill Stewart lost to Bruce Lopucki, a standout in the National Junior Amateur last summer. Tom Thomas shot a 75, which was the low Tech score for the day, to win his match 3-1. Dave Daner won, 2-1.

Greg Kast lost his match in the nineteenth hole. Carl Everett and Mike McMahon won, 5-3 and 4-2.

The tennis team evened its record to 3-3 with a 7-2 win over Brown Wednesday afternoon. Ed Clapp, Geoff Hallock, and Scudder Smith all won long singles matches. Colbert Reisz and Tom Stewart quickly disposed of their opponents. Bill Eberling lost 6-4, 10-8.

In doubles, Reisz and Hallock, the usual second team, lost to Brown's number 1 team, 6-4, 6-2. Stewart and Greg Dervos, and Smith and Ebeling won second and third doubles.

## Cronberg stars

# Sailors sweep at New London

By John Kopolow

Last weekend MIT's sailors took part in various elimination regattas for both team and single-handed championships.

The team championship quali-

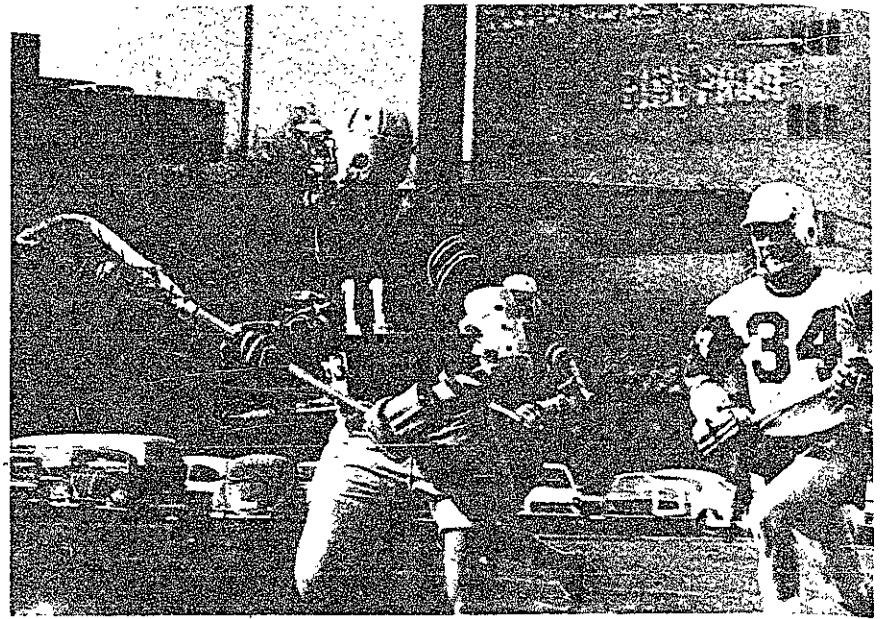


Photo by Jeff Reynolds

Center midfielder Walt Maling advances toward the University of New Hampshire goal with opponent John Paige in hot pursuit. Despite his goal scored a mere five seconds into the game, the frosh lacrosse men lost a 9-7 squeaker.

### Lacrosse team bows

The lacrosse team lost an exciting 9-7 game to UNNH at home Wednesday. Walt Maling got the

game off to a promising start by scoring 5 seconds after play began. Ken Schwartz joined in the early scoring by netting a shot in 3:39.

Rich Dobrow scored two goals and Keith Montgomery scored one in the second period to leave a half time score of 6-5 for UNH. Jack Anderson and Chris Davis scored in the third period, but a scoreless fourth quarter for MIT gave UNH the final lead.

The freshmen baseball team lost to Harvard's JVs, 7-1. Bob Dobson's triple in the fifth put MIT in position for their only score.

## Golfers sixth in GBC; 2nd round scores soar

By Steve Wiener

The varsity golfers faltered Monday and finished sixth in the Greater Boston College tournament. On a tight, well-conditioned Weston Golf Club, the Tech squad toured the course twice and turned in an 882, only three strokes off the fifth place score of Tufts and Northeastern.

Gerry Banner '68 and Travis Gamble '67 were both in contention after the morning round, but neither broke 90 in the afternoon. Gamble added a 90 to his 78 for a sixth place finish while Banner's 79-93 gained him a tie with teammate Dave McMillan '67 for twelfth position. Dave shot 84-88 for his total of 172.

Jack Rector '68, Captain Harry Barnes '66, Ben Roach '68, and Tom James '68 all failed to crack ninety in either round and finished with 184, 186, 187, and 188 respectively.

# Varsity nine annihilates Brandeis

By Joe LaBrecche

MIT's varsity nine rapped out 19 hits Tuesday to swamp Brandeis 30 to 11 before the umpires called a halt to the three hour rout after six and a half innings.

Brandeis scored one run in their half of the first, but MIT roared back as cleanup man Eric Jensen '67 hit a three run homer during MIT's first appearance at the plate. MIT kept increasing the margin as 8 runs scored in the third, 6 in the fourth, and 13 in the sixth. It was after the sixth inning, in which MIT greeted the opposition with seven hits and collected eight walks, that it was decided to cut the game short.

### Jensen gets 2 homers

Jensen was outstanding with three hits, including two home runs, and seven RBI's. Bob Kiburz '68 was the winning pitcher, allowing 10 runs (five

earned) on 13 hits and five Tech errors. Kiburz looked better at the plate getting two hits, driving in four. Oki Moriawaki '68 relieved in the seventh and allowed one run.

| MIT         |    |    |    |    | Brandeis       |    |    |    |    |
|-------------|----|----|----|----|----------------|----|----|----|----|
| ab          | r  | h  | bb | so | ab             | r  | h  | bb | so |
| Young       | 3  | 4  | 3  | 3  | Bates          | 4  | 4  | 3  | 3  |
| Norelli     | 5  | 2  | 4  | 1  | Frost          | 4  | 4  | 1  | 1  |
| Ryba        | 5  | 4  | 4  | 3  | Shamres        | 4  | 2  | 1  | 1  |
| Jensen      | 6  | 3  | 4  | 7  | Boyes          | 5  | 0  | 1  | 1  |
| Papenhausen | 4  | 1  | 1  | 0  | Plunkett       | 4  | 2  | 1  | 1  |
| Reid        | 4  | 1  | 3  | 2  | Berenson       | 2  | 0  | 1  | 1  |
| Cleary      | 4  | 2  | 3  | 3  | Katzman        | 5  | 1  | 1  | 1  |
| Bailey      | 2  | 1  | 2  | 2  | Margolin       | 1  | 0  | 0  | 0  |
| Kiburz      | 5  | 2  | 3  | 4  | Epstein        | 3  | 1  | 1  | 1  |
| Altman      | 1  | 0  | 0  | 0  | #Altman        | 3  | 1  | 1  | 1  |
| Hood        | 0  | 0  | 2  | 0  | Totals         | 35 | 14 | 11 |    |
| Totals      | 42 | 26 | 30 | 25 | #replaced      |    |    |    |    |
|             |    |    |    |    | M'golin in 4th |    |    |    |    |

\*ph for Kiburz 6th.  
\*\*ph for Papenhausen 5th, catcher 6th & 7th

### Close loss to Lowell

The artillery which sounded against Brandeis was silenced as MIT lost an 11-inning squeaker to Lowell Tech 1-0 Wednesday at Briggs Field. Pitcher Bill Dix '67 scattered six singles while striking out five and walking only one before an unearned run gave him him the loss.

Ron Norelli '67 was the only MIT batter to get a hit as he lashed two singles into the outfield. Lowell Tech's Barry Eldridge went all the way striking out five although he did not have Dix's control, walking four. The lone run came off a walk, a single, and an error. MIT tried to come back in the last of the eleventh hitting the ball hard, but unfortunately flying out to deep left field each time.

## Two qualify

# Kayakists race at Dartmouth

MIT White Water Club members raced for the second time this season in the Mascoma Slalom held by Dartmouth's Ledyard Canoe Club. Tom Wilson '67 placed sixth in the expert class in a field including most of the top Kayakists in the East. Sam Galpin '66 placed second in the intermediate class. Both members are now qualified for the Eastern Kayak Slalom Champion-

ships, to be held May 14 and 15 on the West River at Jamaica, Vt. The national canoe championships will also be at Jamaica the same weekend. Galpin said the races will be exciting to watch and that if those interested in or able to offer rides called him (dl 9-161, x3271, 491-5092), he will serve as a clearing house and information center.



Photo by Jeff Reynolds

Pitcher Bob Kiburz '68 connects in Tuesday's game against Brandeis. Kiburz was credited with the win.

# Lacrosse routes WPI; Nygren scores 3 goals

By Tony Lima

In their highest scoring outing of the season so far, the varsity lacrosse men completely annihilated WPI by the score of 11-6.

WPI scored the first goal of the game, but Tech came back when Greg Wheeler '67 took a pass from co-captain Pete Kirkwood '66 and scored. This was the beginning of a five-goal first quarter for the engineers. Steve Schroeder '67 and Wheeler each scored unassisted and Dick Nygren '66 took a pass from Kirkwood before WPI scored again. To round out the quarter, Kirkwood hit for his first goal of the game.

### Tech continues domination

The second period was much the same, as Nygren and Bob Wyatt '68 hit for unassisted goals within 30 seconds of each other. Nygren scored again on another Kirkwood pass before WPI hit their lone goal of the period. With four minutes left in the half, Terry Vanderwerff '66 took a pass from Schroeder to make the half-time score 9-4.

Not much scoring was done in the third period, as WPI had the only goal. But Tech scored twice in the fourth, with Julius Gutman '68 and Wyatt hitting unassisted. WPI scored their final goal with five minutes left, but by then the game was far out of their reach.

### Ball control wins

The biggest factor in the win was Tech's ball control. The Beavers got off a fantastic total of 48 shots to WPI's 29. Goalie Bob Macdonald '66 was called on only 9 times in the game.

This win boosts the lacrosse men to an even record at 5 wins and 5 losses. The new attack and midfield line-ups seem to be working very well. They will get their next test tomorrow against Bowdoin on Briggs field at 2 pm.

Second-class postage paid at Boston, Massachusetts. The Tech is published every Tuesday and Friday during the college year, except during college vacations, by The Tech, Room W-2-433, MIT Student Center, 84 Massachusetts Ave., Cambridge, Massachusetts 02139. Telephone: Area Code 617, 353-8399, and 353-8000 extension 3741. United States mail subscription rates: \$1.25 for one year, \$3.00 for two years.