

## Bush Building dedicated in honor of former Corporation Chairman



Dr. Vannevar Bush

By David Jodrey

The new materials science research building was named for Dr. Vannevar Bush during dedication ceremonies on Friday.

The inscription on the wall of the Bush Building lobby reads: "An engineer distinguished for his creative contributions to science, engineering and the Nation. Honored for his achievements in research and education; for his devoted service to the Massachusetts Institute of Technology as teacher, administrator, and Corporation Member; for his acclaimed leadership of the Carnegie Institution of Washington; for his mobilization during World War II of the Nation's scientific resources to achieve advances in military technology decisive in the winning of the War; for his statesmanship in formulating and advocating sound policies for the advancement of science, engi-

neering and education."

**D. Eng. from MIT-Harvard**

Dr. Bush was born in 1890 in Chelsea, Mass. He received both bachelor and master of science degrees from Tufts College in 1913, and a D. Eng. degree in 1916 jointly from Harvard University and MIT.

During the first world war he worked on submarine detection for the Navy. He returned to MIT as associate professor of power transmission in 1919, and became professor in 1923.

**Analogs**

During the 1920s and 1930s Dr. Bush began and continued development of machines capable of analytical tasks—the first analog computers. He built three machines, the last of which was started in 1935. It weighed 100 tons, used two thousand electronic tubes, 150 motors, several thousand relays and nearly two hundred miles of wire. It could solve differential equations involving as many as eighteen variables.

**Dean of Engineering**

Dr. Bush became Dean of Engineering and Vice President at MIT in 1932. He left the Institute in 1938 to become President of the Carnegie Institution in Washington, D.C.

President Roosevelt appointed him chairman of the National Defense Research Committee and, when it was formed in 1941, Director of the Office of Scientific Research and Development. The scientific program to develop the

(Please turn to Page 5)

## New AF Secretary

### Dr. Brown visits MIT

By John Corwin and Mike McNutt

Air Force Secretary Dr. Harold Brown was guest at a symposium banquet at the MIT faculty club last Thursday.

Previous to his appearance at the banquet, and 18 hours before he took the oath of office in the presence of Secretary of Defense Robert S. McNamara, the Secretary designee conducted a brief press conference in the Sloan building. Reporters and photographers from national magazines, metropolitan dailies and The Tech were in attendance.

**Succeeds Zuckert**

As successor to former Secretary Eugene Zuckert, Dr. Brown will assume leadership of the largest non-profit consumer in the United States. Among the proposed Air Force projects with which he will be concerned is the Manned Orbital Laboratory (MOL) which will cost about \$1.5 billion. He predicted a detailed budget and design study in the near future.

MOL's plans call for preliminary flight tests without equipment by the end of 1966. Equipped unmanned flights are set for early 1968, with the first manned flight projected for a year later.

**Purpose of MOL**

The Secretary presented the purpose of MOL as being threefold: to study the effects of extended flight on future astronauts and equipment, to undertake environmental studies, and to examine the potential military applications of such flight.

When asked to comment on the choice of subcontractors for Air

Force projects, he stated that they would be chosen by the major contractors, but that a new policy would require approval by the Air Force.

After the press conference, Dr. Brown attended the banquet, and spoke about current government studies concerning the proper level of research funding (for NASA, AEC, etc.) and its possible effect on university teaching and research.

**Background**

Dr. Brown, formerly the Director of Defense Research and Engineering in the U. S. Department of Defense, graduated from Columbia University in New York, his home town, in 1945, 1946 and

(Please turn to Page 3)

## Kindleberger succeeds Shapiro as chairman of MIT Faculty

Dr. Charles P. Kindleberger, professor of economics, has been chosen as chairman of the Faculty of MIT, succeeding Dr. Ascher H. Shapiro, who resigned after his appointment as head of the Department of Mechanical Engineering.

**At MIT since 1948**

Dr. Kindleberger has been at MIT since 1948, first as an associate professor of economics and then as a full professor, beginning in 1951.

He was born in New York City in 1910, did his undergraduate work at the University of Pennsylvania, and received his Ph. D. from Columbia University in 1937. As an economist, he served with the Federal Reserve Bank of New York, the Bank of International Settlements in Switzerland, and the Board of Governors of the Federal Reserve System.

**Advised war reparations**

In the Second World War, Dr. Kindleberger served in the Office of Strategic Service and as a major in the 12th Army group. After the war, before coming here, he was in the Department of State as an advisor on reparations,

## Ceremony marks SC dedication

Dr. Julius A. Stratton, President of MIT, will be the honored guest at Saturday ceremonies dedicating the building housing the MIT Student Center. Dr. Stratton was the key figure in the final planning and construction of the \$5.2 million, six-floor structure.

The half-hour formal ceremony will take place on the plaza in front of the center at 2:15 p.m., October 9. Master of ceremonies is Bill Byrn, '66, UAP; speakers will be Dr. James R. Killian, Jr., Chairman of the MIT Corporation; Robert J. Holden, Associate Dean of Student Affairs; and Dr. Stratton. The event will conclude with the presentation to Dr.

Stratton by Mr. Byrn of a scroll bearing a facsimile of the building's inscription.

The scroll reads: "Dedicated to Julius Adams Stratton, Class of 1923, eleventh President of the Massachusetts Institute of Technology, in grateful appreciation of his abiding concern for the students of MIT. This building stands as an enduring expression of their affection and esteem for his devoted efforts on their behalf."

Following the formal ceremony there will be an Open House in the Center; Dr. and Mrs. Stratton will be in the East Lounge to speak with guests.

The building, designed by Professor Eduardo Catalano, will, in Dr. Stratton's words, "provide a focus for undergraduate extracurricular life." Most of the ma-

ior student activities will be housed on the fifth floor of the building; the basement recreation facilities include bowling and pool.

Commercial facilities for student convenience include the new Tech Coop, occupying the second floor; the Lobdell Dining Room and the Grill Room, on the third and mezzanine floors; and the Post Office, barbershop, and laundry (Charlie the Tech Tailor) in the basement.

Rooms designed for general use are the Sala de Puerto Rico, a large, cherry-paneled and teak floored room for large banquets and dances, on the third floor; several furnished lounges on this and the mezzanine floor; and the library on the sixth floor, with reserve books and small group conference rooms.

## SC Post Office Opened Monday

The MIT branch of the Cambridge Post Office was formally dedicated in the Student Center Monday morning.

Present at the ceremony were Ephraim Martin, Postmaster of Boston; Mayor of Cambridge Edward Crane; Francis Wylie, Director of MIT Public Relations; Philip Stoddard, Vice President of MIT Operations and Personnel; Robert Godfrey, Superintendent of the MIT Post Office; and William Byrn, UAP.

The new Post Office, located in the basement of the Student Center, will be open from 8:30 a.m. to 5:00 p.m., and automatic stamp dispensers will be open outside the Post Office 24 hours a day. The post office will handle outgoing mail only, and will cancel only airmail and special delivery.

Business at the new Post Office began almost as soon as Mayor Crane snipped the ribbon, by midday the volume was terrific, and clerks Samuel Bodkins and Carl Bourque were without a moment's rest.

About 60 first-day covers, envelopes with the MIT hand-cancellation on them, were distributed to the guests at the dedication. Mayor Crane was given the first envelope mailed at the new P.O., a packet of MIT publications.

Meanwhile, all activities should be moved into their new Student Center offices by the end of this week. The air conditioning has been installed, and soon the bowling alleys will be completed. The practice pianos should be ready within two weeks, and Charlie-the-Tech-Tailor is already doing business in its Student Center basement location.



Vol. 85, No. 18 Cambridge, Mass., Wednesday, Oct. 6, 1965 5c

## NASA to start Center

### \$15,300,000 allocated for Kendall development

By John Corwin

The U.S. Urban Renewal Administration has allocated \$15.3 million to the Cambridge Redevelopment Authority in order to develop a 43-acre tract of land in Kendall Square.

**Last Obstacle Overcome**

This action paves the way for the Space Agency to begin work on its \$61 million electronics research center. With the final obstacle removed, NASA will begin construction next spring on a 26-story tower, a three story microwave lab, and an auditorium and cafeteria.

The money will be used for land acquisition, clearance, development, laying out new streets and putting in new sewer systems. \$2.5 million of the total will pay 100% of the relocation costs for the 94 businesses in the Kendall Square area which will be forced out because of the project.

**Opposition Speaks**

Meanwhile, a Cambridge businessman and spokesman for the opposition to the proposed NASA project, accused MIT of being a major developer of land within the proposed center in collaboration with a Boston realty firm.

Dr. John J. Brennan, Vice-President of Electronics Corporation of America and Chairman of the of Committee to Preserve Cambridge Industry, issued the statement at a public hearing before the state Division of Industrial and Urban renewal late last week.

**Killian named**

Brennan, arch enemy to NASA, blamed its conflict with Cambridge business firms on Institute Chairman Dr. James R. Killian, who, he said, "exerted every effort to divert NASA to Kendall Square."

The plan, according to Brennan, was "a preconceived scheme with the whole program of urban renewal founded on sand." He insisted that MIT was going into the real estate business.

He noted that MIT owns jointly, with Cabot, Cabot and Forbes of Boston, Technology Square, an urban renewal development near the proposed NASA site. In addition, Brennan charged that Dr.

Killian owned a scale model of the entire NASA area in his private office.

**Rowland Defends Plans**

Robert F. Rowland, director of the project for the Cambridge Redevelopment Authority, introduced transcripts of records from previous City Council hearings showing 153 businesses, not in the area, favoring the plan.

He also listed representatives of various organizations, including the local Chamber of Commerce, as being in support of his plans.

"The proposed research center plan," said Rowland, "is consistent with the sound needs of the locality as a whole."

Rowland was the only defender present last week. The other proponents had been heard at a meeting last month. There were, however, five other opponents backing up Dr. Brennan.

## College Board tests show Class of '69 exceptional in math

Although not surpassing previous records, the 916 males and 48 females in the class of 1969 continue to uphold the typically high intellectual standards of all MIT entering classes.

The traditional yardstick of academic ability and achievement, the College Board tests, indicated as usual a relatively high but not record breaking performance by the new class.

Statistics released by the Office of Admissions show the class of '69 extremely high in math aptitude, with 33% of the new freshmen scoring over 770! The average score appears to range around 747, in the general vicinity of the classes of '67 and '68.

Verbal aptitude results were somewhat lower, as expected, ranging from 470 to one perfect 800. At the 770 level and up, only 1.5% of the entering class was represented, with the average score around 680.

The results of the achievement tests were much the same, with over 300 frosh scoring 800 in math, as opposed to 20 in English. Go '69.



Professor Charles Kindleberger

## Join The Tech

The Tech will meet with all undergraduates, particularly freshmen, who are interested in becoming staff candidates, tomorrow night at 7:30 in Room 483 of the MIT Student Center.

## Good news for many upperclassmen —neither 5.02 nor 5.02T required

A letter has been sent to faculty counselors stating that upperclassmen who have not completed 5.02, General Chemistry, will be allowed to substitute other subjects.

A student in the class of 1966, '67, or '68 who has failed to complete 5.02 as part of his regular program, upon petition to the Committee on Curricula, may substitute Science Distribution or Laboratory subjects as listed on pages 44 and 45 of the catalog, provided that the subject is not required in the curriculum in which the student is enrolled.

A student may substitute 5.01T for 5.02 if he had a poor record in 5.01. A petition is not necessary if the student chooses to take 5.02T. Deficiencies in 5.01 may be removed, without petition, by a satisfactory record in 5.01T.

## Dr. Markey returns from AF position

Dr. Winston R. Markey has returned to MIT as an associate professor of aeronautics and astronautics and Director of the Experimental Astronomy laboratory. His return ends a year of absence during which time he served as Chief Scientist of the United States Air Force.

Dr. Robert G. Loewy, associate professor of mechanical and aerospace sciences, University of Rochester, will succeed Dr. Markey for the next year.

## Student Center to serve 'Beaverburgers' Oct. 9

The gourmets of MIT have a special treat coming on Dedication day, October 9. On that day only, the Lobdell Room in the Student Center will serve Beaverburgers.

Yes, that's right—and made from genuine beaver meat, flown in specially for the occasion. Mr. Fred Grotheer, head of Stouffer's Restaurant Division's Student Center operations, is responsible for the execution of this daring culinary feat. The Beaverburgers will sell, while they last, at 50c each.

Mr. Grotheer, himself a noted epicure, has sampled the Beaverburgers and found them "quite good." He is hoping that Techmen will join in united response to the restaurant's slogan for the day, "Beaverburgers for Eager Beavers."

**Samuel Bluestein Co.**  
"Complete School Supplies"  
**TYPEWRITERS**  
SALES - SERVICE - RENTAL  
1080 Boylston St. | 345 Main Street  
Boston | Malden  
Copley 7-1100 | Davenport 2-2315



**JIM XAVIER (Ch.E.)** of the '62 Bethlehem "Loop" Course is an engineer at our Sparrows Point, Md. plant—biggest in the world. He's typical of young men on the move at Bethlehem Steel.

Seniors and graduate students in engineering and non-technical curricula will soon be interviewed for the 1966 Bethlehem Loop Course. We offer splendid career opportunities in steel plant operations, research, sales, mining, accounting, and other activities. For detailed information, pick up a copy of our booklet, "Careers with Bethlehem Steel and the Loop Course," at your Placement Office.

An Equal Opportunity Employer in the Plans for Progress Program

**BETHLEHEM STEEL**



# Letters to The Tech

Plea from Japan

Dear Sirs:

We are two young engineers in Japan, Akira Kanematsu and Kiyoshi Ohgida. We both are 24 years old. We live in Nagoya City. Kanematsu graduated from the mechanics department of Nagoya University and Ohgida from the electronics department. After we graduated from the university we entered into Toyo Rayon Company, synthetics fiber makers. Now we both work in Aichi Factory of Toyo Rayon.

We are good friends, and have a great interest in America. About America we only know through movies and books, but we can't help admiring the great politics, economics and culture. We have heard that especially your MIT contributes to them in many parts of the world.

Japan has now fallen into worse economic conditions. Especially in the field of synthetic fibers, excess competition is very severe, and even Toyo Rayon in Japan, like Dupont in America (?—Ed.) doesn't seem to recover from this poor condition. We have been worried about it, thinking that we young engineers must do something at this time. We can't be calm because of the free trade system, too.

Thinking of our future, it is regretful for us to pass our young age conventionally in this factory. We feel acutely that it is necessary for us to study in America while we are young so that we may achieve splendid works in the future. Recently that feeling has grown stronger day by day and so we wish earnestly to go to America. But we have no expectation about our life in America, where we are to live, and what we are to do.

Because of these reasons we are writing to you. As we wish to pass a complete life in study, we would like to find jobs at the university or with some company. We hope to stay there for a year or two. We expect a guarantor

or consultant in America, as we think our parents are afraid of our going abroad.

Please let us attain our wishes.

Yours sincerely,  
Akira Kanematsu  
Kiyoshi Ohgida  
Gonyoshi-Cho 3-40  
Nakagawa-Ku  
Nagoya City  
Japan

(We printed this letter, not only so that some student or faculty member might help these young men, but also to demonstrate to our readers the regard in which MIT is held abroad; it also points out the difference between life in less (Please turn to Page 10)

**COMING**  
Soon FOR Your Smoking and Snacking PLEASURE  
in rear lobby of Morss Hall, from **TSE**

**JP - 65**  
Nov. 12, 13, 14



## FLASH ONE—TWO—THREE—FOUR BEFORE CHANGING

What new development will make indoor photography four times as much fun for the nation's millions of camera fans? The new Blue Dot Flashcube, developed by GT&E's Sylvania subsidiary for use with the new Kodak Instamatic cameras.

Pop one on and you're ready to take four flash pictures without changing bulbs!

The Sylvania Blue Dot Flashcube revolves after each shot, bringing a fresh Blue Dot flashbulb into position, with its own built-in reflector.

With this latest of many important innovations from GT&E, millions of home photographers will get the great shots that used to get away while they were changing bulbs.

The Sylvania Blue Dot Flashcube is another example of how GT&E keeps growing through constant research and swift response to the changing needs of the public.

If you're looking for a young, aggressive company with no limit to its growth, you may wish to view GT&E in the light of your own future.

**GT&E**

**GENERAL TELEPHONE & ELECTRONICS**

330 THIRD AVENUE, NEW YORK 10017 • GT&E SUBSIDIARIES: General Telephone Operating Companies in 33 states • General Telephone & Electronics Laboratories • General Telephone & Electronics International • General Telephone Directory Co. • Automatic Electric • Lenkurt Electric • Sylvania Electric Products

## Air Force Secretary speaks at Faculty Club

(Continued from Page 1)  
 1949 with degrees through the Ph. D. in Physics.  
 He was a lecturer for a few years at Columbia, and then at Stevens Institute of Technology. In 1952 he joined the staff of the Livermore Site of the Radiation Laboratory, becoming Director 8 years later.  
 Dr. Brown was also an adviser to the U.S. Delegation to the Conference of Experts on the Detection of Nuclear Weapons Tests in Geneva during the summer of 1958.  
 In addition, he was appointed a member of the President's Science Advisory Committee by President Kennedy days after his inauguration, and 2 months later became Director of Defense Research and Engineering, a position he held until last week.

## Distributes 80,000

### MIT grad runs Contact

Contact, a new computerized date-matching program, has recently been spreading across the MIT campus.  
 Completely owned and operated by MIT students, the program runs all year, with computer runs scheduled monthly. The first set of dates is expected to be released early in November.  
 David DeWan, '65, President of the organization, stressed that the great advantage of this new program is its double reporting. That is, the guys and girls are matched two ways, and every girl on a boy's list are sent his name and vice versa.  
 This establishes an advance relationship especially popular among the girls, since they don't have to make the call for the date.

Dave, an NSF graduate student at MIT in Course VI-2 spent most of this past summer planning the project.

More than 80,000 applications have been distributed in the past two weeks, with returns running just under 1,000 daily, about half each of boys and girls. The project is operating principally in the Boston area, covering 40 schools.

### Finboard gives \$150 to MIT Math Club

The newly formed MIT Math Club got off to a flying start with a \$150 grant from Finboard on Saturday.

The Club held its first meeting a week ago Monday with a lecture by visiting Professor Andrew Gleason on how to escape lions. The meeting was a tremendous success; over 100 people attended and 45 paid \$1 apiece to become members.

President of the Math Club Theodore Chang, '67, said that the club will present an extensive series of lectures of interest to the entire MIT community. Members will be encouraged to present original work, and a coaching class for the Putnam Mathematical Competition will be sponsored.

## Sloan alumni convocation set for October 10-12

The 1965 convocation of alumni of the Sloan Fellowship Program at the Alfred P. Sloan School of Management is scheduled for October 10-12.

More than 600 former Sloan Fellows will return to the convocation which marks the opening of the new \$3 million Grover M. Hermann Building adjacent to the present Sloan Building which will provide new facilities for research in management and the school sciences.

Through a grant from Grover M. Hermann, chairman of the Martin-Marietta Corp., a grant from Alfred P. Sloan, honorary chairman of the General Motors Corp., and a grant from the National Science Foundation, construction of the Hermann Building was made possible.

Mr. Sloan, an 1895 graduate of MIT, has been a benefactor of the Institute for many years. He was a leader in beginning the Sloan Fellowship Program, which gives young executives in mid-career an opportunity to spend a year in graduate management study. — the first such graduate executive development program in a major U.S. management school.

Theme of the convocation this year will be "Management of Change in a Dynamic Society." According to Dr. Peter Gil,

Director of the Sloan Fellowship Program, "... the basic task of the executive is the management of change itself. The 1965 convocation will be concerned with a deeper understanding of such changes and with the adaptive, innovative skills the manager requires to lead his organization in the world today."

**The Program Schedule**  
**Sunday, Oct. 10** — Registration, inspection of the Hermann Building and a reception.

**Monday morning, Oct. 11** — An opening address by President Julius A. Stratton. Also a discussion by Dr. Charles H. Townes, Provost, on the new technology and industry; a discussion by Mr. Abs on the financial aspects of industrial investments in Europe; and a paper by Prof. Warren G. Bennis on changing organizations. Dean Howard W. Johnson, Dean of the Sloan School, will preside at the convocation luncheon on Monday.

**Monday afternoon:** Presentations will include a paper on power and responsibility by Prof. Elting Morison and a discussion of economic problems of growth by Prof. Sidney Alexander. The afternoon session will conclude with an address by Mr. Watson of IBM on the outlook for American industry over the next five years.

**Monday evening** — The annual convocation banquet at the Somerset Hotel, this year being held in honor of Mr. Sloan, with an address by Dr. James R. Killian, Jr., Chairman of the MIT Corporation.

**Tuesday** — 30 different seminars on subjects ranging from computer-aided policy management to labor relations, taxes from business law. Each Sloan Fellow will have the opportunity to attend three during the day.

### Persons from all lands welcomed by I.S.A.

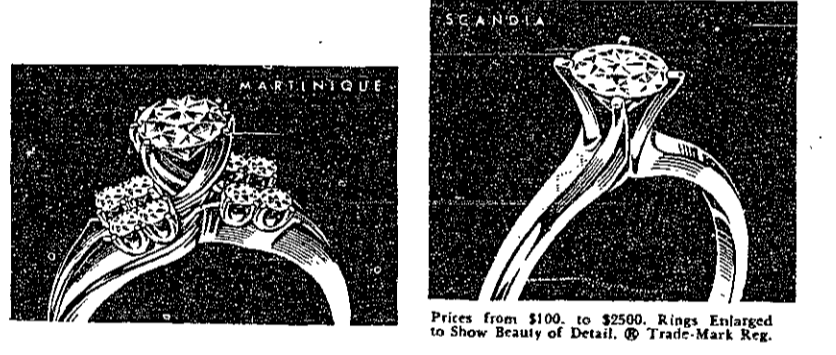
To encourage the exchange of ideas and the meeting of peoples of all nationalities, the International Student Association offers a wide variety of activities. The I.S.A. is open to all full-time students, research fellows, and trainees in the Greater Boston Area.

Activities include overnight and day outings to many Massachusetts communities, Sunday teas, lectures, Friday night orchestra dances, nationality dinners, folk singing and French and German classes.

Members receive reduced rates at paid events, use of the I.S.A. ski lodge, and mailings of the bi-monthly calendar. The Center is located at 33 Garden St., four blocks from Harvard Square, next to the Continental Hotel. For further information, call UN 4-1600.

FOR DIAMONDS, WATCHES, JEWELRY  
**DAVIDSON JEWELERS**  
 of Kenmore Square  
 Guaranteed Repair Service  
 518 Commonwealth Ave. CO 7-0017

The ENGAGE-ABLES go for **Keepsake**



Each Keepsake setting is a masterpiece of design, reflecting the full brilliance and beauty of the center diamond... a perfect gem of flawless clarity, fine color and meticulous modern cut. The name, Keepsake, in the ring and on the tag is your assurance of fine quality. Your very personal Keepsake is now at your Keepsake Jeweler's store. Find him in the yellow pages under "Jewelers."



**HOW TO PLAN YOUR ENGAGEMENT AND WEDDING**  
 Please send new 20-page booklet, "How To Plan Your Engagement and Wedding" and new 12-page full color folder, both for only 25¢. Also, send special offer of beautiful 44-page Bride's Book.

Name \_\_\_\_\_  
 Address \_\_\_\_\_  
 City \_\_\_\_\_ State \_\_\_\_\_ Zip \_\_\_\_\_  
 KEEPSAKE DIAMOND RINGS, SYRACUSE, NEW YORK 13202

**Suburbant<sup>®</sup>**  
 PURSE MATES  
 by Rumpff

You'll want these precious purse-mates because they are just right for fashion conscious females. Trim, elegantly tailored in a perfectly matched group of genuine matted pigskin leather accessories. Each one softly, distinctively created by Rumpff — for ideal gift giving or getting.

Briefcase \$5.00\*, French Purse \$5.00\*, Key Case \$5.00\*, Cigarette Case \$4.99, Lighter \$5.00, Fold-Over Clutch \$6.00\*, Eyeglass Case \$5.00.

**THE TECH COOP**  
 MIT STUDENT CENTER  
 Open Monday thru Saturday  
 8:30 to 5:15

He's working on his Ph.D. thesis

**SUNDAY'S FUN DAY, CHARLIE BROWN**

THE NEW **PEANUTS**<sup>®</sup>  
 CARTOON BOOK!  
 by Charles M. Schulz

ONLY \$1 at your college bookstore  
 Holt, Rinehart and Winston, Inc.

**BUY PEANUTS THE TECH COOP**

# Student Center dedication

This Saturday the MIT Student Center will be dedicated. The ceremonies will last only thirty minutes. These brief minutes will culminate thirteen years of student-administration cooperation.

That day a perspective of the building's history, past and future, will be offered to the students of today. The men who made the building possible will be there—Dr. Stratton, whose persistence and foresight turned a dream into reality; Dean Emeritus John T. Rule, founder of the first faculty committee, and Dean Robert Holden, its first chairman; past chairmen of the Student Center Committees since 1953—the list is a long and distinguished one.

For these men, the day will be one of satisfaction and fulfillment. For the students, it will be more than just a history lesson. For on them lies the burden of continuing the work, of carrying on the tradition. The building needs to be used; until the spirit of the campus penetrates it, it is only cold concrete.

The dedication looks to this uncompleted work as well. Its organization by students, and the cooperation of the administration, are prophetic. The tribute of naming the building for Dr. Stratton recognizes the goals he has set for it—the creation of "a student environment for which we have all been striving."

Other buildings have been and will be dedicated this fall by the MIT Corporation. But our dedication is different. It emphasizes not science, but the lives and the welfare of the people who create and use science. It is a family affair, not a national event; we are demonstrating to the faculty, the administration, and ourselves that there is more to life and learning than books and classrooms.

In a sense the building will be a testimony to the belief that the "whole man" knows how to relax, to have fun, to pursue hobbies, and to enjoy culture and quality. And as the words and actions of men like Dr. Stratton demonstrate, the school feels that its students deserve this respite from studies.

Student government will help prove this testimony, as will the activities in the Center, the recreation facilities, the music and art rooms, and the library. We hope that better student-faculty communications, new organizations, and expanded operations of old groups will also add their proof.

The Center is not a panacea, nor the dedication the Last Trump. But on Saturday we celebrate a long-needed step in the right direction. We urge all the students and faculty to attend the ceremonies at 2:15 in front of the Center, both to pay tribute to Dr. Stratton and to support the continuation of concern for student welfare symbolized by the building.

## Grading system

MIT has undoubtedly raced ahead of many universities with its curriculum changes; but it seems not to be making progress in a very important related area, that of grading systems. We would like to see some work done on the feasibility of a major revision to match the curriculum change.

It has long been a complaint that "cums" are overrated; that they are misleading and at best vague indications of ability. The whole being equal to the sum of its parts, perhaps even the individual grades should be examined. Is a "guts course" A the same as a lab A? And just what does that A mean in terms of effort, ability, initiative, or just plain memorization?

Grades have an advantage in being brief and to the point; but is that the best way to transmit important information? With the increased enrollment in graduate school and the growing competition in business, those two-digit numbers seem to have more than two significant figures. Must MIT increase its diversity of education, only to have it reduced after four years to the lowest possible, two-digit denominator?

The freshmen were told that they all had the ability to make it at MIT. But they won't all make it, because they are competing against each other. Is there something to be said for the English system of examinations, where a student is individually graded? Is there psychological evidence that our good old American spirit of competition is the best attitude compatible with learning?

The curriculum revision admitted that there can be different kinds of intelligence; combine this with the admission requirements, and it becomes harder to understand why, for example, MIT has a five-point grading system, creating an even greater differential than exists at most state universities. One would expect, on the contrary, a narrower range.

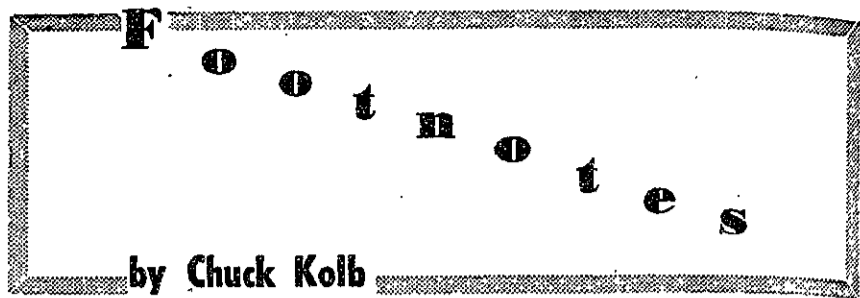
It is not our purpose to create a new system here; but it is time that some serious faculty study was made of the situation. We don't believe that the "whole man" can equate knowledge and cum; we hope that the variety of the new curriculum can be reflected in a real variety of grading.

## Freshman schedules

The freshman registration figures given us by Dean Gray indicate that the new curriculum will get a thorough test in its first year of operation. Variety was the key concept in the change, and variety is certainly the word for the freshman load distribution: only 252 students are taking what would have been called, in the past, the "normal" freshman schedule.

While it is certain that there is variety, it is left to time to say whether there is great improvement. Two things in particular will stand watching: the success of 8.001, the physics introductory course, and the load imposed by taking 5.01 in the second term instead of the first.

We hope to hear from Professor Valley, the Undergraduate Planning Professor, as the term progresses; as yet it is too early to assess the value, for example, of the Physics Diagnostic Test. Professor Valley has also told us he would like to see a running discussion of the curriculum in the Letters column; we encourage our readers to respond.



by Chuck Kolb

70. In naming the new building for the Center for Materials Science and Engineering the Bush Building, the Institute has certainly honored a well known scientist and MIT figure. It has also strengthened what seems to be a new trend in campus building designation.

New buildings have names; real Christian names. True each structure is still assigned a number, but now your class, lab or office can be in the Dorrance Building, the Bush Building, the Green Building, the Hermann Building or the older Sloan Building. Even the new Student Center will be in the Stratton Building.

Somehow this minor point seems to give the place more of the atmosphere of a campus than the old, impersonal Buildings 1, 2, 3, 4, 5, 6, 7, 8, 10, 20 etc.

71. While on the subject (sort of) of the Stratton Building and the Student Center, you'll sort of miss the point of the whole dedication this Saturday if you ignore the Dedication itself at 2:15 and just show up for the concert and dance later on.

72. Dealing with celebrities can be trying at times, as the Lecture Series Committee dis-

covered recently.

LSC's first lecturer was supposed to be noted author Arthur Koestler, but LSC received a telegram shortly before his scheduled appearance informing them that he was out of the country. A call to Koestler's California home brought out the information that he had moved to England.

LSC had also planned to present author James Michener this term, but Michener suffered a recent heart attack and has been forced to cancel. All this naturally leaves LSC wondering what god it has to appease before it can get its lecturers on campus.

73. The problems of putting out a newspaper are many, but occasional bits can be amusing.

Consider the letter we just received from the Office of the Registrar. It told us how much that office would appreciate our printing the inclosed announcement in the October 6th issue.

The announcement read: Applications for postponed Final Condition and Advanced Standing Examinations due Friday, October 1 in Room E19-355.—Registrar.

Isn't it nice to know that you're late?

## Campus Topics

### Activities financially thriving; cash flow to exceed \$100,000

By Gene Sherman  
Finboard Chairman

The Undergraduate Association budget is being presented in this column as a barometer of extra-curricular life on the MIT campus. Many facets of student government and activities would cease to exist without subsidy grants from the Finance Board. As of October 2, 1965, hearings on the 1965-66 budget are complete with the exception of special programs and events which arise during the year.

This year's budget is the largest ever, totaling \$68,181. The Institute Committee and its subcommittees represent \$26,374 of that total with an increase of 10% from the previous year, while the activities climbed to \$41,817 with increase of over 20%. An additional \$6,000 has been budgeted separate from operating budget for purchase and replacement of capital equipment. With funds of the class governments and the Spring Weekend Committee also considered, the total cash flow handled through the Finance Board should

exceed \$100,000 for the first time ever.

The Musical Clubs has topped the \$16,000 mark this year, while T.C.A. reached \$13,000. Increased activity in the Debate Society has enabled that group to support a \$6,000 budget and present a high quality tournament schedule for all its members. Subsidies for lecture programs have been approved for the Student Movement for the Freedom of Cuba and the Civil Rights Committee.

New activities receiving support this year include the magazine Innisfree, War Games Society and the Math Club. Large programs in the realm of student government include a new Activities Secretary, the Student Center Dedication, the Urban Affairs Conference, and the PRC bimonthly Calendar of Events. One of the largest self-sustaining projects will be this year's Junior Prom which has added novelty to this annual fall event and should provide MIT with one of its most outstanding weekends ever.

## Appointments

The Board of Directors of The Tech has regretfully accepted the resignations of Paul Jeffrey Trimmer '66, as Features Editor, and Ted Trueblood '67, as Sports Editor.

The Board is pleased to announce the appointment of H. Robert Horvitz '68, of Alpha Epsilon Pi and Skokie, Ill., as Features Editor, and of Gerald P. Banner '68, of Alpha Epsilon Pi and Haverhill, Mass., as Sports Editor.

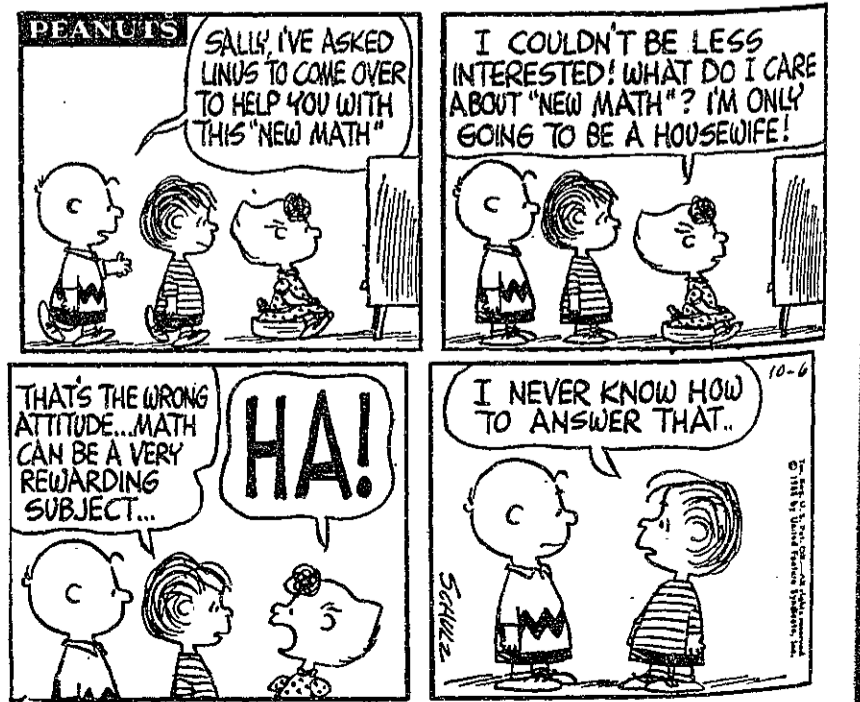


Vol. LXXV, No. 18 Oct. 6, 1965

### BOARD OF DIRECTORS

Chairman	Kenneth Browning '66
Managing Editor	Dave Kress '67
Editor	John Montanus '66
Business Manager	Stephen Teicher '66
News Editor	Charles Kolb '67
Features Editor	Robert Horvitz '68
Sports Editor	Gerry Banner '68
Photography Editor	John Torode '66
Entertainment Editor	Jeff Stokes '68
Advertising Manager	Michael Weidner '66
Associate Managing Editors	Louise Lentin '68
	Mark McNamee '68
Associate Sports Editor	Russell Mosteller '68
Controller	Guille Cox '68
Treasurer	M. William Dix '67
Assistant Ad Manager	Joseph LaBreche '67
Assistant Treasurer	Nicholas Covatta '68
Accounts Receivable	Dan Green '68
Office Manager	Rob Taylor '66
News Staff	Scott Moffatt '67
	Ted Nygreen '67, Dan Asimov '68
	Mark Bolotin '68, John Corwin '68
	Sue Downs '68, Jeff Pece '68
Features Staff	Sue Kolb
	John Blankenship '68
	Tom Rozsa '68, Bill Mack '68
	Pat Haynes '68
Sports Staff	Don Bosack '67
	Neal Gilman '67, Chuck Hottinger '67
	Dave Chanoux '68, Jerrold Sabbath '68
	John Kopolow '68, Bob Sultan '68
	Jack Sequist '68, Mona Dixon '68
Entertainment Staff	Sam Cohen '68, Eric Goldman '68
	Sherry Gulman '68, Andy Seidenfeld '68
	David Swedlow '68
Photography Staff	William Bloomquist '67
	Philip Dows '66, Saul Mooallem '66
	Steven Rife '67, John Rylaarsdam '67
	Paul Stamm '66, James Cornell '68
	Lewis Golovin '67, William Ingram '68
	Harold Iuzzolino '65, Arthur Kalotkin '68
	Scott Mermel '68, Norman Neff '66
	James Robertson '68, Steven Silverstein '68

This week's front page picture of the Vassar Street side of Building 35, the Metals Processing Laboratory, taken by Art Kalotkin.



## T-men appear as models in Esquire, featured wearing latest fall fashions

Fashion conscious college men across the country may very well emulate MIT's own this fall. The September issue of *Esquire*, noted men's fashion magazine, features Techmen as models for the latest in return-to-campus garb.

The "Back to College" issue devotes 12 pages to the article entitled "Gentleman's Degree in the Art of Dressing Well"; it consists of 9 pictures, many full page and in color. A total of 39 MIT men and 2 coeds (in bathing suits) are depicted, with Institute settings as the background.

Clad in everything from three-button suits to terry cloth robes, the Techmen are generally posed in small groups of similar attire. One page, for example, consists of 7 AEP's modeling the latest in Scots sweaters; another features 8 men of DTD in bike coats atop their scooters and cycles — the background is Kresge.

The Alumni swimming pool sets the scene for 4 SAE's in plaid shirts, while coeds Eileen Tate and Karen Henry remain appropriately attired for the water. Two more SAE's stand atop the Green Building in new corduroy outfits. Baker House and 7 of its residents establish the dominant color of the new season: gold. Examples include a V-neck pull-over and a mohair-and-wool sweater.

The Computation Center, complete with three DU's provides the setting for "extra-curricular fashions for campus and off-campus wear". Two men from LXA sport a new suit and traditional topcoat in the Great Court.

The original photography session was conducted over a three day period last April. Present for the shooting were *Esquire* fashion editor Chip Tolbert and photographer Robert Fresor.

## College World

By Jeff Trimmer

There is no doubt about it. College gets progressively harder from freshman to senior year. Freshman year you spend all your time dreading those quizzes and midterms as they parade before you in a never ending flow.

Sophomore year brings with it the first hints of professional courses. Everyone looks forward to the weekly problem sets, weekly quizzes, and other niceties. By the time you're a junior you're looking forward to a relaxing year only to find that advanced courses are indeed advanced. And senior year brings thesis joys to the hearts of many Techmen.

What the four years add up to—since there isn't enough time to do everything—is a never-ending search for The Way to Beat the

## The CEPT preCEPT: How to succeed at school without really trying, much

System. The answer may be found in the theory of Princeton grad Edward H. T. Tenner, who invented it last year. (Credit should be given here to *The Daily Princetonian* indirectly and the Middlebury newspaper *The Campus* directly.)

### CEPT theory explained

The theory, known as the CEPT Theory, is, according to its inventor, the best way to get a good grade on a paper without knowing anything. Simply, a CEPT is defined as the smallest convenient unit of knowledge.

Supporting the CEPT are the PRECEPTS—the smallest indivisible units of knowledge. An example is: "Luther was the first Lutheran."

The CEPT itself should be the bulk of the paper, the element on which the whole grade depends. The CEPT constitutes an unarguable minor conclusion. For instance: "Lincoln's election caused the secession of South Carolina." Contrary to this CEPT is the COUNTERCEPT, a foil for the CEPT, used as a rhetorical device to avoid a one-sided, boring argument. Example: "The secession of South Carolina caused Lincoln's election." This, as one can easily see and go on to prove, is ridiculous. Therefore the first point must be true.

### MEGACEPT is largest CEPT

The biggest CEPT of the paper is the MEGACEPT, a thesis supported by all the CEPTS, PRECEPTS, and COUNTERCEPTS. For instance: "A loose examination of historical evidence reveals that Abraham Lincoln was the pen-name of an Australian monk named Herbert Glum." A MEGACEPT then, is defined as the largest Manageable unit of knowledge.

It will probably work out that the instructor grades according to the CEPT system. He simply adds up all the CEPTS, and COUNTERCEPTS, finds the MEGACEPT, balances the total number against the CEPT median of the whole class, and divides by pi r-squared.

Working for the student are various other special CEPT devices, however. Some of these are DECEPTION, EXCEPTION, CONCEPTION, and CONTRACEPTION.

DECEPTION occurs when the paper begins with a MEGACEPT,

ends with a MEGACEPT, and has a series of casually related CEPTS in between. This means the utilization of a sequence of "A equals A, therefore B equals B."

EXCEPTION is citing an expert for the sake of citing an expert. Under a strict command to have three footnotes per page, a student will then cite "E equals MC squared" with "Albert Einstein, MS Note, July 25, 1904, Einstein Papers, Series XVII, Princeton University Library."

CONCEPTION of great value CONCEPTION is a CEPT contrived to con the professor. Example: "All scholars agree that . . ." or "As you said last week in class . . ."

CONTRACEPTION occurs when a student remembers the CEPT, but forgets the PRECEPTS, MEGACEPTS, etc. This happens most commonly on examinations, and what he will do is begin the exam with the CEPT, DECEPT it, then subtly CONTRACEPT it. For instance: "All historians agree that Lincoln's election caused South Carolina to secede, but it cannot be denied that recently discovered evidence may defeat this theory. Close study of Lincoln's Gettysburg Address, for instance, reveals that 'Lincoln' was the nom de plume of the famed itinerant Australian theologian Herbert Glum . . ."

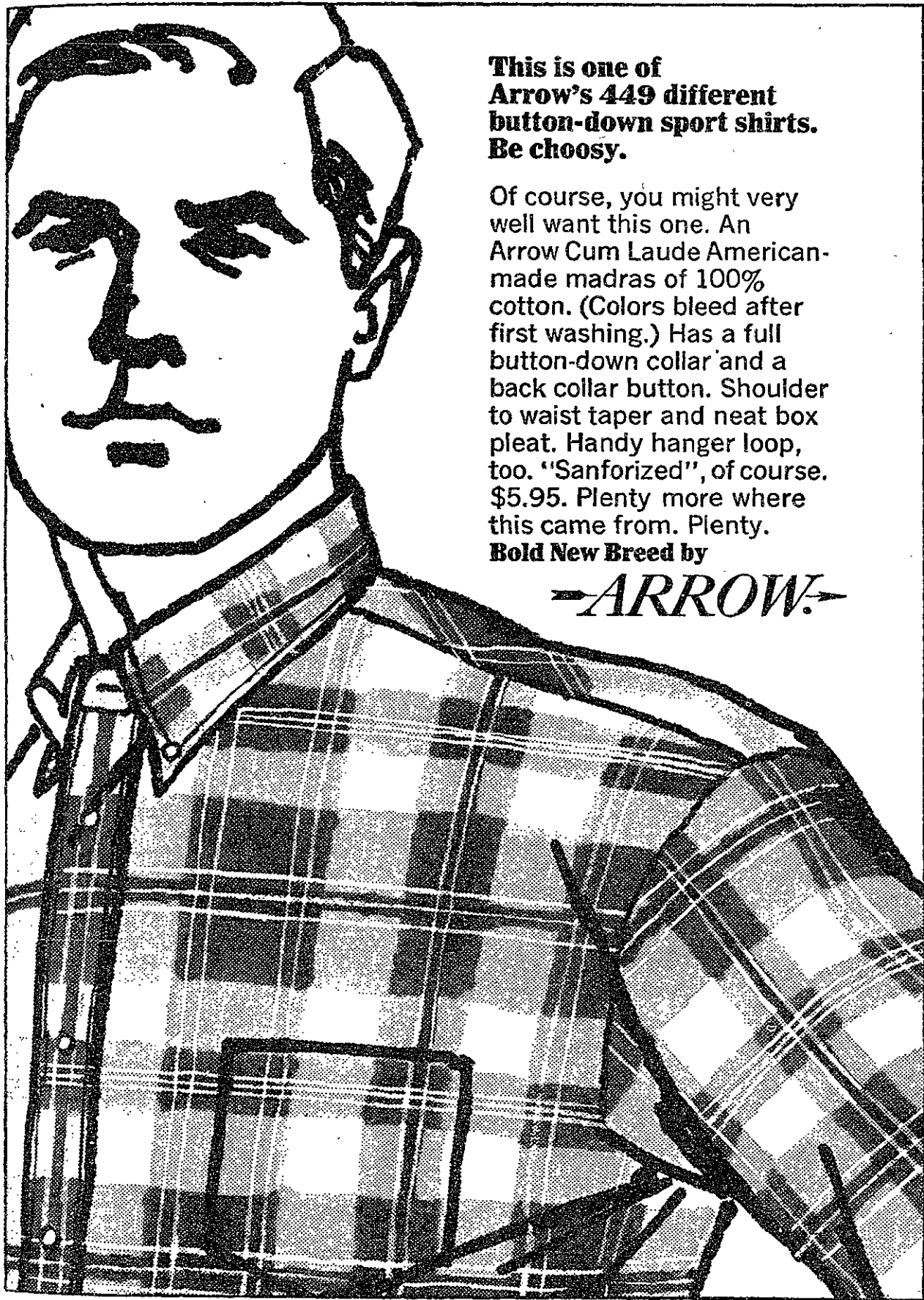
"Glum was born February 12, 1809, the son of a . . ."

CONTRACEPTION, as one can see, involves using an unsupported MEGACEPT to transfer the student from an area of profound ignorance to one of relative brilliance, and so DECEPT the professor. If the subject is competently developed, and the teacher gives credit, then the student has successfully CONTRACEPTED.

### CEPTing also helpful

The CEPT Theory also has valuable implications when it comes to dealing with lengthy reading assignments. After one has developed a rapid way of skimming for Important Points Which One Can Regurgitate on Exams, one has learned to CEPT out—in other words, to find the CEPTS.

It has been reported that Tenner is working out a new theory called the UNICEPT. No telling what great revolution in education this will cause.



This is one of Arrow's 449 different button-down sport shirts. Be choosy.

Of course, you might very well want this one. An Arrow Cum Laude American-made madras of 100% cotton. (Colors bleed after first washing.) Has a full button-down collar and a back collar button. Shoulder to waist taper and neat box pleat. Handy hanger loop, too. "Sanforized", of course. \$5.95. Plenty more where this came from. Plenty.

Bold New Breed by

—ARROW—

Save **ARROW SHIRTS** Now  
**THE TECH COOP**

## Bush chaired A-bomb program, later investigated peaceful uses

(Continued from Page 1)

atomic bomb began under the NDRC and continued under the OSRD until it was transferred to the Army in 1943.

### Report for Roosevelt

In *Science, the Endless Frontier*, written in 1945 at the request of President Roosevelt, Bush explored how the lessons of OSRD might be applied in time of peace. This report is considered a milestone in the emergence of science and technology as a prominent force in society and government.

Returned in 1955

Dr. Bush retired from Carnegie in 1955, and returned to MIT as Chairman of the Corporation.

He became Honorary Chairman in 1959.

Although retired, Dr. Bush remains active. At his home workshop and at his summer residence he works at projects such as a new type of free piston engine, an improved hydroplane boat (which rode out of the water on its fins for the first time this summer), a plastic appliance for use in heart surgery. He is also writing two books concurrently.

Dr. Killian said during the dedication ceremonies that the Bush Building could not be better named—"a salute to a colleague who has made immense contributions to science and engineering, to MIT, and to the nation."

# VISA

VISA is coming soon  
 Students only  
 passport to savings

# VISA

## 6.01X—An experiment in learning; 15 take part in programmed course

By Alan Pollack

Can a course of programmed instruction in a technical field succeed on the college level? This, according to Prof. Alan V. Oppenheim, is the question that occurred to Prof. Thomas S. Huang and him a little over a year ago. Their attempt to answer it has led to the creation of 6.01X, the unofficial name for a new experimental section of 6.01, the introductory electrical engineering course.

However, before 6.01X could become a reality, Prof. Oppenheim and Huang would have to solve another minor problem: They were not sure just what they meant by programmed instruction. In its most common form, programmed instruction is a method of self-teaching in which the student learns by working through a set of problems arranged in a systematic order. After working a problem, or frame, the student checks his answer against the one provided. If he is correct, he proceeds to the next stage; if not, he is directed to another set of frames designed to re-teach the misunderstood concept.

### Supplement regular course

Prof. Oppenheim and Huang, then, took this idea and revised it to their own specifications. "The programmed exercises," explained Professor Oppenheim, "serve only as a supplement to the regular 6.01 program. They are designed neither to replace the lecture nor the personal contact session. What they do replace is the regular homework."

The course has already been tried twice — last fall and again this spring — but only in a pilot version covering the first and last chapters. The first attempt was with one student; the second was with four.

"The results," said Professor Oppenheim, "were extremely encouraging. Therefore we have extended the program this year to a full section of fifteen volunteers."

Larry Burgess, '67, one of the

four who took the course last spring, cited some of its advantages and disadvantages. "One improvement over the regular 6.01 is that the learning process is more continuous. Working many small problems whose answers could be checked immediately — as opposed to doing the regular 6.01 problem sheets — had a cumulative effect and gave me a stronger conceptual grasp of the subject. Also, we could all work at our own speed rather than being tied to the lecture schedule." The major disadvantage mentioned was that it was too easy to cheat oneself by looking ahead to the answer before completing a frame.

### Future widespread use possible

What, then, will be the long term effects of this experiment on 6.01 and teaching in general at MIT? Perhaps, after much more testing, if the program proves to be of comparable effectiveness to the standard teaching methods, its inherent money-saving feature — the reduced manpower needed to implement the course — may possibly lead to more widespread application. "Nevertheless," insisted Professor Oppenheim, "this time is far in the future for the present the programmed instruction section of 6.01 will remain purely an experiment."

## The Bulletin Board

Compiled by the Public Relations Committee of Incomm, The Bulletin Board is a weekly service of the PRC and The Tech.

Meetings and events may be included in this article and in the MIT Student Bulletin by filling out a form in the Incomm office or in Mr. Jim Murphy's office in the Student Center at least 12 days in advance of the week the event is to occur.

The deadline for events of the week of October 18-24 is today, October 6.

Further information may be obtained from Bob Howard (x3783), editor of the MIT Student Bulletin.

### Wednesday, October 6

8:00 am—Hillel Orthodox Yom Kipper Service. Conducted by Dr. Gerald Schroeder in the Chapel.

9:00 am—Hillel Conservative Yom Kipper Service. Conducted by Rabbi Pollack. Kresge Auditorium.

10:00 am—Hillel Reform Yom Kipper Service. Conducted by Prof. Leonard Fein. Rehearsal room A, Kresge Auditorium.

5:00 pm—MIT Glee Club. Kresge Auditorium.

5:00 pm—MIT Concert Band rehearsal. Kresge Auditorium.

7:30 pm—Student Center Art Studios. Life-portrait drawing class. Instructor: Mimi Luft. \$10/term. 5th level. Student Center.

7:30 pm—APO meeting. The Student Center.

### Thursday, October 7

4:00 pm—JV soccer: MIT vs. Ste-

vens Business College. Briggs Field.

5:00 pm—MIT Glee Club rehearsal. Kresge Auditorium.

7:30 pm—Activities Council meeting, cider and donuts. Student Center, West Lounge.

8:30 pm—Ravi Shankar Concert sponsored by the Baton Society.

### Friday, October 8

1:00 pm—MIT Islamic Society: Juma Prayers. Rehearsal room A, Kresge Auditorium.

4:00 pm—Varsity tennis: MIT vs. Rhode Island. The tennis courts.

5:00 pm—Science Fiction Society meeting. Spofford Room, I-236.

All Weekend MIT Sports Car Club Orange Autocross. Entry fee: \$6.00. Practice Friday and Saturday. Time trials Sunday. Orange Airport, Orange, Mass.

7:30 pm—Hillel: Friday Evening Service. The Chapel.

(Please turn to page 13)

### Relax and Divert

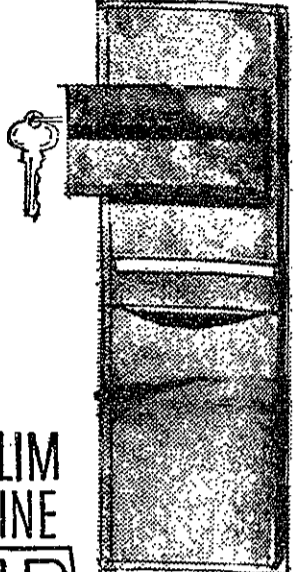
## CAMPUS CUE

590 Commonwealth Ave.  
(Opposite B. U. Towers)

## Pocket Billiards

"Great for a Date"

SQUASH RACQUETS  
All Makes — Large Variety  
**Tennis & Squash Shop**  
67A Mt. Auburn St., Cambridge  
(Opp. Lowell House)  
TR 6-5417



SLIM  
LINE  
Traveler  
BY Rump

Nothing pleases the particular man more than keeping all his personal effects — money, cards, keys — everything he needs — precisely present in this slim-line traveler by Rump.

Available in a variety of rich leathers. Colors: black, brown, chestnut, olive.

Billfold \$5.00\*

Matching Key Case \$2.50\*  
\*plus tax

**THE TECH  
COOP**

MIT Student Center  
Open Monday thru Saturday  
8:30 to 5:15

## NEED LIFE INSURANCE?

NO BETTER BUY THAN



Ask about Rates, Net Payment, Net Cost, Special Purpose Policies.  
It will be worth your while — No obligation

## Life Insurance Department

CAMBRIDGEPORT SAVINGS BANK

689 Mass. Ave., Cambridge

TR 6-2240 — UN 4-5271

# Attention Graduate Students!

# PART-TIME COMPUTER WORK

The Bedford Laboratory of the Raytheon Company—Missile Systems Division is currently involved in extensive programs in the broad field of Computer Technology. As a result of this effort, Engineering opportunities exist for graduate students to work on a part-time basis. Students whose academic schedules would permit one full day per week would be highly desirable. However, we would be more than willing to discuss school/work schedules with interested applicants.

To discuss these opportunities, please call:

Mr. William O'Melia

CRestview 4-7100, Ext. 2138

**RAYTHEON Company M.S.D.**

Bedford, Mass.

**Sec. Connor to speak at Harvard Korol views Kremlin**

**By Sue Downs**  
 John T. Connor, Secretary of Commerce of the United States, will be the key speaker for the 19th Annual series of Harvard Law School Forums this Friday evening at 8:30 p.m.  
 Connor, a graduate of Harvard Law School, was sworn in as secretary January 18, stepping down

as the \$129,800 a year president of Merck & Co. Following this talk, (for which no topic has yet been announced) he will participate in a discussion with two faculty members and then answer questions from the floor.

Future Forum speakers this year will include Sir Patrick Dean, the British Ambassador; Bishop Fulton Sheen; Selective Service Director, General Lewis Hershey and Authors Leon Uris, Jerome Weidman, Joseph Heller, Helen Gurley Brown and Betty Friedan.

The forum will be held in the Ames Courtroom of Austin Hall (the building directly behind Littauer Center of Public Administration. Tickets sell for \$1.00 (or \$5.00 for the season) and will be available at the door or from the Harvard Cooperative Society.

**Korol views Kremlin Soviet economic policies analyzed**

**By Jim Smith**  
 Author of a recent book on Soviet Research and Development, Mr. Alexander Korol of MIT's Center for International Studies explained his views of the Kremlin's latest economic reorganization.

According to Mr. Korol, the present reorganization is merely one in a series of fluctuations between emphasis on centralization and emphasis on efficiency. On the one hand the Soviet leaders insist that the government maintain absolute control and supervision over the economy and its outlets; yet on the other hand, the leaders realize that efficiency is hard to achieve under such centralization.

The present reorganization, explained Mr. Korol, comes at a time in the Soviet economy of high centralization and low efficiency, and hence it is that this

reorganization stresses efficiency, whereas the last one (1963) stressed centralization.

When asked whether he had expected the present reorganization Mr. Korol said it was inevitable as Soviet Union, in trying to establish and maintain an artificial yet efficient market mechanism, has succeeded in the former but failed in the latter. They simply could not continue to operate as inefficiently as they had been.

**Inefficiency main problem**  
 Inefficiency, he says, has been the chief problem of the Soviet Union ever since the Revolution. It was then that Communism was most idealistic, for it was still untested. And one of the basic precepts which distinguished Communism from Capitalism was the governmental (i.e. "democratic") control of markets—an artificial control to replace the self controlled free market mechanism of supply and demand.

**Criticizes inefficiency**

When asked whether he considered the inefficiency the result of poor problem analysis or poor solution management, Mr. Korol pointed out that the problem almost entirely in the management of the economy. He said that inefficiency was caused basically by two factors. First, by having each factory manager directly responsible solely to Moscow, coordination on the plant to plant level was almost non-existent and duplications, cross-hauling of freight, and the such resulted. Secondly, it has always been and will always be impossible for humans to actually plan an economy by dictating demand and supervising supply.

**Soviet Union lacks incentive**  
 Furthermore, the classic problem of missing incentive has required the Soviet Union in the past to set up quota systems by which Moscow tells each factory what is expected of it according to the analysis of the central planners. Since each factory had nothing to gain by increasing product quality, sloppy workmanship and unmarketable articles resulted.

To a certain extent, then, economic efficiency was solely in the hands of the planners, and only when the planners knew exactly the comparative need for each size screw could a screw factory satisfy demand and not waste metal by producing only heavy screws to satisfy a weight quota or only tiny screws to satisfy a numerical quota.

When asked whether Soviet planners had considered computer-aided planning as a remedy to inefficient market mechanisms, Mr. Korol pointed out that in (Please turn to page 11)

**CHRISTMAS in CALIFORNIA**  
 \*\*\*\*\*  
 ● Spend your vacation in California this year.  
 ● Board a non-stop JET.  
 ● Return any time\*.  
 ● Save \$89 over regular airfare.  
 Call  
**PARKER TRAVEL AGENCY**  
 (Opp. B.U.) 566-4087  
 \*\*\*\*\*  
 RESERVATIONS ARE LIMITED  
 RESERVE YOUR SEAT NOW  
 \*Minimum stay 10 days

**Kick the dull driving habit. Step out in a lively Dodge Coronet.**

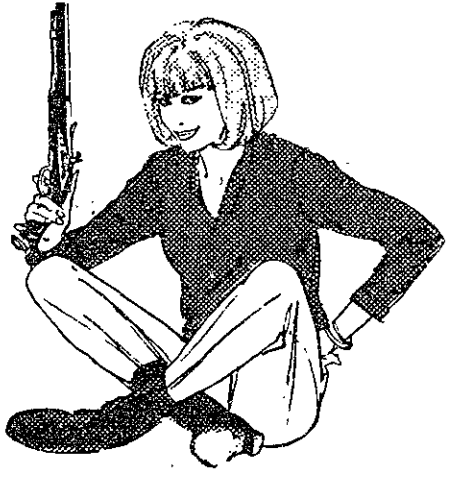


Isn't it time you joined the Dodge Rebellion?

Forget all you've seen and heard about '66 cars. Because Coronet is here . . . sharp, smart and sassy, the greatest thing from Dodge since Year One. Loaded with luxury the higher-priced cars haven't caught onto yet. With a choice of five engines, each one designed to make the walls of Dullsville come tumbling down. And with a whole slew of standard equipment that used to cost extra. Like an outside rear view mirror. A padded

dash for extra safety. Variable-speed electric windshield wipers and washers. Backup lights. Turn signals. Seat belts, two front and two rear. And, as some extra frosting on the Coronet cake a 5-year or 50,000-mile warranty.\*

Enough said to get you really tempted? Now let's get away from the look-alike, drive-alike, first-cousin cars with Coronet, a car with a lively personality all its own.



DODGE DIVISION CHRYSLER MOTORS CORPORATION **'66 Dodge Coronet**

**\*HERE'S HOW DODGE'S 5-YEAR, 50,000-MILE ENGINE AND DRIVE TRAIN WARRANTY PROTECTS YOU:** Chrysler Corporation confidently warrants all of the following vital parts of its 1966 cars for 5 years or 50,000 miles, whichever comes first, during which time any such parts that prove defective in material and workmanship will be replaced or repaired at a Chrysler Motors Corporation Authorized Dealer's place of business without charge for such parts or labor: engine block, head and internal parts, intake manifold, water pump, transmission case and internal parts (excepting manual clutch), torque converter, drive shaft, universal joints, rear axle and differential, and rear wheel bearings.

**REQUIRED MAINTENANCE:** The following maintenance services are required under the warranty—change engine oil every 3 months or 4,000 miles, whichever comes first; replace oil filter every second oil change; clean carburetor air filter every 6 months and replace it every 2 years; and every 6 months furnish evidence of this required service to a Chrysler Motors Corporation Authorized Dealer and request him to certify receipt of such evidence and your car's mileage. Simple enough for such important protection.

Join the Dodge Rebellion at your Dodge Dealer's.

**WE GOT SO**  
  
**'CAUSE WE CHARGE SO LITTLE**  
 Here's why Econo-Car is the Big New Star in rent-a-car! We feature Valliants & other fine Chrysler-built cars. We include gas, oil, insurance, seat belts. We provide pick-up or delivery. When you want a car, try us!

rent a car from  
**ECONO-CAR**

from **399** per college day plus pennies a mile

**"Dial DEBBIE"**  
**LI 2-4229**

**PARK SQ. CINEMA** 542-2220  
**High in Fidelity**  
"A zestful comedy for grown-ups."  
—Herald Tribune.  
**CINEMA** Kenmore Sq. 262-3799  
**CASSANOVA 70**  
Marcello Mastroianni - Verna Lisi

DE 8-9882  
**HOUSE OF ROY**  
REAL CHINESE FOODS  
Open daily from 4 p.m. to 2 a.m.  
Food Put Up To Take Out  
25 TYLER ST., Boston 11, Mass.

**LAUREL & HARDY'S** Laughing  
20's  
KENMORE 6-7067

**IN WHITE AMERICA**

**NEW ENGLAND LIFE HALL**  
8 PERFS. ONLY OCT. 20-25  
BUY TICKETS BY MAIL NOW  
Thurs., Sun. matinees; Thurs., Mon. evenings \$3.80, \$2.80. Fri., Sat., Sun. evenings \$4.50, \$3.50. All orders should list alternate dates. Make check payable to and mail to: "IN WHITE AMERICA," New England Life Hall, 225 Clarendon St., Boston. Enclose stamped return envelope.

**EDDY ARNOLD**  
IN PERSON  
and His  
Nashville  
ALL STAR SHOW

featuring  
**SONNY JAMES**  
and **CONNIE SMITH**  
**Back Bay Theatre**  
(formerly Donnelly Memorial)  
One Performance Only  
FRIDAY, OCT. 15, at 8:30 P.M.  
Tickets \$4.50-\$3.50-\$2.50 on sale at FILENE'S BOSTON 10-5 daily and at all ticket agencies

**SPECIAL STUDENT PRICES**  
By mail order (check or cash) with self-addressed stamped envelope to Room 305, St. George Hotel, Kenmore Sq., Boston. Students deduct 50 cents per ticket. Enclose this ad with order.

**Academia Espanola**  
SCHOOL OF LANGUAGES  
Small groups and private instruction.  
Spanish French  
German Italian  
Portuguese  
CLASSES START SEPT. 28  
Tel. EL 4-2124 54 Boylston St.  
(2 blocks from the Harvard Sq. MTA Station)

**HARVARD SQ. UN 4-4580**  
Today thru Tues., "Help!"  
2:30-5:00-7:30-10:00;  
"A Home of Your Own,"  
1:45-4:20-6:45-9:20.  
Oct. 13-14, "An Evening with the Royal Ballet,"  
2:30-5:30-8:30.  
Tickets now being sold.

**BRATTLE SQ. TR 6-4226**  
Today, "Journey into Fear."  
Thurs.-Fri.-Sat., "The Magnificent Ambersons."  
Week of October 10-16, "Time in the Sun" plus "The Spanish Earth."  
Daily 5:30-7:30-9:30; Sat. and Sun. matinees at 3:30

The MIT Baton Society presents  
**RAVI SHANKAR**  
with Alla Rakha  
THURSDAY, OCT. 7, 1965, 8:30 P.M.  
**Kresge Auditorium**  
Tickets \$2.00 in Bldg. 10

**THE THIRSTY EAR**  
OPENING FOR  
**ANOTHER SUCCESSFUL SEASON**  
Oct. 8 & 9—Paula Willmore  
—folksinger—  
Oct. 15 & 16—Oxford Street Stompers  
—jazz—  
Coming Oct. 29 in Kresge: NCM  
M.I.T. Ashdown House Pub,  
305 Memorial Dr.

theatre...

Moliere's 'Miser' at the Charles

By Sherry Gulmon

Just as alive as it was 300 years ago, Moliere's "The Miser" is a delightful spoof on an avaricious, money-grubbing old man and his heroic battle against the subworld dominated by love, generosity and the other noble traits which surround him.

The plot is very simple, and it is played on a simple stage of one set. The Miser wants his children, Elise and Cleante, to marry for money. In their youthful exuberance, they want to marry for love. The widowed Miser decides to marry for both, but malheurusement, he and his son pick the same girl. Elise wants to marry Valere, a man who has gotten himself into the Miser's employ just to be near her and win the confidence of her father.

Four against one sounds simple until Froisine comes into the picture. A woman who lives by her wits, she allies herself with the Miser because he has the most money, but it will never work. When she finds even she can't get money out of him, she switches loyalties, and the play leaps on until it falls into an incredible conclusion; that is, a series of coincidences to end all coincidences.

No more subtle than the plot, the characters are exquisitely molded, bigger than life models of exactly the types that Moliere wants them to be. Harpagon, which means "a greedy, money-grubbing person," is irredeemably miserly, not displaying one redeeming trait right up through the end of the play. Superbly played by Terrence Currier, who stepped into the role at the last minute, Harpagon approaches the sublimely ludicrous when he stuffs grapes into his purse rather than let his guests eat them. The money box, around which the whole play ro-

tates, is never shown opened, but through Currier's portrayal of Harpagon, the image of his eyes twinkling, as gold coins slip through his fingers, is just as vivid as if it had been staged.

Setting off Harpagon by surrounding him with a gilt-frame world of all sorts of noble virtues, Lucy Martin and Lawrence Pressman, and their respective lovers, Valere and Mariane, portrayed by John Devlin and Lynn Milgrim, are themselves color enlargements of the foppish manners and sentimental excesses of people in general.

Excellently done by Barry Michelin, the character of la Fleche, "the arrow" sits right in the middle as a sort of reference line. In two of the most

delightful scenes of the play, he points out Harpagon's total domination by thoughts of money when Harpagon accuses him of stealing something, and Cleante's unceasing quest for funds to keep himself in silk shirts and ruffled sleeves when he tells him of the loan he has finally succeeded in arranging for him. Also, it is la Fleche who finally steals the money box.

Today, a character such as Harpagon might be the theme of a tragedy, but Moliere saw comedy rather than tragedy in a world he painted black and white. There is no indication that Harpagon will someday be infused with self-doubt and internal conflicts as he goes prancing off the stage. "And I'm going to see my little money box." Therein lies the permanence of Moliere's genius.

Branden to speak on Objectivism; author Ayn Rand will be present

Ayn Rand, author of *Atlas Shrugged* and *The Fountainhead*, will answer questions about her philosophy at the opening of the Boston series of "BASIC PRINCIPLES OF OBJECTIVISM: THE PHILOSOPHY OF AYN RAND." The lecture, offered by the Nathaniel Branden Institute, will be held Friday, October 15, at 7:30 p.m., at Brown Hall, Huntington Ave. and Gainsboro St., in Boston. Admission: \$3.50, students: \$2.75.

The lecture will be given by Nathaniel Branden, and will deal with such issues as: What is philosophy — the bankruptcy of today's culture — the nature of Objectivism. Miss Rand will join Mr. Branden during an extended question-and-answer period which follows the lecture.

This is the first in a series of twenty lectures on Objectivism to be given weekly in Boston. The re-

maining lectures will be given by means of tape transcriptions.

Nathaniel Branden is the founder and president of Nathaniel Branden Institute, an organization which offers lectures on Objectivism, the philosophy of Ayn Rand, a study of the works of Ayn Rand from the standpoint of ethics, psychology and esthetics, and is co-editor, with Miss Rand, of *The Objectivist Newsletter*, a monthly journal of ideas. In addition, Mr. Branden contributed several articles to *The Virtue of Selfishness*, a collection of essays by Ayn Rand, published by New American Library in December, 1964.

Nathaniel Branden Institute, 120 E. 34th St., New York City, currently offers lecture series in more than seventy cities in the U.S. and Canada.

Making the Scene

S	M	T	W	T	F	S
			6	7	8	9
10	11	12	13	14	15	16
17	18	19	20			

THIS WEEK MUSIC

Baton Society Concert — Ravi Shankar; October 7; Kresge Auditorium.

Boston Symphony Orchestra — Erich Leinsdorf conducting; October 7, 8:30 pm; Symphony Hall. Program: Wagner, "Siegfried Idyll," and Beethoven, "Symphony No. 9 in D minor," Op. 125.

Gardner Museum — Robin Hendrich, flute, and Helen Keane, harpsichord and piano; Oct. 7, 3:00 pm; admission free. Program: Schumann, "Romance, op. 94," Rouse, "Pan," from *Toujours de Flute*, Leclair, "Sonata in C major," Couperin, "Rigaudon," and "Forlane," Pinkham, "Aria," "Dithyramb," and "Eclogue."

Boston Symphony Orchestra — Erich Leinsdorf conducting; Oct. 8, 2:00 pm, and Oct. 9, 8:30 pm; Symphony Hall. Program: "Dallapiccola, "Due Pezzi," Mozart, "Sinfonia Concertante," K. 364, Dvorak, "Symphony No. 8 in G major," Op. 88.

Student Center — Dedication Ceremony, Oct. 9, 2:15 pm. Open house following.

Student Center Steps Concert — Cannonball Adderly Sextet; Oct. 9, 3:30 pm; tickets \$5.00 Kresge Auditorium in case of rain.

Gardner Museum — Carl Davis and John Oliver, piano four hands; Oct. 9, 3:00 pm; admission free. Program: Mozart, "Sonata No. 1," K. 381, Schubert, "Fantaisie," Op. 103.

Gardner Museum — Carolyn Reyer, mezzo-soprano, and Ralph Zitterbart, pi-

ano; Oct. 10, 3:00 pm; admission free. Program: Perischetti, "Two Songs on Emily Dickenson Poems," Pinkham, "Two Songs," Diamond, "We Two," Bales, "Four Songs" from "A Set of Jade," and Canning, "The Bird."

Uncorn Coffee House — Judy Collins; Oct. 11, 12, and 13.

Gardner Museum — Althea Mitchell, piano; Oct. 12, 3:00 pm; admission free. Program: Bach, "Prelude and Fugue No. 5," from "Well-Tempered Clavier," Book 2, Beethoven, "Sonata in E flat major," Op. 7, No. 4 Faure, "Nocturne," Op. 36, No. 4.

LECTURE  
Ford Hall Forum — Dr. Henry A. Kissinger, "A New Approach to International Relations," Oct. 10, 8:00 pm; Jordan Hall; admission free. (Priority given to members.)

Wellesley — Strappie Der Nersessian, "The Mosaics and Frescoes of the Kariye Camili," Oct. 11, 8:00 pm; Jewett Hall.

Wellesley — Francis Ponge, French poet and critic, lecture on poetry; Oct. 13, 7:45 pm; Penkleton Hall.

MISCELLANEOUS  
Hayden Gallery — Exhibit, "Ten Contemporary Indian Painters," through Oct. 10; 10:00 to 5:00 Mon. to Friday; Sat. and Sun. 1:00 to 5:00.

Wellesley — Junior Show, "One Knight's Stand," Oct. 8 and 9, 3:00 pm; Alumnae Hall; open to members of the Wellesley College Community and their guests.

LSC MOVIE — "Eight and a half," Oct. 8, 7:00 and 9:30 pm; Room 26-100; admission \$5.00.

LSC MOVIE — "Move Over Darling," 5:15, 7:30, and 9:45 pm; Room 26-100; admission \$5.00.

NEXT WEEK MUSIC

Gardner Museum — Virginia Schulze,

flute, and Myron Press, piano; Oct. 14, 3:00 pm; admission free. Program: Handel, "Sonata No. 2," G minor, Hindemith, "Sonata," Hanson, "Serenade," Faure, "Fantaisie."

Class of '66 Concert — Joe and Eddie; Oct. 16, 8:00 pm; Kresge Auditorium; \$2.25 admission.

Folklore Concert Series — Lester Platt & Earl Shruggs and the Foggy Mountain Boys; Oct. 16; Jordan Hall. Tickets available at Folklore Productions, P. O. Box 227, Boston.

Gardner Museum — Richard Vrotney, Bassoon, and Ralph Lockwood, Harpsichord; Oct. 16, 3:00; admission free. Program: Ozi, "Adagio and Rondo," Vivaldi, "Concerto," A minor, Senaille, "Introduction and Allegro Spiritoso."

Gardner Museum — Richard Conrad, Tenor and bell carillon, Robert Paul Sullivan, flute, guitar, and percussion, Arthur Loeb, recorders, viola da gamba, and percussion, Daniel Pinkham, organetto, regal, harpsichord, Psalter, and percussion; Oct. 17, 3:00 pm; admission free. Program: music from the time of Dante, in honor of the 700th anniversary of the year of his birth.

LECTURE  
Nathaniel Branden Institute — Nathaniel Branden, "Basic Principles of Objectivism," Oct. 15, 7:30 pm; Brown Hall, Huntington Ave. and Gainsboro St.; admission \$3.50, Students \$2.75. Ayn Rand will be present to answer questions.

Ford Hall Forum — Allen Drury, "Challenge to America," — the View from Washington, D.C.; Oct. 17, 8:00 pm; Jordan Hall; admission free.

LSC Lecture — Oct. 20.

MISCELLANEOUS  
Dramashop — "A Night Out" by Harold Pinter and "Improvisation" by Eugene Ionesco; Oct. 15, 8:00 pm; Kresge Little Theatre.

LSC Movie — "Mafioso," Oct. 15, 7:00, 9:30 pm; Room 26-100; admission \$5.00.

LSC Movie — "Strange Bedfellows," Oct. 16, 5:15, 7:30, and 9:30 pm; Room 26-100; admission \$5.00.

**UNICORN COFFEE HOUSE**  
**JUDY COLLINS**  
**OCT. 11, 12, 13**  
two shows nightly 8 p.m. and 10 p.m.  
825 BOYLSTON ST., BOSTON Tel. 262-9711

**Theatre Company of Boston**  
presents special performance of  
**"WAITING FOR GODOT"**  
Samuel Beckett  
FRIDAY, OCT. 8, 8:30 P.M.  
New England Hall  
Reservations call CO 6-7262  
All seats \$2.50  
"One of the few true classics of the avant garde theater."  
—Elliot Norton

music at mit...

Season starts — Open Rehearsal

By J. P. Montanus

Boston is famed for her culture, and especially for her music; and outstanding in musical Boston is the Boston Symphony Orchestra. It is the best paid orchestra in the world; and the most conservative of critics admit that it is among the best—period.

Students learn with awe that regular subscription tickets are not for sale; they are willed, not sold, to their new owners. But almost unbelievably, there is an opportunity to see the BSO at a ridiculously low rate. This bargain of the music world is the Open Rehearsal Season, which opened last Thursday at Symphony Hall with a performance of Beethoven's Ninth Symphony.

**Boston Theatre Co. announces workshop**

The Theatre Company of Boston, which has long shown its interest in new works, will include a Festival of New American plays among the major offerings of its 1965-66 season. In addition, a series of Monday evening performances of new plays will be presented under the new play workshop program. Four plays will be presented in the series, which is directed by Sara O'Connor. Playwrights who wish to submit plays for consideration should send them as soon as possible to: Theatre Company of Boston.

**Five ballets presented**

**Royal Danish Ballet Here**

By Mona Dickson

What kind of performance does the oldest ballet company in the world present? Is it steeped in Renaissance tradition, a paragon of Russian classicism? Neither.

Last weekend the Royal Danish Ballet brought to Boston their amazingly vivacious style, a mode of interpretation that transforms everything they do into something totally Danish. This is the tradition that Rudolf Nureyev received second hand. Male roles predominate (there are almost as many men as women in the company). Surprisingly, the leaping is not restricted to the men; everyone spends a good part of the time in midair. Movements are swift and abandoned, in a controlled double time that lends itself to joy and tragedy.

Five ballets were presented here, two classical and three modern. Saturday night they began with 'Fanfare', which was choreographed for the New York City Ballet in 1953 by Jerome Robbins. Based on Benjamin Britten's 'The Young Person's Guide to the Orchestra,' the ballet presents dancers as the instruments playing the original composition, their own variations, and a series of études and fugues by the separate sections. Without altering the original dance, the Danes have changed its mood. One is reminded of a company of roving players performing for a medieval prince.

'Miss Julie,' based on Strindberg's play, was choreographed by Birgit Cullberg for the Royal Swedish Ballet. This story of a titled prude who is so affected by the midsummer peasant reveals that she seduces her father's servant and later cannot bear the shame is drama in the 'Hamlet' tradition. Here in dance has been created a tragedy to rank with the finest plays ever written.

Starring in this ballet were the Danes' top performers — Kristen Simone and Erik Bruhn, who also stars in the company's version of Carmen.

The final presentation of the evening was the third act of 'Napoli,' written in 1942 for the Danes by August Bournonville, of whom we shall hear more later. Coming as it does after plot intrigues have been solved, the third act is a

For \$17.50 one can attend eight concerts on Thursdays from fall to spring; these are technically rehearsals, and Conductor Erich Leinsdorf does occasionally pause to give instructions to the concertmaster, Joseph Silverstein, or to one of the principals, but only between movements.

Thursday's concert was a fine example of the quality that can be expected at every appearance of the BSO. The program opened with Wagner's 'Siegfried Idyll,' the great orchestrator's only work composed without voice parts (excepting his chamber music). The small (for Wagner) ensemble demonstrated the purity and richness of tone that make the BSO a true 'virtuoso orchestra'. And the tone of the string section literally must be heard to be believed. No recording can capture it.

The Beethoven Ninth was, of course, the big attraction of the

evening, as the lines waiting to get to the unreserved seats attested. The orchestra was joined by the Harvard-Radcliffe Chorale and the New England Conservatory Chorus, plus four fine soloists. It cannot be said that the performance was perfect; those of us pampered by the mechanical perfection of records are quick to notice a slightly sour French horn note. But it was alive — and as close to perfect as one could ask.

Leinsdorf's precision was especially appreciated in the second movement, the scherzo (familiar as the Huntley-Brinkley music); the tympani, with hard sticks, was crisp and exact. And the choral finale, after a minor problem in the trumpet section, was truly inspiring. From the first whisperings of the theme in the cello and basses to the prestissimo climax, it was masterfully and sensitively done. It was an unforgettable experience — and one luckily open to Boston area students.

**Movie Schedule**

- MOVIES**
- Astor—'Ship of Fools,' 10:30, 1:07, 3:45, 6:20, 9:00. Short—12:55, 3:30, 6:05, 9:50.
  - Beacon Hill—'What's New Pussycat?' 10:00, 12:00, 2:00, 4:00, 6:00, 8:00, 10:00; 'Dial P for Pink,' 11:50, 1:50, 3:50, 5:50, 7:50, 9:50.
  - Brattle—Today, 'Journey Into Fear.' Thurs-Fri-Sat. 'The Magnificent Ambersons.' Week of October 10-16. 'Time in the Sun' plus 'The Spanish Earth.' Daily 5:30-7:30-9:30; Sat & Sun matinees at 3:30.
  - Boston Cinerama—The Hallelujah Trail, Wed. at 2:00 pm; Sat., Sun. and hol. at 1:30 and 5:00 pm; eve. at 8:30 pm.
  - Capri—'The Collector,' 10:45, 1:05, 3:20, 5:40, 8:00, 10:00.
  - Center—'The Invisible Dr. Mabuse,' and 'The Terror of Dr. Mabuse,' starts 9:30 am.
  - Cinema Kenmore Square—'Casanova 70,' 1:45, 3:45, 5:45, 7:45, 9:35.
  - Esquire—'Cat Ballou' and 'Dr. Strangelove.'
  - Gary—'Sound of Music,' eve. at 8:30, Sun. at 7:30. Mat. daily at 2:00 pm.
  - Harvard Square—Today through Tuesday, 'Help!' 2:30-5:00-7:30-10:00; 'A Home of Your Own,' 1:45-4:20-6:45-9:20. Oct. 13 & 14, 'An Evening with the Royal Ballet' 2:30-5:30-8:30. Tickets now being sold.
  - Lewis—'Orpheum—Marriage on the Rocks,' 10:20, 12:45, 2:55, 5:15, 7:30, 9:45.
  - Mayflower—'Lord Jim.'
  - Music Hall—'Funny Feeling,' 6:00, 8:00, 10:00.
  - Paramount—'Old Yellow,' 9:30, 11:59, 2:28, 4:57, 7:26, 9:55. 'Flash, the Teenage Auto,' 11:01, 1:30, 3:59, 6:28, 8:57, 11:19.
  - Paris Cinema—'The Knack and How to Get It,' 1:15, 3:00, 4:45, 6:30, 8:15, 10:00.
  - Park Square Cinema—'High Infidelity,' 1:30, 3:30, 5:30, 7:35, 9:35.
  - Savoy—'Darling,' 9:45, 11:50, 2:05, 4:20, 6:40, 9:00.
  - Saxon—'My Fair Lady,' eves. at 8:30, Sun. at 7:30, matinees Wed., Sat., Sun., and hol. at 2:00 pm.
  - Symphony Cinema—'Divorce Italian Style,' 2:00, 4:00, 6:00, 8:00, 10:00.
  - Uptown—'The Ambherst General,' and 'The Wrong Arm of the Law.'
  - West End—'Male Hunt.'

**Theatre Schedule**

- Colonial—'On a Clear Day You Can See Forever,' by Lerner and Lane; 8:30 pm; mat. Thurs. 2:15; through Oct.
- Wilbur—'The Impossible Years,' by Bob Fisher and Arthur Marx; 8:30 pm eve., mat. Thurs. 2:15 and Sat. at 2:30; through Oct. 9. Starting Oct. 11, 8:00 pm; 'Mating Dance,' with Van Johnson.
- Shubert—'Hot September,' 8:30 pm eve., mat. Thurs. 2:15 and 2:30; through Oct. 9.

M. A. Greenhill presents  
a country music show with

**LESTER EARL  
FLATT & SCRUGGS**  
and the Foggy Mountain Boys

and the inimitable  
**CHARLES RIVER VALLEY BOYS**

Sat., Oct. 16, 8:30 pm  
**JORDAN HALL**  
\$3.75, 3.25, 2.75, 2.25

To the readers and admirers of  
"Atlas Shrugged" and "The Fountainhead"  
**Nathaniel Branden**  
will deliver the opening lecture of his series on  
**Objectivism**  
the philosophy of

**AYN RAND**

and its application to psychology

Friday, October 15, 7:30 p.m., Brown Hall  
Huntington Avenue and Gainsborough Street, Boston  
Single Admission \$3.50, Student Admission \$2.75

Miss Rand will join Mr. Branden during the question period.

Nathaniel Branden Institute, Inc.

For a descriptive brochure, contact NBI's local representative  
Dr. Mary Efron, 292 Hammond St., Newton, Mass. 02167  
Phone: BE 2-1076 (evenings and weekends)

**LSC Presents**

Friday—October 8

Fellini's

**8 1/2**

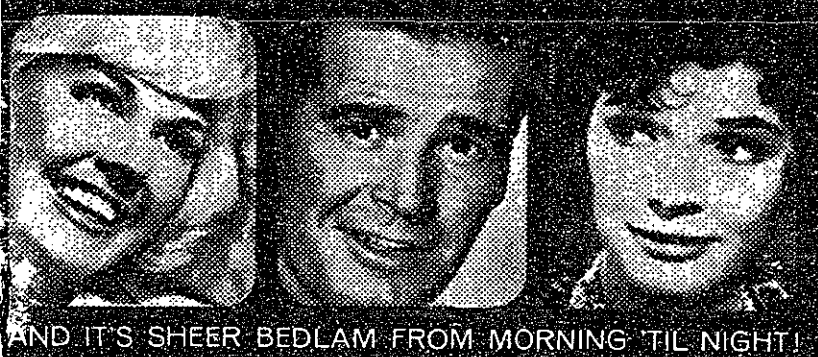
26-100

7 & 9:30 p.m.

50c

Saturday—October 9

HE'S MARRIED TO HIM ... HE'S MARRIED TO HER



AND IT'S SHEER BEDLAM FROM MORNING 'TIL NIGHT!

TWENTIETH CENTURY-FOX PRESENTS  
**doris day  
james garner  
polly bergen**

AN ARAB ROSENBERG-BARTH BELCHER PRODUCTION

**move  
over,  
darling**

CO-STARRING THELMA RITTER-FRED CLARK-BOB KROTTIS-ELLIOTT REED  
**and chuck connors**

PRODUCED BY ARON ROSENBERG & MARTIN MELCHER  
DIRECTED BY MICHAEL GORDON—SCREENPLAY BY HAL KANTER & JACK SHER  
CASTING BY BELLA SPENCER, SAMUEL SPENCER & LEO MCCARTHY  
CINEMASCOPE

26-100

5:15, 7:30, 9:45

50c

The new serial

**"The Spider Returns"**

starts at 5:00

Sunday—October 10

Kafka's

**THE  
TRIAL**

10-250

8 p.m.

50c

**MIT ID REQUIRED FOR  
FRIDAY AND SATURDAY  
NIGHT MOVIES**

Exceptions: Dates and members of the immediate family.

## Letters to The Tech

(Continued from Page 2)  
 fortunate countries and in our own, where education is taken more for granted. We hope the Office of Foreign Students can offer some suggestions to these hopeful students.—Ed.)

### Coopitis

To the Editor:

The new Coop is here, and I'm glad. It's bigger and better. But, at times, it seems bigger-er than better.

It's much easier to get your textbooks now, and the present cash register lines are shorter than the old textbook lines. But the textbook information is still often faulty or missing, and the Coop's ideas about how many copies to get are as cretinous as ever. (Do you have all your textbooks yet?)

There's a box of my favorite typing paper in the window, but none in the store. Try to get some

Ivory soap. Try to get some unlined notebook paper.

I went in there the other day to get some bleach. Bleach. You know the stuff. I like a strange, out-of-the-way brand called Clo-rox, but I'm not at all picky. But I do like to have some kind of bleach because it gets my underwear cleaner, and even a Tech Tool occasionally likes clean underwear.

Friends, the Coop doesn't carry bleach.

I know what you're thinking. You're thinking maybe I didn't know where to look, or maybe they were out of it that day, or maybe in the hustle and bustle of starting a new store they just hadn't gotten any in yet. Nope. I checked.

Dear Coop, I love you, but Stop & Shop still will have a place in my life.

Daniel P. Smith

## Christian Fellowship schedules speakers

The MIT United Christian Fellowship will present its fall program of two lectures.

The first "The Uniqueness of Christ" will be given Monday, October 11, at 7:30 p.m. in the Vannevar Bush Room, 10-105. The speaker will be Mr. Robert Hill of the Inter-Varsity Christian Fellowship Staff.

The second lecture will be Monday, October 18, at 7:30 p.m. in the Bush Room. The speaker will be Mr. Robert S. Smith speaking on "The Meaning of Guilt."

A discussion session will follow each lecture.

### Samuel Bluestein Co.

"Complete School Supplies"

TYPEWRITERS

SALES - SERVICE - RENTAL

1080 Boylston St. | 345 Main Street  
 Boston | Malden  
 COpley 7-1100 | DAvenport 2-2315

## AEC notes MIT's atom power request

The Atomic Energy Commission is considering a proposal to permit increased power operations of the research reactor at MIT.

The Institute now holds a license for operation at power levels up to two thermal megawatts. It has asked for authority to boost this to five.

## ELSIE'S

Noted for the best Sandwiches to eat in or take out.

FAMOUS ROAST BEEF SPECIAL SANDWICH—KNACKWURST—

BRATWURST with SAUERKRAUT

or POTATO SALAD

"und die feinen Wurstwaren"

71 Mt. Auburn St., Cambridge

491-2842

PHIL & CLAUDETTE MARKELL

## The most walked about slacks on Campus are HUBBARD slacks with "DACRON"

Great Hubbard styling with the lasting neatness and care-free comfort of "Dacron", in these slacks of 55% Dacron\* polyester, 45% worsted wool. Styled in traditional Classic and Gay Blade plain front models, in all the favorite colors, at better stores everywhere. Also available in blends of 70% Orlon\* acrylic, 30% worsted wool, or "Dacron" with "Orlon".

\*du Pont Reg. T.M.



# Want to be a big hero? Then look for big challenges!

Come to General Electric, where the young men are important men.

Important responsibilities come to you early at G.E.

You could find yourself on the team responsible for marketing a new appliance. Or you could be in India, installing a nuclear power plant. Or in a laboratory, looking for applications for a remarkable

new "artificial gill" that lets mammals breathe under water.

This is a worldwide company that makes over 200,000 different products, from jet engines and weather satellites to computers and color TV. In this kind of company, you have to be very good to get very far.

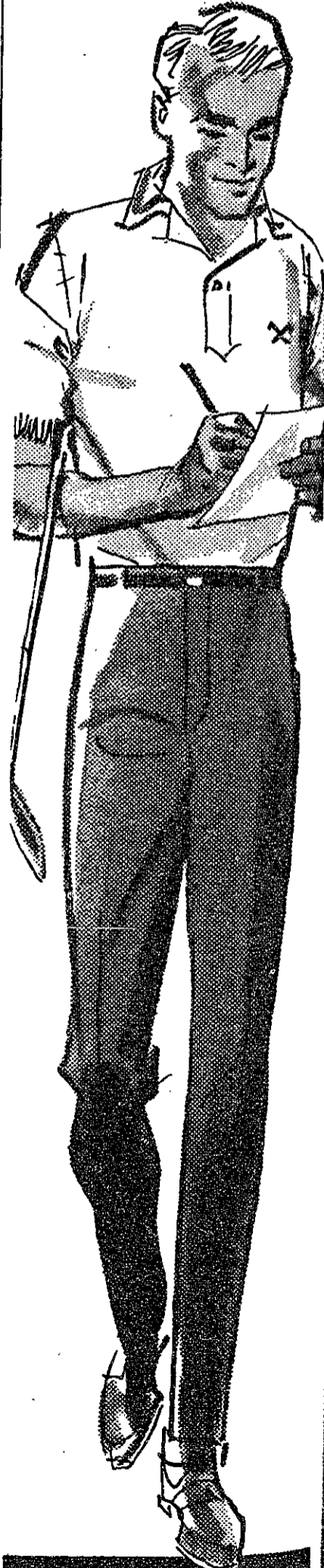
If you are good, you'll be rewarded. With money, of course. But with responsibility, too.

The most important job you'll ever have is your first job.

And the most important job interview you may ever have is with the man from G.E.

Progress Is Our Most Important Product

GENERAL  ELECTRIC



HUBBARD

## Programmers lacking

# Computer possible answer to inefficiency

(Continued from Page 7)

fact the computer is the chief hope Soviet planners have of gaining efficiency yet retaining the all-important centralization and control. The only thing holding them back is the fact that a computer's knowledge can only be as good as its programmer's, and the Soviet Union's heritage in the field of computers is very limited.

**Computer-power important**  
This new dependence on the computer is significant. The Soviets are coming to realize that it is beyond human capabilities to establish artificial yet efficient market mechanisms. From the capitalists' perspective, it merely now remains for them to discover

that even a computer cannot achieve an efficient market mechanism.

If this is a fluctuation in favor of efficiency at the expense of centralization, Mr. Korol was next asked, can we look for the opposite fluctuation in the future? Yes, Mr. Korol asserted, and he referred to Khrushchev's decentralization of the late 1950's when "sovnarkhozy" were established, placing centralization on a regional level. But these proved inoperable, and Moscow immediately pulled in the ropes, first by reducing the number of "sovnarkhozy" and finally by complete re-centralization. Mr. Korol expects the same reaction to any further radical changes.

**Decentralization seems unlikely**  
Is decentralization impossible, then, in the Soviet Union? Mr. Korol's answer to this was basically "Yes." His theory is that once one removes the initiative from the factory manager and replaces it with quotas, it is hard to remotivate that initiative. Likewise, now that a planned economy is the system of the Soviet Union, a free market can not simply be introduced and have the planners expect instant stabilization. An important example is that of standards. In the United States standards are set by mutual and voluntary agreement within each industry. Screws turn clockwise; a Zenith tube can fit an R.C.A. appliance, and so forth. Mr. Korol believes that among Soviet planners there is a definite fear that if industries and individual "companies" were granted autonomy, present standards would be lost.

Turning to the topic of Mr. Korol's latest book, Soviet research and development, he was next asked whether inefficiency was also a major problem in science. First, Mr. Korol pointed out that

in the Soviet Union all funds for research and development come from the government. Although most contract-conscious American scientists would jump at such assured funds and assured work, economically this creates quite a problem for, with such incentive lacking, scientific efficiency is severely hurt.

In short, then, the Soviet Union is making another attempt at increasing efficiency through decentralization. But Mr. Korol does not doubt that eventually the Soviets will resort to a free market of some sort and have an economy operating at peak efficiency. (And the reader should be reminded that the Soviet Union has tremendous resources, resources much greater than even those of the United States. Until that time, however, the Soviet Union is insistent on making sure that centralization and efficiency are incompatible.)

## TSE adds VISA to list of projects

Technology Student Enterprises is again expanding. Under the leadership of President Hank Perritt '66, TSE is presently contracting the Varsity International Sales Ass'n, and soon intends to make VISA a separate division.

VISA is a discount card which entitles student members to receive cash discounts at subscribing merchants, which range from barber shops to gas stations to theatres to ski areas.

The card will cost three dollars and is available only to college students. It is also valid nationally at all subscribing merchants on more than 55 college campuses, as well as the more than 150 member stores in the Boston area.

Sale of the cards will begin in approximately two weeks.

## Cherchez la Femme

# Clear sailing for mixers

By Mike Rodburg

For the Techman ever eager to reap the bounty of adventure aboard the Mixers of the Seven Seas, this weekend could provide the necessary elements for excitement, swashbuckling, and daretaking. (Who knows?—There's even the chance of meeting some girls.)

Keep in mind, however, that feint heart ne'er won fair lady, so be prepared to match wits and charms with such scavengers as the Crimson Pirates of the neighboring port. But wherever the currents carry you, Cherchez la Femme wishes you good luck and Bon Voyage.

Our first port of call is rather nearby. Just across the Straits of Charles lie the Towers of Boston University. This Friday evening at 7:30 the fair damsels of that fortress will present the "Club 140." Liberty passes have been issued by the Towers' Social Committee and must be presented at the door.

The girls will be available and receptive to Tales of Tech, so the gob who is sufficiently glib of tongue and fleet of foot ought to find the entire affair conducive to fulfilling his aims and worthy of his presence. Music and refreshments both will be provided.

For the more intrepid sailors, or for those low on dramamine supplies, the Lawrence Hospital, School of Nursing is providing aid and comfort to the storm-tossed. On Friday, beginning 8 pm, the Medford based port will provide music by the Luv Lace Lads. The cost of admission is 99c (or one piece of eight).

The truly adventurous sort with a sturdy set of sails will site on a friendly star and make his way to the fabled Mt. Holyoke. He will drop anchor for the evening of Friday, Oct. 8, at Abbey Hall. There it is advisable that he re-

move the bees wax from his ear and girt himself for the wail of tempting music and the sight of temptress sirens.

## Voo Doo places fourth in humor magazine poll

Voo Doo placed fourth in a national humor magazine poll conducted not too long ago. The poll, conducted by Voo Doo, also placed Voo Doo third if suitable combinations of votes were considered.

The top ten, in order, were (1) Charlatan (Florida State), (2) Pelican (Berkeley), (3) Sundial (Ohio State), (4) Voo Doo, (5) Satyr (UCLA), (6) Lampoon (Harvard), (7) Record Yale, (8) Ranger (University of Texas), (9) Chaparral (Stanford), and (10) Tiger (Princeton).

Some of the men responsible for this fine showing for Voo Doo were Mike Levine, General Manager; Charles Deber, Editor; Bob Pindyck, Managing Editor, and Kim Thurston, Business Manager. Voo Doo refers to these people as the "Managing Board."

In addition to this placing, Voo Doo also took fifth place for the best single issue with its notorious Gayboy publication last winter.

## Creative photography display now in gallery

A display of paintings and creative photographs is being shown in the Creative Photograph Gallery.

The paintings are the work of Robert O. Preusser, associate professor of visual design at MIT. Before coming to MIT Prof. Preusser was curator of education at the Houston Museum of Fine Arts, and prior to that was a director of the Contemporary Arts Museum in Houston.

**GOOD YEAR**  
**TIRES**  
AT DISCOUNT PRICES  
New — Used — Sport  
**2.95 UP**

**MUFFLERS**  
Installed Free  
**8.95 UP**

**BONDED BRAKES**  
While U Wait  
**12.95**

**TIRE MART**  
185 BROADWAY, CAMBRIDGE  
EL 4-8649  
UN 4-8989

# The Student Center Dedication

**SATURDAY, OCTOBER 9**

**2:15 pm Dedication Ceremony on Kresge Plaza**

All students and their dates, faculty, staff invited

**2:45 pm Open House in the Center**

Refreshments and tours of the building

**3:30 pm The Cannonball Adderly Sextet, featuring Nat Adderly**

Presented by Alpha Phi Omega. Tickets 50c.

**8:00 pm A Semiformal Dance with the Ken Reeves Orchestra**

Sala de Puerto Rico. Couples 50c.

The ceremony and the concert will be held in Kresge Auditorium in the event of rain.

Presented by the Dedication Committee of the 1966 Institute Committee:

John Montanus, chairman, Ernie Ascherman, Steve Lipner, Keith Patterson, Judi Sahagen, Jim Schwarzrock

## Mrs. Lutz, draft adviser discusses deferments

With the deferments of many students expiring in October or November, there have been many delays in reclassification. However, Mrs. Eleanor Lutz, Selective Service Advisor, adds that no student need worry about being called up for the draft unless he has failed to apply for an extension.

Mrs. Lutz also said that every full-time college student whose file is completed is entitled to one mandatory deferment in Class 1-SC; so that it is impossible for any present student to be inducted before June. The 1-SC deferment, a law and therefore not a decision of the local board, automatically follows a 1-A classification. Before the 1SC deferment expires, there is still ample time to request a 2-S deferment.

The following have not applied for extension of 2-S deferment for this schol year:

### Sophomores

Joseph E. Campbell, Peter C. Colter, Alan D. Covey, Jonathan

A. Fellows, Charles B. Miller, Daved N. Olson, Lawrence N. Smith.

### Juniors

Beau E. Cox, Larry P. Cox, Harry T. French, Michael A. Gelberh, John N. Gowdy, Richard A. Haverman, Stephen K. Holford, Larry A. Mc Nechols, Alan M. Miller, Richard S. Patoon, Stephen H. Skiles, James H. Williams, Jr.

### Seniors

David Assael, Neal J. Brower, Thomas S. Bush, Jr., Timothy M. Carney, David Chandler, James C. Deckert, Alan B. Dolmatch, Thomas G. Franzel, Timothy P. Karpotsky, Frederick F. Kazmierczak, Joseph M. Kurland, Robert D. Large, Robert S. Liberles, John M. Mazola, Arnold L. Moore, Jr., Edmund M. Notzon, III, Richard E. Nygren, Duncan J. Rhodes, Victor L. Fosenberg, Paul F. Salipante, Jr., Rodney A. Schmidt, Jr., Thomas A. Scott, Nicholas A. Shain, Clinton D. Winant, Jr.

## Patricia Cain named Activities Secretary

Miss Patricia Cain has been selected to fill the newly-created post of Activities Secretary.

The position was formed to solve the problem of many activities which had to do their own secretarial work, because none of these groups had enough work to necessitate the hiring of a secretary. Now with the selection of Miss Cain, there will be a single person who will handle all of the secretarial chores of many of the larger activities, primarily Social Service Committee, LSC, and the publications.

Miss Cain's office is in the new Social Service Committee offices, room 443 in the Student Center.



Photo by John Torode

Pat Cain, new activities secretary, watches from behind desk as more experienced TCA secretaries Connie Houghton and Nancy Salvato (both on desk) and Inscomm secretary Betty Hedricks tell her about new Student Center offices.



1. Hey, you coming to the hootenanny?

I'm not feeling very folksy tonight.



2. You got those low-down, feelin' poorly, out-of-sorts blues?

I wouldn't get so poetic about it.



3. Why not sing out your woes? Let the world hear your troubles.

Look, singing has nothing to do with it. I've been thinking about the kind of work I want to do when I graduate.



4. Music of the people can provide a catharsis.

I don't need one.



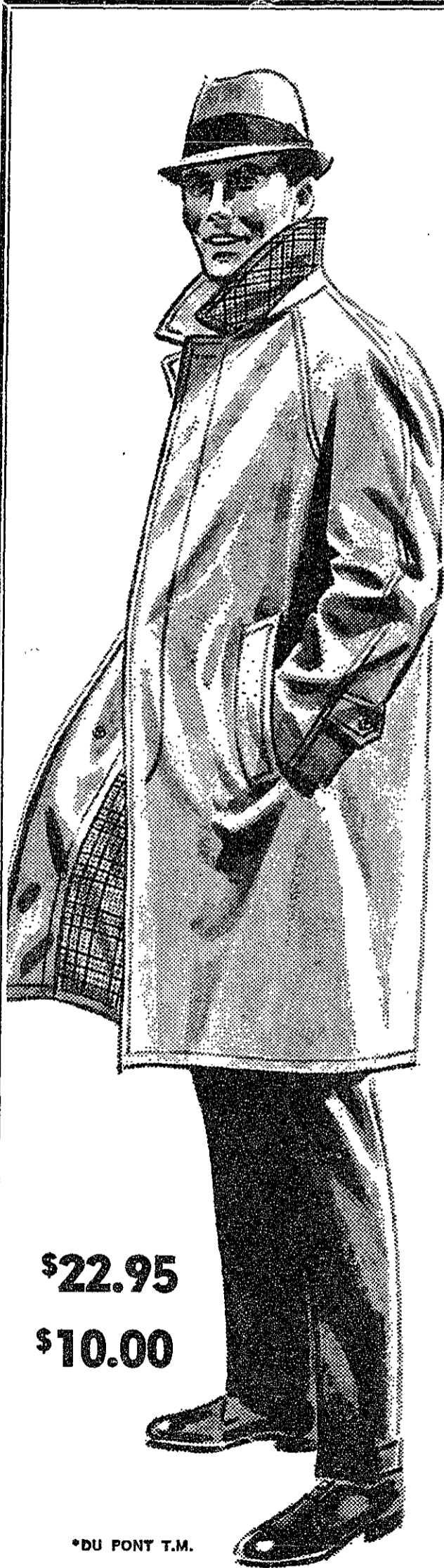
5. Shout your story to the hills, the sands, the far-away seas. And listen for an answer from the winds.

I doubt if the winds will tell me where I can get a challenging job with good pay and plenty of opportunity to move up.



6. Oh, if that's what you're concerned about, why not get in touch with Equitable. They're looking for college men who have demonstrated a potential for above-average achievement. I'm sure you'd be happy in one of the special development programs because the work is fascinating, the salary excellent, and the opportunities unlimited.

Say, how about a medley of John Henry, Rock Island Line and Michael, Row the Boat Ashore.



*handsome is as handsome does*

This wash-and-wear all-weather coat by Plymouth performs handsomely in any weather.

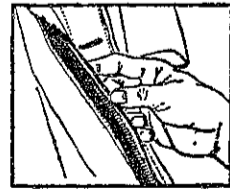
Comfortable raglan shoulders and careful craftsmanship by Plymouth in a striking style. Wear the collar up — it's lined with handsome plaid that matches the full lining. And, coats by Plymouth are as good as they look. Stays water repellent and stain resistant even after repeated washing.

TOPS EVERYTHING YOU WEAR™

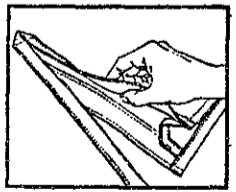


\$22.95

\$10.00



**INSTANT ZIPABILITY** — an exclusive Plymouth feature! A zipper is pre-sewn into every Plymouth coat so you can zip in any Plymouth liner at any time.



**VENTRIM** — an exclusive Plymouth feature! Floating lining design with unusually fine detailing at vent prevents puckering and pulling.

\*DU PONT T.M.

**THE TECH COOP**

**MIT STUDENT CENTER**

Store Hours:— 8:30 to 5:15 Monday thru Saturday

Make an appointment through your Placement Office to see Equitable's employment representative on **October 22** or write to Patrick Scollard, Manpower Development Division, for further information.

The **EQUITABLE Life Assurance Society of the United States**

Home Office: 1285 Ave. of the Americas, New York, N.Y. 10019 ©Equitable 1965  
An Equal Opportunity Employer

## Whitewater Club seeking members; Coeds hold mixer Planning meeting tomorrow night for the Harvies

At Cohasset, Massachusetts, Sept. 25-26 and at Dartmouth College last weekend, several members of Whitewater Club participated in whitewater slaloms. A whitewater slalom is similar to a ski slalom, except that the poles or gates are hung above river rapids with the paddler negotiating these gates while maneuvering through foam and turbulent

water. This exacting sport, requiring precision and, hence, more brains than brawn, has been known in Europe since World War II, but it has been only in last five years that Americans have shown an interest and corresponding ability in slalom and down-river racing.

### No experience necessary

The Whitewater Club was formed to promote this sport within the MIT Community, and as such, offers the beginner, as well as the more experienced paddler, instruction in basic technique for handling kayaks and whitewater canoes (banana boats). Although nobody in the group has paddled more than a year and a half, three qualified for the National Canoe and Kayak Championships last Spring.

### Meeting at 7:00

Members of the MIT Community who can swim (no whitewater experience necessary) and who are interested should attend the meeting on Thursday at 7:00 pm in room 2-142.

For the first time in history, MIT coeds held a mixer with Harvard College, a fair-sized liberal arts school in Cambridge.

Wilma Sandler, Course IV junior, heard from her brother Kenny, a Harvard freshman, that MIT coeds had a reputation at Harvard for being "sliderules." In order to prevent this unfavorable attitude, Wilma conceived the idea of letting the Harvies find out for themselves what coeds are like.

Kenny chose twenty suitable Harvard freshmen, and Saturday night they met McCormick's Third Floor freshmen in the penthouse. The evening, spent in dancing and talking, was called successful. This is interesting, since no coeds have yet received calls from their Ivy mixer-mates.

The organization of the "Harvie Party" was taken over by freshman Amy Shigemoto. She and Wilma would both like to see similar events in the future.

## CAREERS IN STEEL



Our representative  
will be on campus

November 1, 2, 3

to interview undergraduate  
and graduate candidates for  
Bethlehem's 1966 Loop  
Course training program.

OPPORTUNITIES are available for men interested in steel plant operations, sales, research, mining, accounting, and other activities.

DEGREES required are mechanical, metallurgical, electrical, chemical, industrial, civil, mining, and other engineering specialties; also chemistry, physics, mathematics, business administration, and liberal arts.

If you would like to discuss your career interest with a Bethlehem representative, see your placement officer to arrange for an interview appointment.

An Equal Opportunity  
Employer in the Plans for  
Progress Program

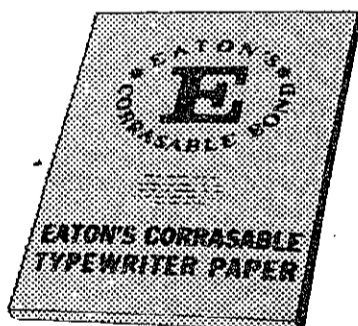
**BETHLEHEM  
STEEL**

# DON'T

fight it.

Get Eaton's Corrasable Bond Typewriter Paper.

Mistakes don't show. A mis-key completely disappears from the special surface. An ordinary pencil eraser lets you erase without a trace. So why use ordinary paper? Eaton's Corrasable is available in light, medium, heavy weights and Onion Skin. In 100-sheet packets and 500-sheet ream boxes. At Stationery Departments.



Only Eaton makes Corrasable.®

EATON PAPER CORPORATION, PITTSFIELD, MASSACHUSETTS

## The Bulletin Board . . .

(Continued from Page 6)

Technique Senior Pictures. All Co-op Seniors and any other Seniors who did not have their picture taken in the Spring. Sign up in Bldg. 10, October 6, 7, 8.

### Saturday, October 9

2:00 pm—Freshman soccer: MIT vs. Connecticut. Briggs Field.  
2:15-2:45 pm—Formal dedication of Student Center. Student Center steps. (In case of rain . . . Kresge Auditorium).

2:45 pm—Student Center open house.

3:30-5:30 pm—Cannonball Ad-derly Sextet concert. Tickets: \$.50 per person. Student Center steps in case of rain . . . Kresge).

7:00 pm—Anton Heiler. Department of Humanities organ concert. Kresge Auditorium.

8:00-12:00 pm—Semi-formal dance. Ken Reeves Orchestra. Refreshments. Tickets: \$.50 per couple. Sala de Puerto Rico, Student Center.

### Special Notice

Pershing Rifles. Members only. Maneuver to Fort Devens, Ayer, Mass. Meet bldg. 20E-014.5, October 9 at 7:00.

### Sunday, October 10

11:00 am—Protestant Worship Service. The Chapel.

6:30 pm—MIT concert jazz band rehearsal. Kresge Auditorium.

7:00 pm—Institute Committee meeting. Refreshments. Student Center.

7:30 pm—Freshman Council organizational meeting.

8:00 am—Society of Radicals for Capitalism. Lecture: In Place of Coercion. Speaker: Adam Reed. Admission: 30c for non-members. The Miller Room, 3-070.

### Monday, October 11

9:00-5:00—Technique: Co-op students' senior pictures. The Student Center, the Green Room.

5:00 pm—MIT Concert Band rehearsal. Kresge Auditorium.

5:00 pm—MIT Outing Club meeting. Walker Memorial, Room 306.

7:00 pm—MIT Gilbert & Sullivan Society rehearsal. Rehearsal Room B and the Main Auditorium, Kresge Auditorium.

7:30 pm—MIT United Christian Fellowship. Lecture and discussion: The Uniqueness of Christ. Speaker: Robert Hill, staff member, Inter-Varsity Christian 105.

7:30 pm—MIT Young Americans for Freedom meeting. Miller Room, 3-070.

### Tuesday, October 12

9:00 am-5:00 pm—Technique: Co-op senior pictures. The Green Room.

5:00 pm—MIT Glee Club rehearsal. Rehearsal Room A, Kresge Auditorium.

7:00 pm—T.C.A. Smoker for anyone interested in social service work, general service work, the Social Beaver, the Blood and the Charities Drives, and other worthwhile projects. Refreshments. The Student Center, Room 491.

7:00 pm—MIT Gilbert & Sullivan Society rehearsal. Kresge Auditorium.

7:30 pm—MIT Symphony Orchestra rehearsal. Kresge Auditorium.

### Wednesday, October 13

9:00 am-5:00 pm—Technique: Co-op senior pictures. The Green Room.

4:00 pm—JV soccer: MIT vs Stevens Business College. Briggs Field.

5:00 pm—MIT Concert Band rehearsal. Kresge Auditorium.

5:00 pm—MIT Glee Club rehearsal. Rehearsal Room A, Kresge Auditorium.

7:00 pm—MIT Gilbert & Sullivan Society rehearsal. Kresge Auditorium.

### Thursday, October 14

4:00 pm—Varsity soccer: MIT vs Tufts. Briggs Field.

4:00 pm—Varsity tennis: MIT vs Brandeis. The tennis courts.

5:00 pm—MIT Glee Club rehearsal. Rehearsal Room A, Kresge Auditorium.

6:30 pm—I.F.C. dinner and business meeting. Hotel Kenmore.

7:30 pm—MIT Hillel: Discussion of Norbert Weiner's book, **God and Golem, Inc.** by MIT Dean Jerome Wiesner and Prof. Walter Rosenblath. Refreshments. The Student Center, Room 407.

### Friday, October 15

12:00 noon—Voo Doo stunt. Lobby, bld. 10. Nonetheless and unforgetably, **Voo Doo** on sale today only! Bldgs. 10, 2.

5:00 pm—Science Fiction Society meeting. Spofford Room, 1-236.

8:30 pm—Dramashop presents an evening of one act plays. Admission: free. Kresge Little Theater.

7:00 pm and 9:30 pm—L.S.C.: Mafioso. Room 26-100.

### Saturday, October 16

1:30 pm—Freshman Cross Country: MIT vs New Hampshire. Franklin Park.

1:30 pm—MIT Bridge Club meeting. Walker Memorial, the Blue Room.

**SAVE** On Eaton Paper  
**THE TECH COOP**

# TECH TRAVEL SERVICE

AN AGENCY OF TSE, INC.

128 MASS. AVE. (ARMORY)

## ANNOUNCES ITS THANKSGIVING OPERATIONS

Exclusively for members of MIT community and immediate families

### CHICAGO via Boeing 727

**\$90.40** round trip

Limited to 35 Passengers

Leave Boston 4:00 P.M. Wednesday, Nov. 24  
Arrive Chicago 5:14

Leave Chicago 6:35 P.M. Sunday, Nov. 28  
Arrive Boston 9:29 P.M.

### N.Y.C. via Lavatory-Equipped Greyhound

**\$10.00** round trip

Leave Kresge Auditorium 4:15 P.M. Wednesday, Nov. 24  
Arrive Port Authority 9:30 P.M.

Leave Port Authority 5:00 P.M. Sunday, Nov. 28  
Arrive Kresge Auditorium 10:00 P.M.

Tickets available Oct. 13 in Bldg. 10 or in TSE Office,  
in the front of the Armory—864-3194, X2924 or X7010

## Middlebury next

# Soccer team outscored by Trinity, WPI

By Bob Sultan

Trinity lived up to its reputation of having one of the two best soccer teams in New England as it defeated the Tech squad 6-3 on Saturday, October 2. Tech trailed 3-0 until the final quarter when three Tech goals in succession brought the fans to their feet. The Tech rally was short-lived, however, as Trinity scored three more goals before the final gun. Captain Savit Bhotiwihok '66 scored one Tech goal and Bayou Ajita '67 the other two.

Batterman pulls switch

Saturday's loss followed closely behind a 2-1 loss to Worcester Polytech on Wednesday, September 28. After Wednesday's game Coach Charles Batterman decided that the Tech defense was not strong enough for a 4-2-4 formation but needed a full five men playing back. As a result Saturday's game was played with standard W and M formations. Trinity promised to be the season's toughest game and knowing this, the coach pulled a real

switch. The most experienced players had been playing defense and the line had consisted of all sophomores, in previous games. On the theory that, if we were to win this game, we'd need a really aggressive offense, the coach completely reversed the situation. This put experienced players like Bhotiwihok and Ajita on the offensive line.

Trinity too balanced

The plan wasn't enough. It looked like Trinity just didn't have weak spots. Their passing was short, accurate, and controlled and their defense was tight. One spectator summed it up by nothing that they always seemed to be where the ball was. With ball a couple of yards directly in front of the goal a Techman gave it a solid kick right in. Out of nowhere came the Trinity goalie and suddenly the ball was between him and the ground. It happened so fast that it took a while for Tech fans to realize that it wasn't a goal.

Tech weak spots show

The Tech team's weak spots showed up in contrast to their competition. Passes were made in the general direction of the goal rather than to a receiver goal shots were well set up, and in general the Techmen didn't function as a team. The sophs had little experience on defense and tended to play defensively. This left a major portion of the defense to the Tech goalie Avrim Markowitz '67 who made a multitude of fantastic saves.

We'll probably see some more juggling of positions and a lot of practice on short passing before the next game which is against Middlebury, another top opponent. It's clear from Tech's three goals in succession that cheering helps them along so show up at the games, yell, and enjoy a really exciting sport.

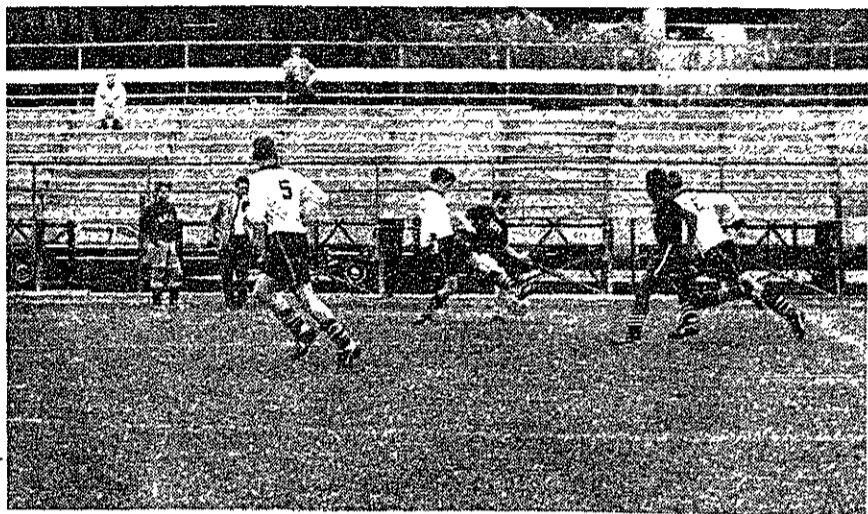


Photo by Jim Robertson

Bayou Ajita '67 (running toward ball) and an unidentified MIT soccerman fight for ball control at midfield against WPI last Wednesday on Briggs Field. The Worcester team edged the Techmen, 2-1.

## Grad crew still needs coxswain

The first event of the year for the Graduate Students Crew will be the Head of the River Race on October 16. As of now, the Grad oarsmen are without a regular coxswain, and anybody interested in coxing the eight should contact Paul Blaiklock at 267-4195. Any help from experienced rowers willing to act as coach, even on a

part time basis, would be much appreciated.

The Grad Crew will also row in the Class Day Races in November, and will compete against many local college eights in the spring. They hope to improve on their last year's record of 2-2 and to again put two boats on the water.

### On Deck

**Thursday, October 7**  
Soccer (JV) — Stevens Business College, Home 4 pm.  
**Friday, October 8**  
Tennis (V) — Rhode Island, Home, 4 pm.  
Golf (V) — ECAC Qualifying Round at Rhode Island (through Sat.).  
**Saturday, October 9**  
Soccer (V) — Middlebury, Away, 11 am.  
Soccer (F) — Connecticut, Home, 2 pm.  
Cross Country (V) — Wesleyan, Coast Guard, Away, 2:30 pm.  
Cross Country (F) — Wesleyan, Coast Guard, Away, 2 pm.  
Sailing (V) — NEISA Eliminations at Coast Guard  
Sailing (F) — Nonagonal at Rhode Island.

**Sunday, October 10**  
Sailing (V) — Wood Trophy at Corinthian.  
Sailing (F) — Nonagonal at Brown.  
**Monday, October 11**  
Golf (V) — Boston College, Babson, Away, 12:30 pm.  
**Tuesday, October 12**  
Sailing (V) — Finn Invitational at Harvard.  
Soccer (F) — Tufts, Away, 3 pm.

**Dutch Cleaners**  
233 Massachusetts Ave.  
Opposite Necco  
TRowbridge 6-5662  
**Quality - Service**

## Three matches open IM tennis this afternoon; Chinese Students vs. Theta Chi in feature

The 1965 intramural tennis tournament will open today with three matches scheduled on the courts 8-15 behind Burton House at 4:00. Pi Lambda Phi "B" meets Burton "B," Chinese Students "A" meets Theta Chi, and Ashdown "B" will play Tau Epsilon Phi.

On Friday, October 8, NRSA plays Theta Xi, Grand Economics faces Senior House and Delta Upsilon meets Zeta Beta Tau. These matches will also take place behind Burton House. Saturday at 9:30 will find Alpha Tau Omega against Phi Gamma Delta, Sigma Alpha Epsilon against Phi Sigma

Kappa, and East Campus against Burton "A." At 11:30, Sigma Chi meets Sigma Phi Epsilon, Lambda Chi Alpha faces Student House Dining, and Pi Lambda Phi "A" plays Chinese Students "B."

In event of rain, matches will be rescheduled for Sunday morning on the same courts 8-15. The courts behind Walker Memorial may also be used in case of prolonged inclement weather. Any questions about the tournament can be answered by calling Gerry Banner, manager, at X3205 or CI 7-8574.

**The Young Man in the Know knows "Dacron" and "Orlon".**

Counts on slim-cut slacks of 50% Dacron\* polyester, 50% Orlon\* acrylic to fight wrinkles, hold a crease through lots of hard wear. In all the best colors at fine stores everywhere.  
\*Du Pont's registered trademark.

**DU PONT**  
Better Things for Better Living  
... through Chemistry

For A Fine Selection of Men's Wear  
Visit **THE TECH COOP** Men's Shop

Does  
this  
spot  
feel sticky?

NEITHER DOES OLD SPICE STICK DEODORANT  
Dries as it applies... in seconds. And stays dry! Gives you fast... comfortable... dependable deodorant protection. Lasting protection you can trust. Try it. Old Spice Stick Deodorant for Men. 1.00 plus tax.



S H U L T O N



only \$16.50

**THE TECH COOP**

**MIT STUDENT CENTER**

Store hours 8:30 to 5:15  
Monday thru Saturday

# Intramural wrestling October 22, 23

This year's intramural wrestling meet will be held on Friday and Saturday, October 22 and 23, for both individual and team championships.

Over 150 grapplers from at least 30 teams are expected to be shooting for the title grabbed by Beta Theta Pi last fall. Teams with a chance of wrestling the title from the Betas include such perennial powerhouses as Burton "A", Lambda Chi Alpha "A", and Phi Delta Theta "A." Last year's matches saw 145 individuals representing 35 teams shoot for the nine individual titles.

More than 200 spectators crammed the wrestling room to cheer them on.

**Collegiate rules enforced**

The tournament will be run strictly according to collegiate rules, except for the length of the periods. The matches will consist of three one-minute periods, except for the finals, which will be three two-minute periods. Determination of winners will be on a modified double-elimination system. A wrestler who loses a preliminary match is out of contention for first or second, but if the man who defeats him con-

tinues to win, the loser will be given a spot in the consolations and a chance for third or fourth.

Competition will be held in nine normal collegiate weight classes, 123, 130, 137, 145, 152, 160, 167, 177, and heavyweight. Weigh-ins will be held in the training room in DuPont from 9:00 a.m. to 12:00 noon.

**Finals on Saturday**

Matches through the championship semi-finals and the consolation quarter-finals will be held Friday beginning at 5:00 p.m. and the rest will be held Saturday afternoon beginning at 1:00. Intramural managers Brook Landis, Dave Schramm, Norm Hawkins, and John Fishback encourage all interested Techmen to turn out and are hoping for a huge crowd to continue the avid support given the sport.

# Golf team bows to Rhode Island; Barnes, Rector only Tech victors

**By Steve Wiener**

The varsity golfers were downed 4½-2½ by a strong Rhode Island team on Tuesday, September 28, at Point Judith Country Club outside Providence. MIT's two points were registered by Captain Harry Barnes, '66, playing in the first position and fifth man Jack Rector, '68 who won his third successive match this year. Seventh man Bill Caton '67 salvaged half a point by having his match.

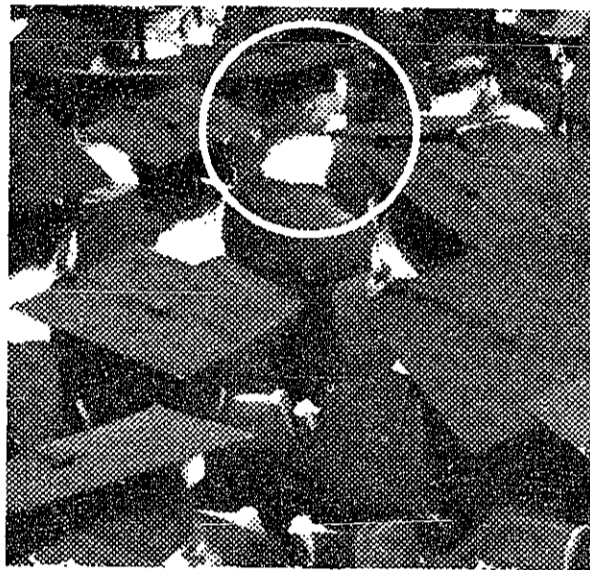
Scoring matters ended here for the visitors. Gerry Banner '68 had troubles with his driver during his match which he lost 4 and 3. In spite of turning in the low round for the engineers, a 79, Ben Roach, '68 was subdued on the final few holes. Tom James '68 and Tom Sharon '67 could not contend with their powerful hosts.

The golfers return to familiar soil as they host Brandeis in a return match at Oakley Country Club. Coach Merriman's team will be trying to even its record at 2-2.

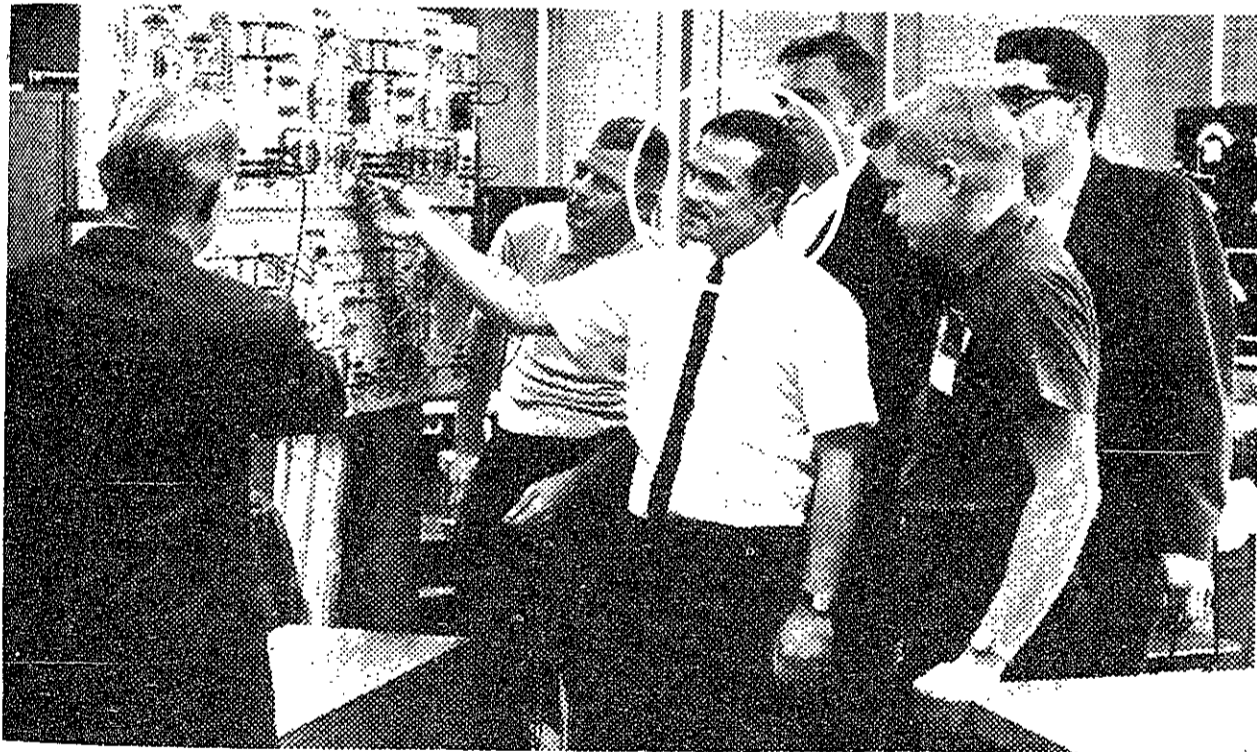
## How They Did

- Cross Country**  
MIT (V) 30, RPI 45, WPI 45  
MIT (F) 26, RPI 29, WPI 82
- Baseball**  
MIT (V) 11, New Bedford Tech 10
- Soccer**  
WPI 2, MIT (V) 1  
Trinity 6, MIT (V) 3  
MIT (F) 1, Lincoln Sudbury High 0
- Golf**  
Rhode Island 4½, MIT (V) 2½
- Sailing**  
MIT (V) finished first in competition for the Denmark Regatta

**YELLOW CAB SERVICE**  
ALL CABS RADIO EQUIPPED  
Dial MIT X2303



## Graduation was only the beginning of Jim Brown's education



## Because he joined Western Electric

Jim Brown, Northwestern University, '62, came with Western Electric because he had heard about the Company's concern for the continued development of its engineers after college graduation.

Jim has his degree in industrial engineering and is continuing to learn and grow in professional stature through Western Electric's Graduate Engineering Training Program. The objectives and educational philosophy of this Program are in the best of academic traditions, designed for both experienced and new engineers.

Like other Western Electric engineers, Jim started out in this Program with a six-week course to help in the transition from the classroom to industry. Since then, Jim Brown has continued to take courses that will help him keep up with the newest engineering techniques in communications.

This training, together with formal college engineering studies, has given Jim the ability to develop his talents to the fullest extent. His present responsibilities include the solution of engineering problems in the manufacture of moly-permalloy core rings, a component used to improve the quality of voice transmission.

If you set the highest standards for yourself, enjoy a challenge, and have the qualifications we're looking for — we want to talk to you! Opportunities exist now for electrical, mechanical and industrial engineers, and for physical science, liberal arts and business majors. For more information, get your copy of the Western Electric Career Opportunities booklet from your Placement Officer. And be sure to arrange for an interview when the Bell System recruiting team visits your campus.

**Western Electric** MANUFACTURING AND SUPPLY UNIT OF THE BELL SYSTEM  
AN EQUAL OPPORTUNITY EMPLOYER

Principal manufacturing locations in 13 cities □ Operating centers in many of these same cities plus 36 others throughout the U.S.  
Engineering Research Center, Princeton, N.J. □ Teletype Corp., Skokie, Ill., Little Rock, Ark. □ General Headquarters, New York City

## Netmen compete in ECAC meet at Princeton; Dick Chandler sole Techman to win match

**By Armen Varteressian**

The MIT varsity netmen traveled to Princeton, N.J., last Saturday to compete in the annual Eastern Collegiate Athletic Association tournament. Among other schools competing with Tech and host Princeton were Cornell, Yale, Georgetown, Dartmouth, Army, Navy and Harvard.

by and then was defeated by Ken Karlon of Dartmouth 7-5, 6-3. This was Therber's first tournament appearance after one year's absence from the Tech team.

Sophomore Carl Weissgerber, playing the No. 2 singles spot, was defeated in the first round by Mark Maison of Columbia 6-3, 6-2, while John St. Peter '67 lost to Maurice Necksher of Penn 6-0, 6-3. In the No. 6 spot, Navy's Bob Chester defeated George Kraut '67 6-0, 6-1.

**Chandler only winner**

In the first round, No. 1 singles Dick Chandler '66 scored Tech's only victory as he came from behind in a hotly contested match to defeat Brian Tart of Georgetown 5-7, 6-2, 6-0. Chandler lost to Jack Waltz of Yale in the second round 6-2, 6-0.

The only other Techmen to get beyond the first round were Chesley Therber '67 and Capt. Paul Ruby '66, third and fourth singles respectively. Ruby, after drawing a bye in the first round, narrowly lost to Tom Marema of Dartmouth 5-7 6-3, 9-7. Therber also drew a

**Doubles pairs lose**

In doubles play, all three Tech entries met defeat in the first round of play. The number one team of Chandler and Ruby lost to a powerful Dartmouth team 6-1, 6-2. Weissgerber and Therber put up a hard fight against the No. 2 Navy doubles team, but lost in extended sets 7-5, 10-8. The favored Princeton doubles team beat Tech's No. 3 combination of St. Peter and Kraut 6-0, 6-3.

MIT is not traditionally a favorite in the ECAC, and this year's performance was about the same as last year's.

**JP — 65**  
Nov. 12, 13, 14

**RACQUETS RESTRUNG**  
Prompt Service  
**Tennis & Squash Shop**  
67A Mt. Auburn St., Cambridge  
(Opp. Lowell House)  
TR 6-5417

**CLASSIFIED ADS**

**WANTED: STUDENT SALESMEN** for Collegiate Samplers. Good commissions. Phone 536-0145 to apply.

**WANTED: STUDENTS WITH** Programming experience for part-time occasional work. Contact Ron Mandel, TSE, x-2924, 9-1 weekdays.

**WANTED: SALESMAN** to sell products and services to MIT community. Contact Hank Perritt, TSE, x-2924, 9-1 weekdays.

The Largest Stock of Fine Men's Shoes in Metropolitan Boston

Featuring: FLORSHEIM, PEDWIN, HUSH PUPPIES, ACME BOOTS  
from \$8.98 to \$24.95  
Sizes: 5 to 13 Widths: A to EEE

We also feature Jumping-Jacks for children and a complete line of shoes for women.

**ROSENBERG'S SHOE STORE**  
538 MASS. AVE., CENTRAL SQUARE — TR 6-8807  
Open Thursday and Friday Evenings until 9 P.M.

**BUY OLD SPICE NOW**  
THE TECH COOP

# Sailors dominate regatta

By John Kopolow

Last weekend the MIT sailing team established without a doubt its superiority over a host of the top collegiate sailing teams in the country. Thirteen schools from all over the eastern half of the United States participated in the Denmark Regatta here on the Charles. The final standings were:

MIT	313
University of Rhode Island	293
Tufts	250½
Princeton	237
Coast Guard Academy	227
Harvard	225½
Yale	217
Tulane	202
Brown	155
Drexel	149
McGill	146
Detroit	130
Babson	114

The racing was divided into two divisions with 13 races taking place in each. Terry Cronburg '66 Tech's captain, skippered in all thirteen of the A division races. He, along with crew Joe Smullin, '66 picked up two first places and came in second on four occasions. However, his total of 144 points was ten short of the A division leader, Art Paine of URI.

### MIT dominates Class B

Despite the 15-25 mile per hour

winds a combination of MIT skippers virtually dominated the B division racing. Don Schwanz '66 skippered in six different races, of which five he won and in one he only managed to take third. Chet Osborne '67 was skipper in five races and had two first place finishes, one second, one third, and one fourth. Joe Smullin took a third and a fourth in the two events in which he was skipper. Alternating as crew in the B division were Joe Ferreira '67 and Tom Maier '67.

The only reason that no Tech skipper compiled the most points in the B division was that three of them shared the position. Peter Gren of URI and Art Seaver of Tulane were leaders in that division.

With this triumph and the victory the previous week in the Pentagonal Regatta at the Coast Guard, the MIT sailors have not had to settle for anything less than first place yet this fall. With an equally fine showing in the New England Intercollegiate Sloop Championships at the Coast Guard and the Nonagonal Regatta at URI this week end, they could be headed for one of their biggest seasons in a long time.

# Betas win 14-12 squeaker

By Herb Finger

Brisk fall weather brought a full schedule of twenty-five games to the MIT Intramural football scene this past weekend. Defending champs Beta Theta Pi continued its winning streak by squeezing out a big win over Burton A in Sunday's action. The Betas drew first blood near the end of the first quarter as Steve Schroeder '67 passed to Peter Kirkwood '66 to lead 7-0. Burton A came back in the second quarter with a short pass to the left end to close out the first half at 7-6. In the second half Burton went ahead 12-7 on a long pass to Alex Wilson '67. But the Beta offense got the victory on a 45 yard run by Schroeder followed by a pass from Schroeder to Kent Groniger '64.

### SAE's romp 47-2

Elsewhere, it was Fred Souk '66 all the way as Sigma Alpha. Epsilon rolled up a 47 to 2 victory over Sigma Chi. There was no questioning SAE's strength as Souk passed to Ted Nygreen '67 in the first two minutes of play. Souk accounted for thirty-three more points including a pass to Nygreen and two to Jack Mazola '66. Passes to Dave Dewitt '69 and Mazola accounted for the rest of the SAE scoring.

In other 'A' league action, Phi Gamma Delta broke into the scoring column early in the second half. Phil Whidner '68 blocked a Sigma Alpha Mu punt at the Sammie goal line for a safety. Bruce Andrews '69 and Roy Wittenbock '65 assured the Fiji's of the victory by combining for two touchdowns, one of which covered forty yards, as Fiji's beat the Sammies 15-0.

Fourteen points in the first quarter gave Theta Chi an easy victory over Sigma Phi Epsilon as the Oxes outscored Sig Ep 21-8. A three yard run by Jim Anderson '63 opened the scoring for Theta Chi. Toward the end of the first quarter Ray Ferrara '67 made a diving catch in the end zone to bring the score to 14-0. After a Sig Ep touchdown in the second quarter and a safety in the third, Bob Ferrara '67 equalled his brother's TD and ended the scoring, 20-9.

### Delts score by 20-0

A strong Delta Tau Delta met a surprising Alpha Epsilon Pi team but came out on top by a 20-0 score. At the end of the first quarter Art Von Waldburg '67 passed to Tom Larson '67 for the first Delt score. The half ended 7-0. In the second half Garland Taylor '67 started off around left end then reversed his field and edged in by the flag for the second score of the afternoon. Another pass to Larson closed out the scoring.

Grad Management shocked and overwhelmed Lambda Chi Alpha as the Graduates accumulated 23

points and a victory. A GM touchdown late in the first quarter followed by another TD early in the second gave them a 13-0 lead. Lambda Chi made the score 13-7 on a long drive late in the first half. Grad Management then got two safeties and a long touchdown brought the final score to 23-7.

Looking toward next week's action we find four big games on tap. DU meets the Betas and Theta Chi takes on SAE Sunday at 1, while Lambda Chi and the Delts, and Fiji and Phi Delta Theta meet Sunday at 3.

### Other scores:

- NRSA "A" 20, Sigma Nu 0
- Phi Sigma Kappa 14, Ashdown Din. 0
- Phi Delt 26, Phi Kappa Theta 0
- Baker "A" 6, ATO 0
- Theta Zeta 8, Chi Phi 0
- Grad Econ 6, Westgate 0
- TEP 12, Sen. House "A" 7
- Phi Kappa Sigma 25, Bak. "B" 6
- LXA "B" 13, Baker "C" 0
- Kappa Sig 22, Burton "C" 0
- EC "A" 1, Fiji "B" 0 (forfeit)
- Theta Delta Chi 6, Bur. "B" 0
- Phi Mu Delta 25, NRSA "B" 6
- Phi Sig Kap. 62, Stud. Cent. Din. 0
- Pi Lamb 15, DKE 14
- ZBT 31, Bexley 0
- Stud. House 2, Sen. House "B" 0
- Phi Beta Epsilon 6, EC "B" 4

### Standings A DIVISION

Beta	2
DU	2
Bur "A"	1
Ashdown	0
League 2	
SAE	2
Theta Chi	2
Sigma Chi	2
Sig Ep	0
League 3	
Delts	2
LXA	1
Grad Man	1
AEPi	2
League 4	
Fiji	2
Phi Delt	1
SAM	0
PKT	0

### B DIVISION

League 1	
TEP	2
Sen Hou A	1
PLP	1
DKE	0
League 2	
ZBT	2
PK Sig	1
Res	1
Bak B	0
League 3	
BAK A	3
ATO	1
EC A	1
Fiji B	0
League 4	
NRSA A	2
Sig Nu	1
Th D Chi	1
Bur B	0

### C DIVISION

League 1	
Stud Hou	2
LXA B	0
Sen Hou B	0
Bak C	2
League 2	
Kappa Sig	2
Bur C	1
FBE	1
EC B	2
League 3	
PMD	2
NRSA B	1
Theta Xi	1
Chi Phi	0

## Tech nine outslugs New Bedford; Twelve hits produce eleven runs

The MIT varsity baseball team outlasted a New Bedford Tech nine last Wednesday on Briggs Field to score its first victory of the young fall season 11-10. The game was a "wild one," according to MIT manager Sandy Kornfeld '68, with nineteen hits enlivening the six inning duel. MIT coupled seven walks with their twelve hits for its eleven runs. While the three MIT pitchers allowed just seven hits, only six of New Bedford's ten runs were earned. Both teams committed two errors.

### Four runs in first

MIT's scoring occurred in the first, third, and fifth innings. In the first, Ron Kadomyia '67 led off with a walk. Mike Ryba '67 hit into a fielder's choice, and Erik Jenson '67 singled, leaving runners on first and second. This was followed by a walk and a fly out. Then Dave Altmann '68 belted a bases loaded double, scoring two runs. Not to be outdone, Tom Bailey '66 also doubled to score two more.

The first run in the third came when Jenson singled and Jim Reid '68 tripled. A single by Dave Vahey '66 ended our scoring in the third. The big fifth got started when Altmann bashed his second double and Bailey drew a walk. Ben Gikis '66 then smashed a triple to score two; Bill Dix '67 followed with a hit, and the bases were loaded with a walk. Ryba

singled to score one, and Jenson hit into an error which accounted for MIT's two unearned runs.

Although only four of MIT's ball players have had any high school experience (none of the pitchers), they have shown great spirit. Their schedule is a tough one, including games against the best eastern teams, so a little support for the team wouldn't hurt.

New Bedford Tech		AB	R	H
Greenwood, lf	2	1	1	
Rapoza, 2b	2	1	0	
Vigeant, 3b	3	1	1	
Bshara, 1b	4	1	0	
Budd, cf	2	1	0	
Snigger, ss	3	1	0	
Santos, rf	2	2	1	
Ferreira, c	2	0	1	
Cory, p	4	0	1	
Augustyn, lf	1	1	1	
Adams, 2b	1	1	1	
Viens, rf	1	0	0	
Totals	27	10	7	

MIT		AB	R	H
Kadomyia, 2b	2	1	0	
Ryba, ss	1	1	3	
Jenson, rf	4	2	2	
Reid, cf	3	2	1	
Vahey, lf	2	0	1	
Altmann, 1b	4	2	2	
Bailey, 3b	2	0	1	
Gikis, c	4	1	1	
Richman, p	0	0	0	
Treant, 2b	0	0	0	
Young, ss	0	0	0	
Pappenhausen, lf	2	0	1	
Clairey, 3b	1	1	0	
Dix, p	1	1	0	
Brown, p	0	0	0	
Totals	29	11	12	



Steve Kanter '68, AEPi quarterback, skirts left end behind the blocking of Gerry Siegel '67 and Sam Wilensky '69 (foreground) against Delta Tau Delta. In a hard fought game, the Delts prevailed 20-0.

## Frosh also win Harriers defeat WPI, RPI

By Larry White

Last Saturday, M.I.T.'s cross-country teams led off the 1965 season with a pair of hard-earned victories. Competing on the newly laid out course at Franklin Park for the first time, both the varsity and the freshman teams won in a triangular meet with Rensselaer Polytechnic Institute and Worcester Polytechnic Institute.

### Varsity wins easily

The varsity won its race quite easily, taking first, third, seventh, eighth and eleventh places for 30 points compared to 45 points for both RPI and WPI. Sumner Brown '66 took control of the race midway through the torturous 4.5 mile course and won by a comfortable 200 yard margin. Rob Wesson '66 also ran a fine race to come in third, while Helge Bjaaland '67, Dan Hoban '68 and Harry Link '67 also scored.

The frosh race was not so easily won, but our squad won for the first time in the history of this meet. Over the 2.6 mile frosh course, the race turned into a two way battle between MIT and RPI. At the finish, the top five men from each school had split the top ten positions! MIT took first, third, sixth, seventh and tenth for 29 points. WPI finished second, fourth, fifth, eighth and tenth for 20 points. WPI finished a distant third with 82 points. Stan Kozubek of MIT ran a tremendous race to finish first with Jim Yankaskis, Tom Najarian, Rich Wolfson and Larry White rounding out the top five.

### Squad lacks depth

This year's varsity squad has some fine individual performers, like Brown and Wesson, but lacks depth, making it extremely vulnerable if anyone is injured. A

small turnout can be blamed, but the squad makes up for this with a tremendous amount of spirit as shown in their first race. The freshman team looks very strong with both fine individuals and a large team, and should have a winning season. Next Saturday, the team travels to Wesleyan to tackle their team and the Coast Guard Academy.

- Varsity Results — 1. Brown (MIT), 23:49.2; 2. Palulis (WPI), 24:28; 3. Wesson (MIT), 24:50; 4. Whitby (RPI), 25:03; 5. Bell (RPI), 25:26; 6. Raslavsky (WPI), 25:42; 7. Bjaaland (MIT), 25:49; 8. Hoban (MIT), 25:57; 9. Burton (WPI), 26:35; 10. Young (RPI), 26:48; 11. Link (MIT), 26:48.
- Frosh Results — 1. Kozubek (MIT), 13:24; 2. Satterthwaite (RPI), 13:24; 3. Yankaskis (MIT); 4. Peters (RPI); 5. O'Neil (RPI); 6. Najarian (RPI); 7. Wolfson (MIT); 8. Henrich (RPI); 9. White (MIT); 10. Wroblewski (RPI).

## the sports spot

# Coach Charles Batterman

By Dave Lyon

The Sports Spotlight this week shines on varsity swimming and soccer coach, Charles Batterman. Besides the fact that his swimming team has been breaking record after record while his soccer team has been holding its own on the field, Coach Batterman has found time to accomplish other things during the last few months.

This past summer in July, he traveled to Poland in order to set up training camps for young swimmers. The entire venture, which lasted two months, was financed in full by the State Department under the heading of cultural exchange.

### Polish swimmers developed

Mr. Batterman admitted that he had a fairly successful stay. His swimmers broke between fifteen and twenty Polish national rec-

ords while under his tutelage. The coach feels that by 1968 several of his young proteges might be ready for Olympic competition.

This type of success is not a new thing for the coach. While attending Ohio State University in 1944, he managed to attain the national championships in diving, both 1 meter and 3 meter, in both collegiate (NCAA) and open (AAU) competition.

If we add to all this the fact that Coach Batterman is actually Assistant Professor Batterman, we come up with the picture that he is a most extraordinary individual. Even with the unique coaching problems encountered here at the Institute, e.g., insufficient time for proper training, Coach Batterman and his colleagues have been able to put together some remarkably successful squads of athletes for in-

tercollegiate competition.

### Coaching problem is time

Mr. Batterman states that with such a premium placed on time the coach has a serious choice to make — should his men spend more of their valuable hours building up their bodies or should they concentrate on improving their techniques and form? This problem, of course, has to be solved by both the coach and the athlete. In swimming especially, the key words are constant improvement. If we cannot improve as rapidly as our competition, all is lost.

For all the freshmen (or even upperclassmen) who do not know Coach Charlie Batterman by sight and want to know what he looks like, they can consult any one of the numerous photographs of him diving which are posted around the school.

Second-class postage paid at Boston, Massachusetts. The Tech is published every Wednesday during the college year, except during the summer months, by The Tech, Room W-333, MIT Student Center, 84 Massachusetts Avenue, Cambridge, Massachusetts 02139. Telephone: (Area Code 617) 864-6900 extension 2731. United States mail subscription rates: \$2.75 for one year; \$4.25 for two years.

Bldg. Room 14E-210