

Dr. Stratton speaking at commencement: Johnson "idea men:" will personally present 1,100 degrees

By Esther Glotzhofer
Dr. Julius A. Stratton, President of MIT, will be the speaker at this year's commencement, Friday, June 12.

Traditionally, the President has given a brief speech to graduating seniors, and the principal speaker has been a visiting dignitary. This year Dr. Stratton will be the only speaker.

At the request of the graduating class, the President will continue the tradition of personally presenting diplomas. Approximately 1,100 degrees will be awarded.

Senior Week activities will be omitted this year, according to Class of '64 President Steven Glassman, primarily because of the late date of graduation. Glass-

man said that only about 55 couples attended last year's program, and even fewer would have been expected this year.

In partial replacement for Senior Week, a steak fry and party June 5, will mark the end of classes.

Panel discussion

A panel discussion on "The Graduate's Role in Tomorrow's World" will be held Thursday, June 11, in place of the traditional baccalaureate ceremony. Speakers will be: Edward J. Hanley '24, president of Allegheny Ludlum Steel, representing industry; Robert H. Winters '33, president of the Rio Tinto Mining Company of Canada and former member of the Canadian Parliament, representing government; Dr.

Howard O. McMahon '41, president of Arthur D. Little, Inc., representing research; and Dr. Jerome B. Wiesner, Dean of Science at MIT and former scientific adviser to the President, representing education. Glassman will moderate.

Tea at McCormick

Following the panel discussion, a tea will be held in Stanley McCormick Hall. Panel participants, faculty, the graduates and their families have been invited.

Commencement will begin June 11 with the military commissioning ceremony. Major General Alden K. Sibley, Commanding General of the US Army Mobility Command, will address the joint commissioning exercises for Army and Air Force cadets and Navy midshipmen.

Graduation exercises will be followed by the traditional luncheon and President's reception in the Great Court. Alumni Day will follow, Monday, June 15.

Two professors chosen as presidential advisors

By Mark Rockman

Two MIT professors have been appointed to an informal group of twenty-seven "idea men" to advise President Johnson for the duration of his stay in the White House.

Dr. Edwin H. Land, president of the Polaroid Corporation and visiting professor at MIT, and Dr. Robert C. Wood, Professor of Political Science here, are the appointees.

Wood's Comments

In a Monday evening telephone interview, Prof. Wood explained that the group "will be a channel for ideas to flow from the academic community to the President."

Wood said that the President feels that there is an abundance of short-range solutions to the nation's problems, but a scarcity of long-range ideas. It will be the

most important new ideas in each of their respective fields and forward the best to President Johnson.

Commenting on the proposed cabinet post of Secretary for Urban Affairs, Wood said, "I'm for it and the President has said he's for it."

Wood is a member of the Technical Committee of the Center for Space Research at MIT, where he is investigating the political implications of space development. He is a member of the Faculty Policy Committee of the MIT-Harvard Joint Center for Urban Studies and is a consultant to several Federal agencies.

He received his A.B. summa cum laude from Princeton University in 1946; M.A. in 1947, M.P.A. in 1948; and Ph.D. in 1950 from Harvard University. Wood has worked as an associate director of the Legislative Reference Bureau of the State of Florida, was a Bureau representative on Project East River from the Office of Management and Organization of the Bureau of the Budget.

He returned to Harvard, but in September 1957 was appointed assistant professor of political science at MIT and director of the MIT Field Study Program for Political Education.

Dr. Wood was promoted to associate professor in 1959 and full professor in 1963; he received a Senior Research Award in American Governmental Affairs for 1962-3.

Land inventor

Dr. Land, who was unavailable for comment, is the inventor of the Land-Polaroid Camera; he holds more than two hundred patents.

He attended Harvard University and is the first fellow to be appointed to the School of Advanced Study at MIT when it was established in 1956.

The Tech



Vol. 84, No. 12 Cambridge, Mass., Wednesday, May 6, 1964 5c

Starting salaries report:

Engineers rank highest

By Esther Glotzhofer

Students holding degrees in aeronautical and electrical engineering will again draw the largest starting salaries among June graduates, according to the College Placement Council. Expected monthly income for these graduates is \$621.

Salaries increased on an average of 2.5 percent over last year. Humanities and social science graduates will start at salaries averaging \$483 a month, less than one percent above 1962. The type of employer offering highest starting salaries is aircraft, space vehicles and components, at \$620 a month.

Technical graduates in general have drawn offers averaging \$610 a month, up 2.5 percent; non-technical graduates were offered \$509 a month, up 1.8 percent.

Electrical engineering students drew the highest average offer among master's degree holders, at \$777 a month. Chemical engineers enjoyed the largest rise, to \$732 a month.

Master's degree holders in business administration and commerce can expect about \$620 a month with non-technical, or \$688 with technical undergraduate background.

According to the College Press Service, researchers have observed a slowing of salary increases in general. Both technical and non-technical students experienced overall gains less than half

as large as those the previous year.

Automotive industries showed the largest salary increase among employers making large numbers of job offers. Their offers averaged \$598, up \$28 from last year.

Chemicals and drugs raised starting salaries to \$605, up \$25. Public utilities continued their upward trend with a rise of \$24 to \$585.

Construction and building materials manufacturers are offering fewer positions this year, and the average starting salary has dropped \$19 to \$529. Banking, finance and insurance dipped \$5 to \$445.

Drive this week for contributions to Kennedy Memorial Library Fund

By Steve Portnoy

The MIT student drive for contributions to the John F. Kennedy Memorial Fund is being held this week. The project will be part of a nationwide student drive which is seeking to raise \$250,000 on nearly 700 campuses for a special student-given room within the library.

Solicitations will take place on a door-to-door basis and in the lobby of Building 10. Every student will be able to place his name on a signature sheet which will be bound with MIT's school colors and put in the library.

JFK chose land

The library will be built on the Charles River in Boston overlooking Winthrop House, the Harvard dormitory where the President lived as an undergraduate. Built on land selected by Kennedy himself eight weeks before his death, the library will cost \$10,000,000. This amount will be raised entirely through personal donations.

The library will consist of three main components: a museum, containing the momentos associated with the President and his times; an archive, containing his presidential papers and files; and an institution, which is dedicated

to education in the understanding and practice of democratic political life.

Other libraries

The idea of presidential libraries originated with Franklin Delano Roosevelt. They were suggested as a means to save the President's papers and files, which are his personal property, for the purposes of research and scholarship.

As worked out in Roosevelt's plan, land for the library was donated to the government by himself and his mother, and funds for its construction were raised by public subscription. His private collections and the White House papers were put in the building. The maintenance of the library was guaranteed by the federal government.

partment within the school. At that time a full scale program of seven to ten courses was suggested. Due primarily to staffing problems, this all-out undertaking was vetoed.

In April the committee again approached department heads and inquired about the possibility of running an experimental pilot program of three courses. Final approval for this came last week.

An evaluation of the program will be conducted next fall. If results are positive, a significantly expanded group of offerings may be prepared for the following summer.

With this program, MIT will be one of the few schools in the Boston area offering evening courses this summer. Harvard's summer session has no evening class. Boston University offers a limited group of evening courses. In addition, committee members spoke with the heads of each de-

Summer humanities program at MIT

By Howard Ellis

For the first time ever, MIT will offer this year an evening program of summer study in economics, social science, and the humanities. A letter describing the program was distributed to all undergraduate residents this past weekend.

Courses included in this year's program are: 14.01 — Economic Principles; 14.63 — Labor Relations; and 21.11 — The Nature of Literary Art. As part of the regular summer session, these courses will run June 22 to August 28 and will meet one or two evenings per week for a total of 4½ class hours. Tuition is \$17 per credit hour or a total of \$136 for each of the courses in the program.

Summer daytime study in economics, social science and humanities is not new at MIT. As late as the early fifties, a large group of subjects was offered in these areas. In recent years the number has dropped to two: 14.01 and 14.70.

The work on this year's summer program began in January at a meeting of the Student Committee on Educational Policy.

Following up on a suggestion made then, the committee contacted Dean John E. Burchard, former Dean of the School of Humanities and Social Science. In addition, committee members spoke with the heads of each de-

Massachusetts State Science Fair held at MIT; Winners will go to New England Science Fair

The Massachusetts State Science Fair was held last weekend in Rockwell Cage. Nine regional fairs had been held in April to determine the entries to the state fair. Both the regional competitions and the state fair are sponsored by MIT and the Boston Globe.

More than 250 students representing 152 schools exhibited projects in the fair. The projects were judged for trophies and scholarships in addition to the right to compete in this weekend's New England Science Fair.

Dr. John A. Tyrell of the Charlestown High School was chairman of the event. He was assisted by several educators and administrators from the state's high schools and colleges.

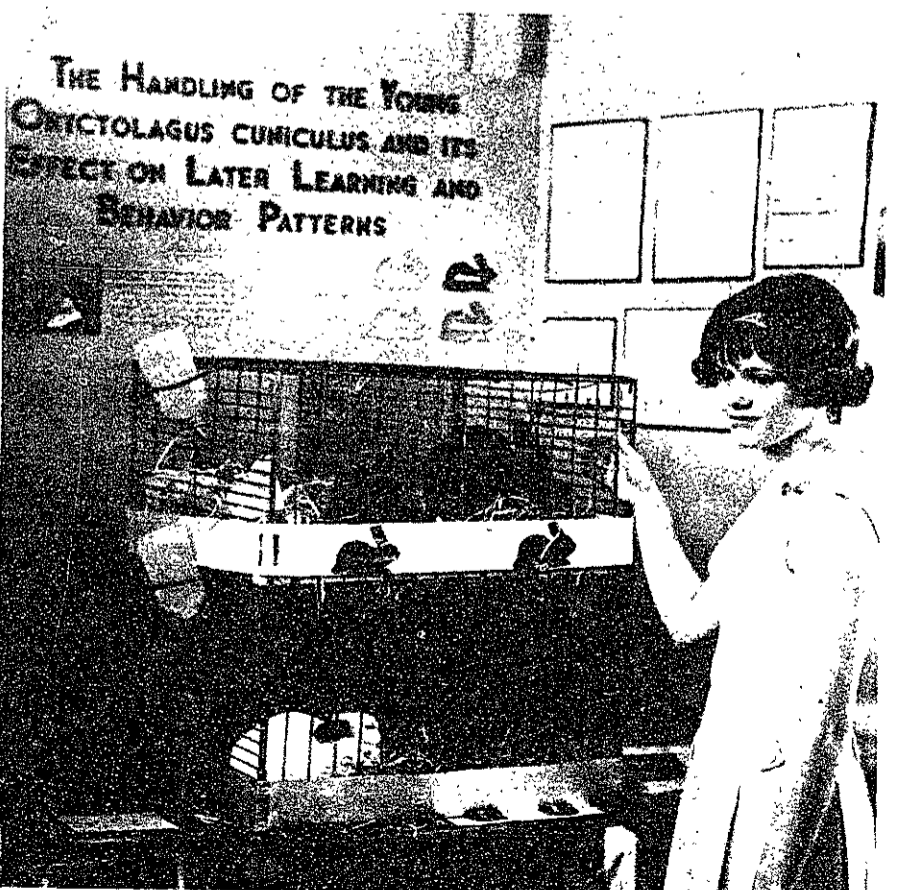


Photo by Bill Park

Elaine Tucker, a senior at North High School in Worcester, with her exhibit that won honorable mention at the Massachusetts Science Fair held in Rockwell Cage last Sunday. ("Oryctolagus cuniculus" translates from the Latin as "rabbit.")

Summer session

The Registrar's Office made the following announcement Monday: "Summer session registration material must be returned to the Registrar's Office before 5:00 pm Wednesday, May 20."

Students have also been reminded by the Committee on Academic Performance that this Friday is the last date a course may be added or dropped without petition.

INDEX

Campus Topics	4
Critic's Choice	7
Editorials	4
Entertainment	6-8
Footnotes	4
Letters	4
Peanuts	4
Sports	9-12

Congress slashes \$297.9 million from funds for higher education aid

The US House of Representatives, acting at the request of the House Appropriations Committee, last week slashed aid to higher education by \$297.9 million.

Cut breakdown

From funds authorized by the House for aid to colleges and universities, the Appropriations Committee cut: \$266.7 million from the college construction act; \$30.4 million from a bill to implement the health professions educational assistance act, providing loans and grants for building medical and dental schools and student loans; and \$1.5 million from funds to fill vacated fellowships under the National Defense Education Act.

The college construction act provides that funds authorized

Foundation like NSF urged for humanities

A report recommending the establishment of National Humanities Foundation (NHF), similar to the National Science Foundation (NSF), will be issued next month by the Commission on the Humanities. Charles Blitzer, the commission's staff director, outlined the report a week ago last Tuesday at the National Conference of the Association of Higher Education.

Blitzer hopes to introduce the proposal into Congress as legislation next January. Opposition is anticipated, particularly in the area of federal support of research not relating to the nation's defense.

He supports the Commission's basic conclusion that the federal government should aid the humanities since "its health at all levels is an issue of national concern."

The Collegiate Press Service reports that three institutional forms have been suggested for the foundation:—

1. A National Institute of the Humanities, similar to the National Institutes of Health, located in the Department of Health, Education and Welfare as a part of the office of Education.
2. An expanded NSF which would include the humanities.
3. A separate National Humanities Foundation, as proposed by the Commission.

Blitzer emphasized that the proposed Foundation is not meant to replace other sources of support for the humanities. It would be expected, he said, that private and university support would continue.

but not appropriated for undergraduate building (\$230 million) may be added to the 1965 or 1966 appropriations. This has not yet been done. The \$25 million authorized but not appropriated for graduate facilities grants may not be added to future appropriations. According to the Collegiate Press Service, committee members said they denied the full appropriations because they lacked evidence that colleges and universities would be able to use the full amounts. The American Council on Education claimed that institutions of higher education lack \$700 million to meet their construction needs.

Furthermore, the appropriations would have been enacted late in the fiscal year, which ends June 30. In most cases, the 1965 appropriations will be available immediately upon enactment of the bills, according to a committee spokesman.

Now approved

Bills approved by the House for fiscal 1965 include: \$493 million for facilities, including grants for graduate and undergraduate construction and institutional loans; \$85.8 million for the health professions educational aide act, providing for both construction and student loans; \$278.8 million for the NDEA, providing fellowships and student loans; \$15.8 million for cooperative research; \$18.6 million for the Office of Education; \$11.95 million for land-grant colleges; and \$1.5 million for foreign language training and area studies.

Retiring Dean Burchard studied, taught at Institute

By Barbara Cohen

Prof. John Ely Burchard, Dean of the School of Humanities and Social Science, has announced his retirement from that post. Dean Burchard has achieved recognition both as an educational and cultural leader, and as an authority on housing and architecture.

Born in 1898 in Marshall, Minnesota, Dean Burchard attended its small, serious public high school. There the dean acquired four years of Latin and two of Greek, in addition to a rigorous background in English, mathematics, and science.

Comes to MIT

Upon graduating he came to Boston to take the entrance exams for MIT. He passed them, but a downward turn in the family finances prevented his entering MIT that fall. Instead he entered the University of Minnesota in a pre-medical program. For two years he ran straight A's in the medical school. The next term he failed every one of his courses, largely because of too many extracurricular activities.

Ambulance Driver

Leaving Minnesota behind, Dean Burchard joined the hostilities in Europe, driving an ambulance in France until the end of the war. He was able to study for a short

time in France in GI courses after the war. There he became interested in architecture, and entered the School of Architecture at MIT in 1919.

Taking extra courses in many different fields, he finally chose to take his degree in architectural engineering.

He continued his studies at MIT in architecture and civil engineering as a graduate student, while teaching an English section and writing music reviews for the Boston Evening Transcript and the Boston Globe. His job as a second-string music reviewer permitted him to hear a great many unusual and rarely-performed pieces, since only by electing unorthodox programs could the aspiring young performers he heard hope to attract an audience.

Enters business

After completing his graduate work, Dean Burchard entered the business world. He joined the staff of Bemis Industries, Inc. Within thirteen years he became successively director of research, vice president, and a member of the board of directors of that corporation and its subsidiary, the

(Please turn to page 5)

Need students to teach in Summer Program

TCA has announced that positions are still available in the summer teaching program for student instructors in chemistry, biology, general physics, topics in mathematics and calculus, and other subjects. Further information may be obtained from the TCA office in Walker Memorial

TENNIS RACKETS

Large Variety
All Makes
Rackets Restring

Prompt Service

TENNIS and SQUASH SHOP

67A Mt. Auburn Street
Cambridge

Tel. TR 6-5417

STOP!
Don't Sign That Pact!
until you
SEE FAUST FRIDAY
10-250 - 8 pm - 35c

THE ALPS... made in Italy by FABIANO

Handmade Imported Boots for the Outdoor Man and Woman...
PROVEN IN 2500 MILE HIKE



STYLE #91
\$23.95
plus postage

For Men or Women, Siena Brown Italian Suede, soft and supple, will never crack or harden. For Rock Climbing or Hiking. Padded Tongue and Quarter for extreme comfort at the ankle. Vibram lug sole. Men's N and L—6 to 14, Ladies N and M—5 to 11. (Sizes 13 to 14 \$3.00 Extra).

Write for free brochure
FABIANO SHOE CO., INC.
Dept. A, South Station
Boston 10, Mass.

BOSTON'S HONDA HEADQUARTERS



HIGH FUN! LOW COST!

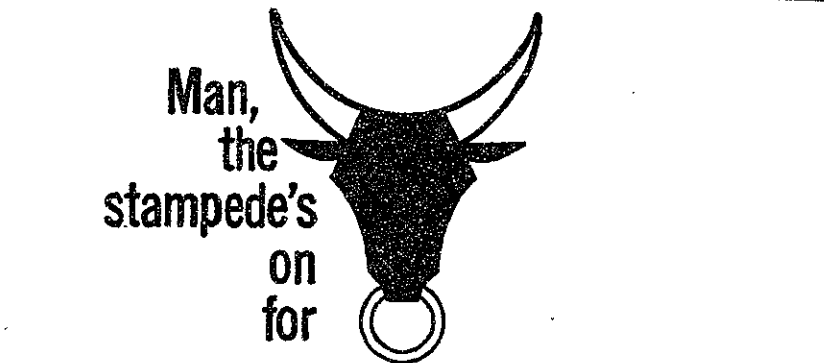
MODEL "CUB 50" \$245 p.o.e.
No Money Down - Small Monthly Payments
ALL MODELS AVAILABLE PLUS COMPLETE
LINE OF VESPA & LAMBRETTA SCOOTERS

SALES • SERVICE • PARTS • ACCESSORIES

Open daily 'til 9 P.M. Sat. 'til 5:30 P.M.
WHY NOT RENT ONE?
Low daily & weekly rates

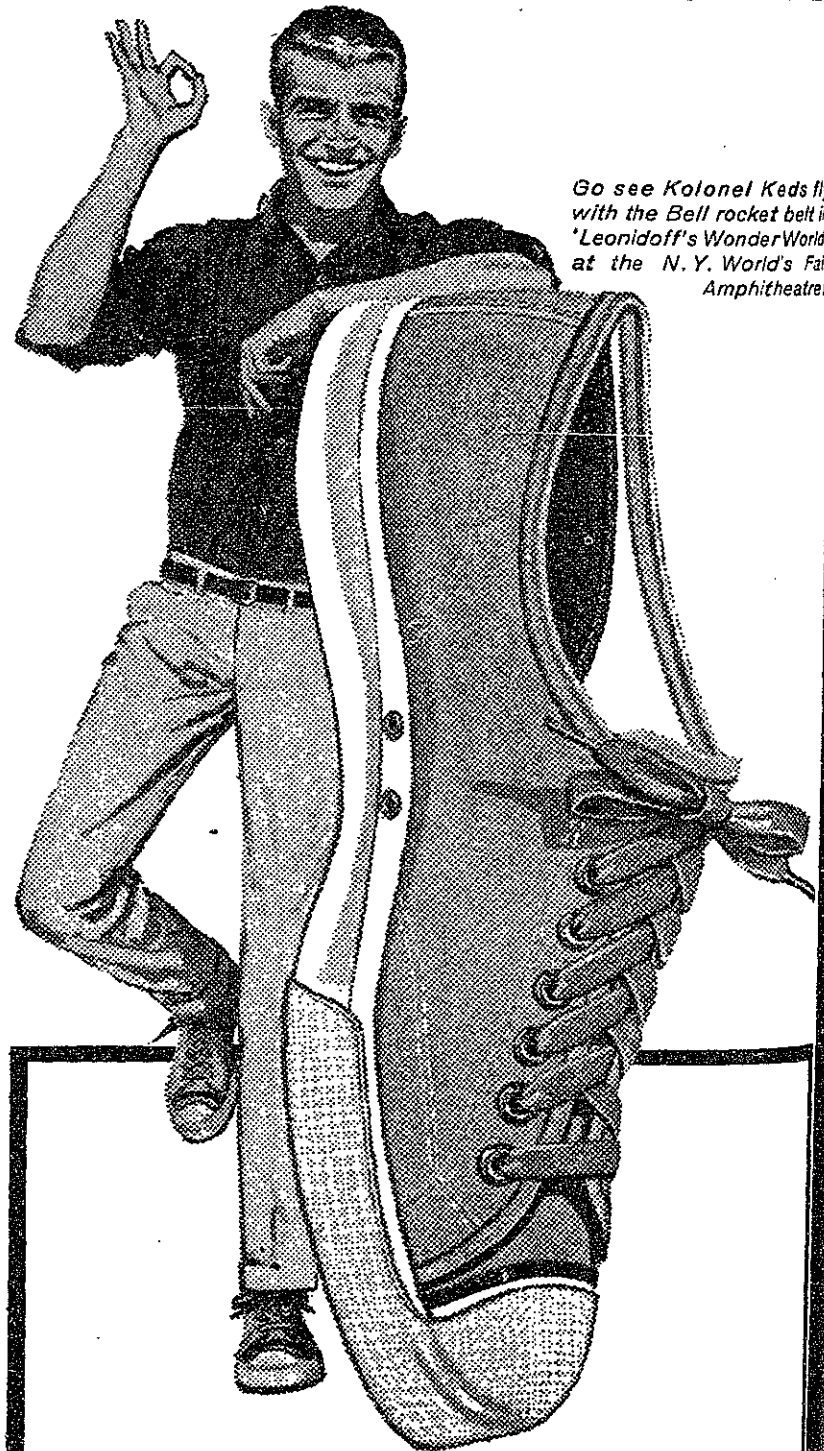
NEW ENGLAND CYCLE CENTER

78 Brookline Ave., Boston At FENWAY PARK
KE 6-3223



Man,
the
stampede's
on
for

BRASS RINGER



Go see Colonel Keds fly with the Bell rocket belt with 'Leonidoff's Wonder World' at the N.Y. World's Fair Amphitheatre

Hop to it, meet the new "Brass Ringer," it really gets around. It's clean and lean. With man-size brass eyelets and wraparound toe guard. Long on looks, strong on comfort, great on wear. Made of washable cotton duck in a new smoky white chino, also in white. N & M widths, sizes 5 to 12, 13, 14. Stamped on down to your nearest store and let 'em rustle y' up a pair. Ask for "Brass Ringer" Keds® today! It's a



United States Rubber

Rockefeller Center, New York 20, New York

THE CHRISTIAN SCIENCE MONITOR

Printed in
BOSTON
LOS ANGELES
LONDON

College Students
Faculty Members
College Libraries

SUBSCRIBE NOW AT HALF PRICE

Clip this advertisement and return it with your check or money order to:
The Christian Science Monitor
One Norway St., Boston 15, Mass.

1 YEAR \$11 6 mos. \$5.50
 COLLEGE STUDENT
 FACULTY MEMBER

P-CN

Student Summer Opportunities Committee give smoker for prospective members next Tuesday

A smoker will be held for all students interested in joining the Student Summer Opportunities Committee this coming Tuesday at 7:30 in the Jackson Room (10-280).

The committee was recently formed by Incomm to continue the successful experimental work of the Student Committee on Educational Policy—who contacted over a thousand companies last

year by letter on behalf of MIT students—to broaden summer job opportunities.

According to Perry Seal '65, chairman of the newly-formed SSOC, such work will be expanded and "more jobs for underclassmen as well as juniors and seniors will certainly follow."

Seal also noted that the committee will actively participate in another area—obtaining summer employment positions for foreign MIT students, who present unique hiring problems.

Another project of the committee, said Seal, will be to help establish foreign exchange programs in cooperation with the Foreign Opportunities Committee.

Samuel Bluestein Co.
"Complete School Supplies"
TYPEWRITERS
SALES - SERVICE - RENTAL
1000 Boylston St. 345 Main Street
Boston Malden
COpley 7-1100 DAvenport 2-2315

JOBS ABROAD

STUDENTS & TEACHERS

Largest **NEW** directory. Lists hundreds of permanent career opportunities in Europe, South America, Africa and the Pacific, for **MALE** or **FEMALE**. Totals 50 countries. Gives specific addresses and names prospective U.S. employers with foreign subsidiaries. Exceptionally high pay, free travel, etc. In addition, enclosed vital guide and procedures necessary to foreign employment. Satisfaction guaranteed. Send two dollars to Jobs Abroad Directory—P. O. Box 13593—Phoenix, Arizona.

Killian speaks out:

New England must increase graduate work in science

Dr. James R. Killian Jr., Chairman of the MIT Corporation, last Wednesday challenged New England to produce more centers for graduate education in the sciences in a speech at Boston before the Fourth National Conference on the Peaceful Uses of Space.

Dr. Killian focused his attention directly on the problem: "Of the 40 institutions in the US giving the most doctorates, there are presently only four located in New England."

He went on to state that the total number of doctorates in science, engineering and mathematics granted in this area must be increased. More important, it must be done "by expanded graduate study in institutions other than those which have already expanded their output."

Dr. Killian based this statement on studies which show that the U. S. will need 7,500 new doctorates in these fields by 1970. This means that New England's output will have to rise from a 1959-60 level of 400 to a level of 1000 just to maintain the present regional proportion. This can only be accomplished by the construction of new graduate centers.

Career-long study

Dr. Killian noted another important contribution New Eng-

land and its universities can make to the space program. He cited the "explosion of knowledge" which necessitates the expansion of postdoctoral training programs for professional men at mid-career, and stated:

"There are probably many thousands of engineers in the U. S. who find themselves out of date and who face a reduction in effectiveness unless they can master new fields and technologies not taught when they were in professional schools. This prevalence of newness which marks our time poses wholly new demands for education continuing through the practicing life

of almost all kinds of professional men."

Community effort

Dr. Killian urged a close cooperation between all segments of the New England community to maintain and promote what he called the science-based "innovation industry" needed in the space age. He continued:

"We in this region, both in According to Professor Bonilla: "As soon as a society gets as complicated as Venezuela's some system must be set up for finding out what's happening to it, what it is doing to itself. It must set up institutions that everybody trusts enough to allow it to look over them."

Professor Frank Bonilla directs sociological study in Venezuela

By Harvey Schultz

Professor Frank Bonilla is director of a sociological study of a group of men in Venezuela believed to be the 400 most powerful men in their country.

The study, financed by a \$400,000 grant from the Ford Foundation, aims to discover what kinds of peaceful social change are possible in a country where violent change is so common.

About 160 people have already been interviewed. The study includes cabinet ministers, Communists, company directors, terrorists, a bishop, editors and educators.

The day-long, tape-recorded interviews go into family backgrounds, biographies, means by which these men acquired power, how they use it, how involved they feel with the destiny of the country, their political and social views, their tastes and aspirations, and their styles of expression.

Concomitantly, a broader study is being conducted of those upon whom this power is being used. Briefer tests are being given to 5,000 ordinary Venezuelans, among them students, workers, storekeepers and farmers, on the theme of conflict and consensus in Venezuelan society.

The studies are attempts to learn how much social tension and how much acceptance and social cohesion there is in Venezuela.

Questions in the second study ask "What circumstances justify a violent protest against the government?" and "Has your economic situation bettered or worsened in the last five years?" A third question asks: "Have you ever belonged to a group where you felt that the others were real comrades?"

Last chance for sophs to get rings

Class of 1966 President Hank Perritt announced that the L. G. Balfour Company will have a representative in the lobby of Building 10 today until 3:30 to take orders for class rings. This will be the last chance for sophomores to order their rings.

A five-dollar deposit is required on placing the order, with the balance due upon delivery of the ring, shortly before Christmas vacation.

Balfour will also be taking orders for '65 rings for those who did not buy one last year and wish to now.

FOR DIAMONDS, WATCHES, JEWELRY
DAVIDSON JEWELERS
of Kenmore Square

Guaranteed Repair Service

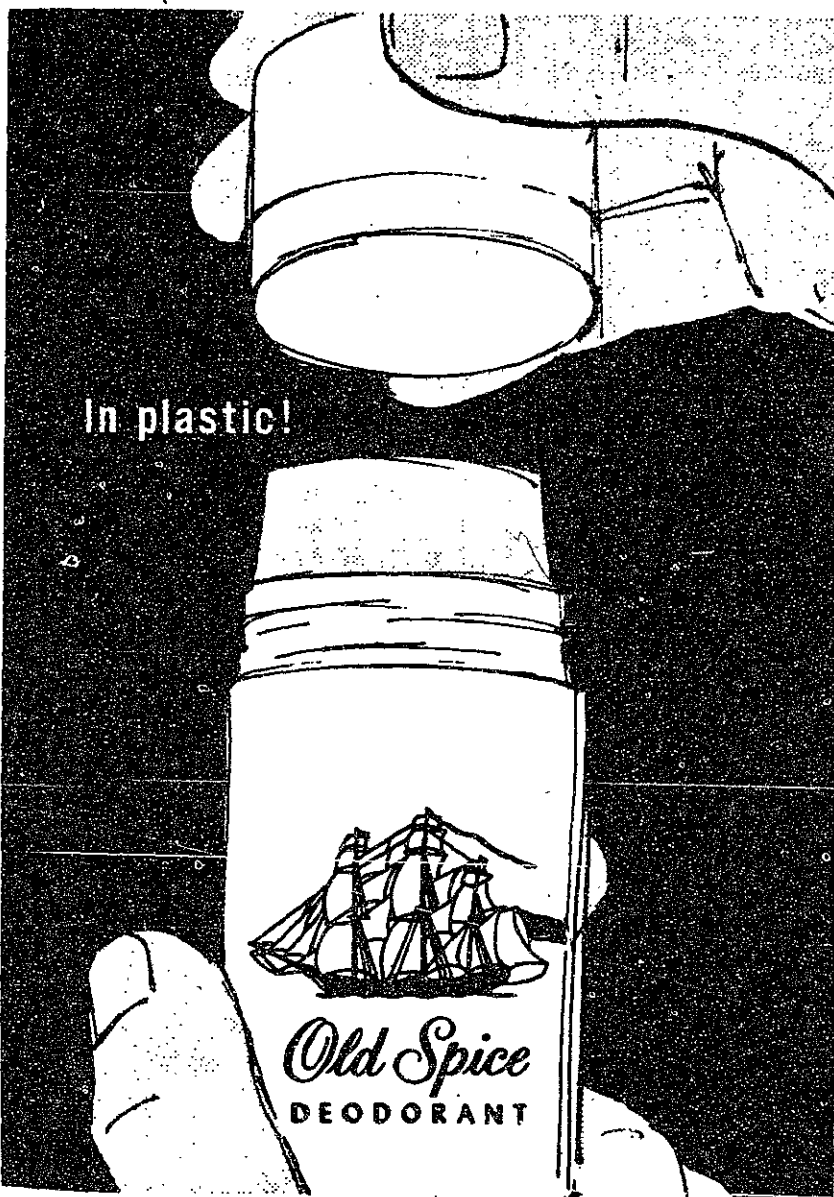
518 Commonwealth Ave. CO 7-0017

Mother's Day Cards and Gifts

Mother's Day is next Sunday, May 10. It is enough to remind you that she deserves the best and to tell you that The Coop has an excellent selection of cards from the best makers. To add a little extra to this day of days, you may wish to send a small gift . . . one that will add measurably to your thoughtfulness, and results in much appreciation.

THE TECH COOP

MEN!



In plastic!

Old Spice
DEODORANT

Here's deodorant protection

YOU CAN TRUST

Old Spice Stick Deodorant...fastest, neatest way to all-day, every day protection! It's the man's deodorant preferred by men...absolutely dependable. Glides on smoothly, speedily...dries in record time. Old Spice Stick Deodorant—most convenient, most economical deodorant money can buy. 1.00 plus tax.

Old Spice

STICK DEODORANT

SHULTON

Second day in May—Reign of Terror



Half-naked youths running wild, pursuing each other and hurling missiles. Screams and weird howls. Half-cooked and crisp-burned meat over smoking fires.

Something out of 'Lord of the Flies'? No! This was East Campus last Saturday during the annual rite of spring known as East Campus Day, or the Reign of Terror.

Take the scene in the upper left. Five panes of the window shown were shattered by catapult-launched water balloons. Next door, the high-velocity balloons reduced a window to shards of glass, damaged a painstakingly built architectural model, and drenched a



number of valuable books under the window. The lower-right photograph shows further evidence of the damage from the balloon wars—in this case, a window over a Bemis stairwell.

The walkie-talkie-equipped East Campus Judicial Committee, led by Bruce Bottomley '65, managed to put the catapults out of action. However, they were unable to prevent the flooding of the halls to an inch or more by fun-loving folks whose cohorts had closed up the drains.

From a distance, the lawn between the Parallels seemed to be blooming with small, multicolored flowers on East Campus Day. On closed inspection, the flowers turned out to be burst water balloons. The scattered balloons were only a small part of the litter and mess caused by the celebrants.

East Campus Day doesn't have to be so costly—and paying for replacing glass and cleaning up takes money. It can be enjoyable, as the upper-right barbecue scene shows. The barbecue is shown again in the lower left, through the broken glass of a wrecked room.

The money spent on recovering from East Campus Day is wasted. It could be spent on more barbecues, for example. Isn't there some way to have the fun of East Campus Day without the damage?



Footnotes

By Bill Judnick

Congratulations are the order of the day.

First, to voodoo for their attempted parody of The Tech. Why "attempted"? Because, by major league standards, a true parody must be judged on the criterion of believe-ability.

I cite the Lampoon's two parodies of the Harvard Crimson last semester where their fake issues had hundreds of reader at the Square initially believing, for example, that parietal hours had been cancelled! I doubt that readers of voodoo's attempt were so taken in.

Make no mistake, I enjoyed it; the misnomer "parody" still doesn't fit. (They ought to make another go of it.)

The other felicitations go to Ron Gilman for running a profit-producing Spring Weekend. I'm glad that Footnote 18 turned out wrong.

Back on the winning track:

The Crystal Ball

50. The MIT varsity lightweight crew will come away winners when the Eastern Sprints are held May 16. (Cornell's recent 2-foot victory over them was not THAT impressive.)

51. Those on MIT's payroll may expect a computer to calculate their take-home starting this coming January.

52. Remember the Asian Book Drive? There's a good chance that Techmen won't be asked to fill the boxes next year; only the faculty part of the drive seems to produce anything.

53. Members of the Class of '67 will probably have the opportunity to watch Dramashop presentations in a NEW theater on campus by the time they graduate. (Details on the plans, if they exist, are top-secret; but reading between the lines of Dean Burchard's annual report leads to this speculation.)

Did you know?

Those MIT clubs and organizations which had ticket-taking booths at the APO Carnival split their profits in a 2-to-1 ratio favorable to the national service fraternity. Considering the numerous service projects they undertake, they'll certainly find good use for the money.

Up North

It's surprising what the national news media won't print. I found out the following information about Canada from a graduate student in Nova Scotia:

A big-wig in his history department predicts that Canada will not be a nation within 6 to 10 years from now. Perhaps you've read buried news about successionist feelings in Quebec. But did you know that British Columbia will withdraw upon the slightest provocation too?

It seems that province has already defied Canadian constitutional provisions several times when it negotiated with the US over the Columbia River Project by itself. (What would happen to a US state that made a foreign treaty?) More next week.



Vol. LXXXIV No. 12 May 6, 1964

BOARD OF DIRECTORS

Chairman	Howard M. Brauer '65
Managing Editor	John Reintjes '66
Editor	Ronald Frashure '64
Business Manager	Kenneth Browning '66
News Editor	William Judnick '65
Features Editor	David Vanderwerf '66
Sports Editor	Dave Kress '67
Photography Editor	Stephen Teicher '66
Entertainment Editor	John Montanus '66
Advertising Manager	Michael Weidner '66

Second-class postage paid at Boston, Massachusetts. The Tech is published every Wednesday during the college year, except during college vacations, by The Tech, Room 50-211, 142 Memorial Drive, Cambridge, Massachusetts 02139. Telephones area code 617, 876-5855; 876-5856; 864-6900, Extension 2731.

United States mail subscription rates: \$2.75 for one year, \$4.25 for two years.

Campus Topics

SCEP Chairman outlines areas of study in educational policy

By Howie Ellis



For most MIT students, study is a year-round activity. Whether through on-the-job experience, individual work, or formal courses the process continues from June to September. The summer gives one the opportunity to "dig in" to his technical field, but moreover it gives a student the opportunity to broaden his field of study, to work in those areas not directly related to his major field, yet so important to the overall education.

With these thoughts in mind, the Student Committee on Educational Policy, of which I am the chairman, has worked with the School of Humanities and Social Science in launching an experimental evening program of summer study in economics, social science, and the humanities. The aim of the program is to give MIT students the maximum opportunity for summer study.

Three courses offered

The courses in this summer's evening program are few in number, yet representative of three basic areas of study. They include a course in basic economic principles (14.01), one in labor relations (14.63), and one in literature (21.11).

It is important to realize that this year's program is an experimental one and if successful, could well lead to a significantly expanded undertaking next year.

I hope those MIT students who will be in the Boston area this summer will give every consideration to this new educational opportunity.

A second area of significant concern to our committee is freshman tutoring. More than ever before, with next year's planned revision in 8.01 and 8.02, living group tutors will have to keep up to date on the latest changes in the freshman curriculum. SCEP is probably in the best position to help in this area. In contrast to last year, our aim is not to set up a SCEP tutoring program, but rather to assist existing programs and encourage the development of new ones within each living group.

Based on adaptability

Under the leadership of Norm Kaderlan '65, Burton House Tutoring Committee Chairman, a SCEP subcommittee will distribute in September information from freshman course heads to each interested living group and will set up only an initial meeting with course heads. The whole framework of the program is based on adaptability—whether a group has a single graduate student tutor, a big brother system, or a formalized undergraduate tutoring committee—we hope to offer effective assistance. It is also important to emphasize that this program will be undertaken only where requested. In sum, the initiative must come from within the living group. In light of the significant planned revision of the freshman curriculum for

September, I hope each living group gives careful thought to the establishment or continuance of a freshman tutoring program.

Two other subjects of significant importance to our committee, are Freshman course selection and feedback. Headed by Judy Risinger '66, a SCEP subcommittee is collecting information and faculty evaluations of the present course selection programs for freshmen presented by each department. In a similar manner our feedback subcommittee, under the guidance of Mike Oliver '65, is gathering as much information as possible on what forms of student-teacher feedback now exist and how effective, according to faculty and student evaluations, these programs are. In both cases our information will be organized over the summer and presented to the faculty with specific suggestions in the fall.

SCEP needs student help

The above four projects are taking up a considerable part of the committee's time. A list of ten possible future projects are also under consideration. But the important point is that these alone do not constitute all the problems on the MIT academic scene. In sum, they are the problems seen by a representative yet small group of committee members. To be an effective representative of student opinion on academic policy, our committee must have the cooperation of the entire undergraduate body—cooperation in the sense of communicating and suggesting to committee members those areas in which improvement is needed. Indeed, an overall student awareness of problems and suggestions for improvement form a very effective complement to the faculty and administrative efforts in this area.

Letters to The Tech

Judcomm men hit

To the Editor:

At a recent meeting of the various Judicial Committees at Dean Wadleigh's house, Bill Pinkerson, now ex-Inscomm Judicial Committee Chairman, commented at length on the alleged ineffectiveness of the judicial system in the MIT dormitories. Similarly, in a recent letter to the editor, published in the December 4, 1963, edition of The Tech, Dave Sullivan, then IFC representative to Inscomm, purported to be shocked by the immature conduct of certain people, left unnamed, but hinted to be dorm men.

We of the dormitory system, most assuredly, do not condone flouting of regulations. If the aforementioned people hold the best interests of the Institute as

much at heart as they claim to, why do they not speak of open-bid fraternity parties which attract policemen and police dogs in squad cars, at which gaming is allowed to take place, at which fire regulations are consistently broken? If they are so concerned with the "image" of the Institute, why do they not clean up their own backyard first? We further resent the continual condescending and supercilious paternalism exhibited towards the dormitory system and its members.

The list of incidents like the above-mentioned is long; however, we do not wish to further embarrass people who had no part in this surge of self-righteousness, nor in the creation of this double standard.

Frank Darmory '64



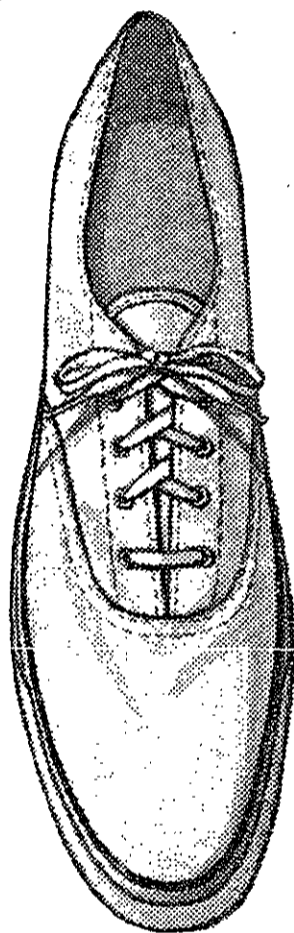
Peanuts appears daily and Sunday in the Boston Herald.

Auto Insurance
 ★ All Risks ★ Easy Payments
 ★ Open 9 to 9 & Saturday
 JAMES F. BRENNAN Ins. Agency
 11 Union Sq., Somerville, Mass.
Call 666-5600

as advertised in
THE NEW YORKER



Why pay less than \$10 for a canvas shoe?



Frankly, the Sperry Top-Sider canvas oxford is the most expensive you can buy. But it's worth every penny. The famous, exclusive anti-slip safety sole has made it the only shoe for men and women who know boats. (Great tennis favorite, too.) And the rest of the shoe makes it perfect for all casual wear. The non-chafe loose lining, that relaxes your foot. The double-deep heel cushion. The tailored looks. So why pay less, when you could wear fashion's famous Sperry Top-Sider canvas oxford for \$9.95?



BOX 3387, NAUGATUCK, CONN.

Adelman on steel industry:

Price-fixing suit emphasizes problems

By Stu Orkin
 The Justice Department's latest indictment charging eight major steel producers with price-fixing has emphasized the steel industry's problems associated with the long price rise trend.
 Morris Adelman, MIT Professor

of Economics, expressed his opinion on the industry's problems in the April 11 issue of Business Week. He feels that "the steel companies no longer predicted further wage and price increases in the spring of 1959. They elected instead to take a strike lasting nearly half a year, which lends

some support to the suggestion that they really believed they could not raise prices, and knew that higher wages would come out of profits."

The indictment of price-fixing dealt not with the basic price of steel, but with the "extras on carbon steel sheet: finish, temper, and packaging. According to American Iron & Steel Institute Statistics, carbon steel shipments represented approximately 92 percent of total steel shipments.

Heavy competition from foreign steel manufacturers has caused the American steel industry concern about its price structure.

Burchard entered business after graduation; passed at Tech after flunking at Minnesota

(Continued from Page 2)

Bemis Housing Co. During that period he became internationally known for his work on housing.

When Albert Bemis died, the Housing Company, a speculative venture, rather than an established profit-making concern, was dissolved. In order that the research started by the company be continued, the Albert Bemis Foundation was established at MIT, largely for the purpose of providing a professional chair for Burchard.

The following years saw the great architectural innovators of the day—Aalto, LeCorbusier, Raymond, and others—brought to MIT. Many of these became close personal friends of Dean Burchard. Among the students of architecture who passed through the Institute at that time were many who are now leaders in the field: Pei, Weese, Dahl, Beckwith, Haible, and Coudail.

During World War II Dean

Burchard took a leave of absence from MIT to direct important war work. He was one of many distinguished people from MIT who took a leading role in directing scientific and technological contributions to the war effort. For his work, Dean Burchard was awarded the Medal of Merit, the nation's highest civilian award, by President Truman in 1948.

Returning to the Institute in 1946, Dean Burchard became Director of Libraries, with the understanding that he would receive his present post as soon as it became vacant. When in 1948 he did take the post, a period of tremendous change and growth was underway at MIT.

Faculty doubled

During Dean Burchard's administration the humanities faculty more than doubled in size and quality. The Hayden Library, Lecture Series Committee, Drama Shop, the art exhibits in the Hayden gallery, the exchange of undergraduate students with Harvard, and the visual arts program were all started during this period.

Extensive travel

Dean Burchard has traveled extensively, studying housing and architecture in every corner of the world. When he retires Dean Burchard will alternate as a visiting professor in the School of Architecture at Berkeley for the fall term, and visiting professor in the School of Industrial Management at MIT in the spring.

He also plans to travel abroad to write two books. One will be a history of architecture for the layman, relating buildings to their sociological background. The other he plans as his last work, a chronicle of one man's experience of fifty years of architectural innovation, of the modern movement in whose progress he has been intimately involved.

Two MIT students given summer grants

Peter Heineman '65 and Teh-mau Kan '64, have been awarded grants to participate in the third annual Summer Institute in Space Physics at Columbia University.

The program, sponsored by the National Aeronautics and Space Administration, is designed to attract outstanding students into fields related to US space research.

WHAT'S NEW IN THE MAY ATLANTIC?

"The Squeeze on the Liberal University" by J. Douglas Brown: Can the liberal university survive in a climate of bigness, diversity, and specialization? And what values would be lost if we succumbed to the concepts of the multiversities?

"Liebling, Libel, and the Press": Louis M. Lyons discusses the responsibility of the press, the threat to the freedom of the press from libel suits, and inadequate training of reporters.

"The Computers of Tomorrow": Martin Greenberger analyzes the extent to which computers will reach into our daily lives.

PLUS: "The Mad Strangler of Boston" by Erie Stanley Gardner, "Tokyo and the Olympics", "People on Fire: The Congo" and "A Rough Map of Greece".

What happens when an outstanding staff of editors sets out to produce a magazine of the highest academic and cultural interest? You'll know when you read The Atlantic. In each issue you'll find fresh new ideas, exciting literary techniques, keen analyses of current affairs and a high order of criticism. Get your copy today.



ON SALE NOW

MOSCOW NEWS

Weekly from the Soviet Union. In English or in Spanish.

All aspects of Soviet life.

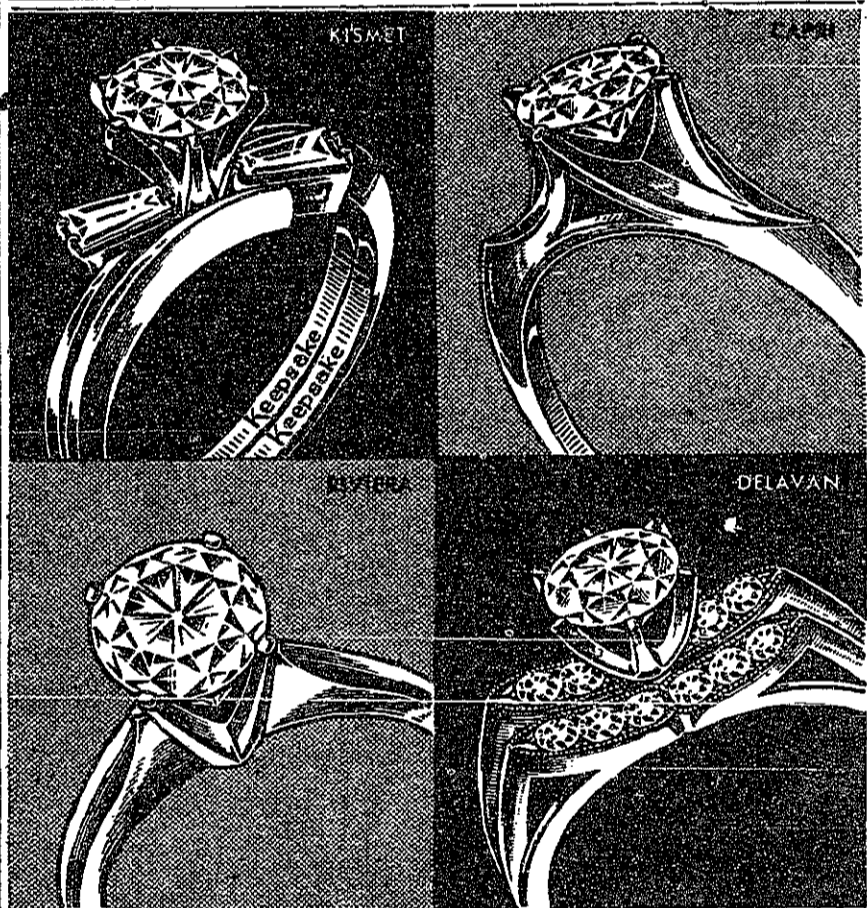
Full statements of the Soviet government.

1 yr. subscription \$2 air-mail.

IMPORTED

PUBLICATIONS & PROD.

1 Union Square, N.Y.C. 3 (H)



THE ENGAGEMENT RING WITH THE PERFECT CENTER DIAMOND

Keepsake®

True artistry is expressed in the brilliant fashion styling of every Keepsake diamond engagement ring. Each setting is a masterpiece of design, reflecting the full brilliance and beauty of the center diamond... a perfect gem of flawless clarity, fine color and meticulous modern cut.

The name, Keepsake, in the ring and on the tag is your assurance of fine quality and lasting satisfaction. Your very personal Keepsake diamond ring is awaiting your selection at your Keepsake Jeweler's store. Find him in the yellow pages. Prices from \$100 to \$2500. Rings enlarged to show beauty of detail. ®Trade-mark registered.

HOW TO PLAN YOUR ENGAGEMENT AND WEDDING

Please send two new booklets, "How to Plan Your Engagement and Wedding" and "Choosing Your Diamond Rings," both for only 25c. Also send special offer of beautiful 44 page Bride's Book.

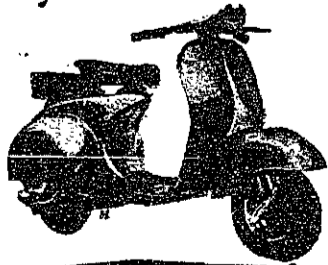
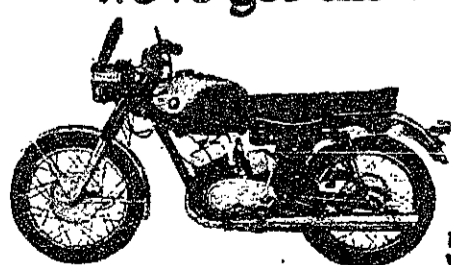
Name _____

Address _____

City _____ Co. _____ State _____

KEEPSAKE DIAMOND RINGS, SYRACUSE, NEW YORK

FOR ROAD or TRACK we've got the transportation you want



RENTALS

LOW DAILY & WEEKLY RATES

SENSATIONAL NEW YAMAHA MOTORCYCLE

3 Models for street or competition from \$999

YAMAHA 750-3-2

New high performance 750 cc SPORT MODEL

13 hp. 4 speed gearbox. 25 mph. only \$669!

MOTORSCOOTERS/MOTORCYCLES FROM \$295

dependable economical



MOTOR SCOOTERS

152 miles per gallon. New \$799!

Liberal trade-in... \$10 down!

USED MACHINES FROM \$99!

BOSTON VESPA CO., INC.

949 COMMONWEALTH AVE.

AT B. U. FIELD

Algonquin 4-1150

NEW ENGLAND'S SHOWPLACE FOR 2 WHEEL TRANSPORTATION

Open daily 'til 9 P.M. Sat. 'til 5:30 P.M.
 SALES SERVICE PARTS ACCESSORIES

**MAD SCIENTIST?
GENIUS?
TOOL?**
Can one man find happiness by unleashing the powers of hell?
SEE FAUST FRIDAY, 10-250, 8 pm, 35c

HARVARD SQ. UN 4-4560
"HUD"
1:45, 5:45, 9:40
"LILIES OF THE FIELD"
4:00 and 8:00

BRATTLE SQ. TR 6-4226
Through Saturday: Revival of Rene Clair's "The Italian Straw Hat" plus Jean Renoir's "A Day in the Country." Starting Sunday: A Cycle of Horror Films: Sunday, "Hound of the Baskervilles;" Monday, "Cat People;" Tuesday, "Horror of Dracula." Shows Daily 5:30, 7:30, 9:30, matinee Sat. and Sun. at 3:30.

Airline vice president to give Gardner lecture

William Littlewood, vice president of American Airlines, will give the sixth annual Lester D. Gardner Lecture on the History of Aeronautics Thursday at 8:30 p.m. in the Little Theatre.

Mr. Littlewood, who since 1927 has been connected with the development of air transport, will speak on the history of transport aircraft in the U.S. and will also deal with the future and its problems of safety, acceptability, and profit.

The Gardner lecture is presented annually under a bequest by the late Major Lester Gardner, MIT '98, who was an early leader in aviation industry, publisher of aviation journals and a supporter of education in aeronautical engineering.

music at mit...

Choral Society 'Requiem' top-rate

By John Montanus
The MIT Choral Society, under the direction of Klaus Liepmann, has once again proved that science and music are not inimical. Their performance Friday of Verdi's 'Requiem' was another triumph for art at the Institute.

The Requiem was an ambitious work to undertake; the bon mot that it is 'Verdi's greatest opera' gives a clue to the difficulty of its presentation. The work requires a richness of tone and a dramatic as well as a lyric talent which are seldom found in any but the best groups. It speaks well for the Choral Society that, with the exception of the double fugal passages of the Sanctus, the work was given a full tone all the more remarkable in Kresge's naturally thin acoustical atmosphere.

The Dies Irae, which tells in rhymed Latin verse the story of the 'day of wrath,' was properly hair-raising—the unrestrained drama which the chorus and orchestra waged showed a new aspect of the group, which, under the almost ascetic direction of Professor Liepmann, has hitherto been more outstanding for its precision of rhythm and pitch than for its dynamic interpretations. This precision was put to full advantage in the two fugal passages; however, the full tone of the final Libera Me was not achieved in the Sanctus, where

the voices are subdivided, and the entrances there were a bit shy. And it must be mentioned that an ascetic interpretation was a virtue in the contrasting last numbers, with their obvious plain-song references. Such contrast of the most extreme sort is the dramatic keystone of the Requiem, and its proper recognition made the concert a success.

The lyric contrast was offered by the four soloists, who provided some of the high points of the performance. Helen Boatwright's soprano solo in the Libera Me was magnificent, particularly in the climax when her voice shone out clearly above both orchestra and chorus, fortissimo. Eunice Alberts showed fine tone in her

contralto parts, but was a bit shrill on her high notes; this was the strong range area of the other soloists, who tended on the contrary to be weak in the lower register. Blake Stern's Ingenuis was lacking in lyric tone, but his performance was otherwise reasonable; Paul Matthew showed a fine dramatic command of this bass role in the Mors Sepulchritatis, which requires an ominous tone fitting to the character of the words.

Tribute must be paid to Professor Liepmann, who elicited such a fine performance from soloists, chorus, and the Cambridge Festival Orchestra. With such performances he fully justifies music at MIT.

Making the Scene

THIS WEEK
MUSIC
'Così fan tutte' — Mozart's great comic opera, presented by the New England Conservatory's Opera Theatre, Jordan Hall, May 7 and 8, 8:00 pm, all tickets \$1.00.
Debut Recital — Violinist Hiroko Abe of the New England Conservatory, playing music of Mozart, Ives, Prokofiev, and others, Jordan Hall, May 11, 8:30 pm, admission free.
Conservatory Concert — Jordan Hall, May 12, 8:30 pm; program includes a Telemann cantata, Schubert's Quartet for flute, viola, cello, and guitar, and three works for the viola, a Spanish lute. Admission free.
MIT Spring Festival — Saturday, May 9, 8:30 pm; Concert Band playing the world premiere of Kazinskas' 'Transcendental Expressions,' Symphony playing Dvorak's Othello Overture and 'An English Suite' by Shakespeare's contemporaries, John

S	M	T	W	T	F	S
10	11	12	13	14	15	16
17	18	19				

Corley directing, plus 'English Ayres and Dances,' played by the Brass Choir, William Trapagen conducting Sunday, May 10, the MIT Glee Club the Wellesley College Choir, the Festival Soloists, and the Cambridge Festival Orchestra, Klaus Liepmann conducting; performance of Purcell's 'The Fairy Queen'; both concerts Kresge Auditorium, tickets \$2.50 and \$3.50 at the Box Office, ext. 204 and in the lobby of Building 10.
Gardner Museum — Saturday, May 9, Winsor School Glee Club, singing choral works of Bach, Victoria, Brahms, Moore, and others; concert free at 3:00 p.m. Sunday, May 10, 3:00 p.m., Robert S. Stebbins, editing music of Debussy, Prokofiev, and Tchaikovsky, with Samuel Sanders pianist.

THEATRE
'Romeo and Juliet' — opening May 11 North Shore Theatre, Beverly, Mass. at 8:00 pm.
'King Lear' readings — Paul Schofield currently appearing in the Days Shakespeare Theatre's production of Boston, will read from this and other Shakespeare plays at the BU Theatre this afternoon at 2:00 pm, admission free.

LSC Contemporary Series — 'The Mouse That Roared,' starring Peter Sellers, Room 26-100, May 8, 6:30 and 9:00 pm, admission 60c.
LSC Entertainment Series — 'The Life of Adrian Messenger,' mystery thriller, at 5:15, 7:30, and 9:45 in Room 26-100, May 9, admission 35c.
LSC Classic Series — 'The Bleeding Thief,' (Italian 1949) in Room 10, 250, May 10, 8:00 pm, 50c.
Wellesley Barnswallows, May 8 and 9, Alumnae Hall, 8:00 pm, \$1.50.

MISCELLANEOUS
Friedman Lecture — Dr. Philip Morrison, Cornell University Professor of Physics, 'First and Last Things: The Elements of Cosmology,' May 12, Little Theatre of Kresge Auditorium.
Museum of Fine Arts — exhibits include watercolors, nineteenth century Americans, recent acquisitions of European masters, prints and drawings by Venetian masters.

MUSIC
A Tech Afternoon in the Great Court — Informal blanket concert by the Concert Band, playing Pops-style program of light classics and modern hits; May 17, 3:00 pm, tickets free in Building 10 or \$1.00 at the Gardner Museum — May 16, 3:00 pm, the Motor Club, works of Kay Johnson, Prichard, May 17, 3:00 pm, Gabrieli Trio with piano, playing trios by Gibbons and Schubert and Faure's piano quartet; both concerts free.

THEATRE
Orestes — Aeschylus' complete trilogy, staged in the classical style, in the Richard Lattimore translation, Adams House Drama Society of Harvard performs the complete trilogy nightly, May 14-16, at 8:00 pm, tickets \$2.00-\$3.00 at the Harvard Coop.
'Judith' — Jean Giraudoux's play, in the John Savacol English version, MIT Community Players, directed by Joel Oberly, May 14-16 and 21-23, 8:30 pm, Little Theatre, Kresge Auditorium; tickets \$1.50 at the Box Office.
LSC Entertainment Series — 'The Martian Candidate,' May 16, 5:15, 7:30, and 9:45 pm, Room 10-250, admission 35c.
LSC Contemporary Series — 'Auntie Mame,' May 15, 6:30 and 9:00 pm, Room 26-100, admission 60c.
LSC Classics Series — 'A Night with Chaplin,' showing 'The Cure,' 'The Rink,' 'Easy Street,' 'The Floorwalker,' 10-250, May 17, 8:00, 50c.

E.M. LOEW'S WEST END CINEMA
OPP. NORTH STATION 523-4050

In recognition of the 400th anniversary of the Bard of Avon the WEST END CINEMA is proud to announce for a limited engagement a **SHAKESPEAREAN FILM FESTIVAL**

WEDNESDAY thru SATURDAY—MAY 6-9
HAMLET
Starring SIR LAURENCE OLIVIER-JEAN SIMMONS

SUNDAY thru TUESDAY—MAY 10-12
RICHARD III
Starring SIR LAURENCE OLIVIER—IN COLOR

WEDNESDAY thru SATURDAY—MAY 13-16
JULIUS CAESAR
Starring MARLON BRANDO-JAMES MASON GREER GARSON-SIR JOHN GIELGULD-DEBORAH KERR

SUNDAY thru TUESDAY—MAY 17-19
HENRY V
Starring SIR LAURENCE OLIVIER IN COLOR

PARKING REAR of HOTEL MADISON

SPECIAL STUDENT DISCOUNT
Bearer of this advertisement including this portion will be admitted at a special discount price of \$1.00 during this engagement

The Great Love Story of Our Time!
LAURENCE OLIVIER in "Wuthering Heights"

CINEMA

Brought Back by Popular Demand! Ingmar Bergman's "THE SILENCE"

PARK SQ. CINEMA

Explosive Excitement! Carl Foreman's "The Victors" also—Alec Guinness in "THE LAVENDER HILL MOB"


ESQUIRE CINEMA

Note — Special Student Prices
Mon.-Thurs. \$1 (Kenmore & Park Square) 75c (Esquire)

ELSIE'S
Noted for the best Sandwiches to eat in or take out.
FAMOUS ROAST BEEF SPECIAL SANDWICH—KNACKWURST—BRATWURST with SAUERKRAUT or POTATO SALAD
"und die feinen Wurstwaren"
71 Mr. Auburn St., Cambridge 491-2842
ELSIE & HENRY BAUMANN

what's all this **JAZZ** about Jonathan? tune in Saturday at 2:05 **WNAC 680** and find out!

Batiste gets an Oxford education
by **ARROW**



Comfortable batiste fabric in the college man's favorite oxford weave is sure to be one of the most popular shirts this season on or off the campus. Traditional ivy styling in the handsome Sussex button-down collar... traditional ARROW tailoring for perfect fit and "Sanforized" labeled to ensure lasting fit washing after washing. Crisp, cool white in short sleeves.

\$5.00

REVIEW!
A RUTHERFORD
THE HAPPIEST DAYS OF YOUR LIFE
MURDER SHE SAID

ANNOUNCING
The M.I.T. Logarithms' Close-Harmony Record Release
THE LOGARITHMS
OF M.I.T.
ON SALE STARTING **MONDAY, MAY 11, 1964**

Critic's Choice

Dreyer's 'Joan of Arc' a great film masterpiece

By Gilberto Perez-Guillermo

Carl-Theodor Dreyer, one of my best-admired directors, is one of the very few cinema artists who have resolutely refused any compromise, preferring to remain inactive if they cannot express themselves to the fullest. Dreyer's films, with their haunting beauty, their mystical fervor, their deliberate slowness, their emphasis on detail, have never been material for an average audience. Hence, Dreyer has been able to find financial backing for only four films after reaching artistic maturity, four major films, all of which failed at the box office: "The Passion of Joan of Arc" (1928), "Vampyr" (1931), "Day of Wrath" (1943), and "Ordet" (1955).

"The Passion of Joan of Arc" (at the Harvard Visual Arts Center, Sunday at 7:15) reaches heights of emotional intensity unequaled on the screen. The Stylized settings, Rudolf Mate's photography, with its predominant whites, its capture of expressive detail, the extraordinary performance of Maria Falconetti as Joan, conveying in a series of memorable images a peasant girl's convictions, her hesitations, her suffering, her fears, are all responding to Dreyer's inspiration. Dreyer's cutting, in contrast with Eisenstein's, seldom takes place between two simultaneous actions, being rather a carefully timed succession of action and reaction, often relating two images in state of change. Dreyer's beautiful compositions, his grouping of priests, of the people at the execution, his huge close-ups of Joan in some carefully determined position are often in a state of flow, and the montage places these

frames in a harmonious interaction. The film is composed mostly of close-ups which result in an extraordinary flow of emotions, sustained by the beautifully balanced succession of images, which suggest the majestic, larger-than-life nature of the trial and martyrdom of Joan of Arc. Into this extraordinary whole, Dreyer has integrated a number of details, ranging from the motives of Joan's judges, to the consequences of her death, which are splendidly suggested in the final sequence. There is no doubt, "Joan of Arc" is one of the supreme masterpieces of the screen.

Jean Renoir's "A Day in the Country" (at the Brattle, and at the BU Student Union, Friday at 8) is probably the best short film ever made, a lyrical, nostalgic expression of Renoir's love of nature, done with beautiful simplicity. This is one of the director's major works and a film which should remind the viewer that Jean Renoir is the son of Pierre Auguste Renoir.

Vittorio de Sica's "Bicycle Thief" (at the LSC Classic Series) may be a trifle over-sentimental, but it is mostly constructed with genuine feeling, and its directness and simplicity, its creation of the illusion of real life, render it one of the more successful neo-realist films, and certainly the most popular one.

"The Mouse That Roared" continues the practice of the LSC Contemporary Series of showing the films that the Entertainment Series showed a few years ago. The film was very popular, but I don't care much for it.

Spring Festival at MIT continuing; Band, Symphony, Glee Club to play

The Spring Festival of Music at MIT will continue this weekend with performances by the Concert Band, the Symphony Orchestra, the Brass Choir, and Glee Club. MIT has again commissioned an original concert band work for the occasion: Jeronimas Kacinskis' "Transcendental Expressions" will have its world premiere Saturday, May 9 at 8:30 p.m., in Kresge Auditorium. The work features an organ part written especially for Saturday's organist, Zenonas Nomeika.

Also on the program for Saturday are Dvorak's 'Othello Overture' and 'An Elizabethan Suite' for strings and four horns arranged by John Barbirolli, played by the orchestra, and 'English Ayres and Dances' by Holborne,

played by the Brass Choir. John Corley directs the band and the orchestra; the Brass Choir is led by William Traphagan.

Sundays concert, by the MIT Glee Club, the Wellesley College Choir, the Cambridge Festival Orchestra, and the Festival soloists, will be Purcell's The Fairy Queen, with Klaus Liepmann conducting.

The concert will begin at 3:00 p.m.

**1964
AUTO INS. & PLATES
A STONE'S THROW FROM MIT
At 428 Mass. Ave., Cambridge
491-3330, 491-3331**

Movie Schedule

Wednesday, May 6, through Tuesday, May 12, (Unless otherwise stated the Sunday schedule is the same as the weekly schedule except that no movies are shown before 1:00 p.m.)
ASTOR — 'Dr. Strangelove' Mon.-Sat. 9:55, 11:55; Sun., 1:35, 3:55, 5:55, 7:55, 9:55; Sun., 1:25, 3:25, 5:25, 7:25, 9:25; shorts start 25 minutes before the feature.
BEACON HILL — 'Tom Jones,' 10:15, 12:30, 2:45, 5:00, 7:15, 9:30; Sun., 1:00, 3:10, 5:20, 7:30, 9:40.
BOSTON CINERAMA — 'It's a Mad, Mad, Mad, Mad World,' evenings.
BRATTLE — Through Saturday: Revival of Rene Clair's 'The Italian Straw Hat' plus Jean Renoir's 'A Day in the Country.' Starting Sunday: A Cycle of Horror Films: Sunday, 'Hound of the Baskervilles'; Monday, 'Cat People'; Tuesday, 'Horror of Dracula.' Shows daily 5:30, 7:30, 9:30, matinees Sat. and Sun. at 3:30.
CARRI — 'Paris When It Sizzles,' 10:30, 2:15, 4:30, 6:55; 'The Servant,' 12:20, 4:10, 8:00.
CINEMA KENMORE SQUARE — 'Wuthering Heights' 2:30, 4:20, 6:10, 8:00, 9:50 p.m.
EXETER — 'Murder, She Said,' 2:05, 5:05, 8:05; 'The Happiest Days of Your Life,' 3:40, 6:40, 9:40.
ESQUIRE — 'The Victors,' no times available.
GARY — 'The Pink Panther,' 10:00, 12:00, 2:00, 4:00, 6:00, 8:00, 10:00; Sun., 1:00, 3:00, 5:00, 7:00, 9:00.
HARVARD SQUARE — 'Hud,' 1:45,

5:45, 9:40; 'Lilies of the Field,' 4:00 and 8:00.
KEITH MEMORIAL — 'Captain Newman, M.D.,' Mon.-Sat. 9:45, 1:35, 5:30, 9:20; Sun. 2:30, 6:05, 9:40.
LOEW'S ORPHEUM — 'Lilies of the Field,' no times available.
MAXFLOWER — 'Flight from Ashiya,' no times available.
MUSIC HALL — 'A Tiger Walks' weekdays and Sat. 9:30, 11:30 a.m. 1:30, 3:35, 5:40, 7:40, 9:40 p.m. Sun. 1:30, 3:35, 5:40, 7:40, 9:40 p.m.
PARAMOUNT — 'The Seven Faces of Dr. Lao' weekdays and Sat. 11:20 a.m. 2:45, 6:10, 9:40 p.m. Sun. 2:25, 5:50, 9:20 p.m. 'Girls at Sea' weekdays and Sat. 9:50 a.m., 1:15, 4:45, 8:10 p.m. Sun. 1:00, 4:25, 7:50 p.m.
PARK SQUARE CINEMA — 'The Connection,' 1:35, 3:30, 5:25, 7:15, 9:10; short, 'A la Mode,' starts 10 min. before feature.
SAXON — 'The Cardinal,' evenings 8:30, matinees Mon.-Fri., 2:00, Sat.-Sun., 2:00, 5:00.
UPDOWN — 'The Victors' weekdays 12:30, 4:45, 9:05; Sun. 1:00, 5:10, 9:25; 'To Bed or Not to Bed,' weekdays, 10:45, 3:00, 7:15, Sun. 3:20, 7:35.
WEST END CINEMA — 'The War of the Buttons,' 11:15, 1:15, 3:15, 5:15, 7:15, 9:15.

Theatres

CHARLES PLAYHOUSE — 'The Glass Menagerie,' by Tennessee Williams; performances Wed. at 8:00, Thurs. and Fri. at 8:30, Sat. at 5:30 and 9:00, Sun. at 3:00 and 7:30.
COLONIAL — 'Fade Out, Fade In,' starring Carol Burnett, eves. at 8:30 (except Sun.) mats. Thurs. at 2:15, Sat. at 2:30.
HOTEL BOSTONIAN PLAYHOUSE — two Pinter plays, 'The Room' and 'The Dumbwaiter,' evenings, Thurs., Fri., Sun. at 8:30, Wed. 8:00, Sat. 6:00 and 9:30; mat. Thurs. 3:00 p.m.
IMAGE — Two one-acts by W. F. Mc-Cort, 'We Might As Well Be Here As Where We Are,' and 'Six Million and One and Two and...' playing Wed.-Fri. and Sun. at 8:30, Sat. at 7 and 9:30.
SHUBERT — Royal Shakespeare Company, 'King Lear,' Thurs. and Fri. at 8:00; 'Comedy of Errors,' Wed. and Sat., 2:30 and 8:30.

Someplace Else

IAN & SYLVIA
and
THE BIG THREE

Parking across street Beacon Hill 172 Cambridge Street

UNICORN

DAVE VAN RONK
and
ELIZABETH COTTON
through May 10

YANA COFFEE HOUSE

SILENT FILM FESTIVAL
CHARLIE CHAPLIN | **LIONEL BARRYMORE**
MARY PICKFORD | **HAROLD LLOYD**
W. C. FIELDS | and others
 7, 9 & 11 P.M. — 99c Minimum
 through May 25

Caps & Gowns

The Coop is now taking orders for Rental Caps and Gowns.
Cancellations will be accepted.

BACHELORS — MASTERS — DOCTORS
\$3.00 \$3.50 \$4.00

Please order early
No Deposit Required at Time of Ordering

THE TECH COOP

LECTURE SERIES COMMITTEE CALENDAR

Contemporary Series

'The Mouse that Roared'
also Peter Seller's short "The Case of the Mukkinese Battlehorn"

at first and last shows only

Friday, May 8 6:30, 9:00 and 10:30

26-100 60c

Entertainment Series

'The List of Adrian Messenger'

Saturday, May 9

5:15, 7:30, 9:45

26-100 35c

Classic Series

'The Bicycle Thief'

Sunday, May 10 8:00

10-250 50c

or by membership

interviewed K, LBJ

Pearson speaks on world politics

By Anthony Pappas
Drew Pearson, political commentator and journalist, discussed the Johnson administration and world politics April 26 in a lecture sponsored by the Lecture Series Committee. Pearson, whose syndicated column, Washington Merry-Go-Round, appears in many newspapers, drew upon personal interviews with Premier Khrushchev and President Johnson to paint an optimistic picture of international relations and the American role in the world.

Pearson credits President Johnson with going out of his way to be nice to people and being a real salesman. Johnson has shown these qualities in settling the recent railroad dispute and progressing towards improving relations with the Communist bloc.

US-Soviet relations improving
Mr. Pearson feels that cross-currents in the Western and Eastern blocs provide a great opportunity for the relaxation of tensions. In one of Khrushchev's interviews with him, the Premier stressed the importance of raising Communist living standards. He stated that Communism "cannot be served on empty plates."

In Pearson's view, the United States faces a prolonged period of "competitive peace." Khrushchev echoed this opinion in his interview, inviting the U. S. to compete with the Soviet Union in economic terms and to let the outcome determine which system is superior.

In the question period, Mr. Pearson was asked how Khrushchev's purported peaceful aims could be reconciled with the stationing of Soviet missiles in Cuba

in October, 1962. He feels that the Soviet military pressured the Premier into taking this move and that the probable U. S. reaction was miscalculated.

Khrushchev familiar with U. S.
The journalist credits Khrushchev with possessing a wide knowledge of the United States and its leaders. The Premier confided that he felt that Eisenhower didn't always run his administration, and used Eisenhower's refusal to express American regret for the U-2 incident at the 1960 summit conference as an example. Then Secretary of State, Christian Herter objected when Eisenhower had seemed ready to comply, and no expression of regret was issued.

Pearson criticizes business
Pearson expanded further on the role of the industrial complex on defense spending. He feels that large corporations with defense contracts exercise undue control over television and radio communications media.

Large corporations, General Electric and Westinghouse, for example, own wholly or in part many TV and radio stations. According to Pearson, criticism of defense expenditures tends to be muted and reporting of news such as criminal convictions against the controlling corporations for price-fixing is also discouraged.

Moves towards peace
Pearson said that within the past year the arms race has ceased. There was the test-ban treaty. Subsequently, Khrushchev reduced the USSR military budget by 4.7% last December. Johnson has cut American defense spending by 4% and recently announced a further reduction in

military installations. In addition, the Soviet Union and the U. S. announced that production of fissionable material would cease. Pearson expects further steps in the direction of a limited detente.

Competitive spirit in Russia
On his last trip to the Soviet Union, Pearson was invited to present a short talk over a government-owned radio station. The officials in Sochi, a Black Sea resort town, wanted him to comment on their town. The affair continued reasonably well, but the officials became unhappy when he praised near-by Yalta.

Pearson concluded that this local "Chamber of Commerce" attitude portends the sweeping changes which will take place in the Soviet Union.

WBZ commentator to speak on Europe

Carl de Suze, commentator on WBZ radio, will present 'Empires Revisited—the New Look of Europe' next Wednesday, May 13, in Kresge Auditorium, at 8:00 pm. His presentation uses films and tapes to chronicle the old nations and the new unity of post-war Europe. The rise of the 'Eurocratic' feeling will be emphasized.

Mr. de Suze's talk, presented by the Lecture Series Committee, is open to the public without charge.

Colleges vital to pop entertainment Campus major stage for new talent

By Richard Art, Jr.
College students appear to be making someone besides the bookstores rich. The entertainment industry, as evidenced by a recent issue of Billboard, is enjoying the fact that American college students buy more than five LP's each per year and that many of the better acts can earn more playing one campus engagement than in a week anywhere else. Top names command prices in the \$5,000 range, with George Shearing, Dick Gregory, Louis Armstrong, and Julie London leading the pack. Dave Brubeck makes \$5,000 and 'can just sit back and take orders.' The cost of live entertainment of the 'name' variety costs upwards of \$2000 plus 50-90% of the remainder.

Although the booking for recent events at the Institute has been fairly successful, it is possible that the students can have a still larger influence on the entertainment industry in the Boston area. In Boston there are close to 90,000 students with a combined buying power that supports a noticeable share of the downtown theatres, the folk concerts, the few jazz spots, etc.

Not only do colleges support the industry by sales; they are also the major source and stage of new talent. Since 1958 campuses have fostered such groups as the Kingston Trio, the Brothers Four, Peter, Paul, and Mary, the Brandywine Singers, and others of varying talent.

Coop plans building in Harvard Square

The Harvard Cooperative Society is considering the possibility of making some alterations in its plans for a new Coop Annex in Harvard Square.

The Society recently mailed out drawings of the building it would like to construct, which Stanley F. Teele, president of the Coop, claims would enhance the appearance of the neighborhood. The Church Street Trust, a group of three businessmen who oppose the plan on esthetic grounds, submitted an alternate sketch.

The Church Street proposal, featuring wide sidewalks and trees, would preserve the 120-year-old Hawkins building that the Coop bought last summer.

HYDRODYNAMICS EQUIPMENT

Gravity or Catapult Type

Excellent from dormitory roofs from 75c gross

Hydraulic Type

For hand to hand combat 10c to \$1.00 each

CLASSIC TOY & NOVELTY, INC.

75 PEARL STREET, CAMBRIDGE

MASSACHUSETTS INSTITUTE OF TECHNOLOGY
FACULTY MEMBERS AND PERSONNEL

MAY PURCHASE
T I R E S
At Wholesale Prices

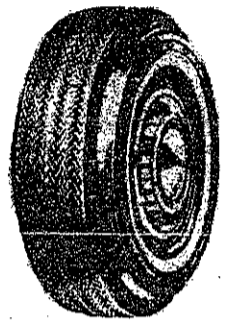
MIT
Identification
Required

OVER 25,000
TIRES IN STOCK
INCLUDING
FOREIGN AND
COMPACT SIZES

NEW Perfect
Quality

GOOD YEAR Firestone US

TUBELESS
750x14 \$ 9⁹⁵ 560x15 \$12⁷⁶
600x13 \$ 9⁸⁴ 800x14 \$13⁹⁵
650x13 \$10⁶⁵ 850x14 \$16⁹⁶
800/820x15 \$18⁴¹



TUBE TYPE
676x15 \$ 7⁷⁵
710x15 \$11⁷⁷
760x15 \$13⁶⁶

No Trade-In Required
Every Tire and Tube Unconditionally Guaranteed, Regardless of Time or Mileage
(Adjustment Provided on Tread Depth, Based on Mfg. Depreciated Point)

Terms Available
FREE TIRE MOUNTING

CAMBRIDGE TIRE COMPANY

"Nationwide Wholesale Warehouse Distributors"

290 ALBANY STREET • CAMBRIDGE 39, MASS.

Off Mass. Ave. Near M. I. T.

• • • University 4-7575 • • •

HOURS — 7:30 A.M. to 5:30 P.M.

Saturday: 7:30 A.M. to 2:00 P.M.

HALF A CENTURY OF SERVICE

MEMBER: CAMBRIDGE CHAMBER OF COMMERCE

SOUTH SEAS

21 HARRISON AVE.
HA 6-4210

(Between Essex & Beech
Streets, Boston)

ISLAND & CANTONESE
FOOD • EXOTIC DRINKS

Authentic Hawaiian Luau
Moderate Prices

11 a.m.-3 a.m.

Daily & Sunday

BUY OLD SPICE NOW

THE TECH COOP

Take the box, fill it, then return it to us for storage. We clean, insure and vault store your winter garments on hangers throughout the summer. Your garments are guaranteed safe from moths or any danger. In the fall, a refreshed, ready-to-wear wardrobe is yours.

Wonderful Way to
Store Your
Winter Garments

Coop Box Storage

Why haul those heavy winter woollens home over the summer? Let them vacation in our vaults and have them waiting freshly cleaned and pressed, ready to wear when you return.

ONLY \$4⁹⁵ PAY NOTHING UNTIL FALL

PLUS USUAL CLEANING CHARGES

This includes insurance protection up to \$250.00

Everything will be dry cleaned

(FUR, FUR TRIM AND SYNTHETIC FUR COATS EXCLUDED)

THE TECH COOP

M.I.T. SPRING FESTIVAL OF MUSIC

May 9, Saturday, 8:30 p.m., Kresge Auditorium:

CONTEMPORARY MUSIC and MUSIC INSPIRED BY SHAKESPEARE

M.I.T. Concert Band and Symphony Orchestra
John Corley, conducting

May 10, Sunday, 3:00 p.m., Kresge Auditorium:

PURCELL'S "THE FAIRY QUEEN"

Wellesley College Choir and M.I.T. Glee Club
with the Cambridge Festival Orchestra

Soloists: Helen Boatwright, Eunice Alberts, Donald Sullivan,
Paul Matthen — Klaus Liepmann, conducting

Tickets: \$2.50, \$3.50, \$5.00; by mail to Kresge Auditorium, M.I.T.;
or by phone at UN 4-6900, ext. 2910; or weekdays 12:00 to 2:00,
Lobby, Bldg. 10.

Enjoy the Finest Italian-American Food and Delicious Pizza

Simeone's
ITALIAN-AMERICAN RESTAURANT
Choice Liquors and Imported Beers

21 BROOKLINE STREET, CAMBRIDGE — Tel. EL 4-9569
(at Central Square)

Open Every Night 'til Midnight — Free Parking
Ask About Student Discount Books

IM table tennis finals in 2nd week, four teams still in unbeaten ranks

The Intramural table tennis final playoffs got underway last week. After one week of play in the double elimination tournament, four teams were left undefeated, ten teams incurred only one loss, and ten teams were eliminated by losing twice.

The undefeated teams are Baker "B", Chinese Students' Club "A", Baker Ball Busters,

and Burton "B". Those who have lost once are Burton "C", Senior House "A", Tau Epsilon Phi "A", Graduate House, Baker "D", Baker "A", Alpha Epsilon Pi "B", Burton "A", Alpha Epsilon Pi "A", and Chinese Students' Club "B".

Among the teams that have been eliminated, Bexley "A" and Tau Epsilon Phi "B" are tied for 13th place. Lambda Chi Alpha, Alpha Epsilon Pi "C", and Sigma Phi Epsilon are tied for 17th place. There is also a five-way tie for 20th place among East Campus "B", Senior House "B", East Campus "A", Alpha Tau Omega, and Zeta Beta Tau.

The contest for the championship will be played this Thursday night at 9:00 p.m. on the Burton House table. This match should be quite interesting and spectators are welcome. Final results and standings will be published next week.

Burton A cops first in IM rifle match

The Burton A team outshot seven others in the final match of the intramural rifle season to become the winners last Sunday afternoon. In all, 35 teams from 16 living groups fired in two matches held over the last two weekends, the top 20% of the first round returning to fire in the finals.

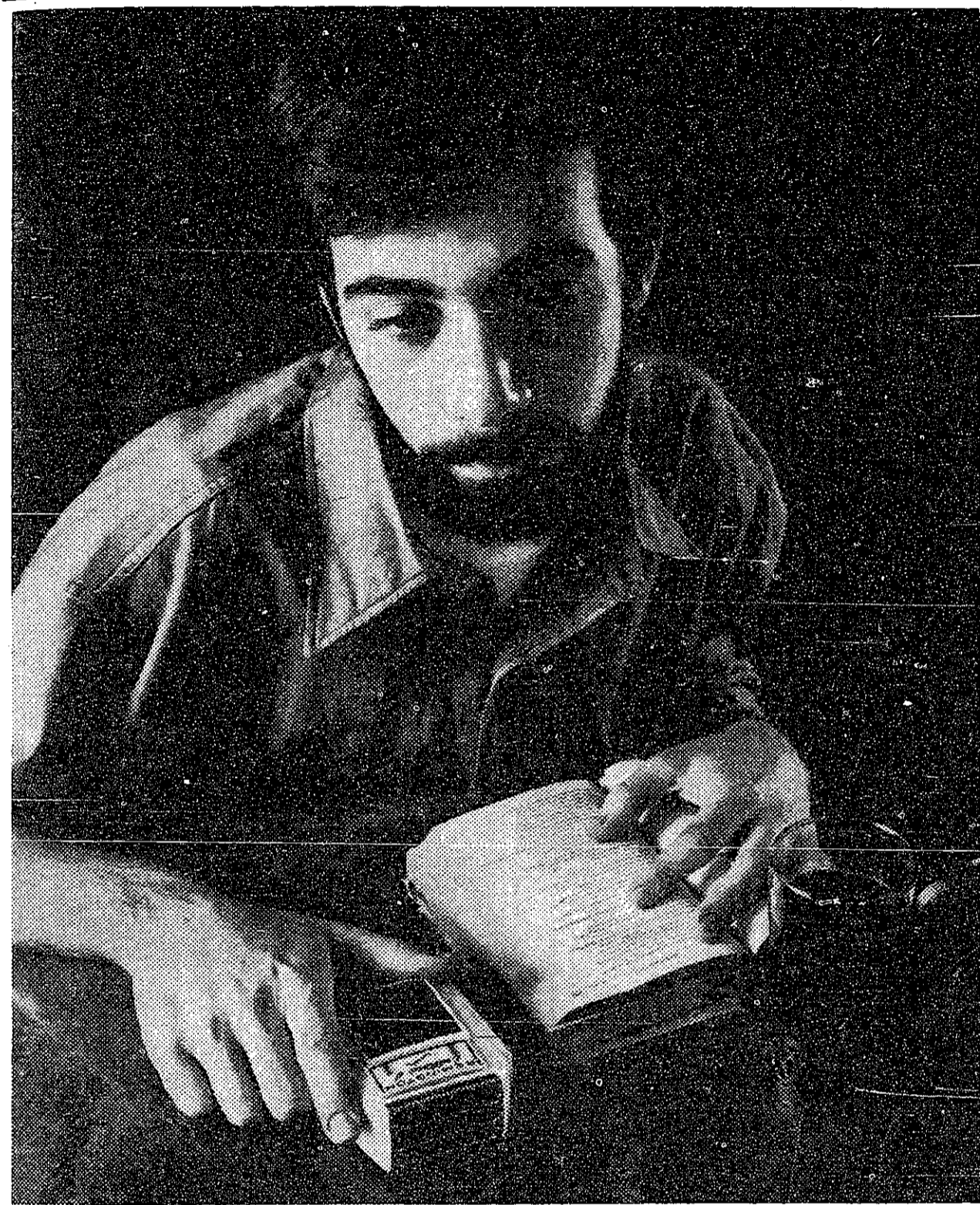
Teams consisted of four men, each firing 20 shots in the prone position for a possible high team score of 800. Gary Schwartz of Senior House had the high individual score of the season with a 199 out of 200 on both weekends.

The top eight teams:

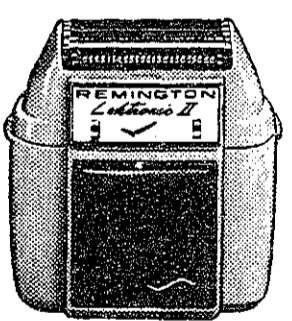
1. Burton House A 779
2. Student House 777
3. Pershing Rifles 773
4. Senior House C 770
5. Sigma Phi Epsilon 769
6. Sigma Alpha Epsilon 768
7. Phi Sigma Kappa 749
8. Burton House C 747

On Deck

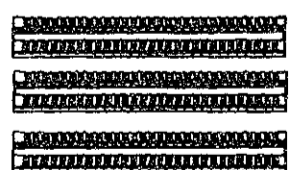
- Today, Wednesday, May 6**
- Golf (V) Amherst, Massachusetts, Away, 2:00 pm
 - Tennis (F) Phillips Andover, Away, 2:15 pm
 - Track (V) Greater Bostons at Brandeis
- Thursday, May 7**
- Baseball (V) Brandeis, Home, 4:00 pm
 - Baseball (F) Northeastern, Home, 4:00 pm
 - Golf (V) New England at Rutland, Vermont
 - Lacrosse (V) Tufts, Home, 3:30 pm
- Friday, May 8**
- Golf (V) New England at Rutland, Vermont
- Saturday, May 9**
- Baseball (V) Coast Guard (2 games), Home, 1:00 pm
 - Baseball (F) Newton Junior College, Home, 2:00 pm
 - Heavyweight Crew (V) Cochrane Cup, Dartmouth, Wisconsin at Madison, Wisconsin
 - Lightweight Crew (V) Callow Cup, Pennsylvania, Navy at Philadelphia
 - Golf (F) Winchendon School, Away, 1:00 pm
 - Lacrosse (V) Trinity, Home, 2:00 pm
 - Lacrosse (F) Lawrence Academy, Away, 2:00 pm
 - Sailing (V) NEISA Dinghy Finals at Harvard Yacht Club
 - Tennis (V) Trinity, Away, 2:00 pm
 - Tennis (F) Trinity, Away, 2:30 pm
 - Track (V&F) Columbia, Away, 3:00 pm
- Sunday, May 10**
- Sailing (F) Freshman Minor at Harvard Yacht Club
- Tuesday, May 12**
- Golf (V) Springfield, W.P.I., Away, 2:00 pm



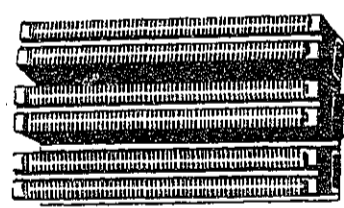
"MAN MUST SACRIFICE BEFORE HE CAN BE AN ARTIST"
says budding painter as he gives away his REMINGTON® LEKTRONIC II
LOOK AT WHAT HE GAVE UP:



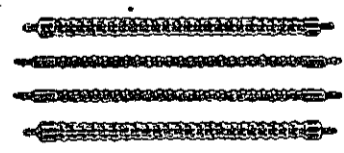
Freedom: The cordless feature. Those built-in, rechargeable energy cells that let you shave anywhere without a plug. Forget to recharge? There is a cord. Just plug it in and shave on the spot.



Efficiency: 348 cutting edges of hard, durable high-carbon steel. Specially honed on an angle, they slice whiskers off without ploughing up skin.



Convenience: 756 slots in the big shaving head gather whiskers. Feed them to the cutters faster. Make short work of shaving.



Comfort: The REMINGTON Roller Combs, 4 of them. Right on top of the shaving head. They push skin down, pop whiskers up into cutters, so they're stroked off gently. With a cord, without a cord, there just isn't a faster, more comfortable way to shave.

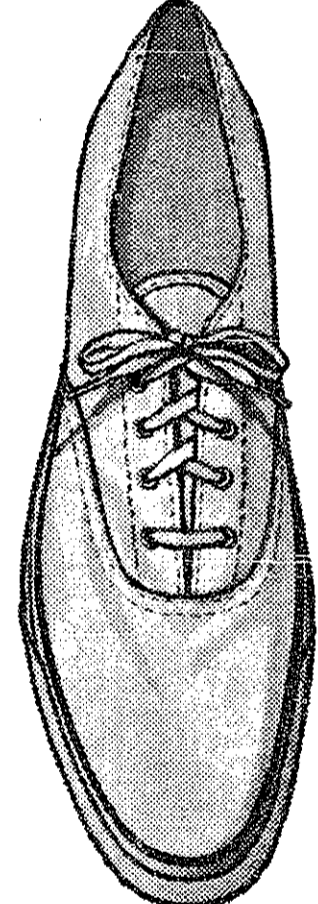
The thought of giving up the LEKTRONIC II is enough to make a man want to become a teacher.

The REMINGTON LEKTRONIC II may cost a little more than most electric shavers. That's because it's worth more.
LEKTRONIC: Trademark, Sperry Rand Corporation, REMINGTON ELECTRIC SHAVERS, BRIDGEPORT, CONN.

BUY REMINGTON THE TECH COOP NOW

WHAT
drove this brilliant college professor to seduce the sweet young maiden?
SEE FAUST FRIDAY, 10-250, 8 pm, 35c

Why pay less than \$10 for a canvas shoe?



Frankly, the Sperry Top-Sider canvas oxford is the most expensive you can buy. But it's worth every penny. The famous, exclusive anti-slip safety sole has made it the only shoe for men and women who know boats. (Great tennis favorite, too.) And the rest of the shoe makes it perfect for all casual wear: The non-chafe loose lining, that relaxes your foot. The double-deep heel cushion. The tailored looks. So why pay less, when you could wear fashion's famous Sperry Top-Sider canvas oxford for \$9.95?



TENNIS & SQUASH SHOP
67A Mt. Auburn St.
Cambridge, Mass.
TR 6-5417
Harvard Square

Dutch Cleaners
233 Massachusetts Ave.
Opposite Necco
TRowbridge 6-5662
Quality - Service

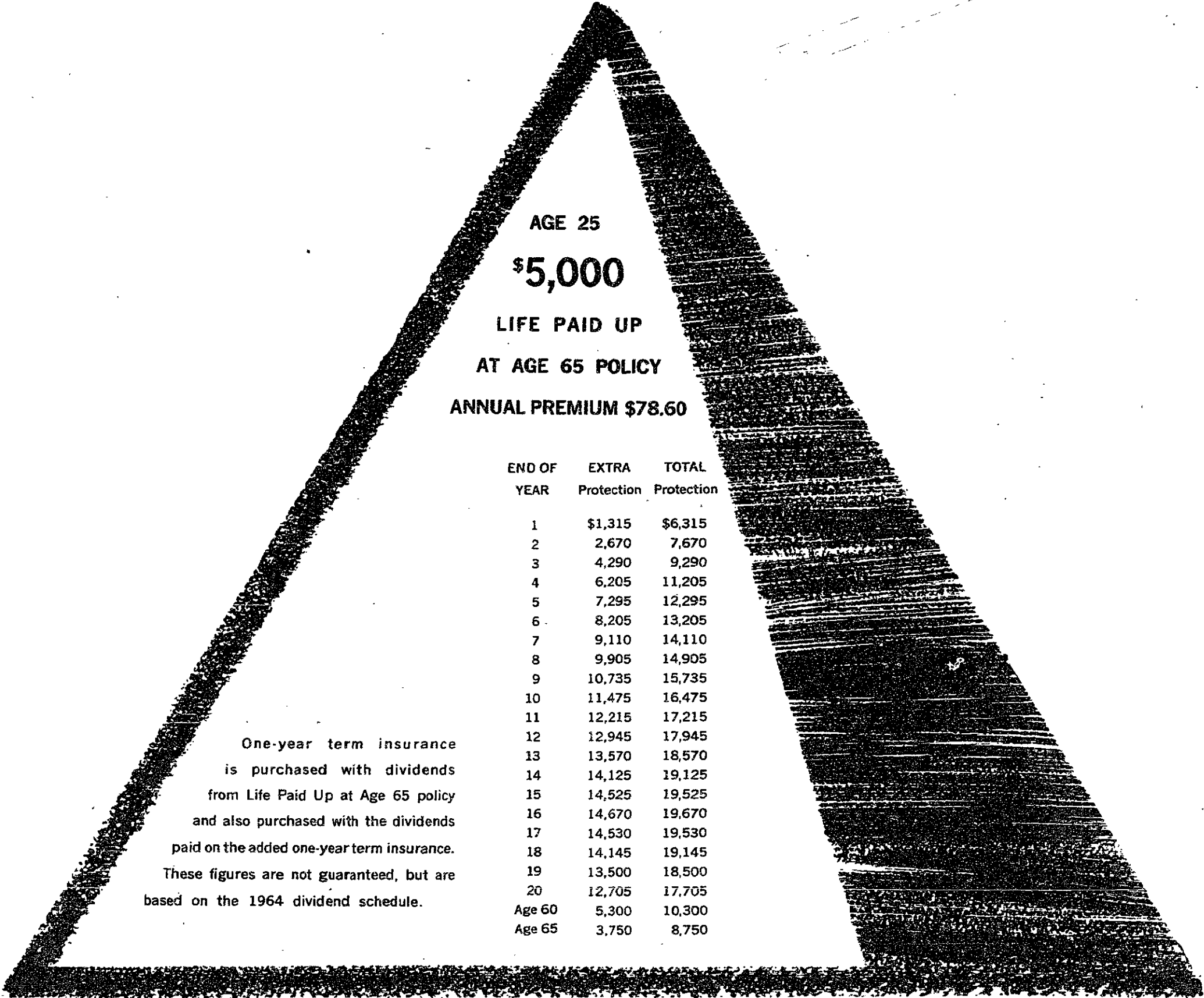


plan now for
A SUMMER SEMESTER IN THE NATION'S CAPITAL
at The George Washington University
TWO TERMS
June 15-July 21
July 23-August 28

- Air-conditioned classrooms and library
- Housing available in student residence halls
- Urban campus just four blocks from the White House

write for catalogue:
Dean of the Summer Sessions
The George Washington University
Washington, D.C. 20006

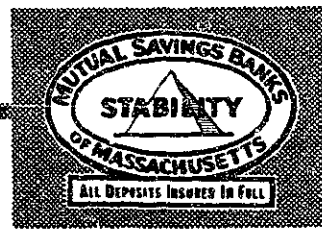
The George Washington University



One-year term insurance is purchased with dividends from Life Paid Up at Age 65 policy and also purchased with the dividends paid on the added one-year term insurance. These figures are not guaranteed, but are based on the 1964 dividend schedule.

Pyramid Protection Plan available for ages 15 days to 70 years on SBLI policies except Term. Individual Pyramid Protection Plan cards available for ages 21 through 45 years.

Pyramid Your Life Insurance



ONLY YOUR SAVINGS BANK OR INSTITUTION FOR SAVINGS offers you all 3 services:

- 1 Complete Savings Services
- 2 Complete Home Financing
- 3 Savings Bank Life Insurance

Pyramid Protection Plan provides such amazing family coverage that many prospects feel it is almost too good to be true. But the figures in the chart illustrate, as they will at your age, that anyone who needs life insurance should investigate SBLI. The modest premium will never increase – but the total insurance coverage pyramids during the years your family needs it most. At age 65 premium payments stop forever, but the insurance continues all your life.



For facts and figures at your exact age just telephone UN 4-5271 or come in and see us. We will gladly answer any questions you may have.

**LIFE INSURANCE DEPARTMENT
CAMBRIDGEPORT SAVINGS BANK
Right in Central Square**

OTHER PLANS specifically designed to suit your needs
Popular FIVE YEAR TERM • ENDOWMENT • HOMEOWNERS • FAMILY

Racquetmen drop three straight; lose to Amherst, Dartmouth 5-4

It was a gloomy week for the Tech netmen. Sporting a 7-5 record at the beginning of the week, the team was fairly confident of a solid winning season this spring. But last week the courtmen dropped two close matches 5-4 to both Amherst and Dartmouth and got swamped by Williams 9-0.

Amherst Wins 5-4

The team traveled to Amherst on Wednesday and couldn't seem to click against their opponents. Jack Moter came back to win his match against Jack Levine 4-6, 6-2, 6-0. Marty Ormond, Bob Blumberg and Mike Long all lost in straight sets but Bill Petrick and Ken Comey won, to tie the match at the end of the singles play. Amherst took both 1st and 3rd doubles to win the match, while Moter and Comey defeated Poor and Ransmeir at the 2nd slot.

Dartmouth on top 5-4

Dartmouth visited the Tech courts on Friday and the story was about the same as with Amherst. Jack Moter lost in three sets after having complete control of his man in the first 1-6,

6-1, 6-1. Marty Ormond lost but Bill Petrick won in three sets 6-4, 3-6, 9-7. Bob Blumberg took his match easily but both Ken Comey and Dick Thurber lost in quick straight sets. In the doubles play Tech took both first and third doubles. Blumberg and Petrick won 6-1, 9-7, while Thurber and Ormond pulled out a close one, 4-6, 7-5, 8-6. The match was tied at this point at 4-4. Comey and Moter took the first set and seemed to have control but Dartmouth took the next two sets giving the racquetmen their second consecutive 5-4 loss.

Williams tops netmen 9-0

The match with Williams was never close. Some of the Techmen jumped to early leads but it didn't last long, as a strong Williams team swept the match 9-0.

With these three losses the team's record now stands at 7-8 with just one regular match left, at Trinity. The New Englands are to be held at Williams on the 15th of May this year and Tech's four top courtmen will attend the tournament.

3rd heavies post win

Harvard sets record in Compton win

by Dave Waltz

The MIT heavyweights were defeated in four out of five races by a strong, smoothly stroking Harvard squad last Saturday on the Charles. Visiting Princeton, with a previously undefeated varsity, failed to capture a single race. Very fast conditions prevailed on the 2000 meter course, with a strong tailwind and somewhat choppy water, while the sunny skies and high temperatures drew a large crowd to the banks of the river.

Heavies 3rd to Harvard

Although the MIT varsity started at 43½ strokes per minute, they were unable to keep up with the shovel-blade equipped Harvard crew, which pulled out to an early lead, with Princeton second. All crews settled to about 36 strokes per minute, and Harvard continued to increase their margin, while MIT had difficulty with the rough water near Smith House. All crews sprinted across the line at 39, Harvard finishing first in 5:00.5, Princeton 13.9 seconds behind, and MIT 6.6 seconds behind the Tigers.

Tech's JV's 2nd to Crimson

The Harvard J.V. also jumped ahead at the start with all crews rowing around 40. The stroke went down to 34 for the middle of the race, but at Baker House, MIT went up to 36 and passed by Princeton, although they were unable to catch the Harvard boat, which continued to pull out in the sprint, crossing the line 9.2 seconds ahead of MIT and 10.2 seconds in front of Princeton, with a winning time of 6:09.5.

3rd Varsity Win in 6:21

The only bright spot of the day was the third varsity contest where the MIT eight, starting at 41, pulled to an early ¾ length lead. Rowing at 35, MIT held off Harvard and Princeton bids, and sprinted across the line at 39, 1¼ lengths ahead of Harvard, with

Princeton about two lengths astern. The winning time was 6:21.0.

MIT Heavyweight Boatings 1st Varsity

- Row Sam Drake '65
2 Bill Nelson '66
3 Bob Sandile '64
4 Marty Poe '64
5 Bill Weber '64
6 Jim Falender '65
7 Bob W'81 '64
Stroke Chris Miller '64
Cox Bud Boring '64
- Row Ray Fisher '65
2 Dave Penney '65
3 Bob Menzies '65
4 Tom Rice '65
5 Sandy Phillips '65
6 Keith Stolzenbach '66
7 Joe Capwell '64
Stroke Bill Kamps '66
Cox Jesse Lipson '65
- Row Bob O'Donnell '66
2 Dave Waltz '65
3 Bill Jultz '64
4 Rob Taylor '66
5 Fritz Eberle '66
6 Bob Camd '65
7 Jim Larsen '65
Stroke Dick Leonard '65
Cox Dennis Overbye '66

Baseball squad drops close games to Bates, NU; Calof, Mazola turn in top pitching performances

The MIT varsity baseball team dropped two close games last week. The squad lost to Northeastern 6-3 Thursday on the NU diamond, while Bates edged MIT 3-2 at Bates Saturday. The two losses brought the season mark to 1-11.

Northeastern collected ten hits off starter Larry Calof '66 and parlayed them into six runs. Tech's big blow was a three-run homer by Captain Don Alusic '64 in the fifth tying the score. Calof struck out four and walked four. Coach Jack Barry directed them from the stands after being ejected from the game in the first inning.

Jack Mazola '66 scattered four hits and struck out fifteen against

Bates; but first inning wildness, which helped Bates push across two runs, proved his downfall. Mazola also collected two of Tech's six hits and scored one run. The other run was driven in by Alusic with a seventh inning double which scored Bill Graham '64 from first base.

The Engineers now have five games remaining, all home, including a double-header against Coast Guard Saturday.

Line scores	R	H	E	
MIT	000	130	000	4 4 3
Northeastern	102	010	11x	6 10 1
MIT	000	001	100	2 6 2
Bates	200	010	00x	3 4 1

IM softball play enters final weekend; playoffs to begin next weekend

The IM softball season will finish off the regular season this weekend to decide playoff positions. Scores for the last two weeks:

- Nuclear Engineering 16, PSK 9
- Sigma Phi Epsilon 12, Baker C 8
- Tau Epsilon Phi 14, Student House 13
- Theta Delta Chi 6, Kappa Sigma 5
- Phi Kappa Sigma 12, Baker D 14
- Senior House 14, NRSA B 2
- Phi Kappa Theta 27, Theta Xi 9
- Grad Dining Staff 18, SPE B 9
- Baker A 15, Pi Lambda Phi 10
- Sigma Chi 4, Bexley 2
- NRSA A 24, Phi Mu Delta 2
- SAM 19, PGD 7
- Grad Management 28, PMD 5
- Nuclear Engineering 15, DKE 1
- Phi Sigma Kappa 23, Baker C 8
- Sigma Chi 10, Baker A 6
- Club Latino 7, Phi Kappa Theta 2
- Student House 20, SAE 2
- SPE 27, PBE 3
- Grad Economic 7, Baker D 4
- Grad Dining Staff 20, PLPhi 2
- Club Latino 13, Chinese Students 1
- Grad House 10, Alpha Tau Omega 3
- Grad Men Students 10, ZBT 0
- Lambda Chi Alpha 17, Burton C 13
- Alpha Epsilon Pi 16, Theta Chi 12
- Grad Dining Staff 25, Bexley 4
- Phi Mu Delta 25, Sigma Nu 16
- Burton A 21, NRSA A 9
- Paradise Cafe 7, Baker D 0
- Chi Phi 14, Alpha Tau Omega 11

CLASSIFIED ADS

1958 VAUXHALL Blue 4-door Victor Sedan (British). Body in fair condition. Good motor, brakes, tires, battery. A bargain at \$150. I must sell it now. Mike Levin x5868 or 491-7423.

WANTED used movie camera with zoom lens. Wentworth 247-8090.

MIT WESTGATE efficiency apartment to sublet June-Sept. Completely furnished for housekeeping. Grocery and laundry in building. MIT students, faculty or administration, married or single, are eligible tenants. \$95 month. Phone 491-4517.

MIT STUDENT FURNITURE EXCHANGE will buy furniture from May 15th to closing June 19th. Tuesdays, Thursdays 10 a.m. to 3 p.m. 224 Albany Street, or telephone Mrs. William Kaufmann, treasurer, 491-3803. Desks and Bookcases wanted.

BEAUTIFUL 4 rm. Apt. 5 yds. from Mechanics MTA. New kitch. & lvg. rm. furn. \$135 mo. June thru Sept. 536-6764 or X3214.

'57 FORD CONVERTIBLE; radio, heater, power steering and Ford-omatic; good mechanically; some body rust, needs muffler. Call Bob V., 267-8438.



Let's say for a minute, this is you.

Once you wear the gold bars of a second lieutenant in the United States Air Force, what's in store for you?

Well, you may fly an aircraft entrusted with a vital defense mission. Or you may lead a research team tackling problems on the frontier of knowledge. You'll be helping to run an organization that's essential to the safety of the free world.

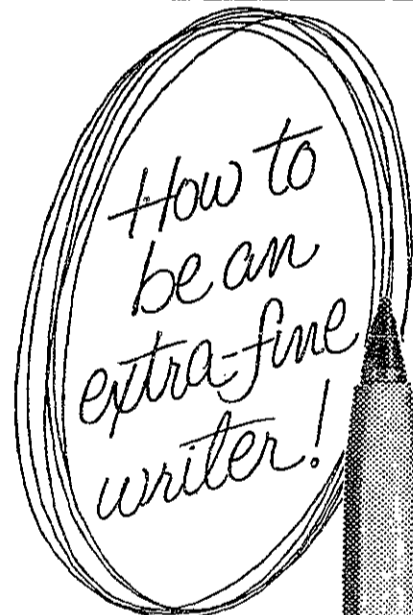
Sounds like you'll be called on to shoulder a good deal of responsibility, doesn't it?

But when you come right down to it, that's what your college

years have been preparing you for. You've got ability and a good education. Now's the time to put them to work!

You'll have every opportunity to prove your talents in the Air Force. By doing so, you can put yourself and your country ahead.

If you're not already enrolled in ROTC, you can earn your commission at Air Force Officer Training School—a three-month course that's open to both men and women college graduates. To apply, you must be within 210 days of graduation.



GET THE NEW BIC "FINE POINT" — ONLY 25¢!

This is really fine writing. Until today, only a spider could spin such a fine line. Now BIC invents a new "Fine Point" pen that writes sharper, clearer, thinner lines.

BIC "Fine Point" with "Dynamite" Ball Point is guaranteed* to write first time every time because it's tooled of the hardest metal made by man.

BIC is the world's finest writing instrument: BIC never skips, BIC never clogs, BIC never smears. What a pair of pen pals: thin-writing BIC "Fine Point" with orange barrel, only 25¢; standard line BIC Medium Point "Crystal," just 19¢. Both available with blue, black, green or red ink. Made in the U.S.A. *For replacement send pen to:

WATERMAN-BIC PEN CORP. MILFORD, CONN.



U.S. Air Force

Varsity lights lose Geiger to Cornell by .2 seconds

by Pete Staecker

It was another close one for the varsity lightweights last Saturday as they met Columbia and their perennial rivals Cornell in New York for the Geiger Cup—and lost by some two feet. The 1963 EARC Sprint Champions proved they were just that as they held the Engineers at bay all the way down the 1 5/16 mile course at their powerful 32 strokes per minute beat.

Cornell wins by .2 sec.

Tech never took the lead throughout the race, but no more than 4 seats ever separated the two crews during the entire test. With 1/4 mile left, the Engineers tried to duplicate their last week's effort against Harvard, but the Big Red held off the challenge and went home with the Geiger Cup and nine Tech shirts. Times: Cornell—6:27.8; MIT—6:28; Columbia—6:36.

JV—3 for 3

That was all that Cornell took home, however, for the JV race was all MIT. Another fine job by stroke Fred Furtek '66 and his JV's got them out in front of the

BMA (Best Men Afloat) boys right at the start. At the mile marker, it was Tech by a length, and that was pretty much the story as MIT came home in 6:16.9, Cornell in 6:19.5, and Columbia way back in 6:36. So it was nine Cornell shirts and a wet coxswain for the Engineers. That was all that Tech took home, however, for the third varsity race was taken by Columbia in the last 16 strokes.

MIT Lightweight Boatings

- 1st Varsity**
 Bow Dennis Smith
 2 John Proctor
 3 Allen White
 4 Bert Blewett
 5 Dave Evans
 6 Pete Staecker
 7 Herb Herrmann
 Stroke Mark Barron
 Cox Julian Adams
- J. V.**
 Bow Tom Perardi
 2 Bruce Powell
 3 Tom Strand
 4 Wayne Hasse
 5 Jim Bochnowski
 6 Rich Sayre
 7 Bill Carithers
 Stroke Fred Furtek
 Cox Ray Pfau
- 3rd Varsity**
 Bow Kirby Meacham
 2 Ralph Magann
 3 Steve Shutz
 4 Lou Kleinman
 5 Mal Wheeler
 6 Dick Carpenter
 7 Dennis Jedlinsky
 Stroke Dave Cook
 Cox Dick Tsien

Lacrossemen take pair

By Neal Gilman

The varsity lacrosse team finally got going on a winning streak by swamping WPI 13-3 and Bowdoin 8-2. This ended a four-game drought and brought the season mark to 3-7.

In the Worcester Tech game played Thursday, MIT jumped to an early lead in the first quarter with two goals by Bob Beardsley '64 and one by Don Yansen '63. Later, in the third quarter, Beardsley scored two more goals and Yansen received two assists.

Score six in 3rd quarter

The third quarter was MIT's best offensive period of the season with a total of six tallies. Captain Bill Dreiss '64, Wayne Matson '64, Joe Kirk '64, Bob Wiley '66, and Pete Kirkwood '66 all scored one goal in this high scoring quarter. Kirk scored unassisted on a fast break, and the big defenseman's goal so unnerved WPI that they were never the same afterward. Kirkwood also scored twice more in the fourth quarter. Dick Nygren '66 also scored a goal in the fourth quarter and obtained two assists.

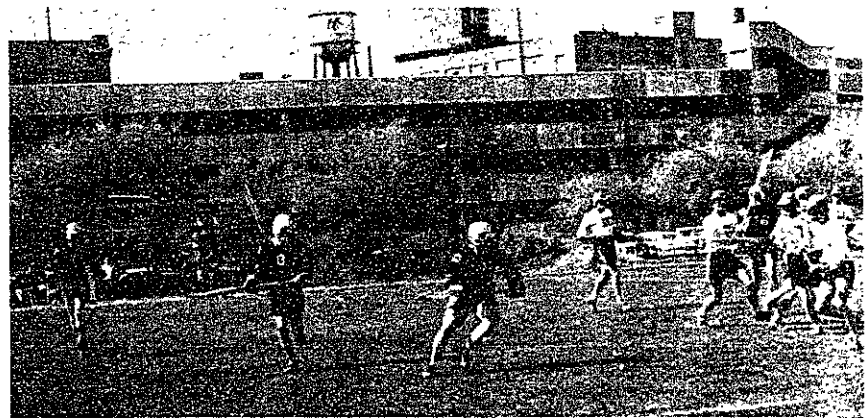


Photo by Bill Park

MIT is on the attack against Bowdoin in a game on Briggs Field played Saturday. Leading the attack for MIT (left to right): Bob Beardsley '64, Dave Driscoll '65, Wayne Matson '64, and Bob Wiley '66. MIT swamped Bowdoin 8-2 after allowing them only one shot at the goal in the first half.

The Bowdoin game, also played at home, was another game well-played by MIT. Nygren played a very alert ball game, converting three scoring opportunities into goals. Yansen also played a good game while getting four points, two goals and two assists. Matson, Wiley and Terry Vander Werff '66 each scored one goal. Ron Mandle '65 and Kirkwood were each credited with one assist. MIT controlled the ball throughout the game.

Defense stops Bowdoin cold

For the first two periods, the Engineer's goalie Bob MacDonald '66 remained untroubled, for Bowdoin took only one shot at the

goal, and that was in the last few seconds of the half. In this first half, MIT took a total of 41 shots to Bowdoin's one. Tech also controlled the ball for 25 minutes out of the 30-minute half.

Much of this was due to the exceptional play of defenseman Hank Rack '64 and Kirk who so devastated the Bowdoin attack that they rarely managed to complete a pass much less attempt to score.

The lacrosse squad travelled to UNH last Monday in hopes of bringing the 3-7 season mark closer to .500. Also this week, the team plays host to Tufts Thursday and Trinity this Saturday.

Frosh Sports

Sailors take Nickerson Trophy

By W. Thomas Compton

The MIT freshman sailing team took top honors in Nickerson Trophy regatta held on the Charles last Saturday and Sunday. This trophy, the New England Intercollegiate Sailing Association Freshman Dinghy Championship Cup, was contended for by eight other schools from all over New England, who had earned the right to participate by placing high in elimination regattas held two weeks before.

MIT led all the way, finishing with 248 points, eleven ahead of second-place Dartmouth. Tufts placed third while Harvard and Coast Guard finished in a tie for fourth. Other schools competing in the finals were U.R.I., Middlebury, Merrimack, and University of Connecticut.

Tom Maier and Mike Zuteck, who co-skippered in the "B" Division, led the Tech skippers with nine first place finishes between them. Chet Osborn and Rod Peterson did the "A" Division skippering.

Baseball

The baseball team lost 14-2 to Andover and bounced back to cream Emerson 26-3.

Rick Pappenhausen went all the way against Emerson and struck out 16 in the 7th inning. Ron Kadomiya had 2 doubles and a single and Dick Gostyla hit a home run.

In the third inning the first ten Techmen up scored. Then they got an out and four more scored. When MIT had a 24-2 advantage, Pappenhausen was on second and got a signal to steal. The man on third didn't see the signal, and didn't move. So rather than have the coach think he wasn't paying attention, Pappenhausen successfully stole first—and was

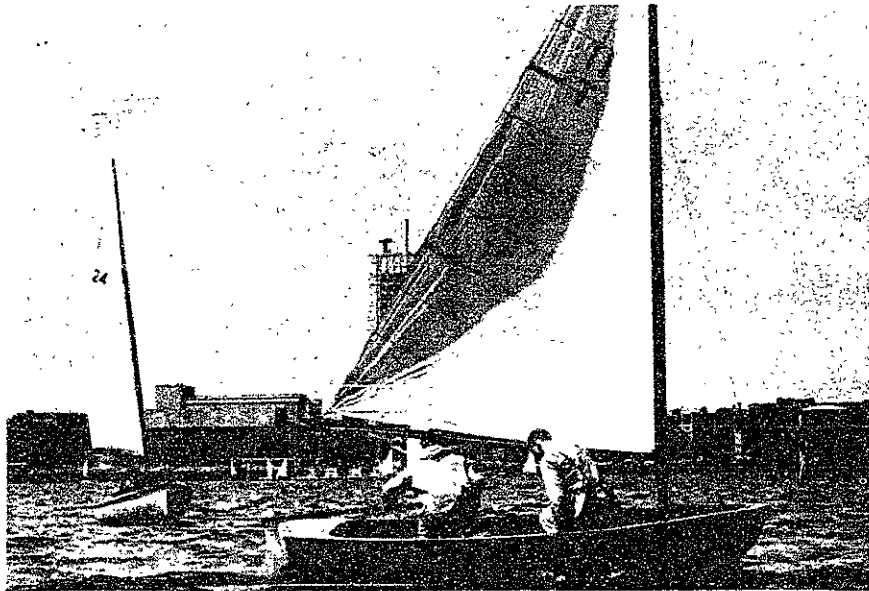


Photo by Saul Moollem

Rod Peterson '67 (left), skipper, and Chet Osborn '67, crew, lead in a race on the Charles Saturday while leading the freshmen to first place in the Nickerson Trophy races.

called out for running the bags backwards.

Lacrosse

The lacrosse team got down to business Saturday and beat Bowdoin 6-1, after a 3-7 loss to New Hampshire.

Steve Schroeder scored in the first 5 seconds and went on to score three more. Ron Scharlack and Dave Avrin also scored to round out the scoring.

Lightweight crew

In the lightweight race last Saturday, the MIT first boat was last across the line behind Columbia and Cornell. The Columbia boatload is the same one that plastered Harvard about two weeks ago and haven't let up since, as they came home in 6:03.2, with a length on Cornell in 6:07.2 and about three on MIT

1st in New England

Trackmen win 74-70 over Bowdoin

MIT's undefeated varsity track team squeaked by Bowdoin, 74-70, last Saturday for their fourth victory. Dave Carrier's first place distance of 42' 7 1/2" in the triple jump, the last event of the day, gave the Techmen their narrow winning margin.

Sumner Brown '66 led MIT with a triple win, taking firsts in the mile, the two mile, and the 880 yard run. Other first place winners were Kim Sloat '64, shot put; and Jim Flink '64, 100 yard dash.

MIT 74, Bowdoin 70

- Mile:**
 1. Brown (MIT) 2. Oliver (MIT) 3. McAllen (B)
- 2-Mile:**
 1. Brown (MIT) 9:51.7 2. Wesson (MIT) 3. Oliver (MIT)
- 100-Yard Dash:**
 1. Flink (MIT) 10.1 2. Rounds (B) 3. Ross (MIT)

- 220-Yard Dash:**
 1. Rounds (B) 22.1 2. Flink (MIT) 3. Ross (MIT)
- 880-Yard Dash:**
 1. Brown (MIT) 2:02 2. Rodgers (MIT) 3. Kahill (B)
- Discus:**
 1. Schulten (B) 145' 3/4" 2. McCutcheon (B) 3. Ingram (B)
- Triple Jump:**
 1. Carrier (MIT) 42' 7 1/2" 2. McDowell (B) 3. Ross (MIT)
- Javelin:**
 1. Horton (B) 190' 7 3/4" 2. Ross (MIT) 3. Stocking (B)
- Shot Put:**
 1. Sloat (MIT) 48' 5 1/4" 2. Coggins (B) 3. Stocking (B)
- High Jump:**
 1. Seager (B) 5'8" 2. tie between Carrier (MIT) and Ekzbahl (B)
- Hammer:**
 1. Sabuiten (B) 177' 5" 2. Ingram (B) 3. Dassel (MIT)
- Pole Vault:**
 1. Ekzbahl (B) 12' 6" 2. Letshman (B) 3. Lukis (MIT)
- Broad Jump:**
 1. McDowell (B) 22' 11 3/4" 2. Ross (MIT) 3. Carrier (MIT)
- High Hurdles:**
 1. Good (B) 15.3 2. Dorschner (MIT) 3. Flink (MIT)

Varsity golfers lose three more; season record now stands at 1-13

The MIT varsity golf team saw their season record fall to 1-13 after losing three matches last week. Against Boston University Monday, they lost a close one 4-3 on the Oakley Country Club home course. In a triangular meet played at the University of New Hampshire last Friday, the squad lost to UNH and Lowell Tech by identical 5-2 scores.

Against BU, Tom Hedburg '65 shot a 75, while Peter Lubitz '65 shot a 78 to pick up MIT's first two wins. Dick Shoemaker '65 accounted for the third victory.

In the triangular, Dave Andrews '65 beat his UNH opponent 1-up on the 19th hole and his Lowell opponent 2 and 1. Lubitz scored the other win over Lowell 2-up, while Bill Grigg '66 scored the second win over UNH 1-up.

Delta Tau Delta takes Beaver Key Trophy; Leading houses have ratings at record high level

At the Awards Convocation during Parents' Weekend, the Beaver Key Trophy was awarded to Delta Tau Delta. This trophy is given to the living group that places first in the standings computed on the basis of percentage participation in intercollegiate sports. It was originated by the junior honorary to encourage athletics at MIT. The ratings for the leading houses this year were at a record high level. Houses above 1.0

(1 sport/man):

1. Delta Tau Delta 1.28
2. Beta Theta Pi 1.18
3. Lambda Chi Alpha 1.15
4. Sigma Alpha Epsilon 1.10

Each person is awarded 1.0 for the first sport, and 0.5 for each additional sport; managers and freshmen are included. The living group average is computed from the point total in the same way that scholastic standings are computed.

How They Did

- Baseball**
 Northeastern ?—MIT (V) ?
 Bates ?—MIT (V) ?
 Phillips Andover 14—MIT (F) 2
 MIT (F) 26—Emerson 3
- Golf**
 B.U. 4—MIT (V) 3
 Lowell Tech 5—MIT (V) 2
 U.N.H. 5—MIT (V) 2
 Harvard 5—MIT (F) 2
- Heavyweight Crew**
 Harvard 6:00.5—Princeton 6:14.4
 MIT (V) 6:21.0
 Harvard 6:09.5—MIT (JV) 6:18.7
 Princeton 6:19.7
 MIT (3rd V) 6:21.0—Harvard 6:25.8—Princeton 6:30.0
 Harvard 6:19.1—Princeton 6:23.2
 MIT (1st F) 6:24.7
 Harvard 6:31.5—MIT 6:39.0
- Lightweight Crew**
 Cornell 6:27.8—MIT (V) 6:28
 Columbia 6:36

- MIT (JV) 6:16.9—Cornell 6:19.5
 Columbia 6:36
 Columbia 6:03.2—Cornell 6:07.2
 MIT (F) 6:14.7
- Lacrosse**
 MIT (V) 13—W.P.I. 3
 MIT (V) 8—Bowdoin 2
 New Hampshire 7—MIT (F) 3
 MIT (F) 6—Bowdoin 1
- Sailing**
 MIT (F) 1st in Nickerson Trophy races
- Tennis**
 Williams 9—MIT (V) 0
 Amherst 5—MIT (V) 4
 Dartmouth 5—MIT (V) 4
 Milton Academy 10—MIT (F) 8
 Phillips Exeter 7—MIT (F) 2
- Track**
 MIT (V) 74—Bowdoin 70
 Bowdoin 71—MIT (F) 64

Second-class postage paid at Boston, Massachusetts. This Tech is published every Wednesday during the college year, except during college vacations. By The Tech, Room 50-211, Walter Memorial Drive, Cambridge, Massachusetts 02139. Telephone (Area 617): 876-8856, and 944-6900. Extension 2731. United States mail subscription rates: \$2.76 for one year, \$4.26 for two years.