

# Cagers Just Nip Union

By Edward M. Schneider '62

The MIT varsity basketball team went into last night's encounter with Lowell Tech in high spirits, thanks to a thrilling come-from-behind victory, 68-67, over Union College on Tuesday. Tech, as has been the case in the last seven games, was ahead at the half; this time, 37-34, thanks to the twenty-one point output of center Dave Koch '62. However, Union showed signs, toward the end of the half, of breaking through MIT's zone defense.

## Press Hampers Tech

Sure enough, cornerman Lew Jones and Dave Santos of Union, began to score on easy layups in the opening minutes of the second half. Fine shooting by Koch, Chuck Gamble '62, Tom Burns '62, and Jeff Paarz '63, kept the Engineers in the ball game. However, with about eight minutes left in the game, and the score knotted at 53-53, the Union full-court press, which had made MIT look a bit clumsy in the previous minutes, really took effect.

Tech's erratic passes combined with fine driving shots by the Dutchmen from Schenectady resulted in a 65-54 Union lead with only 4:25 remaining in the game. It looked like the Engineers were going to go down to their fifth straight defeat.

## The Gap Closes

What took place in the next four minutes had the spectators jumping on their feet. Tech was stealing passes right and left. First Gamble swished two foul shots. Kent Groninger '63 chipped in a three-point play. Phil Robinson '62 banged in a long one-hander. Koch scored with two quick, short jump shots. It was 65-64 Union with two minutes remaining.

The Engineers weren't stopping here. MIT got the ball, Robinson popped in another push shot, and it was 66-65. Moments later, Gamble stole the ball and was fouled. He converted both attempts, and Tech was on top 68-65 with only 52 seconds remaining in the game. Union scored another bucket and trailed by only one point. A bad pass gave the visitors the ball under their own basket with three seconds remaining. Their last shot was wide, and it was a well-deserved 68-67 victory for MIT.

## Koch Paces Victors

Koch was high man with 29 points. The Engineers looked pretty good from the foul line, scoring on 20 of 25 attempts.

It was an entirely different Tech team than the one that had lost to the Coast Guard Academy last Saturday night. Coach John Barry hopes they will look as good throughout their next game, at Trinity, a week from tomorrow night.

# Long Beard Contest Planned As Part Of Centennial Weekend

The student Centennial Committee has just made public its plans for a beard-growing contest to accompany the student observation of Centennial Weekend in April.

All MIT students, regardless of class or graduate status, are eligible. There is no time limit as to when the contestant should begin to chuck his shaving gear, which means that existing beards will be eligible for competition then.

Prizes will be awarded for different categories of form and character as well as brute length. Judging will be held on Friday at noon, so that contestants may shave their growths before the Centennial Ball the same evening. Dean Frederick Fassett has graciously consented to assist in the final judging.

# Dr. Wieman To Talk On Theism

Rational Naturalistic Theism is the title of a free lecture to be delivered by Dr. Henry Nelson Wieman today, January 13, at 8:00 p.m., in the Library Lounge.

Dr. Wieman, for many years professor of the philosophy of religion at the University of Chicago and presently visiting professor at Southern Illinois University, comes to Boston this week under the auspices of the Billings Fund of the American Unitarian Association.

Dr. Wieman's philosophy argues that the idea of God has its roots within the context of nature and that a supernatural explanation is an inappropriate academic contrivance. He does not equate God with nature; rather with the growth experience which tends to bring order and meaning into life. Wieman refers to God as the process of creative synthesis which operates in a tender and loving manner. Devoid of the dualism which has traditionally thrown science and religion into conflict, Wieman's position presumes there is a compatible relationship between religion and science and that the disciplines merely serve different needs oriented within the same plane of reality.

## Free Film Announced

The Lecture Series Committee happily announced its annual FREE pre-exam movie in Kresge Auditorium next Wednesday, January 18: "The Horror of Dracula". Two complete showings, at 6:30 and 9:00.

# Stratton, Kennedy Visit



Shown above at left is President-Elect John F. Kennedy leaving the home of Harvard Professor Arthur M. Schlesinger, Jr., a few minutes after MIT President Julius A. Stratton. Rumors of a Kennedy visit to MIT later in the year ran rampant as a result of the visit.

# Professor Weisner Chosen As Advisor For President-Elect

It was announced Wednesday morning in Palm Beach, Florida, by Pierre Salinger, press secretary to President-elect John F. Kennedy, that MIT Professor Jerome B. Wiesner has been appointed "Special Assistant to the President for Science and Technology."

This post is currently held by Professor George B. Kistiakowsky of Harvard University, and was previously held by MIT's Dr. James R. Killian.

In accepting the job, Wiesner builds on a career already marked with accomplishments. Presently director of the Research Laboratory of Electronics at the Institute, he has been a leader in the rapid development of communications sciences. He has been a member of the President's Science Advisory Committee, was a member of the committee which prepared the Gaither Report, and was staff director of the American Delegation to the 1958 Geneva conference on the prevention of surprise attack.

Dr. Wiesner came to MIT in 1941 as associate leader of the radio frequency development group of the Radiation Laboratory. He later became project engineer of a key radar development program and a member of the laboratory's steering committee. Wiesner returned to MIT in 1946 after serving a year on the staff of Los Alamos Laboratory.



Jerome Wiesner

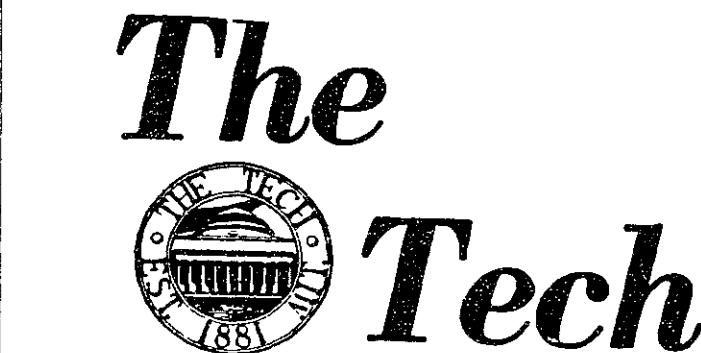
In recognition of "outstanding services to his country", Wiesner was awarded the President's Certificate of Merit, the second highest civilian award, in 1948.

# Freshmen Plan Sale Of Traditional Pins

MIT's class of 1964 has announced plans for the sale of the traditional class pins during the first two weeks of the second semester.

As a result of "expressed interest" on the part of the class as a whole, the Freshman Council will offer the '64 pins for sale at \$2.25 each in the lobby of Building 10 early next term. A deposit will be required with each order.

As in past years, the pin will depict a beaver surmounting the particular class numerals.



Vol. 80 No. 40 Cambridge, Mass., Friday, January 13, 1961 5 Cents

# Arab Club And Fair Play For Cuba Given Provisional Class B Status

Two MIT organizations were granted Provisional Class B status at the Wednesday night meeting of the Activities Council this week. The two groups are the Arab Club and an organization known as "Fair Play for Cuba."

The Arab Club was organized formally in October of 1958 at MIT. Its planned program for the future includes dinners consisting of traditional Arabic dishes, lectures on problems of the modern Arab world by reputable speakers, including MIT alumni, and a number of debates of a political nature. A special speaker scheduled for February 28 is to be announced at a later date. The officers of the society are: President, Rurik Halaby; Vice-President, Qais Fattah; and Secretary-Treasurer, Imad Taher.

The Fair Play for Cuba group plans to undergo thorough organizational procedures at the beginning of the second semester, at which time its first discussion session will be held. A permanent slate of officers will also be elected at that time.

## John Corley To Conduct

# Musical Carnival To Be At Kresge

The MIT Symphony Orchestra, the MIT Brass Choir, and members of the MIT Concert Band, all under the baton of John Corley, Assistant Director of Music at MIT, will combine to present a Winter Carnival at Kresge Auditorium Sunday afternoon at 3. The concert is free and open to the public.

The program will open with "Seven Roumanian Dances" by Bela Bartok, played by the string section and solo woodwinds of the Orchestra. Next the woodwind choir of the Concert Band will appear to perform three preludes by Dmitri Shostakovich. Concluding the first half will be the Brass Choir with "Sonata" for brass, by Guisepppe Battista Buonamente, "The Village," by Sigmund Singer, and "Symphony for Brass," Opus 5, by Victor Ewald.

Following intermission, the Symphony Orchestra will present "Fidelio" Overture by Beethoven, "Oboe Concerto," by Cimarosa, with Dave Roberts '61 as soloist, and four dance epi-

sodes from the ballet "Rodeo," by Aaron Copland. The Shostakovich preludes are three piano pieces "freely transcribed" for woodwinds by John Corley. The brass pieces range in period from the 17th century Buonamente sonata to the contemporary work by Singer. The Ewald symphony is a rarity, being one of the few Romantic pieces for brass.

Roberts is Soloist Dave Roberts '61 has been solo oboist with the MIT Symphony since his arrival at Tech. Conductor Corley has termed him "the most outstanding on his instrument in the past ten years at Tech." The "Oboe Concerto" is a concerto in the classic mode with melodic elements suggestive of the coming of the Romantic Era. Cimarosa, whose dates are 1749-1801, was chiefly known as a prolific composer of Italian comic opera.

The four dance episodes of the contemporary ballet "Rodeo" are entitled "Buckaroo Holiday," "Corral Nocturne," "Saturday Night Waltz," and "Hoedown."

## First-Term Grade Reports To Be Mailed February 2

First-term grade reports will be mailed to the term addresses of all students on Thursday evening, February 2.

The report may be sent to the student at a different address if he calls at the Registrar's Office no later than January 27.

Duplicate reports will be sent to the parents of all first-year students.

Transcripts will not be prepared after January 27 until the week of February 20, 1961. Orders should be placed now.

DE 8887 麗香飯店  
**HOUSE of ROY**  
*Real Chinese Foods*  
 OPEN DAILY FROM 4 P.M. TO 2 A.M.  
 Food Put Up To Take Out  
 12A TYLER STREET BOSTON 11 MASS

**BRATTLE THEATRE**  
 Friday and Saturday  
 Peter Sellers  
 in  
**YOUR PAST IS SHOWING**  
 5:30 7:30 9:30

**MAXETER** KENNEDY 67067  
**INGMAR BERGMAN'S**  
 NEWEST FILM  
**THE VIRGIN SPRING**

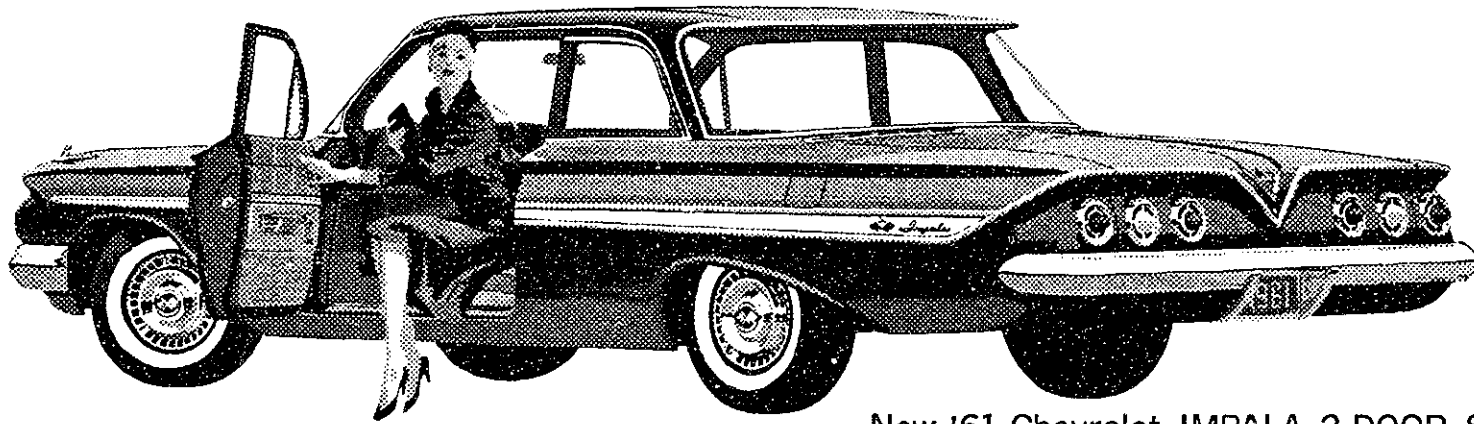
**SOUTH SEAS**  
 Restaurant-Lounge  
 21 Harrison Ave. — HA 6-4210  
 Superb Chinese and Polynesian  
 Cuisine • Exotic Island Drinks  
 Lush Tropical Atmosphere  
 Moderate Prices  
 Authentic Luau  
 Facilities for Private Parties  
 Catering Service, Take-out Orders  
 11 a.m.-3 a.m. daily and Sunday  
 American Express, Carte Blanche

**FARCO SCOOTERS INC.**  
 Sales and Service  
 Specialized Service  
 On All Makes  
 Scooter Storage  
 320 Watertown St.  
 Newton 58, Mass.  
 LAcell 7-9331  
 DEcatur 2-7534  
 Open Daily From  
 7:00 A.M.-9:30 P.M.

**LOWER RATES**  
**SBLI** Good News! Savings  
 Bank Life Insurance  
 has **REDUCED** pre-  
 mium rates for  
 straight life and endowment poli-  
 cies in amounts of \$3,000 and  
 over. Ask for the folder showing  
 these **NEW LOWER RATES**,  
 today.  
**CAMBRIDGEPORT**  
**SAVINGS BANK**  
 (Right in Central Sq.)  
 Cambridge, Mass.  
 Phone UN 4-5271

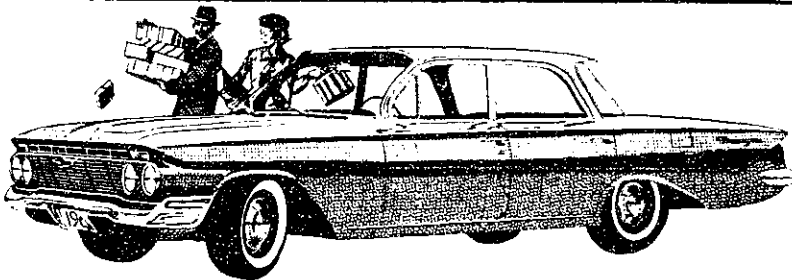
# One-Stop Shopping makes it easy to make the right buy at your Chevrolet dealer's!

No need to look farther than your Chevrolet dealer's to find the car you're looking for. There under one roof you can pick from 30 models—almost any type of car for any kind of going. A whole new crew of Chevy Corvairs for '61, including four wonderful wagons unlike any built before in the land. Thrifty Chevrolet Biscaynes, beautiful Bel Airs, elegant Impalas and six spacious Chevy wagons—all with a Jet-smooth ride. Come in and choose the one you want the easy way—on a one-stop shopping tour!



**New '61 Chevrolet IMPALA 2-DOOR SEDAN**

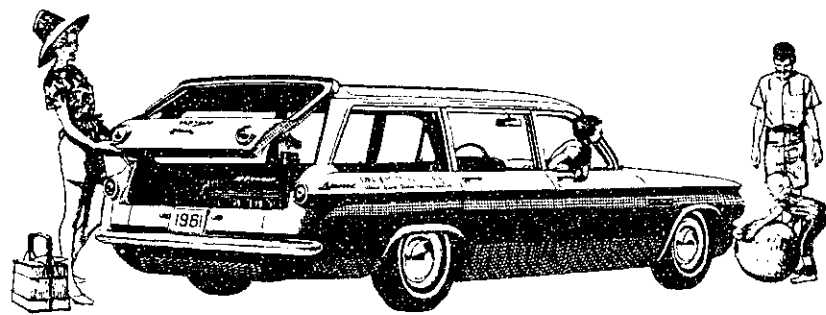
Here's all anyone could want in a car! One of a full line of five Impalas with Chevy's sensible new dimensions, inside and out.



**New '61 Chevrolet 4-DOOR BISCAYNE 6**

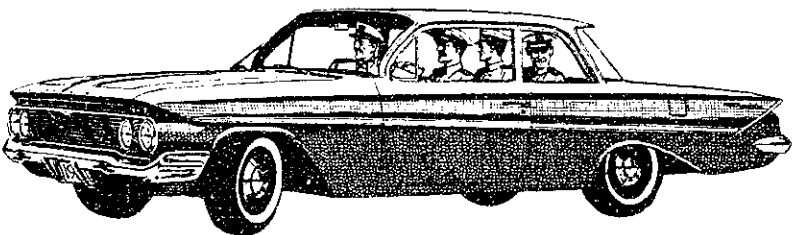
**NOW—BIG-CAR COMFORT AT SMALL-CAR PRICES**

These new Biscaynes—6 or V8—are the lowest priced full-sized Chevies. Yet they give you a full measure of Chevrolet roominess.



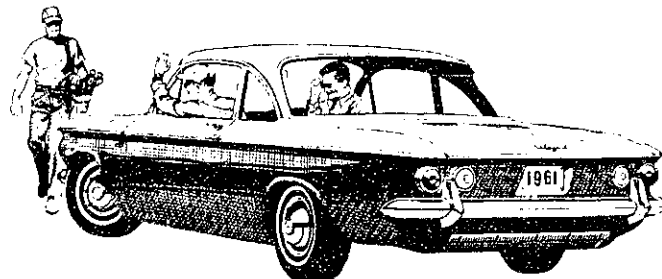
**New '61 Corvair 500 LAKEWOOD STATION WAGON**

One of Corvair's wonderful new wagons for '61, this 6-passenger Lakewood gives up to 68 cu. ft. of storage space.



**New '61 Chevrolet BEL AIR 2-DOOR SEDAN**

Beautiful Bel Airs, priced just above the thriftiest full-sized Chevies, bring you newness you can use. Larger door openings, higher easy-chair seats, more leg room in front, more foot room in the rear.



**New lower priced 700 CORVAIR CLUB COUPE**

Corvair brings you space, spunk and savings in '61. Thriftier sedans and coupes with more luggage space. That rear engine's spunkier, too, and there's a new gas-saving rear axle ratio to go with it.

See the new Chevrolet cars, Chevy Corvairs and the new Corvette at your local authorized Chevrolet dealer's

**IVY SPORT SHIRTS** Were \$5 to \$7  
Now \$2.59 to \$4.69

**SPORT JACKETS** Were \$35.00  
Now \$27.99

**CHINO SLACKS** Were \$5.95  
Now \$4.69

**TAB COLLAR  
WHITE SHIRTS** Were \$5.00  
Now \$4.00

White Summer Formal Dinner Jackets \$1.00 to \$10.00

**BROOKLINE FORMAL WEAR**  
392 Hubbard Street  
AS 7-1312

**Grandson Of Ghandi To Enter Graduate School**

Kanu R. Ghandi, a grandson of the late Mahatma K. Ghandi, will enter the Institute second semester to begin graduate studies in structural engineering. Ghandi is at present associated with a private engineering firm in Calcutta and plans to complete his doctorate.

**M** Opticians — Jewelers  
**E** 163 Mass. Ave., CO 7-0498  
**R** (Opp. Sherry Biltmore)  
**I** Eyeglass Watch  
**T** Service Repairs

**Democrats Use Brains**

**New Machine Predicts Election**

A hitherto secret computing machine — one which can estimate human behavior — was used by Kennedy strategists in the recent election, it was revealed recently.

Built at a cost of \$65,000 for the Democratic Party, the machine was able to tell Kennedy, as long ago as last August, what his stand should be on the religious issue, foreign affairs, and the upcoming TV debates, it was able to give the Democratic candidate his "image" in the voters' minds.

An article by Thomas B. Morgan, in the January issue of Harper's Magazine, discloses that the Simulmatics Corporation of New York City and Cambridge developed for the Democrats a mathematical "model" of the U.S. electorate.

This machine fused "the memory, speed and accuracy" of electronic computers with over 6,000,000 pieces of information obtained in more than ten years of public opinion polls and other studies. It consisted of more than 100,000 interviews divided into 480 voter-types together with demographic and political facts on each group. Consolidated and transferred to a memory tape, the material in the computer could be scanned in about forty minutes.



**ATMOSPHERE\***



*\* a surrounding  
or pervading  
influence*

There are several prevailing atmospheres at GPL. The working atmosphere is thoroughly professional. Management is by engineers who understand the engineer's goals, ambitions and working preferences. GPL engineers work in small groups, which encourage original contributions from every individual.

The other atmosphere at GPL involves the physical—the modern buildings and equipment, the excellent research and development facilities. These include an Environmental Test Lab, a Flight Test Section equipped with jet and conventional aircraft, and model shops for both formal prototype and informal experimental work. There is also a modern library of more than 2500 volumes. GPL is situated on 69 estate-like acres less than an hour from New York City, at residential Pleasantville in Westchester County.

At GPL you will have full opportunity to select the work of greatest interest to you, and you may choose to accept a direct assignment in that area, or participate in GPL's training program to broaden your engineering understanding.

*These are some of the current areas of activity:*

**Air Traffic Control.** GPL has a prominent role working with civilian and military authorities in the development of digital computer systems and devices for safe, efficient air navigation and traffic control.

**Advanced Radar.** GPL is the leading designer and builder of Doppler navigation systems. New projects include millimeter wave guidance, advanced FM radar techniques, terrain avoidance, space radar sensors and passive radar systems.

**Research.** Advanced studies are underway at GPL on such projects as infra-red and optical techniques, Maser amplifiers and nuclear magnetic resonance.

**Industrial TV.** GPL is an outstanding developer and producer of broadcast and closed-circuit TV systems, for military and commercial applications.

There are excellent career openings for EEs, MEs, Mathematics and Physics majors.

*GPL's representative will visit M.I.T.  
Friday, February 10th*

**GPL DIVISION**  
Pleasantville, New York



**GENERAL PRECISION, INC.**

**ENGINEERS**

**HAMILTON STANDARD**  
DIVISION OF  
**UNITED AIRCRAFT CORPORATION**  
WILL INTERVIEW ON

February 7, 8

concerning career positions in design, analysis, test, sales, electronics and manufacturing.

**MORE SUN**

**MORE SNOW**

**Stowe**  
SKI CAPITAL OF THE EAST

For folders, information or reservations, write lodge of your choice or Box CG, Stowe Area Association, Inc., Stowe, Vermont.

# The Tech

## MIT Political Interests: An Anomaly

A recent Activities Council decision gave Class B status to the "Fair Play For Cuba" group now in the process of organization. Although we must specifically reserve judgment on this particular activity, at least until it is organized and functioning, we can't help but draw a parallel or two between this group and last year's EPIC. Both are *ad hoc* groups, formed by MIT men in answer to a specific national political problem. Both bear out the hypothesis that MIT students are becoming more and more politically aware, albeit slowly. Viewed in the light of last week's editorial, this is heartening news.

Several factors on the MIT scene combine to encourage this tendency of the Techman to think about and involve himself in the political world. The presence and activity of the economics and political science departments, particularly the Center for International Studies, is part of the answer. The involvement of well-known faculty members in the Washington political scene — Dr. Killian, Professors Samuelson and Rostow, and now Dr. Wiesner — is another part. We might also cite the return to a freer atmosphere of discussion and action as memories of the McCarthy Era fade.

Although one may not approve of a specific group or its actions, this general situation seems to us to be a healthy one. It represents an extra-classroom step in the right direction; namely, toward educating and involving the engineer and scientist in the world "outside his laboratory" — the world of the humanities.

Of course there are inconsistencies and stops along the way. Inscomm's decision to leave the National Student Association, followed as it was by little or no progress toward affiliation with a group with ideals more closely akin to our own,

is one. The indifference commonly displayed toward student politics is another.

Why are MIT students interested in national but not student politics? At first glance the answer would seem to lie in the fact that the former involves clashes between groups, and clashes of ideas, while the latter involves neither.

We would add, however, that a genuine interest in political affairs also must be accompanied by some feeling of responsibility or personal involvement. This feeling should extend to the local political scene, however far removed it may seem. One cannot expect to be a citizen of a nation without first being a citizen of a community. If student politics at MIT lack color, ideas, and real conflict it is because the very ones who deride them, refuse to be involved.

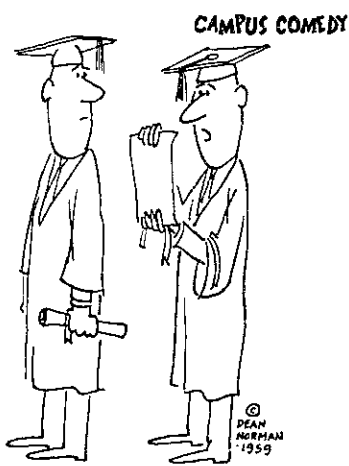
If an increasing interest among undergraduates in politics and government on the national level is noted, this is encouraging. Accompanied by widespread disinterest in student politics, it is somewhat anomalous. We ask you to consider the anomaly.

## Finis LXXX

Nearly a year ago we opened Volume Eighty of *The Tech* by stating that our desire was to discuss the major issues that beset MIT. Since then our considerations have ranged far and wide. "Space junk" in Building Seven, research vs. teaching, MIT architecture, B.U. coeds in the Library, intramural athletics, Rush Week, the time necessary to procure a hamburger in Pritchett — all these and more have passed in review. On some, our comment has stood alone; on others we have been joined or attacked by various members of the community. Suddenly we find ourselves with just one last set of makeup sheets to lay out; only twenty more column inches in which to express our editorial views.

The feeling of nostalgia is strong, but hardly unconquerable. Volume Eighty-one is already taking shape; officers and editors are soon to be elected. We are sure that the next year of publishing will see major changes in the paper just as has the past one.

We wish the Board of Volume Eighty-one all success. The Board of Volume Eighty deeply appreciates the support — and criticism — which has come its way from so many different quarters. Given this essential element, we are confident that the new Board will meet its goals with something to spare.



"GO TO WORK... GO DIRECTLY TO WORK...  
DO NOT PASS GO... DO NOT COLLECT \$200."

## The Tech

Vol. LXXX, No. 40  
January 13, 1961

Chairman ..... Linda G. Sprague, '60  
Managing Editor .. Charles Muntz, '62  
Co-Photography Editors ..... Curtiss Wiler, '63, Boyd Estus, '63

Business Manager .. Brian Strong, '62  
Editor .. Joseph Harrington, III, '61  
Assistant Business Manager ..... Maynard Johnson, '61  
Associate News Editor ..... Richard U. Bayles, '63  
Assistant Sports Editor ..... Ronald Baecker, '63

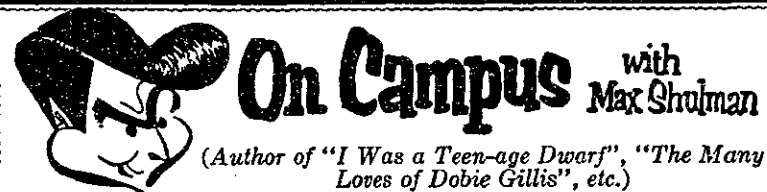
News Editor ..... Chip Goldblum, '63  
Sports Editor..... Thomas Brydges, '62  
Circulation Manager ..... Howard Kirkendall, '63  
Associate Sports Editor ..... Paul Robertson, '61  
Treasurer ..... Elliot Savitz, '63

Managing Board: Barry Blesser, '64; Business Board: Bart Weitz, '63, John Downie, '64, Carl Mampaey, '63; Editorial Board: Howard Hershberger, G., Elwyn Berlekamp, '62, Hans Schroeder, '62, Roger Lewis, '62, James Dorr, '63, Toby Zidle, '63; News Board: Lita Donnelly, '64, John Drumheller, '64, Grover Gregory, '64, Bert Knight, '64; Sports Board: Don Nelsen, '61, Ed Schneider, '62, Jeff Levinger, '63, Jay Salmon, '63, Chris Ritz, '64; Photography Board: Conrad Jaffee, '63, Allan Rosenberg, '63, Armand Poirier, '63.

Deadlines: Advertising — Noon Monday  
Entertainment — 2 p.m. Tuesday  
Photography, Letters to the Editor — 3 p.m. Wednesday  
News, Sports — 8 p.m. Wednesday  
Makeup: Entertainment — 4 to 5 p.m. Tuesday  
News, sports, editorials — 7 to 11 p.m. Wednesday

THE TECH is entered as second class matter at the post office at Boston, Massachusetts. Published every Friday during the college year, except college vacations, by THE

TECH, Walker Memorial (50-211), Cambridge 39, Mass. Telephones TRowbridge 6-5855 or -5856, or UNiversity 4-6900, extension 2731.



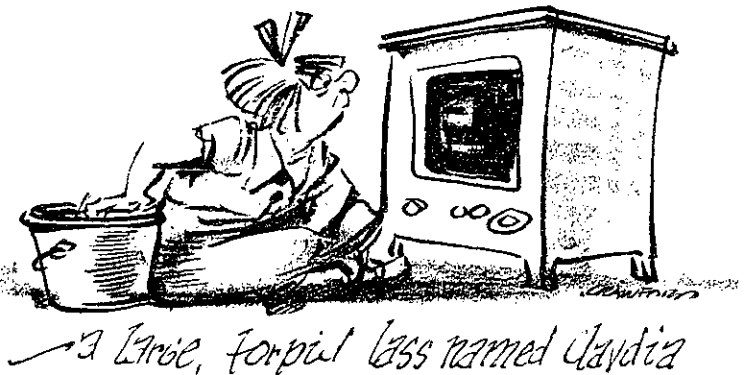
## THE ENGINEERS HAVE HAIRY EARS

Today in this age of technology when engineering graduates are wooed and courted by all of America's great industries, how do you account for the fact that Rimbaud Sigafos, who finished at the very top of his class at M.I.T., turned down hundreds of attractive job offers to accept employment as a machinery wiper at the Acme Ice Company at a salary of \$20 a week with a twelve-hour day, a seven-day week, and only fifteen minutes for lunch?

I know what you are thinking: "*Cherchez la femme!*" You are thinking that Mr. Acme, head of the Acme Ice Company, has a beautiful daughter with whom Rimbaud is madly in love and he took the job only to be near her.

Friends, you are wrong. It is true that Mr. Acme does have a daughter, a large, torpid lass named *Clavdia* who spends all her waking hours scooping marzipan out of a bucket and staring at a television set which has not worked in some years. Rimbaud has not the slightest interest in *Clavdia*; nor, indeed, does any other man, excepting possibly John Ringling North.

So how come Rimbaud keeps working for the Acme Ice Company? Can it be that they provide him with free Marlboro Cigarettes, and all day long he is able to settle back, make himself comfortable and enjoy the filter cigarette with the unfiltered taste?



No, friends, no. Rimbaud is not allowed to smoke on the job and when he finishes his long, miserable day he has to buy his own Marlboros, even as you and I, in order to settle back and enjoy that choice tobacco, that smooth, mellow flavor, that incomparable filter, that pack or box.

Well, friends, you might as well give up because you'll never in a million years guess why Rimbaud works for the Acme Ice Company. The reason is simply this: Rimbaud is a seal!

He started as a performing seal in vaudeville. One night on the way to the Ed Sullivan show, he took the wrong subway. All night the poor mammal rode the B.M.T., seeking a helping hand. Finally a kindly brakeman named Ernest Thompson Sigafos rescued the hapless Rimbaud.

He took Rimbaud home and raised him as his own, and Rimbaud, to show his appreciation, studied hard and got excellent marks and finished a distinguished academic career as valedictorian of M.I.T.

Rimbaud never complained to his kindly foster father, but through all those years of grammar school and high school and college, he darn near died of the heat! A seal, you must remember, is by nature a denizen of the Arctic, so you can imagine how poor Rimbaud must have suffered in subtropical New York and Boston, especially in those tight Ivy League suits.

But today at the Acme Ice Company, Rimbaud has finally found a temperature to his liking. He is very happy and sends greetings to his many friends.

© 1961 Max Shulman

*Any time, any clime, you get a lot to like with a Marlboro— and with Marlboro's newest partner in pleasure, the unfiltered, king-size, brand-new Philip Morris Commander. Get aboard!*

"PURE ENJOYMENT"

Bosley Crowther, N.Y. Times

"HILARIOUSLY DISRESPECTFUL"

Time Magazine

PETER SELLERS - TERRY THOMAS


"MAN IN A COCKED HAT"

FENWAY MASS. AVE. & BOYLSTON ST. KE 6-0610

Mattson Karate Academy is now in the process of interviewing prospective students for Karate instruction beginning February 2 at 6 p.m. Learn the ultimate in weaponless self-defense through the practical application of Zen principles. Learn Karate as it was taught by Buddhist monks 2000 years ago. For information call: CO 7-3374

ASSOCIATED TUTORS An MIT Tradition New Address: 301 Vassar Street Phones: CO 7-0160 MI 3-4572

**SACK Theatres NOW**



"ONE OF THE YEAR'S TEN BEST!"  
—Bosley Crowther, N.Y. Times

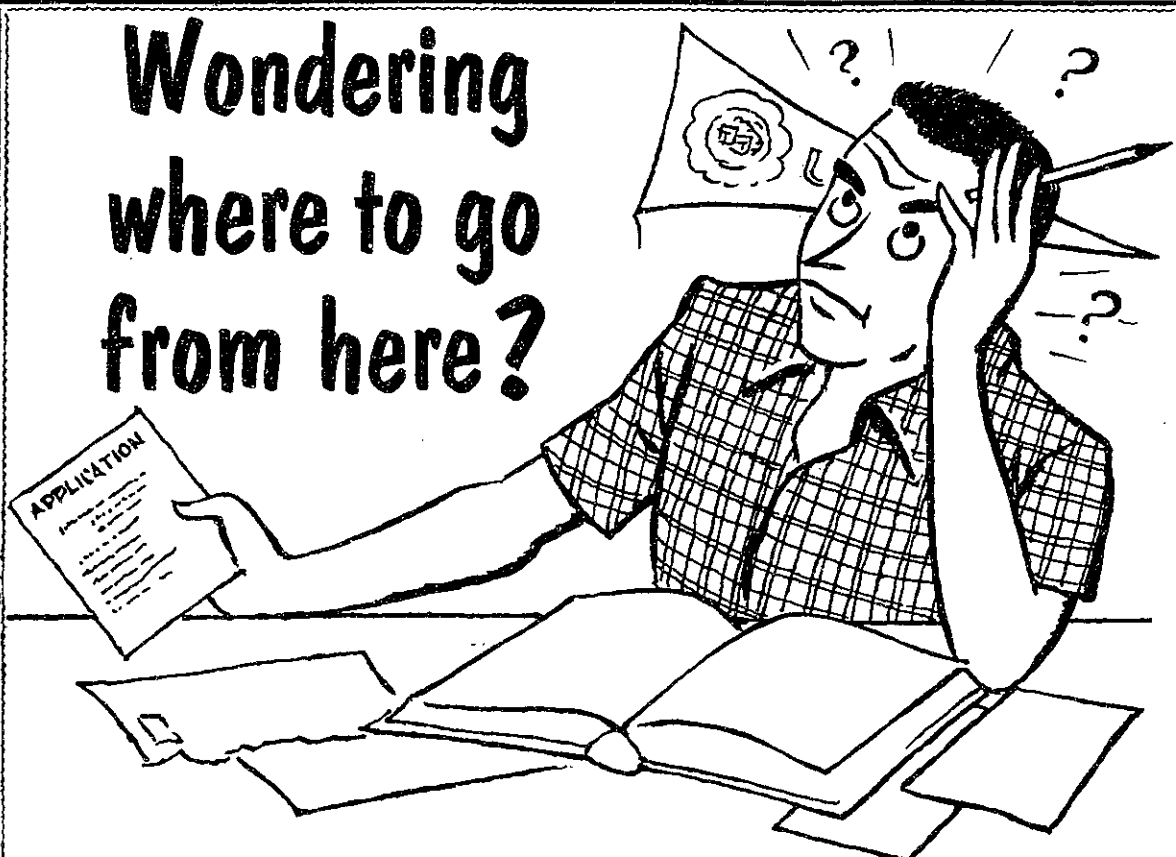
"ONE OF THE OUTSTANDING FILMS OF THIS OR ANY OTHER YEAR!"  
—Elinor Hughes, Herald

**ALEC GUINNESS JOHN MILLS**

**TUNES OF GLORY**

also starring DENNIS KAY JOHN PRICE WALSHER FRASER

Beacon Hill CA 7-6676 | Opposite Parker House Cont. from 9:30 a.m.



Wondering where to go from here?

Get the facts about a career with Con Edison

Con Edison is in the midst of a huge expansion program to serve a constantly growing New York—the world's most dynamic city. In five years we're spending over a billion dollars to build new plants, sub-stations and distribution facilities and to find new and better ways to meet our city's increasing demand for electricity, gas and steam.

Our tremendous growth is increasing the need for creative and ambitious college graduates—in both technical and non-technical fields. In the next fifteen years 750 of the 791 top management positions in the company will fall vacant—mainly through retirement. These important positions will be filled largely by men who join us now. Our carefully planned program for college graduates offers a good starting salary, major assignments at once and rapid advancement.

So why not get all the facts about the many interesting and worthwhile careers Con Edison has to offer...pick up a copy of our booklet "Con Edison—The Right Place To Build Your Future" at the Placement Office and be sure to talk with our interviewer when he comes.

Our interviewers will be here at **M. I. T. FEBRUARY 9** to tell you about the unusual job opportunities Con Edison can offer you.



THE BRYN MAWR CLUB of BOSTON OLYMPIC HOLIDAY presented by JOHN JAY for the New England Regional Scholarship Fund TUESDAY, JANUARY 17, AT EIGHT O'CLOCK Rindge Auditorium Broadway, Cambridge Tickets at T.C.A.

Key to the Trails and Other Facilities at Mad River Glen

① Catamount	① Bunny	① Grasshopper and Cricket	① Parking Area
② Chute	① Porcupine	② The Long Trail	② Club Lodge
③ Fall-Line	① Chipmunk	③ The Basebox	③ Mid-Station
④ Beaver	④ Snail	④ The Hutch	④ Stark's Nest
⑤ Glade	⑤ Open Slope		⑤ Chair Lift
⑥ Grand Canyon			⑥ T-Bar Lift

In The "Snow Corner" of New England  
MAD RIVER GLEN Ski Area • Waitsfield, Vermont

# Icemen Down WPI And Amherst

MIT's varsity hockey team, with two straight victories in its sticks, faces the University of Pennsylvania tonight on the Briggs Field Rink at 7 p.m. The Techmen captured an impressive 7-2 victory over Amherst Wednesday after blanking a hapless Worcester Polytechnic squad last Saturday, 11-0.

Mike Denny '63, currently the hottest Tech scorer, garnered a hat trick against Amherst and four goals in the WPI rout.

The Amherst game was all even until the second period, when the Techmen erupted for four tallies. The seventh goal was the result of a third period effort.

Captain Erik Salbu '61 and Steve Levy '62 each accounted for a pair of points. Protecting the net for MIT was Tim O'Brien '62.

### Eight Fast Goals

Tech exploded for eight markers in the opening stanza against WPI as Denny struck for a hat trick. After that there was no contest. O'Brien was seldom called upon for a save.

### SPORTSWRITERS

The planned expansion of The Tech's sports coverage will permit the creation of new staff positions. Persons interested should contact the sports editor.

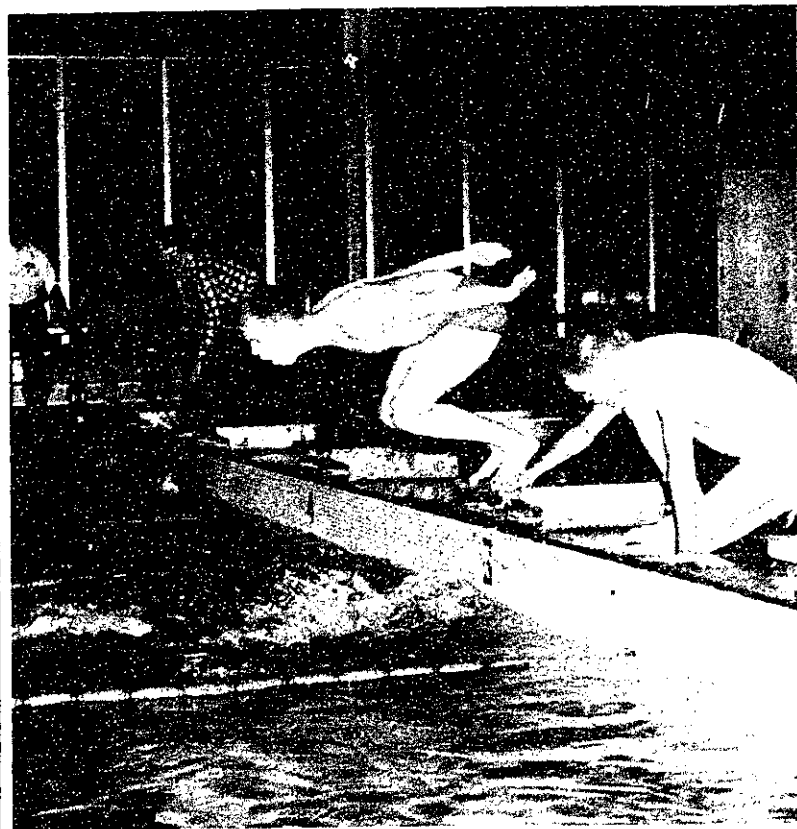
Salbu and Bill Vachon '63 each scored twice in the Saturday frolic. Contributing a goal apiece were Levy, John Rupert '62 and Tony Weikel '63.

### Expectation High

MIT is in good position for its fourth victory tonight since Pennsylvania was recently one of Amherst's victims. Penn is fairly new to college hockey ranks, having initiated the sport to comply with an intra-Ivy League competition-in-all-sports pact.

After the intercession the icemen will be at home five times and on the road once. UMass, Wesleyan and WPI will be facing the Techmen for the second time. Bowdoin and Connecticut end the regular season, to be followed by the annual alumni classic.

# Swimmers Defeat Coast Guard And Wesleyan



Dave Carey '62 poises for his leap into the second leg of the 400-yard medley against Wesleyan Wednesday. Completing the first leg is Lauren Sompayrac '63. Tech won the relay, then went on to cop the meet, 60-35.

## Four Records Fall Stein, Cooke Star

By Chris Ritz '64

Sparked by Dave Stein the varsity swimmers down the Coast Guard Academy Wesleyan University in successive meets last week. In lining up a 58-37 score against the Coast Guard, Techmen broke four school records; Stein, holder of the old record in the 50-yard freestyle, not only broke it Saturday against the Coast Guard, but bettered it Wednesday in the Wesleyan meet. Ron Cooke, also '62, cut one-tenth of a second off his old mark in 50-yd. freestyle competition against Coast Guard, Pete Basson '61, along with Stein, broke records in 2 successive meetings his triumphs coming in the individual medley competition.

Stein made the swimmer's week a huge success, covering the 440-yd. distance in 2 records smashing times of 5:05.0 and 5:00.9, against USCGA and Wesleyan, respectively.

Winning performances against Coast Guard were also turned by the medley relay team, Bill Bails '62 in the diving, and Lauren Sompayrac '63 in the 220-yd. backstroke.



Dave Stein

In out-distancing Wesleyan, 60-35, Techmen ran up impressive victories in the 100-yd. butterfly (Nathan Golden '63), diving (a repeat by Bails), 50-yd. freestyle (Cooke's 2nd victory, with Lynn Wheeler '62 second), the 400-yd. medley relay team (a fine effort by Tom Silvestri '61, Dave Carey '62, Lauren Sompayrac, and John Schrader '63). Gordon Mann '61 ran a close 2nd to two brilliant performances by Bails in the diving, while Jed Engeler '62 after placing 3rd in the 220-yd. freestyle against Coast Guard Saturday, was second to teammate Stein on Wednesday.

The Freshmen swimmers led a close one to Wesleyan, being edged out 44-40.

Tomorrow, the Varsity (1 win, 1 loss thus far in the campaign) journeys to Amherst for an afternoon meet, while the Frosh swim against Phillip Exeter Academy, also away.

Four away meets are scheduled next month, with one home encounter against Adelphi on the 18th. The New England championships will be held at Connecticut in March.

## Track Team Bows To Area Colleges In 3-Team Meet

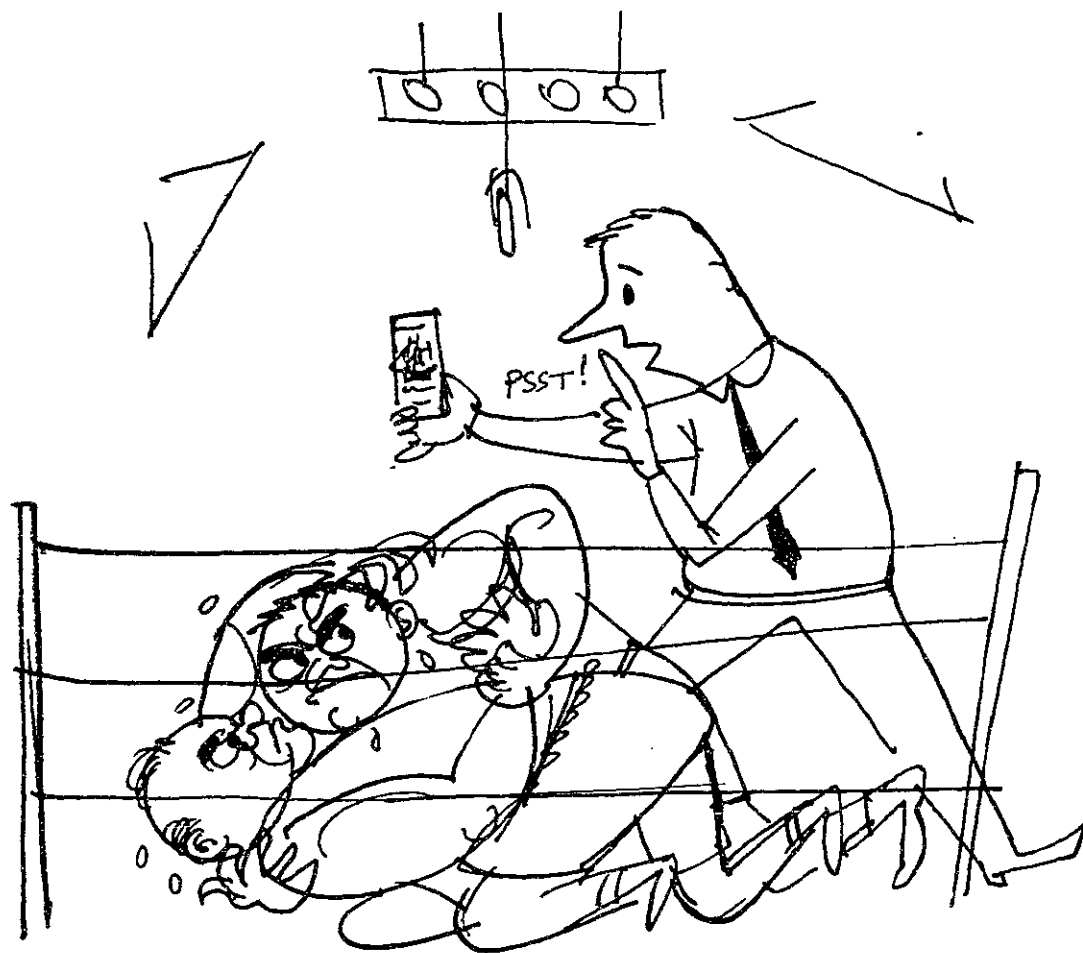
Evidently off form after vacation layoff, the varsity track team was topped by Northeastern and Tufts last Saturday at the Northeastern cage. The score was Northeastern 73, Tufts 44½, MIT 22½. The frosh aggregation placed second, scoring 51 to 16 for Tufts and 73 for the host squad.

Joe Davis '61 continued to lead the Tech scoring with six points gained via a second in the high jump, third in the low hurdles, and fourth in the lows. Davis' 6 foot effort in the high jump was second to a cage record by Northeastern's Willy Anderson.

George Withbroe '61 was the only winner for the Beaver varsity, coming from behind in the last half lap to nip the Huskies' Joe Bolton in the 600 in 1:8.7. Al Ramo '63 put forth one of MIT's best shotput efforts in finishing second to Tufts' Carl Beasley. Herb Grieves '61 came back from a fifth place in the two-mile to anchor the relay team to a second spot finish. Forrest Green '63, John Murdock '63, and Larry Coppola '62 made the first three baton passes.

Frosh Jim Flink was a triple victor for the third consecutive meet, taking the dash and both hurdles events, in addition to a third in the broad jump for a total of 17 points. Gary Lukis and Jim Allen copped the pole vault and high jump with 11'6" and 5'7" efforts, respectively, while Bill Harper and Jerry Dassel placed 1-2 in the 35-pound weight throw.

The varsity hopes to move into the winning column tomorrow when both varsity and frosh meet Bowdoin at Rockwell Cage at 1:00 p.m. The meet will have an unusual feature in that, since both teams are competing in the mile relay in the Knights of Columbus meet at the Boston Garden tomorrow night, that race will also count as the final event of the afternoon meet.



When things get too close for comfort\*

*your best friends won't tell you...  
but your opponents will!*

- Old Spice Stick Deodorant brings you safe, sure, all-day protection.
- Better than roll-ons that skip.
- Better than sprays that drip.
- Better than wrestling with creams that are greasy and messy.

NEW PLASTIC CASE  
PRE-SET  
FOR INSTANT USE  
1.00 plus tax



\*Old Spice STICK DEODORANT comes to the rescue fast!

### How They Did

<b>Basketball</b>	Coast Guard 60	MIT 52
	MIT 68	Union 67
<b>Squash</b>	Williams 8	MIT 1
	Amherst 9	MIT 0
<b>Swimming</b>	MIT 58	Coast Guard 37
<b>Pistol</b>	Coast Guard 1371	MIT 1322
<b>Track</b>	Northeastern 73,	Tufts 44½,
	MIT 22½	
<b>Hockey</b>	MIT 11	WPI 0
	MIT 7	Amherst 2

# Shooting Ranges- MIT Eyesores

As the Second Century Fund continues to grow and Institute expansion plans are released, one project is notably missing: the construction of modern target shooting facilities.

To be sure, the rifle range is not generally seen by visitors to MIT, but its status as the campus eyesore cannot be denied. And the pistol range, which, in serving both students and faculty occupies less space than the Ping Pong Club headquarters, can hardly be termed an asset.

In a recent two year period 600 incoming freshmen expressed an interest in organized shooting. Yet there are only 60 undergraduates presently associated with the rifle and pistol programs. This drastic reduction can be directly attributed to the lack of adequate practice facilities. The rifle range boasts five firing points, the pistol range four. At other colleges 24 points are not unknown.

The amazing fact remains that MIT's varsity teams have done well in both sports. Last year the rifle team captain, Bill Leffler, was eighth in the National Rifle Association Intercollegiate Individual Championships, which drew 1390 competitors. This year the rifle team is undefeated and the pistol team has drawn the sincere praise of the Coast Guard coach. We can only imagine how well these men would perform, given decent facilities.

Boston is a stronghold of the nation's shooting enthusiasts. The MIT Faculty team leads its division in the Greater Boston Pistol League, the nation's largest. The MIT undergraduate team is second. But MIT's facilities place last.

We realize that the Second Century planners are aware of this problem, since the present decrepit rifle range is not seen on the model of the future MIT. We hope that MIT's shooters will be able to join the April celebration, having been assigned a respectable home.

— The Editor

## On Deck

Today, January 13  
Hockey with Pennsylvania 7 p.m.  
Squash at Princeton

Tomorrow, January 14  
Basketball (V&JV) at Trinity  
Basketball (F) with Exeter Academy 7 p.m.  
Fencing at Brandeis  
Hockey (F) at Gov. Dummer  
Pistol with Navy 2 p.m.  
Rifle with Navy 10 a.m.  
Squash at Navy  
Squash (F) at Exeter  
Swimming at Amherst  
Swimming (F) at Exeter  
Track with Bowdoin (V&F) 1 p.m.  
K of C Track Meet 7:30 p.m.  
Wrestling (F) at Phillips

Saturday, January 28  
BAA Track Meet 7:30 p.m.

Sunday, January 29  
Skiing at Brown Slalom, N. Conway, N. Hampshire

Mid-Term Trips  
Rifle (January 30-February 4, at Coast Guard, St. John's, Navy, CCNY, Merchant Marine, Army)  
Basketball (February 1-4 at Hartford, Stevens, Johns Hopkins)

Wednesday, February 8  
AAU track meet here

Friday, February 10  
Hockey with UMass 7 p.m.  
Rifle at Wentworth and Boston College

Saturday, February 11  
Basketball with Case  
Fencing with UConn  
Hockey with Wesleyan  
Rifle with Dartmouth

## WHY PAY \$\$\$

PANTS CUFFED  
AND PRESSED 60c  
AT SAM'S  
2078 Mass. Ave. at Walden St.  
EL 4-0380 — FREE PARKING

## CALIFORNIA

Round Trip Air Fare Plus Tax  
FROM \$160 to \$206  
WHY PAY MORE?  
Howard Hillman, Student Rep.  
LA 3-6100  
Other Flights: Chicago & Florida

## Everyone Needs Some

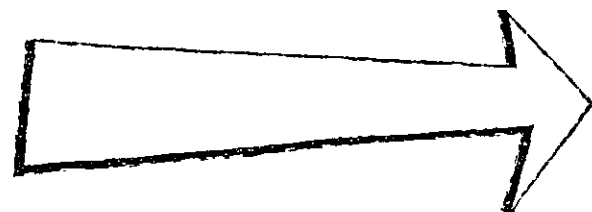
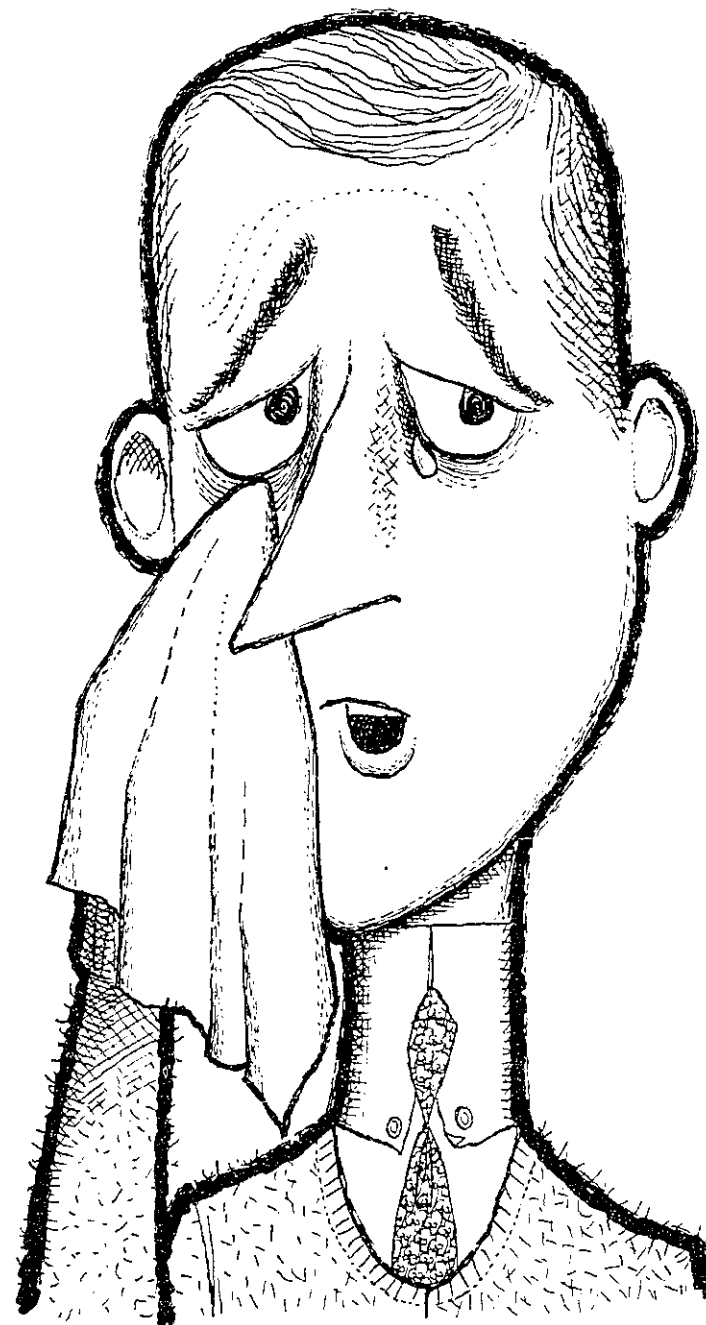
**SBLI** Yes, today everyone needs SOME life insurance — probably more than they have. Many would buy more if they knew how little low-cost Savings Bank Life Insurance is. 5-Year Renewable Term costs just 50c monthly for each \$1,000, age 25; just 69c monthly, age 35; 87c, age 40. Protect every member of your family with SOME Savings Bank Life Insurance. Get folder here, showing rates, all ages, 15 days to age 70, all types of policies.

CAMBRIDGEPORT  
SAVINGS BANK  
Cambridge, Mass.  
Phone UN 4-5271

The Institute pays a quarter of a million dollars a year for telephone calls.

Between five and ten men from the telephone company are on duty at the Institute at all times.

# SOMETHING BEAUTIFUL WENT OUT OF MY LIFE WHEN YOU LEFT...



THE F. & M. SCHAEFER BREWING CO., NEW YORK and ALBANY, N.Y.

## FACULTY, STUDENTS AND STAFF

OF M.I.T.  
MAY PURCHASE

At Wholesale Prices

# SNOW TIRES

1961 DESIGN

## RETREADS

First Quality

Firestone Town & Country

OR

GOOD YEAR

Suburbanite

640x15 }  
670x15 } \$9.00  
710x15 }  
750x14 }

760x15 }  
800x15 } \$9.50  
800x14 }  
850x14 }



WHITE WALLS — 1.00 ADDITIONAL  
TAX INCLUDED  
PLUS RECAPPABLE TIRE OR ADDITIONAL \$2.00

## NEW\*

First Quality

Pennsylvania  
with Tyrex\*

GOOD YEAR  
with Tyrex\*

\$9 <sup>84</sup>	670x15	\$13 <sup>19</sup>
\$11 <sup>25</sup>	710x15	\$16 <sup>31</sup>
\$12 <sup>30</sup>	760x15	\$17 <sup>82</sup>
\$14 <sup>61</sup>	800x15	\$19 <sup>62</sup>

## TUBELESS

\$11 <sup>67</sup>	750x14	\$15 <sup>99</sup>
\$13 <sup>60</sup>	800x14	\$18 <sup>27</sup>
\$14 <sup>88</sup>	850x14	\$19 <sup>97</sup>

\*PLUS TAX  
PLUS RECAPPABLE TIRE OR ADDITIONAL \$2.00

## FREE TIRE MOUNTING

Every Tire and Tube Unconditionally Guaranteed, Regardless of Time or Mileage  
(ADJUSTMENT PRORATED ON TREAD DEPTH USED, BASED ON CURRENT PRICE)

\*TYREX is a Certified Trade-Mark of Viscose Tire Corp.

## CAMBRIDGE TIRE COMPANY

Wholesale Distributors

290 ALBANY STREET • CAMBRIDGE 39, MASS.  
(Off Mass. Ave. Near M. I. T.) UNiversity 4-7575  
(Nearly half a century of service)

Established 1915

HOURS — 7:30 A.M. to 6:00 P.M.  
Saturday: 7:30 A.M. to 4:00 P.M.

Complete Stock of  
Foreign and  
Sport Car Sizes

MEMBER OF  
NATIONAL TIRE DEALERS  
AND RETREADERS

Member  
Cambridge  
Chamber of  
Commerce

**Samuel Bluestein Co.**  
 School-Engineering Supplies  
 Ask About Student Discount  
 1080 Boylston St., Boston  
 CO 7-1102  
 345 Main St., Malden  
 DA 2-2315

**WANTED**  
 MIT students to wear our tuxedos at all your proms. Brookline Formal Wear, 392 Harvard Street, Brookline — AS 7-1312.

**Pay All Debts**  
**SBL** You'll be amazed how little it costs to leave enough dollars to pay off all your debts, if you should die, using low-cost Savings Bank Life Insurance 5-Year Term Insurance. Costs, monthly, for each \$1,000 just 50c if you are age 25; 57c if age 30; 69c if age 35; 87c if age 40. Yearly dividends reduce costs even more. Get rates, your age. No obligation.  
**CAMBRIDGEPORT SAVINGS BANK**  
 (Right in Central Square)  
 Cambridge, Mass.  
 Phone UN 4-5271

  
**FUN 'ROUND THE Round Hearth**  
**STOWE'S GREAT SKI DORM**  
 Warm, casual, glowing with good companionship, the Round Hearth's the lodge to rest and refresh yourself. Hearty fare, dancing, relaxing around the famous circular fireplace—it adds up to fun! Only \$6.25 a day with two meals, \$40 a week. Write for folder or Tel. STOWE, Vt., Alpine 3-7223.

**G. L. FROST Co., Inc.**  
**AUTOMOBILE BODY REPAIRING & REFINISHING**  
 E. W. PERKINS 31 LANSDOWNE STREET  
 Tel. Eliot 4-9100 CAMBRIDGE, MASS.

In 1960 the Physical Plant consumed 1,668,466 gallons of oil; 26,160 kilowatts of electricity; 397,968,100 lbs. of steam; 267,281,100 cu. ft. of gas and 3,375 cases of paper towels.

**DID YOU HAVE TO TAKE THE SCHAEFER BEER?**



If the Schaefer beer has gone out of your life, stock up right away. You get all the pleasure of the first beer, every beer through—with Schaefer all around!



THE F. & M. SCHAEFER BREWING CO., NEW YORK and ALBANY, N.Y.



**8,000 Management Opportunities!**

That's right. There will be 8,000 supervisory jobs filled from within the Western Electric Company by college graduates in just the next ten years! How come? Because there's the kind of upward movement at Western Electric that spells *executive opportunity*. Young men in engineering and other professional work can choose between two paths of advancement—one within their own technical field and one within over-all management.

Your progress up-the-ladder to executive positions will be aided by a number of special programs. The annual company-wide personnel survey helps select management prospects. This ties in with planned rotational development, including transfers between Bell Companies and experience in a wide variety of fields. Western Electric maintains its own full-time graduate engineering training program, seven formal management courses, and a tuition refund plan for college study.

After joining Western Electric, you'll be planning production of a steady stream of

communications products—electronic switching, carrier, microwave and missile guidance systems and components such as transistors, diodes, ferrites, etc. Every day, engineers at our manufacturing plants are working to bring new developments of our associates at Bell Telephone Laboratories into practical reality. In short, "the sky's your limit" at Western Electric.

Opportunities exist for electrical, mechanical, industrial, civil and chemical engineers, as well as physical science, liberal arts, and business majors. For more information, get your copy of *Consider a Career at Western Electric* from your Placement Officer. Or write College Relations, Room 6106, Western Electric Company, 195 Broadway, New York 7, N. Y. Be sure to arrange for a Western Electric interview when the Bell System team visits your campus.



Principal manufacturing locations at Chicago, Ill.; Kearny, N. J.; Baltimore, Md.; Indianapolis, Ind.; Allentown and Laureldale, Pa.; Winston-Salem, N. C.; Buffalo, N. Y.; North Andover, Mass.; Omaha, Neb.; Kansas City, Mo.; Columbus, Ohio; Oklahoma City, Okla. Engineering Research Center, Princeton, N. J. Teletype Corporation, Skokie, Ill., and Little Rock, Ark. Also Western Electric distribution centers in 32 cities and installation headquarters in 16 cities. General headquarters: 195 Broadway, New York 7, N. Y.