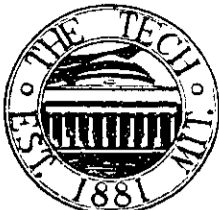


The Tech



NEWSPAPER OF THE UNDERGRADUATES OF THE MASSACHUSETTS INSTITUTE OF TECHNOLOGY

VOL. LXXX No. 1

CAMBRIDGE, MASSACHUSETTS, FRIDAY, FEBRUARY 12, 1960

5 Cents

TCA Plans March Drive; To Get More Tech Blood

The Cambridge Red Cross BloodMobile will be at Kresge Auditorium, from March 15 through March 18, to collect blood from MIT students and staff in the annual TCA Blood Drive. TCA has held a blood drive since World War II and collected 720 pints last year, but only 5% of the student body turned out. Dave Montgomery, '60, TCA head, and Bob Weirich, '61, chairman of this year's drive will be satisfied with the same turn-out but are hoping for more donors.

TCA to Visit Dorms

Because persons under 21 need parents' permission if they desire to give blood, TCA solicitors will go into action two weeks before the actual drive to muster support. TCA representatives will visit each fraternity and dormitory occupant, from February 22 to 26, and will have a booth in Building 10 lobby to schedule commuters. The Institute will also help in the drive by asking the support of its staff.

For Tech's Use

Montgomery stated that the Institute will receive an important benefit from the drive in the form of assurance that any of the MIT Staff or student body needing fresh blood will be able to obtain it from the Red Cross with more speed and priority than normally is given. He said that most colleges sponsor a blood drive to receive the same benefit.

MIT Out-donates Harvard

MIT uses two hundred pints of blood each year, said Montgomery, and should do something to insure an ample supply of blood for its needs. He said that the students do not use as much blood as the staff does.

Two years ago MIT gave more blood than Harvard and this year the TCA hopes the full-blooded engineers will beat the Crimson again.

Scott Charged With Larceny

Police Ground Crated Freshman

Boston police foiled the attempt of MIT freshman Roland Scott to fly to Washington concealed in a wooden crate on Friday of exam week. Scott, a 17 year old Phi Kappa Sigma pledge from Valdosta, Ga., built himself a wooden crate, supplied himself with two salami sandwiches, some cookies, and a warm flight jacket and had two friends drive him to Logan airport to be loaded on a 6 P.M. flight. Unfortunately, the crate did not make connections and was held over to be sent on the 8 P.M. flight. Meanwhile, Scott's friends had notified Washington newspapers who immediately sent word to Boston. Fifteen minutes before the take-off police pried open the crate and jailed Scott on charges of attempting to defraud Eastern Airlines and its air-freight service. Judge Thomas Kay in the East Boston Court released Scott for a period of six months

at which time he will dismiss charges if Scott gets into no further trouble.

Scott said, "I just wanted to see if I could do it. I'd heard before that it had been done". When asked how he felt about the danger of being stored in a non-pressurized compartment, Scott stated that the airlines had assured him that his "package" would be stored in a pressurized cabin. Reappraising his scheme Scott averred, "I don't recommend that other MIT students try it".

Ruth Slenczynska To Give Recital In Kresge Feb. 27



Ruth Slenczynska will appear in Kresge Auditorium, on Friday, February 19, at 8:30 P.M. The program will include works by Bach, Liszt, Chopin, Schuman, Louise, and Talma.

Noted Scholar to Speak On Golden Age of Judaism

The semi-annual Morris Burg Memorial Lecture will be held this Sunday in Kresge. Dr. Abraham A. Neuman, President of Dropsie College, will speak on "Another Golden Age of Judaism".

The lecture, which will begin at 8:30 P.M. in the Auditorium, is free of charge and open to the public. Following his talk, Dr. Neuman will answer questions from the audience. He will be introduced by Prof. Bernard Gould of the Biology Department.

A supper for Dr. Neuman will be given before the lecture. It will be held in the Baker House Dining Hall at six P.M. Admission is one dollar plus purchase of Hillel Membership for the year, which can be bought at the door.

MIT Goes To Montreal For Mock UN Represents Indonesia In Assembly

MIT became Indonesia as a six-member delegation participated in the University Model United Nations at Montreal, February 3-6. Approximately 50 colleges and universities of Canada and the U. S. joined MIT in representing 75 nations of the UN in mock debate.

The second meeting of its kind gave college students an opportunity to discuss aspects of several important international problems. Discussions centered around the UN status of Communist China, but included such problems as peaceful uses of outer space, the arms race, and French nuclear tests.

The MIT students, who represented Indonesia, were Jaime DeSola, '60, chairman, UAP Chris Sprague, '60, Stephen Gill, '60, Salomon Scroussi, '60, Linda Greiner, '60, and Indrawan Roosheroe, a native Indonesian graduate student.

The Tech Gets New Board, Offices



Shown on left are a few members of The Tech staff in their new location — the former offices of TCA on the second floor of Walker Memorial.

New members of The Tech, Volume 80, are Chairman, Linda Greiner; Managing Editor, Charles Muntz; Business Manager, Brian Strong; Editor, Joseph Harrington III; News Editor, Barry B. Roach; Sports Editor, Thomas Brydges; Photography Editor, Herbert Taylor.

Supported Red China

MIT upheld the position, as a neutral, of Indonesia throughout the debates. While it supported the admission of Communist China to the General Assembly, Indonesia insisted upon complete agreement between East and West before steps toward use of outer space are adopted. Red China's admission was ultimately defeated by a vote of the Assembly.

The Honorable Lester B. Pearson acted as Honorary President of the model group, and spoke on the position of the United Nations today. Canadian Prime Minister John Diefenbaker was Honorary Patron of the group.

Debaters Will Hold 30 School Contest On Friday Afternoon

Tech debaters will be host Friday and Saturday, February 12 and 13, to the debating teams from thirty Eastern schools for the fifteenth annual debate tournament. Some of the participating schools will be Dartmouth, Harvard, Georgetown, Bowdoin and Boston University.

The topic for debate is Resolved: That Congress should be given the power to reverse the decisions of the Supreme Court.

The members of the MIT debating team arguing for the affirmative are John Castle, '63, and Norm Langemac, '63; for the negative are Steve Wanner and Dan Gourley, each a freshman.

Where Tuition Goes A Financial Picture

by Carl Wunsch, '62

The article appearing in the last issue of The Tech tried to give some idea of the current financial status and the long-range financial aims of the Institute. This article will try to give an indication of current MIT expenses, income, and general information perhaps of interest to the student.

All figures given here are from the current Treasurer's Report which appeared in September, 1959, and which covers the 1958-59 year. As given in this report the total physical worth of MIT is \$44,178,921 in "Land, buildings, and equipment." Total investments in Bonds, stocks, real estate, etc., is \$95,668,836. This plus \$22,332,759 in cash, accounts receivable, etc., give a total on the balance sheet of \$162,180,516.

Of Institute income, \$7,667,046 of the total \$23,124,959 for education came from tuition, \$1,722,317 from investment income, \$5,343,942 from gifts, \$6,542,382 from contract allowances for running expenses and \$1,849,272 from Dining and student housing.

The breakdown on educational expense is as follows: Academic depart-

(Continued on page 3)

MIT to Form Team

Oxford Seeks Tiddlywinks Match

Tom Nicholson, of Oxford University, issued a ringing challenge to MIT in the following letter:

"The Oxford University Tiddlywinks Society hereby challenges the Massachusetts Institute of Technology to a match as part of our projected tour (mainly New England) in September of this year.

We are aware, and disturbed, that practically NO American College or University plays the game, with the notable exception of Harvard. However, in the event of a suitably spirited provisional response to our challenge — sent to a number of well known Universities — we could arrange for the distribution of the accepted rules in all their subtlety and go ahead with the detailed organization.

I would be grateful if you would combine speed with good nature in your consideration of this proposal."

At present, MIT is in the process of mustering a team in this forgotten sport. Watch for the members, captain, and coach in next Tuesday's Tech.

Rush for Jobs Foreseen After Senior Complacency

The Class of 1960 is showing marked "complacency" towards securing jobs, according to Placement Officer Thomas W. Harrington, Jr. The relatively small number of interviews scheduled thus far is expected to lead to a "madhouse" as Seniors rush the Placement Office in coming months.

About one thousand seniors and graduate students will be in the job market this Spring. As of the end of last term, only 400 men had signed for company interviews — a rate well behind that of last year. The hours and rooms available for interviewing are almost completely filled for the coming period, and students will have to make appointments on a "first-come first-served" basis; there is almost no flexibility in scheduling.

A number of job seekers seem to come with the attitude that they will "just walk into a job", according to Harrington. The picture, however, is not quite that rosy. Last year, there was an average of 1.5 job offers per student, with a high of 14. This year, Harrington does not foresee an average greater than 2 offers per student.

Although 98% of last year's graduating class were eventually placed, there were many temporary moments of "panic". Harrington attributes this to a "lack of realism"

and a "lack of a frame of reference about objectives and qualifications" on the part of the student. If any student is running into problems, it is recommended that he consult with the Placement Office or his Departmental Placement Advisor before Spring Vacation.

Many companies are leaving MIT unsatisfied, and many of these do not plan to return. An average of one company interviewer per day is advised against coming by the Placement Office, since not one person has signed up for an appointment. One large aircraft company had four interviews on Campus for four days this past term; in that time, they saw a total of four students. Many small companies have felt this lack of interest, and some may not bother sending interviewers to MIT in future years.

Although most employers are looking for recruits on all degree levels, an advanced degree is a real advantage. For example, two Ph.D. graduates in mathematics once walked into the Placement Office two days before graduation and asked, in effect, "We're through, so what do we do now?" These two men were rapidly placed in good positions, because of the extreme interest in their advanced degrees. This is not the recommended procedure, though, for the average student.

LXXX

Before moving on the term ahead, the new Board of *The Tech* would like to take this opportunity to welcome the MIT Community to Volume Eighty. We look forward to discussing with you the problems that surely lie in the year ahead for MIT. We sincerely invite comment and criticism in the form of letters, fully realizing that many Techmen consider themselves too busy to send us such, or not interested enough. This we feel is regretful.

We, for our part, will try to make the issues discussed on this page worthy of consideration. This to us means not so trivial as to be meaningless, and not so large as to be nebulous and ill-defined. If MIT responds with discussion and constructive criticism, we feel that it will be to her benefit; in addition, one of the major purposes of *The Tech* will have been fulfilled.

Before getting on with Volume Eighty, we would like to thank the Board of Volume Seventy-Nine for starting *The Tech* on a decidedly upward path, along the lines outlined above. It is our hope to continue this development.

Elections, Anyone?

As things stand now, with one week to go before the deadline for filing UAP and class officer candidate petitions, there will be one candidate elected by default for UAP, and three class officers similarly elected. Ten class offices will be vacant.

Normally the community would look to the Class of 1961 to fill the job of UAP. By now, however, it should be plain that this class is either unwilling or unable to produce many qualified people to run for this office and the other seats on Incomm. The danger now is that, through a lack of qualified people in one particular rising senior class, that unqualified people may find their way to office. Lest this occur, may we point out that the qualified people need not necessarily come from within the ranks of '61. Where the juniors have failed, perhaps the sophomores can produce. We look to the Freshmen and Sophomores to provide enough qualified candidates to make the election something other than a formality.

And the class officers? Here we feel the blame for the lack of candidates does not lie entirely with the potential leaders. Some of it falls on the classes themselves for not realizing that three or four class officers are not necessary. To have both a secretary and a treasurer is surely wasting the efforts of both people; likewise a vice-president is unnecessary where there is a president. If there were fewer offices in each class, and each one were vested with real challenge and responsibility, there might be more interest in running for the positions. We invite those classes having trouble finding candidates to consider the possibilities of going to the root of the matter and cutting out positions which now only serve to pad out activities records on job applications.

The  Tech

Entered as second class matter at the post office at Boston, Massachusetts. Published every Tuesday and Friday during the college year, except college vacations, by THE TECH — Walker Memorial, Cambridge 39, Mass. Telephones TRowbridge 6-5855-6 or UNIVERSITY 4-6900, Ext. 2731. Twenty-four hour answering service: TR 6-5855.

VOL. LXXX February 12, 1960 NO. 1

Linda Greiner, '60 Chairman
Charles Muntz, '62 Managing Editor
Brian Strong, '62 Business Manager
Joseph Harrington III, '61 Editor
Barry B. Roach, '62 News Editor
Thomas Brydges, '62 Sports Editor
Herbert Taylor, '62 Photography Editor
Henry McCarl, '62 Associate Managing Editor
John Barnard, '63 Advertising Manager
Howard Kirkendall, '63 Circulation Manager
Jean Pierre Frankenhuis, '61 Associate Editor

MANAGING BOARD

Joe Hanlon, '63 Toby Zidle, '63 Steve Zilles, '63

NEWS BOARD

John Scott, '63 Jerry Glaser, '63
Carl Wunsch, '62 Dan DeMatties, '63
Tony Dralle, '63 S. Soo, '63
Wally Manheimer, '63
Dave Vilkomerson, '62 Features Manager
Jeffery Steinfeld, '62 Columnist

SPORTS BOARD

Paul Robertson, '61 William Mihalte, '62
Ronald Baecker, '63 Donald Nelson, '61

PHOTOGRAPHY BOARD

Richard Marks, '62 Allan Rosenberg, '63
Curtiss Wiler, '63 John Terrey, '63
Kenneth Anderson, '63 John Wawzowick, '63
James Queenan, '63 Boyd Estus, '63
Mike Casey, '62 Robert Purdy, '63
Peter Politzer, '63 Armand Poirier, '63
Bill Frazier, '63

review

Jazz on a Summer's Day

It is a curious matter that the conservative minds of our modern society refuse to admit that this is essentially the century of discoveries, a century full of dynamism, of enthusiasm, a century for young people, for young ideas, for young leadership. The "intellectual" tends to treat the "3-B's" as his close relatives, sports as a pastime for brutes, art as an escape where he can quote names with a slight British accent, being careful in every instance to keep his little finger from touching anything, afraid maybe that he might pollute his mind by such contact.

This refusal to admit new forms has been damaging Jazz for a long time. Considered as a "noise", Jazz tends to be represented as a young boneless hoodlum pinching away at a guitar; unfortunately few efforts had been made for a better understanding of our modern expressions in music. It is difficult to interest the layman in a three-hour performance of representative recorded works; it is almost impossible to convince him to go to a Festival; and it is also important to think of the foreign countries who don't have the privilege of sharing in our show business facilities.

All these problems have been solved by a superb motion-picture directed by Bert Stern and presented by Galaxy Attractions at the Beacon Hill. The picture was taken at the Newport Jazz Festival of 1958, at the same time of the American Cup Race, and features such popular figures as Louis Armstrong, Mahalia Jackson, Gerry Mulligan, Dinah Washington, George Shearing, Chico Hamilton, Jimmy Giuffre, Anita O'Day, Jack Teagarden, Thelonious Monk, Sonny Stitt and Big Maybelle.

"Jazz on a Summer's Day" is not a static take of sweaty musicians in a smoky atmosphere; it is not a picture for fanatics or restricted to people who *understand* Jazz. It is rather a beautiful movie in every respect. The direction is swift, precise, sensitive; the camera work is superb — the image wanders in the streets of Newport, above the sea, on the beaches, inside houses, on roofs, playing with people, picturing them as such, filling the screen with colorful bits of a lively humanity, commenting on the music played in the background; the color itself is well composed, suggesting the moods with poetic beauty; the sound-track follows the general pattern of the picture, creating a dialogue from the movements of the crowd, from the roaring of the waves, from the tip-toeing of the sun on the musical instruments, combining as never before four of our five senses in a festival of exciting impressions.

The musical numbers played are representative of the different schools of thought in the difficult art of Jazz, varying from Dixieland to Modern Jazz. What amazes most is the excellent combination of dissimilar technical fields such as direction, photography or sound in a perfect whole.

"Jazz on a Summer's Day" has outdone the usual documentary feature on Jazz because it is a full-fledged production lasting 85 minutes; moreover, it has created history — Jazz history as well as Motion-picture history. It is a classic in its form and its content. You owe it to your education to see it.

Jean Pierre Frankenhuis, '61

The Tumbler

In writing *The Tumbler* Mr. Benn Levy has used a theme very popular in the past with writers in his native England, but has created a play totally new and different. The "angry young man" in this case speaks entirely in verse, making him stand out from the rest of the characters without much acting necessary on his part. Although the story-line becomes a bit confusing at times, this only makes for more interest in what is to come. The gradual unfolding of the events leading to the present situation holds the observer's interest until the very end.

Laurence Olivier, as director instead of actor, has cast the parts excellently. Charlton Heston does a superb job as the "angry man," reciting his verse with a beautiful song-like quality. Hermione Baddeley is a very realistic jealous and selfish wife for him.

The play is very enjoyable, and we highly recommend your stopping in to the Shubert Theatre between now and February 20 to see for yourself what good theatre can be.

If you are looking for something for after the theatre, try *Ron and Nama* at the Ballad Room with their unusual arrangements of folk songs of Israel and elsewhere.

Gerald J. Hornik, '60

For French Cuisine Par Excellence
Come to
LA DUCHESSE ANNE
A Charming Corner of France
Open Every Day Including Sunday from 5:30 P.M. to 10 P.M.
Luncheon and Morning Reception Parties on Reservation
224 Newbury Street CI 7-9126 Boston



CRONIN'S RESTAURANT

30 Dunster Street off Harvard Square

Famous for
CHARCOAL BROILED STEAKS, CHOPS and SEAFOOD

Dinner from 80c to \$3.00
TRY OUR PORTERHOUSE STEAK FOR TWO — \$5.00

Full line of Beer, Wines and Liquors
EL 4-1366 AIR CONDITIONED

AIR CONDITIONED FOR YOUR COMFORT

Pizza — Steaks — Spaghetti — Ravioli — Cacciatore — Chicken

A SNACK TO A FULL COURSE DINNER

Simeone's

ITALIAN-AMERICAN RESTAURANT

21 Brookline St., Cambridge, Mass., off Mass. Ave. Tel. ELiot 4-9566

Campus to Career

An executive of the Warner & Swasey Co., leading manufacturers of machine tools, textile machinery, earthmoving equipment and other precision machinery will visit MIT on February 18, to interview high caliber men with technical backgrounds or mechanical interests who are looking for a career in research, development, engineering, sales, manufacturing or finance.

This medium sized company offers programs planned to prepare you rapidly for positions of responsibility in line with your background, training, and objectives.

See your placement director to arrange an interview, or write direct to: C. W. Ufford, Director of Industrial Relations,

The Warner & Swasey Co.
Cleveland 3, Ohio

SQUASH RACKETS
All Makes - All Prices
Tennis & Squash Shop
67A Mt. Auburn St. Cambridge
Opp. Lowell Hse. TR 6-5417

UPTOWN THEATRE — BOSTON
CARROLL BAKER
"THE MIRACLE"
(Technicolor)
ALEC GUINNESS
"THE HORSE'S MOUTH"
(Technicolor)



Only Public Appearance!
BRADFORD HOTEL
Wednesday, February 24
Concert — Dance
In Person, "The Great"

DUKE ELLINGTON

VI, XV Most Expensive Courses

(Continued from page 1)

ments \$9,816,095, General and administration \$7,894,794, Plant operation \$3,537,222, and Dining and Student Housing, \$1,876,848. There was thus an apparent loss on Dining and Student Housing of \$27,576. This is not a large amount, but since dormitories and cafeterias are generally supposed to be self-supporting, it bodes ill for the future.

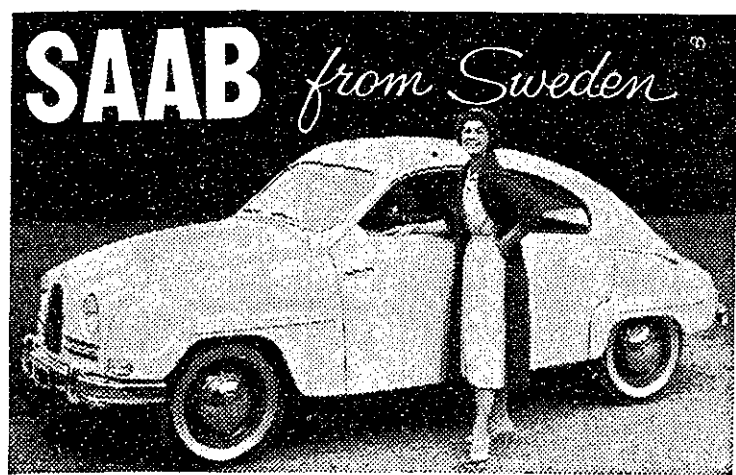
U. S. government research revenue exclusive of Lincoln Labs came to \$28,444,832, while Lincoln Labs budget was \$35,687,580. Total research revenue was \$67,276,820, of which only \$3,144,408 came from sponsors other than the Federal government. It is clear that of total Institute expenditures only 39% was directly concerned with educational costs, the remainder mainly going to government sponsored research.

The Treasurer's Report breaks down expenses in quite some detail. Total professional academic staff salaries "accessory to teaching", for example, came to \$7,799,096; at the top of the list is Electrical Engineering at \$1,178,352, followed by Physics, Mechanical Engineering, Chemistry, and Metallurgy. The smallest departmental division is apparently Naval Ar-

chitecture with a total of \$68,580. The department with the largest expenses was again Electrical Engineering at \$278,075, but second high was Industrial Management at \$227,327. Library and museum expenses totalled \$426,068, with books, periodicals and binding getting \$75,649 of the total.

Under general and administration expenses one finds that "salaries of officers and their staff assistants" amounted to \$1,114,356, Administration office expenses were \$383,732.88 and clerical salaries were \$859,666. As might be expected, the two most costly offices were the Registrar's at \$164,468.52 and the Accounting Office at \$152,325. Under General Expenses, one finds such things as a Telephone bill of \$229,491.05, Campus Security force cost of \$110,693, Publicity cost of \$108,973, Insurance of \$37,236.63, and payments in lieu of taxes of \$69,953.33. Student related expenses give the following information: Athletics, \$214,913, Athletic and other facilities operation \$255,126, Scholarships, fellowships and awards, \$161,117, Housemasters, etc., \$59,120, Hobby Shop, \$6,435, and student pictures \$4,198, among other items. The total Student related expense was \$788,505.

Among housekeeping expenses, one finds that Janitorial services cost \$166,965; Night Cleaners, \$334,459; Watchmen, \$70,800. Fuel gas and oil costs were \$220,511 and power came to \$328,557.



the economy car...

Let us give you a ten-minute Revelation Ride in the new SAAB. The comparison in pep, smoothness, comfort and extra room is really remarkable. SAAB GIVES YOU SO MUCH MORE!

See Russia in 1960

Economy Student/Teacher summer tours, American conducted, from \$495.

- **Russia by Motorcoach.** 17-days from Warsaw or Helsinki. Visit rural towns plus major cities.
- **Diamond Grand Tour.** Russia, Poland, Czechoslovakia, Scandinavia, Western Europe highlights.
- **Collegiate Circle.** Black Sea Cruise, Russia, Poland, Czechoslovakia, Scandinavia, Benelux, W. Europe.
- **Eastern Europe Adventure.** First time available. Bulgaria, Roumania, Russia, Poland, Czechoslovakia, Western Europe scenic route.

See your Travel Agent or write **Maupintour**
400 Madison Ave., New York 17, N. Y.

FACTS ABOUT YOUR FUTURE

PUBLIC SERVICE ELECTRIC AND GAS COMPANY • NEW JERSEY

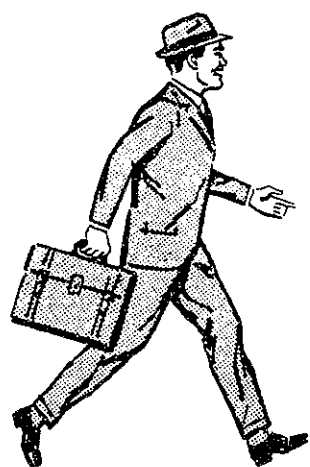
1960
Training Courses
for College Graduates

... A RAPIDLY GROWING COMPANY

... A DYNAMIC INDUSTRY

Send For This Today!

Write now for your copy of the new brochure, "Training Courses for College Graduates". It can be an outline of your future! Write Public Service, 80 Park Place, Room 2152A, Newark, New Jersey, for your free copy.



LIVE, WORK, AND PLAY IN NEW JERSEY

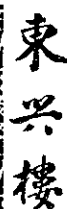
Here is your opportunity to learn about your future in a rapidly growing company which is a leader in one of today's most dynamic industries.

The electric and gas utility companies are among the most rapidly growing industries in the country, and there is every indication that Public Service's unit sales of electricity and gas will increase by 100 per cent in the next ten years. This is more than twice as great as the predicted growth in the Gross National Product during this period.

This means one thing to you . . . opportunity! So look for the Public Service man the next time he is on your campus.

PUBLIC SERVICE ELECTRIC AND GAS COMPANY
NEWARK 1, NEW JERSEY

Peking On Mystic



Restaurant

66 High Street, Medford
EXport 6-0850

Exquisite Peking & Cantonese Dishes

SMORGASBORD — 6-8 P.M.
Tuesday through Sunday

THE MOUSE THAT ROARED
with PETER SELLERS and JEAN SEBERG
"A REALLY FUNNY AND ORIGINAL BUSINESS!"

TELEPIX CINEMA

Opposite Statler HA 6-1115
"one of the six BEST of all time"
Brussels, 1958

Jean Renoir's masterpiece

"GRAND ILLUSION"

an unforgettable experience . . .
a cinema classic . . .

Folk Music Nightly & Sun. Exeter St. at Huntington

Ballad

KE 6-9000 At Copley Sq. Hotel

RON & NAMA
Lively Israeli Duo
Opening Sunday — LEON BIBB plus
Every Fri., Sat., Sun. — JOAN BAEZ

BIG SAVINGS

SBLI can be yours! Premiums have been REDUCED on many Savings Bank Life Insurance "economy-size" policies issued in amounts of \$3,000 or more. Ask for free folder showing how you can get more protection at lower cost. Do it today.

Cambridgeport Savings Bank
Right In Central Square — UN 4-5271
Savings Bank Life Insurance

BRATTLE THEATRE
Harvard Square
Seventh Anniversary Program
Never Before Shown!!
IVAN THE TERRIBLE — Part II
(The Revolt of the Boyars)
5:30 7:30 9:30

DE 8-8882
麗香飯店
HOUSE of ROY
Real Chinese Foods
OPEN DAILY FROM 4 P.M. TO 2 A.M.
Food Put Up To Take Out
12A TYLER STREET, BOSTON 11, MASS.

SQUASH RACKETS
All Makes - All Prices
Tennis & Squash Shop
67A Mt. Auburn St. Cambridge
Opp. Lowell Hse. TR 4-8417

Rifle Squad Annexes 3 Matches, Pistolmen Split On Southern Trip

The Beaver sharpshooters — rifle and pistol squads — completed successful road trips over mid-term vacation. The riflemen won three out of five matches on a southern trip; the pistol marksmen split four contests.

The Annapolis rifle team eked out a victory over the Engineers on February 1. The next four days proved more successful — the Cardinal and Gray triumphed over Maryland, were vanquished by St. Johns, slaughtered the New York Maritime Academy, and closed with a victory over the Merchant Marine Academy.

Top scores for MIT were recorded by Captain Bill Leffler, '61, (at Merchant Marine) and Dan Schwartz, '60, (at Maryland). Both hit 290 out of a possible 300 points. One of the brightest stars was a sophomore, Steve Smith, who showed great promise with consistently fine shooting.

The pistol squad also was vanquished at Annapolis, on February 1, but the following day trounced Villanova. On the 3rd the West Point pistol team set an all-time Army record while running over the Beavers. In the final match the Engineers scored their biggest total of the trip and easily triumphed over the Merchant Marine Academy.

Vincent Zappala, '63, shot 271 (out of 300) for the Beavers' high score of the journey, and the entire squad improved consistently.

On Deck

Friday, February 12
Varsity squash with Princeton 7:30 P.M.
Varsity hockey at Bowdoin
Rifle match at Boston University
Saturday, February 13
Varsity basketball with Williams 8:15 P.M.
Varsity wrestling with Coast Guard 6:00 P.M.
Varsity swimming with Trinity 2:00 P.M.
Varsity skiing at Mt. Whittier, New Hampshire
Varsity fencing at Connecticut

Matmen, Cagers In Saturday Twin-Bill

Fans will be treated to a unique doubleheader Saturday night when the Cardinal and Gray wrestlers tangle with Coast Guard preceding the Beaver-Williams basketball game at Rockwell Cage.

The grapplers, who have posted a 4-1 record in the first half of the season, will be out to avenge last year's loss to the Sailors. The match is scheduled for 6 P.M.

Four varsity matmen — captain Don Weaver, '60, Andrew Bulfer, '61, Dave Latham, '61, and John Sullivan, '61, will be out to lengthen their unbeaten strings.

The cage contest is slated for 8:15 P.M.

Ski Team Captures Conference Opener

Sparked by Roberto Peccei, '62, the Beaver ski team opened defense of its New England Inter-collegiate Ski Conference championship with two victories during mid-term. Peccei, who placed third in the Brown Invitational giant slalom on Saturday, January 30, came back to win the New England College giant slalom Sunday.

The team, which has lost the services of two top men, has six meets remaining on its schedule. The squad will compete in the Tufts College giant slalom Saturday.

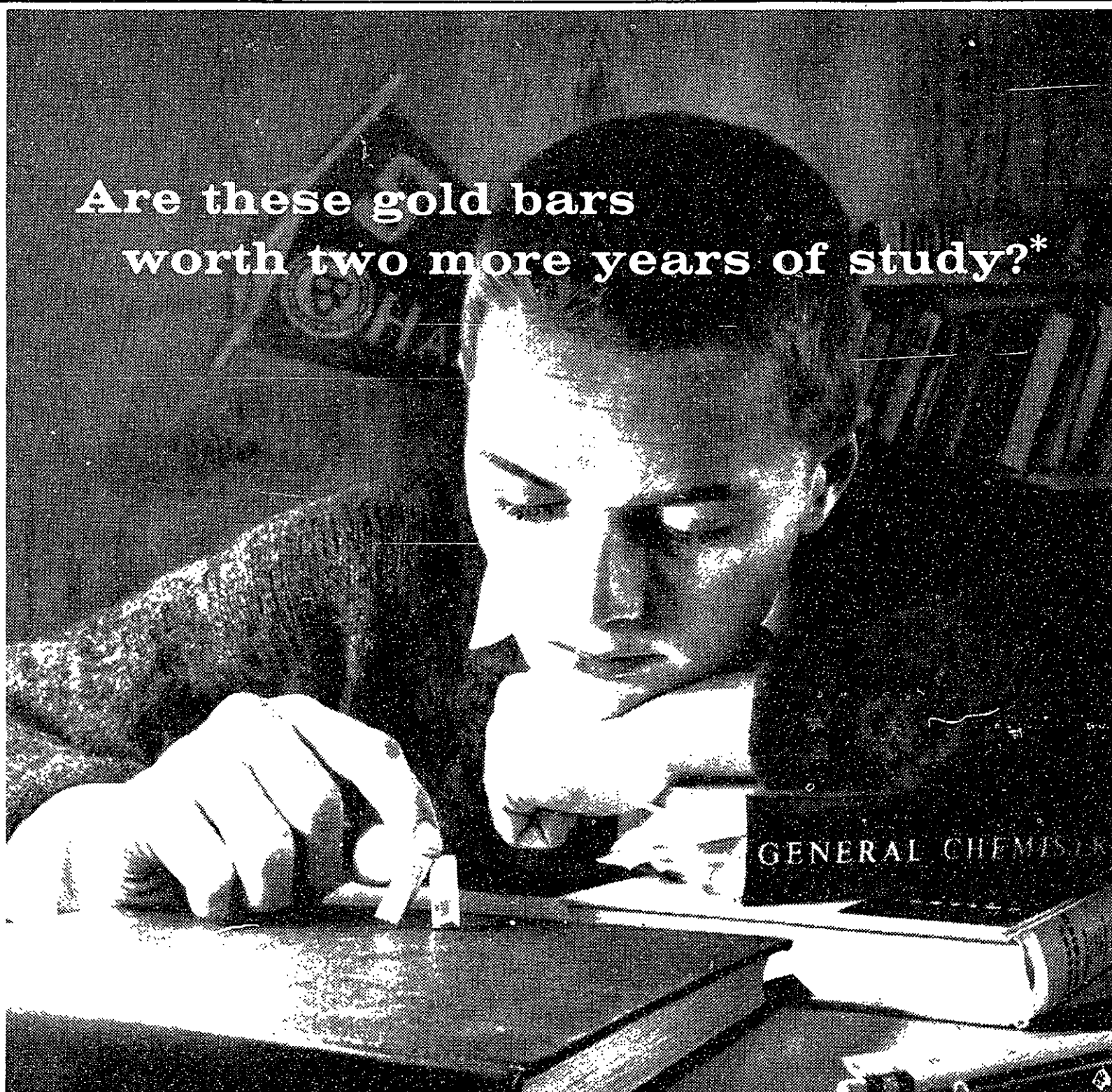


Stays moist and firm throughout your shave!
regular or new mentholated

Take your choice of new, cool mentholated or regular Smooth Shave. Both have rich, thick Old Spice quality-lather that won't dry up before you've finished shaving. Both soften your beard instantly—end razor drag completely. For the closest, cleanest, quickest shaves... try Old Spice Smooth Shave!

Old Spice
SMOOTH SHAVE
by SHULTON

100 each



Are these gold bars worth two more years of study?*

As a college sophomore, you're nearing the mid-point. Halfway through college—halfway through Army ROTC. Now you face a major decision: Are the gold bars of a Second Lieutenant worth two additional years of study in advanced ROTC?

That question is yours to answer *now*—before you register for your junior year. As you explore the facts, carefully weigh the traditional responsibilities and rewards of serving as an Army officer . . .

1. Traditional responsibilities. To meet the command responsibilities of an Army officer, you apply the leadership principles absorbed during advanced ROTC training. And your executive potential grows as you gather leadership experi-

ence. That's why employers often prefer men who served as commissioned officers. These men already have proven their capacity to shoulder executive responsibility.

2. Traditional rewards. In every organization, greater responsibilities mean greater rewards. Thus the traditional responsibilities and prestige of an Army officer are matched by material advantages. For example, if you plan to marry soon after graduation—an officer's salary can be a distinct advantage. A married 2nd Lieutenant earns a minimum of \$355.68 per month—plus substantial fringe benefits.

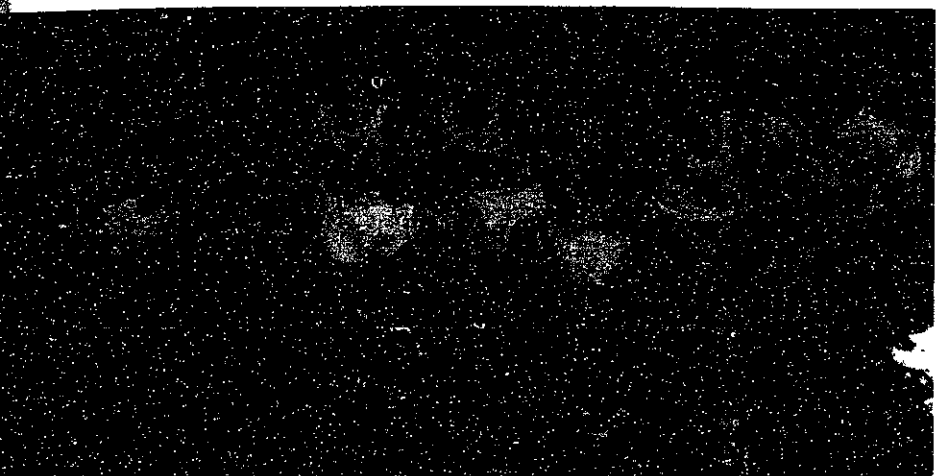
Need more information? Check with the Professor of Military Science and Tactics at your college or university. He'll be glad to discuss your decision with you.

*Last year, 14,436 sophomores answered "yes" to this question—and entered advanced Army ROTC.



A film that stirs the senses
WORLD PREMIERE THURSDAY EVE. FEBRUARY 11TH OF A UNIQUE NEW FILM "JAZZ ON A SUMMER'S DAY." PHOTOGRAPHED IN VIBRANT COLOR AND LIVING SOUND AGAINST THE BACKGROUND OF THE NEWPORT JAZZ FESTIVAL. STARRING LOUIS ARMSTRONG, MAHALIA JACKSON, GERRY MULLIGAN, DINAH WASHINGTON, GEORGE SHEARING, GENE HAMILTON, ANITA O'DAY, JACK TEAGARDEN, THELONIOUS MONK. ESQUIRE IN AN ADVANCED REVIEW CALLED IT "THE BEST FILM OF THE BEACON HILL" THE SUBJECT OF JAZZ EVER MADE

Withbroe Cops Lone Point For Tech In AAU Meet



A field of 14 starts the first heat of the 1000-yard run at the New England AAU championships held Wednesday in Rockwell Cage. Photo by Herb Taylor, '62

George Withbroe, '61, recorded the lone tally for MIT in the New England AAU Indoor Track Championships held at Rockwell Cage Wednesday. Withbroe copped second in his heat and fourth place overall in the 600-yard run in 1:20.5. The single marker gave the Tech cindermen a tie for 17th place in the meet. Holy Cross was the meet winner with 30½ points. A total of 51 colleges, schools, and athletic clubs were represented.

The Beavers missed placing higher in the meet by small margins. Muili Salami, '62's 20 foot 7 inch leap in the broad jump fell only a half inch short of fourth spot. Salami and Bob Williamson, '60, reached the quarter finals of the 50-yard dash before being eliminated. Tom Goddard placed fourth in his mile heat in 4:55. Also participating were Bill Nicholson, '60, 35-pound weight throw; Joe Davis, '61, high jump and high hurdles; Joe Crowley, '62, high hurdles; Chuck Sigwart, '63, Roger Hinrichs, '63, Herb Grieves, '61, and Paul Robertson, '61, three-mile run.

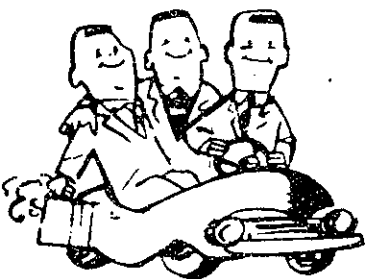
The meet marked the first time MIT has been host to the Indoor Championships. Next spring Tech will also be the host team for the Outdoor Championships on Briggs Field.

Both varsity and freshmen will return to dual meet competition with a trip to Bates College at Lewiston, Maine. In the following week and a half, home meets are scheduled with Brandeis, New Hampshire, and Connecticut.

CONVOCATION

A new program to aid Freshmen in selecting their courses will begin February 19 with a convocation of the Class of 1963, in Kresge Auditorium. Watch for announcements of further details of the program in THE TECH.

WEEK-END IN NEW YORK



\$5 DAILY PER PERSON
3-IN-A-ROOM
(1 single, 1 double bed; slight extra charge for third bed)

BREAKFAST, TAXES INCLUDED BY RESERVATION ONLY.
See your travel agent. Or write:

HOTEL COMMODORE
42ND STREET AT LEXINGTON AVENUE
N. Y. 17, N. Y. • A ZECKENDORF HOTEL

WTBS

PROGRAM SCHEDULE

Friday	
6:00 P.M.	Caravan
6:00	Jazz
6:00	Piasta
6:00	Baton Society
6:50	News
8:00-2:00	Nite Owl
Saturday	
6:00 P.M.	Jazz
6:00	Show Music
6:50	News
8:00-2:00	Nite Owl
Sunday	
6:00 P.M.	Sunday Serenade
6:00	Folk Music
6:00	Jazz
6:50	News
8:00-1:00	Classical Music
Monday	
6:00 P.M.	Caravan
6:00	Jazz
6:00	Bob Nagro Show
6:00	Potpourri
6:30	Campus News
6:50	News
8:00-1:00	Classical Music

ENGINEERING OPPORTUNITIES for Seniors and Graduates in

PHYSICS
APPLIED MATHEMATICS
ENGINEERING MECHANICS
ENGINEERING PHYSICS
AND
AERONAUTICAL, CHEMICAL,
ELECTRICAL,
MECHANICAL,
METALLURGICAL,
and NUCLEAR
ENGINEERING

CAMPUS INTERVIEWS

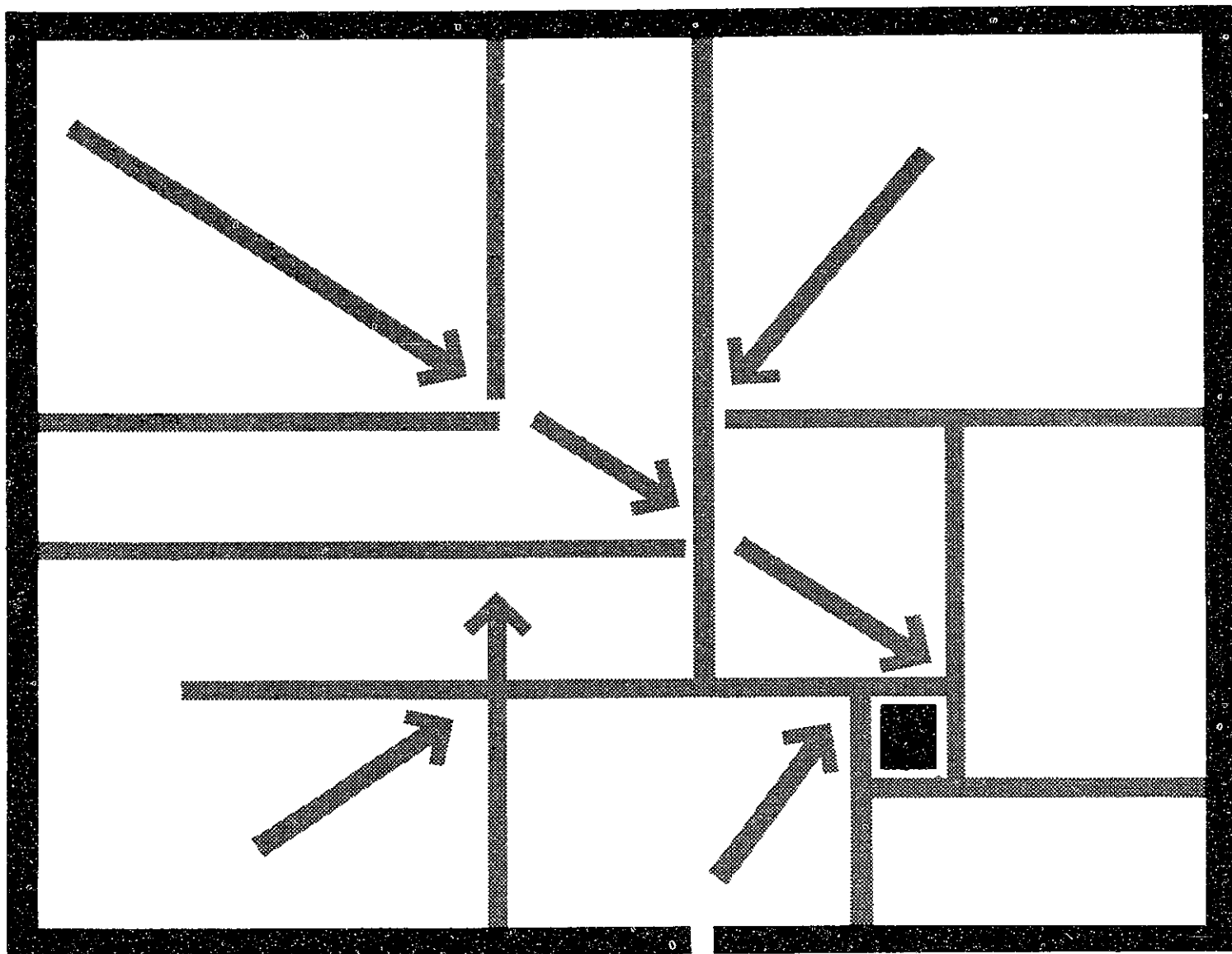
WEDNESDAY, FEBRUARY 17
THURSDAY, FEBRUARY 18

Appointments should be made in advance through your College Placement Office



PRATT & WHITNEY AIRCRAFT

Foremost designer and builder of all types of flight and space propulsion systems



How to shrink a giant computer

Electronic computers do big jobs—250,000,000 calculations a day, for instance, in tracking earth satellites.

The computer's already gargantuan capacity is being increased at IBM as our scientists and engineers probe deep into the mysteries of such fields as cryogenics, magnetics and microwaves. Utilizing many of their findings, we are simultaneously working to shrink the giant computers of today down to Tom Thumb size.

The improvement of our products and methods is an area to which IBM has devoted a great deal of time and work. This effort has resulted in a steady, planned growth, which in turn has created excellent career opportunities for persons of widely diverse skills and talents in research, engineering, programming and manufacturing.

A person like yourself, for instance.



You are invited to contact your College Placement Division to find out when our interviewers will next visit your campus. Or write to the Director of Recruitment, Dept. 872, IBM Corporation, 590 Madison Avenue, New York 22, New York.

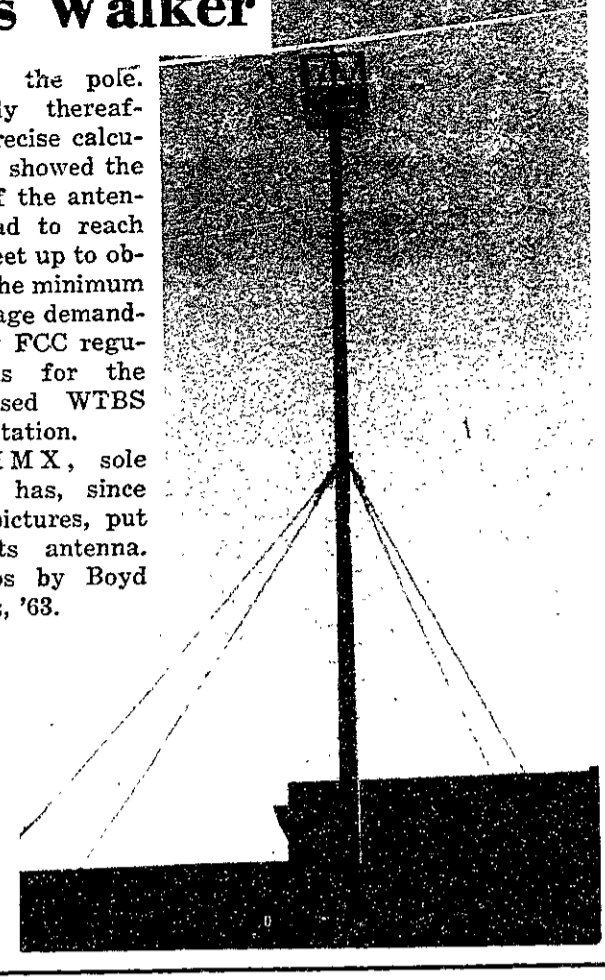
IBM Salutes Engineers' Week—February 21-27

One-Hundred-Foot Antenna Crowns Walker

The newest addition to the MIT skyline is the antenna tower, shown here being erected at great trouble and some thousands of dollars expense. It was originally intended for use by both WTBS and WIMX. Preliminary studies indicated the hundred foot height provided by the tower would be satisfactory for WTBS's contemplated switch to FM. The Institute went ahead and bought . . .

. . . the pole. Shortly thereafter precise calculation showed the top of the antenna had to reach 250 feet up to obtain the minimum coverage demanded by FCC regulations for the proposed WTBS FM station.

WIMX, sole user, has, since the pictures, put on its antenna. Photos by Boyd Estus, '63.



"Come Back, Africa" Coming To Institute

"Come Back, Africa", Lionel Rossin's movie depicting Negro subjugation in South Africa, will be sent tonight at 6:30 and 9:00 the Lecture Series Committee, Kresge Auditorium.

This will be the American premiere of "Come Back, Africa", acclaimed European film festivals. Mr. Rossin produced the movie in South Africa under strictest secrecy, violating government regulations prohibiting publicity of Negro subjugation. He selected the picture for showing on the basis of its unusual quality.

CHEZ LUCIEN

FRENCH CUISINE AT ITS BEST

Formerly with the French Line

IMPORTED WINES

Lunch 12-2 Dinner 5:30-10
Friday Only Daily

121 Mass. Ave., Boston Cl 7-8
Opposite Mass. Station

LUCIEN: Chef and Owner

REFRIGERATORS
To Sell or Rent
Guaranteed and Delivered
Call John at TR 6-0335

EGGBERT

Walker Staff IDC To Sponsor Mammoth "Leap" Dance

In two weeks the Walker Staff and its sub-committee, the IDC, will sponsor an acquaintance dance even bigger than their October Beatnik Blast. The dance, named appropriately after leap year 1960, The Big Leap, will be held Saturday, February 27, in Walker Memorial. Dress is casual, not beatnik, and the IDC will provide live music, entertainment, and refreshments.

Admission fee is \$1.25 for guys and \$.75 for dolls. Bob Huff, Chairman of IDC and in charge of the dance, expects girls from all schools within a 17-mile radius.

RINGS

The familiar Beaver rings will be distributed February 15, 16, and 17 in the lobby of Building 10.

LOWER RATES

Good News! Savings Bank Life Insurance has REDUCED premium rates for straight life, limited payment life and endowment policies in amounts of \$3,000 and over. Ask for the folder showing these NEW LOWER RATES, today.

Cambridgeport Savings Bank
Right in Central Square — UN 4-5271
Savings Bank Life Insurance

FOLKLORE PRODUCTIONS M. A. GREENHILL
presents
Pete SEEGER
Friday and Saturday Evenings, 8:30 P.M.
FEB. 12 & 13 — JORDAN HALL
KE 6-2412
Tickets \$3.00 and \$2.20 at box office or by mail order

Saturday, March 19 8:30 P.M. JORDAN HALL KE 6-2412
ODETTA
A Concert in the Folklore Concert Series
Tickets: \$3 and \$2.20 MAIL ORDERS NOW

Now!
SIR WALTER RALEIGH
in a Pouch!

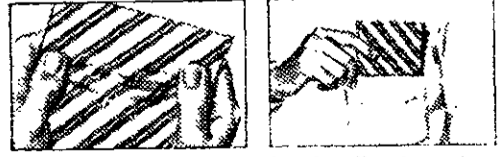
Keeps Tobacco **44%**
FRESHER!

New airproof aluminum foil pouch keeps famous, mild Sir Walter Raleigh 44% fresher than old-fashioned tin cans. Choice Kentucky burley — extra aged. Get the familiar orange-and-black pack with the new pouch inside!



No spills when you fill... just dip in!

Open the pack Out comes the Pouch!



Tearproof—it's triple laminated. Really durable... won't spring a leak.
Carries flat in pocket. No bulge. Flexible, too... it bends with you.

Sooner or Later—Your Favorite Tobacco... **SIR WALTER RALEIGH**



OUR INTERVIEWERS WILL BE HERE

MONDAY, FEBRUARY 15

You're invited to get the facts about Con Edison's growth and what it can mean to you.

We're spending four million dollars a week to expand—over a billion dollars in the next five years to find new and better ways to meet New York's demand for vital electric, gas and steam services.

Our growth has increased the need in every department—technical and non-technical—for creative, ambitious young men. And...of the 791 top management positions in the company, 750 will fall vacant in the next fifteen years, mainly through retirement. These jobs will be filled by the men who join us now. Our program for college graduates offers major assignments immediately and a clear road to rapid advancement.

We invite you to talk to our interviewer while he's on campus. Let him give you the full details about the career opportunities awaiting you at Con Edison.

Your Placement Office has copies of our booklet "Con Edison—The Right Place to Build Your Future." Ask for it today.

Con Edison OF NEW YORK

4 IRVING PLACE • NEW YORK 3, NEW YORK