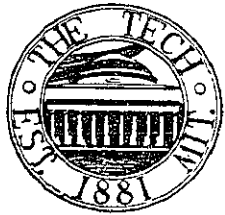


The Tech



NEWSPAPER OF THE UNDERGRADUATES OF THE MASSACHUSETTS INSTITUTE OF TECHNOLOGY

VOL. LXXIX No. 41 CAMBRIDGE, MASSACHUSETTS, TUESDAY, NOVEMBER 17, 1959 5 Cents

Vote today . . .
JP SENIOR WEEK

COMMITTEE CRITICIZES HOUSEMASTER SYSTEM

An apparent student malcontent with the functioning of the housemaster system in Senior House came to a head last week in a meeting between the Senior House Committee and the housemaster of Senior House, Dr. John Goodenough. Al Krigman, Senior House President, stated in Pravda, the official Senior House organ, "We tried to explain some of the attitudes that are running around here, and give some examples of actions and attitudes on the part of the Housemaster which have resulted in these thoughts."

Krigman also said in Pravda that a number of currents of thought about the system exist in the dorm, the two main ones being, "We can ignore it completely if we choose; and the other is that since it was meant to have a real positive effect, and isn't, (although it isn't having any real negative effect), then the Institute is wasting money, time, and effort, and is building up a system that will only lead to discontent." Krigman stated that he personally felt that the system should benefit everyone and has not. He was, however, very optimistic about the situation, stating, "I feel that by speaking with Dr. Goodenough we have taken a real forward step in making the housemaster system accomplish the purpose for which it was set up."

In an open letter to Senior House residents dated the same day as the issue of Pravda, Senior House tutor Ernie Huber stated in part, "I am appalled at the recent ill will and complete lack of understanding for Dr. and Mrs. Goodenough. . . ." He also stated, "The House Resident System is a service to you which the Institute has provided. Are you going to make full use of it, or ignore it and go your own way?"

At the time we went to press, the situation, while described by Krigman as "promising", was unstable depending upon a house committee meeting to be held tonight.

Dig Deep . . .

Technology Community Association launched its annual three-day charity drive Monday. It is the only approved charity solicitation within the MIT student body.

The MIT student has the choice of contributing to the United Fund, the American Cancer Society, CARE, and the World University Service. Information on each of the charities can be obtained from the student solicitors who will visit every resident of a living group.

Last year the T.C.A. charity drive netted \$2,132, about \$5.50 per student. The average contribution to similar drives in neighboring schools was about \$6.00 per student.

White Leads 26-0 Victory

Betas Jar SAE, Capture IM Grid Title

Playing as though vying for a major bowl bid, League III champions Beta Theta Pi rolled over Sigma Alpha Epsilon, the representatives of League IV, by a 26-0 count to annex the Division "A" intramural football championship at Briggs Field Sunday.

In the battle for "B" division supremacy, Lambda Chi Alpha, League V victors, downed East Campus, League

VIII titlists, 19-6.

White Leads Beta Triumph

Brian White, '61, a co-op student rushed here from an IBM plant in Poughkeepsie, N. Y., led the Betas. The Beta offense was geared on both a spinner and straight series, off which both end sweeps and trap plays were run, and White's ball-handling, faking, and running made it click.

The Betas took the opening kickoff and drove 60 yards in 6 plays for a score. The march was highlighted by a 40-yard pass play from White to Tony Aldrich, '60, and culminated in a 7-yard-trap play-TD run by Koonce. The ensuing short kickoff was recovered by the Betas, who drove to the two-yard line and were halted, but intercepted a pass two plays later and moved for another score. Runs by White and Koonce set up the tally, which came on an 11-yard pitch to Aldrich.

In the third quarter the Betas again drove inside the Sailor five, but a fourth down pass was picked off by Fred Browand, '59, who sped 60 yards to the Beta 19 before being overtaken by White. The first Sailor scoring opportunity was stifled by an inter-

(Continued on page 4)

\$150,000 Grant For Fellowships

The Ford Foundation has made a \$150,000 grant to the Massachusetts Institute of Technology. Under the terms of the grant, announced today by Dr. George R. Harrison, Dean of the School of Science, MIT will award fellowships for graduate study to outstanding students who are well qualified in the physical sciences and mathematics.

Many of these students, Dean Harrison said, would normally continue into graduate work in their undergraduate fields. The new program at MIT seeks to bolster sagging national resources for research in meteorology and oceanography by attracting to this work students who might otherwise never discover its opportunities.

Students holding the new fellowships will be among the first participants in MIT's new Center for Earth Sciences, an integrated teaching and research program in geology, meteorology, and oceanography. They will use research facilities of the Woods Hole Oceanographic Institution to supplement those on MIT's Cambridge campus.

Broker to Investigate Insurance

Lawyers Report Acted Upon

After two weeks of examining the insurance policies of the two MIT flying clubs, Aero-Tech and The Tech Flying Club, Institute lawyers presented a report to Activities Council which was read at the Council meeting last Thursday. Activities Council President, Tom Farquhar refused to reveal the contents of the report and stated that all pertinent information in the report was contained in the Council's action concerning the report. This action, stated in the minutes of the Council's meeting, was in three parts: (1) Both clubs must present to the Council as soon as possible a form containing the signatures of all members and a statement of both clubs' insurance coverage and financial policies; (2) Insurance coverage of both clubs should be further reviewed by a qualified insurance broker; (3) The Financial Board of the Institute should fully investigate financial operations of both organizations and present a report to the Council on both clubs' handling of funds and current solvency.

When questioned, Sue Schur, Sec-

Judcomm Acts on Kidnapping Recommends Pencil Probation

"At 5:30 A.M., October 31, 1959, Richard Bradt, Paul Klareich, Dan Rosenthal, and Art Shantz entered the Baker House room of one Les Lamport; put a pillow case over Lamport's head and shoulders, bound him with rope and took him out to Lexington, Mass., in a car. At that point they cut his hands free and left him. Lamport had only his sleeping wear and a dressing gown." Judicial Committee based its recommendation for pencil probation of the four upperclassmen involved on the above facts, quoted from the committee's statement.

Possible penalties for the act range from no action to expulsion from the Institute. Pat Coady, '60, Chairman of Judicial Committee, said that the committee felt the penalty was adequate in light of the facts uncovered.

Asked whether intent of the defendants was taken into consideration, Coady replied, "We could substantiate no malicious intents from testimony given by Security Force, the Instructor, or Baker House residents."

Coady continued, "It might possibly have been a situation of 'Let's get

Lamport' but the committee could not substantiate this on any basis of fact. According to the involved 'parties' testimonies they were all good friends and the act was only a prank."

Coady added that no bad light was cast on the defendants by their records at the Institute.

The statement of Judicial Committee, continued from the previous quotation is as follows:

"After trying several houses Lamport was admitted and got access to a telephone and called an Institute instructor for whom Lamport works. The instructor notified the Security Force who then went out to pick up Lamport.

The Judicial Committee takes the following action: A recommendation shall be sent to the Dean of Students that the four defendants, Bradt, Klareich, Rosenthal and Shantz be put on Dean's Office pencil probation for the remainder of the 1959-60 academic year."

(At this point Judcomm cites precedents used.)

"Quite some time has passed since a somewhat similar incident culminated in the death of a MIT student. Since that time there has been quite a bit of work done in preventing a recurrence of such an incident. In this case Institute Judicial Committee did not want to make an example of the people involved only on that basis alone. However the Committee feels very strongly about any action that even in the slightest degree places a person's life in danger and states ever so strongly at this time that any such similar action may lead to an immediate recommendation for expulsion from the Institute.

Ignorance of the Institute Committee and Judicial Committee's feelings in this matter forms no basis for excuse. In most cases it is just a matter of forethought to see the inherent dangers involved.

We have received information that incidents of this nature have occurred recently and will state here that any MIT student that is partaking in these actions does so at risk of expulsion from MIT."

Struve Topic Tonight-Binary Stars

Final lectures in the Compton lecture series by Dr. Otto Struve will be delivered at 8 p.m. Tuesday (November 17) and Thursday (November 19) in Kresge Auditorium. Because of the large attendance at previous lectures, arrangements have been made for audio reproduction in the Kresge lobby and audio and slide reproduction in the Little Theatre and Rehearsal Room A.

In tonight's lecture, Dr. Struve

will discuss "Binary Stars and Variables", and on Thursday he will sum up the entire series when he speaks on "Man and the Universe". On Friday, November 20, Dr. Struve will participate in a seminar at 4 p.m. in Kresge on the subject "Cosmological Theories". The principle speaker will be Dr. Thomas Gold of Cornell University, and Dr. Victor F. Weisskopf, professor of physics at MIT, will serve as chairman.

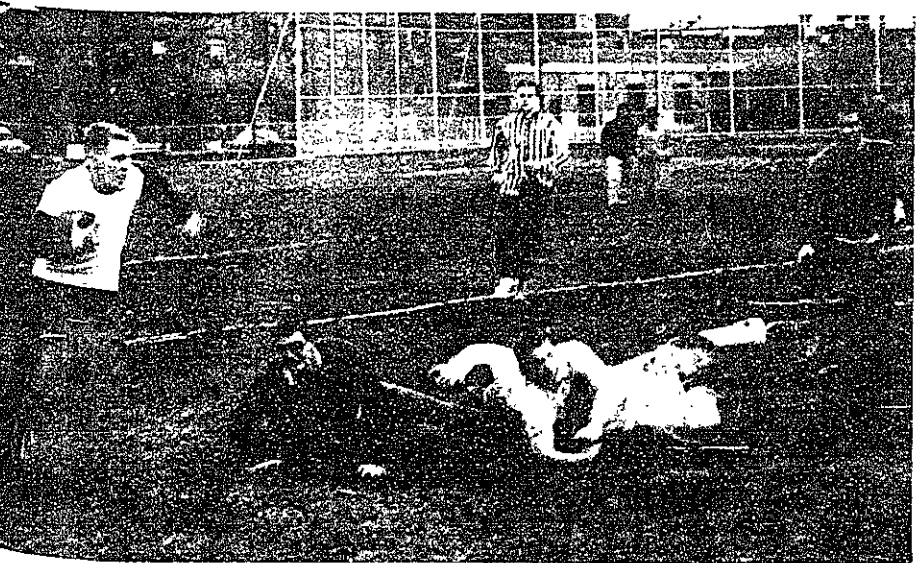
Symphony Orchestra to Perform Saturday; More Tom Lehrer Tickets Available

A concert by the MIT Symphony Orchestra, John Corley conducting, and two performances by the satirical songster Tom Lehrer are on the pre-Thanksgiving schedule at MIT's Kresge Auditorium.

Gerald M. Litton '60 will play George Gershwin's Piano Concerto in F in the first concert of the year by the Symphony Orchestra, Saturday, November 21, at 8:30 p.m. The event will mark Mr. Litton's fourth year as soloist with the orchestra. Also included in the program are Prokofiev's Lieutenant Kije Suite and Rossini's La Gazza Ladra Overture. The concert will be open to the public without charge.

Tom Lehrer was originally sched-

uled to appear only on Tuesday, November 24. But advance sale of tickets have been so heavy that an additional concert for the preceding night, Monday, November 23, has been scheduled. Both events will be sponsored by the Baton Society at MIT and will repeat the program of his sell-out performance at the Sanders Theater last spring. Tickets (all reserved) at \$1.00, \$1.50 and \$2.00 may be obtained at the Kresge Auditorium ticket office between 9:00 A.M. and 4:00 P.M. daily or may be reserved by calling Ext. 2902. The concerts will begin at 8:30 P.M. Any unpaid phone reservations remaining at 8:15 P.M. on the night of the performance will be resold to the general public.



Beta quarterback Brian White, '61, sweeps right end past blocked SAE lineman. White, playing his first game of the season, substituted for the injured Dick Pickett, '61.

Wheels of Justice

The kidnapping case which has come before, and has been decided by, the Institute Committee Judicial Committee has, in itself, set a precedent.

In the past, too many cases of this same type, which broadly involve student's faulty actions, have been decided solely within the confines of the Dean's Office. This case, which could be construed as a "college prank," is of the same nature as the telephone headset clipping which was handled through Dean Rule.

We hope that the policy of turning over all but the most extreme cases to student government for investigation and decision will be continued in the future. The student investigation branch has proven its ability to shoulder such a load with due responsibility.

Judcomm was hampered in making its decision and in leveling penalties by the difficulty in gathering evidence of the type necessary to draw a distinction between a college prank in good spirits and truly irresponsible action. The meager discipline imposed, the virtually meaningless "pencil probation," is probably the result of Judcomm's inability to ascertain motives along with a leaning over backward so that individuals would not suffer inordinate punishments resulting from a "test case."

The tone of the Judcomm report does, however, bring to light a point too often unthought in student minds. No action can be justified with the excuse of "having fun" which, in reality, places an individual in danger. College students are not exempt from responsibility and forethought in their actions.

We hope that this case, which resulted in harm to nobody but which was wrought with lack of judgment, will serve as a puissant guide to future action. "Risk of Expulsion", of which Judcomm speaks, is no joke, nor do we believe it to be an idle threat.

Muffled Wheels

In their recent action on rushing violations, the IFC again refused to release the names of the houses involved or the particulars of the case.

As reason for this silence, Joe Verdeber, IFC Chairman, cited the rules of the IFC forbidding publicity (See news story page 1). The ineffectiveness of this regulation is apparent from the fact that *The Tech*, as it did in the previous case, knows the full story surrounding the incident, from an independent and reliable source, including the names of the house accused and its accuser.

Since the IFC is powerless to prevent the disclosure of its rushing penalties, the responsibility falls on *The Tech* to maintain the secrecy. However, we are in no way restrained by the regulations of the IFC, since *The Tech* obviously does not fall under its jurisdiction. Moreover, it is our policy that the students of MIT are entitled to know such information as is available to the newspaper.

Since we do not wish to usurp the powers of the IFC by revealing these punishments now, we have not printed the full story of the case. However, our responsibility to the students demands that they be informed, as long as reliable information is available, which it always seems to be.

The best policy for the IFC, considering that its attempts to keep its proceedings secret have been unsuccessful, would be to act realistically and release its punishments to the student body in general. We urge the IFC, in its next meeting, to eliminate this fruitless practice, for the benefit of the entire undergraduate body.

Letters

Thirty

TO THE EDITOR:

Eighteen months have passed since I joined your staff and I can't deny that I enjoyed it. I've made friends and I've tickled the sensitivity of some people, all in good taste and in honest disposition.

As the weeks passed I got used to mediocrity, to jotting down words on a piece of paper, signing it and fighting for its publication.

I have personal projects which have been neglected and I think it time now to seriously continue them.

I believe very few people will notice my absence from page two, and I hope those who do notice won't mind too much.

Thank you. It was fun while it lasted.

Jean Pierre Frankenhuis, '61

That Slimy Serpent

TO THE EDITOR:

As MIT students, most of us feel that we are free of bonds which freeze the actions of students at other colleges. On the surface, this is true, but, unfortunately, there is some authoritarian control. This control sometimes comes to light, but who knows how often it does not? We should, therefore, make every effort to stamp out this snake of slimy authoritarian control whenever it shows its ugly head.

It is toward this end that I am writing this open letter, in order to arouse the student body by informing them of a

gross injustice being perpetrated upon them. Then, with the force of public opinion, the initiators of this gross authoritarianism may correct it.

This authoritarianism consists of censoring of songs played by WTBS on their shows, including the request show, "Night Owl", which supposedly plays requested numbers.

This week, I requested "Officer Krupke" from the *West Side Story*. After an hour or so of listening without hearing this, I decided to call again. Then, I was informed that three songs from this album had been "banned" from the air by WTBS.

Let us consider the reason for this. One may feel this was for the use of so-called "suggestive" language. However, there is so little of such in these songs that the Kingston Trio records WTBS plays so frequently have much more of it.

What, then, is the reason? It is that these songs are highly satirical (and also very funny). They satirize "sacred idols" to someone on WTBS, and are therefore banned, nothing being thought of the enjoyment and intellect of us MIT students. And, in fact, no other segment than MIT students can be considered in this for, by FCC regulations, WTBS broadcasts only to MIT.

Therefore, I appeal to you, fellow MIT students, to arise to correct this iniquitous situation by writing to, and calling in, WTBS.

Edward J. Dudewicz, '63

Vox populi vox Dei est. Ed.

Second Attempt

TO THE EDITOR:

We have for some time now been loyal readers of *The Tech*, and have always found it to be an enjoyable specimen of literature. It is for this reason we were recently astonished to hear a member of the staff of a rival publication denounce *The Tech* as a piece of rotten journalism which invariably got the facts wrong, as he put it. Nevertheless, an article in your November 6th issue has led us to suspect an iota of truth in this vituperation. This was the article concerning the William Lowell Putnam Team and entitled "Math Club Contest." The fact that the contest in question has nothing to do with Math Club at all is not in itself disturbing. However, all three members of the team were disappointed to find that their names, without exception, were misspelled. The correct names are:

Steven A. Orszag, '63

Richard L. Faber, '61

Stephen Scheinberg, '60

The above might be appreciative if you took another crack at it and got the names right.

review

Camera Concerti

An excellent group of young musicians, performing under the name of Camera Concerti, gave an afternoon concert at Kresge Auditorium last Sunday. Camera consists of six violins, two violas, a bass and a cello, two oboes, two horns, and piano.

Seldom does one see an ensemble perform with such precision, clarity, and sense of balance as did Camera. The acoustics of Kresge seemed to have been designed specifically for them, and every facet of their excellence was clearly discernible in the auditorium.

In addition to displaying tremendous group virtuosity, Camera also presented several outstanding soloists.

The Concerto in G Major for Viola by Telemann and the Trauermusic for Viola and String Orchestra (1936) by Hindemith featured Karen Tuttle. Miss Tuttle is undoubtedly one of the finest violists performing today. Her tone is comparable to any of the contemporary string virtuosos, and her technique is sufficient to handle the difficult passages in the Telemann without giving a forced impression.

The Concerto in c minor for Violin and Oboe by J. S. Bach featured Alan Grishman, violinist and Henry Schuman, oboist. The performance, while technically beyond reproach, was marred by the fact that the oboist was drowned out in several passages by the over-enthusiastic playing of the violinist.

The Handel Concerto No. 2 in F Major was also performed by the ensemble. The striking thing about this performance, and, by the way, also the horn concerto, was that they were performed without the aid of a conductor. It is somewhat of a mystery how fourteen people could perform so well without a leader. There is no question, however, about the reason why Camera was so enthusiastically received by the audience.

The Tech



Entered as second class matter at the post office at Boston, Massachusetts. Published every Tuesday and Friday during the college year, except college vacations, by THE TECH — Walker Memorial, Cambridge 39, Mass. Telephones TRowbridge 6-5855-6 or UNIVERSITY 4-6900, Ext. 2731. Twenty-four hour answering service: TR 6-5855.

VOL. LXXIX November 17, 1959 NO. 41

BRATTLE THEATRE
Harvard Square

Joanne Woodward in
— THREE FACES OF EVE —
5:30 7:30 9:30

VOLKSWAGON IN BOSTON
Charles Street Garage
144 Charles Street
CA 7-7460
Glenn E. Whitham, '42, President

G. L. FROST CO., INC.

AUTOMOBILE BODY REPAIRING & REFINISHING

E. W. PERKINS
Tel. Eliot 4-9100

31 LANSDOWNE STREET
CAMBRIDGE, MASS.

TELEPIX CINEMA

Horst Buchholz — Romy Schneider

— MON PETIT —

Directed by Helmut Kautner

"all the aspects of young love and life . . ."
Cyrus Durgin — Globe

"lovely, lovely . . ."

Elinor Hughes — Herald

Opposite Statler

HA 6-1115

In color — SHOT IN PARIS

Live Boston Premiere

"RASHOMON"

TUFTS ARENA THEATRE

Last 3 Times

November 19, 20, 21

8:30 P.M.

MIT Students — \$1.00

Regular Admission — \$2.00

Reservations — SO 6-9662

WTBS Program Schedule

Wednesday

7:30-8:45 A.M. Rise and Shine
5:00 P.M. Caravan
6:00 Clyde Reedy Show
8:30 Campus News
8:50 News
9:00 Classical Music
1:00 A.M. Sign-off

Thursday

7:30-8:45 A.M. Rise and Shine
5:00 Caravan
6:00 Jazz
7:00 Bob Nagro Show
8:30 Limelight Review
8:50 News
9:00 Classical Music
1:00 A.M. Sign-off

Friday

7:30-8:45 A.M. Rise and Shine
5:00 P.M. Caravan
6:00 Jazz
7:00 Fiesta
8:00 Baton Society
8:30 Campus News
8:50 News
9:00 Nite Owl request show
2:00 A.M. Sign-off

Saturday

5:00 P.M. Sports Roundup
7:00 Jazz
8:50 News
9:00 Nite Owl request show
2:00 A.M. Sign-off

ELECTRICAL & MECHANICAL ENGINEERS

NORDEN DIVISION

OF

UNITED AIRCRAFT CORPORATION

... will be on campus

November 21 (Friday)

To Meet Graduating Electrical and Mechanical Engineers

Interested in Research & Development Engineering

(UNITED STATES CITIZENSHIP REQUIRED)

Please Arrange in Advance
Through Your Placement Office
for Your Convenient Appointment
with Norden Representatives

CHOICE OF LOCATIONS

NORDEN LABORATORIES

(White Plains, New York and Stamford, Connecticut)

Offers opportunity to do research and development engineering in diversified areas: Missile & Aircraft Guidance; Re-Entry Attitude Control Problems; Radar & Communications; Inertial & Stellar-Inertial Navigation; Data-Handling & Navigation-Stabilization Systems; Bomb Director Systems; and other electronic areas.

MILFORD DEPARTMENT

(Milford, Connecticut)

Offers opportunity to engage in development and design engineering of advanced precision instrumentation for application in air and space vehicles and missile systems, including All-Attitude Stable Platforms, Ultra-Resolution Position Encoders, Ground Support Equipment.

Norden now has under construction a new multi-million dollar engineering research and manufacturing facility in Norwalk, Connecticut.

NORDEN DIVISION
UNITED AIRCRAFT CORPORATION

Descriptive Brochure Available upon Request

PRC Changes Constitution to Fit Activities *Gyorgy Kepes Exhibit Opens Here*

The Public Relations Committee is re-writing its old constitution to fit its present activities. The present products of the 15 man PRC headed by Tom Hastings, '62, include such as the Activities Calendar, which annotated with tests and labs has a prominent place in every undergrad's room, and the Freshman Booklet, which introduces every freshman to his classmates. The PRC supervises the Junior Prom Queen contest and the Faculty sports events (like last year's Faculty basketball game). It operates a newspaper information service, which sends publicity to home town newspapers when a student gets some honor, as election to an office or a varsity letter, and, in conjunction with the Secretariat and

APO, an institute information service which when it starts shortly will supply information as to time, place, and importance of any activity in the Institute.

The *Beaver Buzz* is the publication of the PRC. It has not been published so far this year, but a meeting is being held Wednesday for those interested in writing for the publication.

None of the above activities save the home town paper information service are incorporated in the present constitution. The new constitution, when completed, will accurately describe the activities of the present Public Relations Committee.

The PRC won a \$500 Compton Award last spring for "Efficient Under-graduate Publicity". Most of the activities of the PRC are self-maintaining, though some, such as the Activities Calendar, are financed through Inscomm.

An exhibit of recent paintings by Gyorgy Kepes opened yesterday at the Hayden Gallery for a three-week showing. Seven of the 19 paintings included in the exhibit came directly from the artist's studio and have never been seen by the public.

Mr. Kepes returned to painting eight years ago after a successful career as a designer and photographer. He has exhibited widely throughout the United States and Europe, including one-man shows at the Art Institute of Chicago and the San Francisco Museum of Art.

A native of Hungary, Mr. Kepes came to the United States in 1937. He has been professor of visual design at the Institute since 1946, and is author of two books, "Language of Vision" (1944) and "The New Landscape in Art and Science" (1956).



"Nature Caligraphy" (1959)
by Gyorgy Kepes

Mr. Kepes' next exhibit is scheduled for January in the Saidenberg Gallery in New York. In Boston his works are on permanent exhibit at the Swetsoff Gallery.

Kepes' abstract re-creations of natural forms — the branch of a tree, a lake, a garden — are a kind of personal translation of visual reality into light, color and space. A sense of lyricism that recalls oriental art permeates a number of the paintings in this exhibit. Especially such works as "Mirror," "Light Idiom" and "Nature Caligraphy" portray a harmony of space and delicacy peculiar to the eastern tradition.

Memo for opportunity

Ingersoll-Rand

will interview
Graduating Engineers

(BS, MS, PhD)

December 4

I-R offers attractive opportunities in research and development, design, production and sales engineering. Our machinery products include pumps, compressors, engines, vacuum equipment, power tools, and mining and construction equipment.

CHEZ LUCIEN
FRENCH CUISINE AT ITS BEST
Formerly with the French Line
IMPORTED WINES
Lunch 12-2 Dinner 5:30-10:30
Friday Only Daily
121 Mass. Ave., Boston CI 7-8933

For Graduates Seeking

GROWTH TYPE CAREER OPPORTUNITIES IN CHEMICAL INDUSTRY!

Approaching its 50th year of specialization in industrial chemicals and commercial explosives, ATLAS is constantly on the alert for graduate engineers seeking unusual growth opportunities. Here at ATLAS in Wilmington, as well as in our nine manufacturing facilities and four research centers throughout the United States, we are planning and looking, as always, to the future.

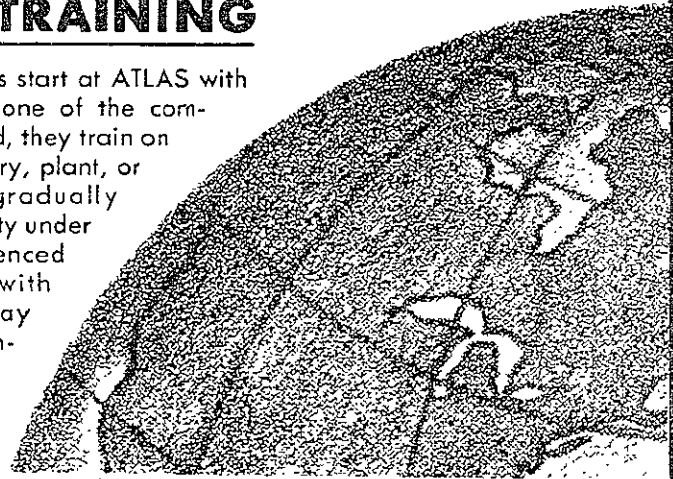
Since YOUR future, as well as OUR OWN, could be closely linked together in the expansive period ahead, we invite your consideration of our opportunities.

For those who have degrees in Chemistry and Chemical Engineering, we have a wide range of openings. Our present need is for qualified men at every level for work in Research, Development, Sales, Management, Staff Functions and Production. We also need imaginative graduates who seek unusual experiences in Civil, Mechanical and Mining engineering.

Our financial rewards are many. Salaries are competitive with the industry; our benefits are unsurpassed. And, opportunity for rapid advancement depends on you . . . our planned program of management development will prepare you for the responsibilities you are capable of assuming.

ON-THE-JOB-TRAINING

Most new technical employees start at ATLAS with a formal training course at one of the company's laboratories. Afterward, they train on the job at an ATLAS laboratory, plant, or sales office, where they gradually assume increasing responsibility under the guidance of an experienced ATLAS staff member. Men with specialized qualifications may immediately begin the on-the-job phase of the training program.



MAKE YOUR APPOINTMENT NOW WITH YOUR PLACEMENT OFFICER TO SEE OUR MR. MR. L. H. SNYDER WHO WILL VISIT YOUR CAMPUS ON DECEMBER 10, 1959

ATLAS POWDER COMPANY WILMINGTON, DELAWARE
Olympia 8-6511

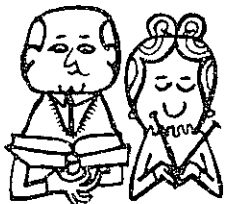
GOING HOME FOR THE HOLIDAYS?



No strain, no pain, when you go by train

This year when you go home for the holidays, play it smart and take the train.

It's great. Just settle back in your comfortable seat. Catch up on some of that missing sleep. Arrive fresh and rested and avoid the lecture. "You're not getting enough sleep. You've got to take better care of yourself."



LET THE FOLKS RELAX

No worries about treacherous, icy roads. Never any unfortunate delays due to stormy weather. The folks know when to expect you and you're home on time.

GIVE YOURSELF A TREAT

Why not investigate sleeping or parlor car fares? (They're cheaper than you might expect.) Treat yourself to real travel luxury. You've earned it, haven't you? Of course you have.

And while you're at it, really live it up by dining or enjoying refreshments while enroute.

There's a spirit of sociability you'll like aboard train too . . . the opportunity to make new friendships . . . the chance to renew old ones.

Your local New Haven ticket agent is ready to sell you your ticket right to your home town. See him today.

NEW HAVEN RAILROAD

P.S. After you get back from the holidays, look into the New Haven's special low fare excursions to New York.

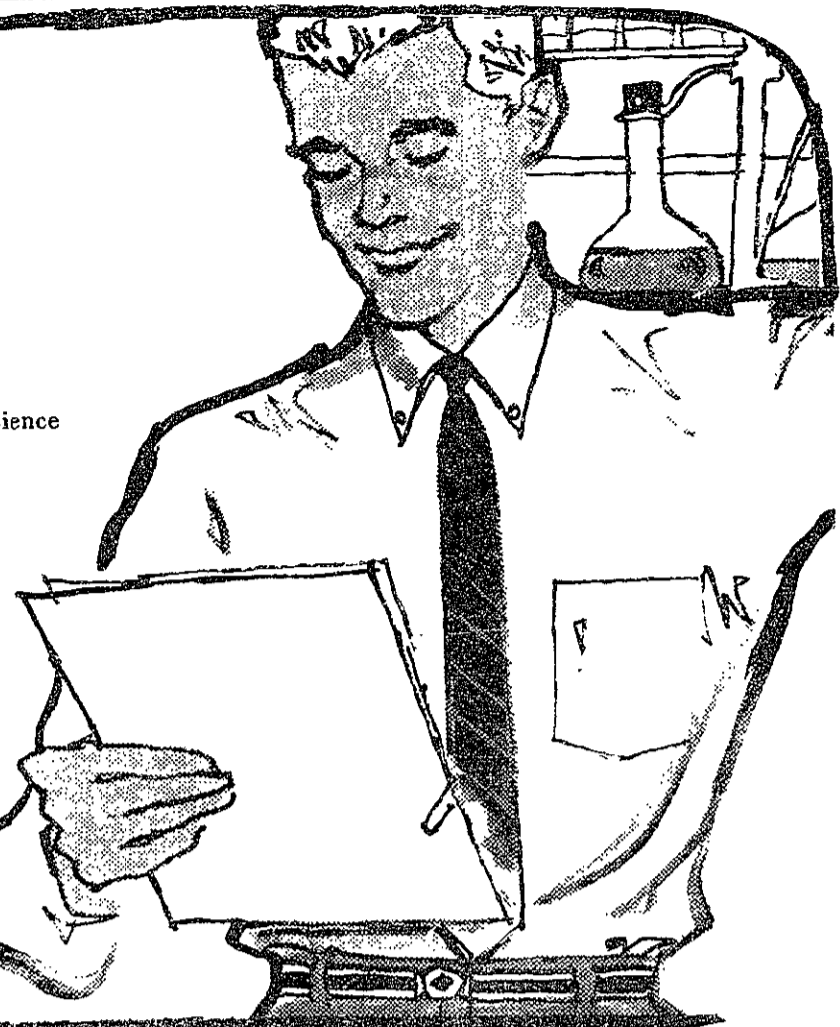


The shirt with a future...

You needn't be a man of science to recognize the superior styling of Arrow's Gordon Dover. Its fashion credentials number—the buttondown collar with the perfect arched flare, the finest "Sanforized" oxford cloth, Arrow's outstanding tailoring and enduring fit. Try one—you'll vouch for it! \$5.00.

ARROW

Each Saturday see the NCAA football "Game of the Week"—NBC TV—sponsored by ARROW.



A Message TO A.E., E.E., M.E. Graduating Engineers

EMERSON ELECTRIC

interviews

TUESDAY NOVEMBER 17



You'll get the "GO" sign at Emerson to get right into the thick of advanced projects

"Why should a graduating engineer consider Emerson Electric?" That's what we recently asked our youngest engineers . . . men who graduated in the past 4 to 24 months. They were in your exact shoes not long ago, seeking important decisions.

Here are their answers . . . reporting significant advantages that you should know and carefully consider.

You'll enjoy every opportunity to produce right away. You'll get into the thick of important work, actual problems, gaining first-hand experience immediately. Engineering work begins at once . . . no weeks or months of orientation lectures, back-to-school textbook courses, non-technical or drawing board work.

Career freedom allows you a wide choice of challenging work . . . design, testing, liaison, stress analysis to mention a few . . . anything an engineer could want. It's customary to follow your project from specs through production.

To illustrate the free hand given our young engineers, a May graduate already has developed two hardware components with excellent patent potential.

Employee relations? You'll find none of the usual stratification between department heads, group leaders, and their engineers. Formalities are non-existent. We work together closely and cooperate fully on an open-door, first-name basis.

Size is right at Emerson. It's not so large that you get lost, yet certainly large enough to contend in the "big leagues" and to offer all the advantages of a big company.

New openings offer a future full of opportunities. Where do these openings come from? From the fact that Emerson is a dynamic growth company. Sales have advanced from \$45 to \$90-million annually in just four years.

These advantages cover only a few of the many reasons why our young engineers believe Emerson offers you more.

Here, in brief, are examples of Emerson's diversification. Our Commercial Division, established in 1890, is the nation's leading and largest independent supplier of fractional horsepower motors. We manufacture a wide variety of fans, air conditioners, arc welders, bench saws, surface mounted and recessed lighting fixtures and a complete line of electric heat equipment.

Our Electronics and Avionics Division, formed in 1940, is the world's leading developer and producer of active defense systems for strategic bombers . . . the B-52H and B-36. We are involved in radar development, parametric amplifiers, electronic scanning and complete radar fire control systems, servo devices, analog and digital computers, supersonic airframe structures, automatic test equipment for airborne electronic systems, missiles, rockets, launchers and mortar locators.

Find out how you can get . . . and grow . . . with Emerson Electric. Meet Emerson's engineering representatives and discuss your future with them. If it is impossible to make a date, write immediately to Byron Johnston for full details.

Sign up for your interview at the Engineering Placement Office. Don't put off your future . . . do it today!

EMERSON ELECTRIC
8100 W. FLORISSANT SAINT LOUIS 20, MO.



Harriers Twelfth in New Englands, Then Run Eleventh in NCAA Meet

Although running against a much stronger field, the varsity cross country improved its finish by a place over the previous year in the New England Cross Country Championships on Monday, November 9 at Franklin Park. The Beavers were 12th among the 18 teams participating, topping Rhode Island, Bowdoin, Boston University, University of Connecticut, Brandeis, and Tufts. The freshman were 14 of 17 in their meet, over Tufts, Connecticut, and Brandeis.

Dan Oliver '60 was top man for the harriers in 39th position, followed by George Withbroe '61 45th; Herb Wegener '61, 63rd; Ed McCartney '60, 75th; Bob Mullen '60, 80th; Rog

Weissinger '62, 91st; Herb Grieves '61, 92nd.

Last Saturday the varsity traveled to Wheaton, Illinois to compete in the NCAA College Division Championships. As a reward for the unusual spirit and team solidarity displayed by the squad, not just the top seven or eight but the entire team of thirteen runners were sent to the meet where the hill and dalers also impressed the Midwesterners with their team unity and esprit de corps.

Running in 20 degree weather with three inches of snow on the ground, The Engineers managed to finish eleventh, with a total of twenty schools represented.

Theta Chi Captures IM Swimming Crown; Robert Ten Eick Takes Individual Honors

Theta Chi amassed 39 points to edge out defending champion Delta Upsilon for the intramural championship at Alumni Pool Sunday.

Sigma Alpha Epsilon and Student House tied for third in the meet, which drew 19 team entries, of which 12 qualified for the finals.

Freestyle Decides Meet

A six-inch victory by Theta Chi's Lars Larson '62 in the 100-yard freestyle ended any hopes DU might have had about retaining their crown. Larson nosed out the runnerup's Chris Ward '60, who led the qualifiers in the event.

Phi Delta Theta gained fifth place with 19 points, followed by Burton House (16) and Baker House (15).

Sigma Chi came in sixth with 11, with Sigma Phi Epsilon, Theta Xi and the Chinese Students' Club following in that order.

Robert Ten Eick '60 gathered 14 of Student House's points with victories in the 50-yard freestyle and 50-yard breaststroke. Other individual winners were Robert Blossy '61 of Burton House (50 yard backstroke) and Earl Rueter '62 of Student House (50-yard butterfly).

FOOTBALL

(Continued from page 1)

See Russia in 1960

Economy Student/Teacher summer tours, American conducted, from \$495.

■ **Russia by Motorcoach.** 17-days from Warsaw or Helsinki. Visit rural towns plus major cities.

■ **Diamond Grand Tour.** Russia, Poland, Czechoslovakia, Scandinavia, Western Europe highlights.

■ **Collegiate Circle.** Black Sea Cruise, Russia, Poland, Czechoslovakia, Scandinavia, Benelux, W. Europe.

■ **Eastern Europe Adventure.** First time available. Bulgaria, Roumania, Russia, Poland, Czechoslovakia, Western Europe scenic route.

■ See your Travel Agent or write

Maupintour

400 Madison Ave., New York 17, N. Y.

ception by Jim Russell, '59, who ran the ball to midfield.

In the final minutes the Sailors were desperate, and as a result gave up two meaningless TD's. White ran one across from the 6, and Russell tallied on a 15-yard run with his third interception of the game.

The "B" victors scored three times through the air and added one extra point the same way.

In the first half Dave Sikes, '63, spotted Hank Hobbs, '59 and Herb Prasse, '63, for TD's, then hit Prasse for the conversion.

Following East Campus' lone scoring venture, a pass from Terry Chatland, '63, to Bob Petrich, '63, Sikes fired to Hobbs for the final tally.

RAMO-WOOLDRIDGE

will conduct

Campus Interviews

November 17 and 18

At the Placement Office

Advanced degree candidates in Electrical Engineering, Physics, Mathematics, and Mechanical Engineering are invited to discuss professional research and development opportunities in the following general fields.

- | | |
|---|---|
| Missile Electronics Systems | Electronic Reconnaissance and Countermeasures |
| Advanced Communications | Microwave Techniques |
| Information Processing Systems | Optics and Infrared |
| Digital Computers and Control Systems | Antisubmarine Warfare |
| Electronic Instrumentation and Test Equipment | Automatic Language Translation |
| | Nuclear Energy Applications |

Appointments for interviews with Mr. Theodore Coburn, Tuesday and Wednesday, November 17 and 18, may be arranged through the Student Placement Center. If these dates are not convenient candidates may direct correspondence to Mr. Coburn at

RAMO-WOOLDRIDGE

P. O. Box 90534 Airport Station

Los Angeles 45, California

A DIVISION OF THOMPSON RAMO-WOOLDRIDGE INC.

Sailors Top BU, Brown, Harvard to Win NE Team Champion

The varsity sailing team ended their season with a brilliant performance last weekend, as they captured the finals of the New England Team Sailing Championships to win the title Trophy.

Taking advantage of the brisk winds the Charles, the MIT sailors owned Brown and BU to come out top after BU had beaten Harvard. These four teams had taken either first or second in the two eliminations held last month.

In Saturday's best-of-four-out-of-seven semifinal competition, the Terriers blanked the Cantabs 4-0, while the Beavers and Bruins tied 3-3. The next morning MIT won the deciding race to gain the finals.

Needing five wins to take the trophy, the Engineers ran off three vic-

tories in a row against BU. The Terriers then came back to win two of the next three, but with darkness falling, MIT registered the clincher by the slim margin of ¼ point.

MIT Shows Depth

The teams entered four boats apiece with a skipper and a crew in each. With more depth than the other squads, MIT rotated six men at the helms of their four boats. Pete Gray, '61, George Kirk, '60, Don Nelsen, '61, Gerald Slawecki, '60, Jerry Milgram, '60, and Gary Helmig, '62, were skippers on the winning team, and Walter Dence, '63, Thane Smith, '62, and Bruce Bardes, '61, were crews. Some of the skippers crewed while not at the rudder.

Goalkeepers Top BU In Final Game of Season; Former Goalie, Georgio Emo, Scores Twice

Scoring in every period, the varsity soccer team routed Boston University 4-1, last Monday night on Briggs Field in their final appearance of the year. Due to the large winning margin, Coach Charles Batterman was able to substitute freely.

The surprise of the game was MIT's Georgio Emo, '62, who had played goalie in all the previous contests. Switched to right wing, Emo booted some two of the Engineer goals, while Joe Skendarian, '61, was netminder.

Cord Ohlenbush, '62, left wing, opened the scoring for the victors in the first period when his long kick was deflected into the goal by a BU full-back. The remaining MIT tallies were

notched by inside left Pete Camejo, '62, inside right Arturo Marques, '61, and left halfback Dirk Berghaeger, '62.

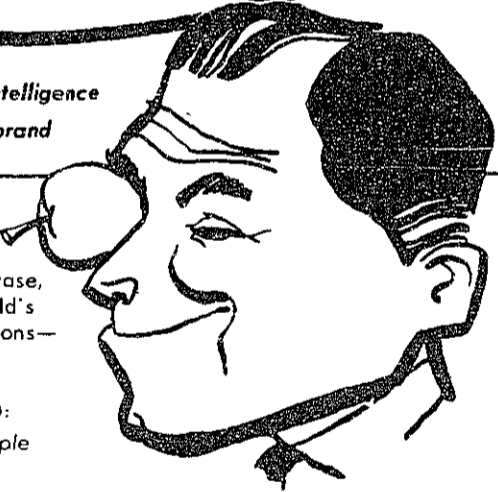
BU averted a shutout in the final quarter. The game was originally scheduled for October 17, but was postponed by rain.

ALL INSTITUTE SWIMMING MEET

The All Institute Swimming Meet will be held this weekend at the Alumni Pool. Trials will be held Saturday afternoon with the finals that evening. All entries must be in by this Friday at 6:00 P.M. Entry blanks are obtainable at the booth in Bldg. 10.



A column of incidental intelligence by **Jockey** brand



"APPLE OF THE EYE"

For this overworked phrase, we must turn to the world's richest source of quotations—the Bible. Specifically, the Old Testament, Deuteronomy, XXXII, 10: "He kept him as the apple of his eye."



"ALL IS NOT GOLD"

Seems like everybody had a crack at this piece of homely philosophy, but the originator seems to be Geoffrey Chaucer, in "The House of Fame", Book I: "Hyt is not all gold that glareth"



"COUNT 10..."

Was there any limit to the talents of Thomas Jefferson? Statesman, scientist, architect—he also authored this admonition: "When angry, count ten before you speak; if very angry, a hundred."

Jockey T-Shirts

The most respected, creative name in underwear is Jockey brand. It stands to reason, then, that Jockey brand T-shirts are unmatched for quality as well as styling. You can choose from standard crew neck T-shirt, "taper-tee" shirt, sleeveless T-shirt, and V-neck T-shirt models. Every man needs a drawer full of T-shirts—and the label to look for is Jockey brand. Let it guide you to the world's finest underwear.

fashioned by the house of **Cooper**



Coming December 1, 2

Hughes announces campus interviews for Electrical Engineers and Physicists receiving M. S. or Ph. D. degrees. (Mid-Year or June Graduates) Consult your placement office now for an appointment.

the West's leader in advanced electronics

HUGHES

HUGHES AIRCRAFT COMPANY

Culver City, El Segundo, Fullerton, Los Angeles, Malibu and Newport Beach, California; and Tucson, Arizona

WE HAVE OVER

300 M.I.T. GRADS

AND WE NEED MORE . . .

- **FOR OUR 17 OPERATING COMPANIES AND LONG LINES DEPARTMENT**
 - to fill in behind 12,700 middle and top level management people who will retire in the next 9 years
 - to manage the engineering and operating of companies expanding at the rate of \$2.5 billion annually
- **FOR THE BELL TELEPHONE LABORATORIES**
 - to engage in basic research or technical planning for the development of new and improved systems
 - to invent, develop or design components and systems in the fields of electronics and communications
- **FOR THE WESTERN ELECTRIC COMPANY**
 - to become leaders in an organization whose sales doubled from 1952 to 1957
 - to administer the manufacture, distribution and installation of communications equipment for the Bell System and national defense
- **FOR THE SANDIA CORPORATION**
 - To fill our need for young engineers with outstanding technical competence for the non-nuclear phases in the development and design of atomic weapons. Sandia has grown to be one of the AEC's major installations in the U. S. and holds a key position in the weapons program.

Please make arrangements for interviews through your Placement Office.

NEW ENGLAND TELEPHONE AND TELEGRAPH COMPANY

CAMPUS INTERVIEWS
Nov. 18, 19

- New England Telephone and Telegraph Company
- Long Lines Department, AT&T Co.
- New York Telephone Company
- Michigan Bell Telephone Company
- Southern New England Telephone Company
- Bell Telephone Laboratories
- Western Electric Company
- Sandia Corporation



WOLFGANG

IS

COMING

A Folk & Country Music
JAMBOREE!
 with **MERLE**
 — **TRAVIS** —
 Don Stover's Lilly Bros.
 Blue Grass Band
 Saturday November 21 8:30 P.M.
 JORDAN HALL
 Tickets — \$3 & \$2.20
 KE 6-2412

— **SEMINAR** —
"European Model Techniques"
 Professor Robert J. Hansen
 Professor of Structural Engineering
 Professor Hansen will discuss European methods of structural analysis using models, which he observed in his recent trip abroad.
 Thursday November 19 3:00 P.M.
 Room 1-390
 Coffee Hour following
 Sponsored by American Society
 Of Civil Engineers — MIT Student Chapter

WANTED

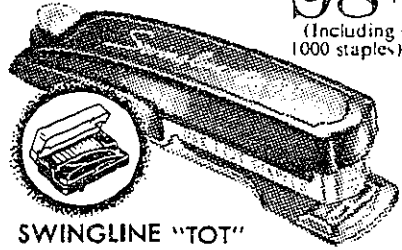
MIT Students to wear our tuxedos at all your proms. Brookline Formal Wear — 342 Harvard St., Brookline — AS 7-1312.

APARTMENT

Brookline, spacious, heated 7-room apartment. Three bedrooms, 14 x 28 living room, 13 x 18 dining room, study room, 2 bathrooms. For gracious living — call Mr. Mirkin, 4 Fairbanks St. — BE 2-3621.

a Swingline
Stapler no
 bigger than a
 pack of gum!

98¢
 (Including 1000 staples)



SWINGLINE "TOT"

Millions now in use. Unconditionally guaranteed. Makes book covers, fastens papers, arts and crafts, mends, tacks, etc. Available at your college bookstore.

SWINGLINE
 "Cub" Stapler \$1.29



Swingline INC.
 LONG ISLAND CITY, NEW YORK, N. Y.

To Candidates for Baccalaureate and Advanced Degrees
 in the Engineering and Scientific Disciplines

THE
MITRE
 CORPORATION

*Invites You To Investigate The Broad Opportunities
 Inherent In Large-Scale System Engineering*

MITRE, a systems engineering and development organization, has the continuing responsibility for solving the complex problems involved in the design, development, evaluation and integration of the many and varied air defense systems.

Formed under the sponsorship of the Massachusetts Institute of Technology with a staff nucleus composed of the scientists who designed and developed the SAGE System, MITRE affords individuals accelerated professional growth in a multi-disciplined environment. There exists freedom of choice in assignments ranging from system design through prototype development to advanced operations research.

We invite you to discuss with us how your academic training can be effectively utilized in one of these stimulating areas:

- SYSTEM DESIGN
- COMPONENT DEVELOPMENT
- REAL-TIME COMPUTER CONTROL SYSTEMS
- RADAR TECHNIQUES
- OPERATIONS ANALYSIS
- WEAPONS SYSTEM INTEGRATION
- HUMAN ENGINEERING
- COMMUNICATIONS SYSTEMS
- ELECTRONIC WARFARE
- INTEGRATED SYSTEM EVALUATION

The above openings are available at MITRE's modern facilities in suburban Boston, Massachusetts—Fort Walton Beach, Florida—and Montgomery, Alabama.

CAMPUS INTERVIEWS

TUESDAY, DECEMBER 1

Please contact your Placement Director for appointment

THE MITRE CORPORATION

244 Wood Street — Lexington 73, Massachusetts

A brochure more fully describing MITRE and its activities is available on request

DODGE DEALERS OF GREATER BOSTON ANNOUNCE THE 1960

\$2000 DODGE SCHOLARSHIP AWARDS

for High School Seniors and College Students

**WIN!
 WHO?
 HOW?
 WHERE?
 WHEN?**

Four individual awards of \$500 each for college tuition and/or board at any accredited college.

Any high school senior or college student currently enrolled in the Greater Boston area.

Tell us in a hundred words or less why you want a college education. Official Entry Form must be used. Entries will be judged on the basis of sincerity, clarity and expressiveness.

Eligible students or their parents are invited to pick up Official Entry Forms & Rules at any Dodge Dealer's showroom in the Greater Boston area.

Now! All entries must be returned before December 1st. Winners will be notified by mail and public announcement.

**A MESSAGE TO PARENTS
 AND EDUCATORS**

This Scholarship Award Program is sponsored by the Dodge Dealers of Greater Boston

to stimulate interest in the need for higher education among the youth of our community. As businessmen in this area, we feel an obligation to share in the vital responsibility of encouraging our children to seek education. For this reason we have established this Scholarship Fund, which in its small way may annually provide a measure of financial assistance to four worthy students, and encourage many others to consider the importance of a college education.

**OFFICIAL ENTRY FORMS MAY BE OBTAINED WITHOUT OBLIGATION
 AT THESE DODGE SHOWROOMS:**

ARLINGTON
 REED MOTOR COMPANY, Inc.
 328 Massachusetts Ave.
 Kenneth C. Reed MI 3-8500

BELMONT
 PLEASANT ST. GARAGE OF
 BELMONT, Inc.
 1060 Pleasant St.
 Joseph A. DeMilla IV 4-5420

BEVERLY
 DOOLING'S GARAGE
 8-12 Railroad Ave.
 Francis D. Dooling WA 2-0122

CAMBRIDGE
 MOLL MOTORS, Inc.
 820 Bemerville Ave.
 A. J. Moll TR 6-3740

CHELSEA
 MYSTIC BRIDGE
 MOTORS, Inc.
 18-28 Eden Street
 Ralph Pallin WE 3-7272

DANVERS
 GETCHELL MOTORS
 95 High Street
 C. C. & B. H. Getchell SP 4-0291

DORCHESTER
 FRANKLIN FIELD
 MOTORS, Inc.
 972 Blue Hill Ave.
 Edward Frutman GE 6-7400

GALLIVAN MOTORS, Inc.
 450 Talbot Ave.
 Leo Berman AV 2-1400

EAST BOSTON
 NEPTUNE MOTORS, Inc.
 480 Bennington St.
 Syd Goldberg LO 7-5800

LYNN
 CARGILL MOTORS, Inc.
 871 Lynnway
 Charles Cargill LY 8-1400

MALDEN
 MALDEN AUTO
 EXCHANGE, Inc.
 200 Eastern Ave.
 Samuel Glick DA 4-3100

MARBLEHEAD
 FLEMING-GRIFFIN, Inc.
 381 Atlantic Ave. NE 2-0682
 W. Fleming & R. Griffin

MEDFORD
 FLAMMIA BROTHERS
 321 Salem Street EX 6-5720
 Joseph & Paul Flammia

NEWTON
 SILVER LAKE MOTORS, Inc.
 444 Watertown St.
 C. J. Lupo BI 4-5880

PEABODY
 FAY MOTOR COMPANY, Inc.
 77-81 Main Street
 William Fay JE 1-0810

QUINCY
 GRANITE MOTOR SALES, Inc.
 310 Washington St.
 F. A. Hassen PR 3-8810

READING
 NEWHOUSE MOTOR
 SALES, Inc.
 142 Washington St.
 Charles W. Newhouse RE 2-1671

ROXBURY
 WESTMINSTER MOTORS, Inc.
 420 Warren St.
 Max Siegel GA 7-2400

SALEM
 PIONEER DODGE, Inc.
 475 Highland Ave.
 Melvin Goldberg PI 4-8611

SOMERVILLE
 KNOX BROS.
 MOTOR CO., Inc.
 645 Broadway MO 6-2200
 Stanley & Arnold Knox

WAKEFIELD
 CLASSEN BROTHERS, Inc.
 327 Main Street CR 9-0783
 C. W. & J. E. Classen

WALTHAM
 TOWNE LINE MOTORS
 21 Main Street
 J. T. Bothen TW 3-1856

WATERTOWN
 CRAWFORD MOTORS
 15 Crawford Street
 Sheldon J. Ananian WA 3-9202

WOBURN
 ALDA DODGE SALES
 100 Winn Street WO 2-1224
 A. R. Ross & D. C. Russell