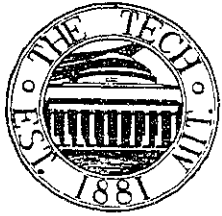


# The Tech



NEWSPAPER OF THE UNDERGRADUATES OF THE MASSACHUSETTS INSTITUTE OF TECHNOLOGY

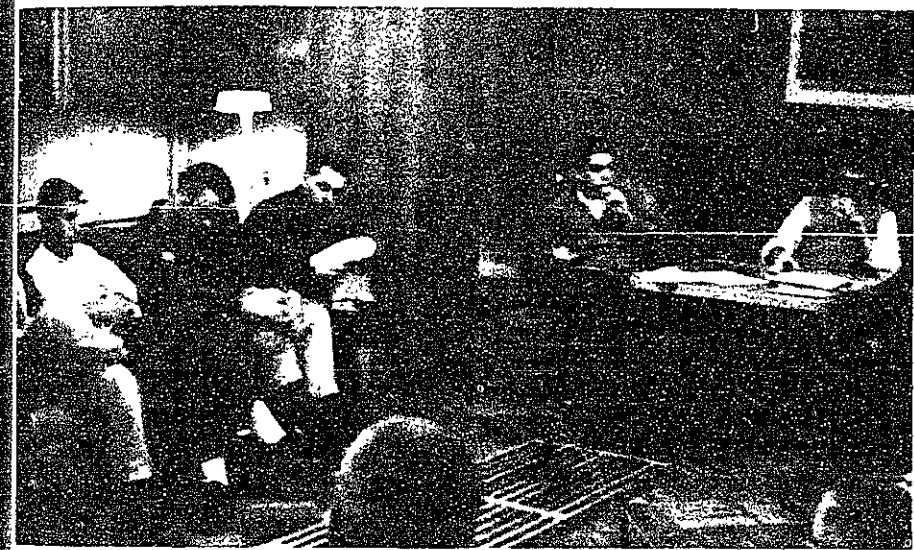
VOL. LXXIX No. 35 CAMBRIDGE, MASSACHUSETTS, TUESDAY, OCTOBER 27, 1959 5 Cents

## Dormitory Council Constitution Approved Will Help Dormcom "Believe In Itself"

The Dormcom can now be spoken of in tones above a whisper. Last Thursday at the Inscomm meeting the Dormcom was recognized as the sole representative of the dormitories and its constitution was accepted unamended.

A petition was first introduced to recognize the Dormcom and to establish it as a financially independent subcommittee of Inscomm. Frank Tapparo, '60, Baker House President, mentioned that this recognition would force the Dormcom to believe in itself. It could then unify the dorms when necessary and appropriate without destroying the individualism of each dorm. This petition was passed. It is hoped that this move will clarify the relationship of the Dormcom to the Inscomm.

The Dormcom Constitution was then introduced to the Inscomm. It was considered section by section. An amendment was proposed providing that the quorum include at least one representative from each house. This amendment



Meeting of the East Campus House Committee, at which the Dormitory Council Constitution was discussed. — Photo by Boyd Estus, '63

was defeated. No other amendments were proposed and the Constitution passed unamended by a vote of 10 to 0.

The Constitution as it now stands leaves unchanged the Inscomm representation and the Judicial set-up of the various houses.

An unusual feature of the Constitution is the floating chairman. Although the offices of Treasurer and Chairman of the Secretariat will be permanent, the chair will be occupied by the President of the house in which the meeting is held. In this way no one person will represent all of the dorms.

### Parent's Weekend Discussed

## SCEP Receives Vote of Confidence

The Student Committee on Educational Policy received a vote of confidence from Inscomm last Thursday. The question under debate was whether to appropriate money for SCEP's dinner meetings. Finance Board did not feel that these meetings were worth the money spent on them.

Farley Fisher, '60, SCEP Chairman, said that these dinner meetings provide a profitable atmosphere for deliberations and helped establish diplomatic relationships with the faculty. He explained that the faculty is often reluctant to attend afternoon meetings because they feel that these meetings provide a "third degree atmosphere". A dinner and after-dinner discussion has proved much more valuable.

### Refreshment Fund

Dick McDowell, '60, head of the Finance Board, offered a compromise — a refreshment fund. This fund would be for refreshments at smokers and conferences, but not to be used for dinner meetings. Fisher pointed out that only one-fifth of the SCEP meetings were dinner meetings, but that these provided the whole basis for SCEP operations.

The Inscomm then gave SCEP a vote of confidence by a roll call vote.

### Parents' Weekend

The subject of Parents' Weekend was also brought up at the Inscomm meeting. The first problem was to decide whether or not to have one this year. It was decided in favor of one. Elected as co-chairmen were Fred Janiewicz, '61, and Jerry Grossman, '61. The Weekend will be held this coming Spring.

## Judicial Committee Hears JP Evidence; Decision on Charges Expected Shortly

Members of the Junior Prom committee answered questions about alleged malfeasance at a Judicial Committee hearing yesterday. The meeting, which was held in the Vannevar Bush room yesterday afternoon, was open to anyone interested in attending.

The purpose of this hearing was to bring out testimony disclosed at closed hearings between JP Committee and Judcomm last Tuesday and Wednesday. If a committee member was present, he was questioned to bring out his testimony, and also given an opportunity to speak in his own behalf. However, if any member did not appear, his testimony at the closed hearing was read verbatim. Specific charges are expected to be stated in a few days.

Although Judcomm chairman Pat Coady, '60, declined to mention any specific testimony prior to the meeting, he did indicate that there was evidence of some irregular practices concerning the administration of this year's Junior Prom.



East Campus resident Eugene Zoba, '59, expresses his opinions at the meeting. — Photo by Boyd Estus, '63

Most of the members of the present Dormcom feel that this new constitution will "secure for the individual dormitory residents, by mutual effort, those benefits which can not be obtained through the separate House Committees." This is the purpose of the Dormcom as outlined in its constitution.

### Phi Lambda Upsilon Sponsors

## Hans Mueller at Talk Thursday

Hans Mueller, Professor of Physics, will discuss some of his remarkable views on education this Thursday night. The talk is sponsored by the local Beta Alpha chapter of Phi Lambda Upsilon, national honorary chemical society; it will be held in the Hayden Library Lounge at 8:00 P.M.

This is the first in a series of discussions by outstanding Institute personalities which has been planned by the chapter for the coming year. The next talk is scheduled for the coming month and will feature Dr. James Killian, Chairman of the MIT Corporation.

### Some Recent Remarks

Dr. Mueller, who has been described by Life Magazine as "MIT's most lucid professor", spoke out concerning his opinions of education in March of 1958 at a Burton House Egghead Seminar. At the time, he expressed a feeling of dissatisfaction with many features of the educational methods here, including quizzes, curricula, oversize classes, and emphasis on research. Despite his criticisms, he was genial throughout, spicing his remarks with frequent anecdotes which brought continuous laughter from his audience. Those who attended the talk agreed that it was most stimulating.

## Field Day Rules Stressing Safety; Coed Tug-of-War is Possibility

The official rules for Field Day have been cleared through the Dean's Office and submitted to the freshman and sophomore classes. They remain essentially as previously reported, with some changes.

The order of events has been set as Boat Race, Tugs-of-War, "X" event, and glove fight. The "X" event has been substituted for the totem pole race, which was initiated last year but considered too dangerous.

The boat itself is not to be driven by wind or any engine, but solely by freshman and sophomore labor. It must be equipped with life preservers, and the crew must be equipped with swimming certificates. In addition, the boat is to carry a Tech coed classmate as coxswain. This event will yield 40 points to the winner of the race, and 15 points for "color".

In addition to the unlimited and limited tugs-of-war, a limited coed contest is being tentatively planned. This hinges on the approval of the coeds and their willingness to participate.

The rules for the glove fight state that each participant will receive his glove just prior to the start of the contest. This is intended to forestall attacks on a rival class's store of gloves before the glove fight itself.

In addition, the glove fight is being regulated with many safety precautions. The rules state that violence is not to be tolerated, and that the marshalls can stop any struggle. In addition, any marshal can halt the entire glove fight with a gun shot if he feels that it is getting out of hand. Also, each class must submit its plans for Glove Fight strategies to Beaver Key for checking one week before Field Day.

According to the official rules, the Field Day is designed to "promote organization and teamwork in the Freshman and Sophomore classes"; to "be a welcome diversion . . . providing a small degree of relaxation from scientific endeavor"; and to "encourage organized action by the Freshmen, giving their newly elected leaders a chance to prove themselves."

It is further stated that good taste and good sportsmanship are to govern

(Continued on page 6)

### Tech Matrons Sponsor

## Frosh Meet Profs at Section Mixers

Freshmen began getting a chance to meet their favorite instructors yesterday as the schedule of Freshman Section mixers got underway. These mixers are sponsored by the Technology Matrons. Each section is given the opportunity to invite those teachers, lecturers, and teaching assistants to the mixers with whom they would like to discuss matters of mutual interest.

Section 3 and 4 were the first to have their mixer scheduled. Tomorrow, sections 13 and 14 will meet at 3 P.M., and sections 20 and 21 from 4 to 5 P.M. All the mixers are being held in the Technology Matrons' Rooms, 10-300 and 10-340.

The schedule for the remaining sections is as follows:

Thursday, October 29: Sections 22 and 23 at 3 P.M.

Friday, October 30: Sections 11 and 12 at 4 P.M.

Monday, November 2: Sections 1 and 2 at 3 P.M.

Wednesday, November 4: Sections 15 and 16 at 3 P.M., and sections 18 and 19 at 4 P.M.

Thursday, November 5: Sections 34 and 35, 3 P.M.

Friday, November 6: Sections 27 and 28 at 4 P.M.

Monday, November 9: Sections 26 and 29 at 3 P.M.

Tuesday, November 10: Section 31 at 3 P.M.

### APO Phone Directory Out; Distribution Starts Thurs.

Alpha Phi Omega will begin distributing the undergraduate telephone directories this week. Dormitory residents will find their copies in their mail boxes Thursday morning; fraternities will receive their copies by mail or messenger. Non-residents registered with the NRSA can pick up their directories in building 10 between November 2nd and 6th; non-resident students who are not so registered will have to pay for theirs. This year it is planned to include all undergraduates, including apartment dwellers, in the directory.

## Leslie Discusses Art In LSC Talk Oct. 28

Mr. Frank P. Leslie, a recognized authority on European art, will be the speaker at a lecture presented by the Lecture Series Committee at 5 p. m. October 28 in the Kresge Little Theatre.

Mr. Leslie will speak on "A European Tour 1450-1550" The talk will include a commentary on European art during the renaissance period along with background material on the artists and subjects of the paintings.

A large number of colored slides taken by Mr. Leslie, including some taken recently on his Russian tour,

## Combined Musical Clubs Concert



The MIT Symphony Orchestra playing in the Combined Musical Clubs concert in Kresge last Saturday night. Included on the program was Gregory Tucker's "Kinvaven Suite". For details, see review on page 2. — Photo by Robert Purdy, '63

## President's Report 1959

The new President's Report shows again that the Institute is really changing under Dr. Stratton. Its readers cannot fail to be impressed by a profound awareness of the long-range needs and trends of technical education. But more than this, there is a continuing effort to see that the Institute, with its first-rank status, stays a leader among the colleges and universities whose educational concepts will prevail during the next decades. It seems as though the group within the Faculty and Administration which, headed by Dr. Stratton, has long favored a stranger base of fundamental science in the engineering curriculum has finally won out over those who cling, with some justification, to an engineering education in which traditional courses in practical design and application predominate. Perhaps "won out" is unfair, since it is certainly recognized that each point of view has its merit. Yet there is some significance in the fact that the present Report makes no mention of this rivalry, whereas previous Reports have.

It is refreshing to read a report in which the broad outlines of policy are clear. Dr. Stratton's response to those who cry for an "upgrading" of American education is sober and considered. ". . . MIT will contribute most to the national interest by an even greater concentration upon the quality of our undergraduate school before venturing to expand it materially in size." Some maintain that higher education has much to learn from industry about more efficient operation. While he agrees that this is true to some extent, Dr. Stratton is wary of facile solutions proposed from outside the educational province which do not properly apply to it. ". . . we must keep ever in mind that the cultivation of the individual is our single goal, the sole reason for our being." And, it might be added, the universities are among the few remaining places where this goal is appreciated. MIT as an academic institution, an independent influence which, however deeply it may be involved with the demands of society as a whole, refuses to lose sight of the inspiration which is peculiarly its own — this is the theme which runs through the President's Report. Speaking of sponsored research, Dr. Stratton finds it ". . . imperative that the present short-term funding of government-sponsored research be revised to meet more adequately the special requirements of an academic institution."

The Report calls attention to an already well developed trend in MIT's academic organization. As departmental boundaries are breached by an inter-disciplinary interest in such things as materials, communications, and electronics, as well as by the realization that many subjects of fundamental importance are being taught in half a dozen different versions in the various departments, we can expect to see added to the old departmental organization a parallel group of research and study centers whose personnel may come from all parts of the academic structure. It is an exciting prospect and it is a trend, encouraged by the Administration, which will capitalize upon the essential unity of knowledge.

## Progress

It looks as if some old and new problems and projects at the Institute are going to see action at last. The problem of the sunken sidewalks in the Great Court during rainy weather must remain unsolved for the present, but there are plans for alleviating, among other things, the parking problem. The Institute hopes to receive bids this month for the construction of a four-story parking garage. The building will be located on the corner of Main and Vassar Streets where there is now a parking lot (across from Building 20 which, because of the need for space, will probably continue to be a blot on the MIT landscape). MIT hopes to build the garage for \$1500 per space — with 400 spaces, a total cost of \$600,000 — but initial bids were much higher. To help defray construction costs the Institute will probably instigate a fee of \$25 for using MIT parking facilities.

The building of a Student Center has been under consideration for at least four years but there is still no definite target date for beginning construction. The difficulty lies in obtaining the money for the project. The probable site of the Center will be between Kresge Auditorium and the row of commercial buildings on Massachusetts Avenue. The building would have offices for activities, meeting rooms, workrooms, and dining and dancing facilities. It is expected that there will be a commercial area to house a new Tech Coop about twice the size of the present one. Total floor space for the Center will be around 100,000 square feet and the expected cost is \$3 million. MIT hopes to finance the Student Center by means of alumni gifts; work will start as soon as the money is received. Yet as of this time there is no concentrated alumni fund-raising drive planned. In consideration of the fact that the Student Center has been a perennial proposal for a good many years, these plans do seem a little nebulous.

The \$2½ million dollar grant for the Geology and Geophysics Center has put that project on a fairly firm basis. The new building will probably be constructed in the East

Campus area, but the exact location and size of the site are as yet unknown.

On other fronts, the athletic fields have been extended into the Westgate area, and the married housing facilities situation is being looked into. The MIT campus is changing fast; if the money keeps coming in, even the sidewalks may be above ground some day.

## half notes

### Combined Musical Groups

Variety was the keynote Saturday night in Kresge Auditorium as the MIT Musical Clubs presented a combined concert to a nearly filled house. Five different groups were heard in a program including almost everything from 16th Century madrigals to Stan Kenton arrangements. After the Brass Choir opened the program with competent performances of two pre-Bach works, the Orchestra was heard in Gregory Tucker's "Kinhaven Suite". While probably not destined for immortality, it was quite interesting and was well received by the audience, and underscored Professor Tucker's talents as a composer as well as pianist and teacher. The solo and small ensemble writing for the woodwinds in the thinly-scored soft passages was very lovely, and the violin solos were particularly well performed.

The Glee Club next sang six short selections in four different languages, not always with complete preciseness of attack, but with a full rich sound and apparently a real enthusiasm for singing. The choice of program was admirable, and the overall effect was the most pleasing of the evening.

The performance of the Techonians, while technically at least as good as any of the others, was the least satisfying, probably through no fault of the group, but because they just didn't seem to fit in with the mood of the evening. Their selections also appeared to be a bit too long compared to the other groups (or perhaps it just seemed that way.)

The band opened the last section of the program literally with a crash as MIT was given an arresting introduction to John Corley's new tam-tam in "Canto Yoruba", a composition based on African dances and chants by the Spanish composer Sanjuan. Exciting, if a little noisy! Clifton Williams' "Dramatic Essay" was given a good reading by the Band, with Kenneth Rahn as trumpet soloist. This was not one of the usual showpieces for trumpet with incidental accompaniment, but rather seemed to be a tone painting in which soloist and band share an equal role in the creation of a mood. Mr. Rahn handled his part quite well, if not with complete ease.

To close the evening, the Band and Glee Club combined forces to present another installment of Randall Thompson's "Testament of Freedom", this time the 3rd movement. Except for some brief confusion following a mistaken entrance, it was a very fine and dramatic performance of these words from the writings of Thomas Jefferson. All in all, it was a most enjoyable evening, and the performances, while not yet completely polished, brought cheers of approval from the audience, and portend well for the concerts each group will give later in the season.

— JED

## The Tech

Entered as second class matter at the post office at Boston, Massachusetts. Published every Tuesday and Friday during the college year, except college vacations, by THE TECH — Walker Memorial, Cambridge 39, Mass. Telephone: TRowbridge 6-5855-6 or UNIVERSITY 4-6900, Ext. 2731. Twenty-four hour answering service: TR 6-5855.

VOL. LXXIX October 27, 1959 NO. 35

Kenneth F. Reinschmidt '60 ..... Chairman  
 John B. Stevenson '60 ..... Managing Editor  
 Peter M. Silverberg '60 ..... Business Manager  
 David W. Packer '59 ..... Editor  
 Linda H. Greiner '60 ..... News Editor  
 Abraham Feinberg '60 ..... Sports Editor

Stewart Wade Wilson '59 ..... Associate Editor  
 Henry N. McCarl '62 ..... Associate Managing Editor  
 Barry Roach '62 ..... Associate News Director  
 Jeffery I. Steinfeld '62 ..... Associate News Director  
 Leonard R. Tenner '60 ..... Associate Sports Director  
 Robert N. Gurnitz '60 ..... Associate Sports Director  
 Brian Strong '62 ..... Circulation Manager  
 Charles Muntz '62 ..... Advertising Manager  
 Deloss S. Brown '62 ..... Editorial Assistant  
 Hans C. Andersen '62 ..... Treasurer

MANAGING BOARD  
 Gerald Winston '62

NEWS BOARD

Fred Jancewicz '61 ..... Dave Vilkomerson '62

SPORTS BOARD

Gerald H. Kaiz '60 ..... Assistant  
 W. Thomas Brydges '62 ..... Assistant  
 Paul T. Robertson '61 ..... Donald E. Nelsen '61  
 Archie C. Thomas, Jr. '62

EDITORIAL BOARD

Jean Pierre Frankenhuis '61 ..... Henry Okun '60  
 Carl V. Swanson '60 ..... Larry M. Ayres '61  
 James R. Chaffant '60 ..... David N. Ness '61

BUSINESS BOARD

Dennis Kelly '60 ..... John Epstein '61

BUY and SAVE  
 on  
 GAS and OIL  
 for  
 YOUR CAR

AUTHORIZED COOP GAS STATION

NELSON'S MOBIL GAS STATION

218 Main Street

Near Kendall Square Rotary

Patronage Refund

also paid on greasing charges and on purchase of tires and batteries

Tech Coop

Make your selection of at TECH COOP  
 KAYWOODIE PIPES 40 Mass. Avenue



Why are so many college men switching to pipes?

SEND YOUR ANSWER IN 25 WORDS OR LESS

**WIN 4 YEAR WARDROBE**  
 261 PRIZES IN ALL

1st prize—A famous Botany "500" wardrobe every year for 4 years (2 Suits, 2 Sport Jackets, 2 Pair of Slacks, and 1 Topcoat.)

Next 5 prizes—Ultra-precision imported Sony Transistor Radio

Next 5 prizes—World-famous pocket size Minolta "16" Camera

Next 250 prizes—Kaywoodie Campus Pipe

Pick up an official entry blank at your regular tobacco counter, or write Kaywoodie Pipes, Inc., New York 22, for one.

**HINTS TO WIN: Why men smoke pipes—**  
 There's a rich, fulfilling, "all's well" feeling that a man gets only from a pipe. A relaxed, calms-you-down contentment that's associated exclusively with pipe smoking. And you get all the pleasure of smoking without inhaling.

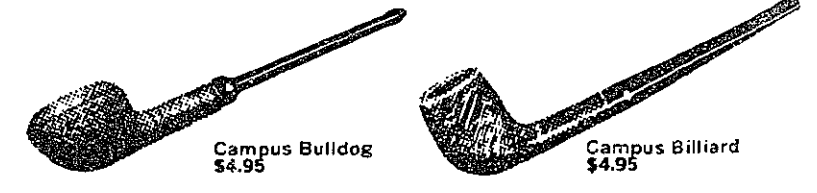


Campus Yacht \$4.95

Why pipe smokers choose KAYWOODIE

Kaywoodie Briar is imported, aged, selected, hand crafted, hand rubbed, tested, inspected, and only then does it earn the coveted Kaywoodie Cloverleaf. That's why Kaywoodie heats airily light; always smokes cool and sweet. The exclusive Drinkless Fitment inside the pipe condenses tars, moisture and irritants as nothing else can. Try a Kaywoodie. One puff is worth 1,000 words.

CHOOSE YOUR KAYWOODIE from the famous campus collection... \$4.95



Campus Bulldog \$4.95

Campus Billiard \$4.95

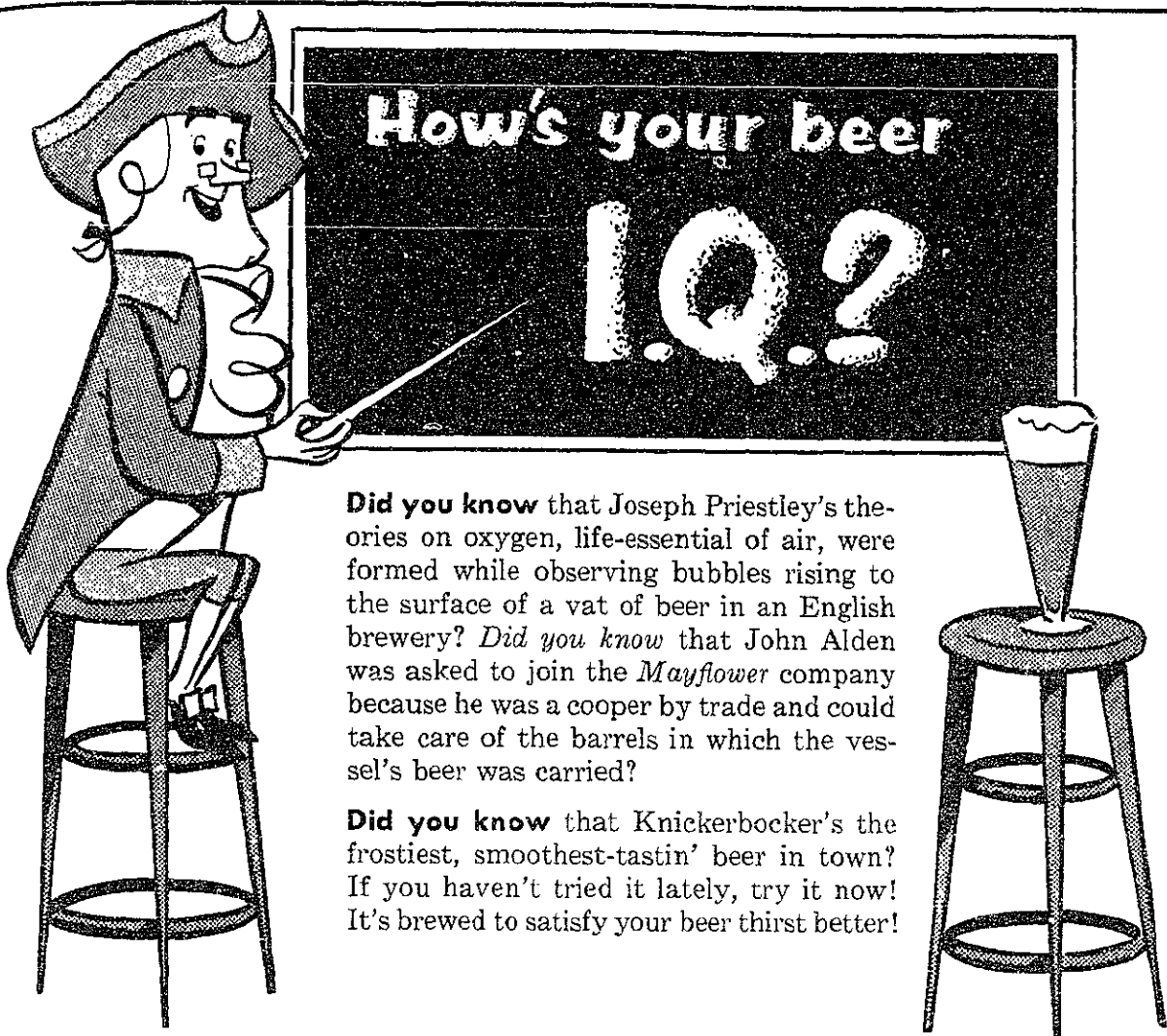
other styles and shapes \$5 to \$50



White Briar Pear \$5

Custom Grain Prince of Wales \$10

**KAYWOODIE**  
 accents the male look



**Did you know** that Joseph Priestley's theories on oxygen, life-essential of air, were formed while observing bubbles rising to the surface of a vat of beer in an English brewery? *Did you know* that John Alden was asked to join the *Mayflower* company because he was a cooper by trade and could take care of the barrels in which the vessel's beer was carried?

**Did you know** that Knickerbocker's the frostiest, smoothest-tastin' beer in town? If you haven't tried it lately, try it now! It's brewed to satisfy your beer thirst better!

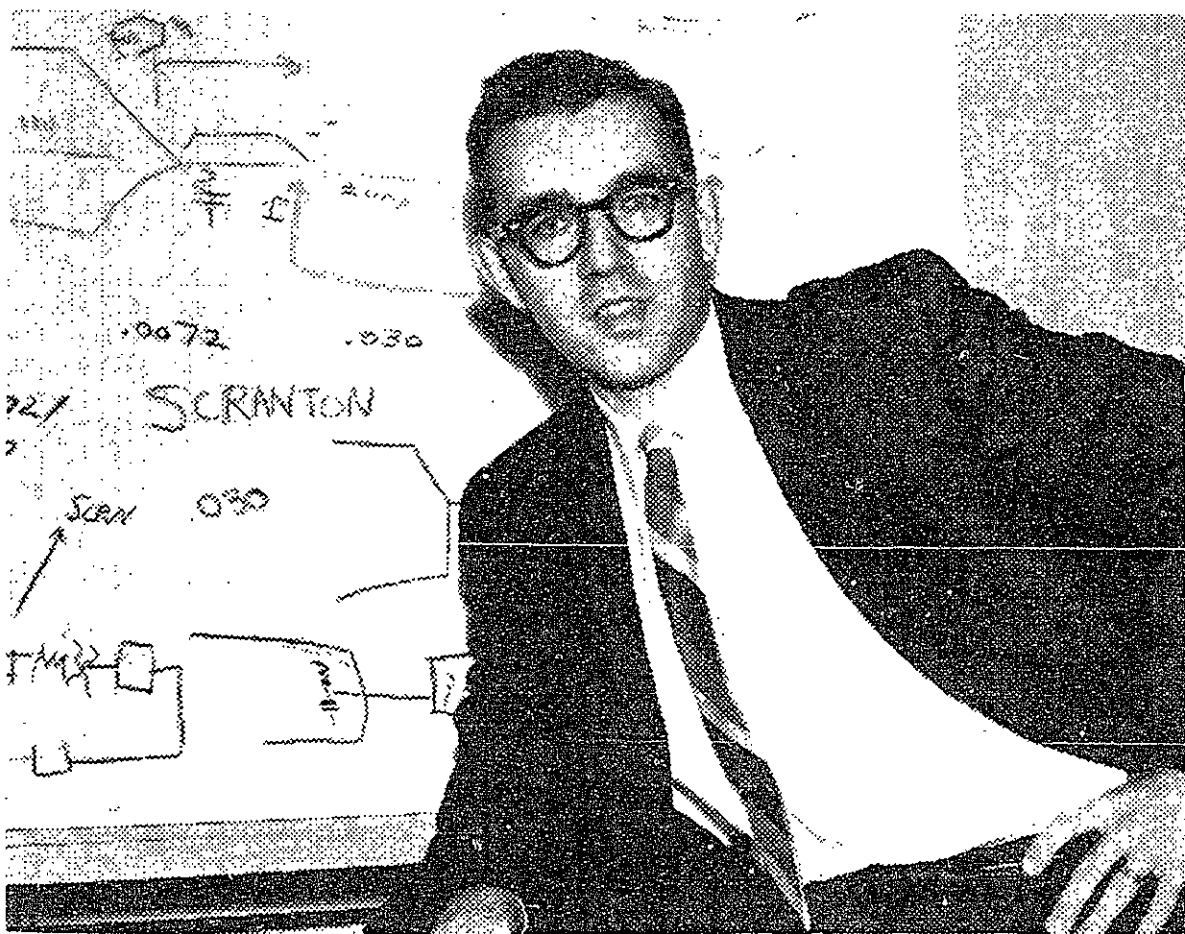
RUPPERT

**Knickerbocker**

First in sales because it's first in taste!

JACOB RUPPERT, N.Y.C.

A Campus-to-Career Case History



**"I found I could be an engineer  
—and a businessman, too"**

William M. Stiffler majored in mechanical engineering at Penn State University—but he also liked economics. "I wanted to apply engineering *and* economics in business," he says, "and have some administrative responsibilities."

Bill got his B.S. degree in June, 1956, and went to work with the Bell Telephone Company of Pennsylvania at Harrisburg. During his first two years, he gained on-the-job experience in all departments of the company. Since June, 1958, he's been working on transmission engineering projects.

Today, Bill is getting the blend of engineering and practical business-engineering he wanted. "The economic aspects of each project are just as important as the

technical aspects," he says. "The greatest challenge lies in finding the best solution to each problem in terms of costs, present and future needs, and new technological developments."

"Another thing I like is that I get full job-responsibility. For example, I recently completed plans for carrier systems between Scranton and four other communities which will bring Direct Distance Dialing to customers there. The transmission phase of the project involved almost a half-million dollars—and it was 'my baby' from terminal to terminal."

"Telephone engineering has everything you could ask for—training, interesting and varied work, responsibility, and real management opportunities."

Bill Stiffler and many college men like him have found interesting careers with the Bell Telephone Companies. There may be a real opportunity for you, too. Be sure to talk with the Bell interviewer when he visits your campus—and read the Bell Telephone booklet on file in your Placement Office.



BELL TELEPHONE COMPANIES

**Creative Writing Workshop Set Up Under Aegis of Tech Show Writer**

Tech Show this year is making a major step toward the establishment of a creative writing course at MIT. Jeane Pierre Frankenhuis, 61, writer of this year's Show, and winner of three Best Prizes in the last two years, says that although the humanities department would like to conduct such a course, it would involve too much expenditure for too few interested students. In order to prove that there are enough interested students, a writing workshop will be established, the first meeting of which will be held Thursday, Nov. 5th, at 8:00 p. m. in the Miller Room.

In the words of Mr. Frankenhuis:

"I do not have the audacity to maintain that I am entirely qualified for the job. But somebody has to start it. The meetings will be conducted in a very informal fashion every Thursday until the opening of the Tech Show in February. Its purpose will be to assign some kind of creative work to each person, and to give explanations of theatrical methods, study of scripts, and to read representative plays. I also expect to have guests from the Humanities department as well as professional writers who happen to be in Boston. Any student may attend."

With regard to a fee or obligation, Mr. Frankenhuis says: "Certainly not: Our reward will come from seeing more people interested in the theater; it will come from showing that MIT is not only a scientific school, but also a place which gives its students an opportunity to develop their artistic talents as well. It is enough satisfaction to know that in the near future our idea may become permanent."

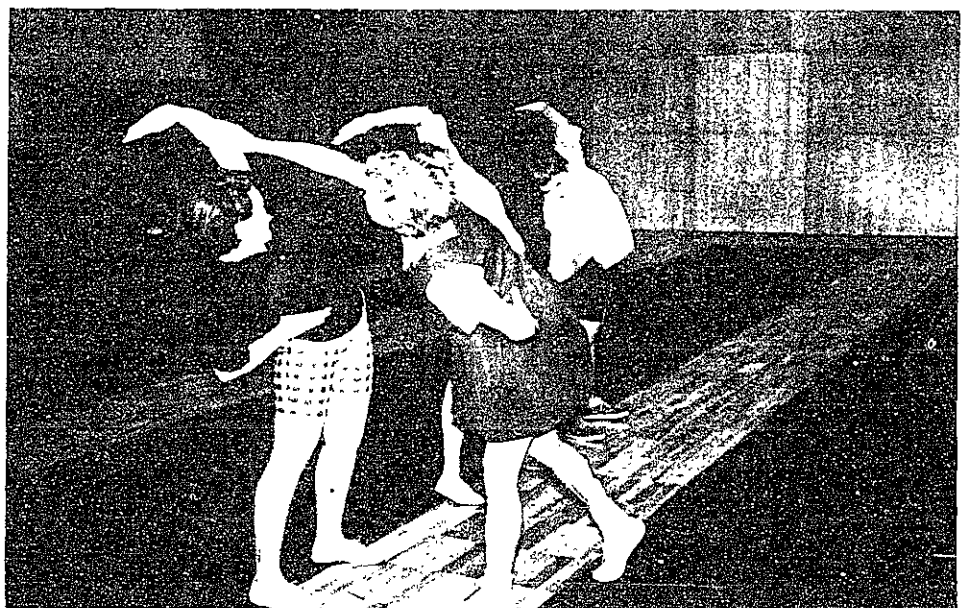
**Girls Work Out**

**Coeds Taking Phys. Ed. Program  
Frosh Meet Profs at Section Mixers**

With the inauguration of the du Pont Athletic Center a question could be asked: what will be the use of a women's locker room?

Fortunately the spirit of initiative of the coeds took care of the question with the formation of an athletic program now well under way.

The program is composed of exercises and gymnastics, Mondays and



Some of the Tech Coeds taking their constitutional in their new physical education program. The workouts are designed both for physical development and to toughen the girls for their sojourn at the Institute. — Photo by Ken Anderson, '63

Thursdays, from 7:15 to 8:30, under the competent direction of Mrs. Jean Johnson, a senior at Bouve; on Saturdays there are swimming classes from 12:00 to 1:00, supervised by Betsy Schumacker, '60, the famous MIT senior who made the last page of Sports Illustrated last year, and Gordon Smith, a member of the Athletic staff.

The idea was accepted with enthusiasm by our coeds and a dozen are already attending each of the activities. Should anybody be interested in joining this program (provided it's a she) Buzz Arsey, at Ext. 4132, or Pat Andre at Ext. 4131, will be glad to give further information.

**Lawyers Investigate Flying Clubs**

The Institute lawyers are now in the process of investigating MIT's two flying clubs. Both the Tech Flying Club and the Aero-Tech Flying Club have hurled charges at each other, which included such points as insufficient insurance coverage and financial mismanagement. The lawyers are now investigating the validity of these charges, and hope to arrive at

some decision at the middle of this week.

According to Activities Council President Tom Farquhar, '60, they will especially note the insurance policies of the two clubs, and try to determine who is liable in case of accident. They will also look into the leasing arrangement that Tech Flying Club has with General Aeronautics and Astronautics, a body which owns the club's planes.

Guitar Lessons, Folk, Flamenco, Blues, Finger Picking, Beginners & Advanced. Rolf Cahn  
HU 2-1827

VOLKSWAGON IN BOSTON  
Charles Street Garage  
144 Charles Street  
CA 7-7460  
Glenn E. Whitham, '42, President

**WANTED**  
MIT Students to wear our tuxedos at all your proms. Brookline Formal Wear —  
342 Harvard St., Brookline — AS 7-1312.

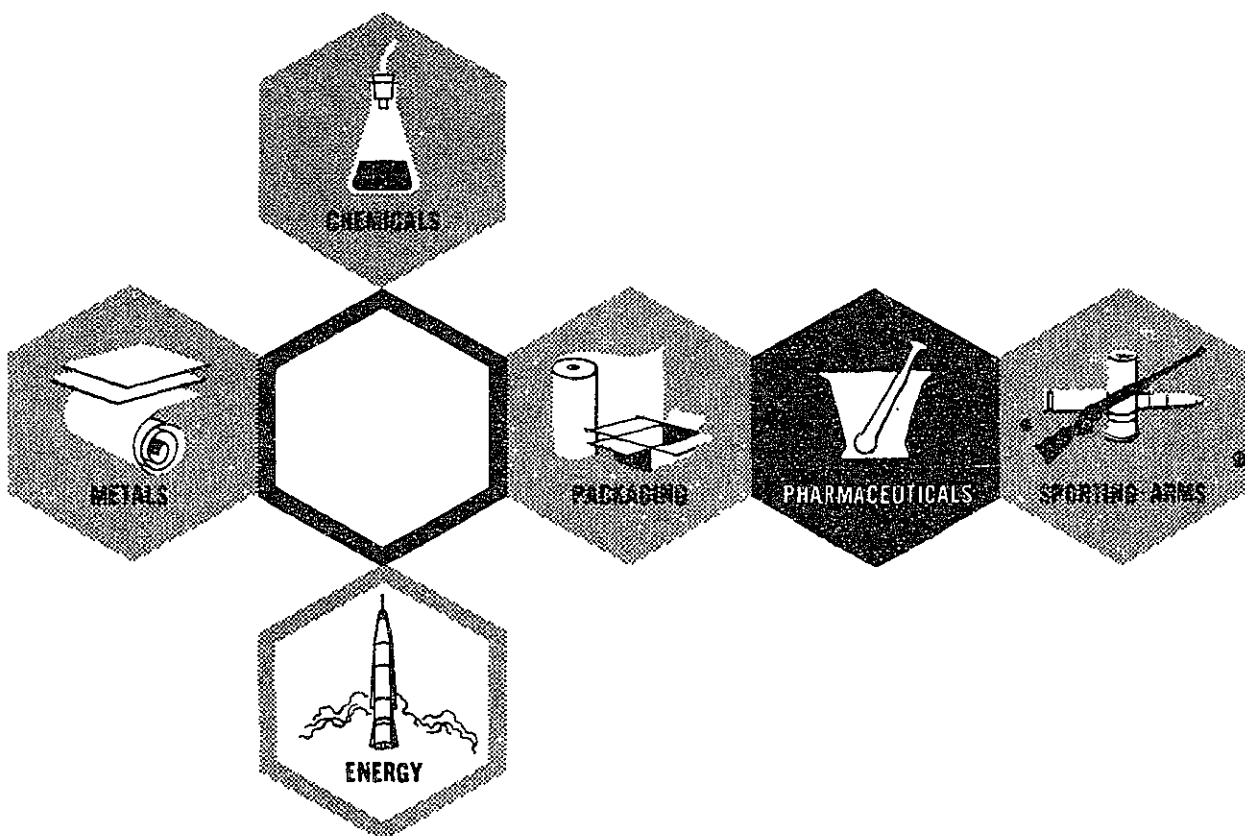
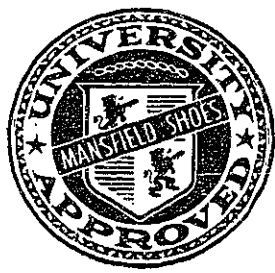
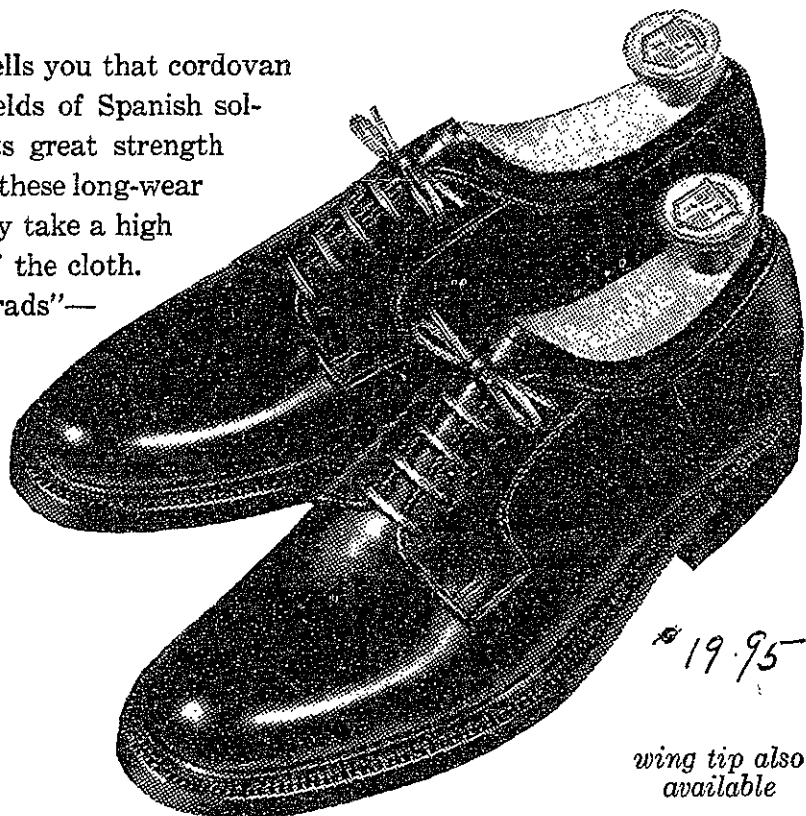
*University Styled*

**MANSFIELDS OF GENUINE IMPORTED SHELL CORDOVAN**

Your history book tells you that cordovan was used in the shields of Spanish soldiers—because of its great strength and high polish. Try these long-wear shoes... see how they take a high shine with a flick of the cloth. Classics!—for all "grads"—old and under!

STYLE # 1841

**Tech Coop**



**DIVERSIFICATION**  
for  
unlimited  
opportunity

The interest of Olin Mathieson in the vital fields of chemicals, metals, packaging, pharmaceuticals and energy and in the sporting arms and ammunition industry promises the chemist, the chemical and the mechanical and metallurgical engineers a career that can progress along any one of many avenues just as rapidly as ability can be displayed. We would like to talk to you about your post-graduate plans. Include Olin Mathieson in your interview itinerary.

The Olin Mathieson representative will soon be on your campus. See your placement office for full details.

Interviews to be held on OCT. 29

**OLIN MATHIESON** 460 PARK AVE., NEW YORK 22, N. Y

**Bushleaguer**

**Rain Hampers IM Grid Schedule**

By Thomas Brydges, '62

Prospects of finishing the intramural football season before late November dimmed last weekend as rain washed out eighty games Saturday and hard fought contests Sunday threw one league into a tie and made another tie certain.

According to Eric Haseltine '59 intramural football manager, the postponed games will be played next weekend if conflict with the intramural wrestling tournament can be avoided.

Even if the games are rescheduled Saturday, complications may develop if Delta Upsilon defeats Grad House. This combination of events would cause a DU-Delta Tau Delta tie in League I and playoffs could not start until the two leaders met for the League I title.

Since no games will be played the weekend of the Junior Prom (Nov. 7) and since a team will probably not be required to play twice in the same weekend, the playoffs could not begin until Nov. 21, assuming games will be played only on weekends.

Phi Gamma Delta and Phi Delta Theta, both undefeated and unscored upon in their last two games, battled to a scoreless deadlock Sunday to establish a tie in League II. The Phi Deltas threatened in the second period, driving to the Fiji ten, but ran out of downs.

A bad pass from center cost the Phi Gams a chance at the game-winning touchdown in the final quarter after they marched downfield on a series of passes by Chuck Gamble '62. Another scoring opportunity was lost as the first half ended with the Fiji's on the one yard line as a result of a long pass from Gamble to Don Aucamp '57.

Delta Tau Delta assured its League I tie with a 38-14 victory over Sigma Phi Epsilon. Terry Bray '62 led the Delt offense, counting twice on runs and connecting on a touchdown aerial to John Crissman '61. Steve Smith '62 and Frank Bradich '61 accounted for the other two Delt scores.

Dick Pickett '61 threw three touchdown passes in the second half Sunday as Beta Theta Pi won the League IV championship over Sigma Xi. Pickett located Jim Russell '59, Bill Martin '60 and then Russell again for touchdowns before an arm injury forced him out of action late in the game.

East Campus backed into the League VII title Sunday as Phi Kappa Theta battled to a 6-6 draw with Baker House. East Campus, previous winner over Phi Kappa Theta and Baker House, holds a 2-0 mark while all the other clubs in the league post at least one loss with a minimum of one victory.

Student House completed a successful defense of its League VII crown Sunday, edging Dover Club 7-6. Ken Millet, '63, passed to Sam Duncan, '62, for the touchdown late in the fourth period and then connected with George Simmons '60 for the extra point.

Burton House blasted Kappa Sigma 26-0 Sunday to remain in the running for the League V prize. However, a win by Lambda Chi Alpha in their postponed game with Senior House I would clinch the title. Last week Lambda Chi Alpha downed Burton 13-12 to assure at least a tie.

Theta Delta Chi and Phi Mu Delta battled to a scoreless tie Sunday but the game had no effect on the League VI championship, which Senior House II won last week with its fourth straight triumph.

Interceptions cut down scoring threats by both sides in the second half.

**Varsity Sailors Third at Brown; Freshmen Sweep Meet on Charles**

Brisk winds swept the waters at Providence Sunday afternoon, as the varsity sailing team finished third of four teams in the Jack Wood Trophy Regatta. In this meet named for MIT's sailing master, the Coast Guard Academy successfully defended the title they won last year by a thirty-one point margin over Brown. The Techmen were sixteen points behind the Bruins with 107, while Dartmouth trailed with 95.

Skippering in "A" Division for the Engineers were George Kirk '60 and Jerry Milgram '60, with respective crews Bruce Bardes '61 and Tom Nosak '61. Gerry Slawacki '60 and Gary Helmig '62 were at the helm of the beaver "B" Division boats, assisted by Warren McCandless '62 and Thane Smith '62.

One of the best freshman sailing teams to represent MIT in years raced home first of six schools in a freshman meet on the Charles Sunday. Second place Yale chalked up 75 points to finish six behind the victors.

Ken Klair, skippering for the home squad in "A" Division, was high point skipper for the regatta with four firsts, a second, and a third. Jeff Levinger was his crew. In "B" Division, Mike Lifshultz handled the rudder, while John McNeil and Kimon George set the sails.

Coast Guard, Trinity, Rhode Island School of Design and Tufts rounded out the field.

**BRATTLE THEATRE**  
Harvard Square  
**THE CAPTAIN FROM KOEPENICK**  
5:30 7:30 9:30

FOR SALE: Rolls Royce Station Wagon — Showroom condition. Wraith chassis; Jaguar Young body. Phone LI 2-0896 or PA 7-0900

**G. L. FROST CO., INC.**  
AUTOMOBILE BODY REPAIRING & REFINISHING  
E. W. PERKINS 31 LANSDOWNE STREET  
Tel. ELiot 4-9100 CAMBRIDGE, MASS.

Get your Kaywoodie Pipes at the Tech Coop

**SPECIAL 10% DISCOUNT CARD**

Now Available to all MIT Students in  
Our New Men's Furnishings Department

**Introductory Special**  
IVY SHIRTS — \$5.95

**Brookline Formal and Leisure Wear**

392 Harvard Street, Brookline  
Telephone AS 7-1312

Open Monday, Tuesday and Thursday Until 8 P.M.

## Hill and Dalers Top Coast Guard; As NU Captures Triangular Meet

Running in a driving rain, the varsity cross country team downed the United States Coast Guard Academy while yielding to Northeastern University last Saturday at New London. The final score was NU 25, MIT 51, USCGA 54. The freshmen topped the Coast Guard JV's but also lost to the NU frosh: NU 36, MIT 41, CG JV's 47.

About half the course consisted of trails through woods, which were muddy due to the recent weather. The surface was made even more slick by the driving rain and fallen leaves. The unsure footing, which caused many runners to slip and fall, especially on a steep downgrade in the first mile, resulted in one MIT injury. Chuck Sigwart, '63, fell and dislocated a finger in the JV contest. However, he hung on to finish in second place, tops for the Beaver yearlings.

**McCartney Faces Techmen**  
Ed McCartney, '60, led the Engineers for the first time this year, taking seventh spot in 23:20 for the 3.9-mile course. The Cardinal and Gray grouped their first five in front of the third Coast Guard harrier to give them their edge.

Following Sigwart in the JV contest were frosh Rog Hinrichs, 3rd, Jeff Gibson, 7th, Tom Goddard, 11th, Bill Klehm, 20th, and Dave Kabat, 25th.

**Summary:**  
1. Brady (CG) 22:03. 2. Bentley (NU) 22:21. 3. Abelon (NU) 22:22. 4. Whitten (CG) 22:29. 5. Watt (NU) 22:47. 6. Parillo (NU) 23:07. 7. Ed McCartney, '60, 23:20. 8. Dan Oliver, '60, 23:23. 9. Woodland (NU) 23:27. 10. Kneeland (NU) 23:29. 11. Bob Mullen, '60, 23:30. 12. Rog Weissinger, '62, 23:35. 13. George Withbroe, '61, 23:35. 14. Crosby (NU) 23:38. 15. Horan (CG) 23:49. 16. DiBella (CG) 24:01. 17. Herb Wegener, '61, 24:02. 18. Watts (CG) 24:07. 19. Bolton (NU) 24:11. 20. Steps (CG) 24:21. 21. Pierce (CG) 24:24. 22. McKean (CG) 24:33. 23. Dean (NU) 24:34. 24. Steve Banks, '62, 24:39. 25. Phil Nelson, '62, 24:44. 26. Vence (CG) 24:45. 27. Herb Grieve, '61, 24:46. 28. Stevens (NU) 24:57. 29. Valenti (CG) 25:00. 30. Burchell (CG) 25:26. 31. Caudle (CG) 25:28. 32. Ron Troutman, '62, 25:39. 33. Paul Robertson, '61, 25:58. 34. George Ioup, '62, 26:26. 35. Hancock (NU) 26:31. 36. Brian Tunstall, '62, 26:47.

## Boxing Club Formed All Students Invited

The first meeting of the newest sport at MIT was held last Wednesday afternoon, at which time approximately thirty students interested in boxing professed their desire to learn the manly art. The pugilists are now members of the MIT Boxing Club, with equipment for combat on its way. Spearheading the group's formation is Paul Yaffe, '61. All parties eager to compete are urged to contact him at BE 2-2587, or leave their names at the A.A. office.

## WTBS Program Schedule

**Wednesday**  
7:30-8:45 A.M. Rise and Shine  
5:00 P.M. Caravan  
6:00 Clyde Reedy Show  
8:35 Campus  
8:50 News  
9:00 Classical Music  
1:00 A.M. Sign-off

7:30-8:45 A.M. Rise and Shine  
5:00 P.M. Caravan  
6:00 Jazz  
7:00 Bob Nagro Show  
8:35 Limelight Review  
8:50 News  
9:00 Classical Music  
1:00 A.M. Sign-off

**Friday**  
7:30-8:45 A.M. Rise and Shine  
5:00 P.M. Caravan  
6:00 Jazz  
7:00 Fiesta  
8:00 Baton Society  
8:35 Campus  
8:50 News  
9:00 Nite Owl request show  
2:00 A.M. Sign-off

**Saturday**  
5:00 P.M. Sports Roundup  
7:00 Jazz  
8:50 News  
9:00 Nite Owl request show  
2:00 A.M. Sign-off

## Soccer with BU Postponed; Next Game at Springfield

Heavy rain and a layer of mud on Briggs Field forced the postponement of the varsity soccer game with Boston University scheduled for last Saturday morning. The contest will probably be played within the next two weeks, although no definite date has been set.

Tomorrow afternoon the MIT booters travel to Springfield, where they'll face their toughest opposition to date.

## ATTENTION

JUNIOR PROM — NOVEMBER 6

NEW BLUE-BLACK TUXEDOS  
Special Low Prices For Students

— CAPITOL FORMAL SHOP —  
1357 Commonwealth Avenue Allston

One minute from Harvard Avenue  
Phone AL 4-2770 FREE PARKING



## There's opportunity, challenge, and excitement at Convair!

The widest diversity of missile and aircraft projects in the U.S. assures Convair of a continuing program of research and development . . . a challenging and exciting program that offers unlimited career opportunities to young scientists and engineers in many fields.

Talk with the men from Convair (see dates below). Ask about the extensive opportunities Convair offers for training . . . for continuing education . . . for personal advancement.

### CONVAIR SAN DIEGO

As an engineering or science major, you will soon make one of the most important decisions of your life: *Choice of Association*. We hope you will choose Convair-San Diego, but whatever your choice, the selection of association must be made with utmost care. Our representatives have a new booklet which describes the work of each group within the Convair-San Diego Engineering Department. After reading it, we believe you will be better equipped to make your decision . . . whether or not you choose our company.

SAN DIEGO, CALIFORNIA

### CONVAIR ASTRONAUTICS

Selected young graduates are offered the opportunity to join groups of outstanding scientists and engineers in the advanced research and development atmosphere of Convair-Astronautics' new \$40,000,000 facility in beautiful smog-free San Diego . . . to participate in the design and development of the ATLAS Intercontinental Ballistic Missile (ICBM) a top priority of the Air Force that is pushing man's exploration into outer space. You may qualify for a position with Convair-Astronautics.

SAN DIEGO, CALIFORNIA

### CONVAIR FORT WORTH

Latest project to emerge into the stages of flight test and production at Convair Fort Worth is the B-58 — a long range supersonic bomber, first aircraft to be built under the "weapons system" concept. Nearly half-a-hundred other Air Force contracts are in various stages of design and development. In addition to working in this atmosphere of advanced thinking, you'll find better living at lower cost, and enjoy a wealth of recreational and cultural facilities in Fort Worth.

FORT WORTH, TEXAS

### CONVAIR POMONA

New programs at Convair-Pomona offer excellent opportunities today for engineers. Convair-Pomona created the Army's newest weapon, *Redeye* shoulder-fired missile, and developed the Navy's advanced *Terrier* and *Tartar* missiles. Many other programs, still classified, are at various stages of development, providing stimulating assignments for progressive-thinking engineers and scientists. Positions are open for Bachelors, Masters and Doctorate candidates in electronics, aeronautics, mechanics and physics.

POMONA, CALIFORNIA

Undergraduate & Graduate Students Majoring In  
**AERONAUTICAL, ELECTRICAL, ELECTRONIC, MECHANICAL, NUCLEAR, CIVIL ENGINEERING**

Plus Graduate Students Majoring In  
**PHYSICS and MATHEMATICS**

Representatives From Convair Will Conduct

## JOINT INTERVIEWS

**Thursday and Friday  
October 29 and 30**

Consult your placement office for details

## CONVAIR

A DIVISION OF

## GENERAL DYNAMICS

## Beadle of Caltech is ADL Lecturer; Nobel Winner to Discuss Genetics

President Stratton announced on Monday that this year's Arthur Dehon Little Memorial Lecturer will be Dr. George W. Beadle, one of the nation's outstanding authorities in the field of genetics.

Dr. Beadle, 1958 Nobel Laureate in Medicine, is the chairman of the Division of Biology at the California Institute of Technology. He will spend two weeks at MIT early in November and will conclude his visit with a public lecture on "The Place of Genetics in Modern Biology" in Kresge Auditorium at 8 P.M., on November 16. In addition to the public lecture, Dr. Beadle will participate in classes, seminars and other events in the Biology Department during his two week visit.



Professor George W. Beadle

After receiving his Ph.D. degree from Cornell University following undergraduate work at the University of Nebraska, Dr. Beadle held research and teaching posts at the California Institute of Technology, Harvard and Stanford, where he was Professor of Biology for ten years before returning to Cal Tech in 1946. He is a past president of the Genetics Society of America and of the American Association for the Advancement of Science. Dr. Beadle is at present chairman of the National Academy of Science Committee on Genetic Effects of Atomic Radiation.

Dr. Beadle's 1958 Nobel Prize was awarded for his work establishing the biochemical methods of studying genetic mutations. He also holds the Albert Einstein Commemorative Award (1958), the Emil Christian Hansen Prize of Denmark (1953) and the 1950 Lasker Award of the American Public Health Association.

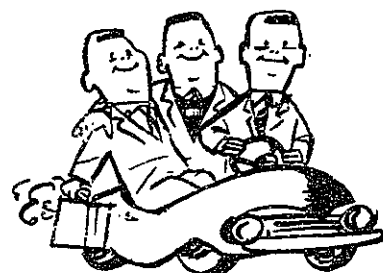
### FIELD DAY

(Continued from page 1)

all activities, since "Field Day" still on a trial basis, is permitted to exist only through the indulgence of the Dean's Office and the Athletic Association." Both classes are urged to refrain from any hazing during the coming few weeks.

FOR SALE: Rolls Royce Station Wagon — Showroom condition. Wraith chassis; Jos. Young body. Phone LI 2-0896 or PA 7-0409.

## WEEK-END IN NEW YORK



**\$5 DAILY PER PERSON**  
3-IN-A-ROOM  
(1 single, 1 double bed; slight extra charge for third bed)

BREAKFAST, TAXES INCLUDED BY RESERVATION ONLY. See your travel agent. Or write:

**HOTEL COMMODORE**  
42ND STREET AT LEXINGTON AVENUE  
N. Y. 17, N. Y. • A ZECKENDORF HOTEL

## -ESQUIRE- BARBER SHOP

90 Mass Ave. at Commonwealth Ave. opposite Eliot Lounge  
KE 6-6113

Where all M.I.T. STUDENTS MEET  
**OUR FLAT TOPS ARE THE TALK OF EVERY FRATERNITY HOUSE**  
Our Added Feature  
The "IVY LEAGUE" Hair Cut

Give Her Flowers From  
**MAHEGAN'S FLOWER SHOP**

Flowers For All Occasions

20 Norfolk Street  
Cambridge, Mass.  
In Central Square  
Your nearest florist  
**TOM McNEELEY**  
Phone TRowbridge 6-3932



## SPECIAL 10% DISCOUNT CARD

Now Available to all MIT Students in  
Our New Men's Furnishings Department

**Introductory Special**

IVY SHIRTS — \$5.95

**Brookline Formal and Leisure Wear**

392 Harvard Street, Brookline

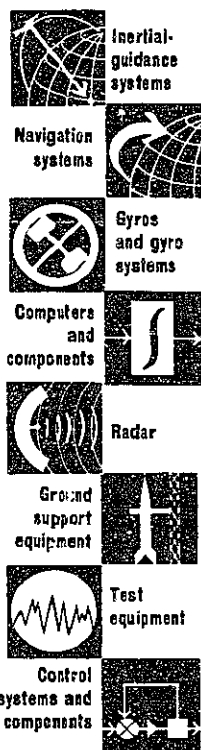
Telephone AS 7-1312

Open Monday, Tuesday and Thursday Until 8 P.M.

### Senior engineering students...

**Kearfott will be on campus, Nov. 3**  
Check your placement office for complete details

#### KEARFOTT CAPABILITIES INCLUDE:



interviewing for

## ASSISTANT PROJECT ENGINEERS

Responsible training-program assignments offer varied experience, and a chance to select the work you prefer for long-range growth. For example, let's examine the present training of Larry Wood, class of '58:

Larry chose the Navigational Systems Laboratory for his initial assignment. Here, he is working on the inertial guidance system for the SUBROC missile; he selects components such as networks and gear trains, specifies parameters such as amplifier gain, and is studying possible alternates to the present system.

If Larry requests permanent assignment in this Lab, he will write design specifications, sketch originals, and supervise draftsmen in the preparation of final prints. He will coordinate the efforts of engineers from supporting groups, supervise technicians performing final systems tests and developing required supporting test equipment.

Larry is helping Kearfott grow, and he is growing with it. Similar opportunities exist for this year's EE and ME graduates. Please see your Placement Director for additional information and for an appointment.



Larry Wood, BSEE, University of Maine, June, 1958



**Kearfott Company, Inc.**  
1500 Main Avenue, Clifton, N. J.  
A subsidiary of General Precision Equipment Corporation

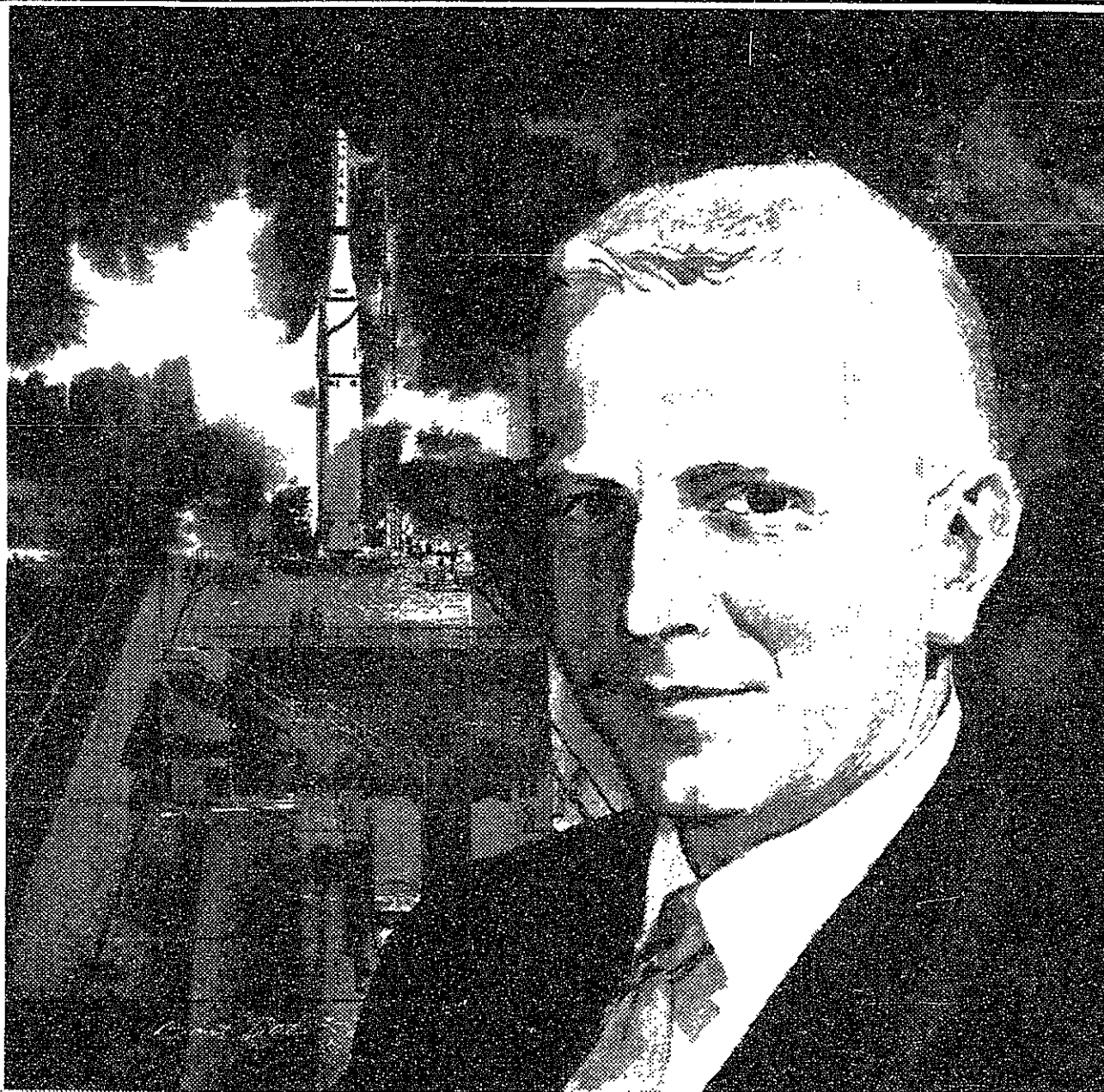
## C. D. Boyce

October, 1958, when the Thor-Able lunar probe soared 79,000 miles, was a time of quiet pride for Clay Boyce. Design engineer Boyce was responsible for successfully predicting the in-flight performance of the Aerojet second stage of the Able vehicle.

Clay Boyce has gone on to become an Aerojet Systems Division group leader, in charge of design and installation for the next generation of Able upper-stage vehicles for scientific and military applications. A mighty important assignment, you'll agree, for a BSME still in his twenties.

Clay Boyce, with Aerojet since 1955, exemplifies the possibilities that exist at Aerojet for professionally gifted younger men to perform tasks of engrossing interest.

An Aerojet-General representative will be on campus to discuss employment opportunities with you on October 28, 29, and 30. Contact the placement office for details.



**Aerojet-General CORPORATION**

AZUSA AND NEAR SACRAMENTO, CALIFORNIA • A SUBSIDIARY OF THE GENERAL TIRE & RUBBER COMPANY