

The Tech



VOL. LXXVIII NO. 15

CAMBRIDGE, MASSACHUSETTS, FRIDAY, APRIL 11, 1958

5 CENTS

Informal ParStuFac Discussions Will Highlight Parents' Weekend

By stressing informal discussions between the parents and the faculty, the Parents Week-end Committee hopes this year to give the parents a greater insight into the life of the MIT student. The affair, which is held once every two years, will be May 10-11.

"In order to give the parents a feeling for the various aspects of their son's or daughter's life at the Institute," said Charles W. Holabird '59, General Chairman, "we are putting the affair on a much more individual basis than before." Instead

of using the somewhat-cold exhibit system alone, as in previous years, the group is supplementing the exhibits with informal discussions and speeches by leading members of the faculty of each course. Parents will have the opportunity to talk individually with the instructors at the open houses and at the course luncheons on Saturday.

A dinner for the students and their parents will be held Saturday night, and a special program in Kresge will follow, featuring a speech by acting President Stratton serenading by the Logarithms; a film, "This Is MIT"; and an international program. Gerry Stephenson '59, Undergraduate President, will speak at the dinner.

A full schedule is planned for Sunday with services in the chapel and open house in each of the individual living groups.

The committee has corresponded with the students and their parents, and a large attendance is expected.

Latin American Firm Gives Institute Grant For Soil Research

The Institute has received a grant of \$30,000 from the Creole Foundation of Caracas, Venezuela, to aid the program of research and education in soil engineering, acting President Stratton announced last night.

The grant is the first the Creole Foundation has made in New England and the largest it has ever given to an educational institution in the U. S. The money will be used to expand facilities in the soil engineering laboratories in the department of Civil and Sanitary Engineering.

Soil Engineering deals with the fundamental properties of soils and with ways of improving them for engineering purposes. It ranges from foundation studies for buildings and bridges to research on highway and airport construction, as well as on earth structures such as dams, embankments and tunnels. The first course in soil engineering in the U. S. was given by MIT in 1928.

Soil Engineers from underdeveloped countries—some of whom are studying at the Institute—are particularly interested in the use of earth as a building material. In many of these countries, soil is not only the most economical but also the only available construction material. More than 125 Latin American students, including 16 from Venezuela, are currently enrolled at MIT.

New Machine Makes Diffraction Gratings Finer than Previously

The world's most precise engraving machine, a new type of electronically-controlled ruling engine developed at the Institute, has recently produced the largest and most perfectly diffraction gratings ever made, Dean Harrison told the Optical Society of America on March 28. This accomplishment is the result of ten years of work in the Spectroscopy Laboratory under the direction of Harrison.

The ruling of improved diffraction gratings is important because these instruments are used for many scientific purposes, ranging from the analysis of the light from stars to the study of the structures of atoms and atomic nuclei. The more precisely engraved and the larger a diffraction grating is, the more detail it will reveal about the infinitesimal structures of atoms and nuclei.

(Continued on page 5)

'All-Tech Basketbrawl Game' Stars Vannevar Bush Tomorrow Evening

Vannevar Bush '16 will lead an all-star contingent into the Armory tomorrow night for the "Second Annual All-Tech Basketbrawl Game." Bush, who doubles, in the off-season, as Chairman of the Corporation and elder statesman of the scientific and engineering worlds, will act as head referee.

Thirty-odd faculty and staff members will lend their talents to the festivities, breaking ranks to form two teams: Science & Humanities vs. Engineering & Administration. Last year, the S&H team took the initial encounter 39-5 and the E&Aers have reportedly sworn a terrible oath to recoup.

Patrick J. McGovern '59, outgoing chairman of the public relations committee, announced the rosters yesterday. The rosters, he said, were based on student preferences as evidenced in a recent poll.



Some of the dazzling play to be seen Saturday at the All-Tech Basketbrawl game is previewed at a practice session.

Referee Bush will toss the first ball at about 7:30 p.m., McGovern predicted. A second contest, pitting the MIT Intramural All-Stars against their Harvard counterparts, will get underway later. Tickets will be forty cents (two for seventy-five). In addition, tickets to the Vassar-MIT Glee Club performance, later in the evening, will be honored.

Last year's game drew a capacity house. The bright costumes of the participants, including full Indian headdress worn by President Killian, last year's referee, as well as the wide open style of play, drew rafter-rocking plaudits from the crowd. The final score of 39-5 does not give a true picture of the game, particularly since field goals counted for five points and foul shots for two.

McGovern announced that the same scoring rules would apply this year. The game will be divided into eight two-minute periods, he said.

(Continued on page 7)

Burton Housemaster

The Burton House Committee has been told by the administration that a system of housemasters will be started in Burton House in September, 1958. According to one Housecomm member, official announcement of the housemaster plan awaits only the selection of the master.

The latest plan calls for eight faculty and graduate residents. There will be one full-time resident professor in the faculty resident's apartment plus two associate professors in the house. There will also be one graduate student resident on each of the five floors.

Eggs to Roll Saturday

The Technology Community Association will stage a huge egg-coloring party tonight, to which the public is invited. This will be in preparation for the Post-Easter Egg Roll on the Great Court at noon tomorrow.

Those interested in coloring the eggs may do so at the TCA Office in Walker at eight p.m. tonight. Dye and eggs will be provided, but dates will have to be supplied by the participants.

Monster Egg Rally

The eggs will be deposited in the Great Court tomorrow morning; the Department of Physical Plant has been instructed by TCA not to cut the grass. At eleven a.m., sixty Cambridge youngsters from local settlement houses will be turned loose to find the eggs. Five hundred of them, all hard-boiled, will have been hidden in the grass.

After the eggs have been found, the urchins will line up on the Great Court for the egg-rolling contest. Each will push an egg with his nose over a thirty-foot course.

April 19 Is Date Set For All Tech Sing

With ten entries, including the dorms, fraternities, coeds and grad students, this year's All-Tech Sing promises to be the best in years. Saturday, April 19, is the date when "Egbert" will make his long awaited debut, being presented for the most original skit.

The evening will also feature Professor Ted Wood as emcee with his usual spicy humor; Betty Lou Marple, Music Department secretary and Dr. Stockmayer of the Chemistry department as two of the three judges selected to date; and some outstanding scenes from this year's Tech Show, "Out on a Limbo".

The festivities should be over at about one .m.: at that time, students and faculty will be allowed to go over the Great Court and hunt for left-over eggs.

MIT Reactor to Aid In Medical Research; Has Operating Room

The Institute reactor, which will be completed this spring, will be unique in its medical facilities which will be available for use by doctors from various hospitals and medical schools. It will be very versatile, however, and will be used by virtually every department at MIT, in scientific and industrial research as well as in educating students in nuclear engineering.

The reactor will be the only such facility with a medical room located beneath the source of radiation. This will make it possible to position a patient on a hydraulic operating table, in a way that will provide a maximum of comfort and effectiveness in using the beam of radiation from overhead.

The medical chamber is a conventional tile-walled operating room and will be equipped so that surgery can be performed when required by the irradiation technique. Patients will be kept under observation during treatment by doctors who can watch

(Continued on page 5)

The Vassar Glee Club Joins MIT Group For Anniversary Concert

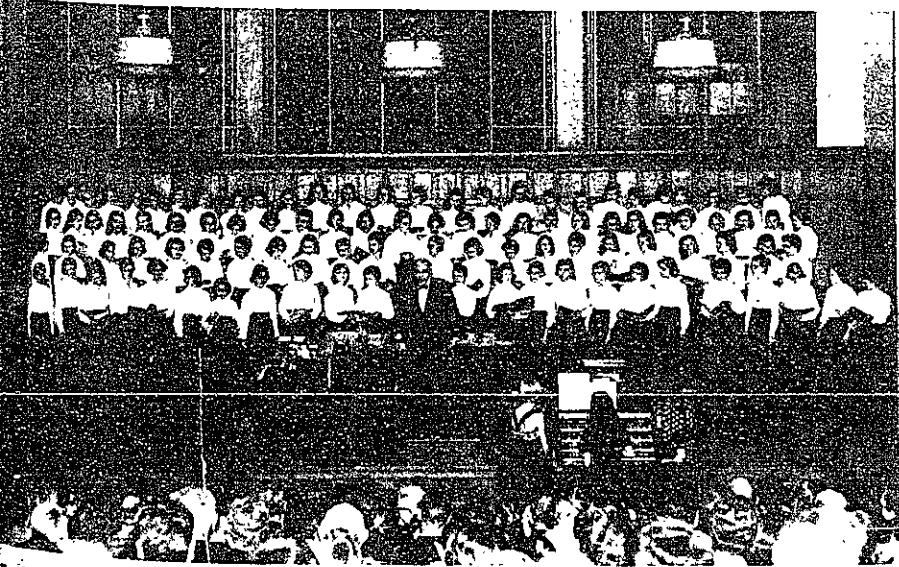
In their initial visit here, the Vassar Glee Club will join the MIT Glee Club in a concert celebrating the 75th anniversary for both groups. They will sing in Kresge Auditorium on Saturday, April 12 at 8:30 p.m.

The MIT Glee Club, directed by Klaus Liepmann, will open the concert with a group of choral works taken by Randall Thompson from the writings of Thomas Jefferson. This will be followed by works by Brahms, Palestrina, Bach, Sibelius, and Hindemith. Professor John Peirce will then direct the Vassar Club's performance of works by Henry Purcell, J. S. Bach, and an intriguing number by Handel entitled "Haste Thee Nymph".

The two groups will then join forces to sing excerpts from "The Peaceable Kingdom" by Randall Thompson.

The Vassar Glee Club has previously given concerts with such groups as the Amherst, Bard and Bennett Junior College Glee Clubs, and the Bowdoin, Colgate, Columbia, Hamilton, Harvard clubs, as well as the Vassar Mandolin Club.

Tickets for the performance, which is sponsored by the Vassar Club of Boston, are now available at the MIT music office, Room 14-N236. Tickets are \$2.00 reserved, \$1.00 unreserved. Tickets procured for the concert will also be honored at the nearby All-Tech basketball game.



Professor John Peirce with the hundred members of the Vassar College Glee Club at a recent concert. The Glee Club will sing here with the MIT Glee Club tomorrow night.

On page three of this issue are listed the numbers of the freshly installed fraternity telephone extensions. These numbers may be reached by dialing the proper Institute extension.

Reveal Girl Seduction Ring

A Wellesley College girl was arrested by Security Force Police yesterday evening, while roaming suspiciously through East Campus dorms. She was later found to be a ring leader in an extensive husband-hunting syndicate, operating in three quarters of the women's colleges in the Boston area.

A Simmons College spokesman, in an exclusive *Daily Reamer* interview, has admitted that girls there must belong to this guild, known as "The Free Thinkers Society for Promotion of Hasty Marriages", as a prerequisite for graduation. Likewise, a Wheelock Dean has admitted encour-

aging girls there to enroll in the secret society as a part of the broad education offered at that college.

Women students are organized into assault teams in their freshman year, attending hourly classes dealing with such topics as: "body dynamics", "elementary perfume techniques", "effective innocence", and "principles of gold digging". Laboratory periods offering practical experience in the art, are held monthly, and are known to the society as "acquaintance dances".

By the time she has reached her sophomore year, the average girl is deemed fit for duty, and is dispatch-

ed to lure unwary male students from their studies.

Proposals for marriage are solicited through the subtle arts of seduction learned in primary training. Essentially, the accepted scheme is: 1. contact, 2. cultivation, and 3. the big pitch—usually enacted behind closed doors of dormitory rooms, particularly in Baker House.

MIT men, as potential \$12,000 a year engineers, are considered top notch prospects. "MIT men are easy prey, due to the unwholesome surroundings inherent in a factory atmosphere," said a Radcliffe girl, "even our novices have had great success there."

This fact is borne out by the record of one Chandler girl, who has said

to have been engaged simultaneously with eleven different MIT men.

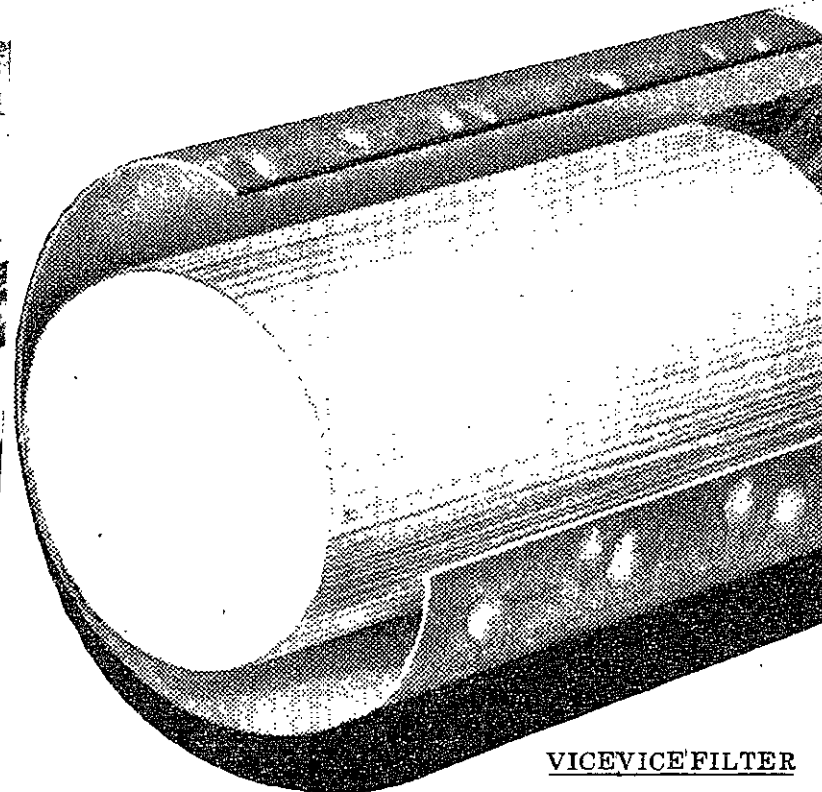
The crime-smashing Security Force is busily devising countermeasures and hopes to prevent further damage to Technology morals by placing all girl colleges on an off-limits list.

District Attorneys, Inc. offers its services
Yawn I. Browman '59
Eugenic R. Zober '59
Christy O'Sprayed '60
Successors to Dick Butcherson & Associates
"We prosecute all Engineering matters
their final natural end. No failure ever."
See us, best inquisitors since Torquemada,
best investigators since MacCarthy.
Any day at Walcott Third, 3 Ames St.



THURSDAY EVENING May 1 AT 8 O'CLOCK
Hon NIKITA KRUSCHEV
"I was a Communist for the FBI!"
CHEVY HALL FORUM
FANEUIL HALL—Red Square cor. Lenin St. BOSTON
DOORS OPEN 8:30 P.M. EVERYBODY WELCOME

What does this fruit have to do with this cigarette filter?



THE VICEVICE FILTER IS MADE FROM A PURE, NATURAL MATERIAL FOUND IN ALL FRUITS

—and it gives you Maximum Filtration for the Smoothest Smoke!

• From the same soft, pure material found in the rich pulp of nature's healthful fruits, modern filter scientists have created the greatest cigarette filter ever designed . . . the ViceVice filter. For the ViceVice filter gives you the *maximum filtration* for the smoothest smoke of *any* cigarette. More taste, too . . . the pure, natural taste of rich, mellow tobaccos. Yes, ViceVice gives you *more* of what you change to a filter for!



New crush-proof flip-open box or famous familiar pack.

VICEVICE PURE, NATURAL FILTER...
PURE, NATURAL TASTE