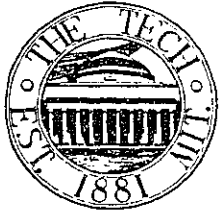


# The Tech



NEWSPAPER OF THE UNDERGRADUATES OF THE MASSACHUSETTS INSTITUTE OF TECHNOLOGY

VOL. LXXVIII NO. 54

CAMBRIDGE, MASSACHUSETTS, FRIDAY, JANUARY 16, 1959

5 CENTS

## Ella To Entertain Sellout Crowd In Kresge Jazz Concert Tonight

The MIT community will be in for a rare treat tonight as Ella Fitzgerald makes her appearance in Kresge Auditorium at 8:30. Scheduled as a part of Ella's winter tour, the Kresge performance will be her only appearance in the New England area.

Chuck Staples, Baton Society President, reports that nearly all the tickets have been sold, and the one chance for late-comers will be last-minute cancellations. Kresge seats 1200 and an overflow crowd is expected, this being Ella's only appearance in Boston. The Baton Society, musical honorary of MIT, is sponsoring the concert.

"Evening with Ella Fitzgerald" will feature selections by Cole Porter, Rodgers, and Hart, and Irving Berlin. In addition Ella will feature

some current hits and, of course, jazz, jazz, jazz. Accompanying Ella is guitarist Herb Ellis, of the Oscar Peterson Trio, a group with which she sang on the West Coast recently. Lon Levy, formerly with Woody Herman, will perform on the eighty-eight, while Wilfred Meddlebrooks, a musician long connected with Count Basie, will strum the bass. Both Ellis and Meddlebrooks are from Los Angeles.

Ella will arrive in Boston from New York late this afternoon. Immediately after the show she will catch a plane to Rochester, New York, for an engagement there. Jazz fans should take advantage of this opportunity while they can, for Ella plans a tour of Europe this April. Before her appearance in New York, Ella had been playing the West Coast.

Ella, known as America's First Lady of Song, had her start in the twenties when she recorded her first song, "A Tisket a Tasket." Since this early start in the Harlem, Ella has shot to the top of her field. Although Ella devotes most of her time to recording for the Verve label, she has starred in several movies, the most recent being "Pete Kelley's Blues." Some of her latest albums were LP's with other famous artists, including Louis Armstrong. Her most recent "Ella Fitzgerald Sings Her Song Books," features hits by Cole Porter, Rodgers and Hammerstein, and Irving Berlin. Ella has appeared in Boston before at Storyville and Blinstrub's, but this will be her only appearance here this year, as she is returning to Europe. She was there last summer and sang at the World's Fair at Brussels.

### ERRATUM

The Tech was in error in the last issue in stating that Mort Achtor '59, is chorus and orchestra director of Tech Show '59. Mr. Achtor has no connection with this year's show.

## Top MIT Internat'l Week Slogan Writer To Visit UN Gratis

A one-day expense paid trip to the United Nations Building in New York City is in the offing for the winner of a slogan contest sponsored by the International Week Committee.

Chairman Jaime de Sola '59 announced that this prize will be given to the writer of the best short sentence advertising and popularizing the mid-April International Week.

Entries should be written to conform to the purpose of the week, which is promoting international cooperation and understanding.

Deadline for turning in entries has been set as Feb. 16. The winner may take his trip at the time of his choosing during the spring term.

The International Week Committee feels that through this program foreign students will have the opportunity to show American students their way of life just as they are shown ours through living here.

## Course XV Appoints Dr. Marquis, Eminent Psychologist, Professor

Dr. Donald G. Marquis, internationally known psychologist, has been appointed professor in the School of Industrial Management. He has been chairman of the departments of psychology at both Yale and the University of Michigan. His contributions in research and publication have ranged over such fields as learning, manpower utilization and social psychology of human behavior in organizations.

"MIT's active interest in the human side of economic enterprise goes back more than two decades to the establishment of the Industrial Relations Section in 1937," Dean E. P. Weeks of the School of Industrial Management has said. "The distinguished social scientists who have been members of the Section have made outstanding contributions to knowledge in labor relations and personnel administration, and have helped to broaden the education of several generations of MIT students."

"In the School of Industrial Management other social scientists have been pursuing related interests in the organization and management of managers. It is obvious that profound changes are taking place all over the world in the demands on industrial management and in the nature of

management's responsibilities. Theory and practice are undergoing extensive modification as a result of these changes, which we believe they will accelerate in the future. The appointment of Dr. Marquis to our faculty is in line with our desire to give proper emphasis to this vital subject."

Dr. Marquis received his Ph.D. from Yale in 1932 and since then has chaired the psychology departments at both Yale and the University of Michigan. For the past year and a half he has been on the staff of the Social Science Research Council in New York. During the war he was director of the Office of Psychological Personnel of the National Research Council and served also in the Office of Scientific Research and Development under Dr. Vannevar Bush, now Honorary Chairman of the Corporation. He was a trustee of Antioch College from 1952 to 1956. He has been a consultant to many public and private organizations including the Carnegie Corporation, the Ford Foundation, the Veteran's Administration and the National Science Foundation. He is a past president of the American Psychological Association and a member of the National Advisory Committee on Mental Health.

## Fraternity Scholarship Chairmen Discuss Means of Improving Greek Average

The reasons behind the perennial difference between MIT's all-men's average and all-fraternity average was the topic of a Tuesday night's meeting of fraternity scholarship chairmen.

Fourteen houses were represented at the conference, which was directed by Bob Lienhard '60, who was recently appointed IFC scholarship chairman, a post which had been vacant for several years.

The discussion was called primarily as a preliminary feeler, to get an idea of fraternity attitudes toward scholarship and methods for its improvement. Over a period of years, all-fraternity average has run consistently one-tenth of a point under all-men's average. The purpose of IFC's scholarship committee will be to try to find reasons for this difference and make these findings avail-

able for individual fraternity use. Lienhard stressed that IFC was not trying to legislate scholarship or force fraternities to adopt these suggestions.

Another function of the committee will be awarding the trophies presented each year to the houses having highest average, highest pledge class average, and most improved scholarship.

Fraternity requirements for initiation and study regulations within the house were discussed at some length. Initiation requirements varied considerably from house to house, ranging from simply staying in the Institute to a 3.0. Quiet hours are somewhat universally set at from 7:30 p.m. or so throughout each week-day evening. Following is a random sampling of scholastic rules in some fraternities.

Beta Theta Pi enforces quiet hours from 7:00 on every night except Saturday. If necessary, fines are available to aid enforcement, and a 3.0 average is required for initiation.

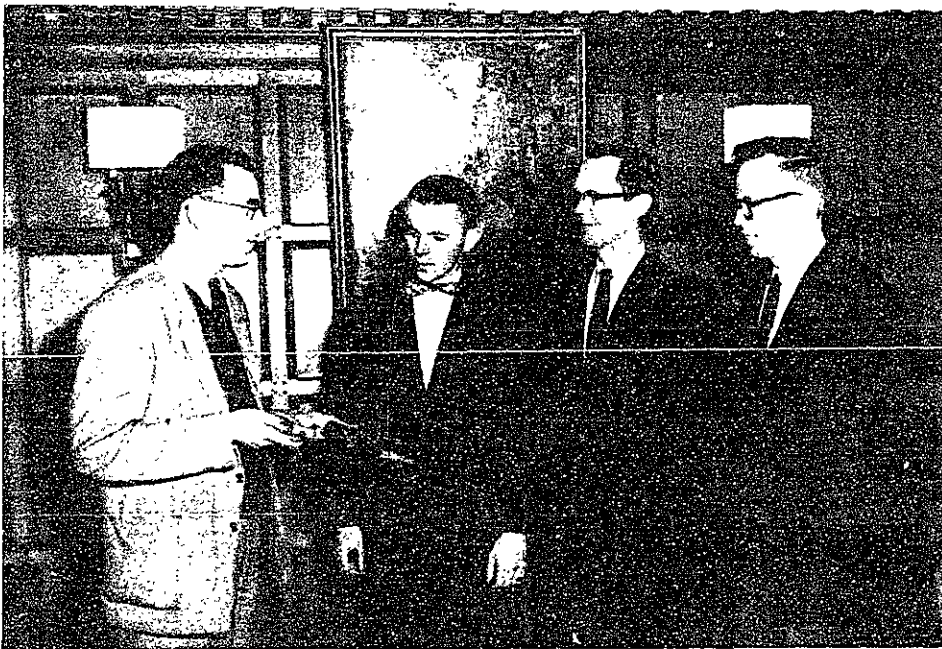
Phi Gamma Delta and Delta Upsilon enforce quiet hours, but levy no fines. DU requires a 3.0 for initiation, Phi Gam a 2.5.

Pledges of Sigma Nu must remain at their desks from the commencement of study hours, at 8:00 p.m., until they go to bed, with permission required to leave the room. They must have a 2.5 their first term for initiation, a 3.0 thereafter.

Sigma Alpha Epsilon and Delta Kappa Epsilon have no specific grade-point requisites, and though study conditions are maintained five days a week, neither house levies fines for breach of regulations. AEPi requires a 2.5 for initiation, and maintains quiet hours after 7:30, Monday through Thursday and all-day Sunday.

The task of the scholarship committee will be to correlate these regulations, along with other factors such as number of men per room, and produce some positive suggestions.

(Continued on page 6)



Phi Lambda Upsilon President Dr. David H. Freeman awarding membership to chemistry research men: Professors David P. Shoemaker, Norman A. Nelson, and Frederick D. Greene.

## Phi Lambda Upsilon Computers Unsnarl Traffic Jams Soon? To Fraternal Ranks Work Is Promising

The election of three faculty members of the Chemistry Department to membership in the Beta Alpha Chapter of Phi Lambda Upsilon was announced Tuesday, January 13. The new members are Professors Frederick D. Green, Norman A. Nelson, and David P. Shoemaker. All are associate professors of chemistry.

Professor Greene joined the MIT faculty in 1955 after studying at Amherst and Harvard. He is presently conducting a research program on organic reaction mechanisms. Professor Nelson came to the Institute in 1955 also, and is now probing into enol ether reactions. He attended the Universities of Alberta and Wisconsin. Professor Shoemaker attended Reed University and Cal Tech before coming to MIT in 1951. He is using X-rays to study chemical structure.

Whereas undergraduates are admitted on the basis of scholastic achievement or research, faculty candidates are judged on research and teaching.

The purpose of the fraternity is to promote high scholastic achievement, and high standards of research and teaching in various fields of chemistry. Phi Lambda Upsilon awards the Freshman Award for excellence in chemistry and gives a series of lectures each year in conjunction with this purpose. This spring the fraternity will invite high school teachers to their lecture series. The fraternity numbers 100 undergraduates and 20 faculty members.

Traffic jams, frustrating and unpredictable to most people, are being scientifically studied with the use of computers by a group at MIT. Specific bottleneck areas are precisely simulated and analyzed with regard to individual vehicles and driver psychology.

The Operations Research Center is presently conducting the study with the help of The Port of New York Authority. The work is focused on such places as the Holland and Lincoln Tunnels and the George Washington Bridge, but the research is applicable to heavy traffic condition areas around the country.

The computer generates a picture of traffic situations, simulating the position of each car at intervals of a fraction of a second, so that delays and varying distances between vehicles can easily be seen. The information fed into the computer has been obtained from various sources such as a camera mounted in one of the towers of the George Washington Bridge. Walter Helly, one of the Center's research engineers, remarked, "I can study the actions of 100 cars in a simulated situation on the computer in the same time it would take me to study one car at, say, the entrance to the Sumner Tunnel in Boston."

An essential work of the project is to build into the simulation the proper characteristics of individual drivers. The camera mounted in the George Washington Bridge can de-

(Continued on page 6)

## \$10,000 Grant To Research in Casting Art Objects at MIT

A \$10,000 grant has been made by the Rockefeller Foundation to support research by Alfred Duca, Boston sculptor, in the MIT foundry laboratory. Mr. Duca seeks new techniques to take the place of 5,000-year-old methods of casting art objects in metal.

According to Prof. Howard F. Taylor, who announced that Mr. Duca had joined the staff of the department as a research associate, the research will concentrate on the simplification and improvement of the "lost wax" process of molding sculpture, first used in Egypt and China thousands of years ago.

"The lost wax process, and for that matter, practically all casting of sculpture, is nearly a lost art in America," Professor Taylor said. "Young men have found that they can earn more money working on mass production assembly lines than as apprentices or artisans in art casting, with the result that it is difficult to find a foundry in the United States to cast a work of art at a reasonable price."

"The consequence is that most casting of fine sculpture must be done in Europe. An American who has done his work in clay or wax must send it to Italy, Portugal or France, where art casting is still a highly regarded craft. It is generally desirable that he oversee the work himself. This is one reason that sculpture has languished in the United States."

## Strattons Entertain Senior House Comm

President Julius A. Stratton and his wife entertained the Senior House Committee Wednesday in the Penthouse. The seventeen guests presented him with two books as tokens of appreciation, and following a short cocktail hour, the ensemble partook of a buffet supper. Dr. Stratton was impressed with the artificial icicle display of East Campus and said that he expects his daughters to commence growing cucles also.

# The Tech



VOL. LXXXVIII January 16, 1959 No. 54

Entered as second class matter at the post office at Boston, Massachusetts. Published every Tuesday and Friday during the college year, except college vacations, by THE TECH—Walker Memorial, Cambridge 39, Mass. Telephones TRowbridge 6-5855-6 or UUniversity 4-6900. Ext. 2731. Twenty-four hour answering service: TR 6-5855.

Stephen M. Samuels '59.....Chairman  
John J. McElroy '59.....Managing Editor  
Kenneth F. Reinschmidt '60.....Business Manager  
Philip E. Beach, Jr. '59.....Editor  
Glenn W. Zelders '59.....News Director  
David W. Packer '59.....Sports Director

John B. Stevenson '60.....Associate Managing Editor  
Alfred G. F. Kniazze '59.....Associate Managing Editor  
Peter M. Silverberg '60.....Advertising Manager  
Brian Strong '62.....Circulation Manager  
Raymond J. Waldmann '60.....Treasurer  
Jon P. Wigert '60.....Associate Editor  
William F. Burke '59.....Associate News Editor  
John E. Arens '61.....Assistant News Editor  
Abraham Feinberg '60.....Associate Sports Editor  
John R. B. Disbrow, Jr. '61.....Assistant Sports Editor

## SPORTS BOARD

Paul T. Robertson '61.....Bob Gurnitz '60  
Phillip Fauchard '60.....Leonard R. Tenner '60  
Martin H. Nipomnich '61

## BUSINESS BOARD

Dennis E. Kelly '60.....Robert A. Solem '61

## NEWS BOARD

John E. Arens '61

## MANAGING BOARD

Gene W. Ruoff '61

## EDITORIAL BOARD

M. Dixon Browder '59.....Allen C. Langford '58  
Carl V. Swanson, Jr. '60.....Henry Okun '60  
Eric S. Langford '59.....Morton J. Achter '59  
Myer P. Kutz '59

## STAFF CANDIDATES

Charles Weller '62.....John Werkheiser '62  
Jim Kistler '62.....Robert Johnson '62  
Bostwick Wyman '62.....Archie Thomas '62  
Ted Zehnpeennis '62.....Tom Brydges '62  
John Carraway '62.....Jack Blum '62  
Herb Taylor '62.....Bernie Herschberg '62  
Steve Levy '62.....Woods Halley '62  
George Hippisley '62.....John Ryan '62  
R. H. Kunz '62.....Jean Pierre Frankenhuis '61  
Dennis E. Cook '62.....Cy Tadd '62  
Michael M. Gold '62.....Juri Toomre '62  
Michael F. Casey, Jr. '62.....Jerry A. Winston '62  
Robert N. Gurnitz '60.....Loren Bachman '62  
Donald R. Twyman '61.....Deloss S. Brown '62  
Peter B. Burleson '61.....Charles Muntz '62  
David E. Nickless '62.....B. T. Tucker '62  
Barry Roach '62

## half notes

For those of you who are inclined toward "modern" music, tomorrow night's Symphony concert (MIT—Boston) promises to be an elegant affair. The program:

Rumpelstiltskin .....Kazdin  
Concerto for Cello .....Dvorak  
Karl Kornacker G, soloist  
Firebird Suite .....Stravinsky

John Corley, conducting

High point of the evening will be a toss-up between the *Concerto* and the *Firebird*. Karl Kornacker G had appeared as soloist with the Orchestra before. Tomorrow night's interpretation of the Dvorak *Concerto* promises to be a masterful one. Stravinsky's controversial *Firebird* is perhaps the Orchestra's most ambitious undertaking to date. This number has to be heard to be believed.

Opening the concert will be Andrew Kazdin's *Rumpelstiltskin*, a delightful fantasy derived from the familiar fairy tale. Several other of Andy's compositions have been performed by the Concert Band in past years.

Earlier this term, a near-capacity crowd turned out for the Orchestra's November concert. Judging from audience satisfaction resulting from that first program, tomorrow's concert at 8:30 in Kresge should be a sell-out. But there's nothing to buy. Admission is free.

## QUARTER-NOTES:

Ella tonight at Kresge . . . Any remaining or unclaimed tickets will go on sale at the door circa 7:45 p.m. . . . Sunday afternoon at four there's a free organ recital by Bruce Bennet of Baltimore in the Chapel.

—Mort Achter

## reviews

### Inspector Maigret

Simenon, the author of more than twenty mystery stories in the series of Inspector Maigret, is certainly one of the more impressive gentlemen in this art. His stories are perfectly described, the atmosphere is created right away, and

a touch of realism takes you along the steps of the mumbly Maigret without even realizing it. This picture currently showing at the Exeter is taken from one of the books and has all the qualities of it, mystery, excitement, realism, atmosphere, and the final twitch, unexpected and unexpected. A very fine picture indeed with a calm performance by Jean Gabin and a uniform good quality of the other actors; it is worth seeing, if you don't arrive in the middle. Quite apart from this commentary I would like to explain, for those who think that I praise a French movie more than an American one, the only reason is that France only exports good pictures. We do have the same terrible ones you can find here, but fortunately we never see them on this side of the Atlantic. As for Inspector Maigret, it is a "thriller", and a good one. It would be ridiculous to tell you the story, given the classification of "detective story". The photography is regular black and white as usual for a good "thriller" (unless it's by Hitchcock when it doesn't depend on technicalities of any sort), and the rhythm is very fast. All leads to one suspect, but . . . a very comic figure in the person of one of the inspectors relieves the tension in the good spots. Some nice looking girls, some smart devices and traps set by Maigret, and the picture is on its way to a very tense and unnerving end. The quality which distinguishes Simenon from other authors like Agatha Christie and Erle Stanley Gardner is the intense effort to give a sound psychological background to his stories and characters, in a certain way very much like Graham Green, though the latter writes novels with background, while Simenon writes detective stories with psychological background.

Inspector Maigret is a very good picture, dramatic, touching in certain parts, brutal, and vivacious. In the same program with Inspector Maigret we can enjoy a surrealistic "short" on a day in New York with beautiful colors and images reflected in deforming mirrors creating a very interesting effect. The experience is quite successful, though a little tiring to the eyes after a while. There is also a little picture on a certain mountain in New Zealand which is typical of all skiing pictures. The Exeter, in its policy of showing good movies, has certainly hit a success this time, and we can't think of much better entertainment for two next Saturday night.

—Jean Pierre Frankenhuis '61

## college world

What is it about this time of year, this end-of-January-push time, that wakes within me all my frustrated desires and unquenchable thirsts, and drives me onward to the Red Lion, to Simmons, to anywhere where the possibility of assimilating a trace of knowledge is utterly nil? Finals are more than tests of accumulated sense, they are a state of mind. Now you just watch—tomorrow when the crowd of gents taking 6.251 adjourn to the Red Lion to celebrate the last lab of the term (as they have similarly celebrated the end of every other lab this term), I will join them, as I have been known to do in the past, in similar celebration of another lab. Oh yes, you bet it's against my better judgment, but I'll be there. Why don't you all join us?

Prowling through a stack of newspapers to see what's going on in the world, I find that a fraternity at the University of Louisville, while decorating the inside of their house with ivy for a party, neglected to notice that they had installed the poison type.

*The Connecticut Daily Campus*, in an article protesting the many existing and ever-increasing number of rules restricting the courting of women by men on college campuses, advances the thought that, since the girls are largely the ones who are doing the legislating, ". . . usually in the form of a straight arrow dorm council or women's student government agency," and since men tend to ". . . shy away from dates with the female legislator sort . . . It is therefore very possible that the ladies that are passing the restrictions are of the dateless, frustrated variety, and all that they need to make them change their tune, some men say, is a good, hearty necking session in the lounge of some dorm or the back seat of a car." As steps to ". . . safeguard those cherished social prerogatives . . .", they suggest that ". . . a liaison group of males be assigned to detect and label the dateless, mateless, and kissless females, and some sort of rotation system be devised to provide them with virile dates." They go on to say, ". . . a bit of preventative basic-drive stimulation can certainly prevent a lot of nasty regulations which at this point may be inevitable. Let's hop to it, men."

I had planned to say something about the founding of a free love society at one noted university, but I think I'll just end this last column, for this is the last College World I'll be writing, on the note of the last paragraph, speaking of the Red Lion, of Simmons, of wasting time on frivolous pastimes, of evading the curse of legitimate work whenever the opportunity permits, and of loafing in the most leisurely of all possible manners, LET'S HOP TO IT, MEN!!

—Dix Browder '59

BRATTLE THEATRE  
1400  
Thru Sat.: NIGHTS OF CABRIA  
Start Sun.: RAZZIA

**THIS IS IT!**

**SBL** You can't get any better family protection than Savings Bank Life Insurance—so why pay more? Join the more than 500,000 thrifty policyholders who have this low-cost protection. Many policies available in amounts from \$500 up. Age limits 15 days to 70 years. Ask for folder giving rates and benefits.  
CAMBRIDGEPORT SAVINGS BANK  
Central Square UN 4-5271

SECOND HAND  
TEXT BOOKS  
BOUGHT, SOLD AND  
EXCHANGED  
AT ALL TIMES

**HARVARD  
BOOK STORE**

1248 Massachusetts Ave.  
Cambridge, Mass.  
Free Book Covers

TONIGHT thru SUNDAY  
Also Sunday Matinee 3-6:30

HI-LO'S  
Opening Monday:  
OSCAR PETERSON TRIO

GEORGE WEIN'S **STORYVILLE**

No Cover Charge  
Except Friday and Saturday

**EXETER** KENMCO 670  
GEORGES SIMENON'S  
**INSPECTOR  
MAIGRET**  
WITH  
**JEAN GABIN**  
IN FRENCH WITH ENGLISH TITLES  
NEW YORK SHOWS OF  
AORANGI

ORGANIZER FOR  
SCHOOL CHARTER TO  
EUROPE WANTED

We have available some charters on regularly scheduled airlines. If some person would be willing to organize a charter for students, faculty and staff at M.I.T., please contact.

Edward Bloomberg  
UNIVERSITY TRAVEL COMPANY  
Harvard Square  
Cambridge, Mass.

**GRIME AND PUNISHMENT**

On a gloomy evening in July 19--, in the town of P--, bystanders were amused to see an impoverished student named Rasnalikov enter the tavern of Fyodor Fyodorivitch in L. Street and demand a beer can opener. They smiled because they knew he had no cans of any sort to open, and also because Fyodor had not kept a tavern in L. Street for some years.

Inside, a police inspector named Ilfa Ilfanoya told him the place was now a precinct station. "But . . . how can . . . that be?" Rasnalikov gasped, pointing at a S-----r\* beer sign that read "Your kind of beer—real beer!"

"Ah, that I retain for my own pleasure," Ilfa said. "Although of late I study it for some clue to the recent theft of a case of S-----r from a delivery truck in the Province of T--. Your home province, is it not?"

"Y...e...s," Rasnalikov said. "Can...he know...?" he thought. He glanced, trembling, at the small black cloud hovering inches above his head. "Why did I bring that? . . . He is sure to notice it . . . It is just such trifles that ruin everything . . ."

"For the sake of absurd argument," Ilfa said, "and also because I have five hundred kopecks bet on it, let us say you are guilty. Would your motive be thirst? Avarice? The smooth S-----r flavor experts call round?"

"I . . . don't . . . drink beer," Rasnalikov mumbled, aching to cry out, to die, to give Ilfa a punch in the j--. "Forgive me!" cried Ilfa. "I must not detain you further, then, in your search for a beer can opener! You might try N-- in the village of F--."

Rasnalikov turned to go, but he could not. "Why, what is it?" asked Ilfa. "You are grown even paler." "It was I who took the case of S-----r from the delivery truck in the Province of T--," Rasnalikov sobbed softly. Ilfa Ilfanoya rolled his eyes. People surrounded them. Rasnalikov repeated the dark words.

\*Schaefer—TRANSLATOR

THE F. & M. SCHAEFER BREWING CO., NEW YORK and ALBANY, N. Y.

# The Peripatetic Critic

## For Playgoing Post - Quiz Vacationers

### New York Stages Offer Varied Fare

**LA PLUME DE MA TANTE**  
 Anyone who has a chance to go to New York should not miss this very funny show of madness, legs and French spirit, this show whose name could certainly be changed to: "Scenes we'd like to see". It is not a great production, it is not headed by a cast of millions (dollars) and it is not and never was intended to be a musical comedy. It is a "Variety" show, a wonderful, witty, hilarious succession of things which go wrong, mixed with a subtle touch of slapstick, of course, and full of the best French madness. In two fast moving hours, entirely dedicated to give you enough laughs for the price you paid, and some extra ones on account of your own sense of humor, "La Plume de ma Tante" with Robert Dhéry and Colette Brosset is a hand-full of bits of life, of show-business scenes, most of them purposely spoiled by something which happens and wasn't in the book. In the middle of a very nice act a late violinist walks front stage to ask the maestro which is the way to the orchestra pit; the ever-lasting scene of the lady on a swing singing, with a powerful tenor, is interrupted because the gentleman pushes too hard and sends his part-

ner back-stage; the zipper of a strip-teaser (not really) doesn't open and somebody has to come and help her; a row of dancers kicking their legs one way while one of them keeps kicking the other way is one of the best scenes. At the end of the scene the manager comes to the stage and tells us that she would like to try again, which she does, without success; a very fine ballet goes on until the male lead comes on stage (Pierre Olaf) and stops because he is too self-conscious of the indecency of his tights; from scene five we jump to scene seven because the girl who shows the card couldn't find number six; and on and on and on. A ridiculous person in a bright yellow raincoat sings riding a horse (a real one!) who keeps laughing all the time, and so do we. Though some examples were given here, it will not spoil your fun because the true comic comes when you see it; and it is a very amusing show, with no pretensions to be a great dramatic event or a fabulous vaudeville show, but just a bit of good comedy, intended to amuse you and not only the critics. Going backstage we found that Mr. Dhéry is as funny in real life as he is on the stage. He seemed a

little surprised by the evident success he had, the show being booked for several weeks and going to run at least for a year.

Mr. Dhéry was certainly happy of the tremendous reviews he had but everything seemed quite fantastic to him, as are the things in the United States and he looked like a marveled child, one for whom Santa Claus appeared after all, without looking too much like his father. A charming man, a brilliant comedian and a purposely childish look on life are the characteristics of the wonderful and smiling character who greeted us, and "La Plume de ma Tante" is no less charming, brilliant and refreshing a show. There are certainly more important shows on Broadway at the present time but it is hard to find one which is funnier.

It is already difficult for a playwright to produce a one-act play with only two characters, but when the same thing is accomplished in a full-length comedy, the author is either an excellent writer or a fool. It is a pleasure to consider Mr. William Gibson as an excellent writer, his play "Two for the Seesaw" being one of the funniest, most touching, simplest and most charming of the shows we have seen for a long time. A brilliant dialogue, alive and witty, a touching story and a profound knowledge of human beings allows Mr. Gibson to attain the maximum possible enjoyment out of the two hours the curtain is up. It is a play about people, lonely people, living among the great masses of unfriendly concrete of the city of New York. This loneliness is, however, full of the desire of living, taking as much as possible from the agitated automation of those who eat, sleep

(Continued on page 4)

## With Three Hundred Squid a Day

### Dr. Schmitt Seeks a Nerve Relay

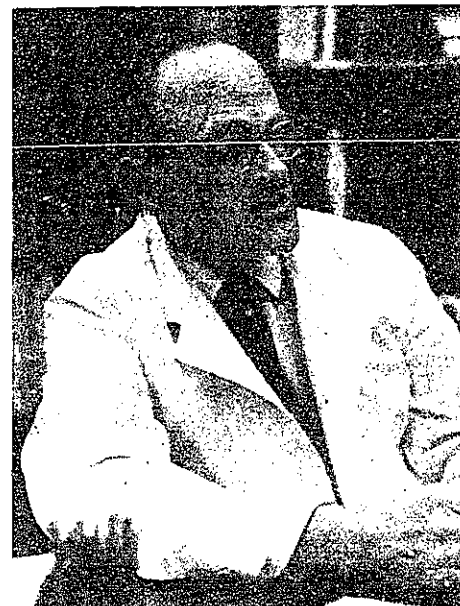
Do you know that MIT has a Squid Club with headquarters in Building 16? On the fifth floor a group of molecular biologists, biochemists, and physical chemists is working on a research program to discover the molecular machinery of nerve impulses. To accomplish this, a supply of nerve fiber was needed.

The lowly squid proved to be the answer to the biologists' prayers, since its nerve axon has a diameter fifty to a thousand times greater than the fiber available from most animals. Because of their large size, these squid nerve fibers were once thought to be blood vessels. It was not until 1933 that they were proven to be axons. This size is a decided advantage, since by cutting the large fibers and excruding their contents, pure axoplasm can be obtained without fear of contamination from substances from surrounding tissues, as was the case when using fibers from other sources.

Dr. Francis O. Schmitt, an Institute Professor since 1955, heads this program. Working on this type of research since 1936, Dr. Schmitt came to MIT in 1941, at the invitation of President Compton. During World War II the research program was discontinued. Not until 1946 was the group able to resume its program. The National Institutes of Health through a long-time grant has generously subsidized the effort.

The Office of Naval Research provided the Unit with a specially equipped truck to transport an average of fifty live squid a day from Cape Cod to the Cambridge laboratory. After several summers it became evident that a more plentiful supply of axoplasm was needed especially since northern squid, which range in length only up to a foot, could be obtained only in the late summer and early autumn.

In 1955 the New York Times featured an article on this research,



Prof. Francis O. Schmitt

which was later read by Louis E. Marron, a champion fisherman. He wrote Dr. Schmitt, stating that he knew of large squid off the coast of Chile. The laboratory examined several samples from the six-foot squid, finding that they were an excellent source of axoplasm. With financial aid from Mr. Marron and the Office of Naval Research, a full-time unit was set up near Valparaiso, Chile, to obtain and process these squid. The trustees of the Charles and Marjorie King Trust have also been generous in financial underwriting of the program.

Recent arrangements have been completed to ship the axoplasm of two to three hundred large squid per week.

Drs. Peter Davison and Edwin Taylor have worked on isolating and determining the characteristics of the fibrous protein of axoplasm. Dr. Taylor is now in Chile to augment the supply of axoplasm for the MIT Unit.

(Continued on page 4)

## CRONIN'S RESTAURANT

30 Dunster Street off Harvard Square

Famous for

CHARCOAL BROILED STEAKS, CHOPS and SEAFOOD

Dinner from 80c to \$3.00

TRY OUR PORTERHOUSE STEAK FOR TWO—\$5.00

Full line of Beer, Wines and Liquors

EL 4-1346

AIR CONDITIONED

# why the smart switch is to the '59 Chevrolet

**ROOMIER BODY BY FISHER:** features wider seats and more luggage space. **MAGIC-MIRROR FINISH:** keeps its shine without waxing for up to three years. **NEW BIGGER BRAKES:** better cooled with deeper drums, up to 66% longer life. **OVERHEAD CURVED WINDSHIELD** and bigger windows—all of Safety Plate Glass. **SLIMLINE DESIGN:** fresh, fine and fashionable with a

practical slant. **H-THRIFT 6:** up to 10% more miles per gallon. **VIM-PACKED V8's:** eight to choose from, with compression ratios ranging up to 11.25 to 1. **FULL COIL SUSPENSION:** further refined for a smoother, steadier ride on any kind of road. One short drive and you'll know the smart switch is to Chevy. Come in and be our guest for a pleasure test first chance you get.

NOW—PROMPT DELIVERY!

Stepped-up shipments have assured you a wide choice of models and colors. We can promise prompt delivery—and it's an ideal time to buy!



The 6-passenger Nomad and the Impala 4-Door Sport Sedan.

now—see the wider selection of models at your local authorized Chevrolet dealer's!

DE 8-8882  
 麗香飯店  
**HOUSE OF ROY**  
 Real Chinese Foods  
 OPEN DAILY FROM 4 P.M. TO 2 A.M.  
 Food Put Up To Take Out  
 12A TYLER STREET BOSTON 11, MASS.

"BEST Foreign Film of 1958" N. Y. Film Critics' Award

JACQUES TATI'S

"MY UNCLE"

9TH HILARIOUS WEEK!

**KENMORE** NEAR KENMORE SQ KE 6-0777

## EVERYONE SAVES

**SBL** Anyone who buys \$500 or more Savings Bank Life Insurance, whether he's 15 days or 70 years of age, SAVES. But now rates have been reduced on many policies of \$3,000 or over. These LOWER rates mean GREATER savings. Ask for free folder showing rates for all ages.

CAMBRIDGEPORT SAVINGS BANK  
 Central Square UN 4-5271

## CHEZ LUCIEN

FRENCH CUISINE AT ITS BEST

Formerly with the French Line

IMPORTED WINES

Lunch 11:30-2:30 Dinner 6:00-9:00

121 Mass. Ave., Boston CI 7-8933

Opposite Mass. Station

LUCIEN: Chef and Owner

## ELSIE'S

Noted for the Best Sandwiches To Eat In or to Take Out  
 The famous Hercules Roast Beef Sandwich

KNACKWURST - BRATWURST

with Sauertrout or Potato Salad

71 Mt. Auburn St., Cambridge, Mass

ELSIE and HENRY BAUMAN

EL 4-8362

**NEW YORK STAGE**

(Continued from page 3)  
and breathe dirt, neon signs, and coldness. The girl is Anne Bancroft, who won the Antoinette Perry Award and the Variety Award, for her interpretation of Gittel Mosca, and she certainly deserves awards for she is the most accomplished actress we ever knew at her age: a splendid performance accompanied by a very attractive silhouette, which she doesn't mind showing to us whenever possible. Miss Bancroft is a show by herself and with the marvelous lines she has from the script she brings us to the very heights of comedy. The boy is Dana Andrews and unfortunately he is far from giving full satisfaction to the audience. He seems to be asleep most of the time, and his monotonous voice throws away what could be the best part he ever had in show business. It is a pity that Henry Fonda, the original Jerry Ryan of the play, left us and the director, Arthur Penn, with the responsibility of enduring the very poor performance of Mr. Andrews, not at all "a la hauteur". It seems that Mr. Andrews, besides having an absolute ignorance of what the play is about, hasn't realized yet that raising an eye-brow is enough for a close-up on the screen, but far from being enough on a Broadway stage. The direction is very good, and shouldn't be too difficult,

the stage being large and the characters restricted. However, Arthur Penn could have fallen in the easy attitude of putting the actors on the stage and leaving them alone, which wouldn't really matter in this case: on the contrary he made a point of directing the play very accurately and the rhythm he gives to it adds to its success. The costumes are well done and the main feature of the technical aspects is certainly the change of scenario.

**SCHMITT**

(Continued from page 3)  
The axoplasm must be chilled and flown in iced thermos jars from Chile to Miami by Panagra Airlines, where it is transferred to domestic airlines which complete the journey to Boston. It usually takes fewer than sixty hours between the time of the dissection of the squid and its arrival at Logan Airport. For other phases of research, the axoplasm is usually freeze-dried and shipped as a powder in units of four to five grams.  
The MIT research group, particularly Dr. Gottfried Deffner and Reimar Hafter, has already discovered several new substances of low molecular weight in the axoplasm. These substances can be accurately separated by preparative paper electrophoresis. In order to go further into these problems, the group is awaiting the arrival of a high capacity separator which can process about eight grams of material daily.

**Ivory Tower**

With the second returning to school this February MIT is thrust into the jockeying of the campaigns for the various undergraduate elected offices. But MIT is not thrust into the political battles. Rather the skirmishers swoop upon this academic community with a great rustle of paper hanging as the gospel of Tom, Dick, and Harry is preached from that most oft seen of places: the inside of the head door.

MIT seems to have neither the mass rallies and football atmosphere campaigns of some campuses nor a resentment towards the ambitious candidate's intrusion — even in the most sacred sanctuaries of contemplation and solitude. Instead a great many Tech men, not all certainly but many, show a mild interest in the ability and qualifications of those who would head the student body. The interest in politics at the Institute is not a vital interest driving us to great demonstrations but a concern for something which can affect a certain amount of the life at this school. The better qualified more able man can accomplish more for the students. Considering student government a minor though probably measurable force upon his life, many of us demonstrate a mild interest in the better candidate winning. Fewer attempts to insure the victory of this candidate.

The campaigning of the candidate also points out this "individual" nature of politics at MIT. A person running for office, generally, by himself, decides to run for that office and alone, perhaps with occasional help from friends, conducts the vote drive. In his politicking the candidate uses the recognized best vote getting technique on campus—the personal approach where the candidate and a voter talk the individual appeal.

While a split between the dormitories and the fraternities particularly during campaigns has been spoken of, this split does not exist to an overwhelming extent.

FOR RENT—3 room apartment, furnished or unfurnished. Ocean view thru picture windows, sundeck. Boulevard, Point of Pines, Revere. Phone: RE 8-0326 or CH 3-1490.

**NEW, LOWER RATES**

**SBI** Good News! Savings Bank Life Insurance has **REDUCED** premium rates for straight life, limited payment life and endowment policies in amounts of \$3,000 and over. Ask for the folder showing these **NEW LOWER RATES**, today.

CAMBRIDGEPORT SAVINGS BANK  
Central Square UN 4-5271

Advertise, Merchandise, Economize. Selling your car, need a roommate, book sales, wife leave. Advertise in THE TECH at ten cents a line for members of the MIT community with classified ads.

'57 MGA ROADSTER: Excellent shape, \$1900, 21,000 miles. Call John Brosens, IV 4-6306, evenings.

WANTED—Reliable worker to earn \$1.50 an hour, 2-6 hours a week. If interested call Brian Strong at ext. 3217.

**EUROPE**

Dublin to the Iron Curtain; Africa to Sweden. You're accompanied—not herded around. College groups. Also shorter trips: \$685—\$1340.  
**EUROPE SUMMER TOURS**  
255 SEQUOIA (Box 4) Pasadena, Ca

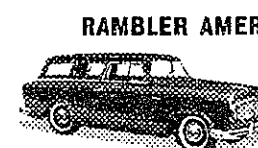
Big car bills stealing your room rent?



See the Compact '59 Rambler Save more than ever on first cost, gas, upkeep



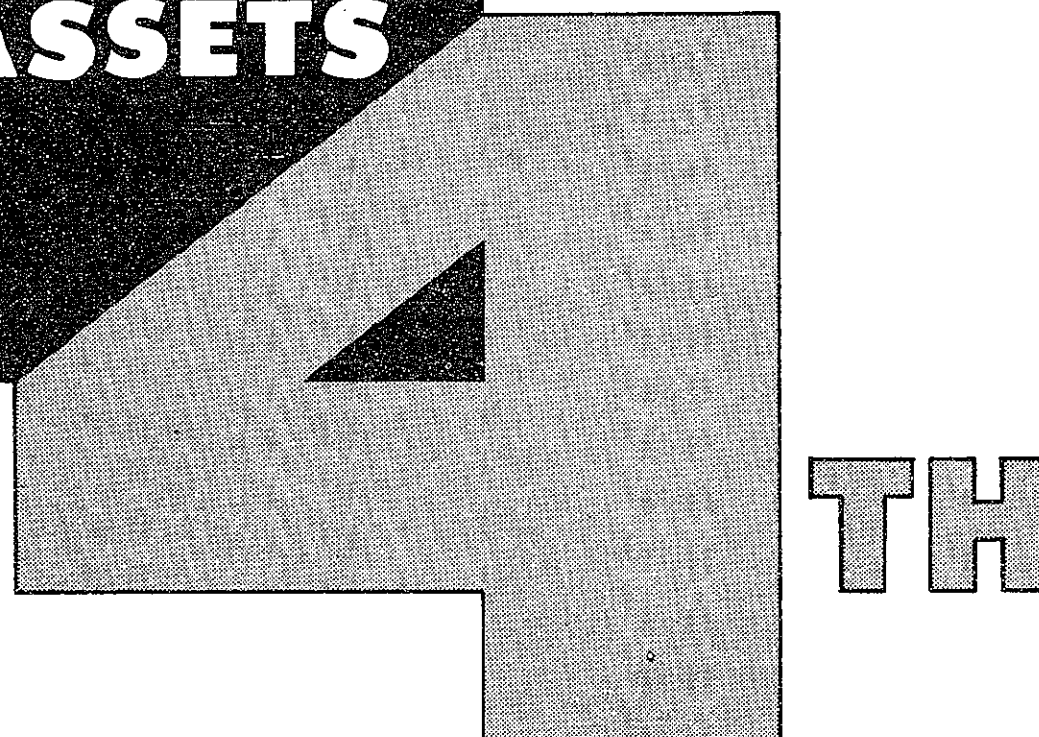
You've seen the others grow in size and price—now see how much more you can save with Rambler. Hundreds on first cost. New gas economy. Top resale. Easiest parking. Personalized Comfort: sectional sofa front seats glide back and forth individually. Go Rambler 6 or V-8.



**RAMBLER AMERICAN STATION WAGON**  
Save \$500 on First Cost \$500 less than other leading low-priced wagons. Based on a comparison of published manufacturer suggested prices. Full 5 passenger room.

**SEE YOUR RAMBLER DEALER TODAY AND SAVE**

**A BILLION DOLLARS IN ASSETS**



**...IN REVENUES!**

Here are two significant statistics to consider when you are thinking about your future:

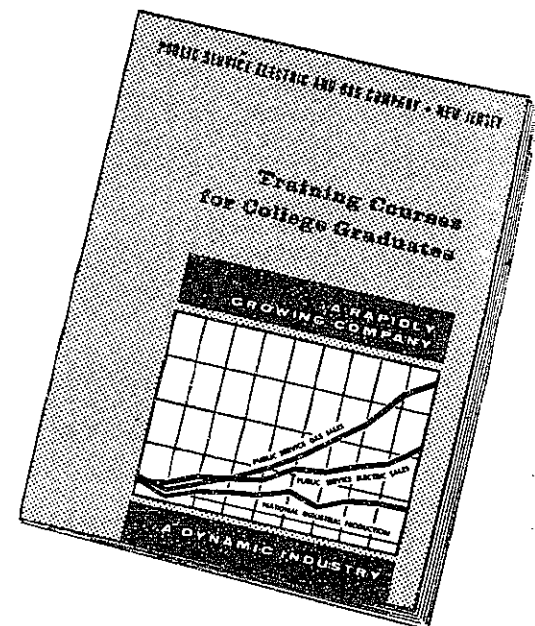
Public Service, one of the leading electric and gas utilities in the nation, has more than \$1,000,000,000 invested in its utility plant.

The company ranks fourth in total revenues among investor-owned operating utility companies providing both electric and gas service in the United States.

Serving the highly concentrated residential heart of New Jersey in a thriving territory marked by diversified industry, Public Service is certain to realize a dynamic expansion in the years to come.

You would be wise to consider working for this rapidly growing company. See the Public Service man the next time he is on campus.

Send for this today. Write now for the new brochure, "Training Courses for College Graduates." Write Public Service, 80 Park Place, Room 2152A, Newark 1, New Jersey for your free copy.



**PUBLIC SERVICE ELECTRIC & GAS CO., NEWARK 1, N. J.**

# Intramural Basketball Playoffs In Progress SAE, Fijis, Grads, Senior House Unbeaten

Marked by a few upsets, the intramural basketball playoffs began with eight first round contests Sunday and six second round games Wednesday night. As expected, Grad House A and Phi Gamma Delta are undefeated and appear headed for the finals as they did last year. The only surprises of the double elimination tournament to date have been the victories of Sigma Alpha Epsilon over seeded Burton C and Alpha Epsilon Pi.

Defencing champs, Grad House A walked over Student House 61-28, with Cy Galvin netting 15 for the victors in their only playoff appearance prior to presstime. Last season's runner up Phi Gam quintet found Sigma Chi soft competition Sunday night to earn a 39-28 win, but Wednesday the Sky Gazers proved tougher and cut their victory margin to 32-28.

The Sailors notched their opening round surprise triumph when Walt

Humann '59 put in two foul shots in the last second to beat Burton C 35-33. Humann led the game's scorers with 13 while Tom Tisch '60 hooped 12 for the losers. Sparked again by their 6' 6" center who tallied 21 points, SAE disposed of AEPi 45-38. The latter had edged Sigma Nu 27-25 Sunday as Dave Garelick '59 had 9 markers in the low scoring contest.

The only other aggregation with a 2-0 record is Senior House who captured two one-point decisions, edging Alpha Tau Omega 32-31 then Grad House B 34-33. Tom Taylor '61 hit for 21 against ATO. This Sunday, the Senior House streak runs up against the Fijis.

Also in the ranks of the unbeaten is Phi Sigma Kappa who topped Lambda Chi Alpha 40-33 Sunday as Pat Coady '60 poured in 16 tallies.

In other first round action, Beta Theta Pi forfeited to the Sky Gazers and Grad B drubbed Phi Delta Theta 70-31. The winners' trio of high scorers was Jack Eversole with 19 and John Cutting and Pete Rosenbaum with 17 apiece.

Wednesday evening's remaining encounters saw Sigma Nu and the Betas put out of the tournament by Burton House and Sigma Chi respectively.

THE L. S. C.  
CLASSIC FILMS SERIES  
REGRETFULLY ANNOUNCES  
THAT "THE THREE PENNY OPERA" HAS BECOME  
UNAVAILABLE TO US. IN ITS PLACE, FRIDAY, JAN. 16,  
WE ARE SHOWING S. M. EISENSTEIN'S  
"ALEXANDER NEVSKY"  
A Russian film in sound and with English subtitles

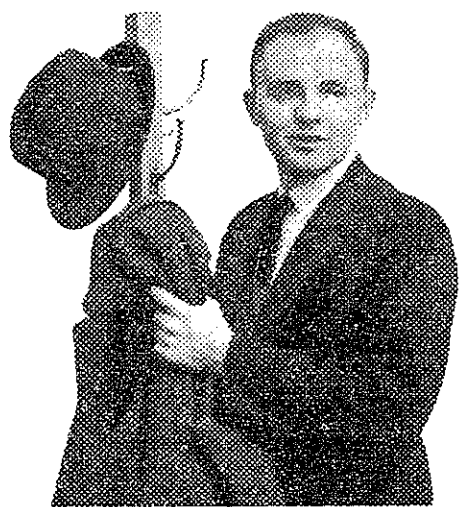
**THE NEW PENWAY** 136 MASS. AVE. KE 6-0610  
NOW with Distinctive and Unique Cinema Attractions from the Film Capitals of the World  
Introducing A PROVOCATIVE NEW STAR **ANNELI SAULI**  
IN *The Milkmaid*  
Michael REDGRAVE • Ann TODD  
CO. HIT *Time without Pity*

WORLD PREMIERE • TUESDAY THRU JAN. 31  
at Little Theatre, M.I.T.  
DYLAN THOMAS'

## "THE DOCTOR AND THE DEVILS"

Adapted for the stage by Joseph D. Everingham  
Presented by the POETS' THEATRE  
Sponsored by M.I.T. DRAMA SHOP CELEBRITY SERIES

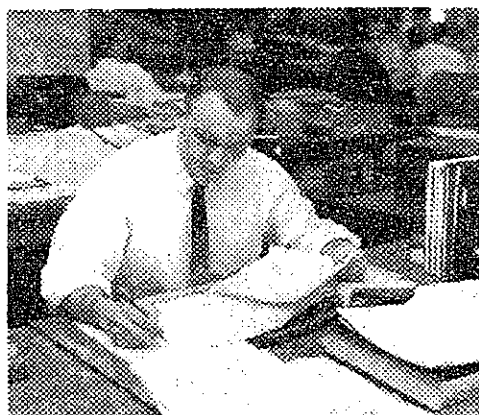
PRICES: \$2.50 (STUDENTS \$2.00)  
Seats on Sale: Leavitt & Peirce, 1316 Mass. Ave., Cambridge  
Phone for Tickets: UN 4-1887 Tickets also available at Box Office



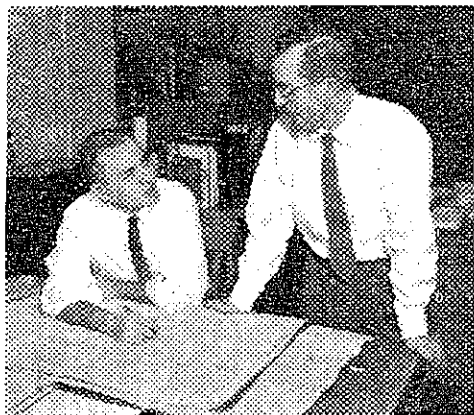
KEITH LYNN, B.S.E.E., PURDUE, '52, INVITES YOU TO

*"Spend a day with me at work"*

"I'm an Equipment Engineer for Illinois Bell Telephone Company in Chicago. Speaking personally, I find Bell Telephone engineering darned interesting and very rewarding. But judge for yourself."



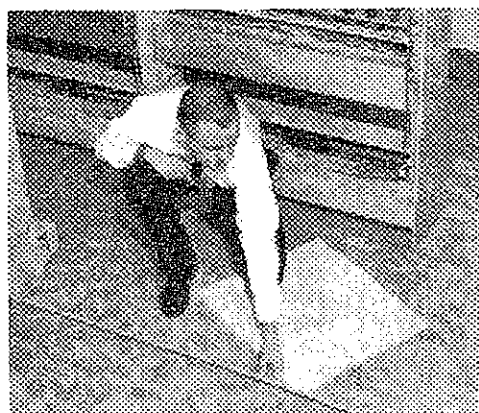
"8:30 a.m. We start at my desk. I'm studying recommendations for installing additional dial telephone facilities at the central office in suburban Glenview. This is the beginning of an interesting new engineering assignment."



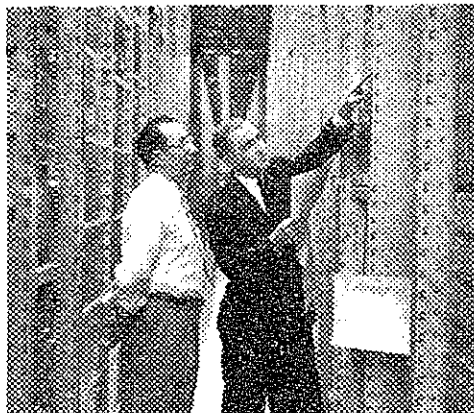
"10:20 a.m. I discuss a proposed layout for the additional central office equipment with Supervising Engineer Sam P. Abate. I'll want to inspect the installation area this afternoon, so I telephone the garage and order a car."



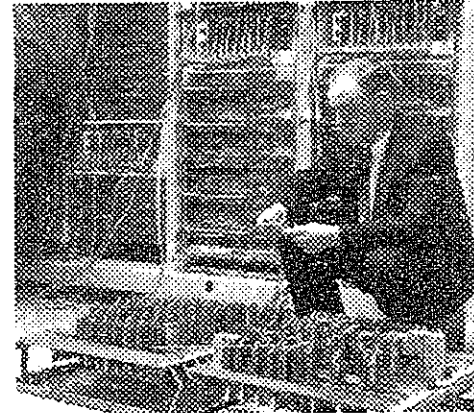
"11:00 a.m. At an interdepartmental conference I help plan procedures for another job that I've been assigned. Working closely with other departments of the company broadens your experience and know-how tremendously."



"2:00 p.m. After lunch I drive out to the Glenview office. Here, in the frame room, I'm checking floor space required by the proposed equipment. Believe me, the way our business is growing, every square foot counts."



"3:10 p.m. Then I drive over to the office at nearby Skokie where a recent engineering assignment of mine is in its final stages. Here I'm suggesting a modification to the Western Electric installation foreman on the job."



"3:30 p.m. Before starting back to Chicago, I examine a piece of Out Sender equipment being removed from the Skokie central office. This unit might fit in just fine at one of our other offices. I'll look into it tomorrow."

"Well, that was today. Tomorrow will be different. As you can see, I take a job from the beginning and follow it through. Often I have a lot of jobs in various stages at the same time. I think most engineers would agree, that keeps work interesting."

Keith Lynn is one of many young engineers who are finding rewarding careers in the Bell Telephone Companies. Find out about opportunities for you. Talk with the Bell interviewer when he visits your campus. And read the Bell Telephone booklet on file in your Placement Office.

**BELL TELEPHONE COMPANIES**



### on deck

Saturday  
Varsity Basketball with Army 1:00 p.m.  
Varsity and Frosh Indoor Track at Army 1:15 p.m.  
varsity Basketball with Army 8:15 p.m.  
Frosh Basketball with Exeter 6:15 p.m.  
Varsity Squash at Navy 2:00 p.m.

**Erroll Garner**  
IN CONCERT  
One Night Only • Tomorrow  
SAT., JAN. 17, 8:30 P.M.  
SYMPHONY HALL  
Tickets: \$2.40, 3.60, 4.80  
at Symphony Hall Box Office

**Special STUDENT WEEKEND RATES**

Single with running water ..... \$3.75  
Single with bath ..... \$6.25  
Double-bedded rooms ..... \$4.00  
Twin-bedded rooms ..... \$4.90  
Triple ..... \$4.30  
per person  
Also rates for 4 or more to suite

**Somerset HOTEL**

400 Commonwealth Avenue  
Boston 15, Mass. Copley 7-9000

**-UNIVERSITY-**  
HARVARD SQUARE UN 4-4580

Today and Saturday  
COLUMBIA PICTURES presents  
**SPENCER TRACY**  
**THE LAST HURRAH**  
A JOHN FORD PRODUCTION

Shown at 2:40, 5:55, 9:10  
Also "SKI-TOWN U.S.A."  
(Featurette on Western Skiing)

Sunday, Monday, Tuesday  
"THE BRIDGE ON THE RIVER KWAI"

Shown at 2:00, 5:15, 8:30

Wednesday Only  
"WITNESS FOR THE PROSECUTION"

"THE TROUBLE WITH HARRY"  
Continuous Daily from 1:30

# Fencers Capture Three Matches Win Over Syracuse, Trinity, BU

Sparked by their captain, Barrie Shabel '59, the MIT fencing team went on to win a triangular match at Walker Memorial last Saturday. The Techmen led the field with 34 points against second place Trinity's 28 and third place Syracuse's 18.

The foil men paced the victory with a 14 and 4 record. Shabel led this division, winning all but one of his matches. Close behind were the sabremen who copped 11 and lost 7. Joe Verderber '60 and Karl Koepke '60 were both in strong form, each with a 4-2 record. Frank Cuerdo '60 had a 3-3 slate.

The epeemen were even for the contests with a 9-9 tally. Ronald Wempen '59 was outstanding in this division with a 5-1 record. Joe Pedlosky '59 won 2 out of 5 and William Jullian '61 copped 2 for 6. Ernie Gudath '60, substituting for Pedlosky lost his match.

### Fencers Smash BU

The Beaver duellers were even more impressive Wednesday evening when they extended their season's record to four victories with but one setback by trouncing Boston Univer-

sity 21-6. The victors won each of the weapons events by 7-2 scores.

Sherman Karp '60 won all three of his foil matches, while Shabel and Jerry Yarborough '60 captured two each to wrap up that division. Larry Campbell '59 and Verderber each took a pair of sabre encounters, and the losers forfeited three more. Pedlosky won three and Wempen two in epee competition, with Chuck Haspel '60 also picking up a victory.

This Saturday the Beaver fencers will be host to Holy Cross at 1:00 p.m. at Walker Memorial. The Techmen should keep up their fine record against the visitors who are a new team on the schedule this year.

# Engineer Hoopsters Topped by Boston U. Morrow Tallies 27

Controlling the backboards because of their height advantage, Boston University downed the MIT varsity basketball squad 72-55 at Rockwell Cage Tuesday evening. The Engineers stayed even with the victors until midway in the first half when the Red and White went on to gain a 42-34 lead by the intermission. In the second session, the visitors widened their margin as the full court press they used throughout the game increased in effectiveness.

The one bright spot in the encounter for the Beavers was the sharpshooting of guard Hugh Morrow '60 who tallied 27 points.

This Saturday evening, the MIT hoopsters meet Army at Rockwell Cage at 8:15 for what looks to be a spirited battle that could go either way.

# Yearling Trackmen Drubbed by Andover In Season Opener

An undermanned MIT freshman indoor track team suffered a 73-17 defeat at Andover Wednesday afternoon in their opening meet of the season. Only ten Techmen made the trip, and the coach stated that there is still time for any interested freshman to come out for the team, as there are three meets remaining after mid-terms.

Neil Bacote was outstanding for the Engineer yearlings, scoring eleven of their seventeen points. Bacote won the 40-yard dash in 4.6, took second in the broad jump, and second in the 300-yard run. Steve Banks finished second in the mile for the visitors, with their scoring completed by third place in the high hurdles, 600-yard run and 300-yard run by Val Silbey, Larry Coppola, and Pete Mpontsikaris respectively.

### TRAFFIC

(Continued from page 1)

fect "accordion" effects due to driver reaction lags when traffic is accelerated or slowed down.

The immediate goal of the studies is greater knowledge of the nature of congested traffic flow, and measurement of factors that control it. Ideas to speed flows include stop or brake lights visible many cars ahead, minimum speed limits, and even more horsepower for greater acceleration.

### IFC

(Continued from page 1)

tions toward improving fraternity scholarship.

Questionnaires are being sent to all houses inquiring about their scholarship programs, and another meeting of scholarship chairmen is planned for the early part of next term.

The M.I.T. Science Fiction Society presents the film "The Day the Earth Stood Still" Wednesday, Jan. 21, in Room 10-250 at 8:00 P.M. Added attraction: 2 "Road Runner" cartoons. Admission is 25c.

Moderate Prices

## LA DUCHESSE ANNE

A Charming and Informal Corner of France

SUMMER GARDEN

RESTAURANT AVAILABLE FOR GROUP LUNCHEONS OPEN EVERY DAY, INCLUDING SUNDAY, FROM 5 TO 9:30 P.M.

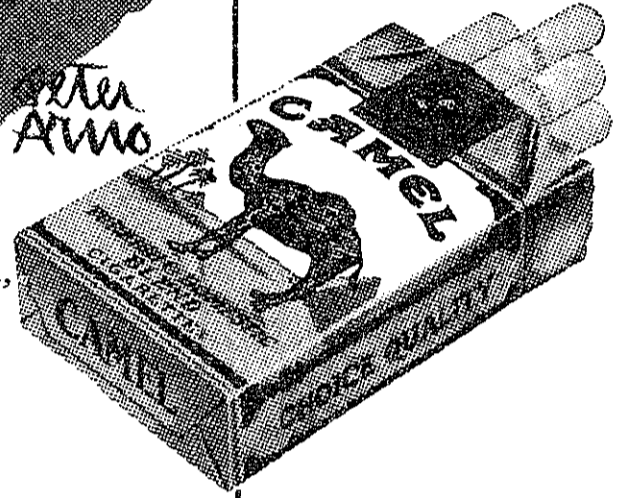
224 Newbury St. CI 7-9126 Boston



Many a girl would rather walk home than do without Camels. For the 10th straight year, this cigarette outsells every other—every filter, every king-size, every regular. The Camel blend of costly tobaccos has never been equalled for rich flavor and easygoing mildness. The best tobacco makes the best smoke.

Don't give in to fads and fancy stuff . . .

Have a real cigarette—have a CAMEL



"I don't mind your running out of gas—but Camels!"

B. J. Reynolds Tob. Co., Winston-Salem, N. C.

EVERY FRIDAY and SATURDAY  
NO COVER—NO MINIMUM  
SWING WITH  
THE STOMPERS  
at  
**MAHOGANY HALL**  
DEDICATED TO DISTILLING  
COPLEY SQUARE HOTEL  
HOURS: 11:00 A.M. to 1:00 A.M. KE6 7-000

English: **TURKISH CHECKROOM**  
Thinklish: **FEZIDENCE**  
PATRICIA MCELROY, CORNELL

English: **INEBRIATED RELATIVE**  
Thinklish: **DRUNCLE**  
CARL BASE, ARIZONA STATE COLL.

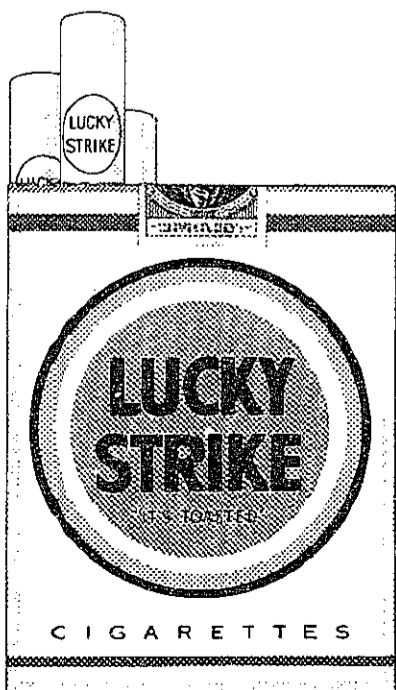
English: **BOVINE MELODY**  
Thinklish: **MOOSIC**  
BUD SCHUMAN, U. OF CAL.

Lucky Strike presents

# THINKKLISH

—the funniest, easiest way yet to make money!

PUT IN A GOOD WORD AND MAKE \$25!



Speak English all your life and what does it get you? Nothing! But start speaking Thinklish and you may make \$25! Just put two words together to form a new (and much funnier) one. Example: precision flight of bumblebees: *Swarmation*. (Note: the two original words form the new one: swarm + formation.) We'll pay \$25 each for the hundreds and hundreds of

new Thinklish words judged best—and we'll feature many of them in our college ads. Send your Thinklish words (with English translations) to Lucky Strike, Box 67A, Mt. Vernon, N. Y. Enclose name, address, college or university, and class. And while you're at it, light up a Lucky. Get the full, rich taste of fine tobacco—the honest taste of a Lucky Strike.

Get the genuine article  
Get the honest taste  
of a LUCKY STRIKE

Product of The American Tobacco Company — "Tobacco is our middle name"