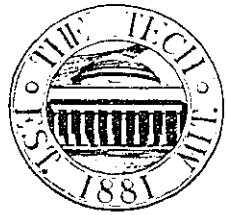


The Tech



NEWSPAPER OF THE UNDERGRADUATES OF THE MASSACHUSETTS INSTITUTE OF TECHNOLOGY

VOL. LXXVIII NO. 33

CAMBRIDGE, MASSACHUSETTS, TUESDAY, OCTOBER 7, 1958

5 CENTS

Physics Takes Registration Lead From EE; Math Makes Big Jump

Amounting to slightly over half of the Class of '62, the electrical engineering and physics fledglings have followed in the paths of previous classes in keeping those courses at the top of the enrollment lists. For the first time, however, EE this year with 208 frosh was nudged out of its lead position by the Course VIIers with 268.

Still occupying the third slot is Chemical Engineering, but it, too, is declining, dropping from 109 freshmen last year to 91 new enrollees this year. Mechanical Engineering, which was once one of the most popular courses at the Institute dropped only slightly, but it was enough to let Mathematics, rising from 46 to 76, to move into fourth.

A possibility for an interesting case study arises from the Course VI and Course VIII enrollment figures, particularly the latter. The frosh physicists—to be have, as a matter of tradition, always borne the brunt of a lot of comments concerning their "fatality" rate—with good reason. The registration list gives Physics enrollment by years (frosh, soph, etc.) as: 263, 150, 103, 106; odds are high that 8.01 is the chief assassin." Electrical Engineering, though not suffering quite so badly *en totale*, still must have received a shock when only 139 Class of '60's returned this year from a group of 240 last year. Percentage-wise, Aeronautical Engineering also took a sudden dive with the Class of '61, going from 63 to 36. Possibly, one answer to this may be the fact that these are largely "glamour courses" in name, but ones which the practical student soon finds are no more attractive than some of the little-known courses.

Of the smaller courses which usually attract few freshmen but which grow rapidly, probably the best example is Course XV, "money engineering," which now lists for enrollment by classes: 23, 45, 78, 92. On a smaller scale, Metallurgy with measurements of 11, 26, 37, and 43, is another "course changer."

The "small-but-mighty" fields of endeavor provide just one excuse for the drops in the major courses; the other lies in the total enrollment. From last year to this by classes: '61, 913 to 866; '60, 914 to 842; '59, up with 892 to 902. For whom the bell tolls...

The smaller courses which usually attract few freshmen but which grow rapidly, probably the best example is Course XV, "money engineering," which now lists for enrollment by classes: 23, 45, 78, 92. On a smaller scale, Metallurgy with measurements of 11, 26, 37, and 43, is another "course changer."

The "small-but-mighty" fields of endeavor provide just one excuse for the drops in the major courses; the other lies in the total enrollment. From last year to this by classes: '61, 913 to 866; '60, 914 to 842; '59, up with 892 to 902. For whom the bell tolls...

The smaller courses which usually attract few freshmen but which grow rapidly, probably the best example is Course XV, "money engineering," which now lists for enrollment by classes: 23, 45, 78, 92. On a smaller scale, Metallurgy with measurements of 11, 26, 37, and 43, is another "course changer."

The "small-but-mighty" fields of endeavor provide just one excuse for the drops in the major courses; the other lies in the total enrollment. From last year to this by classes: '61, 913 to 866; '60, 914 to 842; '59, up with 892 to 902. For whom the bell tolls...

The smaller courses which usually attract few freshmen but which grow rapidly, probably the best example is Course XV, "money engineering," which now lists for enrollment by classes: 23, 45, 78, 92. On a smaller scale, Metallurgy with measurements of 11, 26, 37, and 43, is another "course changer."

The "small-but-mighty" fields of endeavor provide just one excuse for the drops in the major courses; the other lies in the total enrollment. From last year to this by classes: '61, 913 to 866; '60, 914 to 842; '59, up with 892 to 902. For whom the bell tolls...

The smaller courses which usually attract few freshmen but which grow rapidly, probably the best example is Course XV, "money engineering," which now lists for enrollment by classes: 23, 45, 78, 92. On a smaller scale, Metallurgy with measurements of 11, 26, 37, and 43, is another "course changer."

The "small-but-mighty" fields of endeavor provide just one excuse for the drops in the major courses; the other lies in the total enrollment. From last year to this by classes: '61, 913 to 866; '60, 914 to 842; '59, up with 892 to 902. For whom the bell tolls...

The smaller courses which usually attract few freshmen but which grow rapidly, probably the best example is Course XV, "money engineering," which now lists for enrollment by classes: 23, 45, 78, 92. On a smaller scale, Metallurgy with measurements of 11, 26, 37, and 43, is another "course changer."

The "small-but-mighty" fields of endeavor provide just one excuse for the drops in the major courses; the other lies in the total enrollment. From last year to this by classes: '61, 913 to 866; '60, 914 to 842; '59, up with 892 to 902. For whom the bell tolls...

The smaller courses which usually attract few freshmen but which grow rapidly, probably the best example is Course XV, "money engineering," which now lists for enrollment by classes: 23, 45, 78, 92. On a smaller scale, Metallurgy with measurements of 11, 26, 37, and 43, is another "course changer."

The "small-but-mighty" fields of endeavor provide just one excuse for the drops in the major courses; the other lies in the total enrollment. From last year to this by classes: '61, 913 to 866; '60, 914 to 842; '59, up with 892 to 902. For whom the bell tolls...

The smaller courses which usually attract few freshmen but which grow rapidly, probably the best example is Course XV, "money engineering," which now lists for enrollment by classes: 23, 45, 78, 92. On a smaller scale, Metallurgy with measurements of 11, 26, 37, and 43, is another "course changer."

The "small-but-mighty" fields of endeavor provide just one excuse for the drops in the major courses; the other lies in the total enrollment. From last year to this by classes: '61, 913 to 866; '60, 914 to 842; '59, up with 892 to 902. For whom the bell tolls...

The smaller courses which usually attract few freshmen but which grow rapidly, probably the best example is Course XV, "money engineering," which now lists for enrollment by classes: 23, 45, 78, 92. On a smaller scale, Metallurgy with measurements of 11, 26, 37, and 43, is another "course changer."

The "small-but-mighty" fields of endeavor provide just one excuse for the drops in the major courses; the other lies in the total enrollment. From last year to this by classes: '61, 913 to 866; '60, 914 to 842; '59, up with 892 to 902. For whom the bell tolls...

President's Report Emphasizes Gains, Cites Extreme Undergraduate Problems

In the annual President's Report, released yesterday, Dr. J. A. Stratton cited the Institute's failure to emphasize undergraduate problems. Stratton says, "today's undergraduate feels himself anywhere but at the center of this particular academic universe."

Stratton points out that there are many Institute activities which the undergraduate can only read about in the newspaper. He maintains that, "The typical entering freshman at MIT is far from ready to cope with such a mature concept of learning," as is found here. Stratton recognizes the fact that MIT must deal with this problem realistically.

Along these same lines, the President thinks that "there is even more immediate need to convey to the undergraduate a keener sense of belonging, of personal participation in the great enterprise which is MIT." Measures are being taken within the residential program to remedy the situation.

A major problem has arisen with regard to engineering education. There are two basic positions. The liberal viewpoint desires the conversion of all engineering courses to applied science. This would postpone most specialization to graduate study. The conservative viewpoint defends the present system, stating that engineers have professional problems far different from those of scientists. Compromises have led to the development of "engineering science" parallel courses.

At the moment, MIT is in the throes of re-examination of all educational programs. This has led to the no-homework plan employed in freshman calculus sections. Other changes in the offing are the replacement of requirements with electives in the last two years, and more opportunities for independent research.

The department of Modern Languages has expanded its program in Russian, German, and French. The spoken word is emphasized rather than grammar or translation.

Responsibility To Nation
Stratton says that MIT is in the national limelight: The appointment

of Killian to Washington was evidence of a new national awareness that the hopes for our survival as a free and prosperous nation rest in large measure upon the quality of our education and upon our capacity for scientific research.

Even though MIT deals with public service, defense research and the broad advancement of scientific knowledge, the foremost concern of the Institute is the education of its students. In the future, private institutions will be able to supply only a small part of the needed scientific manpower. However, according to Stratton, MIT will have "... a heavy responsibility to provide highest standards of excellence, to set new patterns, to give leadership, and to lift the sights of all."

Financial Situation Improved
Stratton reports that the Institute did \$75,000,000 worth of business last year. Of this, \$21,000,000 was for educational expenses, and \$54,000,000 was spent on sponsored research. This represented an increase of 7 per cent for education, and a 12 per cent gain in research.

The total amount of student aid last year was nearly two and one-half million dollars, an increase of 15 per cent over the previous year. However, Stratton says in the report: "We are assisting through scholarship aid only 22 per cent of our undergraduates, a percentage relatively low compared to other ranking educational institutions. Our need for scholarship endowment funds is urgent."

A major source of this increase was the loan fund, which topped the half-million dollar mark for the first time. This fund has just now been made available to freshmen.

Information Theory Expert

Shannon To Donner Science Chair

Claude E. Shannon, Professor of communication science, Professor of mathematics, has been selected to fill the recently established Donner Chair of Science at MIT.

The new professorship, made possible by a grant of \$2.5 million from the Donner Foundation, is one of a total of five chairs of science established at leading universities. Sharing the Donner grant with MIT are Harvard, Yale, Princeton and the University of Pennsylvania. Harvard has selected Nobel Prize winning physicist Henry Purcell as its Donner Professor.

Professor Shannon holds a S.M. degree, electrical engineering, and a Ph.D. in mathematics from MIT. He is a graduate of the class of 1940.

Here From Bell Labs

In 1956 he left a research position at Bell Telephone Laboratories to become visiting professor of electrical communications here. Last year he became a permanent member of the Institute faculty in his dual-titled role.

While holding the Donner Chair of Science he will retain the title of full professor in both departments.

Professor Shannon has achieved special eminence in the field of information theory, which combines mathematics with electronics in the design of computers and automated machinery. Norbert Weiner and Vannevar Bush have been among the other Institute personnel who have been leaders in this field.

The \$2,500,000 Donner grant has been hailed by educational leaders as a timely and pace-setting effort to bolster basic research and science education.

The Donner Chair of Science raises to a total of four the number of permanent endowed chairs at MIT. Others are: Alfred P. Sloan, Professor of Industrial Management, Jerome C. Hunsaker, Professor of Aeronautical Engineering, and Edwin Sibley Webster, Professor of Electrical Engineering.

Senior House Votes On Its Constitution; Autonomy at Stake

The Senior House held the referendum on its new constitution today. Approval by three-fourths of the residents will ratify, and place Senior House in the position of a separate dormitory unit on a par with Burton, Baker, and rest of East Campus. The parallel units of East Campus will still be known officially as East Campus, although the Senior House unit is farther east.

At the Dormitory Council meeting which approved the new constitution, a steering committee was set up to run the referendum today and the forthcoming election of House officers. The members of the committee are Adul Pinsuvana '59 and Christopher Sprague '60 of East Campus, and Mike Padlipsky '60 of Baker House. Two residents of the Senior House, Al Krigman '60 and Charlie Rook '60, were selected to advise the committee in their actions.



Professor Claude E. Shannon, newly appointed Donner Professor of Science, in the departments of Electrical Engineering and Mathematics.

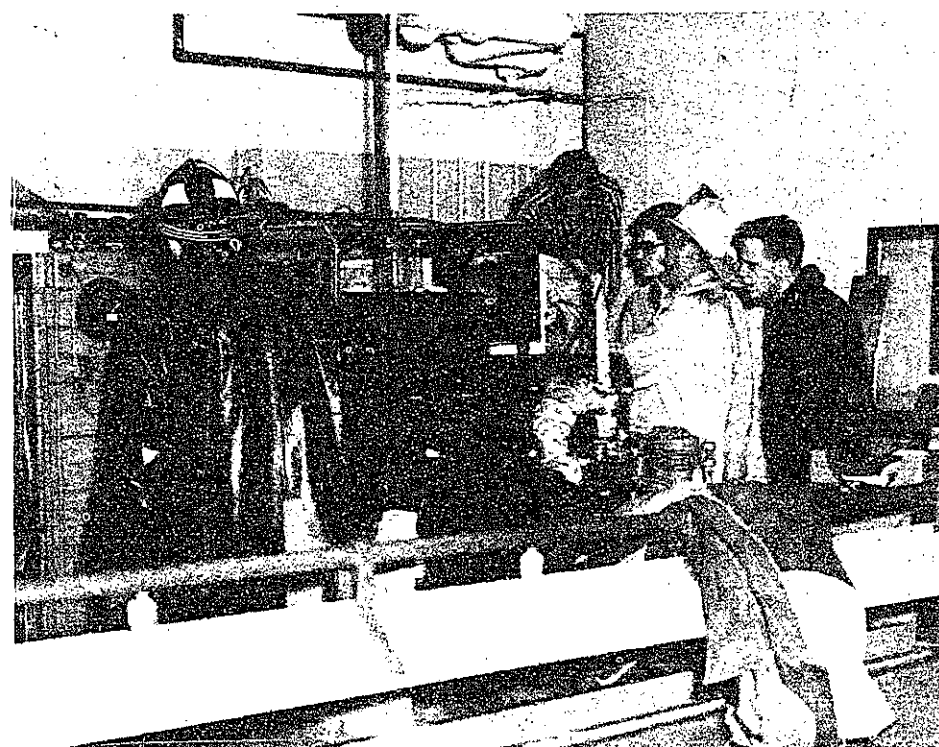
Dense Smoke, WTBS Alarm Draw Crowd of Students And Firemen to Building 5 Saturday in Fire Scare

A fire which burned out a refrigeration unit in Building Five, was announced over WTBS as it happened. At 1:30 Saturday morning, the announcer broke into the regular "Night Owl" show and announced "Three fire trucks have been seen heading towards Building Seven. We believe this is authentic!" Linda Greiner '60 had seen the fire trucks come past under her dormitory window, and had immediately called the radio station, who relayed the information to their listeners. Within a short time, about fifty students had gathered in the area, some bringing dates.

The kibitzers were not disappointed. A York Refrigeration unit had caught fire in the Refrigeration Lab, Room 5-007, and was giving out thick clouds of smoke. The fire was soon put out, but the firemen had to shovel away several hundred pounds of smoldering cork insulation. The entire laboratory was covered with a thick pall of burnt cork, some of it mashed into paste with the water.

The fire was discovered by William Franklin, a night sweeper. He reported it to the Heating and Ventilation technician on duty, who pulled out the plug. When the fire kept on, the firemen were called. This is standard operating procedure, since the Institute must pay heavily whenever the fire trucks are called, as MIT does not pay the regular city taxes.

The fire department responded with its normal fleet: three hose companies,



Firemen and kibitzing students inspecting the burned wreckage of the refrigerator in the Building Five fire early Saturday morning.

two hook-and-ladder units, and one rescue unit. When they saw the magnitude of the fire they sent all but one truck back home. The fire chief reports that he ran into difficulty with the new gate blocking off the parking lot between Buildings Three and Five. He was unable to get through the gate, so he was forced to park the truck under Building Seven and run hoses

down the length of Building Five.

The hero of the night was John Scroffels, a graduate student. He walked over when he saw the fire trucks, and came just in time to help drag some valuable instruments to safety. Other students in the audience chatted with the firemen, tripped over the hoses, and took home pieces of charred wood as souvenirs.

The Tech



VOL. LXXVIII October 7, 1958 No. 53

Entered as second class matter at the post office at Boston, Massachusetts, published every Tuesday and Friday during the college year, except college vacations, by THE TECH—Walker Memorial, Cambridge 39, Mass. Telephone TRowbridge 6-5855-6 or UNIVERSITY 4-6900. Ext. 2731. Twenty-four hour answering service: TR 6-5855.

Stephen M. Samuels '59.....Chairman
John J. McElroy '59.....Managing Editor
Alberto Velochaga '59.....Business Manager
Stewart Wade Wilson '59.....Editor
Glenn W. Zeiders '59.....News Director
David W. Packer '59.....Sports Director
Louis R. Nelson '59.....Photography Editor

John B. Stevenson '60.....Associate Managing Editor
Kenneth F. Reinschmidt '60.....Advertising Manager
Maria A. Moody '61.....Circulation Manager
Peter M. Silverberg '60.....Treasurer
Jon P. Wigert '60.....Associate Editor
Abraham Feinberg '60.....Associate Sports Editor
John R. E. Disbrow, Jr. '61.....Assistant Sports Editor
Jeff Steinfield '61.....Associate News Editor

STAFF CANDIDATES

Charles Weller '62.....George Hippisley '62
Jim Kistler '62.....R. H. Kunz '62
Bostwick Wyman '62.....Dennis E. Cook '62
Ted Zehnpiennis '62.....Michael M. Gold '62
John Carraway '62.....Vincent Giambalvo '62
Herb Taylor '62.....John Werkheiser '62
Steve Levy '62.....Robert Johnson '62
Michael Remler '62.....Carl Wunsch '62
Woods Halley '61.....Archie Thomas '62

BUSINESS BOARD

John Epstein '61.....David M. Silverman '61
Dennis E. Kelly '60.....Robert A. Solem '61
Manuel A. Moreno '60.....Raymond J. Waldmann '60

EDITORIAL BOARD

Philip E. Beach, Jr. '59.....Eric S. Langford '59
M. Dixon Browder '59.....Allen C. Langord '58
Thomas S. Doherty '57.....Henry Okun '60
J. A. Friedman '57

SENIOR BOARD

F. Thomas Bond, Jr. '58.....Murray R. Kohlman '58
William G. Dalv. Jr. '58.....Ralph E. Manchester, Jr. '58
Leland E. Holloway, Jr. '58.....F. Helmut Weymar '58

Up To You

Dr. Stratton has again spoken with candor on the shortcomings of MIT education. His message to the Corporation, contained in the recent *President's Report*, shows a continuing concern for the undergraduate's welfare, his opportunities, and his attitude toward the Institute. Pointing out that there are conflicting views within faculty and Administration on the best approach to a technical education, Dr. Stratton seems determined eventually to synthesize what he calls the "conservative" and the "liberal" aspects of these views.

An emphasis on skills and techniques rather than an investment in fundamental knowledge characterizes the "conservative" as opposed to the "liberal" standpoint. The arguments on either side are many. What is needed, as always, is a careful assessment of the sort of preparation that will best suit the undergraduate to the world he will encounter when he gets out.

The perplexing problem here is that rather than prepare the student for the world as faculty and Administration see it, MIT must prepare him for the world as he sees it—which may be something quite different. It is just this difference which may account in part for the fact that a great many, too many, leave MIT totally uneducated. At a time when diverse fields of science and engineering are converging, when a similarity of basic content is obscured by variation in method, when at least five courses present their own version of a subject like thermodynamics—this is a time to re-think the curriculum and perhaps to liberalize further the professional course requirements. True, few freshmen are capable of laying out a plan for their education without considerable guidance, but upperclassmen, with a little encouragement, would probably welcome the chance to select courses on their own—and still get a degree.

Rather than devise a uniform curriculum which will satisfy and benefit the greatest number of students, wouldn't it be better to let the undergraduate, if he is sufficiently interested, organize his own schedule as far as he can? Strides have been made by some departments in this direction, but on the whole students often feel they must take certain courses, even when not required, because they see others doing so. Hopefully, with the effort of both faculty and students, the problem of "conservative" vs. "liberal" education can be solved on an individual basis.

—SWW

reviews

High Sierra

Thoroughly recommended to increase teen age menace and encourage harassed present-day movie-makers is a venerable product of pre-war low-budget movie production called High Sierra, currently at the Brattle and featuring old friend Bogart in a top spot. Humphrey is tough and ungrammatical in a stereotyped tale complete with a good girl named Velma, a bad girl named Maria (Ida Lupino) and caricatures of a Negro (intentional), and a genuine hayseed (unintentional).

The good girl is a cripple, and Bogart, as Roy Sears, notorious gunman and desperado, woos and loses her. (But can't we still be friends?" she squawks). Meanwhile Roy, all unbeknownst to the fair damsel and her ridicu-

lously homespun kinfolk, commits a spectacular series of murders and robberies which culminate in a fine automobile race and a melodramatic last stand on a high sierra. Hence the film gets a name and the story (at last and thank God), a termination.

Ida Lupino (the bad girl), is the sort of V-for-victory pin-up who makes one glad to live in the second half of the century. Replete in flowing tresses, dewy eyes, and plenty of mascara, she isn't likely to do much for lonesome engineers.

Dialogue is mostly monosyllabic, but includes a sprinkling of philosophic comment from Hollywood's half-baked underworld, and a review of the fairly unique vocabulary of the same set. ("I'm givin' it to you straight," mutters Bogart, "this knockover's gonna be a waltz." And again: "Once you get your mitts on it, don't let your mitts off it.")

It's clear that Bogart has learned a few things about making love since 1938, though his English (not the king's) is hopeless. It may be (who knows?) that he's learned to drive a car. Anyway someone should tell him that he might have gotten away if he hadn't insisted on fishtailing that 1936 Plymouth around every corner.

college world

We picked up a copy of *The Harbus News* the other day and immediately became engrossed in the activities of that lauded haven for aspiring organization men, the Harvard Business School. There is little to distinguish this sheet from that of any other school until one notice announcing a cocktail party for those interested in joining the staff of the Harbus struck our eye. Spotted throughout the paper were notices of cocktail parties for such groups as the "Canadian Club" and the "Old F'ers." Hmmm!! Well obviously these future executives must be prepared for the cocktail party.

These Business Schoolers really are not different from other students. They even have a student government. . . . the Student Association is the student's organization for self government and that it plays a vital role in Business School extracurricular activities . . . the SA has fulfilled the aims of its constitution which outlines a program of actions to 'promote friendship and solidarity in the student body' Well certainly solidarity and friendship are essential.

The B-school truly follows the modern trend or perhaps creates it. Demonstrating the awareness of all B-school boys are these lines in the "Harbus," "The communications of these meetings in turn assist the Faculty and Administration in the formulation of the School policies, policies which are designed to give the student the best possible business training. It's easy to see, isn't it, how essential it is that the students have a voice in suggested changes to these policies." It's easy to see how aware these boys are, isn't it?

Actually the Student Association does perform valuable services to the students. "Members will receive, gratis, picture seating charts of their first year sections and a notebook index card containing the complete first year schedule."

As in any organization "membership in the Student Association is entirely on a voluntary basis." This certainly is a very fine gesture as well as excellent practice in decision making. However, fine young men attend the B-school as "past experience indicates that virtually 100% membership is consistently maintained." The Business School can neither fire nor demote such divergents that refuse to join. Perhaps a grade is given for extracurricular activities.

Realizing that finance is a vital part of every executive's training, a group of the students up the river have formed a Finance Club. One of their recent speakers was a Mr. Robinson, Chairman of the Board of the Massachusetts Investors Trust, the largest mutual fund in the United States. Its quarterly report showed net assets of \$1,149,844,598 at which time the company held stock in 132 companies. As their next speaker the Finance Club will present A. M. Sonnabend, president of the Hotel Corporation of America and director of the Studebaker-Packard Corporation. Being practical men these future financiers also apply the theory they learn to practical situations. For example someone must administer the membership fee of the Student Association. This person must handle all the books as well as the policy determining the distribution of the seven dollars each student pays to the SA for two years membership. However, justice for the individual reigns within the Student Government organization because "If a student for any reason withdraws from school before his two years are up, the unused membership is refunded."

Impressing upon the students the great tradition they must follow, spurring them on, and providing a big happy family atmosphere, the "Harbus" occasionally publishes a list of promotions of HBS graduates (an impressive list at that).

Onward Harvard B-school grads
seeking that promotion
William H. Whyte before us.

Carl Swanson '60

COLLEGE DANCE CLUB

The Original

THE ONLY DANCE EXCLUSIVELY FOR
COLLEGE STUDENTS AND GRADUATES

HOTEL KENMORE

FRIDAY NIGHTS ONLY

Stag \$1.25

8:30-12:30



"She's a most triumphant lady."
—Antony and Cleopatra, II. ii. 190

— A VESPA from your

VESPA

Headquarters

F & S Motors Inc.

55 Boylston Street

ELiot 4-6060

Harvard Square

To the attention of those doing research on cigarette smoke analysis, we wish to call your attention to the same type of research to be performed on the smoke produced by cigarettes made entirely of natural leaf tobacco, made without additives of any kind, so that the end result of this research should be correlated with the work currently being done with commercial cigarettes.

ALAN A. EVANS

19 Dunster St.

KI 7-8765

P.S. We would like to hear from those interested in this ad.

**MEET ME
UNDER THE CLOCK**

Weekends and the holidays
are so much more fun in
New York if you stop at
The Biltmore, traditional favorite
on every campus in the
country! Economical, too.

Write to our College Department
for special student and faculty
rates and reservations.

The BILTMORE
Madison Avenue at 43rd St., N. Y. 17, N. Y.
AT GRAND CENTRAL STATION
Other REALTY HOTELS—The Barclay & Park Lane
Harry M. Anholt, President

Lend your room-mate the money...

After all, you will wear the sport jacket he selects at our new Kentonian Shop as much as he will! What's more, the fact that he shops at Roger Kent proves that he knows how to get the most for YOUR money.

Kentonian Sportcoats ...\$32.50
Kentonian Suits\$55.

Roger Kent

75 TREMONT STREET
Across from the Parker House
OPEN MONDAY AND WEDNESDAY UNTIL 8:30 P.M.



COLD BEER?
LATE SNACK?
RAID A REFRIGERATOR
Rented at Reasonable Rates from
WALCOTT SALES
ALBION ST. SOMERVILLE
SO 6-1412 WI 6-3756
Enjoy the luxury of
Modern Day Living

F & T RESTAURANT
DELICATESSEN and DINER
304-310 Main St., Cambridge
Open Daily from 6 a.m. to 12 p.m.
Closest Restaurant to Tech

DE MOLAY INSTALLS
MIT "Tech" chapter of the Order
of De Molay will hold a public instal-
lation of officers on Wednesday,
October 8th, at 8:00 P.M. in the
Hayden Library Lounge.

BRATTLE THEATRE
Harvard Square
Thru Sat.
HUMPHREY BOGART in
"HIGH SIERRA"

Holden and Religious Counselors Speak at First Skeptics Seminar

"Religion at MIT and You," was the general topic of T.C.A.'s first Skeptics Seminar of the season, held in the Little Theater from five to six last Thursday afternoon. A rather large audience of students responded to the excellent publicity announcing this program and came to hear moderator Dean Robert J. Holden and a panel of three chaplains: Reverend Robert C. Holtzapple, Reverend J. Edward Nugent, C.S.P., and Rabbi Herman Pollack.

The seminar was officially opened when Dean Holden delivered an informative thirty minute talk, touching on many aspects of the relationship between church and campus. He showed that religion in the classroom was not feasible and that since MIT is such a cosmopolitan place and has people embracing many creeds, it can't be secular; the Institute may only encourage its students to find religious experience in the chapel or in places of worship nearby.

Father Nugent, next to speak, was brief and direct, explaining that he was here in the capacity of a priest—to administer mass and confession to those of his faith. He was very explicit in expressing that he was available to aid the student and to try to stimulate serious study into tangent and spiritual things.

The Presbyterian-Congregationalist chaplain, Reverend Holtzapple, then rose and stated his sincere desire to help and counsel students who were having difficulties. Reverend Holtzapple explained that the Protestant churches traditionally have been interested in the life of the intellectual.

Finally Rabbi Pollack fluently explained the nature, organization and history of the Hillel student group. He described it as an assembly of young men of the Orthodox, Reformed and Conservative Jewish traditions who by learning and worshipping together gain broadening experiences.

Your **NEW**
BOSTONIANS
TAKE A SHINE
and keep it



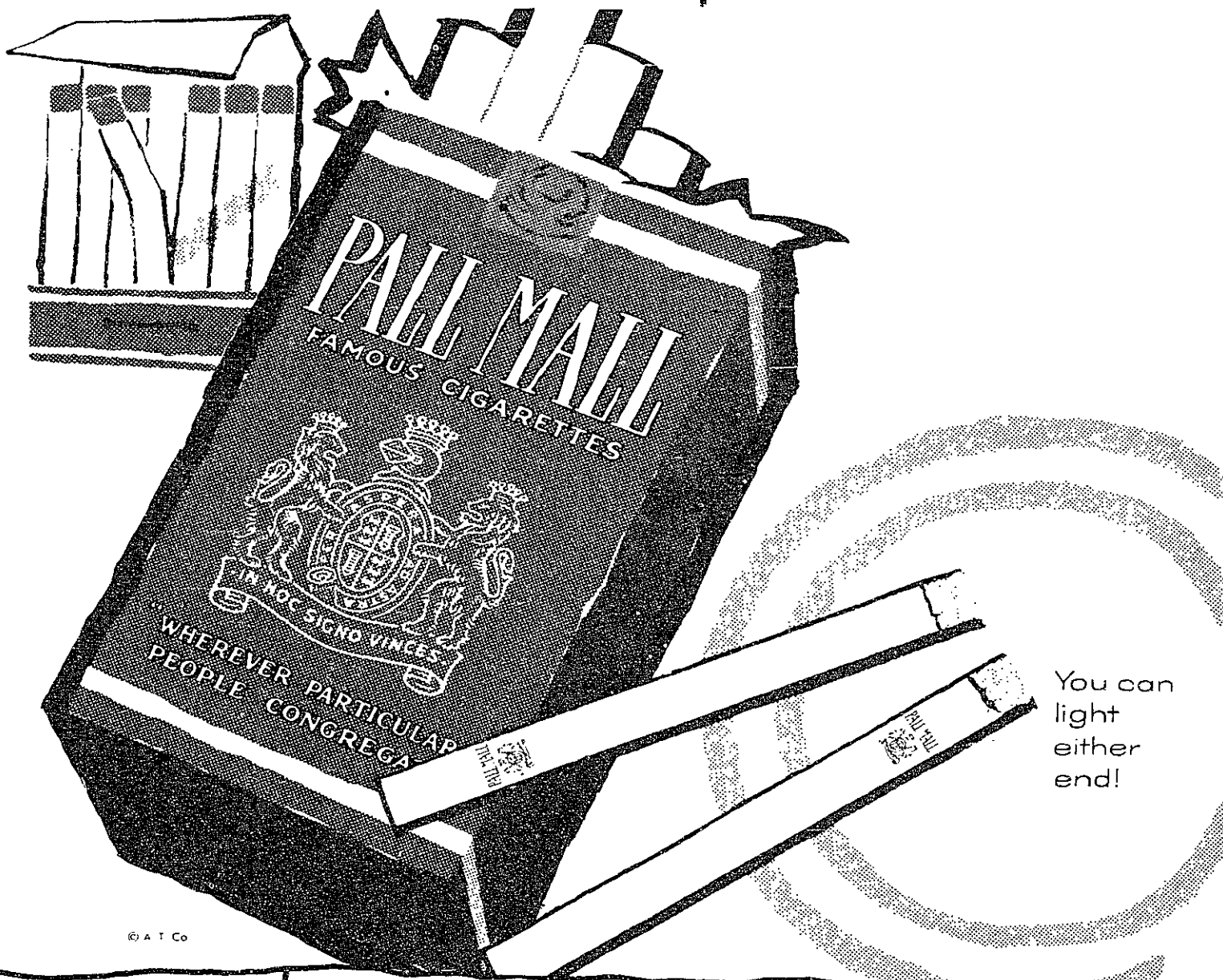
Notice how these Bostonians shine with a flick of the cloth . . . and keep the shine longer. That's because the rich leathers are hand-picked and hand-finished to take a shine and keep it.

**THE
COOP**

GET SATISFYING FLAVOR...

So friendly to your taste!

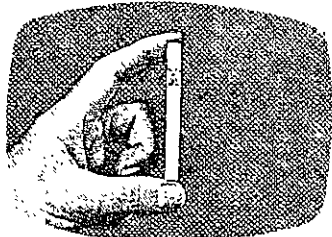
No flat "filtered-out" flavor!
No dry "smoked-out" taste!



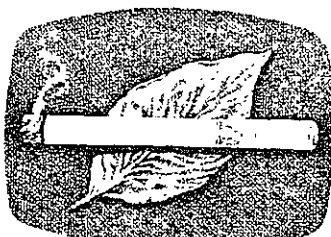
You can
light
either
end!

See how
Pall Mall's
greater length
of fine tobaccos
filters the smoke
and makes it
mild—but does not
filter out that
satisfying
flavor!

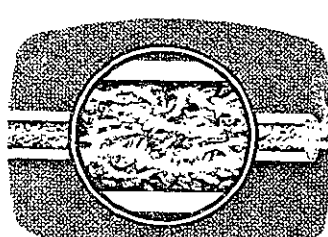
FOR FLAVOR AND MILDNESS, FINE TOBACCO FILTERS BEST



1 You get greater length of the finest tobaccos money can buy



2 Pall Mall's greater length filters the smoke naturally



3 Filters it over, under, around and through Pall Mall's fine tobaccos!

Outstanding...and they are Mild!

Product of The American Tobacco Company—"Tobacco is our middle name"

AHRIMAN SOCIETY

The Ahriman Society will hold its next meeting this Wednesday at its usual place and time. Every member should be doing preliminary meditation with regard to deciding the role he will take in the Ritual B.M.

CHESS

The MIT Chess Club will sponsor a rapid transit tournament this Saturday afternoon.

ASCE SEMINAR

A seminar will be held by the American Society of Civil Engineers Thursday at 4:00 P.M. in Room 1-190. Refreshments will be served immediately afterwards in the Spofford Room.

CREW

Freshmen interested in crew should turn out at 3:00 P.M. at the MIT Boathouse on Memorial Drive.

BRILLAT-SAVARIN

La Societe de Brillat-Savarin will convene Friday at the River House Meeting Suite. Plans for the forthcoming Faubus cocktail party will be discussed.

SAVE \$4

GUARANTEED

REFRIGERATOR

INSTALLATION BEFORE OCT. 11th
have

"The Iceman Cometh"

To Your Door

By Calling

EAST CAMPUS HOLMAN 404

or

GRANT HOFFMAN CO 6-3660

325 Columbus Ave., Boston

Now All You Have To
Do Is Graduate...



Keep On Your
Toes With
NODOZ

Now that you've got yourself into college, let safe, handy NoDoz tablets help you get out. Harmless NoDoz helps you keep alert through long, late cramming sessions . . . keeps you on your toes during exams. NoDoz tablets are safe as coffee and much more convenient.





CONFUCIUS say:
"Most wise idea for
college boy or girl"
...an Olympia
precision portable!



... and a word to the wise should be sufficient—for the magnificent German-made Olympia makes short work of *any assignment*—easier, faster, finer!

A breeze to operate, it's fully-equipped with the most advanced and worthwhile typing features. There's even convenient half-spacing—ideal for ruled index cards, mathematical problems and equations.

So, see—test—and compare Olympia before you decide on any other portable. One can be yours for just pennies a day! Full one-year national warranty, too.

Cambridge Headquarters
 UNIVERSITY TYPEWRITER CO., INC.
 10 Boylston St., Harvard Sq.
 Cambridge 38 KI 7-2723

Tech Soccer Team Loses First Game To Amherst Eleven

In the opening soccer game of the 1958 season, the internationally flavored MIT eleven fell to a strong Amherst squad, 5-1. With only six lettermen back from last year's fine team, the Techmen face a major rebuilding job. One of these lettermen, Fouad Malous, has been unable to see action thus far in the 1958 season because of an injury. The others are John Comerford, Captain; Ernesto Machaya, Ken Evans, Manoel Penna, and Dale Rhee.

Soccer coach Charles Batterman commented that the opening game was not as successful as hoped, but he pointed out that nine starters are missing from last year's team including the backbone of any soccer team, the halfback line. In addition, only twenty-five men reported for the soccer team this year compared to a much higher number last year.

Coach Batterman did have special praise for the "wonderful performance" of Dale Rhee and the "tremendous job" turned in by goalie Phil Robinson in last Saturday's game. Robinson, who entered the game in the second half, allowed just one Amherst goal.

In conclusion, Coach Batterman said that "the team learned a great deal and should do much better in the future."

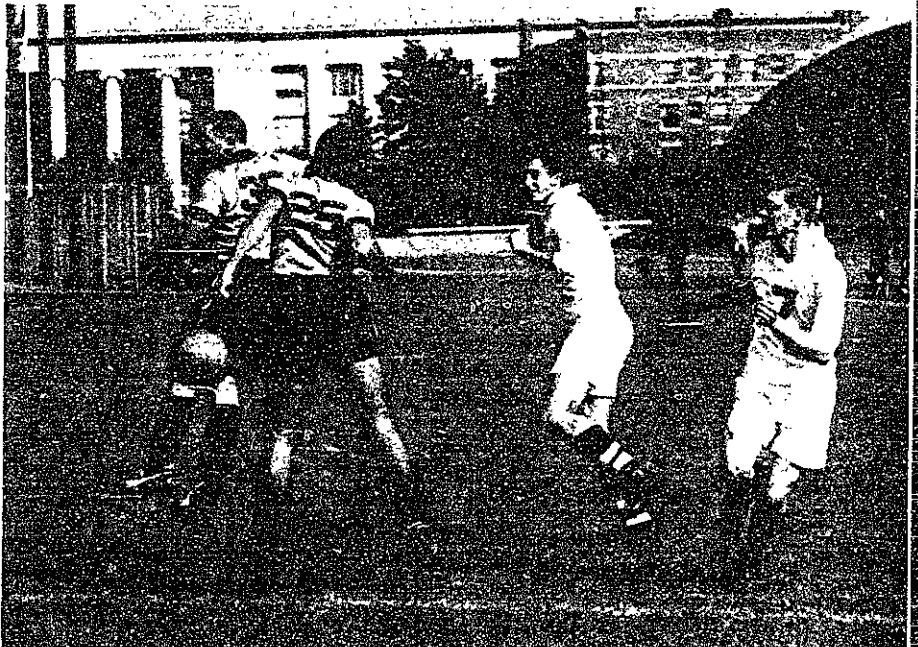
Yearling Harriers Yield To Andover In Season's Opener

MIT's freshman cross country team was edged by Andover Academy Saturday, 24-35. The meet, first of the season for both squads was held on Andover's rugged, hilly, 2 1/2 mile course. The Prepsters took five of the first eight places to insure their victory.

Art Harper led the Beaver forces, finishing in second spot in 15:30. He was followed closely by Steve Banks, who was third in 15:34. Bill Beller was also in the top ten, taking seventh position in 16 minutes flat. Joe Harris, in eleventh place, and Steve Root, in fourteenth, rounded out the scoring for the Cardinal and Gray.

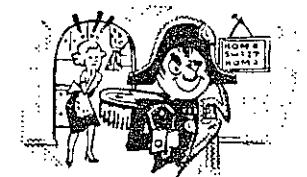
Art Harper's second place finish, leading all the MIT runners, provided a pleasant surprise for Coach Art Farnham. Harper, Banks, Beller and Harris are expected to provide an outstanding scoring punch as the season progresses but a fifth man is still being sought to complete the unit.

The frosh now have a two-week respite before their next contest at University of New Hampshire on October 18. The varsity hill and dalers will inaugurate a busy slate this afternoon against Brandeis at Franklin Park in Dorchester at 4:00 P.M. They will follow up with a triangular meet Saturday against Williams and Springfield, also at Franklin Park.



Nobody seems to want the ball during opening action in Saturday's MIT-Amherst soccer game at Briggs Field. Amherst soon gained control, however, and scored an impressive 5-1 victory.

Do You Think for Yourself? (HERE'S YOUR CHANCE TO FIND OUT!*)



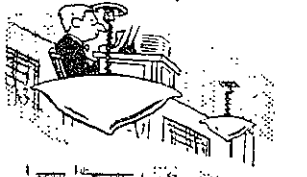
Can you honestly say you never imitate the manner of an executive or leader you admire?

YES NO



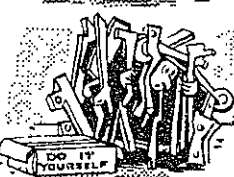
Do you enjoy adapting yourself to new conditions?

YES NO



Are you entirely confident that you would not get "lost" if you worked for a large firm?

YES NO



Do you always look at the directions before using a complicated new appliance?

YES NO



When driving or walking for some distance, do you like taking short cuts rather than a longer route you know will get you where you're going?

YES NO



Have you ever thought seriously of spending a long period alone somewhere... writing, painting or getting some major independent task done?

YES NO



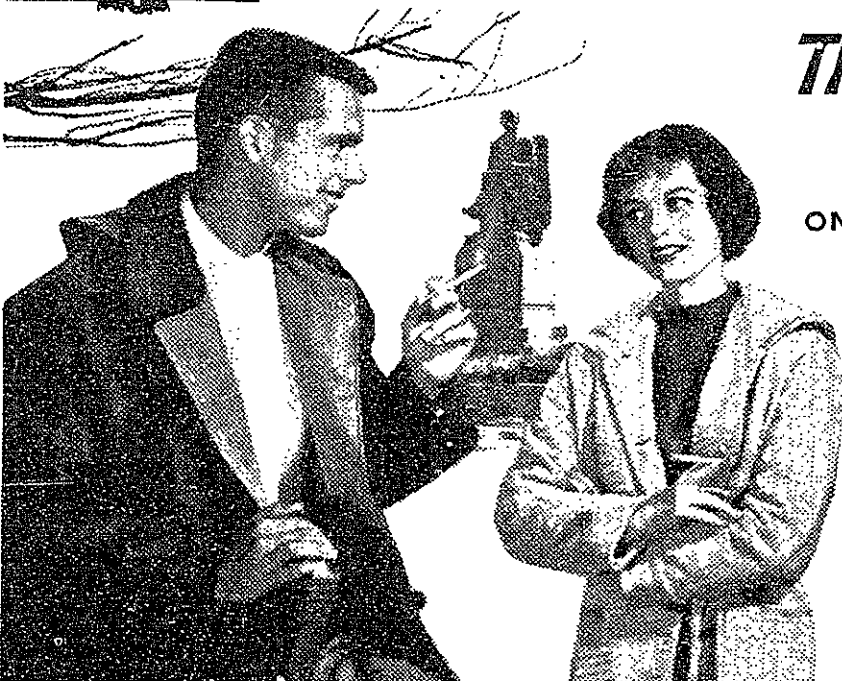
In going to the movies, do you consult the reviews first rather than just take "pot luck"?

YES NO



When faced with a long, detailed job, do you try hard to find a simpler way of doing it before getting started?

YES NO



The Man Who Thinks for Himself Knows...

ONLY VICEROY HAS A THINKING MAN'S FILTER...
 A SMOKING MAN'S TASTE!

Before you light your next cigarette, ask yourself this: Have you really thought which filter cigarette is best for you?

If you have... chances are you're a VICEROY smoker.

The fact is, men and women who think for themselves usually smoke VICEROY. Their reasons? Best in the world. They know for a fact that only VICEROY—no other cigarette—has a thinking man's filter and a smoking man's taste.



Familiar pack or crush-proof box.

*IF YOU HAVE ANSWERED YES TO 6 OF THESE QUESTIONS, YOU ARE A PERSON WHO THINKS FOR HIMSELF!
 © 1958, Brown & Williamson Tobacco Corp.

Intramural Football Season Starts; Top Teams Shut Out Opponents

Last year's three top teams returned in good form as Sigma Alpha Epsilon, Beta Theta Pi, and Phi Gamma Delta all shut out their opponents in this year's openers. Phi Delta Theta, Delta Tau Delta, Sigma Chi, and Theta Chi also held their opposition scoreless in two sunny afternoons of League "A" football. The final scores indicate that the top teams of last year will all be in contention with one or two other teams for the title.

Theta Delta Chi and Phi Kappa ran up good scores in League "B" action.

League I

Sigma Alpha Epsilon 27,
Tau Epsilon Phi 0

The SAE's crushed the TEP's with the well organized machine that has kept the Lions in top contention for years. A good passing back, Walt Human '59, some fast receivers, and an outstanding set of delaying pass plays have made this a tough team to beat.

Phi Delta Theta 14, Sigma Nu 0

The Phi Delt seem to have rebounded from a little two year slump to approach their old championship form as they triumphed over Sigma Nu early Saturday afternoon. Fritz Frink '60 led the Phi Delt backfield with sharp passes and some pretty tricky running. Starring on defense were Tony Johnson '60, who broke up a lot of plays from end, and Mark Pratt '60, who kept the Sigma Nu's defenseless, Kai Johansen '60, from breaking into the backfield.

League II

Beta Theta Pi 26,
Phi Mu Delta 0

The Betas, capitalizing on the fine running of Brian White '60, who scored three touchdowns, and a team virtually unchanged from last year, crushed the Phi Mu Delt Sunday afternoon. A good, hard charging line broke up the opposition's plays



The Betas and Phi Mu Delt struggle for a play in a contest that saw the Betas win.

Sailors Second At Tufts Meet

MIT's varsity sailing team met seven opponents Saturday at Mystic Lake in Medford, Mass., and emerged in second place in over-all points.

In the "A" division, George Kirk, '60, assisted by Vance Hoffman, '60, shipped his craft to one first, two seconds, and one fourth place in the afternoon's events. Will Johnson, '59, and Tom Robinson, '60, garnered two firsts and two seconds in the "B" division, finishing high-point men in this section.

Leading MIT by a single point were the sailors from Boston University, who finished with fifty-eight points. Following the Tech boats in this order were Hudson, forty-seven points; Brown, thirty-one; Northern Vermont, twenty-six; Holy Cross, twenty-five; Worcester Polytechnic Institute, twenty-two; and Tufts University, the host school, nineteen points.

During the first few races, there was very little wind in evidence, and the day was characterized by drifting races. Another meet is in progress at the U.S. Coast Guard Academy, but no reports have been received as yet.

and cleared the field for the Beta's strong ground game.

Theta Chi 14, Alpha Epsilon Pi 0

The Theta Chi's overcame the AEPi's defense with a good passing attack while the victor's "Trained Killers" kept the opposition from gaining any net yardage.

League III

Phi Gamma Delta 29,
Non-Res. St. Ass. 0

The Fijis overwhelmed their opponents with a well balanced attack that produced three touchdowns on the ground and one in the air. Bob Williams '59 scored twice in the first and Bruce Nelson '59 put two more across in the last. The Phi Gamms gained an extra two points near the end of the game when their all frosh team caught the Non-Resident's quarterback in his own end zone.

Delta Upsilon 6, Alpha Tau Omega 6

The DU's and the ATO's played to a six-six tie in the third quarter, when the game was stopped. The contest will be completed at a later date.

Delta Tau Delta 36, Baker House 0

The Delt's showed a good passing game and a solid line in their easy victory over Baker. The first score was a 50 yard run on a pass interception. This was soon followed by a safety, and two passes to Hall '59. A punt return and another pass play finished out the scoring.

Sigma Chi 14, Phi Kappa Sigma 0

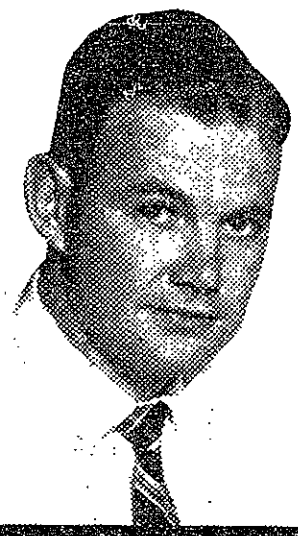
The Sigma Chis feature a big team this year, yet they rely on an aerial attack. The key men in defeating Phi Kappa Sigma were Jim Long '60 at quarterback and Mark Jensen '60 at end.

"B" LEAGUES	
League V	Theta Delta Chi 31—Burton House 0.
League VI	Lambda Chi Alpha 8—Theta Pi 0.
League VI	East Campus Senior I 1—East Campus "A" 0.
League VI	East Campus Senior II 1—East Campus Senior III 0.
League VII	Student House 18—Grad. House Dining Staff 0.
League VII	Kappa Sigma 13—Chi Phi 0.
League VIII	Phi Kappa 20—East Campus "B" 0.
League VIII	Dover 6—Phi Beta Epsilon 2.

End Run!



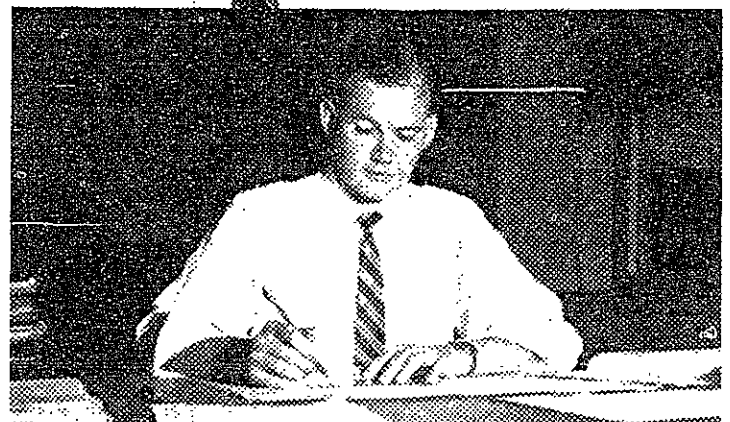
A TEP starts around end in one of the contests that highlighted the weekend on Briggs Field.



ROBERT H. SWISHER, B.S.E.E., GROVE CITY COLLEGE, '54, SAYS:

"I like my job. Here's why."

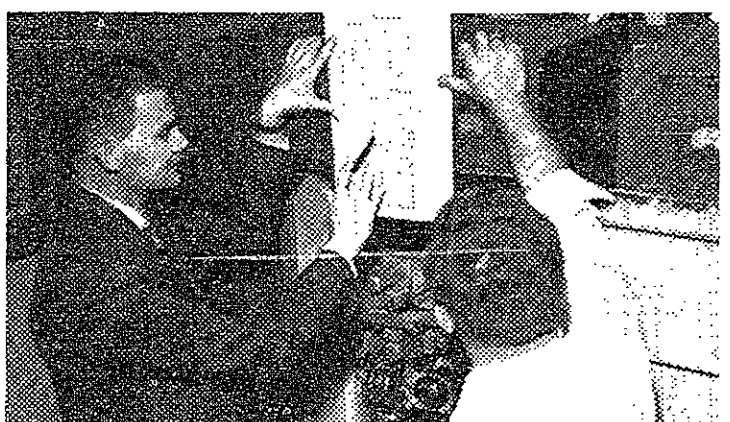
"I'm a radio transmission engineer for Bell Telephone Company of Pennsylvania. My work is interesting and full of variety, and I get all the responsibility I can handle. Have a look at today's assignment, for example —and see for yourself."



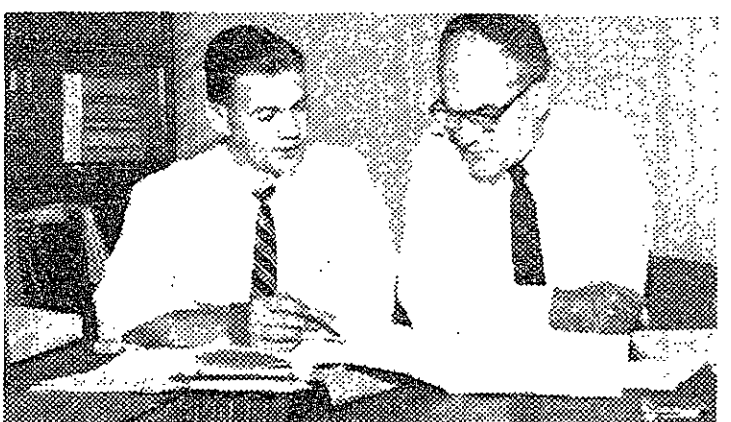
"8:30 a.m. I'm at my desk applying a new method for overcoming interference on Pittsburgh's mobile radio channels. It involves operating inactive channels on reduced power."



"10:45 a.m. Before any modifications can be made, it's important that I check apparatus and wiring options. That's what I'm doing here at the Remote Control Terminal equipment."



"1:30 p.m. After lunch, I take a company car out to the transmitter tower site. Here I check wiring and explain our plan to one of our mobile radio maintenance men."



"3:15 p.m. I review my proposed modifications of auxiliary control circuits with Supervisor Sid Graul. Now I'll prepare work orders, and next week we'll make operational tests."



"Final phase. The operational test is made from an actual mobile radio unit. I'll make test calls and monitor the channels from various points within the Pittsburgh area."

"See what I mean? I really get to 'carry the ball.' Soon I'll be taking a special course in advanced electronics at Bell Labs—a great opportunity. As I said—I like my job."

Like Bob Swisher, you may find a bright engineering future with the Bell Telephone Companies. Talk with the Bell interviewer when he visits your campus. And read the Bell Telephone booklet on file in your Placement Office.

BELL TELEPHONE COMPANIES



WATCH FOR
MAC AND HIS
NEW LAMBRETTA
MOTORSCOOTER
CI 7-8048 Inst. Ext.: 3217

DISCRIMINATING MIT MEN READ
PLAYBOY
FOR SPECIAL LOW-RATE SUBSCRIPTIONS
CONTACT GLENN ZEIDERS
KE 6-4128

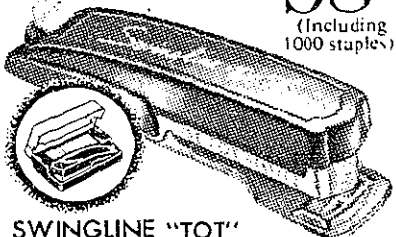
**WANT THE BEST?
RENT A NEW
REFRIGERATOR**

Cambridge Radio
940 Mass. Avenue Cambridge
TR 6-9408

SWING LINE STAPLERS
AT THE
TECH COOP

a Swingline
Stapler no
bigger than a
pack of gum!

98¢
(Including
1000 staples)



SWINGLINE "TOT"
Millions now in use. Unconditionally guaranteed. Makes book covers, fastens papers, arts and crafts, mends, tacks, etc. Available at your college bookstore.

SWINGLINE
"Cub" Stapler \$1.29



Swingline INC.
LONG ISLAND CITY, NEW YORK, N. Y.

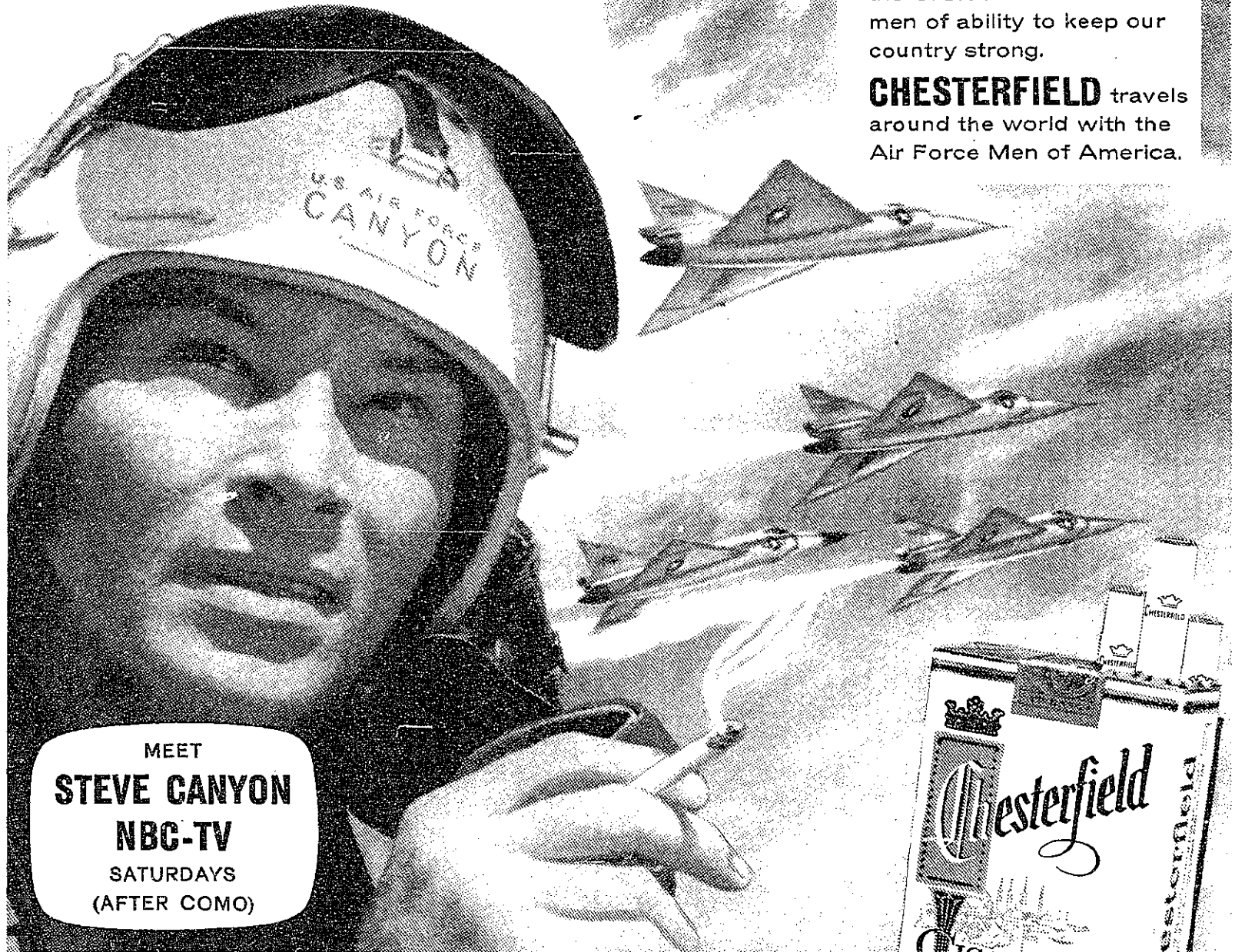
CHESTERFIELD

**NEW CAREERS FOR
MEN OF AMERICA:**

U. S. AIR FORCE

"A proud profession in the Age of Space" offers special rewards to men who meet the standards of the U.S. Air Force. Wanted: men of ability to keep our country strong.

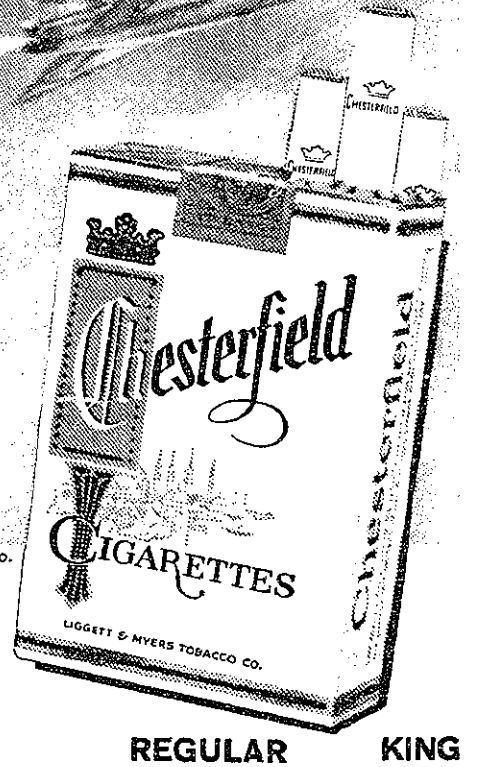
CHESTERFIELD travels around the world with the Air Force Men of America.



MEET
STEVE CANYON
NBC-TV
SATURDAYS
(AFTER COMO)

© Liggett & Myers Tobacco Co.

**Nothing satisfies like the
BIG CLEAN TASTE OF TOP-TOBACCO**

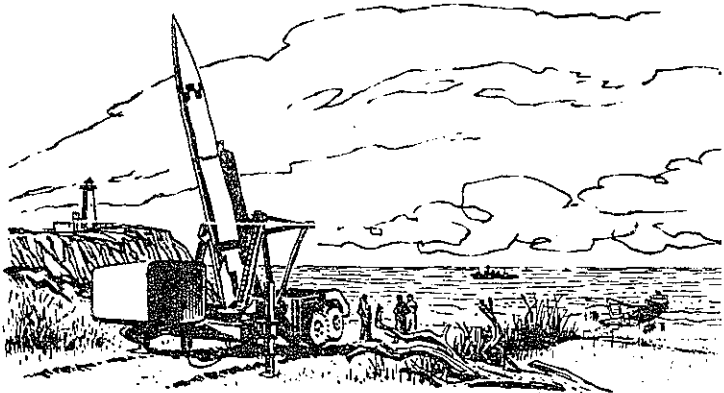


REGULAR KING



CALIFORNIA INSTITUTE OF TECHNOLOGY
JET PROPULSION LABORATORY
PASADENA • CALIFORNIA

OFFERS CAREER OPPORTUNITIES in research and development of missile systems



Active participation in Space Research and Technology, Radio Astronomy, Missile Design and Development • Opportunity to expand your knowledge • Individual responsibility • Full utilization of your capabilities • Association with top-ranking men in field

Openings now in these fields

**ELECTRONIC ENGINEERING • APPLIED PHYSICS
MATHEMATICS • MECHANICAL, METALLURGICAL,
AERONAUTICAL AND CHEMICAL ENGINEERING**
Systems Analysis • Inertial Guidance • Computer Equipment • Instrumentation • Telemetry • Fluid Mechanics • Heat Transfer • Aerodynamics • Propellants
Materials Research

U.S. CITIZENSHIP REQUIRED

ON CAMPUS
INTERVIEWS

OCTOBER 14, 15



JAPANESE PRINTS
One of the nation's eminent collections of oriental prints and original drawings by the principal masters of the 18th and 19th centuries is being dispersed at sacrifice prices. Shown by appointment only (Harvard Square). Telephone: Mr. Fulton, UN 4-5482, 7:30-9:30 evenings.

G. L. FROST CO., INC.
AUTOMOBILE BODY REPAIRING & REFINISHING
E. W. PERKINS
Tel. EL 4-9100
31 LANSDOWNE STREET
CAMBRIDGE, MASS.

Make your selection of

Old Spice

at



use

Old Spice

**PRE-ELECTRIC
SHAVE LOTION**

to get a better shave!

Quicker . . . closer . . . smoother . . .
no matter what machine you use. 1.00
plus tax

SHULTON New York • Toronto