

The Tech

OFFICIAL NEWSPAPER OF THE UNDERGRADUATES OF THE MASSACHUSETTS INSTITUTE OF TECHNOLOGY

VOL. LXXVII NO. 31

CAMBRIDGE, MASSACHUSETTS, FRIDAY, OCTOBER 11, 1957

5 CENTS

Lester Lanin Is New JP Orchestra; Goodman Out On Booker Foul-Up

Lawyers Consulted

Institute lawyers have been contacted by the Junior Prom committee to determine the possibility of bringing charges against a New York booking firm, Willard Alexander, Inc., who had handled their business with the Benny Goodman Orchestra.

The firm had the Goodman contract signed by the committee, and upon its return for Goodman's signature held it, claiming it was in the business office—"presumably waiting to see if a better booking area could be found for the date of the Junior Prom. When such an area was found, in Texas, the firm told us the band was no longer available," a committee member commented.

Since no contract was signed by both parties the lawyer consulted was dubious as to the strength of a damage suit on the grounds of verbal evidence. A similar case of unethical practices by such a booker had come up at Harvard several years ago, and was lost in court.

The committee could hope to gain, however, the money lost in publicity for Goodman, and if an inferior band had been contracted the money lost in reduced ticket sales. With Lanin, though, who has as good a name, or a better one, than Goodman this part of the suit would be very weak.

Willard Alexander has intimated that it will give the committee adequate recompense for the advertising losses; so to bring the case to court would probably be relatively fruitless as far as financial matters are concerned.



Junior Prom Weekend Entertainers. Left, Lester Lanin, who will play at the Friday night Formal. Right, Kai Winding, who will appear with his trombone septet at the Saturday night affair.

Lester Lanin and his orchestra, one of the East's leading society and dance groups, will provide the music for the Friday night formal of JP weekend. He replaces the Goodman Orchestra which was formerly scheduled for the event.

Early this week, the Prom committee received word from their New York booker that Goodman was no longer available, even though the committee had been assured that he would play. His contract had been signed early in the term by the committee and returned to New York to receive Goodman's signature. Upon repeated requests for a return of the contract, the booker, Willard Alexander, Inc., claimed that the date was certain and that "the contract is still in the business office."

Committee Acts

Then the new of his unavailability came in. The committee went into action immediately, making contacts for another band "of equal or higher calibre than Goodman."

Late Tuesday evening Lanin was signed; and the contract came in Thursday afternoon. Committee chairman Sampson commented: "We are fortunate in getting Lanin, by far the most up-and-coming band of today for the dance. Every report on him is favorable, and we think he will be one of the best dance orchestras which we could have gotten."

Recording Orchestra

The group which will play for the formal is composed of fifteen pieces, with Lanin in the lead. It is the recording orchestra which has recently made several very popular records, the latest of which is to be released late this month.

Lanin achieved fame over 20 years ago as a society orchestra; a field in which he is now regarded as the top. He now has bookings until 1963, and verbal engagements until 1968. *Time* magazine said of Lanin, "The mammas book him for their infant daughters' debuts in the same way that the papas book their infant sons for Yale."

Grace Kelly's Wedding

Lanin first became known as a prom orchestra when a recording cut at Grace Kelly's wedding reception was distributed. His style, often termed "refreshing and different" caught on, and he received many contracts for such dance engagements.

One of Lanin's greatest assets is his versatility; for society dances he can play much lively music, for college affairs "his music is slower, dreamier, smoother."

At the Statler formal, Lanin will distribute the famous Lanin hats, as he does at all of his appearances.

Lanin is now booked for the Totem Pole for the weekend of October 19. This weekend he is playing at the Rhodes Ballroom in Providence.

Saturday of the Weekend

Saturday morning and afternoon of JP Weekend will feature the Field

(Continued on page 3)

Insufficient Data For 704 Moon Orbit Search Keeps On

by Joseph Harrington, III

Man's first artificial satellite of Earth, after commanding the world's exclusive attention for several days, has retreated slightly from its previous prominent position in the news to a secondary one, superseded slightly by the now complete World Series, and perhaps in a few days, even by the Little Rock situation. An air of watchful waiting, however, prevailed throughout the labs and offices of those here at MIT for whom there is still only one objective—find the orbit of the satellite. The problem is basically one of getting three accurate plots of the position of the satellite, within a reasonable time interval. This data can then be fed into the IBM 704 computer in the Compton Laboratories, which, given the proper "programming" by Dr. Gianpiero Rossoni, should give the orbit of the "moon".

Those at the Smithsonian Observatory and the Computation Center are currently waiting only for such data. One attempt to get a "fix" was made the night of October 9, when the satellite was predicted to be due south of MIT and about 135 miles away. The altitude of the satellite is said by American scientists to vary between 200 miles and 460 miles in its elliptical orbit. Using one of the weather radar sets on the sixth floor of Building 24 to scan the possible area, which the satellite could occupy under these conditions, MIT scientists and students saw nothing. This is far from conclusive, however,

since the apparatus was operating at the limit of its powers, and the data is far from accurate.

Perhaps the most disappointing recent development to those throughout the world who have "seen the satellite" was the Russian announcement that the third stage of the rocket had not yet left the orbit, but was trailing the "moon" (which is, by the way, instrumentated, at last report) at a distance roughly estimated to be on the order of 50 to 100 miles. It is undoubtedly this much larger "third stage" that has been seen at twilight by various lucky people throughout the world who were looking skyward at the right time.

Edgerly Dies

Stuart Edgerly, Assistant Professor of English and History, died suddenly Wednesday while teaching one of his classes.

Professor Edgerly had been at MIT since 1942. In 1946 he was made Assistant Professor. Edgerly received an A.B. from Dartmouth and an A.M. from Harvard. Before coming to MIT he had taught at Syracuse, Suffolk, and Northeastern.

Professor Edgerly was 53 years old. His two sons are both alumni of MIT.

It was reported that Professor Edgerly died of a heart attack, though he had not been sick.

Trio Of New Frosh Coaches

Mentors Doyle, Emerson and Strzelecki

The appointment of three new coaches was announced recently by Richard L. Balch, director of athletics at MIT. Robert E. Doyle '29, was named freshman crew coach. Christy P. Emerson '26, was chosen frosh baseball coach. Richard S. Strzelecki '27, will coach the first-year hockey players.

Doyle Follows Dubois

Doyle succeeds his ex-teammate, Frank S. Dubois, who is now coaching the varsity crew. They rowed on the 1951 Pennsylvania lightweight crew which won the E.A.R.C. Sprints, the Thames Challenge Cup at Henley and the Hamburg Regatta in Germany.

Bob started his rowing under Ken Burns at Shrewsbury High School. In addition to his rowing he played 150-pound football at Penn. Since his graduation in 1952 he has worked as a salesman for the Owens-Corning Fibreglas Corp. He and his wife live in Beverly.

Emerson Diamond Star

Emerson, a native of Greenwich, Connecticut, takes over the reins of the frosh baseballers from Ed Krinsky, who has completed his graduate work at the Harvard School of Education and is now teaching in New Jersey.

Christy pitched for the Hotchkiss School and Yale. He captained the 1950 Yale freshman team and later won three varsity letters for his exploits on the diamond. He has also played several seasons of summer ball in Maine's Down-east League and in the Anchorage, Alaska circuit.

Since his graduation from Yale, he has served three years in the Navy on submarine duty. Emerson is now completing his final year of graduate work in City Planning at Tech. While in the Navy, he organized a team from the USS Orien and pitched for Sublant in the Fleet Tournament.

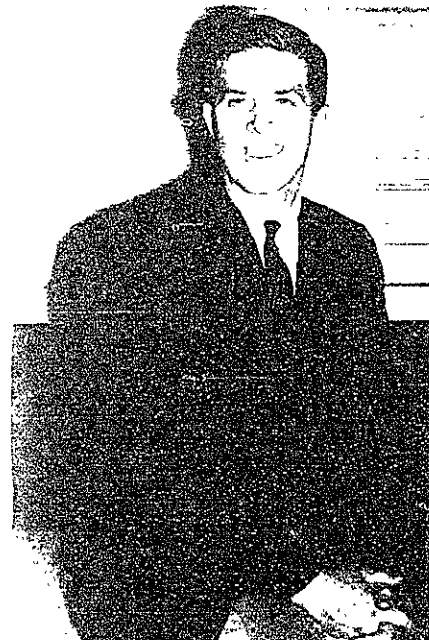
MIT Ice Veteran

Strzelecki replaces onetime N.H.L. star Paul Ronty, who has given up coaching to concentrate on business.

A native of Detroit, Dick tended goal for Tech under coach Ben Martin from 1949 to 1953. He also served as captain of MIT's hockey team.

He has received B.S. and M.S. degrees from MIT where he is now working towards a doctor's degree in nuclear engineering.

While serving in the Army Engineers last winter Dick coached a sextet in the V.F.W. League in Washington, D.C., and compiled a 6-0-1 record.



Pictured above are Christy Emerson, new frosh baseball coach, and Richard Strzelecki, first-year ice mentor.



Robert E. Doyle, MIT's new freshman crew coach

Asian Flu Is Here; Outbreak Very Mild; Volunteers Help Out

Authorities have stated unequivocally there is no probability of school's closing on account of Asian

Five Days In Bed

According to Dr. Harriet L. Hardy, Assistant Director of the Medical Department who was in charge of cases until recently, there are only about thirty cases of flu in the infirmary. She estimated the number of people who have flu, but have not reported to the infirmary to range from about twenty to fifty. She strongly urged all those sick to come to the infirmary as "there is plenty of space, equipment, and facilities." According to Dr. Hardy, the first large group of patients entered the infirmary on the 29th of September. The case then entered numbered about twenty-five; the peak number of patients since, has been 35. Most stay in the infirmary between one and five days but it takes about more days to recuperate completely. No member of the faculty has been affected by the flu. The epidemic is expected to last about six weeks.

Outbreak Not Serious

The Medical Department had made preparation for a much larger number of cases. According to Dr. Hardy, "the situation is not very different from the one we have at this time nearly every year." Plans have been made for a more serious outbreak and Dr. Hardy said that

(Continued on page 4)

The Tech



VOL. LXXVII October 11, 1957 No. 31

Entered as second class matter at the post office at Boston, Massachusetts. Published every Tuesday and Friday during the college year, except during college vacations, by THE TECH, Walker Memorial, Cambridge 39, Mass. Telephones TRowbridge 6-5855-6 or UNiversity 4-6900, Ext. 2731.

Ralph E. Manchester, Jr. '58.....Chairman
 F. William Daly '58.....Managing Editor
 Murray G. Kohlman '58.....Business Director
 Leland E. Holloway, Jr. '58.....Editorial Director
 Stephen M. Samuels '59.....News Director
 Patrick J. McGovern '59.....Sports Director
 George E. Glen '59.....Photography Director

NEWS BOARD

David W. Packer '59.....Associate
 Glen W. Zeiders '59.....Assistant
 W. Fred Crewson '60.....Ranjit Puri '60
 Gus A. Pettitt III '60.....Carl Swanson '60
 Jon Wigert '60

MANAGING BOARD

F. John McElroy '59.....Associate
 Robert Saunders '60.....Alfred Kniazeh '59, Night Editor
 John Stevenson '60, Night Editor

BUSINESS BOARD

Ken Reinschmidt '60.....Advertising
 Alberto Velaachaga '59.....Circulation
 Stephen J. Sacks '59.....Sales
 Peter Silverberg '60.....Treasurer
 Charles Rook '60.....Yin Yeh '60
 Don Wilen '60.....Bill Hess, Office Manager

PHOTOGRAPHY BOARD

Louis R. Nelson '59.....Associate
 Justin Kreuzer '60.....Associate
 Jerry Milgram '60.....Phil Fauchald '60
 Malcolm Fraser '60.....Dave Cahlander '59
 Joe Palmer '60.....Linda Greiner '60
 Bill Heess '59

EDITORIAL BOARD

Stewart Wilson '59.....Associate
 Warren Heimbach '59.....F. Heimit Weymar '58
 Chuck Eckert '60

SPORTS BOARD

Abe Feinberg '60.....Associate
 Lenny Spar '60.....Ernesto Macaya '60
 Bill Widhall '59

STAFF CANDIDATES

Stan Yukon '61.....Seth Goldstein '61
 Carl Brown '61.....Paul Hogle '61
 Bob Knighten '61.....John Rourke '61
 Paul Klarriech '61.....Jerry Weingart '61
 Peter Kraus '61.....Manuel Blum '59
 Bob Solem '61.....Frank Lane '61
 Tom Stimson '60.....William Barrett '61
 Bruce Bardes '61.....Marla Moody '61
 Paul Robertson '61.....Edmond Berger '61

editorial

Last week the Russians hurled an earth satellite into the sky. Some people are considering this a disastrous propaganda defeat for the free world. Western scientists assure us that we could have had the first satellite in the sky if we had sent merely a transmitting unit into space, as the Russians appear to have done.

The scientific significance of the launching is far greater than the political significance. Scientists are far more concerned with the boundaries of the earth than its divisions. Though it would have been wise for an American satellite to have been first in the sky, it is still a great victory in the study of the earth during this International Geophysical

Year. It represents the first step towards one of man's long sought goals, travel outside the bounds of the earth.

Besides the fact that MIT's "704" was used to compute the course of the satellite, the launching has other significance to the Institute. As one of the leading science schools in the country, it shows MIT (and the world) the importance of science and technology in our modern world.

Thus the day last week when the Russians launched the first earth satellite will prove to be a major milestone in the history of interplanetary travel.

college world

"FROSH UPROOT TREE, TROY, IN FROSH WEEK CLIMAX. Freshman week, including the Grease Rush, March on Sage, Banner Rush, and Phalanx Dance commenced last Monday morning." Not project Vanguard, not Little Rock, and not the world series could take priority over this bold head in the *Rensslaer Polytechnic* last week. As a matter of fact, campus passions quite dominated every college newssheet. UConn's daily featured an article reviewing the results of campus shenanigans. It included these quotes by UConn deans: "(during a wild spring weekend) there was too much rowdiness and drunkenness"; "... There has not been enough discretion used in drinking, and there has not been a definite closing time for parties." Student government should "insure rapid and effective improvement of the social atmosphere of the campus"! Simultaneously the University of Pennsylvania quoted the governor as saying "(only) The individual student would be held responsible for (poor) conduct in regard to the consumption of liquor".

Mount St. Mary's College editorialized on "Youthful Violence", beginning "The teen-age criminal is rapidly becoming a commonplace entity", and asking "Who is to blame for (this) situation, terrible as it is? Rumble anyone?" And even behind the walls of the Harvard Yard we find that "Several youths, believed to be college students, last night deposited a large moose-head before the statue of the Virgin Mary situated beside Father Feeney's headquarters on Bow St."

At B.U.: students mobbed the goalposts before a football game had ended, eventually clashing with policemen, who took them to be Brink's bandits. Southwestern Louisiana Institute also finds editorial space in which to discuss students' mishandling of an honor system, which demands reporting anyone who so much as cuts in line.

This year no field day and no purple shaft are scheduled at Tech; and the Institute's rational wheels are simply grinding out the same old engineers. One other newssheet, though, the *Toike Oike* of the University of Toronto, carried a commentary pertinent to this week's college world. "Snake dances, pajama parades, bonfires, and pep rallies are all part of college fun and life. The problem is knowing when to stop, and that is what separates the men from the boys. Show that you have an adult sense of responsibility in your college hijinks. Have all the fun you want, as long as it doesn't... damage or demonstrate disrespect for the law and for society.

Fellas, can't we at least paint a beaver on their satellite?
 —Sidney Magee, Jr. '61



The Inimitable JOSH WHITE with his guitar
 with SAM GARY
 BLUES, BALLADS and FOLKSONGS
 At Jordan Hall Saturday, October 19 8:30 P.M.
 \$.90 \$ 1.75 \$ 2.50 \$ 3.30
 Tickets at Jordan Hall or at Briggs & Briggs
 1270 Mass. Avenue, Cambridge

COOP NOMINATIONS

The Stockholders at the annual meeting on Friday, October 4th, made the following nominations for Stockholders, Officers and Directors:

STOCKHOLDERS:

To hold office for five years—
 John Petersen Elder
 Carl F. Floe

OFFICERS:

To hold office for one year—

President
 Vice President
 General Counsel
 Secretary
 Treasurer

Stanley F. Teele
 Austin W. Scott
 Austin W. Scott
 Walter Humphreys
 Russell H. Hassler

OTHER DIRECTORS:

From the Officers or Alumni of Harvard

Archibald Cox
 John H. Finley, Jr.
 Delmar Leighton
 Robert S. Mullen
 Kenneth B. Murdock

From the Officers or Alumni of M.I.T.

Elliott Perkins
 Houder Hudgins
 Donald P. Severance

From Harvard, Class of 1958
 From Harvard, Class of 1959
 From Harvard, Class of 1960

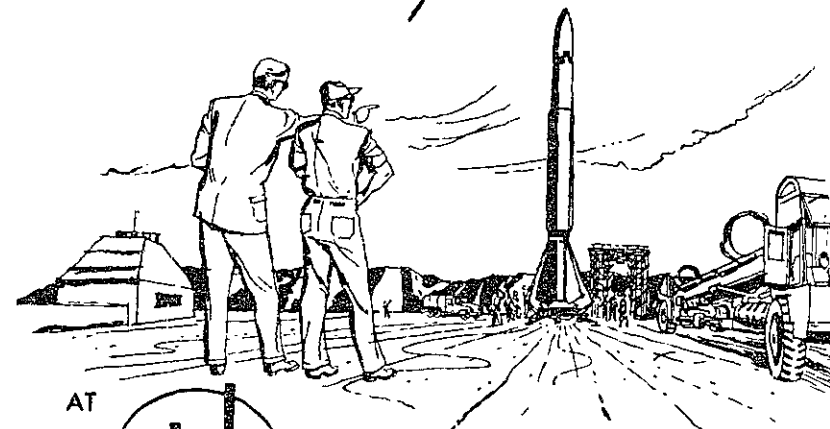
Kenneth MacIntosh
 Richard H. Seaton
 Langley C. Keyes, Jr.

From M.I.T., Class of 1958
 From M.I.T., Class of 1959

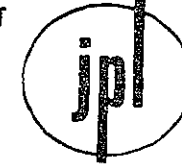
Lewis H. Cohen
 Lawrence H. Bishoff

YOUR CAREER OPPORTUNITY

in research and development of missile systems



AT



California Institute of Technology
JET PROPULSION LABORATORY
 PASADENA · CALIFORNIA

Active participation in the quest for scientific truths · Opportunity to expand your knowledge · Individual responsibility · Full utilization of your capabilities · Association with top-ranking men in field

Openings now in these fields

**ELECTRONIC ENGINEERING · APPLIED PHYSICS
 MATHEMATICS · MECHANICAL, METALLURGICAL,
 AERONAUTICAL AND CHEMICAL ENGINEERING**
 Systems, Analysis · Inertial Guidance · Computer Equipment · Instrumentation · Telemetry · Fluid Mechanics · Heat Transfer · Aerodynamics · Propellants Materials Research

U.S. CITIZENSHIP REQUIRED

ON CAMPUS INTERVIEWS

Tues. and Wed., October 15-16
 9:00-12:00 M. 1:30-5:00 p.m.,
 Room 1-173

Dr. Bohr Will Meet With Students Individually And In Small Groups

Niels Bohr will meet informally five times with selected groups of students during his stay at the Institute next month. The meetings are now being set up by a committee of five students headed by R. Travis Amis '58.

The committee, according to Amis, will select equal numbers of graduates and undergraduates, about sixty in all. Ten to twelve will be present at each meeting. Amis expects that at least part of the group will be picked on the recommendation of the heads of departments.

Dr. Bohr is also expected to be given an office within the Institute. He will keep regular office hours and students wishing to see him will be able to make appointments for that purpose.

Dr. Bohr will arrive here on October 21. He will remain for a few days, then go to Washington to formally accept the first Atoms for Peace Award. Afterward, he will return and be in residence here during most of November.

Dr. Bohr will deliver the Karl Taylor Compton Lectures, six in all, beginning on November 5.

AEC Loans Reactor Elements To Institute

The Atomic Energy Commission will provide nuclear materials for use in a research reactor now under construction by the Institute.

Twenty-six uranium fuel elements, containing approximately 2.5 kilograms of U-235, 5 tons of heavy water for the initial loading of the reactor and neutron sources will be loaned without charge for use and materials consumed. The fuel elements will be reprocessed by the Commission without charge and additional fuel elements and heavy water will be made available for continued operation.

The research reactor, cooled and moderated by heavy water, will operate at power levels up to 1000 kilowatts, and will be enclosed in a gas-tight steel shell. The reactor will be used for research in the physical and life sciences, reactor engineering studies, medical therapy and in training nuclear engineers.

CHARTER FLIGHT TO EUROPE
All members of the MIT Community interested in a round trip from New York to Paris for \$325 should attend an organizational meeting Wednesday, October 23, at 5:00 p.m., in Litchfield Lounge.

Bexley's Coed Rules Limit Male Visitors, Drinking In Rooms

House rules for the coed section of Bexley Hall were proposed at a meeting of the Bexley Hall House Committee on October 1. Final approval of these rules, which will control house procedure and hours for male visitors, will be made on November 4th at a general house meeting. Faculty residents, Professor and Mrs. William D. Bottiglia, Dean Ruth Bean, and Dean Fassett will be charged with endorsing these rules.

As stated in the proposed rules that friendliness is essential to the dormitory but rules are requisite for practicability, these rules will both formulate house organization and govern house rules. The first part will control the elections of the future officers and state the function of the government. The house rules will determine hours for male visitors and the use of alcoholic beverages. Also to be included in this section is a provision to regulate persons not conforming to these rules.

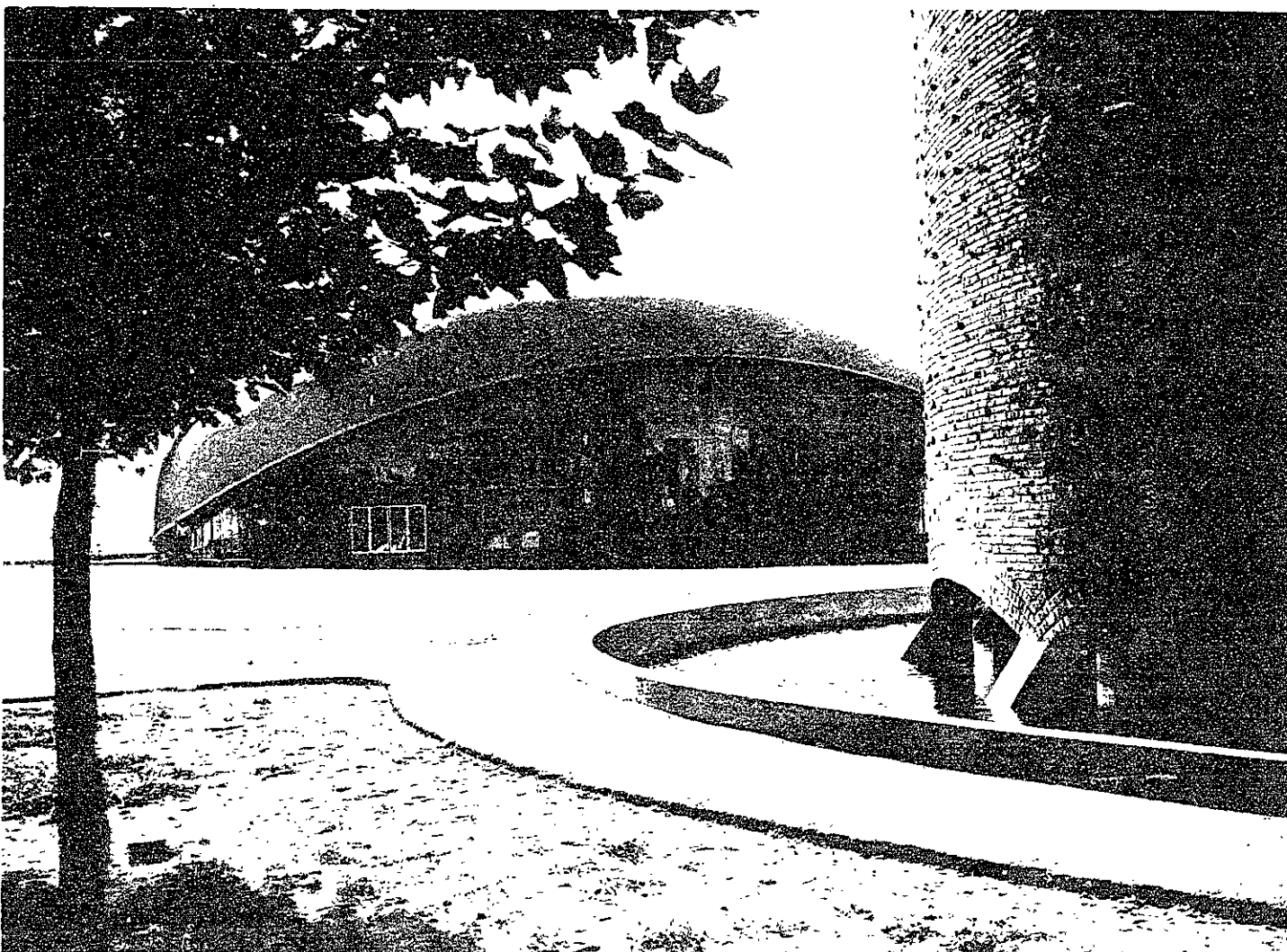
House Committee

The House Committee, "a group to which living problems and complaints can be referred and which has judicial powers concerning house rules," had its first meeting last Tuesday, at which time Gun Hovik was elected chairman and Linda Greiner secretary. The Committee will meet again tomorrow to produce a final draft of the rules.

The rules, which will attempt to produce a dormitory atmosphere in the apartment house type building, will take effect immediately upon approval.

P CLUB

P Club will meet this Saturday from 5 to 7 p.m. at Delta Upsilon.



TEMPLES IN THE SUN

JP Option Sales, Queen Contest Soon



Beautiful Jean Ann Schlagel of Simmons College, last year's reigning Junior Prom Queen, who will be succeeded by a date of someone in the Class of 1959 at the Friday night formal of JP Weekend.

Queen Finalists To Be Chosen By All

Voting for a new Junior Prom Queen will be underway soon, announced the Public Relations Committee which is handling the contest.

Within the next few days each Junior will receive a letter containing information about the contest and an application blank. If he wishes to enter his JP date in the contest he must return the blank and a 4" x 5" picture of the girl.

These pictures, identified by numbers only, will then appear on a board in building 10, and balloting will be open to all undergraduates.

From this balloting, five finalists will be chosen. These finalists will appear in person at the Friday night formal dance, where the final decision of a queen will be made by the JP committee.

JUNIOR PROM

(Continued from page 1)

Day replacement, "All Sports Day", during which there will be a crew race, rugby game, and soccer and track contests. The Athletic Association is arranging a luncheon in the cage for spectators and their dates.

Saturday night, Kai Winding and his trombone septet, will play at the semi-formal second night affair to be held at the Statler Georgian Room.

Options Sale Oct. 18; Tickets On Next Day

Option sales to Juniors for JP Weekend will be held in Building 10 next Friday, Oct. 18 from 9 to 5. The options, which cost two dollars, entitle the holder to purchase a ticket to the Prom, and to establish a table reservation. The two dollars goes toward the ticket price.

Tickets and Reservations

Tickets will be sold and table reservations made at 12 noon Saturday, the 19th, in the cage. Reservations will be made, as usual, on a first-come, first-serve basis. Open ticket sales will be held Monday in building 10.

Different colored options will be sold to fraternity and dormitory residents. The option should be purchased according to the person who will use it. Tables will be divided in the same ratio as in the option sales.

Ticket Prices

Prices are \$10.25, Friday and Saturday nights combined; \$8.25 for Friday night only; \$2.75 for Saturday night only.

As usual the famous "line" for tickets will begin at the cage immediately following option sales. This line will last all night, as different groups hold their position for the best tables, awaiting the sales at noon the next day.

MAKE YOUR SELECTION OF **the TECH**
OLD SPICE at . . . **COOP**



use

Old Spice

PRE-ELECTRIC SHAVE LOTION

to get a better shave!

Quicker . . . closer . . . smoother . . .
no matter what machine you use. 1.00

SHULTON New York • Toronto

Closed Desk Puts Damper On Baker Residents' Spirits

With the main desk in the lobby closed fifteen hours a day, the complaints are mounting in Baker House. As part of the economy drive within the dormitories as the Ryer Report recommended, the operation of the desk has been reduced from last year's twenty-four hours a day to the present hours of eight a.m. to five p.m. Many inconveniences have sprung up, the use of the facilities within Baker House has materially lessened, and house spirit has reduced as a result of the limited operation of the desk.

The older residents of Baker House have noticed a drop in the spirit of the dorm as groups no longer congregate by the desk or are able to get information about the house after five p.m. Paul Zeiger '58, the Baker House Chairman, explaining this, said, "The desk, when operated, was the nerve center for group activities. Now that the desk is closed during the evening communications have been reduced between the residents—cutting the communal spirit."

Formerly the desk controlled the use of the athletic equipment, the organ, music room, the pingpong and billiard tables, etc. Now that the desk is closed during the evening, students have to seek out the staff captain to get keys for the rooms or equipment. Often he isn't in his room reducing the use of this equipment and when he is, he is frequently interrupted to give out keys or equipment.

Complicating the entire situation is the failure of several of the phone lines between Baker and the other houses and the Institute operator. Presently the line from the MIT operator to the Baker line is out meaning that many times Baker residents don't receive outside calls in the evening as they can't be contacted in their room.

In addition inconveniences such as telegrams and special delivery letters not being delivered, people locked out of rooms, and no change for the vending machines have sprung up.

Selective Service HQ, 20E-226, Interprets Draft Law For Students

The following was released by Headquarters of the Advisory Committee on Military and Selective Service here at the Institute:

The Administration at the Massachusetts Institute of Technology established Headquarters of the Advisory Committee on Military and Selective Service five years ago to help students and Academic Staff members with their military service problems because they are convinced that scientific and engineering education is vitally important to the welfare of our country. We are now located in Room 20-E226.

We believe that each student should decide for himself what course he should follow, but we do try to supply complete information on all phases of military service and the Selective Service System by making valuable contacts and by keeping up with the constantly changing situation. By knowing all the facts, a student may make an intelligent decision.

Freshmen and all other students who have not done so, should definitely plan to take one of the Selective Service College Qualification Tests. Last year's Freshmen did exceptionally well, according to the returns we have already received from the students. Of the 240 who have reported their scores, 202 received a score of 80 or over, which means that they are eligible for five years of Graduate School as far as Selective Service System regulations are concerned. A score of 70 is passing for undergraduate studies.

We have been informed that only one test will be given during the current academic year and that this will take place sometime in the "Spring." There will be a deadline for making application, so be sure to watch for it in *The Tech* and on the various bulletin boards.

Every effort is being made to keep pace with changes in the various six-month programs. It is important to keep in mind the fact that there is a six-month plan for men with critical skills and critical occupations and that this is very different from the other six-months programs. We are informed that the six-months critical skills plan has not worked out and that it is now under discussion in Washington. This may develop into a deferment policy controlled by the Scientific Advisory Committees which have been set up in each state to select men for the present six-months critical skills plan which has broken down. As soon as we succeed in acquiring the facts, we will offer them to *The Tech*.

Gilbert M. Roddy '31 Vice-President Named Alumni Prexy In World-Wide Vote

Gilbert M. Roddy of Concord has been elected president of the Alumni Association by a world-wide mail ballot. He is a member of the Class of 1931.

D. Reid Weedon, Jr., '41, Winchester, was elected vice president and Raymond A. St. Laurent, '21, Manchester, Conn., and William L. Taggart, Jr., '27, Belmont, were elected to the executive committee.

Mr. Roddy, who will succeed Theodore T. Miller, New York, is vice president of the Boston Manufacturers Mutual Insurance Company and the Mutual Boiler and Machinery Insurance Company. He served for two years as vice president of the Alumni Association and has been active in a number of other capacities. He is president and a director of the Emerson Hospital in Concord and a trustee of the Boston Museum of Science, Wheaton College and Phi Gamma Delta and a director of the Concord Community Chest.



Gen. James McCormack, Jr. '37, newly named Vice-President for Industrial and Government Relations. Gen. McCormack was formerly a Special Advisor to the President, and last year was named president of the Institute for Defense Analysis. A Rhodes Scholar, he took the degree of master of science in civil engineering here at the Institute.

ASIAN FLU

(Continued from page 1) in the normal course of events the should have been far more patients by now. As it was, she did not think the situation would get much worse. In case the infirmary was not able to cope with a sudden influx in patients, extra beds would be set in buildings seven and eleven. Beds would also be put in Walker Memorial if necessary.

At the request of the Medical Department, the Technology Community Association was asked to organize volunteers to help out; evidently, even with the mildness of the epidemic, the department found had more work on its hands than could handle. About 24 students volunteered, estimates Amis Travis, Vice-President of TCA. They did unskilled work like preparing and serving the meals and generally helping the nurses. "What would be called KP in the army," commented Dr. Hardy, who went on to add "They were very, very good."

MEETING

The first meeting of the Orthodox Christian Fellowship will be held Wednesday, October 16, at 5:30 p.m. in the Library Lounge (room 14E-310).

COMING TO CAMBRIDGE
NOVEMBER 2
MODERN REGRESSIVE JAZZ

CUSTOM TAILORED
SUITS
\$45.00

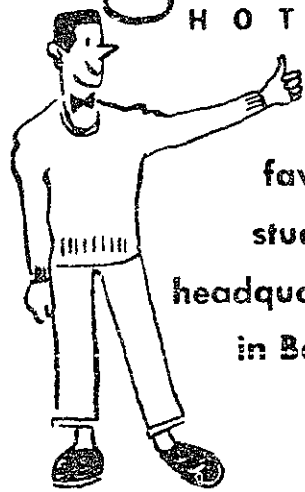
PERFECT FIT
COSTLY HAND TAILORING
FINEST BRITISH FABRICS
PERSONAL STYLING
20 DAY SERVICE

Select from over 500 luxurious imported fabrics. All styles including Ivy League. Garments hand tailored to your personal measurements by skilled craftsmen in the British Crown Colony of Hong Kong. Workmanship and materials are unexcelled. Compare with domestic goods selling for \$125 or more.

CALL: Robert Hing, KI 7-3962

*Most fabrics. Other fabrics \$26-\$54. Topcoats and sportcoats at equally low prices. All prices plus duty—\$4 to \$8.

THE Somerset
HOTEL



favorite
students
headquarters
in Boston

Centrally located near Kenmore Square in Boston . . . convenient to rail depots . . . airports . . . and rapid subway service to all parts of the city. Special Somerset facilities for theatre tickets, and other special events in Boston.

Special
STUDENT
WEEKEND
RATES

Single with running water \$ 3.30
Single with bath \$ 5.50
Double-bedded rooms \$ 7.00
Twin bedded rooms \$ 8.80
Triple \$11.50

Also rates for 4 or more to suite

Somerset
HOTEL

400 Commonwealth Avenue
Boston 15, Mass. COpley 7-9000

What's
doing...

at Pratt & Whitney Aircraft in the field of Combustion

Historically, the process of combustion has excited man's insatiable hunger for knowledge. Since his most primitive attempts to harness this phenomenon, he has been tremendously fascinated by its potentials . . . perhaps never more so than today with respect to the use of combustion principles in the modern aircraft engine.

Theorems of many sciences are being applied to the design and development of high heat release rate devices at Pratt & Whitney Aircraft. In the realm of aerodynamics alone, one of many airflow problems that exist in combustion work is diffuser design for advanced powerplants.

In spite of the apparent simplicity of a combustion system, the bringing to-

gether of fuel and air in proper proportions, the ignition of the mixture, and the rapid mixing of burned and unburned gases involves a most complex series of interrelated events occurring simultaneously in time and space.

Fuel injection systems which properly atomize and distribute under all flight conditions are a continuing challenge. In later stages of powerplant development, various combustion problems may be encountered which can be studied and resolved through the highly advanced facilities of P & W A's Willgoos Turbine Laboratory.

Although the combustion engineer draws on many fields of science (including thermodynamics, aerodynamics, fluid mechanics, heat transfer, applied

mechanics, metallurgy and chemistry), the design of combustion systems has not yet been reduced to really scientific principles. The highly successful performance of engines like the J-57, J-75 and others stands as a tribute to the vision, imagination and pioneering efforts of those at Pratt & Whitney Aircraft engaged in combustion work.

While combustion assignments involve a diversity of engineering talent, this field is only one of a broadly diversified engineering program at Pratt & Whitney Aircraft. That program—with other far-reaching activities in the fields of materials problems, mechanical design, instrumentation and aerodynamics — spells out a gratifying future for many of today's engineering students.

World's foremost designer and builder of aircraft engines

PRATT & WHITNEY AIRCRAFT

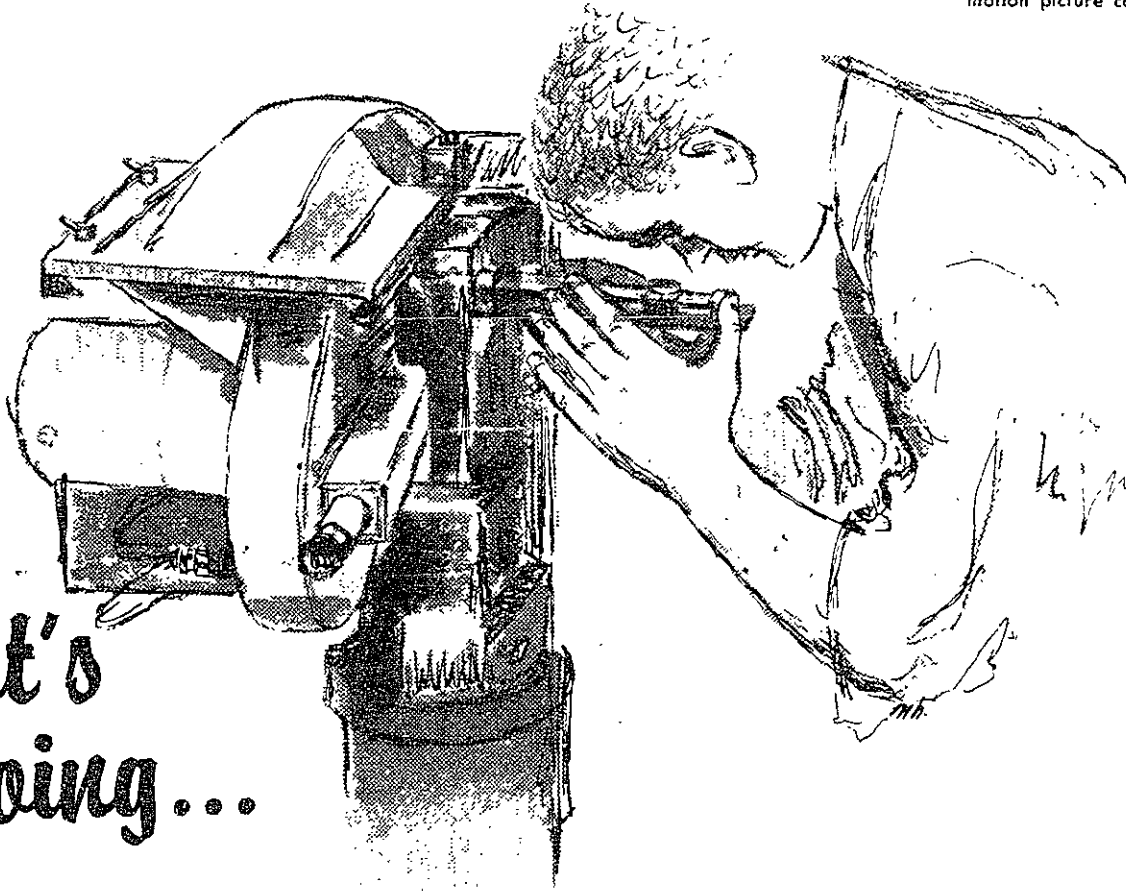
Division of United Aircraft Corporation

EAST HARTFORD 8, CONNECTICUT



Pratt & Whitney Aircraft operates a completely self-contained engineering facility in East Hartford, Connecticut, and is now building a similar facility in Palm Beach County, Florida. For further information about engineering careers at Pratt & Whitney Aircraft, write to Mr. F. W. Powers, Engineering Department.

The combustion process as it actually takes place in the afterburner of an advanced jet engine on test is viewed directly through a special periscope. What the engineer observes is simultaneously recorded by a high-speed motion picture camera.





Ernesto Macaya heads the ball at Amherst last Saturday, while the Beaver Varsity booters were on the way to deadlock the Jeffs 3-3, in the season's opener.

Soccer Team Hopes High For Best Season In Years

by Ernest Macaya '60

With the strongest varsity team since the 1954 season, Tech has excellent possibilities of placing high in the Soccer League this Fall. The Beaver booters nevertheless will face a rough schedule, but they have shown strong capabilities to turn down their opponents.

The backbone of the team seems to be concentrated in forward line where international players have massed skillful attacks. The halfback and fullback lines also have excellent depths to control the offensive plays and cut down the scoring by opposition.

Top Goalie

Guarding the nets, Tech is fortunate to have one of the best goalies in New England, whose sterling defensive play provides confidence to the rest of the players. Standing out in the team are: Captain Rod Landt '58 at Left Fullback, Rudy Kovach '58 as goalie, Andrus Viilu at the Halfback, Reinaldo Donal '58, Dail Rhee '60, Rudy Villavizcaino '60, Manael Penna '60, and Ernesto Macaya '60 all forming the forward line.

New Coach

A great deal of the fine, early performances of the team are due to the excellent work of the rookie coach Charlie Batterman, whose ability to get the most out of his players has fired up the team's spirit.

Tomorrow on a home game at 2:00 p.m. the engineers will meet W.P.I. whom they were not able to play last year. Two years ago, however, Tech defeated them 3-1. On October 22 at Harvard, the Beavers will meet with the usually tough Crimson team in what may be the best game of the season. Last Fall for the first time in many years, Tech dumped the Crimson booters. Next Wednesday also on Briggs Field, the varsity booters play Tufts, who appear to be a rough and strong team. Also on the schedule are Springfield and Brown which should also become dangerous competitors as the season moves on.

The majority of this year's starting squad are players from the Sophomore class, which provide Tech with depth for successful seasons in the near future.

Bushleaguer

I.M. Gridders Play Second Games Theta Chi, Betas, Fijis, SAE Favored

Going into the second week of the round-robin competition, it appears that last year's top teams will head their respective leagues again this season. In Division A especially, the outcome looks quite clear.

Division A

League I

After Sigma Alpha Epsilon's demonstration of power in their 20-6 triumph over Alpha Epsilon Pi for the Sailors' twenty-second consecutive victory, they seem to be the team to beat. They have virtually all of last year's championship squad back again; all-star passer Walt Humann '59, all-star receivers Pete Hohorst '57, Fred Browand '59, and Bob Thompson '58, and a line spearheaded by Bob McCullough '60 and Dave Berg '58. They meet Pi Lambda Phi this Saturday in what should be a walkaway.

In the other League I encounter, Sigma Chi faces a surprising AEPI team. The former rate a slight edge.

League II

With a 47-0 rout of Phi Kappa Sigma under their belts, the Betas could well be SAE's main rival for the title. They face the Sammies this Sunday. Freshman quarterback Gordie Gilbert, who passed for five touchdowns and ran for one last week-end, should again supply the spark with the aid of receivers Warren Goodnow '59 and Jim Russell '59. The Betas' defense is very solid.

Delta Upsilon, the other League II victor in their opener, meets the bat-

tered Phi Kappa Sigma gridders in what should be a lopsided contest. DU, led by tosser John Roberts '61 and end Bob Shelton '60, is definitely the chief threat to another Beta league crown.

League III

Theta Chi takes on Alpha Tau Omega Sunday in a warmup for their meeting with the Delts. Theta Chi, runnerup to SAE last year, is led by Dick "Killer" Beale '58 and Scott Loring '57.

Delta Tau Delta encounters Sigma Phi Epsilon in the other League III tilt. Passer-receiver Dan Holland '58 looks like the key to the Delts' offensive fortunes. He'll be aided by end John Crissman '61 and back Mike Haugh '59. Joe Tims '58 will be a stalwart on defense.

League IV

With tailback Al Beard '59 calling the plays and throwing the majority of the aerials, Phi Gamma Delta rates the nod over dark horse Sigma NU in Saturday's action. The latter, feature a rock-hard defensive platoon, anchored by Chuck Conn '60 and Ed Macho '58, and offensive aces Paul Ekberg '58 and Richie Johnson '58. The Fijis are paced by lineman of the year, John Irwin '58, all star Chuck Ingraham '58, Bruce Blanchard '57, and Hal Smith '57.

Chuck Hughes, Grad House' one-Chuck Hughes, Grad House's one-The Phi Deltis are no longer the powerhouse of previous years, but they still have all star back Walt

Ackerlund '58 and Emil Wright '58.
Beaver Predicts

League I

SAE 30 Pi Lambda Phi 0
Sigma Chi 13 AEPi 0

League II

Beta Theta Pi 25 Sigma Alpha Mu 6

Delta Upsilon 35 Phi Kappa Sigma 0

League III

Theta Chi 14 Alpha Tau Omega 0

Delta Tau Delta 21 Sigma Phi Epsilon 0

League IV

Phi Gamma Delta 19 Sigma Nu 13

Grad House 20 Phi Delta Theta 6

League V

Phi Mu Delta 13 Phi Beta Epsilon 7

Theta Delta Chi 14 Delta Kappa Epsilon 13

League VI

Baker House 26 Phi Kappa 0

Kappa Sigma 7 Lambda Chi Alpha 6

Chi Phi 12 Theta Xi 6

League VII

5:15 Club 13 Grad House Dining Staff 0

League VIII

Phi Sigma Kappa 13 TEP 12

East Campus 20 Student House 7

David Flett DuPont Tennis Courts Open Restricted To MIT

Within a fortnight, the final half-dozen David F. DuPont tennis courts will be ready for use. At present, six of the all-weather composition playing surfaces are being utilized.

The single entrance facilitates the exclusion of unauthorized visitors, even though it may cause slight inconvenience to Techmen.

There is definite need for tennis sneakers, as other footwear has ridged soles that mark the ground.

Rues For Use

Regulations

- Courts are reserved for use of MIT personnel only.
 - At the request of the supervisor of the tennis courts, undergraduate and graduate students must present their *Bursar's Card*.
- Players must wear tennis shoes on all courts.

Reservation Procedure

- Courts may not be signed up for more than one day in advance.
- Partners may not reserve a court for more than one hour on any given day.
- Unassigned courts may be used on a "first come-first serve" basis.
- Reservations may be made by contacting the supervisor of the courts on extension 2912 after 10:45 a.m.

Guests

- Undergraduates and graduate students must register the name of their guest with the supervisor of the tennis courts. Students may invite one guest free of charge.
 - These guest privileges will also apply to the skating rink, the Alumni Swimming pool and the squash courts.

Tennis Court Schedule

Open for general play from 8 a.m. to dusk.

Reservations pending Physical Education class schedule, team practice, and maintenance schedule.

Frosh Booters Drop Medford HS By 3-1 Count In Year's Opener

The predictions of the AA that elimination of Field Day would strengthen soccer at MIT were partially borne out last Wednesday on Briggs Field as an inspired freshman team downed a strong Medford High squad by a 3-1 count.

The Engineers opened the scoring midway in the first quarter as right wing John Vleck crossed to center forward "Killer" Piedrahita who slammed it home. Medford fought back with a quick goal to open the second period but midway in the quarter Piedrahita shot another through from just outside the penalty area unassisted. The half ended with the Engineers holding on to the slim 2-1 margin.

The second half started slow but the Engineers got rolling again midway through the third quarter as Vleck sent another beautiful pass, this time to Guillelmo Van Ordt who stuffed in the third MIT tally. The frosh were unable to score again but put up a tight defense to beat off the desperation attacks of Medford in the closing minutes.

Assistant Coach Pete Hohorst '57 placed a large part of the credit for the victory on the shoulders of goalie Frankenhuis who played a tremendous game. Hohorst also cited the play of Don Twyman at right half and Marques at left inside as extremely good.

The freshmen make their second appearance of the season tomorrow when they meet the perennially strong Harvard eleven on Briggs Field. Last year's freshman squad downed the Crimson 1-0, for the first Engineer victory in recent years, and the boys from up the river will be all out for revenge in what should be one of the most exciting games of the year.

Although this year's squad can field one of the best freshman soccer teams seen in many years, the depth is negligible. Only twenty men are presently out for practices and a few injuries to critical men could completely ruin the team's chances for a successful season.



"Pretty soft!"...new Arrow Cambridge Cloth

This new Arrow University-styled shirt is a deft blend of the old and new... traditional styling in smart new feather-soft Arrow Cambridge Cloth... bound to become as popular as our famous Oxford cloth. Collar buttons down, front and center back.

Mitoga®-tailored body and sleeves fit smooth and neat, without bunching. Full

length box-pleat in back. Your favorite colors in solids, checks, pencil-line stripes. At your Arrow dealer's. Shirt, \$5.95; Tie, \$2.50.

ARROW
Shirts and Ties

DRIVERS 16-25

Save on your 1958

Auto Insurance

* Special Registry-licensed Driver Education Course to qualify for substantially reduced insurance premiums.

* Preparation for Massachusetts Registry exam.

* Beginner and Refresher Courses.

CALL LO 6-2100

for Pick Up in

Your Community

GARBER'S AUTO

DRIVING SCHOOL

1406 Beacon St., Brookline



Eighty Frosh Workout On River For Crew Opener November 2nd

Fired with enthusiasm, approximately eighty freshmen are currently working out at the boat house and on the Charles in preparation for the fall crew season. The squad is almost evenly divided between heavies and lights with the latter in slight excess.

New Freshman Coach Bob Doyle is pleased with the turnout, and has stated that the quality of the hopefuls is excellent. With the additional feature of an unusually fine group of coxswains, Coach Doyle feels that there is a bright outlook for the year.

To date, practice has been on the barges every afternoon, but the teams will make use of the shells tomorrow for the first time. Much more will be known of the squad's prospects after a few weeks in the shells.

The first-year men will have their first autumn test on November 2, when they meet the Big Green of Dartmouth on the Charles at 10:00 a.m. in conjunction with All-Sports Day. A meet with Andover is being planned, but a definite date has not been set.

This will be the first fall crew season since the abolition of Field Day by the Athletic Association last Spring. Thus the frosh will have to point toward the Dartmouth and proposed Andover competition only, in lieu of the departed race with the sophomores.

on deck

Saturday

Sailing—Danmark Regatta	Away
Fr. Sailing—Nonagonal	Away
Cross Country—Williams, Springfield	Away
Soccer—W.P.I.—Home	2:00 p.m.
Fr. Soccer—Harvard—Home	2:00 p.m.

CommunityBoatInc., On Charles, Brings Yachting To Masses

On the Cambridge bank of the Charles, a stone's throw from the Institute, stands the only public yacht club in America—Community Boating, Inc. Begun 17 years ago as a philanthropic gesture by Joseph Lee, the club lists among its 1700 members people from almost every walk of life found in and around Boston. Its ranks are enriched by the presence of many foreign students, tourists, and sailing enthusiasts. A large part of the membership is occupied by youngsters between 12 and 17 who are enrolled in the junior section where they learn to sail and become friendly young people instead of juvenile delinquents.

No previous experience is necessary for membership, indeed, most of the club's new members have never set foot in a sailboat before. After a period of expert instruction by a veteran member, the novice can take one of the club's 39 boats out on his own and even invite friends to come along at certain times.

Membership dues for adult members are very reasonable: \$15 for a 30-day membership and \$35 for the full season, which runs from April to November.

It is fortunate for the Institute to have at its door this unique yacht club dedicated to bringing the fun of sailing to all!

MIT Runners Open Season In Saturday, Chances Look Good

Possessing greater depth than in recent years, the varsity cross-country team opens its 1957 season at Springfield tomorrow, racing Williams and Springfield over the latter's four-mile course.

Last year at Williamstown, the Techmen were shaded by Williams by the slim margin of five points over a hilly course.

Led by Captain Rod Swift '58 and Glenn Bennett '58, the Tech array will gain additional strength from sophomore Bob Morano, last year's outstanding performer in frosh cross-country and track. Others pacing the attack will be Sophs Dan Oliver, Bob Mullen, Ed McCartney, and Howie McDowell. The remainder of the squad includes Duncan Ewing '58, Sarsfield McNulty '58, Robert Cooper '59, George Barnett '58—back from the 1956 squad—and sophomores Bob Pieri, Ray Fletcher, Larry Martin, and Townsend Carmen.

A greater-than-usual turnout has insured depth for the MIT forces which should create a successful team before the season's end.

Future prospects are also bright as the Class of 1961 has sent out a great number of men. The freshmen will also begin their slate on Saturday at Springfield, racing the Springfield yearlings at 1:00 p.m. over a 2.7-mile course.

Up Is Long Way For EE Scalers

Electrical engineers, in roughing clothes, will climb to the top of Mount Monadnock tomorrow.

The occasion will be the graduate student-staff acquaintance hike for electrical engineering staff, graduate students, their families and friends.

Mount Monadnock, located near Jaffrey, New Hampshire, is 3,166 feet high. Climbing time is estimated at about two hours.

Red ribbons will be worn by all of the electrical engineers so that, when they reach the top, they will be able to distinguish themselves from the other climbers.

WANTED—Dixieland Jazz Musicians. Experience not necessary if you have a good Up and coming Jazz Band needs new members. CRestview 4-7594

are you SELLING Hi-fi equipment Books Slide Rules Bicycles Bibles or ROOMS Rides Rooms Babysitters?

THE TECH announces a new classification policy whereby you can, through THE TECH, reach DORMITORY RESIDENTS FRATERNITIES GRADUATES MARRIED STUDENTS FACULTY INSTITUTE EMPLOYEES Bulletin boards reach only a fraction of the market, but you can cover the Institute with a THE TECH classified ad for the low cost of only 10c per line (min. 2 lines) ad placement or information call THE TECH On Monday and Wednesday 9-11 a.m. 1-2 p.m.; Tuesdays and Thursdays 12-1 p.m. Phone numbers: TR 6-5856, Institute station 2731, or East Campus line.

STARLIGHT DANCE

The International Student's Club announces that it will hold a Starlight Dance at Baker House at 8 p.m. tomorrow. Tickets, at \$2.00 for members and \$2.50 for non-members, are available from Surendra Paul, Baker House, and Peter Yang, East Campus.



Sunday Evening OCTOBER 13 at 8 o'clock
DR. J. B. RHINE

"Life After Death?—The Search for Proof"

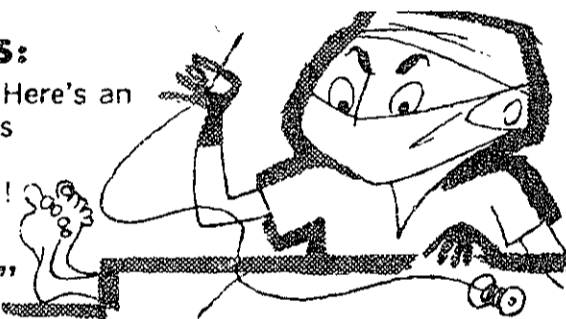
FORD HALL FORUM

JORDAN HALL — Gainsboro St. cor. Huntington Ave. — BOSTON
DOORS OPEN 7:45 P.M. EVERYBODY WELCOME

DIAGNOSIS:

DELIGHTFUL! Here's an operation that's going to have you in stitches!

"DOCTOR at LARGE"



ME 6-0777 KENMORE Near Kenmore Sq.

M.I.T. HUMANITIES SERIES FOR 1957-58 presents

Boston Symphony Orchestra, Charles Munch conductor
Wednesday, Nov. 20, 8:30 p.m.

Pauk Quartet of Budapest, Sunday, Dec. 15, 3 p.m.

Juilliard String Quartet, Sunday, Jan. 19, 3 p.m.

Chamber Ensemble Concert, Sunday, Feb. 16, 3 p.m.

Walton's FACADE; Gregory Tucker's CONCERTINO
Members of the Boston Symphony, Klaus Liepmann conducting; Norma Farber, reciter; Gregory Tucker, pianist.
Ernst Levy, pianist—Sunday, March 23, 3 p.m.

Series tickets: \$7.50 (tax exempt) by mail from Room 14-N236, M.I.T., Cambridge. Reserved seats. Single tickets: \$1.75 (Boston Symphony \$3.50) on sale on Nov. 1. Checks payable to M.I.T. Humanities Series.

New, Lower Rates

SBL Premiums on Savings Bank Life Insurance 5-Year Renewable Term policies have been reduced \$1.10 per \$1,000 per year! This means lower immediate premiums—less money to pay out for family protection. Yearly dividends make the net cost even lower. Ask us for EXACT rates at your age. You'll be amazed how little it costs to get the protection you NEED—at a cost you can afford. By buying life insurance direct, over-the-counter, you help cut selling costs... and you get the savings.

BANK NAME
Life Insurance Dept. UN 4-5271 — Central Square
CAMBRIDGEPORT SAVINGS BANK
SAVINGS BANK LIFE INSURANCE

HAVE A REAL CIGARETTE—

HAVE A

Camel

Sure are lots of fads and fancy stuff to smoke these days. Look 'em over—then settle down with Camel, a real cigarette. The exclusive Camel blend of costly tobaccos has never been equalled for rich flavor and easygoing mildness. Today, more people smoke Camels than any other cigarette.

So good and mild...
the finest taste in smoking!

