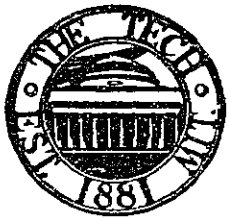


# The Tech



OFFICIAL NEWSPAPER OF THE UNDERGRADUATES OF THE MASSACHUSETTS INSTITUTE OF TECHNOLOGY

VOL. LXV. NO. 42

CAMBRIDGE, MASSACHUSETTS, TUESDAY, NOVEMBER 15, 1955

5 CENTS

## Dormitory Council Plans Questionnaire About Open House

Dormitory Council is publishing a questionnaire concerning the rules for Open House Hours. This is to be the first of three such questionnaires; the other two will cover hazing and physical damage to the dorms; and hot plates and other appliances in the dorms. The questionnaires represent a "serious attempt to evaluate the opinions of the dormitory residents" and will be "judged by a faculty committee" which will decide on the "further continuation" of such a program.

This questionnaire was discussed at the special meeting of DormCon held in Baker House Tuesday, Nov. 8.

At the regular meeting held the night before, discussion concerned the hiring of caterers for refreshments after usual hours, amendments to the by-laws of DormCon, and the reports of the three house committees.

The present policy on hiring people for catering affairs has been to hire dining staff personnel. This is more expensive than hiring outsiders as the dining personnel are paid time and a half for this type of work. Outsiders would not receive such pay but there is fear of labor trouble if outsiders are hired. DormCon is looking into the problem.

East Campus reported that the stolen telephones will not be replaced. Baker House explained the house tax that is planned. This tax would require all Baker residents to pay one dollar per term to be used for house improvements. A house vote is planned to get the opinion of the residents on this point. Burton House also reported on plans for a tax, of 50 cents per person. The report also mentioned that the darkroom fee will be revised and that new rules on the use of the ladies' lounge in the 410 section have been passed.

## Weisskopf, Whitman Talk Tonight On Atoms For Peace Conference

A report on the "Atoms For Peace" Conference held this summer in Geneva, Switzerland, is the topic of a lecture to be given this afternoon at 5:00 p.m. in Kresge Auditorium. Everyone is invited to the program, presented jointly by the International Program Committee and the Lectures Series Committee, which will feature Professors Victor Weisskopf and Walter G. Whitman as speakers. A question and answer period is scheduled after the address.

Originated in December

The Geneva Conference originated last December when the United Nations General Assembly voted unanimously to establish a scientific congress to exchange information on the peaceful uses of atomic energy. The conference was judged to be extremely successful through the efforts of 1400 delegates from seventy-three nations on both sides of the Iron Curtain.

## Alpha Phi Omega Seeks Ugly Man

Alpha Phi Omega, National Service Fraternity, will open their annual contest to choose the "Ugliest Man on Campus" this Wednesday. Petitions will be given to all hall chairmen, fraternity houses, and TCA, and will be available from members of APO. To win, an undergraduate need only submit his petition with \$2.00 and begin campaigning. The contest, which is held in order to raise money for Cambridge Boy Scouting, offers as an award to the man elected "Ugliest" an expense-paid evening with a beautiful girl and a trophy and certificates proclaiming his office. The campaigns, which in the past have been hot and heavy, center on novel ways of convincing the student body that one contestant is uglier than all the others.

## Three Students To Face Charges For Nocturnal Visit To Radcliffe

Three MIT undergraduates were arrested in the middle of the Radcliffe Quad early last Sunday morning. Officer George Mercier of the Cambridge Police Department, on duty at Radcliffe at the time, heard what he termed "wild noises" and, suspecting a riot, called Central Square Station for help.

### Spots Prowlers

He headed into the Quad and spotted three figures. He called for them to stand still and when they started to run, he, taking them for the Cambridge hoodlums who had been causing disturbances in the area (two were wearing dark leather jackets) fired two shots which halted the three.

### INFORMAL DANCE COMMITTEE

The Informal Dance Committee of the Walker Student Staff will present its second dance of the season at 8:00 p.m., Saturday, November 19. The event will take place in Morris Hall. The admission is \$1.00.

## Baker House Expels Two Residents For Exploding Chemicals In Dorm

As a result of last Wednesday's Baker House Committee meeting, two Baker House residents, Arthur H. Aronson '57 and Peter Schwartzkopf '57, were expelled from Baker House for exploding fulminate of mercury bombs on Sunday morning, November 6. The expulsion action is now pending review by the Dormitory Judicial Committee.

The events leading to the explosions, as related by one Baker House resident who was present, is as follows: A group of sophomores on the sixth floor of Baker House were having a rather noisy party in celebration of their shut-out victory in Field Day. During the festivities they were joined by several residents from the lower floors who added their liquor and noise to that already on hand. Among the

additions were Aronson and Schwartzkopf. After a few small firecrackers were exploded Aronson and Schwartzkopf repaired to their room on the second floor, and brought back with them some fulminate of mercury bombs which they proceeded to set off. It was then 3:00 Sunday morning.

### Students Questioned

Sergeant Hallice on duty at the desk and the arresting officer questioned the three students at length. The police were assured that there had been no others participating. After an hour and a quarter, they were charged officially with Disturbance of the Peace and trial was set for Monday, November 14 at Third District Court, Cambridge. The students were released on twenty dollars bail.

### Past Disturbances

Several girls from the Quad were questioned by the police. They declined to prefer charges. Repeated disturbances in the area had kept the police on the lookout and complaints had been registered by nearby residents.

### 20 People Questioned

Twenty people who might have had some knowledge about the explosion were questioned during the investigation which consisted of two formal parts. First the twenty were brought together in one room, each person being given a mimeographed sheet of four questions to fill out. These questions were essentially: (1) Were you present at the time of the explosion? (2) Without mentioning names do you know who supplied the explosives? (3) If the answer to the preceding question is "yes" is that person in this room? (4) Will you tell who was responsible? While the answers to the first three questions was yes in many cases, the answer to the fourth was in all cases no.

It soon became quite evident that nothing constructive was being accomplished with this line of investigation, and the committee decided to question each of the 20 men individually behind closed doors. The length of the investigation is demonstrated by the fact that at least one person was required to wait more than three hours to be called in. Among the questions asked this individual were the following: Do you know who did it? Describe what happened. What do you think the committee should do? The committee seemed to impress upon the 20 that "they could do anything they wanted to."

Nothing was proved conclusively at the closed hearing, but after its conclusion Aronson and Schwartzkopf confessed their actions together.

### Aronson and Schwartzkopf Make Statements

The following is the essence of a joint statement made to *The Tech* by Messrs. Aronson and Schwartzkopf: Peter Schwartzkopf admitted lighting and carrying the bombs, while

(Continued on page 7)

## Institute Committee Passes Motion To Expand Facilities For Commuters In Walker

Institute Committee has approved the establishment of a Commuter Center on the second floor of Walker Memorial. At its November 9 meeting, Inscomm accepted the compromise plan offered by the Special Committee on Commuter Compromise and forwarded the entire commuter report to the administration.

The effect of the compromise is to give the commuters the requested Center in Walker while at the same time keeping TCA in the building. The provisions are as follows:

As an immediate step, the TCA office would be relocated in the Faculty Lounge and its present quarters assigned to the Commuter Association. TCA would not be moved from the second floor of Walker until adequate facilities are provided elsewhere in Walker or in some other center of student activities.

## Tech PR Named Best In Country

The MIT company of Pershing Rifles, Company C-12, was named the top company in the outstanding Pershing Rifles regiment in the United States. Last May, MIT was adjudged the winner of the 12th Regiment drill competition. Last Saturday, November 12, it was announced at the 12th Regimental Assembly that Pershing Rifles' national headquarters had selected the 12th Regiment as the outstanding regiment in the U. S.

The occasion for the announcement, the Regimental Assembly, was a semi-legislative meeting of the company commanders of the 12th Regiment's seven companies. The Assembly was held at the Institute, which houses the headquarters company of the regiment.

Company C-12 was organized in 1947, and now consists of approximately 50 active members. Its members are primarily basic ROTC cadets, while its officers are advanced corps cadets elected from the membership.

(Continued on page 4)

## Corley Developed Band In 1948; Success Limited By Lack Of Time

This is the second and concluding article of a series on John Corley, the director of MIT Concert Band, Symphony Orchestra, and Brass Choir. The first article was concerned with his previous musical experience, the following with his work at the Institute.

In the fall of 1948, the idea dawned upon an Institute upper-classman, James Burkhardt, that there were considerably more students at Tech who played wind instruments than were being accommodated in the symphony orchestra. He consequently decided that a band should be formed in order that these students might continue to derive pleasure from their musical talents while in college.

The first rehearsal of the MIT Concert Band was attended by approximately 75 individuals, and James realized that competent leadership was needed immediately. He therefore approached Professor Klaus Liepmann, the director of music, who in turn contacted the Boston University Music School. Prof. Liepmann was referred by B.U. to a young, experienced band director named John Corley, and a meeting of the three individuals was soon arranged. At this meeting, John was offered the leadership of the band, which he gladly accepted.

During its first year, the band was very active; playing for such events as the mid-century convocation and "Tech's-a-Poppin'". In May they inaugurated a series of annual Esplanade concerts, which continued until two years ago.

Since he first came to MIT, John Corley has constantly thought in terms of improving the musical quality of the band. He therefore began slowly to inject original works of high stature into the band's repertory, but the idea of playing original compositions exclusively was nothing but a wild dream—until December, 1953.

During the preceding few months, the technical quality of the band had shown improvement due to the large freshman class; and the interest in the organization on the part of its members had also improved—this being due to a strong, active management under president Randall Robinson, '55. As a result, the band decided to take the big step and program original music for the December concert in Huntington Hall.

The audience's reception of this concert was mediocre, but the bandsmen realized that they had a challenge in original works, and their interest was fired. The two greatest problems confronting John Corley were whether or not an audience for original band music could be cultivated, and where and how would he obtain this music, since the repertory was rather limited. After two years, these problems still exist, but the growth of the band under John Corley's guiding hand is worth noting.

Acquiring Impressive Reputation Since that eventful decision in 1953, the band has performed at Tufts, Brandeis, Lasell, Smith, Vassar. (Continued on page 5)

# The Tech

Vol. LXXV Tuesday, November 15, 1955 No. 42

### MANAGING BOARD

General Manager: M. Philip Bryden '56  
 Editor: Stephen N. Cohen '56  
 Managing Editor: Frank J. Sarno '56  
 Co-Business Manager: Robert Kaiser '56  
 Co-Business Manager: Philip B. Mitchell '57

Night Editor: Robert H. Rosenbaum '57

### COPY

J. Philip Bromberg '56, co-editor  
 Robert G. Bridgman '57, co-editor

### NEWS

John A. Friedman '57, editor  
 Seth Weeks '58, assistant  
 Stephen Auerbach '58  
 Arthur Schultz '57  
 Roger Kapp '58  
 Robert Solt '58

### FEATURES

James D. Robertson '56, editor  
 William J. Alston '56  
 Fredric Gordon '56  
 Richard Teper '56  
 Paul Abrahams '56  
 Verthold Lippel '56  
 Kenneth Mitzner '58  
 Larry Boedecker '58  
 Daniel B. Schneider '57

### CIRCULATION

Roger D. Wollstadt '58, co-manager  
 Robert D. Logcher '58, co-manager  
 Donald C. Rich '58  
 Richard Schou '58  
 William C. Kazokys '58

### OFFICE MANAGER

Jacob D. Gubbay '56

### STAFF CANDIDATES

Michael Brunschwig '59  
 Ed Cheatham '59  
 Ken Liebermann '59  
 David Ytterock '59  
 Donald King '59  
 Judson James '59  
 Charles Spangler '59  
 Stephen Sacks '59  
 George Glen '59  
 Kenneth Hellerman '59  
 Harold Laeger '59  
 Murray Kohiman '58  
 Fred Epstein '57  
 J. Howells '58

### SUBSCRIPTION RATES

	Institute Mail	United States	Foreign
1 year	\$2.25	\$2.75	\$3.25
2 years	\$4.00	\$5.00	\$6.00

### OFFICES OF THE TECH

News, Editorial and Business—Room 020, Walker Memorial, Cambridge 39, Mass.  
 Entered as second class matter at the post office at Boston, Massachusetts.  
 KI rkland 7-1881 UN 4-6900, Extension 2731

## letters

To the Editor of *The Tech*:  
Dear Sir:

At a recent meeting of the Managing Board of the *Tech Engineering News* it was decided to sever all connections between *TEN* the magazine, and the *TEN* Audio Line.

The Audio Line was started several years ago by a group of interested students on *TEN* who wanted to enjoy High Fidelity classical music the whole day and also wished to share their good fortune with everyone else. Thus the Audio Line grew and acquired a vast listening audience.

Unfortunately, there is not the interest in *TEN* this year for the maintenance of the Audio Line and, hence, we are forced to abandon the Line.

This does not mean that the Line will not be maintained in the future. Several East Campus students have offered to take over complete operation of the Audio Line and already the lines are being removed from our offices.

Furthermore, the Audio Line will not be called the *TEN* Audio Line.

This letter is to serve as official notice of *TEN*'s resignation from this student service.

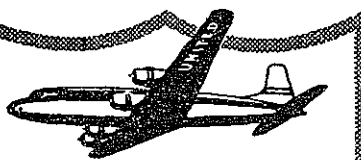
Allen C. Langord '57  
General Manager

The *Tech Engineering News*  
November 10, 1955

To the Editor of *The Tech*:  
Dear Sir:

I was encouraged by your recent editorial announcing the gradual realization of the Institute's efforts to turn out "whole men" If this be so, we are surely approaching the point where students seize the cultural opportunities offered here, and gain an optimum stimulation from the college community. The question has crossed my mind, whether, in fact, this degree of "wholeness" is to be reached solely by attending three or four humanities classes a week, writing an occasional theme, and covering the great human problems of history and literature in desultory fashion.

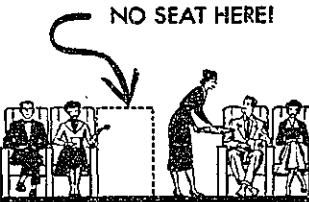
It is not my purpose to decry the Institute's program in humanities; the thoughtfulness with which it was



SAVE DOLLARS!  
SAVE DAYS!

fly home on UNITED AIR COACH

Stretch those vacation dollars and days by taking advantage of United's right combination of low fares, fast flights and frequent schedules.



And enjoy the extra comfort of roomy 2-abreast seating — exclusive on United. All flights on modern 4-engine Mainliners.

Boston: for reservations, call Hancock 6-9500 or an authorized travel agent.



## "Misanthrope" By Poets' Theatre Superbly Translated To English

by Robert Kaiser '56

Last Wednesday evening, the troupe of the Poets' Theatre moved from its Palmer Street Home to the Little Theatre of the Kresge Auditorium for a three-night run, and presented its adaptation of Richard Wilbur's new verse translation of Molière's classic comedy, "The Misanthrope"

The translation is superb; Mr. Wilbur has been able to preserve the spirit of the original play, and still produce an excellent English text. The excellence of the presented interpretation is, however, debatable. If one considers "The Misanthrope" to be a light comedy, a commendable job was done. If, on the other hand, one considers "The Misanthrope" to be a more meaningful play with satirical and philosophical value, the presentation would be found weak and lacking in character. In this case some points would have to be seriously criticized. Rather than presenting a brisk and biting satire of the petty courtesans of the era, Tom Wheton and Gregory Lafayette portray Alceste and Clitandre, the two marquis, as two moronic clowns, with

extremely affected accents and poses. Alceste should have been played with much more stature, and the contradiction in his character portrayed as a tragic flaw, not as an indecisiveness.

Mr. Edward Thommen, director of the production, stated after the presentation that he was trying to present "The Misanthrope" as Molière would have it played. Mr. Thommen contends that the play should be produced in the tradition of the Italian "comedia del arte", a tradition in which Molière's art was nurtured—thus the need for the elements of buffoonery and heavy handed comedy. On the other hand, "The Misanthrope" when first produced in Paris in 1665, was rejected by the public because it wanted amusing farces. It would appear that the play showed subtle overtones even then, contradicting Mr. Thommen's interpretation.

If we base our criticism on his interpretation, Mr. Thommen was able to achieve his goal. One performance was outstanding. Robert Beatey's Philinte was artful and extremely amusing throughout.



On Campus with Max Shulman

(Author of "Barefoot Boy With Cheek," etc.)

### SCHULTZ IS A MANY SPLENDORED THING

Beppo Schultz, boulevardier, raconteur, connoisseur, sportsman, bon vivant, hail fellow well met—in short, typical American college man—smokes today's new Philip Morris Cigarettes.

"Why do you smoke today's new Philip Morris Cigarettes, hey?" a friend recently asked Beppo Schultz.

"I smoke today's new Philip Morris Cigarettes," replied Beppo, looking up from his 2.9 litre L-head Hotchkiss drive double overhead camshaft British sports car, "because they are new."

"New?" said the friend. "What do you mean—new?"

"I mean modern—up-to-date—designed for today's easier, breezier living," said Beppo.

"Like this 2.9 litre L-head Hotchkiss drive double overhead camshaft British sports car?" asked the friend.

"Exactly," said Beppo.

"She's a beauty," said the friend, looking admiringly at the car. "How long have you had her?"



"It's a male," said Beppo.

"Sorry," said the friend. "How long have you had him?"

"About a year," said Beppo.

"Have you done a lot of work on him?" asked the friend.

"Oh, have I not!" cried Beppo. "I have replaced the pushrods and rockers with a Rootes-type supercharger. I have replaced the torque with a synchromesh. I have replaced the tachometer with a double side draft carburetor."

"Gracious!" exclaimed the friend.

"I have replaced the hood with a bonnet," said Beppo.

"Land o' Goshen!" exclaimed the friend.

"I have replaced the gasoline with petrol," said Beppo.

"Crim-a-mentlies!" said the friend.

"And I have put gloves in the glove compartment," said Beppo.

"My, you have been the busy one!" said the friend. "You must be exhausted."

"Maybe a trifle," said Beppo with a brave little smile.

"Do you know what I do when I'm tired?" asked the friend.

"Light a Philip Morris?" Beppo ventured.

"Oh, pshaw, you guessed!" said the friend, pouting.

"But it was easy!" cried Beppo, laughing silverly. "When the eyelids droop and the musculature sags and the psyche is depleted, what is more natural than to perk up with today's Philip Morris in the red, white and gold package?"

"A bright new smoke in a bright new pack!" proclaimed the friend, his young eyes glistening with tears.

"Changed to keep pace with today's changing world!" declared Beppo, whirling his arms in concentric circles. "A gentler, more relaxing cigarette for a sunnier age, an age of greater leisure and broader vistas and more beckoning horizons!"

Now, tired but happy, Beppo and his friend lit Philip Morris and smoked for a time in deep, silent contentment. At length the friend spoke. "Yes, sir," he said, "he certainly is a beauty."

"You mean my 2.9 litre L-head Hotchkiss drive double overhead camshaft British sports car?" asked Beppo.

"Yes," said the friend. "How fast will he go?"

"Well, I don't rightly know," said Beppo. "I can't find the starter."

©Max Shulman 1955

The makers of Philip Morris, who bring you this column, assure you that whether you're in a sleek new sports car or the old family sedan, your best driving companion is new, gentle Philip Morris.

## The Tech calendar of events

wed. november 16 through wed. november 23, 1955

### WEDNESDAY, NOVEMBER 16

Mathematics Department. Colloquium: "Asymptotic Behavior and Uniqueness of Subsonic Flows." Professor David Gilbarg, Indiana University. Tea in Room 2-290, 4:00 p.m. Room 2-390, 4:30 p.m.

Catholic Club. Meeting. Topic: "The Mission of the Layman in the Christian Community." Father William J. Leonard, S.J. Room 2-190, 5:00 p.m.

Hillel Foundation. First of a series of four lectures by M.I.T. humanities professors on the subject "Should I Believe." First by Dr. Robert Hartman, a specialist in value theory. Library Lounge. 5:00 P.M.

Chemistry Department. Harvard-M.I.T. Physical Chemistry Colloquium: "Experiments in High Temperature Chemistry." Professor Charles Law McCabe, Carnegie Institute of Technology.

### THURSDAY, NOVEMBER 17

Mathematics Department. Continuum Mechanics Seminar: "Transonic Flow from Infinite Reservoirs." Dr. L. Roberts, Mathematics Department. Room 2-229, 3:00 P.M.

Physics Department. Colloquium: "Magnetic Spin Correlations in Iron at High Temperatures." Dr. Clifford G. Shull, Brookhaven National Laboratory and M.I.T. Room 6-120, 4:15 P.M.

Lecture Series Committee. Film: "The Titfield Thunderbolt." Admission, 30 cents. Room 10-250, 5:00, 7:30 and 9:30 P.M.

M.I.T. Chemical Society. Lecture: "Course V, Then and Now." Professor Stephen G. Simpson, Chemistry Department. Room 6-321, 5:00 P.M.

M.I.T. Staff Players. Monthly supper meeting. Playreading of "Better Than Gold" in the Penthouse at 8:00 P.M. M.I.T. Faculty Club, 6:15 P.M.

Architecture and City Planning Department. Lecture: "Expansion at M.I.T.—Some Problems in Architecture." Professor Albert Bush-Brown, Architecture Department. Exhibition Room, 8:00 P.M.

### FRIDAY, NOVEMBER 18

Mechanical Engineering Department. Seminar: "Fatigue under Triaxial Stress." Professor J.L.M. Morrison, Bristol University, England. Coffee in Room 3-174, from 3:00-3:30 P.M. Room 3-270, 3:30 P.M.

M.I.T. Concert Band. Concert of original works for band. Admission, 75 cents. Kresge Auditorium, 8:30 P.M.

### SATURDAY, NOVEMBER 19

Modern Languages Department. Graduate Language Examinations.

French and Russian: Room 3-440, 10:00 A.M.-12:00 Noon

German: Room 3-440, 2:00-4:00 P.M.

### SUNDAY, NOVEMBER 20

Catholic Club. Day of Reflection Stigmatine Retreat House, Waltham, Mass. Meet at the Graduate House, 8:35 A.M.

M.I.T. Humanities Series. First concert for 1955-56. "Facade: An Entertainment with Poems by Edith Sitwell and Music by William Walton." Norma Farber, reciter, with a chamber orchestra composed of members of the Boston Symphony Orchestra, Klaus Liepmann conducting. Tickets at \$1.50 available from Room 14-N236 and at the door. Kresge Auditorium, 3:00 P.M.

### MONDAY, NOVEMBER 21

Aeronautical Engineering Department. Seminar: "Some New Developments in Helicopter Engineering and Operation." Mr. Bartram Kelly, Chairman of Engineering Helicopter Division, Bell Aircraft Corporation. Coffee and Cake in duPont Room at 3:30 P.M. Room 35-225, 4:00 P.M.

### TUESDAY, NOVEMBER 22

Acoustic Laboratory. Seminar: "Loudness: Some Theory and Measurement." Professor S.S. Stevens, Director of the Psycho-Acoustic Laboratory, Harvard University. Room 20E-225, 3:30 P.M.

Metallurgy Department. Colloquium: "Recent Work on Transient Creep." Professor E. Orowan, Mechanical Engineering Department. Room 35-225, 4:00 P.M.

Endicott House: Informal social dinner. All members of the Technology Community are invited. Please call Dedham 3-5151 for reservations (\$2.50 per person). Endicott House, Dedham, 6:30 P.M.

### WEDNESDAY, NOVEMBER 23

Biology Department. Colloquium: "Some Biological Characteristics of a

CALENDAR OF EVENTS (Cont. on page 8)

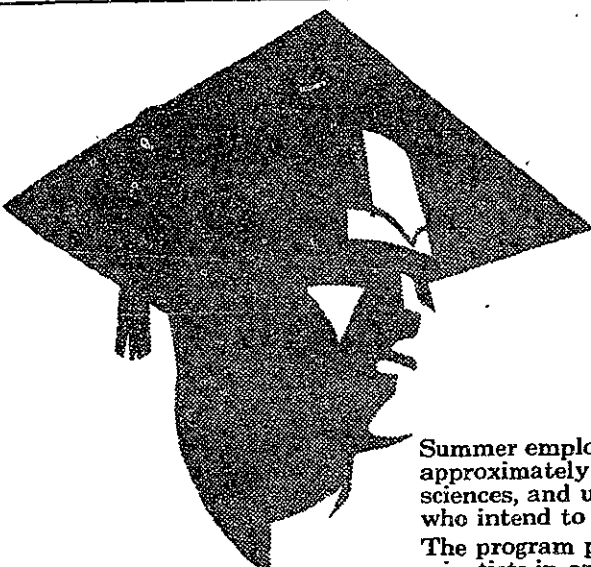
# WRINKLE?

I never!

**VAN HEUSEN**  
Century Oxford Shirt

with the new soft button-down collar that *won't wrinkle ever!*

If you thought the classic oxford button-down could never be improved, this may shake you. Van Heusen (and only Van Heusen) now makes one that you can wear to classes, to afternoon football scrimmage (if you're so inclined) and to tonight's dance. It will still look fresh, even if you don't. It's a fine, soft, specially woven oxford cloth that will outlast two of those regular jobs. And—don't let anybody else see this—if you happen to wear it a second day, nobody will be the wiser. \$4.50



**APPLICATIONS**  
are now being accepted for  
**1956**  
graduate student summer  
employment program for...

- Experimental Physicists
- Nuclear Physicists
- Theoretical Physicists
- Mathematicians
- Metallurgical Engineers
- Analytical Chemists
- Inorganic Chemists
- Physical Chemists
- Mechanical Engineers
- Electrical Engineers (Electronics)

Summer employment opportunities at the Laboratory are open to approximately 100 graduate students majoring in various physical sciences, and undergraduates receiving their degrees next June who intend to continue their advance studies.

The program provides for well-paid summer work with renowned scientists in one of the nation's most important and finest equipped research laboratories.

Summer employees will become familiar with several phases of vital scientific research and development activity related as closely as possible to the individual's field of interest. This experience will enable students to appraise the advantages of a possible career at the Laboratory.

In addition to interesting work, employees will enjoy delightful daytime temperatures and blanket-cool nights in a timbered, mountainous area, only 35 miles from historic old Santa Fe.

Interested students should make immediate inquiry. Completed applications must be received by the Laboratory not later than February 1, 1956, in order to allow time for necessary security clearance. Applicants must be U. S. citizens.

Mail inquiry to:  
Department of Scientific Personnel

**los alamos**  
scientific laboratory  
OF THE UNIVERSITY OF CALIFORNIA  
LOS ALAMOS, NEW MEXICO

## on the screen

### "THE SHEEP HAS FIVE LEGS"

by Fred Epstein '57

We must admit that we approached the Exeter Theatre with some trepidations the other night, half-way expecting the film "The Sheep Has Five Legs" to be reminiscent of our tedious tours through various animal shows at State Fairs, which proudly exhibit two-headed bulls and other such nauseating agricultural freaks. We were delightfully surprised. The sheep was of the proverbial black hue, and was the basis of one of the funniest French films we've seen in many an evening.

The story is skillfully built around the lives of a family consisting of a set of quintuplets, every one of whom has equal claim to the distinction of being the "black sheep" of the family. Fernandel plays all five parts with amazing versatility, giving each one of the characters an individual personality quirks. There is Alain, a fashionable Paris beauty saloon tycoon who is as pompous as he is filthy rich. Brother Bernard earns his keep by giving advice to the love-lorn, occasionally shedding his Miss Lonely Hearts facade to fill in as the long-sought suitor when the need arises. Charles is a village curé whose reputation has been shattered with mirth. Perhaps the blackest of the five legs is Désiré, whose one duty in life is to keep a high gloss on the windows of a local funeral parlor. Robust adventure is added through the fifth limb—Etienne is a ship's captain, who possesses a flair for gambling and a South Sea mis-

stress whose attire and general posture would set any Watch and Warder's eyes a-popping.

Continuity is contributed by the quint's godfather, who has the most difficult task of rounding up the prodigal sons for their fortieth birthday, a project of the French version of a Chamber of Commerce. While the film's main virtue is excellent comic character portrayal, the episodes which describe the caprices of the five brothers are also quite clever in general. The only serious downfall comes in the presentation of Charles, who is more or less thrown in towards the end of the picture, with the result that he truly appears as an extra leg.

While the main feature is sheer delight, we feel obliged to recommend that the cinemagoer avoid the short subjects if at all possible. The cartoon is a UPA mistake, and a super-pseudo presentation of rocket research includes the trials and tribulations of a comic-strip space man and a sure-enough scientist who declares that the greatest technical difficulty still facing rocket researchers is "Money." Ain't it a shame!

### "QUENTIN DURWARD"

by Jack Friedman '57

There is a class of Hollywood picture which although thoroughly enjoyable, always leaves one with a doubtful feeling. *Beat The Devil* and *The African Queen* were two which never quite removed the suspicion that they were ridiculous Hollywood blunders rather than superb burlesques. *Quentin Durward*, now appearing at the Loew's State and Orpheum Theatres in Boston is a third.

The time is 1475 when, as the prologue claims, "knighthood was a drooping flower". Robert Taylor (who else) plays its last blossom, poor but noble nephew of Lord Crawford, traditionally canny, ancient, and tight, powerful Scot nobleman who dispatches him to the court of the Duke of Burgundy to investigate whether Isabelle, reputedly the most beautiful and certainly the richest woman in France would make a good wife—that is, is she thrifty?

Isabelle (desirably played by Kay Kendall) rebels against the Duke of Burgundy who seeks to marry her as his ward to the ancient Crawford to further his intrigues toward controlling France. Shortly after Quentin arrives, she flees to the court of King Louis. Quentin gives chase, but instead of capturing the fair lady does battle with a squad of medieval hoodlums wearing black leather armor (what else)?

Quentin goes to Louis' court to seek her out. (After a delectable scene which shows the Scottish ambassador painfully counting out expense money to the gallant Quentin. After being rudely thrown out, he attempts to save the life of a gypsy which wins him the friendship of the gypsy's brother, who gives an enjoyable and entertaining performance as a spy (one day for Burgundy, one day for Louis).

Quentin, of course, storms the castle, and enters the bedroom of the unscrupulous Louis (played to perfection by Robert Morley) and threatens him with a dagger (just to get a job, of course). He meets the fair lady and the usual passionate scenes result. Louis plans a super double-cross but Quentin foils the dastardly plot by single-handedly defeating a whole army of villains (with cannon). The villains, by the way, are the most horrible since Cinemascope.

A surprise ending enables everything to come out happily. Isabelle and Quentin go back to Scotland, France is saved and so on.

If this is a satire, it is deserving of any award (including the Audience Award which the local theatres are pushing so hard). If it is for real, well . . . Anyway, it is entertaining, and, whether or not consciously, witty. In Eastman Color, Cinemascope and whatnot, it is, we

(Continued on page 4)

## Dramashop Picks New Official Seal, Announces Talks

MIT Dramashop has announced the selection of a design by Jerry Solomon '55 as its new official emblem. The choice was made from entries in a recent contest sponsored by the group to obtain a symbol for use in advertising and promotion; the award carries with it a five dollar prize.

At a special Dramashop meeting on Friday evening, November 18, at 8:30 p.m., Mr. Bryant Haliday, producer of the well-known Brattle Theatre, will deliver an informal talk and theatre-arts demonstration. Haliday, an accomplished actor and an able executive, is responsible for the highly successful Brattle program, both stage and screen; it was he who produced last summer's Brattle Shakespeare Festival, which later traveled to New York's City Center on a four-week tour. No admission will be charged.

Monday evening, November 28, Mr. Louis Kronenberger, author, anthologist, playwright, and currently Drama Critic for TIME magazine, will appear as the first in this year's celebrity series. Kronenberger, who will be followed by playwright Robert Anderson (TEA AND SYMPATHY) in January and producer Cheryl Crawford (REUBEN, REUBEN) in February, will speak, "On Being A Drama Critic" Admission for this, as well as other events in the Celebrity series, will be \$.60 for students and \$1.00 for others.

interesting careers in

# research!

Many attractive openings are available in our modern research laboratory for . . .

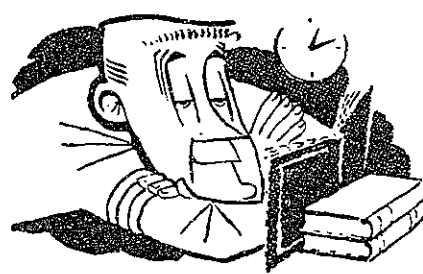
- Mechanical Engineers
- Aeronautical Engineers
- Chemical Engineers
- Electrical Engineers
- Engineering Physicists
- Applied Mathematicians

**INTERVIEWS:**  
Thursday, November 17

See your College Placement Officer for an appointment and a copy of our brochure.

Research Department  
**UNITED AIRCRAFT CORPORATION**  
400 South Main Street  
East Hartford 8, Connecticut

## Cramming for Exams?



### Fight "Book Fatigue" Safely

Your doctor will tell you—a NoDoz Awakener is safe as an average cup of hot, black coffee. Take a NoDoz Awakener when you cram for that exam . . . or when mid-afternoon brings on those "3 o'clock cobwebs." You'll find NoDoz gives you a lift without a letdown . . . helps you snap back to normal and fight fatigue safely!

15 tablets—35c large economy size (for Greek Row and Dorms) 60 tablets—98c



# Second Fall Chapel Organ Recital Called "Enjoyable, But Imperfect"

MIT Chapel

November 13, 1955

Robert Pettitt, organist  
assisted by  
Phyllis Skoldberg, violinist  
PROGRAM

Grand Jeu .....	Du Mage
Elevation .....	Couperin
Chaconne .....	Vitali
Chorale Partita on "Jesus, My Joy".....	Walther
Prelude and Fugue in D major.....	Bach
Sonata No. 6 in E major.....	Corelli

by Allen C. Langford '57

On Sunday, November 13, at 3:00 p.m. the second free organ recital of the term, performed to an overflowing audience, was presented in the MIT Chapel.

Mr. Robert Pettitt, organist and choir-master of the First Universalist Church of Lynn and also organist for the morning devotional services in the chapel, is a fairly competent organist, although he makes no pretense of being primarily a soloist, but, rather, an accompanist. This was very evident in the D Major Prelude and Fugue which is one of Bach's truly great contributions to organ literature. It failed to convey the sense of precision and majesty which is inherent in this com-

position. In addition, there were irritating tempi fluctuations throughout. Conversely, in the Vitali and the Corelli, both violin solos, the organ accompaniment was splendidly handled.

It was indeed strange that while performing the Corelli, Miss Skoldberg, a graduate of the New England Conservatory of Music, gave every indication of being quite a mediocre violinist although she seemed to have had excellent instruction. Let me explain.

One of the most difficult ornaments to produce is a good trill and this is, consequently, a contributing factor in the appraisal of an accomplished musician. Miss Skoldberg executed a marvelous trill but, oddly enough, displayed very sloppy technique in changing positions and, moreover, seemed to be obsessed with the idea that a "sobbing" vibrato is pleasant.

This is not to imply that the general performance was poor, for it was not, but to the scrutinous observer these amateurish imperfections most definitely detracted from the overall enjoyment of the program.

It is the opinion of the reporter, judging by the response to these first two recitals, both in the size and reaction of the audiences, that there is a genuine interest in the MIT family for this type of music, and this reviewer sincerely hopes that recitals of this nature will be given frequently.

## LETTERS

(Continued from page 1)

conceived is very apparent. Its only shortcoming is that we have too little of it.

I have been at Tech eight weeks now, and have felt the imbalance of scientific plethora and cultural vacuum prevalent among my fellow freshmen. How excellent it would be if, from a nucleus of interested freshmen, a group might be formed that would meet, once or twice a week and simply talk about some piece of writing, some historical event, or some idea. Useless? Far from it; the broadening influence of such a club or society would be significant, the contribution to the Institute, incalculable.

I hope that other freshmen who are equally aware of this need will communicate with me, will display the initiative to organize such a meeting of minds as I have described.

Stewart W. Wilson '59

## QUENTIN DURWARD

(Continued from page 3)

think, Hollywood's finest type of picture. Don't forget to take a salt shaker with you.

On the same program is *The Big Bluff*, which proves that the grade B picture is not yet dead. If you go to see *Quentin Durward*, go late enough to miss this trite, miserably acted melodrama—it's not even in color.

## INSCOMM

(Continued from page 1)

Certain Inscomm members stated that Dean Bowditch had given assurances that the Administration would subsidize the Association next spring if Inscomm suggests it.

Inscomm also passed a motion giving the Commuter Council the right to determine jurisdiction over and administration of the 5:15 Club Room. However, the room was to be reserved for the use of all commuters for recreational purposes in any case.

Russ Schweikart '56 resigned from Inscomm; he said his plans to enter the ministry required him to maintain a high scholastic average in his senior year and necessitated curtailment of his extra-curricular activities.

**LORD WEST**  
The first name in quality formal



the authentic University model tuxedo... now in brand new JET BLACK and MIDNITE BLUE lightweight year-round fabrics

natural shoulders, narrow shawl lapel, flap pockets, center vent, non-pleated trousers

for name of nearest retailer and free formal dress chart, write—

**LORD WEST**  
tailored by West Mill  
101 West 21 St., New York 11, N.Y.

**ETON'S MEN'S SHOPS**  
5 Convenient Arrow Locations

104 BOYLSTON ST. (Colonial Theatre Bldg.)	HOTEL STATLER (Park Square)
COOLIDGE CORNER (Brookline)	279 WASHINGTON ST. (near School St.)
NORTH STATION (B & M Railroad)	



You can't SEE all of Europe.  
You have to LIVE it!

That's why American Express Student Tours are expertly planned to include a full measure of individual leisure—ample free time to discover your Europe—as well as the most comprehensive sight-seeing program available anywhere! Visit England, Holland, Belgium, Germany, Switzerland, Italy and France—accompanied by distinguished tour leaders—enjoy superb American Express service throughout.

8 Grand Tours . . . 53 or 61 days . . . via famous ships: Ile de France, United States, Liberté, America, Flandre. \$1,213 up  
Also Regular Tours . . . 43 days . . . \$861 up

For complete information, see your Campus Representative, local Travel Agent or American Express Travel Service, member: Institute of International Education and Council on Student Travel

... or simply mail the handy coupon below:

**AMERICAN EXPRESS TRAVEL SERVICE**  
65 Broadway, New York 6, N. Y. c/o Travel Sales Division

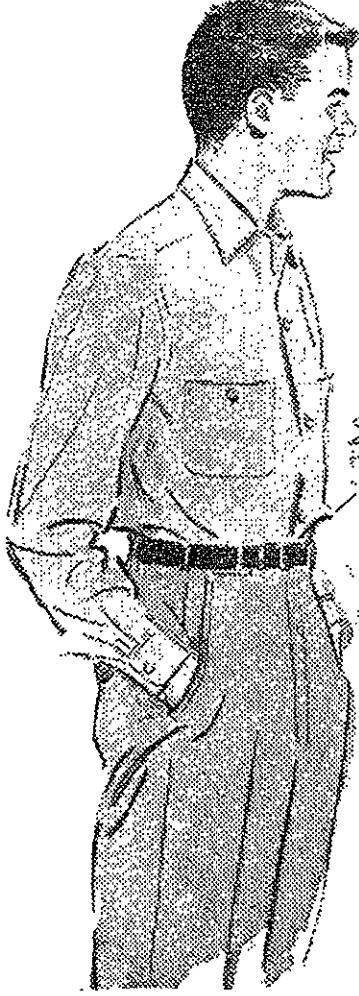
Yes! Please do send me complete information about 1956 Student Tours to Europe! C-25

Name .....

Address .....

City.....Zone.....State.....

PROTECT YOUR TRAVEL FUNDS WITH AMERICAN EXPRESS TRAVELERS CHEQUES—SPENDABLE EVERYWHERE



New ARROW Gabanaro... styled for campus wear

A campus style survey produced this smart medium-spread collar—just the neat yet casual shirt you'll want for class or informal dates. It's made in your exact collar size and sleeve length too—for perfect fit. Smart new colors, with matching pearl luster buttons, saddle stitching around collar edge, button thru pockets. In rayon gabardine, "Sanforset", \$5.95.

**ARROW**  
CASUAL WEAR  
—first in fashion

**RADIO SHACK HAS THOUSANDS OF LP RECORDS AT REAL N.Y.-LOW DISCOUNTS!**  
STYL, PHONOS TOO!  
**RADIO SHACK**  
157 WASHINGTON ST.

Make Your Selection of  
**ARROW**  
SHIRTS, UNDERWEAR, TIES and HANDKERCHIEFS AT THE  
**TECHNOLOGY STORE**

add Spice to your life!



**Old Spice**  
SMOOTH SHAVE

Shaving at its best! OLD SPICE SMOOTH SHAVE in the pressurized container... gives a rich, velvety lather... remains firm and moist throughout your shave. And a unique, lubricating formula soothes your skin. For top performance and speed—make your next shave OLD SPICE SMOOTH SHAVE.

100  
SHULTON New York • Toronto

# G. L. FROST CO., INC.

Automobile Body Repairing & Refinishing  
 E. W. PERKINS  
 Tel. LIot 4-9100  
 31 LANSDOWNE STREET  
 CAMBRIDGE, MASS.

# Corley Works With Many Groups; Expands Activities

JOHN CORLEY

(Continued from page 1)

sar and Wellesley, in addition to a broadcast over WBUR and a performance in Kresge Auditorium during the dedication week last May. They have played the compositions of numerous eminent composers, such as Piston, Hindemith, Milhaud, Persichetti, and Vaughan-Williams. A year ago, the band issued a 12-inch record of original works. In a short while they will issue a second record made from tapes of the Kresge concert in May.

The band may not draw capacity audiences, but they have acquired a formidable reputation in New England. The Yale University School of Music has invited the group to present a concert in New Haven this year. Plans are not definite yet, but the date has been set for December 4. This will be the organization's most important concert thus far.

As John Corley put it, the band is travelling in uncharted waters. They are the only outfit of their kind in the country, and are one of two groups in the country which perform original band music exclusively. Asked why he has pursued this policy, John replied that a wind band "has a voice of its own" which is strangled when orchestral compositions are

transcribed for it, for they invariably attempt to make violins out of clarinets.

### Audiences Unused to Music

However, it is only recently that this viewpoint has achieved general acceptance, and consequently all of the major works for the band have been written during the last couple of decades. This is where the audience problem appears, for very few individuals have learned to enjoy a program of twentieth-century music. This also has its effects among the bandsmen who, even now, are not completely accustomed to the music which they play. Many a composition has had a cold reception at first by the musicians, but after a few rehearsals it "grows on them" and they enjoy performing it. John Corley hopes that the same thing will happen with the band's audiences.

As a result of his efforts with the concert band, John Corley has been enjoying a growing personal reputation in New England. In addition to being called upon as an adjudicator in school competitions throughout the state, he was the host to a Massachusetts Music Educators Association conference in the Kresge Auditorium in September. Despite his many jobs, he found time to complete the work for his master's degree in

music, which he obtained from B. U. in June, 1955.

### Directs Other Groups

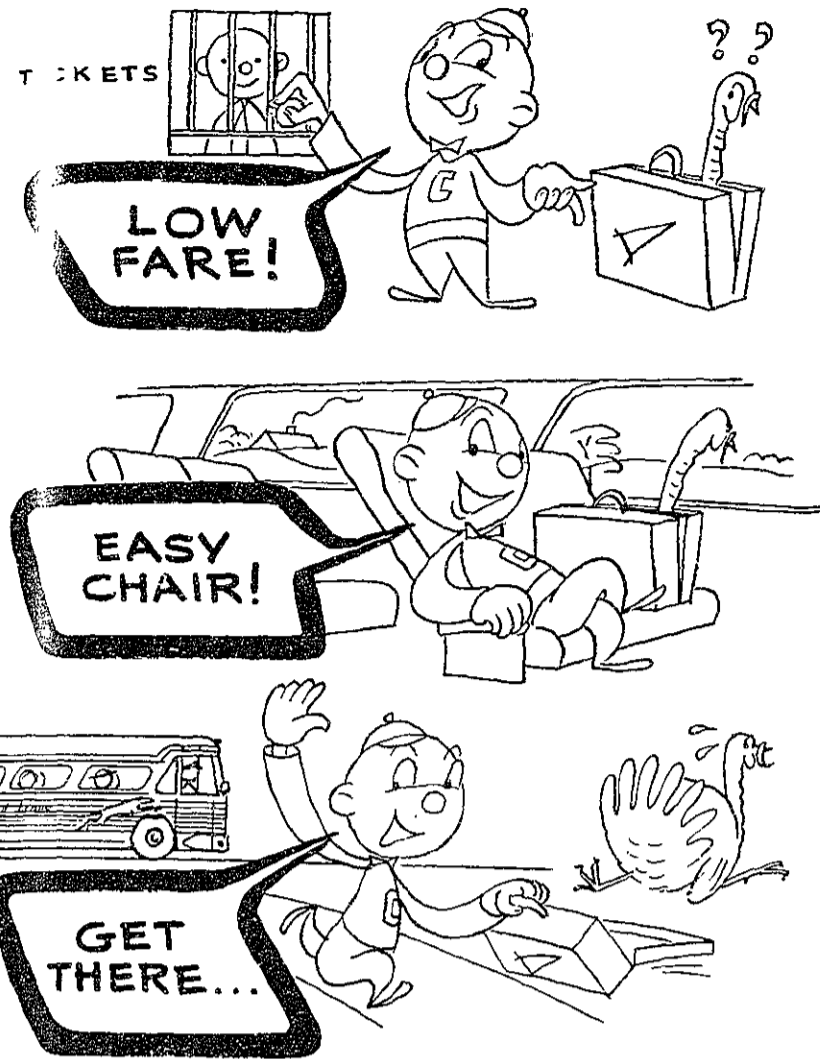
Although the concert band has been John Corley's major group at Tech, it has not been his only one. As was mentioned earlier, John has always had a strong interest in brass ensemble music; and, accordingly, he formed a brass choir here shortly after his arrival at the Institute. This group has possessed as many as 30 members at a time, and is the only one of its kind in the Boston area.

This year, more than ever before, John is feeling the pinch for time. His activities at MIT require his presence here for two evenings and one afternoon each week. The concert schedule consumes almost a third evening per week. All his additional time is spent obtaining and learning the music which he plays, and planning for future performances. He is especially concerned because there is a whole area of woodwind and brass literature which has barely been touched, and which he would like to play at MIT.

This music is primarily for small ensemble groups, which have occasionally been formed here in the past but which need competent assistance and guidance in order to succeed. Many students have expressed a desire to form groups which could perform Mozart divertimenti, serenades, etc., but John lacks the time to work with them. John also feels the pinch for time in coaching individual players and sections, something which is desired by both musicians and conductor.

Considering the time which is being spent, John is extremely pleased with the accomplishments of the MIT instrumental groups. He has conducted school, service, and professional organizations, but he claims that he has nowhere found the quick responsiveness and alertness which characterizes his groups at Tech. Furthermore, he is delighted to be able to work in the Kresge Auditorium which he calls "a musician's dream".

John has brought the band and brass choir a long way during the past few years, but both he and the students feel that it is just the beginning, and that the extent of their development is limited only by the amount of time which each has available.



Quickly, Comfortably, Dependably  
**by GREYHOUND**

One Way		One Way	
HARTFORD	\$2.85	ALBANY	\$4.50
NEW HAVEN	3.35	HOLYOKE	2.50
BRIDGEPORT	3.60	NORTHAMPTON	2.70
NEW YORK CITY	4.50	PITTSFIELD	3.65
PROVIDENCE	1.25	NEWPORT, R. I.	2.50
PORTSMOUTH	1.50	SYRACUSE	7.65
PORTLAND	2.75	ROCHESTER, N. Y.	9.60
LEWISTON	3.75	SCRANTON, PA.	7.80
AUGUSTA	4.40	RUTLAND, VT.	4.65
BANGOR	6.45	BURLINGTON, VT.	5.95
ROCKLAND	4.95	BUFFALO, N. Y.	10.70

Plus U. S. Tax  
 Save an Extra 10% Each Way with a Round-Trip Ticket  
 GREYHOUND TERMINAL

10 St. James Avenue Phone: LI 2-7700



**GREYHOUND**

A REPRESENTATIVE  
 FROM THE  
**NEWPORT NEWS SHIPBUILDING  
 AND DRY DOCK COMPANY**

WILL INTERVIEW  
 APPLICANTS FOR  
 ENGINEERING POSITIONS  
 IN THE PLACEMENT OFFICE  
 ON NOVEMBER 16, 1955

YOU'LL BOTH GO FOR THIS CIGARETTE!

**WINSTON's** way ahead on flavor!



No wonder Winston changed America's mind about filter smoking!  
 King-size Winston tastes good — like a cigarette should! Its full, rich, tobacco flavor really comes through to you — because Winston's exclusive filter works so effectively. Try a pack of Winstons for real flavor, real filtering, and real easy draw.

R. J. REYNOLDS TOBACCO CO., WINSTON-SALEM, N. C.

Smoke  
**WINSTON**  
 the easy-drawing  
 filter cigarette!

# Harriers 6th In New Englands; Smith, Vaughan Pace

Paced by team captain Ray Smith '56 and Dave Vaughan '57, the 1955 Beaver harrier team performed creditably in placing sixth in the 43rd annual New England Intercollegiate Amateur Athletic Association championship cross-country run over a revised Franklin Park course here in Boston last Monday. The water-logged hills and valleys proved a formidable challenge to an even 100 runners representing 17 New England colleges as an exceptionally strong University of Maine aggregation, led by the individual champion, fast-stepping senior Paul Firlotte, ran away with the title, replacing the defending champion MIT squad.

Smith and Vaughan, running together over most of the rough, approximately 4.7 mile course, placed eleventh and fourteenth respectively in leading their teammates. The other Beaver places were taken by Ed Carter '58, forty-first, Jack Buell '56, forty-seventh, and Walt Kuckes '56, forty-eighth. The sixth place varsity

total of 161 placed behind Maine, runner-up Providence College, Massachusetts, Connecticut, and Northeastern.

The Tech freshmen were represented by an incomplete team but managed a fair showing. Top yearling harrier Mark Porter took a 46th with Chuck Staples, 56th, Graham Harvey, 75th, and Terry Kuroda, 76th. The underclass individual winner was Tom Flynn of Rhode Island while the University of Massachusetts took the team title.

In a field considered by many to have been the strongest in many years, the MIT team did well to place as high as it did. They came in ahead of most of the entries and beat several strong squads including New Hampshire, Rhode Island, Springfield, and one of the pre-meet favorites, Boston University. Perhaps they didn't show as well as last year's winning squad but the results certainly could have been considerably worse.

In the final intercollegiate competition of the season, an MIT delegation composed of Smith, Vaughan, Kuckes, Bob Solenberger '57, Pete Carberry '57, Glenn Bennett '58, and freshmen Porter and Staples participated in the ICAAAA meet down in New York yesterday. Ed Carter '58 was a doubt-

ful starter due to a hip injury. Last year Tech led all New England entries while placing 14th in this championship affair. Vaughan and Smith placed 49th and 50th to lead that team. Pre-meet favorites this year were Michigan State, Pittsburgh, and defending champ Manhattan. George Terry of BU, eighth in last week's meet, will attempt to retain his individual title.

### SUMMARIES OF THE NEW ENGLAND MEET:

Varsity Team Finishes	
1—Maine	1- 7- 9-10-15 42
2—Providence	3- 5-12-20-28 68
3—Massachusetts	2- 6-17-26-32 83
4—Connecticut	4-21-27-42-52 146
5—Northeastern	16-23-34-36-44 153
6—MIT	11-14-41-47-48 161
7—New Hampshire	225
8—Rhode Island	244
9—Springfield	284
10—Boston University	313
11—Coast Guard	314
12—Tufts	323
13—Brown	325
14—Vermont	345

Boston College, Bowdoin, and Holy Cross entered incomplete teams.

Individuals	
1—Firlotte, Maine; 2—Horn, Mass.; 3—Boucher, Prov.; 4—Stieglitz, Conn.; 5—Hanson, Prov.; 6—Lepowski, Mass.; 7—Furrow, Maine; 8—Terry, B.U.; 9—Law, Maine; 10—Rearick, Maine; 11—Smith, MIT; 12—Madden, Prov.; 13—Patrellis, B.U.; 14—Vaughan, MIT; 15—Hanson, Maine.	

## Hedlund Reveals Track Schedule; Workouts Begin

Coach Oscar Hedlund has announced that the 1955-56 indoor track season will open tonight with the inauguration of workouts leading up to a series of relay and dual track meets. Everyone interested in either the track or field events is invited to come out this afternoon or as soon as possible in order to get a good start on the season.

Home meets and practices are held on the Briggs Field board track to be constructed shortly and in Rockwell Cage. The schedule is as follows:

- Jan. 14 K. of C. Games, Boston Garden, Varsity and Frosh.
- 21 Huntington School, Fr. only, Briggs Field.
- 28 B.A.A. Indoor Games, Boston Garden, Varsity and Frosh.
- Feb. 4 Millrose Games, Madison Square Garden, New York, Varsity.
- 11 Handicap Meet (N.Y.A.C. Games).
- 18 Northeastern U. at Briggs Field, Varsity and Frosh.
- 25 I.C.A.A.A.A. Indoor Meet at New York.
- Mar. 3 U. of New Hampshire at Briggs Field, Varsity and Frosh.
- 10 U. of Connecticut at Briggs Field, Varsity and Frosh.
- 17 Indoor Interclass Meet, Briggs Field.

### HOCKEY

All Freshmen interested in hockey are invited to a smoker in Room 5-133 at 5:00 this afternoon.

## Beaver Booters Blank WPI 3-0, Close Disappointing 5-3-1 Season

Finishing another winning season last Monday, the varsity soccer team played with a weak Worcester Poly squad as they won, 3 to 0. After right wing Tom Buffet '57 scored twice in the first half, once unassisted, the Cardinal and Gray were never headed, and when center forward Cel Almeida scored in the second half, the game was clinched.

Coach Ben Martin's Beavers thus ended the campaign with five wins, three losses, and one tie. Although this gave them a winning record, the outcome of the season was a disappointment to most interested parties in that the Engineers were given a strong chance to come up with the New England Intercollegiate Soccer Association crown. The soccermen started fast as they walked over B.U. in the first game of the season at Briggs Field, 5 to 0. Next they reached their peak, smashing a very weak Brandeis team, 9 to 0, as Martin emptied the bench and the Beavers kept scoring. Playing their first top calibre team of the season, the soccermen dropped their first game to a strong Amherst squad 3 to 0, during the aftermath of Hurricane Dianne. The Beavers came back

strong the following week as they shut out Tufts, 4 to 0. Brown next gave them a scare, but a goal late in the second overtime period gave them the necessary 4 to 3 victory to keep them in the race for the NEISA crown. Harvard provided the turning point of the season in that they were traditional rivals, and they were leading the league at the time. In a close and hard-fought game, during the better part of which the Beavers held the edge, the Crimson won on two disputed decisions, 2 to 1. Following the let down of this loss, the Techmen were tied by Uconn, 2 to 2, and were beaten by Springfield in a deluge, 2 to 1.

**OPPORTUNITIES STILL EXIST FOR GRADUATING ENGINEERS AND PHYSICISTS**

If we missed meeting you and visiting with you when our representative was on your campus recently, please send us your resume right away and we will give it prompt, personal attention.

As a division of General Dynamics Corporation CONVAIR-FORT WORTH occupies an important place in the long-range development of the Nation's aerial defense as well as commercial aviation. CONVAIR'S scope of activity offers interesting, highly remunerative career opportunities.

Address all correspondence to H. A. Bodley, CONVAIR Engineering Personnel Dept. Fort Worth, Texas

**C O N V A I R**  
A DIVISION OF GENERAL DYNAMICS CORPORATION  
FORT WORTH, TEXAS

An enlarged reprint of the above cut-out silhouette, suitable for framing or pinning up, will be sent free to any engineering student on request.

# New Philip Morris

*- made gentle for modern taste*

Enjoy the fresh unfiltered flavor of this new cigarette—now in the smart new red, white and gold package.

See Max Shulman's column—**"ON CAMPUS"** in this issue, for the full, exciting story.

Regular or King Size Snap-open Pack

PHILIP MORRIS Inc. NEW YORK

**Bud makes it a feast because it's Budweiser**

Talk about crowds... Budweiser fans make up the biggest cheering section any beer has ever had. Its taste tells you why!

*Something more than premium quality... Budweiser quality!*

**WORLD'S LARGEST SELLING BEER**

ANHEUSER-BUSCH, INC. ST. LOUIS • NEWARK • LOS ANGELES

Be sure to see the "DAMON RUNYON THEATRE" on TV

**DINNER DANCE**

Baker House Dining Room will be the scene of a semi-formal Dinner Dance to be held this Saturday, November 19, from 7:00 p.m. to midnight. Jack Edward's Orchestra will provide the dinner and dancing music and other entertainment will be provided. The \$5.75 ticket includes a catered roast beef dinner. Tickets are available in the lobby of Building 10 and from Baker House Hall Chairmen. The dance is sponsored by the Baker House Social Committee.

**BAKER HOUSE EXPULSION**

(continued from page 1)

Arthur Aronson admitted being there and knowing all about it. They were convicted on these points. They felt that the severity of the penalty was unjust for the following reasons: it was Schwartzkopf's first offense of any type at the Institute, and Aronson was not directly involved in the incident. They denied causing the explosions at the open hearing with the 20 men and again during the closed hearings with individual suspects. As a result of this their conviction cited "disrespect toward student government." The two stated that they first denied their actions not out of disrespect toward student government, but rather out of respect toward each other, since they did not want to incriminate each other. After the formal questioning was over they jointly confessed their actions after being able to confer with one another, and with one of the members of Baker House Committee. They emphatically deny that they confessed only after being confronted by one member of the House Committee who informed them that their guilt was well known and that it would be much easier for all involved if they confessed.

**the bush leaguer**

by William Daly '53

**Phi Gams Win In League Four; Title Playoff Starts**

by Bill Daly '58

Intramural football closed its regular season last Friday when Phi Gam topped Theta Chi for the league four championship, but the start of the round robin playoff for the school title began with vigor on Sunday. SAE is back to defend their title from last year and Phi Gam, Beta Theta Pi, and Phi Delta Theta are the challengers. All of the teams but Phi Gam were unbeaten in league play, but the Phi Deltas and the Betas both had some close calls.

In the rubber game of their meetings this year, Phi Gam downed Theta Chi for the league four title by a 13-7 score on Friday. Theta Chi opened strong, driving to the Phi Gam three yard line on two passes from "Killer" Beal '58 to Dave Palomountain '56. The Phi Gams held but when they attempted a punt, the Theta Chi line rushed Fred Culick '56 and forced him to pass incomplete. Theta Chi took over again on the five but Chuck Ingraham '58 intercepted a pass on the second down and Phi Gam moved out of danger. In the second quarter with Phi Gam in possession on their own thirty, Tom Hoffman '56 threw a 30 yard pass to Bruce Blanchard '57, who went the final 20 yards untouched for the opening score. The point was missed and Phi Gam led at the half, 6-0. The third quarter was an even battle with neither team threatening. With a little less than three minutes remaining in the game Beal threw long to Palomountain who went to the three yard line and Beal ran over on the next play for the tying score. The pass for the leading point was knocked down and Phi Gam received with 45 seconds remaining. Hoffman threw a long pass to Bob Williamson '59 who ended up on the five and then Hoffman threw to Art Wilks '58 who ran over from the two. Williamson ran for the point and the game ended with Phi Gam leading 13-6.

Phi Delta Theta staged the first upset of the championship tourney by knocking off Beta Theta Pi 14-7. The game was a rough and tumble affair which saw the Betas jump to an early 7-0 lead in the first quarter, but then

bog down as the inspired Phi Deltas came from behind to win. Bill Layson '56 suffered a head injury in the contest and was sent to the infirmary. Layson has been a mainstay of the Phi Delt line all season and if he is unable to return to action this could hurt the team. The Beta offensive attack went to work early in the first quarter as the backs went off tackle and around end for large gains. The drive was climaxed by a 10 yard delayed pass for the score. In the second quarter the Phi Deltas began to drive, completing several long passes before Walt Ackerland '58 drove over for the score. Ackerland threw to Ben Lightfoot '56 in the flat for the point and the game was tied. This closed out the scoring in the first half and the goal line was uncrossed until Ackerland again found

Lightfoot alone in the flat—Lightfoot went over for the winning score with 2 minutes remaining in the game. Ackerland's pass was again good and the game ended 14-7. Fine line play by Layson, Don Dolben '58, and Will Veeck '58, highlighted the game for the Phi Deltas while Ackerland and Lightfoot carried the load in the backfield. Ackerland played a great defensive game at middle linebacker as well.

In the second Sunday encounter, SAE dumped a highly rated Phi Gam team by an 18-0 score. Alert defensive play made the difference as two of the victor's scores came on intercepted passes. The SAE defensive line also played a good game and the Phi Gams were unable to get their offense rolling. Bill Calvert '56, Bill Dean '57, and Dave Berg '58, all turned in fine performances on the forward wall. Bob Balacek '58 threw to Pete Hohorst '57 for the first SAE touchdown. Allen Bell '56 and Fred Broward '59 ran Phi Gam passes for the final two scores. Tom Hoffman '56, Phi Gam tailback, played the game with a bad leg and hand and suffered further injuries which will keep him out of play for the rest of the year. Larry Andrews '58 and Bruce Blanchard '57 will also be absent from the Phi Gam team for the remaining games due to injuries.

**Tech Crews Split In Hanover Races**

Rowing in an informal fall meet for the first time in several years, the MIT crews were held to an even split by Dartmouth, Saturday, as the Tech Freshman and Varsity heavyweight crews won, while the Varsity lights and the JV heavies were beaten. In inviting the Engineer crews for this dual meet, Dartmouth made the first of a series of moves which, it is speculated, will bring her up into a position to compete with other top Eastern crews.

The day was ideal for rowing as the sun shone brightly upon the placid Connecticut River. The first race was close all the way. The Dartmouth heavy frosh pulled out into a boat length lead at the half-way marker of the mile course, with the Tech yearlings rowing five strokes under at 29. Dartmouth caught a crab just before the three-quarter marker, and the Beavers pulled back to a three seat lead at the finish with a time of 5:26.

In the next race, Tech's Henley Champion Varsity lightweight crew, rowing with but two men back from the championship boat, was edged over the Henley distance by a spirited Dartmouth boat. The Beaver lights pulled out steadily to take a six seat lead with a quarter mile to go, but at that point the stroke developed back trouble and couldn't use his full slide or bring up the stroke for the final sprint. With seven men rowing, Tech held off the steady gain of the Indians only to lose in the last few strokes by two seats. Dartmouth's winning time was 6:46.

The Engineer JV heavyweight boat pulled out to an early six seat lead within the first twenty strokes but was unsuccessful in trying to get down to a 30, at which they had planned to row the body of the race, and with both boats pulling at a fast 34, Dartmouth won by two lengths with a time of 6:57.

In the final race, both varsity heavyweight shells rowed evenly up to about the three-quarter-to-go marker where the Engineers slowly pulled out to a two seat lead. With half of a mile to go, Tech jumped from a 28 to a 30 and immediately took four more seats. The Beavers pulled out steadily in the sprint and, although slowed by a near crab with five strokes to go, they won by a three quarter length margin. Winning time was 6:57.

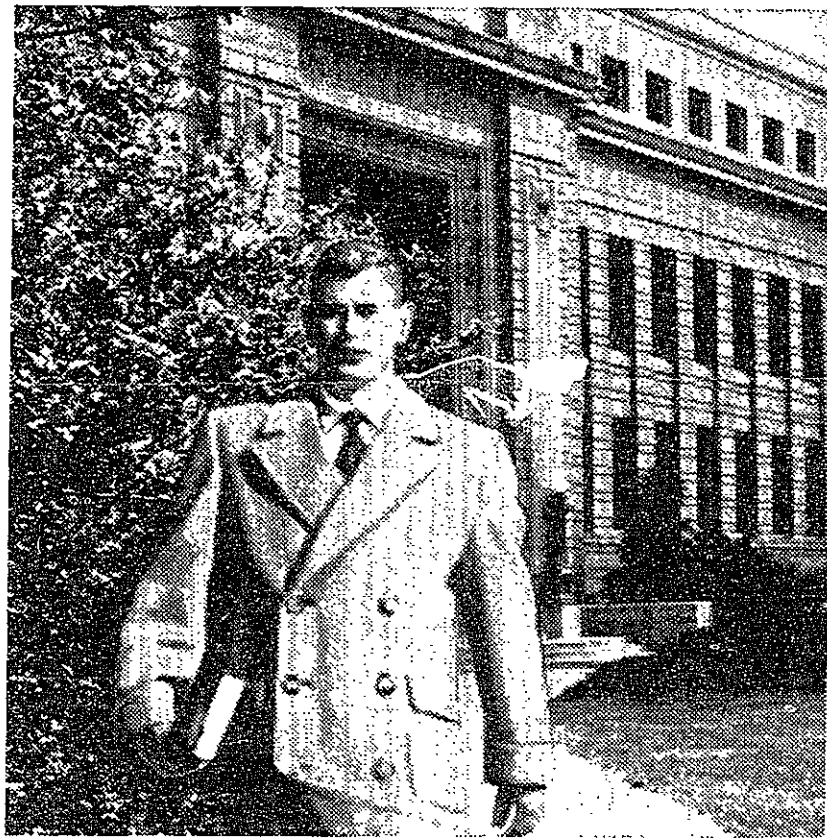
**USED TEXT BOOKS BOUGHT and SOLD HARVARD BOOK STORE**  
Used and New Books of All Kinds  
1248 Mass. Ave. Cambridge TR 6-9069

**YOU** are cordially invited  
Wednesday, November 16 to hear  
**J. FRASER NICOL**  
Former Research Associate  
Duke University  
Parapsychology Laboratory  
(Dr. J. B. Rhine, Director)  
contributor  
Journal  
Society for Psychical Research  
(London)  
American SPR  
Associate  
Parapsychology Foundation  
New York

Speak on  
**PERSONALITIES AND PROCEDURES IN PSYCHICAL RESEARCH PAST AND PRESENT**  
There will be an opportunity for questions  
**TIME**  
8 p.m.  
**PLACE**  
Music Room  
Exeter Street Theatre Building  
Exeter and Newbury Streets, Boston

**Dave Johnson asks:**

**What's involved in production work at Du Pont?**



**DAVID L. JOHNSON, JR.**, expects to receive his B.S.Ch.E. from the University of Kansas in 1956. He is very active in campus affairs, president of Alpha Chi Sigma and a member of several honorary engineering fraternities. Dave is interested in learning more about production work in the chemical industry.



**JAMES L. HAMILTON** is one of the many young engineers who have been employed by Du Pont since the end of the war. After service in the Navy, Jim got his B.S.Ch.E. from the University of West Virginia in June 1948, and immediately joined Du Pont's Repauno Plant at Gibbstown, N. J. Today, he is Assistant Superintendent of the dimethyl terephthalate area at this plant.

**Jim Hamilton answers:**

Well, Dave, I've been doing production work at Du Pont for about seven years now, and I'm still getting involved in new things. That's what makes the work so interesting—new and challenging problems arise all the time.

To generalize, though, the duties are largely administrative. That's why effectiveness in working with others is one of the prime requirements. Teamwork is important in research and development work, for sure. But it's even more important in production, because you work each day with people having widely different skills and backgrounds.

A production supervisor needs a good understanding of engineering and scientific principles, too. He has to have that to get the best results from complicated equipment—but he doesn't necessarily need the specialized training that goes with research and development work. A real interest in engineering economics and administration is usually more helpful to him here than advanced technical training. The dollar sign's especially important in production work.

It all adds up to this, Dave. If you enjoy teamwork, and have a flair for large-scale, technical equipment, then you'll find production work mighty rewarding.

**A MORE COMPLETE ANSWER** to Dave Johnson's question about production work is given in "The Du Pont Company and the College Graduate." This booklet describes in detail the training, opportunities and responsibilities of engineers who take up this kind of work at Du Pont. Write for your free copy to E. I. du Pont de Nemours & Co. (Inc.), 2521 Nemours Building, Wilmington, Delaware.



BETTER THINGS FOR BETTER LIVING . . . THROUGH CHEMISTRY  
WATCH "DU PONT CAVALCADE THEATER" ON TV

**notices**

**CONCERT BAND TICKETS**

On Friday at 8:30 p.m., the MIT Concert Band under John Corley will present their first performance of the year in the Kresge Auditorium. This concert will consist of works written originally for band, but will include 19th as well as 20th century compositions. Tickets will be sold at the door, and in building 10 lobby from 10 a.m. to 2 p.m. each day this week. Price of the tickets is \$.75. Seats are unreserved.

**TCA EXPANDS PROJECTOR LOAN SERVICE**

The TCA recently purchased an 8mm Bell & Howell Monterey projector, a Revere No. 555 35mm, 500 watt slide projector and two 40 x 40 inch Radiant portable screens to add to their present two 16mm sound projectors in the loan service. All of this equipment may be used, free of charge, by any member of the MIT family. These projectors may be signed out and picked up at their second floor Walker Memorial office.

**INTRAMURAL REFEREES**

Referees are needed for intramural basketball games. The pay is \$1.50 per game, and \$3.00 per night. For further information, contact Scott Loring at CI 7-7790.

**CALENDAR OF EVENTS (Cont. from page 2)**

Water Soluble Extract of the Ovary." Professor M. X. Zarrof, Purdue University and Worcester Foundation for Experimental Biology. Room 16-310, 4:00 P.M. Mathematics Department. Colloquium: "A Non-Linear Integral Equation Occurring in Meson Theory." Professor Freeman Dyson, Institute for Advanced Study, Princeton. Tea in Room 2-290, 4:00 P.M. Room 2-390, 4:30 P.M.

Exhibits. The following exhibits will be on display in the North Corridor Cases of the Charles Hayden Memorial Library through November 25: "A French History in Documents"; "Journals of Travel and Discovery"; and "A Mozart Anniversary."

An exhibition of photographs and building models entitled "Building in the Netherlands" will be on display in the New Gallery of the Charles Hayden Memorial Library through November 27. Hours: Monday through Friday, 9:00 a.m.-5:00 p.m. Saturday and Sunday, 2:00-5:00 p.m.

An exhibition of Photography Salon prints by John F. Barnes of Cambell, California, will be on display in Photo Service Gallery, Basement of Building 11, through November 27.

New England Opera Theater. The first performance of opera in the Kresge Auditorium will be held on December 4 at 8:30 p.m. when the New England Opera Theater (Boris Goldovsky, Artistic Director) will present Donizetti's *Don Pasquale*. Tickets, priced at \$2.00, \$2.50 and \$3.00, are on sale in the Office of the Director of Music, Room 14-N236; and mail orders should be addressed to "Opera, Room 14-N236, M.I.T." Make checks payable to M.I.T. Bator: Society, which is sponsoring the program.

**RELIGIOUS SERVICES IN THE CHAPEL**

Daily Service (except weekends)

Roman Catholic Mass 7:55 A.M. Sunday Mass at 10:00 A.M.

Morning Chapel Service 8:35 A.M. (United Christian Council)

Weekly Services

Episcopal Holy Communion Wednesday from 5:10-6:00 P.M.

Eastern Orthodox Christian Evening Worship Thursday from 5:10-5:30 P.M.

Jewish Sabbath Service (Hillel) Friday from 7:30-10:00 P.M.

Vedanta Service Monday from 5:00-6:00 P.M.

Christian Science Organization Tuesday from 5:15-6:00 P.M.

Baptist Student Union Tuesday from 7:00-8:30 P.M.

The chapel is open for private meditation from 7:00 a.m. to 11:00 p.m. every day.

**THE SMORGASBORD RESTAURANT**

Established 1936

"All you can eat for one and the same price"

Lunch from \$5c Dinners from 95c

19 Province Street, 2nd Floor, Boston

Near City Hall, 4 min. from Park St. Sub. Station

Capitol 7-3997 NO LIQUOR

Tel. TR 6-5410

Joseph Melan

Cambridge Wheel Alignment

Frames Straightened

Wheels Balanced

Auto Springs—Brake Service

227 River Street

Cambridge



**Three Wonderful Restaurants**

BEST KNOWN IS

**39 NEWBURY STREET**

at 39 Newbury Street, next to Traynor's

**THE ENGLISH ROOM**

at 29 Newbury Street, next to Emmanuel Church

AND THE NEW ONE AT

**260 BERKELEY STREET**

corner of Commonwealth Avenue known as

The Frank and Marion Lawless

Wonderful home made Bread like your Grandmother made and delicious desserts. They are all owned and operated by Frank and Marion Lawless, who have the famous Carriage House on Cape Cod in North Falmouth

OPEN SUNDAYS

For your  
**THANKSGIVING  
HOLIDAY**



Head For These  
**HILTON HOTELS**  
and  
**SPECIAL STUDENT RATES**  
in  
**NEW YORK**  
**WASHINGTON—BOSTON**  
**BUFFALO—HARTFORD**

**HOTEL NEW YORKER**  
NEW YORK

- 1 in a room \$5.50
- 2 in a room \$4.50
- 3 in a room \$3.50
- 4 in a room \$3.00



**ROOSEVELT and STATLER**  
NEW YORK  
**MAYFLOWER and STATLER**  
WASHINGTON, D. C.  
**STATLER HOTELS IN**  
BUFFALO, BOSTON,  
HARTFORD

- 1 in a room \$6.50
- 2 in a room \$5.50
- 3 in a room \$4.50
- 4 in a room \$4.00



**WALDORF-ASTORIA and**  
PLAZA, NEW YORK

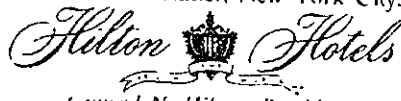
- 1 in a room \$8.00
- 2 in a room \$6.50
- 3 in a room \$5.50
- 4 in a room \$5.00\*

\*The Waldorf has no 4 in a room accommodations. All hotel rooms with bath.

**FOR RESERVATIONS**

write direct to Student Relations Representative at the hotel of your choice.

For information on faculty and group rates in any of the above hotels, write Miss Anne Hillman, Student Relations Director, Eastern Division Hilton Hotels, Hotel Statler, New York City.

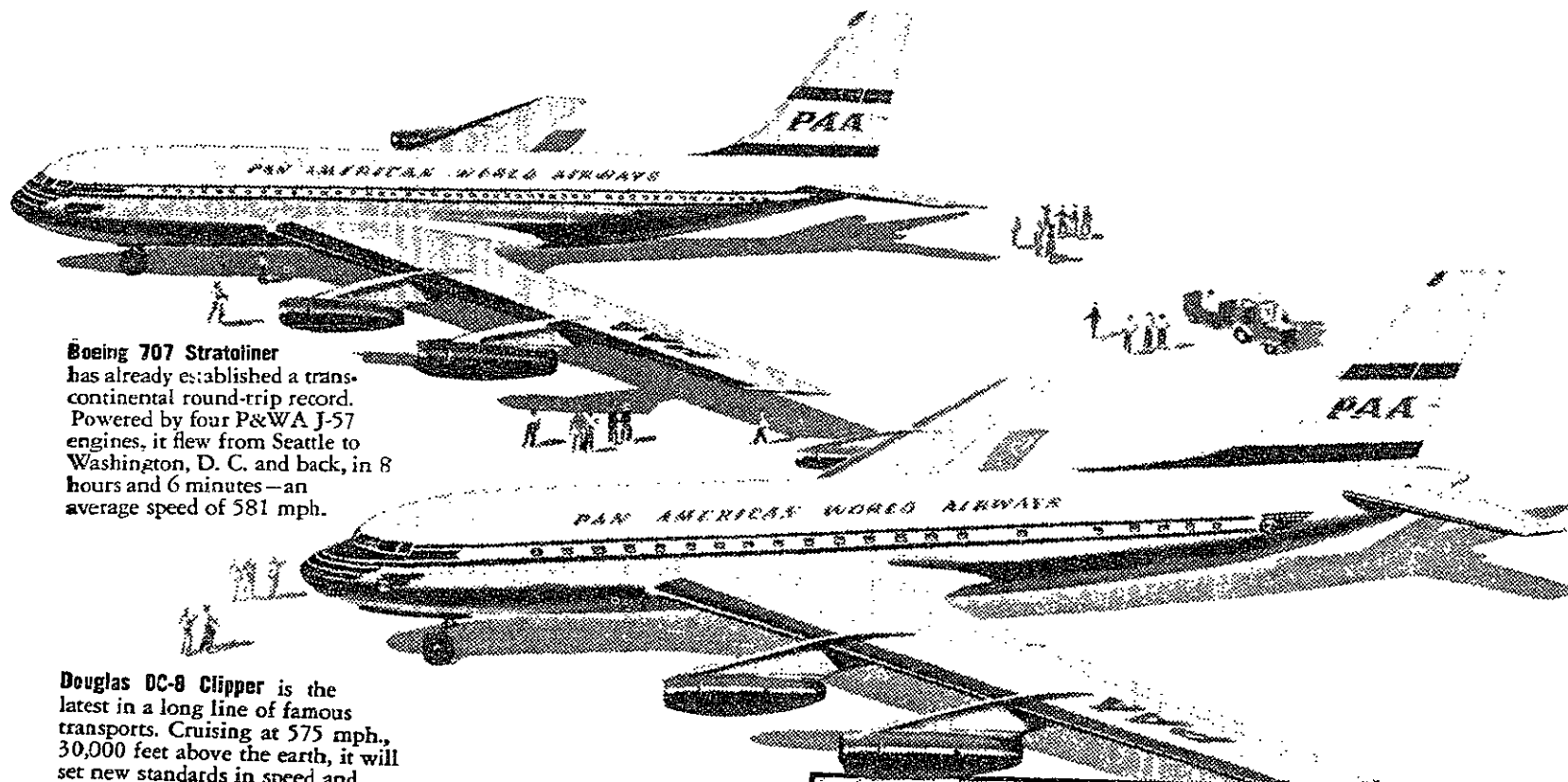


Samuel N. Hilton, President

*What's doing*  
**at Pratt & Whitney Aircraft**

**World Travel**  
**in the Jet Age**

Carrying forward a great tradition of American leadership in aviation, a team of four world-famous organizations has ushered in a new era in commercial transportation. Between December 1958 and January 1961, Pan American World Airways, who pioneered trans-oceanic air travel with Pratt & Whitney Aircraft piston engines, will put into passenger service twenty Boeing 707 and twenty-five Douglas DC-8 jet transports. This fleet of airliners will be powered by twin-spool axial-flow jet engines, designed and developed by Pratt & Whitney Aircraft.

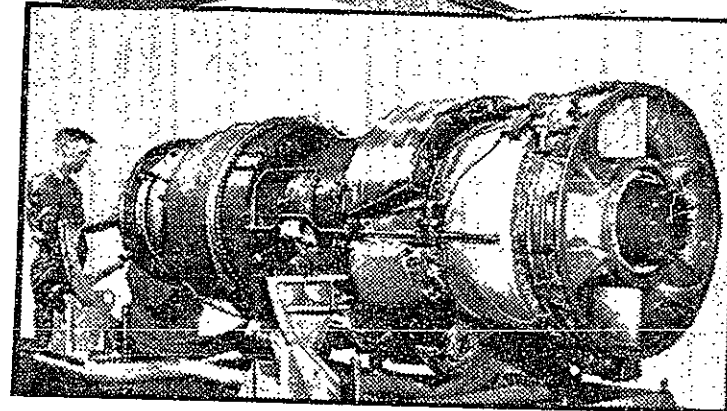


**Boeing 707 Stratoliner** has already established a trans-continental round-trip record. Powered by four P&WA J-57 engines, it flew from Seattle to Washington, D. C. and back, in 8 hours and 6 minutes—an average speed of 581 mph.

**Douglas DC-8 Clipper** is the latest in a long line of famous transports. Cruising at 575 mph., 30,000 feet above the earth, it will set new standards in speed and comfort, along with the Boeing Stratoliner. Travelling 9 1/2 miles per minute, these planes will span the Atlantic in less than 7 hours.

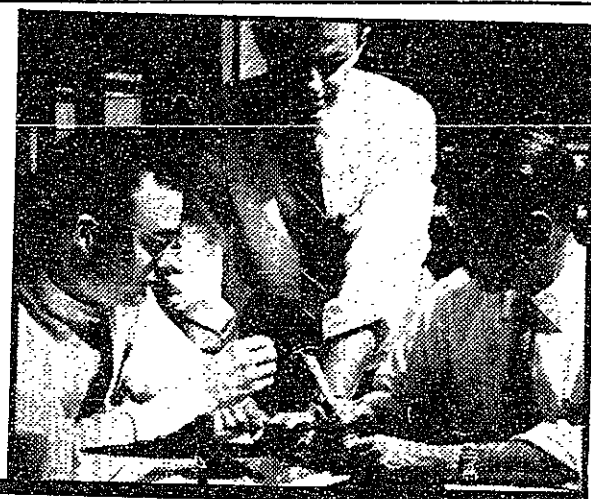
World's foremost  
designer and builder  
of aircraft engines

Pratt & Whitney Aircraft J-57 Turbojet is one of two versions of the jet engines for the Boeing 707 and the Douglas DC-8. The most powerful production aircraft engine in the world, it already powers America's nine most important types of military airplanes.



**PRATT & WHITNEY AIRCRAFT**

DIVISION OF UNITED AIRCRAFT CORPORATION  
EAST HARTFORD 8, CONNECTICUT



Some recent engineering graduates are today working on careful analytical studies of the J-57 to provide commercial airline operators with data that will insure maximum performance with operating economies and rugged dependability.