

PBE suspension terms relaxed by MIT; IFC uneasy

PBE allowed to stay in house, remain member of IFC; new initiation plans in progress

By Joanna Kao
STAFF REPORTER

The terms of Phi Beta Epsilon's suspension have been changed as a result of a new agreement between MIT and PBE. MIT recently granted PBE the privileges to stay in their house at 400 Memorial Drive, to remain members of the Interfraternity

Council (IFC) — although under probation — and to participate in rush starting in fall 2012 provided that they abide by the terms of their suspension and avoid future violations. The IFC did not sign or agree with the wording of the joint statement.

Joint statement by PBE and MIT
In a joint statement released on

Friday, the Division of Student Life and PBE said that they "have resolved issues that were raised by the fraternity regarding a decision made this past fall by MIT's Interfraternity Council."

Neither MIT nor PBE were willing to speak about the specifics of the process which led to the joint statement, stating that they had

"confidential discussions."

The statement revealed that Chancellor W. Eric L. Grimson PhD '80 will consult with various individuals, including the Chair of the Faculty, and will proceed to assemble and charge a committee to "examine FSILG judicial and other processes, especially as those processes relate to decisions about approved

housing and recognition as a fraternity or independent living group."

View from the IFC

The IFC also released a statement on Friday stating that the executive board "did not feel comfortable with the current wording and chose not

PBE, Page 12

David Koch marks institute dedication

Koch research center celebrated

By Clara Park
and Ethan A. Solomon

On March 4, some of the most powerful people in the United States gathered under the tent outside the Building 76 to celebrate the dedication of the David H. Koch Institute for Integrative Cancer Research. All of MIT's top brass was joined by Senator Scott P. Brown (R-Mass.) and David H. Koch '62 himself — who *Forbes* listed as the 24th richest person in the world in 2010.

The Koch Institute — which was the MIT Center for Cancer Research until 2008 — moved into its new home in Building 76 just two months ago, thanks to Koch's \$100 million donation in October 2007. The new building

boasts about 180,000 square feet and is located at a regional hub of biomedical research, near the Broad Institute and Whitehead Institute buildings on Main Street. The building's physical design was intended to foster "interdisciplinary research" across the life sciences and engineering by encouraging active communication between scientists and engineers.

Tyler E. Jacks, director of the Koch Institute, said that Koch's donation "enabled us to reshape our very approach to how cancer can be overcome, using interdisciplinary approaches and cancer solutions-oriented research," in a speech on Friday.

Koch Institute, Page 15



MANOHAR SRIKANTH—THE TECH

The Koch Institute as viewed from Main Street. The MIT community and prominent figures including Cambridge Mayor David P. Maher, Senator Scott P. Brown, and David H. Koch '62 celebrated the dedication of the David H. Koch Institute for Integrative Cancer Research on March 4, 2011.

IN SHORT

Spring Weekend Concert tickets are now on sale. Reserve your ticket to see Jason Derülo and Grammy-nominated R&B artist Janelle Monae.

Boston Restaurant Week is underway and continues until March 18. Eat well this week before midterms strike.

Are you part of a group on campus that makes a positive

impact on the community? Apply for the Everett Moore Baker Memorial Foundation Grant at <http://web.mit.edu/baker-foundation/www>.

Hoads of kids are coming to MIT this Saturday for ESP's Spark. Help facilitate the flow and sign up to volunteer at <http://esp.mit.edu>.

Send news information and tips to news@tech.mit.edu.



MELISSA RENÉE SCHUMACHER—THE TECH

Jeremy M. Hahn '12 (Protoss) takes on Yue Jack Chu G (Terroran) in the first round of the Starcraft II tournament finals on Sunday, March 6. Hahn went on to the final round, but lost to Max M. Nelson '12 (Terroran).

Lone runners

UA election uncontested

By Rebecca Han

Beginning March 16, 2011, the MIT undergraduate student body will have three days in which to vote for Allan E. Miramonti '13 and Alec C. Lai '13, uncontested candidates for president and vice president of the Undergraduate Association, respectively. Miramonti is currently a Senator from Random Hall, and Lai is Next House President and UA Secretary General.

Despite the overwhelming odds, Miramonti and Lai have campaigned vigorously; their platform promises to "address student engagement and improve student spaces and resources."

"Those are the three main forks of our plans," said Miramonti. "Student engagement particularly is

a meta-issue." The pair said that they do not believe there has been a sufficiently proactive report on student life. While the Committee on Student Life is devoted to overseeing student life, Miramonti believes the group's role is not well-defined: "Yes, that [role] sounds vague because it is vague ... they organize student activities, like a random capture-the-flag ... but we want to be able to formally sit down and look at some real feedback."

Miramonti and Lai face no opposition; there are no publicly-declared write-in candidates so far, according to UA Election Commissioner Harrison L. Bralower '11. Miramonti would also be the first non-senior UA President since at least 1994. None-

UA elections, Page 13

Hate crime in Baker

A hate crime involving paintings of a swastika, penis, and the letters "FU" occurred at Baker House over President Day weekend. The perpetrator has not been found, and the issue remains unresolved, according to the victims.

Around 3 a.m. on the morning of Sunday, Feb. 20, Eric M. Emer '14 and Vladislav O. Kontsevoi '14 returned to their double in Baker to find it vandalized. A penis and "FU" were painted on their door and walls in spray paint, and a half pound of salt had been poured on their doorstep. Shortly after cleaning up the salt, the roommates returned to find a swastika painted on a plate outside their door.

In an e-mail sent to the baker-forum list that morning, Emer and Kontsevoi announced what had happened and told the perpetrator, "Stop. You better leave the money for cleaning [the room] under our door." The e-mail garnered no public responses.

In an e-mail to *The Tech* Sunday afternoon, Kontsevoi and Emer described the event as "extremely childish."

Though the roommates still do not know who committed the act, they speculated that the incident might be related to a bike theft that occurred earlier that night on the west side of the first floor of Baker.

An empty can of salt was later found by the west staircase in Baker.

The Baker housemasters could not be reached for comment. Campus Police Captain Jay A. Perault says the incident is currently under investigation.

—Jessica Pourian

WHAT TO LEARN FROM LIBYA

We need to wake up and see that it's sometimes worth stepping in before we hear it on TV. **OPINION, p. 4**

INVASION TIME?

U.S. military intervention in Libya is justified. **OPINION, p. 5**

SAY NO TO SETTLEMENTS

For peace, settlements in the West Bank must be addressed. **OPINION, p. 4**



SITTING DOWN WITH CATHY DRENNAN

Chemistry professor explains her connection to Lisa Kudrow and her philosophy on office hours. **CAMPUS LIFE, p. 8**

MIT IS A STRESSFUL PLACE

But here's eight ways to reduce stress, stay healthy, and stay productive at the Institute. **CAMPUS LIFE, p. 9**

SECTIONS

World & Nation . . . 2
Opinion 4
Fun Pages 6
Campus Life 8
Sports 19



Chairman
Joseph Maurer '12
Editor in Chief
Ethan A. Solomon '12
Business Manager
Greg Steinbrecher '12
Managing Editor
Connor Kirschbaum '13
Executive Editor
Aislyn Schalck '13

NEWS STAFF

News and Features Director: Pearle Lipinski '12; **News Editors:** Elijah Jordan Turner '11, Jingyun Fan '12, Robert McQueen '12, Jessica J. Pourian '13; **Features Editor:** Ana Lyons '12; **Associate News Editor:** Margaret Cunniff '13; **Staff:** John A. Hawkinson '98, Arkajit Dey '11, Liz Tsai '11, Danielle Gorman '12, Ziwei Hao '12, Jiyeon Baek '13, Joy E. Lee '13, Divya Srinivasan '13, Aparna Sud '13, Anne Cai '14, Derek Chang '14, Deborah Chen '14, Stan Gill '14, Evan Moore '14, Isabella Wei '14, Leo Zhou '14; **Copy Editor:** Michelle E. Szucs '14; **Meteorologists:** Allison A. Wing G, Vince Agard '11, Roman Kowch '12.

PRODUCTION STAFF

Editors: Judy Hsiang '12, Sarah Ritter '14; **Associate Editor:** Stephanie L. Ku '14; **Staff:** Fareeha Safir '13, Ben S. Frank '14; **Illustrators:** Monica Gallegos '11, Robin L. Dahan '12, Rachel Fong '12, Alison Malouf '12.

OPINION STAFF

Editors: Nina Sinatra '12, Ryan Normandin '13; **Staff:** Florence Gallez G, Ronan Killian McGovern G, Alejandro Rogers B. G, Keith A. Yost G, Vinayak Ranade '09, Rachel C. Bandler '13, Andy Liang '14, Nils Molina '14, Mike Veldman '14.

SPORTS STAFF

Editors: David Zhu '12, Shelley Ackerman '13; **Staff:** Michael Gerhardt '12, Zach Hynes '12, Nydia Ruleman '12, Carlos Greaves '13, Russell Spivak '13, Nidharshan Anandasivam '14, Sarah Weir '14.

ARTS STAFF

Editors: Maggie Liu '12, Kathryn Dere '13; **Associate Editor:** Samuel Markson '12; **Staff:** Sudeep Agarwala G, Bogdan Fedeles G, Joyce Kwan '10, Joanne Y. Shih '10, Philipp Diesinger '11, Tracy Kambara '11, Sun K. Kim '11, Jeff Z. Chen '12, Yü Linlin Huang '13, Emily Nardoni '13, Jenny Xie '13, Natthida Wiwatwicha '14.

PHOTOGRAPHY STAFF

Editors: Jessica Liu '13, Sam Range '13; **Associate Editors:** Elijah Mena '13, Jessica L. Wass '14; **Staff:** David Chen G, Aviv Ovadya G, Sheng-Ying Aithne Pao G, Arthur Petron G, Melissa Renée Schumacher G, Scott Johnston '03, Biyeun Buczyk '10, Sarang Kulkarni '10, William Yee '10, Jasmine Florentine '11, Stephanie Lin '11, Michael Y. McCanna '11, Minh Phan '11, Yuanyu Chen '12, Jason Chiu '12, Nicholas Chornay '12, Rui Luo '12, Manohar Srikanth '12, Meng Heng Touch '12, Aditi Verma '12, Feng Wu '12, Arfa Aijazi '13, Elizabeth D'Arienzo '13, Sunny X. Long '13, Sean Tang '13, Logan P. Williams '13, Xuan Yang '13, Turner Bohlen '14, Andrew Swayze.

CAMPUS LIFE STAFF

Editor: Joanna Kao '13; **Staff:** Christine Yu '11, Paul Woods '13, Deena Wang '14; **Cartoonists:** Emily Ruppel G, Michael Ciuffo '11, Letitia W. Li '11, Michael Benitez '12, Elise Stave '13.

BUSINESS STAFF

Advertising Manager: Moya Chin '13; **Operations Manager:** Jennifer Fong '13; **Staff:** Mark Thompson '11, Wendy Cheng '13, Emmanuel Carrodegus '14, Sarine Shahmirian '14.

TECHNOLOGY STAFF

Director: Quentin Smith G.

EDITORS AT LARGE

Contributing Editors: David M. Templeton '08, Jeff Guo '11, Steve Howland '11, Michael T. Lin '11, Natasha Plotkin '11, Maggie Lloyd '12; **Senior Editors:** Brian Hemond G, Charles Lin G, Satwiksai Seshasai G, Vibin Kundukulam '11, Sherry Yan '11.

ADVISORY BOARD

Karen Arenson '70, Paul E. Schindler, Jr. '74, V. Michael Bove '83, Barry S. Surman '84, Robert E. Malchman '85, Deborah A. Levinson '91, Jonathan E. D. Richmond PhD '91, Karen Kaplan '93, Saul Blumenthal '98, Frank Dabek '00, Daniel Ryan Bersak '02, Eric J. Cholankeril '02, Jordan Rubin '02, Nathan Collins SM '03, Keith J. Winstein '03, Akshay R. Patil '04, Tiffany Dohzen '06, Beckett W. Sterner '06, Marissa Vogt '06, Andrew T. Lukmann '07, Zachary Ozer '07, Austin Chu '08, Michael McGraw-Herdez '08, Omari Stephens '08, Marie Y. Thibault '08, Ricardo Ramirez '09, Nick Semenkovich '09, Angeline Wang '09, B. D. Colen.

PRODUCTION STAFF FOR THIS ISSUE

Editors: Joanna Kao '13, Connor Kirschbaum '13, Fareeha Safir '13, Aislyn Schalck '13, Stephanie L. Ku '14, Sarah Ritter '14; **Copy Editor:** Michelle E. Szucs '14.

The Tech (ISSN 0148-9607) is published on Tuesdays and Fridays during the academic year (except during MIT vacations), Wednesdays during January, and monthly during the summer by The Tech, Room W20-483, 84 Massachusetts Avenue, Cambridge, Mass. 02139. Subscriptions are \$50.00 per year (third class). **POSTMASTER:** Please send all address changes to our mailing address: The Tech, P.O. Box 397029, Cambridge, Mass. 02139-7029. **TELEPHONE:** Editorial: (617) 253-1541, Business: (617) 258-8324, Facsimile: (617) 258-8226. **Advertising, subscription, and typesetting rates available.** Entire contents © 2011 The Tech. Printed on recycled paper by Mass Web Printing Company.

No precedent for peace

International community must stop turning a blind eye to genocide

By Rachel Bandler
STAFF COLUMNIST

The Libyan people have been met with fighter jets, bullets, and clubs as Moammar Gadhafi attempts to quell the uprisings overtaking his country. The violence being used against the protesters has been unrivaled in any other Arab country, and what began as protests now resembles something closer to civil war. Thousands have tried fleeing the brutality in fear of their lives, creating a refugee crisis in the process. However, it seems unlikely that Gadhafi picked up such a violent disposition overnight. Why, then, was more international effort not spent exposing Gadhafi's cruelty before the situation deteriorated to the point of hundreds of people being murdered in the streets?

Since Gadhafi seized control of Libya in 1969, he has been responsible for a number of lethal terrorist attacks, including the 1988 bombing of Pan Am Flight 103 to New York that left 270 dead. In addition, he has funded a number of guerilla terrorist groups and has denied his people the basic freedoms of democracy. Now, his 40-year rule is culminating with government troops using automatic weapons to ruthlessly exterminate protesters in mosques.

Ironically, amidst Gadhafi's repressive rule, the international community embraced what is only now emerging as tyranny. In the past few years, for example, the U.S. has had full diplomatic relations with Libya, the prestigious London School of Economics has signed a training contract with the Libyan government, and Libya has

been a member of the U.N. Human Rights Council. The oppression of the Libyan people seems to have, at best, been largely overlooked by the global community, and at worst extolled for exemplifying "human rights."

A trend is emerging in the international community where legitimate human rights violations are ignored until the tension erupts or until mass genocide has taken place. The U.N. knew exactly what Gadhafi represented, and yet chose to ignore it by offering Libya a place on the Human Rights Council. If they did not know Gadhafi's true nature, it was their obligation to investigate the despot further.

A trend is emerging in the international community where legitimate human rights violations are ignored until the tension erupts or until mass genocide has taken place.

International unawareness is a wide and far-reaching problem, and seems to be getting worse with time. Instead of looking deep into conflicts and considering historical context in formulating decisions, the news and international policy-making bodies seem to take things at superficial face value. To the world at large, if there is no obvious violence or immediate danger, all is fine, and it is okay to embrace leaders of

oppressed countries where dissatisfaction is teeming beneath the surface. It is only when huge, drastic riots break out across an entire region and women and children are being massacred publicly that suddenly the misdeeds of decades are recognized.

For example, what was done to save the 800,000 people murdered in Rwanda in 1994, or to prevent Hamas from indiscriminately showering Israel with thousands of rockets, or to mediate the tension between Georgia and Russia? And surely not nearly enough attention has been paid to Sudan, where over 2.2 million people have been killed by civil war. Right now, who is effectively helping the 2.7 million people displaced from Darfur by the Janjaweed, where the violence is only escalating? Yes, the Middle East is taking center stage at the moment, but genocide is occurring globally and nothing is actually being done — lofty discourse and rhetoric alone do not accomplish much.

The media needs to broaden its focus and to learn proactive investigative reporting; once genocide has occurred, it is already too late. Furthermore, serious study of international conflicts should be encouraged, so that a historical understanding of any culture or conflict can contribute to decisions, and not just a naïve labeling of "victim" and "bad guy."

By learning from our mistakes with Libya, we can actively combat threats before they occur. The U.S. is now taking a strong stance against Libya, seizing over \$30 billion in assets and threatening to enforce a no-fly zone. Hopefully, things will change internationally, and we can transform our mindset from reactionary to proactive.

GUEST COLUMN

View from the other side of the Wall

Settlements are an important part of the peace process

By Wissam Jarjoui

I am currently in my final semester as an undergraduate at MIT. The Institute is a great place to learn how to make an impact in any part of the world, and I believe that one of the most important skills that we can take from our four years of study here is the development of a critical perspective and analysis.

Two weeks ago, Rachel Bandler wrote an opinion column entitled "Don't settle for settlement condition," (Feb. 25) speaking about the irrelevance of the Israeli settlements' to the peace process between Israel and Palestine. Bandler states that settlements are not the main obstacle to peace and claims that the question of the settlements is not as crucial as many consider it to be. Her column discusses a very important and delicate topic, but unfortunately with, in my opinion, insufficient sources backing up her arguments.

I hope to address the claims made in

that article and to offer some resources that provide a different perspective and further information on the topic.

Most Palestinian residents of the West Bank cannot travel between cities within the region without passing Israeli checkpoints.

The majority of Palestinians living in the West Bank are under Israeli authority, rather than that of Palestine. Most Palestinian residents of this region cannot travel between cities within the West Bank without passing Israeli checkpoints. In fact, the West Bank is divided into three regions, only one of which is completely controlled

by the Palestinian Authority; effectively, over 50 percent of the West Bank is under direct Israeli control (mainly settlements and restricted areas). The 2010 "West Bank: Access and Closure" map provided by the U.N. Office for the Coordination of Humanitarian Affairs (OCHA) clearly depicts this fact.

Moreover, an important fact to keep in mind is that Israel is continuing settlement construction in East Jerusalem — a crucial area in which Israeli settlements are also considered illegal based on international law. In fact, during Vice President Biden's visit to Israel last year, Israel's Interior Ministry announced that 1600 new housing units were approved for construction in northeast Jerusalem. President Obama had emphasized on multiple occasions that the construction of settlements beyond the borders established in 1967 would be unacceptable. The White House vehemently

Settlements, Page 5

CORRECTIONS

An article published last Tuesday regarding the UA presidential candidacies incorrectly identified "Random Hall" as "Random House."

OPINION POLICY

Editorials are the official opinion of *The Tech*. They are written by the editorial board, which consists of Chairman Joseph Maurer, Editor in Chief Ethan A. Solomon, Managing Editor Connor Kirschbaum, Executive Editor Aislyn Schalck, Opinion Editors Nina Sinatra and Ryan Normandin, Contributing Editors David M. Templeton and Steve Howland, and Advisory Board member Andrew T. Lukmann.

Dissents are the signed opinions of editorial board members choosing to publish their disagreement with the editorial.

Letters to the editor, columns, and editorial cartoons are written by individuals and represent the opinion of the author, not necessarily that of the newspaper. Electronic submissions are encouraged and should be sent to letters@tech.mit.edu. Hard copy submissions should be addressed to The Tech, P.O. Box 397029, Cambridge, Mass. 02139-7029, or sent by interdepartmental mail to Room W20-483. All submissions are due by 4:30 p.m. two days before the date of publication.

Letters, columns, and cartoons must bear the authors' signatures, addresses, and phone numbers. Unsigned letters will

not be accepted. *The Tech* reserves the right to edit or condense letters; shorter letters will be given higher priority. Once submitted, all letters become property of *The Tech*, and will not be returned. Letters, columns, and cartoons may also be posted on *The Tech's* Web site and/or printed or published in any other format or medium now known or later that becomes known. *The Tech* makes no commitment to publish all the letters received.

Guest columns are opinion articles submitted by members of the MIT or local community.

TO REACH US

The Tech's telephone number is (617) 253-1541. E-mail is the easiest way to reach any member of our staff. If you are unsure whom to contact, send mail to general@tech.mit.edu, and it will be directed to the appropriate person. You can reach the editor in chief by e-mailing eic@tech.mit.edu. Please send press releases, requests for coverage, and information about errors that call for correction to news@tech.mit.edu. Letters to the editor should be sent to letters@tech.mit.edu. The Tech can be found on the World Wide Web at <http://tech.mit.edu>.

Afterhours with Cathy Drennan

Chem professor tells us why students should come to her office hours, not her shower

By Maeve Cullinane

Catherine L. Drennan is head of a chemistry laboratory investigating medically- or environmentally-relevant enzymes here at MIT. She is also co-professor of 5.111, a popular freshman chemical principles course, in the spring. In December, I had the opportunity to sit down with Drennan to find out more about her strange connection to Lisa Kudrow, why she thinks purple is the best kind of dinosaur, and why she wishes students would ask questions at her office hours and not in her shower.

The Tech: What was the most exciting thing you ever did in college?

Catherine L. Drennan: I took a course in Indian theater with one of the famous directors of Indian theater who was on sabbatical leave at Vassar College. We read all of these traditional plays from India and then we performed a play. My role was basically sitting cross-legged on the floor and then at one point during the play — there were three of us — we all stood up and sort of screamed and then sat back down again. We all had to go to every rehearsal and I was like, “Really? Do I really need to be here at every rehearsal?” I was also taking analytical chemistry that semester, so I had little cards that I wrote my notes on. When I was sitting cross-legged, I had my little analytical chemistry cards and I ended up getting an “A” in analytical chemistry, as well as in Indian theater! I’m not sure I would’ve gotten an “A” in analytical chemistry if it hadn’t been for all of those hours sitting cross-legged that I got to study.

TT: What is your most embarrassing story, or what’s the weirdest thing that’s ever happened to you?

CLD: I taught high school after I graduated from college. I taught at a Quaker boarding school in Iowa that doubled as a working hog farm. I lived in the girls’ dorm and I taught chemistry and physics and biology — basically ninth grade science — and I was also the drama teacher. When I was living in the girls’ dorm, at one point someone did not remember what her homework was. So she came to my apartment, found the door open — and I was actually in the shower — she came into the apartment and into the bathroom, pulled back the shower curtain and said, “What was the chemistry homework for tomorrow?” I tell that story as a way to indicate to freshmen here that coming to my office hours is OK. I have office hours, I like students to come to my office hours — this is not bothering the professor — as opposed to coming into my apartment and my bathroom, pulling back the shower curtain, and asking what the homework is! That is too much! Coming to my office hours is just fine.

TT: A more serious question for you: Do you have an overarching goal or set of goals in your life, and where do you think you are in reaching that?

CLD: I like to have lots of goals, actually. One goal that I definitely have has to do with convincing people that chemistry is a wonderful subject. It is something that I did not figure out for a long time in my personal life. I did not like chemistry at all in high school and then I got to college and was forced to take it, and I discovered that I like chemistry. And I think that chemistry is often taught in a way that really makes it uninteresting, and that sort of the natural interest in chemistry — you know you have to get more into it. People can get things that they like about biology more readily, and somewhat in physics too, because you

So she came to my apartment, found the door open — and I was actually in the shower — she came into the apartment and into the bathroom, pulled back the shower curtain and said, “What was the chemistry homework for tomorrow?”

can see these basic principles in physics. But chemistry somehow doesn’t have that. People don’t always see what’s cool about chemistry until they get into it more. So one of my goals is to help people find their own personal connection with chemistry, because it really is a core of science. Everyone at MIT is interested in science or engineering at some level, and they need basic chemical principles in order to do well in what they’re studying. Yet sometimes they don’t quite get why chemistry is important



COURTESY OF CATHERINE L. DRENNAN

Cheat Sheet aka that random stuff that never shows up on the test

The Tech: What’s your favorite song right now? What have you got playing on repeat?

Catherine L. Drennan: “Jingle Bells” — it’s Christmas time. I have a two-and-a-half-year-old so I have no control over the music in the house anymore.

TT: What’s your favorite kind of dinosaur?

CLD: Purple.

TT: So does that mean your daughter is a Barney fan?

CLD: I don’t think she knows what Barney is, but purple is her favorite color. So [for] everything, if you ask her what her favorite whatever it is, like, “What’s your favorite meal?” Purple. And if I said, “What song do you want to sing?” Purple.

TT: If you were a cereal, what kind of cereal do you think you’d be?

CLD: Granola.

TT: Kinda like the earthy, crunchy.

CLD: Yeah, yeah.

until it’s too late.

TT: So what’s it like to be a mother, a professor, and to be doing research? How do you divide your time?

CLD: Being a professor, you’re always pretty much insanely busy. The job is very demanding because you’re teaching, you’re doing research, you’re running a research program — so you’re supervising people, you’re raising money for your research. So you’re kind of a CEO, and a teacher, and it’s just like all sorts of things wrapped up. One time I had a collaborator in town and normally, before having a child, I would take

So I think that the flexibility is just amazing, and the graduate students and post-docs in my lab are really supportive of trying to help me balance everything. If it means having a meeting in my house instead of at the office, everyone is very supportive of that. I think that people just look at the job and they see the “busy,” but they don’t see that flexibility as much.

TT: At the beginning of every semester of 5.111 you tell your class a story about how when you were a student at Vassar College, Lisa Kudrow (of *Friends* fame) was also studying there. And you said that when you went to college you were planning on majoring in drama and that Lisa had planned to major in biology, but evidently you kind of switched paths. Now, I know you can’t speak for Lisa, but can you tell us in a little more detail what it was that motivated you to make such a big switch?

CLD: I also liked science, so I was thinking of sort of biology, psychology, biopsychology, drama, or some combination thereof. I actually did take a number of drama classes at Vassar, including the Indian theater one, and Vassar is a very famous place for theater — Meryl Streep and Jane Fonda and all sorts of people have come from there. That was one of the reasons why I thought that that’s where I wanted to go to college. They’re not so much known for chemistry — they have a very small chemistry department, but it’s a very good one. And because I was thinking of becoming a biology major, I had to take chemistry my freshman year, and then I just fell in love

with chemistry. I continued to take theater and education courses. I was definitely a well-rounded chemistry student and took a lot of other things, but it was my freshman chemistry teacher who really made me fall in love with chemistry.

It’s always good to be thinking about what interests you and what you like, but having too firm a plan is not a good idea because it just puts blinders on you, and you often don’t notice something else that is really what you should be doing.

I certainly use all of the things that I learned in my theater classes when giving lectures. Often, if it’s a really big lecture hall, I will have stage directions to myself about when the boards go up and down and where I’ll be standing, and when to do the demo. So all of my lecture notes also have a whole bunch of stage directions. I think that for anyone that wants to teach really large lectures, a few theater lessons can definitely be useful.

TT: Having said that, can you give your students some advice on how to balance their own lives here at MIT?

CLD: What I tell people is that it’s always good to be thinking about what interests you and what you like, but having too firm a plan is not a good idea because it just puts blinders on you, and you often don’t notice something else that is really what you should be doing. It’s fine to not really know what you want to do, and it’s fine to switch majors. And here, because everyone is taking sort of the same core courses, there’s extra time to figure out what you want to do. Just try out things, explore, and don’t take seven classes at once — that’s too much exploring! Just look around, talk to people, try out some things. Deciding something isn’t right for you, it isn’t failure, it’s just that’s part of the growing experience. If you never make any mistakes it just means your path is too well-defined.

TT: If you had one final piece of advice for your students, what would it be?

CLD: I think the biggest advice about MIT, at least, is to get involved in research while you’re here because there are so many amazing opportunities to do research and it can be an extra family in a place that’s fairly big. Most undergraduates get to know the people that they live with and those people become very important to them, but a research group can be like a second family. Get to know graduate students, get to know undergrads, get to know faculty, and make a home for yourself that’s sort of a research home here. Even if you end up not doing that research in particular later in life, having those connections and that network here can be really, really important. My undergrad research advisor was very much key, someone I’m still in touch with. Regarding a lot of the faculty here, I think a lot of undergrads think that they are busy and that they aren’t interested in getting to know the students, but for the most part I think that’s just not true. Engagement with undergrads is one of the things that faculty say is the most rewarding. Undergrads should really get to know at least three faculty members. I mean, obviously you need three letters of recommendation, but it’s more than just that. It’s advice on all sorts of things besides your professional development and it’s just good to have those connections. We’re not that scary!

This is the first of a series of interviews with MIT professors. Ever wanted to ask your professor something totally random? Send your questions and professor suggestions to cl@tech.mit.edu.

To read the rest of the interview, check out the Tech blogs at techblogs.mit.edu.

RANDOM NEURONAL FIRINGS

Are you a stressed out student? Read this.

Eight ways to get rid of mid-semester stress

By Nazia Chowdhury

S-T-R-E-S-S-E-D O-U-T! Here at MIT, that's the usual answer to the question, "How are you?" — especially midway through the semester. While some studies suggest that stress is a significant factor contributing to weight gain, aka the infamous "freshman fifteen" issue, we really do not mind the pressure. Because, hey, pressure is what turns a lump of coal into diamond, as my friend Deeni Fatiha '13 would say.

However, we do not like the feeling of getting overwhelmed by our academic workload, social network, roommates, all the dynamics of young adult relationships, eating healthy and the new meal plan, etc. ... so what do we do?

1. Get some sleep!

This might be in the form of taking a power nap, going to bed early, sleeping late, or sim-

ply sticking to a regular healthy sleep schedule. If you are having a headache trying to solve an 18.03 problem (I am a freshman! What else did you expect?), try it after a refreshing nap. You'll surely be more productive with a well-rested and clearer brain.

2. Eat healthy!

Eat fruits and veggies, protein, and whole grains. One thing my first semester taught me is that having a proper breakfast before classes makes a person and his or her stomach happy companions. Also, bring your caffeine consumption down. Definitely indulge in some sweet chocolatey delicacies whenever you feel like you've been starved of them for a while.

3. It's workout time!

You don't have to spend two exhausting sweaty hours at the gym. Just take a walk along the Charles while listening to your fa-

vorite music. Breathe in the cold fresh air or walk to your favorite restaurant nearby. Eat and then walk back. Or take a yoga or ballroom dancing class. Go swimming with friends and splash around. There are loads of options, and you can create even more.

4. Fun time!

The best way to do this is to grab some friends and do something you all love. Have an ice cream, hop onto the T and explore Boston, go shopping, make a robot (if that's your idea of having fun), watch a movie, listen to music, play some games or a musical instrument, dance, or sing! You can even make your "writing lab report time" enjoyable. Work with your friends, use their input and take a five minute chat break as you complete each section. Before long, the whole report will be ready to roll.

5. Branch out!

There's surely a student activity group you're interested in. Even if there isn't, start a new group. Getting involved will give you some time away from college academics while doing something you love. Check out <http://web.mit.edu/asa/resources/group-list.html> for a list student groups at MIT.

My personal favorite is writing for *The Tech*. But let me spill the beans here — I'm writing this article to take a break from my 9.00 notes. Ssshhhh ...

6. Get some distance

Create your own space in your room, in your dorm's common room, or in a library. Get some time solely for yourself. Stepping out from the crazy college environment for a while works magic in reducing stress.

7. Stay connected!

During my international students' orientation, I was taught

by the MIT International Students Office (ISO) that the ultimate solution to every problem on Earth is "Skype-ing your mom!" So skype with people you love — parents, siblings, close friends. Crack stupid jokes and talk nonsense. And if you want to talk with friends at MIT, that's even better. Even if you rant for thirty minutes about how stressed you are, you'll feel lighter afterwards.

8. Ask for help!

Do not forget that your advisor, associate advisor and loads of other people are out there to listen to you and to make your life easier. The best people to go to when you don't know where to go are the Medlinks. They know a lot about resources available on campus. Just shout out! Help will arrive!

Last but not least, don't get stressed out about being stressed. Stress is quite normal in college. We just have to breathe.

EVENTS MAR. 8 – MAR. 14**TUESDAY**

(12:00 p.m. – 2:00 p.m.) Women and Gender Studies celebrates International Women's Day with Open Mic — W20 Coffeehouse

(5:00 p.m. – 6:00 p.m.) Legatum Lecture: 2010 Prosperity Index. Lecture given by Dr. Ashley T. Lenihan and Jiehae Choi — 32-144

(8:00 p.m.) Mardi Gras Contra sponsored by the MIT Folk Dance Club — W20-491

WEDNESDAY

(12:05 p.m. – 1:00 p.m., 7:00 p.m. – 8:00 p.m.) Ash Wednesday Service — W15 (MIT Chapel)

(5:30 p.m. – 6:30 p.m.) Graduate Women at MIT (GWAMIT) Empowerment Conference Keynote: "Power, and How to Find it in Places You Didn't Expect" by Cindy Gallop — 46-3002 (BCS Auditorium)

THURSDAY

(3:00 p.m. – 4:00 p.m.) So You Got a Job ... Now What? Strategies for success in your new position — 1-246

(5:30 p.m. – 7:00 p.m.) GWAMIT Empowerment Conference Panel: "Power Couples" — Successful partners from academia and industry — E51-345

(8:00 p.m. – 10:00 p.m.) Killian Hall Jazz Series concert by composer and pianist Guillermo Klein and saxophonist Bill McHenry — 14-111 (Killian Hall)

FRIDAY

(4:30 p.m. – 6:00 p.m.) GWAMIT Empowerment Conference Panel: "I'm not a Feminist, but ..." — Conversations on what modern feminism looks like — 32-G449 (Stata Kiva Room)

(7:00 p.m. – 9:30 p.m.) Thai Night 2011: Siam HD — Morss Hall (Walker Memorial)

(8:00 p.m. – 10:00 p.m.) MIT Symphony Orchestra, featuring Amanda N. Mok '11, winner of the 2011 Concerto Competition — Kresge Auditorium

SATURDAY

(2:00 p.m. – 3:00 p.m.) Special tour given by MIT Museum Curatorial Associate Ariel Weinberg; Inside 150: Gracious Professionalism, Cooperation, and Competition — MIT Museum

(6:00 p.m.) MIT Figure Skating Club's Annual Figure Skating Exhibition — Johnson Athletics Center

(8:00 p.m. – 10:00 p.m.) MIT Wind Ensemble, with guest composer and pianist Guillermo Klein and saxophonist Bill McHenry — Kresge Auditorium

SUNDAY

(2:00 p.m. – 4:00 p.m.) The MIT Shakespeare Ensemble presents *Romeo and Juliet* — W20 La Sala de Puerto Rico

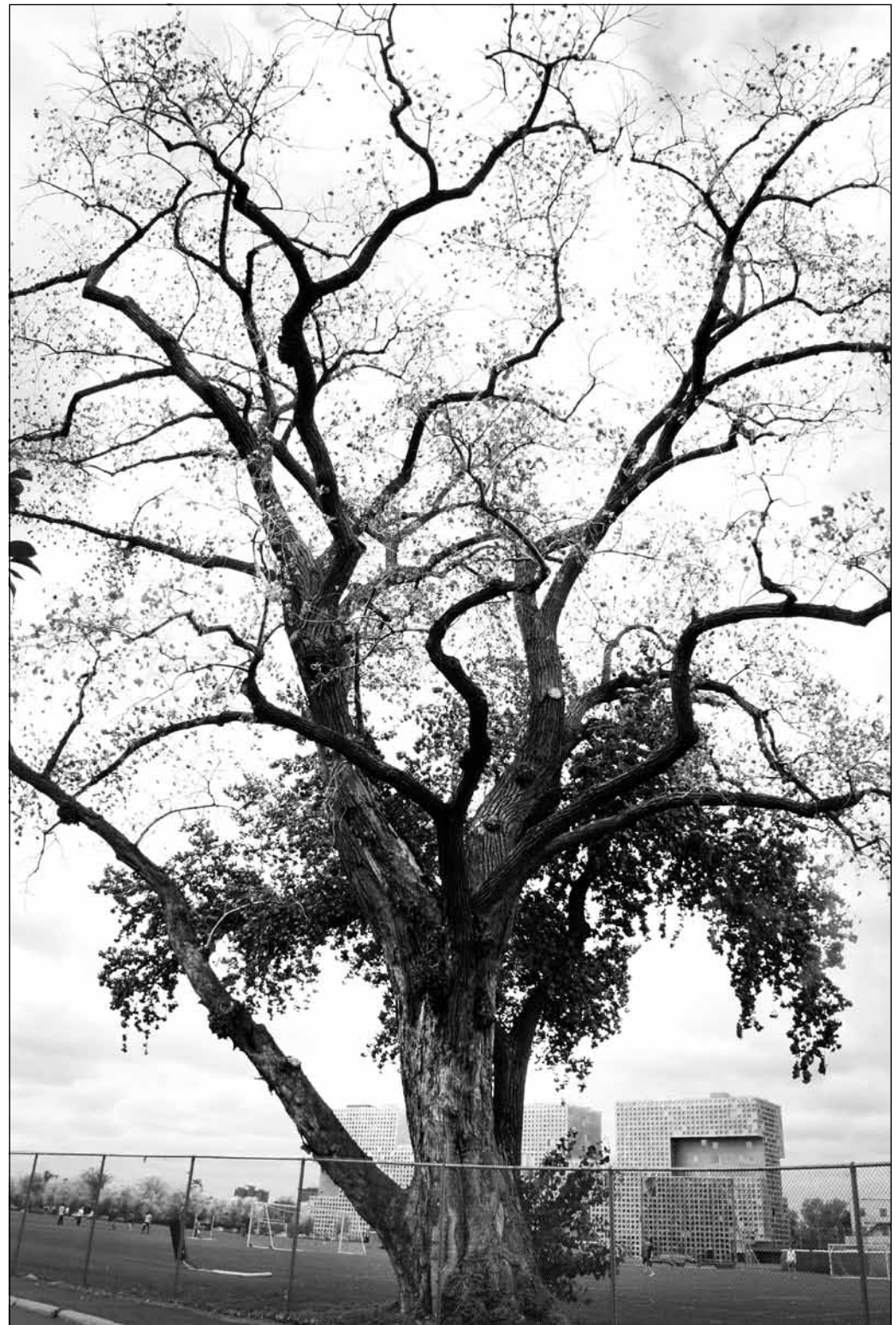
(7:00 p.m., 10:00 p.m.) LSC shows *Due Date* — 26-100

MONDAY

(4:00 p.m. – 5:00 p.m.) Janet Napolitano, secretary of the Department of Homeland Security, speaks about "The Future of Science as Public Service" — Kresge Auditorium

(1:30 p.m. – 3:30 p.m.) Celebrate Pi Day with pies, sponsored by the Graduate Association of Aeronautics and Astronautics — 33-104

Send your campus events to events@tech.mit.edu.

Institute Double Take

By Lynn Jepsen

I took this photo with a Nikon D300 camera on my way home from a track barbeque on Oct. 3, 2010. It was decently warm outside, with only a little bit of cloud cover. I stopped to take this picture of the tree on Briggs Field because it still had some leaves, but few enough that you could see the pattern of the branches.

I have a wide angle lens, so the picture shows an exaggerated view of the fractal nature of the branches. I don't know how long that tree has been there, but I hope it remains a while longer.

Aperture:

f/3.6

Exposure Time:

1/250 sec.

Sensitivity:

ISO 100

Effective Focal Length:

27 mm

The to-do list in Beth Hoyme's purse will never get done because a drunk driver convinced his friends he'd be fine.

Friends Don't Let Friends Drive Drunk.



Photo by Michael Mazzeo

U.S. Department of Transportation

Ad Council

This space donated by The Tech

IFC does not sign agreement

IFC feels uncomfortable with agreement wording

PBE, Page 1

to sign it." They also said that "[the joint statement] is not sufficiently comprehensive and does not fully encompass the details surrounding this situation."

IFC president Gordon W. Win-trob '12 declined to comment on the joint statement made by MIT and PBE.

The previous executive board members of the IFC who were involved in PBE's suspension were, for the most part, not part of this resolution, according to Garrett R. Fritz '11, former chair of the IFC Judicial Committee.

As part of the modified suspension, PBE is once again a member of the IFC. However, the fraternity is on probation until 2014, meaning that it will not receive a vote in IFC dealings.

The statement said that PBE will be working with the IFC and the Dean of Student Life on a new anti-hazing education program open to the entire FSILG community. "It will be similar to Party Safe training. We hope that there will be more than just a few from each fraternity well-versed in the issue [of hazing]," said Kyle M. Knoblock '11, president of PBE.

Moving forward: The new PBE

PBE is using their suspension period to "really redo and reinvent" the house, including both the physical house and their fraternity initiation process.

The biggest changes will be to PBE's initiation process. According to President of the PBE Corporation Steven C. Carhart '70, they will be starting "with a clean sheet of paper

but keeping the goals." Activities will be drawn from publicly available literature and trainings that have been proven effective in creating "intense bonding with groups of people."

The most obvious change will be that the initiation events will be public, which is not typical for most fraternities. "What we do we will say. This is a change. The idea that there could be some misunderstanding because something was private ... the surest way to make sure there's no misunderstanding is that it'll be out in the open," Carhart said.

The previous executive board members of the IFC who were involved in PBE's suspension were mostly not part of this resolution, according to Garrett R. Fritz '11.

"There has been the perception that in the fraternity world, one can have a challenging or intense kind of experience or people have backed off of it. What we're trying to do is have a series of challenges that will be intense and meaningful experiences but not possibly perceived to be hazing. We're trying to break some new ground in that," Carhart said.

PBE says that this change to making their initiation events known publicly was not part of their agreement with MIT. "This is

entirely our choice. This is something that we want to do. It's really what we're trying to do. We're trying to reinvent the notion of the fraternity for the 21st century," Carhart said. "It's a lifetime intergenerational social and professional network. That's the idea — that it has elements of training and education that you get as part of a frat that complements what you get at MIT."

PBE sees themselves as setting a precedent in initiation reform. "We plan on coming up with a new [initiation]. We would help others come up with initiation reform and make sure it's not hazing," Knoblock said. "There's never a point when you take the time to sit down and really think about [hazing]. There could be hazing going on that never gets changed."

Over the weekend, almost a hundred PBE alumni from all over the country came to meet the actives. "We worked on planning major renovation of the house. We're in the middle of a big fundraising plan. Alumni are extremely interested in rebuilding the house," Carhart said.

Renovations to the house have been planned for several years. Carhart estimated that the renovations would be finished sometime between 2012 and 2015.

"The outpouring of alumni and parent support are beyond belief," Carhart said. "One of the things that has been really great is that this has brought undergrads and alumni much closer. We realized that if we didn't work this out, then a lot that we worked for would be lost."

"[The alumni] want to make sure PBE gets rebuilt and comes out strongly and better than ever," Carhart said.

Start Your Career in Accounting



Northeastern's MS in Accounting/MBA for non-accounting majors:

- Earn two degrees in just 15 months.
- Complete a 3-month paid residency at a leading accounting firm.
- Proven track record of 100% job placement.

Application deadlines: March 1 and April 1


 Become our fan on Facebook.
facebook.com/northeasternuniversitymsamba

617-373-3244
gspa@neu.edu
<http://cba.neu.edu/grad/accounting-mba/>

Northeastern University
 College of Business
 Administration

Looking for an interesting place to start your career?

Consider...

CANADA'S EAST COAST



An expanding economy, lots of wide-open spaces, great quality of life, and JOB OPPORTUNITIES!

Learn more at Canada's East Coast Job Fair.
Omni Parker House Hotel, March 11-13, 2011

The Canada's East Coast Job Fair offers skilled job seekers an opportunity to meet Atlantic Canadian employers who have jobs available now in the following sectors:

- Life sciences • Aerospace • Finance • Information technology
- Health care • Energy • Defense • And more

Don't miss Canada's East Coast Job Fair.

Register online now at: www.canadaseastcoast.ca

Miramonti, Lai lone candidates

Platform focuses on transparency, student life, space

UA elections, Page 1

theless, the pair remains enthusiastic and optimistic; they have printed out business cards that advertise their campaign website, <http://engageMIT.com>. "The campus should know who we are," said Lai. "We've hit every dorm at least once ... yes, going door-to-door. That's what our Thursdays, Fridays, Saturdays, and Sundays have been devoted to these last few weeks."

The Tech will host the UA Election Debate this coming Sunday on the first floor of the student center in front of La Verdes. If any write-in tickets announce their candidacy for UA President and Vice President, they will be considered for participation in Sunday's debate. If Miramonti and Lai remain the only ticket by Sunday, the "debate" will take the form of a question-and-answer style session.

Miramonti and Lai explain their platform

"We want to re-establish trust and transparency between students and the administration," said Miramonti. "I guess that's what we want to see improve most."

Although undergraduates and administrators represent two interest groups, the UA "is always — always — going to be pro-student," affirmed both candidates. "Take Orientation," said Miramonti. "It took the administration weeks to explain why REX should be cut short — budget issues. But that's the point: [the administration] should set its goals clear, and we will try to meet you. That's what the UA is here for."

The administration has never said their primary motivation for suggesting Orientation changes was budgetary. On Feb. 1, Dean for Undergraduate Education Daniel Hastings PhD

'80 said that a desire for "efficiency" spurred plans to change Orientation, but that other factors, including the amount of free time students reported and concerns that Orientation was "too long," were the crux of the problem.

If elected, Miramonti and Lai will have each UA committee compile a report of student responses to various issues. "This will help us identify areas that need change," explained Miramonti. "Right now, we largely function as a reactive body; the administration tries to fix certain issues, like Orientation, and the UA scrambles to react."

The reports will not focus exclusively on items that need improvement, either. "We also want to see what basic principles students prefer in items like dining and housing," said Lai. "What are the values that students perceive as central to MIT?" Should the administration then propose changes, the UA will be able to either affirm or contest the proposition as beneficial to undergraduate culture and tradition.

Another important item on the Miramonti-Lai agenda is a UA help desk or directory. "We want this online on a website somewhere," said Lai. "It would be a compilation of student resources — add/drop forms, course requirements, a link to the course guide, extracurriculars — that way students can just go to one place to easily find what they need." Miramonti hopes to have the preliminary coding completed over the summer, and an actual functional directory established by the end of the Fall 2011 term.

"I'm not sure why there isn't a precedent for something like this," said Miramonti. "There have been information FAQs for freshmen, but we hope something all-inclusive like

this will be useful for all classes."

In line with their plans to engage students more actively, the balloted pair are looking to reoptimize student spaces. "We've already asked students what they'd like to see in the former game room [in the Student Center]," said Miramonti. "We're also trying to let students know about obscure study places. For example, there are great spaces in the Sloan building that people aren't aware of." Lai predicts that the UA will reach out to undergraduates through the Senate and then work with the MIT Department of Facilities to actuate student desires. "We will probably have to spend some money too, but we think students will [be happier]."

Miramonti joined the UA in January 2010; Lai, in September 2010. The two built a strong rapport during internal meetings. "We complemented each other, skill-set wise," said Miramonti. Lai agreed: "We clicked well as a team early on."

When considering their joint candidacy, Lai decided that his current position as secretary general gave him a great deal of insight into communication with undergraduates. "I take minutes, organize the UA newsletter, get UA information out to students," said Lai. "As vice president, I would focus on internal management on overseeing individual committees."

Conversely, Miramonti has had more experience working with high-level administrators as a Senator. "I sit on [Executive] Committee," he explained. "I'm always in the UA office; I talk to [current UA president] Vrajesh a lot, and I'm just really invested in student affairs — that's why I'm running as president."

The UA Presidential and Vice Presidential Debates will be held this Sunday at 8 p.m. on the first floor of W20 (Student Center).

Co-founder of Reddit speaks at MIT Startup Club meeting

Last night's gathering of the MIT Startup Club featured a presentation and Q&A from Alexis Ohanian, cofounder of the popular social news site Reddit (<http://reddit.com>).

Reddit, initially run entirely by Ohanian and his college roommate Steve Huffman with "a few hundred dollars in sticker budget," now gets over one billion monthly page views. Ohanian confirmed this statistic when he spontaneously logged into his Google Analytics account during his presentation, to gasps from many of the 43 students in attendance. "Reddit in the beginning was mostly Paul Rand essays. And us berating our friends. And me, pretending to be users."

Ohanian described Reddit's rapid growth and his experience selling Reddit to Condé Nast in 2006, saying he was "half expecting Ashton Kutcher to pop out and say, 'Ha ha! Punked you, bitch!'"

Ohanian also described several of the other projects he is involved in, including Hipmunk (<http://hipmunk.com>), a flight and hotel search site; and Y Combinator (<http://ycombinator.com>), a company that funds small startups. His talk was prefaced by a presentation from Erika M. Bildsten '12 of Incubomber, a group working out of a Burton Conner dorm room, about their new project Bookxor (<http://bookxor.com>).

Near the end of Ohanian's presentation, one of the young entrepreneurs in the audience raised his hand: "A lot of people say that failure is very important to success. Now that you have experienced success, how do you make sure that you keep failing?"

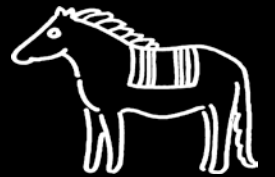
"Oh," Ohanian laughed, "that's easy."

—Connor Kirschbaum

Can you beat this drawing?
Join Illustrators at The Tech!



E-mail join@tech.mit.edu



The MIT Figure Skating Club's Annual FIGURE SKATING EXHIBITION

Ice Arena at Johnson Athletics
Center

Saturday, March 12
6pm

Free Admission

Ice Dancing • Solo Skating • Group Numbers • Theater on Ice

This event is hosted by the MIT Figure Skating club and is sanctioned by the United States Figure Skating Association

<http://web.mit.edu/skatingclub/www/Home.html>



SPERM DONORS

Earn up to **\$1200** per month

Invest minimal time
Make a real difference in the lives of families
Receive free health and genetic screenings

APPLY ONLINE:
SPERMBANK.com
- convenient Cambridge location



MIT
PUBLIC SERVICE CENTER

summer fellowships and internships

apply your skills and passion while building capacity for a community organization

work by yourself or as part of a small team or create a project from scratch, (find ideas on our website), work locally, nationally, or internationally

deadline: noon on friday, march 18

more info web.mit.edu/mitpsc/resources/internshipsandfellowships
project ideas at: web.mit.edu/mitpsc/showcase/opportunities

Royal Bengal

Boston's only authentic Bengali Cuisine restaurant

Open Daily Except Monday
11:30 am - 11:30 pm
Lunch Buffet \$7.95
Reasonably Priced Dinners

313 Mass. Ave., Cambridge
(617) 491-1988
T: Red Line, Bus #1 - Central Square

10% Discount on \$15
(or more) order with MIT ID.

Free delivery for orders over \$10.
Take-out, platters, and catering available.
<http://www.royalbengalrestaurant.com/>

Meet your fellow tech staff.
(aka, your new 3 a.m. pset support group)



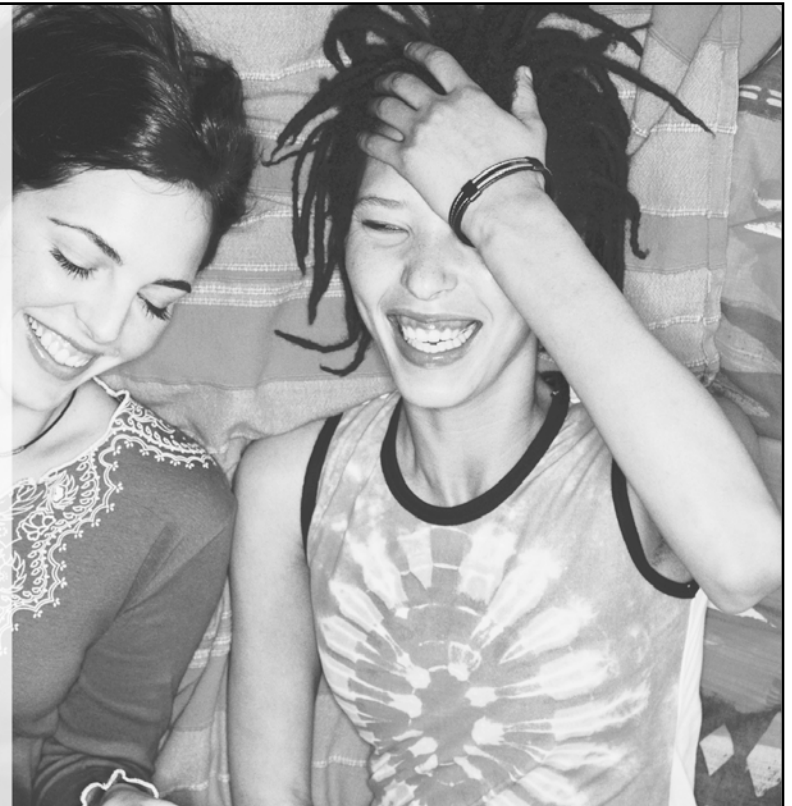
join@tech.mit.edu
W20-483, 617-253-1541

You tell her about the guy you're crushing on.

You tell her when she needs a haircut.

You even tell her when there's spinach in her teeth.

So when will you tell her she has a gambling problem?



When it stops being a game...
it's time for straight talk.



800.426.1234

masscompulsivegambling.org

Funded in part by the Massachusetts Department of Public Health, Bureau of Substance Abuse Services.
Reproduced with permission from the Vermont Council on Problem Gambling.

This space donated by The Tech



Thai Student Association
at MIT and Harvard
Proudly Presents...

Thai Night 2011

Siam HD

See it to feel it

FEATURING

- Authentic Thai Food
- Classical, Choral, and Contemporary Music
- Traditional Dances
- Cooking Show
- Thai Boxing



Friday, March 11 | 7 PM
MIT Walker Memorial

This event is open to the public.

Door opens at 6:45 PM (Refreshment provided)
Dinner served at 8:00 PM

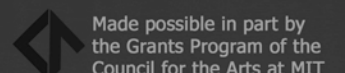
TICKET SALE
March 7th-11th in Lobby 10
Ticket price: \$12 (\$15 at the door)

Get your ticket before we're sold out!

Event Sponsored By



LEF/ARCADE



Made possible in part by the Grants Program of the Council for the Arts at MIT

Koch designed for interdisciplinary research

MIT nationally recognized at the forefront of biomedical and cancer research

Koch Institute, Page 1

Emphasizing collaboration among experts from different fields, he said, “will advance the discoveries and technologies that revolutionized the way cancer is detected, monitored, treated, and prevented.”

Jacks also highlighted the Institute’s proximity to established institutions of biological research fame.

“I was thrilled and surprised when Eric Lander [founding director of the Broad Institute] came crossing the street in a white-frilled apron with a tray of cookies,” joked Jacks.

At the dedication, MIT President Susan J. Hockfield called the Koch Institute a place where “MIT’s world-class biologists and engineers, with their laboratories side-by-side, collaborate to understand the basic molecular mechanisms of cancer cells and develop practical, patient-ready devices.” She said she was confident that the strength of today’s researchers at the Institute will be passed onto students when they learn the “collaborative instincts, interdisciplinary skills, and hands-on problem solving.”

Senator Brown, who also visited the Koch Institute last month, spoke at Friday’s ceremony as well. “This amazing facility really puts Massachusetts and Cambridge and MIT on the map to do things that no other countries and no other institutions can do by taking the convergence model and using that multi-disciplinary thinking,” Brown said.

Koch gave the dedication’s final remarks, explaining his personal motivations for supporting cancer research at MIT. He said his long association with MIT began with his father — Fred C. Koch ’22 — who also graduated from MIT.

“Father graduated from the Institute with the first class ever to receive a degree in chemical engineering,” said Koch. The elder Koch encouraged his sons to attend MIT, three of whom — including David — graduated from MIT with chemical engineering degrees. Koch said he holds a “lifelong respect for MIT” and “admire[s] everything about this great institution.”

Koch became interested in can-



A visitor looks at one of the displays in the new Koch Institute gallery. The image, captured by Kara Cerveny of the Steve Wilson Group at University College London, shows the differentiation of stem cells into functional neurons in the zebrafish eye.

cer research when he was diagnosed with prostate cancer in 1992. At that time, Koch expected he had “not long to live,” but he was treated with an experimental drug called abiraterone that “worked like a miracle.” Koch is on the Board of Directors of the Prostate Cancer Foundation.

Koch had also supported cancer research at many other institutions, including a \$25 million commitment to MD Anderson Cancer Center at the University of Texas and \$20 million to Johns Hopkins Medical Center. He said that supporting a wide range of institutions is the best strategy in furthering cancer research, just like winning a bet by “buying a ticket on every horse in the race.”

Koch politics

In addition to his support for cancer research, Koch — valued at

\$17.5 billion and the executive vice president of Koch Industries, Inc. — is known for his support of conservative causes. Koch Industries has financially backed conservative candidates, including Governor Scott Walker of Wisconsin, according to *The New York Times*. Koch also provided funds to start the Americans for Prosperity Foundation in 2004, which has contributed to the rise of the Tea Party movement.

Koch Industries has also been called a “kingpin of climate science denial and clean energy opposition” by Greenpeace. But Koch Industries has said that Greenpeace was a “denier of any rational and honest dialogue on the underlying scientific debate regarding climate change,” the *Times* reported.

In an interview with the *Times* at Friday’s dedication, Koch, a libertarian, responded to criticisms of

his political advocacy.

“I read stuff about me and I say, ‘God, I’m a terrible guy,’” said Koch. “And then I come [to MIT] and everybody treats me like I’m a wonderful fellow, and I say, ‘Well, maybe I’m not so bad after all.’”

And while Koch’s speech focused mostly on the cancer research institute, his politics did manage to slip through.

“The National Institutes of Health, and the National Cancer Institute in particular, are facing serious cutbacks in their funding due to the massive deficits the federal government is incurring,” said Koch, imploring those in attendance to donate to cancer research.

The *Times* has reported that one of Koch’s companies, Georgia-Pacific, has been attempting to convince the government not to list formaldehyde as a carcino-

gen; Georgia-Pacific is a producer of formaldehyde. In a 2010 statement, Koch Industries said that “all Koch companies will respect and fully comply with any new formaldehyde regulation,” and for all six years that Koch has been on the National Cancer Institute’s advisory board, “he has never engaged in a discussion of formaldehyde.”

In addition to his support for cancer research, Koch has also given \$100 million to New York’s Lincoln Center, \$20 million the American Museum of Natural History, and \$15 million to the National Museum of Natural History to establish an exhibit on human evolution.

The Huffington Post reported that, at Friday’s dedication, Senator Brown was filmed telling Koch, “Your support during the election, it meant a ton. It made a difference and I can certainly use it again.”



A visitor is spotted in the Koch Institute Gallery, which features striking biomedical images.

MIT China Forum

globalMIT

Dynamics of Chinese Economy and Society
— A Perspective of a Real Estate Entrepreneur

A Conversation with Professors Yung Ho Chang and Yasheng Huang.

March 10, 2011, 11:30am-1:00pm
MIT Building E51-345



Zhang Xin
CEO, Co-founder
SOHO China



Introduced by MIT Chancellor Eric Grimson

Sponsored by the Office of the Associate Provost



Solution to Crossword

from page 6

N	I	P	S	E	P	A	L	S	M	A	A	M	
A	L	E	O	R	A	N	G	E	A	R	I	A	
V	I	A	M	A	R	K	E	T	A	L	E	R	T
Y	E	S	E	S	T	A	B	R	E	A	S	T	
H	A	R	E	T	A	O	S						
F	O	L	S	R	U	S	H	I	N	C	T	S	
R	H	O	D	E	N	O	E	L	F	O	R	E	
E	A	T	A	T	S	L	Y	M	U	R	A	L	
E	R	E	S	S	E	A	R	A	N	N	I	E	
D	A	R	W	H	E	R	E	A	N	G	E	L	S
P	A	I	N	M	A	I	D						
O	B	T	A	I	N	A	T	I	T	B	I	L	
F	E	A	R	T	O	T	R	A	D	E	E	R	A
F	A	R	E	L	A	O	T	S	E	E	M	U	
S	U	P	S	A	U	D	I	T	S	F	A	D	

Solution to Techdoku

from page 7

4	2	6	1	5	3
3	1	5	6	4	2
6	4	2	3	1	5
5	3	1	2	6	4
2	6	4	5	3	1
1	5	3	4	2	6

Solution to Sudoku

from page 7

4	5	8	7	3	2	9	1	6
9	6	2	4	8	1	5	3	7
1	7	3	6	9	5	8	4	2
8	9	7	1	6	3	2	5	4
5	3	4	2	7	8	1	6	9
6	2	1	9	5	4	3	7	8
7	8	9	3	1	6	4	2	5
2	1	5	8	4	7	6	9	3
3	4	6	5	2	9	7	8	1

YouTube acquires web video company Next New Networks

By Claire Cain Miller
THE NEW YORK TIMES

SAN FRANCISCO — YouTube, the video site owned by Google, formally announced on Monday that it had acquired Next New Networks, a Web video production company, in its biggest effort yet to move beyond short, quirky home videos to professionally produced content.

The acquisition of Next New Networks, which produces original programming and helps video creators distribute their films and make money, is YouTube's biggest leap into creating its own programming. But that will be minimal, the companies said. Original programming has taken a back seat at Next New Networks, and Google has shied away from producing its own content.

"We want to make as clean a line as possible for us to build the platform on YouTube and then let the content production happen with our partners," said Tom Pickett, director of global content operation at YouTube.

Google will pay less than \$100 million for the company, according to someone briefed on the terms of the deal, which *The New York Times* first reported in December. The companies declined to comment on the price.

Improving its original programming is crucial for YouTube, which faces competition from Web video services like Hulu, iTunes and Netflix. For its part, Google, which is trying to popularize its Google TV service, needs more Web video that people will watch for hours at a time.

"There's still a lot of YouTube that's about the single video experience right now," Pickett said. "We want to think about sets of videos and program experiences. That's where we're heading and we think this team is going to help us get there."

Many video creators on YouTube "are making money and doing great, but as a group they have not added up to shake the foundations of the way people watch content," said James L. McQuivey, a digital media analyst at Forrester Research. "Maybe it's just that they're not aggregated in a meaningful way, but as long as YouTube remains something you do between phone calls at work, it won't change the way the industry envisions its relationship with the viewer."

The company also said Monday that it was creating a program called YouTube Next that will help the video makers with whom YouTube shares ad revenue to produce more professional content by giving them grants and training.

Next New Networks, which attracts 2 billion views a month, compares itself to cable networks, which do not own all their programming but package and broadcast other people's shows. It helps video creators with advertising, distribution of their shows to various websites, and in building an audience by including shows as part of a programming package.

It created the shows *Barely Political* and *Indy Mogul*. It produces videos for the Gregory Brothers, whose video "Bed Intruder Song" was the most-watched video on YouTube last year, and *Hungry Nation*, a series of online food shows. The Gregory Brothers' videos, for instance, had up to 20,000 views an episode before the group started working with Next New Networks, and now they have up to 2 million views for an episode, Podell said.

Most of Next New's shows are on YouTube, but others appear on services like iTunes and Vimeo, and that will continue postacquisition.

Lance Podell, chairman of Next New Networks, will be director and global head of YouTube Next lab and audience development. YouTube also said it hired the former head of digital distribution at Paramount, Alex Carloss, to work on content acquisition. "At this point, we are YouTube-focused, but that doesn't mean that as an adviser to creators we won't be able to suggest to them how their business can build on YouTube and off of YouTube," Podell said.

Next New Networks, which was founded in 2007, has raised \$26 million from investment firms including Spark Capital, Fuse Capital, and Goldman Sachs. The company is based in New York and will remain there.

\$30,000 LEMELSON-MIT Student Prize

come celebrate the inventive spirit at the
2011 Award Ceremony

When: Wednesday, March 9th, 6:15 pm

Where: Stata Center, Kirsch Auditorium, (32-123)

The winner and finalist will present their inventions at 6:15pm.
The award ceremony will follow at 7pm.

All MIT faculty, staff, and students are invited to attend.

Refreshments will be served.



LEMELSON-MIT PROGRAM
celebrating innovation, inspiring youth

LEGAL COUNSEL
MIT students, family, employers and start-ups seeking U.S. legal counsel, campus or office consultation. Call:
James Dennis Leary, Esq.
321-544-0012

Astronomy Professor James Elliot dies at 67

James Ludlow Elliot '65, an MIT professor of planetary astronomy and physics who discovered the rings of Uranus in 1977, died on March 3 from cancer-related complications. He was 67.

Elliot was known as one of the great observational planetary astronomers of the modern era. Among his accomplishments were leading the team that discovered the ring system of Uranus and discovery of the atmosphere of Pluto. He was committed to excellence in teaching and mentoring and was a staunch advocate for women in science.

Elliot was one of the pioneers in the technique of stellar occultations: watching a star as a planetary object moves in front of it and studying the effect on the star's light.

Elliot was born on June 17, 1943, in Columbus, Ohio. He received an undergraduate degree in physics from MIT in 1965 and a PhD in astronomy from Harvard University in 1972. While a graduate student at Harvard, Elliot was an avid observer on the 60-inch telescope at the Agassiz Station in Harvard, Mass. He held a postdoctoral position at Cornell University and joined the faculty of Cornell's Astronomy Department in 1977. He returned to MIT in 1978 after he discovered Uranus's rings alongside Edward Dunham and Douglas Mink '73. He was also the director of MIT's Wallace Astrophysical Observatory.

Elliot was one of the pioneers in the technique of stellar occultations: watching a star as a planetary object moves in front of it and studying the planetary object from the effect on the star's light. Elliot used occultations to probe planetary atmospheres as well as the physical properties of small bodies in the outer solar system.

But catching occultations can be challenging since the events themselves might last only seconds, and there are no second chances. To record them electronically, a team must be completely prepared.

Elliot, however, excelled in coordination and preparation. When the planet Uranus was about to cross in front of a star in 1977, he and his team were flying in the Kuiper Airborne Observatory, telescopic equipment trained on the star, waiting. Because of the uncertainty in the event's timing, they turned their equipment

on about an hour in advance. To their surprise, the starlight disappeared briefly several times before the planet moved in; after the planet had moved on, the star winked out again several times. They realized that the symmetric dips in the star's brightness — before Uranus itself hid the star and after the star re-emerged — were caused by a ring system around the planet. Their discovery was confirmed by several more occultation events and eventually with direct imaging from the Voyager 2 spacecraft, the Hubble Space Telescope and otherwise. Elliot received a NASA Medal for Exceptional Scientific Achievement for this discovery.

With the same occultation technique, Elliot and colleagues observed Pluto as it crossed in front of a star in 1988. The gradual manner in which the star disappeared allowed them to deduce that Pluto had an atmosphere since in the absence of an atmosphere, the star would have disappeared abruptly. Subsequent occultations have revealed that the atmosphere changes with time. The next such occultations will occur in June, and Elliot's colleagues and students have observations planned.

Elliot was especially supportive of women in astronomy. At a science celebration at MIT held in his honor in June 2010 (called the "Jimboree"), nearly two dozen of his former and current students — more than half of them women — spoke about their research, as well as life lessons learned from Elliot. One common theme was his gift for engaging his students deeply in his research and then sending them off on their own with his utter trust that they could do the research themselves. He also conveyed to all his students a strong work ethic, admonitions to always be prepared, and reminders to always trust the data. At the Jimboree, notes of remembrance were captured on white index cards, because Elliot was never caught without one in his pocket.

Jim Elliot is survived by his wife, Elaine; his daughters, Lyn and Martha; son-in-law, Lute Breuer; his granddaughter, Bella Breuer; a brother, Tom Elliot; and sisters, Suzanne Elliot and Martha Bureau.

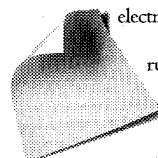
The family plans a private memorial service and requests that no flowers be sent. Gifts may be made to the Wallace Observatory Fund via mail (Attn: Bonny Kellermann, MIT Office of Memorial Gifts, 600 Memorial Drive, MIT Room W98-516, Cambridge, MA 02139-4822) or online (be sure to indicate that this is a gift in memory of Jim Elliot).

This obituary originally appeared at <http://web.mit.edu/newsoffice/2011/obit-elliott.html>.

—The MIT News Office

BE LESS PRODUCTIVE AT THE OFFICE.

The office has always been a place to get ahead. Unfortunately, it's also a place where a lot of natural resources start to fall behind. Take a look around the next time you're at work. See how many lights are left on when people leave. See how much paper is being wasted. How much



electricity is being used to run computers that are left on. Look at how much water is being wasted in the restrooms. And

how much solid waste is being thrown out in the trash cans. We bet it's a lot.

Now, here are some simple ways you can produce less waste at work. When you're at the copier, only make the copies you need. Use both sides of the paper when writing a memo. Turn off your light when you leave. Use a lower watt bulb in your lamps. Drink your coffee or tea out of mugs instead of throwaway cups.

IT'S A CONNECTED WORLD. DO YOUR SHARE.



A Public Service of This Publication

Set up a recycling bin for aluminum cans and one for bottles. And when you're in the bathroom brushing

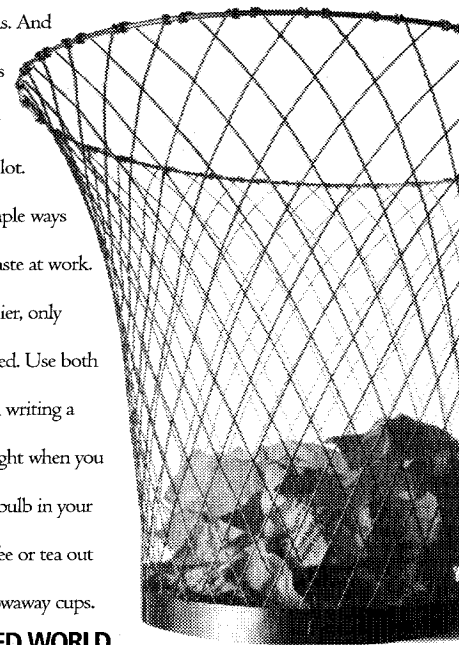


your teeth or washing your face, don't let the faucet run. Remember, if we use fewer resources today, we'll save more for tomorrow.

Which would truly be a job well done.

FOR MORE INFORMATION AND TIPS

CALL 1-800-MY-SHARE



Earth Share

This space donated by The Tech

The MIT Student Juggling Club presents...

JUGGLE MANIA!

Friday, March 11 7pm, 54-100

FREE
w/MIT ID, \$5 otherwise

Juggling Performances by:

Hired Professionals!

The Airborne Comedians and Peter Panic

MIT Students and Staff!

Jacob Sharpe, Stephen McCrory,

MIT Chinese Yo-yo Club, and Darin Marriott



Sponsored by the UA Finboard

This space donated by The Tech



MANOHAR B. SRIKANTH—THE TECH

Using props and sketches, the winning team of the FarmHack Event presents design solutions for water usage and associated energy consumption for small-scale farms. Farmhack@MIT, which is part of the MIT Global Challenge, brings together New England small-scale farmers and MIT engineers.



Be part of the founding faculty of INVENTORS and LEADERS

Design a better world.



INFORMATION SESSION

Wednesday March 9th, 2011

5:00pm - 6:30pm

Grier Room B (34-401B)

Presented by President Tom Magnanti

Engineer young minds.



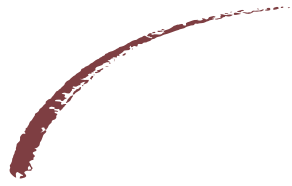
THE Singapore University of Technology and Design (SUTD), **established in collaboration with MIT**, has a mission to advance knowledge and nurture technically grounded leaders and innovators to serve societal needs. This will be accomplished, with a focus on Design, through an integrated multi-disciplinary curriculum and multi-disciplinary research.

THE University's programs are anchored on four pillars: **Architecture and Sustainable Design, Engineering and Product Development, Engineering Systems and Design, and Information Systems Technology and Design.**

SUTD **currently has openings** for interdisciplinary faculty appointments at all levels, with many opportunities available at the Assistant and Associate Professor levels. Duties include teaching of graduate and undergraduate students, research, supervision of student research, advising undergraduate student projects, and service to SUTD and the community. Faculty will be expected to develop and sustain a strong research program.

SUCCESSFUL candidates can look forward to internationally competitive remuneration, and assistance for relocation to Singapore. Attractive research grants are also available.

If you share SUTD's vision on the 'Big-D' approach, focusing on the art and science of 'design' within your field of specialization, please join us on March 9th to learn more about what SUTD has to offer!



BRIDGEWATER

BWATER.COM

SOFTWARE DEVELOPMENT INTERN

Apply online through MIT's Career Development Center

Resume Drop Deadline: March 11, 2011

BRIDGEWATER ASSOCIATES, LP IS AN AFFIRMATIVE ACTION - EQUAL OPPORTUNITIES EMPLOYER.

**WE NEED
COMPUTER SCIENCE
STUDENTS TO
MAKE US**

software that lets us visualize gigabytes of
up-to-the-minute data so that we can better understand
how a rally in Colombian bonds affects the price of

COFFEE.