



President Susan Hockfield delivers the concluding comments of the 2008 MIT Excellence Awards on Tuesday afternoon.

ANDREW LUKMANN—THE TECH

\$30,000 Awarded to Graduate Student for Bacterial Innovation

By Arkajit Dey
ASSOCIATE NEWS EDITOR

Timothy K. Lu G is a prize-winning killer.

To be more precise, on Wednesday, he won the \$30,000 Lemelson-MIT Student Prize for Inventiveness for developing methods to kill antibiotic-resistant bacteria. The prize will support research that aims to contain one of the deadliest threats known to biologists.

"I'm very honored," said Lu at the awards ceremony Wednesday. "I've been working in the lab for three or four years doing my Ph.D., it's nice to be recognized," he said.

Lu described two major sources of infections that his research fights: hard-to-kill antibiotic-resistant bacteria, and biofilms, bacteria sticking to surfaces.

MRSA, or methicillin-resistant *Staphylococcus aureus*, is one example of such a "superbug" which in 2005 killed nearly 19,000 people in the United States, surpassing the death toll due to AIDS in the U.S., according to the Centers for Disease Control and Prevention.

Lu's research modifies bacteriophages, viruses that attack bacteria, to make them deadly to biofilms. The

bacteriophages weaken the defense mechanisms of biofilms, making the biofilms susceptible to antibiotics which ordinarily could not destroy them.

"The next step is to bring it to the real world," Lu said. "Currently it's just a really cool thing in the lab," he said. But Lu plans to collaborate with the CDC to make real-world tests of the technology.

The most practical applications could target industry, starting with food processing plants. Once the technology has been proven, it might eventually be used in clinical trials.

Lu said that one important goal is to "expand the library of phages." Currently his techniques only uses one phage, targeted at *E. Coli*.

"I started off as a techie," said Lu, who majored in Course VI as an undergraduate and received an M.Eng in 2003. He developed an interest in biology while working with Prof. Rahul Sarpeshkar of RLE to "make devices that stimulate the inner ear for deaf people."

Later, after entering the HST program and witnessing patients crippled with infections first-hand

Lemelson, Page 10

Next House Housemasters Medard, Simmons Will Leave at End of Term

By Michael McGraw-Herdeg
EXECUTIVE EDITOR

Next House housemasters Muriel Medard '89 and John Simmons '90 will leave the post at the end of the 2007-8 academic year to focus on their family.

Medard said in an e-mail that the decision is a result of space pressures. "The kids are getting bigger," she wrote, "and it was getting very tight when we had long visits by relatives."

Perhaps the housemasters' most widely-known achievement is their advocacy for freshman participation in Residence Exploration. This fall, freshmen will be able to enter or

leave Next House, putting the dormitory in line with all other undergraduate dormitories except McCormick Hall and the cultural houses.

"People sometimes concentrate on the fact that freshmen could not leave - the fact is also that freshmen could not come in," Medard wrote in an e-mail. "I think that allowing the students who are most enthusiastic about Next House to live there will strengthen the community further," she wrote.

When Medard and Simmons came to Next House in fall 2006, freshmen were barred from REX because of constraints imposed by the Residence-Based Advising program,

in which students who live together share an academic advisor. RBA was first adopted by the dormitory in

Housemasters, Page 11

Fifteen Apply to Serve as W1 Founders

Four More Late Applications Will Not Be Considered, Says Residential Life Dean

By Nick Bushak
NEWS EDITOR

Fifteen applications for the W1 "founders group" were received by Tuesday's deadline, and the group's student membership will be selected by Friday.

The founders group, which will have about ten members, will prepare the culture and structure of the new undergraduate dormitory W1

(currently Ashdown). Four students applied late; their applications will not be considered.

Associate Dean of Residential Life Donna M. Denoncourt said that almost 40 people attended two information sessions held to tell people about the founders group. Denoncourt said that the committee will choose about ten founders group members by Friday evening.

About 50 students, including the founders group, will move into the new graduate dormitory NW35 this fall in advance of moving into W1 when it reopens in fall 2010. W1 has been the graduate dormitory Ashdown House for decades, and NW35 will be named Ashdown when it opens this fall.

W1, Page 10

Sherley's Discrimination Claim Rejected

The Equal Employment Opportunity Commission has denied employment discrimination claims by former professor James L. Sherley, who left MIT on June 30, 2007 after an unsuccessful hunger strike to have his tenure case re-examined, according to documents provided to

The Tech by Sherley.

News Brief

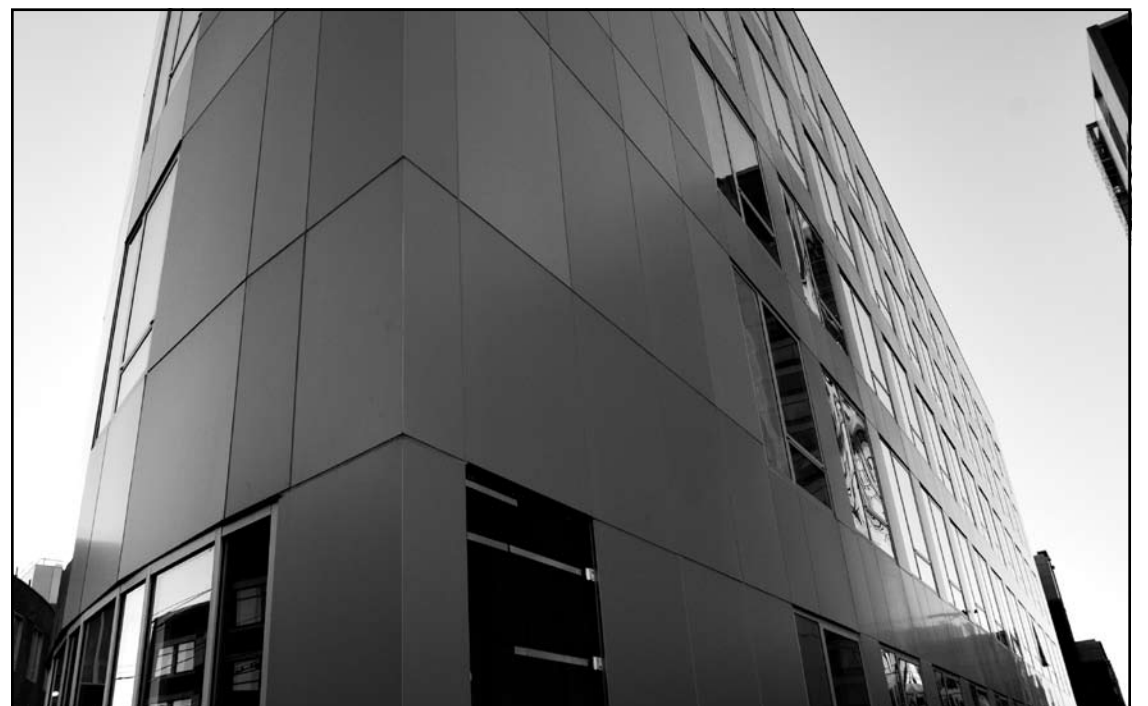
Sherley filed a complaint on Sept. 11, 2007 through the U.S. Equal Employment Opportunity Commission, claiming that his termination from MIT violated Title VII of the Civil Rights Act of 1964.

The EEOC replied that the evidence Sherley provided "fails to indicate that a violation of the law occurred" and that his claim was filed more than 300 days after he was informed of the decision to deny him tenure (on Jan. 3, 2005). According to Title VII, discrimination claims must be filed within 300 days from the date an employer tells a complainant about a harm.

One key question is whether the "harm" was Sherley's denial of tenure in 2005, or his termination from work on June 30, 2007. Sherley argued that the harm happened on June 30, 2007, and he said that his complaint was not made too late. In a letter, he said that "the crucial moment of harm ... was my fire from MIT due to illegal racial discrimination on June 30, 2007."

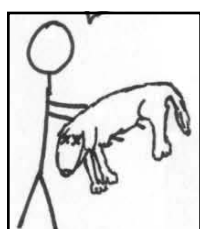
A letter dated Feb. 4, 2008 from EEOC Boston office director Robert L. Sanders cited *Delaware State College v. Ricks*, a 1980 Supreme

Sherley, Page 10



The southeast corner of MIT's NW35 dormitory, which will soon house about fifty undergraduates.

MARTIN SEGADO—THE TECH



Comics

Page 7

CAMPUS LIFE / SPORTS

Ask a TA

Page 6

Game of the Week:
Men's Fencing

Page 12

ARTS

MIT Dramashop's SubUrbia
performance captivates

Page 5

Upcoming March concerts

Page 5

World & Nation 2

Opinion 4

Arts 5

It's Friday 6

Police Log 11

Sports 12

WORLD & NATION

Obama Tops Clinton in a Record Fundraising Month for Both

By Michael Luo and Jeff Zeleny

THE NEW YORK TIMES

Sens. Barack Obama and Hillary Rodham Clinton both had a record-breaking month of fundraising in February, bringing in more than \$80 million combined, but with Obama again raising significantly more than Clinton.

Obama's campaign did not release an official estimate of its February fundraising on Thursday. But several major donors estimated it to be about \$50 million based on their calculations and knowledge of tallies during the month, when on many days the campaign took in as much as \$2 million.

The unprecedented sum underscores the challenge facing Obama in his decision to accept public financing for the general election and abide by the spending limits that come with it, something he indicated last year he would do if the Republican nominee also signed up for the campaign finance program. Sen. John McCain of Arizona, the presumptive Republican nominee, has criticized Obama for wavering on the issue.

Obama campaign officials were still tabulating and said only that their total was "considerably more" than the \$35 million that Clinton's campaign announced Thursday that it had raised in February.

Partisan Split Emerges On Mortgage Crisis Relief

By Edmund L. Andrews

THE NEW YORK TIMES

WASHINGTON

Just a month after President Bush and Democratic leaders hailed their bipartisan agreement on an economic stimulus plan, the two sides went to war on Thursday over how to prevent widening damage from the housing crisis.

Senate Republicans, lining up with President Bush, blocked a Democratic bill that would provide more money for homeowner counseling programs and let bankruptcy judges reduce the terms of a mortgage for people about to lose their houses through foreclosure.

Meanwhile, the Bush administration flatly rejected Democratic proposals to rescue hundreds of thousands of borrowers, as well as their mortgage lenders, by having the government buy up and restructure billions of dollars in delinquent home loans. Instead, the president called on Congress to extend indefinitely his 2001 and 2003 tax cuts, which expire at the end of 2010.

With new data showing that the economy may be even weaker than previously thought, Republicans and Democrats plunged back into a partisan, ideological clash over whether the government should try to stabilize home prices, prevent foreclosures and perhaps even bail out lenders.

Arctic Seed Vault Is a Fort Knox of Food

By Elisabeth Rosenthal

THE NEW YORK TIMES

LONGYEARBYEN, NORWAY

With plant species disappearing at an alarming rate, scientists and governments are creating a global network of plant banks to store seeds and sprouts, precious genetic resources that may be needed for man to adapt the world's food supply to climate change.

This week, the flagship of that effort, the Global Seed Vault, received its first seeds here, millions of them. Bored into the middle of a frozen Arctic mountain topped with snow, the Seed Vault's goal is to store and protect samples of every type of seed from every seed collection in the world.

As of Thursday, thousands of neatly stacked and labeled gray boxes of seeds — peas from Nigeria, corn from Mexico — reside in this glazed cavelike structure, forming a sort of backup hard drive, in case natural disasters or human errors erase the seeds from the outside world.

Recall Widens for Blood Drug Possibly Tied to More Deaths

By Walt Bogdanich

THE NEW YORK TIMES

Amid indications that more people may have died or been harmed after being given a brand of the blood thinner heparin, federal drug regulators said Thursday they had found "potential deficiencies" at a Chinese plant that supplied much of the active ingredient for the drug.

Baxter International, which makes the brand of heparin associated with the problems, and buys its supplies from the Chinese plant, announced it was expanding a recall to include virtually all its heparin products. Though Baxter produces much of the heparin used in the United States, regulators said the other major supplier would be able to meet the demand.

The Food and Drug Administration said the number of deaths possibly associated with the drug, made from pig intestines, had risen to 21 from four. But it cautioned that many of those patients were already seriously ill and that the drug may not have caused their deaths.

The FDA emphasized that it had yet to identify the root cause of the problem, and that it had not concluded that the Chinese factory was respon-

sible. The agency also said it was investigating two Chinese wholesalers — also called consolidators — that supplied crude heparin to the Chinese plant, Changzhou SPL, as well as those who sold raw ingredients to the consolidators.

The New York Times reported Thursday that at least one of the consolidators received supplies from small, unregulated family workshops that scraped mucous membrane from pig intestines and cooked it, eventually producing a dry substance known as crude heparin.

The FDA admitted earlier this month that it had violated its own policy by failing to inspect SPL, located west of Shanghai, before it began shipping the heparin ingredient to Baxter in 2004. China's drug agency also did not inspect the plant.

Last week, the FDA sent inspectors to the plant. Among the potential problems they found was a failure to properly follow the steps for identifying impurities and deficiencies related to manufacturing equipment. According to a redacted inspection report released by the agency, the SPL plant appeared to have made at least some heparin with "material from an un-

acceptable workshop vendor." The vendor was not identified.

Scientific Protein Laboratories, a Wisconsin company that is the majority owner of the Chinese plant, issued a statement on Thursday saying the FDA's finding did not represent its final determination as to whether the plant complied with federal regulatory rules. The company, the statement said, is committed to finding the root cause of the adverse reactions.

Erin Gardiner, a spokeswoman for Baxter, said the company was reviewing the FDA's report. "We expect SPL to respond to those observations thoroughly and promptly," Gardiner said. "The observations are important and need to be addressed promptly but they are not necessarily indicative of the root cause."

The FDA concern about heparin had previously centered on Baxter's multidose vials, but on Thursday Baxter agreed to voluntarily recall not only the multi-dose vials but also single-dose vials and a diluted solution of heparin used to keep blood clots from forming in intravenous lines. There have been no adverse reaction reports involving the latter product, called Hep-Lock heparin flush products.

Kenyan Rival Leaders Reach A Power-Sharing Peace Deal

By Jeffrey Gettleman

THE NEW YORK TIMES

NAIROBI, KENYA

Kenya's rival leaders broke their tense standoff on Thursday, agreeing to share power in a deal that may end the violence that has engulfed this nation but could mark the beginning of a long and difficult political relationship.

The country seemed to let out a collective hooray as Mwai Kibaki, the president, and Raila Odinga, the top opposition leader, sat down at a desk in front of the president's office, with a bank of television cameras rolling, and signed an agreement that creates a powerful prime minister position for Odinga and splits cabinet positions between the government and the opposition.

The two sides, which have been bitterly at odds for the past two months, will now be fused together in a gov-

ernment of national unity.

But there are still many difficult issues to resolve, starting with how the government will function with essentially two bosses and how it will go about the delicate business of reassigning the choice posts already given to Kibaki's allies.

There is also a deeply divided country to heal. More than 1,000 Kenyans have been killed, and hundreds of thousands driven from their homes in an uncharacteristic burst of violence set off by a deeply flawed election in December. Much of the fighting, like the voting, has been along ethnic lines.

The two-page power sharing agreement, which came after intense international pressure and mediation by Kofi Annan, the former U.N. secretary general, seemed to serve as a contract to pull Kenya back from the brink. Both leaders urged their sup-

porters, who have battled viciously across the country in recent weeks, to respect it.

"I call on Kenyans to embrace the spirit of togetherness," Kibaki said.

Odinga was beaming next to him. He said that Kenyans should "celebrate and love each other" and "destroy the monster that is called ethnicity."

Kenyans were glued to their television sets and radios across the country as the news broke. In downtown Nairobi, the capital, a crowd poured into the streets and danced and cheered until they were run off by tear-gas shooting police officers. In offices across town, business executives, who have watched their profits fall and the investments tank over the past two months, finally exhaled.

"Yes, I'm relieved; you don't know what we've been through," said Ngovi Kitau, the managing director of a large car dealership.

WEATHER

February Deluge

By Jon Moskaitis

STAFF METEOROLOGIST

Logan airport has recorded almost 8 inches (20 cm) of rain and melted snow this month, making it the wettest February on record in Boston. However, only a small portion of this precipitation was snow and ice, such that the accumulated frozen precipitation depth for the month is just 15 inches (38 cm). This brings our seasonal frozen precipitation total to 50 inches (127 cm), still above average due to the near-record snowfall total in December.

Compare this to the seasonal frozen precipitation total of 102 inches (259 cm) in Concord, NH, just 70 miles (113 km) to our north. Concord has had roughly the same amount of precipitation, but their slightly colder conditions have made a huge difference in terms of accumulated snow and ice.

March will pick up right where February left off, in terms of precipitation. Expect snow and rain overnight Friday into Saturday, and then another moisture-laden storm system around the middle of next week.

Extended Forecast

Today: Mostly sunny, chilly. High 26°F (-3°C).

Tonight: Snow developing late; light accumulation likely. Temperature rising to 32°F (0°C) by morning.

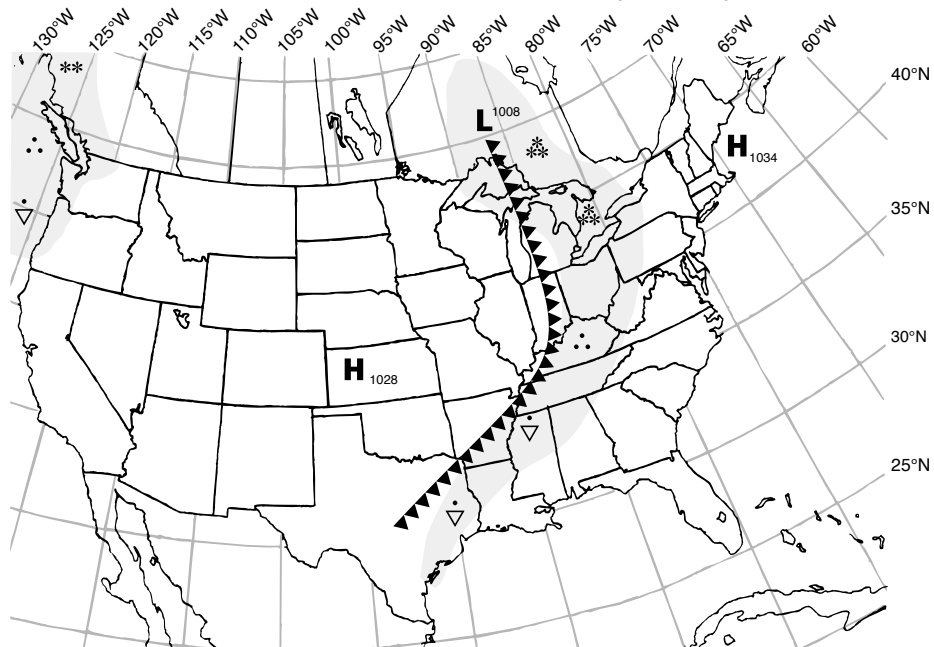
Saturday: Snow changing to rain in the morning, then mostly cloudy late. High 38°F (3°C).

Saturday Night: Partly cloudy, breezy. Low 27°F (-3°C).

Sunday: Mostly sunny, windy. High 32°F (0°C).

Monday: Mostly sunny. High 38°F (3°C).

Situation for Noon Eastern Standard Time, Friday, February 29, 2008



Weather Systems	Weather Fronts	Precipitation Symbols	Other Symbols
H High Pressure	- - - Trough	Snow *	Fog
L Low Pressure	—•— Warm Front	Rain ▽	Thunderstorm
§ Hurricane	▲▲▲ Cold Front	Light *	Haze
	▲▲▲ Stationary Front	Moderate **	
		Heavy ***	

Compiled by MIT Meteorology Staff and The Tech

Republicans Investigate New Lines of Attack Against Obama

By Adam Nagourney
THE NEW YORK TIMES

WASHINGTON

When Sen. Hillary Rodham Clinton goes after Sen. Barack Obama these days, she presses him on the details of his health care plan, criticizes the wording of his campaign mailings and likens his promise of change to celestial choirs.

But if Obama becomes the Democratic presidential nominee, he is sure to face an onslaught from Republicans and their allies that will be very different in tone and intensity than what he has faced so far.

In the last few days alone, Sen. John McCain has mocked a statement he made about al-Qaida in Mesopotamia. The Tennessee Republican Party, identifying him with his middle name as Barack Hussein Obama, suggested that his foreign policy would be shaped by people who are anti-Semitic and anti-Israel.

The Republican National Committee issued a statement Wednesday invoking a questionnaire Obama filled out when running for Senate in 2004 to show that he once opposed cracking down on businesses that hire

illegal immigrants. Without using Obama's name, President Bush used a news conference at the White House on Thursday to assail his willingness to meet Cuba's new leader, Raul Castro, without preconditions, saying that to do so would grant "great status to those who have suppressed human rights and human dignity."

For much of this year, Obama has been handled with relative care by Clinton and the other Democratic candidates before they dropped out. They generally do not have huge policy differences with him, and they have been wary of making a particularly harsh attack that winds up in a Republican television advertisement this fall.

Yet this shifting tone offers a glimpse of the Republican playbook as the party adapts to the prospect that it will be running against Obama rather than Clinton. It is a reminder that should Obama win the nomination, he will be playing on a more treacherous political battleground as his opponents — scouring through his record of votes and statements and his experiences before he entered public life — look for ways to portray him as out-of-step with the nation's values, challenge his ap-

peal to independent voters and emphasize his lack of experience in foreign policy and national security.

Some of this will almost certainly take the shape of the Internet rumors and whispering campaigns that have popped up against Obama since he got into the race, like the false reports that he is Muslim. Others will no doubt come from the types of shadowy independent committees that have played a big role in campaigns in recent years.

But others will simply draw on Obama's voting record and speeches, interviews and debate appearances. McCain's aides said their first line of attack would be portraying him as a liberal, and they have already begun pointing to the National Journal having rated Obama as the most liberal member of the Senate, based on his votes.

Though McCain has vowed repeatedly to wage a tough if respectful campaign — he chastised a conservative talk radio host this week for disparaging Obama and invoking his middle name — his aides have left no doubt they would draw sharp distinctions with him on issues that Clinton has never been able to use.

Facing Default, More Owners Are Walking Away From Their Homes

By John Leland
THE NEW YORK TIMES

When Raymond Zulueta went into default on his mortgage last year, he did what a lot of people do. He worried.

In a declining housing market, he owed more than the house was worth, and his mortgage payments, even on an interest-only loan, had shot up to \$2,600, more than he could afford.

"I was terrified," said Zulueta, who services automated teller machines for an armored car company in the San Francisco area.

Then in January he learned about a new company in San Diego called You Walk Away that does just what its name says — for \$995, it helps people walk away from their homes, ceding them to the banks in foreclosure.

Last week he moved into a three-bedroom rental home for \$1,200 a month, less than half the cost of his mortgage. The old house is now the lender's problem. "They took the negativity out of my life," Zulueta said of You Walk Away. "I was stressing over nothing."

You Walk Away is a small sign of broad changes in the way many

Americans look at housing. In an era in which new types of loans allowed many home buyers to move in with little or no down payment, and to cash out any equity by refinancing, the meaning of homeownership and foreclosure have changed, economists and housing experts say.

Last year the median down payment on home purchases was 9 percent, down from 20 percent in 1989, according to a survey by the National Association of Realtors. Twenty-nine percent of buyers put no money down. For first-time home buyers, the median was 2 percent. And many borrowed more than the price of the home to cover closing costs.

"I think I could make a case that some borrowers were 'renting' (with risk), rather than owning," Nicolas P. Retsinas, director of the Joint Center for Housing Studies at Harvard University, said in an e-mail message.

For some people, then, foreclosure becomes something akin to eviction — a traumatic event, and a blow to one's credit record, but not one that involves loss of life savings or of years spent scrimping to buy the home.

"There certainly appears to be more willingness on the part of borrowers to walk away from mortgages," said John Mechem, spokesman for the Mortgage Bankers Association, who noted that in the past, many would try to save their homes. In recent months top executives from Bank of America, JPMorgan Chase and Wachovia have all described a new willingness by borrowers to walk away from mortgages.

Carrie Newhouse, a real estate agent who also works as a loss mitigation consultant for mortgage lenders in Minneapolis-St. Paul, said she saw many homeowners who looked at foreclosure as a first option, preferable to dealing with their lender. "I've had people say to me, 'My house isn't worth what I owe, why should I continue to make payments on it?'" Newhouse said.

"You bought an adjustable rate mortgage, and you're mad the bank is adjusting the rate," she said. "And sometimes the bank people who call these consumers aren't really nice. Not that the bank has the responsibility to be your friend, but a lot are just so uncooperative."

For Controversial Detroit Mayor, This Crime May Be Too Much to Forgive

By Monica Davey
THE NEW YORK TIMES

DETROIT

This city has forgiven Kwame M. Kilpatrick, its towering, charismatic, next-generation mayor, before.

Detroiters looked past accusations of cronyism, of partying with exotic dancers and of leasing a red Lincoln Navigator for his family with taxpayers' money. In 2005, even as opinion surveys showed an older, more traditional challenger with a lead, voters re-elected Kilpatrick, who had been among the youngest mayors to run a major American city and whose unique draw, in part, was his sway over young voters.

But forgiveness seems uncertain now.

Demonstrators for and against Kilpatrick have clashed downtown in recent weeks. The City Council's aldermen voted to audit Kilpatrick's office, to expose records he hoped to keep private. A criminal investigation looms, and on Thursday an alderman introduced a resolution calling on Kilpatrick to resign.

With keystrokes on an electronic

pager, Kilpatrick, 37, may have jeopardized the political promise that won him speaking roles at the Democratic National Conventions in 2000 and 2004 and the musings of many, including his mother and perhaps strongest advocate, Rep. Carolyn Cheeks Kilpatrick, that he might reach higher office — even the White House — one day.

In January, the Detroit Free Press published steamy text messages from a city-issued pager which revealed a romantic relationship between Kilpatrick, who is married and has three sons, and his longtime chief of staff, Christine Beatty.

Beatty resigned. After a week in seclusion, Kilpatrick and his wife, Carlita, emerged on television, offering tense speeches from side-by-side wooden chairs in their church. He said he was sorry; she said she loved him, and deemed the matter private, "between me, my husband and God."

But the specter of an affair was only the start of the trouble.

The text messages obtained by the Free Press contradict testimony Kilpatrick and Beatty gave under oath

last year during a civil trial, in which several former police officers accused Kilpatrick of forcing them out of jobs, in part because their investigations might have uncovered his romance.

In court, Kilpatrick, who has a law degree, had scornfully denied carrying on a non-professional relationship with Beatty.

"My mother is a congresswoman," he testified. "There have always been strong women around me. My aunt is a state legislator. I think it's absurd to assert that every woman that works with a man is a whore. I think it's disrespectful, not just to Christine Beatty, but to women who do the professional job that they do every single day."

But the text messages between Kilpatrick and Beatty, loaded with exclamation points and LOLs, allude to a romance with exchanges of banter, hotel room numbers, and worries about a security detail overhearing them. "And, did you miss me sexually?" Beatty wrote in one message, according to the Free Press. "Hell yeah!" the mayor wrote back. "You couldn't tell. I want some more. Don't sleep!"

Revenge Attacks Widen Rift Between Gaza and Israel

By Isabel Kershner

THE NEW YORK TIMES

JERUSALEM

Palestinian militants in Gaza fired at least eight imported, Katyusha-style rockets on Thursday at Ashkelon, on the Israeli coast, in what Israeli officials said was a serious broadening of the conflict.

Ashkelon has been an occasional target of these longer-range rockets, but never of so many in one day. The attack scored a direct hit on a house there for the first time.

The rocket attacks came on the second day of deadly Israeli airstrikes on Gaza. These attacks killed at least 19 Palestinians, among them four young boys, Palestinian hospital officials said.

Many of the others killed were from the military wing of Hamas, known as the Qassam Brigades, which claimed responsibility for the latest rocket fire.

Hamas, the Islamic group that controls Gaza, also continued to fire locally made rockets known as Qassams at Sderot, on the Israeli border, where a civilian was killed by rocket on Wednesday.

Thousands of these rockets have been fired at Israel over the past seven years.

The 122 mm Katyushas, based on a Russian design, are manufactured in many countries and have a range of at least 10 miles, longer than the relatively crude Qassams. Israelis refer to the Katyushas fired at Ashkelon as "grad" rockets.

China to Loosen One-Child Limit, Official Suggests

By Jim Yardley

THE NEW YORK TIMES

BEIJING

China is studying how to move away from the country's one-child-per-couple restriction, but any changes would come gradually and would not mean an elimination of family planning policies, a senior official said Thursday.

The official, Zhao Baige, vice minister of the National Population and Family Planning Commission, told reporters at a news conference that government officials recognize that China must alter its current population-control policies.

"We want incrementally to have this change," Zhao said, according to Reuters. "I cannot answer at what time or how, but this has become a big issue among decision makers."

With more than 1.3 billion people, China is the most populous nation and is home to one of the most stringent family planning regimens. Most urban couples are limited to a single child unless they pay hefty fines. Farmers are generally permitted to have a second child if the first is a girl. Minorities often are allowed to have two or more children.

For more than three decades, the restriction on births has been a centerpiece of government economic and social policy. Local officials receive performance ratings based partly on how well residents adhere to the restrictions. In the 1980s, officials routinely forced women to abort fetuses that would have resulted in above-quota births, and both men and women were often forced to undergo sterilization operations.

Panel is Set to Examine Security at U.N. Sites

By Warren Hoge

THE NEW YORK TIMES

UNITED NATIONS

The director of a new panel that will look into attacks on U.N. offices said Thursday that the organization had to accept the fact that in many parts of the world it was no longer viewed as impartial and was therefore increasingly vulnerable.

"We have got to recognize that things have changed, and our blue flag does not protect us any more," said the official, Lakhdar Brahimi.

Brahimi, a former foreign minister of Algeria and a longtime U.N. troubleshooter, made the comments in announcing the makeup of the panel. It will study security at U.N. offices around the world in the aftermath of the bombing of its building in Algiers, Algeria, on Dec. 11, which killed 17 staff members.

The six-member panel includes officials from the police and security services of Egypt, India and South Africa, a retired senior diplomat from Turkey and a former assistant secretary-general from Sweden.

Responsibility for the Algiers bombing was claimed by al-Qaida in the Islamic Maghreb, a regional militant group that has sworn allegiance to al-Qaida. The attack deepened fears at headquarters that the United Nations had become the target of anti-Western terrorist groups.

In addition, U.N. officials and leaders of the staff union contended that Algeria had not provided adequate security before the attack and had ignored recommendations for improvements.

Officials Split On Viability Of Border Fence Project

By Julia Preston

THE NEW YORK TIMES

A top Homeland Security official said Thursday that a pilot project to create a virtual fence along parts of the Mexican border had been a success, but he said the technology was never intended to be used and would not be used — across the entire length of the border.

"It is working, and it met the requirements," Jayson P. Ahern, deputy commissioner of Customs and Border Protection, said of the pilot project during a briefing with reporters in Washington.

Ahern's assessment was in line with an announcement Feb. 22 by Homeland Security Secretary Michael Chertoff but contradicted testimony on Wednesday by an official from the Government Accountability Office, a nonpartisan watchdog arm of Congress.

The official, Richard M. Stana, who handles domestic security and justice issues for the accountability office, told a House subcommittee that the pilot project had "resulted in a product that did not fully meet user needs." He also said "the project's design will not be used as the basis" for future development of a virtual fence along the border because of the problems.

The conflicting accounts about the pilot project and its applicability elsewhere add to the confusion and debate that has surrounded the virtual fence almost since its inception.

OPINION



Chairman

Benjamin P. Gleitzman '09

Editor in Chief

Nick Semenkovich '09

Business Manager

Austin Chu '08

Managing Editor

Jessica Witchley '10

Executive Editor

Michael McGraw-Herdeg '08

NEWS STAFF

Editor: Nick Bushak '10; **Associate Editors:** JiHye Kim '10, Arkajit Dey '11, Jeff Guo '11, Ryan Ko '11, Natasha Plotkin '11, Emily Prentice '11; **Staff:** Waseem S. Daher G, Curt Fischer G, Ray C. He G, John A. Hawkinson '98, Jiao Wang '08, Daniela Cako '09, Mei-Hsin Cheng '09, Diana Jue '09, Ji Qi '09, Kirtana Raja '09, Yiwei Zhang '09, Yi Zhou '09, Yuri Hanada '10, Joyce Kwan '10, Manisha Padi '10, Joanne Y. Shih '10, Yan Huang '11, Elijah Jordan Turner '11, Lulu Wang '11; **Meteorologists:** Cegeon Chan G, Jon Moskaitis G, Michael J. Ring G, Roberto Rondanelli G, Scott Stransky G, Brian H. Tang G, John K. Williams G, Angela Zalucha G, Garrett P. Marino '08, Mike Yee '08.

PRODUCTION STAFF

Editor: Steve Howland '11; **Staff:** K. Nichole Treadway '10, Yue Li '11, Mark Thompson '11, Mark Yen '11.

OPINION STAFF

Editor: Aditya Kohli '09; **Staff:** Josh Levinger '07, Ali S. Wyne '08, Krishna Gupta '09.

SPORTS STAFF

Editor: Shreyes Seshasai '08; **Staff:** James Zorich '08, Albert Ni '09.

ARTS STAFF

Editors: Sarah Dupuis '10, Praveen Rathinavelu '10; **Staff:** Bogdan Fedeles G, Andrew Lee '07, Alice Macdonald '08, Tyson C. McNulty '08, S. Balaji Mani '10, Tina Ro '10, Kevin Wang '10.

PHOTOGRAPHY STAFF

Editors: Perry Hung '08, David M. Templeton '08, Ricardo Ramirez '09, Andrea Robles '10; **Staff:** Alex H. Chan G, David Da He G, Dmitry Kashlev G, Andrew T. Lukmann G, Ramya Sankar G, Martin Segado G, Scott Johnston '03, Christina Kang '08, Arthur Petron '08, David Reshef '08, Martha Angela Wilcox '08, Ana Malagon '09, Peter H. Rigano '09, Eric D. Schmiel '09, Jerzy Szablowski '09, Diana Ye '09, Daniel P. Beauboeuf '10, Mindy Eng '10, Helen Hou '10, Monica Kahn '10, Samuel E. Kronick '10, Diane Rak '10, Aaron Sampson '10, Jongu Shin '10, William Yee '10, Kari Williams '11, Sherry Yan '11.

CAMPUS LIFE STAFF

Editor: Charles Lin G; **Staff:** Bruce Wu G, Kailas Narendran '01, Elizabeth Zakszewski '06, James Scott Berdahl '08, Michael T. Lin '11; **Cartoonists:** Scott Burdick G, Daniel Klein-Marcuschamer G, Roberto Perez-Franco G, Emezie Okorafor '03, Nancy Hua '07, Jia Lou '07, Ash Turza '08, Danbee Kim '09, Roxana G. Safipour '09.

BUSINESS STAFF

Operations Manager: Michael Kuo '10; **Staff:** Jeffrey Chang '08, Cokie Hu '08, Tai Ho Kang '08, Neeharika Bhartiya '10, Jennifer Chu '10, Ritu Tandon '10, Heymian Wong '10.

TECHNOLOGY STAFF

Staff: Quentin Smith '10.

EDITORS AT LARGE

Contributing Editors: Rosa Cao G, Brian Hemond G, Valery K. Brobbey '08, Angeline Wang '09, Caroline Huang '10; **Senior Editors:** Satwiksai Seshasai G, Jillian A. Berry '08, Omari Stephens '08.

ADVISORY BOARD

Paul E. Schindler, Jr. '74, V. Michael Bove '83, Barry S. Surman '84, Robert E. Malchman '85, Deborah A. Levinson '91, Jonathan E. D. Richmond PhD '91, Karen Kaplan '93, Saul Blumenthal '98, Frank Dabek '00, Daniel Ryan Bersak '02, Eric J. Cholankeril '02, Jordan Rubin '02, Nathan Collins SM '03, Keith J. Winstein '03, Akshay R. Patil '04, Tiffany Dohzen '06, Beckett W. Sterner '06, Marissa Vogt '06, Zachary Ozer '07, B. D. Colen.

PRODUCTION STAFF FOR THIS ISSUE

Editors: Austin Chu '08, Steve Howland '11; **Staff:** Megan Pilkington '09, Mark Thompson '11.

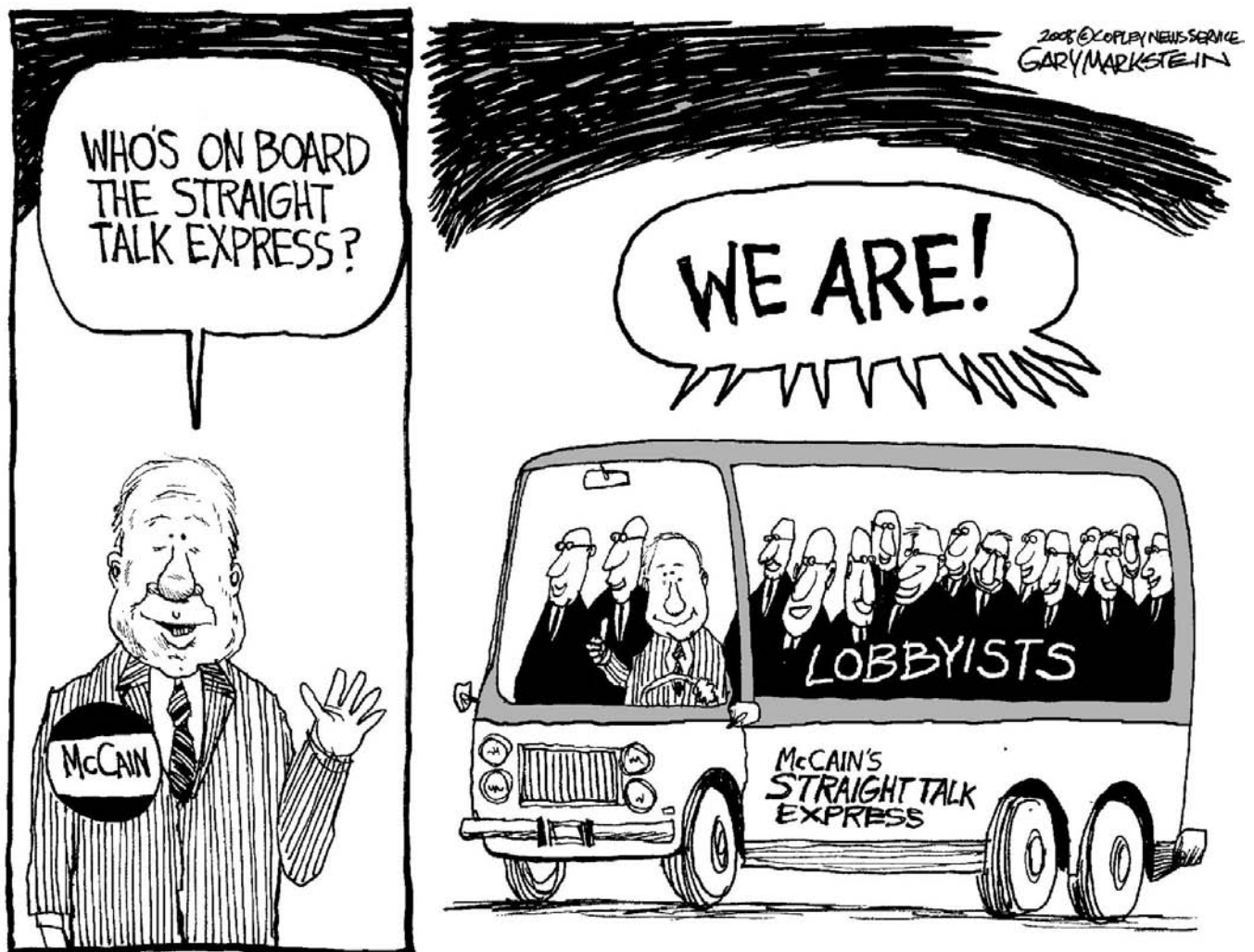
The Tech (ISSN 0148-9607) is published on Tuesdays and Fridays during the academic year (except during MIT vacations), Wednesdays during January, and monthly during the summer by The Tech, Room W20-483, 84 Massachusetts Avenue, Cambridge, Mass. 02139. Subscriptions are \$45.00 per year (third class) and \$105.00 (first class). **POSTMASTER:** Please send all address changes to our mailing address: The Tech, P.O. Box 397029, Cambridge, Mass. 02139-7029. **TELEPHONE:** Editorial: (617) 253-1541. Business: (617) 258-8324. Facsimile: (617) 258-8226. *Advertising, subscription, and typesetting rates available.* Entire contents © 2008 *The Tech*. Printed on recycled paper by Charles River Publishing.

Corrections

The Feb. 26, 2008 captions for the Bexxxley Rxxxx Some More concert incorrectly identified a band as The Peaches. The band is actually called The Pears.



Chinese Sub Threatens the U.S. Navy



Opinion Policy

Editorials are the official opinion of *The Tech*. They are written by the editorial board, which consists of Chairman Benjamin P. Gleitzman, Editor in Chief Nick Semenkovich, Managing Editor Jessica Witchley, Opinion Editor Aditya Kohli, and Contributing Editor Rosa Cao.

Dissents are the opinions of signed members of the editorial board choosing to publish their disagreement with the editorial.

Letters to the editor, columns, and editorial cartoons are written by individuals and represent the opinion of the author, not necessarily that of the newspaper. Electronic submissions are encouraged and should be sent to letters@the-tech.mit.edu. Hard copy submissions should be addressed to The Tech, P.O. Box 397029, Cambridge, Mass. 02139-7029, or sent by interdepartmental mail to Room W20-483. All submissions are due by 4:30 p.m. two days before the date of publication.

Letters, columns, and cartoons must bear the authors' signatures, addresses, and phone numbers. Unsigned letters will not be accepted. *The Tech* reserves the right to edit or condense letters; shorter letters will be given higher priority. Once submitted, all letters become

property of *The Tech*, and will not be returned. Letters, columns, and cartoons may also be posted on *The Tech's* Web site and/or printed or published in any other format or medium now known or later that becomes known. *The Tech* makes no commitment to publish all the letters received.

Guest columns are opinion articles submitted by members of the MIT or local community and have the author's name in italics. Columns without italics are written by *Tech* staff.

To Reach Us

The Tech's telephone number is (617) 253-1541. E-mail is the easiest way to reach any member of our staff. If you are unsure whom to contact, send mail to general@the-tech.mit.edu, and it will be directed to the appropriate person. You can reach the editor in chief by e-mailing eic@the-tech.mit.edu. Please send press releases, requests for coverage, and information about errors that call for correction to news@the-tech.mit.edu. Letters to the editor should be sent to letters@the-tech.mit.edu. The Tech can be found on the World Wide Web at <http://www-tech.mit.edu>.

ARTS

The Best Concerts of March 2008

Blitzen Trapper, Eels, Caribou and Others Offer Refuge from Emergenza

By Sarah Dupuis
ARTS EDITOR

March can be a pretty bleak time for music in a college town like Boston. This is true for a number of reasons. It's halfway through the semester, so students are stressing out and staying in. It's right around vacation, so they've got less to spend on extravagant tickets. Most importantly, every week, there's at least some school on Spring Break, which means a large population of the city up and vanishes.

Some venues turn to Emergenza Music Festival, a pay-to-play series of concerts in which the most desperate and idiotic acts in college rock sell tickets that benefit the suits, all the while holding on to the unlikely hope that they'll either profit or make it big at this scam-fest. So by making money off the bands and the concertgoers, venues can make up for all the music fans who've gone home for the week. It's a great way for them to keep up business, really. I'd hate to see another club close in Boston. The bummer is that Emergenza takes up a ton of nights this month, and I have no desire to see any of it.

It seems, however, that fate will save Boston from turning into a second-rate BOTB this year: Canadian indies, 90s rock stars and experimental ensembles are all coming to town.

Good thing I'm not going anywhere for Spring Break.

Good. Thing.

Sunday, March 2

Band Marino

The Middle East (Upstairs), 18+, \$10

Band Marino is a terrific outfit from Orlando, FL. It's tough to describe their sound; it's some combo of Latin-y, sea chantey and rock 'n roll. Apart from their debut, *The Sea and the Beast*, I've also heard their live show is quite impressive, complete with a 20 foot sea serpent (!).

Wednesday, March 5

The Black Crowes

Somerville Theatre, AA, \$45

The Black Crowes are making headlines

for their upcoming album, *Warpaint*, and not because anyone thinks it's any good. No, the Robinsons and co. are in the spotlight because they feel wronged by Maxim magazine, who published a negative review of *Warpaint* without ever hearing it. Maxim claims it was an "educated guess" review. Maybe they'll offer an "educated guess" about how this concert went, too.

Tuesday, March 18

The Gutter Twins

Paradise Rock Club, 18+, \$15

I'm a sucker for gravel-throated dudes, musically speaking, and Mark Lanegan (noted for his vocals in 90s Seattle grunge group The Screaming Trees) is one of those types. He and Greg Dulli of Afghan Whigs fame now form a Sub Pop alt-rock-frontmen superduo. Based on where they've come from, I can only expect good things for this show.

Friday, March 21

Xiu Xiu

Museum of Fine Arts, AA, \$15 (Adult) / \$12 (Student)

Do you know the way to San José? No? Well, you'd better get to the MFA and ask one of those post-punk percussionists making all that ruckus. They may be experimental and noisy, but I hear they're hella' good with directions.

Saturday, March 22

The Most Serene Republic

The Middle East (Upstairs), 18+, \$10

Arts & Crafts grand-scale septet tour in support of last year's sophomore release, *Population*. They hold the distinction of being the first band signed to their label that isn't related to Broken Social Scene, but fans of that indie supergroup will find things to love in this one, too.

Sunday, March 23

Matthew Good

The Middle East (Downstairs), 18+, \$20

According to the Middle East's box office,

this show was moved downstairs due to popular demand. I had no idea anybody else in the United States was in to Matthew Good, but I do know a lot of Canadians that like his brand of political Canuck hard rock. Barkeep, beer me a Molson!

Wednesday, March 26

Caribou

Paradise Rock Club, 18+, \$15

Another friendly neighbor from the north, Ontario songwriter Dan Snaith is a man of many names. He chose the most recent title for his musical persona while tripping on acid in the woods of Canada. His sonically vast and detailed compositions could fit in the past or the future, and I'm glad they're happening in the present. No LSD required to enjoy.

Thursday, March 27

Blitzen Trapper

The Middle East (Upstairs), 18, \$10

Blitzen Trapper should be a shitty band. Then I could call them Blitzen Crapper and all would be well. The problem is that they are actually awesome (as evidenced by their number seven ranking on The Tech's "Ten Best Albums of 2007").

In the spirit of MIT, here's an equation to describe them:

$$2.5(\text{Pavement}) + (\text{Apples in Stereo} - \text{The Beatles}) + (\text{Wilco} - \text{Your Dad}) + 0.5(\text{The Band}) = \text{Blitzen Trapper}$$

Cool, okay. I'll see you at the show.

Presidents of the United States of America

*(with Joe Jack Talcum and Ludo)**Paradise Rock Club, 18+, \$16*

This is a theme show, and the theme is brain-deadness. Said theme's application to PUSA is obvious — "she's lump / she's in my head / she's lump / she might be dead," they sang on the second hit off their debut album. Joe Jack Talcum's credentials include guitarist and vocalist of Dead Milkmen, and there's your connection. Ludo needs first-hand knowledge to fit the trend, but I'll hand

it to you: they're named after a muppet from Labyrinth and wrote a rock opera about a city beset with zombies. What could be more brainless? Try not to lose your head at this one.

Friday, March 28

They Might Be Giants

Somerville Theatre, 14+, \$25

Note the age restriction: 14+. Do you think some of TMBG's younger devotees might actually commission fakes for this show?

Saturday, March 29

Boredoms

Paradise Rock Club, 18+, \$17

Japanoise tribal drummers do anything but spread the emotion of their moniker. Last summer on July 7, they performed a concert titled 77 Boadrum featuring — you got it — 77 drummers. Some audience members watched from atop the Brooklyn Bridge. Hopefully, you'll get closer at this show.

Sunday, March 30

Dirty Projectors

Museum of Fine Arts, AA, \$15 (Adult) / \$12 (Student)

The weird yet inspired Dave Longstreth is undoubtedly brilliant but can get a little emotional on stage. It'd be all too much to stand if he weren't flanked by two lovely leading ladies (I like to refer to them as French Hottie and Mom Butt), who pluck their instruments with pride and howl in perfect dissonance. We can only hope this touring iteration features them when Dirty Projectors make an artistic statement at the MFA.

Monday, March 31

Eels

Somerville Theatre, AA, \$21

Mr. E's beautiful blues roll into town to meet you, jack your soul and take you away to the daisies of the galaxy. Prepare for some electro-shock with love from California, you beautiful freak.

THEATER REVIEW

'SubUrbia' Captivates

Racism, Sexism, Idealism, and Cynicism Presented and Analyzed Throughout

By Samuel J. Cole

SubUrbia

MIT Dramashop

Written by Eric Bogosian

Directed by David R. Gammons

Thursday-Saturday, Feb. 7-9, 14-16

Dramashop's production of "SubUrbia" was an incredibly enjoyable and searing performance of Eric Bogosian's original play. It shows an extremely affecting view of young adult angst which viewers can easily relate to.

The set and props are rendered in a sophisticated way. The primary stage area is set up with a realistic 7-Eleven store, outside of which the primary characters spend most of their time hanging out. The stage is made all the more believable with graffiti, payphones, and other relevant props that buoy the scenery. The music, recordings of songs played by MIT bands, is perfectly placed throughout the play to simulate the varying drama and emotions presented in each scene.

The show opens with barely-legal Jeff (Brian L. Ross '11), Buff (Brian P. Cass '11)

and Tim (Jonas Kubilius '08) causing chaos outside of the 7-Eleven run by Norman (Vinith Misra '08) and Pakeesa (Hui Ying Wen '08). They each exhibit varying emotions about life and about places besides their own town based upon their own experiences. Tim has become hardened and cynical from time spent in the army, Jeff debates life and refuses change, and Buff is rowdy and confident with his own life. These varying degrees of character portrayal mesh into an exciting first scene with varying scales of offensiveness. Norman and Pakeesa are immediately outraged by the noise they are creating as well as the offensive nature of their comments and actions, which leads to a confrontation between Norman and Tim. This scene solidly establishes the rejection of the characters to authority and change, considering that Norman and Pakeesa are not from America (i.e. outsiders to Tim, Jeff and Buff). It is in this scene that Jeff is established as the mediator and voice of reason throughout most of the chaos. This scene also establishes the general state of mind of the young adults throughout the remainder of the play.

Sooze (Erika L. Bakse '08), Jeff's girlfriend,

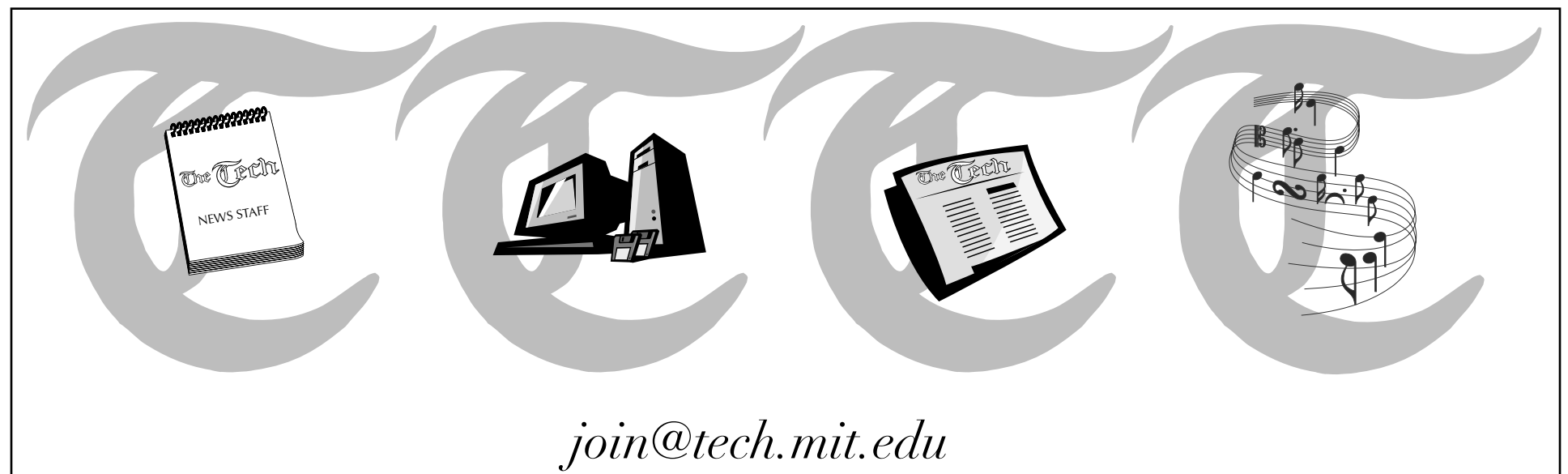
and Bee-Bee (Sally E. Peach '09), her friend, are then introduced and bring a female dynamic into the young adult chaos. Unlike Jeff, Sooze is outgoing, motivated, and enthusiastic about change, which causes much drama between the two. Meanwhile, Bee-Bee straddles the line between indifference and anguish.

The introduction of Pony (Jonathan "Yoni" A. Gray '10), a rock star who went to high school with the group, and Erica (Kelly A. Thomas '08) his publicist, only serves as a catalyst to the rebellion of the circle of friends. Pony, who has left town and had a strong taste of fame, returns with little fanfare from anyone besides Sooze and Buff (who only seems interested in the perks Pony has gained from celebrity). This once again brings to light the rejection of change by the other characters as Pony is treated like an outcast. Erica, on the other hand, creates an interesting dynamic due to her attraction to Tim. Tim's cynicism has little effect on her other than piquing her interest. This leads to more conflict later in the play between Jeff and Tim. Jeff rejects Pony much like he rejects change. He wants to stay in his home town, unlike Sooze, and wants things to

remain the same. For the remainder of the play, things seem to focus on Jeff as he wrestles with coming to conclusions about life and the world outside of his home town.

In general, the characters remain stagnant in their opinions throughout most of the play. Not much character growth is seen at all, even in the devastating last scene. The only real change is some acceptance and understanding gained by Jeff. Through conversations with Norman, Tim, and Sooze, Jeff begins to come to realizations about the many questions he has asked throughout the play. Little is resolved, but every theme is rigorously explored. A sense of consequences for negative choices and actions is given off by the end of the show.

"SubUrbia" is an engrossing play. Topics such as racism, global warming, sexism, idealism, and cynicism are all presented and analyzed throughout the play. The cast members attack their roles with an unyielding vigor that exposes each character's personality clearly. These performances are outstandingly memorable and create an engaging experience — one with a poignant message for viewers.



IT'S FRIDAY

Brought to you by **CAMPUS LIFE**

The Tech, February 29, 2008, Page 6

Morning Pick-me-ups

By **Manisha Padi and Ying Yang**

We here at Figuring Out Fashion know how hard mornings can be. Mornings are a time for the ring of a monotonous alarm clock, grumbling showers, and the unpleasant jolt of cold air in our faces upon leaving our dorms. Dragging ourselves to class is far from an easy task, and when combined with brushing teeth and eating breakfast, the challenges of the typical morning seem insurmountable. Most mornings,

the last thing on our minds is fashion. Yet, we found it was no coincidence that the mornings we dressed well and felt good about ourselves led to our best days. In the interests of our own future happiness and that of our audience, we've collected a set of morning tips from our most stylish friends and acquaintances. The plan? Doing just one of these every day to make our lives more positive and fashionable.

Tip 1: Choose flattering and tastefully bright outerwear — Go for fitted sweaters and coats with exciting silhouettes rather than sweatshirts, because, after all, you'll have to wear warm outerwear all the time thanks to the Boston weather.

Tip 2: Do a quick work out in the morning — Nothing makes you feel good like tight muscles and blood pumping in the morning hours. Try stretching and crunches to keep it simple and not too tiring. If you're very ambitious, wake up earlier every morning and run on the treadmill for 15 minutes.

Tip 3: Use per-

fume/cologne — Choose something light and informal for daytime. Guys could use Axe, while girls could use light perfumes, body sprays, or lotions. We all know how important a great cover-up can be when there's no time for a shower.

Tip 4: Accessorize — Nothing spices up even the dowdiest sweatpants/sweatshirt combo like an awesome pair of earrings or a bright patent leather purse. For guys, consider a bright hat or an unusual scarf to liven things up.

Tip 5: Exfoliate at least once a week — An exfoliating face wash and all over body wash can rejuvenate the skin by taking off dry winter layers and leaving you feeling fresh. Follow with a moisturizing cream to lock in the smoothness.

Tip 6: Ladies, a touch of makeup — A little bit can bring that polished edge even on the dreariest days. We recommend nail polish because of its lasting power and concealer to deal with circles under the eyes. The post-pset raccoon look is definitely not flattering.

Tip 7: Drink a glass (or more) of water — Dehydration is the most common reason for lack of focus, headaches, and other plagues. Don't start the day by falling victim to it. Compliment it with whole fruits to improve complexion and moderate blood sugar.

Tip 8: Check your posture — Even the most stylish outfit can be ruined with slumped shoulders

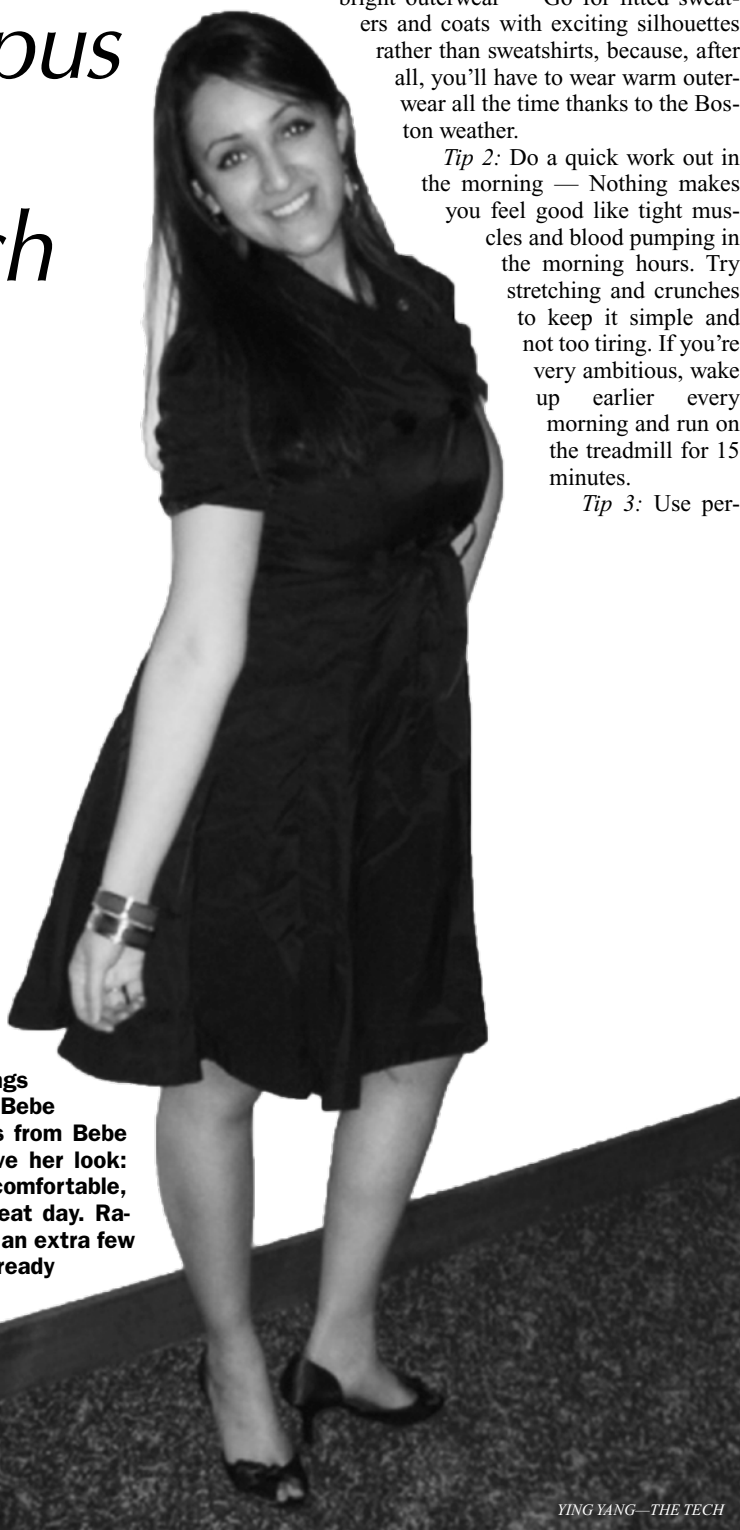
and a curved spine. Try to pull your spine straight with the muscles in the middle of your back and relax your shoulders for a natural look.

Tip 9: Look in the mirror and say "I'm a strong, attractive MIT guy/gal." — It may sound silly, but you'll be amazed by how well it works. Just being reminded that you're a red-blooded human will allow you to act and dress more comfortably. If you love the way you are then it will show in the way you present yourself to others.

Tip 10: Wear one exciting piece of clothing that you really feel good about — Try a pair big gray sweatpants with a bright patterned tank top, or a boxy sweatshirt with your best fitting jeans. Even consider wearing your favorite underwear/boxers. It's a lot easier to get by if even only a part of you feels stylish.

We love these tips because none of them take much time or effort, so there's no excuse not to pick one and try it out today. One day, we hope to get them all incorporated in our morning routines, but that's far in the future when there's time to get ready and no last minute psetting to do in the wee hours. Until then, we'll keep scavenging for tips that make it easier for us all to be stylish. In the mean time, here's to taking care of ourselves — something as important as our academic lives.

Campus Style Watch



Sulinya Ramanan '10 is wearing shoes from Payless (\$20), earrings and bangles from Bebe (\$15), and a dress from Bebe (\$60). Why we love her look: She looks cute, comfortable, and ready for a great day. Ramanan knows that an extra few minutes of getting ready can go a long way.

YING YANG — THE TECH

Figuring Out Fashion

Quotes from the Facebook Group: Overheard At MIT

"Game theory is what separates us from the monkeys."

—Random Sloan Student

Person 1: "Aw, they name the goldfish?! That's so depressing!"

Person 2: "It's like naming your functions ... and then erasing them."

Person 1: ...

Person 3: "Yeah, it's like killing a friend."

Person 1: ...

—Unknown

Person 1: "You met Richard Stallman? Why didn't you ask him any questions? Like, is your beard the source of your power? Where do you shower? Can I give you a tie with a Windows Vista logo? When will you ever finish the Hurd? Why did you do the Soulja Boy carrying your laptop? Have you ever run into a physicist from the future with an orange suit with a lambda on it and a beaten up crowbar?"

Person 2: "Come on, I'm course 5. You think I can come up with all that?"

—Unknown

To submit quotes, join the Facebook group!
Special thanks to group creator Kristin M. Rose '10.

Top 5 Albums to Blow Out Your Eardrums

1. To Live and Shave in L.A., "The Wigmaker in Eighteenth-Century Williamsburg"
2. Hair Police, "Drawn Dead"
3. Prurient, "And Still, Wanting"
4. Kevin Drumm, "Sheer Hellish Miasma"
5. Yellow Swans, "Psychic Secession"

Harsh noise is in, and it's not going anywhere. If you listened to any of these records the way they're meant to be played, you'd go deaf by the end. Full of feedback, static, screaming, pounding bass, and of course, dentist drills, harsh noise is one of the best ways to piss off your roommate and entertain the side of you that thinks death metal is for sissies.

Hear these records and more from all sub-genres of noise, plus plenty of indie rock on Lady Lost Her Lunch, Monday nights at 11 p.m. on WMBR 88.1 FM, hosted by Gabe Cira and Dugan Hayes.

wmbr
88.1fm

Ask A TA

This week features TAs asking TAs questions because you undergrads don't ever write in. You also never show up to recitation. You think we like having recitations just so we can monologue to ourselves? Seriously, if you have any questions about life or, hell, even the midterm, write to us at AskTA@tech.mit.edu. Putting it off until the night before won't be fun for either of us.

—Askata

Dear TAs, I'm debating between buying the games *World of Warcraft* and *Second Life*. Which one should I choose?

—Hypothetical Nightmare Undergrad

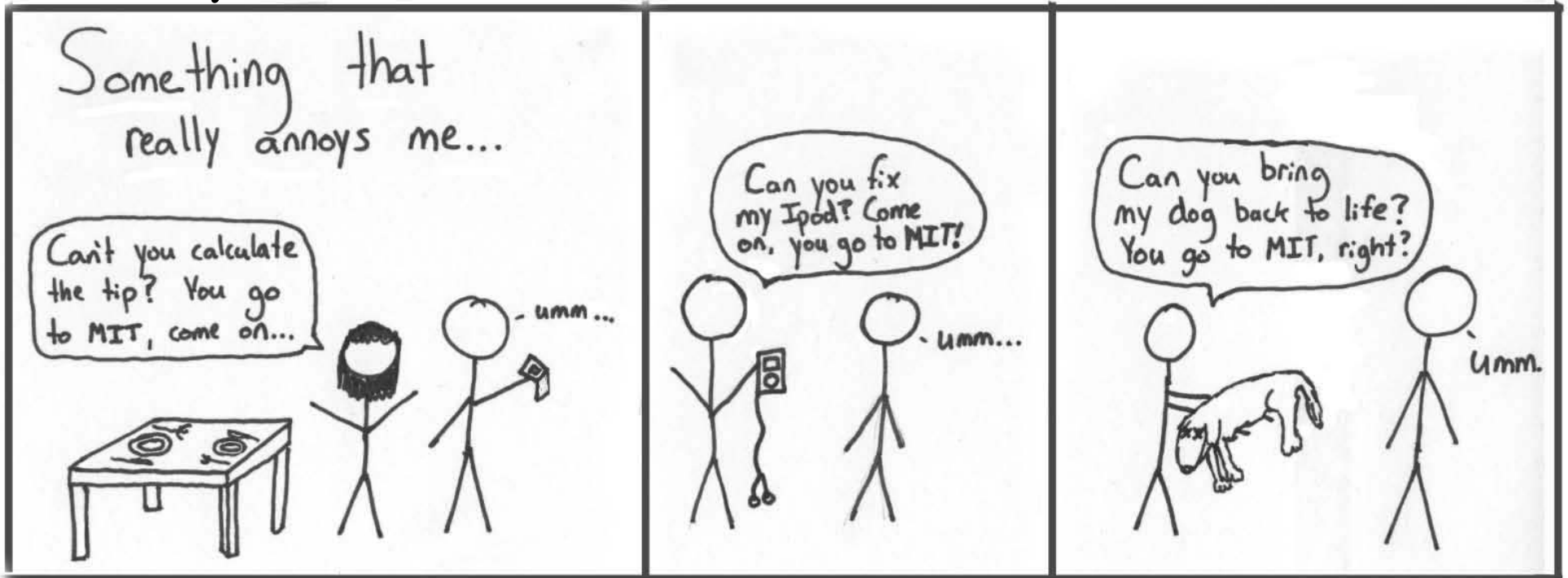
Dear Hypothetical Nightmare Undergrad,

I'll let you in on some common TA knowledge: the easiest tests to grade are those that are nearly perfect or nearly empty. The tests falling between these two extremes take up over 80% of the time. With this in mind, the real question isn't which game should you buy, but rather: should you buy both or none at all? Regardless of your choice, you'll be less likely to land in that middle testing ground. Now one option coincides quite well with the mentality of a 15-year-old, while the other may appeal to a 45-year old-nun. Hey, I like running my level 10 Night Elf around Felwood as much as the next guy. Seriously, who doesn't love collecting shrubs, rocks and animal hides for hours on end? But in the same token, I like giving out perfect papers. Besides, wouldn't you rather pwn your exam rather than some newbs? So despite being irked by the thought of growing up, I might have to agree with the old nun.

—TA David Shirokoff G

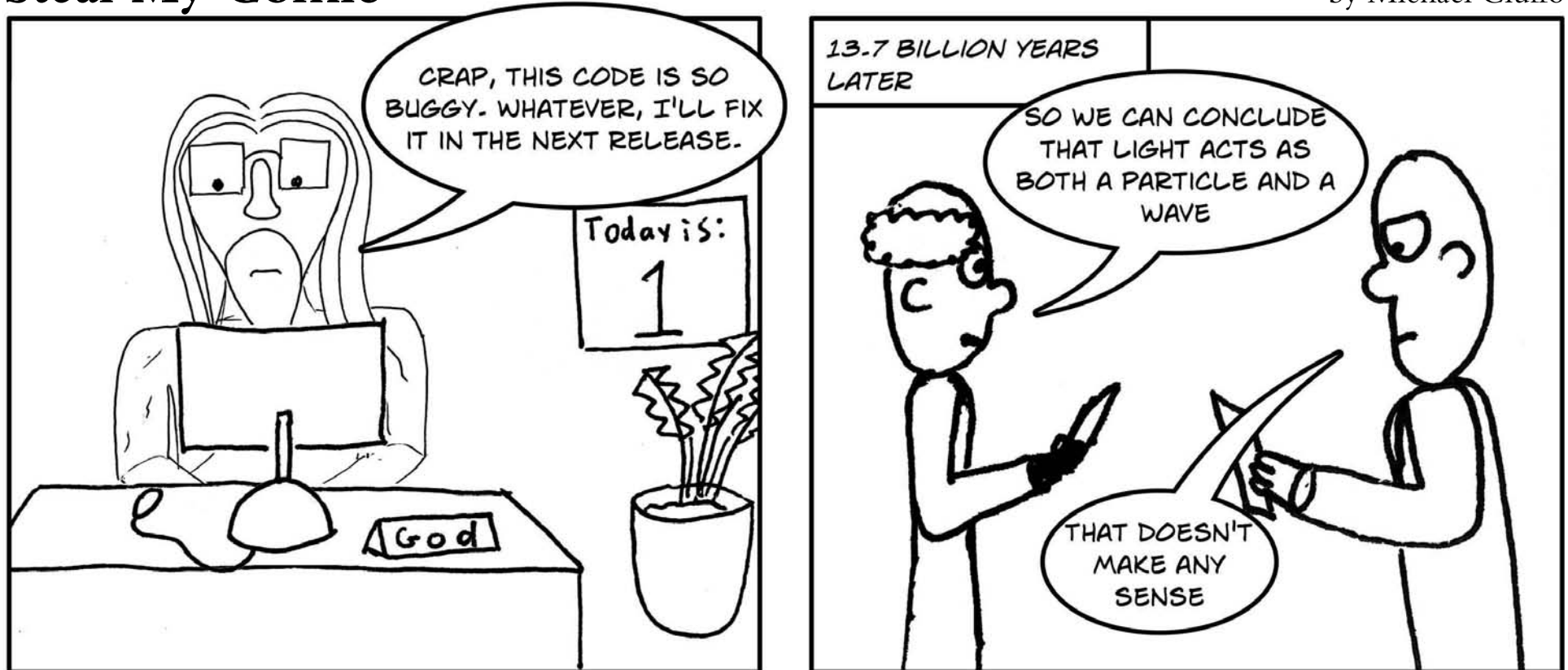
The Daily Blunderbuss

by Ben Peters



Steal My Comic

by Michael Ciuffo



by Daniel Klein-Marcuschamer

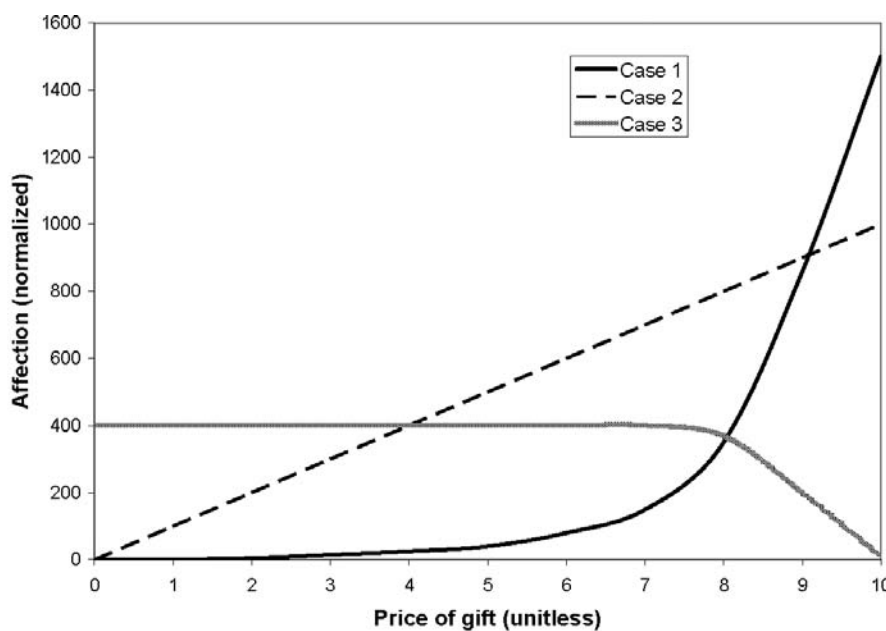


Figure 27. The plot shows the affection a person is willing to supply as a function of the price of a gift he or she receives. The local slope (point price elasticity of affection supply) changes depending on how materialistic the person is. Case 2 is the theoretically expected behavior (one which the elasticity is positive and constant). Deviations from the expected behavior are common and examples are given by the other curves. Case 1 shows a significantly materialistic person, since for expensive gifts, even small changes in price result in large changes in affection. Case 3 shows a non-materialistic, but highly distrustful person: the affection does not change initially, but it decreases sharply with expensive gifts. This behavior is based on the perception that pricey gifts are given out of guilt for infidelity or similar misconducts. (The author thanks Monica Martinez-Bravo for being a source of inspiration for this plot).

Pseudoscience

Travel more. Spend less.

Recent fares From Boston to:		Recent fares From Boston to:	
New York	\$99	London	\$156
Chicago	\$201	Rome	\$268
Los Angeles	\$302	Beijing	\$772

StudentUniverse.com

Terms: Prices include \$5 service fee. Some taxes and fees additional. Based on actual bookings made on StudentUniverse within the past 45 days.

Doonesbury

BY GARRY TRUDEAU

Dilbert® by Scott Adams

Crossword Puzzle

Solution, page 12

ACROSS

- 1 Pound to pulp
- 5 Felony
- 10 Length times width
- 14 Sacramento's arena
- 15 Aden's country
- 16 Tear to pieces
- 17 Canyon comeback
- 18 Product name
- 19 Church section
- 20 Start of Evan Esar quip
- 23 Is able to
- 25 Sea eagles
- 26 Map dot
- 27 Doing sums

DOWN

- 29 Poetic contraction
- 31 Farm outbuildings
- 32 Part 2 of quip
- 38 New driver, usually
- 39 Cloud nine
- 40 Norway's patron saint
- 41 Part 3 of quip
- 43 Nigerian currency unit
- 44 Hole maker
- 45 Rang a big bell?
- 46 Closet material
- 50 Look over
- 52 Opp. of SSW
- 53 End of quip
- 57 Spoils
- 58 Taken __

(surprised)

- 59 Finest
- 62 Aware of
- 63 Cranny
- 64 Enthralled with
- 65 Mt. Holyoke's founder
- 66 Interrogated
- 67 Bedazzle

DOWN

- 1 Actress West
- 2 Circle part
- 3 Subject of a Spielberg film
- 4 Flicka's foot
- 5 Bionic Woman, e.g.
- 6 Second showing

7 Mosque prayer

- leaders
- 8 Bill of fare
- 9 Breaks off
- 10 Saudis and Omanis
- 11 Drive back
- 12 Follow logically
- 13 Skillful
- 21 Cravings
- 22 Wee
- 23 Throws
- 24 Farewell in Rouen
- 28 Actress Skye
- 29 Scottish Gaelic
- 30 '94 and '97 U.S. Open winner
- 32 Hebrew month
- 33 Missing from a

vacuum

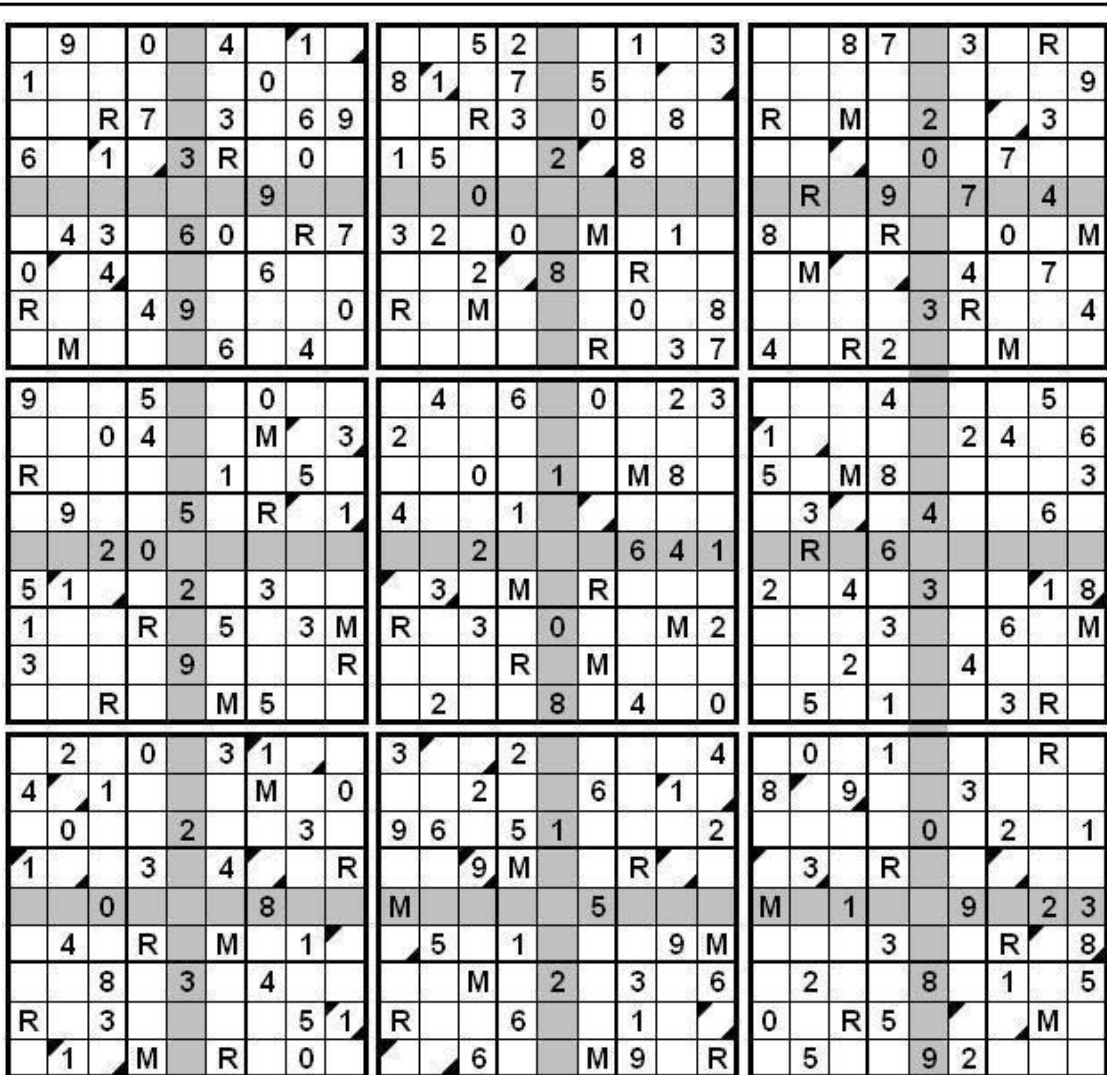
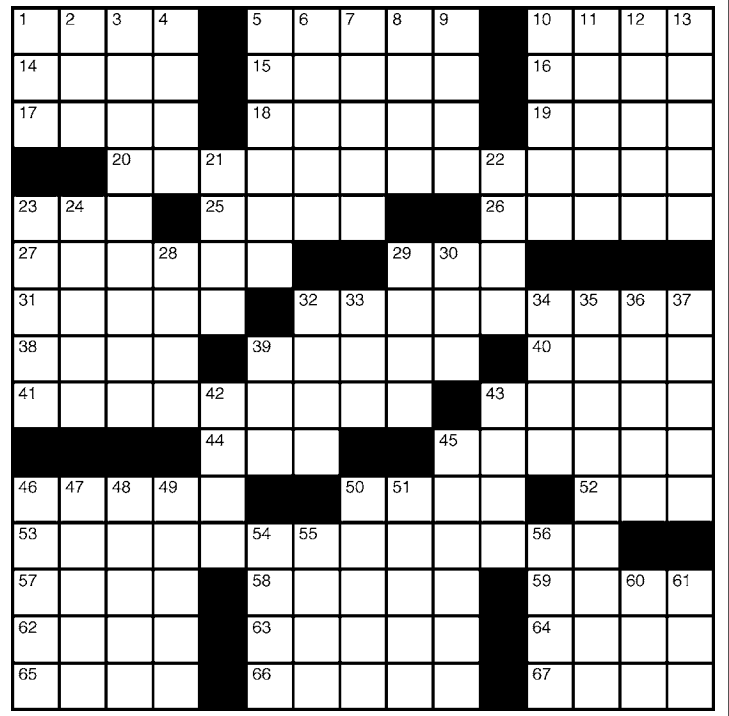
- 34 Mournful sound
- 35 Proper relative position
- 36 Actress Black
- 37 Keep clear of
- 39 Show obeisance
- 42 Unit of length

43 Childhood prohibition

- 45 Stared stupidly
- 46 Channing or Burnett
- 47 Jet black
- 48 Same again
- 49 Fiery felony

50 Pancake order

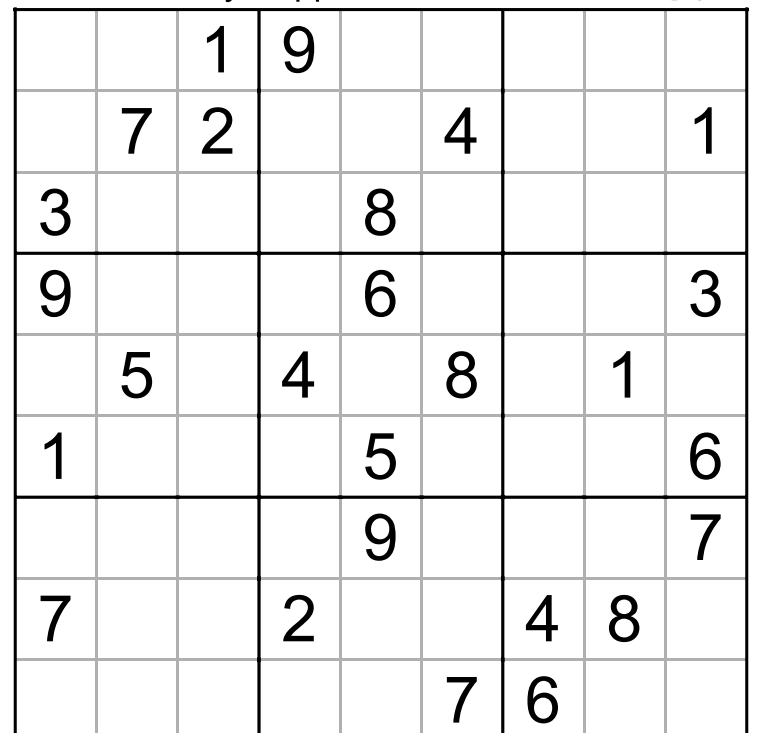
- 51 Secret storage place
- 54 Wendy's dog
- 55 Sapporo sashes
- 56 Bagwell stats
- 60 R-V hookup
- 61 Very great weight



su | do | ku

Instructions: Fill in the grid so that each column, row, and 3 by 3 grid contains exactly one of each of the digits 1 through 9. Solution on page 10.

© Puzzles by Pappocom



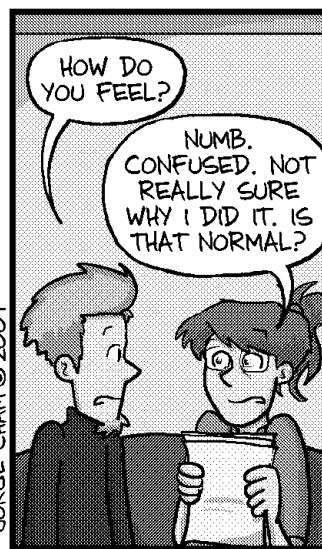
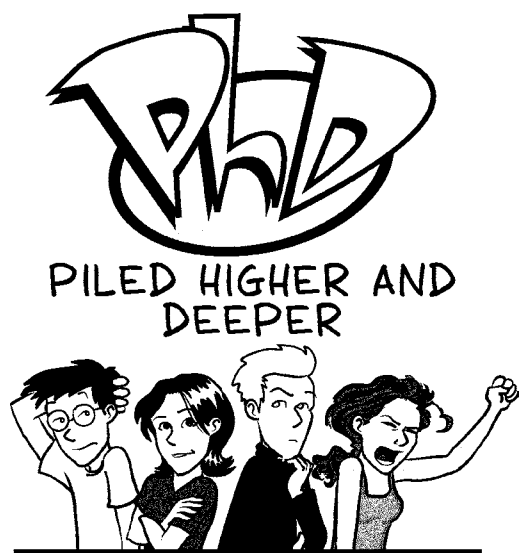
Solution, tips, and computer program at <http://www.sudoku.com>

Think you've solved it?

If you're an MIT student and your answer is correct, you could win a new iPod Nano! Go to libraries.mit.edu/puzzle to get a copy or submit your answer by March 3rd, 2008 to be eligible for the drawing.



CONGRATULATIONS TO THE WINNER OF PUZZLE #3, USMAN AKEJU



WWW.PHDCOMICS.COM

Bonus Crossword

Solution, page 12

ACROSS

- 1 Supersonic number
- 5 Mends by reweaving
- 10 Vesuvian flow
- 14 Hautboy
- 15 Concorde, e.g.
- 16 Ardent
- 17 Verdi opera
- 19 Homeowner's document
- 20 Superlative ending
- 21 Library sec.
- 22 Makes available
- 24 Commandment verb
- 26 Real
- 28 Make confident
- 30 More chilled
- 34 Croat or Serb
- 37 Black cuckoo
- 38 Highest pitch
- 39 Unless, in law

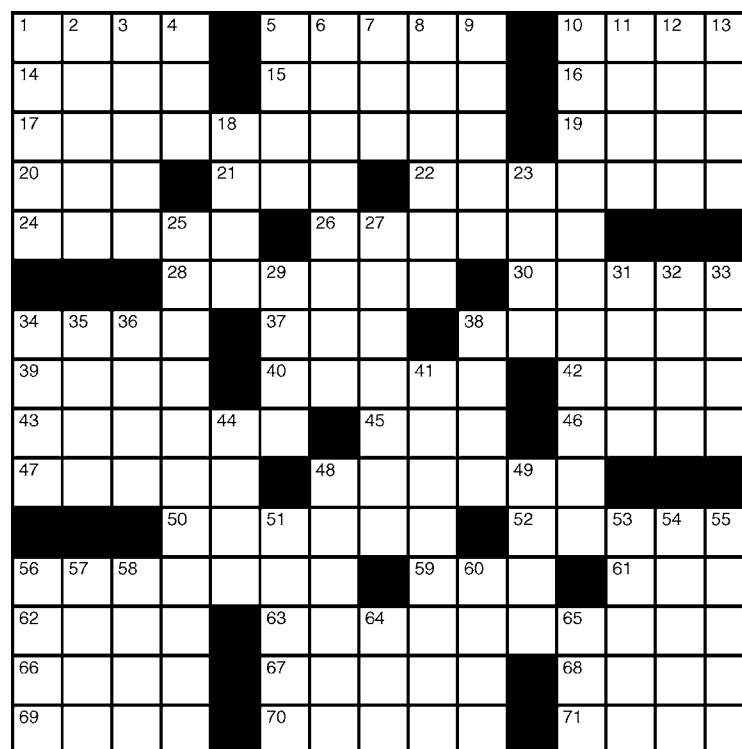
- 40 More feeble
- 42 Travel stamp
- 43 Hinder
- 45 112.5 degrees from W
- 46 As previously said: Lat.
- 47 Procession of matadors
- 48 Museum lecturer
- 50 Prayer series
- 52 Gutter sites
- 56 Welcome place
- 59 Uncooked
- 61 Toronto's prov.
- 62 Cogito __ sum
- 63 French fabulist
- 66 Freeway fillers
- 67 School in Soissons
- 68 Marine shade
- 69 "Twittering Machine" painter
- 70 Hurlled

- 71 Top off four walls

DOWN

- 1 Burrowing mammals
- 2 Discomfit
- 3 Terra follower
- 4 "I Saw __ Standing There"
- 5 Humorist Barry
- 6 Birds of a region
- 7 River inlet
- 8 Write music
- 9 Blunder
- 10 Fellini classic
- 11 Declare
- 12 Competed
- 13 Puts in more
- 18 Humanistic disciplines
- 23 So-so
- 25 Edith Piaf's signature song
- 27 Cardinal's color

- 29 Mall event
- 31 Footnote wd.
- 32 Ultimatum word
- 33 Paper quantity
- 34 Clipped-off piece
- 35 Peruvian capital
- 36 African cobras
- 38 Forest unit
- 41 Endive
- 44 Dire fate
- 48 Separate
- 49 Small salamander
- 51 Dresser, of sorts
- 53 See-through fabric
- 54 Ho-hum feeling
- 55 Girder material
- 56 Pack of cards
- 57 Evangelist Roberts
- 58 Fairy tale heavy
- 60 Over again
- 64 In favor of
- 65 Initial letters



Are you a healthy, drug-free Type 1 Diabetic between the ages of 18-65?

Would you like to participate in a research study that involves only blood testing?

All donors are prescreened for diseases and compensated \$25. Those who are eligible will receive \$50 for each blood draw.

Please call 617.225.0834 x201 to see if you qualify to participate and set up an appointment and interview. Refer to KPI-BS001.

Committee Members See High Interest in W1 Founders Group

W1, from Page 1

Because of the high interest seen so far, founders group organizers are confident that they will be able to fill the "colony" of students moving into NW35 next year. Denoncourt said that she and the founders group will settle details for selecting co-residents in about a month.

Sarah C. Hopp '08, the Dormitory Council's president and a member of the committee that will select

W1 founders, said that she was confident that undergraduates would be interested in moving to NW35 and that she was not worried about a shortage of applicants. She said that the option to live in NW35 and later W1 will be "heavily promoted to the freshmen through the I3 videos," introductions to MIT dormitories recorded by residents that are sent to new students and are available online via YouTube.

Fifteen applications were re-

ceived by the deadline, and another four applications were submitted late, Denoncourt said. She said that although only the on-time applications are being considered, she hopes that late applicants will consider joining the W1 "colony" in the new graduate dorm NW35 next year.

Even the "colonists" who are not in the founders group will have some input into the future of the dormitory, probably through committees, future housemasters Suzanne Flynn and Jack Carroll told *The Tech* last week.

The committee for selecting the students contains Denoncourt, Hopp, Flynn, Carroll, and Undergraduate Association President Martin F. Holmes '08. The selection committee is impressed by the level of interest in the project, Denoncourt said.

"It's looking great," she said.

\$30,000 Prize Goes to Student Who Studies Bacteria-Killing Viruses

Lemelson, from Page 1

while working in local hospitals, Lu "got interested in fighting bacterial infections." Switching to the field of synthetic biology which he describes as "programming cells or modifying organisms" was not a complete departure from his original computer science background. Lu compared the "ability to program DNA" to the "early years of engineering semiconductors."

Lu said the most exciting time

during his "many, many late nights in the lab" came when he made his first effective phage.

The prize money's use is unrestricted, but Lu said he plans to spend it on furthering his research.

This is the second year that the Lemelson-MIT Program, which recognizes outstanding inventors, has offered a prize to an MIT student. Lu said his advisor, J.J. Collins, professor of biomedical engineering at Boston University, encouraged him to apply.

Employment Commission Refuses To Hear Sherley's Claim of Racism

Sherley, from Page 1

Court case in which the court ruled that a professor who was denied tenure received "harm" when he learned about his tenure denial, not on the last day of his employment.

Another question is whether, if the commission were to consider Sherley's claim, they would find that MIT had illegally discriminated against Sherley. A Feb. 4, 2008 letter from Sanders said that even if Sherley had filed his charges sooner, the commission would have found that MIT's reasons for denying Sherley tenure were valid and nondiscriminatory:

"[MIT] articulated bona-fide, legitimate and non-discriminatory reasons for its actions that may have been unfair to you but they were not causally connected or directly related to your partition [sic] and opposition in a legally protected activity that is enforced by the EEOC."

In a February 22, 2008 letter, Sherley wrote to Governor Deval Patrick, Senator Edward Kennedy, and Attorney General Martha Oakley requesting that the EEOC's denial be investigated. Sherley wrote that the EEOC chose its date of "harm" to his detriment. He said that a later date should have applied since MIT reversed his first termination notice and repeatedly extended his appointment. Sherley also wrote that it was unfair for the EEOC to accept MIT's termination reasons without thoroughly investigating them. He also alleged that racial discrimination inside the EEOC may have led to the rejection of his complaint. It is unclear whether the EEOC's denial will be investigated.

When the EEOC determines that it will not investigate a claim or that no discrimination has occurred, it issues a "Right to Sue" letter that entitles the complainant to file a discrimination lawsuit within 90 days. The EEOC sent Sherley such a form on Dec. 27, 2007, so under the law he has only 90 days from then to file a Title VII discrimination lawsuit against MIT.

Sherley offered the commission more information in a letter dated Jan. 10, 2008, including a brief timeline of his firing, and additional allegations that MIT failed to notify him about health benefits (in violation of a the Consolidated Omnibus Budget Reconciliation Act). Sherley also wrote that he had two witnesses who could testify that MIT was withholding information necessary to transfer his federal research grants from MIT to the Boston Biomedical Research Institute.

For more information on Sherley's complaint, including copies of the EEOC filings, visit *The Tech's* Web site at <http://www-tech.mit.edu/V128/N8/sherley/>.

—Nick Semenkovich

Solution to Sudoku
from page 8

4	6	1	9	2	5	3	7	8
8	7	2	6	3	4	5	9	1
3	9	5	7	8	1	2	6	4
9	8	4	1	6	2	7	5	3
6	5	3	4	7	8	9	1	2
1	2	7	3	5	9	8	4	6
5	4	6	8	9	3	1	2	7
7	3	9	2	1	6	4	8	5
2	1	8	5	4	7	6	3	9

got sperm?

SPERM DONORS NEEDED Up to **\$1100 a month!**

Healthy MEN in college or with a college degree wanted for our sperm donor program.

Minimal time commitment

Help people fulfill their dreams of starting a family.

Receive free health and genetic screenings.

APPLY ONLINE:
www.SPERMBANK.com

Daily Meditation
"Religion and science walk hand in hand, and any religion contrary to science is not the truth." —Abdu'l-Bahá
MIT Bahá'í Association


Wednesday, March 5 at 8:00 PM • Room 26-100

Latke vs. Hamentashen

The Great Debate of 2008

Moderated by **Jeremy Wolfe**, Brain & Cognitive Sciences

For the Latke

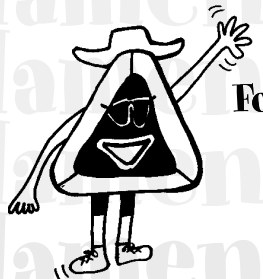


Peter Dourmashkin
Physics

Stephen Van Evera
Political Science

Patrick Winston
EECS

For the Hamentashen



Erik Demaine
EECS

Hazel Sive
Biology

Ari Epstein
Terrascope

Sponsored by MIT HILLEL Latke & hamentashen reception follows the debate. Supported by SHASS's Peter de Florez Fund for Humor, U.A. Finbaord, and ARCADE

Get in our sheets. join@tt.mit.edu

T-SHIRTS

...a necessary fact of College!




QRST'S
part of R.A.W. (Rinnigade Art Works)

- Deal direct...no middlemen
- Fast turnaround
- Award winning & computer literate art dept.
- Free delivery & reasonable pricing *Cambridge & Boston Area
- Full color t-shirts and coffee mugs - no minimum!
- Locally owned & operated in Somerville, MA.
- ...and best of all - no boring lectures

ph - 617-625-3335
email - info@qrsts.com
www.qrsts.com
serving the M.I.T. Community since 1989

Housemasters Will Remember Bonds With Student Community

Housemasters, from Page 1

2002. One *Tech* letter writer dubbed the policy which kept entering freshmen in Next House “the RBA fly-trap.”

Medard said that despite its effect on REX, residence-based advising has helped the Next House maintain a strong sense of community. “The dorm has kept its very service-oriented culture, which we have really enjoyed,” she wrote.

As housemasters, Medard and Simmons are responsible for the social well-being of Next House’s nearly 400 residents. It “is an intense job, but it is also completely unique in its rewards,” Medard wrote.

“There are particular instances which we shall look back on with great satisfaction and that no other job in academia can give,” she wrote, citing as an example “a student who maybe went through a very rough patch and then thanked you after graduation.”

The housemasters offered support in October 2007, when Anna L. Tang, then a Wellesley College student cross-enrolled at MIT, entered Next House and allegedly stabbed her ex-boyfriend Wolfe B. Styke ’10 seven times. Medard said that she and Simmons tried to ensure the well-being of students who needed support after the event: “Mostly, we just offered a haven.”

Some students were disappointed that Medard and Simmons gave them little immediate information about the stabbing. “I was somewhat disturbed to find out about this from someone who does not live at Next House,” Albert W. Chang ’10 wrote in an e-mail to the *next-forum* mailing list. Chang wrote in an e-mail that he heard about the stabbing from a Boston resident after he left Next House and went to class.

At the time, Medard said in an e-mail to *next-forum* that she only told residents the facts she could verify, and that she was limited by concerns

about privacy.

Both Medard and Simmons have undergraduate and graduate degrees from MIT. Medard, an associate professor, is working at Harvard University on sabbatical.

Dean for Student Life Larry G. Benedict, who plans to retire at the end of this academic year, will organize the search for new Next House housemasters. Medard is a member of the committee appointed to find his replacement.

Housemaster work, however, need not always be challenging.

During dress rehearsals for last year’s annual Next Act show, the housemasters’ second eldest child was in the show and was turning seven. “I have a very fond memory of our family and the cast sharing a chocolate birthday cake,” Medard wrote.

“There are many students whom we shall never forget and who, I hope, will stay in touch with us,” Medard wrote.

ANNA'S TAQUERIA
Burritos & Tacos To Go!

MIT Stratton Center
Open Everyday 7 a.m.
324-2662

Porter Square, Davis Square,
and Brookline Locations
Open Everyday 10 a.m. to 11 p.m.

Police Log

The following incidents were reported to the MIT Police between Jan. 10, 2008 and Feb. 26, 2008. This summary does not include incidents such as false alarms, general service calls, larcenies, or medical shuttles.

- Jan. 11:** NE49 (600 Tech Square), 3:52 p.m., Fraudulent withdrawal from checking account.
E52 (50 Memorial Dr.), 3:54 p.m., Attempted breaking and entering; several door locks damaged.
- Jan. 14:** E40 (1 Amherst St.), 3:26 p.m., Credit card fraud.
- Jan. 15:** E28 (338 Main St.), 4:24 p.m., Default warrant served on David Scrima of 150 E. 44th St, New York, NY. Taken into custody at 338 Main St.
- Jan. 16:** E52 (50 Memorial Dr.), 11:37 a.m., Breaking and entering; LCD projector and screen stolen.
- Jan. 17:** M13 (105 Rear Mass. Ave.), 11:20 a.m., Attempted check fraud.
E55 (60 Wadsworth St.), 7:53 p.m., Fraudulent use of check card.
- Jan. 18:** M3 (33 Mass. Ave.), 11:40 a.m., Breaking and entering; laptop stolen.
- Jan. 22:** N42 (211 Mass. Ave.), 3:26 p.m., Breaking and entering; monitors stolen.
- Jan. 23:** M5 (55 Mass. Ave.), 9:25 a.m., Breaking and entering; laptop stolen.
W20 (84 Mass. Ave.), 8:56 p.m., Breaking and entering; camera lens stolen. *Editor's Note: If you've seen an AF-S Zoom-NIKKOR 17-35mm f/2.8 IF-ED with "THE TECH" etched on it, please return it to The Tech's office, W20-483, no questions asked.*
- Jan. 25:** M10 (77 Mass. Ave.), 11:24 a.m., Breaking and entering; laptop stolen.
- Jan. 30:** M3 (33 Mass. Ave.), 11:20 a.m., Breaking and entering; LCD projectors stolen.
E15 (20 Ames St.), 1:52 p.m., Person reports altercation in front of E15.
- Jan. 31:** NW86 (70 Pacific St.), 12:04 p.m., Fraudulent use of credit card.
- Feb. 1:** M10 (122 Memorial Dr.), 2:06 p.m., Breaking and entering; speakers and computer parts stolen.
- Feb. 2:** W70 (471 Memorial Dr.), 5:51 p.m., Domestic disturbance; report of domestic assault and battery. Robert Jackson of 473 Memorial Dr., Cambridge, Mass., arrested for assault and battery.
- Feb. 3:** W84 (550 Memorial Dr.), 4:06 p.m., Domestic disturbance; report of a domestic problem. Yong Zhao of 305 Memorial Dr., Cambridge, Mass., arrested.
- Feb. 5:** M7 (77 Mass. Ave.), 4:16 p.m., Malicious damage; window broken in Lobby 7.
M13 (105 Rear Mass. Ave.), 10:13 p.m., Report of a suspicious person in the conference room on the 4th floor. David Scrima, homeless, arrested for trespassing, resisting arrest, and assault and battery on a police officer.
- Feb. 7:** M13 (105 Rear Mass. Ave.), 9:30 a.m., Illegal dumping behind Building 13.
- Feb. 9:** Delta Upsilon (526 Beacon St.), 2:55 a.m., Assault and battery; problem with individual attending party.
W5 (350 Memorial Dr.), 5:15 p.m., Operator of vehicle reports damage on Harvard Bridge. Andrew Toews of 321 Elery St. #26, Brooklyn, NY, arrested for malicious destruction of property over \$250.
- Feb. 10:** Chi Phi (32 Hereford St.), 12:16 a.m., Assault; Unknown person punched a student while trying to gain access to a party.
- Feb. 12:** W61 (450 Memorial Dr.), 7:13 p.m., Domestic assault; Christine Z. Yu of 450 Memorial Dr. #326F, Cambridge, Mass., arrested for domestic assault and battery.
- Feb. 16:** Lot 1 (125 Vassar St.), 3:27 p.m., Vehicle stolen; 1988 Chevy Caprice stolen from West Garage.
- Feb. 22:** E19 (400 Main St.), 7:53 a.m., Malicious damage to a door.
M14 (160 Memorial Dr.), 8:58 p.m., Arrest of Brian M. Eckert of 443 Washington St., Dorchester, Mass., on outstanding warrant.
- Feb. 25:** M50 (142 Memorial Dr.), 11:39 a.m., Breaking and entering; cash box stolen.

COMPILED BY NICK SEMENKOVICH

THANK YOU **M.I.T.**



Bose® Wave® music system



QuietComfort® 2 Acoustic Noise Cancelling® Headphones



Companion® 3 multimedia speaker system

Thank you to Students, Faculty, Staff and Employees of M.I.T.

Bose Corporation was founded and built by M.I.T. people. Our success in research and in business is a result, in no small part, of what M.I.T. has done for us. As one measure of our appreciation, we are extending special purchase privileges to all students and employees of M.I.T. for their personal use.

Please direct all inquiries to the “M.I.T. Purchase Program.”

Bose Corporation
1-800-444-BOSE



SPORTS

Match of the Week

Fencing Competes at IFA Champ; Kopylov Given Cointe Award

By DAPER Staff

The men's fencing team finished ninth out of eleven teams this weekend in the Intercollegiate Fencing Association Championship, the oldest collegiate championship in the country.



The épée team led the charge with an eighth-place finish, followed by foil (ninth) and sabre (10th). The women's team finished tenth out of twelve teams, and the foil team posted the highest ranking for MIT as it took sixth place for the second year in a row.

Igor Kopylov '09 was the lone Division III recipient of the Georges L. Cointe Award, given to an individual who excels in high-level competition with excellence in sportsmanship. He is MIT's second consecutive winner of this award and third overall, as Trevor T. Chang '07 was honored last year and Guy P. Pommares '71 was chosen in 1969-70.

On the women's side, Cordelia S. Link '10 led the way by capturing fifth (6-5) in the top foil pool en route to an overall fifth-place ranking and the highest finish by a Division III competitor. She defeated Mina Zargham from Princeton University, 15-10, before falling to the eventual champion, Misha Goldfeder of Harvard University, 15-9. In the "C" pool, Jenna G. Caldwell '11 captured fifth with a 4-1 outing while Chun Li '08 was ninth with a 3-3 mark. Lindley C. Graham '10 rounded out the group in twelfth place and record of 3-8 in the "B" pool.

Yuhsin Chen '08 finished ninth in the individual sabre competition and sixth in the "A" pool as the top Division III performer with a record of 6-5. Elena A. Tatarchenko '11 went 4-7 (ninth place) in the "C" pool while Laura Evans notched a total of 1-10 (12th) in the "B" pool. Overall, the sabre team captured tenth place.

Zhenya Gu '08 recorded the best performance for the épée team

Why this is Match of the Week:

The fencing teams, coming off their victories in the New England Championship, performed well in this national competition, representing MIT well against formidable Division I opponents.

with a 4-6 ledger and an eighth-place finish in the "B" pool as the squad claimed 11th place. Sophie M. Monahan '11 (3-2, ninth place) and Kristin D. Kuhn '11 (1-5, 13th) represented the Engineers in the "C" pool as Stephanie H. Shin '10 wrapped up the competition with a twelfth place ranking and a total of 1-10.

In the men's competition, Kopylov finished eleventh in the individual sabre competition, falling to the eventual runner-up, Alex Diacou of Columbia University, 15-9. In the top qualifying pool, he placed fourth with a record of 6-4. Maximilian L. Brand '11 claimed ninth place (2-8) in the "B" pool while Matthew W. Farrell '08 took eleventh (1-9) in the "C" pool.

Spencer R. Sugimoto '08 led the charge for the foil team as he ranked thirteenth overall and eighth in the "A" pool with a record of 4-6. Sebastian Castro '08 and Richard C. LaGrandier '11 finished tenth and eleventh, respectively, with identical marks of 1-4. In the "C" pool, Benjamin T. Switala '09 went 2-8 en route to a tenth place finish.

Gabriel A. Chan '09 posted a 5-5 record en route to an eighth-place ranking in the épée "B" pool while Matt L. Gethers '09 finished tenth in the top tier, going 2-8. In the épée "C" pool, Jeremy S. Hurwitz '08 placed seventh with a record of 4-6.

The field included Boston College, Brandeis University, Brown University, Columbia University, Harvard University, New York University, University of Pennsylvania, Princeton University, Vassar College and Yale University.



ARKA DHAR

Edward J. Sturm '08 skates after a loose puck during MIT's quarterfinal match-up against Western Connecticut State University in Johnson Ice Rink on Wednesday. The Engineers won the game 6-3, advancing to the semifinals of the NorthEast Collegiate Hockey Association Conference A playoffs where they will face Westfield State College. MIT is 0-1-1 against Westfield State this season.

SCOREBOARD

Men's Basketball	
Wednesday, Feb. 27, 2008	
MIT (12-14, 3-9 NEWMAC ¹)	44
U.S. Coast Guard Academy (19-6, 7-5)	58

Women's Basketball	
Wednesday, Feb. 27, 2008	
MIT (12-4, 4-9)	36
Wheaton College (20-6, 12-1)	79

Men's Ice Hockey	
Wednesday, Feb. 27, 2008	
MIT (13-4-1)	6
Western Connecticut State (4-17-1)	3

Women's Ice Hockey	
Wednesday, Feb. 27, 2008	
Salve Regina University (10-13-2, 9-9-1)	3
MIT (1-17-2, 1-16-2 ECAC ² East)	1

Men's Volleyball	
Tuesday, Feb. 26, 2008	
MIT (12-8, 7-2 NECVA NE ³)	3
Newbury College (15-5, 4-1)	2
Wednesday, Feb. 27, 2008	
Milwaukee School of Engineering (5-12)	0
MIT (13-8)	3

²Eastern College Athletic Conference

³North East Collegiate Volleyball Association New England Division

¹New England Women's and Men's Athletic Conference

UPCOMING HOME EVENTS

Friday, Feb. 29, 2008

Men's Swimming and Diving, NEWMAC Championship
11 a.m., Zesiger Center
Men's Tennis vs. UMass-Boston 3 p.m., duPont Tennis Courts

Saturday, March 1, 2008

Rifle, MAC Conference Championship
8 a.m., duPont Athletic Center
Men's Swimming and Diving, NEWMAC Championship
11 a.m., Zesiger Center
Men's Tennis vs. Stevens Institute of Technology
1 p.m., duPont Tennis Courts

Sunday, March 2, 2008

Men's Swimming and Diving, NEWMAC Championship
11 a.m., Zesiger Center

Solution to Crossword Puzzle

from page 8

M	A	S	H	C	R	I	M	E	A	R	E	A
A	R	C	O	Y	E	M	E	N	R	E	N	D
E	C	H	O	B	R	A	N	D	A	P	S	E
I	F	Y	O	U	M	U	S	T	B	E	U	P
C	A	N	E	R	N	S	I	S	L	E	T	
A	D	D	I	N	G	E	E	N				
S	I	L	O	S	E	A	R	L	Y	M	A	K
T	E	E	N	B	L	I	S	S	O	L	A	V
S	U	R	E	Y	O	U	R	E	N	A	I	R
				A	W	L	G	O	N	G	E	D
C	E	D	A	R	S	C	A	N	N	N	E	
A	B	I	R	D	N	O	T	A	W	O	R	M
R	O	T	S	A	B	A	C	K	B	E	S	T
O	N	T	O	N	I	C	H	E	I	N	T	O
L	Y	O	N	A	S	K	E	D	S	T	U	N

Solution to Bonus Crossword

from page 9

T	I	E	C	M	E	R	H	L	E	E	T	K
E	N	T	E	T	O	C	E	S	R	V	O	
E	N	I	V	A	N	O	F	A	T	O	G	E
I	N	O	M	V	R	J	V	W	R	O	O	D
S	E	A	V	E	V	N	E	L	A	O	N	
				I	N	E	C	O	O	O	E	S
W	E	D	I	E	S	S	E	D	E	D	W	I
V	S	I	A	R	E	W	A	T	I	S	I	N
E	T	B	E	R	L	I	N	V	A	V	T	S
U	R	I	C	I	C	H	E	R	S	S	V	
				T	V	N	T	C	O	V	L	T
S	D	R	O	F	F	E	R	I	S	E		
D	E	E	D	V	L	V	I	A	V	I	V	T
D	I	A	V	N	O	I	A	V	E	O	B	O
L	A	V	T	S	N	H	V	D	H	C	A	W

STSTRAVEL.COM
Spring Break Sale!
Cancun, Acapulco & Jamaica
up to \$500 off per room!
Bahamas, South Padre and Florida also available.
Limited Time Offer!
1-800-648-4849 / www.ststravel.com

RETHINK

polonium 84 Po [209]	lithium 3 Li 6.941	titanium 22 Ti 47.867	carbon 6 C 12.011	sulfur 16 S 32.065
--------------------------------------	------------------------------------	---------------------------------------	-----------------------------------	------------------------------------

www.SHARP.SEforA.org

Join Us.

SEA
SOCIETY OF ENGINEERS FOR AMERICA

The MIT Hippocratic Society Presents

Climate Change and Health: A Medical Perspective on Global Warming

Friday, March 7: 7-10 PM
Screening of Leonard DiCaprio's "The 11th Hour"
Free for registered attendees

Saturday, March 8: 10AM - 3PM
Arrive at 9:30AM for breakfast. Lunch will also be provided

Room: 34-101

Register online NOW at
<http://web.mit.edu/hippocratic/www>

UA
MADE POSSIBLE WITH FUNDING FROM: UA FINBOARD, THE DEPARTMENTS OF BIOLOGY, HST, STS AND THE CENTER FOR ENVIRONMENTAL HEALTH SCIENCES