

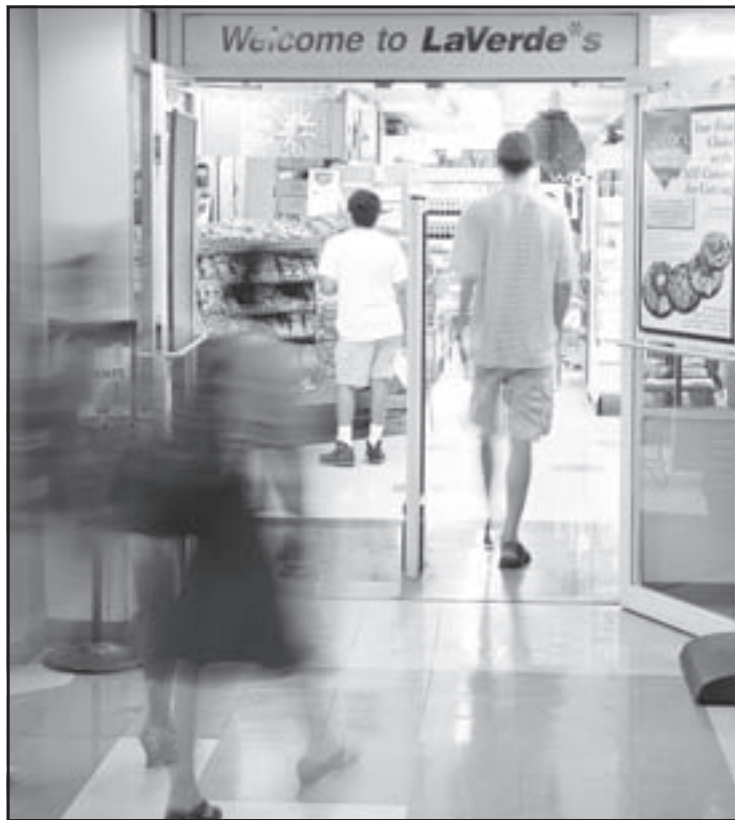
## LaVerde's Sold to 660 Corporation

By Valery K. Brobbey  
STAFF REPORTER

On Sunday, LaVerde's Market will have a new owner but not a new name. Frank LaVerde, who opened LaVerde's Market in 1988, is selling the store to 660 Corporation, which operates eleven convenience stores, including the one in MacGregor House. The sale of the convenience store, located on the first floor of the student center, is expected to be finalized on Sunday.

Chris Christensen, Director of Operations for 660 Corporation, declined to comment on the price that 660 Corporation paid for the store, saying only that "we were both happy" with the negotiated price. He said that the amount paid covered the terms of the current lease, LaVerde's equipment, and the store's current inventory. The terms of the lease allows LaVerde's to remain in its current location for at least ten years.

LaVerde could not be reached for comment, though Christensen said that LaVerde, who is 67, is selling the store because he wishes to retire. Christensen said that Frank LaVerde's main concern during the sale was for his staff and that all of the employees will continue to work at the store. Some will receive raises and additional benefits made possible by the fact that 660 Corporation is a larger company than the



OMARI STEPHENS—THE TECH

Patrons enter La Verde's Market yesterday evening. The store will get a new owner this Sunday, August 6, but will keep its name.

previously independently-owned LaVerde's store, he said.

Because the space occupied by LaVerde's is leased to the store by

MIT, the transfer of the lease to 660 Corporation had to be approved by

LaVerde's, Page 9

## State Regulations Affect Health Plan

International Students' Insurance Plans Will be Most Affected by Changes

By Diana Jue  
STAFF REPORTER

In order to comply with new state regulations, changes have been made to the MIT Student Health Plan that will once again affect international students at MIT. One new regulation will require that students purchase a comprehensive health insurance policy from a United States-based insurance carrier. International students will no longer waive the MIT Student Extended Insurance Plan for a plan based in a foreign country.

Also included is the exception for MIT students who are studying in a foreign country. These students must subscribe to a plan that will cover them in the country where they will study. The revisions are effective August 11, 2006.

Thirteen percent of the international students at MIT — 266 graduate students and 79 undergraduates — waived the extended plan during the 2005-06 academic year, according to MIT Health Plans officials Maryann Wattendorf and Sara

Fuschetto.

International students have had varied responses. Kah Seng Tay '08 from Singapore said, "I think it's fine if they want to force international students to take up the extended insurance, since most of us do not have parents here that might have taken out insurance for us and do not actually have any form of insurance in the States at all."

However, Tay feels some dissat-

Health Plan, Page 9

## Barracuda Devices Installed To Help Catch Fishy E-mail

By John A. Hawkinson  
STAFF REPORTER

Information Services and Technology has added new equipment to the campus e-mail system to improve handling of spam e-mail; this change has been driven by an increase in spam that has escaped MIT's existing SpamAssassin filtering system.

Some incoming campus e-mail now goes through a cluster of three Barracuda Networks BT-800 Spam Firewall devices, according to Jeffrey I. Schiller '79, who manages MIT's network for IS&T. The change was made late Wednesday night on an experimental basis, Schiller said.

The Barracuda devices provide additional filtering beyond that provided by IS&T's existing SpamAssassin installation, Schiller said. In particular, it is especially good at detecting spam in mail containing image attachments, of which there has been a substantial increase recently,

Schiller said.

Schiller also said that the Barracudas update their spam filtering rules automatically on an hourly basis; IS&T's SpamAssassin system, by contrast, has rules updated every few weeks. Frequent updates in filtering rules allow the system to better track changes in spam mail.

Previously, all incoming campus e-mail to @mit.edu addresses went through two of IS&T's mail servers. After this change, that incoming e-mail is split four ways between the three Barracuda servers and one of the IS&T servers. (Incoming e-mail to other addresses, like @csail.mit.edu, is not affected.)

Schiller said this configuration was chosen by IS&T because the Barracudas are still an experiment, so an incremental approach is warranted. After the Barracudas receive

Spam, Page 9

## Professor Accused of Career Intimidation

Incident Highlights Growing Research Rift

By Angeline Wang  
NEWS EDITOR

Allegations made against a prominent MIT professor regarding his actions during the Institute's failed recruitment of a young female scientist have raised concerns about the tensions between the Institute's neuroscience units and the ability of professors in the two major neuroscience centers to collaborate on research. Nobel laureate and Biology professor Susumu Tonegawa, the head of the Picower Institute for Learning and Memory, was accused of bullying neuroscientist Alla Y. Karpova into declining the Biology Department's offer to become an Assistant Professor working at the McGovern Institute for Brain Research.

The allegations were raised in a letter addressed to President Susan Hockfield on June 30. It was signed by 11 tenured female faculty members from the five MIT schools, many involved in gender equity issues on campus. The 11 professors state in the letter that they strongly believe "MIT failed in this situation" and that MIT's reputation as an Institute that supports fairness had been damaged. "We have allowed a senior faculty member with great power and financial resources to behave in an uncivil, uncollegial, and possibly unethical manner toward a talented, young scientist who deserves to be welcomed at MIT."

The letter goes on to explain that this case is not the first instance in which structural issues have interfered negatively with faculty recruitment in the neuroscience community.

In response to the June 30 allegations, another letter was sent to Hockfield by six of Tonegawa's colleagues defending his actions, as reported in the *Boston Globe*. Two of the six faculty members were women. All six are affiliated with Picower and were hired by Tonegawa.

"We feel that [Tonegawa] is being unfairly maligned, and we wish to express our strong support of him," the letter said, as published in the *Globe*. "This is not a gender issue, and to portray it as such sets back the cause of women scientists."

In actuality, the June 30 letter did not bring up gender at all, but Biology professor Nancy H. Hopkins does feel that it plays a part. Hopkins was the chair of faculty diversity last year and is also one of the signers of the June 30 letter.

"Regardless of the specifics of any one case, it is always a gender issue in recruiting because of the significant under-representation of women on the faculty," Hopkins said, adding that there are currently 36 women and 240 men on the School of Science faculty at MIT. "We know that identifying

Tonegawa, Page 11

### In Short

¶ A chiller at Facilities' Central Utilities Plant failed on Wednesday, resulting in a reduction of available air conditioning capacity on campus during peak demand. Facilities hopes to have the unit repaired soon. Separately, building N42 has been without air conditioning all week, seeing temperatures in excess of 100°F.

¶ A community forum on spam e-mail will be held on Wednesday, Aug. 9, at noon in W20-491. IS&T will discuss the effectiveness of MIT's automated spam screening, as well as the management of the e-mail system and the spam screening tools in particular. This forum comes after a recent increase in spam and widespread complaints about it.

¶ Professor Steven R. Lerman will serve as Chair of the Faculty through June 2007. Lerman replaces Professor Lorna J. Gibson, who became associate provost effective Aug. 1. Lerman, who is a housemaster at Sidney-Pacific and was Chair of the Faculty from 1999-2001, was appointed by the Faculty Committee on Nominations. Professor Bishwapriya Sanyal will succeed Lerman in a two-year term beginning July 2007.

Send news information and tips to news@the-tech.mit.edu.

### NEWS

- SafeRide Changes . . . . . Page 11
- Police Station Outage . . . . . Page 11
- Big Jimmy Scholarship Exceeds \$50K . . . . . Page 11
- MITPAY Error . . . . . Page 11

### NEWS

- Class of 2010 Details . . . . . Page 11
- Class Comparison Table . . . . . Page 10
- Dunkin' Donuts Update . . . . . Page 11
- Sexual Health Educator Stuart Leaves MIT . . . . . Page 11

- World & Nation . . . . . 2
- Opinion . . . . . 4
- Arts . . . . . 5
- Comics . . . . . 8
- Police Log . . . . . 9



ERIC SCHMIEDL—THE TECH

On Thursday, July 27, a student on the Student Center steps holds a sign in protest of the Israeli assault on Lebanon.

# WORLD & NATION

## New Tapes Disclose Confusion Within the Military on Sept. 11

By Philip Shenon

THE NEW YORK TIMES

WASHINGTON

Newly disclosed tapes offer evidence of the widespread confusion within the military as the Sept. 11, 2001, terrorist attacks were being carried out, further undermining claims by the Pentagon that it moved quickly to try to intercept and shoot down one or more of the hijacked jets.

When matched with the timeline of the attacks, the tapes make clear that information about the hijackings was slow to reach the military on Sept. 11 and that much of the information that did reach Air Force commanders was faulty.

The tapes were provided under subpoena to the independent commission that investigated the Sept. 11 attacks, and parts of them had previously been made public by that commission.

But the full collection of nearly 30 hours of tapes from the North American Aerospace Defense Command, or Norad, were released by the Pentagon last year to Michael Bronner, a producer on the recent film "United 93," who described them in detail in an article posted this week on the Web site of Vanity Fair magazine ([www.vanityfair.com](http://www.vanityfair.com)). The Web site includes links to excerpts from the actual tapes.

## IBM to Buy Maker of Software That Monitors Equipment

By Steve Lohr

THE NEW YORK TIMES

IBM announced Thursday that it planned to buy MRO Software for \$740 million, a move that underlines the increasing importance of software to the company's big services business.

MRO, based in Bedford, Mass., makes software that companies use to monitor the location and operation of all kinds of equipment, including airplanes, train cars, trucks, automobiles and power plants.

IBM is pursuing a strategy of trying to apply more scientific engineering and technology to its \$47 billion-a-year global services group. That means helping to automate services tasks with software to gain efficiency, while improving profits and quality.

"We want a more repeatable, assembly-line approach to delivering services to our customers," said Kristof Kloeckner, a vice president for strategy and technology in IBM's software unit.

The MRO purchase, analysts said, represents a step toward that goal.

## AOL to Drop Thousands of Jobs As Part of Internet Cutbacks

By Saul Hansell

THE NEW YORK TIMES

AOL will eliminate at least 5,000 jobs over the next six months, more than one-quarter of its workforce — as part of its plan to scale back its Internet access business, the company said Thursday.

Jonathan Miller, AOL's chief executive, met Thursday with employees at the company's headquarters in Dulles, Va., to outline the cutbacks.

AOL said Wednesday that it planned to reduce annual expenses by at least \$1 billion — largely by eliminating jobs — to compensate for lost revenue from paying subscribers. The company is trying to compete with Yahoo and Google by offering free, advertising-supported services.

Some 3,000 of the affected jobs are part of AOL's European Internet access business, which it is trying to sell. The company said the eventual buyers might choose to retain a substantial number of these employees.

Another 2,000 jobs, largely those of customer service workers in the United States, will also be eliminated, the company said. The jobs also include a variety of other professional and administrative roles related to marketing and operating AOL's dial-up Internet access service.

# Hezbollah Missiles Kill 12 As Israel Pushes Into Lebanon

By Richard A. Oppel Jr. and Steven Erlanger

THE NEW YORK TIMES

MAALOT-TARSHIHA, Israel — The Lebanese militia Hezbollah killed 12 Israelis — eight civilians and four soldiers — on Thursday, making it Israel's deadliest day in more than three weeks of conflict.

As Israeli troops tried to create a narrow buffer zone inside Lebanon and bombed southern Beirut, Hezbollah's leader, Sheik Hassan Nasrallah warned he would send his long-range missiles into Tel Aviv if the Israelis continued airstrikes.

"If you bomb our capital Beirut, we will bomb the capital of your usurping entity," he said on Lebanese television. "We will bomb Tel Aviv." But he also offered to halt Hezbollah's missile barrage into Israel if it stopped bombing Lebanon.

Israeli Defense Minister Amir Peretz told the army to begin preparing to push to the Litani River, some 15 miles north of the border, according to Haaretz newspaper, a move that could mean a further call-up of reservist soldiers. That would expand the security zone Israel is trying to create. But it is not clear whether he

will receive government approval to do so.

Hezbollah launched more than 100 rockets at northern Israel in less than an hour, with most of the damage on the western edge, in Maalot, its associated Arab Israeli village of Tarshiha, and the Israeli town of Acre.

Five Israelis, including a man and his daughter, were killed in Acre and another three, young Arab Israeli men, were killed when a rocket exploded in Tarshiha. Thirteen people were seriously wounded. Lebanese security officials said that an Israeli missile killed a family of three in the border village of Taibeh.

In Gaza, Israeli forces killed five Palestinian militants and three civilians, including a 12-year-old boy, in fighting on the edges of the southern town of Rafah as Israeli troops searched for tunnels between Egypt and Gaza.

Israeli airplanes struck again at Hezbollah strongholds in southern Beirut, in the Bekaa Valley and in Nabatiye, while four Israeli soldiers were killed and four wounded in intermittently fierce fighting. Three were hit by an anti-tank mis-

sile fired by Hezbollah fighters near the southern village of Rajmin and one was killed by an anti-tank missile in Taibe, the Israeli military said. The Israelis said they moved to take over new positions along the border and now control some 20 villages.

The Israelis are trying to create a new defensive line some four to five miles north of the border, recreating a security zone Israel intends to occupy until a multinational force can take its place. The zone is similar to that held by Israel in an occupation that ended in 2000. The government is debating whether to extend that zone northward to the Litani River.

Maj. Zvika Golan, a spokesman for the northern command, said the zone would be expanded. "We are looking to clear 15 kilometers into Lebanon within the next few days," he said. "We're going to need more brigades, probably two more, and that will depend on government authorization." (Fifteen kilometers is about nine miles.)

Adding two more brigades could bring the number of Israeli soldiers in Lebanon to more than 12,000.

# Armed Shiites Killed in Baghdad En Route to Anti-Israel Display

By Kirk Semple

THE NEW YORK TIMES

BAGHDAD, IRAQ

U.S. troops opened fire Thursday on a vehicle carrying armed Shiites on an anti-Israel demonstration in Baghdad, killing as many as two occupants and wounding others, officials said.

While details of the incident remained murky late Thursday, the U.S. military command said in a statement that the occupants of the van had first fired at the watchtower of a U.S. military base near the town of Mahmudiya.

U.S. troops returned fire, the statement said, and more than an hour later, Iraqi troops at a checkpoint captured the van and found two dead men in the back with AK-47 and PKC assault rifles.

An official at the Interior Ministry said the vehicles' occupants were followers of the militant Shiite cleric Muqtada al-Sadr, who has

called for a mass demonstration on Friday against Israel's bombardment of Lebanon. Charismatic and decidedly anti-American, al-Sadr counts millions of disaffected poor Shiites among his constituency.

According to the ministry official, one person was killed in the incident and 16 were wounded.

Mahmoudiya has been a harrowing location for U.S. troops in recent months. Four U.S. soldiers and one former soldier have been accused of raping a 14-year-old girl there and killing her and three family members.

The van was passing through Mahmoudiya on its way to Baghdad from the southern Shiite town of Hilla, said Sahib al-Ameri, an official in al-Sadr's movement.

The shooting comes at a time of rising tensions between the U.S. military and al-Sadr's organization. In recent weeks, U.S. and Iraqi forces

have conducted a series of raids on bases of al-Sadr's restless militia, the Mahdi Army, and have arrested high-ranking militia leaders.

Thousands of al-Sadr's supporters from Shiite-dominated cities in southern Iraq began converging on the capital on Thursday in anticipation of the rally. They boarded buses decorated with pictures of Sheik Hassan Nasrallah, the leader of the Hezbollah militia in Lebanon, which set off the current fighting with a cross-border raid. The Sadr supporters waved Iraqi and Hezbollah flags, and chanted "Death to America! Death to Israel!" wire service reports said.

Israel's offensive in Lebanon is highly unpopular among Iraqis, and al-Sadr was among the first politicians to condemn Israel's actions publicly, warning last month that his followers would "not sit by with folded hands before the creep of Zionism."

# WEATHER

## Hot Stuff Coming Through

By Brian H. Tang  
STAFF METEOROLOGIST

A monster heat wave melted the entire nation the last couple weeks, with numerous cities reporting record high temperatures. For instance, on July 15, Uta, South Dakota reached an incredible 120°F (49°C), which tied the all-time state record high previously set back in the Dust Bowl years. The temperatures on campus haven't been as extreme, but the last few days have been quite uncomfortable with the high heat and humidity making it feel well over 105°F (41°C) during the mid-afternoon hours. Fortunately, a strong cold front moved through the region late yesterday and will lead to an extended period of warm, less humid, and generally dry weather.

Hurricane season is entering what has traditionally been its more active period. Tropical Storm Chris formed NE of the Leeward Islands Monday night and has since been ripped apart by strong winds in the mid-levels of the troposphere. Chris now appears to be a minimal threat to any land areas. Nevertheless, a busy hurricane season is anticipated, and a group of atmospheric scientists at Colorado State forecasts a 64% chance of a major hurricane strike on the US East Coast in the coming months, which is more than double the long-term probability.

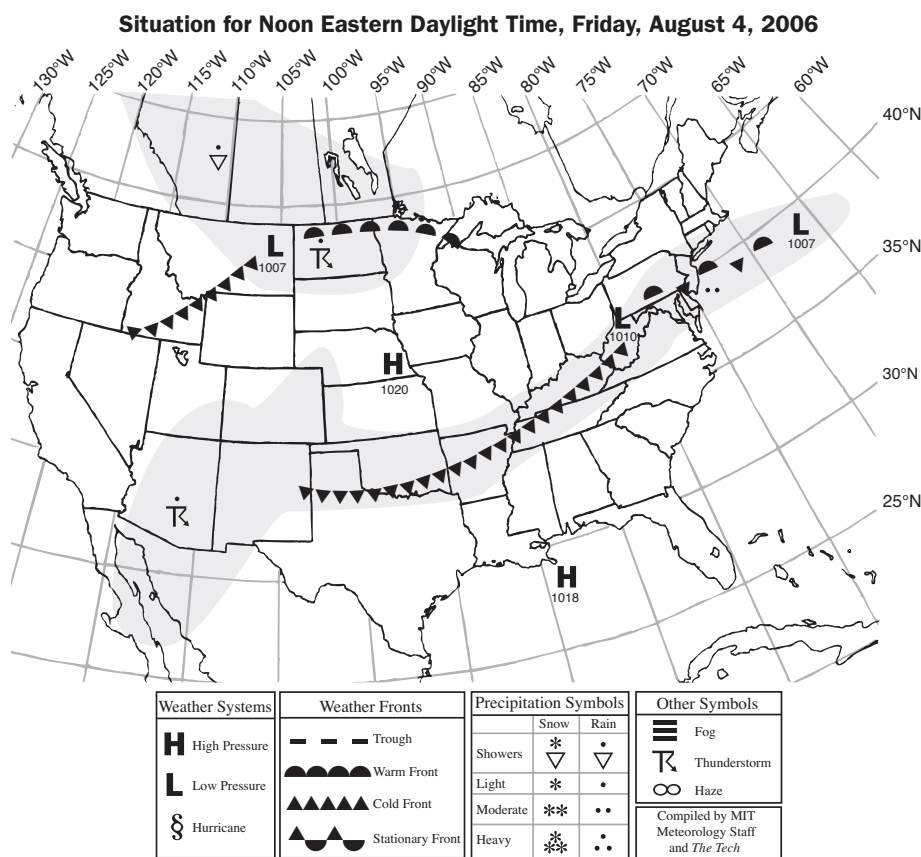
### Extended Forecast

**Today:** Cloudy in the morning, then a little sunshine in the afternoon. Much cooler. High 77°F (25°C).

**Tonight:** Clear and comfortable. Low 65°F (18°C).

**Tomorrow:** Sunny. High 83°F (28°C).

**Sunday:** Partly cloudy. Low 66°F (19°C). High 82°F (28°C).



# White House Asks Congress For Refined War Crimes Definition

By Kate Zernike  
THE NEW YORK TIMES

WASHINGTON

Attorney General Alberto R. Gonzales pressed Congress on Wednesday to refine the definition of war crimes prohibited under the Geneva Conventions, as the Bush administration and lawmakers continued to debate the rules for treatment and trials of terror suspects.

Administration proposals on how to bring suspects to trial have moved closer to what key senators have said they will demand, but two hearings on Capitol Hill on Wednesday foreshadowed a fight over the definition of coercive interrogation tactics.

And administration lawyers and senators continued to clash over evidence obtained through coercion or hearsay and how to deal with classified evidence.

The Supreme Court ruled in late June that terror suspects must be extended the protections outlined in a provision of the Geneva Conventions that prohibits "outrages upon personal dignity, and in particular humiliating and degrading treatment."

Gonzales argued that the language of the provision was too vague. And

because the federal War Crimes Act passed a decade ago makes it a felony to violate that provision, he said that troops could be prosecuted for interrogation tactics considered too harsh. Congress, he said, could "help by defining our obligations" under the provision, known as Common Article Three.

Gonzales, publicly discussing the administration's new proposal for detainee trials for the first time since the court's ruling, said it would offer legislation that included a proposal to change the War Crimes Act, to bring "clarity" in defining which violations of Common Article Three rise to the level of war crimes.

"The surest way to achieve that clarity and certainty, in our view, is for Congress to set forth a definite and clear list of offenses serious enough to be considered war crimes," he said.

But senators said Congress should not endorse any treatment it would not want used on American soldiers. "We must remain a nation that is different from, and above, our enemies," said Sen. John McCain, R-Ariz. The differences between the administration and the Senate were most pronounced when McCain

asked Gonzales whether statements obtained through "illegal and inhumane treatment" should be admissible. Gonzales paused for almost a minute before responding.

"The concern that I would have about such a prohibition is, what does it mean?" he said. "How do you define it? I think if we could all reach agreement about the definition of cruel and inhumane and degrading treatment, then perhaps I could give you an answer."

McCain, a former prisoner of war, said that using illegal and inhumane interrogation tactics and allowing the evidence to be introduced would be "a radical departure" from long-standing U.S. policy.

The court ruled in June that the military tribunals that President Bush had established for suspects held at Guantanamo Bay, Cuba, violated international law and were not authorized by federal statute.

Lawyers from the Defense and Justice Departments initially tried to persuade Congress simply to approve the tribunals. By Wednesday's hearings, the administration had changed its position. "What we are considering now is a better product," Gonzales said.

# Castro's Brother Assumes Power As Cuban President Battles Illness

By Anthony Depalma  
and James C. McKinley Jr.  
THE NEW YORK TIMES

With the mysterious illness of Fidel Castro this week, attention has turned to his brother, Raul, the new provisional leader of Cuba, a man whose personality is little known to Cubans and who remained out of sight and silent on Wednesday.

As police stepped up patrols in Havana's poorer neighborhoods, the state run news media released little information about Fidel Castro's medical condition after abdominal surgery Tuesday or Raul Castro's whereabouts, deepening uncertainty about the future of the government.

"That is totally consistent with the culture of this government," said Lisandro Perez, a Cuban-American sociologist at Florida International University. "What is surprising is not that they're trying to keep this under wraps, but that they made it public in the first place."

In an interview on public radio in the United States, Ricardo Alarcon, president of the Cuban National Assembly, said that he had spoken to Fidel Castro for a half-hour on Tuesday

after his surgery and found him alert and in good spirits.

"He's in, I would say, a normal period of recovery after an important surgery," Alarcon told Democracy Now's host, Amy Goodman. "But very alive and very alert, as always, very interested in what's going on around him and around the world."

Alarcon did not say what illness Castro, 79, was suffering from, though he acknowledged that "it is a serious matter." Castro had said on Monday that he was ceding power temporarily to his brother and a collective of other high-ranking officials during his recuperation.

Doctors outside Cuba said that Castro could be suffering from several conditions. Possibilities include cancer, intestinal bleeding or an intestinal infection. After such surgery, patients generally have tubes inserted through their nose into the stomach to drain off stomach secretions. Such tubes make it difficult to speak and are unsightly, which would possibly make Castro in his weakened condition reluctant to be seen on camera.

But in the absence of detailed statements from the government,

outside observers and Cubans were left to speculate.

What seemed certain, however, was that the long-awaited transition from Fidel Castro to Raul — first laid out 47 years ago — had begun. And so had the concerns about what that new regime would bring.

A constant in Cuba since the earliest days of the uprising more than half a century ago that forced out dictator Fulgencio Batista, Raul Castro is alternatively described by those who know him as ruthless and compassionate, as an executioner and as an executive, as a rigid Communist and a practical manager of economic and security matters.

But one of the most telling aspects of his career is that in the nearly five decades that Raul Castro has led the Cuban armed forces, there has never been a coup attempt or an uprising of rank and file soldiers against their officers.

That combination of loyalty and stability — extraordinary for a Latin American army — is a reflection of the largely overlooked skills of Castro, 75, and a key to understanding what is likely to happen now that he is in charge.

# Coach Banned From Olympic Stadium Following Positive Testosterone Test

By Lynn Zinser  
and Juliet Macur  
THE NEW YORK TIMES

Olympic and world track officials turned up the pressure Thursday on Trevor Graham, the coach of the sprinter Justin Gatlin and at least six other runners who have served drug suspensions.

The U.S. Olympic Committee announced that it would permanently bar Graham from using any of its training facilities. Also Thursday, the director of a Golden League event in Berlin said that several of Graham's current or former athletes, including Marion Jones, Shawn Crawford and Dwight Thomas, would not be welcome at his meet in September.

The developments come in the aftermath of the disclosure last weekend that Gatlin, the co-owner of the world record in the 100-meter dash, tested positive for testosterone in April. The U.S. Anti-Doping Agency could offer Gatlin a chance at a reduced punishment if he cooperates with an investigation of Graham. A similar deal was offered to the sprinter Kelli White, who testi-

fied in hearings against several other athletes and coach Remy Korchemny when she was caught in 2003.

"The ideal paradigm is to rid sport of the distributors and suppliers," said Travis Tygart, general counsel for the anti-doping agency. "USADA certainly appreciates athletes who have the courage to admit their mistakes and cooperate to help clean up sports."

But Olympic Committee leaders and the Berlin meet director were not waiting for findings to make their decisions. The USOC said it had sent Graham a letter denying him access to any of its three training centers — in Colorado Springs; Chula Vista, Calif.; and Lake Placid, N.Y. — or its 12 official training sites around the country. It called the ban permanent unless circumstances prompted a re-evaluation.

"Access to our facilities is a privilege extended by the good will of our board of directors," said Jim Scherr, chief executive of the USOC. "They can give permission to restrict that, and they have."

Graham, who has disavowed

knowledge of drug use by any of his athletes, did not respond to requests for comment.

"Mr. Graham and I will be issuing a full statement over the weekend addressing all of these issues," Graham's lawyer, Joseph Zeszotarski, said in an e-mail message. "There is no basis for any ban of Trevor, and he will be pursuing all legal avenues available to him."

USOC leaders also issued what they named a "national call to action" on the drug issue, urging the federal government and all other sports organizations and leagues to participate in a new initiative to fight doping that would include increased research, education and enforcement.

"This is a national issue," said Peter Ueberroth, chairman of the USOC. "Nothing less than this kind of effort will be needed. We run the risk of losing an entire generation of sports participants and sports fans."

For now, a broadened effort has taken the form of action against Graham, who has drawn increased scrutiny since Gatlin's positive test was

## Legal Stance May Pay Off For Merck

By Alex Berenson

THE NEW YORK TIMES

MERCK IS GAINING GROUND IN THE VIOXX LITIGATION

at least for the moment. On Wednesday, a California jury ruled that Merck's painkiller Vioxx did not cause the heart attack that Stewart Grossberg, who is now 71, had in September 2001. The case was Merck's second consecutive victory, following a win for the company in New Jersey last month.

Lawyers on both sides agree that Merck's victories, and its stated strategy of trying every case rather than settling any, are discouraging plaintiffs with weaker claims. Already, lawyers for plaintiffs have recently withdrawn more than 300 federal suits, mainly after finding that their clients could not produce adequate evidence that they took the drug.

Merck, however, still faces 14,000 federal and state suits over Vioxx, covering about 27,000 plaintiffs.

Merck's recent victories have helped propel its stock up 27 percent in the last two months.

Merck stock closed Thursday at \$41.59, up 56 cents, and less than 10 percent below the levels where it traded before Merck stopped selling Vioxx.

Merck withdrew Vioxx in September 2004, after a clinical trial showed that it caused heart attacks and strokes.

Since then, Merck has insisted that it behaved legally and that it will contest every suit brought by people who claim that they were injured after taking Vioxx.

## Whiff of Elvis or Tinge of Jealousy Sets Dog Ravaging Rare Bears

By Alan Cowell

THE NEW YORK TIMES

LONDON

For these teddy bears, it was no picnic.

On Tuesday night, at a tourist attraction called Wookey Hole Caves in western England, Barney, a Doberman pinscher guard dog, briefly went berserk, running amok among a collection of teddy bears, including a 1909 German Steiff bear called Mabel reputed to have belonged, once upon a time, to Elvis Presley.

"It could have been the scent of Elvis" that triggered the attack, said Daniel Medley, a spokesman for the 70-acre site near Wells in Somerset.

In any case, something was hounding Barney, and whatever it was, Barney chewed, tore, ripped and otherwise savaged about 100 teddy bears before his handler, Greg West, was able to restrain him.

"I still can't believe what happened," West said. Either it was a "rogue scent," he said, that "switched on Barney's deepest instincts, or it could have been jealousy. I was just stroking Mabel and saying what a nice little bear she was."

Photographs of Barney in British newspapers on Thursday showed the Doberman with what may or not be an expression of canine contrition, sitting on his haunches amid a detritus of stuffing, glass eyes, amber fur and other ursine innards. On the other hand, the expression may just have been saying, "Oops!"

## Clash Over Water Access Leaves 17 Dead in Sri Lanka

By Shimali Senanayake

THE NEW YORK TIMES

COLOMBO, SRI LANKA

At least 17 civilians were killed Thursday when shells hit four schools being used as shelters on the fourth day of clashes between Sri Lankan security forces and rebels in the eastern part of the country.

It was the highest number of civilian casualties since the latest fighting began, effectively reviving the two-decade civil war in Sri Lanka after four and a half years of a tenuous truce. On Wednesday, a civilian hospital in the eastern town of Muttur was hit by shelling, and four staff members were wounded.

There was no independent accounting of who was responsible for the strikes on the schools in the same town where the civilians had taken shelter. The government blamed the rebel Liberation Tigers of Tamil Eelam, who in turn blamed the military. Civilians have moved into several schools, churches and mosques seeking protection from the fighting.

The latest clashes are over the control of an irrigation channel near Muttur. The government accuses the rebels of blocking the flow of water from a reservoir that sits in rebel-held territory and depriving 15,000 families, most of whom are of the ethnic Sinhalese majority, of vital irrigation water. The rebels say that it is a protest measure by ethnic Tamil civilians who are demanding more water for their villages.

## Publishers Try to Sell Words With Moving Pictures

By Claudia H. Deutsch

THE NEW YORK TIMES

Book publishers are unlikely to concede that a picture is worth a thousand words. But many of them are hoping that some well-placed pictures can help sell their words.

Random House, Workman Publishing, Scholastic and other publishers are running the equivalent of movie trailers on the Internet, all aimed at drawing fresh audiences to their books. The videos are not confined to sites catering to avid readers; they are also appearing on sites as general as Yahoo and YouTube.

The idea has received a thumbs up from the Association of American Publishers. "People want to know what a book is about before they buy, and these videos are a great new way to tell them," said Patricia S. Schroeder, the association's president.

Perhaps more important, in an industry that is notorious for penny-pinching on marketing for all but the best-known authors, it is also a cheap way to tell people about books. Companies like Expanded Books offer to film and place book videos for as little as \$4,000. The Book Standard, an online publishing information service that is owned by VNU (the Dutch company that also owns Kirkus Reviews, Billboard and Adweek) has devised a contest in which film students compete to come up with book videos.

# OPINION

## Shivering, Not Sweating, in the Heat

*Time for the Energy Initiative to Address Conservation On Campus*

Rosa Cao

Al Gore must be feeling pretty vindicated this week, with scorching temperatures making themselves felt across the country. Here on campus, Facilities had to reduce cooling to parts of campus, and “energy production was strained all over the Institute” on Wednesday, according to an MIT news office article.

How ironic then, that I’ve spent many of my working hours in the last week shivering in a lab in Building 46 where frigid air comes blasting out of ceiling vents. It seems that I wasn’t alone; in an MIT News Office article published Wednesday, graduate student Jason Orcutt justified his purchase of hot coffee at Bosworth’s on a steamy day when outside temperatures reached 98 degrees, saying “my lab is about 65 degrees.”

Meanwhile, others complained that campus was insufficiently air-conditioned on a regular basis, and when Facilities decided to “shed [some of the] cooling load” on Wednesday, some were driven from their work. A student who works in Building 18 said that his chemistry lab was about 85 degrees on Wednesday morning (thereby explaining his lounging presence in the student center).

### Testing the temps

Two weeks ago, during a period of more typical summer weather (high 80s and humid), I took an admittedly unscientific survey of sites around campus. I found significant variation in the temperature, from a chilly 68 degrees (and surprisingly windy) in the corridor of Building 14N and the lobby outside 26-100, to 80 degrees in the heavily trafficked Infinite between Killian Court and Mass Ave.

What struck me most on my tour of campus with a pair of lab thermometers was how cold entryways and hallways were relative to the offices and laboratories where people presumably spent more time.

For example, the McGovern entrance to building 46, a cavernous three-story space with a glass wall on one side was still at 68 degrees during the partial shutdown on Wednesday. Worse, when I stood outside I could feel cold air streaming out through a half-centimeter crack between the doors and the wall. At the same time, the Zesiger Center gym was pushing a sweaty 80 degrees. It’s not clear which one was contributing more to productivity. And why are places like the entrance to Building 4 from Killian Court, and the elevated hallway connecting Buildings 12 and 24, so overheated in the winter?

### What is to be done?

Ideally, everyone would be able to regulate their local temperature for their needs and comfort. While this may not be possible in older buildings, where the whole building is on one thermostat, Peter Cooper, manager of sustainable engineering and utility planning in the Department of Facilities, confirmed that “MIT buildings built in the last ten years, or spaces that have undergone major renovation have that capability.” Furthermore, he said “the people who are paying for the energy would be supportive of ... individual control of each space, so that we could change spaces to people’s liking or program [the thermostats].”

Currently, the target temperature for campus buildings connected to the central cooling/heating system is 70 degrees, that being the temperature at which the fewest call to complain, according to Cooper. Over the years, people have pushed for lower temperatures in the summer, as the oil crisis of the 70s receded, and people became more accustomed to air conditioning at home.

If we sacrificed cooling to low traffic or non-

work areas even in high-priority buildings with animal facilities such as 66, maybe there would be more chilled water to go around for other labs, offices, and common spaces.

If work spaces really are colder than they need to be in the summer, or warmer than they need to be in the winter, then MIT could save energy as well as increase comfort and give people a better sense of control over their work environment.

I’m guessing that people would be less motivated to complain about the temperature in hallways and entrances than in their offices and labs. If we could raise the set temperature in low traffic areas in summer (and lower it in winter), there could be significant energy savings. Cooper said a common rule of thumb for winter was that a one-degree drop in the thermostat setting resulted in about three percent savings in energy.

Overnight settings are another opportunity to save (or waste) energy. “In the wintertime, we lower the temperature set point to 65 degrees, usually done on a whole building basis, and lower the heating. But in a research area, people are there into the night, so some of these temperature setbacks for the off-hours are overridden,” Cooper said. With better local control, people could only maintain the temperature in their working areas, letting a more conservative thermostat regulate the unoccupied parts of the building.

### Barriers to conservation

With a school full of engineers, it can’t be that hard to find a good way to program a smart thermostat. What’s more, MIT is an energy conscious campus (just look at Mr. Cooper’s title), especially since President Hockfield announced the new Energy Initiative — so why aren’t we doing more to conserve?

Cooper said that the main barrier to implementation was neither good will nor good ideas, but a lack of resources. “It’s a matter of allocating resources and capital.”

For now, “energy cost has not been a serious enough issue for MIT to force people to suffer in warmer or colder temperatures,” said Cooper, adding that he thinks a greater motivation for conservation would be because “people become concerned about global warming and the environment.”

Another reason may be the lack of immediate consequences. As Cooper elaborated: “One of the problems in research buildings is that the energy cost goes into the overhead rate, and all the departments use the same overhead rate for federal government sponsored research. It’s very socialized, so the [financial] benefit that you would get from running a more efficient lab wouldn’t come back to you personally at all.”

The lack of incentive extend to other areas as well. While most MIT dorms do not have central air conditioning, many students buy and install their own window units. As students pay a flat rate, MIT Housing pays for the electricity these units (which are considerably less efficient than the central chilled water system) consume. Similarly, vendors in Lobdell and in the student center such as LaVerde’s have large open coolers for cold drinks. While these units are notoriously inefficient compared to refrigerators with doors, the cost of electricity is included in the rent for these businesses, which then have little motivation to cut back.

Cooper added that a more sophisticated metering system would allow his department to better measure usage, and help them push for changes in consumption behavior. “It’s hard to engineer improvements without being able to record actual usage ... and it’s easier to get behavior changes if we can play that data back to people.” Unfortunately, “these [improvements] are hard to sell because they are not very sexy,

but they would make us able to do a better job in running the Institute more efficiently, and would have an environmental impact [by reducing] CO2 emissions.”

Asked for a right-here-right-now tip to save energy, Cooper asked that those who work in labs with fume hoods close the sashes. According to Professor Leon R. Glicksman from the Department of Architecture, a fume hood uses more energy than a home does on an annual basis — and leaving a sash open is like leaving the doors and windows open in winter and summer. Buildings with many hoods consume two or three times more energy than the campus average, at least partly due to the temperate air lost even when the hoods are not in active use.

Given current energy prices, and their uncertain future, it would be fiscally prudent to cut unnecessary expenditures of energy.

### A strong basis for further action

Significant steps have already been taken: thanks to a ten-year environmental initiative, MIT has some of the most efficient power generation in the area, with a natural gas fueled cogeneration plant providing steam, chilled water, and power to supply up to 80 percent of the campus’ needs. (The rest comes from NSTAR). A 20 megawatt gas turbine produces electricity, with waste heat from the process going to steam generation. In the winter, heaters for most of main campus use steam, while in the summer, the steam drives the machinery to produce chilled water for air conditioning. Cooling the air is actually more efficient than heating it; because the chilled water is generated through evaporation, to remove 100 btus of heat from the air, it takes only about 50 btus of steam.

Cooper provided rough estimates for resource use: over the course of a year 60 percent of energy use on campus is for heating and cooling, while 40 percent supplies electricity for computers, equipment, fans, etc.

MIT has claimed a commitment to tackling the world’s energy problems. It may not be as glamorous, but the Institute should demonstrate an equally strong commitment to providing an environment that is not only conducive to innovation and advancement of knowledge, but also socially and environmentally responsible.

Conservation is often perceived to be a matter of personal virtue. But a small adjustment by MIT can have a much greater effect, both in concrete and symbolic terms, than even the most heroic efforts of self-denial by an individual. So give Facilities the resources they need to maximize what we get from our burn.

Americans find conservation inconvenient, they tend to argue that technology will solve our energy and environmental woes before it becomes necessary to cut back on our consummatory vices. That kind of attitude is what led our federal government to opt out of the Kyoto accords, preferring to concentrate on more tax breaks for futuristic-sounding fuel cell research. Should MIT follow that example? Do we only care about innovation and not about practical application of existing remedies?

A better course would be for the Institute to continue to pursue many possible avenues towards solving a large and ever-growing challenge. We know there will probably not be a single breakthrough that will solve our energy problems. As a symbol of how things should be done, MIT should allocate some of those Energy Initiative funds to making a sound financial, social, and environmental investment in energy conservation on campus.

*Do you have an example of egregious energy waste in your area? Please send your examples to [rosa@ft.mit.edu](mailto:rosa@ft.mit.edu).*



### Chairman

Zachary Ozer '07

### Editor in Chief

Marie Y. Thibault '08

### Business Manager

Jeffrey Chang '08

### Managing Editor

Michael McGraw-Herdeg '08

### Executive Editor

Rosa Cao G

### NEWS STAFF

**Editors:** Kelley Rivoire '06, Marissa Vogt '06, Benjamin P. Gleitzman '09, Angeline Wang '09; **Staff:** Curt Fischer G, John A. Hawkinson '98, Brian Keegan '06, Jenny Zhang '06, Wasem S. Daher '07, Ray C. He '07, Tongyan Lin '07, Hanhan Wang '07, Michael Snella '08, Jiao Wang '08, Daniela Cako '09, Mei-Hsin Cheng '09, Gabriel Fouasnon '09, Hannah Hsieh '09, Diana Jue '09, Laura Nicholson '09, Yinuo Qian '09, Kirtana Raja '09, Yi Zhou '09; **Meteorologists:** Cegeon Chan G, Robert Korty G, Jon Moskaitis G, Michael J. Ring G, Roberto Rondanelli G, Brian H. Tang G, Tim Whitcomb G, Angela Zalucha G; **Police Log Compiler:** Marjan Rafat '06.

### PRODUCTION STAFF

**Editors:** Tiffany Dohzen '06, Austin Chu '08; **Associate Editor:** Rong Hu '08; **Staff:** Sie Hendrata Dharmawan G, Valery K. Brobby '08, Emily Ko '08.

### OPINION STAFF

**Editors:** Beckett W. Sterner '06, Aditya Kohli '09; **Staff:** Hector H. Hernandez G, Barun Singh G, Josh Levinger '07, Ruth Miller '07, Justin Wong '07, Ali S. Wyne '08, Krishna Gupta '09.

### SPORTS STAFF

**Editors:** Brian Chase '06, Travis Johnson '08; **Associate Editor:** Yong-yi Zhu '06; **Staff:** Chris Bettinger G, Caitlin Murray '06, Albert Ni '09.

### ARTS STAFF

**Editors:** Jacqueline O'Connor '06, Jillian Berry '08, Nivair H. Gabriel '08; **Staff:** Bogdan Fedele G, Andrew Guerra '06, Yao-Chung King '06, W. Victoria Lee '06, Kapil Amarnath '07, Tony Hwang '07, Andrew Lee '07, Nikhil S. Nadkarni '07, Mirat Shah '08, Natania Antler '09.

### PHOTOGRAPHY STAFF

**Editors:** Stephanie Lee '06, Christina Kang '08, Omari Stephens '08, Ricardo Ramirez '09; **Associate Editor:** Yun Wu '06; **Staff:** Melanie Miller G, Stanley Hu '00, Scott Johnston '03, Liang Hong '06, Grant Jordan '06, Edward Platt '06, Fred Gay '07, Dmitry Kashlev '07, Stephanie Dudzic '08, Scot Frank '08, Tiffany Iaconis '08, Nicole Koullisis '08, Mary-Irene Lang '08, David M. Templeton '08, Kenneth Yan '08, Connie Yee '08, Sally E. Peach '09, Eric D. Schmiedl '09, Yalu Wu '09.

### CAMPUS LIFE STAFF

**Editor:** Bill Andrews '05; **Staff:** Bruce Wu G, Kailas Narendran '01, Sarah Buckley '06, Nikhil S. Shenoy '06, Elizabeth Zakszewski '06, Victor Cabral '07; **Cartoonists:** John David Payne G, Emezie Okorafor '03, Juan Pablo Mendieta '06, Josie Sung '06, Jia Lou '07, Ash Turza '08.

### BUSINESS STAFF

**Advertising Managers:** Cokie Hu '08, Tai Ho Kang '08; **Operations Manager:** Jennifer Wong '07; **Staff:** Fan Yu '06, Julia Ye '09.

### TECHNOLOGY STAFF

**Director:** Shreyes Seshasai '08.

### EDITORS AT LARGE

**Contributing Editors:** Brian Hemond G, Kevin G. Der '06; **Senior Editors:** Keith J. Winstein G, Jina Kim '06, Lucy Li '06.

### ADVISORY BOARD

Paul E. Schindler, Jr. '74, V. Michael Bove '83, Barry Surman '84, Robert E. Malchman '85, Deborah A. Levinson '91, Jonathan Richmond PhD '91, Saul Blumenthal '98, Frank Dabek '00, Ryan Ochylski '01, Satwiksai Seshasai '01, Rima Arnaout '02, Daniel Ryan Bersak '02, Eric J. Cholankeril '02, Jordan Rubin '02, Nathan Collins SM '03, Akshay R. Patil '04, Jyoti Tibrewala '04, B. D. Colen.

### PRODUCTION STAFF FOR THIS ISSUE

**Editor:** Michael McGraw-Herdeg '08.

*The Tech* (ISSN 0148-9607) is published on Tuesdays and Fridays during the academic year (except during MIT vacations), Wednesdays during January, and monthly during the summer by The Tech, Room W20-483, 84 Massachusetts Avenue, Cambridge, Mass. 02139. Subscriptions are \$45.00 per year (third class) and \$105.00 (first class). **POSTMASTER:** Please send all address changes to our mailing address: The Tech, P.O. Box 397029, Cambridge, Mass. 02139-7029. **TELEPHONE:** Editorial: (617) 253-1541. Business: (617) 258-8324. Facsimile: (617) 258-8226. *Advertising, subscription, and typesetting rates available.* Entire contents © 2006 *The Tech*. Printed on recycled paper by Charles River Publishing.

## Opinion Policy

**Editorials** are the official opinion of *The Tech*. They are written by the editorial board, which consists of the chairman, editor in chief, managing editor, opinion editors, a senior editor, and an opinion staffer.

**Dissents** are the opinions of signed members of the editorial board choosing to publish their disagreement with the editorial.

**Letters to the editor, columns, and editorial cartoons** are written by individuals and represent the opinion of the author, not necessarily that of the newspaper. Electronic submissions are encouraged and should be sent to [letters@the-tech.mit.edu](mailto:letters@the-tech.mit.edu). Hard copy submissions should be addressed to *The Tech*, P.O. Box 397029, Cambridge, Mass. 02139-7029, or sent by interdepartmental mail to Room W20-483. All submissions are due by 4:30 p.m. two days before the date of publication.

Letters, columns, and cartoons must bear the authors’ signatures, addresses, and phone numbers. Unsigned letters will not be accepted.

*The Tech* reserves the right to edit or condense letters; shorter letters will be given higher priority. Once submitted, all letters become property of *The Tech*, and will not be returned. *The Tech* makes no commitment to publish all the letters received.

**Guest columns** are opinion articles submitted by members of the MIT or local community and have the author’s name in italics. Columns without italics are written by *Tech* staff.

## To Reach Us

*The Tech*’s telephone number is (617) 253-1541. E-mail is the easiest way to reach any member of our staff. If you are unsure whom to contact, send mail to [general@the-tech.mit.edu](mailto:general@the-tech.mit.edu), and it will be directed to the appropriate person. Please send press releases, requests for coverage, and information about errors that call for correction to [news@the-tech.mit.edu](mailto:news@the-tech.mit.edu). Letters to the editor should be sent to [letters@the-tech.mit.edu](mailto:letters@the-tech.mit.edu). *The Tech* can be found on the World Wide Web at <http://the-tech.mit.edu>.

## ARTS

## BOOK REVIEW

## 'Snakes on a Plane' Novel Packs a Slithering Punch

## Great Beach Read For Summer

By Michael McGraw-Herdeg

MANAGING EDITOR

*Snakes on a Plane*

By Christa Faust

416 pages, paperback

Published by Games Workshop 2006

The good news about Christa Faust's *Snakes on a Plane* (the book based on the soon to be released movie) is that it lives up to my expectations: about halfway through the book, there are snakes everywhere, and it is awesome.

The bad news is that my expectations for movie novelizations are rather low, and this book never exceeds them. The plot, of course, is patently silly. All the characters are lively and original, but few are particularly compelling. And though the action makes for an enjoyable read, there is little significance to the serpentine horror. In short, *Snakes on a Plane* is a perfect book to read on the beach, on a road trip, or (if you must) on a plane.

In today's skeptical world, readers expect stories to make sense; there can't just be airborne snakes without some justification. The plot of *Snakes on a Plane* proceeds thus: an orphaned Hawaiian surfer witnesses a brutal murder, flies under FBI protection to Los Angeles to testify against the gang boss responsible for the killing, and discovers en route that his plane is filled with snakes. There are also parallel storylines, in which the killer hangs out with a Triad gang elder and a herpetologist (someone who studies reptiles and amphibians) looks for antivenin.

Seemingly tempted by the possibility of exploring these side plots, the story suffers from the unfortunate occasional tendency to change

scenes just when things get interesting. On the whole, however, the main plot stands out pretty clearly; and if it isn't exactly Tolstoy, well, what were you expecting from a book called *Snakes on a Plane*?

What saves this book from obscurity is the overwhelming force of its action. With strong, solid language, Faust effectively describes a rampage of deadly snakes in a gripping fashion. Snakes attack through the plane's ventilation system, and soon they are "everywhere, sliding over every surface, coiling around corpses and dangling from the overhead compartments". The "stealthy, slithering movement and sibilant hiss of writhing snakes" suffuses the scene. Most impressively, one hapless character realizes too late that "they weren't just oxygen masks that dropped down from the ceiling." The book likewise successfully incorporates many witty, self-aware remarks, as when a character mentions the movie "Airplane," and when a character notes that the emergency preparedness sheet supplied free with every seat is silent on the topic of snake invasion.

Unfortunately, Faust's writing doesn't always connect. She gives verbose descriptions of everyday objects, and the first few chapters are full of excessive references to brand names; perhaps this is meant to be a commentary on the state of product placement in modern films, but it still seems a little odd when the evil gangster's Lincoln Navigator is described as having a "cool, luxurious interior".

Happily, the most egregious examples of failed writing are also the most entertaining. Choking as a result of snake venom is, according to one unlucky character's internal monologue, "like when you laugh while trying to drink a Dr Pepper and it goes up your nose, only a billion

times worse." In a similarly unpoetic moment, FBI agent Neville Flynn (in the film, Samuel L. Jackson) aptly notes that his situation "suck[s] about as badly as it [is] possible for something to suck." It's clear that Faust had fun writing this book, and it's equally fun to read.

Faust populates the plane with a veritable menagerie of characters, each with a background story and a physical description, to great success. It is in these characterizations that the writing of *Snakes on a Plane* truly shines. The inhabitants of South Pacific Air Flight 121 represent a cross-section of real people in contemporary America, and there's just a hint of mocking social commentary in Faust's choices. My favorites are the skateboarding champion "Chocodile" and his indie-rocker girlfriend; the germophobe rapper who can't shake hands, and the Chihuahua rescue activist who happens to be on the same flight as a spoiled, rich blonde girl with a Chihuahua in her purse. They're not all people that you'd like to hang out with - in fact, only a handful of them are more endearing than annoying - but they're interesting. Luckily for action-minded readers, the plane is carrying a light load, so Faust is done introducing the passengers after the first hundred pages.

Of course, all this is a setup designed to toy with the reader's emotions. When the snakes began their rampage, these characterizations made me feel the slightest bit of remorse about rooting for Team Reptile. What does it mean for a society when we're curiously intrigued by the thought of an airplane full of bloodthirsty snakes? I'm not sure, and Faust certainly doesn't explore the topic, but she does offer two other dubiously useful moral suggestions in the novel. The first is endemic to the survival horror genre: those who survive possess some trait the author deems valu-

able. In the case of *Snakes on a Plane*, that trait is an appreciation of others; those who behave unselfishly make it to Los Angeles alive. The champion martial artist develops humility when a flight attendant's novice kung fu against the snakes saves his life, and the stuck-up socialite decides to help others survive. Meanwhile, self-absorbed people are killed by venomous snakes. The misanthropist who throws a helpless Chihuahua to a python is doomed; so is a teenager with a vapid internal monologue; and so is the voluptuous woman who takes long vacations to cheat on her husband. In Faust's universe, caring about others is a survival trait. (Hating snakes is fine.)

The second and more sophisticated of the morals of *Snakes on a Plane* is that people should not irrationally fear snakes. Various characters repeat the information that the snakes aboard the plane are not inherently aggressive; all the fun of the book is caused by a pheromone, introduced by the same assassin who planted the snakes. Snakes themselves, the herpetologist tells us, are mostly harmless creatures undeserving of society's paranoia and hate. Near the very end of the book, the herpetologist laments the possibility that the "news stories alone would bring on a whole new wave of rattlesnake killing and mothers making their teens turn over beloved exotic pets." Though the defense of snakes' rights sounds utterly serious, in light of the savage, brutal, and thoroughly enjoyable snake attacks that litter the book, I'm thoroughly confused by the mixed message.

If you're looking for heartwarming character studies, scintillating plot twists, or ironic post-structuralist fiction, look elsewhere. If you'd just like to have a good time, read *Snakes on a Plane*.

## MOVIE REVIEW \*\*\*1/2

## The 'Clerks' Are Back with a Deep-Fried Passion

## Brilliantly Outrageous!

By Bogdan Fedeles

STAFF WRITER

*Clerks II*

Written and Directed by Kevin Smith

Starring: Brian O'Halloran, Jeff Anderson,

Rosario Dawson, Jennifer Schwalbach,

Jason Mewes, Kevin Smith

Rated R

Now Playing

"Today is the first day of the rest of our lives," said Dante Hicks to his friend, Randal Graves, in the movie "Clerks" (1994), as they contemplated their stodgy existence as store clerks for a suburban New Jersey mini-mart. Kevin Smith's first feature (both as director and writer), "Clerks," was hailed as one of the boldest comedies of the decade, winning multiple nominations and awards; it became a classic for many. And "Clerks" first introduced the world to the characters Jay and Silent Bob, who have since become a unique and hilarious backdrop for several of Smith's movies.

Although the original movie did not need a sequel, Kevin Smith decided to write, direct and produce the follow-up, "Clerks II," primarily to fulfill a promise to his friend Jason Mewes (who plays the character "Jay") under the condition that the latter give up drugs in real life. Luckily, unlike other mediocre sequels, "Clerks II" lives up to the expectations established by the original film.

The story picks up 10 years after the original movie, and the two protagonists, Dante (Brian O'Halloran) and Randal (Jeff Anderson), now in their mid-thirties, have to find a different job following an unfortunate fire that consumes the mini-mart. They become clerks at Mooby's, a fictitious local fast food chain resembling McDonalds. Although the venue is radically different from the original mini-mart, their attitude towards customers and life does not seem to have changed much. However, their friendship is put to test by Dante's imminent marriage to Emma (Jennifer Schwalbach, who is incidentally also Kevin Smith's wife), and his plan to leave New Jersey forever and settle in Florida.

The movie introduces two new characters: Elias (Trevor Fehrman), a dorky, religious, teenage clerk at Mooby's who becomes a prime target for Randal's racy jokes; and Becky (Rosario Dawson), the hot manager who gets involved in an unusually close friendship with Dante.

While there are new characters, "Clerks II" draws much of its inspiration from the first film,



THE WEINSTEIN COMPANY

## Becky Scott (Rosario Dawson) and Dante Hicks (Brian O'Halloran) sell fast food in "Clerks II."

as the plot is essentially an augmented retelling of the original movie. Excluding the initial transition and the coda, the entirety of the action takes place over the course of one day - the day before Dante is set to leave New Jersey forever with his fiancée, Emma. But what starts like an ordinary day at work quickly becomes a full-blown adventure, with Randal trying to throw the most memorable going-away party for Dante, who in turn tries to hide his uneasiness with the big turn his life is about to take.

Still, the overall arch of the plot is but a supporting frame which Kevin Smith fills with numerous satirical episodes aimed at criticizing almost every aspect of mundane life. The protagonists often engage in theorizing or philosophizing about diverse topics such as movies (with Star Wars vs. Lord of the Rings being a particularly intense debate), famous writers, Internet blogs, TV ads, sexuality, drugs, and last but not least, the Bible. The results are hilarious, but beware the R rating of the movie; most of the jokes are not for squeamish audiences, especially when the arguments escalate and fluids start flying.

As in his other movies, Kevin Smith exag-

gerates the profane element surrounding his characters in every sense of the word. Smith depicts them as living in hopeless misery, no less for being gregarious. Yet the sacred is eventually revealed in the midst of the profane, when redeeming values such as friendship and love prevail, in stark contrast with the mundane reality of their setting.

By contrast with the first "Clerks," which was darker and less obvious, "Clerks II" dares to depict a broader range of emotions by relying more on cinematographic techniques. While the pacing is brilliant, some of the scenes (the buddy-bonding episode or the dance montage) may strike the audience as overly cheesy and uncharacteristic of Kevin Smith. However, the intention is probably sarcastic, with the broad and inconsistent cinematography being a tool to mock the clichés of contemporary movies. An important (and obvious) detail to point out is that "Clerks II" is in color (the original was black and white). Since the color alone adds so much more liveliness to the characters, the whole movie is infused with the ironical contrast between the "evolved" appearance and the stagnant reality of the protagonists.

In addition to the inspired script and brilliant directing, the acting in "Clerks II" is also top notch. Brian O'Halloran and Jeff Anderson effortlessly resurrect their characters from the initial movie, making them even edgier than before, without over-acting. The supporting cast is also very convincing, especially Rosario Dawson in her portrayal of Becky, who is not only the woman mediator between Dante and Randal, but also their boss. Jason Mewes shines again as the frantic, perpetually stoned Jay, whereas Kevin Smith is hilarious as his enigmatic, quiet partner - silent Bob. The interaction of this dynamic duo with the other characters renews a metaphor from the previous movie: Jay and Silent Bob are the id and super-ego, watching over the ego of the movie, which is represented by the other characters. Their actions only incidentally affect the others, but often ends up giving them hope, and even, by the end of the movie, fortune.

I strongly recommend this movie, but only after you watch the first "Clerks". It will make you laugh really hard, but it may also make you wonder. A movie such as this is always a welcome rarity.

## FILM REVIEW \*\*

# “John Tucker Must Die” A Classic Teen Comedy

## Wait For the DVD

By Jillian Berry

ARTS EDITOR

“John Tucker Must Die”

Starring: Jesse Metcalfe, Brittany Snow, and Jenny McCarthy

Directed by: Betty Thomas

Rated PG-13

Now Playing

“John Tucker Must Die” is the story of four girls who attempt to bring down the coolest guy in school. In the film, Kate (Brittany Snow) has just moved to a new town, after yet another of her mother’s (Jenny McCarthy) disappointing relationships fails. In fact, her mother has so many failed relationships that Kate does not even bother to learn the men’s names; instead she calls them all Skip, since that’s what they do in the end. Not only does she move a lot, making it difficult to make new friends, but she is always overshadowed by her beautiful mother, and she thus feels invisible.

In the new town, Kate quickly learns about John Tucker (Jesse Metcalfe) – the most popular guy in school, a star basketball player, with looks that could easily qualify him to be an Abercrombie model. However, he is also a promiscuous dater, as Kate discovers early on. When she first meets him, he is simultaneously going out with Heather (Ashanti), the head cheerleader; Carrie (Arielle Kebbel), the straight A student who is the head of nearly every club; and Beth (Sophia Bush), the vegan animal rights activist. Soon after Kate moves into town, the three girls discover that they are not John Tucker’s only girlfriend. After finally becoming visible, Kate’s help is enlisted by the girls in order to bring down John Tucker. What follows is a series of plans the girls enact (without much success) to embarrass John Tucker. However, they soon realize what they really need is to break his heart, so they help Kate win him over so that she can destroy him.

### RESTAURANT REVIEW

## Petit Robert Bistro - New Location a Bit of a Squeeze

### Elegant Food Undermined by Noisy Atmosphere, Slow Service, and Cramped Space

By Marie Y. Thibault

STAFF WRITER

Petit Robert Bistro  
480 Columbus Ave.  
Boston, MA. 02215  
(617) 867-0600

The brick houses behind the Prudential Center are identical to each other, and unfortunately each has its own exceedingly steep set of front steps. Some passersby may wonder how many hips are broken each winter as a result, but no one can help admiring the elegance and quiet sophistication of the architecture and the neighborhood. This is the locale for Boston’s second Petit Robert Bistro, which opened this past July, more than a year after the first restaurant’s debut in Kenmore Square.

Judging from the crowd at the Columbus Avenue location on a recent Thursday night, the new restaurant is already at home. All of the outdoor tables were filled and the bar was lined with more, mostly middle-aged, customers waiting for a table. However, we were lucky enough not to have to wait very long. The walls of the dining room were painted pale yellow



DIYAH PERA—TWENTIETH CENTURY FOX

Carrie (Arielle Kebbel) uses a computer to plot revenge against John Tucker (Jesse Metcalfe, on screen).

During this process, Kate becomes the most popular girl in school, but she is not sure that she has not lost herself as she has become more visible.

Let’s be honest, this movie is not really award-worthy. Actually, it is not even as insightful or funny as teen classics like “Clueless,” “Mean Girls,” or “10 Things I Hate About You.” Instead, the movie is a simple teen comedy that focuses on girl power. Once you accept this, then the experience is actually fairly enjoyable. The movie gets right into the story, and it flows easily with the help of a good soundtrack. While “John Tucker Must Die” is completely unrealistic, especially when

we are told to believe that Brittany Snow could be invisible, it does not try to hide this fact. The jokes are still funny, and some of the plans the girls conceive are rather ingenious (I know I could never think of them).

The characters (like the movie) are formulaic, but the actors embrace the stereotypical nature of their roles. My particular favorite is Arielle Kebbel as Carrie. Maybe I just relate most to her, since she’s the closest to an MIT student, but she is forceful in her role without overacting the part. Even in her geekiest moments, you do not doubt that she could date the most wanted man in school. In addition, Jesse Metcalfe makes the movie work as he com-

pletely embodies John Tucker. He has an ease about him that can make the audience like and hate him at the same time. You never know if he is being genuine, or just acting genuine to suit his needs. At first I thought his slippery character was a flaw in his acting, but by the end of the movie I realized it is crucial to the character.

The movie has a (very) slight twist at the end, but that will probably not keep it from becoming one of the scores of forgotten teen movies. While I wouldn’t necessarily pay \$10 to see it in the theaters, I would recommend the DVD when it is released. Definitely watch it with a group of girlfriends, and let yourself (and your brain) just enjoy.

with a mirror lining one wall — perhaps in an attempt to convince the cramped diners that the room is twice as large. The effect was lost on us, though, as we were squeezed into a two-person table right next to another couple.

Appetizers range between \$5.50 and \$9.25, and include options like *Steak tartar classic with croutons and mussels marinières*. One exception to this price range is the *Pan-seared Hudson Valley foie gras topped with a baked rhubarb cinnamon reduction* which is a wallet-busting \$16.75. The soups and salads section includes *Soupe a l’oignon gratinée* for \$6.25, and a *Salad Niçoise with fresh pan-seared tuna*, which could have served nicely as a main course. Traditional French main dishes on the menu include *Bouillabaisse*, a seafood stew (\$19.25), and *Coq au vin* or chicken thigh (\$15.75).

Although we quickly decided what to order, we had to wait half an hour for our waiter to take our orders (at least he was smiling when doing so). Additionally, given that there were at least 25 other people in the small dining room, our attempts to have a conversation to pass the time were futile. The couple next to us was shouting, but after trying the same tactic, we decided the conversation just wasn’t worth the

strain to our vocal cords.

Once the waiter finally showed up, we were able to order the *Escargots bourguignon* appetizer (\$7.75). After another half hour, our snails showed up. They were supposed to be cooked in a garlic butter sauce, but there was nothing either garlicky nor buttery about them. Instead, they were a bit dry and almost ... earthy. Still, we found them enjoyable after having waited over an hour for any real food.

Another 30 minutes and a mini-loaf of bread later, our entrees made an appearance. By this time the crowd had thinned the slightest bit and the lights were dimmed (precisely on the stroke of 9!). The noise level is still a dull roar, but now only a few decibels louder than the typical clamor in a high school lunch room.

The *Duck confit and grilled duck magret with braised cabbage* (\$16.75) was quite delectable. The duck leg is tender, juicy, fall-off-the-bone delectable. The duck magret (duck breast) was nicely seasoned and lean, making it the perfect complement to the leg, which gets its savory taste from the melted fat. The *Native bluefish grilled with cream of corn and bacon* (\$13.75) was also very good. The bluefish had found a fitting flavor partner in bacon as the

bacon crust gave the fish a slightly salty and nutty taste. Even the braised cabbage side dish was mouth-watering, tasting almost like apple and not at all like cabbage.

The big question is whether or not the food was worth the wait or the lack of dining atmosphere. The answer is no, but it is worth the moderate prices. Although the service was slow, the staff were friendly, and our eternally-smiling waiter offered me some tips as he apologized for the long wait: Go to Petit Robert for lunch, since the prices are lower and a wide selection is still available. And if you’re planning a romantic dinner date, go before 7:30, when the crowds arrive.

I’ll add one more to his. Don’t choose Petit Robert for a first date. Go with someone you’re comfortable with, someone who is patient and accommodating. Otherwise, the shouting conversations will be too stressful and sitting quietly will only be awkward.

In case you’re wondering what we had for dessert — we didn’t stay to look at the menu. We turned our backs on the deafening crowd and my favorite French dessert — *Ile flottante*, meringue in custard — for a walk through the quiet neighborhood.

### FILM REVIEW \*\*\*

## Cast Shines in “Little Miss Sunshine”

### A Trip to the Beauty Pageant Has Never Been More Enjoyable

By Kapil Amarnath

STAFF WRITER

Little Miss Sunshine  
Starring: Steve Carrell,  
Toni Collette, and Greg Kinnear  
Directed by Jonathan Dayton  
and Valerie Faris  
Rated R  
Now Playing

“Little Miss Sunshine” is a film that combines two familiar genres — the dysfunctional family and the road trip — into one movie. The film stresses that the American road can free us from our personal burdens to the point of physical liberation. In this story, the end result is the family coming together. Though the screenplay is limiting in its predictability, the film is both funny and thought-provoking right through to its gut-busting finale.

In the initial dinner scene, the chaos that ensues when mother Sheryl (Toni Collette) tries to get everyone to dinner brilliantly mirrors this extended family’s divergent interests. There is Olive (Abigail Breslin), who wants to be a beauty queen at age seven. Uncle Frank (Steve Carrell) is a Proust scholar who wants the (male) graduate student of his dreams. Dad Richard (Greg Kinnear) is a motivational speaker who wants a book deal. Dwayne (Paul Dano) is a Nietzsche-worshipping teen who wants desperately to be a fighter pilot. Finally, Grandpa (Alan Arkin) just wants something other than fried chicken for dinner. As the awkward dinner table conversation heats up, a half-forgotten message on the phone says that Olive has won the right to compete in the Little Miss Sunshine beauty pageant. Problem is, it’s in California, and the plane tickets cost too much. By necessity, the whole family ends up going on a road trip to California,

although the only people who actually want to go are Olive and Grandpa.

As the trip progresses, each of the characters realizes, somewhat predictably, that she will never get what she wants, but that, in the end, the one thing everyone can do is to help Olive get to the one place she wants to go — the pageant.

Over the course of forced confinement in the car, eating at cheap restaurants, and dealing with the broken clutch of their VW bus, the family gradually comes together. However, unlike many family road trip movies, a second element emerges when Grandpa dies.

Arkin’s Grandpa is the exception to a cast of characters who often seem like artificial constructions rather than living feeling human beings. Initially, Grandpa comes off as a grizzled, nasty old man, intent on passing away his final years snorting heroine. But he becomes endearing in his love for Olive and his concern for the

family. When he dies, he helps the family unite even more, allowing them to discard their other troubles as they cope with the void left by his death.

First-time directors Valerie Faris and Jonathan Dayton do a solid job, offering beautiful shots of the southwest and including relevant songs like Sufjan Stevens’ “Chicago.” They are wise in deviating little from the solid screenplay by first-timer Michael Arndt. Each actor embodies and grounds his character, creating a greater connection with the audience. As a result, we laugh with the cast at their own follies and feel their lightness at the end of the film.

The screening was the most enjoyable time that I’ve experienced in a theater since Carrell’s last movie, “The 40-Year Old Virgin.” “Sunshine” seems a promising kick-off for the slate of fall movies.

August 4,  
2006

# COMICS

The  
Tech

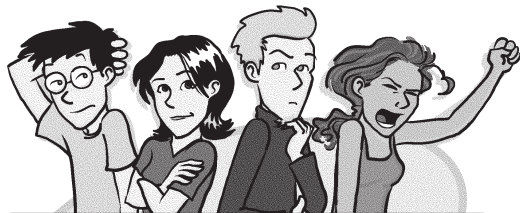
# FUN

Page  
7

# PAGES



PILED HIGHER AND  
DEEPER



## COLLEGIALITY DECISION CHART

Quick, your labmate has just asked you to help them with their research project. Should you lend a hand or pretend you have too much work to do?

START HERE

[www.phdcomics.com](http://www.phdcomics.com)

Did they help you move when you changed apartments?

Are they your friend?

IRRELEVANT

YES

Will it get you authorship in their paper?

NO

Will it make you look good in front of your advisor?

Is the quality of the work something you want your name on?

ALSO IRRELEVANT

YES

Have they been in grad school longer than you?

NO

Response: "Gee I wish I could help but I have a (class/paper/wedding invitations) to work on. Good luck, though."

Do his/her spouse and children depend on his graduation to subsist?

YES

Do you really want to do any work?

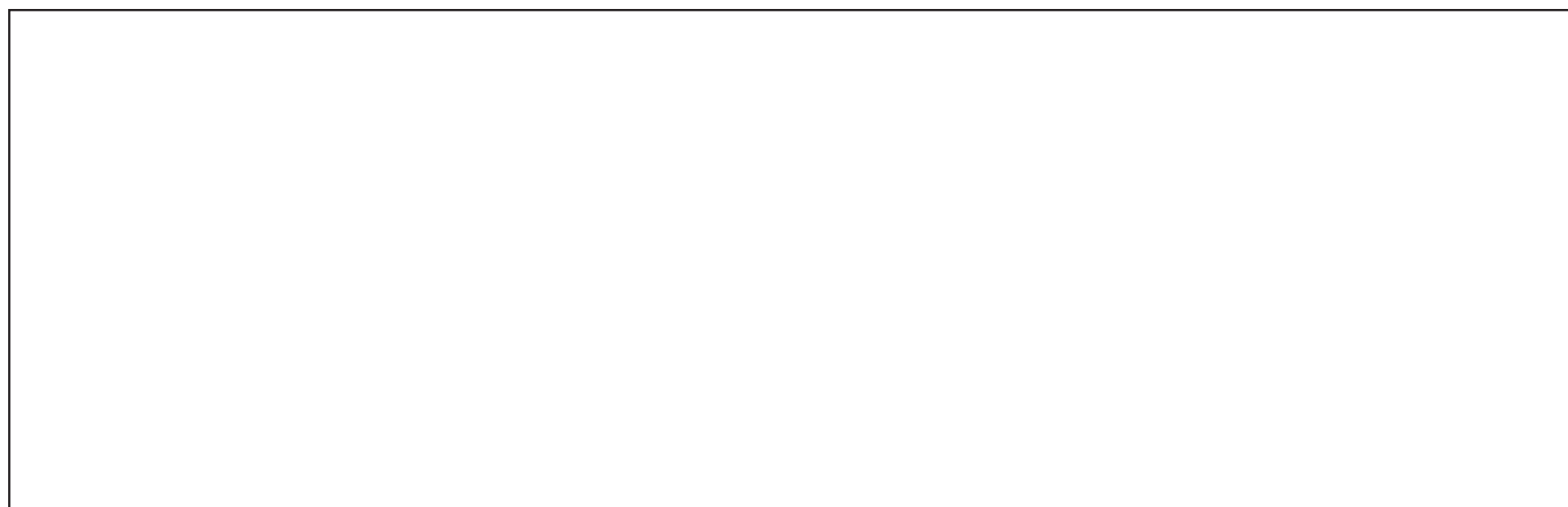
YES

Yeah right.

Response: "Oh, ok, I'll help you, but you owe me one!"

Helping you move is a debt payable in blood.

JORGE CHAM © 2005



**FoxTrot** by Bill Amend

**Dilbert®** by Scott Adams

# CAMPUS LIFE

## The Magic of SIGGRAPH 2006 International Computer Graphics Convention Comes to Boston

By Benjamin P. Gleitzman  
NEWS EDITOR

As a child I was captivated by Disney World. Even now, the offer of a world of magic is hard to resist. After attending SIGGRAPH 2006, the Special Interest Group on Graphics and Interactive Techniques, I decided that the self-proclaimed "happiest place on earth" has some tough competition.

SIGGRAPH, presented by the Association for Computing Machinery, is one of the largest conferences devoted to computer graphics in the world. Now in its 33rd year and one of 34 special interest groups presented by the ACM, SIGGRAPH 2006 combines art, design, and technology in a refreshingly energetic atmosphere. Open to the general public, SIGGRAPH 2006's return to Boston after numerous years in Los Angeles heralds a renewed atmosphere of innovation and progress in the New England area.

Over the course of five days of lectures, exhibits, and special presentations, thousands of people from around the world visited the Boston Convention Center to get a glimpse into the future of graphic technologies and to witness graphic design products already on the market.

### The Style of Technology

Blending the dynamic worlds of fashion and science, Monday night's fashion show "Un-

ravel" presented designs with a technological aspect in mind. Amid pulsing beats, video DJs mixed live footage of the crowd with enough cutting edge distortions and filters to make the audience's heads spin.

Designs showcased included clickSneaks, a pair of women's tennis shoes equipped with speakers that play back the sound of Stiletto heels with each step, Flame 5, a jacket that alerts the wearer through heat when an SMS message is received over a Bluetooth enabled phone, and the No-Contact Jacket, which thwarts attackers by sending 80,000 volts of low amperage current through the material. The Computer Hood by Joe Malia is a sound-proof full-face mask that links the wearer's face with a piece of technology (such as a computer monitor). Outsiders can touch the back of the hood to record messages which can be played back later, after the wearer emerges from the digital cocoon.

Accessories included Diana Eng's Mathematical Knits, a scarf with ruffles that fan out according to the Fibonacci sequence, and Kelly Dobson's ScreamBody, a portable device that relieves tension by both muffling and recording the user's screams of frustration throughout the day, allowing them to be played back later in a more appropriate setting.

### Peering Over the Tech Horizon

Back at the conference proper, the Emerg-

ing Technologies exhibit and corporate booths provide the main allure for the average visitor to SIGGRAPH. Thousands of square feet filled with cutting edge graphic design tools are enough to make any programmer's mouth water, and to put dollar signs in the eyes of corporate types. Big name companies such as ATI, NVIDIA, Adobe, and Pixar were in attendance to debut their newest commercially available graphic design creations. Niche companies such as Syflex, which specializes specifically in cloth simulation, also came to strut their stuff on the corporate floor.

More die-hard veterans of SIGGRAPH came for the in-depth lectures on computer graphics given by top individuals in the field offered throughout the week. Keynote speaker John Rohde, executive designer and vice president of Walt Disney Imagineering, addressed a crowd on Monday with a speech entitled "From Myth to Mountain: Insights Into Virtual Placemaking" which touched upon his work as lead designer of Disney's Animal Kingdom.

### Touchable Tech

The SIGGRAPH Emerging Technologies exhibit is where visitors can touch, feel, grab, and dance their way into the future of human-computer interaction. DigiWall enhances the basic climbing wall by providing games in the form of interactive lighted hand and foot holds connected to an array of sensors. The Forehead

Retina System, designed at the University of Tokyo, allows the user to experience tactile electrical feedback through the forehead to real objects in the environment. In addition to such exhibits by large companies and universities, Japanese high school students presented a ghost-buster style game where two players search for ghosts with a spotlight and back mounted vacuum cleaner.

Other exhibits presented vibrant holographic displays controlled through ingenious methods. A crowd favorite was the 16 foot long Multi-Touch Interaction Wall developed at New York University which senses multiple points of touch from numerous users. No additional input equipment is required since maps, tables, and games can be controlled with both hands and fingers on a rear-projected screen. Another exhibit created a real-time video mosaic of the observer using live video feeds from cable TV channels.

Among the exhibits presented by MIT's Tangible Media Group at the Media Lab were Topobo, a modular toy with kinetic memory capable of remembering actions taught by the user, I/O Brush, a painting tool that grabs snapshots from the physical world that can be used to draw in a digital environment, and AudioPad, an electronic music performance instrument that can combine music samples on the fly using objects on a tabletop surface.

### A World of Imagination

Beyond the buzzwords and corporate jargon, almost everyone can find something appealing at the convention. Adults wandering the floor of the Emerging Technologies exhibit can find their inner child along with the futuristic technologies. Children can watch their dreams come alive while interacting with a digital environment that can be touched and seen. While many of the exhibits are far from market release, the promise of future interactive technologies charges the convention with a tangible sense of anticipation. SIGGRAPH remains a glimpse into the future, a journey into the unexpected, and an escape from the commonplace.

## Imminent Collapse Laundering the Ugly Truth

By Bill Andrews  
CAMPUS LIFE EDITOR

As you may or may not have noticed, summer is drawing to a close, bringing the school year inexorably closer. Back in the proverbial day, by the end of summer most of us were almost glad: we got to buy new school supplies and the promise of a year of academic alacrity was filling our little heads. Some of us remain that way: my fiancée, for example, still gets a particular thrill out of buying just the right pens before the year begins. And even if we're not exactly overjoyed at the thought of spending yet another term here, still we are grateful for the changing scenery of the seasons, since we human beings crave change. The thing is, though, some things didn't change for me over the summer. The one constant since last term, amidst all the job and weather changes, has been the necessary evil of doing laundry.

For years (years!) I have dreaded doing laundry. In fact, my freshman year (approximately during the Carter administration) when friends from home would ask if it was really hard here I always said the same thing: "It's kinda hard, but the worst thing of all is doing the laundry." It's not that I'm averse to physical work or chores; unlike my 'everyone-in-my-family-is-an-engineer' friends, I come from a more modest household, where not doing chores meant I didn't get my allowance of \$3.50 a week. And it's not that I think it's beneath me to do laundry, since I willingly do so many things that are clearly beneath doing laundry (another column for another time). I simply don't like doing my laundry @mit.edu.

East Campus, for instance, makes it particularly tough. I lived on the fourth floor (41W) for a few years, meaning it always felt, quite literally, like I was descending into hell whenever I did laundry. Going down the stairs, the gigantic bag heavier with each step, I'd eventually find myself on the ground floor staring at that gaping maw, the narrow, dark passageway which led to the laundry room.

Saying a silent prayer, I would step down, deeper into the heat, into the steam of the EC basement, the random noises getting louder and louder in my ears until finally I stood before a laundry machine – a gleaming white slot machine, minus the slot. Would this one work, or would it break down five minutes after leaving, throwing my whole laundry schedule into confusion? Would it mangle my clothes, shrinking and discoloring with wild abandon? Would it call its accomplice in five minutes to come steal my clothes and make hundreds in the black market? You never knew what kind of trouble your dirty laundry could get you into.

Swiping my card (on the fortunate days when the reader wasn't broken), I'd hope beyond hope first that the washing machines liked me, then that the dryers hadn't heard anything bad about me either. After all, there's nothing quite so disgusting as reaching into what you expect to be nice, clean, dry clothes and feeling that sickly, sneeze-reminding dampness of an evil dryer's work. Finally, if all goes well and fortune had smiled upon me, the only thing left was the long, arduous trek back to my room. After the infernal conditions I'd been in, the rest was child's play, and I'd ascend the stairway to heaven, while listening to Led Zeppelin.

I'm sweating just from remembering it all. Well, that and the heat. Nowadays, I do my laundry at Senior House, and that's no picnic either. I have never lived on West Campus, nor have I ever investigated the laundry conditions over there, but my male's intuition tells me they're probably similar. Well, maybe a little better actually, since (unlike so many of my East Side compatriots) students there still actually do their laundry. Still, it's an unpleasant adventure wherever you are. Just one of the prices of civilization, I suppose, and in the end it's much better than practices were 100 years ago.

The thing is, though, you'd think we could improve things, especially being MIT and everything. We should have, like, little nanobots that go through and clean our clothes while we're wearing them. Or, perhaps, a new type of laser strong enough to burn up dirt and stains but gentle enough for our clothes to, you know, not catch fire. Now that would be a welcome change from my summer routine, something to really get excited about this term. Well, that and some cooler weather.

### Positions Available: Off-Campus

Stalcommopol Inc., a locally based public-service organization, is recruiting mature, motivated, outgoing students and (recent) graduates to work in a cooperative group setting on projects for improving community health and safety.

### Non-Technical

#### Research Assistants: Sexual Assault Prevention & Response

You must be willing to complete a 1-wk paid training program leading to certification as a Mass. Rape Crisis Counselor and to apply relevant skills on projects addressing issues of sexual assault on college campuses. A background in psychology, urban studies, or management science would be desirable. You must be available at least 6 hrs/wk during business hours. US citizenship is required.

Hours: 5-15/wk (adaptable to your schedule)

Salary: \$8.00/hr (training program)  
\$11.50-16.00/hr (project work)

### Technical

#### Webmaster

Maintain simple Dreamweaver-based site. Publish research findings and breaking news stories provided by our student associates and investigators. A talent for graphic design would be helpful. You must be available to post formatted documents within one day of submission.

Hours: 3/wk (essential) + 0-10/wk (optional)

Salary: \$23.00/hr

Contact: Marjan Rafat or James Herms

Address: 14 Lawrence St.

Cambridge, MA 02139

Phone: (408) 568-4195 or (617) 835-2922

Fax: (617) 547-0858

E-mail: marjan@mit.edu or jkherms@yahoo.com



# Deductible Changes For Insurance Plans

Health Plan, from Page 1

isfaction with the reach of the MIT Student Extended Insurance Plan. Tay is spending his summer in California, but the Extended Insurance Plan which he pays for only covers him at MIT. "I'm dissatisfied with the fact that the insurance does not extend out of MIT," he said. "We are not entitled to any of the plan except for emergency cases."

The new Qualified Student Health Insurance Program regulations also include a requirement that students under 18 who want to waive the MIT Student Extended Insurance Plan must include a signature of a parent or guardian on the waiver. MIT Health Plans will modify the waiver process so that minor students and their parents acknowledge the students' minor status and supply necessary signatures, Fuschetto said in an e-mail.

"It falls in line with everything," Esther Chung '09 said, referring to the requirement for minors to provide signatures on their waivers. "Why wasn't it required from the beginning? It just makes sense."

Another change is a \$250 deductible per calendar year for out-of-network services. The new regulations state that the total annual deductible, which is the amount a student would pay for covered services each year before the MIT Student Extended Insurance Plan begins to pay benefits,

## LaVerde's Will Retain Same Name, Hours, and Workers

LaVerde's, from Page 1

MIT. Christensen said he was confident of 660 Corporation's ability to provide a "smooth transition" because the company already has a presence on the MIT campus, and he has previously worked with Director of Campus Dining Richard D. Berlin III on the MacGregor location.

Though customers will notice few immediate changes, 660 Corporation hopes to eventually add additional area to the food service section, including more prep area for sandwiches. "I see the [length of the] lines there as problematic," Christensen said. He added that 660 Corporation is considering adding a fifth cash register. LaVerde's will continue to operate during the same hours. Lottery tickets will be temporarily unavailable until the store obtains a lottery license, which could take three to four weeks. Christensen said that the delay is due to the fact that the person or company applying for a lottery license must own the store.

LaVerde's started operations at MIT under a lease agreement with the Real Estate Office and does not fall under the jurisdiction of campus dining, though 660 Corporation, in its role operating MacGregor Convenience, does. Berlin said that he believes that the sale will give Campus Dining the opportunity to partner more closely with LaVerde's.

"660 corporation turned a troubled operation into a strong business," said Berlin, speaking about the MacGregor convenience store. "660 Corporation has a successful history of serving MIT," he continued. 660 Corporation took over the management of MacGregor Convenience two years ago after many companies had failed to make the store profitable. One of these companies was Bon Appétit, which provides catering services for MIT. "Different companies have different strengths," Berlin said.

### Students give opinions

Many students praised LaVerde's for offering a wide selection of goods. "LaVerde's has everything you need," said Michael Ghebrbrhan G, explaining that he was surprised to realize that the store carries

may not exceed \$250 for in-network and out-of-network services. The in-network is a group of doctors, hospitals, and other health care providers contracting with MIT Health Plans to provide price discounts and services for a high volume of patients. In-network services have no annual deductible.

Many changes were also made to in-network services, Fuschetto said. To accommodate the cap put on all deductibles regardless of network, in-network services which had deductibles will now have co-payments. The deductible and co-payment for benefit of short term physical therapy and occupational therapy visits has been replaced by a 20 percent coinsurance (the percentage of covered charges for which a student is liable) for visits one through 16 and 50 percent coinsurance for visits 17 through 24. This benefit is limited to 24 visits per year, which combines in-network and out-of-network short term rehabilitation visit limits.

The MIT Health Plan staff is currently in the process of notifying all affected students.

Details regarding the MIT Student Health Plan can be found in the MIT Student Health Plan Overview, which can be downloaded from <http://web.mit.edu/medical/pdf/student0607.pdf>. Students with questions about health insurance can contact the Student Health Plan Office at [stuplan@med.mit.edu](mailto:stuplan@med.mit.edu).

first aid supplies.

Other factors contributing to LaVerde's success are its location and its ability to accept TechCASH. "I come here because I can use my MIT card," said Sultan Alkusaier, who is on a summer program at MIT.

The most popular complaint was that some of LaVerde's items are too pricey, though many customers acknowledged that LaVerde's is a business and has to be profitable. "This s\*\*\* is ridiculous," said Ghebrbrhan, complaining about the four dollar price tag on the peanut butter and jelly sandwich.

Marissa Vogt contributed to the reporting of this story.

## Servers Will Filter E-mail For Spam

Spam, from Page 1

and process the e-mail, they then forward it on to an existing IS&T mail server.

If the Barracudas perform well, then IS&T may reconfigure them so that all mail goes through them, Schiller said.

IS&T first deployed these Barracuda servers a few weeks ago, for incoming e-mail to alum.mit.edu, MIT's alumni "E-mail Forwarding for Life" service. Schiller said that the expanded deployment for all incoming mail happened in "accelerated" fashion, because of a recent increase in spam with image attachments.

Both the Barracudas and IS&T's existing spam filtering make use of SpamAssassin software, but the Barracudas add additional software and enhancements to produce better results in some cases, Schiller said. SpamAssassin is open-source software, so it is easy for vendors to make enhancements to it and use it as the basis for their commercial products. One difference between the two spam filtering mechanisms is that IS&T's installation trains itself based on the mail in Spamscreen mailboxes of all users, and uses that training to filter everyone's e-mail. The Barracudas, by contrast, learn based on a single user's mailbox and apply that training only to that user; because of this, the learning and training feature of the Barracudas is currently disabled.

The spam score assigned to e-mail messages (visible as the X-Spam-Score header) is the higher of the two scores assigned by the Barracudas and the IS&T SpamAssassin system, Schiller said. IS&T has decided to not make the individual scores from the two systems available to users right now, Schiller said, to avoid affecting the way users do filtering.

Users can determine whether their mail went through one of the Barracuda servers by examining the Received headers and looking for the presence of "W92-130-BARRACUDA" or the phrase "Spam Firewall."

## Police Log

The following incidents were reported to the MIT or Cambridge Police between July 6 and August 2, 2006. This summary does not include incidents such as suspicious activity, false alarms, or medical shuttles.

- July 9:** W85 (540 Memorial Dr.), 6:45 p.m., domestic family problem.
- July 13:** Windsor Lot, 11:46 p.m., reporting party's vehicle was broken into.
- July 17:** E2 (70 Amherst St.), 11:48 p.m., Mikael Balderrama of 291 Alewife Brook Pwky, Somerville and Joao Depuna of 8 Buf-falo Dr Apt. 1, W. Roxbury arrested on outstanding warrants.
- July 18:** M24 (60 Rear Vassar St. #205), 12:50 p.m., suspicious package postmarked from Kuwait is received; Cambridge Bomb Tech Sgt. Steve Ahern on scene, package checks okay.
- July 18:** [location not disclosed], 2:37 p.m., report of sexual assault that took place July 4 at 11:50 p.m., case open.
- July 19:** NW12 (138 Albany St.), 8:46 p.m., graffiti, report of person(s) unknown spray painting the front of the building near the loading door, no suspects found in the area.
- July 20:** E23 (25 Carlton St.), 3:52 a.m., staff on the fourth floor of E25 reports male subject at rear door on plaza near E15 banging on door and ringing buzzer, units locate subject at Amherst and Carleton Streets, non-affiliate transported by pro ambulance.
- July 21:** M32 (32 Vassar St.), 9:49 a.m., motor vehicle struck pole in Stata garage three days prior.
- July 21:** NW86 (70 Pacific St. #384), 4:32 p.m., party reports fight with girlfriend who had left the area.
- July 22:** ATO (405 Memorial Dr.), 2:17 a.m., fight, report of individuals refusing to leave the house.
- July 22:** PBE (400 Memorial Dr.), 2:57 a.m., Sector 3 assisted the state police regarding a past assault on the 400 block of Memorial Dr.
- July 24:** SPE (518 Beacon St.), 8:15 p.m., report of loud drum sound coming through wall.
- July 25:** N10 Lot, 1:48 p.m., report of window on motor vehicle smashed.
- July 26:** WILG (355 Mass Ave.), 3:32 p.m., Roy Simpson of 402 Mass Ave., Cambridge arrested for outstanding warrants.
- July 28:** W35 (100 Vassar St.), 5:01 p.m., female child missing from the day camp area, child has been missing for about half an hour, child located at friend's house, all units clear.
- July 29:** W35 (100 Vassar St.), 9:55 p.m., all units dispatched to fight at W35, Claudia Dyer, 20 Kingman Rd., Somerville, MA, arrested for larceny under 250.
- Aug. 1:** East Lot, 7:41 a.m., reporting party states his vehicle was hit while in the parking lot yesterday.

### California Cryobank, Inc.

#### Donor Department

<http://www.cryobankdonors.com>

#### Reproductive Tissue Services

California Cryobank, a leading reproductive tissue bank, is the choice of fertility specialists worldwide.

[www.cryobank.com](http://www.cryobank.com)

#### Cord Blood Banking Services

Family Cord Blood Services provides cord blood banking services for families worldwide.

[www.familycordbloodservices.com](http://www.familycordbloodservices.com)



## The Council for the Arts at MIT

### 2006 - 2007 Grants Schedule

#### First Round (projects must begin on or after Thursday, November 23, 2006)

|                               |                            |
|-------------------------------|----------------------------|
| Application Deadline          | Friday, September 29, 2006 |
| Supporting Material Deadline  | Friday, October 13, 2006   |
| Site Visit & Committee Review | Thursday, November 9, 2006 |

#### Second Round (projects must begin on or after Thursday, March 15, 2007)

|                               |                          |
|-------------------------------|--------------------------|
| Application Deadline          | Friday, January 26, 2007 |
| Supporting Material Deadline  | Friday, February 9, 2007 |
| Site Visit & Committee Review | Thursday, March 1, 2007  |

#### Third Round (projects must begin on or after Thursday, May 17, 2007)

|                               |                        |
|-------------------------------|------------------------|
| Application Deadline          | Friday, April 6, 2007  |
| Supporting Material Deadline  | Friday, April 20, 2007 |
| Site Visit & Committee Review | Thursday, May 3, 2007  |

Grants Guidelines: <http://web.mit.edu/arts/do/funding/grantguide.html>

Application form: <http://web.mit.edu/arts/do/funding/grantform.html>

Clip 'n' save for your files! Welcome back!

# The Big Fix: Coast-to-Coast Without Coasting



In an effort to raise awareness of histiocytosis, a rare blood disease, a group of cyclists rode fixed-gear bicycles from Davis, CA to Boston Common, a 3,500 mile journey, in 28 days. See <http://www.fixhistio.org> for more information.

(Counterclockwise from left) Michael J. "mojo" Cosgrove, the main organizer of the so-called Big Fix, celebrates the end of the group's cross-country sojourn with a shout and a shared bottle of champagne.

A number of cyclists from the area, including MIT graduate students Nick C. Loomis and Paul S. Nerenberg, escort the riders to Boston Common on the final day of the ride.

A young family member joyfully copies a few of the riders by dumping water over her head.

Two Big Fix riders congratulate each other after their arrival.

Photography by Omari Stephens



## Comparing Class Demographics

| Class               | 2007  | 2008  | 2009  | 2010  |
|---------------------|-------|-------|-------|-------|
| Percentage Admitted | 16.4% | 15.9% | 14.3% | 13.3% |
| Percentage Enrolled | 58.8% | 64.9% | 66.6% | 66.7% |
| Male                | 55%   | 58%   | 53%   | 55%   |
| Female              | 45%   | 42%   | 47%   | 45%   |
| African American    | 6%    | 6%    | 6%    | 8%    |
| Asian American      | 28%   | 26%   | 24%   | 28%   |
| Caucasian           | 36%   | 35%   | 39%   | 37%   |
| Mexican American    | 7%    | 7%    | 5%    | 7%    |
| Native American     | 1%    | 2%    | 2%    | 1%    |
| Puerto Rican        | 3%    | 2%    | 2%    | 2%    |
| Other Hispanic      | 2%    | 3%    | 3%    | 3%    |
| Other/No Response   | 2%    | 13%   | 10%   | 6%    |
| International       | 7%    | 6%    | 10%   | 8%    |

The Tech wishes Director of Student Financial Aid Daniel Barkowitz a very happy birthday!



The Hayward Garage (Building E42) and Building E32—the former location of both the MIT Card Office and Housing Office—were scheduled to be demolished over the course of the past few weeks.

MICHAEL MCGRAW-HERDEG—THE TECH

## SafeRide Changes Implemented

A series of changes to SafeRide and shuttle schedules were instituted on Tuesday. All SafeRide routes will stop running 30 minutes earlier each night. The Northwest shuttle will now run all year on weekdays but will stop running 40 minutes earlier. Riders on the Northwest shuttle will also be able to request stops at Hotel@MIT. Finally, Edgerton will be the second stop on the Cambridge East SafeRide route.

### News Briefs

These particular changes were put into effect due in part to the efforts of a group of graduate students led by Graduate Student Council representative Natalija Z. Jovanovic G. Earlier this year, due to impending budget cuts, the Parking and Transportation Office proposed cutting off Northwest shuttle services after 2 p.m., reasoning that students served by this line could use the non-MIT, EZ Ride shuttle. According to Jovanovic, the proposal upset graduate students who felt the EZ Ride route did not provide enough stops on campus to serve as an effective Northwest substitute.

This group of graduate students created a new proposal, met with administration and solicited feedback from the undergraduate community. Jovanovic said that the current changes to SafeRide were "based on ridership numbers provided by the PTO," which showed that "a 30-minute reduction in SafeRide service would affect approximately 20 students per day."

Further changes will be implemented starting in September. During the school year, the Tech Shuttle will run every 10 minutes, instead of every 20, from 7:55 a.m. to 9:55 a.m. and the Northwest Shuttle will run every 10 minutes from 7:25 a.m. to 9:25 a.m.

Larry R. Brutti, operations manager at PTO, declined to comment due to lack of time.

Printable routes are available at <http://mit.edu/facilities/transportation/shuttles/>.

—Gabriel Fouasson

## Downed Wires Result in Campus Police Station Power Outage

The Campus Police Station lost power last Friday evening when the raised bed of a dump truck caught on and pulled down power lines, according to Captain David Carlson. Several buildings on the west end of campus — W59, W89, N42, NW61, NW62, W11, and N57 — also lost power. All of the buildings were on an NSTAR power grid, not an MIT power grid.

The power outage meant that people calling on a cellular phone needed to dial 911 instead of the campus police's phone number. They were then routed to the Massachusetts State Police in Framingham, MA and on to either the Cambridge Police Department or the campus police. This did not cause any problems for anybody, Carlson said, though being routed to different departments did mean a delay.

Normally the police station's diesel-fueled emergency generator would kick on in the case of a power outage. However, last Friday there was a computer programming error that prevented it from turning on during the power outage. The generator had been tested during drills and had worked, Carlson said. The generator has since been reprogrammed, he said.

Undergraduate students were notified of the outage in an e-mail from Undergraduate Association President Andrew T. Lukmann '07. Director of Utilities Randall Preston said that during normal hours an operations center would e-mail department officers to notify them of any emergencies or outages. However, he said, this alert system becomes harder to maintain outside of normal work hours although the operations center is staffed around-the-clock.

Carlson did not know if faculty, staff, or graduate students were notified about last Friday's outage. He said that a possible alternative or complement to e-mail alerts may be a notification on MIT's home Web page.

—Marie Y. Thibault

## Big Jimmy Scholarship Exceeds \$50K

The James ("Big Jimmy") E. Roberts Sr. Memorial Scholarship Fund, named for the East Campus and Senior House security guard who passed away in 2005, has met its goal of \$50,000. The now-sustainable scholarship will be given preferentially to East Campus and Senior House residents, provided that there is a financially eligible candidate from one of the two dorms.

"The kids at MIT did a wonderful job in selling and raising money," said Kim Roberts Beaudoin, Roberts' daughter, in an e-mail. A mural was created in Roberts' honor at the Stata Amphitheater in May.

Since Roberts' death, residents of the two dormitories have worked to raise money for the scholarship, which will be distributed through the MIT Financial Services Office. Students have sold hot dogs and "Women of The East Side" calendars to support the fund. Additionally, money collected at this year's Steer Roast was donated to the Jimmy Fund.

—Benjamin P. Gleitzman

## MITPAY Error Forces Self-Calculated Payment

Student account information omitted anticipated financial aid awards when the statements were posted to MITPAY in July, forcing students and parents to individually calculate the amount owed to MIT by August 1. MITPAY is an electronic billing and payment system accessible to students and authorized users, including parents.

Director of Financial Aid Daniel Barkowitz said that the error was due to a computer glitch which was resolved within a day. He said that the online statements could not be adjusted once the bills had been posted, but that Student Financial Services assisted students and parents in calculating the amount owed. "Our phone volume was very busy after [the error]," Barkowitz said.

A statement on MITPAY's message board directed students to WebSIS, MIT's student information system, to determine the actual amount due. It also suggested that students and parents read their paper award letter sent by mail to determine the expected amount of aid.

Because the due date for the payments was August 1, Barkowitz said that he does not yet know how many students may have accidentally paid the incorrect amount. However, he said that if students find that has happened, MIT "will be sympathetic."

—Marissa Vogt

## Admissions Releases Detailed Look at Class of 2010

Roughly a month before their arrival on campus, statistics on the incoming class of 2010 students is available. This year's class is 55 percent male and 45% female and from every state except for South Dakota, according to a blog maintained by Associate Director of Admissions Matthew L. McGann '00. McGann said that admissions statistics for the past several years demonstrate "extremely competitive admissions rates" and continued increases in the yield rate. Yield rates for the class of 2007 were 58.8 percent and have increased steadily to 66.7 percent for the class of 2010. This pattern is "alot about the number of students applying and the number of schools they are applying to," said McGann. Likewise, the percentage of students admitted has decreased, with a 16.4 percent admittance rate for the class of 2007 and a 13.3 percent admittance rate for the class of 2010.

For a more complete list of statistics, please see the table on page 10.

—Marie Y. Thibault

## Dunkin' Donuts Construction To Begin in a Week

Construction on the new Dunkin' Donuts in the Student Center will start "in a week or so," according to Richard D. Berlin III, director of campus dining. The construction, which was originally expected to begin in July, should be finished by the end of August. Representatives from Alpine Bagels, Dunkin' Donuts, the MIT Department of Facilities, Dining Office, and Card Office met this past Monday to finalize design plans. Alpine Bagels will be replaced with a Dunkin' Donuts and there will be some changes to the Cambridge Grill as well, in order to make room for the Dunkin' Donuts. The Cambridge Grill is may also undergo changes that will speed up its operations and service, Berlin said. For example, grill customers currently have to fill out a paper form when placing an order, but may soon be able to place their order verbally.

In the case that the construction is not completed by the time classes start, Dunkin' Donuts will operate a kiosk with its more popular items in the dining area of the restaurant.

Drawings of the construction plans have been sent to the city as part of an application for a construction permit. A go-ahead from the city should come sometime soon, Berlin said.

—Marie Y. Thibault

## Sexuality Health Educator Stuart Leaving MIT

After a five year stay at MIT, the Institute's only sexuality health educator Laura A. Stuart has decided to transfer to the University of Wisconsin-Milwaukee to work as a sexuality health educator there. "I decided to move since I wanted to work somewhere closer to Chicago where my family is living," Stuart explained.

MIT is currently looking for Stuart's replacement. "There wasn't a sexuality health educator at MIT before I came," Stuart said. "It is very important to have such programs on campus, and I feel as if I made a difference."

Stuart arrived at MIT in November 2001. Along with being a health educator, Stuart was also a faculty advisor for Sigma Kappa and Third East beginning in 2004 and was a supporter of MIT Panhel. She co-advised two seminars: "Geek Girls, Computer Chicks" and "Sex and the Institute," the second of which was featured on CNN.

—Harsha Wasalathanthri

# Allegations Result In Faculty Investigation

Tonegawa, from Page 1

and attracting exceptional women can require novel approaches and special commitment by the faculty and administration."

Tonegawa was unavailable for comment but released a statement to the *Globe* two weeks ago, saying that he welcomed the committee's efforts to strengthen the relationship between the neuroscience entities at MIT.

"I am absolutely certain that I acted entirely appropriately at all times regarding the candidacy of Ms. Karpova," his statement, as published in the *Globe*, said. "I did nothing to interfere with the offer she received from the McGovern Institute. Ms. Karpova asked me to serve as her mentor and to collaborate in research if she were to join the McGovern Institute faculty. Because of my responsibilities as director of the Picower Institute and other factors, I felt I could not agree to her request."

### E-mails offer further insight

The latest documents that have been made public are a series of confidential e-mails between Tonegawa and Karpova written in May, which were obtained by the *Globe*. (<http://www.boston.com/news/daily/27/MITmail2.doc>) The e-mails show that Karpova, who had just completed a postdoctoral fellowship and was applying for her first faculty position, had considered MIT to be her top choice but was disheartened when Tonegawa described the problems that would arise because of their similar research interests and that "unpleasant competition will be unavoidable." Tonegawa, in the e-mails, while praising Karpova and saying that he had grown fond of her, also described the "uneasy atmosphere between McGovern and Picower."

"Many Picower Institute faculty members are very upset about the way this recruitment process was bulldozed," Tonegawa wrote in one e-mail. "These Picower people are seriously concerned that your arrival under the conditions will intensify the competition and ill feelings between the two institutes. These concerns are in fact shared by a substantial number of other members of the Biology Department."

Interestingly, many faculty members in the neuroscience departments do not share Tonegawa's opinions on the relationship between the two research centers. Both Robert Desimone, director of McGovern, and Mriganka Sur, Brain and Cognitive Sciences Department head and member of Picower, feel that the relationship between the research centers is a collaborative one and that faculty members work together quite a bit. Sur also said that there is no competition for space, as the new building was designed so that the three neuroscience entities — McGovern, Picower, and the BCS Department — could coexist.

An important factor in recruitment, Sur said, is to have consensus within the faculty on a candidate.

According to the *Globe*, Karpova declined MIT's job offer on June 24 in an e-mail sent to the Dean of Science Robert J. Silbey and other MIT officials. The copy obtained by the *Globe* was included in a complaint to Hockfield from Stanford neuroscience professor Ben A. Barres '76. Barres had heard Karpova's story during her visit to Stanford, a school that was also

interested in hiring her.

"I wanted very much to come to MIT," she wrote in the e-mail, as published in the *Globe*. "However, the strong resistance to my recruitment by Dr. Tonegawa has convinced me that I could not develop my scientific career at MIT in the kind of a nurturing atmosphere that I and the young people joining my lab would need in order to succeed."

In his letter, Barres said that Silbey also discouraged Karpova from coming to MIT. In a *Globe* article, Silbey denied that claim. Silbey declined to comment to *The Tech*.

On July 17, upon her return from traveling, Hockfield responded to the June 30 letter and thanked the professors for bringing the issue forward in such a "positive and productive way." Hockfield wrote in her letter that MIT has reached out to Karpova "to apologize for any misunderstanding during the recruitment process that might have made her question MIT's commitment to young faculty."

Hockfield also called for the creation of the faculty committee to investigate the incident and the overall structure of the neuroscience programs.

"We are disappointed," Provost L. Rafael Reif said, referring specifically to the administration's reaction to the Karpova situation. "MIT has made a significant commitment to neuroscience, which we believe is a tremendously exciting field with enormous promise that can be realized at MIT. I have confidence that we will learn from this situation, and that we will come out of it considerably stronger."

Karpova declined to comment on the current situation but said in an e-mail that she has since accepted an offer to run a lab at Janelia Farm, which was recently created by the Howard Hughes Medical Institute. She said that she is excited about the "unprecedented opportunity to just focus on science" and "will have a lot of fun being in a highly collaborative environment."

### Faculty committee to investigate

The investigation into faculty hiring practices within MIT's neuroscience programs is currently underway, a few weeks after allegations were made against a prominent MIT professor regarding his actions during the university's failed recruitment of a young female scientist.

The faculty committee, convened by Reif on July 18 to conduct the investigation, will use the faculty search and recruitment processes, in this specific case and in general, "as a window into underlying tensions among the neuroscience entities at MIT," Reif said in an e-mail. According to Reif, the faculty members chosen to be on the committee are all "highly respected members of the MIT community" who are not members of either the Biology or BCS Departments. The faculty members also have experience in hiring faculty and have managed interdisciplinary research programs, Reif said.

According to committee chair Jacqueline N. Hewitt PhD '86, director of the Center for Space Research, the structure of the neuroscience programs will be examined, as well as the way interdisciplinary work is conducted between the departments and research centers. A combination of documents and interviews with faculty, researchers, and the people involved in this specific recruitment case will be used to help "fill in some of the gaps."

Hewitt said she hopes that the committee will complete its fact-finding work by October, at which point the provost will use the acquired information to make recommendations to improve collaboration in the neurosciences. According to Hewitt, whether Karpova chooses to be a part of the committee's investigation into these events is her choice.

"This issue has broad significance because the most important intellectual challenges of our time call for interdisciplinary approaches," Hockfield said in a July 18 press release.

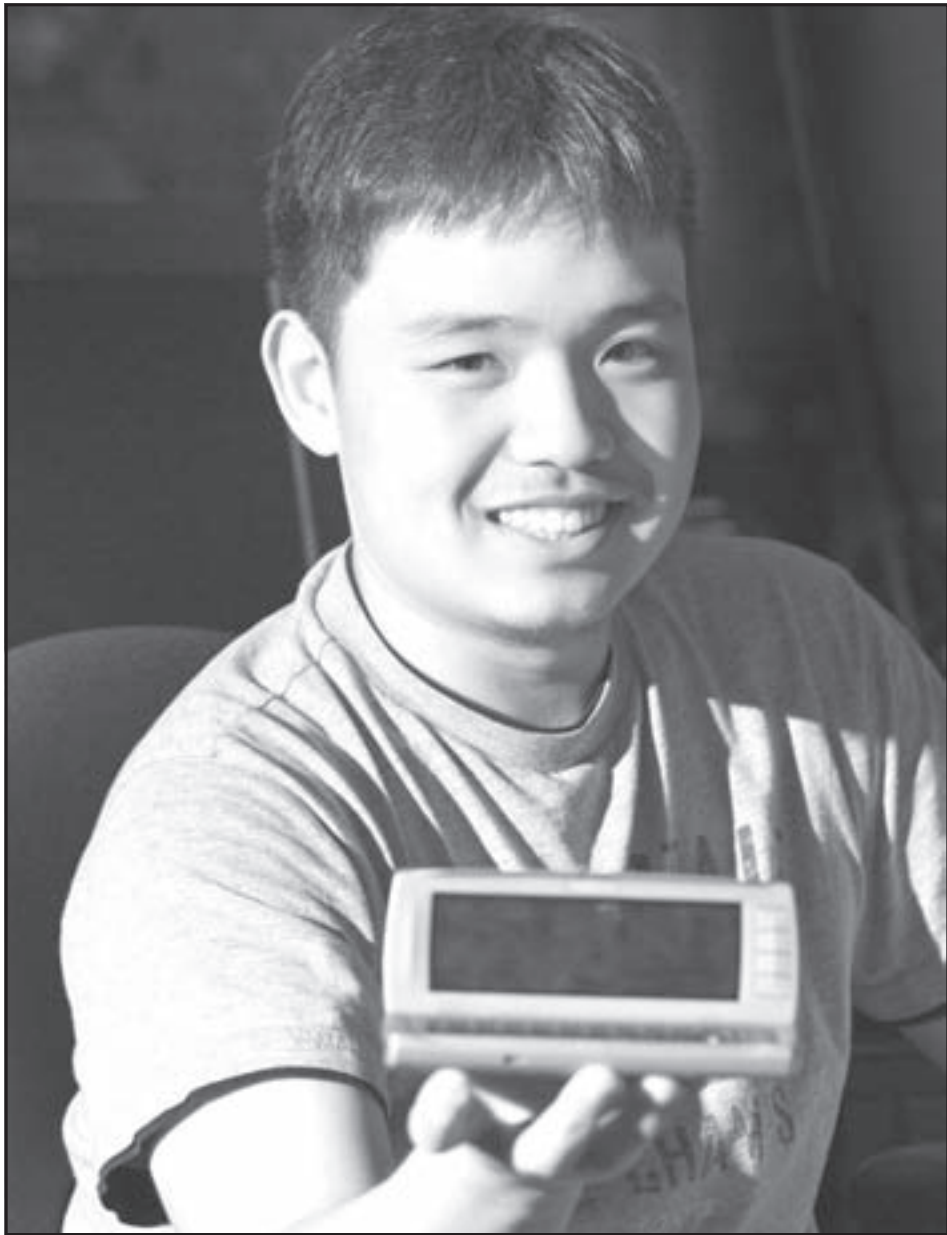
### Solution to Crossword

from page 7

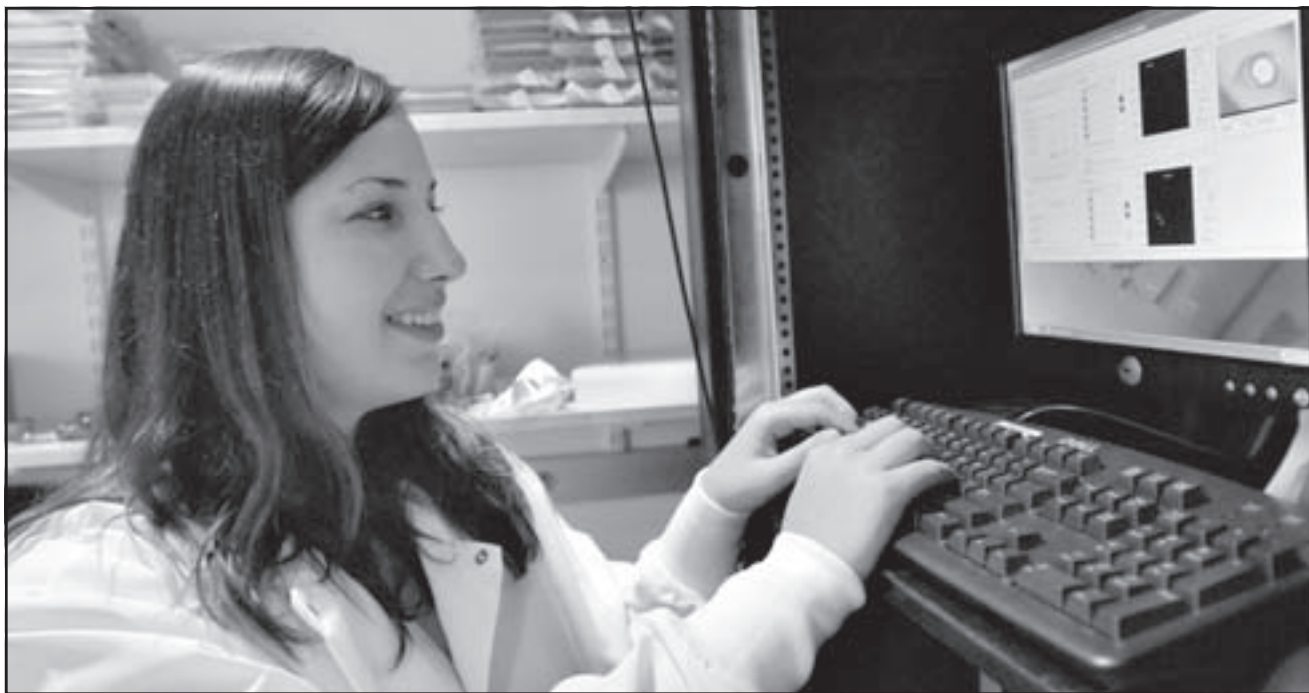
|   |   |   |   |   |   |   |   |   |   |   |   |   |   |   |
|---|---|---|---|---|---|---|---|---|---|---|---|---|---|---|
| B | E | F | O | R | E | H | A | D | V | A | M | P |   |   |
| O | V | U | L | A | R | O | L | E | A | B | E | L |   |   |
| P | A | R | A | T | R | O | O | P | S | C | U | T | E |   |
|   |   |   |   |   |   |   |   |   |   |   |   |   |   |   |
| A | S | P | F | R | A | N | K | S | I | N | A | T | R | A |
|   |   |   |   |   |   |   |   |   |   |   |   |   |   |   |
| D | I | R | E | C | T | O | B | J | E | C | T |   |   |   |
|   |   |   |   |   |   |   |   |   |   |   |   |   |   |   |
| U | N | I | T | E |   | A | O | N | E | R | S | T |   |   |
| L | A | M | A | B | O | M | B | S | H | O | P | E |   |   |
| T | I | E | B | U | L | B | H | E | L | I | X |   |   |   |
|   |   |   |   |   |   |   |   |   |   |   |   |   |   |   |
| C | A | N | D | I | D | C | A | M | E | R | A |   |   |   |
| M | O | D | E | L | R | O | N | X | E | S |   |   |   |   |
|   |   |   |   |   |   |   |   |   |   |   |   |   |   |   |
| O | P | E | N | M | A | R | R | I | A | G | E |   |   |   |
| L | I | L | T | R | H | A | P | S | O | D | I | Z | E |   |
| A | N | T | E | M | E | N | T | U | N | N | E | L |   |   |
| R | E | A | R | Y | A | K | S | T | A | K | E | D |   |   |

# MIT Abounds With UROP Students

Below: JongMoon Kim '09 works with smart phones in the Viral Communications center of the Media Lab. Kim is working on an implementation of "VidTorrent," a developmental peer-to-peer network. While the popular BitTorrent network is limited to PCs, VidTorrent would allow smart phones to share videos amongst themselves. He says the technology could be expanded to mobile applications and video streaming. Kim's day-to-day activities involve coding and hacking the software on the smart phones.



Above: Jenny Liu '09 is taking the path less traveled for a Course VI major by pursuing a Course IX summer UROP. She engages in learning and memory studies with rats, particularly using water mazes. In the Morris Water Maze, Liu studies how the rats interact with a hidden platform submerged in an opaque liquid, with and without visual clues. Liu is also responsible for raising and nurturing some of the rats in her lab. Outside of lab, she can be found playing Ultimate Frisbee and recreational tennis.

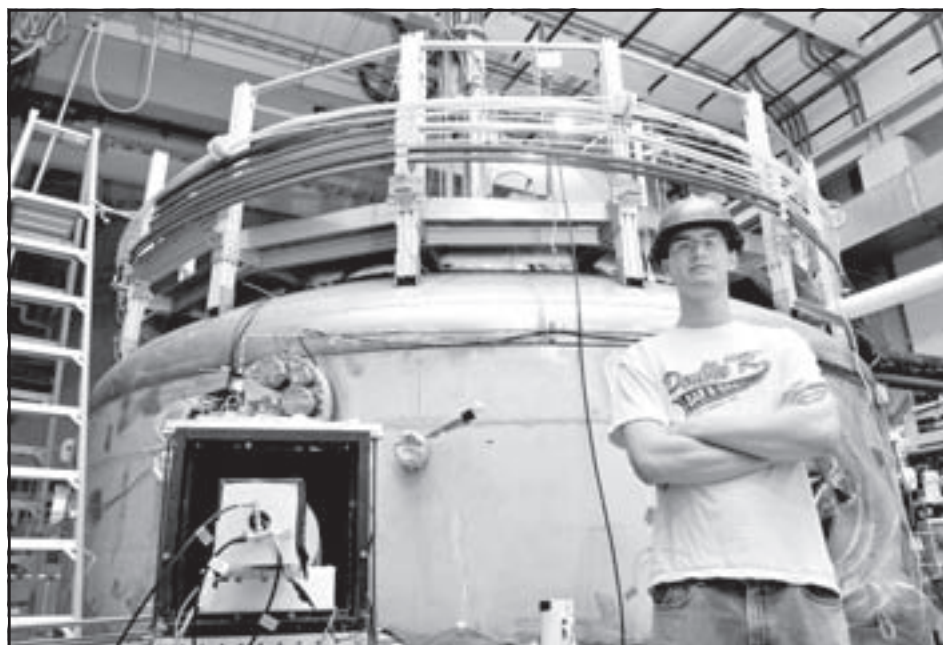


This summer, 825 students, slightly over 20 percent of all undergraduates, participated in an Undergraduate Research Opportunities Program, according to the UROP office. This figure does not include those staying in the area for private jobs and internships, or other campus employment. With such a large contingent of students remaining in the Boston area, the campus is far from dead—even through the heat of summer. Five undergraduates from a range of academic departments were interviewed about their UROP and recreational activities at the Institute during the summer of 2006.

*Photography by David Templeton*

Left: Helene G. Moorman '08 has been working in the Miller Lab (Course IX) since June. Moorman works everyday with a female Rhesus Macaque monkey named Samantha, making sure she is kept healthy and clean, while performing visual studies with her during the day. Here, Moorman operates a computer program which is interacting with the monkey in an isolated space. Helene only spends her mornings in this lab, as she has a second UROP she does during the afternoons. When she's not in lab, Helene is probably playing pool at East Campus.

Below: Dugan K. Hayes '08 does inorganic chemistry in the Lippard Lab, where he has worked since last summer. While he has spent the majority of his UROP on synthetic work, he has recently begun the characterization of his synthates using fluorescent scaffolds. Here, he is preparing a sample for the fluorescence detector. On his off days, Dugan has been swimming laps in the Zesiger center pool.



Above: Ryan M. Bergmann '08 is seen standing in front of the vessel he and other experimenters use in the Levitated Dipole Experiment at the Plasma Science and Fusion Center. Ryan has been working in the lab since early June, and has spent most of his time developing diagnostics, including "removing the noise from a laser alignment system." Recently he has written scripts for the automated positioning of measurement probes into the experiment vessel. Ryan spends his free time relaxing after a hard day's work.