

## Expenses Difficult For Grads

By Gireeja Ranade

Despite efforts by the MIT administration to buffer the effects of a 60 percent health insurance hike and rising rents, graduate students continue to feel the pinch.

"Extra costs are all piling up," said Stefan D'Heedene G. "My rent went up by about \$50 per month. For my finances I felt it necessary to have a summer job and freelance after hours," he said.

Graduate student rents increased by an average of 6 percent this year. However, rent for some apartments increased by much more because of a realignment in rent based on the quality of facilities. The realignment, while neutral overall, caused a sharp jump in rents in several dormitories.

"Food is really expensive," said Anand Rajagopal G. Costs have "gotten a little bit better from last year, but it's still very expensive ... Money which you could spend having fun and partying has gone down" compared to before, he said.

Moreover, in the current budget crunch at MIT, it looks like costs will only continue to rise compared to income.

"Given the financial situation MIT is in, I can't expect that there will be any dramatic increases in stipend levels this year," said Dean for Graduate Students Isaac M. Colbert. "We are looking at every aspect for how we can make it possible for students to live and survive at MIT," he said.

MIT cannot do much for married graduate students, Colbert said, since stipend increases only cover the costs for the student, and not his or her family.

### Health premium rise a surprise

Last year, "no one expected that the health insurance premium would increase as much as it did," Colbert said.

He said that one critical factor in the rise in premiums was that MIT health insurance serves a relatively small population, as opposed to other health insurance programs that serve tens of thousands of people, but still have a lot of the same fixed costs.

In addition, MIT Medical had been running a surplus in its budget for several years and five years ago decided to increase services. The

Grad, Page 9

## Star Market To Consider Accepting Card

By Kathy Lin  
ASSOCIATE NEWS EDITOR

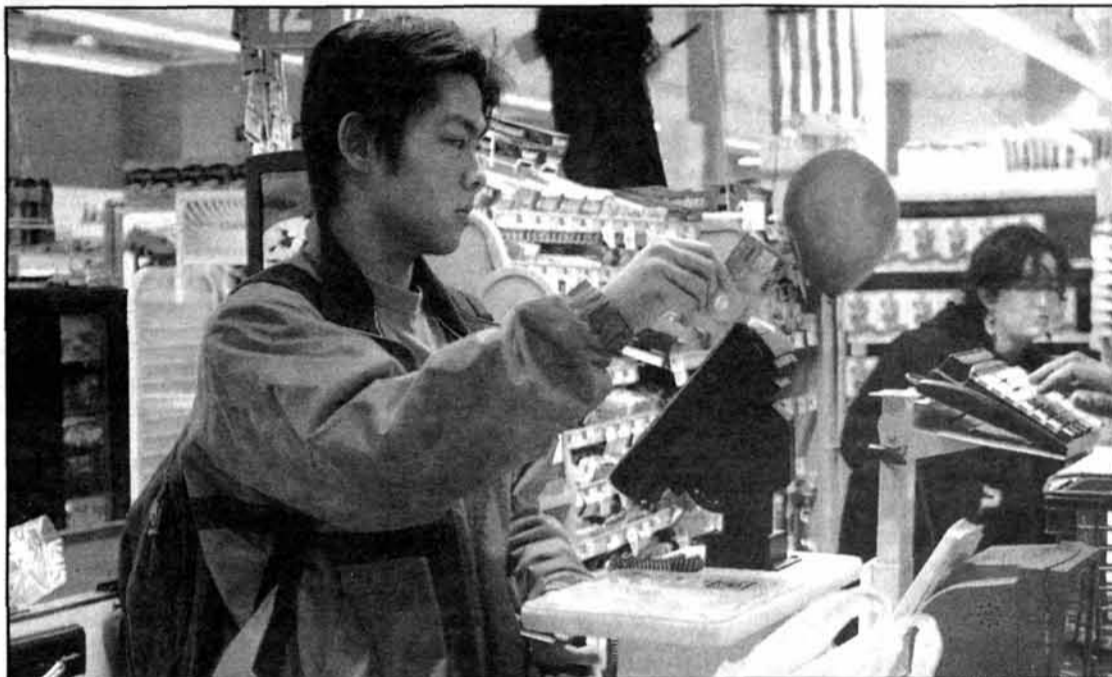
Star Market has received a proposal from MIT Enterprise Services to accept TechCash via the MIT card. In addition, a local restaurant is now accepting TechCash, and another will be accepting it in the near future.

University Park Star Market Manager Marty O'Halloran said that he is aware that a proposal was submitted by MIT, but only recently began working at Star Market and has not had a chance to look at it.

Passport restaurant, located at the Sidney-Pacific graduate residence, has been accepting TechCash for about eight months now, said Restaurant Manager Gregory Serino. Polcari's, a new restaurant in Tech Square, is planning on accepting the MIT card soon.

### Option benefits students, Star

Reuben L. Cummings '04, Undergraduate Association dining committee chair, said that additional food vendors accepting TechCash is good for students since "there will be additional locations where they can go to," and "because some students don't pay for the money on



Jay Wu '07 pays for his groceries during his weekly shopping trip to Star Market. Star is considering a proposal to allow students to use TechCash to make purchases.

their card."

The advantage for vendors, Cummings said, "is that it will widen their customer base because

students who didn't go there before might go there now, or students who do go there might go there more often."

O'Halloran declined to comment about the MIT proposal to Star Mar-

Star, Page 17

## Milk Wins UMOC, Total Donations Down

By Tongyan Lin  
STAFF REPORTER

Random Hall's nine-year-old milk took first place in this year's Ugliest Manifestation on Campus contest with a total of \$136.48 raised.

Alpha Phi Omega's week-long charity fundraising contest featured seven candidates and raised a total of \$379.41, which will be donated to the Greater Boston Food Bank.

The amount of money raised this year decreased from previous years,

said Oliver E. Kosut '04, the UMOC project chair. Last year, UMOC raised \$1222.43 for the Leukemia and Lymphoma Society.

He thought that the amount of

UMOC, Page 8

## Students May Access Records

By Waseem S. Daher

In response to an inquiry by *The Tech*, MIT has reaffirmed its policy of providing a copy of a student's non-confidential records when requested by that student.

"Students may read anything in their file that they have not waived their rights to see," said Dean of Admissions Marilee Jones.

This means that students can access their admissions scores and application reader comments, provided that they are still present in their admissions files.

Detailed admissions records such as reader comments are destroyed at the end of freshman year, simply because of a lack of physical storage space for them. However, all numerical scores are archived electronically, and available for viewing upon student request.

### Contents of admissions file

The admissions file contains Parts 1 and 2 of the MIT admissions application, letters of recommendation from two teachers and high school guidance counselor, a high

Records, Page 15



DAN BERSAK—THE TECH

"The falling leaves drift by my window. The autumn leaves of red and gold. I see your lips, the summer kisses, those sunburned hands I used to hold. Since you went away, the days grow long. And soon I'll hear old winter's song. But I miss you most of all, my darling, when autumn leaves start to fall." Lyrics by Johnny Mercer.



A second MIT blind date runs afoul.

Page 6



Comics

Page 11

### OPINION

Jeff Roberts explains why students should pay attention to MIT's changing campus.

Page 5

World & Nation	2
Opinion	4
Features	6
Events Calendar	14
Sports	20

# WORLD & NATION

## Web Site Recovers Edited Portions Of Justice Report

THE NEW YORK TIMES

WASHINGTON

An internal report that harshly criticized the Justice Department's diversity efforts was edited so heavily when it was posted on the department's Web site two weeks ago that half of its 186 pages, including the summary, were blacked out.

The censored passages, electronically recovered by a self-described "information archaeologist" in Tucson, Ariz., portrayed the department's record on diversity as seriously flawed, specifically in the hiring, promotion and retention of minority lawyers.

The unedited report, completed in June 2002 by the consulting firm KPMG, found that minority employees at the department, which is responsible for enforcing the country's civil rights laws, perceive their own workplace as biased and unfair.

Among the censored findings: "The department does face significant diversity issues. Whites and minorities, as well as men and women perceive differences in many aspects of the work climate. For example, minorities are significantly more likely than whites to cite stereotyping, harassment and racial tension as characteristics of the work climate. Many of these differences are also present between men and women, although to a lesser extent."

## North Korea Ready to Resume Talks on Nuclear Program

THE NEW YORK TIMES

BEIJING

North Korea said on Thursday that it was ready to enter a new round of negotiations about its nuclear weapons program with the United States, China, and other countries in the region. The announcement suggests that President Bush's offer last week to discuss a security guarantee may have been enough to revive the on-again, off-again dialogue with North Korea.

North Korea agreed "in principle" to new talks, according to Chinese Central Television's main news broadcast, which announced the results of a two-day visit to Pyongyang, North Korea's capital, by a top-level Chinese delegation.

After Thursday's announcement by the Chinese, the official North Korean news agency issued a more qualified endorsement of talks, expressing a willingness to take part "if they provide a process of putting into practice the proposal for a package solution based on the principle of simultaneous actions."

## FDA Declares Food From Cloned Animals Safe

THE NEW YORK TIMES

Milk and meat from cloned animals are safe to eat, the Food and Drug Administration has tentatively concluded, a finding that could eventually clear the way for such products to reach supermarket shelves and for cloning to be widely used to breed livestock.

The agency's conclusions are being released on Friday in advance of a public meeting on the issue Tuesday in Rockville, Md. Agency officials said that after receiving public comments, they hope by late next spring to outline their views on how, if at all, cloning would be regulated, including whether food from cloned animals should be labeled.

But if the preliminary conclusion stands, labeling would not be needed and there would be little regulation, Stephen Sundlof, director of the agency's Center for Veterinary Medicine, said in an interview.

"There appears to be few if any safety concerns," Sundlof said. He added, "If we consider them materially the same as traditional foods, the role for the FDA would be minimal."

# White House Says Bush Tax Cuts Caused Economic Surge

By Richard W. Stevenson

THE NEW YORK TIMES

COLUMBUS, OHIO

The White House claimed credit on Thursday for the surge in economic growth, saying the tax cuts championed by President Bush had helped the nation overcome recession and the economic effects of the terrorist attacks, two wars and corporate scandals.

The news that the economy had expanded in the third quarter at a 7.2 percent annual rate — the best performance since 1984 — gave Bush and his party a compelling piece of evidence to back their assertions that they have put the nation back on the road to prosperity a year before Election Day.

"The tax relief we passed is working," Bush said to whoops of approval from several hundred workers during a speech at an aluminum processing plant in this state that could be critical for his re-election bid.

Continuing his strategy of never suggesting he is satisfied with the economy, Bush said the good news was only a starting point for his efforts to bring down unemployment.

"We're making progress," the

president said earlier at a fund-raiser here for his campaign. "But we will not stop until there are jobs aplenty for those looking for work."

Continued success, he said, required enactment of the rest of his agenda, including making permanent elements of his tax cuts that will otherwise expire in coming years and passing energy legislation pending in Congress that would promote more domestic oil and gas production.

In a shot at the nine Democratic presidential contenders, all of whom have called for rolling back some or all of his tax cuts, Bush suggested that their approach would derail the recovery just as it is gathering steam.

"Just as the economy is coming around, some over in Washington say now is the time to raise taxes," Bush said. "I strongly disagree. Tax relief put this nation on the right path, and I intend to keep America on the path to prosperity."

Faced with the prospect that the strong growth figure would undermine their campaign theme that Bush has the worst economic record of any president since Herbert Hoover, Democrats sought to focus attention on what they said were two of the administration's greatest

political vulnerabilities.

One, they said, is that the upturn in economic activity has not yet translated into new jobs to offset those lost since Bush took office. Depending on what measure is used, the economy has shed between 2.6 million and more than 3 million jobs since January 2001.

The other, Democrats said, is that the surge in growth was the result of an unsustainable tax-cutting binge that mostly benefited the wealthy and drove the budget deficit to levels that will bedevil the nation decades. Persistent large deficits, Democrats said, could undermine the expansion down the road by forcing interest rates higher and limiting the nation's ability to address long-range problems like the mounting imbalances in Social Security and Medicare.

"We've lost more than 3 million jobs, 3 million people have fallen into poverty, the budget deficit and national debt are growing, health care and college tuition costs are escalating," said Sen. Joseph I. Lieberman of Connecticut, one of the Democratic presidential candidates. "And this president still has no real plan to sustain this growth, translate it into jobs, and rebuild a strong middle class."

# Saddam May Have Important Role in Attacks on U.S. Forces

By Douglas Jehl

THE NEW YORK TIMES

WASHINGTON

Saddam Hussein may be playing a significant role in coordinating and directing attacks by his loyalists against U.S. forces in Iraq, senior U.S. officials said on Thursday.

The officials cited recent intelligence reports indicating that Saddam is acting as a catalyst or even a leader in the armed opposition, probably from a base of operations near Tikrit, his hometown and stronghold. A leadership role by Saddam would go far beyond anything previously acknowledged by the Bush administration, which has sought in its public remarks to portray the former Iraqi leader as being on the run and irrelevant.

Officials acknowledged that the reports of a significant role by Saddam could not be corroborated, and one senior official cautioned that recent intelligence reports contained conflicting assessments. Nonetheless, three senior officials described reports of a larger role by Saddam as credible, and a Defense Department official said the information had given a fresh sense of urgency to the U.S.-led manhunt for the former Iraqi leader.

"There are some accounts that say he is somehow instigating or fomenting some of the resistance," another U.S. official said of the intelligence reports.

Saddam is believed to have met with Izzat Ibrahim, a fugitive former general who was officially the sec-

ond-highest ranking member of the Iraqi government at the time of the U.S.-led invasion and who is described by U.S. officials as playing a significant role in the insurgency.

Ibrahim, who is No. 6 on the U.S. most-wanted list, has been described by some Defense Department officials as having recently been in contact with members of Ansar al-Islam, a militant group that had been based in northern Iraq before the U.S.-led invasion and which is linked to the terrorist organization al-Qaida.

Such contacts would be the clearest evidence to date of coordination between forces loyal to Saddam and members of the extremist group in the campaign against U.S. forces in Iraq.

# WEATHER

## Earth, Wind, and Fire

By Robert Lindsay Korty

STAFF METEOROLOGIST

By 1962, California had surpassed New York as the most populous state, the Brooklyn Dodgers had left for Los Angeles, and the certain promises of sunshine and new beginnings lured millions to leave behind the East, the cold, the past. If there was to be a flaw in the golden weather, it would come most often in October; Joan Didion called it "the bad month for the wind." The Santa Ana is a hot, dry wind that descends down the San Gabriel Mountains, races through the passes, warming as it compresses, and breathes an uneasy air all the way to the Pacific. Fires grow with an ominous rapidity, and the wind ushers in a tense mood across Southern California. In her essay "The Santa Ana," Didion described it this way: "just as the reliably long and bitter winters of New England determine the way life is lived there, so the violence and the unpredictability of the Santa Ana affect the entire quality of life in Los Angeles, accentuate its impermanence, its unreliability. The wind shows us how close to the edge we are."

The wind has turned onshore again across much of Southern California, returning maritime moisture and cool breezes, and halting the westward expansion of the fires that have raged unrelentingly for days. Back East, westerly winds descending down the Berkshires and Worcester Hills will warm Boston to temperatures more common in September. Enjoy this weekend; another of New England's "reliably long and bitter winters" looms on the horizon.

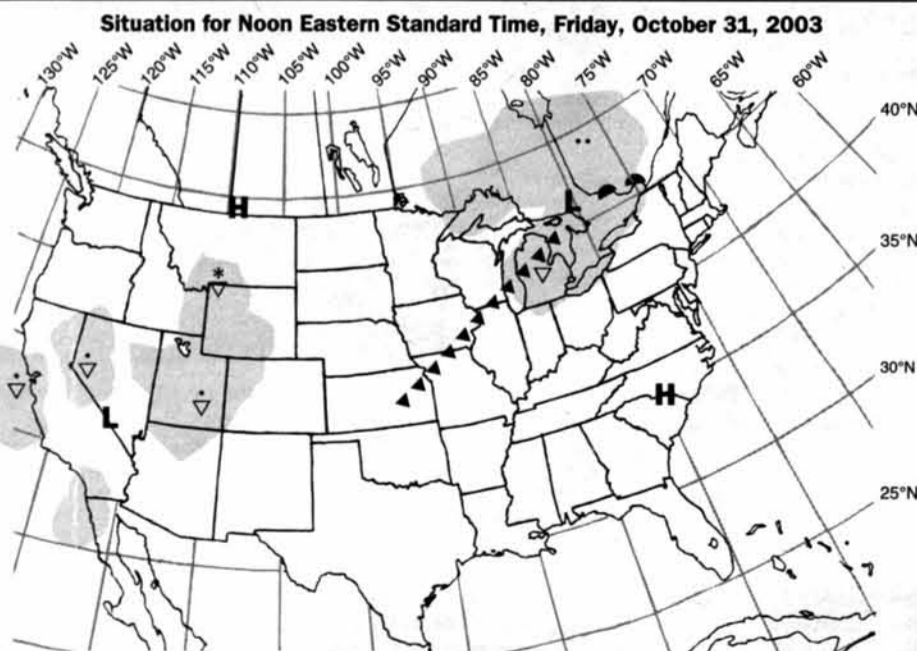
### Weekend Outlook

**Today:** Sunny. High 68°F (20°C).

**Tonight:** Clear. Low 49°F (9°C).

**Tomorrow:** Partly cloudy; near record warmth. High 80°F (27°C).

**Sunday:** Partly cloudy. High 70°F (21°C), low 50°F (10°C).



Weather Systems	Weather Fronts	Precipitation Symbols	Other Symbols
<b>H</b> High Pressure	--- Trough	☁ Snow	☁ Fog
<b>L</b> Low Pressure	—▲— Warm Front	☂ Light	⚡ Thunderstorm
<b>S</b> Hurricane	▲▲▲ Cold Front	☂ Moderate	☁ Haze
	▲▲▲ Stationary Front	☂ Heavy	

Compiled by MIT Meteorology Staff and The Tech

# Russian Prosecution Freezes Billions in Oil Company Stock

By Steven Lee Myers  
THE NEW YORK TIMES

MOSCOW

Russian prosecutors on Thursday froze stock worth billions of dollars in Russia's richest company, Yukos Oil, raising the stakes in their investigation of its imprisoned chief executive, Mikhail B. Khodorkovsky.

The move came as the Kremlin announced that President Vladimir V. Putin had removed his chief of staff, Aleksandr S. Voloshin, who had already submitted his resignation to protest Khodorkovsky's arrest. Putin replaced Voloshin with Dmitri A. Medvedev, 38, a lawyer who had been Voloshin's deputy.

Compared with Boris N. Yeltsin's presidency, Putin's term has been noted for its stability. The move on Thursday was the most significant change in his inner circle since he took office nearly four years ago and demonstrated the wide political ramifications of Khodorkovsky's arrest.

With the promotions of Medvedev and another aide, Dmitri

N. Kozak, who assumes Medvedev's old position, Putin appeared to solidify the power of a coterie of advisers who have worked for him since he served in St. Petersburg's reformist government after the collapse of the Soviet Union.

The Yukos situation has highlighted a political struggle in Russia between reform-minded officials favoring a market economy and others, often with a background in the state security services, who are determined to retain a strong dose of state control. Putin has been trying to steer a course between the two.

The Prosecutor General's office announced its action — by far the largest freezing of assets here — as Putin met with major foreign investors to try to reassure them.

The freezing of 1.2 billion Yukos shares — 44 percent of the total, the company said — sent the country's already reeling stock prices plunging still further. The seized shares are owned by Khodorkovsky and his partner, Platon Lebedev, who was arrested in July. Those shares were

worth \$14 billion at the start of the day but \$12 billion by the end.

A spokeswoman for the prosecutor general, Natalya B. Vishnyakova, said in televised remarks that the freezing of the shares did not represent the "confiscation or nationalization" of Yukos assets. Still, the government could in theory end up with a large stake in the company if prosecutors prevail in court.

In an e-mail message sent after the meeting with Putin, Stephan Newhouse, the chairman of Morgan Stanley International, said of the Russian president: "With regard to the recent Yukos events, he assured us that this does not represent a campaign against business, nor any change in the government's commitment to the market economy."

But Voloshin's resignation has led many analysts to conclude that the struggle between reformists and hard-liners has been won by the KGB veterans, some of whom belong to the St. Petersburg crowd Putin brought to the Kremlin.

# CDC Tightens Oversight on Labs Capable of Fueling Bioterrorism

By David Wahlberg  
COX NEWS SERVICE

ATLANTA

So many labs across the country store dangerous germs that could be used for bioterrorism — 414 at last count — that the Centers for Disease Control and Prevention is requiring they register and submit to inspections and security clearances.

"Up until this rule, we had no idea who possessed all these agents in the United States," said Mike Sage, deputy director of the Atlanta-based CDC's Office of Terrorism and Emergency Response. "Historically, you just put it on a UPS truck and sent it."

While some researchers say they understand the need for tighter security, others claim the new regulations are interfering with studies on developing drugs and vaccines to respond to bioterrorism.

Some cite the indictment of a Texas Tech researcher who goes on trial Monday on charges he mishandled plague samples as reason for concern.

CDC officials say the rules, mandated by the 2002 Patriot Act and a separate public health security law, aim to avoid problems like those that arose during the 2001 anthrax attacks: confusion over where

anthrax is stored and who has access to it.

"The goal is to help deter the potential use of these agents or the release of these agents, which could harm human health," Sage said.

Under the rules, labs that keep any of a list of 49 biological agents considered dangerous to humans must register with the CDC by Nov. 12. So far, 414 universities, government agencies, businesses and research foundations have signed up.

The CDC won't release the list of labs, saying it would pose a threat to national security.

Labs that use 33 other agents considered harmful to animals and plants must register with the U.S. Department of Agriculture, which will inspect the labs.

Both agencies are required to inspect each lab at least every three years. Laboratory workers — including scientists, students and secretaries — must undergo FBI background checks.

The CDC's list of germs includes anthrax, ricin, smallpox and botulinum toxin, as well as lesser-known pathogens such as the Lassa and Marburg viruses, which can rapidly cause severe bleeding and organ failure.

CDC previously had a list of labs that transported agents, but didn't require notice of when each sample was shipped and who was responsible, Sage said.

The rules also didn't apply to storage of the germs.

Nearly half of the newly registered labs have been inspected. The searches have revealed some shortcomings, including inadequate security plans and the need for better door locks, CDC officials said.

Making all lab workers clear FBI background checks led biologist Daniel Portnoy of the University of California, Berkeley, to destroy his bubonic plague samples.

He said he's one less scientist who may have helped develop countermeasures for the disease.

"I work in a lab where there are undergraduates, rotating students and people coming in for office hours," Portnoy said. "Completely eliminating any access to the lab would have been too difficult."

Some researchers at Emory University in Atlanta have also discarded samples instead of facing increased scrutiny and paperwork, said Kristin West, director of Emory's Office of Research Compliance. She would not identify the researchers.

# Senate Strikes Down Climate Change Control Bill on Economic Grounds

By Jeff Nesmith  
COX NEWS SERVICE

WASHINGTON

The Senate held Congress's first vote on regulating the causes of global warming Thursday and turned the idea down, 55-43.

Sen. John McCain (R-Ariz.) said the vote on a bill to control emissions of greenhouse gases such as carbon dioxide were only the beginning of an extended campaign.

"I want to assure my colleagues that we will be back," McCain said. "We have to begin to address this issue."

McCain co-sponsored the bill with Sen. Joseph Lieberman of Connecticut, a Democratic presidential candidate.

"Today we scored an important moral victory for protecting our environment and combating global warming," Lieberman said. "President Bush has denied, delayed and derailed any action on global warming."

Sen. George Voinovich (R-Ohio)

described opponents' chief argument when he called the legislation a "jobs bill for Mexico" and said it would cause 178,000 manufacturing jobs to leave Ohio.

"I can hear the giant sucking sound of jobs leaving our country every time I go home to Ohio," Voinovich said.

"This bill would mean the end of manufacturing jobs in my state," Voinovich added. "It will exacerbate the loss of jobs in my state and drive up the cost of energy."

McCain and five other Republicans voted for the bill, along with independent James Jeffords of Vermont and 37 Democrats. Two senators, Ben Nelson (D-Neb.) and Democratic presidential candidate John Edwards of North Carolina, did not vote.

Sen. Bill Nelson (D-Fla.) recalled looking back at the Earth from the space shuttle during the mission he flew as a House member in 1986. He described the planet as a "beautiful blue and white ball, suspended in nothing."

"It is so beautiful, yet so fragile,"

Nelson said, adding that one expected impact of climate change, sea level rise, would "have a devastating effect on my state of Florida."

Environmental groups declared that 43 votes for the bill was better than they had hoped, even though McCain and Lieberman had rewritten their original bill to make it less demanding.

The bill voted on Thursday would have required industrial plants to cut pollution from burning fossil fuels to 2000 levels by 2010. It would have set a national cap on greenhouse gas emissions and allowed companies to trade "pollution rights."

"Although the bill did not pass, the strong show of support from lawmakers from every region of the nation exceeded our expectations," said Jeremy Symons of the National Wildlife Federation.

Fred Krupp, president of the activist organization Environmental Defense, called the vote a "big repudiation of the president."

# Senate Panel Demands Access To Iraq Documents

THE NEW YORK TIMES

WASHINGTON

The Senate Intelligence Committee, in a letter to Condoleezza Rice, the national security adviser, demanded Thursday that the White House "must lift" its objections to handing over to the panel documents related to intelligence about Iraq and its illicit weapons before the war.

The panel set a deadline of noon Friday for compliance by the White House, the same as it has set for the Central Intelligence Agency, the State Department and the Pentagon to provide documents and schedule interviews that the committee has been seeking for months.

The committee, headed by Sen. Pat Roberts (R-Kan.) and Sen. John D. Rockefeller IV (D-W.Va.) is trying to determine how the Bush administration reached its conclusions about Iraq's suspected stocks of chemical and biological weapons and its nuclear program.

Among the documents sought by the committee, congressional officials said, are copies of President Bush's daily brief, a document prepared by the CIA that the White House has until now claimed was off-limits to Congress because of the doctrine of executive privilege.

The congressional officials said the documents also included memorandums between the CIA and the White House discussing disputed claims that Iraq was seeking to obtain enriched uranium from Niger for its nuclear weapons program.

A letter signed by the two senators and released by the committee calls on Rice to authorize the CIA to release documents and allow interviews with individuals whom the panel suggested she had previously declared off limits.

# Women with a Toy Gun Shuts Down House Office Building

COX NEWS SERVICE

WASHINGTON

Two women carrying a Halloween costume and a toy gun passed through a security checkpoint in a House office building Thursday, causing a massive police search and lockdown of the facility.

Staffers and lawmakers said the incident reveals weaknesses in the Capitol complex's security system.

"I don't think they had any ill-intent," said Capitol Police Chief Terrence Gainer, of the women. "It was just an unusual set of Halloween circumstances that unfolded on us."

The two women, identified only as House employees, had entered the building and put a back pack with the costume and gun on the conveyor belt of a metal detector.

When an officer, who had been distracted by someone asking a question, noticed something that looked like a gun on the X-ray screen, the women had already left the area, police said.

"You could not tell from the X-ray whether it was plastic or real," Gainer said.

As a result of the confusion, police told occupants of the Cannon House Office Building to remain in their offices while they searched room by room for a possible gunman. They later moved hundreds of people into a large rotunda, where they waited to exit the building.

# Scientists Explain Lemmings' Boom And Bust Cycle

THE NEW YORK TIMES

For centuries, people have puzzled over lemmings, the northern rodents whose populations surge and crash so quickly and so regularly that they inspired an enduring myth: that lemmings commit mass suicide when their numbers grow too large, eagerly pitching themselves off cliffs to their deaths in a foamy sea.

Scientists debunked that notion decades ago. But they have never been certain what causes the rapid boom-and-bust cycles that gave rise to it. Now, in a study of collared lemmings in Greenland, being published on Friday in the journal *Science*, a team of European researchers report that the real reason has nothing to do with self-annihilation and everything to do with hungry predators.

After 15 years of research, the scientists report, they discovered that the combined actions of four predator species — snowy owls, seabirds called long-tailed skuas, arctic foxes and weasel-like creatures known as stoats — create the four-year cycles during which lemming populations explode and then nearly disappear.

# Congress Fumes as U.S. Finds Chinese Currency Policy Legal

COX NEWS SERVICE

WASHINGTON

Treasury Secretary John Snow told Congress on Thursday that China is not violating U.S. law by manipulating its currency to gain an unfair trade advantage.

But both Republican and Democratic lawmakers attacked Snow's report, saying it ignores China's efforts to depress the value of its currency to make its exports cheaper. They said currency manipulation has contributed to the loss of 2.7 million U.S. manufacturing jobs over the past three years.

"This report is a whitewash," said Sen. Charles Schumer, co-sponsor of a bipartisan bill that would impose a 27.5 percent tariff on Chinese goods entering the United States.

Bill co-sponsor Sen. Jim Bunning (R-Ky.) said that regardless of what the Treasury report says, it is obvious "the Chinese are cheating." But Snow defended the Bush administration's decision to continue putting quiet diplomatic pressure on Chinese officials, rather than publicly declaring them in violation of the law.

"We're engaged on a number of points" with the Chinese on their currency, called the yuan or the renminbi, Snow said.

Snow presented the Senate Banking Committee with his department's annual report. It found that China's tight control of the yuan's value did not meet the "technical requirements" that would trigger economic sanctions set forth in the Omnibus Trade and Competitiveness Act of 1988.

# OPINION

## DeBergalis for City Council

For the city council elections on Nov. 4, one candidate in particular has demonstrated that he would serve the students of the Institute with diligence and excellence. *The Tech* officially endorses Matt DeBergalis '00 for a position on the Cambridge city council.

From the beginning of his campaign, DeBergalis has shown dedication and respect to the process of democracy. He has spearheaded voter registration drives on campus, which netted over 1,000 new registered voters in Cambridge, and enlightened the student body on the power their vote carries at this level. Cynics may see this as a means to merely obtain votes; rather, DeBergalis' drive has been largely independent of his election campaign through cooperation with dormitories and community members. For this educational effort alone we would support his candidacy.

The issues controlled by the council that affect MIT are many. The relationship between MIT and Cambridge City Council has been very adversarial; in any sort of negotiation between these two entities, it would benefit both parties to have common connections to the other. DeBergalis would act in an excellent capacity. His platform includes affordable housing for students, not just at MIT, but Harvard and other institutions of higher learning. He is also in favor of extended hours for local

businesses and transportation to serve the student population, a population typically ignored by Cambridge government.

MIT alumna Aimee Smith PhD '02 is also a candidate for city council, running as a member of the Green-Rainbow party. While we do not believe that her platform would best represent the student body of MIT in general, she has proven her dedication to the issues she supports and to the party she represents. She would fight zealously for her issues, the most prominent of which seems to be rent control. There are nine positions open for 20 candidates. Because votes are cast in a preferential manner, one can appropriately rank candidates in the order of support. We strongly recommend that Matt DeBergalis appear as your number one preference on the Nov. 4 ballot as a vote of support for the interests of the MIT community.

For those students who live on campus, the voting location is Kresge Auditorium; for those who live in Random Hall, ADP or WILG, the polls are at the Salvation Army Headquarters. For off-campus voters, check your mail for ward information.

For more information about DeBergalis's campaign, visit <http://deberg.org>. For more information about Smith's campaign, visit <http://www.electaimee.org>. Information about the election can be found at <http://www.cambridgema.gov>.

## Letters To The Editor

### An Issue of Tolerance

To the Editor:

I agree with Dean Larry Benedict ["Blowing in the Wind," Oct. 10] and Professor Keith Hampton ["Responding to Flag Flap," Oct. 17] that it is perfectly reasonable for MIT Housing to enforce a regulation forbidding unauthorized external decorations, provided, of course, that the regulation exists on the books and is enforced universally and blindly to politics. I'll leave others to argue about whether Jonathan Goler's and others' flags were ordered inside as a result of such fair practice. (As an exercise for the informed observer, though, I suggest a tally of the non-flag devices outside dorm windows, such as air conditioners and flower pots, that seem to have eluded the administration's notice.)

However, as Professor Hampton also noted in his column, "there remains a much larger and more serious issue" — that of MIT's ability to be a tolerant and welcoming community. Clearly some people on this campus have a mistaken understanding of the meaning of tolerance, but Professor Hampton's column does nothing to help the situation. In a display of pure Orwellian doublespeak, he asserts that those who cannot tolerate living in view of a particular country's flag are "not motivated by intolerance." Somehow, demanding the flag's removal (which the original complainer did, even if the Housing Office didn't) lives up to Professor Hampton's expressed ideal of "accommodat[ing] others, respect[ing] differences, and go[ing] out of our way to make everyone feel welcome," and for some reason, it is the Housing Office's duty (besides enforcing regulations) to communicate that expression of prejudice to the flag's owner. On the other hand, those who dare to stand up to such unwelcoming behavior and protest against the Housing Office acting as a conduit

for it exhibit "the intolerance at the root of the problem."

I wonder how Professor Hampton would label students who complained of discomfort in classes populated by people with different skin tones. Or, if students told him they found the presence of a rainbow flag "unwelcoming," I wonder if he would advocate that the Housing Office advance their message to that flag's owner. If not, is "But Israel's different" an argument that a political administration should be making?

Isaac Moses, G

### Handicapped Classrooms: Lecture Accessible?

To the Editor:

I'd like to tell you *Tech* writers and editors that my thumbs have been constantly up at you since I arrived here last year. However, I was offended by a slick side comment in the Stata Center article ("Glass, Bricks and Angles," Oct. 24). Actually, it made me queasy. The article quoted Christopher J. Terman '78, a senior lecturer in the Department of Electrical Engineering and Computer Science as saying that the multimedia capabilities of the new Stata Center classrooms will make "'chalk-talk' lectures a thing of the past." As a former teacher with nine years of high school, college, and corporate teaching experience, I really appreciate "chalk-talk." (God, that's such cheesy market-speak.) I have developed curricula for and taught with some of the latest presentation software, animation, video, and display technology, but I'm still a sucker for a really well-delivered lecture — with extra chalk.

While I realize that Dr. Terman is not necessarily talking about replacing standard lec-

tures, he should realize that such facilities shape teaching techniques. For me, deriding "chalk-talk" falls in line with an exaggerated emphasis on learner-centered environments, multimedia presentation, and the apotheosis of learning today: interactivity. I emphasize the latter word, because I think "chalk-talk" can be highly interactive, but doesn't get billed as such. A really engaging speaker engenders interactivity. You know? Listening, I mean really listening to another person speak, is about the most interactive thing we can do. However, funding isn't directed that way. It's directed towards tools to capture our attention, ergonomics to keep us plugged in, and classrooms made for multitasking rather than oratorical elaboration. Multimedia for me wouldn't be an issue if there weren't serious problems with finding strong lecturers at MIT and at the university level in this "Information Age." Right now I have a class with an amazing lecturer. I know he's amazing because as he speaks hands go up while people are writing. Sometimes he'll take questions and sometimes he'll keep going. The class is three hours long, features a little multimedia, a lot of chalk, and students that are riveted.

It mystifies me that MIT has put millions of dollars into improving learning with interactive computer systems and done so little to refine professors' lecturing skills. Instead of multimedia tools, I'd like in-service funding for professors to get more training in presentation skills. I'm not going to argue that multimedia, Internet, and shi-shi lecture halls have to go, but I think it would make a powerful statement to balance such expenditures with investments in human skills. And if Frank Gehry is really trying to build a human village in the Stata Center, such training would be essential.

Michael Epstein  
MIT Comparative Media Studies

### Opinion Policy

**Editorials** are the official opinion of *The Tech*. They are written by the editorial board, which consists of the chairman, editor in chief, managing editor, opinion editors, and a photography editor.

**Dissents** are the opinions of signed members of the editorial board choosing to publish their disagreement with the editorial.

**Letters to the editor, columns, and editorial cartoons** are written by individuals and represent the opinion of the author, not necessarily that of the newspaper. Electronic submissions are encouraged and should be sent to [letters@the-tech.mit.edu](mailto:letters@the-tech.mit.edu). Hard copy submissions should be addressed to *The Tech*, P.O. Box 397029, Cambridge, Mass. 02139-7029, or sent by interdepartmental mail to Room W20-483. All submissions are due by 4:30 p.m. two days before the date of publication.

Letters, columns, and cartoons must bear the authors' signatures, addresses, and phone numbers. Unsigned letters will not be accepted. *The Tech* reserves the right to edit or condense letters; shorter letters

will be given higher priority. Once submitted, all letters become property of *The Tech*, and will not be returned. *The Tech* makes no commitment to publish all the letters received.

*The Tech's* Ombudsman, reachable by e-mail at [ombudsman@the-tech.mit.edu](mailto:ombudsman@the-tech.mit.edu), serves as the liaison between *The Tech* and its readers. From time to time, the Ombudsman writes an independent column reflecting the complaints, questions, and concerns of the readership.

### To Reach Us

*The Tech's* telephone number is (617) 253-1541. E-mail is the easiest way to reach any member of our staff. If you are unsure whom to contact, send mail to [general@the-tech.mit.edu](mailto:general@the-tech.mit.edu), and it will be directed to the appropriate person. Please send press releases, requests for coverage, and information about errors that call for correction to [news@the-tech.mit.edu](mailto:news@the-tech.mit.edu). Letters to the editor should be sent to [letters@the-tech.mit.edu](mailto:letters@the-tech.mit.edu). *The Tech* can be found on the World Wide Web at <http://the-tech.mit.edu>.



**Chairman**  
Jyoti Tibrewala '04

**Editor in Chief**  
Christine R. Fry '05

**Business Manager**  
Roy K. Esaki '04

**Managing Editor**  
David Carpenter '05

**Executive Editor**  
Eun J. Lee '04

#### NEWS STAFF

**News and Features Director:** Jennifer Krishnan '04; **News Editors:** Keith J. Winstein G, Lauren E. LeBon '06, Beckett W. Sterner '06; **Associate Editors:** Kathy Lin '06, Marissa Vogt '06, Jenny Zhang '06; **Staff:** Jeffrey Greenbaum '04, Michael E. Rolish '04, Jay K. Cameron '05, Sam Hwang '05, Jessica A. Zaman '05, Tiffany Kosolcharoen '06, Lakshmi Nambiar '06, Jennifer Wong '06, Tongyan Lin '07, Julián E. Villarreal '07; **Meteorologists:** Samantha L. H. Hess G, Robert Lindsay Korty G, Greg Lawson G, Nikki Privé G, William Rarnstrom G, Michael J. Ring G.

#### PRODUCTION STAFF

**Editors:** Hangyul Chung '05, Kevin Chen '06, Tiffany Dohzen '06; **Associate Editors:** Sie Hendrata Dharmawan '05, Nicholas R. Hoff '05; **Staff:** Andrew Mamo '04, Albert Leung '06, Jolinda Lin '06, Y. Grace Lin '07, Jonathan Reinhardt '06, Jennifer Huang '07, Yaser M. Khan '07, Sylvia Yang '07.

#### OPINION STAFF

**Editors:** Andrew C. Thomas '04; **Associate Editor:** Vivek Rao '05; **Columnist:** Philip Burrowes '04; **Staff:** Basil Enwegbara SM '01, Gretchen K. Aleks '04, Ken Nesmith '04, Atif Z. Qadir '04, W. Victoria Lee '06, Daniel Barclay '07, Ruth Miller '07.

#### SPORTS STAFF

**Editor:** Jennifer DeBoer '05, Phil Janowicz '05; **Staff:** Yong-yi Zhu '06; **Columnists:** O.B. Usmen '03, Eric Rosenblatt '04.

#### ARTS STAFF

**Editors:** Jeremy Baskin '04, Allison C. Lewis '04; **Associate Editors:** Daniel S. Robey '04, Kevin G. Der '06; **Staff:** Erik Blankinship G, Ruby Lam G, Bence P. Olveczky G, Sonja Sharpe G, Fred Choi '02, Amandeep Loomba '02, Bogdan Fedeles '03, Sonali Mukherjee '03, Jed Horne '04, Pey-Hua Hwang '04, Devdoot Majumdar '04, Chad Serrant '04, Petar Simich '04, Jorge Padilla '05, Ricky Rivera '05, Amy Lee '06, Jacqueline A. O'Connor '06.

#### PHOTOGRAPHY STAFF

**Editors:** Brian Hemond '04, Jonathan Wang '05, Dan Bersak '02; **Staff:** Regina Cheung G, Wendy Gu G, Jinyang Li G, Michelle Povinelli G, Peter R. Russo G, Dong Wang G, Xiaowei Yang G, Stanley Hu '00, Eric J. Cholankeril '02, Yi Xie '02, Scott Johnston '03, Marissa L. Yates '03, Miguel A. Calles '04, Nina Kshetry '04, Dmitry Portnyagin '04, Benjamin Solish '04, Dalton Cheng '05, Annie Ding '05, Michael Lin '05, Timothy Suen '05, Amy L. Wong '05, Hassen Abdu '06, Matt D. Brown '06, John M. Cloutier '06, Noel Davis '06, Colin Dillard '06, Grant Jordan '06, Jina Kim '06, Melanie Michalak '06, Edward Platt '06, Omoleye Roberts '06, Benjamin Schwartz '06, Sandra Yu '06, Elizabeth Zellner '06, Jean Zheng '06, Rene Chen '07.

#### FEATURES STAFF

**Editor:** Brian Loux '04; **Associate Editor:** Ricarose Roque '06; **Columnists:** Bruce Wu G, Akshay Patil '04, Michael Short '05; **Cartoonists:** Jason Burns G, Kailas Narendran '01, Bao-Yi Chang '02, Jumaane Jeffries '02, Lara Kirkham '03, Alison Wong '03, Sergei R. Guma '04, Sean Liu '04, Jennifer Peng '05, Nancy Phan '05, Josie Sung '05, Qian Wang '05.

#### BUSINESS STAFF

**Advertising Manager:** Aye Moah '05; **Staff:** Lynn K. Kamimoto '05, William Li '06, Victoria Fan '06, Lauren W. Leung '07, Donald H. Wong '07, Jennifer Y. Wong '07.

#### TECHNOLOGY STAFF

**Director:** Roshan Baliga '03; **Staff:** Frank Dabek G, Daniel Leeds '05, Lisa Wray '07.

#### EDITORS AT LARGE

**Senior Editor:** Aaron D. Mihalik G, Satwiksai Seshasai G; **Contributing Editors:** Joel C. Corbo '04, Joy Forsythe '04.

#### ADVISORY BOARD

Peter Peckarsky '72, Paul E. Schindler, Jr. '74, V. Michael Bove '83, Barry Surman '84, Robert E. Malchman '85, Deborah A. Levinson '91, Jonathan Richmond PhD '91, Vladimir V. Zelevinsky '95, Anders Hove '96, Saul Blumenthal '98, Joel Rosenberg '99, Joseph Dieckhans '00, Ryan Ochylski '01, Rima Arnaout '02, Ian Lai '02, Nathan Collins SM '03, B. D. Colen.

#### OMBUDESMAN

John A. Hawkinson.

#### PRODUCTION STAFF FOR THIS ISSUE

**Editors:** David Carpenter '05, Hangyul Chung '05, Sie Hendrata Dharmawan '05, Tiffany Dohzen '06; **Staff:** Jennifer Huang '07.

*The Tech* (ISSN 0148-9611) is published on Tuesdays and Fridays during the academic year (except during MIT vacations), Wednesdays during January and monthly during the summer for \$45.00 per year. Third Class by The Tech, Room W20-483, 84 Massachusetts Ave., Cambridge, Mass. 02139. Third Class postage paid at Boston, Mass. Permit No. 1. POSTMASTER: Please send all address changes to our mailing address: *The Tech*, P.O. Box 397029, Cambridge, Mass. 02139-7029. Telephone: (617) 253-1541, editorial: (617) 258-8329, business: (617) 258-8228. Backside: Advertising, subscription, and reprinting rates available. Entire contents © 2003 The Tech. Printed on recycled paper by Charles River Publishing.

# Campus Planning and You

Jeff Roberts

Current MIT students are seeing the completion of one of the largest campus development programs in the history of the Institute. Expectedly, MIT's newest buildings have been the subject of much criticism by students, along with most others in the community. But as students criticize what they see, it is important for them to do so with an eye towards how MIT might develop its campus in the future. While students are not likely to see much more construction occur in the near future, MIT will be preparing the planning and design work necessary for future building projects. I believe that students should be aware of this planning work as it occurs, and I feel that MIT as a whole may benefit from their input into the campus planning process.

Students may not be particularly interested in MIT's campus planning because of their relatively short tenure. Though there are many students who remain at MIT for a very long time, the typical student "generation" lasts for four to five years. Many current students have seen massive projects being built, including the Zesiger Sports and Fitness Center, Simmons Hall, and Sidney-Pacific, but might not realize that the planning work for these projects began as early as the 1970s. The planning decisions MIT makes over the next few years will have major impacts that might not be realized until long after the current generation of students has left.

However, while individual students are only at MIT for several years, the larger community of students has enduring characteristics. One of the hallmarks of MIT is the continual informal interaction that occurs among generations of students, resulting in the transmission of ideas from one generation to the next. Students of the past, present, and future will tend to share many similar values, particularly with respect to the environment in which they study, live, eat, and socialize. Some values of the student body may change gradually over time, as the world around MIT changes, and as individuals thoughtfully challenge long-held beliefs. If campus development intends to support a high quality of stu-

dent life, it is vital that students are engaged in the planning process at all times, so that long-held planning goals can be continually tested against the changing desires of the community.

Students are also the segment of the MIT community that interacts with the campus virtually all day, every day. Most faculty and administrators interact with the campus as a place of business, while students experience the campus as a living environment as well as a working environment. Current students can add value to the campus planning process because they can scrutinize it from a perspective that administrators, professionals, and others cannot. While professionals may be able to study and identify potential shortcomings of the campus, students live with those shortcomings every day. Thus, students develop an instinct for whether development choices might have a positive or negative impact on their quality of life.

Earlier this year, I undertook a study based on conversations with resident students about the quality of the MIT campus. The resulting thesis, entitled "Is MIT a Good Place to Live? The University Campus as a Residential Environment" (<http://web.mit.edu/thejoker/thesis>), provides some examples of where MIT's planning ideals and student desires might diverge.

For instance, MIT's planning over the past fifty years assumes that academic and research activities should be confined to the area east of Massachusetts Avenue, and the west campus should become a comfortable residential environment. MIT accordingly planned for its west campus residences to have river views and proximity to athletics and recreation facilities, and internal facilities for study, dining, and socializing. However, the research in my thesis indicates that students living on west campus feel isolated from the main campus and from students in other dormitories, and that the athletics fields, which are difficult to access, are a hindrance rather than a convenience. Most students would prefer residences that formed smaller blocks with courtyards situated closer to the main campus, which would sacrifice river views and the convenience of athletics fields but would result in a greater feeling of community within.

As another example, my research showed that students are generally unhappy with the aesthetic "look and feel" of the campus, many feeling that it is cold and industrial, and resembles a workplace instead of a college environment. The MIT administration promotes its current campus building initiative as a means of improving the aesthetic character of the campus and creating a more iconic look for MIT. However, in the course of my research, students criticized these new aesthetic features, ranging from large projects like Simmons Hall to small ones like the new Lobby 7 information kiosks, as reinforcing the cold aesthetic character of the campus, and making the campus feel more like a workplace than a living and learning environment.

I don't mean to imply that students should make campus planning decisions themselves. Some people may reasonably argue that students, because of their immersive campus experience, might lack the perspective to think of creative new ideas. My intent is only to suggest that students can use their experience to complement the expertise of professional planners, designers, administrators, and others involved in the campus planning process. Specifically, I think students can help in defining problems and criticizing recommended solutions. If they are integrated into the process thoughtfully, students can help guide professionals towards excellent planning solutions.

I hope this will serve as a call to students to take an interest in future campus development, as well as to administrators to think of ways by which students can aid their decision-making. Planning decisions are being made at MIT all the time — in the Department of Facilities, in the Building Committee, in the offices of the vice president, chancellor, provost, and deans. From the next new student dormitory to future changes in MIT's buildings, pathways, and landscapes, the decisions MIT makes will impact students far into the future. Students, individually or in groups, within or outside of student government organizations, should think about how they can help guide this planning process towards a favorable outcome.

Jeff Roberts is a graduate student in the Department of Urban Studies and Planning.

# Why the Cambridge Housing Market Is Not Free

Aimee L. Smith

As election day rapidly approaches, many people are talking about Question 1 on the ballot in Cambridge and the effort to bring back rent control.

First, let me explain why the Cambridge housing market is anything but "free." Because housing is a basic necessity, and I believe a human right, and because housing and land are finite in a densely populated city, zoning and development choices shape the housing market — not idealized models of supply and demand. Further, because it is the residents of a city that make up the community fabric, idealizing tenants as interchangeable wallets of varying size fails to capture how a city sustains and protects itself — through networks of people who participate in community at the neighborhood and citywide level and/or as part of religious or ethnic or cultural or interest community. Long-term residents have generally deeper roots, and are more central to enabling the functioning of various community networks. If exorbitant rents drive out too many of the long-term residents too quickly, the city is not able to function in basic ways such as keeping crime low and keeping the morale and effectiveness at the primary and secondary schools high. Universities like MIT understand this concept well. Whenever MIT wants to change a policy or defeat the momentum of student demands, they simply have to wait a few years. At my former university, a full contact self-defense class was funded for around five years. Then, once those who initiated the project had graduated and moved on, it hit the fiscal chopping block. I hope this is not going to be the fate of MIT's commitment to include rape awareness education in new student orientation, but it is certainly a possibility.

The city is a little harder to push around. People who are lifelong residents have strong desires to preserve their neighborhoods, to keep their friends around, and to develop the city in a way that serves the residents of the city. Large universities like Harvard and MIT have other plans for the city. They want to generate research and development related

industries that will synergize with their core mission: to carry out world class research. This development brings jobs to the area, but many of these jobs will be filled by people who move here from other cities. That puts pressure on an already tight housing market. The developer seeking a variance to make R&D space instead of the promised housing at 100 Lansdowne St. is a typical example. If MIT were to promote different development on its vast land holdings, the market would be affected quite differently.

Imagine if MIT built enough housing to house its graduate students and staff. Less than 40 percent of graduate students can be housed in Institute housing and many MIT staff and contract staff do not make enough to live in the area. That means they then need to commute from long distances, often in a car, increasing traffic, pollution, and parking pressure, and taking away precious time from their lives. Instead, MIT land is used to make more R&D space, the housing market becomes tighter, and then MIT uses this manipulated market to turn around and increase rents for students in Institute housing because that is what the "market" rate is. (In fact, MIT continues to increase rents as the "market" is leveling off due to the recession, but we will leave that for another time.) Well, the housing market in Cambridge is a market, but what is not discussed is this large role that MIT plays in manipulating that market.

If inflating the real estate and rental prices too quickly drives out long-term residents and destroys a city, won't that cause the housing "market" to correct itself with a crash? Yes, that will happen. Meanwhile, neighborhoods and communities have been lost and small property owners whose homes were their retirement nest eggs will be hit hard. Large landowners like MIT and Harvard will be able to weather the storm, of course. And then they will be able to take over more land and further shape the city in their interests with much less interference from those pesky residents who think that everyone should be able to access the river, and that wetlands should be preserved.

Rent control is a mechanism to mediate this manipulation. It stabilizes the rental market and thereby the property market. It sets fair

prices for rents so that renters can stay and landowners can recoup costs. "Affordable housing" subsidies in an unregulated market form a bottomless pit because the "affordable" rate is pegged to 80 percent of the median of the market — that same manipulated market I have been describing. A few years ago an MIT postdoc wanted to move into an affordable housing unit, but found that her salary was too low to get in the door, the minimum at that time was \$45,000 per year. The well-kept secret about "affordable housing" is that it isn't affordable. Estimates are that one-third of the jobs in Cambridge do not pay enough to enable living in Cambridge. The fraction of housing slated as "affordable" is a tiny drop in this bucket.

People talk about democracy and how the will of the masses promotes selfish behavior. There is some truth to that, but what is more interesting is how masses of people can be tricked into going against their own interests. Rent control would benefit most students and employees at MIT, yet many students cling to abstractions over "free markets" and inapplicable models from Economics 101 rather than thinking about why their housing costs are so jacked up and about who is laughing all the way to the bank. Perhaps someone else is paying your housing bill? Or maybe you figure it is noise on your tremendous tuition debt. Or perhaps you figure you won't be living here for too long, so it isn't worth getting acquainted with the policies of the city. Whatever the reason, the whole point of democracy is to distribute the self-interest as broadly as possible so that the interests of a few are not attended to at the expense of the many; that means we all need to be paying attention and participating.

I hope you will vote Yes on Question 1 on Nov. 4. I also hope you will consider me for your vote for Cambridge City Council. And if you can't vote or didn't register, I hope you will consider getting involved in city politics one way or another. There is a lot to be learned from long-time residents of Cambridge about the city, struggle, and community.

Aimee Smith PhD '02 is a candidate for Cambridge City Council.

# Limits of Speech

Thouis Jones

Recent events have led me to wonder exactly where the boundaries of safe discourse lie in the MIT community regarding racism. The Institute's willingness to bring a formal complaint against the authors of the "ghetto party" e-mail obviously indicates the e-mail was close enough to the line to warrant close scrutiny, at least according to the administration.

I'll be conservative and cross "making fun of negative racist stereotypes" off the list of acceptable behaviors. Did Margaret Cho break this rule? Does that mean I can't show an episode of "The Simpsons" to some friends? Can I tack a copy of Boondocks to my door? Is a more serious discussion of racist stereotyping off-limits, as well? Do we accord more or less weight to levity in discussions of race?

What about political discussions? Am I allowed to stump for Buchanan? What about putting up a David Duke poster? Is a black student allowed to wear a "Farrakhan for President" shirt? Are we allowed to argue about reparations for slavery, for or against? What about the costs and benefits of affirmative action in college admissions?

How about academic discussion? Can we talk about racism and its social perception in classes? Are students allowed to analyze the data given in *The Bell Curve*? Will they be docked points if they fail to show its statistical invalidity, or will they be sent before the Committee on Discipline?

Can we form student groups others might find offensive? There's a Black Students' Union. Would forming a White Students' Union be allowed? If black students protested outside the WSU's offices, could a complaint be filed against them? What if white students were to protest in front of the BSU's offices?

Is it really the case that there exists a double standard with regards to racism and who can say what at MIT? I could easily believe it. Of course, it would be nice if someone in the administration would let us know. We could all get a list during Orientation of "Things you can't say if you're white/black/asian/Jewish/male/female/etc." It would clear things up quite a bit. Surely the "ghetto party" e-mail wouldn't have been sent if such a list existed.

Of course, no administrator is willing to go out on that very shaky limb. Drawing a "bright line" wouldn't cover all the cases they would like to, and would allow loopholes they'd rather close. Regardless of the inability to delineate every case, it's an inherently untenable position to draw the line at all, particularly at a place where academic freedom is supposed to be fundamental. Yet, the administration's actions certainly seem to indicate that there are unwritten rules, and that they include a double standard.

Let me be misunderstood, I'm not arguing that anyone should do the more offensive things above, or that if someone did, that they shouldn't experience the social disgrace that would result. But I do believe that the administration's willingness to intervene in situations like this is wrong-headed. The result will be for those formerly willing to think about and discuss racism openly to become less willing to do so. People will be more careful in what they say, but out of fear of saying something that will get them in trouble, rather than of an understanding of why some things are hurtful to others. This will lead to fewer opportunities to convince people that racial stereotypes are wrong, rather than just unacceptable to express.

There is sometimes a need for the administration to step in and limit speech; for example, instances of harassment and discrimination in hiring need to be dealt with, both from a moral and legal standpoint. But the e-mail that led to the questions above was not harassment, except under MIT's extremely vague and overly broad definition, which could include even the most innocuous items above. The e-mail that started all this wasn't even particularly offensive in context, given the level of discourse usually seen on the lists to which it was sent. It neither warrants nor needs an official response from a disciplinary committee. The student response was more effective at convincing the senders of the e-mail that they erred than any official response could ever be.

Either our community is strong enough to police itself against transgressions of this sort, or it is no community at all. If the only way we can deal with those that express ideas offensive to us is to cry "harassment!," we've failed as an educational community. Open discussion of dangerous ideas implies a certain level of risk of receiving offense. We should be willing to take that risk, and when we are offended, respond in a way that strengthens the community, rather than divides it further.

Thouis Jones is a graduate student in Electrical Engineering and Computer Science.

## FEATURES

## UA Q&amp;A

By Harel Williams and Rose Grabowski  
UA COORDINATING COMMITTEE MEMBERS

Dear UA,

What do the Class Councils do? I know we elected some last spring and some this fall, and I've been seeing tons of posters lately for class events like *The Matrix* pre-screening and *Halloween at Salem* — so does Class Council just try to do entertainment/social sort of stuff?

— Neo-phyte

Class Councils are more than just a social group — their goals are to promote class unity, which includes a lot of social events like a formal and class trips, and to be advocates for the issues and concerns of their class. They represent their fellow students when talking with administrators and faculty and are able to press topics that could potentially influence the lives of their constituents.

In addition, they assist students with career planning, including the Career Fair and other job search activities, plan community service events and opportunities, and select the Ring Committee which designs and displays each class' Brass Rat.

So your Class Council really serves to unify the class and bring forth their concerns to the larger community. If you want to get involved with your Class Council, e-mail them at [200xCOUNCIL@mit.edu](mailto:200xCOUNCIL@mit.edu).

Dear UA,

I saw that the Graduate Student Council had a whole bunch of events last weekend to celebrate their 50th anniversary — how old is the UA? Why don't we get any cool events on our anniversaries? No way we're gonna let the GSC out-party us!

— Overgrad, not Undergrad

After a little research, we discovered that there isn't a simple answer to that. It turns out that the origins of our current undergraduate student government are based on something called the Institute Committee, InsComm for short, which began in 1893. So in certain ways you could say we're 110 years old (take that, grad students!). This committee started off as a group of ten people with two to three members from each class, but grew and evolved throughout the early 20th century to include more members and many subcommittees. In 1913, the Undergraduate Association was formed to supplement InsComm and provide a larger forum for undergraduates. So, if you consider that, then this is in fact our 90th anniversary. However, the UA continued to change and a new constitution was drafted and approved in 1969 to better organize the students and more effectively represent student opinion. That makes us 34. But, any way you look at it, the UA is damn old. Time to party like it's 1969! Or 1913. Or whatever.

Dear UA,

I've been seeing posters around campus asking for input on where to put bike racks — what is this for? Are the bike-riders unionizing and forming a coalition for equal rights at MIT?

— Speedracer

The bikers are not unionizing that we know of — however, one of the UA Senators from Baker, Jennifer Peng, has made it her project to get more bike racks around campus. It seems that the ones that exist at the moment are always full and a lot of the time it's hard to find a place to secure your bipedal vehicle.

So she is going around taking pictures of the current state of things as evidence of the need for more racks, and then will look into facilitating the regular replenishment of racks by the school as well as getting additional funds from MIT to buy more racks to be strategically placed.

So if you have an idea of where more bike racks are needed, let Jen know at [jpeng@mit.edu](mailto:jpeng@mit.edu) so she can better help her fellow bike-lovers.

Got more questions? E-mail [uaqa@mit.edu](mailto:uaqa@mit.edu) with your quizzicality. Want more information on any of the issues raised this week? Visit <http://web.mit.edu/ua/www/uaqa>.

## Ask Nutty B

By Nutty B  
COLUMNIST

Nutty B is currently a graduate student at MIT. Please e-mail him with whatever question you would like someone to listen to, and help him have an excuse to procrastinate at 3 a.m. Please send all questions to [askNuttyB@yahoo.com](mailto:askNuttyB@yahoo.com).

## Column

Dear Nutty B,  
I am an international student. I think I can command the English language with ease, but I have this distinct accent that no matter what I do people always notice. My friends always tell me it's no big deal, but I have become self-conscious whenever I speak anything to anyone. This is driving me crazy. What should I do?

— Harry

Dear Harry,

You are worried about your accent, eh?

I have to agree with your friends in this case. There is nothing wrong with having a distinct way of speaking. Even in the U.S. people speak differently in different regions. A cowboy from Texas is very likely to be surprised by the way a Bostonian say the word pAAAk when he really just means park.

In fact, I find speaking with a little accent often adds a flavor into the language and makes the whole speaking experience interesting.

As a matter of fact, I have been trying to emulate the British accent with much effort. Whenever I see a foxy lady, I find adding a few British lingoos into sentences help me catch her attention. Indeed, even when I just excuse myself to go to the loo, my company always seems to be excited by the word. This trick is truly brilliant and it works all the time.

However, because of the lack of practice, my faking effort sometimes backfires and makes me sound like one from the ghetto side of London. Bugger!

The point is, there is nothing wrong with speaking with an accent. As long as people understand you (and you understand yourself), the purpose of communication is fulfilled. Try to relax and just speak like how you would normally speak and you will be fine. Tata.

Dear Nutty B,

I am in a crisis. I just looked myself in the mirror and I just realized I look like crap. When I look into my wardrobe, the only thing I see is jeans and t-shirts.

I am going out on a date this weekend, I am sure wearing what I have definitely won't get me a second date. Help!

— Fashion Clueless

Dear Fashion Clueless,

Well, I am not exactly one would call a fashion consultant. I, too, simply wear clothes that the majority of the MIT population choose. However, I will see what I can do for you.

What makes one looks good, I find, is usually of self-confidence (but not arrogance). The aura around a person who believes in himself or herself is significantly different than that around a person who is never sure of what he wants.

However, if you plan to go to this date dressing semiformally, a pair of white pants with perhaps a white jacket like the one worn by Ethan Hawke in the movie *Great Expectations* may look good on you. A fit turtleneck sweater with khaki pants may also be suitable if you are into a more casual look.

If this lady friend is the biker-chick type, then perhaps wearing a leather jacket will help. If all else fails, then perhaps call The Learning Channel and sign up for "A Makeover Story" and see what they can do for you.

Don't worry too much. If she is already agreeing to go on a date with you, it means she is already attracted to your personality rather than the way you dress. Good luck!

## Death by Zeitgeist

### Blind Date: Dead On Arrival

By Devdoot Majumdar  
STAFF WRITER

After my first try at matchmaking for *The Tech*, I received a steady trickle of e-mails from many types of people — the brooding, the sketchy, and the flat-out undate-able.

Ten short e-mails came my way from members of Zeta Psi reading, "I know this guy Andrew Greenhut. He'd be a real good blind date candidate."

Every year, fraternities mess up and let the most irritating of freshmen join by mistake; these people eventually become the butt of that frat's jokes for the next four years. With the Zeta Psi outpouring on Andrew D. Greenhut '06, I had the kid sized up as precisely that walking joke. And since I'm occasionally in the business of public mockery, I thought I had found myself a walking target.

However, as it turned out, Andrew was just a normal Zete. Though no Friendster information was available, a reliable source on the soccer team (on which Andrew plays) mentioned that Andrew's a wily fellow and a good sport, even though he doesn't get to play all that much. That was endorsement enough.

Kristin D. Hrabak '05, a very sweet, somewhat shy, and fun-loving junior from Baker House was the girl I found most suitable for Andrew. Her optimism would rescue even the worst of scenarios, I figured. Though she was a tad taller than him, Nicole had four inches on Tom.

To his credit, Andrew showed up on time, dressed nicely, and with a flower, even. His housemates had warned him about the awkward silence phenomenon, and to avoid excessive talk of academics. "I've seen the Blind Date show many times, and I know all about awkward silences," Andrew said.

Their date consisted of Mexican food at Fajitas and Ritas in Boston followed by a bit of comedy at the ImprovAsylum. It's all standard date stuff for standard west campus peo-

ple — dinner and a comedy club. And unfortunately, the evening's conversation attained the standard depth of, at best, a UPN sitcom.

From the post-date reconstruction, it seems that they discussed common hobbies (she likes hockey, he plays soccer), academics (she studies hard, he's learned how not to), and Homestar Runner. Andrew commented, "It seemed like she wasn't too happy working hard. I tried to give her some advice about getting out."

Homestar Runner — unknown to me, but apparently a cult favorite (<http://www.homestarrunner.com>) — serves as Andrew's nick-

And that was that. The date was over, the movie was about to begin, and to top it all off, they invited one of Kristin's neighbors to watch the movie with them.

So precisely where and why did this date go wrong? Unfortunately, folks, this date was dead on arrival.

Andrew had e-mailed me before the date to give me an idea of his type of woman: "She should be smart, in good physical condition (not necessarily an olympic athlete, but I like someone who can keep up with me), good hygiene, receive humor well and be able to joke herself (for ex[ample]: she would think

my parrot is funny, not stupid)." I'm fairly confident that Kristin fulfills this description — she is the type of girl who'd be forgiving of bad jokes and the like.

"I didn't really have that much interest in her," Andrew said. "It was at the beginning," when Andrew decided this, he said, based primarily on her looks and the fact that their personalities "didn't click."

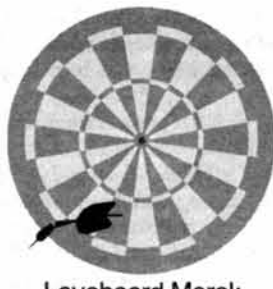
Now, I'm a believer in catch theory. In almost every relationship, there is a "catch." By standards of looks and personality, one person is always "the catch" and the other person is simply lucky to be in a relationship with "the catch." As far as I'm concerned, Kristin was the catch here. Though a tad sullen, the girl has an animated sense of humor, is tolerant of a boy who's in love with a speech-deficient online cartoon, and is quite endearing both in the character and looks departments.

So, another blind date runs afoul because another guy has overestimated his self-worth. I suppose MIT might be predisposed to insecure girls and overconfident guys. Regardless, there is hope. This weekend, two couples will be going on dates sponsored by *The Tech*, and we're hoping to get a dart back on the dartboard this time. If you're interested in finding yourself or your friend a *Tech* date, let me know by e-mailing me at [devdoot@mit.edu](mailto:devdoot@mit.edu).

## Blind Date Recap



Name: Kristin Hrabak  
Class of 2005; Course 10



Loveboard Moral:  
Never date a Homestar  
Runner fan.



Name: Andrew Greenhut  
Class of 2006; Course 2

name at his house, primarily because of his manner of speaking and its likeness to the cartoon character. Hrabak did consider the conversation as "not really deep," but didn't take issue with it. "When there were awkward silences, they were short," she said. Luckily for the two of them, they didn't have to talk to one another during their stay at the comedy club, though both enjoyed the ImprovAsylum thoroughly.

And, after four hours of idle chatter, the couple came back to Kristin's room in Baker House to watch a movie, "Harry Potter and the Sorcerer's Stone." Here's where it was supposed to get juicy. But of course, this was a bad date, so none of that happened.

However, Kristin epitomized true feminism (and should be applauded) for asking Andrew point blank if he had a good time. "Yes," he said. "Yes, as in we're going to do this again or yes as in just friends?" she asked. "Friends," he said.

## Tax info, toll-free.

Tax questions? Call TeleTax for recorded information on about 150 tax topics, 24 hours a day.



<http://www.ustreas.gov>

1-800-829-4477

This space donated by *The Tech*

Have an idea for a feature? Comments about the section? Want to write for *The Tech*?

Just e-mail [features@tt.mit.edu](mailto:features@tt.mit.edu) to fulfill those desires!



# Sex and the SafeRide

## Single and Looking

By Daniel Chai  
COLUMNIST

There are some people who really enjoy being single. I am not one of them.

I'm not sure why I dislike being single so much. I think it lies in the security of knowing you always have someone to count on in a relationship; that you'll always have someone to hang out with you on Friday night.

However, many college students believe that you shouldn't tie yourself down like that. People tell me that college is the time to explore, to leave your options open, and to broaden your horizons. As such, they say I should try to date around, figure out what I want in a woman, and have fun. These are all great suggestions, but I don't think people have taken into account my situation: I just got out of a five year relationship a couple of months ago.

I've never really learned to date casually; I've always been the serious type. Come to think of it, I never really learned how to date. It's a little ironic considering I write this column.

If you're like me, you've gotten tired of going to clubs and parties to try to find someone.

The type of woman I'd be interested in probably wouldn't be partying hard anyway. I'm very much a homebody that likes to watch movies and play board games. So how do you go about finding a girl that likes to stay at home? Do you just go knocking on doors in the dorms to see who's staying in on a Friday night? I could see how bad that would turn out:

*(knocking on door)*

**Girl:** Who the hell are you?

**Me:** The man of your dreams... wanna play Monopoly?

**Girl:** What?

**Me:** Monopoly! Do you play with money on free parking?

**Girl:** Get away from me before I call the CP's on your ass, you freak!

Scratch that idea. So how do you meet people outside of the party scene, then? I've turned to something that I never thought I would: online dating services!

Some might call it desperate; I'm just going to say that the ends justify the means.

Alright, you can stop laughing at me now. Actually, I've gotten a little addicted to it. I created a profile, put up my picture, and now I check everyday to see if I've gotten any messages from anyone.

You're wondering what dating service I use? No way in hell I'm going to let that information out. I'm still a little embarrassed that I couldn't find a date in person.

Aside from all of that, it is a pretty legit way of meeting people. It could never replace actual human contact, but hey, I'm at MIT. Actual human contact is in short supply. What do you do when someone actually contacts you, though? Is there some sort of etiquette to this? I've always hated the idea of asking someone out over e-mail, but I suppose there's no way around it here. I haven't talked to anyone yet, but I can't imagine how I'd respond to someone's message of "I'm interested in you." What if I'm not attracted to this person? I guess it's rude to ignore them, but that's the route I'm going to take. Hey, I'll deal with it if it happens to me.

Online dating not for you? Well, here are some old-fashioned alternatives: arranged marriages, amass a huge fortune, beating your love interest over the head with a club, or challenging the alpha male for dominance. I'm pretty sure women go wild over the last one.

All kidding aside, you could always get set up through friends, meet people through classes, take a PE, or join a new club/organization. I personally enjoy letting other people do the work for me, so lately I've been relying on my friends to set me up. We'll see what they come up with, and hopefully they'll at least find me someone interesting enough to write about.

I guess you can see by now that dating is a big pain in the ass. But frankly, anything worth doing is going to be a pain in the ass. I'll keep you posted on any developments in my love life, although I won't go into graphic detail. Hope this gives you some ideas, and as always, good luck with your romantic endeavors...

*Daniel Chai is a pseudonymous male undergraduate who writes a weekly column about sex and relationships in college from a male's perspective.*

By Tiffany Kosolcharoen  
STAFF REPORTER

You and I are equal for approximately six hours a day. You are also on par with Britney Spears, the Queen of England, and the drunk-en dude on Massachusetts Avenue at 3 a.m. in the morning. Yes, 100% equal.

Whether the thread count of your sheets is ten or 200, or your bed is a cold pavement rather than a cozy mattress, the realm of sleep makes us all the same. Is this what the realm of death feels like, too?

This Halloween day is the most appropriate day of the year to examine death. After all, "I died on this test" is said all year round, and Salem, the town of witchcraft, is just a puff away.

Amid the graveyards of Boston, it is odd that humans are so fascinated with death — its numb, cold nothingness — rather than ways to defy it.

You can never truly "die" if you play the game of life well. Your life's ultimate report card will be written after you die by someone you cannot control. The obituary.

Sadly, the hours spent cramming for midterms in Hayden will not end up there. What will we all be known for if today, tomorrow, or the day after were your last day to live?

**Name:** Masochist

**Cause of Death:** Nervous breakdown from 6.111, commonly called "digital death lab."

**Aspirations:** 5.0 GPA, triple-major.

**Remembered for:** playing loud music, showering freshmen, and pulling all-nighters.

**Survived by:** One goldfish, unnamed.

**Virtual Friends:** IM list of gqboi232, xox-

ochica32, hottie23

**Items bequeathed:** 2 half-empty cans of Starbucks Doubleshot Shaken Espresso, two tokens on the T, and dirty laundry.

If we knew the dates of our deaths, every day would be more important. Although it wouldn't be practical for one to know his date to R.I.P. because life would be experienced as a ticking time bomb. Life in the grand scheme flips our daily priorities upside down.

Will our lives even be memorable enough for an obituary to be written? What will people say about you? Who will be your undying friends?

Obituaries are subjective truths. Your life is written by those you hold dearest, and the only elixir to life is to live through the eyes of others.

At the end of the day, it is your memories, your time, and your impact on others that will make your life successful.

The time you surprised your best friend for her half-birthday or made your best buddy a home-cooked meal will be remembered forever. It puts the personal goal of getting a 5.0 GPA all in perspective. Who gives?

As we dress up as skeletons and ghosts (or, for the seniors, feel the spirits on your booze cruise), visit graveyards, and conceal ourselves in black, think before you mock death on this night of All Hallows Eve.

On this Halloween, the trivial Salem tombstones that costumed trick-o-treaters walk on with total apathy could be ours — unless we make our lives worthy of something more.

Instead of acting just plain wicked, please do something kind unto others. Have a memorable Halloween, MIT.

**We need someone with the confidence of a surgeon, the dedication of a marathoner and the courage of an explorer.**

We have a unique opportunity for someone very special. A chance to spend two years in another country. To live and work in another culture. To learn a new language and acquire new skills.

The person we're looking for might be a farmer, a farmer, a farmer, or a retired nurse. Or

maybe a teacher, a mechanic, or a recent college graduate. We need someone to join over 5,000 people already working in 60 developing countries around the world. To help people live better lives.

We need someone special. And we ask a lot. But only because so much is needed. If this

sounds interesting to you, maybe you're the person we're looking for. A Peace Corps volunteer. Find out. Call us at

(Collect) 617-565-5555 x598

**Peace Corps.**  
The toughest job you'll ever love.



This space donated by The Tech

# T-SHIRTS

...a necessary fact of college life



- Deal direct...no middlemen
- Fast turnaround
- Award winning & computer literate art department
- Free delivery & Reasonable prices
- Most major organization logos on file for easy art work at no charge
- Full color heat transfers - no minimum!
- Web, print & graphic design

...and best of all - no boring lectures

ph - 617-625-3335  
fx - 617-625-0404  
email - info@qrsts.com  
www.qrsts.com  
serving the M.I.T. Community since 1989

## NOW OPEN ~ POLCARI'S OF CAMBRIDGE

AUTHENTIC ITALIAN AMERICAN RESTAURANT WITH A FABULOUS BAR

FREE VALIDATED PARKING EVENINGS AFTER 5PM AND ALL DAY ON WEEKENDS IN THE TECHNOLOGY SQUARE GARAGE • TEL. 617-577-0555 • WWW.POLCARIS.COM

COME TRY OUR NEW LOCATION FOR DINNER

**\$5.00 off** a food purchase of \$15.00  
or more per person (beverages excluded) with this coupon.

One Coupon per person not valid with any other offer. Original certificate valid at the Cambridge, MA location after 4PM only. Offer Expires 12/30/03





## SPOOKY SKATE

Halloween  
Night @ 10pm

Johnson  
Athletic  
Center

*Costume Contest, Games,  
Pumpkin Carving, Prizes!  
Free Food & Candy!*  
Open to ALL MIT students!

*Sponsored by Club Z, SaveTFP, &  
Dormcon*

## Lobby 7 Kiosks, MIT Logo Win Pity Prizes

UMOC, from Page 1

participation had been "going down because people don't run anymore." The last time a person ran was four years ago. Instead, objects or concepts were the choices this year.

You Zhou '07, UMOC awards chair, offered another explanation for the lower contest total: "The candidates were all rather ugly so voters probably had a hard time choosing."

The Random Hall milk earned over \$50 more than its competitors. Zhou announced the results at the awards ceremony Wednesday night in Lobby 7.

### Ugly prizes presented to winners

A representative of the Random Hall milk was not present, but Zhou showcased the first place prize, the Ugly Hat, which he said would "keep [Random Hall milk] warm on the long, cold, bitter nights in the refrigerator." The hat is made of neon colored feathers and shiny gold cloth. Zhou wore it briefly for onlookers to marvel at.

The other six contestants were

given pity prizes, which consisted of plastic spoons with vibrant green feathers attached with duct tape. Only the Lobby 7 kiosks were present to accept their pity prize.

Of Random Hall milk's victory, Michael J. Salib '04 said, "I think the milk's ugliness is well-deserved."

The Random Hall milk began competing in the contest eight years ago. Its expiration date is October 20, 1994. This year's win is a bounce back from its fourth place finish in last year's UMOC.

The MIT logo, a new contestant, took second place, while the Lobby 7 kiosks took last place with \$18.93.

### UMOC promotes charity

Voters donated money for the ugliest manifestation last week at a booth in Lobby 10.

Kosut said that the purpose of UMOC is "to raise money for charity and to promote ugliness in the world."

The UMOC charity fundraiser is a tradition of the national APO service fraternity.

## UMOC Final Results

Contestant	Charity	Total
Random Hall Milk	Greater Boston Food Bank	\$136.48
MIT Logo	Boston Harbor Island	\$81.96
Simmons Hall	Unknown	\$47.18
Freshmen Housing Policy	United Way	\$25.23
MIT Web site	Rosie's Place	\$23.26
Stata Center	American Red Cross	\$19.17
Lobby 7 Kiosks	Literacy Volunteers	\$18.93
<i>Write-ins</i>	Winning charity	
Anonymous		\$7.11
Hack nomination (New \$20 Bill)		\$20.00
<b>Week Total</b>		<b>\$379.41</b>

SOURCE: ALPHA PHI OMEGA

DO YOU WANT TO  
MAKE A DIFFERENCE  
AT MIT?

Then join the Campus Alcohol Advisory Board (CAAB)!

Current initiatives include:

- Review & evaluation of revisions to MIT's alcohol policy
- Enhancement of communication & education among students, administrators & city officials.

**NEXT MEETING: TUESDAY, NOVEMBER 4<sup>TH</sup>**

**4:00PM-5:00PM**

**W20-MEZZANINE LOUNGE**

**Open to ALL MIT Students!**

For more information, email [caab@mit.edu](mailto:caab@mit.edu)

# Stipends Do Not Match Costs

Grad, from Page 1

surplus ran out last year during an unexpected increase in the usage of mental health services.

The actual increase in the health insurance premium was 70 percent, but the Institute has absorbed 10 percent of it, Colbert said.

The Medical Department is now involved in the process for setting stipend levels, and health insurance information will be taken into account, he said.

## Students face several greater costs

Both graduate and undergraduate students have faced increasing costs recently with the imposition of a new student life fee on top of health insurance and rent costs.

D'Heedene said that the new \$200 student life fee led to an additional burden on the students. Some graduate students feel that they are being made to pay for facilities that they do not use as much as undergraduates.

The fee was instituted last year in part to provide funding for the new Zesiger Center and in part as extra funding for the Student Life Office.

Colbert said that "it's a question of who has access to [student life facilities]. Nothing stops a student from going over." He said that statistics do not show that graduate students use the facilities and participate in student life programs less

than undergraduates.

Rajagopal said that despite the increased costs, "the Z-Center has been great."

## Int'l students particularly hit

"Domestic students probably have a lot more options to pay. Rules are stricter for international students," said Danielle Guichard-Ashbrook, director of the International Students Office. For instance, international students cannot increase their workload beyond 20 hours per week, and spouses of international students are not allowed to work.

"Immigration is not particularly sympathetic about health insurance," Guichard-Ashbrook said, and work hour regulations would not change as a result of increases in health premiums.

She said that both domestic and international students are facing the consequences of the insurance hike, and although none of the students had complained to her particularly, she said she knew it was on their minds.

In addition, a new \$100 fee may be levied on future incoming international students for the maintenance of the Student Exchange and Visitor Information System.

## Stipend levels increase slightly

"Many departments increased stipend levels in response" to the increase in health insurance, Colbert said, in order "to help reduce the

impact of the unexpectedly high premium increases."

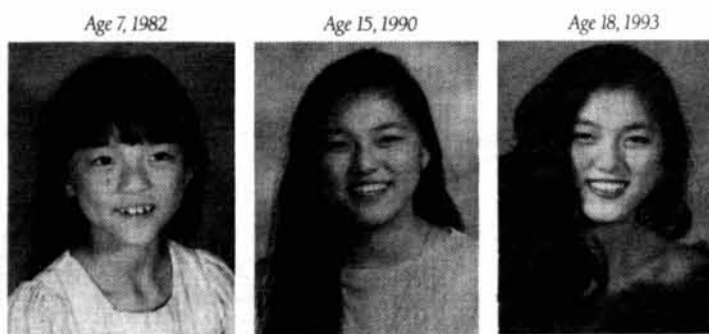
However, less than half the graduate students are supported as research assistants, about 850 as teaching assistants, and the rest are either supported by fellowships or pay their own way, Colbert said. The stipend increase would only affect RAs and TAs and thus not affect the overwhelming majority of students, he added.

Stipend levels are recommended to the Academic Council by a committee composed of the dean for graduate students, faculty from different schools, directors of major research laboratories on campus, graduate student representatives, and Associate Provost Alice P. Gast.

According to a June memo sent out by Colbert and Gast, the research assistant and teaching assistant stipend levels were increased by an additional \$30 per month as a result of the health premium rise. The cost for Extended Health Insurance at MIT, however, is \$45 a month, leaving a \$15 gap each month.

Cost of living is only one part of the consideration in setting stipend levels. Another consideration is "what faculty believe the research accounts are able to bear," Colbert said.

Currently, MIT graduate students are among the most expensive to maintain in the nation in terms of tuition and fixed costs.



Elizabeth Suto.

Killed by a drunk driver on February 27, 1994, on Bell Blvd. in Cedar Park, Texas.

If you don't stop your friend from driving drunk, who will? Do whatever it takes.

**FRIENDS DON'T LET FRIENDS DRIVE DRUNK.**



U.S. Department of Transportation

This space donated by *The Tech*

# \$30,000

## LEMELSON-MIT STUDENT PRIZE

Learn more about the Lemelson-MIT Student Prize on **November 5th, 8 pm** at The Muddy Charles Pub's "Weekly Wednesdays." Lemelson-MIT staff and former winners will be present.

Inventive graduate students and graduating seniors may apply: <http://mit.edu/invent/a-student.html>



LEMELSON-MIT PROGRAM

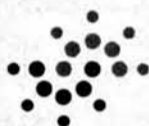
celebrating invention and innovation

**DEADLINE: FRIDAY, JANUARY 9, 2004**

### Solution to Crossword

from page 13

A	H	A	B	R	I	G	S	U	T	T	E	R		
M	O	R	O	E	D	E	N	N	A	O	M	I		
O	P	E	N	A	C	A	N	O	F	W	O	R	M	S
R	E	S	U	M	E	A	R	E	A	T	A	E		
				S	I	D	E	T	E	N	T			
L	A	C	D	I	N	A	S	T	R	A	T	A		
A	M	O	S	N	E	L	L	E	A	M	E	S		
D	O	T	H	E	G	R	O	U	N	D	W	O	R	K
E	L	T	O	N	O	N	C	E	L	U	N	E		
S	E	A	R	E	D	G	R	I	M	R	I	D		
				T	R	E	T	E	G	O	S			
I	T	O	V	E	I	L	H	O	L	L	O	W		
T	A	K	E	A	D	E	E	P	B	R	E	A	T	H
E	L	I	O	T	U	N	T	O	E	R	I	E		
M	E	E	S	E	P	A	A	R	T	A	C	T		



MIT PUBLIC SERVICE CENTER

[web.mit.edu/mitpsc](http://web.mit.edu/mitpsc)

This space donated by *The Tech*

We want you in our sheets.



[join@tt.mit.edu](mailto:join@tt.mit.edu)  
W20-483, 617-253-1541

# MIT esd OPEN HOUSE TPP

for  
**Prospective Masters and Doctoral Students**  
in  
**MIT's Engineering Systems Division and Technology and Policy Program**

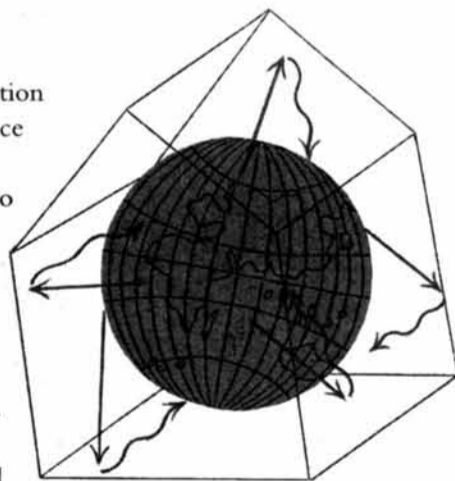
Monday, Nov. 3  
9 a.m. - Noon  
RM. E40-380

For further information contact  
[Sydney@mit.edu](mailto:Sydney@mit.edu) or [esdgrad@mit.edu](mailto:esdgrad@mit.edu)

COLUMBIA UNIVERSITY  
SCHOOL OF INTERNATIONAL AND PUBLIC AFFAIRS  
THE EARTH INSTITUTE AT COLUMBIA UNIVERSITY

## Earn your MPA in Environmental Science and Policy

The Master of Public Administration Program in Environmental Science and Policy combines Columbia University's hands-on approach to teaching public policy and administration with pioneering thinking about the environment. This twelve-month program takes place at Columbia University's New York campuses.



For more information, please call 212-854-3142, e-mail: [lar46@columbia.edu](mailto:lar46@columbia.edu), or visit our Web site.

**You are invited to an Information Session** | **November 3, noon**  
MIT  
Building 26, Room 204

[www.columbia.edu/cu/mpaenvironment](http://www.columbia.edu/cu/mpaenvironment)

Free food after 11 p.m.



join@tt.mit.edu

The Kendall  
a Hotel

FIRE ENGINE

350 Main Street  
Cambridge, MA 02142  
Tel. 617-577-1300

www.kendallhotel.com

## Depression is a serious threat to anyone that has a brain.

Depression is a suppression of brain activity that can strike anyone. It can make life unbearable, but it is also readily, medically treatable. And that's something you should always keep in mind.

**UNTREATED DEPRESSION**

Public Service message from SAVE (Suicide Awareness Voices of Education)

http://www.save.org

This space donated by *The Tech*

The Fannie and John Hertz Foundation takes great pleasure in announcing its Fall 2003 Fellowship Awards.

Mr. Christopher Loose  
Department of Chemical Engineering

is one of 15 Hertz Foundation Fellows chosen from a field of 584 applicants to receive a five year, \$200,000 Graduate Fellowship Award in the Applied Physical Sciences. The Hertz Foundation would like to extend its congratulations to Massachusetts Institute of Technology for attracting this Fellow to their graduate program.

See [www.hertzfoundation.org](http://www.hertzfoundation.org) for more details.

This space donated by *The Tech*



You're at a greater risk of getting skin cancer if your hair is blonde or red.

(Assuming your hair is really blonde or red.)

Fair skin, light eyes and a tendency to burn in the sun, also put you at a higher risk. So, examine your skin regularly. If you find anything unusual, see your dermatologist.



AMERICAN ACADEMY OF DERMATOLOGY

For more information, call 1-888-021-DERM or visit [www.aad.org](http://www.aad.org)

Join America's #1 Student Tour Operator  
Jamaica, Mexico, Bahamas, and Florida  
Sell Trips, Earn Cash and Go Free!  
Call for group discounts.

For more information, contact STA Travel at 617-225-2555

1-800-648-4849 / [www.ststravel.com](http://www.ststravel.com)

### USASPRINGBREAK.com

Cancun, Bahamas, Acapulco, Jamaica & More  
Don't be fooled! Go with quality and experience!  
28 years in business  
Largest Student Tour Operator (Division of USA Student Travel)  
**Call 1-877-460-6077**

Now hiring Campus Reps  
Earn 2 Free Trips for 15 Travelers & \$\$

### Movie Extras/ Models Needed

No exp. required, all looks and ages  
Earn \$100 to \$500 a day  
1-888-820-0167 ext. U87

# FREE PHONE!

You can get the T-Mobile Nokia 3595 phone **FREE\*** when you sign up for T-Mobile's "Get More 1000" Plan that includes 1000 Whenever Minutes and no long distance or roaming for only \$39.99/Month

The 3595 SRP is only \$49.99 and comes with a \$50.00 mail-in rebate.



"You'll also receive a **FREE** Handsfree headset when you sign up!"

T-Mobile offers you exceptional products and services. Boston Cellular and YesWireless offer you three convenient locations for all your cellular service, equipment and accessory needs.

Offer also good on any other T-Mobile rate plan that costs \$39.99 or more. Limit one offer per wireless phone. New activation required on a qualifying rate plan. This rebate offer may not be combined with any other rebates or offers. Offer expires 12/1/03.

Limited time offer, subject to change or revocation at any time. Coverage only available on our domestic network and that of our U.S. roaming partners (Get More Network™), but not in all areas. Your use of the service constitutes acceptance of the T-Mobile terms and conditions, including the mandatory arbitration clause. Credit approval, activation fee and 1-year service agreement required, with \$200 early cancellation fee per number. Domestic long distance (but not for credit card or operator-assisted calls) and roaming offered on the Get More Network. Applicable taxes, fees, toll, roaming and other charges additional. Unused minutes do not carry forward to subsequent billing cycles. Any fraction of a minute used is rounded up and billed at the full minute rate. Calls are measured from the time the network begins to process the call (before the phone rings or the call is answered) through its termination off the call. Weekends defined as Saturday & Sunday. Rates are for domestic use only. Rebate is an exclusive rebate only if it is in store as opposed to a mail-in rebate that requires the purchase from a participating retailer of the phone listed in this ad and a new T-Mobile activation on a qualifying rate plan. See materials in T-Mobile stores for complete details, offer dates and proof-of-purchase requirements. Some features such as Unlimited Downloads, Unlimited Nokia and Mobile to Mobile are not available with this rate plan. Additional restrictions apply. See printed materials for details. T-Mobile is a registered trademark of Deutsche Telekom AG. © 2003

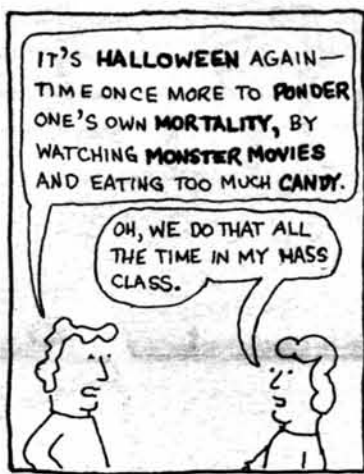
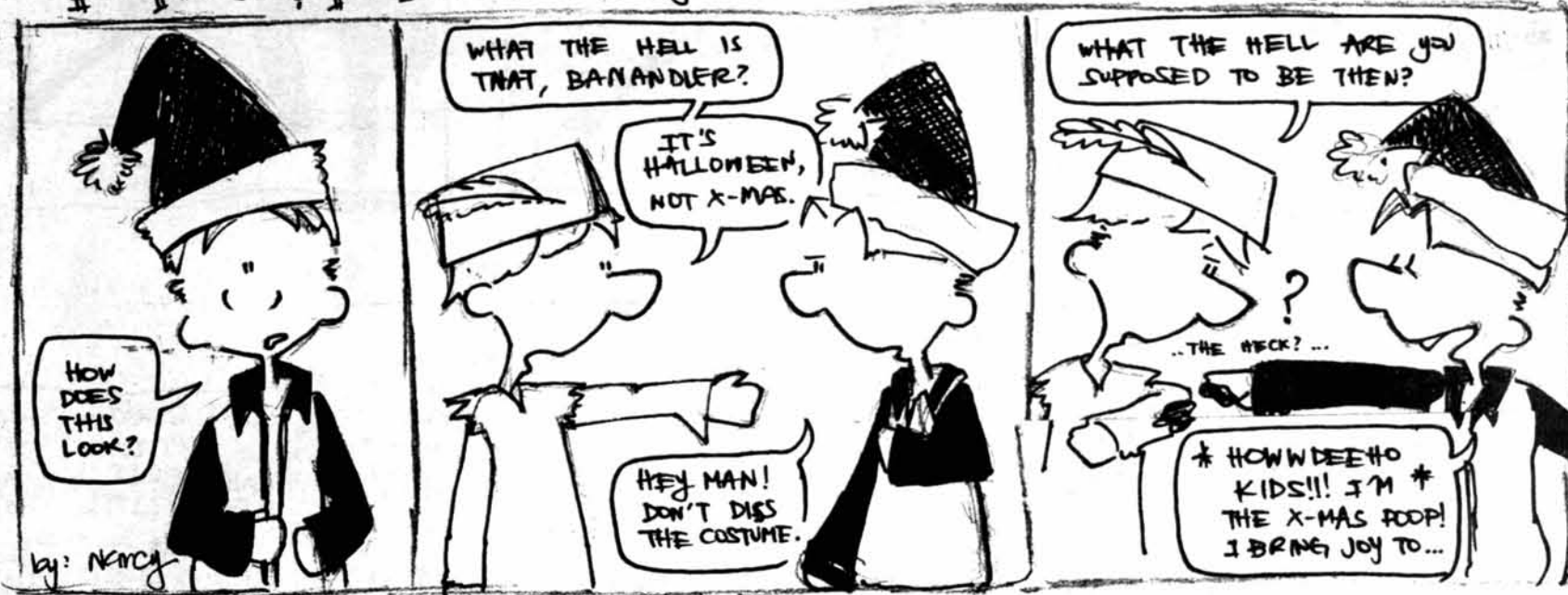
**BOSTONCELLULAR**  
The Wireless Professionals

1726 Mass. Ave. Cambridge (617) 497-6100  
1345 Main Street, Waltham (781) 642-9700

**YESWIRELESS**  
Yes Is Always Our Answer

197A Mass. Avenue, Boston (617) 236-1007

POOPLITS & POOPLITS (Note way because "The Poop" has returned!!!!) Happy Halloween!!!



## Hay Fever

by: Qian Wang + Jennifer Peng

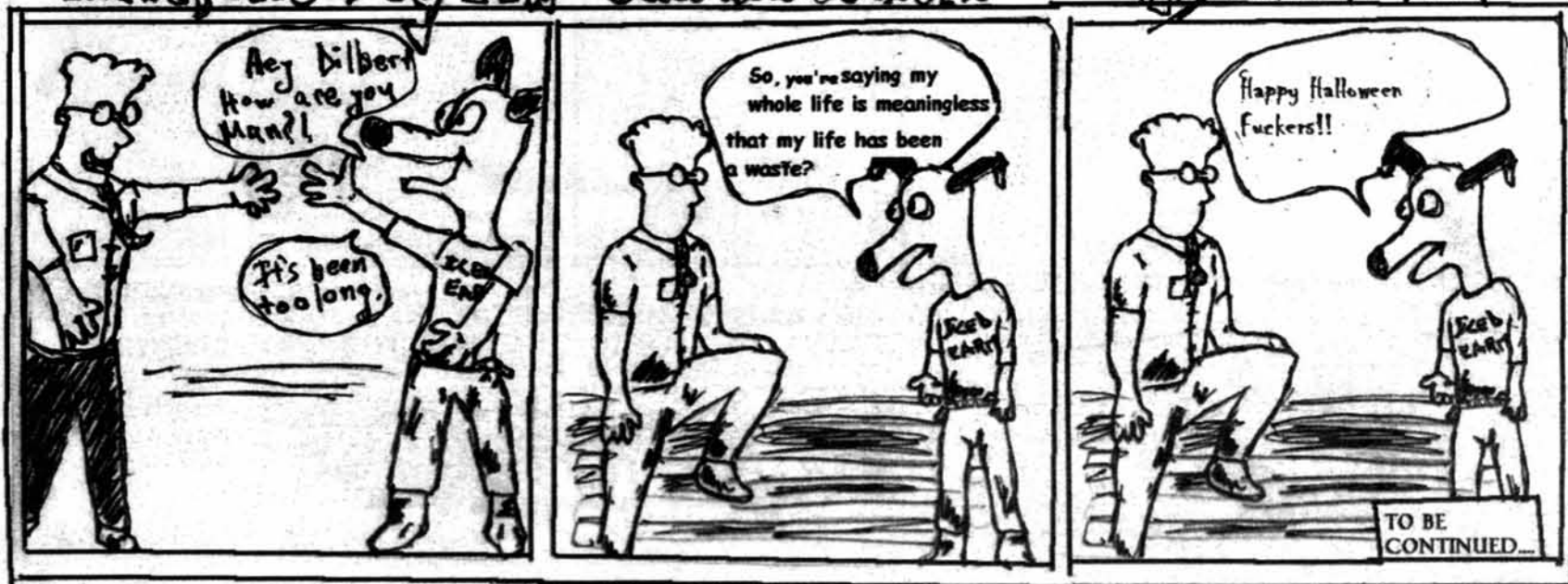


10-31-03

-JPeng

## Mike, the Dog in Guardian Angel

By: SERGEI R. MANA





My friend Kevin + the Chef



Curse free for Ramadan!

mat'solar

By: Solar



PHD

PILED HIGHER AND DEEPER



"WE'RE NOW JOINED BY DIET BOOK AUTHOR AND EDUCATION EXPERT, PHIL STATHAM..."

"GLAD TO BE HERE..."

"PHIL, YOUR ARTICLE IN THE NEW YORK TIMES REVEALS THAT GRAD SCHOOL ACTUALLY MAKES YOU DUMBER?"

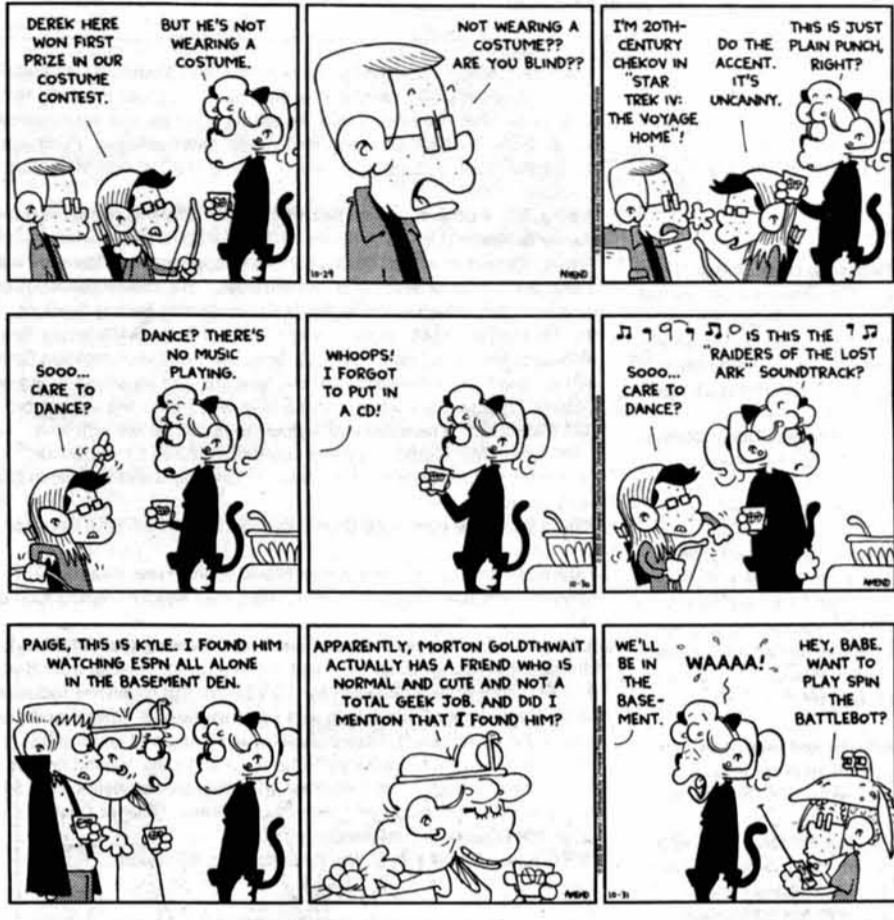
"YES, JOHN, YOU SEE, AFTER EXHAUSTIVE ASKING AROUND, I DISCOVERED TWO THINGS: PEOPLE IN GRAD SCHOOL NOT ONLY REALIZE THEY ACTUALLY NEED THE THINGS THEY THOUGHT THEY LEARNED IN UNDERGRAD..."

"BUT THEY ALSO FIND OUT HOW MUCH STUFF THEY DON'T KNOW. PROPORTIONATELY, THEY'RE DUMBER. SEE, REGULAR PEOPLE REMAIN BLISSFULLY IGNORANT, WHICH IS DIFFERENT THAN BEING DUMBER."

"SO GRAD SCHOOL DOESN'T MAKE YOU SMARTER?"

"HAHA, NO, NO... UNFORTUNATELY, THAT'S JUST A COMMON MISCONCEPTION"

# FoxTrot by Bill Amend



# Dilbert by Scott Adams



## Positive Sinking Ostentatious and Delicious

By Akshay Patil

COLUMNIST

Since you seemed to enjoy the chewing gum item, here's another item you might have fun with, especially for your women readers:

**Column** Nov 2003 issue of Prevention magazine reports, "men who like flora-spicy scents thought women wearing the fragrance looked 12 pounds lighter." The test was run on 200 guys aged 12-61. Not all noses were fooled. Tailors weren't and neither were women. The best replica of the experimental slenderizing fragrance? A mixture of Old Spice men's cologne and floral shampoo.

Brought to us by researchers at Chicago's Smell and Taste Treatment Research Foundation.

P.S.: Apparently pumpkin pie aroma makes men feel sexy and green apple fragrance controls appetite.

Pumpkin pie aroma makes men feel sexy? Well, ladies now you know what to do

tonight as you party away All Hallow's Eve — ditch the costume and rub yourself with pumpkin pie. Guys dig it.

Now I know many of you are asking, "What exactly do you mean by 'ditch the costume?'" And to you I say, "You heard me." And then you ask, "So what are you, Mr. Not Sin King, doing for Halloween?" And to you, I say, "Driving out of state in a van full of girls." And then you raise your eyebrows and ask, "Uhm, isn't that a bit kinky?" And to you, I say, "Not really, it's part of a carpool headed to Talbot House." And you say, "Oh," in a disappointed voice. And to you I say, "But maple syrup will be involved."

Of course, you ladies may not be able to get your hands on pumpkin pie before the bewitching hour, so I encourage you to experiment with other types of pie such as pecan pie, apple pie, or rhubarb pie (What exactly is a rhubarb again? Does it make you randy, baby?).

But the major point here, men, is that cologne doesn't make us look skinnier. Now I know it's been a big craze recently for guys

go to on the "cologne diet" despite FDA studies showing the negative effects of such behavior, but here is concrete proof that it just doesn't work if you're keen on impressing members of the opposite sex... or tailors. Them tailors are wily folk.

If you're really keen on hitting on a tailor, you're probably better off not ditching your costume, assuming it's a well stitched piece of handiwork. But I digress.

The real issue at the heart of this study is a startling one indeed. One that shakes me to the very core of my very bones and then does a tango with my conscience while gettin' down and dirty with my bad self and does its best to make my jaw drop. It's the kind of issue that finds you awake late at night staring at the ceiling trying to reconcile ideas as different as elephants and mountain climbers: What kind of fruit is Squeeze talking about when they sing "Tempted?"

You know, "Tempted by the fruit of another/Tempted but the truth is discovered." Squeeze (being the avid horticulturists that they are) is obviously not referring to pump-

kins since they are in fact vegetables (pumpkins, not Squeeze — though this is a disputed fact). Are they then referring to apples? Maybe they're talking about oranges... I've always been partial to oranges. Or perhaps it's actually mangos... Yeah, I think I could be tempted by another's mangos. Or avocados, but then again the song would probably go "tempted by the guacamole of another" if it were avocados. Oh, if only we knew.

What's your opinion on "The November Rule" for upperclassmen (and, theoretically, grad students) dating freshmen?

—booty

Screw the rule — you've got 24 hours, so go crazy. Remember to use pumpkin.

Are you a lonely female seeking a pumpkin companion? Would you like to hear the patter of little Positive Sinking's in future issues of The Tech? Well then send e-mail to [sinking@mit.edu](mailto:sinking@mit.edu) and we'll promise to chug a bottle of old spice for every e-mail received (offer subject to change, see Web site for details).

# Crossword Puzzle

Solution, page 9

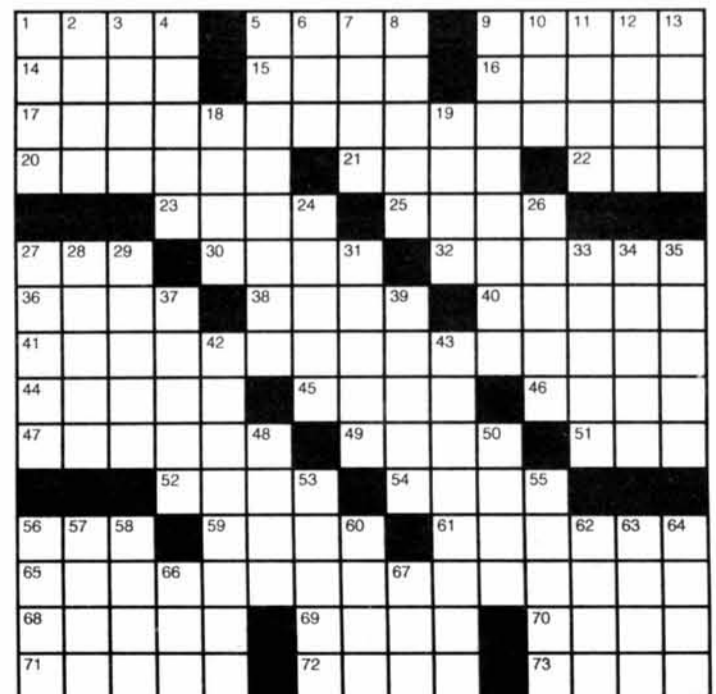
### ACROSS

- 1 Fictional whaler
- 5 Semis
- 9 State
- 14 Gulf of the Celebes Sea
- 15 Churchill's successor
- 16 Model Campbell
- 17 Prep, for an angler?
- 20 Get back to
- 21 Type of rug
- 22 Menlo Park initials
- 23 Lateral part
- 25 Camper's quarters
- 27 Varnish ingredient
- 30 Actress Merrill
- 32 Geological layers
- 36 Singer Tori
- 38 Foster title role
- 40 Chair designer
- 41 Prep, for a farmer?
- 44 Rocker John
- 45 Formerly
- 46 "Clair de \_"
- 47 Scorched
- 49 Bleak
- 51 Free (of)
- 52 Waste allowance
- 54 Vanities
- 56 O.J.'s judge
- 59 Bridal wear
- 61 Like some Easter bunnies

- 65 Prep, for a pearl diver?
- 68 "Middlemarch" author
- 69 Biblical preposition
- 70 New York canal
- 71 Attorney general Edwin
- 72 Host before Carson
- 73 Diplomat's forte

### DOWN

- 1 \_\_\_ patriae
- 2 Partner of faith and charity
- 3 Bellicose god
- 4 Unexpected sum
- 5 Like the outgoing tide
- 6 Wash, neighbor
- 7 Actress Rowlands
- 8 Derisive noise
- 9 In the way
- 10 The way to Lao-tzu
- 11 Wrongful act
- 12 Poet Lazarus
- 13 Get up
- 18 Surrounded by
- 19 Professional charges
- 24 Juan's winter month
- 26 Use a trotline
- 27 Fills the hold
- 28 Soap plant
- 29 Terra \_\_\_
- 31 \_\_\_ for the ride
- 33 Love affair
- 34 City near Roma
- 35 Invited
- 37 Brief
- 39 Filthy money?
- 42 Sap of energy
- 43 Reside beside
- 48 Act
- 50 Othello, e.g.
- 53 Bind
- 55 Wintry forecast
- 56 Thing
- 57 Fable
- 58 Dust Bowl migrant
- 60 Chanteuse Horne
- 62 Doctor Zhivago's love
- 63 Of the ear
- 64 Hone
- 66 Greek Aurora
- 67 Mom-and-pop grp.



# Events Calendar

Events Calendar appears in each issue of *The Tech* and features events for members of the MIT community. *The Tech* makes no guarantees as to the accuracy of this information, and *The Tech* shall not be held liable for any losses, including, but not limited to, damages resulting from attendance of an event. Contact information for all events is available from the Events Calendar web page.

Visit and add events to Events Calendar online at <http://events.mit.edu>

## Friday, October 31

**9:30 a.m. - 3:30 p.m. - M.I.T. Libraries' Booksale.** Selection of material from diverse areas including Engineering, Sciences, Computer Science, Math, History, Architecture, Urban Studies, and Miscellaneous General Interest. Proceeds benefit the Libraries' Preservation Fund. Open to the M.I.T. community only. Free. Room: Bush Room, 10-105. Sponsor: MIT Libraries Gifts Office.

**10:00 a.m. - Admissions Information Session.** Admissions Office Information Session gathers at the Admissions Reception Center. Groups over 15 people need to make special reservations. Free. Room: Admissions Reception Center. Sponsor: Information Center.

**10:45 a.m. - Campus Tour.** Student-led campus tours are approximately 90 minutes long and provide a general overview of the main campus. Please note that campus tours do not visit laboratories, living groups or buildings under construction. Groups over 15 people need to make special reservations. Free. Room: Lobby 7. Sponsor: Information Center.

**12:00 p.m. - 1:00 p.m. - Writers Group.** New writers are invited to join our weekly Writers Group (sponsored by the Writing and Communication Center). Share a piece of your writing with other interested and supportive writers. Open to all MIT students, staff, faculty, and spouses. Free. Room: 14N-417. Sponsor: Writing and Communication Center.

**12:00 p.m. - 3:00 p.m. - Rainbow Lounge Open.** MIT's resource lounge for lesbian, bisexual, gay, transgendered, and questioning members of the community offers a place to hang out, various activities, and a lending library during its open hours. Free. Room: 50-306. Sponsor: lbgt@mit.

**12:00 p.m. - Vision Seminar.** A new view of the function of the primary visual cortex. Room: E25-401. Sponsor: Brain and Cognitive Sciences.

**12:10 p.m. - 1:00 p.m. - GABLES Lunch.** GABLES is the MIT lbgt staff & faculty group. The lunch is an opportunity for us to gather in a social environment to meet and greet one another. It is also a venue for us to talk about issues of interest to the MIT and larger communities. Our colleagues from the wider community are invited to join us. Free. Sponsor: GABLES.

**1:10 p.m. - 1:50 p.m. - Muslim Friday Prayer.** Weekly congregational prayer for Muslims. People of other faiths welcome to attend. E-mail [msa-ec@mit.edu](mailto:msa-ec@mit.edu) for more information. Free. Room: W11-110. Sponsor: Muslim students' Association.

**2:00 p.m. - Admissions Information Session.** Free. Room: Admissions Reception Center. Sponsor: Information Center.

**2:30 p.m. - 3:30 p.m. - George Hart: Sculpture from Symmetrically Arranged Planar Components.** George Hart PhD '87, sculptor, mathematician, engineer, researcher, writer, computer scientist and educator, is artist-in-residence through Nov. 4. Free. Room: NE43-510. Sponsor: EECS. Office of the Arts, Special Programs.

**2:45 p.m. - Campus Tour.** Free. Room: Lobby 7. Sponsor: Information Center.

**3:00 p.m. - 4:00 p.m. - Chemical Engineering Department Fall Seminar Series.** Water-Mediated Interactions Relevant to Protein Structure and Stability: Understanding Pressure Effects on Proteins. Free. Room: 66-110. Sponsor: Chemical Engineering.

**3:00 p.m. - 4:30 p.m. - SSL Seminar (Soon-Jo Chung).** Model-Based Optimal/Robust Control vs. Adaptive Neural Control for Precision Pointing/Tracking of ARGOS. Free. Room: 37-212. Sponsor: AeroAstro.

**3:00 p.m. - 4:00 p.m. - Special String Seminar.** Quantizing String Theory in ADS(5) X S5: Beyond the PP Wave. Free. Room: Center for Theoretical Physics. Sponsor: Laboratory for Nuclear Science.

**4:00 p.m. - BCS Colloquium.** How Chipmunks, Cherries, Chisels, Cheese, and Cellos are Structured, Computed, and Impaired in the Mind and Brain. Room: E25-117. Sponsor: Brain and Cognitive Sciences.

**5:00 p.m. - IAP 2004 Print Guide Deadline.** The print IAP 2004 Guide will be available in December 2003. Free. Sponsor: IAP.

**5:30 p.m. - 9:00 p.m. - Eastgate Halloween Party.** 5:30 p.m. - 6:30 p.m.: dinner; 6:30 p.m. - 7:30 p.m.: children's games and crafts, 7:30 p.m. - onwards: trick or treating. Free. Sponsor: Graduate Student Council, Eastgate Community Association.

**6:00 p.m. - Shabbat Services & Dinner.** Celebrate Shabbat. MIT Hillel's three religious communities hold Shabbat services. Dinner afterwards. Cost for dinner only. Room: Religious Activities Center (W11). Sponsor: Hillel, MIT.

**6:00 p.m. - 8:00 p.m. - Halloween Potluck Party.** Join us for Halloween fun for kids and adults, including trick-or-treating and pumpkin carving. Please bring a dish to share: 8 servings of a meat, veggie, salad or dessert. Everyone is welcome to come in costume! Free. Room: Simmons Hall. Sponsor: spouses&partners@mit. MIT Japanese Wives Group, Simmons Hall.

**6:00 p.m. - 11:00 p.m. - Cambridge Latino Film Festival.** "Nicaragua: The Children Are Waiting" (50 min) Marta Bautis. Q/A with director after the screening. 7:30 p.m.: "Ni uno Solo" (70 min) Pablo Hadis. "Aguante Animal" (51 min) Heloisa Cardoso. Free with MIT ID, otherwise \$5. Sponsor: Society of Hispanic Professional Engineers, Latino/a Cultural Center.

**7:00 p.m. - 11:59 p.m. - MIT Anime Club Showing: Halloween costume contest, Anime Music Video contest, ninja apprentices, a collector of spooky tales, and steampunk aerial dreadnoughts.** The MIT Anime Club shows the best of both recent and classic Japanese animation. Showings are open to the public. Tonight we'll have our annual Cosplay contest, with prizes for the best costumes, we will also hold the judging for our first Anime Music Video contest. We will be rejoining the ninja apprentices from "Naruto," show more of the steampunk aerial adventures of Klaus Valca, Lavie Head, and the rest of the cast of "Last Exile." We'll conclude our showing tonight with an episode of the creepy new series "100 Stories," about an Edo-era collector of spooky tales and his encounter with haunts. Free. Room: 6-120. Sponsor: Anime Club, MIT, UA Finance Board.

**7:00 p.m. - 9:00 p.m. - 28 Days Later.** \$3. Room: 26-100. Sponsor: LSC.

**7:30 p.m. - 9:00 p.m. - Bible Study.** Is there more to life than grad school? We believe the answer is "YES!" Come study the word of God with us. There will be dinner provided and games afterward. Free. Room: 4-149. Sponsor: Asian Baptist Student Koinonia Graduate Division, GSC Funding Board.

**8:00 p.m. - 11:30 p.m. - Sangam Movies.** Screening of popular movies. Please subscribe to [sangam-request@mit.edu](mailto:sangam-request@mit.edu). Free. Sponsor: Sangam, GSC Funding Board.

**8:00 p.m. - Antigone.** Jean Anouilh's play, directed by Elizabeth Jochum. \$8, \$6 MIT/Wellesley students. Room: Kresge Little Theater. Sponsor: Shakespeare Ensemble.

**9:00 p.m. - 1:00 a.m. - Warehouse Halloween Party.** The annual Warehouse Halloween Party! Games, food, drinks (proper ID required), DJ and dancing. Wear a costume and see if you can win the best costume contest! Free. Room: NW30. Sponsor: The Warehouse.

**10:00 p.m. - 12:00 a.m. - 28 Days Later.** \$3. Room: 26-100. Sponsor: LSC.

## Saturday, November 1

**10:00 a.m. - 1:00 p.m. - MIT Furniture Exchange Open House.** The MIT Student Furniture Exchange is hosting a Fall Open House. We welcome you to stop by and enjoy some refreshments with us. We are open to all affiliated with the Institute, but you must bring your university ID to make a purchase. If you have never had the opportunity to stop by and browse, you don't know what you've been missing! Free. Sponsor: MIT Women's League.

**12:00 p.m. - 4:00 p.m. - New England Rugby Football Union Division III Women's Rugby Championships.** Championship tournament for New England women's rugby, Division III. E-mail [wrugby-admin@mit.edu](mailto:wrugby-admin@mit.edu) with any questions. Free. Room: Briggs Field. Sponsor: Women's Rugby Club.

**1:00 p.m. - Drowned Out.** A film by Franny Armstrong. "The forest is ours. The land is ours. The River Narmada is ours. We are not going to leave all this. We will drown, but we will not move." Film will be followed by a Q&A session with director Franny Armstrong. Suggested donation: \$5. Room: 54-100. Sponsor: Amnesty International group 133, AID-Boston and Alliance for Secular and Democratic South Asia

**1:00 p.m. - Varsity Men's Soccer vs. Coast Guard.** Free. Room: Steinbrenner Stadium.

**2:30 p.m. - 6:00 p.m. - Michael Joo: artist talk and reception.** Free. Room: List Visual Arts Center. Sponsor: List Visual Arts Center.

**3:00 p.m. - Varsity Women's Ice Hockey vs. Wheaton College.** Free. Room: Johnson Athletic Center.

**3:00 p.m. - 11:30 p.m. - Cambridge Latino Film Festival.** Free with MIT ID, otherwise \$5. Room: MIT Bartos Theater E15. Sponsor: Society of Hispanic Professional Engineers, Latino/a Cultural Center.

**4:30 p.m. - 1:00 a.m. - TMRC Build Time.** These are our normal meetings, where we build the layout. Free. Room: N52-118. Sponsor: Tech Model Railroad Club.

**5:30 p.m. - 7:30 p.m. - Michael Joo Reception.** Organized by MIT LVAC director, Jane Farver, this is the first survey of the works of NY base-artist Michael Joo. Consisting of more than 35 works created between 1992 and 2003, the show includes sculpture, video, and works-on-paper, and will also be the world premiere of Circannual Rhythm (pibloktok), 2003, a three-screen digital video installation, shot on location in Alaska. Joo's art explores how science, religion, and the media shape consciousness and knit together the physical and the metaphysical. It is about energy and waste, the visible, and what cannot be seen. Free. Room: List Visual Arts Center. Sponsor: List Visual Arts Center.

**6:00 p.m. - 9:30 p.m. - Caribbean Cultural Night.** Enjoy high-quality food and entertainment at MIT Caribbean Club's 16th Annual Cultural Night! Entice all your senses with: Good Music and Pelau, Jerk Chicken and Talented Dancers, Sweet Vocals, Curry goat, Guest Appearance, Rice and Peas. \$10.00. Room: Lobdell - MIT Student Center (W20). Sponsor: Caribbean Club.

**6:00 p.m. - Varsity Pistol vs. Coast Guard.** Free. Room: MIT Pistol and Rifle Range in DuPont Athletic Center.

**7:00 p.m. - 9:00 p.m. - The Housekeeper.** \$3. Room: 26-100. Sponsor: LSC.

**7:00 p.m. - 9:00 p.m. - Seminar on Immigration Laws.** Seminar on Immigration Laws. Main Topics are: Immigrant/Nonimmigrant-related issues concerning F-1 Holders; J-1 Waiver and strategies for J-1 holders' Green card application; New development of Labor Certificate and H-1 application in the condition of the deteriorating US economy and the increasing restrictive INS policies toward immigrants; Alien of Extraordinary Ability EB-1(a), Outstanding Researcher/ Outstanding Professor EB-1(b) and National Interest Waiver(NIW); New development of the third country visa application; Green card application by concurrent filing of I-140 and I-485. Free. Room: 35-225. Sponsor: Chinese Student and Scholar Association.

**8:00 p.m. - 11:30 p.m. - Sangam Movie Special.** Free. Room: 2-105. Sponsor: Sangam, GSC Funding Board.

**8:00 p.m. - 11:00 p.m. - Patrol.** Travel to strange new classrooms. Meet interesting, unusual people, and kill them! Patrol is a high-action game of live combat with rubber-dart guns. Shoot your friends, then watch out as they try to take their revenge. Free. Room: 36-115. Sponsor: Assassins' Guild, MIT.

**8:00 p.m. - Antigone.** Jean Anouilh's play, directed by Elizabeth Jochum. \$8, \$6 MIT/Wellesley students. Room: Kresge Little Theater. Sponsor: Shakespeare Ensemble.

**8:30 p.m. - 11:30 p.m. - Vienna Teng Concert.** By the time San Francisco-based singer/songwriter/pianist Vienna Teng, 24, quit her full-time software engineering job at Cisco last August, she had signed with an independent record label and was preparing for the release of her debut, *Waking Hour*. A few months later, she was featured on NPR's *Weekend Edition* and, soon after, made her network television debut on the Letterman show. Vienna will be performing at the Wong Auditorium in the Tang Center. \$5. Room: Wong Auditorium, Tang Center. Sponsor: Graduate Student Council, NE43-313 Lab.

**10:00 p.m. - 12:00 a.m. - The Housekeeper.** \$3. Room: 26-100. Sponsor: LSC.

## Sunday, November 2

**10:00 a.m. - 3:00 p.m. - New England Rugby Football Union Division III Women's Rugby Championships.** Free. Room: Briggs Field. Sponsor: Women's Rugby Club.

**11:00 a.m. - 2:00 p.m. - MIT Endicott House Presents Artists Behind the Desk.** Enjoy a festive fall brunch and concert at the MIT Endicott House. Reservations required. \$30/person for brunch and concert (inclusive of tax and service charge). Room: MIT Endicott House, Dedham MA. Sponsor: Artists Behind the Desk, MIT Endicott House. Council for the Arts.

**11:00 a.m. - 12:30 p.m. - Ashdown Sunday Brunch.** Free. Room: Ashdown. Sponsor: Ashdown House, GSC Funding Board.

**1:00 p.m. - 5:30 p.m. - Ballroom Dance Lessons - Rumba, Foxtrot, Swing.** No partner required. Social focus rather than competitive. Check Web site for Halloween and Winter balls. \$1-\$5 depending on level. Room: Lobby 13. Sponsor: Ballroom Dance Club.

**2:00 p.m. - 4:00 p.m. - Cinderella's Ball.** Relive the magic and wonder of Cinderella, the gracious Prince, the kindly Fairy Godmother and more as Morss Hall in Walker Memorial is transformed into a grande Cinderella's ballroom. Make your own crown and magic wand; learn ballroom dancing from the MIT Ballroom Dance Team; feast on fine

ballroom confections; listen to a storyteller read stories of Cinderella from around-the-world; take in a recent Rogers and Hammerstein film adaptation of the children's tale. An afternoon of joy and enchantment for all. Optional Black Tie dress for all ages most welcome. Purchase by October 31st. \$5, ages 3+. Room: Morss Hall, Walker Memorial. Sponsor: MITAC.

**2:00 p.m. - 4:00 p.m. - Nat'l Security & Civil Liberties/Congressmen Honda & Frank.** U.S. Congressmen Mike Honda (D-CA) — whose family was interned during WWII at a camp for Japanese-Americans — will speak on "National Security & Civil Liberties." His talk will be followed by a roundtable discussion featuring Congressman Barney Frank of the 4th District of MA, as well as MIT Political Science Professor Kenneth Oye, Merrie Najimi of the Arab American Anti-Discrimination Committee, and Margie Yamamoto of the New England Japanese American Citizens League, the co-sponsor of this event. Topics will include the USA Patriot Act. A reception will follow the event. All are welcome. Free. Room: MIT Medical Building Auditorium (E25-111). Sponsor: Center for International Studies. New England Japanese American Citizens League.

**7:00 p.m. - 9:00 p.m. - 28 Days Later.** \$3. Room: 26-100. Sponsor: LSC.

**7:00 p.m. - 9:00 p.m. - Hungarian Movie Night.** Free. Room: 4-237. Sponsor: Graduate Student Council, Hungarian Student Association of MIT.

**8:00 p.m. - 11:00 p.m. - International Folk Dancing (participatory).** International folk dancing. Teaching and beginners' dances from 8-9 pm. A mixture of all skill levels from 9-11 p.m. Our repertoire includes dances from Eastern Europe as well as other parts of Europe and the rest of the world (Israel, France, Russia, even England and the US). Note: We will move to La Sala de Puerto Rico (on the second floor of the Student Center) if it is available. MIT/Wellesley students free; \$1 donation (or more) requested from others. Room: Student Center room 491. Sponsor: Folk Dance Club.

**10:00 p.m. - 12:00 a.m. - The Housekeeper.** \$3. Room: 26-100. Sponsor: LSC.

## Monday, November 3

**9:00 a.m. - 12:00 p.m. - Open House - Technology and Policy Program, ESD PhD and SM.** The event is intended for prospective students interested in applying to the MIT Technology and Policy SM program and to the MIT Engineering Systems PhD program, including the Technology, Management, and Policy track. Free. Room: E40-380. Sponsor: Engineering Systems Division. Technology and Policy Program.

**10:00 a.m. - Admissions Information Session.** Free. Room: Admissions Reception Center. Sponsor: Information Center.

**10:45 a.m. - Campus Tour.** Free. Room: Lobby 7. Sponsor: Information Center.

**12:00 p.m. - 1:30 p.m. - LBGT and Questioning Student Support Group.** Bi-weekly discussions on topics you want to talk about. Support and discussions for all LBGT and questioning undergraduates and graduate students - not just for coming out. Safe and confidential! Emily Meghan Morrow Howe from Women's Studies and Peter Kassel from the Mental Health Service of MIT Medical will facilitate a drop-in brown bag lunch. Free. Room: 5-104. Sponsor: lbgt@mit, Women's Studies Program, Student Life Programs. Counseling and Support Services and MIT Medical.

**12:00 p.m. - 2:00 p.m. - Design Innovation in the UK.** This is the fifth in a series of seven public sessions on "Design at the Frontier of Engineering and Architecture." Anthony Hunt is a leading structural engineer who has worked on some of the most innovative architectural projects over the last 40 years in the United Kingdom and whose firm is an international leader in this field. Free. Room: 3-401. Sponsor: Department of Architecture, Building Technology Program.

**2:00 p.m. - Admissions Information Session.** Free. Room: Admissions Reception Center. Sponsor: Information Center.

**2:00 p.m. - 3:00 p.m. - Monday Research Seminar.** Seeking the Truth and Beauty of Single-Top-Quark Production. Free. Room: Center for Theoretical Physics. Sponsor: Laboratory for Nuclear Science.

**2:45 p.m. - Campus Tour.** Free. Room: Lobby 7. Sponsor: Information Center.

**3:00 p.m. - Film making on the Margins: Vulnerable Women and Girls in South Africa.** Talk by film maker Julie Frederikse, who will also screen a film and lead a discussion. Free. Room: 14E-304. Sponsor: Women's Studies Program, Comparative Media Studies.

**3:00 p.m. - 4:00 p.m. - Environmental Fluid Mechanics Seminar Series: Modeling Water Waves with Smoothed Particle Hydrodynamics.** Free. Room: 1-350. Sponsor: Civil and Environmental Engineering.

**4:00 p.m. - 5:30 p.m. - Pharmaceutical Ties: Family, Medicine, and the State in Brazil.** STS Colloquium. Free. Room: E51-095. Sponsor: STS.

**4:00 p.m. - 5:00 p.m. - Einstein metrics and complex singularities.** Free. Room: 2-143. Sponsor: Differential Geometry Seminar, Mathematics, Department of.

**4:00 p.m. - 5:00 p.m. - Mechanics Seminar: Influence of Grain Boundaries on the Heterogeneous Deformation of Metals.** Please contact Professor Simona Socrate for additional information, Room 3-334, 452-2689. Refreshments will be served at 3:50 p.m. outside Room 3-370. Free. Room: 3-370. Sponsor: Mechanical Engineering Dept.

**4:00 p.m. - Media Under Pressure.** Jean-Marie Messier is the former CEO of Vivendi-Universal, and will be talking at Sloan about the lessons he learned during his time there. Free. Room: E51-345 (Sloan's Tang Building). Sponsor: MediaTech. European Business Club of Sloan.

**4:15 p.m. - 5:15 p.m. - Analytic and Topological Techniques for Multivariate Asymptotics.** Refreshments beforehand. Free. Room: 4-231. Sponsor: Applied Mathematics Colloquium. Department of Mathematics.

**5:30 p.m. - Urban Parades and Processional Theater: Director, designer, teacher writer Mark Sussman.** Participation in Fall Department of Urban Studies and Planning seminar. Respondent: Lisa Peattie, Professor Emeritus in the Department of Urban Studies and Planning, MIT. Free. Room: 10-485. Sponsor: Department of Urban Studies and Planning.

**5:30 p.m. - 7:30 p.m. - Aga Khan Program at MIT Lecture.** Bourdieu's Battle in Algeria: War, Ethnology, Photograph. Free. Room: 56-114. Sponsor: Aga Khan Program for Islamic Architecture.

**8:00 p.m. - La Notte (1960) Directed by Michelangelo Antonioni.** Roman nights film series: Four nights of Rome in the cinema sponsored by the "Envisioning Modernism" and "Historic Cities in the Modern Age" seminars of the History, Theory and Criticism of Architecture and Art program. Free. Room: 3-133. Sponsor: History, Theory and Criticism of Architecture and Art.

# FERPA Guarantees Access to Most Student Records

Records, from Page 1

school transcript, and the high school final grade report.

Many students, however, waive their rights upon applying to view their letters of recommendation and cannot receive copies of them. If the student was interviewed by an Educational Counselor, the report of that interview is also present in the admissions file.

In addition to these records, freshmen have an E-3 card. This card contains a summary of the applicant information including SAT scores, the applicant's Numerical Index and Personal Rating, and comments about the application by the readers. The Numerical Index and Personal Rating are two calculated scores that determine where a particular applicant lies relative to the rest of the applicant pool. (See below for a description of the E-3 card.)

After one year, the E-3 card is destroyed, so it is not available to sophomores, juniors, or seniors.

However, all of the numerical information on the E-3 card (including the Numerical Index and Personal Rating) are archived electronically and can be requested. In short, everything but the application reader's comments are available for student request.

After five years, the complete physical admissions file is destroyed, but the electronic records are stored "pretty much indefinitely," Jones said. These data are then used for statistical purposes by the admissions office, to track trends in SAT score or grade point average over the years, for example.

### Students have right to documents

Two documents come into play in giving students the right to request their records. The Family Educational Rights and Privacy Act states in 20 U.S.C. Sec. 1232g; 34 CFR Part 99 that "each educational agency or institution shall establish appropriate procedures for the granting of a request by parents for

access to the education records of their children within a reasonable amount of time, but in no case more than forty-five days after the request has been made."

The document goes on to say that if the student in question is enrolled at a post-secondary institution such as MIT, the rights granted to parents in the document are then transferred to the student.

MIT's Student Information Policy (<http://web.mit.edu/policies/sip/>) also says that "the right of access includes a right to an explanation or interpretation of the record, and the right to obtain copies of the record."

However, both FERPA and the Student Information Policy include provisions that protect the confidentiality of letters of recommendation. If an applicant has waived his or her right to view his or her letters of recommendation when he or she applied to MIT, these portions of the records remain confidential and cannot be viewed by the student in question.

Furthermore, the language of

both these documents is intentionally broad. "Educational records" are not just limited to admissions records, but also include housing, financial, disciplinary, and academic records.

"In principle and in practice, there is no question of the right" of the students to access these records, said Dean for Undergraduate Education Robert P. Redwine.

Unfortunately, requests for multiple records may take a substantial amount of time since not all student records are stored in the same place.

"When students request information from many offices, it takes some time to assemble it. The truth is, we are not set up administratively to easily provide that information to large amounts of students. We don't get a lot of requests of this sort," Redwine said.

### Student reactions

Many students seem unaware of their rights regarding their admissions folder.

"I had no idea," said Mark D. Mascaro '07, when asked if he knew that he had the right to see his application scores and comments.

"I totally want to do that," said Melissa W. Gregson '06. "That's something I'd like to know."

Some students see other purposes beyond personal curiosity, however.

"For personal satisfaction, I feel like getting in is enough," said Caitlin T. Mueller '07. However, she said that "maybe I'd do it if I had friends in high school and they wanted to know" where they would stand in the MIT applicant pool.

"I don't want anyone to be undermined by something as simple as this," Jones said. The summary has "no meaning in and of itself. It's just a tool in the selection process" and is only relevant during admissions.

The scores are "not a selection tool," she said. "Every single student admitted to MIT should thrive here."

## Description of Elements of E-3 Card, Ranking Grid

The form is filled out for Mr. Waseem S. Daher, born 09/25/85, from Arlington, VA. It shows SAT scores of 800 in Math and 800 in Reading, and a GPA of 4.23. The grid shows rankings from three readers, with Reader 1 giving a 4.7, Reader 2 a 3.7, and Reader 3 a 3.7. Handwritten comments include "Waseem is modest kid - 1st generation, Lebanese immigrant parents" and "Also has taken on admin. responsibilities as Pres. of student congress this yr."

1. The top number (470130) is the College Board's number for the applicant's high school. The numbers that follow below are the number of applicants from the applicant's high school, in reverse chronological order. In this case, two students applied to MIT in 2003, 2 in 2002, 5 in 2001, 4 in 2000, 3 in 1999, and 3 in 1998.

2. The applicant's name and birth date appear at the top. Under it are the Grade Point Average, the maximum GPA, and the percentage of students from the applicant's high school that go on to four-year colleges (73 percent). Under that is class rank (which was not calculated at this school) and the department that the applicant picked as a potential major (Course VI). Anticipated major has no bearing on admissions decision, said Dean of Admissions Marilee Jones.

3. The applicant's SAT scores appear here. The MAX row contains the applicant's maximum scores on the various tests along with the dates that they were taken.

4. Each applicant is placed into a quintile (1-5) based on results from the following categories. CRK is class rank (again, not calculated in this case). MCB represents performance on the SAT I and II Math section and test, SCB is science-related performance, and HCB is humanities-related performance. GPA is the grade point average, and TFL is performance on the Test of English as a Foreign Language, not taken in this case. NI represents the Numerical Index on a scale of 1 to 5 that is the result of an algorithm applied to the applicant's GPA, class rank, and standardized test scores. The far right number (21610) represents a batch number.

5. The batch number (21610) appears here, as does the name of the Educational Counselor that interviewed the applicant along with the counselor's identification number. Under this information are the Application Ratings (AR) that the various readers gave the application. Reader 1 gave this application a 3.3, Reader 2 gave this application a 3.7, and there was no third reader. The significance of this value will be described in (8). See the explanation of the grid for a definition of "cell."

6. The check box in "Competitive" means that this application passed "Triage," a first quick examination of the application. Competitive applications are re-read, non-competitive applications are not.

7. The letter "A" under "Form" means that this application was

accepted on 12/6/02, and notification was mailed on 12/13/02 (this was an Early Action application).

8. The student's Grade Point Average and highest possible GPA at the applicant's high school. Adjacent to that is class rank and class size (rank was not calculated in this case). Then, each reader indicates the date the application was read, and fills in three values, R1, R2, and R3, respectively representing "co-curricular" activities (e.g. science fairs), extracurricular activities, and general initiative and other personal characteristics.

9. The "A" under "Reply Action" indicates the applicant accepted the offer of admission. The date of the response along with the college that he chose to attend are also listed.

10. Used for comments by Reader 1 about the application. Gaps appear where the reader wrote direct quotations from letters of recommendation, and were removed because this applicant waived the right to view them.

11. Used for comments by Reader 2 (see number (10)).

12. This box contains information about the applicant's parents and siblings.

### Explanation of Grid

The Numerical Index and Personal Rating are "just a tool in the selection process" and do not decide admission, Jones said. They are used to lay out each application relative to all of the other applications, as follows:

A grid of 24 cells is created. Cell 1 represents the highest grouping of NI and PR scores, within the ranges of 4.5 to 5 and 3.7 to 5, respectively. The NI score range decreases going to the right and the PR going down.

Ninety-five percent of accepted applicants come from cells 1 through 9, although the percentage is not fixed. Jones said that in some cases the NI is artificially low if the applicant came from a particularly challenging high school, and that is taken into account.

In addition, even if a student has both a low NI and PR, but the readers feel that the applicant would thrive at MIT and contribute to its community, he or she will still be accepted.

Jones said that both indices do not solely decide admissions and can only be used to compare applicants within a given year.

For a detailed explanation of the admissions process itself, see the November 2003 article "Who Gets In?" from the *Technology Review*, available at <http://www.techreview.com/articles/atwood1103.asp>.

90% of admitted students come from cells 1 - 9

Personal Rating	3.7 - 5	1	4	7	10	13	16	19	22	
	2.7 - 3.3	2	5	8	11	14	17	20	23	
	1 - 2.3	3	6	9	12	15	18	21	24	
		5 - 4.5	4.4 - 4	3.9 - 3.5	3.4 - 3.0	2.9 - 2.5	2.4 - 2.0	1.9 - 1.5	1.4 - 1.0	
		Numerical Index								

# Alcohol at MIT: A Quick Guide

*The fundamental value of the MIT Community is the health & safety of its students. Most MIT students either drink moderately or abstain from drinking. However, MIT acknowledges that there may be times when students face dangerous situations involving alcohol. The following guidelines may help you in times of need:*

## The following are signs of alcohol poisoning:

- Breathing fewer than 8 times per minute
- Passed out, unconscious, cannot be wakened
- Cold, clammy, pale or bluish skin
- Vomiting while sleeping or passed out
- No pulse, stopped breathing

## If you are concerned that the person has alcohol poisoning:

- DO have another sober person with you to help
- DO stay with him/her
- DO continually monitor him/her
- DO check his/her breathing
- DO ensure that he/she is laying on his/her side
- DO NOT LEAVE THE PERSON ALONE
- DO NOT put another drunk person in chare of caring for him/her
- DO NOT give food, drink (including coffee) or medication to try to sober him/her up
- DO NOT give a cold shower or try to exercise the person
- DO NOT allow him/her to leave alone

*If the person is suffering from ANY of these signs, it could be alcohol poisoning.*

**When in doubt, call for Help! Medical Transport . . . On-Campus: dial 100  
Off-Campus: dial 253-1212**

*It is MA State law and MIT policy that you must be 21 years or older to purchase or consume alcohol. For more alcohol policy information, please visit [web.mit.edu/alcohol](http://web.mit.edu/alcohol)*

Community Development &  
Substance Abuse Programs



Undergraduate  
Association

*campus-wide forums*

November 9th  
Boston Park Plaza  
Tickets \$10 Onsale 11/3  
mtf lobby 10 wr Student Center

Questions? email [cloud9@mit.edu](mailto:cloud9@mit.edu)

Sponsored by Burton-Conner, East Campus, McCormick, Simmons Hall

# Restaurants Near MIT Added to TechCash Service

Star, from Page 1

ket since he has not yet looked at it. However, he said that he considered a similar plan to MIT's when he was working at the Star in Fenway, and said "it could be a good thing," although it depends on the proposal. He said that the other plan he looked at was not approved because of a "big upcharge," or initial fixed costs. That plan, unlike MIT's, was nationwide and would have allowed students from many universities to use their individual cards under one system.

Cummings said that proposals to add TechCash usually require the company to pay for the card reading

machines and also to pay a percentage of sales fee to MIT.

However, "generally the increase in sales more than makes up for the sales fee," he said.

"So far, people seem pretty excited, and most people want to see more locations added to the card," he said.

### TechCash continues to expand

Director of Campus Dining Richard D. Berlin III said that there are ongoing discussions about how to go about adding vendors.

Passport and Polcari's are the two new vendors for this year, and they are going to "play it by ear and see how that affects the cam-

pus operators and whether it's successful for the off-campus vendors," he said. "If you add tons of restaurants, then it doesn't become worthwhile for any one operator to do it."

Serino said they decided to accept TechCash at Passport "to help the students out," and that "a good amount" of people use it. However, it has not increased business so far.

Eddie Bisher, manager of Polcari's, said that Polcari's also decided to accept TechCash "because of the students. Sometimes they prefer to use the card." Bisher viewed the possibility of paying with TechCash to be a benefit for patrons and hopes

that this new form of payment will increase business.

Berlin said that he and the MIT Card Office are currently working to get Polcari's on the card, and "that should happen shortly." A nice feature about Polcari's, Berlin said, is that unlike residential dining Polcari's is open on weekends, giving students an additional option.

Alpine Bagel and Arrow Street Crepes, both of which accept the card, are "both doing great," Berlin said.

### Survey to gather feedback

The UA is preparing an online survey to collect students' feedback about having TechCash accepted at

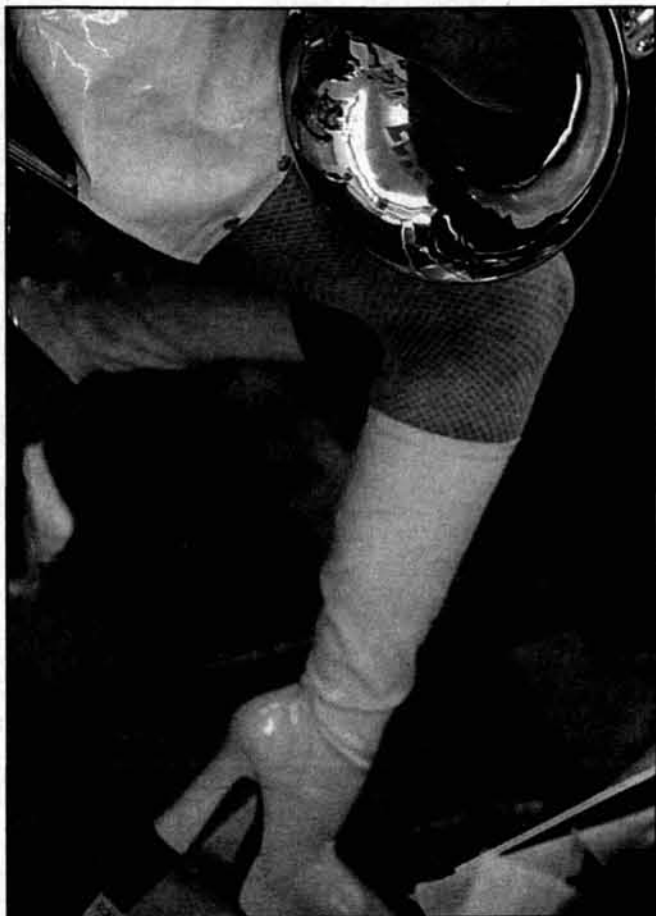
Star Market.

"We're in the process of fixing the minor details and plan to release the survey on Monday," said Cummings.

The survey is supposed to "quantify student support for this proposal," and "information gained from the survey will be used to project future sales increase and given as a report to Star Market," according to the UA 2003-2004 Goals Checklist.

The survey will be sent to all undergraduate students, and Cummings said that little publicity will be needed for the survey, since the nature of the issue makes it something students would be interested in.

## MIT Concert Band Puts on Spooky Performance



The MIT Concert Band played a Halloween Concert Thursday night in costume in the of the Student Center. Clockwise from top left: A French horn-playing nurse shows off legs and brass.

Gretchen M. Poehlman G plays the French horn in Grainger's "Lincolnshire Posy."

The trumpet section, dressed as the self-flagellating monks from Monty Python, in Wagner's "Elsa's Procession to the Cathedral."

The sax section belts out "Jupiter," from Holst's "The Planets."

Cristina M. Wilcox '07 plays the bassoon in "Lincolnshire Posy."

Photography by Dan Bersak, Peter R. Russo, Brian Hemond, and Christine R. Fry



We have a world class organization. You have the ambition, skills, and perseverance to achieve your goals. Together we have a passion to perform.

We welcome you to attend our event to learn more about Deutsche Bank.

**Event:** Panel Discussion  
**Date:** Thursday, November 6, 2003  
**Time:** 6:00 PM - 7:30 PM  
**Location:** Charles Hotel, Longfellow Room  
One Bennett Street, Cambridge, MA

Apply online now.

[www.db.com/careers](http://www.db.com/careers)

A Passion to Perform.

Deutsche Bank



# Kilpatrick Goes for 50-yard TD

Football, from Page 20

Matt Ramirez '06 was good, and the score tied 7-7.

Flummoxed by the MIT defense, led by Spencer M. Cross '05, Philip T. Zakielarz '05, and senior Michael J. Harvey (12 tackles apiece), the Bison attempted a fake punt on the next series. The punter took the snap and fired a pass to the sideline, but David A. Blau '06 broke the play up, giving the Beavers possession.

## Beavers take control

MIT immediately capitalized. Kilpatrick beat his defender down the left sideline and caught a perfect pass from Love, streaking 50 yards for the score. After the kick the Beavers held a 14-7 lead they would never relinquish. Love finished with 13 completions in 25 attempts for 195 yards. Kilpatrick was again his favorite target, catching seven passes for 136 yards. The offensive surge was also felt in the running game — Ostlund and fullback Ryan J. Lan-

Name	School	Total	T/G
1. Eric Guilmette	Framingham	84	12.0
2. Brian Galvin	Salve Regina	86	10.8
3. Dan Rosen	Maine Maritime	75	10.7
4. Phil Zakielarz	MIT	72	10.3
5. Shane Szydlo	Nichols	80	10.0
6. Daniel Walker	Worcester St.	75	9.4
7. Frank Famularo	Fitchburg	65	9.3
8. Scott Ferrell	Salve Regina	65	9.3
9. Mike Harvey	MIT	61	8.7
10. Jesse Blackwell	Endicott	54	7.7

SOURCE: NEFC

phere '06 combined for 94 yards on 24 carries.

MIT's defense went to work in the third quarter, denying the Bison on two scoring chances. Nichols looked like they were back in the game, driving to the Beaver 25-yard line. But defensive captain Daniel Relihan '04 hit the quarterback on his blind side, forcing a fumble that was comically bobbled by two Nichols linemen before Relihan fell on it, extinguishing the scoring threat. On their next pos-

session, the Bison moved to first-and-goal on the seven, but were denied the end zone and missed a field goal.

Fittingly, the day did belong to seniors — Relihan, Harvey, Shearer and Tanis L. Fidelholtz '04 corralled a hard-hitting defensive effort that saw three Nichols tailbacks leave the game with injury. Also seeing their last game in the red jersey were offensive linemen Justin M. Nelson and captain Keith G. Reed, linebacker Michael A. Terry, and defensive linemen Christopher P. Anderson and Mark A. Jury.

MIT finishes the season with two more games on the road. Tomorrow the Beavers travel to Newport, Rhode Island to face the Salve Regina Seahawks (1-6). Last year MIT denied Salve's bid for a conference championship with a 16-8 win, the program's first ever win over the Seahawks.

# Strong KC Chiefs May Win AFC West Division

NFL, from Page 20

ever strings together consecutive wins and plays as a team, Carolina might be in trouble. It will probably come down to the Tampa-Carolina game at Carolina on Nov. 9. I do think that whoever doesn't gain the division will get one of the NFC Wild Cards. The New Orleans Saints (3-5) and the Atlanta Falcons (1-6) are both huge disappointments this season, and won't sniff the playoffs.

**NFC West:** While the NFC South has the potential to be a close race, this division already is. The St. Louis Rams and the Seattle Seahawks are tied atop with division at 5-2, but the Rams, coming off a four game winning streak, look like the more solid team, while Seattle's wins always seem to leave questions. The consensus from the sports people is that the Rams will take the division, and I think they are right. But, I think that Seattle is a more solid team than Philadelphia, and so they will get the second NFC Wild Card. As for the San Francisco 49ers (3-5) and Arizona Cardinals (2-5), I say get a better kicker, and see you next year.

**AFC East:** The New England Patriots (6-2) are atop the division with a big win against the Miami Dolphins (5-2) two weeks ago. Neither team can score well, but the Pats have the better defense and they have people coming back from injury in the next half of the season, so they are likely to hold on to the division lead. The Buffalo Bills (4-4) could contend if they could ever score and defend in the same game, but they do not look capable of that. The New York Jets (2-5) are hoping they don't get as bad as the Bears or the Cards. Whoops, they already are.

**AFC North:** This division is interesting only because none of the teams in it are great so everyone has a chance to win. The Baltimore Ravens (4-3) are in the lead now, but the Cincinnati Bengals (3-4) or

Cleveland Browns (3-5) could both vie for the title. However, as much as Cincinnati has improved, their tough schedule will make it difficult to win, and the Browns aren't consistent enough. And the Pittsburgh Steelers (2-5) have no offense to speak of and no heart to play.

**AFC South:** This will be the best division race to watch down the stretch. The Indianapolis Colts (6-1) and the Tennessee Titans (6-2) are both great teams with all-star quarterbacks. The Colts, walloped the Titans the first time they played, so the Titans need to even it up if they want to take the division. I honestly have no clue who will win, but it doesn't really matter because whichever one doesn't win will get an AFC Wild Card. The Houston Texans (2-5) and Jacksonville Jaguars (1-6) are bad, but not as bad as the NFC cellar-dwellers.

**AFC West:** This division is practically sewn up. The Kansas City Chiefs (8-0) are likely the best team in the NFL and hold a three game lead over the Denver Broncos (5-3) who are without their starting quarterback for a couple more weeks due to injury. The Broncos won't be able to catch up to the Chiefs, but if they play well I think they can take the second AFC Wild Card over the Dolphins and the runner-up in the North. The Oakland Raiders (2-5) and the San Diego Chargers (1-6) are again a pair of huge disappointments, the Raiders due to old age and the Chargers due to just plain bad football.

So who will win the Super Bowl? From the NFC, I still like the Minnesota Vikings, because I haven't fully bought into St. Louis's re-emergence yet. In the AFC, I have to go with my hometown team, the Chiefs. And I hope the Chiefs will win the Super Bowl as well, capping one of the greatest years of sports Kansas City has ever seen.

And by the way, these predictions come with an "any or all picks will be wrong or your money back" guarantee. It's the least I can do.

Name	School	Punts	Avg.
1. Zac Attaway	Worcester St.	28	39.5
2. Michael Carven	Nichols	28	38.2
3. Mark Puchalski	Westfield	34	36.9
4. Derek Bealby	UMass-Dart.	33	35.5
5. J.T. Eakins	Curry	33	35.5
6. Matt Ramirez	MIT	42	35.3

SOURCE: NEFC

# Women's Beginner Team Wins Gold

Taekwondo, from Page 20

won convincingly with his speed and experience. They continued to dominate against West Point A2 with several axe kicks by Madigan and solid points by Sinn. They met their rivals, Cornell A1, in the semi-finals, where Sinn and Madigan strategically switched the middle and heavyweight spots. Although Cornell's middleweight was a tournament legend from his undergraduate days, Sinn continued to prove himself as one of the most talented competitors in the league with a clear win to give the team momentum. Visch came through with a big 4-2 win over the lightweight to advance the team to the finals, where they bowed out to the Canadian Royal Military Academy because of injury.

Picking up the momentum from the black belts, the women's beginner team (Lee, Laurel J. Ng G, and Yu) advanced the medal count as well. The women showed no fear as they plowed through Temple C1 and LeHigh C1 to reach the finals against John Jay. Yu started off the rally with a blowout 20-0 win against the heavyweight, the highest scoring match of the entire tournament. Although Ng gained aggression with every match, she was unable to pull it out in the end, and the deciding match came down to Lee. The John Jay lightweight was aggressive, but Lee used quick steps and a good sense of distance to spar intelligently and keep her

away to clinch the match and a gold medal for the team.

Although the intermediate teams had been the key to MIT's success in the last season, graduation and promotions caused the team to lose much of its depth on both the men's and women's sides. The women's B2 team (Radhika Jagannathan '05, Lee, and Yu) squeaked into third place when NYU bowed out, and they fell 0-3 to Cornell B1, the eventual champions. The men's B1 team (Bobby B. Ren '05, Ho, and Andrew D. Selbst '04) advanced past two rounds, anchored by the experience and continual improvement of Ren. Ho showed a lot of heart in his first tournament back from a torn PCL, with a phenomenal sense of timing and distance in this new division. Selbst used his size and strength to overpower his opponents, though carelessness for blocking to the head caused him to lose a 7-7 tie decision in the semi-finals.

MIT trails Cornell by a nominal margin of 404 to 432 as the season begins, and looks to rebuild and come out strong as the defending INCTL Champions at the next INCTL tournament, which is to be held at Cornell University on November 22nd. In the meantime, several members (Chan, Nathan F. Hanagami '04, Archaumbault, and Madigan) and alum Christina S. Park '02 will travel to Seattle, Washington, for the National Collegiate Taekwondo Championships on Nov. 7-8.

# Free Food Shouldn't Be the Only Draw of MIT Athletics

Pride, from Page 20

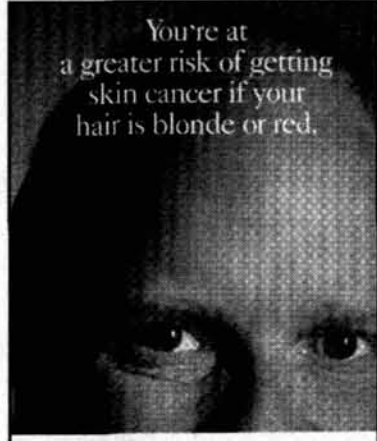
rather disturbing and disgusting as a sports person. Do we have so little pride that the only reason we would go to a game is to get free food? Or a gift certificate?

Sports is all about pride. Without pride, nobody would care which team they rooted for and which team they hated. Without pride, there is no sense of hurt when a team loses, or what is far worse, when a team does

not draw adequate attendance.

This lack of pride kills some of everyone's enthusiasm, the athletes included. Sure, they take satisfaction in their performance on the field, but without support from the fans, their performance goes unnoticed. Once again, I don't proclaim to understand how we can let these sports suffer by not noticing them.

But I guess I'm just a sports person who doesn't understand actions of regular people.



You're at a greater risk of getting skin cancer if your hair is blonde or red.

(No matter how much of it you have left.)

Fair skin, light eyes and a tendency to burn in the sun, also put you at a higher risk. So, examine your skin regularly. If you find anything unusual, see your dermatologist.



AMERICAN ACADEMY OF DERMATOLOGY  
For more information, call 1-888-462-DERM or visit www.aad.org

This space donated by The Tech

## UPCOMING HOME EVENTS

### Saturday, Nov. 1

- 12 p.m., Women's Rugby, New England Rugby Football Union Division III Championships
- 1 p.m., Varsity Men's Soccer, Coast Guard
- 3 p.m., Varsity Women's Ice Hockey, Wheaton College
- 6 p.m., Varsity Pistol, Coast Guard

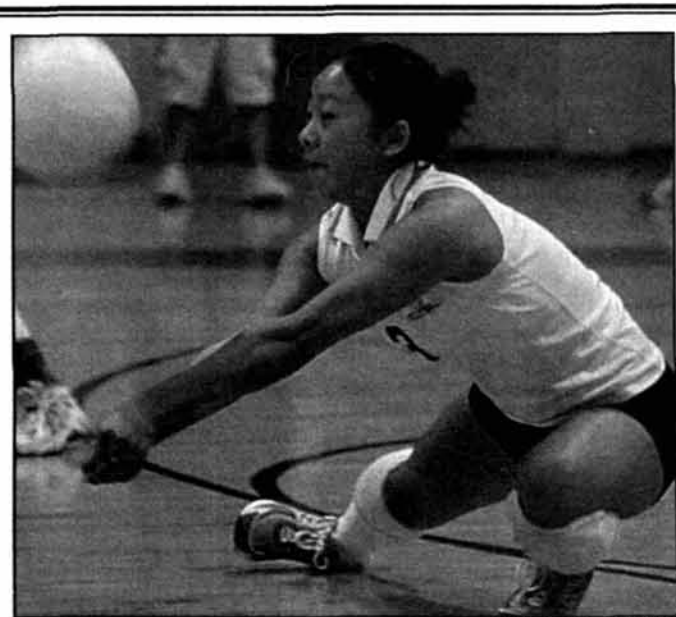
### Sunday, Nov. 2

- 10 a.m., Women's Rugby, New England Rugby Football Union Division III Championships

We want you in our sheets.



join@tt.mit.edu  
W20-483, 617-253-1541



PETER RUSSO—THE TECH

Jacklyn Y. Wang '06 moves in to hit the ball, keeping the Engineers alive in the third game against Wellesley College last Tuesday. MIT lost the match in three close games, with scores of 29-31, 28-30, and a nail-biting 35-37.

# SPORTS

## Football Seniors Go Out Winners

By Christopher P. Anderson  
TEAM MEMBER

In the final home game of the season, MIT's football team sent their seniors out with the perfect gift — a win. The Beaver offense scored two quick touchdowns early, the defense stopped three critical second-half drives, and Brennan P. Sherry '05 blocked the final extra point to secure a 14-13 win over the Nichols Bison.

Trailing 14-7, Nichols took possession on their own 14-yard line with 8:25 to play. Moving down the field, and aided by a third-down pass interference penalty, the Bison finally scored with 1:34 on the clock on a fourth-down fade pass to Daragh McCann. To preserve the 14-13 score, MIT had no choice but to block the extra point kick. The right side of the line collapsed under heavy pressure, and defensive end Brennan P. Sherry '06 buried the ball as the sideline and crowd exploded.

MIT had to win it twice, though, as Nichols recovered a perfect onside kick and looked to drive for the win. But after a holding penalty moved the ball back to the Beaver 45-yard line, Nichols fired a pass that was tipped by Mark D. Boudreau '05 and David W. Shearer '04 before falling harmlessly to the grass, sealing MIT's first win in five games and pushing their record to 3-4 (1-3 in New England Football Conference Boyd division).

Nichols drew first blood, returning an interception for a touchdown on MIT's second offensive series, but the Beavers answered later with

a nine-play drive that ended in the end zone. Twice in the drive, quarterback Adam C. Love '07 went to Tom Kilpatrick '05. The first time, the Bison were flagged for pass interference; the second time, Love completed the pass for 11 yards and a first down, then took a roughing the passer penalty that pushed the ball to the Nichols six-yard line.

On 3rd and goal, tailback David J. Ostlund '04 gathered in a screen pass right off the blades of grass, sidestepped a defender and flew into the end zone. The extra point by R.

Football, Page 19

## NFL Week 8: The Midpoint

By Brian Chase

We're halfway through the 2003-04 NFL season, right at the time when all the sports analysts re-predict who will be in the postseason based on the first half of the games. So why should I be any different? Here's how the NFL divisions stand now with my guesses as to who are going on in the postseason:

**NFC East:** The Dallas Cowboys (5-2) are in the lead now, but they have shown that they aren't prepared yet for tough opponents. But that won't matter too much because I think the Philadelphia Eagles (4-3) will not be able to mount an effective campaign to challenge the Cowboys for the division title. Quarterback Donovan McNabb is too banged up, and the rest of the team is mediocre. The Washington Redskins (3-4) and New York Giants (3-4) are both on-again-off-again teams that won't really factor into the playoffs.

**NFC North:** The Minnesota Vikings (6-1) are three games ahead of the Green Bay Packers (3-4) for the division title, and with the Vikes playing the way they are, that's a lot. It is going to take a huge effort by the Pack just to get the wild card, and I don't think they will do it. The Chicago Bears (2-5) and the Detroit Lions (1-6) are both unutterably bad.

**NFC South:** This division could be a tight race between the Carolina Panthers (6-1) and the Tampa Bay Buccaneers (4-3). If Tampa

NFL, Page 19



DMITRY PORTNYAGIN—THE TECH  
Candace N. Wilson '04 sprints by a WPI defender last Tuesday afternoon. MIT lost the game 1-0, but despite the loss and the recent 1-5-2 record, the team grabbed one of the last spots in the NEWMAC conference playoffs.

## MIT: Show Some Pride in Your Teams

By Yong-yi Zhu

COLUMNIST

There are two kinds of people in this world: normal people and sports people. I happen to fall in the latter category. It's quite sad in many ways.

Instead of thinking about when the next problem set is due, you think about how to work your next problem set into that night's Red Sox game. Instead of thinking about what to eat for dinner, you think about how to get the meal on the table just as the game is starting so that you don't miss any of it.

Yeah, we are a pathetic race. Our priorities are very out of whack. Bill James, a baseball analyst, describes our predicament fairly well: "Now, look, both of my parents died of cancer. It would be very easy for me to say that cancer research is more important to me than baseball — but I think about cancer research a few times a month; I think about baseball virtually every waking hour of my life" (Michael Lewis, *Moneyball*).

It's true, we don't seek to create sense of our lives, we simply live it through baseball, basketball, foot-

ball, ESPN, and whatever we can get our hands on. In fact, there have been people who have named their children after ESPN commentators or professional sports players. Once again, our priorities are very out of whack.

When two sports people get together, it's difficult to get them apart again because they simply do not stop jabbering about sports. Trust me, I've done it.

However, when normal people and sports people get together, often times they will not understand each other. I don't proclaim to understand how a person can do work or go watch a movie on the night of game six of the World Series. I don't proclaim to understand how someone cannot be completely obsessed with the Super Bowl.

This brings me to the reason why I am writing: MIT and its lack of sports people. I guess it makes sense, we are all academically inclined.

True, during the Red Sox run, much of the school was infused with the spirit that the rest of Boston adopted. People were sitting in front of TVs, getting score reports during tests, and just plain caring about the team. Students here were fans for

once.

Believe me, it's not too often that the MIT body becomes sports fans. After the Red Sox's loss, the "obsession" with baseball suddenly stopped. It appears that the fans were not rooting for the Sox but rather for the city of Boston. The attachment wasn't to the players and the team but to their proximity to a stadium and to a city.

Also, an incident at MIT is the main reason I thought about commenting on the lack of sports people at MIT. The other day, I received an e-mail about a soccer game that was going on during the weekend. I opened the e-mail expecting a mere flyer about the match; however, what I received in addition to a flyer was an ad to make posters to bring to the game. The best poster at the event would receive some sort of prize. Of course, the posters could not be negative in any way.

Clearly, there is a need for more spirit at the soccer games and more support for the players. Apparently, there must be some sort of incentive, a bribe almost, to get fans to come out to the games. This I found

Pride, Page 19

## MIT Taekwondo Finishes Second at Cornell Northeast, Ivy Tourney

By Christina Park

TEAM COACH

Last Sunday, the MIT Sport Taekwondo Club sent a 34 member team to New York for the first Ivy/Northeast Collegiate Taekwondo League tournament of the 2003-2004 season. After a long day of competition, the MIT students emerged in second place.

The tournament day began with forms competition, where each student performed a choreographed set of techniques to be judged on merits such as grace, balance, power, and agility. The women continued their dominance from last year, sweeping nearly half the available medals with a first place finish from Wendy M. Pierce '05 (black belt), and second and third places by Margaret H. Cho '04 and Jaime Lien '05 (red belt), Grace Y. Kim G and Delphine M. D. Dean G (blue belt), and Stephanie K. Lee '06 and Sandra M. Yu '06 (green belt). The beginner and intermediate men also added to the medal count, with a first and second place finish by Ryan B. Huang '06 and Brandon R. Kam '04 in the green belt division, and a gold in the yellow belt division by John C. Ho G.

After a brief break, sparring began with the black belt teams. The

women's black belt A1 team (Erica Y. Chan '07, Nancy J. Archaumbault G, and Cho) received a bye in the first round and then faced Cornell A2. Despite being illegally punched in the face twice, Chan responded by kicking the tall lightweight in the face twice, and Archaumbault followed by dominating the timid middleweight to advance the team into the semi-finals.

The West Point A1 women were fierce, and the lightweight came out strong to take the match. Cho faced the heavyweight and won on a 3-3 tie decision to leave the team with the deciding match on the middleweights. Archaumbault was the unfortunate recipient of a bad judgement call from the referee when she sprained her ankle, but was disqualified for failure to continue. Despite the appeal and protest for an injury time-out by her coach and several officials, the team was eliminated and finished in third place.

The men's black belt A1 team (Nima Viseh '07, Conor F. Madigan G, and Richard J. Sinn '06) avenged their counterparts with a spectacular performance. Madigan and Sinn anchored the team, clearly outclassing the Cornell A3 team in their first round. Although Sinn had to bump up to heavyweight, he held his own and



STEPHANIE LEE—THE TECH  
Nancy Archaumbault G lands a high-section kick to the head against her opponent from Cornell to win 5-0 at the Ivy-Northeast Collegiate Taekwondo League tournament, hosted by West Point Military Academy on Sunday. The MIT Sport Taekwondo Club competed against 10 other teams and placed second overall after Cornell.

Taekwondo, Page 19