

## Ground Broken on New Dorm

By Pey-Hua Hwang  
STAFF REPORTER

After a year's delay, amidst the stops and starts in construction, a formal groundbreaking ceremony took place for Simmons Hall, the new undergraduate dorm on Vassar Street.

The date for the groundbreaking lunch was set to coincide with the MIT Corporation's December meeting. The selection process for new members of the Corporation is underway.

Both students and faculty spoke at the groundbreaking. The surprise of the event was the announcement of an award by Chancellor Larry S. Bacow '72 for Founders Group Chair and Green Hall Housemaster Anne E. McCants.

McCants, who will be the housemaster of Simmons Hall, will receive the first ever William and Betsey Leitch Associate Professor of History in Residence Endowment. This is the first time MIT has provided the backing of an endow-

Corporation, Page 15



World AIDS Day brought varied responses from the MIT and Cambridge communities. An MIT student reads part of the AIDS Quilt in Lobby 10 (left); Boston area doctors and students held a protest and vigil (center). Renee Hsia (right), a Harvard medical student, wept and prayed for victims of AIDS at the vigil, which took place in front of the Pfizer Discovery Technology Center on Memorial Drive in Cambridge.



AARON MIHALIK & NATHAN COLLINS—THE TECH

## Protesters Attack Pfizer's Drug Policies

By Naveen Sunkavally  
EDITOR IN CHIEF

About a hundred protesters gathered before Pfizer's Discovery Technology Center on Friday and presented a list of demands to the pharmaceutical giant concerning its pricing of the AIDS drug fluconazole.

The rally, organized by the Boston Global Action Network and meant to coincide with World AIDS Day, came on the heels of an agreement by Pfizer with South Africa to provide the country with fluconazole for free for two years.

Protesters at the rally, who had hoped for a more substantive agreement, expressed disappointment and vowed to press forward in their fight to get Pfizer to lower its drug prices.

"I just learned Pfizer offered a new drug in the market — the drug of fractional solutions," said Adam Taylor, a student at the Harvard Kennedy School of Government.

After eight months of negotiations, "they have the nerve to announce a fractional solution," said

Brook K. Baker, professor of law at Northeastern University. "Pfizer should not receive praise; it should receive condemnation."

### Demands include dropping patent

The list of demands made by the protesters include dropping the prices of fluconazole to match the prices of similar generic drugs, dropping the patent on fluconazole, and dropping a lawsuit in South Africa against companies manufacturing generic drugs.

As an example of the company's pricing inequities, Baker said that it costs Pfizer 5 cents to produce a tablet of fluconazole, but the company charges \$10/tablet in the United States and \$20/tablet in South Africa.

Pfizer has said in the past that it must keep its drug pricing policy so that it can maintain its level of innovation. At a press conference on Oct. 2, Pfizer Senior Medical Advi-

Pfizer, Page 20

## Harvard Medical Student Dies in Apparent Suicide

By Matthew Palmer  
ASSOCIATE NEWS EDITOR

A first year student at Harvard Medical School (HMS) apparently committed suicide last Thursday.

The woman, Luz Angelica Chavez, was found dead with a gunshot wound to her head by a librarian in Harvard's Countway Library of Medicine around 10:30 a.m., reported Harvard's *The Crimson*. University officials confirmed the news.

However, suicide will not be confirmed as the cause of death until the autopsy results have been completed and released. As of Monday, the Boston Chief Medical Examiner's office said it had not made those results public but expected it would soon.

The suicide would be the first the Medical School has seen in eight years.

A small memorial to Chavez has been set up in the library, *The Crimson* reported. The date for an official memorial service has not yet been set.

The death follows on the footsteps of a similar tragedy on the MIT campus. Less than two weeks prior to the incident at Harvard, Lucy D. Crespo Da Silva '00 jumped to her death off the Westgate dormitory.

Her friends said at the time that her death was unexpected and that she appeared to be doing well.

Similarly, HMS spokesperson Don Gibbons told *The Crimson* that

"no students or faculty recognized any warning signs" with Chavez.

Administrators at Harvard tried to reach out after the death to tell students what options are available for seeking help. Harvard maintains a Mental Health Service similar to MIT's department.

Harvard students received a letter Thursday from Medical School Dean Joseph B. Martin informing them of Chavez's death.

Also, HMS Student Affairs Coordinator Carla Fujimoto sent an e-mail which reminded students of the many mental health services available at Harvard.

Bound by patient-doctor confidentiality policies, Harvard's Mental Health Service would not say whether Chavez had sought counseling or discuss details of the incident.

Chavez, who was in her late 20s, had recently moved from California to Boston with her husband, according to *The Crimson*.

The Dean of the Harvard Medical school was unavailable for comment Monday.

### Boston Globe leaks victim's name

When reached for comment, some student leaders in the Harvard Medical School Student Council said they had been encouraged by the administration to decline talking to the press after an incident involv-

Chavez, Page 19

## SCEP Gives UA Report on Pass/NR

By Melissa Cain  
STAFF REPORTER

Responding to strong student opinions about academics during the freshman year, the Undergraduate Association passed a resolution supporting the Unified Student Response to the Report on Freshman Pass/No Record Grading and Advanced Placement Policy last night.

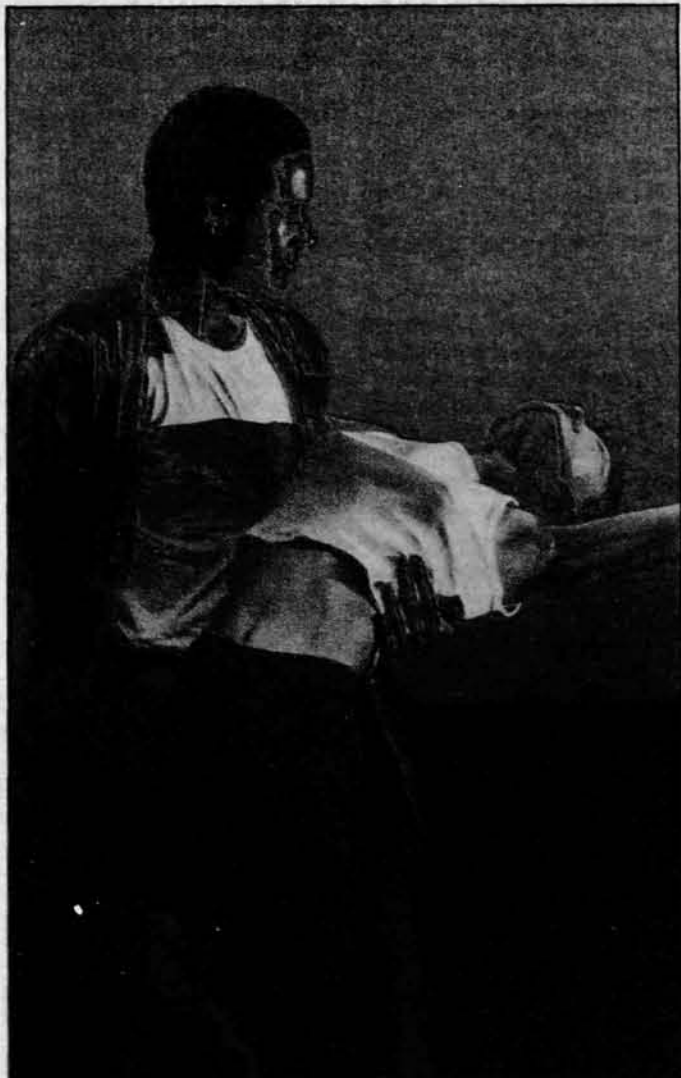
The report is a compilation of students' opinions on the Freshman Pass/No Record Grading and Advanced Placement Policy report presented by the subcommittee of the Committee on the Undergraduate Program (CUP) earlier this academic year.

The student report was "the result of months of deliberations with students," said Victoria K. Anderson '02, co-author of the report and Chair of the UA Student Committee on Educational Policy.

SCEP gathered student input for the report from commentary at CUP forums on Pass/No Record and feedback through the UA Council, and by holding a joint discussion session of the UA Cabinet and Council.

Anderson felt that the most important recommendation was to "delay changing the freshman

UA, Page 19



ERIKA BROWN—THE TECH

The MIT Dance Troupe impressed a full Kresge Little Theater Saturday night with various dancing styles and colorful lights. See review, pages 12-13.

### ARTS

Jane Maduram reviews the latest book in the *Wheel of Time* series by Robert Jordan.

Page 11



### Comics

Page 7

The job market for the Class of 2001 looks better than it ever has been.

Page 16

World & Nation	2
Opinion	4
Arts	10

# WORLD & NATION

## Pepsi to Buy Quaker Oats for \$14B

THE WASHINGTON POST

NEW YORK

PepsiCo announced the takeover of Quaker Oats Co. Monday morning in a \$13.8 billion stock deal that will give the world's largest beverage company control of Gatorade, the world's best selling sports drink.

The acquisition follows weeks of maneuvering by PepsiCo, Coca-Cola Co. and France's Danone SA over who would capture one of the prizes of the beverage industry. Gatorade accounted for \$1.8 billion in sales last year, and brought in 44 percent of Quaker Oats' income in the first three quarters this year.

Coke's board of directors abandoned an attempt to orchestrate a \$16 billion stock swap on Nov. 21, after some investors warned the price was too high.

PepsiCo earlier was in talks with Quaker Oats for a \$14.8 billion stock deal that valued Quaker Oats stock at about \$103 a share. But Pepsi backed away because it was reluctant to specify a floor for its stock price.

## House May Fund Transition Teams for Both Candidates

NEWSDAY

WASHINGTON

With George W. Bush's campaign pressing for federal money to pay for its transition efforts, the leaders of a House panel said Monday they are considering bipartisan legislation to allow Bush and Vice President Al Gore to spend federal money even before a president-elect is finalized.

Rep. Stephen Horn (R-Calif.) chair of the House government management subcommittee, and Rep. Jim Turner (D-Texas) the ranking member, are planning to draft legislation that would allow both camps to start spending some of the \$5.3 million in federal transition funding immediately to speed the transition to a new government.

But with events in the ongoing election battle moving so swiftly — particularly in light of Monday's legal defeat for Gore in a Florida circuit court — it was unclear Monday night whether legislation could be drafted, debated and approved before a final winner is declared and receives the funding anyway.

Republicans have criticized the General Services Administration, the government's landlord, for refusing to turn over the money to Bush, the certified victor in Florida, and therefore, they say, the White House.

## Putin Seeks Restoration Of Soviet Music, Symbols

THE WASHINGTON POST

MOSCOW

President Vladimir Putin proposed Monday to restore the music of the Stalin-era Soviet anthem as Russia's national song and the Soviet red flag as the official banner of the army, saying that not everything from the Soviet years can be tossed aside.

In a televised address aimed at one of post-Soviet Russia's most intractable issues, Putin said he was sending legislation to the lower house of parliament, the State Duma, that would formally enshrine the music of Alexander Alexandrov — written for Soviet dictator Joseph Stalin — as the country's national anthem.

Putin did not mention lyrics for the anthem, but Yegor Stroyev, leader of the upper house of parliament, said that "it would be good to write new words."

Russia dropped the Stalin-era anthem when the Soviet Union collapsed in December 1991, and President Boris Yeltsin signed a decree in 1993 adopting a new one. Yeltsin's choice was the 19th-century "Patriotic Song" by composer Mikhail Glinka, which had no words.

# U.S. Supreme Court Rejects Florida Ruling on Recounts

By Charles Lane

THE WASHINGTON POST

The most closely watched Supreme Court case in a generation reached an anticlimax Monday, with the justices issuing a brief, unsigned opinion offering no resolution of the knotty legal issues that have arisen from the battle over Florida's 25 electoral votes.

Saying it did not yet have enough information upon which to base a holding of its own, the court, with no recorded dissent, threw out the Florida Supreme Court's Nov. 21 decision extending the deadline for manual recounts in the state. It then sent the case back to the Florida justices with suggestions on how to produce a further explanation of their reasoning.

"After reviewing the opinion of the Florida Supreme Court, we find that there is considerable uncertainty as to the precise grounds for the decision," the justices wrote, borrowing language from a 1940 case in which they also declined to rule definitively. "This is sufficient reason for us to decline at this time to review the federal questions asserted to be present."

The opinion represented a relatively cautious way for the high court

to handle one of the most politically explosive cases to come its way in years. And in the short term, the action may help Republican candidate George W. Bush. Because it vacates the Florida court's order, it could mean that the manual recounts conducted under the Florida court's ruling would be wiped out — at least until the Florida court issues a new decision — and that Bush's margin of victory would return to 930 votes from the 537 certified under the later deadline.

The court's disposition of the case doesn't necessarily mean the justices will hear it again. Assuming the Florida court reaches the same legal conclusion but simply adds new language explaining itself, Bush would then have to appeal the case and the justices would have to agree anew to hear it, something that requires four votes.

With the legal and political ground shifting rapidly, it's possible by that time that the matter could be decided elsewhere, meaning that the court would not involve itself again.

The justices told the Florida court they wanted clarification on two questions, and the Florida court on Monday afternoon asked for briefs on the issue by midafternoon Tuesday.

The first was the extent to which the Florida court based its decision to extend the deadline on the Florida constitution's guarantee of a right to vote. If the Florida court's decision rested on the state constitution, that could run afoul of the U.S. constitution's grant of authority to state legislatures to regulate the conduct of presidential elections.

The second was how much the Florida court had considered the compatibility of changing the deadline with an 1887 law that requires presidential election disputes to be resolved according to rules already in place by Election Day.

These were the two questions that most concerned the court's more conservative justices during oral argument last Friday.

Both sides pronounced themselves pleased with Monday's ruling. "When the Supreme Court of the United States unanimously vacates the decision you sought review of, that's a win," said Theodore Olson, who represented Bush before the justices last Friday. "I'm very, very gratified they recognized that there are significant constitutional concerns with respect to what the Florida Supreme Court did."

# San Diego State Expels Frats After Recent Hazing Incidents

By Tony Perry

LOS ANGELES TIMES

SAN DIEGO

In a strong statement against drinking and hazing, San Diego State University on Monday expelled two fraternities for recent incidents in which underage pledges were forced to drink to excess and became sick.

Two pledges were taken to a hospital for alcohol poisoning.

"This behavior will not be tolerated," said Jim Kitchen, San Diego State vice president for student affairs, in announcing the expulsion of Beta Theta Pi and Tau Kappa Epsilon fraternities. The case was turned over to the city attorney for possible prosecution of fraternity members.

The action comes amid national

concern about excessive drinking among students, particularly at fraternities.

By some studies, more than 50 college students each year are killed by alcohol poisoning.

"We cannot look at alcohol abuse as just a way of college life," Charles B. Reed, chancellor of the California State University system, said last month. "Our children's lives are at stake."

The San Diego State incidents involved pledges who were coerced into excessive drinking as a condition of being accepted into the fraternity.

At Beta Theta Pi, four 18-year-olds on Sept. 30 were coerced into drinking and one later had to be hospitalized for alcohol poisoning and a gash on his chin he suffered

when he passed out.

The Tau Kappa Epsilon incident, which occurred at the apartment of a fraternity member Oct. 17, involved three 18-year-olds, one of whom suffered a near-fatal case of alcohol poisoning.

The fraternities will not be allowed to sponsor events and social functions, use university facilities or vote on the interfraternity council.

The university does not have authority to close the fraternity houses, which are off campus and privately owned. But a national official with Beta Theta Pi said that San Diego State members will have to find another place to live because the organization's rules prohibit recognition of a chapter that has been expelled.

# WEATHER

## Winter Invasions

Robert Korty  
STAFF METEOROLOGIST

Arctic air that began crossing the U.S.-Canadian border yesterday will continue to push to the south and east today. Across much of the Midwest and Northeast, there will be a full-scale intrusion of polar air. With strong northwesterly winds, lake-effect snows will begin in earnest across the lee shores of Lakes Michigan, Erie, and Ontario. Temperatures will not get out of the single digits across Minnesota today, and lows there tonight will drop well below 0°F (-18°C).

Closer to home, the Arctic front will march across the Northeast today with little moisture (aside from the lake-effect snow in New York state), but strong, blustery winds will usher the colder air into New England. Expect the cold air to linger for most of the week, but (unfortunately for snow lovers) it appears that the week will be mostly dry.

### Extended Forecast

**Today:** Becoming mostly cloudy. High in the upper 40s°F (8-10°C), with southwesterly winds gusting 15 to 25 mph.

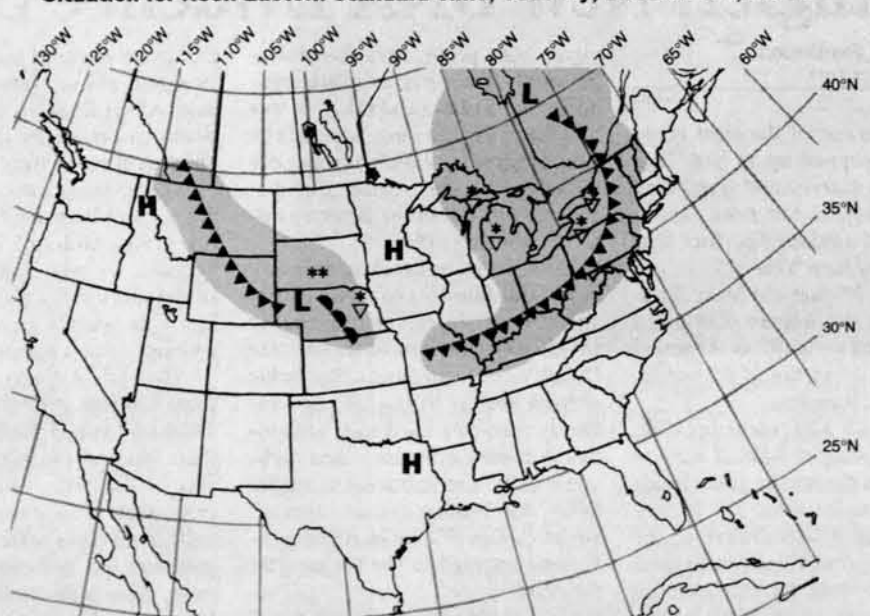
**Tonight:** Blustery and colder. Low near 23°F (-5°C).

**Wednesday:** Mostly sunny but cold. High of 32°F (0°C).

**Thursday:** Partly cloudy. High near 30°F (-1°C); low near 18°F (-8°C).

**Friday and the weekend:** Expect partly cloudy skies. Highs generally around 40°F (4°C) with lows in the 20s (-5 to -1°C).

Situation for Noon Eastern Standard Time, Tuesday, December 5, 2000



Weather Systems	Weather Fronts	Precipitation Symbols	Other Symbols
H High Pressure	- - - Trough	Snow	☁ Fog
L Low Pressure	—•—•— Warm Front	Shower	⚡ Thunderstorm
§ Hurricane	▲▲▲▲ Cold Front	Light	☁☁ Haze
	—•—•— Stationary Front	Moderate	
		Heavy	

Compiled by MIT Meteorology Staff and The Tech

# New President Inspires Hopes Of Peace in War-Torn Chiapas

By Kevin Sullivan

THE WASHINGTON POST

ACTEAL, MEXICO

The killers came in broad daylight, three days before Christmas in 1997, first spraying bullets into a makeshift church, then chasing villagers onto a steep hillside thick with broad banana leaves. They opened fire into the brush, aiming by the sound of crying children.

In the end, 45 unarmed Acteal villagers — Roman Catholic Indian pacifists committed to nonviolent struggle for indigenous rights — lay dead. Diego Perez Jimenez lost seven members of his family in the massacre, committed by paramilitaries backed by members of the ruling party trying to maintain control over the area's impoverished Indians.

But today, in this mountain village whose name is an emblem for the bloody seven-year struggle here in the southern state of Chiapas, Perez said he sees new hope for peace since last Friday's inauguration of President Vicente Fox. And he said that if Fox can restore hope

to this heartbroken place, maybe he can bring it to all of Chiapas.

"The last government brought us the massacre and pain, but with Vicente Fox we are hoping for a new world," Perez said, standing before a wall where the victims' photos are hung around a large wooden cross, illuminated by two candles. "I am a victim of this war, and I think we are going to see a change in our lives."

Fox has given the people of Acteal what they have not had since the massacre: hope. But turning hope into peace will be far harder here in this violent stew of rebels and soldiers, poverty and neglect and the bloody rampages of shadowy paramilitary groups. The conflict in Chiapas remains the most intractable obstacle in Mexico's march toward equality and democracy promised by Fox, Mexico's first opposition party president in 71 years.

Chiapas, perhaps more than any issue, points out the nation's stark economic and ethnic divisions. The economic advances of northern

Mexico, where the population is largely of European descent, haven't been shared in the poor south, where the largely indigenous population lives with poverty and illiteracy. While Fox is trying to bring new Internet technology to the north, poor and angry Indians in the south still live in dirt-floor shacks with no running water.

The Chiapas conflict is often described as a simple struggle for a better life for Indians; during the campaign, Fox boasted that he could end it in 15 minutes. But Chiapas is actually an overlapping web of tensions, some recent and some ancient. It's a struggle between Indian and non-Indian, rich and poor, large landowners and poor landowners, the army and clandestine paramilitary groups, traditional Catholics and Protestant Evangelicals.

Fox has quickly put Chiapas at the top of his agenda. The tens of thousands of Mexican army troops here have already pulled back from roadside checkpoints that have existed for years.

# Photos Suggest Historic Presence Of Water on Ancient Red Planet

By Usha Lee McFarling

LOS ANGELES TIMES

The dry, dusty surface of Mars once might have been a Minnesota-like land of lakes, according to vivid new photos of the planet released Monday.

The images do not show water, but capture dramatic layered geological outcrops, such as those found in the Grand Canyon, that usually form within bodies of water.

The new pictures radically could revise notions of Martian geology, suggesting the planet was a wetter — and wilder — place than previously believed. They also suggest that water might have been a long-standing feature of the planet and existed for millions of years, long enough for life to evolve.

"To geologists, layering is like the 'Holy Grail,'" said Mike Malin, who heads Malin Space Science Systems, the San Diego company that operates the Mars Orbital Camera now circling the planet aboard NASA's Mars Global Surveyor. "Mars isn't the way we thought it was."

"This picture really blew our socks off," said Ken Edgett, the study's co-author and a scientist at Malin, said of an image showing detailed, regularly spaced layers

across the bottom of Valles Marineris, a canyon in Mars that stretches across a length equivalent to the distance between Los Angeles and New York. "We looked at that and said, 'We don't know how you do that without water.'"

The report is to be published in Friday's issue of the journal Science.

This summer, Malin and Edgett reported finding evidence that small amounts of water recently might have flowed on Mars and carved out gullies within craters. The new finding indicates large amounts of water might have covered parts of the planet billions of years ago.

Signs of layered sediments were first detected on Mars in 1971, with the Mariner 9 mission. The new images are the first highly detailed pictures and show the layers are distinct from most of the Martian terrain.

The pancake-like layers are widespread, visible in hundreds of the impact craters and deep chasms that scar the planet's surface. As in the Grand Canyon, erosion exposes layered outcrops far beneath the planet's surface. The layered rocks date from the earliest part of Martian history, more than 3.5 billion years ago.

Malin and Edgett have no idea where the sediments that make up

the layers came from or how they could have been eroded so dramatically. They also see no "smoking gun" — traces of gullies or streams that might have carried water to the areas where the sediments accumulated.

An alternative explanation is that the energetic mix of wind and sand that fuels the infamous dust storms on Mars might be transporting the sediments and that cyclic changes in the planet's atmosphere might play a role in depositing dust. In such a scenario, water would not be required, and the chances of finding traces of life might be diminished.

Other explanations, such as dust thrown up by impacting craters, or rocks spewed by volcanoes, do not explain the widespread extent of the layered sediments, Malin said.

Mars has "a lot of real estate," said Jim Garvin, the geologist who heads Mars exploration for the National Aeronautics and Space Administration. The new observations, he said "give us some direction ... on where to go."

Garvin compared the views of the layered rocks to the findings of archeologists who opened the first known tombs of the pharaohs. "These are landscapes exhumed from the martian past," he said.

# Clinton Announces Creation Of Offshore Nature Preserve

LOS ANGELES TIMES

WASHINGTON

President Clinton announced Monday the creation of the nation's biggest official nature reservation — an expanse of 84 million underwater acres along the northwestern stretch of the Hawaiian Islands — to help protect seals, ocean birds and 70 percent of the nation's coral reefs.

The president's executive order establishes the Northwestern Hawaiian Islands Coral Reef Ecosystem Reserve, a vast area larger than Florida and Georgia combined. The order bans removal of coral from the region and caps both commercial and recreational fishing at existing, already limited levels.

The new reserve is "a special place where the sea is a living rainbow," Clinton said at the National Geographic Museum in Washington, where giant pictures of coral were projected on a screen behind him.

The order establishes "the strongest level of protection for oceans ever enacted," and sets "a new global standard for reef and marine wildlife protection," the president told members of the audience, many of whom were wearing leis made from purple and yellow Hawaiian blossoms.

Though some fishing industry representatives voiced opposition to the reserve, the announcement was welcomed by environmental groups, who are hopeful that the administration will grant more of the items on their extensive wish list before leaving office in January.

# Problems Delay Unfurling of Solar Power Wings on Space Station

THE WASHINGTON POST

CAPE CANAVERAL, FLA.

Two spacewalkers bolted a \$600 million solar power tower to the International Space Station Sunday, but the shuttle Endeavour's crew quickly ran into problems and only managed to unfurl one of two huge solar wings.

Deployment of the second 115-foot solar wing was held up by a stuck latch pin on a box housing its two folded up solar cell blankets. After a lengthy assessment on the ground, Endeavour's crew was asked to cycle the latches closed and back open. And this time, the latch pin in question opened normally.

But flight controllers decided to hold off making any additional deployment attempts until engineers could complete a preliminary assessment of problems with the array that did deploy. Engineers at the Johnson Space Center in Houston were concerned one of the two blankets on the deployed solar wing was not sufficiently taut.

The wing appeared to have extended just 110 feet or so and that prompted a request for a detailed photo survey to help assess options for increasing tension on the blanket in question. Until that issue is resolved, the second array will remain stowed.

"We want to make sure we're in a good posture before we deploy the second wing," said lead flight director William Reeves.

Astronauts Joseph Tanner and Carlos Noriega wrapped up a spacewalk that had gone into overtime, repressurizing Endeavour's airlock at 9:09 p.m. to end a 7-hour, 34-minute excursion.

# Cheney Warns of Future Recession

NEWSDAY

The dreaded "r" word has returned to the nation's vocabulary, although few experts predict a recession will occur next year despite growing signs that the U.S. economy is slowing.

The longest economic expansion in U.S. history had made talk of recession moot until last weekend, when Republican vice presidential candidate Dick Cheney said in a televised interview that "we may well be on the front edge of a recession here." He touted George W. Bush's widespread tax cuts as a remedy.

Cheney's comments came on the heels of dire predictions from several economists, including Irwin Kellner of CBS MarketWatch, who said there was a 50 percent chance of a recession next year.

There is little question that the economy has slowed from the heady days of last year. The gross domestic product, the sum of all goods and services produced, grew at a 2.4 percent annual rate in the third quarter, less than half the 5.6 percent pace earlier this year. Consumer confidence fell last month to its lowest level in more than a year, due in part to roiling stock markets and the collapse of technology shares. And shoppers aren't opening their wallets as often, leading retailers to worry about the crucial holiday buying season.

# E-Commerce Sites Create Tool That Raises Privacy Concerns

THE WASHINGTON POST

Several dozen e-commerce specialists are creating a system designed to vastly improve their ability to share names, identification numbers and a wealth of behavioral data about individual consumers — raising new questions about the security and privacy of personal information.

The group, which includes IBM, MicroStrategy and First Union Bank, hopes its Customer Profile Exchange standard will address one of the secrets of the Information Age: Technology-savvy companies use so many different computer systems they often cannot easily transmit dossiers about individuals.

This communications problem has hindered development of personalized products that many companies are betting will be enormously popular and profitable. And they say it has hurt customer service because company representatives sometimes have too little up-to-date information at their fingertips.

The problem has also protected customer privacy by making it harder for business to mine and trade complete records, specialists say.

The standard, developed in a series of meetings over the past year, would change all that if software makers begin using it soon, as the developers expect. It would enable companies to share profiles in the time it takes to press "Enter" on a keyboard, using a data format known as XML.

# DeSalvo May Not Have Been Boston Strangler, New DNA Evidence Says

By Pamela Ferdinand

THE WASHINGTON POST

BOSTON

Hers was one of the most grisly slayings: propped up in bed, legs spread, two scarves and a stocking wrapped around her neck, and a card placed against one foot that read, "Happy New Year's!"

In 1964, 19-year-old Mary Sullivan became the woman considered the youngest — and, as it turned out, the last — victim of the notorious Boston Strangler.

Now, with additional possible evidence coming to light, it may be that Sullivan did not die at the hands of the Strangler after all. It may even be that Albert DeSalvo, the sexually depraved handyman who confessed to being the Strangler, did not commit any or all of the nefarious strangling crimes, and that the real killer — or killers — is still out there.

A search for the truth about this city's most famous homicide spree is proceeding with unprecedented

vigor. State prosecutors are analyzing newly uncovered evidence related to the Sullivan slaying to see whether DNA testing is possible. The evidence, which reportedly includes traces of semen, was discovered this fall in the Boston medical examiner's office.

And, in an unusual crime story twist, the families of both victim and alleged slayer are cooperating in efforts that could exonerate DeSalvo. In September, after being denied access to police records, family members sued state authorities to release evidence. Then Sullivan's body was exhumed to gather DNA, and leading forensic specialists at George Washington University were engaged to test the samples for proof.

"It's the least I can do for Mary," said her younger sister Diane Dodd, now 54. "She went through all the horror."

But the survivors also suffered. The Sullivans lost the closeness they once shared, while the

DeSalvos endured public humiliation and abuse, family members said. Albert DeSalvo was stabbed to death in prison in 1973; his two children changed their names.

"These years have been like hell for my family, myself, and now for my grandchildren," said Richard DeSalvo, 64, who visited his brother in prison nearly every week. "I know he wasn't an angel, but he certainly wasn't a murderer."

The violent deaths of 13 women from summer 1962 through winter 1964 terrorized Bostonians with their apparent randomness and cruelty. Victims ranging from respectable elderly women to young college students were raped, strangled and left in lurid sexual positions, often with stockings or knotted pillows looped in bows as if to mock police.

The first victim, a 55-year-old woman, was discovered June 14, 1962, strangled with the belt of her robe. Two weeks later, two others were found slain on the same day.

# OPINION



**Chairman**  
Satwiksai Seshasai '01

**Editor in Chief**  
Naveen Sunkavally '01

**Business Manager**  
Huanne T. Thomas '02

**Managing Editor**  
Ryan Ochylski '01

**Executive Editor**  
Gregory F. Kuhnen '00

#### NEWS STAFF

**Director:** Dana Levine '02; **Editors:** Laura McGrath-Moulton '01, Rima Arnaout '02; **Associate Editor:** Matthew Palmer '03; **Staff:** Daniel C. Stevenson G, Sanjay Basu '02, Kevin R. Lang '02, Karen E. Robinson '02, Efen Gutierrez '03, Vicky Hsu '04, Pey-Hua Hwang '04, Nancy L. Keuss '04, Jennifer Krishnan '04, Brian Loux '04, Shankar Mukherji '04, Shefali Oza '04, W.S. Wang '04, Jennifer Young '04; **Meteorologists:** Veronique Bugnion G, Rob Korty G, Peter Huybers G, Greg Lawson G, Bill Ramstrom G.

#### PRODUCTION STAFF

**Editors:** Mary Obelnicki '98, Eric J. Cholaneril '02, Ian Lai '02, Jordan Rubin '02; **Associate Editor:** Stacia Swanson '03; **Staff:** Gayani Tillekeratne '03, Vimal Bhalodia '04, Laura Boylan '04, Joel Corbo '04, Joy Forsythe '04, Bob Hall '04, Kartik Lamba '04, Andy Leiserson '04, Andrew Mamo '04, Eric Tung '04, Tao Yue '04.

#### OPINION STAFF

**Editors:** Kris Schnee '02, Mike Hall '03; **Associate Editor:** Veena Thomas '02; **Staff:** Matthew L. McGann '00, Michael Borucke '01, Kevin Choi '01, Jason H. Wasfy '01, Philippe C. Laroche '03, Philip Burrowes '04, Roy Esaki '04, Ken Nesmith '04, Jyoti Tibrewala '04; **Cartoonist:** Samia Majub '04.

#### SPORTS STAFF

**Associate Editors:** Jeffrey Colton '02, Brian K. Richter '02; **Staff:** Alvan Eric P. Loreto '01, Jennifer C. Lee '03.

#### ARTS STAFF

**Editors:** Rebecca Loh '01, Annie S. Choi; **Associate Editors:** Fred Choi '02, Devdoot Majumdar '04; **Staff:** Erik Blankinship G, Karen Feigenbaum G, Bence P. Olveczky G, Roy Rodenstein G, Vladimir V. Zelevinsky '95, Zarminae Ansari '97, Bogdan Fedeles '02, Lianne Habinek '02, Jumaane Jeffries '02, Jacob Beniflah '03, Daniel J. Katz '03, Jane Maduram '03, Amy Meadows '03, Ryan Klimczak '04.

#### PHOTOGRAPHY STAFF

**Editors:** James Camp G, Nathan Collins G; **Staff:** Erika Brown G, Krzysztof Gajos G, Saphir Hamilton G, Garry Maskaly G, Karlene R. Maskaly G, Wan Yusof Wan Morshidi G, Michelle Povinelli G, Bob Sumner G, Samudra Vijay G, T. Luke Young G, Charles Boatin '01, Nii Dodoo '01, Ying Lee '01, James Snyder '01, Minnan Xu '01, Aaron D. Mihalik '02, Yi Xie '02, Roshan Baliga '03, Leonid Drozhinin '03, Ekaterina Ossikine '03, Wendy Gu '03, Pedro L. Arrechea '04, Max Planck '04, Jacqueline T. Yen '04.

#### FEATURES STAFF

**Editor:** Katie Jeffreys '01; **Cartoonists:** Aaron Isaksen G, Kenneth Lu G, Solar Olugebefola G, Jennifer Dimase '01, Grace H. Wang '01, Bao-Yi Chang '02, David Ngo '02, Baris Yüksel '02, Lara Kirkham '03, Alison Wong '03, Guan-Jong Chen '04; **Staff:** Katherine H. Allen '03, Bushra B. Makiya '03, Sonali Mukherjee '03, Melissa S. Cain '04, Eun Lee '04.

#### BUSINESS STAFF

**Associate Advertising Manager:** Rachel Johnson '02; **Staff:** Kiwah Kendrick '02, Kedra Newsom '02, Jasmine Richards '02, Dashonn Graves '03, Joey Plum '03.

#### TECHNOLOGY STAFF

**Staff:** Chris McEniry G, Shantonu Sen '02.

#### EDITORS AT LARGE

**Senior Editors:** Eric J. Plosky '99, Frank Dabek G; **Contributing Editors:** Brett Altschul G, Gábor Csányi G, Michael J. Ring '01.

#### ADVISORY BOARD

Paul E. Schindler, Jr. '74, V. Michael Bove '83, Barry Surman '84, Robert E. Malchman '85, Thomas T. Huang '86, Simson Garfinkel '87, Jonathan Richmond PhD '91, Josh Hartmann '93, Jeremy Hylton '94, Thomas R. Karlo '97, Saul Blumenthal '98, Indranath Neogy '98, Joel Rosenberg '99, B. D. Colen.

#### PRODUCTION STAFF FOR THIS ISSUE

**Night Editors:** Mary Obelnicki '98, Ian Lai '02, Jordan Rubin '02; **Staff:** Ryan Ochylski '01, Gayani Tillekeratne '03, Joel Corbo '04, Eric Tung '04.

The Tech (ISSN 0148-9607) is published on Tuesdays and Fridays during the academic year except during MIT vacations. Weekdays during January and monthly during the summer for \$45.00 per year. Third Class by The Tech, Room W20-483, 84 Massachusetts Ave., Cambridge, Mass. 02139. Third Class postage paid at Boston, Mass. Permit No. 1. POSTMASTER: Please send all address changes to our mailing address: The Tech, P.O. Box 397029, Cambridge, Mass. 02139-7029. Telephone: (617) 253-1341; editorial: (617) 258-8324, business: (617) 258-8226, business, advertising, subscriptions, and operating rates available. Times content © 2000 The Tech. Printed on recycled paper by Charles River Publishing.



## Letters To The Editor

### Not an Election Article

Before I begin, let me make one thing abundantly clear; unlike all those other opinion articles you've been reading, this is NOT an election article. Let's face it — I think we're all getting a little sick with all this unending election nonsense; you'd think we were trying to have an election between O.J. Simpson and Elian Gonzalez with the amount of hot air and political/legal rhetoric we've been hearing. Enough is enough. It's time for us to move on to something far more interesting.

That's not to say that I'm a political hermit. Why, back in my day (high school, that is) I was a very prominent member of the political scene. But now all that the news seems to come down to is an obscene number of court cases that really don't affect me (or anyone at all, really) very much.

I watch political commentators, and I have the sensation that I'm watching a football game. Everyone's sitting around the TV anxiously waiting to see whom the referees are going to award possession to after the onside punt by the Gore Team. I don't know about you, but I'm starting to get a little bit tired of having to watch the unremitting instant replays of Bush stumbling into the end zone and the different referees constantly overturning each other's decisions as to whether or not his feet were legally inbounds. Years from

now, will we even care? I get the feeling that US History students will one day look at this period of time the same way I looked at all the taxes and acts passed by British Parliament during the colonial period: a whole bunch of stuff that was all essentially the same that I now have to memorize. The only people, years from now, who will closely look at the details of this election will be desperate graduate students hoping to use the election as a "social commentary" in their theses. True, there's a chance that constitutional law might be changed, and we all know what a barrel of monkeys that is. A year from now I might think of the changes as being fascinating, but right now they're just overkill.

This is the election that proves that the adjective "interesting" is a relative term. I'm sick and tired of being sick and tired. Come January 20th, 2001, we'll have a president, be it Bush, Gore, or, heaven forbid, Strom Thurmond. Our country's been doing fine for a few hundred years, and I'm sure it can deal just fine with whatever mountains or molehills we're currently going over. We're all just tired of hearing the incessant babble about how Bush's flossing technique is believed to be unconstitutional by members of the Gore team, so if you were hoping to maybe read something more about Indecision 2000, then go read something else, because I certainly wouldn't be caught dead writing another article about the election.

Akshay Patil '04

### Tech Soapbox Misused

What a shame that *The Tech's* ombudsman Frank Dabek used his latest column ["Pravda We're Not," Dec. 1] to advocate not for *The Tech's* readers, but for his own legacy. Treating his position as a personal soapbox from which to vent over Matt Norwood's article in the latest issue of *Counterpoint* was wholly inappropriate. It served only to diminish the office of the ombudsman, compromising its appearance of impartiality and giving the lie to Dabek's purported "dedication to journalistic principles."

The role of the ombudsman is clearly delineated: to investigate complaints from the paper's readership, report findings, and help to achieve an equitable settlement. Nothing more. Dabek stepped outside that role to defend his own actions during his long tenure on *The Tech's* editorial board as News Editor and Editor in Chief.

The basic principle is that the ombudsman be independent of the paper he oversees. That is why the ombudsman's work is not subject to review by *The Tech's* editorial board. (And, consequently, why *The Tech* shares no blame for Dabek's bad judgment here.) So how can MIT students be expected to take seriously an inveterate insider with the most blatant conflict of interest playing the role of impartial, independent overseer?

Kevin Beach G  
Senior Editor, *Counterpoint*

## Opinion Policy

**Editorials** are the official opinion of *The Tech*. They are written by the editorial board, which consists of the chairman, editor in chief, managing editor, news editors, and opinion editors.

**Dissents** are the opinions of the signed members of the editorial board choosing to publish their disagreement with the editorial.

**Columns and editorial cartoons** are written by individuals and represent the opinion of the author, not necessarily that of the newspaper.

**Letters to the editor** are welcome. Electronic submissions are encouraged and should be sent to [letters@the-tech.mit.edu](mailto:letters@the-tech.mit.edu). Hard copy submissions should be addressed to *The Tech*, P.O. Box 397029, Cambridge, Mass. 02139-7029, or sent by interdepartmental mail to Room W20-483. All submissions are due by 4:30 p.m. two days before the date of publication.

**Letters and cartoons** must bear the authors' signatures, addresses, and phone numbers. Unsigned letters will not be accepted. No let-

ter or cartoon will be printed anonymously without the express prior approval of *The Tech*. *The Tech* reserves the right to edit or condense letters; shorter letters will be given higher priority. Once submitted, all letters become property of *The Tech*, and will not be returned. *The Tech* makes no commitment to publish all the letters received.

**The Tech's Ombudsman**, reachable by e-mail at [ombudsman@the-tech.mit.edu](mailto:ombudsman@the-tech.mit.edu), serves as the liaison between *The Tech* and its readers. From time to time, the Ombudsman writes an independent column reflecting the complaints, questions, and concerns of the readership.

## To Reach Us

*The Tech's* telephone number is (617) 253-1541. E-mail is the easiest way to reach any member of our staff. If you are unsure who to contact, send mail to [general@the-tech.mit.edu](mailto:general@the-tech.mit.edu), and it will be directed to the appropriate person. *The Tech* can be found on the World-Wide Web at <http://the-tech.mit.edu>.

# Can Bush Lead?

Ken Nesmith

It is nearly a month after Election Day, and both Al Gore and George Bush still have reasonable chances of winning the presidency, depending on the outcome of the current court battles. Regardless of who the eventual victor is, the legitimacy of the winner's triumph will be shadowed in doubt. Each candidate can make valid claims that his opponent behaved inappropriately and even in a manner that jeopardized the genuine results of the election.

But forget, for a moment, the intense partisan wrangling, the spin and image construction tactics reminiscent of George Orwell's *1984* that the Bush camp continues to employ, or the possible blackmailing of Republican electors by the Gore campaign. Forget the equally vitriolic but oppositely positioned pieces featured daily in the op-ed pages of the *Wall Street Journal* and the *New York Times*. Forget the fights over dimpled chads, voter intent, and all the rest of this hullabaloo. Forget your own perhaps strongly held opinions about the candidates, and just for a moment, let's consider carefully George W. Bush himself, and consider the prospect that he might run the country.

Bush has often been considered something of an intellectual lightweight. Endless jokes have been made about his equally endless stream of verbal gaffes, each more outrageous than the last. Disturbingly enough, to stem the flow of notable mispronunciations, Bush finally resorted to phonetically spelling out on teleprompters those especially tricky words that he just couldn't seem to remember correctly. However, anyone can misspeak, and this seems like more of a personal quirk than a pressing, central concern.

More important than his inescapable tongue troubles or his less-than-outstanding academic performance is Bush's failure even to meet some basic standard of intellectual ability that we would expect of a leader: an ability to analyze and dissect an issue carefully, considering it from several vantage points, and becoming familiar with its history and seeing how it relates to other important issues

before acting on it.

In Texas, when his staff was explaining an issue and their research on it to the Governor, Bush could stand to listen for only ten minutes or so before halting the presentation and asking what were the one or two most important things he needed to know to make a decision on this issue. He simply did not have, and presumably does not have, the capability to thoroughly weigh arguments and act based on his analysis. He instead takes an oversimplified, impatient approach

judgment by God.

Regardless of one's own religious beliefs, it should be evident that there is a danger in allowing a leader's personal beliefs, not about morals but about an afterlife, to play such a strong part in making crucial decisions.

Many think that Bush will be able to rely on the competence of his advisors and staff once he becomes president.

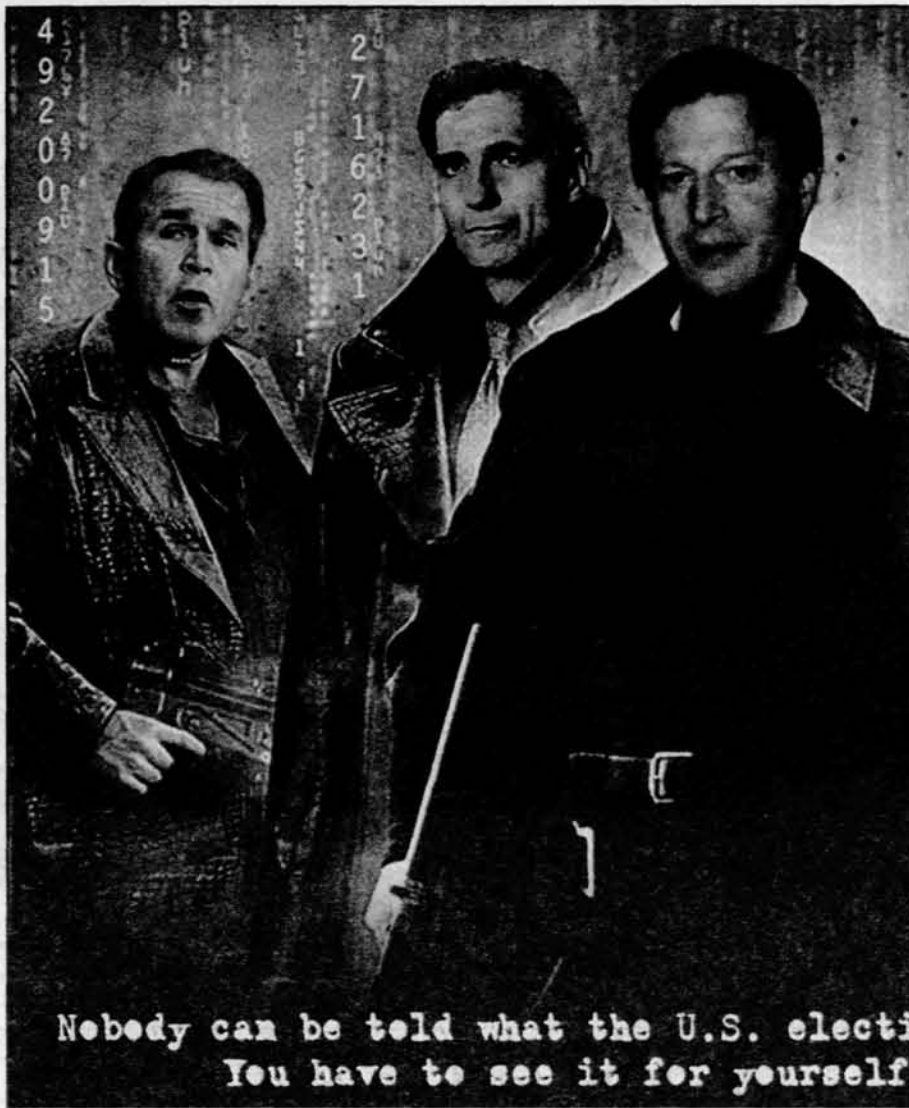
However, more important than having an able staff who can administer good advice is the ability to make discerning judgments

when that staff is advising radically different courses of action. America will face difficult trials at home and abroad in the coming years, yet the most pressing problems will probably be those of which we are not yet aware. If the nation found itself at some critical juncture and it lay upon the President to decide our course, might we hope that a thoughtful, critical person would be making that choice, and that he might afford it more than a fifteen- to thirty-minute review?

These worries, while serious enough on their own, are compounded severely when one considers that Bush makes little or no attempt to become a more knowledgeable person. He does not read books. Perhaps, for whatever reason, he does not enjoy them, but nonetheless he makes no effort to stimulate his mind, expose it to new ideas, and expand his mental horizons. A desire to learn and

grow intellectually should be a fundamental one, especially for a world leader, but Bush seems to lack this desire.

It is all too easy to pass off an account of ethical wrongdoings, verbal flubs, and comical anecdotes as reasons to support or oppose either candidate, for both have more than their share of each, but it is not responsible or valid to do so. In today's twenty-four-hour information overload world, where most time is spent analyzing the actions and reactions of voters and candidates in a hopelessly self-referential system, it becomes difficult to step back and consider a bigger picture. When I do this, however, I simply cannot find a way to convince myself that Bush would make a competent President. Maybe he'll get a chance to show me himself.



Nobody can be told what the U.S. election  
You have to see it for yourself.

to important issues, relying on others around him to pick up the slack.

Even more troubling is his treatment of execution cases. He afforded to these cases perhaps a 15-minute review before making a decision and continuing with his short workday. To so casually toy with the fate of a human life is certainly questionable, but more questionable is the apparent reasoning behind some of Bush's decisions to let executions proceed.

On several occasions, after announcing that he would not grant a stay of execution, Bush spoke of rightful judgment in the afterlife for the convict. He seemed perfectly comfortable in paying scant attention to possible wrongdoing within the trial, and instead acted as one who was passing on this person to a

# Communicate This!

Jason H. Wasfy

The new communications requirement is MIT's boldest step in years toward endowing students with the skills that their careers and lives will demand.

Starting with the incoming class of 2001 and replacing the old writing requirement, it will require students to take four "communication intensive" courses. The first two of these courses that students will take will be humanities, arts, and social sciences offerings, many of which will offer specialized tutors to help MIT's freshmen and sophomores polish their writing skills.

At the end of the last school year, President Charles Vest told a group of students, faculty, and administrators who serve on faculty committees that he thinks the communications requirement is the most important piece of legislation to come from the faculty that year. With such a strong administrative endorsement, I had assumed that funding for the communications requirement would be plentiful.

But those of us who are hashing out the implementation of this initiative are concerned that funding of the communications requirement will be lower the first year than in subsequent years. The logic goes that since only freshmen — and not sophomores — will be subject to the communications requirement in 2001-2002, fewer students will be in the

system. And so, the system will need fewer tutors and less money.

The problem with that logic is that the Institute expects faculty to roll out and create their communication-intensive subjects next year, regardless of how many students take them. Without proper funding for tutors, faculty won't be able to plan their courses adequately for the next year, when two full years of MIT students will be subject to the communications requirement. Some faculty have already complained quietly, but bitterly, that although the Institute expects them to create this system from scratch next year, it might not cough up the necessary funds until the year after.

The last thing that the Institute should do at this early stage of the communications requirement is to alienate the faculty on whom the system will depend. Even if MIT intends to fund the communications requirement fully next year, it needs to be more forceful now in assuring faculty that the funds will come before rumors to the contrary begin to erode faculty support for the initiative.

And the case for full funding transcends just faculty creating new courses. Even though only freshmen will be required to take communication-intensive courses next year, other students will likely enroll in them as well, as the list of communication-intensive courses will include many mainstays of MIT's offerings in the humanities, arts, and social sciences. We cannot assume that

upperclassmen and sophomores will choose suddenly not to take those courses just because they've been designated communication-intensive.

Even with what I'm calling full funding, the money will be less than ideal. This "full funding" level hinges on the assumption of paying each tutor \$3000 per semester for 10 hours of work per week. That amount might be enough to coax an undergraduate struggling to make ends meet to sign up for a teaching assistant job, but it falls short of what we need to attract the best writing tutors to the Institute. We should be trying to hire experienced writing tutors, many with advanced degrees. This amount of money is not enough to properly reward those who teach writing to MIT students, since many students arrive at the Institute with barely rudimentary writing skills. MIT should consider offering these writing tutors more money.

Fully funding the communications requirement next year will require a one-time cost on the order of \$50,000. That's just a drop in the bucket for a university whose endowment tops \$6 billion. Since the Institute sincerely does consider the communications requirement a top priority for undergraduate education, it needs to find the money to support this important institutional goal. If MIT does not fund the initiative fully, then many undergraduates are going to start wondering if our education really is a serious priority.

# A Secular Holiday Season

Roy Esaki

At long last the Yuletide greets us with its full cohort of secularized and materialistic pomp and pageantry — and that's a good thing. It is a common grievance that Christmas has of late departed from its true import, corrupted by commercialization and general complacency. To an extent, this is true; the message of appreciation of the holiday season is often lost upon many of us during this day and age of plenty. But the idea of a secularized and commercialized Christmas can be a beneficial and enjoyable one, provided that we allow these ornaments to decorate, rather than replace, the tree of holiday spirit.

The secularization of Christmas represents to many the loss of the religious significance of the holiday. Christmas pageants and nativity scenes are replaced by the likes of *Ernest Saves Christmas* and jovially gyrating Santa Claus dolls, and it seems that more people are familiar with Bob Rivers' "Twelve Pains Of Christmas" than the lyrics to traditional Christmas carols.

A secularized Christmas, however, is a more egalitarian Christmas. Commenting explicitly on religious issues is always tricky, especially in print, but I think that a secularized Christmas season — now referred to as the Holiday Season to be politically correct — is something that people of all denominations can enjoy and appreciate. A nondenominational Christmas isn't necessarily an oxymoron, given the dual nature of the holiday in our society. The religious significance of the First Christmas can still be celebrated by those religiously inclined, while everyone and anyone can enjoy a nicely decorated Christmas tree while watching "A Charlie Brown Christmas."

Making the spirit of generosity and happiness more accessible to a diverse assemblage of people, such as that found on the MIT campus, can only be a good thing.

Secularization, of course, naturally leads to mundane, mercenary concerns. The cry against a commercialized Christmas has been heard many times. Commercialization results in people spending several hundred dollars on bags full of obligatory store-bought feelings; the Amazon.com commercials which tell us that we can effortlessly find the perfect gift for friends online (though the friend could just as easily buy what he or she wants online), and the consequential irony that a gift certificate is actually the most useful, and thus thoughtful, gift.

Still, we need not lament that the commercial interest is the motive force in our society. Commercialization has its drawbacks, certainly, but as it's incorrigible, we might as well look at the benefits it brings. Without commercial endeavors, there would be neither the Prudential or Rockefeller Tree to enliven the downtown scenes. There would be no *It's a Wonderful Life* to watch every Christmas, we wouldn't have "The Christmas Song" or "Sleigh Ride" to hum to, and certainly no Christmas-edition Coke cans to collect.

Commercialization completes society's Christmastime consortium. Practically every single aspect of our society — family, friends, stores, schools, workplace, the city, the media — operates around, and is bonded by, the unifying theme of the holidays. It's essentially a conspiracy of joyousness, where all people and institutions continually and insidiously all work together to spread holiday cheer. The holiday lights in the park, the decorations in the department stores, the holiday specials on TV, the receptionist that answers the phone with "happy holidays," the teacher who leaves a bowl of candy canes on the desk, the red and green stop lights, the Christmas Gap commercials, even the dogs barking "Jingle Bells" on the radio create an overall unity of purpose and theme that's quite encouraging in an increasingly factional world.

Secularization and commercialization aren't necessary the scourges of the modern Christmas season, as they can actually enhance the holiday cheer. It's important to remember, of course, that Christmas is special only because we choose to feel differently during the season. The decorations, the songs, and lights only serve to put us in the holiday mood, and the rest is determined by the presence, pun intended, of friends and loved ones.

n e t w o r k t h e w o r l d



## Anything Is Possible

This is where the generation of new ideas lives.

Because we've built a global network of people who see possibilities where others see confusion and risk — and who know how to turn those possibilities into realities. And by working at internet speed — propelling dozens of companies and millions of investors into the new economy.

We are propelling careers all over the world.

Morgan Stanley Dean Witter Asia invites juniors (class of 2002) interested in Summer Analyst opportunities in Investment Banking or Private Equity to apply online at [www.msdw.com/career/recruiting](http://www.msdw.com/career/recruiting).

**Application Deadline: December 20, 2000**

**MORGAN STANLEY DEAN WITTER  
ASIA**

Careers at Morgan Stanley Dean Witter Asia start @ [msdw.com/career/recruiting](http://msdw.com/career/recruiting)

Morgan Stanley Dean Witter is an Equal Opportunity Employer committed to workforce diversity. Morgan Stanley Dean Witter is a service mark of Morgan Stanley Dean Witter & Co.

December  
5, 2000

# COMICS

The  
Tech

# FUN

Page  
7

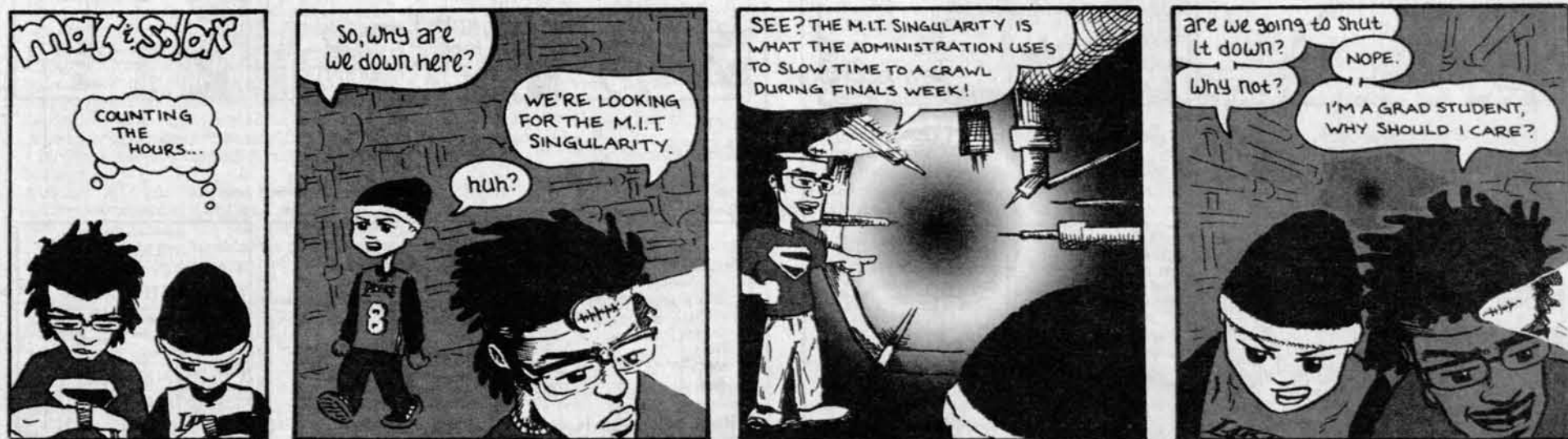
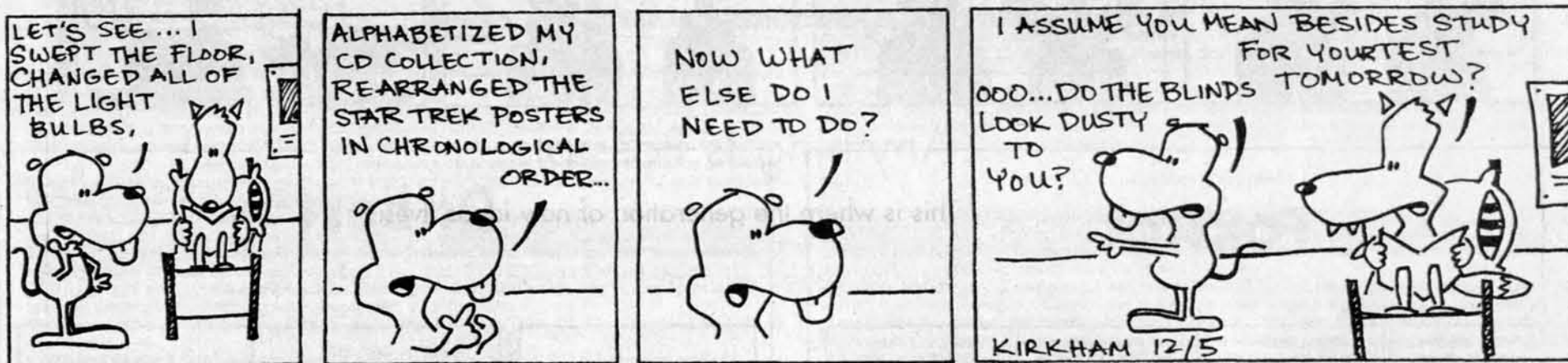
# PAGES

Down with Science

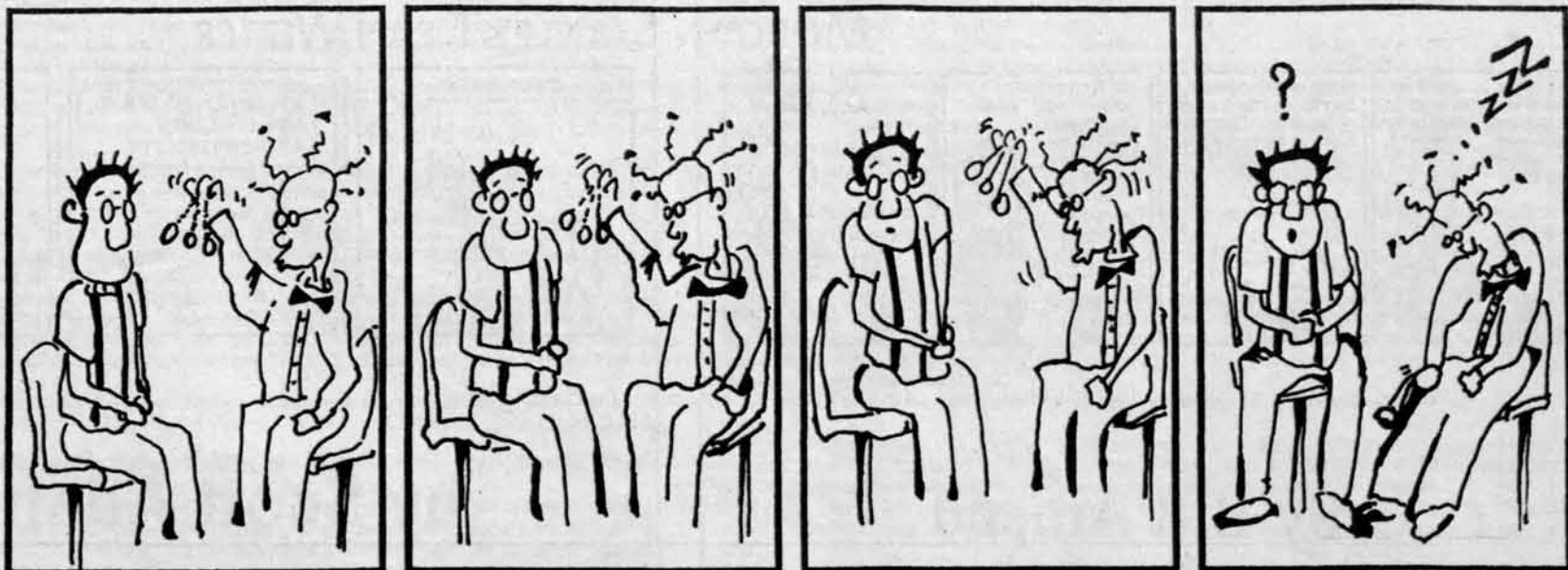
by Jennifer DiMase



## the crass rat



By Guan-Jong (John) Chen  
**Tech  
Life**





MIT3H by ToastyKen "Meet the critics!"

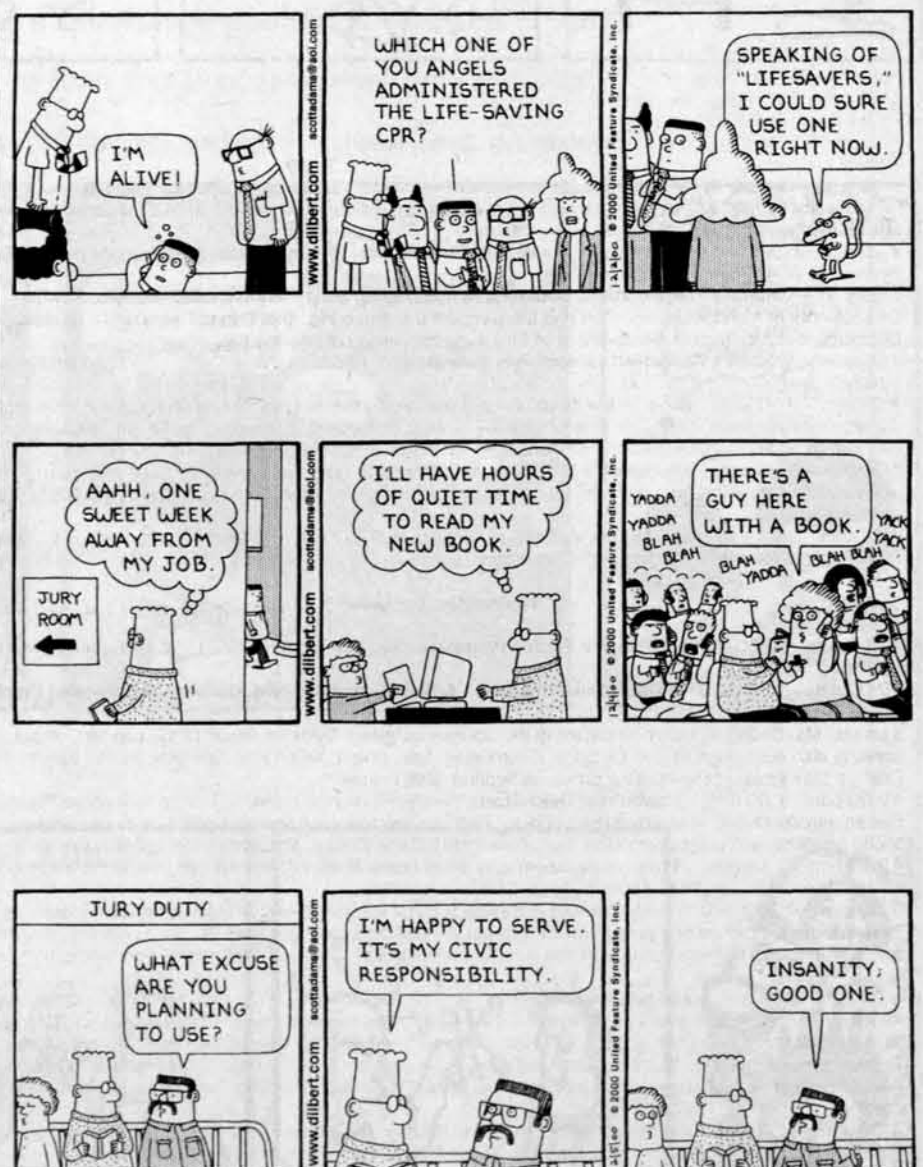


FoxTrot



by Bill Amend

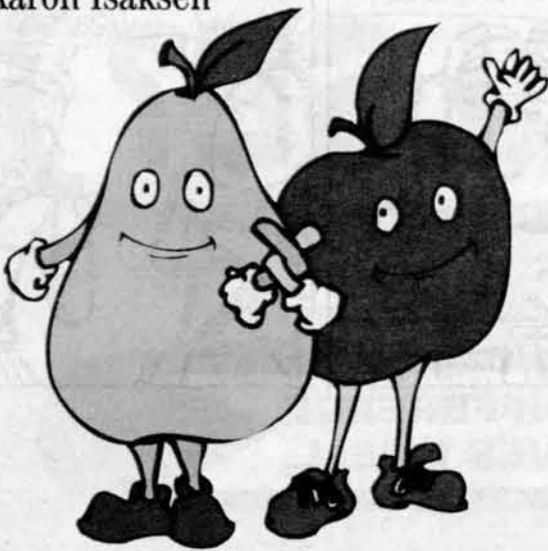
Dilbert®



by Scott Adams

# Fun With Clip Art

Aaron Isaksen

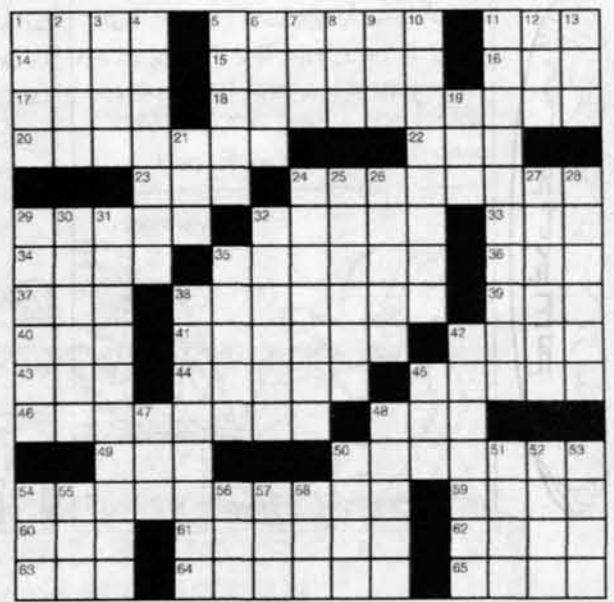


**WARNING!** Eating gay fruit can induce homosexual feelings and/or actions.

# Crossword Puzzle

Solution, page 20

- 29 Game-show host Pat
- 32 Throws down the gauntlet
- 33 Actress Gabor
- 34 Book before Obadiah
- 35 Infuse with oxygen
- 36 Blubber
- 37 Hive builder
- 38 Offers counsel
- 39 A couple
- 40 "A Nightmare on \_\_\_ Street"
- 41 Word manufacturer
- 42 Diviner
- 43 Spanish river
- 44 City in Provence
- 45 Naomi and Wynonna
- 46 Rationality
- 48 \_\_\_ excellence
- 49 Small child
- 50 Rugs
- 54 "Red Dust" star
- 59 \_\_\_ vera
- 60 Possess
- 61 Prenatal
- 62 Blackthorn
- 63 Herbal drink
- 64 Reeks
- 65 Bacteriologist Jonas



- ACROSS**
- 1 Scram!
  - 5 Classified
  - 11 Polish
  - 14 Ark builder
  - 15 Stick together or break up
  - 16 Memorable time
  - 17 Farm measure
  - 18 Speaking to
  - 20 Upholstery fabrics
  - 22 No \_\_\_ intended
  - 23 "\_\_\_ Miniver"
  - 24 Of the Middle Ages

- DOWN**
- 1 Break sharply
  - 2 Chanel of fashion
  - 3 Org. for seniors
  - 4 Ritter and Long

- 5 Scrutinizes
- 6 GM make
- 7 Skelton or Buttons
- 8 Pipe collection?
- 9 Holiday lead-in
- 10 Loathes
- 11 Used earnings for more shares
- 12 Container with a tap
- 13 Valise
- 19 "For Love" author Miller
- 21 Anger
- 24 Leathernecks
- 25 Rubs out
- 26 Talk out of
- 27 Confessed
- 28 Tasks
- 29 Cavalry swords
- 30 Aviator Earhart
- 31 Three-time Super Bowl MVP
- 32 \_\_\_ advocate
- 35 Be nuts about
- 38 Bear's breech
- 42 Go beyond
- 45 Clash
- 47 Long time
- 48 Hocks
- 50 Wine stopper
- 51 Cinder ending?
- 52 Piece of equipment
- 53 Endeavor to obtain
- 54 Iota
- 55 Female of the flock
- 56 Colonial insect
- 57 Slugger's stat
- 58 Chaney of "The Wolf Man"

# TechCalendar

Visit and add events to TechCalendar online at <http://tech-calendar.mit.edu>

## Tuesday, December 5

- 12:00 p.m. - 1:00 p.m. - **Excel User Group.** The purpose of the MIT Excel User Group is to provide a means of support for members of the MIT community. The topic for each month's meeting will be announced in a mailing to all members of the list. The first fifteen minutes is for new issues, future topics suggestions and a Q&A followed by a thirty minute presentation to be followed with 15 minutes of Q&A on the presentation. All levels of users are encouraged to attend. free. Room: N42 Demo Center. Sponsor: Information Systems.
- 12:00 p.m. - 1:00 p.m. - **Modern Optics and Spectroscopy: Intrinsic Noise in Gene Regulatory Networks: Using Fluorescence Microscopy.** free. Room: Marlar Lounge 37-252. Sponsor: Research Lab of Electronics, Spectroscopy Laboratory, Rowland Institute for Science.
- 12:00 p.m. - 12:50 p.m. - **Academic Skills Programs: Finals/"The Home Stretch".** Tips and tools to prepare for finals and other end-of-term projects. free. Room: 66-168. Sponsor: Academic Resource Center.
- 12:00 p.m. - 2:00 p.m. - **Dibner Institute Lunchtime Colloquia: Isaac Newton and his Predecessors in Alchemy.** Dibner Institute Lunchtime Colloquium. free. Room: E56-100. Sponsor: Dibner Institute.
- 2:30 p.m. - 3:30 p.m. - **Another approach for modeling radiating, MHD and .** free. Room: Room 2-338. Sponsor: Physical Mathematics Seminar. Department of Mathematics.
- 4:00 p.m. - 5:00 p.m. - **LIDS Colloquium.** Abstract:TBA. free. Room: LIDS - 35-225. Sponsor: LIDS Colloquium.
- 4:00 p.m. - 5:00 p.m. - **Non-linear impacts of SST anomalies on tropical and extratropical variability.** free. Room: Km 54-1615. Sponsor: MIT Atmospheric Science Seminars.
- 4:00 p.m. - 5:00 p.m. - **Geoadditive Models.** Refreshments will be served at 3:30 PM in room 2-349. free. Room: Room 2-338. Sponsor: Statistics Seminar. Department of Mathematics.
- 4:15 p.m. - 5:30 p.m. - **Gas Turbine Laboratory Seminar Series.** TBA. free. Room: 31-161. Sponsor: Gas Turbine Laboratory.
- 4:30 p.m. - **Lecture 9: "More on pseudo differential operators".** Lectures on Operator Algebras, Noncommutative Geometry, and K-Theory (primarily for physicists). free. Room: Room 4-231 at M.I.T. Sponsor: Harvard-MIT Mathematical Physics Seminar. M.I.T. Department of Mathematics.
- 4:30 p.m. - 6:00 p.m. - **"Psychology, Utopia, and Escape From History."** Humanities Workshop Series. free. Room: 14E-304. Sponsor: History Office.
- 6:30 p.m. - **Calatrava Lecture 2000: Structural Morphologies.** Series of three talks sponsored by the Departments of Architecture and Civil and Environmental Engineering. free. Room: Rm 10-250. Sponsor: Department of Architecture. Department of Civil and Environmental Engineering.
- 7:00 p.m. - **Women's Basketball vs. Simmons College.** free. Room: Rockwell Cage. Sponsor: Department of Athletics.
- 7:00 p.m. - 9:00 p.m. - **Cabaret Auditions.** Bring a prepared song, in English, and sheet music. Wear clothes suitable for movement. Group vocal warm-ups will be held at 7:05pm. If you can't make this, warm-up on your own before auditioning. free. Room: Student Center Rm 491. Sponsor: Musical Theatre Guild, MIT.
- 7:00 p.m. - 9:00 p.m. - **Investments 101.** Come and have your questions about investing and trading answered by representatives from the top Investment Banks!! free. Sponsor: Sloan Undergraduate Management Association.
- 7:15 p.m. - 9:15 p.m. - **BUSA General Meeting.** Come to BUSA's General Meeting and learn how to pass phase II. Free food. free. Room: 4-153. Sponsor: Busa.

## Wednesday, December 6

- 11:00 a.m. - 12:00 p.m. - **Entangled Photon Photoemission.** free. Room: 34-401B, Grier Room. Sponsor: Optics.
- 12:00 p.m. - 1:00 p.m. - **Artists Behind the Desk: Artists Behind the Desk Concert: Jazz Vocalist Grace Chung.** Musical series featuring (both solo and group) vocalists, pianists, strings, woodwinds, brass, percussion etc. Ms. Chung, research assistant in the Spoken Language Systems Group of the Lab for Computer Science, is also pursuing a PhD in Electrical Engineering. free. Room: Killian Hall. Sponsor: Artists Behind the Desk, a task group of the Working Group on Support Staff Issues.
- 12:00 p.m. - 1:00 p.m. - **PowerPoint QuickStart.** PowerPoint makes it easy to jazz up your presentations. Get an introduction to what PowerPoint can do. Find out how to create shows. Learn how to use drawing tools, graphics, and create handouts. free. Room: N42 Demo Center. Sponsor: Information Systems.
- 12:10 p.m. - 1:10 p.m. - **Physical Oceanography Sack Lunch Seminar.** The velocity Distributions in the Ocean. free. Room: 54-915. Sponsor: Physical Oceanography.
- 3:00 p.m. - 4:30 p.m. - **Weekly Practice Sessions for Oral Presentations: Weekly Practice Session for Oral Presentations.** Practice oral presentations and get professional feedback from Dr. Steven Strang, director of MIT's Writing and Communication Center. free. Room: 14N-325. Sponsor: Writing and Communication Center.
- 3:00 p.m. - 5:00 p.m. - **spouses&partners@mit - Holiday Presentation.** Brad Bitner, a teacher at Boston Academy of English, will give a presentation on the history and traditions involved in religious and cultural winter holidays. We will learn about Christmas, Hannukah and Kwanza through an interactive discussion. Please come prepared to share about the winter holiday customs in your culture (and feel free to bring examples of decorations, photographs or stories). free. Room: W20-400. Sponsor: spouses&partners@mit, MIT Medical.
- 4:00 p.m. - 4:50 p.m. - **Academic Skills Programs: Finals/"The Home Stretch".** Tips and tools to prepare for finals and other end-of-term projects. free. Room: 3-343. Sponsor: Academic Resource Center.
- 4:00 p.m. - 5:00 p.m. - **Nanostructures Laboratory.** "Micro- and nanoscale electronic devices for biomolecular recognition." free. Room: 34-101 - Refreshments served at 3:45 pm. Sponsor: Nanostructures Laboratory.
- 4:15 p.m. - 5:15 p.m. - **Homology of Bounded Degree Graph Complexes.** Refreshments will be served at 3:30 PM in Room 2-349. free. Room: Room 2-338. Sponsor: Combinatorics Seminar. Department of Mathematics.
- 4:30 p.m. - 6:00 p.m. - **Sahin Lecture Series .** "Social History and Social Archaeology: Launching a New Excavation in Egypt". free. Room: Bldg. E51-063. Sponsor: History Office.
- 6:00 p.m. - 9:00 p.m. - **Start-up Clinic.** Attendees discover how to present a business plan to potential investors. Two pre-selected companies present their business plans and receive feedback from a panel of experts and the audience over an informal dinner. The key learning points include how plans and presentations are evaluated; what investors and evaluators look for, and how to fine-tune plans and presentations. These events are limited to 60 preregistered individuals. \$35 for Forum members & students; \$45 non-mem-

TechCalendar appears in each issue of *The Tech* and features events for members of the MIT community. *The Tech* makes no guarantees as to the accuracy of this information, and *The Tech* shall not be held liable for any losses, including, but not limited to, damages resulting from attendance of an event. Contact information for all events is available from the TechCalendar web page.

- 6:30 p.m. - 7:15 p.m. - **MITgaard Weekly Meeting.** free. Room: Student Center, PDR#3. Sponsor: Society for Creative Anachronism.
- 8:00 p.m. - 10:00 p.m. - **Salsa Workshop: Salsa lesson.** students \$7/lesson, \$12/series
- 8:00 p.m. - 10:00 p.m. - **International Film Club Film Seminar Series: International Film Club Film Seminar.** Consult our web page for this weeks title: <http://web.mit.edu/ifilm/www>. free. Room: 4-237. Sponsor: Graduate Student Council, International Film Club.

## Thursday, December 7

- 9:00 a.m. - **PE IAP Lottery Opens!** free. Sponsor: Physical Education.
- 3:00 p.m. - 5:00 p.m. - **Visiting Artists Series: Experiences in Interactive Expression.** Open discussion by visiting artists highlighting the history of interactive digital art & contemporary issues in the field. free. Room: Rm N52-390. Sponsor: Center for Advanced Visual Studies.
- 3:00 p.m. - 4:30 p.m. - **Kawamura Fellowship Info Session.** Are you interested in Japanese culture? Then come to this information session and learn how to apply for the Kawamura Fellowship, a five-week, all-expenses-paid summer fellowship to Japan. free. Room: 5-217. Sponsor: Academic Resource Center.
- 4:00 p.m. - 5:00 p.m. - **The Impact of Asian Pollution on Climate and Atmospheric Chemistry.** free. Room: 54-915. Sponsor: MIT Atmospheric Science Seminars.
- 4:15 p.m. - 5:15 p.m. - **A Combinatorial, Strongly Polynomial Algorithm for Submodular Function Minimization.** ORC Fall Seminar Series. Seminar followed by refreshment in E40-106. free. Room: E51-361. Sponsor: Operations Research Center.
- 5:00 p.m. - 7:00 p.m. - **Fluidity and Blurred Boundaries in Men's Fantasies.** The full title of this lecture is "Fluidity and Blurred Boundaries in Men's Fantasies with Pornography." This is cosponsored by Women's Studies as part of MIT's CMS Colloquium Series. free. Room: 2-105. Sponsor: Women's Studies Program, Comparative Media Studies.
- 5:00 p.m. - **MIT Chamber Music Society.** Gunther Schuller's Music for Young People performed by Margy Glasner, flute; Laurel Smith, violin; Alan deLespinasse, cello; Tilman Bauer, piano (Jean Rife, coach). BÉla Bartók's Quintet performed by Romy Nakagawa (G), violin; Laurel P. Smith '01, violin; Martina Hurwitz '03, viola; Angus P. Davol (G), cello; Yu Yasufuku (G), piano (David Deveau, coach). free. Room: Killian Hall. Sponsor: Music and Theater Arts.
- 7:00 p.m. - **Men's Basketball vs. Tufts University.** free. Room: Rockwell Cage. Sponsor: Department of Athletics.
- 7:00 p.m. - 9:00 p.m. - **Trading Game.** Trade for your trip to New York to visit one of the top investment bank's trading floors! Meet company representatives! Dinner will be served! free. Room: E52 Lobby. Sponsor: Sloan Undergraduate Management Association.
- 8:00 p.m. - **Cloud Nine.** Caryl Churchill's exploration of sexual politics examining the changing ideas of women's sexuality in the Victorian and Post-Modern periods. \$10, \$8 students, MIT community & srs, \$6 MIT/Wellesley students. Room: Kresge Little Theater. Sponsor: MIT Community Players.

## Friday, December 8

- 12:00 p.m. - 1:00 p.m. - **Web at MIT Quick Start.** Learn how to explore the Web using Netscape, and get an introduction to the Web at MIT. free. Room: N42 Demo Center. Sponsor: Information Systems.
- 12:00 p.m. - 1:00 p.m. - **AI-Anon Open Discussion: AI-Anon Meeting.** free. Room: E25-101. Sponsor: MIT Medical.
- 1:10 p.m. - 2:10 p.m. - **Physical Oceanography Sack Lunch Seminar.** Probabilistic state estimation. free. Room: 54-915. Sponsor: Physical Oceanography.
- 3:00 p.m. - 4:00 p.m. - **"Shape and Structure, from Engineering to Nature."** free. Room: Rm. 3-133, refreshments following in 1-114. Sponsor: ME Seminar Series.
- 4:00 p.m. - 5:00 p.m. - **Plasma Science and Fusion Center Seminar Series: Hyperfine-scale Turbulence and Electron Heat Transport.** free. Room: NW17-218. Sponsor: Plasma Science and Fusion Center.
- 4:00 p.m. - **MIT's Annual Messiah Sing.** William Cutter, conductor with professional musicians and section leaders, including soprano Lynn Torgove. Scores provided. Refreshments served. free. Room: Twenty Chimneys (Stratton Student Ctr). Sponsor: Lutheran-Episcopal Ministry.
- 4:15 p.m. - 5:15 p.m. - **Monotone graph properties.** Refreshments will be served at 3:30 PM in Room 2-349. free. Room: Room 2-338. Sponsor: Combinatorics Seminar. Department of Mathematics.
- 5:00 p.m. - **Men's & Women's Swimming vs. Wheaton College.** free. Room: Alumni Pool. Sponsor: Department of Athletics.
- 5:30 p.m. - 6:00 p.m. - **MITSFS weekly 'meetings'.** While these are, technically, meetings, it is high-forbiddan to conduct Real Business at them, as they're really social events, Imaginary Business, however, is allowed. Usually a dinner trip follows. free. Room: MITSFS Library, W20-473. Sponsor: Science Fiction Society, MIT.
- 7:00 p.m. - **Wavelength.** (1966-67, 16mm film, 45 minutes) by Michael Snow, Global Conceptualism exhibition artist. Film presented in conjunction with Global Conceptualism: Points of Origin, 1950s-1980s at the List Visual Arts Center Oct 24-Dec 31. \$3, free to students and MIT affiliates. Room: Bartos Theater. Sponsor: List Visual Arts Center.
- 7:30 p.m. - **LSC Classics Presents Bonnie and Clyde.** Warren Beatty, Fay Dunaway, Gene Hackman. They're young .. they're in love .. they kill people. A bored small-town girl and a small-time bank robber leave in their wake a string of violent robberies and newspaper headlines that catch the imagination of the Depression-struck Midwest in this take on the legendary crime spree of these archetypal lovers on the run. \$2.50. Room: MIT Room 10-250. Sponsor: LSC.
- 7:30 p.m. - **Women's Ice Hockey vs. Buffalo State College.** free. Room: Johnson Rink. Sponsor: Department of Athletics.
- 8:00 p.m. - **Cloud Nine.** Caryl Churchill's exploration of sexual politics examining the changing ideas of women's sexuality in the Victorian and Post-Modern periods. \$10, \$8 students, MIT community & srs, \$6 MIT/Wellesley students. Room: Kresge Little Theater. Sponsor: MIT Community Players.
- 8:00 p.m. - 12:00 p.m. - **Jazz Night.** Enjoy a night of good music, good food while socializing with your classmates and schmoozing with company recruiters!. free. Sponsor: Sloan Undergraduate Management Association.
- 8:30 p.m. - **MIT Symphony Orchestra.** Dante Anzolini, music director. Stravinsky's Petrouchka (1911) and other works. \$2. Room: Kresge Auditorium. Sponsor: MIT Symphony Orchestra.

# TRUE OR FALSE?

**25% OF PEOPLE SAY THEY CAN DETECT THE DIFFERENCE BETWEEN HOW EACH NOSTRIL PERCEIVES SMELL.**

**AMERICANS EAT APPROXIMATELY 350 SLICES OF PIZZA PER SECOND.**

**7 OUT OF 100 AMERICANS HAVE FLOSSED THEIR TEETH WITH THEIR HAIR.**

**MEN BURP 4.7 TIMES PER DAY WHILE WOMEN BURP 2.1 TIMES PER DAY.**

**8% OF COLLEGE STUDENTS HAVE NOT WATCHED T.V. IN THE LAST WEEK.**

**NEARLY 2/3 OF COLLEGE STUDENTS DRINK ON AVERAGE LESS THAN ONE ALCOHOLIC BEVERAGE PER DAY.\***

**ONE OUT OF EVERY FOUR AMERICANS HAS APPEARED ON TV.**

**3.9% OF WOMEN DON'T WEAR ANY UNDERWEAR. 6.4% OF MEN GO COMMANDO.**

\*SOURCE: CORE INSTITUTE 1999

**GUESS WHAT? EVERY ONE OF THESE IS TRUE. MOST IMPORTANTLY, COLLEGE STUDENTS ARE MAKING RESPONSIBLE CHOICES ABOUT DRINKING. THANKS FOR MAKING INTELLIGENT CHOICES THE NORM.**

**ANHEUSER-BUSCH**  
Companies  
[www.beeresponsible.com](http://www.beeresponsible.com)

**THE 200+ PUBLIC UNIVERSITIES OF THE NATIONAL ASSOCIATION OF STATE UNIVERSITIES AND LAND-GRANT COLLEGES (NASULGC)**  
[www.nasulgc.org](http://www.nasulgc.org)

© 2000 Anheuser-Busch, Inc., St. Louis, MO

# THE ARTS

## BOOK REVIEW

### Winter's Heart

Another Addition to a Great Series

By Jane Maduram  
STAFF WRITER

**W**inter's Heart, by Robert Jordan, is an exciting continuation of the *Wheel of Time* series. Its popularity, not excluding its position as #1 on the *New York Times* Bestsellers List, is demonstrated by the fact that the Kendall/MIT COOP has run out of stock of this book at least twice within the past two weeks. The series was initially projected to span three books; it is currently nine books long and still going. Nonetheless, this novel is a wonderful addition to the series.

My own discovery of Robert Jordan occurred while I was in the midst of high school senioritis; the books in this series run an average of two inches in the soft cover editions, so it was quite interesting to start a book of the series in the morning and work my way through the book in class until the end of the school day. What made the series so interesting even then was Jordan's mastery of the nuances that make life real.

Jordan is a beautiful writer in that most characters, even the relatively minor ones, are nicely delineated by their clothing, accents, or behavioral mannerisms. While some of the ideas he works with are stereotypes — such as Lan, the typical overachieving/hardened military man — Jordan nonetheless manages to flesh out believable, three-dimensional people. This is particularly impressive in light of the volume of people that pass through the pages of each book.

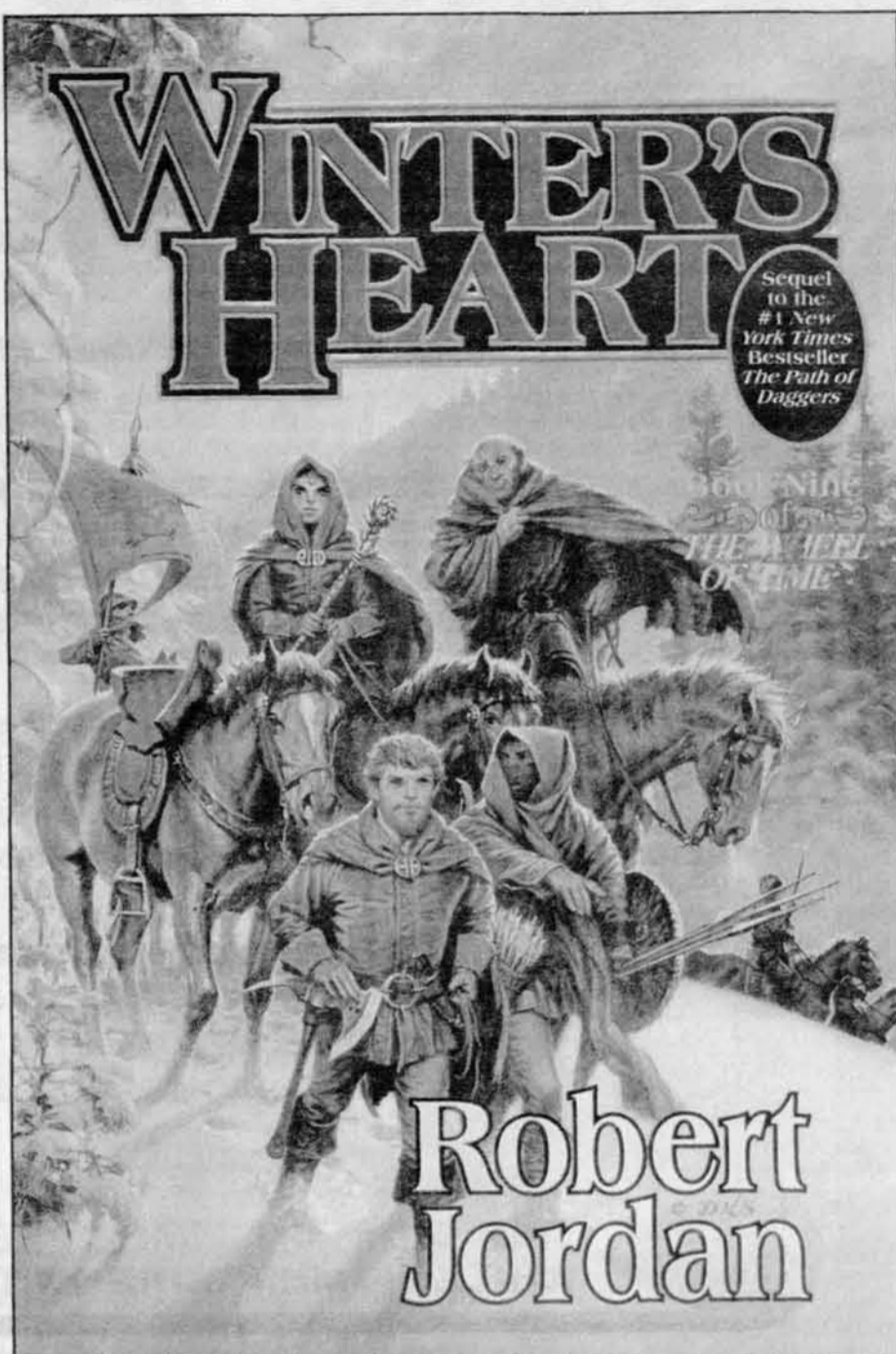
Jordan achieves believability in part through his writing style, through which he passes comments, criticism, and forewarnings. The conversational style is helped in large measure by Jordan's eye for detail. A reader can only interpret events from the writer's clues, and Jordan is quite good at noting what people look for when they see another person or place. The dialogue is

quite realistically portrayed, as are the tensions within groups, the created societies, and the invented accents. An additional point in Jordan's favor is his subtlety. Metaphors and symbols run rampant through the book, but rarely do these interfere with the plot. More often, these metaphors and symbols are hidden within the details, making multiple readings of the book rewarding.

Perhaps more interesting in the series, however, is the way Jordan deftly weaves plot lines together. The way he jumps between three or four different plot lines can be awkward at first for the reader. The transitions make sense, though, even if they are fairly predictable. As usual, Jordan closes a few plot lines and opens yet more; some of the opened plot lines are so vague and obtuse as to be irritating, but this does not happen very often. What is quite remarkable is the fact that Jordan has written so much within this series and is yet able to keep the narrative relatively cohesive.

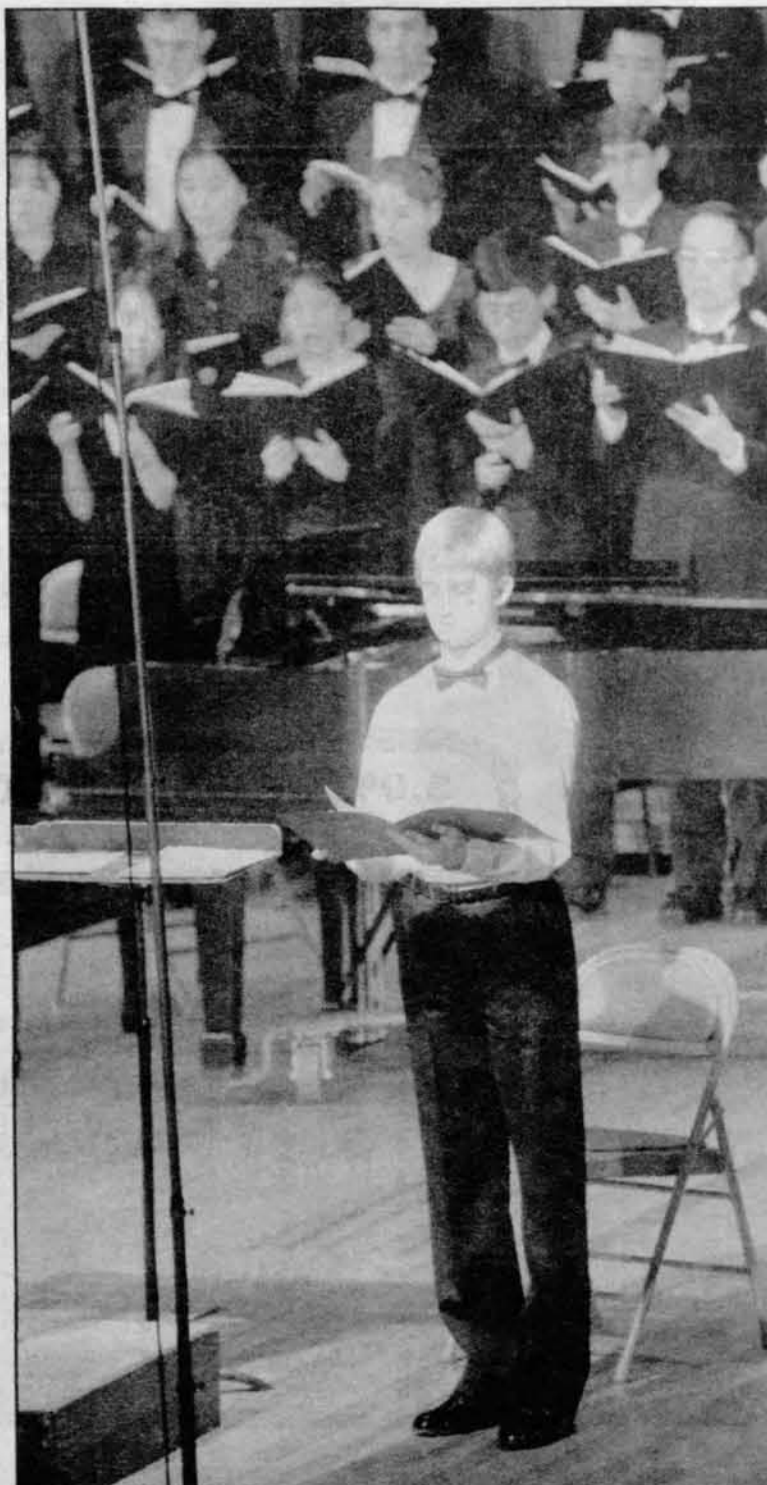
Overall, this book is much, much more satisfying than *The Path of Daggers*, Jordan's previous book. A few new characters are introduced, the most significant being the Daughter of Nine Moons. While I'm not quite sure that the midpoint of the series has been reached, many of the odd prophecies brought up earlier in the series seem to be resolving themselves. In terms of plot, quite a few questions are brought to a satisfying close (I'd explain, but spoilers tend to be unappreciated).

New readers really shouldn't start with this book, though, as the structure will be quite confusing. In those cases, it'd be probably best to work through the books in order: *The Eye of the World*, *The Great Hunt*, *The Dragon Reborn*, *The Shadow Rising*, *Fires of Heaven*, *Lord of Chaos*, *A Crown of Swords*, *The Path of Daggers*, and then, finally, *Winter's Heart*. The books are long, but they are also tremendously rewarding. Good luck!



## Concert Choir

Vocalists entertain with works by Copland, Bernstein



The MIT Concert Choir's performance of Aaron Copland's *Old American Songs* (above) featured soloist Robert M. McPhie '01. David Brenton Allen (right) soloed during Leonard Bernstein's *Chichester Psalms*. The Concert Choir, under Music Director William Cutter, performed with MIT's Wind Ensemble, directed by Frederick Harris, Jr., Saturday, December 2 in Kresge Auditorium. In addition to *Songs* and *Psalms*, the choir also performed *Four Motets* and *Canticle of Freedom*, both also by Aaron Copland.

ERIKA BROWN—THE TECH

MIGUEL CALLES—THE TECH

# STORM



## MIT Dance Troupe's Fall Concert

By Bess Rouse  
STAFF WRITER

Repeatedly performing to sold-out audiences, Dance Troupe shows have earned the reputation on campus as shows not to be missed. The choreographers and dancers of this term's show, *Storm*, have proven why once again. In a show dominated by hip-hop and funk, pieces such as "Scream" and "Uncensored" were crowd pleasers that drew hooting and catcalls from the exceptionally enthusiastic audience. In "Scream," choreographed by Sarah Funderburk '04, the dancers exuded energy and excitement as they danced to the music of Michael Jackson. Often times, with so many dancers on stage (in this instance, 11), a piece can lose clarity if the movement of the dancers is not perfectly together. This was not the case in "Scream." All of the dancers were strong and precise and at the same time seemed to be relaxed and having a good time.

"Uncensored" was reminiscent of some of the racy Dance Troupe pieces of previous concerts. Set to the "Thong Song Uncensored" by Sisqo featuring Foxy Brown, the choreography, by Emily Lee, was filled with suggestive dancing. The talent of all of the dancers in this piece earned them the right to wear barely-there tops and to shake and gyrate across the stage. This piece kept the crowd literally on the edges of their seats.

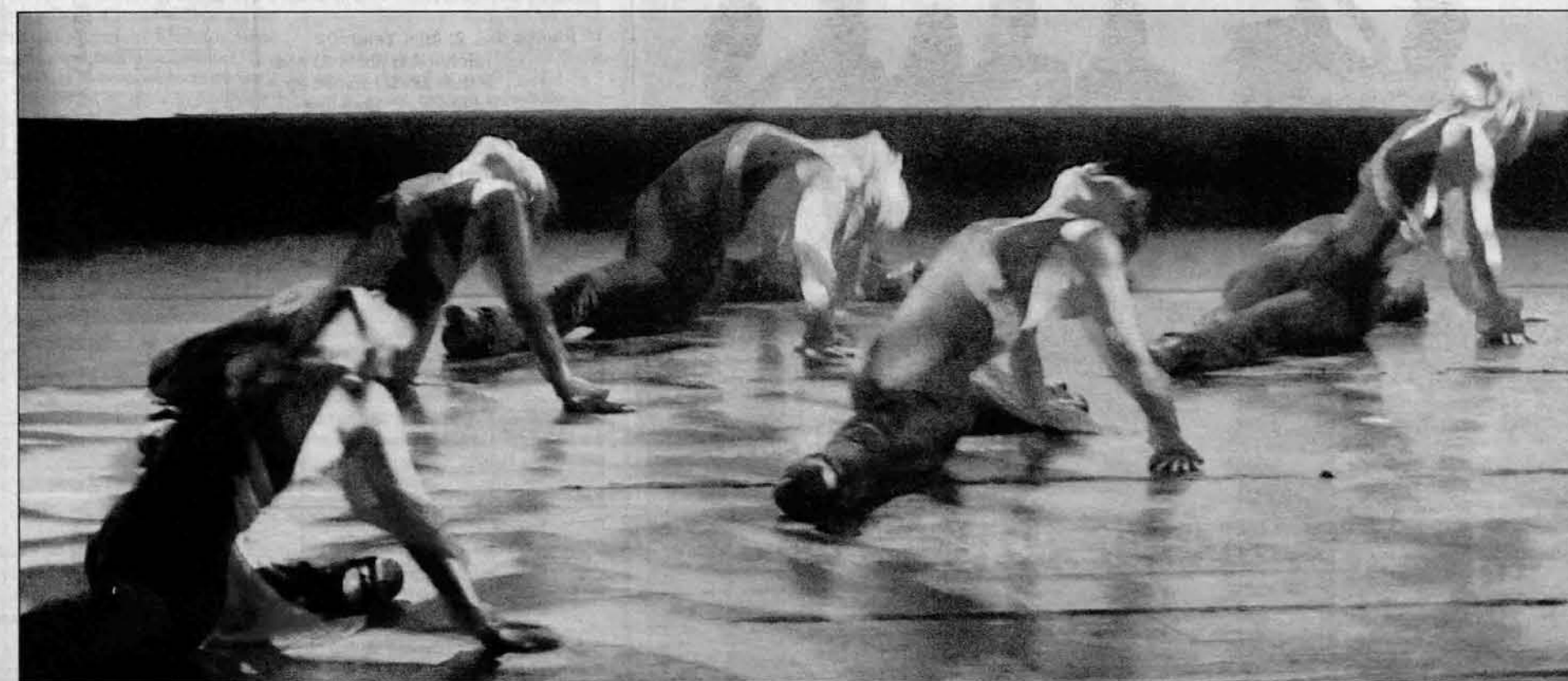
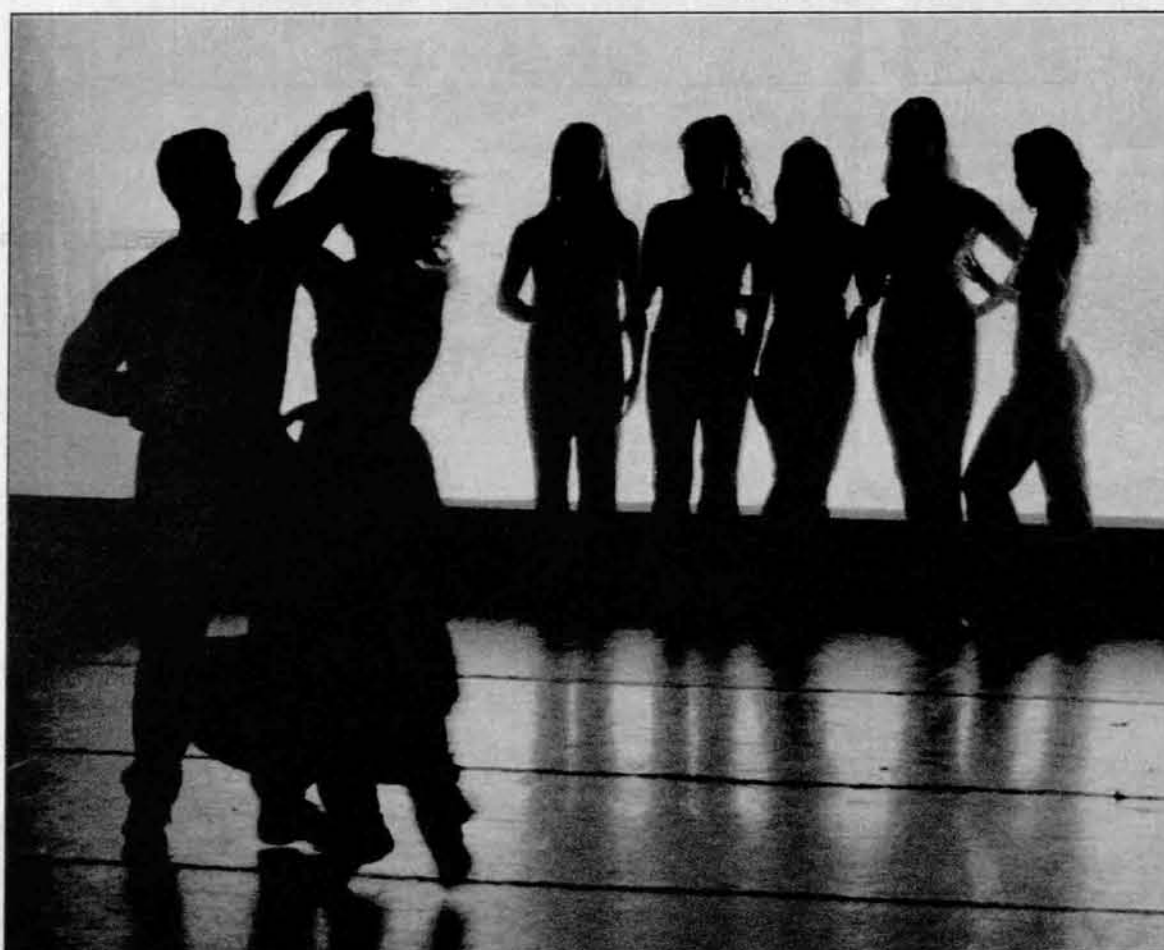
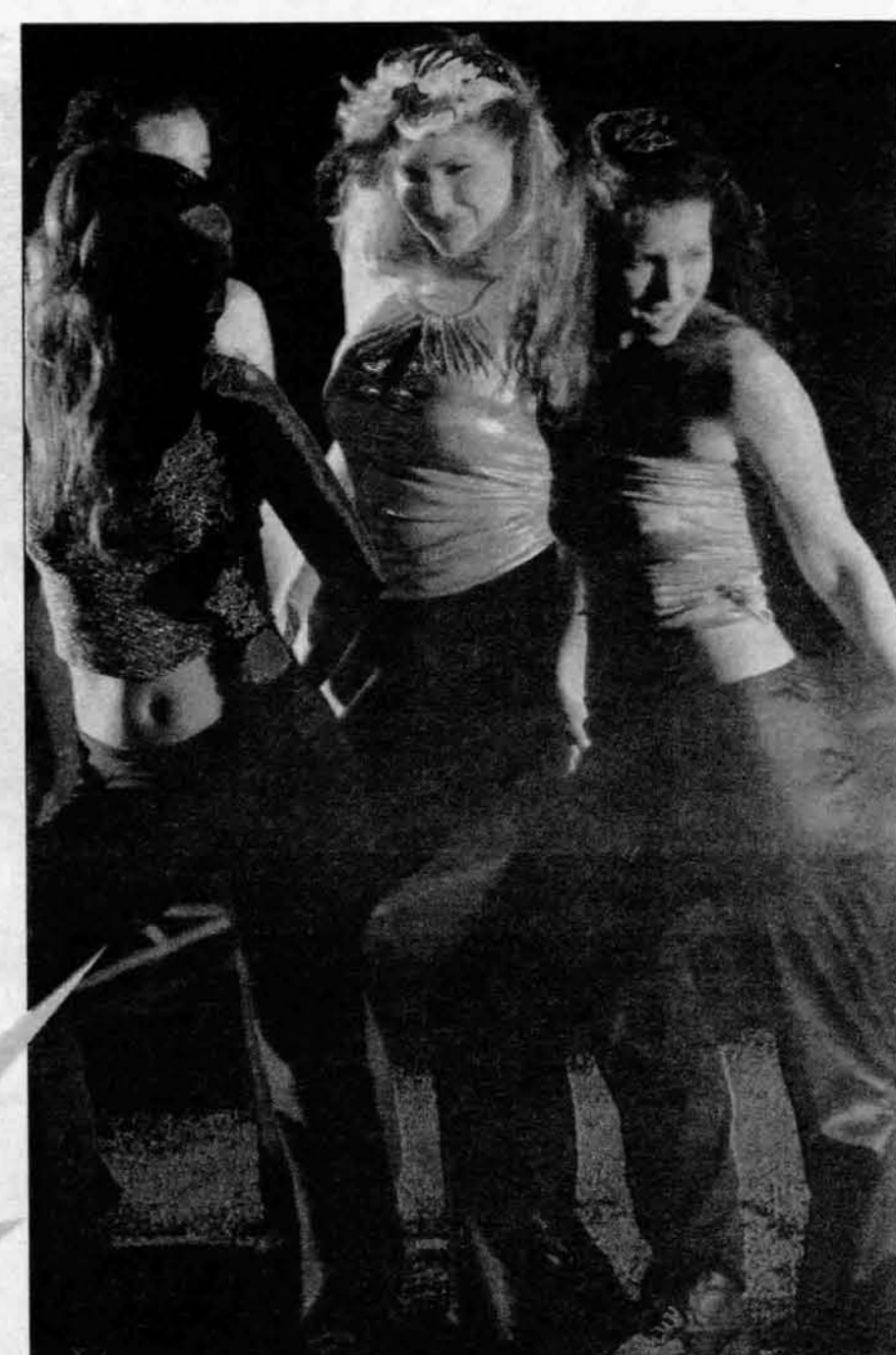
One of the jazz-based pieces, "Bleeding Kindness," choreographed by Haixia Lin G and Ailin Yang '02, showcased the serious technical ability of its six dancers. The music for the piece, "Waitress" by Tori Amos, allowed the dancers to switch between dancing lyrically and sharply. With the performers displaying black unitards with a red sash draped across the dancers' chests, the piece was definitely the most beautiful of the concert.

In sophomore Rebecca Lipon's "Sanctuary" (another jazz piece), the dancers did not seem to all share the same intention. Some danced with a sharpness and an attitude typical of hip-hop, while others favored a more serene seriousness common to ballet. The lighting and the music ("Ave Maria" by Cafe del Mar) seemed to indicate the more serene interpretation. The dancing, though strong, seemed confused.

In the first act's "Battle of the Boogie," Vikas Sodhani '00, Brad Hasegawa '03, and Eric Gunther G (the choreographers) aroused the interest of the audience by keeping the identity of the dancers anonymous for almost half of the piece. By wearing hoods and black stockings over their faces, the dancers forced the audience to focus on their amazing "poppin'" ability. After they revealed themselves, each of the dancers performed a solo in which they really had the chance to show off.

In the second act, Eric Gunther continued the "poppin'" theme in his piece "Beat-Pop-Boxin'." Gunther, in improvised Beatboxing, provided the sound effects for his transformations that ranged from robot to Gumby. Gunther's often amusing and extraordinary ability held the audience captive to his every move.

The show closed with another hip-hop piece, "Partyin' with the Girls," choreographed by Rebecca Lipon to "One Wild Night" by Bon Jovi. The dancers had so much energy that in the middle of the piece they felt compelled to scream. A perfect closing piece for a performance of over 20 dances, "Partyin' with the Girls" left the crowd feeling as though they had indeed experienced "One Wild Night."



In order of appearance...

Photos 1 & 2: Allin Yang '02 (pictured in photo 1) and Haixia Lin G teamed up to produce "Bleeding Kindness," a mix of pop and ballet styles set to Tori Amos's *Waitress*

Photo 3: Dancers whirl to Cafe Del Mar's version of *Ave Maria* in "Sanctuary" by Rebecca E. Lipon '03

Photo 4: Providing a change of pace, two dancers faced off in a martial arts dance to *Ibuki* by Kodo

Photo 5: Sporting glowsticks and fluorescent stripes, dancers made "Lightning" on stage to music by Daft Punk and choreography by Weifang Sun '04 and Sudha R. Amarnath '04

6 Carmen Carreras	Photography Credits	5 James Camp	8 James Camp
1 Erika Brown		4 Erika Brown	3 Carmen Carreras
7 James Camp		2 Erika Brown	

Layout & Design by Jordan Rubin

Photo 6: James Bond (Justin Schmid '01) grabs a female spy (Van Chu '99) in the narrative dance "I Spy," choreographed by Chu and set to music by Moby

Photos 7 & 8: Rebecca E. Lipon '03 (photo 8, center) choreographed "Partyin' with the Girls," a finale set to Bon Jovi's *One Wild Night*

MUSIC REVIEW

# State of the Airwaves

## Megadeth, Matthews, and Mind-Blowin'

By Dan Katz

STAFF WRITER

I could come with a clever pithy introductory paragraph here ... or I could pass Algebra. Decisions, decisions. Come to think of it, I don't know how much more clever or pithy I'm going to get than this, so let's just move things right along.

Nice to see some life in the concert schedule again. Our first attraction is unfortunately one of those "free" win-your-tickets-on-the-radio shows I abhor. It's a WFNX holiday concert with SR-71, Nickelback, and Lifehouse tomorrow night. If you really want to go, turn on your radio and pick up the phone. You've got a better chance at getting in there than seeing the Mighty Mighty Bosstones; their annual five-night-stand starts tomorrow at Axis, and is sold out all week. Thursday night, Dido, currently riding a wave of fame thanks to her backup vocal on Eminem's "Stan," opens for the Bangles at the Orpheum, while Seventeen plays yet another hometown gig at Bill's Bar.

Thursday and Friday, the Magnetic Fields play a pair of shows at the Somerville Theater. They may be drowned out Friday by loud noises from Worcester, where Megadeth, Sevendust, and Staind will fill the Centrum with distortion. Saturday there are a pair of cult favorites in town: PJ Harvey does the Paradise Rock Club, while Buffalo Tom shows up at the Middle East. Finally, Monday night, there's no better place to breathe in the mainstream like the Fleet Center, as Dave Matthews band rolls into town. Maybe they'll record a seventeenth live album.

A handful of records hit the shelves today, the most prolific being the final release by the standard lineup of Rage Against The Machine, a covers album called *Renegades*. Alice In Chains also has a nonstandard disc out, a record called *Live* that consists of ... well, you figure it out. Queen fans can get excited about *Solo*, a 3-CD set of tracks by the late Freddie Mercury, and no one can get excited about Vanilla Ice's new release, *Mind Blowin'*.

Since I'm too lazy to write a full-fledged concert review, I'll do some ranting about the Christmas Rave here. Unable to get tickets to the Dandy Warhols/SR-71 show Wednesday night, I went to the Paradise for a bill of Orgy, VAST, and 6Gig, and I think it probably worked out for the best. I enjoyed the Dandys' gig at Axis a few months ago, but if you like Orgy at all, you truly need to see them live — they re-create the intensity of their music very well and complement it with appropriately eerie and futuristic lights, sets, and apparel. Most importantly, vocalist Jay Gordon was a born bandleader, pumping his mike stand to the music and generally keeping the crowd in the palm of his hand. The band opened with a raging rendition of "Suckerface" and moved on through highlights of both the band's

albums, closing their first set with their infamous cover of New Order's "Blue Monday" before a slightly anticlimactic encore. Fellow rockers Crazy Town are clearly fans of the band — they showed up in the audience during the set, having just played at the Avalon.

The openers were successes in their own right; the one-man orchestral goth-rock of VAST doesn't seem like it would translate well to the stage. At times, guitars and samplers were sufficient, such as in the band's biggest singles, "Touched" and "Free." However, occasional numbers like "My TV And You" were bogged down in random power chords that drowned out the melodies, and front man Jon Crosby seemed more concerned with projecting a pained expression than connecting with his audi-

ence. 6Gig, a quartet of newcomers from Portland, Maine, were much more laid-back than the other two bands, and while their songs were somewhat basic, the aggressiveness of the music and vocals gave them life, and having heard their studio tracks, I think they are far superior in a live environment.

It's that time again; as the calendar year comes to an end, I'll be ranting about what I thought was the best music had to offer in 2000, but I wouldn't want to provide a one-dimensional perspective (even though that's essentially what I do every week); hence the existence of the *Airwaves* Reader Awards. We'll keep it simple this year: vote for your Top Three Favorite Albums of the year, Top Three Favorite Singles, and Least Favorite Vegetarian Newspaper Columnist. Send your ballots to <airwaves@the-tech.mit.edu>, preferably with a clear subject line like "Votes" or "Awards" or "Hey, Dan, your refrigerator's running!" Any other comments you might have can be appended, or sent to the same address. I shall await your input, and in the meantime invite you to have a great week and keep expanding your horizons.



Megadeth (from left, Jimmy DeGrasso, Dave Mustaine, David Ellefson, and Marty Friedman) will fill the Worcester Centrum Center with distortion this Friday with the help of Sevendust and Staind.



Conductor Frederick Harris leads the MIT Wind Ensemble in Emile Bernard's *Divertissement* last Friday in Kresge.

BRIAN HEMOND—THE TECH

**CHALLENGE THE MASTER & WIN \$\$**

at a game of dots and boxes! Elwyn Berlekamp MIT '62, '64, author of *The Dots-and-Boxes Game: Sophisticated Child's Play*, will be at Quantum Books, Kendall Sq. for a talk, light lunch and simultaneous COMPETITION in the game. Free, Thurs. 12/7, 12pm. Limited seating. RSVP: (617) 494-5042, susan@akpeters.com WINNERS RECEIVE \$50!!!

Acapulco  
Cancun  
Jamaica  
Bahamas  
Florida  
Europe

**SPRING BREAK 2001**

SELL TRIPS  
EARN CASH  
GO FREE!!!

STUDENT TRAVEL SERVICES  
1-800-648-4849  
www.ststravel.com

**MIT Department of FACILITIES**

**CAMPUS CONSTRUCTION UPDATE**

**LIFE SAFETY**

Installation has begun in Amherst Alley on a fire protection water pipe from Baker House to Burton Connor. Work will continue for several weeks and will disrupt daytime vehicular traffic. Excavation of a trench will cause noise, vibration and some dust.

**UTILITIES UPGRADE:** Albany Street Garage: As part of the utility expansion, the walkway between buildings 42 and 44 at the railroad crossing connecting Vassar Street to the Albany Garage will be closed to pedestrian traffic through early January.

**FIREHOUSE INN:** Construction continues on the firehouse on Main Street and of a new 7 story steel frame structure. Contact: Suffolk Construction, Inc. Co, John Laquale, Project Manager, at (617) 517-5234 or e-mail: jlaquale@scci-bos.com. Project completion: Spring 2002.

**MASSACHUSETTS AVENUE**

Excavation of a fire protection main will close part of the sidewalk in front of Building 9 and affect the service road at W20. Work will take place in the evenings and on weekends.

**NW30 (GRADUATE RESIDENCE)**

Pile installation during the next few weeks will cause noise disruption to the surrounding area. Project completion: August 2001.

**SIMMONS HALL**

Excavation of soil continues causing dust and noise to the surrounding area. Trucks removing the material may impact traffic along Vassar Street. Project completion: August 2002.

**STATA CENTER**

Drilling of holes for tiebacks continues for the next few weeks and will cause noise and vibration. Project completion: Fall 2003.

This information provided by the MIT Department of Facilities:  
web.mit.edu/facilities/www/construction/

# MIT Endows First Housemaster Post

Corporation, from Page 1

ment to a residence chair position. "Everyone was fairly thrilled to hear about it," said Jeffrey C. Roberts '02, a member of the Founders Group.

McCants was also excited about the new developments. Apparently the arrangements for the endowment had just been finalized that morning. "I was most encouraged by talking with the members of the corporation. ... There seems to be a lot of support on taking the residential side of campus affairs very seriously. ... That mind set wasn't around a decade ago," she said.

Student representation at the dorm's groundbreaking was small. Since the event was arranged to coincide with the Corporation meeting and had already been delayed due to the illness of the wife of Richard P. Simmons '53, there weren't many students present, McCants said. Even so, in the limited space of the tent every seat was occupied and there was some student representation in the form of the Founders Group and the Residential System Steering Committee.

McCants is enthusiastic about having "a more festive, party-like event" for students towards the end of IAP or at the beginning of the spring semester, "when the timing is better ... not so close to finals." She also mentioned that "it would be fun to have a party in a half-built structure," but she conceded that safety concerns would probably render that impossible.

## Corporation seeks members

At their meeting last week, the Corporation and the Alumni Association were gearing up to find new members.

R. Robert Wickham '93 is serving his last year in the Corporation and postcards for nominations were sent out this November to members of the classes of 1999, 2000, and 2001 for a replacement. Sixty-seven nominations for both graduate and undergraduate representative of recent classes were sent back. Currently, long application forms are being sent to the nominees. The applications are due by December 18, 2000.

The nominations and applications, however, are only the beginning of a long selection process to submit one candidate's name to the Corporation for approval. Although lengthy, according to Secretary of the Corporation Sue Lester, "we always wind up with first rate nominees through this process ... who end up contributing positively. ... They fill a valuable role [in providing] a link to current members of the student body."

The process continues after the applications are submitted as the Screening committee reads them and interviews applicants. The

screening committee consists of Wickham as Chair, Paul E. Gray '54, Elisa A. Stock '90, Matthew J. Turner '96, and Pardis C. Sabeti '96. They then narrow down the nominees to between 6 and 12 candidates who are then put on a ballot that gets mailed to the alumni of 1999, 2000, and 2001 before May. Online balloting is also going to be implemented for the first time this year.

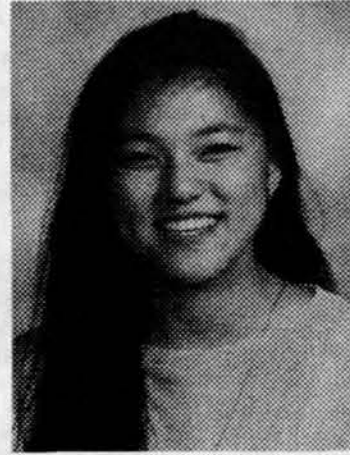
Once these ballots are in, the candidate with the most votes will be put on a final ballot of approval which is addressed at the June 8th Corporation meeting. If the candidate is approved he will become a Corporation member for the next five years effective July 1, 2001.

Bonnie Jones, Alumni Recognition program manager also commented on the process. "We're working to improve our communication with the students and alumni who are eligible with the hope that we will see greater participation and interest." The Corporation also tries to maintain contact with current students through the Corporation Joint Advisory Committee which consists of one third graduates, one third undergraduates, and one third Corporation members.

Age 7, 1982



Age 15, 1990



Age 18, 1993



Elizabeth Suto.

*Killed by a drunk driver on February 27, 1994, on Bell Blvd. in Cedar Park, Texas.*

If you don't stop your friend from driving drunk, who will? Do whatever it takes.

**FRIENDS DON'T LET FRIENDS DRIVE DRUNK.**



U.S. Department of Transportation

This space donated by *The Tech*

## The Sloan Subject Prioritization System Bidding Dates for Spring, 2001 Classes

<http://sloanbid.mit.edu>

**Leave password field blank, create new password under 'Personal Information'**

### Institute-wide bidding for Sloan courses:

Opens 12:00 p.m., Monday, December 11  
Closes 5:00 p.m., Friday, December 15

### Waitlist-Only Round for closed classes:

Opens 12:00 p.m., Wednesday, December 20  
Closes 5:00 p.m., Monday, February 5

Waitlists for Closed Sloan Classes are part of the Course Bidding System, beginning in Round II.

**Successful bids appear on your Registration Form on February 5 and will be posted on the bidding website as of December 20 -- write down your password to check results!**

### EARN UP TO \$600 MONTH

We are looking for men to participate in our Anonymous Sperm Donor Program. To qualify you must be 5'9" or taller, between 19-39 years old, enrolled in or graduated from a four year college or university and able to commit for 9-12 months. Donors will be compensated \$50 for each acceptable Specimen.

Call California Cryobank's CAMBRIDGE office at 617.497.8646 for more information, M-F 8:00-5:30.

join@the-tech  
join@the-tech  
join@the-tech  
join@the-tech  
join@the-tech

# Graduating Class Anticipates Unusually Strong Job Market

By Jennifer Krishnan  
STAFF REPORTER

The job market for the Class of 2001 promises to be one of the best for college graduates in years, according to *The Chronicle for Higher Education*.

"It's a fantastic market, particularly for MIT students," said Jason M. Wall, a member of the Office of Career Services and Preprofessional Advising. "There's such a demand for the skills that MIT students have. If a student wants a job, it should be available for them."

Employers anticipate hiring 23.4 percent more graduates of the Class of 2001 than they did from the previous class, and almost 20 percent of their job offers will be for new college graduates, according to the National Association of Colleges and Employers.

A strong economy, an increased demand for products and services, business growth, and a shortage of

skilled laborers are all contributing to the increase in job opportunities. Other factors potentially involved include a delay of company projects during the Y2K craze last year and a trend for retirement of older workers while the market is still good.

"[At this year's Career Fair] we had a lot of companies," said Jennifer T. Law '01, president of the Society of Women Engineers. "In the past we just had the big general companies. This year, the smaller companies and start-ups are doing well enough to come here and recruit. That's a sign of how good the job market is right now."

"The most openings are in computer science fields, mostly with Internet start-ups and software," Wall said. "They're everywhere!"

"The job market is great right now," said Anand B. Ramakrishnan '01. "It's very positive toward software developers, and they're willing

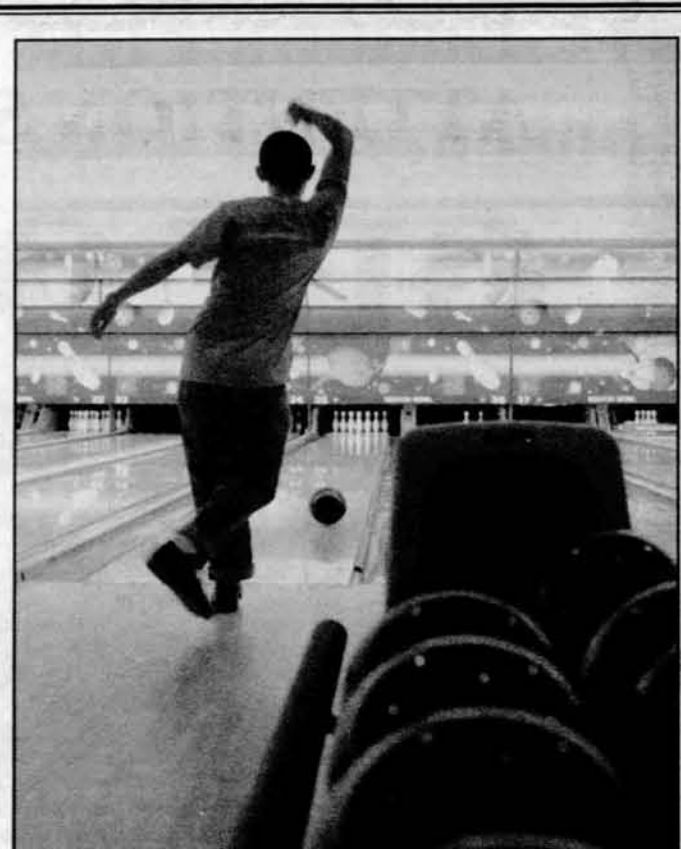
to pay lots of money ... particularly because I'm Course VI and I'm going to graduate immediately."

Emery Y. Kuo '01 agrees that "it's not too difficult to find a job ... Obviously it's not as easy in Course X as it is in Course VI, but there are still a lot of opportunities."

Wall added that the most popular jobs among students were management and consulting positions, as well as dot-coms and anything related to computer science.

Only about half the graduates who go straight into the work force enter in a field directly related to their major.

The average starting salary for MIT students graduating with an Bachelors degree last year was \$51,700. "This number is currently going up as the competition for graduating students increases," Wall said. "However, all these changes are cyclical, and everything's going to get put back into check in a few years, if not sooner."



MAXWELL PLANCK—THE TECH

The second annual MIT vs. BU 5-on-5 bowling match ended up in an upsetting defeat this past Saturday. Beaver Bowlers Jennifer J. Ng '01, Daryn T. Harkins '01, Robert M. Hardy G, Jason E. Mueller '04 (above), and Christopher B. Buenrostro '04 lost by a combined pin count of 462 pins. The team average per game was 153.9 with a high score of 210 bowled by Hardy.

The Tech News Hotline  
253-1541

\$\$\$\$ WIN \$50 \$\$\$\$

If you beat Elwyn Berlekamp MIT '62, '64, author of *The Dots-and-Boxes Game*, in a simultaneous competition at Quantum Books, Kendall Sq., Thurs. 12/7, 12pm. Free. Limited seating & light lunch. RSVP: (617)494-5042 or susan@akpeters.com

## LaVerde\*s Market!

START YOUR DAY RIGHT WITH BREAKFAST FROM LAVERDE\*S

We have the following:

**Jumbo Muffins,  
Pastries  
and Rolls**

Fresh Baked by June Everyday

**Toast**

White, Wheat, Dark or Light Rye

**Cereal**

A Variety of Individual Packages

**Royal Leed s  
Coffee**

23 Varieties of Freshly Brewed

**Teas, Hot Cider  
and  
Hot Chocolate**  
Lots of Varieties

**Juices and  
Cold Drinks**

We have the largest selection on the East Coast.

**Fruit Salad**  
Made Fresh Daily

**Breakfast Sandwich**  
on an english muffin or white,  
wheat or rye bread or have it on  
a freshed baked bagel. Two  
scrambled eggs with your choice  
of bacon, sausage or ham.

**\$1.99** Plus Tax

Add 35¢ for any kind of cheese.

### The Bagel Menu

We have a full selection of fresh baked bagels delivered seven days a week. You can enjoy them the following ways:

<b>Plain Bagel</b> 65¢		<b>Toasted Bagel w/Butter</b> 79¢ <small>Plus Tax</small>
<b>Bagel w/Peanut Butter &amp; Jelly</b> 89¢ <small>Plus Tax</small>	<b>Bagel With Cream Cheese</b> \$1.39 <small>Plus Tax</small>	<b>Bagel With Other Cheese</b> \$1.39 <small>Plus Tax</small>
<b>Bagel w/Cream Cheese &amp; Lox</b> \$2.59 <small>Plus Tax</small>	<b>Bagel w/Lox</b> \$1.99 <small>Plus Tax</small>	<b>Bagel w/Veggie, Scallion or Lox Spread</b> \$1.69 <small>Plus Tax</small>
<b>Bagel w/Bacon</b> \$1.59 <small>Plus Tax</small>	<b>Bagel With Cheese &amp; Bacon</b> \$2.09 <small>Plus Tax</small>	<b>Sandwich on a Bagel</b> \$3.50 <small>Plus Tax</small>

\*Free delivery within a 1 mile radius.

Call: 617-621-0526

Fax: 617-621-1389



**VALUABLE COUPON**

Bring in this coupon for a **FREE** 12 oz. Cup of **Royal Leed s Freshly Brewed Coffee**  
We have 23 flavors to choose from!!

Located on the first floor of the Stratton Student Center on the MIT Campus at 84 Mass. Ave. Cambridge, MA

## LaVerde\*s Market!

Open:  
Mon. thru Sat.  
7 am to Midnight,  
Sunday,  
8 am to 11 pm.

Thanks to you, all sorts of everyday products are being made from the paper, plastic, metal and glass that you've been recycling.

But to keep recycling working to help protect the environment, you need to buy those products.

**BUY RECYCLED.**



**AND SAVE.**

So look for products made from recycled materials, and buy them. It would mean the world to all of us.

For a free brochure, write Buy Recycled, Environmental Defense Fund, 257 Park Ave. South, New York, NY 10010, or call 1-800-CALL-EDF.

ENVIRONMENTAL DEFENSE FUND **EDF**

Ad Council **EPA**

This space donated by *The Tech*

# ATTENTION STUDENT COOP MEMBERS GET ON BOARD!



**REAL  
BUSINESS**

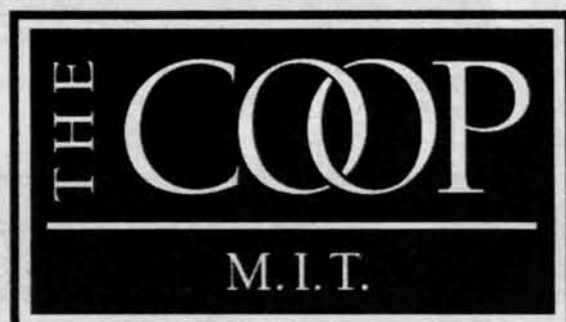
**REAL  
DECISIONS**

**REAL  
EXPERIENCE**

## Apply to be elected to **THE COOP'S BOARD OF DIRECTORS**

The Coop is now accepting applications for nomination for election as a Student Board Member for the 2001-2002 academic year. Applications are available at any Coop branch store, or at the Member Services Office, 4th floor, of the Coop's Harvard Square Bookstore.

Final date for return of application is  
**FRIDAY, DEC. 15, 2000 AT 5:00PM**



[www.thecoop.com](http://www.thecoop.com)

**DATE:**  
**Wednesday**  
**December 6th**  
**2000**

**TIME:**  
**7:00 pm**

**LOCATION:**  
**Room 10-250**  
**MIT**

*Creating Tomorrow's Leading Firms*

**MIT \$50K Entrepreneurship Competition™**

# **MIT \$1K Final Awards**

*Keynote Speaker*

## **Howard Anderson**

*Founding Partner and the Senior Managing Director of YankeeTek Ventures*

*Founder and Chairman of The Yankee Group*

*Founder and a Special Partner of Battery Ventures*



**MIT \$50K Entrepreneurship Competition™**  
<http://50k.mit.edu/>

# UA Council Suggests Changes To Advanced Placement Policy

UA, from Page 1

pass/no record system until after all the other changes had been made [and especially] until after the 2002 change in housing policy has been instituted."

The report begins by describing values students find important to the educational policies focusing on the freshman year. It then presents key statements drawing from these values, and makes recommendations for changes to pass/no record grading and advancement placement policy.

With regards to advancement placement credit, the report recommends "that departments publicize their own exams more, so students realize that they do not have to

spend the money for AP tests, especially if they will not get credit for them anyway," Anderson said.

The report also introduces the idea of an exploratory subject for sophomores to help ease the transition into grades.

SCEP recommends that sophomores be allowed to designate one subject in the fall term as "exploratory." Students would be able to change this subject to Pass/D/F status if they do not want the class to be counted towards their major.

Anderson said the report also recommends "revamping the fifth week flag system to provide unofficial, non-binding grades to help advisors and students know how they are doing."

Other changes that SCEP suggests include giving associate advisors grades based on attendance to their freshman seminars to increase accountability and make sure that freshman advisors have up-to-date information on classes that freshmen usually take.

In other business, the UA Council approved the UA's spring budget and the UA Finance Board's recommendations for allocations during Independent Activities Period and spring.

The UA Council also passed a resolution of appreciation of the life of Lucy D. Crespo Da Silva '00 as well as a resolution offering condolences for President and Mrs. Charles M. Vest on the recent loss of Mrs. Vest's father.

# Globe Reported Death Before Kin Were Told

Chavez, from Page 1

ing *The Boston Globe*.

On Friday, *The Globe* reported Chavez's death, including her name. *The Globe* wrote that it had gotten the name from "an e-mail from a Harvard dean." The paper contin-

ued, "Harvard officials would not confirm her identity until her family was notified."

Even though it turned out that *The Globe's* information was correct, it may have been released before the university officially notified Chavez's family.

## Largest Spring UA Finboard Allocations

Group	Amount Requested	Amount Received
Hillel	\$3,805.00	\$1,950.00
APAC: Grains of Rice	\$6,761.00	\$1,632.00
Equestrian Team	\$3,000.00	\$1,500.00
Dance Troupe	\$7,700.00	\$1,400.00
Movements in Time	\$3,841.81	\$1,313.40
Paksmit	\$2,855.00	\$1,300.00
Kendo Club	\$6,065.00	\$1,275.00
Snowboarding Team	\$6,220.00	\$1,220.00
BSU	\$10,200.00	\$1,200.00
ISA	\$6,700.00	\$1,200.00
Mars Society	\$2,700.00	\$1,200.00
MITGSP	\$1,550.00	\$1,200.00

Source: Undergraduate Association

## TAKE A FEW MINUTES TO GO THROUGH YOUR GARBAGE.

Every Monday, more than 500,000 trees are used to produce the 80% of newspapers that are never recycled.

We throw away enough glass bottles and jars to fill the 1,300-foot twin towers of New York's World Trade Center every five weeks.

Americans go through 2.5 million plastic bottles every hour, only a small percentage of which are now recycled.

American consumers and industry throw away enough aluminum to rebuild our entire commercial aircraft every three months.

Every year we dispose of 24 million tons of leaves and grass clippings, which could be composted to conserve landfill space.

We throw away enough iron and steel to continuously supply all the nation's automobiles.

The ordinary bag of trash you throw away is slowly becoming a serious problem for everybody.

Because the fact is, not only are we running out of resources to make the products we need, we're running out of places to put what's left over.

Write the Environmental Defense Fund at 257 Park Avenue South, New York, NY 10002, for a free brochure that will tell you virtually everything you'll need to know about recycling.

One thing's for certain, the few minutes you take to learn how to recycle will spare us all a lot of garbage later.

**IF YOU'RE NOT RECYCLING, YOU'RE THROWING IT ALL AWAY.** EDF ED

This space donated by *The Tech*

# NIGHTLINE

We're here to listen.

x3-888000

Easter 1987, Age 5



Easter 1988, Age 6



Easter 1989, Age 7



Lorien Lea Denham.

Killed by a drunk driver on Good Friday, March 29, 1991, at College Park Drive and Hwy. 19 North in Meridian, Miss.

If you don't stop your friend from driving drunk, who will? Do whatever it takes.

**FRIENDS DON'T LET FRIENDS DRIVE DRUNK.**

U.S. Department of Transportation



This space donated by The Tech

# Pfizer Defends High Fluconazole Prices

Pfizer, from Page 1

sor Mike Magee said that the company spends \$5 billion on research and development and that the company must make such sizable investments in order to "to provide ... the hope that something can be discovered to make a difference [in patients' lives]."

In addition, in a press release on its web site, <<http://www.pfizer.com>>, Pfizer maintains the variations in its drug pricing around the world are due to market supply and demand and exchange rates, and that there are

many products which vary in their prices from country to country.

Pfizer prices are also markedly lower in countries, such as India and Thailand, which have more lax patent policies, allowing manufacturers of generic drugs to prosper.

Martha Herbert, in the department of neurology at Massachusetts General Hospital, said, however, that Pfizer spends most of its profit on marketing and advertising and not on R&D as the company claims. Pfizer is simply "making back money on advertising," she said.

Taylor also said that Pfizer should have an agreement covering other countries in Africa, Asia, and South Africa as well.

Alain Mignault, a visiting scholar at the Media Laboratory, was at the rally and felt that the "main issues aren't addressed" in Pfizer's agreement with South Africa. "The medication could be produced for a lot cheaper."

David L. Hu, a senior in Mechanical Engineering, said that he heard of the Pfizer rally through flyers in the Student Center. "I had some reservations," Hu said, but he believes that there is some truth in that Pfizer's pricing has a lot to do with profit rather than innovation.

## Solution to Crossword

from page 9



# FRESHMAN ALERT! PAID

# UROP OPPORTUNITIES

in

# CIVIL AND ENVIRONMENTAL ENGINEERING

The Department of Civil and Environmental Engineering offers funded freshman UROPs for Spring 2001

See the Course One homepage ([web.mit.edu/civenv/html/academic\\_programs/undergrad/urop\\_opportunities.html](http://web.mit.edu/civenv/html/academic_programs/undergrad/urop_opportunities.html)) on the web for a list of UROP projects.

Or

see Cynthia Stewart in the Academic Programs Office, Room 1-281.

If you don't find a project you like, propose your own.

Funding is available for a significant number of freshman UROPs, first come, first served.



"You can prevent colon cancer, even beat it."

• HILLARY RODHAM CLINTON •

**MAKE THE TIME TO GET A TEST THAT COULD SAVE YOUR LIFE.**

Colon cancer is the second leading cancer killer and everyone aged 50 and older is at risk. More than 50,000 Americans will die from colon cancer and 131,600 new cases will be diagnosed this year.

Colon cancer is an equal opportunity disease that affects both women and men. This silent killer frequently begins without symptoms and those with a family history are at even greater risk.

Colon cancer is preventable—even curable when detected early. In fact, if cancer is found early enough, the patient has more than a 90 percent chance of survival.

Colon cancer screenings are safe and effective and are now covered by Medicare and an increasing number of other health providers. There's even a test that can be used in the privacy of your own home.

**Talk to your doctor about getting tested.**



SPONSORED BY THE NATIONAL COLORECTAL CANCER ROUNDTABLE FOR MORE INFORMATION, CALL THE AMERICAN CANCER SOCIETY AT 1-800-ACS-2345

This space donated by The Tech

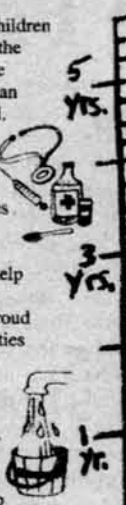
## How Do You Measure the Growth of A Child?

Unfortunately for children living in some of the poorest countries in the world, it takes more than fading marks on a wall.

Childreach, one of the oldest and largest child sponsorship organizations, measures growth by the number of hospitals, wells for clean water, and self-help programs we build in partnership with the proud families and communities where our sponsored children live.

Childreach is not a quick fix or a handout. It is child sponsorship at its best—a caring, continuing relationship that leads to measurable progress over time.

So when you become a Childreach sponsor and receive pictures and letters that speak of hope, you'll know that you have helped to make a real difference in the lives of a needy child, family, and community overseas.



Childreach. It works.

For more information about Childreach sponsorship, please call **1-800-752-3400** or send in the coupon below.



**Yes! I want to know more about Childreach.**

Name \_\_\_\_\_  
 Address \_\_\_\_\_  
 City \_\_\_\_\_ State \_\_\_\_\_ Zip \_\_\_\_\_  
 Area Code \_\_\_\_\_ Phone \_\_\_\_\_ V303



Samuel A. Worthington, National Executive Director, Childreach with a sponsored child in Tariju, Bolivia.

Please send to: Childreach, 155 Plan Way, Warwick, RI 02886-1099

This space donated by *The Tech*

# We need someone with the confidence of a surgeon, the dedication of a marathoner and the courage of an explorer.

We have a unique opportunity for someone very special. A chance to spend two years in another country. To live and work in another culture. To learn a new language and acquire new skills.

The person we're looking for might be a farmer, a for-ester, or a retired nurse. Or

maybe a teacher, a mechanic, or a recent college graduate.

We need someone to join over 5,000 people already working in 60 developing countries around the world. To help people live better lives.

We need someone special. And we ask a lot. But only because so much is needed. If this

sounds interesting to you, maybe you're the person we're looking for. A Peace Corps volunteer. Find out. Call us at

(Collect) 617-565-5555 x598

**Peace Corps.**  
 The toughest job you'll ever love.



This space donated by *The Tech*

## STUDENT TRAVEL

Change YOUR World!



65 Mt. Auburn St.  
 617.576.4623

**STA TRAVEL**

www.statravel.com



The MIT Graduate Student Council

office: Walker Memorial, 50-220 (above the Muddy)  
 phone: 253-2195  
 website: <http://web.mit.edu/gsc/www>  
 email: [gsc-request@mit.edu](mailto:gsc-request@mit.edu)

Academics, Research & Careers Committee  
*brings to you*

### Professional Development Seminar

WHAT COLOR IS YOUR ALGORITHM?  
 Career Choices for Engineers & Scientists

DR. STEPHEN ROSEN

Dec 7th 2000,  
 6.30-8.30 PM, 6-120

## December - Calendar

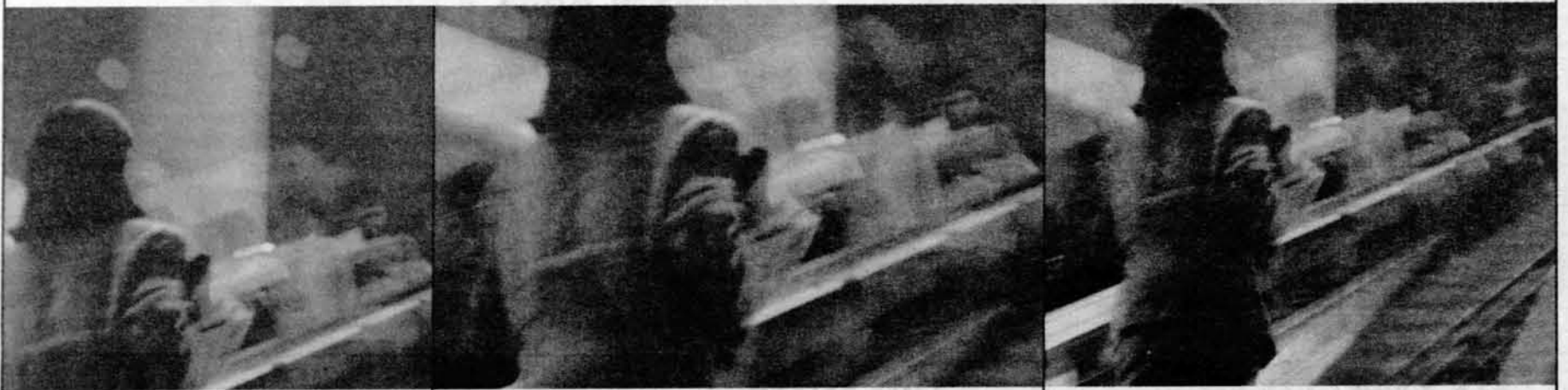
- 6 General Council Meeting\*
- 11 Activities Committee Meeting\*
- 12 Academics, Research & Careers Committee Meeting\*
- 13 Housing & Community Affairs Committee Meeting\*
- 14 MIT Museum Social & Nutcracker trip

All graduate students are welcome. Food is provided.

\* @ 5:30 in 50-220 (above the muddy)

**CREDIT  
SUISSE** | **FIRST  
BOSTON**

**SEE THE EFFECTS OF CHANGE.  
OR ACTUALLY AFFECT IT.**

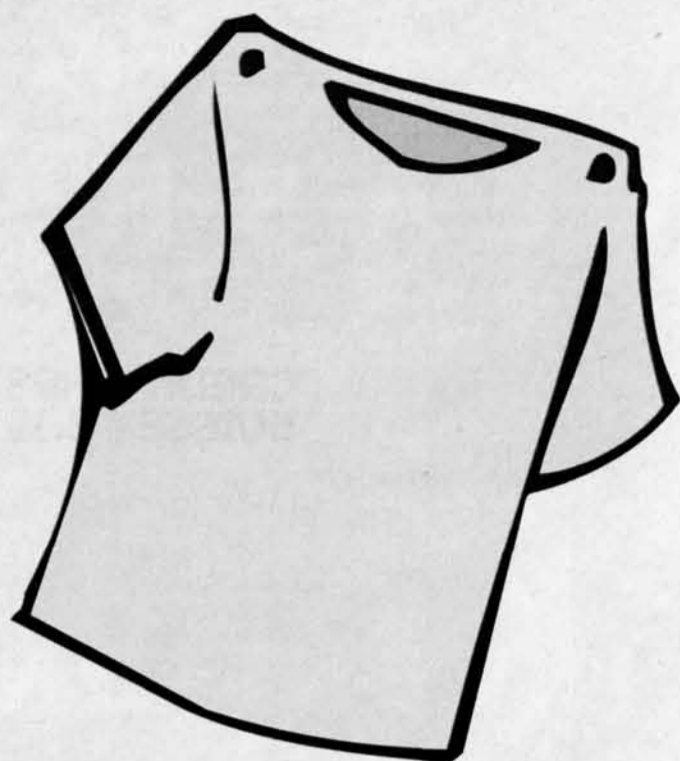


[www.csfb.com](http://www.csfb.com)

In a world that changes by the hour, the challenge is to lead the change yourself. To identify trends and then capitalize on them. Now that Credit Suisse First Boston and Donaldson, Lufkin & Jenrette have merged to form the preeminent global financial services firm, there's never been a better time to join our team. Whether your interests are in investment banking, private client services, equities, fixed income or IT, you'll find a dynamic environment that values one thing above all else. You. Your development. Your contribution. Your entrepreneurialism. Above all, you won't just learn about the world of business. You'll affect it. We invite you to get to know us. **CREDIT SUISSE FIRST BOSTON.**

**EMPOWERING CHANGE.<sup>SM</sup>**

© Copyright 2000 Credit Suisse First Boston Corp. All rights reserved.



Q  
R  
S  
T's  
s

**MIT's premier T-shirt supplier**

Call Mike at (617) 868-8881  
or e-mail <mshirt@aol.com>.

We accept digital artwork.



Our average  
student improves  
by 8 points!

**The Princeton Review MCAT  
course meets at MIT.**

**20% discount for  
MIT students!**

**Don't settle for anything less  
than the best.**

Register now and receive your materials before your winter break.

**(800)2-Review | www.PrincetonReview.com**

\*\*\*MIT UNDERGRADUATES\*\*\*

CROSS REGISTRATION



**Massachusetts College of Art**

**The School of the  
Museum of Fine Arts**

SPRING 2001

This exchange program provides up to 10 MIT  
undergraduates per semester the opportunity to  
enroll in selected courses at each of these nationally-  
recognized institutions for MIT credit. All courses are  
pass/D/fail.

**Application Deadline: DECEMBER 13, 2000**

Applications are available at the Student Services  
Center (11-120), Architecture HQ (7-337) or Visual Arts  
Program (N51-315)

Please call Visual Arts Program at 253-5229  
or email slb@mit.edu.



I am wild blue ideas

I dream in NUMBₑR₅  
Silicon and electricity

The FLASH  
of discovery

I know your voice.  
You know me by  
my INVENTIONS

I am itching with  
potential,  
full of tomorrow's  
next big thing.

I don't have a job  
after graduation.  
I am the future.

Analog

DSP  
TEXAS INSTRUMENTS  
TECHNOLOGY

hardware  
software  
open thinking

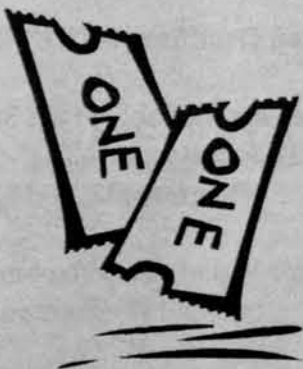
www.ti.com/dsp

THE WORLD LEADER IN DSP AND ANALOG

TEXAS INSTRUMENTS

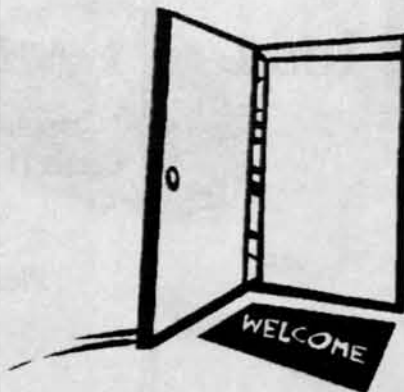
For MIT Students Only

FREE TICKETS



... to the Boston Symphony Orchestra  
... to attend other great concerts, plays,  
exhibitions

FREE ADMISSION



... to Boston's Museum of Fine Arts

FREE ART



... for your dorm room or lab

FREE MONEY !



... for your own art projects

Through programs sponsored by the Council for the Arts at MIT and the List Visual Arts Center. For more information on these freebies and other opportunities in the arts for MIT students, see <http://web.mit.edu/arts/students.html> or stop by the Office of the Arts(E15-205)