

## Postering Violations Taint UA Elections

By Mike Hall  
ASSOCIATE NEWS EDITOR

Allegations of poster tampering in the Undergraduate Association Presidential campaign surfaced this weekend, forcing the UA Election Commission to take steps to restrict postering.

Citing "shady happenings of late," UA Election Commissioner Zhelinrentice L. Scott '01 banned all campaign posters on main campus. Scott said that the Election Commission was "disappointed in those candidates who have been engaging in illegal activity."

Scott was firm in maintaining the integrity of the campaign. If a candidate were found guilty of poster tampering Scott said that she "would have to take them off the ballot."

### Posters allegedly altered

UA Vice Presidential candidate Jason H. Wasfy '01, running with Jennifer C. Berk '01, cited one example of possible poster tampering against his campaign. After

placing one of his ticket's posters directly over an older version on a public board, Wasfy discovered that the top poster had been moved to expose the bottom poster.

"I'm not accusing anyone of anything, but it seems a little bit fishy," Wasfy said.

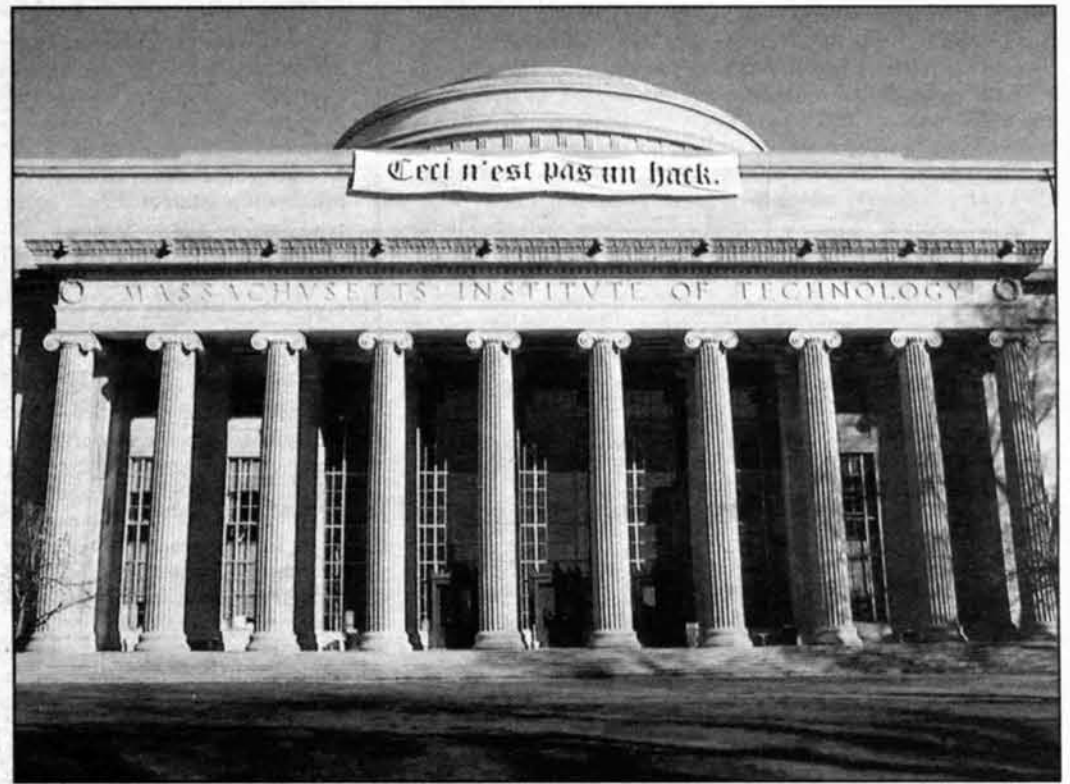
Under UA election laws, candidates are only allowed one poster per bulletin board.

Christopher R. Rezek '99, chairman of the UA Nominations Committee and a supporter of the Peter A. Shulman '01, Mendel Chuang '02 ticket, also noted a possible violation.

"After the VP debate I went up to the UA office, and when I came back down 30 minutes later I saw a poster that had obviously been moved to create a double-poster violation," said Rezek, adding that the poster was ripped where staples had previously been and a single thumbtack held it in place.

Candidates had varying opinions

Elections, Page 21



RICHARD WILLIAMS

**THIS IS NOT A HACK** — In the event of a real hack, this message would be followed by speculation that the hack, which appeared on April 1, was a response to the Boston Globe's recent article on hacking at MIT.

## VP Hopefuls Defend Credentials

By Dana Levine  
ASSOCIATE NEWS EDITOR

Though the talent competition fell short of expectations, Sunday's Undergraduate Association Vice



Presidential debate featured fierce debate and harsh criticism largely missing from the earlier

Presidential debate.

The debate, sponsored by The Tech, evolved into an informal conversation between the candidates, with each trying to emphasize his strengths while criticizing his opponents.

One exchange began with a question about an editorial statement in *The Tech* that UAP candidate Jennifer C. Berk '01 did not present herself as a leader. Although her running mate, Jason H. Wasfy '01, admitted that Berk "struggles somewhat with speaking," he challenged VP candidate Mendel Chuang to state that his running mate, Peter A. Shulman '01 has more UA experience than Berk.

"Peter and I have the best combination of presentability and experience," Chuang replied.

Later, VP candidate Patrick D. Kane '03, running with Christopher D. Smith '01, explained how he had talked to corporate sponsors in order to solicit funding for an incorporated UA. "Ours is the only platform that clearly shows how we can make a positive change in the MIT community," Kane said. He said his opponents lacked concrete ideas such as his incorporation plan.

Wasfy countered that "our ideas

are not as extreme as yours and they aren't sort of pungent. But I think that they are more realistic than yours."

"Having concrete ideas is good. But having correct concrete ideas is also good," Chuang added.

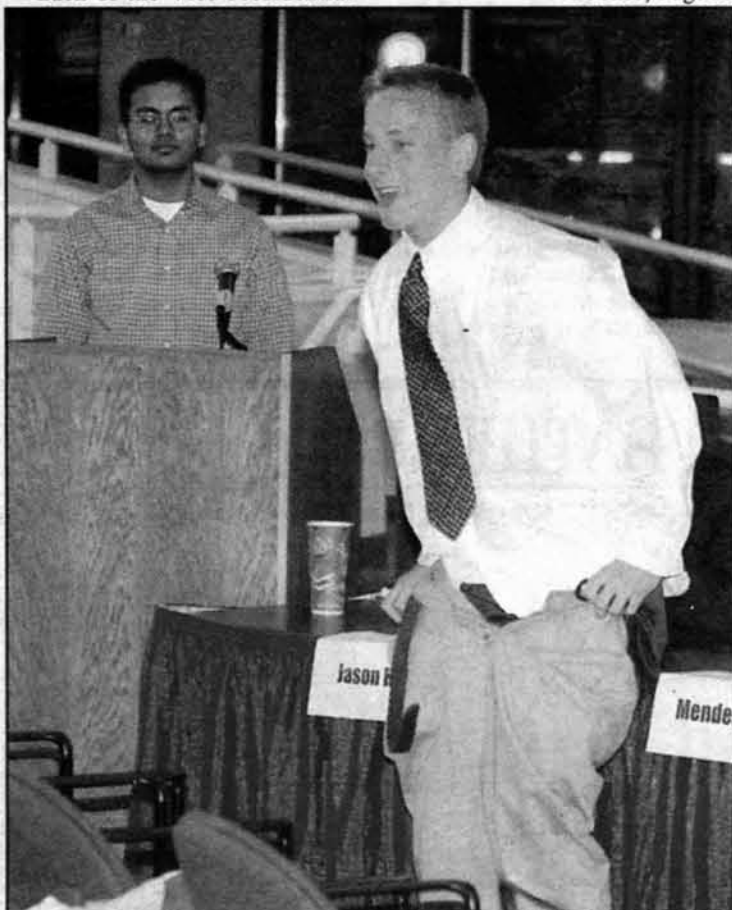
### Candidates promote credentials

Each of the Vice Presidential

candidates chose to emphasize very different qualifications. Wasfy emphasized his close connections with the administration, including positions on six Institute committees.

"Jennifer and I are the only candidates who have a proven record of

Debate, Page 25



SEPHIR HAMILTON—THE TECH

**Brian A. Pasquinelli '02 drops his drawers as part of the talent competition phase of Sunday's UA Vice Presidential debate.**

## Internal IFC Sanctions Could Preempt Boards

By Kevin R. Lang  
NEWS EDITOR

If the Interfraternity Council has its way, hearings such as Kappa Sigma's recent appearance before the Cambridge Licensing Commission could become a thing of the past.

IFC representatives met with members of the CLC and the Boston Licensing Board on Thursday to discuss new plans for internal disciplinary sanctions.

Under a new agreement, the BLB would wait for IFC judicial proceedings to conclude before holding a hearing, and both the BLB and CLC would consider internal actions before levying additional sanctions.

### IFC heads in new direction

The most recent incidents surrounding an MIT fraternity could mark a change in the handling of disciplinary proceedings. Kappa Sigma explained to the Commission that a house member, acting alone, was responsible for damage done to the house. KS sanctioned the student by revoking his active status in the fraternity and asking him to move out of the house.

At the time, CLC executive director Richard Scali said that the commission members were "very happy that they took some action on their own." This incident has set something of a precedent for future fraternity disciplinary proceedings.

### BLB, CLC could have less impact

The most significant change to come from the meeting is a new

policy of IFC self-policing.

IFC Risk Management Chair Rory P. Pheiffer '02 said that the council hopes to eventually have a system where the CLC and BLB would avoid disciplinary hearings except in extreme circumstances.

"The overall goal is to keep everything internal," Pheiffer said.

IFC Judicial Committee Chair Russell L. Spieler '00 will present recommended sanctions for specific incidents at an IFC meeting Wednesday.

Spieler noted that current IFC risk management guidelines do not give much detail regarding specific sanctions. Pheiffer noted that "in most cases lately, we've needed more than the minimum sanction."

The new sanctions "show that in some cases we're going to need to be a lot stricter," Spieler said. The sanctions are only guidelines, however, to prepare member houses for possible IFC action.

Violations explicitly named in the proposal include hazing, serving alcohol to minors, hard alcohol and/or drugs at house events, failing to seek medical attention, and unregistered events.

### IFC has primary jurisdiction

In another development, the BLB will now allow the IFC to carry out judicial proceedings before holding a hearing.

"We met with [BLB chair Daniel F. Pokaski], and I basically got him to agree to hold off on any hearings until we've completed our hear-

Licensing, Page 23

The Campus Police and MIT sign a new contract, ending a two year dispute over work schedules and overtime scheduling.

Page 15



Comics

Page 10

MIT's School of Engineering ranked first for twelfth year running in *U.S. News and World Report* graduate program rankings.

Page 17

World & Nation ..... 2  
Opinion ..... 4  
Features ..... 7  
Police Log ..... 22  
Sports ..... 28

# WORLD & NATION

## Campaign a Close Race, Poll Shows

THE WASHINGTON POST

WASHINGTON

Vice President Al Gore has won the latest round of the battle with Texas Gov. George W. Bush to be viewed by voters as the presidential candidate best able to fix the nation's troubled public schools, according to a new Washington Post-ABC News poll.

Gore has passed Bush as the candidate the public trusts more to deal with education, which was ranked by voters as crucial in determining their vote this election year. Many Americans remain skeptical or are opposed to key provisions of Bush's education reform plan.

At the same time, the poll found that Gore has lost his advantage over Bush on other issues important to voters. And his decision to break with President Clinton and support legislation that would allow 6-year-old Cuban refugee Elian Gonzalez to remain permanently in the United States puts Gore at odds with the growing majority of Americans who favor returning the child to his father in Cuba.

The poll's mixed messages to both candidates are reflected in the overall horse race, which remains deadlocked. According to the poll, Gore claims 47 percent of the hypothetical vote among registered voters and Bush is the choice of 46 percent.

A total of 1,083 randomly selected adults were interviewed March 30 to April 2 for this survey, including 892 self-described registered voters. Margin of sampling error is plus or minus 3 percentage points.

## Supreme Court to Rule on Legal Aid Lawyer Restrictions

LOS ANGELES TIMES

WASHINGTON

The Supreme Court on Monday said it will decide whether federally funded lawyers for the poor have a free-speech right to challenge the government's new restrictions on welfare.

The case, to be heard in the fall, renews a long-running fight between advocates for the poor and congressional conservatives.

For the justices, the case also revives a continuing dispute over whether the government can limit the First Amendment rights of artists, doctors or lawyers as a condition of their eligibility for federal support.

Since 1974, the government has subsidized lawyers for the poor through the Legal Services Corp. These lawyers do not handle criminal cases, instead giving advice or representing low-income people with problems ranging from divorces and consumer complaints to loss of benefits for disabilities, health care or welfare.

Conservatives in Congress have long complained the government should not pay lawyers to carry out political agendas. They have argued that lawyers who are subsidized by the government should represent individual clients only and should not be allowed to lobby legislators or go to court to challenge federal and state policies.

## A Clue to Sexual Orientation

THE WASHINGTON POST

Can you tell someone's sexual orientation by looking at their fingers? The answer, according to new research, is sort of, at least for lesbians.

Heterosexual women tend to have index and ring fingers that are about the same length, especially on their right hands, while men tend to have index fingers that are shorter than their ring fingers.

S. Marc Breedlove and colleagues at the University of California at Berkeley surveyed 720 adults who were attending public street fairs in San Francisco about their gender, age, sexual orientation and siblings, and measured their fingers.

Compared with straight women, lesbians tended to have fingers that were more like heterosexual men, the researchers found. Homosexual men's fingers did not differ significantly from those of straight men. But the more older brothers a boy had, the more likely he was to be homosexual, the researchers found.

# Microsoft Strategy Unchanged After Anti-Trust Guilty Verdict

By David Streitfeld and Ariana Eunjung

THE WASHINGTON POST

WOODSIDE, CALIFORNIA

Three thousand miles away from the courtroom where Judge Thomas Penfield Jackson was reading his devastating verdict, it was business as usual for Deanna Sanford.

The lead product manager for Microsoft's Internet access operation, Sanford was in Silicon Valley to tout the division's umpteenth retooling. "It has gone through several versions over the last five years," she conceded. "But now we're clearly focused."

Perhaps this incarnation of the Microsoft Network service, which has only a tenth the subscribers of America Online, will succeed. If not, Microsoft will assuredly try again, pouring as much money and sweat into the process as necessary. Like the villain in some cheesy Hollywood horror movie, the company can never be counted out.

Monday's verdict, which slammed Microsoft for anti-competitive practices, won't change that, a half-dozen experts said. In some ways, they added, the trial has even strengthened the company — which was and remains the single most

dominant technology firm in the world, despite its struggling MSN service.

"There's a saying along the lines of 'Nothing concentrates the mind like the news you'll be hanged in the morning,'" said Seattle software consultant Frank Catalano. "This verdict was Microsoft's deadline. And they used it to integrate the Internet into everything that they're doing."

Microsoft's core businesses — its Windows operating system and Office software — may be threatened on various fronts, but at the moment they're still generating tremendous revenues and profits. As the company tries to get a grip on a future that involves wireless communications, hand-held devices and all sorts of other new technologies that are distant from its core competencies, that boodle is proving extremely useful.

"Microsoft's basic business strategy is to use profits from the businesses it unquestionably dominates to subsidize money-losing entrants into new businesses," said Richard Shaffer, a consultant with Technologic Partners. "Microsoft goes to the heart of the business models of its competitors, giving

away what others must sell."

Sanford was announcing just such a development. Until Monday, a subscription to MSN's service cost the same as AOL: \$22 a month. But since MSN wasn't gaining ground fast enough, Microsoft will now give it away free for the first six months.

Observed Shaffer: "Using this strategy, there's no business that Microsoft couldn't get in. The only reason it wouldn't dominate is the same factor that has held it from dominating other markets it has entered: its own incompetence."

Microsoft has never been accused of being a technological innovator. But it's brilliant at "reverse engineering" — taking another company's successful product, figuring out what made it work, and copying it. This is what it did with Netscape's Internet browser, of course, which lead directly to the antitrust suit.

In jump-starting MSN this time around, for instance, Microsoft will give away 13 million free CDs to make it as easy as possible to get consumers hooked up — the same strategy AOL used. Microsoft plans to spend \$150 million on television and magazine spots.

# With U.S. Visa, Father is Given Stronger Grip on Elian's Fate

By Mike Clary

LOS ANGELES TIMES

MIAMI

The father of Elian Gonzalez is expected to arrive in the United States perhaps as early as this week to take custody of his son in a dramatic step that could signal the end of a bitter international dispute over the 6-year-old.

During a third full day of talks between attorneys for the boy's Miami relatives and the U.S. government, the focus of discussions Monday shifted to the question of how to transfer custody to Juan Miguel Gonzalez, Immigration and Naturalization Service spokeswoman Maria Cardona said.

"It's not a matter of whether we will do this, but how," she said in an

interview. "What we are trying to discuss is how best to effectuate that transfer so that it happens in the most cooperative way possible, in a manner most conducive to Elian's well-being."

The boy's father, other family members and a dozen of his classmates from Cardenas, Cuba, were among 28 people who applied Monday for visas to come to the United States. State Department spokesman James Rubin said Monday night that the department had approved visas for Elian's father, stepmother, infant half-brother, a young cousin, his kindergarten teacher and a doctor.

Lazaro Gonzalez, the great-uncle who has had temporary custody of Elian since the boy was rescued at sea more than four months ago,

offered no comment as he and a team of attorneys walked out of the federal building in downtown Miami Monday afternoon.

He and other relatives have been battling to prevent Elian's repatriation, arguing that the deprivation of life in Fidel Castro's Cuba overrides the rights of a father. Elian's mother and 10 others drowned when they tried to enter the country illegally.

Manny Diaz, one of the attorneys for Elian's Miami relatives, spoke only briefly. "We continue to be first and foremost concerned about the welfare of the child," he said.

Word of a possible agreement to hand over Elian to his father sent a charge through much of this city's exile community.

# WEATHER

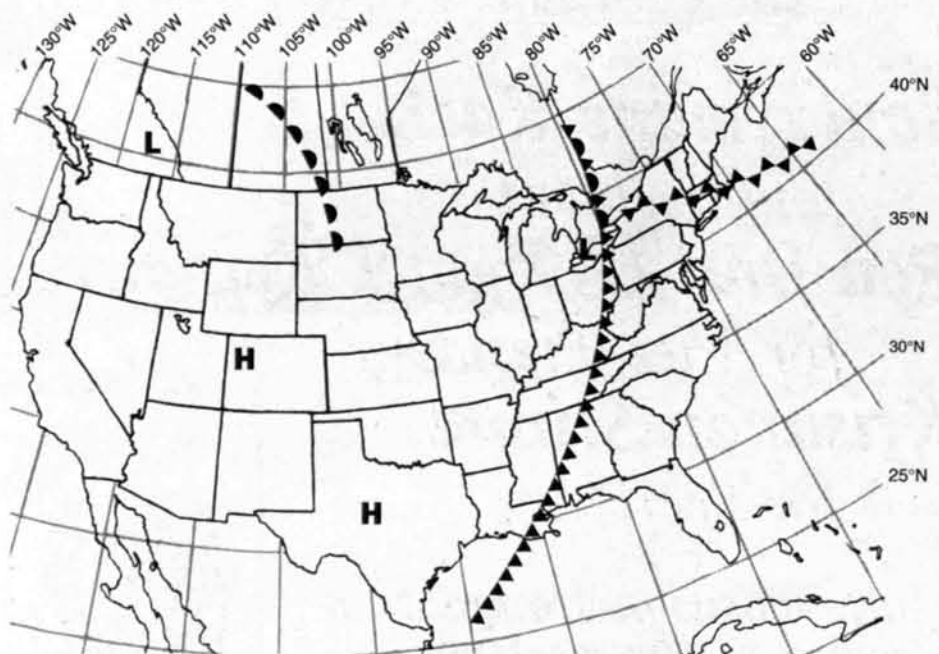
Situation for Noon Daylight Standard Time, Tuesday, April 4, 2000

## Rainy Days

By Peter Huybers  
STAFF METEOROLOGIST

Thunderstorms and showers will move through Boston today. The chance of rain is 80 percent. Expect highs to reach the mid 60s (18–20°C) with a blustery southwest wind of 25 mph. Lows tonight will descend into the mid 40s (6–8°C) with a continuing 80 percent chance of rain. Tomorrow will be mostly cloudy with a 35 percent chance of showers in the morning. Winds will persist, but skies will become mostly sunny in the afternoon. On Wednesday we will experience a cooler night with temperatures dropping into the 30s (1–3°C) and yet increasing cloudiness. Thursday we may see a repetition of this cycle beginning with Thunderstorms during the day and highs again in the 60s (16–18°C).

**Today:** Rain. High 68°F (20°C). Low 45°F (7°C).  
**Tomorrow:** Possible rain. High 55°F (13°C). Low 40°F (4°C).  
**Thursday:** Cloudy. High 60°F (16°C).



Weather Systems	Weather Fronts	Precipitation Symbols	Other Symbols
<b>H</b> High Pressure	--- Trough	Snow: ☁	☁ Fog
<b>L</b> Low Pressure	— Warm Front	Rain: ☁	☁ Thunderstorm
<b>S</b> Hurricane	▲ Cold Front	Light: *	☁ Haze
	◐ Stationary Front	Moderate: **	☁ Compiled by MIT Meteorology Staff and The Tech
		Heavy: ***	

# Massachusetts Imposes Tough New Regulations on Handguns

By Pamela Ferdinand  
WASHINGTON POST

BOSTON

The Massachusetts attorney general announced Monday that his office will begin using its consumer protection authority to enforce the most comprehensive handgun safety regulations in the nation, putting unprecedented pressure on the gun industry to reform itself.

The regulations, which go into effect immediately, essentially govern firearms the same as any consumer product from hair dryers to toasters to automobiles. They ban the sale of so-called cheap handguns — sometimes called “Saturday Night Specials” — and require all handguns sold in Massachusetts to include built-in child-proofing mechanisms, tamper-resistant serial numbers and safety warnings similar to those found on cigarette

packs.

The new rules prohibit the sale of handguns without state-approved trigger-locks and, for semi-automatic handguns, devices that indicate whether a gun is loaded. Suppliers are required to explain to customers how to safely handle and store handguns and use safety devices.

Starting Monday, state officials and investigators will begin inspecting about 700 federally licensed gun dealers in Massachusetts and will issue warnings against the sale of guns that do not comply with the tough new standards. Violators will be subject to a civil penalty of up to a \$5,000 fine for each violation, loss of their license to sell firearms and possible additional charges.

“If they want to do business in Massachusetts, they have to play by our rules — rules that emphasize safety,” said Massachusetts Attor-

ney General Thomas F. Reilly, flanked by several state representatives and gun control advocates at a news conference. “We’re imposing these regulations, and we’re going to enforce them right now. They are not going to have any time.”

With the gun industry specifically exempted by Congress from federal Consumer Product Safety Commission guidelines, gun control advocates said enforcement of the restrictions in Massachusetts under state law add a significant dimension to the ongoing gun control debate should other attorneys general follow suit, as expected.

Thirty cities and counties in 20 states have sued gun manufacturers and dealers. Monday night, Maryland legislators were expected to give final approval to a bill that would make it the state to require built-in locks on all new handguns.

# U.N. Official Finds Many Human Rights Violations in Chechnya

By Kathy Lally  
THE BALTIMORE SUN

MOSCOW

Frustrated because of what she couldn’t see and devastated by what she did see, the United Nations’ chief human rights official returned from Chechnya on Monday, saying she had confirmed reports of serious human rights violations.

In Moscow, Mary Robinson was met by volleys of denial. The interior minister lectured her, she said. An official news agency presented a voluminous “White Paper” arguing that Russia’s conduct in Chechnya was historically inevitable. And a group of intellectuals gave a bellicose news conference, telling the rest of the world to mind its own business.

For months, human rights groups

including Human Rights Watch and Amnesty International have been accusing Russia of using indiscriminate force in its war against the separatist republic. Robinson, the U.N. High Commissioner for Human Rights, set out Saturday to investigate accusations that included summary executions, rape and looting.

“It does make a difference to have the direct contact,” she said Monday night, “and probably the most important thing was to get very authentic accounts from eyewitnesses of some of the worst atrocities that I had already got a lot of written material about and that really confirmed in my view without any doubt that there is a serious pattern of human rights violations.”

She said her visit to the bombed-out Chechen capital of Grozny

made a deep impression on her.

“I was very devastated by the situation in Grozny itself and the very poor circumstances of those whom I met living in Grozny,” she said.

Earlier, her spokesman, Jose Diaz, said she had been frustrated because Russian authorities would not permit her to travel wherever she wished. She turned down a visit to a recently prettified detention center and asked to go to others, instead. Finally, her guides took her.

“It turned out they were holding two middle-aged women for looting,” Robinson, a former president of Ireland, told the Irish Times. “I found this so poignant because one of the worst and persistent allegations against the OMON (police commandos) is blatant looting and terrible pillage and looting.”

## Annan Outlines U.N. Goals

THE WASHINGTON POST

UNITED NATIONS

Secretary General Kofi Annan outlined his vision of the United Nations in the 21st century — a world body that would use “smart sanctions” to punish dictators while sparing innocent civilians, enlist corporate help for disaster victims and bring the Internet to the Third World.

The proposals, contained in a 57-page “Millennium Report,” represent Annan’s most ambitious effort yet to shape the future of the United Nations and put his personal imprint on it.

Annan said Monday that he hoped the report would stimulate debate among world leaders who will gather in New York for a Sept. 6-8 summit to develop a long-term agenda for the U.N. It contains recommendations on a dizzying array of issues, from curbing illegal traffic in small arms to reversing global warming.

The report “attempts to present a comprehensive account of the main challenges facing humanity as we enter the 21st century, combined with a plan of action for dealing with them,” Annan told reporters. “That may sound absurdly ambitious, but if the United Nations does not attempt to chart a course for the world’s people in the first decades of the new millennium, who will?”

Annan directed his most severe criticism at the Security Council’s use of economic sanctions to try to change the behavior of such states as Iraq and Libya, saying innocent civilians, not the ruling elite, bear the brunt of the suffering. He said the council should give serious consideration to studies underway in Germany, Switzerland, Britain and Canada to find ways to target leaders rather than whole populations.

## Random House, Digital Printer Xlibris Strike a Deal

NEWSDAY

At first glance, a publishing deal announced Monday looked like the case of a prestigious symphony doing business with a garage band. However, it’s the latest example of the established media proceeding to coexist and partner with the brave new purveyors of digital technology.

Random House Inc., the world’s largest English-language book publisher and the literary home of such authors as Norman Mailer and Toni Morrison, has bought what it characterized as “a significant minority position” in Xlibris, a service that gives writers the digital tools to publish books on their own, bypassing the whims of editors and marketplace trends that usually bear on what manuscripts a traditional publisher chooses to buy.

Financial terms of the deal were not disclosed. The publishing conglomerate was represented by Random House Ventures LLC, a recently formed investment subsidiary that is seeking out entrepreneurial opportunities and pre-IPO ventures and will put two of its executives on Xlibris’ board.

Xlibris <<http://www.xlibris.com>> based in Philadelphia, also announced that its core services, which enable writers to publish their books within days, are now free of charge. Xlibris makes its money by offering customized printing features (an advanced package costs \$300, and a premium one is \$1,200) and by profiting from the sales of books it publishes and distributes through such outlets as Amazon.com and BarnesandNoble.com.



The MIT Graduate Student Council

office: Walker Memorial, 50-220 (above the Muddy)  
phone: 253-2195  
website: [www.mit.edu/activities/gsc](http://www.mit.edu/activities/gsc)  
email: [gsc-request@mit.edu](mailto:gsc-request@mit.edu)

## GSC Officers Election

April 5 (Wed), GCM  
5:30pm, 50-220

The Candidates Are:

- ★ **Soulaymane Kachani**  
for President
- ★ **Ron Dror & Ryan J. Kershner**  
for Vice-President
- ★ **Krishnan Sriram**  
for Secretary

Treasurer Position Nomination will reopen at the meeting.



## Muddy Charles Pub

### Lunch Menu for This Week

11:45am-2pm Weekdays

- MON — Penne Beef and Tomato
- TUES — Beef Chile over Rice
- WED — Dragon Beef Rice Bowl
- THUR — Chicken Stir Fry
- FRI — Macaroni and Cheese  
w/ Ham

**\$4. Each meal includes a side salad.**

# OPINION

## UA Election Reform Overdue

This year's Undergraduate Association elections have once again suffered from poor oversight and the appearance of impropriety. Loopholes in election rules, lax restrictions on campaign financing, and the inability of the UA's Judicial Board to act impartially all mar this year's elections.

### Editorial

*The Tech* would not be surprised if this year's election meets the same fate as the 1998 election and is forced to be re-run.

Under current rules, candidates who commit an election violation receive demerit points, and those who receive seven points are disqualified. Violations include placing more than one poster per board, postering over other current MIT posters, and e-mailing lists of which the candidate is not a member.

Sunday night, UA Election Commission Chair Zhelinrentice L. Scott '00 announced that all candidates running for all UA positions had to remove all posters from main campus within 24 hours. Candidates were forced to waste precious time and energy scouring campus to remove posters from newly prohibited areas.

*The Tech* believes the Election Commission should have anticipated problems with its election rules and taken appropriate action to insure a smooth election process. Anyone with a stapler and a motive has the opportunity to wreak havoc on the election.

E-mail is another area of concern. Current policies allow candidates to post campaign material to any list of which they are a member. Enterprising candidates may add themselves to any public list and therefore gain legal access to thousands of

undergraduates. While no trouble has surfaced regarding e-mail this year, it is only a matter of time before history repeats itself: UA presidential candidate Paul T. Oppold '99 was accused of spamming two years ago — one of the charges that nullified the original election that year.

Another problem with the election rules this year is the over \$500 cap in personal funds candidates may use for their campaigns. This amount is too much, and candidates with more disposable income have an obvious advantage. We believe the cap should be lowered significantly and that candidates should be reimbursed for their funds.

Yet another serious ethical issue in this election is the refusal of UA presidential candidate Chris D. Smith '01 to take a leave of absence from his position as JudBoard chairman. The JudBoard chairman is a powerful position in the council — in fact, JudBoard presides and decides over all conflicts between candidates. Two years ago, a problem with JudBoard was at the forefront of the election process. Although Smith has agreed to not preside over cases involving the election, he retains the power to choose his replacement, thus retaining his influence.

After a scandal-plagued election two years ago, this newspaper reminded the UA that "if [it] wants to be a useful and effective organization on campus, it must earn the trust of students." Unfortunately, questions swirling about this year's election compel us to give this advice again and urge strong reforms of UA election rules.

## Letters To The Editor

### The Case for Berk: 'Sincere,' 'Dedicated'

Thank you for your thoughtful and perceptive March 31 staff editorial on the current election for UA President and Vice President. I'm glad that you praised our ticket's ability to tackle the issues that will matter most to students and to the Institute next year.

But I was surprised to read that the decisive factor in your endorsement of the Shulman-Chuang ticket instead of our ticket was a concern that students would not rally around Jennifer Berk, my running mate, because of her struggle with public speaking.

Students will rally around Jennifer because she has made a sincere commitment over her three years at the Institute to work hard for students and their interests. She has been involved in campus issues over the long term because she cares — she hasn't just scrambled to join as many committees as possible the weeks before the election. That sincerity and long-term dedication sets her apart from the other presidential candidates and that's why MIT students will rally behind her as president of the UA.

Jason H. Wasfy '01

UA Vice-Presidential Candidate

### Rao, Pasquinelli Aware of Issues

I was extremely disappointed to read your comments about us in last issue's editorial ["Shulman-Chuang for UAP/VP," March 31, 2000]. Statements such as "their (Rao/Pasquinelli) vision underemphasizes the important issues" are unfounded. Have you spent the time to read our entire platform? We are very aware of the issues at MIT and are going to work closely with students and the administration to attack those issues. In fact,

in our roles in the UA we have already begun to work with the administration and students on issues concerning some of our ideas.

One of the important issues is housing. We will work hard to support all 35 FSILGs and will work closely with the leaders of IFC to communicate their needs to the administration. Greek life must remain an integral part of MIT life. We understand and advocate that FSILGs deserve more than just financial support during the residence transition.

You had also stated that we did not address issues such as advising. Brian Pasquinelli (UAVP candidate) is co-chair of the new UA Faculty-Student Relations and Advising Committee and has been devoting much of his time to this issue. Some of the other issues that we are going to tackle range from relations with the media to MIT's 1.5 billion dollar capital campaign to preserving MIT culture (such as hacking and steer roast) to educational policy.

We have a vision to redefine the UA and make it more representative, active, and effective. If elected, this vision will become a reality. The UA President and Vice President are more than just figureheads for students. They must work for students and with the administration to make MIT a better place. Brian and I are passionate, enthusiastic, and excited individuals who are going to work hard for the UA. We not only have a firm understanding of the issues but also a desire to work with students and administration.

I would like each of you to read our platform, you can find it at <http://yourua.mit.edu>. You will find a plan that attacks student representation, pressing issues, the residence system, and campus life.

Sanjay K. Rao '02

UA Presidential Candidate

### No 'Fun' With 'Clip Art'

I just glanced at *The Tech* online at the request of a friend, and was disgusted by the "Fun with Clip Art" comic. It isn't simply that the comic strip doesn't actually do anything original in terms of artistic talent, though that much is telling already.

Frankly, I find the jokes about bodily functions, or crude comments about sex, to be not only without humor, but offensive as well. I can hardly imagine anyone making such crude comments in the company of people they respect — so when did it become acceptable to make such lewd and juvenile jokes in *The*

*Tech*? The captions are mostly unimaginative at best, and disgusting, degrading, and tasteless at worst. In some circles, they would be considered morally offensive as well in their tone and subject matter.

I strongly urge the editors to pull the comic from your pages. Please reconsider whether you want *The Tech*, and MIT, to be known for publishing a comic that can do no better than the crude locker-room humor of a rude seventh grader. The MIT community deserves better, and the reputation of MIT calls for far more.

Eric Ding '95

I'm a pretty regular reader of *The Tech*, and the new comic called "Fun with Clip Art" has caught my negative attention. I find the comic very perverse and disgusting. I'm not sure if the comics go through any sort of "screening" or whatever, but I find the comic excessively perverse.

Michael Chu '01

"Fun with Clip Art" is quite stupid and unimaginative. On top of that, its humor is unnecessarily crass. I enjoy wry humor that has wit, such as the comic strip "Red Meat." "Fun with Clip Art," on the other hand, consistently uses only cheap humor. The jokes run in only one line of thought, which is to be perverted. After a while, I'm quite sure people will get bored with seeing the same bag of jokes and realize how dumb this comic is.

Bruce C. Po G

I'd just like to express my dislike of the comic "Fun with Clip Art." In my opinion, it is perverse and disgusting and holds no redeeming value. I've heard it said that *The Tech* has received much positive feedback about this comic, mostly from fraternity students. Well, I am also from a fraternity, but I abhor the demented humor that is in this comic. So, I would like to put in my two cents to the effect that I think you should stop printing this cartoon.

David Von Stroh '03

I found Friday's "Fun with Clip Art" incredibly offensive and am amazed that you guys decided to run it. Humor that relies purely on x-rated shock value isn't funny and in my opinion the cartoon borders on child pornography — it certainly exploits the sexual innocence of children for a cheap laugh. I hope you consider giving the space currently wasted by "Fun with Clip Art" to someone who can actually draw and write original humor.

Kurt Leafstrand

## Erratum

An article covering the debate between candidates for UA President ["Candidates Probe Issues at Debate," March 31] mistakenly attributed to Sanjay K. Rao '02 a statement about utilizing the web "spotlight." Peter A. Schulman '01 made the statement.

## Opinion Policy

**Editorials** are the official opinion of *The Tech*. They are written by the editorial board, which consists of the chairman, editor in chief, managing editor, news editors, and opinion editors.

**Dissents** are the opinions of the signed members of the editorial board choosing to publish their disagreement with the editorial.

**Columns** are written by individuals and represent the opinion of the author, not necessarily that of the newspaper.

**Letters to the editor** are welcome. Electronic submissions are encouraged and may be sent to [letters@the-tech.mit.edu](mailto:letters@the-tech.mit.edu). Hard copy submissions may be addressed to *The Tech*, P.O. Box 397029, Cambridge, Mass. 02139-7029, or sent by interdepartmental mail to Room

W20-483. All submissions are due by 4:30 p.m. two days before the date of publication.

**Letters** must bear the authors' signatures, addresses, and phone numbers. Unsigned letters will not be accepted. Unsigned letters may not be accepted. *The Tech* reserves the right to edit or condense letters. Once submitted, all letters become property of *The Tech*, and will not be returned. *The Tech* makes no commitment to publish all the letters received.

## To Reach Us

*The Tech's* telephone number is (617) 253-1541. E-mail is the easiest way to reach any member of our staff; send mail to [general@the-tech.mit.edu](mailto:general@the-tech.mit.edu). *The Tech* can be found online at <http://the-tech.mit.edu>.



**Chairman**  
Satwiksai Seshasai '01

**Editor in Chief**  
Frank Dabek '00

**Business Manager**  
Jasmine Richards '02

**Managing Editor**  
Ryan Ochylski '01

**Executive Editor**  
Gregory F. Kuhnen '00

#### NEWS STAFF

**Director:** Naveen Sunkavally '01; **Editors:** Rima Arnaout '02, Kevin R. Lang '02; **Associate Editors:** Laura McGrath Moulton '01, Sanjay Basu '02, Dana Levine '02, Karen E. Robinson '02, Mike Hall '03, Matthew Palmer '03; **Staff:** Anna K. Benefiel '00, Zareena Hussain '00, Jennifer Chung '01, Kristen Landino '02, David Bailey '02, Efrén Gutierrez '03, Cristina Roussel '03, Aurora Schmidt '03; **Meteorologists:** Véronique Bugnion G, Peter Huybers G, Greg Lawson G, Bill Ramstrom G, Chris E. Forest, Marek Zebrowski.

#### PRODUCTION STAFF

**Editors:** Mary Obelnicki G, Ian Lai '02, Jordan Rubin '02; **Associate Editors:** Eric J. Cholanteril '02, Stacia Swanson '03; **Staff:** Caroline Chang '03, Bryan Guzman '03, Nancy Kho '03, Linda Liang '03, Jane Maduram '03, Supriya Rao '03, Jennifer Shieh '03, Gayani Tillekeratne '03.

#### OPINION STAFF

**Editors:** Eric J. Plosky '99, Michael J. Ring '01; **Associate Editor:** Kris Schnee '02; **Columnist:** Veena Thomas '02; **Staff:** Michael Borucke '01, Philippe C. Laroche '03.

#### SPORTS STAFF

**Editor:** Ming-Tai Huh '02; **Staff:** Ethan T. Goetz '00, Amir Mesarwi '00, Nisha Singh '00, Deborah S. Won '00, Susan Buchman '01, Alvan Eric P. Loreto '01, Brian K. Richter '02, Jennifer C. Lee '03.

#### ARTS STAFF

**Editor:** Rebecca Loh '01; **Associate Editor:** Fred Choi '02; **Staff:** Erik Blankinship G, Daniel Metz G, Steven R. L. Millman G, Bence P. Olveczky G, Roy Rodenstein G, Vladimir V. Zelevinsky '95, Zarminae Ansari '97, Tzu-Mainn Chen '99, Mark Huang '99, Kate Samrandvedhya '00, Francisco Delatorre '01, Amrita Ghosh '02, Jacob Beniflah '03, Daniel J. Katz '03, Amy Meadows '03, Heather Anderson.

#### PHOTOGRAPHY STAFF

**Editors:** Karlene Rosera '00, James Camp G, Annie S. Choi; **Staff:** Rich Fletcher G, Krzysztof Gajos G, Saphir Hamilton G, Wan Yusof Wan Morshidi G, Michelle Povinelli G, Omar Roushdy G, Jelena Srebric G, R. Sumner G, T. Luke Young G, Joseph Su G, Stefan Carp '00, Jörg Scholvin '00, Ajai Bharadwaj '01, Ying Lee '01, James Snyder '01, Yi Xie '02, Lucy Yang '02, Roshan Baliga '03, Leonid Drozhinin '03, Wendy Gu '03, Dasha Lyman '03, Cheng Pei '03, Joey Plum '03, Cyndi Vongvanith '03, Miodrag Cirković.

#### FEATURES STAFF

**Editor:** Katie Jeffreys '01; **Associate Editor:** Aaron D. Mihalik '02; **Cartoonists:** Pawan Sinha SM '92, Aaron Isaksen G, Solar Olugebefola G, Mathew Wong '00, Jennifer Dimase '01, Xixi D'Moon '01, Jocelyn Lijn '01, Baris Yüksel '02, Alison Wong '03, Lara Kirkham '03; **Staff:** David Ngo '02, Katherine H. Allen '03, Bushra B. Makiya '03, Sonali Mukherjee '03.

#### BUSINESS STAFF

**Advertising Managers:** Joey Dieckhans '00, Huanne T. Thomas '02; **Operations Manager:** Dan McGuire '99; **Staff:** Erica Pfister '00, Rachael Johnson '02, Kiwah Kendrick '02, Dashonn Graves '03.

#### TECHNOLOGY STAFF

**Director:** Shantonu Sen '02; **Staff:** Chris McEniry '00.

#### EDITORS AT LARGE

**Contributing Editors:** Brett Altschul G, Gábor Csányi G, Daniel C. Stevenson G, Garry R. Maskaly '00.

#### ADVISORY BOARD

Paul E. Schindler, Jr. '74, V. Michael Bove '83, Barry Surman '84, Robert E. Malchman '85, Thomas T. Huang '86, Simson Garfinkel '87, Jonathan Richmond PhD '91, Josh Hartmann '93, Jeremy Hylton '94, Thomas R. Karlo '97, Saul Blumenthal '98, Indranath Neogy '98, Joel Rosenberg '99, B. D. Colen.

#### PRODUCTION STAFF FOR THIS ISSUE

**Night Editors:** Mary Obelnicki G, Ryan Ochylski '01, Stacia Swanson '03; **Staff:** Jordan Rubin '02.

# Keeping Funding Voluntary

Mike Hall

In a surprisingly unanimous vote, the Supreme Court last week ruled in *University of Wisconsin System v. Southworth* that the University of Wisconsin at Madison did not violate the First Amendment by forcing its students to fund student groups holding views all across the spectrum. Justice Anthony Kennedy wrote in the Court's opinion that the First Amendment "...permits a public university to charge its students an activity fee ... to facilitate extracurricular student speech if the program is viewpoint neutral" — that is, if everyone receives their fair share as determined by an equalizing of extremism. Under this new precedent, universities can now legally force a Democrat to fund the Young Republicans, a vegan to fund the Future Dairy Farmers of America, and an apathetic student to fund everybody.

The Court has a long and proud history of maintaining viewpoint neutrality in granting access to free speech. In *Lamb's Chapel v. Center Moriches Union* and *Widmar v. Vincent*, the Court forbade public schools from preventing any group from using school facilities solely on the basis of religion. *Widmar* went further, stating that a policy excluding groups of any ideology "violates the fundamental principle that a state regulation of speech should be content-neutral." The Court also correctly prohibited any university that collects activities fees from discriminating in funding groups of any ideology (*Rosenberger v. University of Virginia*).

With this latest ruling, however, the Court ignores its long-standing tradition of protecting the individual from supporting causes objectionable to him. When providing his money to any group, a student helps it spread its message. While he cannot prevent the group from spreading its viewpoint, he has no obligation to help it out along the way. The Court affirmed this belief in cases such as *Aboud v. Detroit Bd. of Education* and *Keller v. State Bar of California*. In the latter, the Court essentially prevented all public agencies from funding any specific group or ideology outside of the agency's public obligation.

Like any university charged with providing a liberal education, UW has the obligation to provide a broad in-class education to its students. The university can forcefully expose its students to any ideology while the students are in the classroom. A university also has the right to hire professors and guest speakers

with controversial ideas that will challenge and expand the open mind.

Outside class, however, the university cannot mandate that a student be exposed to new ideas. UW itself makes a distinction between curricular and extracurricular life, with its regular tuition fee paid separate of the activities fee. All activities receiving funding are viewed by UW as outside of the curriculum. Therefore, UW does not obligate students to listen to any ideology outside the classroom.

It would be easy to misconstrue the above as permitting all student groups to obtain funding provided students have the maturity to ignore ideas they find offensive. This argument is valid for most free speech cases, in which people claim harm done by an ideology they could have avoided hearing professed. UW cannot prevent any group from speaking just because an individual student claims offense.

At UW, however, a student has an implied involvement with any group receiving part of his money. Once he pays to fund a group, he owns part of it and has a vested interest in its activity. If he deems the group's conduct as personally offensive, the student then is forced to either ignore something he paid for or absorb offensive thoughts that are not part of the curriculum. This is both abusive and fiscally irresponsible — two extremes certainly opposed by a liberal educational institution.

A student has the right to remain close-minded and avoid opposing views. He should not forfeit that right at the cost of keeping track of his money. If he doesn't want to sponsor a specific group or any group in general he should not be compelled to do so, even if all groups get fair representation.

This is where the concept of viewpoint neutrality falls under scrutiny. While an honorable goal, viewpoint neutrality reaches its natural end after the university provides each club access to open communication. Any additional funding cannot be given in a practical, equitable manner because available funds cannot meet the demand of every group. Even at private institutions like MIT, difficult choices must be made about which groups receive their funding requests and which do not.

On a philosophical level, a university cannot fund every student group fairly. The school may claim ideal viewpoint neutrality by funding any group regardless of ideology. The issue here is the method of funding. There are two approaches: the "Senate" distribution, under which all student groups receive equal funding regardless of size and need; and

the "House" distribution, under which funds are distributed proportionally based on group members and activity expenses. There is no middle ground here. Granting everyone a "Senate" minimum while providing "House" extras would enrage smaller groups claiming that they can't get "House"-level members without "House"-level funding. Under either funding scheme, someone gets cheated.

What about selective funding, or funding on a per-group basis by each student's choice? *Rosenberger v. University of Virginia* clearly forbids discrimination by any group in allocating university funding. A student could not show preference with his university money, thereby forcing one of the above systems on the student body, thus robbing both the student and the groups of fair treatment in funding.

Now, the big question: How can student groups survive without university funding? To answer this, the university's obligation to student groups must be carefully defined. A university must provide all student groups with equal access to communication. The club of today, for example should have free Internet access, telephone access, and access to campus media.

Beyond providing access, however, the university has no outstanding obligation to the club. What a club does with its access depends on the conviction and tenacity of its members. Students have a mistaken concept of entitlement when dealing with student group funding.

*The Chronicle of Higher Education* said in its March 21st edition that had the Supreme Court banned mandatory fees, "organizations on campuses might have been forced to rely on voluntary contributions from students for their financial support." Why is this viewed as a bad thing? Receiving blanket funding from a school merely keeps substandard clubs with half-hearted supporters alive. If the commitment exists, a club will survive and thrive on its own.

Clubs that operate independent of their home universities, such as the Associated Students of the University of California and the *Harvard Crimson*, have succeeded because of the tenacity of their members. Local groups acting with scant university support, such as the Boston chapter of Delta Lambda Phi, have survived against incredible odds because their members refuse to surrender. Rather than living on the university dole, these groups prove the advantages of going it alone.

All students have the right to speak, but no student has an obligation to amplify their voices with his personal money

# Reforming Primary Politics

Michael J. Ring

Although several states have yet to hold their presidential contests, the 2000 primary season has been effectively over for nearly a month. And after some early excitement that Bill Bradley, and especially John McCain, would carry the campaign deep into the spring, both insurgents could not keep up with the slew of primaries crammed into a few weeks and bowed out only two days after Super Tuesday. The presumptive favorites, Al Gore and George W. Bush, easily prevailed in the end, vanquishing their opponents nearly three months before the official end of the primary season.

There's got to be a better way to contest the presidential primary than this.

In the end, the gaggle of states that voted on the 7th of March was too insurmountable an obstacle for the underdogs. By the next week both winners had secured more than enough convention delegates to assure their respective nominations. And the reduction of primaries yet to come in over a dozen states like Wisconsin, North Carolina, and New Jersey to meaningless contests robs those states of an opportunity to affect the presidential race — an unhappy circumstance not only for the losers, but also for the winners, who lose the opportunity to learn about issues unique to these states as they have already clicked into general-election mode.

Several plans on reforming the presidential primary process are circulating among the Democratic and Republican National Committees. The two most notable plans are a system of rotating regional primaries, and the so-called "Delaware Plan" which allows small states to hold primaries first. Both plans have merit and both would be an improvement over the current system of frontloading primaries.

The regional plan, espoused by Massachusetts Secretary of State Bill Galvin, would keep Iowa and New Hampshire as the first contests but then split the country into four regions: Northeast, South, Midwest, and West. Each region would vote first once every four elections, with the region voting first in the previous election moving to the end of the calendar in the next election.

The Delaware Plan, supported by former Republican Senator Bill Brock of Tennessee, allows states with the smallest populations to choose the earliest primary dates. Recognizing that states such as the plan's namesake with few electoral votes garner little attention in November, the plan allows smaller states a larger role in the nominating process.

Most importantly, each plan allows primaries to be spread out over the course of months instead of squeezing most states' primaries into a matter of weeks as is done now. Either plan would return to the more leisurely schedule of primary contests, giving all candidates ample time to visit all regions of the country.

Of course, neither plan is without its critics. The Delaware Plan angers officials in electorally-rich states such as California and Texas who are loathe to be sent to the rear of the primary calendar. But under such a system, these states' contests would still wield tremendous influence as candidates could probably not amass enough delegates in the preceding small states to clinch the nomination. And it is undeniable that small states are swamped by these behemoths in November, so giving small states a voice in the primary season is only fair.

Some worry that the rotating regional primary system will encourage candidates of certain ideologies to run or to stay out depending on which region votes first. For example, these critics argue, conservatives would rush in and liberals would stay out if the South voted first; the opposite would happen if the Northeast voted first. But these concerns can be overcome — by splitting the nations into eight smaller regions instead of four large regions, schedulers can ensure sufficiently small blocs of liberal and conservative states vote in succession, negating any ideological head-start.

Ultimately, almost any revision would be an improvement over the current system, where frenzied candidates shuttle between states and must rely on the media rather than retail politics to spread their platforms. Surely Democrats and Republicans alike would like to spend more than a month deciding who they wish to nominate for the most powerful leader of the world.

# In Protest of the IMF and World Bank

Philippe C. Larochelle

Some of you may recall seeing on TV late last November some hullabaloo in Seattle about protesters opposing the "free trade" policies of the World Trade Organization.

In all the coverage of the Seattle protests, what was probably most consistently lacking was an understanding among the general public of the policies of the WTO, and why so many people from around the world were opposing them. This made the few screen shots of the "young anarchist revolutionaries" (as they were called by the media) vandalizing the local Starbucks all the more effective in dissuading public opinion from the issues the protests were attempting to bring to public discourse. Average news viewers could have easily assumed that the protests were dominated by a band of young troublemakers who had no stated opposition to the WTO and its policies, but rather just saw a prime opportunity to cause some havoc.

The truth of the situation was far from this. Ninety-nine percent of the tens of thousands of people who took part in the protest performed exclusively non-violent measures of resistance and were often met by very harsh police responses. They were not simply rounded up like sheep by a couple of expert organizers to struggle for a cause they knew nothing about. Rather, they were individuals that, for the most part, had a conscientious understanding of WTO policies and had formed their own opposition to them.

Pointing out this discrepancy in the portrayal of the Seattle protests is important now, because soon a similar action will commence in Washington, D.C. to protest the policies of the International Monetary Fund and the World Bank at a conference taking place April 16th. It is very possible that a similar portrayal could be put forward, leaving the public in the dark about the most important question that should be addressed: why are these protests occurring in the first place?

In order to give the members of the MIT community a clearer picture of the situation, here is a summary of the policies of the IMF

and World Bank.

The IMF and World Bank are international financial institutions that were formed at the economic conference held at Bretton Woods, New Hampshire in 1944. The International Monetary Fund is a worldwide financial institution created to regulate an international monetary system based on convertible currencies to facilitate global trade while leaving sovereign governments in charge of their own monetary, fiscal, and international investment policies. The World Bank was established to help finance the reconstruction of war-torn Europe and the development of poorer nations.

Hearing the initial descriptions, one wonders why there is such opposition to these institutions. Regulating currencies and helping poorer countries develop seem like positive and necessary goals. The opposition that has been mounting is in response to the kind of development that these institutions have been promoting over the past couple of decades. "If the WTO is the corporate rule-maker in the global economy, then the IMF and the World Bank are the institutions that push Third World nations into that system," explains Mike Prokosch, who coordinates the Globalization project at United for a Fair Economy, an organization that works for economic justice.

Today, the IMF and World Bank adopt policies promoting the neo-liberal development of distressed economies worldwide. If an appeal is made to the IMF or World Bank for a loan, the IMF will agree grant it if a government agrees to sign a "structural adjustment agreement." This is a guideline given to nations by the IMF for the past two decades and is to be followed by troubled Third World economies. Its main elements are:

**Monetary Austerity:** Control the money supply of the country in such a way that internal interest rates will rise to whatever is needed to stabilize the local currency.

**Fiscal Austerity:** Increase tax collections and reduce government spending dramatically (mostly in social spending).

**Privatization:** Sell public, state controlled industries to the private sector.

**Financial Liberalization:** Remove restrictions on the inflow and outflow of international capital as well as restrictions on what foreign businesses and banks are allowed to buy, own, and operate.

These structural adjustment programs (SAPs) have had a decisive effect on the health, living conditions, and environment of developing countries. Cutting social programs forces populations already desperate for meager levels of medical care into an even worse situation. The most striking impact of such policies is apparent in sub-Saharan Africa. The fulfillment of an SAP in Zaire in 1984 mandated that the government cut more than 80,000 teachers and health care workers. Similar cuts were seen in Senegal, where from 1980 to 1993 the number of people per nurse in that country rose more than six times, from 1,931 to 13,174.

Through the SAPs the IMF also mandates that the countries it loans money to increase exports, in order to insure that they have enough money to pay back their IMF loans. According to the American Lands Alliance, a Washington-based environmental group, the IMF-sponsored drive toward export-oriented growth has become a lead factor in the destruction of developing nations' ecosystems. In Indonesia, the ALA states that policies favoring the production of cash crops for export have caused "rampant forest destruction with no end in sight."

The impacts of IMF-World Bank policies deserve more analysis and explanation. Good resources to look up include <<http://www.a16.org>> <<http://www.zmag.org>> <<http://www.50years.org>> and <<http://www.globalexchange.org>>. Hopefully, with this new insight into the reasons behind the protest, you will view the coverage of the Washington events with a more discerning eye.

If after becoming more informed about these issues, you feel strongly enough to join the other MIT students who are going down for the protest, travel arrangements are available on <<http://www.a16.org>>

Philippe Larochelle is a member of the Class of 2003.

# YOU'RE NOT THE VALEDICTORIAN, YOU'RE THE ONE HE'LL END UP WORKING FOR.

Win **\$150,000** in Garage.com's  
**Ultimate Student Business Plan  
Competition—PLANedu.**

Got a great business idea? We want to hear it.

Enter your business plan in Garage.com's  
PLANedu competition. Who's eligible? Full-time  
students from any accredited U.S. college or  
university. The top five business plans will be  
presented to a distinguished panel of judges at  
our final event in Silicon Valley in May. The winning  
team walks away with 150 big ones.

For complete contest details and to  
enter, check us out at

<http://www.garage.com/PLANedu>



**garage.com**  
we start up startups



Grant Thornton



Charles Schwab

## THE ULTIMATE STUDENT BUSINESS PLAN COMPETITION

# FEATURES

## MIT Students Support Injured Peer Through Visits, Fundraising

By Katharyn Jeffreys  
FEATURES EDITOR

Since September, MIT students have held two bone marrow drives in the hopes of finding a match for leukemia patient and MIT student David X. Li '02. Now a student group is again gathering support for causes which have benefited an ailing peer.



Josiah D. Seale '02

On January 25, 1999, while on a Media Lab sponsored ski trip in Lake Placid, NY, two MIT community members were involved in a head-on collision. One was student Josiah D. Seale '02, who was badly hurt, suffering a broken leg and facial injuries. The driver of Seale's car, a Media Lab employee, and the driver of the other vehicle, who was charged with a DUI, were uninjured.

When the accident happened, a woman in her late 50s who lived nearby called 911 and went to the scene to assist the victims. She cleared Seale's air passages using what she had learned in an EMT course in the Navy as well as what she saw on the television medical drama ER.

Seale was in a coma for four days, and after waking was transferred to Shepard Center in Atlanta, GA for rehabilitation. The center is one of the premiere spinal cord rehabilitation facilities in the country.

Josiah's mother, Dana Seale said, "There were weeks when he could just sit and stare and drool." Seale's short term memory was initially challenged, and he still is not able to

recall the weeks after the accident.

Seale does not recall the accident, being pulled from the Ford Explorer or the several weeks following the accident. However he said, "I don't want to remember that kind of thing."

Regaining sentience, he said, was like waking from a deep sleep after being sleep deprived. The difference was that it lasted all day for weeks.

Though he said he suffered significant memory loss initially, his recovery has been rapid. Currently he is auditing two classes at Georgia Institute of Technology, Political Philosophy and Differential Equations. Dana Seale, said "He is at the point it feels very normal to be sitting there taking notes."

Seale describes his accident as a "big annoyance." He said, "the annoyances getting to me now are physical. I can't put weight on my right leg and have to walk with crutches."

### Support widespread

His family attributes this successful rehabilitation to the many well-wishers who sent e-mails and cards to Seale. As his parents are missionaries, many of the wishes came in the form of prayers from around the world, including South America (Josiah attended high school in Venezuela), Africa, Europe, and Asia. Dana Seale said that "hundreds of churches, two counties, ... prayer groups, ... a nursery school, and entire schools" were alerted of Josiah's situation through e-mails forwarded around the Internet.

In total Dana Seale estimates that upwards of 100,000 people may have prayed or hoped for Josiah's recovery. "Paul and I could not believe the amount of love poured on him and on us" said Dana Seale.

MIT students, in true Tech style, created a mailing list which would allow Seale's friends to stay updated on his contact information, well being, and even low airfare rates to Atlanta.

Through this list Josiah's parents were able to thank everyone for their support and send updates on Seale's recovery. "He has received tremendous support from the MIT faculty, especially Dean [of Student Life Robert] Randolph," said Dana Seale. "They said 'we will do whatever it takes to get Josiah back up to speed.'"

Since the accident about 20 Boston area friends have journeyed to Atlanta to visit Seale. Several MIT students went over Spring Break and another large group from the Boston area's Campus Crusade for Christ went later. "I feel so honored" Seale said, of the friends who came to visit.

Anna K. Benefiel '00 was one of the students who visited during Spring Break. "Anna is precious. We really enjoyed getting to know her." Andrew J. Wheeler G, Seale's brother at Chi Phi "has been a tremendous support. He brought Josiah his stereo, a new computer from the Media Lab, his favorite music and clothes," said Dana Seale, which allowed Josiah to "have his life back."

### Future looks promising

Seale said "I went into this as an agnostic. I said, 'God if you are there, let me know.'" He views his accident as that sign and has reclaimed the faith of his childhood.

Seale hopes to return to Boston in May, and will begin by taking "one or two courses in the fall and gradually add more and more," said Dana Seale. He will have another surgery on his leg April 20 to complete his physical rehabilitation.

Mentally, Seale is "95 percent back" according to his mother. He still experiences

fatigue and has difficulty maintaining his concentration. "Sleep restores his brain like a battery that has run down," said Dana Seale.

Seale is striving to stay involved in MIT life. "I am still on all sorts of mailing lists," he said. He is currently using his time in rehabilitation to work on IFC projects, including a report on confidential medical transport at IFC. He had just been elected as IFC Risk Manager before the accident and plans to stay involved upon returning to MIT. "I am trying as hard as I can to keep my finger on the pulse of MIT," said Seale.

### Chi Phi 5K Roadrace to support cause

Now brothers of Seale's fraternity are rallying to support causes which benefit their injured friend. The annual Chi Phi 5K Roadrace will be held April 8 starting at Kresge Oval at 10 a.m. Proceeds will go to Sheperd Rehabilitation Research Center, where Josiah's rehabilitation is taking place. Registration is \$15 and is available on the Internet off the Chi Phi web page at <<http://web.mit.edu/chiphi/www/>>.

Seale has also been recognized in Alpha Phi Omega's Big Screw competition which will be held April 3 through April 7 in Lobby

10. The winner of the contest is the contestant who has received the most donations. If Associate Dean Neal Dorow wins the contest, his earnings will be donated to cover the medical expenses incurred during Josiah's recovery. Dorow serves as the adviser to fraternities, sororities, and independent living groups. Alumni of Chi Phi have also donated money to assist the Seale family with their expenses.

*I am trying as hard as I can to keep my finger on the pulse of MIT.*

—Dana Seale

MIT's Mocha Moves Dance Squad Presents

# HIP HOP FEST 2000

An evening of hip hop culture

Music By Native Sound

Performances By:

The Untouchables

Twin Poets

The Artists of Pro Ghetto Entertainment

The Havnotz

Dangerous Minds

And much more!!!

Friday April 14<sup>th</sup> 2000

MIT Johnson Athletic Center

Show 7-10 PM

After Party 10-1 AM

Damage: \$5.00

College ID Required

Sponsored By:

MIT Program in Women Studies

MIT Fund

Spice Fund

Office of Minority Education

Council for the Arts

Campus Committee on Race Relations

Tickets Onsale at The Source



This is a column where we address questions and topics of all kinds concerning sex and relationships. Dr. Do It and Ms. Emotion do not claim to be experts in the fields but have been "around the block" a few times and have seen their share of situations involving relationships and sex. The opinions of Dr. Do It and Ms. Emotion do not necessarily reflect the opinions of this publication.

**Dear Dr. Do It and Ms. Emotion:**

I'm really infatuated with Natalie Portman. Now that she's attending Harvard, I want to know what I can do to try to get closer to her. Do you have any suggestions?

- Overcome by "The Force"

**Dr. Do It:** Natalie Portman is attending Harvard. However, she currently has a boyfriend. So I'd say it's a safe bet that you should not try to do anything to get closer to her at the moment.

**Dear Dr. Do It and Ms. Emotion:**

My best friend and I are really close. I think I'm falling in love with her, what should I do?

- Getting too close?

**Ms. Emotion:** You should definitely be very careful with this situation. On one hand you have a really close friend whom you probably confide in heavily. On the other hand you have the possibility of taking your relationship to a different, more intimate level. There are definite risks here, which I'm sure you are aware of. Some people swear off dating their close friends because there is the possibility that the relationship might end badly and they will not only lose a relationship but a close friend as well.

This does not mean you should totally write it off. Your best friend may be having the same feelings for you. It might be a good idea you talk with her about the way you feel and see how she reacts. She should be able to handle it because she is your best friend. And based on your discussions, the two of you can determine whether it would be a good idea pursue it further. Just keep in mind there are certain risks and ramifications to consider.

**Dr. Do It:** Have you talked it over with her? This is a tough one for me to answer because I have seen really strong friendships blossom into very strong intimate relationships and some that have ended very badly, to the point the two people don't even speak to one another. Because of the serious risks involved you should do some very serious self-evaluation. Try to determine why you are beginning to feel this way and make sure that it is for the right reasons.

I think that some people have fallen in love with their best friends out of convenience or a misinterpretation of the type of closeness shared in a close friendship and they think it should be taken to a more intimate level. These relationships can definitely end badly. However, if you find that you are falling in love with this person truly for who she is and feel strongly enough about her, then you should feel confident enough to talk it over with her. I strongly suggest that you both weigh in the risks and make sure both of you are confident you are willing to take the next step.

If it turns out that the feelings are not mutual then I am sure that you can still be close friends although you may feel a little awkward for awhile. But this will pass in time and you will most likely find someone else and your friend will be there to support you.

If the feelings are mutual and you do decide to go to a more intimate level, then you will both have to rely on your openness with each other to communicate what each of you wants in the relationship and not try to step on each other's toes. Communication is the key to a strong relationship, whether it's a friendship or a more intimate one. So even if the two of you find at a later time that it's not working out, you can both hopefully remain close friends because of your openness with each other.

If you have any questions for Dr. Do It and Ms. Emotion or topics you would like them to discuss, please send e-mail to [advice@the-tech.mit.edu](mailto:advice@the-tech.mit.edu).

# Meet Your Class Council Candidates

## President, VP Hopefuls Share Their Ideas with The Tech

The Class Council Presidential and Vice Presidential Candidates were presented with the chance to submit information about their goals and experience to The Tech. These statements are not endorsements. For more information on Class Council candidates, see the Undergraduate Association Election web page at <http://web.mit.edu/ua/Committees/Elections/>.

### Class of 2001 • President

#### Anish Parikh

Bexley Hall

Senior Class President demands two major duties, whose importance outweighs the importance of all other Class Council duties combined: 1) using the Career Fair to generate a lot of money, and 2) spending the money to have a lot of fun. I was born to do this. The Career Fair is the biggest fundraiser our class does during its time at MIT. Its success depends on who is leading it; his or her drive and business skills will determine how much money the class gets. That leader must be someone with confidence, tact, and business smarts, who will not be intimidated by the big corporations. And once all this money is made, the class needs someone who knows how to spend it well.

Last year I was concert chair for Busta Rhymes, MIT's largest and most fun concert ever. It cost over \$60,000 and involved over 2,500 people from the MIT community. So I have some experience promoting large-scale events.

Those of you who know me, know my philosophies already: Money and fun. I spend most of my time trying to make money and have fun with it. And I can also be a responsible professional when I need to be. I feel I will serve our class well as president, bringing fun to everyone.



A vote for me will ensure that our senior year is the most exciting one yet!

#### Julia Parsons

Burton Conner

I have five terms of experience working with the Class council, having served as Junior Class Secretary, Sophomore Class Publicity Chair and on the Freshman Class fundraising committee. I have mastered the skill of working with other council members and the administration in order to organize many successful class events. Recent events include the third annual Thanksgiving event and the Finals Breakfast in the fall, 'Pack the Place' this Spring, and many other outings to clubs and shows in Boston.

I have also held leadership positions in many other organizations around campus. I feel that my experience is invaluable and essential to efficient networking with the administration and the general organization of events. I am dedicated to the class and enthusiastic to represent them to the MIT community.

One of the biggest events sponsored by the senior class each year is the Senior Career Fair. The funds raised by this event are used to subsidize the many large-scale events that benefit the senior class, such as boat cruises and the end of the year Senior Ball. We plan to continue the tradition of these events as well as repeat some of the more successful events organized by our class council in the past. In conjunction with the Career fair, we would like to organize a 'Career Month' (building off of the class of 2000's 'Career Week') during which resume, interviewing and networking workshops will be held. We also plan to continue promoting class spirit and unity by supporting class members' activities. A vote for me will ensure that our senior year is the most exciting one yet!

#### Erick Tseng

Next House

I am running with Vik Gottam for President and Vice President. We believe our combined leadership and experiences will enable us to bring you the most exciting and rewarding senior year.

My past leadership experiences include: the UA Student Committee on Educational Policy, the Committee on the Undergraduate Program, the MIT Speech Team (Founder and President), and the Sloan Undergraduate Management Association.

As President, I would pursue three integrated goals: class unity, an amazing career week, and tons of fun. I have already begun



As President, I would pursue three integrated goals: class unity, an amazing career week, and tons of fun.

plans for a Career Week that will host an unprecedented number of companies, which translates into lots of jobs for you and lots of money for the class. This income will help fund a multitude of events, and help unify our class with our own "Millennium Ball."

### Class of 2001 • Vice President

#### Vikram Gottam

Sigma Chi

I am running with Erick Tseng for Vice President and President, respectively. We believe that our combined leadership and experience will enable us to bring you the most exciting and rewarding senior year.

My past leadership experience include being the current Co-Chairman of the Sloan Undergraduate Management Association as well as being Vice President of Sigma Chi.

As a team, we are looking to pursue three goals: class unity, an amazing career week, and tons of fun. Erick and I have already begun plans for a Career Week that will host an unprecedented number of companies and lots of money for the class that we can spend on lots of fun events such as casino night at Foxwoods, pub nights, club nights, movie nights, ski trips, and a Senior Ball that you will never forget.



Erick Tseng and I believe that our combined leadership and experience will enable us to bring you the most exciting and rewarding senior year.

### Class of 2002 • President

#### Sudeb Dalai

Next House

I am currently 2002 Treasurer. I'm also chair of the 2002 Fundraising Committee; last term we coordinated a charity basketball tournament for the homeless, and this term we designed a fly class t-shirt coming next week. Moreover, I'm on the new UA Committee on Student/Faculty Relations and Advising. These experiences, along with working with MIT administrators through Leadershape and helping coordinate the Freshmen Leadership Program this summer, have given me focus, intensity, and vision with which I hope to involve all students in our class, promote enriching, diverse class events, and strengthen faculty/student relationships. I intend to create a Class Congress with FSILG and dorm reps so that our council hears students' voices. I hope to pursue stronger corporate relations to increase class resources and secure part internships for students. I will also unify the 2002 Community Service Committee with the Public Service Center to make sure that students have easier access to service. To achieve our class goals, we need the support of administrators that make things happen at MIT. I recently spoke with MIT's Vice President Kathryn Willmore, who said that we, the students, are the reason our administrators are here instead of that little place up the road. They respect us. Let's show them that we deserve their respect.

Thank you for allowing me to represent you this year. It absolutely rocked.

#### Teresa Ko

Next House

Experience: 2002 Class Secretary (2 years), 2002 Community Service Chair (2 years)

**Why she is running:** There are so many opportunities out there for our class. I want to make those possibilities a reality. My specific skills in organization and working with different people led me to run for the position of President.

**Goals as President:** I plan to increase the Class of 2002's unity through increasing our involvement in Community Service, and supporting athletic game attendance through after-game parties or half-time entertainment.

To understand the concerns and needs of the entire class, I plan to give Dorm/IFC representation on Council.

After being on class council for two years, I feel that I have a unique insight to how two different class councils have



Using focus, intensity, and vision, I hope to involve all students in our class, promote enriching, diverse class events, and strengthen faculty/student relationships.



After being on class council for two years, I feel that I have a unique insight to how two different class councils have worked. From this, I believe that I can bring the best out of each member of council.

<http://vote.mit.edu>

worked. From this, I believe that I can bring the best out of each member of council, so that we can all create the most amazing junior year possible.

**Class of 2002 • Vice President**

**Sonia Garg**

*Next House*

**Experience:** Co-Chair of UA Subcommittee on Advising and Faculty-Student Relations Member of Student Committee on Educational Policy (SCEP) (2 years) Member of CAC Program Board (2 years) Spring Weekend (2 years, currently the Spring Weekend Concert Chair,) 2002 Ring Committee

**Why she is running:** I would like to coordinate and combine the ideas and activities that exist throughout MIT. My involvement on campus gives me insight on the various branches of the community. I want to change the direction of our council and decrease apathy.

**Goals as Vice President:** As 2002 Vice President, I hope to represent our classmates, their opinions and ideas. I plan to assist and enhance both the social and academic roles of our council.

**Increase Class Unity, Participation, and Community Involvement:** Coordinate programs that attract and pertain to students from both sides of the river. Such activities would include: study breaks in the Johnson ice rink, 2002 Talent Show, New England class trips, and sports tournaments.

**Link the Class of 2002 to the administration and Institute wide issues:** My involvement with UA committees will allow me to voice the opinions and views of our class on issues pertinent to these groups. I will tackle faculty-student integration through forums, mixers, dinners in dormitories and FSILGs, and community service projects, such as Habitat for Humanity. I want to keep the class informed and influential, by enhancing the website, making the 2002 Newsletter more informative, and broadening the 2002 online voting system to include Institute wide issues.

**Why people should vote for you:** I am excited and enthusiastic about representing my fellow classmates. I have a lot of experience working on committees, with students, staff, faculty, and administration. I will provide new and innovative ideas to the class council and help our class influence the evolution of MIT.

**Rishi Kumar**

*Next House*

**Experience:** Vice President of International Student Association, Director of Finance of the Sloan Undergraduate Management Association and a member of the MIT IEEE Executive Committee

**Why he is running:** It is always a small group of people, some 20 to 30 percent of our thousand strong class, that run for elections, vote in them and attend class events. I want the class council to be more representative of the class and for more people to feel like they have a stake in it. I feel that I will introduce more diversity in the council, in thought and representation.

**Goals as Vice President:** I plan to implement programs to help the members of our class in their career development efforts and to find the crucial internship before senior year, hold large scale social events completely funded by companies to give our class a chance for social interaction and an opportunity to meet company representatives at the same time, reach out to various groups on campus and bring the class together through social events and forums for students to express their opinions, hold mixers or socials, which enable students to meet Professors of various fields and industries.

I believe that I can implement my goals with professionalism and class. While recognizing the accomplishments of the previous councils and learning from them, I will infuse fresh ideas to make our junior year better.

**Allison Neizmik**

*Alpha Chi Omega*

**Experience:** Serving as co-Social Chair this past year has been an incredible experience, and I'd love the opportunity to serve on Class Council for our Junior year.

**Goals as Vice President:** I will work to foster more coordination with other Class Councils and the Undergraduate Association. In the previous year, our class council has worked with the classes of 2001 and 2003 to plan joint events. Class councils are a part of the UA, and working with the entire UA is an excellent way to facilitate inter-class involvement. Through better involvement, I hope to see our class, and

indeed the whole MIT student body, unite to form a stronger voice, a stronger presence on the MIT campus.

**Better relations with faculty:** The Current 2002 Class Council recently put together a Faculty-Student luncheon for the purpose of sharing experiences and points of view between students and professors. Students and professors depend greatly on one another, and increasing cooperation can only serve to improve the quality of our days here at MIT.

**More opportunities for community service:** No one can ignore the 'bad press' our school has been getting lately from both local and national sources. Obviously, the best way to correct this is to create some good news. My experience as Social Chair with event planning crosses over to the realm of community service. With a base of over 1,000 MIT Juniors, class council can plan, and the Class of 2002 can execute, a highly successful community service program.

**Class of 2003 • President**

**Sina Kevin Nazemi**

*Chi Phi*

I am determined to make the class council more than just a social committee. If elected, I will implement a focused plan (available at <<http://manwiththeplan.mit.edu>>) that opens up direct dialogue between our class and the administration, better unifies the class, and provides members of the class access to and information about the class council.

My first task would be to ask President Charles M. Vest and other members of the administration to partake in a question and answer session with members of the class. My political experience both in high school and in the U.S. government have led me to believe that a leader is most successful if he or she first formulates a focused plan. That's why I put my plan on the web far before asking for people's votes.

**Class of 2003 • Vice President**

**Ankur Mehta**

Hey freshmen, can you believe that our first year at college is already almost over? I find it hard to believe myself. But, for the most part, we've survived, and now its time to start thinking about our future here at MIT. How do you want our next years to be? I'm sure that you don't want our class to simply drift aimlessly. We need to have a strong leader at our helm. That is what I, Ankur Mehta, aim to provide.

As the class of 2003 Vice President, I will provide dedicated service to our class, in an attempt to make ours the best possible. I care about our class, and will do whatever is within my power to improve it. I have shown that I can be there to get things done. Already, I am heavily involved in the future of our class, as a member of the Undergraduate Association Committee on Housing and Orientation as well as Dormcon. In addition, I am a manager in the joint Dormcon/IFC i-campus project. Not only has this provided me with a solid background in some of the more pressing issues for our class, but it also as demonstrated my ability to be our Vice President.

Now, the time has come for us to determine our future. By voting this week for our class officers, you can be instrumental in directing our class. I encourage you to analyze the candidates carefully, reading their statements and looking closely at their qualifications and attributes. Then, vote for the ones who you think can best wear the hat of our class officers. I hope you see that I am the one who can best carry out the duties of Vice President.

*The following candidates did not submit statements to The Tech:*

- James Anderson**  
*Delta Upsilon*  
Class of 2001 President
- Raul-David Poblano**  
*Beta Theta Pi*  
Class of 2001 Vice President
- Joanne Chang**  
*Next House*  
Class of 2003 President
- Ekta Desai**  
*Next House*  
Class of 2003 President
- Rashmi Melgiri**  
*Next House*  
Class of 2003 President
- Chirag Shah**  
*Kappa Sigma*  
Class of 2003 Vice President



**I will tackle faculty-student integration through forums, mixers, dinners in dormitories and FSILGs, and community service projects, such as Habitat for Humanity.**



**I plan to reach out to various groups on campus and bring the class together through social events and forums for students to express their opinions.**



**I hope to see our class, and indeed the whole MIT student body, unite to form a stronger voice and a stronger presence on the MIT campus**



**My first task would be to ask President Charles M. Vest and other members of the administration to partake in a question and answer session with members of the class.**



**How do you want our next years to be? I'm sure that you don't want our class to simply drift aimlessly. We need to have a strong leader at our helm. That is what I aim to provide.**

**This Week in MIT History**

**By Aaron D. Mihalik**  
*ASSOCIATE FEATURES EDITOR*

During the first week of April 1949, MIT brought together distinguished political leaders, educators and scientists to discuss the role of scientific discovery in shaping our civilization. These great minds spent three days appraising the state of the post-war world and discussing the role that MIT would play in the development of the world in the later half of the 20th century.

The two principal speakers were Winston Churchill, the prime minister of wartime Great Britain, and the newly elected U.S. president, Harry Truman. Truman, however, backed out at the last minute and was replaced with Harold Stassen, the president of the University of Pennsylvania and a former Republican politician.

In a formal letter, Truman stated that he could not attend because "the situation in the Congress is a delicate one and I have to be available every minute from morning until late at night to accomplish the program which I believe to be of vital importance to the country."

Truman's critics, however, had a significantly different reason for Truman's absence. A common opinion was that Truman was afraid of being upstaged by the colorful and eloquent Churchill.

Churchill never set foot on the MIT campus — no MIT buildings were large enough to hold the number of people that wanted admission to the service. Instead, the Boston Bruins rearranged their home-game schedule to allow MIT to make use of the Boston Garden. All 13,909 seats were filled and an overflow audience of 4,500 watched the speech on a 10 foot by 13 foot television screen on the MIT campus.

Churchill's address was covered extensively by American, British, French and Canadian broadcast networks. The address was the first national television hook-up to originate in Boston.

Since MIT does not bestow honorary degrees, the customary award is the appointment of honorary lecturer. The MIT Corporation appointed Churchill an honorary lecturer and noted him as a "warrior, statesman, student and maker of history." MIT has also given honorary lectureships to philanthropists Cecil Green, Eugene McDermott, and Carl Mueller. The only other such honor given by MIT was to Salman Rushdie, who was named Honorary Visiting Professor of the Humanities in 1993.

The three days were filled with six discussion panels of distinguished guests. The first day opened with an address on the "State of Science" by MIT president Karl T. Compton and was followed by Churchill's address "The Twentieth Century, Its Promise and Its Realization." Other programs included "Men Against Nature, the Problem of World Production," "Science, Materialism, and the Human Spirit," and "The State, Industry, and the University."

The convocation closed with the inauguration of James R. Killian, Jr., as the 10th president of MIT. In his address Killian focused on the "obligations and ideals of an institute of technology." Killian emphasized that MIT students should be educated not only in the sciences and technology, but also in a broad range of social sciences and humanities.

Killian also noted that universities should remain independent in their funding, research, and education. MIT was the nation's largest non-industrial defense contractor towards the end of World War II.

## the crass rat



## Xippo's Courseload

SOLAR C. OLUGEBEFOLA



reader's warning: the following drawn strip is only sometimes funny, thus the title...

O C C A S  
I O N A L  
C O M I C



### Fun with Clip Art

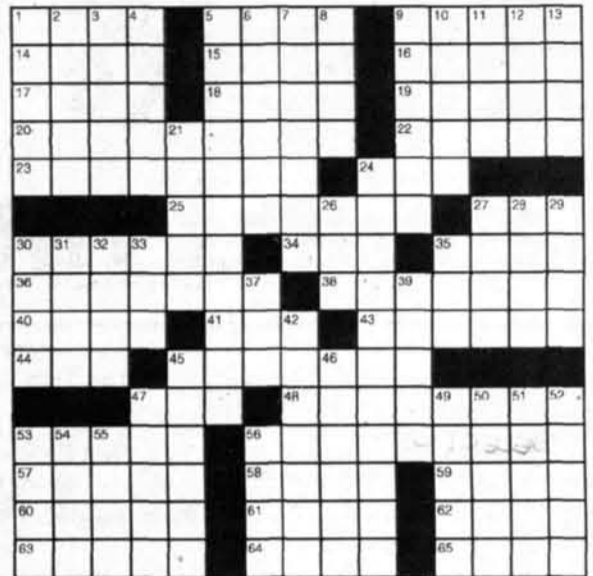
Aaron Isaksen



"Hey Jimmy, I'll give you five bucks if you hit Grandma in the back of the head with that apple."

## Crossword Puzzle

- ACROSS**
- 1 Desire
  - 5 Go by
  - 9 Selling feature
  - 14 Lotion ingredient, often
  - 15 Fancy cloth
  - 16 Pat or Daniel
  - 17 Blackthorn
  - 18 "Quando rapita in estasi," e.g.
  - 19 Polynesian island group
  - 20 Billy's gal?
  - 22 Salad green
  - 23 Roger Moore TV series
  - 24 Dads
  - 25 Members of a Jewish sect
  - 27 Bill
  - 30 Highest-ranking
  - 34 Bunco game
  - 35 Location
  - 36 Makeshift conveyance
  - 38 Surrendering by treaty
  - 40 Right-hand man
  - 41 Laser strike
  - 43 Stonecutters
  - 44 Actress Benaderet
  - 45 Copter port
  - 47 Dejected
  - 48 Protestant sect members
  - 53 Reiner and Jung
  - 56 Of the backbone
- DOWN**
- 1 "The Man Who ... There"
  - 2 Muezzin's God
  - 3 Nary a soul
  - 4 Adolescents
  - 5 Stole ideas
  - 6 Copland and Spelling
  - 7 Of the ischium
  - 8 Resting spot
  - 9 1980 FBI investigation
  - 10 Travels by glider
  - 11 A few
  - 12 Seth's son
  - 13 Herbal quafts
  - 21 Rube
  - 24 Sables' kin
  - 26 Medico
  - 27 Threesome
  - 28 Long period
  - 29 Prohibits
  - 30 Knife thrust
  - 31 Toledo's lake
  - 32 Nothing in Nogales
  - 33 ... been had!



© 1999 Tribune Media Services, Inc. All rights reserved. Solution on page 15

- 35 Mooncalf
- 37 Actor Mineo
- 39 Sexy lady of the Beatles
- 42 Like elevator music
- 45 Sticky situation
- 46 Knitted and ...
- 47 Fall as ice
- 49 Ski-slope transportation
- 50 Shakespearean sprite
- 51 Gymnast
- Comaneci
- 52 Casual coinages
- 53 Rocky outcrop
- 54 Top-drawer
- 55 Decor you can throw?
- 56 Depraved

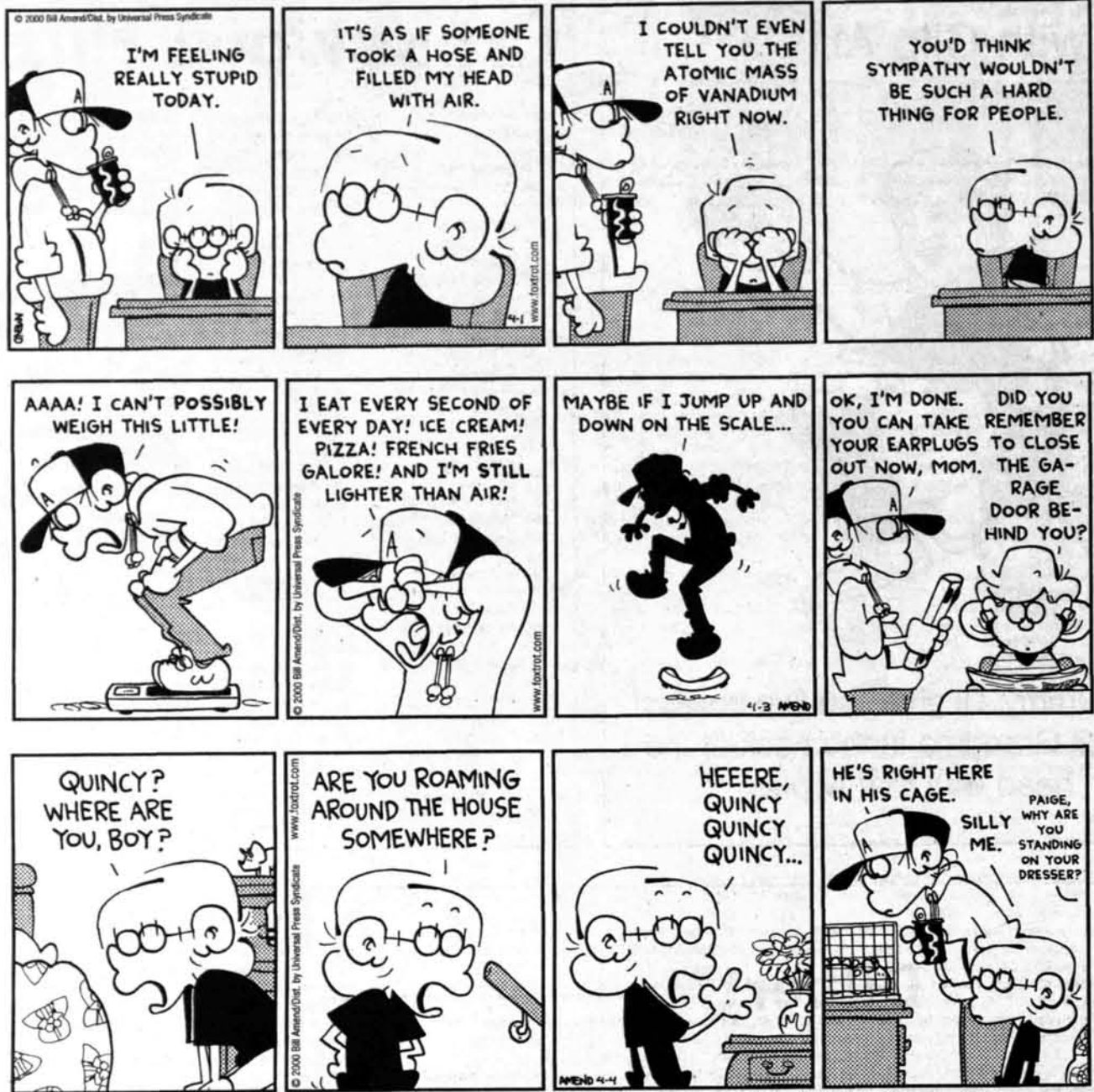
## Dilbert®

## by Scott Adams



by Bill Amend

FoxTrot



# GOTTA BUSINESS PLAN?

(or do you know someone who does?)

### HELP WANTED

UniversityAngels.com is seeking motivated people for on-campus representatives and full-time positions. Visit [UniversityAngels.com](http://UniversityAngels.com) for complete job descriptions and details.

### BUSINESS PLAN CONTEST

UniversityAngels.com presents the First Annual International \$50,000 Business Plan Contest. Visit [UniversityAngels.com](http://UniversityAngels.com) for details about the competition.

UniversityAngels.com™ is an on-line angel investor network bringing together investors and entrepreneurs from the country's top universities. Now it's easy to tap into your alumni community for capital, advice or whatever you need to get your new company off the ground.

REGISTRATION IS FAST, EASY AND CONFIDENTIAL

# University Angels.com

Angel Investing of the Highest Degree

# TechCalendar

Visit and add events to TechCalendar online at <http://tech-calendar.mit.edu>

TechCalendar appears in each issue of *The Tech* and features events for members of the MIT community. *The Tech* makes no guarantees as to the accuracy of this information, and *The Tech* shall not be held liable for any losses, including, but not limited to, damages resulting from attendance of an event. Contact information for all events is available from the TechCalendar web page.

## Tuesday's Events

7:30 p.m. - **Coming Out Support Group**, a friendly, supportive, confidential place to meet other people, to share experiences on the coming out process, and to learn about resources available to the MIT lgbt community. GaMIT (Walker, 3rd floor). Sponsor: GaMIT.

11:30 a.m. - **Responding to Technology-Created Market Niches: Do Industry-Specialized Assets Facilitate Entry?**, Professor Andrew King, Stern School, New York University. Sponsored by the International Center for Research on the Management of Technology (ICRMOT), Sloan School of Management. Bring your lunch; beverages and dessert will be provided. Open. More info: Call ICRMOT at 253-7991. Email [icrmot@mit.edu](mailto:icrmot@mit.edu). Web: <http://web.mit.edu/icrmot/www/>. Rm E56-270.

12:00 p.m. - **Wigner Phase Space Distributions: Watching Optical Ripples**, Adam Wax, MIT. Refreshments served following the seminar. Please see [web.mit.edu/spectroscopy/www](http://web.mit.edu/spectroscopy/www) for more detail. Open. More info: Call Alison Hearn at 253-4881. Email [hearn@mit.edu](mailto:hearn@mit.edu). Web: <http://web.mit.edu/spectroscopy/www/>. Rm 37-252.

12:00 p.m. - **Sports and Parents**, Art Taylor, Center for the Study of Sport in Society, Northeastern University. Open. More info: Call Family Resource Center at 253-1592. Email [frc@mit.edu](mailto:frc@mit.edu). Web: <http://web.mit.edu/personnel/www/frc/>. Rm 16-151.

2:30 p.m. - **Simulation of flows with free surfaces: Bubble dynamics, cavitation and splashing**, Dr. Stephane Zaleski, Université Pierre et Marie Curie (University of Paris VI). Refreshments will be served at 3:30 PM in Room 2-349. Open. More info: Call John Bush at 253-4387. Email [bush@math.mit.edu](mailto:bush@math.mit.edu). Rm 2-338.

4:00 p.m. - **Moment Problems and their applications in Probability Theory, Finance, Stochastic Networks ...**, Dmitris Bertsimas, MIT Sloan, OR & LIDS. A short reception will follow in the Osborne Room (35-338). Open. More info: Call soosan beheshti at 253-2832. Email [soosan@mit.edu](mailto:soosan@mit.edu). Rm 35-225.

4:00 p.m. - **Gigabit Ethernet over Unshielded Twisted Pair Cables**, Kamran Azadet, Bell Laboratories, Lucent Technologies. Refreshments in Room 34-101 at 3:30 p.m. Open. More info: Call Debroah Hodges-Pabon at 253-5264. Email [debb@mtl.mit.edu](mailto:debb@mtl.mit.edu). Web: <http://www.mtl.mit.edu/>. Rm 34-101.

4:00 p.m. - **Computational and Biological Studies of Mechanical Prophylaxis against Deep Vein Thrombosis**, Mr. Guohao Dai, Dept of Mechanical Engineering, MIT. Refreshments served. Open. More info: Call Donna Wilker at 253-2021. Email [dwilker@mit.edu](mailto:dwilker@mit.edu). Rm 5-234.

4:30 p.m. - **Microscale Silicon Heat Exchangers**, Mr. Shaun Sullivan, MIT-Mechanical Engineering Department. Refreshments served 4:15pm. Open. More info: Call Lori Martinez at 253-2481. Email [dragonl@mit.edu](mailto:dragonl@mit.edu). Rm 31-161.

4:30 p.m. - **What's New About the New Economic Geography?**, Professor Paul Krugman, MIT Dept of Economics. A session of the Inter-University Seminar on International Migration. Open. More info: Call Laurie Scheffler at 253-3121. Email [lauries@mit.edu](mailto:lauries@mit.edu). Rm E38-714.

6:30 p.m. - **Non Sequiturs, Diller & Scofidio, artists/architects, Princeton University, The Cooper Union**. Department of Architecture Lecture. Open. More info: Call Dept of Architecture at 253-7791. Rm 10-250.

7:00 p.m. - **The Tongues of Men**, George Steiner, author, "After Babel: Aspects of Language & Translation". Part of the 50th anniversary celebration of the School of Humanities, Arts. Sponsored by Dean's Office, School of Humanities and Social Science. Open. More info: Call Dora Kelle at 253-4771. Rm 4-237.

7:30 p.m. (1 hour) - **Finding Meaningful Work in the World**, Jill Soucy, Public Service Center. Snacks and refreshments will be served. Closed. More info: Call Van Chu at 258-0691. Email [deepblue@mit.edu](mailto:deepblue@mit.edu). Web: <http://web.mit.edu/arc/tnb/tuesdays.html>. Baker House, Dining Hall.

## Wednesday's Events

3:00 p.m. - **spouses&partners@mit weekly meeting**, Brazil: Group members will tell us about their country and traditions. Admission 0. W20-400. Sponsor: [spouses&partners@mit](mailto:spouses&partners@mit).

5:00 p.m. - **AMP (Advanced Music Performance) Student Recital**, Adeline Leong '00, piano. Beethoven's Piano Sonata No. 21 in C Major Op. 53, "Waldstein"; Chopin's Ballade No. 4 in F minor, Op. 52; Debussy's Estampes. Admission 0. Killian Hall. Sponsor: Office of the Arts.

5:00 - 7:00 p.m. - **Performance Lecture by Split Britches**, Split Britches' Peggy Shaw & Lois Weaver & Asian American performance artist Stacy Makishi, intersperse scenes from "Salad of the Bad Café" w/audience discussion/Q&A. Admission 0. Walker 201. Sponsor: Office of the Arts.

7:30 p.m. - **poetry@mit: Fanny Howe**. Sponsored by the Program in Writing and Humanistic Studies and Literature faculty. Admission 0. Rm 14E-304. Sponsor: Office of the Arts.

11:00 a.m. - **High Speed Transmission Systems and All-Optical Signal Processing**, Benny Mikkelsen, Lucent Technologies, Bell Laboratories. On March 1, on this Date only, Lecture will be held in 36-428 (RLE Conference Room). Open. More info: Call Erich Ippen at 253-8504. Email [ippen@mit.edu](mailto:ippen@mit.edu). Rm 34-Grier Room B, 34-401.

12:00 p.m. - **Expanding NATO: A Look Backward and A Look Forward**, Richard Kugler, Research Professor, National Defense University. Bag lunch; refreshments will be provided. Open. More info: Call Lynne Levine at 253-0133. Email [levine@mit.edu](mailto:levine@mit.edu). Web: <http://web.mit.edu/ssp/>. Rm E38-615.

3:00 p.m. - **tba, Professor Manuel Martinez-Sanchez, MIT, Department of Aeronautics & Astronautics**. 3:00 to

4:00pm: Lecture - open to all interested. 4:00 to 5:00pm: Discussion - open to registered students only. Location for Annual Public Lecture to be announced soon. Open. More info: Call Helen Halaris at 258-5546. Email [halaris@mit.edu](mailto:halaris@mit.edu). Web: <http://web.mit.edu/masgc/www/phasel.html>. Rm 37-212.

5:15 p.m. - **Maximum product of spacings method: a unified formulation with illustration of strong consistency**, Marjorie Hahn, Tufts University. Refreshments will be served at 4:45 PM in room 2-349. Open. More info: Call Dr. Marc Genton at 253-4390. Email [genton@math.mit.edu](mailto:genton@math.mit.edu). Rm 2-105.

## Thursday's Events

12:00 p.m. - **MIT Chapel Concert: La Fontegara**, Natalie Palme, recorders, viol, voice; Raymond Rosenstock, viol, recorders, voice; Brian Warnock, recorders, voice. Early music from Spain and Italy. Admission 0. MIT Chapel. Sponsor: Office of the Arts.

8:00 p.m. - **"Stranger than Paradise"**, Directed by Jim Jarmusch (1984). Center for Bilingual/Bicultural Studies/International Film Club "Where East Meets West" series. Refreshments provided. Admission 0. Rm 4-237. Sponsor: Office of the Arts.

9:00 p.m. - **MIT Songwriting Club presents an Open Mic Night**. Come perform or be entertained...in the company of Pre-Frosh during CPWI Event starts at 9pm in the 24-Hour Coffeehouse. Sign-ups begin at 8:30pm. Keyboard and accompanist will be available. 24-Hour Coffeehouse. Sponsor: Songwriting Club.

2:30 p.m. - **Clouds over tropical ocean: development & evaluation of a parameterization for use in climate models**, Sandrine Bony, MIT - NOTE TIME AND ROOM CHANGE !! Open. More info: Call Tieh Yong Koh at 8-6910. Email [yong@mit.edu](mailto:yong@mit.edu). Web: <http://www.paoc.mit.edu/MASseries.html>. Rm 54-1411.

4:00 p.m. - **Deliveries in an Inventory/Routing Problem Using Stochastic Dynamic Programming**, Professor Dick Larson, Director, Center for Advanced Educational Services, MIT. Refreshments to follow in Room E40-106. Open. More info: Call John Hollywood at 253-6185. Email [jshollyw@mit.edu](mailto:jshollyw@mit.edu). Web: <http://web.mit.edu/orc/www>. Rm E40-298.

6:00 p.m. - **authors@mit "Wild Minds / The Design of Animal Communication"**, Professor Marc D. Hauser, Dept. of Psychology, Harvard University. Open. More info: Call The MIT Press Bookstore at 253-5249. Email [books@mit.edu](mailto:books@mit.edu). Web: <http://mitpress.mit.edu/bookstore/events>. E15, Bartos Theater.

7:00 p.m. - **Careers in Venture Capital, Panel Discussion** Come here speakers from five of New England's premier Venture Capital firms speak about career opportunities in this explosive field. Entrepreneurs, come and make a pitch after the talk. Open. More info: Call Jefferson Parker at 253-5106. Email [jparker3@mit.edu](mailto:jparker3@mit.edu). Web: <http://grapes.mit.edu/sbc.html>. Rm 6-120.

## Friday's Events

5:00 p.m. - **AMP (Advanced Music Performance) Student Recital**, Ole Mattis Nielsen '00, flute; Yukiko Ueno, Jaemin Rhee, piano. Poulenc's Sonata for flute and piano; Brouwer's La region mas transparente; Ibert's Aria; Mozart's Quartet in D. Admission 0. Killian Hall. Sponsor: Office of the Arts.

7:00 p.m. - **Chasing Amy**. Romance through the eyes of director Kevin Smith. Holden (Ben Affleck), a comic book author, meets and falls in love with Alyssa (Joey Lauren Adams), a comic book artist who happens to be a lesbian. Admission 2.5. 26-100. Sponsor: LSC.

7:30 p.m. - **Sent Down Girl**. Asian Film Series: China A young teen girl is sent away to a remote corner of Tibet for manual labor in 1975. A year later, she agrees to go to even more remote spot. Admission 0. 10-250. Sponsor: LSC.

8:00 p.m. - **Dance Troupe Spring Concert**. Tickets: \$5/\$6 for students in advance/at the door; \$6/\$7 for non-students in advance/at the door. Admission 6.00. Kresge Little Theater. Sponsor: Office of the Arts.

8:00 p.m. - **MIT Jazz Combo & MIT Wind Ensemble Concert**. Fred Harris, music director. Admission 0. Killian Hall. Sponsor: Office of the Arts.

8:00 p.m. - **Princess Ida or The Castle Adamant**. MIT Gilbert & Sullivan Players production. \$9, \$7 MIT community/other students/children/seniors, \$3 Prefrosh w/Prefrosh ID. Admission 5.00. Sala de Puerto Rico. Sponsor: Office of the Arts.

10:00 p.m. - **Chasing Amy**. Romance through the eyes of director Kevin Smith. Holden (Ben Affleck), a comic book author, meets and falls in love with Alyssa (Joey Lauren Adams), a comic book artist who happens to be a lesbian. Admission 2.5. 26-100. Sponsor: LSC.s

12:00 p.m. - **Emotions and Learning: Innovative Model-based Reasoning Machines**, Dr. Barry Kort, Visiting Scientist, MIT. Room E15-054 at 12 noon. Open. More info: Call Rob Reilly - Affective Computing, Media Lab at 253-0611. Email [nerd@mit.edu](mailto:nerd@mit.edu). Web: [www.media.mit.edu/affect](http://www.media.mit.edu/affect). Media Lab, 054.

2:00 p.m. - **Nuclear Power in Asia**, Mr. Katsuya Tomono, Tokyo Electric Power Company (TEPCO). Open. More info: Call Michael Messina at 253-7407. Email [ned1@mit.edu](mailto:ned1@mit.edu). Rm 3-133.

4:00 p.m. - **Bulk Solids handling/granular flow**, Tony Royal, Jenike & Johanson, Inc. Refreshments at 3:30. Open. More info: Rm 1-350.

6:00 p.m. - **Artificial Intelligence and the Soul**, Professor Rosalind Picard, MIT Media Lab. Dinner and discussion afterwards. Open. More info: Call Donald Crankshaw at 253-4699. Email [mit-gcf-info@mit.edu](mailto:mit-gcf-info@mit.edu). Web: <http://web.mit.edu/mitgcf>. Student Center, 491.

## Undergraduate Teaching Fellows Wanted for...

# MISSION 2004: THE SEARCH FOR LIFE ON MARS

Do you enjoy helping incoming freshmen? Do you enjoy helping others learn? Do you love the material in your classes? Have you ever thought about teaching?

If the answers to these questions are 'Yes!', you should be interested in a new, project-based experiment in teaching and learning that will be offered next fall to 50 incoming students. Mission 2004 will give freshmen an opportunity to work as teams focused on different aspects of the large problem. By the end of the semester, all of the groups would be expected to integrate their work into a comprehensive mission plan posted on the web.

Upperclassmen can expect to develop strong interpersonal and team-building skills as you encourage your team of freshmen in those same dimensions. You will also teach and learn how to identify and address difficult problems in multiple contexts of science, engineering, and society.

We're looking for enthusiastic students in all disciplines to join us in this interactive way of teaching freshmen at MIT. For more details and applications, please visit <http://web.mit.edu/arc/mission2004/>.

## RESEARCH SUBJECT?

Have you been the subject in a medical research project? If so, we'd like to talk to you about your experiences for a potential news report. Please contact us at 617-787-7028.



JAMES CAMP—THE TECH

**SECRET AGENT MAN** — The MIT/Wellesley Toons hosted the New England regional for the National Championship of Collegiate *a cappella* Friday. As hosts, the Toons filled gaps between performances with skits and musical numbers.



PHYSICS DEPARTMENT



### FRESHMAN OPEN HOUSE

DATE: WEDNESDAY, APRIL 5, 2000  
 TIME: 3:00-4:30 PM  
 PLACE: PHYSICS COMMON ROOM, 4-339

#### DEMONSTRATIONS OF PHYSICS FACTS AND ILLUSIONS

- Optical Illusions
- Objects Rolling Uphill
- High Temperature Superconductivity
- Ball Bearings Floating in Space
- Monopole?

COME SEE DEMONSTRATIONS



MEET AND TALK WITH PHYSICS  
 FACULTY AND STUDENTS



# 2001

# 2002

# 2003

## Class — Council

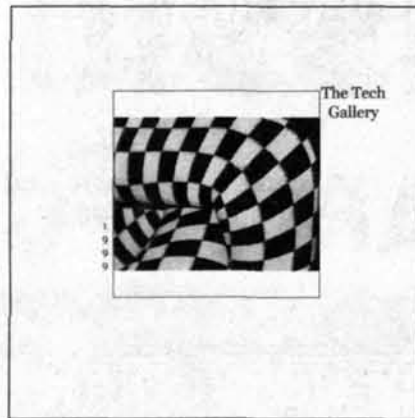
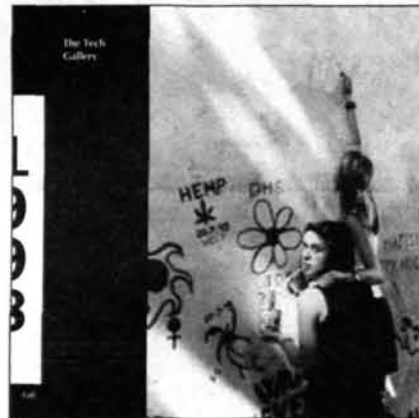
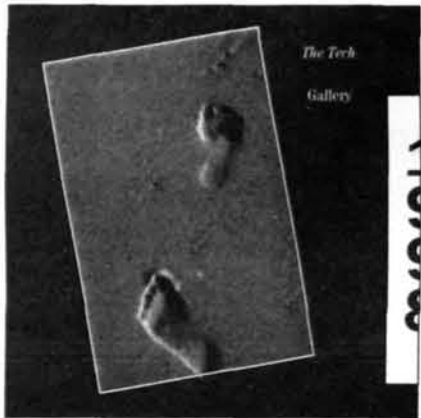
UA

⌘ Add UA  
 ⌘ Vote

Seniors can vote  
 for UA general  
 officers, too.

# The Tech Gallery

<http://www-tech.mit.edu/Gallery>



2000 Spring  
 Submission  
 Deadline:

April 19, 2000

## What Next?

Send your photographs to:

The Tech Gallery  
 Student Center  
 Room W20-483

Questions? E-mail: [gallery@the-tech.mit.edu](mailto:gallery@the-tech.mit.edu)

The Tech Gallery is produced in association with Technique 2000

# CPs, Institute Reach Contract Agreement

By Frank Dabek  
EDITOR IN CHIEF

The longstanding contract dispute between MIT and the Campus Police has finally been resolved.

The two sides, which have been in negotiations since 1997, have agreed to a new contract which addresses the main sticking points of the dispute: work schedules, forced overtime, and Suffolk County deputization.

David Achenbach, manager of labor relations for the Institute and MIT's chief negotiator, said that MIT is pleased with the agreement. Achenbach did not point to a single breakthrough which facilitated the new contract. Rather, the resolution of outstanding details delayed the final agreement.

"The outline of this plan was agreed on months, if not years, ago," Achenbach said.

Alan McDonald, negotiator for the Campus Police Association, pointed to the new work schedule as the final stumbling block to be overcome. CP officers agreed to work a slightly longer (8.5 hour) work day in return for a scheduling plan which gives them an extra 17 days of free time each year.

Quality of life and personal time issues were crucial to the Association, McDonald said. "We are satisfied that progress has been made" in those areas, McDonald said.

The new contract was accepted by an overwhelming majority of the union, according to CPA President Kevin Hayes. The agreement was formally signed on March 14.

### Pay raise, deputization part of deal

The new work schedule comes in concert with a new overtime agreement. The two parties agreed on an MIT-proposed program that would allow officers to work voluntary overtime and reduce the chances that they would be tapped for involuntary overtime work.

Under the old system, no correlation existed between voluntary and involuntary overtime. "That never made any sense," Achenbach said.

The new policy will be implemented as a sixth-month pilot program, but both sides are confident that it will be received warmly.

Campus Police have also won a wage increase that will be applied retroactively to pay dating from 1997. The wage agreement includes an increase in the compensation for EMT training, which the CPA had long demanded.

However, the new agreement failed to address educational benefits, which had previously been hotly contested by the Association.

With the new agreement, the Association has agreed to give up their opposition to being deputized in Suffolk County. This deputization is crucial to MIT's plans to expand CP coverage to Boston-based FSILGs, and MIT had previously accused the CPA of refusing deputization to gain leverage in the negotiations.

### Other legal issues still outstanding

In addition to agreeing to deputi-

zation, the Association agreed to withdraw several labor practice violation complaints. According to McDonald, complaints stemming from retroactive pay and the issue of Suffolk county deputization have been rendered moot by the agreement.

Several other complaints and cases in arbitration are still pending despite the new contract. This includes a complaints stemming from a change to the sick leave policy, a sex-discrimination charge, work rules complaints, and a charge that Association members were subjected to unfair surveillance while leafletting in support of their cause, McDonald said.

That leafletting, according to Achenbach, was unusual for Institute labor disputes but did not play a role in the negotiations. "There was never a groundswell of support" to make the publicity an issue at the bargaining table, Achenbach said.



JAMES CAMP—THE TECH

Over the weekend, work crews cut down a grove of pine trees near the old location of the food trucks, demolishing a favorite student lunch area. The trees were cleared to make room for the Stata Center's large outdoor courtyard, leaving some asking why MIT felt the need to demolish the current treescape to make room for another one.

Have you ever wondered how your mind works?  
How babies see the world, or how they learn to walk?  
Do you wonder why you remember some things and forget others?

□ How you see and why your eyes sometimes fool you?

Step into the world of your mind and the future . . .

Come to the Course 9  
Department of Brain and Cognitive Sciences'  
OPEN HOUSE

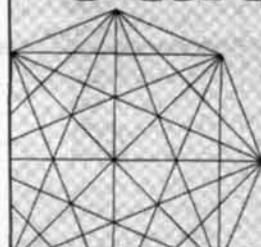
Thursday, April 6, 2000  
4 - 6 p.m.  
E25-117

Physics  
Sale  
2000



Save up to 65% on 235 select titles spanning the spectrum of physics!

Statistics  
Sale  
2000



Save up to 50% on over 120 select titles spanning the spectrum of statistics!

Springer  
www.springer-ny.com

Now Available at:



4 Cambridge Center  
(617) 494-5042  
<http://www.quantumbooks.com/>

Visit this participating store and take advantage of this incredible offer.  
Offer expires May 31, 2000.

### Solution To Crossword

from page 11

W	A	N	T	P	A	S	S	A	S	S	E	T
A	L	O	E	L	A	C	E	B	O	O	N	E
S	L	O	E	A	R	I	A	S	A	M	O	A
N	A	N	N	Y	G	O	A	T	C	R	E	S
T	H	E	S	A	I	N	T	P	A	S		
				H	A	S	I	D	I	M	T	A
S	E	N	I	O	R	C	O	N	A	R	E	A
T	R	A	V	O	I	S	C	E	S	S	I	O
A	I	D	E	Z	A	P	M	A	S	O	N	S
B	E	A	H	E	L	I	P	A	D			
	S	A	D	P	U	R	I	T	A	N	S	
C	A	R	L	S	V	E	R	T	E	B	R	A
R	O	U	E	S	I	D	L	E	A	I	D	A
A	N	G	E	L	L	I	E	N	R	E	I	N
G	E	S	T	E	E	N	D	S	S	L	A	G

Mmmm,  
Matza Ball  
Soup!



Passover  
is coming...  
Do you know  
where you  
will be eating?

All Passover Reservations are due by Thursday April 6  
Reserve today!

Passover Seders April 19 & 20  
Passover Dinners April 24-26

Contact MIT Hillel for information, 253-2982, Bldg W11 lower level

CLASSIFIED ADVERTISING

For Sale

**FOR SALE** Original Surrealist and existentialist oil paintings. Indian Globe Art Gallery (formerly a restaurant) 744 Mass. Ave. Cambridge (next to Middle East Restaurant). Hours are Wed. to Sun. 12:00-5:30 P.M. plus open house on Thursday from 5:30-9: P.M. Tel 617-441-5338

Help Wanted

**EGG DONORS NEEDED!!** Desperately wanted by infertile, hopeful parents. All races needed. Ages 21-30. Compensation \$5,000. Please call: OPTIONS National Fertility Registry at (800) 886-9373 or visit [www.fertilityoptions.com](http://www.fertilityoptions.com)

PART TIME COMPUTER TECHNICIAN

Baystate Financial Services has an immediate opening for a Computer Technician with a minimum of 2 years experience. Hardware and LAN knowledge is a must. The right applicants will also possess basic internet skills, software organizational skills and knowledge of Microsoft Applications. Baystate provides flexible business hours and competitive pay in a fast-paced friendly environment. This is a great opportunity for the right undergrad or graduate student. Please send resumes to: Baystate Financial Services Attn: Robert Goscinak, One Exeter Plaza, Suite 1400, Boston, MA 02116 Email: [bgoscinak@boston-bfs.nefn.com](mailto:bgoscinak@boston-bfs.nefn.com)

**Graduate and Professional Students** returning in Fall 2000 wanted! Earn money counseling students via the Internet. Work as many hours as you want. Approx. \$25 per hour. Contact [Ads1@Shmichael.com](mailto:Ads1@Shmichael.com)

**Make \$20** just to subscribe to a free ezine & \$5 for each referral. Remember to put [zlogvz](mailto:zlogvz@aol.com) as the referrer's ID and [just1pooki@aol.com](mailto:just1pooki@aol.com) as referrers email address <http://www.myemag.com>

**Graduate Students** Work with leading companies on lucrative short-term projects you can perform from home. Use the skills you already have. Research, Writing, Analysis, etc. Work as much/little as you like while making your own schedule and \$\$\$\$. Visit [www.flexmind.com](http://www.flexmind.com) to learn more. Get \$15 just to register, \$10 per qualified grad student you refer.

**\$\$ Great Opportunity \$\$** Marketing company seeks reliable and money motivated students for credit card promos on campus. Excellent Commission. Flexible Hours, 1-800-592-2121 ext. 300

Information

Make \$20 just to subscribe to a free ezine, \$5 for each referral. Remember to put [2loqz](mailto:2loqz@aol.com) as the referrer's ID and [JUST1POOKI@aol.com](mailto:JUST1POOKI@aol.com) as referrer's email address. Visit [www.myemag.com](http://www.myemag.com)

**NEED A PLACE TO STORE YOUR STUFF FOR THE SUMMER?** New Self-Storage Facility. Climate Controlled, Secure. Steps from the T. Brighton Self-Storage 617-739-4401, 1360 Commonwealth Ave., Brighton-[selfstorage@yahoo.com](mailto:selfstorage@yahoo.com)

**Modeling & Acting** Have you always dreamed of being a model or actor but don't know where or how to get started? New Faces MIETOUR is coming to your area soon. For more info call 1-877-MIE-TOUR.

**CAM-CENTRAL SQUARE:** LUXURY 3 AND 4 BED APTS. AVAILABLE 9/1. HIGH CEILINGS, D/D, CENTRAL HEAT/AIR, HUGE. CALL TIM @ (617)905-6428, R.E.

Travel

**BE FLEXIBLE...SAVE \$\$\$** Europe \$169 (o/w + taxes) CHEAP FARES WORLDWIDE!! Mexico/Caribbean \$199 (r/t + taxes) Call: 800-326-2009 [www.4cheapair.com](http://www.4cheapair.com)

RETIREMENT INSURANCE MUTUAL FUNDS TRUST SERVICES TUITION FINANCING

Why is TIAA-CREF the  
#1 choice nationwide?  
The TIAA-CREF  
Advantage.

Call us for  
a free  
information  
package

Year in and year out, employees at education and research institutions have turned to TIAA-CREF. And for good reasons:

- Easy diversification among a range of expertly managed funds
- Solid performance and exceptional personal service
- Strong commitment to low expenses
- Plus, a full range of flexible retirement income options

With an excellent record of accomplishment for more than 80 years, TIAA-CREF has helped professors and staff at over 9,000 campuses across the country invest for—and enjoy—successful retirements.

Choosing your retirement plan provider is simple. Go with the leader: TIAA-CREF.

THE TIAA-CREF ADVANTAGE
Proven Performance
Low Expenses
Highly Rated
Quality Service
Trusted Name



Ensuring the future  
for those who shape it.™

1 800 842-2776

[www.tiaa-cref.org](http://www.tiaa-cref.org)

Jennifer Berk '01  
Jason Wasfy '03  
Sanjay Rao '02  
Brian Pasquinelli '02

Peter Schulman '01  
Mendel Chuang '02  
Chris Smith '01  
Patrick Kane '03

\* According to DALBAR, Inc., a financial services research firm. In its most recent study, 1997 Defined Contribution Excellence Ratings, TIAA-CREF was voted number one in participant satisfaction. TIAA-CREF Individual and Institutional Services, Inc. distributes CREF certificates and interests in the TIAA Real Estate Account, Teachers Personal Investors Services, Inc. distributes the variable component of the personal annuities, mutual funds and tuition savings agreements. TIAA and TIAA-CREF Life Insurance Co. issue insurance and annuities. TIAA-CREF Trust Company, FSB provides trust services. Investment products are not FDIC insured, may lose value and are not bank guaranteed. For more complete information on our securities products, including charges and expenses, call 1 800 842-2776, ext. 5509, for the prospectuses. Read them carefully before you invest or send money. © 2000 TIAA-CREF 1/00.

# Tech Grad Schools Top U.S. News List

By Alda Luong

For the twelfth straight year, MIT's School of Engineering was ranked first in the *U.S. News and World Report's* annual graduate school rankings.

Many other programs also came out on top in the magazine's annual poll. Seven engineering departments along with the Departments of Mathematics and Electrical Engineering and Computer Science placed first. The Department of Economics tied for first with Harvard and Stanford Universities.

MIT's Sloan School of Management ranked a close fourth place, up one from last year. The top business school was Harvard University, followed by Stanford and the University of Pennsylvania.

Administrators were pleased with the results, and said the Institute should not soften its standards.

"We will live up to strong rankings by striving for excellence and never being complacent," President Charles M. Vest said.

"We do believe that the [Engineering] School is one of the best in the world, so we do expect to do well in these polls," said Thomas Magnanti, Dean of Engineering. "On the other hand, we shouldn't be complacent."

With a perfect score of 100, MIT's Engineering School topped those of Stanford University and the University of California at Berkeley, which were ranked second and third, respectively. Stanford had an overall score of 90 and U.C. Berkeley scored 87.

The rankings are based on thousands of surveys sent out by *U.S. News* in the fall of 1999. Schools are scored in many categories in the disciplines of business, education, engineering, law, and medicine. Criteria included entering students' test scores, the student/faculty ratio, reputation ratings from academic and nonacademic individuals, and "educational excellence," which draws on factors such as research expenditure.

### Poll's worth questioned

Even though administrators were

pleased with MIT's high scores, they admit the poll, which ranks schools based on a few sets of numbers, are not the only measure of success.

The rankings "reasonably identify clusters of strong institutions, but the hair splitting of rank ordering them is not very meaningful," Vest said.

"These surveys aren't perfect," Magnanti said. "They at least provide us a perception of how well we are doing at least on the outside."

Another concern is how much stock students and schools place on the much-anticipated results.

"Many constituencies, including prospective students, pay more attention to rankings than I would like," Vest said. "Thus it is helpful when we are highly ranked, but it should never drive our decisions."

### Many departments ranked high

The seven top ranked engineering departments were: Aeronautics and Astronautics, Chemical Engineering, Materials Science and Engineering, Mechanical Engineering, and Nuclear Engineering.

The Departments of Chemistry and Earth, Atmospheric and Planetary Sciences placed second. The departments of Biology and Physics were ranked third.

The rankings also rated specialty programs within each school. In Economics specialties, MIT was ranked first in Industrial Organization and in International Economics and second in Microeconomics.

In the specialties within the School of Management, MIT placed first in Management Information Systems, Production/Operations Management, and Quantitative Analysis.

Also, in the science specialty category, MIT ranked first in Inorganic Chemistry, Computer Science Hardware, Computer Science Artificial Intelligence, Geological Tectonics, Atomic/Molecular Physics, and Nuclear Physics; second in Biochemistry; fifth in Neurosciences; sixth in Genetics; and seventh in Cell Biology/ Developmental.

# TUFTS Summer

May 24 - June 30 • July 5 - August 11

**Visiting students welcome!**

Six-week day and evening classes are available on two campuses:

**Boston • Medford**



**Discover the best value in Boston!**  
\$1,185 for most courses. Credit can be transferred—most courses are equivalent to four semester hours.

**Both campuses are easy to get to,** and offer convenient access.

**Benefit from a summer course.** Lighten your fall course load, concentrate on a difficult course or make up credit.

**For a catalog, call (617) 627-3454,**

or e-mail: [summer@infonet.tufts.edu](mailto:summer@infonet.tufts.edu)

Our catalog is also on the web:

[www.ase.tufts.edu/summer](http://www.ase.tufts.edu/summer)

or mail the coupon below.

Please send a **Tufts Summer Session** catalog to:

Name \_\_\_\_\_

Address \_\_\_\_\_

City \_\_\_\_\_ State \_\_\_\_\_ Zip \_\_\_\_\_

**Mail to:**

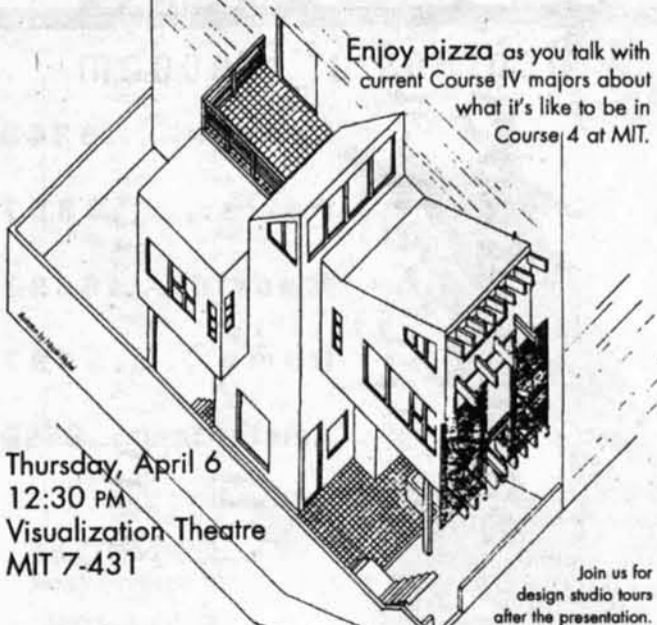
Tufts Summer Session  
108 Packard Avenue  
Medford, MA 02155



## The Department of Architecture Freshman Open House

Presentation by Bill Hubbard, Jr.

architect and instructor of Intro to Architectural Design I



Thursday, April 6  
12:30 PM  
Visualization Theatre  
MIT 7-431

For more information call the MIT Department of Architecture, 253-7387, or send e-mail to [yammie@mit.edu](mailto:yammie@mit.edu).

## Worldco LLC IVY LEAGUE AND TOP SCHOOL GRADS Wanted for position of Equity Trader

Worldco LLC, an established "self clearing" trading firm, seeks bright determined individuals with the drive and commitment to become successful traders.

For those with 3.6+ GPA's, a chance to trade with firm's capital, with no capital contribution of your own.

Experienced risk management and lecture program give you support and instruction. Sponsorship for Series 7, 55 and 24 exams. Join other Ivy-League and top school alum in a thriving trading environment.

Fax resume and cover letter 212-601-7010.  
ATTN: Robert Holmes e-mail resume and letter  
[rholmes@wldc.com](mailto:rholmes@wldc.com)

# Log On. Cash In. At campus.HotDispatch.com.

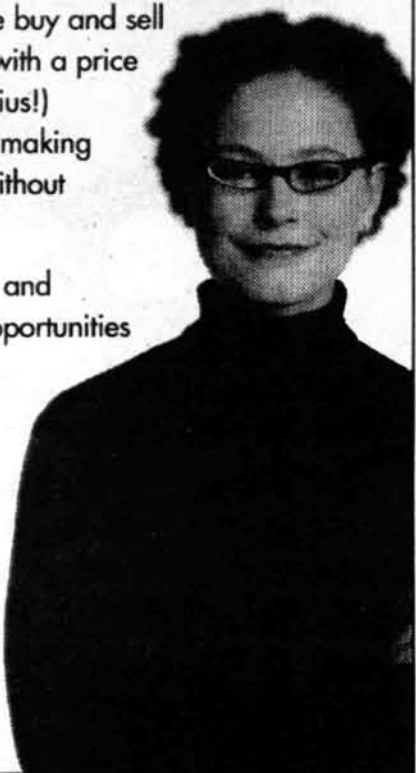
Is your brain full of HTML, Java, or C/C++? Is "Linux" your middle name? campus.HotDispatch.com can turn that knowledge into cash!

HotDispatch is the online marketplace where people buy and sell technical expertise. Requesters post their questions with a price they'll pay for an answer. Providers (that's you, genius!) respond online with answers, and *ka-ching!* you're making money. From your dorm room. When you want. Without commitment. For free.

Transacting services online is the wave of the future and HotDispatch gets you in on the ground floor. The opportunities are limitless. Want to ask a question? Use our \$25 spending credit. Want a class notes exchange? You got it! And did we mention we're hiring?

Join the HotDispatch revolution! Register by 3/31/00 and you'll be automatically entered into the \$75,000 HotDispatch Sweepstakes!

(See [campus.hotdispatch.com](http://campus.hotdispatch.com) for details.)



# HotDispatch

## The I. Austin Kelly III Prizes 1999-2000

*for Excellence in Humanistic Scholarship by  
MIT Undergraduates*

Two prizes of \$626 each for scholarly or critical essays judged to be outstanding in any of the following fields or in an interdisciplinary combination of them:

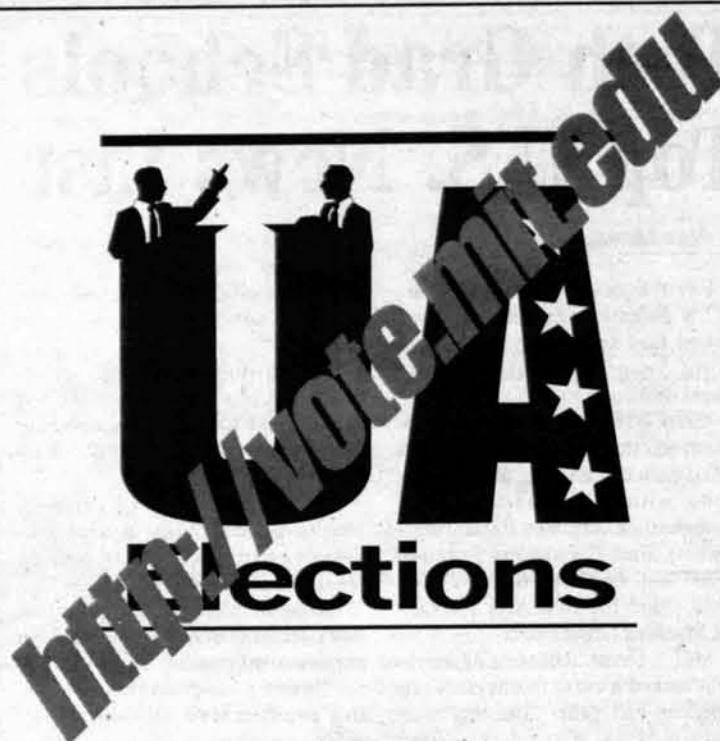
- Anthropology
- Archaeology
- Comparative Media Studies
- Economics
- History
- History of Science & Technology
- Linguistics
- Literature
- Music
- Philosophy
- Politics
- Theater
- Visual Arts
- Women's Studies

Rules and Guidelines are available from the Music and Theater Arts Office, 14N-207

or on the Web at

<http://web.mit.edu/mta/www/music/kellyprize.htm>

**Deadline for submission is April 12, 2000**



**Are you low weight?  
Having irregular or absent periods?**

**WOMEN AGES 18-45  
YOU COULD BE AT RISK FOR BONE LOSS**

- \* Receive a free bone density test \*
- \* 9 month research study of bone loss treatment \*
- \* Study stipend of up to \$500 \*



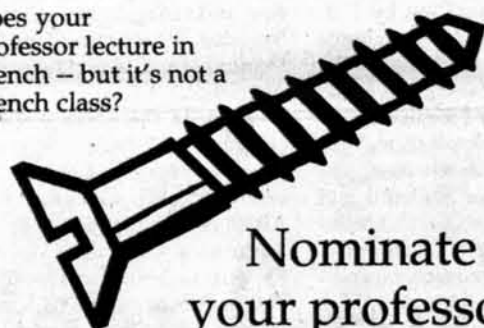
Call Lisa Thomas, NP  
at 617-724-7393  
for more information



## Screw for charity...

Got an impossibly  
large final project?

Does your  
professor lecture in  
French - but it's not a  
French class?



Nominate  
your professor,  
then vote for  
**Big Screw!**

Lobby 10, April 3rd - 7th  
All proceeds go to charity.  
Sponsored by APO.

Send questions and  
nominations to  
[big-screw@mit.edu](mailto:big-screw@mit.edu)

## STUDENT TRAVEL

Degrees of Freedom



- London.....\$348
- Paris.....\$397
- Madrid.....\$497
- Rome.....\$497
- Amsterdam.....\$459

All fares are roundtrip. Tax not included.  
Some restrictions apply.

**266-6014**  
297 Newbury Street

**576-4623**  
65 Mt. Auburn St.  
Harvard Square

**STA TRAVEL**

WE'VE BEEN THERE.

[www.statravel.com](http://www.statravel.com)

## Summer Jobs

Interested in Computer Graphics and Special Effects? Our company has two positions for summer interns who want to work on video and graphics software. As an intern, you'll be working on developing components for current products in collaboration with an MIT alum. Some programming experience is required. Experience with image processing, video, and 3D graphics is a plus. A desire to learn is a must. If you are interested, send your resume and a cover letter to [jobs@borisfx.com](mailto:jobs@borisfx.com). At our company you'll find cool people, interesting work, and free soft-drinks. We're located on Congress St., a 10 minute walk from the South Station T-stop.

[www.borisfx.com](http://www.borisfx.com) - 381 Congress St. - (617)451-9900

### MIT Campus Police Association Labor Relations Update To The MIT Campus Community: Volume VIII March 2000

The MIT Campus Police Association is pleased to announce that its long-standing contract dispute with MIT has been favorably resolved. After two years of negotiations, a tentative agreement was reached on February 24, 2000, and was ratified by the Association's membership at a special meeting held on February 29, 2000. A Memorandum of Agreement was formally signed on March 14, 2000 memorializing all terms of agreement.

A central goal of the Association during the negotiations was to achieve more time off for officers to spend with their families and other loved ones. The centerpiece of the Agreement was a change in the work schedule under which officers will work a one-half hour longer work day in exchange for 16 additional days off during the work year. These extra days off will prove invaluable to officers in fulfilling their parenting and other personal responsibilities. At the same time, the MIT campus community will benefit from the longer work day, which allows for greater police coverage, particularly during the overlap period between shifts.

Although providing salary increases retroactive to July of 1997, the new Agreement extends forward through June of 2003. In addition to the change in work schedule and salary increases, the Agreement also provides enhanced job bidding rights, greater availability of compensatory time and personal time, protection from being called in to work on days off, and a limit on the length of overtime assignments, all of which were important parts of the Association's quality of life bargaining agenda.

The Association would like to publicly acknowledge the wonderful support it received from the students, faculty, and other employees of MIT during the last two years. Your words and actions in support of our cause contributed directly to the successful outcome achieved. We will continue to work hard to maintain a peaceful, safe, and orderly campus environment so that you may enjoy your time here.

THANK YOU!

## STUDENTS



Lori at MIT in 1988.

### Lori Berenson (MIT '91) needs *your* help.

Lori studied music and anthropology at MIT before going to Latin America as a journalist concerned about the welfare of the poor people there. She was in Peru in 1996, when she was arrested, charged with treason against the Fatherland, tried in front of a military tribunal, and convicted to a life sentence in a maximum security prison. She has already spent the past four years of her young life in isolation, the time it would take you to get your degree from MIT. Her health is fading.

*What would you want your classmates to do if you were in her position?*

#### What you can do:

- Learn more about the case at [www.freelori.org](http://www.freelori.org) from the perspectives of her parents, journalists, and even the Peruvian government.
- Support Lori and her family by coming out to hear her parents' talk next **Monday, April 10 at 7 pm in room 10-250.**
- Educate your friends about Lori and encourage them to support her immediate release from her unjust life sentence in Peru.

# Your 2 cents today



# can change tomorrow

Help plan the future MIT student computing environment.  
Tell us how you are using computers now.

**Survey at: <http://web.mit.edu/acs/survey.html>**

MIT Academic Computing ([support-acs@mit.edu](mailto:support-acs@mit.edu))

Attention Student Coop Members

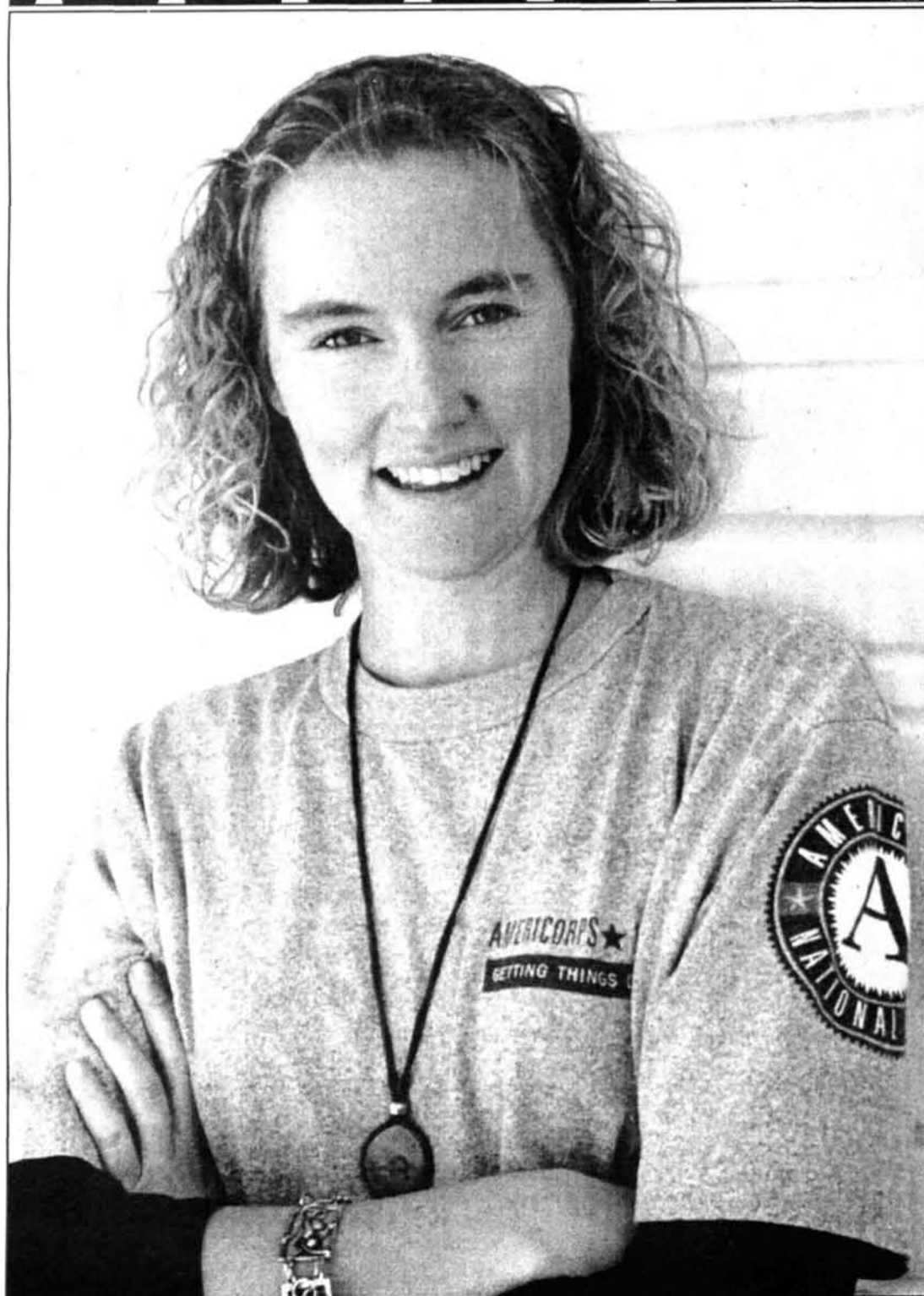
**Vote NOW!**

**Coop Student Board of Directors Election**

Vote online at [www.thecoop.com](http://www.thecoop.com) or pick up a ballot at any Coop store.



*Voting Deadline is April 7th, 2000*



**"I've never felt so strong and capable."**

Helping others was a family tradition for Amy Zaleska, of Massachusetts. So after getting her master's degree, she signed up for a year of service with AmeriCorps. She moved across the country to coordinate a hunger program in California, where she developed new skills and decided to pursue a career in nonprofit management. "My project affected so many people," Amy says. "Now I know that one person really can make a difference."

**AmeriCorps at M.I.T.**

**April 6th**

**5:00 pm**

**Room 4-163**

Join Car Talks Ray Magliozzi (M.I.T. '72, VISTA '70), and Reps from AmeriCorps & Peace Corps for a discussion about community service.

For more information call: (617) 565-7005 or  
E-mail: [dhealy@cns.gov](mailto:dhealy@cns.gov)

**AmeriCorps\*VISTA:**  
**Are you up to the challenge?**

1-800-942-2677 [www.americorps.org/joining](http://www.americorps.org/joining)

# Smith Could Impact Contested Election

Elections, from Page 1

of Scott's decision. "Under the circumstances, I think she did the right thing," said UAP candidate Peter A. Shulman '01.

UAP candidate Christopher D. Smith '01 was more critical of Scott's decision. Smith said that he might not have made the same decision if here were in Scott's position, "but I'm not going to contest it."

All candidates expressed disappointment at the possibility of tampering.

Berk called the events leading up to the restriction "really sad ... I was hoping for a clean election, especially because of the fiasco at Harvard this year." Harvard's newly elected student president was nearly impeached over alleged campaign finance violations earlier this year.

UAP candidate Sanjay K. Rao '02 lamented the loss of posting rights. "It's too bad because I wanted to see a huge voter turnout this year," Rao said. He thought that turnout would decrease without posters on campus

### Candidates look for alternatives

Without posters on much of campus, candidates now must turn to new means of campaigning.

Rao's running mate, Brian A. Pasquinelli '02, said that their campaign will now increase posting in dormitories and FSILGs, which is still permissible under election commission regulations.

Shulman's running mate, Mendel Chuang '02, said that the ticket "plans to use other means of publicity, including flyers."

Shulman added that their cam-

paign will continue "relying on word-of-mouth."

The UA is planning to assist candidates in campaign promotion. In addition to placing non-partisan posters throughout main campus encouraging undergraduates to vote, Election Commission member Sarah L. McDougal '00 said that the UA is also considering sponsoring another candidate debate and placing campaign posters in display cases to prevent further tampering.

### Smith's JudBoard role questioned

Allegations of tampering have raised concerns that the election may be contested. If so, jurisdiction over the election could go to the UA Judicial Board, chaired by UAP candidate Smith.

Early in the campaign, Smith addressed a letter to the UA Council in which he guaranteed to recuse himself in the event that an election conflict came to the Board, with his input going into the selection of a substitute chairman. Smith declined to step down from the Board or to take a leave of absence during the election.

Rao criticized Smith's decision, arguing that candidates should not preside over the election process. Wasfy expressed concern that Smith would be able to "hand-pick" his substitute chairman.

Smith defended his decision, saying, "I would feel ... derelict of duty if I were to drop [the Board] just because of an election."

Scott supported Smith, saying that he would maintain the election's integrity.

"He's not going to affect the process in his favor," Scott added.



JAMES CAMP—THE TECH

Christopher Smith '01 and Patrick Kane '03 seem to have missed the trash can with one of their signs — an election commission mandate requires that UA Presidential candidates remove their signs from main campus.

Electronic Voting goes until midnight April 6th.



Friday, April 7: Paper balloting in Lobby 7 starts at 9am and ends at 7pm

## THE LALLY SCHOOL



AT RENSSELAER

Management and technology.

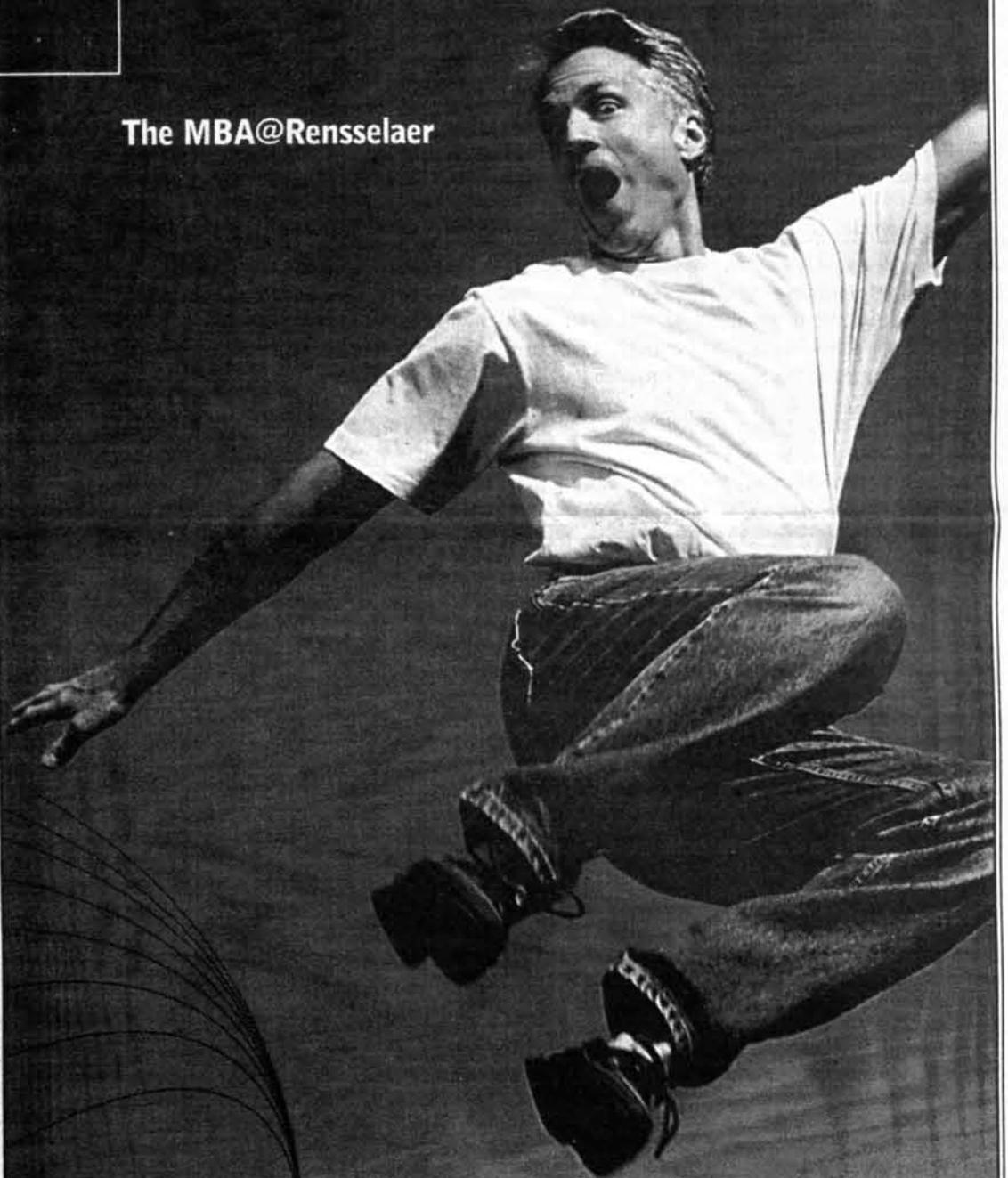
Application and innovation.

# GET THE JUMP

## On The New Economy

The Lally School at Rensselaer.  
Business savvy for a world gone digital.

The MBA@Rensselaer



why not change the world?™



# Rensselaer

<http://lallyschool.rpi.edu> 518.276.6586

\*\*\*\*\*

★ **CAMBRIDGE** ★  
★ **Psychic Studio** ★



★ **PALM, CARD** ★  
★ **and CRYSTAL READINGS** ★

Do you have any questions regarding Love, Life, Business or Health? Dream Interpretation? We have the answers ... The answers that could change your life!

275 Western Avenue • Cambridge • MA  
(Just 4 blocks from Central Square)

**(617) 492-7168**



★ **1/2 OFF** ★  
★ **WITH COUPON** ★

\*\*\*\*\*

Academic couple seeks:

EGG DONOR 21-28

for East Coast clinic. Compensation apprx \$20,000. Strong academics, 5'6" or taller, lean build. Please describe motivation along with several [returnable] photos to: POB 425545, Cambridge, MA 02142.

All serious replies answered.

amazon.com

## You can make history here.

Creating something special isn't easy. Fortunately, there are plenty of rewards along the way—from stock options to the satisfaction of making over 17 million customers very happy.

If you're an Undergraduate Senior who's not afraid of hard work and monumental challenges, you owe it to yourself to explore these opportunities at Amazon.com.



### Merchandising Marketing

The ideal candidate has a lot to offer! You will be highly analytical, detail-oriented, customer-focused, and have an extremely strong work ethic. You will also be flexible, action-oriented, and comfortable using computer databases and tools. You will be a great communicator, have a demonstrated ability to manage projects, and know how to get the right 'stuff' done! A degree concentration and experience in consumer marketing, merchandising or e-retailing is a plus. A BA/BS is required. A GPA of 3.3 and above is preferred.

We offer a competitive financial package, including stock options. To be considered, send your resume in the body of an email (text only, no attachments) to: campus@amazon.com. Please clearly indicate your school in the header of your e-mail.

amazon.com.

Work hard. Have fun. Make history.

Amazon.com is an Equal Opportunity Employer.



OMNIPOD™

Soon.

## POLICE LOG

The following incidents were reported to the MIT Campus Police between March 11 - 29, 2000. This summary contains most incidents reported to Campus Police but does not include incidents such as: medical shuttles, ambulance transfers, false alarms, general service calls, etc.

**March 11:** Boston, Chi Phi, noise complaint; Cambridge, No. 6 club, attempted break into house; Bldg. 2 & 4, malicious damage; Mass. Ave. and Lansdown St., homeless person taken to shelter; Student Center, report of suspicious person; Bldg. 11, suspicious person, issued trespass warning.

**March 12:** Bldg. 3, backpack stolen, unknown value; Bldg. 26, water cooler, computer and cassette recorder stolen \$1,770; Bldg. W61, suspicious activity; DuPont Gym, male arrested for trespassing; Bldg. 16, report of suspicious persons; Bldg. 16, report of homeless person, same checked out okay; MacGregor, suspicious persons; Bldg. NW10, report of suspicious person.

**March 13:** Bldg. 9, case of coffee stolen \$90; Westgate Lot, Honda, damaged sunroof and ignition; Bldg. 3, wallet and contents stolen \$450; Bldg. 68, .22 caliber bullet found; Amherst St., hit and run damage to vehicle; East Campus, student problem; Student Center, two juveniles arrested for larceny; Phanth Onshee arrested for trespass and two outstanding warrants; Memorial Dr. and Mass. Ave. vehicle vs. bicyclist accident; Bldg. 68, credit cards and cash stolen \$180.

**March 14:** Student Center, 1) bike stolen \$400; 2) furniture stolen \$11,047; Bldg. 1, suspicious person; Killian Court, Eric Gay arrested for trespassing; Bexley, delivery package stolen \$30; Bldg. NE43, suspicious mail; Bldg. 56, shelving stolen, unknown value; Bldg. E19, suspicious person; Boston, Sigma Alpha Epsilon, window broken; NW30, check and inquiry.

**March 15:** Baker, 1) suspicious person, trespass warning issued; 2) cell phone and credit cards stolen \$302; 3) suspicious person, checked out okay; Bldg. E19, employee problem; Bldg. 16, suspicious activity; Windsor Lot, check and inquiry of vehicle operator; DuPont, 1) larceny of wallet, complainant left area; 2) Gary Bonner taken into custody on an outstanding warrant; Amherst St. operator of vehicle operating recklessly.

**March 16:** Bldg. N42, past report of a suspicious person; East Lot, minor motor vehicle accident; Student Center turn around, hit and run damage to vehicle; Bldg. E18, larceny of construction supplies; Bldg. 7, suspicious activity; Bldg. 13, report of skate boarders; Westgate, suspicious activity.

**March 17:** Bldg. 8, computer and microwave oven stolen \$4,100; 77 Mass. Ave. assist Cambridge Police, car vs. tractor trailer truck; Bldg. NW22, assisted homeless person to shelter; Bldg. 13, attempted larceny of bike; Baker, student problem.

**March 18:** Bldg. 18, suspicious person; McCormick, suspicious person, checks out okay; Bldg. 26, homeless person.

**March 19:** Assist State Police with vehicle accident; Bldg. NW61, smell of fumes from paint stripping.

**March 20:** Bldg. E32, harassing e-mail; Bldg. E18, animal complaint; Bldg. 56, past assault; Main St. assist Cambridge Police with stolen car; Bldg. NE20, camera stolen \$100; Amherst St. and Hayward, assist homeless person.

**March 21:** NW17, fire in high voltage control panel.

**March 22:** Briggs Field, trailer stolen \$1,500; Bldg. E52, palm top computer stolen \$300; DuPont Gym, wallet stolen \$40 cash; West garage annex lot, '97 Dodge stolen, later recovered in Somerville; Bldg. E23, homeless person transported to shelter; Student Ctr. check and inquiry, trespass warning issued; Bldg. N52, report of suspicious person, checks out okay; Bldg. 68, complaint of skate boarders.

**March 23:** Bldg.'s. E52 plaza and 68, complaint of skate boarders; Bldg. N52, suspicious person, checks out okay.

**March 24:** Bldg. 50, suspicious person, gone upon MIT PD arrival; Bldg. NW21, suspicious person; DuPont, student problem; Pacific Lot, check and inquiry; Bldg. 7, two males arrested for trespassing and other related charges; Cambridge, Phi Beta Epsilon, sudden death.

**March 25:** Student Center, homeless people; Bldg. NW61, homeless person.

**March 26:** East Parking lot, check and inquiry; rear of W89, male taken into custody on an outstanding warrant; DuPont, report of unauthorized persons in area; Baker, employee problem; Pacific Lot, two vehicles broken into, unknown if anything missing.

**March 27:** Audrey St., vehicle broken into and 4 cartons of T-shirts stolen \$1,500; Mass. Ave., check and inquiry of vehicle; Bldg. NE20, harassment; Bldg. 6, bike tire stolen \$150; DuPont, suspicious persons involved in an argument; Student Center, Phanth Onshee arrested for trespassing; Bldg. 7, suspicious person.

**March 28:** Bexley, suspicious person; Memorial Dr., notify State Police, report of suspicious person hiding behind cars, individual stole two car tires and fled, Memorial Dr., vehicle vandalized; MacGregor, obscene phone call; Baker, report of suspicious person.

**March 29:** Notified State Police of vehicle operating erratically on Memorial Dr.; Bldg. 10, suspicious person; Bldg. 17a, working fire on second floor; Ashdown, suspicious phone calls; Student Center, credit card stolen and used for several purchases.

### WHAT IS A HEDGE FUND?

And why do CS grads and programmers make great traders?!

Come and speak with Mitchell L. Dong, President of Chronos Asset Management, Inc. about employment opportunities in HEDGE FUND TRADING

On Campus Interviews Tuesday, April 4<sup>th</sup>.

Sign up on InterviewTrak or call our offices for an interview.

Contact: Amanda Powers, Chronos Asset Management, Inc. 85 Hamilton Street, Cambridge, MA 02139 Phone 617-876-7500 or Email apowers@usdx.com

# Meeting Yields New JudCom Agreement

Licensing, from Page 1

ings," Spieler said. Previously, the IFC attended hearings to present any action they had already taken.

Brosnan said that the agreement tentative, but called the development "a huge step of empowerment for our community."

The IFC hopes that tougher sanctions will convince the licensing boards to avoid further action.

"I think that we regulate ourselves pretty well," Brosnan said, noting that Kappa Sigma's most recent incident was handled "very well internally."

Spieler also hoped to avoid the negative press often associated with hearings before the local licensing boards.

"We'd like to avoid all the public relations issues when you have a public hearing," Spieler said. "We don't want to allow one house to ruin the reputation of all houses."

Brosnan said that the IFC tries "to avoid a hearing from them as much as possible."

Brosnan noted that Pokaski did not want to hear about fraternity incidents through the media rather than through the IFC.

"We have a process right now where MIT informs the Boston Licensing Board ... of any incidents that occur."

## Licensing boards retain authority

Scali said that regardless of the new relationship with the IFC, "the CLC can act at any time to have a hearing to find out information, and they probably will do that no matter what. That's really what the commissioners are looking for."

Spieler recognized that the BLB and CLC will take action in some cases regardless of IFC sanctions, but that the IFC would not turn over cases to the licensing boards automatically.

"We would never say specifically 'we think the Boston Licensing

Board should look at this."

Pheiffer thought that the CLC and BLB "wouldn't be looking in as much as they have to now."

In the past, some of the most severe cases handed down have been when houses on probation have had repeat violations.

Spieler noted that IFC sanctions also become more severe for repeat offenders. "It's usually pretty clear what the second violation would entail," Spieler said.

## Parties praise results of meeting

"When the two members of the CLC left, after the meeting they were very positive," Pheiffer said.

Spieler said that administrators at Thursday's meeting "all applauded what happened. They were very excited about the way the meeting went."

However, Brosnan noted that the CLC and BLB were not as aware of IFC matters as he had hoped.

"They saw things they had no idea about," Brosnan said.

Scali called the meeting "very, very informative," noting that the policies and risk management procedures presented by the IFC were previously unknown to him. The IFC announced a major risk management program in the fall of 1997, and it has since been expanded and revised.

"No one's ever presented it to us," Scali said.

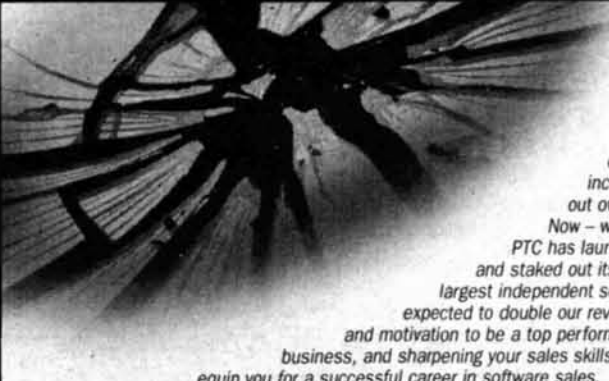
Scali looked forward to working with fraternities outside a hearing setting.

"It would be a great pleasure to work with all of those people," Scali said. "They were very, very helpful."

Ideally, Pheiffer hopes to have meetings at least once a year, not only after specific incidents.

"If another incident were to occur, we wouldn't have one of these meetings two weeks later. That wasn't the point of the meeting."

PTC.COM



**Break into Software Sales**

Break into the career you've only imagined with a software company whose innovative technology continues to revolutionize the industry! With its incomparable product development suite, PTC staked out ownership of the CAD/CAM/CAE business worldwide. Now - with its cutting edge Internet-based **Windchill**® software - PTC has launched the next generation of enterprise-wide systems and staked out its claim on the Web. Today, we're the world's sixth largest independent software manufacturer, a \$1.2 billion superpower expected to double our revenue in the next three years. Show us your ambition and motivation to be a top performer. Spend the next two years learning our product, the business, and sharpening your sales skills. Our investment in you, through extensive training, will equip you for a successful career in software sales.


**Inside Sales Representatives**

Telephone contact and sales to PTC's existing customer base. Educate customer about new PTC offerings and provide solution-based selling of PTC products, then following up to close. Cultivate relationships with current customers, prospect for new customers, and develop business-to-business sales skills. Sales persons in this position will undergo some of the most extensive sales training in the country bettering their skills and ability to embark on outside sales opportunities.

Outstanding track record with evidence of academic and professional success. An unquenchable drive to succeed, 4-year college degree Internships and/or co-ops a plus. Cumulative GPA of 3.0 or higher also a plus.


Key benefits include: Health Plans (100% paid premiums), 401(k) Savings Plan, ESPP and a stock option plan.

**Direct telephone inquiries: (781) 398-5740, Attn: Melissa O'Doherty.**  
**The contact information should be as follows: Company: PTC**  
**Email: careers@ptcjobs.com, Name: Parametric Technology Corporation**  
**Attn: Human Resources, Job Code: WWW2082, P.O. Box 1050**  
**Waltham, MA 02254-1050; fax: (781) 894-6917.**  
**Apply on line: <http://www.ptc.com/company/employment/apply.htm>**  
**\*\*PLEASE REFERENCE JOB CODE WWW2082 WHEN APPLYING FOR THIS JOB.**



**www.ptc.com**

We put the SEA into our RESEARCH



Ocean

ENGINEERING

Freshman  
Open  
House

Wednesday, April 5  
3-5 pm in Room 5-314

Find out about Careers in OE  
Meet faculty and students  
See displays of current projects  
Learn about UROPS in OE

The 1st Annual

Kelly-Douglas Traveling Fellowships

for MIT Juniors

Spring 2000

Fellowships of \$1000 will be awarded to MIT juniors who are committed to further work in the humanities or arts and plan to travel in order to enhance their study.

Students whose study and travel plans relate to a major or minor in the School of Humanities & Social Science will be given preference, but all juniors are encouraged to apply. One or two fellowships will be granted this spring

Deadline: Wednesday, April 12, 2000

Application guidelines are available in the Music Office, 14N-207 or by contacting Mary Cabral at [mcabral@mit.edu](mailto:mcabral@mit.edu)



- Two Summer Sessions
- French Immersion Program
- Desktop Publishing and Web Design Programs
- Cultural Excursions


The American University of Paris  
 6 rue du Colonel Combes  
 75007 Paris, France  
 Tel. (33/1) 40 62 07 20  
 Fax (33/1) 47 05 34 32  
 New York office:  
 Tel. (212) 983-1414

Website <http://www.aup.edu>  
 Email [summer@aup.edu](mailto:summer@aup.edu)

Want to Work for a Leading College Internet Site?

MainCampus.com is a dynamic pre-IPO college community website looking for:

- Summer Interns (in New York City)
- Campus Reps
- Student Writers and Editors



maincampus.com

You Think... Therefore We Are

Contact: [JOBS@MAINCAMPUS.COM](mailto:JOBS@MAINCAMPUS.COM)

## STUDENT GROUP LEADERS

**A member of the MIT community needs *your* help.**

Lori Berenson was condemned for life without an opportunity to defend herself and without a fair trial. In fact, the trial was in such blatant violation of international human rights agreements that **Amnesty International** objects: "*Peru continues to mock human rights guarantees with trials that are but a parody of justice.*"

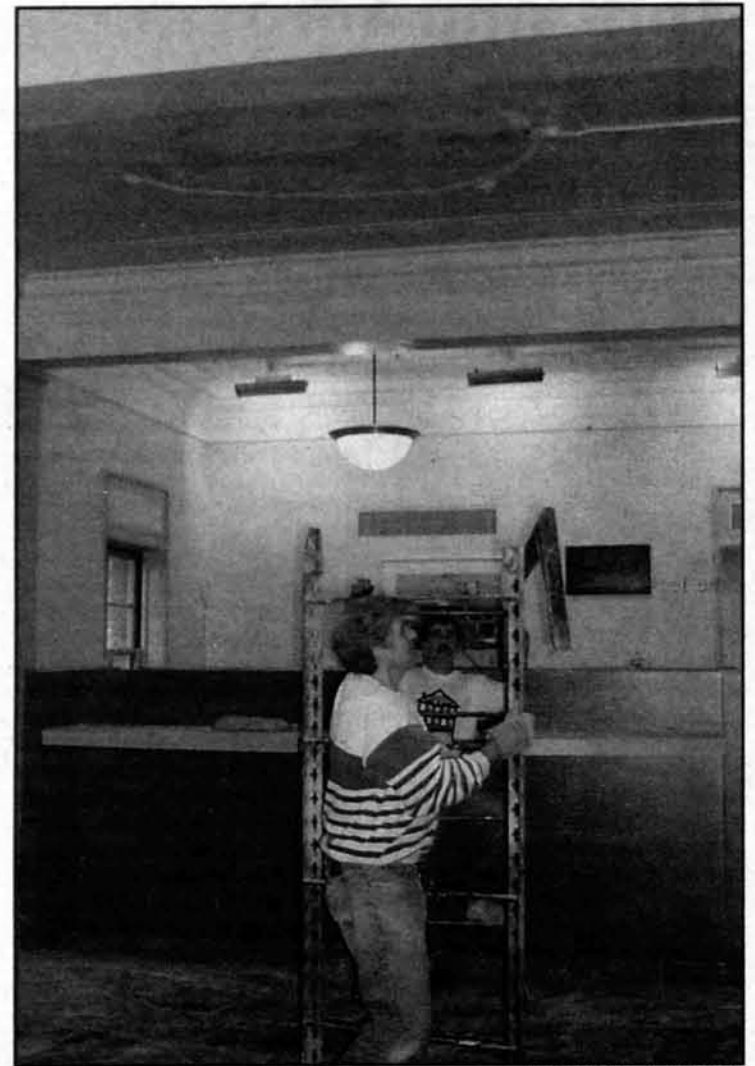
However, the tide is quickly turning, as 180 Representatives signed on to legislation urging the Clinton administration to get involved in Lori's case. Almost half the House and a third of the Senate support bringing Lori home, but the legislation has still not passed, and Lori is still in prison in Peru.



*Lori and her Dad in front of Killian Court, 1987.*

### What you can do:

- Publicize Lori's parents talk over your group email list; for your convenience, a ready-to-send email is available at [mit.edu/justice](mailto:mit.edu/justice).
- Use part of your designated bulletin board space to show support for Lori and her parents; this could be a picture, a statement, or a bumper sticker.
- Discuss Lori's case annually in your group meetings; encourage your members to learn about her plight, and pass a resolution supporting her.



ROBERT SUMNER—THE TECH

Contractors begin repairs on a portion of the Pritchett cafeteria ceiling that collapsed Monday night. Director of Campus Dining Richard D. Berlin said that early suspicions of asbestos were unfounded. The damage was strictly cosmetic and Pritchett should reopen by Wednesday or Thursday, Berlin said.



The Society of Physics Students *presents...*

# *High- $T_c$* Superconductors *...the Current Status*

Prof. Patrick Lee

**4:30 PM Wed., Apr. 5, 4-339**

**3 pm: Freshman Open House & Food**

[sps-exec@mit.edu](mailto:sps-exec@mit.edu)

<http://web.mit.edu/sps/www>

# Experience, Funding Issues at VP Debate

Debate, from Page 1

talking to administrators and getting things done," Wasfy said.

Brian A. Pasquinelli '02, running with Sanjay K. Rao '02, focused more on his experience with students in the UA. Pasquinelli served as the Class of 2002 Vice President, and is currently the co-chair of the UA committee on advising and faculty-student relations.

Chuang also focused heavily on his UA involvement, although his experience has dealt more with administration than interaction with students. He currently serves on the UA Financial Board, and he wrote the legislation that created the UA Subcommittee on Athletics. "I help people, and I like doing that," Chuang said.

Kane strongly advocated UA incorporation. "How can we be a body representative of the students if we aren't independent?" Kane asked.

### VPs debate money, leadership

Wasfy, who cited his knowledge of campus finances, asked his opponents how they think the proceeds from the \$1.5 billion capital campaign should be divided.

Pasquinelli's reply emphasized that "students need to make sure that students are involved in the appropriation committee."

Chuang, a member of Finboard, suggested that home equity be taken out of the formula for financial aid and that aid levels be increased.

Kane advocated that MIT freeze tuition, as undergraduate tuition is just "a drop in the bucket."

Most students were pleased with the exchange. "It seems like they all had a good time discussing the issues and expressing their platforms," said Jeff C. Roberts '02.

Web-based voting for UA President and Class Councils began after the debate on Sunday, and will continue until midnight on Thursday. Students will have an opportunity to fill out paper ballots in Lobby 7 on Friday.

%add ua  
%vote

www.bu.edu/summerterm

## Summer Term 2000

Boston's University

**BOSTON UNIVERSITY**

**617/353-6000**

Session 1: May 23-July 1  
Session 2: July 5-August 12  
Twelve-Week Session: May 23-August 12

An equal opportunity, affirmative action institution

# Register Your Team Today!

## JOHNSON GAMES 2000



**Saturday, April 29, 2000**  
**2:00-5:30 pm**  
**Johnson Athletics Center**

**Post-Games Barbecue and Awards Ceremony**  
**5:00-7:00 pm**

### How to Register a team

- Teams must register by 11:00 pm Wednesday, 5 April 2000.
- Register on-line at <http://web.mit.edu/spring/games>
- Forms also available in the MIT Information Center, Room 7-121.

Sponsored by the  
Offices of the President,  
Provost and Chancellor



During the Johnson Games, the "Mind and Hand" of MIT will be expanded to "Mind, Hands, Feet, Lungs and Funny Bones." Gather your wits, energy and athletic abilities (or lack thereof), form a team, and join fellow students, staff and faculty for an afternoon of fun, fellowship and food.

**Chuck Vest**  
President, MIT

**Who had the greatest impact in the equity markets in 1999?**

**#1 in IPOs: Priced 58 IPOs, more than any other firm in one year.**

**#1 in aftermarket performance: An average 250% increase for lead-managed IPOs and secondary offerings.**

**#1 increase in market share: Largest percentage increase in total equity underwriting volume versus any other firm.**

**Credit Suisse First Boston.**

# Table Tennis Third At Nationals

By Helen Huang  
TEAM MEMBER

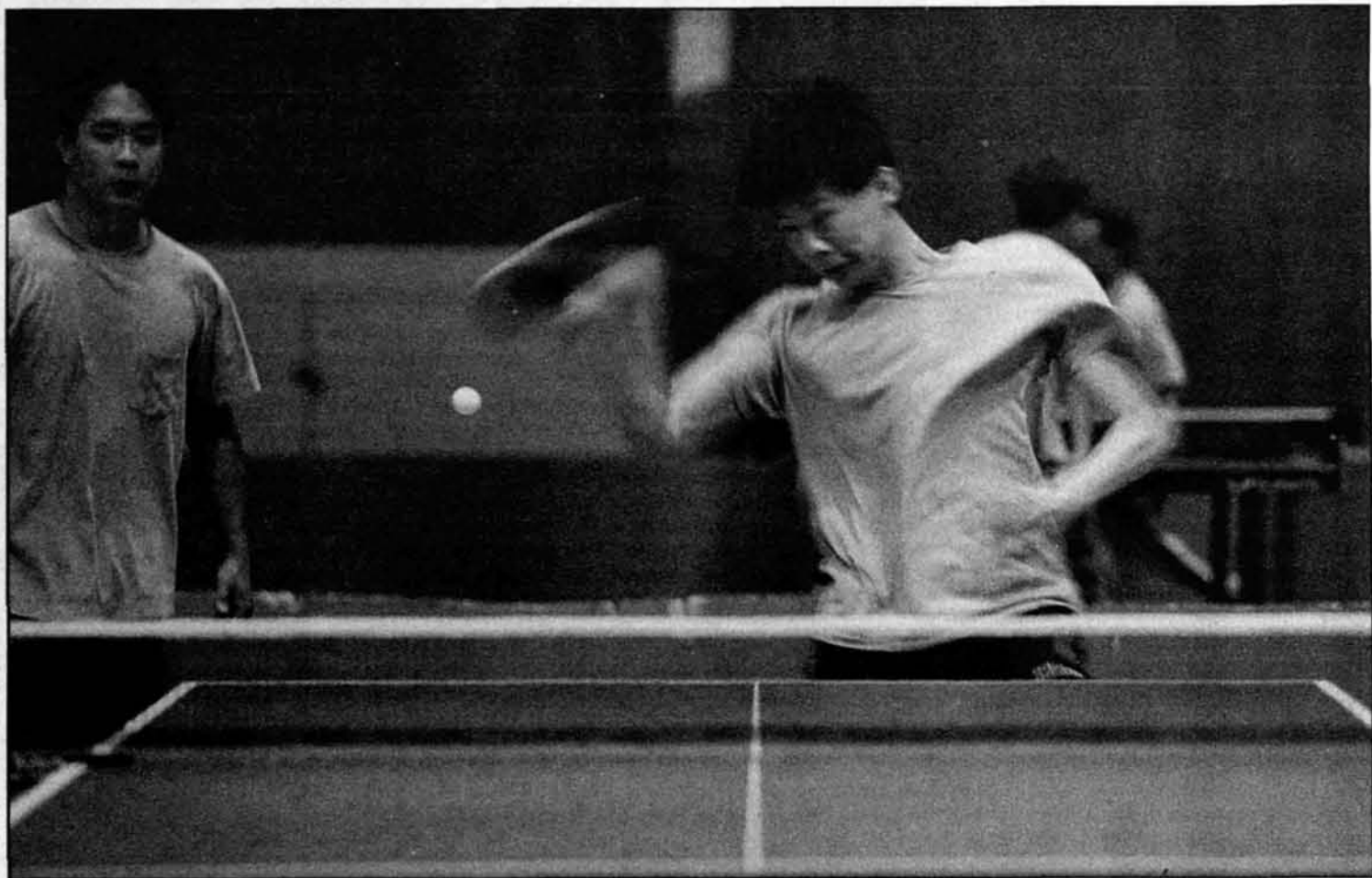
It was one big ping-pong party as the division winners of the National Collegiate Table Tennis Association as well as the host school, MIT, faced off for the championship on Sunday. Teams from Johns Hopkins, Florida State, Cornell, Harvard, and MIT woke up early to spend the day exchanging fast hits, funny spins, and exciting points.

MIT, which finished 2nd to Harvard in the New England Division by just one game was allowed to play in the championships as the host school and was seeded 5th. Nevertheless, they proved they deserved to be there, especially since they were unable to field their strongest team. As usual, Eugene Shuster G led the way, playing the number one position while Shih-Yuan Liu G, Peter Huang '00, and Helen Huang '01 rounded out the team.

The morning was rough for MIT. First playing arch rival Harvard, the team was a little rusty and suffered their worst loss to Harvard this year, 1-4. Next, the team took on the number one seed, Johns Hopkins, and put up a good fight despite being blanked, 0-5. To end morning play, the team split the singles matches 2-2 with Cornell, leaving the doubles match that would start off the afternoon play as the deciding factor.

After lunch, Liu and P. Huang took on the Cornell doubles team and rallied to win the match in the 3rd game after fending off four Cornell game-match points in the 2nd. In the final matches of the day, MIT defeated Florida State 4-1. This round was once again highlighted by another exciting come back doubles victory by Shuster and Peter Huang.

MIT finished with a 2-2 record, placing them 3rd amongst the schools. Johns Hopkins University comfortably won the championships while Harvard came in 2nd. For all the details, visit <<http://www.nctta.org>>



SEPHIR HAMILTON—THE TECH

Peter Huang '00 loops the ball toward Cornell's players while partner Shih-yuan Liu G prepares for the next shot. The MIT doubles team won the match 3-2 during the National Collegiate Table Tennis team championships, held in DuPont gymnasium last Saturday.

GET **\$5**  
WORTH OF  
FREE FOOD

(Without taking the change  
off your roommate's dresser.)



**2 DAYS ONLY! APRIL 8&9**



This weekend, no money is no problem! Just present your Student Advantage Card at the Customer Service Center and we'll give you a voucher good for \$5 worth of FREE\* food at these participating CambridgeSide Galleria Food Court merchants:

- |                |           |         |           |
|----------------|-----------|---------|-----------|
| Burger King    | Damons    | S'barro | Taco Bell |
| Cajun Big Easy | D'angelos | Tacone  |           |

If you don't have a Student Advantage Card, just sign up for one at the Customer Service Center. With the Student Advantage Card, you'll also save at over 45 participating mall stores. Check out everything Student Advantage has to offer at [www.studentadvantage.com](http://www.studentadvantage.com).

\*Offer limited to first 500 customers per day. Must present valid Student Advantage Card. See Customer Service Center for complete details.

**Marathon of Savings!**

During the month of April, save **20% off** all running apparel only at Thunder.

Thunder is located on Level 1. See store for complete details.

**T.HUNDER.**



100 CambridgeSide Place • Cambridge, MA • 02141  
(617) 621-8666  
Monday - Saturday 10 am - 9:30 pm • Sunday 11 am - 7 pm

**Even EZ-er than 1040EZ.**



Introducing TeleFile from the IRS. If you are single and filed Form 1040EZ last year, you can file your tax return in ten minutes by phone. Anytime. Check your tax booklet for information.

**TeleFile**  
It's free. It's fast. It works.

Department of the Treasury  
Internal Revenue Service  
Changing for good.

This space donated by The Tech

## SPORTS

# NCAA Fencing Champ Purcell Finishes Eighth In World Cup

## Purcell Upsets Seventh World Ranked Hungary's Bartok 15-14

By Ming-Tai Huh  
SPORTS EDITOR

After winning four championship titles including the NCAA fencing Championships, engineer Caroline Purcell '02 didn't take any time off to relax. Instead she competed in the World Cup at Peabody, MA. Purcell was placed in a pool of over 80 of the best fencers around the world. Just coming off her hot streak, Purcell made it to the finals to place eighth in the world-level competition.

Last Friday, the national champion took the day off from school to compete in the preliminary

round. She fenced well enough to make the top-48 cut off, which put her into a direct elimination bracket all the way to the finals. "I didn't put any stress on myself," she said. Purcell placed 26th in the preliminary round.

Saturday, Purcell and other preliminary qualifiers were added to the top-16 ranked women saberists. Along the path to the finals, the seventh world seed Bartok from Hungary faced MIT's Purcell. They went touch for touch in the fifteen point match until Purcell landed the winning point for the score 15-14. "Competition was very steep," Purcell said. After defeating the seventh seed Purcell moved to the final

eight bracket. Unfortunately Purcell's run stopped in the first finals match. She lost to fellow American Sada Jacobson, who she may rematch in next week's US Open in Cleveland, Ohio. "I was a little disappointed ... I was ahead of Jacobson early," she said.

Fencers from Poland, Hungary, Italy, Spain, Ukraine, and United States filled the world competition circuit. Engineer Purcell has improved her ranking worldwide and made a name for herself throughout the fencing world. U.S. national men's saber team member Herby Raynaud said, "None of these other girls fence like [Purcell], she's amazing to watch."

# Equestrian Team Starts Spring Season Against UMass Dartmouth

## Sophomore Kristen Landino Takes the Blue Ribbon in the Open Flat Class

By Jennifer Lee  
TEAM MEMBER

On Saturday, the equestrian team headed down early in the morning to Glen Manor Farm in Portsmouth, RI for a competition hosted by the University of Massachusetts at Dartmouth.

The weather was beautiful and sunny, but unfortunately the show took place in an indoor arena. Kristen Landino '02 started off the day on a positive note by placing fourth over fences in the open division. In the intermediate jumping category, Jenny Lee '02 won third place and both Tara Mullaney '02 and Junlin Ho '01 placed fifth.

The flat classes were held in the afternoon following the jumping classes. Landino had a brilliant ride,

capturing a blue ribbon in her open flat class. Several other riders also gave solid performances. Three riders placed third: Sarah Low '02 in the intermediate flat category, Megan McLemore '00 in the advanced walk-trot-canter division, and Cynthia Randles '00 in her beginner walk-trot-canter class. Lee placed fourth in the intermediate flat division, as did Sara Etemadi '01 in her advanced walk-trot-canter class, and Diana Cheng '03 in the walk-trot category. Mullaney won fifth place in her intermediate flat class, and despite a difficult horse draw, Ho placed sixth in the same division, though in a different class.

The equestrian team will continue to train at Verrill Farms with coach Kate Alderfer-Candela in preparation for upcoming events at Tufts University on April 8, and Boston University on April 15.

*Intercollegiate Horse Show Association events are organized by randomly assigning riders from all participating universities to horses from the host school. In order to maximize fairness, competitors are not allowed to practice on their mounts prior to judged competitions. Classes are judged on the basis of the rider's ability to control an unfamiliar horse while riding with the correct form. All competitors are placed in divisions according to their prior riding experience. Riders of all experience levels participate in these competitions, from beginners riding in the walk-trot category, to advanced riders, competing in the open division.*

# Women's Water Polo Take One of Two Last Weekend

## Women Face Mount Holyoke, Boston College

By Jeffrey Colton  
STAFF WRITER

The women's water polo team caught a huge wave this weekend as they opened up a three-team round-robin at Alumni Pool on Saturday.

Riding high off of last weekend's victories, the Engineers were ready to take on anything.

The first game was against western foe Mt. Holyoke College, a club team from South Hadley, Massachusetts. Coming from a city further inland than Boston proved to be harmful as they were swallowing the wake of the MIT ladies. Speed by Jennie Cochran '03 and Andrea Harsanyi '02 proved to be unmatched as they, with the help of the rest of the team, led the transition game and counter attacked to multiple goals giving.

The half-court game was successful as well as Lea Engst '02 stepped up on defense along with others to keep the Lions to only one goal throughout twenty-eight minutes of play. Kristen Clements '02 topped off the offense with her first goal of the year giving MIT a total of 10 for the game, for a final score of 10-1.

BC hungry for victory over MIT

With both MIT and their afternoon opponent BC tired from earlier games, it came down to which team wanted it more. The game got off to a slow start with a score of 5-4 Boston College early on in the third quarter. Rebecca Geraci '00 made some great goalie saves on multiple uncontested shots from the Golden Eagles keeping the Engineers close. Jen Eppig '03 also helped out with agile defense on the transition. However, late in the third quarter both teams started to show fatigue and sloppy defense led to a frenzy of goals.

The teams alternated scoring as and the score quickly rose to 10-8 Boston College. In the middle of the fourth quarter, MIT's wave hit the shore as BC's desire and intensity uplifted them to a 6-1 run as they finished off MIT 16-9.

Since neither games affected their conference standing, the ladies will use these games as a learning experience and continue to work hard in practice as they prepare for upcoming conference games.

Recently, the NCAA selected the MIT water polo team to represent the East Coast in the Division III national championships later on this year.

Current Record: 8-2 (3-0)



Opening the sailing season, Erin Shea '02 and Sean Fabre '00 raced in the A division of the Boston Dinghy Championships this past weekend, coming in fourth in their category to help the MIT team place third overall out of sixteen.

## UPCOMING HOME EVENTS

Friday, April 7

Women's Softball vs. Smith College  
(Double Header), 4:00 p.m.

Saturday, April 8

Men's Baseball vs. Wheaton College (Double Header), 1:00 p.m.  
Women's Outdoor Track, MIT Showdown, 1:00 p.m.  
Women's Sailing, Emily Wick Trophy, all day starts at 9:30 a.m.  
Men's Lightweight, Joy Cup vs. Yale University, TBA.



The MIT Women's 2nd Varsity Crew team rows the shell Muri in Saturday's crew regatta. Despite a strong effort, the team finished last, competing against Dartmouth, University of New Hampshire, and Smith College. Womens' lightweights fared better: they beat Smith College.