

MIT Supports Underdogs

Bush, Gore Win Nationwide

By Naveen Sunkavally and Frank Dabek
STAFF REPORTERS

While frontrunners George W. Bush and Al Gore scored victories across the country, MIT's voters sided with the underdogs.

Returns in wards 2-2 and 2-3, which cover MIT's campus, show that John McCain stomped Bush three to one and that Bill Bradley beat out Gore by a small margin. In Cambridge as a whole, McCain won easily over Bush, while Gore edged out Bradley 51 to 49 percent.

Underdogs appeal to students

Christopher D. Smith '01, treasurer of the MIT College Democrats and Bradley supporter, was not surprised by the results. "Bradley's appeal has been with college students. He was more organized than any other candidate" in courting college voters.

"Bradley is an intellectual," said Aaron B.



JAMES CAMP—THE TECH

Dissension among the ranks of Boston's Democrats was evident as Bradley and Gore supporters vied for media attention during Bradley's brief visit to the Park Street T station this February. Gore won easily at the polls, however.

Strauss '02, co-president of MIT College Democrats and organizer for the Gore campaign. "People with Masters and doctoral degrees were heavily with Bradley."

John McCain struck a chord with students because of his reform-minded message, said

Eric J. Cholankeril '02, coordinator for MIT Students for McCain 2000. "College students are pretty disillusioned with the political process."

Primaries, Page 20

Institute Threatens Steer Roast

Renowned Festival Raises Safety Issues

By Rima Amaout
NEWS EDITOR

MIT's concerns about safety threaten to drastically change or eliminate the 36-year tradition of Steer Roast.

"It was my impression that both the Campus Police and the Safety Office ... felt that there was just no way the Steer Roast could be done in that location," said Dean of Students Margaret R. Bates.

"Administrators don't really like what Steer Roast represents ... MIT is in the process of establishing new traditions," said Blake R. Brasher '01, one of Steer Roast's chief organizers.

Fire, ledges a safety concern

The Safety Office is concerned principally with the size of the steer roast fire and its proximity to the ledges of Senior House, on which people sit while watching the festivities.

"Both of those things are so fundamental to the event that the question is do you move the location" or change Steer Roast to eliminate the ledge and fire problems, Bates said. Bates doesn't know whether a modified Steer Roast will take place this spring or whether the event will be cancelled this year.

"Steer Roast has an amazing safety record," Brasher said. "As far

Steer Roast, Page 22

Human Error Revealed as Cause of 7.06 Scandal

By Sanjay Basu
ASSOCIATE NEWS EDITOR

Last week's reported incident of cheating in Cell Biology (7.06) turned out to be a computer sorting glitch, according to Professor Harvey Lodish, who teaches the course.

Lodish, who declined to comment further, told MIT spokespersons that the changing of exam scores in his course occurred after a spreadsheet error.

"Changes in the 7.06 grade sheet were introduced by accident during sorting of a spreadsheet," said Biol-

ogy Department head Robert Sauer in an e-mail to Biology undergraduates.

An unidentified but authorized user of the course computer improperly sorted grades, causing students' names to be associated with other students' grades.

Last Thursday, however, Lodish announced to his lecture audience that an unknown individual had broken into the course's computer system and raised the scores of two students while lowering those of several other students.

The discovery that the incident was simply an error came after a formal investigation and questioning of the two students suspected to have raised their grades in the course.

According to those attending 7.06 lecture, Lodish formally apologized to the two students who were implicated.

News that a cheating incident occurred at MIT appeared both on National Public Radio and in *The Boston Globe*.

In his e-mail Sauer said that his suggestion that the errors resulted

from human error were deleted by *Globe* editors and that quotes attributed to MIT spokesperson Ken Campbell were incorrect.

"The end result was a prominent and misleading story that impugned the integrity of MIT undergraduates, Sauer said."

The *Globe* also cited a 1990 cheating incident in Introduction to Computers and Engineering Problem Solving (1.00) and recounted a 1991 study that found that 83 percent of MIT students admitted to cheating on homework.

Deans on Call Provide Help to Students

Ready to Provide Counseling and to Help Students 24 Hours a Day, All Year Long

By Katharine Freeman

Have you ever felt that the MIT administration was too distant to help you in a time of need? Think again.

The Deans on Call (DOC) position, which has existed since the early 1970's, helps students at their request with anything during a time of need.

"Anything [students] consider an emergency is an emergency," said Dean on Call Carol Orme-Johnson.

The program began with the creation of a Dean in Residence, who lived on campus and was available year round from 7 p.m. to 7 a.m. Two years ago, the program evolved into the Deans on Call, a group of four deans who each take one week per month.

The Deans on Call program aimed to eliminate the "heavy burden" that formally fell on the Dean in Residence, said Associate Dean for Undergraduate Education Robert M. Randolph.

The DOC's number can be obtained from the Campus Police,

and they are available at any hour of the night. "In the night there are a whole range of personal needs that come up with students," said Randolph.

DOC helps with grades, bail

The deans deal with issues ranging from helping sick students who are worried about taking an exam to helping get students out of jail. Recently, Orme-Johnson was called when a student fell through the roof.

"There's just a range of things that can happen from the sublime to the ridiculous," said Randolph. He was once asked to get some students who were arrested for stealing a Christmas tree out of a New Hampshire jail.

In most cases, the problems involve academic issues. Whatever the crisis is, said Orme-Johnson, "it's okay to call. That's what we're here for." The deans often receive tips from housemasters, advisors, professors, or parents who are concerned about a student's well being.

The deans often call professors to inform them of a student's sick-

ness, and can arrange for a student to get money to fly home for a funeral.

The four deans have weekly meetings, at which they discuss situations and potential responses. "We talk a lot," said Orme-Johnson, "if there's something serious going on, we'll likely consult each other."

The number of calls received by the DOCs varies throughout the year. While fewer people are on campus during the summer, which results in less calls, the end of semester is a particularly busy time. Randolph noted that "October is when stuff gets serious."

Leo Osgood, who was the Dean in Residence for 12 years, and recently retired this past June, remarked on the weather as a factor which adds to student stress. "The fact that it gets dark sooner" tends to increase the number of calls, said Osgood.

Although many students don't know about the Deans on Call, "they probably don't need to know,"

DOC, Page 20



GREG KUHNEN—THE TECH

Demetrius (Damien Burke '02) and Lysander (Brian Keller '01) plead their love to an unreceptive Helena (Jean Barnwell '03) in the Shakespeare Ensemble's production of *A Midsummer Night's Dream*. See story page XX.



THE ARTS
Mission to Mars Crash Lands.

Page 14



Comics

Page 7

Undergraduate Association releases results of Finance Board appeals.

Page 17

World & Nation 2
Opinion 4
Arts 13
On The Town 16
Sports 24

WORLD & NATION

House OKs Tax Breaks In Minimum Wage Debate

THE WASHINGTON POST

WASHINGTON

The House Thursday approved an assortment of new tax breaks for the business community, as GOP leaders tried to give corporate America some sweeteners for an anticipated increase in the minimum wage.

The 257-169 vote came as the House prepared to take up a proposal Thursday night to raise the minimum wage by a dollar — to \$6.15 an hour — over the next two years. House leaders vigorously oppose the measure on philosophical grounds but appeared powerless to stop it — or spread out the increase over three years — because of strong pressure from Democrats and moderate Republicans.

To take the sting out of the minimum wage plan for business, the GOP pushed through a variety of new tax cuts which congressional analysts estimate will cost \$122 billion over the next 10 years. These include reducing inheritance tax rates, providing deductions for self-employed people to buy health insurance and increasing the amount of money people can put into tax-favored retirement accounts.

House Republicans hoped that by taking care of the minimum wage question relatively early this year, they would dispose of an issue that has been wielded to great political effect by Democrats in years past. Congress last increased the minimum wage in 1996.

Amazon.com Chairman Proposes Rewrite of Patent Laws for Web

LOS ANGELES TIMES

Stung by widespread criticism of Amazon.com's patents on some of its Internet-based business methods, company Chairman Jeff Bezos on Thursday proposed a rewriting of U.S. patent laws to accommodate the lightning pace of innovation on the Web.

In an open letter posted on the online retailer's Web site, Bezos proposed cutting the term of patents on business methods and software to 3 to 5 years — much shorter than the existing term of 20 years from the date the patent is applied for.

Amazon came under extraordinary criticism for its 1-click patent from a particularly sensitive source: the Internet community itself, where the notion that information should be free and widely distributed has a large following.

The influential free-software advocate Richard M. Stallman PhD '75 has even called for a boycott of the company, arguing that the patent was an attempt to stake a claim for an obvious application of existing technology, and was granted mostly because patent examiners were unfamiliar with software technology.

Who's Teaching Online Courses?

LOS ANGELES TIMES

While schools developing online curricula try to strike a balance between profits and prestige, many educators are scrambling to define their role in this digital domain.

In traditional course work, a professor creates and leads each class. But online, professors can easily be replaced once the course is built and posted. On the Net, no one knows who's really answering those e-mail questions.

At Deerfield, Ill.-based UNext.com, whose partners include Columbia and the University of Chicago, its professors won't be teaching the classes. The professors lend their names and insights to UNext's staff, which then creates the electronic material and posts it on the Web.

The people who actually run the classes are UNext employees — people the company has hired to act as online mentors, grade homework and answer students' questions.

Industry sources say professors can get \$5,000 to \$10,000 merely for lending their names to Web programs. For instructors who actually help develop courses and lecture online, the paycheck can be \$100,000 or more a year.

McCain, Bradley Drop Out, Vow Causes Will Continue

By T. Christian Miller and Matea Gold
LOS ANGELES TIMES

With wistful farewells spurred by cold-hearted realities, challengers John McCain and Bill Bradley bowed out of the presidential contest on Thursday insisting that their messages will survive their failed candidacies.

Against a breathtaking backdrop of snow-capped buttes in Sedona, Ariz.; near his vacation home, McCain announced he was suspending his campaign — holding onto his 231 delegates but effectively ceding the Republican nomination to Texas Gov. George W. Bush.

"I am no longer an active candidate for my party's nomination for president," said the Arizona senator, whose unorthodox campaign tactics and bold persona helped him win seven primaries but later led to his undoing. "I hoped our campaign would be a force for change in the Republican Party, and I believe we have indeed set a course that will ultimately prevail in making our party as big as the country we serve."

An hour earlier, the Democratic race ended as former New Jersey Sen. Bradley offered his own val-

dictory in the wake of Tuesday's defeat against Vice President Al Gore.

"We have been defeated, but the cause for which I ran has not been, the cause of trying to create a new politics in this country, the cause of trying to fulfill our special promise as a nation," Bradley declared at a banquet hall in West Orange, N.J., near his campaign headquarters.

Bradley endorsed Gore, but said he would not release his 412 delegates because they deserved to have their voices heard at the party's national convention this summer in Los Angeles. McCain did not endorse Bush, indicating that he was waiting until Bush embraces the senator's effort to reform the nation's system of campaign financing. He also ruled out a third-party bid.

The surviving candidates-cum-nominees, meanwhile, continued their already contentious battle for November, with the newly disenfranchised voters in mind. Bush, clothing himself with the mantle of reform, blasted Gore as a campaign finance hypocrite.

"What's going to win (McCain's) supporters over is when they realize Al Gore is no reformer and Al Gore is no John McCain,"

said Bush, who had spent considerable effort in the primaries to convince Republicans that McCain was uncomfortably close to Gore in terms of policy.

"I think McCain voters will be looking for somebody who'll bring honor and integrity to the White House. McCain voters want to hear somebody who's got a positive vision to make sure the American dream touches every willing heart."

While endorsing Gore, Bradley insisted that the country should pursue his platform of eradicating poverty, providing universal health care and enacting campaign finance reform.

For McCain, leaving the race seemed more difficult for him than it was for Bradley, perhaps because until recently he was still a competitive alternative to Bush.

Of the two challengers, McCain leaves behind the largest bloc of voters, although they seemed to be united less by ideology than an attraction to the charismatic senator. If he chooses to hold his delegates until the Republican convention in Philadelphia this summer, McCain will control seven state delegations, giving him at least a small voice in party matters.

Cuban Boy's Uncle Presses For Political Asylum Hearing

By Mike Clary
LOS ANGELES TIMES

MIAMI

Attorneys representing the Miami relatives of Elian Gonzalez insisted in federal court Thursday that the 6-year-old has the right to apply for political asylum even though U.S. immigration officials have ruled that he should be returned to his father in Cuba.

"The future of a child who has suffered extraordinary trauma is at issue," said Kendall Coffey, one of several lawyers representing Elian's great-uncle, Lazaro Gonzalez, who wants to keep the boy in the United States. "It would not be so drastic to allow him a hearing. But to summarily subject him to being torn away from the loved ones caring for him now (would be)."

After three hours of back-and-forth legal wrangling, U.S. District Judge K. Michael Moore recessed the case without ruling on the government's motion to dismiss Lazaro Gonzalez's lawsuit seeking to block the child's repatriation.

But in questions from the bench, Moore seemed sympathetic to the Miami relatives' contentions that a full-blown hearing on an asylum claim could best resolve the issue of what is best for Elian. The judge also said at one point that "it seems almost mandatory" that a legal guardian be appointed to represent the child during litigation.

Before ruling on Elian's right to an asylum hearing, Moore must first decide if the federal court has jurisdiction to hear the case, and then whether Lazaro Gonzalez has stand-

ing to sue the government on behalf of Elian. The judge gave no indication when he might rule.

In Washington, a lawyer who represented President Clinton during his impeachment trial announced that he now represents Elian's father, Juan Miguel Gonzalez.

"We have met with Mr. Gonzalez alone and privately in Cuba, and we are satisfied that Mr. Gonzalez is not being pressured or coerced in any way in his desire to be reunited with his son," Gregory B. Craig said in a statement.

Elian was found at sea Nov. 25, two days after his mother and 10 others drowned when a smuggler's boat sailing from Cardenas, Cuba, to south Florida capsized in the Florida Strait.

WEATHER

March Madness

By Veronique Bugnion
STAFF METEOROLOGIST

The mercury reached 72°F (22°C) at Logan airport yesterday afternoon, breaking the record set in 1921 by 4°F (2°C) degrees. This represents a 28°F (15°C) degree departure from the average temperature for a March 9th.

The cold front which moved through during the night is, however, setting the stage for a very harsh return to reality today.

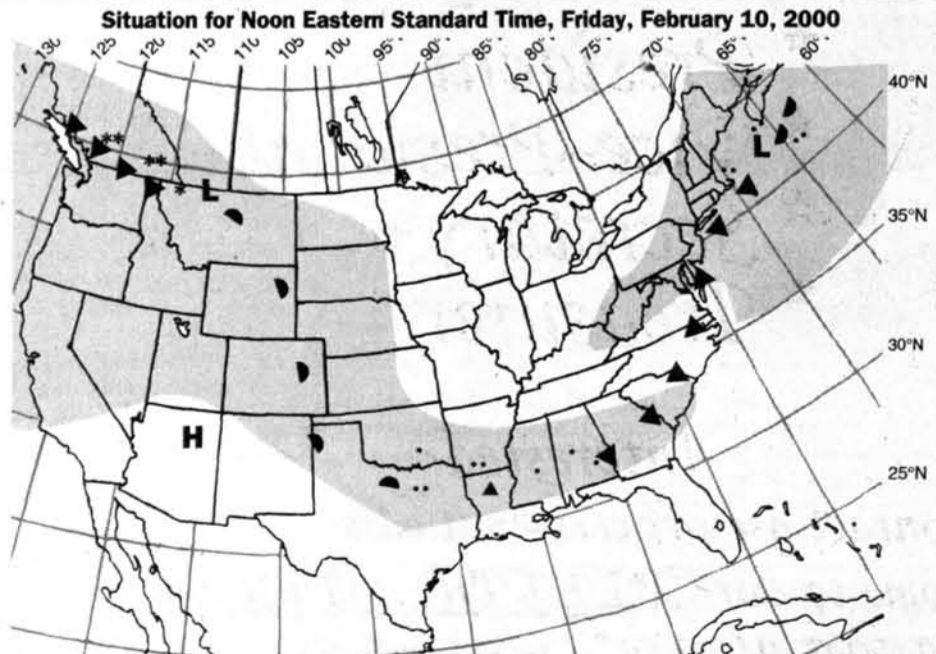
The area of high pressure trekking eastwards across southern Canada will push the remaining clouds offshore during the day. It will also maintain a north to northeasterly flow of cold air today and tomorrow. The combination of this northerly flow with clear skies will allow temperatures to drop below the freezing point later tonight.

The high pressure center will be pushed away over the second half of the weekend, and a storm system forecasted to develop in the Tennessee valley will bring us chilly rain Saturday evening. The timing of the storm may be such as to allow some snow to fall in Northern New England and Maine. Who knows, the ski season may not be over after all.

The early part of next week should see a return of sunny skies and slightly warmer temperatures, albeit well shy of what we experienced yesterday.

Weekend Outlook

Today: Mostly cloudy, cold north wind. High of 47°F (8°C).
Tonight: Clearing, low of 25°F (-3°C).
Tomorrow: Clear high of 38°F (3°C).
Sunday: Rain. High of 48°F (8°C).
Beyond: Partly cloudy, high in the lower 50s (12°C).



Weather Systems	Weather Fronts	Precipitation Symbols	Other Symbols
H High Pressure	- - - Trough	Snow	☁ Fog
L Low Pressure	—••• Warm Front	Showers	⚡ Thunderstorm
§ Hurricane	▲▲▲ Cold Front	Light	∞ Haze
	▲▲▲ Stationary Front	Moderate	
		Heavy	

Compiled by MIT Meteorology Staff and The Tech

Senate Finally Approves Paez, Berzon for Judge Nominations

By Helen Dewar
THE WASHINGTON POST

WASHINGTON

The Senate Thursday approved the fiercely contested nominations of Californians Richard A. Paez and Marsha S. Berzon to the 9th U.S. Circuit Court of Appeals, concluding the longest wait by a judicial nominee in American history.

Although endorsed by legal and law enforcement groups and supported by Republican moderates, Paez and Berzon were bitterly opposed by GOP conservatives who charged that the two nominees were liberals who would accentuate what they call the left-leaning tilt of the nation's largest appellate court.

With women's and Hispanic groups lobbying hard for the two nominees, the high political stakes were underscored when Vice President Gore interrupted a Midwestern campaign swing to be on hand in

case he was needed to break a tie. The stakes were heightened even more when Sen. Jeff Sessions, R-Ala., tried unsuccessfully to bar Gore from voting, citing a "conflict of interest" arising out of a campaign finance case presided over by Paez.

But Gore's vote was not needed. Paez, who currently sits on the U.S. District Court in Los Angeles, was confirmed, 59-39. Berzon, who practices labor law in San Francisco, was approved, 64-34. By a 67-31 vote, Sessions lost an effort to delay the vote on Paez so the Senate could look further into Paez' acceptance of what Sessions called a "sweetheart" plea bargain in the criminal case against Democratic fund-raiser John Huang.

The votes indicated opposition to the two nominees was confined largely to the conservative core of the Senate GOP. Some other lawmakers were concerned about

offending women and Hispanic voters and about the consequences for likely Republican presidential nominee George W. Bush, who is courting both groups.

Paez, whose family came originally from Mexico, has been awaiting Senate action since he was nominated in January, 1996 — the longest wait in history, according to Senate aides. Berzon has been waiting two years.

Appearing at a news conference with Democrats after the vote, Gore opened his remarks by saying in Spanish, "Friends, today we've finally achieved justice," and then decried what he called "a troubling pattern of the Republican Party standing against qualified judicial nominees who happen to be women and minorities." Senate Republicans have bristled at such criticism, contending their record of confirming women and minorities is strong.

NASDAQ Pushed Above 5,000 By Surging Technology Stocks

By James Bernstein
NEWSDAY

It took the NASDAQ almost a quarter of a century to top the 1,000 level, but a mere 10 weeks to race from 4,000 to 5,000 — the mark it crossed Thursday in yet another sign that technology has become king on Wall Street.

The NASDAQ composite index, which has been the hottest index in U.S. history, rose 149.69 points, or 3.1 percent, to 5,046.86, after crossing the 5,000 mark during trading Tuesday before falling off.

"There's lots of money pouring into the market, and half of it is going into technology stocks," said Charles Payne, head of trading at Wall Street Strategies. The NASDAQ is heavy with technology stocks, including bellwethers Microsoft Corp. and Intel Corp.

The gap between the NASDAQ and the Dow Jones industrial average is beginning to look like a gulf. So far this year, the NASDAQ is up about 24 percent. The Dow, which has been depressed, is down about 13 percent. For all of 1999, the NASDAQ was up a stunning 86 percent.

Thursday, the Dow, composed of 30 blue-chip stocks that many say represent the "Old Economy," also had an upbeat day, rising 154.20 points, or 1.6 percent, to 10,010.73. The broader Standard & Poor's 500 index gained 34.99, or 2.6 percent, to 1,401.69.

But those gains were overshadowed by the accomplishment of the NASDAQ, which was created Feb. 8, 1971, and set at 100 by the National Association of Securities Dealers, an industry self-regulating

group. The number was set as a gauge of performance in the computerized market for smaller and faster-growing companies.

NASDAQ 5000 comes two days after the Dow plummeted 374 points, prompting investors to conclude that the tech-heavy NASDAQ was the place to be, analysts said.

Despite the NASDAQ's performance, the market has been uneven, and is expected to remain so until two events play out: the Federal Reserve Board is to meet March 21 to decide whether to again raise short-term interest rates.

On March 27, OPEC is expected to meet to discuss oil prices. The Fed is widely expected to raise rates again to cool what it sees as a too-hot economy. Still, NASDAQ stocks have risen despite interest rate hikes.

Study Suggests 'Seeding' by Extraterrestrial Compounds

THE WASHINGTON POST

A sudden proliferation of living things on Earth 500 million years ago coincided with an increase in meteor and comet impacts on the moon, providing new evidence that exotic organic compounds from space may have played a role in the evolution of life on our planet, a new study suggests.

A chemical analysis of lunar "soil" picked up by Apollo 14 astronauts indicates that impact rates from meteors, comets and interplanetary debris increased nearly four-fold beginning about 400 million years ago. That corresponds — very roughly — with the period of lush and rapid diversification of animal types on Earth known as the "Cambrian explosion."

The new report, reported in Friday's issue of the journal *Science*, adds new evidence supporting a theory that life may have originated here after Earth was "seeded" by extraterrestrial chemicals in a process called panspermia.

Although life on Earth seems to have originated nearly 4 billion years ago, single-celled organisms prevailed for most of that time. The forms of complex life were extremely limited until about 650 million years ago, when within a 150-million-year period scores of new body designs suddenly emerged. At least a dozen of the great categories of the animal kingdom arose in that period, including segmented worms, animals with hard outer skeletons and jointed limbs, creatures with rudimentary spinal cords, and many more.

The new report means "you have to really take seriously the possibility of two things," said Paul R. Renne, a geophysicist with the University of California at Berkeley and the director of the Berkeley Geochronology Center. "One is that even small objects (crashing into Earth) would have had some impact on life. Not an extinction-level event, but enough to create environmental stress that results in adaptation and diversity." The other is that the basic building blocks of life arrived from outer space.

Spy Leaked Details of NATO Bombing to Yugoslavs, BBC Reports

LOS ANGELES TIMES

LONDON

A spy within NATO leaked details of allied bombing raids to the Yugoslav government during the first two weeks of last year's military campaign against President Slobodan Milosevic, a British Broadcasting Corp. television documentary reports, citing a U.S. Air Force investigation.

NATO, U.S. and British officials immediately denied the report, a preview of which appeared in Thursday's edition of the *Guardian* newspaper and on the BBC Web site, <<http://www.bbc.co.uk>>.

The documentary, which will air Sunday on the BBC, asserts that an Air Force investigation found that the Yugoslav government was given highly sensitive "air tasking orders," including the targets to be hit, flight paths and the timing of surveillance flights and bombing sorties.

When the alliance's military commander, U.S. Gen. Wesley K. Clark, ordered that the number of people allowed to see the air tasking orders be reduced — from about 600 to around 100 — the impact on the Serbs' knowledge "was immediate," the Air Force reportedly learned.

Graduate Student Council 00-01 Elections

*Officer Positions Nomination
Open Until March 29*

- ★ *President*
- ★ *Vice-President*
- ★ *Secretary*
- ★ *Treasurer*

Interested?

- Contact gsc-officers@mit.edu
- Come to our **"MEET THE OFFICERS COFFEE HOUR"** On March 27, 5:30pm, 50-220.

Committees Select Their Leadership Next Week!

Contact us if you are interested!

Activities (AC) - March 13
gsc-ac-chair@mit.edu

Orientation (OC) - March 14
gsc-oc-chair@mit.edu

Housing and Community Affairs (HCA) - March 15
gsc-hca-chair@mit.edu

Academics, Research, and Careers (ARC) - March 16
gsc-arc-chair@mit.edu

OPINION

Punishment and Compromise

Last week, the Cambridge Licensing Commission rightly suspended the Alpha Tau Omega and Kappa Sigma fraternities in the wake of recent alcohol abuse at both houses. But the CLC also reached further and announced its intention to enforce draconian zoning rules which jeopardize fraternity parties in Cambridge. We urge the fraternities and the city to avoid these harsh measures and to reach a compromise regarding parties.

Alpha Tau Omega was suspended for ten days because of its New Year's Eve party, which resulted in several events. Kappa Sigma was suspended for thirty days after a guest required hospitalization for alcohol intoxication. These suspensions are reasonable punishment given the gravity of the charges (and the history of abuse, in Kappa Sigma's case). The CLC wants the suspensions to include fall rush; we agree, but recommend that the remaining balance of the suspensions be served during the summer, so that fraternity residents are not disrupted during the academic term.

Also at last week's hearing, the CLC notified Cambridge

fraternities that it will now enforce regulations prohibiting gatherings of more than 50 non-residents at fraternities. Exemptions from this law, which would revolve around zoning and disability access, would be difficult to obtain under present rules. These rules have been law for some time, and there is nothing unfair *per se* in enforcing present laws. However, the timing of the CLC's decision to coincide with the suspensions of ATO and Kappa Sigma amounts to a crackdown on all Cambridge fraternities, rather than punishment of the deviant houses.

After the recent fraternity fiascos in the City of Boston, the city's Inspectional Services Department and MIT's Boston fraternities reached a compromise allowing for exemptions based on inspections of the houses. A similar arrangement would be welcome here. The current policy, with its cap of 50 persons on gatherings, looms ominously over the social life of the Cambridge houses and deserves to be changed.

We call on the Institute, the Interfraternity Council, the individual houses, and the City of Cambridge to work together to reach a compromise that preserves student social life while alleviating the city's concerns.

Editorial



Chairman
Satwiksai Seshasai '01
Editor in Chief
Frank Dabek '00
Business Manager
Jasmine Richards '02
Managing Editor
Ryan Ochylski '01
Executive Editor
Gregory F. Kuhnen '00

NEWS STAFF

Director: Naveen Sunkavally '01; **Editors:** Rima Arnaut '02, Kevin R. Lang '02; **Associate Editors:** Laura McGrath Moulton '01, Sanjay Basu '02, Dana Levine '02, Karen E. Robinson '02, Mike Hall '03, Matthew Palmer '03; **Staff:** Anna K. Benefiel '00, Douglas E. Heimburger '00, Zareena Hussain '00, Jennifer Chung '01, Kristen Landino '02, David Bailey '02, Efrén Gutierrez '03, Cristina Roussel '03, Aurora Schmidt '03; **Meteorologists:** Véronique Bugnion G, Greg Lawson G, Peter Huybers G, Bill Ramstrom G, Chris E. Forest, Marek Zebrowski.

PRODUCTION STAFF

Editors: Mary Obelnicki G, Ian Lai '02, Jordan Rubin '02; **Associate Editors:** Eric J. Cholankeril '02; **Staff:** Caroline Chang '03, Bryan Guzman '03, Nancy Kho '03, Linda Liang '03, Supriya Rao '03, Jennifer Shieh '03, Gayani Tillekeratne '03, Agnes Borszék.

OPINION STAFF

Editors: Eric J. Plosky G, Michael J. Ring '01; **Columnists:** Veena Thomas '02, Kris Schnee '02; **Staff:** Julia C. Lipman '99, Michael Borucke '01, Elaine Y. Wan '01.

SPORTS STAFF

Editor: Ming-Tai Huh '02; **Staff:** Ethan T. Goetz '00, Amir Mesarwi '00, Nisha Singh '00, Deborah S. Won '00, Susan Buchman '01, Alvan Eric P. Loreto '01, Brian K. Richter '02, Jennifer C. Lee '03.

ARTS STAFF

Editors: Rebecca Loh '01, Daniel J. Katz '03; **Associate Editor:** Fred Choi '02; **Staff:** Erik Blankinship G, Daniel Metz G, Steven R. L. Millman G, Bence P. Olveczky G, Roy Rodenstein G, Vladimir V. Zelevinsky '95, Zarminae Ansari '97, Tzu-Mainn Chen '99, Mark Huang '99, Kate Samrandvedhya '00, Francisco Delatorre '01, Amrita Ghosh '02, Amy Meadows '03, Heather Anderson.

PHOTOGRAPHY STAFF

Editors: Karlene Rosera '00, James Camp G, Annie S. Choi; **Staff:** Rich Fletcher G, Krzysztof Gajos G, Sephir Hamilton G, Wan Yusof Wan Morshidi G, Michelle Povinelli G, Omar Roushdy G, Jelena Srebric G, R. Sumner G, T. Luke Young G, Joseph Su G, Stefan Carp '00, Jörg Scholvin '00, Ajai Bharadwaj '01, Ying Lee '01, James Snyder '01, Yi Xie '02, Lucy Yang '02, Roshan Baliga '03, Leonid Drozhinin '03, Wendy Gu '03, Dasha Lyman '03, Cheng Pei '03, Joey Plum '03, Cyndi Vongvanith '03, Miodrag Cirković.

FEATURES STAFF

Editor: Katie Jeffreys '01; **Associate Editor:** Aaron D. Mihalik '02; **Cartoonists:** Solar Olugebefola G, Jennifer Dimase '01, Xixi D'Moon '01, Jocelyn Lin '01, David Ngo '02, Lara Kirkham '03; **Staff:** Katherine H. Allen '03, Bushra B. Makiya '03, Sonali Mukherjee '03.

BUSINESS STAFF

Advertising Managers: Joey Dieckhans '00, Huanne T. Thomas '02; **Operations Manager:** Dan McGuire '99; **Staff:** Rachael Johnson '02, Kiwah Kendrick '02, Sitij Agrawal '03, Dashonn Graves '03.

TECHNOLOGY STAFF

Director: Shantonu Sen '02; **Staff:** Chris McEntry '00.

EDITORS AT LARGE

Contributing Editors: Brett Altschul G, Gábor Csányi G, Garry R. Maskaly '00.

ADVISORY BOARD

V. Michael Bove '83, Barry Surman '84, Robert E. Malchman '85, Thomas T. Huang '86, Simson Garfinkel '87, Jonathan Richmond PhD '91, Josh Hartmann '93, Jeremy Hylton '94, Thomas R. Karlo '97, Saul Blumenthal '98, Indranath Neogy '98, Joel Rosenberg '99, B. D. Colen.

PRODUCTION STAFF FOR THIS ISSUE

Night Editors: Ian Lai '02, Jordan Rubin '02; **Associate Night Editor:** Ryan Ochylski '01, Eric J. Cholankeril '02; **Staff:** Daniel C. Stevenson G, Stacie Swanson '03, Gayani Tillekeratne '03.

The Tech (ISSN 0148-9607) is published on Tuesdays and Fridays during the academic year (except during MIT vacations), Wednesdays during January and monthly during the summer for \$45.00 per year. Third Class by The Tech, Room W20-483, 84 Massachusetts Ave., Cambridge, Mass. 02139. Third Class postage paid at Boston, Mass. Permit No. 1. POSTMASTER: Please send all address changes to our mailing address: The Tech, P.O. Box 397029, Cambridge, Mass. 02139-7029. Telephone: (617) 253-1541, editorial: (617) 258-8324, business: (617) 258-8226, facsimile: Advertising, subscription, and typesetting rates available. Entire contents © 1999 The Tech. Printed on recycled paper by Charles River Publishing.

Windows 'Unreliable,' Doesn't Support AFS

The inability or refusal of some to adapt to the unknown ["Sliced Bread" Better Than Athena," Mar. 7] should not alter Athena's policy toward the platforms they support. Windows, while a popular platform for individual personal computing, is not an appropriate platform for a secure, distributed, multi-user computing environment such as Athena.

One of the cornerstones of Athena is the Andrew File System (AFS), a file system that protects the privacy of each of its users despite its presence in open clusters throughout campus. At this time, Windows does not support AFS; hence, to support Windows boxes that have access to users' lockers would require those lockers to be available in an insecure manner. I would lobby strongly against such a move, as it would questionably improve usability while completely destroying the security model on which the privacy of my locker is founded.

A better solution than eliminating security is improving usability of the existing machines: such improvements could include the addition of Gnome as a desktop environment choice, the replacement of the unmaintained and extremely primitive mh with a generic UNIX mail file, the addition of SSL-secure IMAP and/or POP servers, and the installation of the latest free software end-user applications such as Mozilla, Gnumeric, and Abiword. Such changes would vastly

improve utility of the Athena clusters without compromising security.

Even were Windows to suddenly support AFS, I would still be strongly against the replacement of any of the incredibly stable SGI and Sun machines — already scarce during peak hours — with Windows machines notorious for unreliability. Integration of Windows-based computing into Athena should occur only when that platform is as reliable and robust as the currently supported UNIX platforms, and no sooner.

Kyle Rose G

Why 'Expect' Varied Rat Response?

Your article about the 2002 rat said, "Some students were impressed with the changes in the design, while others less than enthusiastic," quoting, "The additional junk on it is shitty" and suggesting "The difference on opinion of the ring design is to be expected." ["2002 Brass Rat Features Woman on Ring," Mar. 7]

I don't think that's true. As I recall, the overwhelming response to the Class of 2000's rat was that it was bitch-ass, from people in my class and others. Much more interesting and distinctive than the previous ones, with meaningful imagery that did not interfere with due tradition. The subsequent designs are but inferior attempts to mimic our ring's creative glory (sorry guys). Booyeah to

the rockiest class this side of the Charles and its super-phat ring.

Joung-Mo Kang '00

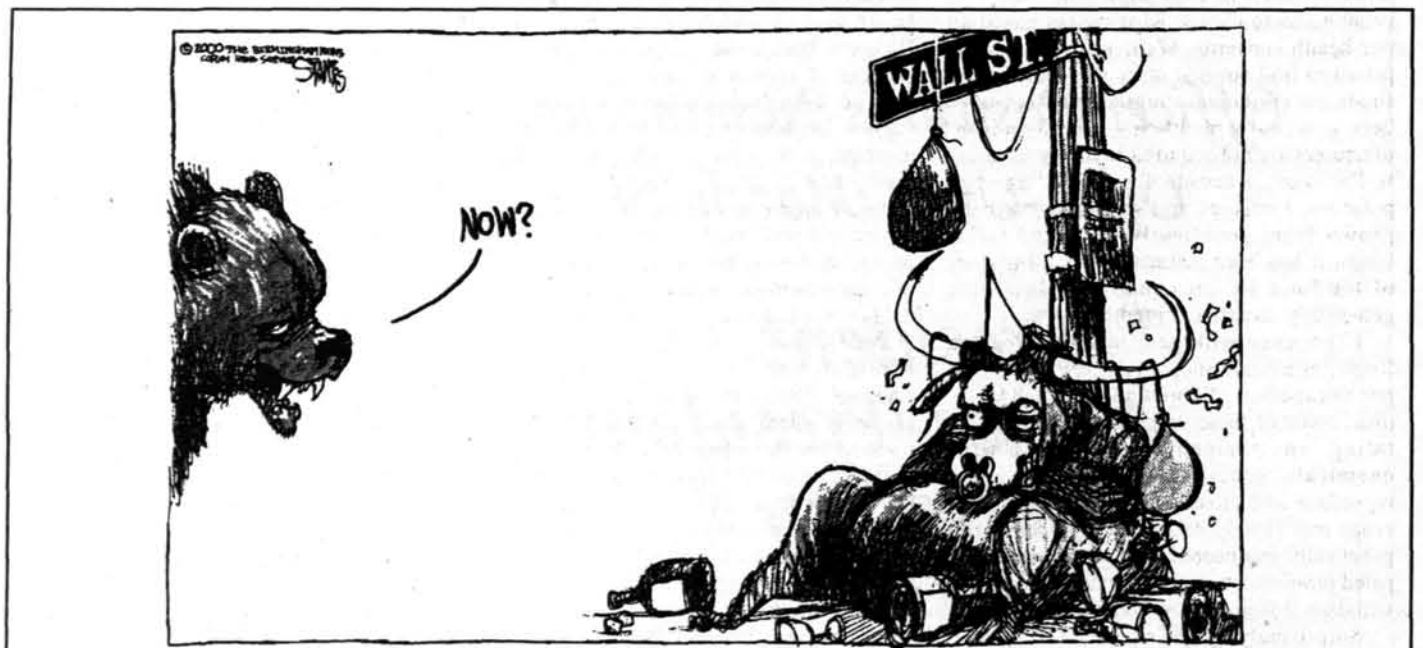
No Reason to Reprint 'Slurs'

Why did *The Tech* feel it was necessary to rehash, verbatim, a bunch of half-witted anti-gay slurs in Tuesday's editorial ["Hate Speech Unacceptable," Mar. 7]? Your point appeared to be that your "public criticism" of hate speech is a deterrent to drunken vandalism and idiocy. While identifying and discussing the issue in such a forum is important, repeating the speech only serves to spread the very thing they found disgusting. Hate speech is unacceptable — why popularize it?

Bob Broderick G

Erratum

An article concerning sanctions against Kappa Sigma ["Permit Concerns Imperil Cambridge Fraternity Events," March 7] reported that a female party-goer was hospitalized after a party at Kappa Sig. In fact, the hospitalized individual was male.



Opinion Policy

Editorials are the official opinion of *The Tech*. They are written by the editorial board, which consists of the chairman, editor in chief, managing editor, news editors, and opinion editors.

Dissents are the opinions of the signed members of the editorial board choosing to publish their disagreement with the editorial.

Columns and editorial cartoons are written by individuals and represent the opinion of the author, not necessarily that of the newspaper.

Letters to the editor are welcome. Electronic submissions are encouraged and may be sent to letters@the-tech.mit.edu. Hard copy submissions may be addressed to *The Tech*, P.O. Box 397029, Cambridge, Mass. 02139-7029, or sent by interdepartmental mail to Room W20-483. All submissions are due by 4:30 p.m. two days

before the date of publication.

Letters and cartoons must bear the authors' signatures, addresses, and phone numbers. Unsigned letters will not be accepted. No letter or cartoon will be printed anonymously without the express prior approval of *The Tech*. *The Tech* reserves the right to edit or condense letters; shorter letters will be given higher priority. Once submitted, all letters become property of *The Tech*, and will not be returned. *The Tech* makes no commitment to publish all the letters received.

To Reach Us

The Tech's telephone number is (617) 253-1541. E-mail is the easiest way to reach any member of our staff. If you are unsure who to contact, send mail to general@the-tech.mit.edu, and it will be directed to the appropriate person. *The Tech* can be found on the World-Wide Web at <http://the-tech.mit.edu>.

Wooing the City

Michael J. Ring

The starkly different portraits of city-Institute and community-Institute relations emerging from planned construction at opposite ends of the MIT campus illustrate perfectly MIT's choppy relationship with Cambridge and its residents. The groundbreaking for the Stata Center was all smiles, with Mayor Anthony D. Galluccio and community development official Beth Rubenstein praising the Institute for designing a complex considerate of community needs. But on Vassar Street, the Institute prepares to lock horns in land court with Cambridge Executive Enterprises over the construction of the new undergraduate dormitory.

As the Institute continues with its building spree, including the newly-announced McGovern Institute for brain research and the oft-delayed graduate dormitory at University Park, MIT must resolve this dichotomy in order to speed construction, spread goodwill, and earn badly needed political capital with city officials and neighborhood residents. Perhaps most importantly, the administration needs a crash course in Cambridge politics and zoning — a topic to which it is unfortunately oblivious.

While the Institute twiddled its thumbs through 1998 and into 1999 trying to design a new dormitory so ugly that it would surpass the Middlesex Courthouse as Cambridge's worst eyesore, the Cambridge City Council passed the Interim Planning Overlay Petition requiring a special review of all development projects over 50,000 square feet. Then, knowing many in Cambridgeport were less than pleased with the Institute's construction plans, MIT forgot to insure all abutters were notified of a community hearing held under the IPOP statute. The organization that failed to receive an invitation was Cambridge Executive Enterprises. No wonder they exercised their right to appeal MIT's IPOP approval.

And as groups such as the Media Lab and Sloan School plan to build on what's left of open land at the eastern tip of the MIT campus, future expansions in that area must necessarily look across Main Street. But that land is off-limits to development now, cordoned off as the Larkin Petition Zone.

The war on development being waged by activists in the City of Cambridge is also a war against MIT. To activists, MIT is just

another business seeking to destroy Cambridge's neighborhoods with more development. The challenge for MIT is the challenge shared by businesses — to demonstrate to the neighborhoods that the Institute is a neighbor and partner, not an enemy.

Fortunately for the administration, the current leadership on the council is warm to development interests. With the election of pro-development councillors Anthony Galluccio and David Maher to the body's leadership positions, the tone set by city government should become more receptive to development. MIT needs to demonstrate to the council, and the surrounding communities, that it's a good neighbor.

The Stata Center is a prime example of cooperation between MIT and the community. City officials have only good things to say about the planning of the Center. A public plaza will invite residents to the Center. Parking will be located underground, saving surface space for more appealing purposes. With the Stata Center, the administration has succeeded at meeting the requests of the community, and it deserves praise for its efforts.

Unfortunately, the administration continues to flounder farther west on Vassar Street, particularly on the issue of parking. The loss of parking spaces, combined with an influx of 350 residents, will impact businesses along Vassar Street, and their concerns deserve to be heard. Given the Institute's failure to notify Cambridge Executive Enterprises of the IPOP meeting, rebuilding trust with Vassar Street businesses and Cambridgeport residents will be especially difficult.

But there are very good reasons why the area should welcome construction of the new dormitory, and MIT might have more success in this ongoing process if it continues to trumpet these reasons. The dorm creates a bridge between campus and Cambridgeport where currently only a scar exists. Further, the arrival of hundreds of new residents will lower crime around the railroad tracks, which even a cursory glance at the police log reveals is currently a problem, as Vassar and Albany Streets are now barren late at night.

To meet directly the concerns of Cambridge Executive Enterprises, MIT should modify its plans to restore more parking spaces. A better long-term strategy that benefits Vassar Street businesses, Cambridgeport residents, and the

Institute alike is to lobby loudly and strenuously for the construction of the Urban Ring light rail line along the Grand Junction right-of-way. The arrival of reliable rail transit services on Vassar Street will drastically reduce the amount of parking needed by businesses, while offering superior transportation options for both residents of Cambridgeport and the new dormitory.

Finally, MIT needs to score some personal points with Galluccio, a rising star in Cambridge politics. A young politician with his eyes clearly set on Beacon Hill, Galluccio will likely be a political force in Cambridge for years to come. It would be beneficial for MIT to make him a friend rather than an enemy.

In an interview with *The Tech*, Galluccio called on the Institute to take a more active role in Cambridge schools. Specifically, he wants MIT to administer a vocational-technical program for the high school.

MIT is justifiably hesitant to embrace this idea, as the effort and scope exerted in running such a program would be far beyond what MIT could reasonably offer. But the Institute clearly has a role to play in improving the Cambridge schools — and those schools clearly need improvement. MIT can do something more basic and more universal than a running a focused technical program — it can help Cambridge improve the teaching of math and science.

The Cambridge public school system is one of the worst systems in the entire state when considering return on the dollar. Cambridge fourth-graders were outscored on the MCAS assessment tests by their counterparts in Everett, Worcester, and Revere — cities that should perform worse than Cambridge, based on their socioeconomic situations. Their performances are superior to that of Cambridge even though these cities spent between one-half and two-thirds of Cambridge's \$10,814 in the 1997-1998 calendar. As Cambridge searches for ways to reform its educational system, MIT can add valuable input to the educational debate and help all students in the city.

Hopefully, MIT will learn valuable lessons from both the success of the Stata Center and the failure of the new dormitory and improve relations with the city and community accordingly. In Cambridge one never knows where the next downzoning petition or lawsuit is lurking, and MIT needs all the friends it can get as it embarks on a program of expansion.

It's A Gas

Eric J. Plosky

Last year, I decided to buy a little car — a practical, fuel-efficient runabout. "Don't you want an SUV?" some of my friends asked. "A big, huge, gas-guzzling behemoth of a vehicle?" No, said I, and I stood by my choice.

Now I'm laughing all the way to the pump. A barrel of oil cost \$11 at the end of 1998. Today, the price tag is \$34, or more. Stung by declining profits throughout the 1990s, the Organization of Petroleum Exporting Countries, OPEC, has over the past year successfully reduced production in order to hike the price of oil. Now the worldwide supply of crude is not only expensive but short — 2 million barrels a day short, to be precise.

That's right, we're talking about OPEC here — the same cartel that in the 1970s shocked America with a well-executed embargo of the black stuff. The 1973 oil crisis caused prices to skyrocket, motorists to queue at gas stations, and Richard Nixon to implore homeowners to adopt conservation measures. Reducing the country's dependence on foreign energy became a national priority and was a particular interest of President Carter, who was keen on federal experimentation with domestic solar, wind and water power.

Eventually, Ronald Reagan figured it was easier to just keep buying OPEC oil, and he killed federal alternative-energy programs. Then George Bush orchestrated the Gulf War to demonstrate that America would defend its supply of oil no matter the cost. It seemed we had triumphed over OPEC.

Several times, the cartel tried to restrict production in order to raise prices. But each time, at least one member state wouldn't go along, maintaining production for extra profits. As went one, so went all, and OPEC's disorganization thus kept — drove — gas prices low, enabling Americans to develop an appetite for 8-mile-a-gallon truck-cars.

Finally, this past year, OPEC got its act together, and for the first time all member states adhered to a production cut, of 4 million barrels a day. As a result, gasoline prices are now stratospheric. The U.S. Energy Department predicted a \$1.80 per-gallon price tag by summer; less conservative private analysts warn of the price reaching \$2.50 — more than a 250 percent increase since last February.

Energy Secretary Bill Richardson has flown to the Middle East to beg Saudi Arabia to step up production, but so far OPEC hasn't moved. Consequently, hawkish senators are pressing for cutting off military aid to OPEC countries, and even dyed-in-the-wool Republicans like Alaska's Frank Murkowski are sheepishly calling for alternative energy research.

Profit-driven OPEC, however, is not to blame for this gas-price crisis; we are. A country driving around in four-ton sport-utility vehicles has no right whatsoever to complain when a full tank of premium unleaded costs \$60. That's the way the market goes. He who complains that his commute now costs twice as much should reconsider his decisions to buy a Ford Excursion and to live sixty miles from work in a car-dependent suburb.

The current crisis was caused by our complacency, our poor energy and development policies, and our recent ham-fisted diplomacy. Motorists are still just as dependent on OPEC oil today as they were in 1973, waiting in line for gas — and this time, there's no excuse. The ludicrous American obsession with four-ton land monsters has finally, in the light of worldwide economic reality, been exposed for the sham it is.

America fell asleep to the soothing gurgle of cheap oil. Now that we're awake, it's time to build a sustainable energy supply for the future.

Keeping an Eye on Our Potatoes

Guest Column
Anton Van der Ven

Most of us probably trust our regulatory agencies, such as the Food and Drug Administration (FDA), to ensure that the foods we eat are safe. Even if some processed foods are unhealthy, they are always accompanied with a label listing their ingredients, enabling us to choose what we eat based on our health concerns. Well, you may be surprised to find out that more and more of the foods we eat contain ingredients that have been genetically modified — and food manufacturers are not required to notify us about it. For nearly a decade, food including corn, potatoes, tomatoes and soybeans has been grown from genetically-modified (GM) seeds. It has been estimated that 60 percent of the food we eat contains at least one genetically modified ingredient.

Experience with genetically-engineered foods has already shown that they could trigger unexpected allergies in humans. Moreover, some of these crops could have devastating environmental effects. Unlike chemicals, genetically-engineered crops reproduce and cross-pollinate with non-GM crops and closely related wild species. If a genetically-engineered crop creates unanticipated problems, it will be impossible for us to withdraw it from the environment.

Surprisingly, the FDA, the U.S. Department of Agriculture (USDA) and the Environmental Protection Agency (EPA) — the three agencies assigned the task of regulating genetically-engineered crops and foods — have remarkably lax policies regarding GM foods. The FDA views genetically-engineered foods as similar to those produced by traditional plant breeding and therefore declares them to be safe. Furthermore, the three agencies do not require the companies that buy from farmers and sell to food producers and grocery chains to keep GM crops separate from traditional crops. Food manufacturers are not obligated to, and in fact do not, label food products with information indicating their genetically-engineered origins. Obviously, this lack of labeling infringes on the ability of consumers to make informed choices about

what we eat. In addition, if GM foods have deleterious health effects, it will be impossible for epidemiologists to trace the problems.

A distinction needs to be made between genetic engineering in medicine and GM crops and food. In medicine, the goal of genetic engineering is to correct inherited or acquired genetic anomalies which can, for example, lead to cancer. New medicines are subjected to extensive clinical trials to identify potential health hazards and unexpected side effects. But even with these safeguards in place, 50 percent of approved medicines have to be recalled within the first five years after introduction. Furthermore, medicines are taken voluntarily. In the case of genetically-modified foods, new products containing GM components are approved with no more than a safety assessment performed by the companies intent on selling the product. They are then released into our environment and food supply without the public's knowledge or approval.

While many scientists contend that the nature of our food is undergoing a huge transformation, the American media is surprisingly silent about the issue. In Europe, meanwhile, there has been enormous public outcry against GM foods, forcing supermarket chains to withdraw most of their GM foods. Some European countries, including France, Italy and Denmark, have imposed a moratorium on further approvals of GM crops. Foods sold in Europe containing a significant amount of GM ingredients must now be labeled with this information.

The conversion to GM crops and foods is being driven by a small handful of companies that include Dow, DuPont and, most notably, Monsanto. Although Monsanto is currently portraying itself as a "life science" company, in the past it has specialized in producing chemicals, among them Agent Orange. The agrochemical companies, as they are more appropriately called, argue that GM crops are needed to feed the ever-growing world population, to save the environment by reducing the need for pesticides, and to make farming less expensive.

Despite these claims, two-thirds of genetically engineered seeds are specifically designed to increase the sales of pesticides sold by the same companies developing the

seeds. Monsanto has developed corn and soybeans that are resistant to their herbicide Roundup and they plan to introduce Roundup-resistant GM wheat in the future. These genetically-engineered seeds enable farmers to spray their crops with much higher doses of Roundup. In fact, to make the introduction of Monsanto's Roundup-resistant seeds possible, the EPA had to triple the allowable residues that could remain on the crop. Another risk, according to an article in *Science*, is that engineered genes from crops may transfer to closely related weeds, producing superweeds that can withstand the herbicides meant to kill them.

Monsanto also produces genetically-engineered crops containing genes from a natural pesticide called Bt. Bt kills caterpillars that eat the leaves of crops and is used on organic farms and by farmers who try to limit their use of chemical pesticides. The GM plants containing Bt genes produce levels of caterpillar-killing toxins that are significantly higher than when used in its natural form. This threatens to severely disrupt the local ecosystem, and industry insiders have admitted that they believe that Bt as a pesticide will lose its effectiveness within ten years.

People who are critical of genetically-modified foods are not necessarily against the field of genetic engineering, but generally believe in the precautionary principle. This principle holds that we should not make irreversible changes to our ecosystem and food supply before we fully understand their consequences. Efforts to rush to a food supply drawn predominantly from genetically-modified crops only serves the corporations that expect to make windfall profits from the conversion. The rest of us, who have had no say in this decision (either through political democracy or as informed consumers), only serve as unwitting guinea pigs in a massive experiment. The citizens of Europe, however, show us that people who are unwilling to participate in the experiment can change their situation by insisting that foods are adequately labeled and that stringent testing is required before GM crops are introduced into the environment.

Anton Van der Ven is a graduate student in the Department of Materials Science and Engineering.

Looking for . . .

your 15 minutes
of fame?

Write a letter to

The Tech
Established 1881

<letters@the-tech.mit.edu>

The Hippocratic Society presents...

The Harvard-MIT
Conference on
International
Health



This Weekend!
March 11-12
Sanders Theater,
Harvard University

Register Online:

<http://web.mit.edu/hippocratic/registration.html>

YOU DON'T WANT TO MISS THIS ONE!

Keynotes: Time Man of the Year David Ho
1999 Nobel Peace Prize James Orbinski

March
10, 2000

COMICS

The
Tech

FUN Page 7 PAGES

the crass rat



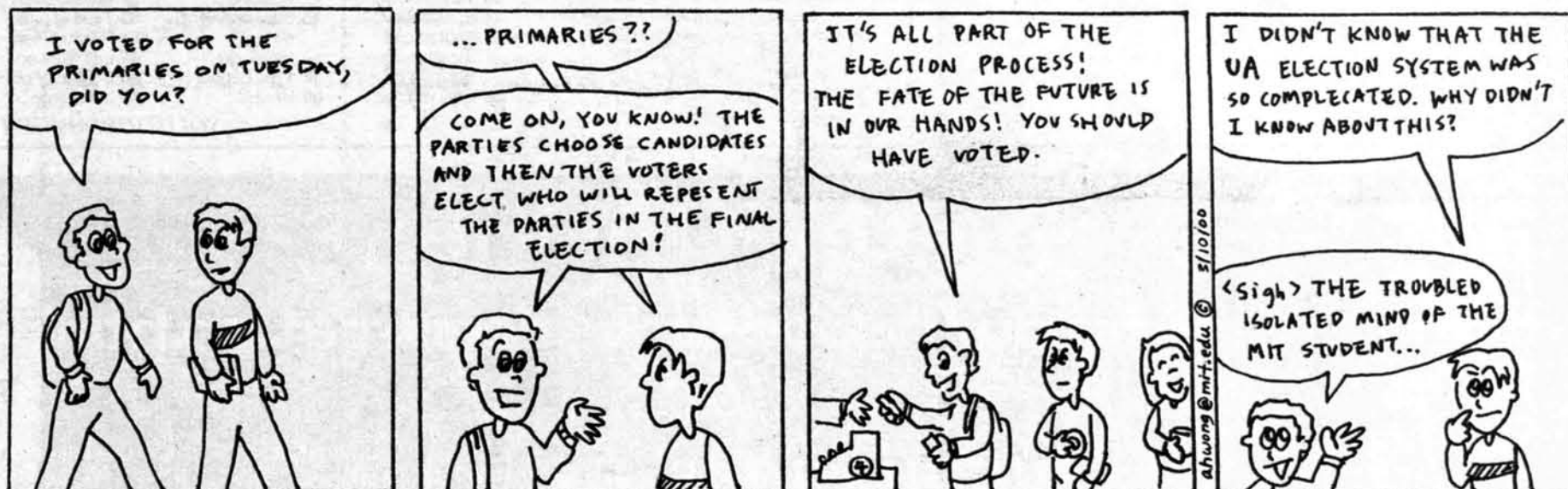
Xippo's Courseload

SOLAR C. OLUGEBEFOLA



INSTITUTE MADNESS!

ALISON WONG

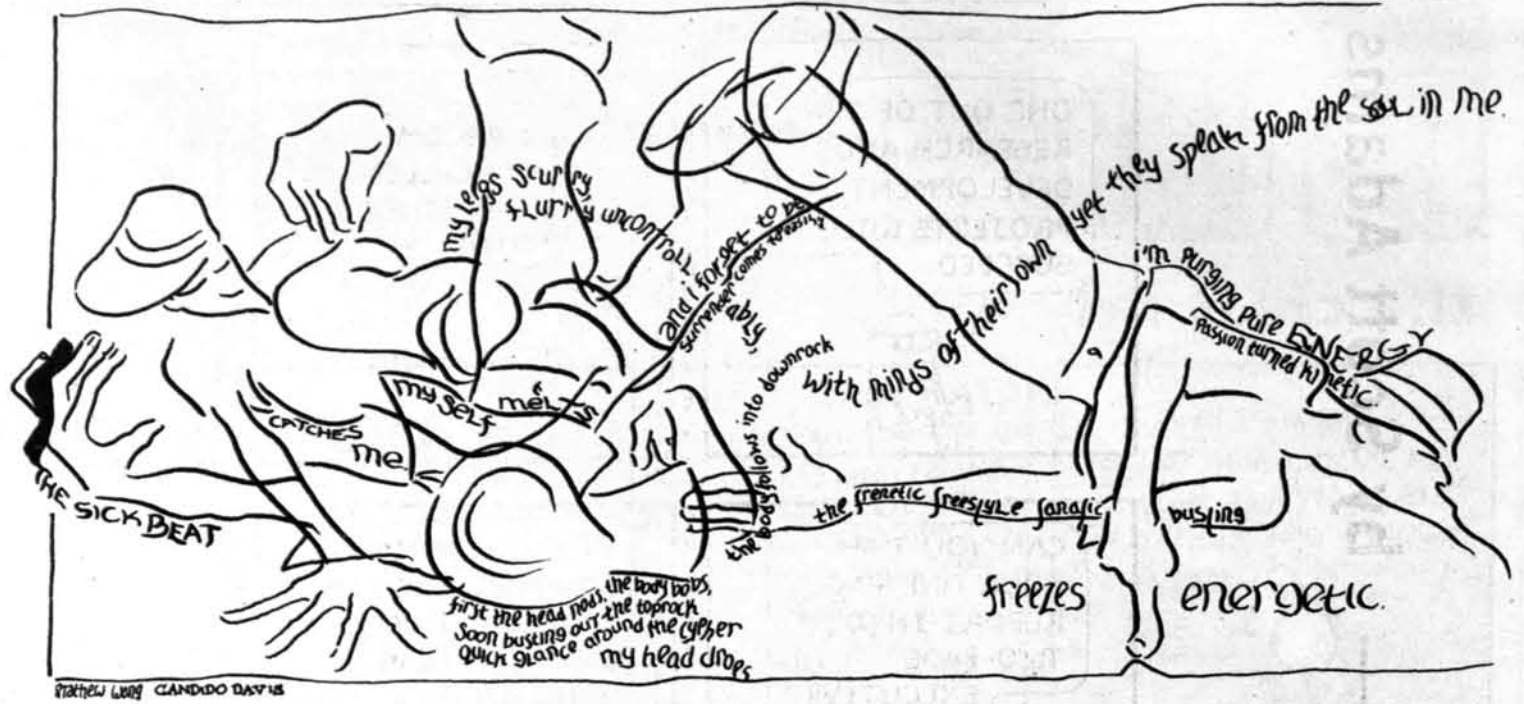


@edu



reader's warning: the following drawn strip is only sometimes funny, thus the title...

S L C
A A I
C N M
C O O
O I C



Matthew Wong CANDIDO DAVIS

Fun With Clip Art

Aaron Isaksen



"Oh! That's why I haven't been getting pregnant... You've been putting your penis in the wrong hole!"

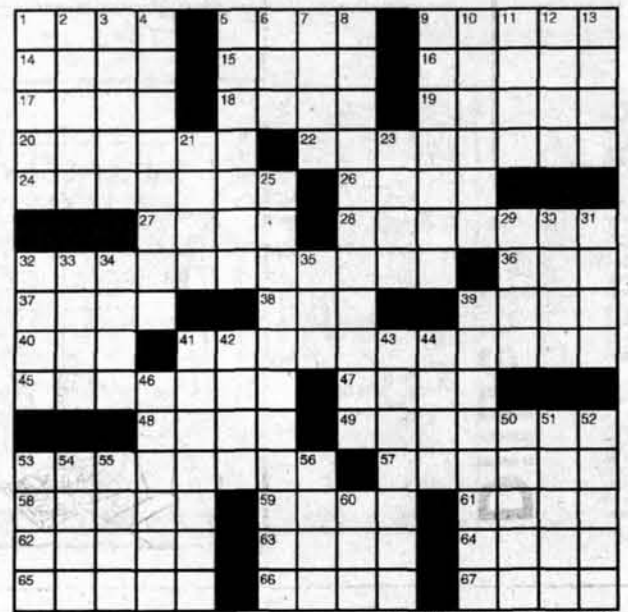
ACROSS

- 1 Ethan Frome's vehicle
- 5 Narrow margin
- 9 Residence
- 14 Son of Leah
- 15 European river
- 16 Jacket piece
- 17 Rara
- 18 Tim of "WKRP in Cincinnati"
- 19 Fleshy fruits
- 20 Free-for-alls
- 22 Former Ethiopian ruler
- 24 Bun seeds
- 26 Type size
- 27 Farm building
- 28 Renters
- 32 Beyond what is required
- 36 That's disgusting!
- 37 Adam's grandson
- 38 Goller Alcott
- 39 "Vissi d'arte," e.g.
- 40 Fuss
- 41 Call to answer charges
- 45 Rick of "Ghostbusters"
- 47 U.S. weather grp.
- 48 Mrs. Parker?
- 49 Aquarium fish
- 53 Like loosest trousers
- 57 Slanting type
- 58 Acrylic fiber
- 59 Record
- 61 Nary a one
- 62 Contemptuous sound
- 63 Work units
- 64 Quaker pronoun
- 65 Deep sleeps
- 66 Castle's defense
- 67 Instrument with seven pedals

DOWN

- 1 Bangs shut
- 2 Embankment
- 3 Bad deeds
- 4 Maladies
- 5 Reflexive pronoun
- 6 Pub offering
- 7 Bird of the Nile
- 8 Changing troop positions
- 9 Andes mammals
- 10 Corkwood trees
- 11 Unnamed work
- 12 Moore of "Ghost"
- 13 So what is new?
- 21 Al Fujayrah leader
- 23 In ___ of
- 25 Sun and its orbiters
- 29 Australia's largest lake
- 30 Destroy
- 31 Card game for three

Crossword Puzzle



1999 Tribune Media Services, Inc. All rights reserved.

- 32 Cloth connection
- 33 Take apart
- 34 Substandard
- 35 Thurman of "Batman and Robin"
- 39 Dark red dye
- 41 Applies oils
- 42 Upslope
- 43 Superlatively sticky
- 44 Naval: pref.
- 46 Type of goat
- 50 Hilo hi
- 51 Lesser
- 52 Freeze over
- 53 Type of pear
- 54 River of Pisa
- 55 Lay eyes on
- 56 Source of poi
- 60 Links org.

SOLUTIONS, PAGE 11

M
U
R
J

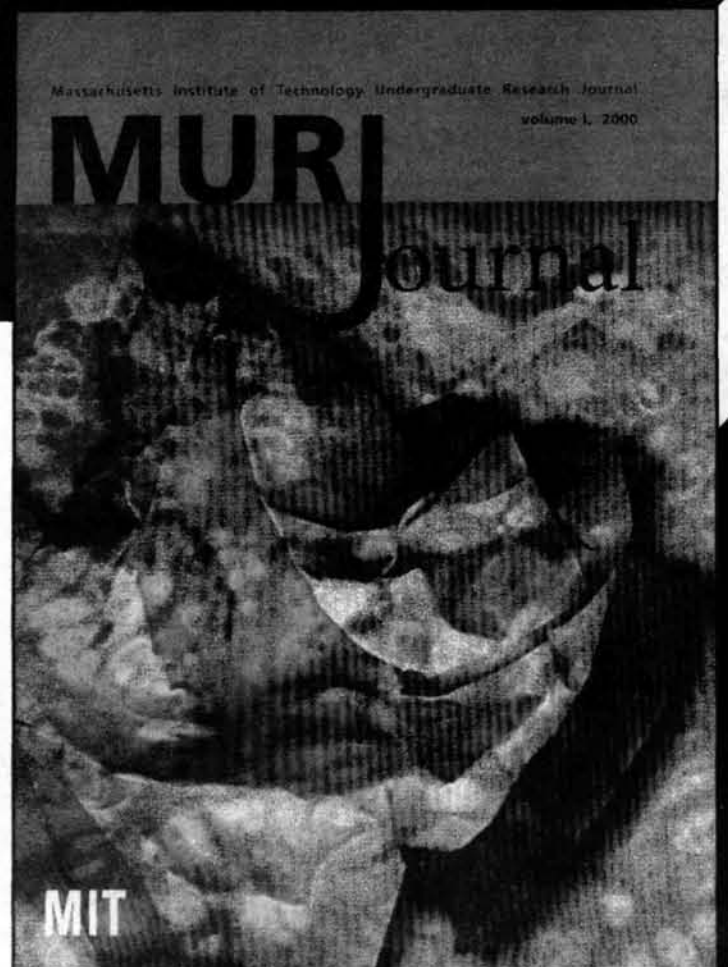
call for submissions

- theory papers
- critical reviews
- research

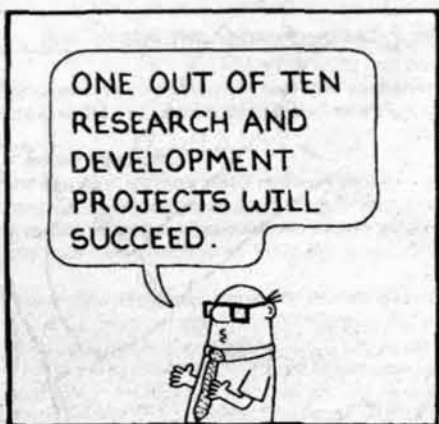
submissions due after spring break

<http://web.mit.edu/murj/www>

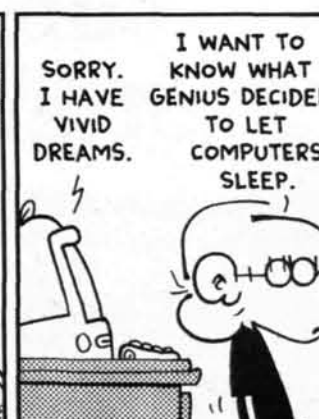
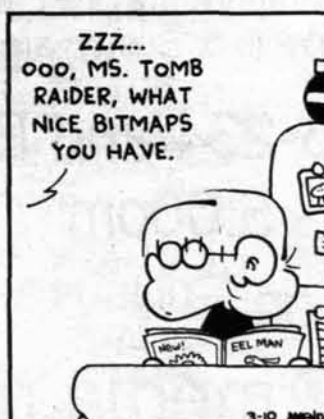
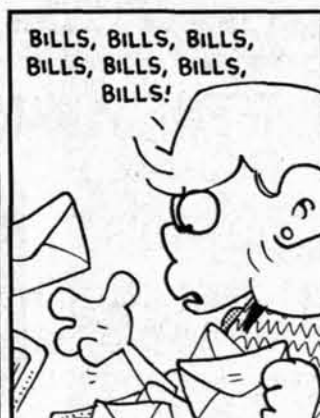
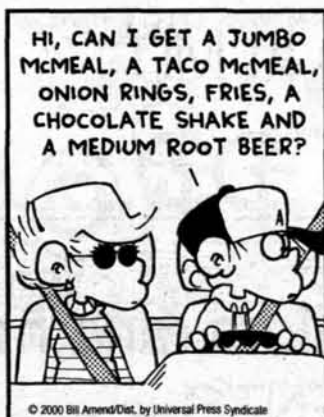
murj@mit.edu



Dilbert® by Scott Adams



FoxTrot by Bill Amend



TechCalendar

Visit and add events to TechCalendar online at <http://tech-calendar.mit.edu>

TechCalendar appears in each issue of *The Tech* and features events for members of the MIT community. *The Tech* makes no guarantees as to the accuracy of this information, and *The Tech* shall not be held liable for any losses, including, but not limited to, damages resulting from attendance of an event. Contact information for all events is available from the TechCalendar web page.

Friday's Events

6:00 p.m. - **Graduate Christian Fellowship Meeting**. Music, prayer, and a talk by Tom van Antwerp of Grace Chapel entitled "Life on Purpose.". Admission 0. W20-491. Sponsor: Graduate Christian Fellowship.
 8:00 p.m. - **MIT Symphony Orchestra Concert**. Dante Anzolini, music director. Bernstein's Symphonic Dances from West Side Story; Prokofiev's Piano Concerto No. 1, Op. 10 with Andrew Pak '02 piano; Stravinsky's Rite of Spring. Admission 2.00. Kresge Auditorium. Sponsor: Office of the Arts.
 8:00 p.m. - **"A Trois"**. Theatre X (a recently-formed student organization) presents Barry Hall's one-act stream-of-character exploration of love and sex. Admission 0. W20-400 (Student Ctr). Sponsor: Office of the Arts.
 8:00 p.m. - **A Midsummer Night's Dream**. Co-directed by Lisa Wolpe, artistic director of Los Angeles Women's Shakespeare group and Sarah Hickler. \$8 general admission. Admission 6.00. Sala de Puerto Rico. Sponsor: Office of the Arts.
 12:30 p.m. (1 hour 15 minutes) - **Preparing for a Baby, Part II, Betsy Ross, A2Z Psychotherapy**. Pre-registration is required; call x3-1592. Open. More info: Call Family Resource Center at 253-1592. Email frc@mit.edu. Web: <http://web.mit.edu/personnel/www/frc/>. Rm 16-151.
 3:00 p.m. - **Cell-Free Protein Synthesis: New Analyses - New Excitement, James R. Swartz, Stanford University, Dept of Chemical Engineering**. Receptions held before seminars at 2:45 p.m. Open. More info: Call Arline Benford at 258-7031. Email arline@mit.edu. Web: <http://web.mit.edu/cheme/www/>. Rm 66-110.
 3:30 p.m. - **Air Pollution in Mexico City, Mario Molina, 1995 Nobel Laureate in Chemistry**. Open. More info: Call Luisa Molina at 253-1603. Email ltmolina@mit.edu. Web: <http://eaps.mit.edu/molina/>. Wong Auditorium.
 3:30 p.m. - **Air Pollution in Mexico City, Mario Molina, 1995 Nobel Laureate in Chemistry**. Open. More info: Call Luisa Molina at 253-1603. Email ltmolina@mit.edu. Web: <http://eaps.mit.edu/molina/>. Wong Auditorium.
 3:30 p.m. - **Air Pollution in Mexico City, Mario Molina, 1995 Nobel Laureate in Chemistry**. Open. More info: Call Luisa Molina at 253-1603. Email ltmolina@mit.edu. Web: <http://eaps.mit.edu/molina/>. Wong Auditorium.
 4:00 p.m. - **Generic Model to Embed Intelligence in Environmental Sensors, Prof. Fernando Figueroa, Tulane University**. Refreshments 3:30 pm. Open. More info: Rm 1-350.
 4:15 p.m. - **A Strong Multiplicity One Result for Irreducible Modules of the Affine Hecke Algebra., Monica Vazirani, University of California, San Diego and MSRI**. Refreshments will be served at 3:30 PM in Room 2-349. Open. More info: Call Michael Kleber at 253-7905. Email kleber@math.mit.edu. Web: <http://www-math.mit.edu/~combin>. Rm 2-338.

Saturday's Events

7:00 - 10:30 p.m. - **Israel Folkdance Festival Folk Dance Party**. Participatory dance preceding the Israel Folkdance Festival on March 12. Features open dancing and requests and video of 1999 Israel Folkdance Festival. Admission 0. Morss Hall (Walker Mem). Sponsor: Office of the Arts.
 8:00 p.m. - **A Midsummer Night's Dream**. Co-directed by Lisa Wolpe, artistic director of Los Angeles Women's Shakespeare group and Sarah Hickler. \$8 general admission. Admission 6.00. Sala de Puerto Rico. Sponsor: Office of the Arts.
 8:00 p.m. - **The MIT Festival Jazz Ensemble and The MIT Jazz Combo**. Fred Harris, music director. Guests: MIT-CAN, James Makubuya, director, and Mark Harvey, MIT Lecturer in Music. Program includes world-premiere by Harvey for six trumpets. 7pm Lecture. Admission 2.00. Kresge Auditorium. Sponsor: Office of the Arts.
 8:00 p.m. - **"A Trois"**. Theatre X (a recently-formed student organization) presents Barry Hall's one-act stream-of-character exploration of love and sex. Admission 0. W20-400 (Student Ctr). Sponsor: Office of the Arts.
 11:59 p.m. - **The Chorallaries Nth Annual Concert in Bad Taste**. The Chorallaries of MIT reprogram PC-brain-washed minds with skits and songs never found on local TV. Admission 0. Rm 10-250. Sponsor: Office of the Arts.

Sunday's Events

3:00 p.m. - **24th Annual Israel Folk Dance Festival**. Performance celebrating the joy and exuberance of Israel and the Jewish culture through dance. Twenty dance groups from throughout the northeastern US will participate. Admission 12.00. Kresge Auditorium. Sponsor: Office of the Arts.
 4:00 p.m. - **Jayanthi, veena**. Presented by MITHAS (MIT Heritage of South Asia). \$15, \$12—MITHAS & New England Hindu Temple members, students & seniors; \$10—MIT students. Wong Auditorium. Sponsor: Office of the Arts.
 4:00 p.m. - **MIT Faculty Concert: Evan Ziporyn with Hazardous Materials**. Associate Prof Evan Ziporyn, composer/bass clarinet, with Hazardous Materials, a NYC string quartet. Music by Ziporyn and John King. Admission

0. Killian Hall. Sponsor: Office of the Arts.

8:00 p.m. - **Logarithms "Pre-Tour" Concert**. MIT's all-male a cappella ensemble with University of Illinois' No Strings Attached and the University of Vermont's Cat's Meow. Admission 0. Rm 10-250. Sponsor: Office of the Arts.

Monday's Events

7:40 - 10:00 p.m. - **Kendo Practice**. Come learn the Japanese art of swordfighting under the instruction of sensei Junji Himeno, 7th dan from Harvard. No experience is necessary. T-Club Lounge. Sponsor: MIT Kendo Club.
 12:00 p.m. - **Helping Children Be Successful in School, Miriam Kronish, Eliot School**. Open. More info: Call Family Resource Center at 253-1592. Email frc@mit.edu. Web: <http://web.mit.edu/personnel/www/frc/>. Rm 16-151.
 12:00 p.m. - **General Motors: Corporate Strategies in the Asia/Pacific Region, G.M. Executive, General Motors**. Lunches served on a first come first serve basis. E38-6th floor conference room. Open. More info: Call Christine Lawrence at 252-1483. Email chriss@mit.edu. Rm E38-6th floor ConfRM.
 4:15 p.m. - **Electromigration: An Electrical Analog of the Saffman-Taylor Viscous Fingering Instability, Professor Martine Benamar, Visiting Professor/Department of Mechanical Engineering, MIT**. Refreshments will be served at 3:45 PM in Room 2-349. Open. More info: Call Professor Michael Brenner at 253-3661. Email brenner@math.mit.edu. Web: <http://www-math.mit.edu/amc/spring00>. Rm 2-105.
 5:30 p.m. - **Contemporary Courtyards: Three Recent Works, Raj Rewal, Architect, New Delhi**. Open. More info: Call Aga Khan Program at 253-1400. Email akpiarch@mit.edu. Rm 3-133.

Tuesday's Events

7:30 - 10:30 p.m. - **Contra Dance for All**. MIT Folk Dance Club presents a Contra Dance. No experience or partner necessary! Live music by Terry Traub & Cal Howard, caller Linda Leslie. Refreshments served. Admission 0. Morss Hall (Walker, b.50). Sponsor: Folk Dance Club.
 12:00 p.m. - **Preparing Siblings for a New Baby, Deborah Issokson**. Open. More info: Call Family Resource Center at 253-1592. Email frc@mit.edu. Web: <http://web.mit.edu/personnel/www/frc/>. Rm 16-151.
 12:00 p.m. - **Modem Laser Spectroscopy: Ultrasensitive, Ultrastable, and Ultrafast, Jun Ye, JILA**. Refreshments served following the seminar. Please see web.mit.edu/spectroscopy/www for more detail. Open. More info: Call Alison Hearn at 253-4881. Email hearn@mit.edu. Web: <http://web.mit.edu/spectroscopy/www/>. Rm 37-252.
 4:00 p.m. - **High-Order, Nonlinear, Feedback Systems from Kindergarten to Chief Executive Officers, Jay W. Forrester, Sloan School, MIT**. A short reception will follow in the Osborne Room (35-338). Open. More info: Call soosan beheshti at 253-2832. Email soosan@mit.edu. Rm 35-225.
 4:00 p.m. - **Technology to Enable Analog/Rf/Digital Systems on a Chip, Dennis Buss, Texas Instruments**. Refreshments in Room 34-101 at 3:30 p.m. Open. More info: Call Debroah Hodges-Pabon at 253-5264. Email debb@mtl.mit.edu. Web: <http://www-mtl.mit.edu/>. Rm 34-101.
 4:00 p.m. - **E-Projects Square, Mary Hopper, Postdoctoral Associate, Comparative Media Studies**. Open. More info: Call Mary Hopper at 868-7157. Email mehopper@mit.edu. Web: <http://web.mit.edu/mehopper/www>. Rm 56-114.
 4:00 p.m. - **SCALING OF RIVER NETWORKS, Prof. Dan Rothman, Dept. of Earth & Planetary Science, MIT**. Open. More info: Call Donna Wilker at 253-2021. Email dwilker@mit.edu. Rm 5-234.
 4:30 p.m. - **Fluent Software in the Aerospace and Turbomachinery Industries, Dr. David G. Schowalter, Fluent, Inc.** Refreshments served 4:15pm. Open. More info: Call Lori Martinez at 253-2481. Email dragonl@mit.edu. Rm 31-161.
 4:30 p.m. - **Will Clinton's Legacy Include Middle East Peace?, Prof. William B. Quandt, Dept of Govt & Foreign Affairs, University of Virginia**. The Emile Bustani Middle East Seminar. Open. More info: Call Julianne Stilwell at 253-8961. Email stilwell@mit.edu. Rm E51-095.
 6:30 p.m. - **Some Aspects of My Art and on Architecture, Hermann Pitz, artist, Berlin; professor, Rijksakademie, Amsterdam**. Department of Architecture Lecture. Open. More info: Call Department of Architecture at 253-7791. Rm 10-250.
 7:00 p.m. - **"Eastern Europe: Memoirs, Memory, History.", Panel discussion Andre Makine, author of "Dreams of My Russian Summers."** Part of the Global Writers Series in collaboration with the Program in Writing & Humanistic Studies; co-sponsored by the Kelly Fund. Closed. More info: Call Program in Writing and Humanistic Studies at 253-7894. Web: <http://web.mit.edu/humanistic/www/writser.htm>. Rm 4-237.

•call for applications•

the Council for the Arts at MIT

ARTS SCHOLARS PROGRAM

open to sophomores, juniors and seniors, and now open to
GRADUATE STUDENTS

regardless of major

Application Deadline: FRIDAY MARCH 31, 2000

Who are the Arts Scholars?

A community of MIT student artists, from all disciplines

Who should apply?

Students who are committed to work in one or more disciplines in the arts and who wish for more interaction with fellow student & faculty artists

What is the program?

The program is structured around informal monthly dinners accompanied by presentations or excursions. Presentations may be given by faculty members, MIT artists -in-residence, fellow students or Boston-area artists

Application forms are available at 3-234 and E15-205

Monday - Friday 9:00am - 5:00pm

For more information

call 253-4005 or email cohen@media.mit.edu

Solution to Crossword

from page 8



Help Wanted Ad

\$17/HR. SAT Tutors
 Needed in all parts of MA.
 Flexible hours. Need car.
 Top Standardized Scores.
 Min. avail. through May.
 College student or graduate or others.
 Call M W F 617-926-8541 or apply at
 www.mytutor.com/jobs



Thailand Cafe

302 Massachusetts Avenue, Cambridge, MA 02139
 Tel: (617)492-2494

\$2.00 OFF

With any purchase of \$10.00 or more



Summer @ UMass Boston

A great university in a great city

Summer at UMass Boston means

- Four- and six-week sessions, beginning May 30, July 5, and July 17
- Morning, afternoon, and evening classes
- Travel-to-learn programs
- Quality education at an affordable cost



To learn more, visit
www.conted.umb.edu
 or call **617.287.6000**

**MIT
 Emile Bustani Middle East Seminar**
 presents

Professor William B. Quandt
 Department of Government and Foreign Affairs
 University of Virginia

“Will Clinton’s Legacy Include Middle East Peace?”

Tuesday, March 14, 2000
4:30 - 6:30 p.m.
E51-095
 70 Memorial Drive
 Cambridge

OPEN TO THE PUBLIC

Sponsored by the Center for International Studies

THE
LALLY SCHOOL
 AT RENSSELAER

Management and technology.
 Application and innovation.

GET THE JUMP

On The New Economy
 The Lally School at Rensselaer.
 Business savvy for a world gone digital.

The MBA@Rensselaer

why not change the world?™

Rensselaer
<http://lallyschool.rpi.edu> 518.276.6586

→ FREE → FAX → FRIDAY

Exclusively at:

CopyTech Express

**March 10,
11am to 6pm**
(Domestic Fax only)
(Students only)

Thanks to all students for
supporting CopyTech Express
during its first year of
business!

*CopyTech Express is on the first floor of W20,
the Stratton Student Center*

The Council for the Arts at MIT
offers

**free tickets for
MIT Students**

to

**The National Song and Dance
Company of Mozambique**

**Friday March 17, 2000
8:00pm
Sanders Theater
Harvard Square**

The National Song and Dance Company of Mozambique presents an electrifying program of traditional and modern dances. With riveting choreography, precise dramatic effects and boundless energy, 30 professional dancers, musicians and singers capture the spirit of Mozambique.

**Pick up tickets at E15-205,
with your valid MIT student ID**



Dance Party

Friday, March 10

9pm-1am
EC Talbot Lounge

**FREE to the ENTIRE
MIT community**

sponsored by:
LBGT-Issues Group
weekends@mit
MIT-FAQS
GaMIT
tEp

free food, dancing, door prizes, and music provided by mitdmc

for more info contact
rainbow-brite@mit.edu

THE ARTS

FILM REVIEW ★★

The Next Best Thing

Better Than Some Things

By Fred Choi
ASSOCIATE ARTS EDITOR

Directed by John Schlesinger
Written by Thomas Ropelewski
Starring Madonna, Rupert Everett, Benjamin Bratt, Michael Vartan, Josef Sommer, and Lynn Redgrave
Lakeshore Entertainment

Madonna and Rupert Everett co-star as Abby and Robert, two best friends who accidentally have a baby together. They decide to form a family, an arrangement complicated by the fact that Robert is gay. In the end the two fight over their child in court.

Hmmm. According to screenplay writer Thomas Ropelewski, the "next best thing" to getting married to a man you love and having a family is shagging your best friend (who happens to be gay) and having a family. Along with this outrageous conceit, he and director John Schlesinger ask us to believe many more incredible elements in the new movie *The Next Best Thing*, which range from the initially startling to the painfully contrived. For the most part the movie is contrived and cliché, but a solid supporting cast and some interesting ideas make this a movie worth seeing.

For example, after a few minutes it's not too difficult to believe that pop music superstar and actress Madonna's name is Abby and that she's a yoga instructor; her demonstration of her yoga prowess in the movie certainly helps make this more real. It's a little harder to believe that Rupert Everett (*My Best Friend's Wedding*, *An Ideal Husband*) is a landscape gardener named Robert, but as we see him working we accept this within the context of the film. And Madonna and Everett's on-screen banter is lively and does a good job of making us believe that they're best friends. But something that requires a tremendous suspension of disbelief is that these two best friends would get drunk enough to have sex together. One has to wonder if the two characters were completely comatose.

Still, one could easily forgive a few sketchy parts in a narrative form which, after all, only imitates life, but even then there are still numerous plot elements that don't make much sense. If a person who had never been to Los Angeles saw *The Next Best Thing*, she might derive an interesting collection of conclusions from it: apparently LA is filled with

"beautiful strangers" who are self-centered and insane and have houses that look like works of art that no one actually lives in.

More to the point, however, is that during the last third of the movie the audience is required to sit through the litigative tug-of-war that occurs between Abby and Robert as they fight for the custody of the child that they have raised together for six years. The circumstances surrounding the change in their situation are for once realistic, but the sudden shift in focus and tone makes the movie stumble, and the sudden lack of character development leaves the audience indifferent and bored.

For the most part, what isn't contrived in *The Next Best Thing* is cliché, albeit well-executed. The beginning, in which Abby begs Robert for advice about what to do about her boyfriend and in which he then consoles her, could have been from a direct-to-video release entitled *My Best Friend's Wedding Part Two*. The scene in which Robert rescues Abby's keys by playing on gay stereotypes is trite and borders on being offensive. And of course there's the obligatory pregnancy montage, which thankfully ends before we have to endure the "baby grows up and daddy learns to change his smelly diaper" sequence. One of the most distracting features of the movie, however, is the artful cinematography. In a more epic movie this would certainly be appropriate, but in this Made For TV-esque bubble gum comedy/grimy courtroom drama such visuals are simply distracting and one wishes the producers had spent more time refining the plot rather than making things look "beautiful."

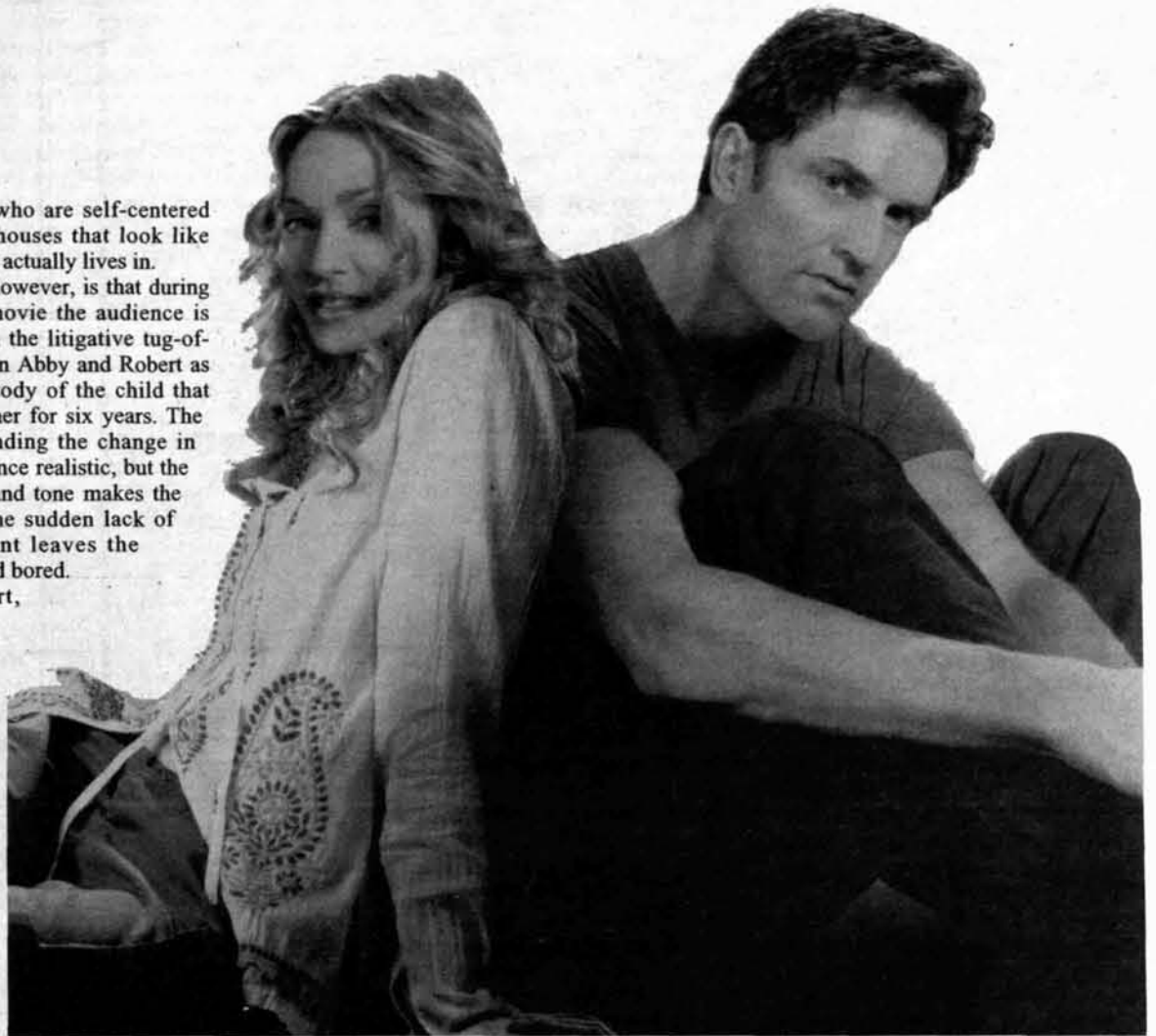
Despite all the complaints, though, it would be overly critical to say that *The Next Best Thing* is a terrible movie. There are a few good reasons to spend eight bucks and two hours seeing it. First, if you need an eye-candy fix after spending too much time on MIT's campus there's the harem of gorgeous,

extremely well-groomed men that accompany the luminous Madonna throughout the movie, specifically the suave Rupert Everett, the virile Benjamin Bratt (*Law and Order*), who plays Abby's new love interest, and the boy-next-door Michael Vartan (*Never Been Kissed*), who plays Abby's former boyfriend. Also, Madonna, although rather stodgy and stiff in parts, demonstrates her maturation as an actress in her role as Abby. However, due to the limiting script we only catch glimpses of her and Rupert Everett's skill.

In general the movie features a strong cast, particularly the wonderful Lynn Redgrave (*Gods and Monsters*, *Shine*) as Robert's mother, who sails through the few scenes she's in, and Josef Sommer (*The Chamber*) as Robert's father, who thinks the life his son has chosen is ridiculous. Newcomer Malcolm Stumpf does a great job as

the six-year old son, and a memorable moment is the one in which he explains to his father that he's heard that being gay is "when two boys kiss and then go to the opera."

The movie does bring up some interesting points about the new American family, homosexuals' abilities in raising well-adjusted children, and the rights of homosexuals as parents, the latter of which is just now becoming more and more relevant, as the Vermont decision on same-sex marriage proves. It never really delves deeply into any of them (perhaps for now bringing them into mainstream pop culture is revolutionary enough), but this is not a fault because the movie's focus is more on the relationship between the two main characters. All in all, although this certainly isn't "the next best thing," it's better than tooling 6.170 or sitting through Madonna's rendition of "American Pie."



Madonna and Rupert Everett star as best friends who accidentally have a baby in *The Next Best Thing*.

DAH LEN—LAKESHORE ENTERTAINMENT CORP.

A Midsummer Night's Dream

SHAKESPEARE ENSEMBLE



GREG KUHNEN—THE TECH



GREG KUHNEN—THE TECH

The MIT Shakespeare Ensemble brings *A Midsummer Night's Dream* to La Sala de Puerto Rico tonight and tomorrow, as well as next week, March 16-18. Director Sarah Hickler bills the play as "one of Shakespeare's best plays, where reality and illusion mix to create a fantastical world."

(left) Titania the Fairy Queen (Rydia Q. Vielehr '03) fawns over the transformed Bottom (Sarah R. Cohen '00) after having a love spell cast on her.

(above) Bottom (front) shows off her dramatic versatility as the director of the Rude Mechanicals casts the show.

MUSIC REVIEW

State of the Airwaves

Conspiracy, Collapsis, and Kryptonite

By Dan Katz
STAFF WRITER

Mmmm ... controversy. If you happen to have an FNX Card, you were abruptly alerted last week about the Airwaves Show of the Week: an extension of the Scaled Tour with Our Lady Peace at TT The Bear's. Being a huge OLP fan, I was pretty confused that I hadn't heard about the show, and even more confused that the e-mail claimed it was sold out (unless you had an FNX card, of course ...) In the WFNX-owned Phoenix as well, an advertisement declared it both a "New Show!" AND "Sold out!" So, skeptic that I am, I checked Ticketmaster ... and discovered there were still tickets available. Apparently, the radio station was planning to purchase all the tickets to give away free, and they just hadn't gotten around to it yet. Now, if you read my column regularly, you know how I feel about seizing tickets away from desperate fans for random giveaways that don't generate much new business anyway. And if you don't, you can figure it out from that last sentence. By the way, one way or another, the concert is now sold out.

Man, I'm so grumpy, I devoted that whole paragraph to one concert. Heaven forbid I ignore the other shows at TT The Bears this week: a two-night stand by local heroes The Gravel Pit tonight and tomorrow, and an appear-

ance by up-and-coming radio stars Collapsis on Thursday. I certainly wouldn't want to ignore Axis tonight, where the Long Beach Dub All Stars continue to attempt to channel the spirit of Sublime. Philadelphia's Grey Eye Glances pop up at Passim's tomorrow night while soundtrack addicts Neve try to expand their fan base with a FREE show at the Hard Rock Cafe, and Kenny Wayne Shepherd hits the Avalon Thursday night.

"Kryptonite" by 3 Doors Down starts like a lot of mainstream rock songs, with a ringing, slightly foreboding repeated series of single guitar notes. Then a uniquely peppy drum line comes in to separate this song from its competitors; it's got a great beat to it, and a catchy, powerful chorus with cute lyrics ("If I go crazy, will you still be my Super-

man?") that are just different enough from the title to confuse radio listeners, who will probably spend the next two months asking DJs to play "that Superman song."

And speaking of surprisingly catchy drum lines, what's the deal with Rage Against The Machine's "Sleep Now In The Fire?" I'm used to their music being vicious free-time assaults, but this one's actually driven by the rhythm section, an improvement that was hinted at in "Guerrilla Radio." Rage Against The Machine is a band I've always felt are good, but could be better. They're proving me right.

And one more song that starts out sounding generic but takes an interesting swerve: Owsley's "I'm Alright," a formulaic power-pop tune that explodes into a burst of harmony and distortion (not a surprise) with an interesting minor-chord progression, producing a sound that's pleasant without sounding sugary. Owsley himself is a guitarist who worked on his own for years before releasing his new album, which has a lot of other winners on it, including "Coming Up Roses" and "Oh No, The Radio," which should perhaps be the new title of this column.

Looking over my last few installments of *Airwaves*, I've noticed an extremely disturbing trend: optimism. What happened? I used to be a cynical bastard; recently, I've been giving props to almost every song that I mention. I think it may be because I specifically write about the songs I want to write about, and I don't get to listen to the radio nowadays to figure out what's truly annoying. We're almost 25 percent through the year, so there's got to be some horrible music out there that I've missed. That's where you come in. I'm looking for the worst rock single so far this year. Send me your suggestions, and the winner will get a snappy State of the Airwaves T-shirt ... or at least they would, if such a thing existed, which it doesn't. You're welcome to make your own though.

So now's the time where I bug you to write in ... but I just did, so I'm taking off early for the weekend. Drop me a line at airwaves@the-tech.mit.edu and keep expanding your horizons.



ANDREW MACNAUGHTAN—UNIVERSAL RECORDS

Up-and-coming radio stars Collapsis (from left: Ryan Pickett, Chris Holloway, Mike Garrigan, and Scott Carie) will be playing at TT The Bears this coming Thursday.

FILM REVIEW ★

Mission to Mars

Coming soon to a MST3K episode near you?

By Vladimir Zelevinsky
ASSOCIATE ARTS EDITOR

Directed by Brian De Palma
Written by Lowell Cannon, Jim Thomas, John Thomas, Graham Yost
With Gary Sinise, Don Cheadle, Connie Nielsen, Jerry O'Connell, Tim Robbins

Toward the end of *Mission To Mars*, a trio of intrepid interplanetary explorers (Gary Sinise, Don Cheadle, and Connie Nielsen) come face to face with a representative of another civilization. As this representative saunters toward the camera in all its computer-generated glory, as the score swells to the unbearably saccharin level, as the actors furrow their brows to signify utter amazement, it's clear that the film is working extra-hard to make this a Scene of High Significance. Just at this moment, a girl a couple of rows behind me said, quite loudly, "Nanoo-nanoo," and the whole audience broke out in applause. This is what movies so rarely are these days: a communal experience, uniting the audience with the single emotional response. In this particular case, this response is: "This is so bad, I might as well laugh at it." *Mission to Mars* is not as much SF (science

fiction) as SR (shameless ripoff).

It doesn't start out quite so badly: director Brian De Palma (*The Untouchables*, *Mission: Impossible*) displays a certain amount of wit when it concerns orchestrating neat extended shots, and the opening one is quite enjoyable. The introductory scene feels recycled, of course, since it copies the opening of *Apollo 13* on a nearly shot-by-shot and character-by-character basis. There's a party, utilizing the contrast between the heroic profession of the people that we see and their down-to-earth behavior. Don Cheadle, in the Tom Hanks part, is a family man; Jerry O'Connell (*Scream 2*), in the Kevin Bacon part, is a single comic-relief guy who keeps making passes at women; and Gary Sinise, in the Gary Sinise part, is the guy who is not cleared for the mission and is doomed to stay on Earth. There are also Tim Robbins and Connie Nielsen on hand, playing a married couple, and they are as convincing as a couple of actors can be if they decided to wear exactly the same facial expressions for the entire movie.

Very soon, the movie cuts to Mars (omitting such extraneous details as actually getting there), and decides, for a change, to steal from another movie, namely *The Mummy*, when a

group of mostly expendable characters are obliterated by a massive computer-generated sand whirl. The scene is directed in the following highly creative manner: it cuts from a shot of this sand whirl, approaching very slowly, to a tight close-up of a spaceman, who stands still, looking vaguely perplexed. Cut back to the whirl. Cut back to the perplexed guy. Repeat a dozen times. Wake the dozing audience by a very graphic computer-generated dismemberment.

Now it's up to our intrepid second crew (Sinise, Robbins, Nielsen, O'Connell) to fly to Mars to find out what happened there — and from now on, we are in a full *2001: A Space Odyssey* mode. It would take too long to list the number of ways *Mission to Mars* steals from the Stanley Kubrick film, so I think I'll save my time and simply say that the rip-offs only serve to make the movie poor. *Mission to Mars*, though, is not poor: it's laughably poor, since it feels like it was either written by idiots or for idiots (the film's screenwriters, Jim Thomas and John Thomas, wrote *Wild Wild West*, which would indicate the former, while the presence of cowriter Graham Yost, who wrote *Speed*, seems to indicate the latter).

Not only does the screenplay fail to demonstrate any understanding of the basic laws of physics (such as conservation of momentum or energy) in the flight scenes, but it flatly fails to provide a single moment of excitement or even action by falling down on the lamest imaginable plot devices. If these are the smartest people on Earth, then humanity is in trouble.

After some more borrowing from such movies as *Alien* and *Contact*, the film reaches the conclusion, which is a laugh riot. For example, in one scene, there's a tight shot of a computer that shows, in big letters, "ATMOSPHERE: O₂ and N₂," which is followed by one character helpfully remarking, "Atmosphere here is a mixture of oxygen and nitrogen," and another even more helpfully explaining, "Otherwise known as air." Then come cheesy special effects: the alien, the holding of hands around the symbolic representation of Earth, another sequence that implies that the mammoth evolved directly from the dinosaur, and many more close-ups of actors who are on hand clearly just to get a paycheck. I can understand why Tim Robbins did this movie: this must have been the only way he could have had *Cradle Will Rock* produced at the same studio, but I have no idea why Don Cheadle or Gary Sinise would want to participate in this. Not that they really participate: Cheadle is fine, but his part is small; Sinise keeps smirking like there's no tomorrow; Robbins looks vaguely confused about what he's doing there in the first place; and Nielsen exhibits the perfectly identical blank facial expression for the entire film.

So I can understand why the audience started, at first, laughing at the film and, eventually, heckling it; I must admit I did it, too, unable to resist the opportunities that seem to cry out for a comment from *The Crow* or *Tom Servo*. Indeed, *Mission to Mars* would make a perfect subject for *Mystery Science Theatre 3000* treatment.



INDUSTRIAL LIGHT AND MAGIC—TOUCHSTONE PICTURES

Jim McConnell (Gary Sinise, left), Terri Fisher (Connie Nielsen), and Mars One Commander Luke Graham (Don Cheadle) watch a living diorama of planetary history in *Mission to Mars*.

ON THE SCREEN

— BY THE TECH ARTS STAFF —

The following movies are playing this weekend at local theaters. The Tech suggests using <http://www.boston.com> for a complete listing of times and locations.

- ★★★★ Excellent
- ★★★ Good
- ★★ Fair
- ★ Poor

American Beauty (★½)

An extremely annoying movie: this deadpan black tragicomedy is a laughable failure as a work of art, being pretentious, simplistic, and self-important. Excepting a truly remarkable performance by Kevin Spacey (whose part is disappointingly small), there's nothing to this movie beyond tortured metaphors, caricatures instead of characters, and a messy pile-up of red herrings instead of a plot. —Vladimir V. Zelevinsky

Anna and the King (★★½)

Chow Yun Fat is an Oscar-worthy scene-stealer with riveting screen presence as the Thai King Mongkut; the only other three-dimensional character is played by Bai Ling in a passionately sincere performance. Jodie Foster disappoints for the first time as the British governess Anna Leonowens. See the movie for the stunning visuals: gorgeous, sprawling epic sets, beautiful details, and the regal Chow Yun Fat's performance which keeps lighting up the screen. —Zarminae Ansari

The Beach (★★½)

The quest for the perfect world drives some people to madness, some to obsession, and some to *The Beach*. In this utopian odyssey chronicling one young, macho American's quest for adventure, elements of postmodern fantasy, horror, and love collide into a final sobering conclusion: that the closest thing to a perfect world may very well be our own. Its gratuitous relationships and its force-feeding of the themes also cripple the plot. — Jacob Beniflah and Amy Meadows

Being John Malkovich (★★★★)

A film so different, so whacked-out, so original, and totally unlike anything else out there — like Monty Python at their most deadpan hilarious. An unconventional mixture of comedy, satire, and frighteningly deep ruminations on the nature of personality. — VZ

The Big Tease (★★)

A foreign film in the tradition of *Strictly Ballroom*, this import follows Scotsman Crawford MacKenzie as he stops at nothing to participate in the Los Angeles Platinum Scissors hair cutting competition. The film suffers from lackluster casting and bad editing, but

the final hairstyles are truly remarkable. — Erik Blankinship

Boiler Room (★★½)

A fairly clever, decent movie about the shady dealings of the employees of a small brokerage firm. Witty dialogue and good acting make the film hard to forget, but *Boiler Room* turns out not to be as thrilling as it claims to be. — Jumaane Jeffries

The Cider House Rules (★★★)

Despite the fact that the protagonist's name is Homer, this film ends up feeling less like a Homeric epic and more like a Norman Rockwell painting: hardly great art or even art at all, but something with instantly recognizable humanity and an overall impact that can hardly be ignored. Credit this mostly to luminous acting and the screenplay's understated emotional complexity. — VZ

Cradle Will Rock (★★★★)

A rich, visually inventive, amazingly-acted, and consistently hilarious tapestry of art set in the 1930's, weaving together characters from John Cusack's Nelson Rockefeller to Emily Watson's homeless street performer. A perfect opening sequence, a perfect closing shot. — VZ

Galaxy Quest (★★½)

Not quite the *Star Trek* parody that it starts out like; more of a *Star Trek* rip-off, with the same stupid computer graphics, fake sets, plot holes (all of the above rather irritating), and general air of amiable nonsense (very enjoyable). It's also neat to see a bunch of good actors having fun. Rather stupid, really; at the same time, rather cute. — VZ

Girl, Interrupted (★★½)

Exploring the struggles of a teenage girl in a mental hospital, Winona Ryder manages the lows but not highs of her character effectively, creating a somewhat skewed view of the movie. However, Angelina Jolie and Brittany Murphy are excellent supporting actresses and serve to balance the movie, while the rest of the acting is lukewarm. Additionally, the dramatic details, such as the lighting, create moods and scenes that are compelling, but that do not make up for the lack of plot. — AM

Magnolia (★★½)

A sprawling incoherent mess of a movie, with a story and characters that manage to be both jaw-droppingly obvious and make no sense whatsoever. On the other hand, the annoying narrative bombast is compensated by great visual verve, and the climactic sequence is simply the most wildly creative bit of filmmaking of 1999, even though it has nothing to do with the rest of the movie. — VZ

Man on the Moon (★★★★)

The talents of director Milos Forman, writers Scott Alexander and Larry Karaszewski, and actor Jim Carrey combine in the remarkable *Man on the Moon*, a film about late comedian Andy Kaufman's life. Great performances and a complex underlying theme make this comedy a must-see. — VZ

Mission to Mars (★)

This latest Brian De Palma movie borrows so much from such space films as *Contact*, *Alien*, and *2001: A Space Odyssey* that the result is not only poor — it's laughably poor. *Mission to Mars* relies heavily on computer graphics and insults its audience with bad writing. The final product would do better as a piece for *Mystery Science Theatre 3000*. — VZ

The Next Best Thing (★★)

Madonna and Rupert Everett star as best friends who accidentally have a baby together. While Madonna and Everett are convincing in their roles, the premise of a gay man getting drunk and having sex with his female best friend is too far-fetched to swallow. Furthermore, the complicated custody battle that takes up the final third of the movie destroys the flow created by the first part of the film. — Fred Choi

The Talented Mr. Ripley (★★★)

A lot to recommend: a complex plot, accomplished acting (Matt Damon and Cate Blanchett especially), and gorgeous visuals; especially impressive is the degree to which the audience gets to understand and identify with the film's immoral protagonist. A bit too slowly-paced, though. — VZ

The Tigger Movie (★★½)

Pooh, Rabbit, Kanga, Roo, and of course, Tigger return to the big screen in the newest Disney animated adventure. This story of Tigger's quest to find other tiggers benefits from top-notch animation, but feels too childish to be enjoyable. — EB

Titus (★★★★)

An excellent film based on one of Shakespeare's weaker plays. With dazzling visuals, fabulous directing and acting, and a great pace, it's a pity that *Titus*'s weakest point should be its source material. — VZ

Topsy-Turvy (★★★)

Following the trials and triumphs of Gilbert and Sullivan as they create their masterpiece *The Mikado*, *Topsy-Turvy* holds and

keeps the audience's attention. But it's the breathtaking final five minutes that make the film worth seeing. — VZ

Toy Story 2 (★★★★)

An instant classic, one of the most creative and fun movies of the year, this completely computer-generated sequel about the



LEFT IN THE DUST — A hapless squeak toy penguin named Wheezy, who has been relegated to the dusty upper shelf in Andy's room, adds to Woody's anxiety about being outgrown in a scene from *Toy Story 2*.

adventures of a bunch of toys is clever, funny, complex, and, most surprisingly, deeply emotional. — VZ

The Whole Nine Yards (½)

There are films that are bad, and there are films that are so bad they are good, and then there is *The Whole Nine Yards*, which is so bad it's not even so bad it's good, and there's no point about writing anything about this stillborn, humorless, sexist, violent piece of garbage, not even worth deciding if the word "sucks" or "stinks" applies better, and since I already killed an hour and a half of my life watching this abomination, I'm not going to write more than a single sentence about it, so there. — VZ

Wonder Boys (★★★)

Wonder Boys, director Curtis Hanson's first film since *L.A. Confidential*, is an endearingly offbeat comedy that takes its sweet time developing, though most of that time it is a delight. Michael Douglas stars as an unshaven, over-the-hill writer and professor Grady Tripp. Tobey Maguire and Katie Holmes play Tripp's students, with Maguire stealing the spotlight as a darkly enchanting would-be Poe. Also enjoyable are Robert Downey Jr. as Tripp's loony editor, and Frances McDormand. Though overlong and overstuffed, the plot is always amiable and amusing, and the cast makes this one worth watching. — Roy Rodenstein

Mission to Mars? Hah.
We'll show you the
whole darn universe.

Exploration. Sci-fi. Mysteries of the Universe. Discover what's out there.

space.com
Houston, we have a website.

Join us for our 100th anniversary!

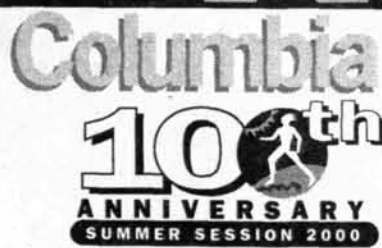
Just a few of this summer's
New Courses

- The anthropology of Wall Street: capital, gender, and cities in transition
- The age of Caesar and Augustus: golden era of Roman intellect
- Plato: philosopher-king
- Magazine and feature writing
- Native American novel
- Modern American poetry
- Auteur study: Hitchcock and performance
- Nineteenth-century poetry: Baudelaire
- Introduction to French linguistics
- Early 20th-century Latin American political history
- Women in the colonial Americas
- Late 20th-century trends in European intellectual history

Find these courses and all the rest in our 2000 Bulletin.

Call (212) 854-6483, e-mail cesp-info5@columbia.edu, or visit the Web:

<http://www.ce.columbia.edu/summer>



An extensive range of graduate and undergraduate courses in 34 areas of study.

Fall 2000 or Spring 2001?
Now is the time to think about spending a semester or two in New York as a Visiting Student at Columbia.

Academic couple seeks:

EGG DONOR 21-28

for East Coast clinic. Compensation \$12,000. Strong academics, 5'6" or taller, lean/athletic build. Please describe motivation along with several [returnable] photos to: POB 425545, Cambridge, MA 02142.

All serious replies answered.

Popular Music

AXIS
Next: 423-NEXT, 617-262-2437
13 Lansdowne St.

Mar. 10: Long Beach Dub Allstars.
Mar. 24: Reveille.

Avalon
617-262-2424
15 Lansdowne St.

Mar. 15: Paula Cole.
Mar. 16: Kenny Wayne Shepherd.
Mar. 17: The Push Stars.
Mar. 29: No Doubt.
Apr. 4: Rollins Band.

Berklee Performance Center
Berklee College of Music
1140 Boylston St.
Free student recitals and faculty
concerts, 4 p.m. and 7 p.m. some
weekdays. For info. on these con-
certs, call the Performance Infor-
mation Line at 747-8820.

Mar. 18: Bruce Cockburn
\$26.50-\$24.50.
Mar. 26: Ryuichi Sakamoto, TBA.

Centrum Centre
Ticketmaster: 931-2000.

Mar. 25: Britney Spears. Sold
Out.
Mar. 30: Korn. Sold Out.
Mar. 31: Korn. \$29.50.

Club Passim
47 Palmer St, Cambridge.
Ticket prices vary. Call 618-492-
7679 for more info.

Mar. 10: Barbara Kessler.
Mar. 11: Grey Eye Glances.
Mar. 15: Don Cosocenti.
Mar. 16: Pierce Pettis.
Mar. 17: Joel Cage & Tom Dean.
Mar. 18: Odetta.

Fleet Center
Ticketmaster: 931-2000.

Mar. 26-27: Crosby, Stills, Nash,
and Young. \$201, \$76, \$51,
\$40.50.

The Lizard Lounge
1667 Mass Ave.
617-547-0759

Mar. 18: Astro Slut.

The Middle East
Ticketmaster: 931-2000.
Ticket prices vary. Call 354-8238
for more info.

Mar. 10: Foxtrot Zulu.
Mar. 10: Wheat, CD release
party, "Hope and Adams."
Mar. 11: Actual Proof with Loop
Dreams, Balkan Tribes, and
DJ. Seishi.
Mar. 11: Jennifer Teft Band with
Crash 22, Lunar Plexus, and
Beth Boche.
Mar. 12: High Rise with opening
acts The Major Stars and
Abunai.
Mar. 12: Toxic Narcotic Crash &
Burn, Full Speed Ahead, and
The Profits.
Mar. 13: Very Secretary with
opening acts Rose of Sharon,
33 Slade, and Snailhouse.
Mar. 15: Chelsea on Fire.
Mar. 16: 128 Columbia Project
with opening acts Dr. Awkward
and Soulwork.
Mar. 16: 18 Abbe with opening
acts Arms (from NY), Nook,

On The Town

A weekly guide to the arts in Boston
March 10 - 10
Compiled by Fred Choi

Send submissions to ott@the-tech.mit.edu or by interdepartmental mail to "On The Town," The Tech, W20-483.

and Y Not U.
Mar. 17: Al and the Transameri-
can with Members of the
bands moe. and Strangefolk
for a night of improv jam rock.
Mar. 17: Ragin' Teens.
Mar. 18: The Donnas.
Mar. 18: Waltham.
Mar. 20: Honeysuckle Vine with
opening acts Steelhead, Fell
Threw, and
Almost Speechless.
Mar. 25: Femi Kuti.
Apr. 22: Dick Dale.

Orpheum Theatre
Ticketmaster: 931-2000

Apr. 6: Tracy Chapman. \$36-
\$26.
Apr. 7: Bryan Adams. \$51,
\$38.50, \$31.
Apr. 8-10: Phil Lesh & Friends.
\$37.
Apr. 15: Bela Fleck and the
Flecktones, TBA.
Apr. 24: Third Eye Blind. \$25.
Apr. 27: Oasis. \$26.

Sanders Theatre
617-496-2222
45 Quincy St., 02138

Mar. 17: National Song and
Dance Company of Mozam-
bique.
Mar. 19: Salute to Robert Shaw,
presented by the Masterworks
Chorale.

T.T. the Bear's Place
10 Brookline St, Cambridge,
617-492-2327

Mar. 10-11: The Gravel Pit,
"Reverse the Curse" benefit
show for Paul Natale.
Mar. 12: Happy Hour with open-
ing acts Choke, Revelation
and Room with a View.
Mar. 13: Our Lady Peace.
Mar. 14: Krakow with opening
acts Bird Get the Smile, Idiot
Toaster, and The Complaints.
Mar. 15: St. Christopher with
opening acts Mishima,
Jump rope, Saturday People,
and Part Time Losers.
Mar. 16: The Wine Field.
Mar. 17: Canine.
Mar. 18: Jim's Big Ego.
Mar. 19: Nimmer, Carry the
Zero, The Dot, and Digital
Blue.
Mar. 21: Chelsea on Fire.
Mar. 22: Best Friend Josh with

opening acts Kung Fu Grip
and Jericho.

Jazz Music

Regattabar
Concertix: 876-7777

Mar. 10-12: Elvin Jones Jazz
Machine.
Mar. 14: Steve Lacy Quartet.
Mar. 15: Michael Williams, with
Sugar Ray Norcia, Bruce Katz,
and David "Fathead" Newman.
Mar. 16-19: McCoy Tyner Trio.
Mar. 21: Michelle Willson & Her
Evil Gal Festival Orchestra.
Mar. 22: Anton Schwartz Quar-
tet.
Mar. 23-25: Kenny Barron Quint-
et.
Mar. 28: Galindo/Phaneuf Sex-
tet.

Scullers Jazz Club
(All performers have two shows
per day unless otherwise noted.)

Mar. 10-11: Yellowjackets.
Mar. 14: Wesla Whitfield. Mar.
15: Dechelis, Tomic, Nakatani
Trio.
Mar. 16-17: Walter Beasley.
Mar. 22: Eric Marienthal.
Mar. 23: The Joyce DiCamillo
Trio.

Classical Music

Boston Symphony Orchestra
Tickets: 266-1492.
Performances at Symphony Hall,
301 Massachusetts Ave., Boston,
unless otherwise noted. For MIT
Students: Tickets are offered for
Thursday evening concerts (8pm)
and Friday afternoon concerts
(1:30 p.m.) and are available on
the day of the concert only at the
BSO Box Office at Symphony Hall
(301 Massachusetts Ave. Open
10 a.m. - 6 p.m.). Two tickets
may be obtained with two current
valid MIT student IDs, subject to
availability. For updated MIT stu-
dent ticket availability, call 638-
9478 after 10 a.m. on the day of
concert.

Mar. 10-11, 14:
Vadim Repin, violin;
Semyon Bychkov, con-
ductor. Gubaidulina:
Offeritorium, for violin
and orchestra;
Tchaikovsky: Sympho-
ny No. 6, "Pathe-
tique." Pre-concert
talk given by Harlow
Robinson prior to each
performance.

Mar. 16-18, 21:
Janice Watson, soprano;
Andre Previn, conduc-
tor. An All-Strauss Pro-
gram including Sextet,
Moonlight Music, and
Closing scene from
Capriccio and the
Symphonia domestica.
Pre-concert talk given
by John Daverio.

**BankBoston Celebrity
Series**
Tickets: 482-6661.
Performances at Sym-
phony Hall, 301 Mass-
achusetts Ave.,
Boston unless other-
wise noted.

Mar. 18 at 8 p.m.:
Beaux Arts Trio.
Beethoven: Variations
on "Ich bin ein der
Schneider Kakadu" in
G Major, Op. 121A;
Trio in B-flat Major,
Op. 97 ("Archduke");
Shostakovich: Trio No.
2 in E minor, Op. 67.
At NEC's Jordan Hall,
30 Gainsborough St.,
Boston, MA. \$45,
\$42, \$38.

May 12 at 8 p.m.:
Audra McDonald. The-
ater's youngest three-
time Tony award win-
ner presents songs
from her latest album
How Glory Goes, her
debut album *Way
Back to Paradise*, as
well as standards by
Arlen, Kern, and Weill.
At the Sanders The-
ater, Memorial Hall,

Harvard University, 45 Quincy
St., Cambridge. A. Tickets \$42,
\$38, \$35 and available by call-
ing CelebrityCharge 617-482-
6661.

Schubert and Brahms
Apr. 7 at 8 p.m.: The Handel and
Haydn Society Orchestra and
Chorus present a program of
music by Schubert, Brahms, and
Rossini, conducted by Harry Bick-
et. At the New England Conserva-
tory's Jordan Hall, 30 Gainsbor-
ough St., Boston. Tickets \$49,
\$37, \$25, available at the H&H
box office, 300 MASS. Ave. M-F
10 a.m.-6 p.m. or call 617-266-
3605 or visit <www.handeland-
haydn.org>. Also available at all
Ticketmaster locations or by call-
ing 617-931-ARTS.

The Messiah
Apr. 9 at 3 p.m.: The Boston
Cecilia performs Handel's Mess-
iah in New England Conserva-
tory's Jordan Hall. Music Director
Donald Teeters will conduct the
Cecilia Chorus and Period Instru-
ments Orchestra, with soloists
Sharon Baker, soprano, Jeffrey
Gall, countertenor, Richard
Clement, tenor, and Mark
Risinger, bass. Tickets are \$60-
411 and may be purchased by
calling the Boston Cecilia office
at 617-232-4540 or the Jordan
Box Office at 617-536-2412. Dis-
counts available for students
and senior citizens. For more
info., call the Boston Cecilia
office or visit
<http://www.bostoncecilia.org>.

Theater

Spalding Gray

Mar. 10-11 at 8 p.m., Mar. 12 at
3 p.m. at the Emerson Majestic
Theatre (219 Tremont St.,
Boston): As part of the Bank-
Boston Celebrity Series, Obie-
award winner Spalding Gray will
perform his monologue *Morning,
Noon and Night*. The monologue
examines a day in the life of
Gray's family in their small town
on Long Island. Tickets are \$35
and \$32 and are available by
calling CelebrityCharge (617-
482-6661, M-F 10-4) or at the
Emerson Majestic Theatre.

Blue Man Group
Charles Playhouse, 74 Warren-
ton Street, Boston, indefinitely.
Curtain is at 8 p.m. on Wednes-
day and Thursday, at 7 and 10
p.m. on Friday and Saturday, and
at 3 and 6 p.m. on Sunday. Tick-
ets \$35 to \$45. Call 426-6912
for tickets and information on
how to see the show for free by
ushering.

Shear Madness
Charles Playhouse Stage II, 74
Warrenton Street, Boston (426-
5225), indefinitely. Curtain is at
8 p.m. Tuesday through Friday,
at 6:30 and 9:30 p.m. on Satur-
day, and at 3 and 7:30 p.m. on
Sunday. Tickets \$30-34.

Exhibits

Isabella Stewart Gardner Museum
280 The Fenway, Boston. (566-
1401), Tues.-Sun. 11 a.m.-5
p.m. Admission \$10 (\$11 on
weekends), \$7 for seniors, \$5
for students with ID (\$3 on
Wed.), free for children under
18.
The museum, built in the style of
a 15th-century Venetian palace,
houses more than 2500 art
objects, with emphasis on Italian
Renaissance and 17th-century
Dutch works. Among the high-
lights are works by Rembrandt,
Botticelli, Raphael, Titian, and
Whistler. Guided tours given Fri-
days at 2:30 p.m.

Museum of Fine Arts
465 Huntington Ave., Boston.
(267-9300), Mon.-Tues., 10
a.m.-4:45 p.m.; Wed., 10
a.m.-9:45 p.m.; Thurs.-Fri.,
10 a.m.-5 p.m.; Sat.-Sun., 10
a.m.-5:45 p.m. West Wing open
Thurs.-Fri. until 9:45 p.m.
Admission free with MIT ID, oth-
erwise \$10, \$8 for students and
seniors, children under 17 free;
\$2 after 5 p.m. Thurs.-Fri., free
Wed. after 4 p.m.
Mon.-Fri.: introductory walks
through all collections begin at
10:30 a.m. and 1:30 p.m.;

The Living Room

Through Apr. 30: Born in Taiwan,
Lee Mingwei's practice as an
artist is to create installations
that involve personal exchanges
between the viewers and the
artist. Lee will create a modern-
day version of the salon life of
Isabella Gardner used to enliven
her collection. Lee and museum
staff will act as hosts to the
museum, spending the day inter-
acting with visitors who enter the
special exhibition gallery.

Lynn Beach Painters

Through Aug. 20: The exhibit,
subtitled "Art Along the North
Shore, 1880-1920," presents 60
works of the seven lyrical and
evocative painters that com-
prised the school of American
Marine Impressionists. The exhibi-
tion focuses on the signifi-
cance and cohesiveness of the
group placed within the context
of the period of American art.

Other Events

The End of the World

Mar. 11 at 8:30 p.m. at the Mid-
dle East Restaurant, 472 Mass.
Ave., Cambridge. Local funk and
blues band Crash 22 showcases
the Boston arts scene with mus-
ical performances, film, fashion,
dancers, tarot card readings, jug-
glers, visual art installations,
and literary readings. \$7.

John F. Kennedy Library Public Forums

At the John F. Kennedy Library
and Museum, Columbia Point,
Boston. Free. For more info., call
617-929-4571.

Robert Frost: The Nation's Poet

Apr. 2, 2 to 4 p.m.: In his recent
biography, Robert Frost: A Life,
Jay Parini analyzes the conflict
between Frost's artistic need for
solitude and his desire for expo-
sure to the general public. After
viewing clips of Frost's recitation
at JFK's inaugural, Jay Parini,
poet, novelist, and professor at
Middlebury College, will offer his
analysis of the final years of one
of this century's greatest poets.

Film Festivals

At the Museum of Fine Arts,
Boston, 02115. For tickets and
more information, call 369-
3770. Tickets for each showing
are \$7, \$6 MFA members,
seniors, students, unless other-
wise noted.

Nine Films by Max Ophuls

The retrospective of the German-
born Max Ophuls combines
revered calassics with rarely
screened archival films.

Mar. 11 at 12 p.m.: *Liebeleil*
(1932, 85 min.).
Mar. 17 at 6 p.m.: *The Exile*
(1947, 95 min.).

Hou Hsiao-Hsien: Director of the Decade

The MFA is currently the sole
institution to host all 14 of Tai-
wanese director Hou Hsiao-
Hsien's films in a complete re-
trospective, including his first
three rarely seen films, and
Boston premieres of Hou's two
most recent films, *The Flowers
of Shanghai* and *Goodbye South,
Goodbye*. Hsien was called "the
world's greatest active narrative
filmmaker" by the *Village Voice*.

Mar. 10 at 7:45 p.m., Mar. 23 at
5:45 p.m.: *Goodbye South,
Goodbye* (1996, 116 min.).
Mar. 24 at 7:45 p.m., Mar. 25,
at 3:45 p.m.: *The Flowers of
Shanghai* (1998, 120 min.).

Don Quixote

Mar. 30-Apr. 9, Tue. 8 p.m.,
Wed.-Thu. 7 p.m., Fri.-Sat. 8
p.m., Sat.-Sun. 2 p.m.: The
Boston Ballet presents Cer-
vantes' classic tale of chivalry
and romance. At the Wang Cen-
ter (270 Tremont St., Boston).
tickets available at the Boston
Ballet box office, or by calling
617-695-6950 or Telecharge 1-
800-447-7400. \$73-\$12.50,
studnet rush tickets \$12.50.

Lesbigan Film Series

Presented by Club Pride at Rox-
bury Community College.

Apr. 14 at 6 p.m. at the Roxbury
Community College, Academic
Building, Room 121 (1234
Columbus Avenue, at the inter-
section of Columbus and
Tremont, located directly directly
across street from the Roxbury
Crossing T station (Orange Line).
Woubj Cheri (Directors: Philip
Brooks & Laurent Bacahut, 62
minutes, France/Ivory Coast,
1998). In French with English
subtitles. The first film to give
African homosexuals a chance to
describe their world in their own
words. Free parking. Free and
open to the public. Refresh-
ments served.



DON HUNSTEIN

André Previn returns to the Symphony Hall podium to lead the Boston Symphony Orchestra in an all-Strauss program, to be performed March 16-21.

UA Approves Finboard Appeals

By Dana Levine
ASSOCIATE NEWS EDITOR

The Undergraduate Association Council recently voted to approve the Finance Board's allocation of more than \$32,000 in appeals funds to student groups.

The budgeting process for each term has two allocation sessions, a regular allocation phase during which two-thirds of the available funds is allocated, and an appeals phase, during which the final third is allocated. Groups which are unhappy with their initial allocations may participate in the appeals phase.

This term, Finboard drastically changed the allocation process to reduce underspending, giving groups more flexibility in spending their funds and slightly overallocating.

"We allocated a bit more this year. The whole curve moved up a bit," said Finboard Chair Edgar H. Martinez '00.

New system cuts underspending

Under the new system, budgets are divided into four segments: operations, capital, events, and publicity and printing. A group is allocated funds in each category, and may use those funds toward any expense within that category.

"This was a compromise. We wanted groups to be able to buy staples even if they left them off their

budget, but the Finboard still needed to have some control over how groups spend money," said UA President Matthew L. McGann '00.

The previous system led to vexing, often absurd, budgeting problems. Last year, the UA was unable to buy tissues because the group forgot to include it in its proposed budget. "Basically, the system wasn't flexible," said McGann.

System allows overallocation

The new system also allows for overallocation, a technique designed to counter underspending. "What we've seen in the past is that there is a consistency in the percentage of their money that the groups spend," said Martinez.

Martinez notes that groups spend the same percentage of their budgets now, when the UA's budget is \$200,000, as they used to spend

when the UA had less than \$100,000 to allocate. Finboard currently has a formula which allows it to calculate how much money will not be spent by student groups, permitting it to budget that much more.

Martinez noted that many groups have been satisfied by the increased funding levels in recent years. "There have been more happy people this year and last year because there is more money to allocate," he said.

McGann also said that the UA has transferred to a new and more flexible accounting system. The new program allows groups to see how much money they have left in each portion of their budget.

Eventually, groups may be able to pay for on-campus services by simply transferring funds between accounts.

"I'm really happy with the way that it turned out," said McGann.

Group Name	Amount Requested	Amount Received	Percent	New Total Allocation
Alternative Spring Break	\$11,381.00	\$1,700.00	15%	\$2,400.00
Asian Athletic Association	\$2,600.00	\$900.00	35%	\$900.00
Asian Baptist Student Kononia	\$1,490.00	\$780.00	52%	\$780.00
Assoc. Taiwanese Students	\$2,110.00	\$480.00	23%	\$1,530.00
Grains of Rice	\$2,000.00	\$500.00	25%	\$2,500.00
Bangladeshi Students	\$420.00	\$420.00	100%	\$420.00
Best Buddies	\$590.00	\$590.00	100%	\$590.00
Black Christian Fellowship	\$1,762.00	\$560.00	32%	\$560.00
Black Women's Alliance	\$6,550.00	\$800.00	12%	\$1,700.00
Brain & Cog. Sci UA	\$400.00	\$400.00	100%	\$400.00
Campus Crusade for Christ	\$1,143.00	\$450.00	39%	\$450.00
Cthulu	\$400.00	\$400.00	100%	\$400.00
Casino Rueda	\$2,390.00	\$440.00	18%	\$440.00
Caving Club	\$3,170.00	\$970.00	31%	\$970.00
Chinese Students Club	\$5,960.00	\$700.00	12%	\$1,650.00
Chorallaries	\$3,500.00	\$200.00	6%	\$200.00
Concert Band	\$1,901.00	\$481.00	25%	\$1,641.00
Counterpoint	\$1,700.00	\$100.00	6%	\$1,700.00
Curling Club	\$450.00	\$450.00	100%	\$450.00
Dramashop	\$1,000.00	\$850.00	85%	\$850.00
Debate	\$2,550.00	\$600.00	24%	\$2,000.00
Equestrian Team	\$4,975.00	\$1,000.00	20%	\$2,225.00
Friendly Alliance of Queers and Straights			0%	\$600.00
Gospel Choir	\$1,392.00	\$492.00	35%	\$1,392.00
Gilbert & Sullivan Players	\$1,450.00	\$1,000.00	69%	\$1,300.00
Habitat for Humanity	\$900.00	\$400.00	44%	\$650.00
Hillel	\$2,000.00	\$500.00	25%	\$500.00
Hippocratic Society	\$1,000.00	\$800.00	80%	\$1,000.00
Japanese Soc. Undergrads	\$315.00	\$230.00	73%	\$390.00
KBH	\$2,660.00	\$1,070.00	40%	\$1,070.00
Kendo Club	\$2,000.00	\$850.00	43%	\$1,300.00
Korean Christian Fellowship	\$2,420.00	\$100.00	4%	\$1,000.00
Korean Students Association	\$1,625.00	\$1,100.00	68%	\$1,100.00
Marching Band	\$2,582.00	\$982.00	38%	\$982.00
Mars Society	\$1,100.00	\$970.00	88%	\$970.00
Men's Ultimate	\$1,168.00	\$468.50	40%	\$1,168.50
Mock Combat Club	\$515.00	\$515.00	100%	\$515.00
Movements in Time	\$1,700.00	\$450.00	26%	\$1,700.00
National Society of Collegiate Scholars				
Oori	\$1,059.50	\$1,059.50	100%	\$1,059.50
Rune	\$2,500.00	\$1,200.00	48%	\$1,200.00
South Asian American Student's Association	\$1,200.00	\$1,000.00	83%	\$1,000.00
Students for the Exploration and Development of Space	\$1,750.00	\$1,200.00	69%	\$1,890.00
Social Justice Cooperative	\$625.00	\$600.00	96%	\$600.00
Songwriting Club	\$340.00	\$340.00	100%	\$340.00
Techiya	\$50.00	\$50.00	100%	\$50.00
Tech Jazz Singers	\$50.00	\$50.00	100%	\$50.00
Tech Squares	\$1,270.00	\$970.00	76%	\$970.00
Vegetarian Group	\$450.00	\$450.00	100%	\$1,125.00
Voo Doo	\$6,600.00	\$700.00	11%	\$1,450.00
Women's Rugby	\$700.00	\$400.00	57%	\$1,261.00
Totals	\$98,213.50	\$32,068.00		
Average:		\$628.78		

Come Visit the Newly Renovated MacGregor Convenience Store

450 Memorial Drive



Now offering

Gourmet to GO

Home Meal Replacements

Specialty Salads: Cajun Chicken Salad - Blackened
Chicken over Wild & White Rice Salad
Entrees: Teriyaki Chicken with Jasmine Rice and Stir-fry vegetables & Much More!

Store Hours:
M-F 5 pm-2 am
Sa & Su 11 am-2 am

MIT Dining Services
ARAMARK

RETIREMENT INSURANCE MUTUAL FUNDS TRUST SERVICES TUITION FINANCING

While TIAA-CREF invests for the long term, it's nice to see performance like this today.

Check out other account performance on the Web

TIAA-CREF delivers impressive results like these by combining two disciplined investment strategies.

In our equity accounts, for example, we combine active management with enhanced indexing. With two strategies, we have two ways to seek out performance opportunities—helping to make your investments work twice as hard.

CREF GLOBAL EQUITIES ACCT. ¹		
36.05%	22.02%	18.75%
1 YEAR AS OF 12/31/99	5 YEARS AS OF 12/31/99	SINCE INCEPTION 5/1/92

With over \$250 billion in assets, we're the world's largest retirement company and the leading choice on America's campuses. If that sounds good to you, consider this number 1 800-842-2776. Call and find out how TIAA-CREF can work for you today and tomorrow.

EXPENSE RATIO		Combine this with our low expenses and you'll see how TIAA-CREF stands apart from the competition.
CREF GLOBAL EQUITIES	INDUSTRY AVERAGE	
0.37% ²	1.92% ³	



Ensuring the future for those who shape it.™

1 800 842-2776

www.tiaa-cref.org

1. The investment results shown for the CREF variable annuity reflect past performance and are not indicative of future rates of return. These returns and the value of the principal you have invested will fluctuate, so the shares you own may be more or less than their original price upon redemption. Foreign stock markets are subject to additional risks from changing currency values, interest rates, government regulations, and political and economic conditions. 2. TIAA-CREF expenses are subject to change and are not guaranteed for the future. 3. Source: Morningstar, Inc. 12/31/99, tracking 279 world stock mutual funds. TIAA-CREF Individual and Institutional Services, Inc. distributes CREF certificates and interests in the TIAA Real Estate Account. Teachers Personal Investors Services, Inc. distributes the variable component of the personal annuities, mutual funds and tuition savings agreements. TIAA and TIAA-CREF Life Insurance Co. issue insurance and annuities. TIAA-CREF Trust Company, FSB provides trust services. Investment products are not FDIC insured, may lose value and are not bank guaranteed. For more complete information on CREF, including charges and expenses, call 1 800 842-2776, ext. 5509, for the prospectus. Read it carefully before you invest or send money. © 2000 TIAA-CREF 1/00.

How Do You Measure the Growth of A Child?

Unfortunately for children living in some of the poorest countries in the world, it takes more than fading marks on a wall.

Childreach, one of the oldest and largest child sponsorship organizations, measures growth by the number of hospitals, wells for clean water, and self-help programs we build in partnership with the proud families and communities where our sponsored children live.

For more information about Childreach sponsorship, please call 1-800-752-3400 or send in the attached coupon.

Yes! I want to know more about Childreach.

Name _____

Address _____

City _____

State _____ Zip _____

Area Code _____ Phone _____ V303

Please send to:
Childreach, 155 Plan Way
Warwick, RI 02886-1099




Senior A. Worthington, National Executive Director, Childreach with a sponsored child in Lesotho, Botswana.

This space donated by The Tech

PE LOTTERY 4TH QTR. INFO!

Dates to Remember:

Lottery Opens:
March 6, 2000

Lottery Closes:
March 14 at 1:00PM

Late Registration
in PE Office:
March 15, 2000



For more info contact PE Office: 253-4291

**Free Oreos, no meetings,
fat salaries.**



**on the Red Line: Davis Square
on the Web: www.galatea-associates.com
on March 28: MIT Career Center**

Submit your resume by March 14.

Copyright 2000 Galatea Associates, LLC

GSC Meeting Minutes

The GSC-UA Capital Campaign Steering Committee has \$100 million set aside for student life and learning. The Committee is looking for students to help with fund raising or put forth ideas. Interested students can give their fund raising ideas at any time.

Current Athletic Board meetings do not focus enough on issues concerning graduate students. The athletics department will receive increased funding by adding \$50 to each student's tuition, and athletics card will be eliminated next year.

The Parking and Transportation Committee deals with such issues as parking rates and T passes. The next meeting, which takes place on April 7, will deal with the parking rates and T pass subsidies for next year.

Both the Spring Weekend By-laws and Constitution have been approved.

GSC officer nominations are open through March 29th. E-mail gsc-officers@mit.edu for further information. Applicants will need to submit a personal statement and a resume. The elections will be held during the April 5 general council meeting. New officers will take office at the May 3 meeting.

The fall career fair profits were \$28,000 greater than the amount budgeted at the July 7 meeting. GSC excomm has already approved a budget proposal to allocate this funding. The GSC treasurer motioned to approve the proposal at the general council meeting.

Committees will focus on selecting new leaders for next year. Academics, Research, and Careers Committee (ARC) focuses on awards convocation. The committee needs help soliciting nominations and finding a new career fair project chair. Orientation Committee (OC) needs nominations for committee chair.

Housing and Community Affairs Committee (HCA) hold their next meeting at Ashdown. HCA will take on a project to evaluate the cost of living at other graduate schools. The Housing and Community Affairs Committee reported on the renovations to NW30. The GSC wants to involve graduate students in the design process, which will take place over the course of March and April. Interested students should contact either GSC president (gsc-president@mit.edu) or HCA chair (gsc-hca-chair@mit.edu).

Credit Union is now allowing graduate membership.

Sloan-MIT networking events have received \$10,000 in funding. The wine and cheese party will be held on March 10 at Walker Memorial. The Muddy Charles is planning on a new lunch program, estimated to cost about \$4.50.

MIT's capital campaign has raised \$1.2 billion of the initial \$1.5 billion goal.

Brain Awareness Week: March 12-18

Study Smart, Not Hard.

MIT BrainTrust presents...

BrainGym

Join us as we discover how we can use
Simple physical exercise to optimize mental function.

Sunday, March 12, 2000
2-4pm in Room 4-159

Protests in Boston, New York Arise After Verdict in Slaying

By Michael Borucke
STAFF REPORTER

Protests rocked the nation last week after four New York City police officers implicated in the death of Amadou Diallo were acquitted.

In Boston, outraged citizens gathered at Government Center to protest the acquittals. Speakers at the rally expressed their "disgust at the unjust verdict" and at a "racist judicial system."

In protest of the verdicts, many protesters raised their wallets, something which Diallo allegedly did before he was shot. The rally culminated in a march through downtown Boston.

Another protest occurred last Wednesday in New York after 23-year-old Malcolm Ferguson was killed by Louis Rivera, a New York police officer. Residents in the surrounding area, still upset over the verdict, were confronted by a squadron of police officers wearing helmets and riot gear.

Many of the protesters linked this recent shooting with the death of Diallo. Prior to his death, Ferguson attended the rally against the Diallo verdict, and was arrested along with dozens of others.

The NYPD's description of Ferguson's death stated that five plain clothes police officers were driving by a building noted for drug deals when "movement in the hallway" aroused their suspicion. Upon closer investigation, the officers observed three men in the midst of a drug deal.

The officers then allegedly flashed their badges at the men. Ferguson supposedly fled up the stairs, pursued by Rivera. After a scuffle on an upper floor, Ferguson was shot once in the face at point blank range. Although Ferguson possessed no weapon, six packages of heroin were found on his body.

During the riot, two protesters were arrested for throwing bottles at the police. News of this demonstration generated a pointed response from New York mayor Rudolph Giuliani, who said the shooting death of Ferguson was "a totally different situation" than the shooting death of Diallo.

While Diallo had no arrest record, Ferguson has been arrested nine times, with six of those arrests being drug-related. Reports indicate that the police did not know of Ferguson's history when they shot him.

Giuliani asked the citizens of

New York to give the officers the benefit of the doubt. "I would think if we can't support our police officers in a situation like this, we can't support our police officers ever," he said.

Nightline

7pm - 7am

DEF
TUV
TUV
OPER
OPER

LSAT

Take the first step towards law school...

Did you know:
At most law schools the LSAT constitutes at least 50% of your application.



The Princeton Review's LSAT program offers a **documented average score improvement of 7 points.** That can put you ahead of up to 25% of those sitting for the exam.

(800)2-REVIEW
www.review.com

Early June classes end in May

We also offer courses for the GMAT, GRE and MCAT

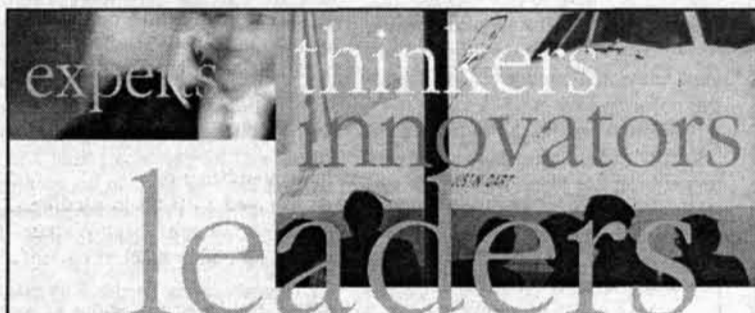


MARKETING RESEARCH STUDY

We are conducting a study about perceptions of companies. We need to interview graduating seniors and graduate students in the next few days. The interview will take about 30 minutes and we are giving \$100 as a thank you for your help.

If you are a graduate student or graduating student in Biology, Chemical Engineering, Chemistry, Environmental Engineering, Industrial Engineering, Pharmacy or Process Engineering and you intend to go into industry upon graduation and you have a B average or better, please call us at 800-683-1287 extension 127 and ask for Elaine to see if you qualify and schedule an interview.

Proof of major and standing will be required at the interview.



We have the following career opportunities

Technical Consultants (MSOR, MS TRANS)

Full-time positions available!

Come learn more about Sabre!

INFORMATION SESSION
Tuesday, March 14th
Building 8, Room 205
6:00pm - 8:00pm

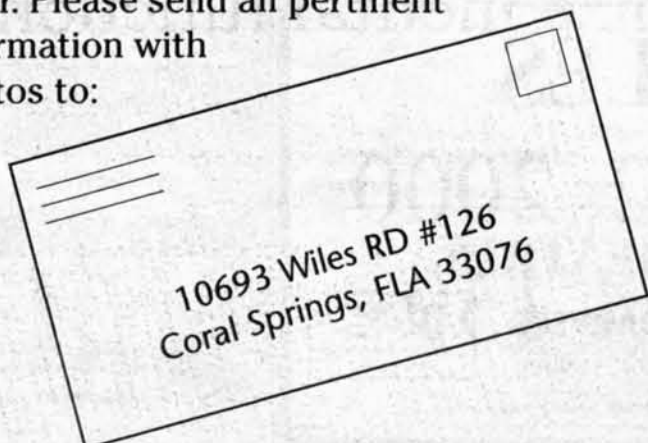
Sabre is the world leader in electronic travel distribution and information technology for the travel and transportation industries.

Sabre

www.sabre.com
equal opportunity employer

Egg Donor wanted \$7500 + expenses

Looking for healthy, energetic, attractive woman between the ages of 18-33 with high IQ. Prefer straight blonde/light brown hair, green/blue eyes, fair complexion. Medical students a plus. Should be 5'4" or taller. Please send all pertinent information with photos to:



The 1st Annual Kelly-Douglas Traveling Fellowships for MIT Juniors

Spring 2000

Fellowships of \$1000 will be awarded to MIT juniors who are committed to further work in the humanities or arts and plan to travel in order to enhance their study.

Students whose study and travel plans relate to a major or minor in the School of Humanities & Social Science will be given preference, but all juniors are encouraged to apply.

One or two fellowships will be granted this spring

Deadline: Wednesday, April 12, 2000

Application guidelines are available in the Music Office, 14N-207 or by contacting Mary Cabral at mcabral@mit.edu

The I. Austin Kelly III Prizes

1999-2000

for Excellence in Humanistic Scholarship by
MIT Undergraduates

Two prizes of \$626 each for scholarly or critical essays judged to be outstanding in any of the following fields or in an interdisciplinary combination of them:

- Anthropology
- Archaeology
- Comparative Media Studies
- Economics
- History
- History of Science & Technology
- Linguistics
- Literature
- Music
- Philosophy
- Politics
- Theater
- Visual Arts
- Women's Studies

Rules and Guidelines are available from the Music and Theater Arts Office, 14N-207

or on the Web at

<http://web.mit.edu/mta/www/music/kellyprize.htm>

Deadline for submission is April 12, 2000

Dean on Call Offers MIT Human Touch

DOC, from Page 1

said Orme-Johnson. The information on the Deans on Call is available in a number of places, including information distributed during orientation.

People often find out about the program through "word of mouth," added Osgood. Since the program is "low-key," said Randolph, only the most serious cases reach the deans.

The current Deans on Call have made a commitment to being a

DOC for several years. "I think most of us expect to be doing this for a while," Orme-Johnson said.

Unlike Osgood, who was the full-time Dean in Residence, the change of the program to Deans on Call has allowed the deans to have day jobs. Three deans work in the office of Residential Life.

"I think a place like MIT can get very impersonal," said Randolph. "The only way you can humanize a place like this is to have people like us."

Losses End McCain, Bradley Campaigns

Primaries, from Page 1

McCain, Bradley drop out

Despite their victories among MIT voters, both Bradley and McCain have ended their bids for president after widespread losses in the Super Tuesday races.

"Bradley wasn't able to separate himself enough from Gore," Smith said.

In addition, Gore benefited from the booming economy. "That, of course, is a help to any incumbent," Strauss said. In the months leading up to the general election in November, Gore will emphasize the economy, Strauss said.

Cholankeril thinks that McCain should have spent more time explaining his plans for reform and talking about issues and less on addressing attack ads.

Looking toward the future

Following the end of his campaign, Bradley called for unity in the party, offering support for Gore

in the general election but stopping short of a full endorsement. He does not to release his delegates.

In a press release which announced the end of his campaign Bradley said that he would continue to press his message as a reformer. He said that he would fight for a new politics "not polluted by money ... in which leaders speak from their core convictions and not from polls of focus groups."

"I think it's pretty obvious Bradley has endorsed Gore, even if he doesn't use the word 'endorse,'" Strauss said.

Smith said that the general election is poised to get nasty. "Gore will be outright called a crook, and Bush will be called a racist and a rich fat cat," he said. In his opinion, Gore will win the November election, although he plans to write in Bradley for president.

Despite wins in the Bay State and across New England McCain also announced the end of his campaign.

Like Bradley, McCain chose not to release his 224 delegates and did not endorse Bush for president. McCain's campaign was lukewarm on Bush's chances in November: "He may very well become the next President of the United States," McCain said at an Arizona press conference. McCain also played down the possibility of a third party run for the presidency.

Like Smith, Cholankeril will support neither Bush nor Gore. "At this point, I don't feel I can vote for Al Gore or George W. Bush," he said.

John Irving's best-selling American classic has now been honored with

7 ACADEMY AWARD NOMINATIONS BEST PICTURE OF THE YEAR

BEST DIRECTOR *Lasse Hallström* BEST ADAPTED SCREENPLAY *John Irving* BEST SUPPORTING ACTOR *Michael Caine* BEST ART DIRECTION *David Gropman & Beth Rubino* BEST FILM EDITING *Lisa Zeno Churgin* BEST ORIGINAL SCORE *Rachel Portman*

TIME MAGAZINE, Richard Corliss

"A TRIBUTE TO THE HUMAN SPIRIT."

THE WALL STREET JOURNAL, Joe Morgenstern

"A GREAT REVELATION! AS MYSTERIOUSLY MOVING AS IT IS ENTERTAINING!"



Superbly directed by Lasse Hallström and remarkably adapted by John Irving. This is a film in which humanity rules."

THE TODAY SHOW, Gene Shalit

"'CIDER HOUSE' MAKES GOING TO THE MOVIES A JOY!"



Lasse Hallström has directed John Irving's screenplay with tenderness and humanity. I reveled in every minute of this film. It is just plain wonderful."

THE NEW YORK OBSERVER, Rex Reed

"A RICH AND RAPTUROUS FILM! VALIANT AND THOUGHT-PROVOKING!"

I can recommend 'The Cider House Rules' without reservation. This film has affected me so much that after seeing it twice, I love it more than ever."



BOSTON GLOBE, Jay Carr

"ONE OF THE YEAR'S RICHEST FILMS! FILLED WITH VIVID CHARACTERS AND ACTION!"

The best film to date of a John Irving novel. Michael Caine is a non-stop source of heart and soul."



THE CIDER HOUSE RULES

MIRAMAX FILMS PRESENTS A FILM BY LASSE HALLSTRÖM. CASTING BY TONY THOMAS. COSTUME DESIGNER: JANE WILSON. HAIR AND MAKEUP: JANE WILSON. PRODUCTION DESIGNER: JANE WILSON. EXECUTIVE PRODUCERS: JANE WILSON, JANE WILSON. PRODUCED BY: JANE WILSON, JANE WILSON. WRITTEN BY: JOHN IRVING. DIRECTED BY: LASSE HALLSTRÖM. CASTING BY: TONY THOMAS. COSTUME DESIGNER: JANE WILSON. HAIR AND MAKEUP: JANE WILSON. PRODUCTION DESIGNER: JANE WILSON. EXECUTIVE PRODUCERS: JANE WILSON, JANE WILSON. PRODUCED BY: JANE WILSON, JANE WILSON. WRITTEN BY: JOHN IRVING. DIRECTED BY: LASSE HALLSTRÖM.

NOW PLAYING AT THESE SELECT THEATRES!

LOEWS
COPLEY PLACE
100 HUNTINGTON AVE., BOSTON
333-FILM #006

LANDMARK'S
KENDALL SQ.
ONE KENDALL SQ., CAMBRIDGE
617-494-9800

SHOWCASE CINEMAS
RANDOLPH
RTE 139, EXIT 20A OFF RTE 24
781-963-5600

WEST NEWTON
1296 WASHINGTON ST.
ROUTE 16
964-6060

SHOWCASE CINEMAS
WOBURN
RTE. 128 EXIT 35 & RTE. 38
781-933-5330

LOEWS
NATICK
RTE. 9 OPP. SHOPPERS WORLD
508-653-5005

LOEWS
DANVERS
LIBERTY TREE MALL
978-750-9019



FOR SHOWTIMES AND TICKETS CALL (617) 333-FILM or (508) 820-FILM or visit moviefone.com AOL Keyword: MovieFone

AMPAS, WGA, MPSE, MPEG, BAFTA-LA and BAFTA-NY: your card will admit you and a guest to any performance.

Even EZ-er than 1040EZ.



Introducing TeleFile from the IRS. If you are single and filed Form 1040EZ last year, you can file your tax return in ten minutes by phone. Anytime. Check your tax booklet for information.

TeleFile
It's free. It's fast. It works.

Department of the Treasury
Internal Revenue Service
Changing for good.

This space donated by The Tech

CLASSIFIED ADVERTISING

Help Wanted

EGG DONORS NEEDED!! Desperately wanted by infertile, hopeful parents. All races needed. Ages 21-30. Compensation \$5,000. Please call: OPTIONS National Fertility Registry at (800) 886-9373 or visit www.fertilityoptions.com

\$\$ Great Opportunity \$\$ Marketing company seeks reliable and money motivated students for credit card promos on campus. Excellent Commission. Flexible Hours. 1-800-592-2121 ext. 300

HELP WANTED \$17/Hr. SAT Tutors Needed in all parts of MA. Flexible Hours. Need Car. Top Standardized Test Scores. Min. availability thru May. College student or graduate. Call 617-926-8541, M.W.F or apply at www.mytutor.com/jobs

Programmer wanted part time for new web database e-commerce site. Contact Steve@atran.com or Steve at 285-4422

A unique opportunity to help mold and develop a start up site linking authors and agents, readers and critics this summer. Per hour, per week or per month: Up to \$3K/month or \$10K for the summer. Flexible Hours. Graphical skills as well as technical computer skills, database admin. required. Contact Seth Millstein, steinphat@yahoo.com immediately.

Get a head start on a hot INTERNET career with a cool college-focused start-up! **BOLDBRAIN.COM** is looking for an energetic and entrepreneurial campus leader to market its website to students, campus organizations, and local merchants. Must possess superior communication skills and knowledge of on/off campus life. Salary + bonus. 10hour+/week for 6 weeks beginning 3/14. Full-time opportunities potentially available. All majors welcome. Email resume to Michele@boldbrain.com or fax to 202-332-5195.

Graduate Students Work with leading companies on lucrative short-term projects you can perform from home. Use the skills you already have. Research, Writing, Analysis, etc. Work as much/little as you like while making your own schedule and \$\$\$\$. Visit www.flexmind.com to learn more. Get \$15 just to register, \$10 per qualified grad student you refer.

PART TIME COMPUTER TECHNICIAN

Baystate Financial Services has an immediate opening for a Computer Technician with a minimum of 2 years experience. Hardware and LAN knowledge is a must. The right applicants will also possess basic Internet skills, software organizational skills and knowledge of Microsoft Applications. Baystate provides flexible business hours and competitive pay in a fast-paced friendly environment. This is a great opportunity for the right undergrad or graduate student. Please send resumes to: Baystate Financial Services Attn: Robert Gosciniak, One Exeter Plaza, Suite 1400, Boston, MA 02116 Email: bgosciniak@boston-bfs.nefn.com

Information

Need Graduation and Concert Tickets Call Eli at 617-225-7275 or collect to Howell Geneva or Dana at 270-522-3488.

NEED A PLACE TO STORE YOUR STUFF FOR THE SUMMER? New Self-Storage Facility. Climate Controlled, Secure. Steps from the T. Brighton Self-Storage 617-739-4401, 1360 Commonwealth Ave., Brightonselfstorage@yahoo.com

Travel

Mexico/Caribbean Central America \$299 r.t. Europe \$169 o.w. Other world wide destinations cheap. ONLY TERRORISTS GET YOU THERE CHEAPER! Book tickets on line www.airtech.com or 212-21-7000

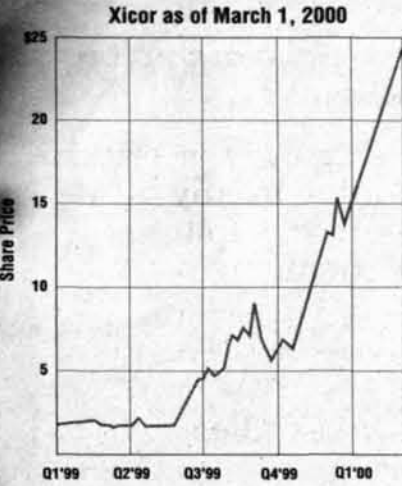
GO DIRECT!We're the Amazon.com of Spring Break! #1 Internet-based company offering WHOLESALE pricing by eliminating middlemen! We have other companies begging for mercy! ALL destinations. Guaranteed Lowest Price! 1-800-367-1252 www.spring-breakdirect.com

Advertising Policy

Classified ads are due at 4:30 p.m. two days before day of publication, and must be prepaid and accompanied by a complete address and phone number. Send or bring ads, with payment, to W20-483 (84 Mass. Ave., Room 483, Cambridge, MA 02139). Account numbers for MIT departments accepted. Sorry, no "personal" ads. Contact our office for more details at 258-8324 (fax: 258-8226) or ads@the-tech.mit.edu.

\$5 per insertion per unit of 35 words.

Help Us Do It Again!



Our new design and marketing teams are driving the success of innovative new programmable analog products. Join the team and be part of a company enjoying increased stock appreciation (2,000%), and sales growth.

Xicor is a leading provider of reprogrammable smart analog and digital products used world wide in telecommunications, consumer electronics, computers and peripherals, transportation and instrumentation. We offer state-of-the-art technology with a commitment to new research and development in a creative and positive environment.

Please join us for a reception on 3/16, Rm #4-149, 6:00-8:00 p.m. We will be interviewing on 3/17, Career Services Center, Rm #12-170

Visit our Website at www.xicor.com for more information on cool job opportunities at Xicor. We are looking for:

- Technical Marketing Engineer
- Product Marketing Engineer
- Analog Design Engineer
- Product Engineer

Xicor is proud to be an equal opportunity and affirmative action employer



Xicor, Inc.
1511 Buckeye Drive
Milpitas, CA 95035



TechLink

Premier

Wine and Cheese

Morss Hall, Walker Memorial

March 10th, 2000

5pm-7pm

All Graduate Students Welcome
Admission is free



MIT Proposes Catered, Alcohol Free Steer Roast



Steer Roast '99 drew a large crowd to the lighting of Senior House's courtyard pit, as well as the popular mud wrestling competition.

Steer Roast, from Page 1

as I know no one has ever been injured or killed themselves" during the event.

Brasher is "still confident that we will be able to keep some of the aspects" of the party like the steer and the Senior House location that make Steer Roast what it is, he said.

In their negotiations with the administration, Steer Roast planners are discussing having a safety officer preside over fire lighting and barring people from sitting on the ledges of the building.

Bates also mentioned that hiring a professional caterer to roast the steer or making Steer Roast alcohol free might increase safety. She also suggested moving the event to the Johnson barbecue pits or the Student Center.

Current residents and alumni would rather eliminate Steer Roast rather than move it from Senior House, Brasher said. Both Bates and Brasher have received e-mails from concerned alumni.

Assembly rules problematic

MIT's administration also raised concerns about the large numbers of students that traditionally attend Steer Roast, especially in light of the Cambridge Licensing Commission's new enforcement of MIT living groups' lodging house license.

According to the lodging house rules, any Cambridge FSLIG needs to obtain a special permit to have an event with over 50 non-residents.

MIT's office of government relations is currently discussing with the CLC how the assembly permit will affect having an event in the courtyard, Bates said, and whether Senior House will need to apply for a special permit to hold Steer Roast.

Last year Steer Roast was limited to 500 people, Brasher said.

Image of students an issue

Bates said that the administration's self-consciousness about the behavior of its students is not behind their safety concerns about Steer Roast.

"Things that might not have been looked at [in the past] are scrutinized now," Bates said. MIT has caught heat from both the local press and Boston and Cambridge licensing boards this year, leading to the closure of fraternities and public relations disaster.

"If something happened [at Steer Roast], how would we justify the decision making process which led up to that," Bates asked.

"It's totally an issue of liability," Brasher said. The MIT administration wants "to keep something from happening at a dorm because that way they can make it seem like the problems MIT's been facing are in the frats alone."

Those problems "are not with the students and how the students use their free time, how they party," Brasher said. "They're with MIT's relationship with the city of Cambridge and with the media."

Bates said that although liability is a danger in today's climate, "the issues of personal responsibility are far more salient. College students are being asked to think seriously about the consequences of their actions." Students are asking to be seen as adults, she said, and thinking though the results of one's actions is part of that.

Steer Roast an MIT tradition

Steer Roast is "a real community-building event for Senior House, but I don't think it's quite the type of community-building that MIT wants to encourage," Brasher said.

"They also don't care that [Steer Roast] is one of the largest alumni events on campus ... because they're afraid that Senior House residents will feel pressured to be more like the alumni were ... and Senior House has somewhat of a reputation for being rowdy," Brasher said.

Senior House has sponsored a Steer Roast every spring since 1964. The weekend-long event, includes bands, mud wrestling, body painting, and of course roasting a steer.

The roast takes place in Senior House's courtyard, and is attended each year by hundreds of students.

"The Senior House motto is 'sport death,' which makes a lot of administrators cringe. Steer Roast is just three days when Senior House residents live up to this motto more than during the rest of the year," Brasher said.

According to Brasher, "the administration saw the photographs in *The Tech* last year of people sitting on the ledges and of the fire pit being lit ... it's hard to get through to them that it's just a blazing inferno for about five minutes."

The MIT International Science and Technology Initiative (MISTI)

Cordially invites you to an Orientation session on the new

MIT FRANCE

Program

With

Jean François Large, Scientific Attaché of the
French Embassy in Washington

and

Professor Suzanne Berger, Director of MISTI

Wednesday, March 15

5 PM

E53-482

Find out about paid 3-12 month
internships in France! All MIT students
welcome! Refreshments will be served!

Contact: S. Berka Tel: (617) 253-6982 E-Mail: sberka@mit.edu

Call *The Tech*
News Hotline

253-1541

Here to Play

MIT's Inman on His Basketball Beginnings and College Choice

By Susan Buchman
STAFF REPORTER

Although Zachary J. Inman '01 downplays his basketball awards as "random little things" and is more likely to talk about his sister's accomplishments than his own, there's no concealing what Inman has done for the men's basketball team since becoming an Engineer.

As a sophomore, Inman was selected as NEWMAC player of the week for two consecutive weeks, and was named a NEWMAC All-Star. Inman was the leading scorer and rebounder for the men's basketball team with 18.1 points and 7.7 rebounds per game, and he was the NEWMAC's second leading scorer and rebounder. Going into his junior season, *Swish*, the New England college basketball quarterly, named Inman to its pre-season Division III "Dream Team."

The Tech: When and where did you get interested in basketball?

Inman: My dad played when he was in college; I started playing when I was in third or fourth grade, I started watching it when I was younger than that. My dad would be watching it on TV: I didn't know what was going on or anything but I'd watch it. I saw my neighborhood kids who were a little older than me, they were playing, and I started playing with them. They always beat me but they were three or four years older than me. I was six, they were ten, big difference there. I started playing in a league in fourth grade for the first time. I was terrible — to be blatantly honest — I was terrible. That's when I first started playing basketball.

Tech: And then how did you develop through middle school and high school?

Inman: First time [I played on] a school team was seventh grade, and I made the team. I was tall — I was taller than everybody except my best friend. We were the same height from seventh grade, eighth

grade, ninth, all the way through twelfth. I made each team from seventh through twelfth grade, made varsity as a sophomore.

Through middle school I had these ridiculous growth spurts — like 4 inches — seventh and eighth and ninth grade. So I went up from 5'8" to 6'4" from seventh to ninth grade and needless to say I was pretty awkward on the court for the first six months of it. Then I stopped growing and I grew into my body and developed different aspects of my game. I wasn't even really a good shooter until probably junior year in high school.

Tech: What was your high school program like? Especially in comparison to MIT.

Inman: In high school, my coach had a lot different points of view than the coach here. He was much more in favor of the guards. Coach Anderson is not so much in favor of the big men, but he expects the guards to get the ball to the big men so it's a much more balanced offense as opposed to high school which was just guards go shoot it and big men get the rebound. There's one difference there.

There's the obvious difference — in high school I had roughly 2,000 to 2,500 people watching me every night and here I have twenty to twenty-five people watching me every night. There's that difference. It was weird, I have to admit, the first few times, but now if I see 150 come out and cheer for me I go nuts. I don't even remember how it is to play in front of 2,000 people. I have a great time when people here come to watch me.

Then there's the biggest difference — the coach. I didn't like my high school coach, now I like the coach. It's that simple.

I would never want anyone to think that the success I have at this school is solely due to me. In high school, I didn't have very good guards; here, I have great guards. In high school I had a good center, and I have one here, but that's not new to me. Without them, honestly, my success would not have been what

it's been. I owe a lot to them; an awful lot.

Tech: Were you ever considering a bigger-name basketball school?

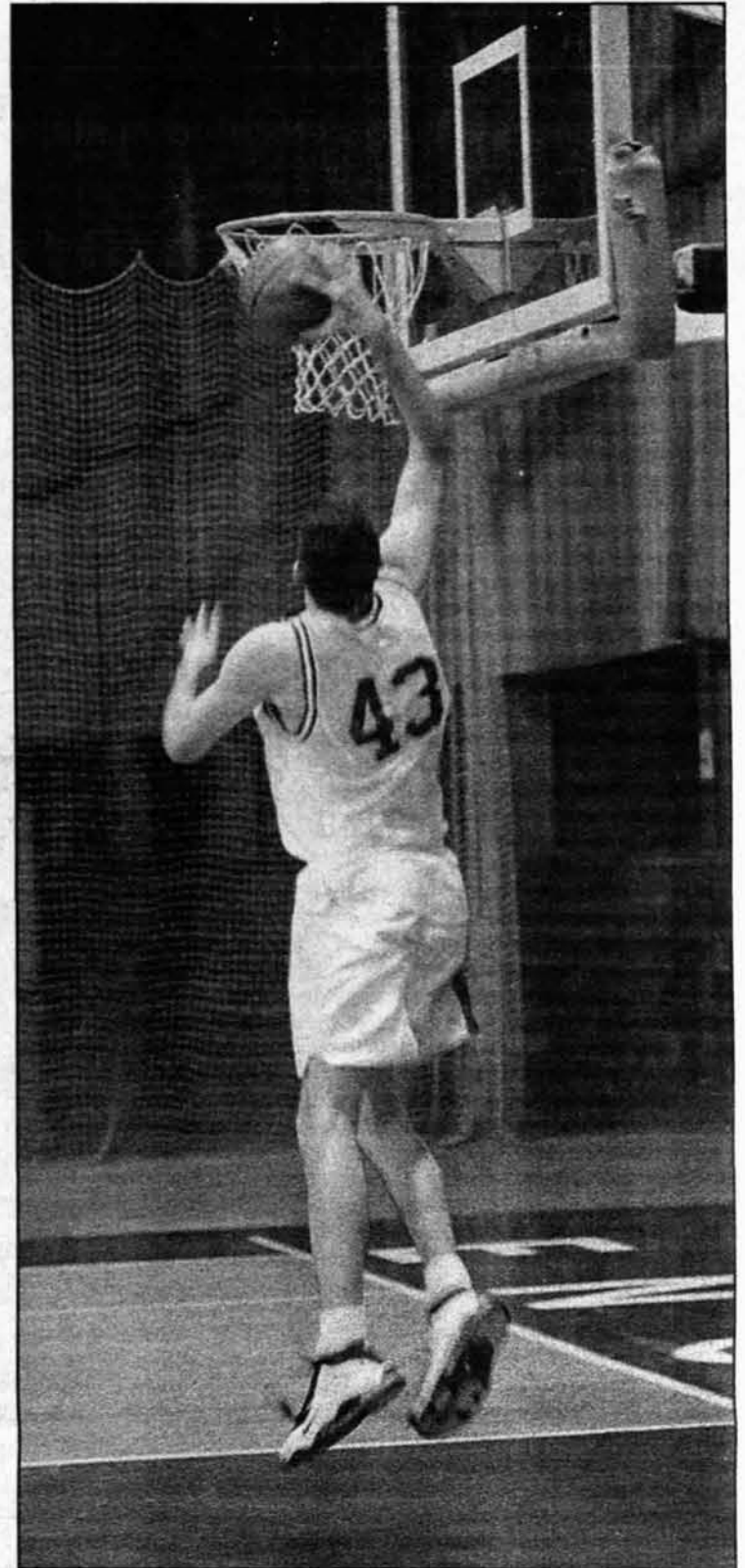
Inman: I was recruited by some small division one schools. I've always known that I wasn't good enough to play for money: ever. I'll never get paid to do this — it's something I like to do. So there were two things that went into my choice of schools.

First there was grades, academics, which is what's going to make me for life. I only applied to schools that were very good schools academically. That narrowed it down right there. Then it came down to the really good academic schools that were division one: I couldn't play for them. Like Duke: I couldn't play for Duke.

Then, there's the second thing. I liked basketball so much, I wanted to play. So I wanted to go to a school that I would play at. Other great division three schools, like Washington University — they were probably 4th in the country when I was recruiting. I could have gone there but probably wouldn't have played much my freshman year at all, maybe not even my sophomore year. I came here, played as a freshmen, I've been starting since sophomore year — playing is what matters to me.

Tech: The college choice of your sister [Inman's sister plays basketball for Purdue University, the 1999 NCAA champions] really interested me because that's the opposite family dynamic that I'm used to. In yours, it's the sister who went off to the big-name school with televised games and the brother who went to college just to play. How is that at home?

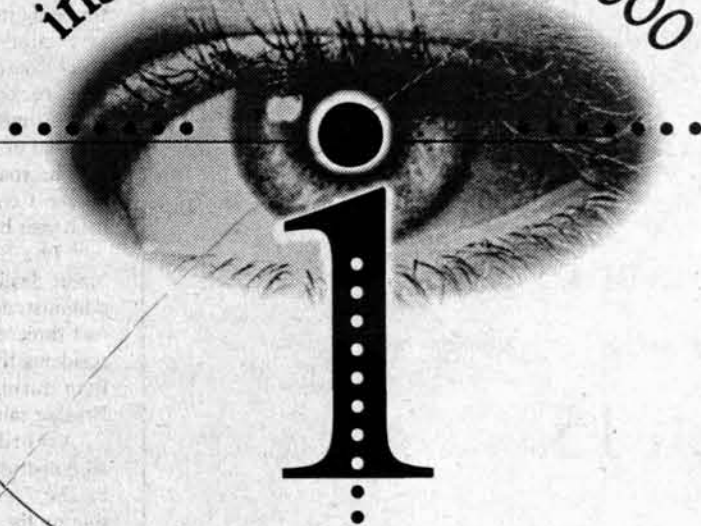
Inman: She'll joke around. She won a state title when I was in high school and I didn't. I was a senior, she was a sophomore and she won the state title, and I was her biggest fan. I only missed two of her games while I was in high school, and those were the two when I had games that night, so there's not much I could do about it. I went to every single one of her games and I'm proud to say I did.



TECH FILE PHOTO

Zachary J. Inman '01 goes up for a dunk during a January 1999 win against Emerson College.

insight middle east 2000



McKinsey & Company

Insight Middle East 2000 will be held
April 13 to April 16.

All expenses will be paid.

A Three-Day Insider's Look into Management Consulting for Ph.D.s, M.S.s, and M.A.s

McKinsey & Company, a management consulting firm with over 5,500 consultants in 80 offices in 42 countries, invites you to gain insight into the world of management consulting. This comprehensive seminar, designed exclusively for Ph.D.s, M.S.s, and M.A.s, will cover a range of topics important to those who are exploring alternative career possibilities in the Middle East. The agenda will include:

- An introduction to consulting via case exercises
- Team-based problem solving exercises
- An interview workshop
- Recreational, team-building activities
- An introduction to our Middle East office

Applicants should be expecting to finish their graduate degree in 2001. Applicants should also have experience in the Middle East or demonstrated interest in the region. No business experience is required.

All applications must be received by March 15. Finalists will be notified by March 27.

For more information, visit our web site at <http://www.mckinsey.com/insightmiddleeast>

<http://www.mckinsey.com/insightmiddleeast>

SPORTS

MIT Teams Looking Forward To Post-Season Competition

Swimming, Fencing Send Competitors to Nationals

By Ming-Tai Huh
SPORTS EDITOR

Winter sports competition has ended for most teams, but several individuals are still striving for national recognition.

Women's Swimming

T Kirsten Alberi '03 qualified in three events for the National Division III Championships at Emory University. She is seeded 21st in the 200-yard backstroke, 25th in the 100-yard backstroke, and 41st in the 500-yard freestyle. She will swim for MIT against the nation's best D-III swimmers today and tomorrow.

Fencing

T Caroline Purcell '03 won the IFA title last weekend to prove herself capable of taking the NCAA Northeastern tournament this weekend. Assuming Purcell crushes her opponents, naturally, she will advance to the National Tournament at Stanford.

Men's Indoor Track and Field

T Christopher McGuire '00 qualified for the 5000-meter race at the national division III tournament this weekend at Illinois Wesleyan University this weekend. Along with McGuire, Sean Montgomery '01 will be racing in the 1500-meter race. The Engineers were also successful in qualifying the 4x400-meter relay, which

consists of: Montgomery, Todd Rosenfeld '01, Matt Lehman '03, Yuval Mazor '02.

Women's Indoor Track and Field

Beside the men at IWU, the women's team has four national qualifiers. Princess Imoukhuede '02 will compete in the Weight Throw. Both Vanessa Li and Stephanie Norris are competing in the Pole Vault event. Alyssa Thorvaldsen will race in the 55-meter hurdles.



Chi-An Wang '01 catches a Tufts runner during this weekend's 4x400, helping MIT meet the NCAA provisional mark.

Fencing Shines At IFA Championships

Purcell Becomes MIT's First Female New England Individual Champion

The IFAs are the largest and highest level collegiate fencing tournament of the season. The format is similar to the New England Championships, with the best fencer in each weapon (A strip) of one team facing the best of the other, then B strip against B strip and C against C. Those with the best records on their strip, six from the A, four from the B and two from the C, move on to an individual round the following day.

By Evan Efstathiou
TEAM CAPTAIN

T Facing the best teams in the nation, MIT travelled last weekend to Yale to fence in the Intercollegiate Fencing Association (IFA) Championship. The Engineers placed a respectable eight out of fourteen teams, finishing ahead of their local rivals Harvard, Boston College, Brandeis, and Brown.

The highlight of the weekend came from 2000 New England Champion, Caroline Purcell '02. Purcell went a strong 12-1 on the A-strip, with her only loss being to Marisa Mustilli of St. John's. Caprice Gray '00 (7-6, B-strip) and Jen McKeehan '01 (8-4, C-strip) both had fierce performances to boost the squad to third place overall.

In the finals, Purcell got her chance to avenge her only loss in the individual competition. After struggling a little in the first round of pools, Purcell caught fire, taking Mustilli 5-4 in the second pool and 5-4 in the barrage for first place. Purcell is the first IFA champion in any weapon from MIT since 1984, and the first woman from MIT to win IFAs since women began competing in the championships in 1996. Purcell was one of three female athletes nominated for the prestigious Cointe Award, which is given for

demonstrating superior skill and sportsmanship at the IFAs.

The men's sabre squad started off the day by learning that Captain and A-strip Evan Efstathiou '00 had not fully recovered from injuries sustained during his performance at New England Championships, and would not be able to fence. MIT sabre was called upon to step up to fill his shoes, and proved their depth and heart by being capable to the task.

Newly-appointed A-strip fencer Phil Miller '01 finished a respectable 6-6, including victories over three NCAA National candidates. B-strip Rafael Bras '02 claimed four victories, and the pleasant surprise of the day was Richard Burstein '02 going a strong 9-3, with wins over two of the three C-strips who finished ahead of him.

Other weapons had some suc-

"We proved that we were the best in our region and that we can compete with the best anywhere. It was exciting for me to watch, especially Caroline's victory."
— Coach Jarek Koniusz

cess on the strips as well. In only his first year of experience, freshman Cheng Pei '03 showed great promise of things to come by taking six wins on the epee B-strip. A-strip epeeist Neal Devaraj '02 counted amongst his five wins a victory over the Penn A-strip, who finished 5th nationally last year. Danielle Morse '02 also claimed six from the women's foil C-strip.

"I like the intensity that I saw today," commented coach Jarek Koniusz.

This weekend the Engineers travel to Vassar College to compete for a spot at the NCAA Nationals at Stanford next weekend.

UPCOMING HOME EVENTS

Featured Upcoming Event

This Saturday and Sunday, the seventh-ranked D-III women's water polo team has their first tournament at Alumni Pool. They will play Boston College at 9:30 a.m. Saturday, Wellesley College 3:15 p.m., and Boston University 11:15 a.m. Come watch the women play on their home water.

The Tech
Established 1881

National Scholastic Press Association:

First Class

with three marks of distinction

Associated Collegiate Press:

Newspaper of the Year

Third Place Supplement

We would like to thank our readers, staff, and contributors for making these achievements possible.

