

MIT, CPA Kane, Chang To Lead Continue New Freshman Class Dispute

Excess Overtime an Issue of Contention

By Mike Hall
STAFF REPORTER

The prolonged dispute between MIT and the Campus Police Association shows no sign of resolution, with both sides entrenched and unwilling to compromise.

The conflict over scheduling, benefits and staffing entered its fifteenth month in September.

"We are not convinced that MIT is prepared to close the gap," said Alan McDonald of McDonald and Associates, representatives for the Association.

Quick resolution unlikely

Compromise between the Association and the Institute is growing increasingly unlikely, as both sides prepare for an extended battle.

Later this week, results will be released of an Association poll judging its members' view of the Institute's willingness to resolve the conflict.

On October 7, both sides will meet with a federal mediator. Meetings to this point have resulted in little compromise from either side.

Since the Campus Police are private sector employees, a strike is an

CPS, Page 31

By Rima Arnaout
ASSOCIATE NEWS EDITOR

The members of the Class of 2003 Council were installed at the Undergraduate Association meeting held yesterday evening. This year's freshman class president is Patrick D. Kane, and the vice president is Joanne Chang. The Class of 2003 Treasurer is Chirag G. Shah.

Stacy S. Chan and Stephanie J. Slowik were named freshmen social chairs, and Ekta M. Desai and Monica S. Krishnan were elected freshmen class publicity chairs. A total of 182 ballots were cast in the election. 13 candidates or teams ran for five positions, including three candidates for president and three for vice president.

The election "was poorly publicized by the Undergraduate Association and the Election Commission," Kane said. He also said that the voting process deterred some from voting. "It might be all right for upperclassmen who've been here and understand Athena," but many freshmen didn't vote because they found the Athena-based ballot system confusing.

Desai admitted that "it was so hard to vote... I couldn't."

The turnout "seemed a little bit lower than usual," said UA Election Commissioner Sarah L. McDougal '00. "It's also the fact that freshmen have only been on campus for a couple of weeks," so they haven't gotten a feel for the issues yet, McDougal said.

McDougal described the pub-

licity for elections as "not outstanding, but adequate," including posters and e-mails.

The timing and process of freshmen elections "is something on the books this coming fall," McDougal said. There's a "double-edged sword between giving freshmen time and how long you can afford not to have a class council," McDougal said.

Also, the election commission is "trying to find a balance between [elections] being moderately secure and still workable," McDougal said.

Campaign rules for this year's election had also changed. Candidates were allowed to e-mail lists they were on but were not

Election, Page 20



ANNIE S. CHOI - THE TECH
The 2003 Class Council (clockwise) Patrick D. Kane, president; Joanne Chang, vice president; Chirag G. Shah, treasurer; Monica S. Krishnan, publicity chair; Stacy S. Chan, social chair; Stephanie J. Slowik, social chair; Ekta M. Desai, social chair.

Winters Stresses Issues of Experience, Environment in Bid for City Council

By Frank Dabek
EDITOR IN CHIEF

Robert Winters, a mathematics instructor at Harvard University, is running for Cambridge City Council

Election '99

on a progressive platform, stressing environmental issues and his experience with local government. Winters, who did graduate work at MIT, was endorsed as part of the Cambridge Civic Association

slate.

Winters did not single out one issue for his campaign but said that his run was motivated by a desire to see "decisive people occupying the seats of city council." He called the current council a "rather ineffectual body."

Winters, who has participated in local government through spearheading a drive for recycling in Cambridge, and serving on a library board and the green ribbon open spaces group, says that his approach to government is "more from a practitioners point of view than a crusader."

He pointed to his success in establishing a curbside recycling program in Cambridge — we "didn't just bullshit about it, we did it," he said. Winters also publishes a web-based journal dedicated to Cambridge politics and was

involved in the effort to computerize the counting of ballots in city council elections.

Environment issues important

Winters stresses the environment in combination with infrastructure improvements such as the water treatment upgrade currently under construction.

He served on the Mayor's Advisory Committee on water and wastewater issues, and, along with other volunteers, began Cambridge's all-volunteer recycling program in 1989. The program led to a citywide curb-side recycling in 1991. He also pointed to the problem of sewer overflows into the Charles River especially in the Magazine beach area as an environ-

Winters, Page 19

Crime Rate Still Low, Says Second Quarter CP Report

By Naveen Sunkavally
NEWS EDITOR

Crime on campus and around the Institute is occurring at roughly the same low rate as last year, according to the 1999 Campus Police mid-year crime report.

Chief of Campus Police Anne P. Glavin said that low crime rate at MIT matches a general decline in crime at local and national levels. "In general the trend is that crime has been down, indicative of the community and [in accord with] local and national statistics," Glavin said.

Glavin attributed the low rate to a dedicated community policing program started last year. The program aims to use "a combination of directed patrols, crime prevention programming, and problem solving" with members in the target area.

For example, a pilot project during the first six months of the pro-

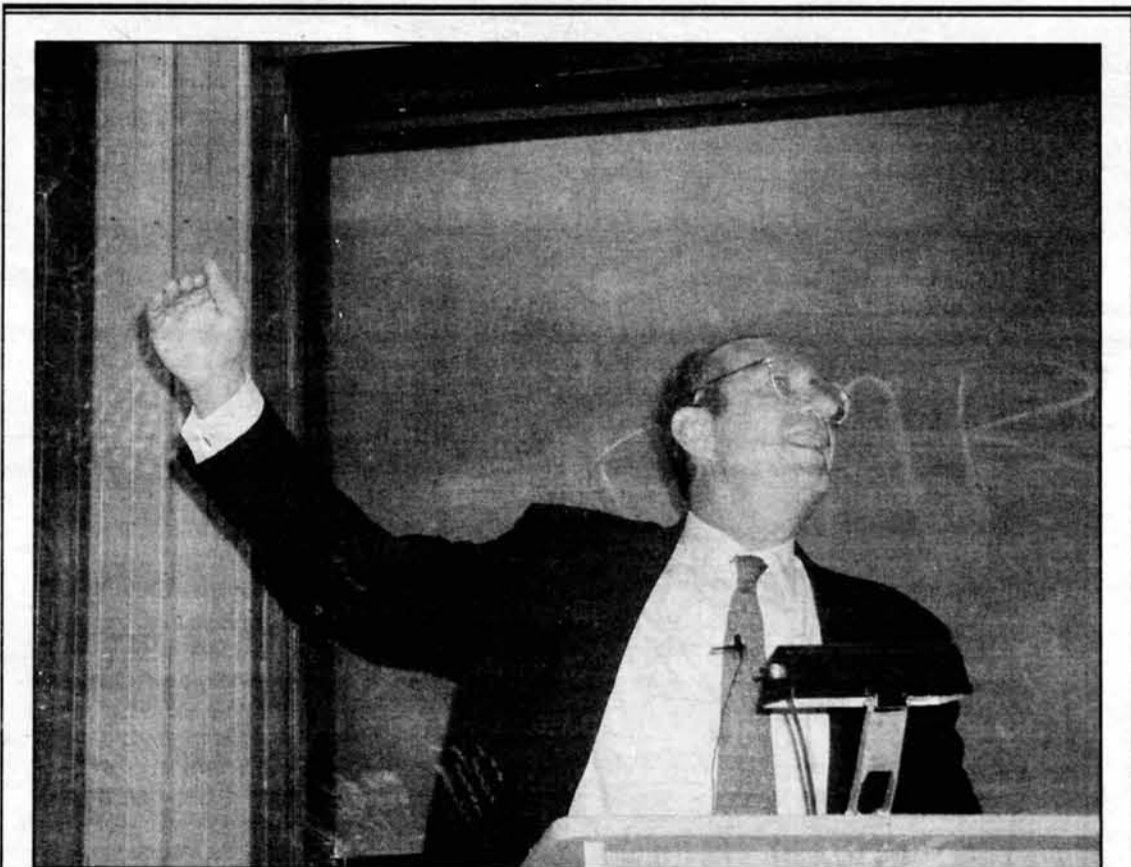
gram targeted at the E-51 area produced a "very good downward trend" in the number of larcenies," Glavin said.

Crime Totals

Sixteen serious crimes, which include homicide, forcible sexual offenses, robbery, aggravated assault, and simple assault, occurred on campus and in dormitories and residences during the first six months of this year, compared to 30 for all of last year.

The number of larcenies committed last year was 290 and 84 arrests, mostly for trespassing, were made during the first half of this year, compared to 287 larcenies and 71 arrests during the first six months last year. There were a total of 723 larcenies in 1997 and 701 larcenies in 1996. The number of

Crime, Page 22



ANKUR MEHTA
Institute Professor and former CIA director John Deutsch discusses moving beyond the paradigm of science and engineering, as part of yesterday's Technology and Culture Forum at the MIT lecture series. See story page 12.

OPINION

Professor Amar G. Bose '51 discuss students' intellectual property rights at MIT.

Page 5



Comics

Page 9

FEATURES

The MIT Assassins' Guild

Page 6

World & Nation	2
Opinion	4
Features	6
TechCalendar	7

WORLD & NATION

Lockheed Martin To Sell Divisions

THE WASHINGTON POST

WASHINGTON

Lockheed Martin Corp. said Monday that it will try to sell off businesses with about \$1.8 billion in annual sales and 9,000 employees in an attempt to make the \$26 billion aerospace contractor quicker and leaner.

Lockheed Chief Executive Vance D. Coffman said the company would cut its management support staff in suburban Bethesda, Md., by more than 100 positions.

"What we're trying to get out is a message that says we're going to focus on our customers and that will have benefits to our shareholders," Coffman told securities analysts in a midmorning conference call.

Coffman's moves, the result of a strategic review of Lockheed by an outside consulting firm, are designed to restore the company's credibility with Wall Street and analysts and investors.

Chechen Refugees Flee as Russians Continue Bombing

THE BALTIMORE SUN

MOSCOW

Tens of thousands of refugees clogged the road from Chechnya to the neighboring Russian region of Ingushetia Monday, as Russian warplanes continued their strikes against Chechen industrial and military targets.

Moscow's strategy in its budding war with Chechnya was starting to become clear — mass troops at the border, bomb from the air, and wait for the "bandits" to give up. The Russians say they are only attacking legitimate targets, such as oil refineries, communications facilities and weapons depots. The Chechen government says 300 civilians, mostly women and children, have been killed in the raids.

And between 50,000 and 100,000 people, not so trusting in Russian intentions, have fled for their lives.

The government of Ingushetia, a constituent part of the Russian federation, Monday appealed directly to the U.N. High Commissioner for Refugees for assistance in dealing with the flow of people, the Itar Tass agency reported. Zakre Sultygov, Ingush vice premier, said authorities there were incapable of providing shelter, food and clothing for so many.

\$27 Billion Debt Relief Given to Poorest Countries

THE WASHINGTON POST

WASHINGTON

A plan to cancel up to \$27 billion in debt owed by the world's most desperately poor countries won key financial backing from major industrial governments Sunday, clearing the way for funds that now flow to foreign creditors to stay home instead to pay for schools and clinics.

Gordon Brown, Britain's top finance official and chairman of an International Monetary Fund group overseeing the plan, said that enough funding pledges had arrived over the weekend to begin the program "not in years or months, but ... now."

In the plan, "those to whom the world's greatest wealth has been given are joined with those burdened down by the world's greatest debt," Brown said, calling the relief "historic." Firm numbers for donor contributions will be announced this week.

International banks often are wary of letting borrowers walk away from signed obligations. This program ranks among their most substantive efforts to date to bend the rules for countries such as Mozambique, Bolivia and Ivory Coast.

U.S. Foreign Officials Fear Anti-NATO Axis Formation

By Tyler Marshall

LOS ANGELES TIMES

U.S. foreign affairs specialists are closely monitoring new signs of increased cooperation between Russia, China and India, along with a growing sense in all three countries, especially after NATO's bombing campaign against Yugoslavia, that U.S. power must somehow be checked.

Although agreeing that the three nations are far from coalescing into a pan-Eurasian, anti-NATO axis, the analysts remain concerned about a potentially grave threat: an alliance that would bring together about 2.5 billion people, formidable military might and a vast stockpile of nuclear weapons, all held together by the common goal of countering America's global dominance.

"Right now, you have flirting," said Charles Williams Maynes, president of the Eurasia Foundation, a Washington-based think tank. "I don't know where this is going to go. If we play our cards right, it's going to go nowhere."

But if the relationships progress, Maynes said, "then you basically have the world's heartland — 2 billion people in China and India — allied with a formidable technologi-

cal power in Russia. That would be a disaster for the United States."

The signs of flirtation include a large and growing arms sale relationship between Russia and the two Asian countries. The trade provides Russia with important arms-export markets, and China and India with sophisticated armaments ranging from advanced combat aircraft to nuclear submarines.

The blossoming relationships are already changing the military equation in Asia. China's acquisition of Russian SSN-22 anti-ship missiles, for example, could quickly become a worry for the U.S. 7th Fleet in any confrontation with Beijing.

The political desire for closer cooperation is reflected in high-level rhetoric about the need for greater cooperation, usually mixed with thinly veiled anti-Western comments or calls for a "multipolar world" — code for counterbalancing America's global dominance.

During a visit to India in December, Russia's then-prime minister, Yevgeny M. Primakov, floated the idea of a "strategic triangle" committing the three nations to a policy of regional peace and stability.

So far, the concept has not been

fleshed out. But Western analysts see a series of converging interests among the nations that, if driven by events, could easily add substance to talk of strategic partnerships.

Aside from a shared discomfort about America's might, the three have other common interests. They want a stable Central Asia. They fear the impact of militant Islam. They oppose theater missile-defense systems. They strenuously back the primacy of the U.N. Security Council for dealing with world crises. And they strongly support the principle of nonintervention in the affairs of sovereign states — a principle violated by NATO as it tried to halt "ethnic cleansing" in Yugoslavia, in the southern Serbian province of Kosovo.

All three opposed the bombing campaign that the United States led against Yugoslavia on Kosovo's behalf, but the experience especially traumatized U.S. relations with Russia and China. Moscow watched an alliance that Westerners had traditionally characterized as purely defensive wade into a domestic conflict; China watched a U.S. B-2 bomber reduce its embassy in the Yugoslav capital to rubble.

Indonesian Soldiers Officially Withdraw from East Timor

By Doug Struck

THE WASHINGTON POST

DILI, EAST TIMOR

The commander of the Indonesian military in East Timor departed Monday, leaving security in the hands of a U.N.-authorized peacekeeping force that controls only a small part of the province.

Maj. Gen. Kiki Syahnakri left behind a token force of 1,500 Indonesian soldiers who will guard army facilities until East Timor's Aug. 30 vote for independence is ratified by the Indonesian parliament, which meets in November.

The commander of the peacekeeping force, Australian Maj. Gen. Peter Cosgrove, welcomed the departure of the Indonesian troops — who are accused of aiding anti-independence militias in their cam-

paign of terror in the province. But Cosgrove expressed concern that their departure leaves a security "vacuum" that the 3,700 peacekeepers here will not immediately be able to fill.

The peacekeeping force has yet to deploy in the vast majority of East Timor, and officials worry that militia gangs may continue to harass those areas.

Cosgrove on Monday sent a force of 150 soldiers, Australian Blackhawk helicopters and armored vehicles to the town of Liquica, about 20 miles west of the capital Dili, on reports that a band of 30 armed militiamen were in the town. The Australian Broadcasting Corp. said the militiamen fled into the hills.

It was the second town outside

Dili to feel the presence of the international peacekeeping force. Australian Lt. Col. Mick Slater, commander of the operation, said his troops "would not be staying long" in Liquica, but he described the action as a demonstration of the peacekeeper's intent to restore order in the countryside.

"The people of Liquica now have some security forces on the ground," Slater said. But he acknowledged that "the people of Liquica are a little worried, and at this point they are keeping their distance" from the peacekeepers.

The militias were recruited by the Indonesian army, and the army was involved in the burning and looting of towns throughout the province after the East Timorese voted for independence.

WEATHER

Fall Around the Corner

By Véronique Bugnion

STAFF METEOROLOGIST

The ridge of high pressure which allowed us to deny that fall was just around the corner is slowly weakening and drifting towards Nova Scotia. Meanwhile, the jet stream is making a major excursion from its usual West to East track and is dipping as far South as Texas. The upper-level disturbance associated with this movement of air masses will influence our weather later this week. A surface low pressure center will develop at the core of this trough but will remain in Canada. On Wednesday in Boston, the cold front extending along the leading edge of this disturbance will bring us numerous clouds. Rain and possibly strong South-Westerly winds are in store for Thursday. This may yet again increase the rainfall total for the month of September, currently at 11.18 inches. The old record of 11.04 inches set back in 1933 has already been broken.

We will only briefly be exposed to colder air on Friday before returning to normal temperatures over the weekend.

Today: Partly sunny. High of 71°F (24°C). Southeast wind around m.p.h.

Tonight: Increasing cloudiness. Low of 52° F (11°C).

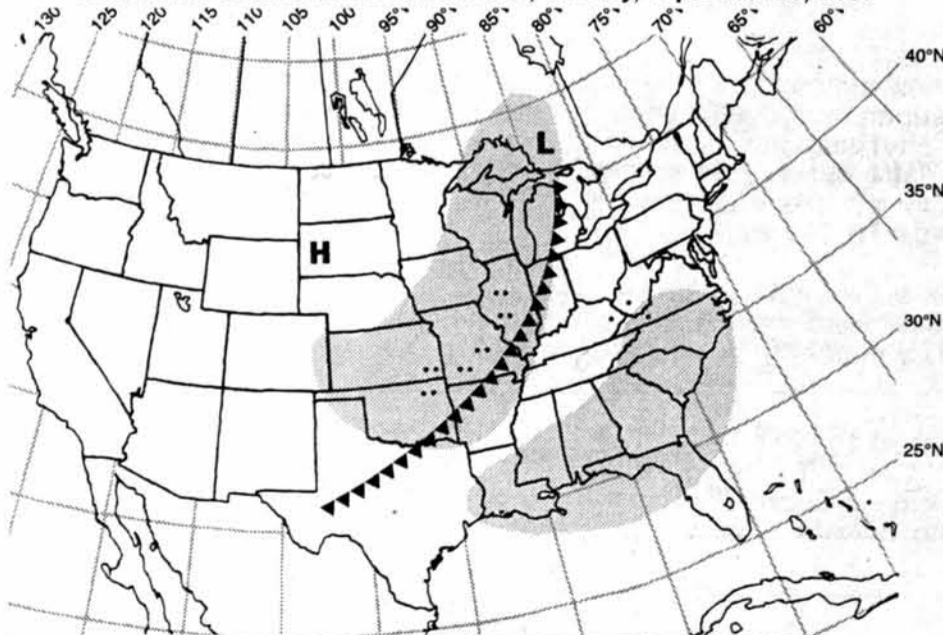
Tomorrow: Mostly cloudy. High 65°F to 70°F (18°F - 21°C)

Tomorrow Night: Chance of showers. Low around 60°F (15°C)

Thursday: Rain. High around 65° F (18°C).

Friday and beyond: Fair. Lows in the 40s (4° - 10°C). Highs in the 60s (15°-21°C).

Situation for Noon Eastern Standard Time, Tuesday, September 28, 1999



Weather Systems	Weather Fronts	Precipitation Symbols	Other Symbols
H High Pressure	--- Trough	Snow	Fog
L Low Pressure	— Warm Front	Light	Thunderstorm
S Hurricane	▲▲▲ Cold Front	Moderate	Haze
	▲▲ Occluded Front	Heavy	
			Compiled by MIT Meteorology Staff and The Tech

McCain Begins Presidential Campaign, Calls for Reform

By David S. Broder

WASHINGTON POST
NASHUA, NEW HAMPSHIRE

Sen. John McCain, the Arizona maverick and former Vietnam prisoner of war, formally launched his uphill bid for the Republican presidential nomination here Monday calling for a "new patriotic challenge" to reform the political system and strengthen the nation's defenses.

McCain, who has emerged as a credible underdog challenger to Texas Gov. George W. Bush, implicitly drew a contrast between their life experiences, saying his ordeal in a Hanoi prison taught him "both the blessing and the price of freedom" and gave him the confidence to make his own judgments on issues of war and peace.

Bush has acknowledged needing tutelage on national security issues, and after questions about his service in the Texas Air National Guard

during Vietnam has been forced to deny that favoritism to his father, who was in Congress at the time, eased his way from Yale into that stateside unit.

McCain identified himself to a noontime crowd of about 1,000 at a park here as "the son and grandson of Navy admirals," a man "born into America's service ... It is because I owe America more than she has ever owed me that I am a candidate for president," he said.

With his compelling personal story and knack for staying in the news, McCain is perhaps as well-positioned to upset Bush as anyone in the race. His endurance through 5 1/2 years in North Vietnamese prisons is movingly recounted in his new best-selling autobiographical book, "Faith of My Fathers."

McCain has been raising about \$2 million per quarter this year and "will have enough cash and match-

ing funds to max out in the early states," said campaign manager Rick Davis — though not enough to keep pace with Bush and Steve Forbes.

In his speech, McCain pledged to press for overhaul of the campaign finance system — a battle on which he has been fighting his party's leaders for years — and to veto any "pork barrel" spending bill that reaches him as president. He also offered voters tax cuts, pledged to seek a nationwide test of school vouchers and vowed to save "every single dollar" of the Social Security surplus.

But mostly, McCain used his announcement speech to begin drawing a personal contrast with Bush, who leads the field in fundraising and endorsements. Without mentioning Bush by name, McCain said, "I don't begin this mission with any sense of entitlement."

Extradition Hearings Beginning In Britain for Augusto Pinochet

By Marjorie Miller

LOS ANGELES TIMES
LONDON

After nearly a year of legal battles and house arrest for Gen. Augusto Pinochet, the former Chilean dictator's extradition hearing began here on Monday with an attorney for Spain charging that the case presented "some of the most serious allegations of crime ever to come before English criminal courts."

The 83-year-old Pinochet was not present in the courtroom to hear the reading of 35 cases of alleged torture and conspiracy to torture involving electric shocks leading to death, as well as beatings, burnings and suffocation.

Pinochet's supporters say he is in fragile health at the rented mansion where he has lived under police

guard since shortly after his arrest at a private London hospital Oct. 16. He must appear for the decision, which is expected next month.

The former dictator is being held on a warrant from Spanish Judge Baltasar Garzon, who has accused him of overseeing a wave of terror and human rights abuses during his 1973-1990 rule in Chile.

Last March, however, Britain's high court said that Pinochet could only face extradition on torture charges after 1988, when Britain adopted an international anti-torture convention. Only one of the original cases that the Spanish judge had presented against Pinochet fell into that category, but he subsequently added the others.

The Chilean government has said that 3,197 people were killed and another 1,000 disappeared in

the political violence that marked Pinochet's reign.

Pinochet has denied all of the charges against him, saying he could not have known everything that was going on, or controlled everything in the country at the time. His lawyers also have said that only Chilean courts have jurisdiction to try him.

In court on Monday, Scotland Yard inspector Andrew Hewitt described how Pinochet had insisted on his innocence when presented with a full arrest warrant earlier this year.

"I don't agree with this. I had absolutely nothing to do with any of these charges," he quoted Pinochet as saying. "I am being humiliated. I am a general — 64 years service — I'm a gentleman who knows about honor."

Albright Warns Indonesia About Economic Reprisals

LOS ANGELES TIMES

UNITED NATIONS

U.S. Secretary of State Madeleine Albright, supported by officials of more than a dozen Asian nations, warned Indonesian Foreign Minister Ali Abdullah Alatas on Monday that his government risks the loss of crucial IMF and World Bank credits unless it starts protecting refugees from East Timor.

Albright told Alatas that Indonesia must rein in militias that are terrorizing refugees who fled to West Timor and elsewhere in Indonesia. Other Asian foreign ministers, from countries as diverse as New Zealand and Vietnam, added their criticism of Indonesia during a breakfast hosted by Albright, a senior State Department official said.

Alatas insisted that the "horror stories" had been exaggerated, said the official, who attended the meeting. The foreign minister did not directly answer complaints that the Indonesian military has been cooperating with anti-independence militias in the wake of East Timor's overwhelming vote for independence Aug. 30, said the official. An Australian-led force has since been dispatched to East Timor to keep peace.

Describing the tone of the breakfast session, the official said: "It was civilized. It wasn't an angry exchange. At the same time, I think it was — as they say in diplomatic parlance — frank."

Researchers Say Heart Drug Can Slow Inherited Blindness

LOS ANGELES TIMES

A widely used heart drug can sharply slow the progression of an inherited form of blindness called retinitis pigmentosa, according to experiments in mice reported Tuesday by French researchers.

This has the potential to be the first effective treatment of retinitis pigmentosa, commonly called RP, which afflicts as many as 200,000 people in the United States, according to the researchers.

The drug, called diltiazem, could be useful in about 10 percent of those patients with the most aggressive forms of the disorder, experts said. And because the drug has already been shown to be safe in treating heart problems, clinical trials in humans could begin early next year.

The mice used in the studies have a form of RP in which a specific genetic defect allows calcium and sodium to flow into eye cells through passageways called calcium channels, poisoning the cells. Diltiazem is a calcium-channel blocker that closes those pathways.

"It's not surprising that it works, but it's very exciting and could be very important," said Dr. Richard L. Hurwitz of the Baylor College of Medicine.

The results, reported in Tuesday's Nature Medicine, are "proof of principle" that targeting genetic defects in RP can be successful, and may thus lead to other treatments as well, added Tom Høglund of the Foundation Fighting Blindness.

Separately, researchers at the California Institute of Technology report in Tuesday's Proceedings of the National Academy of Sciences that another heart drug — an experimental compound known as BQ788 — can suppress skin cancers in mice and may have potential for treating prostate and ovarian tumors as well.



The MIT Graduate Student Council

office: Walker Memorial, 50-220 (above the Muddy)
phone: 253-2195
website: www.mit.edu/activities/gsc
email: gsc-request@mit.edu

Concert at The Roxy "Juan Formell y Los Van Van" Sunday, October 3rd, 8pm

It is now almost thirty years since "los Van Van" first revolutionized cuban music with their ground-breaking fusion of traditional "son" rhythms and modern rock sensibilities. As Juan Formell says: "We make this music so that people can dance, and as we play we are always very aware of the dancers. The music belongs to them..."

And now, "los Van Van", still led by Juan Formell, bassist, lyricist, composer, and musical director, bring their music to Boston for one BIG concert. A unique opportunity not to be missed!

The Graduate Student Council offers a limited number of dicounted tickets to MIT graduate students. \$12 per person. Tickets on sale now at the GSC office (50-220), Tuesdays 10:00am - 1:00pm. Please call ahead (253-2195) before going to pick up tickets. Checks preferred.

The Muddy Charles Pub is now pleased to offer quality wines by the glass!

As always, every Wednesday night there is free jazz at the Muddy Charles Pub too!



September

- 29 Professional Development Seminar
- 30 Graduate Career Fair

UPCOMING PROFESSIONAL DEVELOPMENT SEMINARS

"WHY MANAGEMENT CONSULTING FIRMS HIRE PHDS"

ALAN M. KANTROW, Ph.D.
Chief Knowledge Officer, Monitor Group
Mon., Oct. 4, 5-7pm, Room 6-120

"WRITING A WINNING BUSINESS PLAN

DR. EDMUND DUNN
Executive Director, MIT Enterprise Forum, Inc.
Wed., Nov. 10, 6-7:30pm, Room 3-133

"COMMUNICATION AND PRESENTATION SKILLS"

PROFESSOR LORI BRESLOW
Director, MIT Teaching and Learning Laboratory
Senior Lecturer, Sloan School of Management
Wed., Dec. 1, 6-7:30pm, Room 3-133

For description of each event and speaker profile refer to the web page <http://www.mit.edu/activities/gsc/Committees/ARC/PDS/pds.html>

OPINION

Letters To The Editor



Chairman
Satwiksai Seshasai '01

Editor in Chief
Frank Dabek '00

Business Manager
Joey Dieckhans '00

Managing Editor
Ryan Ochylski '01

Executive Editor
Gregory F. Kuhnen '00

NEWS STAFF

Editors: Douglas E. Heimbürger '00, Zareena Hussain '00, Jennifer Chung '01, Naveen Sunkavally '01; **Associate Editors:** Rima Arnaout '02, Sanjay Basu '02, Kristen Landino '02, Kevin R. Lang '02, Karen E. Robinson '02; **Staff:** Erik Snowberg '99, Anna K. Benefiel '00, Gabriel Daleson '00, Laura McGrath Moulton '01, Krista L. Niece '01, Jane Yoo '01, Gitrada Arjara '02, Steve Hoberman '02, Michael M. Torrice '02, Mike Hall '03, Aurora Schmidt '03, Sagara Wickramasekera '03; **Meteorologists:** Véronique Bugnion G, Greg Lawson G, Peter Huybers G, Bill Ramstrom G, Chris E. Forest, Marek Zebrowski.

PRODUCTION STAFF

Editor: Brett Altschul '99; **Associate Editors:** Ian Lai '02, Jordan Rubin '02, Agnes Borszëki; **Staff:** Mary Obelnicki G, Josh Buttner '99, Erica S. Pfister '00, Eric J. Cholankeril '02, Bryan Guzman '03, Verónica Lois '03, Jane Maduram '03, Supriya Rao '03, Jennifer Shieh '03.

OPINION STAFF

Editors: Michael J. Ring '01, Eric J. Plosky '99; **Columnists:** Julia C. Lipman '99, Elaine Y. Wan '01, Veena Thomas '02, Kris Schnee '02; **Staff:** Wesley T. Chan '00, Jeff Roberts '02.

SPORTS STAFF

Editor: Susan Buchman '01; **Associate Editor:** Ming-Tai Huh '02; **Staff:** Nisha Singh '00, Jennifer C. Lee '02.

ARTS STAFF

Editors: Vladimir V. Zelevinsky '95, Rebecca Loh '01; **Associate Editors:** Benec P. Olveczky G, Fred Choi '02; **Staff:** Erik Blankinship G, Daniel Metz G, Steven R. L. Millman G, Roy Rodenstein G, Zarminae Ansari '97, Teresa Huang '97, David V. Rodriguez '97, Tzu-Mainn Chen '99, Mark Huang '99, Kate Samrandvedhya '00, Francisco Delatorre '01, Amrita Ghosh '02, Daniel J. Katz '03, Heather Anderson.

PHOTOGRAPHY STAFF

Editors: Garry R. Maskaly '00, Karlene Rosera '00, Annie S. Choi; **Staff:** James Camp G, Rich Fletcher G, Sephir Hamilton G, Aaron Isaksen G, Wan Yusof Wan Morshidi G, Thomas E. Murphy G, Michelle Povinelli G, Omar Roushdy G, Jelena Srebric G, T. Luke Young G, Krzysztof Gajos '99, Stefan Carp '00, Rita H. Lin '00, Jörg Scholvin '00, Ajai Bharadwaj '01, Ying Lee '01, Yi Xie '02, Lucy Yang '02, Miodrag Cirković.

FEATURES STAFF

Editor: Katie Jeffreys '01; **Cartoonists:** Solar Olugebefola G, Jennifer Dimase '01, Xixi D'Moon '01, Lara Kirkham '03; **Staff:** Shawdee Eshghi '99, Jean K. Lee '99, Andrew J. Maywah '99, Aaron D. Mihalik '02.

BUSINESS STAFF

Advertising Managers: Jasmine Richards '02, Huanne T. Thomas '02; **Staff:** Karen Cheng '02.

TECHNOLOGY STAFF

Director: Shantonu Sen '02; **Staff:** Hoe-Teck Wee '02.

EDITORS AT LARGE

Contributing Editors: Dan McGuire '99, **Color Editor:** Gábor Csányi G.

ADVISORY BOARD

V. Michael Bove '83, Robert E. Malchman '85, Thomas T. Huang '86, Jonathan Richmond PhD '91, Reuven M. Lerner '92, Josh Hartmann '93, Jeremy Hylton '94, Garlen C. Leung '95, Thomas R. Karlo '97, Saul Blumenthal '98, Indranath Neogy '98.

PRODUCTION STAFF FOR THIS ISSUE

Night Editor: Ryan Ochylski '01; **Associate Night Editor:** Mary Obelnicki G; **Staff:** Satwiksai Seshasai '01, Eric J. Cholankeril '02, Ian Lai '02, Jordan Rubin '02, Bryan Guzman '03, Verónica Lois '03, Jane Maduram '03, Supriya Rao '03, Jennifer Shieh '03, Gayani Tillekeratne '03.

Movie Shows Value of Communication

I was fortunate enough to find myself with enough free time to attend the sneak preview of *American Beauty* at MIT on Wednesday. The review of the movie which ran in *The Tech* on Friday was well-written and brought up several good points. However, I think that the review also missed one important aspect of the film.

As I understand it, one of the important themes of *American Beauty* was loneliness — an emptiness that can be found not only in isolation, but among groups. The movie gives the example of an American family, in which the members have become withdrawn to the point that there is no real family, but simply a collection of three lonely people who just happen to share the same roof.

I think that this is an important concept for any person to understand. Even among friends, if there is an unwillingness to listen or to be heard, the outcome can be just the same as if a person had no friends at all. Loneliness leads to desperation and desperation leads to acts of chaos, both tiny and very, very large and disastrous.

I applaud *American Beauty* simply because it emphasizes this point. Communication — a willingness to listen and to be heard — is a valuable prize that people should nurture and work for. I believe that this is a pertinent lesson that every person should take to heart.

Tzu-Mainn Chen '99

Critical Reviews

Does critic Vladimir Zelevinsky G like anything? I've never seen him give a positive review of anything. Is he actually looking for good qualities in that which he reviews, or is he a critic given to criticism? I just thought that maybe *The Tech* might have someone with something good to say for once.

Pete Gamache '01

Creation Evangelists Exposed

I stand in strong opposition to Glenn McMillon Jr. '03's column advocating creation "science" in the September 24 issue of *The Tech*. I respect his religion but abhor the imposition of his blend of fact and religious opinion on public school decisions.

McMillon's religious ministry-based references tout creation evangelism and pervert his righteous claim of fair science. His creation evangelists begin by exploiting valid scientific discourse and disagreements on the intricacies of evolution. They portray competing theories in the scientific community as proof of massive fraud, despite a preponderance of evidence to the contrary. This is comparable to claiming that, because competing measures of the earth's circumference vary by several meters, our planet must be flat.

History shows that some have been slow to accept new facts and improved theories. However, the dogmatic doubters of the Earth's revolution around the sun and the refuters of the round earth concept never controlled the U.S. public school systems. Thankfully, those 15th-century skeptics also did not

insist upon satellite photographs as proof; they would have had to wait for centuries. Unlike creation evangelists, they reconciled religion and science and stopped trying to disprove facts by yelling loudly and confusing children.

Although these creation evangelists claim to only want fair treatment for their views, a member of the Kansas Board of Education publicly reported receiving a majority of calls and letters urging him to "put God back in the schools," with no mention of equality or fair science. This exposes the true face of creation evangelists who want to impose their religion in public schools while hiding behind a pseudo-scientific mask.

Darian Unger G

Logic and Perception In Guy Tragedy

In Friday's *Tech*, Greg Donaldson '00 discusses what he sees as "holes" in John Muir Kumph's letter, published last Tuesday. Unfortunately, Donaldson seems to have somewhat missed Kumph's point. In the letter, Kumph speaks of larger-scale perceptions, political shifts and morals. Donaldson speaks about logical reasons, cause-and-effect relationships and direct consequences.

Donaldson is completely correct in saying that Ruiz and Mosher — and no one else — were taking a risk if the drugs found in their room did in fact belong to them (a point which I must stress has not yet been proven in a court of law). He is completely correct in saying that only Richard Guy is to blame for arranging and executing his own death, whether it was intentional or accidental. These are statements based on pure logic, but the problem is that in our society, things are never viewed from a logical standpoint.

This is what Kumph tried to address. Though we might despise it, when people read about this in the *Boston Herald* under the gigantic "MIT Cops Find Drug Den" headline, they put the blame on the drugs, on MIT for not controlling the drugs, and on Ruiz and Mosher for allegedly having the drugs. Kumph points out that it is this perspective

that really matters. MIT doesn't have the balls to say to the public that we need to teach students about the dangers of drugs so that they will not use them unsafely.

Instead, MIT chose to say that it would crack down on drug use and expand the investigation of drug use at MIT. The only thing this accomplishes is to make it even harder for those people who choose to use drugs — including alcohol — to do so safely. Consider MIT's new alcohol policy, which may bring sanctions against innocent people if those people request medical attention to save someone's life. This is sick. It is disgusting that MIT values policy and political stance over saving a human life.

Above all else, MIT needs to recognize that people are going to take risks with their lives. This is a simple aspect of human nature that no amount of legislation will alter. MIT needs to provide information and education to minimize that risk. MIT must not create rules that stand in the way of safety.

Encouragingly, someone seems to have had enough initiative to take matters into their own hands: recently a large number of crudely-xeroxed booklets entitled "DAMIT — Drugs At MIT" were anonymously circulated around campus. These booklets gave information on how to use drugs safely instead of preaching about the "evils" of drug use. It is revolting that such a thing had to be done anonymously and clandestinely — presumably since the authors feared repercussions — and that MIT has never done such a thing itself.

Donaldson ends with, "In the future, let's hold people accountable for their actions." I wish that today's society shared that view.

Anael Nazareth '98

Erratum

A chart accompanying an article about the Class of 2000 career fair ["Career Week Begins," Sep. 24] incorrectly listed the fair's web address. The correct address is <<http://classof2000.mit.edu>>



Opinion Policy

Editorials are the official opinion of *The Tech*. They are written by the editorial board, which consists of the chairman, editor in chief, managing editor, news editors, and opinion editors.

Dissents are the opinions of the signed members of the editorial board choosing to publish their disagreement with the editorial.

Columns and editorial cartoons are written by individuals and represent the opinion of the author, not necessarily that of the newspaper.

Letters to the editor are welcome. Electronic submissions are encouraged and may be sent to letters@the-tech.mit.edu. Hard copy submissions may be addressed to *The Tech*, P.O. Box 397029, Cambridge, Mass. 02139-7029, or sent by interdepartmental mail to Room W20-483. All submissions are due by 4:30 p.m. two days before the date of publication.

Letters and cartoons must bear the authors' signatures, addresses, and phone numbers. Unsigned letters will not be accepted. No letter or cartoon will be printed anonymously without the express prior approval of *The Tech*. *The Tech* reserves the right to edit or condense letters; shorter letters will be given higher priority. Once submitted, all letters become property of *The Tech*, and will not be returned. *The Tech* makes no commitment to publish all the letters received.

To Reach Us

The Tech's telephone number is (617) 253-1541. E-mail is the easiest way to reach any member of our staff. If you are unsure who to contact, send mail to general@the-tech.mit.edu, and it will be directed to the appropriate person. *The Tech* can be found on the World-Wide Web at <http://the-tech.mit.edu>.

The Tech (ISSN 0145-9007) is published on Tuesdays and Fridays during the academic year (except during MIT vacations), Wednesdays during the fall and spring breaks, and on Saturdays during the summer. Third class postage paid at Boston, MA, and at additional mailing offices. Postmaster: Please send address changes to *The Tech*, P.O. Box 397029, Cambridge, Mass. 02139-7029. Telephone: (617) 253-1541; advertising: (617) 253-8324; business: (617) 253-8326. *The Tech* is a member of the International Association of College Newspapers and Journals. © 1999 The Tech. Printed on recycled paper by MassTech Printing Co.

Beating Up on Students

Grandstanding Pols Push Tough Restrictions on Teen Rights

Julia C. Lipman

When I was a senior in high school, my government class was selected to draft a bill and present it at the state senate in Springfield. I'd always thought about the kind of laws I would make if I held public office, and I couldn't believe I'd get to start as a sixteen-year-old. There seemed to be so many opportunities for our class. We could abolish the death penalty in Illinois or enact a state Equal Rights Amendment. Or, most relevantly, we could strengthen civil liberties protections for public school students.

The state representatives who visited our class to promote the program also had student rights in mind. They started out by passing out literature describing Illinois' new "Use It and Loose [sic] It" law, which took away the driver's license of anyone under 21 found driving with a blood alcohol content above 0.00. This law, which made it illegal for a twenty-year-old who'd had one drink to take over at the wheel for a drunk friend, was to be the model for the bill that our class would draft.

No, these legislators weren't thinking about capital punishment or the ERA. They had a very specific agenda in mind: using teenagers to pass legislation that would crack down on teenagers. All of the bills they sug-

gested to us had one common thread: restricted rights or tougher penalties for minors. My classmates were happy to sell out their peers, finally deciding on a bill that would strengthen penalties for making fake IDs, which

It was just like Mr. Smith Goes to Washington...

would eventually pass easily. It was just like *Mr. Smith Goes to Washington*, except Jimmy Stewart's scout leader turned politician ends up working with the crooked senator on a bill to clear-cut Boy Scout camps, instead of meeting the cute secretary and contemplating the meaning of democracy.

There's really no need for politicians to use fresh-faced high school government students to sell legislation that cracks down on teenagers. It sells itself. In fact, Elizabeth Dole is hoping that it will sell her faltering presidential campaign. Dole recently called for schools to institute locker and backpack searches as a way to reduce crime. Taking a cue from the Illinois state reps, she announced her proposal in front of an audience of high school honor students in Melrose,

Massachusetts.

Why do politicians think that announcing tough-on-teenagers measures in front of an audience of teenagers is a good strategy? After all, you don't see them promising senior citizen groups that they'll get reckless elderly drivers off the road, or suburbanites that they're going to start imposing tougher environmental standards on SUVs. True, teenagers don't vote or take polls, so offending them isn't going to affect the candidate's standing. But there's more to it than that. By talking to teenagers, Dole makes it clear that she doesn't see them as a monolithic group. There are good teenagers (the ones she's talking to, presumably) and bad ones (the ones these laws are meant for). The core assumption is that good teenagers won't question restrictions on their rights, and bad ones won't question them intelligently.

There are always exceptions — remember how shocked Bush the elder was when a young girl interrogated him about capital punishment on the campaign trail? But if you have nothing to hide, what's the problem with opening your backpack for the occasional search, especially since Mrs. Dole told you that it's for "the lives and bright futures of all students?" Furthermore, your parents (who will, according to Dole's plan, be responsible for giving schools permission to conduct these

searches) will surely be impressed with Dole's tough but caring approach to the teenagers of America.

Gore is getting in on the act too. His education plan involves "codes of discipline and required meetings on the first day for parents, teachers, and their students to sign this code." Is it a national code, or will there be one for every school district? What happens to students who refuse to sign the code? What about parents or teachers who refuse to sign it? Gore doesn't tell us much about the details, but it's safe to say that writing such a code would be a field of political land mines.

It's not a great time to be a student. The American Civil Liberties Union reported a major upswing in the number of calls it received about student rights violations in the months after the Columbine shootings. And now that we're heading into an election year, we'll see more of grandstanding politicians leading the assault on student rights. Of course, many of their ideas, like Clinton's school uniform proposal, will have a shelf life no longer than that of the campaign. And as for the ones that succeed, like my class's fake-ID bill? There are always ways of getting around these things. In fact, most of my classmates left for college in Iowa or Indiana six months later.

Drafting a Better Patent Policy for Students

Guest Column
Amar G. Bose

For decades MIT had a well-articulated, uniformly applied, fair policy with respect to student inventions. Last December I became aware that in recent years this policy was changed to one that is neither well-articulated nor uniformly applied and is blatantly unfair to our students. This policy was created because it was deemed that its predecessor did not bring in sufficient revenue.

In personal meetings commenced in January of this year, the administration confirmed the following points:

1. Straight licensing of student patents to the students is a losing proposition for MIT.

2. This, as is well known, occurs because the vast majority of patents do not amount to anything financially.

3. It is through demanding equity in the student start-up companies that MIT earns money. And this money is a direct result of the ingenuity of the students who cause their company to flourish independent of the value of their patent.

The inescapable conclusion that must be drawn from the above three points is that the current policy of the MIT Technology Licensing Office, which demands equity in student start-ups in partial return for licensing back to the students their own inventions, is unethical. It is unethical because the TLO is giving the student something (the license) which they know has a very small probability of having value, and demanding in return something (equity) which they know has a much higher probability of having value because it is not tied to the value of the patent. The TLO is not willing to tie their income from the patent to that derived from the patent by the licensee as is common practice in industry. Why should MIT demand more from its students than industries demand from each other?

Unfortunately, the TLO's willingness to help a student inventor depends upon how much money they sense is in it for them. And this usually boils down to whether or not a company will be formed by the student from which they can extract a piece. For example, in a recent case a student approached the TLO wanting to patent his invention relating to bandwidth reduction on Internet links. He was told that since he had no plans to form a company and since there was no faculty member involved, the TLO was not interested in pursuing the patent. Further, he was told that if he could get a faculty member interested in starting a company, then the TLO would be interested in pursuing the patent. He was unaware, and not informed by the TLO, that there was an attractive alter-

nate path that could have been opened for him at that point which would have cost the TLO only the time to write one letter. His patent died right there.

A further problem with the TLO policy arises from the conflict of interest that the TLO has with the student inventors. This is manifested, among other ways, in the financial advice that they give to the students. As government funds for research continue to diminish, this country needs more companies that are prepared to invest a larger proportion of their earnings into research. Such action requires a long-term corporate strategy that is often easier to maintain in privately held companies. The TLO guides students

toward short-term strategies by offering to introduce them to venture capital sources of financing. They know that these sources have the objective of getting a fast return on their, and thus the TLO's, investment by rapidly taking the company public. Venture capital sources are useful for companies that desire to go public quickly, but are inappropriate for compa-

nies that wish to take a long-term strategy and invest in research. If any financial advice or introduction to funding sources is to be given to our students, it should be balanced and consistent with their own goals.

In addition, during the process of extracting equity in the start-up company, the TLO portrays their equity as help to the student in raising money because MIT will be a stockholder. Any student wishing to test the sincerity of this portrayal should try to decline the help and negotiate a license on conventional terms without TLO equity. His or her certain failure to negotiate on this basis should shed some light on exactly who is helping whom with respect to equity.

In the fundamental conflict of interest between the TLO and the students, the TLO has a distinct advantage. The students are inexperienced in patent matters and are no match for the TLO staff. Thus I recommend to all students the following guidelines: First, do not enter the TLO office to report or discuss an invention without your own lawyer by your side. (I think MIT should feel obligated to notify all students to this effect.) Second, under no circumstances should you mention to the TLO any plans you may have to form a company after graduation. You are under no obligation to mention or in any way acknowledge such plans and to do so would be a big mistake. If you follow these two guidelines, with the help of your lawyer you will have a better chance of emerging with a fair disposition of the rights in your invention.

In April of this year I proposed the following to the administration:

1. The TLO should stop demanding equity as part of the license agreements because

it is unethical to do so.

2. As was confirmed by the administration, without equity the TLO is left with a losing operation. In this circumstance, their best course of action is to eliminate their losses by reducing their staff to a level sufficient to simply assure that all students, who would then be free to file their own patent applications, honor any contractual agreements that MIT might have with the sponsors of research that the students worked on. The cost of this reduced staff would be recovered in the overhead that the Institute levies on its sponsored research.

I believe that the proposed solution would:

1. Promote entrepreneurship among students, which is a goal at MIT.

2. Lead to effective commercialization of new technology because no one is as dedicated to this as an inventor who owns his or her patent.

3. Introduce students to the experience of patenting their own inventions.

4. Generate a select group of inventive students who would be most likely to succeed and who would, as alumni and alumnae, be much more inclined to contribute to their *alma mater*.

5. Eliminate the unhealthy environment that now prevails in which students are hiding their inventions from MIT as a consequence of the spreading reputation of the TLO.

Recently I received feedback (third-hand) that the Institute dismissed my proposal as a giveaway to the students which did not allow MIT to earn any money from the student inventions. In fact, I have no objection to MIT earning money from student inventions provided that they can find an ethical way of doing it.

What I find additionally troubling about the current situation is that the TLO has not limited its objectionable practices to the MIT campus, but has actually engaged in teaching other universities how to increase their revenues by doing the same thing to their students.

In all my years on the faculty I have never seen anything like this situation. I am sure that no one in MIT set out to design an unfair or unethical policy for our students. However, when one focuses so strongly on bringing in money, it is sometimes surprising how principles, mission statements, and short-term policies can be rationalized, while fairness to our students and long-term consequences are overlooked. It is also surprising that any institution can be so intransigent with respect to changing a policy that they cannot defend. Perhaps the current ten million dollar revenue that the TLO brings in tends to cloud one's view of the issues.

In the end, it may only be our students, either in their current role or when they become alumni and alumnae and are solicited for contributions, who will be able to effect the needed change for the benefit of all future students.

Amar G. Bose '51 is a Professor of Electrical Engineering and Computer Science.



A. Arif Husain '94



Anders Hove '96



Stacey Blau '98



Mike Ring '01



You '03

Join The Tech
Opinion department.

Call Mike or Eric at x3-1541.

FEATURES

Assassin's Guild Brings Buffy to MIT

By Ariel E Segall

Everybody knows the Campus Police aren't quite like the students, but I'll bet you didn't know that they're really robots controlled by the Student Information Processing Board. Or that Physical Plant (sorry, the Department of Facilities) employs zombies. Or that Fox Mulder is working undercover as a member of the administration.

Well, maybe not. But that was how the world worked in Friday's Buffy the Vampire Slayer game, written by Andrew E. Ellis '97, Charles Hope, and Tom Giordano, and run by the MIT Assassin's Guild.

For those people not familiar with the Assassin's Guild, it's an organization dedicated to something called Live Action Role-Playing, or LARPs. LARPing is a lot like acting or improvisational theatre. Instead of lines to memorize, a player is given a character and a

scenario. Character information includes some combination of history, personality, life/game goals, and in-game acquaintances. The scenario, given to all of the players, contains commonly-known information about the universe the game is set in. Recent settings have ranged from far-future galactic civilizations to medieval France and modern-day Croatia. When the game begins, the players are set loose within a section of campus which maps to an in-game location, and the characters descriptions. A game is an interactive story, and the choices that players make for their characters can dramatically influence the direction the plot takes. The Game Masters, or GMs, are the ones who've written everything, but once game begins they are there only to answer last-minute questions and watch their creation unfold.

You may be wondering how action really works in a game. The games are called LARPs for a reason—players are expected to interact in

the same ways their characters would. Of course, this rule doesn't hold for things like combat and seduction. (Some people might want to sleep with their love plot, but most of us would prefer to avoid that.) Anything that a player cannot or should not do himself is done using some form of mechanic; abilities ranging from chemistry to lockpicking to throwing fireballs use cards describing the effect of the ability, while combat involves small plastic guns that shoot plastic or rubber ammunition, and some non-physical system of conflict resolution such as rock-paper-scissors. Persuasion, spying, and racing to finish plots before game end, however, are all left up to the players.

"Buffy" allows new twist for Guild

The game that ran on Friday was "Buffy the Vampire Slayer: Welcome to MIT." As its name implies, it was based very strongly on the TV series. In the game, Buffy and her

friends had all gone off to college, most of them in the Boston area. Willow came to MIT, and most of the main characters of the show just happened to drop by for the Course 6 open house (read, party) that night. Not so coincidentally, so did an awful lot of vampires.

I was playing Officer Alexis Lewis, the CP assigned to the northeastern quadrant of campus. My mission: protect the students. In an unsafe world, it's the job of the campus police to stand between the students and danger, and make sure that if anything does happen, the bodies get taken away before *The Tech* finds out about it. I had my own goal, though: upgrade Athena to utilize magic, creating an everpresent spy network to help the police keep campus safe. Stake in one hand, gun in the other, I was ready to protect my beat from whatever might threaten it. This turned out to be a rather optimistic goal.

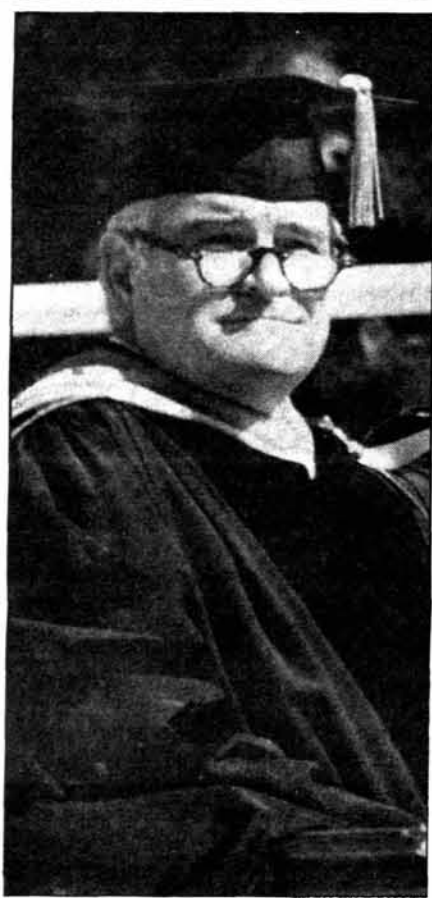
One of the interesting things about this particular game was that it really was attempting to model itself after a television show. Television shows, of course, have stars, main characters, small parts, and extras. In game, this translated into plot relevance, which determined how hard to kill your character was. Buffy had a plot relevance of 4, characters from the show had a relevance of 2 or 3, and the lesser characters had a relevance of 1. The extras, of course, had a plot relevance of 0, and could be killed by just about anyone, just like your average red-shirted ensign in *Star Trek*.

There were also plot points, which could be gained by doing certain in-character actions (in my case, killing vampires and cleaning up bodies) and were spent to achieve goals or kill plot-relevant characters. Most Assassin games have some mechanic designed specifically for that game; these plot mechanics were Buffy's experimental ones.

For the most part, they worked pretty well. The extras in game were either non-player-character (NPC) vampires, or players who played entire student groups, one member at a time. There wound up being something of a food chain, with the plot-relevant characters killing the vampires and the vampires killing the student group members. The ease with which an NPC vampire took down a student

Continued on page 8

This Week in MIT History



Paul E. Gray '54

with the students was rapidly improving.

"I haven't been to class in three days and I'm not planning to go tomorrow. It doesn't feel like a school anymore. Everyone is talking about purpose and direction and leadership and national needs. I feel like I am at something much more vital than just a school. It feels like an important university. What an idea." ["An inaugural diary," September 30, 1980]

The following day was the actual inaugural ceremony. In his address, Gray addressed the condition of science and engineering, specifically at MIT. He also stressed the importance of life outside classes, especially for undergraduates.

On Friday September 26, 1980 Paul E. Gray '54 was inaugurated as the 14th president of MIT. His term, which ended with the decade and the inauguration of Charles M. Vest, was kicked off with a four day celebration.

The weekend's events began on Wednesday with festivities in McDermott Court which included hot-air balloon rides for students and faculty, the MIT Classic Road Race, and, of course, free food. That evening and the next were filled with concerts by the Roumanian String Quartet.

Thursday morning brought the Vice-President to Kresge. Tech Editor-in-Chief Steven L. Solnick '81 found his presence to be insignificant compared to that of Gray, whose relationship

"Consider the possible benefits of more time for contemplation, for pursuits of interests and activities outside the professional realm, and for developing friendships and a sense of community." ["Gray inaugurated as 14th MIT President" September 30, 1980]

Saturday night closed the weekend with an inaugural ball. The event, held in Lobdell Lounge, Sala de Puerto Rico, and du Pont Gymnasium, was enjoyed by students and Gray himself.

Students at the time had mixed feelings about the events—both pride in the Institute and shock at the \$200,000 price tag. "The Inauguration Symposium was very well planned," commented Anitta Bliss '81. "It's very easy to get depressed about MIT in general, and it was nice to feel proud to see people from all over that were coming here to see this event. It was a positive experience for a change." ["Inauguration reactions mixed" September 30, 1980]

Gray follows through with initial promises

Halfway through his term in office, Gray conducted the first comprehensive undergraduate review in a quarter century. According to the Tech Talk review of his term published in October, 1990, this resulted in a successful reorganization of humanities, arts and social science core requirements. Furthermore, he promoted relations between research and industry, encouraged increasing the number of women and underrepresented minorities on the faculty, and took political stands on many important issues.

The ten years following the inaugural weekend were marked by freshman classes for the first time consisting of nearly 40 percent females, the advance of personal computers into everyday life, as well as other technological advances in the sciences and space research.

Gray devotes life to the institute

After leaving his position as president, Gray did not disappear from campus. In fact since enrolling as an undergraduate in 1950, he had been away for only two years, to serve in the army. In April 1997, his service was recognized by his peers, providing an opportunity for retrospection and gratitude.

"He went on to earn two higher degrees and become a professor of electrical engineering, along the way earning a reputation as a dedicated teacher.

"He has carried that reputation through a number of administrative posts, including president through most of the 1980s and chairman of the Corporation since. The 65-year-old plans to step down in June to focus once again on teaching." ["Gray Gala Provides Fitting Goodbye," April 11, 1997]

Spotlight of the Week

Reach Out - Teach a Child to Read

Aaron D. Mihalik
STAFF REPORTER

The MIT Public Service Center offers a number of different opportunities for students who are interested in community service activities. Teach a Child to Read is one of such programs.

Teach a Child to Read is the result of a nation wide effort to improve the reading ability of elementary school students. It is a rigorous program in comparison to other community service opportunities. At the beginning of the semester participants are required to attend three training sessions. After two training sessions, students are ready to begin tutoring elementary school children.

"In this program, everyone is matched up with specific children," said Lauren Erb '01, one of the Teach a Child to Read coordinators. The tutor and the elementary school student meet twice a week, and they have a very structured program. It's not like you tutor them with their homework or you help the teachers out... it's very one-on-one."

The minimum time commitment is "two hours a week [but] some people give as many hours as they can give," said Erica Lee '01, the other program coordinator. "It is an after school program... the children get out of school at 3 or 2:30 and they stay in this afterschool program till 5:30. It is not a very big block of time for people to work."

Many of the tutors work with students at the Cambridge Community Center, but some of them work at the Hurley School and Kennedy School. "The Hurley school is unique," said Lee. Classes are taught "in both English and Spanish because 70 percent of the kids there speak Spanish."

Lee mentioned that this program is a good way to relieve the stress of classes and problem sets. During the tutorial sessions "you go there and these kids are your most important things for an hour of your time. It's not like your work. It's kids running around and you are trying to get them to read."

"It's hard to get down to business," continued Lee. "You're not supposed to be their friend; you're supposed to be tutoring."

Also, students who are eligible for Federal Work-Study funds can be paid for tutoring. "Part of the attraction of this program is that you can get paid," said Erb.

Teach a Child to Read receives contributions from Harvard. "We are trying to get a partnership together with the Harvard School of Education," said Erb. "A lot of the [tutoring] training comes from the Harvard Ed. school."

Since most of the training sessions have been completed, it is too late to join this semester. However, Teach a Child to Read will be recruiting and holding more training in the spring.

Viewpoint

This week's question:

What do you wish you had more time to do during the term?

The probability that I have time to think about this answer is an empty set. Therefore, I don't know the answer to this question because I know it would never happen.

Winnie W. Chan '02

I would exercise, or go to Red Sox games.

Charles W. Booten '00

Eat, sleep, get out to Boston, and go to lectures more often.

Joanne Chang '03

I wish I had more time to get bored.

Bilge M. Demirkoz '01

To have more time for problem sets and extra-curricular activities.

Alanna C. Pinkerton '01

I guess it would be more time to read and watch TV.

Eugene Wienstein '00

I would do more physical things, like working out, or taking dance classes. Art, too — more creative things, other than problem sets.

Amanda M. Beeson '03

Hang out with friends more.

Patty Wang '02

I wish I had more time to sleep because I like to do many things, and sleep is usually the least of my priorities.

Kosanna W. Poon '01

Time to do all the stuff that I have to do, but don't ever get around to doing.

Preeti Chadha '01

Compiled by Sonali Mukherjee

TechCalendar

TechCalendar appears in each issue of *The Tech* and features events for members of the MIT community. *The Tech* makes no guarantees as to the accuracy of this information, and *The Tech* shall not be held liable for any losses, including, but not limited to, damages resulting from attendance of an event. Contact information for all events is available from the TechCalendar web page.

Visit and add events to TechCalendar online at <http://tech-calendar.mit.edu>

Tuesday's Events

7:30 - 10:30 p.m. — **Contra Dance Beginners' Night**. Curious about folk dancing? Now is the time to try this fun, social, traditional American dance form! Live music, refreshments. FREE for MIT students, \$4 others. No partner or experience needed! Student Center rm 407. Sponsor: Folk Dance Club.

12:00 p.m. — **F.C. Bartlett and the Origins of Social Constructionism in 1930's Cambridge** — David Bloor, University of Edinburgh, Scotland. Dibner Institute Luncheon Colloquia. Rm E56-100. Please call if you plan to attend: 253-6989 OR Send an email: dibner@mit.edu. More info: Call Trudy Kontoff at 253-6989. Email kontoff@mit.edu.

12:30 p.m. — **Formation of Gas Hydrates in the Deep Seafloor** — Dr. Bruce Buffett, University of British Columbia. Sponsored by 10.978 Seminar. Rm E40-496. Lunch will be provided. More info: Call Gillian Kiley at 253-3401. Email jkiley@mit.edu.

2:30 p.m. — **Deviations from scaling in geomorphology and deviant scaling in biology** — Peter Dodds, Department of Mathematics — M.I.T. Sponsored by Physical Mathematics Seminar with Department of Mathematics. Rm 2-338. Refreshments will be served at 3:30 PM in Room 2-349. More info: Call John Bush at 253-4387. Email bush@math.mit.edu.

4:00 p.m. — **An Overview of Transistor Technologies for Microwave/Millimeter-Wave Power Amplification** — Phillip Smith, Sanders, a Lockheed Martin Company. Sponsored by MTL VLSI Seminar. Rm 34-101. Refreshments in Room 34-101 at 3:30 p.m. More info: Call Debroah Hodges-Pabon at 253-5264. Contact: debb@mtl.mit.edu <<http://www-mtl.mit.edu/>>.

4:30 p.m. — **Conflict and Displacement in Colombia: The Case of the Magdalena Medio Region** — Jenifer Otsea, Executive Assistant and Policy Advisor, Americas Bureau, UNHCR. Sponsored by Center for International Studies. Rm E38-714. This is a session of the Inter-University Seminar on International Migration. In addition to the talk, information will be provided on this year's Mellon-MIT grants on forced migration. More info: Contact Laurie Scheffler at 253-3121, lauries@mit.edu.

4:30 p.m. — **Elections 1999: Israel's First Post-Zionist Government?** — Dr. Bernard Avishai, International Director of Intellectual Capital, KPMG LLP. Sponsored by Center for International Studies. Rm E51-095. A presentation of The Emile Bustani Middle East Seminar. More info: Call Julianne Stilwell at 253-8961. Email stilwell@mit.edu.

5:30 p.m. — **Water Marked - a reading from a new novel** — Helen Elaine Lee, author of *The Serpent's Gift* & Asst Prof Writing, MIT. Sponsored by Logarithms, MIT. Humanities Library-14S-200.

5:30 p.m. — **Something for Nothing** — Sylvia Kolbowski, New York. Sponsored by Office of the Arts with Department of Architecture. Rm 10-250. Department of Architecture lecture. More info: Call Department of Architecture at 253-7791.

Wednesday's Events

12:00 p.m. — **The War in Kosovo** — Professor Steven Burg, Politics Department, Brandeis University. Security Studies Program Seminar Series. Rm E38-615. Bag lunch, refreshments will be provided. More info: Call Lynne Levine at 253-0133. Contact llevine@mit.edu, <<http://web.mit.edu/ssp/>>.

12:10 p.m. — **Water mass pathways between the tropics and the subtropics in a high resolution model of the Atlantic** — Paola Malanotte-Rizzoli, MIT. Physical Oceanography Sack Lunch Seminars. Rm 54-915. More info: Call Markus Jochum at 3-2322, markus@ocean.mit.edu. <<http://www.mit.edu/~mjochum/sack.html>>.

6:30 p.m. — **SEDS: Near-Earth Asteroids: Friends or Foes?*** — Prof. Richard P. Binzel, Dept of Earth, Atmospheric, and Planetary Science. Sponsored by Students for the Exploration and Development of Space. Rm 1-190. This is the first lecture in SEDS's annual Space Lecture Series. If you're interested in space exploration, come to learn more about how to get involved with SEDS. More info: mitseds-officers@mit.edu, <<http://www.mit.edu/~mitseds/>>.

Thursday's Events

12:10 p.m. — **GABLES Monthly Lunch**. A social get-together of the MIT Gay, Bisexual, and Lesbian Employees and Supporters group. Contact David Fitzgerald at 258-0235 or dfitz@mit.edu for more information about this month's lunch. Send e-mail for location. Sponsor: GABLES.

12:00 p.m. — **Helping Children with Separation and Divorce** — Judy Osborne, Stepfamily Associates. Sponsored by Family Resource Center. Rm 16-151. More info: Call Family Resource Center at 253-1592, frc@mit.edu, <<http://web.mit.edu/personnel/www/frc/>>.

3:00 p.m. — **Experiences in Interactive Expression** — George Fifield, curator (Decordova, Boston Cyberarts Festival). Experiences in Interactive Expression (part of "Special Topics at the CAVS" MAS 879). MIT Museum Bldg, 390. Visiting artists who use digital media and interactivity or audience participation in their work, will focus in depth on one piece, with a quick overview of his/her work, followed by discussion. More info: <<http://cavs.mit.edu/seminar/mas879/interact.html>>.

4:00 p.m. — **Network Algorithms for Exact Statistical Inference in Contingency Tables** — Nitin R. Patel, Cytel Software Corp, Visiting Scientist, Sloan School of Mgmt, MIT. Sponsored by Operations Research Center. Rm E40-298. Seminar followed by refreshments in E40-106. More info: Call Andy Armacost at 253-7412. Email armacost@mit.edu. <<http://web.mit.edu/orc/www/>>.

Friday's Events

7:00 - 10:00 p.m. — **Mars Week @ MIT**. 3 days of famous Mars scientists and engineers, with a writer and a Hollywood director thrown in for good measure. Registration required - <http://thinkmars.mit.edu/marsweek.html> (Oct 1-3). Aero/Astro Marlar Lounge. Sponsor: Think Mars.

7:30 p.m. — **Boston Premiere of "Love Stories" — a film by a Polish director Jerzy Stuhr**. Four stories of love: yearned-for, betrayed, found. An astounding film about life, kept in the spirit of the last films of Krzysztof Kieslowski. Special import from Poland. You'll never see it again. 1 hour 30 minutes. 10-250. Sponsor: International Film Club.

Saturday's Events

6:30 p.m. — **MIT Women Envisioning the Future: 100th Anniversary of AMITA**. Join the members of the Association of MIT Alumnae in celebrating their 100th Anniversary. Faculty Club. Sponsor: AMITA.

7:30 p.m. — **MIT Logarithms Fall Concert**. MIT's oldest a cappella group rings in the new school year with some delightful a cappella tunes. Come hear your favorite Logs tunes, mixed in with some previews of songs from the upcoming CD. 2 hours 30 minutes. 10-250. Sponsor: Logarithms, MIT.

9:00 p.m. — **MILAN**. Milan is an annual cultural dance celebration sponsored by SAAS. Students arrive in ethnic attire to enjoy a mix of garba, dandia raas, and bhangra. Milan is on October 2 from 9PM-1AM in La Sala. Admission 7.00. La Sala, in Student Center. Sponsor: South Asian American Students.

Lessons That Will Last A Lifetime.

OFFICER TRAINING SCHOOL

Put that college degree to use by enrolling into the Air Force Officer Training School. Upon successful completion of the Officer Training School, you will become a commissioned Air Force officer with earned respect and benefits like — great starting pay, medical and dental care, management and travel opportunities. For more on how to qualify and get your career soaring with the Air Force Officer Training School, call 1-800-423-USA, or visit our website at www.airforce.com



www.airforce.com

<http://www.ce.columbia.edu/ys/>

Off-Campus Learning Opportunities Through Columbia

Study Abroad
Visiting Students
Summer Session

For more information:
(212) 854-6483
e-mail:
cesp-info@columbia.edu
Or visit our Website.

Study Abroad
• Columbia University in Paris • Berlin Consortium for German Studies • Summer Program in Italy (Scandiano) • Summer Program in Beijing

Visiting Students
If you need more reasons to be in New York, Columbia University can provide them!

Summer Session 2000
Join us for the 100th anniversary of Columbia's Summer Session! It's not too early to plan for 2000! Bulletin available in February—reserve yours today.



CONTINUING EDUCATION AND SPECIAL PROGRAMS

Meeting Tuesday, September 28th

MIT Computing Help Desk Hiring Again!

We're looking for students who are...

- ...comfortable using Macs and PCs.
- ...reliable, friendly, and courteous.
- ...ready to troubleshoot challenging cases.
- ...eager to work on an energetic team.



If you meet the criteria (or if you're close), come and find out the advantages of working as a consultant at the Help Desk.

\$10/hour
(starting salary)



MIT Information Systems questions? email hd-hiring@mit.edu

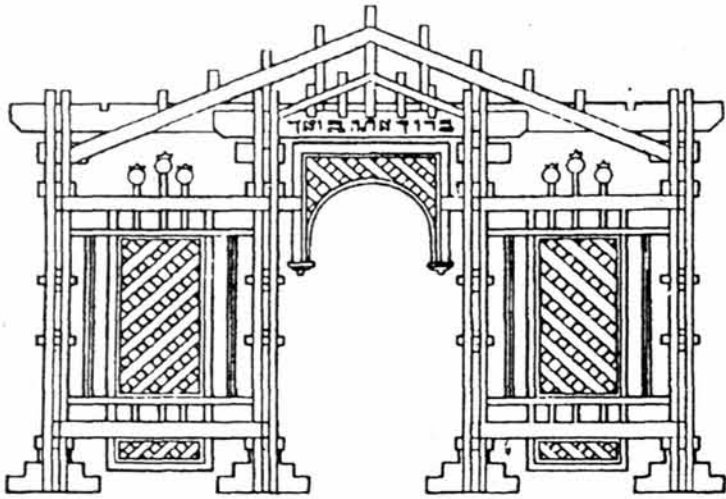
Mandatory orientation meeting

Tuesday, September 28
5:15 PM, N42 Demo Center
(211 Mass. Ave.)

Please bring:

- 1) Your resume
- 2) 2 References

Visit the MIT Sukkah



Sept. 24 - Oct. 2
Kresge Oval

For the MIT community

Open for meals and visits
Sponsored by MIT Hillel #253-2982

CPs Are SIPB Robots

Continued from Page 6

group member made protecting the student groups more than a little bit difficult. There was a never-ending supply of Pagan Student Group members, APO brothers, and the like, however, so it wasn't the end of the world when we lost one.

I spent most of my time running around chasing reports of vampires and trying to keep an eye on the ever-present *Tech* reporter, played by Alexey A. Radul '03. Unfortunately, I didn't manage to prevent him from photographing several dead bodies, but we helped each other kill some vampires, and worked together on researching information for the magical rituals we needed to complete to finish our plots.

About halfway through game, life started getting more interesting. One of the members of the administration passed off a code phrase telling me that he was to be trusted and helped to the best of my ability. Twenty minutes later, his cover had been blown, and Fox Mulder was wandering around game. (Scully, despite constant inquiries, remained missing.) And as though a stake-wielding, magic-using campus police officer wasn't unusual enough, the vampires who tried to drink my blood all wound up spitting it out and complaining that I tasted of motor oil. When the SIPB representative offered to heal me if I could just find an iron resistor and some aluminum wire, the truth finally came out- I was a robot that SIPB had created, and he was looking for an infinite power source with which to upgrade me. I, however, was far more concerned about integrating magic into Athena, and enlisted his help. As it turned out, after gathering together all of the ingredients I needed for my ritual, I was two minutes too late to finish it during game, but I certainly had a good time trying.

Most of the game, it turned out, also just missed finishing their plots. Giles (Matt Ender) was unable to bring his true love back from the grave, Cain/Steve Balzac (Yoav Yerushalmi '97) barely missed banishing himself to Hell, where he wanted to rule, and Spike (Lawrence J. DeLucas G) and Drusilla (Laura M. Karbner '98) were thwarted in their attempts to resolve their love plots. Xander (Chris Provenzano) did succeed in

breaking his curse, however, and many vampire extras were slain.

Cross-cast Buffy provides humor

The most memorable parts of the game, however, had nothing to do with plot. Buffy, as it turned out, was cross-cast, and played by Joe Foley '98. Watching him walk in wearing a small purple tank-top, carrying a purse, and with his hair held back in a bun using two small wooden stakes was extremely amusing.

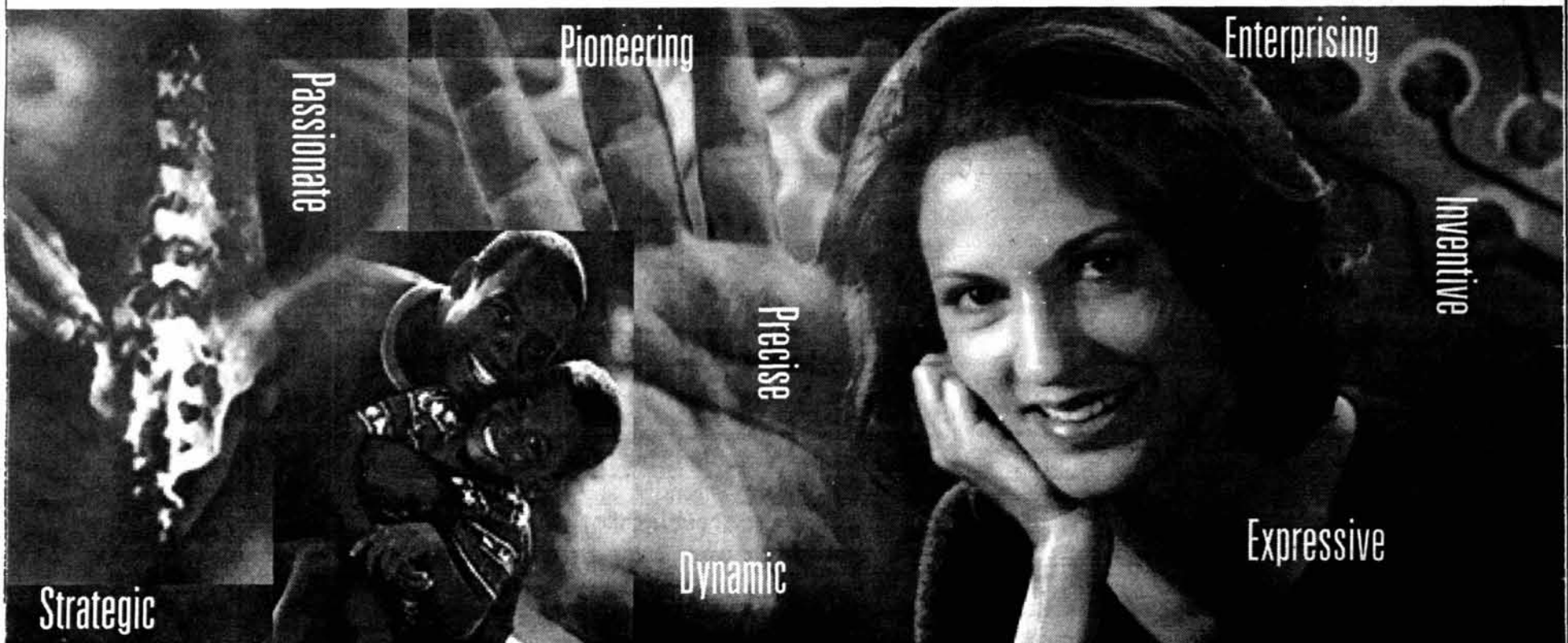
The best moment, however, had to be when Sami Gernstein, playing Guild member and graduate student Jeremy Brown complete with streaked hair and a drawn-on beard, ran into the real Jeremy H. Brown G. Despite distinct differences in sex and height, the resemblance between them, and the expressions they both were wearing, was remarkable. After a great deal of laughter all around, the in-game Jeremy Brown was gifted with one of the original's flannel shirts to wear for the duration of game, to make the costume complete.

"Buffy the Vampire Slayer" might not have been the best Assassin game I've played this year, but it was certainly quite enjoyable. Though lacking many of the standard Assassin game features (there was not a single destroy-the-world or save-the-world plot in the entire game, for example, which although not at all a bad thing is quite unusual) Buffy succeeded in conveying moderately well the spirit of a television show with decently fleshed out characters. I will admit that I have never actually seen the original show, but the combination of a reasonably high action level with low-epic-level plots fit well in my mind with a television episode. I had a good character, and there were many enthusiastic players. All in all, it was a thoroughly entertaining evening.

For more information on the MIT Assassin's Guild and upcoming games, e-mail high-council@mit.edu to be put on the mailing list. The next games running will be the game-show style "Whose LARP is it Anyway?", running October 15th, and "Nexus: Horrors of Fiobrachnae," a high-action game running October 22nd. The Assassin's Guild also runs Patrol, a very high-action game using lots of rubber-dart guns, every Saturday night at 8 p.m. in 36-115.

OPEN

your mind to opportunity...



Medtronic is the world leader in medical technology, pioneering therapies that restore health, extend life, and alleviate pain. We invest heavily in science and technology, service and education, and are committed to spending nearly \$3.5 billion in research and development over the next five years. We use that research to find solutions to life's most challenging, life-limiting medical problems. Our products and therapies save or enhance one person's life every 30 seconds around the world. In 1998 and 1999, *Fortune* magazine recognized Medtronic on its annual list of the 100 Best Companies to Work for in America.

Some of the technical career opportunities we offer at Medtronic include:

Engineering

- Mechanical, Electrical, Computer (Hybrid Circuit Design, High Voltage, Ultra Low Power, FW Design, Embedded Systems, Microprocessor Design), Software, IC Design, Biomedical and Materials Science

Information Technology

- Computer Science, Assembly Language, C++, OOAD, Systems, RF, FW Design, SW Design/Development, Programmer and Business Analysts

We offer excellent compensation, great benefits, and limitless advancement potential.

Visit us at our booth at the MIT Career Fair on Friday, October 1st to learn more about the exciting career that awaits you.

If you are able to meet with us at the career fair, we welcome you to visit us on the Web at www.medtronic.com.



September 28, 1999

COMICS

The Tech

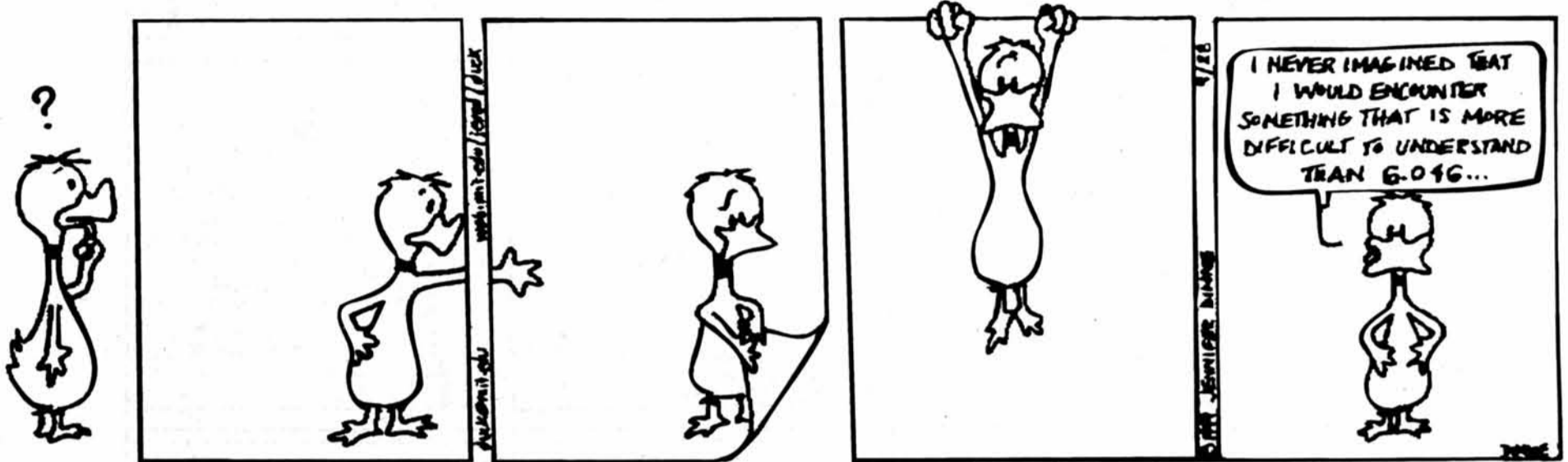
FUN

Page 9

PAGES

Down with Science

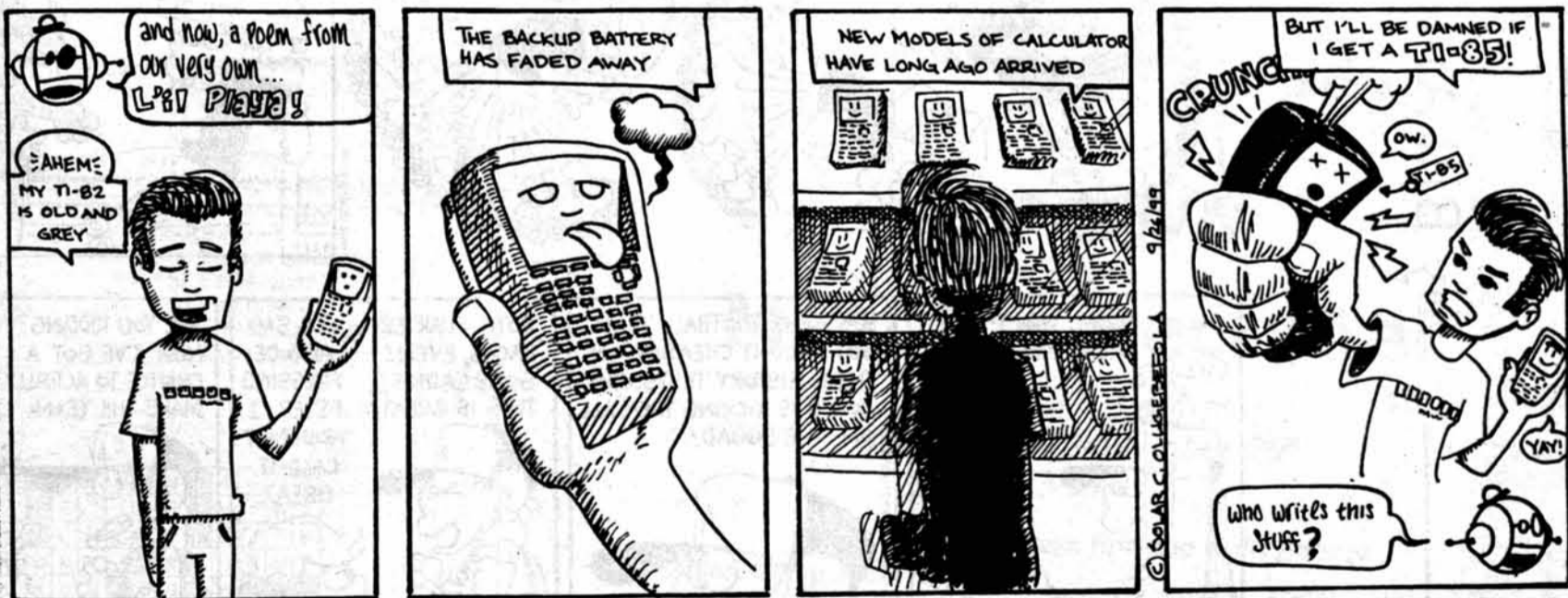
by Jennifer DiMase



the crass rat



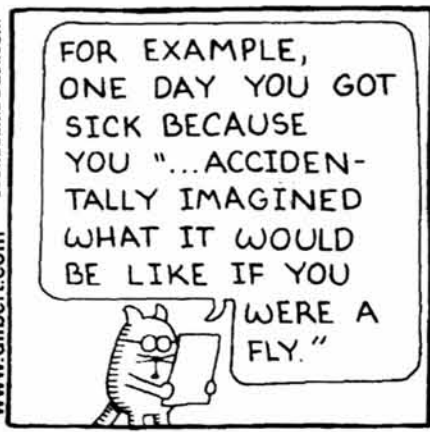
XPAD COURSEPAD



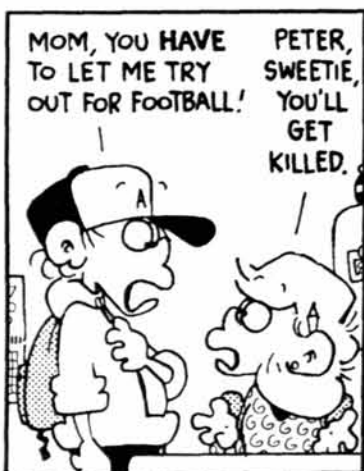
2199D SOLES BY DAVID X.



Dilbert® by Scott Adams

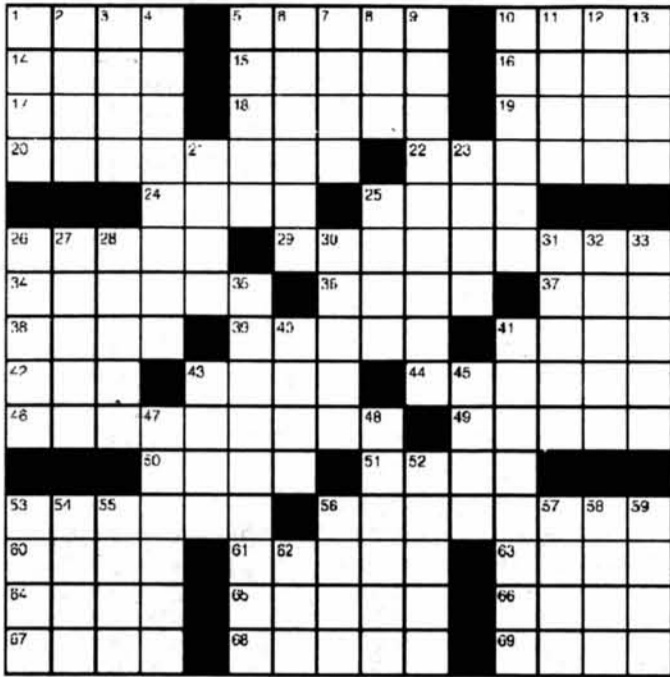


FoxTrot by Bill Amend



FoxTrot

CROSSWORD PUZZLE



© 1999 Tribune Media Services, Inc. All rights reserved.

92899

ACROSS

- 1 Anjou alternative
- 5 Vast chasm
- 10 Heidi's locale
- 14 Foot structure
- 15 Impetuous
- 16 Earth goddess
- 17 "Hud" star Patricia
- 18 Leafy shelter
- 19 Panache
- 20 Work efficiently
- 22 Pay no attention to
- 24 Goes bad
- 25 Roman poet
- 26 Pungent
- 29 Artificial language
- 34 Ponderous mammals, briefly
- 36 ___ never fly
- 37 Broadcast
- 38 Lasso
- 39 Corpulent
- 41 Uris novel, "18"
- 42 Wash. neighbor
- 43 Unforeseen obstacle
- 44 Hogwash
- 46 Set sail
- 49 PC operators
- 50 Overabundant
- 51 Musical group
- 53 Kind of goat
- 56 Victoria's Secret items
- 60 Assistance
- 61 "Aurora" fresco painter Reni
- 63 Dad's sister
- 64 Oriental nursemaid
- 65 Left hungry
- 66 ___-majesty
- 67 Torso
- 68 Fireworks ingredient
- 69 Mach+ jets

DOWN

- 1 Slam sound
- 2 Black-and-white cookie
- 3 Beat it!
- 4 Water purifier
- 5 Monks' leader
- 6 Look over / Show boredom
- 8 Wind dir.
- 9 Withered and wrinkled
- 10 Order of business
- 11 Composer Schifrin
- 12 1A, e.g.
- 13 Rational
- 21 Commotion
- 23 Young lady
- 25 Makes a choice
- 26 Direction symbol
- 27 Task
- 28 Mature
- 30 Blockade
- 31 Inexperienced
- 32 Flooring maker
- 33 Verbal exams
- 35 Euphemistic exclamation
- 40 Foundation
- 41 Bridge do-overs
- 43 Mix
- 45 Ladder crosspiece
- 47 Stanley Cup, e.g.
- 48 Tolerator
- 52 Battery electrode
- 53 Melville's captain
- 54 Verne's captain
- 55 Happy
- 56 London elevator
- 57 Feels regret
- 58 Part of MIT
- 59 French summers
- 62 Cycle starter?



Do You Spider?



MySpider.com
Search, save, and share your web research

TWO THOUSAND SIX HUNDRED AND FIFTY-FOUR



FEWER CALORIES THAN A PEPPERONI PIZZA.

The fruit flavored spring water with zero calories. Visit us at www.veryfine.com and win stuff.

- Available at:
- Store24
 - Lil Peach
 - White Hen Pantry
 - Best Petro
 - Walgreens

MANUFACTURER'S COUPON EXPIRES 11/1/99

FREE Any 16oz. Veryfine® Fruit₂O™

Retailer: VERYFINE PRODUCTS, INC. will reimburse you the face value of this coupon plus 8 cents handling on the specific products only. Coupon is valid where prohibited, taxed, or restricted by law. Cash value 1/100 cent. Mail coupon to: VERYFINE PRODUCTS, CRC Dept. 38, 6633 N. Mesa Suite 601, El Paso, TX 79912-4435. Maximum value \$1.49. I have a good one.



Present

BOEING

Meet the Recruiter

7 pm - 9 pm
Wednesday, September 29th
3-270

Learn how recruiters find the right people

- Interview secrets
- What recruiters look for in a resume
- How to approach at a career fair
- How you really get hired

Q & A Session

- Get your job search questions answered by an actual recruiter

Useful for all students

- Full-time & internships
- Undergrads & grad students
- International & domestic
- Aerospace engineers & others

Presented by Art Friess, College Recruiter, The Boeing Company

for more information, contact: jmarkish@mit.edu / jillian@mit.edu / danimal@mit.edu

BRING IT ON.

DELL IS COMING TO CAMPUS, and we're interested in meeting the people who are ready to take their talents to the next level. And then some.

MIT SLOAN PRESENTATION/RECEPTION

DATE: Tuesday, October 5, 1999

TIME: 6:00 pm - 8:00 pm

PLACE: Royal Sonesta Hotel Boston (Cambridge)

SPEAKER: Brill Flint, VP Finance & Planning WW Operations

MIT-UG FALL CAREER FAIR

DATE: Friday, October 1, 1999

PLACE: Office of Career Services and Preprofessional Advising, Building 12

Interested: For more information on how you can interview with Dell, please visit your career services office.

Check out our web site: www.dell.com

Workforce diversity is an essential part of Dell's commitment to the quality and to the future. We encourage you to apply, whatever your race, gender, color, religion, national origin, age, disability, marital status, sexual orientation, or veteran status.

If you need accommodations to participate in the recruitment process, please let us know.

Dell, the Dell logo, Be Direct are registered trademarks of Dell Computer Corporation.

BE DIRECT™
DELL®
www.dell.com

Deutch Discusses Higher Education

By Laura McGrath Moulton
STAFF REPORTER

Institute Professor John M. Deutch '61 traded ideas with students, faculty, and alumni on the future of higher education last night in the Technology and Culture Forum's first presentation of the academic year, entitled "Beyond Science and Engineering."

Deutch, who is also a former director of the Central Intelligence Agency, began with the proposition that the categories of science and engineering are no longer useful intellectual or educational categories. He continued on a wide-ranging discussion, touching on everything from the history of technology to MIT's Humanities, Arts, and Social Sciences requirement.

"There is an idea that there is this thing called science, and then there is this thing called engineering, and that idea is no longer a useful paradigm," said Deutch. "There will always be a place for pure math or organic chemistry, but the bulk of what we do can't be divided that way."

According to Deutch, the science/engineering paradigm does a disservice to the modern intellectual landscape, process of innovation, and process of the application of technology.

"In the 1950s and 1960s, innovation was a linear process," leading from a new idea to a final product, Deutch said. "In the 50s, if you knew the fundamental science and

engineering, you were in a position to exploit the possibilities of the field. You could create new ideas, and the ideas would just sort of apply themselves," he said. Today, however, a greater emphasis is placed on the application of technology and especially on using technology in socially responsible ways.

Panelists discuss Deutch's ideas

In the second segment of the forum, a panel made up of Zojeila I. Flores '00, Kevin M. Shea G, and Assistant Professor of Aeronautics and Astronautics John-Paul B. Clarke '91 responded to Deutch's comments.

Clarke concurred with Deutch's thesis, noting that "at the highest levels, the distinctions are already blurred. It's often hard to tell from a student's research what department it's from," he added. Clarke called for increased opportunities for interactive learning in the 21st century.

Shea, who expects to receive his Ph.D. in Chemistry in the spring, spoke of the need to modify Ph.D. programs to offer students broader options than traditional research positions.

"Students need to be trained to succeed in a variety of careers," Shea said.

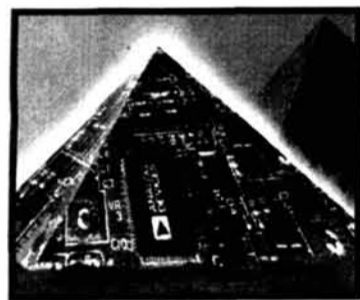
Flores, who is majoring in Biology and minoring in Political Science, spoke about the difficulties of pursuing diverse topics within undergraduate departments.

"My department expects students to go to medical school or a graduate program in molecular or genetic biology. It's not only the lack of time" that keeps undergraduates from designing an interdisciplinary schedule, Flores said.

"There is a lack of understanding of the options," Flores said. "My professors would think I'm wasting my time; they would tell me to take advanced courses within my discipline."

The ensuing discussion among Deutch, the panel, and the audience was moderated by Dean for Undergraduate Education Rosalind H. Williams. Most audience members focused on the possibilities of higher education to create both broadly educated people who can bridge disciplines, and narrowly-focused experts.

The evening was organized by Technology and Culture Forum coordinator Reverend Jane S. Gould and associate coordinator Patricia-Maria Weinmann.



Building The Wonders of THE MODERN WORLD

With five divisions coast to coast and offices around the world, Analog Devices manufactures and markets high performance linear, mixed signal and digital integrated circuits that address a wide range of real world signal processing.

Combine all of this with our Fortune 1000 status and a work environment that encourages both personal and professional growth, while rewarding both team and individual accomplishments, and you have just discovered a career opportunity that can't be beat.

And what's more, we offer an excellent compensation package that includes:

- **An investment partnership plan**
- **Matching 401(k) program**
- **Generous bonus and employee stock option plans.**

We currently have career opportunities available in the following areas:

Product Engineers
Test Engineers
Applications Engineers
Design Engineers

Layout Engineers
CAD Engineers
Software Engineers

ANALOG DEVICES WILL BE ON CAMPUS FOR A GRADUATE CAREER FAIR ON SEPTEMBER 30, AN UNDERGRADUATE CAREER FAIR IN OCTOBER 1, AND INTERVIEWING ON NOVEMBER 12

If you are unable to visit us on campus, please send your resume to:
Debbie Vivian, Analog Devices, Inc.,
804 Woburn Street, Wilmington,
MA 01887.

Analog Devices is an equal opportunity employer.

 **ANALOG
DEVICES**

VISIT OUR WEBSITE: WWW.ANALOG.COM



**Not getting your child
all her shots is like leaving
her out here alone.**

At least 11 shots by two. How sure are you?
Questions? Call 1-800-232-2522.

U.S. Department of Health and Human Services

This space donated by The Tech

Society of
Women
Engineers

Graduate
Student
Council

Class
of
2000

jointly present:

MIT

FALL CAREER FAIR

GRADUATE

**Thursday,
September 30**

UNDERGRADUATE

**Friday,
October 1**

**JOHNSON ATHLETIC CENTER, 2ND FLOOR
10AM-4PM**

For list of companies:

<http://careerfair.mit.edu>

why?

pay for lecture
notes

get
free
lecture notes

academic resource center

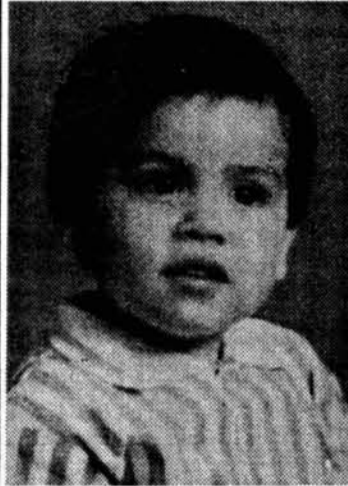
fail-me-not reminder service

online study groups

versity.com
Study Smarter



2 weeks old, 1989



1 year old, 1991



2 years old, 1992

Stevie Ace Flores.

*Killed by a drunk driver on March 23, 1993,
on Pacific Coast Highway in Wilmington, Calif.*

If you don't stop your friend from driving drunk, who will?
Do whatever it takes.

FRIENDS DON'T LET FRIENDS DRIVE DRUNK.



U.S. Department of Transportation

This space donated by *The Tech*



Navigant Consulting/ Strategic Decisions Group



Attention Graduating PhD's

Navigant's Strategic Consulting practice invites you to attend an introductory information session. We will present an overview of our firm, describe how we differ from our competitors, and discuss our recruiting process.

We are a unique global strategy consulting practice working with leading corporations to create, deliver, and protect shareholder value. Our clients are typically Fortune 500 companies in industries such as Pharmaceuticals, Financial Services, High Tech and Oil & Gas among others. We help clients achieve positive, lasting change. Our roots in decision analysis give us distinct capabilities in developing, evaluating and implementing business decisions ranging from CEO-level strategic agendas to R&D portfolio management.

To find out more about exciting career opportunities attend our:

**Presentation and Reception
Tuesday, 5 October 1999
6:00–8:00 pm
The Inn at Harvard, 1201 Mass Ave**

For additional information contact Jay Goldman (Harvard PhD '94, jgoldman@sdg.com), Mary Linton Peters (MIT '92 mlpeters@sdg.com) or our recruiting coordinator Kim McDonald (617-478-7600 kmcdonald@sdg.com)

Visit our web site at www.sdg.com. Resumes may be sent by October 20th to:
Kim McDonald, Navigant Consulting, One Boston Place 39th Floor, Boston, MA 02108

SPONSOR OF CAREER WEEK CLASS OF 2000

It looks like the perfect company.

Too bad they've never heard of you.

Submit your resume online by midnight
on October 1st for a chance to win an

IBM ThinkPad 770Z

366MHz Pentium II
128 MB RAM, 14.1 GB HD
Internal DVD-ROM
56Kbps modem
14.1" active matrix screen


NO PURCHASE NECESSARY.
email rules@collegehire.com for details



CollegeHire.com can change all of that. We're the leading online community dedicated to recruiting tech-major college students and placing them with dynamic technology employers. That means no more wasted time interviewing with out-of-touch companies for dead-end jobs. And no more sending out countless resumes on the remote chance that they might get noticed. We do the legwork, matching employers and candidates who most benefit one another. Look like a good way to meet the right company?

Then you should **enter your resume now at www.collegehire.com.**

For more information contact julie.zures@collegehire.com

 **CollegeHire.com™**

Rethink your job search.

The critics agree!



Capital One...One of the 100 Best Companies to Work For —*Fortune*® (1/11/99)

Capital One...recognized as one of the 25 champs of strong growth —*Forbes* (4/21/98)



Capital One...number 15 of the top 50 performers on the S&P 500 —*Business Week* (3/29/99)

WE'RE GROWING LIKE NEVER BEFORE! Join the Capital One team and you'll enjoy great pay and fabulous benefits—like full medical and dental coverage from day one, a generous vacation package and tuition reimbursement. So, if you're looking for a company with a bright future, a challenging, fast-paced work environment, great benefits and great people, you owe it to yourself, and your career, to attend Capital One's on-campus events!

**Stop by and see us at the Career Fair
on Friday, October 1
and meet Capital One MIT alumni!**

For more information,
contact Evan Goldstein ('96) at evan.goldstein@capitalone.com
or Praveen Ghanta ('99) at praveen.ghanta@capitalone.com.

Capital One®

www.capitalone.com

Capital One is an equal opportunity employer committed to diversity in the workplace. We promote a drug-free work environment.



SEPHIR HAMILTON—THE TECH

Brett Klein '03 is safe in the dirt, but was later stranded at third base during MIT's 4-1 loss to Suffolk on Sunday. On Saturday the Engineers edged out UMASS Boston by a score of 4-3 when James MacDonald '01 ripped a game-winning solo shot in the 8th Inning.

The last challenge of a socially conscious society?

Depression strikes millions— indiscriminately. Depression is simply a suppression of brain activity that makes life unbearable. And even though depression is readily treatable, only 1 in 5 ever seeks treatment. Why do so many just drag themselves along or eventually seek relief through suicide? First, there's the lack of awareness of depression— as an illness and as the threat that it is to each and every one of us. Second, there's the unwarranted negative stigma attached to it. You know, the "mental" thing. It's time to collectively face depression. To know it's an illness, not a weakness. And it's a challenge that's long overdue. It's taken too many of us already.

UNTREATED DEPRESSION

#1 Cause of Suicide

This space donated by The Tech <http://www.save.org>



EARN UP TO \$600/MONTH

The Cambridge office of California Cryobank, Inc. is seeking healthy males between the ages of 19 and 39 to participate in our anonymous sperm donation program. To qualify, you must be 5'9" or taller, enrolled in or graduated from a 4-year college/university, and be able to commit for 9-12 months. Donors are compensated \$50.00 for each acceptable donation provided. Hours: 8:00AM to 6:00PM Monday-Friday. Call California Cryobank, Inc. at (617)-497-8646 to see if YOU qualify! Please see us at www.campus24.com/cryobank.

GRE • LSAT • MCAT

THE PRINCETON REVIEW IS ADMINISTERING FREE TESTS BU CAMPUS

Take a sample test and find out where you stand without having an official score on your record.

MCAT: Sat., October 2 9:00am - 3:00pm BU Campus
 LSAT: Sat., October 2 9:30am - 1:00pm Call today for room information!
 GRE: Sat., October 2 10:00am - 1:30pm

All free tests will be held at The College of Arts and Sciences, which is located at 725 Commonwealth Avenue.

Call today to reserve a spot for one of our FREE tests.

THE PRINCETON REVIEW (800) 2-REVIEW www.review.com

SAT., OCT. 2nd

The EMILE BUSTANI Middle East Seminar @ M.I.T.

will host its first lecture on **Tues., September 28, 1999**

Guest Speaking:

Dr. Bernard Avishai
 Of KPMG Peat Marwick

Topic: **"Elections in 1999: Israel's First Post-Zionist government?"**

Talk begins at 4:30 PM in Bldg. E51-095

OPEN TO THE PUBLIC

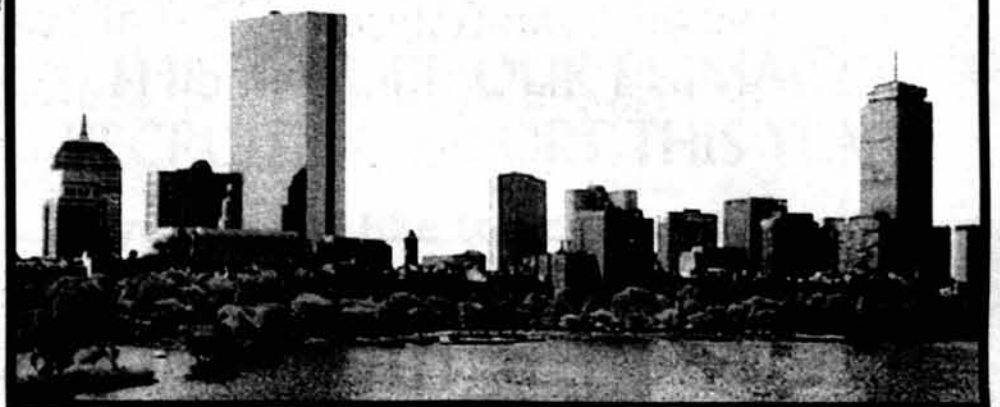
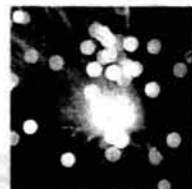
Strategy Consulting Opportunities



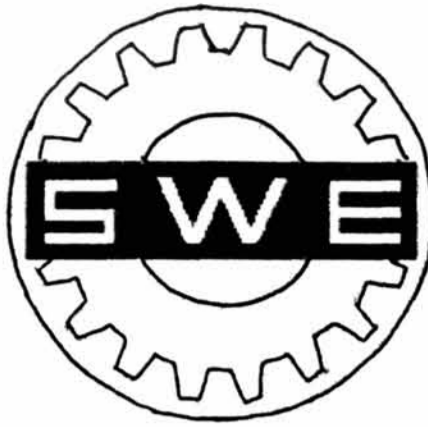
Cambridge Strategic Management Group

CSMG IS A RAPIDLY-GROWING INTERNATIONAL STRATEGY CONSULTING FIRM WITH OFFICES IN CAMBRIDGE (MASS.) AND LONDON (UK) SPECIALIZING IN THE TELECOMMUNICATIONS AND HIGH TECHNOLOGY INDUSTRIES.

DROP BY OUR BOOTH AT THE
1999 MIT FALL CAREER FAIR
FRIDAY, OCT. 1ST
 10:00AM until 4:00PM



MIT SOCIETY OF WOMEN ENGINEERS PRESENTS:



1999 ANNUAL
CAREER BANQUET

Thursday, September 30th
6:30 PM
Westin Hotel of Boston

Please honor us with your presence as we celebrate and explore the future of today's women engineers-

SPONSORED BY:

IBM

Goldman Sachs & Co.

Michelin

-free for members-seats are limited-
-sign up in lobby 10-
-email <swe-banquet@mit.edu>-

Winters A Supporter Of Late Night Buses

Winters, from Page 1

mental concern in Cambridge.

On the issue of housing and rent control, a major issue in this year's election, Winters focuses on "moving the focus of development away from... commercial [ventures]" towards increased investment in new residences.

Winters does not support rent control which he feels would

often don't pay a great deal of attention to local politics, he pointed to a few key issues of interest to students.

Aside from environmental issues, he stressed the need for late night transport. Although Winters has been involved in an effort to coordinate late night taxi service, he supports the concept of a "night owl" late night bus service to selected areas as a superior solution. Winters does not believe that running trains during the late night hours is economically feasible, however.

He also called for greater communication between Cambridge's universities and the city. Cambridge should benefit from "MIT and all of the interesting things that are happening there" rather than viewing the Institute as a "monolithic entity that [is] ... nothing but a threat," he said.

Broadcasting speakers and other events at MIT and Harvard on Cambridge's cable network could be a way to integrate the city and the universities, he said.

Winters has his own connections to MIT — he assisted with tutored exams in the math department and received a Goodwin medal for "conspicuously effective teaching" from MIT.

Part-time politician

Currently a member of Harvard's faculty, Winters plans to maintain his position at the University. "If I was elected I'd keep my day job," he said.

A government official should "be a regular person like everyone else" rather than "their own separate political class," Winters said. The "City Council is supposed to be a policy making board," he said, but many councilmen "make it out as a full-time job" by becoming entangled in full time politicking and re-election campaigns.



CYNTHIA ABATT

Robert Winters

"destroy the availability of affordable housing in the future" by shifting investments away from new residential construction. Cambridge needs to instead "draw investment dollars towards housing," he said.

"MIT and Harvard have to do their part" as well, he said. Winters applauded MIT's decision to build additional undergraduate housing in the Vassar street corridor. MIT is "putting a lot of pressure" on the market, he said. He gives this message to MIT with respect to housing — "Build it. Build it. Build it."

Students often apathetic

While Winters said that students

voice data
video

Explore the Bandwidth
of your Potential

❖ If unparalleled success with the best in technology is the career you're looking for, consider joining our ambitious team at **Harmonic**. As a leading designer, manufacturer and marketer of digital- and lightwave-based communication systems, our exclusive bandwidth capabilities and explosive growth are creating endless possibilities for our professionals.

STOP BY OUR BOOTH AT THE:
MIT Fall Career Fair
September 30th & October 1st
and find out more about
career opportunities with Harmonic!

TECHNICAL MARKETING PROFESSIONALS
DESIGN/DEVELOPMENT ENGINEERS

with expertise in:

- ❖ RF Electronics
- ❖ Embedded Software
- ❖ Optics
- ❖ Digital Design
- ❖ Network Management Software

If unable to attend, send resume to: **Harmonic Inc., Dept. MIT, 549 Baltic Way, Sunnyvale, CA 94089. FAX (408) 542-2522. Email: HR@harmonic.com.**

Harmonic

Redefining the Network™

www.harmonicinc.com

Heroin Addict
Vandal
Purse Snatcher
Car Jacker

...all kicked out with the help of kids like me.
—Billy, age 15

Everybody loves to trash teenagers, right? Maybe they don't realize that we do care. That we can make a difference. Get involved in Crime Prevention. Clean up parks. Teach younger kids. Start a school or neighborhood watch. And help make your community safer and better for everyone. Together, we can prove them wrong by doing something right.

Call Toll Free
1-800-722-TEENS
www.weprevent.org

This space donated by *The Tech*

P&G

THE PROCTER & GAMBLE COMPANY

invites interested students to discuss

FULL-TIME & SUMMER CAREER OPPORTUNITIES

in Manufacturing, Engineering and Product Development.

We are looking for students with majors in Chemical, Mechanical, Materials, and Process Control Engineering.

THIS WILL BE OUR PRIMARY RECRUITING EFFORT THIS YEAR

If you would like to be placed on our Interview Schedule please come to the Open House.

OCTOBER 4th - Lobby 13
10am to 7pm - Open House

We will also be at both Career Fairs

BRING YOUR RESUMES

FRIENDS DON'T LET FRIENDS DRIVE DRUNK.

Ad

U.S. Department of Transportation

This space donated by *The Tech*

New Officers To Focus on Building Unity

Election, from Page 1

allowed to use the BCC feature.

Council hopes to represent students

Despite problems with the election process, the class counselors are happy that they now have a chance to work for their class within the UA.

While "lots of people complain" that students on campus

cannot influence institute affairs, "the UA is a step toward doing something about it," Shah said.

"Coming in, you've heard a lot about a lack of unity" of the freshmen class and attempts by the administration to refashion the freshman year, Kane said. "MIT is not known for its school spirit."

Kane named a "tough but admirable goal" for the Class of 2003 Council as demonstrating that "not only can freshmen

receive the benefit of upperclass students" in their living groups, "but we can do it at the same time as having a unified and enthusiastic class."

Getting elected has its lighter pleasures. When they heard the election results, "[my friends] tried to shower me and they dislocated my shoulder," Chang said.

The council's first responsibility is to schedule a first meeting and pick a council secretary.

Because no freshmen ran for secretary, the position still needs to be filled.

In contrast with last year's elections, in which the seven elected class counselors participated in pre-orientation programs, only three of this year's elected members did so. Kane took part in Cityview, while Shah and Krishnan went to the Freshman Leadership Program.

Catch the spirit of innovation.

Making the impossible possible. Discovering the solution before the problem arises. Creating products for needs not yet known.

This is innovation. This is 3M, where tomorrow's challenges are today's opportunities.

Working among more than 30 core technologies, over 40 distinct business divisions, you will share a sense of discovery and achievement with others of your caliber...the best and the brightest, catalysts of innovation for the coming century.

Meet with 3M representatives and see how all your hard work and scholastic achievements can translate into extraordinary opportunity.

Information Session
Thursday, September 30th
4:00-6:30 p.m.
West Lounge, 2nd floor, Student Center

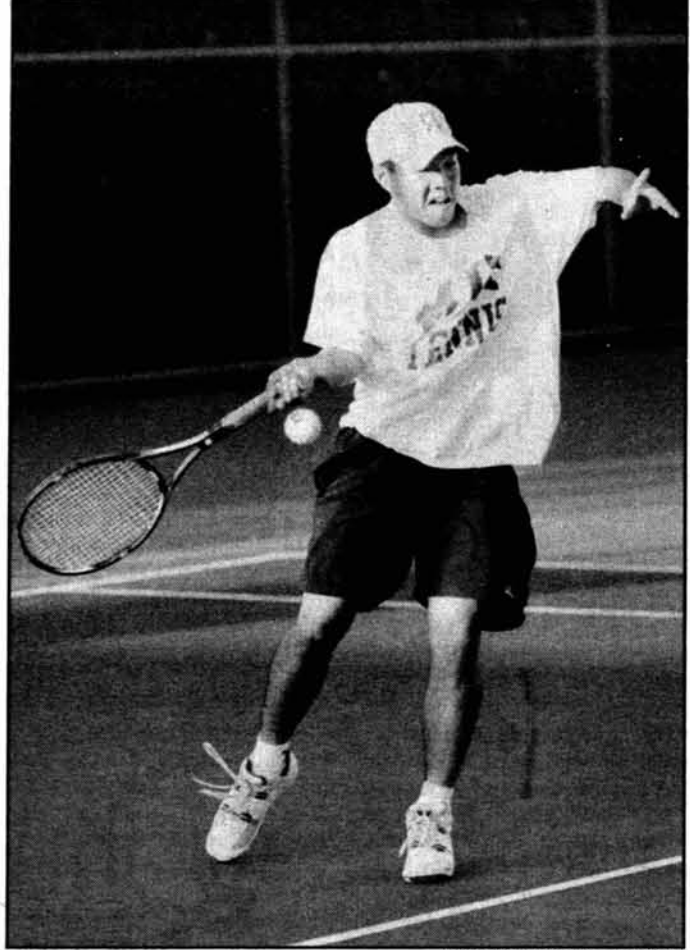
Graduate Career Fair Thursday, September 30th
Undergraduate Career Fair Friday, October 1st

Interviews
Thursday, October 14 and Friday, October 15

Sign up with your department or at Career Services.

Interviewing candidates in Materials Science and Engineering, Chemistry, Chemical Engineering, Mechanical Engineering, Electrical Engineering and Computer Science.

For more information about 3M, visit our Internet site at <http://www.mmm.com>



MIDRAG CIRKOVIC—THE TECH

Team captain and two-time All-American Eric Chen '99 makes a powerful return during Sunday's match against Wesleyan University. The Engineers triumphed with a total score of 7-0.



Something to feel good about.

United Way

This space donated by *The Tech*

Feel the fresh, crisp wind in your hair, the warm glow of sun on your face, the surge of cool, new ideas...

i2 a typical day at **i2**

If you're tired of marching to the same old beat, day after day, then it's time to change your rhythm at i2 Technologies' RHYTHM solutions. i2 Technologies, the world's leading provider of supply chain management (SCM) and intelligent eBusiness solutions, creates solutions that offer the optimization, integration, and forward visibility required for e-commerce businesses.

We have created the next generation of enterprise applications, offering integration across multiple enterprises and processes, high-performance under extreme usage conditions, forward visibility and responsiveness, and the flexibility to grow through acquisition or merger.

With unprecedented growth comes the need for more savvy, talented i2'ers. Current openings exist in most U.S. cities.

i2 will be recruiting on campus on the following dates:

September 30
Career Fair

November 8
On-campus Interviews

Bring your entrepreneurial attitude and the desire to work where you're encouraged to express opinions, and discover how much fun work can be. We currently have openings for a Pre-Sales Consultants, Application Engineer Consultants, and Members of Technical Staff (Software Developers). Check out our website at www.i2.com to learn more about our company.



Not getting your child all her shots is like leaving her out here alone.

At least 11 shots by two. How sure are you? Questions? Call 1-800-232-2522.

U.S. Department of Health and Human Services

This space donated by *The Tech*

***Now that you've had a chance
to experience the joys
of MIT Dining,
you can probably guess why
we like to give our staffers
free food.***



Whether you want to write news stories,
sports events, take photos, or work on the layout
for MIT's Oldest and Largest Newspaper,
The Tech has something to pique your interest.

Stop by our office in Room 483 of the Student Center
every Sunday at 5:00 to see what our various
departments have to offer, or contact Satwik
at 253-1541 for more information.

***Come for department
meetings, stay for the food.***

Substance Offenses Increase This Year

Crime, from Page 1

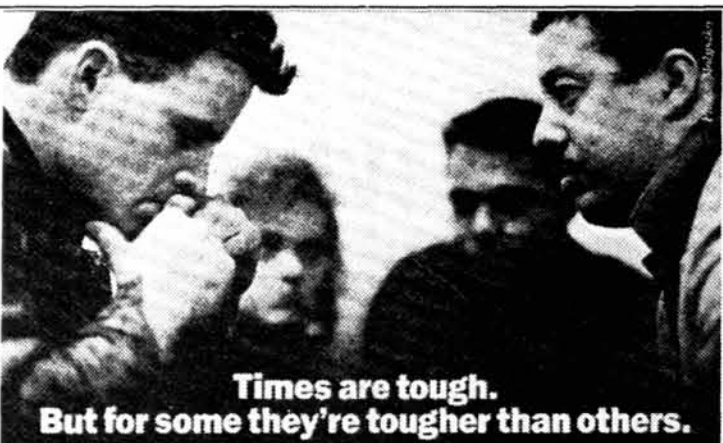
hate crimes last year and this year so far is zero.

The only statistic to change significantly from last year is the number of liquor and drug violations dealt with by the Campus Police. During the first half of this year, 16 liquor violations and 11 drug violations occurred on campus (including dormitories but not fraternities),

more than the total given out for all of last year.

"I think there is a perception in the student community that we give out hundreds of these [violations]," Glavin said. In reality, the level of violations dealt with hasn't changed much, she said.

The first and second quarter crime reports for this year can be found at <http://web.mit.edu/cp/www>.



Times are tough. But for some they're tougher than others.

Last year, your contributions helped 37,000 recovering alcohol and drug abusers. This year, your help will be needed more than ever.



This space donated by *The Tech*



T. LUKE YOUNG—THE TECH

A curious rider talks to the infamous "Chicken Lady" as he prepares to embark on Day Two of the Boston-New York AIDS Ride. A team from MIT's Department of Urban Studies and Planning participated in the event. The ride raised over \$7 million for local AIDS shelters.



October 1-2, 1999

FRIDAY

Alley Rally

Time: 8:00 - 10:30 PM
Location: Amherst Alley
What: Free food, music, dance

Pep Rally

Time: 8:30 PM
Location: Amherst Alley
What: Come meet the sports teams

Outdoor Movie

Time: 10:30 PM
Location: Amherst Alley
What: FREE outdoor movie, BIG screen

SATURDAY

Homecoming Game

Time: 12:00 PM (noon)
Location: football field
What: come see MIT crush Curry College

BBQ & Tailgating

Time: 2:30 PM (or whenever MIT finishes whipping butts)
Location: Johnson BBQ Pits
What: MORE FREE FOOD +music

Homecoming Ball

Time: 10:00 PM
Location: Walker Memorial
What: Semi-formal ball
MORE FREE FOOD

Sponsored by: CAC Program Board, DormCon, IFC, Large Event Funding

You're at a greater risk of getting skin cancer if your hair is blonde or red.

(No matter how much of it you have left.)


Fair skin, light eyes and a tendency to burn in the sun, also put you at a higher risk. So, examine your skin regularly. If you find anything unusual, see your dermatologist.

AMERICAN ACADEMY OF DERMATOLOGY

For more information, call 1-888-362-DERM or visit www.aad.org

This space donated by *The Tech*

Vertex Partners

a  Braun Consulting company


As a newly merged company, we offer **best-in-class strategy consulting** combined with the excitement and growth opportunities of an **Internet professional services firm.**

Come visit us at the
Fall Career Fair

Thursday, September 30th
and Friday, October 1st
10:00 a.m. - 4:00 p.m.



VERTEX PARTNERS

a  Braun Consulting company

2 Atlantic Avenue

Boston MA 02110

617 367 7600

www.vpartners.com

www.lehman.com



Lehman Brothers

cordially invites you to attend a presentation on
career opportunities in

Sales, Trading, Research & Origination

Tuesday, September 28, 1999

7:00 p.m.

Cambridge Center Marriott

Salons 1-2

Uh oh. That thing you used to call your future just became the present.

As a leader in driving radical transformation in the private and public sectors, AMS is looking for individuals who are hungry for the opportunity to build their personal portfolios of challenging experiences. We need motivated people who are willing to accept the responsibility for determining how rapidly they advance. We need people like you. What are you doing to do about it?

A special welcome to these recent MIT alumni who are now working at AMS:

Geoffrey Bloss	James Matysczak
Dedric Carter	Katherine Navarrete
Danica Cheung	Meredith Otterson
George Dolina	Pearl Shen
Ashok Eastman	Hoi Wong
Benjamin Hidalgo	Mykolas Rambusz
Michael Kashambuzi	

*intern

What are you going to do about it?

We're going to be on campus soon to answer any questions you may have about who we are and what we do. Come meet us on the following dates and learn how you too can join the many MIT alumni at AMS.

September 30, 1999-October 1, 1999

1999 MIT Fall Career Fair
Johnson Athletic Center, 10am-4pm

October 1, 1999

AMS/Class of 2000 Casino Night
Prudential Tower Skywalk, 9pm-12am

October 13, 1999

AMS Corporate Presentation
6-120, 7pm-9pm

October 28, 1999-October 29, 1999

AMS Fall Interview Schedules

More Information:

<http://classof2000.mit.edu/careerweek>

ams[®]
amsinc.com

An Equal Opportunity Employer

Protesters Greet Bush at U. of Maryland Appearance

On Friday, several environmental organizations, including University of Maryland students, staged a demonstration during a George W. Bush campaign speech, protesting a statement made by the Republican presidential hopeful indicating he would support increased logging in the Northwest.

As Bush addressed a crowd inside Constitution Hall at the Home School Legal Defense Association conference, 20 to 30 demonstrators marched outside, shouting chants such as, "Increased logging is not the way to end up here after election day."

The chants of the demonstrators could not be heard inside the hall, but the protesters managed to make themselves seen by Bush as he left the building. They shouted slogans over the noise of the national media asking questions about Pat Buchanan.

"We talked to some of the press folks who were following him around, and he got to see our signs, obviously. We saw the look on his face as he [heard] our little chant," said Kim Delfino, staff attorney with the U.S. Public Interest Research Group.

The environmental groups, which included USPIRG, The American Lands Alliance and the Southeast Alaska Conservation Council were protesting a statement about increasing logging in the Northwest that Bush made in a July 8 statement at Spokane International Airport in Spokane, Washington.

Mindy Tucker, of the Bush campaign, said that she could only restate what Bush had said in the speech. She said that Bush said that if elected president he "would have a reasonable plan for timber harvesting in the national forests." The demonstrators were also protesting Bush's criticism of the Clinton administration for not

logging enough on federal lands, Delfino said.

"We've talked to hundreds of thousands of Americans during this campaign. We have done polls of the public, and over and over again we found that the public doesn't want to have increased logging on the national forests. They actually want to protect the national forests," Delfino said. "So part of the demonstration today is just to point out to Gov. Bush that he's out of step with what the American public wants."

Students attending the demonstration were members of the campus chapter of MaryPIRG, a statewide public interest research group.

Stephen Reiling, a junior biological resource engineering major, said he was there to sway Bush's opinion.

"I went just hoping to influence, change whatever I can," Reiling said. "Just to let those in charge know that there's a group of students, and those outside of the college, concerned with our national forests. The goal of the demonstration was to get his attention, and I think we definitely did that."

The demonstration was also part of a larger campaign by USPIRG to raise presidential candidates' awareness of the issue of logging in national forests, particularly.

"We are bird-dogging presidential candidates from around the country," Delfino said. "We've gotten George Bush about four times so far. We were at the straw poll in Iowa. We've done [presidential candidate Bill] Bradley about four or five times. We've done this with [vice-president Al] Gore about five times also. And we'll be keeping it up throughout the race. We're not going to just fade into the woodwork."

[The Diamondback (University of Maryland), Sept. 21]

Frosh manual causes controversy

Rumors of controversy exploded recently amongst members of the

University of New Hampshire Greek System.

Facts began to trickle down through the masses concerning a statement in a Whittemore School of Business and Economics (WSBE) "peer advising manual" that strongly advised freshmen not to pledge a fraternity or a sorority.

The manual stated that "the problem is that being a member of a fraternity or sorority is time-consuming and often takes time away from your studies," although it did not mention other factors or commitments that may take away from time spent studying, such as part-time jobs or

athletics. The manual also stated, "a semester of pledging... can be hazardous, if not fatal to a student's career in college."

According to Interfraternity Council (IFC) President Chris Black and Panhellenic Council President Michelle Paderson, the situation is under control and is being dealt with via President Joan Leitzel and Vice President for Student Affairs Leila Moore.

When Black and Paderson first heard about the manual, they already had a previously scheduled meeting with Leitzel and decided to collect the evidence and approach her about

the issue at that time.

"We didn't want to go in there, guns blazing, without any evidence," Black said.

According to Black, neither Leitzel nor Moore was aware of what the manual stated, but they assured that the matter would be promptly taken care of and the deans responsible would be reprimanded.

The number one graduating senior from WSBE in May of 1999 was a brother of Sigma Nu fraternity, and currently a great number of WSBE seniors intending on graduating in

Short Takes, Page 34



THE Power to Innovate

Put some power behind your ideas. At MIT Lincoln Laboratory, your research and ideas will be transferred directly into the development of leading edge, real-world applications, including air defense, space surveillance, communications and air traffic control systems.

If you're looking for a way to power up your career, please forward a cover letter and scannable resume to:
resume@ll.mit.edu
 (ASCII Text File); Fax: (781) 981-2011; or mail to: Human Resources, MIT Lincoln Laboratory, CN99, 244 Wood Street, Lexington, MA 02420-9108.

An Equal Opportunity Employer, M/F/D/V.
 US Citizenship is required.

We will be attending MIT Fall Career Fairs on September 30 and October 1, 1999. Please visit our website for the times, locations and dates of our informational sessions and interviews for Fall 1999 and Spring 2000.

If you are pursuing a degree in:

- **Electrical Engineering**
- **Physics**
- **Computer Science**
- **Mathematics**

maybe you have the power to succeed at:



LINCOLN LABORATORY
 MASSACHUSETTS INSTITUTE OF TECHNOLOGY

www.ll.mit.edu

The Blackstone Group

A private investment banking firm specializing in:

- Mergers and Acquisitions
- Principal Investment
- Real Estate Principal Investment
- Restructuring and Reorganization
- Mezzanine Investing

Interested seniors are invited to a presentation at the Harvard Faculty Club
 (20 Quincy St. – 4 blocks from Harvard Square)
 Thursday, September 30, 1999 at 5pm

*Blackstone will be conducting off-campus interviews this fall for students interested in full-time employment.
 To be considered for an interview, please bring a resume to the presentation or send it to the following address by October 8th:*

Eric Liu
 The Blackstone Group
 345 Park Avenue, 31st Floor
 New York, NY 10154
 (212) 583-5835
 (212) 583-5710 (Fax)

WANTED: Someone with piercing intellect, superb client skills and entrepreneurial vigor.



(Ability to play nerf® hoops wouldn't hurt either.)

Make no mistake. We work hard at our management consulting company. But we believe the best way to work is in a casual atmosphere where minds (and the occasional jumpshot) can soar.

To learn more about our unique work environment and our world-class clients, please **MEET US FOR LUNCH** on Sept. 30th, 1999, Noon - 1 p.m., Tang Building, E51-335b. To attend, please sign up online with the Career Development Office.

If you are unable to attend, but are interested in learning more about Carlisle & Company, please contact Harry Hollenberg at (978) 318-0500 ext. 106 or visit us at www.carlisle-co.com

CARLISLE & COMPANY, INC.

30 Monument Square • Concord, Massachusetts 01742 • 978-318-0500 • 978-318-0642 (fax) • www.carlisle-co.com



Consulting

At KPMG, you'll find opportunity for growth and recognition as you move up in your career. How high can you go? It's all a matter of altitude. **Please join us at the 1999 MIT Fall Career Fair.**

For more information, check out:
www.us.kpmg.com



How high you go is up to you.



HOW SAY YOU THEN?

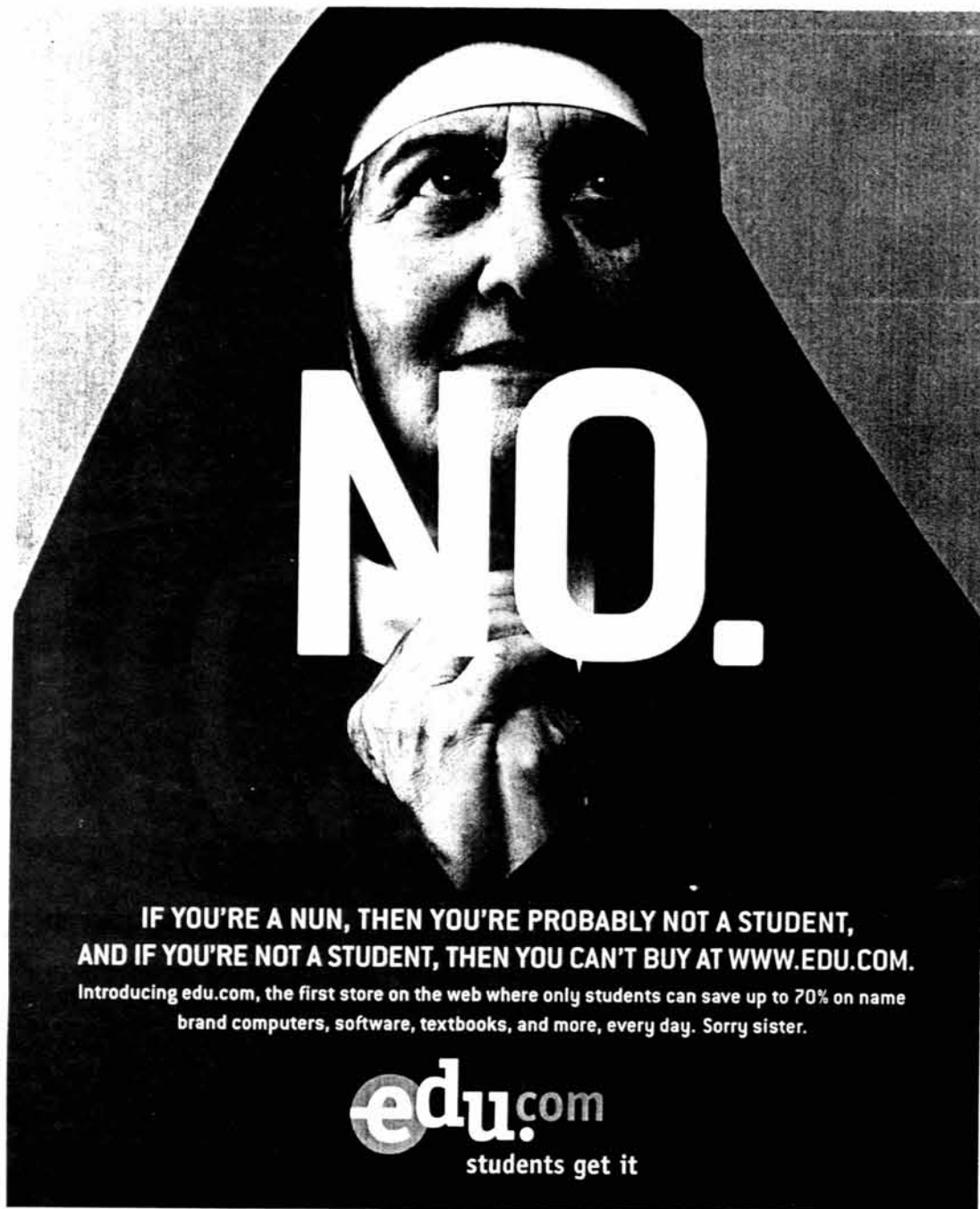
FREE WILLY

LIKE THE WORD "FREE?" HOW ABOUT FREE
LONG DISTANCE OVER THE INTERNET.
LOG ONTO PhoneFree.com AND FIND OUT HOW
YOUR PC CAN HELP YOU GET FREE LONG
DISTANCE ANY TIME ANYWHERE IN THE WORLD.



PhoneFree.com

Talk isn't cheap. It's free.

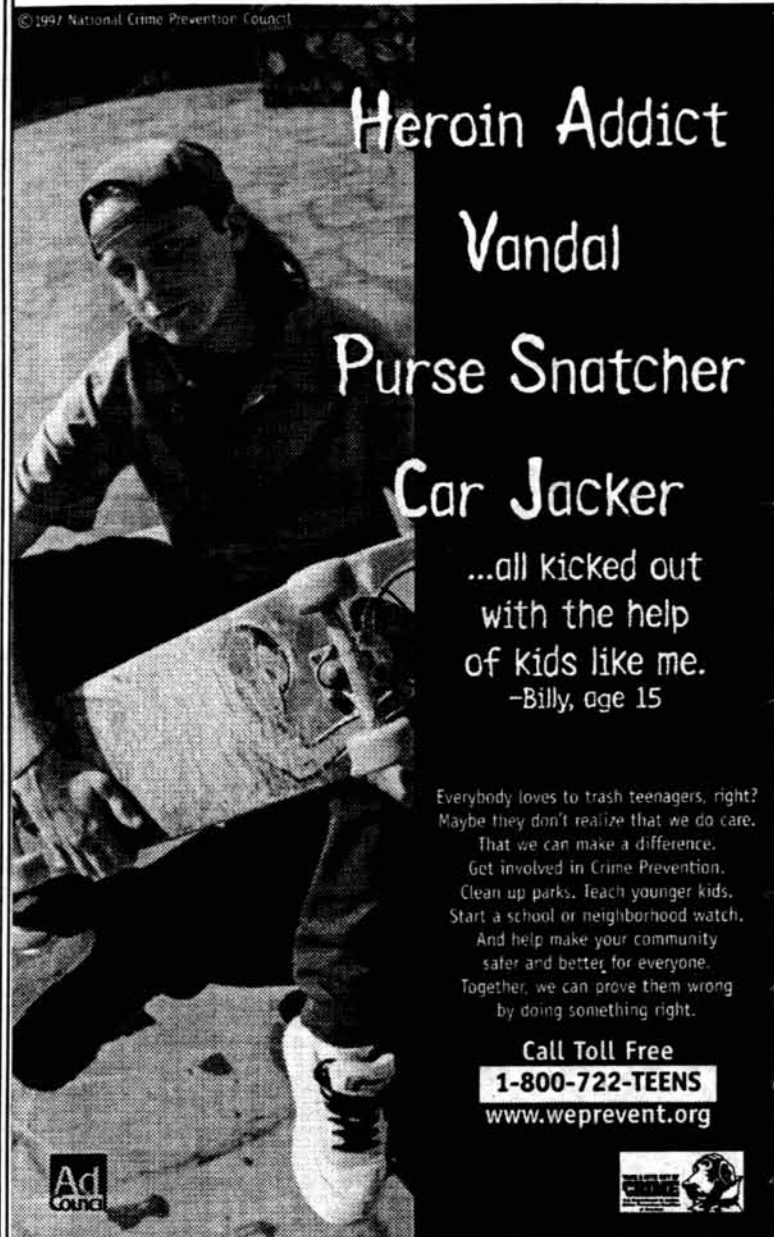


NO.

**IF YOU'RE A NUN, THEN YOU'RE PROBABLY NOT A STUDENT,
AND IF YOU'RE NOT A STUDENT, THEN YOU CAN'T BUY AT WWW.EDU.COM.**

Introducing edu.com, the first store on the web where only students can save up to 70% on name brand computers, software, textbooks, and more, every day. Sorry sister.

edu.com
students get it



© 1997 National Crime Prevention Council

**Heroin Addict
Vandal
Purse Snatcher
Car Jacker**

...all kicked out with the help of kids like me.
-Billy, age 15

Everybody loves to trash teenagers, right? Maybe they don't realize that we do care. That we can make a difference. Get involved in Crime Prevention. Clean up parks. Teach younger kids. Start a school or neighborhood watch. And help make your community safer and better for everyone. Together, we can prove them wrong by doing something right.

Call Toll Free
1-800-722-TEENS
www.weprevent.org

Ad Council

This space donated by *The Tech*

**GUEST SPEAKER
COMMENCEMENT EXERCISES 2000**

The Commencement Committee invites suggestions for the guest speaker at MIT's Commencement Exercises on Friday 2 June from all members of the community. The commencement speaker should be one who will be able to address topics of relevance to MIT.

Written suggestions may be dropped off at the Undergraduate Association Office - Room W20-401, Graduate Student Council Office - Room 50-222, and Information Center - Room 7-121.

In addition, suggestions may be filed with Hugo Barra - President of the Class of 2000 (hbarra@mit.edu), Luis Ortiz - President of the Graduate Student Council (gsc-president@mit.edu), Gayle Gallagher - Executive Officer for Commencement (gayle@mit.edu), and Eric Grimson - Chairman of the Commencement Committee (welg@ai.mit.edu).

Suggestions must be received by Friday 1 October.

Following a review, the Committee will submit a list to President Vest for consideration. The list will not be made public. President Vest has the responsibility and authority for selecting and inviting a guest speaker for the Commencement Exercises.

How Do You Measure the Growth of A Child?

Unfortunately for some of the poorest countries in the world, it takes more than fading marks on a wall.

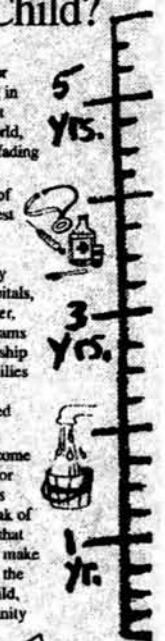
Childreach, one of the oldest and largest child sponsorship organizations, measures growth by the number of hospitals, wells for clean water, and self-help programs we build in partnership with the proud families and communities where our sponsored children live.

So when you become a Childreach sponsor and receive pictures and letters that speak of hope, you'll know that you have helped to make a real difference in the lives of a needy child, family, and community overseas.

For more information about Childreach sponsorship, please call **1-800-752-3400** or send in the coupon below.

Samuel A. Northrup, National Executive Director, Childreach with a sponsored child in Togo, Africa.

childreach
a division of MIT



Yes! I want to know more about Childreach.

Name _____

Address _____

City _____

State _____ Zip _____

Please send to: Childreach, 155 Plan Way, Warwick, RI 02886-1099

This space donated by *The Tech*



Ford Motor Company

What's the next step in our plan to become the world's number one automaker?

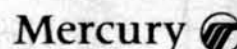
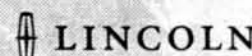
You tell us...

You make the decisions. You decide where we're going. At Ford, we're reinventing ourselves as a company. And from engineering to manufacturing to finance, we're changing the way we do business. Of course, we need the right people to be successful. If you have the ambition, the drive and the confidence to impact one of the largest companies on the planet, you belong at Ford.

We're looking for Bachelor's and Master's candidates in courses 2, 3, 6-1, 6-3, 15 (Operations Management only), and 16. Stop by and talk to us at the Career Fair September 30 through October 1. We'll be conducting interviews on campus on October 19 and 20 (Ford Product Development, Manufacturing, and Process Leadership) and November 8 (Visteon). Please visit the JobTrak web sit (www.JobTrak.com) to submit a résumé for a closed interview by October 3.

To find out more about the exciting career opportunities at Ford Motor Company, attend our information session at the Cambridge Marriott from 7:00 p.m. to 9:00 p.m. on October 18 and check out the Ford (www.ford.com/careercenter/) and Visteon (www.visteon.com/careers) career centers on the web.

Join us
for Food & Drink
at the Cambridge
Marriott on
October 18
at 7:00 p.m.



www.ford.com



Introducing
Sprint PCS Wireless Websm

Free Wireless Web Start-up Bonus

- 50 Wireless Web Minutes
- 50 Information Updates
- \$30 Mail-In Rebate on a select wireless Internet-ready Sprint PCS Phone™

Browse The Internet

Receive Information Updates

Connect Via Your Laptop

Call Clearly Nationwide

Go Site Seeing!

Phone purchase and activation required. Restrictions apply. See printed materials in-store for details.



The clear alternative to cellular.™

Sprint PCS



25 New Chardon Street · BOSTON 617-367-4 BMA (4262)

Imagine The Possibilities!



American Express, the world's most respected and recognizable brand in financial and travel services, has created the ideal environment for your career.

Ready to experience the difference? At American Express we don't treat our team members like commodities. We treat them like our most important asset, with the respect they deserve. We value their opinions. We invest tremendous resources and time in their development. We fire them up, not burn them out.

We'll help you make it happen. We're winning new business and strengthening established customer relationships through continuous innovations in our products and services. There's never been a more exciting time to join us!

Are you...

- a talented, ambitious entrepreneur with a "make-it-happen" spirit?
- someone who thrives in a fast-paced, changing environment?
- eager to make a difference?

If you're ready to be part of a winning team:

Join us for our
MBA Presentation:
Thursday, September 30th
6:00pm - 8:00pm
University Park Hotel
Engineering & Sloan Students Welcome

Can't make it? Forward your resume to: **American Express**, Attn: Danielle VanVorbis, 1100 East Main Cross Street, Suite 15, Finlay, OH 45840. American Express is an equal opportunity employer.

www.americanexpress.com



CLASSIFIED ADVERTISING

For Sale

BICYCLES BICYCLES BICYCLES
Harvard Square Bicycles now has GT/Dyno and Haro bikes. Ask for an "MIT Square Deal" and get a complete tune-up for just \$19.95. Located by Newbury Comics in Harvard Square. Phone 441-3700

Help Wanted

STARTUP COMPANY LOOKING FOR TECHNICAL PROGRAMMERS AND DESIGNERS FOR MULTIMEDIA AND INTERNET PROJECT. PART OR FULL TIME POSITIONS AVAILABLE. PLEASE FAX RESUMES TO ADAM @ 617-687-8383 OR EMAIL: GoldAirLLC@AOL.COM

SPRING BREAK 2000 with STS- Join America's #1 Student Tour Operation to Jamaica, Mexico, Bahamas, Cruises, and Florida. Now hiring on-campus reps. Call 1-800-648-4849 or visit online @ www.ststravel.com

The BELL Foundation is a must do opportunity for any college student in Boston. Based in Boston, The BELL Foundation was created to dramatically increase the educational and life achievements of elementary school aged children living in low-income communities. Currently recruiting students to serve as tutors to Black elementary students throughout the Boston area, 2 days per week. Also looking for work-study students to work as tutors, call and invite a friend Rate of pay \$7.00-\$10.00/hr. Work-Study \$8.00/hr. If interested call Maria Koistinen at (617) 282-1567

FREE TRIPS AND CASH !!! Spring Break 2000 StudentCity.com is looking for Highly Motivated Students to promote Spring Break 2000! Organize a small group and travel FREE! Top campus reps can earn Free Trips & over \$10,000! Choose Cancun, Jamaica or Nassau! Book Trips On-line Log In and Win FREE Stuff. Sign Up Now On Line! www.StudentCity.com or 800/293-1443

World Commerce INNS e-commerce kiosks and World Peace Libraries information services company startup need technology team to help with strategic alliances. Contact amyruzbasan@email.msn.com or call 1-860-668-1511.

EGG DONORS NEEDED! All races. Ages 21-30. Compensation \$5,000. OPTIONS National Fertility Registry (800) 886-9373 www.fertilityoptions.com

Information

RAJA YOGA MEDITATION On-going classes offered as a free service to the community. Learn to empower yourself to reduce stress and clear a path towards easier studying. Learn to tap into your inner power to change unwanted habits and improve relationships. (617) 734-1464 www.bkwsboston.com bostonbkwsu.com

2 Lathes 6" Logan 18.5" X 48" Antique Converted to electric V speed with Back Gear chandler and Farquhar \$50 or 80 from Newbury. Tony P 978-657-2253 Steve 978-462-0966

Travel

Spring Break 2000 The Millennium. A new decade...nce in Travel. Free trips, Free Drinks, Free Meals. Jamaica, Cancun, Florida, Barbados, Bahamas. Book before Nov. 5 for Free Meals & 2 Free Trips! 1-800-426-7710 / www.sunspashtours.com

New Hampshire Vacation Home for rent. On Newfound Lake in Alexandria (2 hours from Boston). 4Bed/2 Bath Cottage Full of Antiques. \$350-750/wk. Call David 617-482-1158 or Email dsgeron@alum.mit.edu.

Advertising Policy

Classified ads are due at 4:30 p.m. two days before day of publication, and must be prepaid and accompanied by a complete address and phone number. Send or bring ads, with payment, to W20-483 (84 Mass. Ave., Room 483, Cambridge, MA 02139). Account numbers for MIT departments accepted. Sorry, no "personal" ads. Contact our office for more details at 258-8324 (fax: 258-8226) or ads@the-tech.mit.edu.

\$5 per insertion per unit of 35 words.

Overtime Concerns Remain Unresolved

CPs, from Page 1

available option. While both sides hope to avoid a strike, the Association's good-faith vote could be the first step towards a walkout.

Excessive overtime draws ire

Involuntary overtime remains a key issue of contention between the administration and the Association. Currently, officers are called to work during "off-hours" to fill staffing needs.

McDonald complained that "MIT continues to rely on overtime rather than fully staffing the department." The Association is demanding that MIT restrict call-ins to emergencies.

David B. Achenbach, manager of labor relations for the Institute, maintains that MIT needs "a certain security presence available" at all times. Under the Institute's current contract proposal, any officer working overtime — either voluntary or involuntary — would move to the bottom of the overtime-eligible list. The plan is designed to distribute involuntary overtime fairly among officers.

The Institute also proposes expanding the number of officers in each watch group in an attempt to diminish the need for involuntary overtime.

Continuing education contentious

The Association also has demanded additional benefits for officers who further their education. Currently, MIT provides \$5,250 per employee for the pursuit of higher education.

The proposed benefits package follows recommendations from the Massachusetts Police Accreditation Commission to reward officers who complete college-level courses. Harvard University is one of the few local colleges implementing such a plan.

"MIT sees no correlation between education and quality of work," McDonald stated, suggesting that MIT wants to avoid spending more on its policemen. MIT should provide additional time and funding for increased officer training, McDonald argued, because the Institute benefits most from the education.

"[Officers] already receive the same benefit as every other MIT employee," Achenbach countered. He also said that MIT already gives the maximum untaxable educational allowance to its employees seeking a first undergraduate degree.

Boston patrol, EMT pay disputed

The Institute's call for Boston

patrols also has increased friction between the two factions. Following the death of Scott S. Krueger '01, the Institute proposed that the CPs patrol all MIT fraternities to control drinking.

Achenbach contended that the Campus Police has an obligation to protect all MIT students, whether living on campus or in Boston. Achenbach also criticized the Association for opposing the Institute's efforts to deputize CPs in Suffolk County.

McDonald countered that the Institute's demands would expose CPs to a more dangerous environment than assumed upon joining the force.

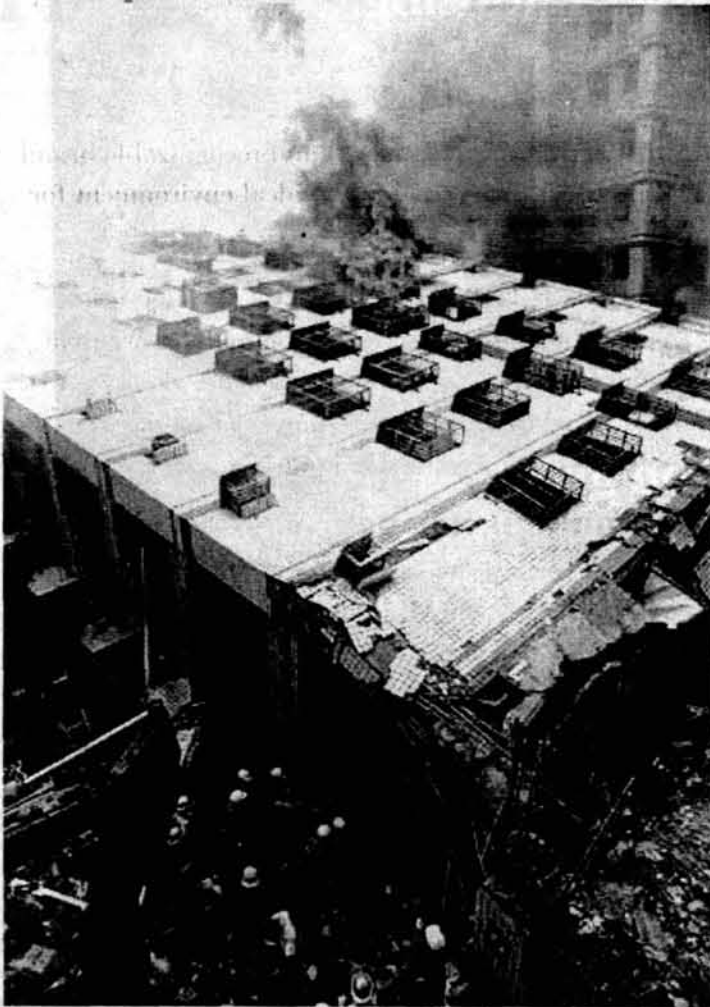
Increased benefits for EMT training also remains an unresolved issue. In addition to their police duties, MIT CPs also serve as EMTs and can provide medical assistance that other college police forces cannot provide.

"[MIT] loves the fact that they have EMTs...they just don't want to pay for it," McDonald contended. Currently, CPs receive an additional \$0.65 per hour for serving as EMTs, which amounts to less than five percent of an officer's total pay.



Operating in their second year without a contract with the Institute, the MIT Campus Police are still grappling with negotiations and questioning MIT's willingness to work with them. TECH FILE PHOTO

Show Your Support for Taiwan's Earthquake Relief



@ Lobby 7, Monday (9/27) - Friday (10/1) 10am-3pm

You can:

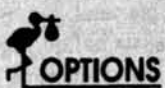
1. Sign a card to comfort quake victims.
2. Make a donation to help earthquake relief. (money will be sent to Taiwan's Red Cross)

Organized by MIT ROCSA, MIT ATS, and Emerson College CSA

EGG DONOR NEEDED!

Loving, infertile couple is hoping to find a compassionate woman to help us have a baby. I'm an academic M.D. and my husband is a business owner. We are hoping to find a bright multi-talented and well balanced student. We have a fabulous marriage and both of us are very active in civic and charity organizations. Thank you for your consideration.

Compensation \$6,500 plus expenses and a special gift



(800)886-9373 ext 391
www.fertilityoptions.com

Free Computing for all MIT Students

Fall Term 1999 Minicourse Schedule



Athena Minicourses Fall Term 1999

	Mon	Tue	Wed	Thu
12 noon	13 Sep	Matlab	14 Sep	Matlab
7 p.m.		MSO		MSO
8 p.m.		Matlab		Matlab
12 noon	20 Sep	Info Res	21 Sep	HTML
7 p.m.		Info Res		HTML
8 p.m.		HTML		HTML
12 noon	27 Sep	First Course	28 Sep	Working
7 p.m.		First Course		Working
8 p.m.		Working		Working
12 noon	4 Oct	Frame	5 Oct	FrameThs
7 p.m.		Frame		Frame Ths
8 p.m.		Latex		Latex Ths
12 noon	11 Oct	Holiday	12 Oct	First Course
7 p.m.		Coulomb's Day		First Course
8 p.m.		No Classes		Working
12 noon	18 Oct	Dotfiles	19 Oct	Ser Emaes
7 p.m.		Dotfiles		HTML
8 p.m.		Serious Emaes		Matlab

New Courses! New Intro Sequence: @FIRST COURSE, @WORKING, @WORD PROCESSING OPTIONS -- means **More Material in Less Time:** les and directories, e-mail and word processing, orientation and help resources, all in just three hours.

Offered during the weeks of 27 September and 11 October only. Don't miss it!

Need More? One hour is all it takes: Get started with any word-processing package, thesis options, data-crunching, graphing, other math software, communication, web-pages, etc. in just one hour.

Y For course descriptions: see the opposite page or web.mit.edu/minidev/

Y All minicourses taught in Room 3-343. Minicourses are one hour each.

HOW TO REGISTER FOR A MINICOURSE: You Can't! They're free!

Y No Pre-registration Needed... JUST SHOW UP FOR THE CLASS.

Why wait? Take them now. Do you think your year will get less busy later on?

1/5 Athena Training Group

All Classes in Room 3-343

BE LESS PRODUCTIVE AT THE OFFICE.

The office has always been a place to get ahead. Unfortunately, it's also a place where a lot of natural resources start to fall behind. Take a look around the next time you're at work. See how many lights are left on when people leave. See how much paper is being wasted. How much electricity is being used to run computers that are left on. Look at how much water is being wasted in the restrooms. And how much solid waste is being thrown out in the trash cans. We bet it's a lot.



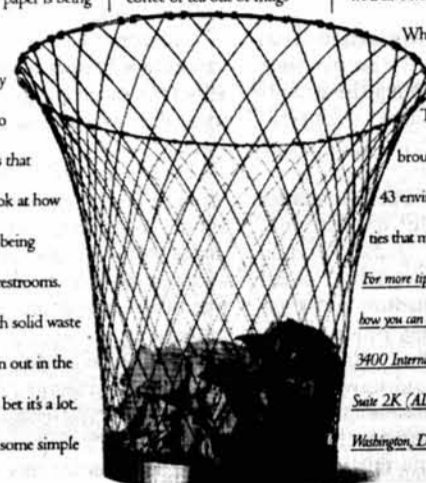
It takes 95% less energy to manufacture products from recycled materials.

ways you can produce less waste at work. When you're at the copier, only make the copies you need. Use both sides of the paper when writing a memo. Turn off your light when you leave. Use a lower watt bulb in your lamps. Drink your coffee or tea out of mugs instead of throwaway cups.



Drink out of mugs instead of throwaway cups.

Set up a recycling bin for aluminum cans and one for bottles. And when you're in the bathroom brushing your teeth or washing your face, don't let the faucet run. Remember, if we use fewer resources today, we'll save more for tomorrow.



Which would truly be a job well done. This message brought to you by the 43 environmental charities that make up Earth Share. For more tips or information on how you can help, write Earth Share, 3400 International Drive NW, Suite 2K (AD3), Washington, DC 20008.



Earth Share

IT'S A CONNECTED WORLD. DO YOUR SHARE.

This space donated by The Tech

"My friends agonized over choosing a company to go with. My strategy was simpler, why join one great company when you can join many?"



Alphonse Mullings
B.S., Electrical Engineering
City College of NY '97

I went with GE.

We didn't become *Fortune* magazine's America's Most Admired Company* by accepting the status quo. We got there by hiring and training graduates with the confidence and courage to think in innovative and revolutionary ways.

No other corporation can match the diversity of opportunities at GE. Because we have small company attitudes with large company strengths, we set no limits, no boundaries. You can move from industry to industry, discipline to discipline, and never leave GE.

We're a leader in every business we compete in, and we're looking for leaders like Alphonse who will take us even further. Start your career by visiting our website now. An Equal Opportunity Employer.

Visit GE at
Our Night Before Session
October 13th
6:00pm - 8:00pm
Room 3-370
(Bring your resume and meet GE reps from several businesses- Food & beverages provided)
Please confirm dates & times with your Career Placement Office for any last minute changes.

Learn about us at www.gecareers.com



We bring good things to life.

GE Aircraft Engines • GE Appliances • GE Capital Services • GE Corporate Research and Development • GE Industrial Systems
GE Information Services • GE Lighting • GE Medical Systems • GE Plastics • GE Power Systems • GE Supply • GE Transportation Systems • NBC

*3/99

Funny how we can panic over a strange spot on a car and ignore one on ourselves.

Skin cancer is a lot like rust- if caught early there's less damage. So, examine your skin regularly. If you spot something such as a changing mole, see your dermatologist.

AMERICAN ACADEMY OF DERMATOLOGY

For more information, call 1-888-462-DEEM or visit www.aad.org

This space donated by The Tech



"You can prevent colon cancer, even beat it."

• HILLARY RODHAM CLINTON •

MAKE THE TIME TO GET A TEST THAT COULD SAVE YOUR LIFE.

Colon cancer is the second leading cancer killer and everyone aged 50 and older is at risk. More than 50,000 Americans will die from colon cancer and 131,600 new cases will be diagnosed this year.

Colon cancer is an equal opportunity disease that affects both women and men. This silent killer frequently begins without symptoms and those with a family history are at even greater risk.

Colon cancer is preventable—even curable when detected early. In fact, if cancer is found early enough, the patient has more than a 90 percent chance of survival.

Colon cancer screenings are safe and effective and are now covered by Medicare and an increasing number of other health providers. There's even a test that can be used in the privacy of your own home.

Talk to your doctor about getting tested.



SPONSORED BY THE NATIONAL COLORECTAL CANCER ROUNDTABLE
FOR MORE INFORMATION, CALL THE AMERICAN CANCER SOCIETY
AT 1-800-ACS-2345

This space donated by *The Tech*

ATHENA® MINICOURSE INDEX

Athena: First Course (1st Course)

Our new introduction to the Athena academic computing environment: what you can do on Athena, your account, finding help, and other basics. Also includes E-mail, Zephyr, WebSIS, and Residential Computing.

Suggested pre-requisites: None

Working on Athena: Files and Unix (Working)

Files, directories, setting permissions, job control, and more. What every new user should know about Unix, Athena's operating system.

Suggested pre-requisites: 1st Course

Word Processing Options: (WPO)

A survey of the text-editing and word-processing packages available on Athena: FrameMaker, Latex, EZ, Emacs. Pick the right tool for the right job.

Suggested pre-requisites: 1st Course, Working

Advanced Word Processing: EZ (EZ)

An introduction to EZ, a combination text editor and formatter, with text-editing commands that are similar to Emacs. As a formatter, it is menu-driven and easy to learn. In the popular style of the "What You See Is (pretty much) What You Get" packages.

Suggested pre-requisites: 1st Course, Working

Advanced Word Processing: Latex (Latex)

An introduction to Latex, a widely-used text formatter, used for converting a text file into an attractive, professional-looking document. It is a powerful and flexible program, with the capability to typeset many foreign characters and very complex mathematical text.

Suggested pre-requisites: 1st Course, Working

Advanced Word Processing: FrameMaker (Frame)

FrameMaker is a powerful word-processing and document-preparation package now available on Athena.

Suggested pre-requisites: 1st Course, Working

Latex for your Thesis (Latex Tha)

Using the Latex text formatter to produce a fully-featured thesis that meets all MIT format requirements.

Suggested pre-requisites: Latex, some Latex experience

FrameMaker for your Thesis (Frame Tha)

FrameMaker, with a special template, can be used to produce an MIT thesis that meets all Institute formatting requirements.

Suggested pre-requisites: Frame, some FrameMaker experience

HTML: Making a WWW Home Page (HTML)

Covers the basic features of HTML ("Hyper-Text Mark-up Language") the language of the World-Wide Web, as well as the steps needed to post your own Web page on Athena.

Suggested pre-requisites: 1st Course, Working

Information Resources on Athena (Info Res)

A survey of the communications, help, and other resources available on Athena.

Suggested pre-requisites: 1st Course, Working

Serious Emacs (Ser. Emacs)

The text editor introduced in First Course has many useful features not covered in that course. This course is a must for anyone who uses Emacs more than an hour or two each week.

Suggested pre-requisites: 1st Course, Working, Emacs tutorial (on-line), some Emacs experience

Customization on Athena (Dotfiles)

Intended for the intermediate-level Athena user, this course will discuss the Athena login sequence and the user-configuration files (dotfiles) that affect it, as well as changes the user can make to those and other files to customize their working environment.

Suggested pre-requisites: 1st Course, Working, some Athena experience

Math Software Overview (MSO)

A survey of major mathematics and graphing packages available on Athena.

Suggested pre-requisites: 1st Course, Working

Matlab (Matlab)

An interactive program for scientific and engineering numeric calculation. Applications include: matrix manipulation, digital signal processing, and 3-dimensional graphics.

Suggested pre-requisites: 1st Course, Working

Xcess (Xcess)

A powerful and easy-to-learn spreadsheet, with a full range of mathematical, statistical, matrix, and string functions. It will be useful for scientific and engineering computations, as well as to general and financial users.

Suggested pre-requisites: 1st Course, Working

Maple (Maple)

A mathematics program that can perform numerical and symbolic calculations, including formal and numerical integration, solving algebraic or transcendental systems and differential equations, and series expansion and matrix manipulation. It also has extensive graphics capabilities.

Suggested pre-requisites: 1st Course, Working (for other X Windows) experience



Athena is a registered trademark of the Massachusetts Institute of Technology. All specified values of "n".

EDF 1994

Thanks to you, all sorts of everyday products are being made from the paper, plastic, metal and glass that you've been recycling. But to keep recycling working to help protect the environment, you need to buy those products.

BUY RECYCLED.



AND SAVE.

So look for products made from recycled materials, and buy them. It would mean the world to all of us.

For a free brochure, write Buy Recycled, Environmental Defense Fund, 257 Park Ave. South, New York, NY 10010, or call 1-800-CALL-EDF.



This space donated by *The Tech*

THE BOSTON CONSULTING GROUP

*Invites all interested
MIT Ph.D. students and Post-docs to
submit a resume and cover letter to one of the
following geographic regions by*

Monday, October 4, 1999

Please indicate geographic preference in your cover letter

North American Australia, New Zealand Offices Contact:
Ms. Susan DiTullio
Phone 617-973-6030

The Boston Consulting Group
Exchange Place, 31st Floor
Boston, Massachusetts 02109

European Offices Contact:
Ms. Lisa Lyons
Phone 617-973-6042

The Boston Consulting Group
Exchange Place, 31st Floor
Boston, Massachusetts 02109

Latin American Offices Contact:
Ms. Hania Rios
Phone 52-5258-2029

The Boston Consulting Group
200 South Wecker Drive, 27th Floor
Chicago, IL 60606

Asian Offices Contact:
Ms. Carolyn Scanlon
Phone 617-973-1224

The Boston Consulting Group
Exchange Place, 31st Floor
Boston, Massachusetts 02109

Amsterdam • Atlanta • Auckland • Bangkok • Berlin • Boston • Brussels • Budapest • Buenos Aires • Chicago • Copenhagen • Dallas
Düsseldorf • Frankfurt • Hamburg • Helsinki • Hong Kong • Jakarta • Kuala Lumpur • Lisbon • London • Los Angeles • Madrid • Melbourne
Mexico City • Milan • Monterrey • Moscow • Mumbai • Munich • New York • Oslo • Paris • San Francisco • Sao Paulo • Seoul • Shanghai •
Singapore • Stockholm • Stuttgart • Sydney • Tokyo • Toronto • Vienna • Warsaw • Washington • Zürich



CHENGWEI PEI

Theresa Burianek '99 works around a defender in Saturday's game against Clark University. MIT was defeated 3-1.

Prank Caller Dupes Iowa Football Fans

Short Takes, from Page 25

May are members of the Greek system. Chris Black is a WSBE senior as well as acting president of IFC. Black added that, in his fraternity alone, six out of 10 of the seniors are WSBE students.

[The New Hampshire (University of New Hampshire, Sept. 21)]

Court ruling raises race inquiries

A ruling by a three-judge panel of the 4th U.S. Circuit Court Friday declared unconstitutional an admissions policy using race as a factor, sparking yet another round of legal wrangling among University of Virginia leaders.

The decision declared an Arlington County, Virginia, kindergarten magnet school's lottery system that gives preference to black and Hispanic applicants unconstitutional.

Board of Visitors member Terence P. Ross said according to the University's legal counsel, using race in granting admissions is no longer defensible in court.

The 4th U.S. Circuit Court's judgment has direct bearing over the University's admissions policies, Ross said. Ross heads a special Board committee charged with analyzing

whether the University's admissions policies are legally sound.

The committee and the University's legal counsel were prepared for the court's decision and had anticipated the ruling, Ross said.

"Everybody knew this was going to govern the admissions policies at colleges and universities in the Commonwealth and we have to comply with it," he said. "It is as if our lawyers had an advance copy of the decision. We have received advice from superb lawyers that got it exactly right."

But the University should not jump to conclusions about the impact of this decision, said Robert O'Neil, University School of Law professor and director of the Thomas Jefferson Center for the Protection of Free Expression.

"It will take a lot more analysis of just what the court has said in this case to have any confidence in applying it to other institutions," O'Neil said. "Courts always rule only on the facts of the issue before them, and they are probably more likely to do so [in this issue], given its sensitivity, to confine what they say to the issue before them."

No two admissions programs are the same, he said, noting that differences could arise in the way race is used, the legislative rationale behind it and the way in which each program has administered it.

Often times people have a tendency to "over-read" court decisions "without knowing how limited they typically and properly are," he added.

Since only a panel of three Circuit Court judges ruled on the Arlington case, the Arlington County School Board probably will petition the court of appeals to hear it in front of the full court, O'Neil said.

The case eventually may be heard in front of the Supreme Court, he said, which would be the only way a definitive ruling on the use of race in admissions could be discerned.

Paul M. Gaston, a history professor involved in the initial desegregation of the University, said the court's decision should not be taken into consideration at the University.

"Using race as one of many factors in judging each applicant as an individual is constitutionally defensible," Gaston said. "Under no circumstance should we change our admissions policies on the basis of the 4th Circuit Court decision."

Nevertheless, the University should remain cautious about how the decision might affect its admissions policies, said Karen Holt, University Equal Opportunity Programs director.

"It depends on what the purpose [of the Arlington admissions policy] was and what the school district was trying to do," Holt said.

[The Cavalier Daily (University of Virginia), Sept. 27]

Prank caller fools Iowa State fans

When something sounds too good to be true, it probably is.

That's a lesson many people learned when they received calls offering free Iowa State football tickets from someone pretending to be from campus radio station KURE 88.5 FM.

As many as 100 to 200 people may have received this prank call in the past few weeks, said Justin Hesse, KURE sports director.

Several of them even stopped by the station looking for their tickets, said Hesse, sophomore in meteorology.

"Once in a while they would pop into the station, and I would explain that we're sorry, but we have nothing to do with the hoax that's going around," he said.

Hesse said five people came to KURE thinking they had won tickets to the Iowa State-University of Iowa game during his radio show a few weeks ago.

[The Iowa State Daily, Sept. 27]

The Colleges Aren't The Only Places In Cambridge Where Really Smart People Go.



With Cheesecake Factory, Houlihan's, Papa Razzi and a waterfront Food Festival, CambridgeSide Galleria is the place for those in the know. Plus, with and over 100 terrific stores like Sears, Filene's, Steve Madden Shoes, Thunder - The Sports Source, Lechters, Sam Goody and World Foot Locker, the reasons to shop here really add up. So be sure to stop by CambridgeSide Galleria and take a class in shopping 101.

100 CambridgeSide Place • Cambridge, MA • 02141 • (617) 621-8666
www.cambridgesidegalleria.com

Open Monday-Saturday 10am-9:30pm • Sunday 11am-7pm

CambridgeSide Galleria is located at the Lechmere T on the Green Line, or take our FREE shuttle bus, "The Wave" from Kendall Square T on the Red Line. Across from the Museum of Science.



LAZARD FRÈRES & CO. LLC

Would like to invite all graduating Seniors
to learn about career opportunities in our
Investment Banking Group*

On

Thursday, September 30th

**The Charles Hotel
6:30 PM**

All seniors interested in interviewing with Investment Banking on
October 21st should send resumes and cover letters by October 7th to:

**Lisa Burke
Lazard Frères & Co. LLC
30 Rockefeller Plaza
New York, NY 10020**

* Positions available in New York, Chicago, and San Francisco

MORGAN STANLEY DEAN WITTER



Interested in Asia Fixed Income Career Opportunities

**Sales & Trading
Research
Derivative Products
Foreign Exchange**

Please submit a cover letter and resume to:

**Vic Garber, Managing Director
Head of Fixed Income Asia
E-mail: vgarber@ms.com
fax: (852) 2848 6738**

or via our InterviewTrak listing

No later than October 3, 1999

www.msdw.com/career/recruiting

Morgan Stanley Dean Witter is an Equal Opportunity Employer

Age of Empires Starcraft Total Annihilation Warcraft

If you love to play these games then you are the person we need to help us create our next generation RTS game called Empire Earth.

JOIN OUR PLAY TEST PROGRAM
VISIT OUR WEB SITE AT:

<http://www.stainlesssteelstudios.com>

**Stainless Steel Studios, Inc.
Kendall Square, Cambridge**

*SERVING OUR COUNTRY,
SERVING OUR COMMUNITIES*

UNITED STATES NAVY



SERVING AMERICA TWICE

1-800-USA-NAVY

www.navyjobs.com

This space donated by The Tech

“My friends agonized over choosing

a company to go with. My strategy

was simpler, why join one great

company when you can join many?

I went with GE.”



Alphie Mullings
B.S., Electrical Engineering
City College of NY '97

We didn't become *Fortune*® magazine's America's Most Admired Company* by accepting the status quo. We got there by hiring and training graduates with the confidence and courage to think in innovative and revolutionary ways.

No other corporation can match the diversity of opportunities at GE. Because we have small company attitudes with large company strengths, we set no limits, no boundaries. You can move from industry to industry, discipline to discipline, and never leave GE.

We're a leader in every business we compete in, and we're looking for leaders like Alphie who will take us even further. Start your career by visiting our website now. An Equal Opportunity Employer.

Learn about us at
www.gecareers.com



We bring good things to life.

GE Aircraft Engines • GE Appliances • GE Capital Services • GE Corporate Research and Development • GE Industrial Systems
GE Information Services • GE Lighting • GE Medical Systems • GE Plastics • GE Power Systems • GE Supply • GE Transportation Systems • NBC

*3/1/99

You're at a greater risk of getting skin cancer if your hair is blonde or red.

(No matter how much of it you have left.)

Fair skin, light eyes and a tendency to burn in the sun, also put you at a higher risk. So, examine your skin regularly. If you find anything unusual, see your dermatologist.

AMERICAN ACADEMY OF DERMATOLOGY

For more information call 1-888-362-DEMI or visit www.aad.org

This space donated by The Tech

Trilogy Software, Inc.

all learning



all innovation



all expertise



all harmony



all opportunity...

Trilogy Software, Inc., is a fast-paced, rapidly growing software company headquartered in Austin, Texas, and boasts an impressive client list of Fortune 500 companies. A 1000 person, privately held software company, we are changing the way business is conducted both in person and on the internet. Trilogy is an industry leader in configuration technology, sales and marketing software, and e-commerce innovation.

At Trilogy, the opportunities are limitless. We seek the best and brightest of all backgrounds and experiences to design, develop, sell, and deploy our products as well as create new ones. Trilogy is not your typical software company, we encourage growth and taking risks, just ask anyone in one of our four spin-offs: pcOrder.com, Inc., carOrder.com Inc., CollegeHire.com, Inc., and applianceOrder.com, Inc.

Trilogy is looking for the best people from the top schools in the country to join us in forging this commerce revolution. We seek technical minds with business savvy, as well as people interested in creating software that will change how the world does business.

Brandon Cohen

512.685.3672

brandon.cohen@trilogy.com

TRILOGY™

Career Week 2000 Sponsor

**Embedded Systems
is the driving force in
advanced processor design.**

THE ENGINE.

We're SandCraft, Inc., developers of advanced microprocessor cores used as the computing engines of high-performance consumer electronic products. Additionally, our processor cores are used in system-on-chip integrated circuits for computer peripheral and data communications applications, enabling web browsers, networking products, digital TV set-top boxes and laser printers to perform at even greater levels than ever before.

Who is at the core of our success?

Founded in 1996 by former SGI managers and engineers who were key contributors to VR4300i (which became the industry's highest shipping volume 64-bit microprocessor), we are a well-funded start-up company focused on development of performance-leading processor cores for high-volume segments of the embedded market. Our first customer and partner is the world's leading semiconductor supplier in consumer electronics. If you're ready to chart your own roadmap for success, then maybe we should talk.

Our exceptional VLSI design team is seeking BS, MS and PhD level candidates in EE, CE or CS to join us for the following:

- LOGIC DESIGN
- CAD TOOLS DESIGN
- CIRCUIT DESIGN
- PRODUCT TEST
- DESIGN VERIFICATION
- SYSTEMS VALIDATION

Come drive the engine that will drive the force in advanced processor design. We offer excellent salaries, stock options, and a strong benefits package. For immediate consideration, send your resume to: SandCraft, Inc., 3003 Bunker Hill Lane, Suite 101, Santa Clara, CA 95054. Fax: (408) 490-3111. Email: jobs@sandcraft.com. Visit our website at: www.sandcraft.com. EOE.



SANDCRAFT

Engines for the Digital Age™

*Engines for the Digital Age™ is a trademark of SandCraft, Inc.
VR4300i is a trademark/registered trademark of NEC Corporation.

MEET US NOW

**WE WILL BE
ON CAMPUS
SEPTEMBER 30 &
OCTOBER 1**

... watch out stomach, here it comes.
**alcohol consumption contributes
to unwanted pregnancies.**

MADD

FACE THE BRUTAL TRUTH ABOUT UNDERAGE DRINKING.

www.madd.org

**STUDY IN
OXFORD**

**Live with British
students in the center
of Oxford as an
Associate Student of an
Oxford college at an
affordable cost**

\$8,600 a semester
Tuition, Housing, Tours, Meals

Summer term option

**Oxford Study
Abroad Programme**

52 Cornmarket Street
Oxford OX1 3HJ England
Tel & Fax: 011 44 1865 798738
Email: osap@osap.co.uk
Web: www.studyabroad.com/osap

*Considering raising funds for your early stage
company? Then you'll need to know ...*

**What Private Equity
Investors Are Looking For**

*with moderator John Dean
President & CEO, Silicon Valley Bank*

**A SATELLITE BROADCAST FROM
KRESGE AUDITORIUM**

BY THE MIT ENTERPRISE FORUM,® INC.

Wednesday, October 6, 1999

**FREE ADMISSION
FOR STUDENTS**

REGISTRATION STARTS AT 6:00 PM
PROGRAM STARTS PROMPTLY AT 7:00 PM
REGISTER AT THE DOOR OR ON LINE AT
<http://web.mit.edu/entforum/www/SBS/registration.htm>

**Undergraduate and
Graduate Students**

You are Invited

to join the Corporation Joint Advisory
Committee on Institute-Wide Affairs (CJAC)
and the Corporation Screening Committee
for the Nomination of Recent Graduates for
a dinner meeting on

**Thursday, September 30, 1999
6:30 - 8:30 pm**

Ashdown House - West Dining Room

This meeting will provide an opportunity to
learn about the process to elect a recent
graduate to the MIT Corporation. This year,
all 1998, 1999, and 2000 graduates are eligible
to be nominated. There will also be an update
on the implementation of the recommendation
of the Task Force on Student Life and Learning.

If you would like to attend, please call
Michele Hinkle in the Corporation Office,
3-2059 or <mdhinkle@mit.edu>.
Please reply by September 28.



**BETTER FOR
YOU THAN
DORM FOOD.**

We're better for your brain. We're netLibrary™. We're thousands of books online. As in, ready to read, research and save you time and effort. We call them eBooks and they're right on your computer. 24/7. Ask your campus librarian or check us out at www.netLibrary.com



GET TO THE GOOD PART.



Come learn more about us at our presentation on September 29 Room 4-159 (7-9pm) or October 4 Room 4-231 (7-9pm)

GUIDANT

There are different technologies, and then there are difference technologies. Technologies that make a difference in how, or if, someone lives. The people of Guidant help save and enhance the lives of hundreds of thousands of patients around the world every day by developing, manufacturing and marketing a broad array of cardiovascular-related medical solutions.

Guidant's innovation is steered by the entrepreneurial spirit that so many companies seek, but so few actually find. Through employee stock ownership, career paths that develop diverse thinking and a keen focus on going beyond the expected, Guidant offers the chance to achieve rewards of many kinds.

A career at Guidant is a chance to affect the future of others and oneself. It's a career with heart, and it can make a world of difference.

We offer excellent career and ownership opportunities in an entrepreneurial environment. To continue our leadership and growth, we are seeking high-potential engineers for these opportunities.

- software engineer
- electrical engineer
- mechanical engineer
- biomechanical engineer
- chemical engineer
- industrial engineer
- biomedical engineer
- computer/systems engineer
- materials engineer

If you're interested in a career with Guidant, forward your resume to:

GUIDANT CORPORATION HUMAN RESOURCES, A270
 4100 HAMLIN AVENUE NORTH ST. PAUL, MN 55112-5798
 FAX 651-582-7299