

MIT's
Oldest and Largest
Newspaper



The Weather

Today: Sunny, 67°F (19°C)
Tonight: Clear, cool, 42°F (6°C)
Tomorrow: Sunny, 67°F (19°C)
Details, Page 2

Volume 119, Number 26

Cambridge, Massachusetts 02139

Tuesday, May 11, 1999



A MIT student was the victim of an attempted robbery at gunpoint in the Kendall T stop Thursday evening. This was the second incident in a two-week period.

Student Victimized In Robbery Attempt

By Kevin R. Lang
ASSOCIATE NEWS EDITOR

For the second time in two weeks, an MIT student was held at gunpoint Thursday in the Kendall Square area.

A Crime Alert sent out by MIT Campus Police described the suspect as a Hispanic male approximately six feet tall and 170 pounds, thin but muscular, with short, "military style" hair. The victim said that the suspect carried a brown or black leather jacket which he used to conceal a small handgun.

The student said that the suspect stood at the bottom of a flight of stairs in the subway entrance so that he was not visible from either the street or the platform. "I didn't see him until I was within maybe ten feet of him," the victim said.

The student said that the suspect stood at the bottom of a flight of stairs in the subway entrance so that he was not visible from either the street or the platform. "I didn't see

him until I was within maybe ten feet of him," the victim said.

As he entered the turnstile area, the suspect stepped toward the victim. "His appearance didn't look threatening," the victim said. The suspect then revealed a handgun pointed at the victim's abdomen, and told the victim not to yell. However, the victim kept walking toward through the turnstiles and up the platform.

The victim said that he "made a quick decision that the guy was either going to shoot me or not shoot me."

Once in public view on the platform, the victim called for help and asked the token booth clerk to call the police. "The police were awesome," the victim said. He said that at least twenty Massachusetts Bay Transportation Authority and Cambridge Police arrived within minutes.

Crime Alert, Page 17

Summers Speaks on World Economic Issues

By Kristen Landino
ASSOCIATE NEWS EDITOR

Deputy Secretary of the U.S. Treasury and Institute Alumnus Lawrence H. Summers '75 spoke on issues relating to the global economy in Bartos Theatre last Tuesday afternoon.

His speech was part of an ongoing series of public policy lectures sponsored by the Undergraduate Economics Association.

Summers' talk focused on effective U.S. and foreign policy initiatives in times of financial crisis.

"The world economy cannot fly forever on a single American

engine. Japan and Europe must contribute to growth as well," Summers said.

Summers speaks on 90's finances

Summers gave a brief synopsis of the U.S. response to the slowdown in Gross Domestic Product growth experienced during the recession of the early 90's. Summers, who worked closely with President Bill Clinton on responding to this economic problem, cited deficit reduction as the major policy objective of Clinton during this

Summers, Page 15

Princeton Mathematician Speaks at CMI Inauguration

By Adam Brown
STAFF REPORTER

A brass quartet, the unveiling of a sculpted logo, a number of notable mathematicians, and an audience of over 450 celebrated the formation of the Clay Mathematics Institute yesterday in Room 10-250. Andrew Wiles, the Princeton University mathematician who proved Fermat's Last Theorem, delivered the keynote address.

The Clay Mathematics Institute (CMI) was formed in September 1998, according to Director Arthur Jaffe. Yesterday's lecture was its first public event. Many notable mathematicians and others gave

brief welcomes.

These welcomes included "three soundbites" from CMI Adviser Edward Witten of the Institute for Advanced Study: Mathematics is a pillar of modern civilization because it is ancient (though it is not, panel moderator and Editor at Large of *U.S. News & World Report* David Gergen later pointed out, the oldest profession); the strongest aspect of modern civilization due to rigor in proofs; and the broadest, because mathematics supports the creative enterprise of most of science.

CMI, Page 20

MIT Joins in Charles Cleanup

By Erik Snowberg
STAFF REPORTER

MIT, along with several other area universities and businesses, is working with the U.S. Environmental Protection Agency to clean up the Charles River by 2005.

The goal of the Clean Charles 2005 Coalition is to make the river fit for swimming, fishing and boating by Earth Day 2005. The EPA began its efforts towards a cleaner Charles in 1995.

John P. DeVillars, the New England administrator for the EPA, said, "When we set out in 1995 to make the Charles fishable and swimmable by 2005, frankly there were a lot of doubting Thomases."

MIT, others join effort

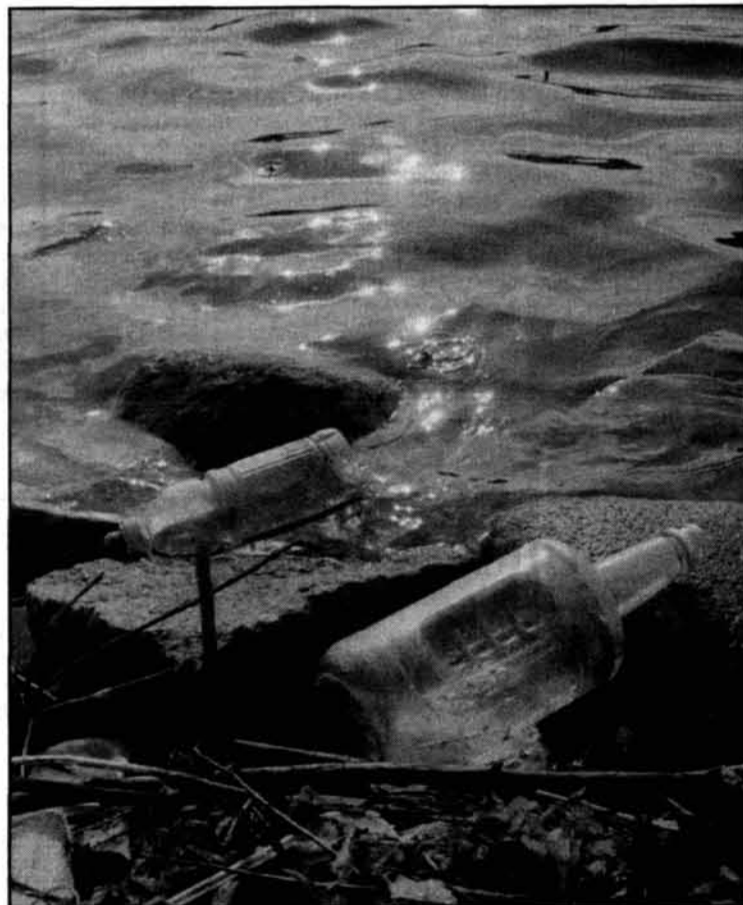
According to Paul Parravano, co-director of the President's Office of Government and Community Relations, MIT has been involved with the Charles River Watershed Association "for several years."

"The EPA has recently become interested in getting involved with colleges and universities. This particular project is important to the EPA and its regional administrator," Parravano said.

According to Parravano, MIT was invited to a meeting in January by the EPA. This meeting was the beginning of the Clean Charles 2005

Coalition. Harvard University, Polaroid and Genzyme, all members of the Coalition, were also present.

Charles River, Page 18

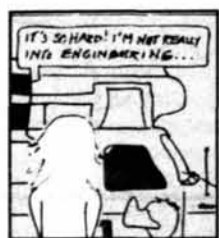


KRZYSZTOF GAJOS—THE TECH

MIT has made an agreement with the Environmental Protection Agency to help clean up the Charles River by Earth Day 2005.

The Undergraduate Association approves fall-term Finance Board allocations to student groups.

Page 11



Comics

Page 12

This is the last scheduled issue of *The Tech* for the spring semester. Summer issues will be published on June 4 (Commencement), June 11, July 7, and Aug. 4. *The Tech* will publish daily during Orientation beginning Aug. 25 and will resume regular publication in September.

World & Nation	2
Opinion	4
Features	6
TechCalendar	7

WORLD & NATION

Confrontation Escalates Over Palestinian Headquarters

LOS ANGELES TIMES

JERUSALEM

Intense U.S. diplomacy and days of negotiations failed late Monday to defuse a confrontation between the Israeli government and Palestinian politicians over the Palestinians' headquarters in East Jerusalem.

Despite warnings that the move could unleash a wave of violence on the eve of national elections, Israeli Prime Minister Benjamin Netanyahu ordered three Palestinian offices to shut down within 24 hours after Palestinians rejected Israeli demands that they curtail certain activities.

Netanyahu, in a tight race for re-election and slipping in the polls, has tried to make Israeli sovereignty over Jerusalem a centerpiece of his campaign. He maintains that the Palestinians illegally use their East Jerusalem complex, known as Orient House, to stake out a presence in the disputed holy city.

Netanyahu threatened to use force if the Palestinians do not obey his order, but Palestinians warned of potential retaliation.

"I hope they do not try," Faisal Hussein, the senior Palestinian official for Jerusalem, told a crowd gathered outside Orient House late Monday, "but we will be ready to confront them if they do."

Medicare Patients Face a Limit On Benefits for Therapy

THE WASHINGTON POST

WASHINGTON

This year, an estimated 200,000 elderly or disabled patients will pay for a little-noticed cut in Medicare benefits that lawmakers tucked into the Balanced Budget Act of 1997.

At the time, politicians boasted of simultaneously saving Medicare from financial ruin and adding popular benefits such as mammograms and Pap smears. Yet generally not discussed was that they also placed a \$1,500 annual cap on physical and speech therapy combined, and a second \$1,500 limit on occupational therapy.

As many patients are discovering, the caps kicked in Jan. 1, potentially impairing patients' rehabilitation from illness and injury. Patients recuperating from strokes, amputation and head trauma, as well as those grappling with degenerative diseases such as Parkinson's and multiple sclerosis, are exhausting their annual benefits and losing access to therapy.

Civil Rights Activists Protest Lack Of Charges in Police Shooting

THE LOS ANGELES TIMES

RIVERSIDE, CA

National civil rights activists joined about 1,000 local residents Monday in a mostly peaceful rally protesting the decision by county prosecutors not to file charges against four Riverside police officers who shot and killed a 19-year-old woman in December.

Riverside police said 45 people — including well-known activists Dick Gregory, the Rev. Al Sharpton and Martin Luther King III — were arrested in a carefully orchestrated demonstration that blocked the entrance to police headquarters.

"We want to let them know we are prepared to go to jail, to get the attention of the (state) attorney general and the U.S. attorney," the Rev. Bernell Butler, a cousin of the slain woman, said on the police station steps as he awaited his turn to be taken away.

Tyisha Miller was shot and killed Dec. 28 by police who, responding to a 911 call, found her passed out in her locked car with a gun in her lap. Police said that when officers broke the window to grab the weapon, she moved for it, prompting the officers to open fire, striking her 12 times.

Refugees Continue to Leave Kosovo Despite Withdrawal

By Carol J. Williams

LOS ANGELES TIMES

MORINA, ALBANIA

If Yugoslav President Slobodan Milosevic has begun withdrawing his forces from embattled Kosovo, the masked, dagger-wielding thugs who drove 14-year-old Fitore Lika and throngs of other ethnic Albanians out of the province Monday hadn't gotten the word.

"They told us to go or we would all be massacred," said Lika, weeping as she trudged across the Kosovo border in a torrential downpour. "They came in the morning with masks and long knives and told us to run to NATO if we wanted to be saved."

After a weekend when Milosevic's army troops, police and paramilitary gunmen stepped up their campaign of terror and expulsion, officials of the U.N. High Commissioner for Refugees in Geneva noted the exodus had now sent about half of Kosovo's 1.8 million ethnic Albanians fleeing past the province's borders.

Kukes, the nearest town in this rugged and remote corner of northern Albania, has swollen to five times its 28,000 prewar population. More than one-third of the 400,000

refugees who have flooded through here have hunkered down in miserable tents and plastic-shrouded truck beds to wait out what they hope will be a short-lived war.

"This town has seen the largest movement of people through a single place since World War II, if not before that," said UNHCR spokesman Ray Wilkinson, reiterating the refugee agency's fears that the inundation provides fresh victims for the already bandit-ridden northern regions of Albania.

In Belgrade, the Yugoslav army announced it was withdrawing part of its forces from Kosovo, a southern province of Yugoslavia, because it had completed its rout of ethnic Albanian rebels of the Kosovo Liberation Army. NATO and Western leaders said the announcement was far short of their demand for a full and verifiable pullout.

The withdrawal order was said to be in effect from 10 p.m. Sunday, but refugees consistently reported being rousted from their most recent place of hiding hours later.

Most of the ethnic Albanian Kosovars in the latest procession of sorrow that arrived here in sporadic, tear-stained clutches of several hundred were among the hundreds of

thousands who had been forced from their homes by threats and gunfire but were unable to escape Kosovo.

Stripped of money, documents and dignity weeks ago and left to wander, the hungry, desperate stragglers have again begun crossing out of Kosovo in droves.

"We've been walking for three weeks and only with the help of God are we still alive," Nuradin Gashi, exhausted and sobbing, proclaimed as he was met by aid workers at this border post with his pregnant wife, infant son and ailing mother-in-law. They had fled their home in Skenderaj under a hail of Serb gunfire.

"The police have been playing with us, pushing us first here and then there, threatening to kill us if we didn't leave and then blocking our way," said the 22-year-old refugee, who could be taken for twice his age.

Gashi said refugees had been repeatedly flushed out of their homes by Serb forces after the bombing started. They would filter back into homes that had not been destroyed, only to be sent fleeing into the woods and hills again by the Serbs.

Federal Officials Criticize FBI Role in TWA 800 Investigation

By Edward Walsh

THE WASHINGTON POST

WASHINGTON

Several federal officials told a Senate subcommittee Monday that the FBI's role in the investigation of the crash of TWA Flight 800 was overbearing and at times inept. According to that testimony, the agency clung to the theory that a bomb or missile had downed the plane months after its own chief scientist on the case had reached the opposite conclusion.

The hearing before the Senate Judiciary Subcommittee on Administrative Oversight and the Courts is the culmination of a two-year congressional review of the TWA investigation. Witnesses portrayed a probe riddled by sloppy investigative techniques and domi-

nated by a powerful FBI agent-in-charge who seemed determined to prove the crash resulted from an act of terrorism.

All 230 people aboard the Boeing 747 died when it plunged into the ocean south of Long Island shortly after taking off from New York on July 17, 1996.

Opening Monday's hearing, Sen. Charles E. Grassley, R-Iowa, the subcommittee chairman and a frequent FBI critic, said the crash investigation was "a model of failure, not success." He described the bureau's leadership in the case as "a disaster," saying the bureau hindered the investigation and "risked public safety" with its alleged attempt to suppress a report on the cause of the crash by another government agency.

The Jan. 20, 1997, report by the Bureau of Alcohol, Tobacco and Firearms (ATF) concluded that the plane crashed after a mechanical flaw ignited an explosion in its central fuel tank, a finding that became official and was endorsed by the FBI several months later. But Andrew Vita, ATF's assistant director of field operations, testified that when he sought to submit the report in March 1997 to the National Transportation Safety Board (NTSB), he "met resistance" from the FBI.

Grassley has accused the FBI of suppressing important public safety information in an act that could have endangered airline travelers. That charge was vigorously denied Monday by Lewis D. Schiavo, head of the FBI's New York office.

WEATHER

Under Pressure

By Krista L. Niece
NEWS EDITOR

A low pressure system centered over the Dakotas and the cold front to the south of it will engender a line of thunderstorms from Texas to Minnesota over the next few days, while the western and southwestern states will experience cloudy but warm weather.

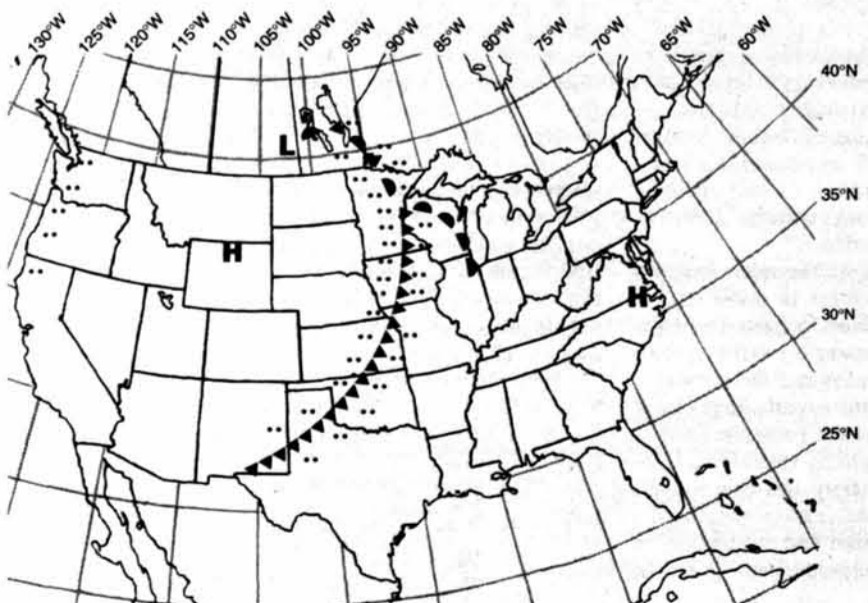
Here in the north, we can expect our omnipresent Boston wind, but increasingly warm air and cloudy-bright weather will make the sea breeze welcome, at least until the weekend.

Tuesday: Sunny, high 67°F (19°C)

Tuesday night: Clear and cool, low 42°F (6°C)

Wednesday: Sunny, high 67°F (19°C)

Situation for Noon Eastern Standard Time, Tuesday, May 11, 1999



Weather Systems	Weather Fronts	Precipitation Symbols	Other Symbols
H High Pressure	--- Trough	☁ Snow	☁ Fog
L Low Pressure	— Warm Front	☁ Light	⚡ Thunderstorm
§ Hurricane	▲ Cold Front	☁ Moderate	☁ Haze
	◐ Occluded Front	☁ Heavy	☁

Compiled by MIT Meteorology Staff and The Tech

China Seeks to Restrain Public Anger Over Embassy Bombing

By Henry Chu
and Maggie Farley

LOS ANGELES TIMES

BEIJING

Thousands of protesters continued to march on the U.S. Embassy here Monday, but China tried to rein in public anger and for the first time held out the possibility of a diplomatic solution to the crisis in Sino-U.S. ties caused by NATO's bombing of the Chinese Embassy in Yugoslavia.

In a list of demands made by telephone to U.S. Ambassador James R. Sasser, who remained trapped inside an embassy building, Beijing demanded a formal apology, a thorough investigation and punishment for those responsible for the attack.

The Communist regime also announced that it was suspending human rights talks with the United States and high-level military exchanges, two key programs the White House has held up as proof of the success of its strategy of "engaging" China.

At the same time, however, Chinese officials tried to reassure jittery American companies that their investments and businesses would be protected from the anti-American backlash.

President Clinton already has written a letter of regret to Chinese President Jiang Zemin and expressed his condolences Sunday to the families of the three Chinese killed in the airstrike. But those facts have not been reported in the media here.

In Washington, the State Department disclosed that Secretary of State Madeleine Albright visited the Chinese Embassy early Sunday to personally deliver a letter of apology addressed to Chinese Foreign Minister Tang Jiaxuan after Tang refused to talk to her on the telephone.

On Monday, Albright told reporters that in her midnight visit she "made very clear that I understood the sadness of losing innocent diplomats." But she said she added: "Ours was a tragic error; (Yugoslav

President Slobodan) Milosevic targets innocent civilians on a regular basis or as a regular part of his policy."

In the letter, whose text was made public Monday, Albright repeatedly expressed regret for the embassy bombing. But she also told the Chinese authorities that they have an obligation "to ensure the safety of all Americans in China and protection of American properties."

A simple apology is not likely to appease people such as Li Fanghui, a graduate student who skipped class to join the protests in Beijing Monday.

"You can't just call this 'a terrible mistake,'" said Li, 25, who read about Clinton's expression of regret on the Internet. "This isn't like kids fighting. It's not just a matter of saying 'Sorry.'"

He acknowledged that he had not fully thought out what kind of restitution the United States should make. But at the very least, those behind the bombing "should step down," Li said.

NRA Criticizes Leading Weapons Makers for White House Meeting

By Charles Babington

THE WASHINGTON POST

WASHINGTON

A fissure in the nation's gun lobby grew wider Monday, as leading gun manufacturers participated in a White House meeting on youth violence while the National Rifle Association attacked the event in a news conference and newspaper ads.

The firearms industry has come under increasing criticism in the wake of the Littleton, Colo., killings and unrelated liability lawsuits filed by several cities. Major gun manufacturers have responded by saying they would support some new restrictions on the right to possess guns.

But the NRA, the major group representing gun owners, has remained defiant. The gulf between the two factions was particularly evident Monday when President Clinton hosted a three-hour meeting on "children, violence and responsibility," involving 60 people representing television, Hollywood, video games and other industries.

At the huge rectangular table were top executives of the Glock Inc. and Smith & Wesson gun manufacturers and the American Shooting Sports Council, which rep-

resents about 350 makers and distributors of firearms. They embraced several proposals backed by Clinton, including raising the legal age for handgun possession to 21 from the current 18, and requiring criminal background checks on people buying weapons at gun shows.

The White House did not invite top NRA officials, who expressed their views in a Washington news conference and full-page ads in newspapers, including the Wall Street Journal.

"More firearms legislation, like previous legislation, that is passed with no intention of enforcement is a dangerous fraud perpetrated upon the safety of the American people that must stop," said the ad, signed by NRA President Charlton Heston. The ad said it was "unfortunate" that Clinton did not invite the NRA, which it described as "the nation's foremost authority on firearms education, accident prevention and proven policies that curb criminal misuse of guns."

Clinton took pains not to single out gun owners or other groups as he called for a variety of voluntary efforts to curb youth violence. "Everyone was talking about what could be done to accept responsibil-

ity. No one was pointing the finger of blame," he said in a Rose Garden ceremony after the closed meeting, which he called a "strategy session." He praised "the remarkable support that gun manufacturers have given to many of our common-sense gun proposals."

Clinton, joined by his wife and Vice President and Tipper Gore, called for "a national campaign to prevent youth violence," modeled on earlier public-private endeavors to curb teen pregnancy and to move welfare recipients into jobs. Hillary Rodham Clinton said the administration will help create a nonprofit agency that "will bring together many of the people around the table today . . . (and) come forward, we hope, with very specific suggestions about what parents can do, what schools can do, what community groups can do, what the media can do, what gun manufacturers can do."

Monday's meeting stressed voluntary rather than mandatory efforts to identify and address possible causes of youth violence. Many of the strategies have been aired before.

For example, U.S. television manufacturers already are required to begin installing V-Chips.

Rocket Failures Cost United States Billions in Damage to Spy Satellites

By Kathy Sawyer

THE WASHINGTON POST

WASHINGTON

U.S. rockets have suffered six serious failures in the last nine months, destroying or rendering useless billions of dollars worth of spy, research and communications satellites, and raising concerns that the nation lacks reliable access to Earth orbit.

The failures, the worst string of launch disasters in more than a decade, last week triggered a general reassessment by military and civilian agencies and the aerospace industry. Some experts have begun to argue that the rocket reliability problem, which threatens U.S. national security and commercial space interests, is more serious than anyone realized and requires more urgent and high-level attention than it has gotten.

"I think this is probably one of the worst times in the launch history of the country," said retired Air Force Gen. Howell M. Estes III, former head of the U.S. Space

Command. "Even the old rockets aren't working, and some of the newer rockets aren't working. That's the concern, and it comes at the very time we most need to get the launch costs down and assure access to space."

General Richard B. Myers, head of the U.S. Space Command, said Friday that the loss of three national security satellites in the near term does "not jeopardize military operations; however, without aggressive action, the impact in the future could be significant."

If the trend continues, it could jeopardize the ability of U.S. fighting forces to communicate, navigate, assess the weather, monitor hostile missile launches and gather intelligence.

Anxieties were heightened when three launches failed within the eight-day period that ended a week ago Tuesday. One of those malfunctions involved a Titan IV rocket, the launch vehicle the U.S. military depends on to put its highest priority satellites into orbit. The Titan IV

has now suffered three failures in three flights since August, including a fiery explosion over the launch pad at Cape Canaveral Air Force Station that destroyed a \$1 billion top-secret intelligence satellite.

In addition to the Titan mishaps, a commercial Athena rocket lost a satellite in April, and last Tuesday, the new Delta III rocket suffered its second failure since August.

Coming nearly a half-century into the Space Age, a congressional staffer who specializes in space issues said, "It is sobering that after four decades, we're still in a situation that (access to space) is not reliable."

Investigators have not yet identified any common denominator in the various hardware and software failures so far uncovered as contributors to the accidents. Analysts said it is too early to know whether the sudden surge in launch failures is a mere coincidence, or something fixable in the system. Launching rockets is inherently risky and unforgiving, they say.

Marine Sentenced for Obstruction Of Justice in Gondola Accident

LOS ANGELES TIMES

WASHINGTON

Capt. Richard Ashby was sentenced Monday to six months in a military prison and ordered out of the Marine Corps for obstructing justice and conspiring to hide and help destroy a videotape made during the flight last year in which the jet he piloted cut a ski gondola cable in Italy, killing 20 people.

Ashby, 32, of Mission Viejo, Calif., immediately asked a supervising general to reverse the sentence, or at least delay the punishment, because the jet's co-pilot — who actually destroyed the tape — was only discharged from the service.

Ashby was acquitted in March of 20 counts of manslaughter in the cable car tragedy, which continues to strain relations between the United States and some European countries. But he was convicted last week of taking the video out of the cockpit of his EA-6B Prowler jet and giving it to his co-pilot, Capt. Joseph P. Schweitzer, who then tossed the tape on top of a bonfire.

The six-month sentence for Ashby, who was tops in his flight squad and had just been promoted to flying more prestigious fighter jets when the accident occurred on a training mission, calls for him to be dishonorably discharged upon completing his prison term. He is not to receive any military pay while serving his time.

Ashby's sentence was delivered by a jury of seven Marine Corps officers. The jurors deliberated for about two hours Monday after hearing closing arguments from attorneys on what would be the appropriate penalty for Ashby.

Amy Fisher Leaves New York Prison

NEWSDAY

Leaving behind the lurid teenhood that riveted a tabloid nation, Amy Fisher walked out of an upstate New York prison Monday straight into the media that catapulted her from suburban high-school senior to made-for-TV temptress.

Head down, big black sunglasses hiding her eyes, Fisher, now 24, stepped from the guardhouse at Albion Correctional Facility about 9:20 a.m. Instantly, she was surrounded by about 15 reporters, photographers and cameramen, some of whom had been waiting since sunrise to record the first sighting of the celebrity ex-convict.

Fisher, dressed in a white pullover and ankle-length black skirt, never uttered a word as she was hustled away by her lawyer, mother and publicist into a rented Ford Expedition. A family acquaintance who accompanied the entourage to the airport in Rochester and on the chartered plane to Long Island took pictures of the mother-and-daughter reunion that were distributed to an international photo agency.

Fisher's publicist, Patricia O'Connor, said the controlled distribution of pictures was meant to allow the family privacy and provide the media with images from the long-awaited meeting.

Microsoft Announces Plan to Buy Five Percent Share of Nextel

THE WASHINGTON POST

WASHINGTON

Microsoft Corp. made another surprise foray into the world of communications and the Internet on Monday, announcing plans to buy a 5 percent stake in wireless phone company Nextel Communications Inc. of suburban Reston, Va. Under the deal, customers who use their Nextel phones to access the Web will first be taken to a Microsoft site.

That will give Microsoft a starting position in the race for ownership of the smallest screens of all: the little displays on the newest-model portable phones, which can show Internet data sent over the air.

The announcement complements one last week that Microsoft would invest \$5 billion in AT&T Corp. That deal would put Microsoft's Windows CE software into millions of cable TV set-top boxes to provide all-in-one video, telephone and Internet access.

This deal and others are part of a flurry of alliances, mergers and investments that companies hope will position themselves to offer a full range of electronic services to Americans in their homes and on the road through hand-held wireless devices.

Microsoft hopes that through the Nextel deal, its Web site will become a "portal" for large numbers of the phone company's customers. Nextel currently has more than 3 million, though how many would use Internet-capable phones is unclear.

Christian Groups Launch New Ad Campaign Touting Gay Conversion

THE WASHINGTON POST

WASHINGTON

Over the weekend, a coalition of Christian groups launched a television ad campaign in the Washington area to convince gay people they can change their sexual orientation "through the power of Jesus Christ." It is the debut of what the coalition says will be a nationwide TV campaign.

The first ad — titled "Mom," scheduled to coincide with Mother's Day weekend — ran in the Washington market on the local UPN network affiliate after the major network stations declined to run it. The ad features a woman in an easy chair discussing the fallout from her son's flirtation with drugs and homosexuality. "My son Michael found out the truth that he could walk away from homosexuality, but he found out too late," she says. "He has AIDS."

An upcoming ad in the series, titled "Family," will feature happy-looking couples who were "freed from the homosexual lifestyle," got married and are now raising children together. Both ads close with the words: "It's not about hate. It's about hope."

Gay rights advocates disagree. "They are trying to put forward a kinder, gentler kind of prejudice but it won't work," said Cathy Renna of the Gay and Lesbian Alliance Against Defamation. "It's just a more subtle form of homophobia."

The ads were the brainchild of Janet Folger at the Center for Reclaiming America in Fort Lauderdale, Florida.

OPINION

Letters To The Editor



Chairman
Josh Bittker '99

Editor in Chief
Zareena Hussain '00

Business Manager
Joey Dieckhans '00

Managing Editor
Ryan Ochylski '01

Executive Editor
Douglas E. Heimbürger '00

NEWS STAFF

Editors: Frank Dabek '00, Susan Buchman '01, Jennifer Chung '01, Krista L. Niece '01; **Associate Editors:** Rima Arnaut '02, Sanjay Basu '02, Neena S. Kadaba '02, Kristen Landino '02, Kevin R. Lang '02, Karen E. Robinson '02; **Staff:** Eric Sit '99, Erik Snowberg '99, Anna K. Benefiel '00, Adam Brown '00, Dudley Lamming '00, Laura McGrath Moulton '01, Jane Yoo '01, Gitrada Arjara '02, Steve Hoberman '02, Alex Ianculescu '02, Payal Kohli '02, Priya Pahalad '02, Michael M. Torrice '02; **Meteorologists:** Michael C. Morgan PhD '95, Véronique Bugnion G, Greg Lawson G, Bill Ramstrom G, Gerard Roe G, Chris E. Forest, Marek Zebrowski.

PRODUCTION STAFF

Editor: Brett Altschul '99; **Associate Editors:** Ian Lai '02, Ágnes Borszéli; **Staff:** Erica S. Pfister '00, Jordan Rubin '02.

OPINION STAFF

Editors: Michael J. Ring '01, Naveen Sunkavally '01; **Columnists:** Julia C. Lipman '99, Eric J. Plosky '99, Elaine Y. Wan '01, Veena Thomas '02, Kris Schnee '02; **Staff:** Wesley T. Chan '00, Dawen Choy '00, Seth Bisen-Hersh '01, Andrew J. Kim '01, Jeff Roberts '02.

ARTS STAFF

Editors: Joel M. Rosenberg '99, Satwikai Seshasai '01; **Associate Editors:** Vladimir V. Zelevinsky '95, Bence P. Olveczky G; **Staff:** Daniel Metz G, Steven R. L. Millman G, Roy Rodenstein G, Teresa Huang '97, David V. Rodriguez '97, Mark Huang '99, Kate Samrandvedhya '00, Francisco Delatorre '01, Fred Choy '02, Amrta Ghosh '02, Daniel J. Katz '03.

PHOTOGRAPHY STAFF

Editors: Gregory F. Kuhn '00, Rebecca Loh '01, Annie S. Choi; **Associate Editors:** Garry R. Maskaly '00, Karlene Rosera '00, Ajai Bharadwaj '01; **Staff:** Rich Fletcher G, Aaron Isaksen G, Wan Yusof Wan Morshidi G, Thomas E. Murphy G, Michelle Povinelli G, Arifur Rahman G, Jelena Srebric G, T. Luke Young G, Krzysztof Gajos '99, Rita H. Lin '00, Connie C. Lu '00, Chun Hua Zheng '00, Ying Lee '01, Rebecca Hitchcock '02, Ming-Tai Huh '02, Angela Piau '02, Yi Xie '02, Lucy Yang '02, Miodrag Ćirković.

FEATURES STAFF

Editor: Katie Jeffreys '01, **Cartoonists:** Jessica Wu '99, Jennifer Dimase '01, Xixi D'Moon '01; **Staff:** Shawdee Eshghi '99, Jean K. Lee '99, Andrew J. Maywah '99, Aaron D. Mihalik '02.

BUSINESS STAFF

Advertising Managers: Jasmine Richards '02, Huanne T. Thomas '02; **Staff:** Karen Cheng '02, Jeannette Stephenson '02.

TECHNOLOGY STAFF

Director: Shantonu Sen '02; **Staff:** Hoe-Teck Wee '02.

EDITORS AT LARGE

Contributing Editors: Jennifer Lane G, Dan McGuire '99; **Color Editor:** Gábor Csányi G; **Senior Editor:** May K. Tse '99.

ADVISORY BOARD

V. Michael Bove '83, Robert E. Malchman '85, Thomas T. Huang '86, Jonathan Richmond PhD '91, Reuven M. Lerner '92, Josh Hartmann '93, Jeremy Hylton '94, Garlen C. Leung '95, Thomas R. Karlo '97, Saul Blumenthal '98, Indranath Neogy '98.

PRODUCTION STAFF FOR THIS ISSUE

Night Editors: Brett Altschul '99, Ian Lai '02; **Associate Night Editor:** Jordan Rubin '02; **Staff:** Jen Lane G, Frank Dabek '00, Douglas E. Heimbürger '00, Ryan Ochylski '01, Naveen Sunkavally '01.

The Tech (ISSN 0148-9607) is published on Tuesdays and Fridays during the academic year (except during MIT vacations), Wednesdays during January and monthly during the summer for \$45.00 per year. Third Class by The Tech, Room W20-483, 84 Massachusetts Ave., Cambridge, Mass. 02139. Third Class postage paid at Worcester, Mass. Permit No. 589. POSTMASTER: Please send all address changes to our mailing address: The Tech, P.O. Box 397029, Cambridge, Mass. 02139-7029. Telephone: (617) 253-1541, editorial: (617) 258-8324, business: (617) 258-8226. Fax: (617) 258-8324. Advertising subscription and typesetting rates available. Unpaid contents © 1999 The Tech. Printed on recycled paper by MassWeb Printing Co.

An Outrageous Bombing

As you all know, on May 7, 1999, the North Atlantic Treaty Organization dropped three missiles from three different angles on the Chinese Embassy in Belgrade. Everyone was shocked by the news. NATO has apologized, calling the bombing a mistake, but it will continue its bombing. So is this an apology or ignorance? There are several points that will convince people it was not a mistake.

If it was a mistake, why were three missiles blasted at the embassy from three different angles? As far I know, the Chinese embassy building is not close to any important attack target, so why has this building been hit?

If NATO used an "outdated" map for this attack, why did it use an "updated" map to hit the house of the President of Yugoslavia?

Is there anybody who believes that NATO does not have an accurate system for positioning in such a big attack? If so, why not stop the war? You are not allowed kill more inno-

cent people by using your bad system.

The attack has brought angry responses from China as well as the international society. The UN Security Council is to meet in an emergency session to discuss the incident. But does NATO care? It carried out more air strikes on Yugoslav targets overnight Saturday and Sunday morning. The apology for the "mistake" is so absurd. On Sunday, as American mothers were happily celebrating Mother's Day, how many Yugoslavian mothers lost their children? How many Yugoslavian mothers are homeless? Why do we need to continue this war?

Any statement can not conceal the bloody fact. The NATO air strike has spurred extreme indignation from the Chinese government and people. This action exposes the aggressors' evil intentions and spilled Chinese blood in an act for which NATO must be accountable. Chinese people died for nothing! This action is an outrageous violation of China's sovereignty, and it tramples on the Vienna Convention on Diplomatic Relations and other basic principles of international law. A country's embassy or a consulate is generally accepted as the territory of the country and is protected by international law. If the American Embassy in China were bombed for some unknown reason some day, would the United States just let the Chinese government say it was a mistake?

During the more than 40 days of bombing against the Federal Republic of Yugoslavia starting March 24, NATO has changed its targets from military to civilian structures such as hospitals, bridges, TV stations, oil refineries, power plants, and residential places. Now, the target has become the Chinese Embassy in Yugoslavia. Not only innocent Yugoslav civilians but also foreign diplomats and journalists have been killed in the bombings. Since the outbreak of the Kosovo crisis, the Chinese government and people have more than once clearly demanded that the crisis

should be resolved through peaceful means on the basis of respecting the integrity of Yugoslavia's sovereignty and territory. China, who maintains a foreign policy of independence and peace, opposes anyone who practices hegemonism and condemns those who invade others. We should always stand on this no matter what threats are faced.

It is well known that the American people are peace-loving people. Then why do the American people support such a war to kill innocent people? Let's stop this war.

Jingsong Wu G

Stop the War

Looking at the blue "stop US/NATO bombings" posters, we found that a majority of them portray the suffering of the civilian population. As such, we believe that for any MIT student, those posters should be perfectly understandable. However, considering some of Kris Schnee's writings on the topic (["Writing on the Wall," May 7] and ["Get Tough or Get Out," April 2]), it seems perfectly understandable why he finds the posters not understandable.

What is appalling in those writings is the ease with which the author justifies the killings of civilians and children, officially stated as "unfortunate incidents", "accidents", "errors", "regretful incidents," or "very, very bad mistakes" for the cause that he believes in. We believe that all people of good will, looking back in history, can recognize where this kind of attitude is coming from. And, more importantly, where it leads to. Once again, let us try to take this war out of the hands of the generals. Thereby, conditions would be established for all of citizens of Yugoslavia, ethnic Albanians included, to return to a normal, everyday life.

Aleksandar Kojic G
Petros I. Komodromos G
Milos Komarcevic '99

Erratum

An article in Friday's issue [Injured Police Officer Files Suit Against Institute, Beta Theta Pi] incorrectly stated that Robert N. Tunick '00 was BTP president at the time of an incident in which summer residents threw beer cans at police. Matthew S. Rehtin '99 was BTP's president at the time. The article also incorrectly listed David W. Weaver '99 as BTP's current president. Steve Lefkowitz '00 is the current BTP president. The article also incorrectly stated Tunick's year as '99.



Opinion Policy

Editorials are the official opinion of *The Tech*. They are written by the editorial board, which consists of the chairman, editor in chief, managing editor, news editors, and opinion editors.

Dissents are the opinions of the signed members of the editorial board choosing to publish their disagreement with the editorial.

Columns and **editorial cartoons** are written by individuals and represent the opinion of the author, not necessarily that of the newspaper.

Letters to the editor are welcome. Electronic submissions are encouraged and may be sent to letters@the-tech.mit.edu. Hard copy submissions may be addressed to *The Tech*, P.O. Box 397029, Cambridge, Mass. 02139-7029, or sent by interdepartmental mail to Room W20-483. All submissions are due by 4:30 p.m. two days before the date of publication.

Letters and cartoons must bear the authors' signatures, addresses, and phone numbers. Unsigned letters will not be accepted. No letter or cartoon will be printed anonymously without the express prior approval of *The Tech*. *The Tech* reserves the right to edit or condense letters; shorter letters will be given higher priority. Once submitted, all letters become property of *The Tech*, and will not be returned. *The Tech* makes no commitment to publish all the letters received.

To Reach Us

The Tech's telephone number is (617) 253-1541. E-mail is the easiest way to reach any member of our staff. If you are unsure who to contact, send mail to general@the-tech.mit.edu, and it will be directed to the appropriate person. *The Tech* can be found on the World-Wide Web at <http://the-tech.mit.edu>.

It's All Your Fault

Perspectives for these topsy-turvy times

Joel M. Rosenberg

You're sitting in your room in Belgrade. The electricity is cut off, which also means the electrically pumped water won't flow. It's night, and you hear what sounds like a fire engine that never gets louder or quieter. Occasionally there is a loud crack, sometimes louder, sometimes quieter, and each one represents another bomb that luckily hasn't hit you. Weeks of this have led you to try desensitizing yourself to the fear, but you're not strong enough to fool yourself that severely. You are powerless to improve your situation, and out of pure frustration curse Clinton, a man you believe has tried to get many women to be impressed with his penis size, and is now working on the rest of the world. You wonder why half the globe is treating your life as a video game.

Cut to an American high school. You're sitting in the principal's office in your black shirt and black pants, with your parents flanking your sides. The principal is informing you that you must either undergo counseling or be expelled from school after telling your history class that, while you disagree with their actions, you can understand the motivations of the Littleton shooters, yourself being a bright, misunderstood, underground-leaning kid. You thought you were helping the class conversation by sharing your feelings, something you don't often do. Now, with the principal obviously not your "pal," unable to talk to your parents (who are urging you to take the counseling), and fearful that soon you'll

have nowhere to turn when your parents take away your computer ("For your own safety"), you curse yourself for ever opening up in the first place.

Zoom out from a tight shot of your face to reveal yourself sitting in the tiny witness chair of a huge, imposing U.S. Senate chamber. Ads for the most violent video games set the stage for a screening of some of the most extremely violent clips from relatively non-violent movies, all out of context. The Senators watch in mock horror, failing to suspend the disbelief that forms the very basis of this entertainment. They are looking for confirmation of their hunch that it is this trash that is causing kids to go out and kill their classmates, but you speak against such generalized correlations and instead speak in favor of trying to understand kids today in terms of the vast amount of technology they have grown up with, technology adults just can't compre-

friends be removed from your dorm. Reading further, you realize that not only is your dorm as you know it being destroyed, but several other dorms are as well, in what seems like a game of Risk being played by MIT administrators using a map of campus for the board. You think back to high school biology, and remember that displacing populations from their ecosystems and introducing them into non-indigenous regions often leads to catastrophic results. You hope you won't have too much work next week so you can go to one of the redesign meetings, which you haven't been able to get to yet, and express your outrage at the proposal.

Flash to right now. You're reading the opinion page of *The Tech*, noticing all of the crazy things going on at the local, national, and international levels, and wonder at what point the world went completely insane. You

wonder why Senators are wasting their time with the Anarchist's Cookbook, stuff you've known about for years, while NATO is literally playing with fire in their "deep regret" for the "accidental" bombing of the Chinese Embassy in Yugoslavia. You wonder why kids who like Dungeons & Dragons are now



hend. You leave frustrated that the press wasn't particularly interested in your take on things but are hopeful that someone was listening.

Jump to your dorm room at MIT. You've just taken *The Tech* out of your book bag, and the lead story informs you that a new proposal recommends you and all of your

kicked out of school for liking Dungeons & Dragons. You wonder why MIT is no better than the Senators who don't really seem to want to solve any problems but only want to appear to be solving problems. You wonder where the rationality has gone. Frustrated, you turn to the comics page and laugh at Dilbert's silly boss.

Rocks And Broken Windows

Elaine Wan

A month ago, Chinese Premier Zhu Rongji's visit to the United States and special stop at MIT raised hopes that America's alliances with China would be fortified. But it now appears that the pro-democracy, Tibetan and Taiwanese activists are not the main opponents against goodwill between the two countries. The "accidental" bombing of the Chinese embassy during a NATO airstrike in Belgrade, Yugoslavia late Friday has caused numerous violent protests in China and the United States.

An United States embassy was established in China to represent the rights of our citizens living there and to act as an American communication line to relay information between the two countries. This communication line has now become the focus of attack for many students and protesters in Beijing. U.S. citizens and political officials have been held accountable for the actions of NATO and the damage to the Chinese embassy in Yugoslavia. Even though the Chinese military have tried to hold the protestors back, the windows of the U.S. embassy have been completely shattered by rocks. U.S. Ambassador James Sasser has now become a hostage within his own embassy. U.S. reporters in China have been mauled and questioned regarding NATO's actions.

China has demanded an emergency session of the U.N. Council to discuss what Chinese officials call a "barbarian act," according to *New York Times* of May 9. Yugoslav officials said one person was killed and twenty-six were injured by two direct hits on the embassy. Many officials in China are still questioning whether the attack was intentional. China is a permanent member of the Security Council and has been strongly opposed to the past NATO airstrikes on Yugoslavia. Some claim that the attack may have been used to spur Chinese involvement

Many officials in China are still questioning whether the attack was intentional.

in the Kosovo crisis.

U.S. officials report that the Chinese embassy was hit by mistake because faulty intelligence information indicated that the building was a Yugoslav supply facility, according to CNN. Many Chinese have ignored NATO's apologies and have declared that apologies are not enough because of NATO's violation of international law.

If the Chinese react the same way we have to our bombed embassies and injured citizens, will we be facing a war with China in the near future? Last August, we lost embassies of our own in Kenya and Tanzania. Those bombings raised such clamor that it emotionally urged us and our politicians to bomb the "secret chemical weapons" plant in Sudan.

Till today, the media are still discussing whether that plant was financially supported by Osama bin Laden, the CIA's suspected mastermind of the Kenyan and Tanzanian bombings. The Sudan government still claims that the American intelligence was faulty and that the plant only made medicine and not chemical nerve gas. Some Americans question point to the fact that only few lab tests were performed at the Sudan plant as evidence of chemical manufacturing.

In April 1986, President Reagan publicized the contents of decoded Libyan diplomatic cables to justify his ordered U.S. bombing raid on Tripoli. Reagan linked Libya to the bombing of West Berlin discotheque that killed a U.S. Serviceman, according to "Flaws in U.S. Account Raise Questions on Strike in Sudan," August 29, 1998, *The New York Times*.

Maybe it is time we make sure that NATO and American intelligence is no longer "faulty." It is completely ridiculous to think that by saying that NATO made a mistake, it is okay to kill one or injure many people. But the truth is that the bombing did occur and the United States is getting the blame for NATO's actions. Therefore, our country will be left with the responsibility of making compensations to China. We may have to make the best use of what is left of Sino-American ties to ensure that increasing involvement of numerous countries in Kosovo does not lead to another big massacre closer to home.

The Lucas Money Machine

Eric J. Plosky

Star Wars hype continues to grow with each passing day.

Although tickets first go on sale tomorrow for "Episode I: The Phantom Menace," Lucasfilm marketers have already been active for several months. Excitement about the film, the first of three planned prequels to the 1977 original, has risen to titanic proportions. "Menace" doesn't even open for eight more days, but, as you read this, MIT students are already standing in line outside the Cheri — probably figuring out how to get their \$10 Qui-Gon Jinn and Darth Maul action figures to talk to one another. The movie isn't just a movie — it's become a Cultural Event.

Action figures are only the first sign. George Lucas's merchandising machine — so eloquently described by Yogurt in Mel Brooks's "Spaceballs" — is in a league of its own as far as Hollywood is concerned. Each Jar Jar shoved from store shelf to shopping cart helps to redefine the entertainment industry's standards; as obedient consumers, we recognize the market leader as a first-tier cultural influence, and we waste no time forming queues outside FAO Schwarz at midnight.

This is Star Wars we're talking about, after all. The world of Luke Skywalker and company has been part of our own reality, in a strange way, for over twenty years. In much the same way as the trilogy took the motion-picture industry by storm, it has captured the popular imagination to an extent few really understand. Few, that is, except for industry analysts, studio executives and entertainment journalists, who confidently predict that the film will gross upwards of \$400 million. It goes without saying, of course, that a \$400 million estimate for any other film would get the estimator run out of Hollywood.

Whatever the eventual take, George Lucas will laugh all the way to the bank. Lucas mas-

terminated every nook and cranny of the Star Wars empire, on celluloid and on balance sheets, and is perhaps the only person who truly knows what is going on, in every category. Hype-building? He tantalized millions of Web-watchers by strategically releasing QuickTime teasers; he titillated moviegoers with full-length motion-picture trailers. Media relations? He's gotten the television news to "report" a new Star Wars story every night (on toy feeding frenzies, ticket buyers' lines, and the assumed 2 million people who will call in sick the day "Menace" premieres). Distribution? He's written up a long list of rules; only theaters that meet his stringent specs can even show the film, and anyone who doesn't play ball is out. Quality control? No more than eight minutes of trailers before the movie itself, and then there are restrictions on ticket sales and marquee runs. Not to mention the fact that Lucas is reported to be noodling with the film's final print up until the very minute the actual reels have to be sent to venues.

For all his careful preparations, for all his calculations, and even with all the hype that guarantees the film will be some flavor or other of blockbuster, Lucas may actually have reason to be a bit nervous. Early reviews of the film are tepid. Those who have seen "Menace" — mostly industry types and those lucky enough to know someone with insider tickets to the preliminary screenings — report that although the movie is quite entertaining and a special-effects spectacle, it doesn't live up to the hype. What movie could? In the end, no matter how much of a Cultural Event it's made out to be, the film is still just a film, capable (soon) of fitting quite nicely between "Ishtar" and "Howard the Duck" on the shelf at Tower Video.

A strategy that may yet backfire is aiming the movie squarely at children. Much more so even than "Return of the Jedi," which introduced us to furry Ewoks obviously designed to inhabit toy-store shelves, "Menace," by all

early accounts, targets the pre-teen demographic. Reviewers (presumably post-teen) have already voiced displeasure at the storyline's simplicity and with the two child-actors, Jake Lloyd and Natalie Portman. Older, less Star Wars-happy audiences might be turned off entirely.

Plus, Lucas has two more prequels to worry about — Episodes II and III, tentatively slated for 2002 and 2005. It is hardly conceivable that those films will have a comparable media buildup, no matter how many hundreds of millions of dollars "Menace" takes in. Much of the demand for Episode I is a result of the long, vacant stretch that's elapsed since 1983's "Jedi"; since then, apart from digitally spiffing up his first three films, Lucas has left audiences drooling for more. Many fans will be able — or should be able — to see "Menace" and then wait the three years until Episode II without snapping up every action figure in sight.

Still, Lucas knows this business well, and has probably accounted for everything I've mentioned. He created his own production company, Lucasfilm, precisely so he could micromanage everything from music to editing to distribution; he financed everything out of pocket and will reap nearly every cent of profit; he invented modern merchandising. Lukewarm reviews of "Jedi" and "The Empire Strikes Back" didn't dampen audience enthusiasm or stop those films from raking in hundreds of millions of dollars, despite their orientation toward teens. Because of Lucas's skill and cleverness, Star Wars is a Cultural Event in and of itself even without the recent hype.

Yes, I will see "Menace"; as a matter of fact, I'm looking forward to it quite a lot. If it's great, I may even (gasp!) see it twice. But I'm not going to plunk down \$200 to buy a miniature plastic doppelganger of every character. At least, not while I've still got my old, circa-1980 Imperial snowtrooper. (Hey, anyone know how much he's worth?)

FEATURES

School Mascots

A beaver, a seal, and an engineer



By Aaron D. Mihalk
STAFF REPORTER

At the center of school spirit undoubtedly lies the school mascot and other representative symbols. Currently there are three symbols that are used to represent MIT: the engineer, the beaver, and the "Mens et Manus" seal.

Although there seems to be no documentation on when the engineer officially became a symbol of MIT, it is likely that it has been

used since the beginning of the Institute. Since MIT is primarily an engineering school, an engineer is an obvious symbol to use to represent the student body. The MIT Chorallaries have since developed an "Engineer's Drinking Song." This entertaining song reflects the comic and creative nature of the students at MIT.

The drinking song is relatively new. It was written shortly after the creation of the

Chorallaries in 1977, by David H. Bass '83. Verses are continually added to the song and currently it boasts almost 50 different verses. These verses include ones that humorously degrade other schools and others that show the ingenious nature and boisterous drinking habits ("we can, we can, we can demolish 40 beers") of the engineer.

"Some schools have more standard traditional songs about their school," said Bernard R. Levin '00, music director of the MIT Chorallaries. "We do have the alma mater, but [the drinking song] is much more offbeat and humorous, and I think that suits MIT well."

An amusing quality of the drinking song is that it is constantly changing. "We tend to write new verses for Bad Taste, at various times throughout the year, and the graduating seniors typically write a verse for their last concert," said Levin.

"People seem to love [the drinking song] at MIT," said Levin. "Especially the verse that trashes Harvard and says they can kiss the beaver's ass."

"We recently performed the Engineer's Drinking Song as an encore for a gig with a capella groups from Ivy League schools," said Levin. "It was our chance to... poke fun at Harvard, if not at the others.... It was definitely our way of showing MIT pride."

"It continually gets verses added whenever we do new events, such as the beaver's birthday party in Lobby 7 this year, or each year at Bad Taste," said Sheri A. Cheng '99, the Chorallaries' business manager.

Beaver becomes MIT's animal mascot

The beaver is perhaps the most conspicuous symbol of MIT. It appears on the "brass rat" class ring and a costumed beaver occasionally appears at sporting events and some student activities.

The beaver was adopted as the MIT mascot in 1914. Lester D. Gardner 1898 presented the idea to MIT president Richard C. Maclaurin at the annual dinner of the Technology Club of New York. According to brass rat lore, Gardner's argument for choosing a beaver follows:

"We first thought of the kangaroo, which, like Tech, goes forward by leaps and bounds. Then we considered the elephant. He is wise, patient, strong, hard working, and like all those who graduate from Tech, has a good tough hide. But neither of these were American animals. We turned to [William Temple] Hornaday's book on the animals of North America and instantly chose the beaver. The beaver not only typifies the Tech [student], but his habits are peculiarly our own. The beaver is noted for his engineering, mechanical skills, and industry. His habits are nocturnal. He does his best work in the dark."

The beaver mascot can also be seen in full gear at sports games and other student events. The first beaver costume design was created for the Class of 1927's 50th reunion and unveiled at the Alumni Day luncheon. It was rented from the costume designer until the early 80's when it was bought for \$1,500.

The costume has become worn-out over the years. The nose is chafed, the eyes need

constant attention, and the legs are threadbare and shedding. Due to the wear of the costume, Ted E. Johnson, assistant director for programs at the Campus Activities Complex, is working with the CAC advisory board and the Undergraduate Association to develop a new design for the beaver mascot costume.

"We are working with [the MIT community] to develop an image," said Johnson. "It is a very delicate matter of choosing the right beaver that will represent MIT."

Currently, Johnson is working with students who submitted entries in the MIT beaver design contest sponsored by CAC. "As it stands now, we are planning to select the image, have the costume constructed this summer, and debuted at an appropriate event in the fall."

"I like the beaver... he cracks me up," said Cheng. "And especially when they do cartwheels... you wonder how they keep that gigantic head-thing on."

MIT seal first adopted in 1864

The oldest official MIT symbol is the "Mens et Manus" seal that appears on MIT letterheads and other official documents.

The seal contains many different items. The most prominent figures (the laborer at the anvil and the scholar with a book) represent MIT's incorporation of science and industry into its curriculum. The year 1861 refers to the year that MIT was incorporated by the Commonwealth of Massachusetts. The Latin inscription "Mens et Manus" (translated to "mind and hand") and the books that appear (entitled, "Science and Arts") on the pedestal embody the idea of cooperation between knowledge and practical science.

The seal was adopted in 1864 and was engraved in 1865 for a cost of \$285. The seal was modernized during President Howard Johnson's (1966-1971) administration. Also, the seal has been hacked numerous times and several unofficial versions are popular with student organizations on campus.

Viewpoint

This week's question:

Is it in the best interests of MIT to admit well-rounded students or students who are exceptional in one area?

"People who excel in one area are probably more valuable to MIT. They have proven their ability. You can always become well-rounded while at college anyways."

Gordon R. O. Campbell '00

"I think it's better for MIT to take exceptional students as long as they are at least capable in other areas. This is because MIT will benefit more from an aggregate of exceptional students rather than a bunch of well-rounded ones. Well-rounded students may increase our average talent level but they won't make MIT stand out."

Christian Baekkelund '00

"It's important to have a good mix of both. You don't want people who are exceptional in one area but incompetent in a lot of others."

Emery C. Lin '02

"I think it is in the best interests of MIT to admit well-rounded people because college is more than just academics. College has a lot of diverse opportunities which you would lose if everyone was isolated in their own fields. If MIT wants to attract more well-rounded students, they should emphasize the humanities departments a lot more."

Polo A. Banuelos '99

"I think it's better for MIT to admit the specialized people because other students can learn from their expertise. Much of what college is about is learning from your peers. A lot of people might say that well-rounded students are more motivated to explore many other interests and take full advantage of an MIT education, but I think students can be more motivated by example — seeing a physics genius bust out a difficult problem makes me want to become better."

Ashwinder S. Ahluwalia '00

Spotlight of the Week

The 24-Hour Coffeehouse

By Katie Jeffreys
STAFF REPORTER

The 24-hour Coffeehouse on the third floor of the Student Center provides a valuable resource to the MIT community: caffeine-filled drinks and sugary snacks at any hour of the day or night. The value of the Coffeehouse becomes even more apparent at a late point in the term like the present, when students are up at all hours of the night finishing final projects and studying for final exams.

In addition to this wealth of nocturnal junk food, manager John Morgan Gerdel, '00 asserts that, "Since the workers and managers are students, we can really provide a unique environment, unlike anywhere else on campus." This atmosphere, including comfortable seating and funky music, is a draw to many students who seek a spot to study that is outside of their living group but has more personality than the library.

The Coffeehouse also has big plans for the future. The managers hope to expand the "coffeehouse series," in which live performers entertain students in the Coffeehouse setting.

The Coffeehouse will also be more earth-friendly. Gerdel said, "Recently the Coffeehouse has started a recycling program. We recycle glass, plastic, and aluminum cans. Paper recycling is also in the works."

In addition to these changes, major renovations will soon take place through the Senior Gift project,

thanks to the Class of '99. The managers hope to "upgrade the lighting and furniture, and expand the Coffeehouse. Integrating these improvements into a professional design would really give the Coffeehouse the character it needs to be a successful center of student activity," said Gerdel.



The Coffeehouse

Compiled by Naveen Talamanchi

TechCalendar

TechCalendar appears in each issue of *The Tech* and features events for members of the MIT community. *The Tech* makes no guarantees as to the accuracy of this information, and *The Tech* shall not be held liable for any losses, including, but not limited to, damages resulting from attendance of an event. Contact information for all events is available from the TechCalendar web page.

Visit and add events to TechCalendar online at <http://tech-calendar.mit.edu>

Tuesday, May 11

- 12:00 p.m. – **Emerging Themes in American Transportation History.** Leonard Reich. Dibner Institute Lunchtime Colloquia. Room E56-100.
- 4:00 p.m. – **Axial Instabilities in a Partially-Filled Horizontal Rotating Cylinder.** Anette Hosoi, Dept of Mathematics, MIT. Fluid Mechanics Seminars. Room 5-234.
- 4:00 p.m. – **Poly-Si Thin Film Transistors on Low Temperature Plastic Substrates.** Paul Carey, Lawrence Livermore National Laboratory. MTL VLSI Seminar Series. Refreshments in lobby of room 34-101 at 3:30 p.m. Room 34-101.
- 4:30 p.m. – **Aerodynamic Performance Measurements of a Fully Scaled, Transonic, Cooled Turbine in a Short Duration Facility.** Mr. Chris Spadaccini, MIT/GTL. Gas Turbine Seminar Series. Room 31-161.
- 5:00 p.m. – **MIT Chamber Music Society Concert.** Student ensembles perform Prokofieff, Mozart, Brahms, Elgar. Killian Hall.
- 6:30 - 8:00 p.m. – **The MIT Sloan E-Commerce Awards.** The MIT Sloan E-Commerce Awards are a first-of-its-kind award ceremony designed to recognize organizations for their successful innovation in web-based business. E51, Wong Auditorium. Sponsor: MIT Sloan E-Commerce Awards.
- 7:00 - 9:00 p.m. – **RSSC Discussion Fourm.** Delta Tau Delta. Sponsor: Residence System Steering Committee.
- 8:00 p.m. – **A Man on the Moon.** Andrew Chaikin, author of *A Man on the Moon*. Andrew Chaikin is the world's premier historian on the Apollo Space Program. Tom Hanks used Chaikin's novel as the basis of his Emmy-winning miniseries "From the Earth to the Moon." Room 6-120. Sponsor: Students for the Exploration and Development of Space.

Wednesday, May 12

- 12:10 p.m. – **Vertical mixing in N.A.T.R.E.** Louis St. Laurent. Physical Oceanography Sack Lunch Seminars at MIT. Room 54-915.
- 12:00 p.m. – **Transforming the Army.** Dr. David Chu, Vice Pres., RAND Army Research Division and Director, The Arroyo Ctr. Bag lunch. Room E38-615. Sponsor: Security Studies Program.
- 12:00 p.m. – **Recent statistical results with floats.** Joe Lacasce, WHOI. Room 54-915. Sponsor: Physical Oceanography.
- 4:15 p.m. – **The After Math of WZ Theory.** Herbert Wilf and Doron Zeilberger, University of Pennsylvania and Temple University. Combinatorics Seminar. Refreshments will be served at 3:30 p.m. in Room 2-349. Room 2-338.
- 5:15 p.m. – **Learn to Sail - Classes 1, 2 & 4.** Bring friends, and a change of shoes. Want to Learn to sail? The MIT Sailing Pavilion offers introductory sailing lessons on the Charles River in Tech Dinghies.
- 5:15 p.m. – **A General Class of Family Based Tests of Genetic Association for Complex Disease.** Professor Kathryn Lunetta, Dana-Farber Cancer Institute and Harvard School of Public Health. Statistics Seminar. Room 2-105.
- 6:30 - 9:30 p.m. – **Innovation Forum Series.** Inaugural event in a series launched and sponsored by the Lemelson-MIT Awards Program. Speaker will talk about top-of-mouth issues in invention and innovation. Entire MIT community welcome. Media Lab-Bartos Theatre. Sponsor: Lemelson-MIT Awards Program.
- 7:00 - 9:00 p.m. – **RSSC Discussion Fourm.** East Campus. Sponsor: Residence System Steering Committee.
- 8:00 p.m. – **Chamber Music Society Student Concert.** Student ensembles perform Beethoven, Schubert, Martinue and Lieberman-Smith-Shioda. Killian Hall.

Thursday, May 13

- 7:30 a.m. – **Innovator's Breakfast with Mark Brender.** Meet Mark Brender, whose company, Space Imaging, is about to flood the commercial market with high resolution satellite images. Good for business, but what will it do for terrorists? 2 hours. University Park at MIT. Sponsor: Technology Review.
- 3:00 p.m. – **Alan S. Michaels Lecture - New Directions in Angiogenesis Research.** M. Judah Folkman, Harvard Medical School and Childrens Hospital Boston. Chemical Engineering Department Spring Seminar Series. Room 26-100.
- 4:00 p.m. – **Recent research in tropospheric ozone.** Daniel Jacob, Harvard University. MIT Atmospheric Science Seminars. Room 54-915.
- 4:15 p.m. – **Stellar-Mass Black Holes in Binary Systems.** Alex Filippenko, University of California at Berkeley. Physics Colloquium. Refreshments in Room 4-339 at 3:45 pm. Room 10-250.
- 5:00 p.m. – **Mr. Rajat K. Gupta, Managing Director, McKinsey & Co.** Room 54-100. Sponsor: Sangam.
- 7:00 p.m. – **authors@mit: John Maeda.** John Maeda, Sony Career Dev Prof of Media Arts & Sciences. The pioneering graphic designer speaks about his new book *Design by Numbers*. Room E25-111.
- 8:00 p.m. – **Dance Troupe Spring Concert.** Student choreographed works in a wide variety of dance styles, including modern, ballet, tap, jazz and funk. Admission: Students—\$5 in advance, \$6 at the door; others—\$6 in advance, \$7 at the door. Kresge Little Theater.
- 8:30 p.m. – **MIT Symphony Orchestra Presents Music by MIT Student Composers.** Works by Jason W. Krug '00, Shamila H. Khetarpal '99, Eric Hu G, Sam Thibault '00, Petra Chong '99 and William Koffel '00. Kresge Auditorium.

Friday, May 14

- 10:30 a.m. – **Safety as a Dynamic Non-Event.** James Reason, Professor, University of Manchester, England. Room E51-372. Sponsor: Nuclear Engineering with Sloan School.
- 4:00 p.m. – **Adaptive Sampling, Data Assimilation and Ensemble Generation.** Professor Craig Bishop, Pennsylvania State University. EAPS Department Lecture Series. Refreshments, 3:30 pm, Ida Green Lounge. Room 54-918.
- 4:00 p.m. – **Dance Troupe Spring Concert.** Student choreographed works in a wide variety of dance styles, including modern, ballet, tap, jazz and funk. Admission: Students—\$5 in advance, \$6 at the door; others—\$6 in advance, \$7 at the door. Kresge Little Theater.
- 4:15 p.m. – **Parking functions, allowable pairs, and a symmetry in trees.** Louis

- Kalikow, Brandeis University. Combinatorics Seminar. Refreshments will be served at 3:30 p.m. in Room 2-349. Room 2-338.
- 4:00 - 6:00 p.m. – **MAS.110 Fundamentals of Computational Media Design.** An exhibition of student works. Interactive and computational graphic design from undergraduates from MIT, Wellesley and Harvard. Animation, evolution and composition. There will be food. Wiesner Building atrium. Sponsor: MAS.110.
- 7:00 p.m. - 12:00 a.m. – **MIT Anime Club Showing.** 7:00 Rurouni Kenshin 60-62 (subtitled); 9:00 Card Captor Sakura 1-3 (subtitled); 11:30 Kodomo no Omocha 18-19 (subtitled); Feel free to come at anytime. E51-345. Sponsor: Anime Club.
- 8:00 p.m. – **Dance Troupe Spring Concert.** Student choreographed works in a wide variety of dance styles, including modern, ballet, tap, jazz and funk. Admission: Students—\$5 in advance, \$6 at the door; others—\$6 in advance, \$7 at the door. Kresge Little Theater.
- 8:00 p.m. – **Gamelan Galak Tika Concert.** Blend of traditional and modern music based on the music and dances of Bali. Kresge Auditorium.
- 9:00 p.m. – **Potluck Performance Art Party.** AKA show+tell. Bring video, poetry, slides, anything to read, show, perform and/or consume. Admission 4.00. N52-115.

Sunday, May 16

- 3:00 p.m. – **Women's Chorale Spring Concert.** Nancy Kushlan Wanger, director; Adele Kraus, accompanist. Children accompanied by adults welcome. Reception follows concert. Killian Hall.
- 7:00 p.m. – **MIT Chamber Music Society Concert.** Student ensembles perform Bach-Busoni and Dvorak. Killian Hall.
- 8:00 p.m. – **Gandharvad City.** Play in English, written and directed by Chen-Hsiang Yeang. Kresge Little Theater.

Wednesday, May 19

- 12:10 p.m. – **Late Pleistocene thermohaline circulation and climate change on millennial and orbital time scales.** Bill Curry, WHOI. Room 54-915. Sponsor: Physical Oceanography.
- 5:15 p.m. – **Learn to Sail - Classes 1, 3 & 4.** Relax, and enjoy yourself. Want to Learn to sail? The MIT Sailing Pavilion offers introductory sailing lessons on the Charles River in Tech Dinghies. Sailing Pavilion.

Friday, May 21

- 8:00 p.m. – **Digital Rewind Concert.** Experimental Music Studio 25th Anniversary event featuring premieres of reworked compositions by Prof Barry Vercoe and Richard Boulanger. Kresge Auditorium.

Saturday, May 22

- 8:00 p.m. – **Ganesh and Kumaresh, South Indian violin.** Presented by MITHAS (MIT Heritage of South Asia) and the New England Hindu Temple (NEHT). Admission \$15, \$12—MITHAS & NEHT members and students, \$10—MIT students. Killian Hall.

Sunday, May 23

- 10:00 a.m. – **Learn to Sail, Weekend Classes.** Bring a change of shoes and a lunch. Sailing Pavilion.

Wednesday, May 26

- 12:10 p.m. – **Dynamics of the meridional overturning circulation and the role of diapycnal mixing.** Jeff Scott, MIT. Room 54-915. Sponsor: Physical Oceanography.
- 4:00 p.m. – **Early history of servomechanisms and control theory at MIT.** David Mindell, MIT. LIDS Colloquia. Reception will follow in 35-338. Room 35-225.
- 5:15 p.m. – **Learn to Sail - Classes 1, 2 & 4.** Take time out to enjoy yourself. Want to Learn to sail? The MIT Sailing Pavilion offers introductory sailing lessons on the Charles River in Tech Dinghies. Sailing Pavilion.

Saturday, May 29

- 7:00 p.m. – **Moonlight Sails & BBQ's.** Glide along the river after dark, sailing in a Rhodes-19. Bring long a flashlight and something for the BBQ on the dock afterwards. You should have a current MIT Sailing Card for this event. Sailing Pavilion. Sponsor: MIT Nautical Association.

Sunday, May 30

- 10:00 a.m. – **Learn to Sail, Weekend Classes.** Bring a change of shoes and a lunch. Learn to Sail, Weekend Classes. This class combines the first 3 of the Wednesday evening classes into one Sunday class. Sailing Pavilion.

Monday, May 31

- 12:10 p.m. – **GABLES Monthly Lunch.** A social get-together of the MIT Gay, Bisexual, and Lesbian Employees and Supporters group. Send e-mail for location. Sponsor: GABLES.

Tuesday, June 1

- 5:30 p.m. – **authors@mit: Howard Wesley Johnson.** The former MIT President discusses his new book, *Holding the Center: Memoirs of a Life in Higher Education*. President Johnson will be introduced by Charles Vest, current MIT President. Room 10-250.

Wednesday, June 2

- 12:00 p.m. – **Learn to Sail on your lunch hour - Class 6 of 6.** Lunchtime Sailing Classes. Learn to sail at lunch. You don't need a sailing card but please bring a change of shoes. Sailing Pavilion.
- 5:15 p.m. – **Learn to Sail - Classes 1, 3 & 4.** Bring a change of shoes, and be prepared to enjoy yourself. Want to Learn to sail? The MIT Sailing Pavilion offers introductory sailing lessons on the Charles River in Tech Dinghies. Sailing Pavilion.

Class of 2001 Celebrates Brass Rat

By Katie Jeffreys
STAFF REPORTER

It rained Sunday, which didn't surprise anyone on the Class of 2001 Ring Delivery Cruise. The 2001 class events have perpetually been rained on — so much so that our ring design incorporates several symbols reminiscent of this.

Fortunately the precipitation this weekend amounted to no more than a few drops as people were boarding the boat, and the sky quickly cleared, gracing the boat's decks with warm sunshine. This was the perfect accompaniment to an afternoon of music, socializing and food. Mike Mills found the event to be a pleasant conclusion to a year at MIT. "[The event] is awesome. It's a nice day — we got the rain and the shine. If they could just end school now!" The forecast of rain — or possibly end of term homework — scared away many students. Others left after being herded through the line to pick up their rings, before the cruise departed. "To people who left right after they got their rings — it's not raining at all," said Dawn Perlner '01.

The rings were clearly the focus of the event, and everyone was eager to receive theirs. Seth M. Bisen-Hersh '01 pointed to one reason to be excited. "Now we can all drop out because we have our class rings."

After receiving their rings, students began to mingle and dance to the music, some selected by the ring committee, and some requested by attendees. Liz Resendes '01, who danced throughout the cruise, said, "I thought it was funny they played Titanic as the first song, but it's a beautiful event."

Many people also took advantage of the event to catch up with acquaintances often forgotten in the busy MIT lifestyle. It was also a chance to meet new people. "I think it's great to see a lot of faces I've never seen before," said Ralph R. Harik '01. The cruise itself offered a view of Boston not often seen, including the downtown skyline, the many docks, and the airport. Dusty de Quine '01 was excited about the latter aspect of the scenery. "It was really cool seeing a 737 nearly graze the boat."

The highlight of the cruise for many people, aside from the rings, was the wide selection of Italian pastries offered. The goodies were on display, but guarded by boat crew, for about an hour before people could begin eating them. Some students and ring com-



LORDS OF THE RING—The Class of 2001 Ring Committee celebrates the distribution of this year's Brass Rat with a cruise in Boston Harbor Sunday.

mittee members were slightly disgruntled by this. While waiting in line for the treats, two hungry sophomores emphasized this. "I want pastries!" said Pei-Lin Hung '01, which her friend Caroline Hon '01 echoed "I want pastries too."

Finally plates and forks were brought out, and Pei-Lin, along with everyone else, was able to satiate her cravings. The scene surrounding the food tables was initially

mob-like, and many people found their clothes smudged with pastry. Eventually people dispersed, but throughout the cruise pastries continued to appear on the table, and were enjoyed by the students.

After about three hours on the bay, the boat returned to the dock and everyone was bussed back to campus. It was a well planned event which was made even better by beautiful weather and cheerful students.

MIT Student Health Plan

most mental health services at MIT Medical are **Free** with tuition

IniMITable, on-campus coping tool for a high-tech student body:

When you're stressed, talk about it.

MIT is legendary for its stress, particularly at this time of year.

To reduce the pressure, talk about it, with your friends, your doctor or a counselor.

We have—at no charge—a wide range of mental health professionals ready to help you make it through the moment or the year. All our services are confidential.

CALL Mental Health Service
617/ 253-2916
Urgent Care Line (24 hours)
617/ 253-1311



At MIT, we do things a little differently

EUROPE

London From _____ \$218 RT
Paris From _____ \$242 RT
Rome From _____ \$290 RT
Amsterdam From _____ \$330 RT

Service to all major cities
You can't get there for less

Hotels from \$39
Rail Passes from \$69
Concert Pkgs from \$299

800-838-6411

930 Commonwealth Ave South
Boston, MA 02215
617/232-8080 Fax 617/232-5801
www.classtravel.com

CLASS ravel

STUDENT TRAVEL

London.....\$348
Paris.....\$464
Frankfurt.....\$547
Athens.....\$596
Madrid.....\$547

All fares are round-trip. Tax not included.
Some restrictions apply.

576-4623

65 Mt. Auburn Street
HARVARD SQ.



www.statravel.com

UROP Increases Direct Funding Wage to \$8/Hour

By Karen E. Robinson
ASSOCIATE NEWS EDITOR

The wage rate for direct Undergraduate Research Opportunities Program funding will

rise to \$8 per hour beginning next fall, the UROP office announced. The rate has been \$7.50 since 1996, according to UROP Program Administrator Michael Bergren.

The UROP office wage rate is also the minimum wage for faculty-funded student research projects. The average wage in projects not funded through the UROP office was slightly more than \$8 in the fiscal year 1998, Bergren said. He said that he expects this average to rise and gradually adjust due to the new wage rate.

In 1998 approximately 80 percent of student projects were funded independently of the UROP office, and approximately \$5 million of

faculty funds were allocated for student research.

The last raise in UROP funding was in 1996, from \$7.25 to \$7.50. This change was preceded by an increase in institute minimum wage for students to \$7.25. UROP hourly wage is now significantly more than campus minimum wage, although minimum wage, too, will eventually rise, Bergren said.

UROP's endowment has been gradually increasing for several years, especially since the establishment of the Paul Gray '54 UROP

fund in 1996.

Changes in pay will take place next fall, but Bergren said he does not expect this to significantly decrease the number of UROPs that can be funded. Eight dollars was chosen as a "comfortable, reasonable figure" because the UROP program's endowment is expected to continue to grow.

In addition to raising UROP pay, the UROP program is also sponsoring 25 more projects this summer than last summer.



ANNIE S. CHOI—THE TECH

Recently released ethnic child slave Rani Matuk '02 expresses his freedom as he bears it all to Lee Knight '00 during Saturday's Plush Daddy Fly show in Room 54-100.



WORLDSCO, LLC.
MEMBER NASD, SIPC, MSRB

PROPRIETARY EQUITY TRADER

Expanding privately held NASD trading firm seeking highly qualified individuals with academic/extra curricular excellence with the ability to manage risk; a desire to pursue trading career essential; 3.5+ GPA. B.S./BA/MBA or PHD, strong math skills & market knowledge. Sponsor for the Series 7, 55, 24. Apprenticeship program. Comp based profitability. Fax full resume, explanatory cover letter and college transcript to: Mr. Jeffrey Hildreth, 212-292-02476

Congratulations to the MIT Class of 1999

At American Management Systems, Inc., our business is partnering with clients to achieve breakthrough performance through the intelligent use of information technology. For some of the best and the brightest of the new grads, it's about to be their business, too.

A special
welcome to our
new consultants

↓
Geoffrey Bloss
Dedric Carter
Danica Cheung
George Dolina
Ashok Eastman
Benjamin Hidalgo
Michael Kashambuzi

↓
James Matysczak
Katherine Navarrete
Meredith Otterson
Mykolas Rambus
Pearl Shen
Hoi Wong



For more information about a consulting career with AMS, visit our website at www.amsinc.com or please contact:
American Management Systems Inc., Attn: Corporate Recruiting Program, 4050 Legato Road, Fairfax, VA 22033.

AMS is committed to excellence in the workplace and to the policy of equal opportunity.

MIT Team Places Second in Putnam Math Contest

By Kristen Landino
ASSOCIATE NEWS EDITOR

An MIT Team comprised of Amit Khetan G, Eric H. Kuo '99, and Edward D. Lee '99 placed second out of 319 teams in the prestigious William Lowell Putnam Mathematical Competition held on December 5, 1998. Each team member received

\$800, and the MIT Math Department was awarded \$20,000 for its team placing in the competition.

Khetan and Abhinav Kumar '02 were the highest ranking MIT individuals, garnering slots in the top twenty-five out of more than 2500 participants. Both received prizes of \$250.

"This is an extraordinary accomplishment, a triumph of consistency. It is a very competitive exam. We are very happy about how we did," said Hartley Rogers, Jr., Mathematics Professor.

The difficulty levels vary from year to year, according to Kumar.

"This year was a bit easier to follow," Kumar said.

Honorable mention winners among MIT students included Adrian Birka '02, Constantin S. Chiscanu '00, Kai Huang '02, Miro Jurisic '99, Eric H. Kuo '99, Edward D. Lee '99, and Hoe-teck Wee '02. In total, 77 students represented MIT in the competition.

Top teams and schools get prizes

The first place team composed of Michael L. Develin, Ciprian Manolescu, and Dragos N. Oprea hailed from Harvard University. A Princeton University team took third place, followed by the California Institute of Technology in fourth, and the University of Waterloo in fifth.

The top five teams in the competition receive cash prizes. Awards are also given to the teams' mathematics departments.

In 1998, 2,581 students from 419 colleges and universities in both Canada and the United States participated in the competition.

MIT has an internal selection process for its team based on previous scores earned on the exam. Any undergraduate may enter the competition as an individual competitor.

"Our goal is to select the three strongest people for the team. We usually take the three highest scorers from last year's exam," Rogers said.

The Putnam Mathematical

Competition began in 1938 and is sponsored by the Mathematical Association of America.

The competition is considered to be the most rigorous test of mathematical reasoning ability for college students, although it rarely involves any technical knowledge beyond high school mathematics.

A background of elementary math, linear algebra, discrete math, and number theory is recommended. The problems require incredible ingenuity and insight on the part of the student to solve them correctly.

18.S34, Mathematical Problem Solving, is a seminar taught by Mathematics Professors Hartley Rogers, Jr. and Richard P. Stanley which focuses on skills needed to do well in the Putnam Math Competition.

The competition is divided into two sessions, morning and afternoon, lasting three hours each. There are six problems on each section and they are graded on a 0-10 point scale, for a maximum score of 120 points. The median score on the 1998 exam was 10 points, so participants who worked just one problem correctly scored in the top half of entries.

The competition is open to regularly enrolled undergraduates in colleges and universities of the United States and Canada who have not yet received a college degree.

COMPUTERS - HI TECH - HAM RADIO GIANT SWAPFEST

NOW the **THIRD SUNDAY** of **EACH MONTH** ALL SUMMER
BARGAIN ELECTRONICS - COMPUTERS - RADIO PARTS
SOFTWARE - HARDWARE

Sunday May 16th

- Buy Sell Swap - 9 AM to 2 PM

Albany and Main Streets, Cambridge

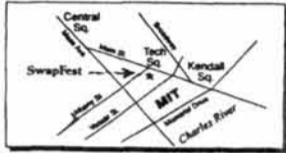
TAILGATE ROOM FOR OVER 200 SELLERS
Rain or Shine - Garage Available

BUYERS \$4

\$1 off with MIT ID

SELLERS \$10

per space includes 1 admission



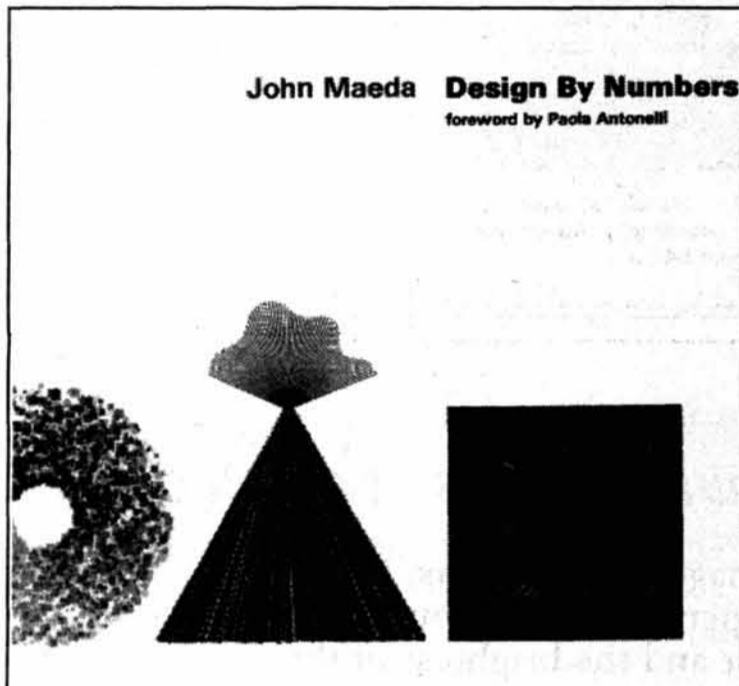
FREE!
Buyers Parking
VENDORS
from all of
New England

Come early for **BEST BARGAINS**

Sponsored by: W1MX, the MIT Electronics Research Society, W1XM/R

authors@mit
presents

**John
Maeda**



John Maeda **Design by Numbers**
foreword by Paola Antonelli

speaking about his new book

Design by Numbers

Thursday, May 13, 7 p.m.

MIT 25-111, 45 Carleton St., near the Kendall Sq. T stop, Cambridge

"John Maeda shows graphic designers how to step back a level and create their own digital tools. His elegant book could change the way we think about graphic design; I hope it will."

- William J. Mitchell, Dean, School of Architecture and Planning, MIT

John Maeda is Sony Career Development Professor of Media Arts and Sciences/Assistant Professor of Design and Computation, and Director of the Aesthetics and Computation Group at the MIT Media Lab.

authors@mit is a series cosponsored by MIT Libraries and The MIT Press Bookstore

Info: 617 253.5249 or authors@mit.edu

Thanks to you, all sorts of everyday products are being made from the paper, plastic, metal and glass that you've been recycling. But to keep recycling working to help protect the environment, you need to buy those products.

BUY RECYCLED.



AND SAVE.

So look for products made from recycled materials, and buy them. It would mean the world to all of us.

For a free brochure, write Buy Recycled, Environmental Defense Fund, 257 Park Ave. South, New York, NY 10010. or call 1-800-CALL-EDF.

ENVIRONMENTAL DEFENSE FUND EDF

SEPA

This space donated by The Tech

Finboard Announces Fall Allocations

By Kristen Landino
ASSOCIATE NEWS EDITOR

The Undergraduate Association approved Finance Board recommendations for student group allocations last night after considerable discussion.

"We funded the groups on the assumption that we had \$97,000 at our disposal," said Edgar Martinez '00, Finance Board Treasurer.

Chancellor Lawrence S. Bacow '72 allocates \$194,000 to the Office of the Dean for Students and Undergraduate Education which gives the money to the Undergraduate Association for dispersal.

"Our goal was to disperse two-thirds of the funds through the initial allocations and set aside the remaining one-third for the appeals," Martinez said.

Finboard appeals will begin in early October. There students can protest the amount given to them during allocations and request more funding.

"Our target dispersement was approximately \$70,000 and the total allocation was \$80,224," Martinez said.

Funds were allocated based on a number of factors including the size of the group, quality of presentation, and when the group was established among other things.

Finboard request forms changed significantly this year as the board separated funding into categories such as operations, capital, events, and publicity.

"Publicity and operations are viewed as necessary to keep the group alive so these categories are not scrutinized as closely as events funding is. The quality of an event, its size, and how unique it is are factors which contribute to its funding potential," Martinez said.

In particular, Martinez noted that these categories will have more of an effect on the reimbursement procedure.

"In terms of allocations, it is not so important. It comes into play more during reimbursement. For example, if a group wants to substitute a Lecture Series Committee ad for an ad in *The Tech*, it can do so because both of these expenses fall under the publicity category," Martinez said.

The UA made one notable change to the Finboard recommendations. They added \$12,500 to their own fund allocation and abolished the UA Social Board which previously existed as a separate entity. However, before the UA meeting the Social Board had not been allocated any money by the Finboard.

"Given the amount of funds we had at our disposal, I think the board did a pretty good job of balancing the requests," Martinez said.

Finboard will notify student groups via e-mail of their allocation for fall term by Friday.

Group	Funds Requested	Funds Allocated		
Association of Student Activities	\$500	\$500	Theatre X	\$550
Undergraduate Association	\$21,147	\$20,135	Black Musician and Producers	\$550
MIT AAH	\$1,200	\$350	Concert Band	\$1,790
Asian Baptist Student Koinonia	\$2,575	\$300	Dance Mix Coalition	\$4,200
Black Christian Fellowship	\$1,392	\$332	MIT Gospel Choir	\$1,300
Campus Crusade for Christ	\$1,100	\$240	MIT Handbell Ensemble	\$324
Chinese Bible Fellowship	\$230	\$155	Marching Band	\$2,520
MIT Hillel	\$3,930	\$1,100	Oori	\$800
Impact Campus Fellowship	\$480	\$375	Chorallaries	\$2,800
Korean Christian Fellowship	\$3,610	\$300	Cross Products	\$575
MIT LDSSSA	\$1,470	\$470	Logarythms	\$900
Lutheran Bible Fellowship	\$575	\$200	Muses	\$950
Protestant Community Services	\$600	\$75	Toons	\$800
United Christian Fellowship	\$445	\$150	Biomedical Engineering Society	\$2,920
United Christian R/O	\$800	\$150	Brain & Cog. Sci. Undergrad. Assoc.	\$425
African Students' Association	\$8,085	\$1,650	Brain Trust	\$1,310
Association of Taiwanese Students	\$2,230	\$950	MIT Experienceing Health Policy	\$3,500
Bangladeshi Student Association	\$300	\$225	MAES	\$12,000
Black Students' Union	\$4,960	\$1,380	MIT FIRST Team	\$3,000
Black Women's Alliance	\$1,550	\$650	NSBE	\$6,000
Caribbean Club	\$4,093	\$1,183	Sloan Undergrad Mgmt. Assoc.	\$3,674
Chinese Students' Club	\$18,061	\$550	SHPE	\$2,600
Clubmex	\$650	\$450	SEDS	\$1,715
Filipino Student Association	\$2,410	\$935	Societo por Esperanto	\$667
Hansori	\$1,450	\$700	Alpha Phi Alpha	\$9,050
Hawaii	\$520	\$360	MIT AIDS Ride Team	\$18,490
Hong Kong Student Society	\$1,140	\$0	Alternative Spring Break	\$4,500
ISA	\$4,500	\$1,725	Circle K	\$1,150
Israeli Student Club	\$650	\$275	Groove Phi Groove	\$3,800
Japanese Association of MIT	\$1,600	\$0	Institute Foundation	\$1,500
Korean Student Association	\$2,500	\$610	Project Health	\$1,030
LUCa	\$10,650	\$1,250	SAVE	\$1,095
Mujeres Latinas	\$3,600	\$700	United Students for Veterans Health	\$820
PaksMIT	\$7,390	\$1,450	Amnesty International	\$1,000
South Asian American Students	\$3,668	\$1,210	MIT College Democrats	\$770
Caving Club	\$1,347	\$675	MIT College Republicans	\$100
Croquet Club	\$190	\$150	NORML	\$1,250
Cycling Club	\$6,464	\$800	MIT Pro-Life	\$770
MIT Debate Team	\$4,350	\$1,300	MIT SETA	\$250
MIT Equestrian Team	\$8,100	\$1,100	SWASS Distribution	\$460
Men's Ultimate Frisbee	\$900	\$550	MIT Anime	\$1,200
MIT Mock Combat	\$485	\$330	MIT Assasains' Guild	\$2,935
MODEL UN	\$5,800	\$1,300	Campus Crusade for Cthulu	\$150
Skydiving Club	\$2,430	\$140	CTYAA	\$1,485
MIT Snowboarding Club	\$1,930	\$430	MIT EMEG	\$1,350
Women's Rugby	\$2,075	\$1,025	ECMRS	\$525
Counterpoint	\$7,721	\$300	MIT FAQS	\$1,775
VooDoo	\$3,500	\$1,400	GAMIT	\$3,380
Dance Troupe	\$7,668	\$880	Panhellenic Association	\$2,770
MITCAN	\$1,350	\$700	Pershing Rifles	\$2,760
MIT G+S Players	\$1,320	\$400	MIT Science Fiction Society	\$1,250
Movements in Time Dance	\$6,010	\$1,300	Society for Creative Anachronism	\$1,082
MIT Musical Theater Guild	\$2,300	\$0	MIT Student Cable Group	\$935
Plush Daddy Fly	\$1,170	\$300	Tech Squares	\$4,000
RoadKill Buffet	\$2,180	\$350	MIT Vegetarian Support Group	\$825
			Totals: 111 Groups	\$315,677
			Average Allocation	\$80,224
				\$729

SOURCE: UA FINANCE BOARD



The MIT Graduate Student Council

office: Walker Memorial, 50-220 (above the Muddy)
phone: 253-2195
website: www.mit.edu/activities/gsc
email: gsc-request@mit.edu

Become an Institute Committee Representative

Graduate Students:

Get involved with the running of MIT!! Don't miss this excellent opportunity to learn and contribute to MIT's governance. Represent grad students on one of these MIT Presidential and Faculty Committees: Assessment Of Biohazards, Athletic Board, Commencement, Campus Race Relations, Community Service Fund Board, Copyrights and Patents, Corporation Joint Advisory, Discipline, Faculty Policy, Family and Work, Foreign Scholarships, Graduate School Policy, IAP Policy, Library System, Martin Luther King Jr. Memorial Planning, Medical Consumers' Advisory, Parking Appeals, Privacy, Radiation Protection, Safety, Shareholder Responsibility, Student Affairs, Task Force on Student Life and Learning, Transportation and Parking, Undergraduate Admissions and Financial Aid, Use of Humans as Experimental Subjects, and Women's Advisory Board.

If you are interested in sitting on any of the above committees, please complete an application form and submit it to the GSC Vice President as soon as possible (Room 50-222),

no later than **May 14th**. Current representatives are encouraged to reapply, but positions are not guaranteed. Interviews will be held on May 20th. Application forms are available at the GSC office or on the web: http://www.mit.edu/activities/gsc/People/InstituteReps/institute_reps.html
A description of each committee can be found at: <http://web.mit.edu/committees/www>.

For more information, email GSC-Vice-President@mit.edu.

GSC Funding

Funding is available for both athletic and non-athletic events, capital expenses, and cross-departmental socials. Guidelines for each type of funding outline eligibility and reimbursement requirements. Check out <http://www.mit.edu/activities/gsc/Committees/FB/fb.html>.

- June 7 Funding applications due
- June 14 Reimbursement applications due
- July 15 Funding/Reimbursement appeals due

may

- 10 housing and community affairs committee meeting *
- 11 academics, research and careers meeting *
- 12 orientation committee meeting *
- 13 last day of classes
- 14 deadline for institute committee application

* @ 5:30 in 50-220 (above the muddy)
All graduate students are welcome. Food is provided.

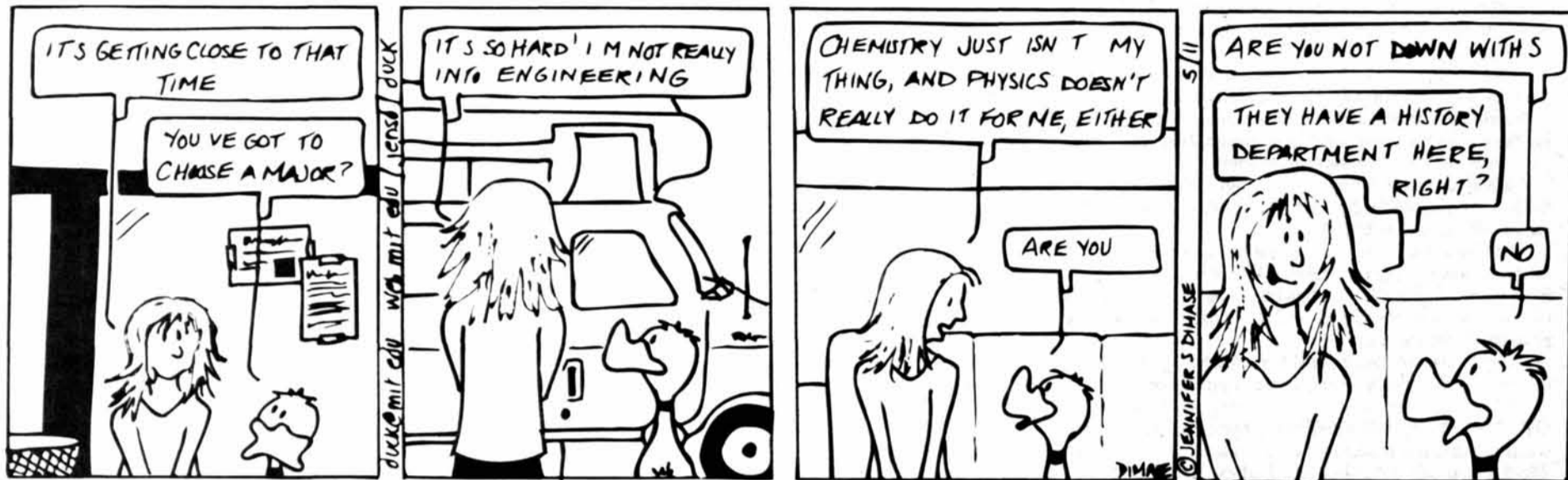
The latest issue of the GSN was published on May 10. Don't miss it!

Jazz Wednesday Nights
@ the Muddy Charles Pub!
Walker Memorial (50-120)



Down with Science

by Jennifer DiMase

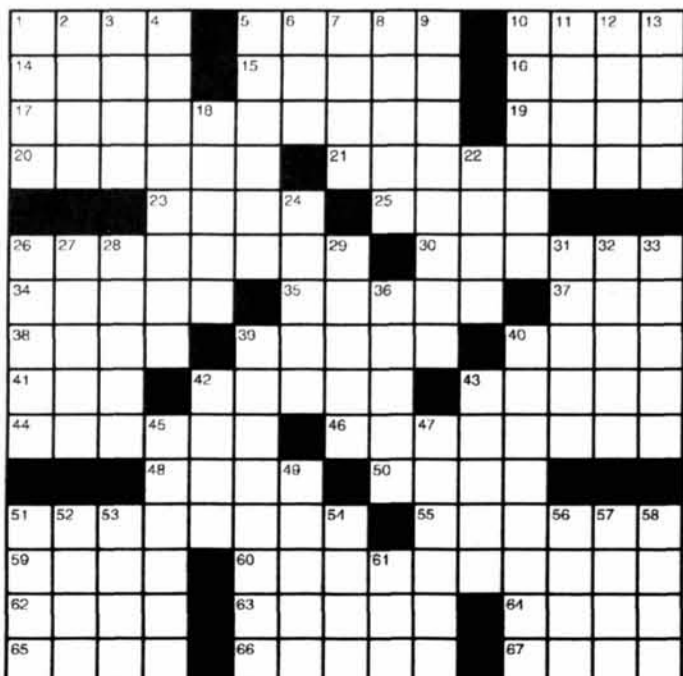


RANDOMELAND

by XiD



Crossword Puzzle



- | | | | |
|---|--|---|--|
| <p>ACROSS</p> <p>1 Sawbuck change</p> <p>5 Open-mouthed</p> <p>10 Oven setting</p> <p>14 Protagonist</p> <p>15 Gaseous element</p> <p>16 "Ars Amatoria" poet</p> <p>17 Author's submission</p> <p>19 Freshwater fish</p> <p>20 "A Streetcar Named Desire" character</p> <p>21 Went to bed</p> <p>23 US automaker</p> <p>25 Stride</p> <p>26 Oversized wine bottle</p> <p>30 Fire-bomb substance</p> <p>34 Cultural values</p> <p>35 Panorama</p> | <p>37 Hilo garland</p> <p>38 Like horse's hooves</p> <p>39 Genders</p> <p>40 Tangible</p> <p>41 Sen. Kennedy</p> <p>42 Melted together</p> <p>43 Boldness</p> <p>44 Christian or Helen</p> <p>46 Chased</p> <p>48 St. Louis eleven</p> <p>50 Iditarod terminus</p> <p>51 Roman emperor</p> <p>55 Poetry</p> <p>59 Vicinity</p> <p>60 Marching band instruments</p> <p>62 All even</p> <p>63 Knight's TV wife</p> <p>64 Give off</p> <p>65 Small vipers</p> <p>66 Pairs</p> <p>67 British actress Diana</p> | <p>DOWN</p> <p>1 Resistance units</p> <p>2 Clean and tidy</p> <p>3 Osprey's kin</p> <p>4 Traditional ethnic cuisine</p> <p>5 Jockey on five Derby winners</p> <p>6 Needlefish</p> <p>7 Mine entrance</p> <p>8 Appear suddenly</p> <p>9 Contestants</p> <p>10 Ineffectual shepherdess</p> <p>11 Enthusiastic</p> <p>12 Singer Dee</p> <p>13 Adam's garden</p> <p>18 Slovenly folk</p> <p>22 Final Four org.</p> <p>24 Bing and Marr</p> <p>26 Playful pranks</p> <p>27 Barrymore or Waters</p> <p>28 Valerie Harper</p> | <p>sitcom</p> <p>29 Blender</p> <p>31 Ready for action</p> <p>32 Part of AWOL</p> <p>33 Distance runner</p> <p>36 Automobile type</p> <p>39 Conjectured</p> <p>40 Passed along</p> <p>42 Apprehension</p> <p>43 Appointed</p> <p>45 Tramples</p> <p>47 Works of fiction</p> <p>49 Cloudless</p> <p>51 Casual farewell</p> <p>52 Garden flower</p> <p>53 Signal sound</p> <p>54 Heroic tale</p> <p>56 Japanese wrestling</p> <p>57 Arab leader</p> <p>58 JFK visitors</p> <p>61 Primary color</p> |
|---|--|---|--|



dammed for life

by jessica

WHEN WE LAST MET OUR TWO HEROES...

HEY GUYS! HEY LISA!

LISA'S UP TO NO GOOD AGAIN, ALBERT

I'M SURE SHE HAS SOMETHING TO DO WITH THIS Y2K THING

YEAH, AND THAT COMPUTER BUG THING TOO.

WHERE AM I SUPPOSED TO MEET THIS SOURCE?

BEHIND THE CHAPEL, 11 O'CLOCK

LET'S ROLL!

LATER...

LOOK! THERE SHE IS!

THAT MUST BE THE SOURCE!

LET'S GET 'EM!

I'M REALLY DESPERATE! MY ADVISOR WANTS A FINAL DRAFT OF MY THESIS BY TOMORROW MORNING!

RELAX, LISA. I'VE GOT EVERYTHING YOU NEED ON MONTE CARLO SIMULATIONS

AAUGH! RUN!

STOP, LISA!

I'M OUTTA HERE!

STOP! STOP! (WHEEZE! WHEEZE! GASP!)

COME ON (GASP) NEWTON! THEY'RE GETTING AWAY!

AAAUGH!

PHYSICS THESIS

5 MINUTES LATER...

I CAN'T (GASP GASP) BELIEVE WE COULDN'T CATCH UP TO THEM!

BUT LOOK! THEY DROPPED THIS!

PHYSICS THESIS

SO...WHAT DOES THAT MEAN?

I'M NOT REALLY SURE...

I'M SORRY LISA, YOU'LL JUST HAVE TO STICK AROUND TIL YOU FINISH YOUR THESIS!

WHAT? I'M NOT GRADUATING?

STAY TUNED

Dilbert® by Scott Adams

TINA, I WANT YOU TO WRITE THE CHINESE VERSION OF OUR PRODUCT'S INSTRUCTIONS.

CAN YOU TELL THE DIFFERENCE BETWEEN CHINESE WORDS AND RANDOM SCRIBBLES?

NO. I'LL BE DONE IN FIVE MINUTES.

WE'VE REDUCED THE VOLUME OF TECHNICAL SUPPORT CALLS...

BY REPLACING OUR "ON HOLD" MUSIC WITH THE SOUND THAT BALLOONS MAKE WHEN YOU RUB THEM.

DO YOU EVER FEEL LIKE WE'RE DRIVING THE GETAWAY CAR?

I'VE FINISHED ALL OF MY OBJECTIVES FOR THE REST OF THE YEAR.

WHAT HAPPENS NOW? DO YOU DOUBLE MY SALARY, OR DO I TAKE THE REST OF THE YEAR OFF?

YOU WERE WRONG, WALLY: THERE IS HARM IN ASKING.

OOPS.

FoxTrot by Bill Amend

PAIGE, YOU'VE HAD THAT PONY-TAIL FOR AS LONG AS I CAN REMEMBER.

SO?

HAVE YOU EVER CONSIDERED CUTTING IT OFF? YOU KNOW, GOING WITH SHORT HAIR FOR A CHANGE?

NOT REALLY.

NEVER?

NO, WHY?

SAY, WHAT HAPPENED TO ALL THAT GUM YOU WERE CHEWING?

UM...

I LIKE THE IDEA OF THEM LINING UP TO SEE ME.

SCRITCH SCRITCH SCRITCH

LOTTERY SCRATCHERS?? GOOD LORD.

TALK ABOUT YOUR WASTE OF MONEY. TALK ABOUT YOUR WASTE OF TIME.

TALK ABOUT YOUR SUCKER BETS.

WOO HOO! I WON \$5!

I GET HALF.



Double bassists Karen Chia from Wellesley College and Andrew Mackay '99 perform in the MIT Symphony Orchestra concert in Kresge Auditorium Saturday, featuring pieces by Grieg, Piazzola, and Bartók.

KRZYSZTOF GAJOS—THE TECH

Clinton Policy Helped Lower Interest Rates

Summers, from Page 1

period.

According to Summers, the Clinton administration's policy helped to bring long term interest rates down, which spurred investment-led growth, resulting in a budget surplus by 1998.

Summers cited the advantages of a budget surplus, among them that it gives the government the opportunity to "reload the fiscal cannon."

"The U.S. economy is doing very well now. The only thing we have to fear is the lack of fear itself. Complacency can be a self-denying prophecy if it leads to unrealistic expenditure plans, excessive capacity creation, inappropriate asset valuations, or misguided credit expansion and acceptance of leverage," Summers said.

'Moral hazard' a risk for future

Summers also discussed the current financial crises occurring in emerging markets. He stated that the central problem in these situations is "money lent without a system that generates the capacity to pay."

Summers also mentioned the issue of moral hazard as one of the primary challenges facing the Asian financial system in light of the current crisis. Moral hazard refers to the problem that firms are less careful with lending if they know the government will protect them in the event of major financial losses.

Summers next raised the issue of multiple equilibrium and discussed its repercussions. He mentioned the example of Korea, where private banks depleted their currency reserves and were forced to default on government loans. As a result, investor confidence failed and peo-

ple withdrew their money, exacerbating the financial crisis.

Summers cited a couple of policy responses to this situation: to encourage these countries to restructure their financial systems in order to regain investor confidence.

A possible solution, according to Summers, is for the International Monetary Fund to provide liquidity by safeguarding people's deposits, preventing the bank runs which result from the domino effect loss in investor confidence. He cited Korea, Thailand, and Brazil as examples of where this policy has worked.

To wrap up his talk, Summers discussed the two types of exchange rate regimes used in current economic policy: floating and fixed. He also touched upon the advantages and disadvantages of dollarization in Latin American.

Commonly Unbearable.
 Dangerously Believable.
 Subsequently Fatal.

#1 Cause of Suicide
UNTREATED DEPRESSION
<http://www.sauv.org>

This space donated by The Tech



®

MAIL BOXES ETC.®

One Kendall Square Bldg. 600 617-577-7578 Phone
Cambridge, MA 02139 617-494-1394 Fax

BOXES, TAPE & SUPPLIES FOR SALE

Lobby of The Stratton Student Center

Wednesday, May 12, 1999

9:00 a.m. – 5:00 p.m.

Thursday, May 13, 1999

9:00 – 5:00 p.m.

cash, check or credit card



AUTHORIZED SHIP CENTER

AFTER FINALS THE CRAMMING BEGINS.....



***SUMMER STORAGE & EXPERT PACKAGING AVAILABLE. ASK FOR A LIST OF OUR RATES!!!**

BOX PICK-UP FOR SHIPPING & STORAGE

East Campus

Wednesday (5/19) 9:00 – 12:30

Thursday (5/20) 1:00 – 4:30

Friday (5/21) 9:00 – 12:30

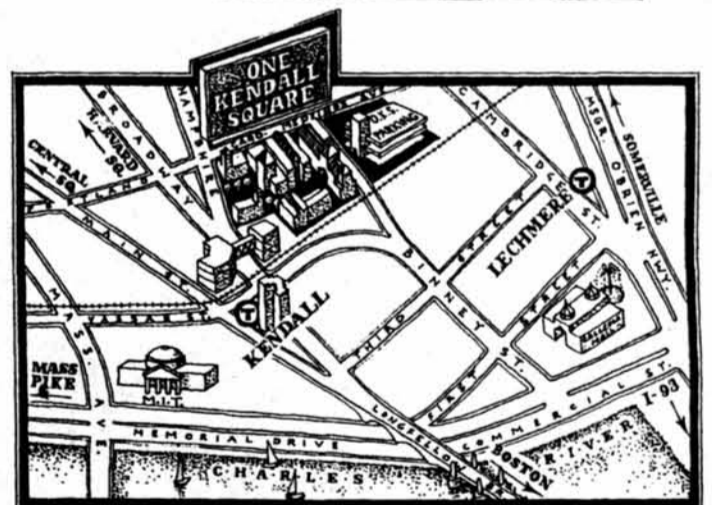
West Campus

Wednesday (5/19) 1:00 – 4:30

Thursday (5/20) 9:00 – 12:30

Friday (5/21) 1:00 – 4:30

Authorized Shipping Outlet



Our Full Service Store is Located At One Kendall Square, Bldg. 600 (see map)
Hours: Monday – Friday 8:00 – 6:00
Saturday 10:00 – 2:00
For More Information Call: 617-577-7578



Congratulations
to the
best and brightest
who've
decided
where
they belong.

We're proud to welcome you to
the Warburg Dillon Read team:

Bettina Baumgartner – Associate
Rami Elkhatib – Associate
David Malpica – Summer Associate
Bernardo Mateluna – Associate
Natasha Mileusnic – Summer Associate
Jason Salfen – Summer Associate

We look forward to sharing the
most rewarding of experiences –
working with you and learning
from you.

We also cordially invite members
of the Class of 2000 who will be
interning in the New York City area
this summer to meet members of
our Firm at our Summer Receptions.
If you're interested in Corporate
Finance or Sales & Trading, e-mail
your resume and summer address,
along with your area of interest
to Vincene Bonventre at
vincene.bonventre@wdr.com.



Warburg Dillon Read

An investment bank of global intelligence

Warburg Dillon Read is the brand name for the investment banking division of UBS AG and its investment banking subsidiaries worldwide.

Robbery Attempt is Second Incident in Two Weeks

Crime Alert, from Page 1

"I was very thankful to see the police after the incident," the victim said, as he did not know whether the suspect had left the area.

Despite a thorough search of the Kendall Square area and a Red Line train that had departed shortly after the incident, the suspect was not

found. However, the victim did hear a report that someone witnessed a suspicious-looking man leaving the area of Broadway and 3rd Street on bicycle just as the police arrived.

Incident second in two weeks

On April 25, an MIT student was robbed at gunpoint at the corner of Wadsworth Street and Main Street,

near building E48. The suspect stole \$50 and was described as a white male of medium build, approximately five feet ten inches tall and about twenty years of age. He was wearing a windbreaker and a baseball cap at the time of the robbery.

Although the victim was a student, this most recent incident falls outside MIT Campus Police jurisdic-

tion. MIT Campus Police Chief Anne P. Glavin said that "the MIT police did interview the victim", but the investigation was being handled by the MBTA and Cambridge Police.

Glavin did not think that the two most recent robberies should be considered a rash of crimes. While armed robberies on campus are rare, the MBTA Police "have a better handle

on the amount of crimes that occur within the T facilities," Glavin said. "Naturally we're concerned about it."

Anyone with information about the robbery is asked to contact the MBTA Police or the MIT Police. Anonymous tips can be registered through the Campus Police home page at <http://web.mit.edu/cp/www/invest/anon.html>.

Tired of Cramming?



Getting a year's worth of stuff into a car is like trying to cram 10 pounds into a 5-pound sack. You've crammed enough for a while. Give yourself a break. Call Ryder and truck it - at the right price.

RYDER
TRS
www.yellowtruck.com

Advanced reservation required. Present this coupon at the time of your rental.

10%
Discount
One-Way
Moves

Coupon only applicable to basic rate of truck rental, which does not include taxes, fuel and optional items. One coupon per rental. Coupon subject to truck availability and Ryder Moving Services standard rental requirements. Coupon expires December 31, 2000.

Coupon not valid with any other offer, discount or promotion.

1-800-GO-RYDER

Ryder® is a registered trademark of Ryder System, Inc. and is used under license.

Note to Dealer: 1. Enter discount on rates screen. 2. Enter Coupon I.D. on payment screen. 3. Attach to rental agreement and send in with weekly report. RA Number NCO30

\$10
Off
Local
Moves



Lighten
your backpack.



Fatten
your wallet.

Harvard Book Store offers cash for your used paperbacks. And not that usual chintzy buy-back cash... good money for good books.

Bring your pile by Monday through Saturday from 10am-4pm. And we'll make sure you leave a little heavier. In the wallet.



Cash for paperbacks. Cool, eh?
1256 Mass. Ave. • Harvard Square
617.661.1515



a firm congratulations

Ernst & Young, the most dynamic professional services firm in the world, would like to congratulate the following Massachusetts Institute of Technology students for accepting a challenging and rewarding career at Ernst & Young.

- | | | | |
|----------------|----------------|----------------|--------------|
| Tyrone Canaday | Joon Hor | Alexandra Kise | Edward Whang |
| Alan Chhabra | Vipul Karundia | Mark Ryan | |

At the same time, we would like to congratulate our own team for their foresight in acquiring some of the best and brightest graduates anywhere. These students will soon be invaluable to the success of our world-class organization. As key members of our global team, they will enable us to deliver new strategies, cutting-edge technologies and exceptional management process skills to some of the most influential companies in the world.

Visit our Web site at www.ey.com

Ernst & Young LLP, an equal opportunity employer, values the diversity of our work force and the knowledge of our people.

ERNST & YOUNG
FROM THOUGHT TO FINISH.™

THE STUDENTS FOR THE EXPLORATION AND DEVELOPMENT OF SPACE PRESENTS:

A MAN ON THE MOON

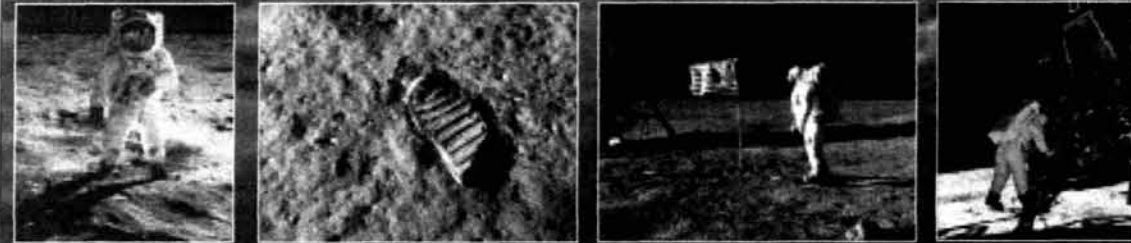


A SPECIAL LECTURE BY

ANDREW CHAIKIN

AUTHOR OF *A MAN ON THE MOON*,
THE BASIS FOR TOM HANKS' *FROM THE EARTH TO THE MOON*

TUESDAY, MAY 11TH
8PM • 6-120



<http://www.mit.edu/~mitseds/> MITSEDS

Coalition to Recruit 100 New Members

Charles River, from Page 1

The Coalition plans to recruit 100 businesses and institutions over the next 18 months. They hope to organize their efforts such that each member is responsible for a segment of the river and its banks.

William Walsh-Rogalski, who is in charge of the river cleanup for the EPA, said that private institutions' eagerness to be involved in the cleanup project is a natural "ownership response."

Parravano said that MIT's involvement in the cleanup made sense because MIT owns so much property along the Charles River.

MIT will provide the cleanup effort with a boat that will make regular cleanup patrols to pick up floating rubbish. Student crews from MIT, Boston University, Northeastern and Harvard will staff the boat.

MIT will also subsidize a graduate student to work on the campaign. In addition, MIT will sponsor and host a competition which will encourage engineers and other experts to create solutions for problems on the river.

MIT was given an extensive audit last year by the EPA. Parravano said the point of this audit was to let MIT know in which areas it could improve its compliance with environmental regulations. The EPA could also fine MIT for any violations they found. The results of the audit are not yet available.

According to a faculty memorandum by Professor J. David Lister, Chair of the Institute Council on Environmental Health and Safety, the penalty for non-compliance with EPA regulations could be substantial. The EPA can fine up to \$25,000 per violation per day. The memorandum also said that in the future environmental compliance may play a role in obtaining government grants for research.

EPA's Efforts Paying Off

DeVillars announced at a press conference earlier this year that the Charles River's water quality had improved to a B- rating this year. The river was given a C last year, and a D in 1995 when the grading began.

The river was clean enough for boating 83 percent of the time and safe enough for swimming 51 percent of the time last year. This is an increase from 70 percent and 34 percent respectively the year before.

DeVillars cited a reduction in combined sewer overflow pipes and illegal sewage dumping as reasons for the increase in water quality over the past four years.



This space donated by The Tech

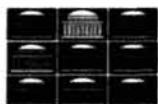


The 1999 Graduate Student Survey

HELP PUT MIT IN FOCUS!

→ <http://web.mit.edu/planning>

Tell MIT how you feel about everything from housing and financial aid to advising and teaching.



For more information, please email planning-www@mit.edu

M.I.T Program in Women's Studies announces a

LOGO COMPETITION

winner-\$100
2 runners-up-\$25

Questions?
Got something to submit?
Contact:
Michèle Oshima 14E-316
[mosh@mit.edu] *3-8844

"Cold Fusion Night at the Movies"

Enjoy an unprecedented Cold Fusion film double-header with this Boston area premier presentation of works by MIT Professor Keith Johnson and distinguished MIT alumnus Dr. Eugene F. Mallove.

Prof. Johnson's feature length thriller **Breaking Symmetry** will entertain as surely as Dr. Mallove's documentary, **Cold Fusion: Fire from Water** will educate on this controversial and often misunderstood field.

Please join us for an evening of fun and enlightenment!



Wed. - May 26th, 1999

at the Cambridge Marriott Hotel Ballroom (Kendall-MIT MBTA Station - Red Line)

"Breaking Symmetry"

begins at 7:00 PM

"Cold Fusion: Fire from Water" will follow.

Admission: \$5.00*, free for students with I.D. Doors open at 6:30 PM.

For more information please visit... www.infinite-energy.com

*Proceeds from this event will be contributed to a student Cold Fusion research fund.

Submit your work to MIT's newest UNDERGRADUATE research publication

PUBLISH YOUR RESEARCH

Don't worry about copyright violations—you can still publish your research in specialty journals before OR after submitting your work to us.

Submissions will be accepted throughout the summer and next fall and will be accepted from UNDERGRADUATES ONLY.

CONTACT SANJAYB@MIT.EDU FOR MORE INFORMATION

M
I
T



Ruth King, the 1999 Page Hazlegrove Memorial Lecturer, finishes a piece while her assistant, Amy Rueffert, prepares to catch it. Glassworking demonstrations will continue today in room 4-003.

GARRY MASKALY—THE TECH

Wiles Expounds on Proof of Fermat's Last Theorem

CMI, from Page 1

Wiles discusses recent advances

Wiles explained recent advances in number theory, the field of mathematics devoted to finding integer and rational solutions to equations. Wiles began by telling the story of Fermat's Last Theorem (FLT) — Fermat wrote it in the margin of his copy of Diophantus's *Arithmetic* without proof. Wiles moved on to describe number theory proofs and

attempted proofs of FLT. Finally, Wiles explained his own proof, incorporating the work of other mathematicians. He ended by displaying other problems related to right triangles, as well as explaining Diffie-Helman and RSA cryptography.

Fermat's Last Theorem states that the equation $x^n + y^n = z^n$ has no integer solutions if n is greater than 2. This had been proved for special cases of $n = 3, 4$, and a few other

small numbers, but the generalized theorem has evaded proof for over 350 years.

Herschbach, Odon on math in life

A small panel moderated by Gergen, discussed their experiences in the world of mathematics. The panelists were Dudley Herschbach, a Harvard chemist, and General William Odon, former director of the National Security Agency.

Herschbach described his experi-

ence as a mathematics undergraduate at Stanford in classes with mathematicians such as George Polya and Gabor Szegő, and told a story of how Polya, who studied probability theory, was prompted to study random walks in the plane, and eventually other dimensions, when he ran into an "amorous couple" several times one day in a maze-like forest.

Herschbach spoke of the need for increased access to mathematics — higher, interesting mathematics

rather than elementary school arithmetic — for young students. He mentioned the falling U.S. performance between the fourth, eighth, and twelfth grade levels.

Asked about mathematics applications and science, Herschbach said, "science has so far used only a tiny fraction of the richness that math has provided."

Odon, who described himself repeatedly as a "layman," described problems that arose at the National Security Agency when there were few mathematicians, and spoke on what should be done to further the discipline in terms of government.

CMI logo is a work of art, math

The head of the CMI, Arthur Jaffe of Harvard University, began the event by introducing Landon Clay, CMI founder, as well as Charles Vest, who spoke briefly about the future of research in general, saying "I feel we still lack that deep-seated commitment" in regard to the government's recent cuts in funding.

Helaman Ferguson, a sculptor and mathematician, was commissioned to design the CMI logo. His sculpture is called "Figure Eight Knot Complement," and is made of black granite. Ferguson described the sculpture's elements of topology, non-Euclidean geometry, and arithmetic. The sculpture originated as a visualization of complex matrices. A small bronze replica of the logo was also presented to Wiles, and CMI advisors said that mathematical awards in years to come may be similar replicas.

The president of the International Mathematical Union, Director of the National Science Foundation, and the President of the American Mathematical Society attended ceremonies, as did two winners of the Fields Medal, the equivalent of the Nobel Prize in mathematics, and numerous students from several schools.

Karen Robinson contributed to the reporting of this story.

M.I.T. Community Summer Softball 1999

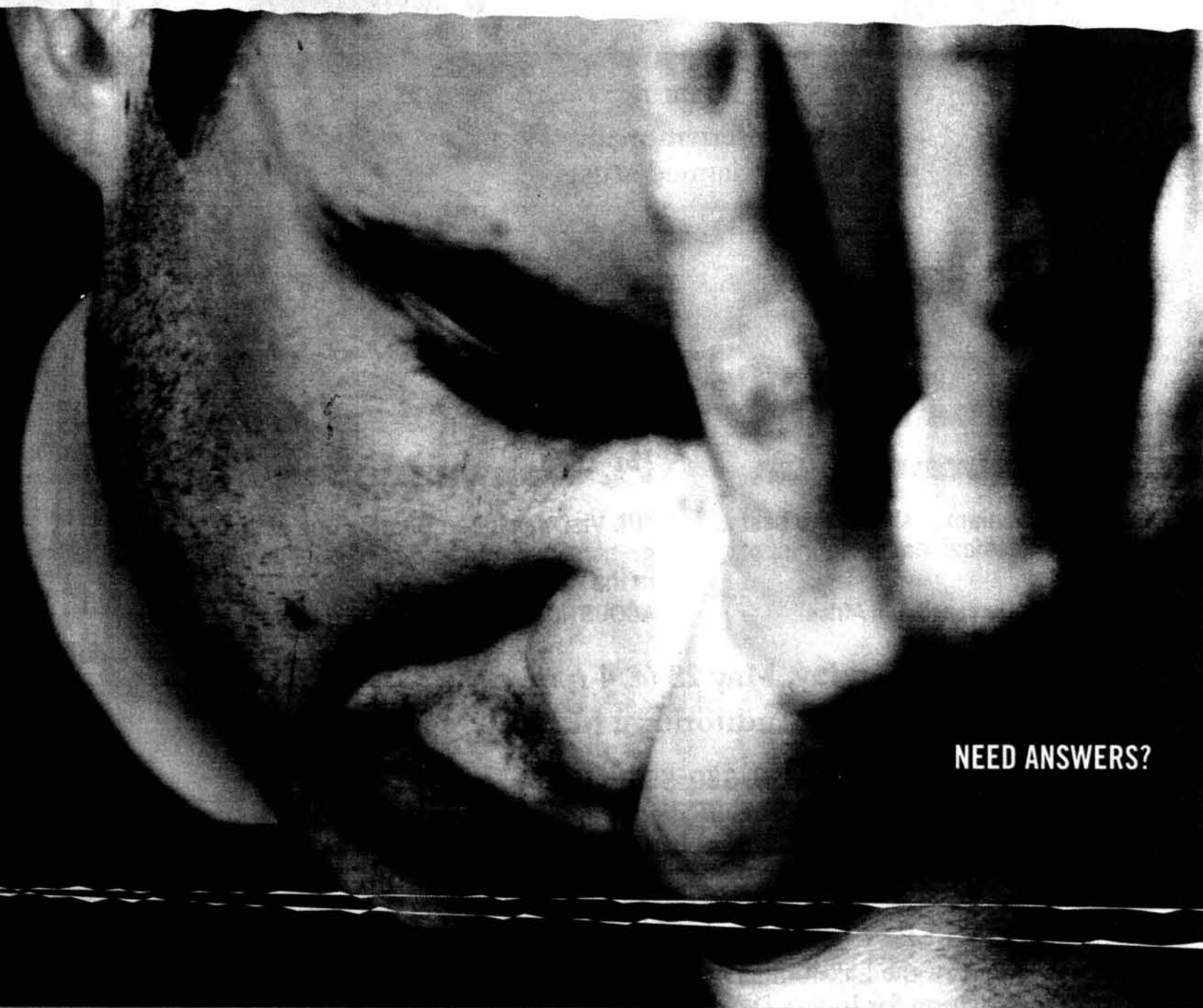
Umpire Meeting
New Umpires Welcome!

Wednesday 12 May
5:30pm 1-190

Umpire Clinic: Thursday
20 May, 5:30pm, 1-190

For more information, contact:
Mark S. Throop & Maryann Smela
MIT Rm. 56-686
X3-6207
978-754-3639
mthroop@ultranet.com

CAN THE WEB REMIND ME OF IMPORTANT DATES?



NEED ANSWERS?

Find them at www.altavista.com/mit

AltaVista™

Even EZ-er than 1040EZ.

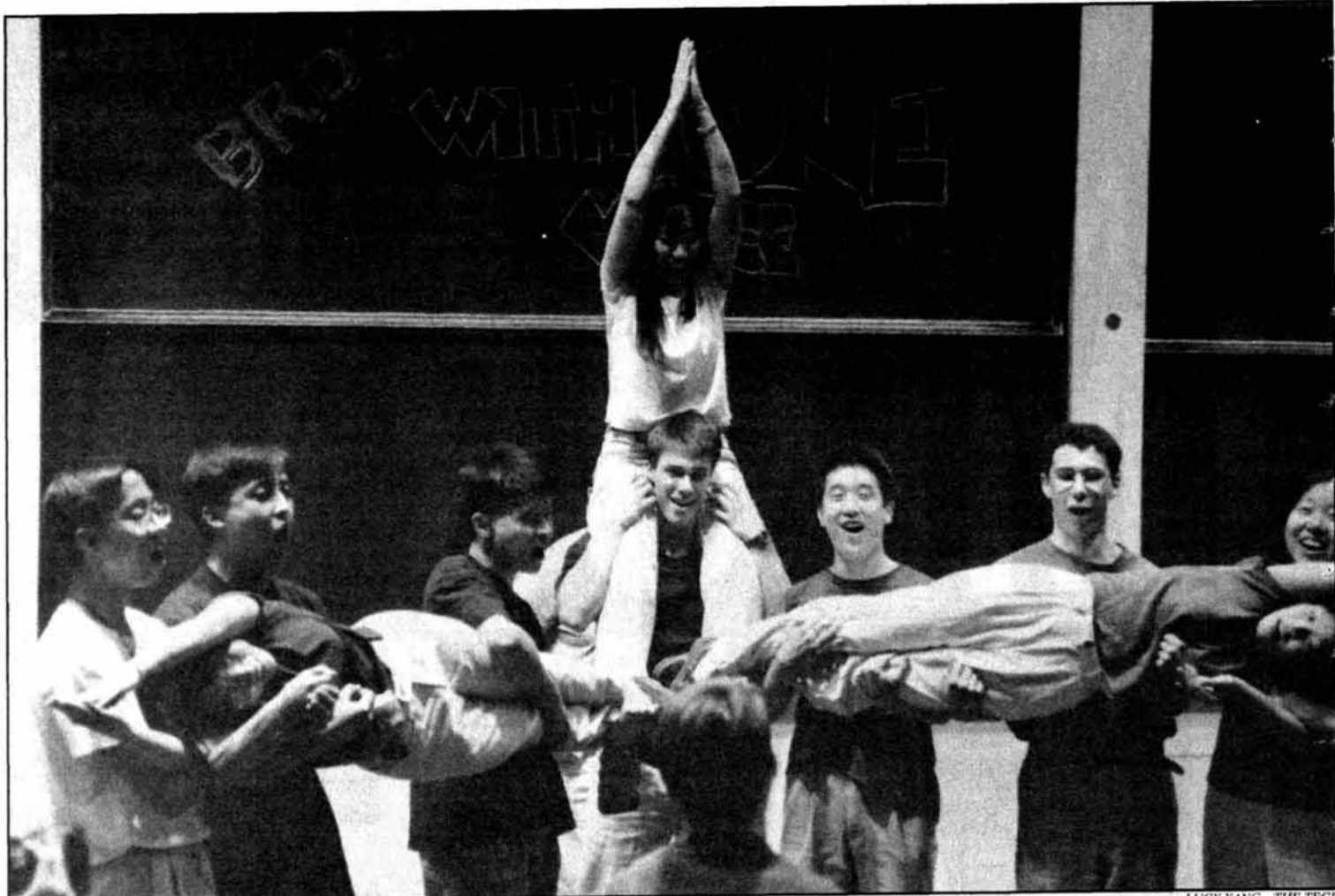


Introducing TeleFile from the IRS. If you are single and filed Form 1040EZ last year, you can file your tax return in ten minutes by phone. Anytime. Check your tax booklet for information.

TeleFile
It's free. It's fast. It works.

Department of the Treasury
Internal Revenue Service
Changing for good.

This space donated by *The Tech*



Members of the Christian a cappella group, the MIT Cross Products, demonstrate vector algebra at their 10th Anniversary Concert Saturday in 10-250.

A Passage to the New Millennium* an Indian Classical Music Concerto



**Padmashree
Dr. L. Subramaniam**

"Dr. L. Subramaniam ... simply the best ... the greatest classical Indian violinist of our time ..."

SUNDAY TIMES, Durban, South Africa

featuring
internationally
acclaimed artists



**Grammy Award Winner
Pt. Vishwa Mohan Bhatt**

"Pt. Vishwa Mohan Bhatt ... one of the greatest and most expressive slide players in the world"

ACOUSTIC GUITAR MAGAZINE

Sunday, May 23 @ 4 p.m.
Kresge Auditorium, M.I.T

Tickets \$20, \$30, \$50, \$100⁺
Students \$5 discount

Call The Source (W20 Lobby) @ (617)-252-1994

For additional information and online reservations visit us at
<http://www.aidboston.org>

* part of the Lakshminarayana Festival presented by Association for India's Development & Viji Global Arts

⁺Includes invitation to a reception with the artists.

Proceeds go towards supporting development projects in India.

don't let this summer
TRAVEL
faster than you!

*Cheap tickets. Great advice.
Nice people.*

Fares are 1/2 round trip, based on roundtrip travel. Taxes not included. Rates are from Boston.

- LONDON • \$100
- MADRID • \$274
- PRAGUE • \$298
- FLORENCE • \$250
- FRANKFURT • \$148

Council Travel

Council on International Educational Exchange

MIT Student Center W20-024
84 Massachusetts Ave.
Cambridge, MA 02139

www.counciltravel.com


**We SHIP
Any PACKAGE
Any Size
ANYWHERE
At a LOW COST**

***** AMERICAN
BAGGAGE & BOX
TRANSPORT CO

800.752.6773

www.village.com/cargo

HOTCAKES, PANCAKES, FLAPJACKS



FREE STUDY BREAK[FAST]

WHEN: Sunday May 16,1999
10:00PM to Midnight

WHERE: Lobdell Dining Hall, Student Center

WHO: All MIT Students who want a Study Break

By WHO: Your favorite celebrity flippers serving you!!!!!!!!!!

SPONSORED BY: the Office of the President and the Office of Residential Life and Student Life Programs.

CO-SPONSORED BY: the MIT Campus Police, The Campus Activities Complex, The Office of Campus Dining, Department of Facilities, and Athletics.

The MIT Hunger Action Group

Thanks

the 1999 Food Salvage Drivers:

Craig Watkins
Tomomi Kumagai
Adam Bovilsky
Nora Szasz

and all of the Food Salvage volunteers.

We couldn't have done it without you!!!

This year's Food Salvage was a great success, and its future success depends on the continued support of our volunteers. Four days a week, volunteers collect leftover food from both Lobdell and Walker that would otherwise be thrown away. Food Salvage drivers, who are also volunteers, collect this food and donate it to a local shelter.

To learn more about the Hunger Action Group, or to participate in next semester's Food Salvage program and make a difference, email hunger-request@mit.edu.



Hunger ACTION

2 CENT COPY DAY
MAY 12, 1999

"THANKS"

To all Students for
 a GREAT semester!
 All self-service copying
 2 Cents per side
 (8.5x11/ 20 lb white paper)

Coffee & lots of help
 copying any last minute
 thesis or reports!

All Day Wednesday

11-004
 8am -11pm

W20
 11am-Midnight

E52-045
 8am - 6pm

COPYTECH COPYTECH COPYTECH



JELENA SREBRIC—THE TECH
 Kaye Kelly sings Cole Porter's "So In Love" during the MIT Festival Jazz Ensemble performance Friday in Kresge Auditorium.



OMAR ROUSHDY—THE TECH
 Hicham El Moussakkal leads the Tarab Chorus in "Kaan Indi Ghazaal," a traditional Arabic song, during a presentation by the MIT Arab Students Association and the Arab Arts Network Saturday in Wong Auditorium.

Earn up to 480.00/month!!

Healthy men between the ages of 19 and 39 are needed as anonymous sperm donors. Must be 5'9" (175cm) or taller and able to commit to the program for a minimum of 9 months. Donors are compensated \$35.00 per donation. Please call California Cyrobank, in Cambridge, MA at (617) 497-8646 between 9-5, Monday through Friday to see if you qualify... Serious inquiries only, please!

MIT ENTERPRISE FORUM, INC. PRESENTS
**"The Soft Side of
 New Enterprise"**

A SATELLITE BROADCAST FROM
 KRESGE AUDITORIUM

By Ray Stata

Chairman of the Board, Analog Devices

with moderator Paul Brountas
 Senior Partner, Hale and Dorr LLP

Thursday, May 20, 1999

**FREE ADMISSION
 FOR STUDENTS**

REGISTRATION STARTS AT 6:00 PM
 PROGRAM STARTS PROMPTLY AT 7:00 PM
 REGISTER AT THE DOOR OR ON LINE AT
<http://web.mit.edu/entforum/www/sbs/registration.htm>