

DA Files Default Against Fiji After it Fails to Show in Court

By Susan Buchman
ASSOCIATE NEWS EDITOR

Prosecutors entered a default motion against the MIT chapter of Phi Gamma Delta fraternity yesterday morning in Suffolk Superior Court after the fraternity failed to offer a representative to appear at its arraignment Thursday.

"The defendant's decision not to respond to the indictment, by ignoring a lawfully issued summons, requires that this court now enter a default," prosecutors wrote in their motion.

Suffolk County Assistant District Attorney Pamela Wechsler informed magistrate William K. Walsh that "we're not asking for a warrant," a procedure that is often used against individuals who fail to appear when summoned.

Walsh allowed the default motion to be filed.

Default is a "formal recognition from the court" of an individual's failure to appear, Wechsler said Thursday when prosecutors moved for a default hearing to be held after

the fraternity did not appear before the court.

The national Phi Gamma Delta fraternity had previously stated that the MIT chapter was no longer in existence.

"The fraternity didn't cease to exist until the day after the indictment was returned," Wechsler said.

Representatives of the national fraternity yesterday said they had not seen the action of the court and could not comment on the case.

The MIT chapter was indicted as an unincorporated association on charges of manslaughter and hazing in September in connection to the death of pledge Scott S. Krueger '01 over one year ago after a night of alleged drinking.

No individuals were named in the indictment handed down by the district attorney. As such, officers in the now-disbanded fraternity were not required by law to provide representation.

Prosecutors have repeatedly said that no individuals will be indicted in the future in connection with the

incident.

Default prevents return of Fiji

The default motion was filed to ensure that the fraternity would not return to campus, according to Wechsler.

"We have been informed that [the fraternity] could regain their status," so the default will remain on the books "so that should they try to reorganize... we will ask that the default be reentered," Wechsler said.

In September, MIT and Malcolm Cotton Brown, the alumni group that owns the Fiji house at 28 The Fenway, signed an agreement that dissolves the fraternity's status at MIT until at least 2001, when the group would be able to petition for readmittance.

Wechsler also reiterated statements made by District Attorney Ralph C. Martin II at the time of Fiji's indictment. She stated that as a result of the grand jury investiga-

Fiji, Page 22



KRZYSZTOF GAJOS

Sheetal Karhade '01 models her traditional Pakistani dress during the Mini International Fair, sponsored by the International Students Association.

1,148 Take Part in Housing Poll; Results Not Yet Released

By Kevin R. Lang
STAFF REPORTER

Though complete results have not yet been released, the Undergraduate Association announced Monday that 1,148 students took part in the UA's web-based freshmen housing poll between October 16 and 26.

UA President Paul T. Oppold '99 said that while full numerical results were available almost immediately after the poll concluded, the results will be withheld at least until the UA Executive Committee meets on Wednesday. Oppold said that the

UA will "form our action agenda for the term and the year" based on the results of the poll. The committee will also discuss what numerical results should be released, he said.

In addition, Oppold noted that the UA wants to present their interpretation of the data to the administration before results are made public to students. Administrators should learn the results through personal conversations, he said.

The only numeric data officially released was that approximately one fourth of MIT's undergraduate population participated in the poll,

which Oppold said was typical for UA presidential elections.

Oppold also said that the UA does not consider the release of more-detailed data pressing, citing the fact that mandatory on-campus housing for freshmen will not go into effect until 2001, and that one week would not make a difference.

UA releases limited data

Although full results are not yet public, the UA did release some information about the poll Monday evening. According to a UA press release, "most MIT undergraduates

strongly support continuing dormitory rush in its current form, and reject proposals in which freshmen would choose dormitories before arriving on campus in the fall."

In addition, the poll found that "the undergraduate student body does not support MIT President Charles M. Vest's decision to house all freshmen on campus."

The release also noted that there was "strong demand" for kitchens and lounges in the new dormitory.

Student opinions on timing for fraternity, sorority and independent living group rush were determined to have "no clear agreement."

According to Oppold, the UA

Poll, Page 19

Campus Crime Act Makes it Tougher For Schools to Withhold Crime Stats

By Susan Buchman
ASSOCIATE NEWS EDITOR

The way in which colleges and universities nationwide deal with campus crime statistics and freedom of information may change significantly under a new federal education law.

On Oct. 7, President Clinton signed the Higher Education Amendment Act of 1998. Although the act deals mostly with student financial aid, the Jeanne Clery Disclosure of Campus Security Policy and Campus Crime Statistics Act is an amendment to the main act which concerns security policy for colleges and universities.

The law affects the reporting of campus crime statistics, requires an open campus police log, gives schools more freedom over the release of student disciplinary records, and aims to help curb vio-

lence against women and binge drinking.

Statistical reporting revamped

The new law will primarily affect how schools compile and categorize their crime statistics.

"Now [the schools] have to provide a type of classification. It's giving the person a total sense of the environment that they're in and that's important. People don't just go from their dorm to class," said Myra Codner, Administrative Assistant at Security On Campus Inc., a non-profit organization geared to the prevention of college and university campus violence and other crimes.

Statistics on all crime will be divided into four categories: on campus, non-campus, public property, and residential facilities for students.

Fraternities, sororities, and all other living groups associated with the school are considered as on-campus. Property owned by a school but managed by a third party, such as food courts, and public property adjacent to school property, such as streets and sidewalks running through and near the campus, are defined as non-campus.

Although the Campus Police already reports crimes occurring on public property adjacent to campus in its annual report, it will now have to report those statistics in the federal law compliance document, according to Chief of Campus Police Anne P. Glavin.

Manslaughter and arson are added to the list of annually required statistical disclosures. Hate crimes are required to be divided

Crime, Page 20



GABOR CSANYI—THE TECH

Professor Alan Lightman was the recipient of this year's György Kepes Fellowship prize, which is presented by the Council for the Arts for excellence in the creative arts. He donated the prize to the Arts Scholars program. His books include *Einstein's Dreams* and *Dance for Two*.

Electrical Engineering and Computer Science continues to be the most-selected major at the Institute.



Comics

Page 7

Page 12

Information Systems has formed a new team to address the Institute's year 2000 problem.

Page 8

World & Nation	2
Opinion	4
TechCalendar	14
Police Log	20
Sports	24

WORLD & NATION

Yeltsin's Failing Health Leads to Lesser Role as President

LOS ANGELES TIMES

MOSCOW

The Kremlin, disclosing that Russian President Boris N. Yeltsin is suffering from a more debilitating disorder than previously acknowledged, abruptly canceled a presidential trip to Vienna on Monday and said Yeltsin will play a lesser role in running the government.

"He will no longer be in charge of all current, daily issues of the economy," said Oleg N. Sysuyev, Yeltsin's deputy chief of staff. "The president will do his best to help the government exercise its powers, but not to the extent as it was before."

Presidential spokesman Dmitri Yakushkin said that Yeltsin, 67, had developed a condition marked by "unstable blood pressure and undue fatigue." Yakushkin said the president, who already is rarely seen in public, would need rest but not hospitalization.

The acknowledgment that Yeltsin is unable to play the dominant role in governing Russia comes after months of attempts by the Kremlin to assure the public that Yeltsin was in charge and actively working. It has become increasingly clear, however, that the president is incapacitated, and calls have been mounting for his resignation, even from his traditional allies.

U.N. Report Says Iraq Lied About Nerve Gas Supply

LOS ANGELES TIMES

UNITED NATIONS

Leaving open the possibility that Iraq retains a hidden supply of the quick-killing nerve agent VX, a panel of chemical weapons experts has concluded that the Iraqi government lied to U.N. weapons inspectors about its nerve gas arsenal, according to a report made public Monday.

The experts met at the United Nations last week to review tests conducted by laboratories in the United States, Switzerland and France on missile warhead fragments recovered from Iraq. Although only the American lab found definitive evidence of VX, one French test found traces of a nerve agent that could have been VX or sarin, each a deadly gas. Moreover, all three labs found evidence that the missile fragments had been treated with decontaminants, which raises the question of whether the warheads were "scrubbed" by Iraq to remove nerve gas elements before the tests were conducted.

The findings, reported to the Security Council on Monday, are significant because Iraq has repeatedly denied to U.N. weapons inspectors that it ever placed VX in munitions. The American tests, the experts found, showed that VX had been loaded into at least two missile warheads that were unilaterally destroyed by Iraq during or immediately after the 1991 Persian Gulf War.

Impeachment Panel Considers Calling Lindsey, Bennett

THE WASHINGTON POST

WASHINGTON

House Republicans are considering calling senior White House adviser Bruce R. Lindsey and Robert S. Bennett, President Clinton's lawyer in the Paula Jones case, to testify before the Judiciary Committee as part of its impeachment probe of the president, according to informed sources.

Republicans see Lindsey, who repeatedly invoked executive privilege rather than answer questions before the grand jury during independent counsel Kenneth W. Starr's investigation of Clinton, as a key figure in the administration's efforts to contain damaging information concerning the president. In a closed-door leadership meeting last month, House Speaker Newt Gingrich, R-Ga., specifically identified Lindsey's unwillingness to cooperate with Starr as an example of the White House's obstructionist tactics.

Netanyahu Faces Rebellion Over Wye Peace Agreement

By Lee Hockstader

THE WASHINGTON POST
HEBRON, ISRAELI-OCCUPIED WEST BANK

Prime Minister Benjamin Netanyahu '76 fought a rear guard battle Monday against the growing likelihood of early elections as an odd alliance of liberals, security hawks and religious parties aimed to topple his government in the fallout from the Middle East peace accord.

The noise generated by Israel's political upheaval nearly drowned out the latest spasm of sectarian violence — the murder of a Jewish settler in Hebron and, hours later, the apparent revenge killing of a Palestinian man near a Jewish settlement outside Nablus.

Monday, the Israeli army clamped a general closure on Hebron, preventing Palestinians from leaving or entering the city.

Having renounced Netanyahu as their champion, Jewish West Bank settlers, including friends of the man murdered in Hebron, protested noisily against the land-for-security deal outside the premier's office in Jerusalem Monday night.

Slamming Netanyahu as a traitor and brandishing posters of him shaking hands with Palestinian leader Yasser Arafat, the 200 or so protest-

ers resembled those who railed against Prime Minister Yitzhak Rabin for making territorial compromises with the Palestinians in the months before his 1995 assassination.

Netanyahu spent much of the day trying to assuage elements in his fracturing coalition opposed to the peace deal, which they believe hands the Palestinians a sizable chunk of land in the Israeli-occupied West Bank in return for empty promises.

He held lengthy meetings with disaffected members of his conservative coalition Cabinet and with representatives of the settlers' council, insisting the pact he signed Friday in Washington is the best possible deal under the circumstances. He also assured them he would continue expanding Jewish settlements in the West Bank in spite of fierce Palestinian opposition and a standing appeal by the United States that he suspend such activity for the sake of the peace process.

Netanyahu's 17-member Cabinet is expected to approve the peace deal, perhaps as early as Thursday, and the pact is also likely to sail through the Knesset, Israel's parliament, with the support of the opposition Labor Party next week.

Monday he easily survived a no-confidence motion on which lawmakers bothered to vote.

But even as Netanyahu lobbied for his political future, the Knesset's law and constitution committee, by a 9-to-7 vote, passed a bill to dissolve the parliament and call new elections early next year. The bill is expected to come before the full parliament within two weeks, and analysts said it stands a good chance of winning a majority of the 120 members — not least because the Labor Party says its support for the peace deal does not extend to a general safety net for Netanyahu.

Dissidents within Netanyahu's coalition were discussing a mid-March election date, over a year before his term is scheduled to expire. Hard-liners were also hopeful that the turmoil of an electoral campaign might derail implementation of the peace agreement, which calls for a withdrawal from a further 13 percent of the West Bank in three phases over 12 weeks.

Although Netanyahu's political future looks tumultuous, it is by no means finished. Having moved toward the center by signing the accord, he could well win fresh elections if he is forced into them.

Troop Withdrawal from Kosovo Lifts Threat of NATO Airstrikes

By R. Jeffrey Smith

THE WASHINGTON POST
POLUZE, YUGOSLAVIA

Several thousand Yugoslav Interior Ministry troops packed their gear and boarded buses heading out of the embattled province of Kosovo Monday, marking the first step in what the government promised would be a total withdrawal of 4,500 troops before Tuesday's NATO deadline.

The withdrawals, if carried out, would put Yugoslavia substantially in compliance with demands that it remove a large number of its forces from Kosovo by that day and would lift the immediate threat of punitive NATO airstrikes. Also Tuesday, NATO ambassadors were to meet in Brussels to assess whether Yugoslavia had met the alliance's

demands, but there was growing reluctance among some European allies for proceeding with military action, according to NATO diplomats.

NATO officials said the pullout was agreed to by Yugoslav President Slobodan Milosevic and his army chief of staff, Col. Gen. Momcilo Perisic, after a marathon negotiating session in Belgrade Saturday evening and Sunday morning with top NATO commanders. Almost every unit was fought over in the talks, but, in the end, Milosevic pledged to withdraw 4,500 Interior Ministry police troops and to order two-thirds of the Yugoslav army units deployed in the field back into their military garisons.

"Milosevic got the message" that

NATO would carry out airstrikes if he refused to order the withdrawals, a senior NATO officer said. "The intent is to break the pattern of repression, provocation and violence" that has claimed more than 800 lives and forced more than 300,000 people from their homes in Kosovo during the past eight months.

Evidence of the pullout was abundant Monday in the central region of Drenica, where many roadside bunkers had been dismantled and hundreds of troops were waiting to be picked up.

As of 2 a.m. Tuesday, a U.S. diplomat said that as many as 4,000 troops had apparently left the province but that monitors would seek to verify that number after dawn.

WEATHER

Ain't It a Mitch?

By Greg Lawson and Bill Ramstrom

STAFF METEOROLOGISTS

Yesterday was a reminder that we are indeed in autumn — unfortunately last weekend's conditions can't continue forever. A small vorticity anomaly over western New York will bring us mostly cloudy to overcast skies this afternoon. Fear not, it may look like rain, but we should stay dry. As a large high pressure center moves off the coast of Nova Scotia, our winds will shift from easterly to southerly.

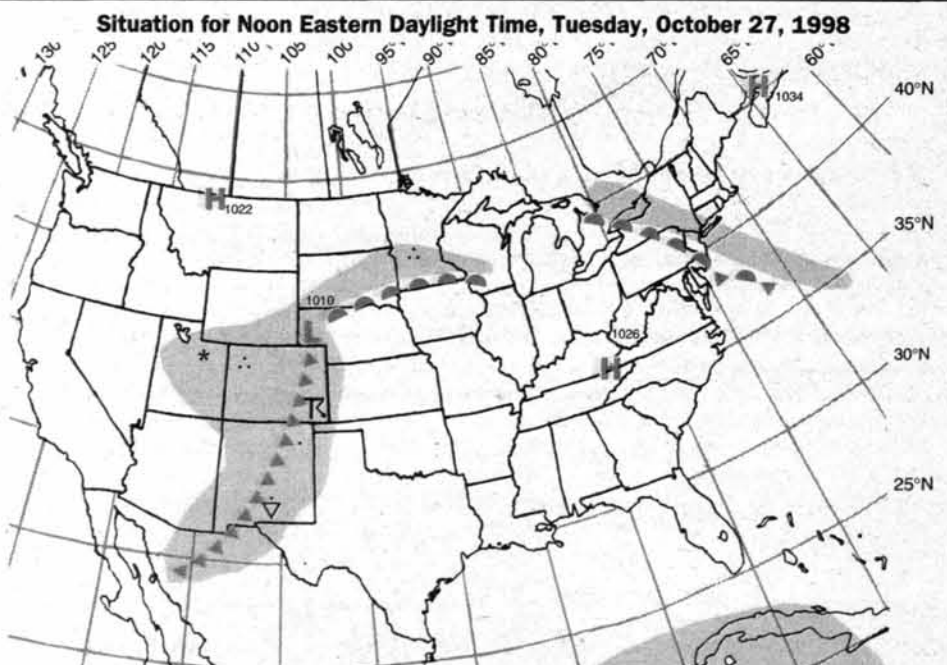
Hurricane Mitch, which was located near the north coast of Honduras last night, has strengthened into the strongest Atlantic hurricane in 10 years, with sustained winds of 180 mph. This places Mitch in the company of only a few other infamous Atlantic hurricanes to reach Category 5 strength, the maximum possible. He is currently drifting slowly in the Western Caribbean, and is forecast to remain in that area, and out to sea, for the next three days, weakening slightly. Mitch is located over a deep patch of warm ocean water; this has enabled him to attain this strength, and should allow him to maintain wind speeds of at least 140 mph during the next couple of days. That is approximately the strength with which Hurricane Andrew in 1992 devastated South Florida. If Mitch makes landfall at the current strength, damage would be catastrophic in the region closest to the center.

Today: Looming clouds by early afternoon. Easterly winds shift to southerly. High 55°F (13°C).

Tonight: Clouds clearing late. Southwesterly winds established. Low 48°F (9°C).

Wednesday: Pleasant. Mostly sunny becoming partly sunny. High 65°F (18°C).

Thursday Outlook: Cooling trend with increased cloudiness and a chance of rain. High in the mid 50s (12-14°C).



Weather Systems	Weather Fronts	Precipitation Symbols	Other Symbols
H High Pressure	--- Trough	Snow	Fog
L Low Pressure	— Warm Front	Light	Thunderstorm
S Hurricane	▲ Cold Front	Moderate	Haze
	▲ Occluded Front	Heavy	

Compiled by MIT Meteorology Staff and The Tech

Papers in Jones' Case Raises Questions About Willey's Role

By Richard A. Serrano and Robert L. Jackson
LOS ANGELES TIMES

WASHINGTON

With Kathleen Willey still the unplayed wild card in Kenneth W. Starr's continuing criminal investigation, documents unsealed Monday from the Paula Jones lawsuit raise fresh questions about how Willey's name originally surfaced in the search by Jones' lawyers for corroborating evidence that President Clinton was a womanizer.

Jones' legal team said a woman called one of their attorneys in January 1997 and, refusing to give her name, said "I had a similar thing happen" to Jones' allegation that Clinton exposed himself in a Little Rock, Ark., hotel suite in 1991.

But Willey, in a September 1997 affidavit, denied making the phone call or describing Clinton groping her in a small room just off the Oval

Office in 1993.

Starr's office of the independent counsel is investigating whether the Clinton White House used a wealthy campaign fund-raiser to persuade Willey not to provide damaging evidence against the president. His ongoing investigation could yet produce criminal indictments.

In addition, if Willey's story about an unwanted sexual episode with Clinton is true, she could provide key supporting testimony should an appellate court reinstate Jones' sexual harassment lawsuit against the president.

The 725 pages of Jones case documents, released for the first time, also show that attorneys for Clinton and Jones fought ferociously over whether the president's medical records should be turned over. Jones' lawyers were seeking verification of her recollection that

the president had a "crooked" penis.

Exactly how Willey's name first came to the Jones team has been a matter of heated debate for nearly two years.

Joseph Cammarata, one of Jones' former lawyers, said in a sworn affidavit that he received an unsolicited telephone call from a woman whom "I now believe is Kathleen E. Willey" and who said Clinton had groped her in the White House.

Cammarata said the woman also advised him that she had told a White House employee about the incident — an apparent reference to Linda Tripp, who later came forward with descriptions of seeing Willey disheveled.

And Cammarata said the woman on the phone told him that her husband "was found dead that night, apparently a suicide," which also tracks with the truth.

Microsoft Says Netscape Set Up Meeting to Manufacture Evidence

By Rajiv Chandrasekaran
THE WASHINGTON POST

WASHINGTON

Microsoft Corp. attorneys accused rival Netscape Communications Corp. Monday of setting up a controversial June 1995 meeting between executives of the companies "for the express purpose of manufacturing evidence against Microsoft." Justice Department lawyers responded by saying the material Microsoft gave a federal judge to support that contention actually helps the government's antitrust lawsuit against the software giant.

As the second week of the trial between Microsoft and the government began, Microsoft attorneys also asked Netscape's chief executive in a closed court session about negotiations his company is having

with America Online Inc. Netscape has been urging AOL to more closely integrate Netscape's Internet "browsing" technology into AOL's software when an agreement between Microsoft and AOL expires Jan. 1, 1999, according to sources familiar with the matter.

Before the day's proceedings began, however, Microsoft gave U.S. District Judge Thomas Penfield Jackson a copy of a letter and a subpoena that the company contends supports its claim that the June 1995 meeting was a "setup." The letter, written by lawyer Gary Reback, who used to represent Netscape, was sent to Justice two days after the meeting between Netscape and Microsoft.

The letter, which details the meeting and includes notes of the encounter taken by Netscape execu-

tive Marc Andreessen, was sent to Justice in response to a civil subpoena that the department had issued to Netscape the day before — one day after the meeting.

"The recently produced documents demonstrate quite clearly that the June 21, 1995, meeting was a 'set up' orchestrated by Netscape's counsel," Microsoft wrote in support of its request to Jackson.

Netscape and the government allege that, at the meeting, the software giant urged Netscape, then an upstart firm, not to make browsers that would run on personal computers using Microsoft's popular Windows 95 operating system because Microsoft wanted to control that market.

Microsoft argues the meeting was a routine business encounter where nothing untoward occurred.

Computer Glitch Halts NYSE Trading for 59 Minutes

LOS ANGELES TIMES

NEW YORK

In a rare technological black eye for the world's biggest stock market, a malfunctioning computer switch forced a 59-minute halt in trading on the New York Stock Exchange on Monday.

Although the NYSE described the glitch as an isolated hardware failure, the mishap highlighted the exchange's — and the entire industry's — vulnerability to such gremlins as global securities trading grows increasingly automated.

The shutdown also cost NYSE member companies an undetermined amount of money in lost business. Officials said that as of late Monday they were aware of no complaints from investors about mis-priced or otherwise bungled trades.

Still, some investors may have made trades based on incomplete information, experts said.

Overall, blue-chip stocks — most of which call the NYSE home — were little changed Monday. The Dow Jones industrial average eased 20.08 points to 8,432.21.

Monday marked the first time that equipment trouble had halted NYSE trading in midstream, although a software problem caused a one-hour delay in the opening of trading on Dec. 18, 1995. Before that, a power outage in New York City shut down NYSE trading for 24 minutes on Oct. 22, 1991.

Peru, Ecuador Sign Pact Ending Border Dispute

THE WASHINGTON POST

BUENOS AIRES

Peru and Ecuador, which fought three territorial wars this century and almost clashed again three months ago, signed a landmark peace agreement Monday that resolved their violent border dispute with an innovative plan that includes creation of two national "peace parks" near the most-contested stretch of their frontier.

Peruvian President Alberto Fujimori and Ecuadoran President Jamil Mahuad were hailed for overcoming strong internal opposition to the accord at an elaborate ceremony in Brasilia — site of most of the talks.

The two leaders finally ended the border conflict after forcing resolutions through their legislatures that allowed the matter to go to binding arbitration with four mediators — the United States, Argentina, Brazil and Chile.

The agreement reaffirms the border set in the 1942 Rio de Janeiro Protocol, which declared the bulk of the disputed land in the Amazon region as Peru's. But there is one exception: Ecuador will now become owner in perpetuity of Tiwinza, a one-square-mile outpost in Peru where Ecuador buried the bodies of 12 of its soldiers killed in its most recent war with its bigger, more powerful neighbor in 1995.

The two nations also agreed to demilitarize a 50-mile stretch of border in the isolated Cordillera del Condor mountain range, once heavily patrolled by both nations and still monitored by 200 peace-keeping troops from the four mediating nations. Soldiers will gradually be replaced with forest rangers and police who will run two separate national parks in what is one of the most biologically diverse regions on earth.



Graduate Student Council

OFFICE: Walker Memorial, 50-220 PHONE: 253-2195

EMAIL: gsc-request@mit.edu WEBSITE: www.mit.edu/activities/gsc

Graduate Student Rings

The GSC is pleased to announce the 1998 Fall Semester Ring days! The rings are available in 10K, 14K, and 18K gold in 4 crown sizes: petite, small, medium, and large. Degrees available include PhD, ScD, SM, M.Eng., MCP, M.Arch., and MBA.

Nov. 2	Stratton Student Center	11 AM - 5 PM
Nov. 3	Sloan Business School	11 AM - 5 PM
Nov. 4	Sloan Business School	11 AM - 5 PM
Nov. 5	MIT Kendall Bookstore	11 AM - 5 PM
Nov. 6	MIT Kendall Bookstore	11 AM - 5 PM

GSC Intramural Sports Teams

LEAGUE	CONTACT
Basketball (all levels)	Mark Chang mchang@mit.edu
Hockey A (checking)	Glen Monnelly monnelly@space.mit.edu
Hockey C (checking)	Scott Ramming sramming@
Hockey D (non-checking)	Nure Aiza nure@

Graduate Student Career Fair

Nov. 13 10 AM - 3 PM Dupont Gym

General Council Meeting - Nov. 4

50-220 5:30 - 6:30 PM

Pick-up Volleyball

Sponsored by the GSC Rockwell Cage
Fridays: Oct. 30 & Nov. 6 7-10 PM.
All skills welcome. Come meet new friends.

Calendar

10	17	OCTOBER
27		- Career Fair meeting *
		NOVEMBER
03		- Muddy Charles Board of Governors *
04		- General Council Meeting *
05		- Publications board committee meeting *
13		- Career Fair Dupont 10 AM - 3 PM
17		- Academics, Research & Careers meeting *

* = at 5:30pm in Room 50-220. All graduate students are welcome. Food is provided.

Graduate Student News

The GSN was published yesterday. Pick up your copy today. The next issue will be published on Mon., Nov 9. Submissions will be due Nov. 3 to con@mit.edu.

GSC Pumpkin Sale Oct. 28 & 29 Stratton Student Center 11 AM - 3 PM

Profits will be donated to aid famine relief in North Korea. Volunteers needed to help sell the pumpkins. If you're in helping, please contact Mark Bailey at mbailey@mit.edu.

OPINION

Student Input in Housing

The recent announcement by Chancellor Lawrence S. Bacow '72 calling for community input in a housing design contest is a welcome move by the administration. *The Tech* supports this request for community and student opinion, particularly at this early stage in the planning of the new housing and residence selection system. This is an unique opportunity for the MIT community to be involved in the formulation of a cohesive housing plan, both in the design and implementation stages.

Editorial

Some of the major concerns of any new system are the role of the fraternities, sororities, and independent living groups and the extent to which the identity of residence halls can be preserved. *The Tech* has several recommendations that should be included in the revised residence selection system.

Working with the premise that all freshmen will be housed on campus, *The Tech* believes that it is important that a variety of housing choices be available. To this end, dormitory rush should be held in a similar fashion to the way it has been held in past years. Temporary housing should be assigned during Orientation, and the first weekend should provide a chance to investigate on-campus living options, including dormitories and language houses. In the absence of a competing fraternity rush, two to three days would be sufficient time to make adequate matches between freshmen and residence halls. While it has been suggested that freshmen could choose their residences based solely on booklets and preference cards, this solution is a poor substitute for actually seeing the facilities and meeting some of the residents of the various dormitories. In addition, floor rush, an important part of finding compatible roommates and roommates, should remain intact.

The role of FSILGs should be minimized during Orientation. However, it is possible to preserve the FSILG system through a revised rush and bidding process. The free flow of information is essential to any residence selection system; as such, freshmen should be free to socialize and visit FSILGs throughout the fall term. But no bids should be extended until after a dedicated rush week that could occur in the latter half of Independent Activities Period. The purposes of maintaining a dedicated rush period are twofold. First, it provides a chance for freshmen to learn about several FSILG options in addition to

any they have visited during the fall. In addition, setting aside a period for rush, exclusive of the academic pressures of the regular term, will allow ambivalent freshmen who are uncertain about joining an FSILG the opportunity to be persuaded that an independent living option may be beneficial. The latter aspect is essential for improving the yield of rush and maintaining the diversity of the current FSILG system.

In the interest of furthering open communication with FSILGs, bids given out after this week of dedicated rush should be valid throughout the spring term; there should be no pressure to accept or lose a place in a house. This would allow houses that do not meet their quota to continue to encourage freshmen to investigate their options throughout the spring term. Pledge programs could occur over the summer or fall of sophomore year, when new members may move in to their choice of houses.

Another means of both improving yield and increasing housing choice is to make it easier to transfer between residence halls after the freshman year. If freshmen have found a housing option through dormitory rush that they are satisfied with, they should be allowed to remain in their residence. However, the inertia of the current system should be avoided; on a housing confirmation card, freshmen should indicate that they are satisfied with their current choice of housing and should be given the option to request a change, rather than remaining in the same dormitory by default. This would also make the transition to living in an FSILG easier, further improving yields.

The transition to a modified housing system will be difficult for FSILGs. For the year of 2001-2002, with no freshman or sophomore pledge class, many houses will be below capacity. MIT should financially compensate houses to the extent that a house bill will not increase any more than a dormitory house bill increases that year. This will prevent individual members of FSILGs from bearing a burden in the form of a house bill that jumps from \$2,500 to \$4,000.

While the transition to a new housing system with freshmen on campus will be difficult, with decreased FSILG yields and potentially more crowding even with a new dorm, it is possible to find a solution that preserves the positive aspects of the current system. Hopefully, with the input of students through the impending design contest, a satisfactory compromise will be found on the numerous aspects of the housing system.

Release the Results

The Tech urges the Undergraduate Association to promptly release the results of the housing poll to students. On Wednesday evening, the UA's executive committee will meet to form an "action agenda" to present to the administration, as well as consider releasing the numerical data to students. Yesterday, President Paul T. Oppold '99 said the release was

likely, but not certain. The idea that the UA would even consider not releasing numerical results from the poll is troubling.

Before releasing the results of the referendum to students, the UA has already provided some of its analysis of the vote. Yesterday, the UA distributed its press release widely to students through e-mail lists. The release makes sweeping generalizations regarding the results of the referendum without providing hard statistics to back its claims. For example, the release states that a majority of voters oppose the housing of all fresh-

men on campus, but it does not provide vote totals or percentages of those who did actually oppose that initiative. We strongly feel that the UA should have released the data from the survey before making its analysis of the situation public.

We are also concerned that the UA will inform the administration of a wider selection of the results of the poll before the student body. The UA exists to serve the undergraduate population of MIT, not the administration. *The Tech* is disturbed that the UA would choose to present findings to the administration before allowing the population it represents to learn the results and draw their own conclusions. Providing information to administrators before students serves little purpose, and only serves to further isolate the general student body from the administration.

Nothing will be lost by promptly providing the student body with the factual results of this poll. The UA should release the results as soon as possible.



Opinion Policy

Editorials are the official opinion of *The Tech*. They are written by the editorial board, which consists of the chairman, editor in chief, managing editor, news editors, and opinion editors.

Dissents are the opinions of the signed members of the editorial board choosing to publish their disagreement with the editorial.

Columns and editorial cartoons are written by individuals and represent the opinion of the author, not necessarily that of the newspaper.

Letters to the editor are welcome. Electronic submissions are encouraged and may be sent to letters@the-tech.mit.edu. Hard copy submissions may be addressed to *The Tech*, P.O. Box 397029, Cambridge, Mass. 02139-7029, or sent by interdepartmental mail to Room W20-483. All submissions are due by 4:30 p.m. two days before the date of publication.

Letters and cartoons must bear the authors' signatures, addresses, and phone numbers. Unsigned letters will not be accepted. No letter or cartoon will be printed anonymously without the express prior approval of *The Tech*. *The Tech* reserves the right to edit or condense letters; shorter letters will be given higher priority. Once submitted, all letters become property of *The Tech*, and will not be returned. *The Tech* makes no commitment to publish all the letters received.

To Reach Us

The Tech's telephone number is (617) 253-1541. E-mail is the easiest way to reach any member of our staff. If you are unsure who to contact, send mail to general@the-tech.mit.edu, and it will be directed to the appropriate person. *The Tech* can be found on the World-Wide Web at <http://the-tech.mit.edu>.



Chairman
Josh Bittker '99

Editor in Chief
Douglas E. Heimbürger '00

Business Manager
Joey Dieckhans '00

Managing Editor
Erica S. Pfister '00

NEWS STAFF

Editors: Brett Altschul '99, Frank Dabek '00, Zareena Hussain '00; **Associate Editors:** Jean K. Lee '99, Susan Buchman '01, Jennifer Chung '01, Krista L. Niece '01; **Staff:** Orli G. Bahcall '99, Shawdee Eshghi '99, Carina Fung '99, Eric Sit '99, Aileen Tang '99, May K. Tse '99, Sharmin Ghaznavi '00, Stuart Jackson '00, Dudley W. Lamming '00, Katie Jeffreys '01, Dalié Jiménez '01, Rima A. Arnaout '02, Sanjay Basu '02, Alex Ianculescu '02, Neena S. Kadaba '02, Kevin R. Lang '02, Karen E. Robinson '02; **Meteorologists:** Michael C. Morgan PhD '95, Greg Lawson G, Gerard Roe G, Chris E. Forest, Marek Zebrowski.

PRODUCTION STAFF

Editor: Ryan Ochylski '01; **Associate Editor:** Ian Lai '02; **Staff:** Moksha Ranasinghe '99, Jason C. Yang '99, Francisco Tanudjaja '00, Kristen Landino '02, Ágnes Borszédi.

OPINION STAFF

Editors: Michael J. Ring '01, Naveen Sunkavally '01; **Staff:** Dan Dunn '94, Anders Hove '96, Wesley T. Chan '00, Seth Bisen-Hersh '01, Andrew J. Kim '01, Elaine Y. Wan '01, Dawen Choy '02.

SPORTS STAFF

Editor: Shao-Fei Moy '98.

ARTS STAFF

Editor: Joel M. Rosenberg '99; **Staff:** Thomas Chen G, Steven R. L. Millman G, Vladimir V. Zelevinsky G, Teresa Huang '97, David V. Rodriguez '97, Mark Huang '99.

PHOTOGRAPHY STAFF

Editors: Gregory F. Kuhnen '00, Rebecca Loh '01; **Associate Editor:** Annie S. Choi; **Staff:** Rich Fletcher G, Aaron Isaksen G, Wan Yusof Wan Morshidi G, Thomas E. Murphy G, Michelle Povinelli G, Arifur Rahman G, T. Luke Young G, Dennis Yancey '97, Ahmed Ait-Ghezala '99, David Tarin '99, Rita H. Lin '00, Connie C. Lu '00, Garry R. Maskaly '00, Karlene Rosera '00, Chun Hua Zheng '00, Ajai Bharadwaj '01, Ying Lee '01, Amy Yen '01, Miodrag Cirkovic.

FEATURES STAFF

Anthony R. Salas '91, Pawan Sinha SM '92, Hugo M. Ayala G, Calista E. Tait G, Solar Olugebefola '99, Jessica Wu '99, Jennifer Dimase '01, Xixi D'Moon '01.

BUSINESS STAFF

Advertising Manager: Jennifer Koo '00; **Operations Manager:** Satwiksai Seshasai '01; **Staff:** Karen Cheng '02, Jasmine Richards '02.

TECHNOLOGY STAFF

Staff: Boris Zbarsky '01, Shantonu Sen '02, Hoe-Teck Wee '02.

EDITORS AT LARGE

Contributing Editor: Dan McGuire '99; **Color Editor:** Gábor Csányi G.

ADVISORY BOARD

V. Michael Bove '83, Robert E. Malchman '85, Thomas T. Huang '86, Deborah A. Levinson '91, Reuven M. Lerner '92, Josh Hartmann '93, Jeremy Hylton '94, Garlen C. Leung '95.

PRODUCTION STAFF FOR THIS ISSUE

Night Editors: Brett Altschul '99, Ryan Ochylski '01; **Staff:** Erica S. Pfister '00.

The Tech (ISSN 0148-9607) is published on Tuesdays and Fridays during the academic year (except during MIT vacations), Wednesdays during January and monthly during the summer for \$45.00 per year Third Class by *The Tech*, Room W20-483, 84 Massachusetts Ave., Cambridge, Mass. 02139. Third Class postage paid at Boston, Mass. Non-profit Organization Permit No. 59720. **POSTMASTER:** Please send all address changes to our mailing address: *The Tech*, P.O. Box 397029, Cambridge, Mass. 02139-7029. Telephone: (617) 253-1541, editorial; (617) 258-8324, business; (617) 258-8226, facsimile. Advertising, subscription, and typesetting rates available. Entire contents © 1998 *The Tech*. Printed on recycled paper by MassWeb Printing Co.

Justice Is Not Served

Someone Should be Held Responsible for Krueger's Death

Michael J. Ring

The people of Suffolk County cried out for justice. But no one was there to answer their call.



The district attorney's office went to Suffolk Superior Court last Thursday to seek the indictment of the MIT chapter of Phi Gamma Delta in the death of Scott S. Krueger '01. But the defendant's box was empty. No members or representatives of the

fraternity were present to answer to the charge of manslaughter.

Now, over a year after Krueger's tragic death, we have no sense of closure or sense of justice. Indeed, it appears that those responsible for his death will walk away without even a slap of the wrist from the court. Instead of judgment in the case of a most suspicious death of a member of our community, we are left with games of legal semantics. Responsibility is tossed about like an old rag, but it is never claimed.

The local members of Fiji, those that were supposed to be brothers and role models to Krueger, deny responsibility in his death. None of them was indicted individually, and apparently none of them felt compelled to answer to the actions of their organization in a court of law last Thursday. Apparently no actions of an individual on this "Animal House Night" of booze, a night when somebody had to obtain and serve the intoxicating potables to Krueger, a night when somebody had to move the unconscious Krueger to his room, were responsible for his death.

The national organization of Phi Gamma Delta also denies responsibility in Krueger's death. The national leadership refused to

authorize their Boston attorney to appear at the arraignment as their representative. The national fraternity does not discuss whether its policies and atmosphere were tragically flawed. Instead it stated last week that since the local chapter of Fiji is suspended, there is no chapter present to answer to the charge of manslaughter. Rather than admit the mistakes of the past, the national leadership dodges responsibility by offering the excuse that the chapter doesn't exist now. Out of sight, out of mind.

But the blame does not merely rest with Phi Gamma Delta. There is another player in this sad tragedy that has failed to execute his duty and therefore has contributed to the absence of justice in this case. This person is Suffolk County District Attorney Ralph C. Martin II.

The actions of the district attorney's office have contributed to the abdication of responsibility. Politics trumped principles last month when Martin announced the indictment of the local Fiji chapter as an unincorporated association. Martin made headlines when he hailed what is believed to be the first-ever indictment in Massachusetts against a fraternity chapter for a crime related to binge drinking. But that is little consolation since the chances are essentially zero he will win in this case the first-ever conviction against a fraternity chapter for a binge-drinking related crime.

There are people in Fiji who were more responsible for Krueger's death than others in the organization. Someone served him alcohol. Someone moved his body, only to go for more drinks instead of seeking immediate medical attention for his "brother." Martin could have sought charges against these individuals, making clear that those most responsible for Krueger's death would be forced to answer for their actions while exonerating the other members of Fiji. He chose not to expend political capital, opting for good press over good practice of law.

Now we are left with the aftermath.

Prosecutors sought a default warrant on Monday but the magistrate, who last week admitted he was "perplexed" by the scenario, found that no warrant could be served now since there was no defendant in the case which could face prosecution, as the local fraternity had been disbanded. Unless Phi Gamma Delta decides to reorganize at MIT, a possibility which is now nearly certain never to happen, no charges will be further pressed and no convictions won in this case.

Krueger's death has caused some radical changes at MIT, some of which have the potential to be very positive for the Institute community. There is a new awareness of the dangers of alcohol abuse and a stimulated interest and fresh debate of housing policy. Both of these changes were greatly aided, if not prompted, by Krueger's death.

At the same time, however, MIT is faced with a tremendous public image problem. The Institute has responded horribly over this past year to these challenges; its administrators have continually come across in the media as cold and uncaring. Many on the outside stereotype MIT as a party school where alcohol flows freely and most students engage in binge drinking. The standing of the FSILG system has been especially damaged, as responsible chapters with spotless behavior are tethered to Fiji and the other chapters which recently have demonstrated their callous immaturity. Many in the MIT community have been left demoralized by these media battles and distortions.

The bottom line, however, is that an 18-year old just embarking upon a promising college career, just starting what should have been a rich and fruitful life, instead died last year at a Fiji booze bash. And apparently not one person is going to have to stand up in court and explain to the people of Suffolk County his responsibility in Krueger's death. The impunity for the crime of manslaughter is a second tragedy, one for which, not surprisingly, no one takes responsibility.

Integrating Communities at the New Dorm

Guest Column
Luis A. Ortiz

Recently there has been discussion among students, faculty members, and administrators concerning the new dormitory to be constructed at the far end of Vassar Street, adjacent to the Westgate married student housing and historic Washington Park. I have been amused to find that the words most often used in conjunction with the proposed location are "despite," "notwithstanding," "while I am aware of," and "although." Allow me to provide a couple of examples, in my own voice:

"Notwithstanding plans to refurbish Vassar Street, the facility may be too far away to expect non-resident faculty or students from visiting it."

"While I am aware of the plans to build eventually new faculty housing in Cambridgeport, I remain unconvinced that faculty living there would have enough opportunity to interact informally with the residents of the new dorm."

"Despite assurances that innovative programs can bring faculty and students together whatever the physical layout of the campus or its facilities, in the past such programs have been transitory while the divisions inherent in the design of campus have been long-lasting."

Although the Presidential Task Force on Student Life and Learning placed itself firmly in favor of making decisions about campus design and development based on the educational goals of the Institute, the supposedly

overwhelming constraints surrounding this new facility seem to be pushing us in the opposite direction.

I am writing this column to urge members of the community to consider whether this new facility, designed in this way, can accomplish the educational goals we all feel should be paramount. In particular, I would like to advocate that this facility be more than a more distant clone of our existing west campus dorms. Specifically, I urge the Institute to consider the recommendations of the Student Advisory Committee to the task force that new residential spaces be integrated.

Like "notwithstanding," the word "integrated" is banded about a great deal these days. It showed up almost two dozen times in the task force report. I use the word to mean that new campus housing should bring faculty, graduate students, and undergraduates closer together to foster informal interactions across those three now largely separate groups. I believe these interactions are best fostered by having a significant number of each group living in the new dormitory.

This last point about fostering interactions is one of several points around which a consensus seems to be forming. The points on which I have heard agreement from a number of different groups are that:

- The new dormitory needs to generate more informal interaction between graduate students, faculty, and undergraduates.
- MIT will find it difficult to do so with formal programs.
- The new dormitory needs a critical mass of each of the three groups in residence to attract others from those groups to the site,

significantly more than just graduate resident tutors and housemasters. All three groups need affordable, attractive and livable housing. Each group has their own perspectives on positive attributes of housing, but they could be accommodated in the same domicile.

- It will be difficult to generate informal interactions, given time constraints, if living spaces are far apart.

- Selection of the site is an important factor in determining whether the residence will become the locus of such informal interaction across groups.

- The new dormitory should be a model for future additional construction.

The question is, what balance shall we strike between providing attractive, private spaces for individuals and encouraging meaningful interactions among disparate groups? Today the system involves no such balance: graduate, undergraduate, and faculty residential spaces are functionally separate, and there is little interaction between them. MIT should be worried that it may be headed in the direction of deepening the divisions among faculty, graduate students, and undergraduates.

Informal interaction among exceptional students and faculty distinguishes an MIT education and makes it worthwhile. If we concentrate on short-term dilemmas and trade-offs we risk short-changing ourselves in the long run, when the need for more regular informal interaction will become an even greater hallmark of higher education than it is today.

Luis A. Ortiz G is a member of the Chancellor's Strategic Advisory Committee.

Bias at the Red Cross Blood Drive

Shantonu Sen

While walking down the Infinite Corridor last week, I started noticing all the posters for the Red Cross blood drive. I decided to swallow my cowardice and go donate my blood.

Everything was going fine until I read one of the questionnaires they gave me to fill out and sign. Not only did some of the questions seem a little personal, but some of them were also just flagrantly discriminatory. Among them: *You must not donate blood if you [are a man who has] had sex even once with another male since 1977.*

This qualification appears to penalize homosexuals who want to donate blood, even if they are completely healthy. With gay men making up a significant percentage of the population, the Red Cross is hurting itself by unnecessarily limiting the number of people who can donate.

The disturbing "logic" behind this requirement is the supposedly high rate of HIV and other sexually transmitted diseases among the homosexual community. However, the Red Cross is misinterpreting and misusing this data by employing homosexuality as a screening process against possibly infected blood.

As hard as it may be to believe, there are homosexuals who have no disease and who practice safe sex by using condoms, and their blood is perfectly good. The Red Cross could be tapping a greater pool of donors if they were willing to drop this completely senseless requirement. Since the form already includes separate questions which ask the donor whether he or she has any infectious disease, the issue of homosexuality should not be brought up as a roundabout way of asking about sexually transmitted diseases. "Homosexuality" is not synonymous with "disease-ridden."

Gender discrimination also seems to exist, as the questionnaire does not require females to answer the same question. Apparently, gay men automatically are at risk for STDs while lesbians are not. This dichotomy hardly seems fair, since HIV transmission can also be transmitted between females, albeit less frequently. The Red Cross should completely remove this "homosexuality clause," since it serves no definitive purpose other than haphazardly to exclude a sizable demographic of adults. Asking whether donors have any diseases is clearly a major concern, but it should depend on volunteers answering straightforward questions rather than ones which unnecessarily delve into their personal lives.

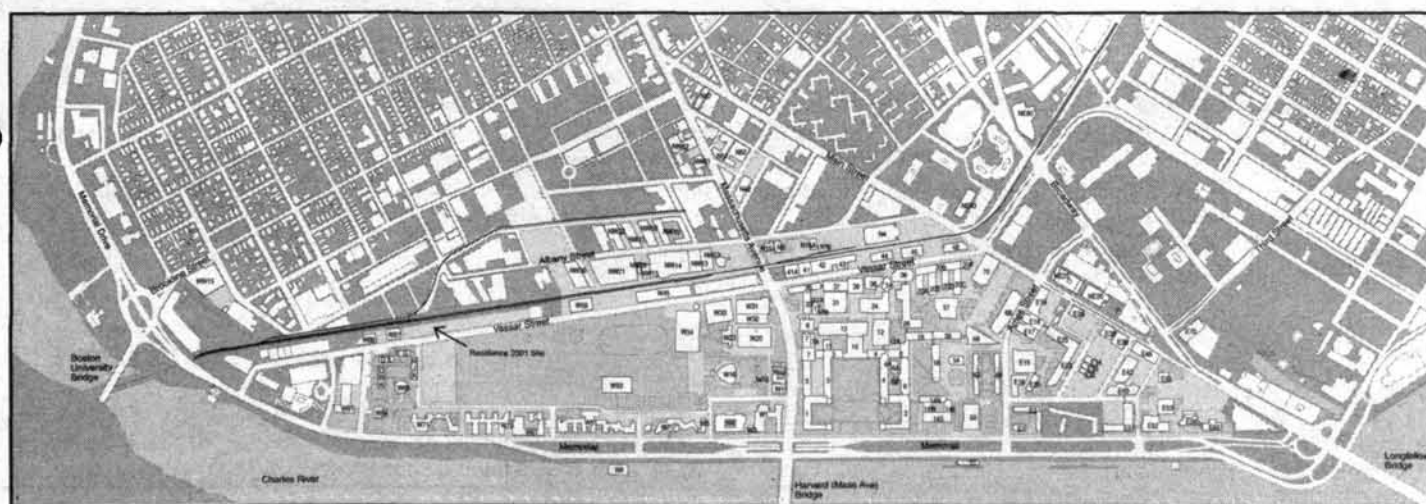
Although it's possible that a person may not know if they have a disease, this ignorance is as likely in heterosexuals as in gay men. Since the Red Cross verifies the questions by testing each sample for HIV and other STDs, sexuality should be a non-issue.

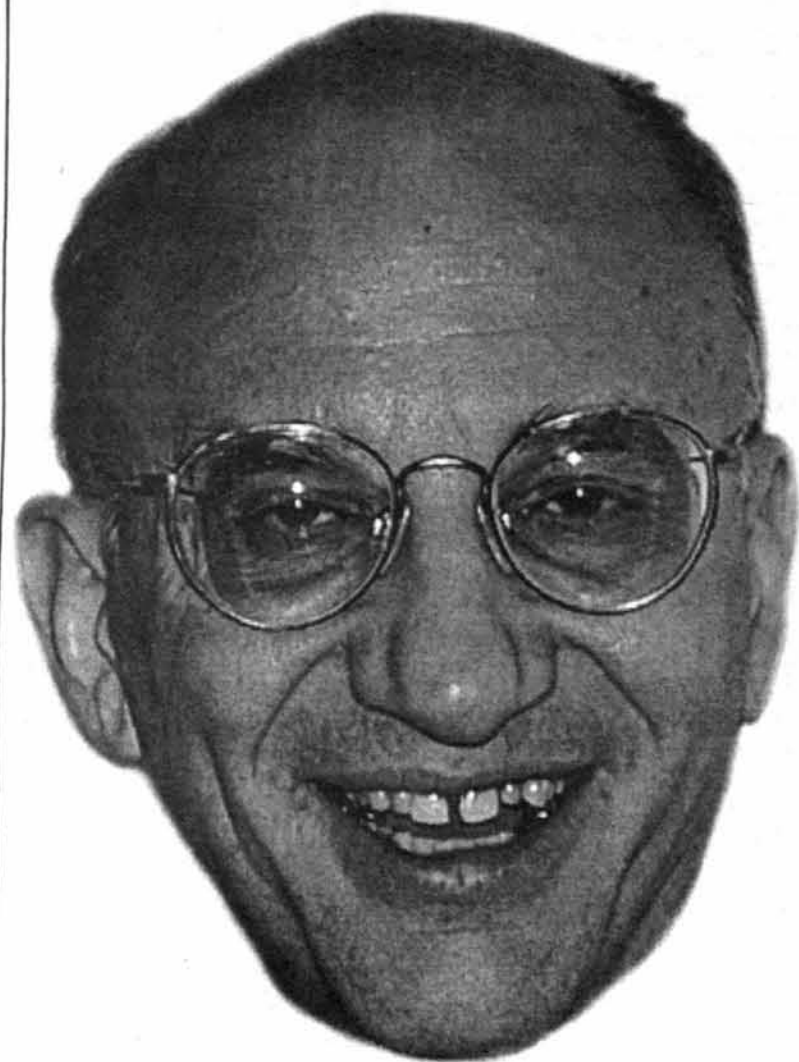
Although that issue was my main contention with the questionnaire, there are other such ungrounded generalizations in the form.

The Red Cross will not accept donations from people who have taken illegal or non-prescription drugs by needle, even once. This requirement is probably based on the statistic that drug users who share needles transmit diseases. However, the question does not even bother to differentiate between safe and unsafe drug use. With the advent of needle-exchange programs and awareness of the risk of transmission, this is another unnecessary limit. Many drug users use their own sterilized needles with little risk of exposure. Admittedly, a blood recipient wouldn't want to get a free "hit" of heroin, but this isn't a problem for donors who may have experimented with drugs many years ago (and have no drugs present in their bodies). But since there is no time qualifier, these people are not allowed to donate.

There is also a restriction against members of both sexes who have given or received money or drugs in exchange for sex. I would venture to say that prostitutes probably have the safest sex out of anyone in the general population, since it is part of their job to be safe — there is no room to get caught up in the passion of the moment and end up having sex without protection. However, I can't say what proportion of prostitutes or their clientele consistently practice safe sex.

I believe the Red Cross needs to revise its blood donation policy. There should be no questions that ask about sexual orientation or behavior. The only questions that need be asked are ones that are immediately relevant to the issue of STDs. There will always be a few people who have unwittingly contracted a disease, but I purport that extra testing is a very small trade-off compared to the extra blood offered by a well thought-out and more equitable donation policy.





Dr. Ben Wegbreit
Founder & EVP Engineering

Epiphany is **the hot company** to check out this year.

Our third founder was sailing around the world with his wife **somewhere around French Polynesia** when he got the call asking him to join the company.

He turned around and **sailed back**.

Epiphany is a **fast-growing start-up**; the leader in the new category of Enterprise Relationship Management software. We're looking for people to do software product design and development, and we hire only the best.

There are a lot of **hard CS problems** we have to solve, involving databases, AI, algorithms, and web-based GUI's. You'll work with recent Harvard, Stanford, CMU and Cornell grads, as well as former professors, lecturers, and MBA's. We didn't include **MIT** in the list, because, well, you could be the first. You'll work with smart, fun, **good solid folk**, and you'll have a chance to have a big impact in building a -- **no, the -- start-up company**.

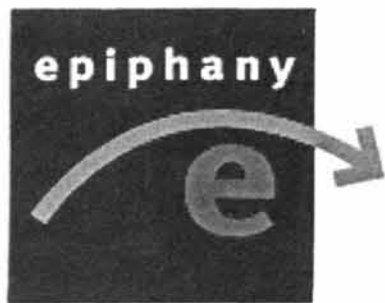
If you can deal with constant bickering about the protocol of calling "**shotgun**", a refrigerator stocked with Odwalla and Snapple, late night trips to the movies and late night programming, you'll have a good time here.

It's a lot of fun, but it's also **serious business**, and we have an amazing management team. Our CEO was previously deputy chairman and COO of KPMG Peat Marwick, LLP, a member firm of a **\$9 billion, 85,000 person** organization. Our VP of Engineering is a former Harvard CS professor and was a venture capitalist for several years before founding Epiphany. Our VP of Marketing has been on the cover of **Wired** (before it became "tired"), is a master at marketing, and has been doing valley startups for nearly 20 years. Our VP of Sales was previously a successful Sales VP at Netscape, and we already have **significant revenues** from our customers. But don't take our word for it, you can see for yourself why **Red Herring** magazine (Sept. 1998) chose us as one of the top 50 private companies of the year!

With a team like this, you might expect that we're well-funded, and you'd be right. We've raised over **\$20M of investment funding** in just the past year. We offer exceptional compensation, with significant equity opportunities. We also provide an unparalleled opportunity to learn about the elements of a well-run start-up!

For more information, contact Jeremy Rassen, jrassen@epiphany.com.

We look forward to hearing from you.



From Startup to Speedup: A Talk on Entrepreneurship

Dr. Ben Wegbreit

Tuesday October 27, 7:30 pm, Room 3-270

Ask a good question, win a digital camera!

Course VI Remains Top Choice Among Sophomores

By Krista L. Niece
ASSOCIATE NEWS EDITOR

Once again, sophomores made Electrical Engineering and Computer Science (Course VI) their top choice of major with Mechanical Engineering (Course II) following a distant second.

Out of a class of 1,082, 689 students chose majors in the School of Engineering. Out of this total, 363 chose one of the divisions within Course VI and 121 chose either Course II or Course II-A.

267 students. Thirty students declared humanities majors, 24 went to the School of Architecture and Planning, and 53 joined the Sloan School of Management. Nineteen sophomores remained undesignated.

These numbers were compiled from the spring, when the then-freshman class declared their choice of major.

Course VI continues strength

Course VI, Electrical Engineering and Computer Science,

garnered the largest number of new members. This has been MIT's largest department for many years—"since at least 1955, when I got here," according to Department Head Paul Penfield Jr. ScD '60.

The major is divided into three programs: Electrical Science and Engineering (VI-1), Computer Science and Engineering (VI-3), and Electrical Engineering and Computer Science (VI-2), which combines components of the other two. This year, the division of Electrical Engineering and

Computer Science attracted 194 freshmen, more than the other two sections combined.

Penfield said that this has been a growing trend since the combined major was instituted. "[It's] a new program... and the most difficult," since it does not involve the specialization of either VI-1 or VI-3, Penfield said. Penfield added that the growing popularity of VI-2 was probably due to the realization of students that, in the future, they would have "to know both sides," both hardware and software.

Computer Science and Engineering gained 124 new members. Electrical Science and Engineering gained 45. This brings the total number of Course VI undergraduate students to 951.

Ocean Engineering grows

The smallest course in the School of Engineering almost doubled in size this year. Ocean Engineering (Course XIII) nearly closed ranks with second-smallest Nuclear Engineering when nine freshmen chose it as their major. There are now 19 undergraduates in Course XIII, only three fewer than in Nuclear Engineering.

The increase is "partly [due to] an effort on the part of the department," said Ocean Engineering professor A. Douglas Carmichael. He emphasized the impact of programs like the one which took place this summer, where thirty incoming students stayed on campus and built underwater aquatic vehicles. Programs like this one, designed to increase awareness of the Course XIII option, influence student choice, said Carmichael.

Some of the students are also joint majors in courses like Course II and Course VI. "A lot of [our graduates] go into software," he said.

Some courses unchanged

Mechanical Engineering remains the second largest department at MIT. The department now totals 383 Course II undergraduates. Biology (Course VII), with just over a hundred new members and a total of 355 undergraduates, ranks first in size among the School of Science courses and third overall. Economics (Course XIV) is still the most popular major in the School of Humanities and Social Science, with 21 new members and a total of 91 undergraduates.

Major	Class of	1999	2000	2001
Civil and Environmental Engineering		23	32	22
Mechanical Engineering		132	113	121
Materials Science and Engineering		32	41	29
Architecture		17	23	21
Chemistry		34	37	35
Electrical Engineering and Computer Science		343	330	363
Biology		137	107	101
Physics		33	31	41
Brain and Cognitive Science		26	23	22
Chemical Engineering		82	85	94
Urban Studies and Planning		2	9	3
Earth, Atmospheric, and Planetary Sciences		7	8	10
Ocean Engineering		6	4	9
Economics		31	37	21
Management		44	67	53
Aeronautics and Astronautics		30	36	45
Political Science		7	6	4
Mathematics		36	44	47
Humanities		15	2	3
Nuclear Engineering		8	11	6
Linguistics and Philosophy		2	1	2
Undesignated		0	0	19
Total Registered		1052	1053	1082

Note: results may not add due to upperclassmen with multiple majors.
SOURCE: ACADEMIC SERVICES

It's a connected world.
Do your share.

For 30 ways to help the environment, write Earth Share,
3400 International Drive, NW, Suite 2K (AD4),
Washington, DC 20008.



Earth Share

This space donated by The Tech

**WIN A FREE TRIP TO
NEW ORLEANS
AND GO ON THE
ANN RICE VAMPIRE TOUR!**

OR WIN FREE TICKETS TO:
Spike & Mike's Animation Festival
The Spooky World Cruise
or an Exciting Whale Watching Tour
(Courtesy of Mass Bay Lines)

Sign Up & Win Today, Check Out:
www.collegestudent.com

Look familiar?



THE PRINCETON REVIEW
Tests are our life.
(800) 2-REVIEW
www.review.com

GMAT
GRE
LSAT
MCAT

MIT

CCRR

grants program

1998 + 1999

we're looking for proposals with new, creative, and innovative ideas for events and activities to enhance racial and cultural relations at MIT.

all members of the MIT community - students, faculty, and staff - are welcome to apply.

NEXT DEADLINE

november 1st

APPLICATION DEADLINES: Proposals are reviewed on a monthly basis. Applications received by the first of any month from October to May will be notified of a decision by the middle of that month.

For more information, an application, or the CCRR Resource Guide, contact:
Dean Ayida Mthembu (mthembu@mit.edu, x3-4861)
or Elizabeth Connors (econnors@mit.edu, x3-0764).

CCRR
MIT Committee on
Campus Race Relations

MIT Team to Deal With Year 2000 Bug

By Sanjay Basu
STAFF REPORTER

With just 431 days remaining in the 1990s, MIT has organized a team of computer experts to deal with the rapidly-approaching year 2000 computer problem.

The year 2000 bug is caused by computer programs designed to give dates in the 1900's, often storing the year as two numbers. When the year 2000 arrives, these programs may reset to the year 1900 instead. The year 2000 problem has the potential to severely hinder computers controlling everything from power plants to banking systems.

Out of concern for the year 2000's impact at MIT, administrators appointed Rocklyn Clark '80 to head the year 2000 Delivery Team, a division of Information Systems.

The delivery team is currently communicating with several departments in order to find remedies for the year 2000 bug.

"Some of these [computer] systems will work fine after 1999 with few or no fixes," Clarke said. "Everything has to be checked, however.... We're seeking out anything that uses microprocessors. I want MIT to get through this well."

Team assesses extent of bug

Last fall, the assessment team conducted interviews to determine how different departments are handling the year 2000 problem. While many people are actively working to find solutions to the problem, some departments have yet to consider the issue.

Information Systems, the Personnel Office, the Payroll Office and Student Services, along with the Controller's Accounting Office, have already begun replacing their systems with year 2000 compliant programs.

"It's not a fascinating technical problem," Clarke said. "There are operating systems and application programs which contain software which are over 20 years old. The

original authors of the sections are no longer available to help interpret their work to the programmers who have inherited them."

The year 2000 team is primarily focusing on safety-related systems like fire alarms and emergency lighting. The William R. Dickson '56 Cogeneration Plant and the Institute's 5ESS telephone system are also being studied.

Problems discovered

The Year 2000 Assessment Team found that a number of other problems are facing MIT.

Long-term lab experiments, for example, may shut down because experiments appear to have continued for a negative number of years.

Data calculations might also be affected by the year 2000: Data from the year 1900 might be overwritten by new data.

Though commercial software creators have attempted to remedy the problem, programs as recent as Windows NT and Javascript can still have problems.

Dates on a Microsoft Excel spreadsheet, for example, can reset from 1900 to 2000.

Team will finish over summer

I/S plans to finish their assessment of the Institute this summer, when they will publish an inventory of the various concerns they have uncovered. The year 2000 team will then estimate the efforts and costs needed to solve the Institute's problems and begin working with administrators and staff in various departments.

"Once these [concerns] have been identified, we want to provide them with any information they may need to fix the problem," Clarke said.

"Everyone knows MIT has a leadership role in something like this. I'm not a year 2000 expert, so I don't have all of the answers," Clarke said. "We have an excellent year 2000 team, however, so when people ask what MIT is doing, I can describe our efforts with confidence."



Angelika Sieburg and Andreas Wellano star in *The Good Woman of Szechuan*, a German play narrated in English and Chinese, in Killian Hall Wednesday.

SHELL INTERNATIONAL

OPPORTUNITIES FOR INTERNATIONAL STUDENTS

We are looking for exceptional students with a fine balance of business acumen, intellectual agility and personal commitment.....the qualities that distinguish the good from the excellent.

In return, we offer a truly international future - varied, stimulating, and intellectually challenging.

So, if you consider that you have these qualities, we are keen to talk to you.

We will consider any degree subject for a career in Commercial Management and any numerate/scientific degree for a career in Exploration and Production.

We are interested in international students of any nationality. US nationals, however, should apply direct to Shell Services International, CSRC/5 910 Louisiana Street, Houston Texas 77002.

To be considered for interview, please send your cv by e-mail to Gill.L.Young@si.shell.com or FAX - 44-171-934-7606.

Open Presentation will be held on Monday, 16th November at 6:00 p.m. in Room 4-153 on the MIT campus.

Scheduled interviews will be held on the 17th and 18th November in the MIT Career Services Center.



WITH ONLINE BANKING, THIS ACCOUNT ALERTS YOU WHEN YOUR BALANCE IS LOW.

HELPING YOU DECIDE BETWEEN GOING TO THE MOVIES OR RENTING ONE BEFORE YOU EVEN LEAVE YOUR ROOM.

Check your balance from your room 24 hours a day using Online Banking with HomeLinkSM. Only the Student Value Package² gives you so much for so little.

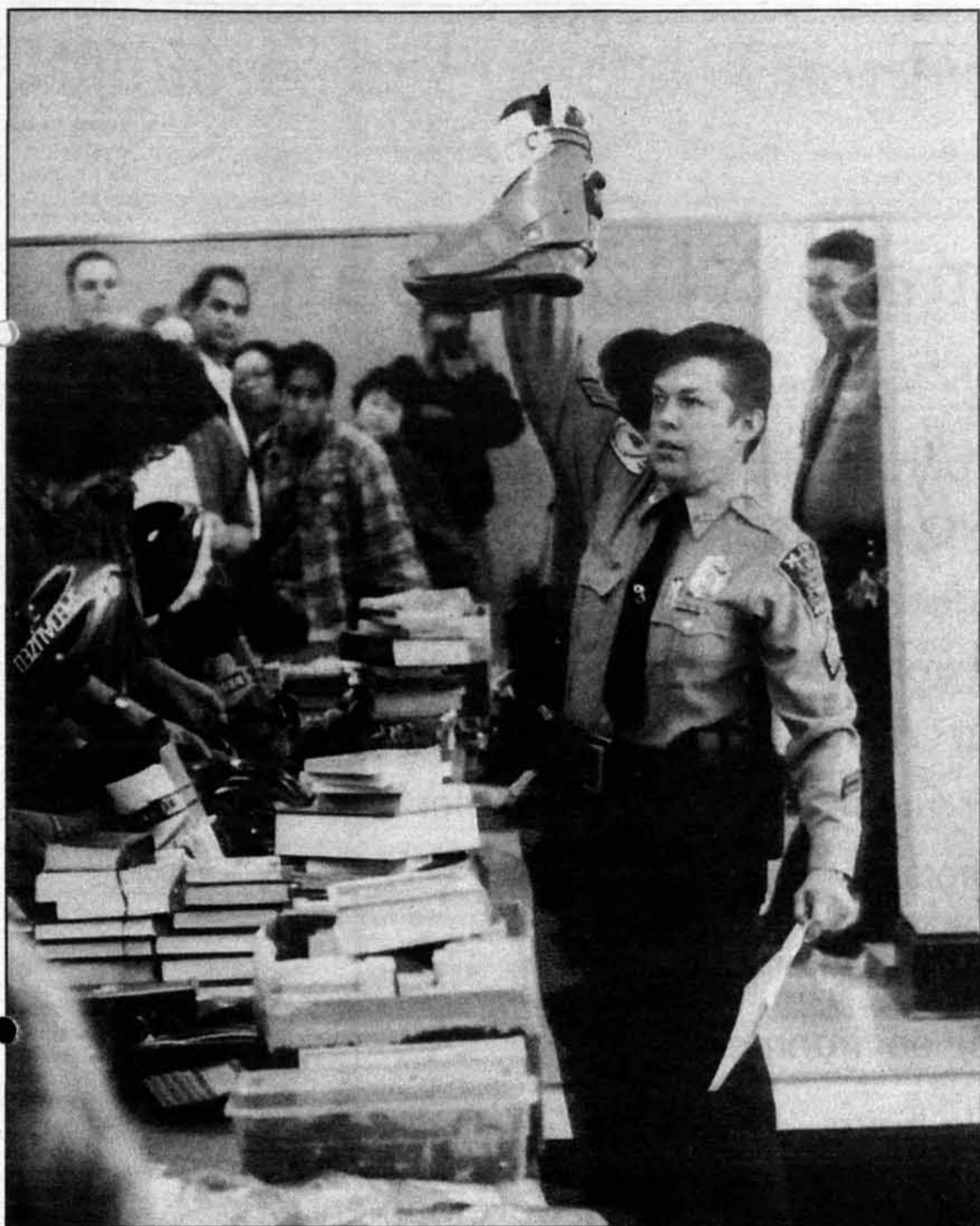
- customized alerts let you know when to say when
- get up-to-the-minute balances
- get free sandwiches at Subway[®] with a coupon, BankBoston Card and a student ID
- use your BankBoston Card with X-Press CheckSM like a plastic check wherever MasterCard[®] is accepted
- over 1,500 BankBoston ATMs
- get overdraft protection if you overspend a little
- new price as low as \$3 a month
- try a demo online or open an account online at bankboston.com/students or call 1-800-2-BOSTON



Get Free
SUBWAY[®]
Sandwiches

1. Online Banking with BankBoston HomeLinkSM is free (e.g., transferring funds, checking balances). There is a \$3.50 monthly fee for Online Bill Payment with HomeLink. 2. Valid school ID or acceptance letter required. To qualify for X-Press Check and Reserve Credit you must be at least 18 years of age and have no adverse credit history. 3. Purchase a six-inch Subway[®] Sandwich and a 21-ounce soft drink and get a second six-inch Subway[®] Sandwich and 21-ounce soft drink of equal or lesser price free upon presentation of a Student Value Package coupon. Offer expires May 31, 1999. Offer available at participating Subway[®] locations and may not be combined with any other offer. One coupon per person per visit. Subway is a registered trademark of Doctors Associates Inc. 4. If you make withdrawals, deposits, transfers, and balance inquiries electronically by phone, ATM, or computer only, the monthly fee is discounted to \$3. The normal monthly Student Value Package fee is \$6.

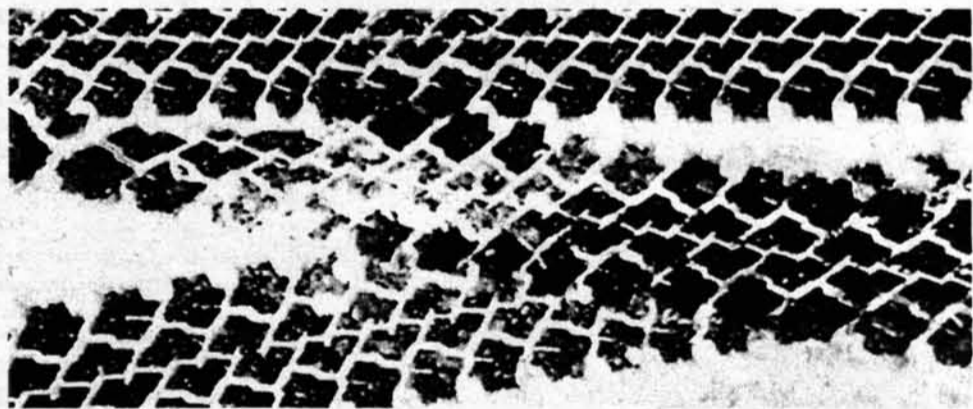
Member FDIC



AARON ISAKSEN—THE TECH

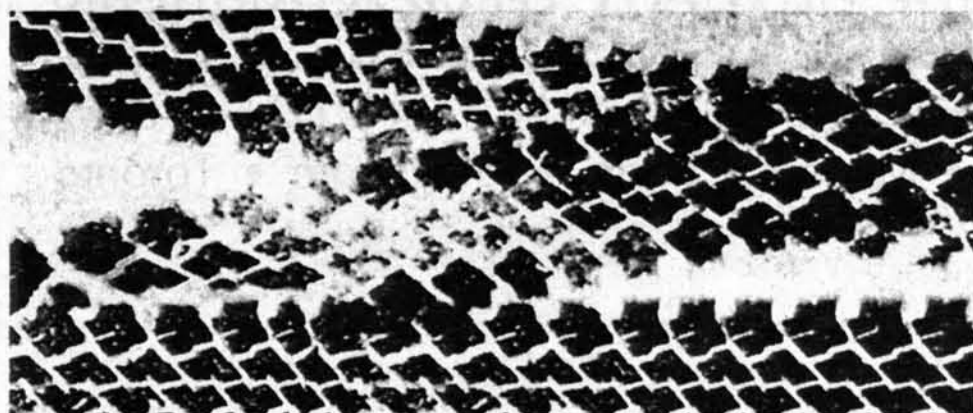
Sgt. Cheryl Dejong Vossmer auctions a pair of ski boots during the Campus Police auction Thursday.

**Of course we help you
get around your driveway.
We practiced on
the Moon.**



From the Specialty Chemicals that melt icy driveways to the motors for the first Lunar Rover, AlliedSignal is making tracks, and so can you. Take your pick from one of ten global divisions that span technology, marketing, and consumer products. Contribute to the International Space Station, market automotive products that keep cars running at peak performance, work with amorphous metals, and so much more. It's the work that's improving our daily lives and shaping our future. Are you ready for the big time? Good, because there's never been a better time to be at AlliedSignal.

Learn more during our on campus visit: 7:00 pm 11/2/98 room 3-370



HAVE YOU MADE YOUR NOMINATION

for the

1999 MIT CORPORATION BALLOT TO ELECT A RECENT GRADUATE?

The deadline is **NOVEMBER 2, 1998.**

**1997, 1998, and 1999 graduates
can nominate someone from these
classes.**

Self-nominations are welcome.

**For more information and to use the
online form, go to the website at**

<http://web.mit.edu/alum/mitcorp/>

**Questions? Contact Bonnie Jones at
3-8212 <jonsey@mit.edu>.**

The Council for the Arts at MIT presents:

FREE TICKETS FOR MIT STUDENTS

Le Ballet National du Senegal

Monday November 2

7:30pm

Sanders Theatre
45 Quincy Street
Harvard Square

Senegal's most famous and well-traveled company, Le Ballet National du Senegal offers a magnificent adventure in total theater. The 35-member company of dancers, musicians and singers combines the rapid-fire staccato of pulsating drums with dazzling dances, airborne acrobatics, swaying costumes and colorful animal masks to create a thrilling cultural tapestry. Their show, entitled "Pangols: The Spirit of West Africa in Music, Song and Dance", explores and celebrates the spiritual nature of all things, animate and inanimate.

**Sign up IN PERSON ONLY
at the Office of the Arts(E15-205)**

**Bring your valid MIT student ID and a \$5
deposit which will be returned to you when
you pick up your tickets.**

**Tickets will be handed out in the
main lobby of Building E15 at
5:00pm on November 2**

Oliver, Wyman & Company

The tremendous growth in our practice creates outstanding career opportunities for **GRADUATING MIT STUDENTS** with a track record of achievement and academic distinction. We are seeking intelligent, motivated, curious individuals from a variety of backgrounds, grounded in quantitative skills, for our **ASSOCIATE CONSULTANT** position. Language fluency in Spanish or German is highly desirable.

Oliver, Wyman & Company offers:

- Intellectually challenging work
- Stimulating environment
- Reasonable hours
- Potential for rapid professional development
- Attractive compensation

**Please join Founding Chairman, Alex Oliver
at our Presentation & Reception on
Wednesday, October 28th, 1998 at 6:30pm
Room 4-149**



STRATEGY CONSULTANTS TO THE FINANCIAL SERVICES INDUSTRY

666 Fifth Avenue • New York • NY 10103 • (212) 541-8100 • fax (212) 541-8957
New York • London • Frankfurt • Madrid • Paris • Singapore • Toronto

Employee at Syracuse Charged with Sexual Assault

FROM UNIVERSITY WIRE

Syracuse Police Saturday charged a Syracuse University Food Services employee with sexually assaulting female students while they slept in their rooms.

Short Takes

Cedric Holmes, 27, used his employee I.D. card early Saturday morning to access the Brewster/Boland complex, SU spokesperson Kevin Morrow said.

"He climbed into bed with several young women and reportedly molested some young women," SU spokesman Kevin Morrow said. "He had a knowledge of the residence hall and knew that some young women left their doors unlocked." Holmes is charged with nine counts of second-degree burglary, four counts of first-degree sexual abuse and five counts of first-degree attempted sexual abuse, Syracuse Police Sgt. Sam Galvagno said.

Holmes is currently in police custody, Galvagno said.

"The intruder has a past of entering the dorm, specifically unlocked doors," Galvagno said.

Holmes allegedly entered the complex at about 5 a.m. with the intention of locating a female friend, Morrow said. His attempts to locate the friend were unsuccessful and Holmes proceeded to walk throughout Boland Hall breaking into unlocked dorm rooms, Morrow said.

Holmes was intoxicated at the time of his alleged entries, Morrow added. Karen Chesley, a freshman, said Holmes broke into her room and attempted to get into her bed.

"I woke up when I felt someone starting to get on my bed," said Chesley, a *Daily Orange* contributing writer. "I looked up and saw someone looming over me."

Chesley said she "ran to turn on the lights," and asked the man why he was in her room. The man said, "sorry, wrong room," and ran out, she said.

"I was stunned and at first I thought it was a dream," she said. Residents who were confronted by Holmes contacted Public Safety between 5:30 and 7:30 a.m., Morrow said. Following Public Safety's arrival, the Brewster/Boland complex was closed and a room-by-room search was conducted, he said.

Public Safety's search of the complex was negative, Morrow said. Police later spotted Holmes in a parking lot east of the Carrier Dome and approached him because he matched the suspect's description, Morrow said. Three students were asked by police to identify Holmes, but they did not make a positive identification and Holmes was released, Morrow said.

At 10 a.m. Saturday, Holmes called to work to say he would not be in, heightening police suspicions and prompting them to bring him to police headquarters for questioning, Morrow said.

At police headquarters, Holmes admitted that he entered the residence halls Saturday and sexually assaulted residents.

Chesley said it took two calls to Public Safety before an officer made it to her room. She made calls at 5:37 a.m. and 30 minutes later, after they did not respond.

Public Safety was surprised about Chesley's concerns when she inquired about their whereabouts, she said.

"She said, 'oh you wanted to talk to someone? We just sent someone to look around your floor,'" Chesley said.

Ten minutes after her second call, a Public Safety officer visited her room and asked "did he touch you in any sexual way?" Chesley said. After explaining her situation, the officer told her that this is a common occurrence, Chesley added.

"They said, 'do not worry, this happens all the time. He was probably just drunk and could not find his room,'" she said.

Public Safety could not be reached for comment.

Students living in the Brewster/Boland complex said they felt violated by Holmes' alleged intrusion.

"It makes me question the security and safety of our dorm," said Zakir Baig, a freshman speech communications major and Boland resident.

Dana Sacchetti, president of the Student Government Association, said 100 to 150 students attended an open forum conducted Sunday night in the Brewster/Boland complex.

Students expressed a variety of security concerns, including Public Safety's "lackluster" response to their calls Monday morning, he said.

"Students were very upset at Public Safety's response," Sacchetti said. "Students still have a lot of concerns that were not answered."

Students were also concerned that SU did not check Holmes' criminal record prior to his hiring — especially because he has been previously caught entering buildings illegally, Sacchetti said.

"This is really troubling," he said. "With a background check, I think this person would not have been hired."

Background checks are a necessity because university employees

have access to various buildings and residence halls, Sacchetti said "It is frightening to me and to other students as well," he said.

Public Safety officials, Brewster/Boland complex staff, maintenance personnel and Brockway representatives attended the forum, Chesley said. Public Safety acted defensively when she asked about their response time, she said.

"He said he could not imagine that it took them that long," Chesley said. "He said their response time is excellent."

Public Safety told her that in "a situation like this, a few minutes can take an hour," Chesley said.

The Public Safety officer in attendance said Public Safety has a limited amount of officers and suggested that students petition the university if they feel that more officers are needed, Chesley said.

[*Daily Orange*, Oct. 26]

Yale students deal with shooting

New Haven police officers continued to work over the weekend to piece together the evidence in a Friday shootout on the Yale University campus.

"We have evidence that is going to lead to the solving of that case," said Douglas MacDonald, assistant chief of the New Haven Police

Department.

Police officials said they expect to make an arrest in the near future.

Friday's disturbing incident began when gunfire broke out around 3 p.m. near the Art and Architecture building and the Yale Repertory Theatre. Shots were exchanged between two groups of high school-aged teenagers, witnesses said.

Eyewitnesses to the Friday shooting confirmed that between four to five shots were fired in rapid succession. A short break followed the initial gunfire, and several additional shots were fired seconds later.

No injuries have been reported, but one bullet did hit a van passing by the intersection, police said.

A policeman on the scene said that the shooting looked premeditated, but police officials said they now believe Friday's incident was not a planned attack.

"This is a remote incident, between a couple of individuals, with no gang affiliation, and not remotely connected to anything that is going on in the schools," MacDonald said.

A small group of approximately three individuals fired the first shots from behind a U-Haul truck in a driveway next to the Art and Architecture building.

While another group watched

from an alley by the Jewish Community Center, two of the three African-American teenagers pulled grey and navy ski masks over their heads. A third individual wearing a grey, wool cap suddenly darted across Chapel Street and the first shots were heard, eyewitness Graham Mosley said.

An unidentified individual standing with the group in front of Photo Snap returned fire, witnesses said.

Moments before shots broke out, Mosley said he encountered a cluster of approximately five teenagers dressed in baggy pants standing by a side alley next to the Jewish Community Center.

After the shooting, the unmasked individual came running towards Mosley and the group of teenagers.

As he ran down Chapel Street, the individual stuffed a black revolver into his pants, Mosley said.

Mosley and the group of young men took off running down the alley.

"As I was running down, I realized that I was running with a guy who has a gun, so if he gets shot this would be a bad place to be," Mosley said.

The group standing at the corner of York and Chapel dispersed down York Street, and several individuals were reported to run in the direction

Short Takes, Page 15

what is special about a career with us?

Corporate Presentation and Reception
Hosted by Saman Majd Global Head of OTC Derivatives
Wednesday October 28, 1998 6:00 p.m.
The MIT Faculty Club 500 Memorial Drive (at Wadsworth)

FINTECH

damned for life
by Jessica



BART SQUAK by Scott



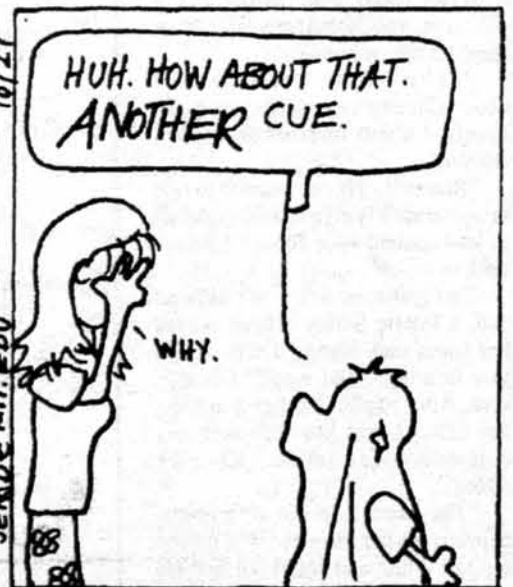
RANDOM FLAND

by X/D

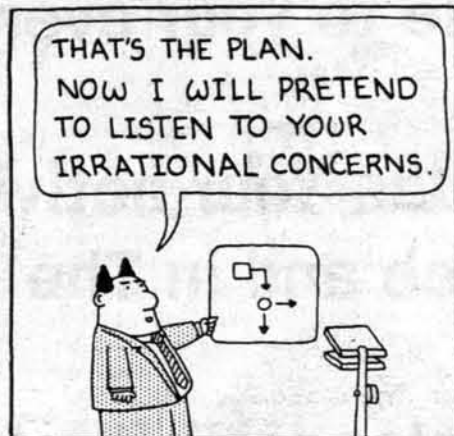


Down with Science

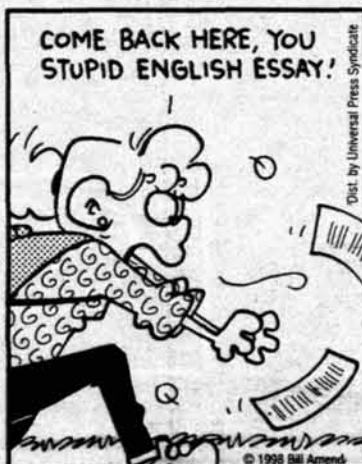
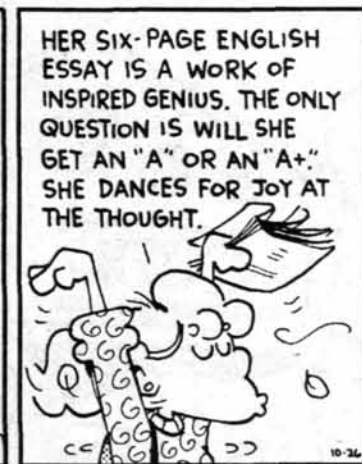
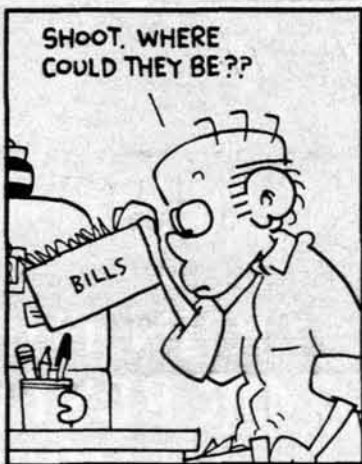
by Jennifer DiMase



Dilbert® by Scott Adams



FoxTrot by Bill Amend



TechCalendar

Visit and add events to TechCalendar online at <http://tech-calendar.mit.edu>

Tuesday's Events

- 6:30 p.m. – **John Hejduk.** The Dean of Cooper Union's Architecture School reads poetry from *Such Places as Memory*. Room 10-250. Sponsor: authors@mit.
- 7:00 - 9:00 p.m. – **Protecting Your Ideas Panel.** Learn about your intellectual property — patents, copyrights, trade- and servicemarks, and trade secrets — and how to protect these valuable assets. Speakers: Testa, Hurwitz & Thibeault, LLP. Room 54-100. Sponsor: MIT \$50K Entrepreneurship Competition.
- 7:30 p.m. – **Reading by Cynthia Ozick.** Program in Writing and Humanistic Studies Writers Series presents the award-winning novelist, poet, short-story writer and essayist. Bldg. E51, Wong Auditorium.

Wednesday's Events

- 5:10 p.m. – **Weekly LEM Service and Supper.** Eucharist in the Chapel followed by a free fellowship supper and discussion. MIT Chapel. Sponsor: Lutheran-Episcopal Ministry.
- 6:00 p.m. – **MIT Concert Band Halloween Concert.** Directed by John Corley, musicians are in costume and music is chosen for its sound-effect potential in the cavernous space of MIT's main entryway. Lobby 7.
- 7:30 p.m. – **Exhibition Slide Show.** Artist Matthias Mansen & art historian Dorothea Dietrich discuss contemporary printmaking practices & Mansen's work in current exhibit, *Matthias Mansen: About the House* at the List Center Oct. 9–Dec. 27. Bldg. E15, Bartos Theater. Sponsor: Office of the Arts.

TechCalendar appears in each issue of *The Tech* and features events for members of the MIT community. *The Tech* makes no guarantees as to the accuracy of this information, and *The Tech* shall not be held liable for any losses, including, but not limited to, damages resulting from attendance of an event. Contact information for all events is available from the TechCalendar web page.

- 8:00 p.m. – **MIT Campus Crusade for Christ Weekly Meeting.** Praise and worship through song, prayer, and a bible lesson. Everyone is welcome. Student Center, Private Dining Rooms 1 and 2. Sponsor: Campus Crusade for Christ.

Thursday's Events

- 12:00 p.m. – **Chapel Concert: Michael Zaretsky, viola; Marina Minkin, harpsichord.** Bach Sonatas for Viola and Harpsichord, BWV 1027-1025. MIT Chapel.
- 6:00 - 7:00 p.m. – **MIT \$50K Organizing Team Meeting.** Join the Organizing Team and help make the \$50K happen. Room E51-325. Sponsor: MIT \$50K Entrepreneurship Competition.
- 8:00 p.m. – **Measure for Measure.** Shakespeare Ensemble production directed by Tom Jaeger and Kristin Wold. Admission \$8, \$6 students with ID and senior citizens. Kresge Little Theater.
- 8:00 p.m. – **MIT Affiliated Artist Concert: Ludmilla Liebman, pianist.** Lecture demonstration on Dimitri Shostakovich and his legacy. Performances by Leibman and others. Bldg. 14, Killian Hall.

Friday's Events

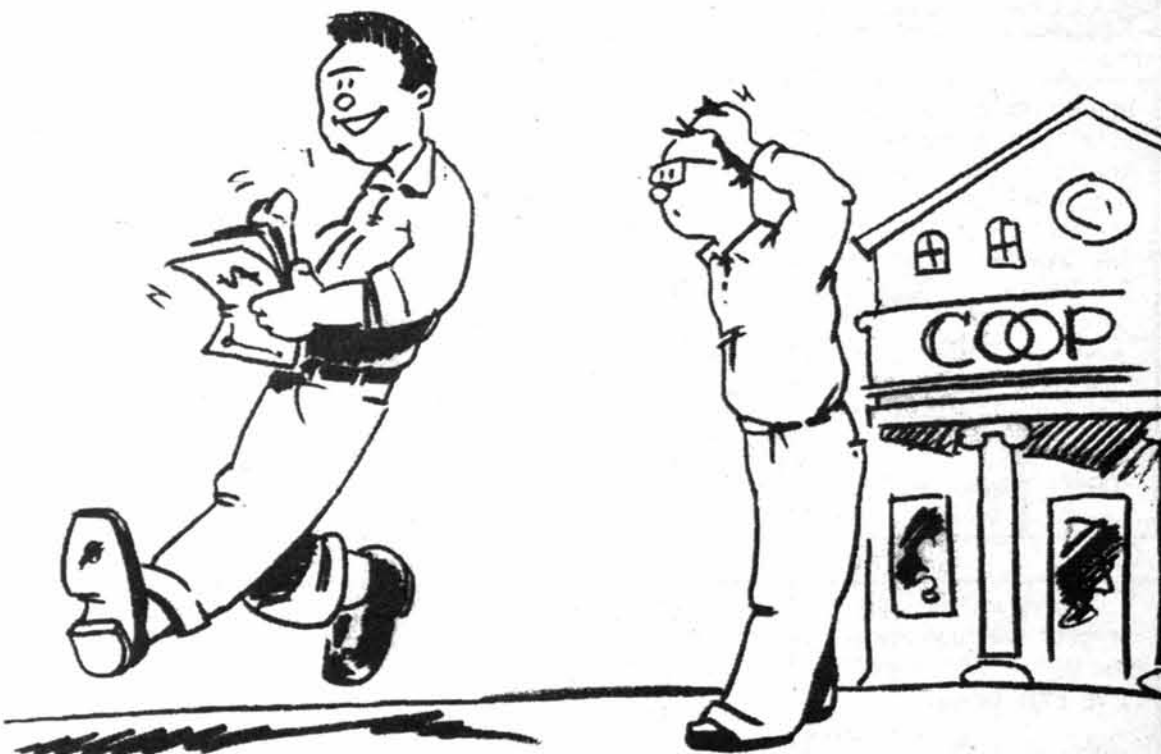
- 8:00 p.m. – **Measure for Measure.** Shakespeare Ensemble production directed by Tom Jaeger and Kristin Wold. Admission \$8, \$6 students with ID and senior citizens. Kresge Little Theater.

Want to attract more people to your events?

Try posting them on TechCalendar. Your activities will appear on the World Wide Web and in The Tech!

Just go to <http://tech-calendar.mit.edu>.

THE COOP ANNOUNCES A 4.5% REBATE!*



IT PAYS TO BE A COOP MEMBER.

JOIN THE COOP OR RENEW YOUR MEMBERSHIP TODAY!

If you were smart enough to be a Coop Member, rebate checks are available for pick-up
OCTOBER 28 THRU
NOVEMBER 14, 1998
at The M.I.T. Coop at Kendall
1st floor, Service Desk.



*4.5% paid on member purchases for fiscal year ending June 1998.

Utah DA Drops Inquiry into Sigma Kappa Incident

Short Takes, from Page 11

of Broadway Avenue.

Another student who witnessed the attack said the unexpected nature of the afternoon attack shocked her.

Inbal Megidido was standing by a Chapel Street bus stop when the first shots were fired. Megidido said she dropped to the ground during the first series of shots and decided to run across the street to seek shelter in the Art Gallery as the second volley broke out.

An Israeli, Megidido said she never expected to hear shots on the Yale campus at a busy intersection in broad daylight.

"I've been bombed, and I've had stones thrown at me, but I've never actually been in a crossfire before," Megidido said.

Despite last week's bus shooting at York and High Streets, Friday's incident comes as numbers suggest that New Haven crime has decreased.

MacDonald said that crime in New Haven has fallen dramatically in the last five years. On-campus crime has also dropped, with the total number of reported crimes against persons falling from 15 in 1995 to 12 in 1997.

Acting Yale Chief of Police James Perotti said that Yale policemen have recorded only one incident of aggravated assault in the first nine months of 1998.

[Yale Daily News, Oct. 26]

Charges dropped in Utah case

Citing a lack of evidence, the Salt Lake County district attorney's office has decided not to file charges against two individuals charged with a set of sexual assaults that allegedly occurred the night of Sept. 4 in the University of Utah Kappa Sigma fraternity house.

Each of the two individuals was either a member or a pledge of the University of Utah chapter of the Kappa Sigma fraternity at the time of the alleged incident.

The barriers to prosecution are threefold, said Susan Hunt, deputy district attorney.

"First, the victim has no memory of the events," she said. "This would obviously hinder any prosecution."

The fact that a urinalysis looking for traces of the "date rape" drug, rohypnol, came back negative also hindered the investigation.

"No drugs were detected," Hunt said, "which doesn't, of course, mean that one wasn't used. It does, however, severely hurt our chances."

Rohypnol metabolizes in the body within seven to 72 hours, and the alleged victim was not tested until 23 hours after the alleged incident, said Detective Heather Stringfellow of the Salt Lake City Police Department sex crimes division.

"Her symptoms were certainly consistent with the use of a date rape drug," Stringfellow said.

For her part, the alleged victim said she feels as though she must have been drugged.

"It's the only explanation that makes any sense," she said.

The third barrier, Hunt said, was the uncooperative nature of some of the Kappa Sigma members who were at the fraternity house the night of Sept. 4.

"The witnesses who were there that night have been very uncooperative and their statements were so inconsistent that it has been impossible to determine what exactly happened that night," Hunt said.

Stringfellow, who performed most of the investigation and interviewed most of the witnesses, agreed with Hunt's statement that many of the Kappa Sigma members were uncooperative and evasive, and that they gave inconsistent statements.

Jason Ellis, president of the Kappa Sigma fraternity, declined to comment on any allegations that his fraternity was uncooperative.

One of the two alleged suspects admitted to being uncooperative with the police.

"I was going to talk to [police], but my attorney told me not to, so I never did meet them," he said. "I

didn't do anything, so why should I give them anything to go on?"

He said he was not especially relieved to hear he will not face prosecution.

"I was never really worried about it," he said. "I knew I didn't do anything wrong."

"We would like to thank the Salt Lake Police Department for such a thorough investigation and for their help in bringing the truth to the public," was Ellis' only comment.

The alleged victim disagreed that the truth has been made available to the public by this decision.

"Just because they didn't press charges doesn't mean something didn't happen," she said. "It just means they couldn't meet the burden of proof."

The decision not to file charges "has hurt me much more than I thought it would," she said.

[Daily Utah Chronicle, Oct. 23]

U. Virginia student sent to ER

A fourth-year University of Virginia student underwent hospitalization Thursday night after binge drinking to celebrate his 21st birthday.

The "Corner Crawl," a night of visiting corner bars and attempting to consume 21 shots of alcohol, is popular among University students to commemorate their 21st birthdays.

Asst. Dean of Students Aaron Laushway said the student consumed about 18 to 19 shots of alcohol and then passed out at the Biltmore Bar and Grill.

A rescue squad responded to the incident and pumped the student's stomach. University Hospital has since released the student in good condition, said WINA news reporter Rob Graham.

The WINA news service reported the incident in a Friday morning broadcast based on information from "an anonymous source at the scene," WINA news director Susan McConnell said.

In spite of the Thursday night incident, University officials and police believe that the number of

alcohol-related cases has decreased compared with last year.

"In spite of several arrests this year, the number of serious drinking incidents has dropped," University Police Sgt. Tom Durrer said.

Even though the drinking situation at the University has improved,

Student Health Director James Turner advised students and administrators to be "cautiously optimistic."

"In spite of a string of quiet weekends, there is nothing preventing another tragedy from occurring," he said.

[Cavalier Daily, Oct. 26]



Heller Travel

Student Travel Specialists, **LOWEST** student and faculty discount airfares.



You just can't get it anywhere else!

146 Massachusetts Avenue at Berkelee
Boston, MA 02115 • (617) 236-4300
email: heller@berkelee.edu

MIT Hillel invites the campus community to a talk on:

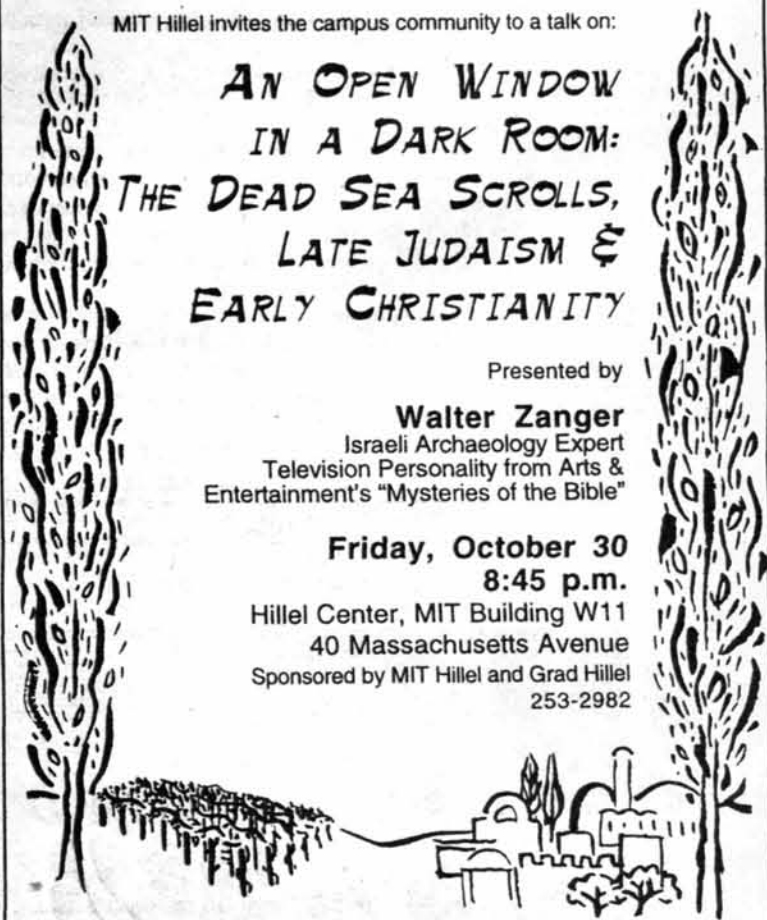
AN OPEN WINDOW IN A DARK ROOM: THE DEAD SEA SCROLLS, LATE JUDAISM & EARLY CHRISTIANITY

Presented by

Walter Zanger
Israeli Archaeology Expert
Television Personality from Arts & Entertainment's "Mysteries of the Bible"

**Friday, October 30
8:45 p.m.**

Hillel Center, MIT Building W11
40 Massachusetts Avenue
Sponsored by MIT Hillel and Grad Hillel
253-2982



MIT Hillel invites the campus community to a talk on:

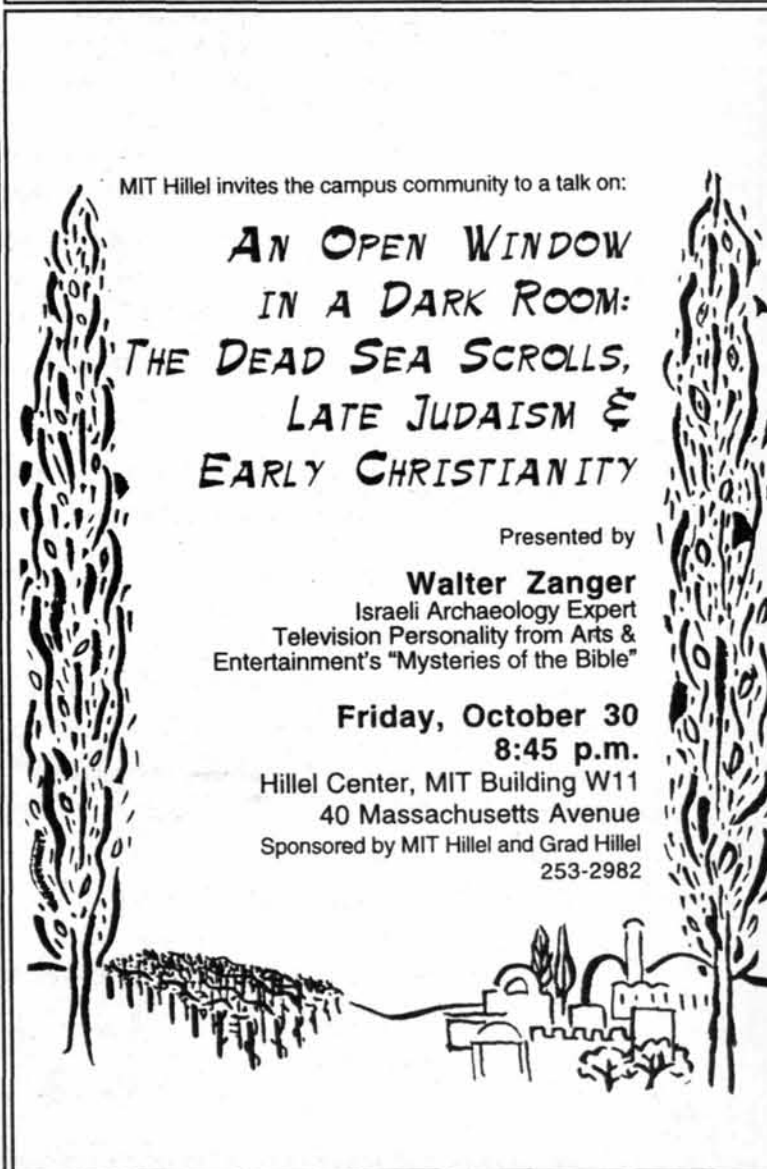
AN OPEN WINDOW IN A DARK ROOM: THE DEAD SEA SCROLLS, LATE JUDAISM & EARLY CHRISTIANITY

Presented by

Walter Zanger
Israeli Archaeology Expert
Television Personality from Arts & Entertainment's "Mysteries of the Bible"

**Friday, October 30
8:45 p.m.**

Hillel Center, MIT Building W11
40 Massachusetts Avenue
Sponsored by MIT Hillel and Grad Hillel
253-2982



A small piece of advice:
work here.



www.primix.com

Primix Solutions is one of the industry's leading Web consulting and systems integration firms servicing Fortune 1000 clients. You will travel within the United States and be working with leading-edge Web technologies while in a fun, casual atmosphere where we play pool and darts in the office.

We will be holding an Information Session and On-Site Interviews at MIT on Thursday, November 5th, and Monday, November 9th, respectively. See your career center for more details, or check out our Web site. EOE

CLASSIFIED ADVERTISING

Information

Confidential HIV and Sexually Transmitted Disease testing and treatment in private medical office. See www.roberttaylor.com. 617-232-1459. Brookline.

Services Offered

Open Your Own Tollbooth on the Information Superhighway. Start your own business, backed by 10-y.o. \$2B NYSE Co. Work at home 5-10 hrs/wk. For info call 617-422-1699, then call 781-283-6858.

Research Papers Edited and Corrected by Harvard Professional INTERFAX LINGUISTIC SERVICES tel/fax: (617) 566-1112

Help Wanted

Get Paid To Party!!!! Festive Events is looking for outgoing people to learn DJ entertaining. Great source of extra cash. Full training provided! Must have car. Must be available weekends. Call 1-508-881-1095 for more info.

P/T Internet Development Arlington publishing company offering part-time position for someone with html and graphic art skills. Duties include scanning, writing code, and designing pages. Macintosh, BBedit and Photoshop experience a plus. Email resume and rates to: info@shoe-trades.com

EARN UP TO \$480.00/MONTH!! Healthy men needed as sperm donors. Must be 5'9" or taller, ages 19-39. Call California Cryobank to see if you qualify @ (617) 497-8646!

\$9.00/hour and all the candy you can eat! Student callers needed for growing Tech Caller Program. Build communication skills while raising money for the MIT annual fund. \$9.00/hour (6 hrs/week minimum) plus incentives, contact Marilyn Silverstein at 252-1608.

Tutor needed to teach **CHINESE** for 11 year old child. 1-2 times per week. Some travel necessary. Good Pay. Please call (781) 837-7608.

The Magma Group is looking for student organizations and motivated student reps to assist with promotions on campus. This is an easy way to earn great money while working flexible hours. For more info please call (617) 783-9700, ext.22.

Asian Indian Sperm Donor Needed Loving couple mid 30's seeks an attractive Indian or South Asian sperm donor with a pleasant disposition. Must be healthy, intelligent, aged 21-40, and taller than 5'3". Compensation \$1000. Please call: OPTIONS (800) 886-9373 ext. 6958

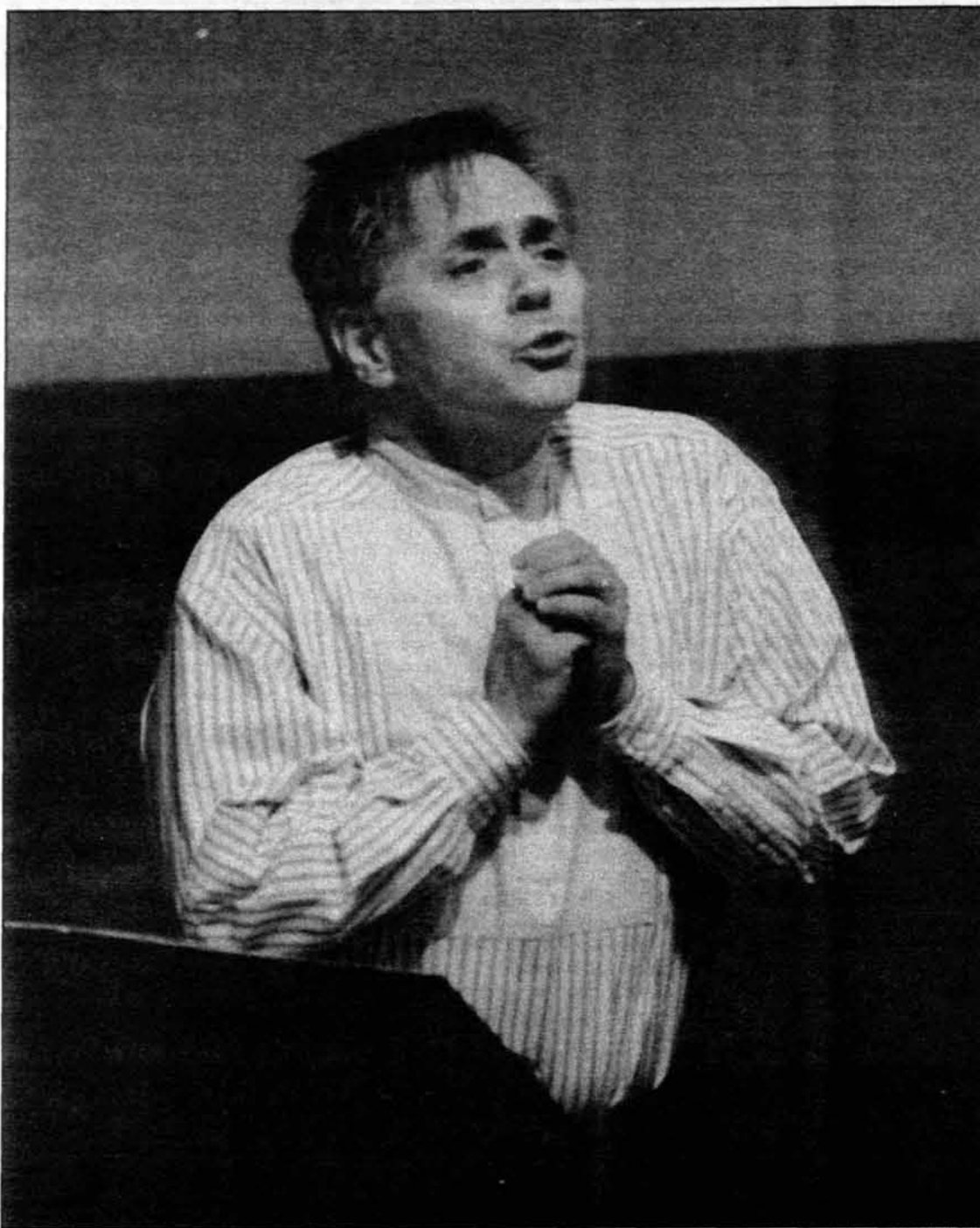
Travel

Absolute Spring Break.. "TAKE 2" 2 FREE TRIPS ON ONLY 15 SALES and.. EARN\$\$\$ Jamaica, Cancun, Bahamas, Barbados, Padre & South Padre. Lowest Prices!! Free Meals, Parties, & Drinks. ****Limited Offer**** Call for free info: 1-800-426-7710 / www.sunspashtours.com

SPRING BREAK 99! Cancun * Nassau * Jamaica * Mazatlan * Acapulco * Bahamas Cruise * Florida * South Padre Travel Free and make lots of Cash! Top reps are offered full-time staff jobs. Lowest price Guaranteed. Call now for details! www.classtravel.com 800/838-6411 930 Comm Ave South, On BU's West Campus

SPRING BREAK '99 Cancun & Bahamas: Sign up now and get FREE Meals/Drinks! Florida, Jamaica and South Padre available! Sell trips and travel free! Call for free brochure 1 (888) 777-4642.

1 SPRINGBREAK Operator! Check our website for the best deals! www.vagabondtours.com Cancun, Bahamas, Jamaica & Florida. Group organizers EARN FREE TRIPS & CASH ... Call today! 800-700-0790



William Cutter gives a heartfelt rendition of "A Civil War Diptych" during the Music and Theater Arts Faculty Recital Saturday in Killian Hall.

JANE KVZELKA



Cordially invites interested students
to attend a presentation on our

Investment Banking Financial Analyst Program

Morgan Stanley Dean Witter is looking to hire qualified candidates for Financial Analyst positions for its São Paulo-based Corporate Finance team. If you are interested and meet the requirements below, please send your Curriculum Vitae and an introduction letter detailing your previous work experience and explaining why you would like to work in an investment bank to the following address:

Financial Analyst Program
Morgan Stanley Dean Witter
Av. Pres. Juscelino Kubitschek, 50 - 7º andar
04543-000 São Paulo - SP
or
E-mail to lowndes@ms.com

Resumes will be accepted until November 15, 1998

Requirements:

- Graduated since December 1997 or graduating in December 1998 or June 1999
- Degree in Economics, Administration, Accounting or Engineering
- Fluency in written and spoken English
- Skills in MSWord and MExcel
- Strong work ethic and commitment to investment banking

IF YOU ARE INTERESTED, PLEASE ATTEND THE PRESENTATION
BEFORE SENDING YOUR CURRICULUM VITAE

<http://www.ce.columbia.edu>

Off-Campus Learning Opportunities

Study Abroad
Visiting Students
Summer Session

Columbia

Visiting Students

If you need more reasons to be in New York, Columbia University can provide them!

Summer Session '99

You just missed our best summer ever—but it's not too early to plan for 1999! Bulletin available February '99—reserve yours today.

Study Abroad

• Columbia University in Paris • Berlin Consortium for German Studies • Summer Program in Italy (Scandiano) • Summer Program in Beijing.



Continuing Education & Special Programs

**DON'T JUST
SIT THERE,
DO SOMETHING!**

Come to the MIT Dining Committee meeting. This is your chance to make a difference!

Lobdell
Food Court

Stratton Student Center, 2nd floor

FREE DINNER

All are welcome, please join us.

Wednesday, Oct. 28 at 4pm



**Join The Tech.
Call Doug or Josh at
253-1541,
or stop by Room 483
of the Student
Center Sundays
at 6 p.m.**



THURSDAY, October 29th

Anteros Capital Markets, a 45-employee global derivatives trading firm based in Chicago, is giving a presentation at Room 4-149, 6:00pm.

We're looking for a few outstanding candidates for our Trader-Trainee program.

Work for a firm that offers intense, challenging work, a work hard / play hard corporate culture, and a career path that rewards ability, teamwork and entrepreneurial thinking.

Our expert traders benefit from cutting edge technology and a comprehensive training program.



(Bring a resume and dress casually.)

You're at a greater risk of getting skin cancer if your hair is blonde or red.



Procter & Gamble LATINOAMERICA

Posiciones Permanentes - Internados de Verano

Únete a ejecutivos de P&G Latinoamérica quienes hablarán de oportunidades para ti el;

**29 de octubre de 1998
6:00 - 8:30 p.m.**

**The Hynes Convention Center
900 Boylston Street, Boston
Ballroom A**

- Ofrecemos carreras en Mercadeo, Finanzas & Contabilidad, Ingeniería & Logística, Información & Tecnología y Desarrollo de Negocio de Clientes.
- Buscamos estudiantes de Maestría o Bachillerato de cualquier concentración con características de dinamismo y liderazgo.

**¿Qué debes hacer?
Lleva tu resumé antes del
24 de octubre a:**

**MIT
Office of Career Services
Room 12-170**

(No matter how much of it you have left.)

Fair skin, light eyes and a tendency to burn in the sun, also put you at a higher risk. So, examine your skin regularly. If you find anything unusual, see your dermatologist.



AMERICAN ACADEMY OF DERMATOLOGY
For more information, call 1-888-362-DERM or visit www.aad.org

This space donated by The Tech

Thinking About Law School?

Meet with the admission deans from these law schools to learn more about legal education and the admission process.

University of California, Berkeley — Boalt Hall
Duke University School of Law
University of Southern California Law School
Vanderbilt University School of Law

Massachusetts Institute of Technology

WEDNESDAY
OCTOBER 28
4:00 P.M.

Mezzanine Lounge

Be sure to bring your questions!

Lecturer Addresses Impact of Technology on Global Society

By Neena S. Kadaba
STAFF REPORTER

Dr. John H. Gibbons, former science advisor to President William J. Clinton, addressed the influence technology will have on society at a lecture entitled, "21st Century: Will Science and Technology Contribute to Society or Scuttle It?"

This was the first lecture in the 1998-1999 Karl Taylor Compton Lecture Series. Gibbons spoke Thursday in Wong Auditorium and will give two more Compton lectures in the coming year.

The lecture focused on the "goods and bads," as Gibbons called them, of the advent of technology on a large scale. Gibbons said that he believed technology is absolutely necessary for progress. In his speech, he addressed the problems the world faces and, more importantly, the possible solutions to global issues that technology provides.

Dr. Gibbons outlined the progress created by science and technology. He spoke of the power of the new options that science and technology creates. His ideas for the 21st century are largely based upon the concept that there is no end in sight for discovery.

Gibbons outlined his beliefs about the role technology should play in solving the world's problems. He proposed solving problems such as the population explosion and the decrease in security using technology.

Problems will get worse

Gibbons also enumerated the issues that threaten today's world, showing that these problems will only get worse in the next 50 to 100 years. While improvement in industrial manufacturing, transportation, biotechnology, information technology, and weapons through the use of new discovery is inevitable, an effort must be made to solve other important issues, Gibbons said. The down sides to the drastic change needed in the 21st century included the effects of proliferation, a further loss of privacy and intellectual property, population issues, and energy concerns, Gibbons said.

Gibbons outlined the environmental problems that the world, and specifically the United States, currently faces. Global climate change, high energy consumption, loss of biodiversity, scarce natural resources, little natural nitrogen fixation, and lack of disposal locations

for radioactive materials are among the many problems facing the world in the 21st century, Gibbons said. Gibbons impressed upon the audience that there were no easy answers to these problems.

Developing nations should grow

Gibbons also said that an outreach to the developing world must be made, in order to create an understanding of alternative growth paths; he proposed that developing nations need not follow the same pattern as developed nations, but instead should jump to the technologically advanced stages immediately. His lecture about devising sustainable measures for growth and progress ended with a look to the future, and the image of how this generation is going to provide for the next.

The lecture was followed by a brief question and answer session, in which several members of the audience posed critical and varied questions on the issues presented. One person asked what role the US should place as its priority in facing the world problems. Gibbons answer was that we should help Russia and China "through their narrows."

Gibbons was science advisor to President Clinton from the beginning of his term until early 1998. He was the Director of the Office of Technology Assessment for 13 years, and worked at Duke University and Oak Ridge National Laboratories as a nuclear physicist on energy conservation research and development.

The annual lecture series honors the memory of the the Institute's ninth president, Karl T. Compton. Past lecturers include Nobel laureates Dr. Oscar Sanchez, Niels Bohr, Linus Pauling and Hubert Humphrey.

The next lecture will be held on Nov. 30, at 4:00 p.m. in the Wong Auditorium. The topic for that lecture will be "This Gifted Age: Science and Technology at the Millennium."

The Office of the Provost and the Department of Political Science sponsored Thursday's lecture.

going places...



PLOT YOUR CAREER AND TAKE OFF



KEEP MOVING KEEP LEARNING



OPERATING WITHOUT BOUNDARIES

MANAGEMENT CONSULTING OPPORTUNITIES

MEET WITH ERNST & YOUNG ON CAMPUS

Massachusetts Institute of Technology

10/29 - Information Session

E&Y Center For Business Innovation
One Cambridge Center
2nd Floor 7:00 - 9:00pm

10/30 - Interviews

They're in touch, in transit and in demand... on-site, on-line and on-the-move... improving businesses, envisioning future technologies and driving change... thinking outside the box, designing solutions and delivering value to customers.

They're Ernst & Young management consultants, and they're going places — making a global impact in one of the most dynamic fields of the 90's and beyond.

As an Ernst & Young management consultant, you'll help companies from Fortune 1,000 giants to Silicon Valley start-ups explore new strategies, methods, markets and technologies — long before others are even aware they exist.

Of equal importance, while you're learning and achieving, we'll put all the strength of our industry-leading organization behind your own career development. With 13,000 consultants delivering ideas and solutions from 89 offices worldwide, we provide an unparalleled world of resources and the opportunity to grow and learn with a proven leader in today's business.

For consideration, please forward your resume to your University Career Center, or: EY Careers, Dept. 11843, 113 Terrace Hall Avenue, Burlington, MA 01803; Fax Toll Free to Dept. 11843: 1-877-4EY-JOBS; or E-mail: dept. 11843@eycareers.com. Please be sure to indicate the department number on your cover letter and resume for routing purposes. Please visit our web site at: <http://www.ey.com>. No phone calls please.

ERNST & YOUNG LLP

Ernst & Young LLP, an equal opportunity employer, values the diversity of our work force and the knowledge of our people.

1 year old, 1991



2 years old, 1992



Stevie Ace Flores.

Killed by a drunk driver on March 23, 1993, on Pacific Coast Highway in Wilmington, Calif.

If you don't stop your friend from driving drunk, who will? Do whatever it takes.

FRIENDS DON'T LET FRIENDS DRIVE DRUNK.

U.S. Department of Transportation

This space donated by The Tech

Questions Focus on Plans for New Dorm

Poll, from Page 1

conducted the poll to learn how undergraduates felt about housing issues. The first group of questions dealt with changes to dormitory rush, including possible methods for freshmen to select housing prior to arrival at MIT. The second segment dealt primarily with the timing and format of FSILG rush. Several questions polled students for opinions about the new dormitory, including what facilities it should have and who should be housed there.

Housing question raised in poll

Students were asked to decide if the numerous proposals for freshmen housing options were either very unsatisfactory, unsatisfactory, neutral, satisfactory, or very satisfactory.

However, question 22, "Do you believe it will be beneficial to require all freshmen to live on campus when the construction of the new dormitory is complete?", only allowed for "yes" or "no" answers.

This question was highly advertised around campus, with "Vote No on 22" signs posted campuswide.

While the poll questions were written by UA Committee on Housing and Orientation Co-Chairs Matthew L. McGann '00 and Jennifer C. Berk '01, the actual poll

was conducted by Oppold and Benjamin M. Adida G, who designed the UA's new web-based voting system.

Poll results were available to the UA early Monday morning, and no delays were reported due to the voting system or computer glitches.

Some students whose e-mail is forwarded to non-Athena accounts had difficulty accessing the voting program, Oppold said. Apparently, Information Systems lists of eligible voters included non-Athena addresses that were denied access with personal certificates.

The UA constitution states that referenda and advisory questions must be run by the UA Election Commissioner, but Oppold said he felt that the constitution was unclear. In addition, Oppold noted that the Election Commissioner position is essentially vacant between freshmen elections and the instatement of a new commissioner in November. Seth Bisen-Hersch '01, who served as election commissioner during this year's freshman class elections, could not be reached for comment yesterday evening.

The UA election policies require that results be released "in a timely manner," though it is unclear how the poll fits into constitutional regulations for referenda and advisory questions.



GABOR CSANYI—THE TECH

While some students posted the campus corkboards with their views on the Undergraduate Association's poll on freshman housing, others resorted to more unconventional locations.

It's Real.

it's SMOTHERING

It is an unbearable nothingness

IT'S DEPRESSION.

It has a biological explanation.

It Strikes 1 in 10 Americans

It injects you with negativity.

It pulls you away from the world you once knew

IT'S NOT SUPPOSED TO BE LIKE THIS

It's onset can be so subtle you don't notice it.

IT CAN KILL YOU IF YOU DON'T RECOGNIZE IT.

...treatment for it is very successful

#1 Cause of Suicide

UNTREATED DEPRESSION

Public Service message from SAVE (Suicide Awareness: Voices of Education)

<http://www.save.org>

This space donated by *The Tech*

How well do you know your π ?

If you can tell us the value of π from the tenth digit on, we'll give you half off on any one of our pies!

La Crosta.

Authentic Italian Pizza and Pasta.

1261 Cambridge St.
Inman Square, Cambridge

617-864-0111

Hours:	Monday-Friday	12-3	Lunch
	Monday-Friday	5-10	Dinner
	Sunday	5-9	

Going Away?

Don't forget to bring a friend!

Nice people. Great advice. Cheap tickets.

London	\$328
Fort Lauderdale	\$178
San Francisco	\$236
Lima	\$603
Honolulu	\$677
Beijing	\$858
Johannesburg	\$1028



Fares are RT. Do not include taxes. Restrictions apply. Are subject to change.

Be an on campus intern! EARN FREE TRAVEL!
call 1-888-council for more details

Council Travel

CIEE: Council on International Educational Exchange

273 Newbury St. Boston [617]-266-1926
12 Elliot St., 2nd Floor, Cambridge [617]-497-1497
MIT Student Center W20-024, 84 Massachusetts Ave. Cambridge [617]-225-2555

www.counciltravel.com

POLICE LOG

The following incidents were reported to the Campus Police between Oct. 14 and Oct. 21. Information is compiled from the Campus Police's weekly crime summary and from dispatcher logs.

The report does not include alarms, general service calls, or incidents not reported to the dispatcher.

Oct. 14: Bldg. 9, suspicious activity.

Oct. 15: Student Center, wallet stolen, \$30; Steinbrenner Stadium, truck damaged fence; Bldg. 1, report of intoxicated persons; Student Center, James Reynolds of 11 Sheridan Avenue, Medford arrested for trespassing.

Oct. 16: Bldg. E19, harassing mail; Bldg. 7, VCR, vacuum, and cash stolen, \$665; Rockwell Cage, pocketbook stolen, \$80; Bldg. E19, fraudulent checks, \$1,680; Sigma Alpha Epsilon, suitcase stolen, \$900; Senior House, notified student to call home; Briggs Field, James D. Burns, of 22 Newtowne Court, Cambridge, arrested for alcohol violations.

Oct. 17: Random Hall, report of unwanted persons on steps; Ashdown House, noise complaint; Bldg. 13, hydrant wrench stolen \$45; Bldg. 4, wallet stolen \$70.

Oct. 18: Baker House, portable CD player and planner stolen, \$300; Walker, tools stolen, \$550; Baker House, Christopher Yang '99 arrested for domestic assault and battery; Bldg. NW10, student problem; MacGregor House, harassing phone calls.

Oct. 19: Burton-Conner House, harassing phone calls; Lobby 7, hack; Bldg. 7, report of harassment; Morss Hall, malicious damage.

Oct. 20: 77 Massachusetts Ave., person riding a bicycle was spat on; Lobby 7, donut stand broken into and food stolen \$200; Bldg. E23, report of suspicious persons; Kresge Auditorium, wallet stolen, \$30; Bldg. E19, annoying phone calls; Bldg. E15, bike reported stolen was later found at another location, owner forgot where originally parked; Senior House, student problem.

Oct. 21: Bldg. 14, vending machine damaged; Bldg. 6, lab fire; Massachusetts Avenue and Vassar Street, assist Cambridge Police; Memorial Drive near Boat House, bike parts stolen, unknown value; Bldg. 68, bag stolen, unknown value.

Act Lifts Privacy Restrictions

Crime, from Page 1

into "categor[ies] of prejudice."

The CPs already report hate crimes, but now "we must show the community the breakdown [of the crimes] as far as religious, gender, whatever the case may be," Glavin said.

Schools will also be required to maintain a public police log of all crimes. Logs of campus crime must be made available to the public within two days of the initial report and must include the date, time, location, and nature of the crime.

"We were doing that before it was even state law," Glavin said. Massachusetts law has required open campus police logs for at least a decade.

Student records more accessible

Survivors of nonforcible sex offenses will be included in the group of victims which are allowed to be informed of the outcome of student disciplinary hearings. The Family Education Right to Privacy Act, which governs the access to educational records, now permits the disclosure of the results of disciplinary hearings involving violent crime or nonforcible sex-offenses.

However, the only name that can be released is the name of the accused and the law states that the school is under no obligation to

release this information.

According to Margaret R. Bates, dean for student life, the Institute probably will not alter its current policy, which keeps all disciplinary records confidential.

"We certainly won't [make any changes to the policy] without a full a full review of the implications," Bates said.

Funds available for schools

The act also allocated funds to be used to reduce violence against women and binge drinking. The Department of Justice will distribute \$10 million during the 1999 fiscal year for combatting violence against women. An additional \$1 million is earmarked for a study on how colleges respond to complaints of sexual assault. Campaigns against binge drinking will receive \$5 million in federal funds.

Bates said that, since MIT already has programs dealing with both issues, "we hope that we would be in a strong position to apply for funds."

Compliance with the act is required of all schools whose students receive federal student aid. The Department of Education is responsible for reporting all schools who fail to comply to Congress. The law took effect on the day of its signing.

"Unfortunately, the Department [of Education] has yet to demon-

strate any inclination to get tough on schools that hide campus crime. I hope that this Congressional encouragement will provide an opportunity for the Department [of Education] to demonstrate that it is no longer the lap dog of those college administrators more concerned about their school's image than the safety of their students," said Mark Goodman, executive director of the Student Press Law Center.

Jeanne Clery, for whom the act is named, was brutally raped, beaten, and murdered by another student that she didn't know in her dormitory room at Lehigh University in the early morning hours of April 5, 1986.

CP logs have had problems

Last spring, *The Tech* discovered omissions in the CP crime summaries for the past five years. Reports of crimes in off-campus fraternities, sororities, and independent living groups, including two rapes, were missing from the reports, but they were required to be included by existing federal law. The discrepancy was discovered when *The Tech* requested statistics on the FSILGs directly from the Boston Police Department.

As a result, the CPs pledged to publish semi-annual reports of crime in off-campus FSILGs. They also worked with Boston Police to gain better statistics as required by law.

authors@mit

a series of talks & readings

Such Places As Memory: Poems 1953-1996

John Hejduk

Tuesday, October 27 6:30 pm 10-250

enter at 77 Massachusetts Avenue

cosponsored by MIT Department of Architecture and poetry@mit

John Hejduk, noteworthy architect, critic, and theorist is Dean of the Irwin S. Chanin School of Architecture at Cooper Union, New York. *Such Places As Memory* was recently published by The MIT Press in the *Writing Architecture* series.

The poems of John Hejduk are almost nonpoetic: still lives of memory, sites of possessed places. They give a physical existence to the words themselves and an autobiographical dimension to the architect. Architect Peter Eisenman likens them to "secret agents in an enemy camp"

One Renegade Cell: How Cancer Begins

Robert A. Weinberg

Thursday, October 29 6:30 pm E25-111

45 Carleton Street, near the Kendall Square T stop

Internationally renowned cancer researcher and National Medal of Science winner Robert Weinberg will speak about his new book *One Renegade Cell*. Weinberg is Director of the Oncology Research Laboratory at the Whitehead Institute and Daniel K. Ludwig Professor for Cancer Research at MIT. *One Renegade Cell* is published by Basic Books in the *Science Masters* series.

Cancer research has reached a major turning point. The quality and quantity of information gathered about this disease in the past twenty years has revolutionized our understanding of its origins and behavior. Perhaps no one is better qualified to comment on these leaps forward than molecular biologist Robert A. Weinberg. He does so in a lucidly written book which presumes little prior knowledge of biology.

The Pattern on the Stone

Daniel Hillis

Thursday, November 5 6:30 pm 10-250

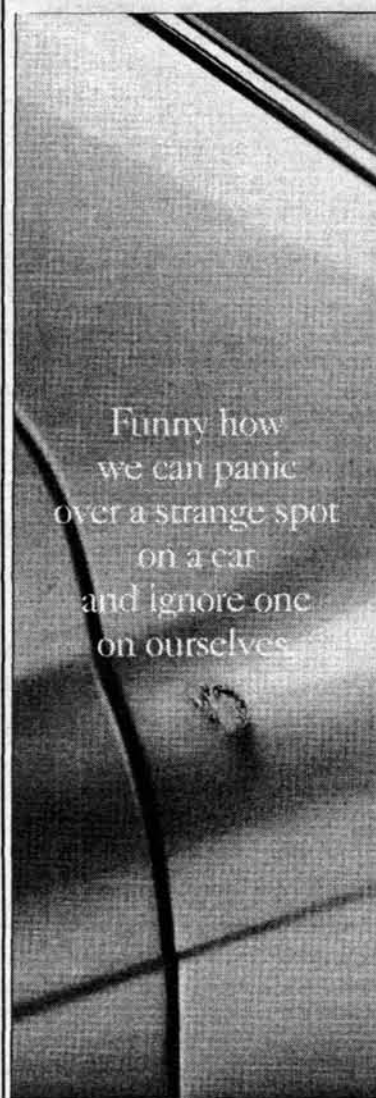
enter at 77 Massachusetts Avenue

Daniel Hillis, supercomputer pioneer, is Vice President and Disney Fellow at Walt Disney Imagineering. *The Pattern on the Stone* is published by Basic Books in the *Science Masters* series.

The Simple Ideas That Make Computers Work is the subtitle for this indispensable guide to understanding this most ubiquitous of machines. "Danny Hillis's ability to be both original and clear is astounding. Even where I thought I knew the material he was talking about he was always teaching me something, either by his clear command of the subject or by his original perspective on it." — Kevin Kelly, Executive Editor, *Wired*

Info: 617 253-5249 or authors@mit.edu All events are at MIT and are FREE, open to the public and wheelchair accessible. Books are available for sale at a discount the week of the event. Signed copies may be ordered in advance.

sponsored by MIT Libraries & The MIT Press Bookstore



Funny how
we can panic
over a strange spot
on a car
and ignore one
on ourselves.

Skin cancer is a lot like rust-

if caught early there's less damage.

So, examine your skin regularly.

If you spot something such as a

changing mole, see your dermatologist.

AMERICAN ACADEMY
OF DERMATOLOGY

For more information, call 1-888-462-DERM
or visit www.aad.org

This space donated by *The Tech*

Easter 1987, Age 5

Easter 1988, Age 6

Easter 1989, Age 7



Lorien Lea Denham.

Killed by a drunk driver on Good Friday, March 29, 1991, at College Park Drive and Hwy. 19 North in Meridian, Miss.

If you don't stop your friend from driving drunk, who will? Do whatever it takes.

FRIENDS DON'T LET FRIENDS DRIVE DRUNK.



U.S. Department of Transportation

This space donated by The Tech

**The CollegeStudent.com
'Get a Nightlife' Sweepstakes!
Grand Prize**

Win free round-trip transportation and exclusive V.I.P. admission for two to New York City's KIT KAT CLUB

NYC's hottest party frequented by Donald Trump and Leonardo DiCaprio
(Transportation compliments of CM101)

1st Prize (10 winners !): A private party for you and 15 of your closest friends at one of Boston's hottest nite spots !

2nd prize (25 winners): Complimentary admission to a Magma Entertainment event

3rd Prize (100 winners !): A CollegeStudent.com prize package

To enter, simply log on to:

www.collegestudent.com

Click on the Northeast region, then click on your school

No Purchase Necessary/Must be 18 years of age to win/Void where prohibited

Thanks to you, all sorts of everyday products are being made from the paper, plastic, metal and glass that you've been recycling. But to keep recycling working to help protect the environment, you need to buy those products.

BUY RECYCLED.



AND SAVE.

So look for products made from recycled materials, and buy them. It would mean the world to all of us.

For a free brochure, write Buy Recycled, Environmental Defense Fund, 257 Park Ave. South, New York, NY 10010, or call 1-800-CALL-EDF.



**Diversity
Job Fair '98**

Sponsored by:
Boston Business Journal

FROM
ENTRY
TO TOP
LEVEL
POSITIONS

**1000's
OF
OPENINGS**

Thursday,
October 29, 1998, 10am - 6pm

**WORLD TRADE CENTER, BOSTON
Everybody is Welcome!**

- Accountemps
- ADT Security
- All Care Visiting Nurse
- Allied Security
- American Express
- Automatic Data Pro.
- Boston Bed & Bath
- Boston Equiserve
- Bell Atlantic
- Beth Israel Medical
- Bread and Circus
- Brink's
- Burger King
- Cambridge Resource
- Cellular One
- Citizens Bank

- Children's Hospital
- East Boston Savings B.
- F.B.I
- Fidelity Investments
- Foxwoods Casino
- Fresenius Medical
- Harvard Medical
- Hertz Corporation
- Hills Department Stores
- Host Marriott Services
- Lucent Technologies
- Macy's
- Nextel Communications
- New Boston Select Staff.
- New England Financial
- Office of Transportation

- Office Team
- Payless Shoesource
- PricewaterhouseCoopers
- Private Healthcare S.
- R.R. Donnelley
- Staples Inc.
- State Street Global
- TAP Pharmaceutical
- Titleist & FootJoy W.
- The May Institute
- Trend-Lines
- Tufts Health Plan
- U.S. Postal Service
- U.S. Air Force
- Volt Services Group
- World Trade Center

and many, many more!

Whether you are getting a Bachelor's, Master's, or Ph.D degree, this Job Fair is for you.

Openings Available: Acct. Execs, Sales, Technical Sales & Mktg., Retail Sales/Mgt., Cust. Service, Restaurant Mgmt., Engineering, Computer Science, DB Development, Financial Mgrs., Insurance Agents, Government and Military Positions, Healthcare ... and many more.

Produced by: SPS Publishing • Call (617) 491-4660

Free Shuttle From South Station • Free Admission

This space donated by The Tech.

DA Takes Credit for Institute's Reforms

Fiji, from Page 1

tion which lead to the indictment, MIT has completely revamped its alcohol, discipline, and housing policy. "We think a lot of things have changed [at MIT]," Wechsler said.

Wechsler said that she was unable to answer questions regarding the possibility of a Phi Gamma Delta chapter containing entirely new members.

Wechsler addressed the failure of the fraternity to appear by saying "you can take from that what you will as far as an admission of guilt."

When asked about the purpose of filing such a motion, Wechsler said, "Scott Krueger, 18 years old, came here from Orchard Park, N.Y....nine weeks later he was dead. He was left in his basement to choke on his own vomit; he was abandoned there. These are the facts. We followed the facts; we followed the law. We have run the fra-

ternity out of town, essentially."

Yesterday's motion marks the end of a legal battle that began one year ago when a grand-jury began to look into the drinking death of Scott Krueger. Speculation that MIT might be held criminally liable for Krueger's drinking death surrounded the investigation.

In early summer, several MIT administrators including President Charles M. Vest voluntarily testified to the grand jury following a summons by Martin.

Throughout, MIT had voluntarily given information to the grand jury to assert its innocence. Speculation that there was deal between MIT and the district attorney on issues such as housing policy were denied by both.

While the criminal case against Phi Gamma Delta is essentially over, lawyers for Krueger's parents have not closed the door against a possible civil suit against MIT and others.



CONNIE LU—THE TECH

Gitrada Arjara '00, a member of Thai Students at MIT, performs on the Student Center steps during the Mini International Fair Friday.

AMERICA'S FUTURE



UNITED STATES NAVY
SERVING AMERICA TWICE

1-800-USA-NAVY www.navyjobs.com
This space donated by The Tech

FACTSET

FactSet is an equal opportunity employer

Software Engineers

Come work in an exciting, fast-paced industry with bright young engineers. Join us at the info session and get the chance to Win a \$50 dinner gift certificate.

Info Session
Room 8-105
Wednesday, October 28, 1998
7:00pm - 9:00pm

Interviews
Career Center
Thursday, October 29, 1998

FactSet is the leading provider of online financial, market, and economic information. Our product is used by over 10,000 investment professionals worldwide to research companies, industries, and economies

If you want to utilize your skills in C/C++, GUI frameworks, Perl / HTML, algorithmic analysis and design, software engineering practices, Microsoft Windows application development, and statistical/quantitative analysis,

You've found what you are looking for.

www.factset.com

UNIVERSITY OF VIRGINIA SCHOOL OF LAW

ASSOCIATE DEAN ALBERT TURNBULL

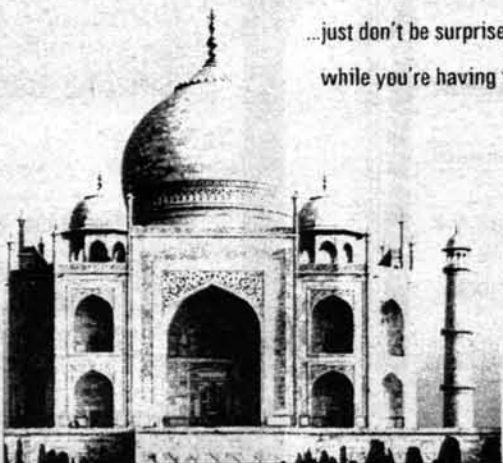
a recruiting visit
Wednesday, October 28, 1998
group meetings at
2:00 & 3:00
Mezzanine Lounge
Student Center at MIT

STUDENT TRAVEL

Because education & adventure are not mutually exclusive.

With our staff of experienced travelers, a global network of offices, great prices, ticket flexibility and a ton of travel services, we know firsthand what it takes to put together a mind-blowing trip...

...just don't be surprised if you learn something while you're having the time of your life.



STA
STA TRAVEL
We've been there.

(617) 576-4623

65 Mt. Auburn Street

FOR AIR TICKETS ON-LINE: www.statravel.com

WWW.THE-WORD-IS-TRUTH.ORG

Is
there
any
cause
worth
living
for?

SPORTS

Subvarsity Tennis Edges Out Simmons

By Carol Matsuzaki
HEAD COACH

The women's subvarsity tennis team played their final home match against Simmons College's varsity team. The match came down to the wire as the Engineers came out on top, 5-4.

At first doubles, the duo of Smriti Banthia '99 and Kosanna Poon '01 fell to Simmons 8-3. At second doubles the pair of Sarah Chalos '01 and Linda Huang '00 were victorious 8-2 as a result of smart shotmaking and overall consistency. MIT defaulted third doubles and sixth singles due to a lack of players.

Going into the singles competition of the match down 1-3, Huang was the first to come off the court with a point for MIT, winning 6-1, 6-2. Banthia, however, lost 6-4, 6-4, giving Simmons a 4-2 lead. Effy Klopfer '02 kept the Engineers in the match with a spectacular 6-3, 2-6, 6-1 win which experienced many momentum changes. Chalos was the next one off, with a 6-1, 6-2 win, which tied the match score at 4-4. Poon, after losing the first set 3-6, used her patience, speed and superior mental and physical fitness to overcome her opponent 3-6, 6-2, 7-6(8-6) to give MIT its fifth and winning point.



Annika Sutton '00 sprints past an opposing forward to clear the ball in a soccer game against Wellesley on Saturday. MIT lost 0-2.

UPCOMING HOME EVENTS

Thursday, October 29

Men's Soccer vs. Wentworth Institute of Technology, 3:00 p.m.

Women's Volleyball vs. Tufts University, 7:00 p.m.

MIT

Students interested in Management Consulting

Over the past few years over 37 of your peers have joined our professional staff.

Come see why!

Tuesday, October 27th

7:00 P.M.

CAMBRIDGE MARRIOTT

We welcome expressions of interest from undergraduate and graduate students from all disciplines interested in positions in any of our global offices.

Please contact:

Trisha Iglesias, Mitchell Madison Group
520 Madison Avenue, New York, NY 10022 • Fax 212 372-4408

New York London Paris Frankfurt Munich
San Francisco Boston Chicago Melbourne
Sydney Toronto Montreal Zürich Madrid
Los Angeles Johannesburg

www.mmgnet.com

**MITCHELL
MADISON
GROUP**

Global Consulting

Commonly
Unbearable.

Dangerously
Believable.

Subsequently
Fatal.

#1 Cause of Suicide

**UNTREATED
DEPRESSION**

This space donated by *The Tech*

Calculus Tutor

- Friendly & Helpful
- Affordable
- Available Anytime
(at your campus bookstore)



STUDY IN
OXFORD

Live with British students in the very center of Oxford as an Associate Student of a medieval Oxford college.

Summer and graduate study available. Since 1985, students from 240 leading U.S. Colleges have studied in Oxford through W.I.S.C.

Washington International Studies Council

214 Massachusetts Avenue, N.E.
(Suite 370)

Washington, D.C. 20002

Phone Number: (202) 547-3275

Free Telephone: (800) 323-WISC

Facsimile: (202) 547-1470

E-mail: wisc@erols.com