

MIT's
Oldest and Largest
Newspaper

The Tech

Established 1881

The Weather
Today: Sunny, cool, 57°F (14°C)
Tonight: Cold, 40°F (4°C)
Tomorrow: Sunny, pleasant, 60°F (15°C)
Details, Page 2

Volume 118, Number 47

Cambridge, Massachusetts 02139

Tuesday, October 6, 1998

Tutor Arraigned for East Campus Arson

By Douglas E. Heimburger
EDITOR IN CHIEF

The Graduate Resident Tutor for the fourth floor of East Campus' west parallel was arraigned yesterday for arson in connection with a fire at the dormitory late Friday night.

The fire burned carpeting and a bulletin board of photographs outside the room of the GRT, Dimitri J. Kountourogianis G.

Kountourogianis received first and second-degree burns from the fire. He was taken to Massachusetts General Hospital for treatment and subsequently released.

The fire allegedly started when Kountourogianis poured an accelerating chemical on the carpeting of the floor, spelling out "41," the hall's moniker, and then set it on fire.

The fire sprinklers did not shut off normally and caused water damage to all floors beneath the fire location near the Monroe stairwell.

Cambridge Fire Department reports estimated damage from the suspicious fire at \$15,000.

The fire alarm failed to activate properly, but the fire department responded at 3:59 a.m. when a water flow report indicated that sprinklers in the building had discharged.

When officials arrived on the scene at 4:08 a.m. Saturday morning, they "found students in the smoke, playing music and partying," according to the fire department report.

The fire department immediately ordered the complete evacuation of the building until they could fully assess the situation.

By the time the fire department arrived, two sprinklers had doused the fire, which was mainly fueled by a sleeping bag and the cork bulletin board, the report said.

Kountourogianis was arraigned yesterday on one count of setting fire to a dwelling in Cambridge District Court. A pre-trial hearing will be held on Nov. 10, court officials said.

If convicted, Kountourogianis could face imprisonment for up to 20 years and a fine of up to \$10,000.

Brian Heffron, spokesman for the Middlesex County District Attorney, could not be reached for comment on the case yesterday.

Kountourogianis suffered burns when he "got a sleeping bag and tried to smother" the fire, said Associate Dean for Residence Life and Student Life Programs Andrew S. Eisenmann '70.

The administration is currently



GARY MASKALY

A fire in East Campus's Fourth West hall burned the numeral "41" into the carpet in the hallway. Firemen arrived to find Fourth West residents partying in the smoke.

investigating the incident, said Dean for Student Life Margaret R. Bates. MIT disciplinary action will likely wait until after the criminal action is complete, she said.

Kountourogianis has been suspended as a GRT and reassigned elsewhere in the housing system, Eisenmann said.

Damage less than expected

East Campus Housemaster Jed Z. Buchwald said that damage to the dormitory was limited despite the flow of water from the sprinklers and the initial fire damage.

Immediately after the fire, all rooms that had water in them were vacuumed out and cleaned, Buchwald said. Painters and other workers from the Department of Facilities will clean up the fourth floor later this week.

The damage was "much much less than I would have thought," Buchwald said. When the building was evacuated, there was a "river of water pouring down the stairs" from the sprinklers.

Fire, Page 11

Student Hospitalized After Party at Baker

By Kevin R. Lang

STAFF REPORTER

A 20-year-old Simmons College student was taken to Massachusetts General Hospital early Saturday morning after allegedly consuming alcohol at a party in Baker House.

Two parties were held in Baker after the Late Night event on Friday, one on the third floor and one on the fourth. It is not clear which party she had attended, but the *Boston Herald* reported yesterday that the student had been drinking a spiked punch.

The student was found vomiting in a fourth floor bathroom at approximately 1:30 a.m. Campus Police were notified, and after finding her ill but conscious they called an ambulance. She was taken to MGH, where she was treated and released, said Kenneth D. Campbell, director of the News Office.

According to sources at Baker House, alcohol was served at the third floor party. A number of underage people were involved in the drinking.

The third and fourth floor halls and lounges were crowded, but the number of attendees at the parties is unknown. Some students placed attendance at the third-floor party as high as 300 students.

Sources also indicate that a large number of non-residents and non-MIT students attended one or both of the parties.

The third and fourth floor parties were apparently not connected. The third floor party was advertised in other MIT dormitories.

Kartik M. Mani '00, one of the third floor party's organizers, sent an e-mail advertisement to the

Baker, Page 16



MICHELLE L. POVINELLI—THE TECH

Gretchen Hayden performs at "An Evening of Kathak Dance," presented by MITHAS in cooperation with Sangam and the New England Hindu Temple Saturday in Killian Hall.

IFC Resolution Condemns Freshman Housing Decision

By Krista L. Niece
ASSOCIATE NEWS EDITOR

The Interfraternity Council announced its opposition to the decision to house all freshmen on campus at its last presidents' council meeting.

The resolution was first passed unanimously by the IFC executive committee. It was then presented to the presidents' council on Sept. 23.

Duane H. Dreger '99 said that the approval at that meeting was unanimous, with one president absent. However, one house president claimed that he attempted to vote against the resolution and was accidentally ignored.

The resolution states, "Freshmen housing choice is an integral and essential part of the MIT undergraduate experience," and lists reasons why it should be retained.

"Freshmen housing choice is fully compatible with the educational mission... [and is] beneficial to the MIT community as a whole."

The IFC resolution calls the decision a blow not only to the fraternities, sororities and independent living groups, but to the rest of MIT as well. "By eliminating freshmen housing choice, irreparable harm will be done to the MIT community as a whole," it said.

The resolution also repeated a claim by Jeremy D. Sher '99, a member of the Task Force on Student Life and Learning. Sher claimed that the administration had forced the task force to include a recommendation to house freshmen on campus.

The decision to house all freshmen in dormitories starting in 2001, was announced on August 23 by President Charles M. Vest.

Administrators dismissed the IFC's actions. "The decision will not be reversed," said Chancellor Lawrence S. Bacow '72.

"You can't let yourself be bullied around," Vest

IFC, Page 16

Jane Pickering has begun work as the new director of the MIT Museum.

Page 6



Comics

Page 18

EDITORIAL

The circumstances surrounding the task force report raise serious questions about its recommendation.

Page 4

World & Nation2
Opinion4
TechCalendar20
Sports36

WORLD & NATION

China Signs Civil Rights Agreement

LOS ANGELES TIMES

UNITED NATIONS

China signed an important international agreement on civil and political rights Monday that guarantees protection against arbitrary arrest while securing freedom of thought, religion and expression.

The treaty provides for fair trials, prohibits torture, or cruel or degrading punishment, and recognizes that citizens have the right to life, liberty and a prompt appearance before a judge after seizure by authorities.

A number of experts hailed China's action as an important first step, but stressed the degree to which the treaty will be honored was still uncertain. The immediate impact in China is likely to be negligible.

"To realize human rights is the aspiration of all humanity," Beijing's U.N. Ambassador Qin Huasun said at a low-key ceremony. "It is also a goal that the Chinese government has been striving for."

"We believe that the universality of human rights should be respected and it can be even better reflected once it is combined with the specific conditions of various countries..."

"As a member of the international community, China stands for dialogue on the question of human rights and on the basis of mutual respect," the ambassador added. "It is opposed to confrontation."

U.S. Embassy in Uganda Cited As Two-Time Target

THE WASHINGTON POST

KAMPALA, UGANDA

Ugandan officials say that an alleged plot to bomb the U.S. Embassy here last month was a second effort by terrorists who originally planned to strike the downtown Kampala compound the same day blasts shattered embassies in neighboring Kenya and Tanzania.

"According to the intelligence that we have, the attack on Kampala was supposed to be simultaneous with Nairobi and Dar es Salaam," said Amama Mbabazi, the Ugandan minister of state for foreign affairs. "Of course it didn't happen that way. And I think the main reason is they find it a lot more difficult to operate here than in Kenya and Tanzania. We've had terrorism ourselves."

A Clinton administration official termed the claim "very plausible," noting that the embassy in Uganda appears on a list of targets compiled by Osama bin Laden, the exiled Saudi millionaire accused of leading a terrorist network blamed for the Aug. 7 blasts that killed more than 250 people.

Boston Chicken Files for Bankruptcy

THE WASHINGTON POST

Boston Chicken Inc., once a Wall Street darling and restaurant powerhouse that rose to fame selling roasted chicken, Monday filed for bankruptcy reorganization as it struggles to turn around sagging sales by closing 16 percent of its restaurants, eliminating debt and adding offerings to its menu.

The company, which two years ago changed the name of its restaurants to Boston Markets, has suffered from weak sales and profits as a result of increased competition, primarily from grocery chains offering ready-to-eat meals, industry analysts said. Declining sales made it more difficult for Boston Chicken, based in Golden, Colo., to continue expanding because it could no longer provide loans to franchisees in its aggressive move to open more restaurants.

"They've definitely faced tremendous pressure in terms of meeting their financial obligations," said Ralph Rush, a senior associate at Technomics Inc., a Chicago-based restaurant consulting firm. "Thus, very little time and investment was spent on helping improve per-store sales, which is the heart of the company's problems."

The chain, whose stock price soared when the company went public in 1993, said it will close 178 of its 1,143 restaurants. All of the employees will be transferred to other restaurants, officials said.

Judiciary Committee Votes To Ask for Clinton Inquiry

By Richard A. Serrano and Marc Lacey
LOS ANGELES TIMES

WASHINGTON

A sharply divided House Judiciary Committee voted Monday night to recommend the start of a formal inquiry into whether President Clinton should be impeached for obstructing justice and lying about his sexual affair with Monica S. Lewinsky.

As anticipated, the vote followed party lines, with the panel's 21 Republicans supporting the motion while its 16 Democrats opposed it. The vote followed an often-heated, all-day session during which the Republicans made their case for proceeding with the inquiry while the Democrats argued Clinton's offenses did not rise to the level of such an investigation.

The committee's action sets the stage for all 435 members of the House of Representatives to vote Thursday on whether they believe there is enough evidence to warrant a full-scale impeachment investigation.

It is expected the GOP-controlled House will approve the inquiry; what will be closely watched is how many Democrats

also support it.

House passage will mark the third impeachment inquiry of a president in U.S. history.

Under the inquiry proposal the committee adopted Monday, the panel will review the Lewinsky matter but also can broaden its scope if other allegations of presidential misconduct are sent to Congress by Independent Counsel Kenneth W. Starr. Democrats strongly opposed such an open-ended approach.

The inquiry, patterned after the one launched for the Watergate scandal, also will not have a timetable for completion. However, Chairman Henry J. Hyde (R-Ill.) has said he would like the committee to complete an impeachment inquiry by the new year.

If the panel approved articles of impeachment against Clinton, the full House would then vote on whether to adopt them, with a simple majority required for passage. If that occurred, the case would then go to the Senate for trial, where a two-thirds majority would be required to remove Clinton from office.

"The 20th century has been referred to often as the American

Century," Hyde said at the start of Monday's meeting. "It is imperative we be able to look back at this episode with dignity and pride.... In this difficult moment in our history lies the potential for our finest achievement — proof that democracy works."

But the senior Democrat on the panel, Rep. John Conyers Jr. of Michigan, complained that House Republicans are simply trying to elevate Clinton's morals into a national scandal.

"This is not Watergate," he said. "It is an extramarital affair."

But reflecting the Democratic strategy of shifting the focus from Clinton's actions to the relentless pursuit of the case by Starr and his aides, Conyers said: "I suggest to you in every ounce of friendship that I can muster that even worse than an extramarital relationship is the use of federal prosecutors and federal agents to expose an extramarital relationship."

Before voting to recommend the impeachment inquiry, the panel defeated several Democratic amendments — each time on strict party-line votes of 21-16 — that would have limited the time and scope of the impeachment review.

Fed Governor Says Rates May Be Cut Further to Spur Growth

By John M. Berry

THE WASHINGTON POST

WASHINGTON

The Federal Reserve will keep cutting interest rates if need be to make sure the U.S. economy keeps growing next year, Fed Governor Laurence H. Meyer said Monday.

Meyer, in a speech to the National Association of Business Economists, said the Fed reduced overnight rates to 5.25 percent from 5.5 percent last week because turmoil in world financial markets is threatening U.S. economic growth.

The cut, although disappointingly small to many financial analysts, was designed to maintain growth by making it easier for banks to lower the cost of borrowing for many businesses and consumers.

Meyer said the rate reduction

wasn't larger because evidence of a significant slowdown hadn't yet emerged, and because the U.S. economy continues to enjoy low unemployment and low inflation. However, he noted, that may change quickly.

"The cumulative force of recent developments appears likely to yield a slowing in the pace of growth next year," Meyer explained, indicating that the Fed stands ready to lower rates in response.

"This is a rapidly changing environment. Fortunately, monetary policy is capable of responding quickly to changing conditions. The role of monetary policy, in this episode, is to cushion this slowdown (and) provide insurance against downside risks...." he said.

The graveness with which some

Fed officials regard those risks also was underscored Monday by William J. McDonough, president of the New York Federal Reserve Bank, who told a group of international bankers in a meeting here that the current crisis was the "most serious financial crisis since World War II."

"I think we should realize that we are living in an extraordinarily difficult time in our financial markets because [there is] a significant possibility of credit crunch," he said, adding, "but the people in this room have the capacity to make sure this doesn't happen" — that is, by continuing to extend credit rather than cutting it off indiscriminately, as some financial institutions have begun to do with some borrowers in the new riskier market environment.

WEATHER

Cool and Clear

By Greg Lawson and Bill Ramstrom
STAFF METEOROLOGIST

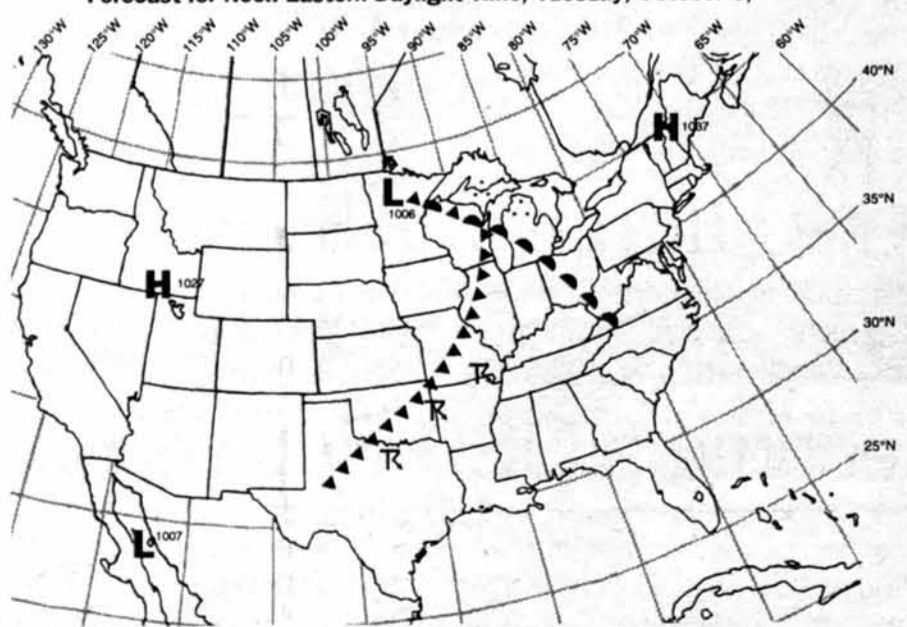
The cool weather we are experiencing today is setting the stage for some frost tonight outside the city. Here in Cambridge, we will have a somewhat longer growing season thanks to the "urban heat island." The asphalt, concrete buildings, and other man-made surfaces in the city absorb more solar radiation during the day than does the vegetation in the suburbs. At night, this reservoir of heat is slowly radiated back to the atmosphere, keeping the temperatures 5-10 degrees warmer in the city. This effect is most pronounced on clear nights with light or calm winds, when the air near the surface can cool rapidly towards the dew point.

However, the urban heat island does not just affect how late into October our tomatoes will grow, but also fuels controversy over claims that global warming has already begun. Some studies based on surface temperature readings over the last century have shown an upward trend in observed temperature, but often the readings were taken in expanding cities where the heat island effect may be the true cause of this change.

For the rest of the week, expect slow warming as a blocking high protecting us from the bad weather over the Midwest through late Thursday moves offshore. The large cutoff low over the Dakotas will only be able to move eastward very slowly, and will thus be forced to go around the high, most likely to the north into Canada.

Today: Cooler but sunny. Light north wind. High 57°F (14°C).
Tonight: Quite chilly. Winds calm down after sunset. Low 40°F (4°C).
Wednesday: Mostly sunny, pleasant. High 60°F (15°C). Low 49°F (9°C).
Thursday Outlook: Warmer with some sun. High: mid 60s (17-20°C).

Forecast for Noon Eastern Daylight Time, Tuesday, October 6, 1998



Weather Systems	Weather Fronts	Precipitation Symbols	Other Symbols
H High Pressure	- - - Trough	Snow	Fog
L Low Pressure	- - - Warm Front	Light	Thunderstorm
S Hurricane	▲▲▲▲ Cold Front	Moderate	Haze
	▲▲▲▲ Occluded Front	Heavy	Compiled by MIT Meteorology Staff and The Tech

Kosovo Talks Break Up Early, Produce Very Little Progress

By R. Jeffrey Smith

THE WASHINGTON POST BELGRADE, YUGOSLAVIA

Talks between U.S. envoy Richard Holbrooke and Yugoslav President Slobodan Milosevic aimed at resolving the crisis in Kosovo ended sooner than expected Monday evening, and Milosevic subsequently issued a statement describing Holbrooke's threat of possible NATO airstrikes against Yugoslavia as "a criminal act."

As NATO stepped up plans for military action to force Milosevic to end his crackdown on separatist ethnic Albanians in Kosovo, it appeared that Holbrooke's efforts to broker a settlement had yet to produce results. Even before the meeting began, a State Department official said that "all the momentum is moving toward the use of force," and NATO officials in Brussels said that airstrikes could begin later this

week if diplomacy fails.

Secretary of State Madeleine K. Albright spent much of the day on Sunday speaking with her counterparts in Russia, Britain, France, Italy and Austria and arguing that force should be used if Holbrooke's mission fails, her aides said.

President Clinton spoke by telephone with Russian President Boris Yeltsin and expressed concern that Milosevic was "playing the classic game of making false promises" to avoid NATO strikes, White House spokesman Joe Lockhart said.

While Yeltsin again expressed Russia's reluctance about the use of force, "the president made it clear this isn't a time for half measures, it isn't a time for promises, it's a time for full compliance" with U.N. and NATO demands that Milosevic end the military crackdown in Kosovo, withdraw government forces and open meaningful political negotia-

tions with the ethnic Albanians.

"What happens next depends on President Milosevic," Lockhart quoted the president as telling Yeltsin.

Holbrooke, who has been nominated as the U.S. ambassador to the United Nations, has more experience negotiating with Milosevic than virtually any other U.S. diplomat, and he came here with three other top U.S. officials in a last-minute bid to persuade Milosevic to take "irreversible, verifiable steps" that would bring peace to Kosovo, which is a province of Serbia, Yugoslavia's dominant republic.

NATO officials have indicated that without such a commitment by Belgrade — capital of both Serbia and Yugoslavia — the alliance could undertake airstrikes later this week involving U.S., Italian, French and German forces.

Twenty-Two Nations Prepare New Rules Governing Flow of Capital

By Paul Blustein

THE WASHINGTON POST WASHINGTON

The United States joined 21 other countries Monday to propose a scheme of global regulation of vast international capital flows in an attempt to reduce the risk of future economic crises.

Financial markets around the world are reeling from the effects of sudden movements of capital — starting with the pullback from Asia a year ago and continuing today as investors pull money out of stock and bond markets and stampede into U.S. Treasury securities. The plan outlined Monday by officials attending the annual meeting of the International Monetary Fund and the World Bank would be the first attempt on a global basis to tame the movement of capital across borders

and to increase the "transparency" of such investments.

"It's a very powerful document — the start of a rewriting of the rules for international capital flows," said Richard Medley, managing partner at Medley Global Advisors, a firm that counsels large international investment firms. "Government regulation and supervision is going to be a much bigger part of the equation for banks, hedge funds and other international investors."

The report called for requiring "hedge funds" and other big institutional investors — which currently place enormous bets on global markets in near-total secrecy — to disclose their international exposure to government authorities. It also recommended international standards to strengthen banking regulation

and supervision. And in a significant move toward forcing banks and other financial institutions to pay a greater price for reckless lending, the report envisioned "extreme cases" where financially strapped countries might suspend all payments to foreigners, with the IMF's blessing, pending negotiations to work out a settlement of claims.

The report did little to quiet concern in financial markets over the lack of bold, coordinated action by top economic policy-makers at the IMF-World Bank meetings to contain the turmoil threatening the global economy.

The finance ministers gathered for the "Group of 22" — the G-7 nations plus 15 others formed to propose a "new architecture" for the world monetary system.

Study: Immigration Skews Congressional Reapportionment

THE WASHINGTON POST

WASHINGTON

The biggest sustained wave of immigration in U.S. history is skewing Americans' representation in Congress, increasing the political clout of states with the largest influxes at the expense of other states, according to a new study.

In a report released Tuesday, the Center for Immigration Studies pinpoints recent immigration as a major factor in the reapportionment of seats in the House, a trend it says is effectively reducing the voting power of citizens in certain states and "redistributing political influence in Washington." An analysis of census data indicates 13 seats changed hands in 1990 or will do so in the next census because of immigration, the center says.

The Washington-based think tank, which advocates lower levels of immigration, makes no specific recommendations in its study but criticizes what it calls the "mass immigration" of recent years and suggests "a more moderate level" would mitigate the reapportionment.

With an influx of more than 15 million legal immigrants alone since 1980 and the tendency of newcomers to cluster together — 75 percent of all immigrants live in just six states — immigration is fueling much more rapid population increases in some places than in others. And because the 435 House seats are reapportioned every 10 years based, according to the Constitution, on each state's population — including citizens, legal immigrants and illegal aliens — this trend is shifting political representation to the states with the most immigrants, creating districts with relatively few voters.

Chiapas Voting Leaves PRI In Control of Local Government

LOS ANGELES TIMES

SAN CRISTOBAL DE LAS CASAS, MEXICO

Despite one unexpected setback, the ruling Institutional Revolutionary Party maintained its traditional domination of the troubled state of Chiapas in elections for the state legislature and town halls, according to nearly complete returns Monday.

Voting was far more peaceful than any election since the Zapatista uprising in January 1994. In many areas, more parties took part in Sunday's vote than in the last local vote in 1995, and voter turnout appeared to be little changed, at about 45 percent.

The ruling party appeared likely to again win 18 of the 21 state legislative seats at stake, although one was in dispute. Voters in San Juan de Chamula, a longtime PRI stronghold, refused to allow balloting. Chamulan residents, staunch Catholics, demanded the release of five men who were charged with murdering an evangelical church leader in the town, a demand that the governor rejected.

State officials said that they hadn't yet decided whether the failure to hold that local ballot would affect the district legislative election or the scheduled seating of the state assembly in November.

Apart from its rebuke in Chamula, the PRI was on its way to retaining virtually all of the 84 mayor's jobs it won in 1995. It also won back the important regional city of Ocosingo, east of San Cristobal de las Casas, from the left-wing Party of the Democratic Revolution, which is sympathetic to the goals of the Zapatista rebels.



Graduate Student Council

OFFICE: Walker Memorial, 50-220 PHONE: 253-2195

EMAIL: gsc-request@mit.edu WEBSITE: www.mit.edu/activities/gsc

Graduate Student Career Fair

Friday, Nov. 13
10 AM - 3 PM Dupont

More information can be found at:
<http://www.mit.edu/activities/gsc/CareerFair/students.html> or by emailing gsc-careerfair@mit.edu.

General Council Meeting

Wednesday, Oct. 7
5:30-6:30 PM 50-220

All graduate students welcome.
Dinner will be served.



Calendar

▶ OCTOBER

- 06 - Publications board committee meeting *
- 07 - General Council Meeting *
- 08 - Career Fair Meeting *
- 12 - GSN Published - pick up a copy in Lobby 7
- 15 - Summer Reimbursement Appeals Deadline
- Fall Funding Appeals Deadline
- 19 - Funding Board Appeals Meeting *
- 19-24 - Fall Festival - Open to entire MIT community
- 20 - Housing and Community Affairs meeting *
- 21 - Publications board committee meeting *
- 26 - Activities committee meeting *

▶ NOVEMBER

- 04 - General Council Meeting *
- 13 - Career Fair Dupont 10 AM - 3 PM

* = at 5:30pm in Room 50-220. All graduate students are welcome. Food is provided.

GSC Intramural Sports Teams

Graduate students interested in intramural sports -- soccer, hockey, basketball, volleyball and many more -- but don't know where to go, contact Scott Ramming, sramming@mit.edu, or subscribe to GSC-sports with: `athena%blanche gsc-sports -a username`.

Become a GSC Representative

The GSC is still looking for representatives for all departments, programs and graduate dorms. Rolling application deadline for representatives. More information about the position and an application can be obtained at: <http://web.mit.edu/gsc/www/People/Representatives/representatives.html>.

Graduate Student News (GSN)

The Graduate Student News (GSN) will now be published bi-weekly. Pick up a copy of the next issue of the GSN on Oct. 12. GSN submissions due Oct. 6 to Constance Lai, con@mit.edu

OPINION

Flawed Process, Questionable Proposals

The recent report of the Presidential Task Force on Student Life and Learning has generated a great deal of skepticism from the MIT community because of the questionable circumstances surrounding it.

Editorial

Initially designed by the administration to undertake a comprehensive review of MIT's educational mission (the last such examination having occurred nearly fifty years ago), it has since become a vehicle for the administration's agenda and its attempts to raise money. Its goals were to define MIT's mission and to make recommendations for changes and resources to support the mission. While the report did accomplish these goals, it also told the administration exactly what it wanted to hear.

The task force's report contains both good and questionable proposals. The report's assertion that management courses and education should be more widely available to all MIT students, regardless of major, is a welcome one. The Sloan School of Management has been allowed to lead a very separate and distinct existence from the rest of MIT's departments for many years. This has made it difficult for non-Sloan students to receive in-depth exposure to managerial subjects, despite the fact that many students with scientific or engineering backgrounds eventually seek or attain managerial positions.

On the other hand, the call for a mandatory freshman research program or required participation in the Undergraduate Research Opportunities Program during the first year is an unwise idea. Research and design experiences are beneficial to many students' student life but usually involve a narrow segment of one specific course of study. Incoming students may believe they know what their major will be, but many are uncertain or end up changing their minds during their first years at MIT. Forcing them to pick an area on which to focus is only a barrier to the wide range of knowledge and experiences that

freshmen ought to experience.

In addition, the call for faculty members to become more involved in community or student activities is, while certainly a great idea, not unique to the task force's report. It is one that has been repeated many times over the years but will probably remain unheeded.

The most questionable move of the task force was its extensive reliance on input from the administration. The initial draft of the report was shown to senior administrators and then significantly expanded. Topics such as dining and on-campus freshman housing were pointed out by the administration as loose ends and were subsequently written into the report. The collaboration between the administration and task force members raises questions about the objectivity of the authors and the agenda behind the report.

Also, the apparently coincidental release of the report with the capital campaign, MIT's attempt to generate a long-term fund for building projects and improvement plans, raises further questions. Along with President Charles M. Vest's upcoming annual report, the task force report is being used as one of the two documents forming the foundation of the capital campaign. Serious questions of objectivity arise when the report is not only being scanned by administrators for input and for review but is also being used as a vehicle for financial gain. It is clear from its timing and usage that the report is being used for purposes other than objective evaluation and commentary on student life and learning.

Thus, whether the ideas of the task force are good or bad, the circumstances surrounding the report cause any subject within it to have much less impact on members of the MIT community. Although it began as an opportunity for reflection, examination, and hopeful change, the task force has lost a great deal of respectability by bowing to the administration's agenda, and the administration has furthered that injury by using the report as propaganda for financial gain.



Chairman
Josh Bittker '99

Editor in Chief
Douglas E. Heimburger '00

Business Manager
Joey Dieckhans '00

Managing Editor
Erica S. Pfister '00

NEWS STAFF

Editors: Brett Altschul '99, Frank Dabek '00, Zareena Hussain '00; **Associate Editors:** Jean K. Lee '99, Susan Buchman '01, Jennifer Chung '01, Krista L. Niece '01; **Staff:** Orli G. Bahcall '99, Shawdee Eshghi '99, Carina Fung '99, Eric Sit '99, Aileen Tang '99, May K. Tse '99, Sharmin Ghaznavi '00, Stuart Jackson '00, Dudley W. Lamming '00, Katie Jeffreys '01, Dalié Jiménez '01, Alex Ianculescu '02, Neena S. Kadaba '02, Kevin R. Lang '02; **Meteorologists:** Michael C. Morgan PhD '95, Greg Lawson G, Gerard Roe G, Chris E. Forest, Marek Zebrowski.

PRODUCTION STAFF

Editor: Ryan Ochylski '01; **Staff:** Moksha Ranasinghe '99, Jason C. Yang '99, Francisco Tanudjaja '00, Roxanne Lau '01, Steve K. Lim '01, Ian Lai '02, Kristen Landino '02, Ágnes Borszéli.

OPINION STAFF

Editors: Michael J. Ring '01, Naveen Sunkavally '01; **Staff:** Dan Dunn '94, Anders Hove '96, Wesley T. Chan '00, Seth Bisen-Hersh '01, Andrew J. Kim '01, Elaine Y. Wan '01.

SPORTS STAFF

Editor: Shao-Fei Moy '98.

ARTS STAFF

Editor: Joel M. Rosenberg '99; **Staff:** Thomas Chen G, Steven R. L. Millman G, Vladimir V. Zelevinsky G, Teresa Huang '97, David V. Rodriguez '97, Mark Huang '99.

PHOTOGRAPHY STAFF

Editors: Gregory F. Kuhn '00, Rebecca Loh '01; **Associate Editor:** Annie S. Choi; **Staff:** Rich Fletcher G, Aaron Isaksen G, Wan Yusof Wan Morshidi G, Thomas E. Murphy G, Michelle Povinelli G, Arifur Rahman G, T. Luke Young G, Dennis Yancey '97, Ahmed Ait-Ghezala '99, David Tarin '99, Rita H. Lin '00, Connie C. Lu '00, Karlene Rosera '00, Cornelia Tsang '00, Chun Hua Zheng '00, Ajai Bharadwaj '01, Ying Lee '01, Amy Yen '01, Miodrag Cirković.

FEATURES STAFF

Anthony R. Salas '91, Pawan Sinha SM '92, Hugo M. Ayala G, Calista E. Tait G, Solar Olugebefola '99, Jessica Wu '99, Jennifer Dimase '01, Xixi D'Moon '01.

BUSINESS STAFF

Advertising Manager: Jennifer Koo '00; **Operations Manager:** Satwiksai Seshasai '01; **Staff:** Karen Cheng '02, Jasmine Richards '02.

TECHNOLOGY STAFF

Staff: Boris Zbarsky '01, Shantonu Sen '02, Hoe-Teck Wee '02.

EDITORS AT LARGE

Contributing Editor: Dan McGuire '99; **Color Editor:** Gábor Csányi G.

ADVISORY BOARD

V. Michael Bove '83, Robert E. Malchman '85, Thomas T. Huang '86, Deborah A. Levinson '91, Reuven M. Lerner '92, Josh Hartmann '93, Jeremy Hylton '94, Garlen C. Leung '95.

PRODUCTION STAFF FOR THIS ISSUE

Night Editors: Josh Bittker '99, Erica S. Pfister '00, Ryan Ochylski '01.

The Tech (ISSN 0148-9607) is published on Tuesdays and Fridays during the academic year (except during MIT vacations), Wednesdays during January and monthly during the summer for \$45.00 per year. Third Class by *The Tech*, Room W20-483, 84 Massachusetts Ave., Cambridge, Mass. 02139. Third Class postage paid at Boston, Mass. Non-profit Organization Permit No. 59720. **POSTMASTER:** Please send all address changes to our mailing address: *The Tech*, P.O. Box 397029, Cambridge, Mass. 02139-7029. Telephone: (617) 253-1541, editorial; (617) 258-8324, business; (617) 258-8226, facsimile. Advertising, subscription, and typesetting rates available. Entire contents © 1998 *The Tech*. Printed on recycled paper by MassWeb Printing Co.

STAFFS OF THE BIRMINGHAM NEWS
LOPLEY NEWS SERVICE



Opinion Policy

Editorials are the official opinion of *The Tech*. They are written by the editorial board.

Dissents are the opinions of the signed members of the editorial board choosing to publish their disagreement with the editorial.

Columns are written by individuals and represent the opinion of the author, not necessarily that of the newspaper.

Letters to the editor are welcome. Electronic submissions are encouraged and may be sent to letters@the-tech.mit.edu. Hard copy submissions may be addressed to *The Tech*, P.O. Box 397029, Cambridge, Mass. 02139-7029, or sent by interdepartmental mail to Room W20-483. All submissions are due by 4:30 p.m. two days before the date

of publication.

Letters must bear the authors' signatures, addresses, and phone numbers. Unsigned letters will not be accepted. Once submitted, all letters become property of *The Tech* and will not be returned. *The Tech* reserves the sole right to edit or condense letters. *The Tech* makes no commitment to publish all the letters received.

To Reach Us

The Tech's telephone number is (617) 253-1541. E-mail is the easiest way to reach us; send mail to general@the-tech.mit.edu. *The Tech* can be found online at <http://the-tech.mit.edu>.

Erratum

An article in Friday's issue ["Report's Academic Suggestions Lack Ideas for Implementation"] quotes attributed to Gerald E. Schneider, professor of Brain and Cognitive Sciences were actually said by Graduate Student Council President Brian J. Schneider G. Also in that article, quotes attributed to Chancellor Lawrence S. Bacow '72 about increasing the availability of management courses to non-majors were actually made by Provost Robert A. Brown.

Primary Colors

California's Decision to Move its Primaries up to March Is Disastrous for the Political Process

Michael J. Ring

Seismic waves emanating from California this week rocked the nation, but these waves were not the result of two of the earth's plates sliding past each other.



The epicenter of these shock waves was Sacramento — more specifically, the California State Capitol building.

This past week the Golden State set its 2000 presidential primaries for March 7. New York and five New England states are among those that have already slated presidential primaries for that week. In the week following that, Texas and Florida will anchor Super Tuesday, and one week thereafter the large states of the Rust Belt head to the polls. California's decision means a candidate will be selected, if not as a *de jure* nominee then certainly as a *de facto* nominee, in a span of two weeks.

Like the great earthquakes of the San Andreas fault that can from time to time wreak such havoc on the Golden State, California's decision is a disaster for our political process. California's decision will rob voters of the chance to meet and learn about candidates, and will force candidates themselves to engage in draining bicoastal travel and expensive media wars on both coasts.

Our nation's primary system has traditionally been grounded in the art of "retail politics." Primaries were designed to give candidates a chance to meet the voters directly and hear from the electorate the cares and concerns that face the nation. The voters were given a chance to learn the personalities and temperaments of the candidates as well as their stands

on the issues. It was old-fashioned, personal campaigning that allowed lesser-known candidates as well as front-runners a chance to get out their platform and vision.

It is with good reason, therefore, that Iowa and New Hampshire hold the first presidential caucuses and primaries, respectively. Both small states without any large cities and major media markets, candidates must travel and talk to the people in the towns across those states to campaign. Iowa and New Hampshire give opportunities for lesser-known candidates, like Bill Clinton and Jimmy Carter, to emerge from a pack of better-known, more well-financed adversaries. The scheduled primaries of the week of March 7 will offer only meager opportunities, if any at all, for prospective presidents to make personal contact with the voters.

California, New York, Georgia, Colorado, Maryland, and the five New England states besides New Hampshire will all cast primary votes at that time. A hodgepodge of states encompassing all regions of the country, these ten states have very divergent needs and interests. No state will probably receive the attention and credit it deserves in this frenzied schedule. Candidates will be hopping to and from the Northeast, the South, the Rockies, and the West under this plan. The emphasis will not be on discussing issues of local interest, as should be the goal of a primary.

The campaigning style on this day will not be a ground war, but an air war. Those running for the presidency will find little time to visit schools in Oakland, conservationists in the Rockies, fishers on the Chesapeake Bay, or industrial plants in Buffalo and Rochester. The emphasis will be on fund raising and a media blitzkrieg blanketing major media markets from Boston to San Diego with expensive, expansive television advertising. California's decision only furthers the already baneful influence of money in our election

process: As it stands now, there is zero probability of an underfinanced candidate making a strong showing in the 2000 primaries.

If this choice was such a disaster to American democracy, then why did California change its primary date? The old system robbed California of a voice in the primary process. Its primary, relegated to the balmy days of June, was meaningless as candidates by that time had already won enough delegates to win nomination. So it is certainly understandable that California sought to move its primary date to give it more of a voice in the electoral process.

The most fair and equitable way to give all states and regions of the country an equal share of responsibility and attention in the primary system is to devise a schedule of rotating primaries. After the Iowa caucuses and New Hampshire primaries, traditional forums which have usually served this country well in its presidential choices, six or seven more groups of primaries would follow. Each of these dates would feature primaries from a different region of the country, such as the Northeast, the Mid-Atlantic States, the Deep South, the Midwest, the Rockies, and the Pacific Coast States. The order of these regional superprimaries would rotate, so that a region voting first one year would vote last four years later.

This schedule of primaries would focus candidates' attention on issues of regional concern. Candidates, for example, could present the farmers of the Plains with thoughtful programs for saving America's family farms. They could offer the fishers of New England plans to replenish the Atlantic fishing stocks. They could address the concerns of Southwesterners worried about illegal immigration. A system of regional primaries would create frank and constructive discussion of local issues, something that is sorely missing in the current presidential process of making vague and broad economic,

education, and health care promises.

A regional primary system would also better serve the needs of candidates. Able to stay in one part of the country for several weeks at a time, a prospective president would be able to learn about the people of a particular region and their concerns. It would lessen the need for frequent cross-country travel in the primary season. And while this plan is absolutely no substitute for a campaign-finance reform bill such as McCain-Feingold, a regional primary system could create opportunities for candidates to make an impact in a particular state or region through personal appearances, instead of TV buys.

Finally, there should be no two-week rush of voting in the new primary schedule. Several weeks' time should space each regional primary, giving candidates time to make thoughtful proposals and voters time to make thoughtful choices. And there is no reason why the campaign cycle could not begin later in the spring. The early primary season may have been important when national party conventions dominated the news of the summer, but today those anachronistic dinosaurs have effectively no power, as the presidential candidate is chosen by the voters, and the vice-presidential candidate by the presidential candidate. The boring, self-promoting atmosphere of the party conventions puts even the most voracious political vultures to sleep. A candidate's time would be better spent on an extended primary season than on those relics.

There is still nearly one and one-half years to the 2000 presidential primary cycle. That is time enough for both national parties and the 50 secretaries of state, if committed to this worthy goal, to devise and implement a new primary system. The voters of 2000 should be very much appreciative if something new and exciting can be worked out, because, as it stands now, the candidate's way to your vote will be through your TV.

Presidential Performances Compared

Steven R.L. Millman

Well, by now you'd have to be in Biosphere II to have avoided hearing about President Clinton's alleged affairs with an intern barely older than his own daughter, a former Miss America and a couple of former state employees from Arkansas among many others. It seems like that the President must have inaugurated the White House on a room by room basis since taking office.

He finally admitted to having had an affair with Gennifer Flowers — something he's denied since he first ran for his high office — presumably because she can testify to the issue raised by Paula Jones as to any "unusual characteristics" on the President's favorite pop-up toy. Now that he knows his impeachable goose may be cooked, he's admitted to improper doings with Monica Lewinsky as well, although he claims it was not "sexual relations" as he understood the term. He gets a lot of flak for that position, but I'm inclined to agree. In my mind, sexual relations never involve a tobacco product until afterwards.

Of course, the media descended on this scandal in less time than it takes for a gumball to lose its flavor, and everyone is asking the question, "Who gives a #%&@?" I mean, rather, "Is this the final, impeachable, straw?" But a question that has gone unasked is whether our less discreet chief executives do a better or worse job for our country and its future. It's time to check the record. To answer this important question, we turn to *Vital Statistics on the American Government* and the *American National Election Surveys, 1952-1996*.

Over the last two-thirds of a century, we've had presidents who were randy to say the least. Bill Clinton's libidinous indulgences have now become legendary, but he certainly isn't unique among modern presidents. John F. Kennedy presided over a veritable White House of ill repute if you believe Seymour Hersh's new book, *Dark Side of Camelot*, but regardless of the faith you put in Hersh there's plenty of evidence pointing to Kennedy's indiscretions. It is widely believed that JFK had affairs with no less than Marilyn Monroe and also the girlfriend of a notorious Mafia boss.

Although less widely known, it is also well established that Lyndon B. Johnson and Franklin D. Roosevelt were sexual hooligans of no small measure. Johnson used to complain miserably that he wasn't getting nearly the credit he deserved for his womanizing compared to Kennedy whose exploits, Johnson believed, paled before his own. FDR even placed his mistress in a job at the White

House as his wife's assistant so he'd have better access and then died in her arms.

Of course, we've also had a crop of decent, faithful, or at least discreet presidents since the 1930's. Truman, Ford, and Carter were above suspicion in this regard. Ronald and Nancy Reagan slept in separate beds, and Richard and Pat Nixon even slept in different rooms! While Dwight Eisenhower and George Bush were suspected adulterers before attaining the presidency, there were certainly no plausible allegations about this kind of misconduct while they were in office. All in all by this accounting, we've had 40 years of discreet administrations and 24 years of indiscreet ones out of the last 64. The table here gives us a clue as to which kind might govern better.

It is instantly clear that economic performance under our less inhibited presidents has greatly outperformed those of more modest drives. Economic growth as measured by the annual percentage increase in the gross national product (GNP) was over three times more vigorous under the indiscreet presidents. The national debt as a percentage of the gross domestic product (GDP), a debt measurement favored by economists, decreased in adulterous years and increased under faithful rule.

Unemployment followed suit, perhaps because the presidents were following FDR's example and hiring their girlfriends as a public works project. The same trend hold true for the number of people under the poverty line and the change in median family income — both better under the presumed adulterers. Finally, the American electorate seems to appreciate the economic performance provided by their sexually aggressive leaders. Sleazy presidents enjoy a four percentage point advantage when running for reelection, and ten percent more citizens trust the government in Washington to do the right thing when they know they have a president doing the wrong thing at home — or at a hotel, or in the Oval Office.

So, if we're all better off when we have a president who can't keep his zipper in the full and upright position (well, everyone's better off except the First Ladies), why can't we find a way to get past our puritanical roots and ignore their indiscretions? I want to be the first to call for an end to the vicious abuse of our most effective public servants.

If their wives can forgive them, we should certainly be able to follow suit, especially since their performance is so good (at least that seems to be the consensus among White House interns). Let's send the message loud and clear next election day and vote for the hound dog. How's this for an honest slogan: "Vote for [candidate's name]. More jobs, better economy, and tabloid sex scandals."

More money in my pocket and more entertainment for those lonely nights at home. Think of all the free pornography that the House of Representatives would post on the Internet. Maybe the next president, eager to appear like a womanizer for the economic as well as electoral benefits, will videotape his encounters so that Newt Gingrich could post them as quick-time movies! That'd get my vote!

In the final analysis, should we really be

putting the affairs of statesmen over the affairs of state? Sure, it's fun to have the special prosecutor and the press get all the sticky details for us — there never seems to be enough smut to fully satisfy our lurid need for scandal — but let's face it, wouldn't you rather have an adulterous president who does the deed to consenting adults than a faithful one who does it to the economy? Of course, that's just my opinion.

Government Performance Under Discreet and Indiscreet Administrations

	Discreet Presidents: Truman, Eisenhower, Nixon, Ford, Carter, Reagan & Bush	Indiscreet Presidents: Roosevelt, Kennedy, Johnson & Clinton	Years Data Available
Average Annual Change in GNP (constant dollars)	2.17%	7.34%	1933-1996
Average Annual Change in National Debt as percent of GDP (constant dollars)	2.08%	-2.50%	1945-1996
Average Annual Change in Unemployment	.19%	-1.65%	1933-1996
Average Annual Percentage Change in Number of Americans Under Poverty Line	.04%	-1.07%	1959-1993
Average Annual Percentage Change in Median Family Income	1.63%	3.13%	1945-1993
Average Change in Number of Americans Who Are Incarcerated Per 10,000	40.6	-8.1	1933-1993
Average Number Of Annual Press Conferences	19.5	52.7	1933-1996
Average Vote Share for Incumbent President Reelection Attempts	50.4%	54.6%	1933-1996
Percentage of Americans Who Trust Federal Gov't to do Right Thing "Most Of the Time" or "Just About Always"	39.7%	50.2%	1958-1996

TABLE COURTESY OF MOTHER JONES, APRIL/MAY 1998 ISSUE

DEAN & COMPANY

STRATEGY CONSULTANTS

Our Business

- Top tier strategic management consulting firm located in the Washington, DC area
- Complex, high stakes business problems
- Clients are Fortune 100 companies and high growth start-ups
- Focused on dynamic industries such as telecommunications, financial services, energy, and consumer products

Our Approach

- Analytical, bottom-line focus leading to actionable solutions
- Top-tier compensation, rapid career growth opportunities, high level of responsibility
- Team-based environment, informal atmosphere

We Are Seeking Ph.D. candidates

- We value Ph.D.'s who are analytic problem solvers and effective communicators with an interest in business strategy
- All fields are welcome; no business experience necessary

Submit resumes to:

Recruiting Coordinator • Dean & Company • 8065 Leesburg Pike, Suite 500 •
Vienna, VA 22182 • 703.506.3900 • www.dean.com

Informational Presentation for Ph.D. candidates:

Tuesday, October 13, 1998
7 pm
The Cambridge Marriott
Kendall Square

hosted by:
Dean Wilde II
Chairman

Pickering Chosen as MIT Museum Head

By Dan Riordan

Jane Pickering has taken over as the new director of the MIT Museum.

Pickering comes to MIT from her native England, where she received a master of arts in natural sciences from the University of Cambridge and a master of science in museum sciences from the University of Leicester.

Pickering worked as curator of the Oxford University Museum of Natural History and then as curator of the Museums of the Royal College of Surgeons of England in London before her appointment at the MIT Museum.

Pickering plans to develop the MIT Museum as "an interface between the university and the wider community" by concentrating more specifically on MIT culture and events.

She mentioned the most recent exhibit at museum, "Flashes of Inspiration: The Work of Harold Edgerton," as emblematic of the exhibits that the MIT Museum will display in the near future.

She expressed excitement about

the prospect of working closely with the Institute's faculty, students, and alumni and alumnae to coordinate these exhibits.

The museum needs to increase its focus on the science at MIT, she said. The museum should feature "more exhibits directly related to research."

This shift in focus will distinguish the MIT Museum from the plethora of museums located in the Boston and Cambridge area, she said.

Pickering's plans include more interactive exhibits — ones that will promote visitor participation.

As director of the museum, Pickering brings her extensive experience in coordinating museum education and outreach programs, particularly within university settings.

Pickering also hopes to draw a larger audience to the MIT Museum by targeting area high schools through outreach programs and educational exhibits. In this way, she said that she expects that the MIT Museum will assume a greater role in not only the MIT community but in the larger community as well.

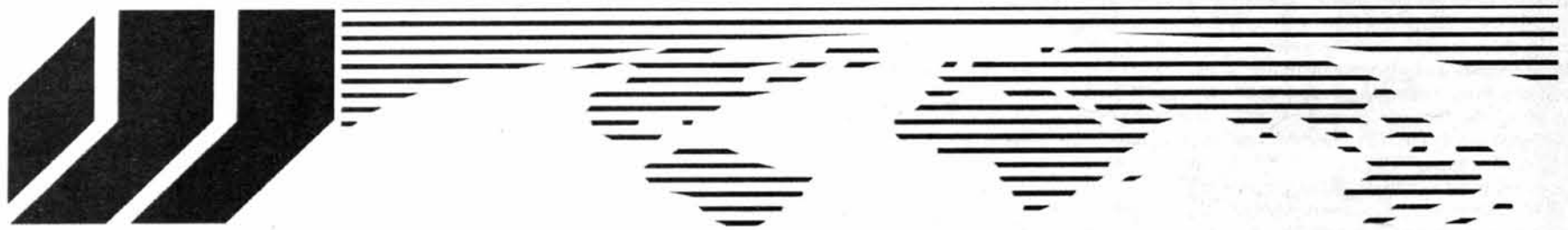
It's a connected world.
Do your share.

For 30 ways to help the environment, write Earth Share,
3400 International Drive, NW, Suite 2K (AD4),
Washington, DC 20008.



Earth Share

This space donated by *The Tech*



MORGAN STANLEY DEAN WITTER ASIA

invites the **Class of 1999** interested in **Full-Time Asia** career opportunities in

**Fixed Income
Information Technology
and
Investment Banking**

to fax a cover letter and resume to
Asia Recruiting Manager
011-852-2524-4356

no later than **October 13, 1998**

Fixed Income interviews: Off-campus on November 3, 1998

Information Technology interviews: TBD

Investment Banking interviews: Career Center on November 4, 1998

www.ms.com

Morgan Stanley Dean Witter is an Equal Opportunity Employer



**MERRILL LYNCH ASIA PACIFIC
REGION INVITES ALL MIT-SLOAN 1ST &
2ND YEAR MBA STUDENTS TO ATTEND A
CORPORATE PRESENTATION &
RECEPTION**

Date: Wednesday, October 14, 1998

Time: 5:30 PM - 8:30 PM

Location: Hyatt Regency Hotel, Cambridge, Molly Pitcher Room

Candidates interested in opportunities in Asia Pacific should submit a cover letter and resume directly to:

Investment Banking
Debt Markets
Equity Markets

Leena Prakash
Merrill Lynch International Inc.
18F, Asia Pacific Finance Tower
3 Garden Road, Central
Hong Kong
Fax: 85-22-536-3173

Candidates interested in opportunities in Japan should submit a cover letter and resume directly to:

Investment Banking
Debt Markets
Equity Markets

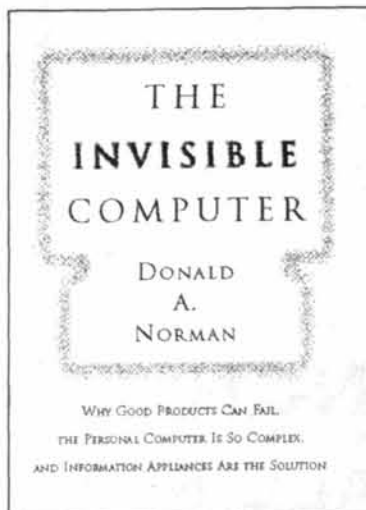
Reiko Tawara
Merrill Lynch Japan Inc.
Ote Center Building
1-1-3, Otemachi, Chiyoda-ku
Tokyo 100-8180
Fax: 81-33-213-8573

authors@mit and LCS Distinguished Lecture Series present

Donald A. Norman

The Invisible Computer:

"Why the Computer Industry Doesn't Work the Way You Think It Should"



Thursday, October 8 3:30 PM 34-101

50 Vassar Street, Cambridge. Info: 253-5249 or authors@mit.edu

Author of the classic book *The Design of Everyday Things*, Donald Norman has been an executive at Hewlett-Packard and a Vice President and Apple Fellow at Apple Computer. He is Professor Emeritus of Cognitive Science at the University of California at San Diego. Norman has just started the Nielsen Norman Group, an executive consulting company that shows companies how to follow the lessons of *The Invisible Computer*. His new book *The Invisible Computer* is published by The MIT Press.

"Don Norman takes no prisoners. His critique of interface design has been a relentless questioning of the dubious 'intuitions' of technology creators." — Brenda Laurel

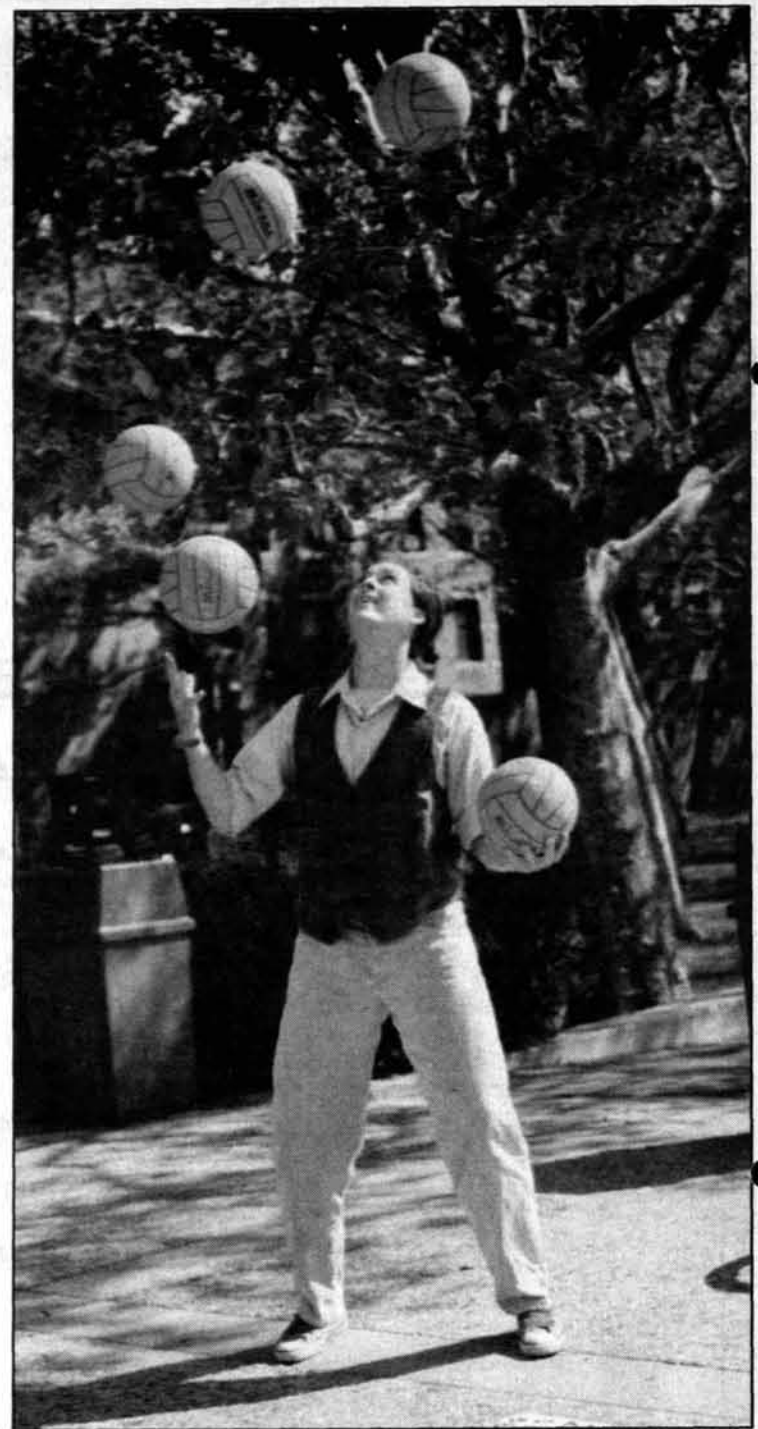
"This book reflects (with an unusual and critical eye) on the past, present and future of product design, success and failure, and should be read by all those in the IT business. I feel that Don's observation, 'Good products can fail and bad products can succeed,' is something more than a truism in our industry, it seems to be almost a law. This book brings Don's unique view to the fore. A nice provoking read that should not be missed."

— Peter Cochrane, Head of Research, BT Laboratories, United Kingdom

authors@mit is a series sponsored by MIT Libraries and The MIT Press Bookstore

The MIT Press Bookstore • books@mit.edu

Kendall Sq T 292 Main St., Cambridge • Books are discounted the week of the event.



MIODRAG CIRKOVIC—THE TECH

A juggler entertains a student center crowd during an 'Afternoon of Music,' a series of events which will lead up to the Fall Festival.



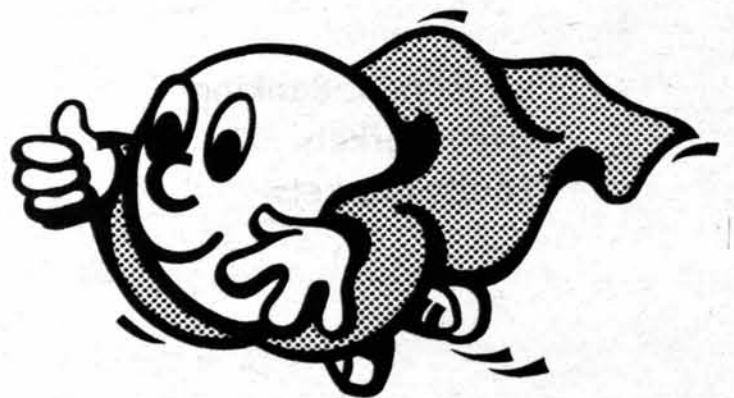
WORK WITH PEAPOD... ...THE FASTEST GROWING INTERACTIVE SHOPPING AND DELIVERY SERVICE!

**Do you DREAM of a truly unique part-time opportunity...?
Do you CRAVE a position that is fast-paced, fun and exciting?
Look no further...**

Peapod's **EXPLOSIVE** growth in your area has created the need for several Delivery Driver positions to be filled **IMMEDIATELY** by YOU!

Take a look at some of the **BENEFITS** Peapod can offer:

- **EXCELLENT** advancement opportunities!
- Refer-A-Friend **BONUSES!**
- Consistent step **RAISES!**
- Employee **DISCOUNTS!**
- **WATERTOWN** location close to school or home!
- **DENTAL PLAN** and 401 (K) available!
- **STOCK** purchase plan for employees!
- **PAID** training!
- **\$200** Sign up **BONUSES!**
- Delivery vehicle **PROVIDED!**



Our Delivery Driver position has an earning potential of \$12.00 per hour, with tips! Morning and evening shifts are immediately available.

Call us at **(888) 492-0066** to hear more about this position, and to schedule a time to come in and fill out an application!

Sloan

Students interested in Management Consulting
We would like to welcome all first and second
year Sloan students. We look forward to
seeing you at our presentation:

TONIGHT

October 6, 1998

7:45 PM

CAMBRIDGE MARRIOTT

We welcome expressions of interest from first and second
year graduate students from all disciplines interested in
positions in any of our global offices.

Resume Deadline: October 15

First Round Interviews: November 3

Please contact:

Carol Labi, Recruiting Manager 212 372-9100 Fax 212 372-4408
520 Madison Avenue, New York, NY 10022

New York London Paris Frankfurt Munich
San Francisco Boston Chicago Melbourne
Sydney Toronto Montreal Zürich Madrid
Los Angeles Johannesburg

www.mmgnet.com

**MITCHELL
MADISON
GROUP**

Global Consulting



MORGAN STANLEY DEAN WITTER

Strategic Planning Group

The Strategic Planning Group provides senior executives of Morgan Stanley Dean Witter with strategic analysis of the financial services industry and the Firm's business lines including:

- M&A and Divestiture
- Business Development
- International Expansion

We invite all members of the Class of 1999 to join us to discuss career opportunities with our group.

Tuesday, October 6, 1998

5:00 pm

Harvard Faculty Club

20 Quincy Street

Please send applications to Amy Yen by December 10, 1998

Complete applications must include cover letter, resume, transcript, and SAT scores

Morgan Stanley Dean Witter & Co.
Strategic Planning Group, 29th FL.
1585 Broadway, New York, NY 10036

Please email ayen@ms.com with any questions

Morgan Stanley Dean Witter & Co. is an Equal Opportunity Employer

BE LESS PRODUCTIVE AT THE OFFICE.

The office has always been a place to get ahead. Unfortunately, it's also a place where a lot of natural resources start to fall behind. Take a look around the next time you're at work. See how many lights are left on when people leave. See how much paper is being wasted. How much

electricity is being used to run computers that are left on. Look at how much water is being wasted in the restrooms. And

how much solid waste is being thrown out in the trash cans. We bet it's a lot.

Now, here are some simple ways you can produce less waste at work.

When you're at the copier, only make the copies you need. Use both sides of the paper when writing a memo. Turn off your light when you leave. Use a lower watt bulb in your lamps. Drink your coffee or tea out of mugs instead of throwaway cups.

IT'S A CONNECTED WORLD. DO YOUR SHARE.



Set up a recycling bin for aluminum cans and one for bottles. And when you're in the bathroom brushing

your teeth or washing your face, don't let the faucet

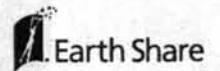
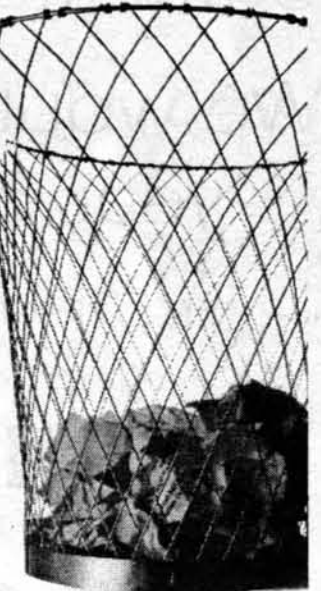
run. Remember, if we use fewer resources

today, we'll save more for tomorrow.

Which would truly be a job well done.

FOR MORE INFORMATION AND TIPS

CALL 1-800-MY-SHARE



This space donated by *The Tech*

CIBC

Oppenheimer

A CIBC WORLD MARKETS COMPANY

Investment Banking Opportunities

High Yield Debt
Public and Private Equity
Mezzanine Finance
Mergers and Acquisitions
Merchant Banking
Restructuring and Advisory

You are cordially invited to attend our information session:

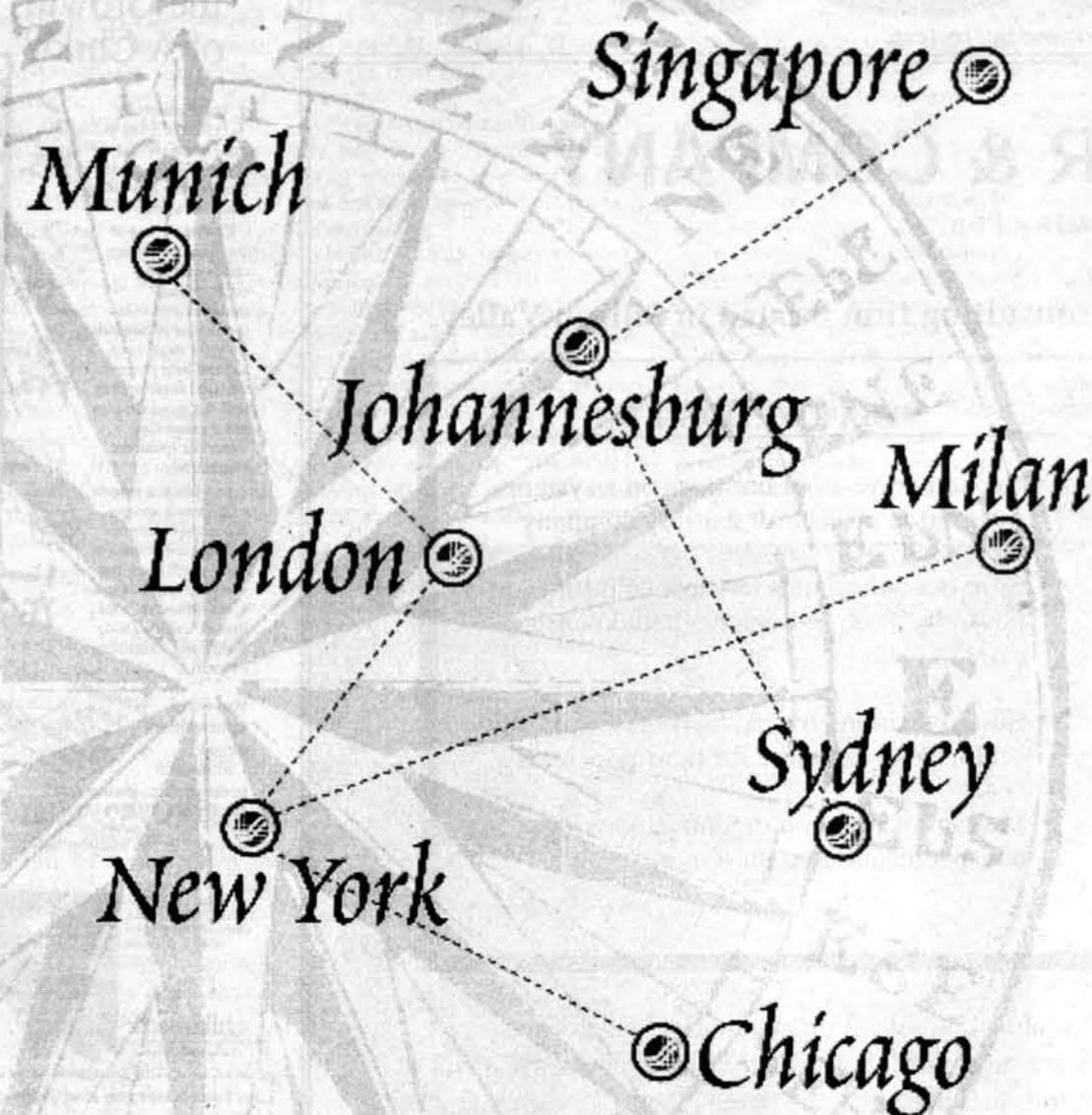
Wednesday, October 7, 1998

6:00 p.m.

Room 2-142

Reception to Follow

Come learn about the energetic, entrepreneurial and highly rewarding Wall Street environment at one of North America's leading and fastest growing financial institutions.



Join STERN STEWART

All January and May 1999 economics and management graduates with an interest in finance and consulting are cordially invited to attend a presentation to learn about available opportunities.

PRESENTATION DATE: Tuesday, October 13th

TIME: 7:30-9:00 PM

PLACE: Room 4-159

ATTIRE: Casual

**PLEASE SEND YOUR RÉSUMÉS THROUGH
THE INTERVIEWTRAK SYSTEM**

INTERVIEW #226440



Stern Stewart & Co. is an international corporate financial advisory firm that assists clients in establishing and implementing corporate strategies which will create sustainable gains in shareholder wealth.

Stern Stewart is best known for its proprietary EVA[®], or Economic Value Added, framework, which FORTUNE magazine has called "One of today's hottest financial ideas and getting hotter."

Stern Stewart is headquartered in New York City and continues to expand internationally. We currently operate offices in Johannesburg, London, Singapore and Sydney, as well as satellite offices in Europe, Canada, Japan, and South America.



Stern Stewart & Co.

THE EVA COMPANY[®]

www.eva.com

Nightline is here to listen. So call and talk.

This space donated by The Tech.

R. B. WEBBER & COMPANY

INCORPORATED

R. B. Webber & Company is a strategy consulting firm located in Silicon Valley.

WHAT WE DO

- Provide strategic business planning advice to high-technology companies
- Work with senior management at high-growth companies, ranging from start-ups to the Fortune 500
- Enjoy a dynamic and entrepreneurial work environment with thirty professionals
- Promote advancement based solely on performance

WHAT WE DON'T DO

- Spend two years of our lives on a systems integration project for a utility company
- Ship our consultants to Cleveland for four days a week to re-engineer and downsize a cement plant
- Employ a large, formal hierarchy with little senior-level exposure for new associates
- Maintain a pyramid organization with advancement based on seniority

R. B. Webber & Company is currently looking for creative and self-motivated individuals for the **Research Associate position**. Research Associates are responsible for research and analysis, financial and market modeling, development of recommendations and presentations to the client.

If you are interested in employment at R. B. Webber & Company, please come to our information session.

*Thursday, October 8
6 PM - Room 2-105*

How Do You Measure the Growth of A Child?

Unfortunately for children living in some of the poorest countries in the world, it takes more than fading marks on a wall.

Childreach, one of the oldest and largest child sponsorship organizations, measures growth by the number of hospitals, wells for clean water, and self-help programs we build in partnership with the proud families and communities where our sponsored children live.

So when you become a Childreach sponsor and receive pictures and letters that speak of hope, you'll know that you have helped to make a real difference in the lives of a needy child, family, and community overseas.

For more information about Childreach sponsorship, please call **1-800-752-3400** or send in the coupon below.

Samuel A. Worthington, National Executive Director, Childreach with a sponsored child in Tarja, Bolivia.



Yes! I want to know more about Childreach.

Name _____
 Address _____
 City _____
 State _____ Zip _____
 Area Code _____ Phone _____ V300

Please send to:
 Childreach, 155 Plan Way,
 Warwick, RI 02886-1099

This space donated by The Tech.

IF YOU WISH TO REACH NEW HEIGHTS, AIM HIGH.

Bear Stearns cordially invites all seniors to meet with representatives from our Investment Banking Department:

**Wednesday, October 7th
6:00PM
Building 4, Room 4-270**

BEAR STEARNS

Damage to East Campus Less Severe Than Predicted

Fire, from Page 1

The sprinkler system remained on from an extended period of time because "evidently the fire department had trouble figuring out how to turn the sprinkler system off," Buchwald said. Under state law, only the fire department can turn off sprinklers or alarm systems.

All students have returned to their rooms except one on the fourth floor, who is being housed elsewhere until the smoke smell clears the area, Buchwald said.

Residents of the floor have already met with Buchwald "several times" to discuss the issues raised by the incident. Additionally, the tutors from the floors above and below the fourth floor are filling in for the GRT, and the dorm will be "moving forward as soon as we can on getting a new tutor," Buchwald said.

Fire alarm system failed to work

Immediately after the fire, concerns were raised about the fire alarm system at East Campus, which failed to sound an audible alarm.

The fire department initially wanted to keep students out of the building until the system could be fixed. Instead, housing officials were placed on each floor as a fire watch, Eisenmann said.

The system was repaired Saturday so that it does sound alarms, Buchwald said.

Fire officials also had concerns with "people keeping things in hallways," he said.

Saturday morning, students were required to remove all materials including posters and signs from East Campus hallways before fire officials conducted a formal inspection of the building, said East Campus President Kai-Yuh Hsiao '99.

"At 8:30 a.m., [they] decided to come through the entire dorm pointing at things and telling us things are bad," Hsiao said. "I really thought they had a stormtrooper effect."

"There can be no blockages in the hall at all," Buchwald said. "You should be able to run from one end to the other without tripping on anything."

Additionally, students were required to remove all non-MIT installed wiring from hallways, Buchwald said. "There was stuff that really couldn't be there."

Eisenmann and Buchwald met yesterday with the Safety Office and the Department of Facilities to begin reviewing the "life safety" systems of East Campus — sprinklers, alarms, and emergency power

— to ensure that they are satisfactory, Buchwald said.

In the coming weeks, inspections will also be made of the other dormitories to ensure their systems are working, Eisenmann said. The group convened today will "look at all the issues that get raised" during this process and suggest improvements to the safety systems in the dormitories.

Buchwald said that while the safety systems at East Campus are old, they are "not in horrible shape."

A general meeting of East Campus residents will be held on Friday to talk about issues related to evacuations, Buchwald said. "Some people simply weren't paying attention; others didn't get out because the alarm didn't sound."

Dorm last inspected in 1985

Cambridge Fire Department Lieutenant Barry Lynde said that the department does not regularly inspect dormitories as they fall under the residence heading, similar to private homes.

MIT would have to request that the fire department do a formal inspection of the facility, Lynde said.

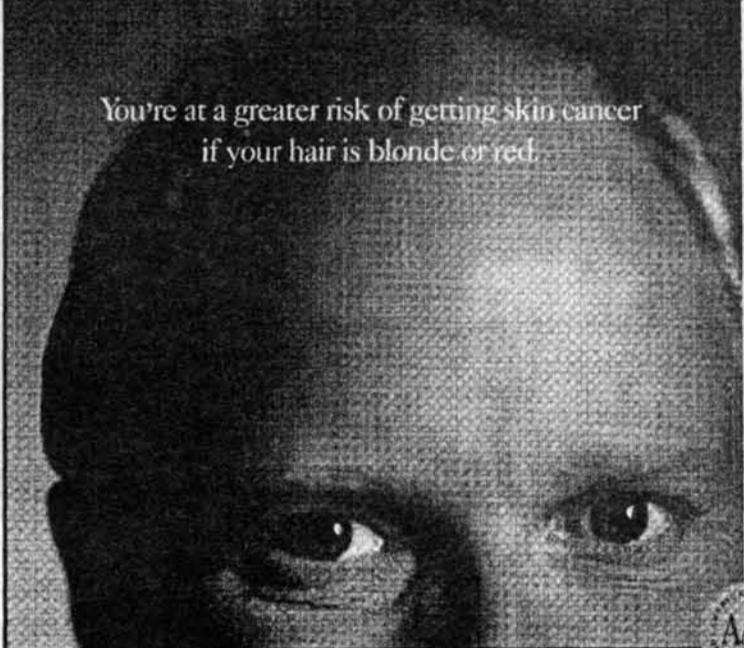
Only primary and secondary schools are required to be inspected under state law, Lynde said.

The last formal Cambridge inspection of the dormitory was done on Sept. 26, 1985, fire department records show.

Lynde said that MIT generally had a good record with keeping its sprinkler and alarm systems functional and up to date.

Officials from the Safety Office were not available for comment yesterday on their inspectional record for East Campus.

You're at a greater risk of getting skin cancer if your hair is blonde or red.



(No matter how much of it you have left.)

Fair skin, light eyes and a tendency to burn in the sun, also put you at a higher risk. So, examine your skin regularly. If you find anything unusual, see your dermatologist.

AAD
AMERICAN ACADEMY OF DERMATOLOGY
For more information, call 1-888-362-DEEM or visit www.aad.org

This space donated by The Tech

EMC Soar to New Heights

Rising to new challenges...setting ambitious goals...achieving beyond your highest expectations: that's THE EMC EFFECT in action. Experience its power in your career.



EMC Corporation is the company that defined enterprise storage - and unleashed its power to drive business success. The top company in a rapidly expanding marketplace, we're the people that banking, financial, and industry leaders worldwide rely on for the tools to access and safeguard critical information in applications such as online reservation systems, transaction processing, billing, and more.



A global enterprise in our own right, EMC is a \$3 billion *Fortune 500/Forbes 500* superpower, ranked #8 on the *Business Week 50* rating of Standard & Poor's and recipient of the *Information Week 500* award. Our consistent dynamic growth - 30% annually for the past several years - creates ongoing opportunities to reach new heights with us. At EMC, you'll find your initiative, enthusiasm, and performance rewarded in an environment that supports your highest goals.

- Hardware Engineering
- Software Engineering
- Information Systems
- Internet Technology
- Manufacturing/Operations
- Marketing
- Customer Services
- Finance
- Sales
- Human Resources
- Business Process Development

Information Session: Oct. 13 - Eng
On-campus Interviews: Oct. 14 - Eng

To start experiencing THE EMC EFFECT in your career, please stop by your career center or please send/fax your resume to: Human Resources, University Recruitment, Job Code AD1-MIT10/16, EMC Corporation, 5 Technology Drive, Milford, MA 01757-3681; Fax: (508) 435-8884 or email to: university_emc@isus.emc.com (ASCII text file only).
EMC is an equal opportunity employer that values the strength diversity brings to our workplace.

One of the nation's 100 Best Places to Work - COMPUTERWORLD

A Wired Index company "The New Blue Chips" - WIRED

EMC²
The Enterprise Storage Company
www.EMC.com

This space donated by The Tech

DEF TUVW OPPER OPER

Nightline is here to listen to you from 7pm to 7am - any time you need someone to talk to.



You Make it Happen Global Graduate Career Opportunities

You've seen the headlines...
now read the small print.

In June 1998, Union Bank of Switzerland merged with Swiss Bank Corporation to create the new UBS AG.

The investment banking businesses of both banks came together to form Warburg Dillon Read* - one of the world's most significant investment banks.

We operate a true meritocracy. From your first day we'll expect to see qualities which go beyond the academic.

We want to see the confident communication of complex ideas and the depth of character required for early responsibility. We want to know that you can make things happen.

Having first experienced one of investment banking's finest education programs, new graduates will choose from a wide range of career options across international locations. Further opportunities for development will continue as your

career takes off. But you won't be held back by bureaucratic structures.

If you think you can make an immediate contribution in a highly demanding environment, then take this opportunity to speak with us.

Check with Career Services when we will be visiting your campus.

All applications for graduate and internship positions can be made via our website. We are an equal opportunity employer.

Apply to www.wdr.com

*References to Warburg Dillon Read in the United States refer to Warburg Dillon Read LLC, a registered broker dealer.



Warburg Dillon Read

Gemini consultants team up
for a global challenge at an
international training event.



Some people are looking for a change...

With 1,800 consultants and more than 30 offices in Europe, Asia, Africa, and the Americas, Gemini Consulting is a leading global management consultancy. Dedicated to helping clients design and implement strategic change, the firm has earned its reputation through a simple but powerful belief: *people matter*. We know that the best consulting solutions are those that the people of an organization can wholeheartedly embrace. Through the power of people, Gemini helps companies achieve lasting results quickly and with the highest impact on performance.

We need people who are looking to change the world.

You can change the world. Gemini Consulting teams do it every day—one business at a time.

We deliver results through people, working alongside our clients as partners in a proven process to create lasting value. Focusing on the growth of an organization's capabilities *and* its profits, we bring leading-edge content knowledge, generate the will to win, and shape a culture which embraces change and makes the impossible possible.

Gemini is the firm of choice for some of the world's top consultants—people who are as emotionally mature as they are intellectually capable. We are currently adding talent across the four dimensions of our change management practice—strategy; operations; information technology; and leadership, mobilization, and renewal. We need professionals with a minimum of two years' relevant consulting or industry experience, particularly in the financial services, life sciences, manufacturing, and telecommunications sectors; the capacity to incorporate technology insights into business solutions; a good university degree (advanced degrees preferred); and fluency in English and at least one additional language.

With Gemini you will be challenged and you will have the opportunity to maximize your talents. At the end of every day, you will know that you made a real difference to yourself and to the people around you—one project, one client at a time. If the challenge of delivering results that matter both to the people and to the performance of a business appeals to you, then perhaps you belong at Gemini.

We would like to invite all interested juniors and seniors to attend an information session:

Thursday, October 8 • 7:00–9:00 p.m. • Cambridge Marriott

GEMINI CONSULTING

Gemini Consulting is a Cap Gemini Group Company.
Visit us on the worldwide web at: www.gemcon.com

When People Matter
and Results Count™

Party Advertised 'All the Fiji Punch You Can Drink'

Baker, from Page 1

Baker House social mailing list and the Leadershape mailing list. Included in the e-mail was the promise of "all the Fiji punch you can drink."

Mani said that while the party was crowded, the crowd was kept under control by extensive supervision.

Baker residents had been notified of the party previously, since the party needed to be approved by third floor residents.

Fewer details are known about the fourth floor party. One Baker resident reported between 100 and 150 people at the party's peak, and that the fourth floor party was primarily attended by MIT students.

Neither party registered

Neither party was registered with the Office of Residence Life and Student Life Programs, Campbell said.

Any residence hall event where alcohol is served must be registered with both RLSP and the CPs. Events with more than 250 people or more than 100 people and non-resi-

dents must also be registered with RLSP.

Although neither party was an official house event, according to Baker House Social Chair John Holmes '00, MIT still requires registration.

Baker House President William W. Vanderson '99 declined to comment on the incident.

In a press release issued Monday afternoon, Campbell said that MIT is investigating the incident as an "unauthorized party." It is "being

treated very seriously by MIT," he said.

"We're moving on several levels," said Dean for Student Life Margaret R. Bates. "There will be disciplinary procedures as appropriate. This simply cannot happen."

Chief of Campus Police Anne P. Glavin could not be reached for comment.

Zareena Hussain and Douglas E. Heimburger contributed to the reporting of this story.

START YOUR JOB SEARCH EARLY!

The Boston Globe



COMPANIES ARE WAITING TO REVIEW YOUR RESUME. PRE-REGISTER TODAY AT WWW.COLLEGEFEST.COM

A CAREER FAIR FOR COLLEGE SENIORS AND GRAD STUDENTS

WEDNESDAY **OCTOBER 14** 10AM-6PM
AT THE BOSTON PARK PLAZA CASTLE

► Corner of Arlington Street and Columbus Ave., Boston ◀
Take the Green Line to the Arlington stop and walk down Arlington Street two blocks

HANDS-ON WORKSHOPS TO HELP YOU GET THE JOBS YOU WANT

► **DON'T FORGET YOUR RESUMES!** ◀
► **ADMISSION IS FREE!** ◀

FOR MORE INFORMATION, CALL US AT (617) 859-5767 OR CHECK OUT OUR WEBSITE AT

WWW.COLLEGEFEST.COM

Dormcom Supports Frosh Housing Move

IFC, from Page 1

said. Threats by fraternity alumni to stop donations will not intimidate the Institute into changing this decision, he said.

Manju V. Madhavan '99, president of the Dormitory Council, said that the dormitory government supported housing all freshmen on campus, "as long as it can be done in the context of reducing crowding."

Madhavan agreed that it would "not be the same as having [off-campus living groups], but it's a matter of bringing community together."

IFC hopes to get decision revoked

According to Dreger, a long-term goal of the IFC is to have the decision "either reversed or

changed." The organization believes that the problem lies not with the FSILGs, but with the administration's lack of understanding, he said.

"The big thing we need to do is educate the administration," Dreger said. The MIT community rarely hears "the positive things" that off-campus living groups do, he said.

In the near future, the IFC's main goal is simply to state its position on the matter, Dreger said.

The future of freshmen are at stake, he said. "It's better for the freshmen and the community" to have off-campus housing available to freshmen from the beginning.

"We feel that the loss of support and guidance far outweighs any advantages to the new housing plan," he said.

It's onset can be so subtle you don't notice it.

IT CAN KILL YOU IF YOU DON'T RECOGNIZE IT.

Depression strikes millions indiscriminately. Depression is MOST dangerous when it goes unrecognized. Always be aware of the threat, and don't always believe everything you feel.

UNTREATED DEPRESSION
#1 Cause of Suicide

Public Service message from This space donated by Tife Tech <http://www.save.org>

WITH EVERYTHING THIS BANK ACCOUNT HAS TO OFFER, WE COULDN'T MAKE YOUR LIFE ANY EASIER. UNLESS, OF COURSE, WE PAID FOR YOUR TUITION.

Only the Student Value Package¹ gives you so much for so little.

- new price as low as \$3 a month² • get free sandwiches at Subway[®] with a coupon, BankBoston Card and a student ID • use 24-hour Online Banking with HomeLink[™] • over 1,500 BankBoston ATMs • use your BankBoston Card with X-Press Check[™] like a plastic check wherever MasterCard[®] is accepted
- get overdraft protection if you overspend a little³ • call 1-800-2-BOSTON
- visit bankboston.com/students



Get Free **SUBWAY** Sandwiches

1. Valid school ID or acceptance letter required. To qualify for X-Press Check and Reserve Credit you must be at least 18 years of age and have no adverse credit history. 2. If you make withdrawals, deposits, transfers, and balance inquiries electronically by phone, ATM, or computer only, the monthly fee is discounted to \$3. The normal monthly Student Value Package fee is \$6. 3. Purchase a six-inch Subway[®] Sandwich and a 21-ounce soft drink and get a second six-inch Subway[®] Sandwich and 21-ounce soft drink of equal or lesser price free upon presentation of a Student Value Package coupon. Offer expires May 31, 1999. Offer available at participating Subway[®] locations and may not be combined with any other offer. One coupon per person per visit. Subway is a registered trademark of Doctors Associates Inc. 4. Online Banking with BankBoston HomeLink[™] is free (e.g., transferring funds, checking balances). There is a \$3.50 monthly fee for Online Bill Payment with HomeLink. Member FDIC

COUNTERPOINT

OUR PROFESSOR BEAT UP YOUR
PROFESSOR BEAT UP YOUR PROFE
AT UP YOUR PROFESSOR BEAT U

BEAT UP YOUR PROF (with words)

MIT SPEECH & DEBATE OPEN

OCTOBER 10-11, 1998

SDO-REQUEST@MIT.EDU

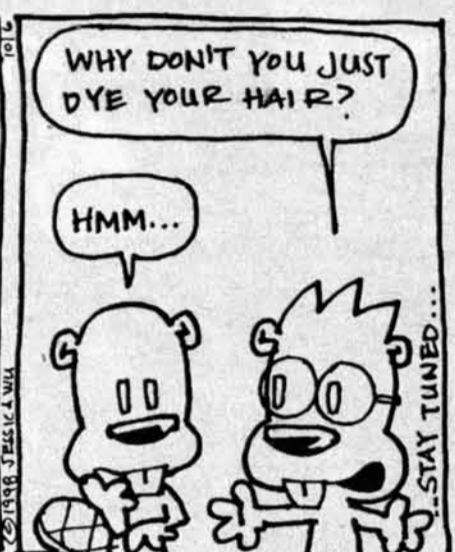
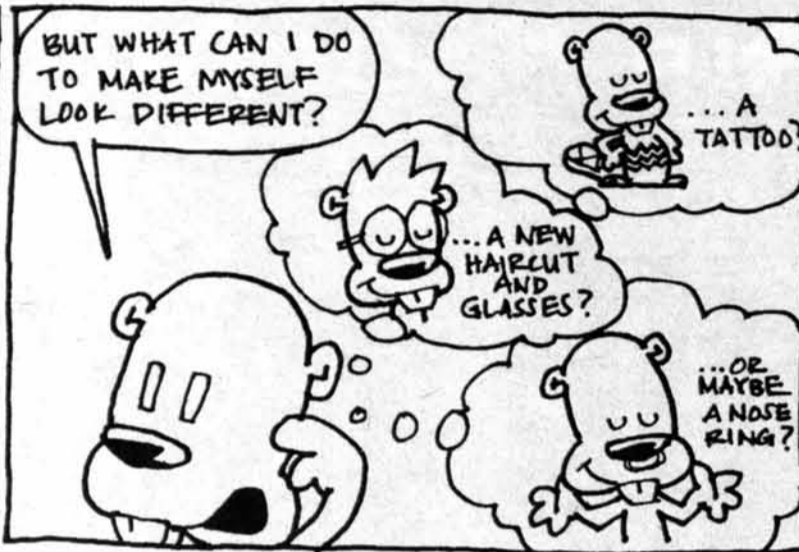
[HTTP://SDO.MIT.EDU](http://SDO.MIT.EDU)

AT UP YOUR PROFESSOR BEAT UP
OUR PROFESSOR BEAT UP YOUR
OR BEAT UP YOUR PROFESSOR E

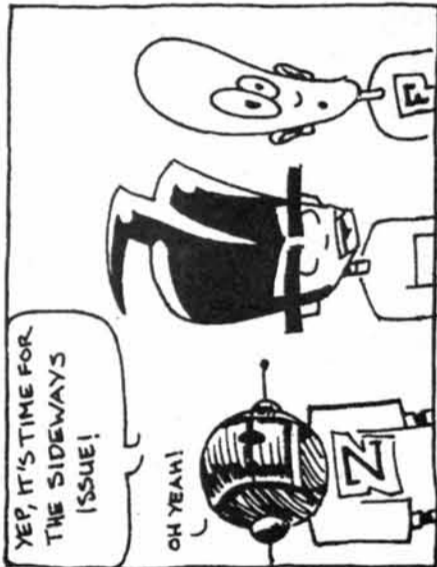
COUNTERPOINT

Hosted by Counterpoint, MIT Debate, and Speech Team.
Sponsored by CAC Program Board, Chicago Pizza,
CopyTech, and The Tech.

damned for life
by Jessica

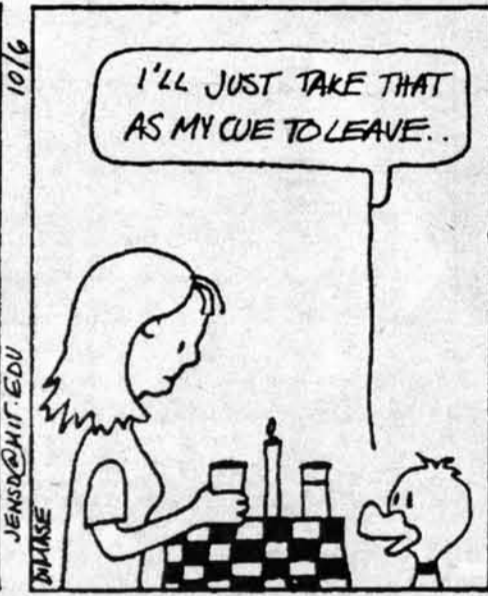
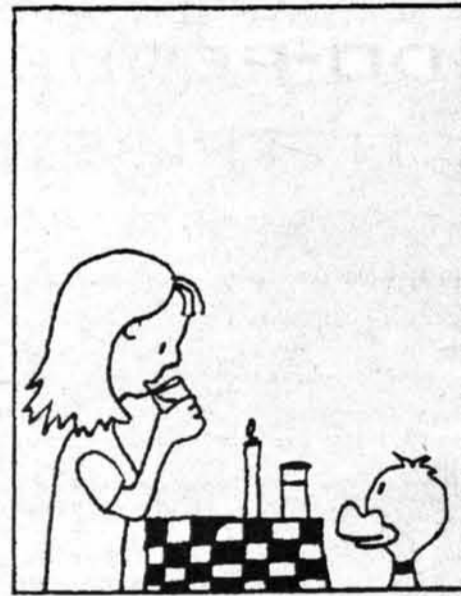
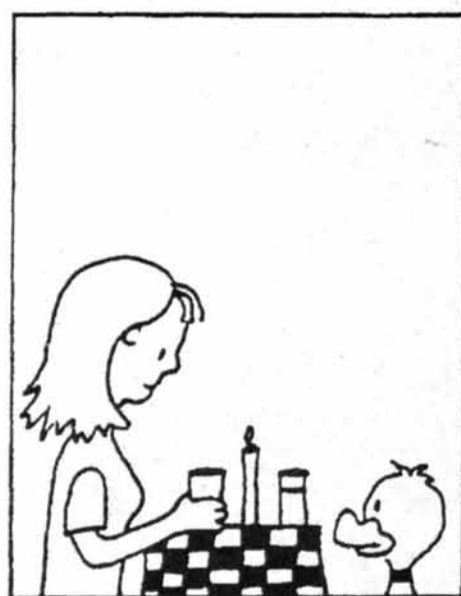
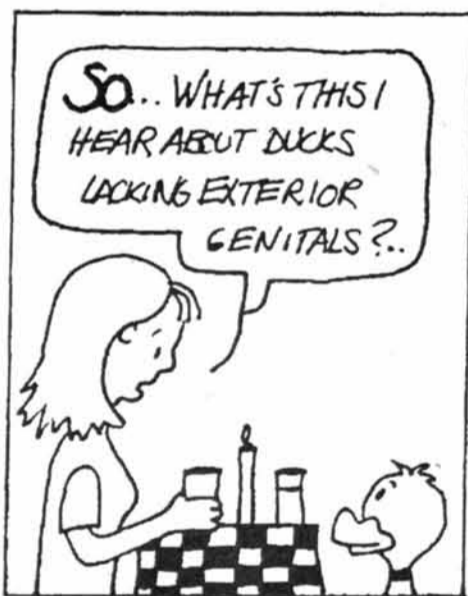


bartholemew squeak



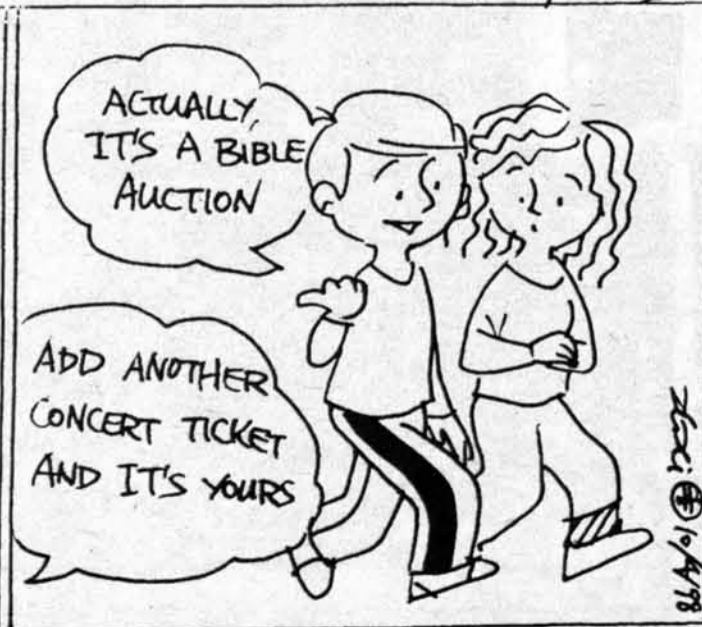
Down with Science

by Jennifer DiMase

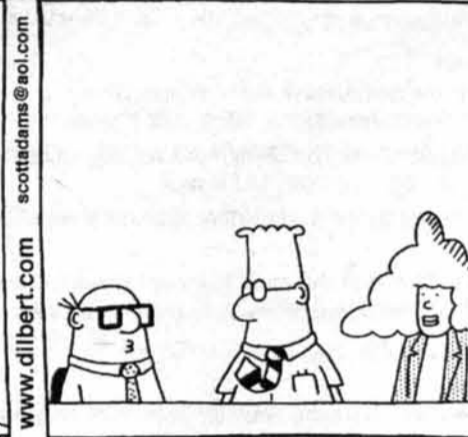


Randomland

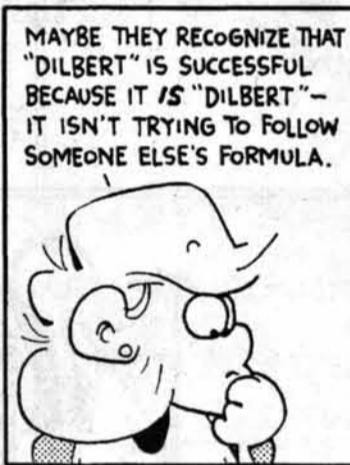
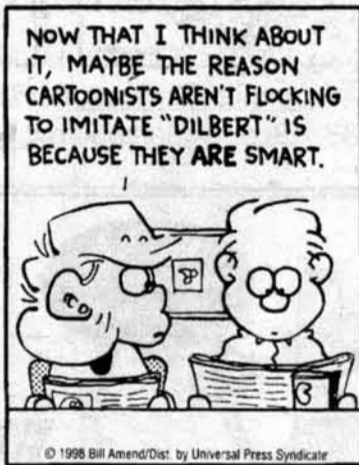
by XiD



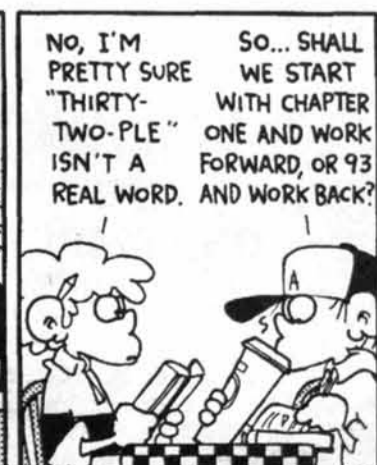
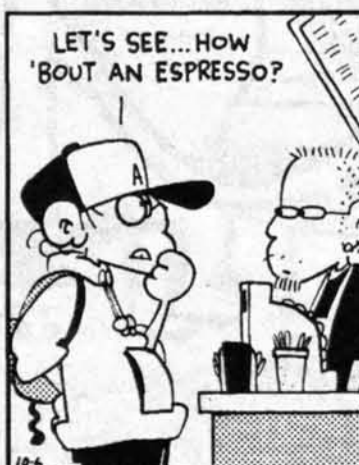
Dilbert® by Scott Adams



by Bill Amend



FoxTrot



TechCalendar

TechCalendar appears in each issue of *The Tech* and features events for members of the MIT community. *The Tech* makes no guarantees as to the accuracy of this information, and *The Tech* shall not be held liable for any losses, including, but not limited to, damages resulting from attendance of an event. Contact information for all events is available from the TechCalendar web page.

Visit and add events to TechCalendar online at <http://tech-calendar.mit.edu>

Tuesday's Events

6:30 p.m. - **Times, Time and Architecture.** Architecture lecture by Jean-Louis Cohen, Directeur, Institut Francais d'Architecture. Room 10-250.

8:00 - 10:00 p.m. - **Chainmail Workshop.** Come learn how to make chainmail in this interactive workshop. Materials will be provided, but bring needlenose pliers if you have them. Student Center, North Lobby Balcony. Sponsor: Society for Creative Anachronism.

Wednesday's Events

8:00 p.m. - **Korero: Confluence of Two Culture.** Pacific Jazz Arts Ensemble with Bernard Makoare/Harold Anderson. The Pacific Jazz Arts Ensemble (PJAE), featuring Maori musician Bernard Makoare and led by African American bassist and composer Harold Anderson. Killian Hall (Bldg. 14).

Thursday's Events

12:00 p.m. - **Chapel Concert: Cantata a Trois.** Susan Harris, mezzo-soprano; Carolyn Jean Smith, recorders; Ronald Dynneson, organ, harpsichord. Works of Telemann and J.S. Bach. MIT Chapel.

3:30 p.m. - **authors@mit: Donald Norman.** The author of the bestseller *The Design of Everyday Things* will speak about his new book, *The Invisible Computer*. Room 34-101. Sponsor: MIT Press.

7:00 p.m. - **poetry@mit: Raold Hoffman.** Science anthology reading by the 1981 Nobel laureate in chemistry. Room 10-250.

8:00 p.m. - **One Tough Cop.** Inspired by the real investigation of one of the most heinous crimes in New York City history, an old-style cop film starring Stephen Baldwin and Chris Penn. A free sneak preview. Room 26-100. Sponsor: LSC.

Friday's Events

7:00 p.m. - **Two Girls and a Guy.** Carla (Heather Graham) and Lou (Natasha Wagner) both think they have the perfect boyfriend... until they discover that they're both dating the same man (Robert Downey, Jr.). 1 hour 32 minutes. Room 26-100. Admission \$2.50. Sponsor: LSC.

10:00 p.m. - **Two Girls and a Guy.** Carla (Heather Graham) and Lou (Natasha Wagner) both think they have the perfect boyfriend... until they discover that they're both dating the same man (Robert Downey, Jr.). 1 hour 32 minutes. Room 26-100. Admission \$2.50. Sponsor: LSC.

Research Participants Wanted at Harvard Business School

Would you like to make some extra \$\$\$\$? Then sign up to be contacted for numerous ongoing studies at Harvard.

If interested, contact Angela Keros at cler@hbs.edu or 496-9300.

The MIT Committee on Campus Race Relations announces

The 1998 Race Relations Grants Program

Proposals are now being accepted for projects aimed at enhancing racial and cultural relations in the MIT community.

All members of the community - students, faculty, staff are encouraged to apply.

During the 1998-1999 academic year, the Committee will review applications on a monthly basis. Applications received by the first of any month from October to May will be notified of a decision by the middle of the month.

Contact Elizabeth Connors (253-0764, econnors@mit.edu) or Dean Ayida Mthembu (253-4861, mthembu@mit.edu) for more information.

Special Egg Donor Needed \$25,000

We are a loving, infertile couple hoping to find a compassionate woman to help us have a baby. We're looking for a healthy, intelligent college student or college graduate, age 21-33, with blue eyes and blonde or light brown hair. Compensation \$25,000 plus expenses. Your gift will bring boundless joy. Please contact us through our representative at 1-800-776-7680.



ALL THIS AND A PAYCHECK TOO?!

The fun does not have to stop when the paychecks start. Especially when you join Adobe. We offer big-company success with a small company attitude. Of course, we did not become one of the world's largest personal computer software developers without lots of hard work. But when your products lead the industry year after year, enrich-

ing the way everyone communicates, you have plenty to smile about. So if you agree that it's possible to have fun while doing interesting and creative work, Adobe may be the place for you. To learn more about opportunities at Adobe, visit the **Office of Career Services and Pre-Professional Advising** and sign up for an interview.

INFO SESSION

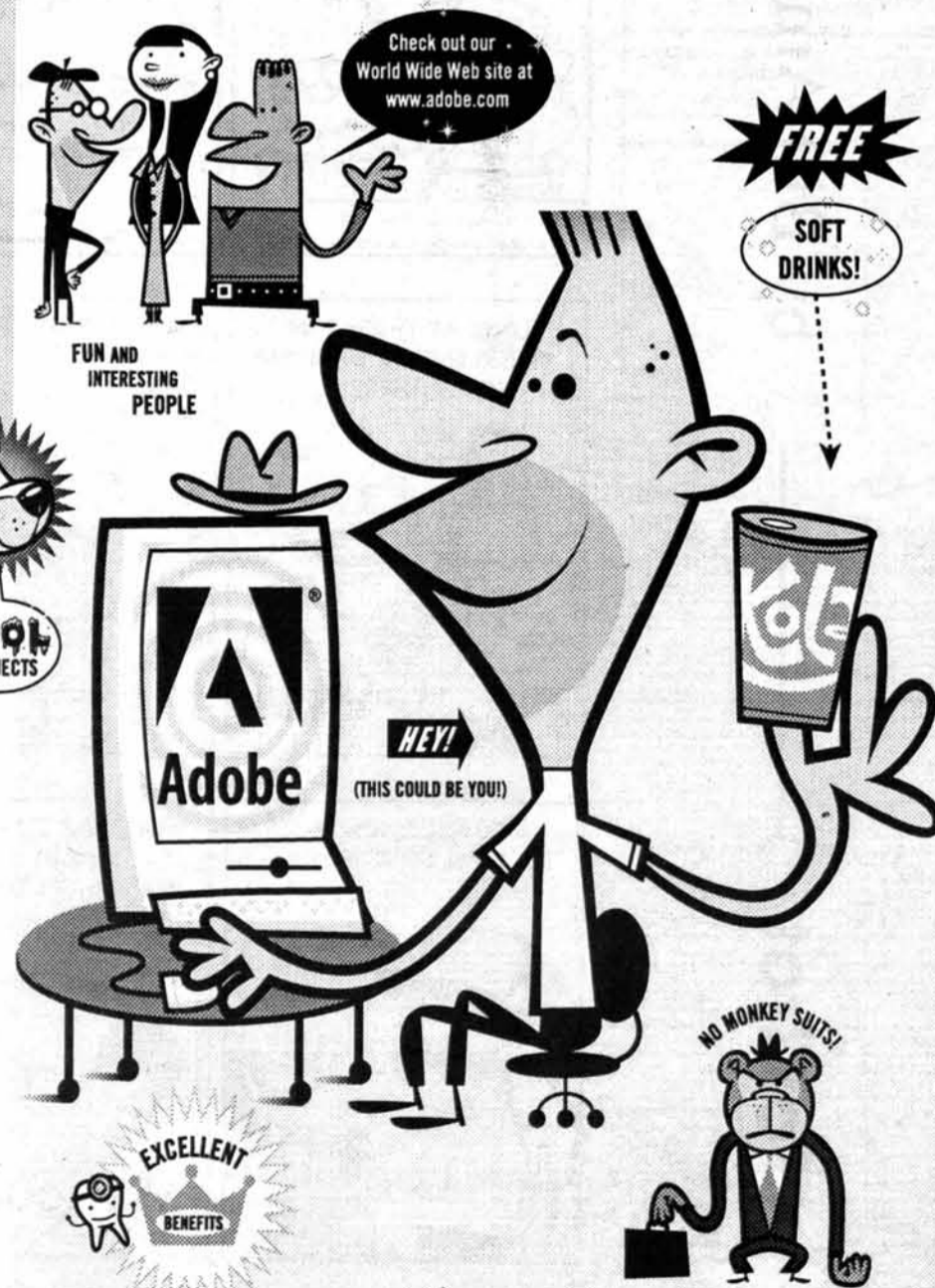
Thursday, October 15, 8:00pm
Room 4-145, Killian Court

ON CAMPUS INTERVIEWS

Friday, October 16
Career Services and Pre-Professional Advising

Adobe prefers resumes in the body of an e-mail (no attachments) sent to jobs@adobe.com or mail scannable resumes to: Adobe Systems Incorporated, College Recruiting, Dept. COLRE9899, 345 Park Avenue, San Jose, CA 95110-2711. Adobe is an Equal Opportunity/Affirmative Action Employer.

Adobe, the Adobe logo and all Adobe products are trademarks of Adobe Systems Incorporated. ©1998 Adobe Systems Incorporated. All rights reserved.



CLASSIFIED ADVERTISING

Help Wanted

Get Paid To Party!!!! Festive Events is looking for outgoing people to learn DJ entertaining. Great source of extra cash. Full training provided! Must have car. Must be available week-ends. Call 1-508-881-1095 for more info.

EARN UP TO \$480.00/MONTH! Healthy men needed as sperm donors. Must be 5'9" or taller, ages 19-39. Call California Cryobank to see if you qualify @ (617) 497-8646!

NATIONAL PARK EMPLOYMENT - Find the ideal job in America's National Parks, Forests & Wildlife Preserves. All skill levels. Competitive wages + benefits. Ask us how! 517-336-4298 Ext.N50331

Harpoon Brewery is looking for Permanent part-time help M-F for Bottling Line. Fax resume with available times to 617-482-9361. Attn: Al.

SPRINGBREAK Cancun, Florida, Jamaica, South Padre, Bahamas, Etc... Best Hotels, Parties, Prices. Book Early and Save!! Earn Money + Trips! Campus Reps / Organizations Wanted. Call Inter-Campus Programs 1-800-327-6013 www.icpt.com

Visual C++ Programmers wanted, work at school or our office. Exciting Global Positioning System software. Salary negotiable, full or part-time. www.teletype.com/gps, Call, Ed Friedman 734-9700. Email resume to ed@teletype.com.

Asian Indian Sperm Donor Needed Loving couple mid 30's seeks an attractive Indian or South Asian sperm donor with a pleasant disposition. Must be healthy, intelligent, aged 21-40, and taller than 5'3". Compensation \$1000. Please call: OPTIONS (800) 886-9373 ext. 6958

Asian Indian Sperm Donor Needed Loving couple mid 30's seeks an attractive Indian or South Asian sperm donor with a pleasant disposition. Must be health, intelligent, aged 21-40, and taller than 5'3". Compensation \$1000. Please Call: OPTIONS (800) 886-9373 ext 6958

Seeking egg donor, for infertile married physician to start family. Generous pay. Anonymity possible. If college enrolled / degreed and caring call Sabrina 1-800-780-1227 Access Code 02.

Build a prototype. Hand-held electronic product. Good pay, good work experience. Call Amy @ (413)-535-3311

\$9.00/hour and all the candy you can eat! Student callers needed for growing Tech Caller Program. Build communication skills while raising money for the MIT annual fund. \$9.00/hour (6 hrs/week minimum) plus incentives, contact Marilyn Silverstein at 252-1608.

Information

Free Cash Grants! College. Scholarships. Business. Medical bills. Never Repay. Toll Free 1-800-218-9000 Ext. G-3797

Travel

1 SPRINGBREAK Operator! Check our website for the best deals! www.vagabondtours.com Cancun, Bahamas, Jamaica & Florida. Group organizers EARN FREE TRIPS & CASH... Call today! 800-700-0790

SPRING BREAK 99! Cancun * Nassau * Jamaica * Mazatlan * Acapulco * Bahamas Cruise * Florida * South Padre Travel Free and make lots of Cash! Top reps are offered full-time staff jobs. Lowest price Guaranteed. Call now for details! www.classtravel.com 800/838-6411 930 Comm Ave South, On BU's West Campus

Absolute Spring Break.. "TAKE 2" 2 FREE TRIPS ON ONLY 15 SALES and.. EARN\$\$ Jamaica, Cancun, Bahamas, Barbados, Padre & South Padre. Lowest Prices!! Free Meals, Parties, & Drinks. **Limited Offer** Call for free info: 1-800-426-7710 / www.sunsplashtours.com

QUANTITATIVE EQUITY ANALYST

MDT Advisers is a small, quality-oriented money management firm. We are looking for a bright, conscientious, and energetic individual to join our Quantitative Equity Strategies Group. This individual will contribute in all areas of portfolio management including software development, investment research, and model operations.

Qualifications include:

- A recent bachelor's degree from a top school.
- A strong computer science background.
- Solid programming skills including experience with C and databases.
- Excellent oral and written communication skills.
- Knowledge of finance, statistics, and operations research.

We offer a very competitive compensation package, an intellectually stimulating work environment, and a convenient Boston area location. This is an outstanding opportunity for an individual with a willingness to work hard and a genuine desire to excel in the money management business.

David Goldsmith, our Director of Quantitative Equity Strategies, will be interviewing candidates at MIT on Tuesday, November 3, 1998.

Candidates should forward a resume, a copy of an official transcript, and a cover letter with GPA and SAT scores by October 13, 1998 to:

Sarah Parsons
MDT Advisers, Inc.
125 CambridgePark Drive
Cambridge, MA 02140

McKinsey & Company

Management Consultants

Melbourne • Mexico City • Miami • Milan • Minneapolis • Monterrey • Montréal • Moscow • Mumbai • Munich • New Delhi • New Jersey • New York • Orange County • Osaka • Oslo • Pacific Northwest • Paris • Pittsburgh • Prague • Rome • San Francisco • Santiago • Sao Paulo • Seoul • Shanghai • Shenzhen • Singapore • Stockholm • Stamford • Toronto • Tokyo • Vienna • Warsaw • Washington, D.C. • Zurich
Amsterdam • Atlanta • Bangkok • Barcelona • Beijing • Berlin • Bogotá • Boston • Brussels • Budapest • Buenos Aires • Caracas • Charlotte • Chicago • Cleveland • Cologne • Copenhagen • Dallas • Detroit • Dublin • Frankfurt • Geneva • Gothenburg • Hamburg • Helsinki • Houston • Indianapolis • Johannesburg • Kuala Lumpur • Lisbon • London • Los Angeles • Madrid



Invites

all 1999 Bachelor's and Master's degree candidates to learn more about our Business Analyst position

Please join us at our PRESENTATION

Tuesday, October 13, 1998
7:00 p.m.
at Salon 2 of the Cambridge Marriott

We look forward to meeting you.

Please visit our home page on www.mckinsey.com

HOW TO USE THE BATHROOM.

You're probably saving

to yourself, any four-year-old knows how to use the bathroom. But you may not know that you use more water at the bathroom than any place else in your home. In fact, between the



toilet, the shower and the sink you can use up to 55 gallons a day.

Multiple that by the number of homes in the world, and that's a lot of natural resources going down the drain.

Now, we're not saying you should stop taking showers or brushing your teeth. We're just suggesting some simple bathroom training. For instance, when you're brushing your

teeth, turn off the water. Do the same when



your shaving.

And just because your shower sounds like

an opera

full, don't

feel the need

to sing one.

Shorter songs make

for shorter showers. And for

the biggest culprit of them

all, the toilet, try putting a

weighted jug in the tank. It will

help save water every time you

flush. Plus, don't forget to

turn out the lights when

you leave. You'll be helping

to conserve electricity.

Save up to 10% more water by installing a weighted jug in your toilet tank.

And oh yeah,

if you don't

think you'll

remember

these things, take

this newspaper with

you the next time you go.

This message brought to you by the 43 environmental charities that make up Earth Share.

For more tips or information on how you can help save Earth Share, 3801 Inter-

national Drive, N.W. Suite

2K, A.D.2, Washington, D.C. 20015

Earth Share

IT'S A CONNECTED WORLD. DO YOUR SHARE.

This space donated by *The Tech*



Theresa Power '00 battles an opponent for control of the ball Saturday. MIT lost to nationally ranked Springfield College 1-4.

AJAI BHARADWAJ—THE TECH



We're looking for thinkers. Not just their diplomas.

It's all about making an impact. Information Session—Tonight, Tuesday, October 6, 7:00 - 9:00 p.m. Room 6-120 Submit resume via Jobtrak by Tuesday, October 20.

You know you're more than a piece of paper. You're bursting with ideas and insights that can change the world of business. And at Andersen Consulting, we want them. As a leading global management and technology consulting organization, we bring our insights and ideas to world-

class clients to help them achieve profound change. After all, it takes powerful ideas to align strategy with people, processes and technology. We'll provide first-rate training and guidance, and expose you to a variety of projects and industries. All of which builds a solid foundation for your future.

Take this opportunity to talk to us about yourself, and most importantly, your ideas. Visit our Web site at www.ac.com



©1998 Andersen Consulting. All rights reserved. An equal opportunity employer.

1 year old, 1991

2 years old, 1992

Stevie Ace Flores.

Killed by a drunk driver on March 23, 1993, on Pacific Coast Highway in Wilmington, Calif.

If you don't stop your friend from driving drunk, who will? Do whatever it takes.

FRIENDS DON'T LET FRIENDS DRIVE DRUNK.

U.S. Department of Transportation

This space donated by *The Tech*

STUDY IN
OXFORD

Live with British students in the very center of Oxford as an Associate Student of a medieval Oxford college.

Summer and graduate study available. Since 1985, students from 240 leading U.S. Colleges have studied in Oxford through W.I.S.C.

Washington International Studies Council
214 Massachusetts Avenue, N.E. (Suite 370)
Washington, D.C. 20002
Phone Number: (202) 547-3275
Free Telephone: (800) 323-WISC
Facsimile: (202) 547-1470
E-mail: wisc@erols.com

Most companies would call 21 equity transactions, two mega-mergers and record breaking growth a great year.

We called it June.

Come join our team next June.



Please submit resumes to:

Yuka Kataoka
Recruiting Coordinator
BancBoston Robertson Stephens
555 California Street, Suite 2600
San Francisco, CA 94104
IB_Recruiter@rsco.com

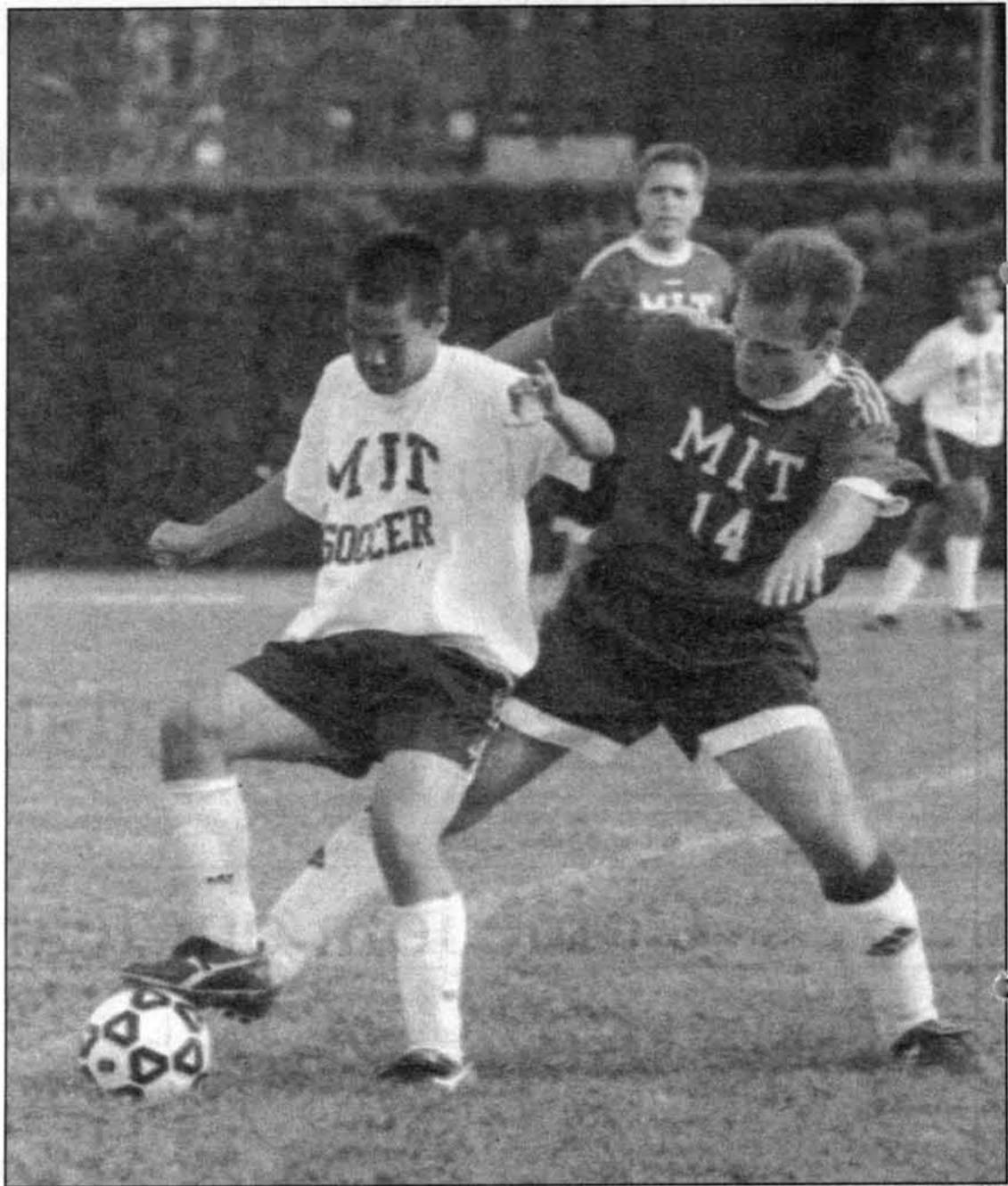
Please join our Investment Banking Business School presentation on Wednesday, October 7th at The Faculty Club 7:30am or our Undergraduate presentation on Thursday, October 8th in Room 1390 at 6:00pm.
Positions available in San Francisco, Boston and New York.

Drug Dealers
Gang Members
Rapists
Arsonists

... all kicked out
 with the help of kids like us.

- Jamal, age 15
 Khaleeq, age 16
 Malcolm, age 16

Everybody loves to trash teenagers, right?
 Maybe they don't realize that we do care. That we can make
 a difference. Get involved in Crime Prevention. Clean up parks.
 Teach younger kids. Start a school or neighborhood watch.
 And help make your community safer and better for everyone.
 Together, we can prove them wrong by doing something right.
 This space donated by *The Tech*



Ken Takase '01 controls the ball during Saturday's game against the team's alumni soccer players. The varsity team upset the alumni 2-0.



Heller Travel

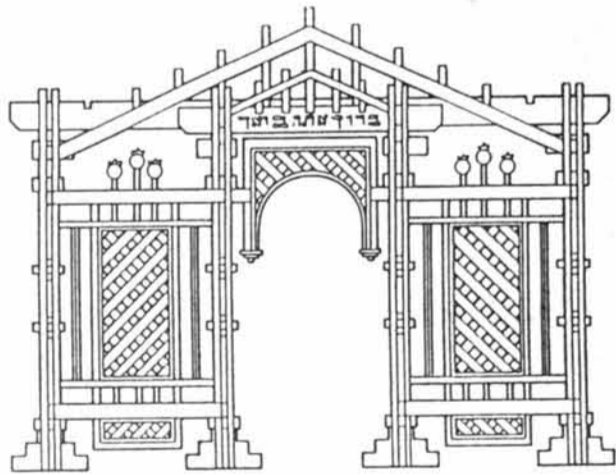
Student Travel Specialists, **LOWEST**
 student and faculty discount airfares.



*You just can't get it
 anywhere else!*

146 Massachusetts Avenue at Berkeley
 Boston, MA 02115 • (617) 236-4300
 email: heller@berklee.edu

VISIT THE M.I.T. SUKKAH



OCTOBER 4 - 12
KRESGE OVAL

- Open for meals & visits •
- Lulov & etrog available •

**Open for the
 M.I.T. Community**

Sponsored by M.I.T. Hillel #253-2982

The Ultimate Outdoor Adventure Store
 featuring Apparel, Footwear and Accessories
 for Men and Women

Come in now and take an additional **10%** off purchase of \$50 or more with your college ID

Cambridgeside Galleria Mall, Cambridge
South Shore Plaza, Braintree • Holyoke Mall, Holyoke
Burlington Mall, Burlington

An open invitation for open minds.



What will be your statement?

**To swing a hammer on top of the Berlin Wall
and help entrepreneurs break through...**

to see a pony on a shirt and help it influence culture...

to move a computer company from dorm room to boardroom.

Make a mark with your mind.



MINDS. WIDE OPEN.SM

www.gs.com

**Goldman, Sachs
& Co.**

Wednesday, October 7, 1998

Firmwide Information Session and Reception

**for MIT students
Cambridge Marriott
Salon 4, 2nd Floor
6:00-8:30 pm**

Casual Attire

Harvard Elections Invalidated by Computer Errors

UNIVERSITY WIRE

Last week's Harvard University Undergraduate Council general elections have been nullified after multiple glitches in the council's custom voting program left the council with incomplete results.

Short Takes

The election has been rescheduled for Thursday through Saturday of this week.

The nullification is the culmination of a series of problems with the election program, which the council bought three years ago from the Harvard Computer Society for between two and three thousand dollars.

Officials from HCS and the council say that both groups share in the responsibility for the voting failure.

"The Undergraduate Council's election commission takes responsibility, but it was an unforeseeable problem that we couldn't do anything about because of the situation with the computer system that we use," said Noah Z. Seton, co-chair of the election commission. "Better choices could have been made in the past about the system, but at the time of the election nothing could have been done."

HCS President Carl P. Sjogreen said the voting failure was a result of the lack of adequate documentation and support for the program.

"The HCS initially did not deliver a program that was maintainable by the U.C., and the U.C. accepted a program that they knew they could not maintain," Sjogreen said.

The council's original contract with HCS was flawed, Stewart said. It required HCS only to help administer the first two elections. After that the council was on its own — without any documentation of the program's design or past problems.

When problems with the program occurred in past elections, the HCS designers were available to troubleshoot, Cohen said. But the designers graduated last year.

"In past years, the original

authors of the program had come in and helped when there were problems, but I gather there were no U.C. people who sat there and took notes," said HCS member Lee D. Feigenbaum, who helped the election commission last week.

"It just didn't occur to anyone that that knowledge needed to get passed on," said council Vice President Samuel C. Cohen.

Troubleshooting was made more difficult because the program was designed to protect privacy and security.

"It's written in a very obscure and multi-layered fashion to avoid tampering with ballots," said council President Beth A. Stewart. "It's hard to find and identify problems."

"Last year when I started running it, it had all been configured," added Cohen, who is responsible for running special elections during the year.

But the general elections — with upwards of 130 candidates campus-wide — caused program flaws to surface.

The election commission's first roadblock occurred a week ago when it could not split student data into the appropriate databases. The election was delayed a day while HCS helped the council write a new program to split the data.

The program then malfunctioned during a test run due to control char-

acters inserted by Pico — the application used to edit the program — according to an election commission statement.

The problems that eventually corrupted the election results did not surface until after the election began.

When voters tried to submit their ballots, they received an error message because the hard drive of the computer running the program was full. This error message prevented voters from submitting their ballots.

It took some time before the complaints about the error message were referred to people who could fix the problem, said Sjogreen, who helped the council throughout the week.

"The problem really came about because the people with the necessary expertise on the U.C. side either never existed or have graduated," Sjogreen said.

The space crunch was alleviated, but the commission did not know how many ballots had been lost.

"Since these people were entered as having used their eligibility, even though the computer did not record their vote, they were not able to resubmit their ballots when disk space was freed," according to the election commission statement.

Benjamin W. Hulse, co-chair of the election commission last year, said that the original program was a "hodge-podge" which required HCS assistance to run.

"There's no script that lets you go step by step through the program to let you know how to set it up for an election; you need to have an HCS person hanging over your shoulder," Hulse said.

The council's constitution requires it to use the Hare proportional voting system, in which candidates are ranked and votes redistributed as candidates eliminated in a series of run-offs. Stewart said the system is "essentially impossible to [tabulate] by hand." Stewart said she did not know when this system was institutionalized.

The council is working with HCS to fix the program to run the current election, but Stewart said the council would hire someone, not necessarily from HCS, to fundamentally redesign the program before the next election.

"It can be salvaged for the purpose of getting this council elected," Cohen said. "We're having someone come in and really look at the stuff knowing all the different problems we encountered this time."

"The HCS and the U.C. are working together to insure that these next elections proceed flawlessly and that such problems do not occur in the future," Sjogreen said.

This is at least the third election hampered by problems with the HCS program.

In 1995, election results were delayed for 16 hours when the program failed to tally results accurately. In addition, a temporary voting program crash prevented some students from voting.

Last year, a glitch prevented transfer students and some other College students from voting temporarily.

"I am fully confident that we will be able to run the elections on Thursday," Seton said.

[The Harvard Crimson, Sept. 5]

Syracuse hit with harassment suit

Syracuse University has responded to the \$762 million sexual harassment lawsuit filed by two former tennis players.

In its official response to the suit, SU confesses to several allegations made by the players — including an admission that head coach Jesse Dwire served alcohol to minors on trips.

Dwire was tried through the university's judicial system in 1996, after former players Dacia Kornechuk and Kirsten Ericson filed a sexual harassment complaint against him.

*Going Away?
Don't forget to bring a friend!*

Nice people.	Great advice.	Cheap tickets.
London	\$328	
Fort Lauderdale	\$178	
San Francisco	\$236	
Lima	\$603	
Honolulu	\$677	
Beijing	\$858	
Johannesburg	\$1028	

Fares are RT. Do not include taxes. Restrictions apply. Are subject to change.

Be an on campus intern! **EARN FREE TRAVEL!**
call 1-888-council for more details

Council Travel

CIEE: Council on International Educational Exchange
273 Newbury St. Boston
12 Eliot St., 2nd Floor, Cambridge
MIT Student Center W20-024, 84 Massachusetts Ave. Cambridge

[617]-266-1926
[617]-497-1497
[617]-225-2555

www.counciltravel.com

JOIN THE BRIGHTEST STARS IN CALIFORNIA.



Launch your career in brilliant company by joining the engineers of ViaSat, a rapidly growing, 12 year old company that designs and manufactures advanced digital signal processing and networking equipment for satellite and wireless applications. No one soars higher than us in digital communications because we feature technically oriented management and a team that includes some of the nation's top engineers.

ViaSat has been included in The INC. 500 list of fastest growing companies three times and we have been listed as one of the "100 Best Small Corporations" by *BusinessWeek* and as one of the "200 Best Small Companies in America" by *Forbes*. As a part of our team, you'll have access to today's most advanced technology as well as a fluid environment where even the newest hires are encouraged to contribute their ideas. You will be involved in the full scope of a variety of projects, and have exposure to ViaSat's exceptional expertise in on-demand satellite networking technology. You may even participate in our latest innovation: a new family of commercial DAMA satellite networks called StarWire.

We'll reward you with a great salary, stock ownership program, promotion from within based on merit - not just longevity and the opportunity to present your work to customers. If you'd like to know more about spreading your professional wings with ViaSat, see us on campus. We will be interviewing

on campus with two schedules on October 23rd. For consideration, please submit your resume to the Office of Career Services. ViaSat will also be holding an Information Session on October 22nd at 5:30pm in Room 4-145. Please submit your resume thru JOB TRAK (www.jobtrak.com). You may also send your resume to ViaSat Inc., 2290 Cosmos Court, Carlsbad, CA 92009-1585. Fax: (760) 438-8489. Phone: (760) 438-8099. E-mail: resume@viasat.com

ViaSat is an Equal Opportunity Employer. Minorities are encouraged to apply. U.S. Citizenship required for government projects.

ViaSat
www.viasat.com

OUR ENGINEERS HAVE THE FREEDOM TO DO ANYTHING THEY WANT, INCLUDING WRITING THIS AD.

ALLOWING OUR ENGINEERS A HIGH DEGREE OF LATITUDE IN THEIR WORK HAS PRODUCED NUMEROUS PATENTS, INNOVATIONS AND REVOLUTIONARY TECHNOLOGIES. MANY ENGINEERS CONSIDER THIS FREEDOM THE BEST PART OF THEIR JOBS, SO IT'S NO SURPRISE THAT THEY'D WANT TO TALK ABOUT IT.



Chris Ickler
BS PHYSICS – MIT

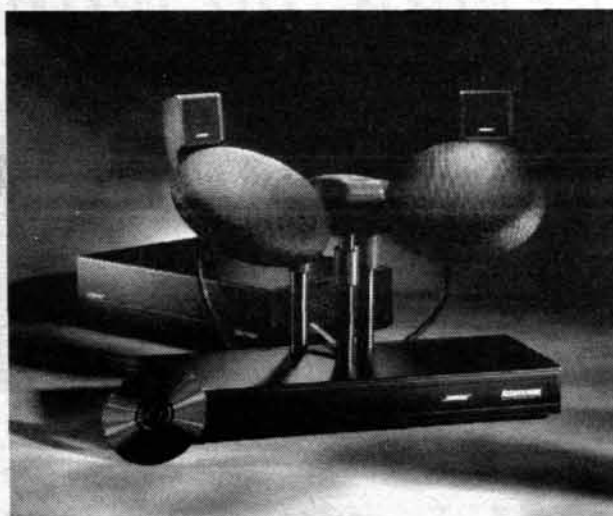
Chris is one of the creators of the Bose® Auditorer® demonstrator. Working from as little as a blueprint, the Auditorer system lets people hear exactly how an audio system will sound from any seat in a facility, even if it hasn't yet been built.

“ At first, the idea was to make a fuzzy crystal ball. What we have today wasn't even thought possible in 1989 when we started. We had a software program called the Modeler® design program that would visually show sound coverage in a given space. They asked me to 'make Modeler audible' – create a system so people could hear what Modeler was showing them. Then they let me do it.

I spent the first six months just studying human hearing. Later, I started ordering equipment that almost no one understood.

Bose never said 'no.' They believed in me and gave me the time and resources to get my job done.

No other company would let me do that. That's what keeps me here. You are given big opportunities. You are encouraged to try. Nobody tells you how to do it – most of the time because it has never been done. You are always told, 'you'll figure it out.'



The Auditorer Playback System.

Today, Auditorer is virtual reality that cannot be distinguished from reality. ”

WHAT DO YOU WANT TO DO?

DISCOVER MORE ABOUT BOSE. ATTEND THESE EVENTS:

ON-CAMPUS INFORMATION SESSION – WEDNESDAY, OCTOBER 7, 7 PM, ROOM 1-190.

ON-CAMPUS OPEN INTERVIEWS – TUESDAY, OCTOBER 13, REGISTER AT THE MIT CAREER OFFICE.

BOSE®
Better sound through research®

For more information fax or e-mail your resume to Lyn Van Huben, Bose Corporation,
The Mountain, Framingham, MA 01701-9168. FAX:(508) 766-7031. E-mail: lyn_vanhuben@bose.com. Visit us at www.bose.com.

THE BOSTON CONSULTING GROUP

AMSTERDAM	CHICAGO	JAKARTA	MILAN	SAN FRANCISCO	TOKYO
ATLANTA	COPENHAGEN	KUALA LUMPUR	MONTERREY	SÃO PAULO	TORONTO
AUCKLAND	DALLAS	LISBON	MOSCOW	SEOUL	VIENNA
BANGKOK	DÜSSELDORF	LONDON	MUMBAI	SHANGHAI	WARSAW
BOSTON	FRANKFURT	LOS ANGELES	MUNICH	SINGAPORE	WASHINGTON
BRUSSELS	HAMBURG	MADRID	NEW YORK	STOCKHOLM	ZÜRICH
BUDAPEST	HELSINKI	MELBOURNE	OSLO	STUTT GART	
BUENOS AIRES	HONG KONG	MEXICO CITY	PARIS	SYDNEY	

*All MIT PhDs and Postdocs interested in
interviewing with BCG,
please submit a resume and cover letter
by Friday, October 9
to Susan DiTullio, Recruiting Coordinator
The Boston Consulting Group
Exchange Place, 31st Floor
Boston, MA 02109*



CONNIE LU—THE TECH

Sumita Pennathur performed a fusion of contemporary jazz and Carnatic music in Killian Hall Friday.

FROM Learning TO Earning

College was your training ground. This is your proving ground. At Wells Fargo, you can build on your student success, and put all your hard earned skills to work without a lot of additional ramp-up time. Because we work as a results-driven team, we use the talent we hire to grow the business.

Come explore the vast frontier of career opportunities at Wells Fargo—The next stage in banking.

MBA INFORMATION SESSION

Thursday, October 8th
12:00pm - 1:00pm
Sloan School of Business
Classroom, 3rd Floor

MBA INTERVIEWS

Monday, November 2nd
9:00am - 4:30pm
Building E-51
2nd Floor

- MIS Project Managers
- Senior Financial Consultants

Stop by the career center today to schedule an appointment with our representatives.

WELLS FARGO

EEO/M/F/D/V

EXPLORE THE NEW FRONTIER
WELLSFARGO.COM

GRADUATE EDUCATION AND CAREERS IN INTERNATIONAL AFFAIRS

- ◆ **DATE:** Thursday, October 8, 1998
- ◆ **TIME:** Fair: 4:00 - 7:00 PM

- ◆ **PLACE:** The Radisson Hotel
Ballroom #1 & 2
200 Stuart Street
Boston, MA 02116

PARTICIPANTS:

Columbia University
School of International & Public Affairs
Georgetown University
Edmund A. Walsh School of Foreign Service
Harvard University
John F. Kennedy School of Government

Johns Hopkins University
Paul H. Nitze School of Advanced International
Studies
Princeton University
Woodrow Wilson School of Public & International
Affairs
Tufts University
The Fletcher School of Law & Diplomacy

For further information, please contact
The Fletcher School of Law and Diplomacy, Tufts University
(617) 627-3040

Commonly
Unbearable.

Dangerously
Believable.

Subsequently
Fatal.

#1 Cause of Suicide
**UNTREATED
DEPRESSION**

<http://www.save.org>

Top Ten Reasons to Volunteer at the ...

10. Looks good on your resume.
9. Coolest internship site around for human services.
8. Convenient location — five-minute walk from 77 Mass. Ave.
7. Flexible hours (open 24 a day).
6. Warm, safe, friendly environment.
5. Free training — excellent support.
4. Meet interesting people from all walks of life.
3. Improve your communication skills.
2. Someone you know is already in trouble with drug or alcohol.
1. You just might have a chance to save a human life!
0. Free snacks (okay, 11 reasons!)

... Mass. Drug and Alcohol Hotline
445-1500

This space donated by *The Tech*

SPECIAL ADVANCE SCREENING

THERE ARE STILL REAL HEROES.



Sometimes the facts get lost in the headlines.

Stephen BALDWIN • Chris PENN • Gina GERSHON

FROM THE PRODUCER OF SERPICO, DOG DAY AFTERNOON AND SCARFACE

FREE MOVIE POSTERS

Wednesday October 7
8:00 PM
Rm 26-100

Pick Up Free Passes at the Door
MIT/Wellesley ID Required

Presented By
MIT Lecture Series
Committee

HOGAN

There's all sorts of weird looking fonts in modern typography.

(The Tech has a lot of them.)

If you're interested in typography or layout and design in general, call Erica at The Tech, 253-1541 or email erica@the-tech.mit.edu.

©1994 EDF



Buy recycled. It would mean the world to them.

Thanks to you, all sorts of everyday products are being made from materials you've recycled. But to keep recycling working for the future, you need to look for these products and buy them. For a free brochure, call 1-800-CALL-EDF.



This space donated by *The Tech*

GORDIAN

You could be a GORDIAN Engineer!

DESIGN COOL STUFF

In Southern California

- Challenging Environment
- Exciting R&D Projects

Talented computer and electrical engineers should plan now to get acquainted with GORDIAN during our visit to your campus.

Check us out today at: www.gordian.com
Interested? E-mail us now: recruit@gordian.com



20361 Irvine Avenue • Santa Ana Heights • CA 92707

STUDENT TRAVEL



STA Travel, the world's LARGEST student travel organization, offers STUDENT DISCOUNTS on domestic travel, too.



(617) 576-4623

65 Mt. Auburn Street

BOOK YOUR TICKETS ON-LINE: www.statravel.com

Morgan Stanley Dean Witter is a service mark of Morgan Stanley Dean Witter & Co.



MORGAN STANLEY DEAN WITTER

invites all undergraduate members of the Class of 1999
interested in career opportunities in

**Fixed Income
Institutional Investment Management
Investment Banking
Market Risk
Process Driven Trading
and
Quantitative Strategies**

to our Firm Presentation on

**Tuesday, October 6, 1998
7:00 p.m.
Faculty Club, Main Dining Room**

www.ms.com

Morgan Stanley Dean Witter is an Equal Opportunity Employer

CAREER OPPORTUNITIES AT BOSE®

ON-CAMPUS INFORMATION SESSION

Wednesday, October 7
7 pm, Room 1-190

ON-CAMPUS OPEN INTERVIEWS

Tuesday, October 13
Register at the MIT Career Office

E-mail or fax your resume to:
Lyn Van Huben, Bose Corporation,
The Mountain, Framingham, MA 01701
FAX: (508) 766-7031
E-mail: lyn_vanhuben@bose.com
www.bose.com

BOSE®
Better sound through research®

Syracuse Denies Coach Physically Harassed Player

Short Takes, from Page 26

After a hearing, he was found guilty of verbally harassing players. He was, however, not found guilty of physically harassing players or abusing his position to intimidate or threaten members of the team. Following the hearing, he was suspended without pay during the summer of 1996 for three months.

Kornechuk, a senior, Ericson, a 1998 SU graduate, and their parents filed suit against the university earlier this year, claiming that the university was negligent and manipulative when investigating sexual harassment charges against Dwire.

The Kornechuk and Ericson families maintain that the university manipulated the judicial process and did not complete a thorough investigation of Dwire. The university did not interview former players and controlled the testimony given during the hearing, the families said.

"It wasn't fair and it wasn't just," Kornechuk told *The Daily Orange* in an Aug. 31 article.

The university's answer to the suit, released earlier this month by university attorney George H. Lowe of Bond, Schoeneck and King, asserts that Dwire did not touch players inappropriately. It denies

that Dwire gave Kornechuk unnecessary, sexual massages or that he forced massages on players.

The university does admit that Dwire and assistant coach Robert "Mac" Gifford brought teammates into a hotel room on a tennis trip and served them champagne. The university admits that many of the team's players were under 21 at the time, and that Ericson was 18.

The university also admits that Dwire harassed players by making inappropriate comments to the team, including a discussion about oral sex with Ericson and a sexist speech made to players about the Gap, which Dwire said stood for "Girls are Pathetic," according to players.

The university also admits that Dwire made statements to players, putting a dollar figure on the value of each player's scholarship.

SU denies all accusations regarding physical harassment and maintains that Dwire massaged Kornechuk because of a knee injury that made it impossible for her to play for part of the 1995 season.

But the university admits that Rachel Marcoccia did not receive similar massages from Dwire, even though she had similar injuries.

The university also admits Dwire told Kornechuk she had "nice legs"

loud enough for teammates to hear. William J. Dealy, the attorney representing Kornechuk and Ericson, said he is especially concerned that Dwire served his players alcohol, and believes the university should investigate whether Dwire violated the NCAA's policy regarding alcohol consumption.

Rob Edson, SU's director of

NCAA athletic compliance, said the NCAA has no specific policy regarding alcohol on trips, but that it could fall under a more vague regulation.

"Out of the manual's 500 pages, there is no specific bylaw on alcohol," Edson said. He said when the university knows of a possible athletic violation, it investigates the

matter and informs the NCAA. He refused to comment on whether the university is currently investigating Dwire for violations.

The sexual harassment suit will go to trial at the end of January and will be heard by the U.S. District Court in New York State's Southern District.

[*The Daily Orange*, Sept. 5]

► Do you have what it takes?

CIA
Directorate of Operations
Clandestine Service



► THE ULTIMATE INTERNATIONAL CAREER

For the extraordinary individual who wants more than just a job, this is a unique career — a way of life that will challenge the deepest resources of your intelligence, self-reliance, and responsibility. It demands an adventurous spirit, a forceful personality, superior intellectual ability, toughness of mind, and a high degree of personal integrity, courage, and love of country. You will need to deal with fast-moving, ambiguous, and unstructured situations that will test your resourcefulness to the utmost.

This is the Clandestine Service of the CIA. We are the cutting edge of American intelligence, an elite corps providing the vital information needed by our policy makers to address the national security interests of the American people. We face new challenges every day, in a world filled with increasingly complex issues. Ours is a mission like no other.

EMPLOYMENT OPPORTUNITIES

We are currently hiring officers for the Clandestine Service Trainee Program to serve internationally in two career tracks. Operations Officers spearhead our intelligence collection efforts and are actively involved in seeking new sources of information. Collection Management Officers coordinate our intelligence collection efforts and disseminate the product to U.S. government consumers.

The Clandestine Service has a second program, the Professional Trainee Program, for recent college graduates. Upon successful completion of this program, a Professional Trainee will be considered for the Clandestine Service Trainee Program.

The Clandestine Service Trainee Program is only one of several opportunities with the CIA. Maximum age for entry into the Clandestine Service Trainee Program is 35. U.S. citizenship is required. Both positions also require a minimum of a bachelor's degree with an excellent academic record. Outstanding interpersonal skills, the ability to write clearly and accurately, and a strong interest in foreign affairs are also necessities. A graduate degree — with specific study in physical, chemical, or biological sciences, international business or law, telecommunications, or computer technology — international residency, foreign language skills, and military experience are given strong emphasis in selecting competitive candidates. All selected applicants must successfully complete a thorough medical and psychological evaluation, a polygraph examination, and an extensive background investigation.

The CIA is an equal opportunity employer and a drug-free work force. We represent America and we want to be representative of America.

To apply for the Directorate of Operations, forward your resume and a cover letter, including your college GPA, to: CST Division, PO Box 12002, Dept. RAMIT1098, Arlington, VA 22209; or FAX to CST Division: (703) 613-7871.

Competitive candidates for the Directorate of Operations will be contacted within 45 days.

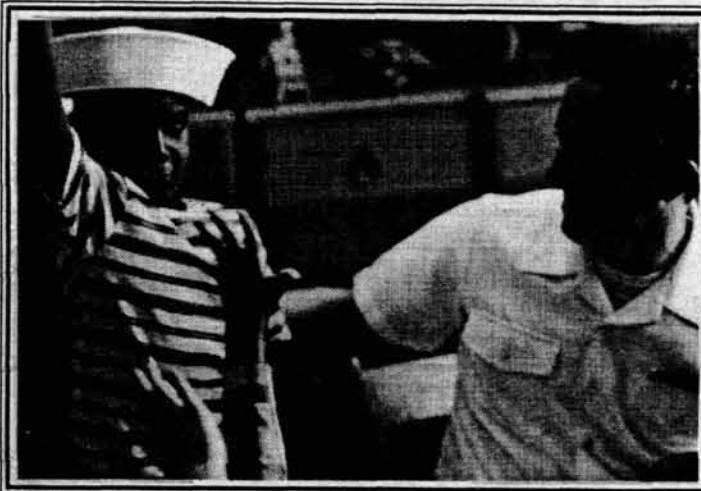
If interested in U.S.-based positions in the fields of Computer Science and Engineering with the CIA, send your resume via FAX to (703) 613-7884, ATTN: DS&T.



Challenges For A Changing World

Please visit our Web site at www.cia.gov

AMERICA'S FUTURE



**UNITED STATES NAVY
SERVING AMERICA TWICE**

1-800-USA-NAVY

www.navyjobs.com

This space donated by *The Tech*

The Brattle Group

Economic
Environmental &
Management Counsel

Is Your Future in Consulting?

Information Session for Seniors with significant coursework in Economics, Math, Engineering, or other highly analytic disciplines

**Wednesday, October 7
Conference Center - Room 4-370
6:00 PM**

CAMBRIDGE ■ WASHINGTON ■ LONDON

For further information, visit our web site: www.brattle.com

Ever Get A Pal Smashed?

TAKE THE KEYS.
CALL A CAB.
TAKE A STAND.



FRIENDS DON'T LET FRIENDS DRIVE DRUNK.

Ad U.S. Department of Transportation

This space donated by *The Tech*

Student Center, Room 483

253-1541

It takes only
25 minutes to
print 9,000 copies
of The Tech.

But don't let that fool you. It takes all kinds of people to put together MIT's Oldest and Largest Newspaper. Whether you're interested in doing layout on state-of-the-art equipment, reviewing the latest movies and CDs, selling ads to national companies, or covering the major events around MIT, we welcome you to join *The Tech*!

**No experience
necessary!**

A.T. KEARNEY

and

The Sloan Undergraduate Management Association

invite you to a

Consulting

Case Interview Workshop



A.T. KEARNEY

Thursday, October 8, 1998

Salon 4 • Cambridge Marriott Hotel • 7:00 p.m. to 9:00 p.m.

SEIZE THIS GREAT OPPORTUNITY TO:

- Participate in the simulation of an actual consulting case interview
- Get insight on how to frame the problem and deliver a solution
- Interact with professionals from A.T. Kearney

ATKEARNEY

SPORTS

UPCOMING HOME EVENTS

Tuesday, October 6

Women's Volleyball vs. Mount Holyoke College, 7:00 p.m.
Water Polo vs. Boston College, 7:00 p.m.

Wednesday, October 7

Women's Soccer vs. Westfield State College, 4:00 p.m.

Thursday, October 8

Men's Soccer vs. Brandeis University, 3:30 p.m.



AJAI BHARADWAJ—THE TECH
Crystal Harris ploughs through a Wellesley defender Saturday. MIT Rugby lost a tough battle 15-19.



ANNIE S. CHOI—THE TECH
Jen Kelly '99 (center) stealthily races her Tech dinghy during the Women's New England Singlehanded Championship preliminaries Saturday.

**COMPUTER ENGINEERING • COMPUTER SCIENCE • PHYSICS • CHEMICAL ENGINEERING
MATH • ELECTRICAL ENGINEERING • MECHANICAL ENGINEERING • BUSINESS ANALYSIS**



TAKE TECHNOLOGY TO THE NTH POWER.

When something is too extreme for words, it's to the Nth degree. And that's the level of technology you'll experience at Raytheon.

Raytheon has formed a new technological superpower—Raytheon Systems Company, composed of four major technological giants: Raytheon Electronic Systems, Raytheon E-Systems, Raytheon TI Systems and Hughes Aircraft. The new Raytheon Systems Company is driving technology to the limit. And we're looking for engineers who want to push the envelope. Break new ground. Make their mark.

At Raytheon, you'll take technology—and your career—to the highest possible level. You'll take it to the Nth. We'll be visiting your campus soon. Contact your career placement office now to schedule an interview, or check out our website at www.rayjobs.com. If you are unable to meet with us, please send your resume to: Raytheon Resume Processing Center, P.O. Box 660246, MS-201, Dallas, TX 75266. We have many exciting opportunities available and we would like to talk to you.

Internet: www.rayjobs.com • E-mail: resume@rayjobs.com
U.S. citizenship may be required. We are an equal opportunity employer.

Raytheon