

Most Freshmen Get Top Choice Under Revised Lottery System

By Douglas E. Heimburger
EDITOR IN CHIEF

Outbursts of joy far outnumbered cries of protest in and outside computer clusters across campus as students learned of their dormitory assignments.

This year's lottery results are vastly improved from previous years, said Program Director of Residential Life Philip M. Bernard, who administrates the lottery.

No students received a dormitory ranked lower than third, Bernard

said, and only 10 students received their third choice.

However, while screams of joy rang through halls at MIT, the overall success of off-campus rush remains in question with only 231 students pledging residential fraternities and independent living groups as of 5 p.m. yesterday, Bernard said.

The results so far this year represents a significant dropoff from previous years. Last year, 332 freshmen pledged off campus living groups. In 1996, 362 freshmen

decided to live in fraternities and independent living groups.

In the end, over 250 students will likely pledge fraternities and ILGs, said Neal H. Dorow, associate dean of RLSLP and adviser to fraternities, sororities, and independent living groups.

As of now, four houses have closed their desks, indicating all of their bids have either been accepted or declined, Dorow said. Rush officially ends at the end of the week.

Lottery improves over past years

Last year, six students received their fourth choice and 29 students received their third choice, even though only 676 students were placed. This year, 744 students were placed in dormitories through the lottery.

Lottery, Page 21

Dorm	# First Choice*	Total Assigned	Ranks of those assigned		
			1st	2nd	3rd
Baker	109	80	80	—	—
McCormick	71	67	67	—	—
MacGregor	120	117	111	6	—
Bexley	27	27	24	3	—
Random	34	35	30	3	2
Burton	93	104	91	13	—
Next	106	129	113	16	—
Senior	23	30	20	6	4
New	44	76	44	28	4
EC	52	79	56	23	—
Language	63	34	34	—	—

* For roommate groups, only one individual in the group is counted.

Dormitories are ranked from most to least subscribed on a percentage basis. Language houses operate under a separate selection system. These figures do not include those assigned for medical or religious reasons.

SOURCE: OFFICE OF RESIDENCE LIFE AND STUDENT LIFE PROGRAMS



THOMAS E. MURPHY—THE TECH

Members of the Society of Creative Anachronism wearing medieval garb tend their booth during Tuesday's Activities Midway, held in Johnson Athletic Center.

Alleged Rape Victim Files Suit Against DU, MIT for Negligence

By Zareena Hussain
NEWS EDITOR

A woman who alleges she was raped at Delta Upsilon in 1996 has filed suit against both the Institute and the fraternity for negligence.

The suit alleges that the woman, Angela Colt, was served so much

alcohol she could not fend off her attacker.

Colt filed suit Monday against MIT, DU's national corporation, and the chapter's alumni association, which owns the house. The suit alleges a "negligent failure to ensure the safety of those lawfully on the

premises of MIT's fraternity houses." Matthew B. Keller '97, the alleged assailant, was also named as a defendant in the case.

Colt, then 17, and a co-worker attended a party at the fraternity on

Lawsuit, Page 22



DAVID TARIN—THE TECH

The Tae Kwon Do Club demonstrates its skill at the Athletics Gateway, held Tuesday in Rockwell Cage. For the first time, the event was held simultaneously with the Activities Midway.

Orientation Begins For Parents This Weekend

By Jennifer Chung
ASSOCIATE NEWS EDITOR

A wide variety of activities have been planned to both entertain and inform parents as they reunite with their children to help ease the transition to MIT life.

The annual Parents Orientation begins tomorrow with several simultaneous events being offered. The Athletic Department, Medical Center, Campus Police, Student Services Center, and Office of Minority Education are all sponsoring open houses.

Events throughout the weekend include dining hall and campus tours, a President's Reception and Continental Breakfast, a Sunday Brunch and Cruise, and an event called Parenting 101.

The MIT Museum will host a presentation on Hacks at MIT on Friday night, as well as having an open house on Saturday night.

Vest will receive parents

The centerpiece of Parent's

Orientation, the President's Reception, is expected to draw large crowds.

Catering has been arranged for the continental breakfast that accompanies the reception at the President's House with expectations that 1,800 people will attend, according to managers from Aramark.

"Very large numbers" of administrators have been invited to meet parents during the traditional continental breakfast held in Walker Memorial as part of the President's Reception, said Margaret R. Bates, dean for student life. Freshman advisers, administrators, graduate residence tutors, housemasters, and approximately ten to twelve additional groups — including the Campus Police, financial aid office, and Parent's Association — will also have tables at the event, Bates said.

Saturday's President's Reception

Parents, Page 16

ARTS

MTG's production of *Into the Woods* is funny and touching, whimsical and sincere.

Page 12



Comics

Page 8

Today is *The Tech's* last daily issue. Starting next Friday, Sept. 11, *The Tech* will resume its normal Tuesday/Friday publication. Also starting Sept. 11, *The Tech's* normal distribution route, covering the entire Institute, will resume.

Police Log16
World & Nation2
Opinion4
Arts6
TechCalendar9

WORLD & NATION

Hillary Clinton Goes Solo In Northern Ireland

THE WASHINGTON POST

BELFAST, NORTHERN IRELAND

A cool and polished Hillary Rodham Clinton barnstormed through two European cities Wednesday, meeting cheering crowds that hailed her as a role model for the women of the world.

If the first lady was bothered by the fact that her husband's infidelity has been reported, and ridiculed, around the planet, there was nary a sign of it as she answered questions jointly with Naina Yeltsin, wife of Russian President Boris Yeltsin, in Moscow and received boisterous support at two speeches here in Northern Ireland.

In both locales she talked easily about working and traveling with the man she called "my husband."

In her first solo appearance since the president admitted to an improper relationship with a White House intern, Hillary Clinton left Moscow a day ahead of her husband to take part in a conference she initiated here, "Vital Voices — Women in Democracy." She was introduced by Fiona Hughes, a high school junior, who called her "a role model to me and to young women around the world."

The president is to join his wife in Northern Ireland on Thursday. Among the 300 women from Northern Ireland participating in the three-day event, there seemed to be almost universal admiration for Mrs. Clinton, and a willingness to ignore her domestic problems.

"It's sad that Americans are so focused on my namesake, the younger Monica," said Monica McWilliams, a key female political leader here and one of 14 women elected in June to Northern Ireland's new assembly. "If that were the only problem our media had to report on, we'd consider ourselves lucky."

"I'm not surprised at all that Hillary has decided to stand by her husband," McWilliams said. "Just because he has a past doesn't mean he has no future. My God, people in Northern Ireland understand that well enough."

"When my ex-husband cheated on me," said Francis McDonaghy, a nursing instructor, "I said that a woman would have to be bloody mad to stay with a man like that. But she's in different circumstances than most women. If she can work things out with him, it's her business and nobody else's."

Dry Spell Takes Heavy Toll On Ranchers in Texas

THE BALTIMORE SUN

RIO GRANDE VALLEY, TEXAS

The plight of the cattle ranchers is no better than the farmers'. Recent rains across parts of central Texas encouraged some grass to grow, giving ranchers a breather. But in the brush country in the northern Rio Grande valley, the dry weather is pushing ranchers out of business. Unlike farmers, no federal assistance is available to them.

With no grass to feed his cattle, Daniel Yturria Butler has been forced to sell off his herd of 2,500. He is down to 700, with plans to sell off all but 50 to 100 head of cattle. Those he'll keep. "For nostalgia," he says.

Butler apologizes for the condition of his herd. Cattle that once grazed in knee-deep pastures now fight over bales of hay — the only food available to them. The weakest cattle wander aimlessly in the dusty soil, their hides scarred and bloody from lost scuffles for hay.

"It's survival of the fittest," Butler says. The same law holds true for ranchers: Only the most diverse outfits survive droughts. While his profits disappear in the cattle business, Butler is raising javelina, deer, quail, wild turkey, nilgai and other exotic animals for hunting. He also plans to open up his ranch to tourists, who want to experience cowboy life, or at least what remains of it.

These options trouble him. The ranch has been in his family since 1858, when his great-great-grandfather, a banker, bought land north of Brownsville and dreamed of raising large herds of cattle. It's a dream fading quickly. Butler fears his 25-year-old niece will not be able to continue it.

"She has a lot of people watching her from the grave," he says. "We don't want to be the ones who lose this."

WEATHER

The Waiting Game

By Greg Lawson
STAFF METEOROLOGIST

We will continue to sit beneath clouds, facing the threat of showers, until the current cold front passes. It is pretty slow moving and will thus take until late this afternoon to pass out to sea. The same large low pressure system which brought us this cold front will bring us another weak line of disturbances, probably hitting sometime late Thursday night or Friday morning. This means the earliest we might see a break in the clouds is Friday afternoon. Until then, things will look peculiarly like yesterday. The weekend poses to be nicer — expect sunshine.

Tropical Storm Earl has been upgraded to a hurricane. Yesterday he gave forecasters the slip as he decided to slow down and shift eastward. Now it appears Florida's Panhandle is the most likely landfall site. Models still seem to disagree with what direction he'll head once he hits. We should not have to worry about the remnants of Earl until Sunday at the earliest, if at all.

Today: Still cloudy. Chances of scattered showers and perhaps thunderstorms. Southerly breeze. High 79°F (26°C).

Tonight: Continued cloudiness with a chance of showers. Low 61°F (16°C).

Friday: Partly cloudy most of the afternoon. Could clear by evening. High 75°F (24°C).

Weekend Outlook: Mostly sunny and nice. Temperatures in the high 70s (24–26°C).

Florida Braces For Cover As Hurricane Earl Lashes Away

By Mike Clary
LOS ANGELES TIMES

MIAMI

Schools and airports were closed, tourists went home and the residents of Gulf Coast barrier islands were urged to flee inland as blustery Hurricane Earl sloshed ashore Wednesday over the Florida Panhandle.

With top winds estimated at 100 miles an hour, the season's fourth named storm was a welterweight as hurricanes go, with more potential to unleash flooding than to flatten homes. Satellite photos also showed that Earl was a poorly defined, lopsided storm, with almost all of its heavy weather to the east and north of an ill-defined center.

Nonetheless, Earl lashed the Florida Gulf Coast with heavy rains through the day and threatened to overwhelm fragile barrier islands that are just above high tide. A storm surge of 8 feet above high tide and as much as 10 inches of rain are possible, forecasters said.

The ragged eye of Hurricane Earl was expected to pass over the coast late Wednesday or early Thursday near Panama City and move to the northeast. Although winds are likely to diminish, the

storm is expected to spread heavy rains into Georgia and the Carolinas over the next two or three days, forecasters said.

"What we are really concerned about is the storm surge and tremendous rains," said Gov. Lawton Chiles in declaring a state of emergency in three Panhandle counties. "Of course, if the storm did stall, it could intensify and become a much more dangerous storm."

Tornado warnings were posted for several counties in north and central Florida.

Eglin Air Force Base sent 30 fighter jets to Oklahoma for safety. Roads leading away from the coast were thick with traffic, and shoppers jammed stores to snatch up candles, batteries and bottled water.

At the Shell station on Panama City Beach, frantic customers snapped up \$5,000 worth of supplies, including gasoline, bread, milk and water, during the day, double normal sales. But as night fell and the wind picked up, clerk Shirley Lee said business just died.

"It's blowing and raining pretty good right now," she said. "I guess everyone's afraid to come out."

Lee said station management canceled the third shift and ordered

her to close at 10 p.m. "This is my first hurricane," Lee said. "I moved here about three years ago from Iowa. But I just live across the street, so I can walk home."

Although hurricane warnings were posted for 320 miles of coastline, from Pascagoula, Miss., to just south of Tallahassee, the state capital, most evacuations were voluntary. Mandatory evacuations were ordered, however, for barrier island communities along Apalachee Bay.

"We've taken the awnings down, and given our guests maps of the emergency routes out of town, in case mandatory evacuations are called for," said Karen Terrell, marketing director for the 700-room Resort at Sandestin in Destin, as winds picked up and horizontal rains swept the area. With only 40 percent of the rooms occupied, Terrell said many resort employees also have been allowed to go home to get ready.

What had been a diffuse area of turbulent weather in the Gulf of Mexico gave birth first to Tropical Storm Earl, which grew to hurricane strength early Wednesday. National Hurricane Center forecasters had earlier predicted the storm would make landfall west of New Orleans.

Words of Support and Accords Complete U.S.—Russia Summit

By Peter Baker
and Sharon LaFraniere

THE WASHINGTON POST

MOSCOW

President Clinton and Russian President Boris Yeltsin wrapped up a gloomy two-day Kremlin summit Wednesday with declarations of enduring mutual friendship but without agreement on how to prevent this nuclear-armed former superpower from sinking further into economic turmoil.

As the ruble plummeted another 18 percent and a senior Yeltsin deputy fretted that the country was adrift because of political instability, the only agreement on the economic crisis to emerge from private talks was that the United States would not come to Russia's rescue.

"We are not saying that we count solely on the support from the outside, no," Yeltsin said at a joint news conference where both leaders were somber. "One more time I will reiterate this: No. ... What we need from the United States is political support to the effect that the United States is in favor of reforms in Russia. This is what we really need and then all the investors who would like to come to the Russian reformed market will do so."

Clinton stayed focused on the heal-thyself theme he has emphasized since arriving here Monday, again lecturing the Russians about the need to remain committed to market-style reforms and resist a return to greater state control of the economy. "How long it will take to get better depends a lot more on you and what happens here than anything else we outsiders can do," Clinton told a Russian reporter, "although if there is a clear movement toward reform, I'll do everything I can to accelerate outside support of all kinds."

Unlike past summits that produced landmark agreements that helped reshape the world, this year's meeting yielded just two arms-control pacts aimed at sharing information on missile launches and shrinking stockpiles of weapons-grade plutonium. Differences over Kosovo, Iraq, NATO and other con-

tentious issues were papered over or left unresolved.

The summit showcased two politically weakened world leaders, hobbled at home by domestic problems that have drained their political capital and distracted their attention. Clinton Wednesday found himself on foreign soil once again trying to explain why he misled his country about his extramarital affair with Monica S. Lewinsky, while Yeltsin played host without a working government in place and only acting ministers to meet with their U.S. counterparts.

Yeltsin triggered renewed concern about his condition by appearing dazed at one point during the news conference in the Kremlin's domed Catherine Hall, where the two leaders enjoyed a ceremonial dinner Tuesday night.

Asked if he might accept someone other than acting Prime Minister Viktor Chernomyrdin or if he might dissolve the State Duma if the Communist-dominated lower house of parliament refuses to confirm him again as it did Monday, Yeltsin paused and stared blankly for a long time before finally speaking.

"Well," he said, "I must say, we will witness quite a few events for us to be able to achieve all those results." Then he stopped, with everyone waiting for him to say more. After another awkward pause, he turned to his press secretary and said, "That's all."

A surprised Clinton joked, "That's my answer too." But after the U.S. president finished speaking a few moments later, Yeltsin's aide called an abrupt end to the news conference after just three questions each from U.S. and Russian reporters.

The news conference originally was supposed to feature four questions from each side, but White House press secretary Michael McCurry said Yeltsin's staff changed plans just before the event began.

U.S. officials later said they believed the odd performance by Yeltsin was not a mental lapse but

instead a tactic to avoid answering the question. Officials who participated in meetings with the Russian leader over the past two days said he seemed to them to be in better shape than they had feared. While acknowledging that he appeared stiff and halting, U.S. officials said Yeltsin was alert and engaged in the meetings.

"I have more confidence now than before I came here," said a senior administration official involved in the discussions. "He ain't quitting. I would be ... very surprised" if Yeltsin succumbed to pressure to resign. The official said Yeltsin was determined not to trade the power of his office in order to get his government installed, as Duma opponents have demanded.

Still, Clinton aides were careful not to pronounce Yeltsin fully fit. Asked if he believed the Russian leader was completely capable mentally and physically, McCurry said, "I didn't say that," then hastened to add that he could not discuss the administration's "confidential assessments."

While Yeltsin publicly stated his commitment to economic reform during Clinton's visit, privately he and Chernomyrdin made clear that they are considering precisely the types of economic moves the United States has warned against, including printing new money to rescue failing banks and instituting new price controls, according to U.S. officials.

Yeltsin insisted that the last session of the summit Wednesday involve just him and Clinton without their top advisers. Having already agreed on the early-warning pact on missile launches, Yeltsin unexpectedly proposed that the two nations locate a joint center for detections on Russian soil, which Clinton quickly agreed to.

Beyond that, they did little to narrow their differences over other security issues, such as the START-II strategic arms pact that remains bogged down in the Duma. In a passing reference, Yeltsin again denounced NATO's expansion into Eastern Europe as "a blunder" and "historic error."

In Testimony, Clinton Admitted He Aided Lewinsky in Search

By John F. Harris and Susan Schmidt
THE WASHINGTON POST

WASHINGTON

President Clinton told prosecutors he tried to help Monica S. Lewinsky in January in her efforts to find a private-sector job and asked a senior White House aide whether he would be willing to write her a favorable job recommendation, according to sources familiar with his grand jury testimony.

Clinton, sources said, asked John Hilley, then serving as the White House legislative liaison, whether Hilley could recommend the former intern for a job. But sources supportive of the president's defense described this exchange as innocuous, since Clinton never instructed Hilley to write a recommendation, and none was apparently ever written.

Clinton's effort on behalf of

Lewinsky, with whom he has acknowledged having an extramarital relationship, came at the same time that lawyers for Paula Jones had issued a subpoena seeking Lewinsky's testimony in Jones's sexual harassment suit against the president. After receiving a private job offer in New York, Lewinsky signed an affidavit swearing she had no sexual relationship with the president. Independent Counsel Kenneth W. Starr is exploring whether Clinton obstructed justice by allegedly seeking to win Lewinsky's silence about their relationship.

January was only the latest time Clinton had taken a personal interest in Lewinsky's job prospects, Clinton acknowledged in his Aug. 17 grand jury testimony, sources said. In the summer of 1997, he talked to White House deputy personnel director Marcia Scott about Lewinsky's desire to return to the

White House after her involuntary reassignment to the Pentagon the year before.

Senior White House officials have told the grand jury that they wanted Lewinsky out of the White House because they believed she was spending too much time around the president, but claimed they did not know she was in an intimate relationship with him.

Clinton, sources said, discussed with Lewinsky her anger about being transferred and later asked Scott if there was a position for her back at the White House. But sources said Clinton issued no instructions to Scott and suggested she find something for Lewinsky only if it was "appropriate." In the end, sources said, Scott did not offer Lewinsky a job and assured her that her public affairs job at the Pentagon was far from a demotion or black mark on her record.

Ex-Mayor From Rwanda Is Found Guilty For His Role in a Slaughter

By Ann M. Simmons
LOS ANGELES TIMES

ARUSHA, TANZANIA

In the first guilty verdict for genocide handed down by an international court, a former mayor from Rwanda was found guilty Wednesday for his role in the 1994 slaughter of more than 800,000 people in his African nation.

The International Criminal Tribunal for Rwanda, the U.N. court based in this northern Tanzanian town, also set a precedent by recognizing rape and other forms of sexual violence as acts of genocide when targeted at a specific population with the intent of causing physical and mental harm.

Jean-Paul Akayesu, an ethnic Hutu and mayor of the village of Taba in central Rwanda during the massacre of ethnic Tutsis and Hutu

moderates, was convicted on nine counts of genocide, incitement to genocide, crimes against humanity, rape and sexual violence.

He was acquitted on six counts, including a charge of complicity in genocide. The judges ruled that someone found guilty of genocide could not also be convicted of complicity and that prosecutors had failed to prove their case on the other counts.

Lead prosecutor Pierre Prosper said he was satisfied with the judgment because the judges in the non-jury trial recognized that Akayesu's case was one "of betrayal and ... abuse of power" in which the ex-mayor "failed in his obligation to protect his people."

The judgment also "recognizes crimes of sexual violence for what they are," said Prosper, a former

assistant U.S. attorney in Los Angeles. "They are horrific crimes, where the suffering continues long after the actual offense."

The judgment comes two days before the scheduled sentencing of former Rwandan Prime Minister Jean Kambanda, who in May pleaded guilty to genocide and confessed that the systematic slaughter of Tutsis was sponsored by his government.

But although the Akayesu judgment hands the U.N. tribunal a victory in its attempts to prosecute genocide, some Rwandans said they felt the verdict will do little to bring relief to a population still suffering the physical and emotional scars of the massacre.

Others said the judgment would mean little, unless those who were hurt are somehow compensated.

Freddie Mac Warned On Civil Rights

THE WASHINGTON POST

WASHINGTON

The U.S. Equal Employment Opportunity Commission is again taking on Freddie Mac, accusing the McLean, Va.-based financial firm of showing a "disregard for the civil rights of black employees" in its hiring and promotion practices.

Acting on a complaint filed by a former Freddie Mac manager, the EEOC issued a finding last month saying that black employees at the firm face widespread discrimination and suffer retaliation if they complain about their treatment.

In finding that Freddie Mac has created a "hostile work environment," the EEOC urged the company to take swift corrective action, warning that failure to do so could lead the commission to file a federal lawsuit.

The EEOC filed suit against Freddie Mac last year, seeking a court order requiring changes. A federal judge dismissed the suit after determining that the company had taken sufficient remedial action, including better training and the creation of a toll-free hot line for employees to report instances of offensive conduct. Since then, EEOC lawyers said, other employees have come forward with evidence of a pattern of discrimination.

Company officials Wednesday denied the allegations, saying they had acted aggressively to root out isolated incidents of misconduct. In its 30-year history, Freddie Mac has an "extremely good employment record," said David Palombi, the firm's vice president for corporate communications. Palombi said no court has ever found that Freddie Mac engaged in discriminatory behavior.

Northwest Lays Off Workers, Cancels Flights

THE WASHINGTON POST

WASHINGTON

Northwest Airlines said Wednesday that it has laid off 27,000 workers and canceled all flights through the long Labor Day holiday. Meanwhile, federal mediators set up a weekend meeting to determine whether it was worth trying to restart negotiations in the five-day pilots strike against the nation's fourth-largest airline.

The airline said it sent layoff notices to 27,000 mechanics, flight attendants, customer service employees and other "groundside employees." Further layoff notices are expected among Northwest's 50,000 employees as the strike continues.

The National Mediation Board said it set up an exploratory meeting in Chicago on Saturday to see whether the two sides were prepared to move on the critical pay issues that triggered the strike.

But even if the meeting produces meaningful results, sources close to the board said Wednesday, actual negotiations probably would not start before Tuesday in either Washington or Minneapolis. That timetable would almost ensure that Northwest's operations would be grounded for all of next week even if negotiators reached a quick settlement.

More than 6,000 members of the Air Line Pilots Association walked off their jobs at 12:01 a.m. Saturday in a dispute over a new labor contract. Northwest immediately canceled its 1,700 daily flights.



Graduate Student Council

Walker Memorial, 50-220 ☎ 253-2195

gsc-request@mit.edu 🌐 www.mit.edu/activities/gsc

Graduate Orientation Calendar

ID Photos

9 AM - 4:30 PM, Sept. 3



Information Booth

10 AM - 4 PM, Sept. 3

10 AM - 12 PM, Sept. 4



Thursday, September 3

Activities Carnival & Info Fair

1 - 5 PM

BBQ Dinner 6 PM **

Bim Skala Bim Band 8 PM



Sunday, September 6

Boston Harbor Cruise 7 - 10:30 PM **

Monday, September 7

Red Sox Baseball Game 7 - 10:30 PM **

Friday, September 4

Beverages at Muddy Charles Pub **

Boston Trolley Tour 2 - 4 PM **

GSC Social 5:30 - 7:30 PM



Friday, September 11

Beverages at the Thirsty Ear 7 PM - 1 AM **

Saturday, September 12

Whale Watch 11 AM - 4 PM **

Night on Town (Meet at 50-220) 9 PM - ?

Saturday, September 5

Hiking Trip 7 AM - 10 PM **

** MUST OBTAIN TICKETS FROM INFORMATION BOOTH



Calendar

▶ SEPTEMBER

- 09** General Council Meeting *
- 09** Deadline for Fall Funding Applications
- 14** Fall Funding Board Meeting *
- 15** Academics, Research & Careers Meeting *
- 17** Publications Board Meeting *
- 22** Housing & Community Affairs Meeting *
- 28** Activities Committee Meeting *
- 29** Academics, Research & Careers Meeting *



* at 5:30pm in Room 50-220. All graduate students are welcome. Food is provided.

1998 Graduate Student Career Fair

The Academics, Research, & Careers Committee is currently soliciting resumes for the 1998 Graduate Career Fair. Resumes can be submitted to the GSC office (50-220) any time until Sept. 18 and we are accepting both hard copies and electronic versions. One page is allowed for masters students and two pages for Ph.D. candidates. More information can be found at: <http://www.mit.edu/activities/gsc/CareerFair/students.html> or by emailing gsc-careerfair@mit.edu.

OPINION

The Tech
Established 1981

Chairman

Josh Bittker '99

Editor in Chief

Douglas E. Heimburger '00

Business Manager

Joey Dieckhans '00

Managing Editor

Erica S. Pfister '00

NEWS STAFF

Editors: Brett Altschul '99, Frank Dabek '00, Zareena Hussain '00; **Associate Editors:** Carina Fung '99, Jean K. Lee '99, Susan Buchman '01, Jennifer Chung '01, Krista L. Niece '01; **Staff:** Orli G. Bahcall '99, Shawdee Eshghi '99, Eric Sit '99, Aileen Tang '99, May K. Tse '99, Sharmin Ghaznavi '00, Stuart Jackson '00, Dudley W. Lamming '00, Katie Jeffreys '01, Dalié Jiménez '01; **Meteorologists:** Michael C. Morgan PhD '95, Greg Lawson G, Gerard Roe G, Chris E. Forest, Marek Zebrowski.

PRODUCTION STAFF

Editor: Ryan M. Ochylski '01; **Associate Editors:** Moksha Ranasinghe '99, Francisco Tanudjaja '00; **Staff:** Jason C. Yang '99, Roxanne Lau '01, Steve K. Lim '01, Ágnes Borszéli.

OPINION STAFF

Editors: Naveen Sunkavally '01, Michael J. Ring '01; **Staff:** Dan Dunn '94, Anders Hove '96, Mitali Dhar '99, Wesley T. Chan '00, Jim J. O'Donnell '00, Seth Bisen-Hersh '01, Andrew J. Kim '01, Elaine Y. Wan '01.

SPORTS STAFF

Editor: Shao-Fei Moy '98; **Staff:** Chris Brocoum '00.

ARTS STAFF

Editor: Joel M. Rosenberg '99; **Staff:** Thomas Chen G, Steven R. L. Millman G, Vladimir V. Zelevinsky G, Teresa Huang '97, David V. Rodriguez '97, Mark Huang '99.

PHOTOGRAPHY STAFF

Editors: Gregory F. Kuhnen '00, Rebecca Loh '01; **Staff:** Rich Fletcher G, Wan Y. W. Morshidi G, Thomas E. Murphy G, Arifur Rahman G, T. Luke Young G, Dennis Yancey '97, Ahmed Ait-Ghezala '99, David Tarin '99, Rita H. Lin '00, Connie C. Lu '00, Karlene Rosera '00, Cornelia Tsang '00, Chun Hua Zheng '00, Ajai Bharadwaj '01, Ying Lee '01, Amy Yen '01, Miodrag Ćirković.

FEATURES STAFF

Anthony R. Salas '91, Pawan Sinha SM '92, Hugo M. Ayala G, Calista E. Tait G, Solar Olugebefola '99, Jessica Wu '99, Jennifer Dimase '01, Xixi D'Moon '01.

BUSINESS STAFF

Advertising Manager: Jennifer Koo '00; **Operations Manager:** Satwiksai Seshasai '01; **Staff:** Amy Cai '01.

TECHNOLOGY STAFF

Staff: Boris Zbarsky '01.

EDITORS AT LARGE

Contributing Editor: Dan McGuire '99; **Color Editor:** Gábor Csányi G.

ADVISORY BOARD

V. Michael Bove '83, Robert E. Malchman '85, Thomas T. Huang '86, Deborah A. Levinson '91, Reuven M. Lerner '92, Josh Hartmann '93, Jeremy Hylton '94, Garlen C. Leung '95.

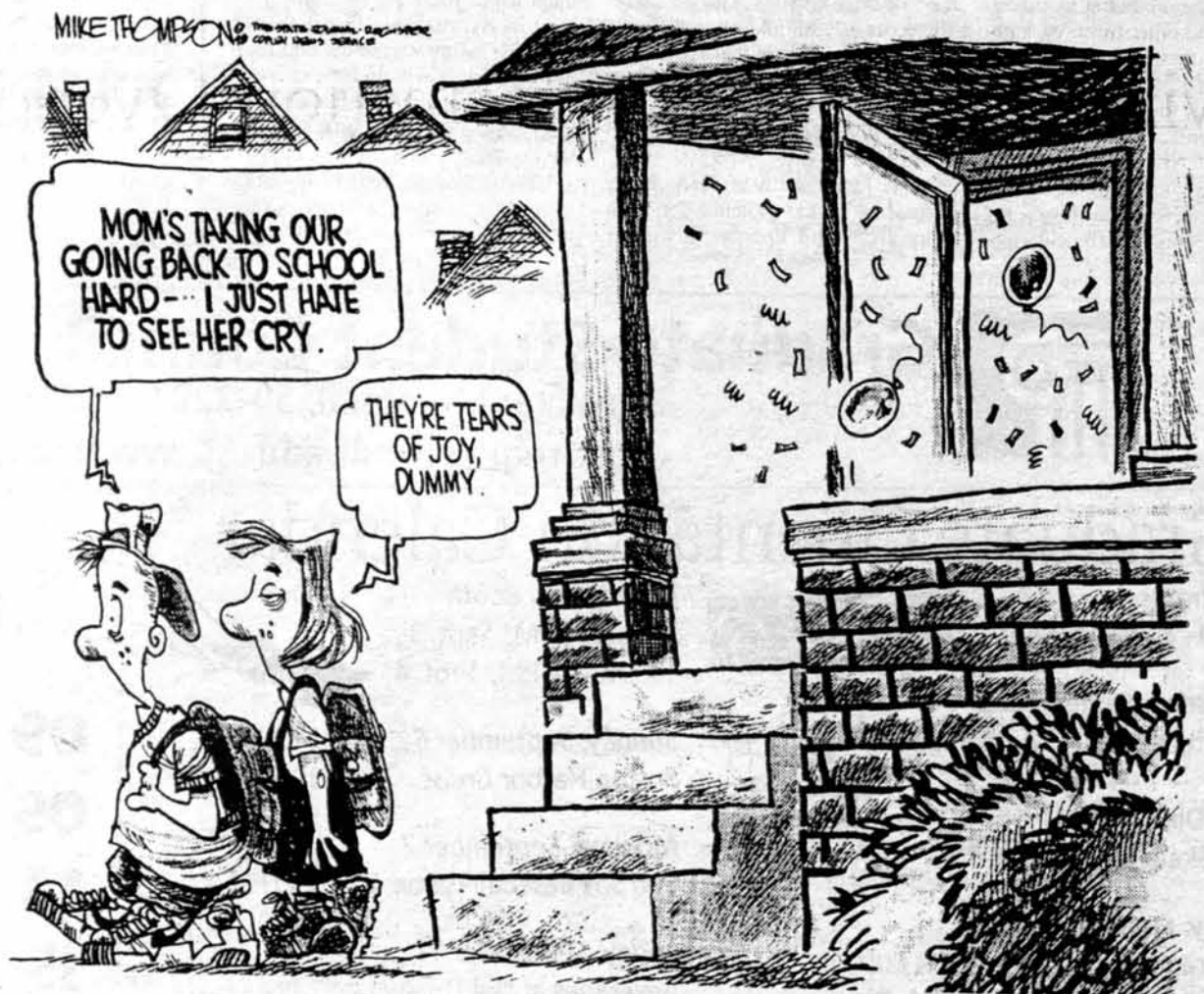
PRODUCTION STAFF FOR THIS ISSUE

Night Editor: Erica S. Pfister '00; **Staff:** Ryan M. Ochylski '01, Kristen Landino '02.

The Tech (ISSN 0148-9607) is published on Tuesdays and Fridays during the academic year (except during MIT vacations). Wednesdays during January and monthly during the summer for \$45.00 per year Third Class by *The Tech*, Room W20-483, 84 Massachusetts Ave., Cambridge, Mass. 02139. Third Class postage paid at Boston, Mass. Non-profit Organization Permit No. 59720. **POSTMASTER:** Please send all address changes to our mailing address: *The Tech*, P.O. Box 397029, Cambridge, Mass. 02139-7029. Telephone: (617) 253-1541, editorial: (617) 258-8324, business: (617) 258-8226, facsimile. Advertising, subscription, and typesetting rates available. Entire contents © 1998 *The Tech*. Printed on recycled paper by MassWeb Printing Co.



"As a member of the religious right who believes in 'conversion,' I want to show homosexuals the way . . ."



Opinion Policy

Editorials are the official opinion of *The Tech*. They are written by the editorial board, which consists of the chairman, editor in chief, managing editor, news editors, and opinion editors.

Dissents are the opinions of the signed members of the editorial board choosing to publish their disagreement with the editorial.

Columns and editorial cartoons are written by individuals and represent the opinion of the author, not necessarily that of the newspaper.

Letters to the editor are welcome. Electronic submissions are encouraged and may be sent to letters@the-tech.mit.edu. Hard copy submissions may be addressed to *The Tech*, P.O. Box 397029, Cambridge, Mass. 02139-7029, or sent by interdepartmental mail to Room W20-483. All submissions are due by 4:30 p.m. two days before the date of publication.

Letters and cartoons must bear the authors' signatures, addresses, and phone numbers. Unsigned letters will not be accepted. No letter or cartoon will be printed anonymously without the express prior approval of *The Tech*. *The Tech* reserves the right to edit or condense letters; shorter letters will be given higher priority. Once submitted, all letters become property of *The Tech*, and will not be returned. *The Tech* makes no commitment to publish all the letters received.

To Reach Us

The Tech's telephone number is (617) 253-1541. E-mail is the easiest way to reach any member of our staff. If you are unsure who to contact, send mail to general@the-tech.mit.edu, and it will be directed to the appropriate person. *The Tech* can be found on the World-Wide Web at <http://the-tech.mit.edu>.

The Problems with State Lotteries

Chance for Quick Fix Presents Irresistible yet Dangerous Lure for the Poor

Michael Ring

One of this summer's great spectacles was the Powerball fever that gripped the nation. With a nearly \$300 million jackpot at stake in late July, millions flocked to their lottery agents to place bets on the multi-state lottery game. The jackpot was finally hit on July 29 by a consortium of 13 workers from Ohio. While the drawing was a time of great excitement for those 13, it should also serve as a time of introspection for the rest of us.

This Powerball drawing offers a good time to assess the impact of gambling, especially state lotteries, on our society. Many of the players in the lottery behaved responsibly, realizing the odds of winning Powerball are an astronomical 80-million-to-1 and, therefore, bought only a few dollars' worth of tickets. There is nothing wrong with this recreational gambling.

Unfortunately, a great number of Powerball players were much more foolhardy. In any state and probably any store that sells Powerball tickets, cases of compulsive gambling will abound. Tales of customers spending \$100, \$200, and even \$500 on Powerball tickets were frighteningly common. Some spent even more. One waiter from New York City claimed to have spent \$3,000 in Powerball tickets in Greenwich, Connecticut. The hysteria was so damaging that the executive director of the New Hampshire State Lottery took the surprising action of holding a press conference urging people not to spend beyond their means.

The anecdote of the waiter highlights a second problem that became obvious with the recent Powerball affair: Many Americans are willing to travel long distances just to bet into these lottery pools. Stores in southern New Hampshire, a state

which participates in Powerball, coped with lines of up to several hours in the wake of a mass influx of residents from Massachusetts, a state which does not issue Powerball tickets.

The Powerball winners themselves, all Ohioans living in the Columbus area, drove 100 miles to Indiana to play the game. But nowhere was the mob frenzy as evident as it was in Greenwich. The quiet Connecticut town, having the misfortune of being the first over the New York border, was inundated by residents of the Big Apple queuing up for Powerball tickets.

Lines at many of the town's gas stations and convenience stores were 500 players long, and one needed to wait for six hours before finally reaching the betting terminal. Traffic was gridlocked for days, and several arrests were made for disorderly conduct. The town spent \$80,000 to cover police details and emergency contingencies. Town police chief Peter Robbins stated, "This is the worst thing I've ever seen, and I've been here 28 years."

No wonder why Greenwich town officials have talked about ending Powerball sales in their town. The people playing Powerball and other lotteries are not the wealthy, but the poor and working classes, those who can least afford to part so recklessly with their money. Massachusetts studies have revealed this state's lottery sales are heaviest in cities like Chelsea, Lawrence, and New Bedford, which also have the state's highest unemployment and poverty rates. Lottery sales are barely detectable in places like Weston, Wellesley, and Sudbury, where the three-Mercedes household is *de rigueur*.

While there are other forms of gambling available as well, none are as problematic as state lotteries. Thoroughbred, harness, and greyhound racing are ancient and noble sports, dating back hundreds if not thousands of years. Still enjoyed by millions of Americans, they offer more sporting and recreational value than just a draw of numbers. While there are compulsive gamblers to be found at the track, they are far, far outnumbered

by the casual fan with enough self-control to put a cap on a day's losses.

Casino gambling offers an exciting atmosphere for millions, who plan vacations around Las Vegas and now even Native American casinos like Foxwoods. The stakes are higher at casinos than they are at pari-mutuel tracks, and so gambling losses are more of a problem there. Still, most casino patrons treat the business as a place to enjoy the holidays, not as a part of everyday life.

That is the most frightening part of the state lotteries — the way it pervades our daily life and surrounds us in our daily routine. Buy a quart of milk, a loaf of bread, or ten gallons of gas, and you are sure to be met by a lottery agent. Dog and horse tracks provide thousands of jobs for mutual clerks and animal trainers. Casinos, too, need to employ dealers and cashiers.

The lotteries, however, make no such employment impact. Lottery agents are paid small commissions, so the lottery business makes no significant impact on their profit. Though the lotteries generate revenue for their respective states, they do so in the form of a regressive tax, stealing money from the working poor with dreams of a big score. While I am not advocating a ban of state lotteries, I do think states should be more proactive in preventing compulsive gambling.

Perhaps they should offer fewer games and be more willing to abandon games that do not draw interest. There is no need for Keno, which turns convenience stores into miniature casinos. High-stakes scratch tickets costing \$5 or even \$10 are terribly detrimental as well.

Most importantly, states need to spend less time promoting the lottery as a fun, recreational activity and follow the cue of New Hampshire's lottery director. Compulsive lottery players need to be reminded that the odds are against them. And while wagering an occasional dollar or two on Powerball can be fun, wagering the occasional one-thousand or two-thousand can destroy one's life.

Much at Stake In War Over Tribal Casinos

Naveen Sunkavally

The concept of luck is something that has been utterly foreign to Native American tribes since the days of Columbus. Left and right,



those newcomers populating North America decimated the Native American population, mostly with disease but with warfare as well. Several times Americans made promises to Indian tribes guaranteeing them land, and on almost all those occasions, the tribes were deceived and their lands were taken. Now Native Americans occupy but a fraction of North America.

Luck hasn't always been on the side of Native Americans — but these days, Native Americans are relying a lot on luck. It's called the Indian casino, and it is at the center of debate in California, where Governor Pete Wilson signed a pact with 11 Indian tribes that allows those tribes to operate slot machines similar to the state lottery. There are currently about 13,000 casinos residing on tribal land. The state, which doesn't permit casinos on its own land, can now also regulate and tax the booming industry, which generates over \$300 to \$400 million a year in profits.

There are 99 tribes in California, and most of these tribes, especially the wealthier ones, are against the newly signed pact. Previously, Indian tribes have had virtually complete control over their lands, and they were able to set up their own casinos without government involvement. Now, with the new legislation, tribes feel that once again in their history that their sovereignty has been breached. In response, tribes have put up a new state new initiative, Proposition 5, that would give tribes back their authority over casinos.

Opponents of the proposition argue essentially that the tribes have too much power. They argue that, as a result of past history, the United States government has given Indian tribes special privileges that many U. S. citizens or groups do not have.

For instance, a U.S. citizen can't file a lawsuit against an Indian tribe or a member of an Indian tribe unless the tribe voluntarily grants a waiver of immunity so that it can be sued. Such a status makes it harder than normal to file personal liability, contractual, and financial liability suits.

Opponents also claim that Indian gaming may be a boon for generally accursed activities such as drinking, prostitution, robbery, drugs, laundering, and even traffic congestion. They think that California taxpayers should not have to pay for damages caused by people attending tribal casinos.

I think that the casinos should remain unregulated and under the purview of the Indian tribes. I am always a fan of personal responsibility, and, in this case as in most, personal responsibility should win out. Tribes should not be held accountable for the costs incurred when outside people gambling at their casinos contribute to general drunkenness and slovenliness.

It is not the tribal casinos' fault that people go there and choose to engage in the activities that they engage in. Taxpayers are not paying to cover damages caused by tribal casinos but are paying for damages rising from their own people.

But the "traffic congestion/drunkenness" excuse is exactly that, an excuse, a subterfuge that covers up the real problem the state feels with casinos. The Nevada casino lobby has a strong stake in seeing Proposition 5 not pass. Fearing that Native American casinos may take away from their own profits, Nevada casinos have waged a ruthless lobby against tribal gaming.

In addition, casinos are generating a lot of money, and the state feels that it would be simply great to tax some of that money. The newly signed law will go farther than any other law in restricting tribal power. The law is simply a result of popular sentiment and resentment against tribal success. It's hard to believe that one nation can legislate and try to enforce laws for another nation, but that's what the United States is doing. It's another case of luck gone bad for Native American tribes. If Proposition 5 fails, the dark cloud of doom will darken even more over North American tribes.

Living in an Age of Information Overload

Dan McGuire

As recently as a few centuries ago, it was possible for a guy with a lot of time on his hands and a decent amount of money to accumulate in his house the entire sum of western knowledge.

You figure that the largest private libraries would stock a Bible, a concordance, a couple of commentaries on the Bible, some classic texts like the *Canterbury Tales*, and a few Greek and Arabic texts on science, mathematics, and philosophy.

This sort of distribution makes sense given the market conditions prevalent in the late middle ages and early Renaissance. A good portion of the population was illiterate and spent the day whacking at the ground with sticks trying to make corn grow. The remainder

that it contains and more that it appeals to the set of prejudices, predilections, and world views that one already holds.

It's possible, given the economics of modern publishing, to print a magazine devoted entirely to fly fishing or smoking cigars. Paper is cheap, stringers are cheap, and the management and publishing structure already exists. The day when each and every person can have a magazine that caters to his or her own per-

sonal neuroses has arrived, with magazines like the *Mellon Report* and *National Spectator* being People's Exhibit A.

Television shows, and even entire channels, dedicated to one particular thing are becoming *de rigueur* on modern, 500 channel cable systems. People can get not one, but two channels covering debates in Congress. There are now, by my count, ten channels dedicated to showing current movies. Old movies get more air time on two or three channels dedi-

cated to the subject. But what is really changing the face of information distribution is the Internet. Nothing gets more specific than one's personal musings on the current state of the world.

A person that would have to call tech support to learn how to pick his nose is now able to immortalize his thoughts on the Internet. Call it the dump truck with the unlocked tail gate on the Information Superhighway. A few quick AltaVista searches reveal the extent of the problem. Almost 16,000 people feel compelled to tell the world about their favorite books, according to AltaVista. Over 130,000 people want everyone to know what they are interested in. And almost 19,000 pages want to tell you about their favorite links.

This isn't to say that there aren't good things out there on the Internet. Some sites are thought-provoking, some are funny, and

some are interesting.

But it's safe to say that the vast majority are not. Most people on the Internet just don't care about 16,000 pages worth of books, 19,000 pages worth of links, and 130,000 pages worth of people's interests. We have reached an age of information overload; we have more information than we can process, and most of it is utterly useless.

So let's regulate it. I have a modest proposal. The French have had great success with the *Academie Française*, the body designed to regulate the growth of the French language and prevent it from being anglicanized.

I propose a similar body to monitor U.S. publications, television, and web pages and prevent excessive specificity. All bits of information judged too specific would be stamped with a big red stamp that says "This document has been judged to be too specific. Federal law would require that everyone who reads this must, as a mind broadening exercise, read an article at random from the *Encyclopedia Britannica*."

That'd take care of those cat fanciers.



0010100010101110101
10101010010101010101
0010010010101011011
1111010011011010101

1001010100010101010100
0010101010101010101010
111101011101010101101010
100010101010100100101010

couldn't support a whole heck of a lot of scribes, so there wasn't a great deal of innovation.

Then a whole series of things hit: the Renaissance, Gutenberg and his press, the Industrial Age, mass production, and literacy. A whole series of momentous changes in society and technology made all sorts of information available everywhere, culminating in the present day where a person looking for toothpaste at CVS can pick up a copy of *Cat Fancy* on the way out the door.

It's hard to imagine medieval scribes spending weeks illuminating a five-page spread named "How to Keep Your Cat's Fur Its Fluffiest". It simply wouldn't be worth their time.

Obviously, the character of the information industry has changed. For one, it's that there's simply more of it, but there is also a growing specificity: it's possible to build a publication that caters only to a specific group of people, such as middle-aged fanciers of cats. The novelty of the publication is less the information

sonal neuroses has arrived, with magazines like the *Mellon Report* and *National Spectator* being People's Exhibit A.

Television shows, and even entire channels, dedicated to one particular thing are becoming *de rigueur* on modern, 500 channel cable systems. People can get not one, but two channels covering debates in Congress. There are now, by my count, ten channels dedicated to showing current movies. Old movies get more air time on two or three channels dedi-

THE ARTS

Troubled...

And, don't know where to turn for help with a personal, family, community, or health concern? Call us.

The United Way's **FIRST CALL FOR HELP™** (formerly Information & Referral) can find an agency or service to meet your particular need. Our service is free, confidential, and provided by trained specialists.

United Way's
FIRST CALL FOR HELP™

A Service of United Way of Massachusetts Bay

1-800-231-4377

This space donated by *The Tech*

RESTAURANT REVIEW

La Famiglia Giorgio

Lots and lots of okay food

By Raffi Krikorian

La Famiglia Giorgio
Price per person: \$13-\$18
250 Newbury Street, Boston
Hours: M-F 11am-10pm, Su noon-10pm
No reservations, no dress code
Rating: 2 out of 5

For some reason, La Famiglia Giorgio seems to be a very popular place, and many of my friends have recommended it to me for its great food, perfect service, and large portions. I guess two out of three is not bad.

The service at La Famiglia is very friendly but lacks a certain amount of grace; one must not mind being pointed at and called "you" when ordering food. The food itself is decent (if a little bland, unimaginative, and oily) and the portions are quite generous. Lastly, the price is not at all unreasonable. For about \$15, you can get a decent and filling meal.

When I first approached the restaurant, it looked like a cute little place with outdoor eating and appetizing food. The building is quaint: a nice little brick structure which houses the basement kitchen and dining room. On the patio in front of the building are small, two person dining tables with closely packed chairs; inside, the same seating arrangement is apparent, leaving a single aisle down the center along which the waiters carefully navigate. If you are claustrophobic, definitely sit outside as there are no windows in the cramped downstairs quarters. La Famiglia gets a lot of traffic on Friday nights and on the weekends, so they do their best to seat as many people as possible.

Aside from the shower of old bread crumbs which empty from the worn menu onto one's lap, the menu looks quite appetizing — there is everything from Calamari to Calabrese (each with ziti or linguini) in the Pastas, an appetizing Chicken section, and even steak tips for those who were dragged

into an Italian restaurant against their will. Price changes are unfortunately marked with post-it notes, which usually fall off due to the bread crumbs. When ordering your food on a budget, make sure your price is right.

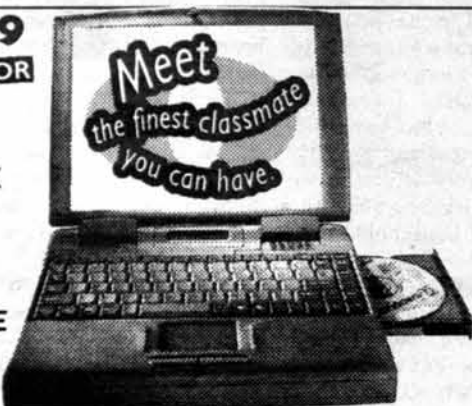
Also, be aware of the waiters' tendency to rush you to order. Unless you have something specific in mind before you sit down, or you can pick your food out really quickly, you will probably have to ask your waiter for more time to choose.

Thankfully, the main courses arrived quickly; the bread given to us to whet our appetites was cold. The main courses were atop platters nearly overflowing with pasta and sauce. After eating what I thought was a considerable amount, there was still no visible dent in the mountain of pasta on my plate. My complaint is that my meal was swimming in olive oil, which crept to the edge of the plate and completely doused the food underneath. The tomato sauce was also simple and bland. On the whole, the meal was decent, spectacular only in portion.

If you are looking for some place elegant, this restaurant is probably not the place to go. But if you and your friends are in the area, and are looking for a large amount of Italian food at a reasonable price, then La Famiglia Giorgio is just about perfect.

\$99999 **\$129999**
DSTN COLOR TFT COLOR

DigiBook 233 MHz Pentium® MMX
Wizard 32MB EDO RAM
12.1" color TFT / DSTN
2.1GB hard drive
24x CD/FD **ALL IN ONE**
512 Level 2 cache
FREE carry case!



Come in for PC cards, RAM & accessories, too!

Cambridge 617-491-3454 1776 Mass Ave.	Boston 617-723-7570 50 Congress St.	Natick 508-650-9800 Loehmann's Village	Nashua 603-897-1300 7 Harold Drive
---	---	--	--

Gamelan Galak Tika is looking for NEW members

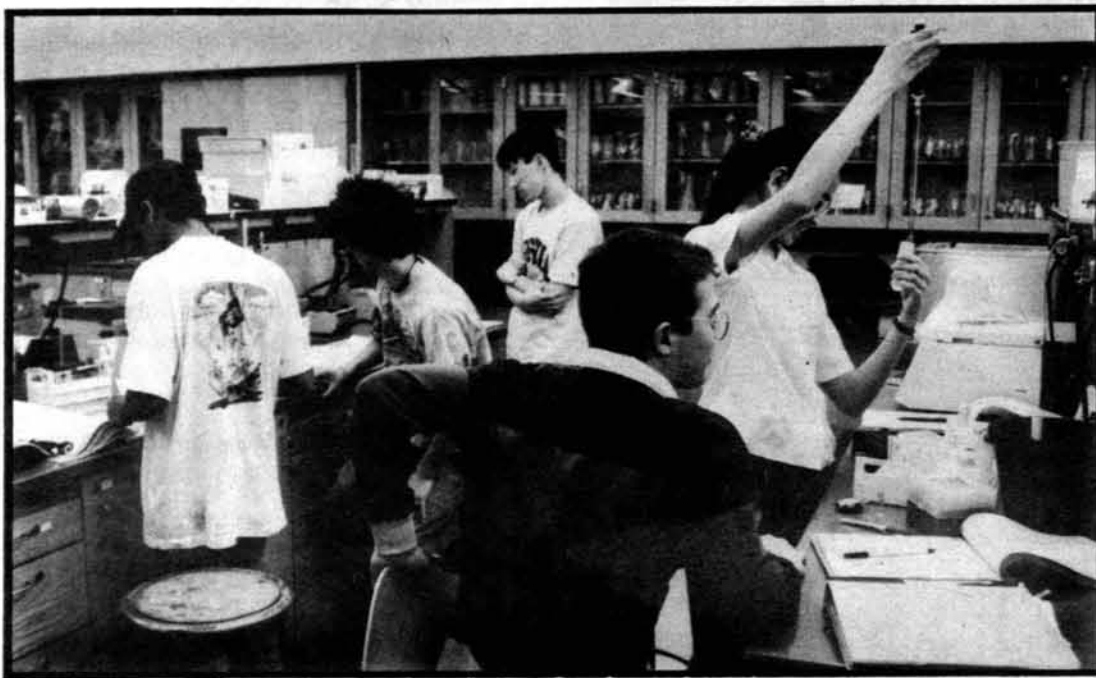
Open rehearsal: Sunday, September 13th
4:30 pm – 6:30 pm
Endicott World Music Center
(MIT Museum building)

Rehearsals: Wednesdays, 7:30 pm – 9:30 pm;
Sundays, 4:30 pm – 6:30 pm

10-minute audition for all new members

Galak Tika website: <http://web.mit.edu/galak-tika/www>

You can't work all the time...



Join Technique!

Yearbook of the Massachusetts Institute of Technology

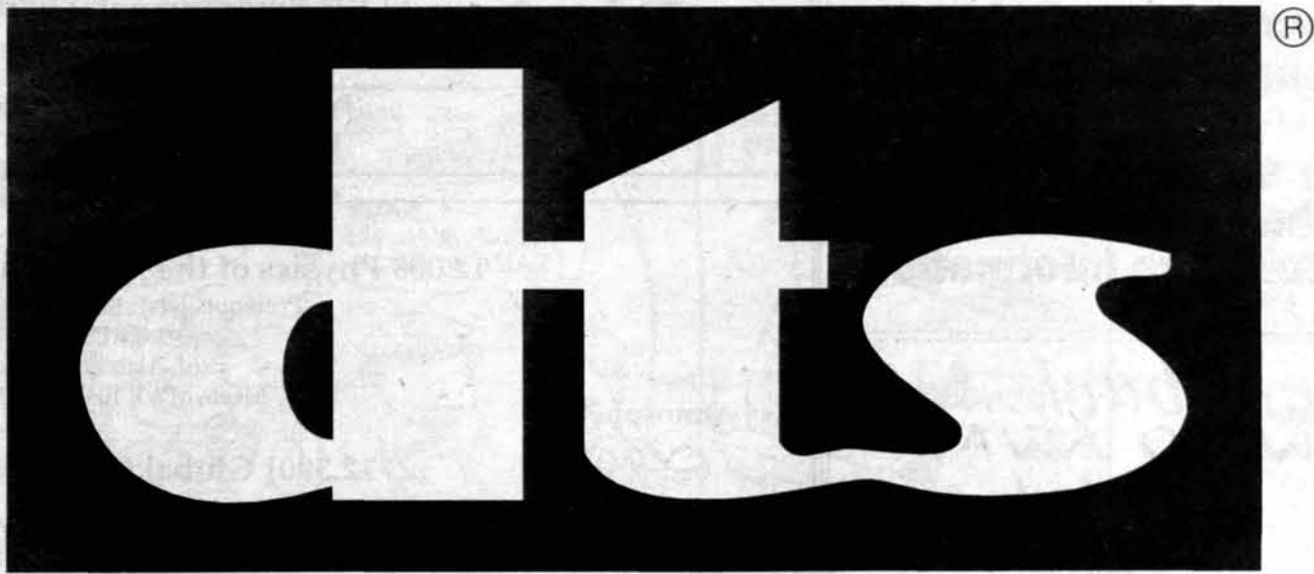
- OPEN HOUSE -

This Saturday, 12:00 noon - 5:00 pm, Student Center, Room 451

... photography ... layout ... writing ... darkroom ... free food ...

Have you heard this yet?

D I G I T A L



S O U N D

Thanks to a generous donation from Digital Theater Systems, most LSC movies shown in 26-100 feature 6-channel digital sound for the finest sound reproduction possible.

Showings presented in DTS Digital Sound include:

Deep Impact	September 8	7 & 10 pm	26-100
Fear and Loathing in Las Vegas	September 11	7 & 10 pm	26-100
Titanic	September 12	2, 6 & 10 pm	26-100
	September 13	7 pm	26-100
Clay Pigeons (FREE sneak preview!)	September 17	8 pm	26-100
City of Angels	September 18	7 & 10 pm	26-100
	September 20	7 pm	26-100
Primary Colors	September 19	7 & 10:30 pm	26-100
	September 20	10 pm	26-100

LSC MIT Lecture
Series Committee

<http://lsc.mit.edu>

Join The Tech.

This box is just too small to tell you about all the great benefits there are to being on our staff...

Call Josh or Doug, 253-1541, or stop by the Student Center, Room 483, for more information.



EAPS Fall Courses

12.002 Physics and Chemistry of the Solid Earth

Prerequisite(s): 8:02, 18.02
3-1-8 REST
Prof. Chris J. Marone
Meets MWF 1:00 - 2:00

Earth



12.102 Environmental Earth Science

Prerequisite(s): None
3-0-9 REST
Prof. Sam Bowring, Prof. John Southard
Meets TR 11:00 - 12:30

12.003 Physics of the Atmosphere and Ocean

Prerequisite(s): 18.02, 8.01, 5.60
3-1-8 REST
Prof. Alan Plumb
Meets MWF 10:00 - 11:00

Atmospheric



12.300J Global Change Science

Meets with 1.11J
Prerequisite(s): 18.03 or 5.60
3-0-9
Prof. Peter Stone, Prof. Elfatih Eltahir
Meets TR 2:30 - 4:00

& Planetary
Sciences



12.421J Physical Principles of Remote Sensing

Meets with 1.761J, 12.621
Prerequisite(s): 8.03
3-0-9
Prof. Rick Binzel
Meets TR 2:00 - 3:30

These are just a few of the EAPS courses available this fall - check out <http://registrar.mit.edu> for a complete listing. If you have questions or need more information about EAPS, send email to sewell@mit.edu.

*Welcome back...
NOW GO AWAY!*



Great deals on study, work and volunteer programs, airfares, and hotels.

Nice people! Gift certificates for sale! European railpasses, and international student ID cards issued on the spot!

Council Travel

(IEE: Council on International Educational Exchange)
273 Newbury St., Boston

(617) 266-1926

12 Eliot St., 2nd Fl., Cambridge

(617) 497-1497

MIT Student Center, W20-024
84 Massachusetts Ave., Cambridge

(617) 225-2555

Open a Cambridge Trust Company ATM Convenience Account and define your best way to bank!

student \stū-dēnt\ n, 1: One who attends school 2: One who studies
checking account \chēk-īng ā-kōunt\ n, A bank account against which depositors can draw funds by check, ATM or over the Internet
best \bēst\ adj, To greatest advantage
best student checking account \bēst stu-dēnt chēk-īng ā-kōunt\ n,
1: Cambridge Trust Company's ATM Convenience Account
2: The best deal for students in town!

In fact, open any checking or savings account during September, and we'll give you a free hardcover or CD-ROM Merriam-Webster's Collegiate Dictionary. We welcome student accounts and can help in many ways with student loans, MasterCard®, Credit Reserve, safe deposit boxes and storage lockers.

Our ATM Convenience Account features:

- NO minimum balance
- NO regular monthly maintenance fee
- NO charge for first eight checks per statement cycle
- A FREE Merriam-Webster Dictionary
- NO charge for Cambridge Trust ATMs
- Unlimited POS and MasterCard™ Card transactions
- Complimentary photo I.D.
- AND NOW WITH ONLINE BANKING

Think you know your history?

Open any checking or savings account before September 30, 1998, and you could be eligible to win a trip for 2 FREE to Williamsburg, VA*



Cambridge Trust Company

Harvard Sq. | Kendall Sq. | University Place | 1720 Massachusetts Ave. | 353 Huron Ave.
University Park at M.I.T. | Weston | Concord | Beacon Hill
New Hampshire Trust Offices: Exeter | Concord
Member FDIC | (617) 876-5500
www.cambridgetrust.com



*Drawing for trip, which includes round-trip airfare for two and two nights' lodging, will be held on October 9th, 1998. Must be 18 or older, one entry per person. No purchase necessary.

September 3,
1998

COMICS

The
Tech

FUN

Page
9

PAGES

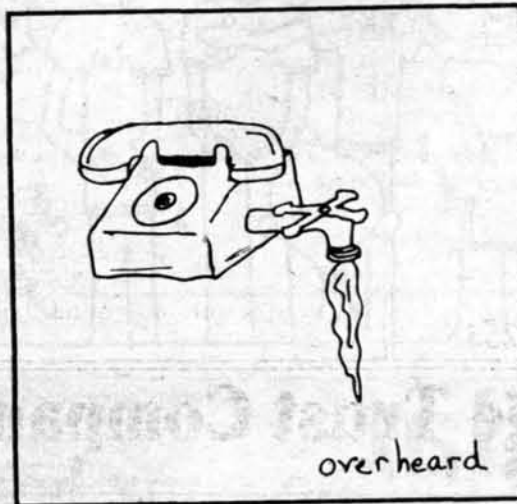
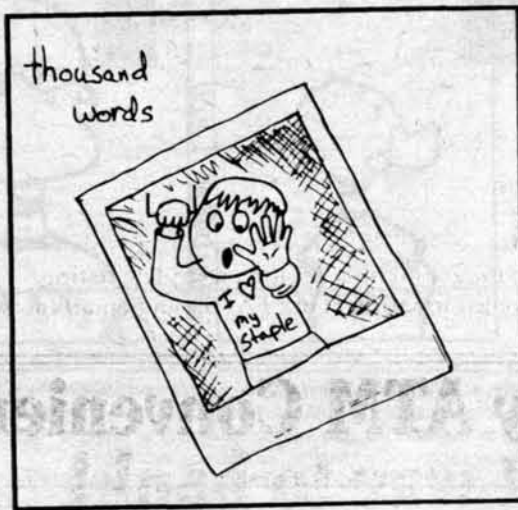
damned for life

by Jessica



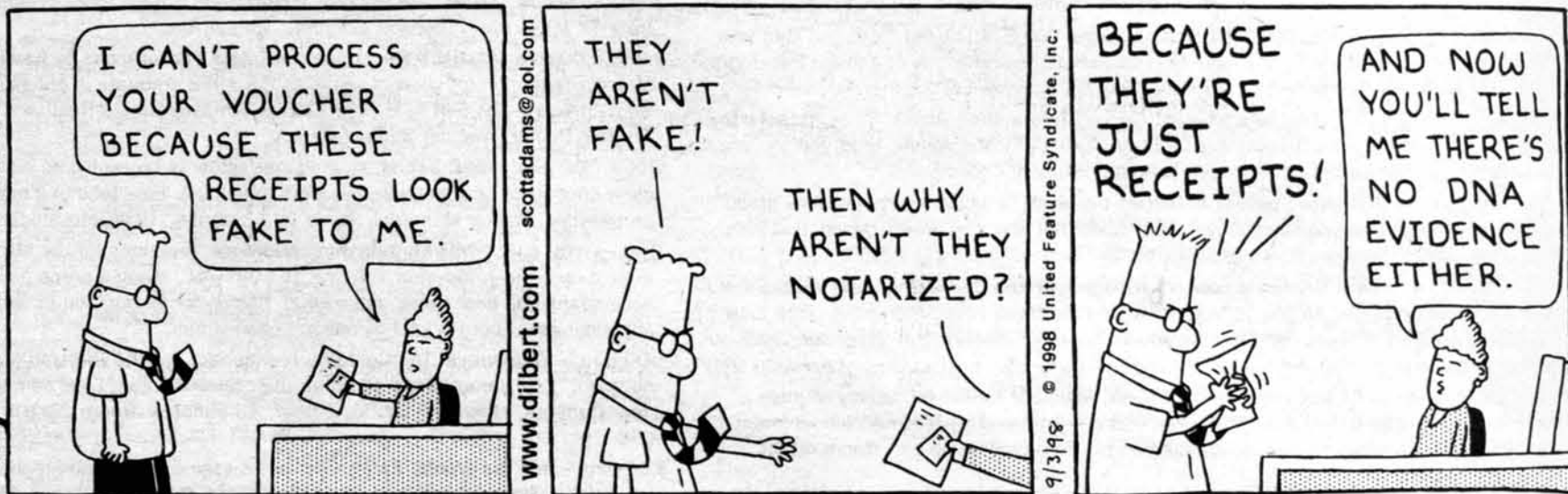
Noun Poetry

by Katy-Cat



Dilbert

by Scott Adams



Fox Trot

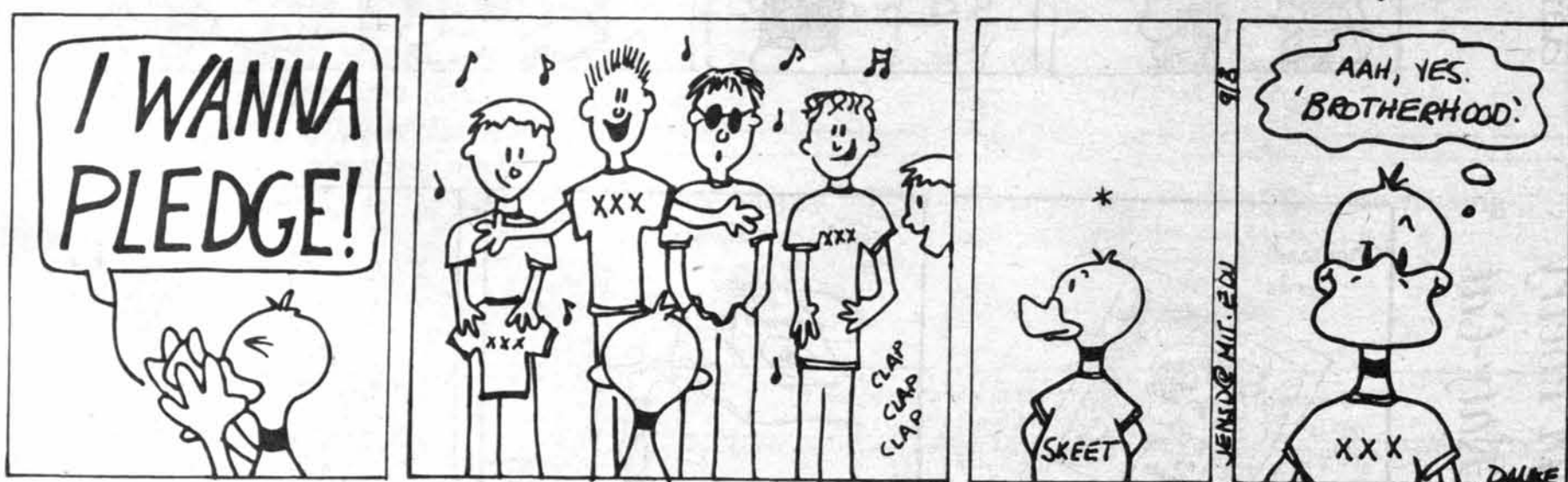
by Bill Amend





Down with Science

by Jennifer DiMase



TechCalendar

TechCalendar appears in each issue of The Tech and features events for members of the MIT community. The Tech makes no guarantees as to the accuracy of this information, and The Tech shall not be held liable for any losses, including, but not limited to, damages resulting from attendance of an event. Contact information for all events is available from the TechCalendar web page.

For further information on any of these events, visit <http://tech-calendar.mit.edu>.

Visit the TechCalendar web site (<http://tech-calendar.mit.edu>) to add information on events to be included in the print and online versions of TechCalendar.

Thursday's Events

- 9:00 a.m. - 11:00 p.m. - **Christian Fellowship Lounge.** Come drop by to meet and chat with Christians from all over MIT! We have free refreshments and plenty of games! Basement, Religious Activities Center (W11). Sponsor: United Christian R/O.
- 10:00 a.m. - 4:00 p.m. - **Graduate Student Council Information Booth.** Come obtain information on the GSC and MIT in general. Obtains tickets for the various graduate student orientation events. Lobby 10. Sponsor: Graduate Student Council.
- 1:00 - 5:00 p.m. - **Graduate Student Activities Carnival.** Participants from various graduate student clubs and sports organizations. Come out and play, swim, dance, and have fun. Kresge Oval. Sponsor: Graduate Student Council.
- 6:00 - 10:00 p.m. - **New Graduate Student BBQ Dinner and Concert.** All new graduate students can obtain tickets to attend free. Eat good food with your department. Free local SKA band concert at 8 pm open to all graduate students. Kresge Oval. Sponsor: Graduate Student Council.
- 7:00 - 10:00 p.m. - **MIT Logarithms Auditions.** Auditions for the MIT's only all-male a cappella group, now entering its 50th year. Bring a prepared song (no accompaniment necessary) and a joke. Signup for an audition by writing logs@mit.edu. Room 4-148. Sponsor: Logarithms.
- 7:00 - 11:00 p.m. - **Visit the MIT Science Fiction Library** - Browse the overwhelming volumes of science fiction and fantasy! Sit in our Comfy Chairs! Meet the illustrious Keyholders! MITSFS Library, Student Center, Room 473. Sponsor: MIT Science Fiction Society
- 8:00 p.m. - **Into the Woods.** Musical by James Lapine (book) and Stephen Sondheim (music and lyrics). \$3 admission for freshmen; \$6 for MIT students, various prices for others. Kresge Little Theatre. Sponsor: Musical Theatre Guild
- 8:00 - 11:00 p.m. - **Learn to Dance.** Come find out why Square Dancing is fun, the Tech Squares high-energy way. There's no other group like us in the world! Lobdell Court. Sponsor: Tech Squares.

Friday's Events

- 9:00 a.m. - 11:00 p.m. - **Christian Fellowship Lounge.** Come drop by to meet and chat with Christians from all over MIT! We have free refreshments and plenty of games! Basement, Religious Activities Center (W11). Sponsor: United Christian R/O.
- 10:00 a.m. - 11:00 p.m. - **Visit the MIT Science Fiction Library** - Browse the overwhelming volumes of science fiction and fantasy! Sit in our Comfy Chairs! Meet the illustrious Keyholders! MITSFS Library, Student Center, Room 473. Sponsor: MIT Science Fiction Society
- 10:00 a.m. - 10:00 p.m. - **Cross Products Auditions.** Come audition for MIT's Christian a cappella group, the Cross Products. We sing for concerts at MIT and local schools, and do community outreach events. Come try out to join us! Student Center, Room 439. Sponsor: Cross Products.

- 10:00 a.m. - noon - **Graduate Student Council Information Booth.** Come obtain information on the GSC and MIT in general. Obtains tickets for the various graduate student orientation events. Lobby 10. Sponsor: Graduate Student Council.
- 2:00 - 4:00 p.m. - **Graduate Student Trolley Tour.** Trolley Tours of Boston. Depart from 77 Mass Ave.. Sponsor: Graduate Student Council.
- 4:00 - 6:00 p.m. - **Artist's Reception: Narrative Photographs by Kevin Simmons.** Opening reception for show of works by the 1998 graduate in philosophy & theater, completed as part of a 1998 Eloranta Undergraduate Research Fellowship. Student Center, Wiesner Student Gallery.
- 5:00 - 7:00 p.m. - **GSC Social.** All graduate students are welcome and we especially encourage new graduate students to join us. Free food and beverages will be provided. Walker Memorial, Room 220. Sponsor: Graduate Student Council.
- 7:00 - 10:00 p.m. - **MIT Logarithms Auditions.** Auditions for the MIT's only all-male a cappella group, now entering its 50th year. Bring a prepared song (no accompaniment necessary) and a joke. Signup for an audition by writing logs@mit.edu. Room 4-148. Sponsor: Logarithms.
- 7:00 p.m. - **Goldeneye.** The Cold War has ended, but the Russian Mafia is up to no good. Only James Bond can stop their terrorist plan. Free admission for new students, otherwise \$2.50. 1 hour, 43 minutes. Room 26-100. Sponsor: LSC.
- 8:00 p.m. - **Into the Woods.** Musical by James Lapine (book) and Stephen Sondheim (music and lyrics). \$3 admission for freshmen; \$6 for MIT students, various prices for others. Kresge Little Theatre. Sponsor: Musical Theatre Guild
- 10:00 p.m. - **Goldeneye.** The Cold War has ended, but the Russian Mafia is up to no good. Only James Bond can stop their terrorist plan. Free admission for new students, otherwise \$2.50. 1 hour, 43 minutes. Room 26-100. Sponsor: LSC.

Saturday's Events

- 7:00 - 10:00 a.m. - **Graduate Student Hiking Trip.** For new graduate students. Leave from Ashdown House. Sponsor: Graduate Student Council.
- 9:00 a.m. - 11:00 p.m. - **Christian Fellowship Lounge.** Come drop by to meet and chat with Christians from all over MIT! We have free refreshments and plenty of games! Basement, Religious Activities Center (W11). Sponsor: United Christian R/O.
- 10:00 a.m. - 10:00 p.m. - **Cross Products Auditions.** Come audition for MIT's Christian a cappella group, the Cross Products. We sing for concerts at MIT and local schools, and do community outreach events. Come try out to join us! Student Center, Room 439. Sponsor: Cross Products.
- 12:00 - 9:00 p.m. - **Visit the MIT Science Fiction Library** - Browse the overwhelming volumes of science fiction and fantasy! Sit in our Comfy Chairs! Meet the illustrious Keyholders! MITSFS Library, Student Center, Room 473. Sponsor: MIT Science Fiction Society
- 12:00 - 5:00 p.m. - **Technique Open House.** Eat lunch at 1pm or snack all day. Come see our office and darkroom; Meet our friendly and talented staff. If your

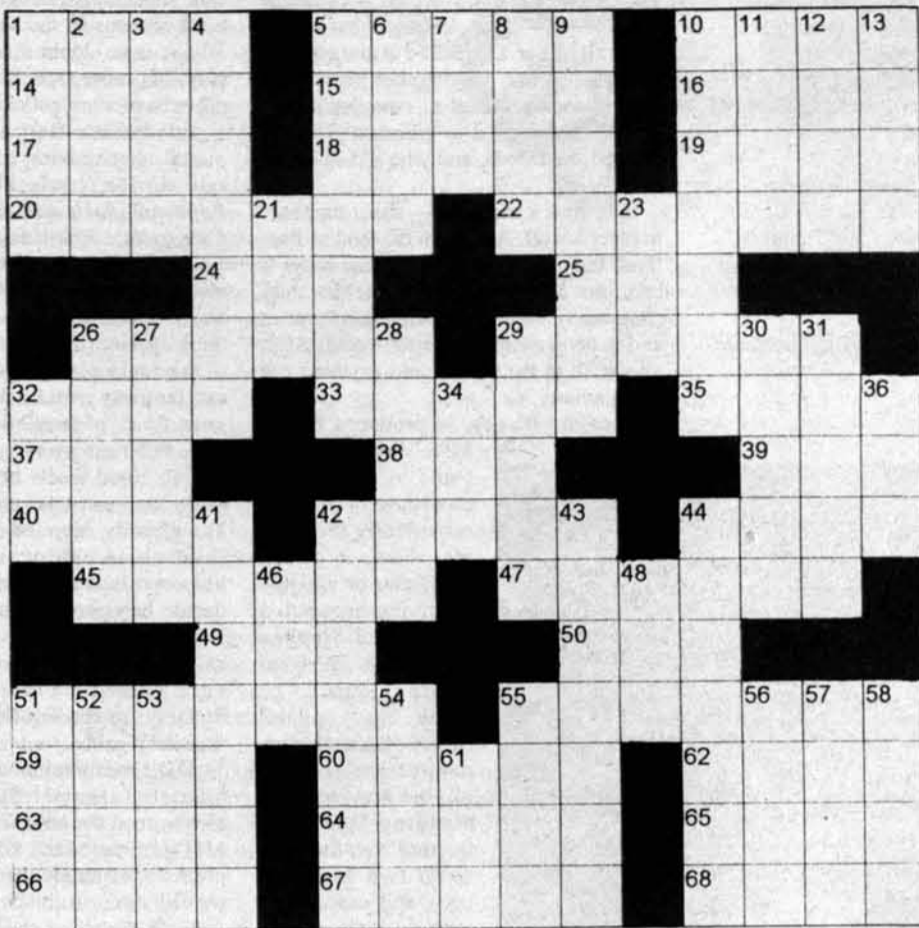
By Anthony R. Salas

ACROSS

- 1 House domestic
- 5 Aptitude
- 10 Tortilla food
- 14 Against
- 15 Night in Madrid
- 16 Kiln
- 17 Bonzo ___ to College
- 18 Farmer
- 19 Missed to the right
- 20 Nearby
- 22 Eternally
- 24 Ship built by 6-Down
- 25 Airline based in U.S.A.
- 26 Apprentice's teacher
- 29 Pub
- 32 Grunge Band
- 33 Artifact
- 35 Salutation of affection
- 37 Habitual
- 38 Pod inhabitant
- 39 Copy
- 40 Do garden work
- 42 Flies high
- 44 Threesome
- 45 Makes a hole
- 47 Entry
- 49 Look
- 50 Elementary Class
- 51 Shore
- 55 Scratching
- 59 Acquire
- 60 Snack
- 62 Paradise
- 63 A ___ apple
- 64 "Interview with a Vampire" author
- 65 Capital of Italia
- 66 Not straight
- 67 Wrote down
- 68 Not fast

DOWN

- 1 Famed gift givers
- 2 Soon
- 3 Repetition, abbr.
- 4 Cholera, e.g.
- 5 Door attachment
- 6 First zoo keeper
- 7 Role play
- 8 Cook
- 9 "On the Road" Author
- 10 Dried, with off
- 11 Tel___
- 12 Abdicate
- 13 Soloist
- 21 Craft
- 23 Toyota Auto.
- 26 Motorized bicycle
- 27 Change
- 28 Reclaimers, for short
- 29 Princessly crown
- 30 Backs up
- 31 Parts of the neck
- 32 Hee___
- 34 Meadow
- 36 King of Spain
- 41 Disagree
- 42 Luge rider
- 43 Criticized sharply
- 44 Support cables
- 46 Hawaiian necklace
- 48 Handbook of Phys. and Chem.
- 51 Knife
- 52 Loosen
- 53 Related to
- 54 Proposed European currency
- 55 ___ Homo
- 56 Icon
- 57 Verne Captain
- 58 Chew
- 61 Basketball tournament, abbr.



PUZZLE SOLUTIONS



portrait was taken at the Midway, you can make extra prints of it. Free Film! Student Center, Room 451. Sponsor: Technique Yearbook.

8:00 p.m. - **Into the Woods**. Musical by James Lapine (book) and Stephen Sondheim (music and lyrics). \$3 admission for freshmen; \$6 for MIT students, various prices for others. Kresge Little Theatre. Sponsor: Musical Theatre Guild

8:00 - 11:00 p.m. - **Patrol**. Shoot Your Friends! Travel to strange, new classrooms! Meet interesting unusual people! And kill them... Building 36, first floor. Sponsor: MIT Assassins' Guild

Sunday's Events

9:00 a.m. - 11:00 p.m. - **Christian Fellowship Lounge**. Come drop by to meet and chat with Christians from all over MIT! We have free refreshments and plenty of games! Basement, Religious Activities Center (W11). Sponsor: United Christian R/O.

10:00 a.m. - 10:00 p.m. - **Cross Products Auditions**. Come audition for MIT's Christian a capella group, the Cross Products. We sing for concerts at MIT and local schools, and do community outreach events. Come try out to join us! Student Center, Room 439. Sponsor: Cross Products.

12:00 - 9:00 p.m. - **Visit the MIT Science Fiction Library** - Browse the overwhelming volumes of science fiction and fantasy! Sit in our Comfy Chairs! Meet the illustrious Keyholders! MITSFS Library, Student Center, Room 473. Sponsor: MIT Science Fiction Society

7:00 - 10:30 p.m. - **Graduate Student Harbor Cruise**. Cruise along Boston Harbor. Long Wharf. Sponsor: Graduate Student Council.

Monday's Events

9:00 a.m. - 11:00 p.m. - **Christian Fellowship Lounge**. Come drop by to meet and chat with Christians from all over MIT! We have free refreshments and plenty of games! Basement, Religious Activities Center (W11). Sponsor: United Christian R/O.

10:00 a.m. - 10:00 p.m. - **Cross Products Auditions**. Come audition for MIT's Christian a capella group, the Cross Products. We sing for concerts at MIT and local schools, and do community outreach events. Come try out to join us! Student Center, Room 439. Sponsor: Cross Products.

12:00 p.m. - midnight - **Visit the MIT Science Fiction Library** - Browse the overwhelming volumes of science fiction and fantasy! Sit in our Comfy Chairs! Meet the illustrious Keyholders! MITSFS Library, Student Center, Room 473. Sponsor: MIT Science Fiction Society.

12:00 - 2:00 p.m. - **BBQ**. Free Food!!! You've probably had a lot of it in the past week, but here's one more. Come eat some good burgers, listen to some a cappella music, and hang out with some Christians from MIT. Barbeque Pits. Sponsor: United Christian R/O.

7:00 - 10:00 p.m. - **Graduate Student Red Sox Game**. Join fellow new graduate students on a trip to Fenway Park. Fenway park. Sponsor: Graduate Student Council.

Tuesday's Events

9:00 a.m. - 11:00 p.m. - **Christian Fellowship Lounge**. Come drop by to meet and chat with Christians from all over MIT! We have free refreshments and plenty of games! Basement, Religious Activities Center (W11). Sponsor: United Christian R/O.

5:00 p.m. - **The Tech news meeting**. Interested in finding out what's happening on campus? Join us for our first news meeting of the term. We're looking for new news staff, and no experience is necessary! Student Center, Room 483. Sponsor: The Tech.

5:30 - 7:00 p.m. - **MEGA Women Fall Kick-Off Meeting**. All female mechanical engineer-

ing graduate students are welcome. Pizza will be served and we will be going to see *Deep Impact* afterwards at 7 pm in 26-100. Room 3-434. Sponsor: Mechanical Engineering Graduate Association for Women.

6:00 p.m. - **The Tech general meeting**. Interested in joining MIT's oldest and largest newspaper? Come by for free food and to find out how you can be involved this semester- no experience necessary! Student Center, Room 483. Sponsor: The Tech.

7:00 p.m. - **Deep Impact**. DTS digital sound makes its debut at LSC! Scientists discover a comet on a collision course with Earth. NASA brings a former astronaut out of retirement to command an international crew to save the world. 2 hours, 3 minutes. Room 26-100. Sponsor: LSC.

7:30 - 9:30 p.m. - **Reg Day Service**. Anxious about the first day of classes? Instead of worrying, come Praise the Lord! Join us for singing, prayer, and a speaker session. La Sala de Puerto Rico. Sponsor: United Christian R/O.

10:00 p.m. - **Deep Impact**. DTS digital sound makes its debut at LSC! Scientists discover a comet on a collision course with Earth. NASA brings a former astronaut out of retirement to command an international crew to save the world. 2 hours, 3 minutes. Room 26-100. Sponsor: LSC.

Wednesday's Events

5:30 - 6:30 p.m. - **GSC General Council Meeting**. All graduate students are welcome. Food will be provided. Room 50-220. Sponsor: Graduate Student Council.

7:00 p.m. - **Quiz Bowl Team Kick-off Meeting**. Introductory meeting for all MIT students interested in joining the MIT Quiz Bowl Meeting. Room 4-270. Sponsor: Quiz Bowl Team.

8:00 p.m. - 9:00 p.m. - **MIT Debate Orientation/Ice Cream Social**. Join MIT Debate for the Fall 98 season of action-packed debate around the world! Revel as we conquer boxes of ice cream! Student Center, Room 423. Sponsor: MIT Debate Team.

Next Thursday's Events

5:30 - 7:30 p.m. - **Mirror Mirror Opening Reception**. Reception for Prof. John Maeda's installation of a Video Fountain. Maeda is Assistant Professor of Design and Computation at MIT's Media Lab. Lobby 56. Sponsor: Office of the Arts.

8:00 p.m. - 11:00 p.m. - **Learn to Dance!** Come find out why Square Dancing IS fun, the Tech Squares high-energy way. There's no other group like us in the world! Sala de Puerto Rico. Sponsor: Tech Squares.

8:00 p.m. - **Into the Woods**. Musical by James Lapine (book) and Stephen Sondheim (music and lyrics). \$3 admission for freshmen; \$6 for MIT students, various prices for others. Kresge Little Theatre. Sponsor: Musical Theatre Guild

Next Friday's Events

7:00 p.m. - **Fear and Loathing in Las Vegas**. You might consider a big-screen adaptation of Hunter S. Thompson's biting satire to be an insurmountable task, but it's difficult to imagine a director more suited for the job than Terry Gilliam. 1 hour, 58 minutes. Room 26-100. Sponsor: LSC.

8:00 p.m. - **Into the Woods**. Musical by James Lapine (book) and Stephen Sondheim (music and lyrics). \$3 admission for freshmen; \$6 for MIT students, various prices for others. Kresge Little Theatre. Sponsor: Musical Theatre Guild

10:00 p.m. - **Fear and Loathing in Las Vegas**. You might consider a big-screen adaptation of Hunter S. Thompson's biting satire to be an insurmountable task, but it's difficult to imagine a director more suited for the job than Terry Gilliam. 1 hour, 58 minutes. Room 26-100. Sponsor: LSC.

THEATRE REVIEW

Into the Woods

MTG's fairy tale dreams come true

By Vladimir V. Zelevinsky
STAFF REPORTER

Musical by Stephen Sondheim (music, lyrics) and James Lapine (book)
Produced by Carolyn Jones '00
Directed by Scott Gagnon
Orchestra direction by Rob Rucinski '99
Vocal direction by Jose Elizondo
Set design by Jennifer Condon
Lighting design by Stuart Levine
With Youngmoo Kim G, Cara Loughlin, Teresa DiGenova '99, Mary Tsien '01, Alan deLespinasse, Jomez Kirtley, John Harker '00, Teresa Raine '98, Jake Yara, and many others
An MIT Musical Theatre Guild presentation.

Once upon a time, there was a little girl, whose grandmother made her a bright red cloak with a hood, which became the girl so much that everyone called her Little Red Riding Hood. Once, when her grandmother became ill, the girl took a basket of sweetmeats and set out to deliver it to grandma. The girl entered the woods, and who did she meet but a baker.

Uh, wait a moment — she's supposed to meet a wolf. Are we in the land of fractured fairy tales? Well, no — the baker is here, not as a guest star of another story (*Rapunzel*), but as a full-fledged character and a denizen of the same world. After all, we're in the woods, and anything can happen here.

Into the Woods, as produced by the MIT Musical Theatre Guild, is a fulfillment of wishes. After a few consistently inconsistent shows in a row, MTG puts on a highly satisfying production of a famed Stephen Sondheim musical (there must be some special connection — after all, the previous outstanding MTG production was *Sweeney Todd* two summers ago), and succeeds in every single aspect.

Into the Woods is simultaneously funny and touching, whimsical and sin-

cere, spare and evocative.

As a matter of fact, aside from a couple of technical rough spots, the only not quite excellent aspect of the production was, shockingly enough, the source itself, most obvious in the second act. *Into the Woods* is no doubt a remarkable musical play, but most aspects of this *Into the Woods* are even more remarkable.

Sondheim's story is a dense contrapuntal interweaving of four main fairy-tale stories (*Little Red Riding Hood*, *Rapunzel*, *Jack and the Beanstalk*, and *Cinderella*), with a few others (*Sleeping Beauty* and *Snow White*, for example) mentioned as well. The main idea of the show is remarkably simple: when you think of fairy tales, doesn't it seem that all of them take place in some special, magical, far-away world, which is one and the same for all of them? Sondheim takes this idea and runs away with it: Little Red Riding Hood meets both Jack, climbing down the beanstalk, and Cinderella, who had already married Prince Charming (himself in agony since he's caught between two tales at once, trying to decide between Cinderella and Sleeping Beauty). During the course of the musical, the stories which we all know from our childhood run their course, quite predictably, to the familiar ending — and then keep going.

Did I mention that all of this is utterly hilarious? Director Scott Gagnon (who also helmed the effervescent *Rudwig* at MITG&S last fall) fills the show with plethora of small throw-away jokes. (I would not condescend to call them "gags"). Each of them is consistently amusing by itself, but taken together, they create a light, airy, whimsical, fairy-tale-like ambiance. I don't usually like modern references, but even they can work on the level of connotations — I thought it was very funny that Little Red Riding Hood's Wolf looks very much like Howard Stern.

Because of this whimsical ambiance, the mood of the show is so agile that it can, without any prior warning, switch into a totally serious mode without skipping a beat. The line between

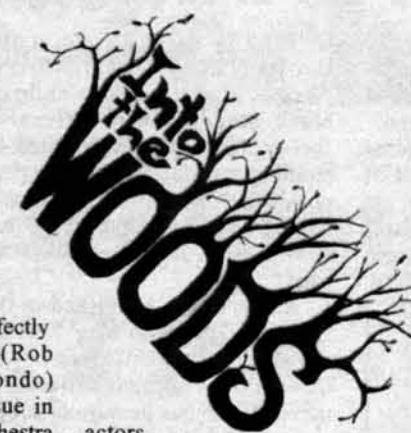
adventure, comedy, and tragedy in fairy tales is blurry (just recall what happens to Cinderella's wicked step-sisters in the original ending of that story), and so it is in *Into the Woods*.

Gagnon's nimble direction is perfectly complemented by orchestral (Rob Rucinski) and vocal (Jose Elizondo) directors. It is always a major issue in small productions to balance the orchestra (usually, too loud) and singers (usually, not loud enough), but this production manages to do to with ease, by doing one simple thing — the orchestra is playing backstage, and therefore doesn't interfere with the line of hearing between the actors and the audience. Of course, this arrangement creates a problem for the singers, since they can't see the conductor. However, almost all the vocal entrances were perfectly on time. And if there were a couple of moments when a pitch felt wrong, well, that's Sondheim for you. You never know — it might have been intentional.

To highlight any of the actors of the huge — eighteen people, all principal players! — ensemble is absolutely impossible (for which I respectfully beg their pardons). *Into the Woods* doesn't have a clear lead, and it compensates smaller parts by making them funnier. All the principal players are perfectly convincing, and the supporting ones are at the very least very funny.

The cast and crew work hard in Act I, and they have to work even harder in Act II, when the musical itself hits a few slow spots. When Sondheim has fun with simple fairy-tale plots, *Into the Woods* is both complex and profound. When in Act II the mood turns much more somber and the focus shifts to examining much more complex issues, the musical paradoxically becomes a tad simplistic and preachy — and it's fully to the credit of the MTG people that is almost doesn't feel this way.

Of course, the second act has more than a few pleasures of its own — the



actors, having previously defined their characters, can now explore them deeper, and the central theme of the musical becomes clear. Also, call me a stickler for technical proficiency, but the aspect of the show I enjoyed most was a truly fantastic lighting design, and in Act II it is absolutely spellbinding.

The final song is a treat as well, and ties into a single knot two main themes of *Into the Woods*. Fairy tales always have a clear point and a sharp distinction between good and evil, and that's why they are told to children as lessons in basic morality and encapsulated life experiences. But there's a higher level of complexity in life, and there are no clear solutions to life's problems, and it's up to every one of us to apply the lessons which we learned in childhood from simplistic fairy tales.

When we learn to ignore their built-in limitations and transcend the stories capped by convenient happy endings, it is then, I guess, that we really grow up and become adults, trying to understand what it really means to live happily ever after.



Photography by Greg Kuhnen



Law May Protect Free Speech in Michigan Colleges

FROM UNIVERSITY WIRE

A bill that would prevent colleges and universities from punishing student speech, even if it is considered offensive or hurtful, is being debated in the Michigan State Legislature.

Short Takes

Michigan

State University doesn't enforce any speech codes, but the bill would protect future decisions to prohibit speech, said Henry Silverman, president of the Lansing branch of the American Civil Liberties Union.

"This sounds very encouraging that this kind of safeguard may be built into legislation," he said.

MSU President M. Peter

McPherson issued statements in *The State News* in past years stating his "strong beliefs in the First Amendment of the Constitution." The letter emphasized "individual responsibility" and the "spirit of [MSU's] core values."

The proposed legislation isn't the first time the issue of free speech on college campuses has surfaced.

In 1989, a speech code at the University of Michigan resulted in 20 cases of white students charging black students with offensive speech. The code, which lasted 18 months, was declared unconstitutional after a Black student was punished for saying "white trash" in a conversation, said an ACLU Web page.

Another case, published in the *Chicago Tribune* on May 5, 1991, involved a University of Connecticut student ordered to move off campus because of a sign she posted on her dorm room making fun of "preppies," "bimbos," "men without chest hair" and "homos." After a federal lawsuit was threatened, the student was allowed to move back on campus and the university revised its code of conduct.

[*State News*, Sept. 2]

SAE chapter pleads in LSU case

Prosecutors investigating the death of a Louisiana State University pledge last year made progress in the criminal case surrounding the death of Benjamin Wynne.

The lawyer for the suspended Sigma Alpha Epsilon chapter pled no contest to 86 criminal charges against the fraternity Monday, according to Prem Burns, assistant district attorney for East Baton Rouge Parish. Pleading no contest is the same as admitting guilt, but the plea cannot be used against SAE in a civil lawsuit, Burns said.

LSU will receive \$100 for each count, totaling \$8,600, which will be used for alcohol awareness education, she said. SAE will also compensate the LSU and Baton Rouge police departments for half of the money spent during their criminal investigations, she said. The DA's office is asking Murphy's Bar to pay matching fines to the two police organizations.

A trial is scheduled for Nov. 4 to bring the 86 criminal charges against the bar, Burns said. They will go to trial if they do not make a plea before then.

Wynne died on Aug. 26, 1997 of

acute alcohol poisoning after a bid night party at Murphy's Bar. Wynne's autopsy revealed his blood-alcohol level to be .588, with traces of the drug Gamma-Hydroxybutyrate.

Prosecutors contacted a medical doctor who indicated the GHB, combined with so much alcohol, was a lethal combination, Burns said. GHB can knock a person unconscious. Mixed with alcohol, it can suppress the ability to breathe and vomit, she said. It is "very likely" Wynne died because he could not vomit the alcohol and GHB out of his system.

[*The Reveille*, Sept. 2]

Marajuana suit continues

A ruling by a federal court judge Wednesday left the door open for cannabis cooperatives throughout California, including one in Berkeley, to continue their distribution of medicinal marijuana, even though it is illegal under federal law.

Meanwhile, the city of Berkeley joins other city governments waiting for a federal decision before trying to aid the cooperatives in legally distributing the drug.

"At this point we are taking a wait-and-see-attitude," said Berkeley Mayor Shirley Dean. "It is obvious to us that everyone in Berkeley supports being able to utilize marijuana for medicinal purposes."

Dean added that pending the decision, the city may have to look at a different method to dispense medicinal marijuana. "Because we have a city health department, we may examine the option of dispensing it ourselves."

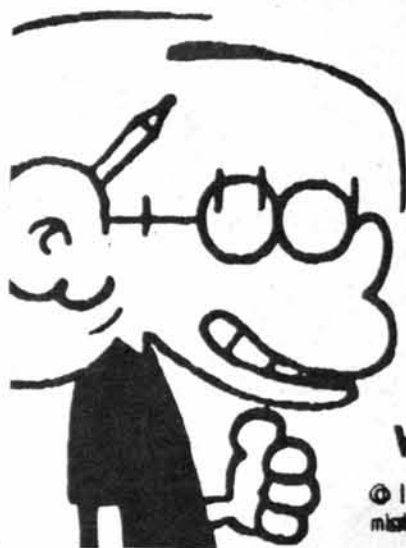
The city has already tampered with marijuana law on several occasions. For instance, it passed an ordinance that states that cannabis clubs within city limits cannot be within a certain distance of schools.

John Pilka, co-founder of the Berkeley Cannabis Buyers Cooperative declined to be interviewed. When asked about the decision regarding the Oakland clubs, he

Short Takes, Page 18

Calculus Tutor

- Friendly & Helpful
- Affordable
- Available Anytime
(at your campus bookstore)



www.wizpower.com

© 1998 Wolfram Research, Inc. Jason Fox of "FoxTrot" is used with permission from Andrews McMeel Universal. Copyright © 1998 B&B Amend.

The one book you'll need through all 4 years of college.



Open a Fleet Self Service Checking Account and get summers free.

There are all kinds of books you'll need for college. This is the one you need to pay for them - and lots of other things. The Fleet Self Service Checking Account. We know you probably don't have tons of money, so the monthly fee is low and we charge no monthly fee for the summer. We require only a \$50 initial deposit with no minimum balance. Plus, you get 20 checks per statement period, unlimited electronic access, conveniently located ATMs and more. And it's easy to open one. Just call 1-800-CALL-FLEET (1-800-225-5353). Or visit our website at www.fleet.com.



www.fleet.com

Low Monthly Fee

No Minimum Balance Requirement

Unlimited No-fee Electronic Access

Web Banking and Free PC Banking*

Over 2400 Fleet24 ATMs in 13 states

*A one-time shipping and handling fee of \$9.95 applies. Ready When You Are is a service mark and Fleet is a registered mark of Fleet Financial Group, Inc. Fleet Bank is a Member FDIC. ©1998 Fleet Financial Group, Inc. All rights reserved.

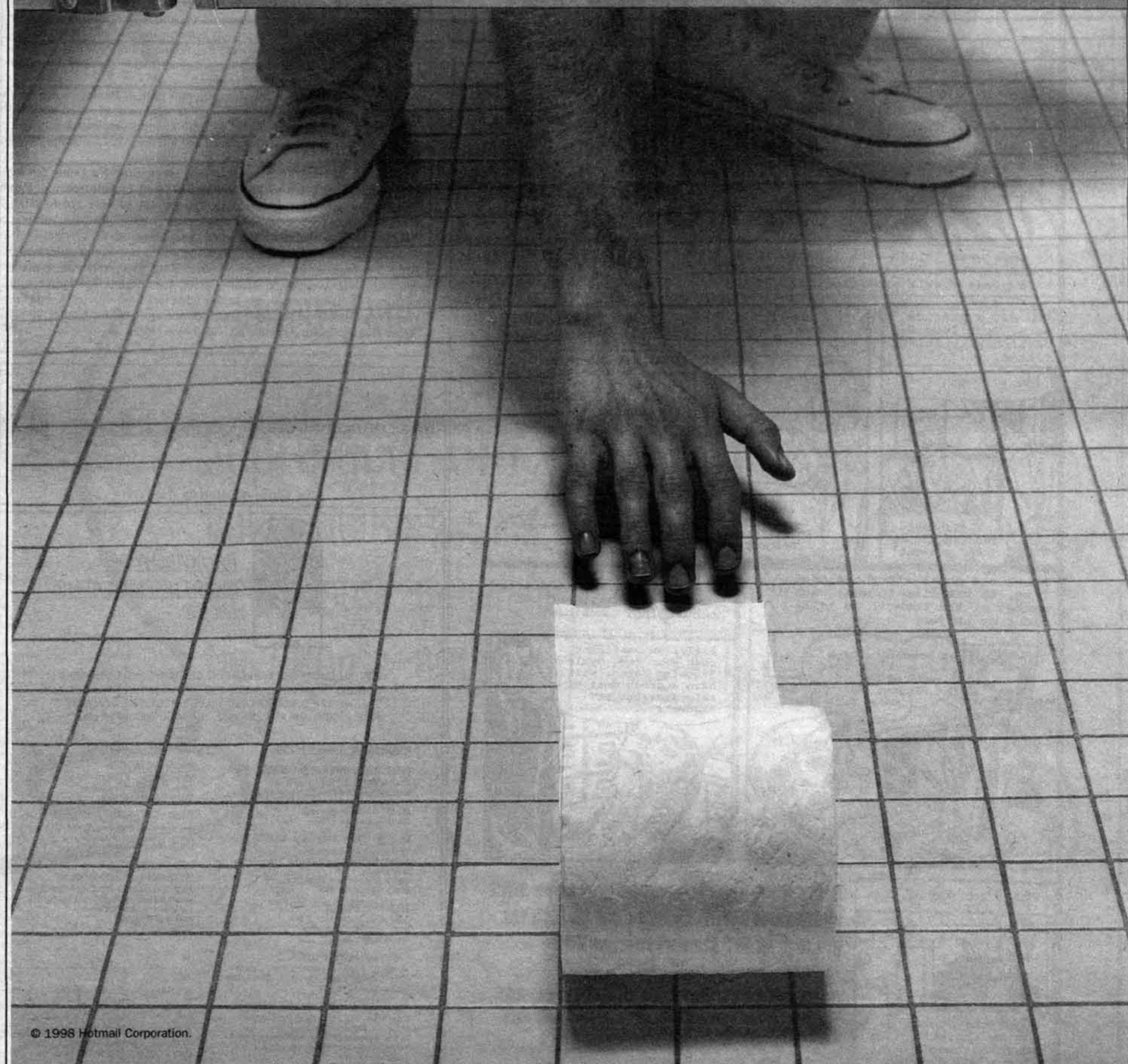
The Tech's Open House

**Come see what we do and how we do it!
Sunday, 2 p.m., Student Center, Rm. 483**

If you can't get it when you want it, what good is it?

Email. While there's no chance you'll ever run out of it, there are times when you need it but just can't get to it. Unless, like 20 million other email users, you have Hotmail. Hotmail is a free service that lets you get your email from any computer with web access. So you can always reach it when you need it.

Sign up for your free email account at www.hotmail.com.



Vest to Greet Parents Saturday

Parents, from Page 1

is actually split into two parts. Along with the breakfast in Walker, a receiving line to meet President Charles M. Vest will begin at the President's House. Student music groups will provide entertainment while parents wait to meet Vest.

This event, like all of the other Parents Orientation events, is open to freshmen as well. "Freshmen are welcome to attend [the President's Reception] with their parents," Bates said.

Orientation Center will be open

Although the Orientation Center will be closed tonight with the conclusion of Orientation at "Presenting the Class of 2002 — Part 2", members of the Orientation committee will still be on the third floor of the Student

Center from 3 p.m. to 7 p.m. on Friday to greet parents and distribute schedules of events, according to Amy W. Cai '01, coordinator of Parents Orientation.

Except for running several tours which will take place on Sunday, "we only put out the schedule," Cai said. Additionally, members of the Orientation Committee will be around to help out at the weekend's events.

Cai gave a "rough guess" that about 300 to 500 parents would be in attendance from Friday through Sunday to learn more about MIT and help their children move in.

IFC talks about frat life

Neal H. Dorow, adviser to fraternities, sororities and independent living groups, the presidents of the Panhellenic Association and the Interfraternity Council, and repre-

sentatives of off-campus living groups will conduct a panel called Greek 101 on Saturday afternoon.

At the event, panelists will "try and explain a little bit about life in a fraternity or sorority," Dorow said, as well as answer questions parents may have.

With regards to alcohol and fraternities, Dorow said that "if [parents] have concerns about their son or daughter and alcohol, they should talk to them. If their son or daughter chooses to drink alcohol, we hope that they will do so responsibly. We'll do the best we can."

Simultaneously occurring with the panel will be an event called Mi Casa Es Su Casa for parents of students who will be residing on-campus. Parents will be able to visit their child's specific dormitory to meet housemasters, GRTs, and officers of the house.

POLICE LOG

The following incidents were reported to the MIT Campus Police between August 13 and August 26. Information is compiled from the Campus Police's weekly crime summary and from dispatcher logs.

This report does not include alarms, general service calls, or incidents not reported to the dispatcher.

Aug. 13: Bldg. NW12 lot, cash stolen from an unlocked vehicle, \$33.

Aug. 14: Massachusetts Avenue and Vassar Street, assist Cambridge Police with bicycle versus vehicle accident, no injuries; Amherst Alley, male taken into custody on outstanding warrant; Bldg. 20, suspicious activity, person attempted to leave area with a computer; Ashdown House, Brass Rat stolen, \$400; Student Center, male arrested for trespassing.

Aug. 15: Kresge lot, bag stolen from vehicle, \$300.

Aug. 16: Edgerton House, noise complaint; Bldg. 11, suspicious activity; Memorial Dr., female reported that while she was jogging a male exposed himself, he was placed under arrest by State Police.

Aug. 17: East Lot, vehicle broken into and cellular phone stolen, unknown value; Zeta Psi, wallet stolen, \$65; Kresge lot, car broken into and laptop computer stolen, \$2,000; DuPont Athletic Center mens' locker room, wallet containing cash and credit cards stolen, \$15; Bldg. 10, suspicious phone call.

Aug. 18: Faculty Club, Louis M. Mongiello of 7801 Collins Ave., Miami Beach, Fla., arrested for breaking and entering and other related charges; West Lot, bicycle stolen, \$100; Phi Beta Epsilon, jewelry stolen, \$1,000; Wood Sailing Pavilion, broken into, nothing stolen; Bldg. 36, suspicious mail.

Aug. 19: Bldg. 2, malicious damage; Ashdown, bicycle tire stolen; Bldg. NW12 Lot, vehicle stolen; Herman garage, bicycle stolen, \$200; Student Center, attempt to break into a room.

Aug. 20: Burton, bicycle secured with a U lock stolen, \$157; Bldg. 12, CD player stolen, \$100; Bldg. 3, computer stolen, \$2,775; Delta Kappa Epsilon, jewelry stolen, \$1,150; Bldg. 18, annoying phone call; Zeta Psi, laptop stolen, \$2,205.

Aug. 21: Bldg. 8, computer stolen, \$1,650; Bldg. 35, laptop and bag stolen, \$2,080; Alpha Delta Phi, bicycle parts stolen, \$250; Kappa Sigma, wallet stolen \$60; Kresge, backpack stolen, \$200; Bldg. 10, water flow alarm, no cause found.

Aug. 22: Bldg. NE43, bicycle secured with a cable stolen, \$300; Burton-Conner, air conditioner stolen, later returned; Bldg. 9, checked to ensure office secured and conducted a stop of person who checked out OK; Ashdown, report of suspicious person, same checked out OK.

Aug. 23: Briggs Field, suspicious persons, stopped and issued a trespassing warnings; Memorial Drive, assist State Police with minor motor vehicle accident; Eastgate, suspicious vehicle, same checked out to be persons moving in.

Aug. 24: Student Center, faulty fire pull station; Bexley, water flow alarm; DuPont weight room, suspicious person, same checked out OK; Dewey Library, passport stolen; Student Center, suspicious package; Bldg. E23, patient became disoriented and left area; Pi Lambda Phi, bicycle stolen, \$900.

Aug. 25: Main lot, minor motor vehicle accident; Nu Delta, threats between persons known to each other; Walker, bicycle secured with cable stolen, unknown value; Alpha Tau Omega, bicycle stolen, \$500; rear of Random Hall, suspicious persons, same issued trespass warning; Bldg. 68, possible safety hazard, same checked out okay.

Aug. 26: Bldg. 10, assist an employee with a restraining order issue; Bldg. 11, tools stolen, unknown value; Bldg. E40, annoying e-mail; Massachusetts Avenue and Albany Street, assist Cambridge Police with person who had fallen asleep at the wheel of her vehicle; Ashdown, noise complaint, noise was from function on Student Center steps; Baker House, smoke detectors activated by welders.

ANOTHER ARTS SUCCESS STORY!!!!

(Next Grants Deadline: September 25!!!!)



My days were filled with frustration - could anyone understand how I yearned to express myself artistically?

One day my office mate, Ted, seemed particularly fulfilled....

Why so happy, Ted?

I just got funding for my video project!

Wow! How did that happen?

I applied to the Council for the Arts at MIT Grants Program!!

I stopped by E15-205, the Office of the Arts.

Just fill in this application and supply some supporting material...

How about my resume? And letters of recommendation?

About one month after the deadline, it was time to meet with a member of the Council to talk about my project

I brought a tape of my work and those updated budget figures you asked for!

My site visit with a Grants committee member went well. Encouraging? And how!

Bill, I am confident that your song cycle "Problem Sets", will have a great deal of relevance for MIT students....

The next day....

I got the Grant! Now my artistic yearnings won't wither and die due to lack of funds!

That's right! You too can be part of an ARTS SUCCESS STORY!!! Apply to the Council for the Arts at MIT Grants Program!!!!!!

Applications & Guidelines available at E15-205 contact cohen@media.mit.edu for more info

or go to:

<http://web.mit.edu/arts/grants.html>

It's a connected world. Do your share.

For 30 ways to help the environment, write Earth Share, 3400 International Drive, NW, Suite 2K (ADP), Washington, DC 20008.



This space donated by *The Tech*



THE ACADEMY OF JEWISH LEARNING AT MIT
FALL 1998

MIT HILLEL OFFERS NON-CREDIT COURSES AND DISCUSSION FORUMS OPEN TO ALL MEMBERS OF THE MIT COMMUNITY. FOR FURTHER INFORMATION AND TO PRE-REGISTER, CONTACT: RABBI JOSHUA PLAUT 253-2982 OR EMAIL: rjplaut@mit.edu

JEWISH LIVING, TORAH & TALMUD:

ENTERING THE CYCLE OF THE JEWISH YEAR: Thursday, 5:30-6:45pm, W-11. Exploration of holidays as historical, spiritual, physiological and how Jews celebrate time. Marty Federman, instructor. Starts September 17th.

TASTE OF TORAH: Thursday, 12:00-1:00pm W-11. Lively discussions over lunch of weekly Torah portion in terms of law, ethics, and religion. Rabbi Joshua Plaut, instructor. Starts September 17th.

BEGINNERS TALMUD: date, time, and location T.B.A., Barry Jacobson, instructor. Email: bdj@mit.edu

TORAH AND MODERN ISSUES: Bi-weekly, Issues of Halacha & orthodox life. Rabbi Gershon Segal, instructor. Email: Eric.Banks@mit.edu

ADVANCED TALMUD: Thursday evenings, time T.B.A. We will be studying Tractate Pesachim (covering Passover, and a few topics related to Shabbat and yomim tovim). Yaakov Weinstein, instructor, email: yaakov@mit.edu Starts September 3rd

HEBREW:

BEGINNING HEBREW: Wednesday 5:00pm, W-11. Edna Rabinovich, instructor. Starts September 16th.

INTERMEDIATE HEBREW: Wednesday 6:00pm, W-11. Edna Rabinovich, instructor. Starts September 16th.

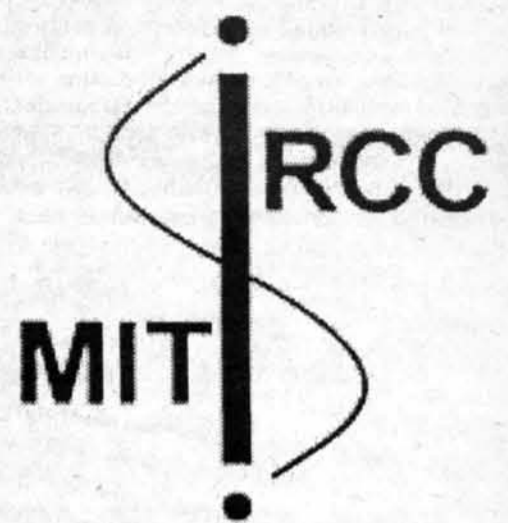
HEBREW TABLE: Wednesday, 12:00-1:00pm, Morss Cafeteria (Walker Memorial) Informal Hebrew discussion over lunch. Facilitator: Adam Bovlitsky: adambov@mit.edu Ongoing

MIT HILLEL IS LOCATED IN THE RELIGIOUS ACTIVITIES CENTER (MIT BUILDING W11).

THERE ARE NO FEES TO ATTEND CLASSES, HOWEVER, SOME CLASSES MAY REQUIRE THE PURCHASE OF RELEVANT BOOKS/SUPPLIES

Cable Days

Get connected to MITnet



September 4th

Burton-Conner: 3-5pm, location TBA

East Campus & Senior House: 6-8pm, in EC Talbot Lounge

MacGregor: 8-10pm, in dining hall

September 5th

McCormick: 3-5pm, in Brown Living Room

Bexley Hall: 6-8pm, Space Lounge or Besk

Random Hall: 8-10pm, in first floor lounge

September 6th

Baker House: 3-5pm, location TBA

Next House: 6-8pm, in main lounge (TFL)

New House: 8-10pm, in House 3, large dining room

Berkeley Tries to Bypass National Marijuana Law

Short Takes, from Page 14

replied that he had no comment.

Wednesday's court decision concerned an Oakland ordinance passed earlier this year which made the Oakland Cannabis Buyers Cooperative a city office.

On this basis, the officials in the club tried to fight for dismissal of

the Justice Department's federal charges on the grounds that the federal government could not tamper with offices of the city.

U.S. District Court Judge Charles Breyer denied the Oakland cooperative's request to have the lawsuit dismissed. He also denied a motion filed by the Justice Department that claimed the

Oakland cooperative was in contempt of court because they were continuing to operate during the proceedings.

A hearing has been set for Sept. 28 to determine whether the contempt of court charge filed against the Oakland cooperative by the Justice Department will go to trial. Proposition 215, the California

initiative which permits the distribution of marijuana for medicinal purposes, was approved by California voters in 1996. Since then, the Justice Department has been trying to shut down various marijuana clubs throughout the state on the grounds that federal law — which typically overrides state law — prohibits the distribution of marijuana. [Daily Californian, Sept. 2]

ized to be part of the group."

James Vick, vice president for student affairs at UT-Austin, said he believes getting parents involved in Greek life is a good idea.

"I think it's admirable of fraternities to reach out to parents and to prospective members and to provide information on the positive aspects of fraternities," Vick said.

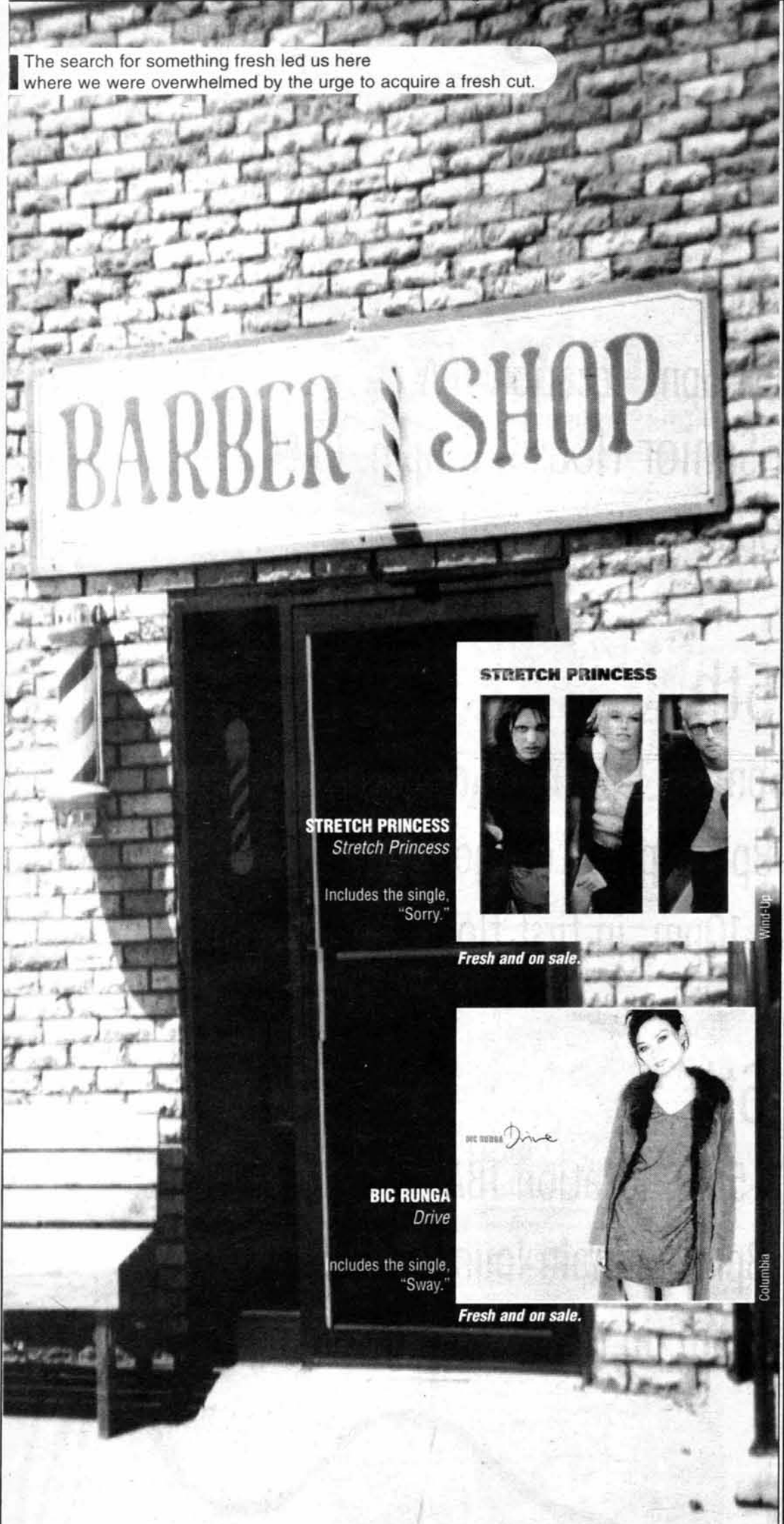
The maximum penalty dealt by the Dean of Students Office for hazing violations is cancellation of a fraternity's registration. UT-Austin canceled the registration of the Kappa Alpha Fraternity last June in response to allegations that a student's skull was cracked after being pushed against a wall during an initiation party.

The freshman was hospitalized for three days as a result of his injuries. Kappa Alpha must wait until Dec. 31, 1999, to register as a student group.

Similarly, in the spring of 1997, the university canceled the registration of Pi Kappa Alpha until the year 2000 after confirming 11 hazing incidents that occurred the previous fall semester.

Thoma Brewer, president of Alpha Phi Alpha, said the practice of hazing started in the 1800's to promote brotherhood and respect for the organization. But some individuals, he said, take the idea too far. [Daily Texan, Aug. 31]

The search for something fresh led us here where we were overwhelmed by the urge to acquire a fresh cut.



STRETCH PRINCESS



STRETCH PRINCESS
Stretch Princess

Includes the single, "Sorry."

Fresh and on sale.



BIC RUNGA
Drive

Includes the single, "Sway."

Fresh and on sale.

Wind-Up

Columbia

For MIT students only.....

FREE TICKETS



- to the Boston Symphony Orchestra
- other great concerts, plays, exhibitions

FREE ADMISSION



- to Boston's Museum of Fine Arts

FREE ART



- for your dorm room or lab

and even

FREE MONEY!

\$\$\$\$\$

- for your own art projects

Through programs sponsored by the Council for the Arts at MIT and the List Visual Arts Center. For more information on these freebies and other opportunities in the arts for MIT students, see <http://web.mit.edu/arts/students.html> or stop by the Office of the Arts (E15-205).

sam goody[®]
goody got it![®]

Sale expires September 13, 1998.

For a location near you, call 1.888.606.3342

© 1997 National Crime Prevention Council



Heroin Addict
 Vandal
 Purse Snatcher
 Car Jacker

...all kicked out
 with the help
 of kids like me.
 -Billy, age 15

Everybody loves to trash teenagers, right? Maybe they don't realize that we do care. That we can make a difference. Get involved in Crime Prevention. Clean up parks. Teach younger kids. Start a school or neighborhood watch. And help make your community safer and better for everyone. Together, we can prove them wrong by doing something right.

Call Toll Free
 1-800-722-TEENS
 www.weprevent.org



This space donated by The Tech

日本プログラム

LEARN HOW YOU CAN

GO TO JAPAN WITH THE MIT JAPAN PROGRAM!



ORIENTATION

Tuesday, September 15, 1998
 4:00 - 5:00 pm

Bush Room
 10-105
 (off the Infinite Corridor)

For more information contact the MIT Japan Program at:
 E38, 7th Floor; 258-8208; japanprogram@mit.edu
<http://www-japan.mit.edu/MITJapanProgram/>

ALL STUDENTS ARE WELCOME

Sometimes...

SDO 98

...being asleep is a bad idea.



Wake *Up* and Be Heard!

10.10.98



<http://sdo.mit.edu>

sdo-request@mit.edu

Now that your tuition,
 room and board, fees
 and books are paid,
 we're guessing that
 there is no money left
 in your checking account!

Here are two FREEBIES
 from your friends at Star Market



FREE
 One Large
 Cantaloupe



0 00000 96114 1

Coupon effective with a \$5 purchase
 Thursday, September 3 through
 Saturday, September 12 at MIT Star
 Market ONLY. Limit 1

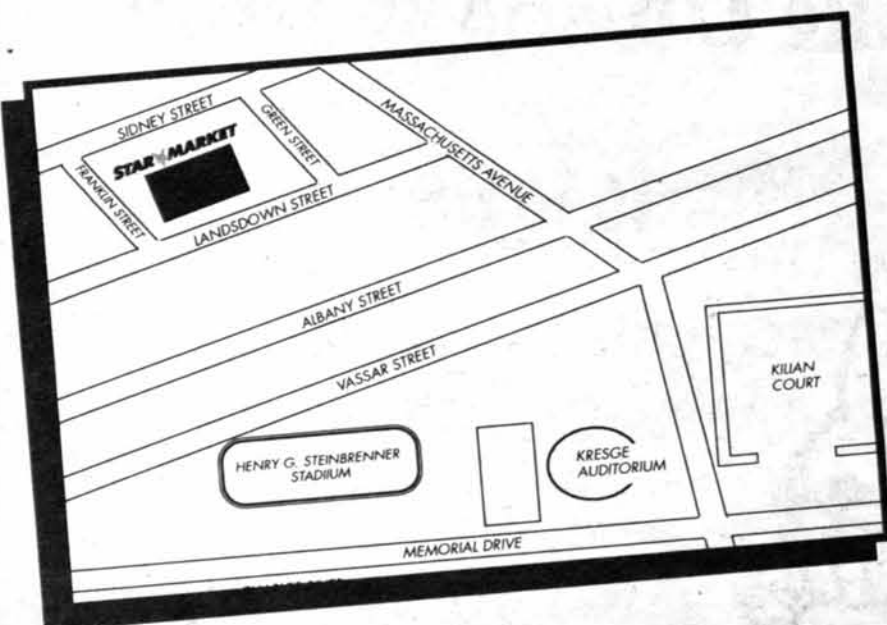


FREE
 8-oz.
 Cedar's
 Mediterranean
 Hummus



0 00000 96113 4

Coupon effective with a \$5 purchase
 Thursday, September 3 through
 Saturday, September 12 at MIT Star
 Market ONLY. Limit 1



FREE
PARKING*
 in our convenient garage
 *First hour of parking is FREE
 when you spend \$10 or more.

STAR MARKET

20 Sidney St., Cambridge

Pledge Numbers May Increase But Crowding Remains High

Lottery, from Page 1

More significantly, 85 percent of those entering the lottery received their first choice this year, compared to 69 percent last year, when some algorithmic improvements were added. In 1996, 76 percent of those entering the lottery received their first choice.

The principal reason for the improvements in the assignments were a variety of alterations to the lottery program written by Eliot S. Levitt '89, a former staff assistant in the Office of Residence and Campus Activities, which is now a part of the Office of Residence Life and Student Life Programs.

Levitt improved the algorithm used to assign students to dormitories by adding additional optimization levels, he said. In previous years, only one optimization was used; this year, the program then attempted to make two- and three-way swaps in order to further optimize the selections.

Crowding in system increases

As a result of the relatively low number of freshmen pledging fraternities, the crowding level in the system is at around 175, higher than in previous years.

This year's algorithm also worked to set the crowding levels in particular dormitories, Bernard said. As a result, 16 lounges in MacGregor House will be converted into doubles this fall.

On the other hand, East Campus will not be as crowded as in some previous years. The changes in crowding levels were designed to increase the number of students getting their first or second choice.

At the same time, the system was not allowed to completely decrowd facilities, said Associate Dean for RLSLP Andrew S. Eisenmann '70. The lottery was generally allowed to select the number of people "within five or 10" of a target, Eisenmann said.

The program received upper and lower bounds for the number of students in each dormitory, Levitt said.

The use of Tang Hall as an undergraduate dormitory for 130 students has significantly relieved pressure on the dormitory system this fall, Bernard said.

Other improvements to the sys-

tem include corrections to ensure that being in a roommate group does not enhance or decrease one's chances of getting a choice, and the removal of McCormick Hall from male selection lists, Levitt said.

McCormick down, Baker up

There were some significant changes in the number of students picking certain dormitories this year.

Demand for female-only housing appears to be on the decline. McCormick Hall, traditionally the most oversubscribed dormitory, was chosen first by only 71 students, with 67 slots available. Last year, 100 students selected it first, and in 1996 225 students placed it first.

Baker House, which was under-subscribed for the last several years, this year was the most oversubscribed dormitory, with 119 students vying for the 80 available slots in the partially-renovated dormitory.

Senior House, which was over-subscribed for the last two years after its renovation, became under-subscribed this year with 23 students applying for the 30 slots.

East Campus continues to be the most under-subscribed dorm, with 52 students ranking it first for 79 slots. Last year, 37 students ranked the dorm first while 107 were assigned to the facility.

The results this year came out just after the announced time of 5 p.m., causing anxiety for many waiting for their results. "We were all like, 'what's going on,'" said Erin Syron '02.

New system planned for next year

While this year's program produced results far better than in previous years, next year's freshmen will likely be lotteried into their dormitories using a new program, Levitt said.

Work is progressing on a new Java-based program that could potentially use genetic algorithms instead of multiple levels of optimization to achieve its task, Levitt said.

The current system has been used in some form since 1990, Levitt said, adding that the interface for student additions has changed twice since then. Initially, staff members entered the data into the computer system. Later, students used a bank of Macintosh comput-

ers in the Student Center, and most recently an Athena and world wide web interface have been used.

Levitt plans to conduct a statistical analysis of lottery results over the years in developing next year's algorithm.

Buy your books for the lowest price

Best Book Buys

A free service that compares online bookstore prices so you can

- save money
- save time
- stay out of long bookstore lines!

at . . . <http://www.BestBookBuys.com>

MIT Music Performance Auditions

MIT Brass Ensemble / Brass Quintets

Rehearsals: Tuesday & Thursday, 5pm - 7pm, Killian Hall. Auditions: Thursday, September 10, 5pm. Prepared solo and sight-reading required.

MIT Chamber Music Society

First meeting & auditions: Tuesday, September 8, 7pm, Killian Hall. Prepared solo required of new members.

MIT Concert Band

Rehearsals: Monday & Wednesday, 8pm - 10pm, Kresge. First Meeting: Wednesday, September 9, 8pm. Read through Concert Band literature and group auditions.

MIT Concert Choir

Rehearsals: Monday & Thursday, 6pm - 8:30pm, Room 2-190. Auditions: Thursday, September 10, 6pm. Group auditions, no solo required.

MIT Chamber Chorus

Rehearsals: Tuesday & Thursday 10am - 11:30pm, Killian Hall. Auditions: Thursday, September 10, 10am. Prepared solo and sight-reading required.

MIT Festival Jazz Ensemble

Rehearsals: Monday & Wednesday, 5:30pm - 7:30pm, Kresge. Auditions & audition sign-up: Wednesday, September 9, 5:30pm. Improvisation preferred, sight-reading from jazz book required.

MIT Symphony Orchestra

Rehearsals: Tuesday & Thursday, 7:30pm - 10pm, Kresge. First meeting: Thursday, September 10, 7:30pm. Auditions: September 6,7,8,9, by appointment only, 253-2826.

MITCAN African Music Ensemble

Rehearsals: Tuesday & Thursday, 6pm - 10pm. First meeting: Thursday, September 10 at 7pm, Endicott World Music Center, N52.

FOR MORE INFORMATION CONTACT THE CONCERTS OFFICE AT 253-2826.



All Students:

REGISTRATION FOR THE PHYSICAL EDUCATION LOTTERY HAS MOVED FROM ATHENA TO WEBSIS!

To access the P.E. Lottery:

1. go to the WebSIS page at «<http://student.mit.edu>»
2. click on "Physical Education"



1st Quarter Lottery

August 26 at 9am - September 9 at 1pm



Ever Get A Pal Smashed?

TAKE THE KEYS. CALL A CAB. TAKE A STAND.



FRIENDS DON'T LET FRIENDS DRIVE DRUNK.

Ad Council U.S. Department of Transportation

This space donated by The Tech

CPs Took No Action in 1996 Per Victim's Request

Lawsuit, from Page 1

Aug. 2, 1996. Colt's co-worker was

a DU brother from another college living at the MIT chapter over the summer, according to *The Boston Globe*.

The alleged assailant was not a member of the fraternity.



BELIEVE IT OR NOT, THIS GUY IS IN CLASS.

Excitement and adventure is the course description, and Army ROTC is the name. It's the one college elective that builds your self-confidence, develops your leader-



ship potential and helps you take on the challenge of command. There's no obligation until your junior year, so there's no reason not to try it out right now.

ARMY ROTC

THE SMARTEST COLLEGE COURSE YOU CAN TAKE

For details, visit Bldg. W59-192
(201 Vassar Street)
or contact MIT Army ROTC at 494-8710 or kfilosa@mit.edu.

"Matthew Keller was definitely not a brother," said Jeffrey L. Steinheider '99, DU rush chair.

According to the suit, alcohol "was being served indiscriminately to minors including the Plaintiff."

The suit says that no one at the fraternity was checking identification at the door to ensure that those entering the fraternity were old enough to drink. The suit also claims that there "was no responsible oversight of the happenings at the premises by those in a position to control the premises including, but not limited to, MIT" and the other institutional defendants.

Colt reported the incident to the Campus Police four days after the DU party, according to a statement released by Kenneth D. Campbell of the News Office.

"She expressly told [Campus Police] that she did not want to initiate any action against the man who she said had assaulted her."

The CPs have a policy of not pressing charges if the victim wishes not to.

"Because Ms. Colt asked the

MIT police not to take any steps to help her prosecute the man, MIT Police took no further action on their own," Campbell said.

Before filing suit, there was an attempt to settle out of court, according to Campbell's statement.

"In January, 1998, Ms. Colt's lawyer demanded a substantial sum of money from MIT. MIT declined to settle the matter because it believes there is no validity to the claim that MIT is legally responsible for this incident," Campbell said.

Victims of rape have the option of withholding their name from any lawsuit. However, Colt decided to use her own name.

"It's her hope that by taking this action, the responsible parties will take steps to protect those in fraternity houses," Colt's lawyer, Jeffrey Beeler, told the *Globe*.

The house first became aware of the suit filed against DU on Wednesday morning, Steinheider said.

"We haven't been served the official papers for the case," he said.

BUY RECYCLED.

AND SAVE.

When you buy products made from recycled materials, recycling keeps working. To find out more, call 1-800-CALL-EDF.

This space donated by *The Tech*

Join *Technique!*

(The MIT Yearbook)

Photography

Layout

Design

Writing

No experience necessary!

Free food!

Free film!

Free fun!

Take (better) pictures with your 35mm camera. Learn how to use medium format or 4x5 cameras. Write about current events, MIT, or the funniest thing you've ever seen. Develop your own black and white film and print your own black and white pictures. Create beautiful layouts. Learn (or share your knowledge) about studio lighting, business strategies, landscapes, pinhole cameras, aesthetic design, portraits, photojournalism, and more, all at *Technique!* (And help us publish a yearbook, in the meantime).

Not sure how you'd like to help out? No problem... Stop by and talk to us, and we'll tell you about all the great things there are to do here. It's a lot of fun. (Really!)

Technique is having an

OPEN HOUSE!

This Saturday, 12:00 noon - 5:00 pm
Student Center, Room 451

<http://web.mit.edu/yearbook/www/~x3-2980~technique@mit.edu>

RED MEAT

the wet snap of an oiled strap

from the secret files of
Max Cannon



CLASSIFIED ADVERTISING

For Sale
For Sale: 87 Toyota Corolla: 117,500 miles, manual, AC, tape, good condition. For sale by original owner. 2500 firm. (617) 547-6792

Help Wanted
Visual C/Visual Basic Programmers wanted, work at school or our office. Exciting Global Positioning System software. Salary negotiable, full or part-time. <http://www.teletype.com/gps>, 734-9700. Email resume to ed@teletype.com.

Information
EARN \$100,000 PLUS!!!
Manufacturer will provide funding to start your own business with \$35 investment. Good opportunity with unique high-tech product everyone needs! Toll free 24 hour 1-888-303-9677.

Don't Be Stupid! College dormitory phones ripping you off? Enjoy major telephone savings anytime! <http://www.BestTelephoneRates.com> 1-888-887-6898 toll free hotline

Advertising Policy
Classified ads are due at 4:30 p.m. two days before day of publication, and must be prepaid and accompanied by a complete address and phone number. Send or bring ads, with payment, to W20-483 (84 Mass. Ave., Room 483, Cambridge, MA 02139). Account numbers for MIT departments accepted. Sorry, no "personal" ads. Contact our office for more details at 258-8324 (fax: 258-8226) or ads@the-tech.mit.edu.

\$5 per insertion per unit of 35 words.

Commonly Unbearable.
Dangerously Believable.
Subsequently Fatal.

at Cambridge, MA
UNTREATED DEPRESSION
<http://www.save.org>



Welcome to MIT (or welcome back) and welcome to intriguing reading!
The MIT Press Bookstore features everything published by The MIT Press and **a whole lot more:**

- other publishers' books in our speciality areas (see sidebar)
- a special focus on MIT authors
- interesting, hard-to-find magazines, cool t-shirts, postcards and gifts
- **authors@mit**, a series of talks cosponsored by MIT Libraries (as seen on CSPAN)
- BOOKNEWS, our email newsletter, keeps you posted on new books and upcoming events
- excellent, knowledgeable, and friendly customer service
- many textbooks - if your textbook is published by The MIT Press or written by an MIT affiliate, chances are we have it. we also stock other textbooks upon professors' requests.

Welcome to big savings too!

- MIT Press "hurts" - 30% to 90% OFF
- save even more with our "dollar cart" in the lobby (with an expanded selection on weekends)
- other publishers' overstocks - 20% to 80% OFF
- regular, exclusive sales and specials (like our Green Dot Sale now in progress)

Welcome to MIT! and Welcome to The MIT Press Bookstore

Intriguing New Paperbacks - published by The MIT Press - just a sampling of what we sell

- | | | |
|---|---|---|
| <p>HAMLET ON THE HOLDECK
The Future of Narrative in Cyberspace
Janet H. Murray
\$15.00</p> | <p>HAL'S LEGACY
2001's Computer as Dream and Reality
edited by David G. Stork
foreword by Arthur C. Clarke
\$17.50</p> | <p>THE CEREBRAL CODE
Thinking A Thought in the Mosaics of the Mind
William H. Calvin
\$14.00</p> |
| <p>MARSHALL MCLUHAN
The Medium and his Messenger
Philip Marchand
with a new foreword by Neil Postman
\$17.50</p> | <p>ABSTRACTING CRAFT
The Practiced Digital Hand
Malcolm McCullough
\$17.50</p> | <p>NOAM CHOMSKY
A Life of Dissent
Robert F. Barsky
\$14.00</p> |

See August's feature at <http://mitpress.mit.edu> for more!

The MIT Press Bookstore
Kendall Square T
292 Main Street
Cambridge MA 02142
617 253-5249
Mon-Fri 9-7, Thurs til 8:30,
Sat 10-6, Sun 12-6.

VISA, MasterCard, American Express, and Discover accepted.

Introductory offer
20% OFF storewide

name _____ email _____

The MIT Press Bookstore • books@mit.edu

When you join our mailing list (email or snailmail), subscribers to our mailing list receive exclusive special offers and news. Includes new and sale-priced stock. One coupon per customer. May not be combined with other offers. Expires 10.31.98

The MIT Press Bookstore



- Architecture
- Art
- Artificial Intelligence
- Business
- Cognitive Science
- Computer Science
- Critical Theory
- Design
- Economics
- Linguistics
- Media & Culture
- Neuroscience
- Philosophy
- Photography
- Science, Technology & Society

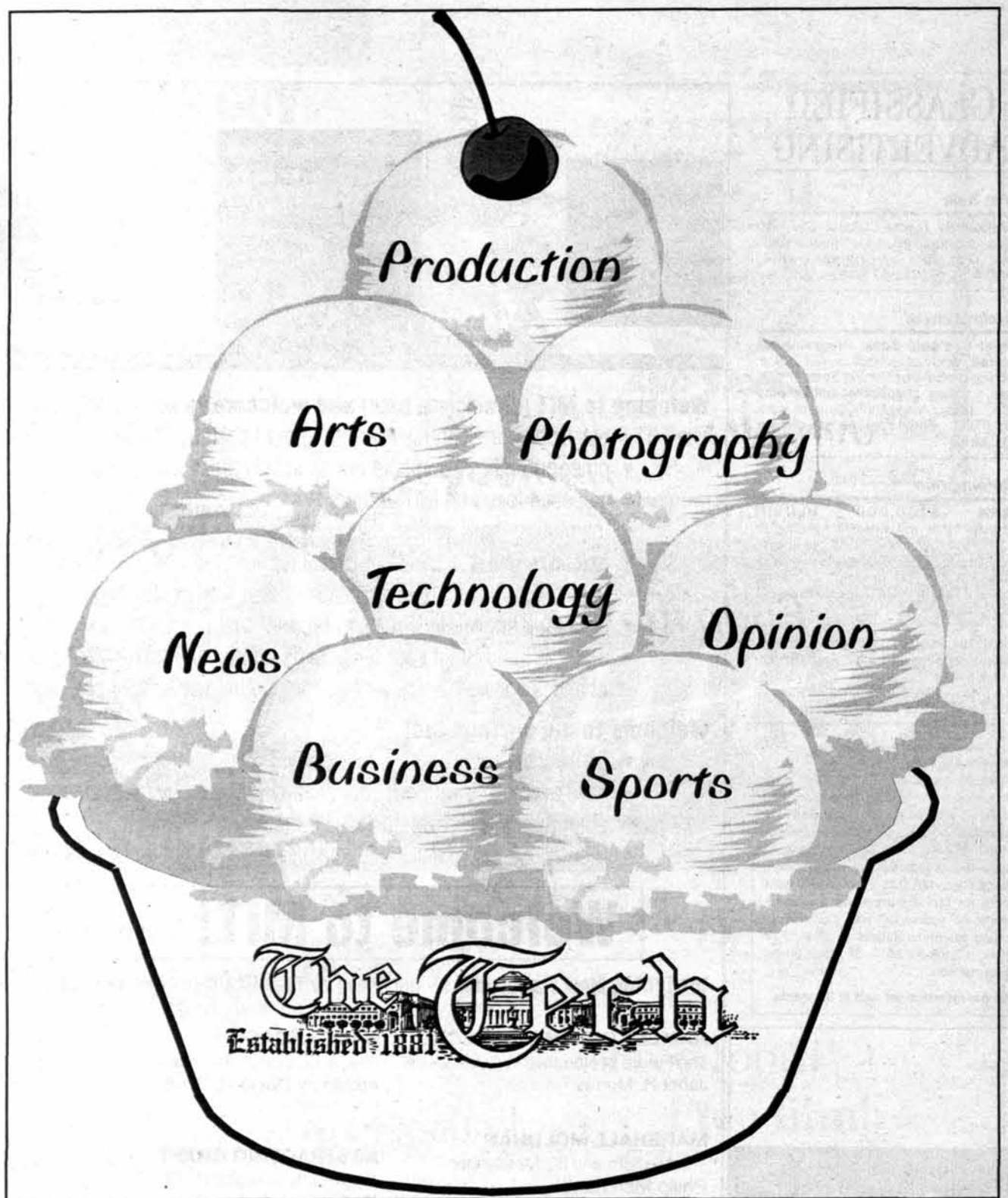
<http://mitpress.mit.edu/bookstore>

books@mit.edu

Interested in what goes on at
The Tech?

Here's how to get
the scoop on our staff...

FREE TOSCI'S



Open House
Sunday, September 13,
2 – 5 pm
Student Center, Room 483